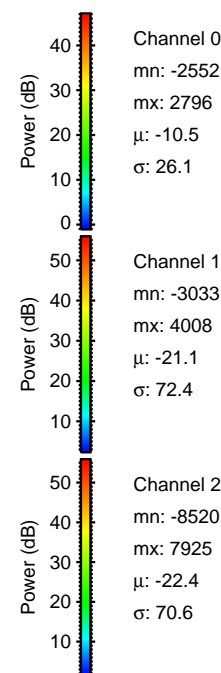
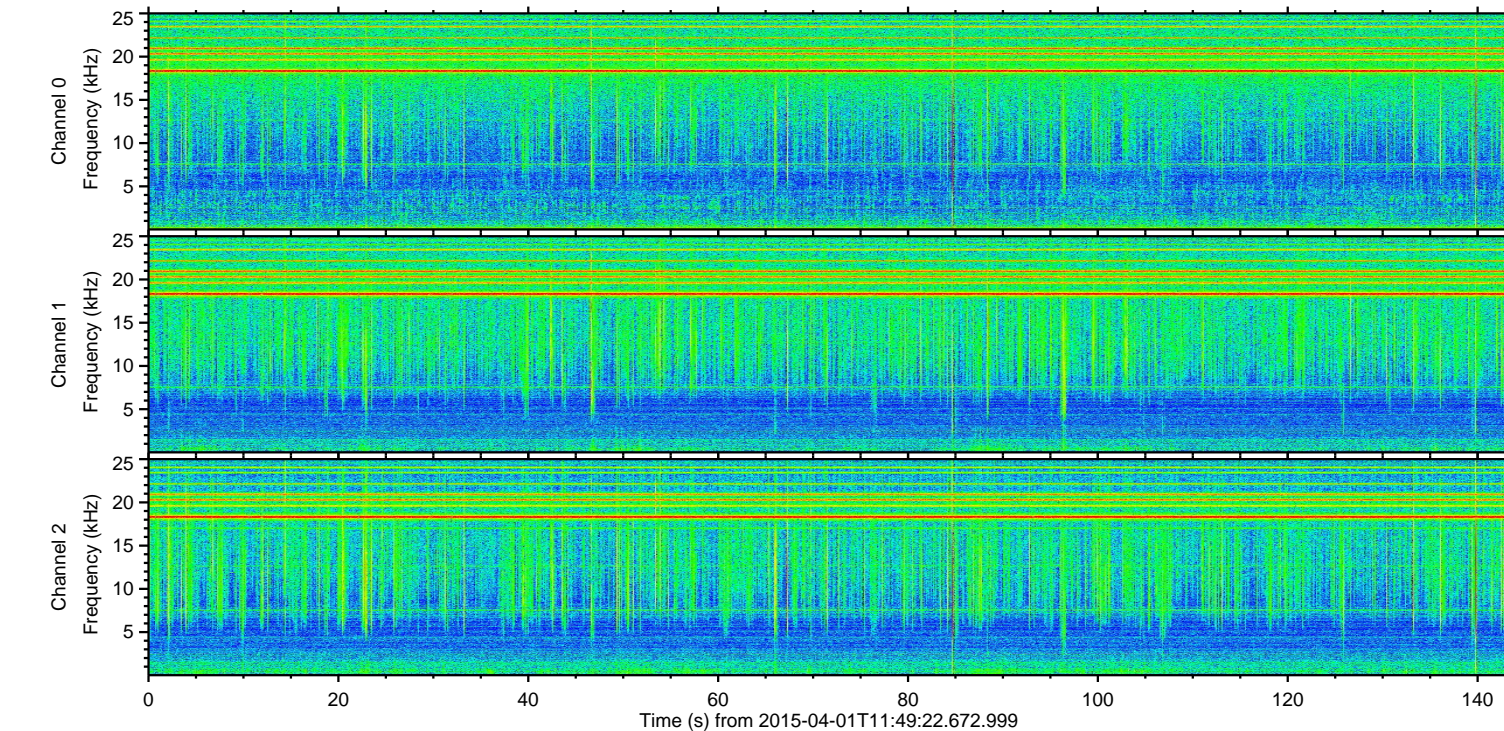
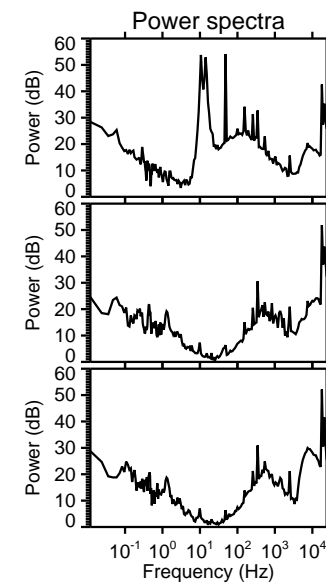
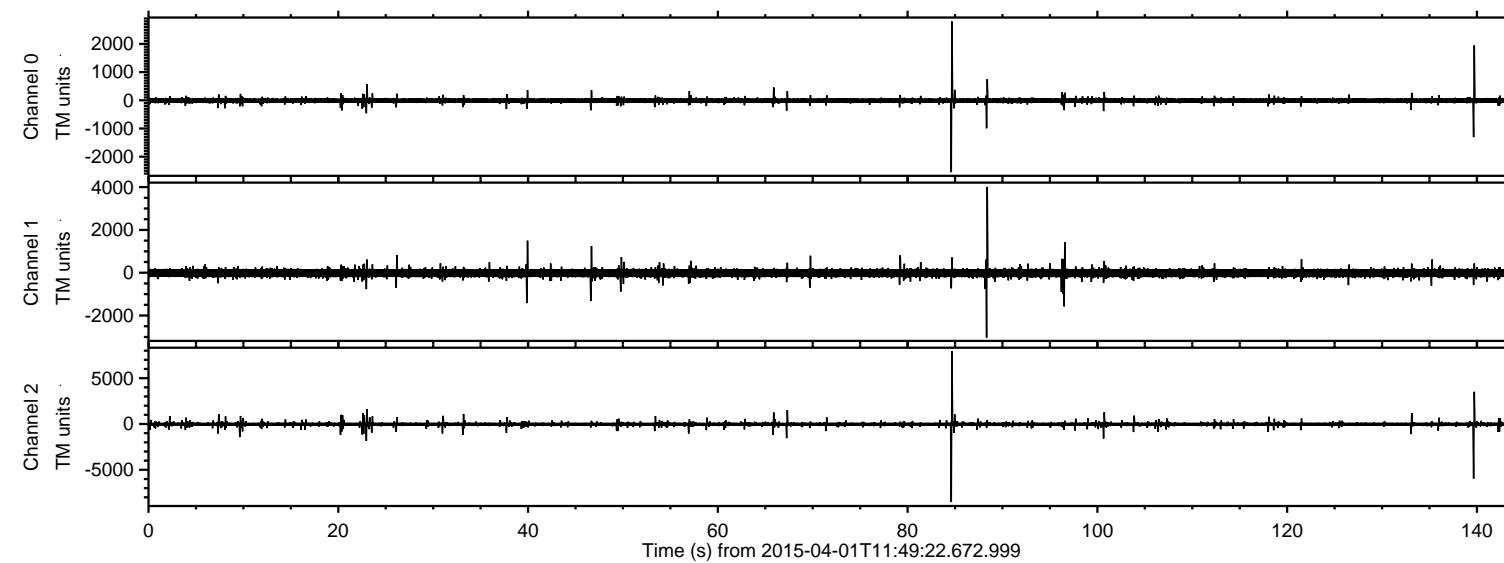


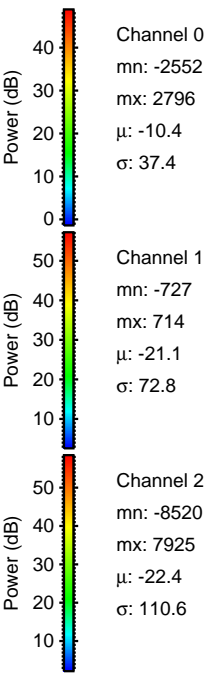
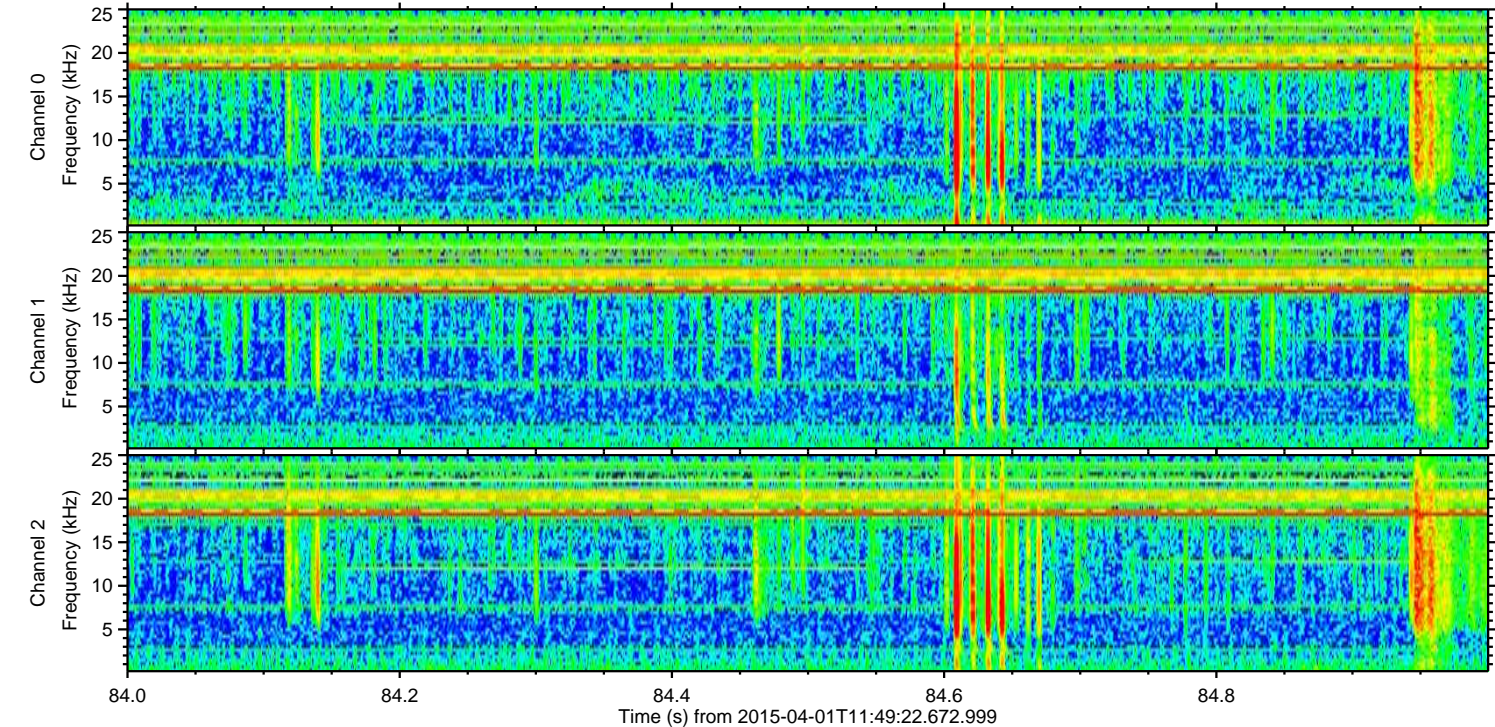
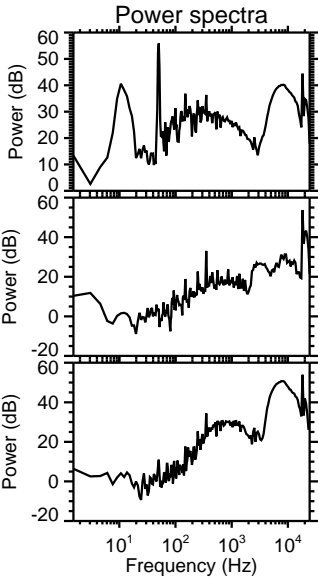
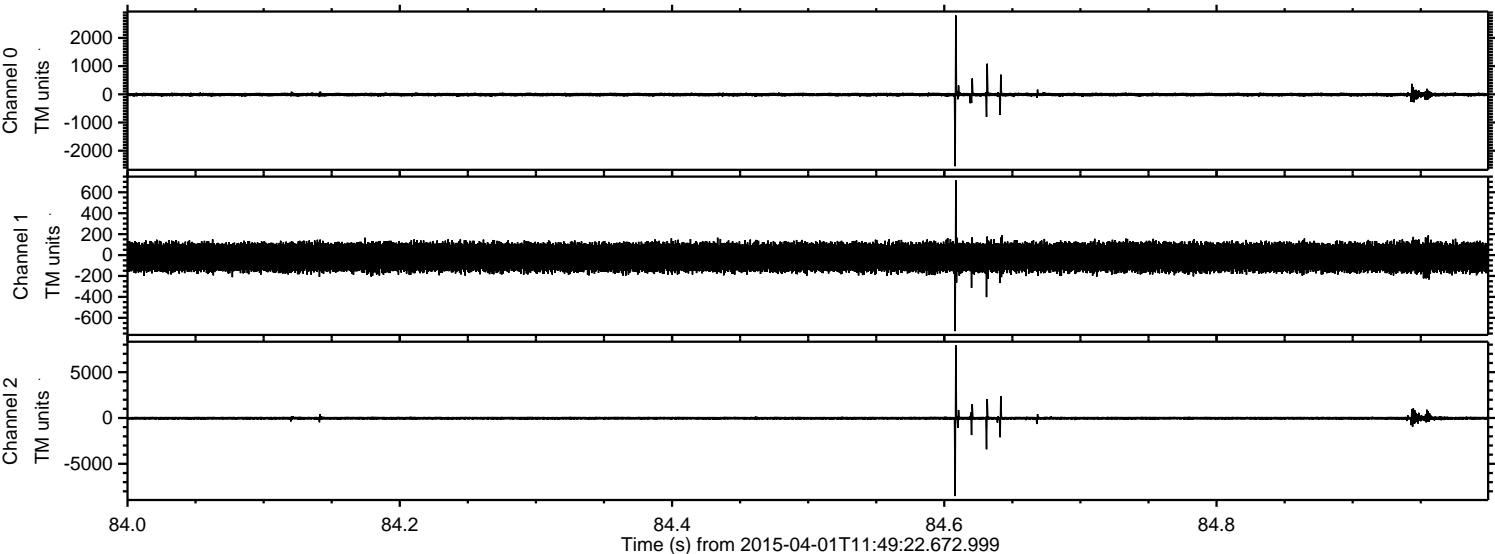
# ELMAVAN 3D WAVEFORMS (Measured data sampled at 50 kHz) 49790 packets of 144 samples from 2015-04-01T11:49:22.672.999.

Processed Wed Apr 1 13:56:26 2015 by ELM ver.2012-10-06 from 001\_\_elm20150401\_114921\_\_dat00.bin





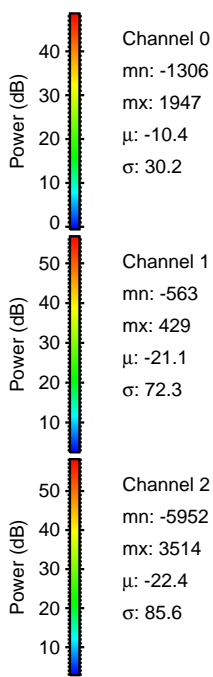
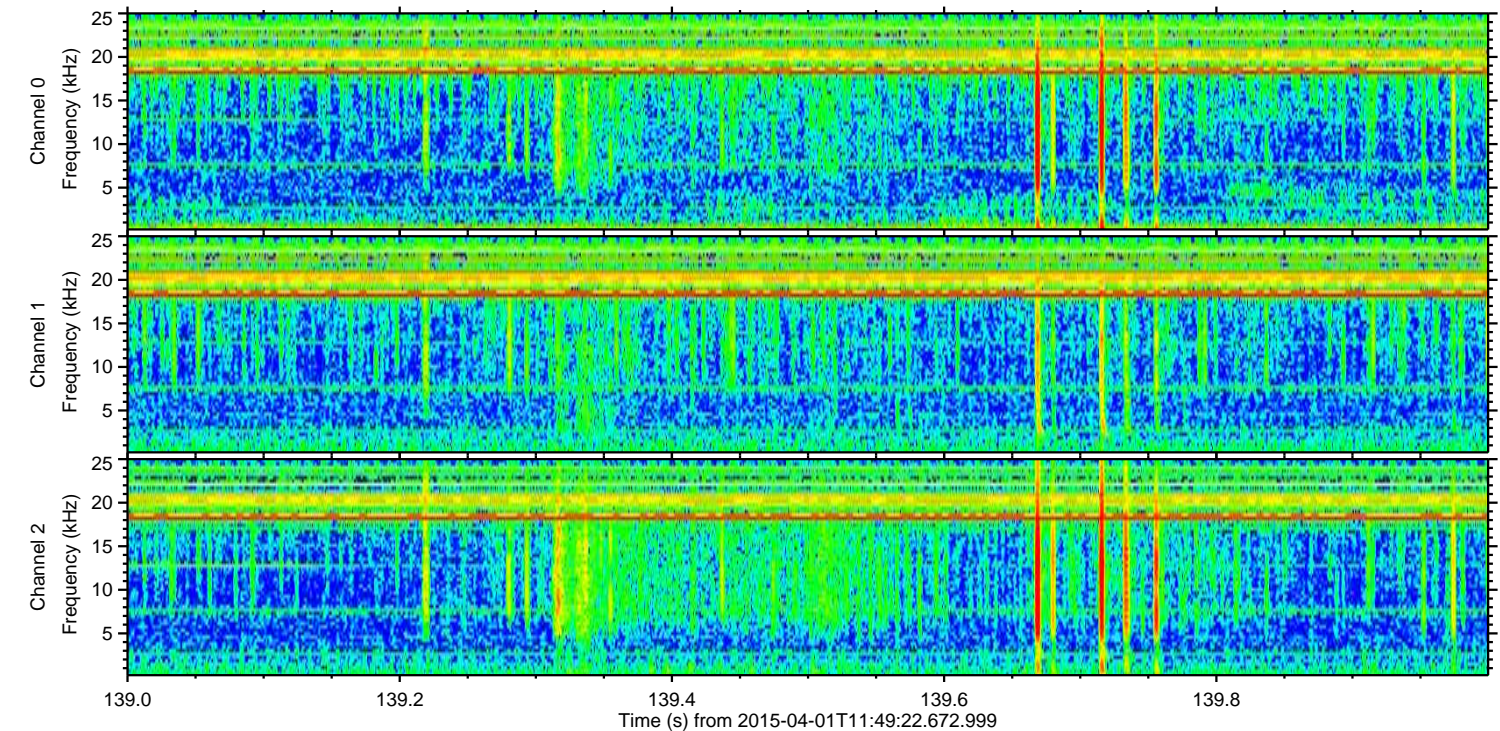
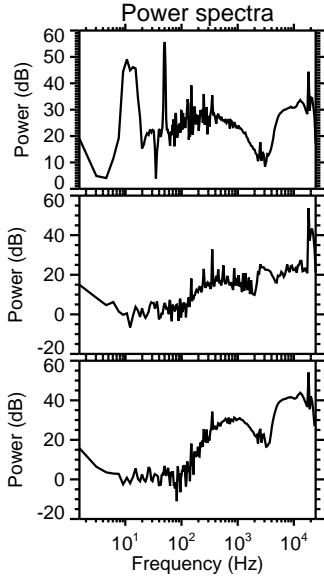
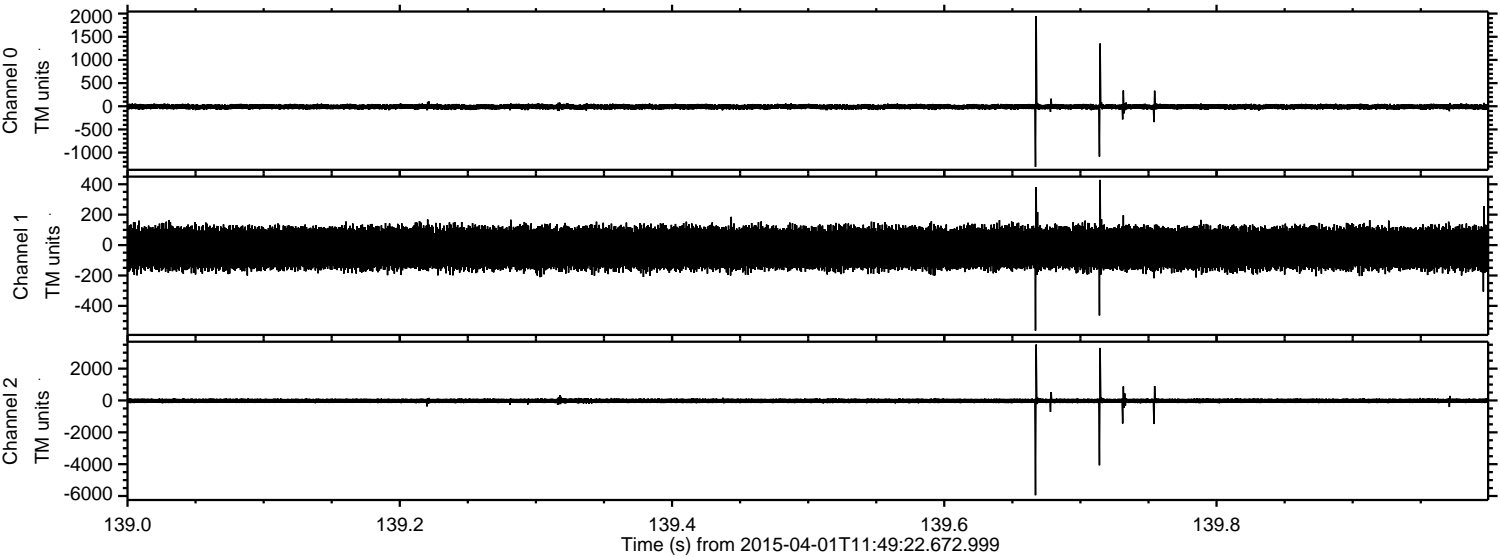
Processed Wed Apr 1 13:56:37 2015 by ELM ver.2012-10-06 from 001\_\_elm20150401\_114921\_\_dat00.bin





ELMAVAN 3D WAVEFORMS (Measured data sampled at 50 kHz) 49790 packets of 144 samples from 2015-04-01T11:49:22.672.999. Part 140/144

Processed Wed Apr 1 13:56:38 2015 by ELM ver.2012-10-06 from 001\_\_elm20150401\_114921\_\_dat00.bin



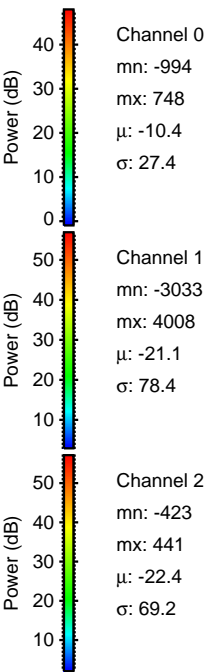
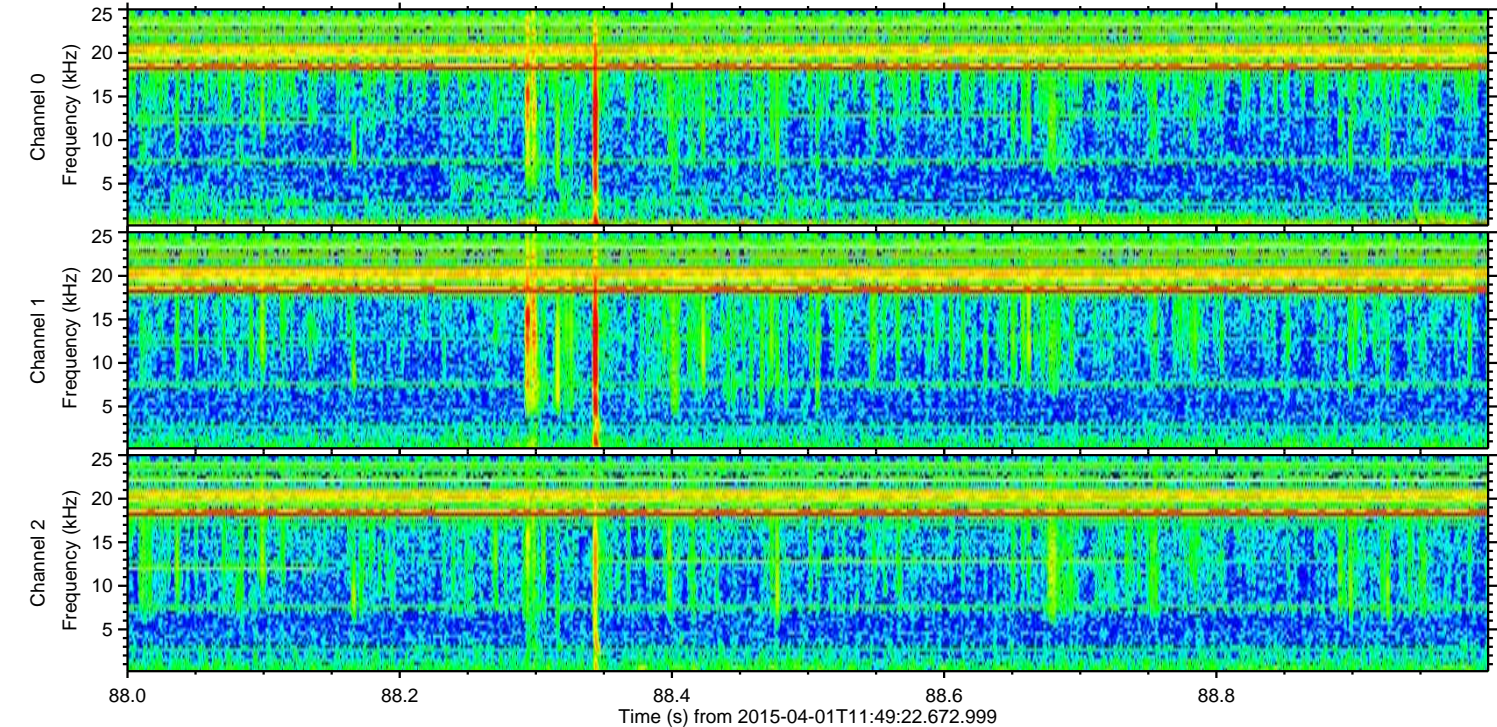
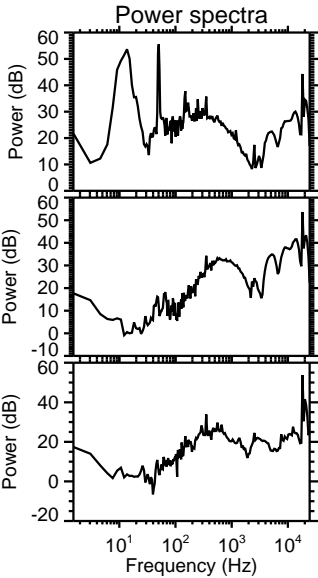
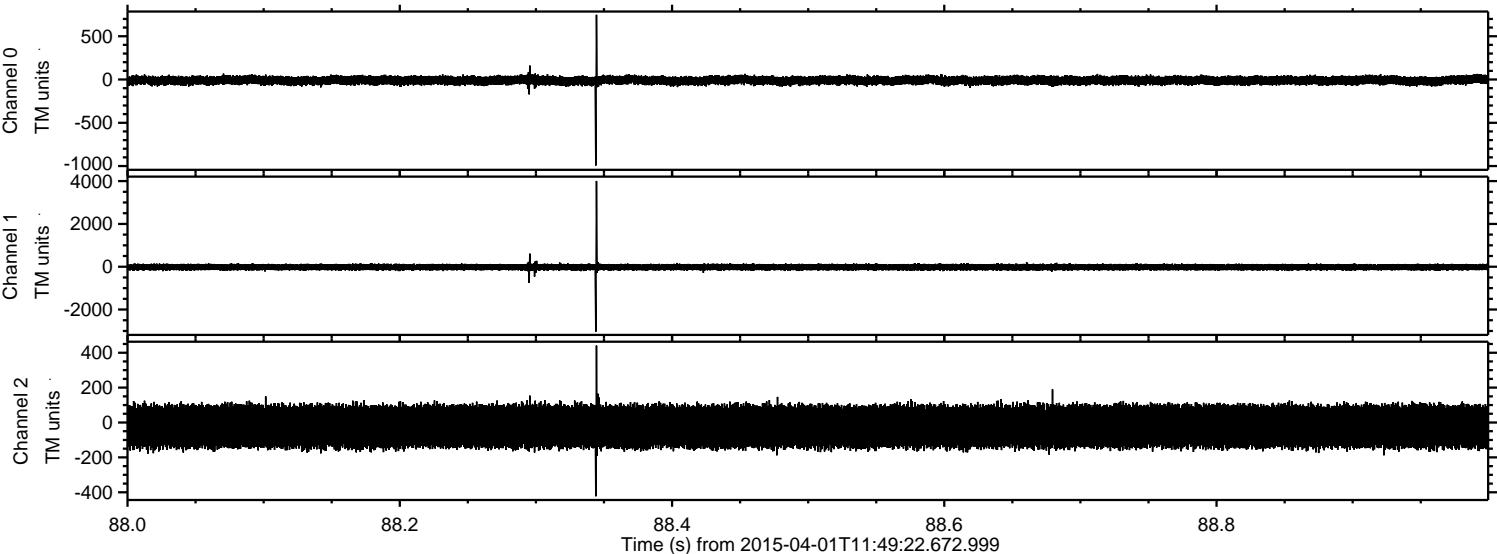
Channel 0  
mn: -1306  
mx: 1947  
 $\mu$ : -10.4  
 $\sigma$ : 30.2

Channel 1  
mn: -563  
mx: 429  
 $\mu$ : -21.1  
 $\sigma$ : 72.3

Channel 2  
mn: -5952  
mx: 3514  
 $\mu$ : -22.4  
 $\sigma$ : 85.6

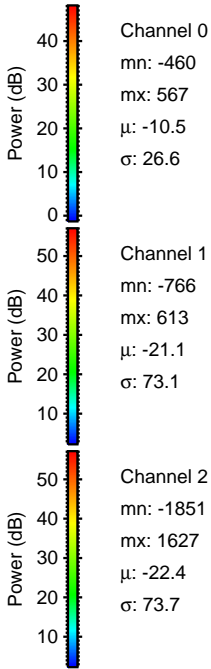
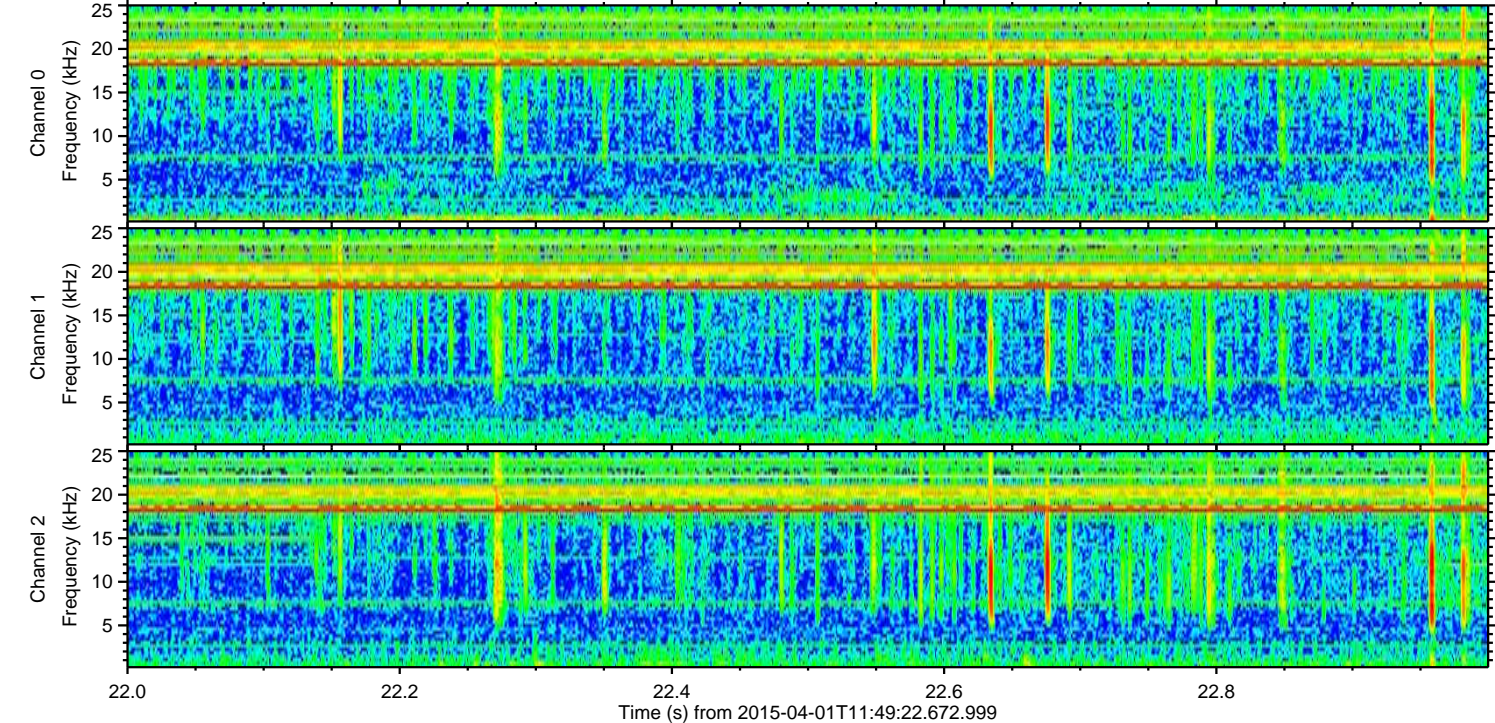
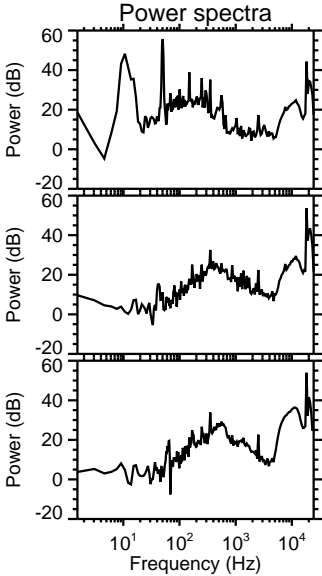
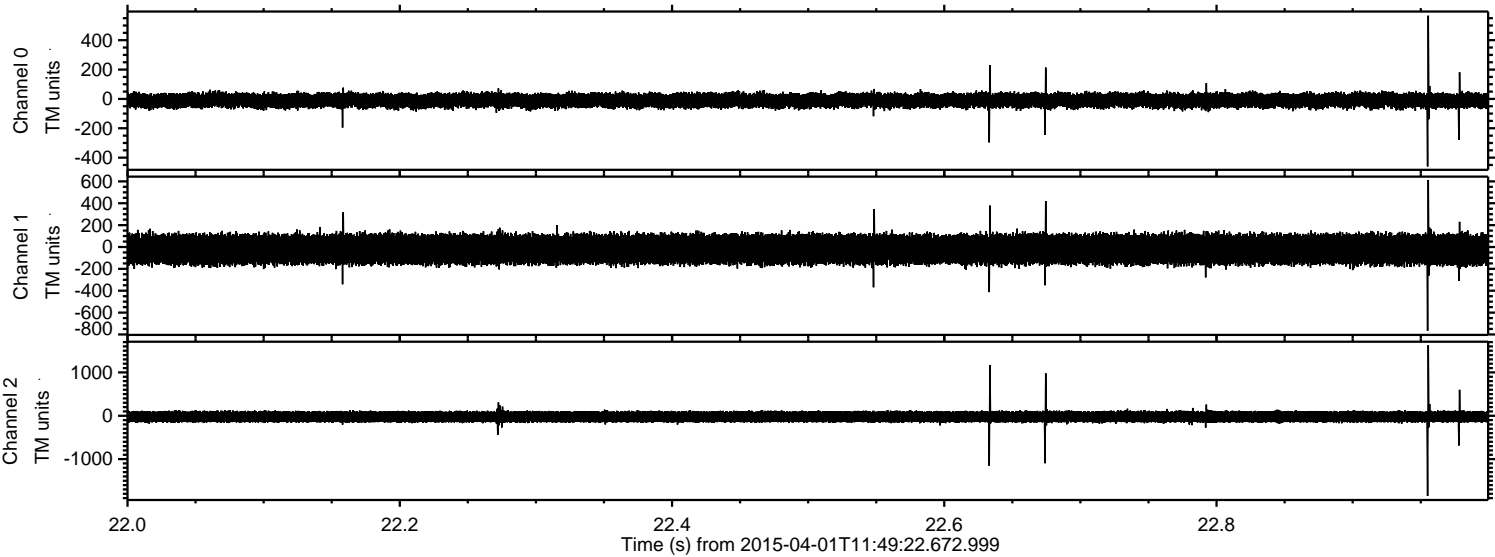


Processed Wed Apr 1 13:56:39 2015 by ELM ver.2012-10-06 from 001\_\_elm20150401\_114921\_\_dat00.bin





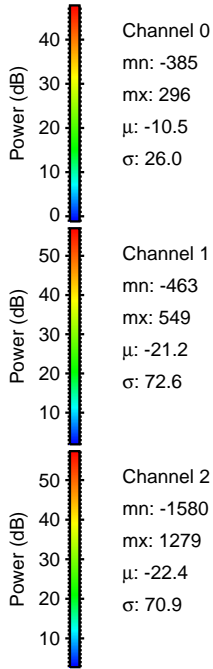
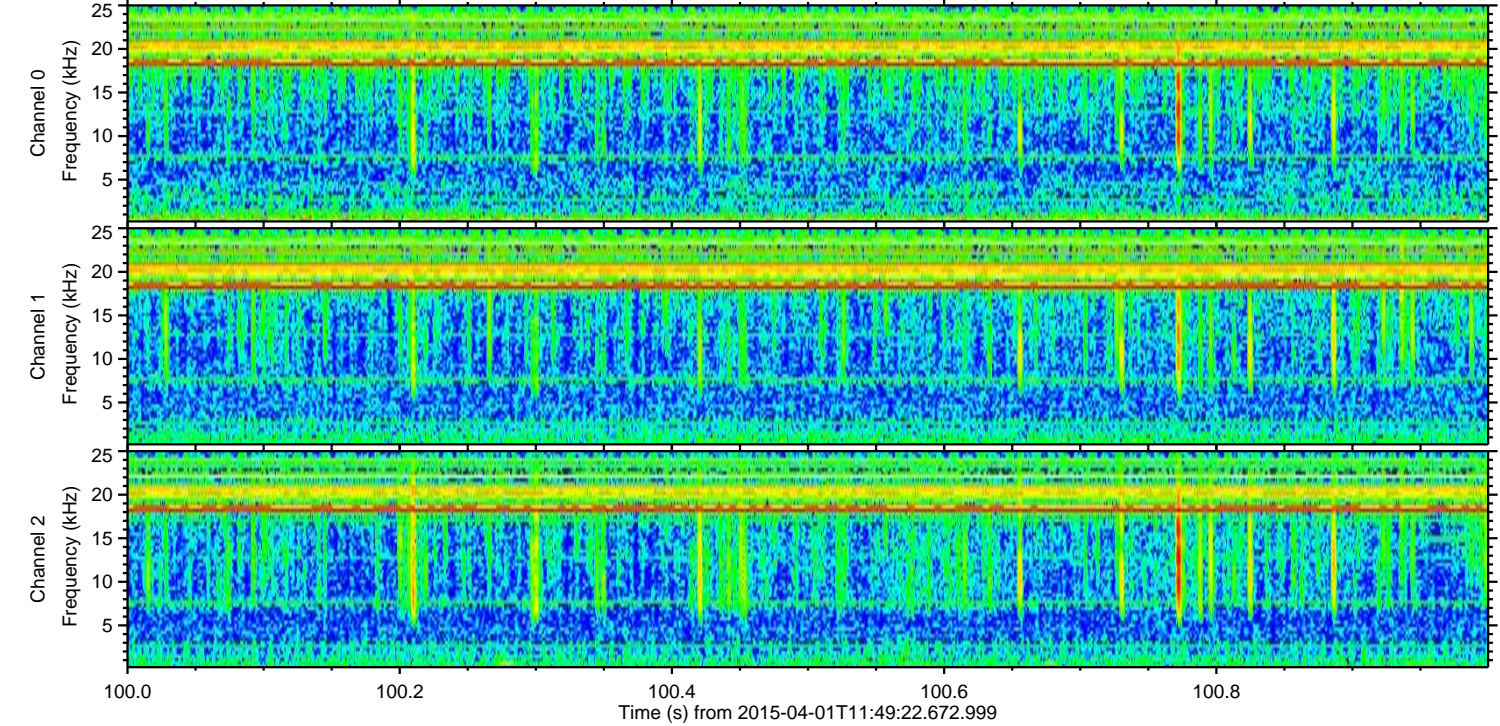
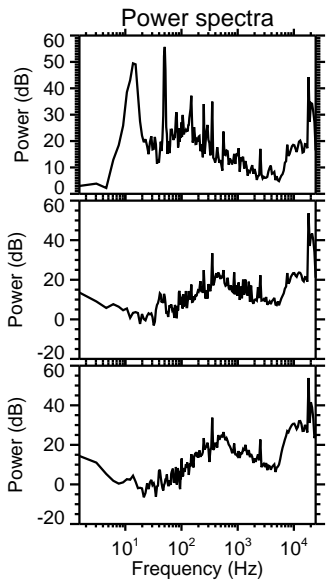
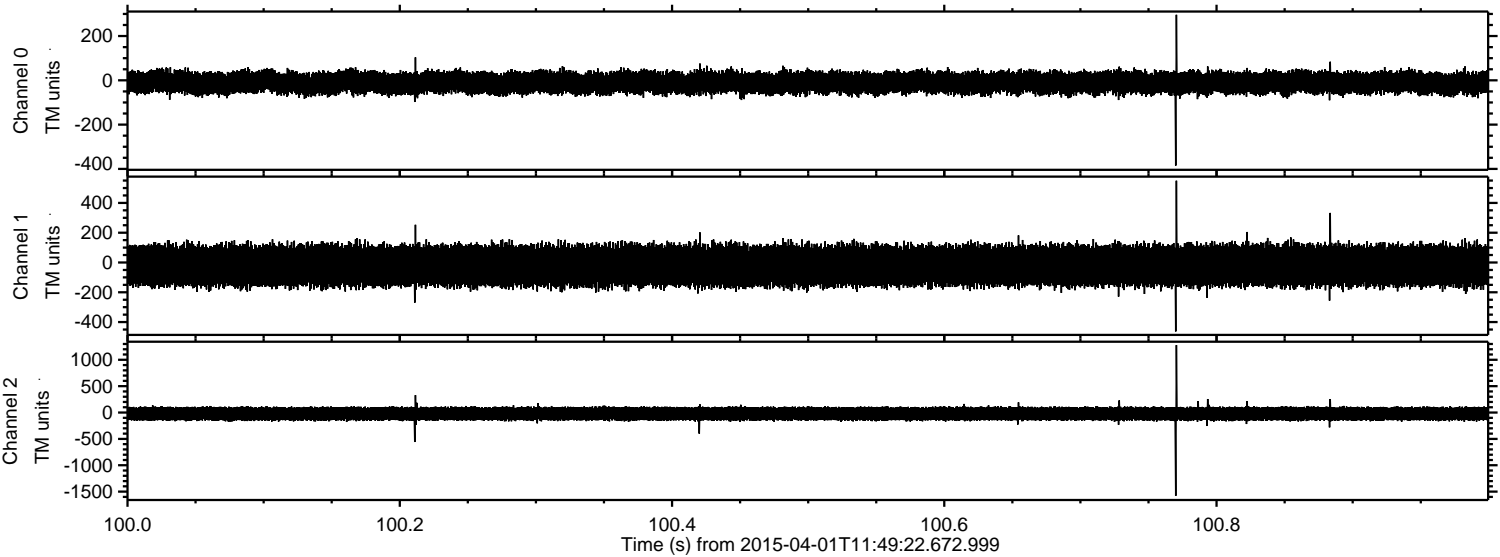
Processed Wed Apr 1 13:56:40 2015 by ELM ver.2012-10-06 from 001\_\_elm20150401\_114921\_\_dat00.bin





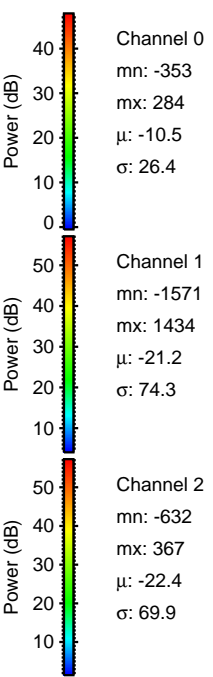
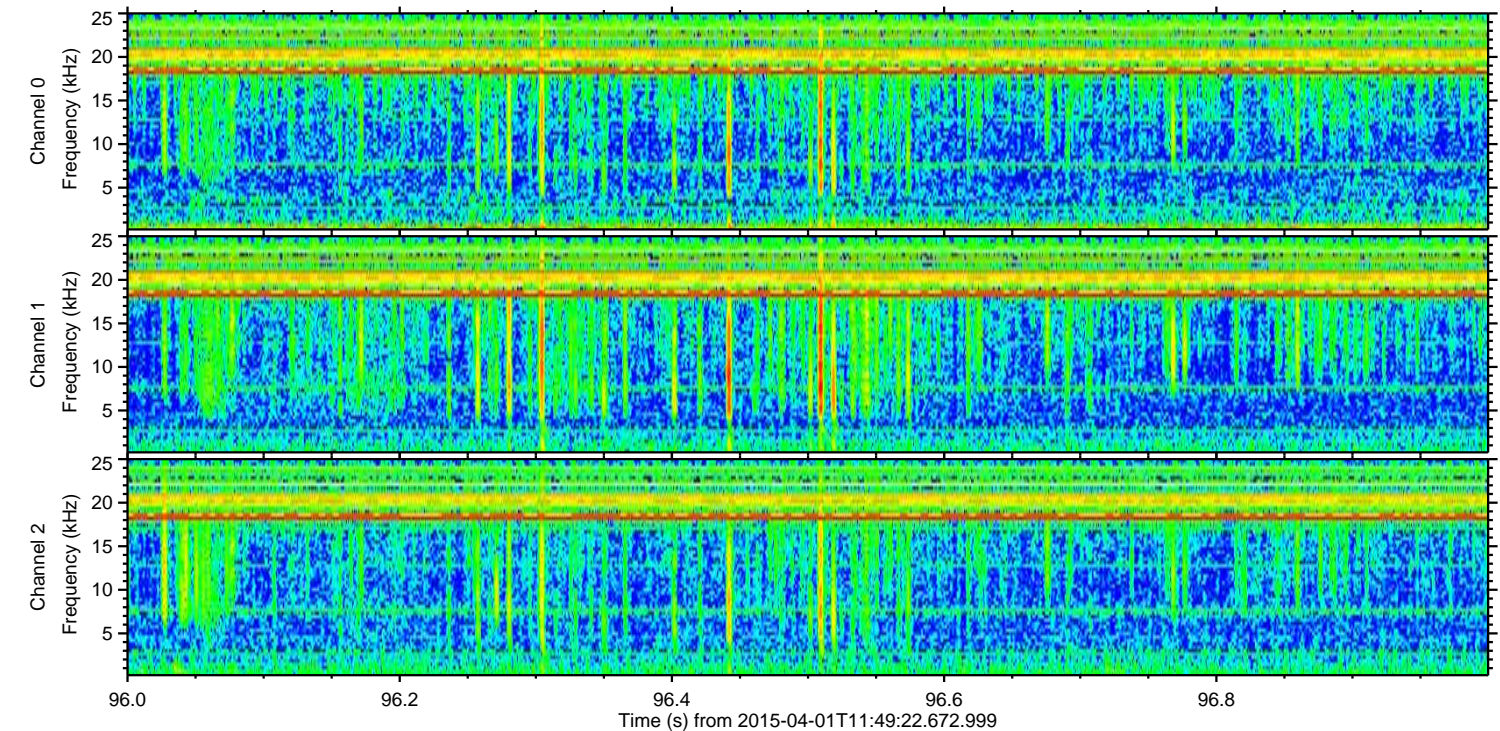
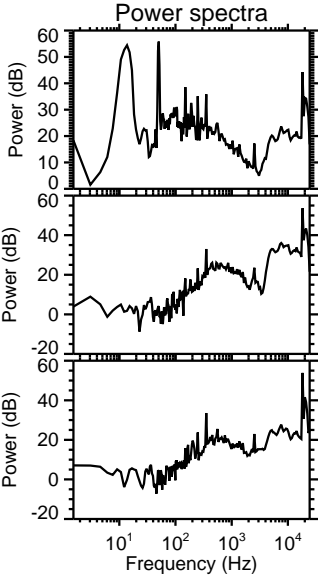
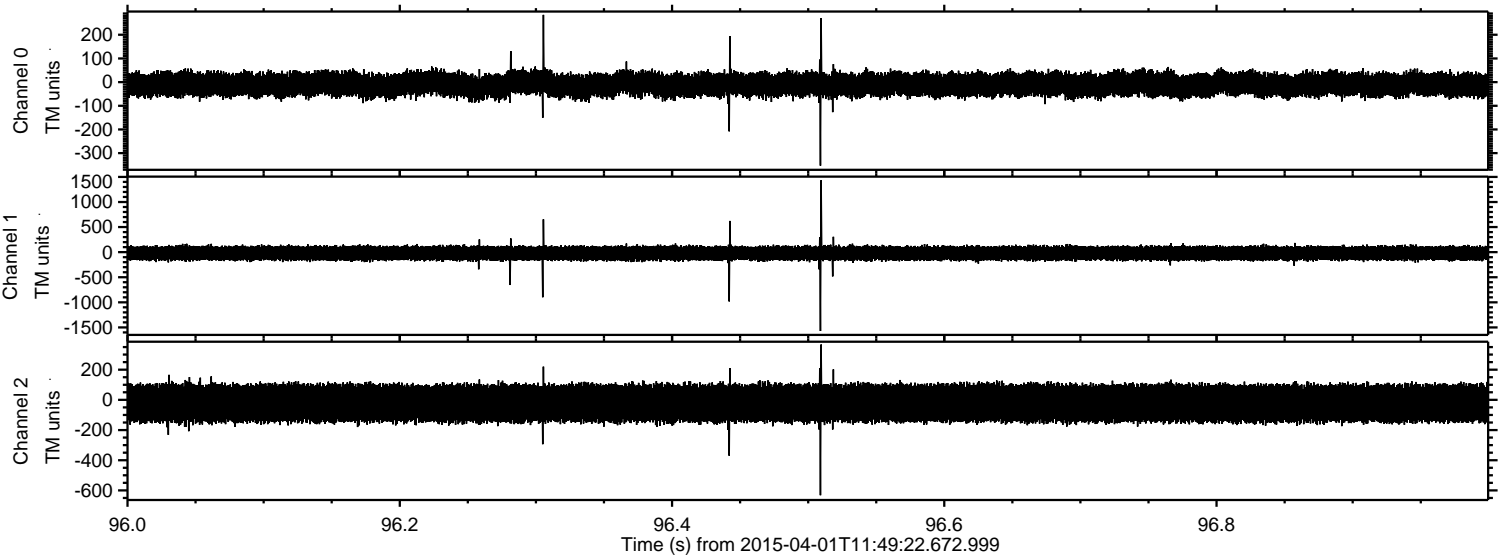
ELMAVAN 3D WAVEFORMS (Measured data sampled at 50 kHz) 49790 packets of 144 samples from 2015-04-01T11:49:22.672.999. Part 101/144

Processed Wed Apr 1 13:56:41 2015 by ELM ver.2012-10-06 from 001\_\_elm20150401\_114921\_\_dat00.bin



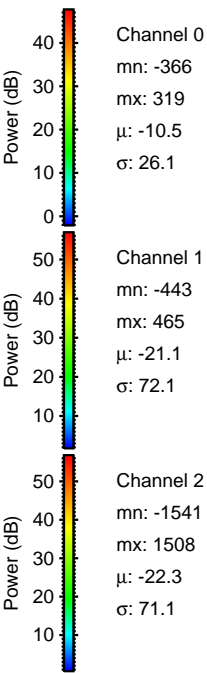
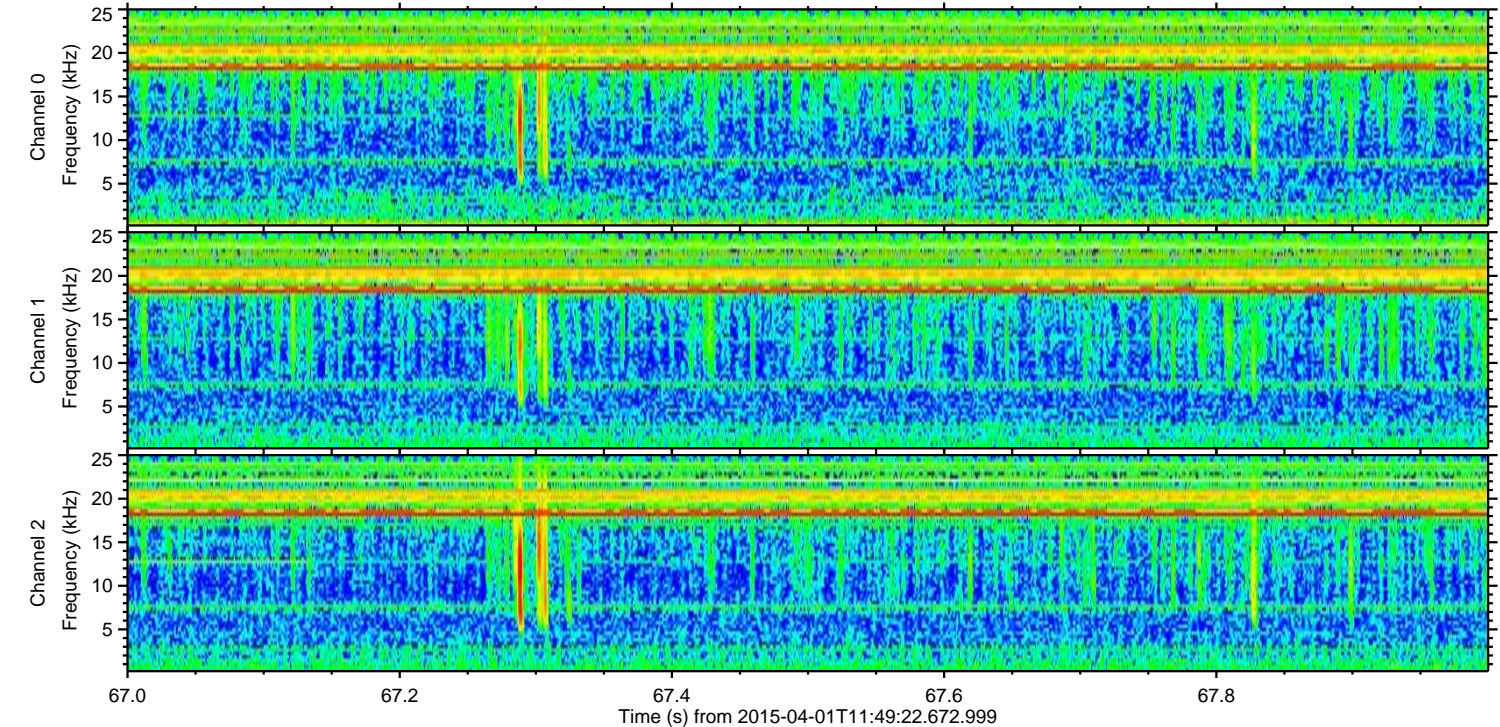
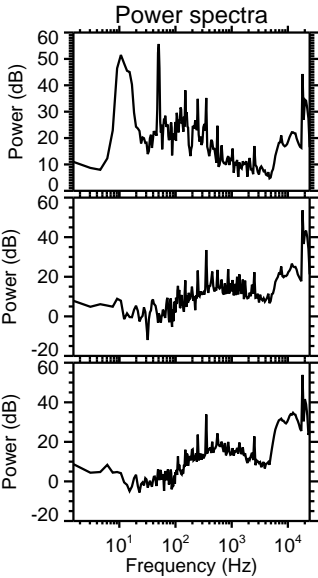
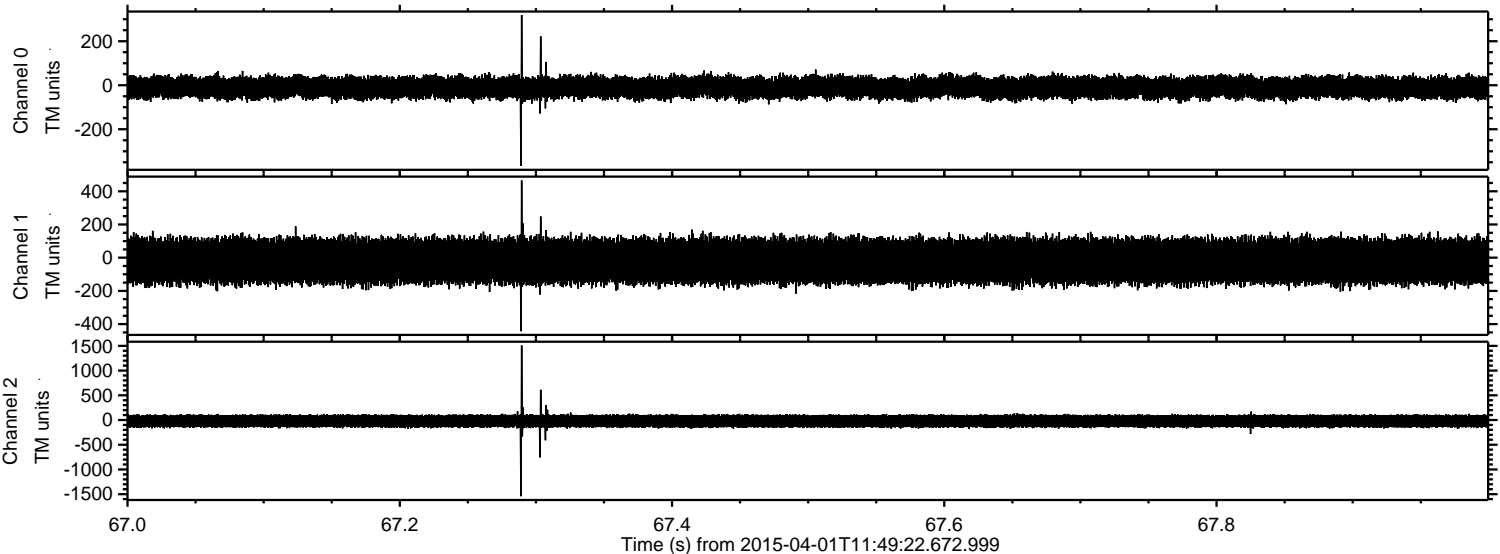


Processed Wed Apr 1 13:56:42 2015 by ELM ver.2012-10-06 from 001\_\_elm20150401\_114921\_\_dat00.bin



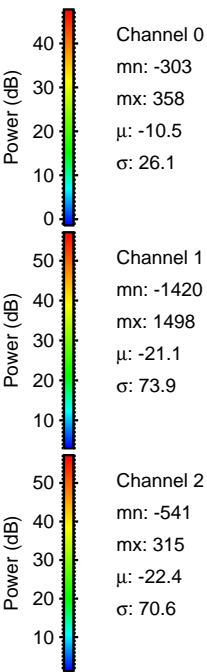
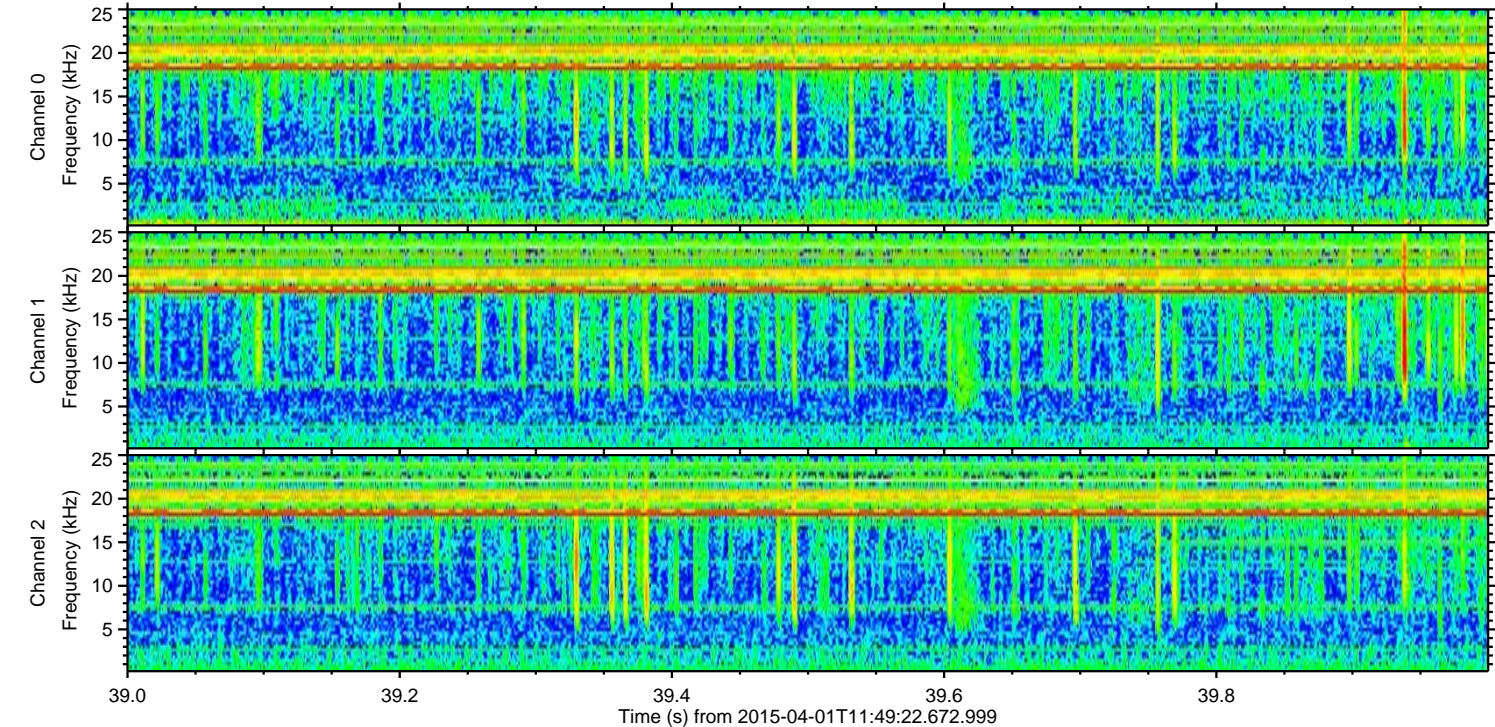
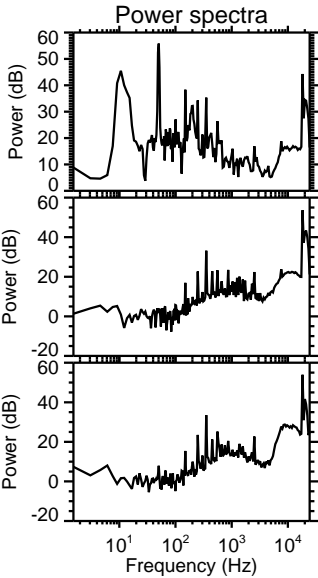
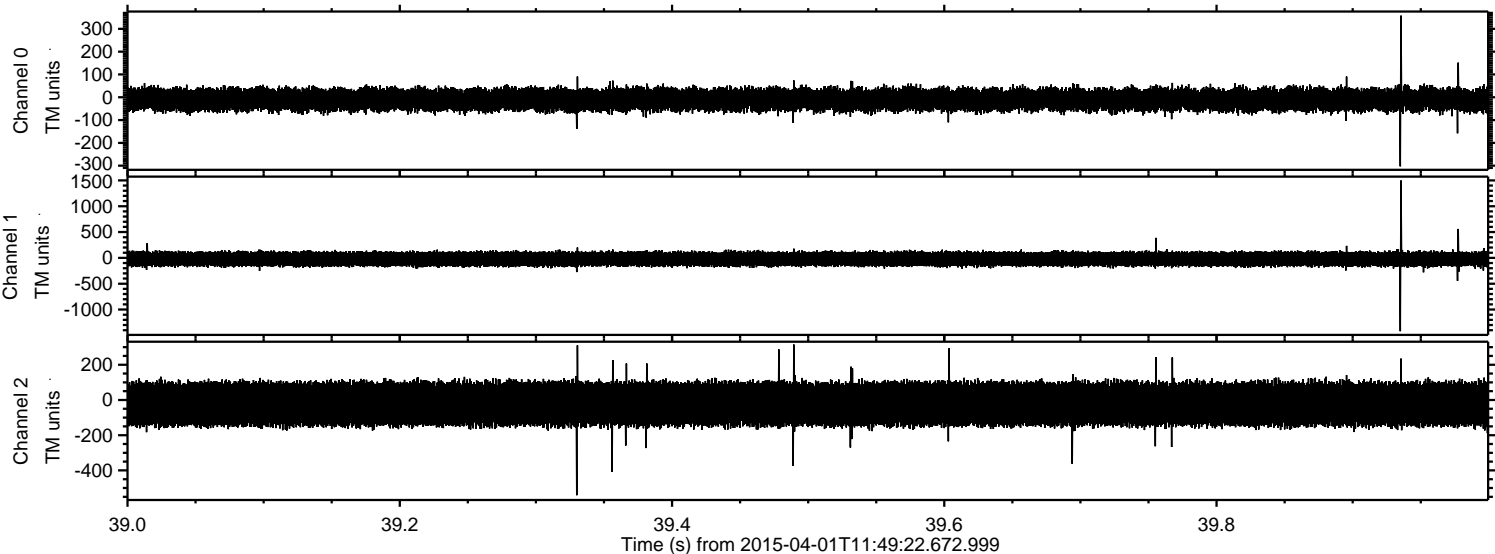


Processed Wed Apr 1 13:56:43 2015 by ELM ver.2012-10-06 from 001\_\_elm20150401\_114921\_\_dat00.bin



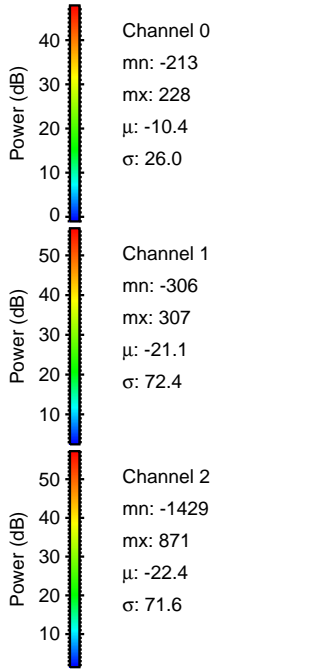
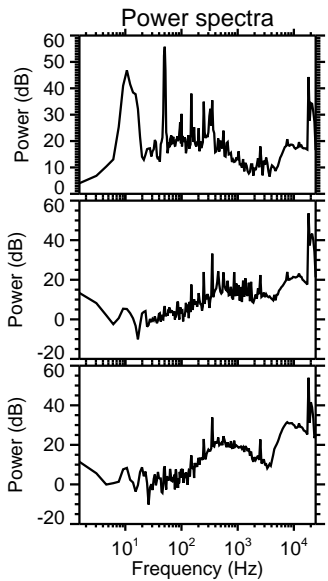
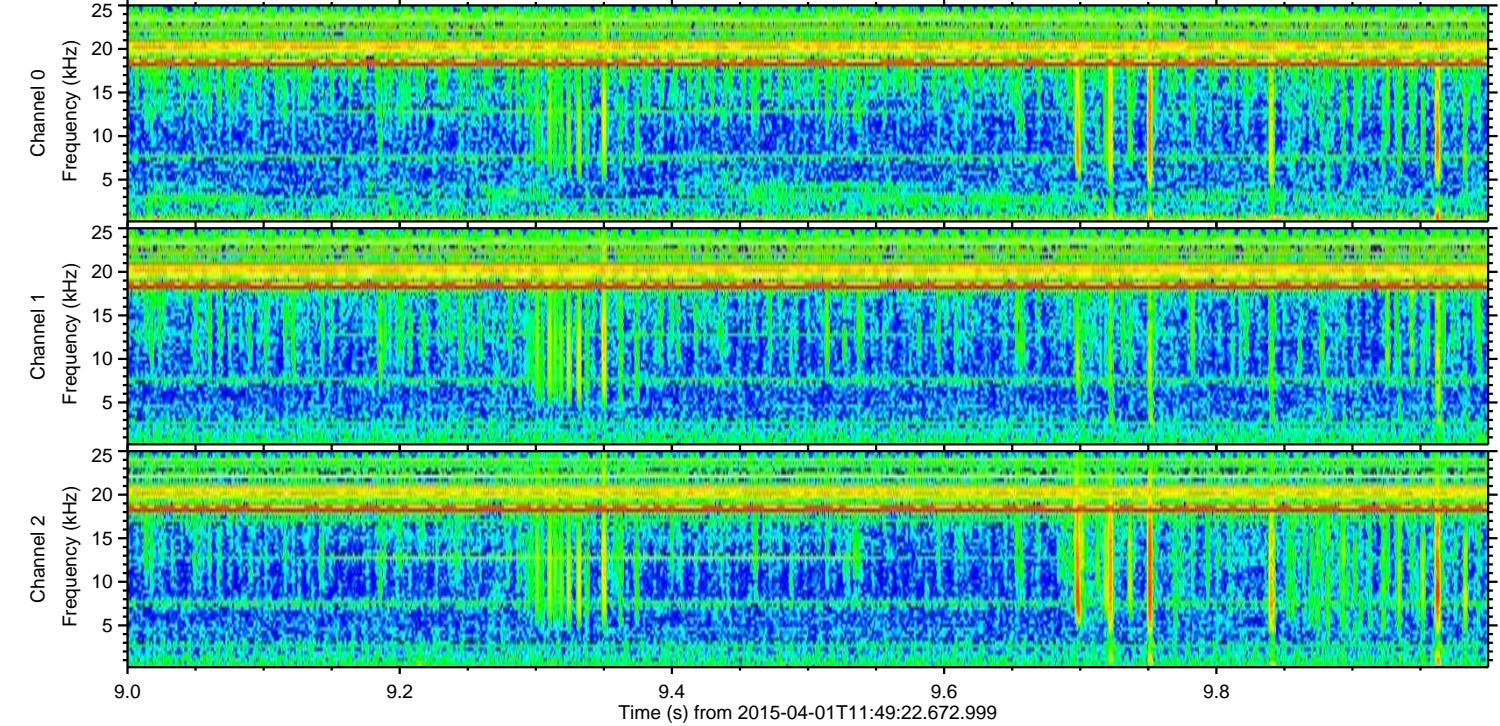
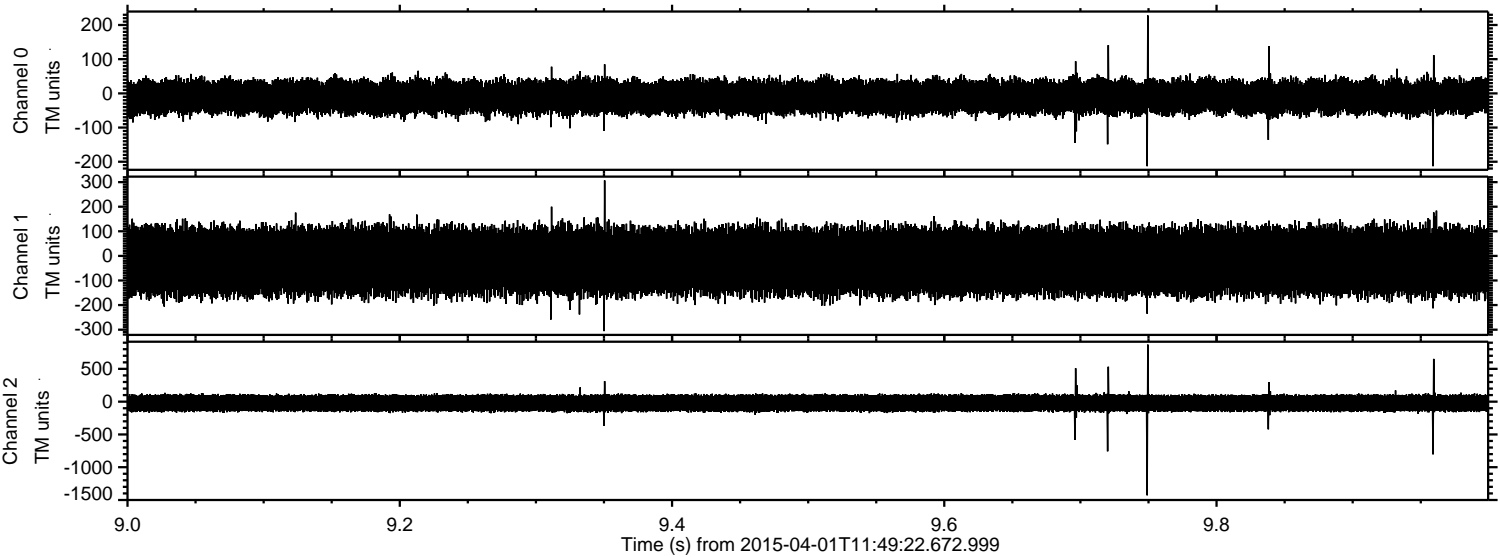


Processed Wed Apr 1 13:56:44 2015 by ELM ver.2012-10-06 from 001\_\_elm20150401\_114921\_\_dat00.bin





Processed Wed Apr 1 13:56:44 2015 by ELM ver.2012-10-06 from 001\_\_elm20150401\_114921\_\_dat00.bin





Processed Wed Apr 1 13:56:45 2015 by ELM ver.2012-10-06 from 001\_\_elm20150401\_114921\_\_dat00.bin

