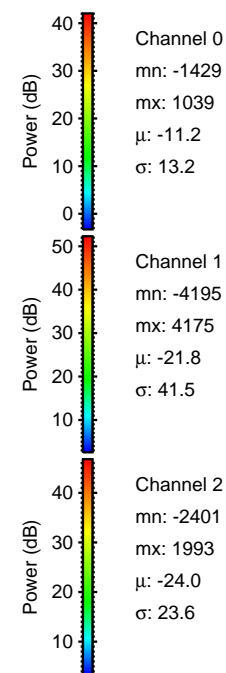
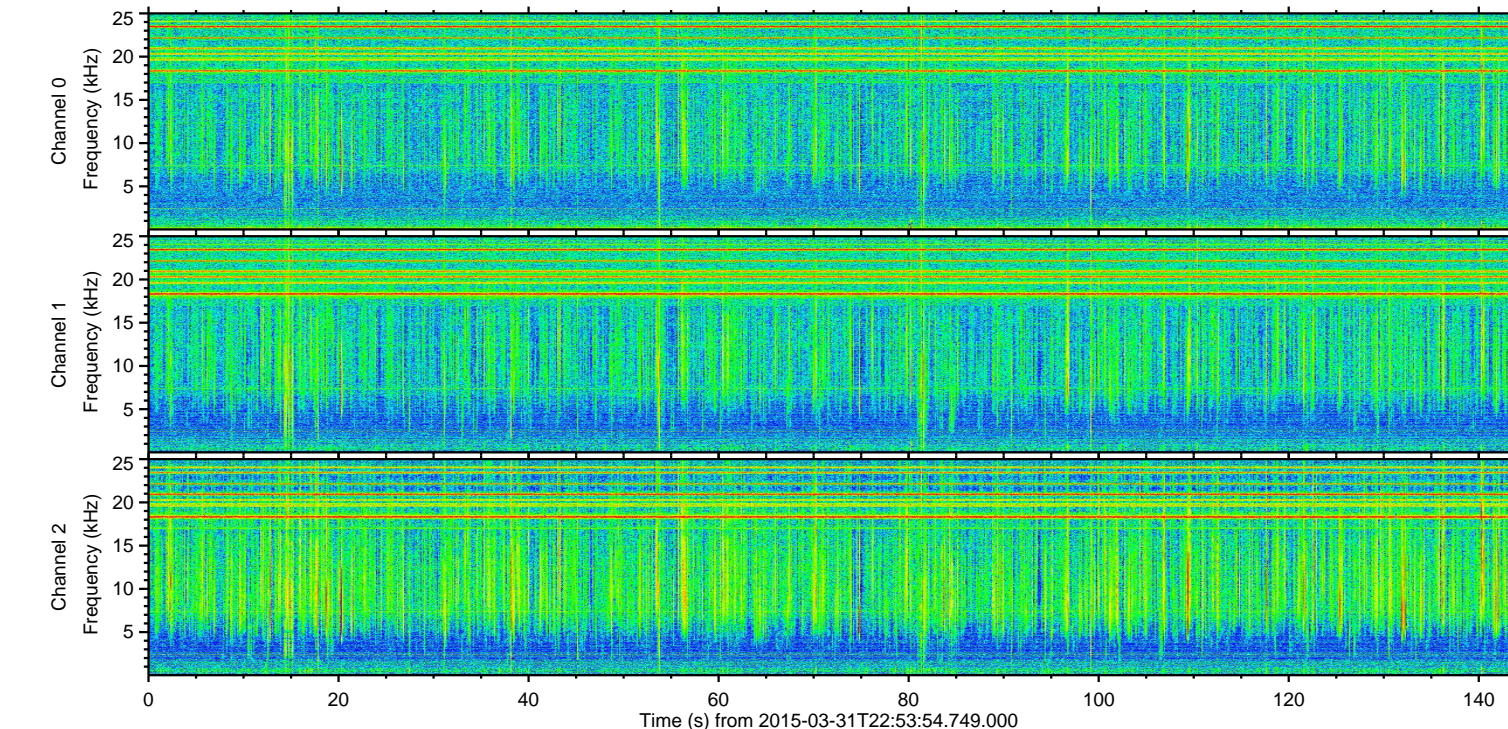
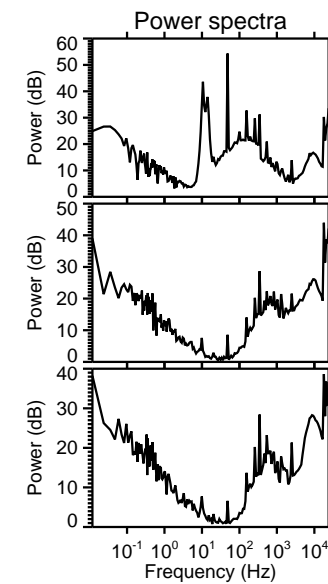
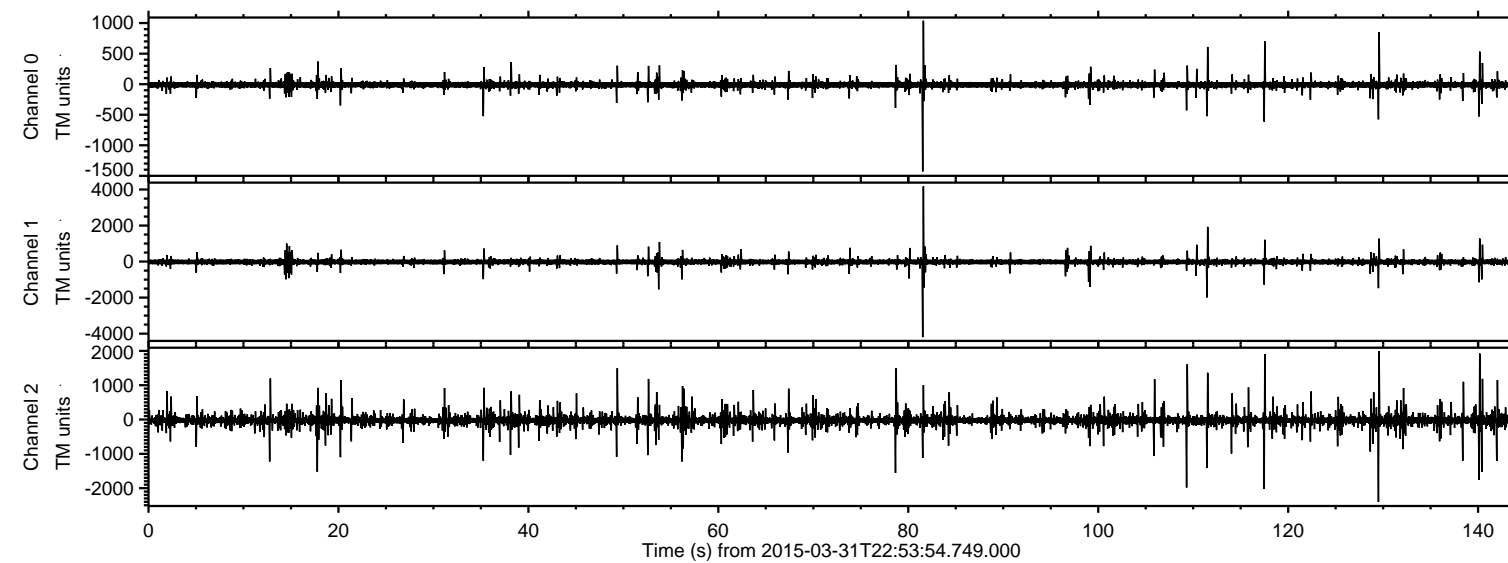


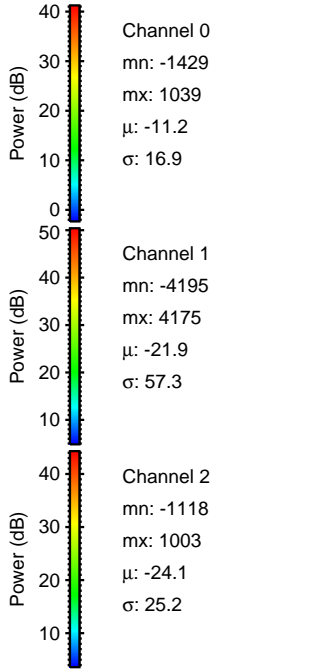
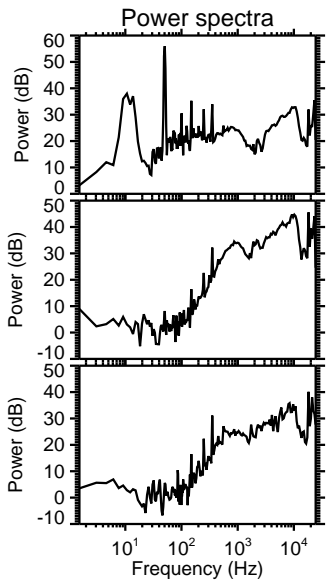
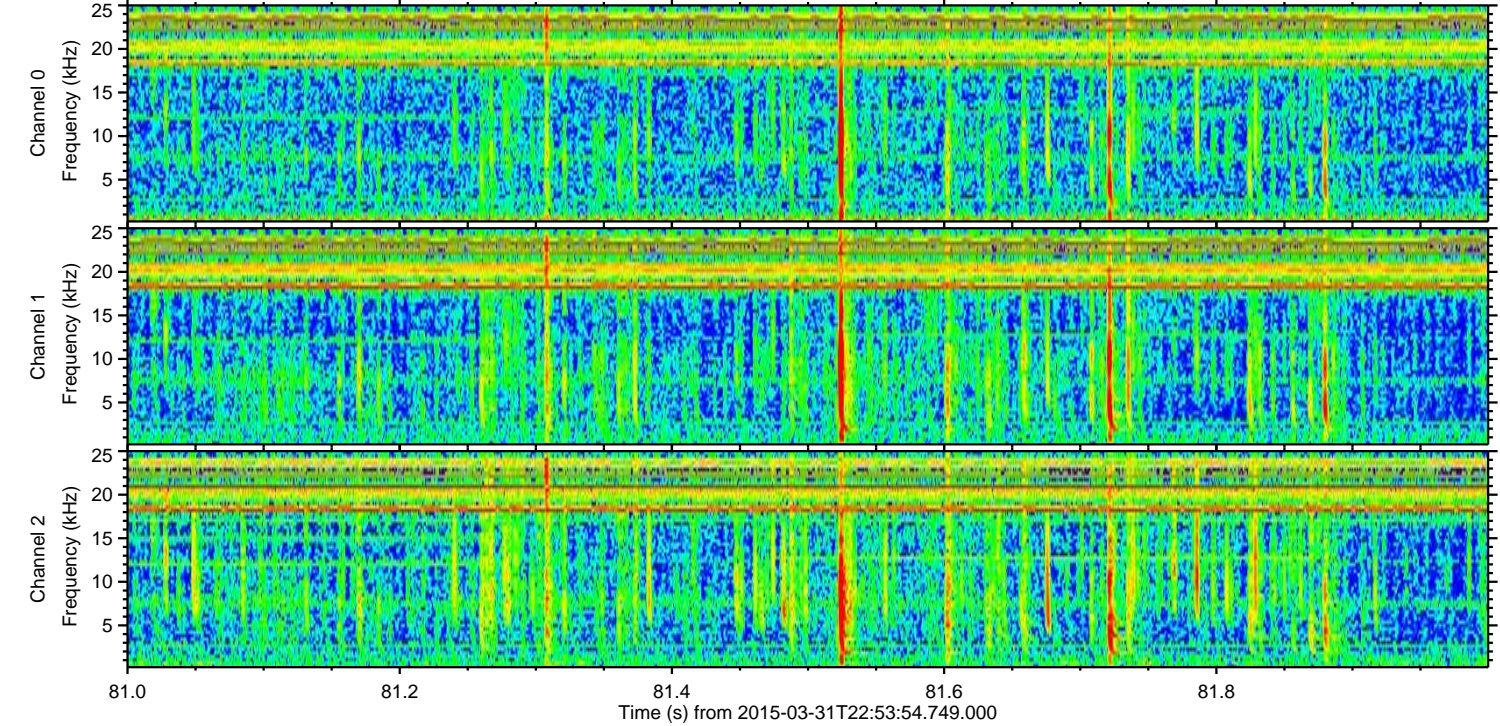
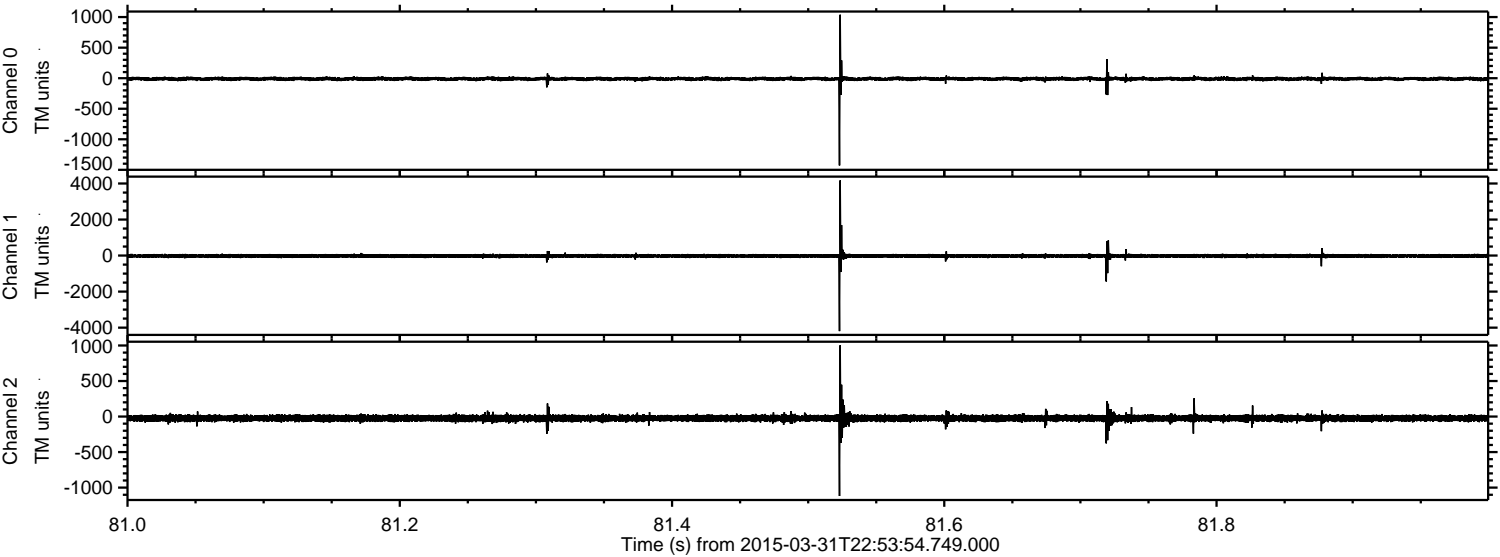
ELMAVAN 3D WAVEFORMS (Measured data sampled at 50 kHz) 49746 packets of 144 samples from 2015-03-31T22:53:54.749.000.

Processed Wed Apr 1 01:01:08 2015 by ELM ver.2012-10-06 from 001__elm20150331_225353__dat00.bin

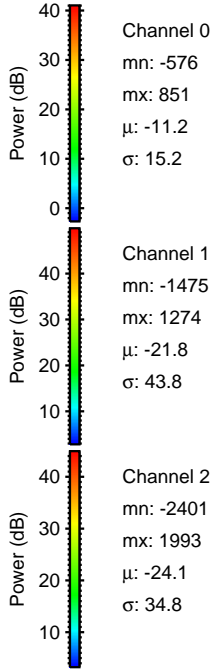
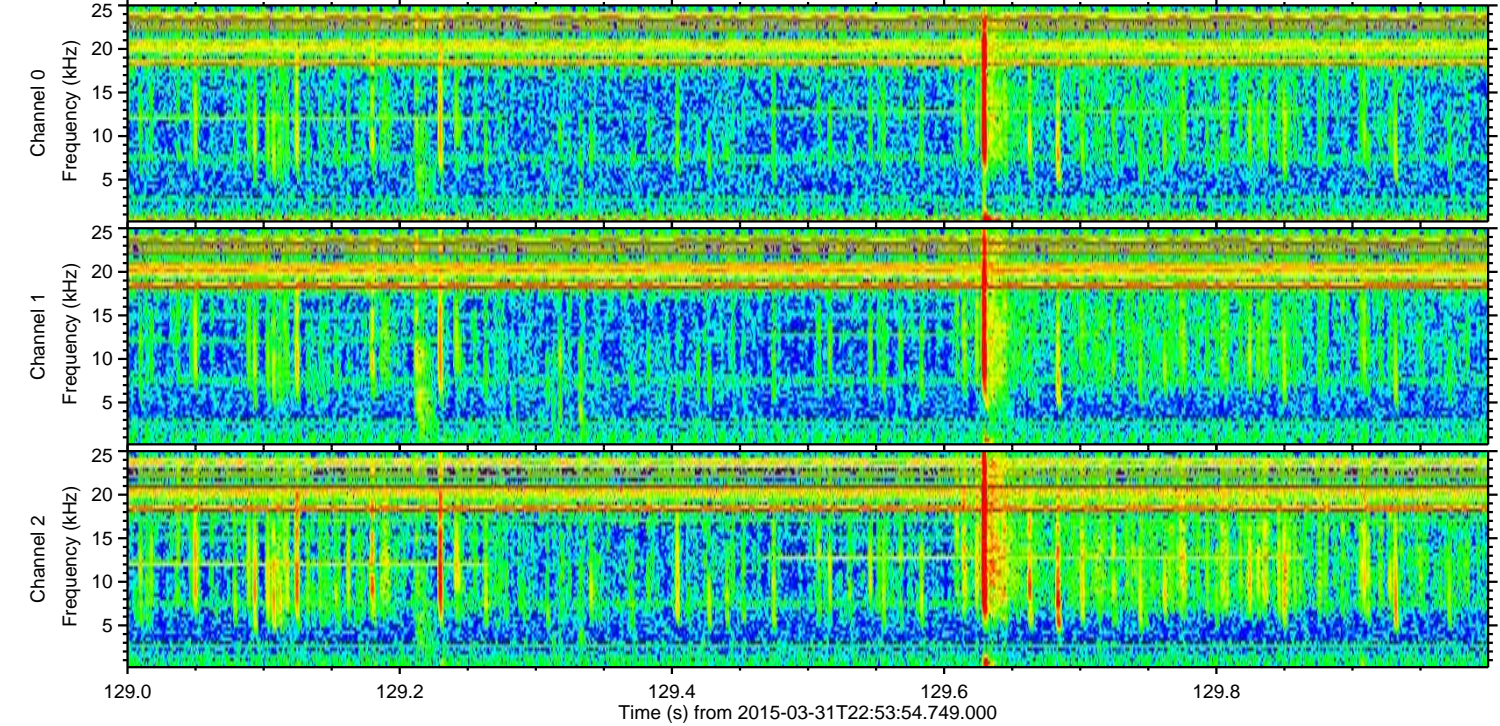
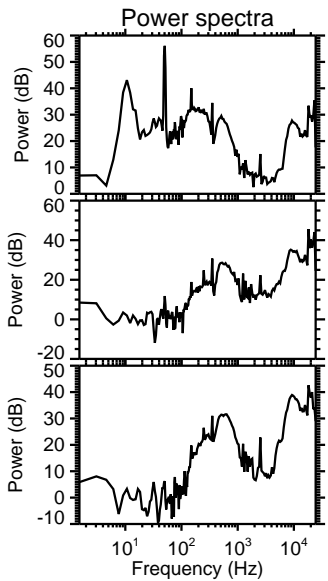
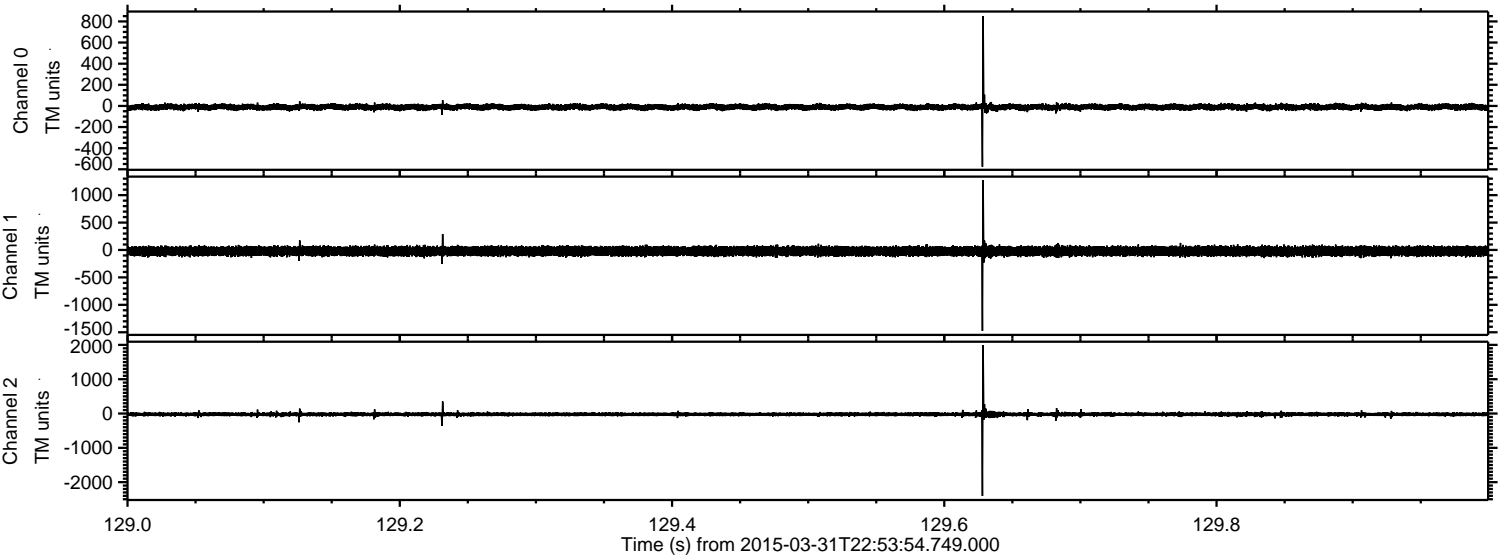


ELMAVAN 3D WAVEFORMS (Measured data sampled at 50 kHz) 49746 packets of 144 samples from 2015-03-31T22:53:54.749.000. Part 82/144

Processed Wed Apr 1 01:01:20 2015 by ELM ver.2012-10-06 from 001__elm20150331_225353__dat00.bin

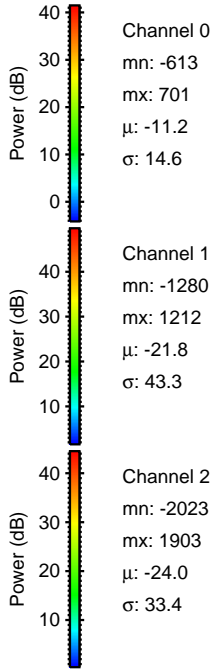
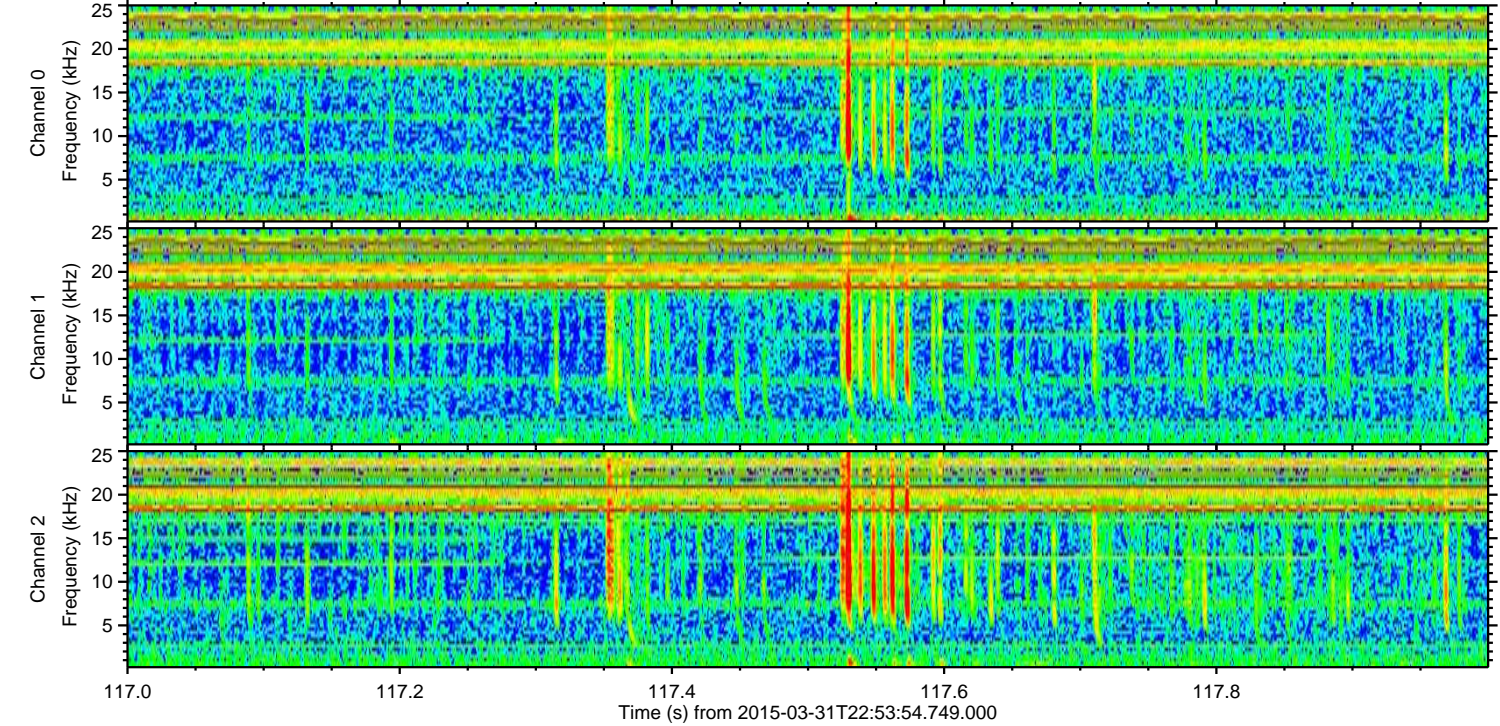
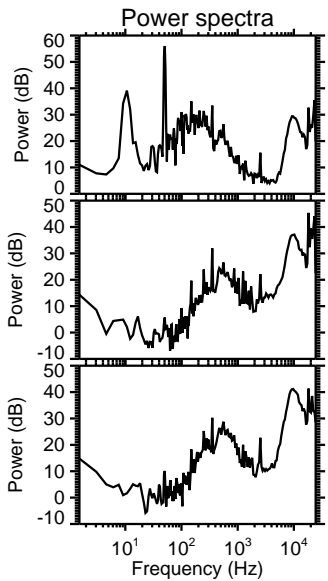
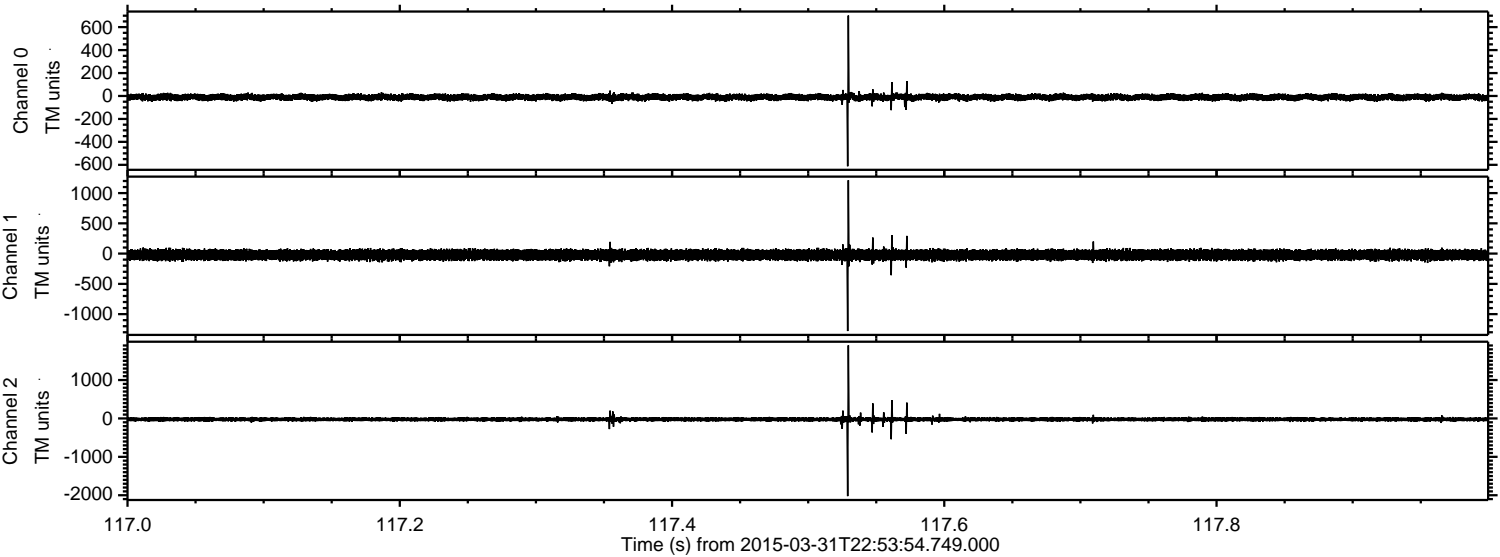


Processed Wed Apr 1 01:01:21 2015 by ELM ver.2012-10-06 from 001__elm20150331_225353__dat00.bin



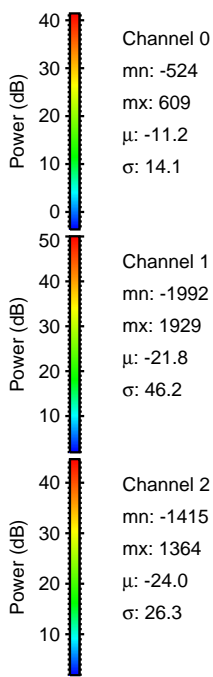
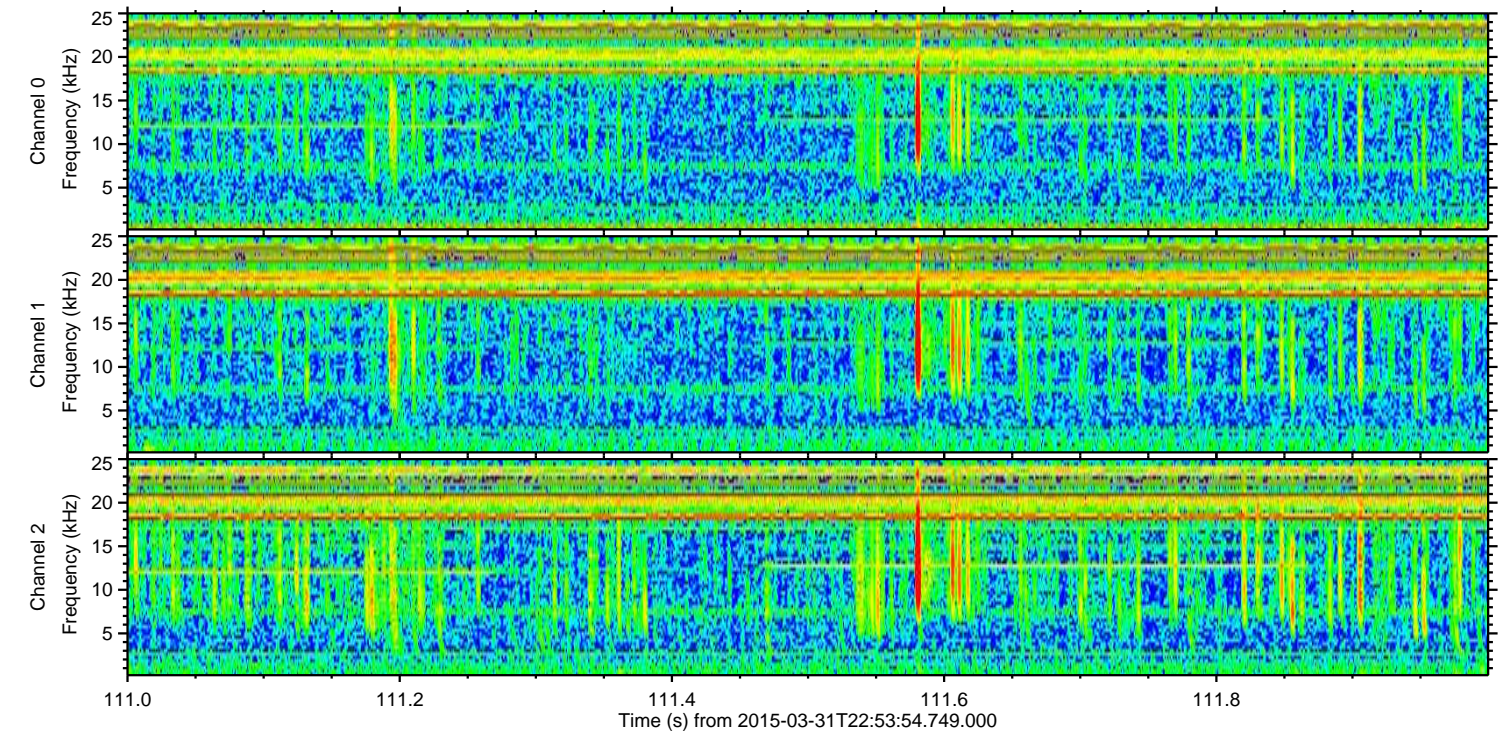
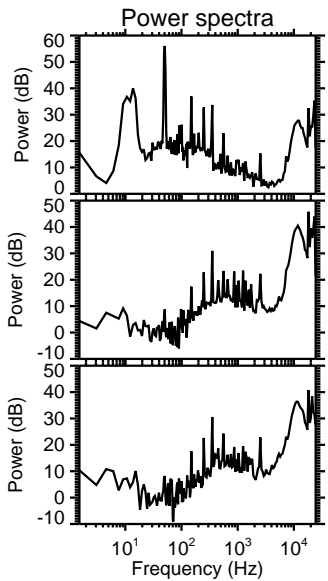
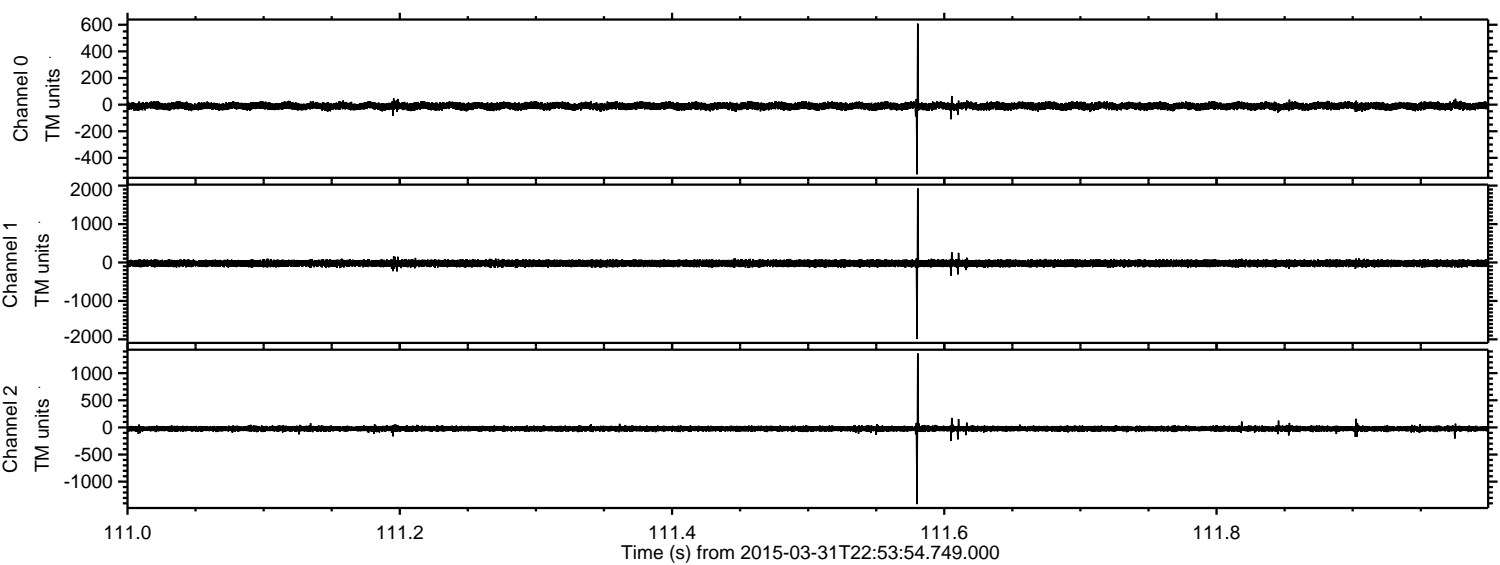
ELMAVAN 3D WAVEFORMS (Measured data sampled at 50 kHz) 49746 packets of 144 samples from 2015-03-31T22:53:54.749.000. Part 118/144

Processed Wed Apr 1 01:01:22 2015 by ELM ver.2012-10-06 from 001__elm20150331_225353__dat00.bin

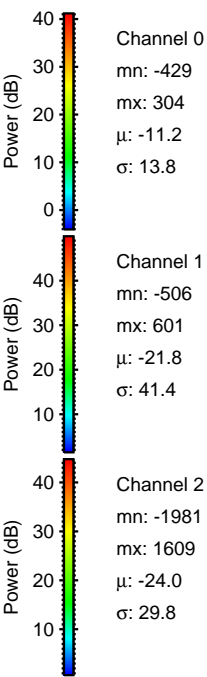
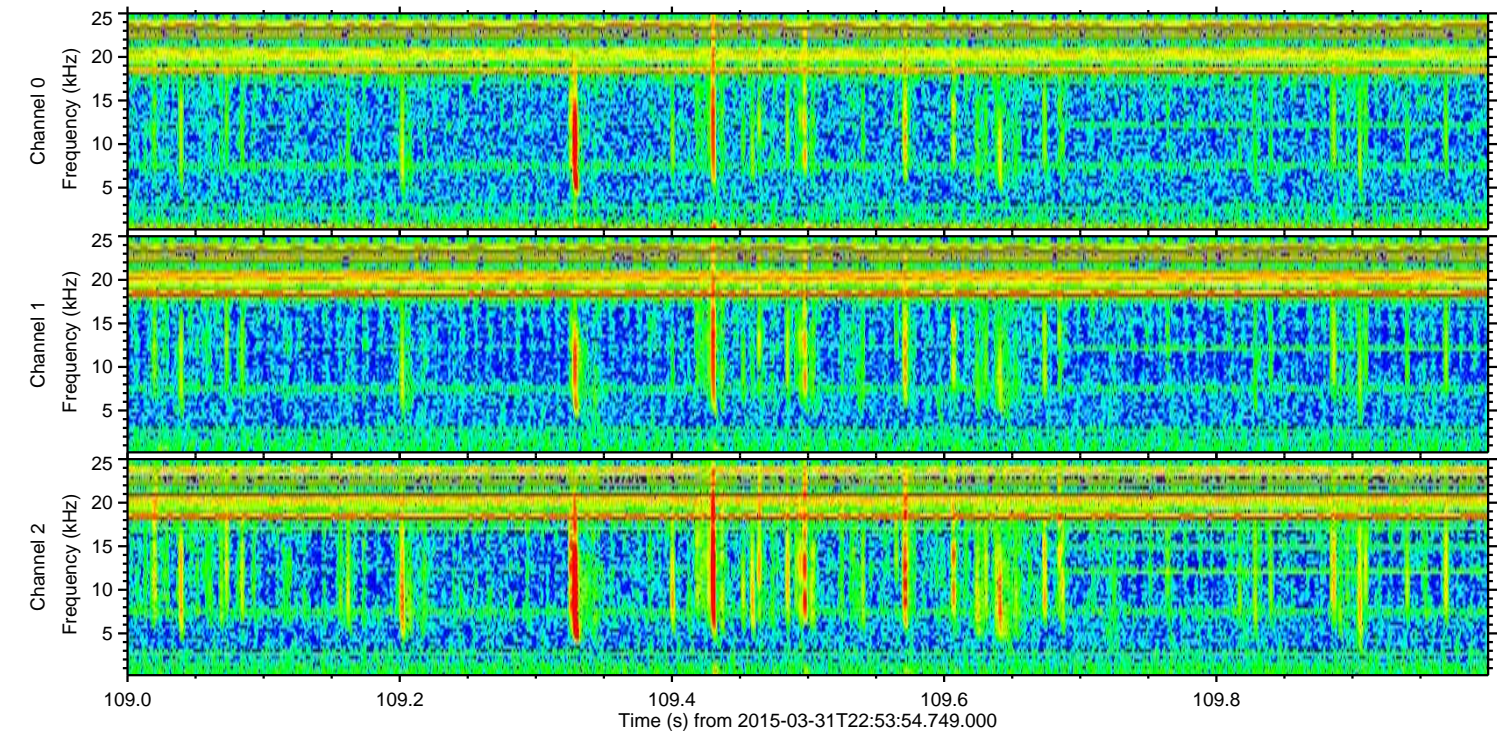
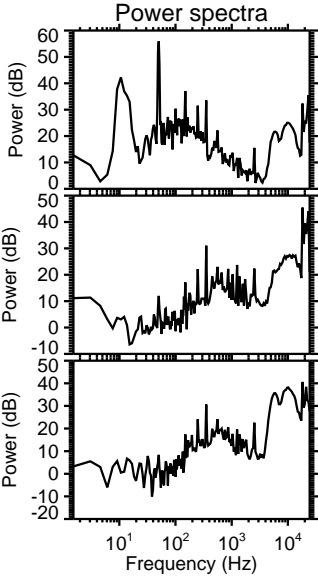
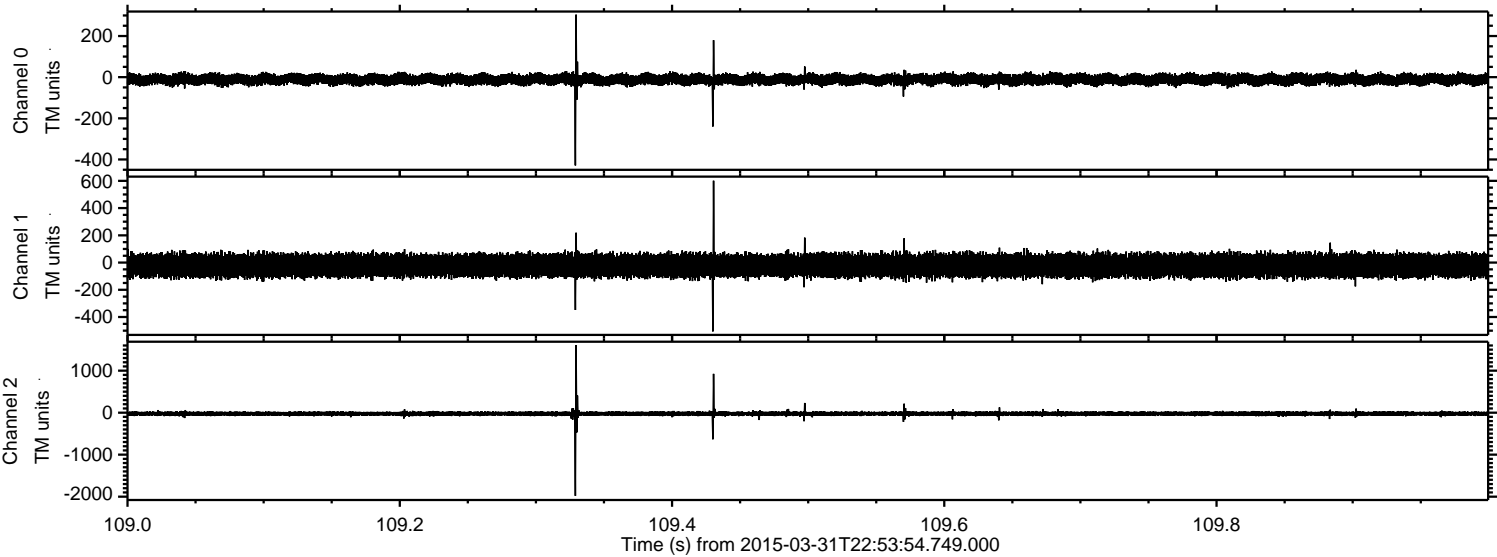


ELMAVAN 3D WAVEFORMS (Measured data sampled at 50 kHz) 49746 packets of 144 samples from 2015-03-31T22:53:54.749.000. Part 112/144

Processed Wed Apr 1 01:01:23 2015 by ELM ver.2012-10-06 from 001__elm20150331_225353__dat00.bin

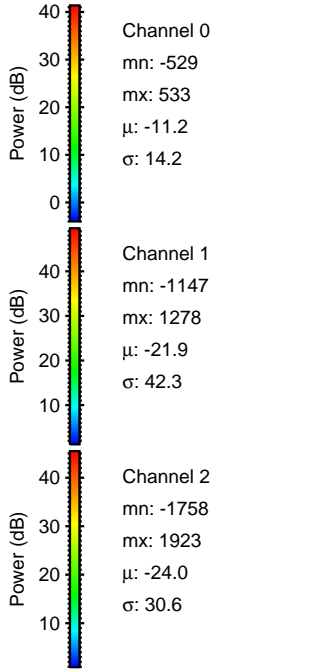
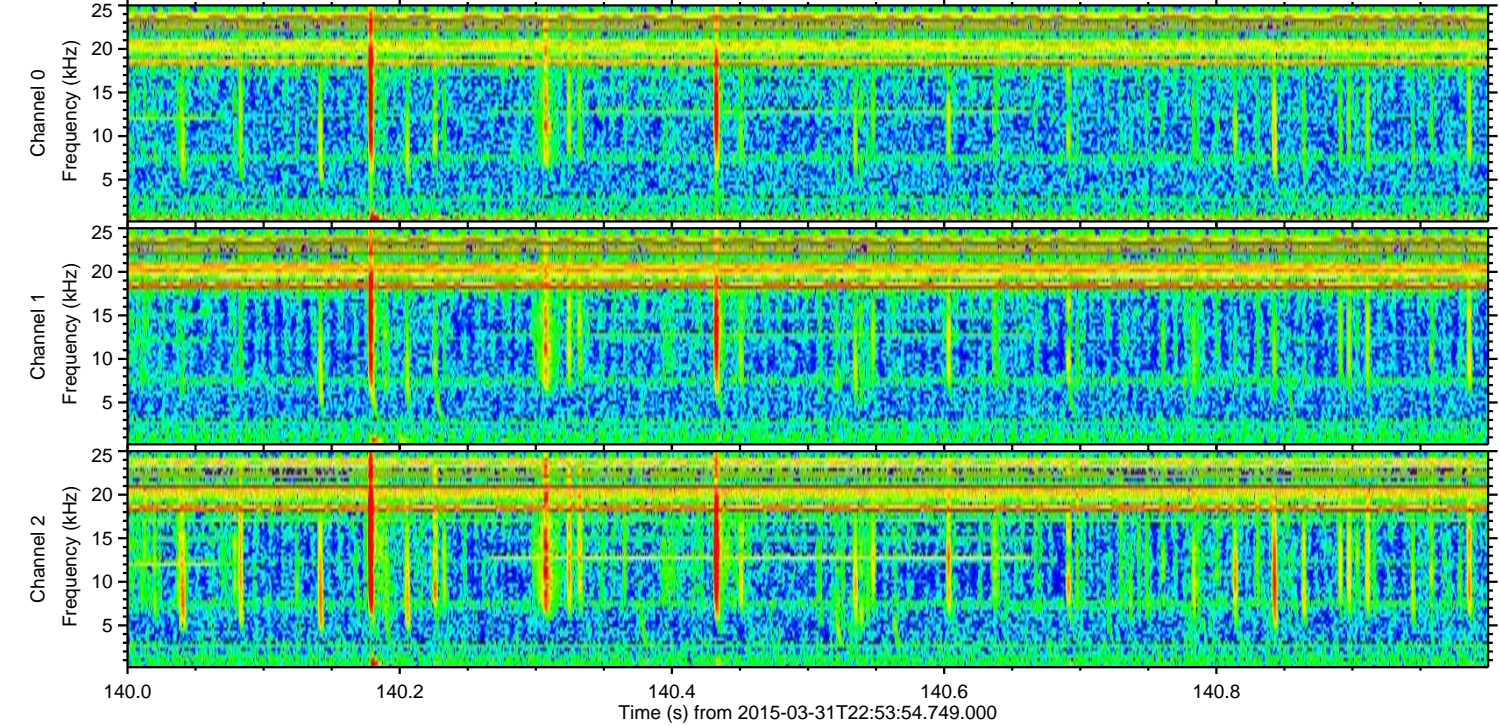
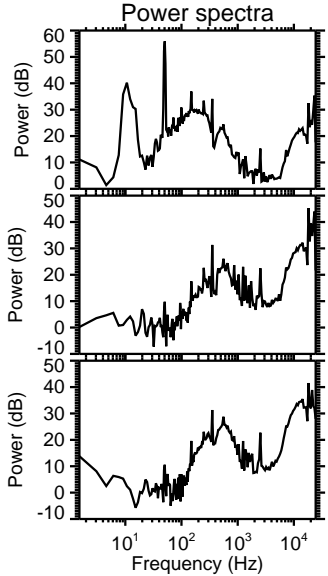
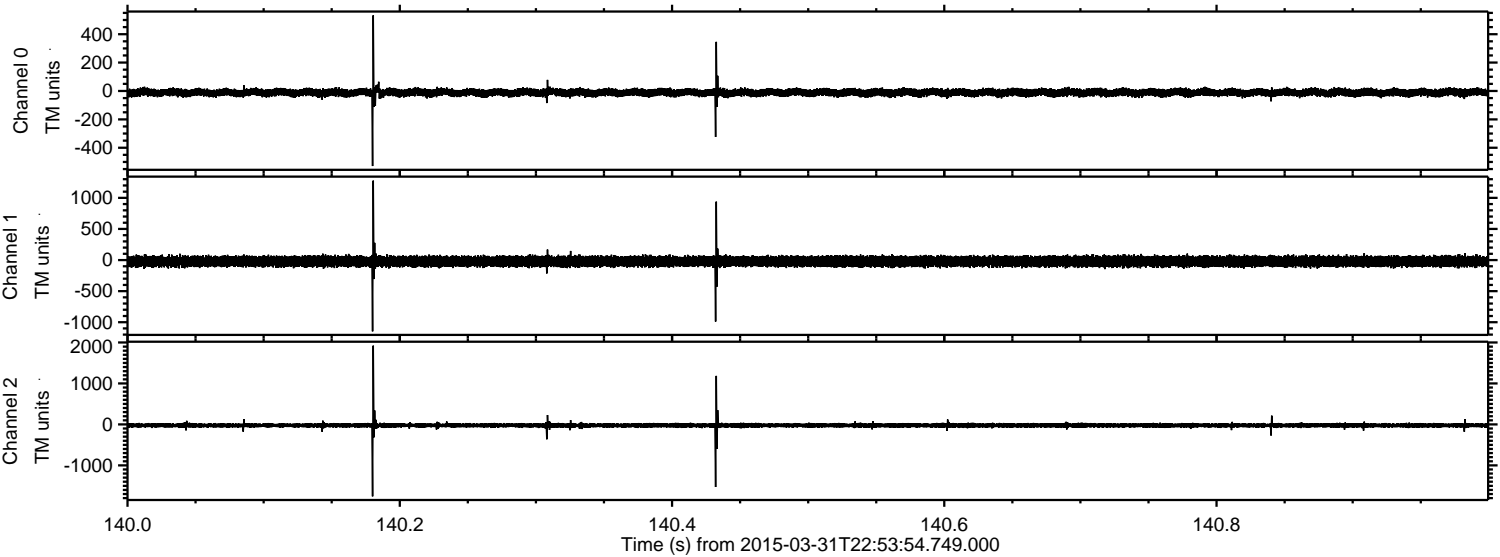


Processed Wed Apr 1 01:01:24 2015 by ELM ver.2012-10-06 from 001__elm20150331_225353__dat00.bin

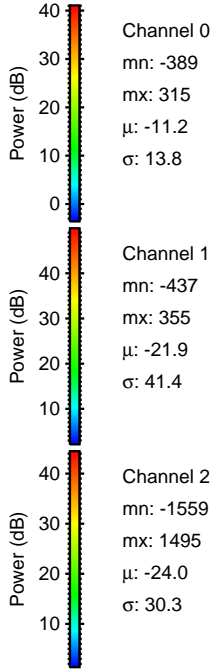
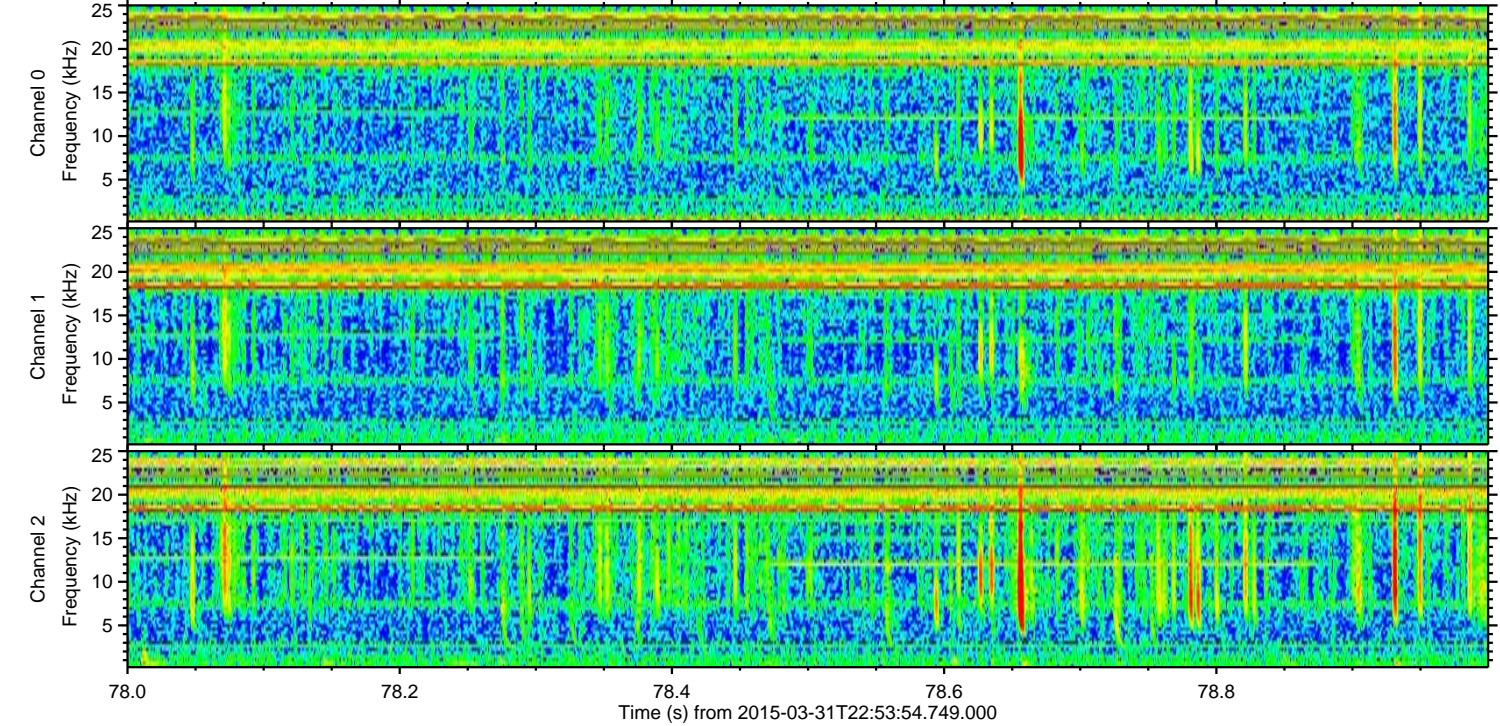
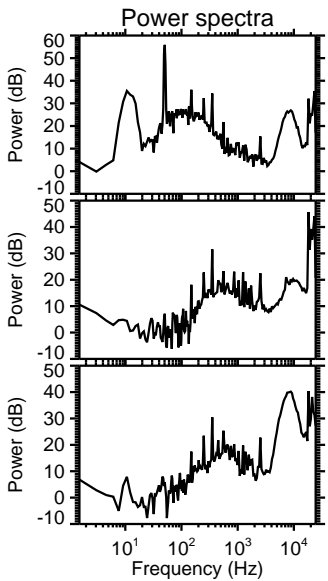
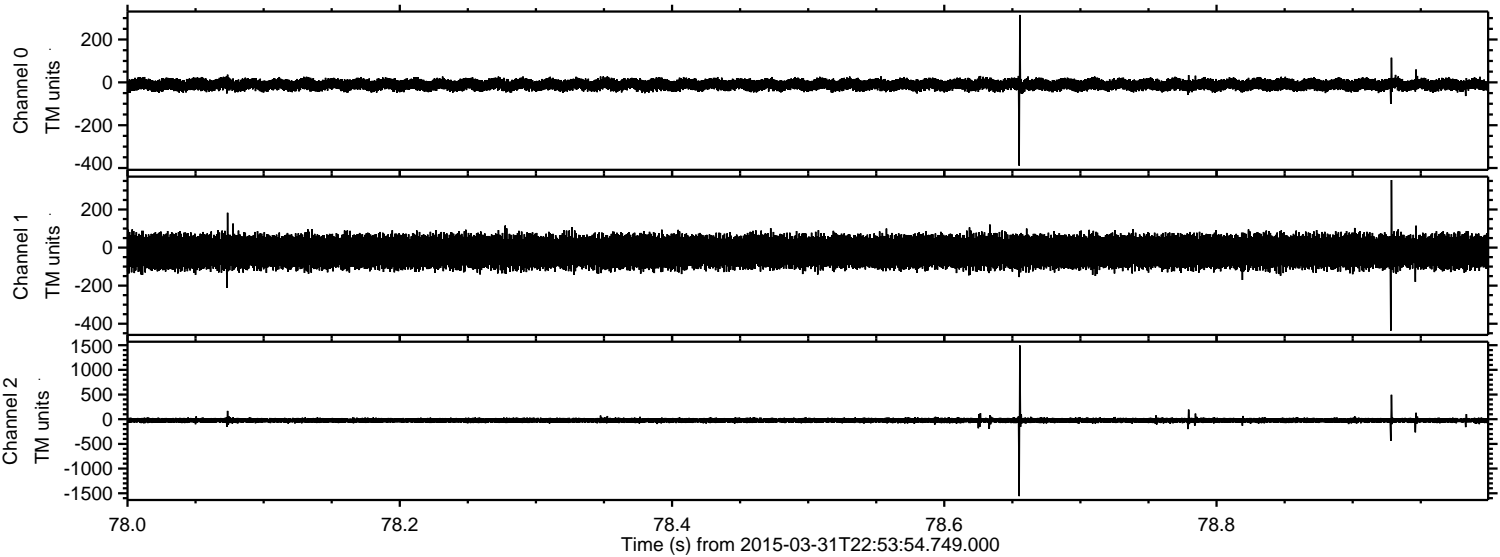


ELMAVAN 3D WAVEFORMS (Measured data sampled at 50 kHz) 49746 packets of 144 samples from 2015-03-31T22:53:54.749.000. Part 141/144

Processed Wed Apr 1 01:01:24 2015 by ELM ver.2012-10-06 from 001__elm20150331_225353__dat00.bin



Processed Wed Apr 1 01:01:25 2015 by ELM ver.2012-10-06 from 001__elm20150331_225353__dat00.bin

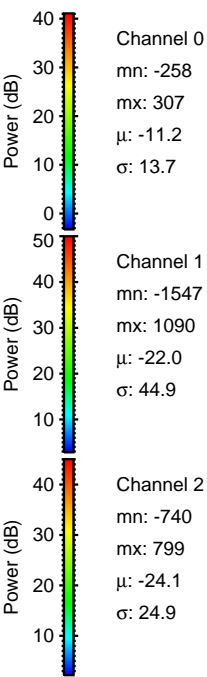
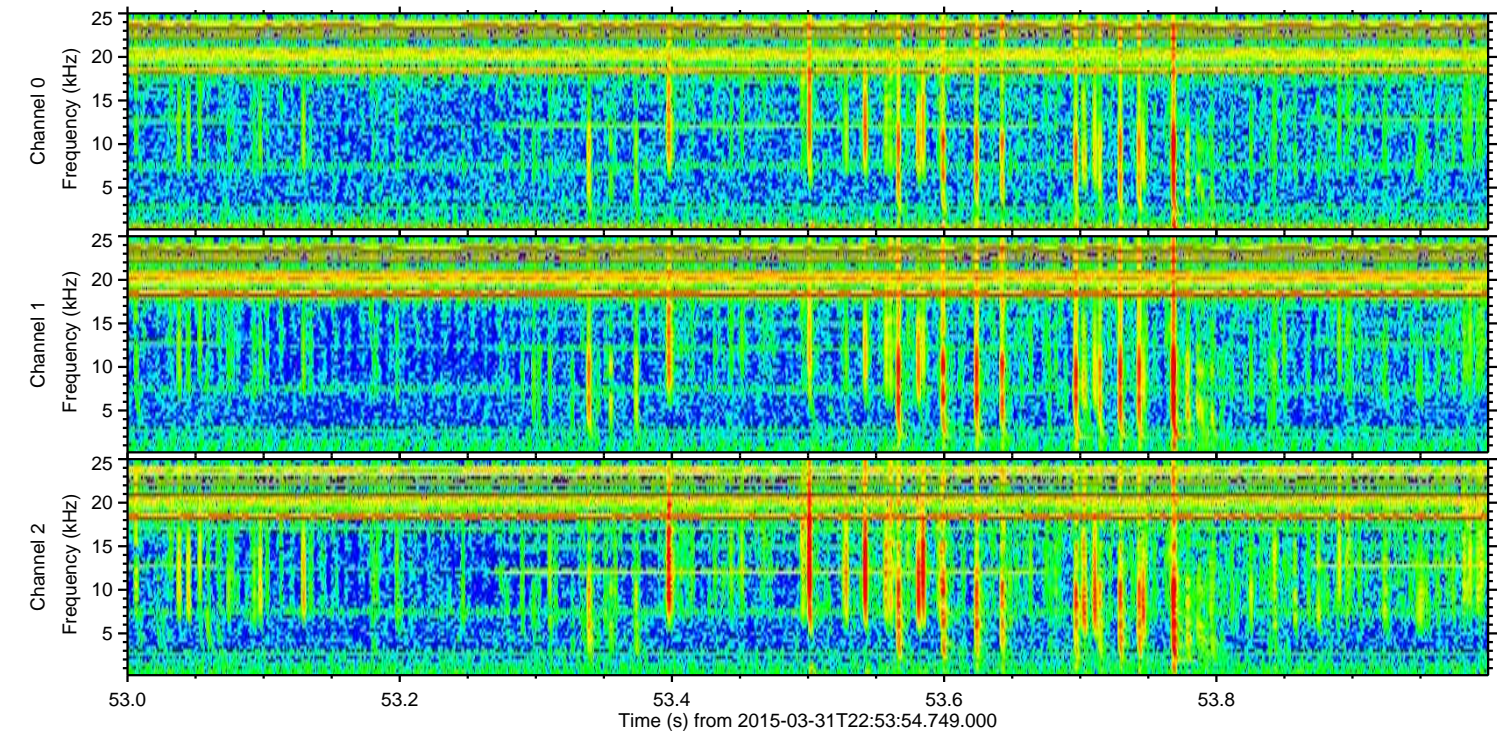
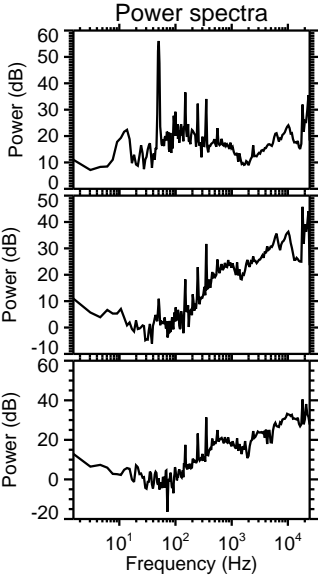
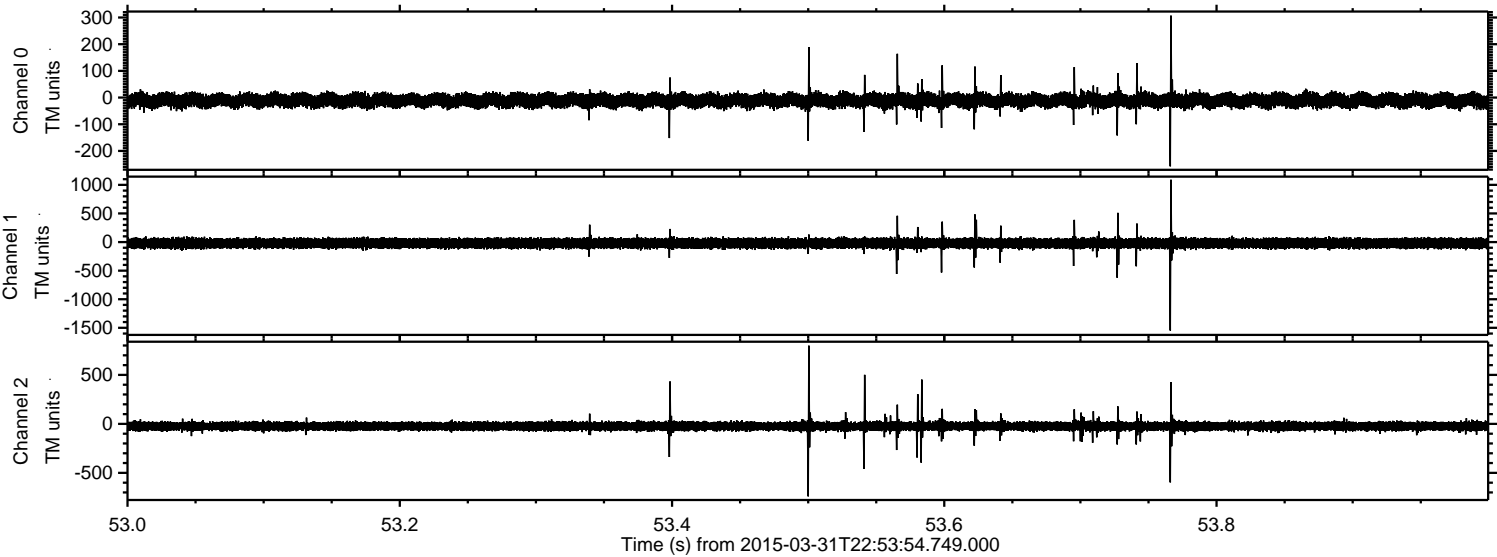


Channel 0
mn: -389
mx: 315
 μ : -11.2
 σ : 13.8

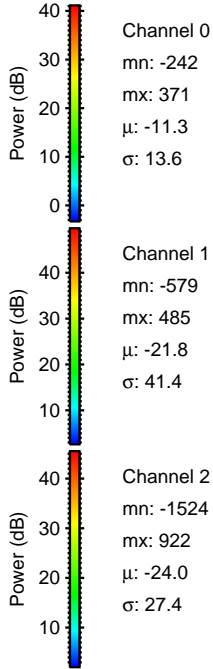
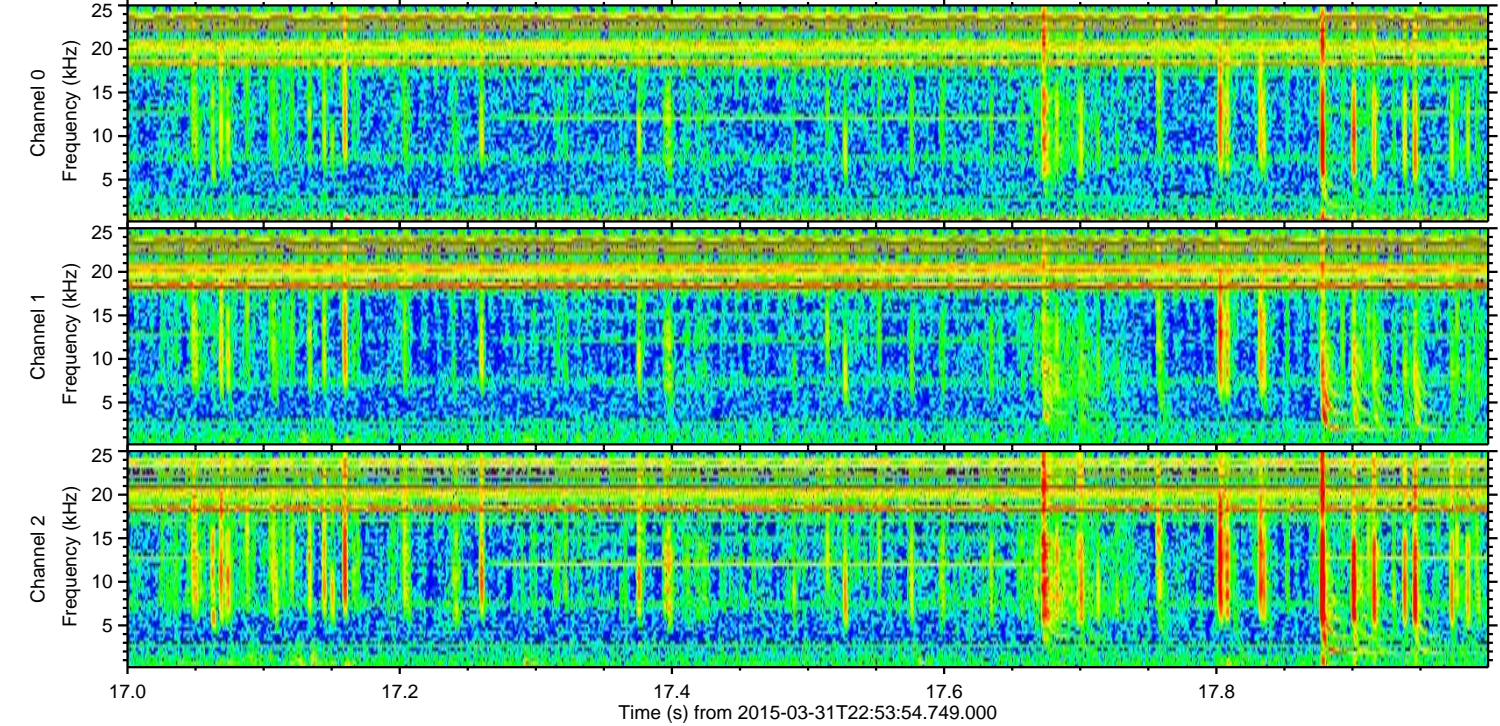
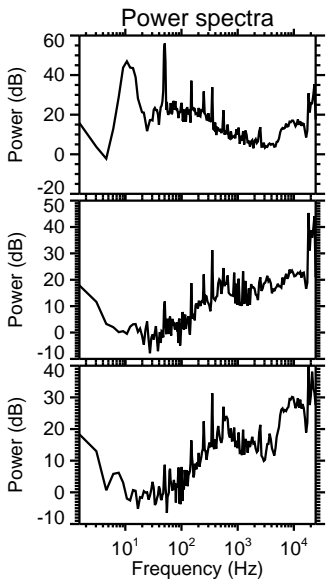
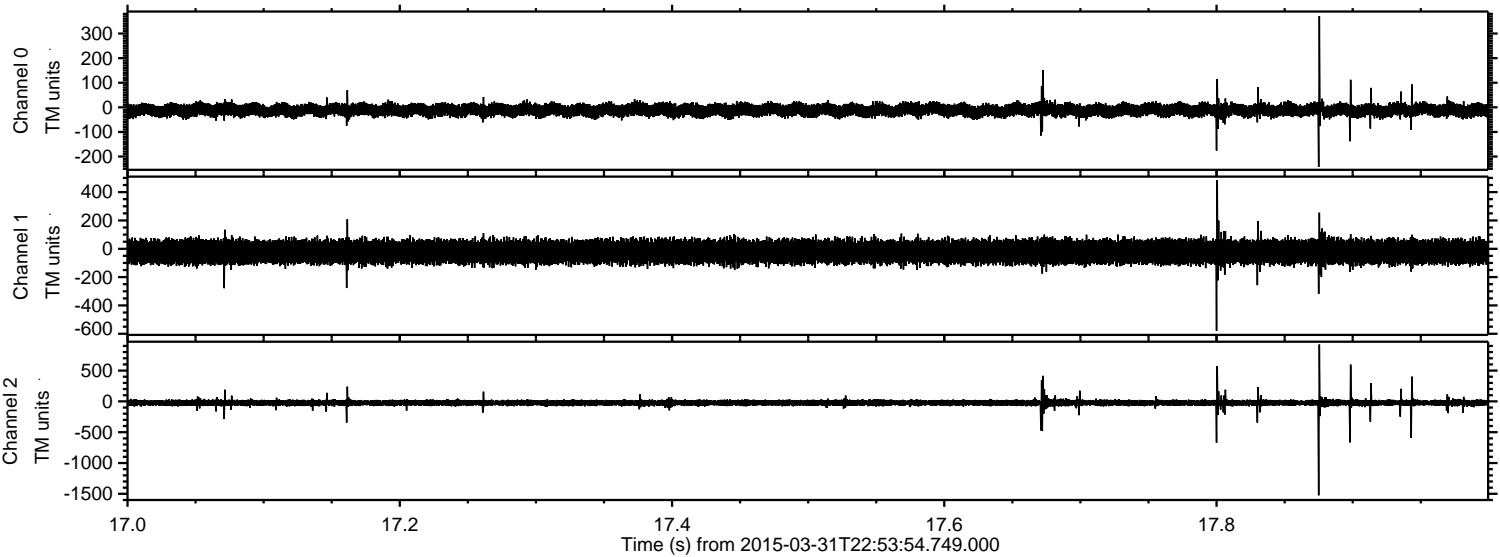
Channel 1
mn: -437
mx: 355
 μ : -21.9
 σ : 41.4

Channel 2
mn: -1559
mx: 1495
 μ : -24.0
 σ : 30.3

Processed Wed Apr 1 01:01:26 2015 by ELM ver.2012-10-06 from 001__elm20150331_225353__dat00.bin



Processed Wed Apr 1 01:01:27 2015 by ELM ver.2012-10-06 from 001__elm20150331_225353__dat00.bin



Processed Wed Apr 1 01:01:28 2015 by ELM ver.2012-10-06 from 001__elm20150331_225353__dat00.bin

