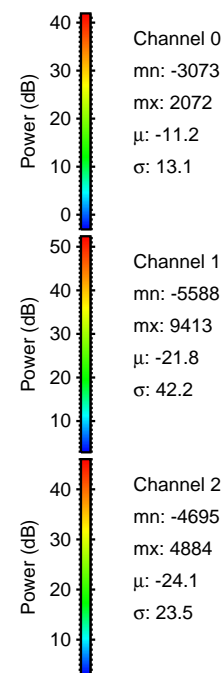
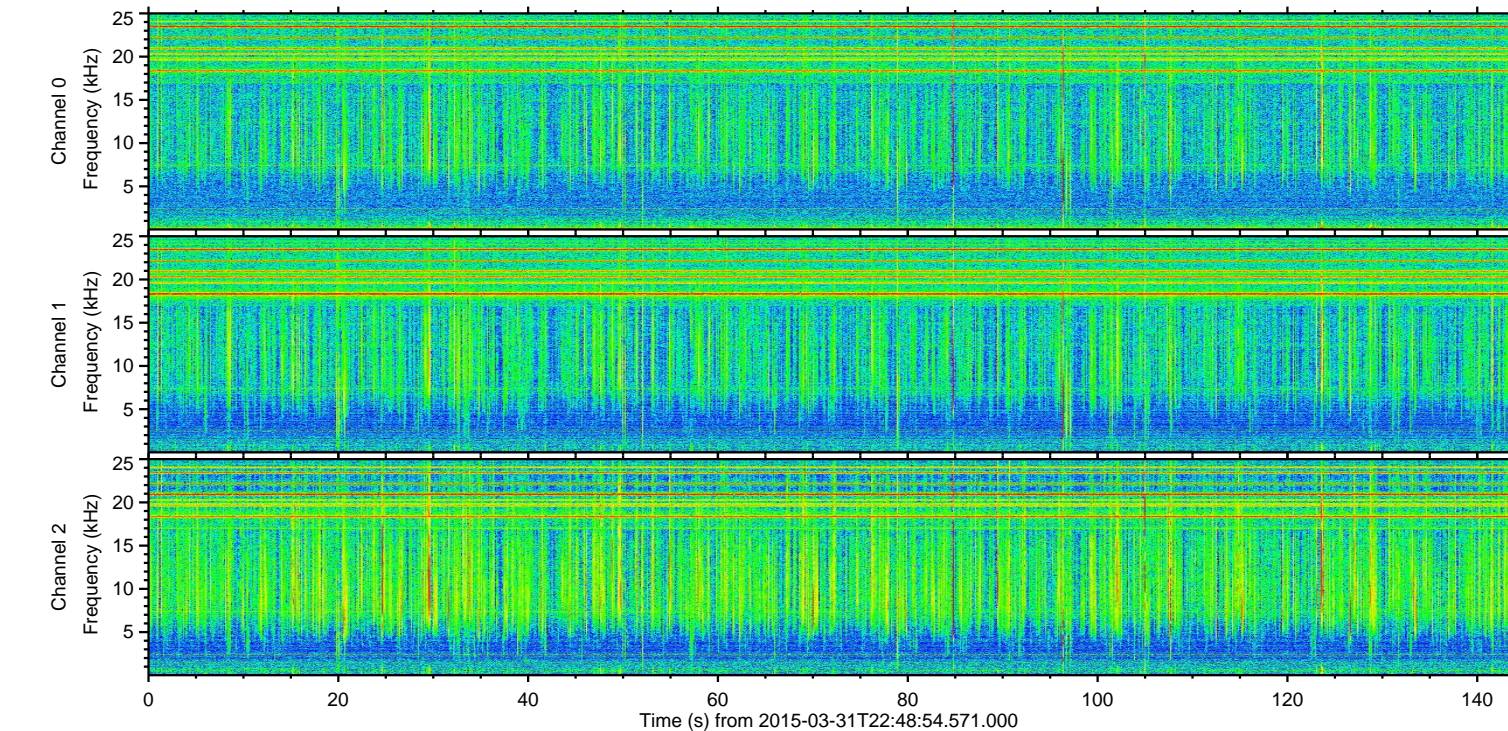
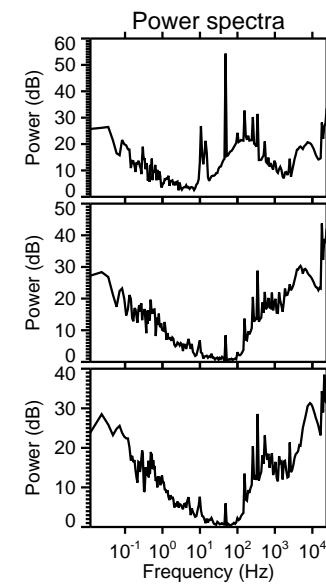
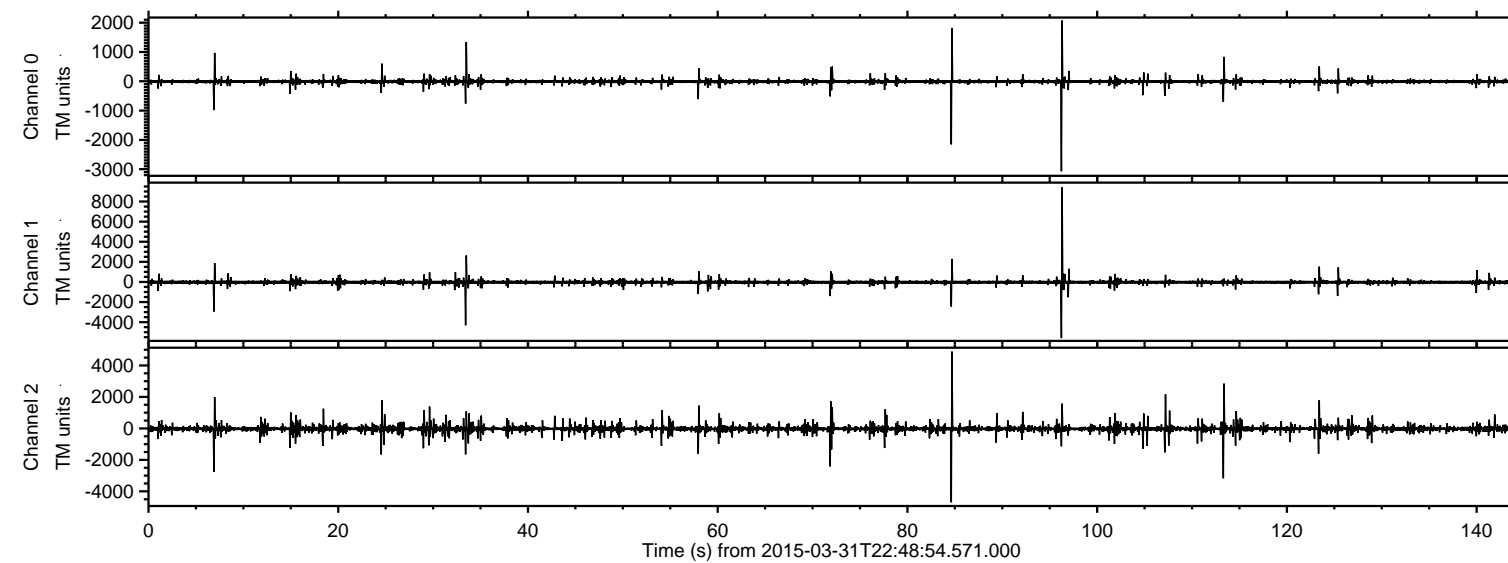
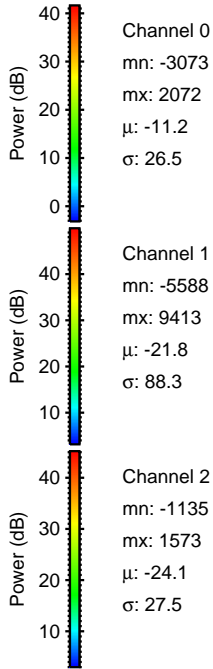
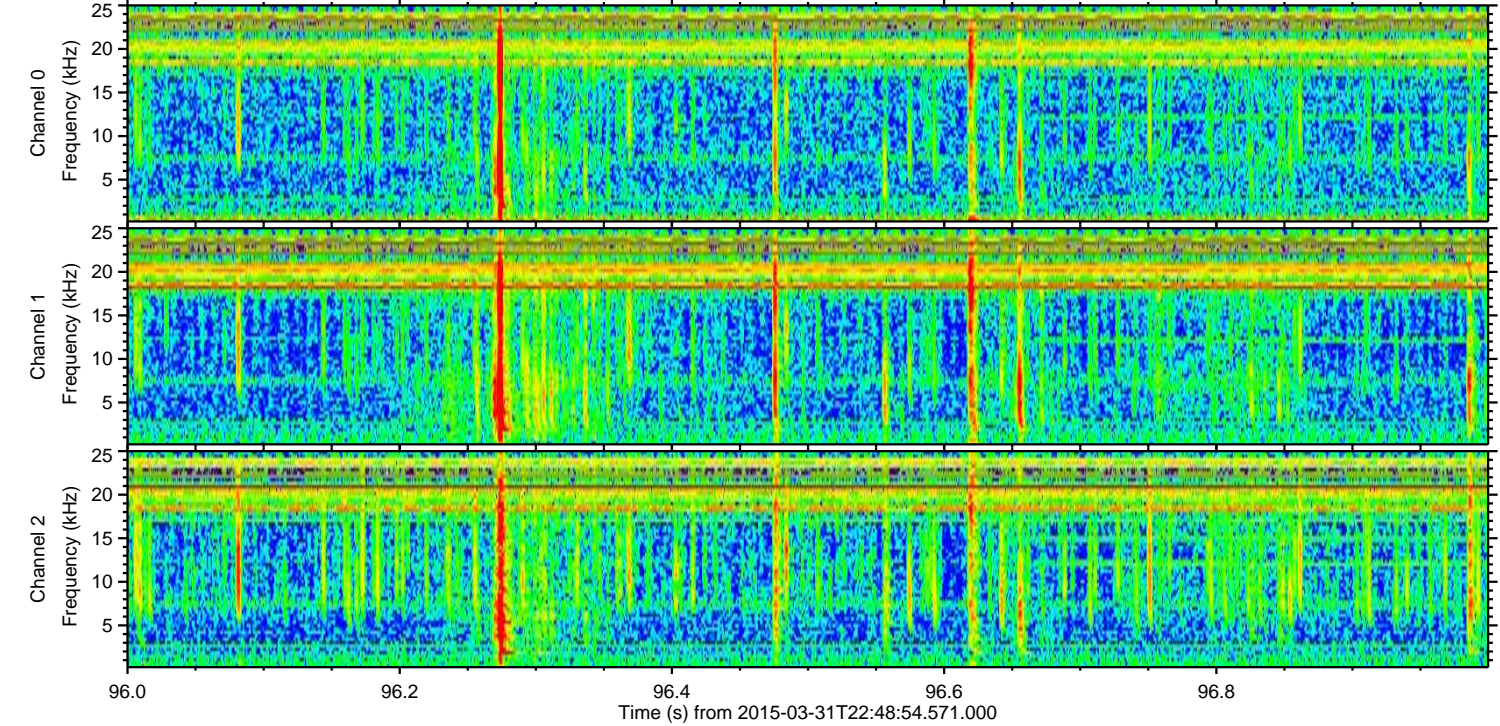
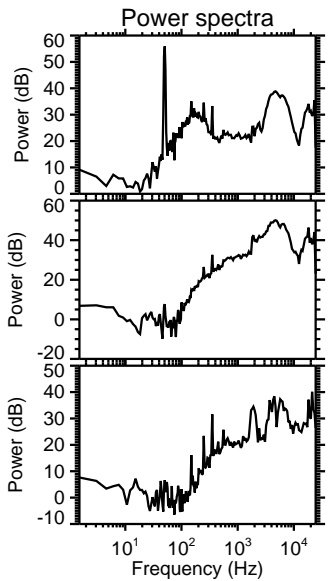
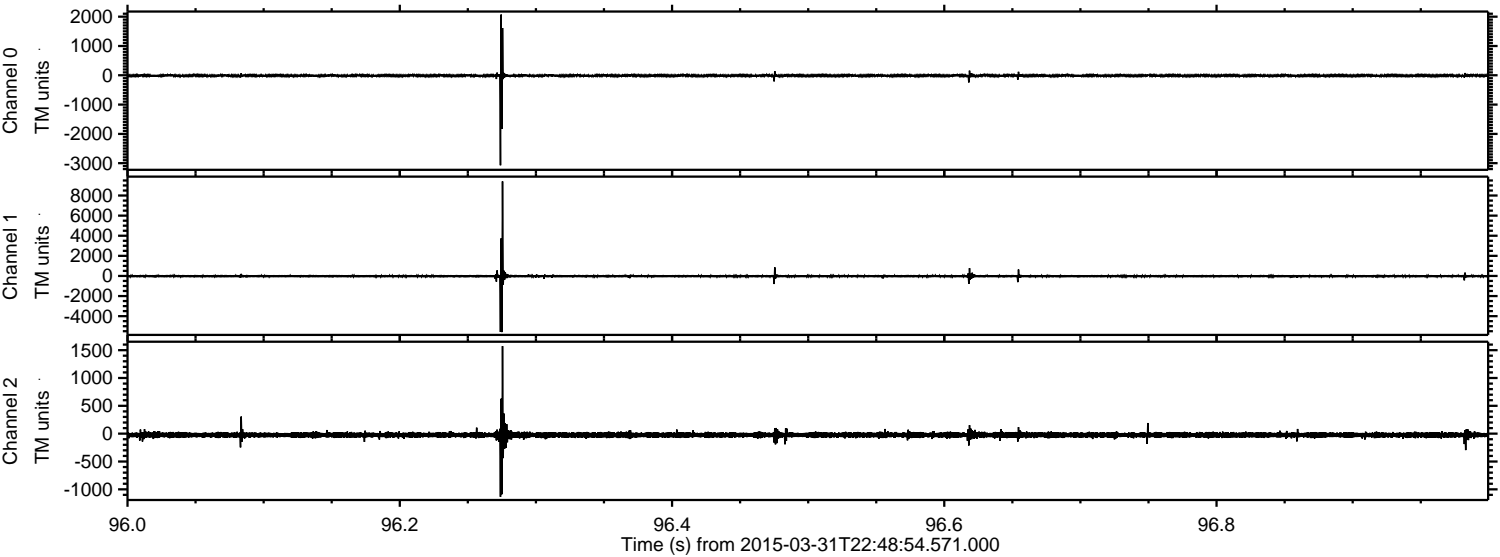


ELMAVAN 3D WAVEFORMS (Measured data sampled at 50 kHz) 49801 packets of 144 samples from 2015-03-31T22:48:54.571.000.

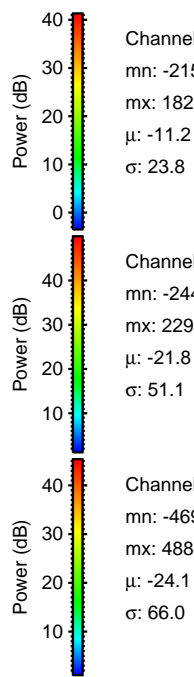
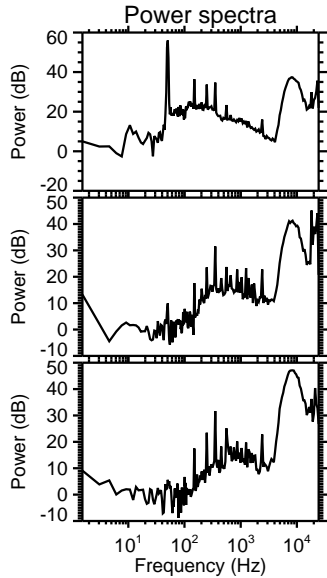
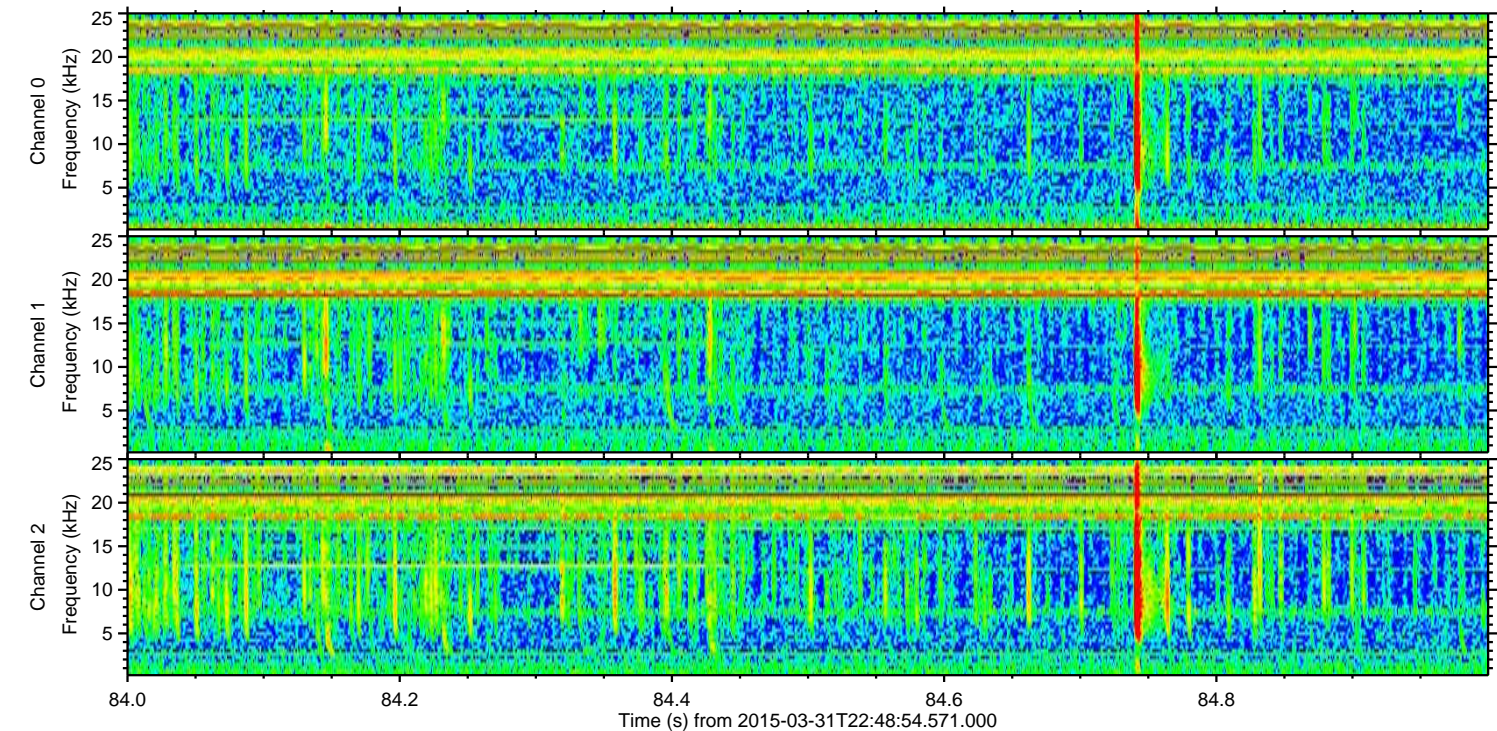
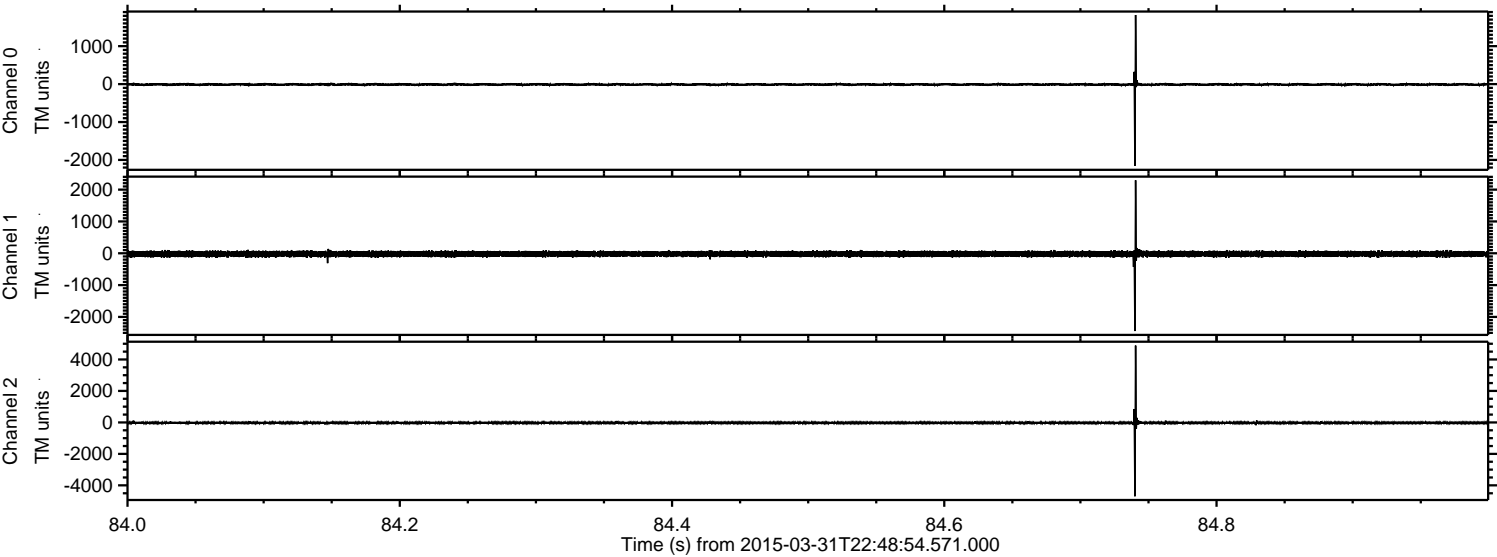
Processed Wed Apr 1 00:56:25 2015 by ELM ver.2012-10-06 from 001__elm20150331_224853__dat00.bin



Processed Wed Apr 1 00:56:37 2015 by ELM ver.2012-10-06 from 001__elm20150331_224853__dat00.bin

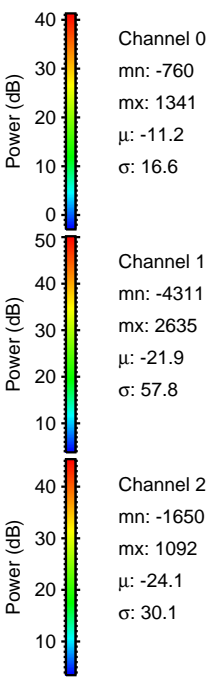
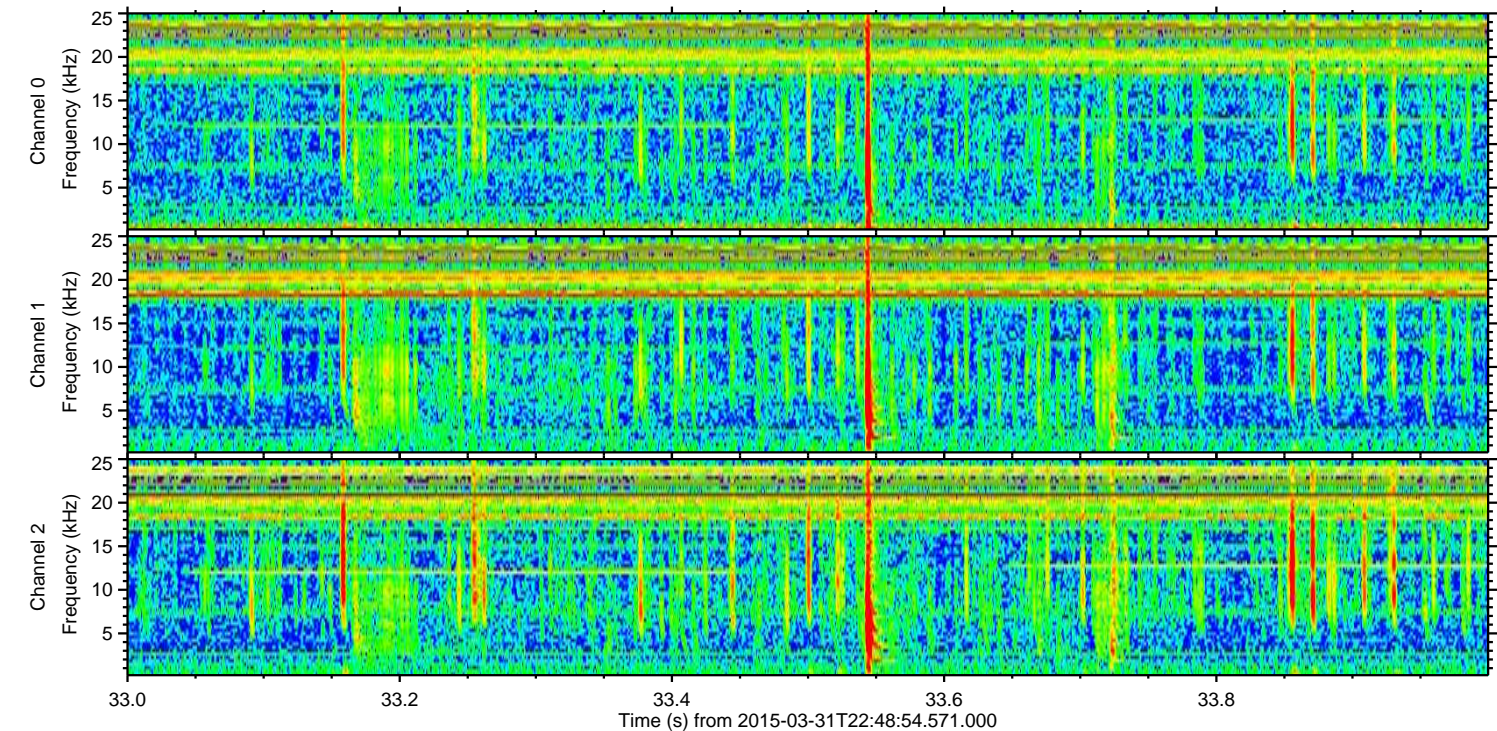
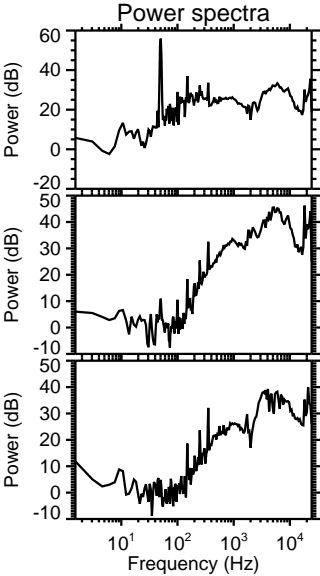
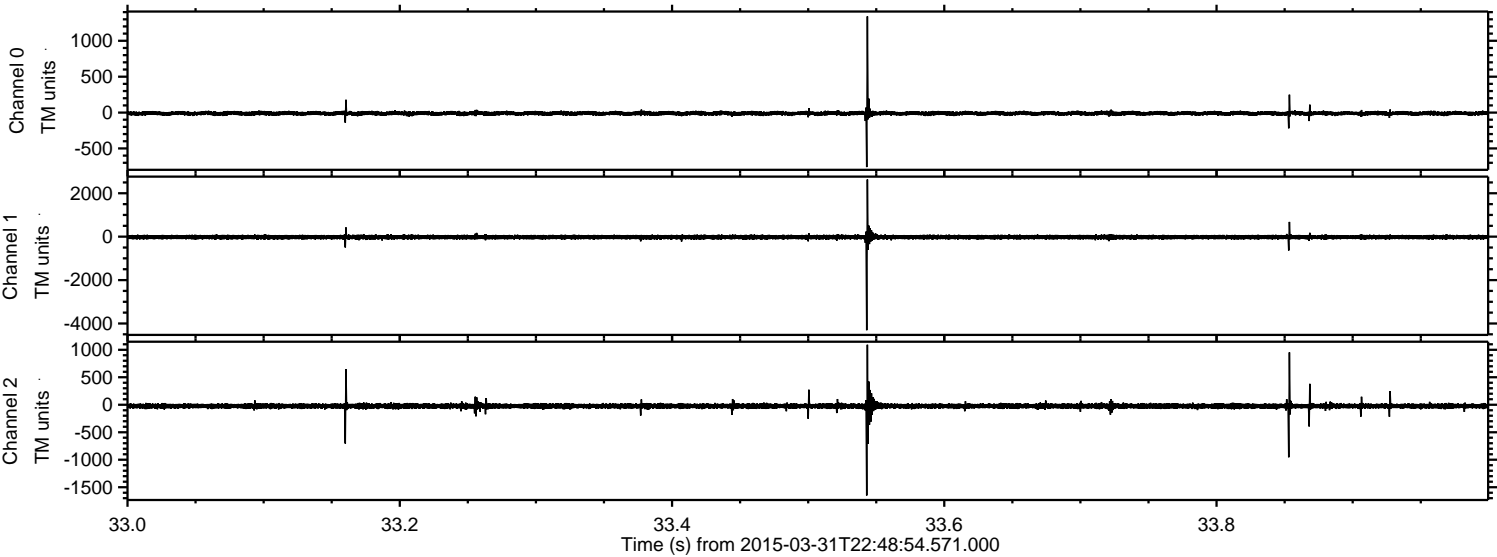


Processed Wed Apr 1 00:56:38 2015 by ELM ver.2012-10-06 from 001__elm20150331_224853__dat00.bin



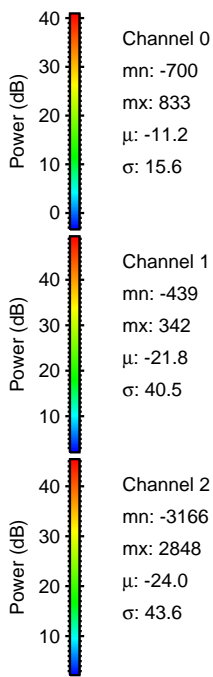
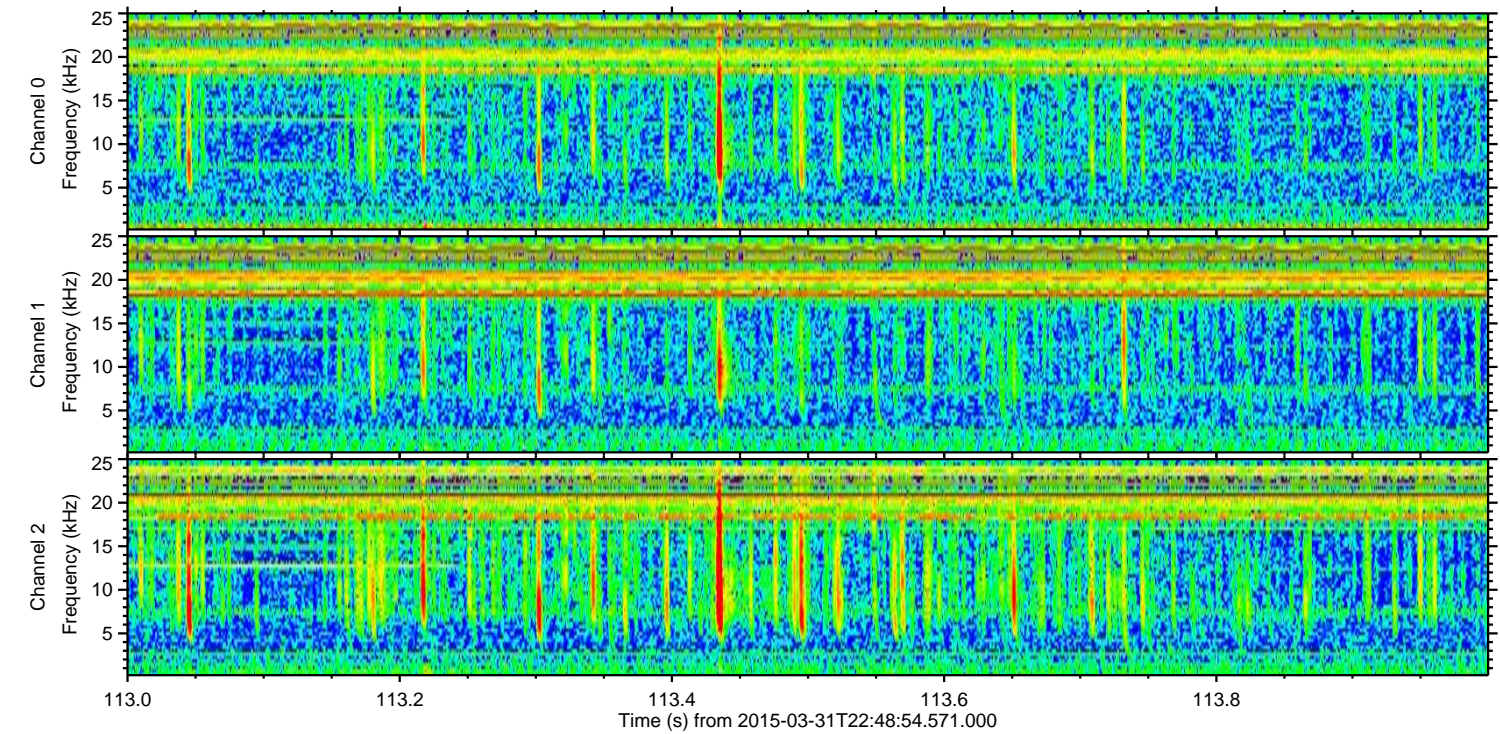
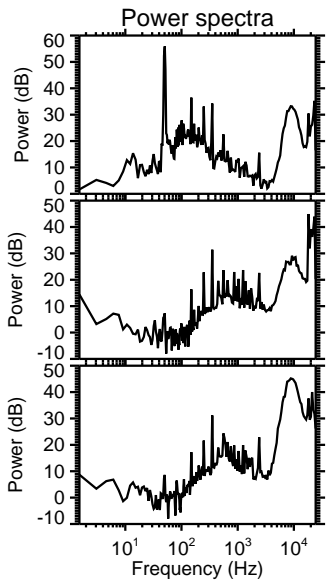
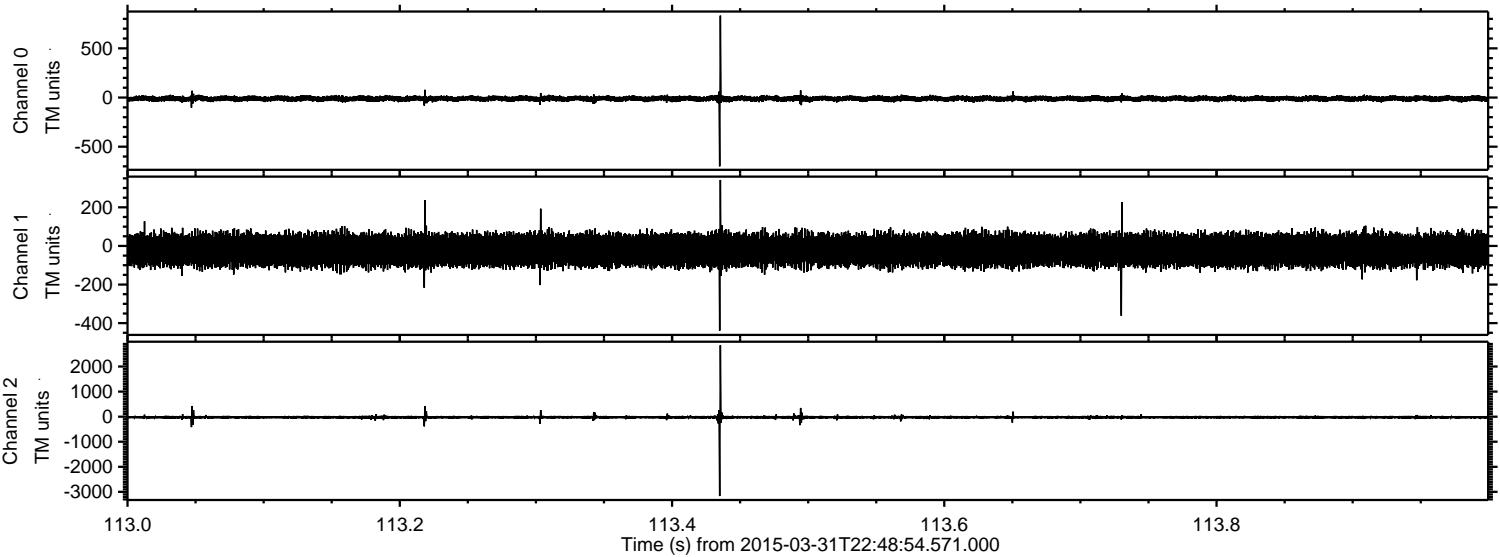
ELMAVAN 3D WAVEFORMS (Measured data sampled at 50 kHz) 49801 packets of 144 samples from 2015-03-31T22:48:54.571.000. Part 34/144

Processed Wed Apr 1 00:56:39 2015 by ELM ver.2012-10-06 from 001__elm20150331_224853__dat00.bin

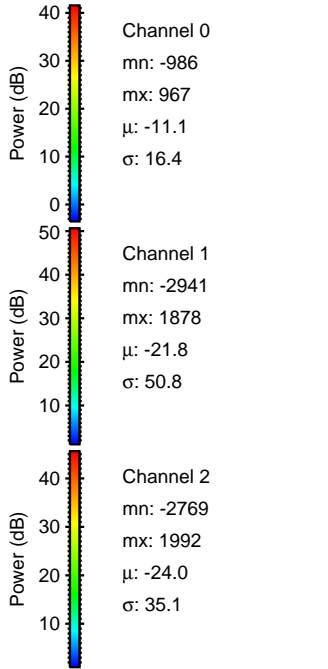
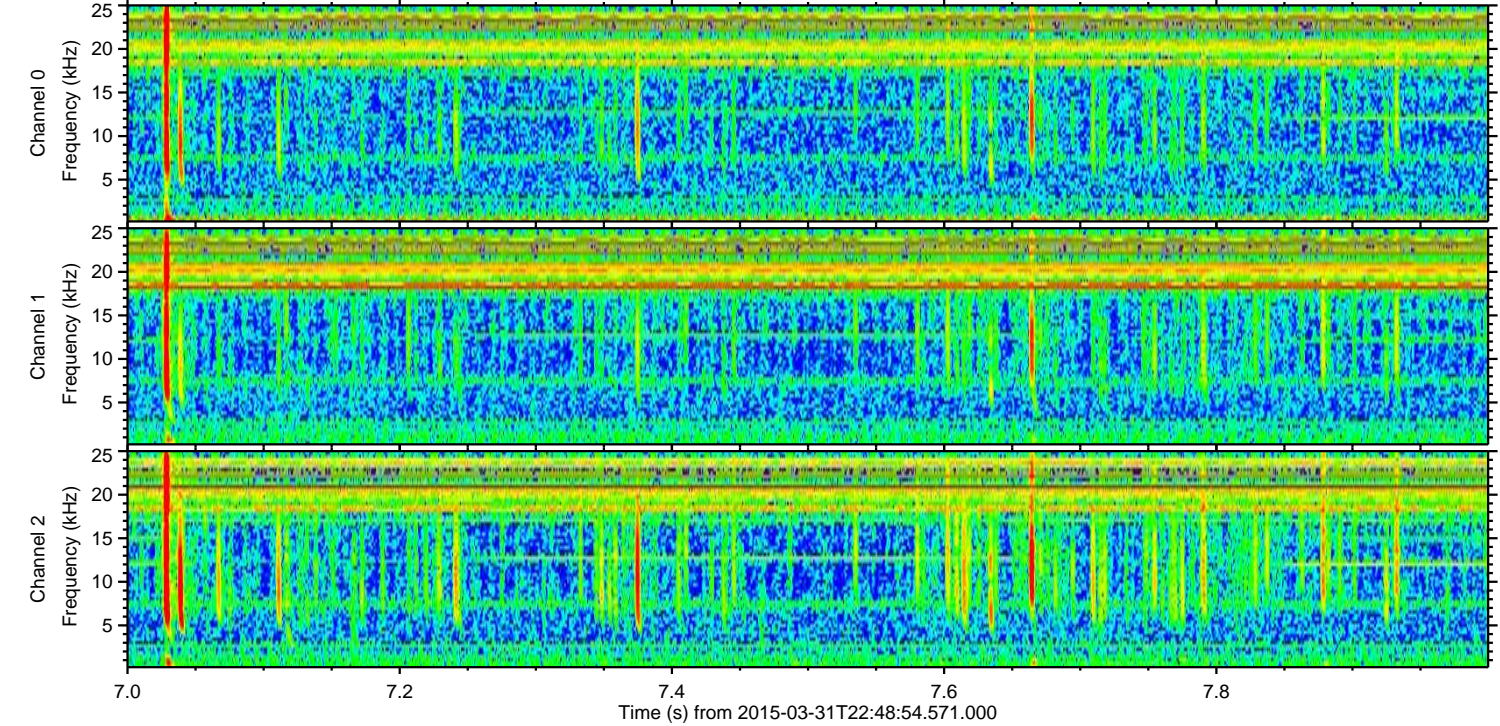
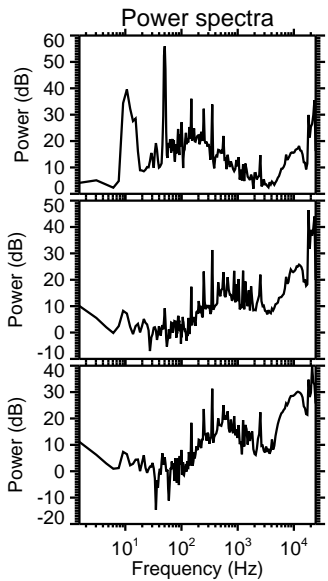
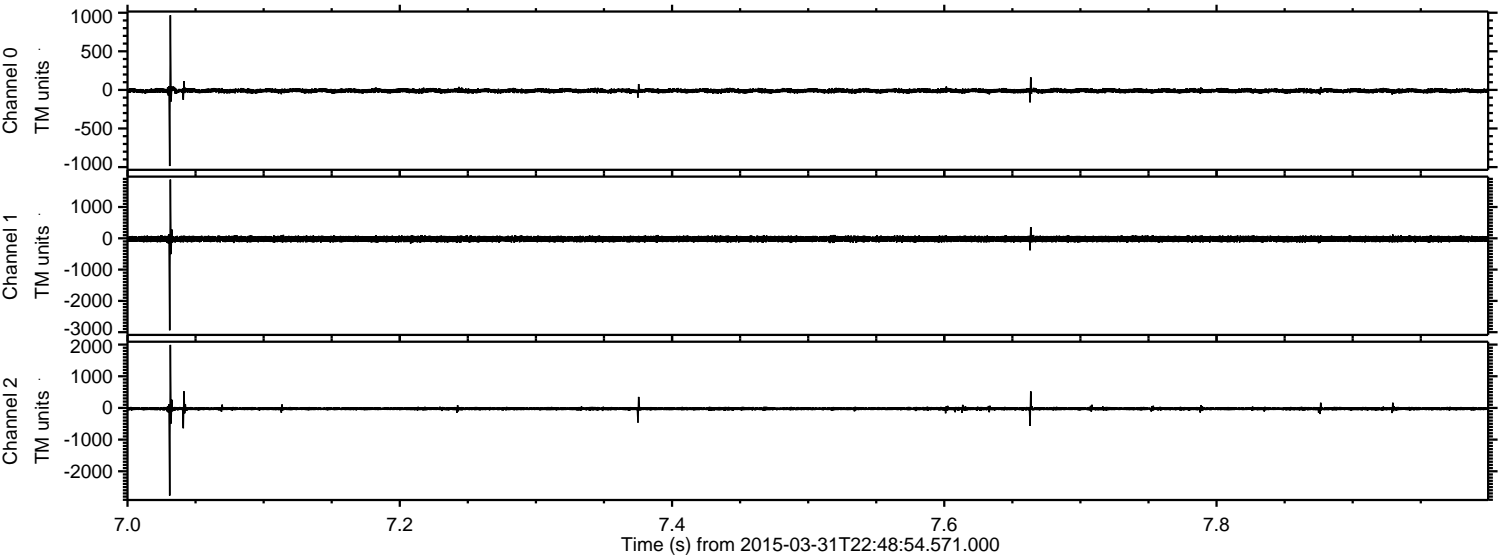


ELMAVAN 3D WAVEFORMS (Measured data sampled at 50 kHz) 49801 packets of 144 samples from 2015-03-31T22:48:54.571.000. Part 114/144

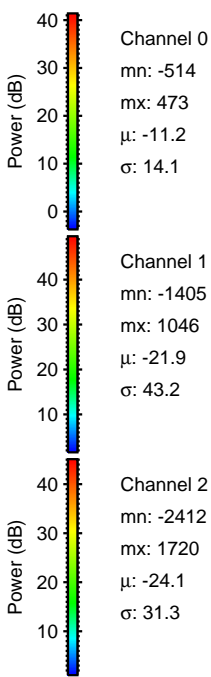
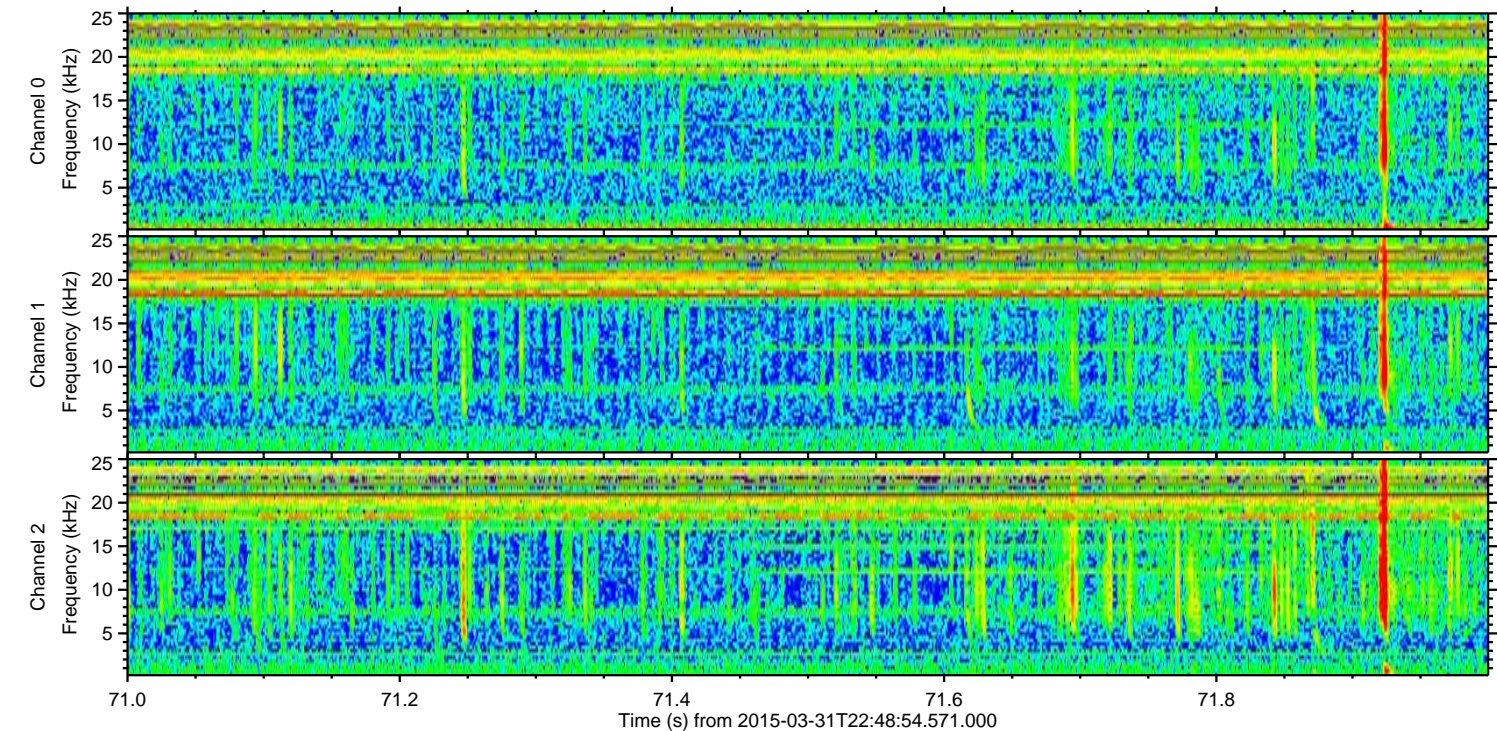
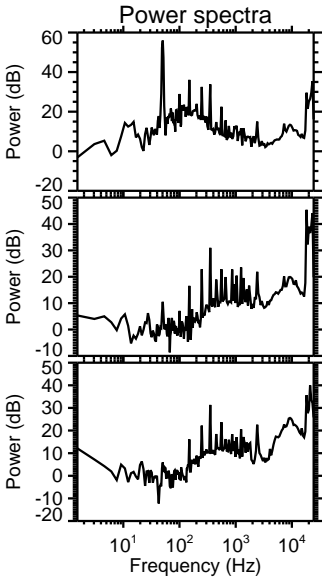
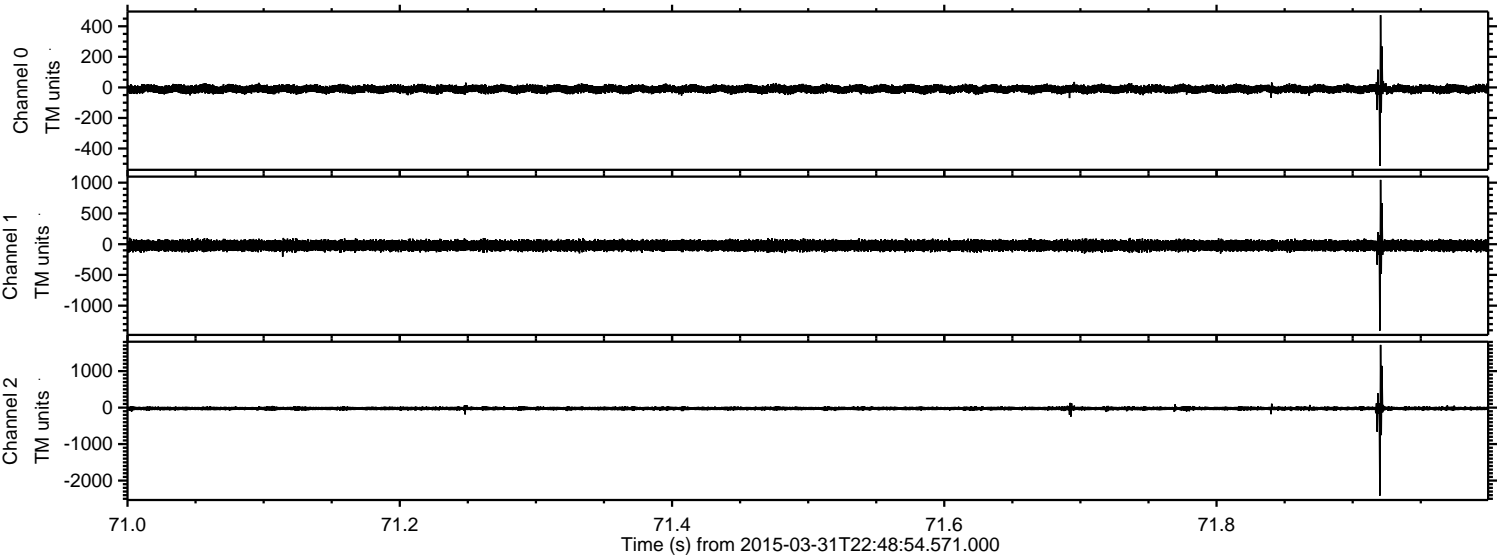
Processed Wed Apr 1 00:56:39 2015 by ELM ver.2012-10-06 from 001__elm20150331_224853__dat00.bin



Processed Wed Apr 1 00:56:40 2015 by ELM ver.2012-10-06 from 001__elm20150331_224853__dat00.bin

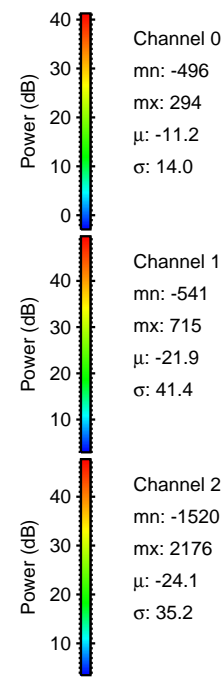
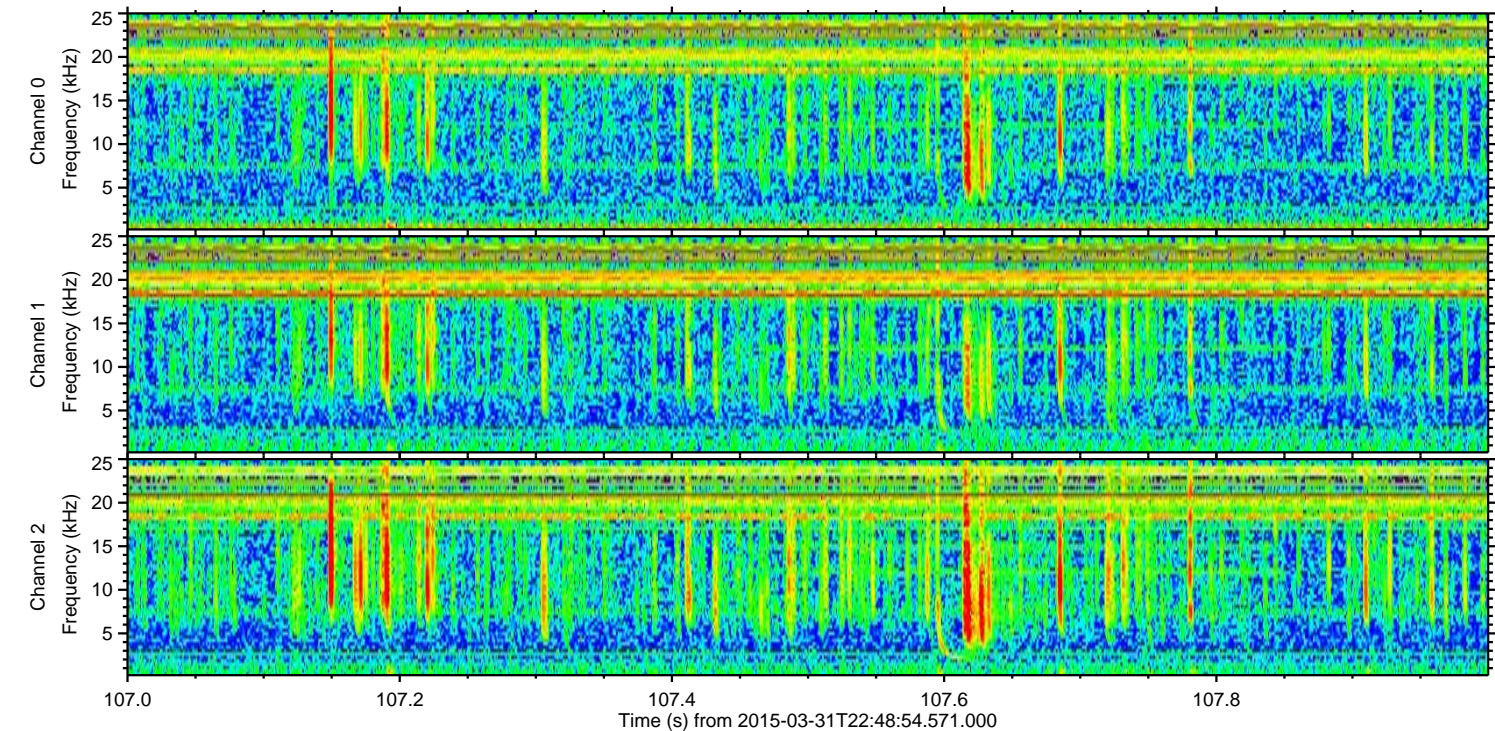
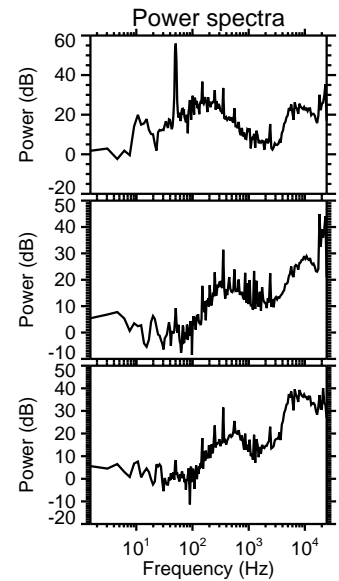
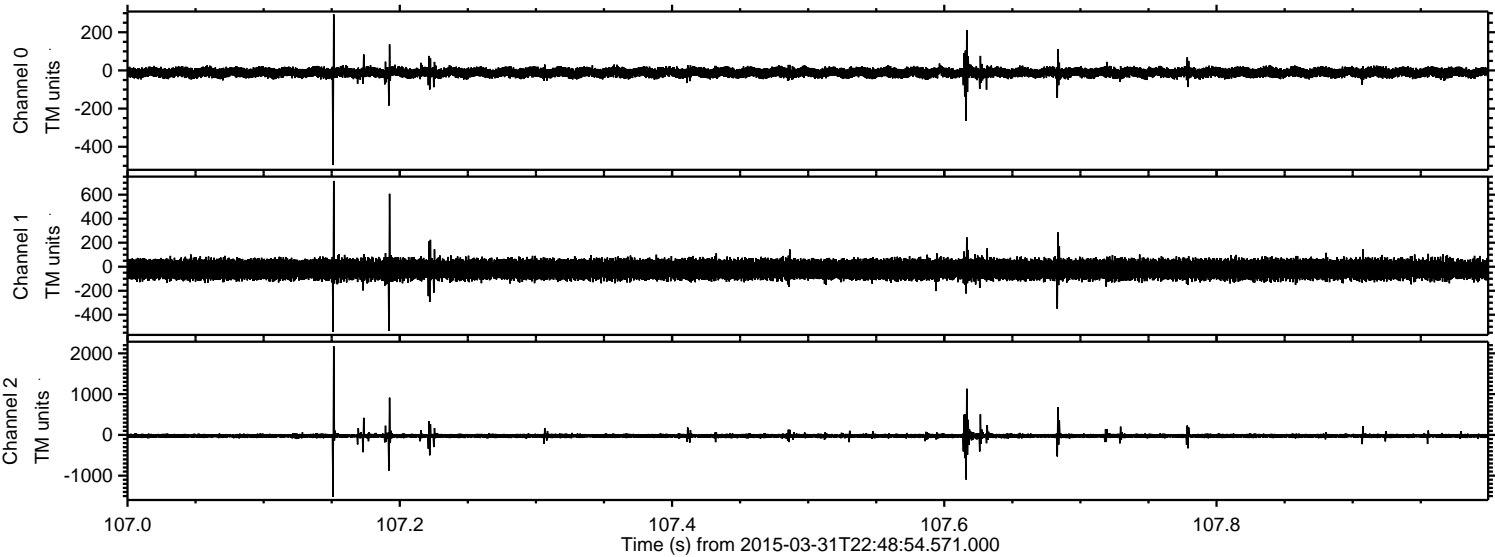


Processed Wed Apr 1 00:56:41 2015 by ELM ver.2012-10-06 from 001__elm20150331_224853__dat00.bin

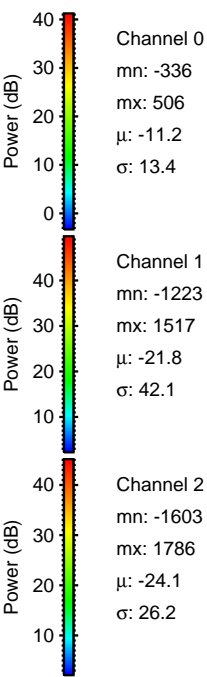
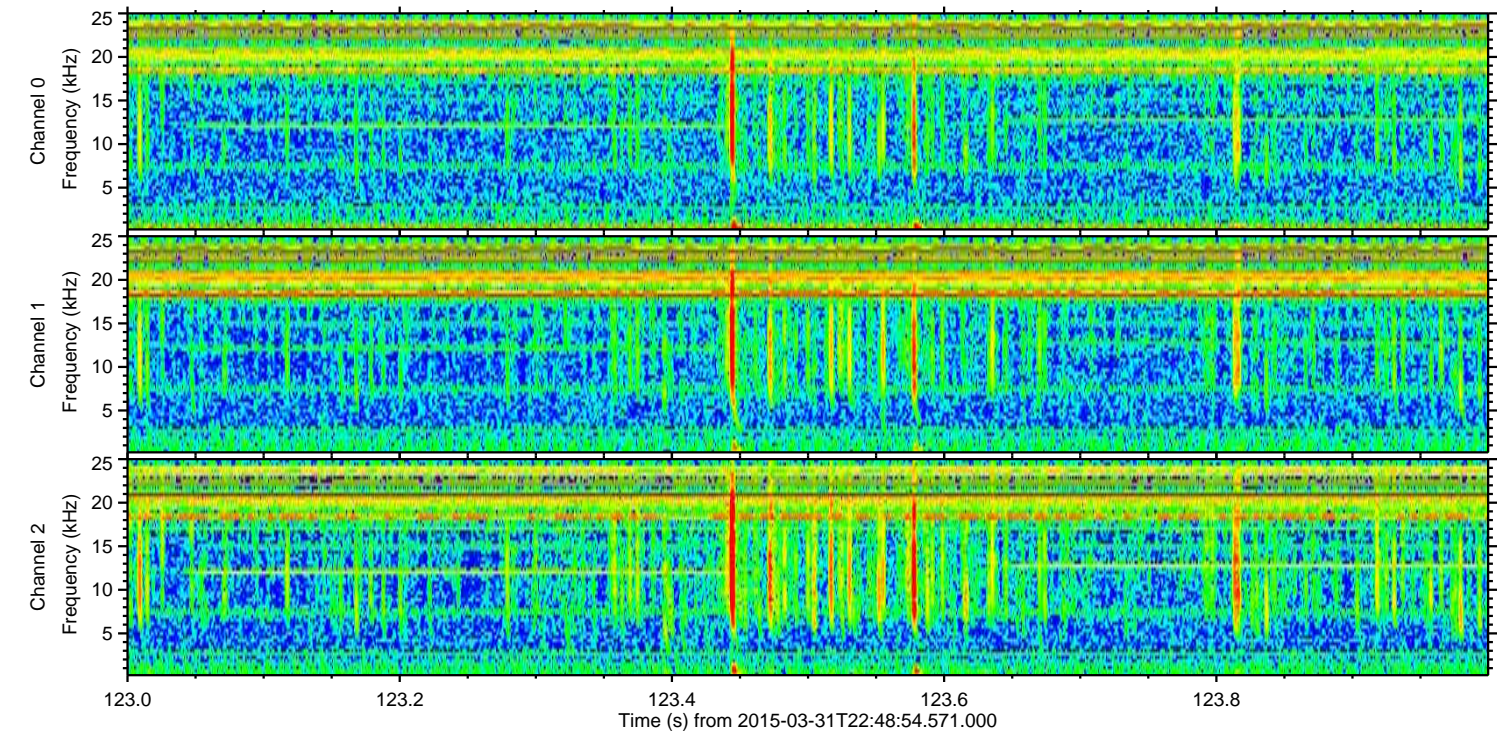
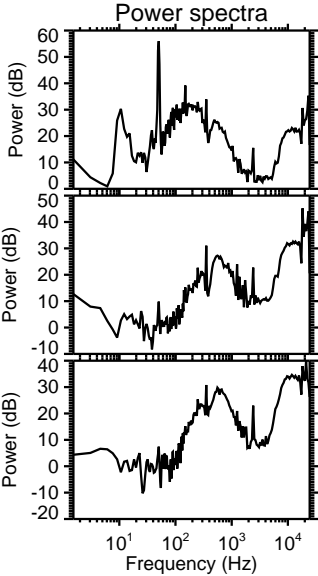
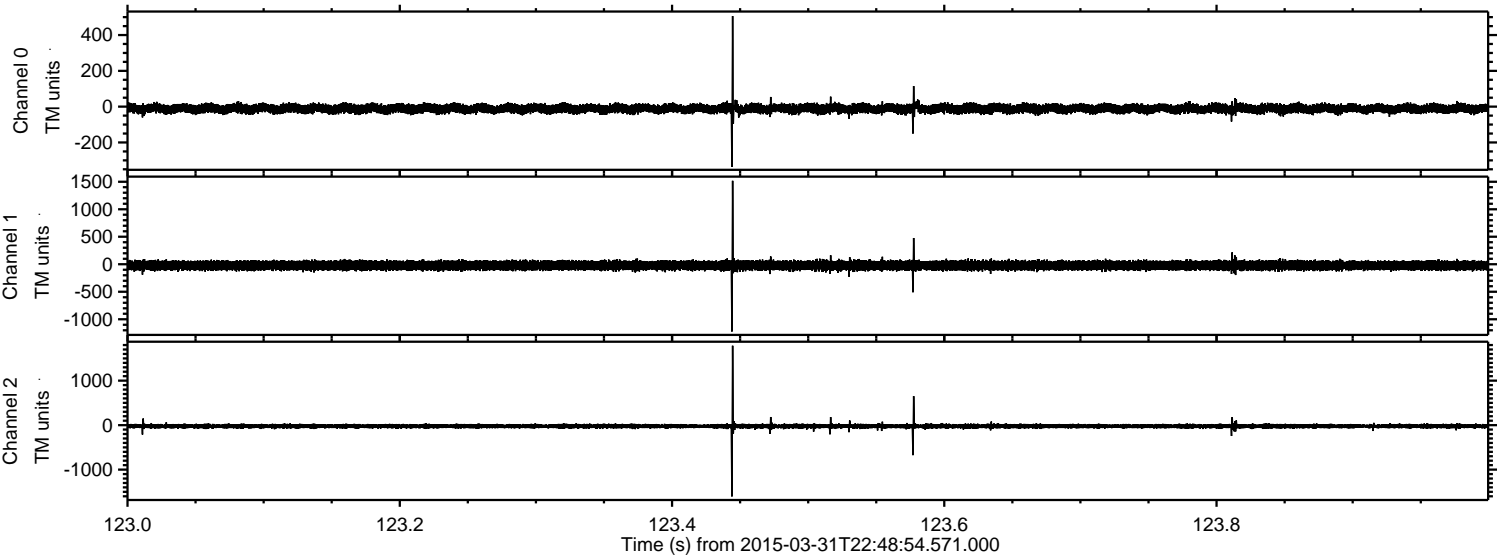


ELMAVAN 3D WAVEFORMS (Measured data sampled at 50 kHz) 49801 packets of 144 samples from 2015-03-31T22:48:54.571.000. Part 108/144

Processed Wed Apr 1 00:56:42 2015 by ELM ver.2012-10-06 from 001__elm20150331_224853__dat00.bin



Processed Wed Apr 1 00:56:43 2015 by ELM ver.2012-10-06 from 001__elm20150331_224853__dat00.bin

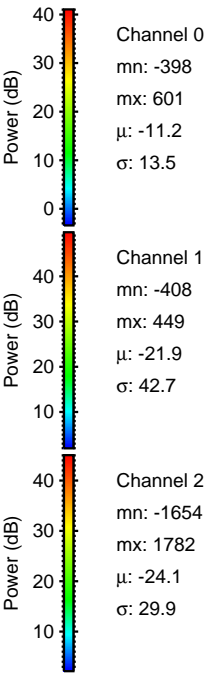
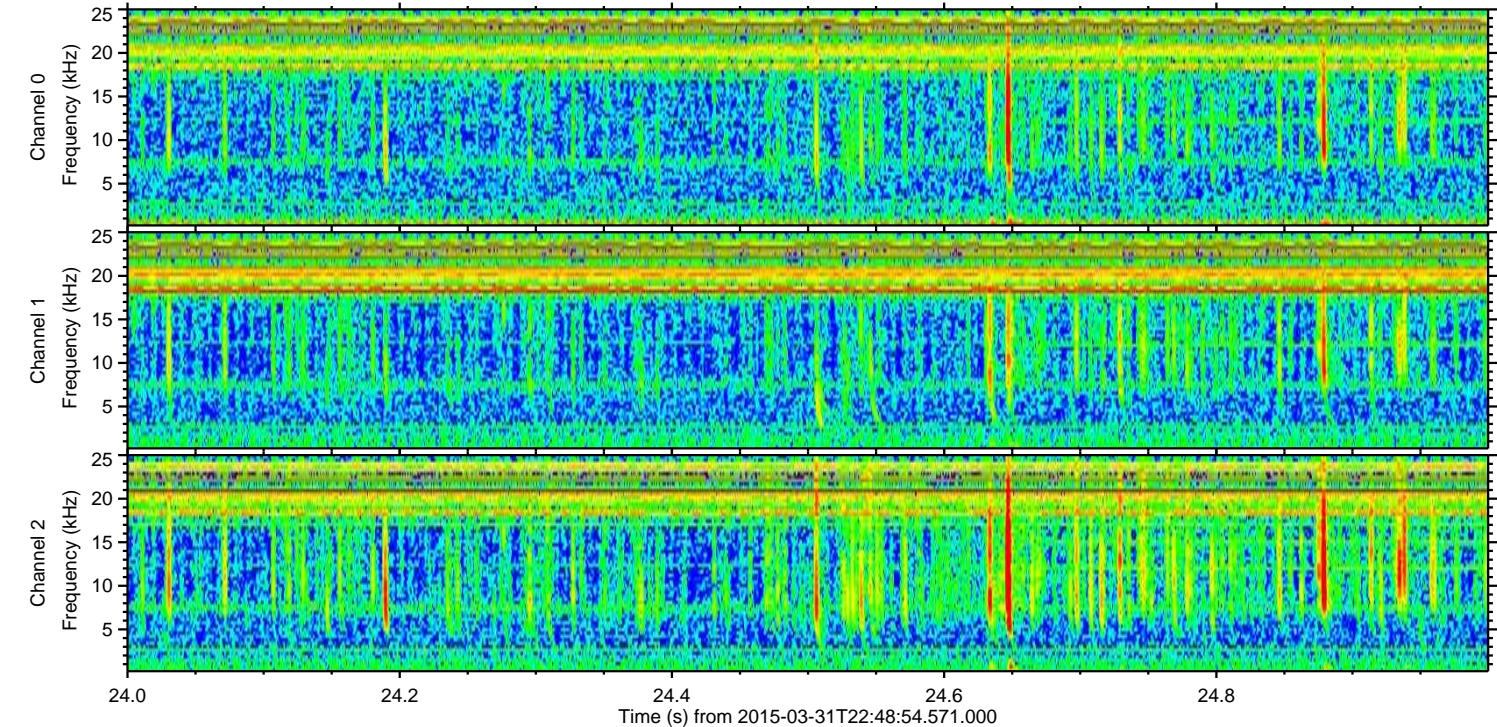
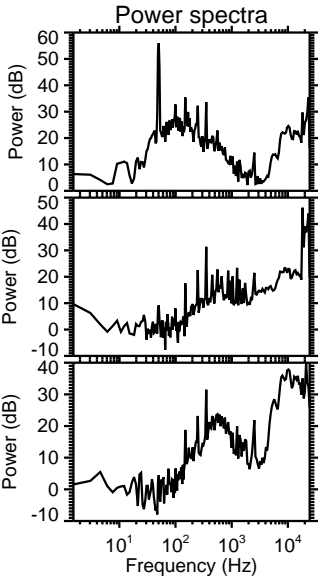
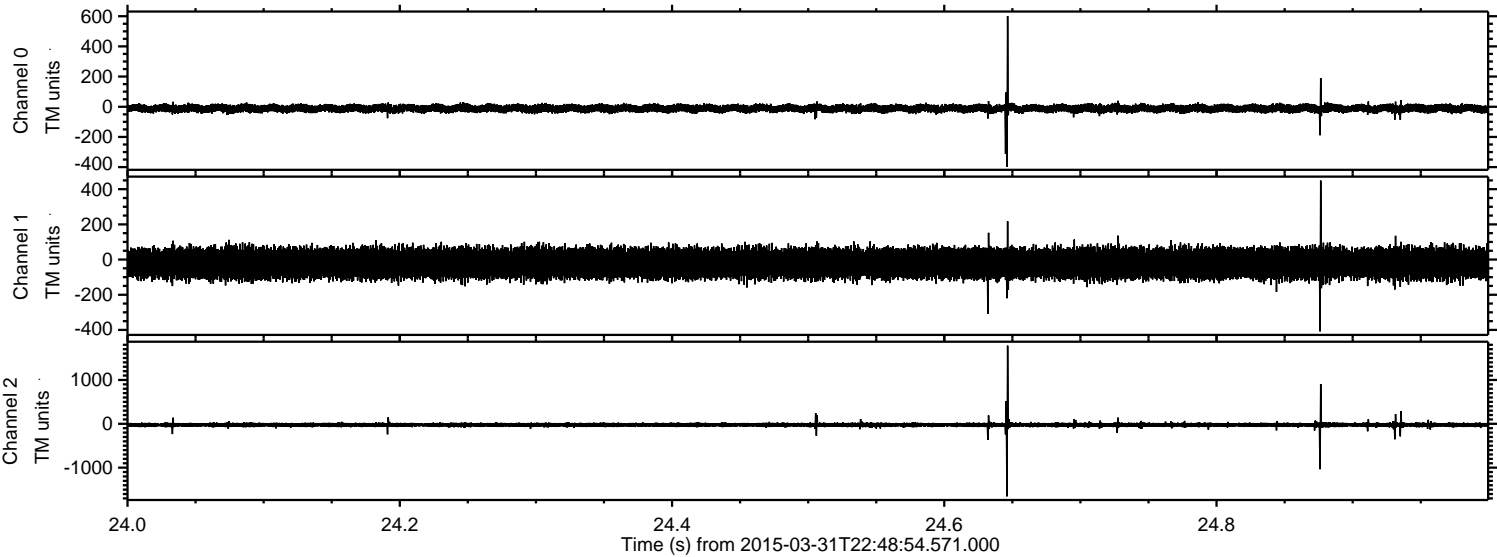


Channel 0
mn: -336
mx: 506
 μ : -11.2
 σ : 13.4

Channel 1
mn: -1223
mx: 1517
 μ : -21.8
 σ : 42.1

Channel 2
mn: -1603
mx: 1786
 μ : -24.1
 σ : 26.2

Processed Wed Apr 1 00:56:44 2015 by ELM ver.2012-10-06 from 001__elm20150331_224853__dat00.bin



Processed Wed Apr 1 00:56:45 2015 by ELM ver.2012-10-06 from 001__elm20150331_224853__dat00.bin

