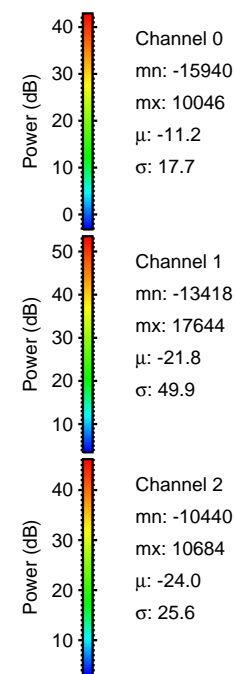
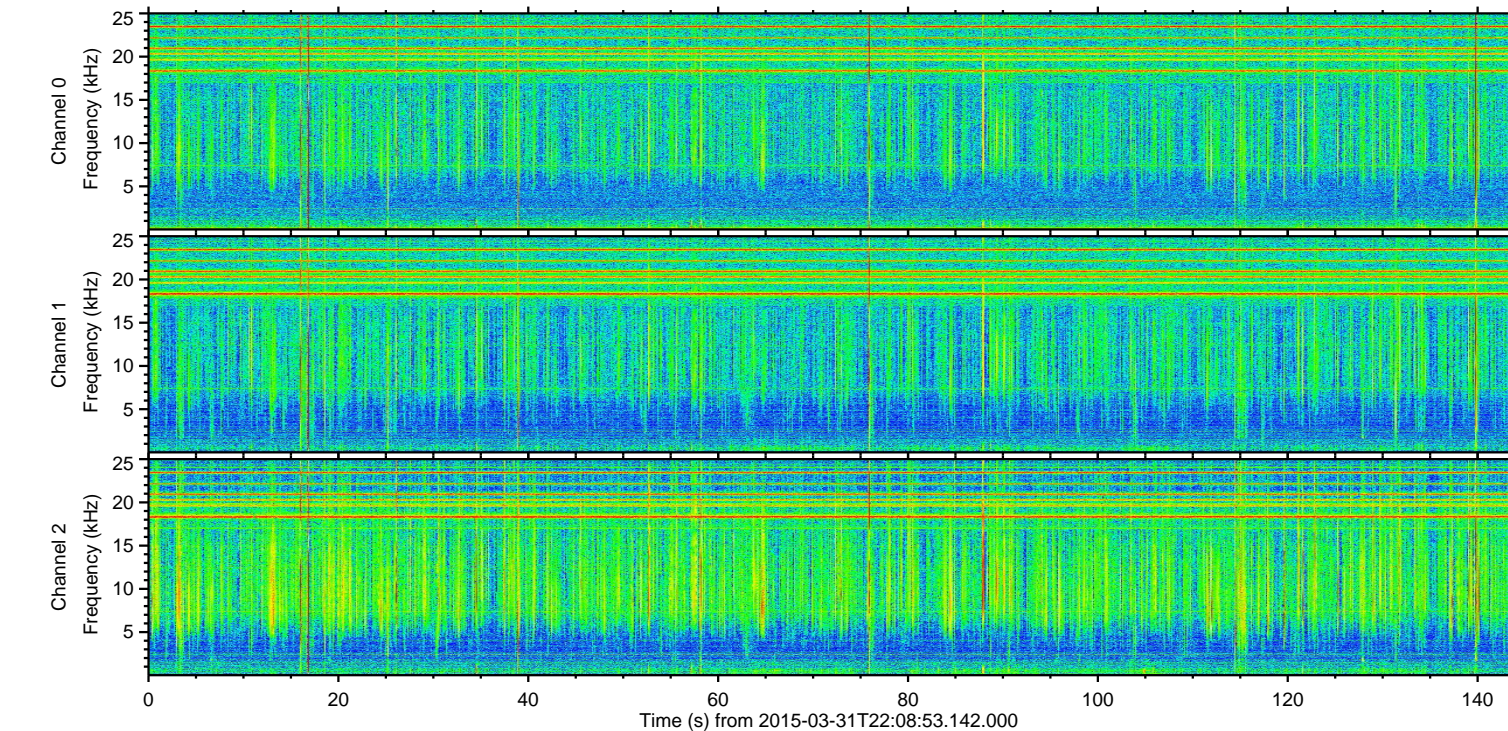
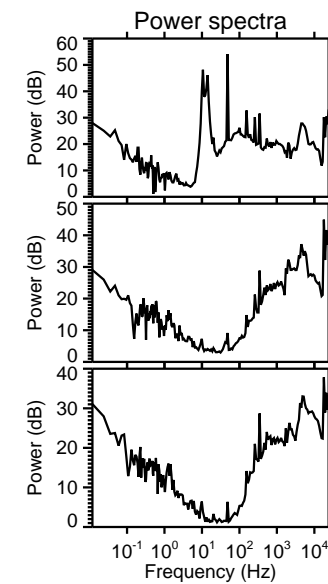
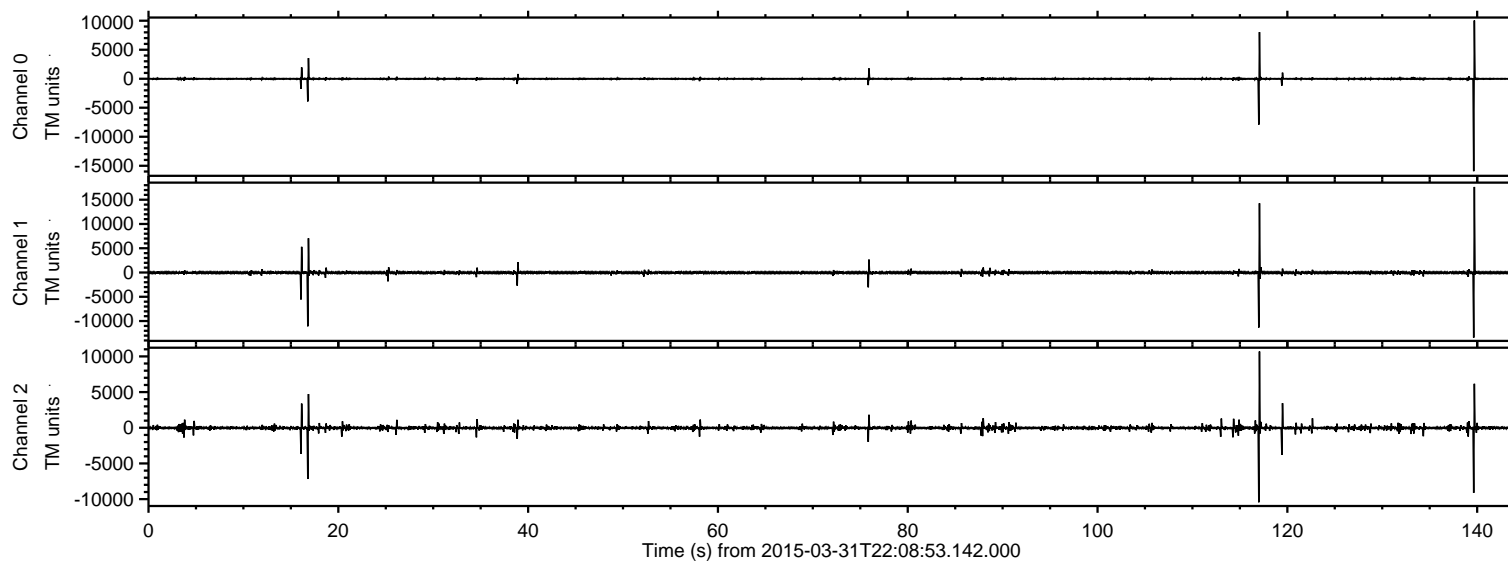


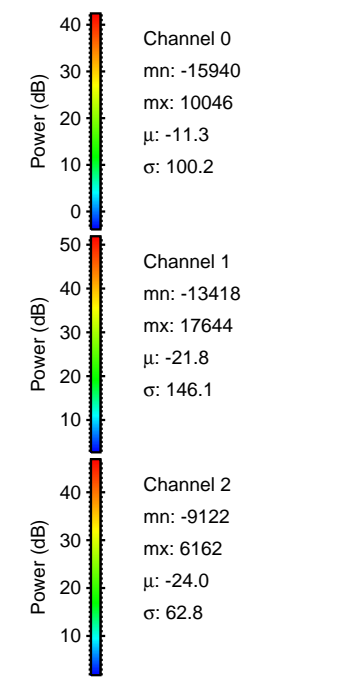
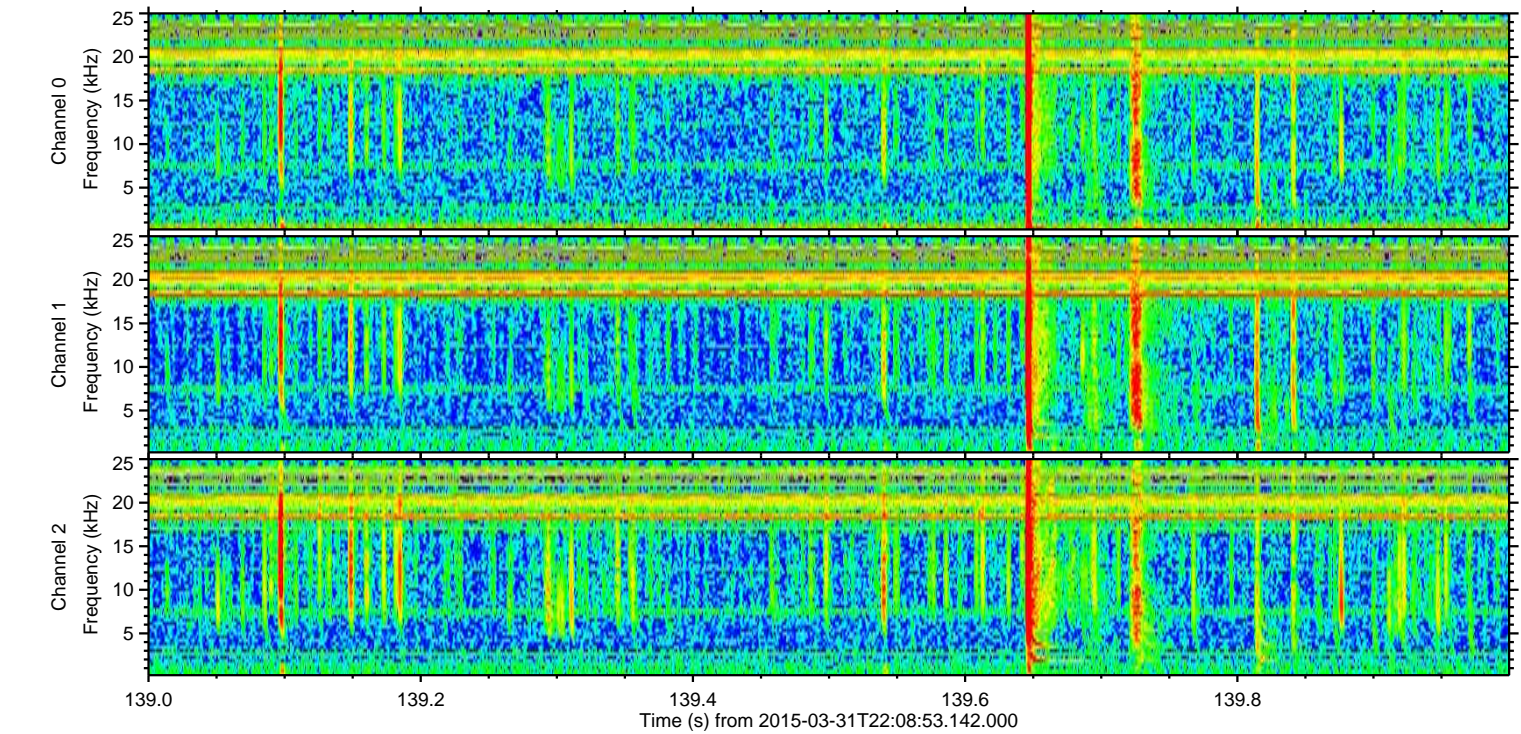
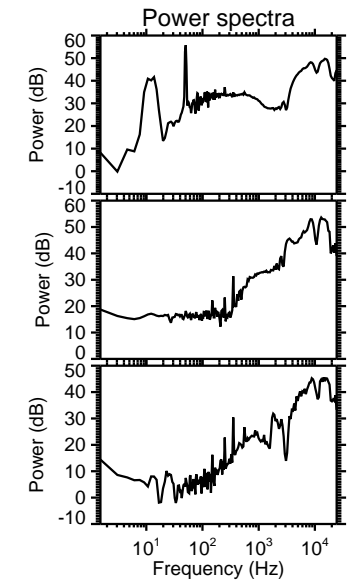
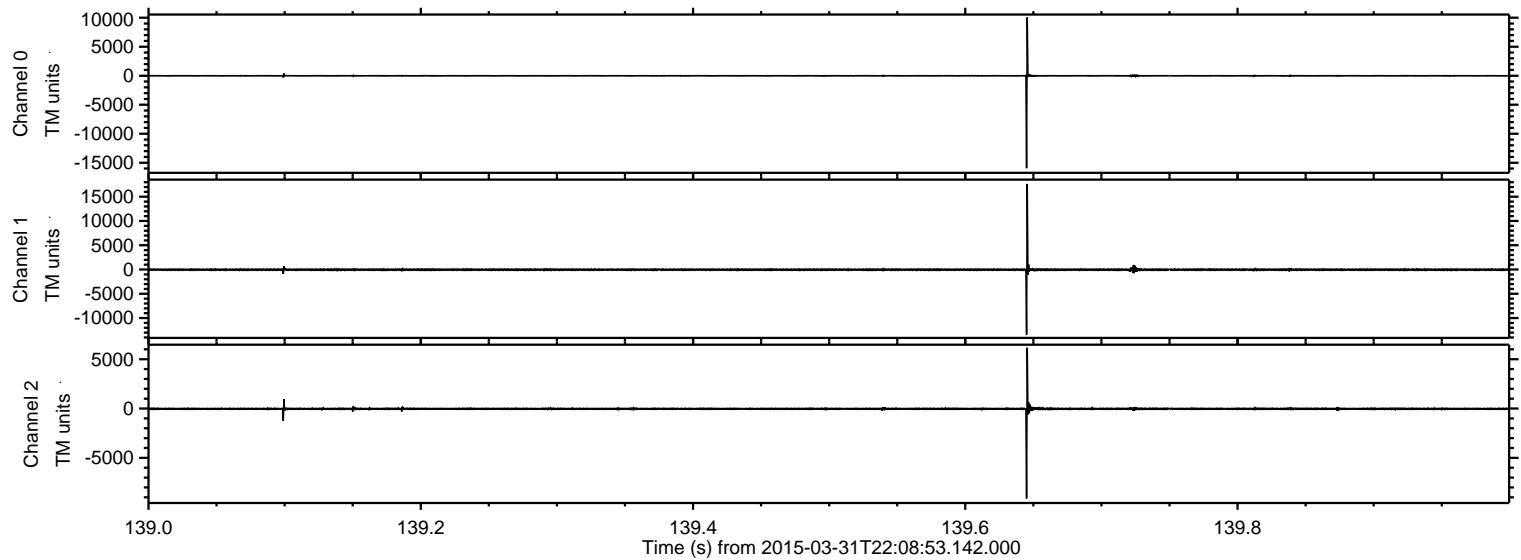
ELMAVAN 3D WAVEFORMS (Measured data sampled at 50 kHz) 49782 packets of 144 samples from 2015-03-31T22:08:53.142.000.

Processed Wed Apr 1 00:16:21 2015 by ELM ver.2012-10-06 from 001__elm20150331_220852__dat00.bin

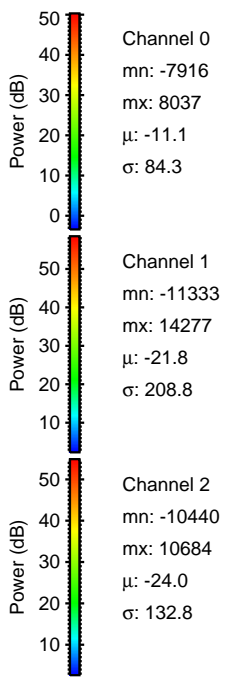
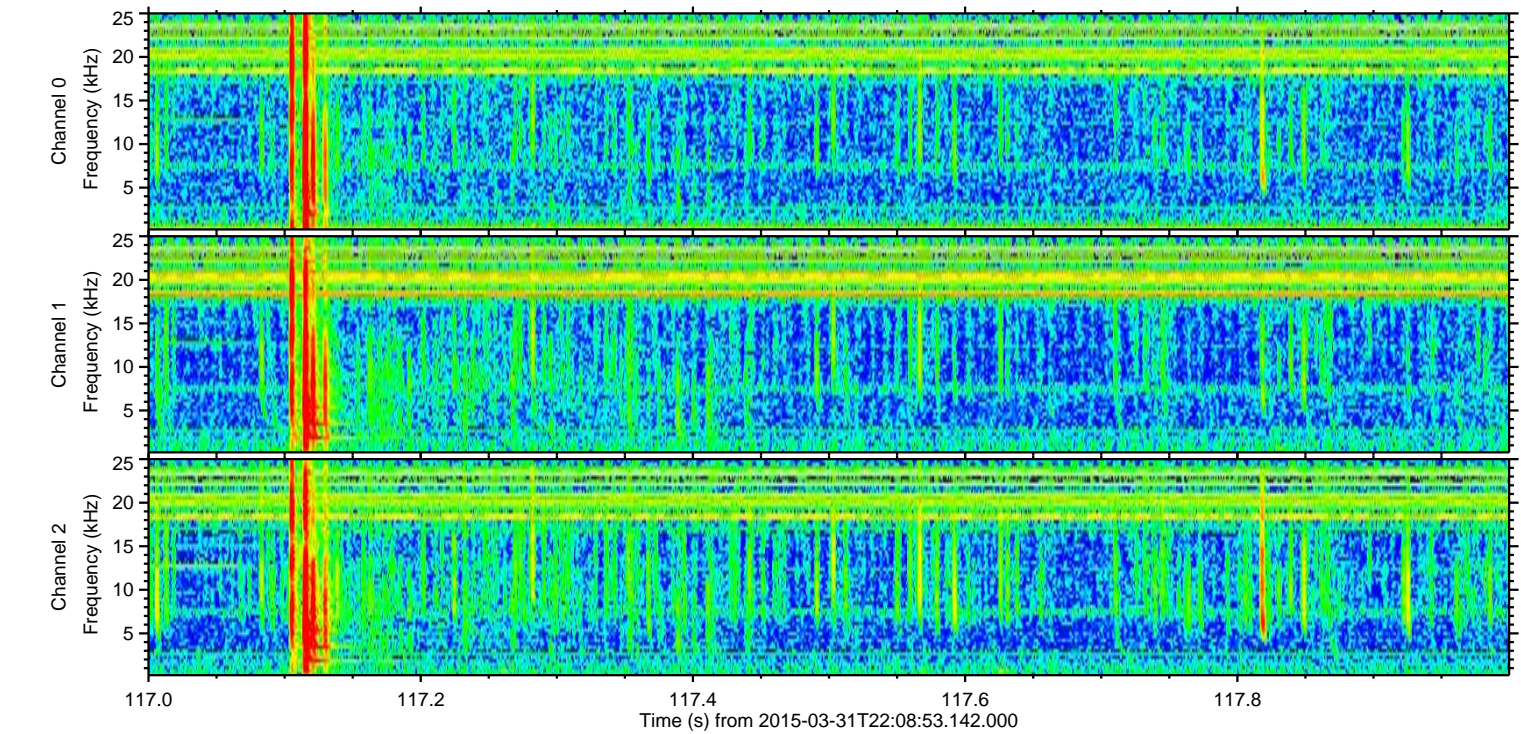
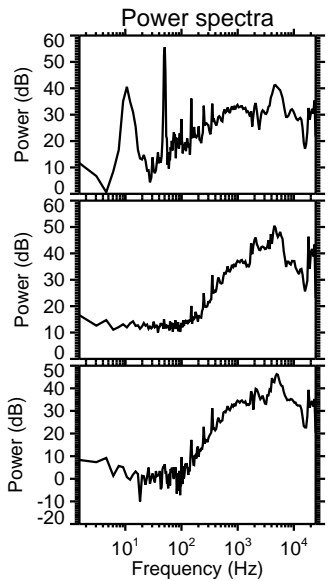
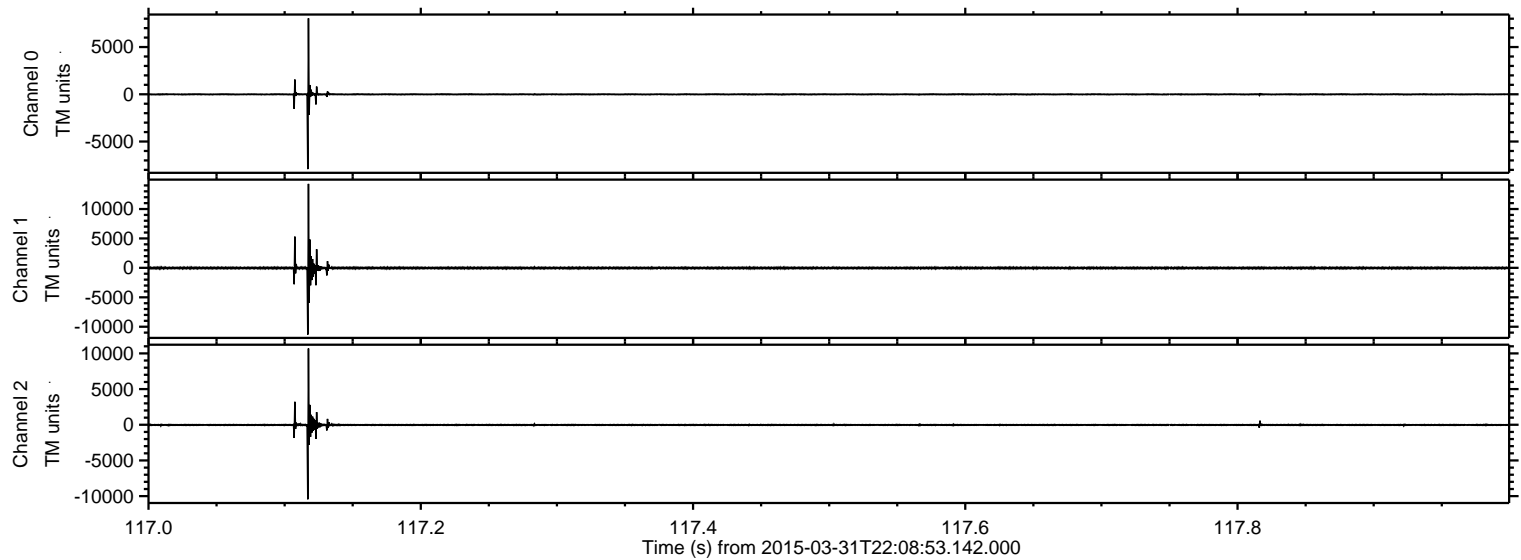


ELMAVAN 3D WAVEFORMS (Measured data sampled at 50 kHz) 49782 packets of 144 samples from 2015-03-31T22:08:53.142.000. Part 140/144

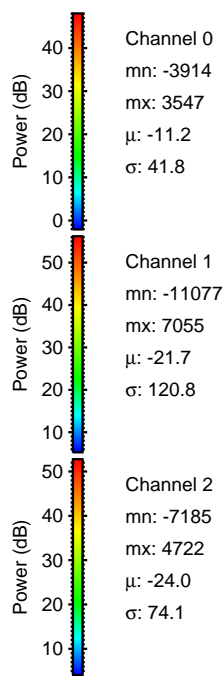
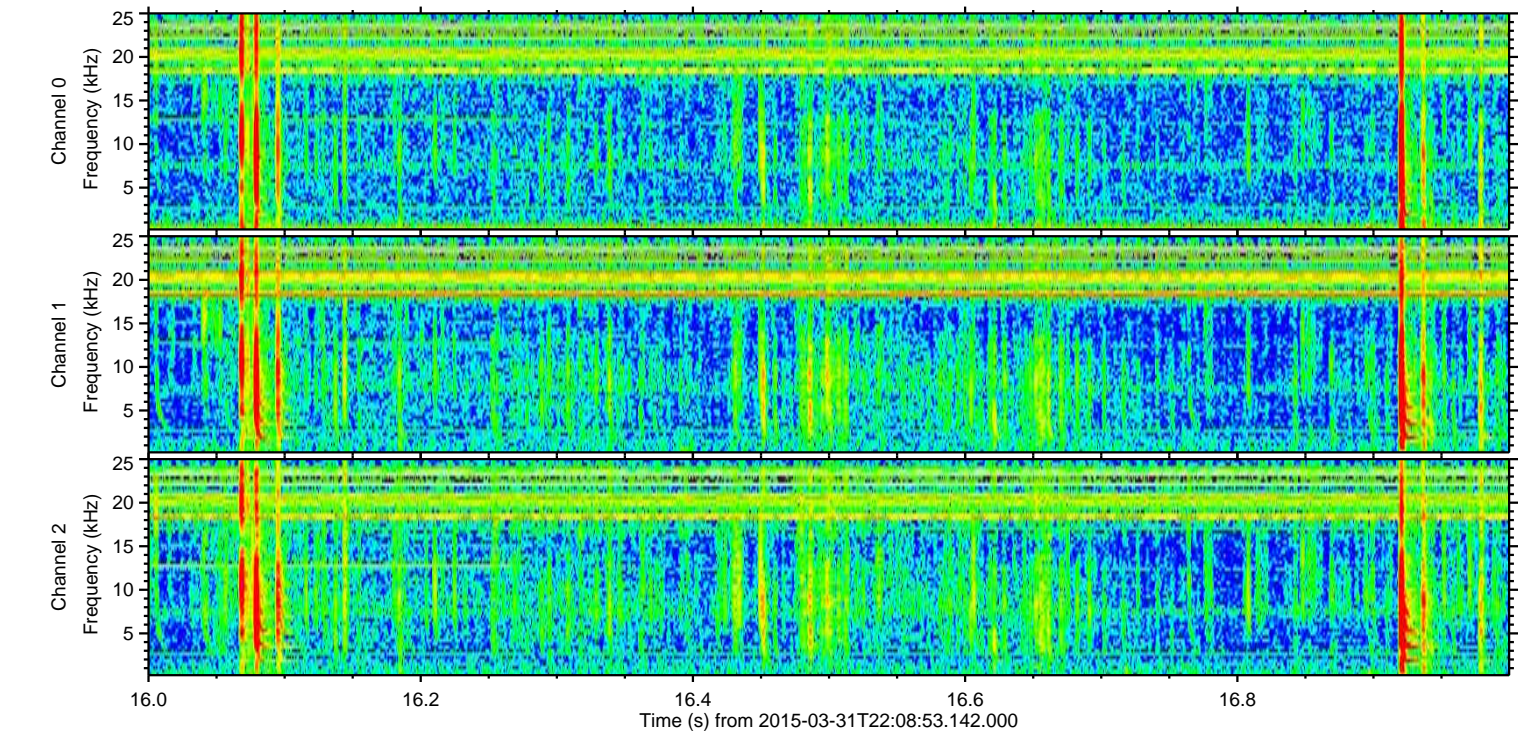
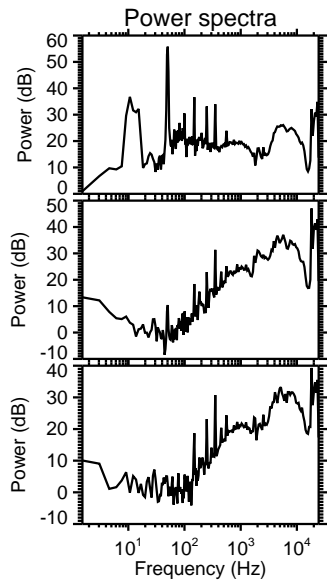
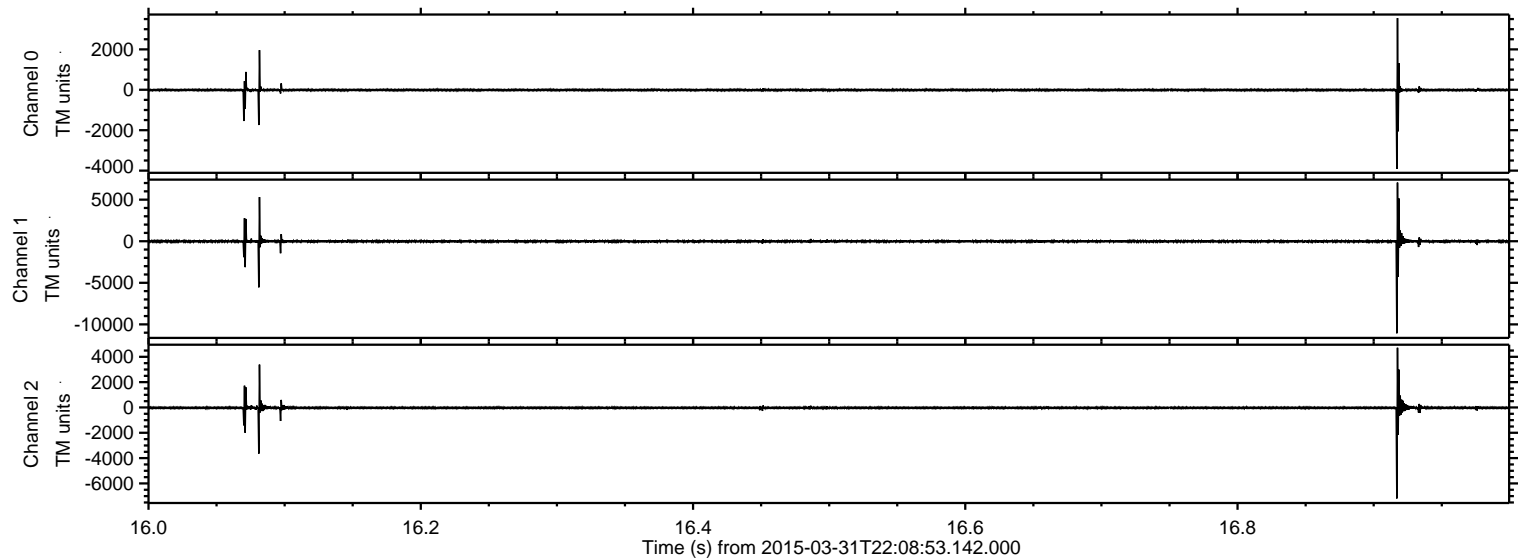
Processed Wed Apr 1 00:16:32 2015 by ELM ver.2012-10-06 from 001__elm20150331_220852__dat00.bin



Processed Wed Apr 1 00:16:33 2015 by ELM ver.2012-10-06 from 001__elm20150331_220852__dat00.bin

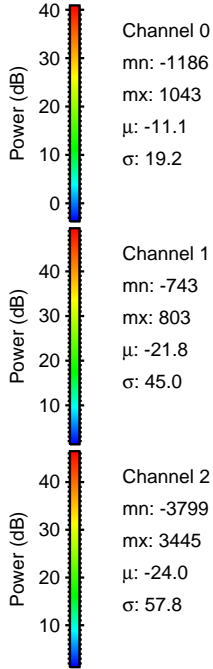
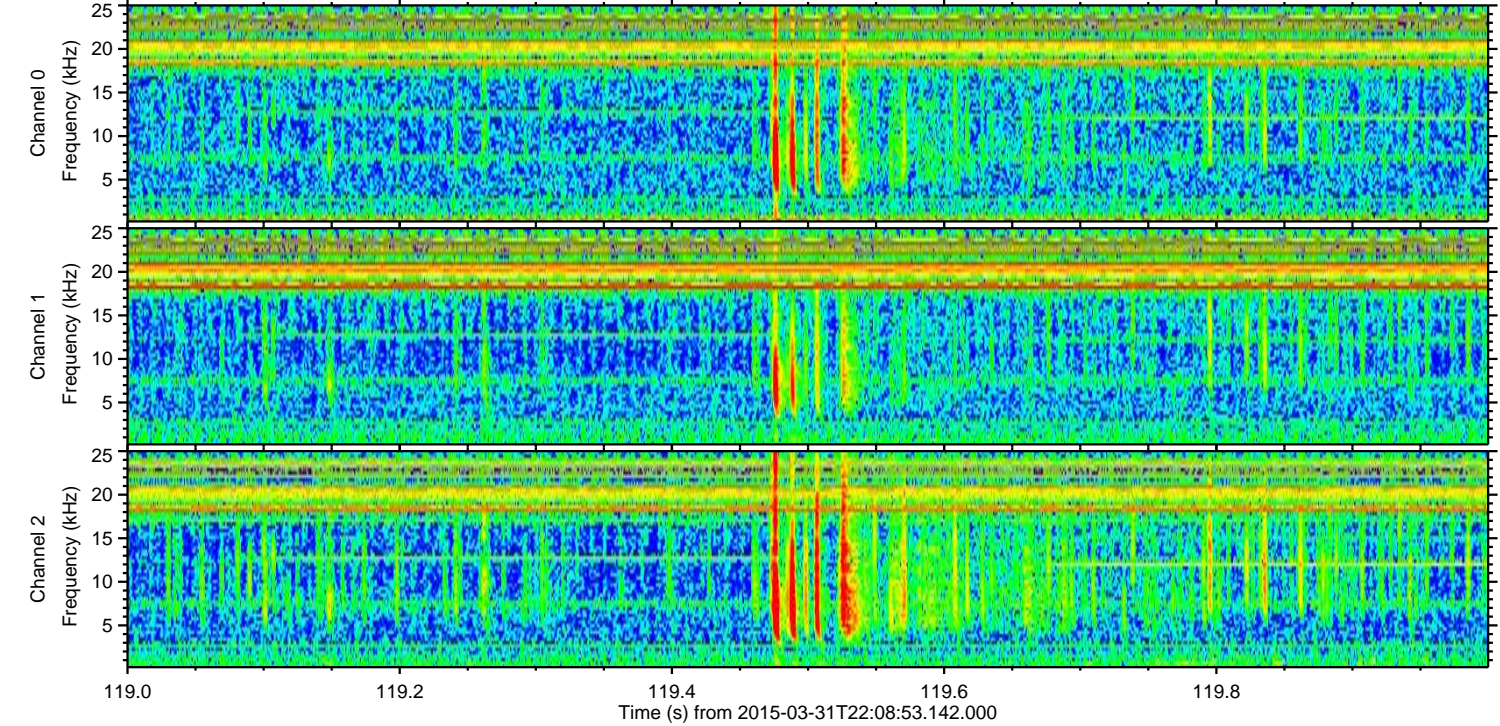
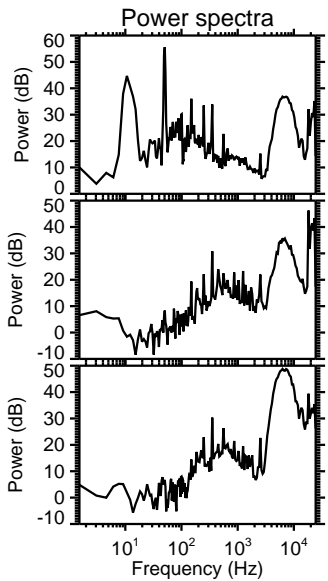
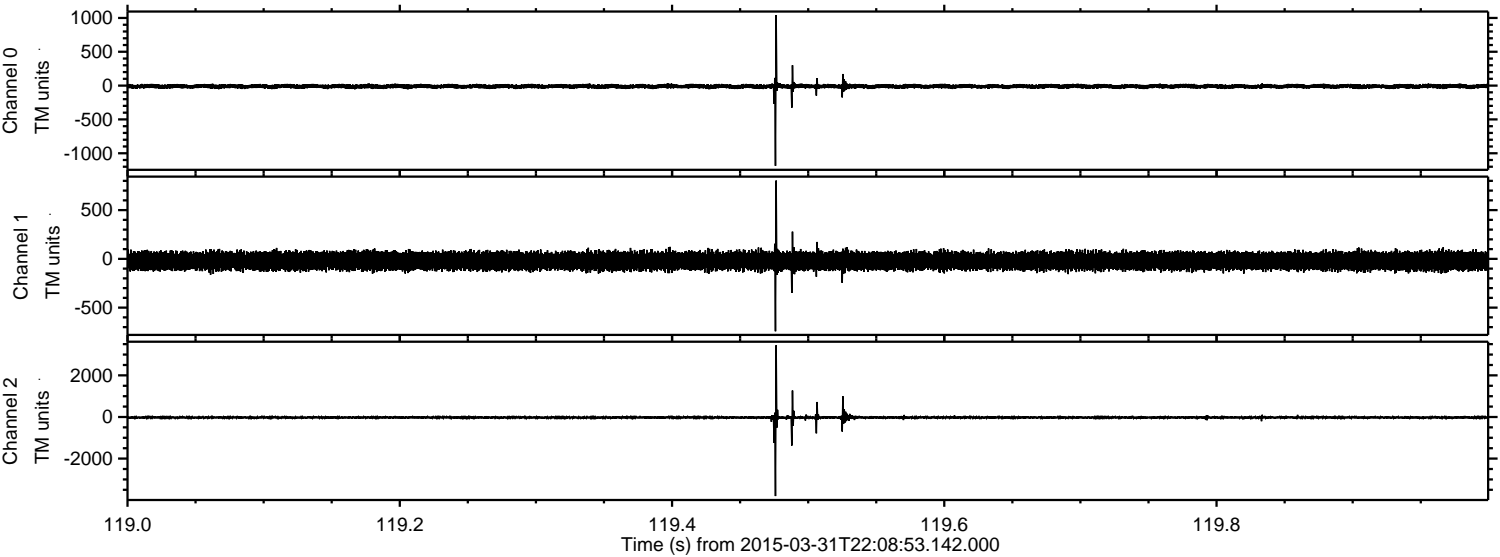


Processed Wed Apr 1 00:16:34 2015 by ELM ver.2012-10-06 from 001__elm20150331_220852__dat00.bin



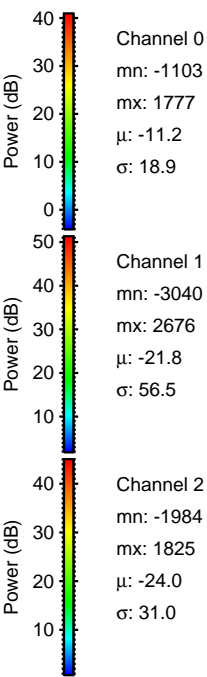
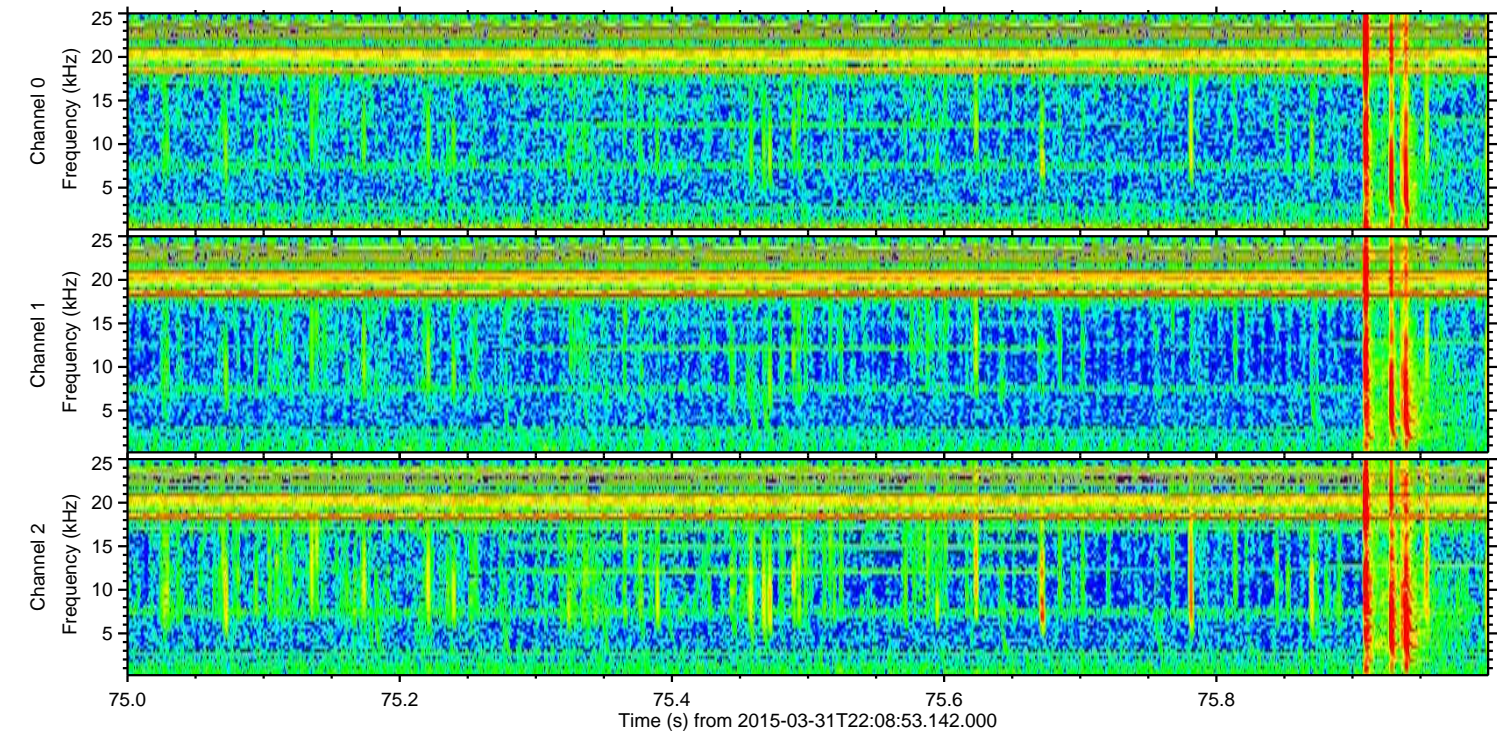
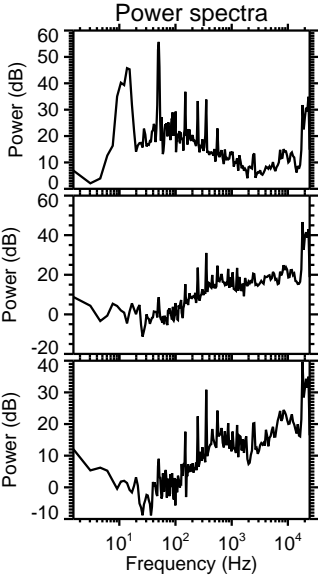
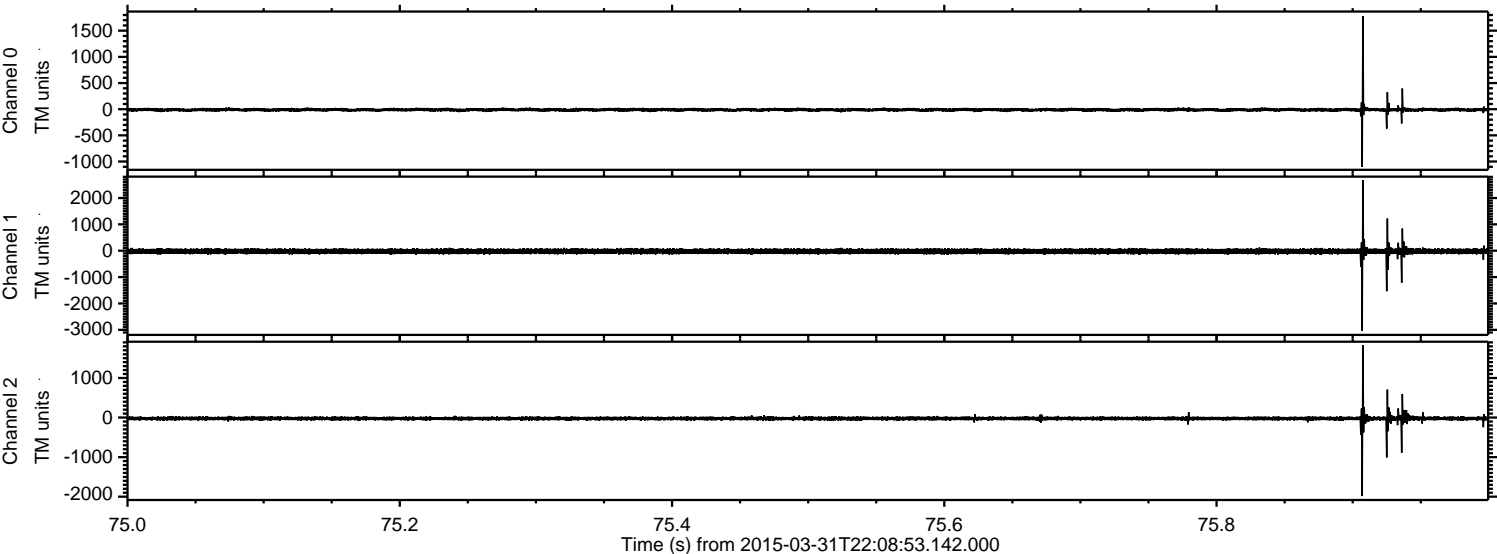
ELMAVAN 3D WAVEFORMS (Measured data sampled at 50 kHz) 49782 packets of 144 samples from 2015-03-31T22:08:53.142.000. Part 120/144

Processed Wed Apr 1 00:16:35 2015 by ELM ver.2012-10-06 from 001__elm20150331_220852__dat00.bin



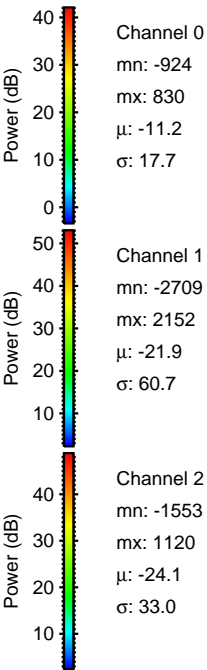
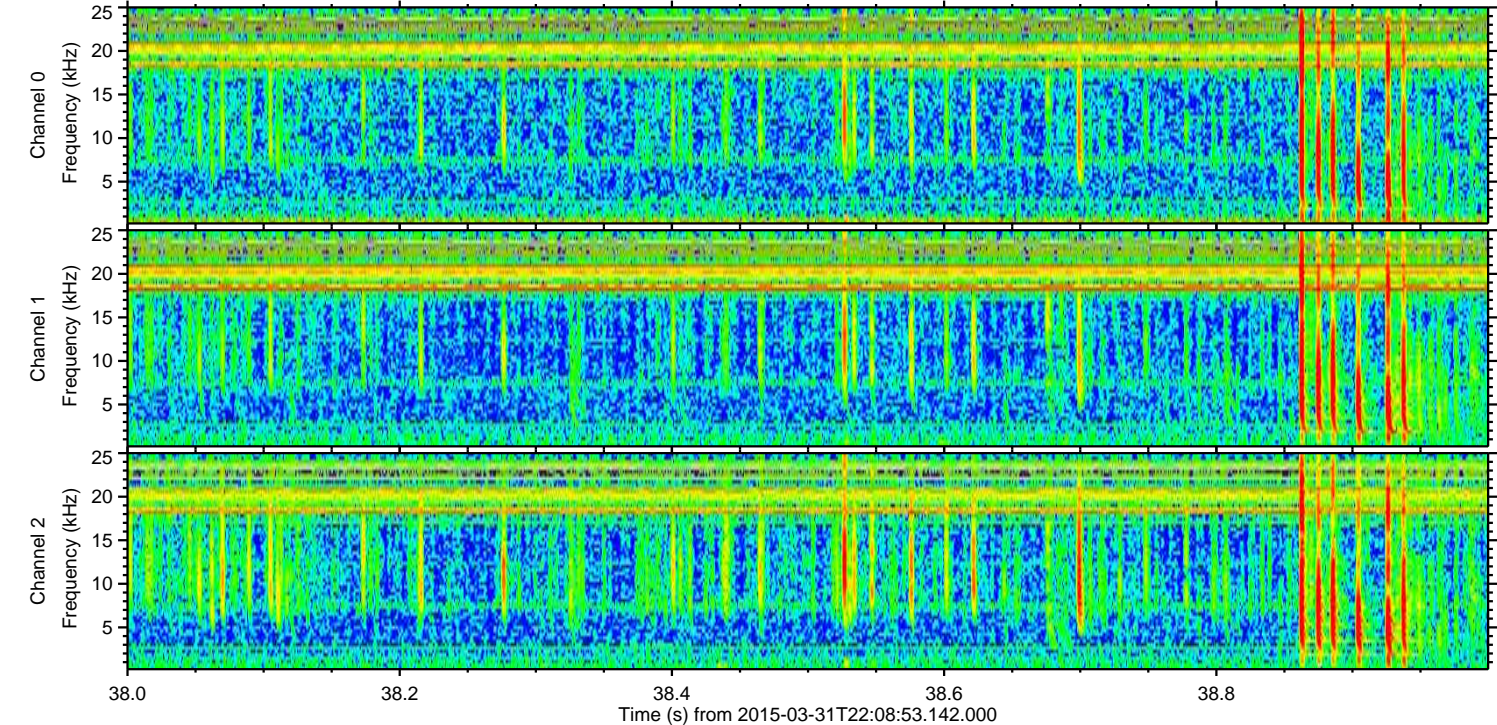
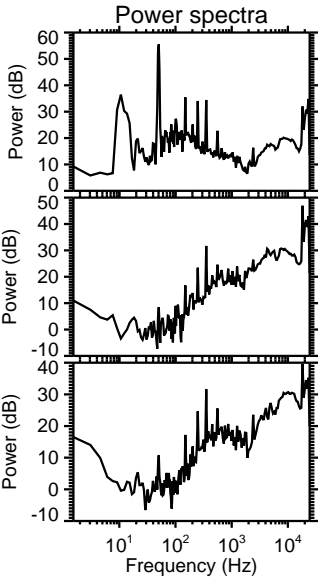
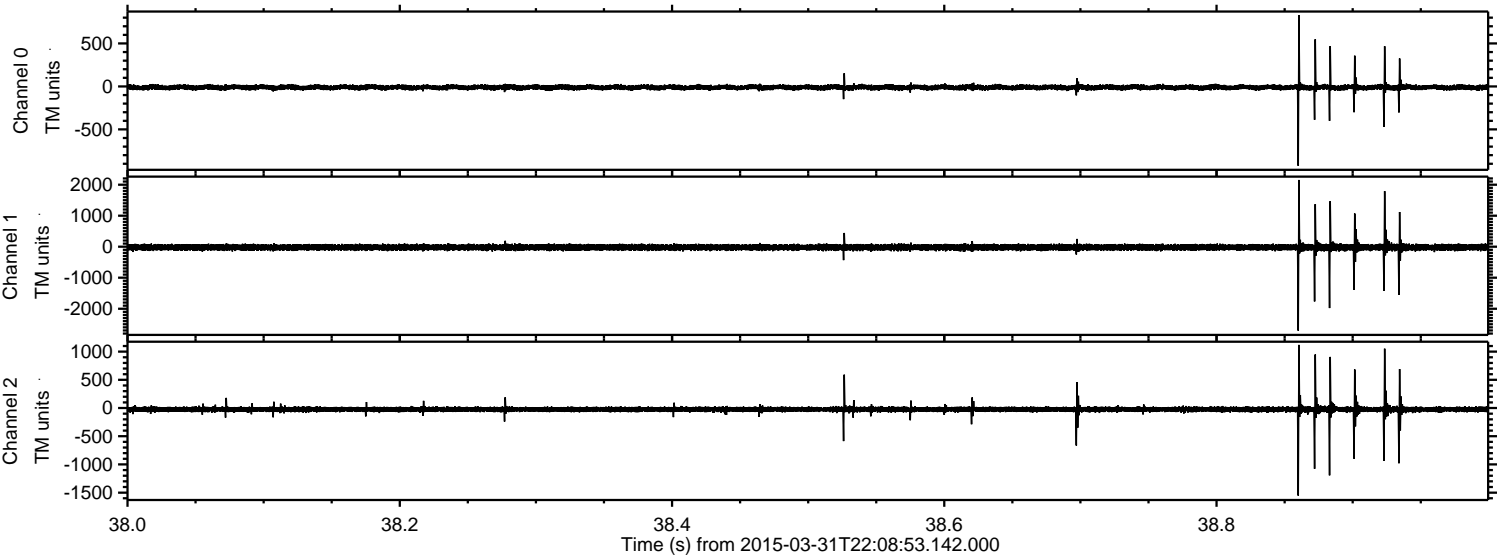
ELMAVAN 3D WAVEFORMS (Measured data sampled at 50 kHz) 49782 packets of 144 samples from 2015-03-31T22:08:53.142.000. Part 76/144

Processed Wed Apr 1 00:16:36 2015 by ELM ver.2012-10-06 from 001__elm20150331_220852__dat00.bin

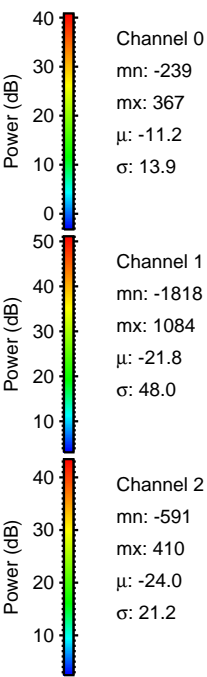
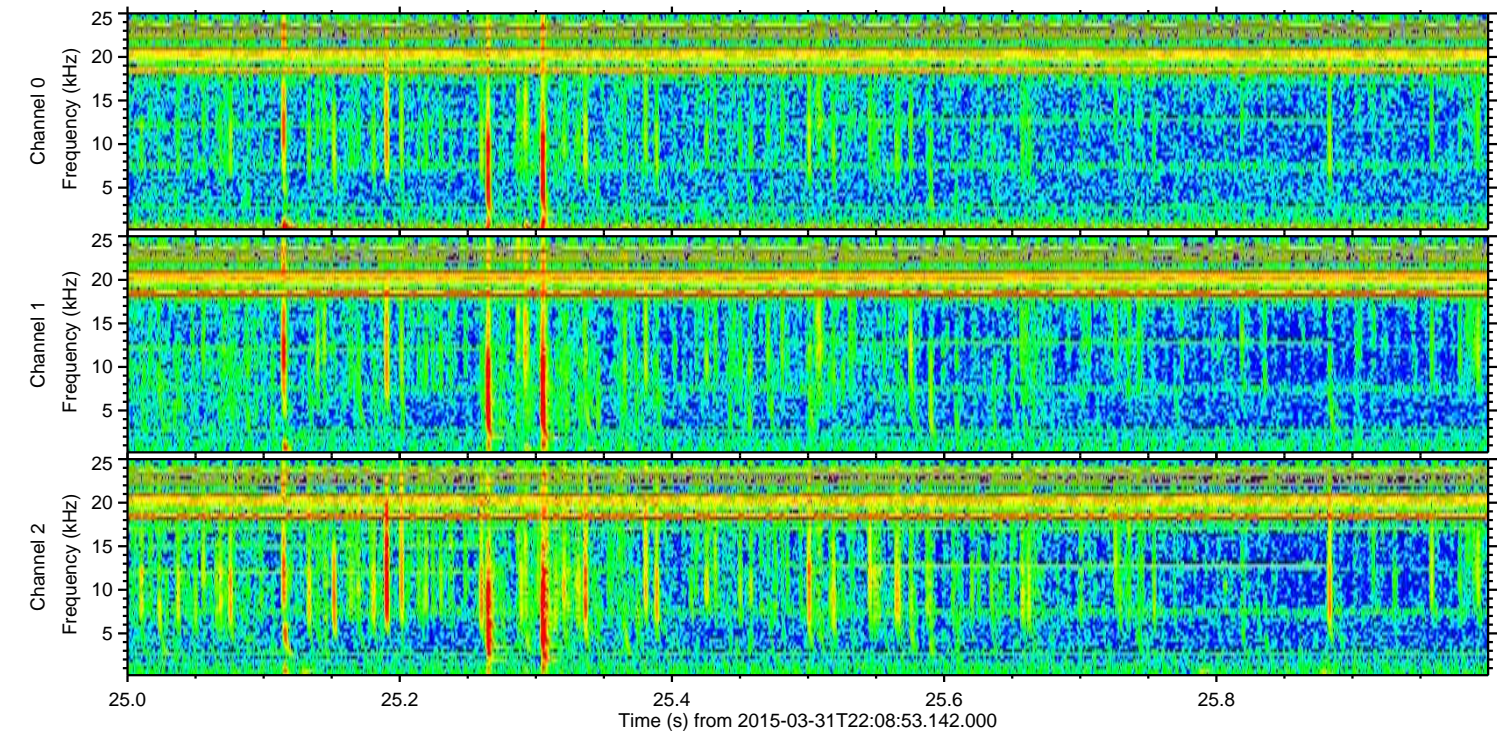
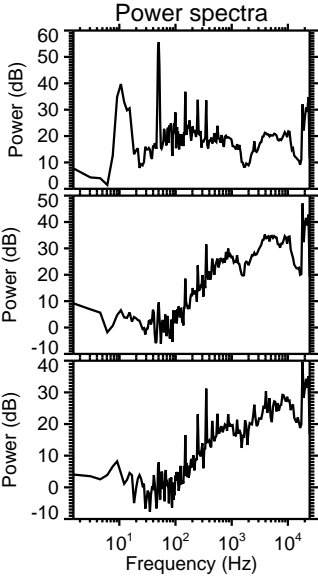
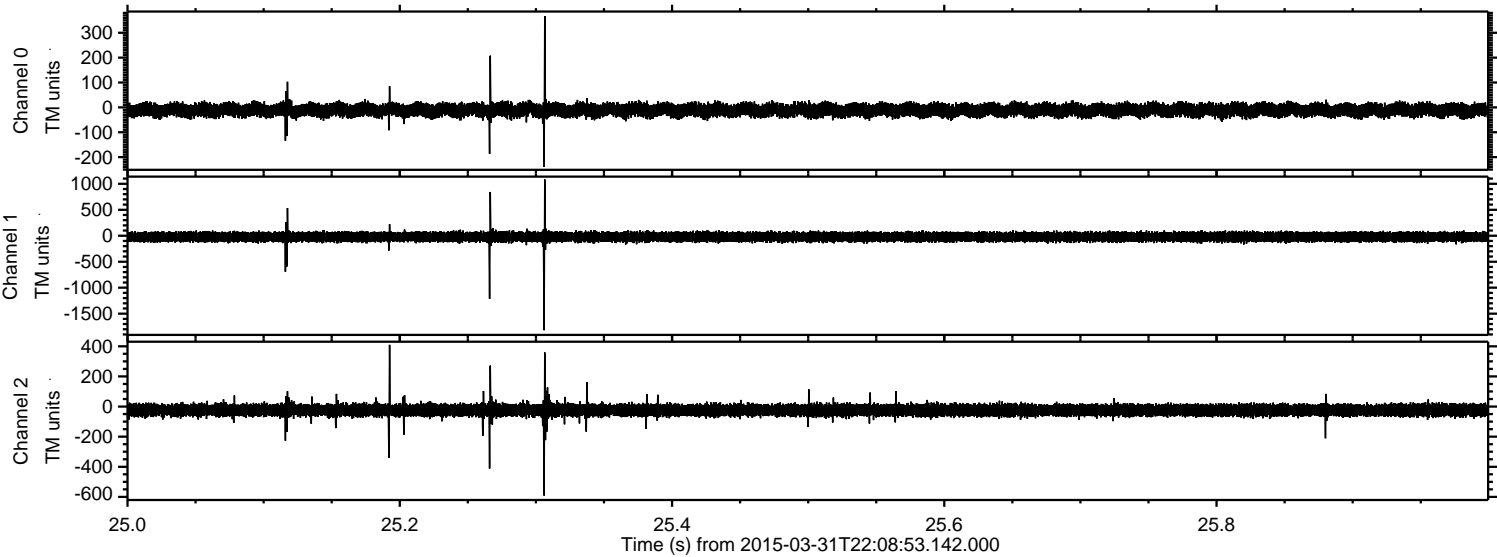


ELMAVAN 3D WAVEFORMS (Measured data sampled at 50 kHz) 49782 packets of 144 samples from 2015-03-31T22:08:53.142.000. Part 39/144

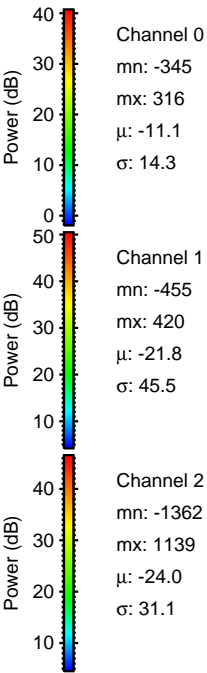
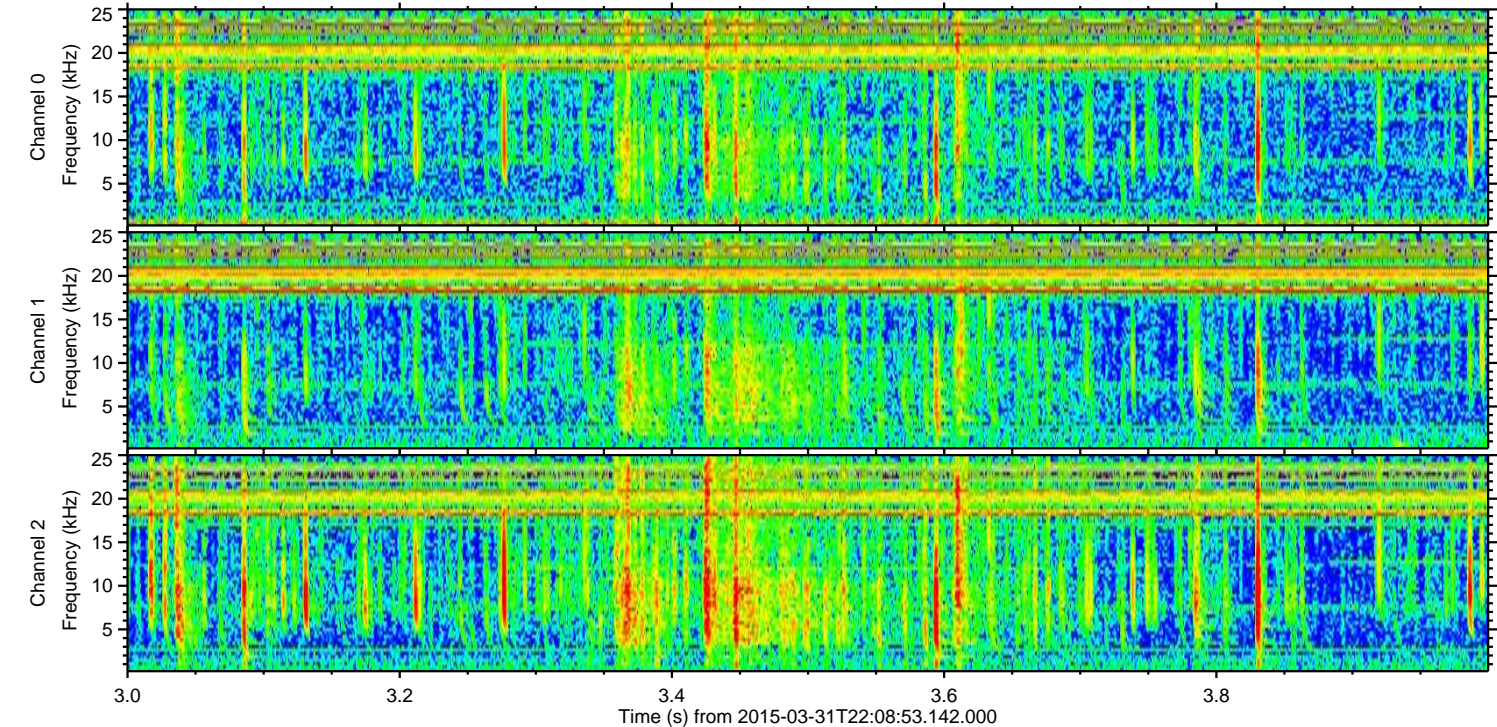
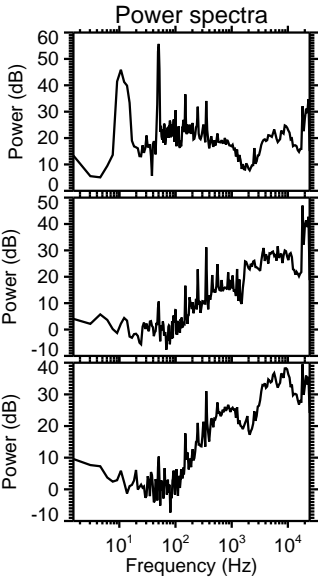
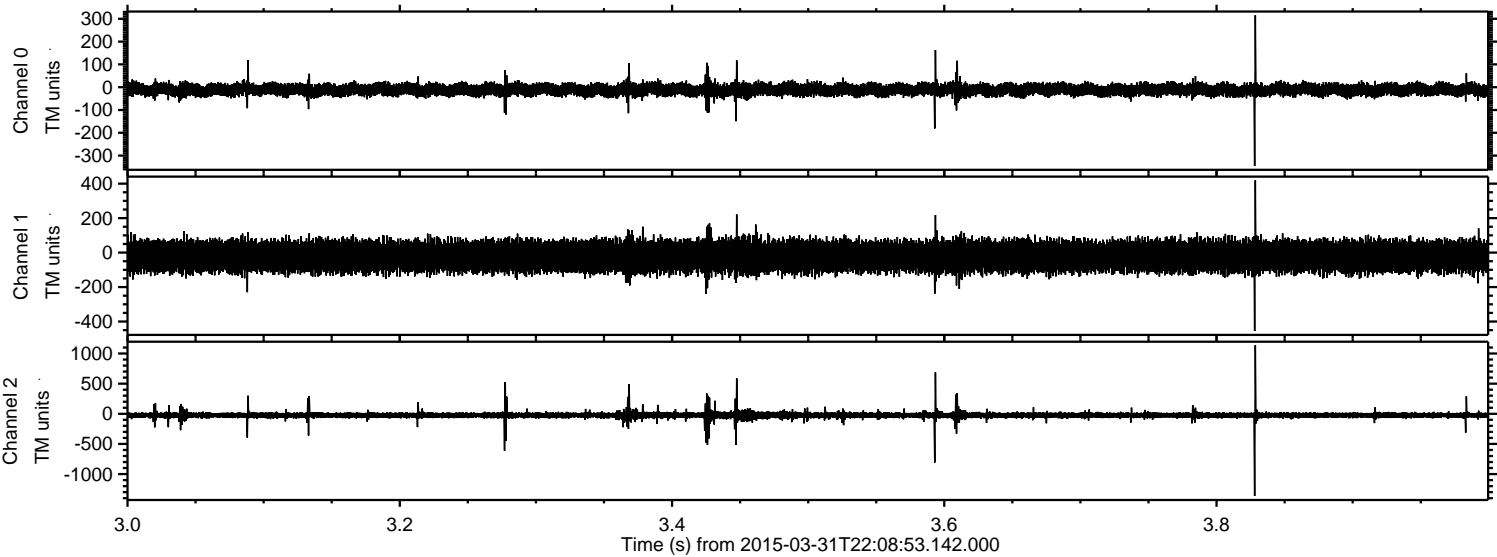
Processed Wed Apr 1 00:16:37 2015 by ELM ver.2012-10-06 from 001__elm20150331_220852__dat00.bin



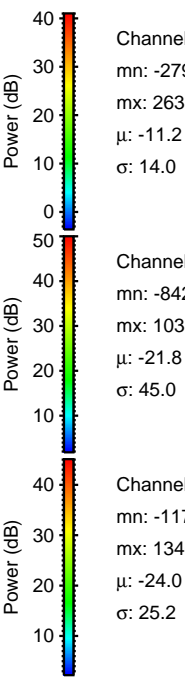
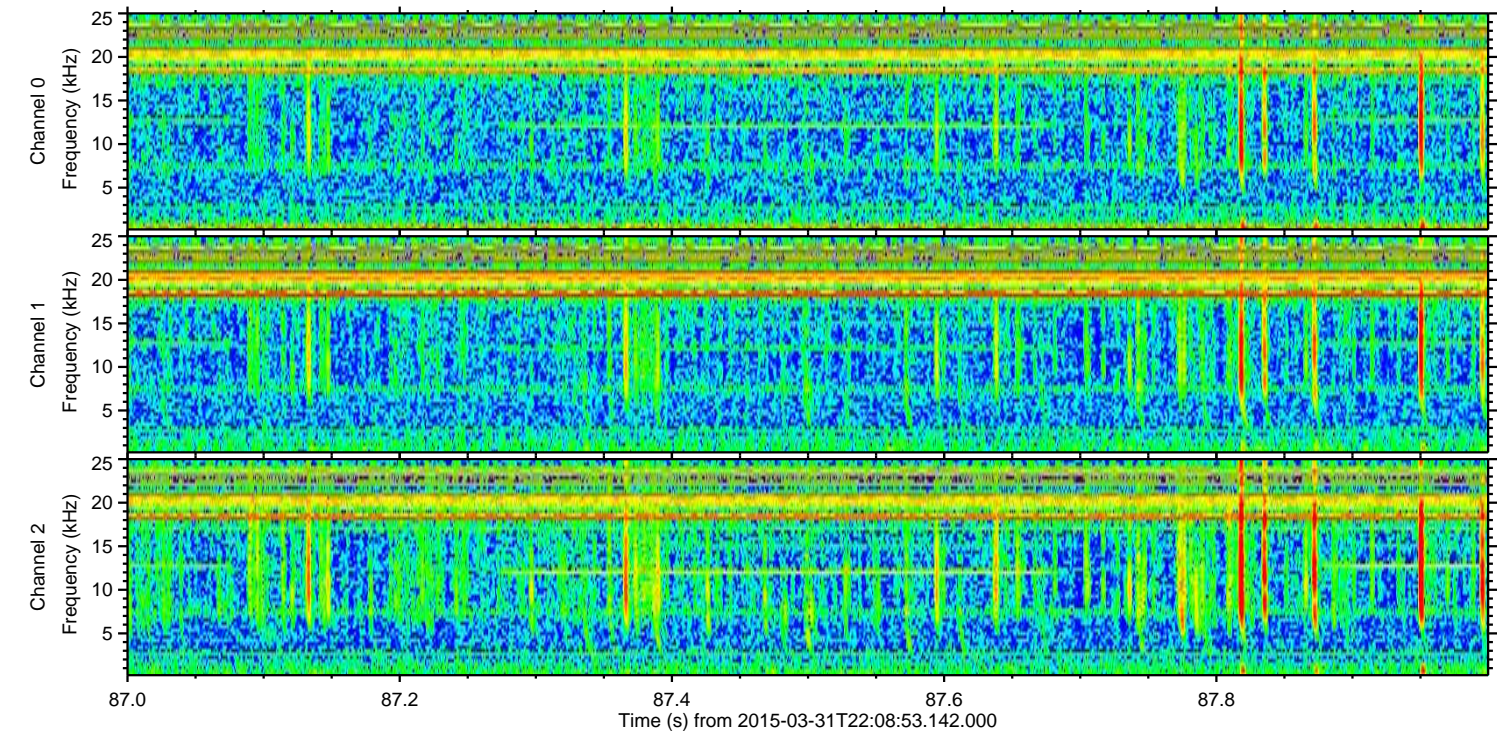
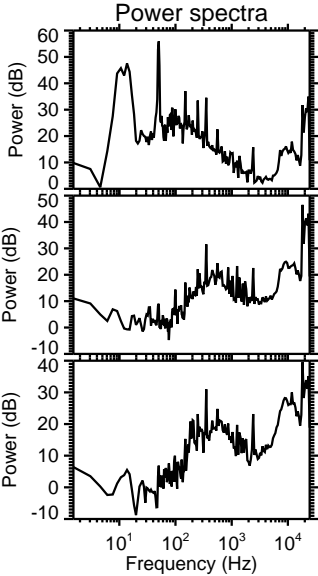
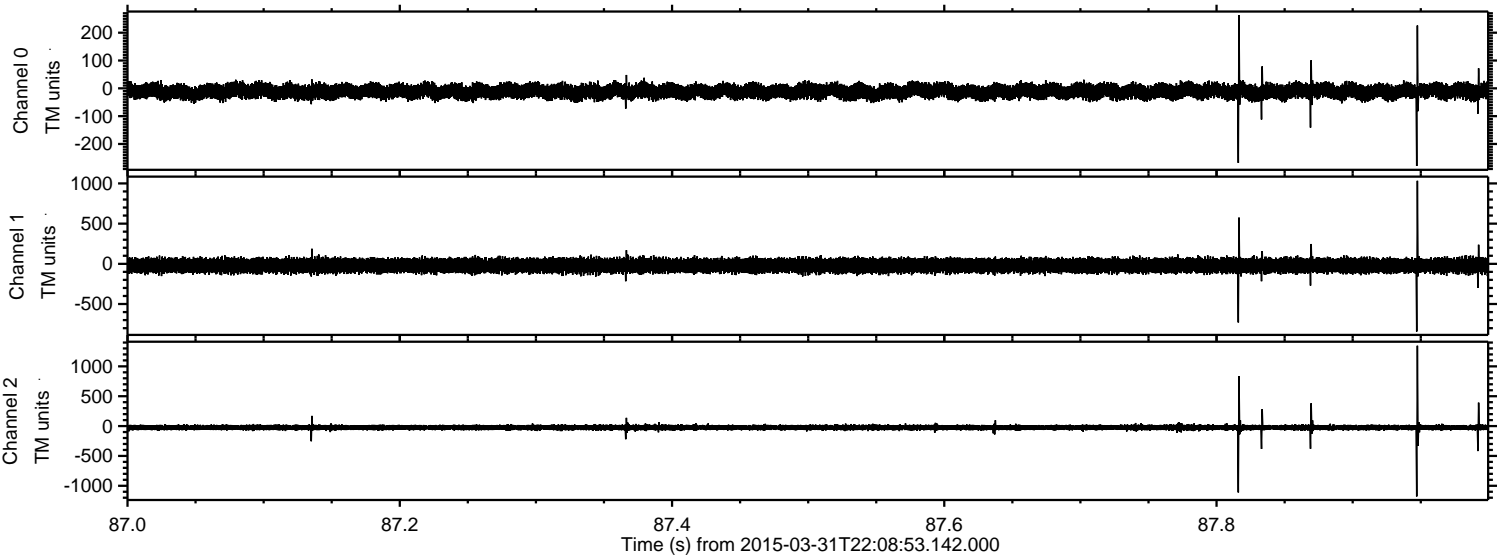
Processed Wed Apr 1 00:16:38 2015 by ELM ver.2012-10-06 from 001__elm20150331_220852__dat00.bin



Processed Wed Apr 1 00:16:39 2015 by ELM ver.2012-10-06 from 001__elm20150331_220852__dat00.bin



Processed Wed Apr 1 00:16:40 2015 by ELM ver.2012-10-06 from 001__elm20150331_220852__dat00.bin



Channel 0
mn: -279
mx: 263
 μ : -11.2
 σ : 14.0

Channel 1
mn: -842
mx: 1033
 μ : -21.8
 σ : 45.0

Channel 2
mn: -1179
mx: 1346
 μ : -24.0
 σ : 25.2

