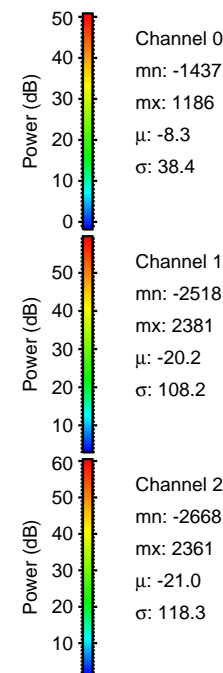
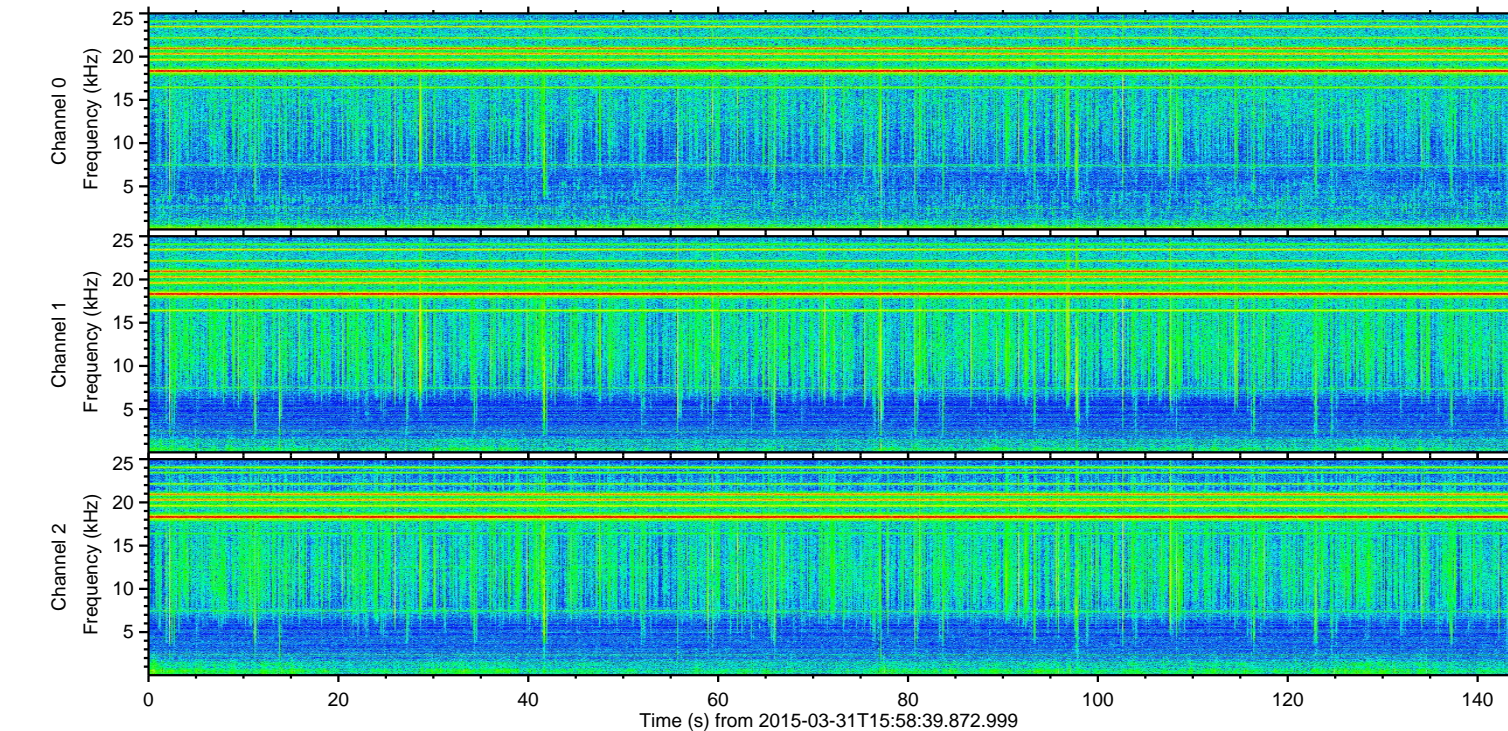
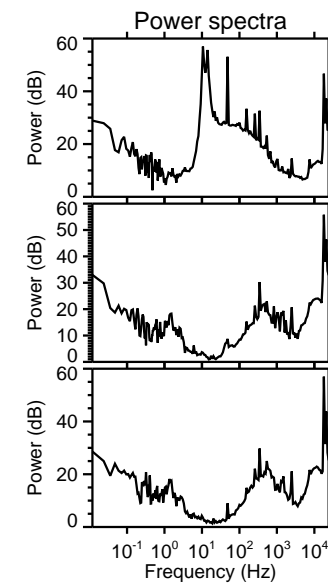
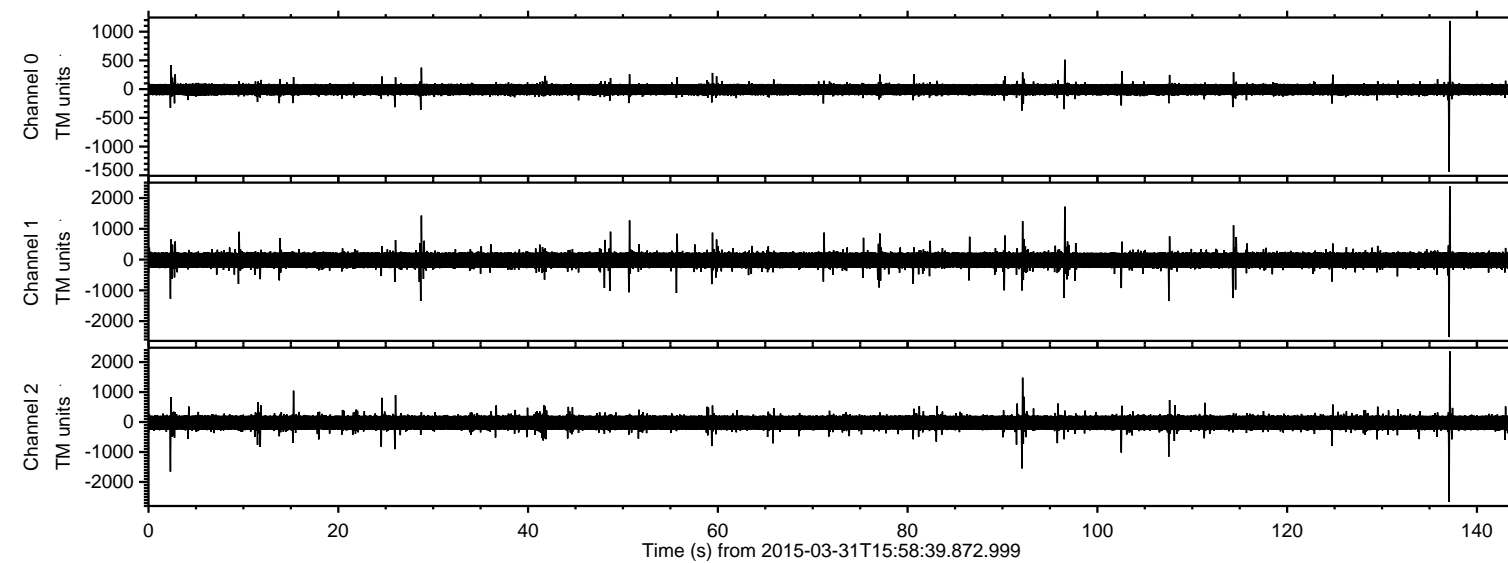


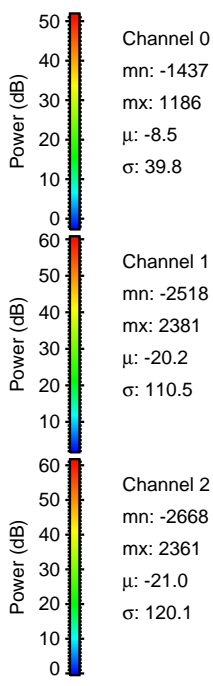
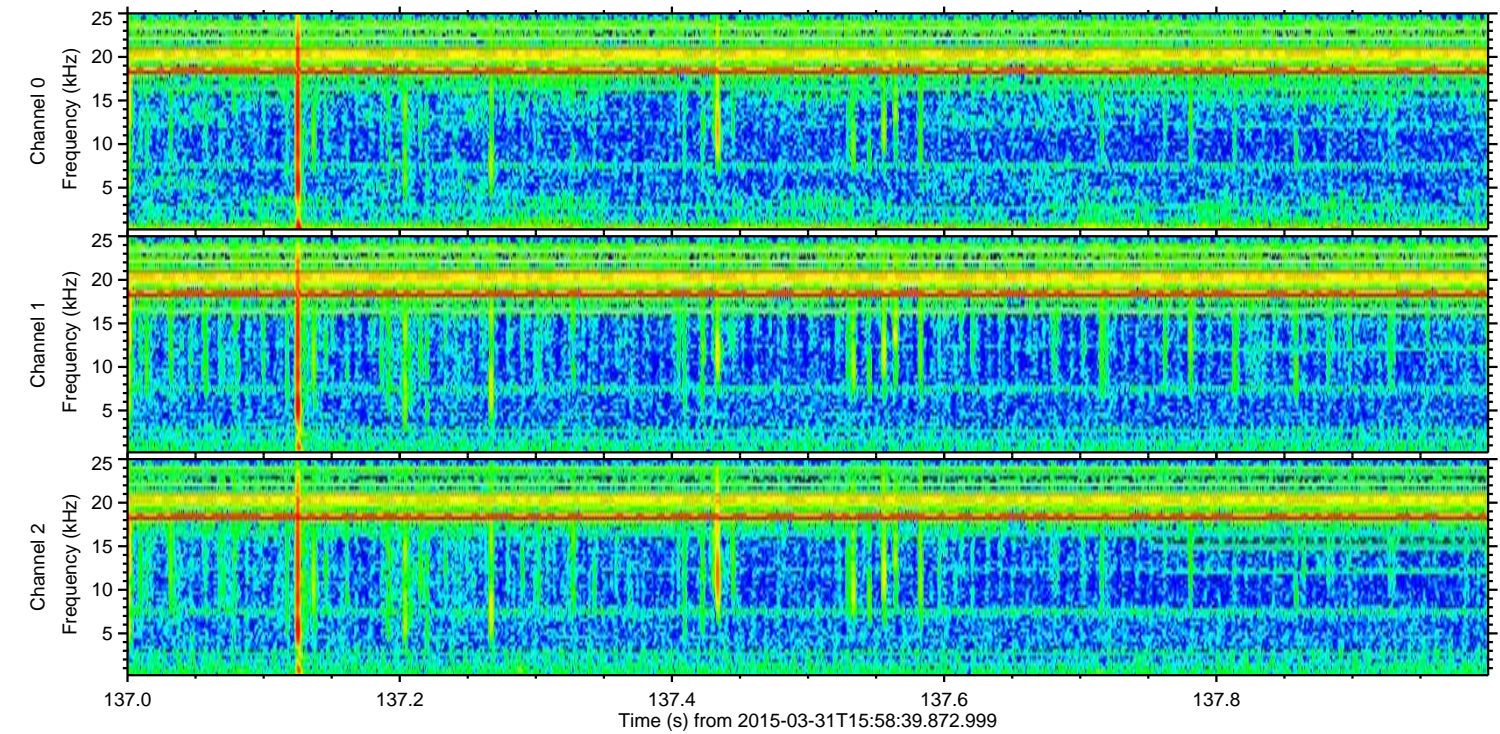
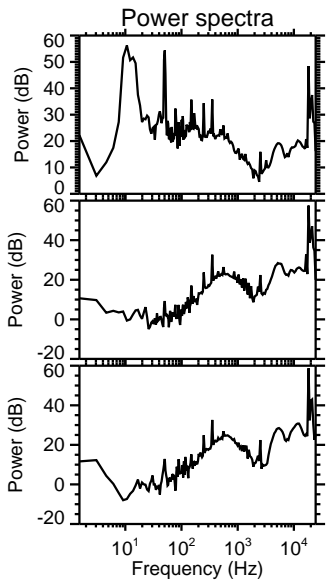
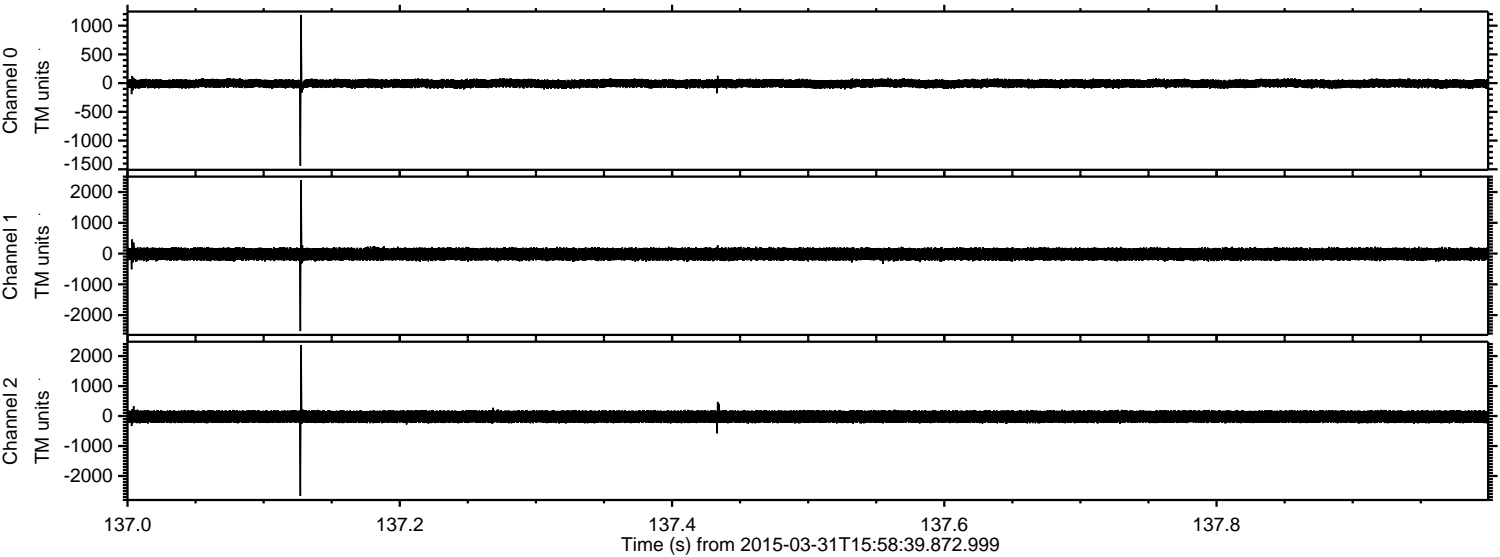
ELMAVAN 3D WAVEFORMS (Measured data sampled at 50 kHz) 49790 packets of 144 samples from 2015-03-31T15:58:39.872.999.

Processed Tue Mar 31 18:05:51 2015 by ELM ver.2012-10-06 from 001__elm20150331_155838__dat00.bin



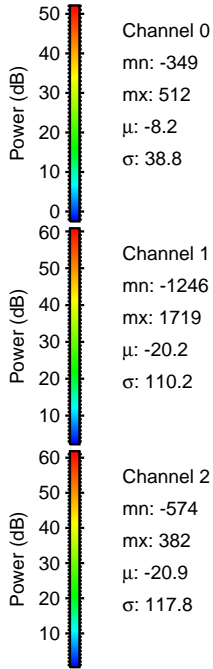
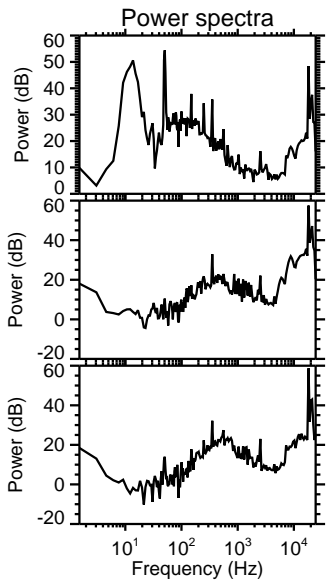
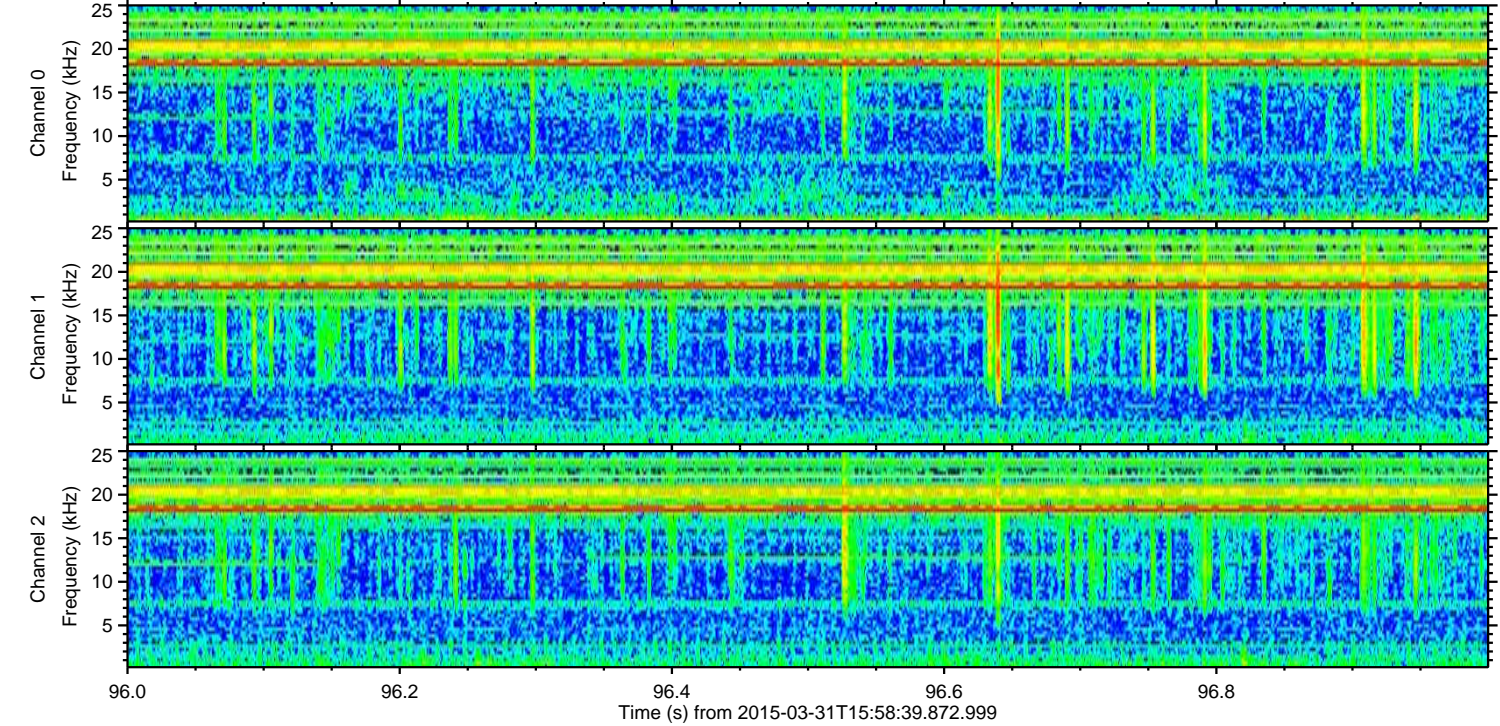
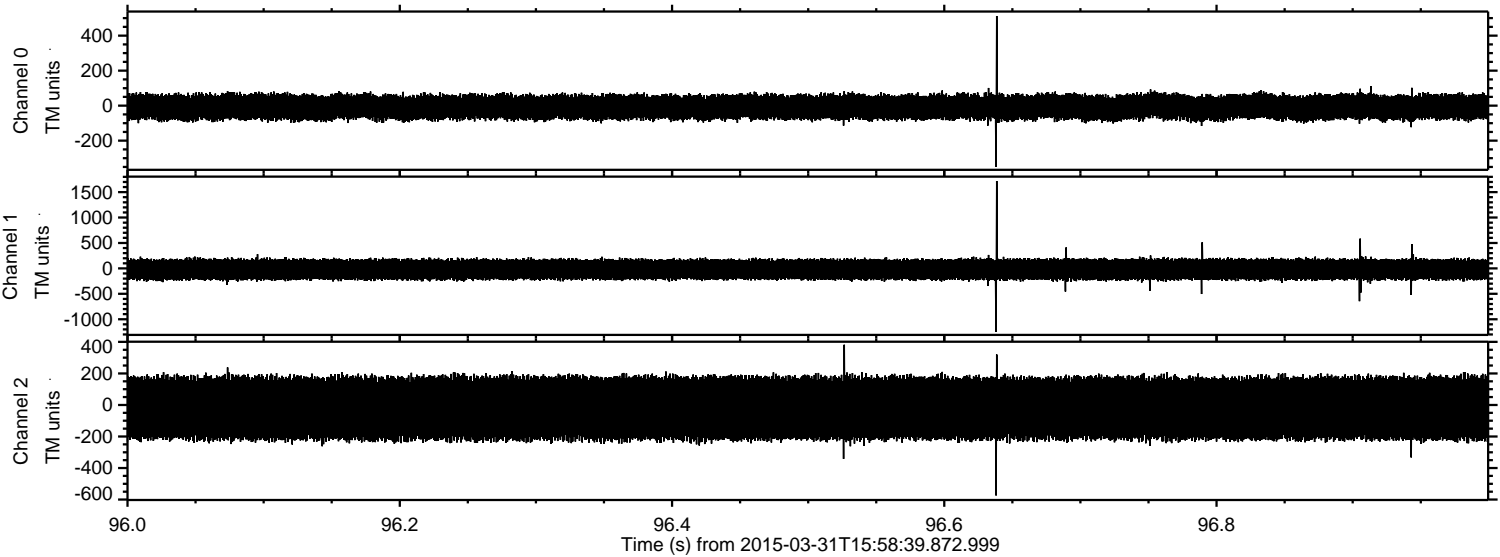
ELMAVAN 3D WAVEFORMS (Measured data sampled at 50 kHz) 49790 packets of 144 samples from 2015-03-31T15:58:39.872.999. Part 138/144

Processed Tue Mar 31 18:06:03 2015 by ELM ver.2012-10-06 from 001__elm20150331_155838__dat00.bin



ELMAVAN 3D WAVEFORMS (Measured data sampled at 50 kHz) 49790 packets of 144 samples from 2015-03-31T15:58:39.872.999. Part 97/144

Processed Tue Mar 31 18:06:04 2015 by ELM ver.2012-10-06 from 001__elm20150331_155838__dat00.bin



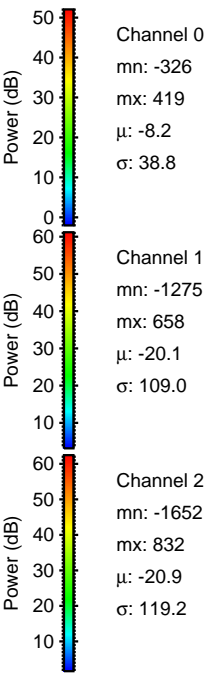
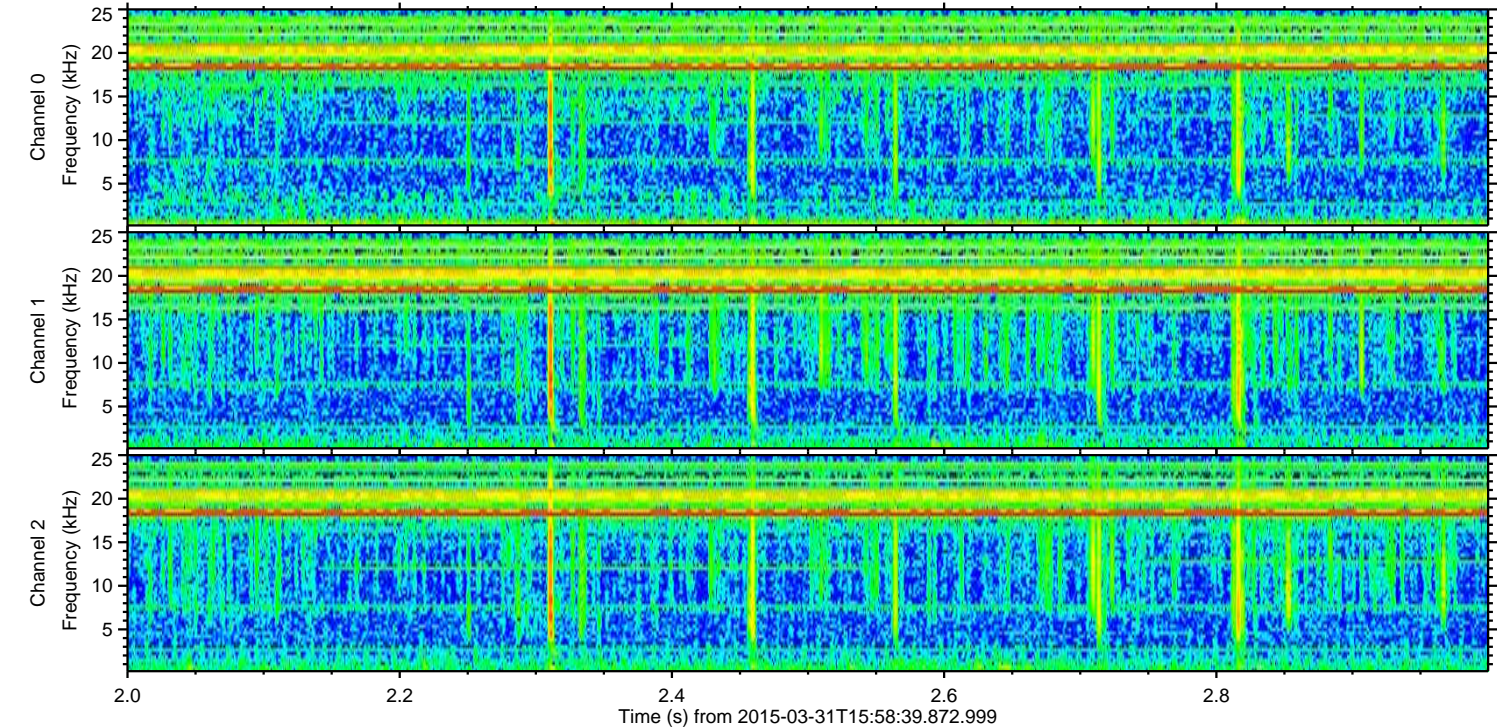
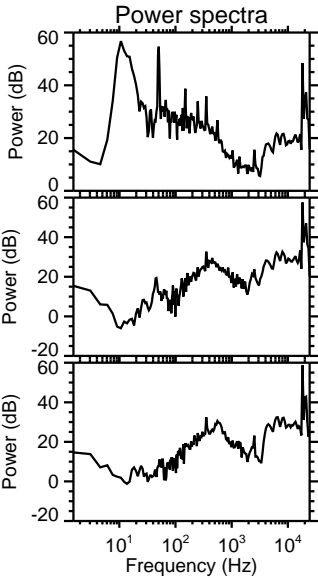
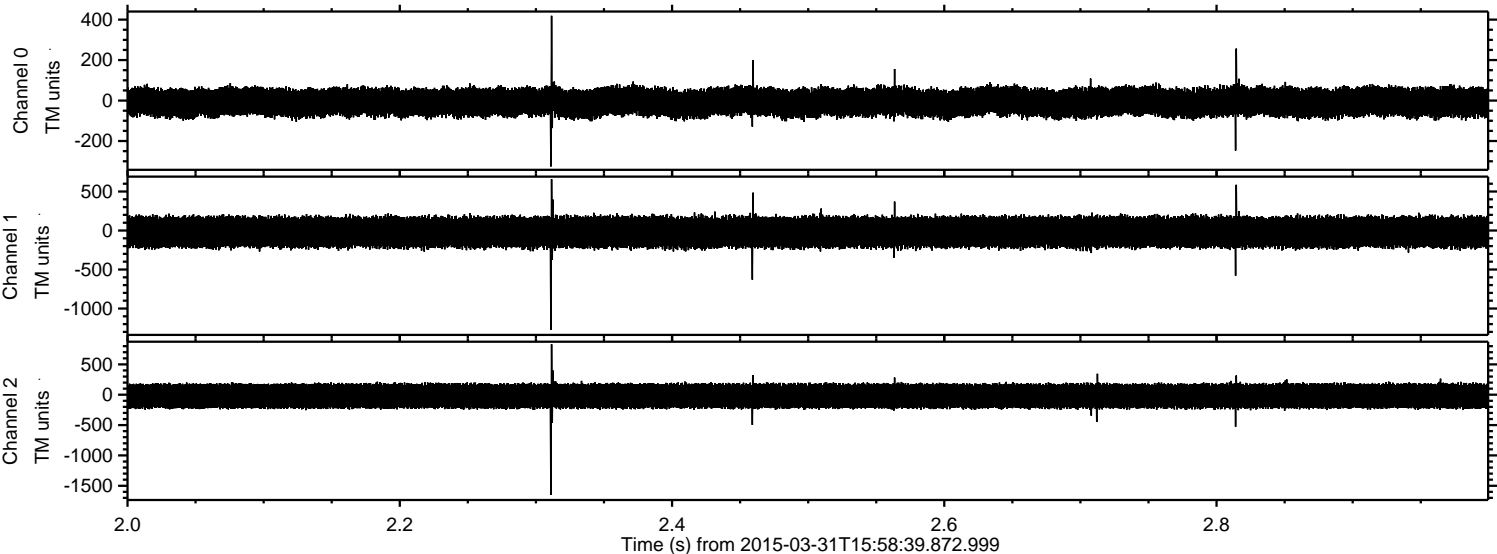
Channel 0
mn: -349
mx: 512
 μ : -8.2
 σ : 38.8

Channel 1
mn: -1246
mx: 1719
 μ : -20.2
 σ : 110.2

Channel 2
mn: -574
mx: 382
 μ : -20.9
 σ : 117.8

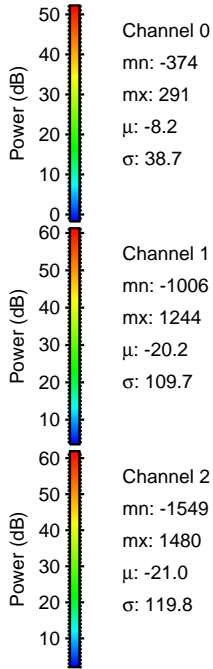
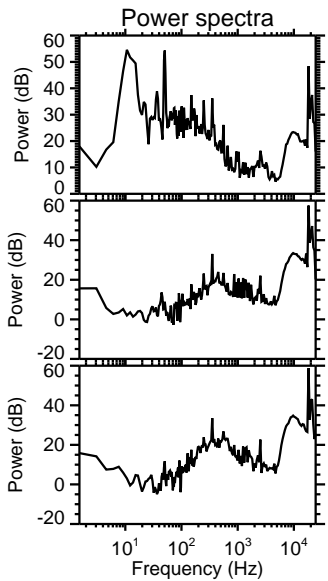
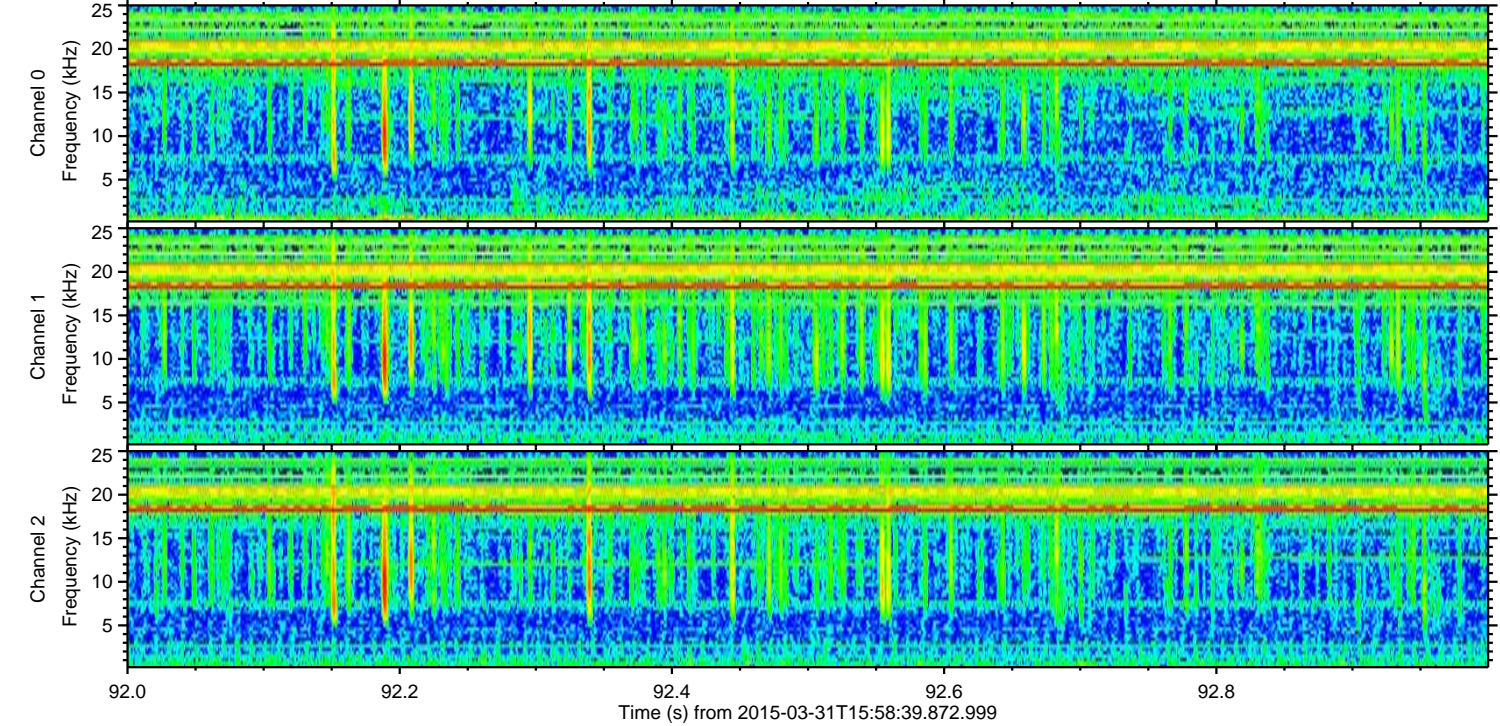
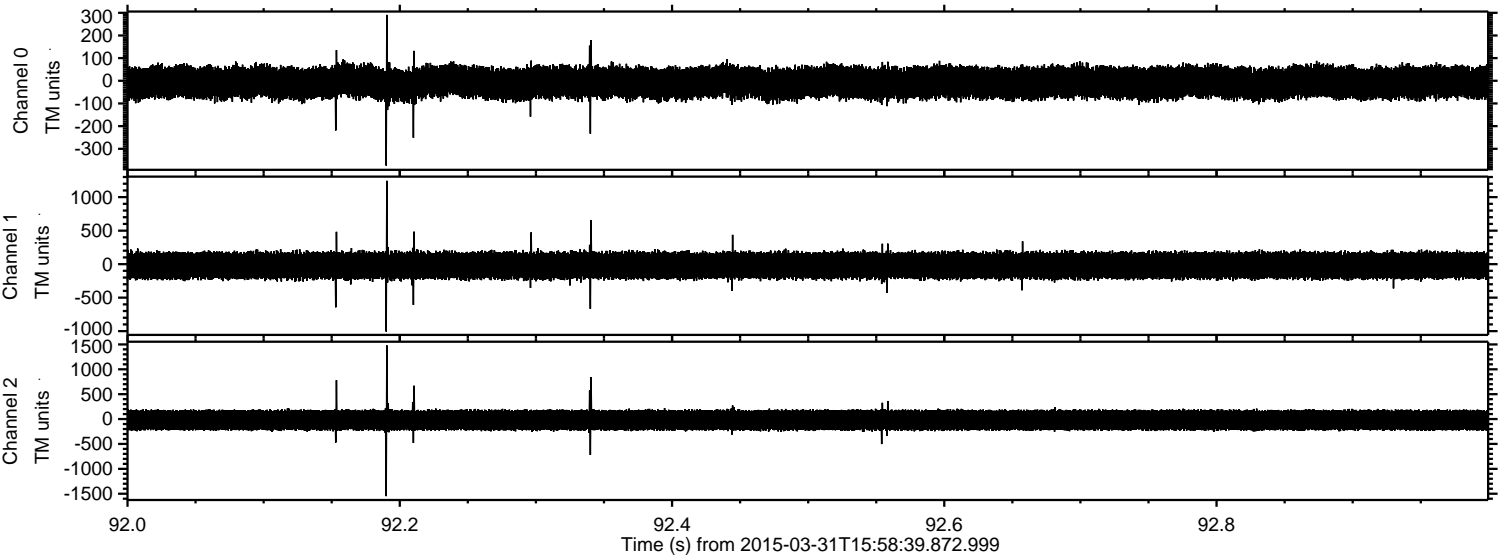
ELMAVAN 3D WAVEFORMS (Measured data sampled at 50 kHz) 49790 packets of 144 samples from 2015-03-31T15:58:39.872.999. Part 3/144

Processed Tue Mar 31 18:06:04 2015 by ELM ver.2012-10-06 from 001__elm20150331_155838__dat00.bin



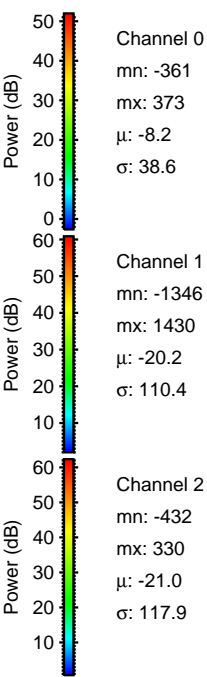
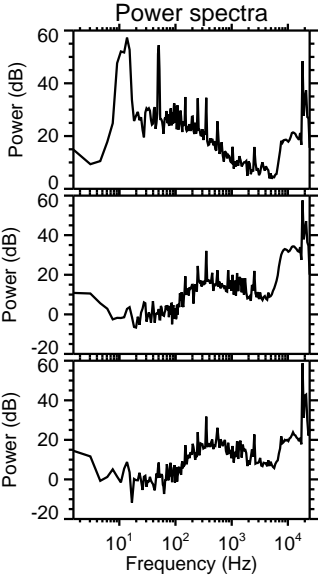
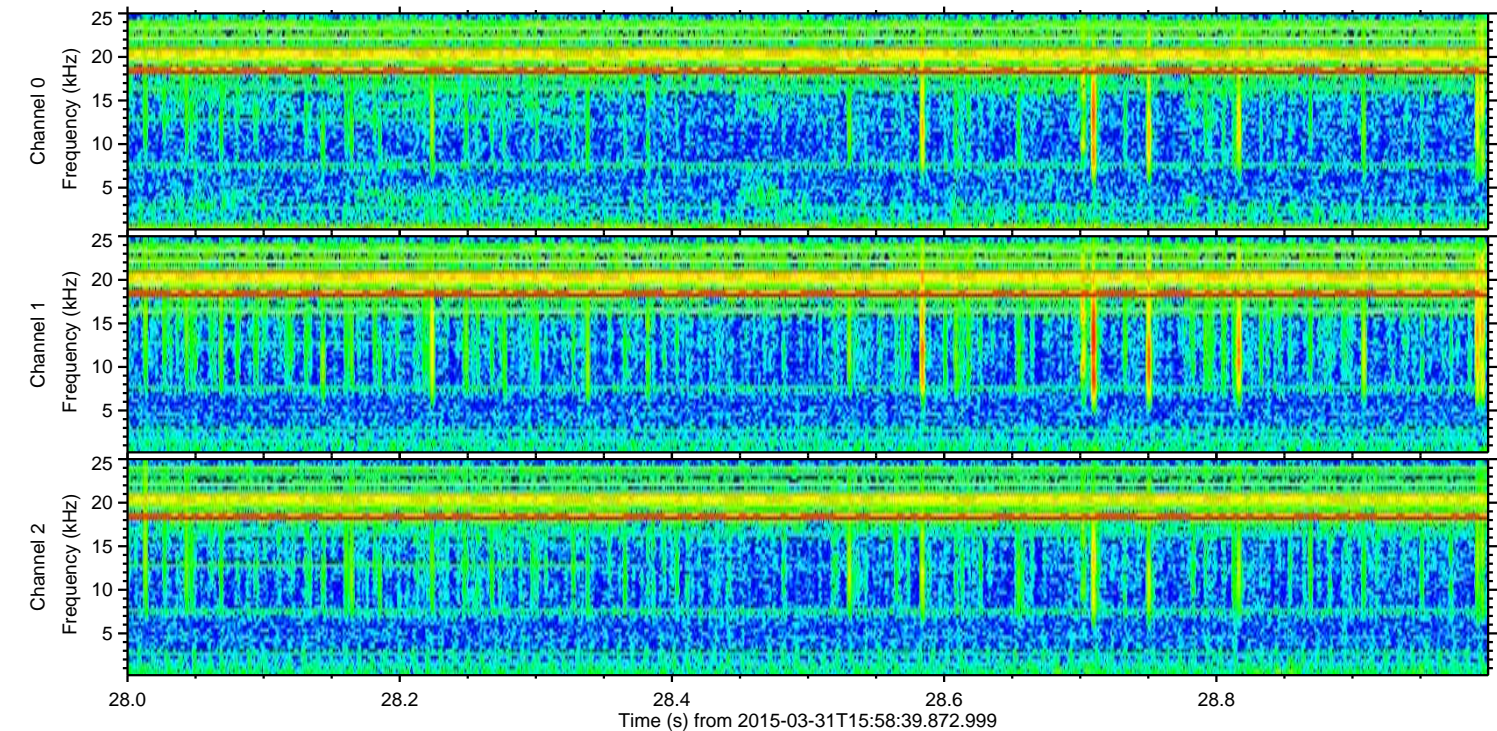
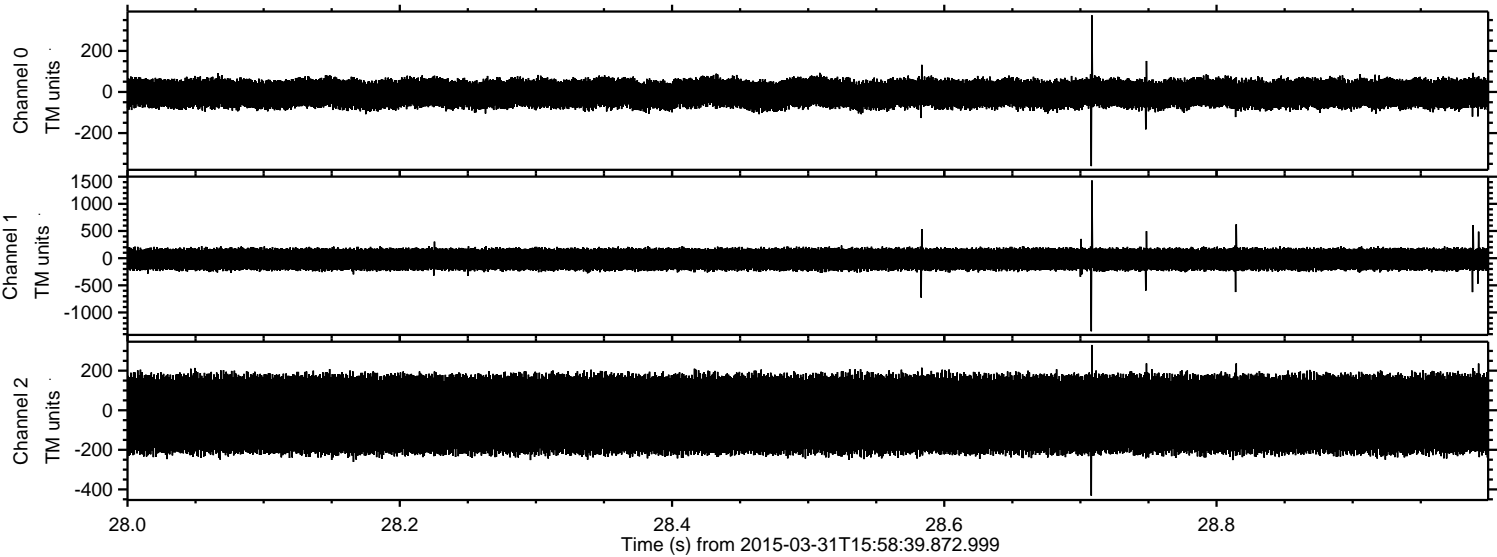
ELMAVAN 3D WAVEFORMS (Measured data sampled at 50 kHz) 49790 packets of 144 samples from 2015-03-31T15:58:39.872.999. Part 93/144

Processed Tue Mar 31 18:06:05 2015 by ELM ver.2012-10-06 from 001__elm20150331_155838__dat00.bin



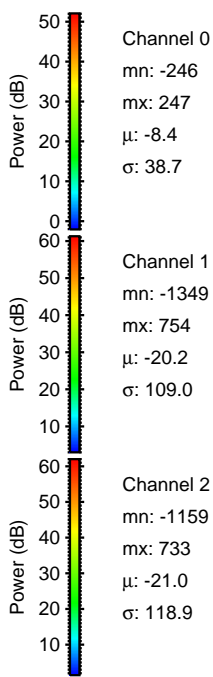
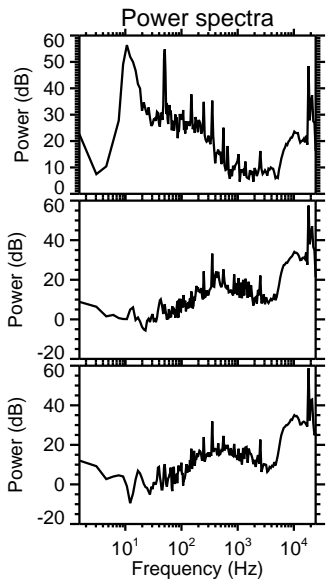
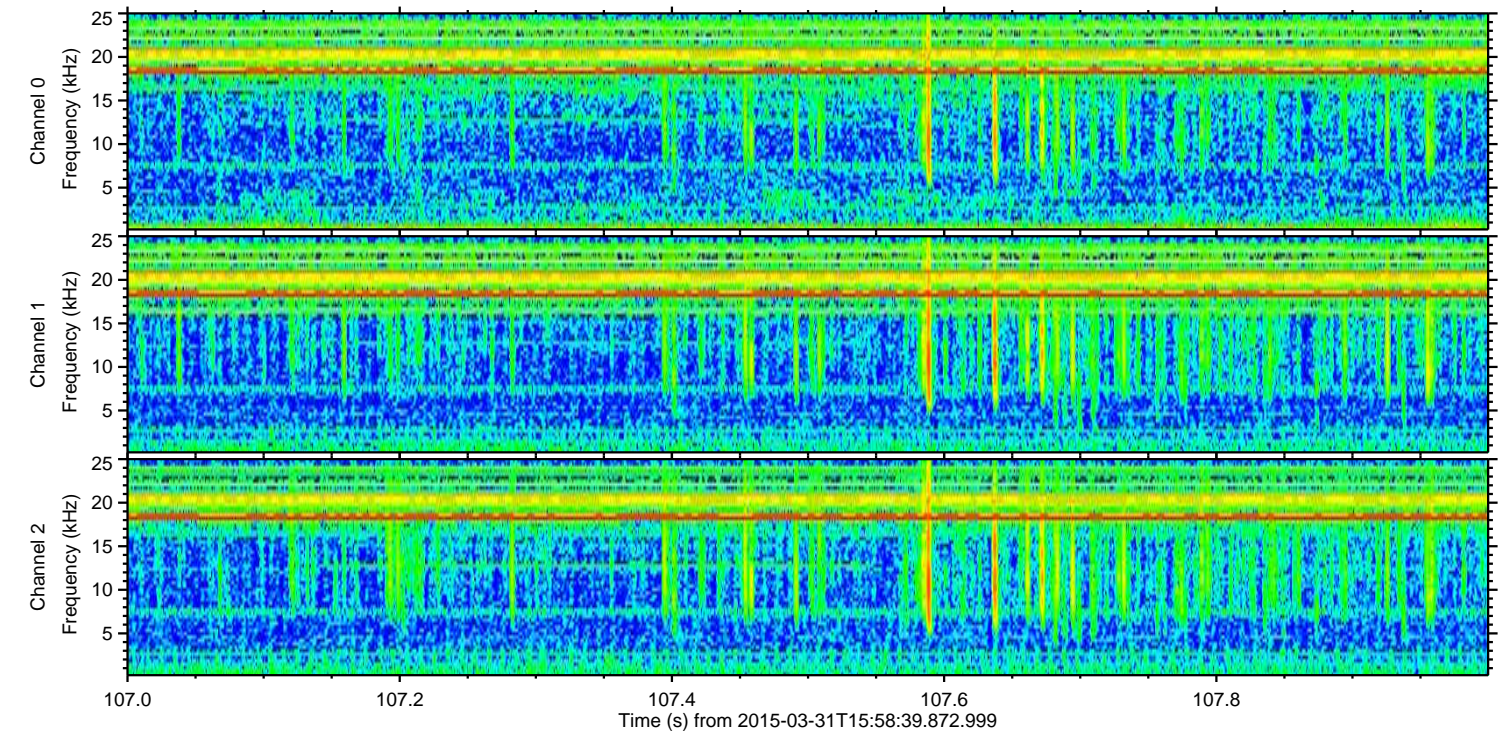
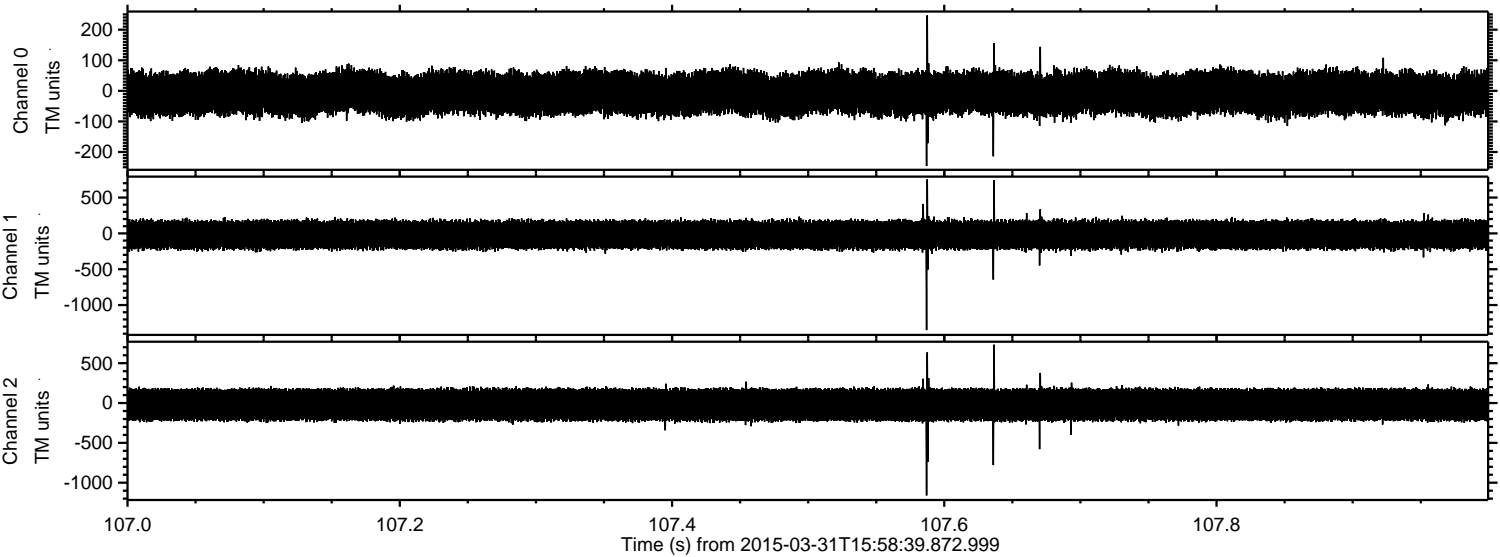
ELMAVAN 3D WAVEFORMS (Measured data sampled at 50 kHz) 49790 packets of 144 samples from 2015-03-31T15:58:39.872.999. Part 29/144

Processed Tue Mar 31 18:06:06 2015 by ELM ver.2012-10-06 from 001__elm20150331_155838__dat00.bin



ELMAVAN 3D WAVEFORMS (Measured data sampled at 50 kHz) 49790 packets of 144 samples from 2015-03-31T15:58:39.872.999. Part 108/144

Processed Tue Mar 31 18:06:07 2015 by ELM ver.2012-10-06 from 001__elm20150331_155838__dat00.bin

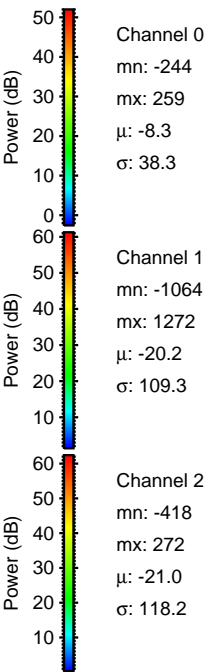
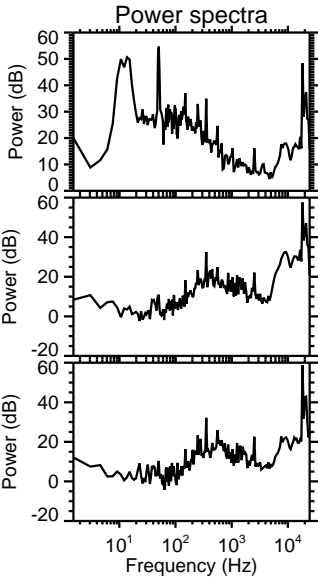
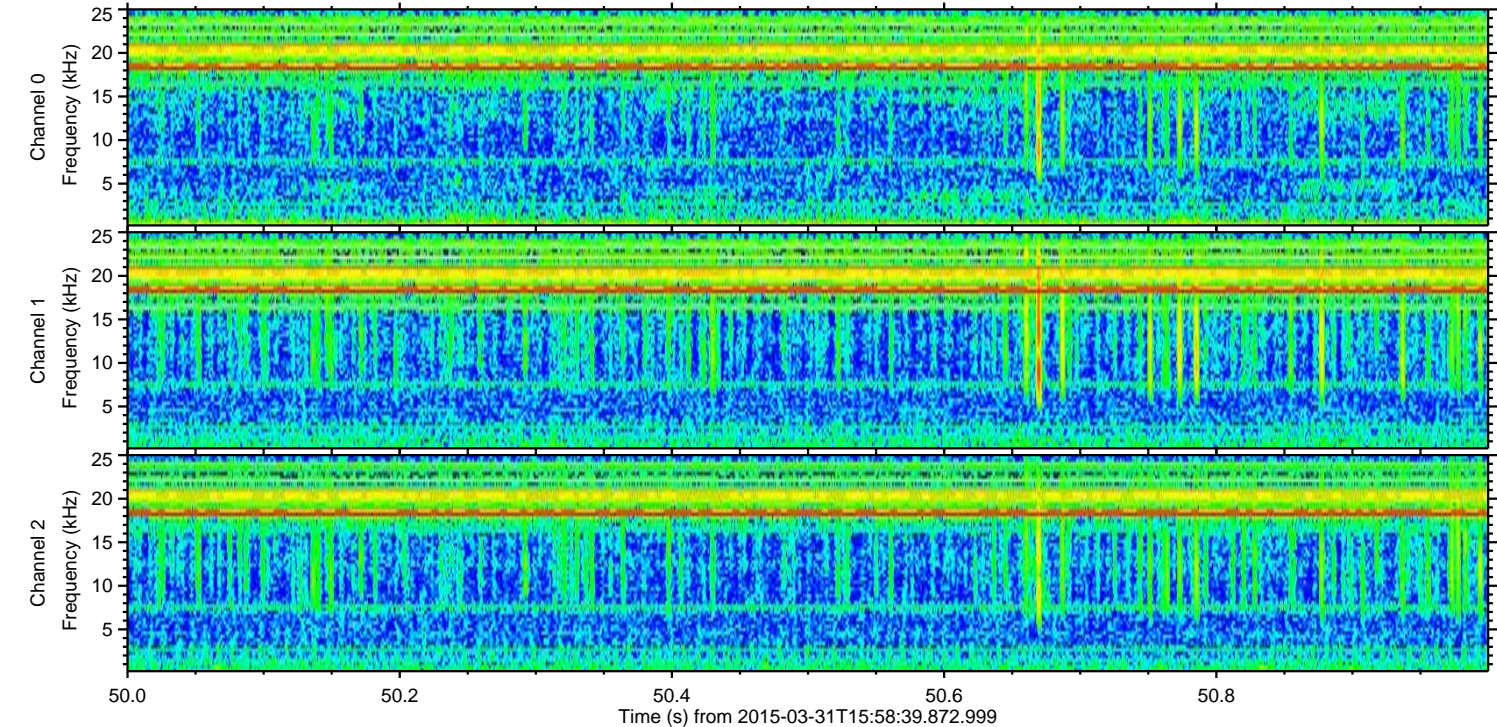
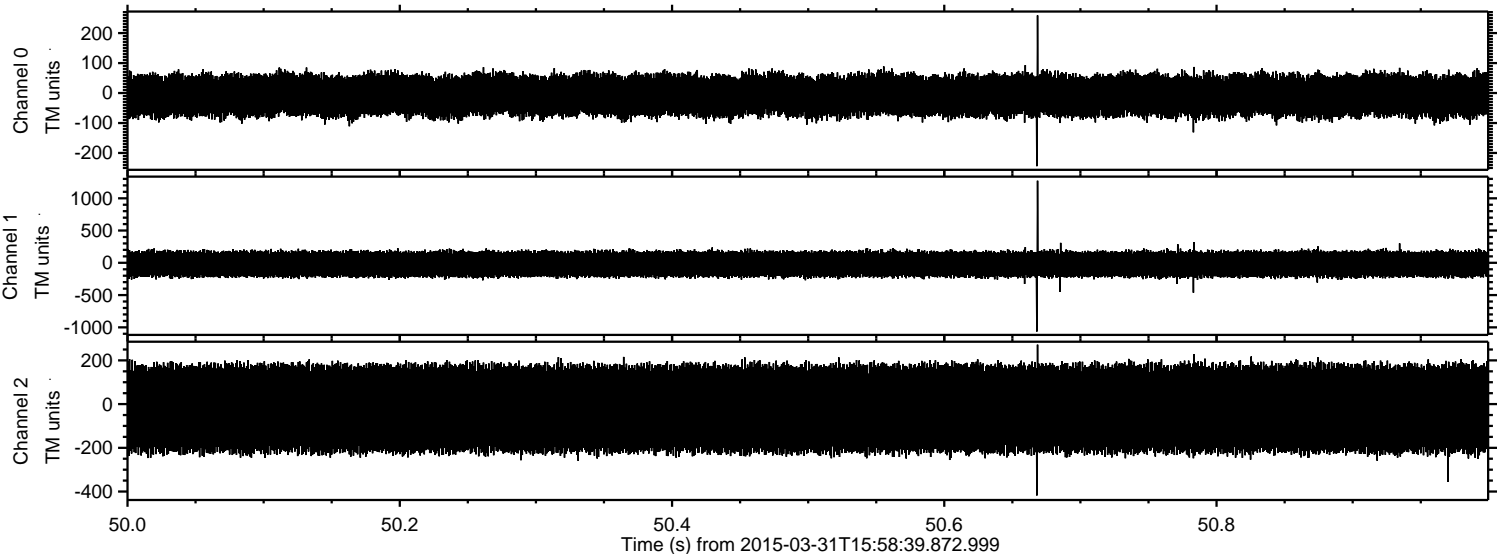


Channel 0
mn: -246
mx: 247
 μ : -8.4
 σ : 38.7

Channel 1
mn: -1349
mx: 754
 μ : -20.2
 σ : 109.0

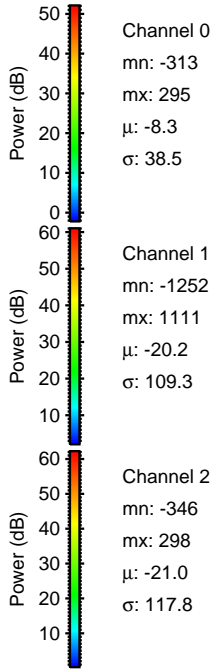
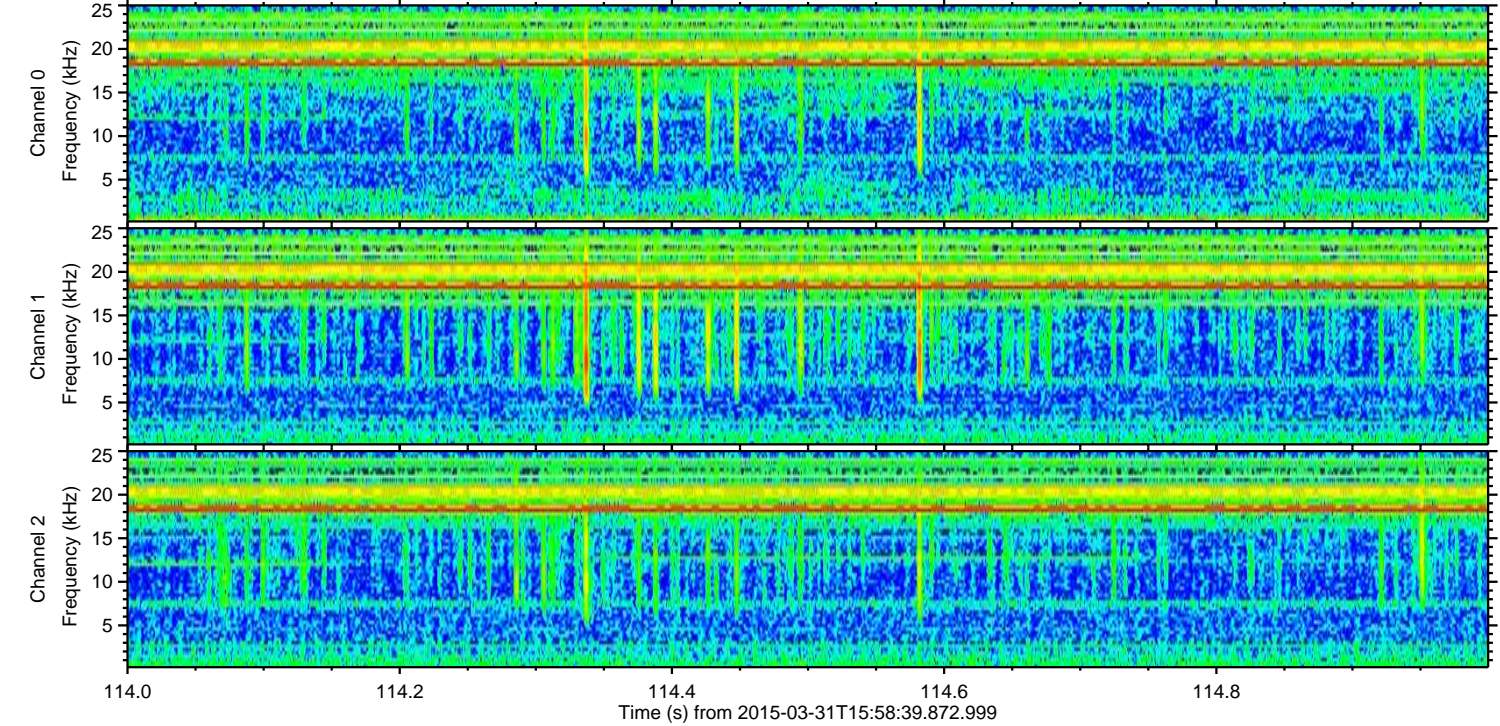
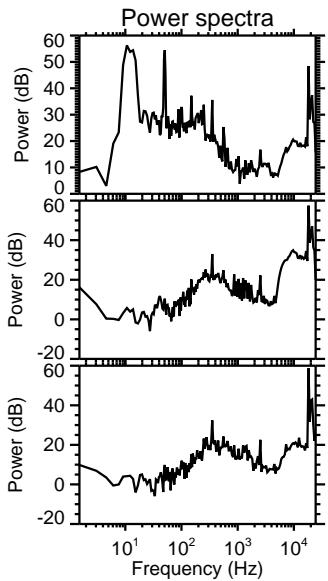
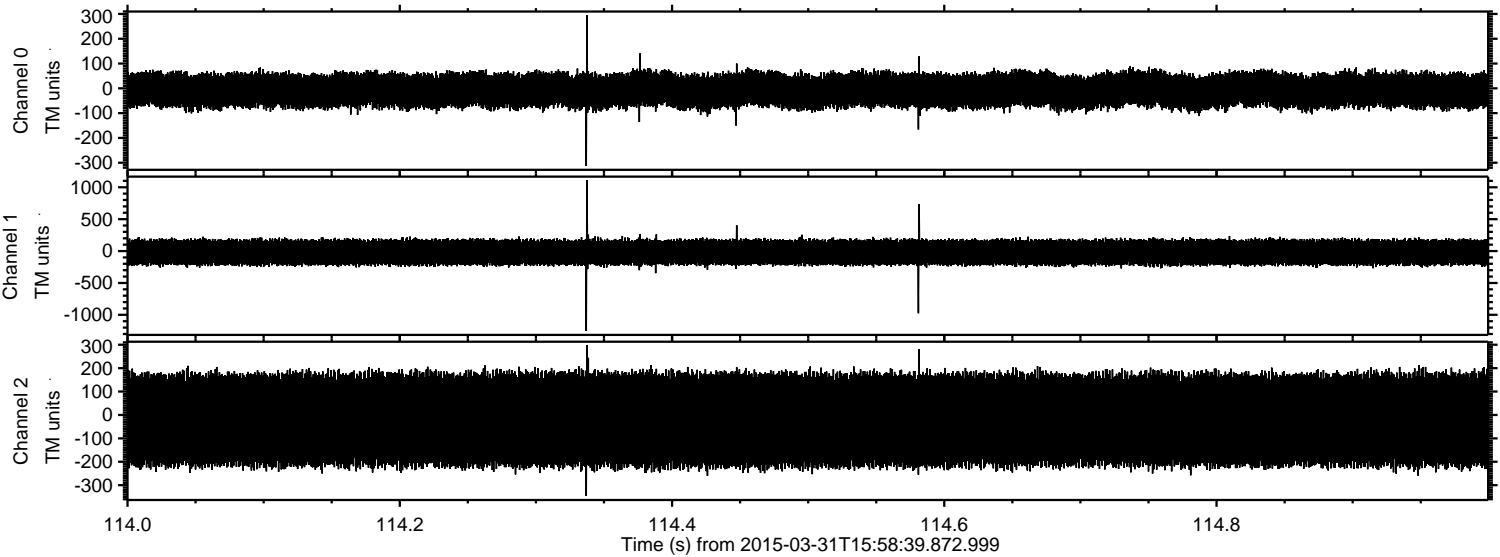
Channel 2
mn: -1159
mx: 733
 μ : -21.0
 σ : 118.9

Processed Tue Mar 31 18:06:08 2015 by ELM ver.2012-10-06 from 001__elm20150331_155838__dat00.bin



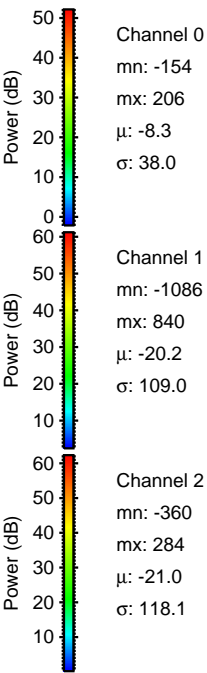
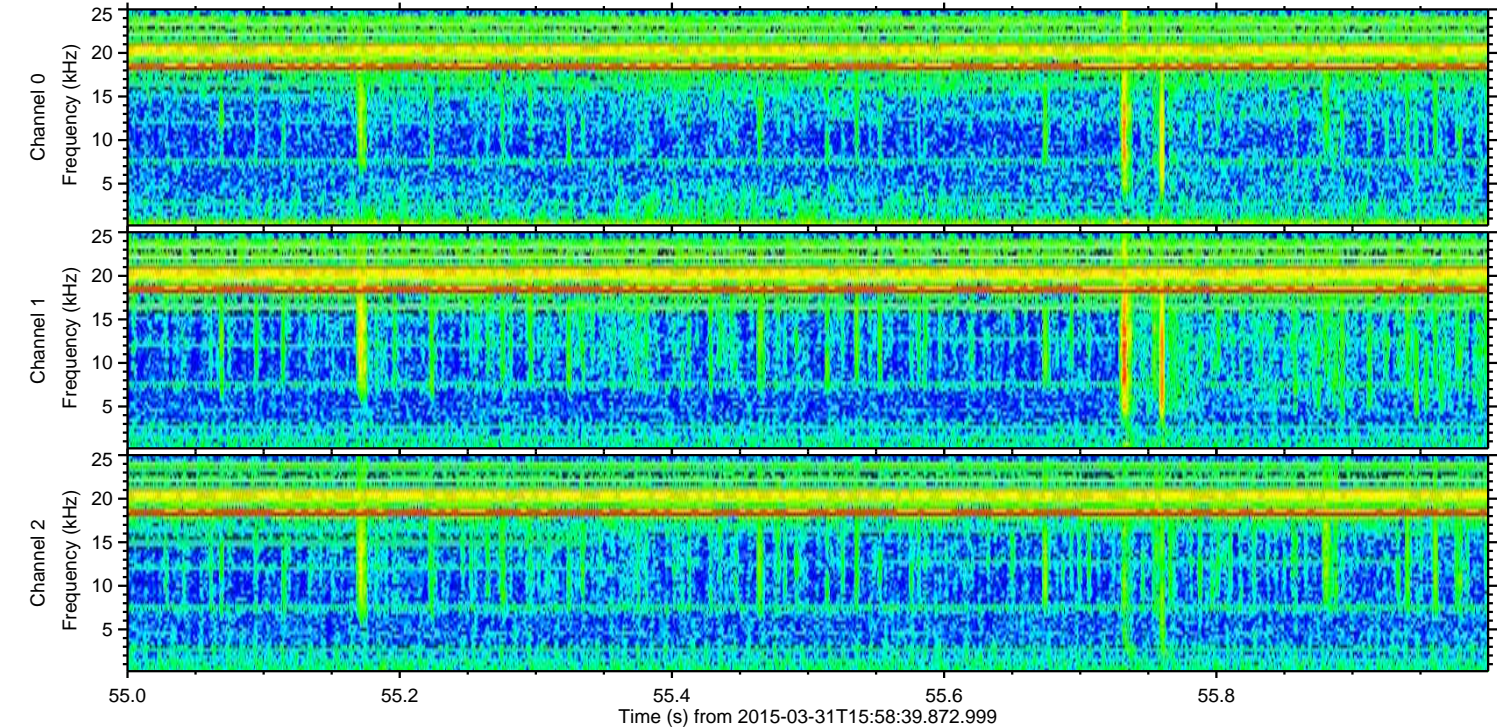
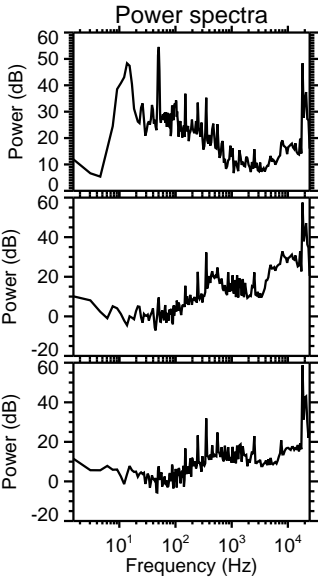
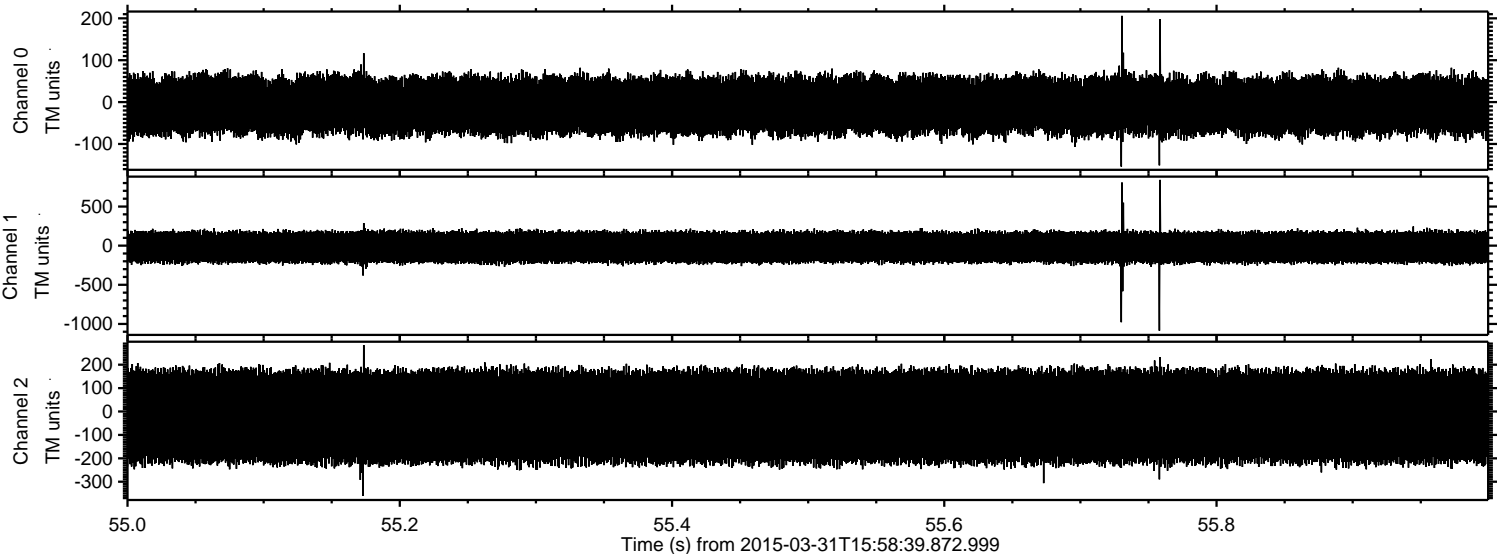
ELMAVAN 3D WAVEFORMS (Measured data sampled at 50 kHz) 49790 packets of 144 samples from 2015-03-31T15:58:39.872.999. Part 115/144

Processed Tue Mar 31 18:06:09 2015 by ELM ver.2012-10-06 from 001__elm20150331_155838__dat00.bin



ELMAVAN 3D WAVEFORMS (Measured data sampled at 50 kHz) 49790 packets of 144 samples from 2015-03-31T15:58:39.872.999. Part 56/144

Processed Tue Mar 31 18:06:10 2015 by ELM ver.2012-10-06 from 001__elm20150331_155838__dat00.bin



Processed Tue Mar 31 18:06:11 2015 by ELM ver.2012-10-06 from 001__elm20150331_155838__dat00.bin

