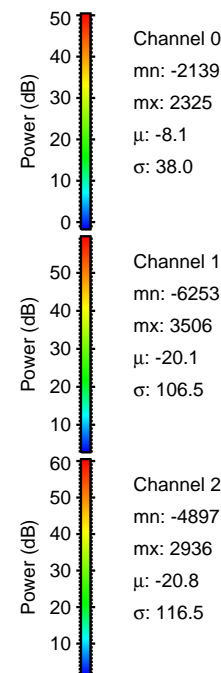
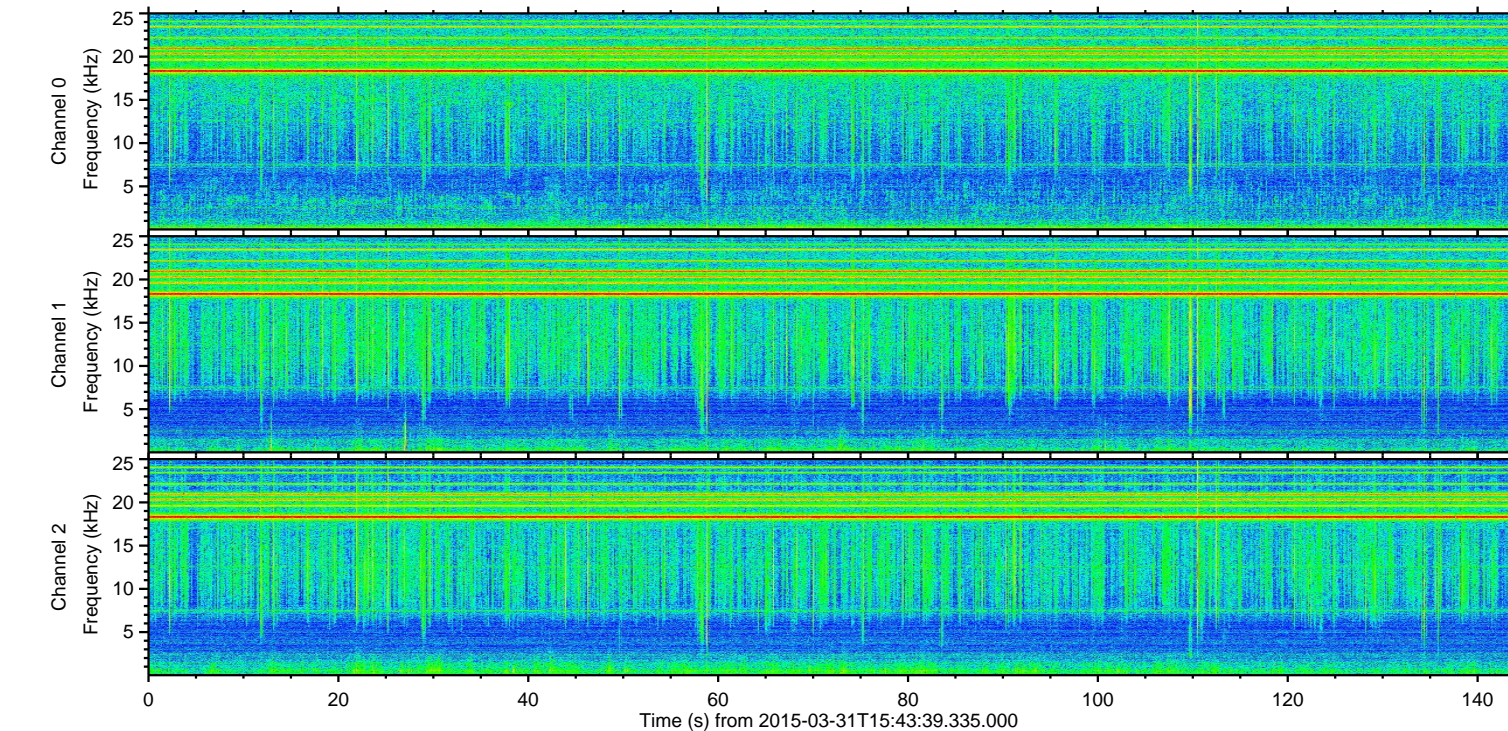
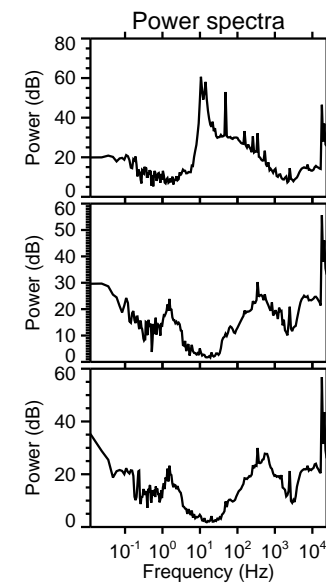
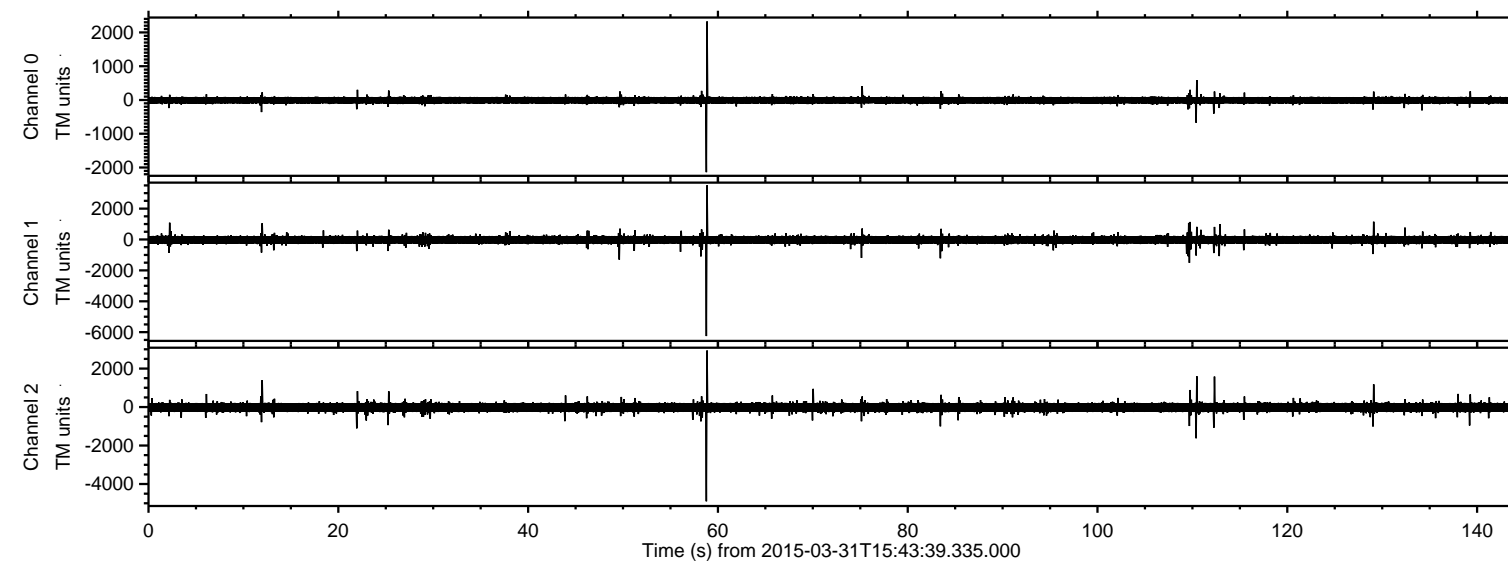


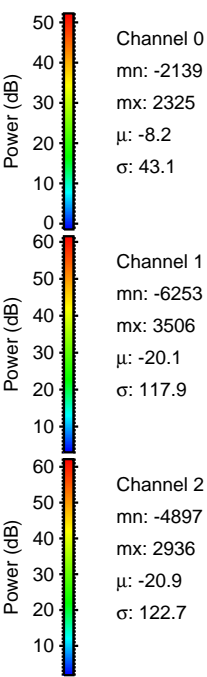
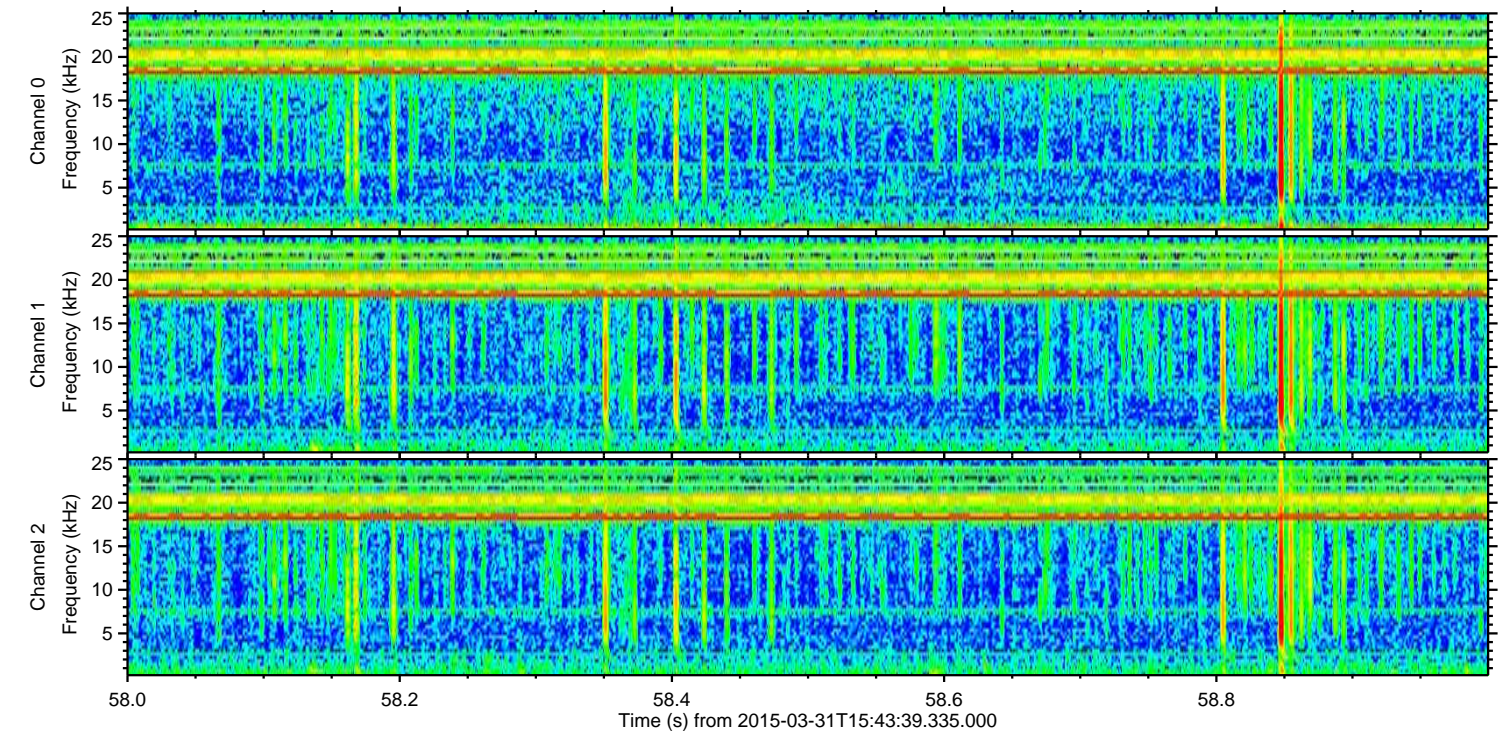
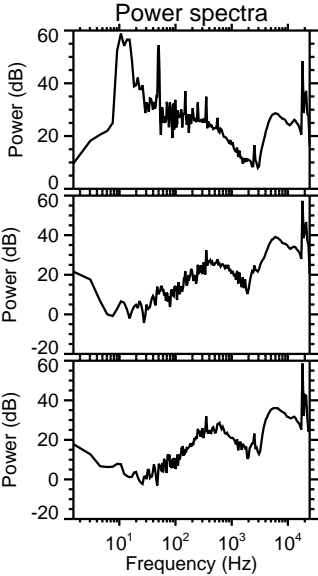
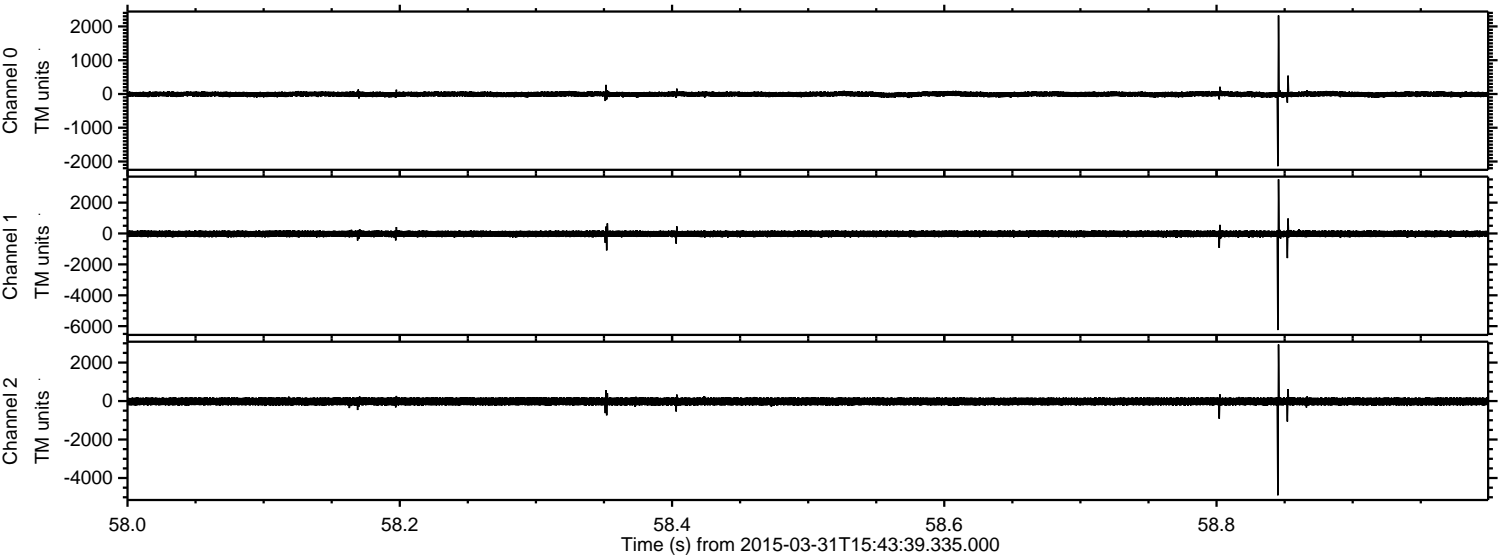
# ELMAVAN 3D WAVEFORMS (Measured data sampled at 50 kHz) 49783 packets of 144 samples from 2015-03-31T15:43:39.335.000.

Processed Tue Mar 31 17:50:44 2015 by ELM ver.2012-10-06 from 001\_\_elm20150331\_154338\_\_dat00.bin





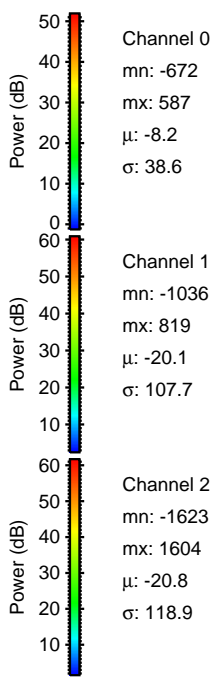
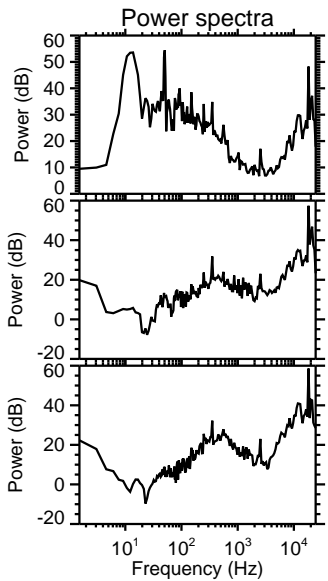
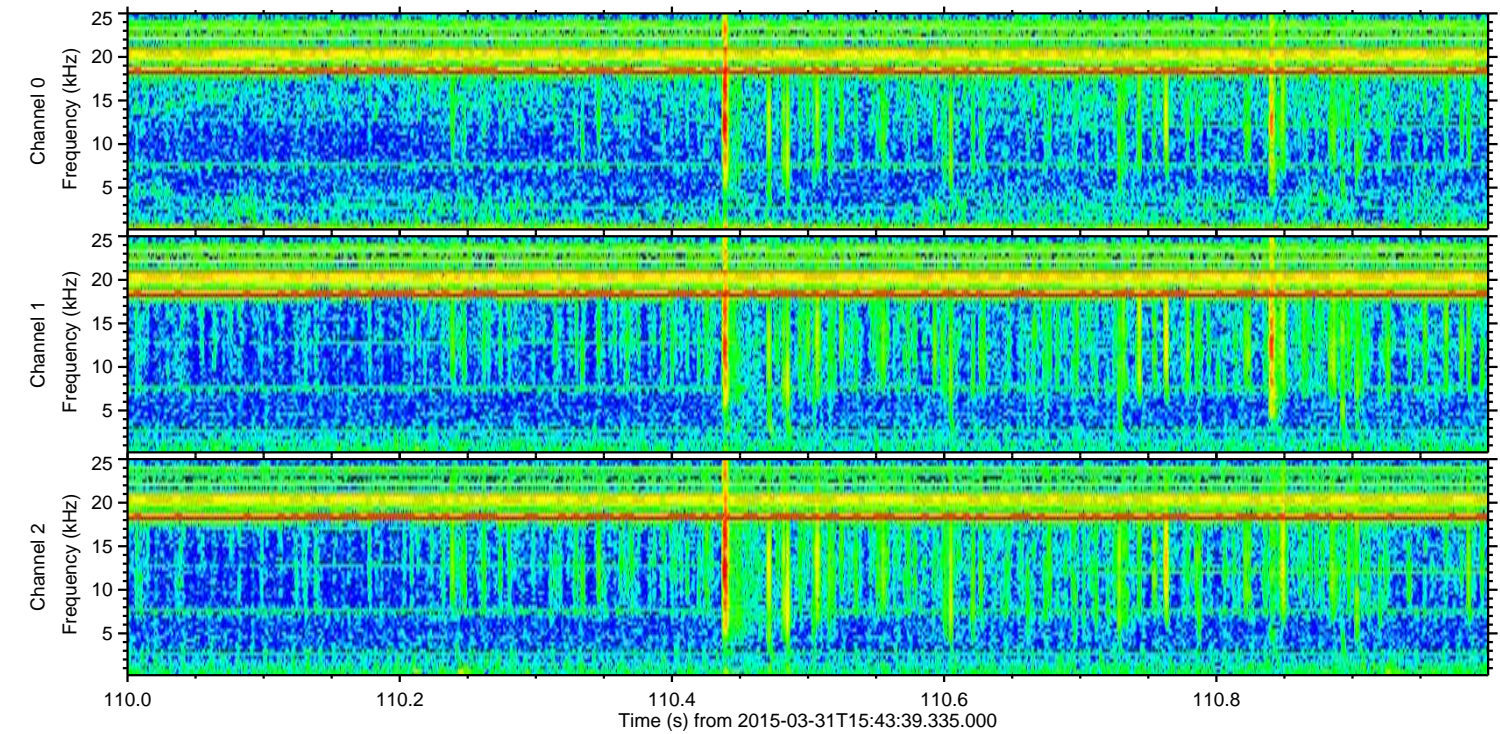
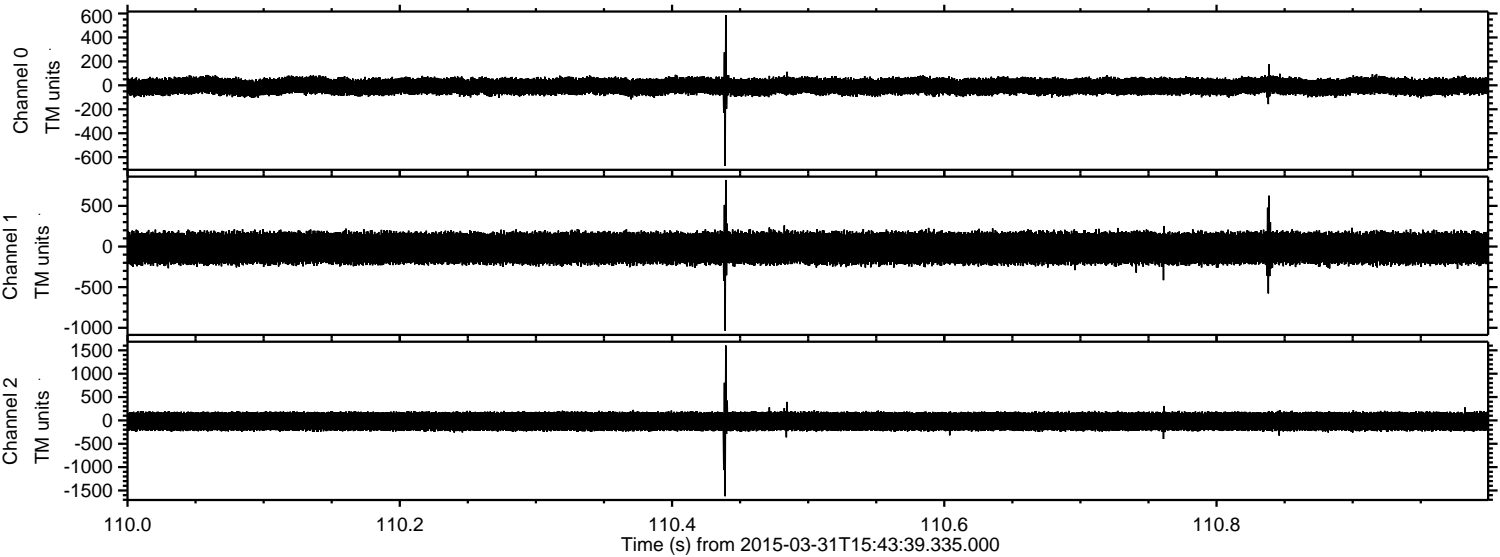
Processed Tue Mar 31 17:50:55 2015 by ELM ver.2012-10-06 from 001\_\_elm20150331\_154338\_\_dat00.bin





ELMAVAN 3D WAVEFORMS (Measured data sampled at 50 kHz) 49783 packets of 144 samples from 2015-03-31T15:43:39.335.000. Part 111/144

Processed Tue Mar 31 17:50:56 2015 by ELM ver.2012-10-06 from 001\_\_elm20150331\_154338\_\_dat00.bin



Channel 0  
mn: -672  
mx: 587  
 $\mu$ : -8.2  
 $\sigma$ : 38.6

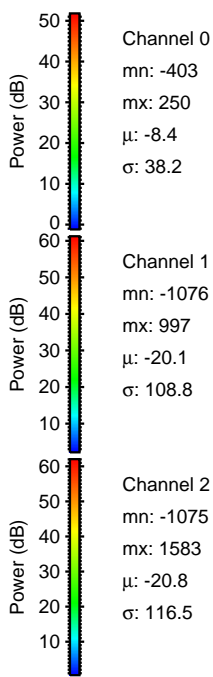
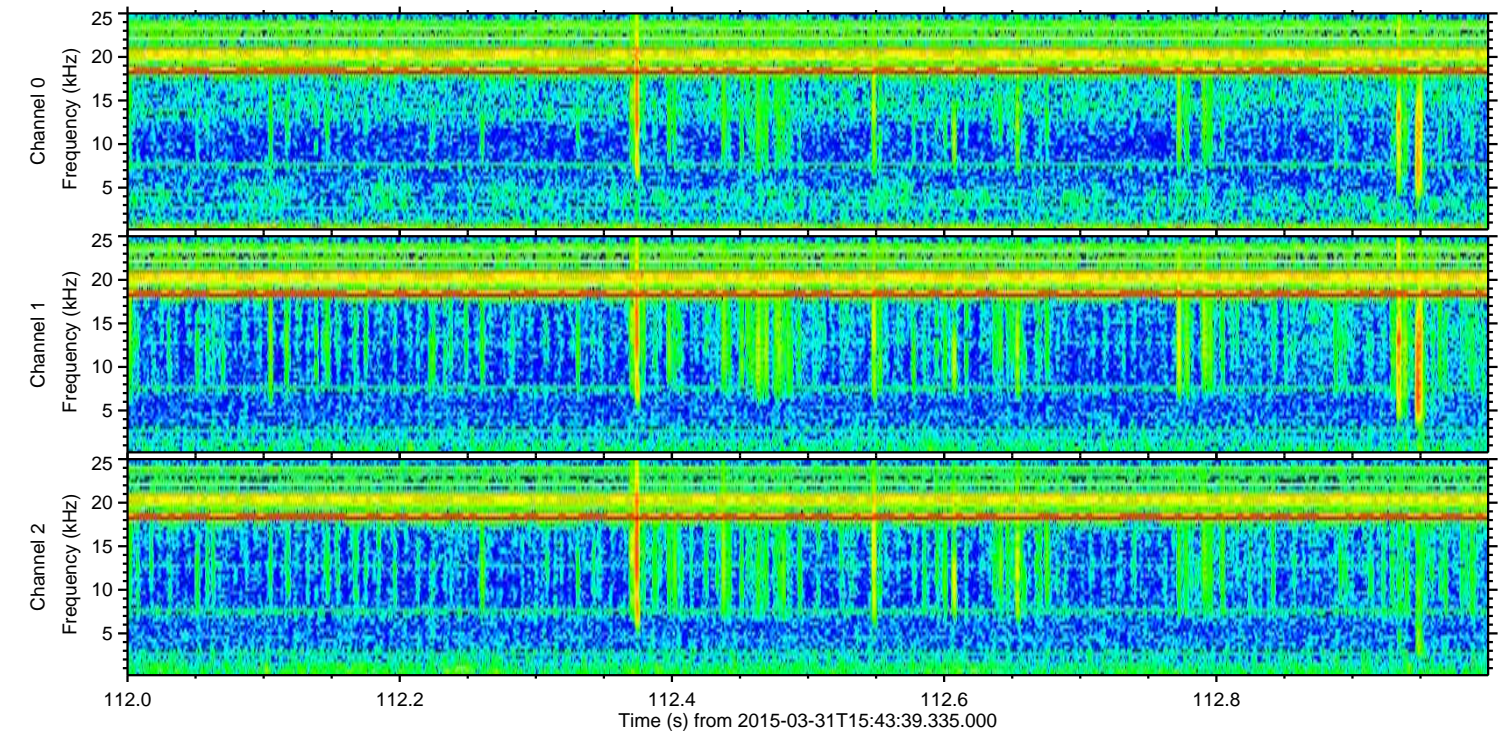
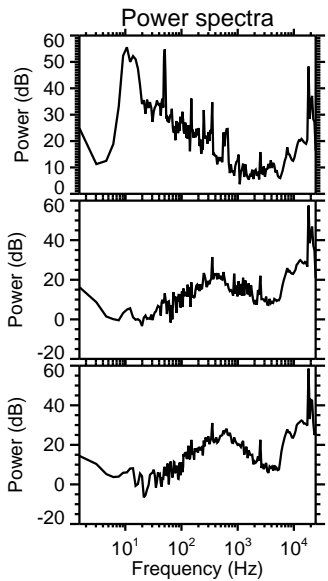
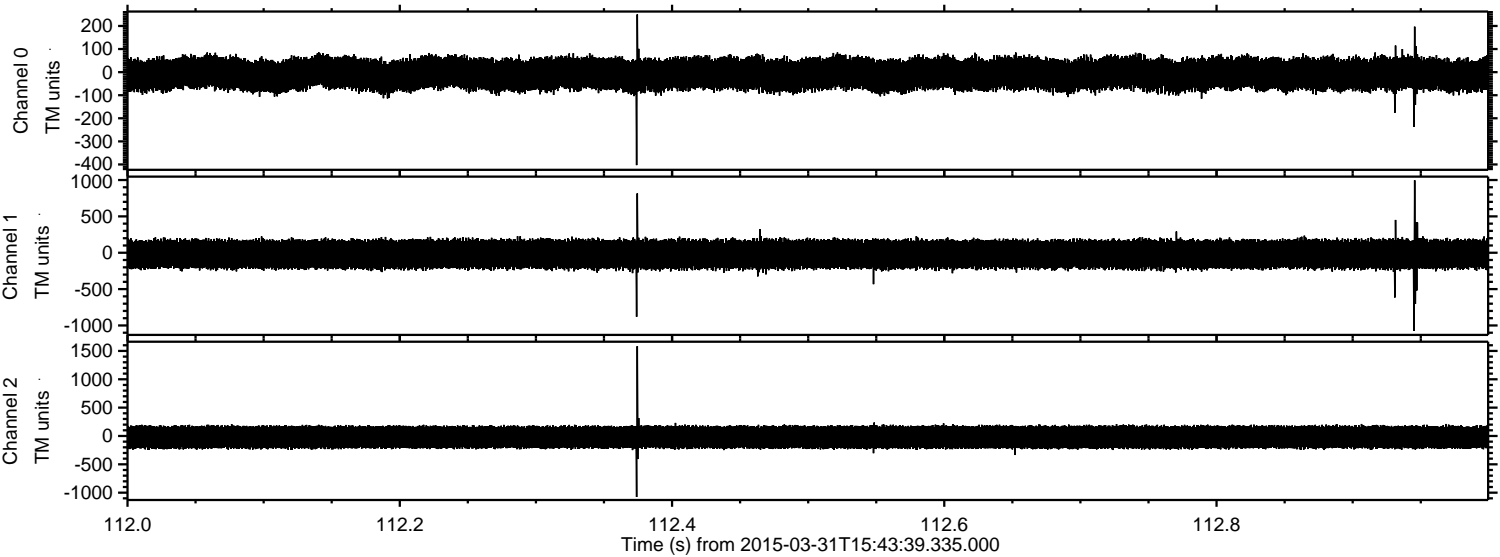
Channel 1  
mn: -1036  
mx: 819  
 $\mu$ : -20.1  
 $\sigma$ : 107.7

Channel 2  
mn: -1623  
mx: 1604  
 $\mu$ : -20.8  
 $\sigma$ : 118.9



ELMAVAN 3D WAVEFORMS (Measured data sampled at 50 kHz) 49783 packets of 144 samples from 2015-03-31T15:43:39.335.000. Part 113/144

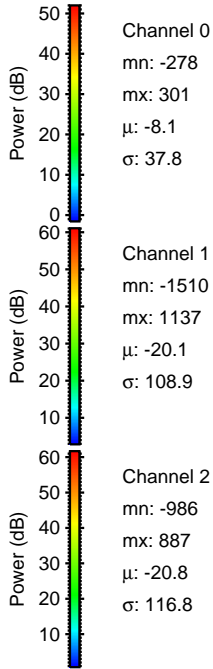
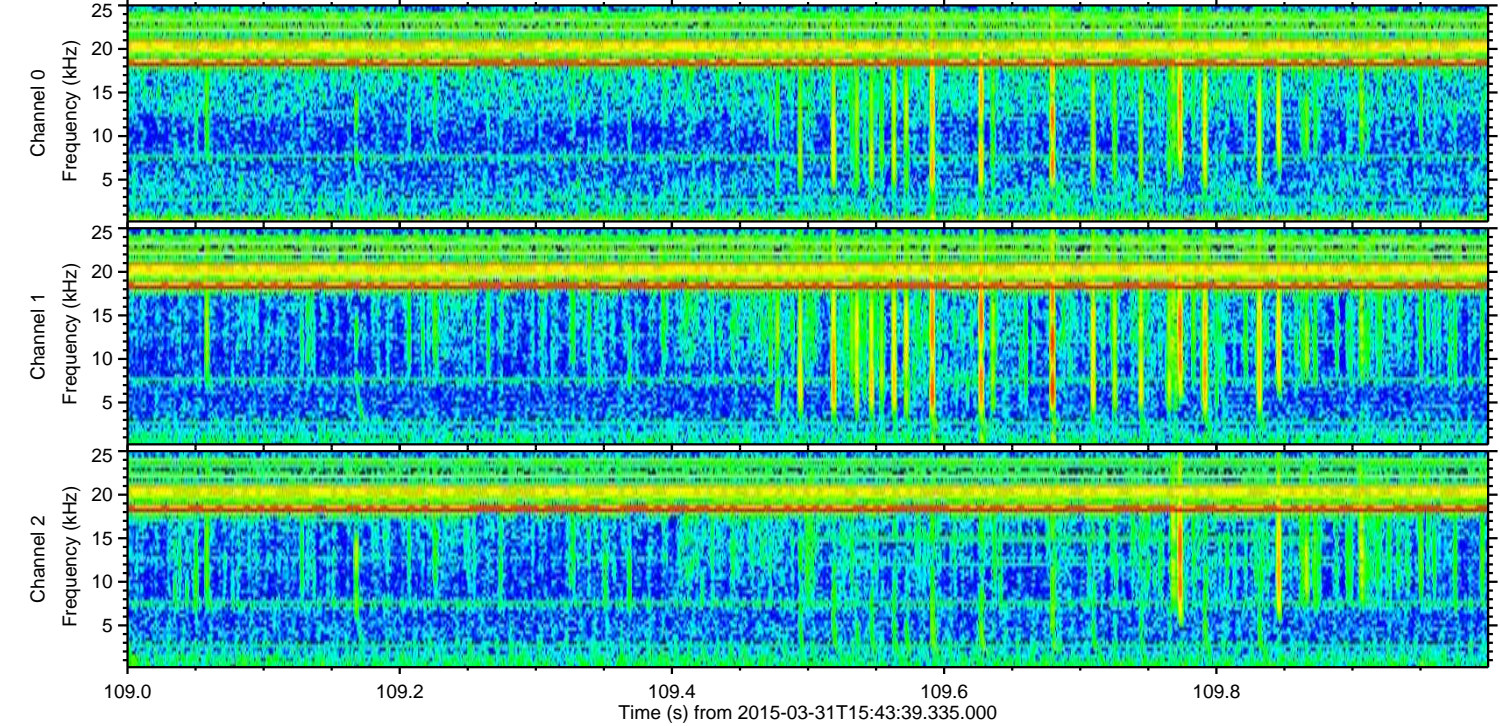
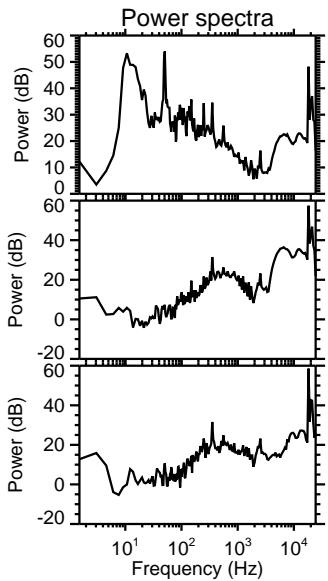
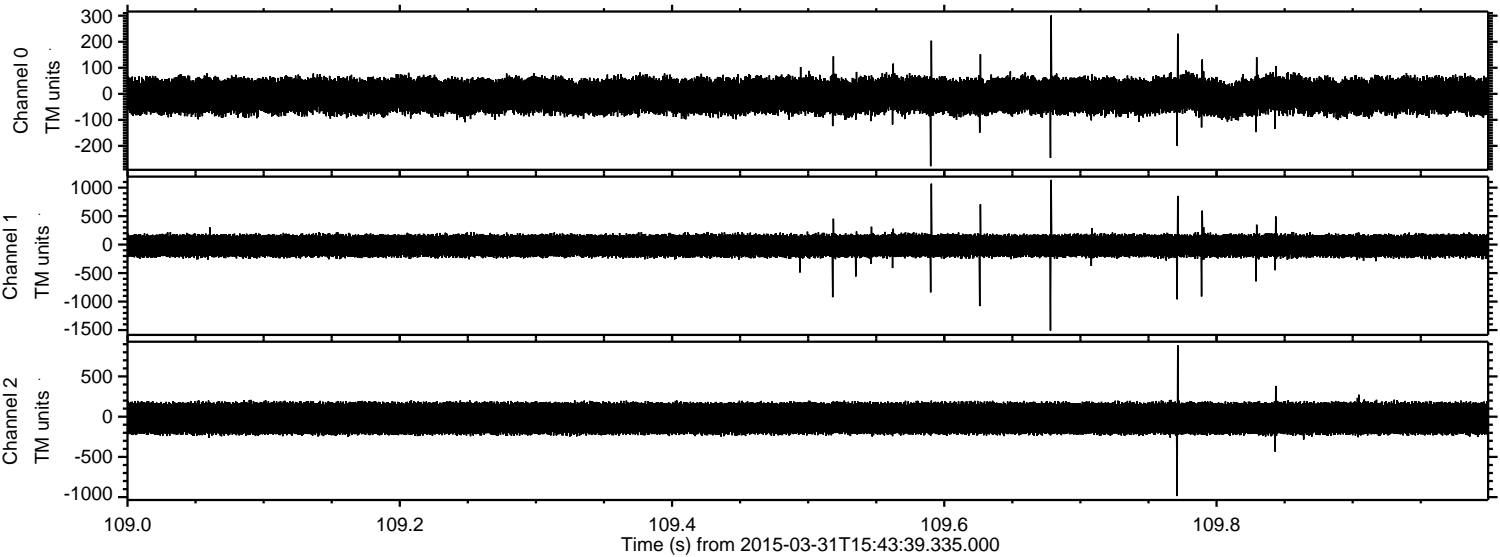
Processed Tue Mar 31 17:50:57 2015 by ELM ver.2012-10-06 from 001\_\_elm20150331\_154338\_\_dat00.bin





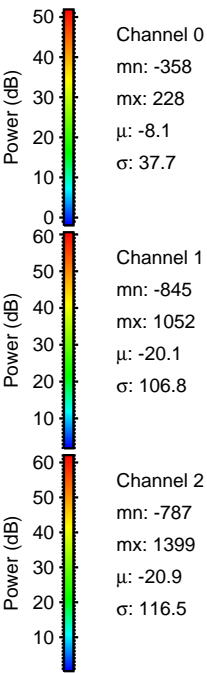
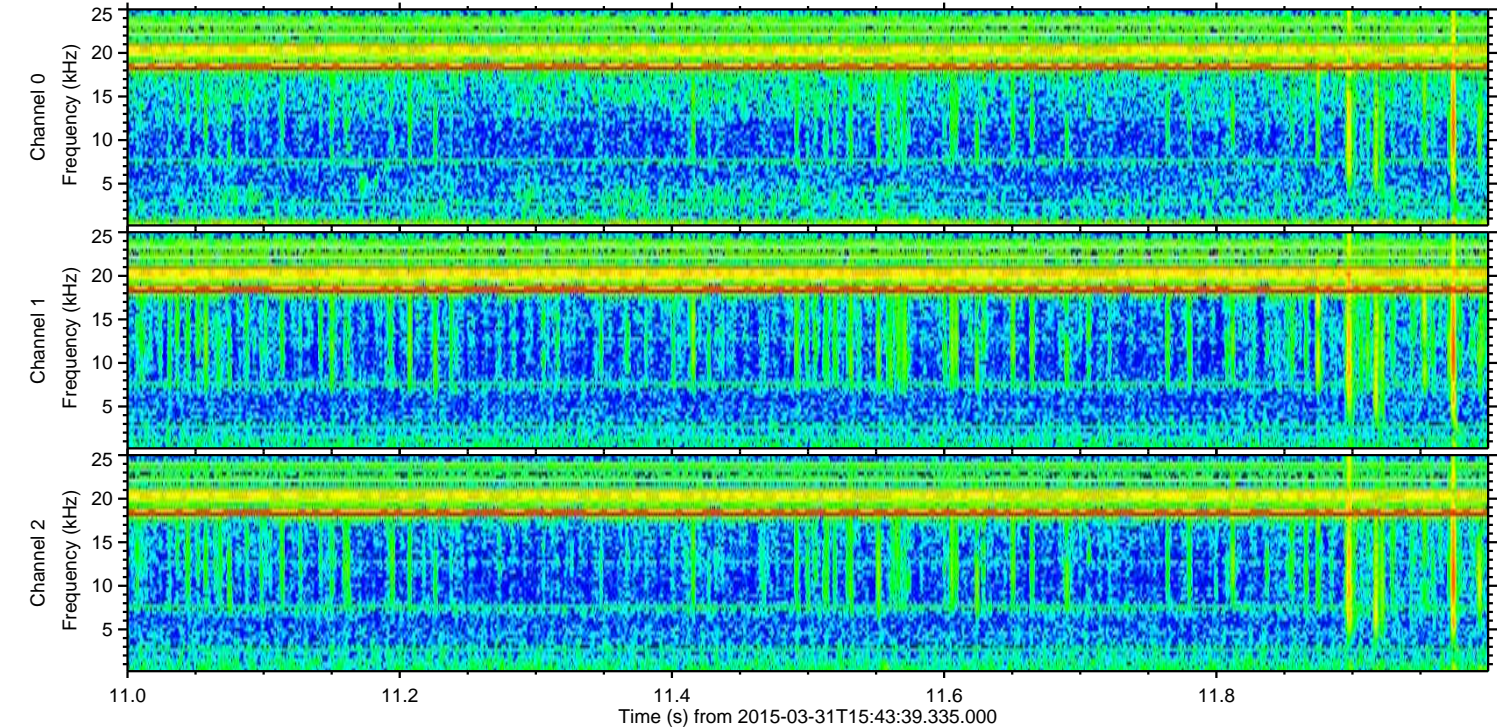
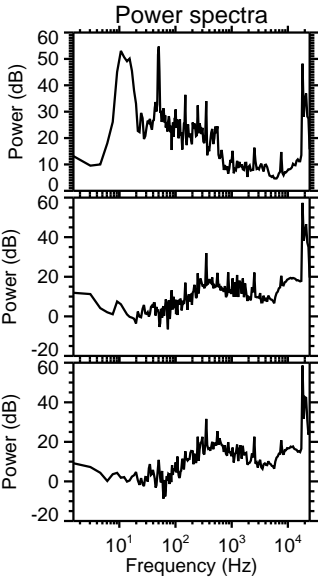
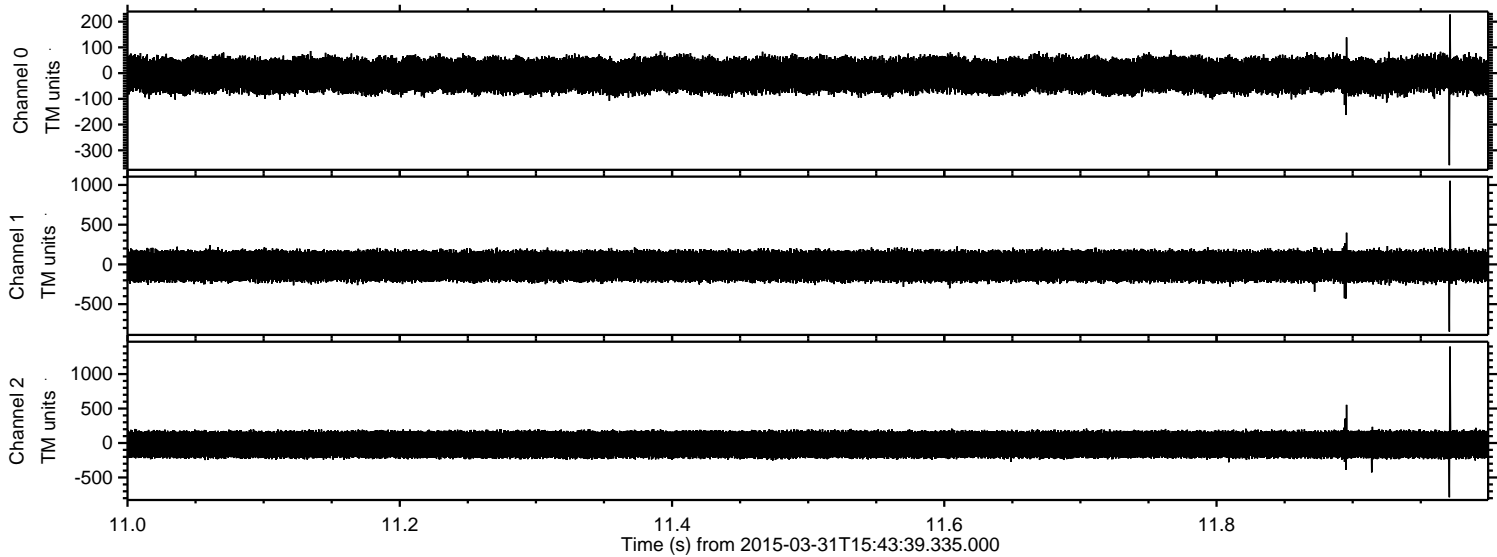
ELMAVAN 3D WAVEFORMS (Measured data sampled at 50 kHz) 49783 packets of 144 samples from 2015-03-31T15:43:39.335.000. Part 110/144

Processed Tue Mar 31 17:50:58 2015 by ELM ver.2012-10-06 from 001\_\_elm20150331\_154338\_\_dat00.bin





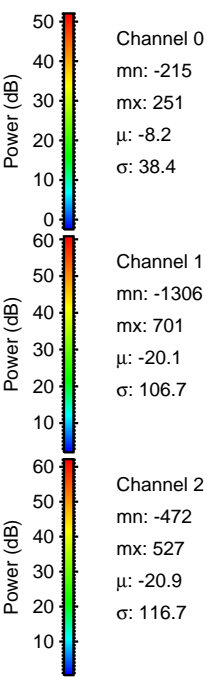
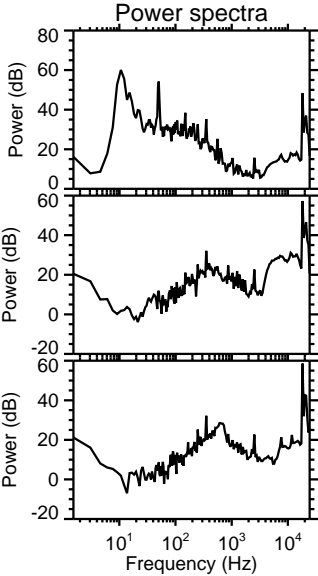
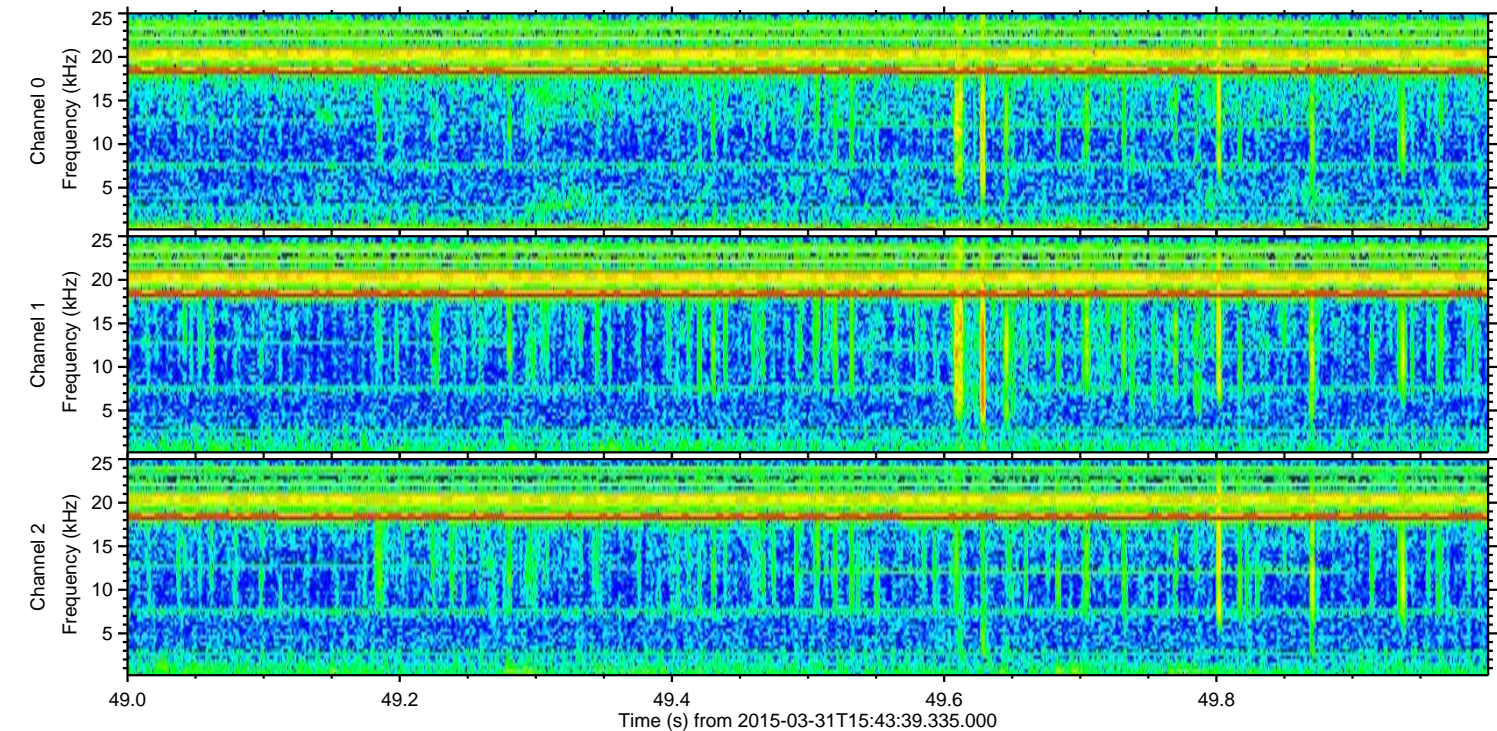
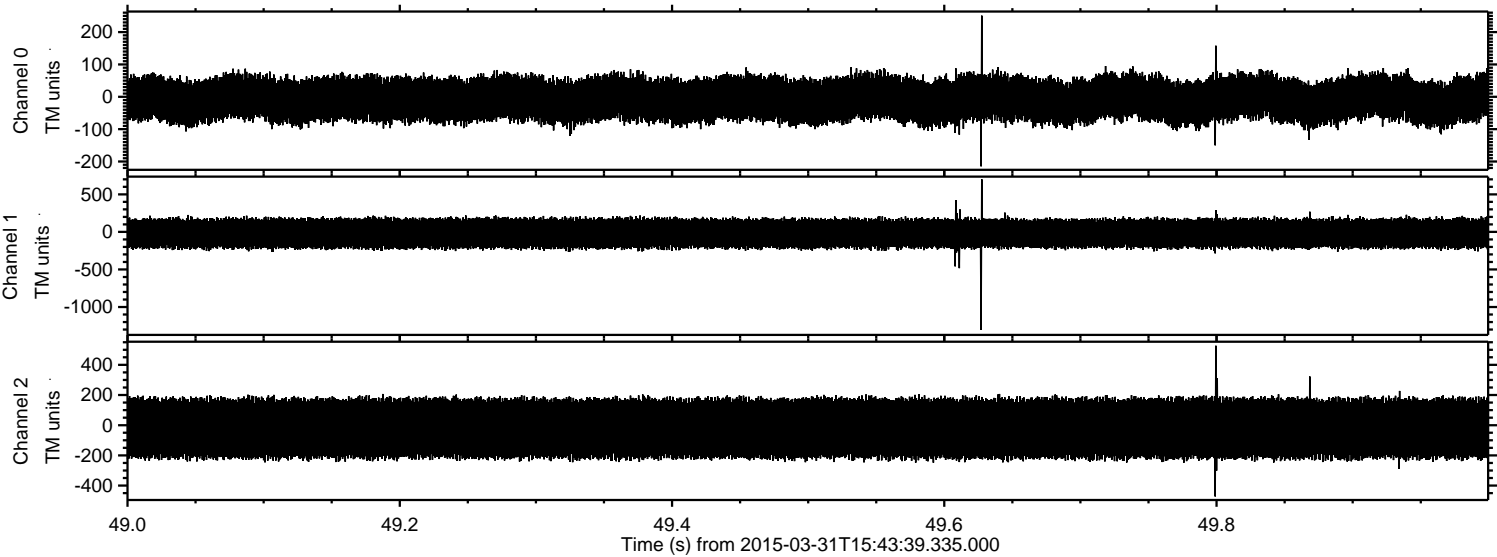
Processed Tue Mar 31 17:50:59 2015 by ELM ver.2012-10-06 from 001\_\_elm20150331\_154338\_\_dat00.bin





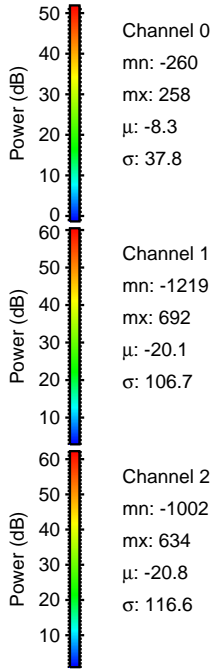
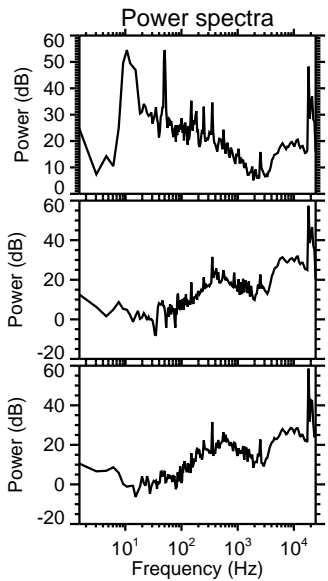
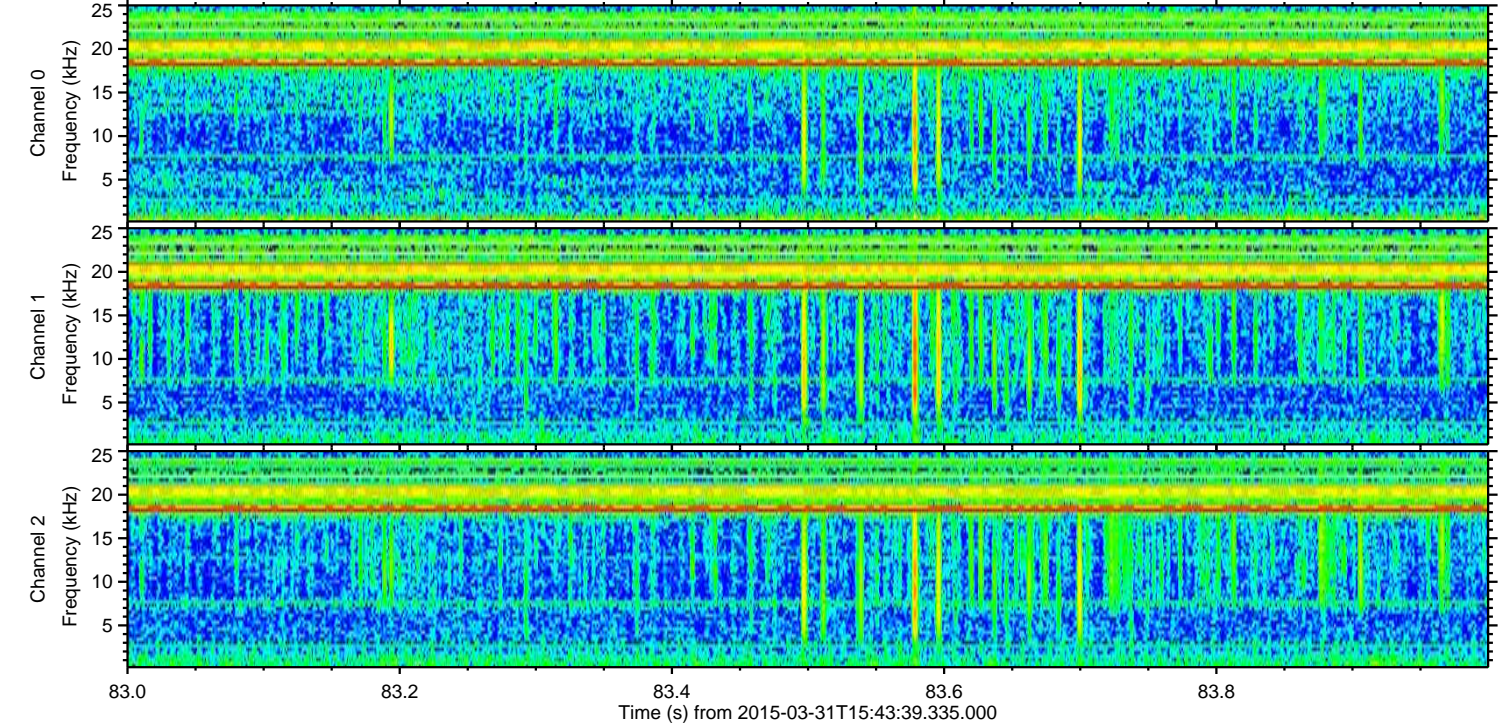
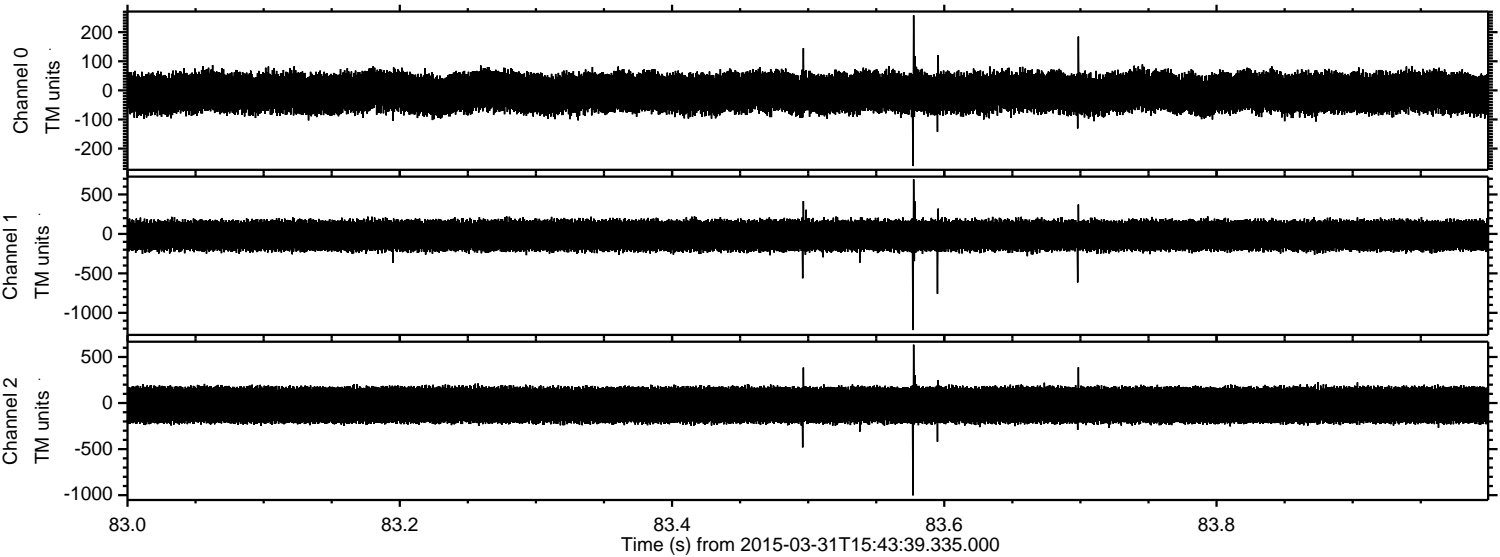
ELMAVAN 3D WAVEFORMS (Measured data sampled at 50 kHz) 49783 packets of 144 samples from 2015-03-31T15:43:39.335.000. Part 50/144

Processed Tue Mar 31 17:51:00 2015 by ELM ver.2012-10-06 from 001\_\_elm20150331\_154338\_\_dat00.bin



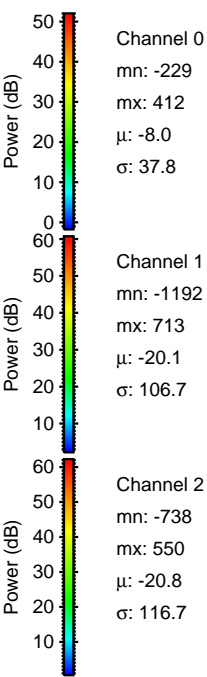
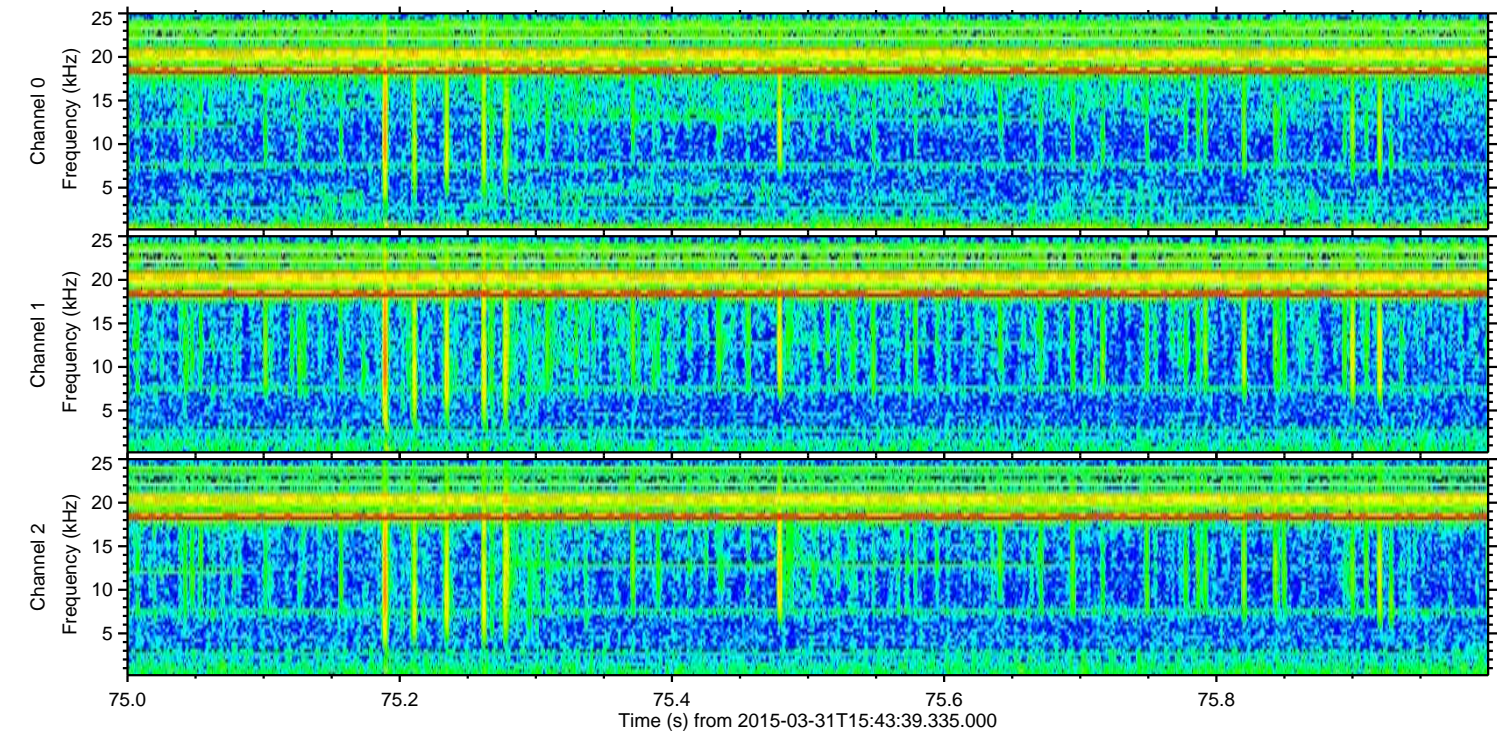
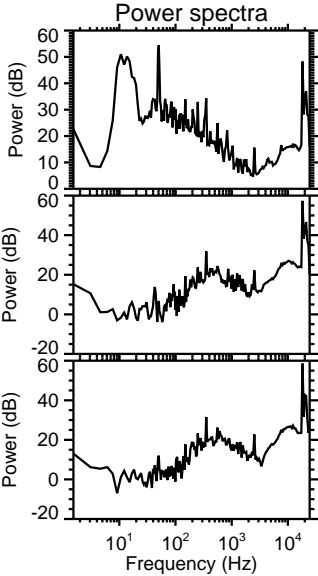
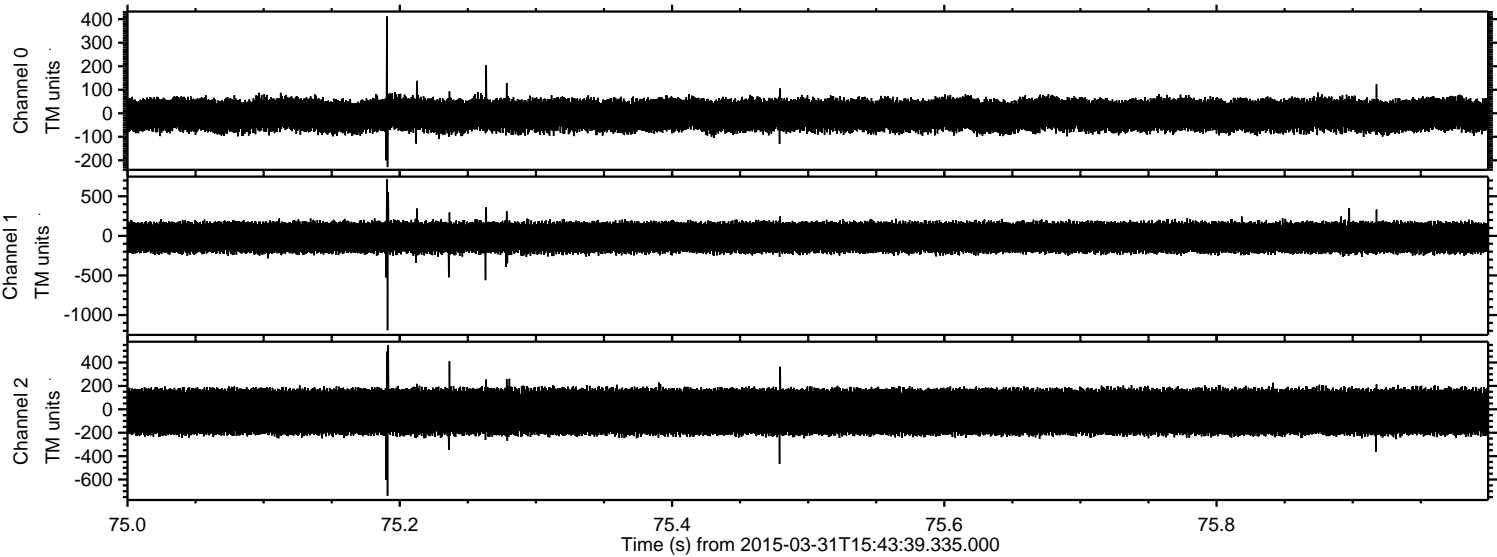


Processed Tue Mar 31 17:51:01 2015 by ELM ver.2012-10-06 from 001\_\_elm20150331\_154338\_\_dat00.bin





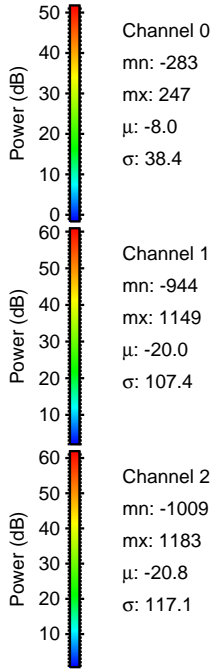
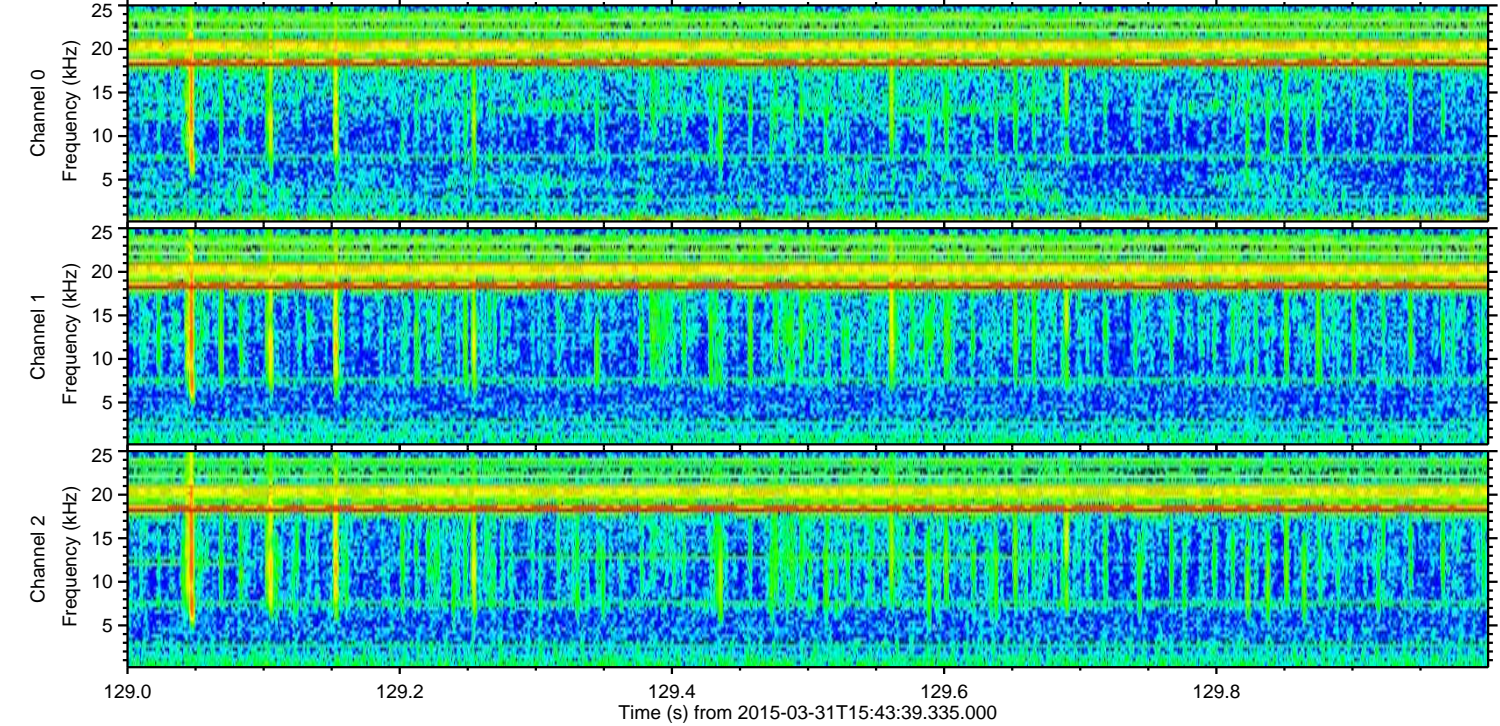
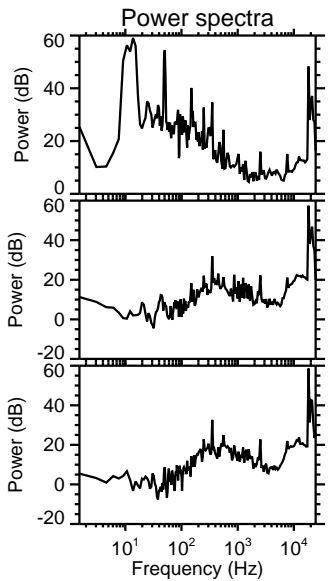
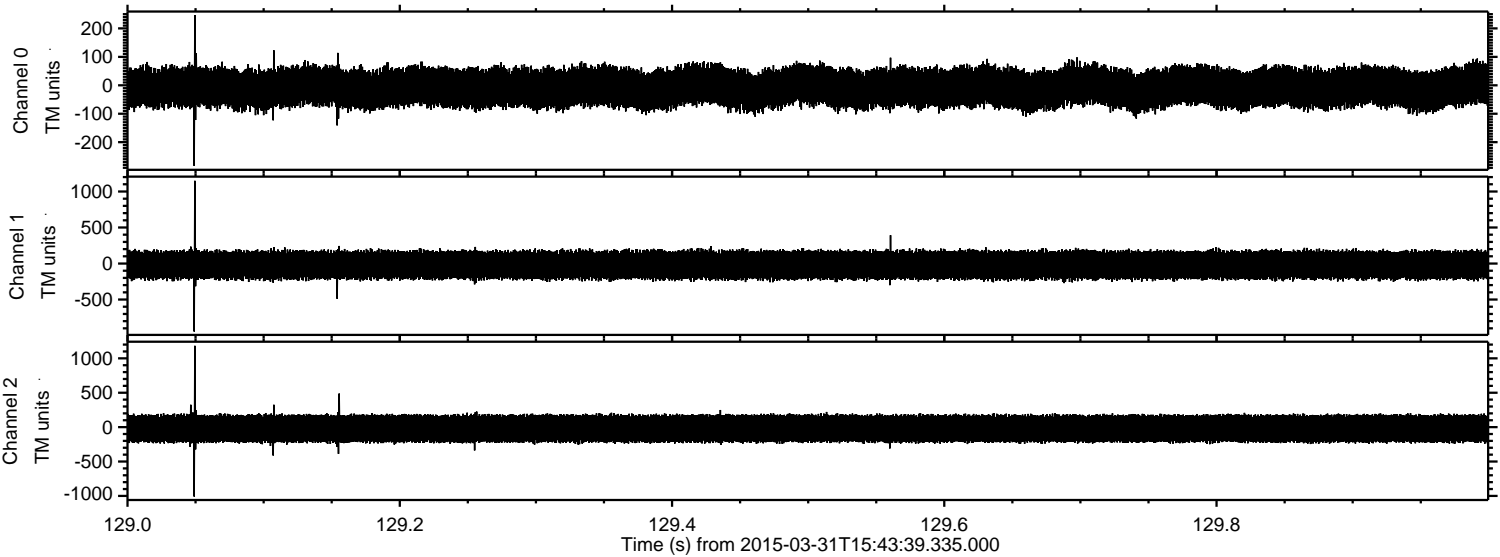
Processed Tue Mar 31 17:51:02 2015 by ELM ver.2012-10-06 from 001\_\_elm20150331\_154338\_\_dat00.bin





ELMAVAN 3D WAVEFORMS (Measured data sampled at 50 kHz) 49783 packets of 144 samples from 2015-03-31T15:43:39.335.000. Part 130/144

Processed Tue Mar 31 17:51:03 2015 by ELM ver.2012-10-06 from 001\_\_elm20150331\_154338\_\_dat00.bin



Channel 0  
mn: -283  
mx: 247  
 $\mu$ : -8.0  
 $\sigma$ : 38.4

Channel 1  
mn: -944  
mx: 1149  
 $\mu$ : -20.0  
 $\sigma$ : 107.4

Channel 2  
mn: -1009  
mx: 1183  
 $\mu$ : -20.8  
 $\sigma$ : 117.1



ELMAVAN 3D WAVEFORMS (Measured data sampled at 50 kHz) 49783 packets of 144 samples from 2015-03-31T15:43:39.335.000. Part 137/144

Processed Tue Mar 31 17:51:04 2015 by ELM ver.2012-10-06 from 001\_\_elm20150331\_154338\_\_dat00.bin

