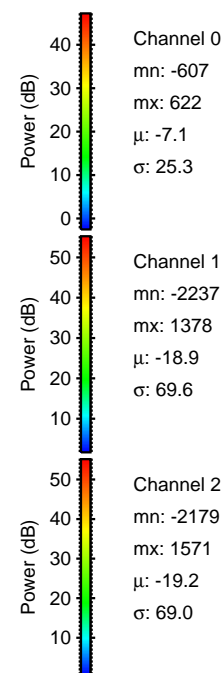
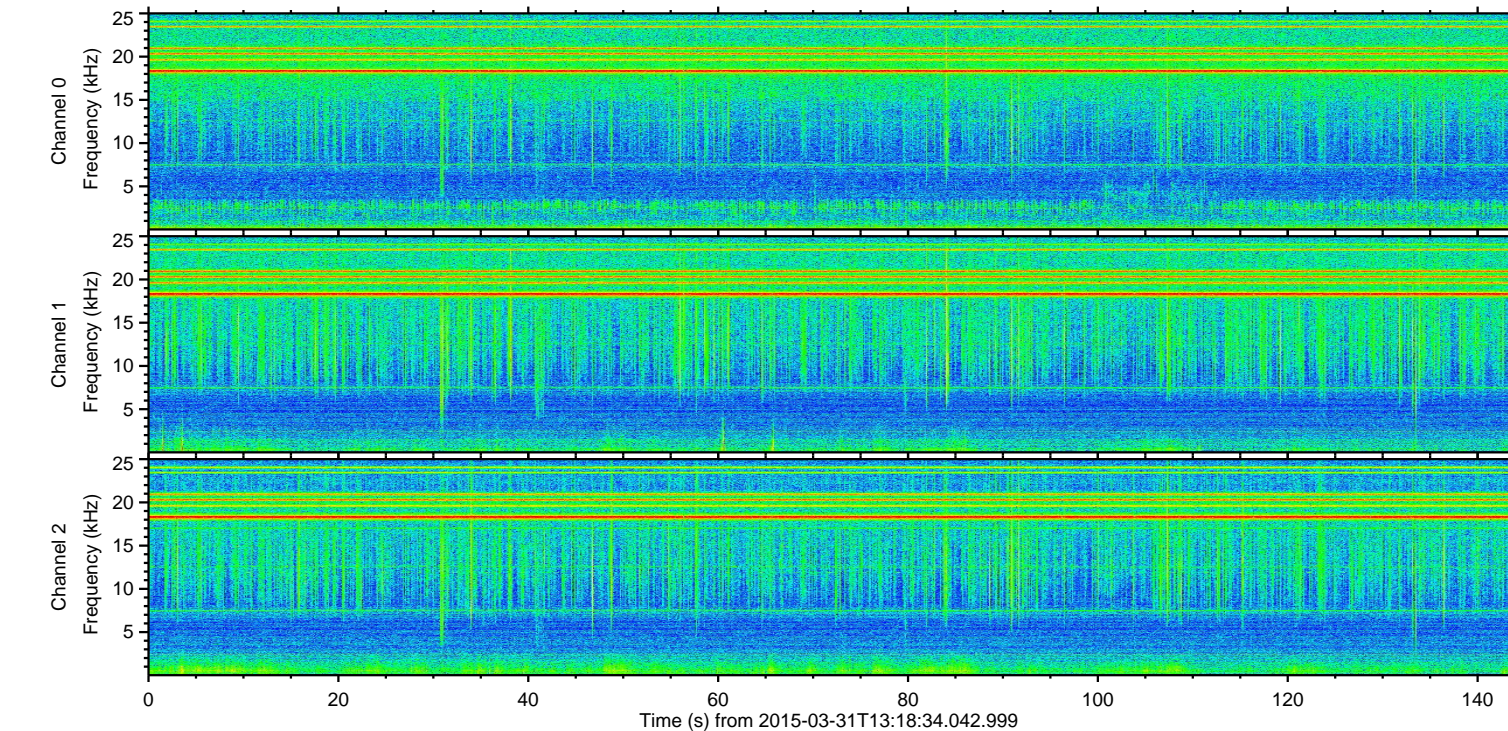
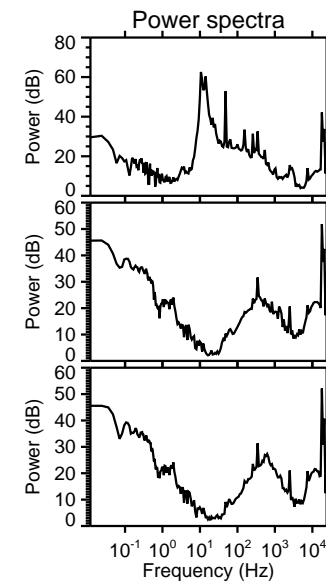
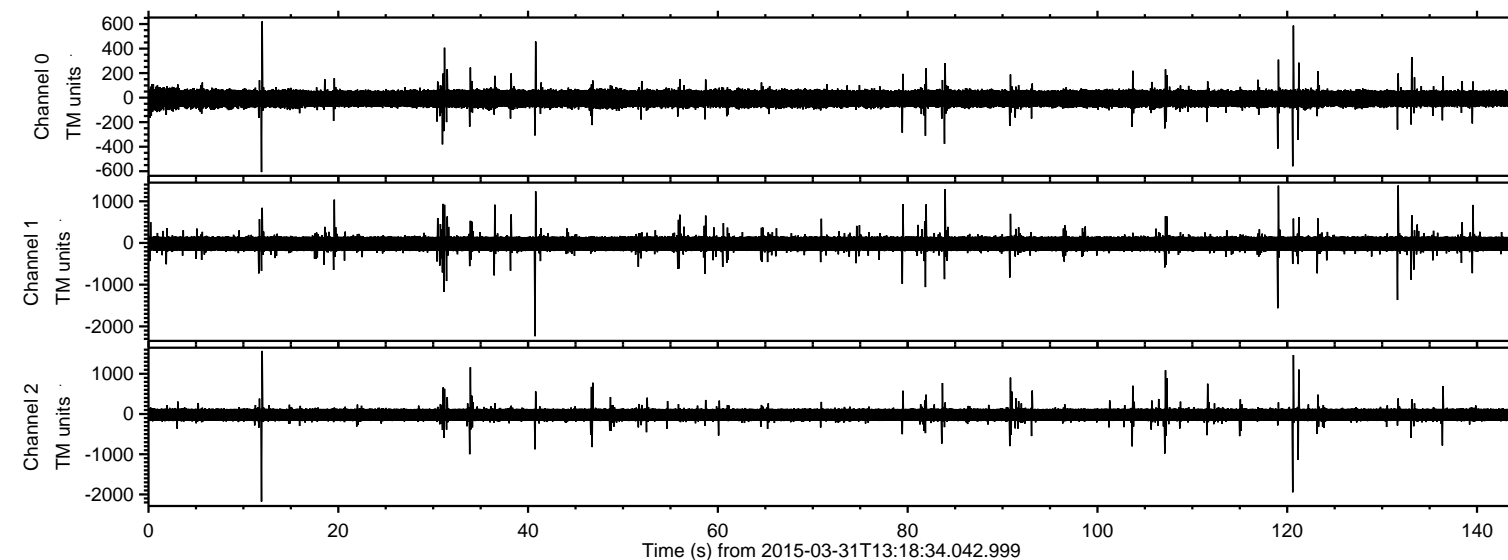
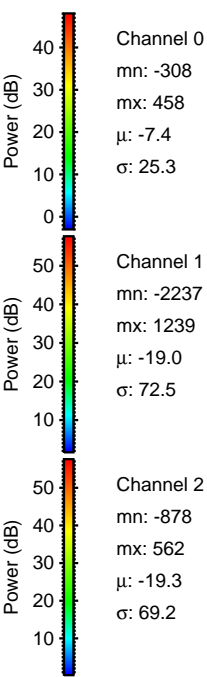
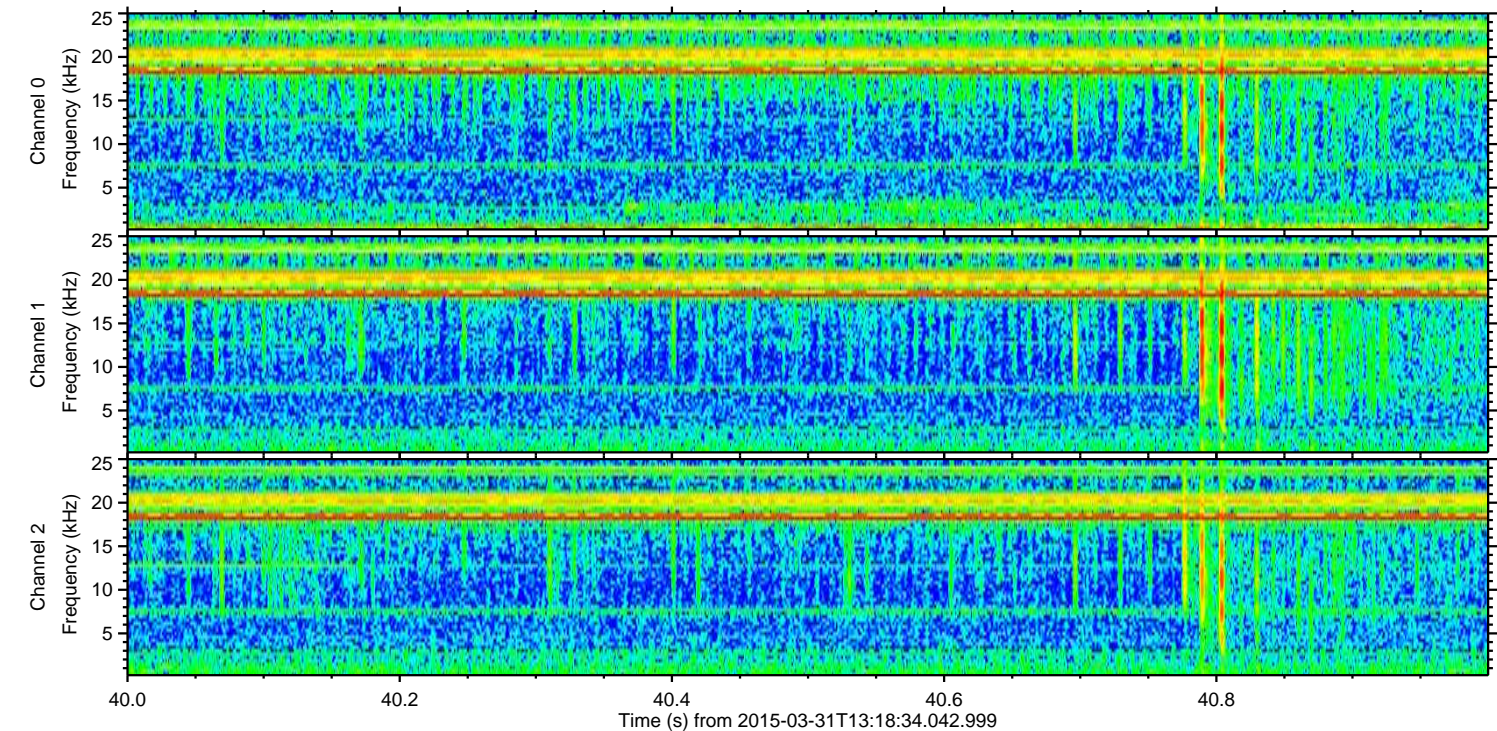
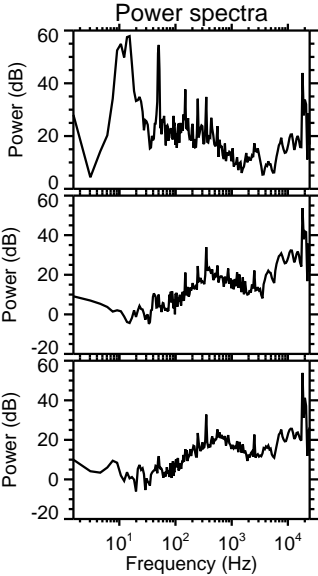
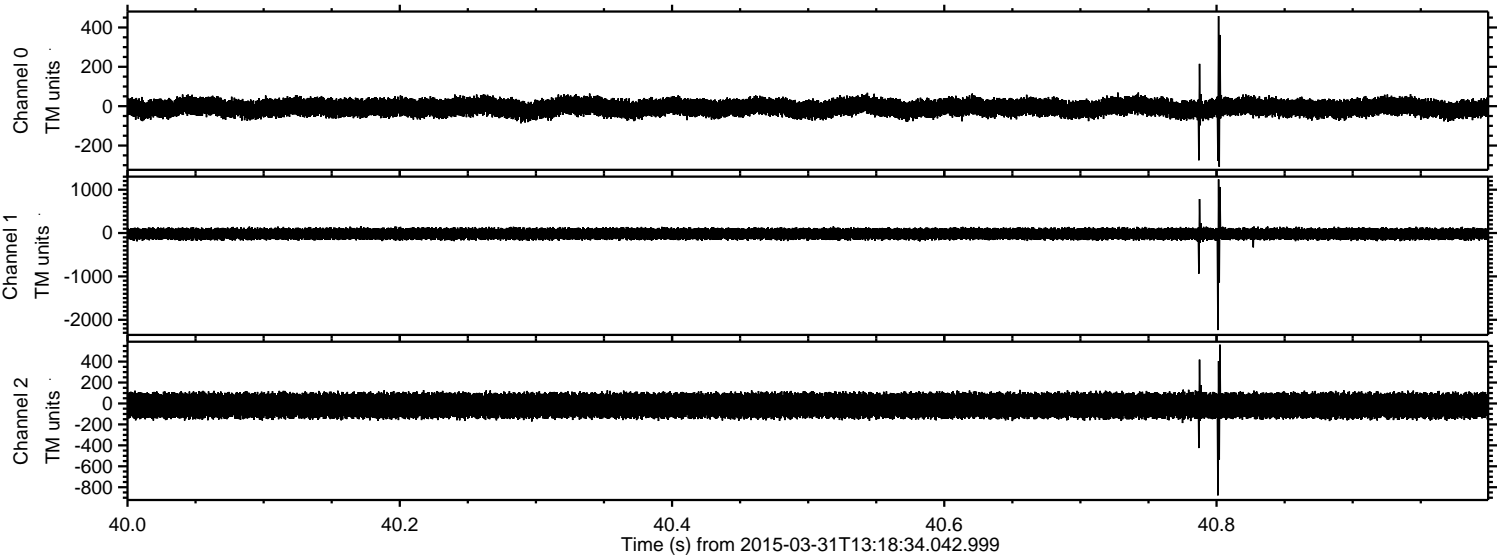


ELMAVAN 3D WAVEFORMS (Measured data sampled at 50 kHz) 49786 packets of 144 samples from 2015-03-31T13:18:34.042.999.

Processed Tue Mar 31 15:26:18 2015 by ELM ver.2012-10-06 from 001__elm20150331_131833__dat00.bin

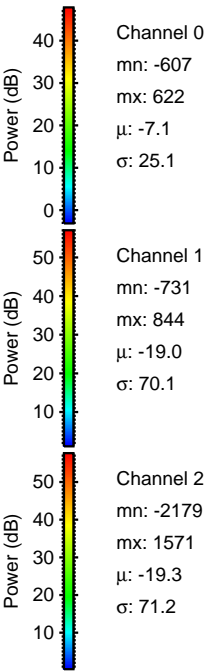
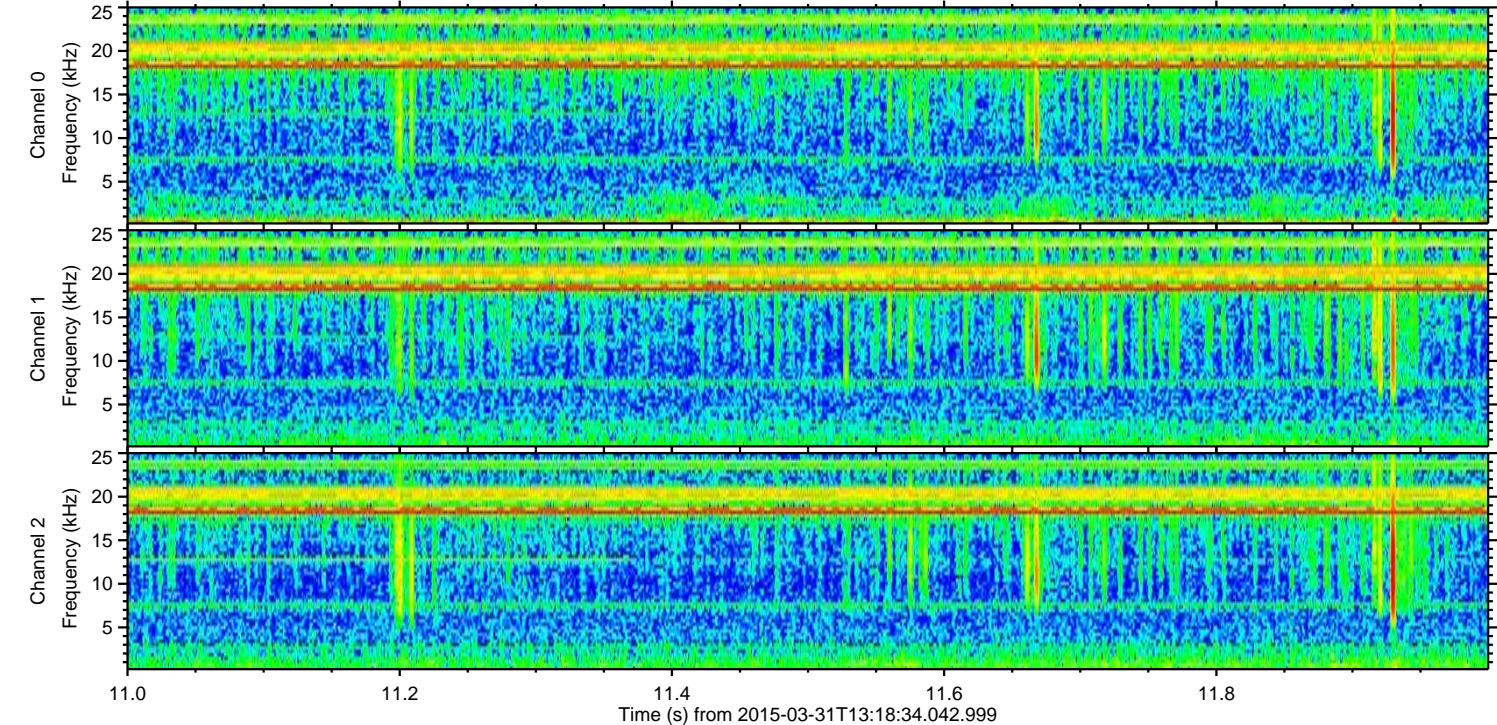
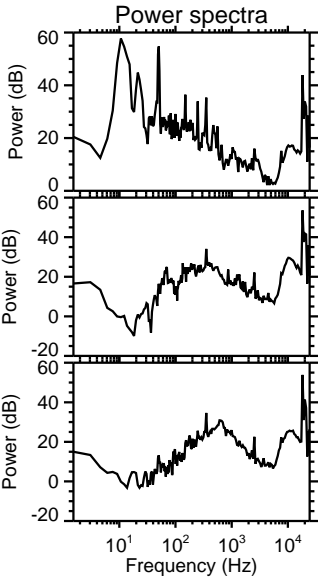
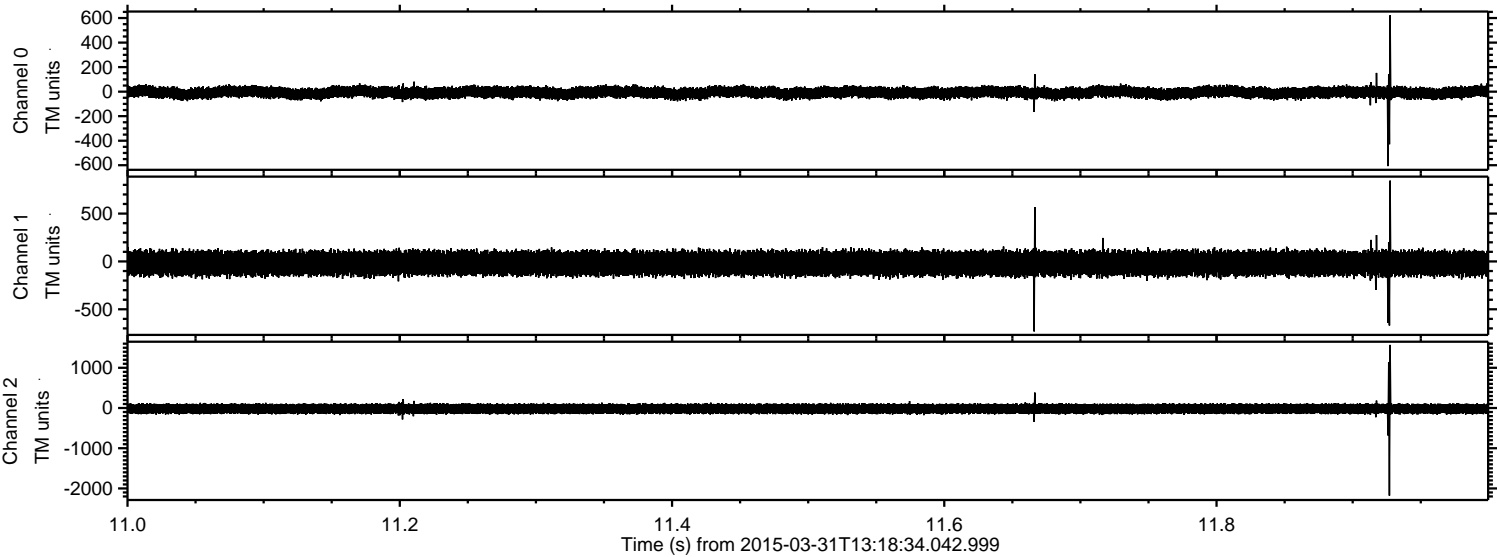


Processed Tue Mar 31 15:26:29 2015 by ELM ver.2012-10-06 from 001__elm20150331_131833__dat00.bin



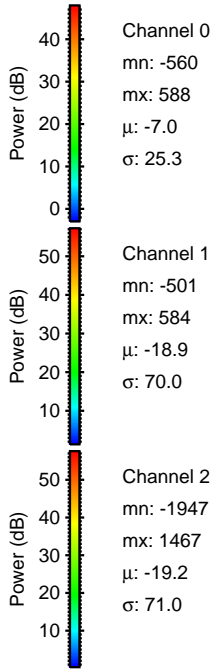
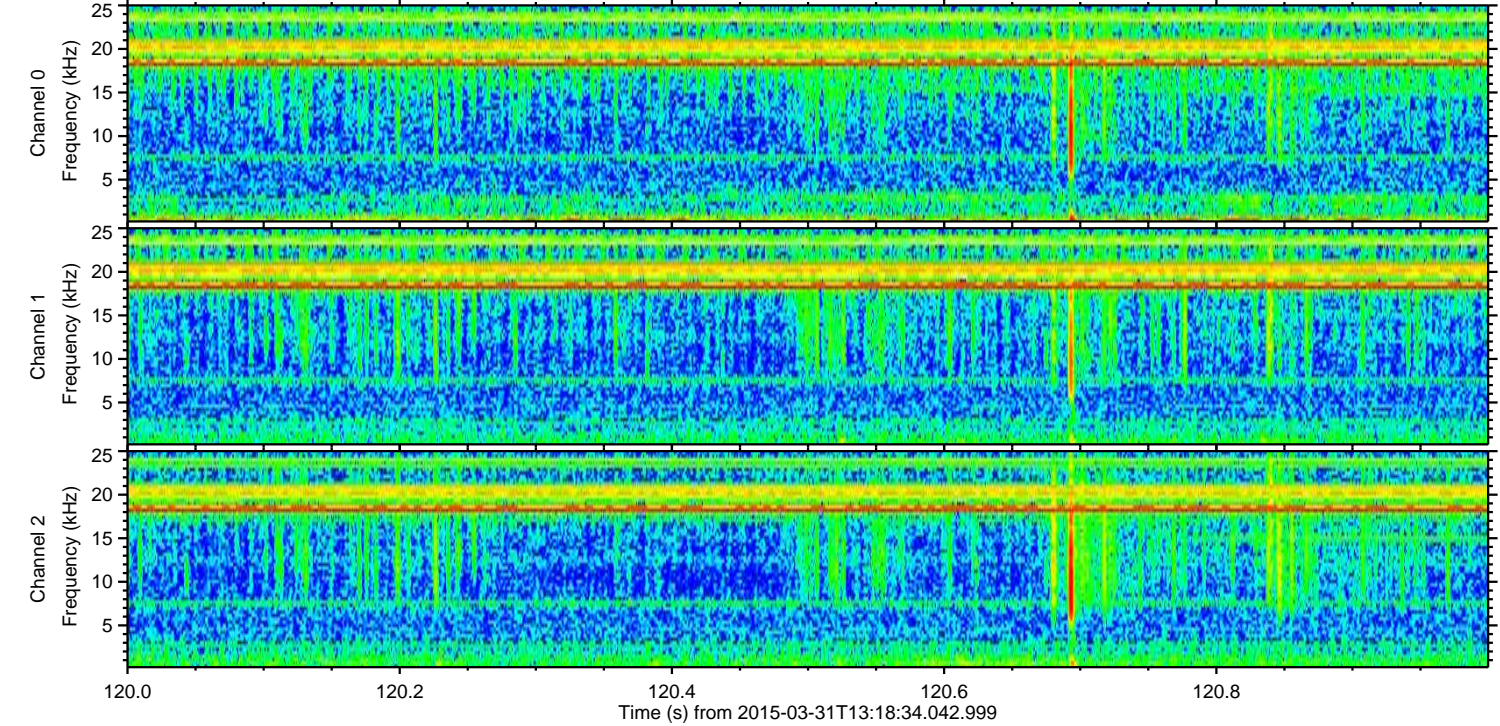
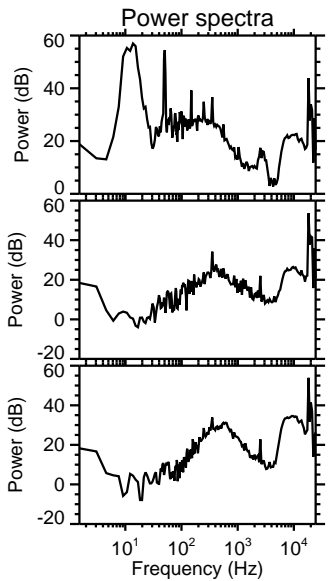
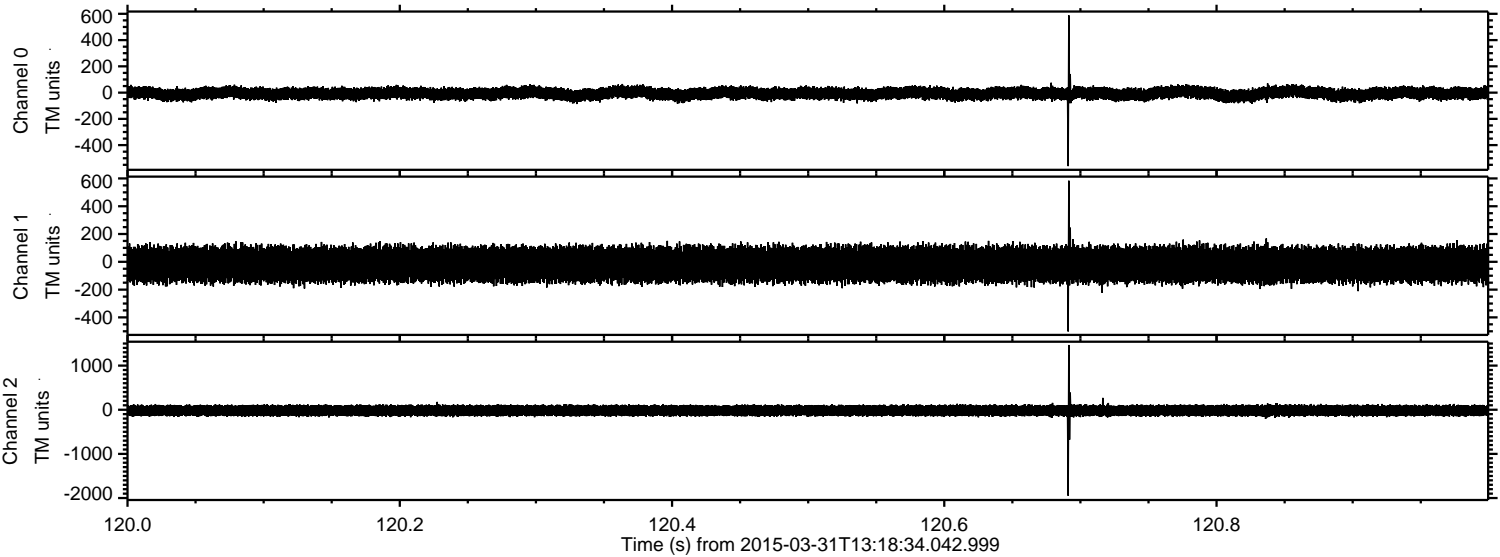
ELMAVAN 3D WAVEFORMS (Measured data sampled at 50 kHz) 49786 packets of 144 samples from 2015-03-31T13:18:34.042.999. Part 12/144

Processed Tue Mar 31 15:26:30 2015 by ELM ver.2012-10-06 from 001__elm20150331_131833__dat00.bin



ELMAVAN 3D WAVEFORMS (Measured data sampled at 50 kHz) 49786 packets of 144 samples from 2015-03-31T13:18:34.042.999. Part 121/144

Processed Tue Mar 31 15:26:31 2015 by ELM ver.2012-10-06 from 001__elm20150331_131833__dat00.bin



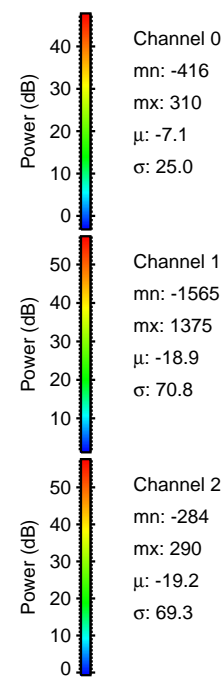
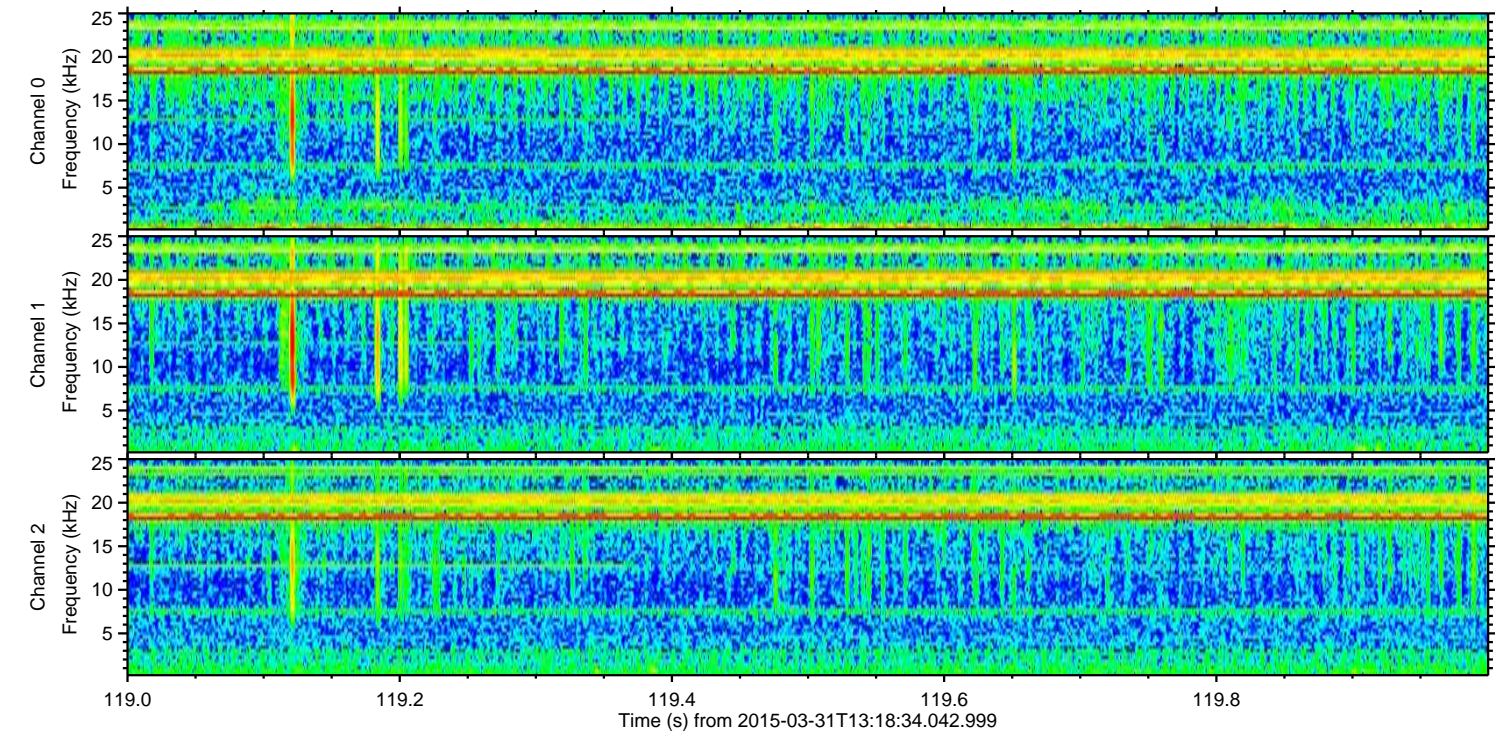
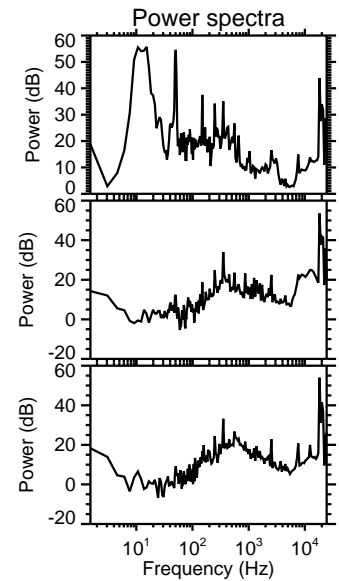
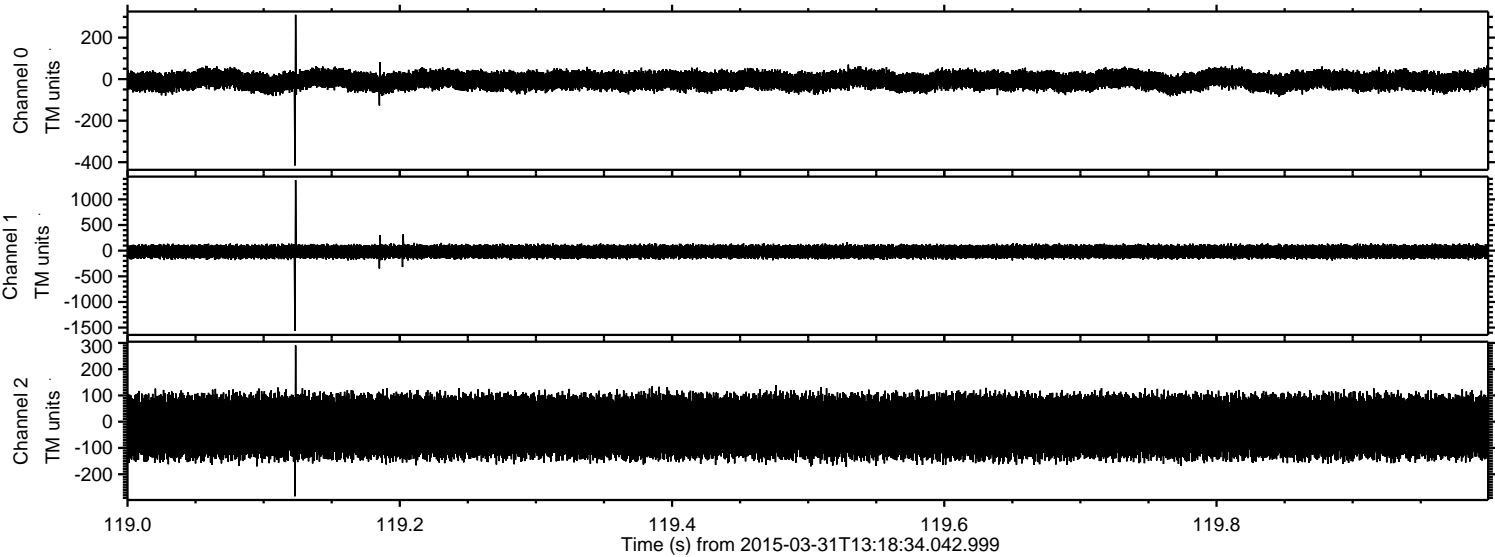
Channel 0
mn: -560
mx: 588
 μ : -7.0
 σ : 25.3

Channel 1
mn: -501
mx: 584
 μ : -18.9
 σ : 70.0

Channel 2
mn: -1947
mx: 1467
 μ : -19.2
 σ : 71.0

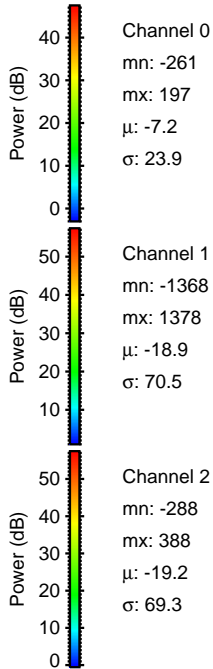
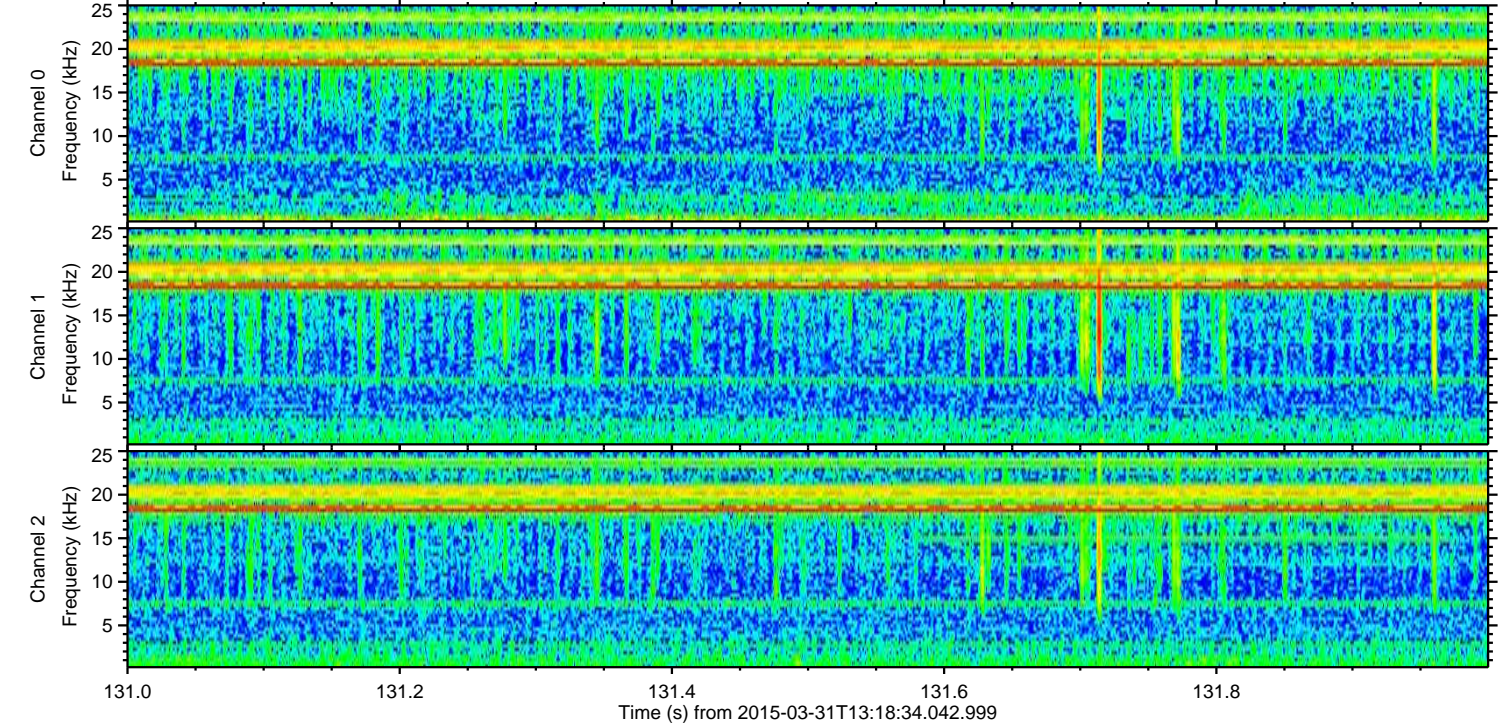
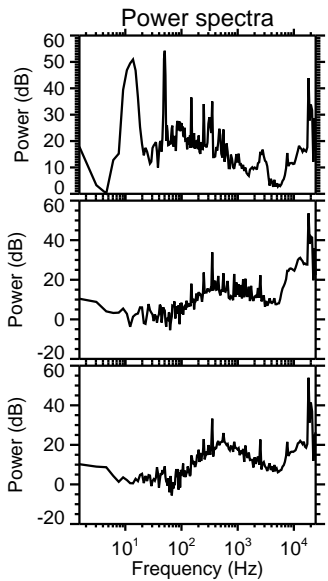
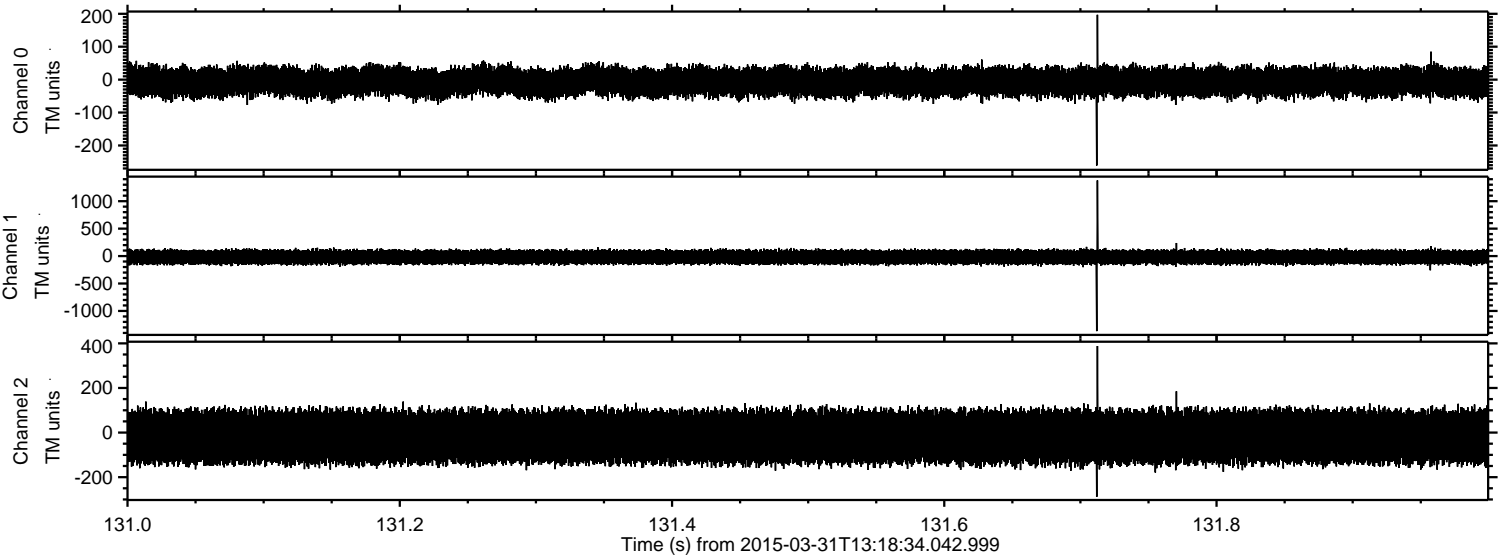
ELMAVAN 3D WAVEFORMS (Measured data sampled at 50 kHz) 49786 packets of 144 samples from 2015-03-31T13:18:34.042.999. Part 120/144

Processed Tue Mar 31 15:26:32 2015 by ELM ver.2012-10-06 from 001__elm20150331_131833__dat00.bin

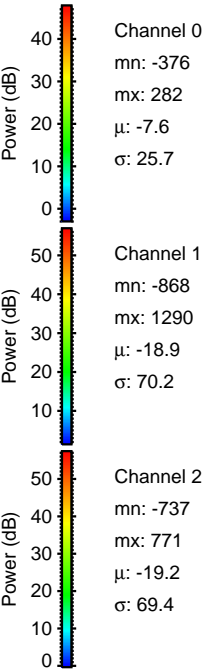
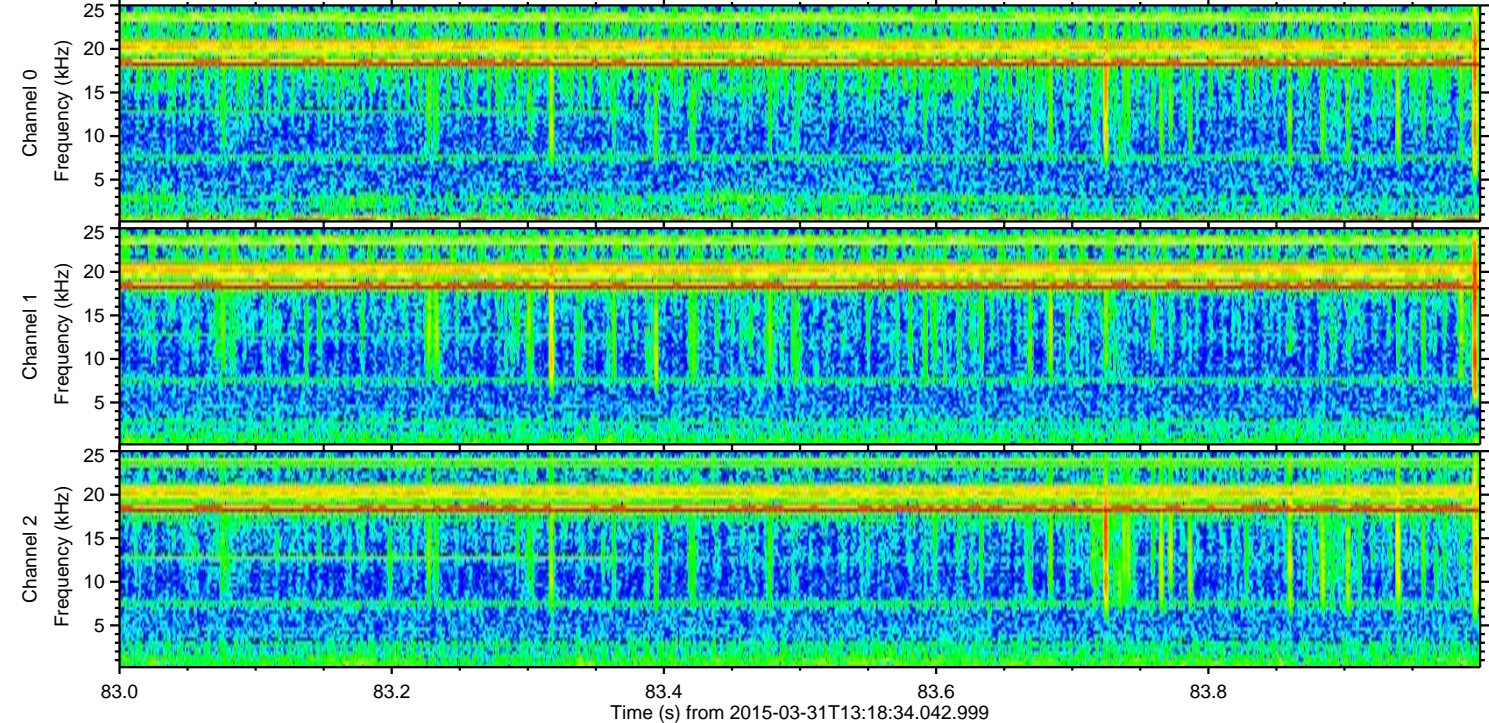
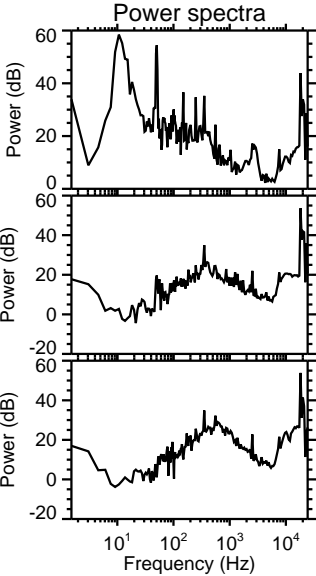
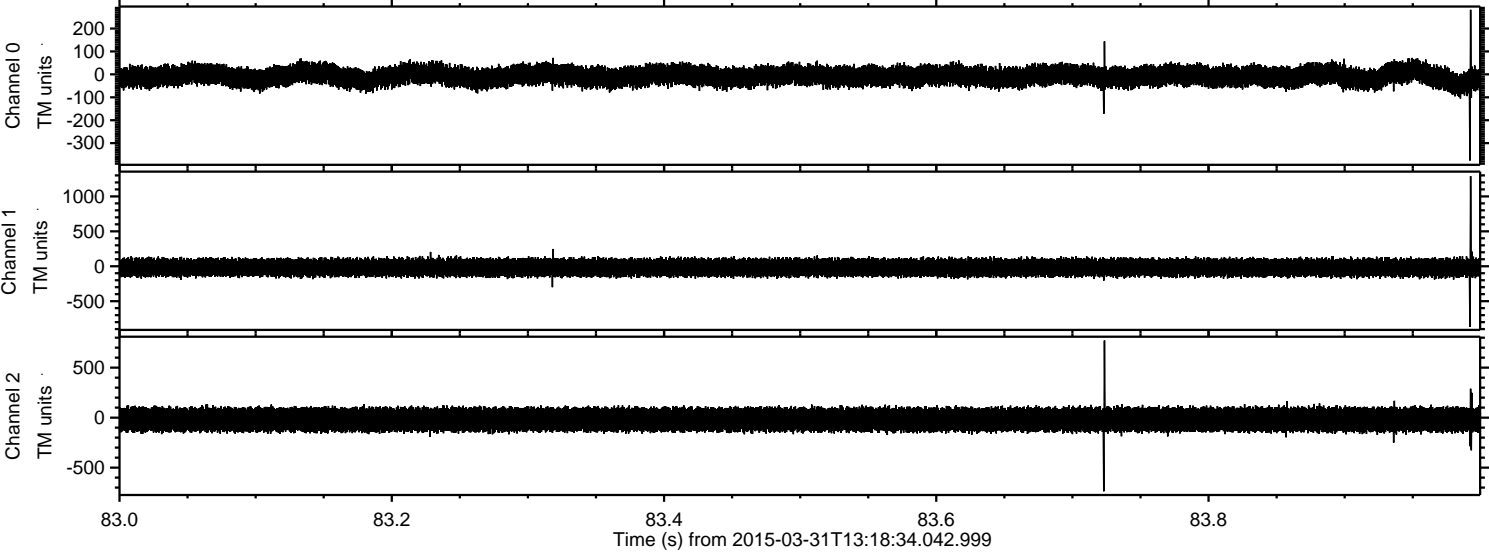


ELMAVAN 3D WAVEFORMS (Measured data sampled at 50 kHz) 49786 packets of 144 samples from 2015-03-31T13:18:34.042.999. Part 132/144

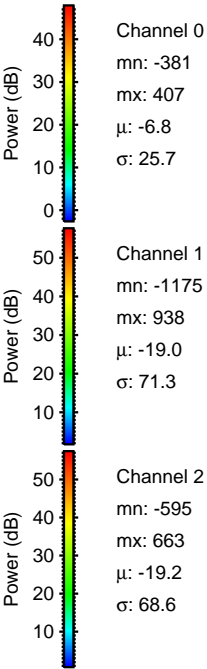
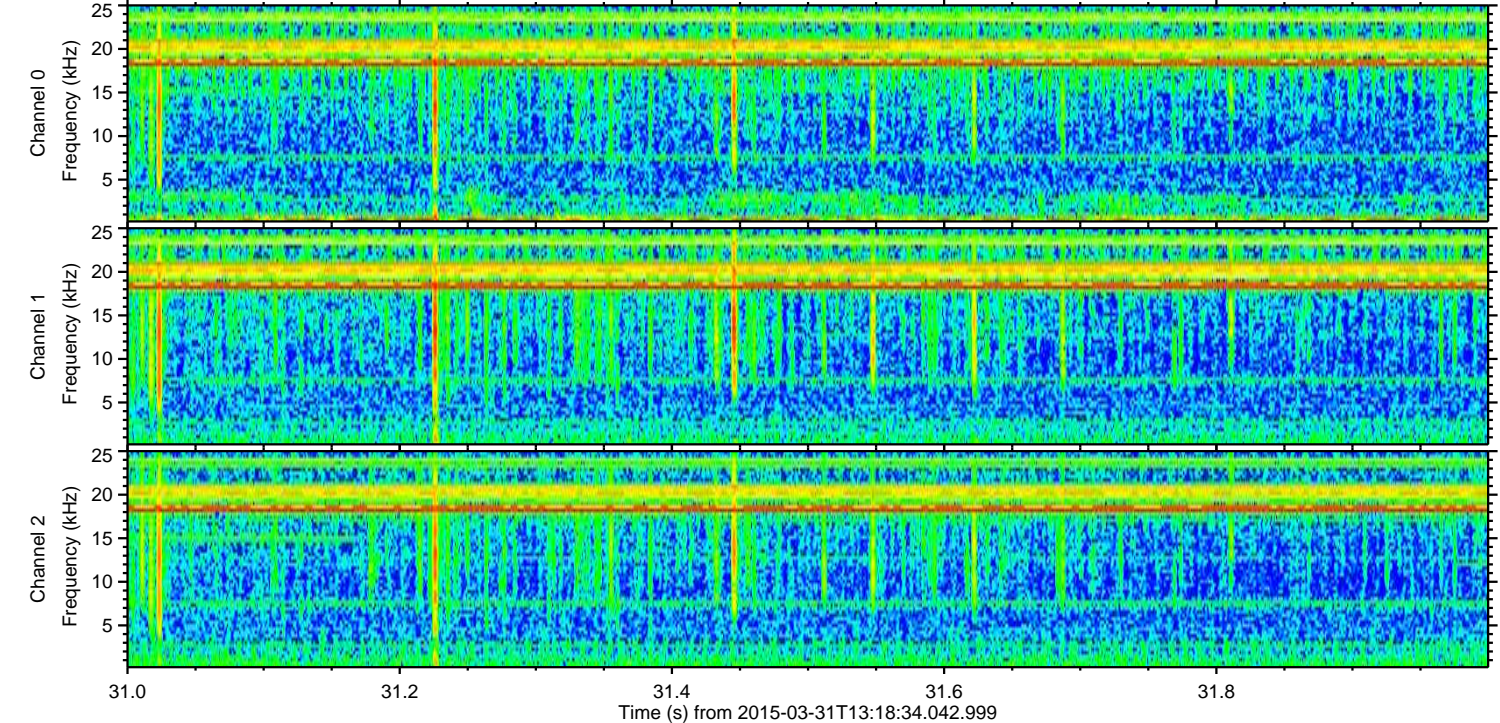
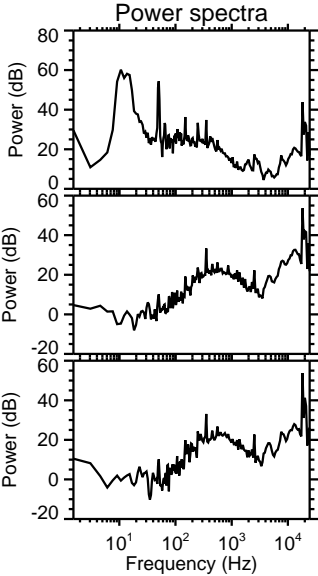
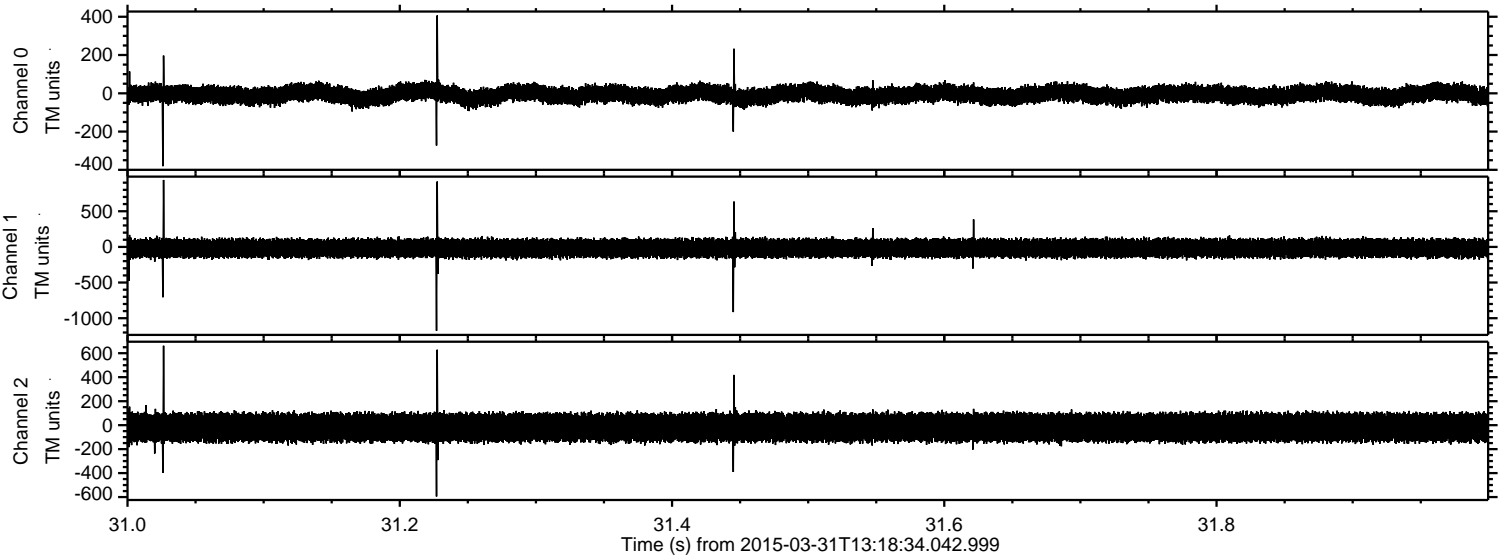
Processed Tue Mar 31 15:26:33 2015 by ELM ver.2012-10-06 from 001__elm20150331_131833__dat00.bin



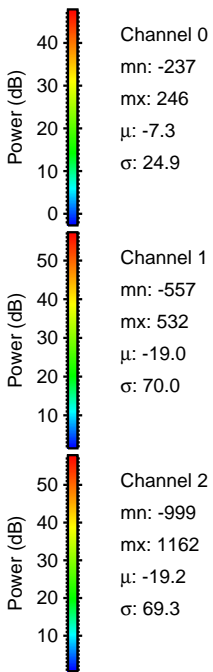
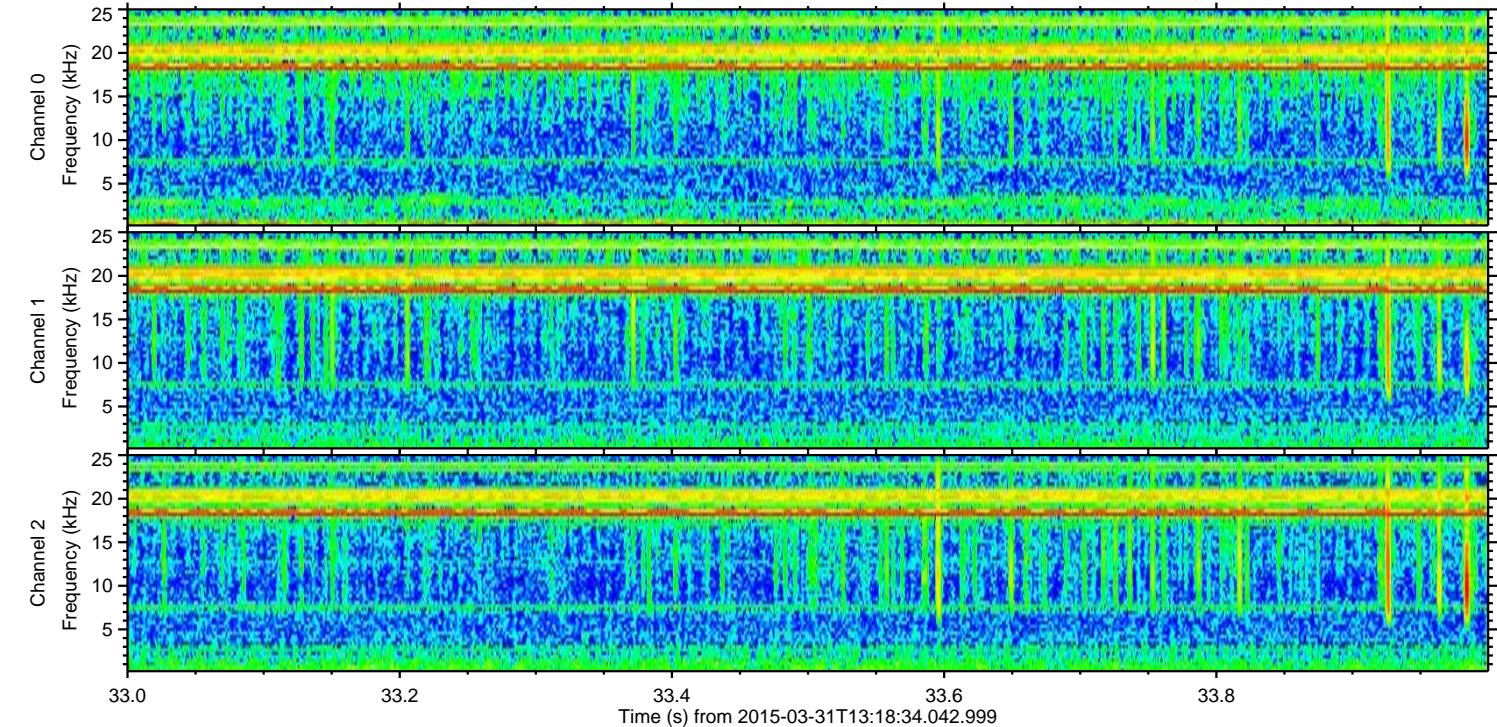
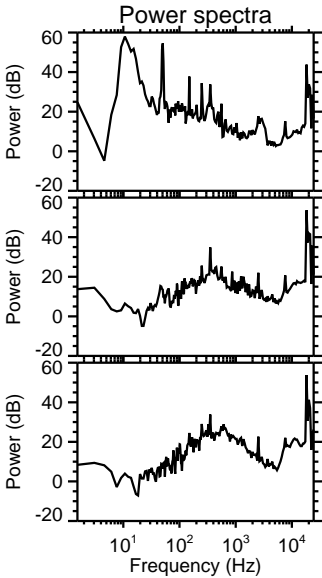
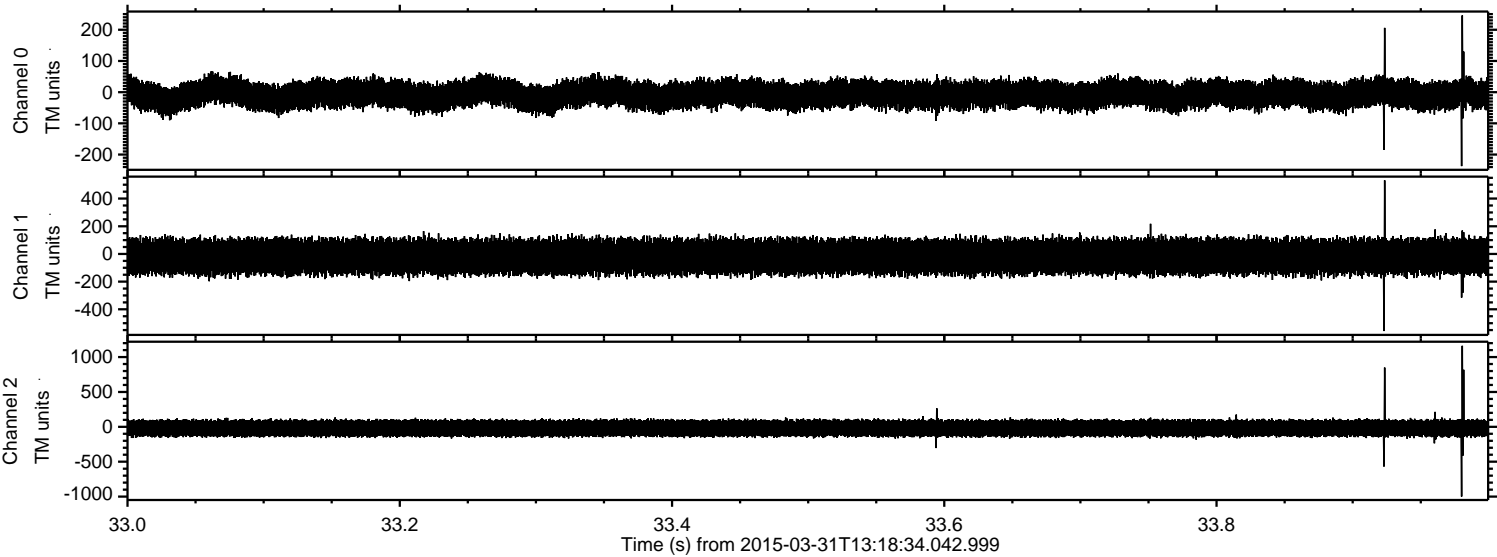
Processed Tue Mar 31 15:26:34 2015 by ELM ver.2012-10-06 from 001__elm20150331_131833__dat00.bin



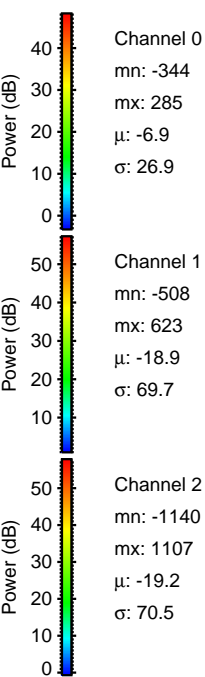
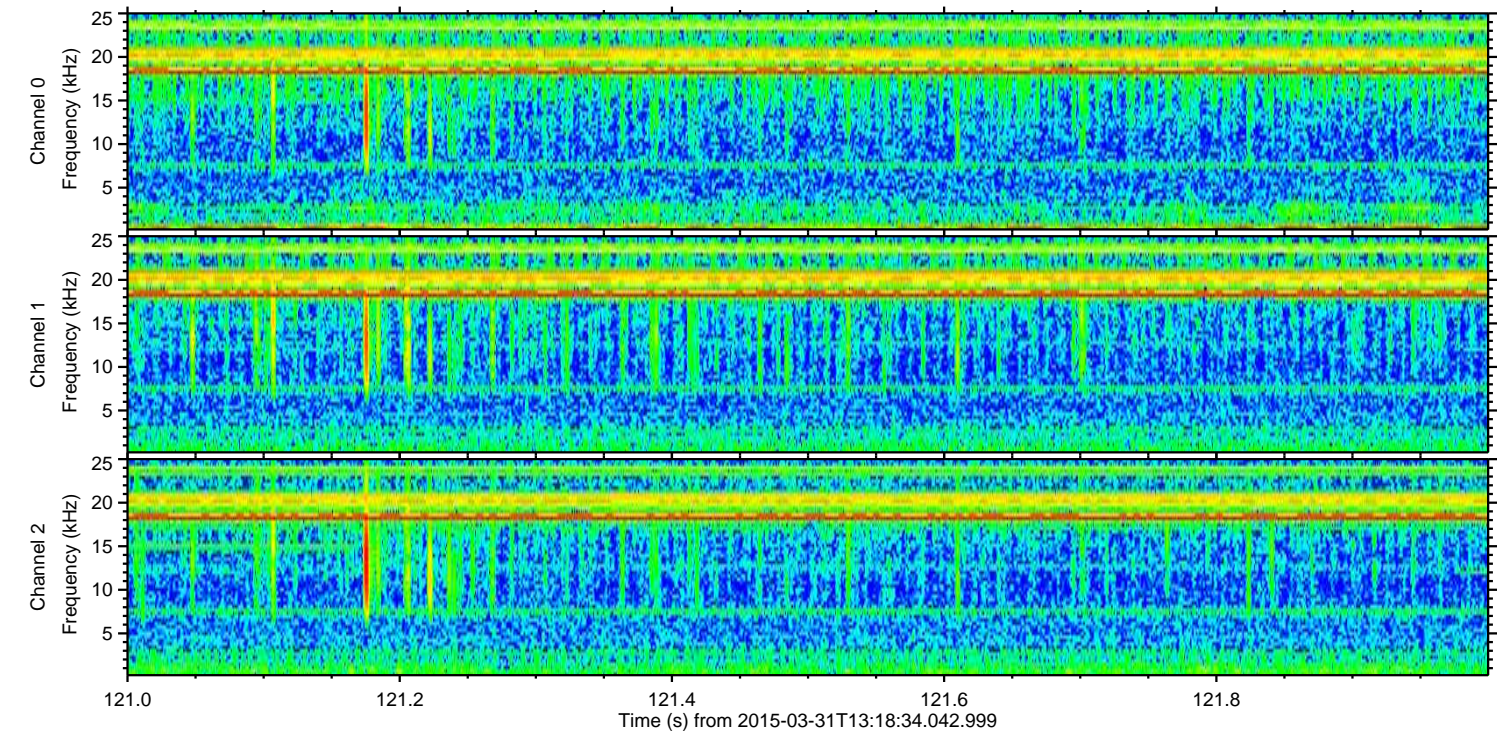
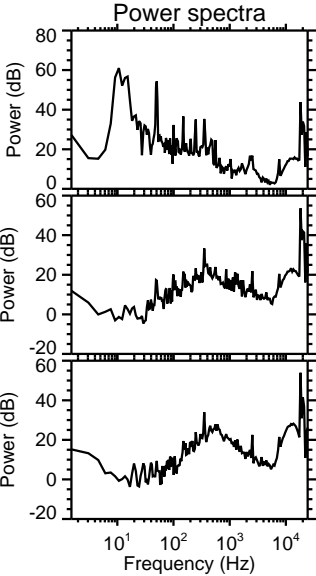
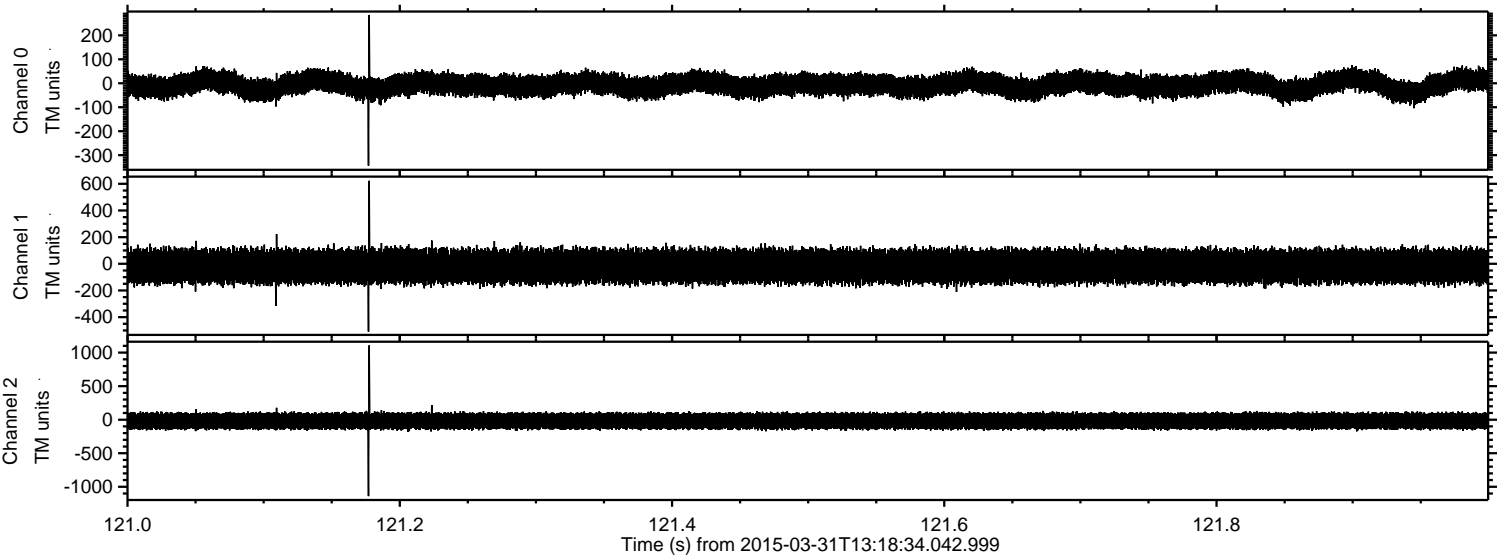
Processed Tue Mar 31 15:26:35 2015 by ELM ver.2012-10-06 from 001__elm20150331_131833__dat00.bin



Processed Tue Mar 31 15:26:36 2015 by ELM ver.2012-10-06 from 001__elm20150331_131833__dat00.bin



Processed Tue Mar 31 15:26:37 2015 by ELM ver.2012-10-06 from 001__elm20150331_131833__dat00.bin



Processed Tue Mar 31 15:26:38 2015 by ELM ver.2012-10-06 from 001__elm20150331_131833__dat00.bin

