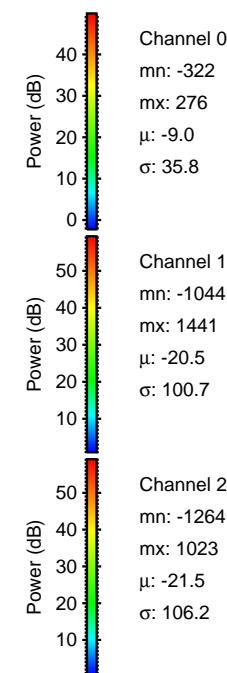
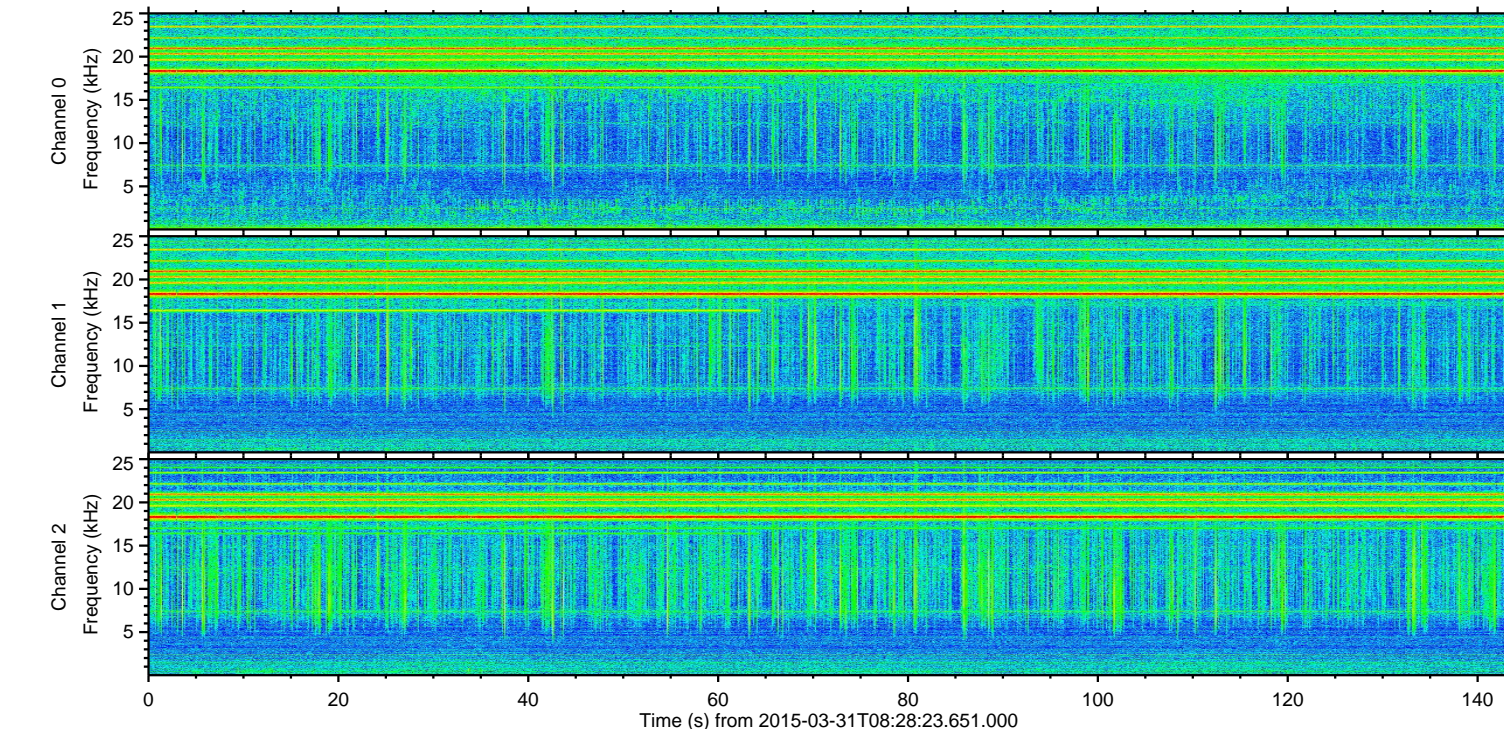
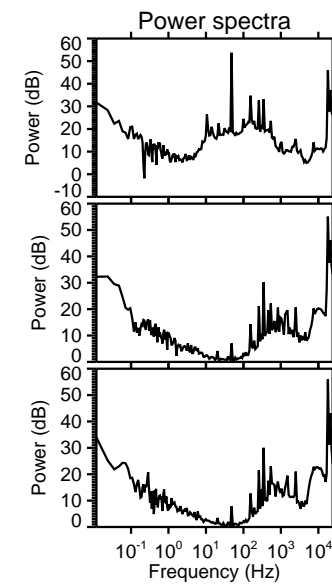
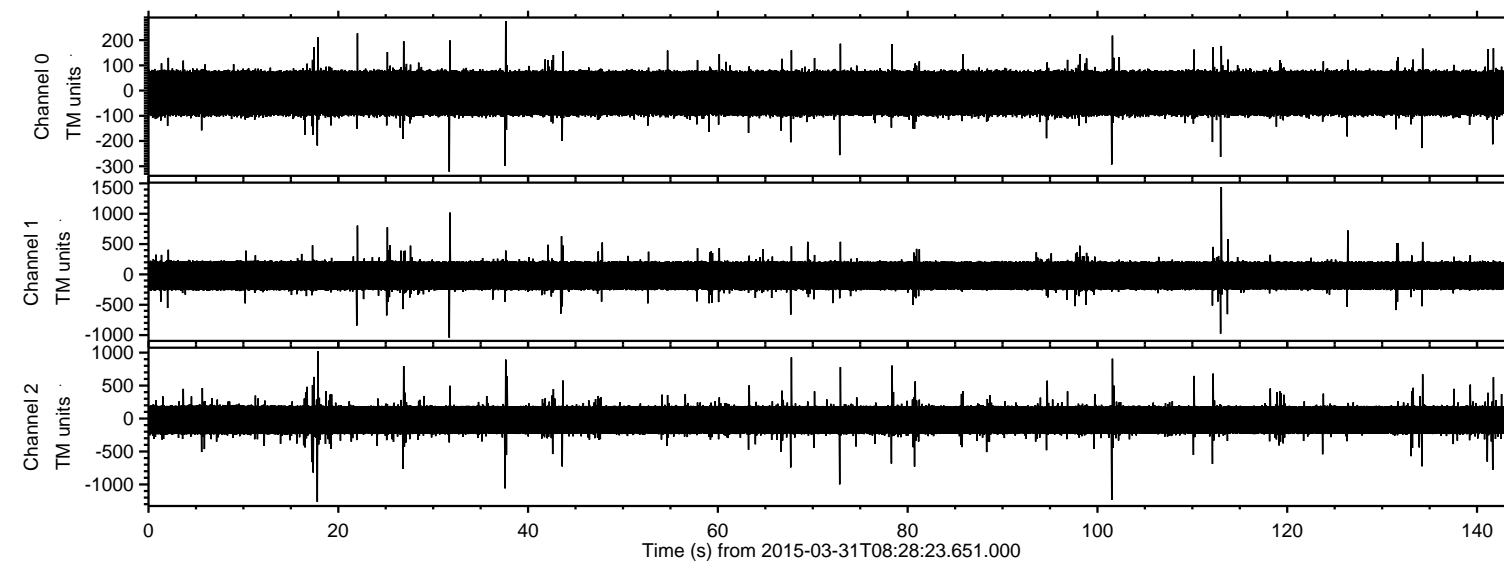


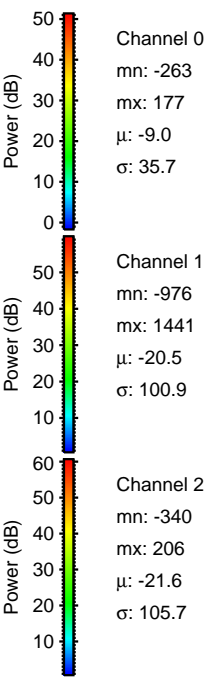
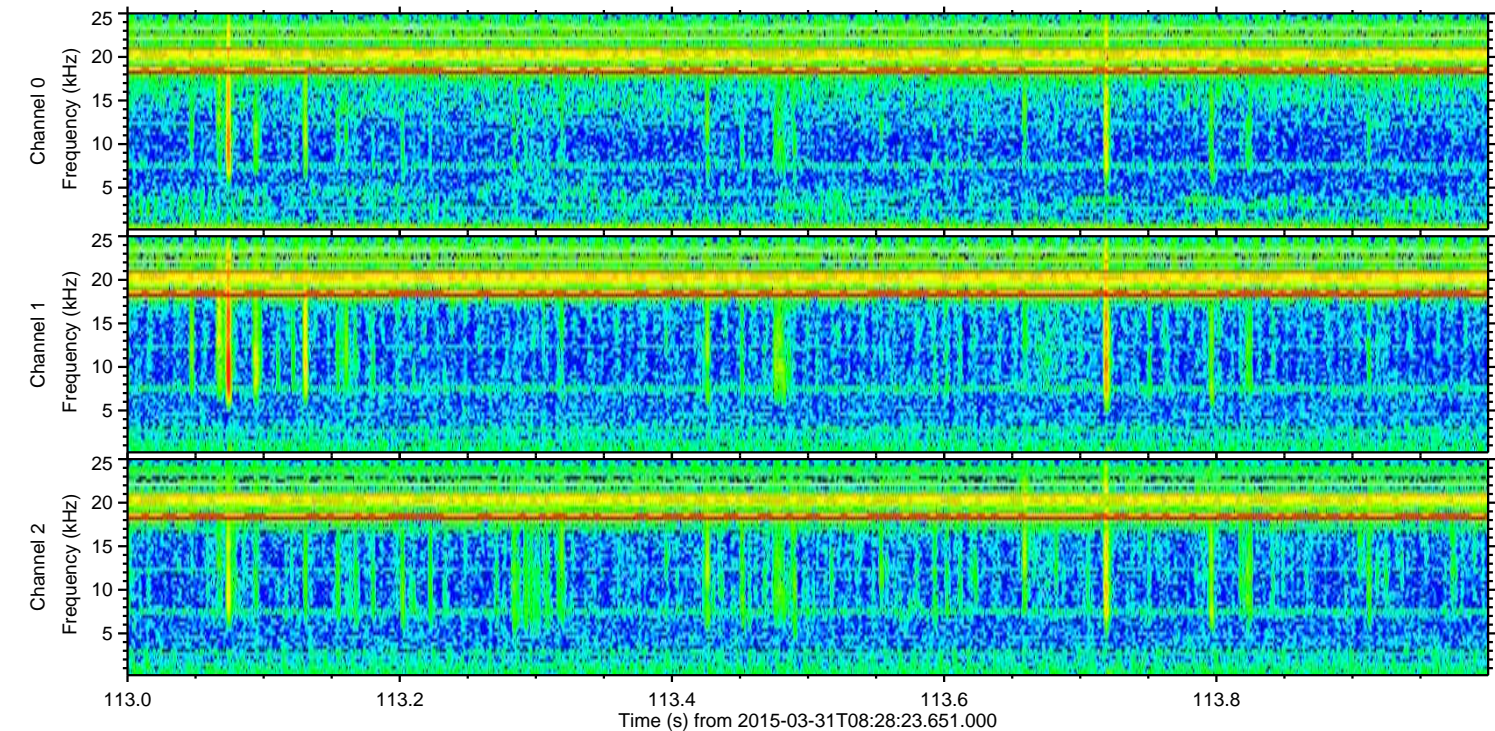
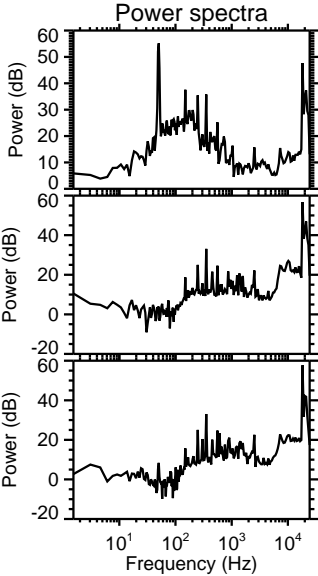
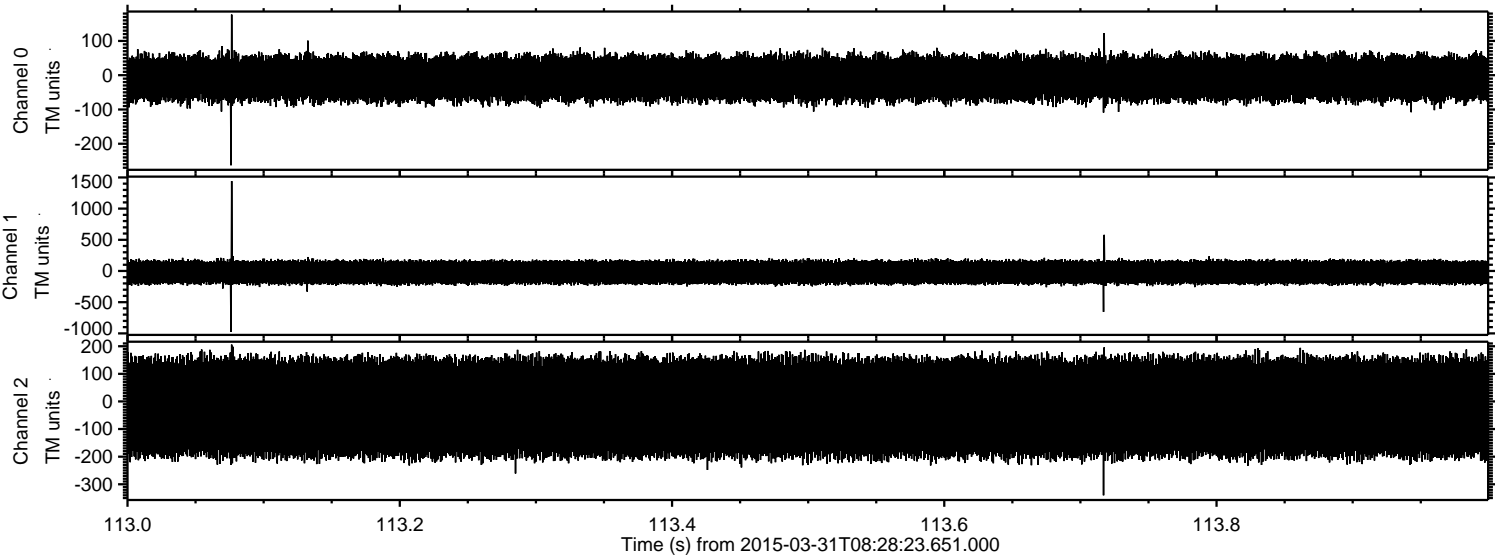
ELMAVAN 3D WAVEFORMS (Measured data sampled at 50 kHz) 49786 packets of 144 samples from 2015-03-31T08:28:23.651.000.

Processed Tue Mar 31 10:35:23 2015 by ELM ver.2012-10-06 from 001__elm20150331_082822__dat00.bin

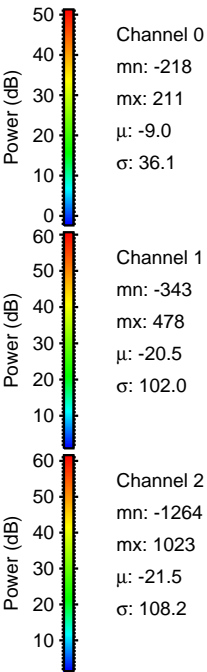
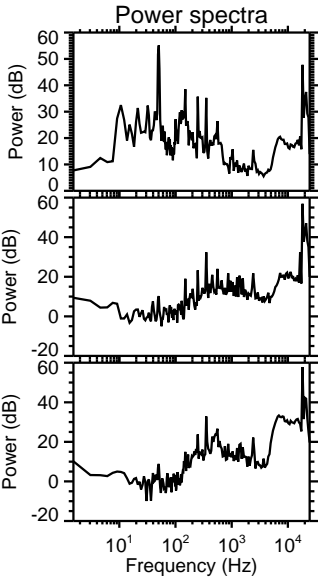
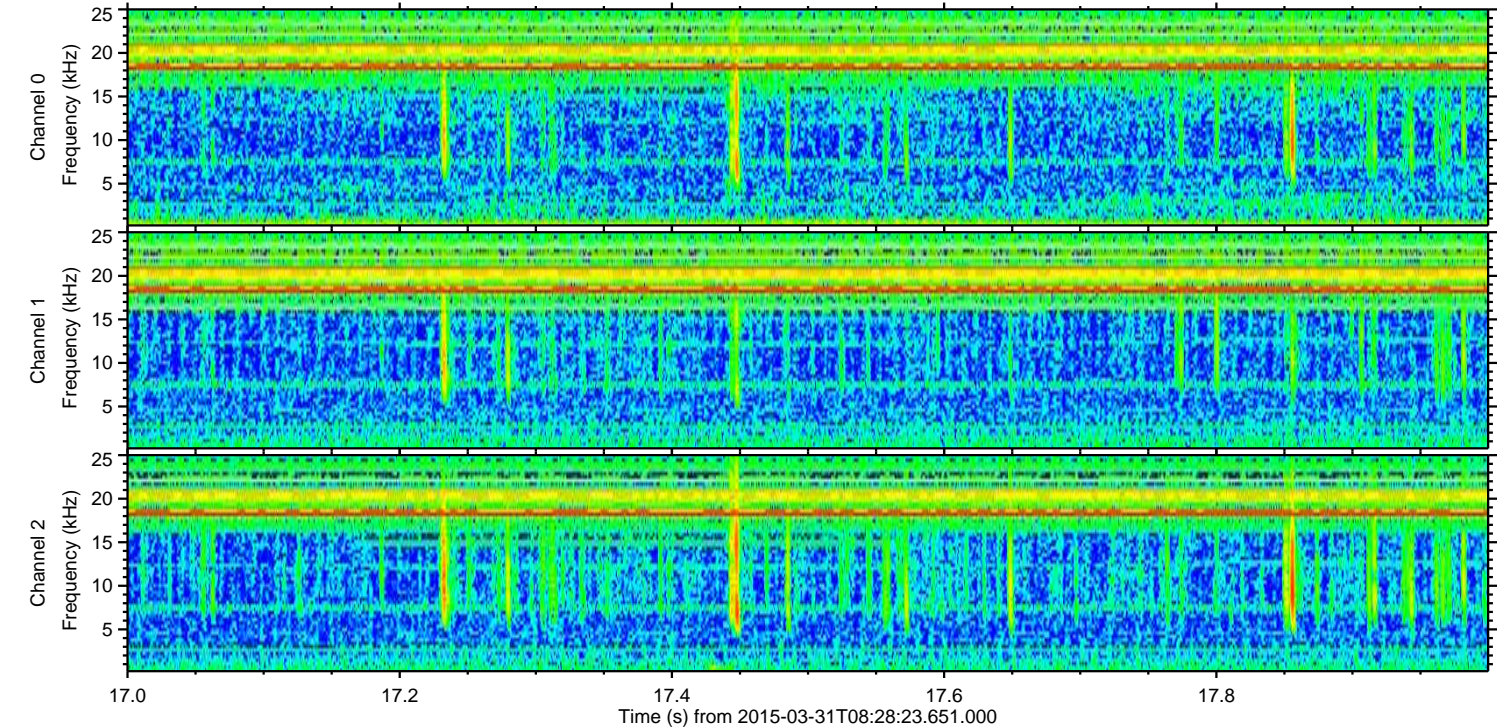
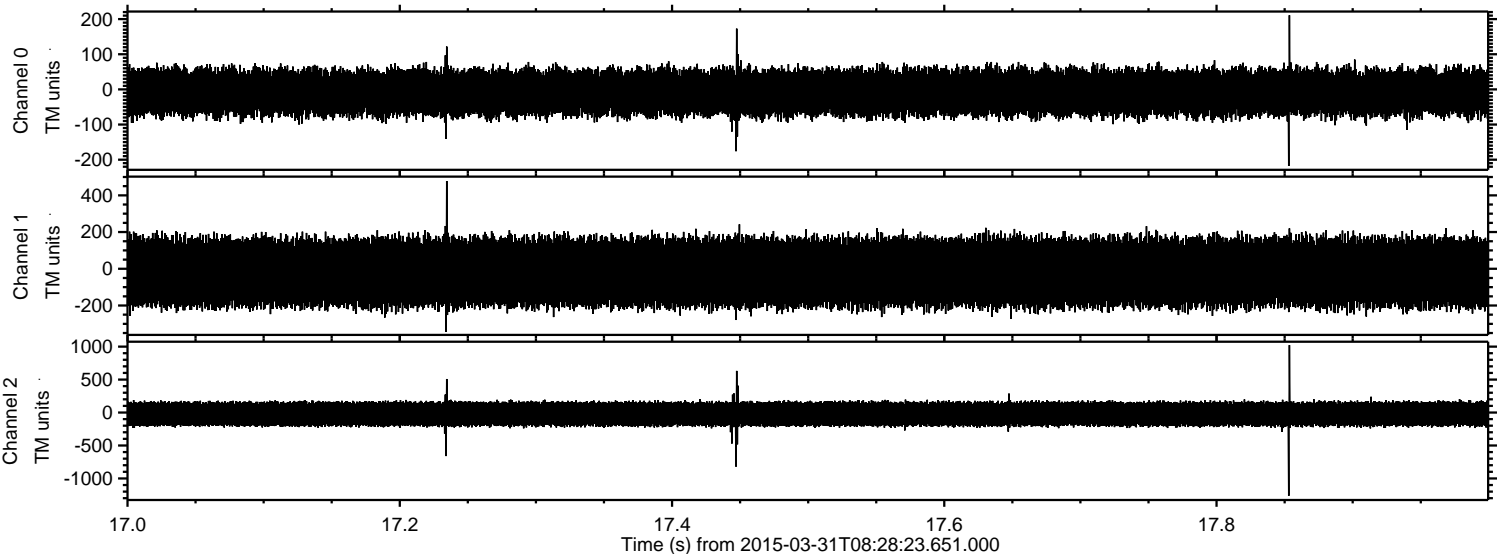


ELMAVAN 3D WAVEFORMS (Measured data sampled at 50 kHz) 49786 packets of 144 samples from 2015-03-31T08:28:23.651.000. Part 114/144

Processed Tue Mar 31 10:35:34 2015 by ELM ver.2012-10-06 from 001__elm20150331_082822__dat00.bin

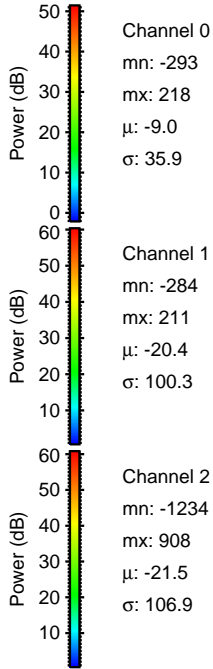
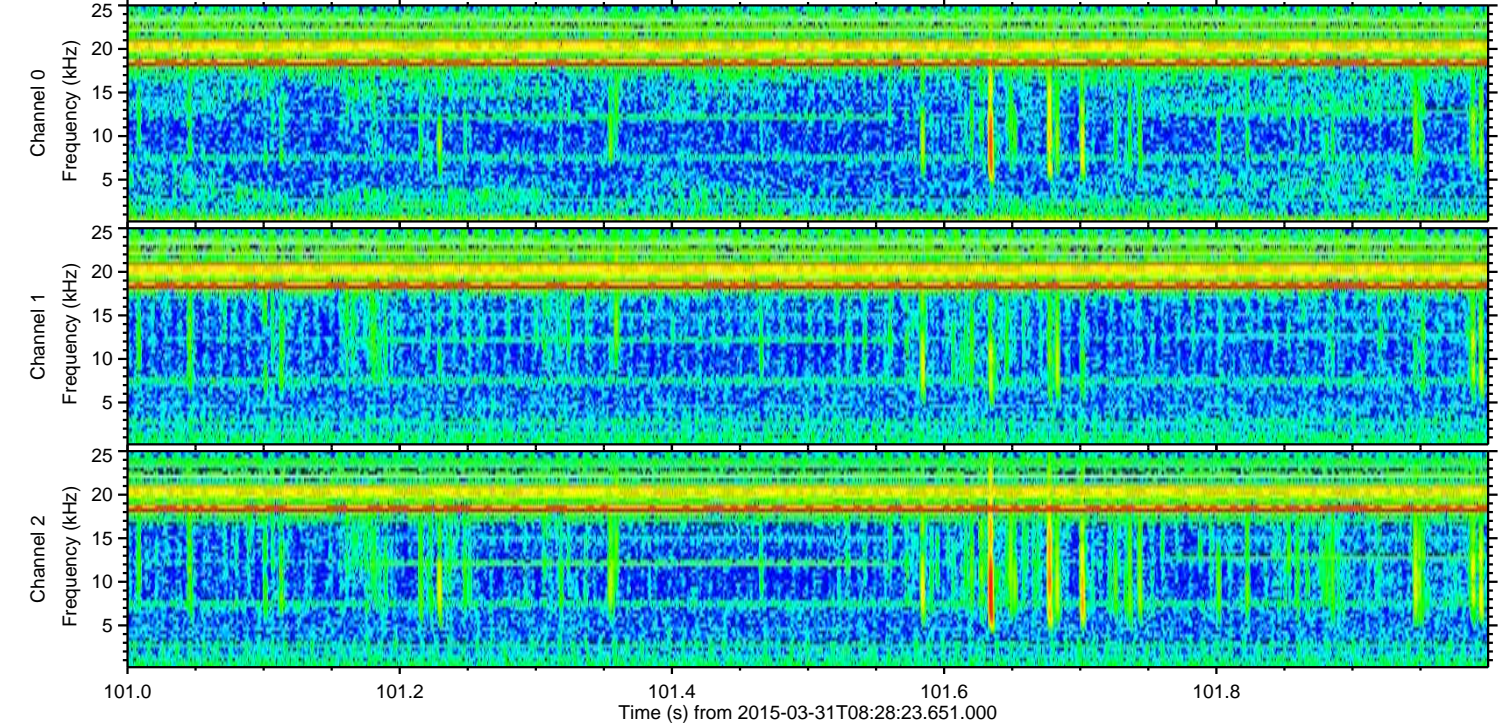
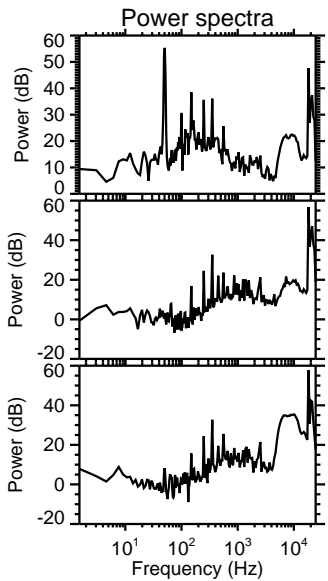
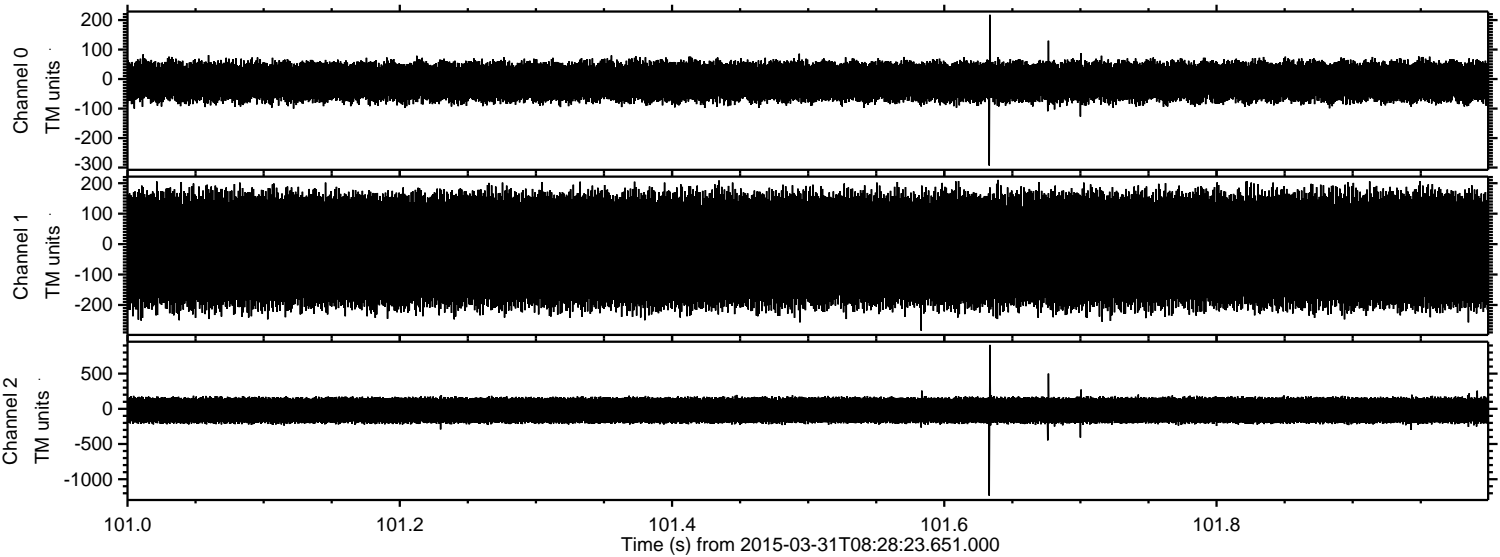


Processed Tue Mar 31 10:35:35 2015 by ELM ver.2012-10-06 from 001__elm20150331_082822__dat00.bin

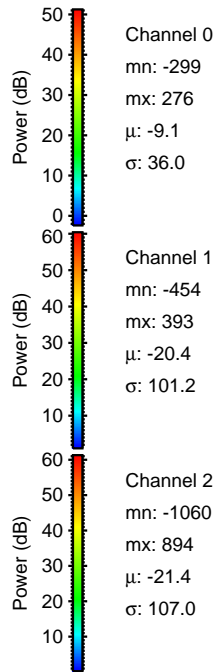
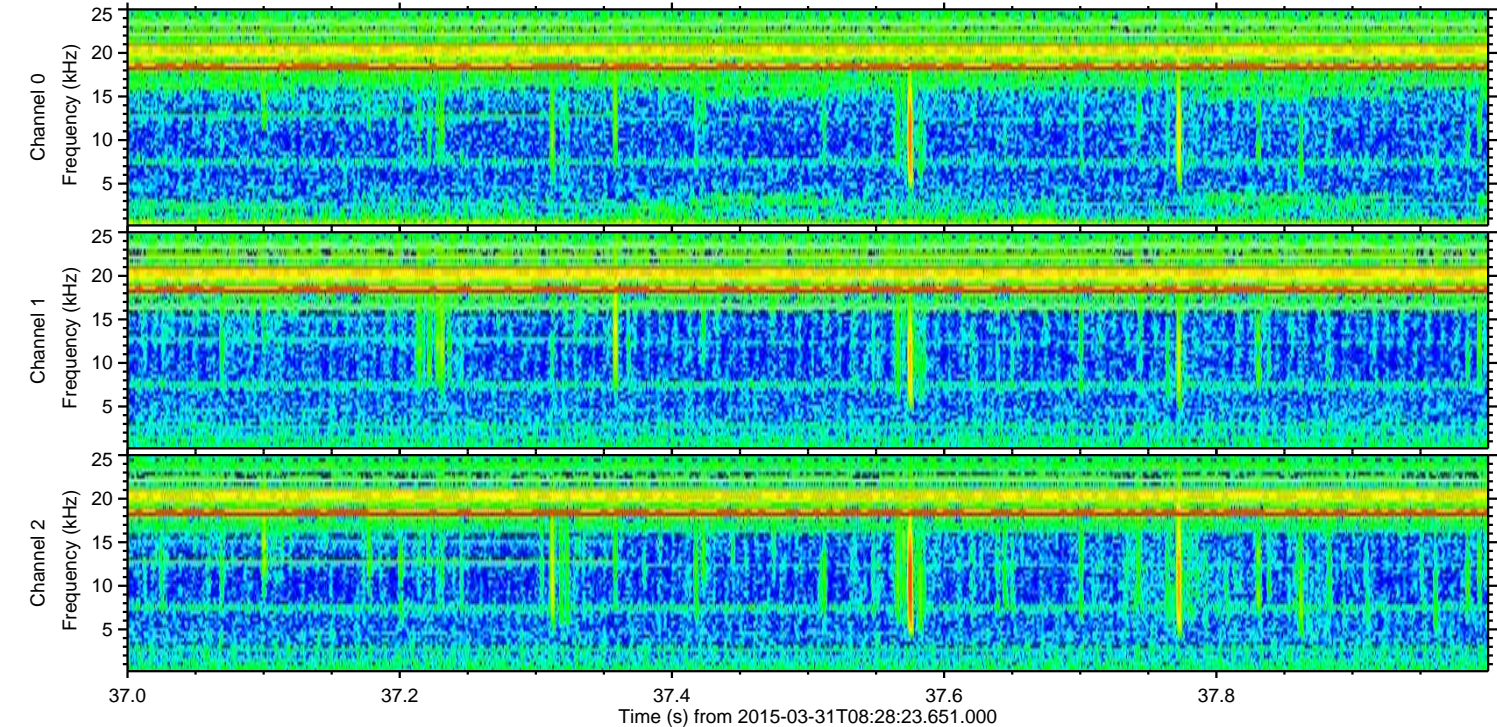
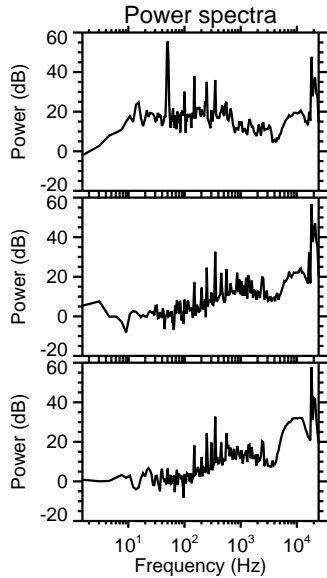
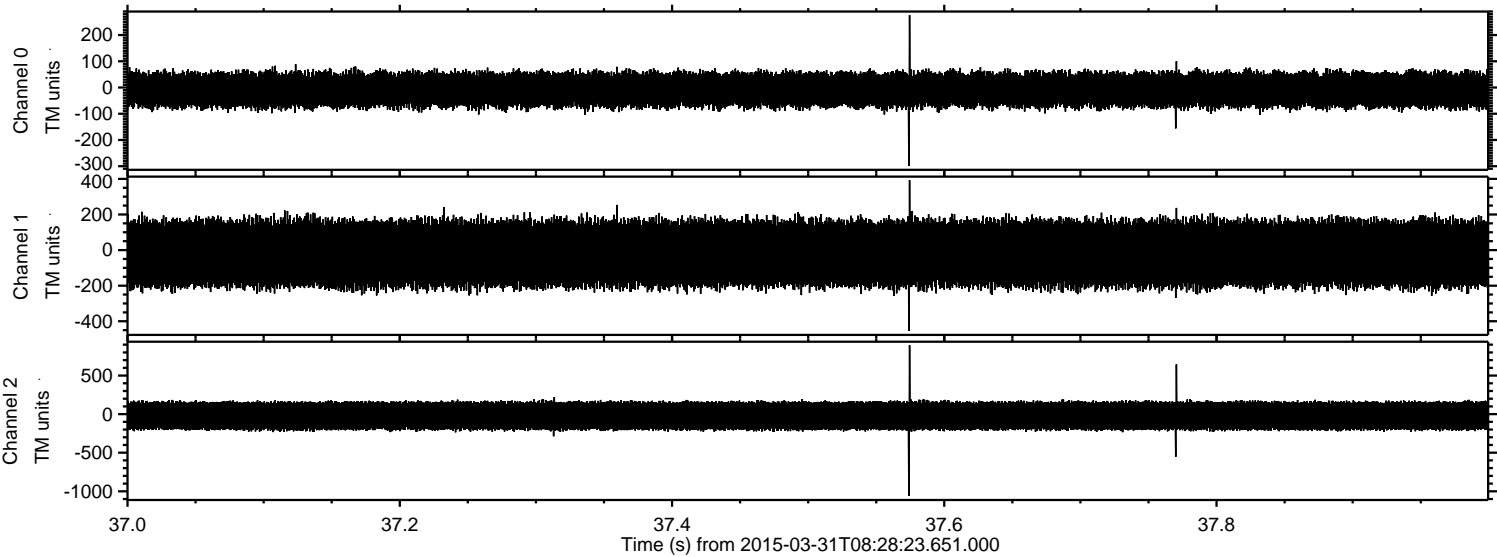


ELMAVAN 3D WAVEFORMS (Measured data sampled at 50 kHz) 49786 packets of 144 samples from 2015-03-31T08:28:23.651.000. Part 102/144

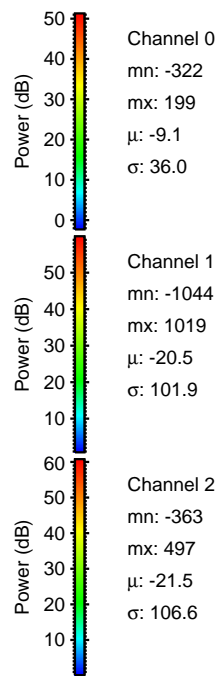
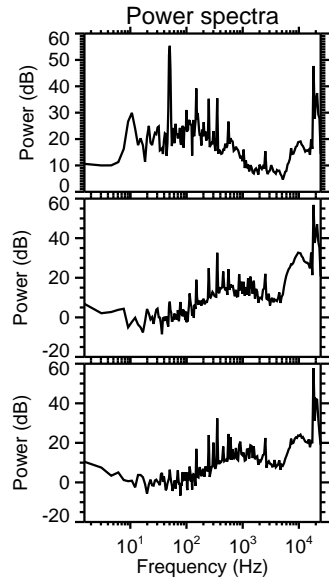
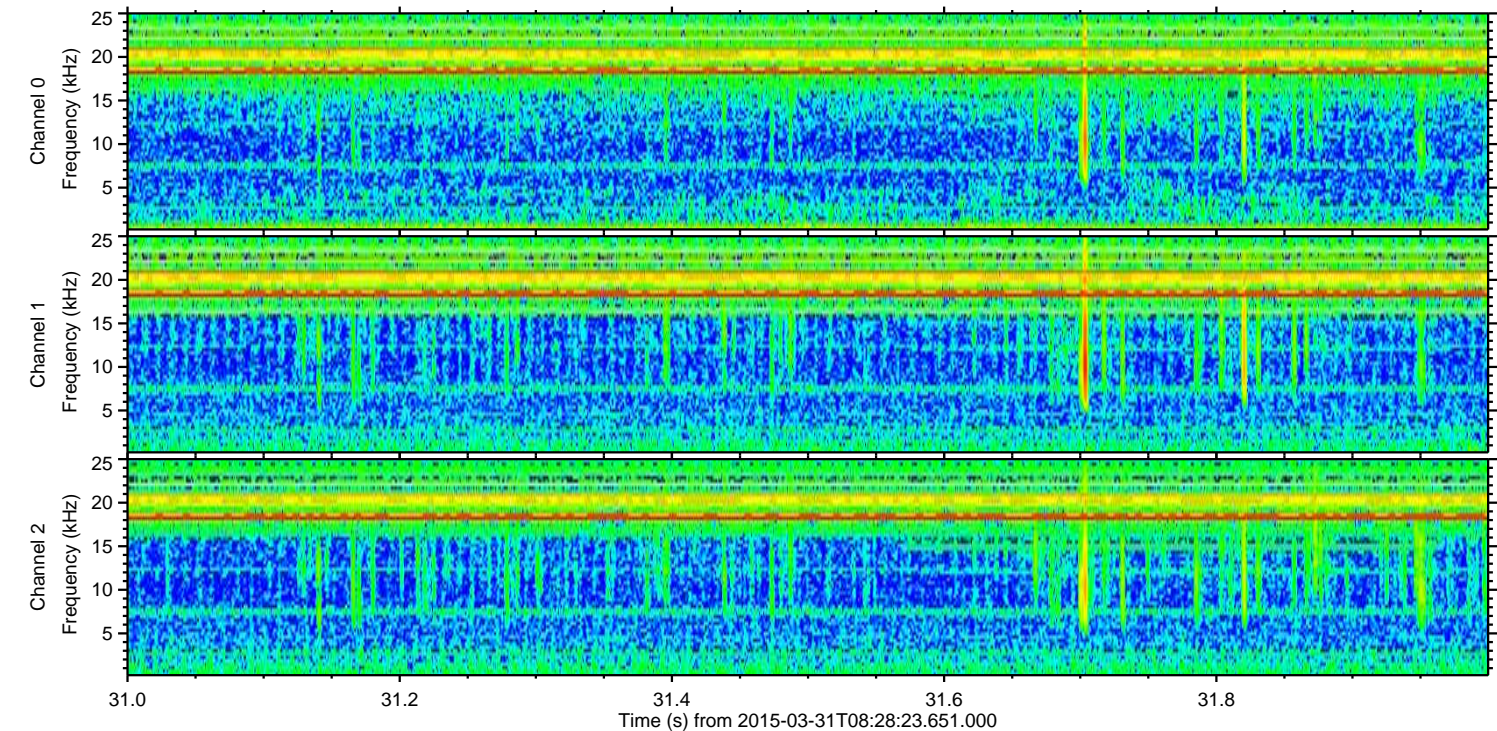
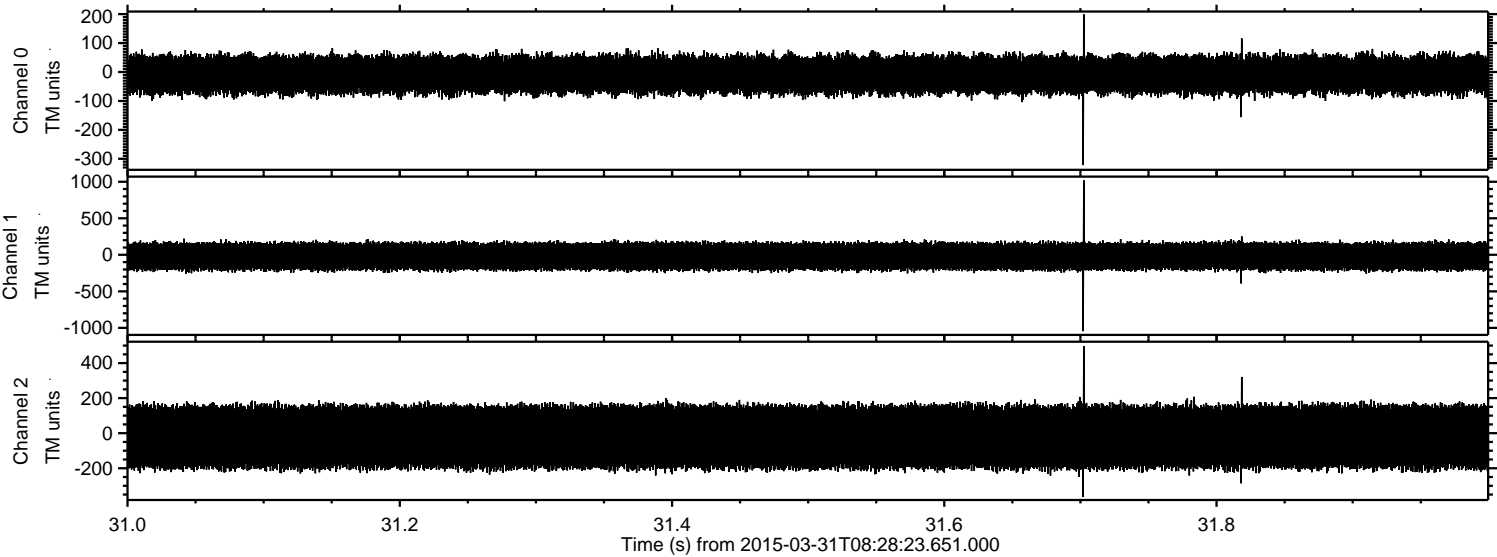
Processed Tue Mar 31 10:35:36 2015 by ELM ver.2012-10-06 from 001__elm20150331_082822__dat00.bin



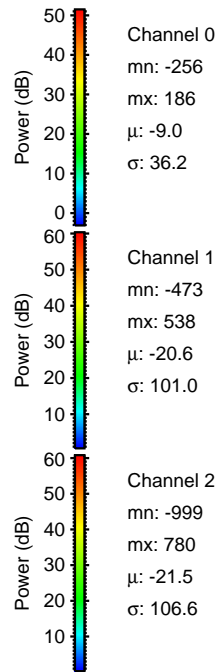
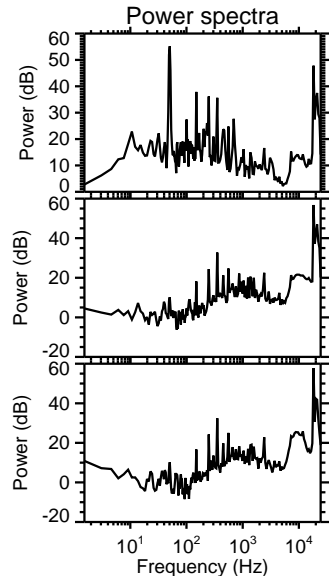
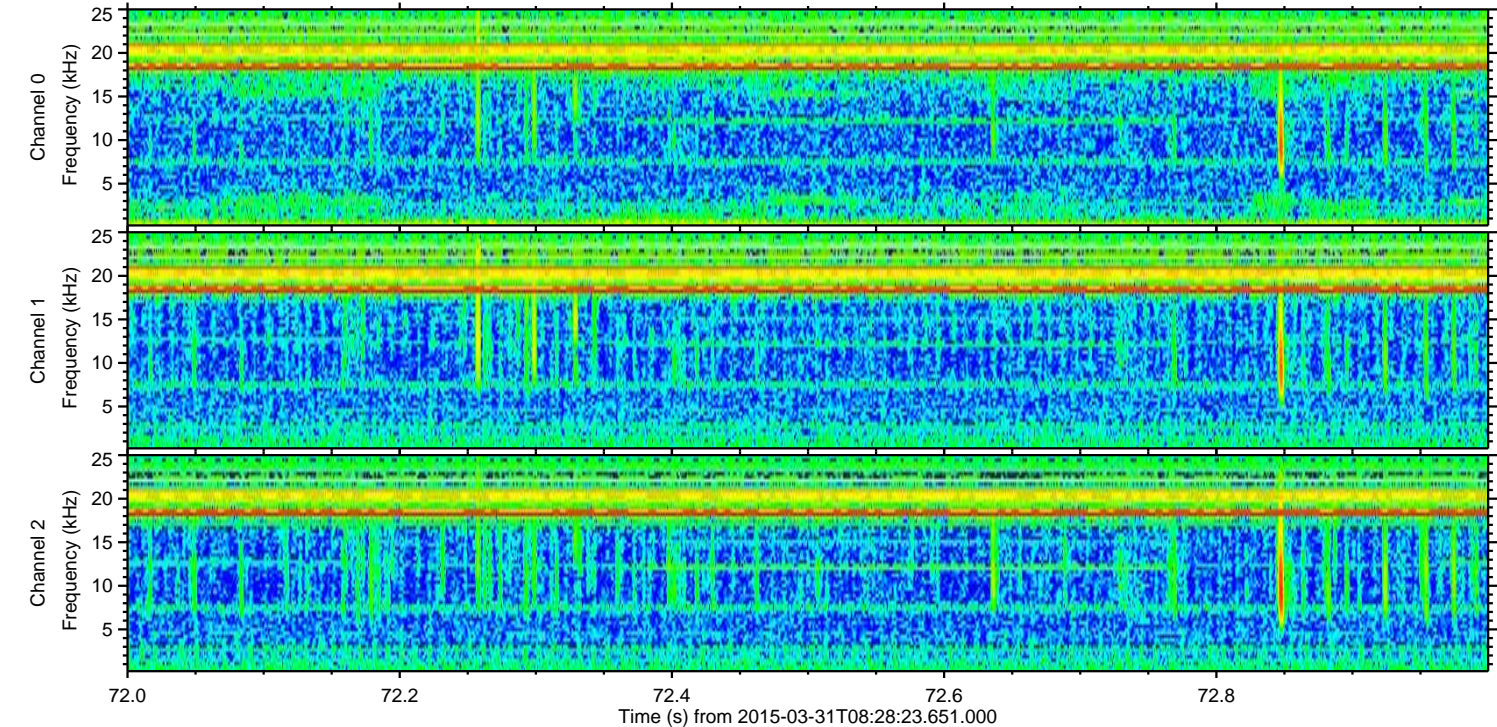
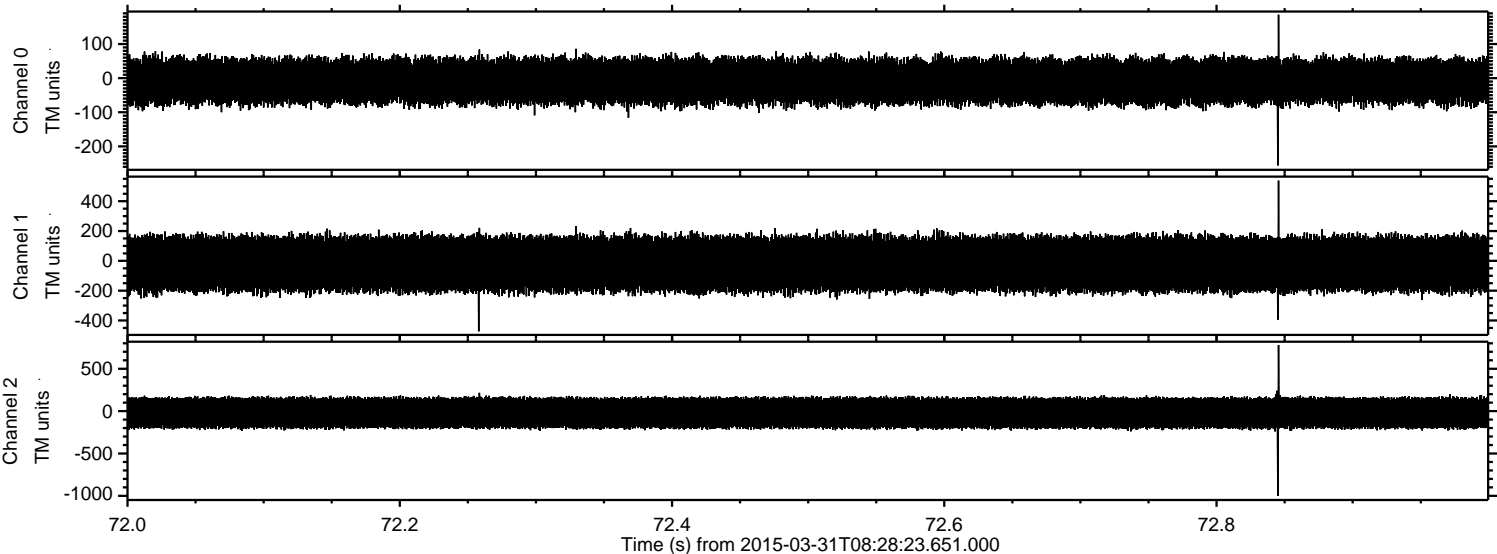
Processed Tue Mar 31 10:35:37 2015 by ELM ver.2012-10-06 from 001__elm20150331_082822__dat00.bin



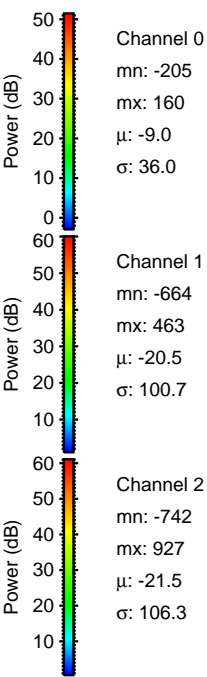
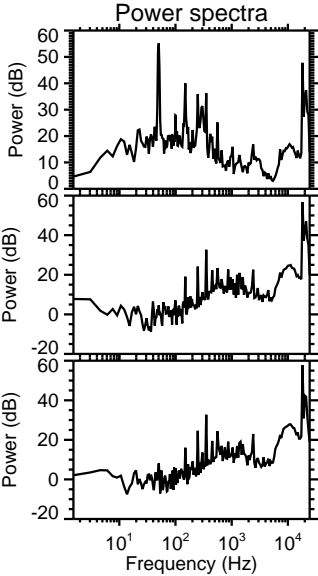
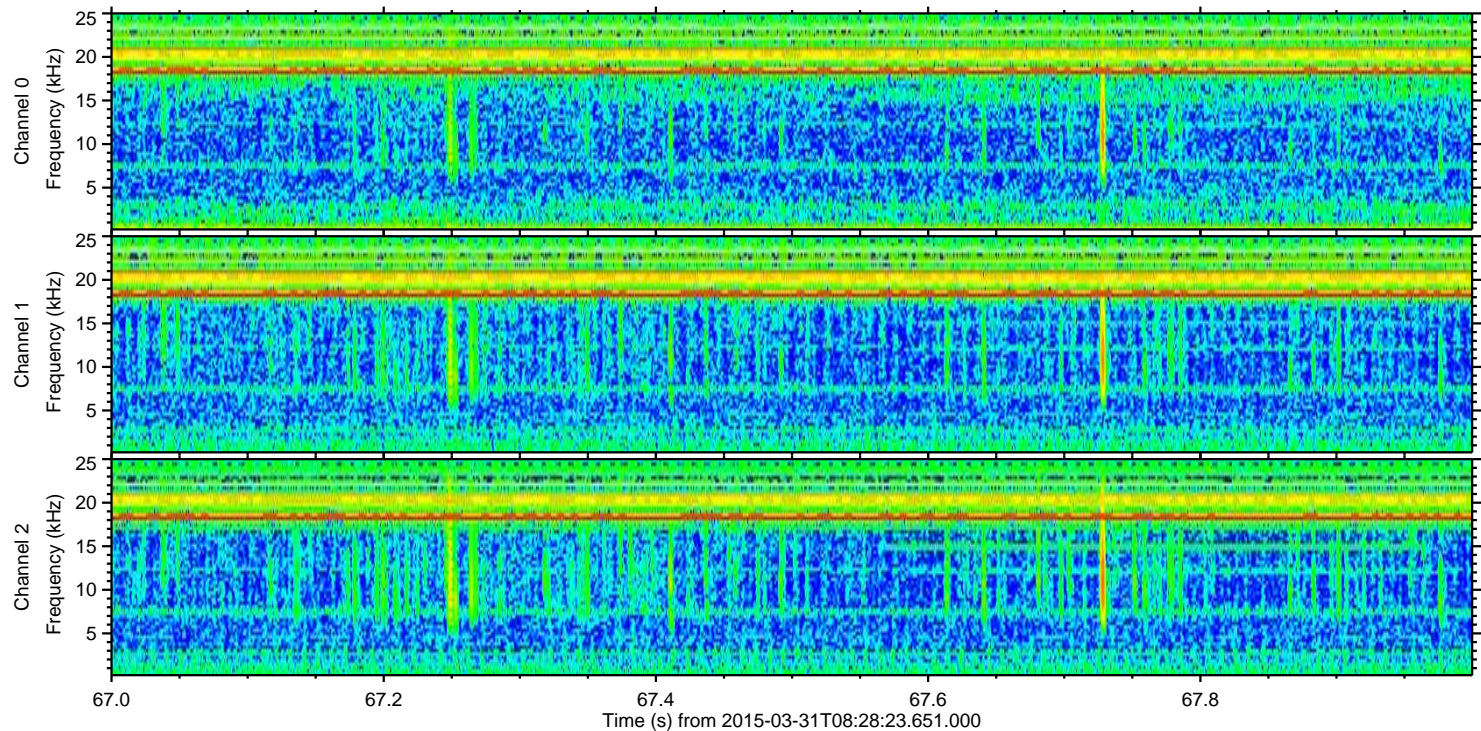
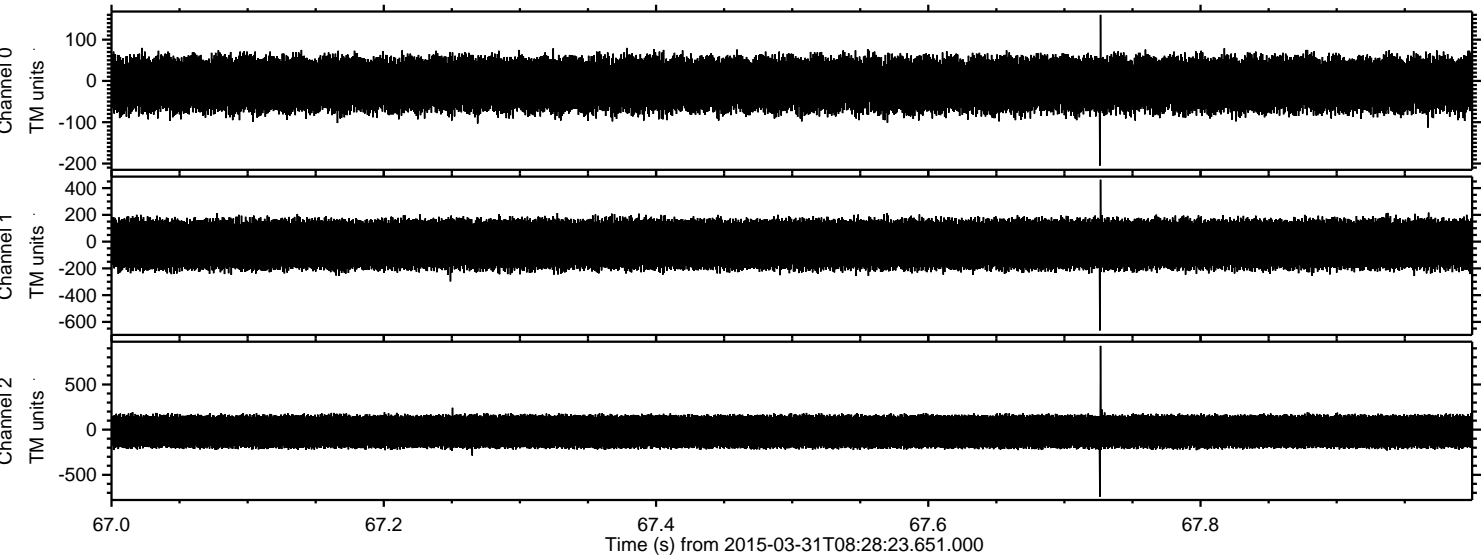
Processed Tue Mar 31 10:35:38 2015 by ELM ver.2012-10-06 from 001__elm20150331_082822__dat00.bin



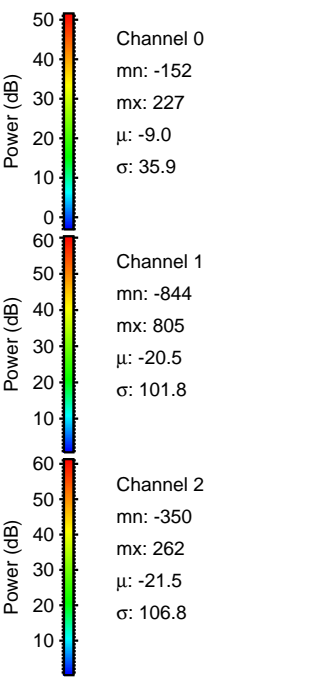
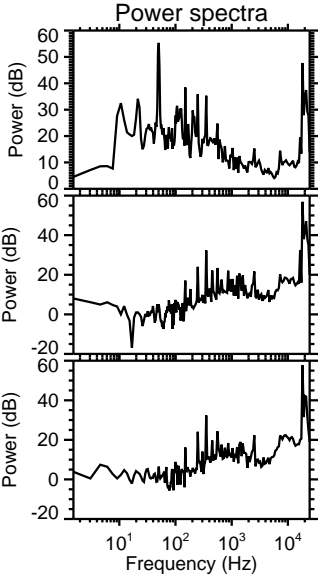
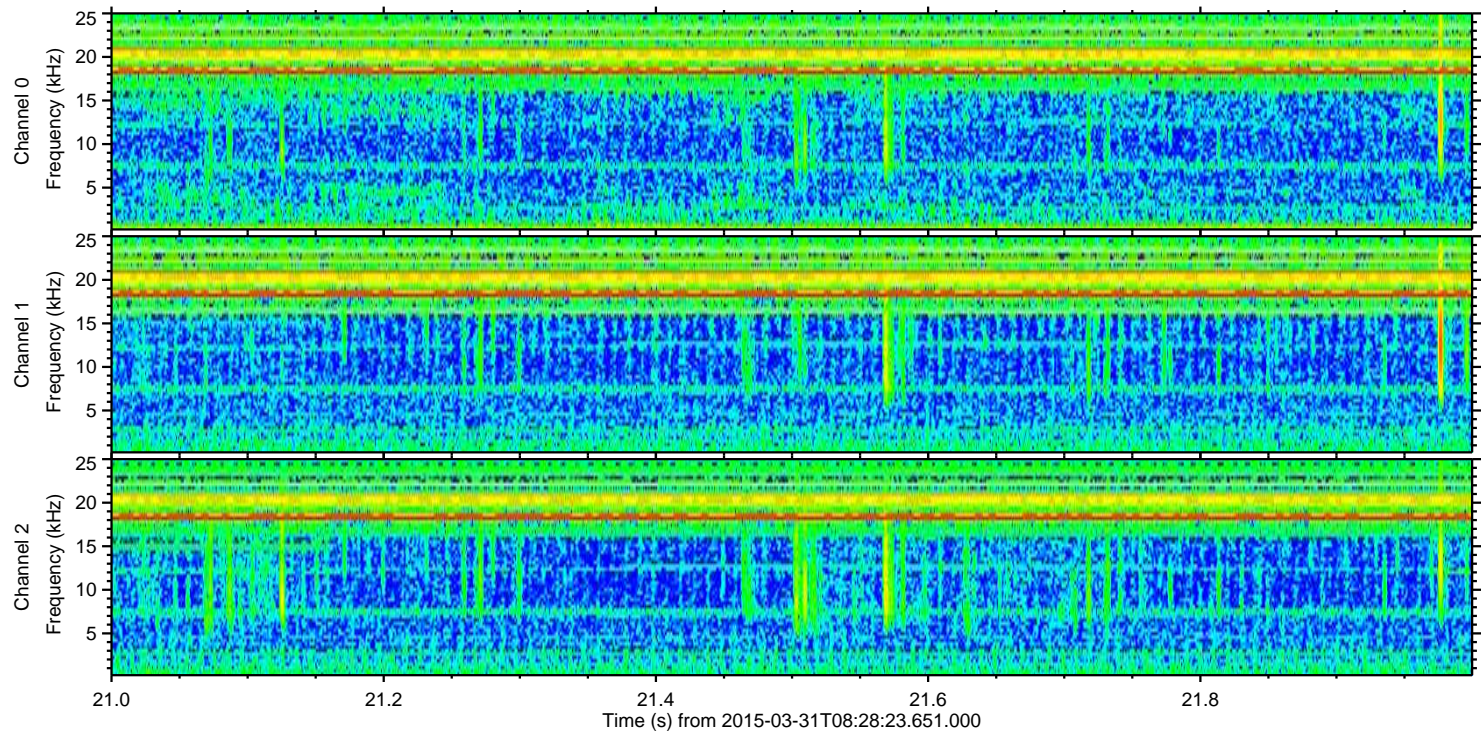
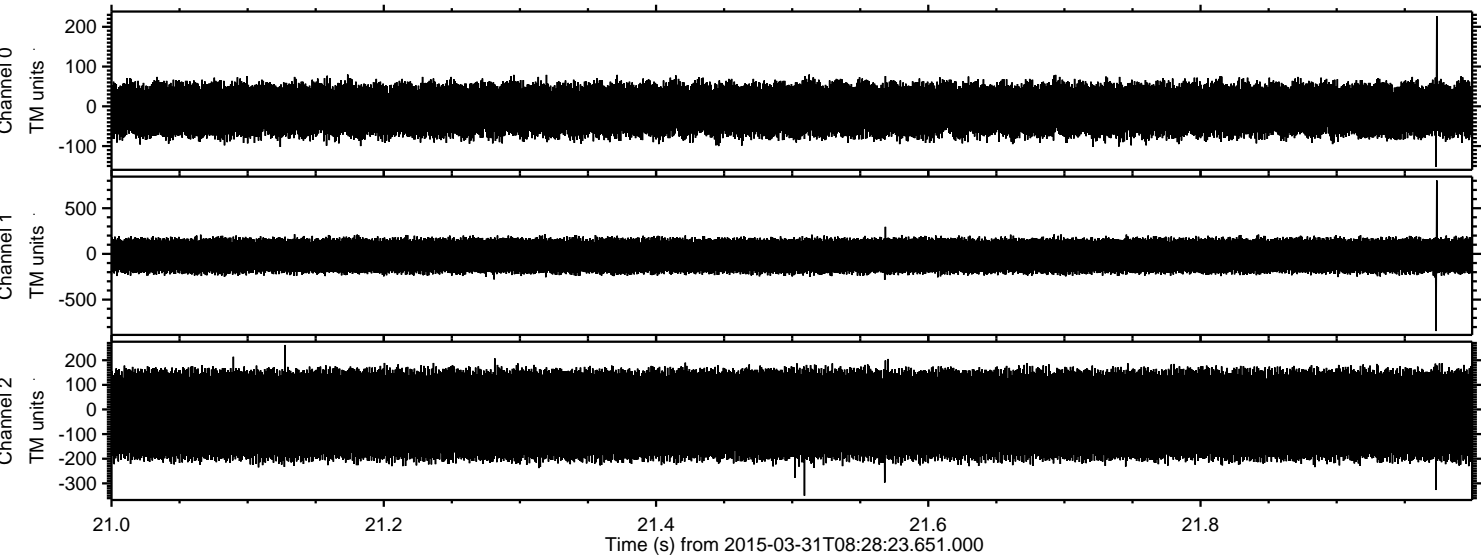
Processed Tue Mar 31 10:35:39 2015 by ELM ver.2012-10-06 from 001__elm20150331_082822__dat00.bin



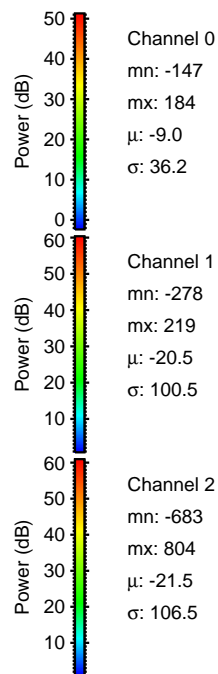
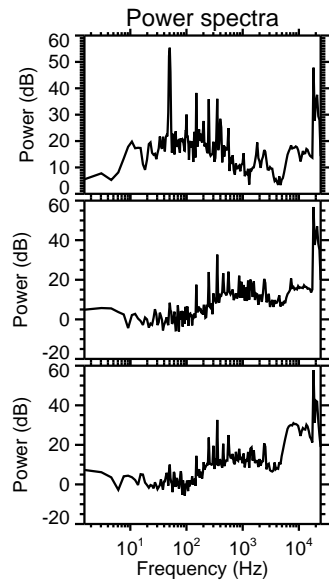
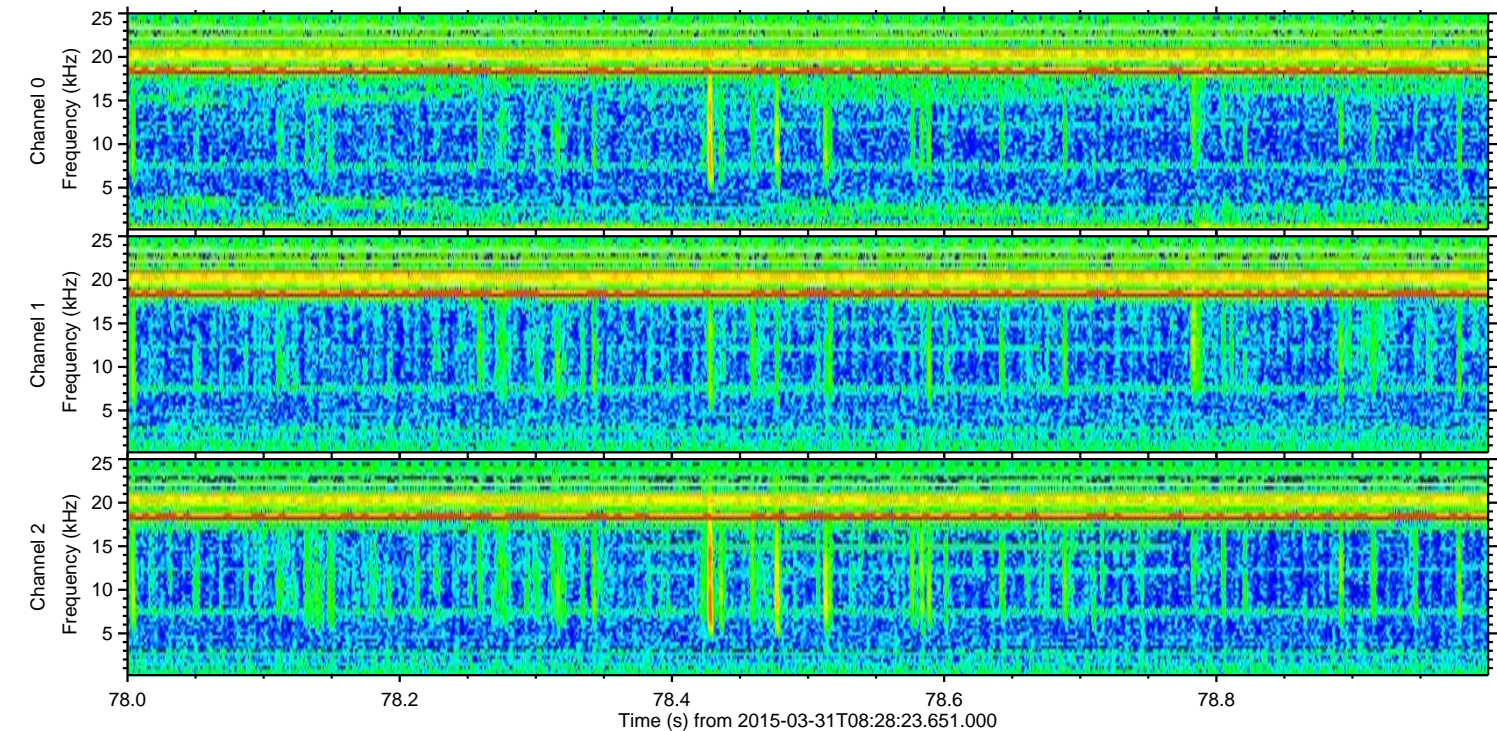
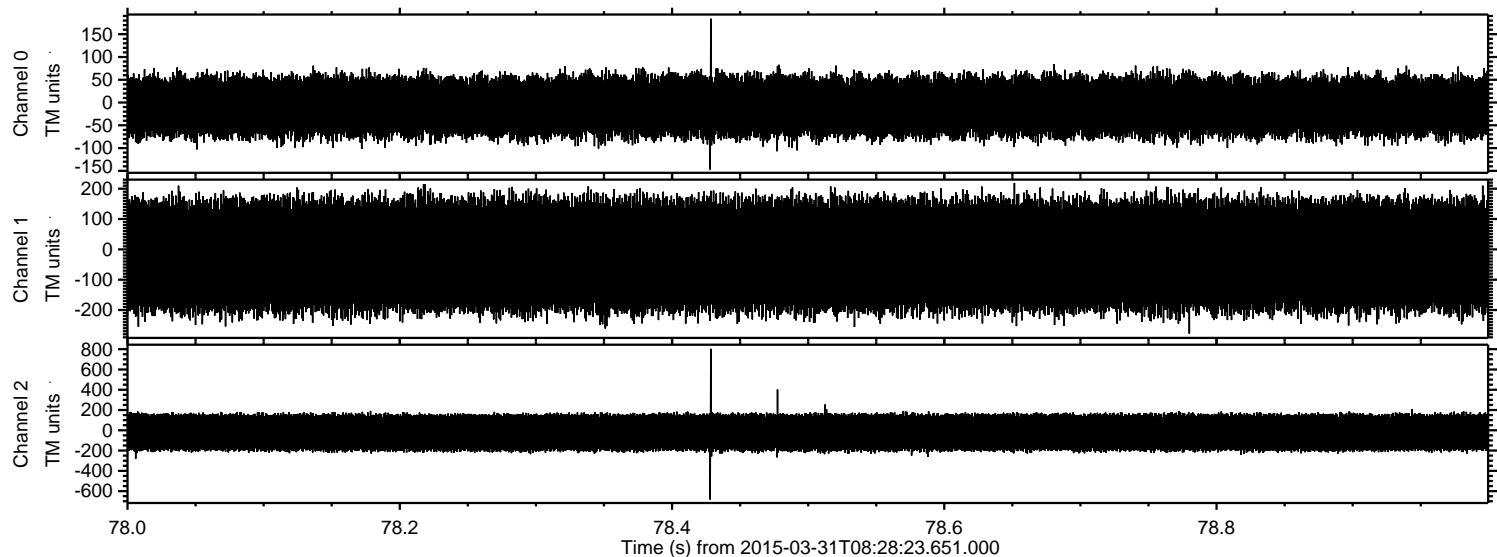
Processed Tue Mar 31 10:35:40 2015 by ELM ver.2012-10-06 from 001__elm20150331_082822__dat00.bin



Processed Tue Mar 31 10:35:41 2015 by ELM ver.2012-10-06 from 001__elm20150331_082822__dat00.bin



Processed Tue Mar 31 10:35:41 2015 by ELM ver.2012-10-06 from 001__elm20150331_082822__dat00.bin



Channel 0
mn: -147
mx: 184
 μ : -9.0
 σ : 36.2

Channel 1
mn: -278
mx: 219
 μ : -20.5
 σ : 100.5

Channel 2
mn: -683
mx: 804
 μ : -21.5
 σ : 106.5

Processed Tue Mar 31 10:35:42 2015 by ELM ver.2012-10-06 from 001__elm20150331_082822__dat00.bin

