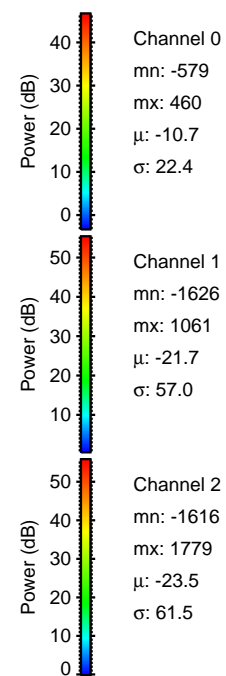
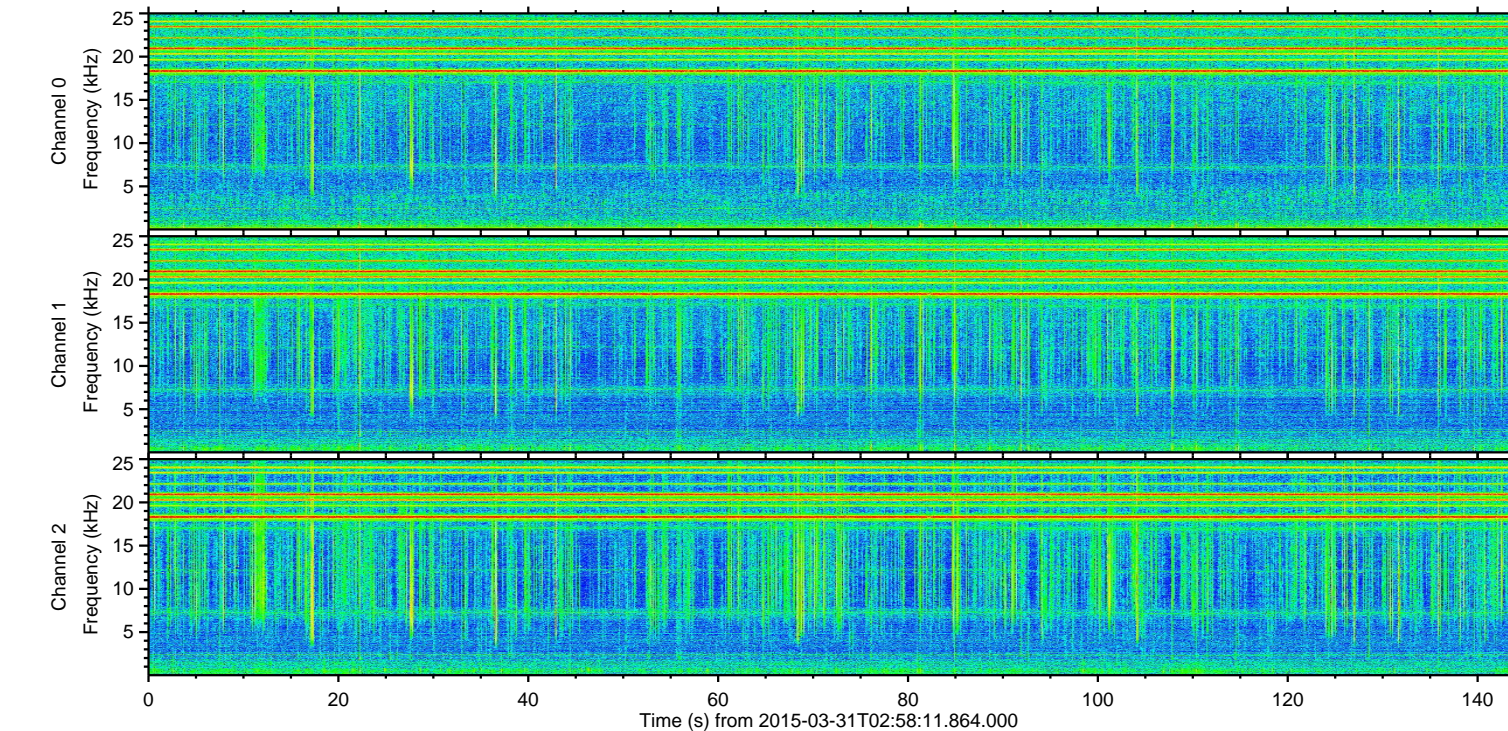
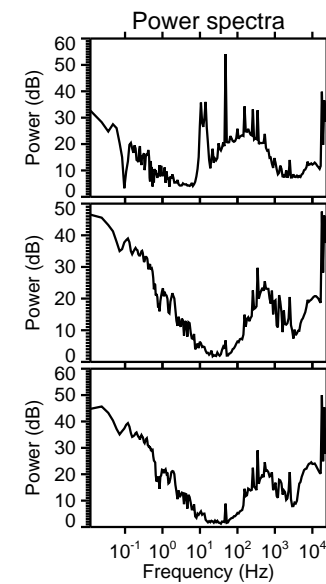
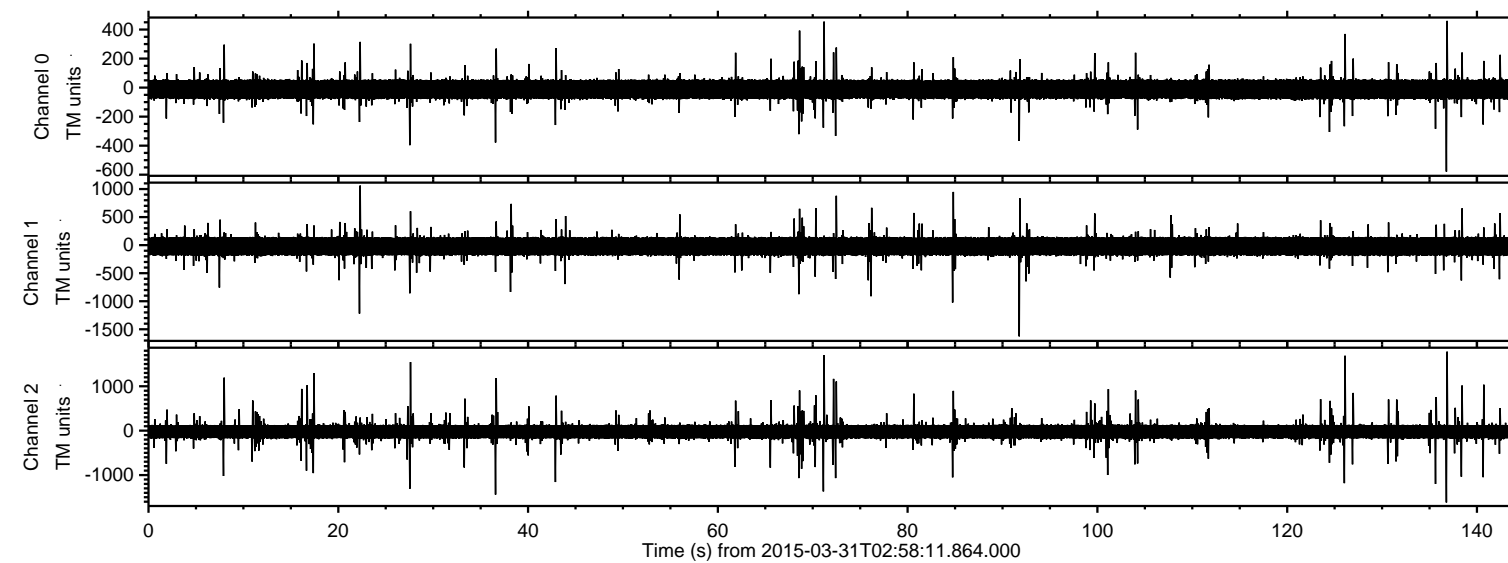


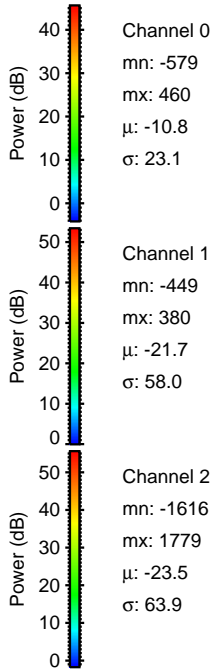
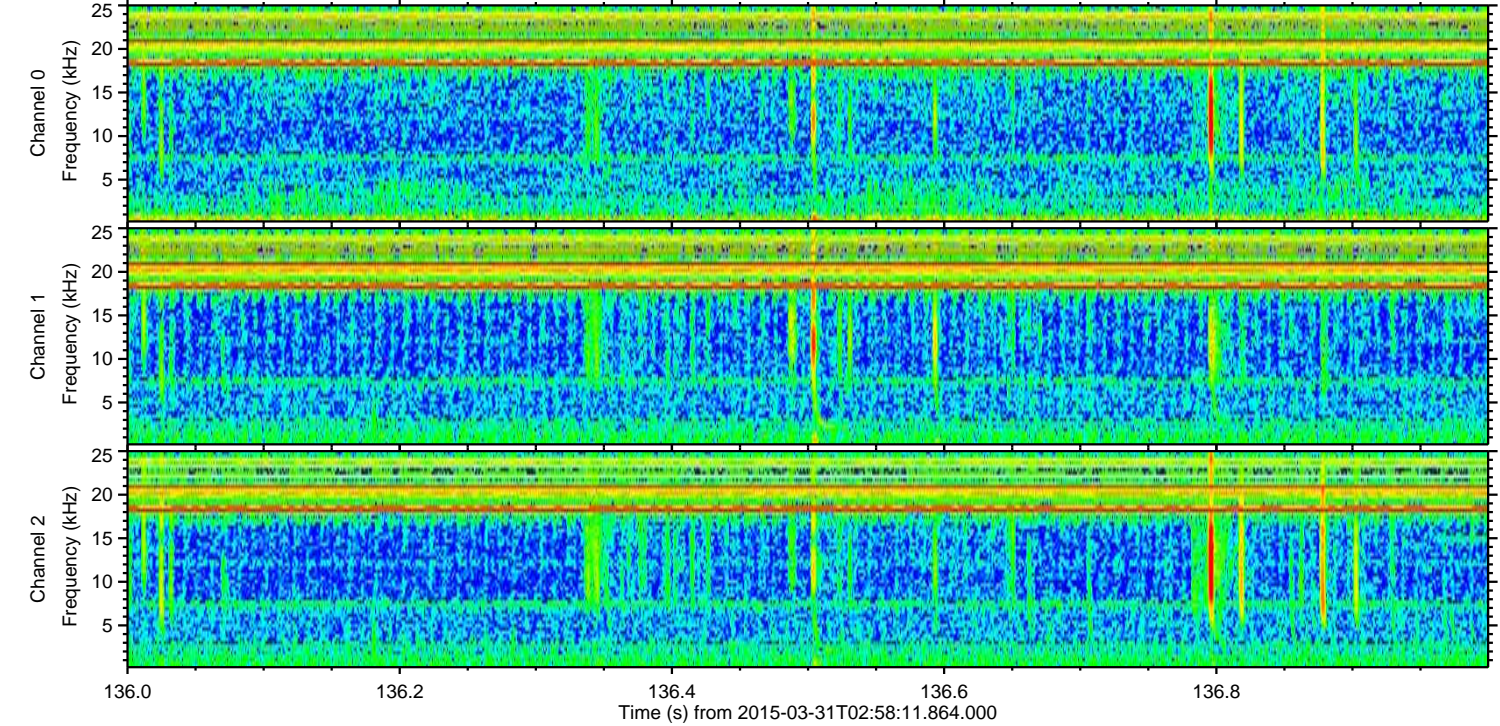
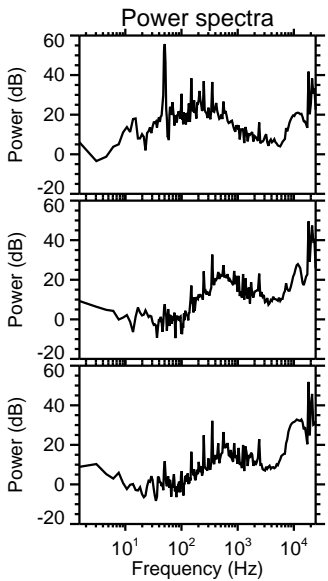
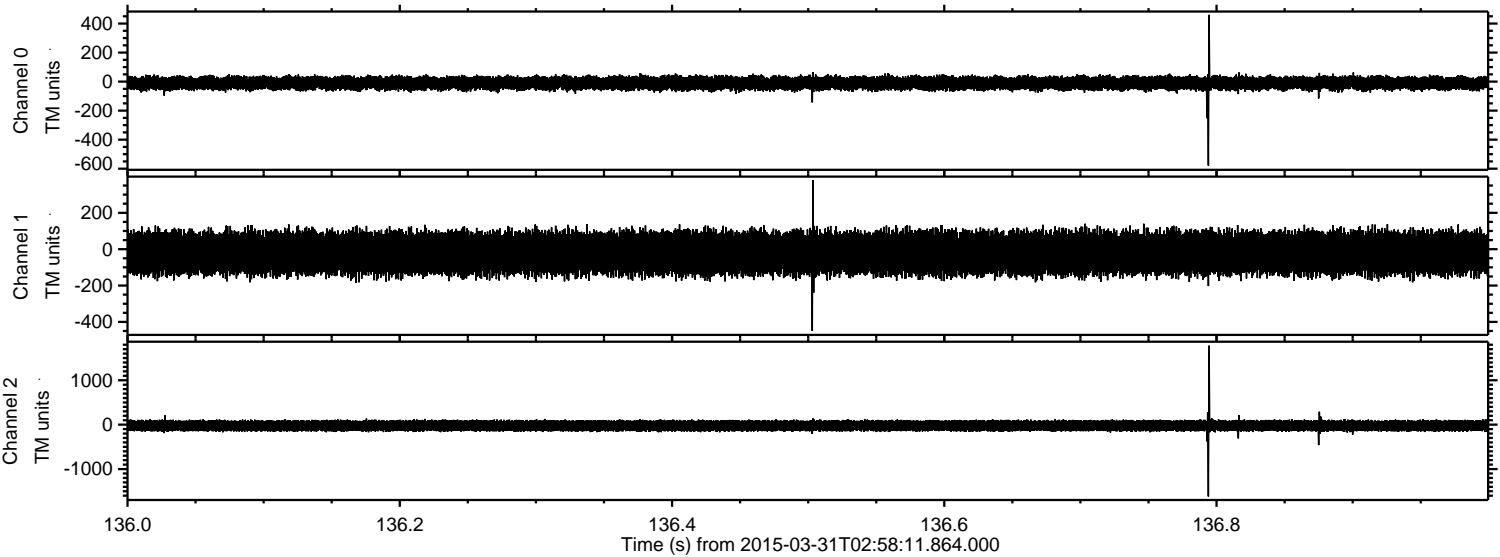
ELMAVAN 3D WAVEFORMS (Measured data sampled at 50 kHz) 49789 packets of 144 samples from 2015-03-31T02:58:11.864.000.

Processed Tue Mar 31 05:05:15 2015 by ELM ver.2012-10-06 from 001__elm20150331_025810__dat00.bin

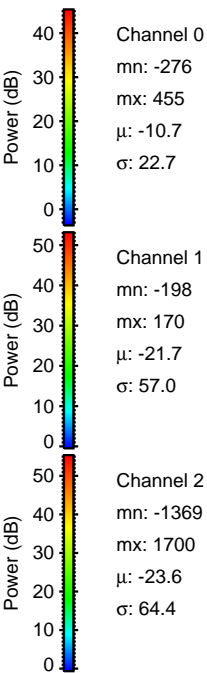
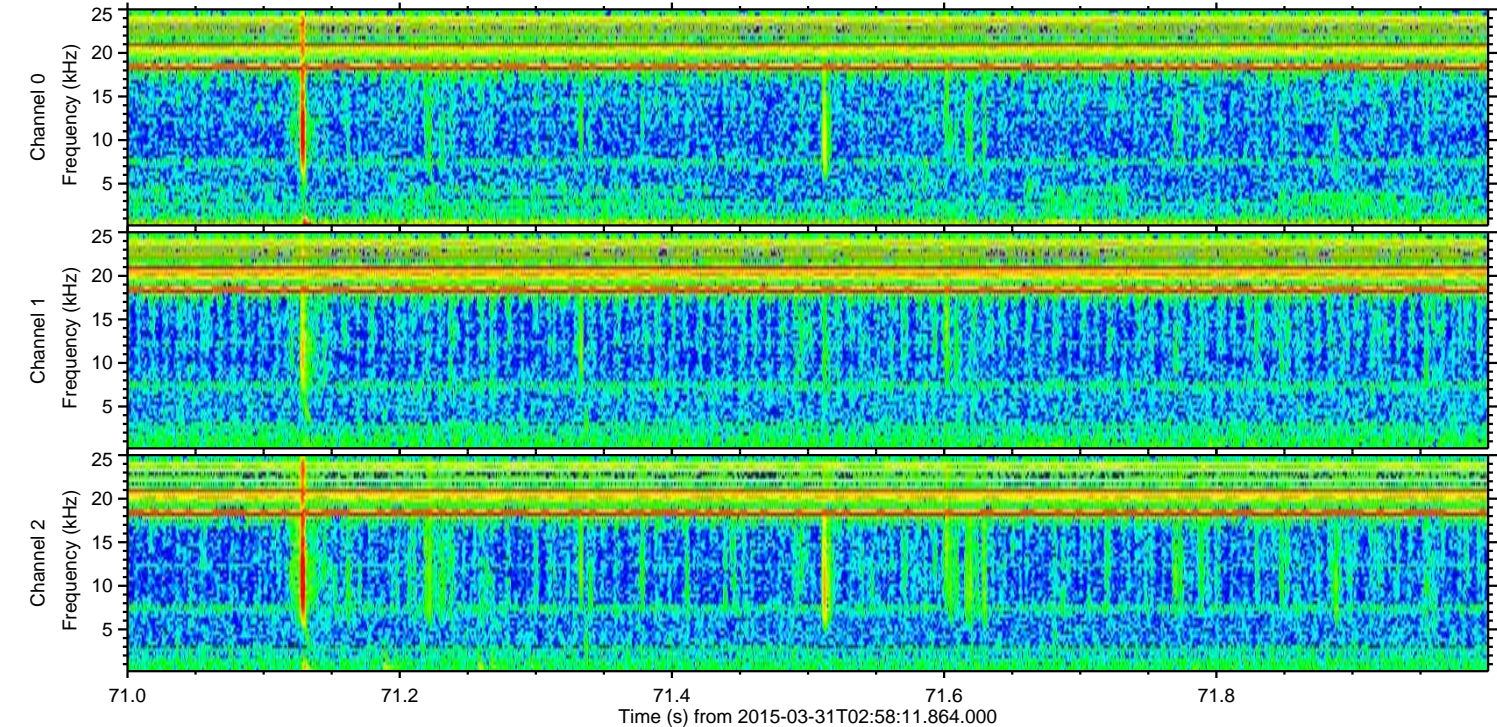
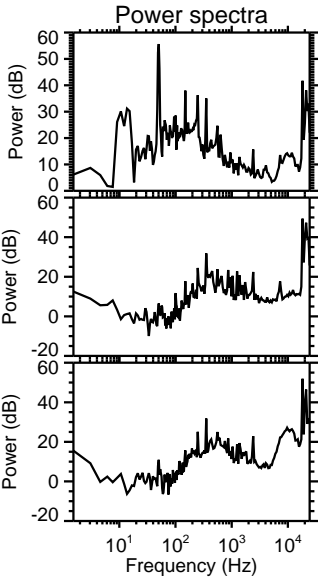
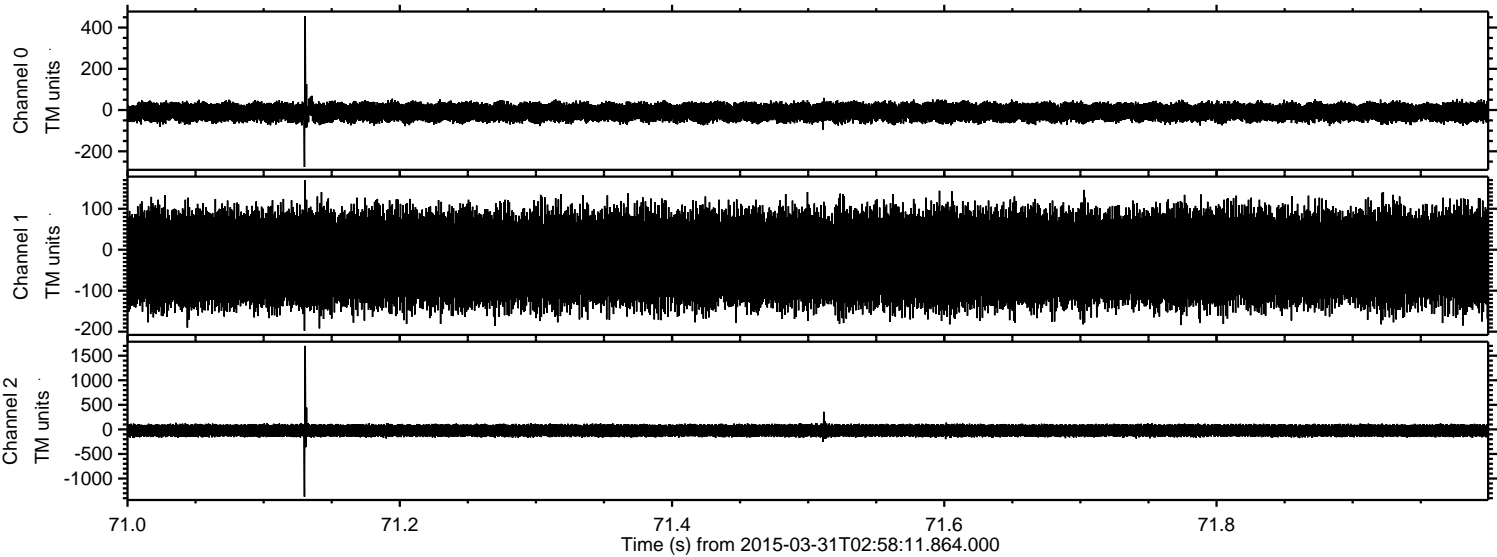


ELMAVAN 3D WAVEFORMS (Measured data sampled at 50 kHz) 49789 packets of 144 samples from 2015-03-31T02:58:11.864.000. Part 137/144

Processed Tue Mar 31 05:05:27 2015 by ELM ver.2012-10-06 from 001__elm20150331_025810__dat00.bin

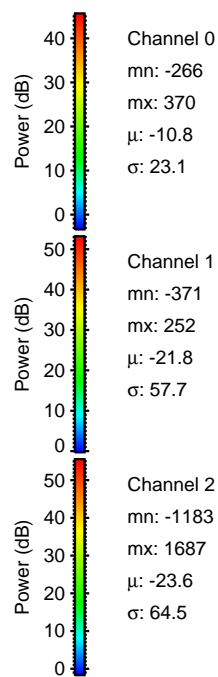
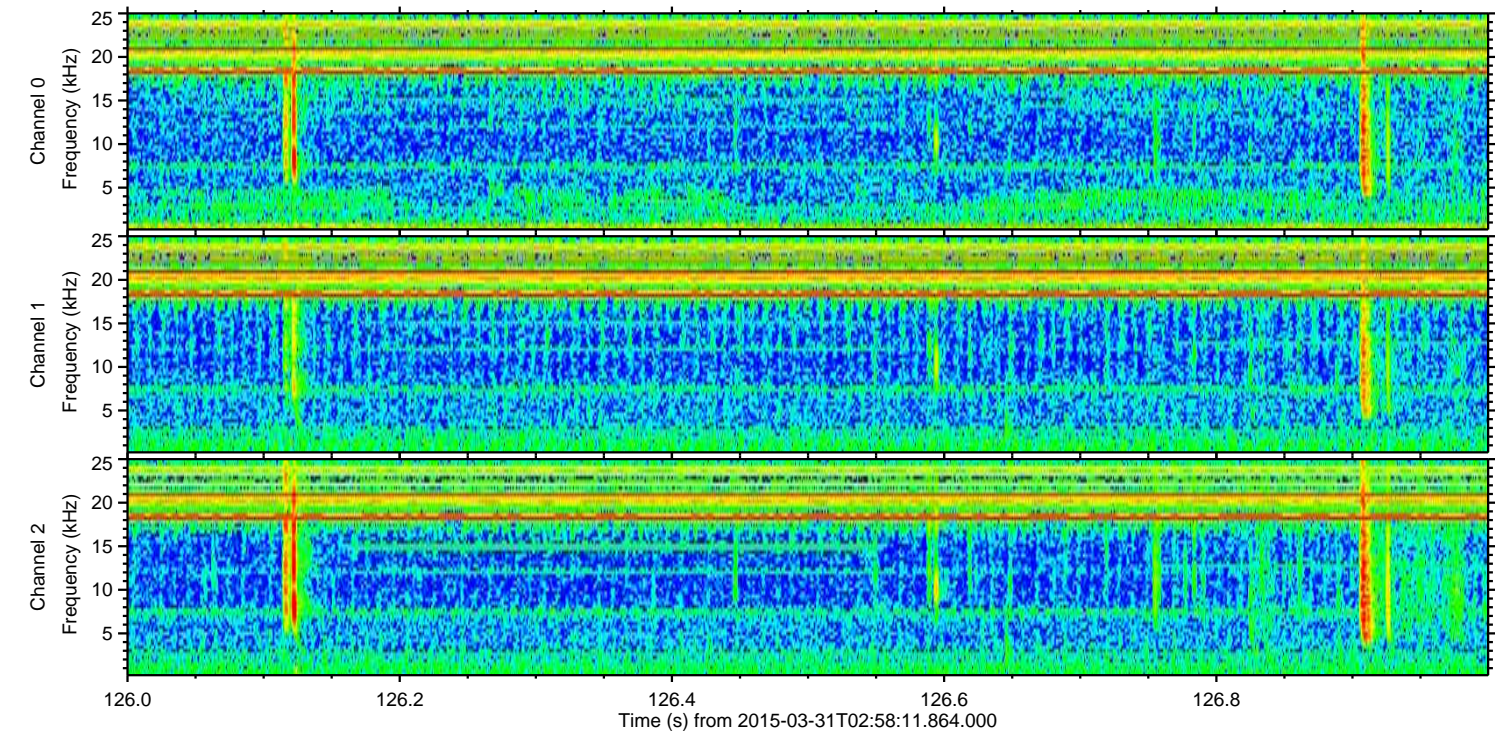
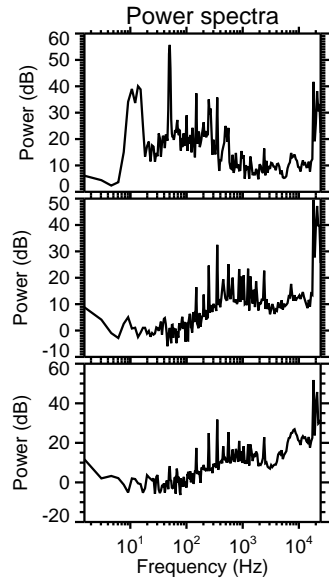
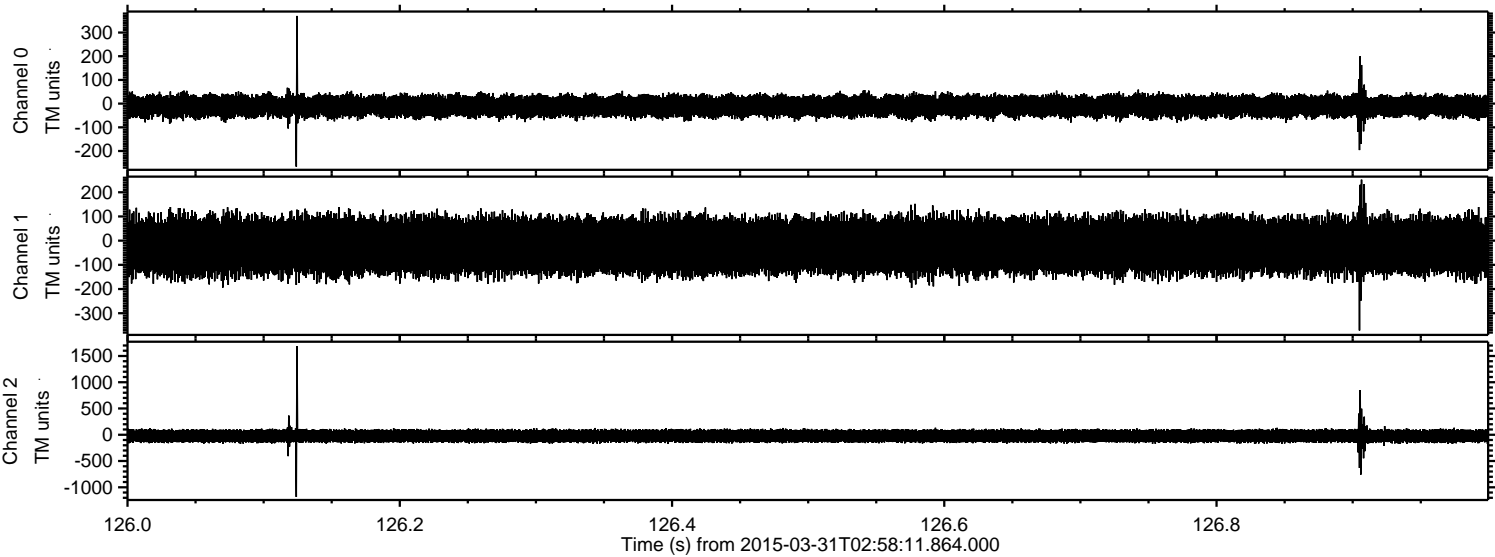


Processed Tue Mar 31 05:05:28 2015 by ELM ver.2012-10-06 from 001__elm20150331_025810__dat00.bin

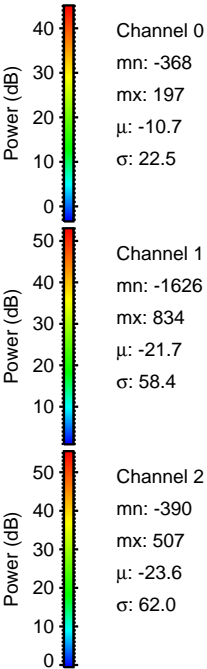
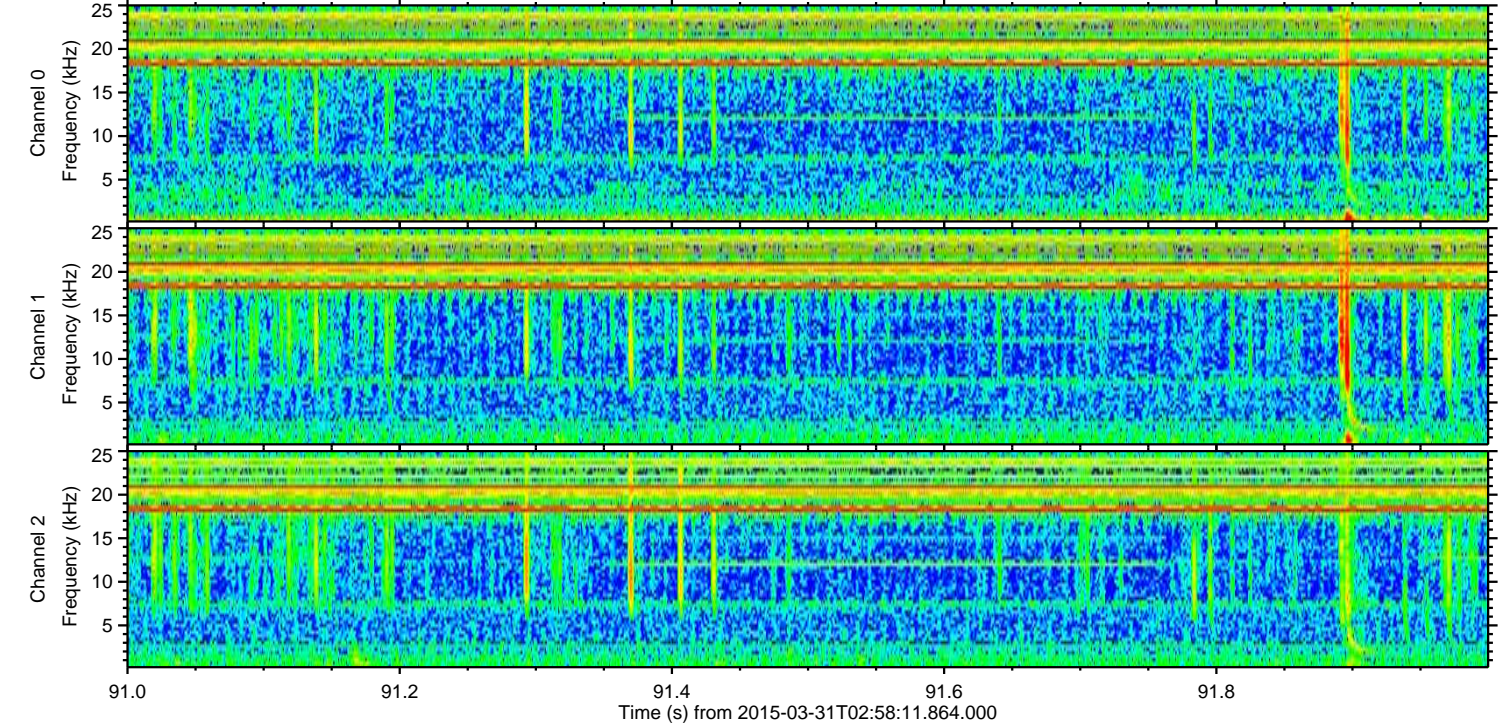
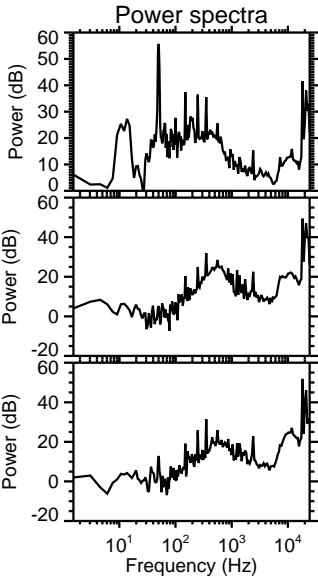
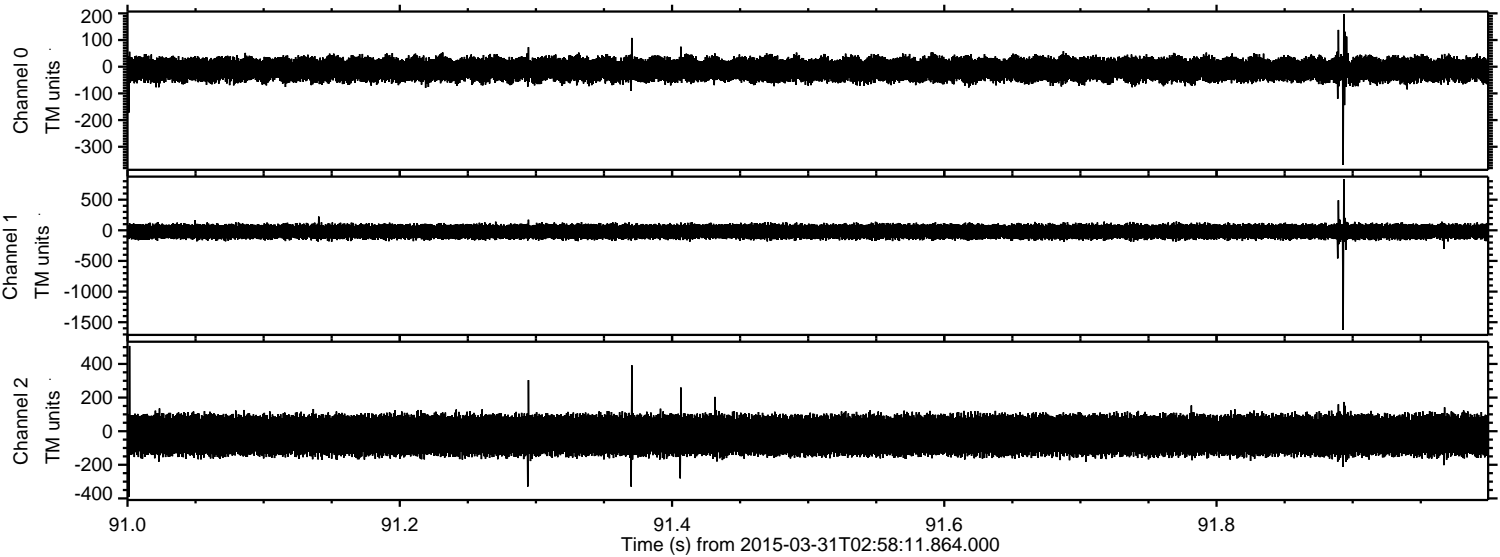


ELMAVAN 3D WAVEFORMS (Measured data sampled at 50 kHz) 49789 packets of 144 samples from 2015-03-31T02:58:11.864.000. Part 127/144

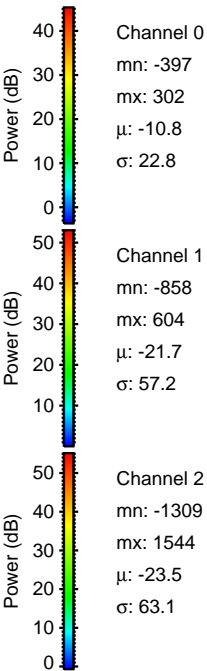
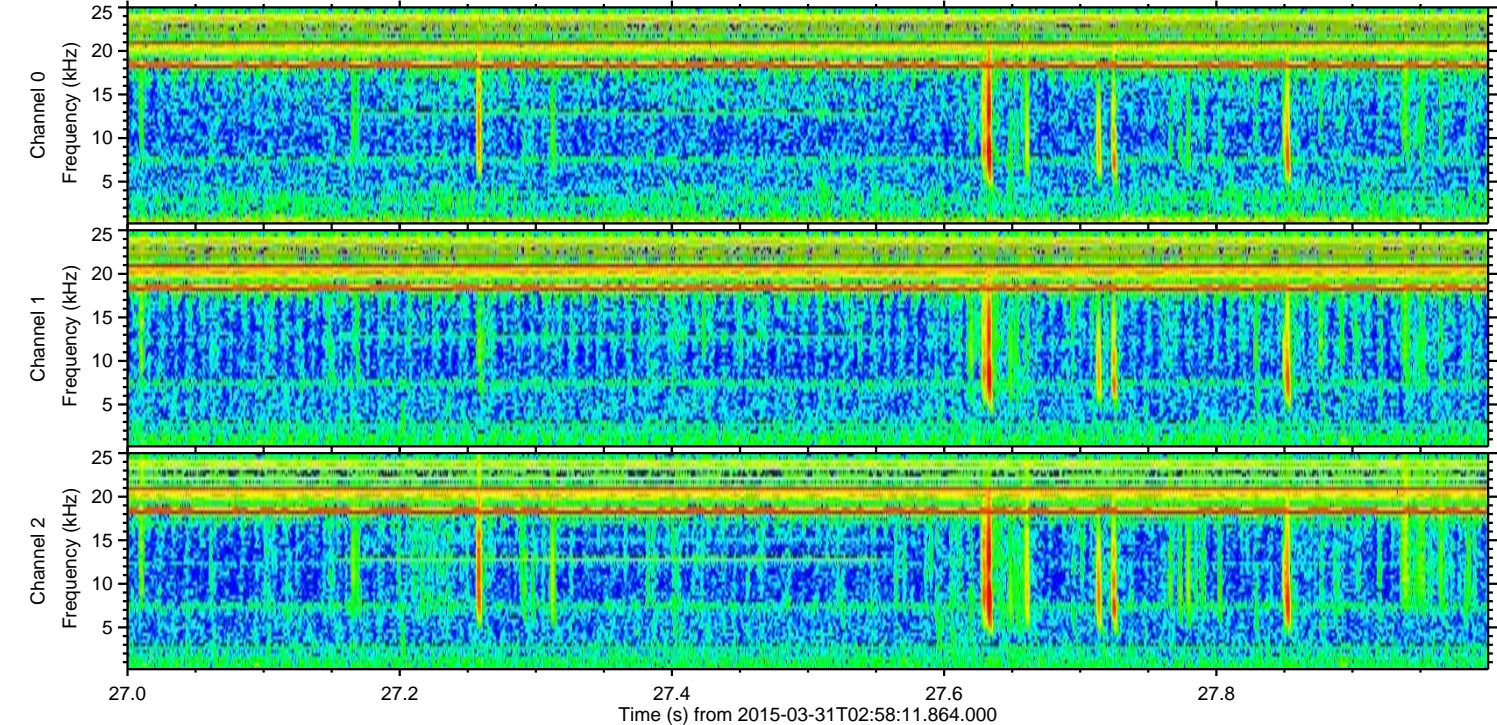
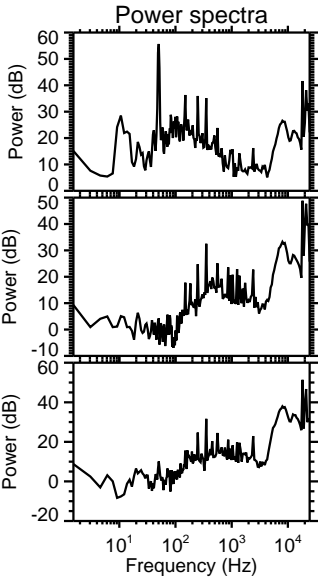
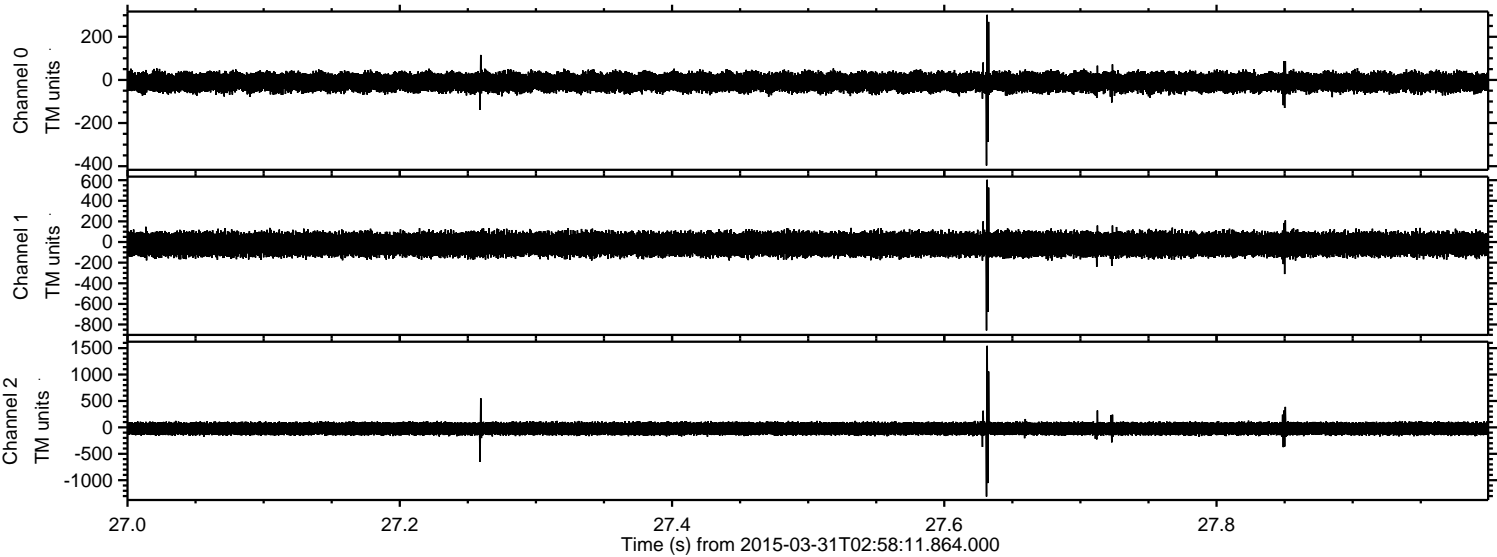
Processed Tue Mar 31 05:05:29 2015 by ELM ver.2012-10-06 from 001__elm20150331_025810__dat00.bin



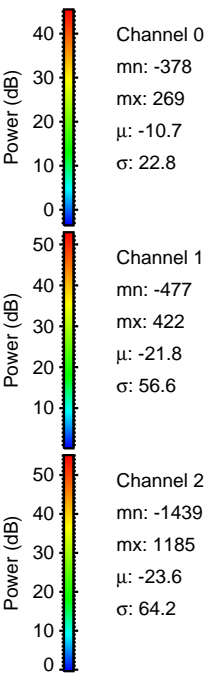
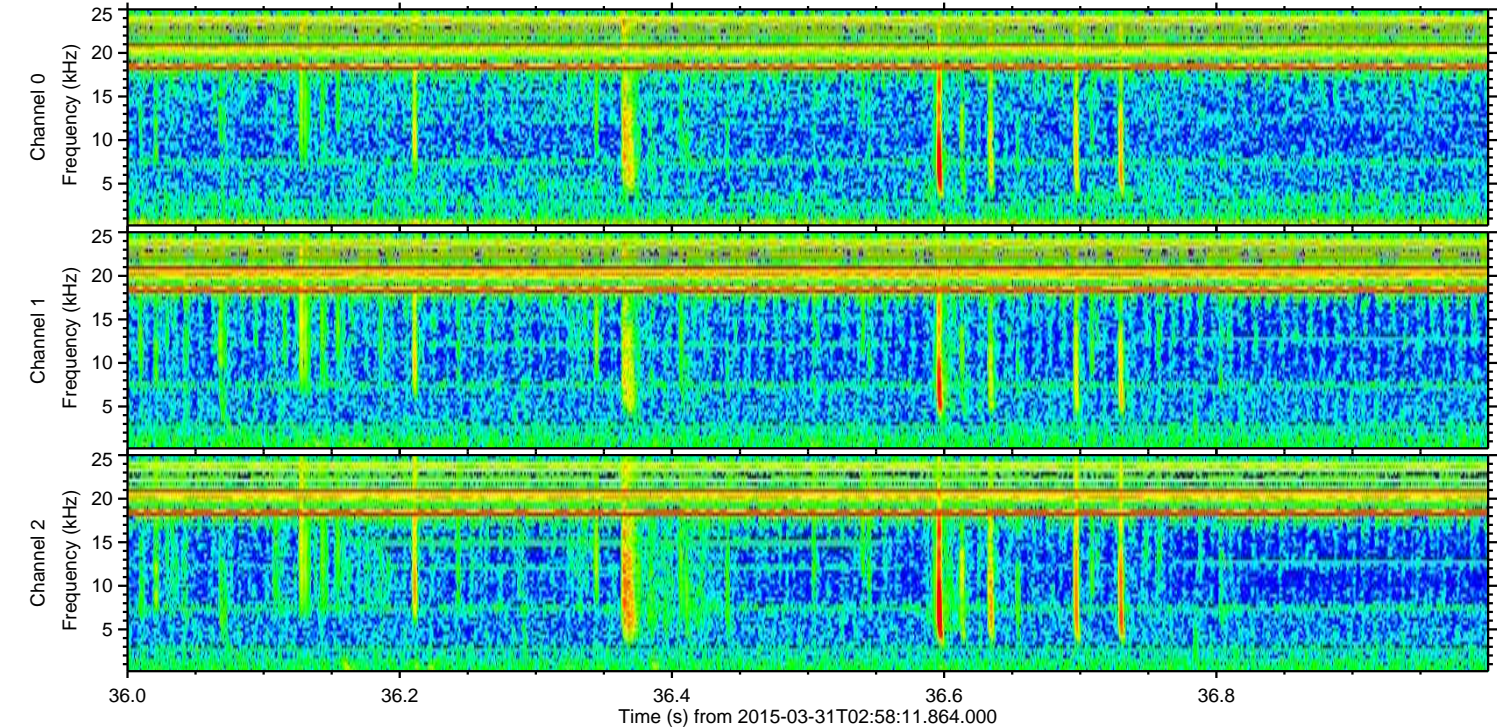
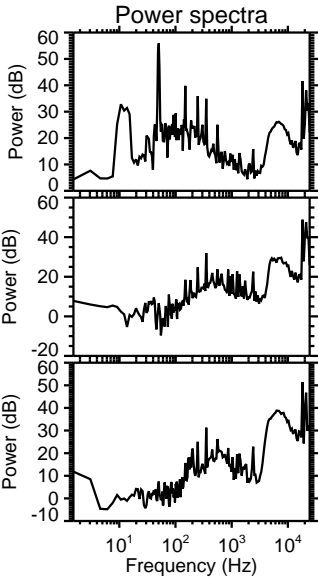
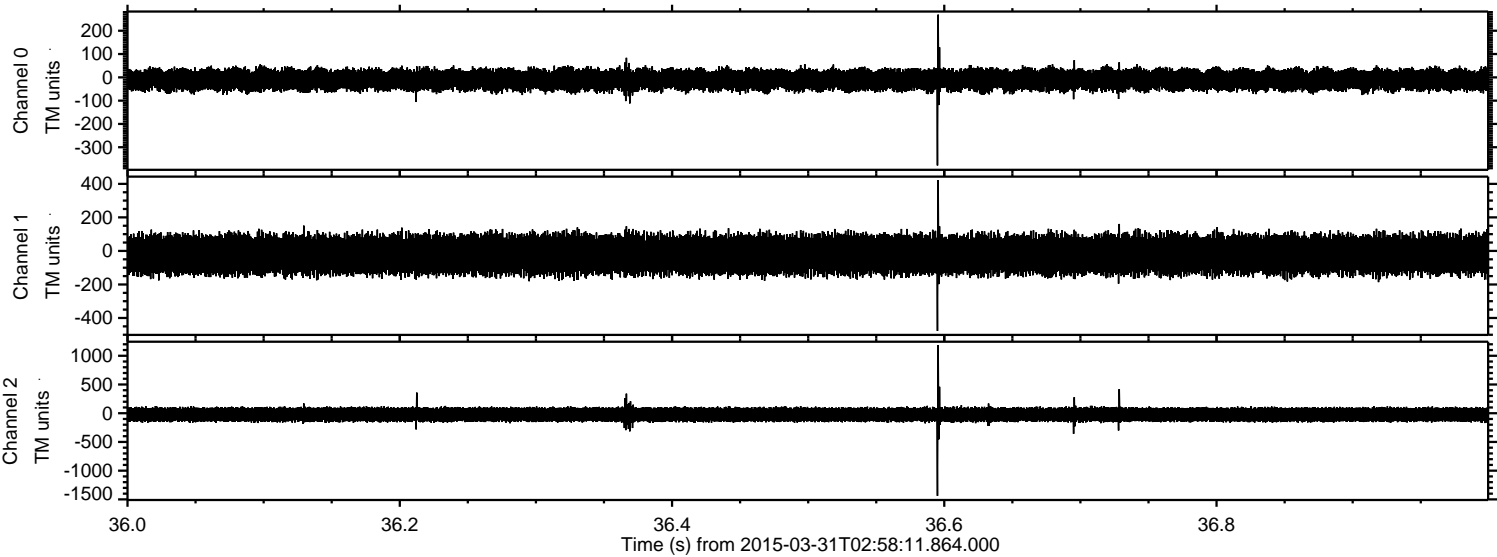
Processed Tue Mar 31 05:05:30 2015 by ELM ver.2012-10-06 from 001__elm20150331_025810__dat00.bin



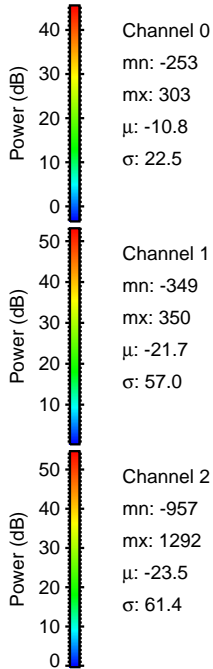
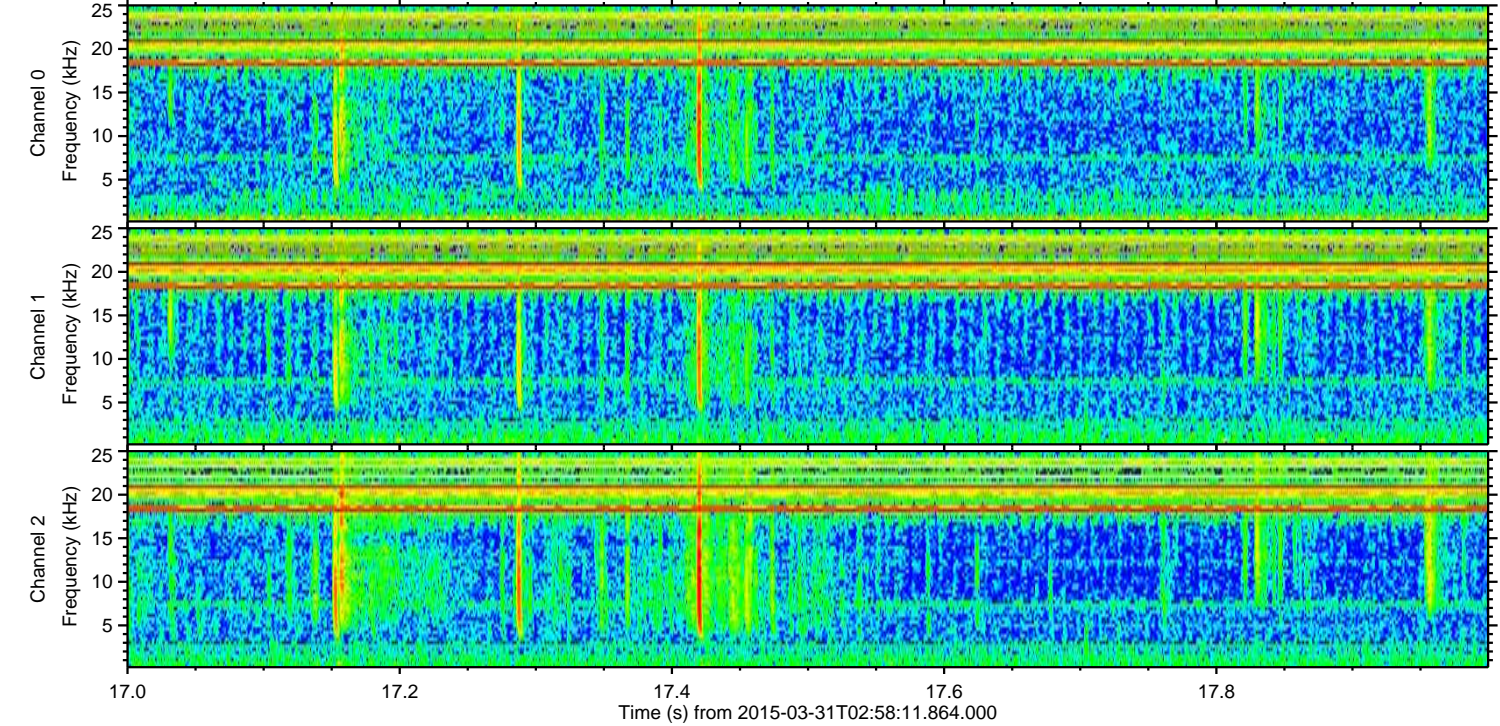
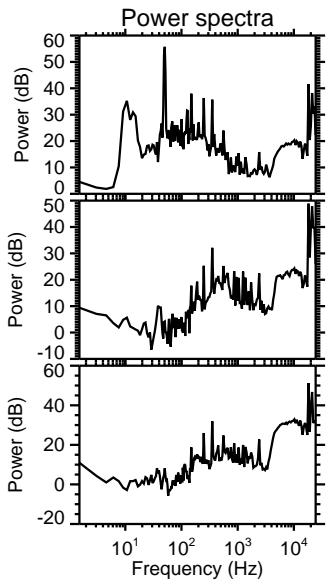
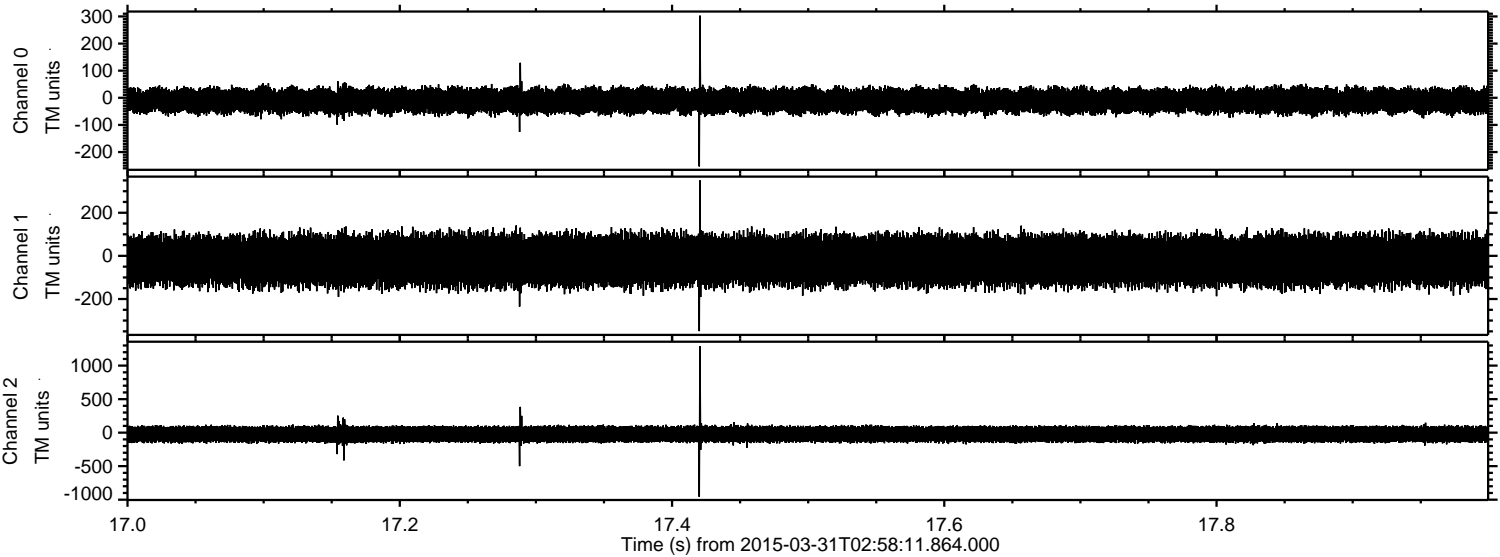
Processed Tue Mar 31 05:05:31 2015 by ELM ver.2012-10-06 from 001__elm20150331_025810__dat00.bin



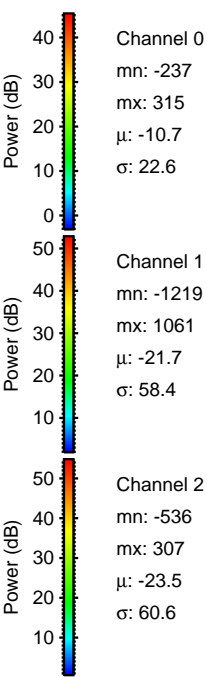
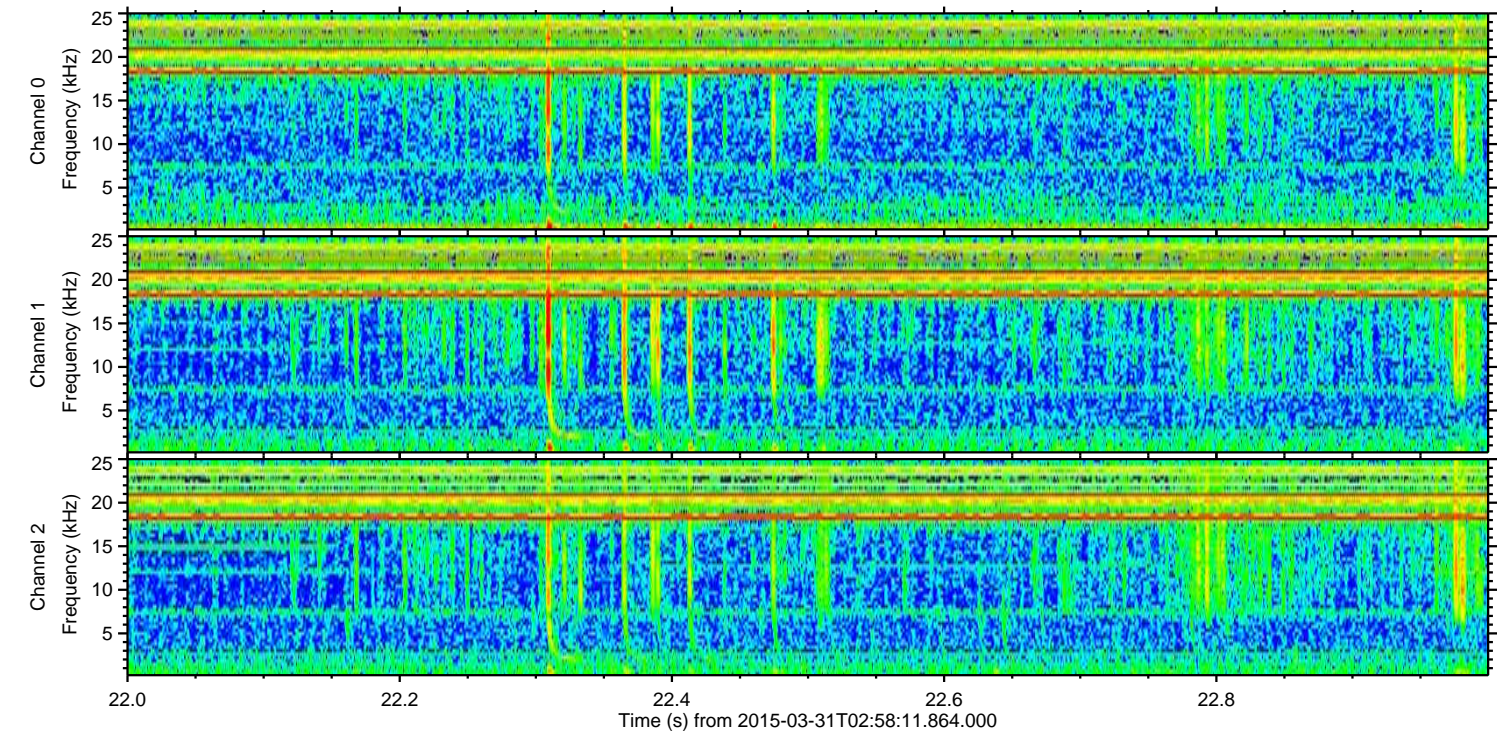
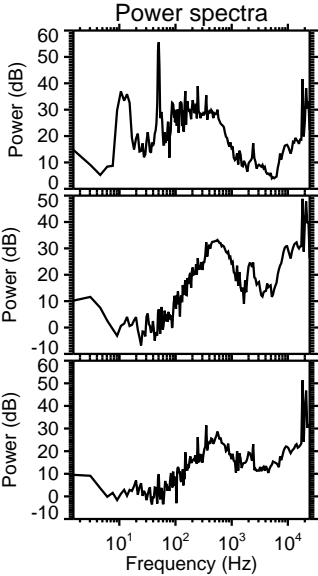
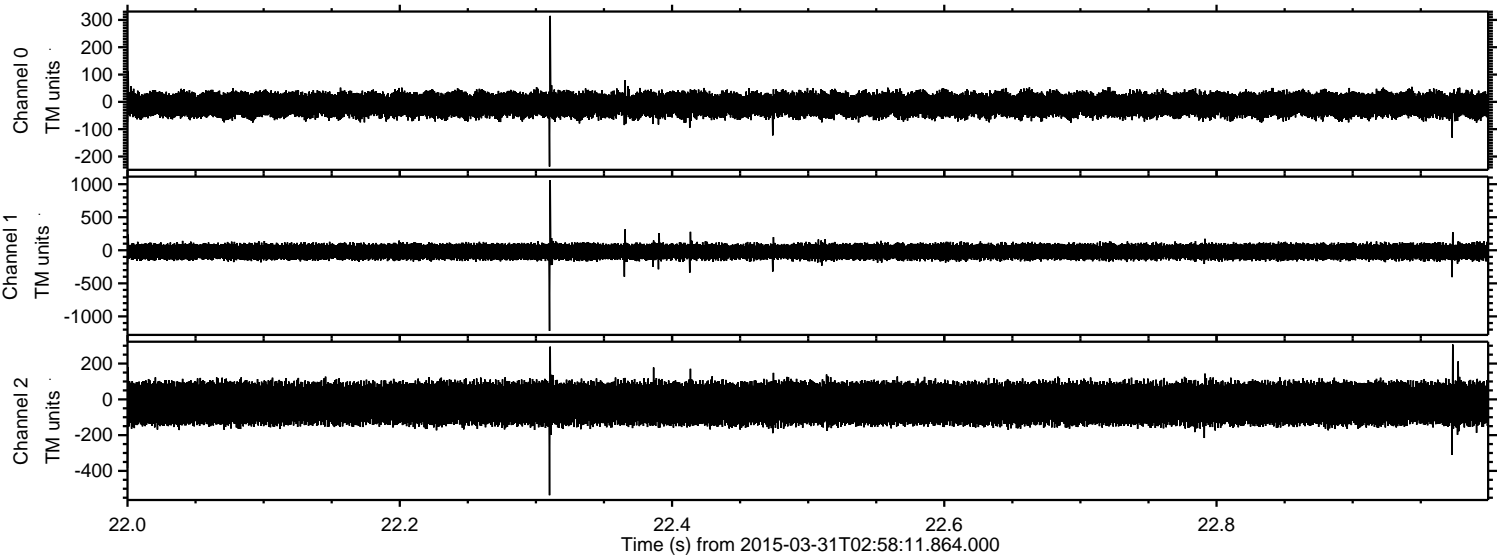
Processed Tue Mar 31 05:05:32 2015 by ELM ver.2012-10-06 from 001__elm20150331_025810__dat00.bin



Processed Tue Mar 31 05:05:32 2015 by ELM ver.2012-10-06 from 001__elm20150331_025810__dat00.bin



Processed Tue Mar 31 05:05:33 2015 by ELM ver.2012-10-06 from 001__elm20150331_025810__dat00.bin

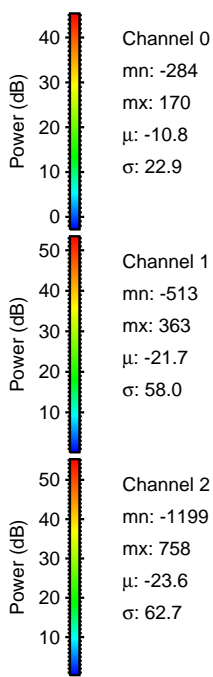
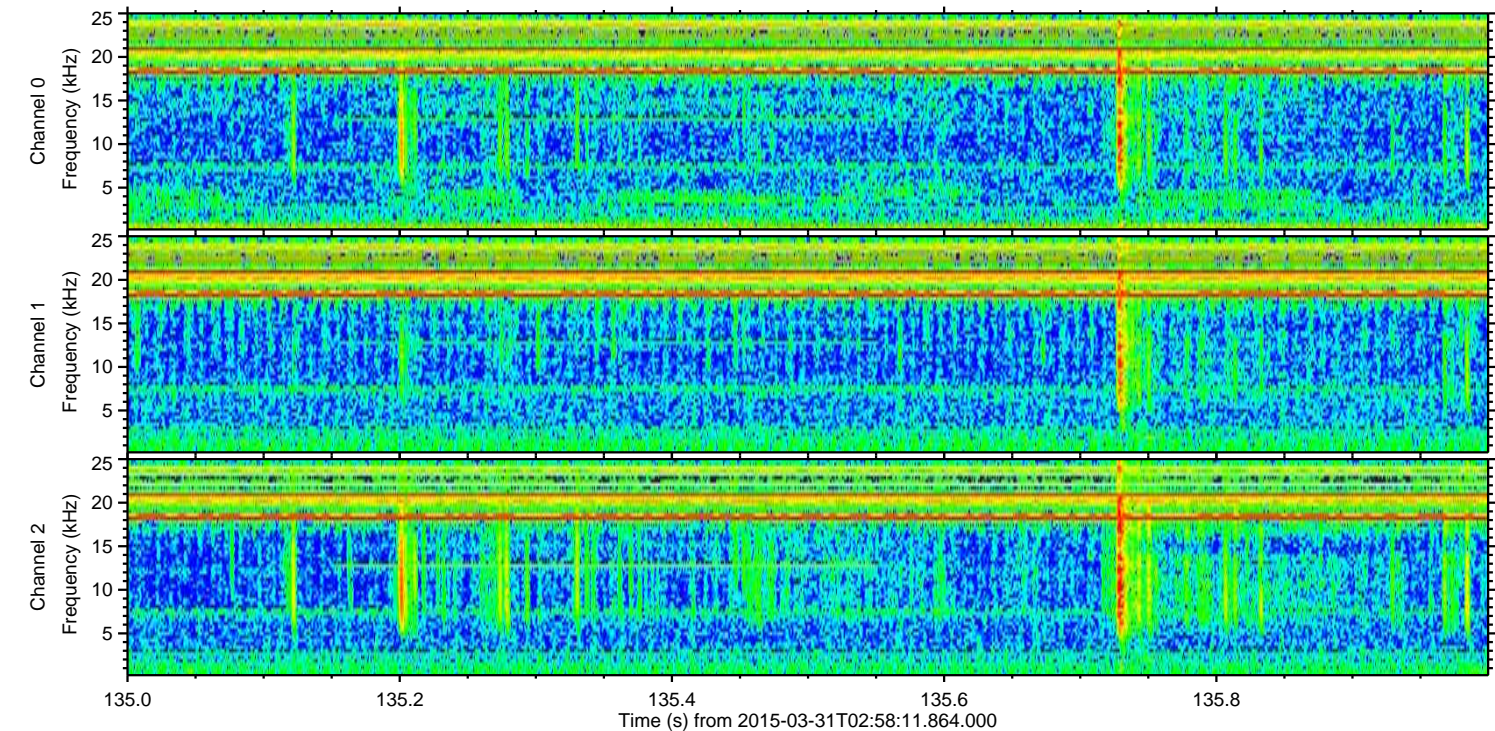
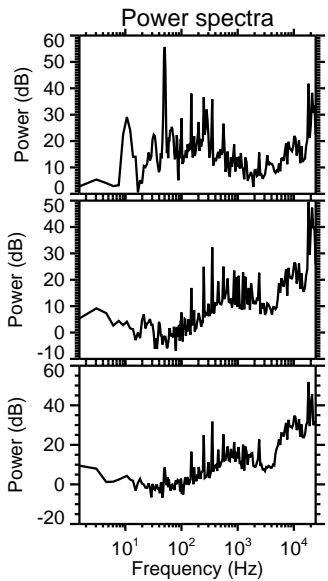
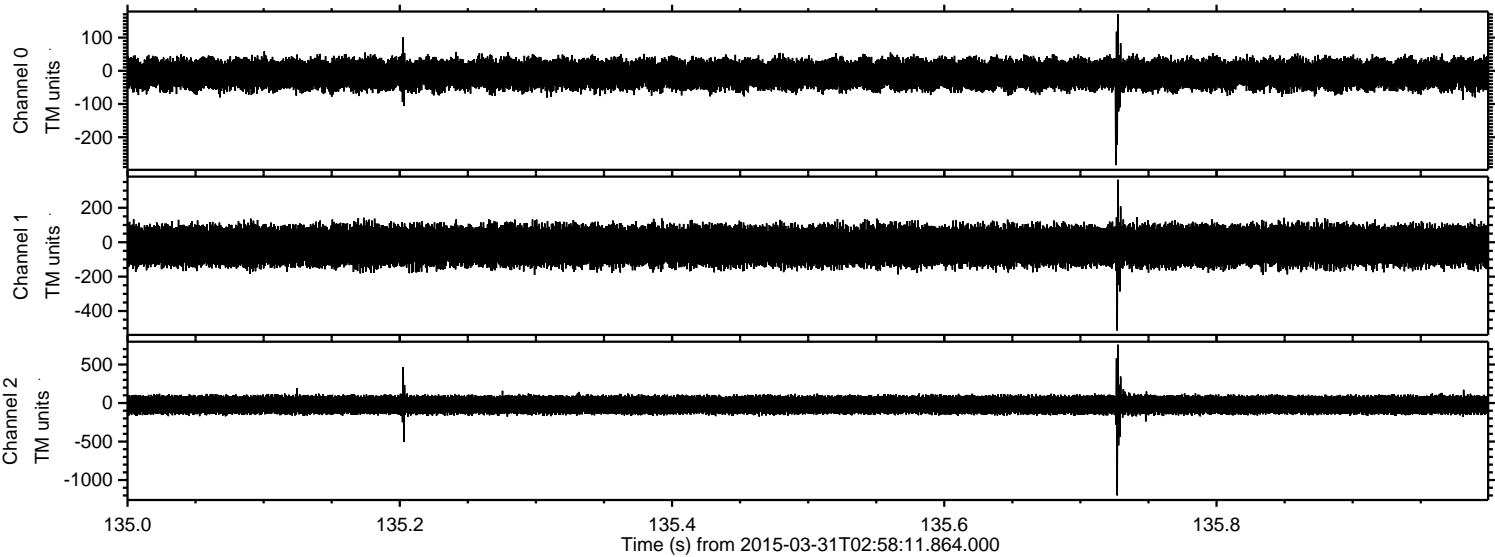


Channel 0
mn: -237
mx: 315
 μ : -10.7
 σ : 22.6

Channel 1
mn: -1219
mx: 1061
 μ : -21.7
 σ : 58.4

Channel 2
mn: -536
mx: 307
 μ : -23.5
 σ : 60.6

Processed Tue Mar 31 05:05:34 2015 by ELM ver.2012-10-06 from 001__elm20150331_025810__dat00.bin



Channel 0
mn: -284
mx: 170
 μ : -10.8
 σ : 22.9

Channel 1
mn: -513
mx: 363
 μ : -21.7
 σ : 58.0

Channel 2
mn: -1199
mx: 758
 μ : -23.6
 σ : 62.7

Processed Tue Mar 31 05:05:35 2015 by ELM ver.2012-10-06 from 001__elm20150331_025810__dat00.bin

