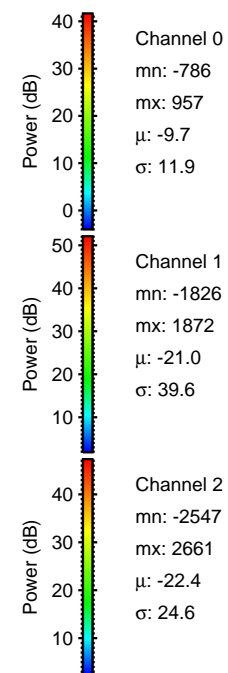
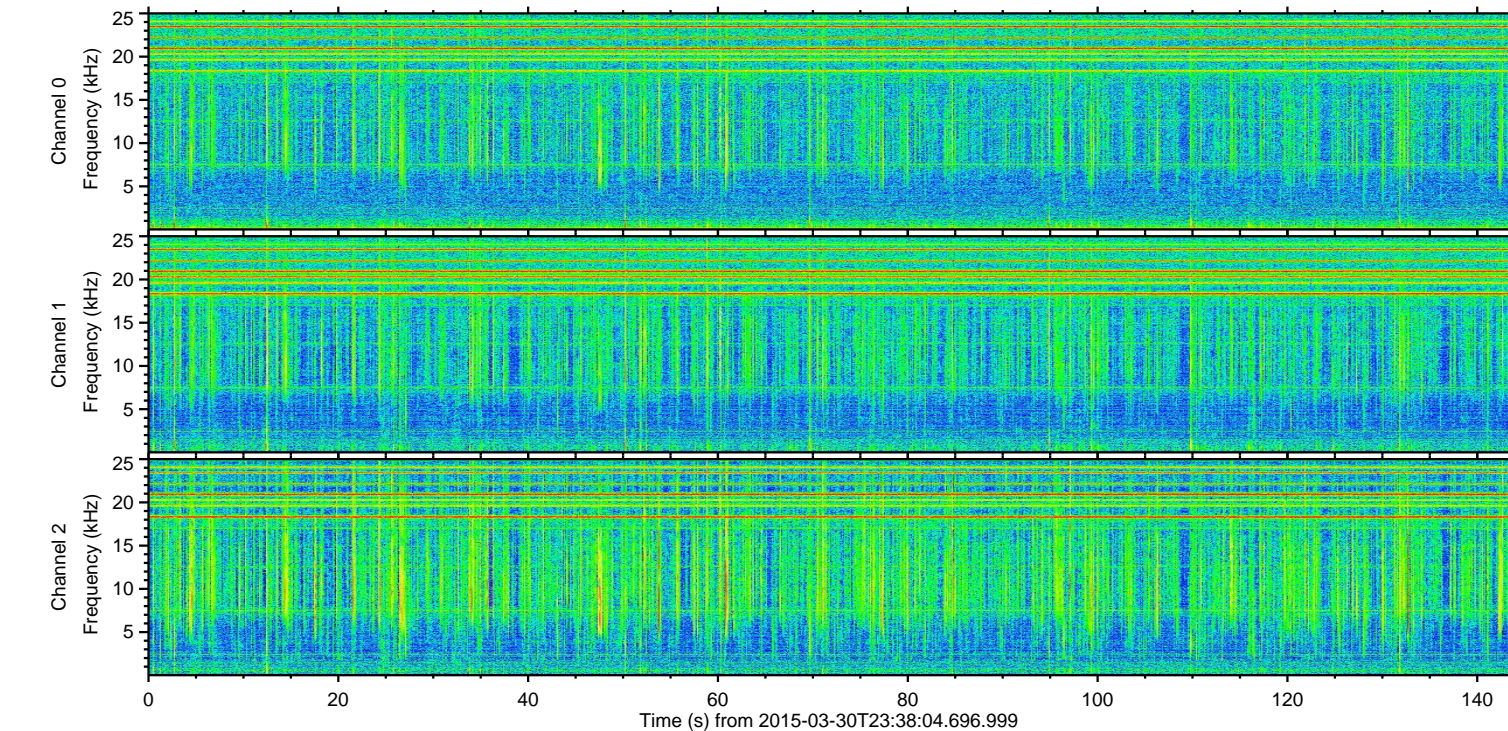
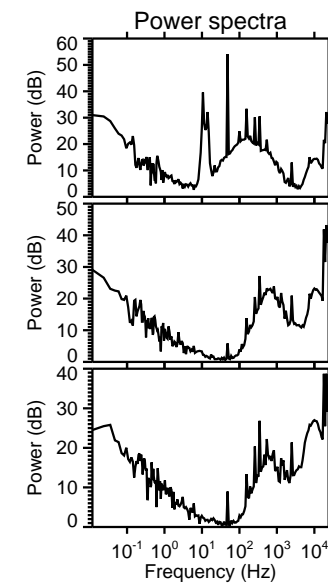
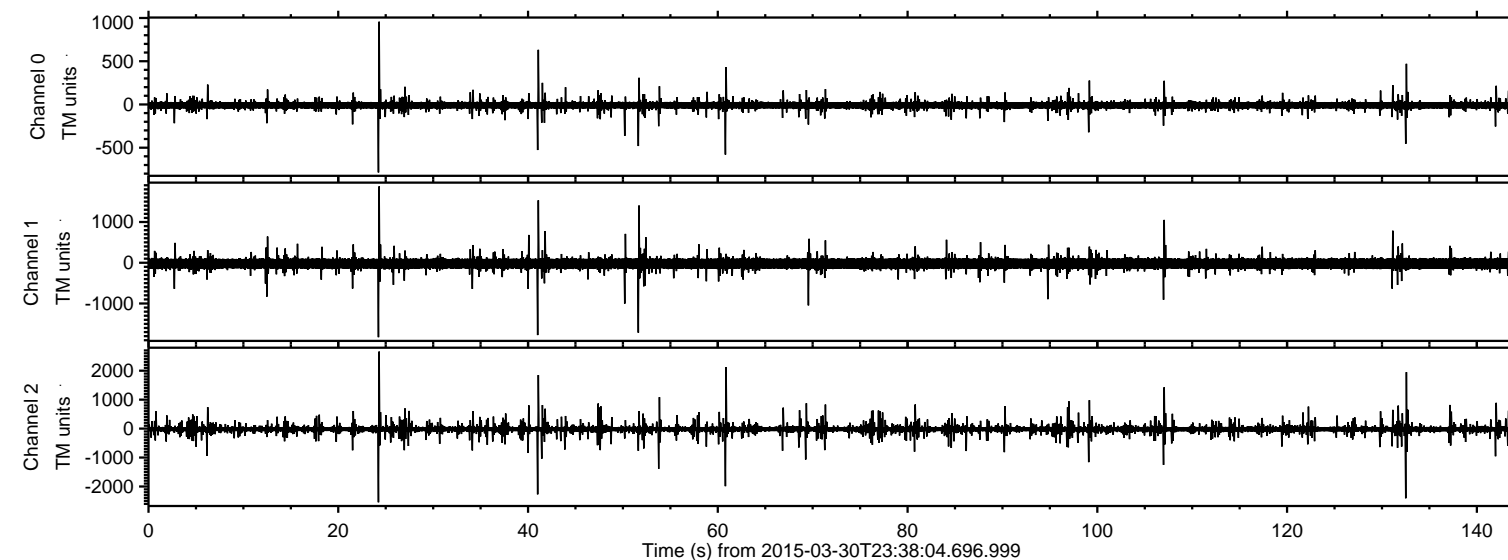


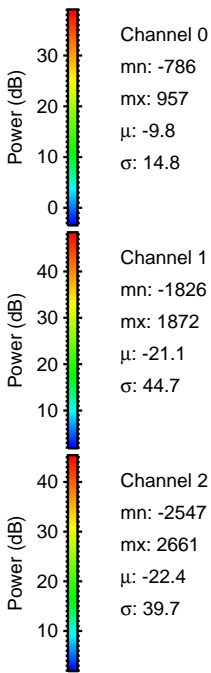
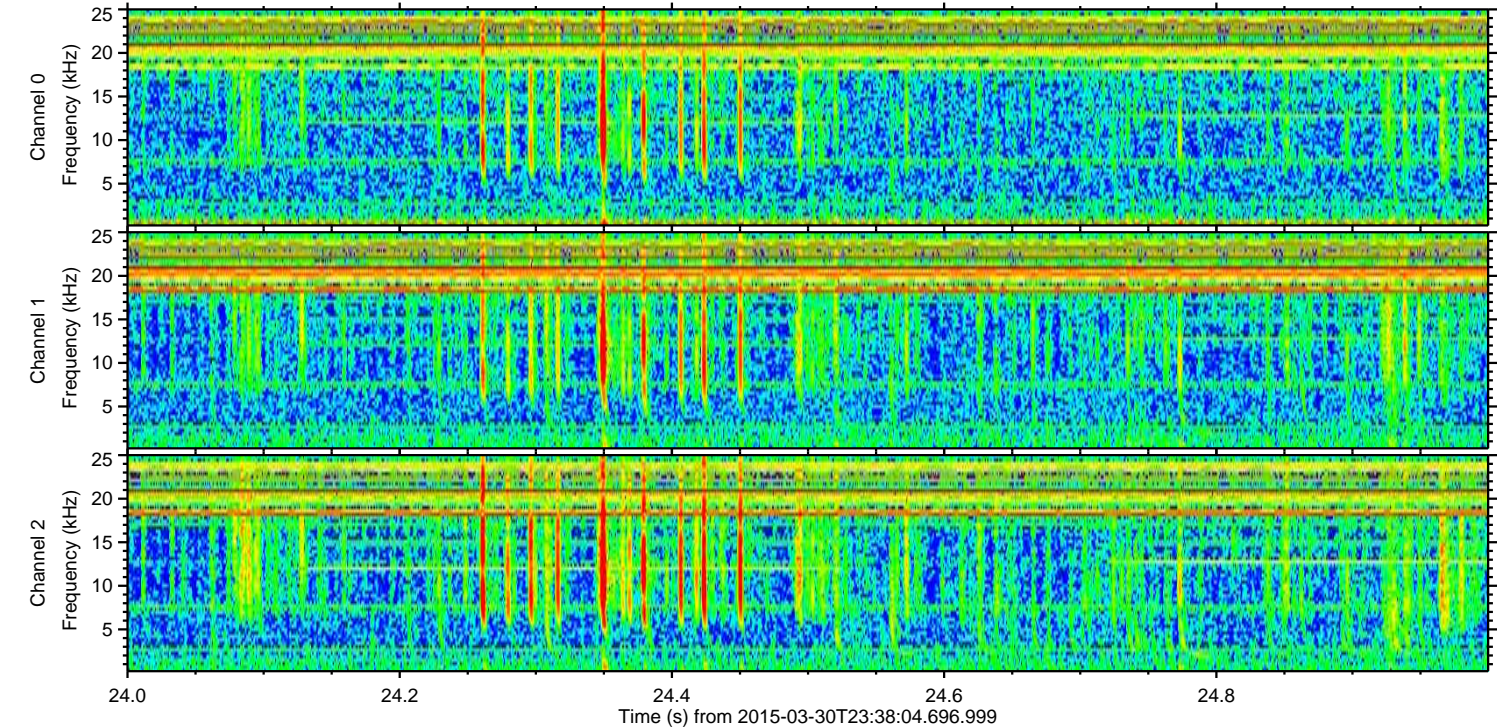
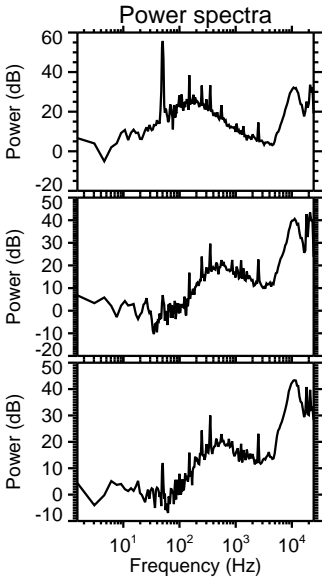
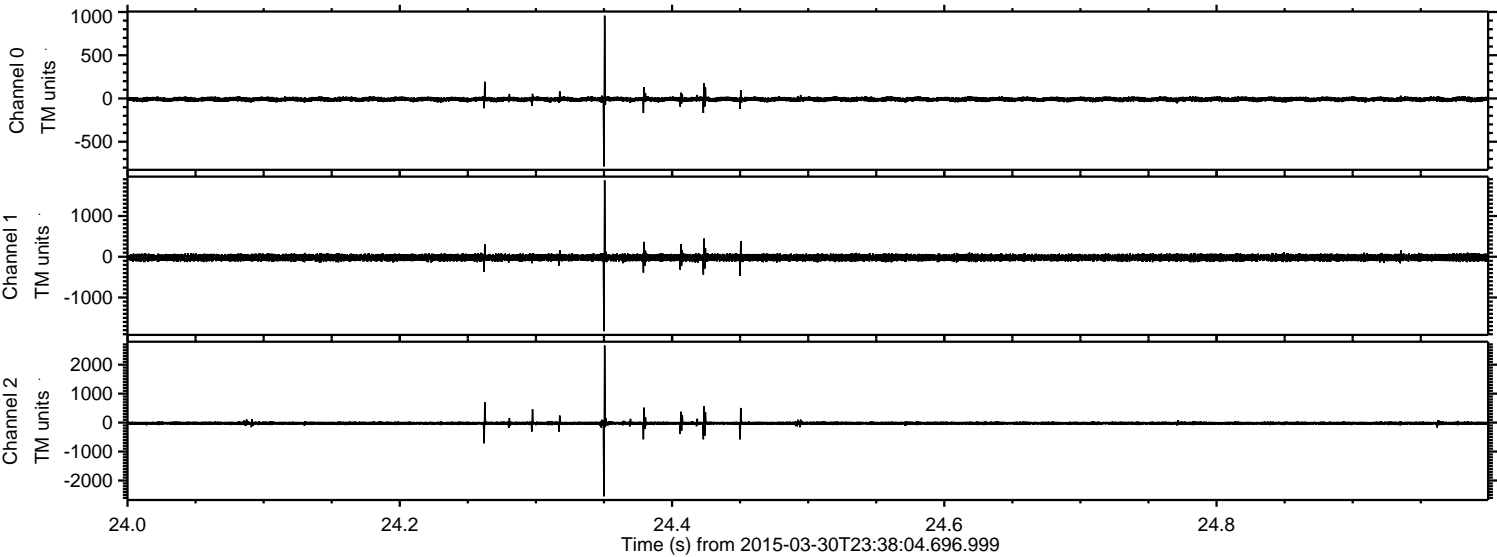
# ELMAVAN 3D WAVEFORMS (Measured data sampled at 50 kHz) 49793 packets of 144 samples from 2015-03-30T23:38:04.696.999.

Processed Tue Mar 31 01:45:10 2015 by ELM ver.2012-10-06 from 001\_\_elm20150330\_233803\_\_dat00.bin



ELMAVAN 3D WAVEFORMS (Measured data sampled at 50 kHz) 49793 packets of 144 samples from 2015-03-30T23:38:04.696.999. Part 25/144

Processed Tue Mar 31 01:45:22 2015 by ELM ver.2012-10-06 from 001\_\_elm20150330\_233803\_\_dat00.bin



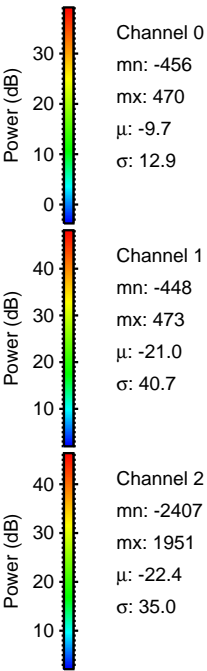
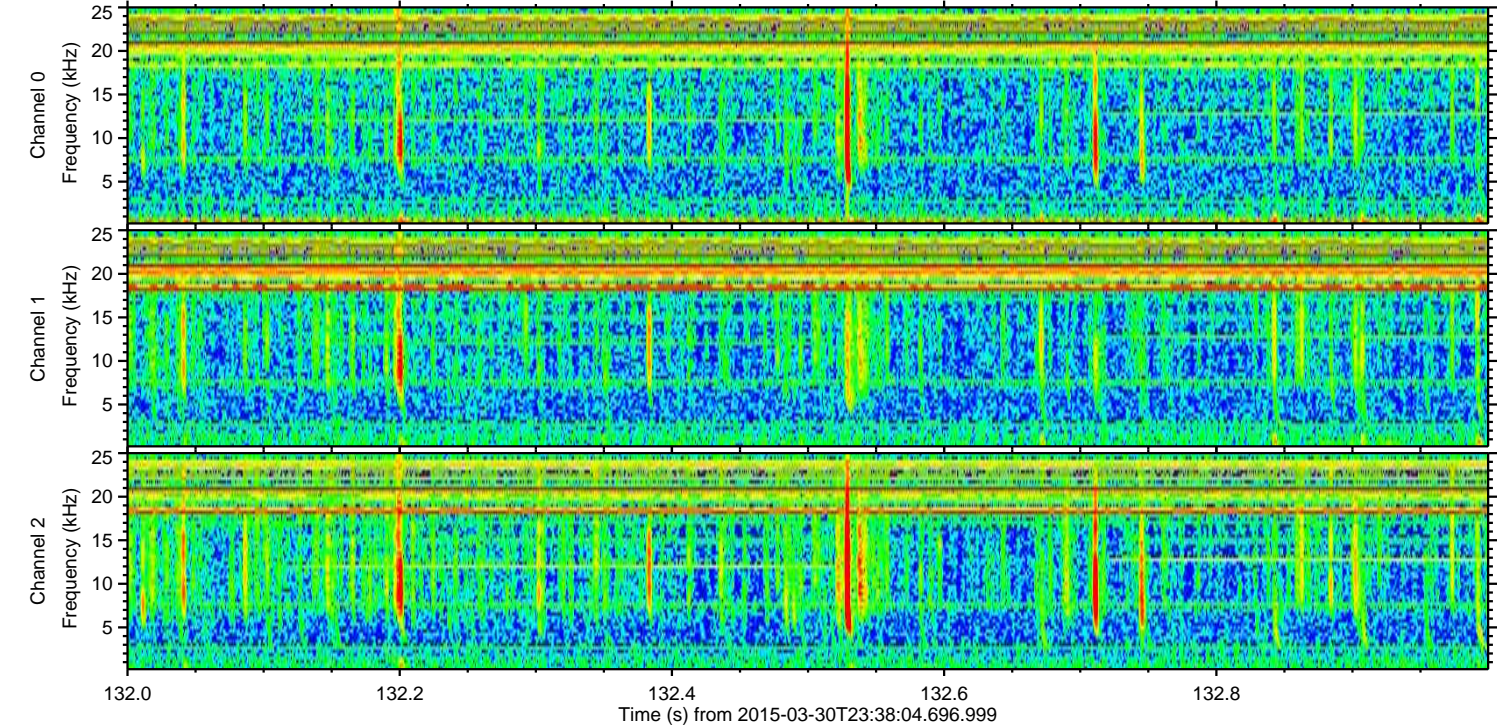
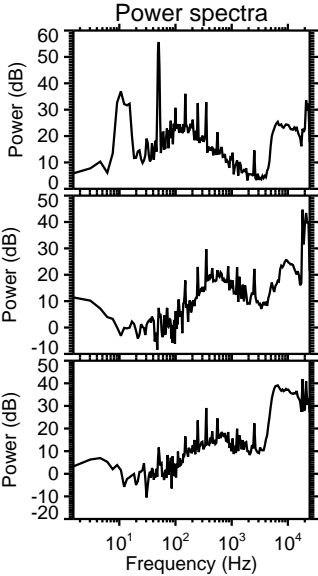
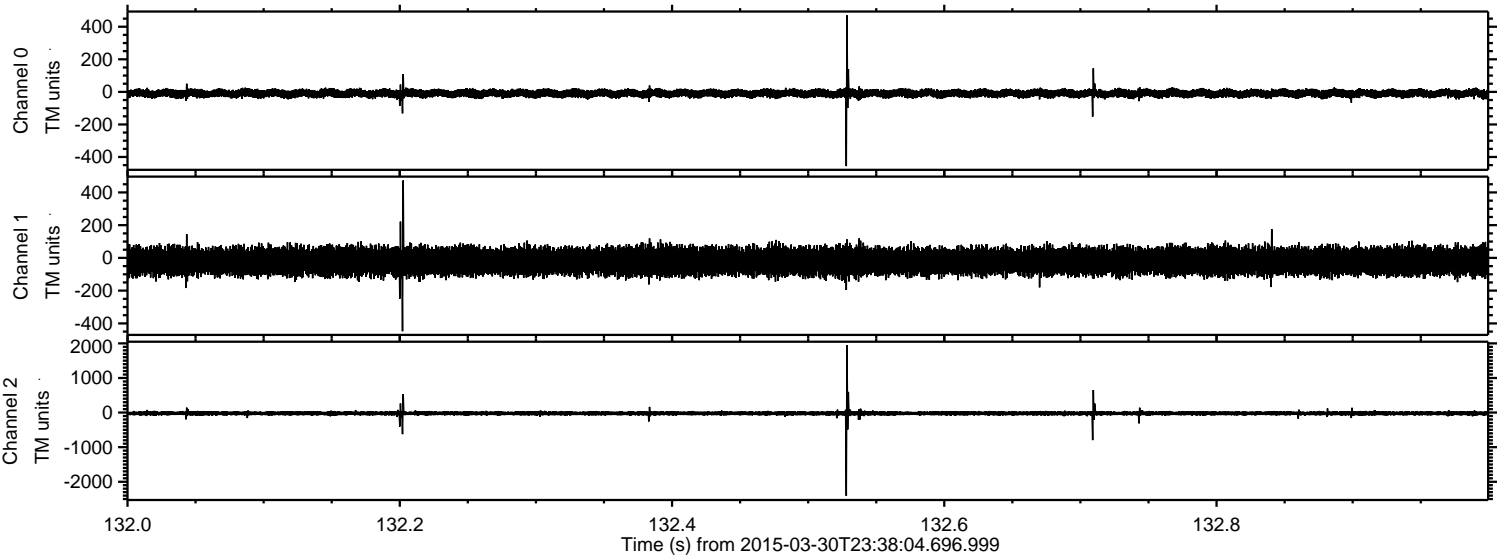
Channel 0  
mn: -786  
mx: 957  
 $\mu$ : -9.8  
 $\sigma$ : 14.8

Channel 1  
mn: -1826  
mx: 1872  
 $\mu$ : -21.1  
 $\sigma$ : 44.7

Channel 2  
mn: -2547  
mx: 2661  
 $\mu$ : -22.4  
 $\sigma$ : 39.7

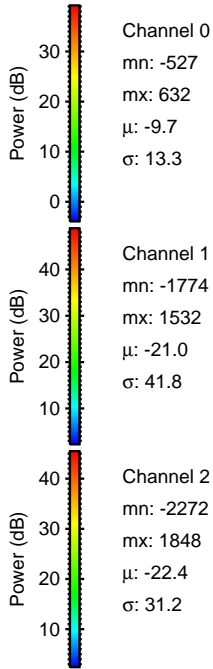
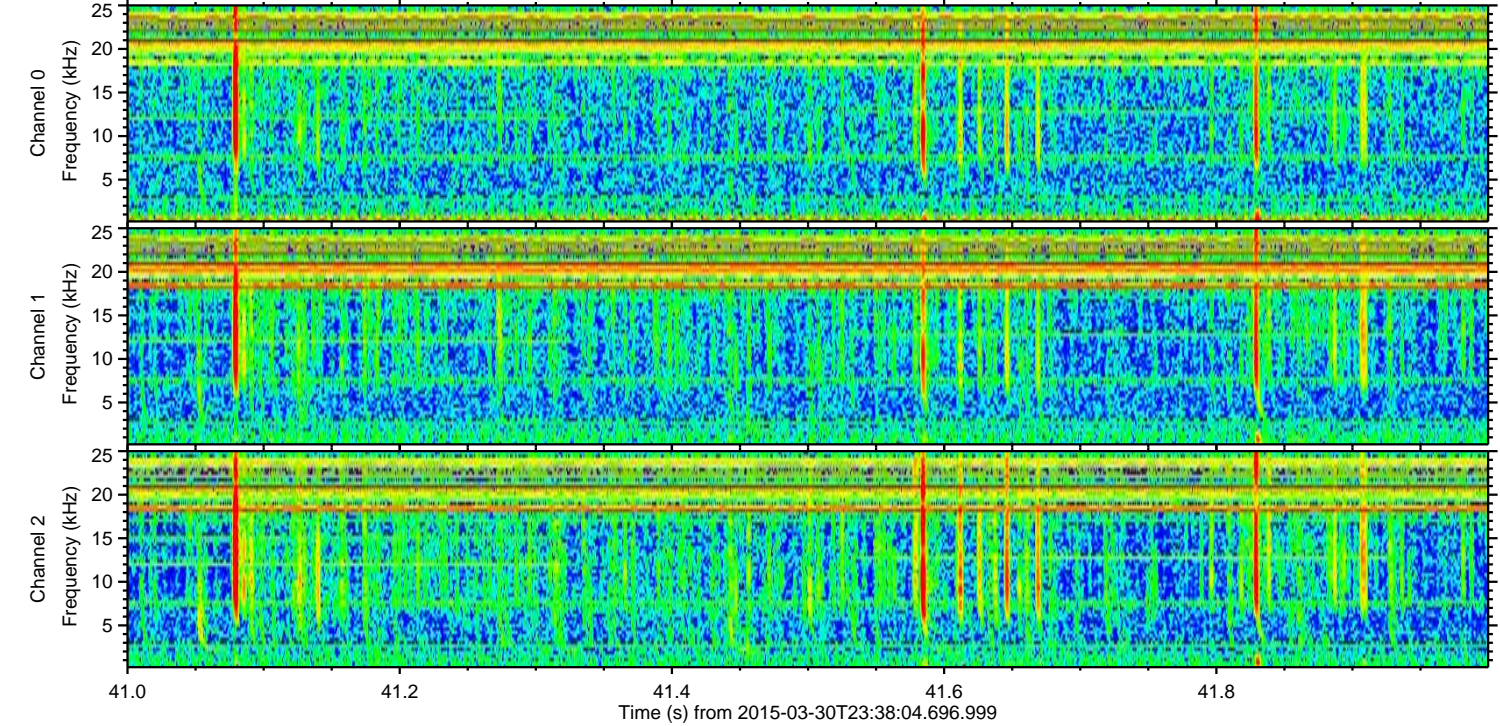
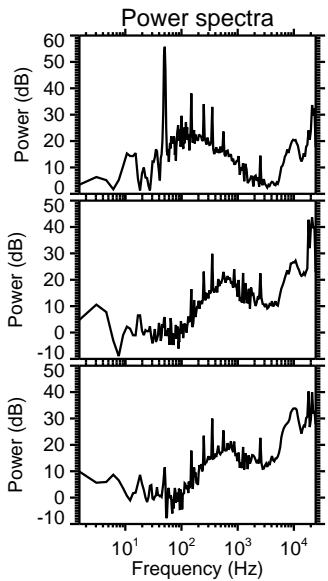
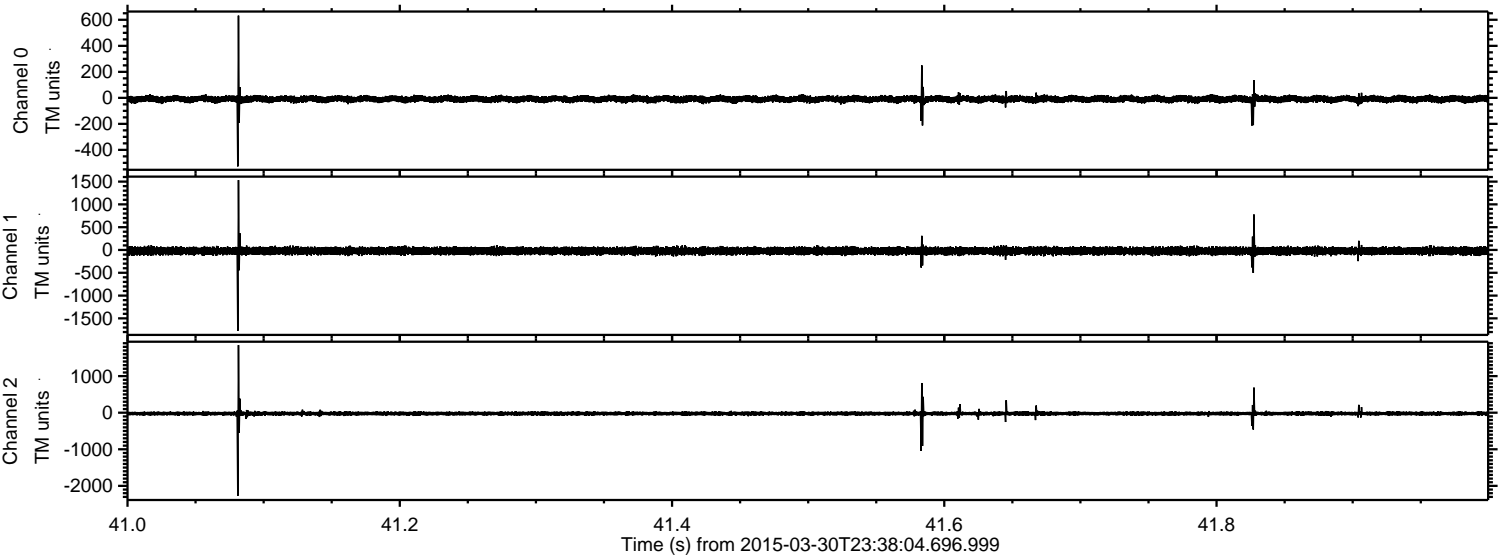
ELMAVAN 3D WAVEFORMS (Measured data sampled at 50 kHz) 49793 packets of 144 samples from 2015-03-30T23:38:04.696.999. Part 133/144

Processed Tue Mar 31 01:45:23 2015 by ELM ver.2012-10-06 from 001\_\_elm20150330\_233803\_\_dat00.bin

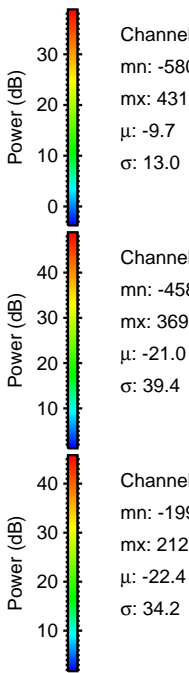
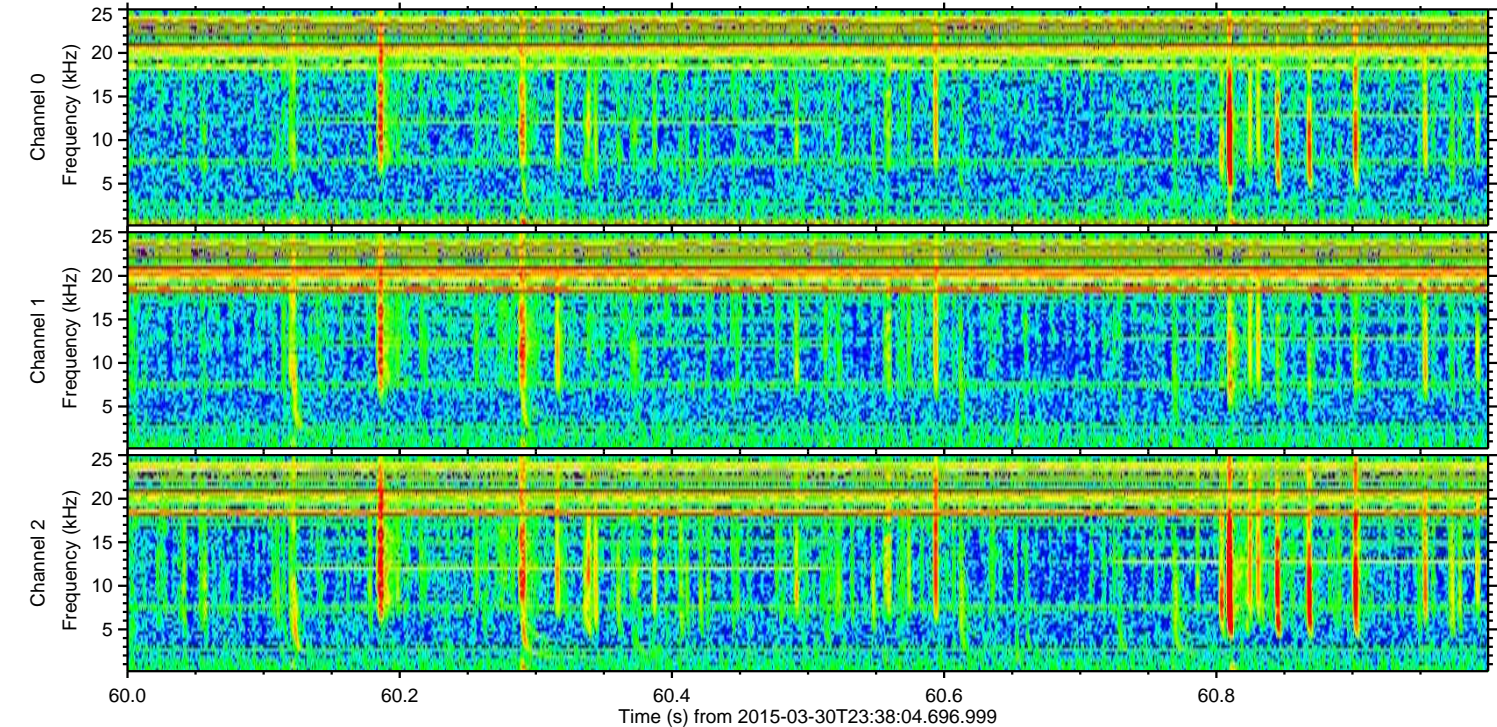
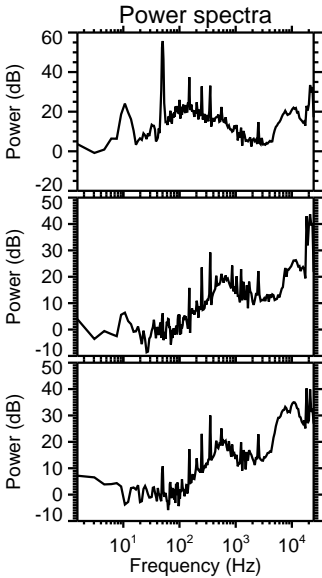
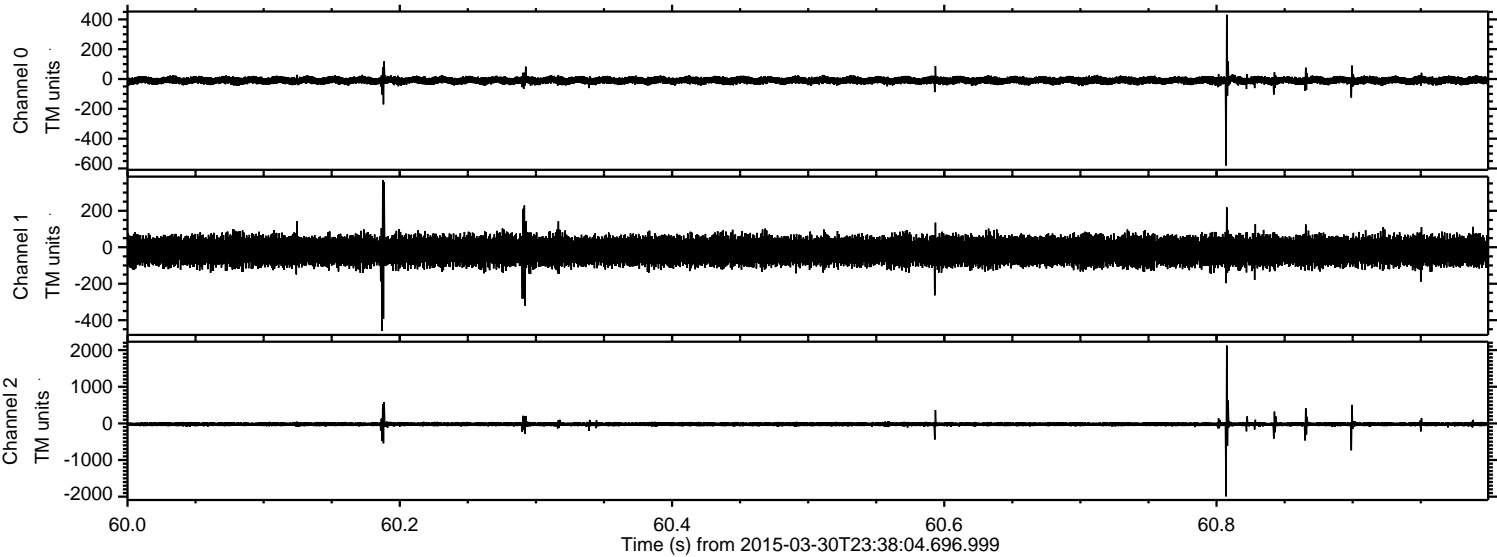


ELMAVAN 3D WAVEFORMS (Measured data sampled at 50 kHz) 49793 packets of 144 samples from 2015-03-30T23:38:04.696.999. Part 42/144

Processed Tue Mar 31 01:45:24 2015 by ELM ver.2012-10-06 from 001\_\_elm20150330\_233803\_\_dat00.bin



Processed Tue Mar 31 01:45:24 2015 by ELM ver.2012-10-06 from 001\_\_elm20150330\_233803\_\_dat00.bin

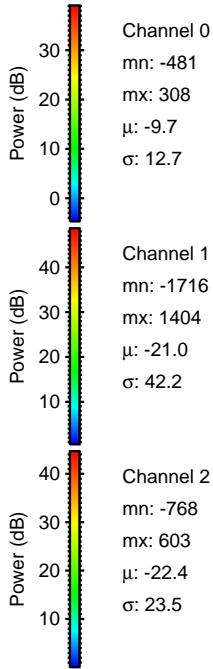
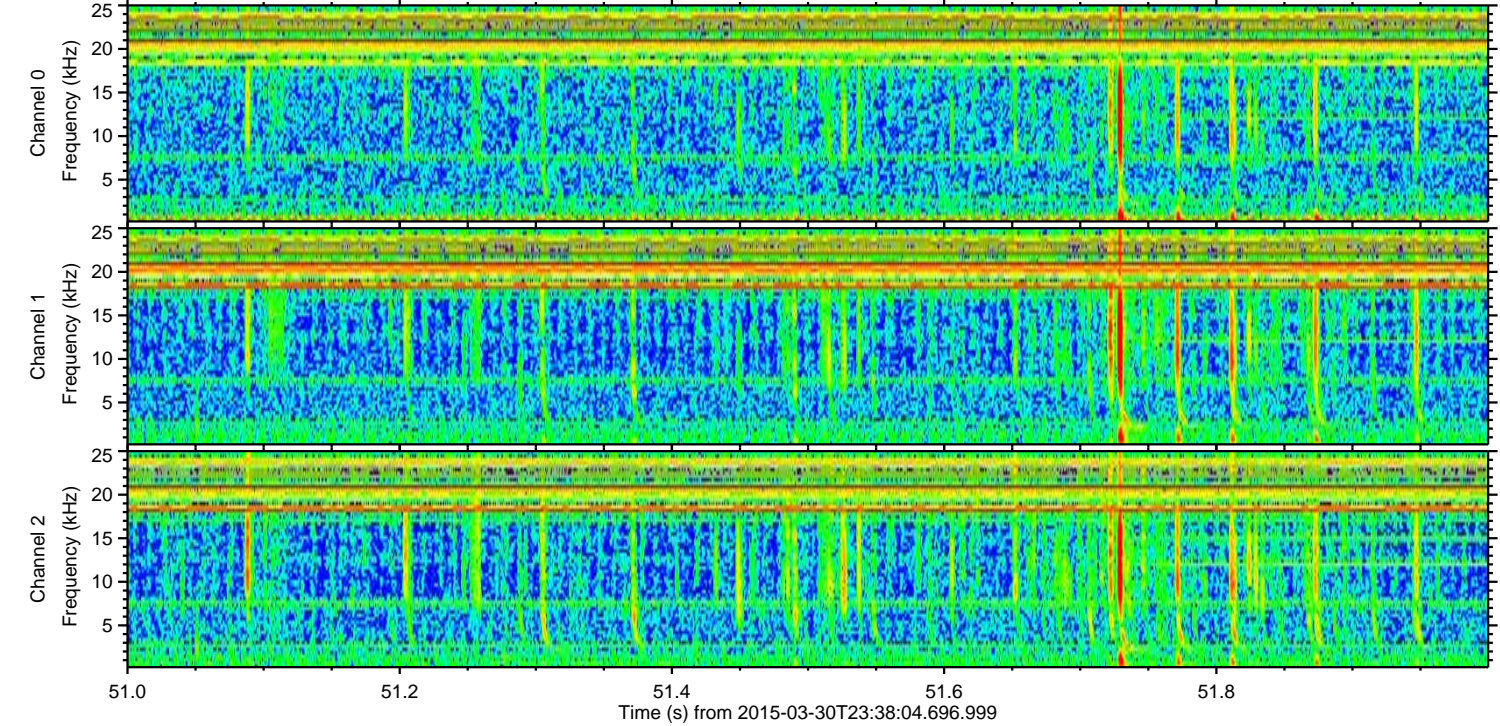
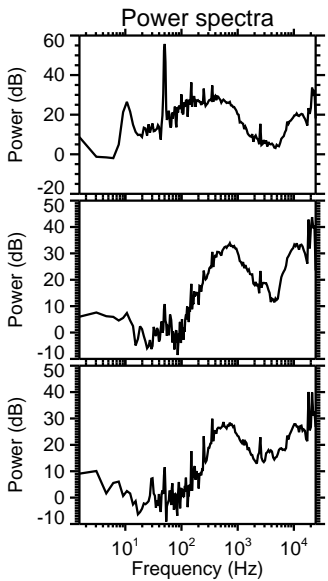
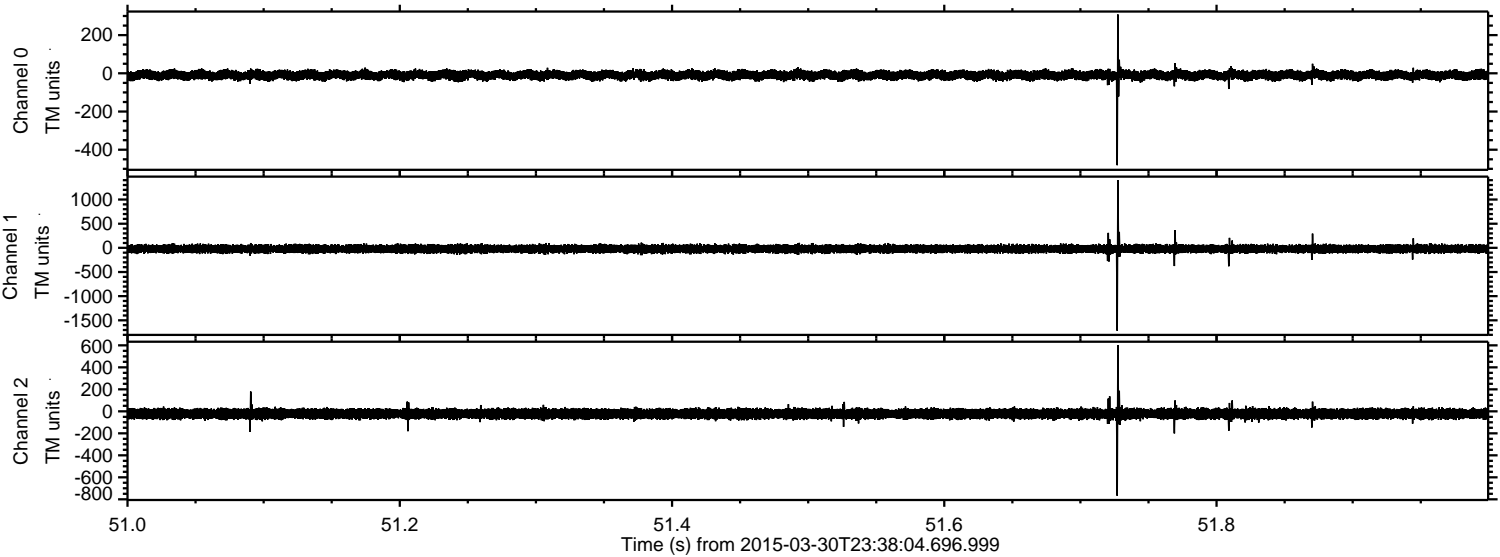


Channel 0  
mn: -580  
mx: 431  
 $\mu$ : -9.7  
 $\sigma$ : 13.0

Channel 1  
mn: -458  
mx: 369  
 $\mu$ : -21.0  
 $\sigma$ : 39.4

Channel 2  
mn: -1991  
mx: 2123  
 $\mu$ : -22.4  
 $\sigma$ : 34.2

Processed Tue Mar 31 01:45:25 2015 by ELM ver.2012-10-06 from 001\_\_elm20150330\_233803\_\_dat00.bin



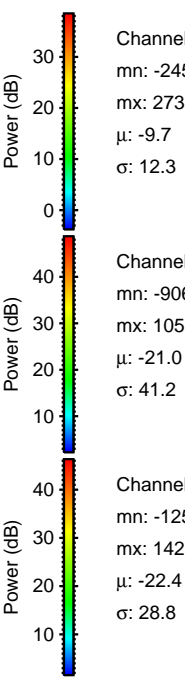
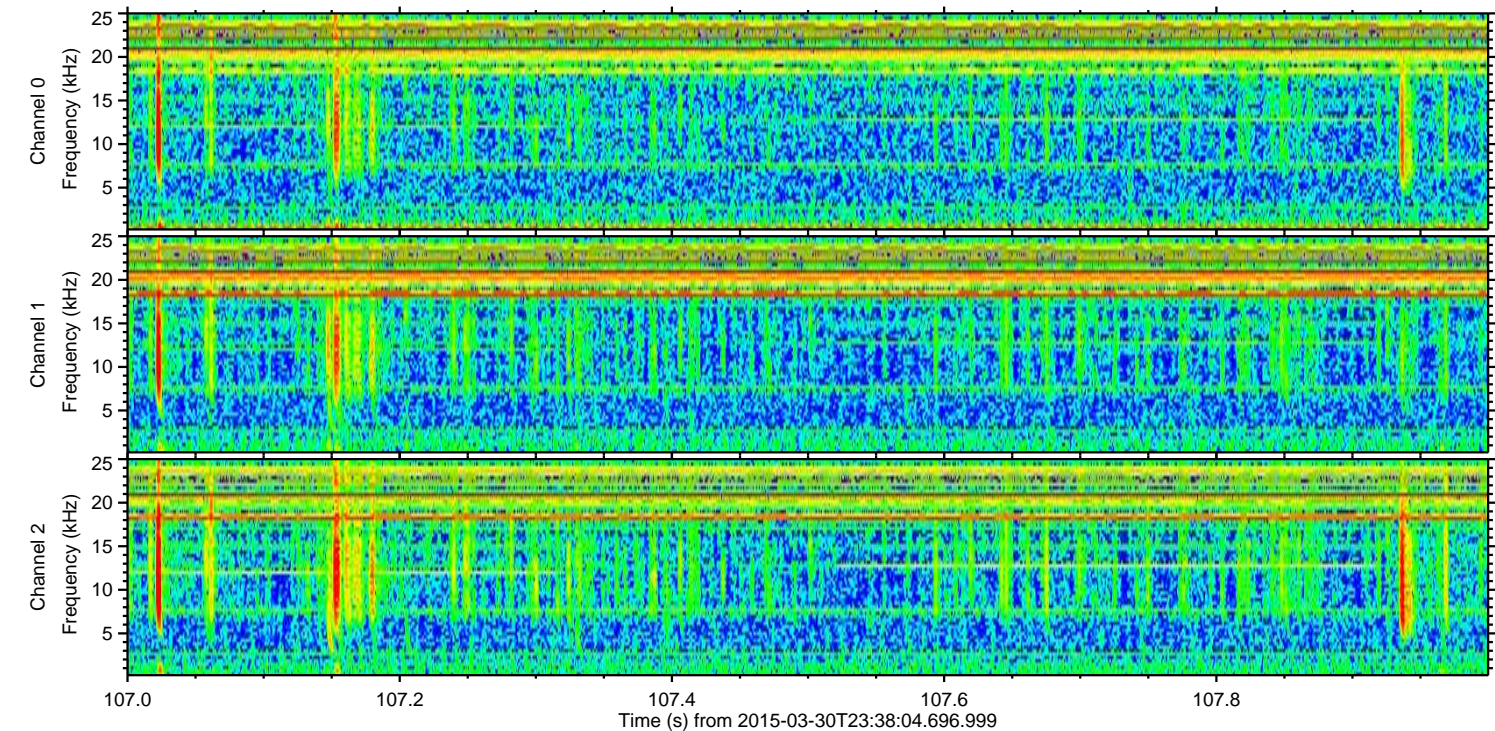
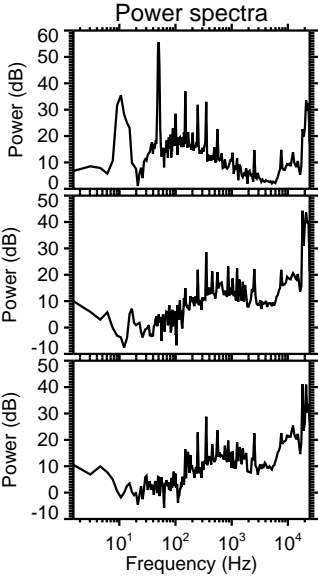
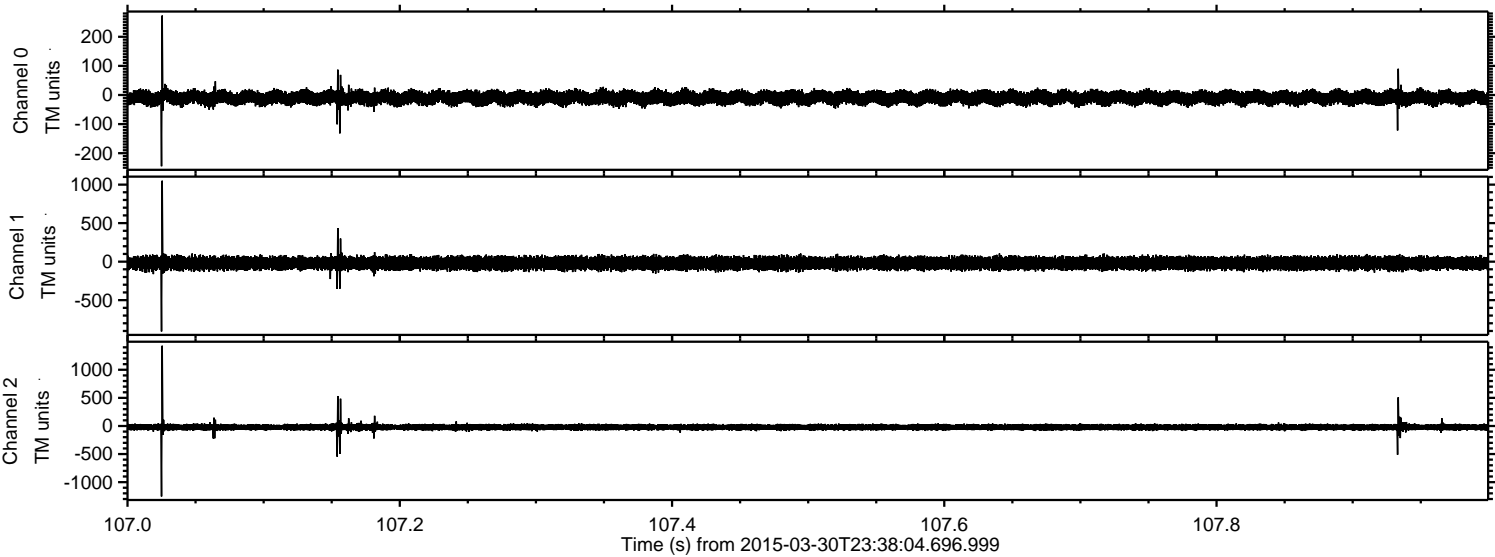
Channel 0  
mn: -481  
mx: 308  
 $\mu$ : -9.7  
 $\sigma$ : 12.7

Channel 1  
mn: -1716  
mx: 1404  
 $\mu$ : -21.0  
 $\sigma$ : 42.2

Channel 2  
mn: -768  
mx: 603  
 $\mu$ : -22.4  
 $\sigma$ : 23.5

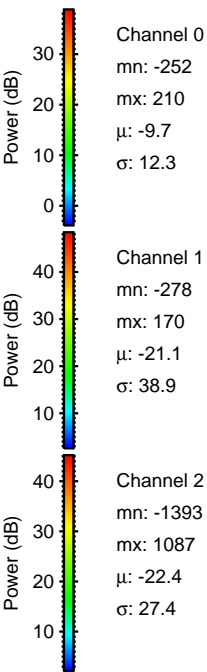
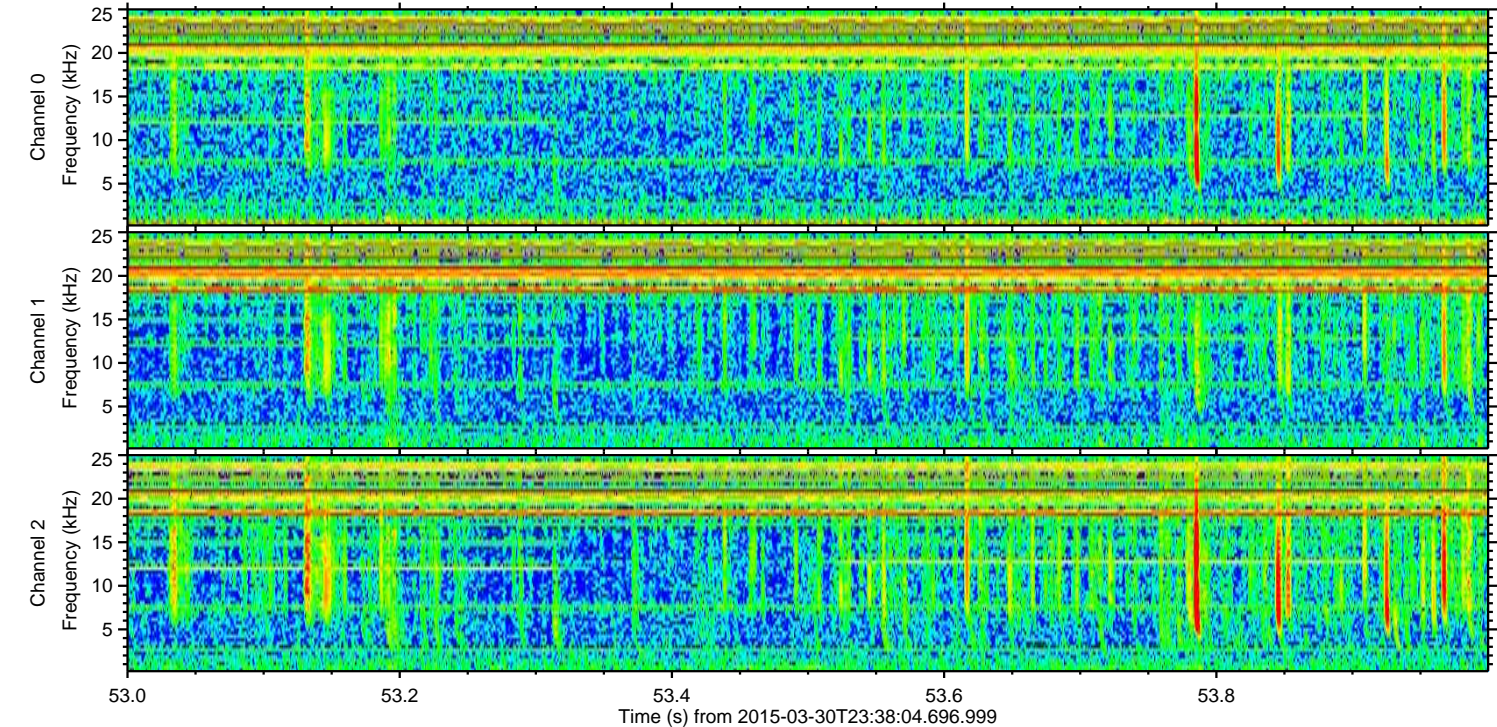
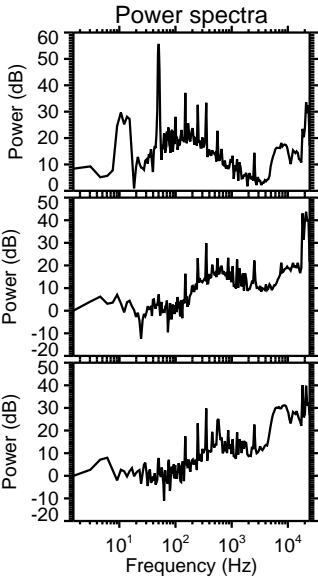
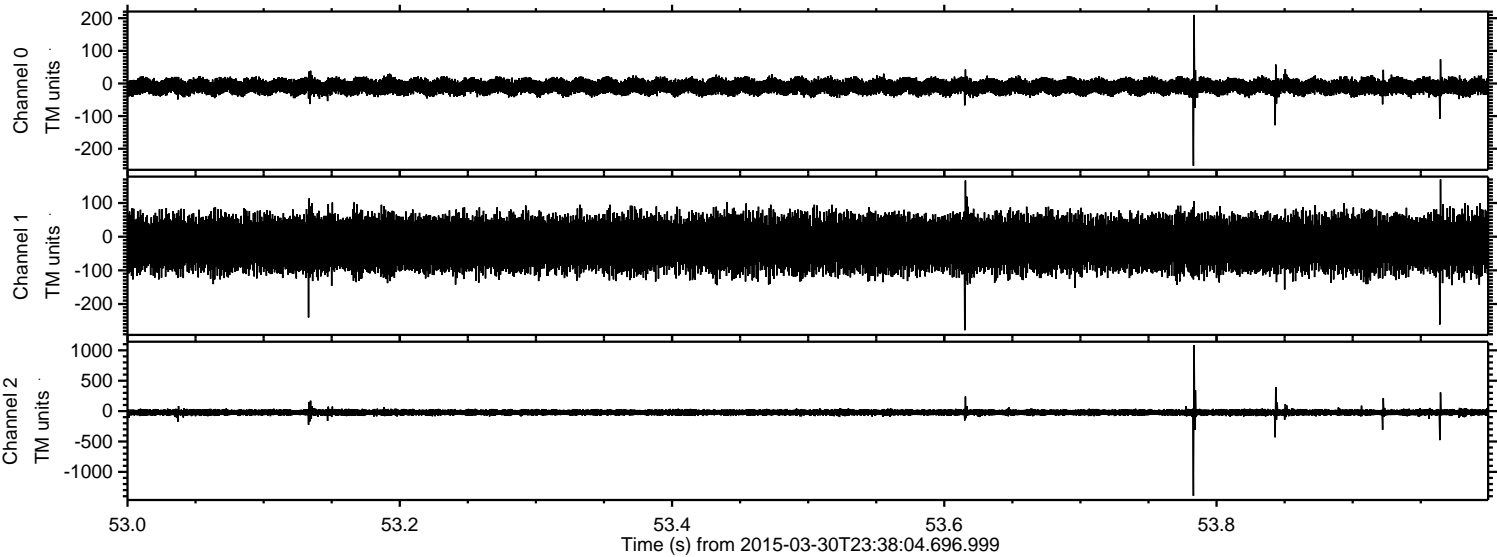
ELMAVAN 3D WAVEFORMS (Measured data sampled at 50 kHz) 49793 packets of 144 samples from 2015-03-30T23:38:04.696.999. Part 108/144

Processed Tue Mar 31 01:45:26 2015 by ELM ver.2012-10-06 from 001\_\_elm20150330\_233803\_\_dat00.bin

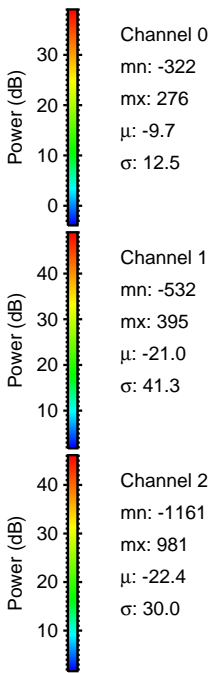
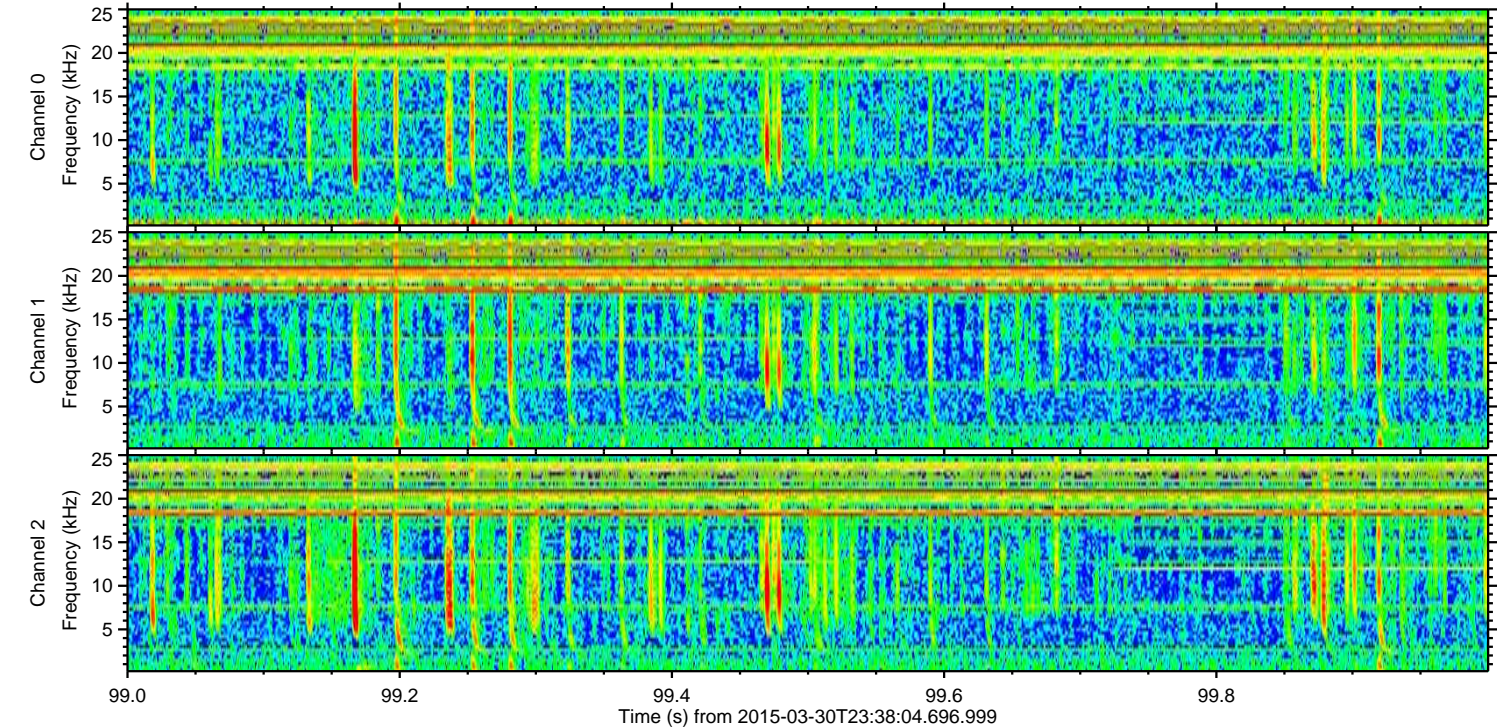
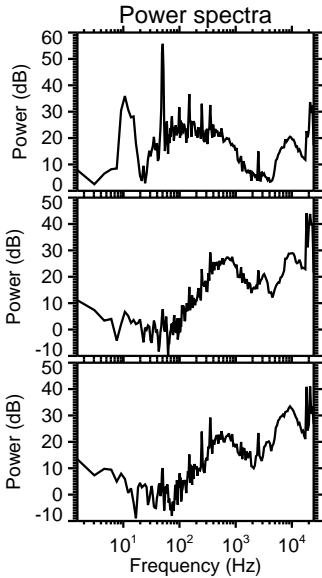
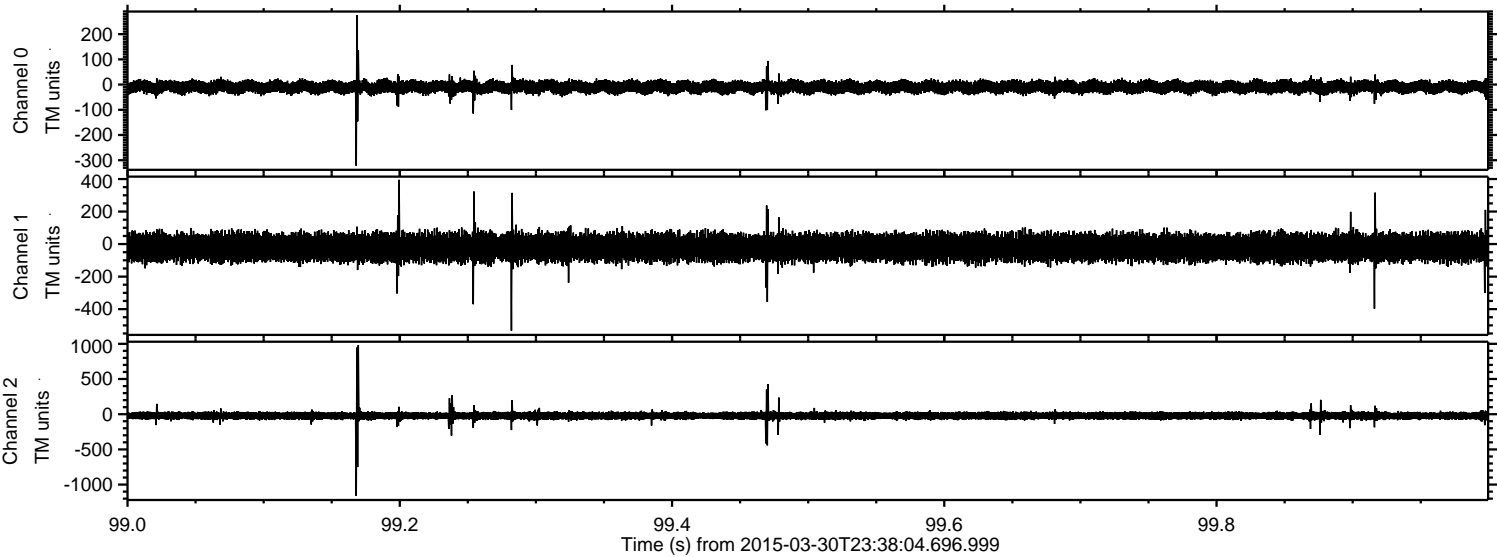


ELMAVAN 3D WAVEFORMS (Measured data sampled at 50 kHz) 49793 packets of 144 samples from 2015-03-30T23:38:04.696.999. Part 54/144

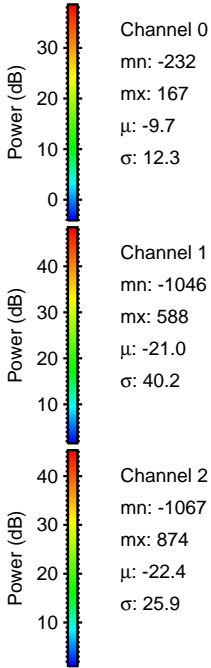
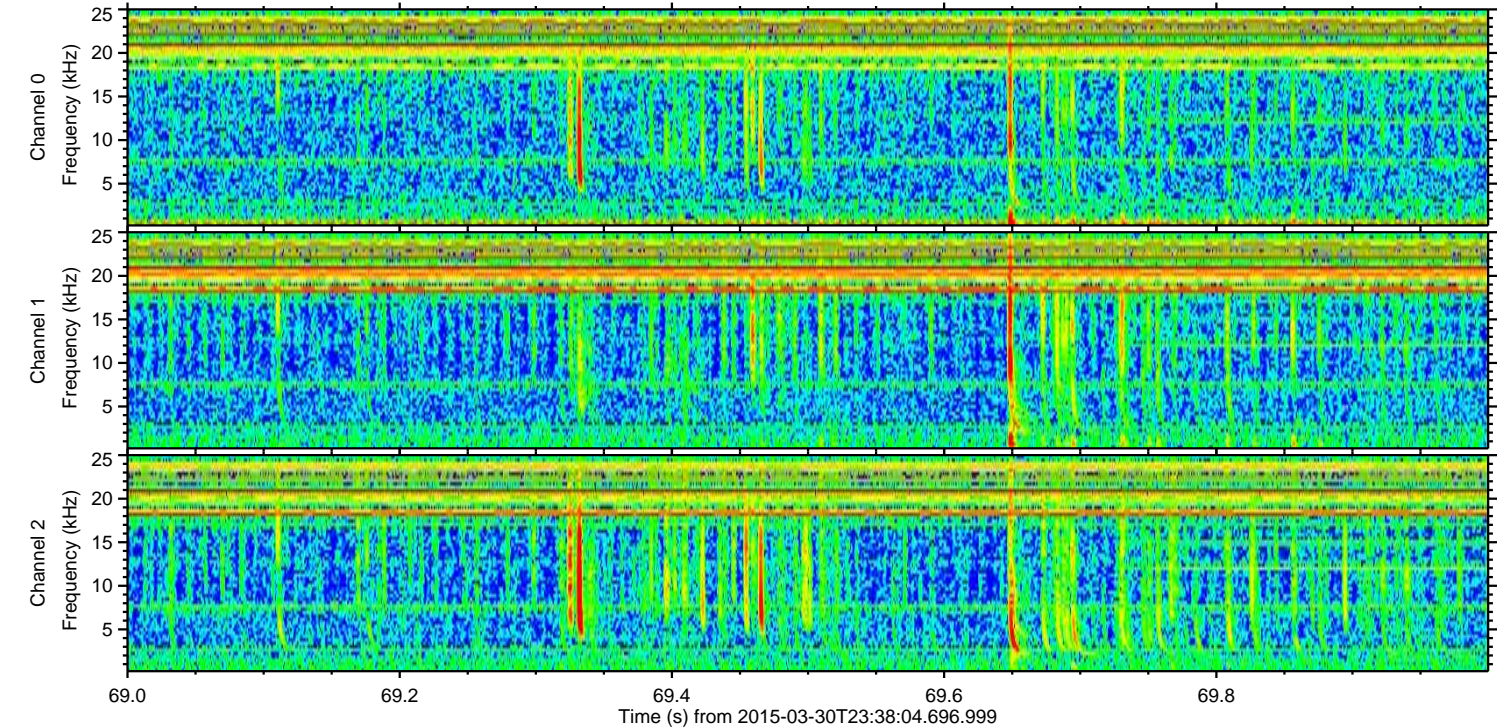
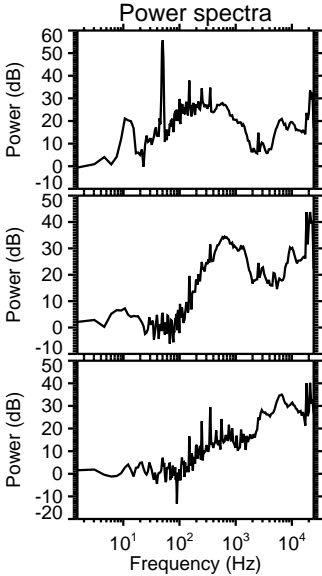
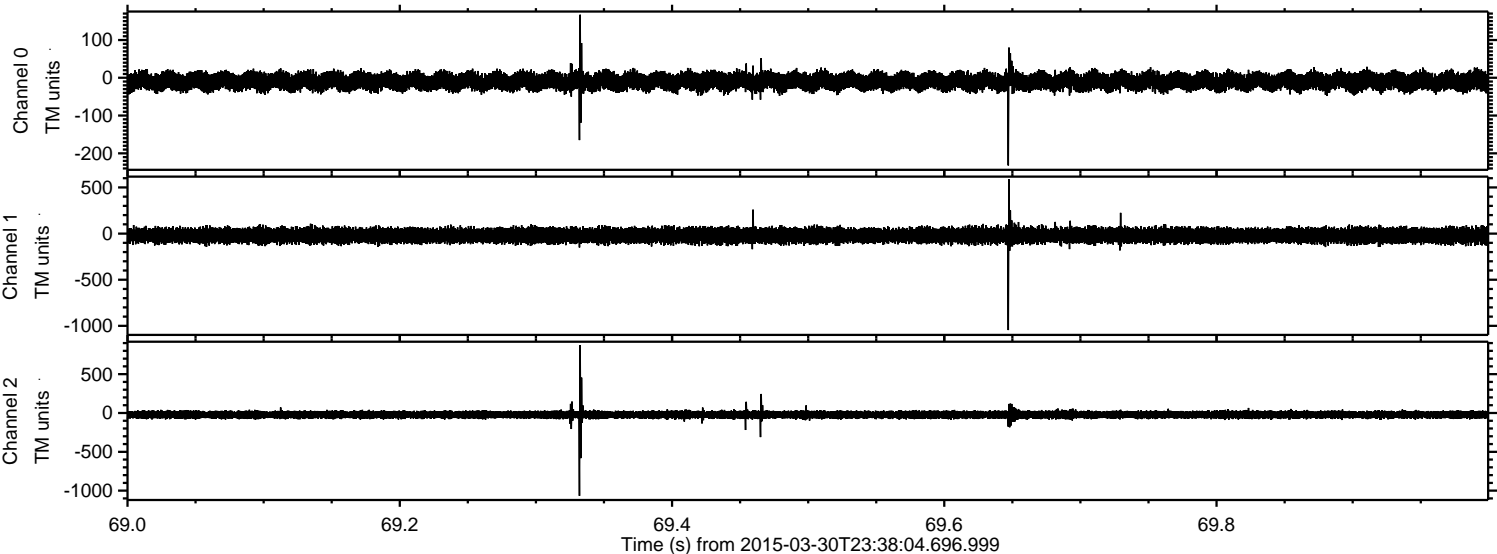
Processed Tue Mar 31 01:45:27 2015 by ELM ver.2012-10-06 from 001\_\_elm20150330\_233803\_\_dat00.bin



Processed Tue Mar 31 01:45:28 2015 by ELM ver.2012-10-06 from 001\_\_elm20150330\_233803\_\_dat00.bin



Processed Tue Mar 31 01:45:29 2015 by ELM ver.2012-10-06 from 001\_\_elm20150330\_233803\_\_dat00.bin



Processed Tue Mar 31 01:45:30 2015 by ELM ver.2012-10-06 from 001\_\_elm20150330\_233803\_\_dat00.bin

