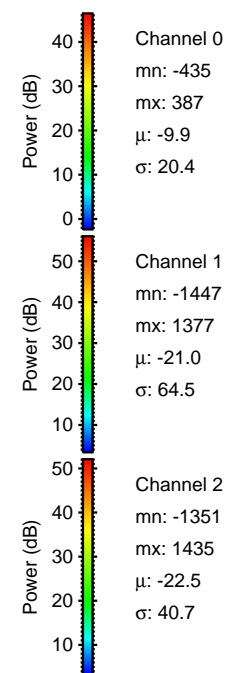
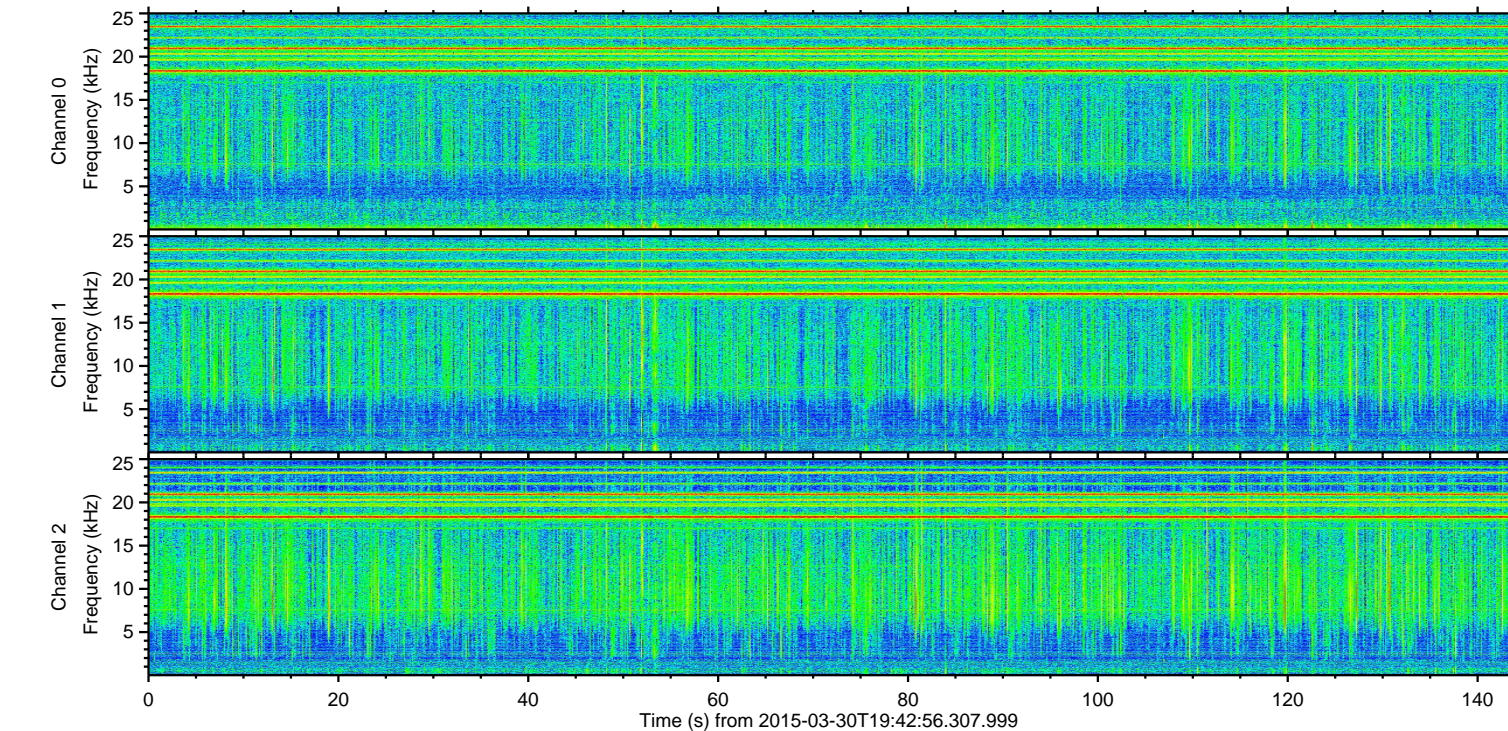
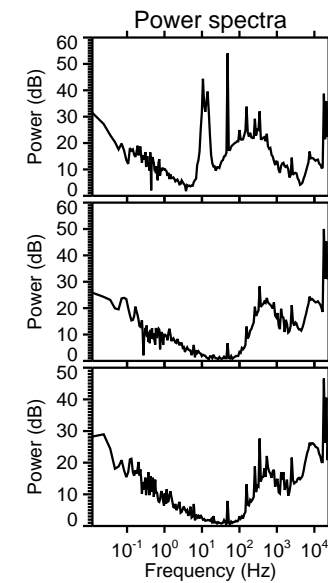
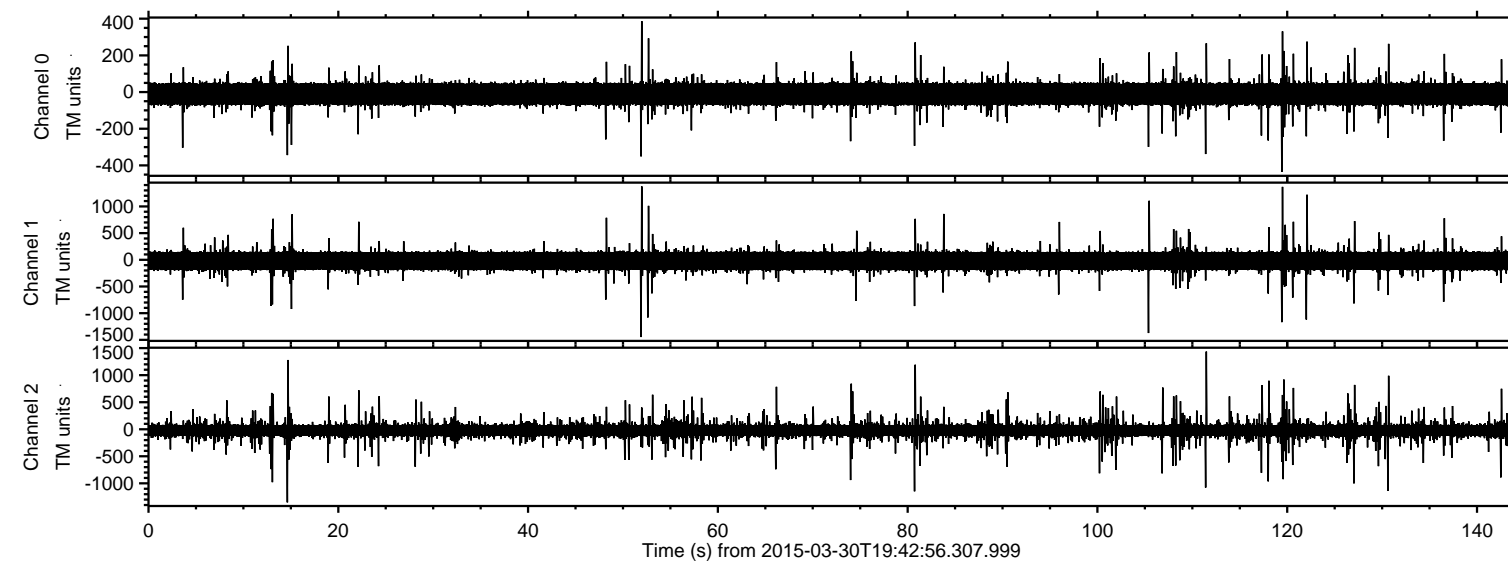
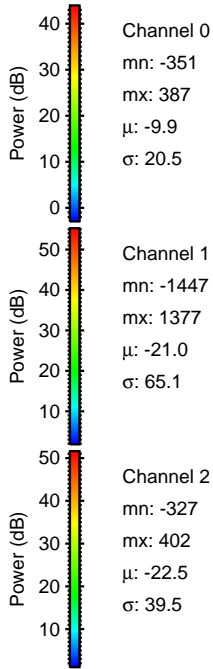
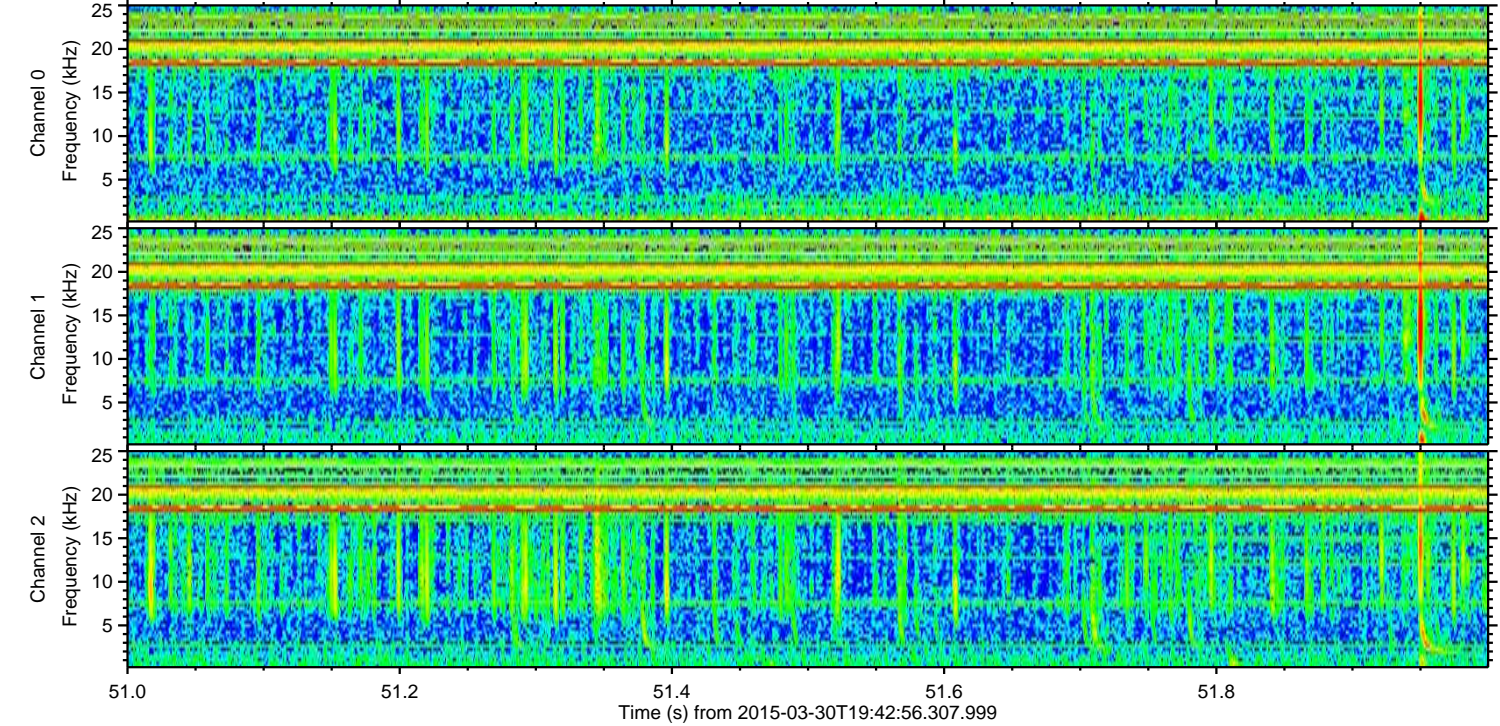
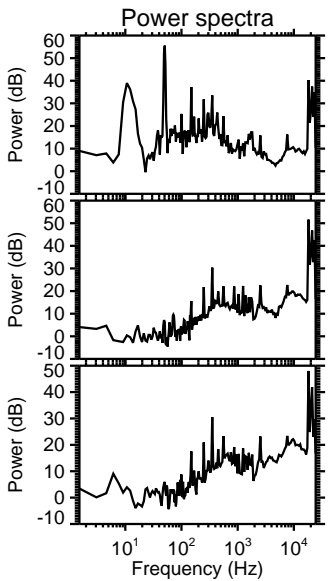
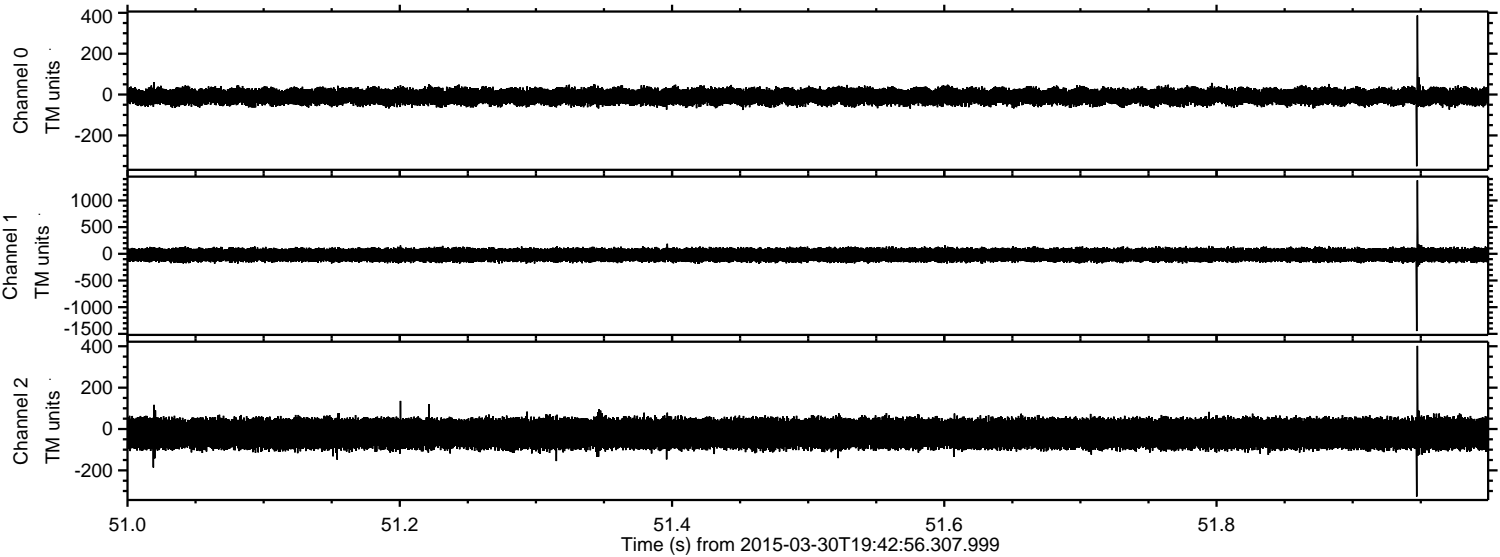


ELMAVAN 3D WAVEFORMS (Measured data sampled at 50 kHz) 49787 packets of 144 samples from 2015-03-30T19:42:56.307.999.

Processed Mon Mar 30 21:50:12 2015 by ELM ver.2012-10-06 from 001__elm20150330_194255__dat00.bin



Processed Mon Mar 30 21:50:24 2015 by ELM ver.2012-10-06 from 001__elm20150330_194255__dat00.bin



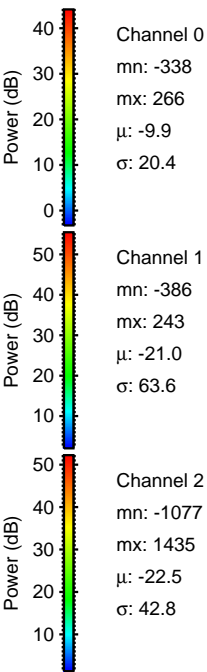
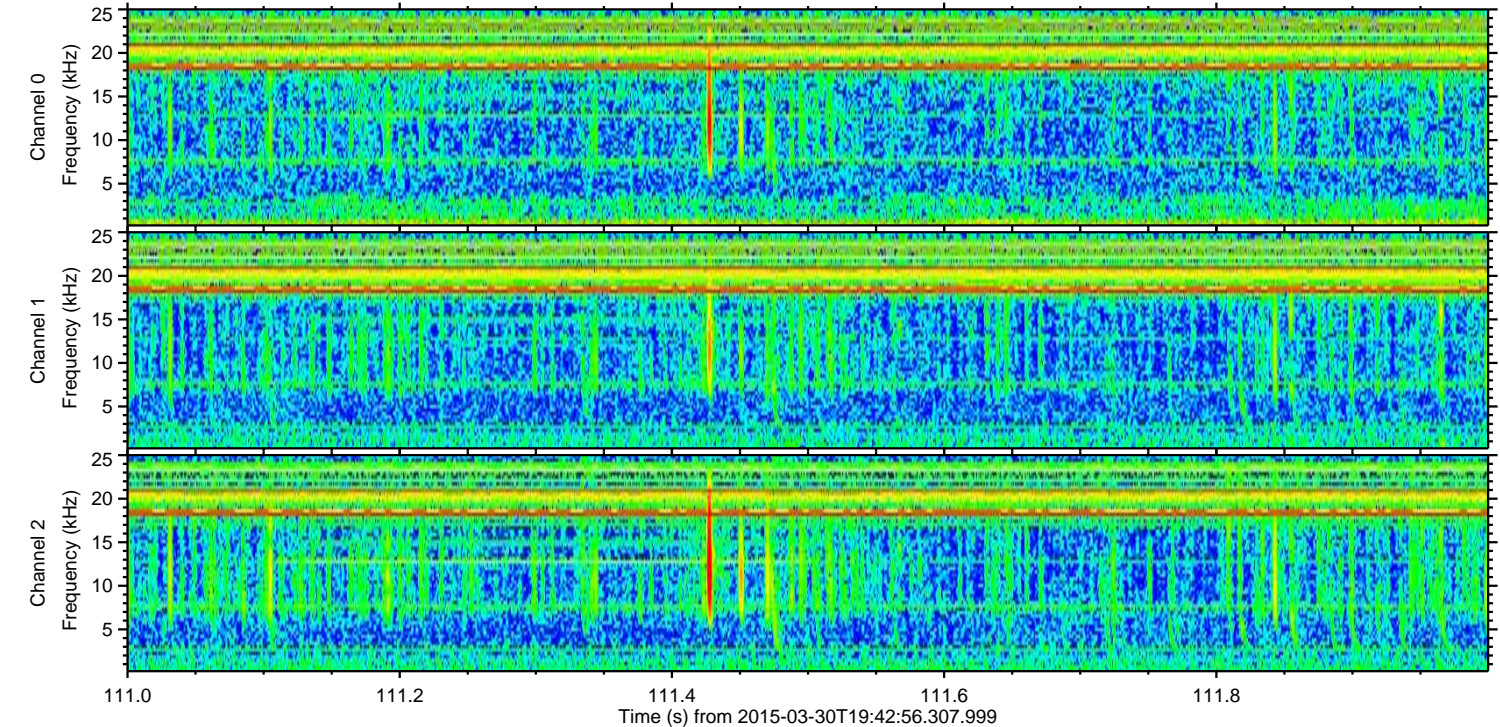
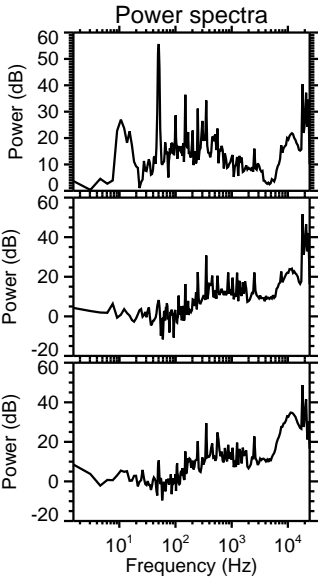
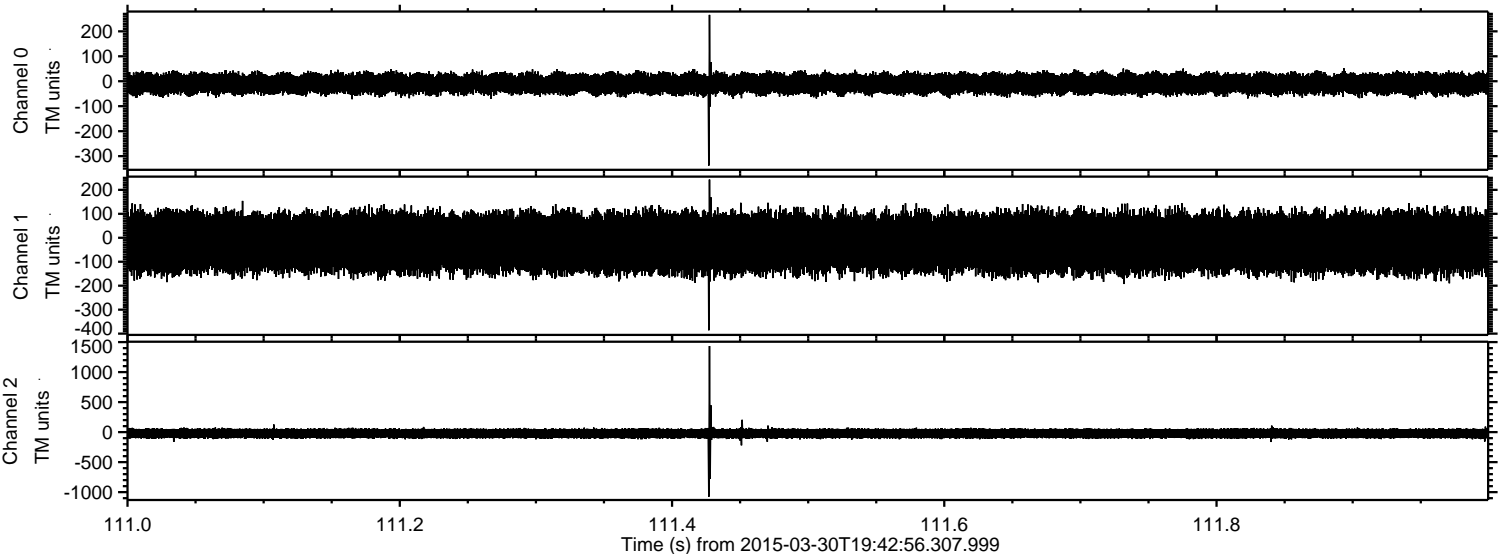
Channel 0
mn: -351
mx: 387
 μ : -9.9
 σ : 20.5

Channel 1
mn: -1447
mx: 1377
 μ : -21.0
 σ : 65.1

Channel 2
mn: -327
mx: 402
 μ : -22.5
 σ : 39.5

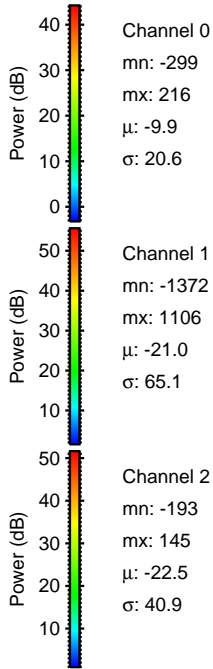
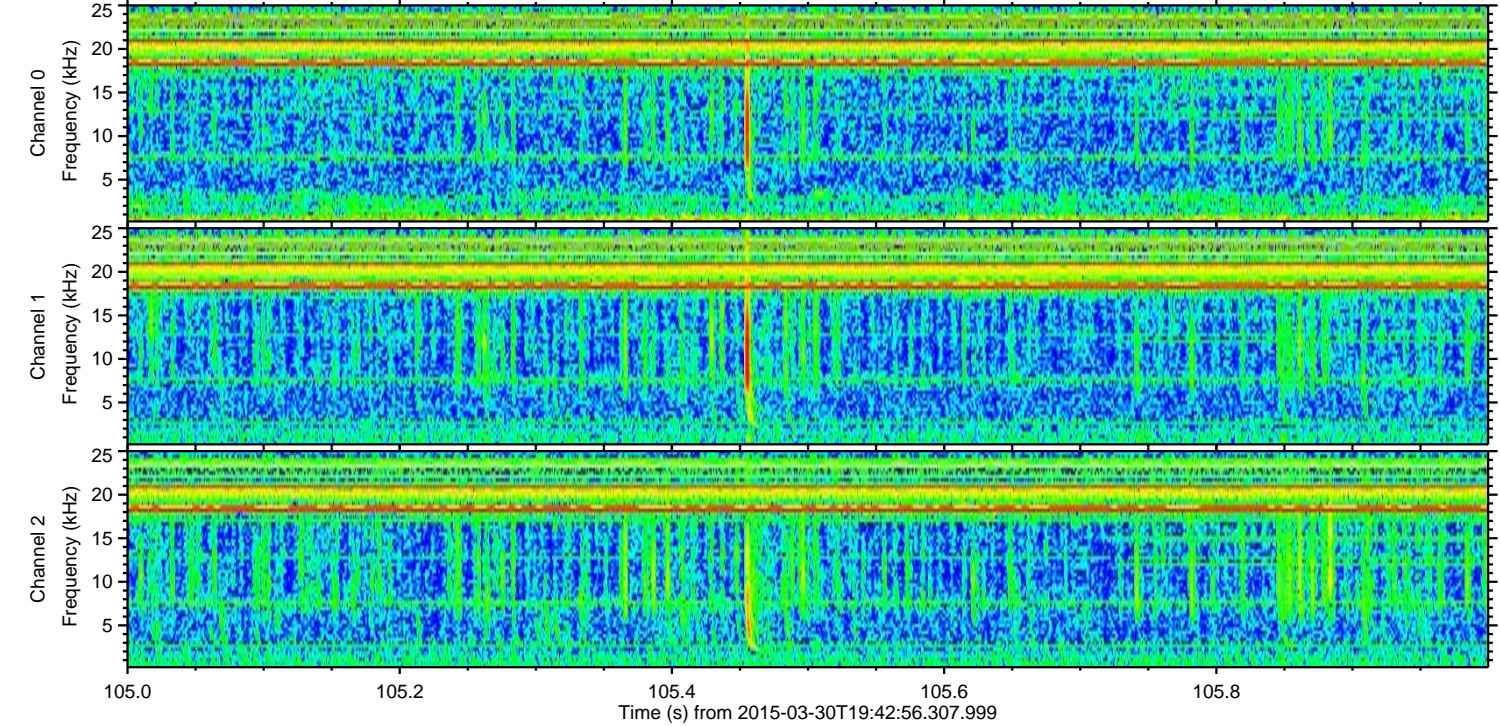
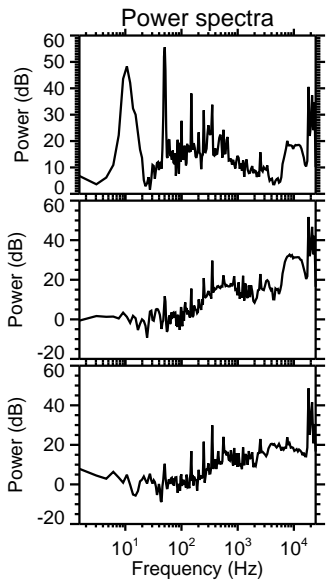
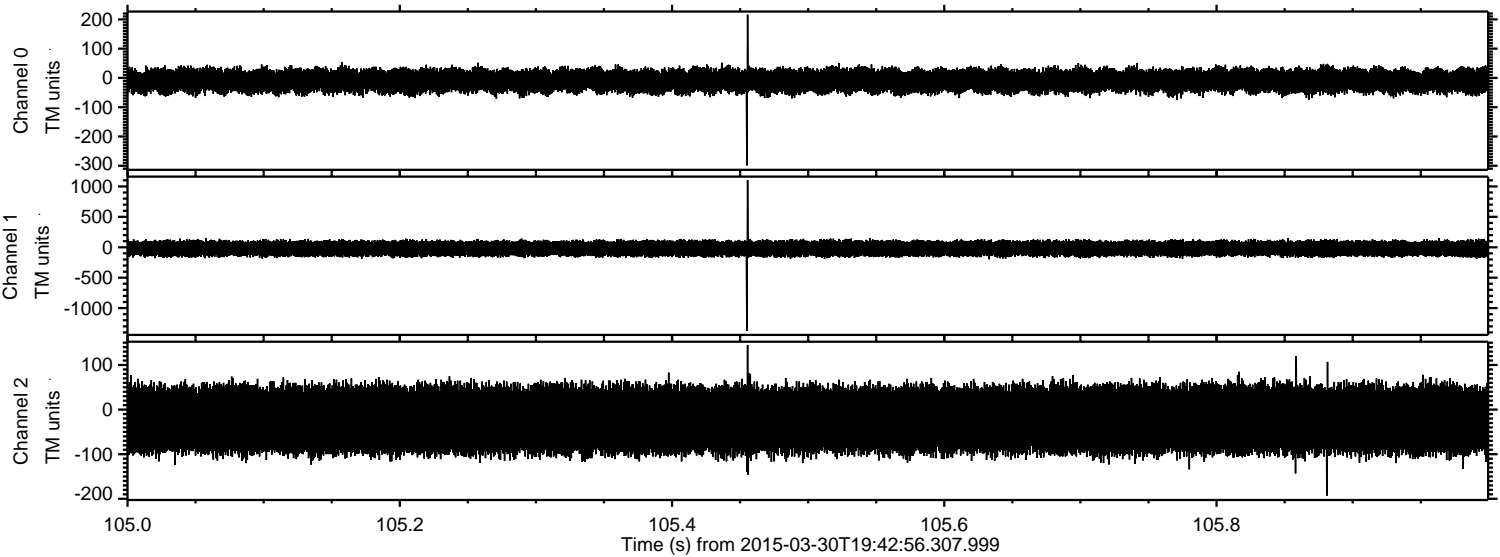
ELMAVAN 3D WAVEFORMS (Measured data sampled at 50 kHz) 49787 packets of 144 samples from 2015-03-30T19:42:56.307.999. Part 112/144

Processed Mon Mar 30 21:50:25 2015 by ELM ver.2012-10-06 from 001__elm20150330_194255__dat00.bin



ELMAVAN 3D WAVEFORMS (Measured data sampled at 50 kHz) 49787 packets of 144 samples from 2015-03-30T19:42:56.307.999. Part 106/144

Processed Mon Mar 30 21:50:26 2015 by ELM ver.2012-10-06 from 001__elm20150330_194255__dat00.bin

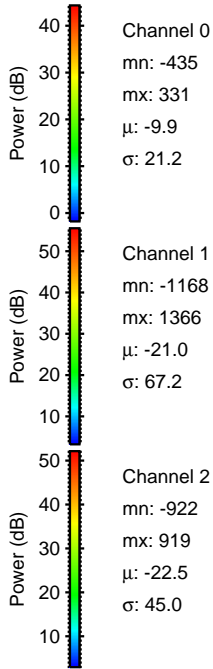
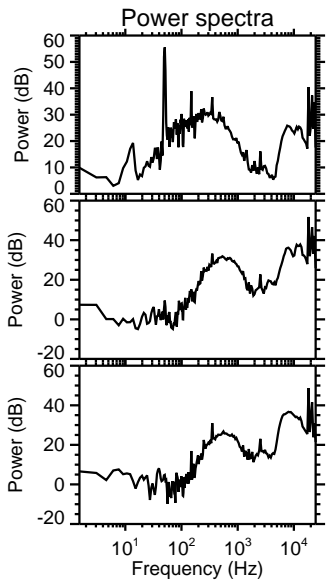
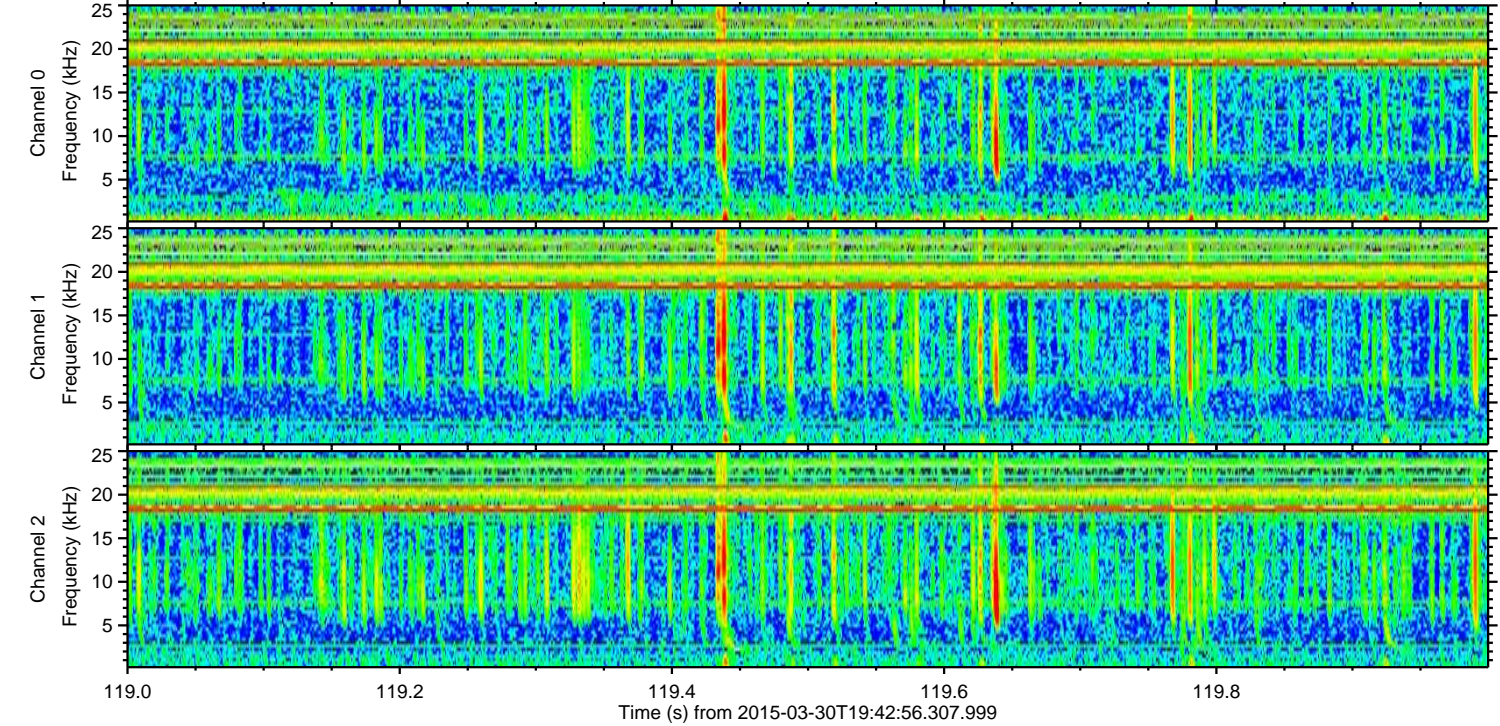
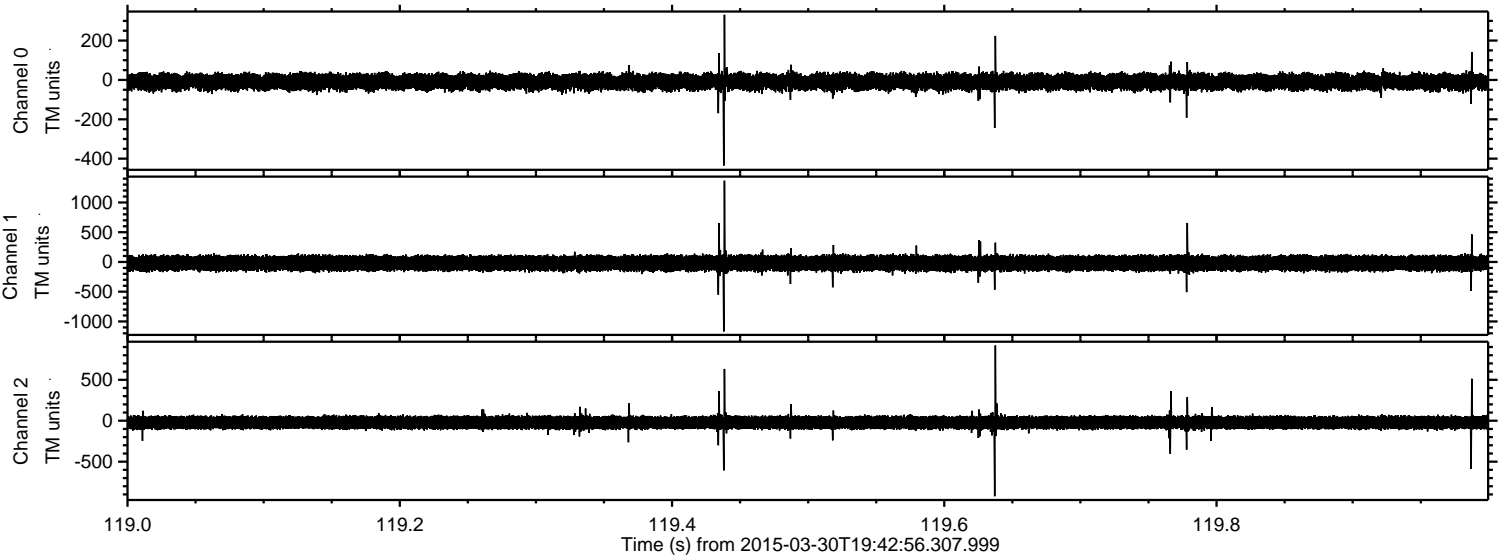


Channel 0
mn: -299
mx: 216
 μ : -9.9
 σ : 20.6

Channel 1
mn: -1372
mx: 1106
 μ : -21.0
 σ : 65.1

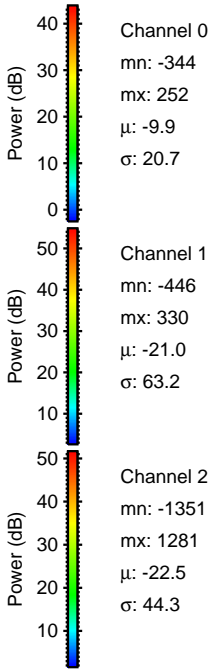
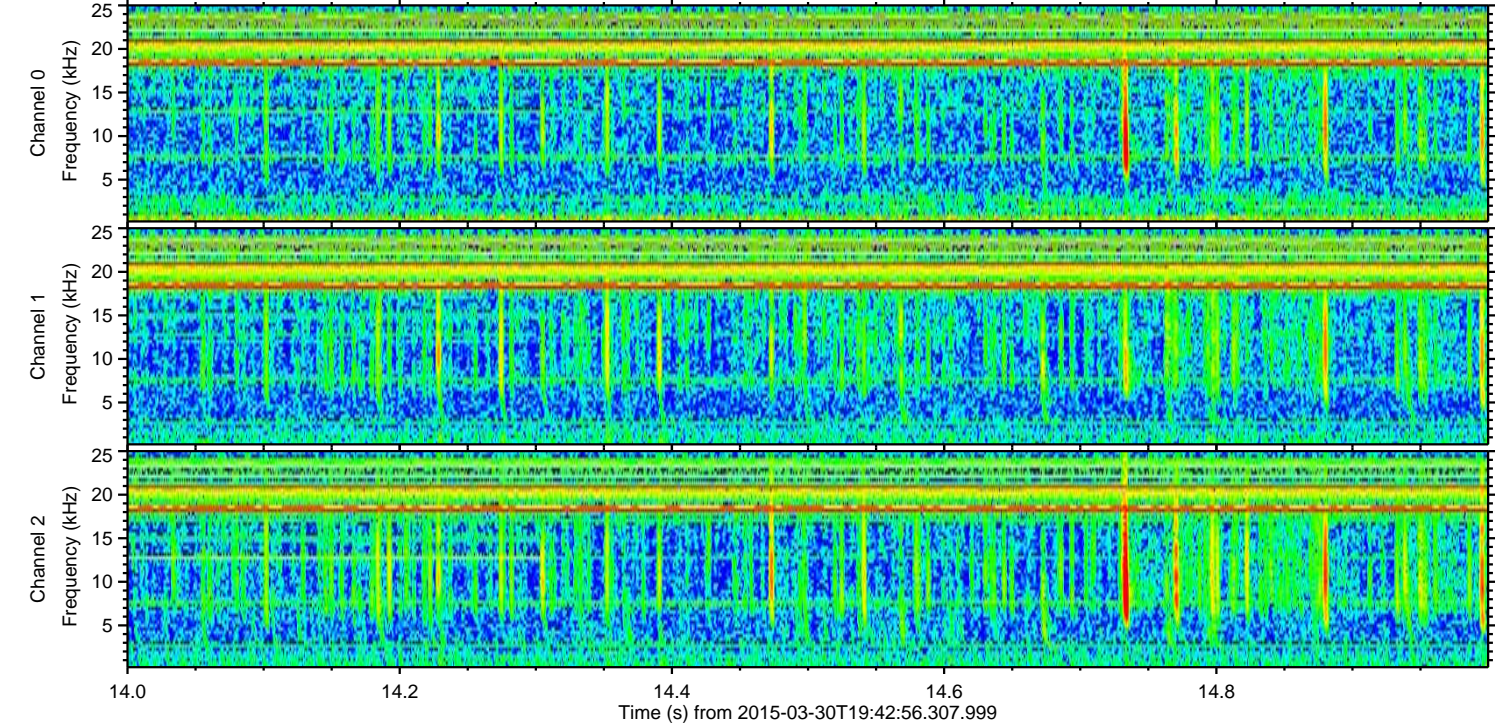
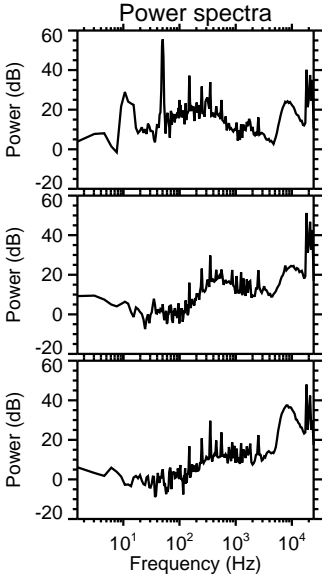
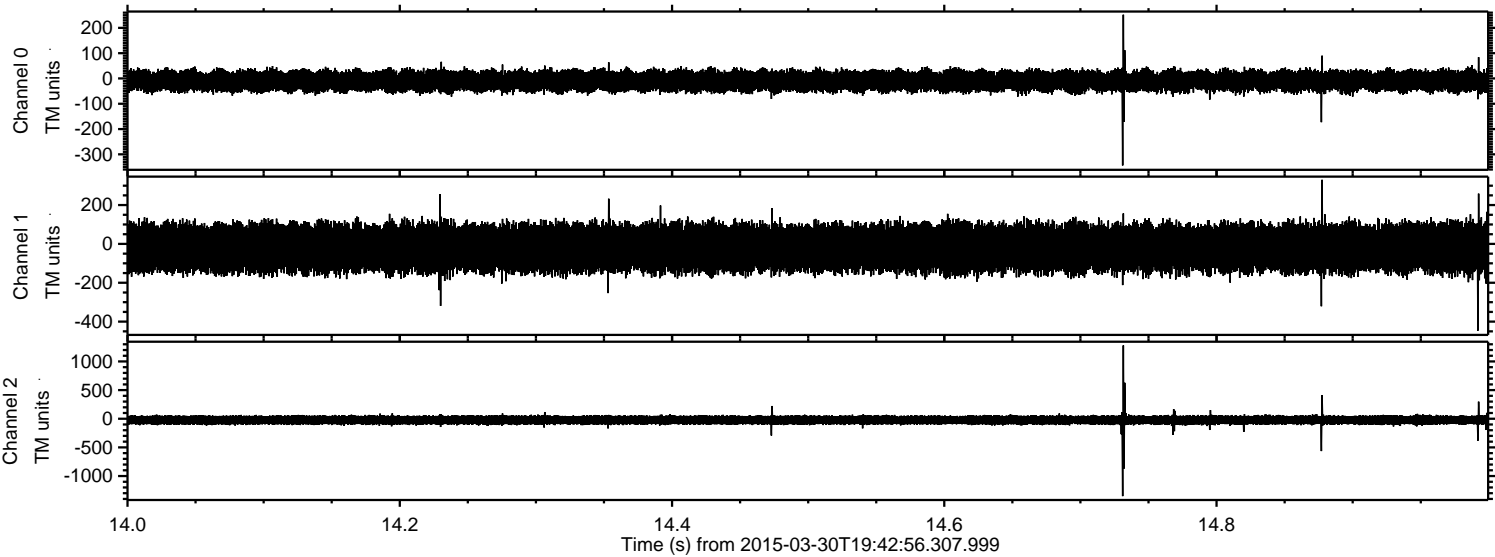
Channel 2
mn: -193
mx: 145
 μ : -22.5
 σ : 40.9

Processed Mon Mar 30 21:50:27 2015 by ELM ver.2012-10-06 from 001__elm20150330_194255__dat00.bin



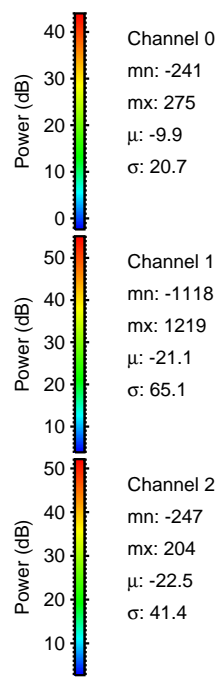
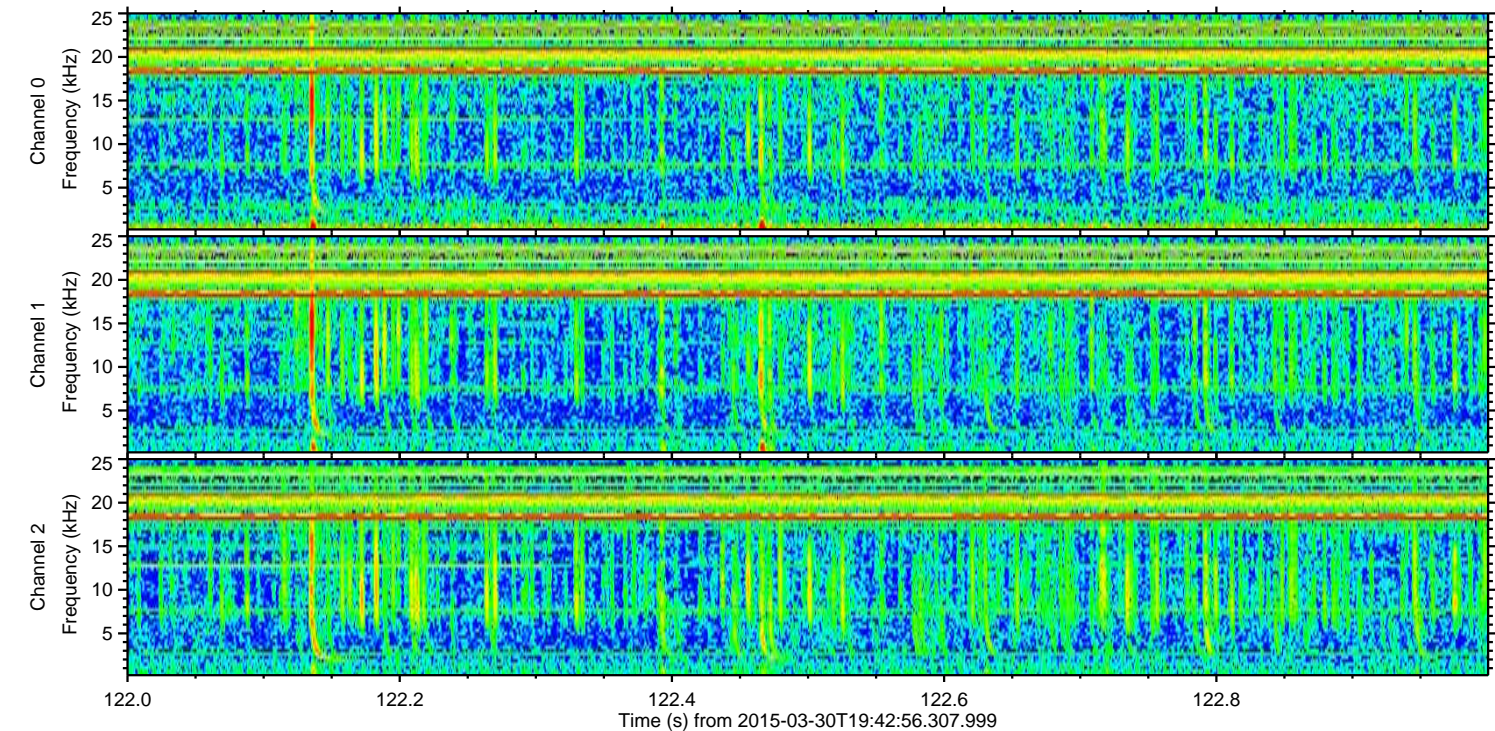
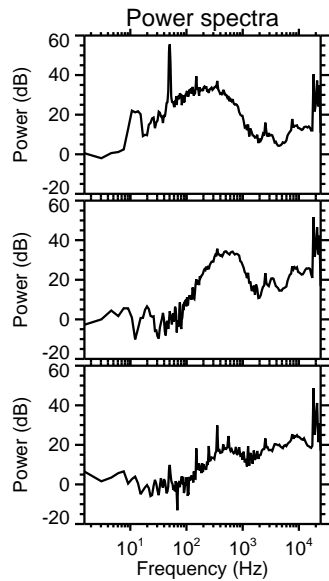
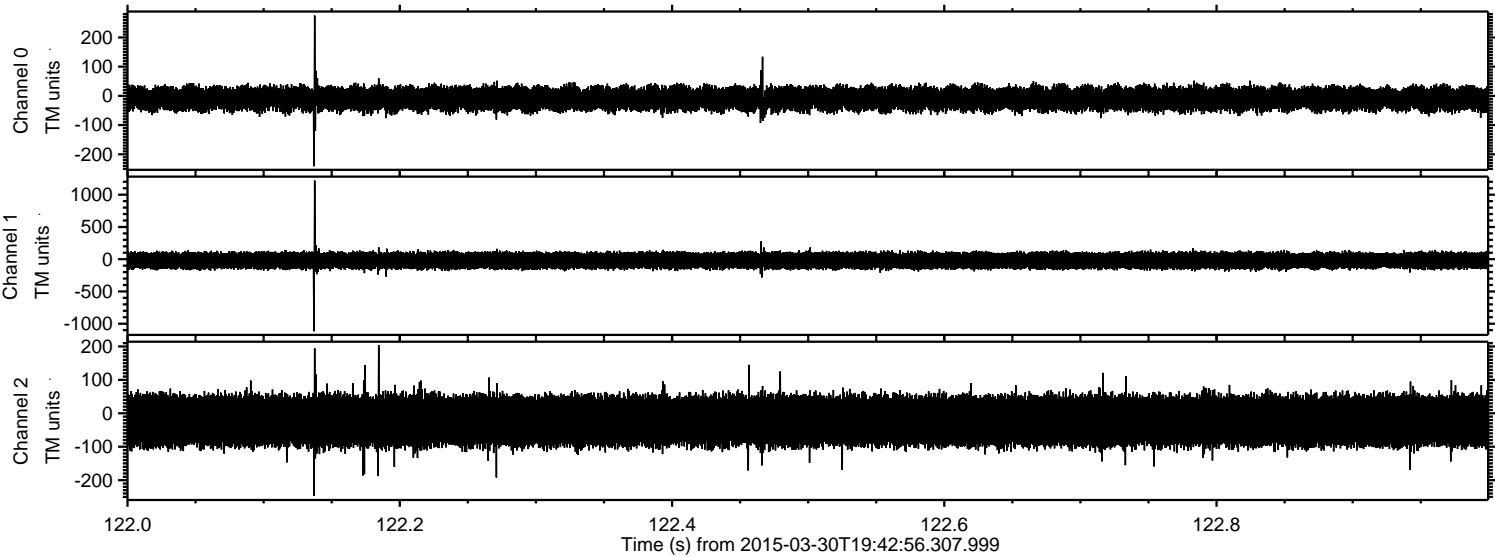
ELMAVAN 3D WAVEFORMS (Measured data sampled at 50 kHz) 49787 packets of 144 samples from 2015-03-30T19:42:56.307.999. Part 15/144

Processed Mon Mar 30 21:50:27 2015 by ELM ver.2012-10-06 from 001__elm20150330_194255__dat00.bin

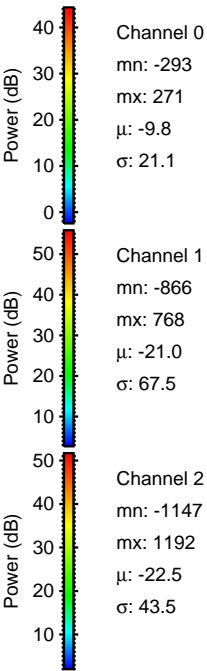
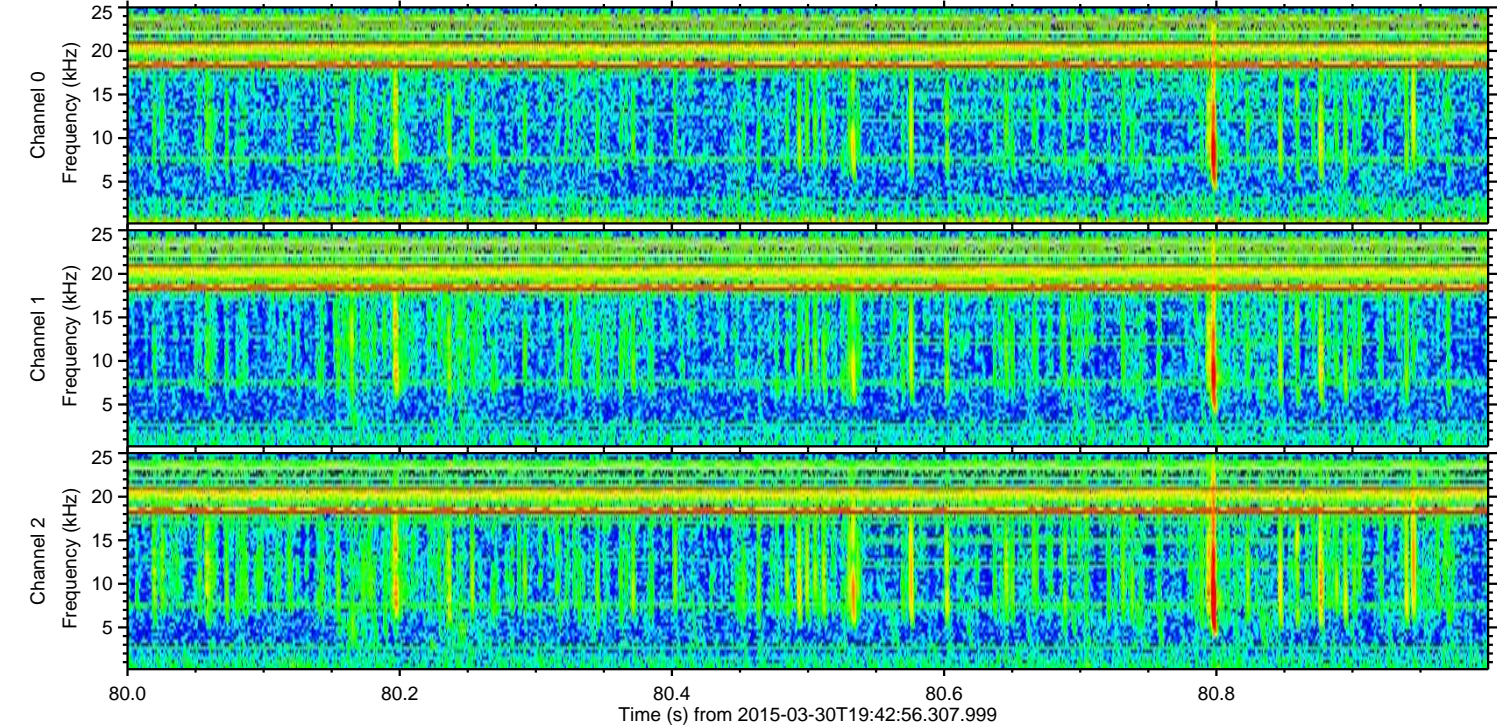
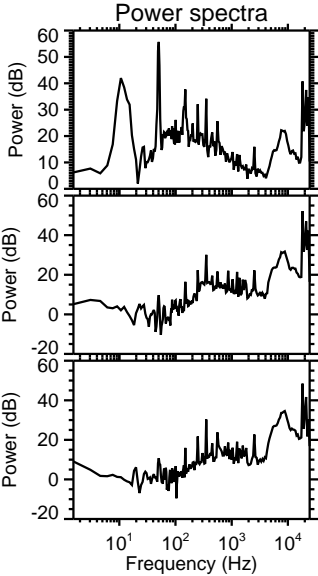
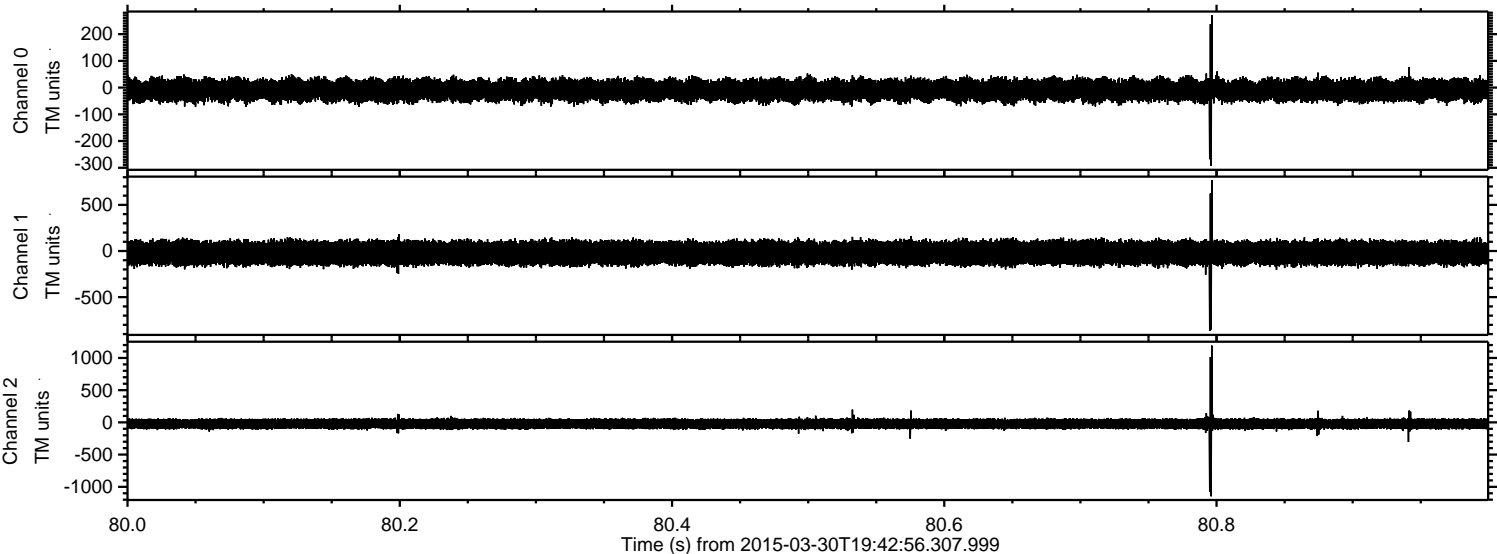


ELMAVAN 3D WAVEFORMS (Measured data sampled at 50 kHz) 49787 packets of 144 samples from 2015-03-30T19:42:56.307.999. Part 123/144

Processed Mon Mar 30 21:50:28 2015 by ELM ver.2012-10-06 from 001__elm20150330_194255__dat00.bin

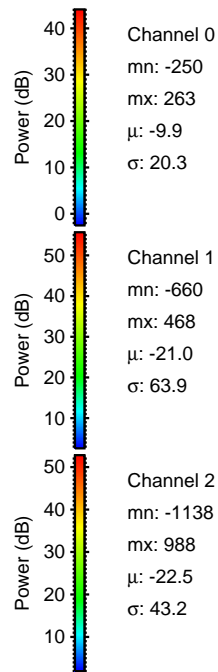
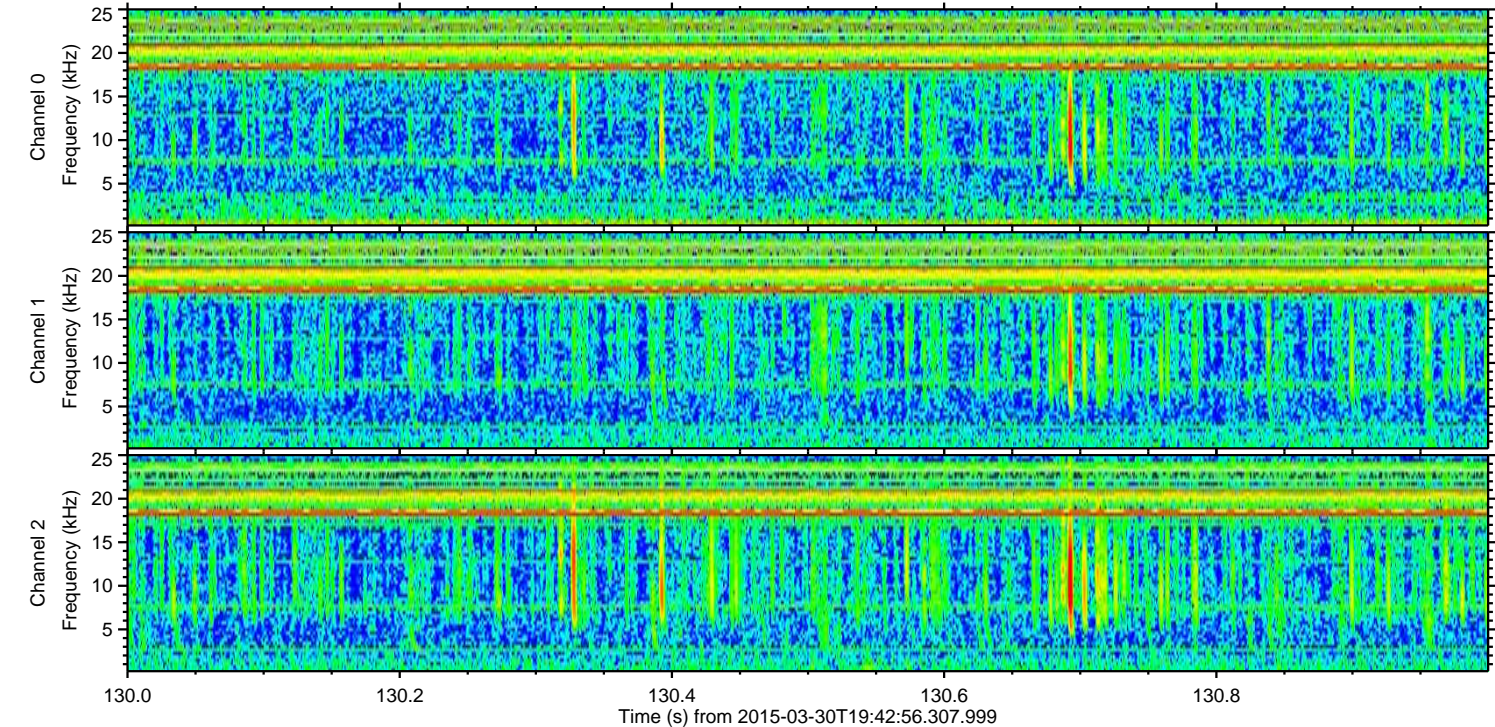
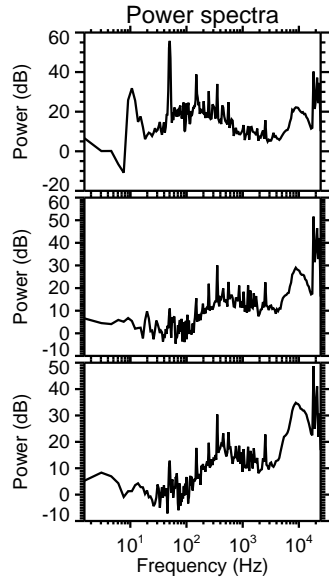
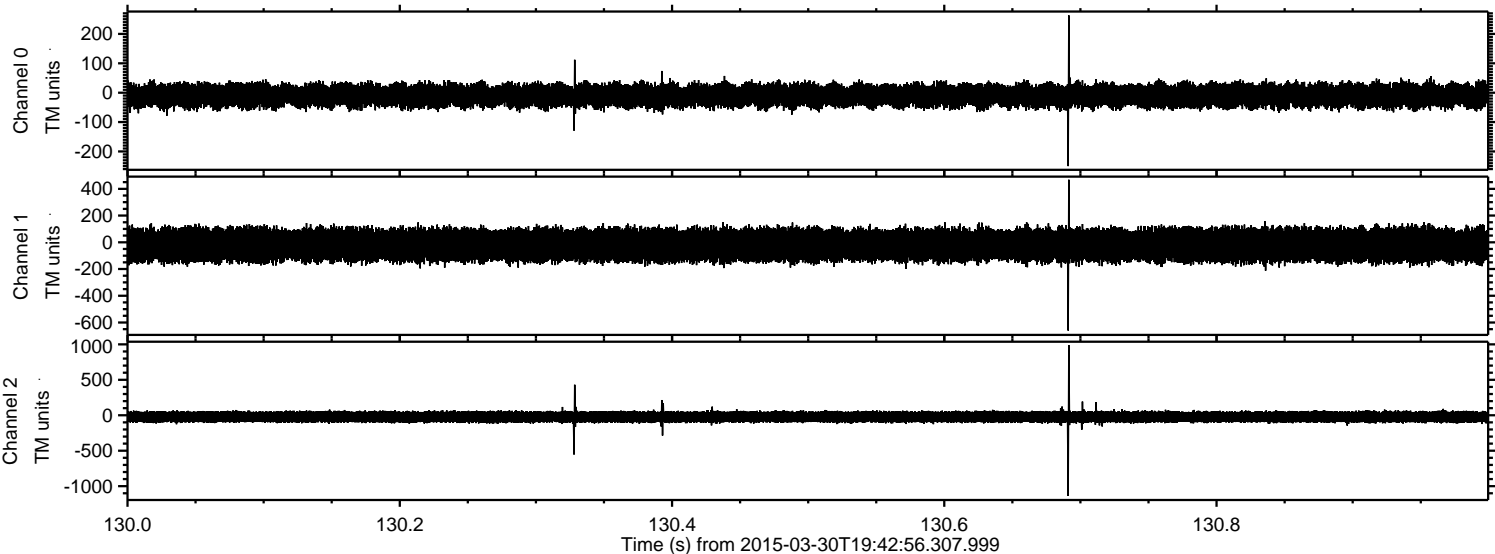


Processed Mon Mar 30 21:50:29 2015 by ELM ver.2012-10-06 from 001__elm20150330_194255__dat00.bin



ELMAVAN 3D WAVEFORMS (Measured data sampled at 50 kHz) 49787 packets of 144 samples from 2015-03-30T19:42:56.307.999. Part 131/144

Processed Mon Mar 30 21:50:30 2015 by ELM ver.2012-10-06 from 001__elm20150330_194255__dat00.bin



Power spectra

Channel 0

mn: -250
mx: 263
 μ : -9.9
 σ : 20.3

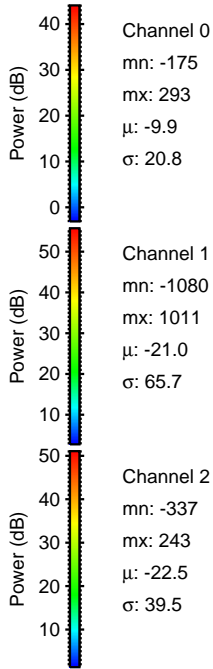
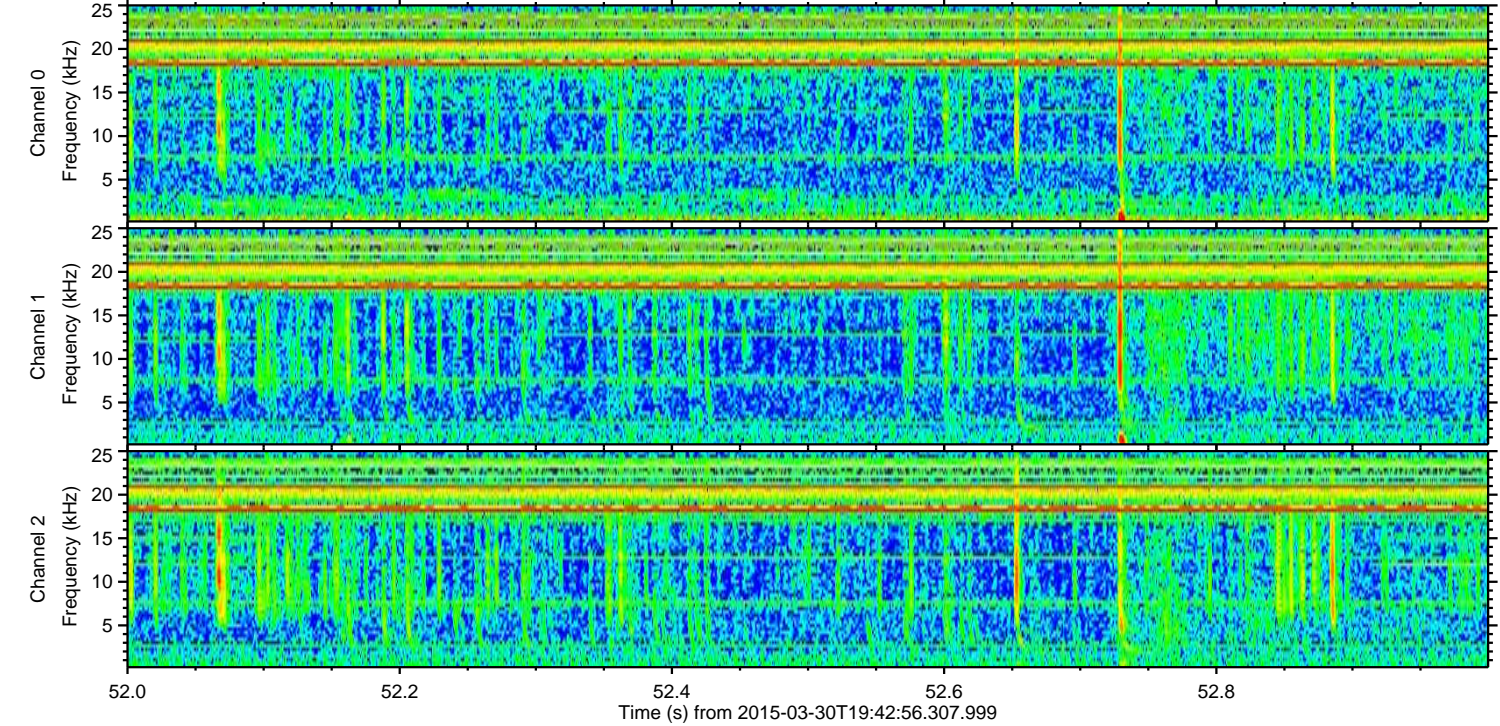
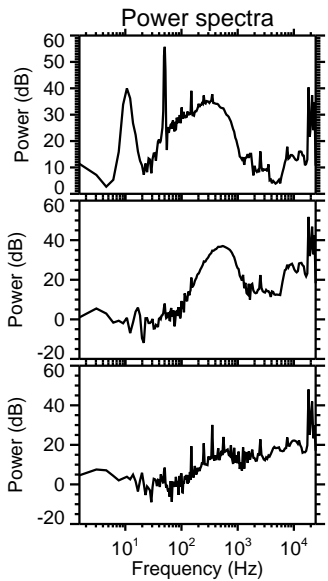
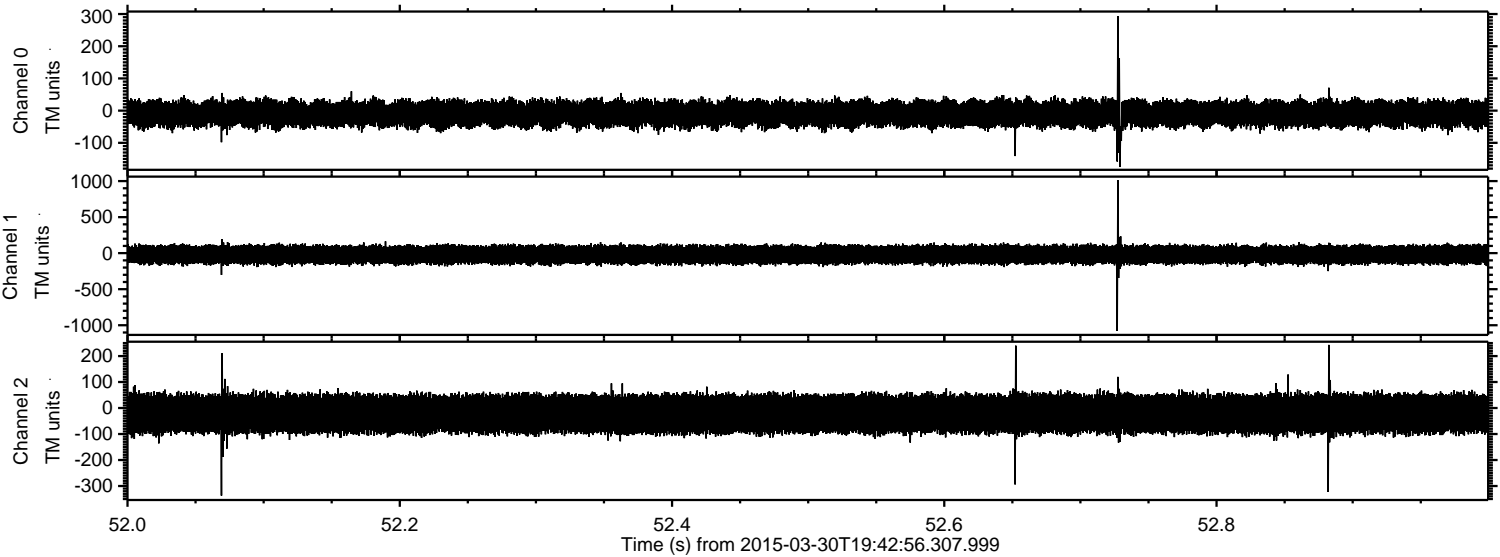
Channel 1

mn: -660
mx: 468
 μ : -21.0
 σ : 63.9

Channel 2

mn: -1138
mx: 988
 μ : -22.5
 σ : 43.2

Processed Mon Mar 30 21:50:31 2015 by ELM ver.2012-10-06 from 001__elm20150330_194255__dat00.bin



ELMAVAN 3D WAVEFORMS (Measured data sampled at 50 kHz) 49787 packets of 144 samples from 2015-03-30T19:42:56.307.999. Part 43/144

Processed Mon Mar 30 21:50:32 2015 by ELM ver.2012-10-06 from 001__elm20150330_194255__dat00.bin

