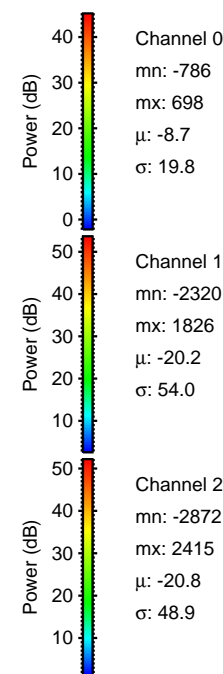
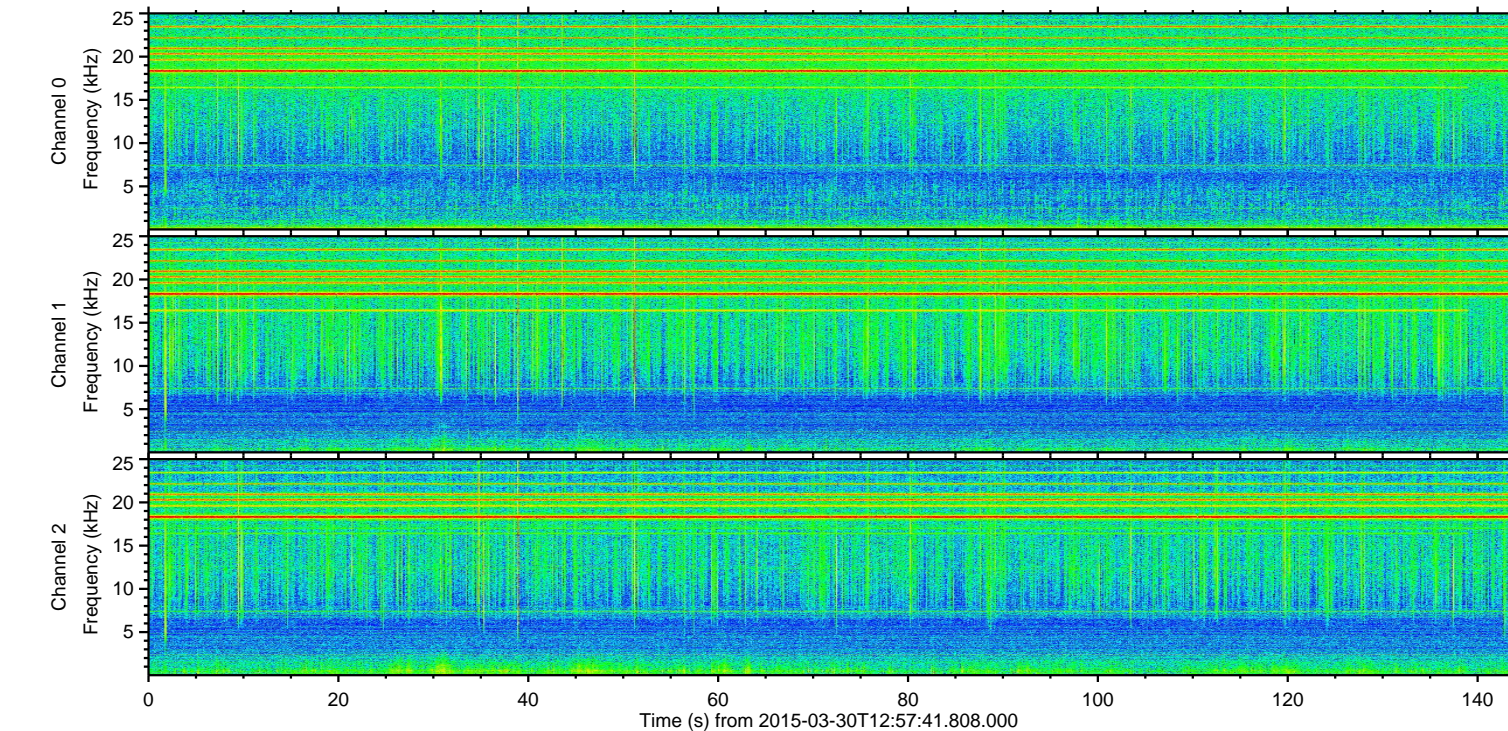
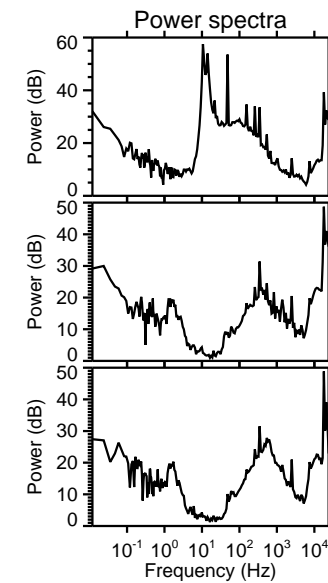
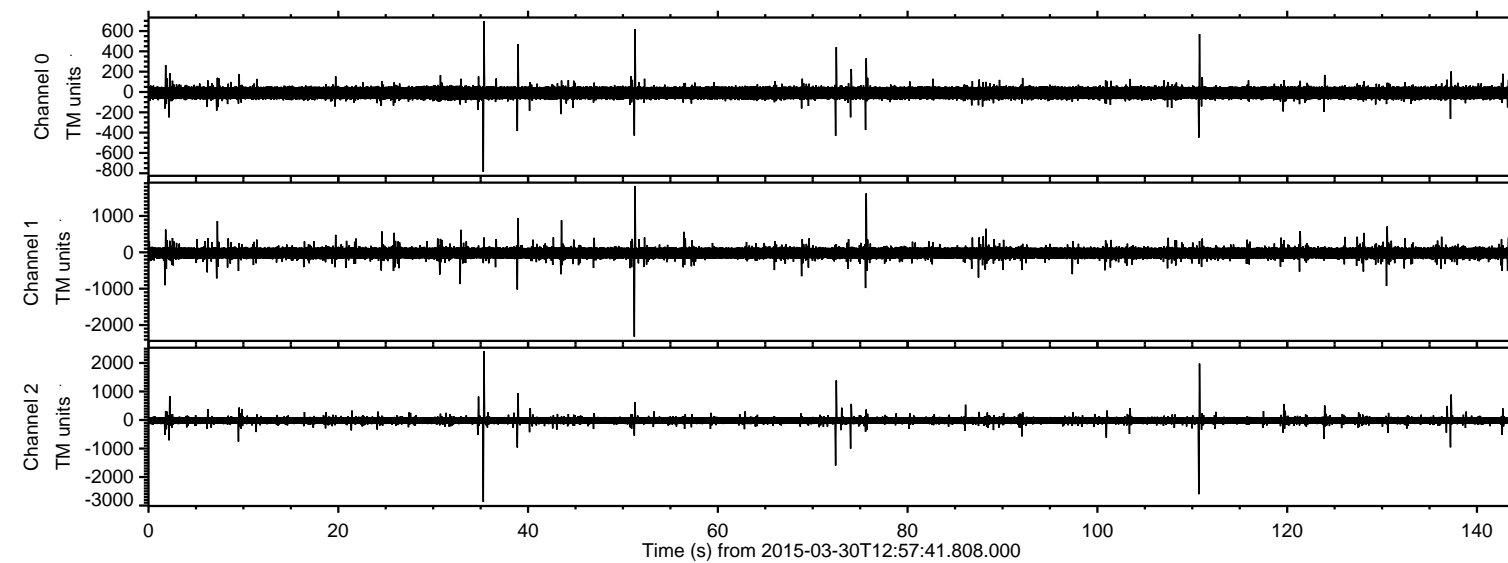
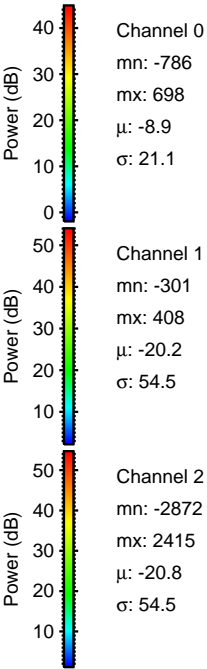
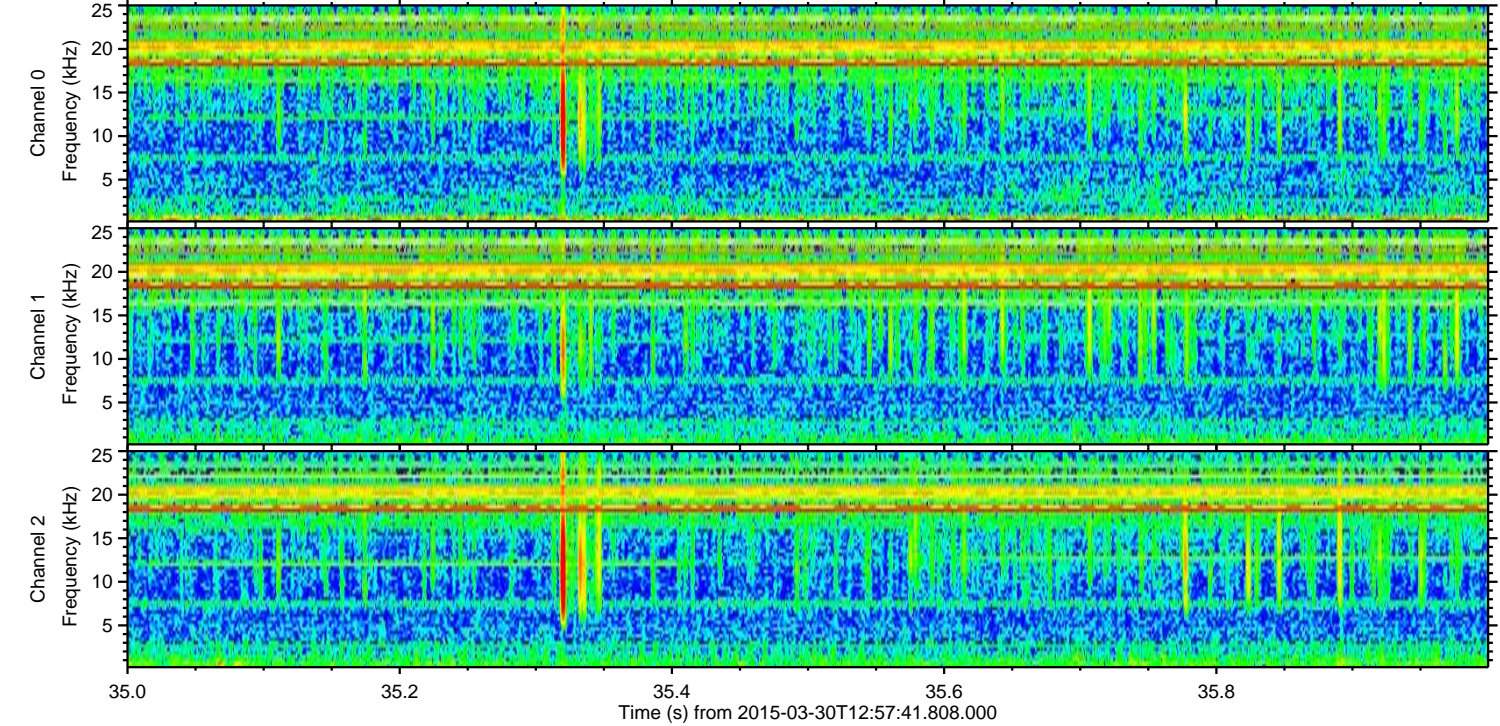
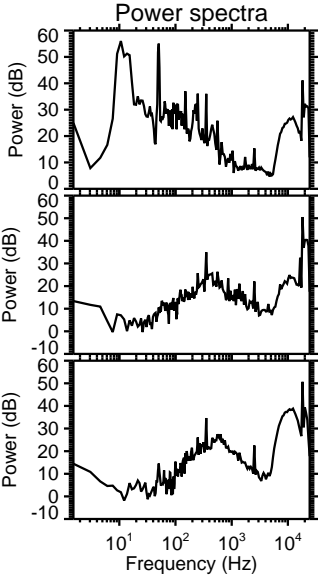
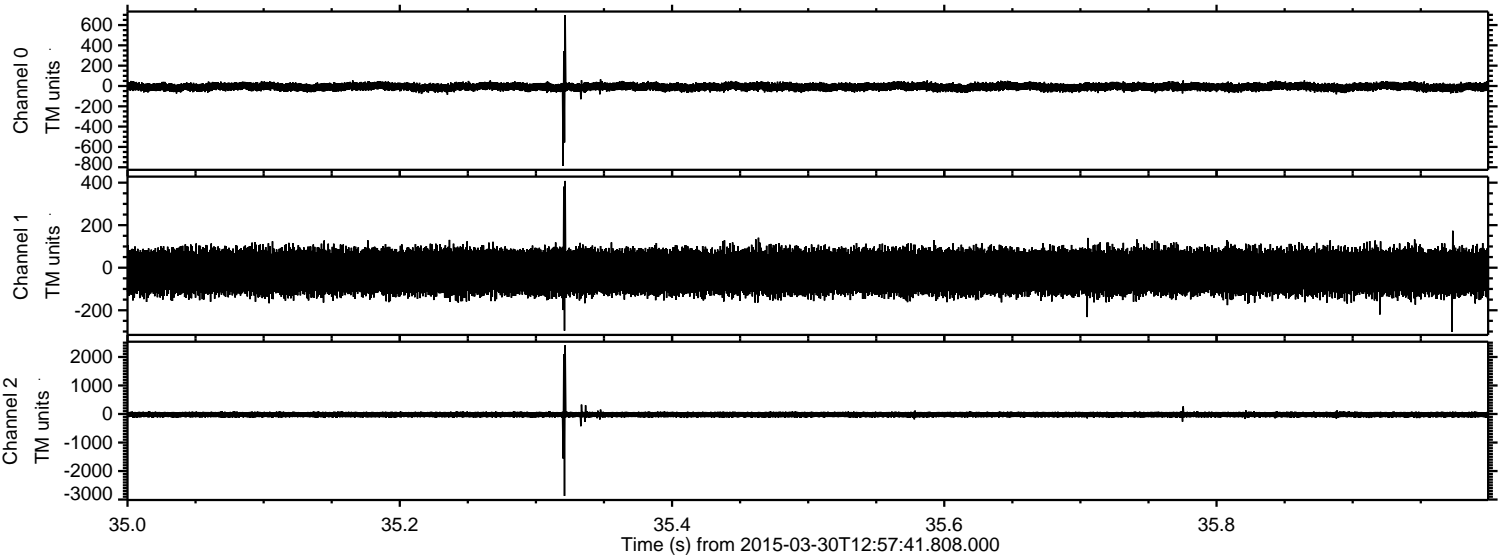


ELMAVAN 3D WAVEFORMS (Measured data sampled at 50 kHz) 49789 packets of 144 samples from 2015-03-30T12:57:41.808.000.

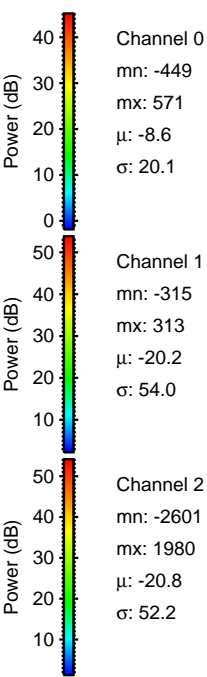
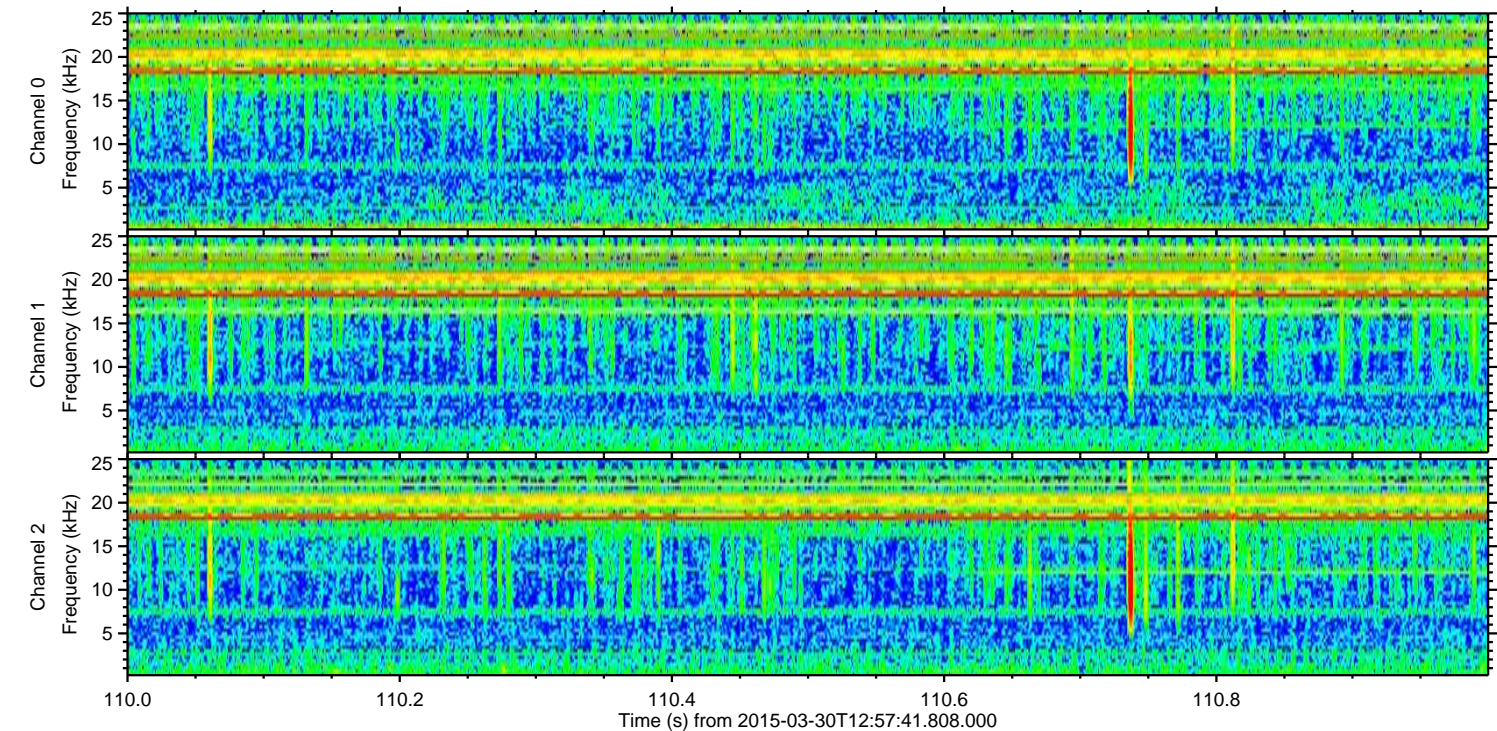
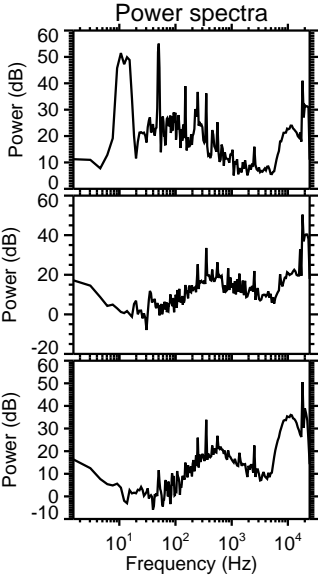
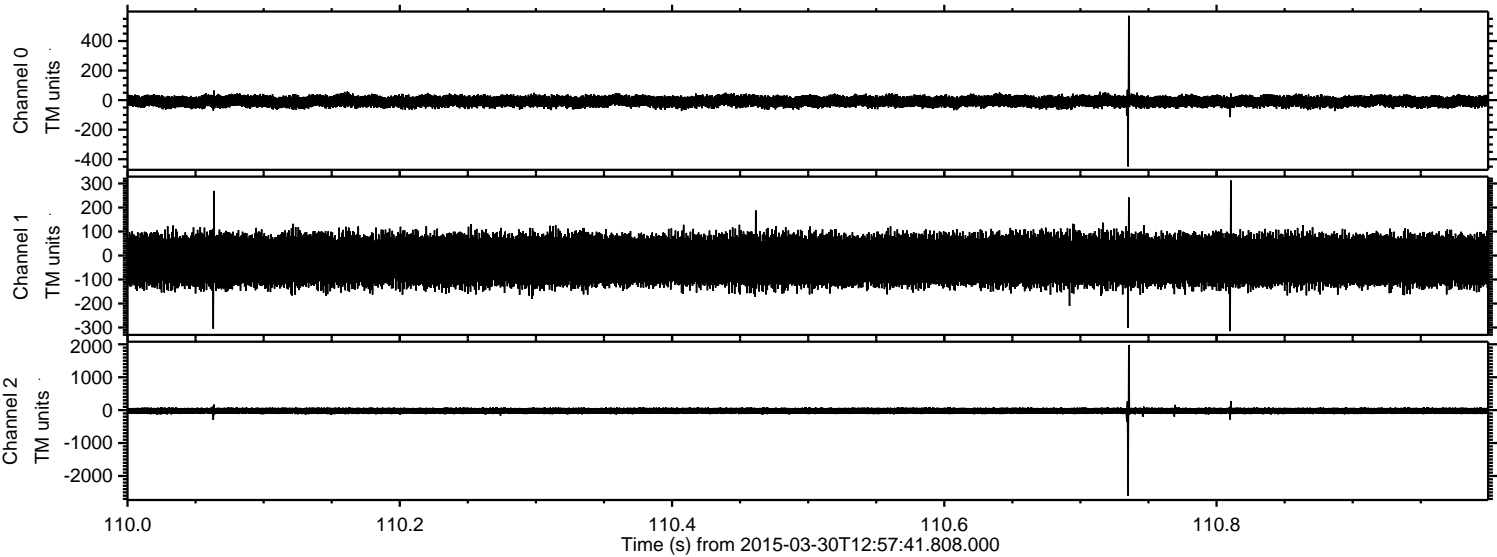
Processed Mon Mar 30 15:05:11 2015 by ELM ver.2012-10-06 from 001__elm20150330_125740__dat00.bin



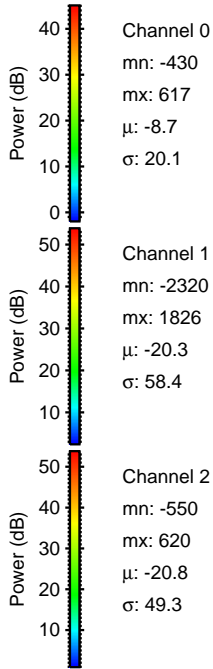
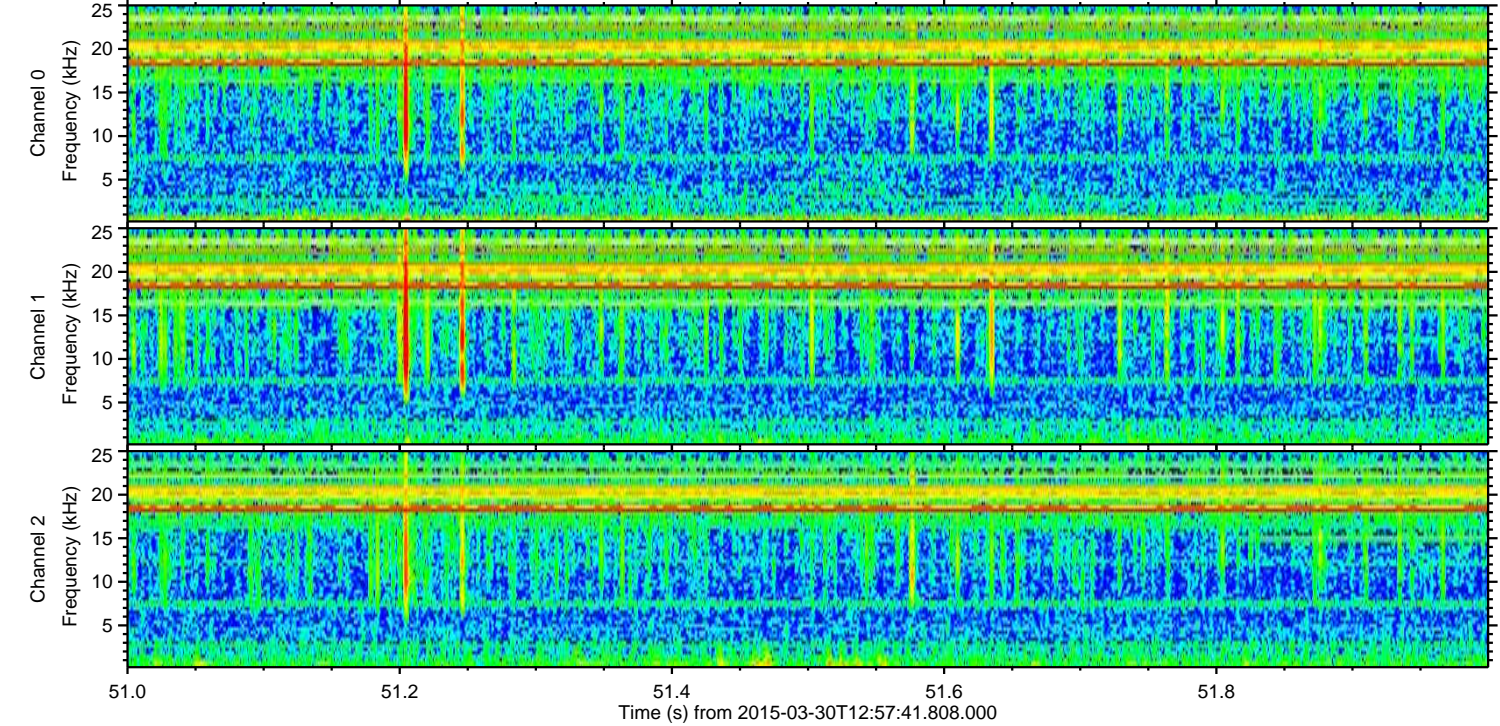
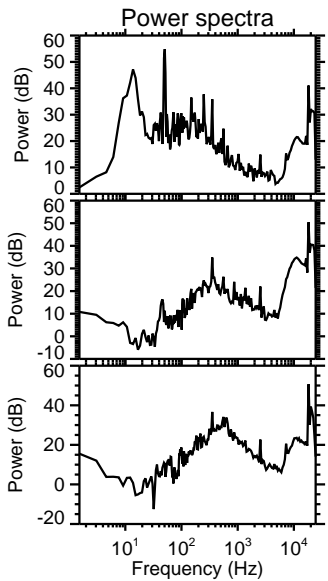
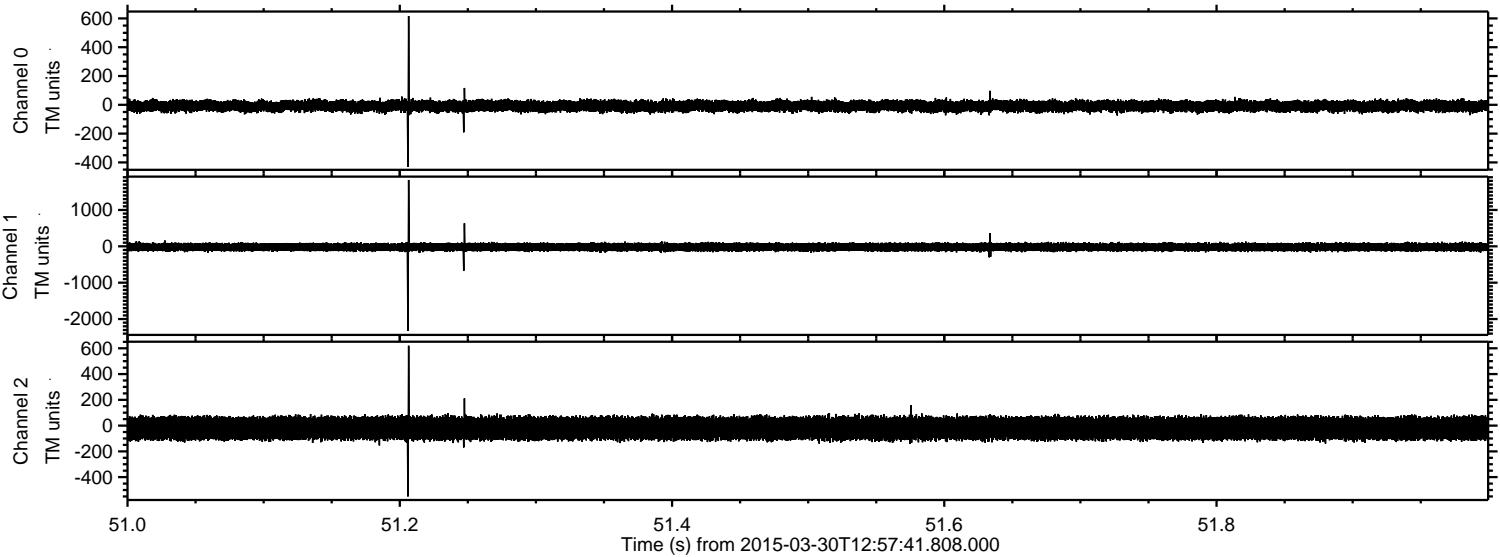
Processed Mon Mar 30 15:05:23 2015 by ELM ver.2012-10-06 from 001__elm20150330_125740__dat00.bin



Processed Mon Mar 30 15:05:24 2015 by ELM ver.2012-10-06 from 001__elm20150330_125740__dat00.bin



Processed Mon Mar 30 15:05:25 2015 by ELM ver.2012-10-06 from 001__elm20150330_125740__dat00.bin

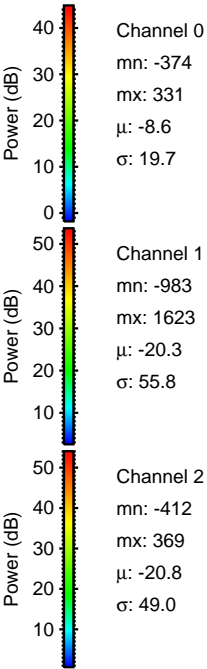
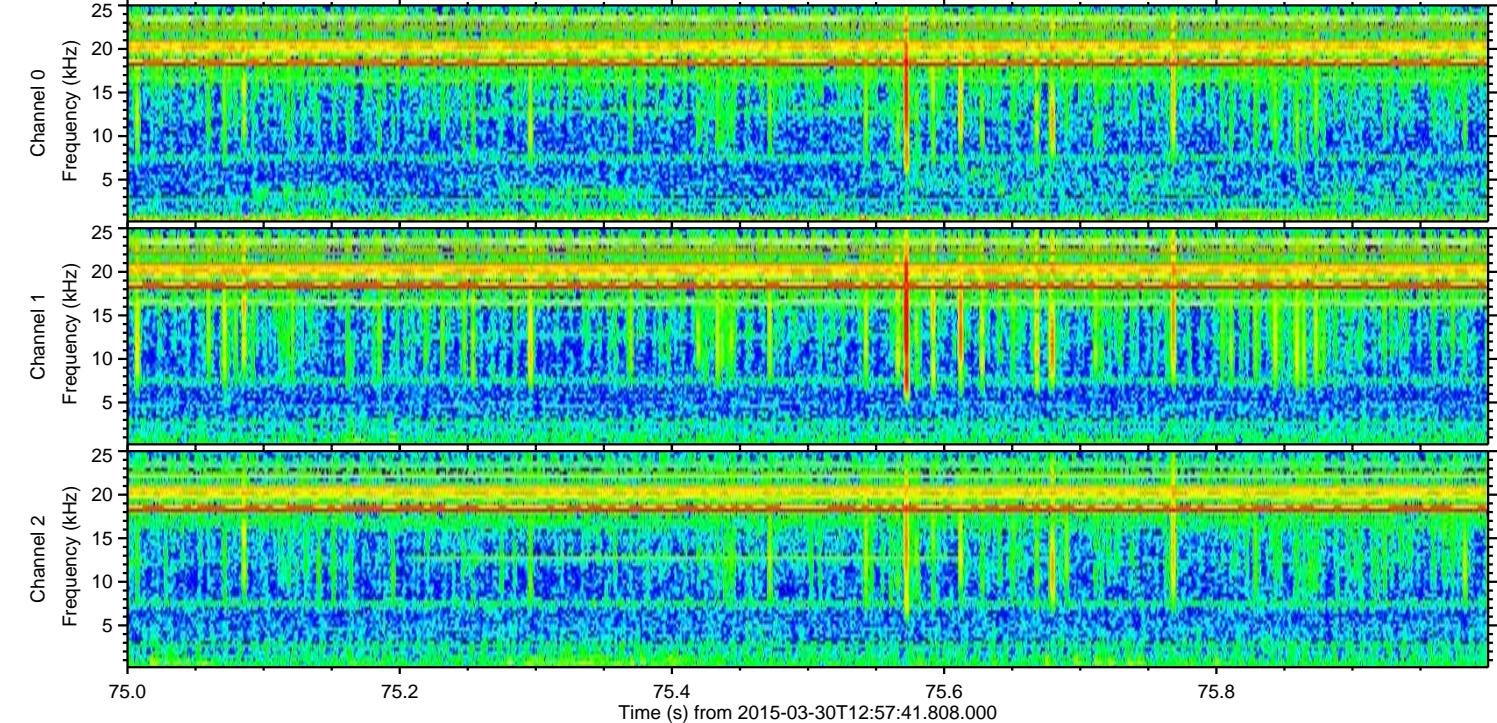
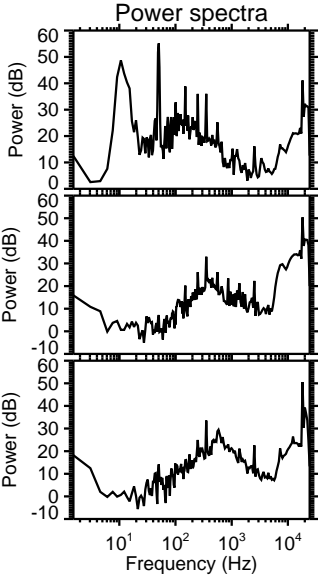
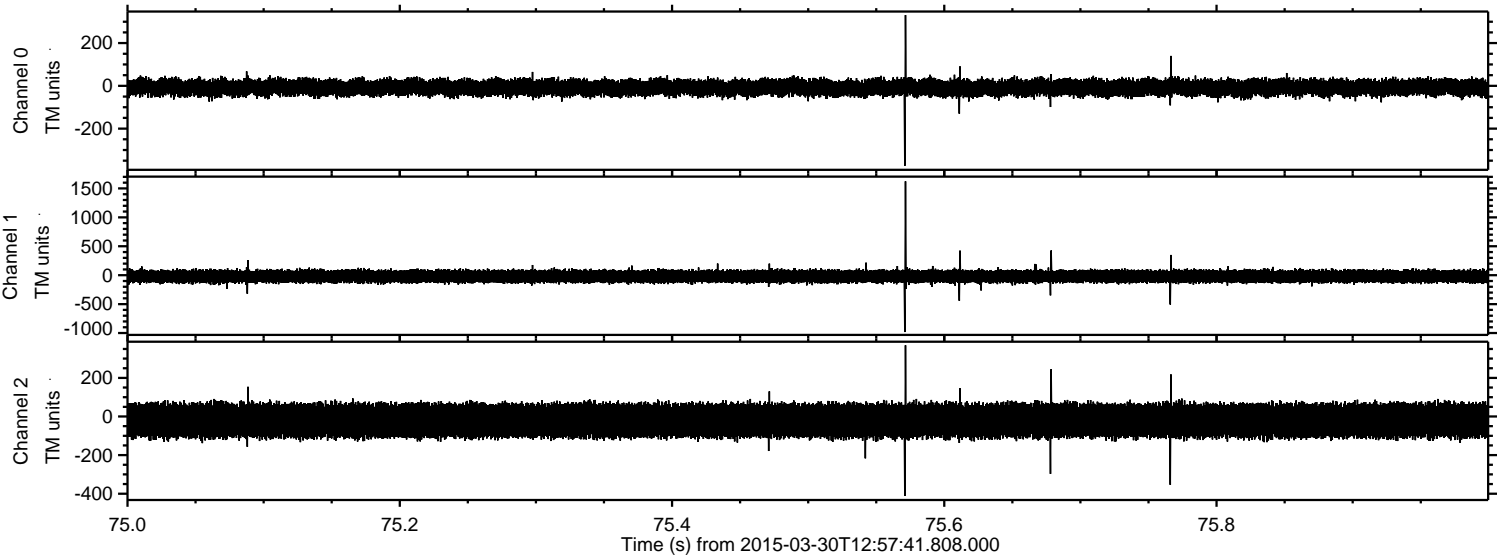


Channel 0
mn: -430
mx: 617
μ: -8.7
σ: 20.1

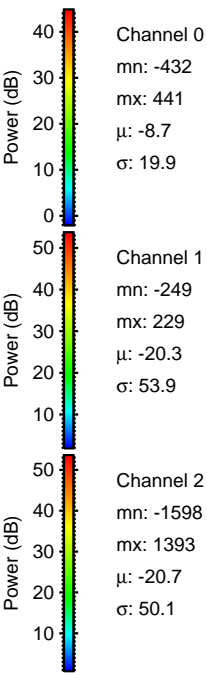
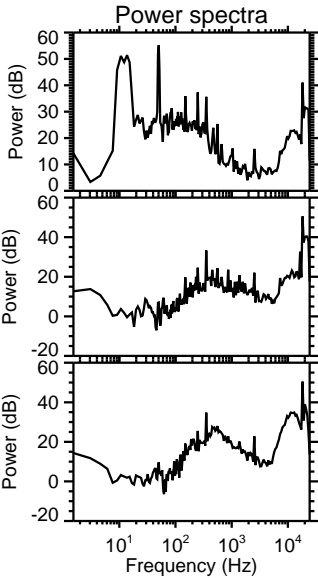
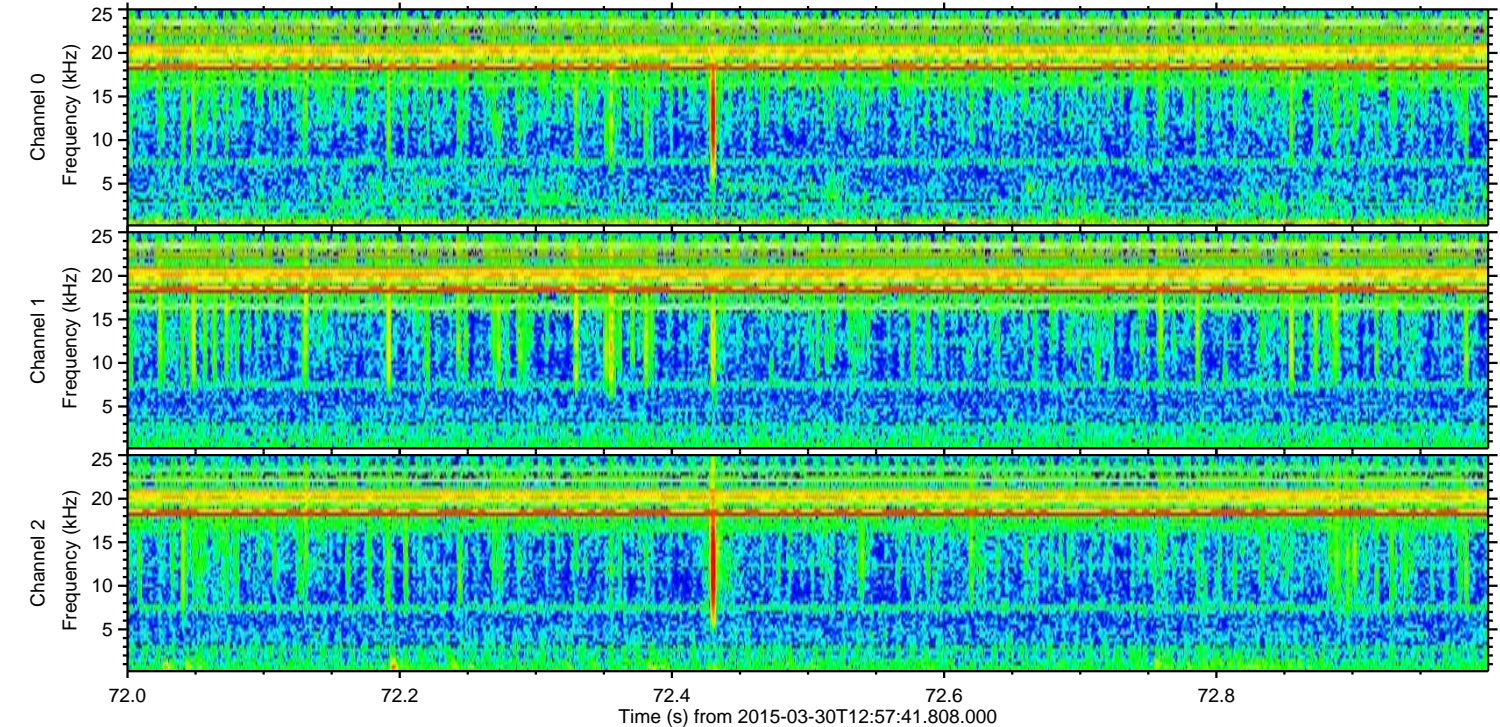
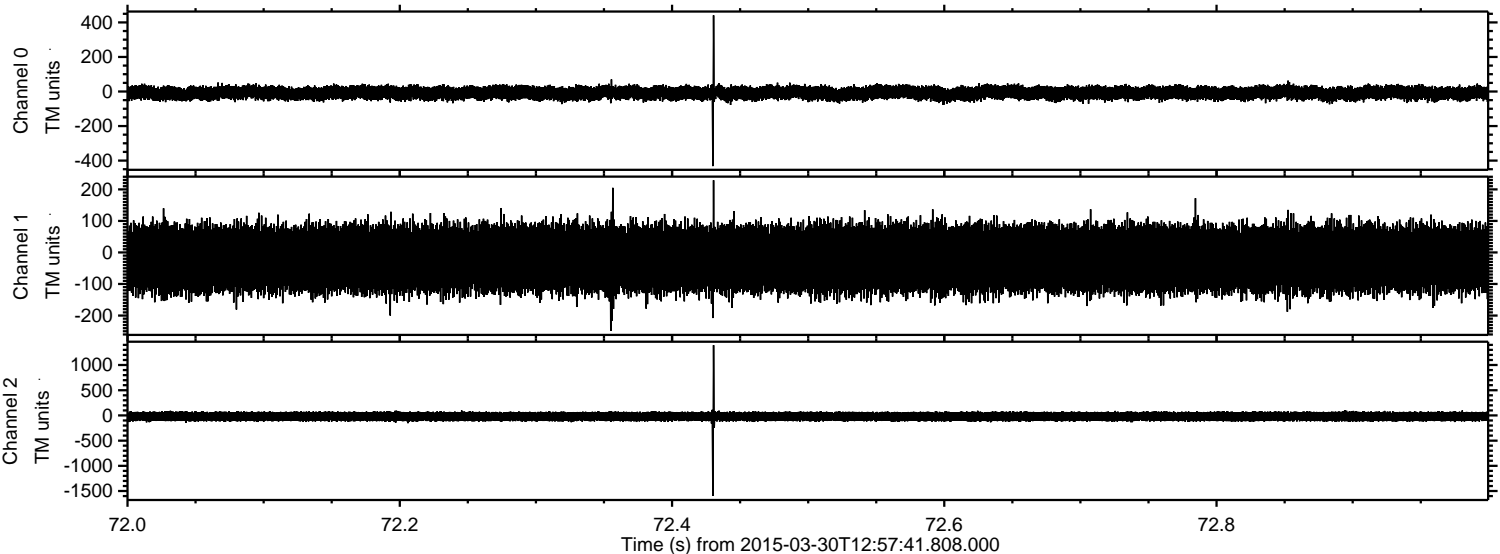
Channel 1
mn: -2320
mx: 1826
μ: -20.3
σ: 58.4

Channel 2
mn: -550
mx: 620
μ: -20.8
σ: 49.3

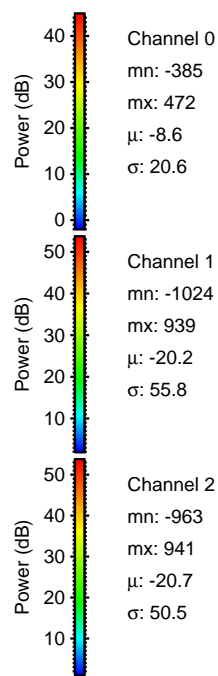
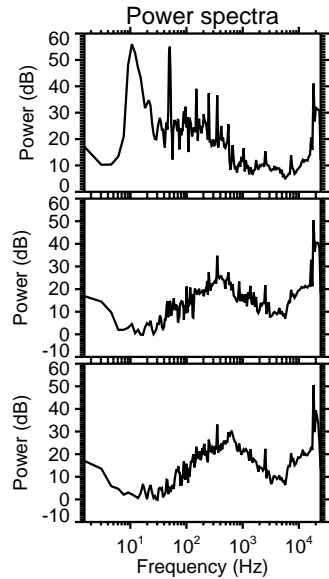
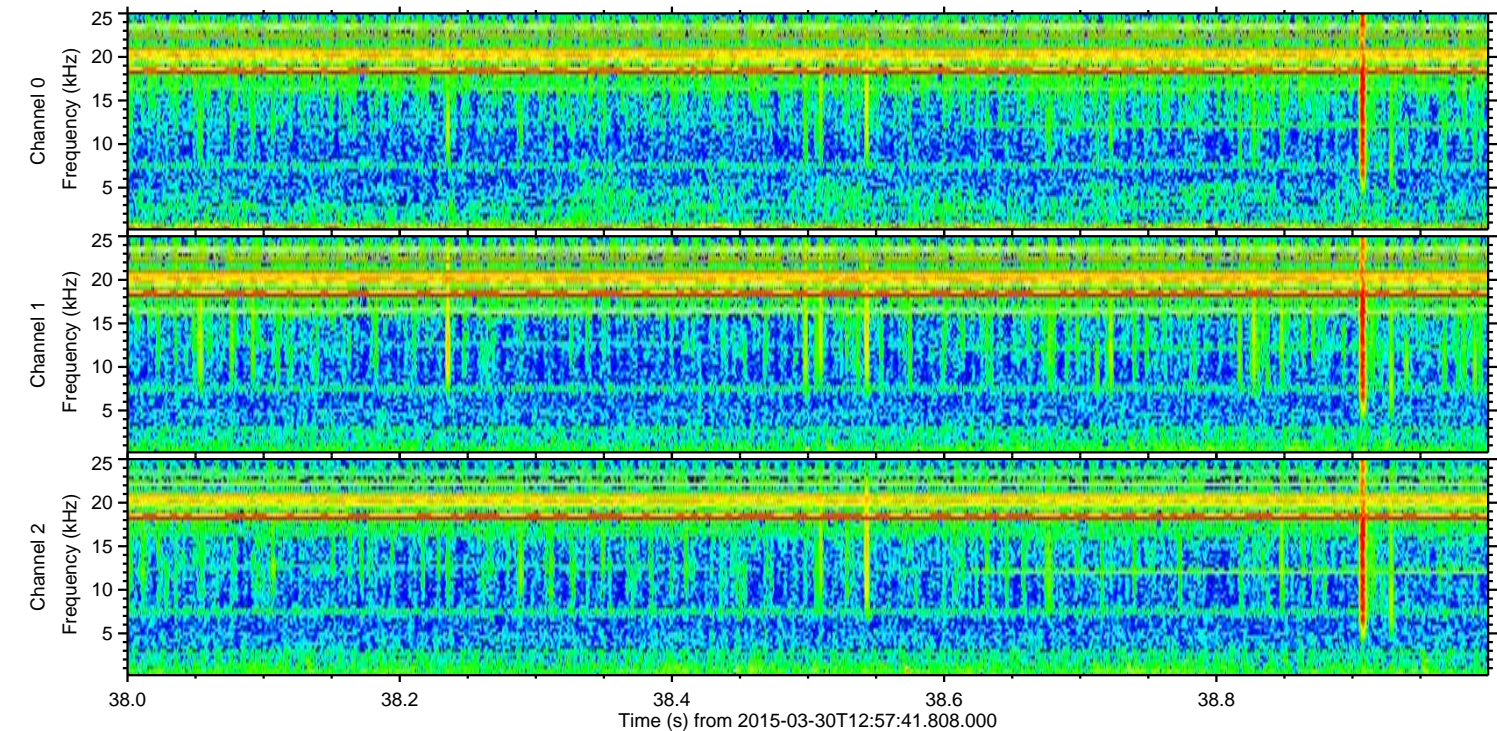
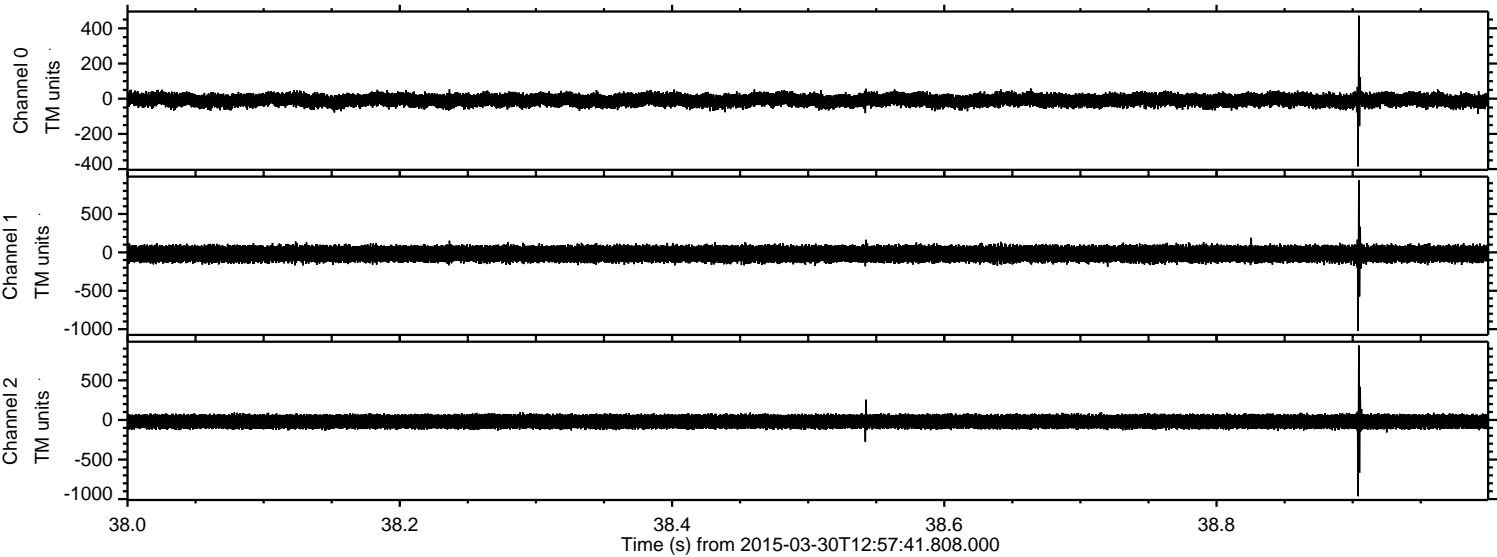
Processed Mon Mar 30 15:05:26 2015 by ELM ver.2012-10-06 from 001__elm20150330_125740__dat00.bin



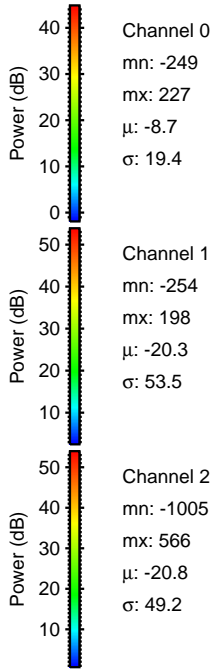
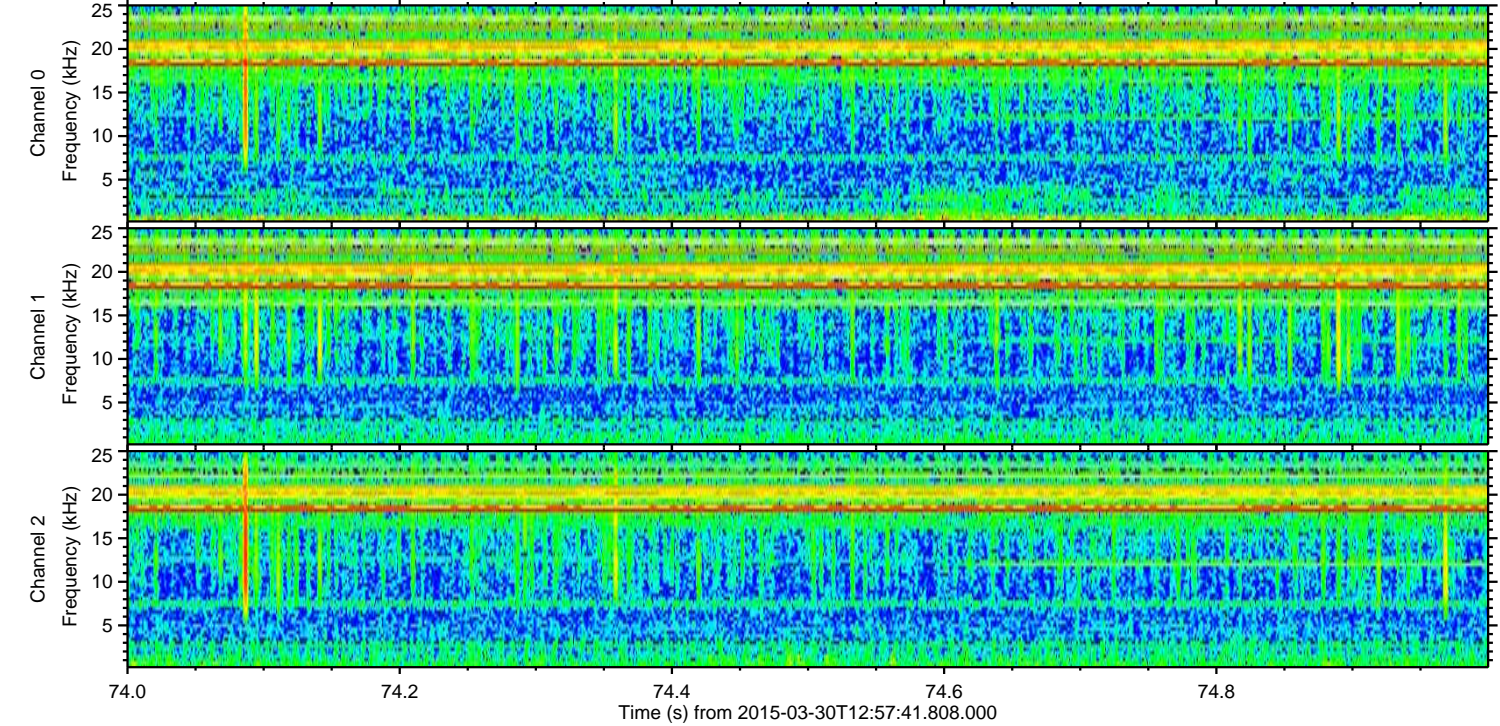
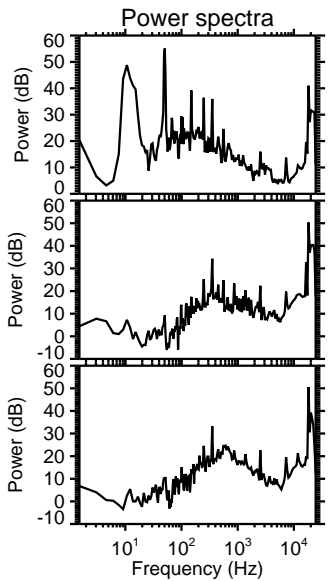
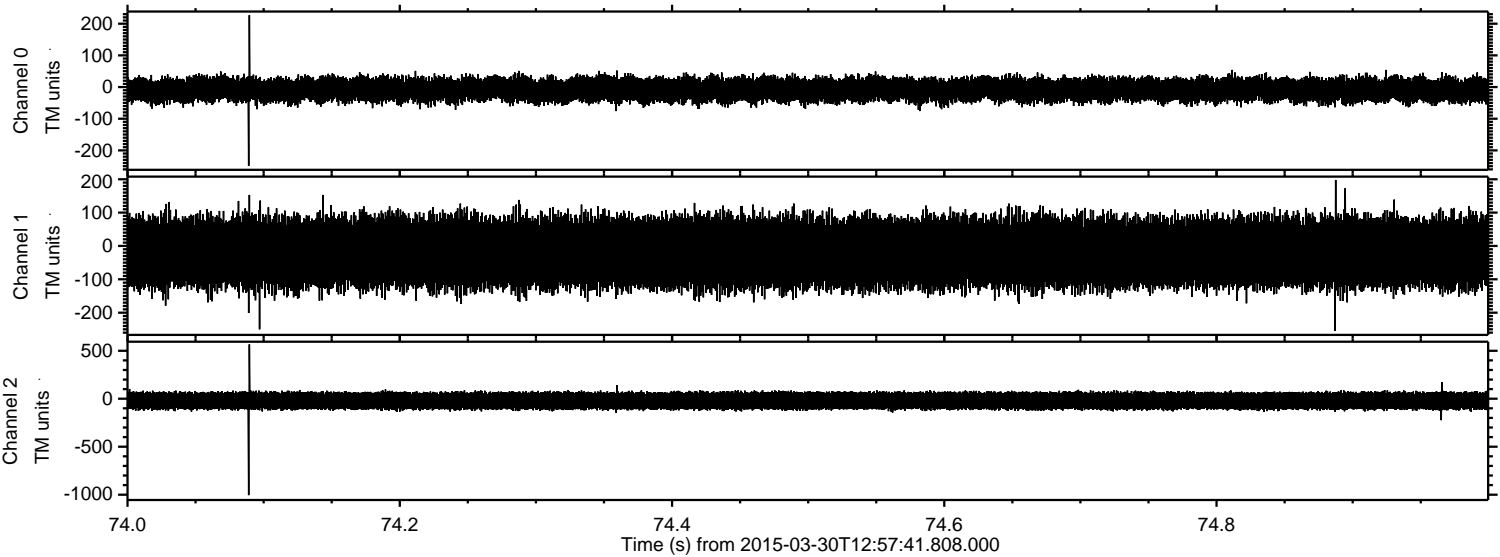
Processed Mon Mar 30 15:05:27 2015 by ELM ver.2012-10-06 from 001__elm20150330_125740__dat00.bin



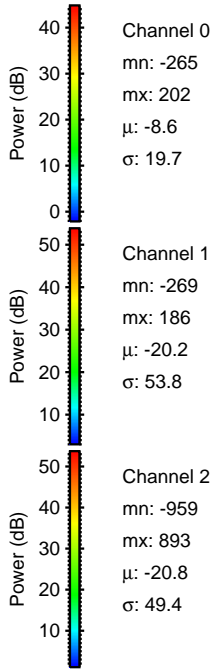
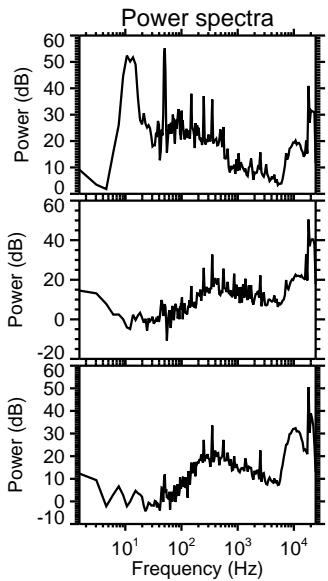
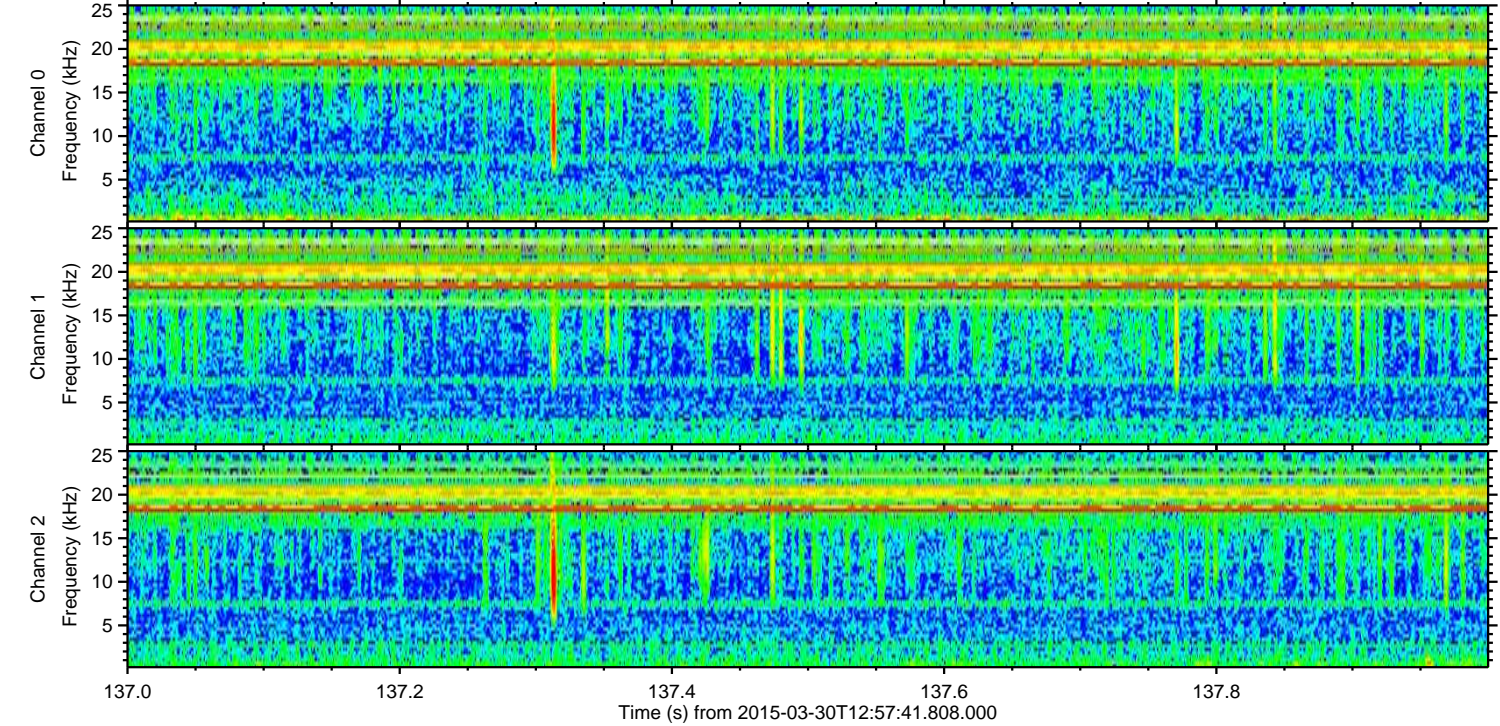
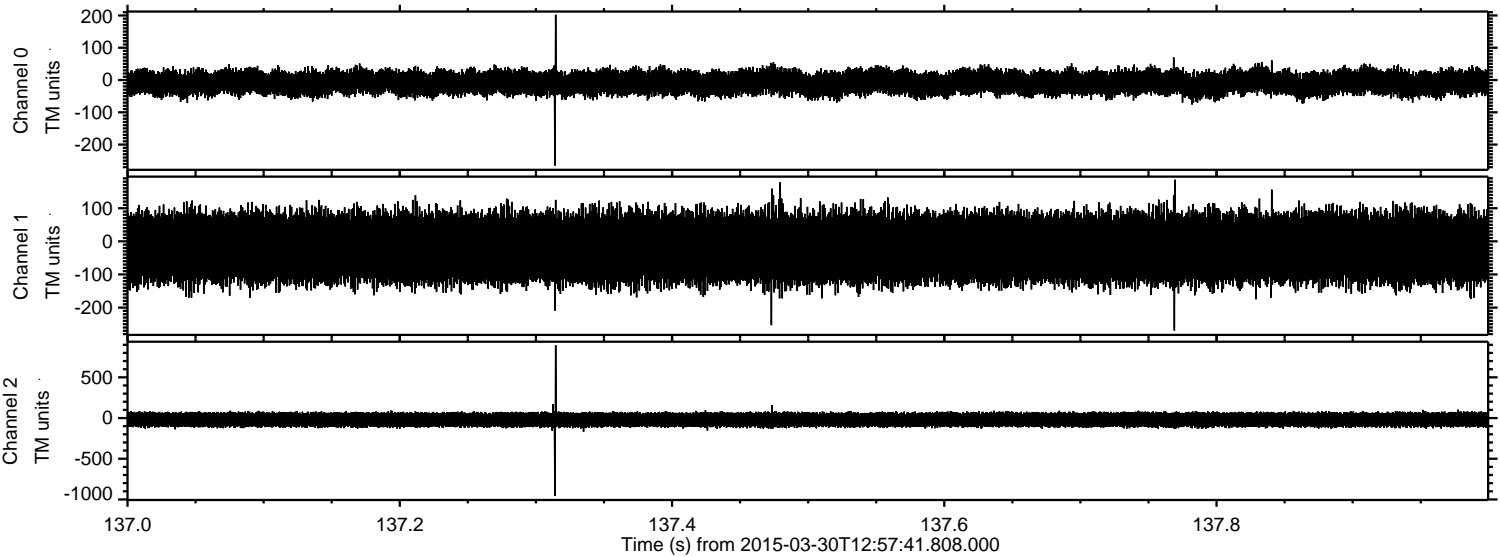
Processed Mon Mar 30 15:05:28 2015 by ELM ver.2012-10-06 from 001__elm20150330_125740__dat00.bin



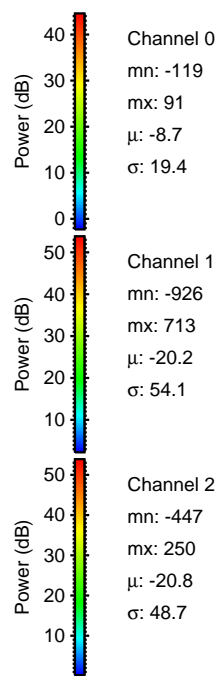
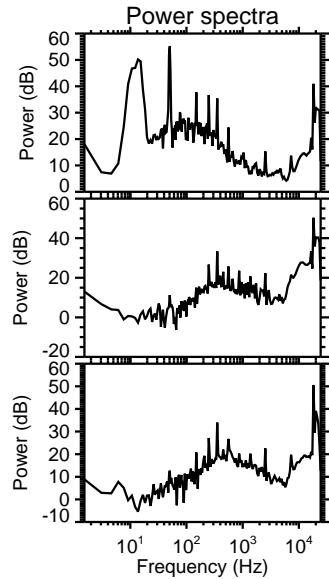
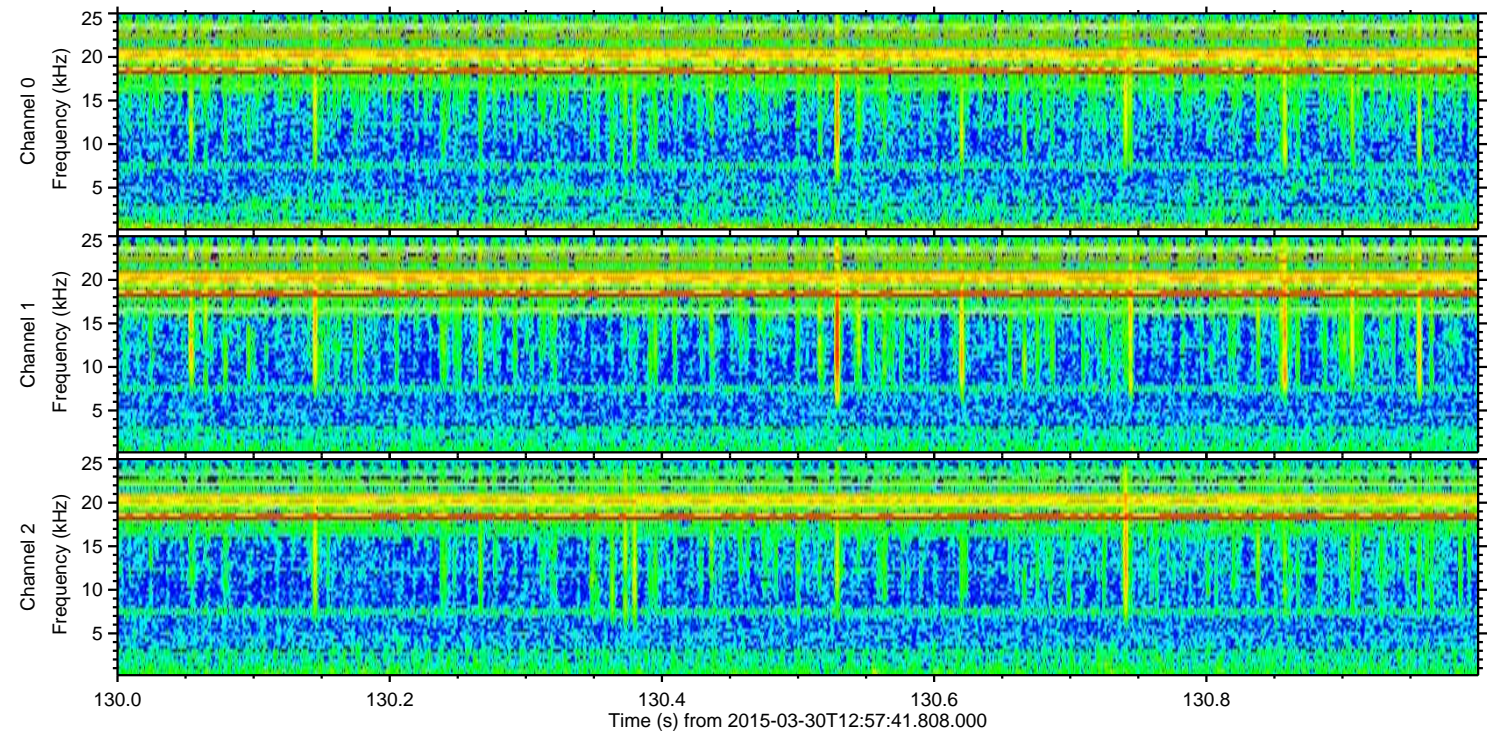
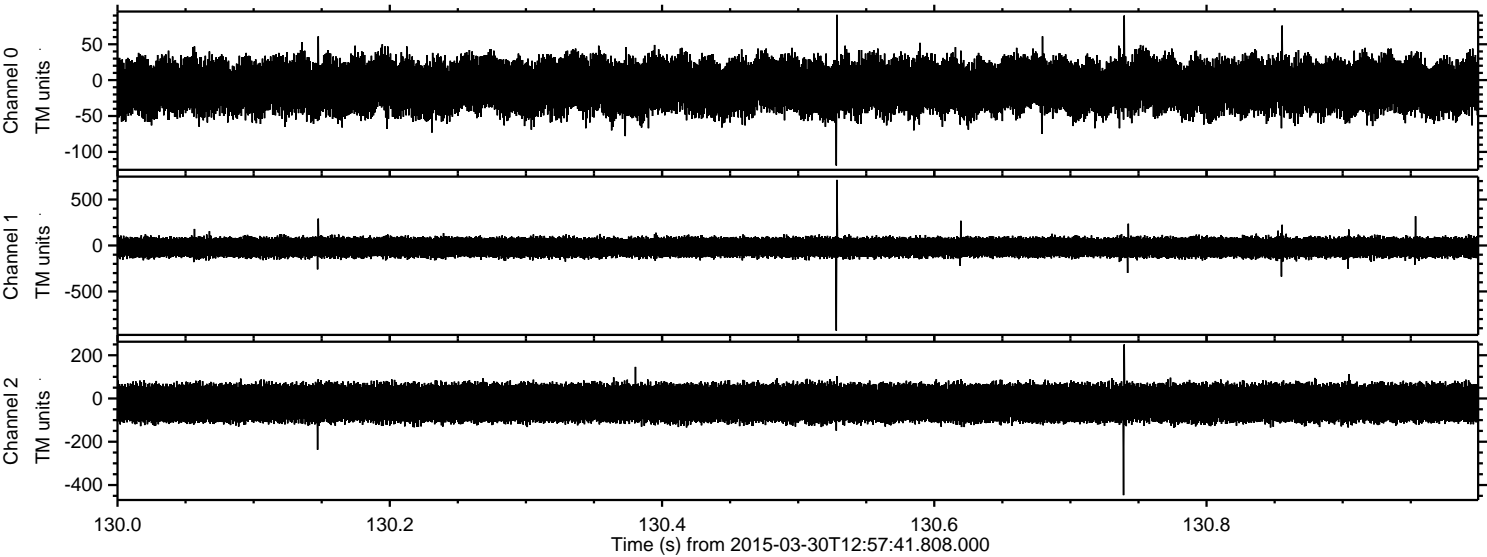
Processed Mon Mar 30 15:05:28 2015 by ELM ver.2012-10-06 from 001__elm20150330_125740__dat00.bin



Processed Mon Mar 30 15:05:29 2015 by ELM ver.2012-10-06 from 001__elm20150330_125740__dat00.bin



Processed Mon Mar 30 15:05:30 2015 by ELM ver.2012-10-06 from 001__elm20150330_125740__dat00.bin



Processed Mon Mar 30 15:05:31 2015 by ELM ver.2012-10-06 from 001__elm20150330_125740__dat00.bin

