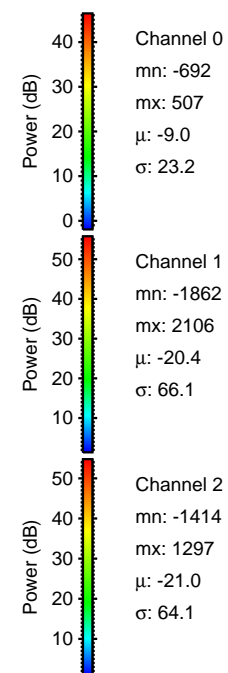
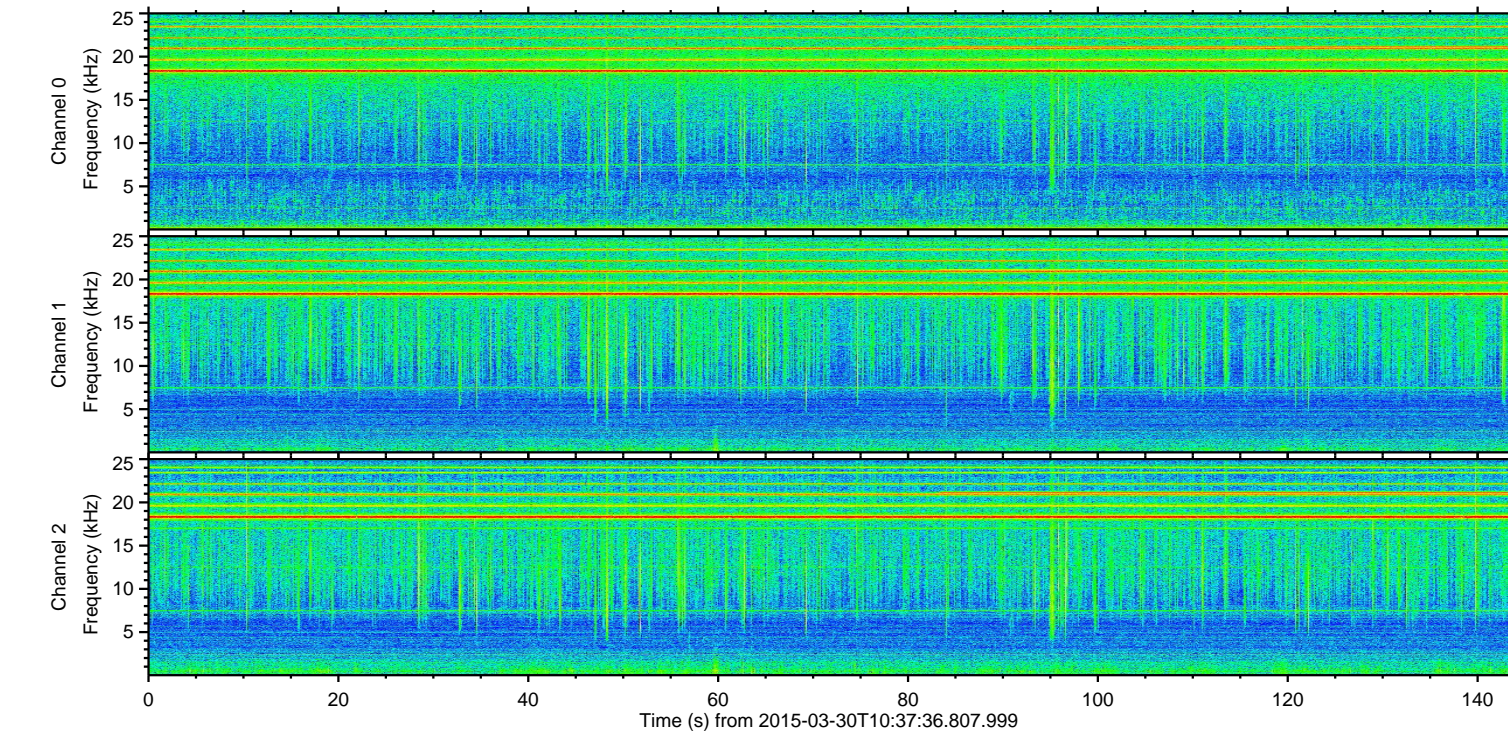
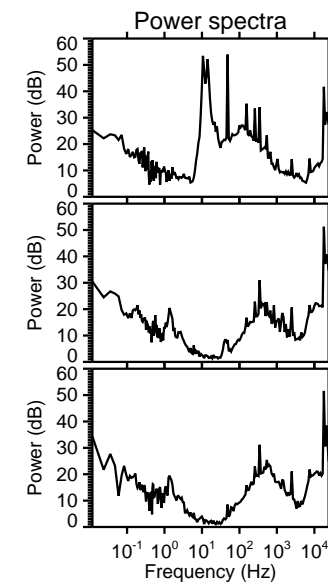
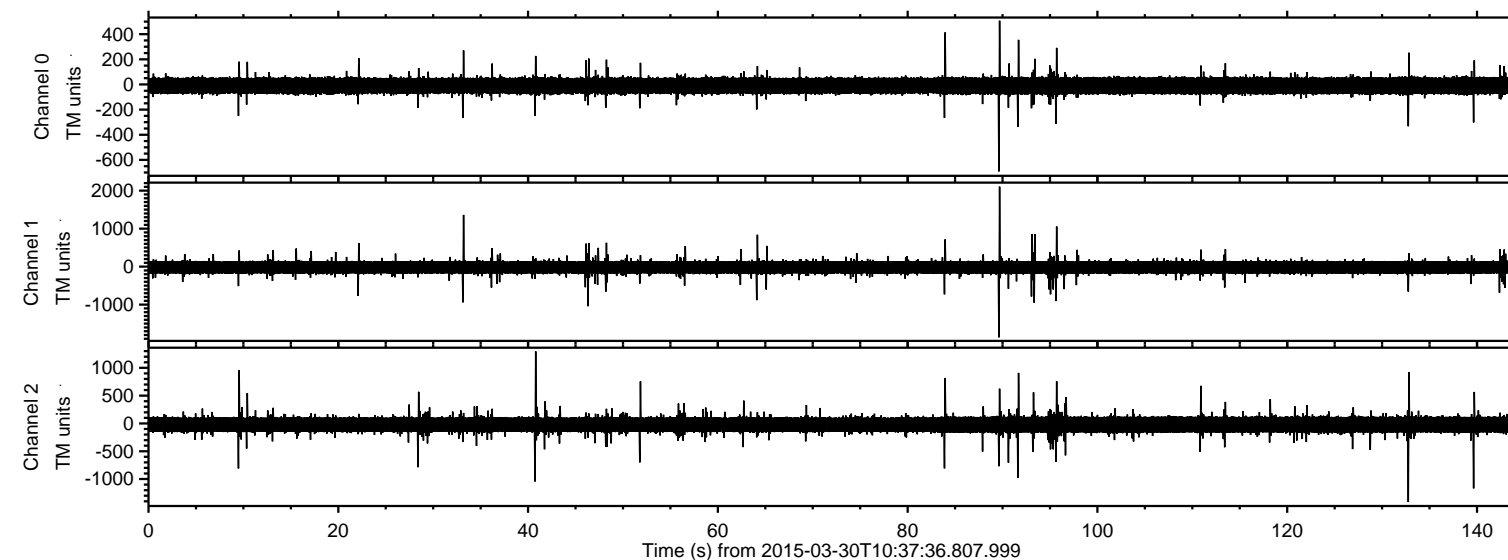
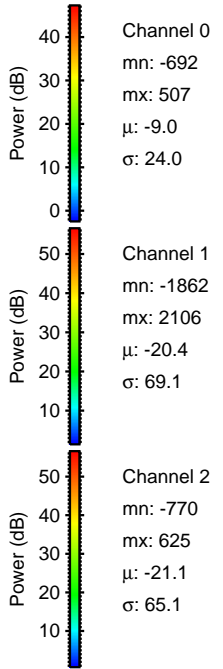
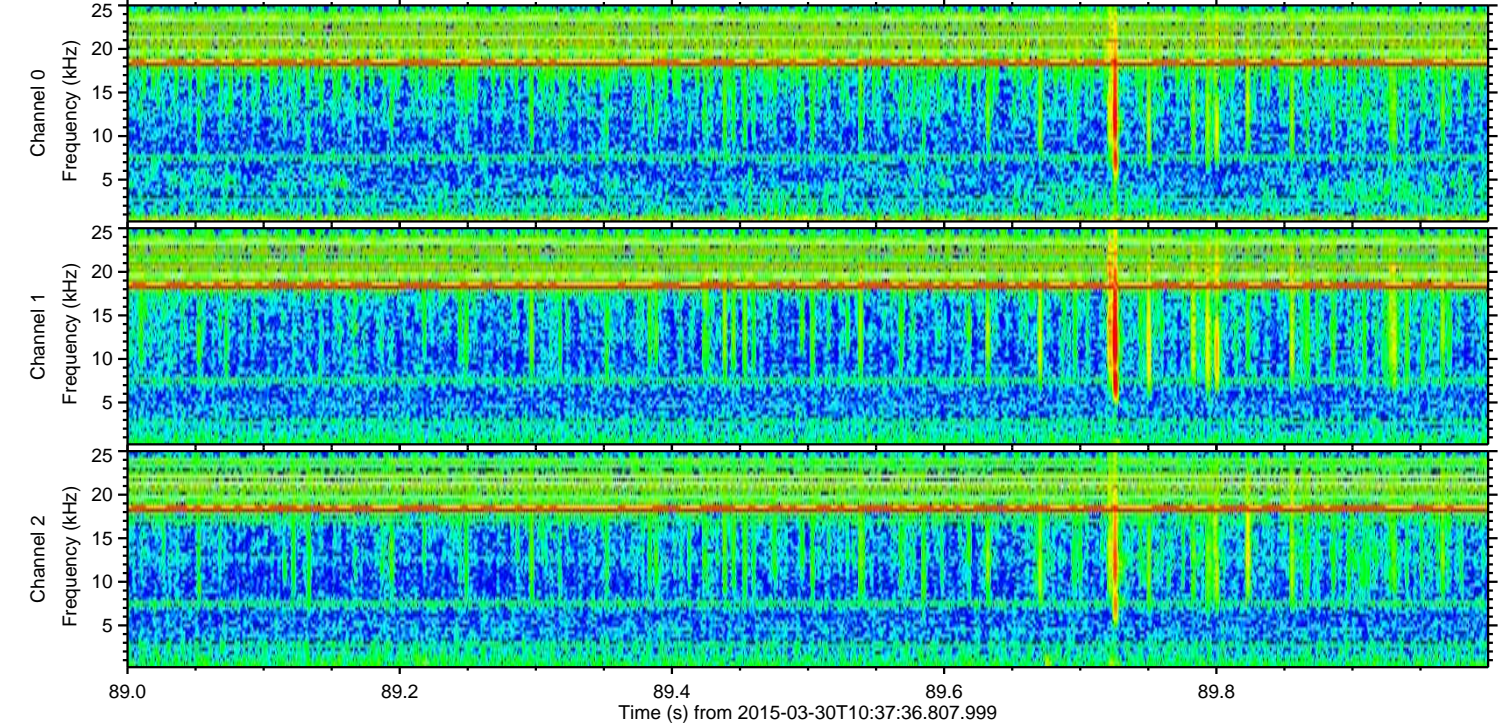
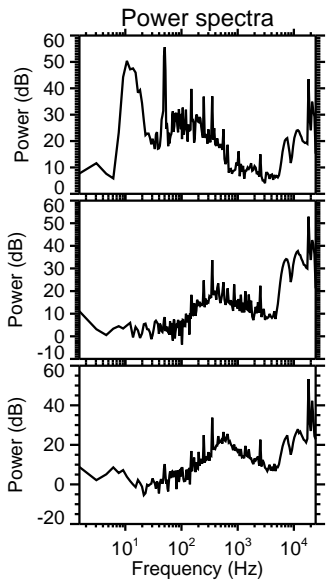
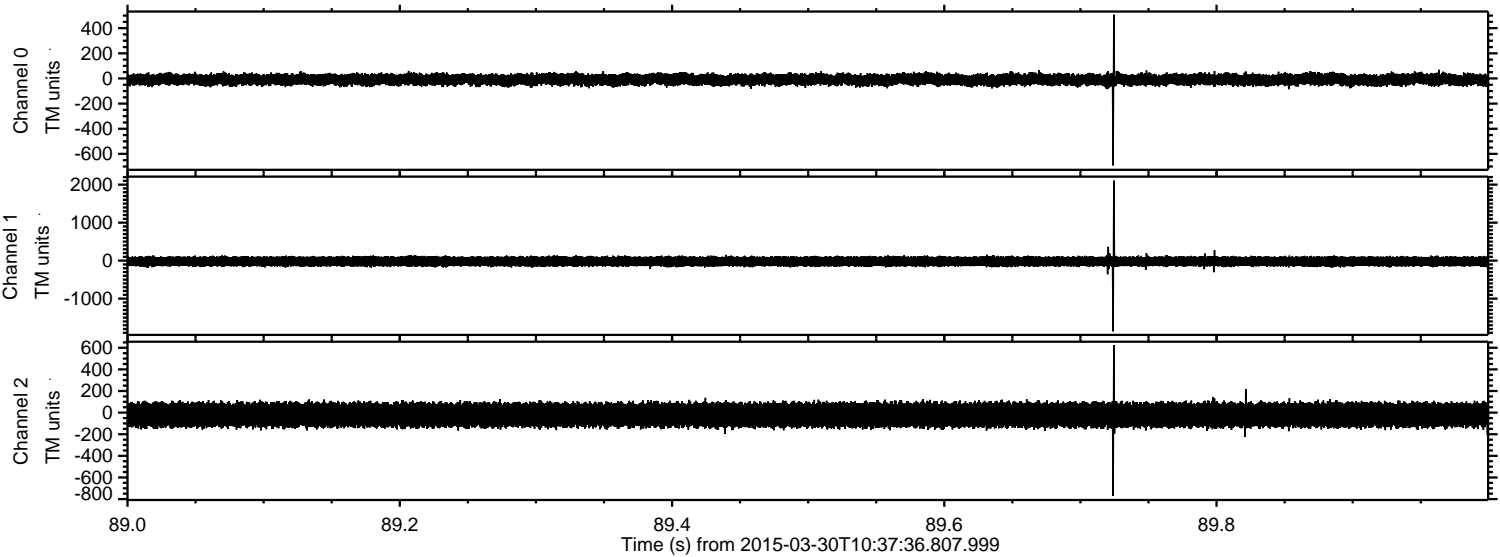


ELMAVAN 3D WAVEFORMS (Measured data sampled at 50 kHz) 49788 packets of 144 samples from 2015-03-30T10:37:36.807.999.

Processed Mon Mar 30 12:45:15 2015 by ELM ver.2012-10-06 from 001__elm20150330_103735__dat00.bin

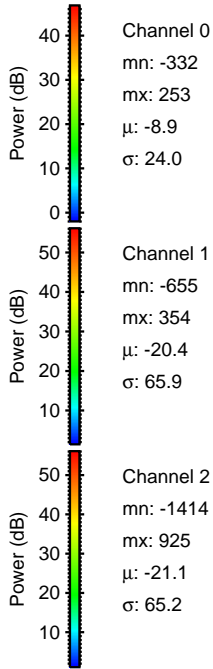
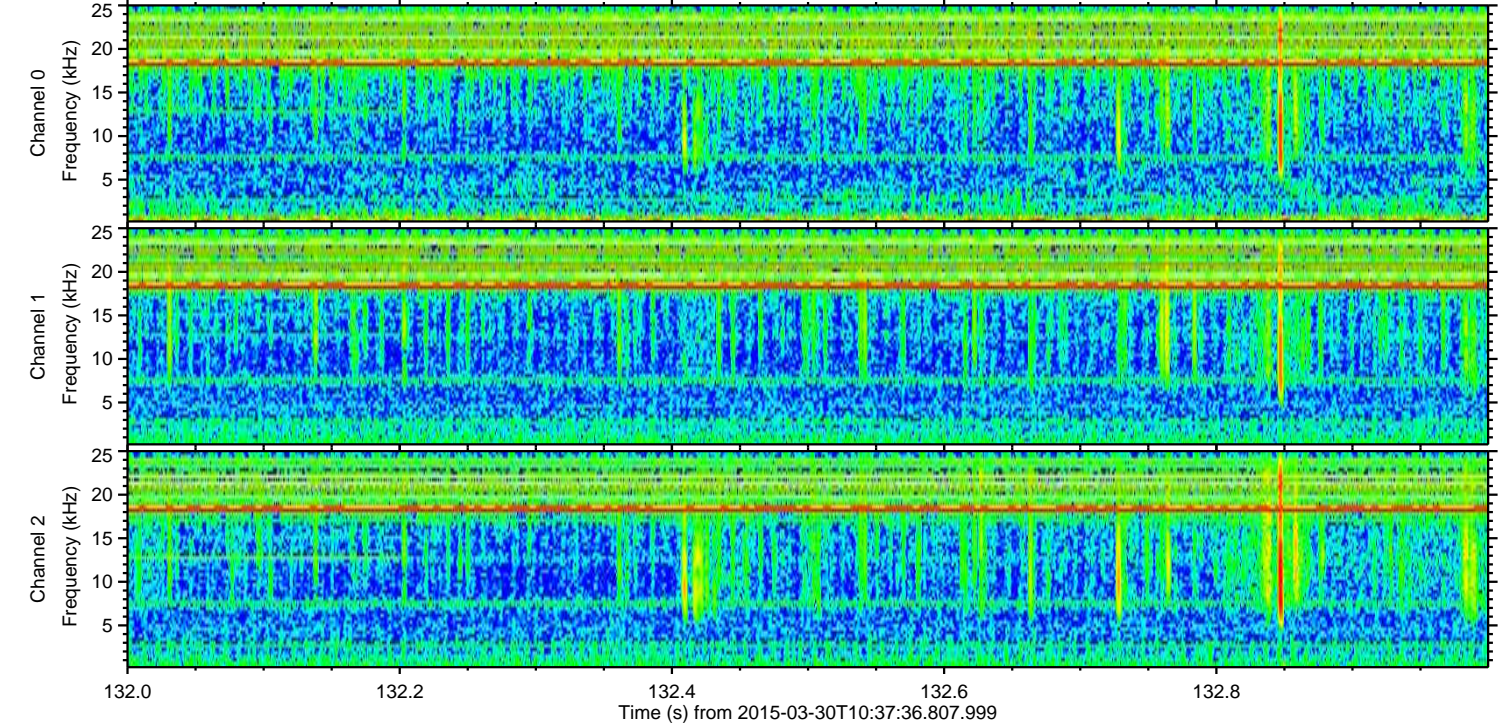
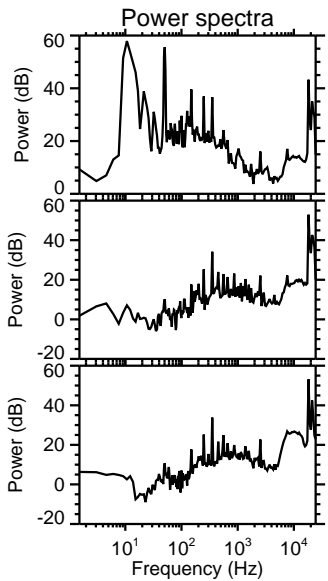
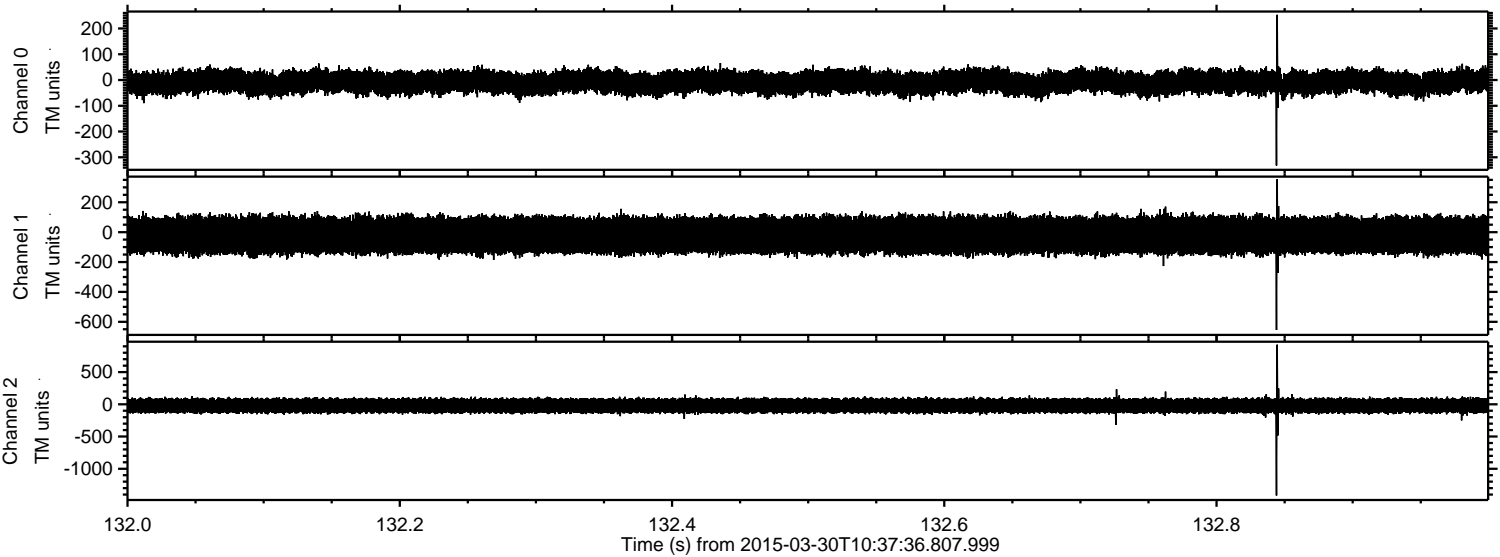


Processed Mon Mar 30 12:45:27 2015 by ELM ver.2012-10-06 from 001__elm20150330_103735__dat00.bin

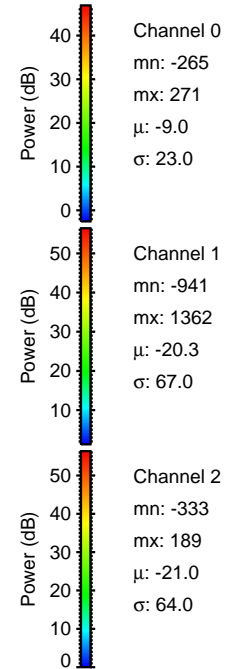
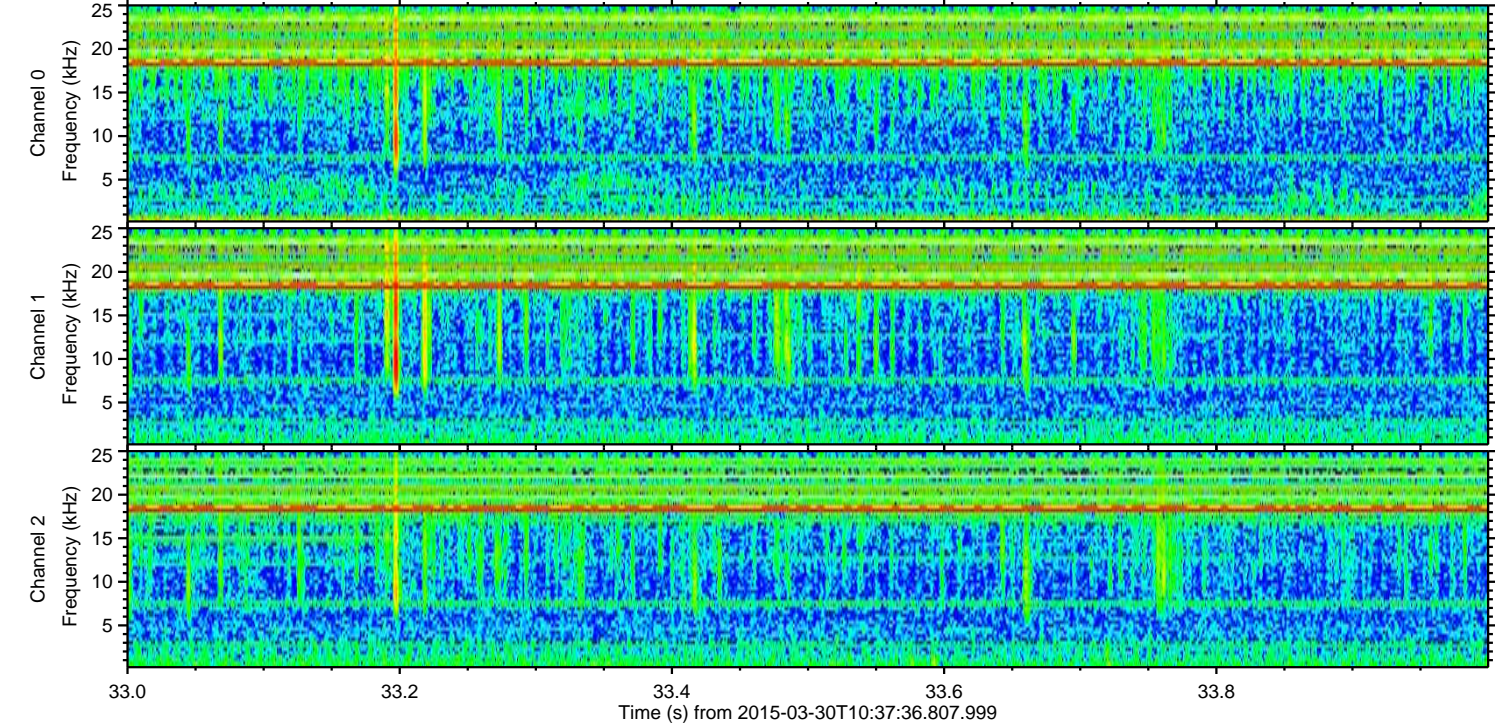
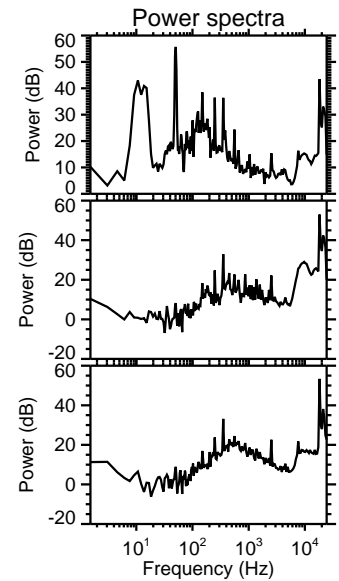
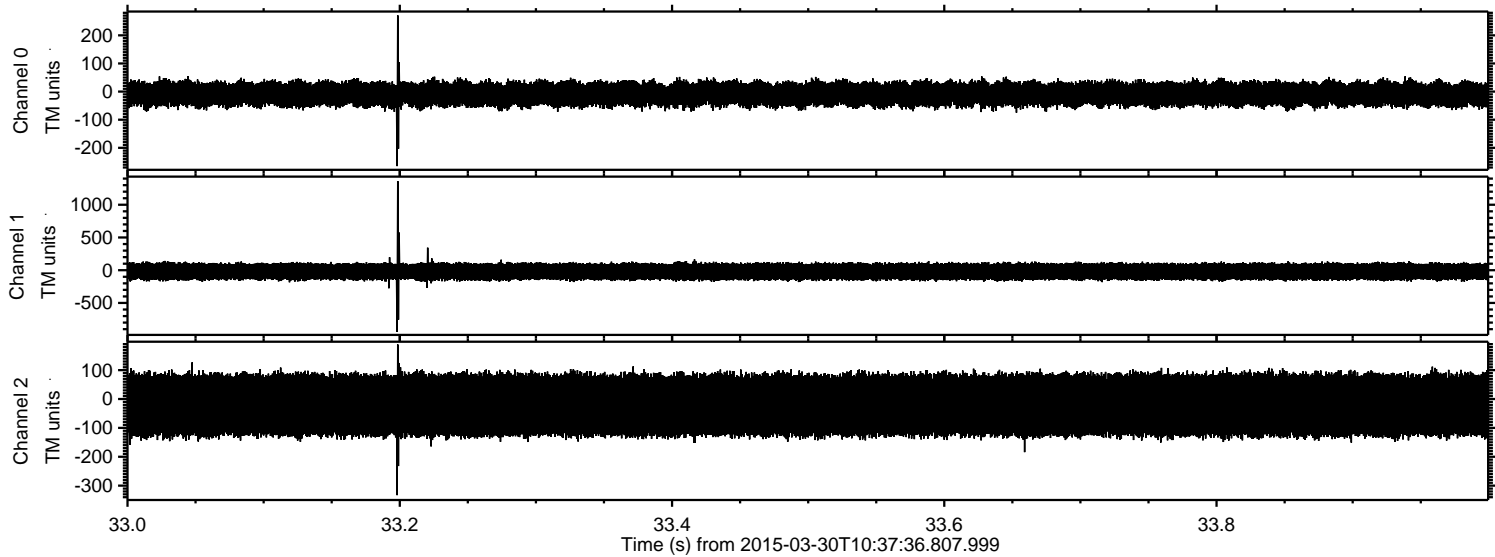


ELMAVAN 3D WAVEFORMS (Measured data sampled at 50 kHz) 49788 packets of 144 samples from 2015-03-30T10:37:36.807.999. Part 133/144

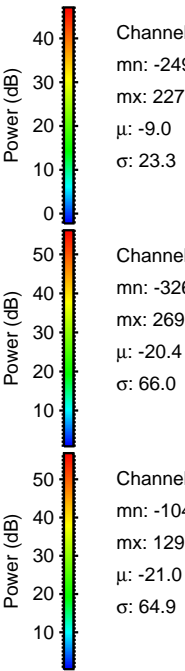
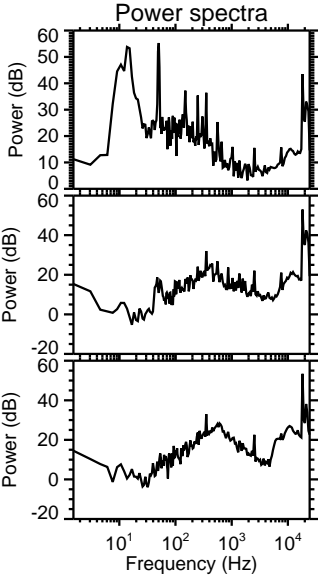
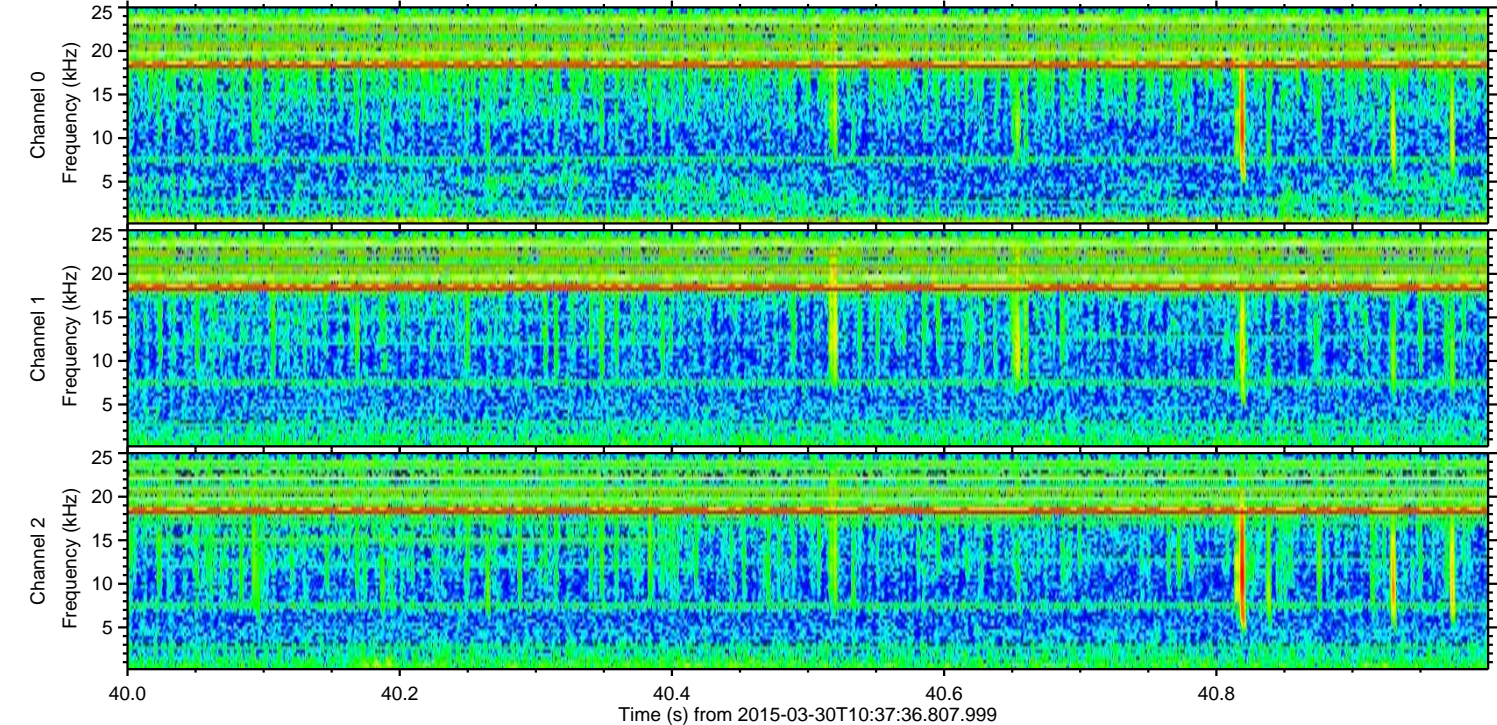
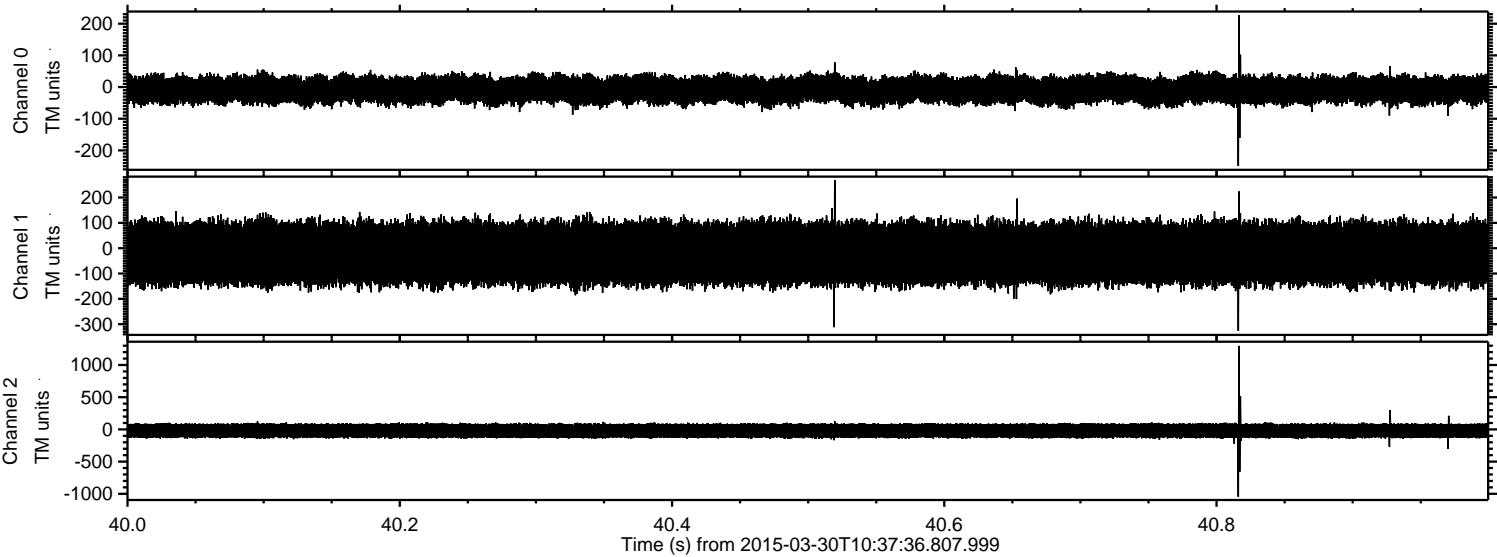
Processed Mon Mar 30 12:45:28 2015 by ELM ver.2012-10-06 from 001__elm20150330_103735__dat00.bin



Processed Mon Mar 30 12:45:29 2015 by ELM ver.2012-10-06 from 001__elm20150330_103735__dat00.bin

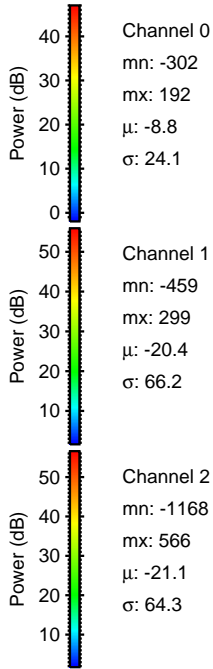
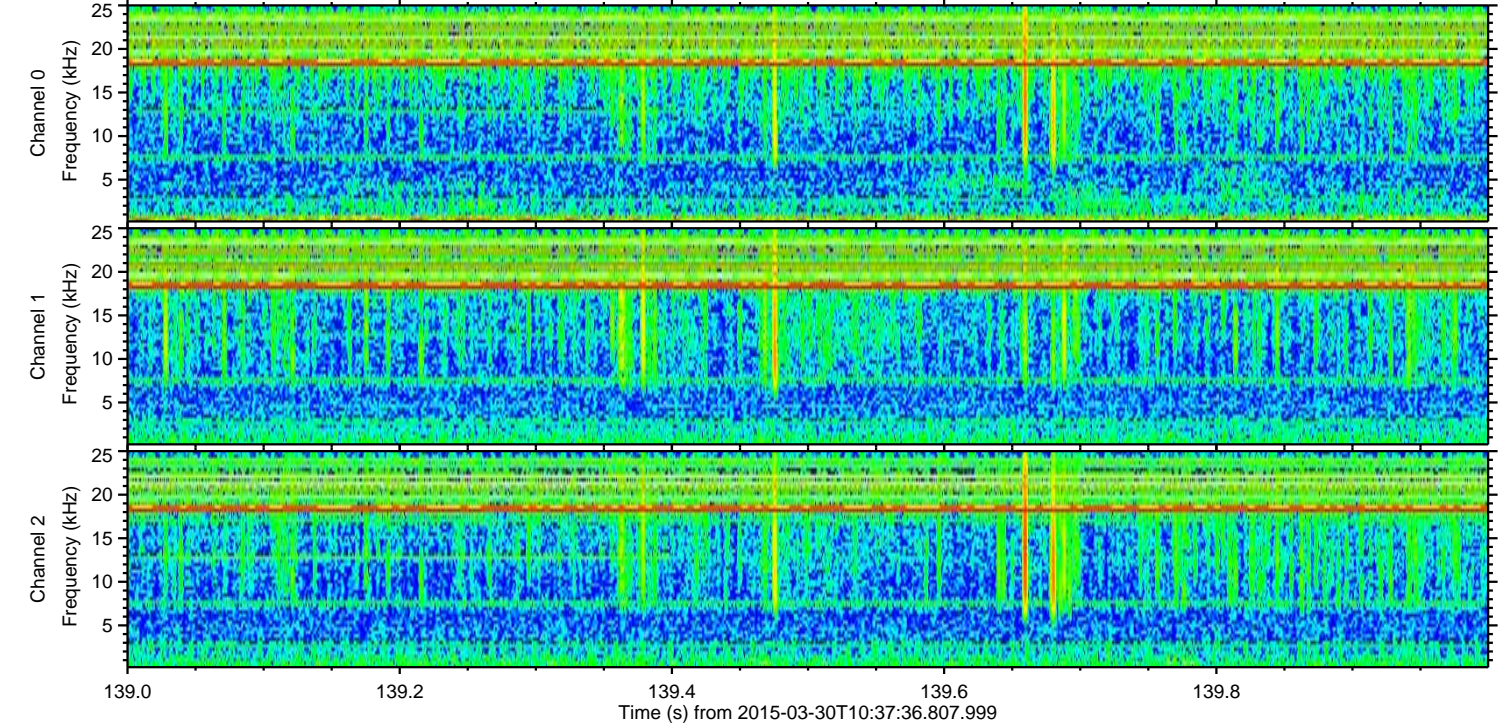
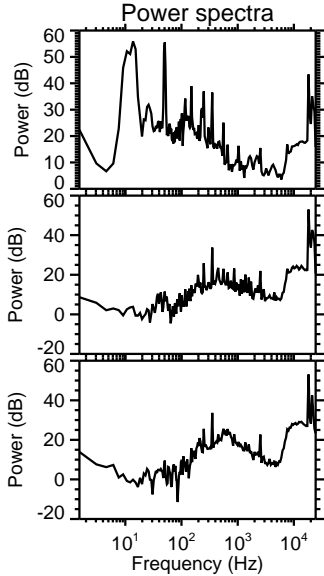
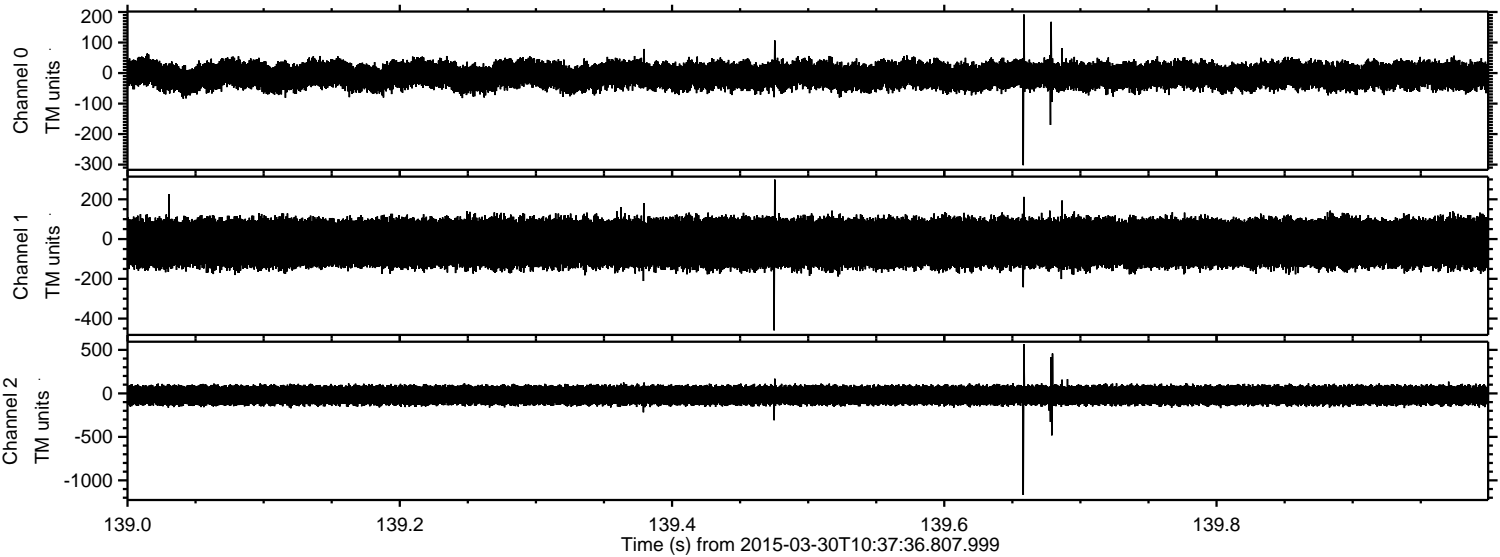


Processed Mon Mar 30 12:45:30 2015 by ELM ver.2012-10-06 from 001__elm20150330_103735__dat00.bin

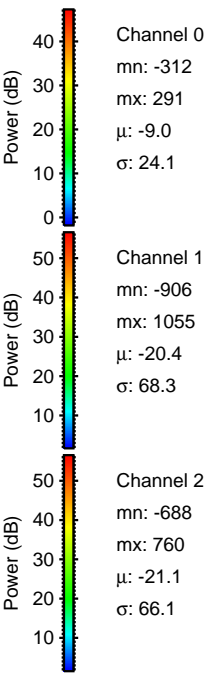
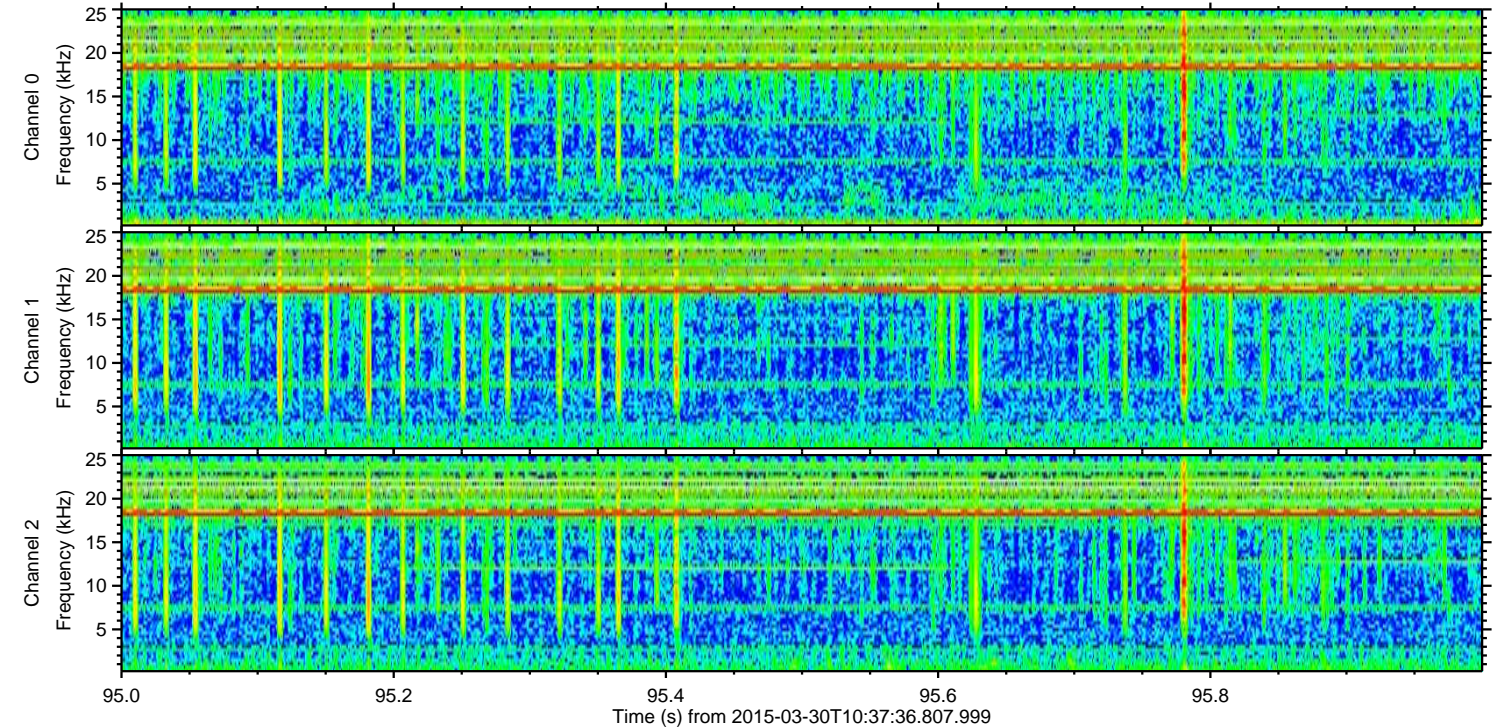
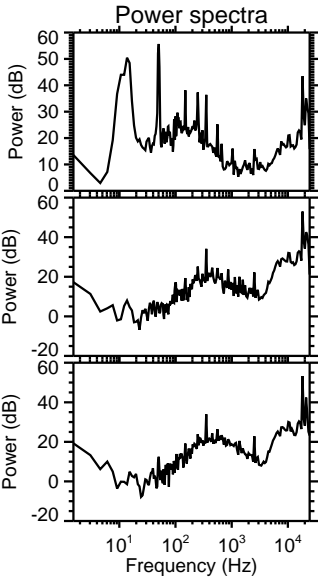
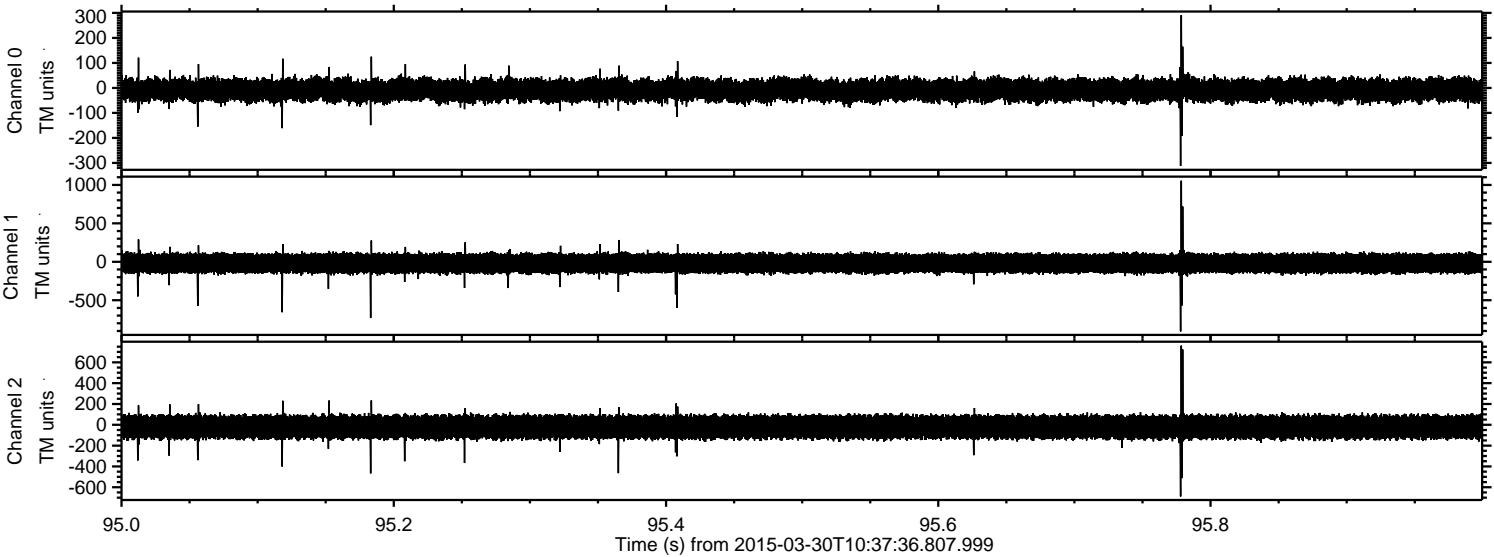


ELMAVAN 3D WAVEFORMS (Measured data sampled at 50 kHz) 49788 packets of 144 samples from 2015-03-30T10:37:36.807.999. Part 140/144

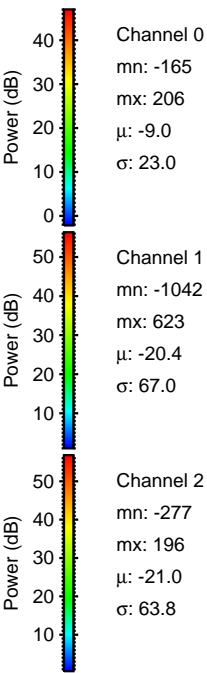
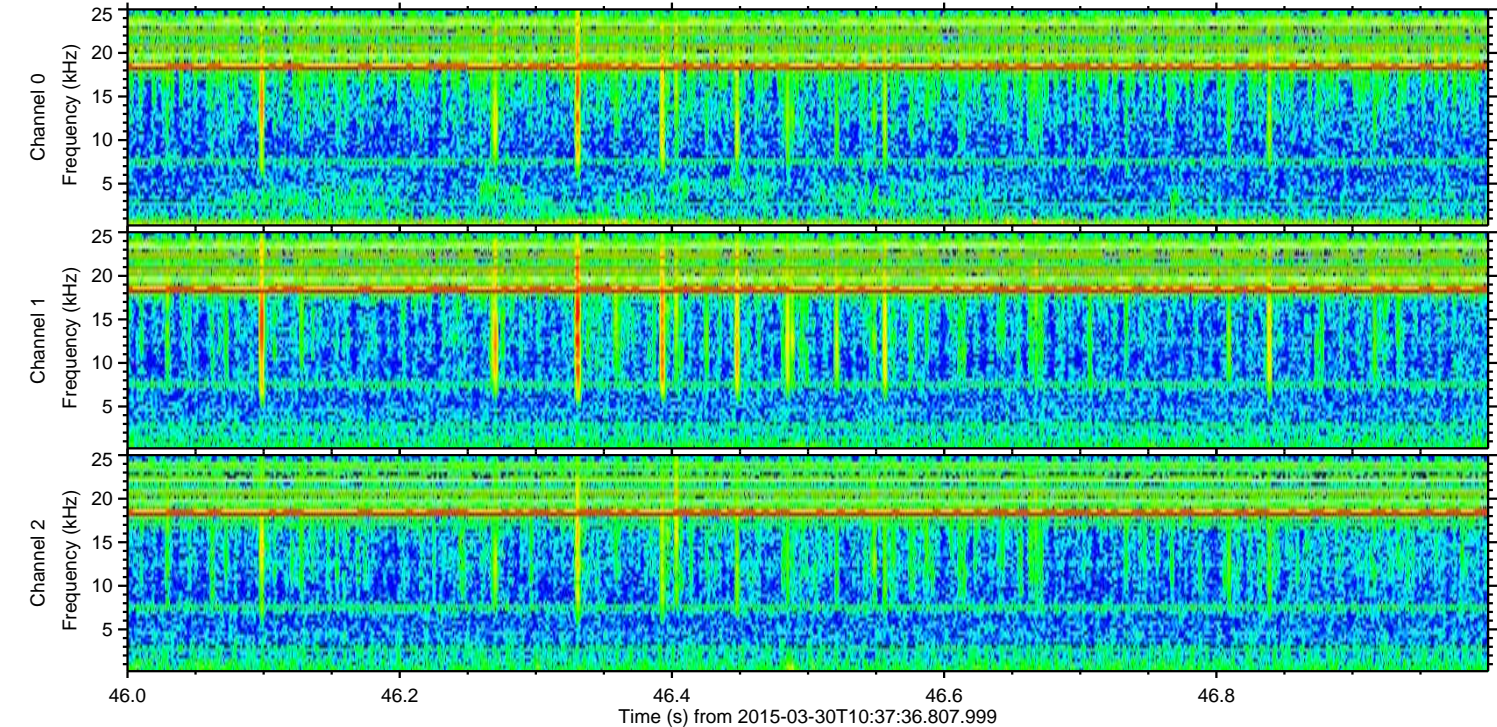
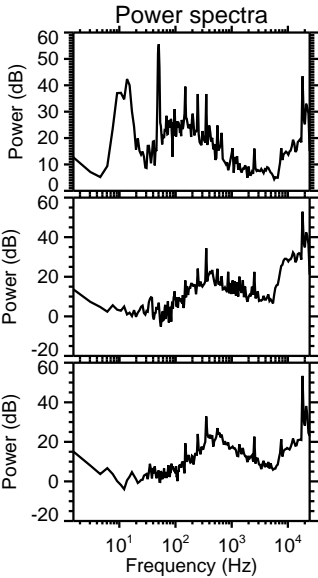
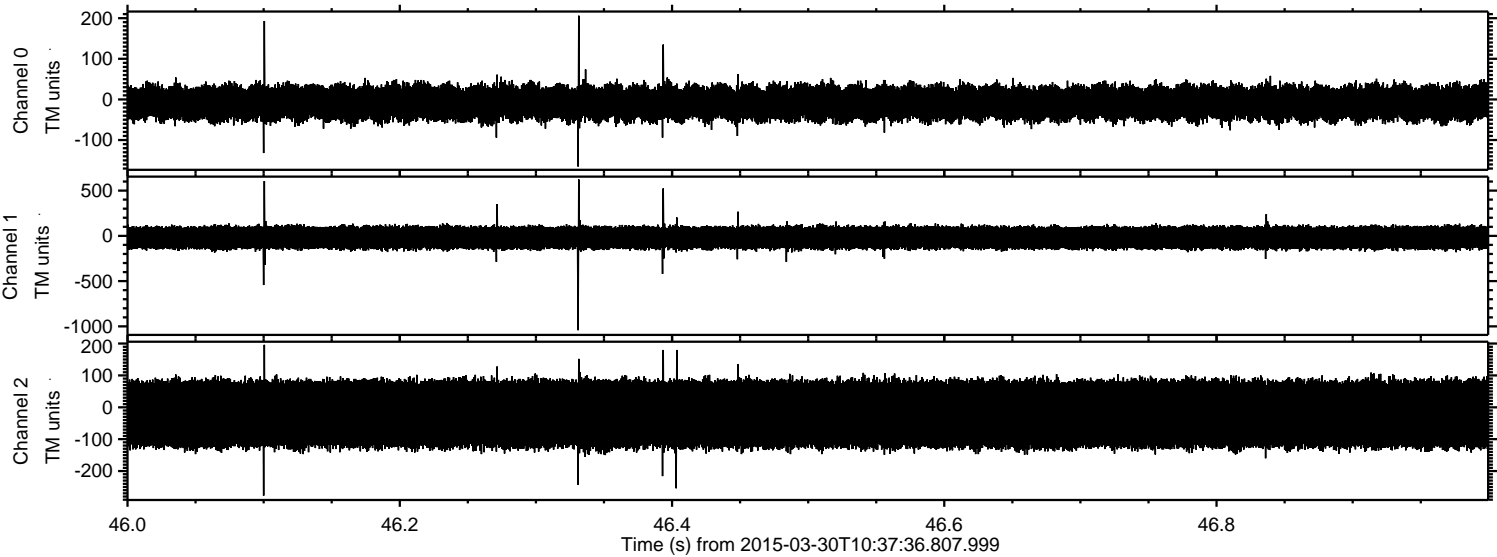
Processed Mon Mar 30 12:45:31 2015 by ELM ver.2012-10-06 from 001__elm20150330_103735__dat00.bin



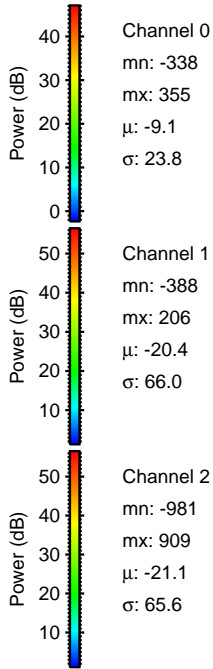
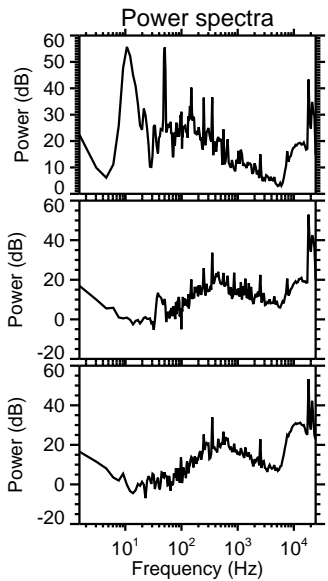
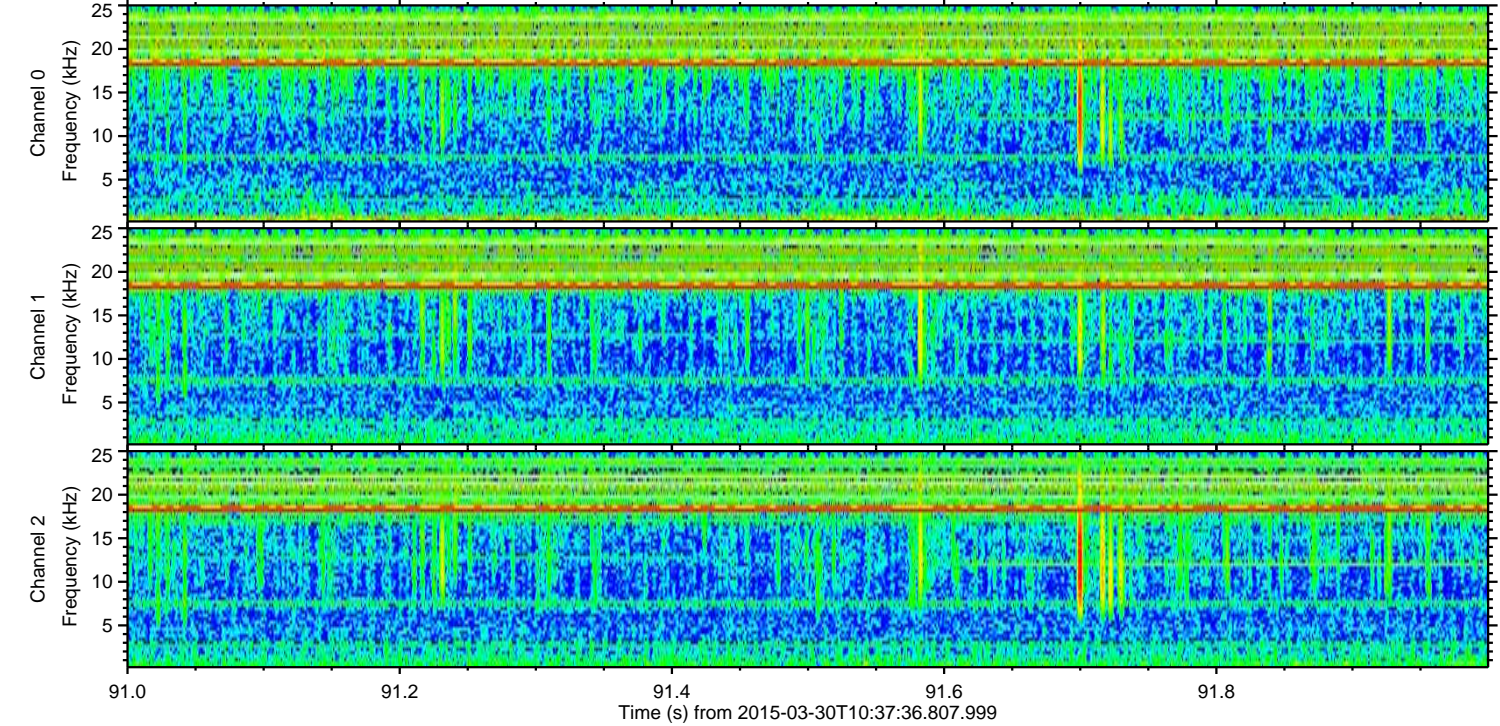
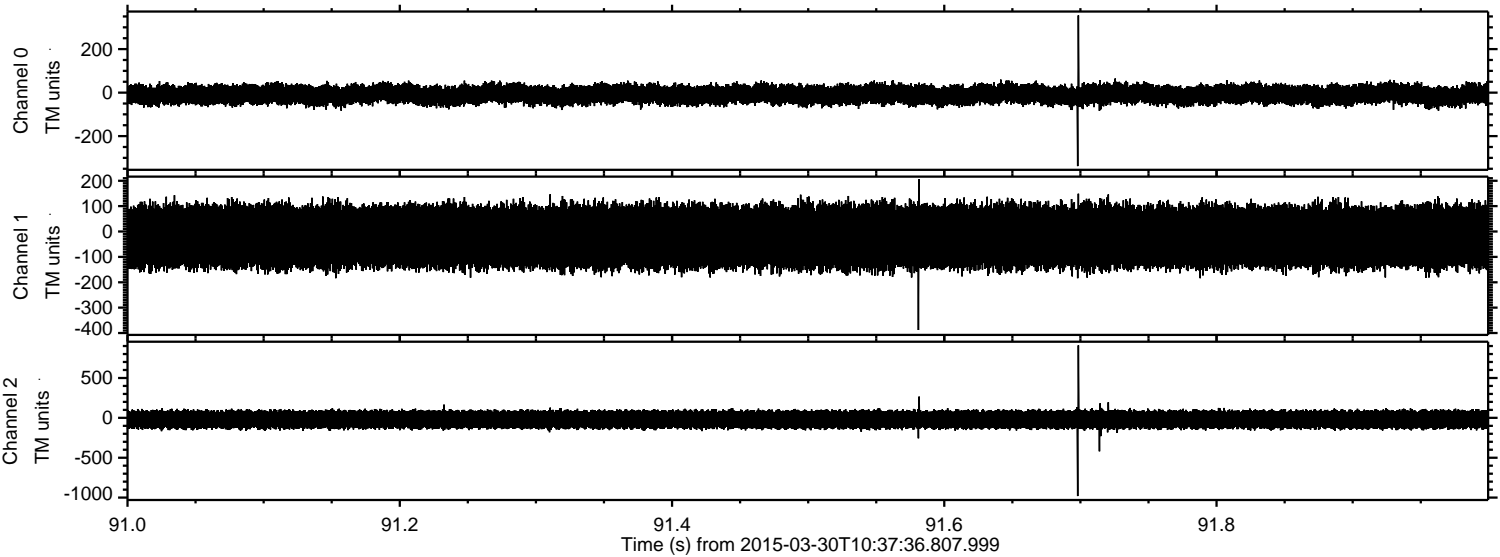
Processed Mon Mar 30 12:45:32 2015 by ELM ver.2012-10-06 from 001__elm20150330_103735__dat00.bin



Processed Mon Mar 30 12:45:32 2015 by ELM ver.2012-10-06 from 001__elm20150330_103735__dat00.bin



Processed Mon Mar 30 12:45:33 2015 by ELM ver.2012-10-06 from 001__elm20150330_103735__dat00.bin



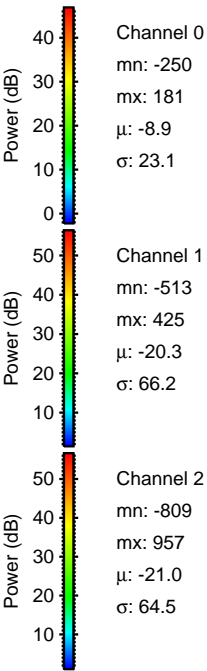
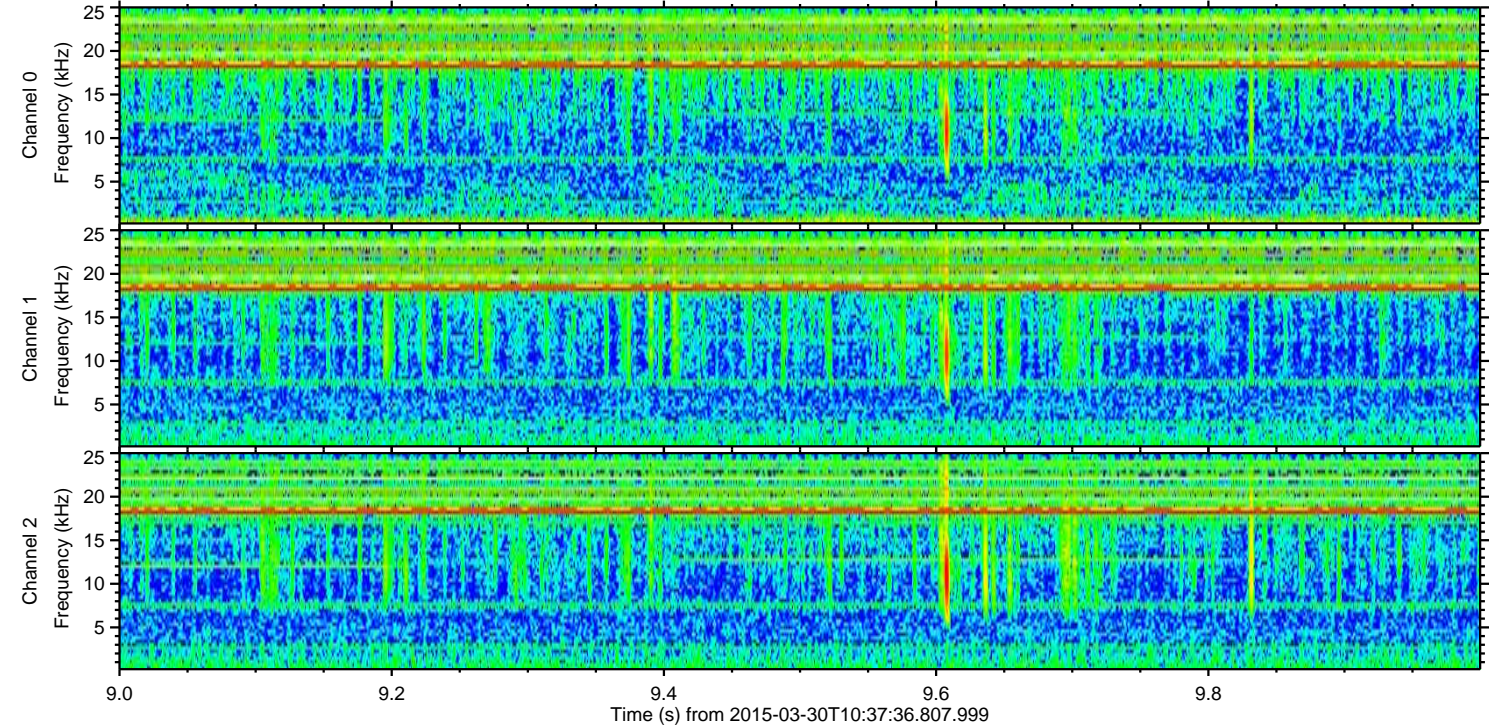
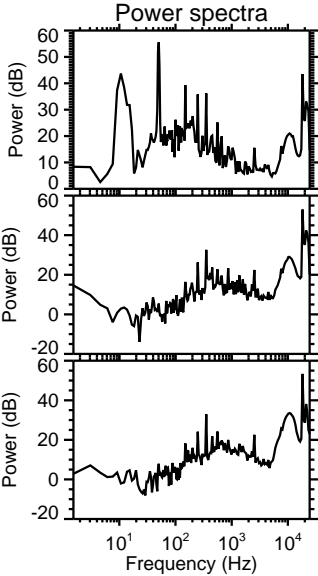
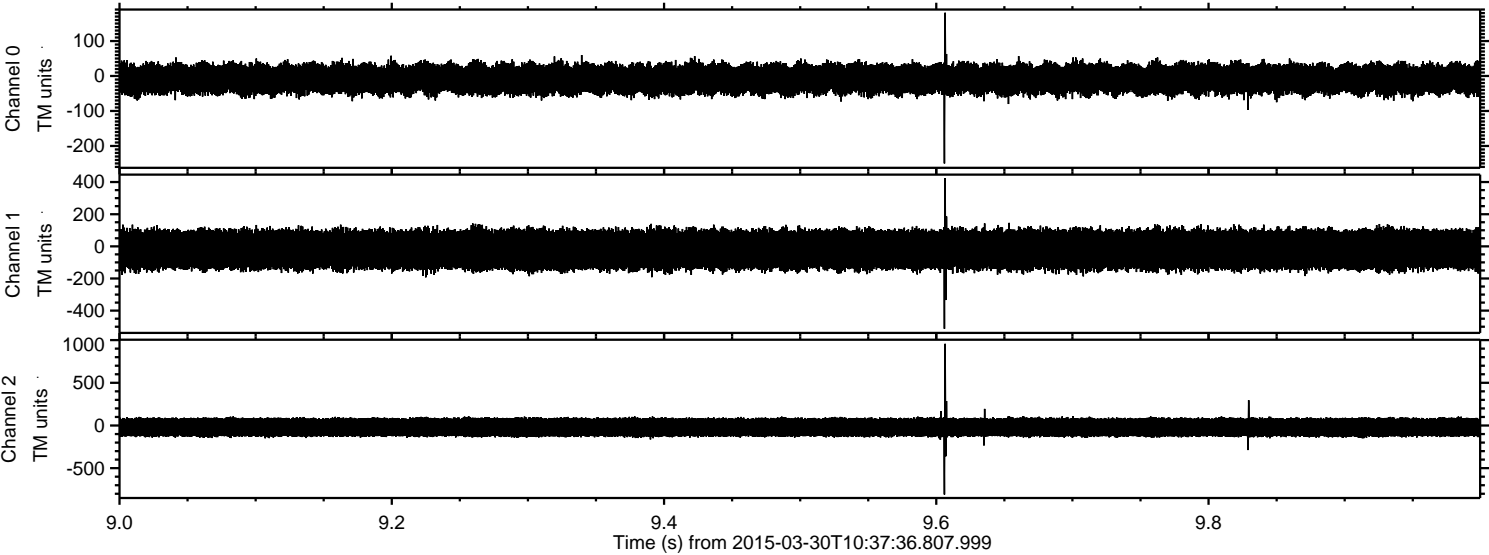
Power spectra

Channel 0
mn: -338
mx: 355
 μ : -9.1
 σ : 23.8

Channel 1
mn: -388
mx: 206
 μ : -20.4
 σ : 66.0

Channel 2
mn: -981
mx: 909
 μ : -21.1
 σ : 65.6

Processed Mon Mar 30 12:45:34 2015 by ELM ver.2012-10-06 from 001__elm20150330_103735__dat00.bin



Processed Mon Mar 30 12:45:35 2015 by ELM ver.2012-10-06 from 001__elm20150330_103735__dat00.bin

