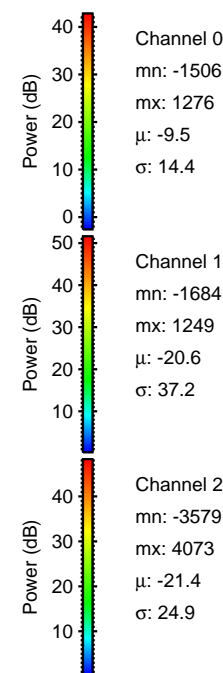
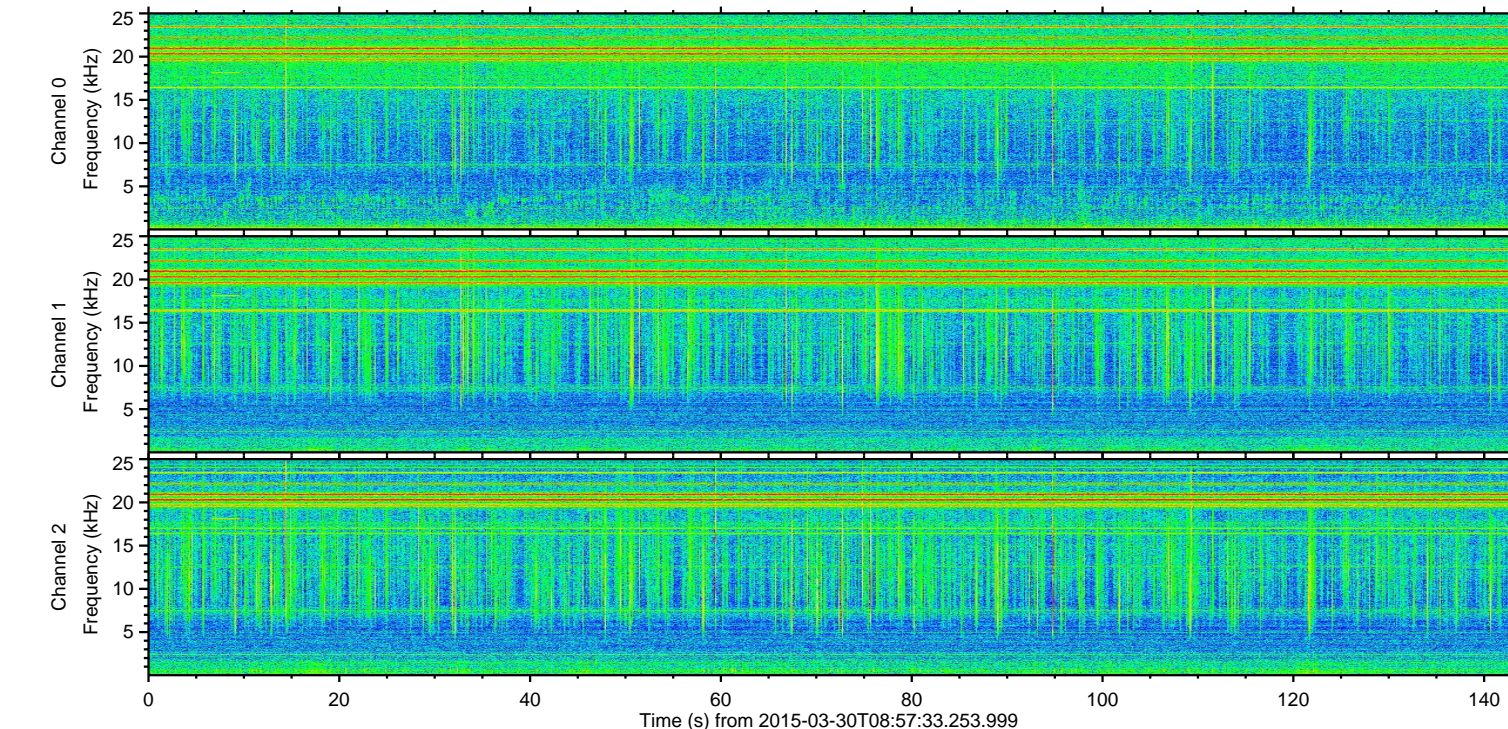
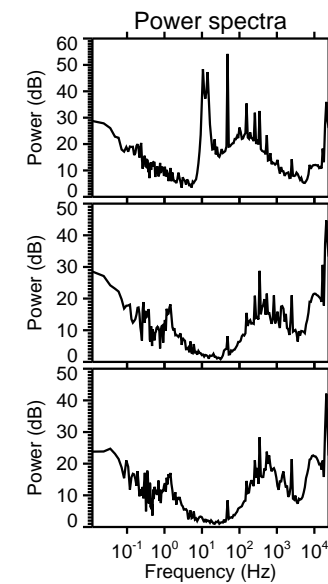
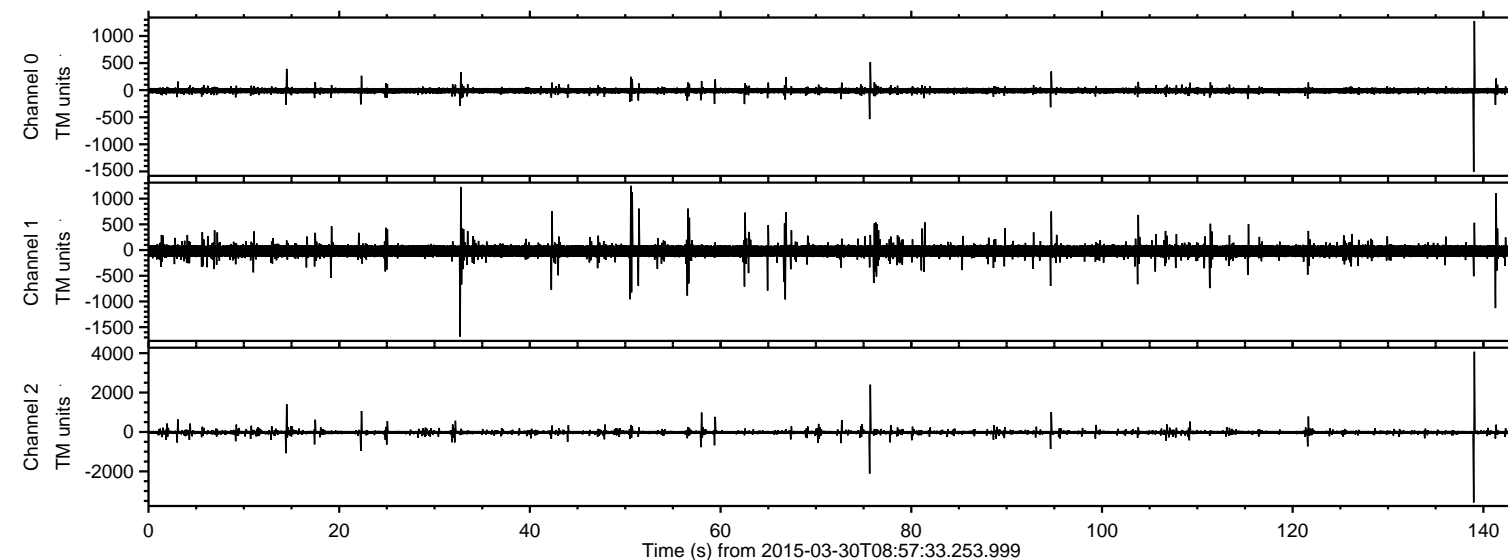


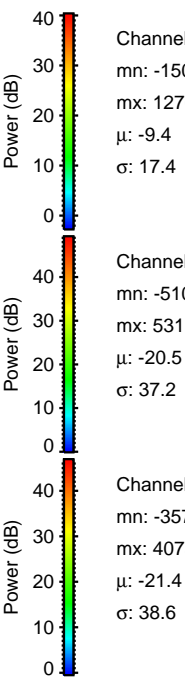
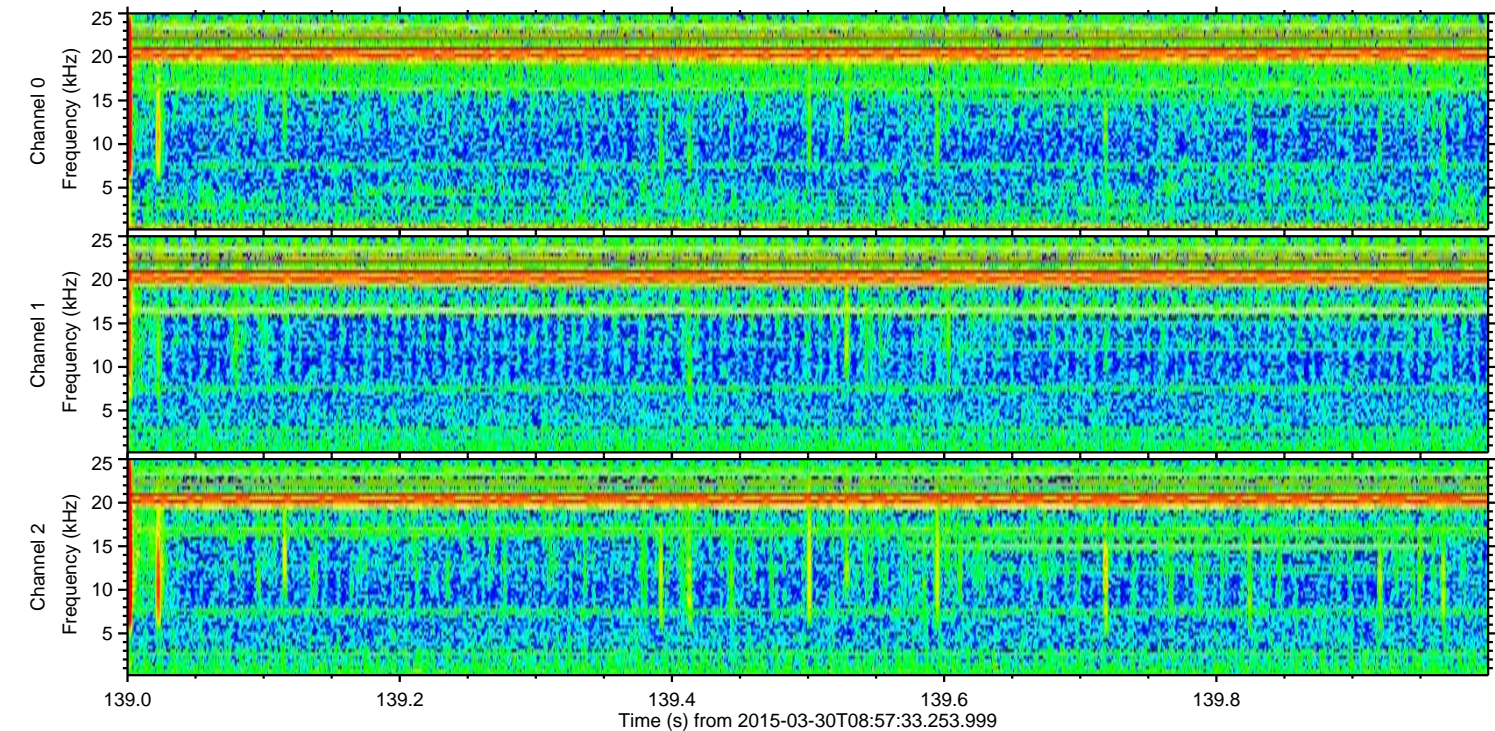
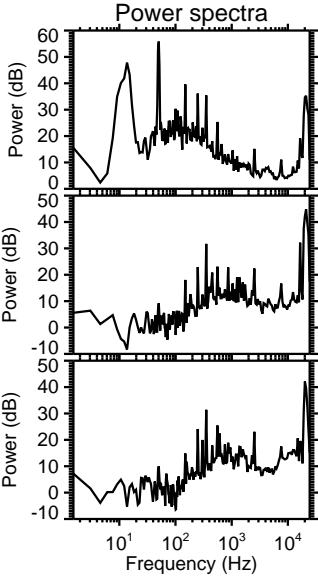
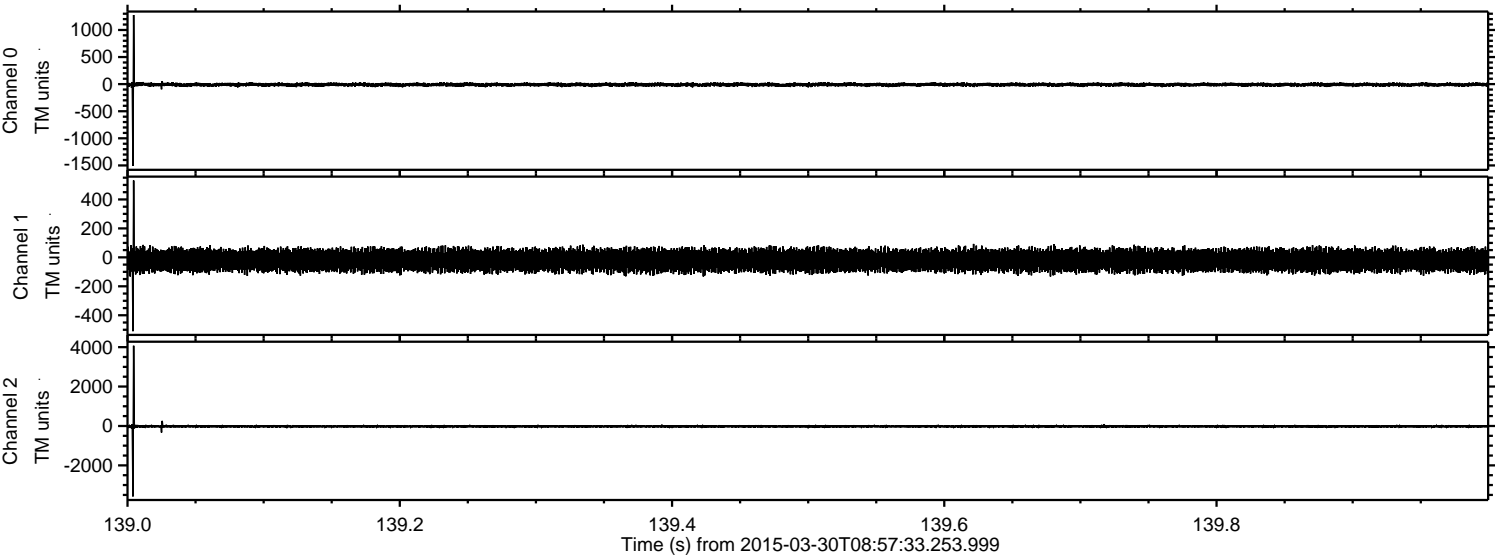
ELMAVAN 3D WAVEFORMS (Measured data sampled at 50 kHz) 49550 packets of 144 samples from 2015-03-30T08:57:33.253.999.

Processed Mon Mar 30 11:05:24 2015 by ELM ver.2012-10-06 from 001__elm20150330_085732__dat00.bin



ELMAVAN 3D WAVEFORMS (Measured data sampled at 50 kHz) 49550 packets of 144 samples from 2015-03-30T08:57:33.253.999. Part 140/143

Processed Mon Mar 30 11:05:39 2015 by ELM ver.2012-10-06 from 001__elm20150330_085732__dat00.bin

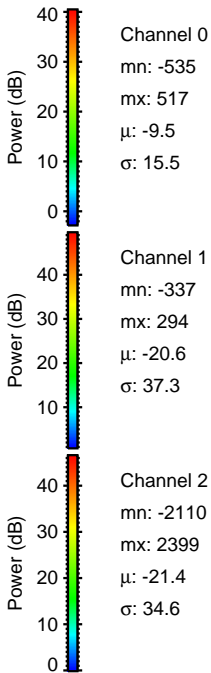
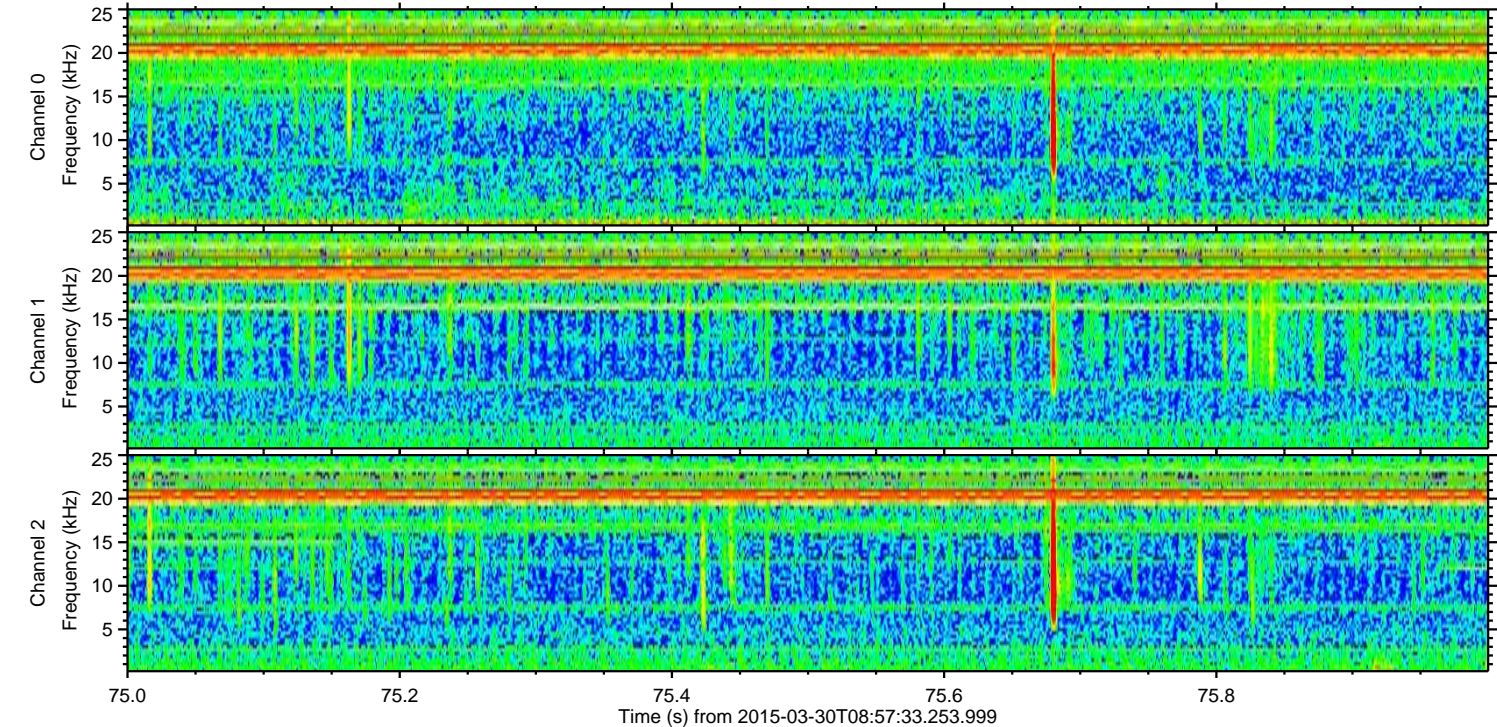
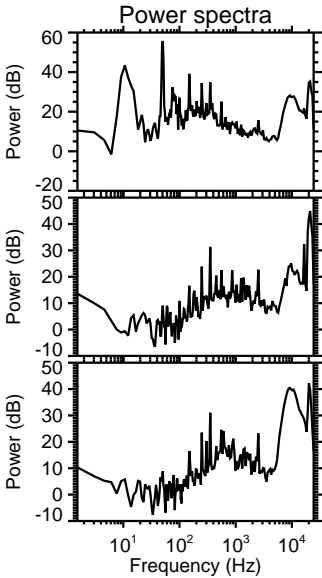
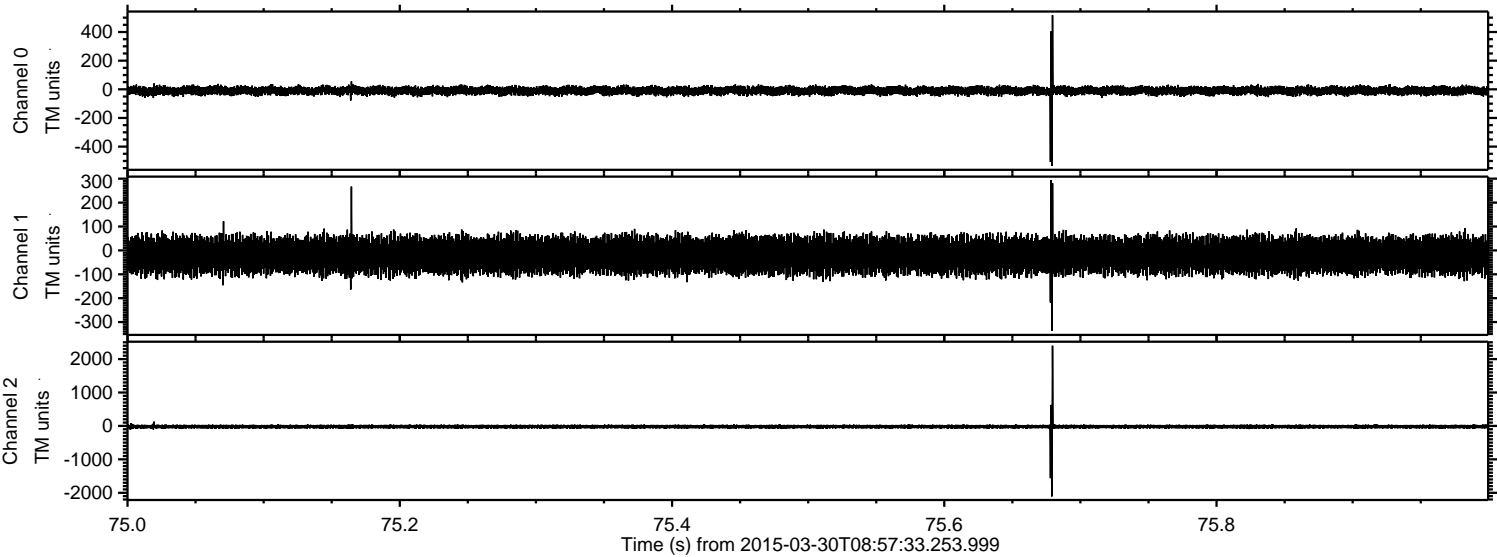


Channel 0
mn: -1506
mx: 1276
 μ : -9.4
 σ : 17.4

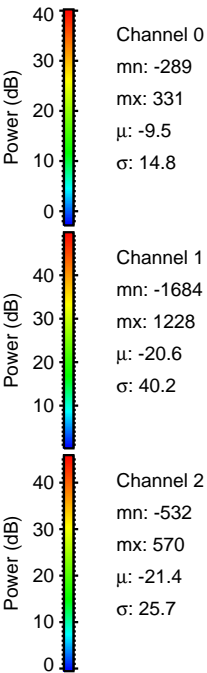
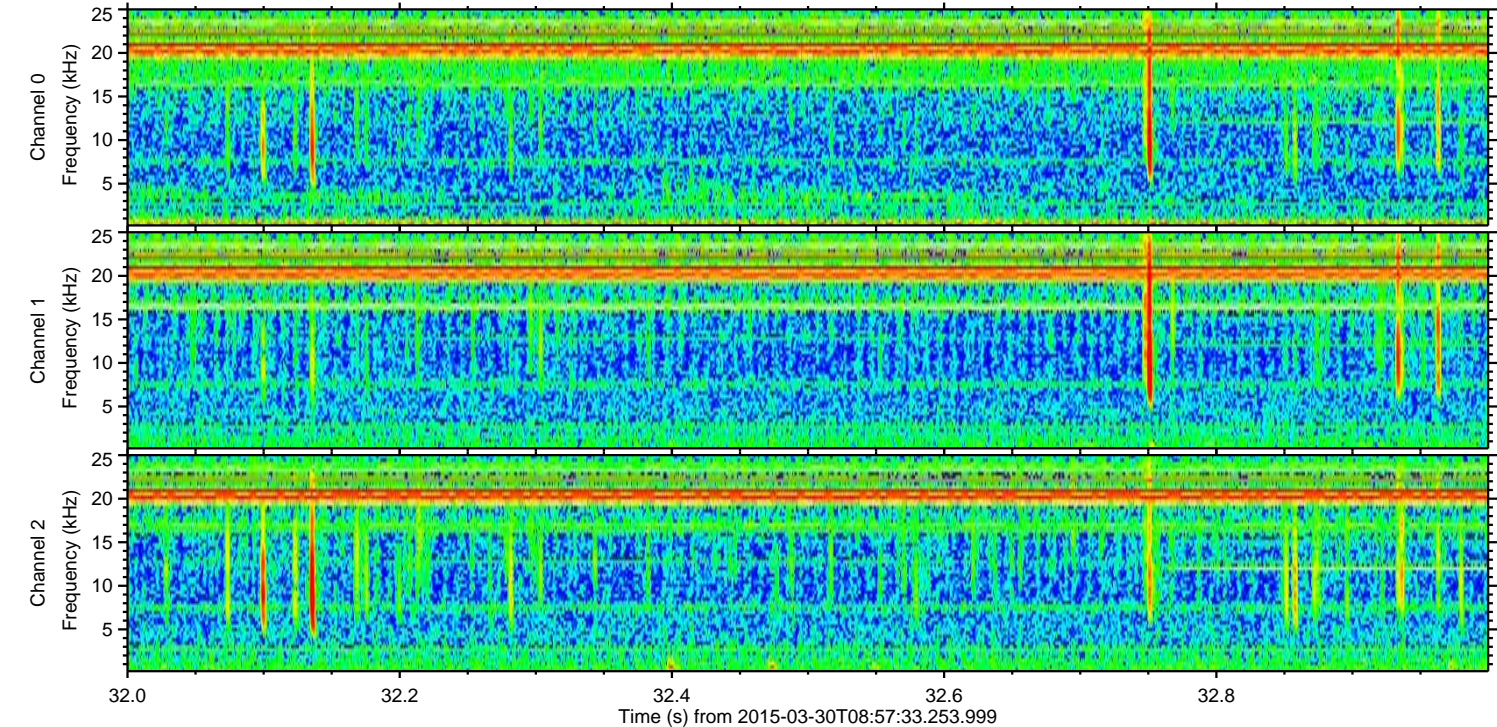
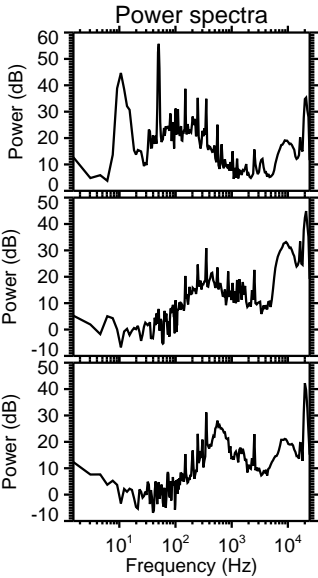
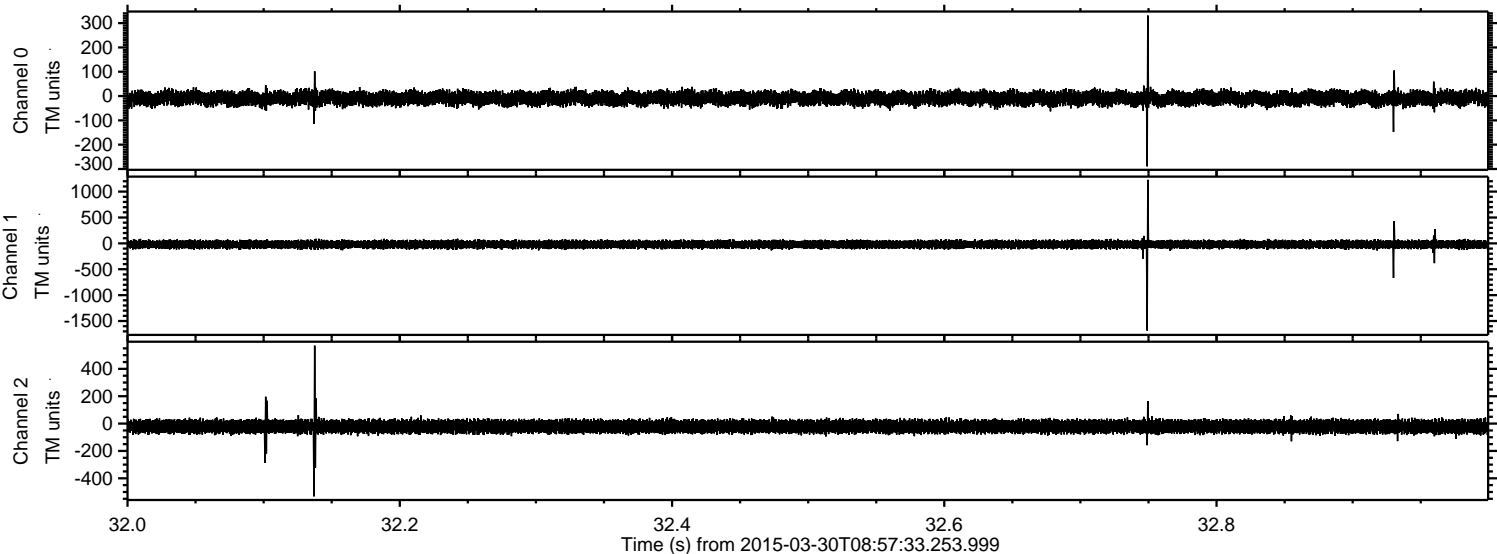
Channel 1
mn: -510
mx: 531
 μ : -20.5
 σ : 37.2

Channel 2
mn: -3579
mx: 4073
 μ : -21.4
 σ : 38.6

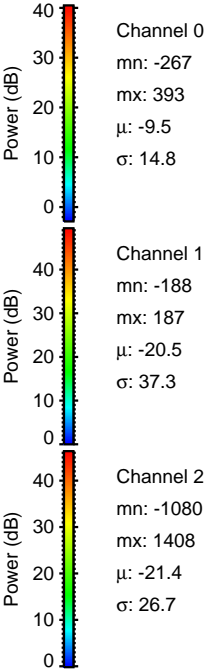
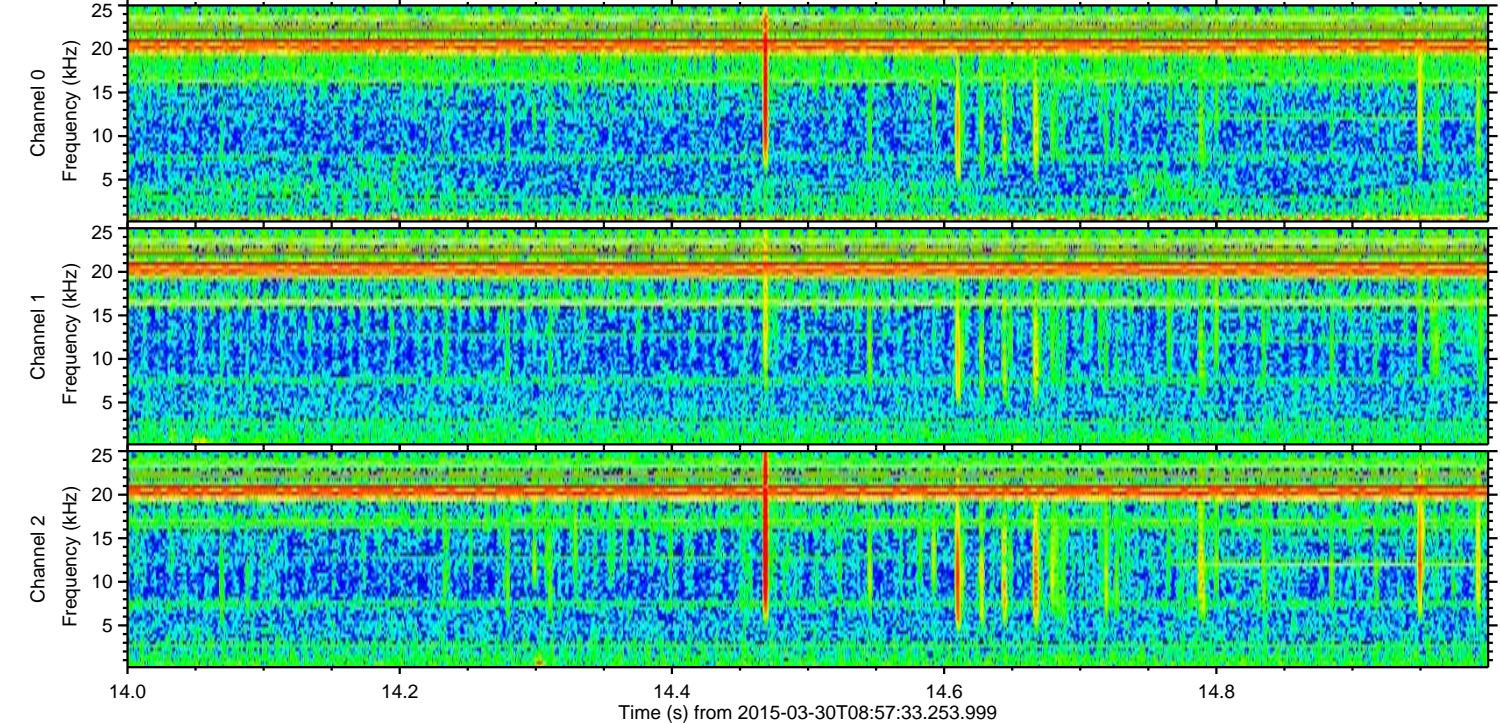
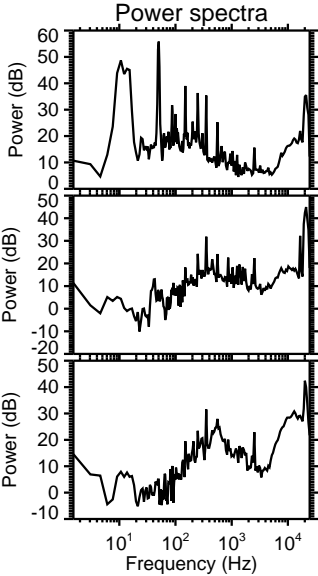
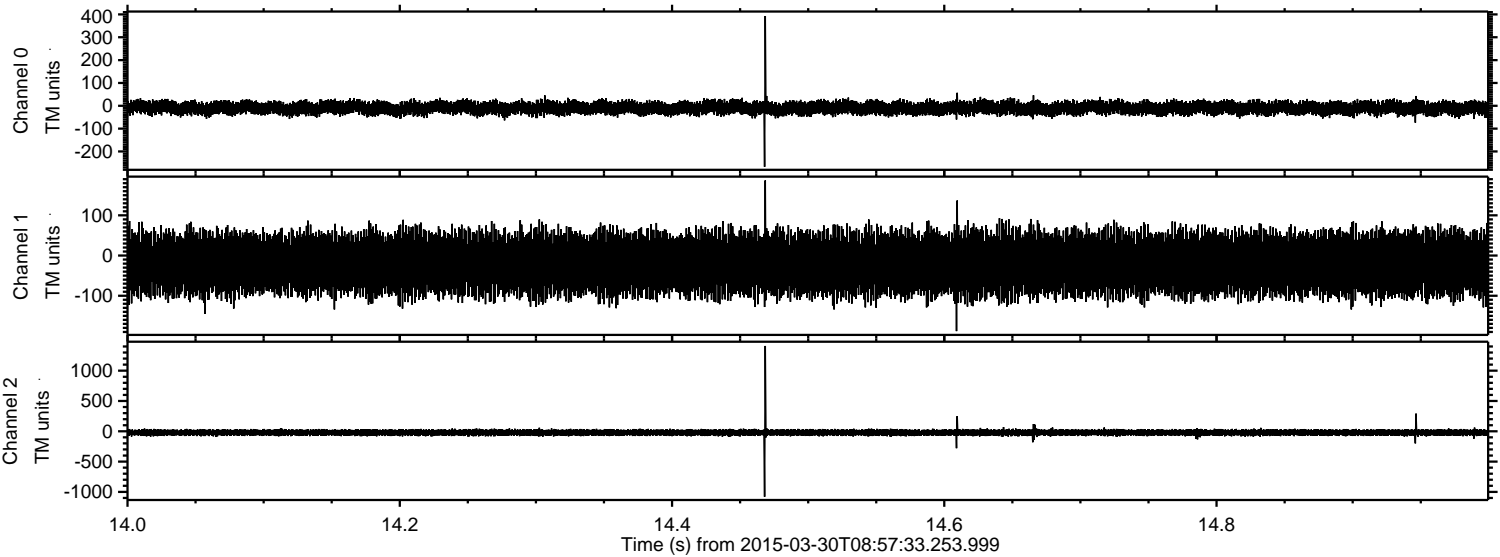
Processed Mon Mar 30 11:05:40 2015 by ELM ver.2012-10-06 from 001__elm20150330_085732__dat00.bin



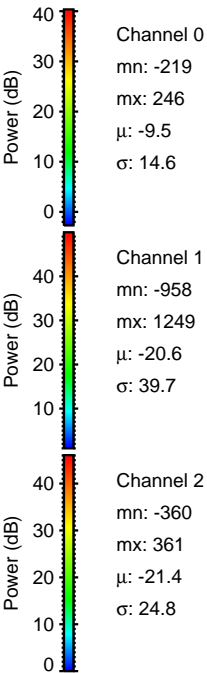
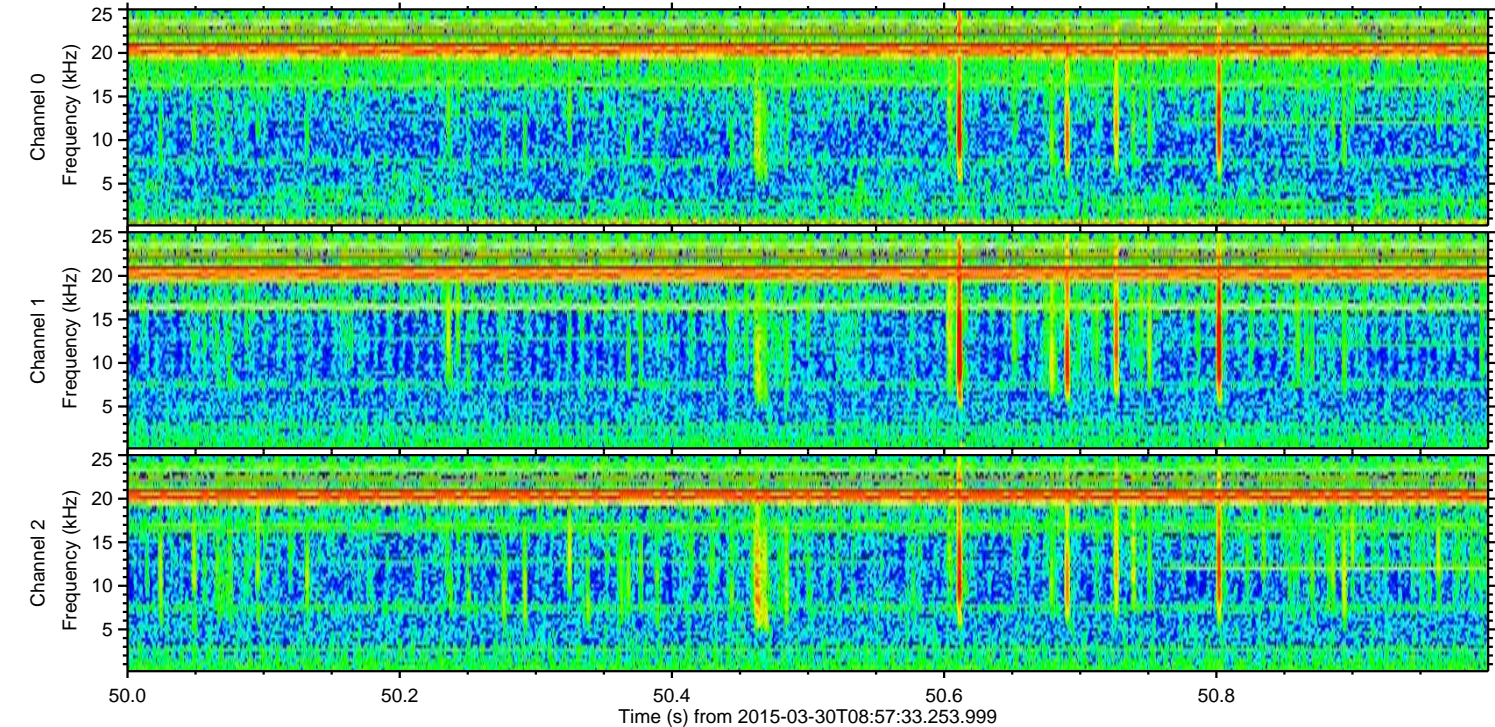
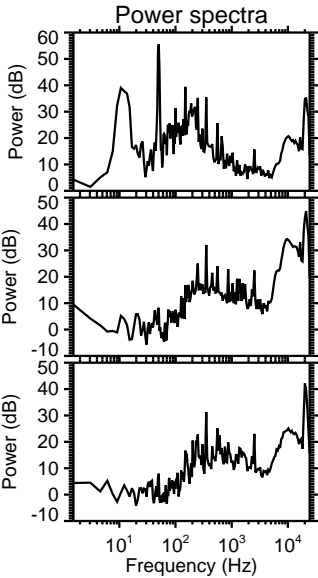
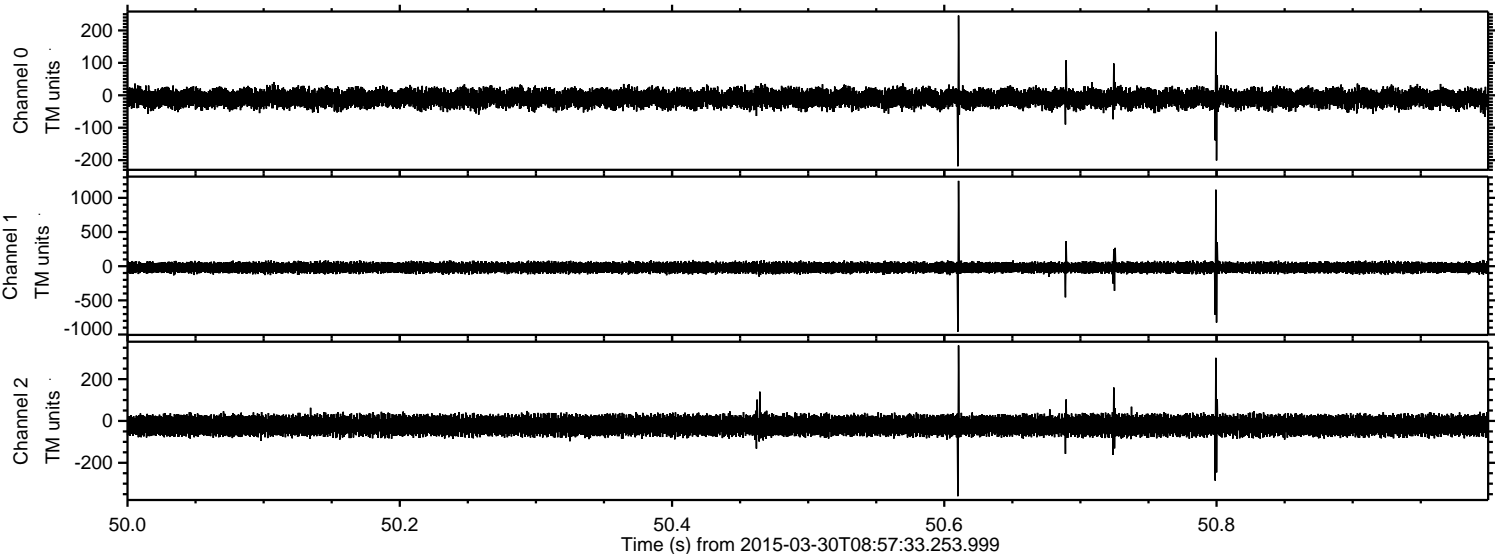
Processed Mon Mar 30 11:05:41 2015 by ELM ver.2012-10-06 from 001__elm20150330_085732__dat00.bin



Processed Mon Mar 30 11:05:42 2015 by ELM ver.2012-10-06 from 001__elm20150330_085732__dat00.bin

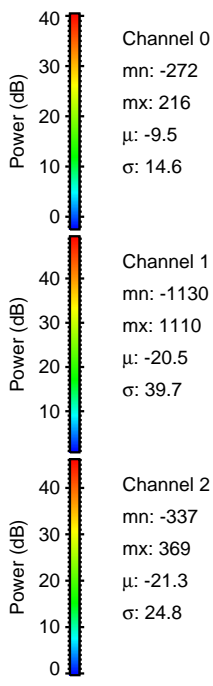
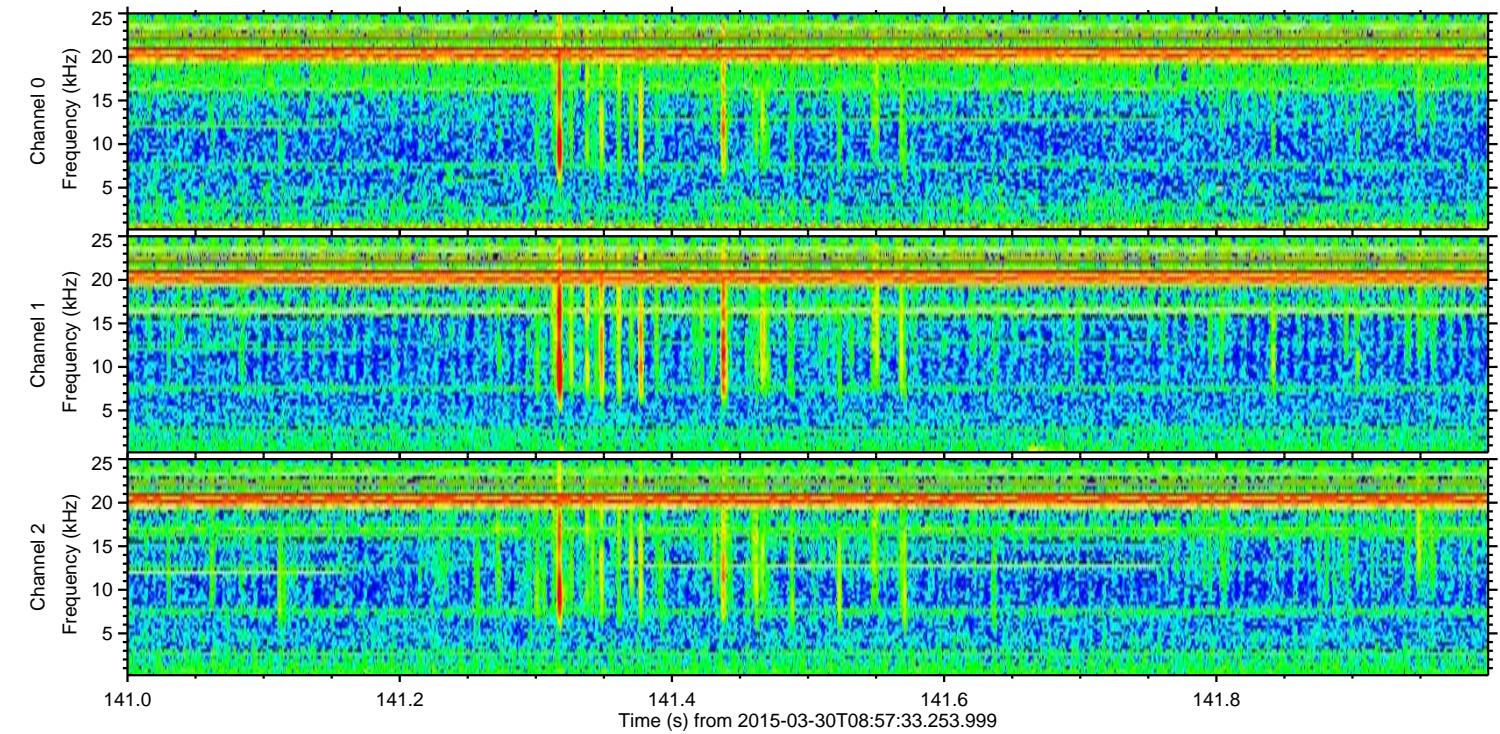
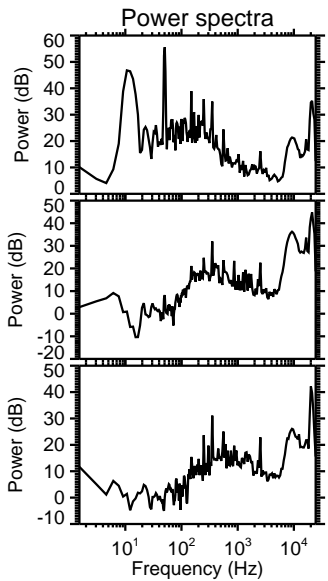
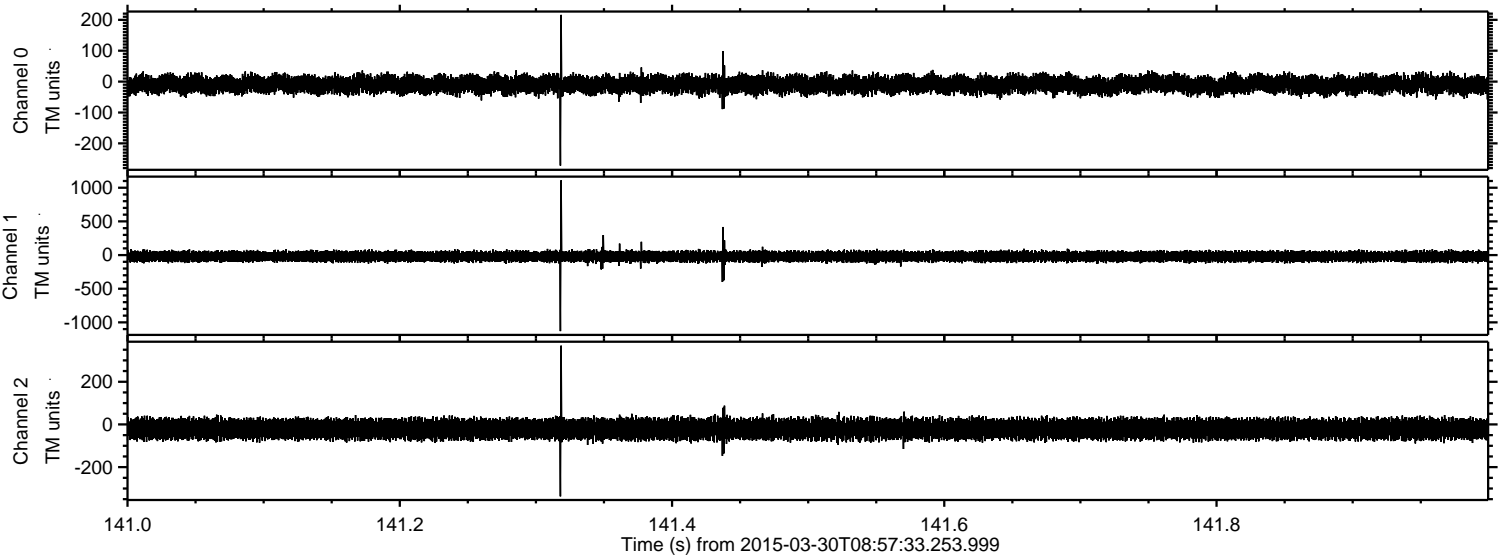


Processed Mon Mar 30 11:05:43 2015 by ELM ver.2012-10-06 from 001__elm20150330_085732__dat00.bin

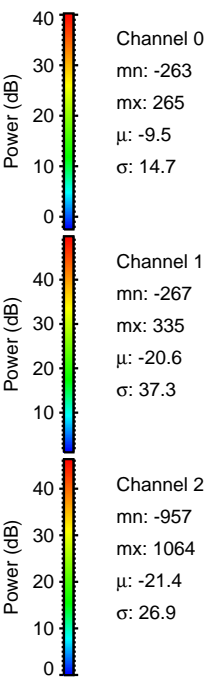
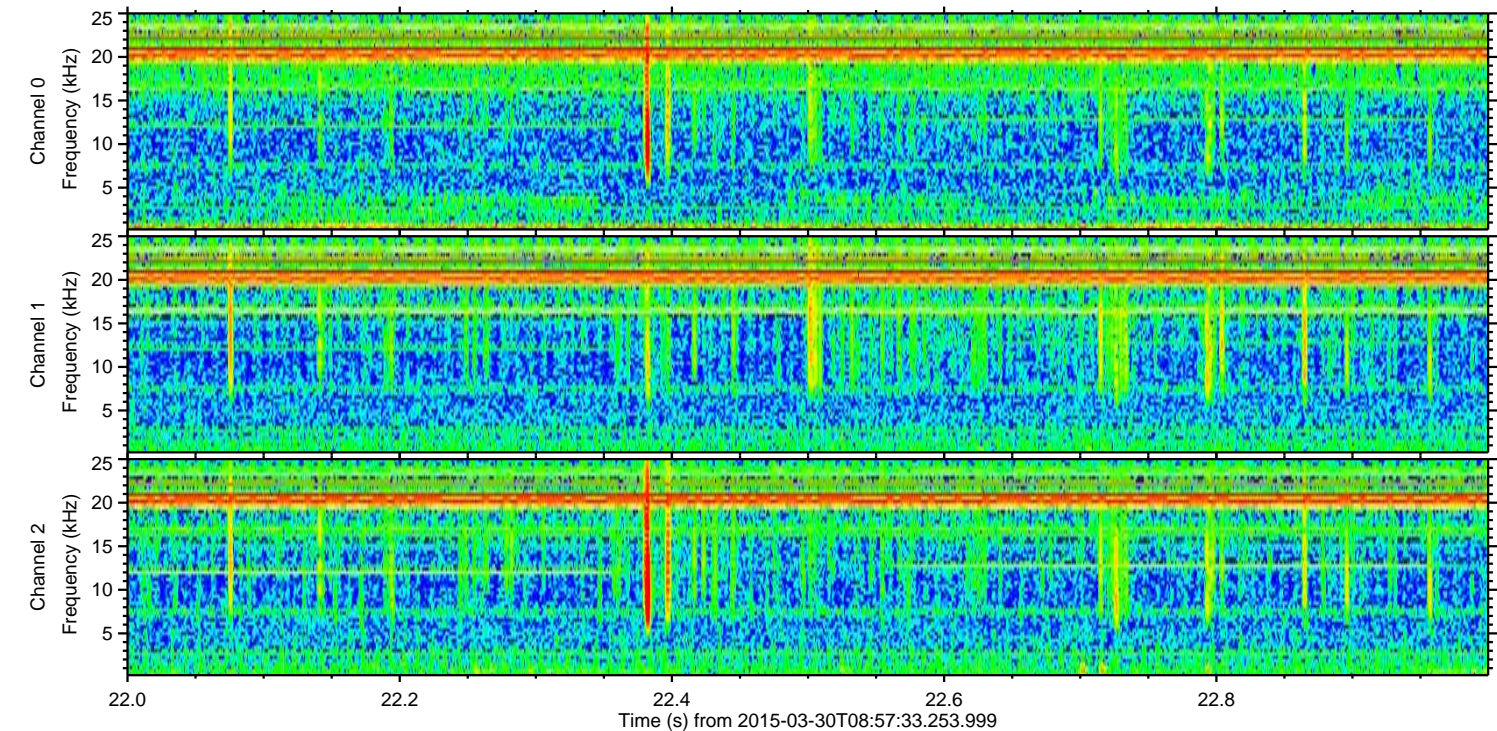
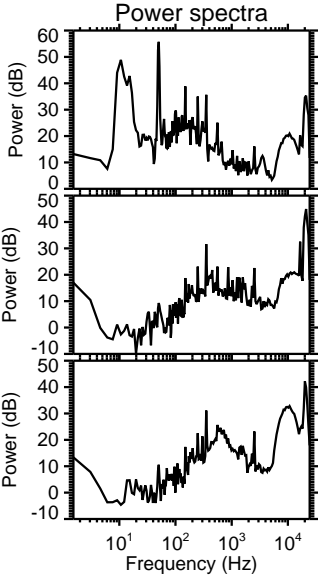
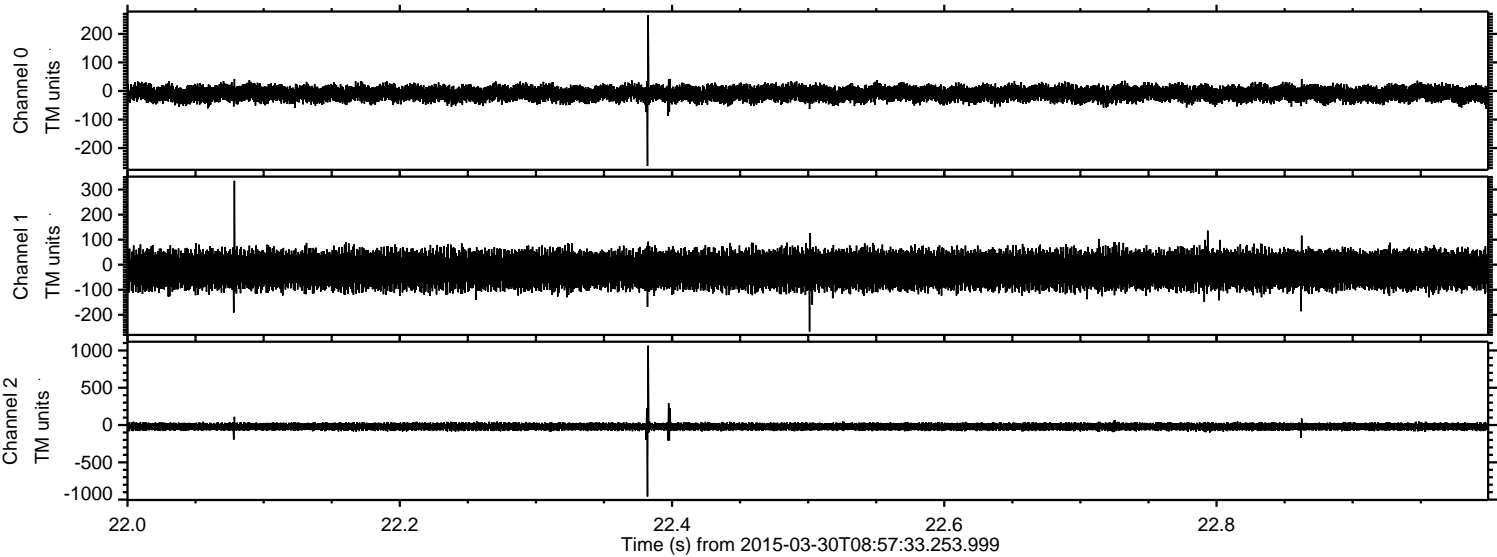


ELMAVAN 3D WAVEFORMS (Measured data sampled at 50 kHz) 49550 packets of 144 samples from 2015-03-30T08:57:33.253.999. Part 142/143

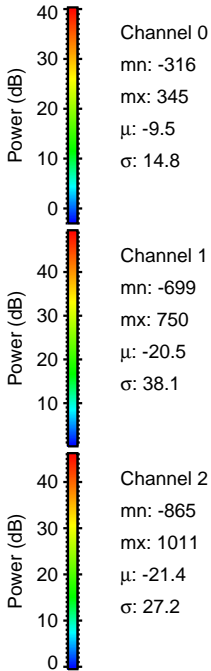
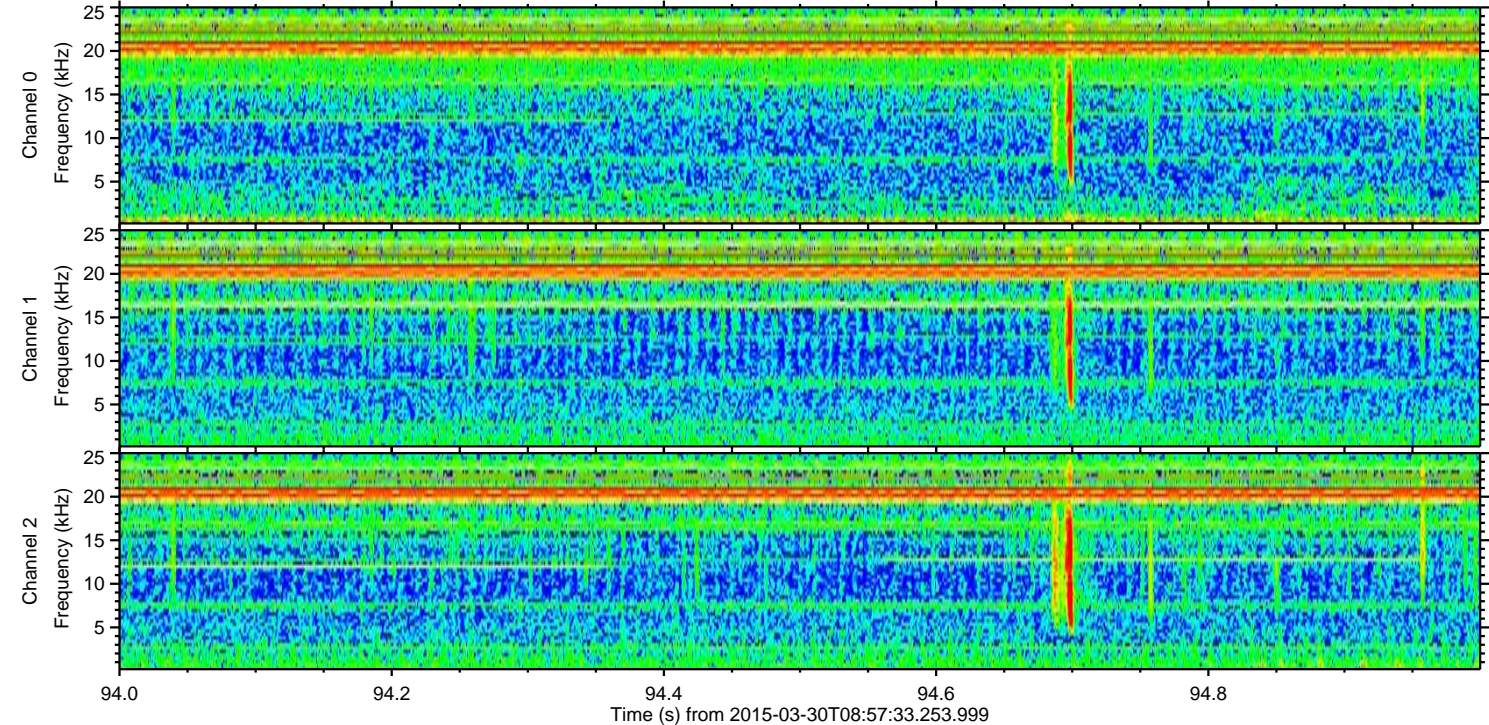
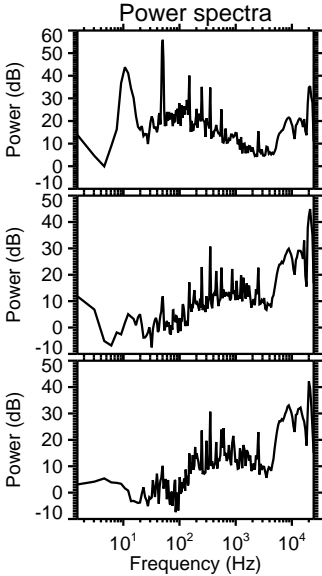
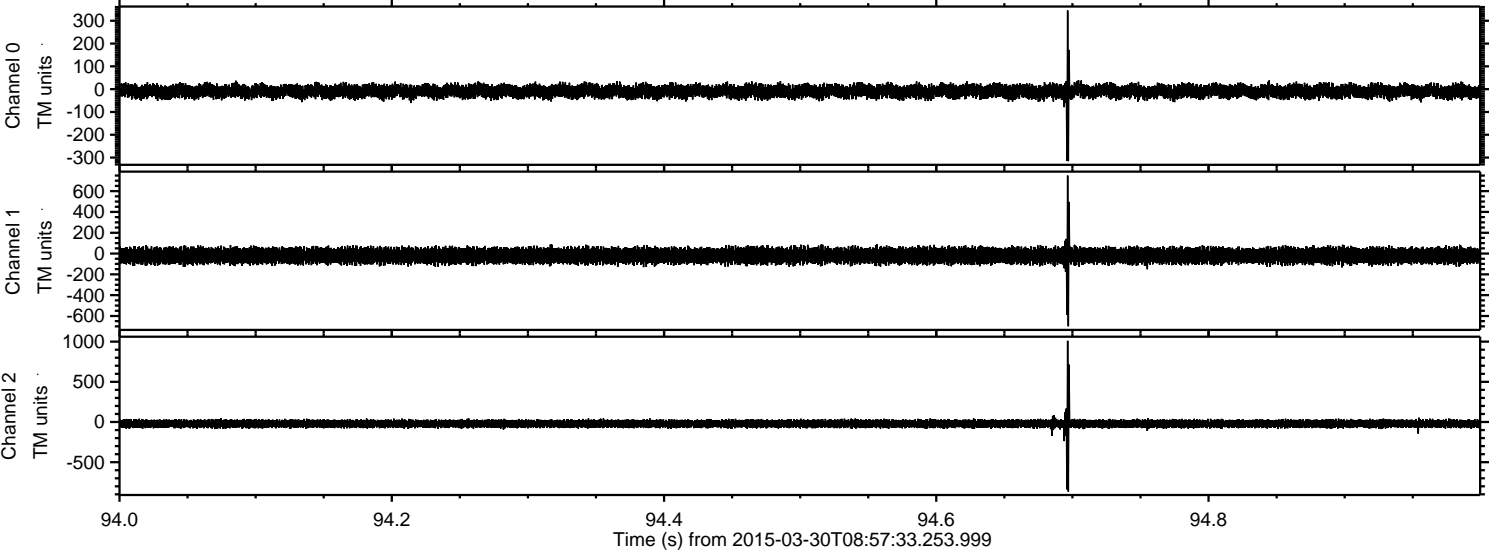
Processed Mon Mar 30 11:05:44 2015 by ELM ver.2012-10-06 from 001__elm20150330_085732__dat00.bin



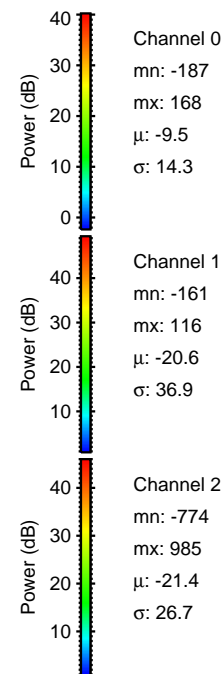
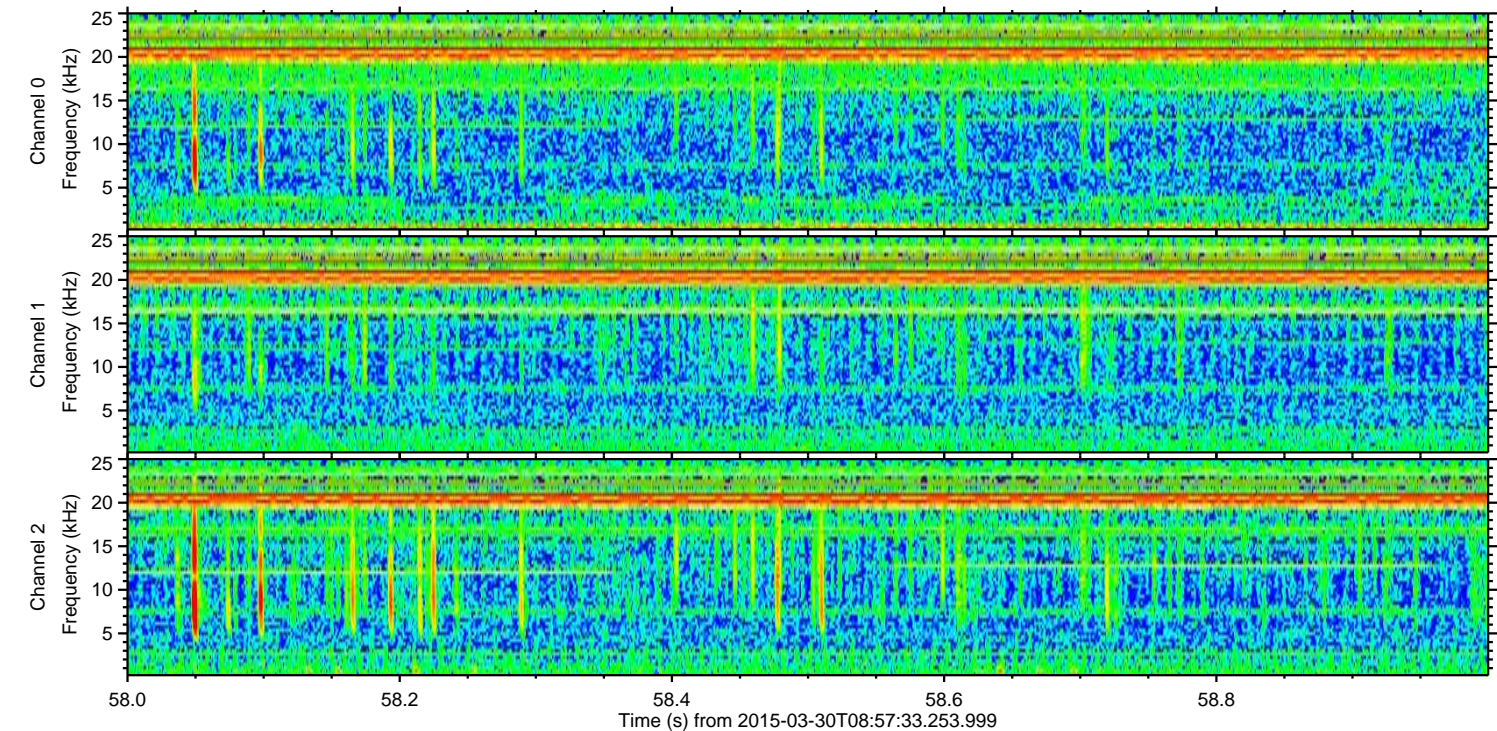
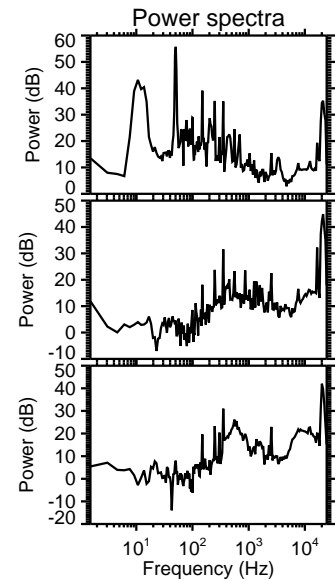
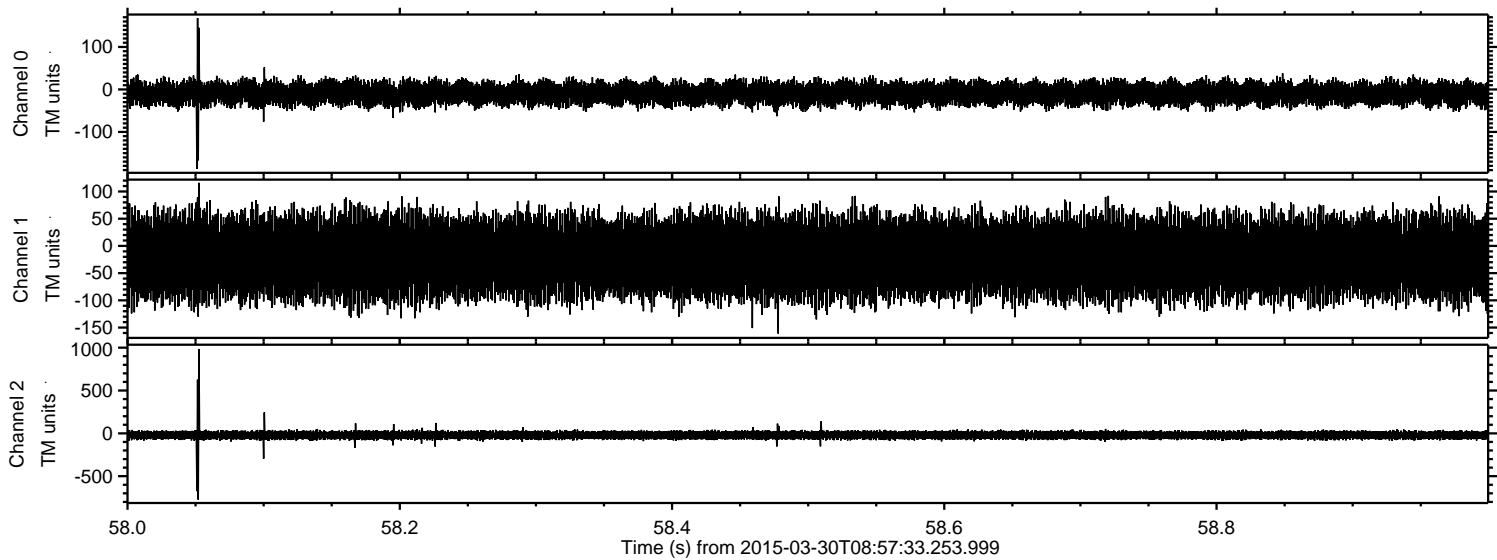
Processed Mon Mar 30 11:05:45 2015 by ELM ver.2012-10-06 from 001__elm20150330_085732__dat00.bin



Processed Mon Mar 30 11:05:47 2015 by ELM ver.2012-10-06 from 001__elm20150330_085732__dat00.bin



Processed Mon Mar 30 11:05:48 2015 by ELM ver.2012-10-06 from 001__elm20150330_085732__dat00.bin



Processed Mon Mar 30 11:05:49 2015 by ELM ver.2012-10-06 from 001__elm20150330_085732__dat00.bin

