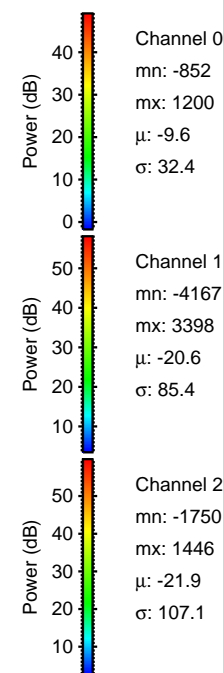
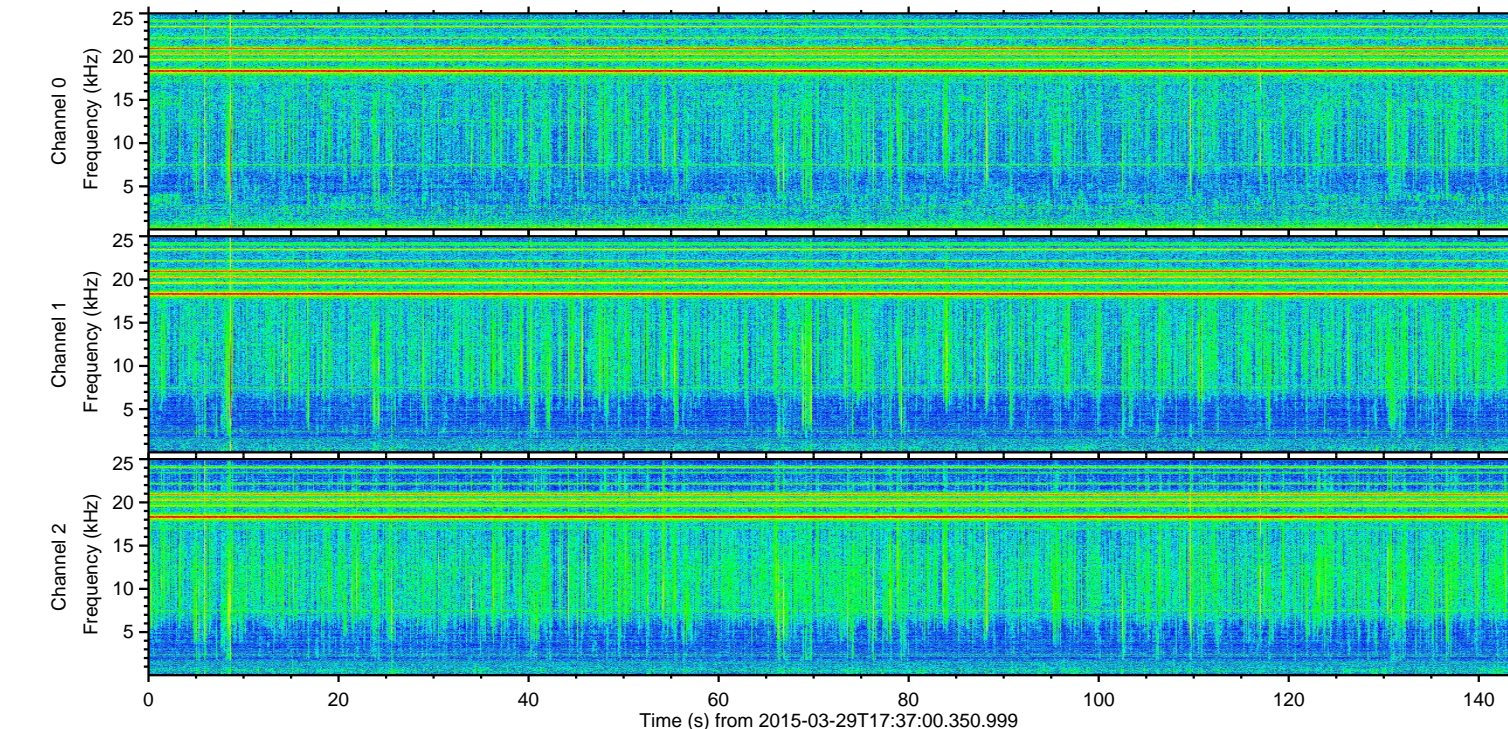
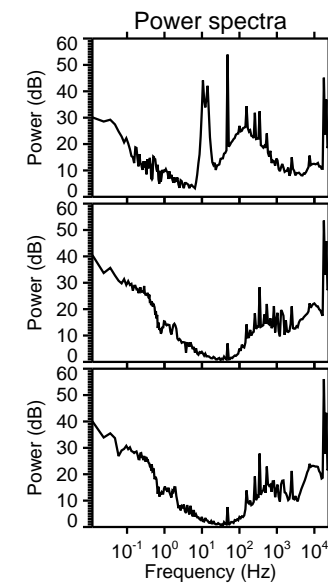
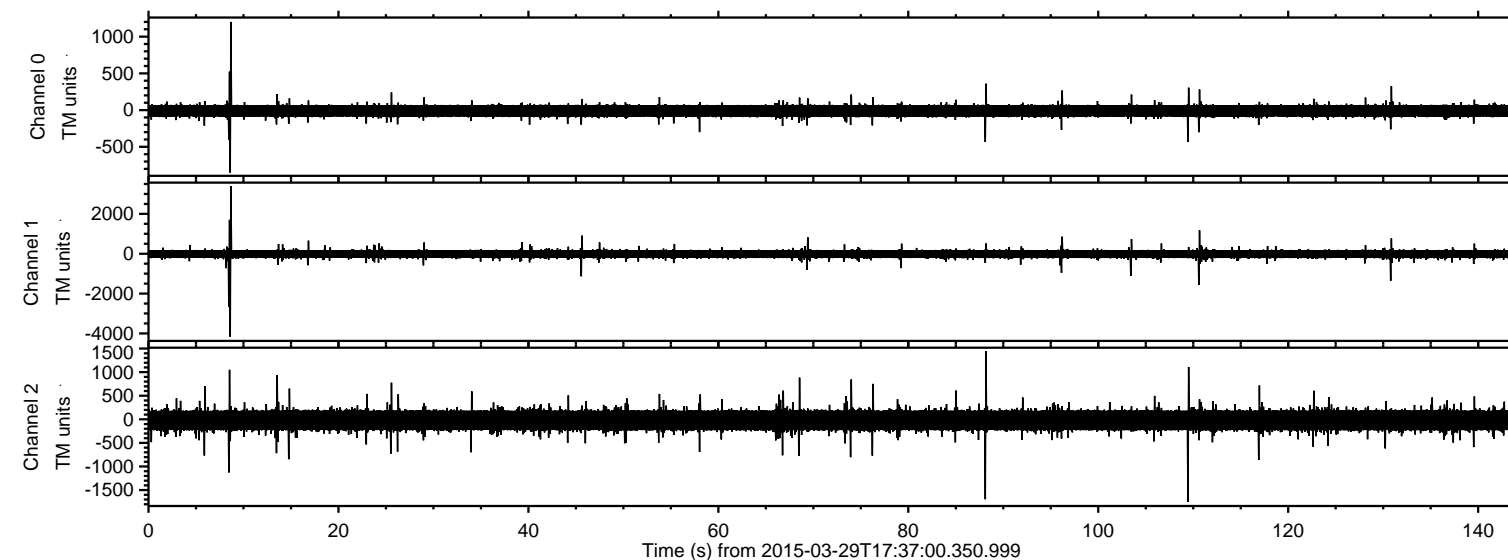


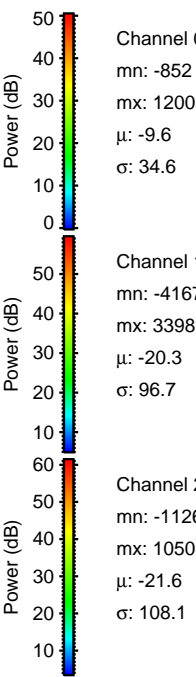
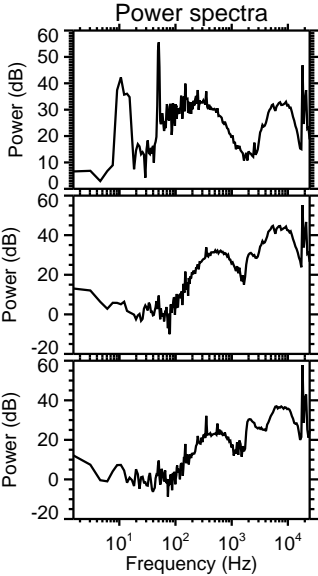
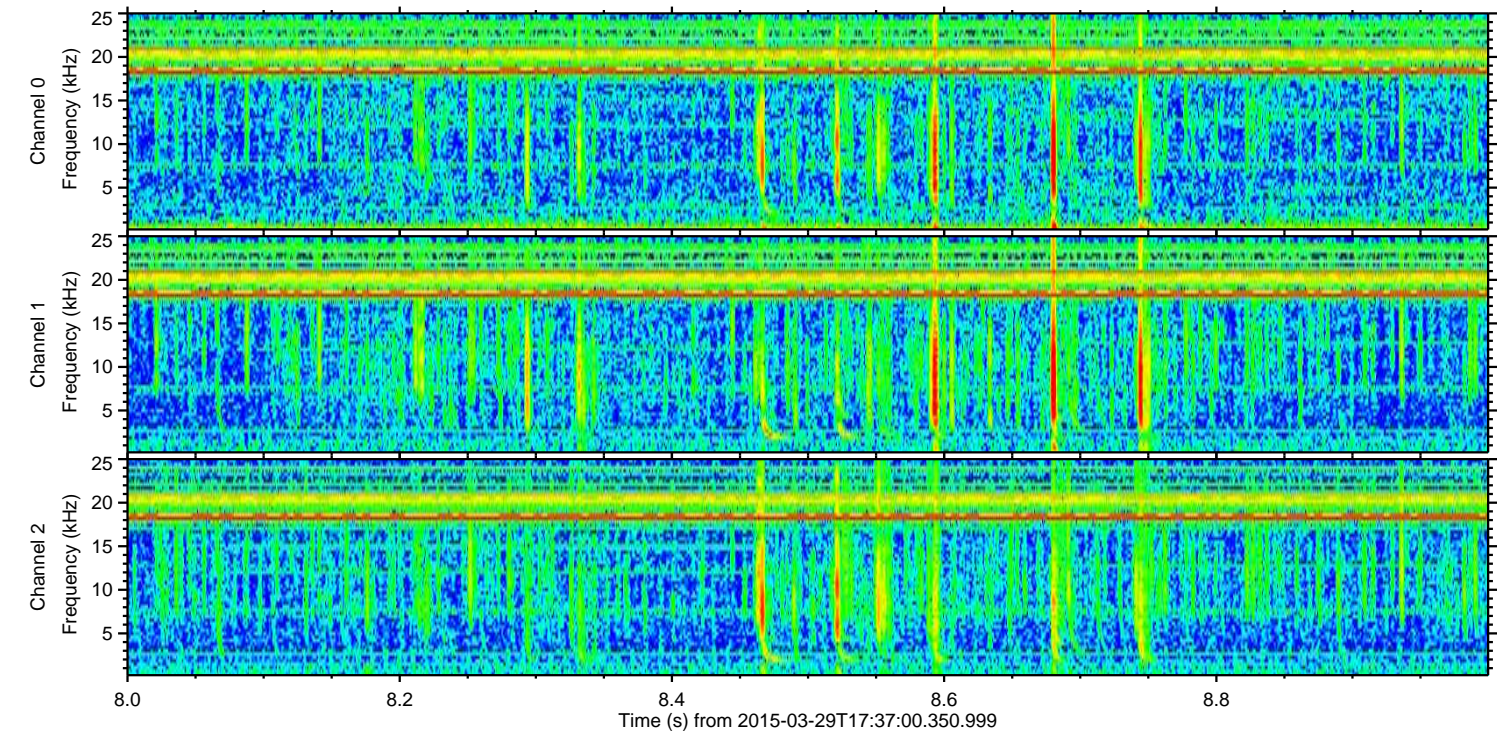
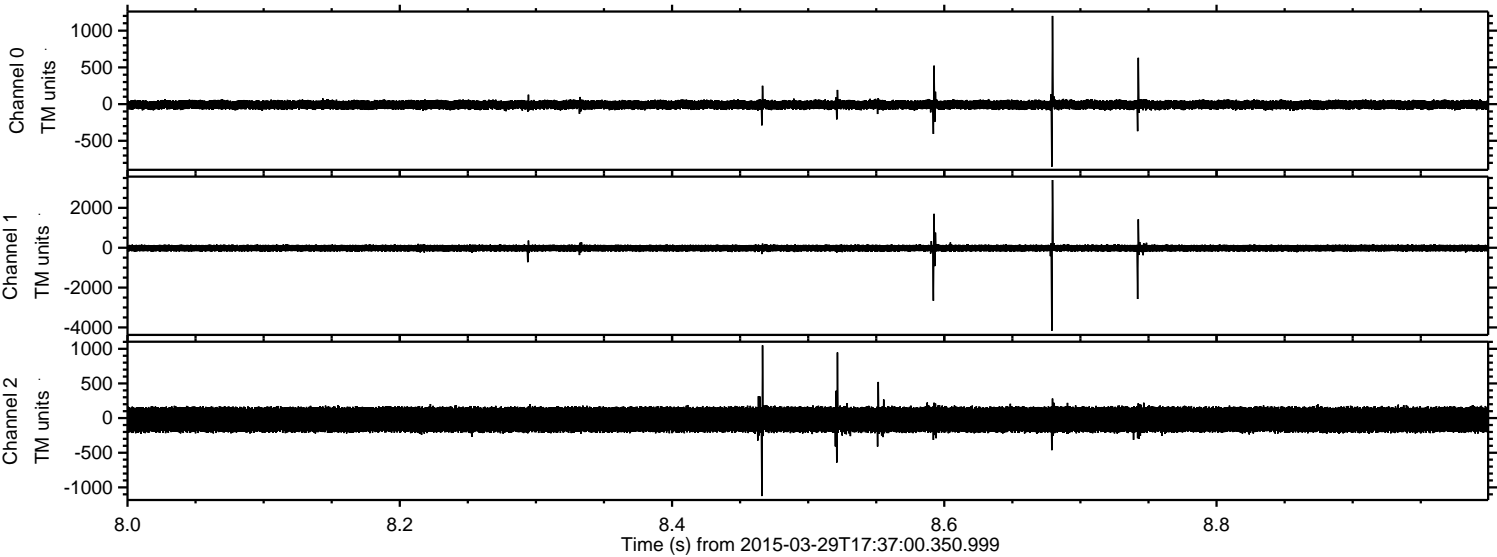
# ELMAVAN 3D WAVEFORMS (Measured data sampled at 50 kHz) 49744 packets of 144 samples from 2015-03-29T17:37:00.350.999.

Processed Sun Mar 29 19:43:58 2015 by ELM ver.2012-10-06 from 001\_\_elm20150329\_173659\_\_dat00.bin





Processed Sun Mar 29 19:44:10 2015 by ELM ver.2012-10-06 from 001\_\_elm20150329\_173659\_\_dat00.bin



Channel 0  
mn: -852  
mx: 1200  
 $\mu$ : -9.6  
 $\sigma$ : 34.6

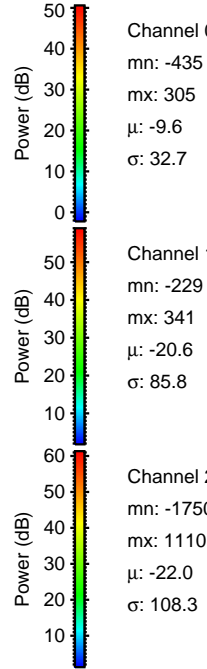
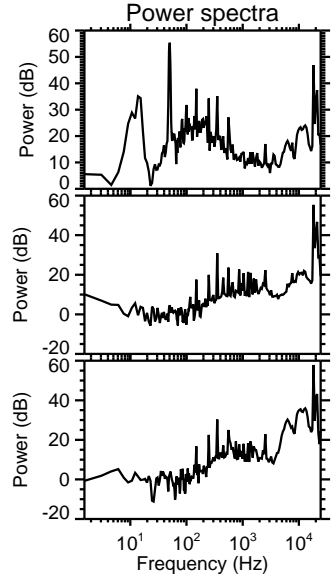
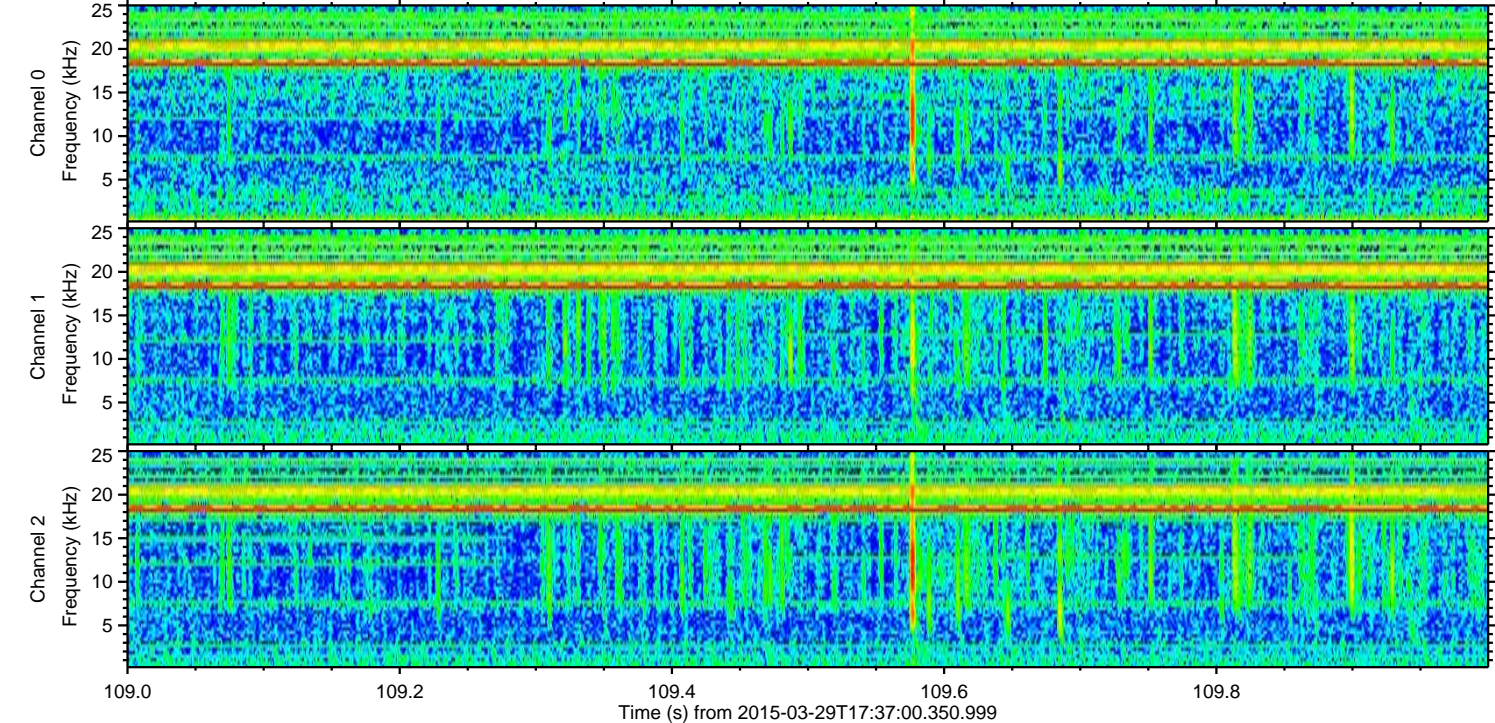
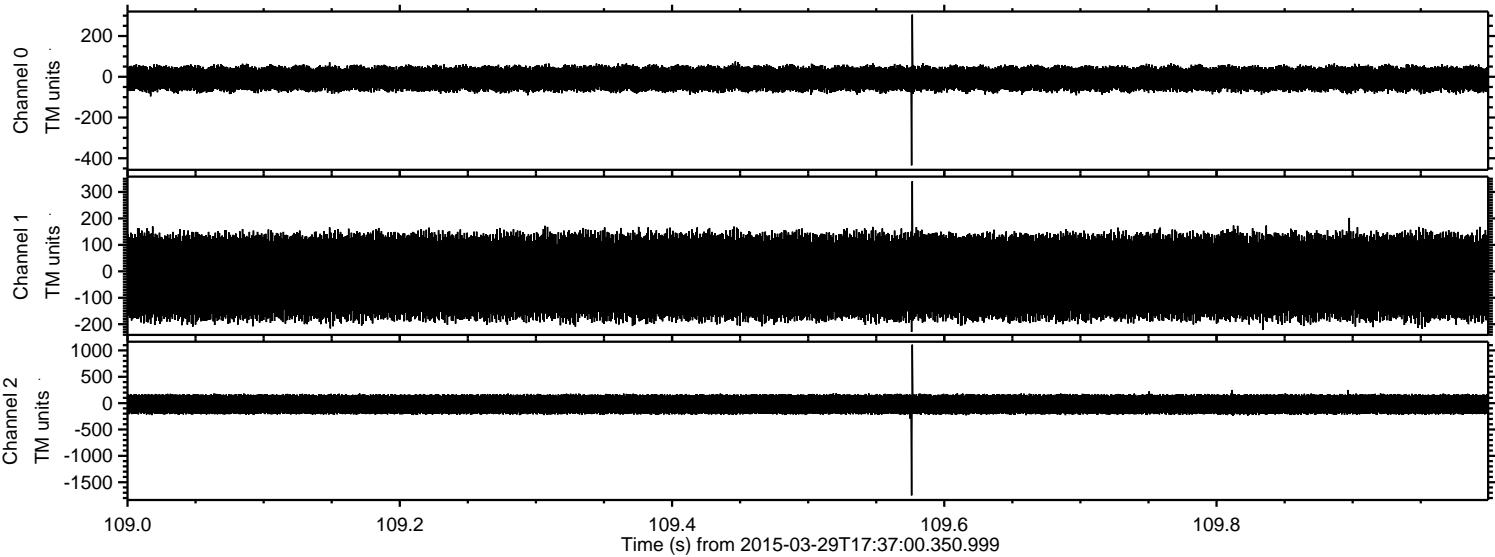
Channel 1  
mn: -4167  
mx: 3398  
 $\mu$ : -20.3  
 $\sigma$ : 96.7

Channel 2  
mn: -1126  
mx: 1050  
 $\mu$ : -21.6  
 $\sigma$ : 108.1



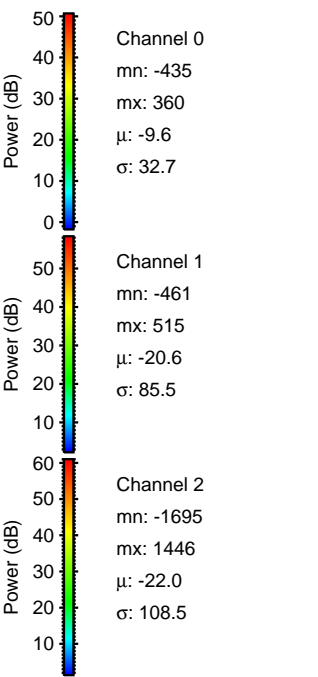
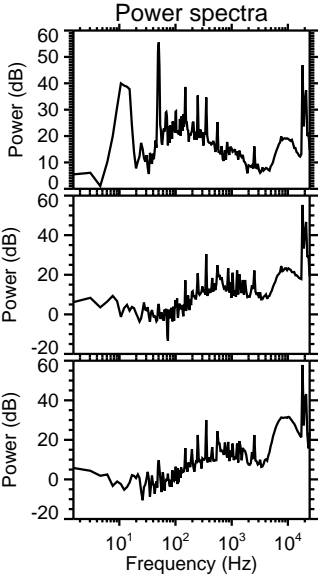
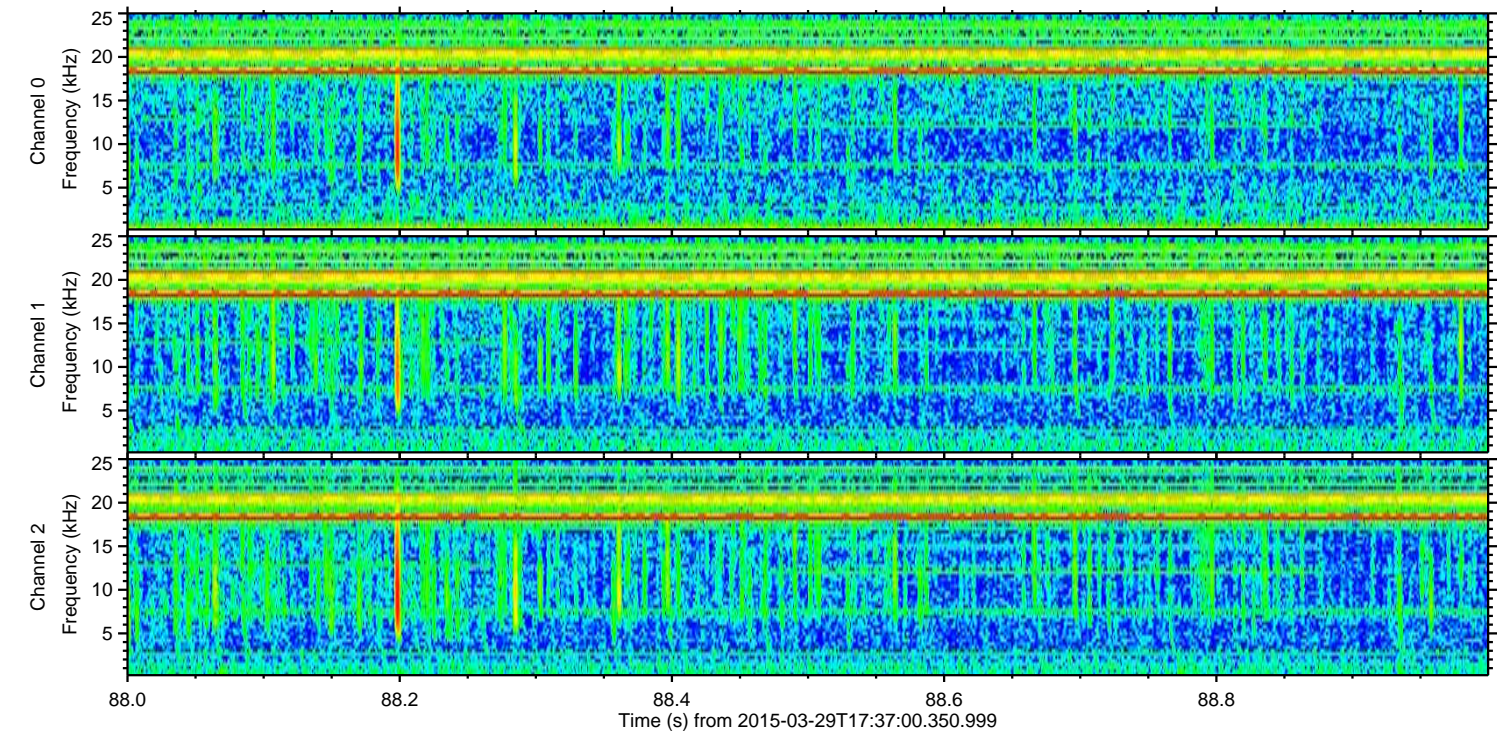
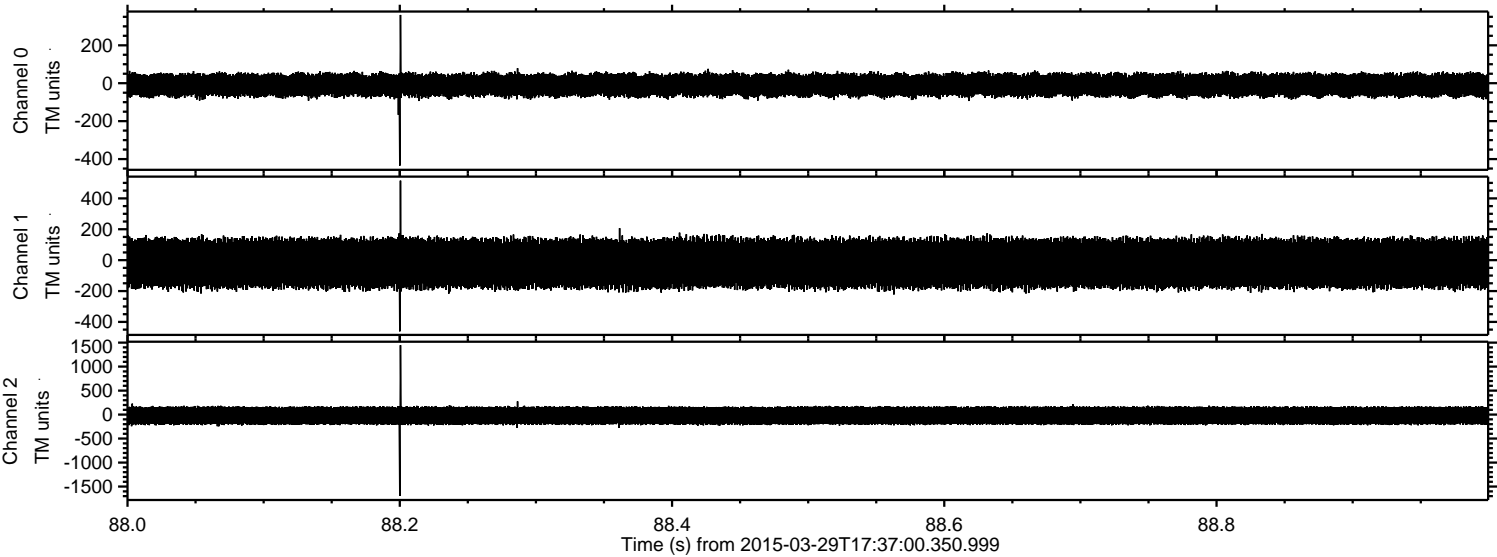
ELMAVAN 3D WAVEFORMS (Measured data sampled at 50 kHz) 49744 packets of 144 samples from 2015-03-29T17:37:00.350.999. Part 110/144

Processed Sun Mar 29 19:44:11 2015 by ELM ver.2012-10-06 from 001\_\_elm20150329\_173659\_\_dat00.bin





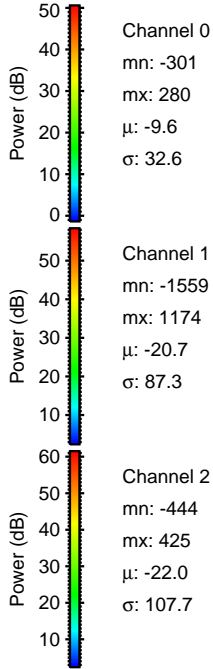
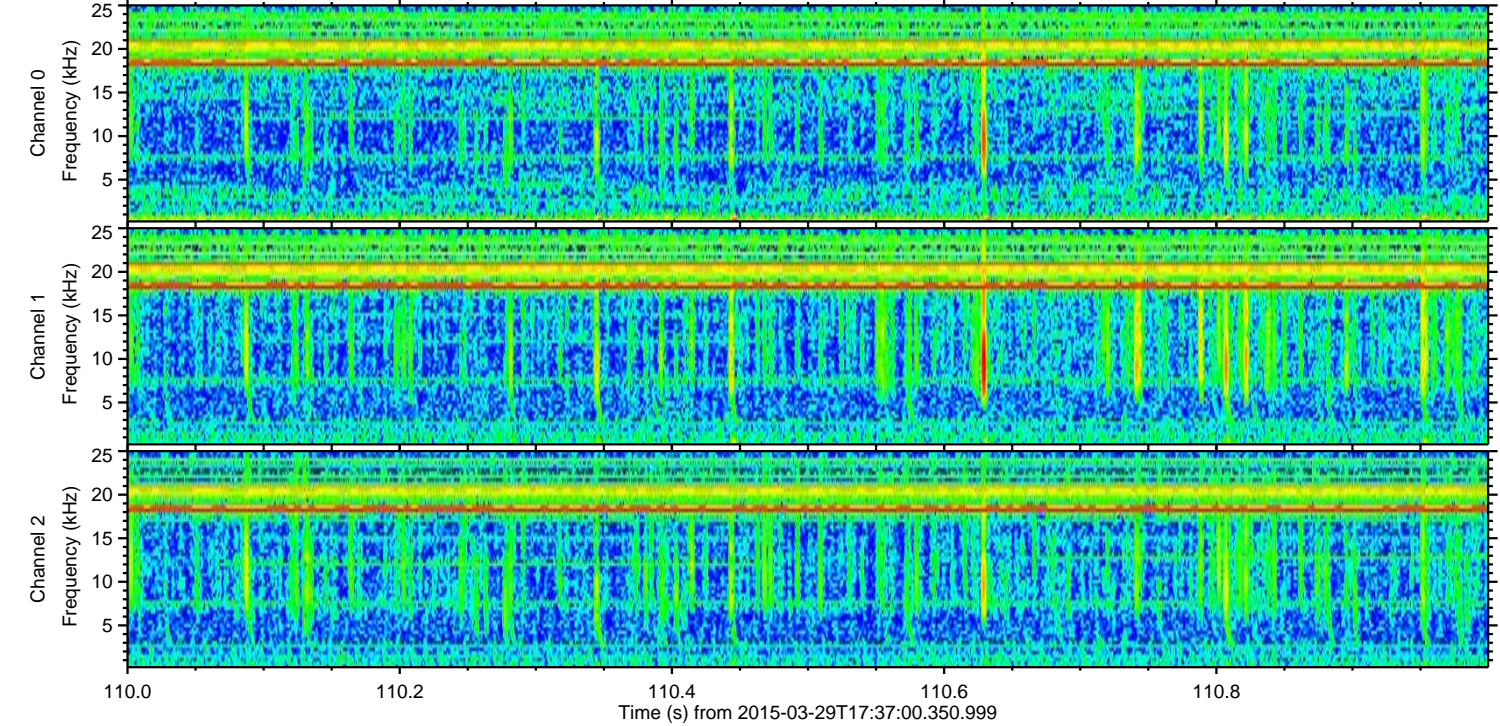
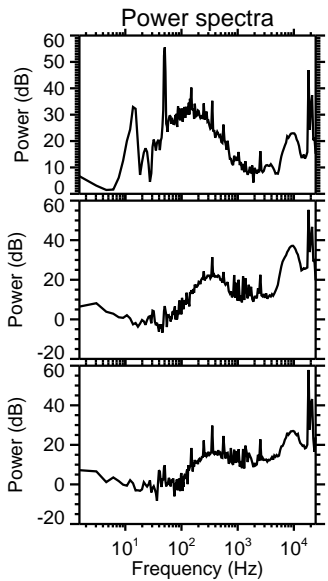
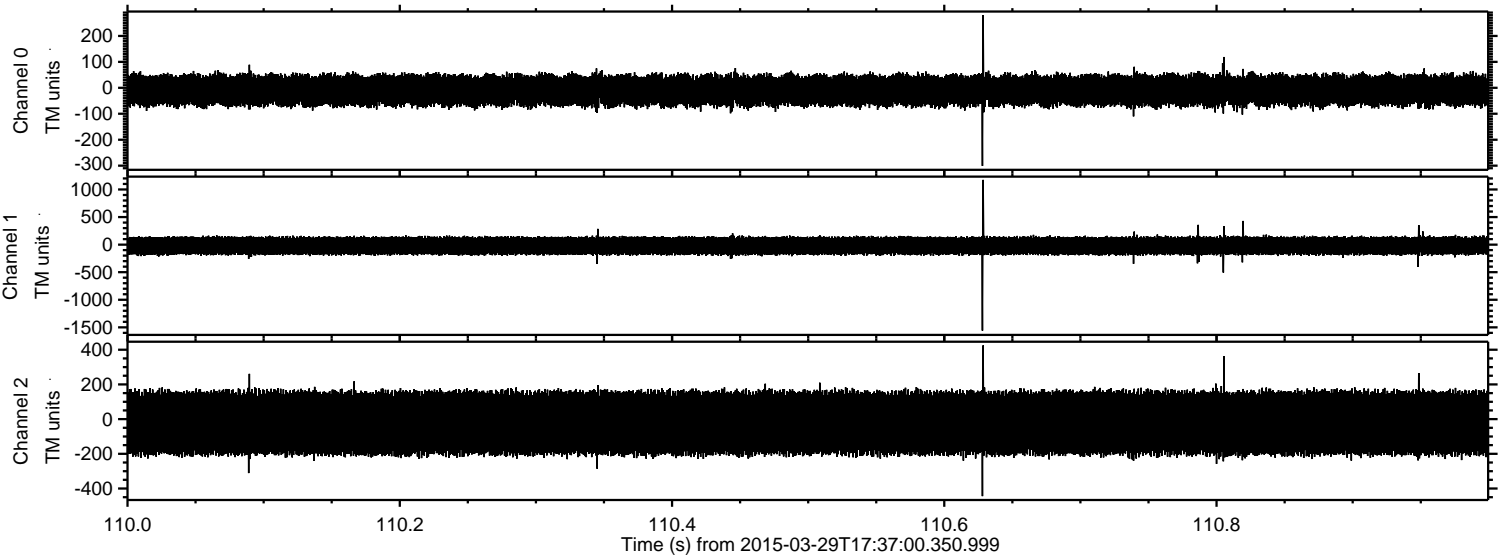
Processed Sun Mar 29 19:44:12 2015 by ELM ver.2012-10-06 from 001\_\_elm20150329\_173659\_\_dat00.bin





ELMAVAN 3D WAVEFORMS (Measured data sampled at 50 kHz) 49744 packets of 144 samples from 2015-03-29T17:37:00.350.999. Part 111/144

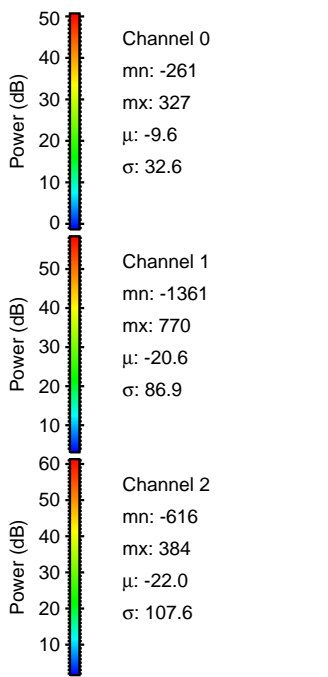
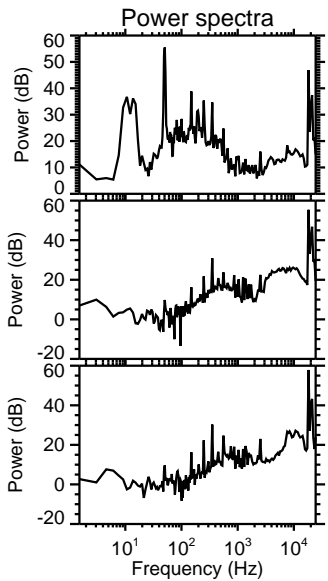
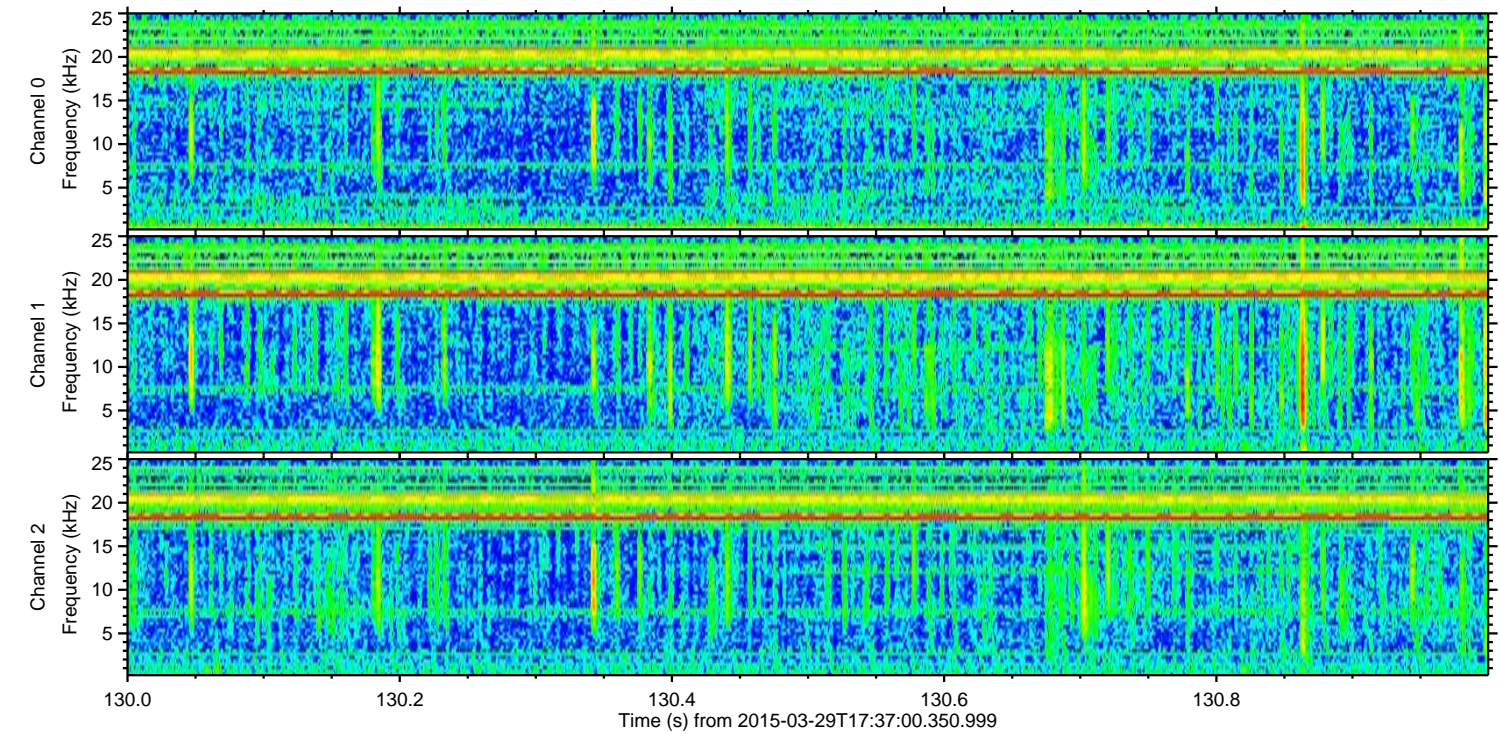
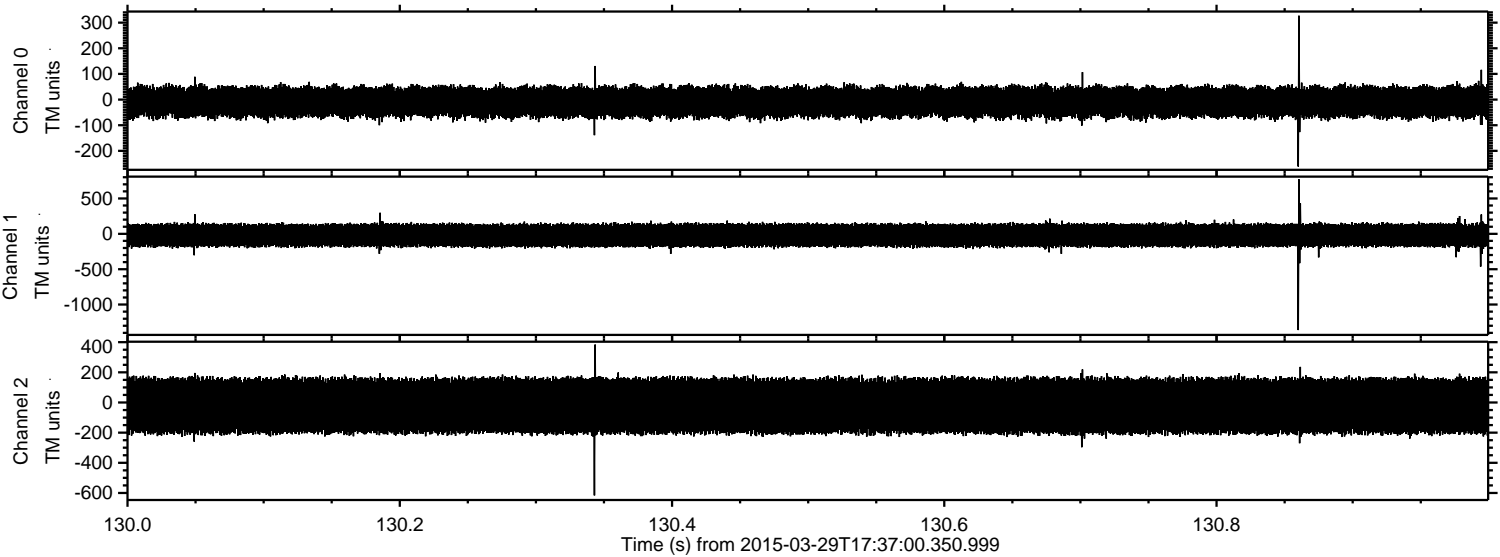
Processed Sun Mar 29 19:44:12 2015 by ELM ver.2012-10-06 from 001\_\_elm20150329\_173659\_\_dat00.bin





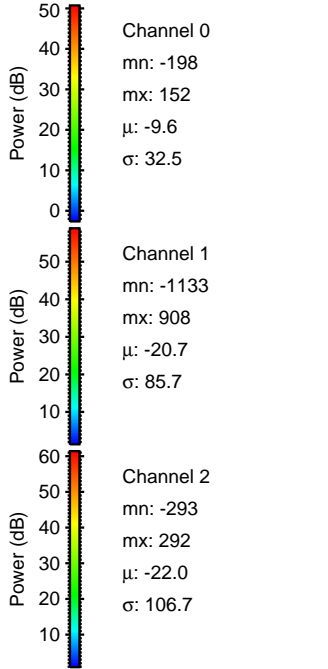
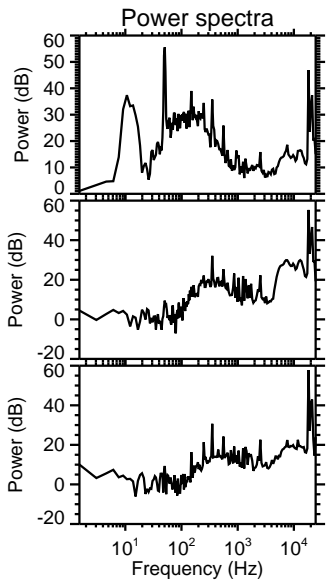
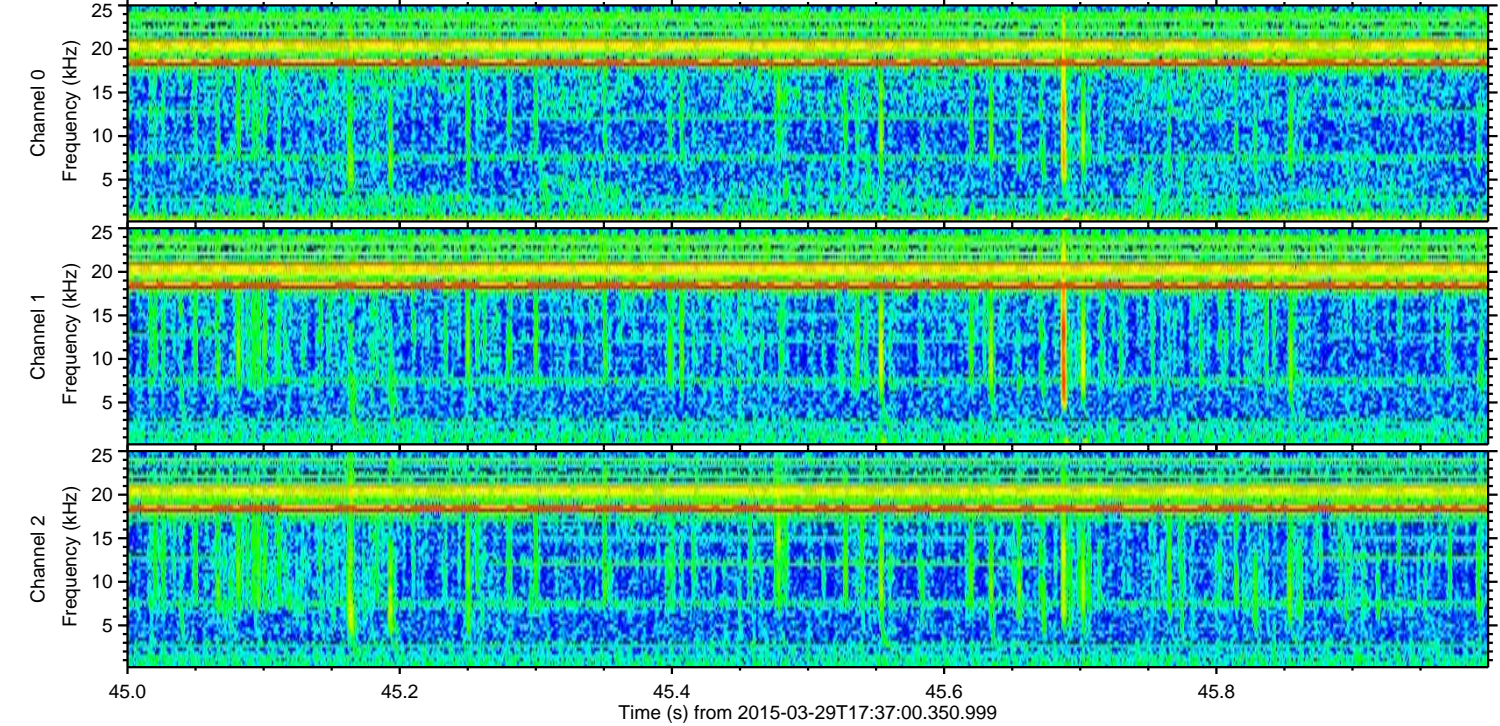
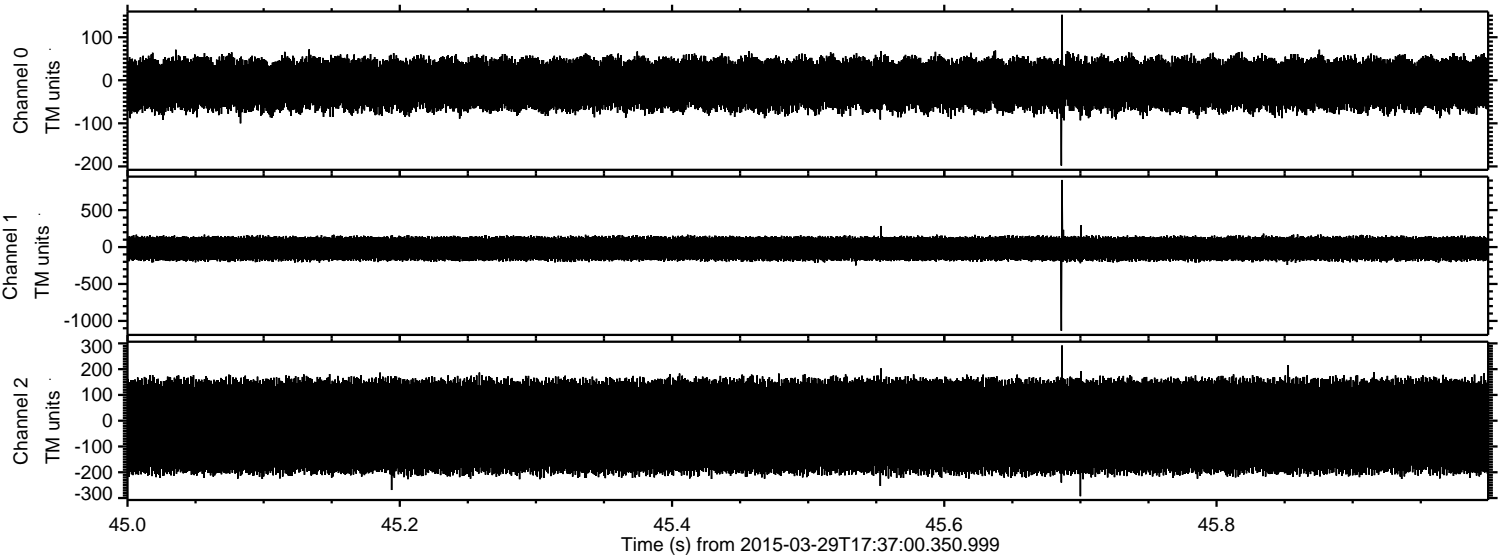
ELMAVAN 3D WAVEFORMS (Measured data sampled at 50 kHz) 49744 packets of 144 samples from 2015-03-29T17:37:00.350.999. Part 131/144

Processed Sun Mar 29 19:44:13 2015 by ELM ver.2012-10-06 from 001\_\_elm20150329\_173659\_\_dat00.bin





Processed Sun Mar 29 19:44:14 2015 by ELM ver.2012-10-06 from 001\_\_elm20150329\_173659\_\_dat00.bin



Channel 0  
mn: -198  
mx: 152  
 $\mu$ : -9.6  
 $\sigma$ : 32.5

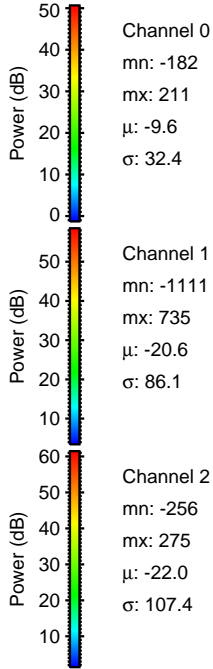
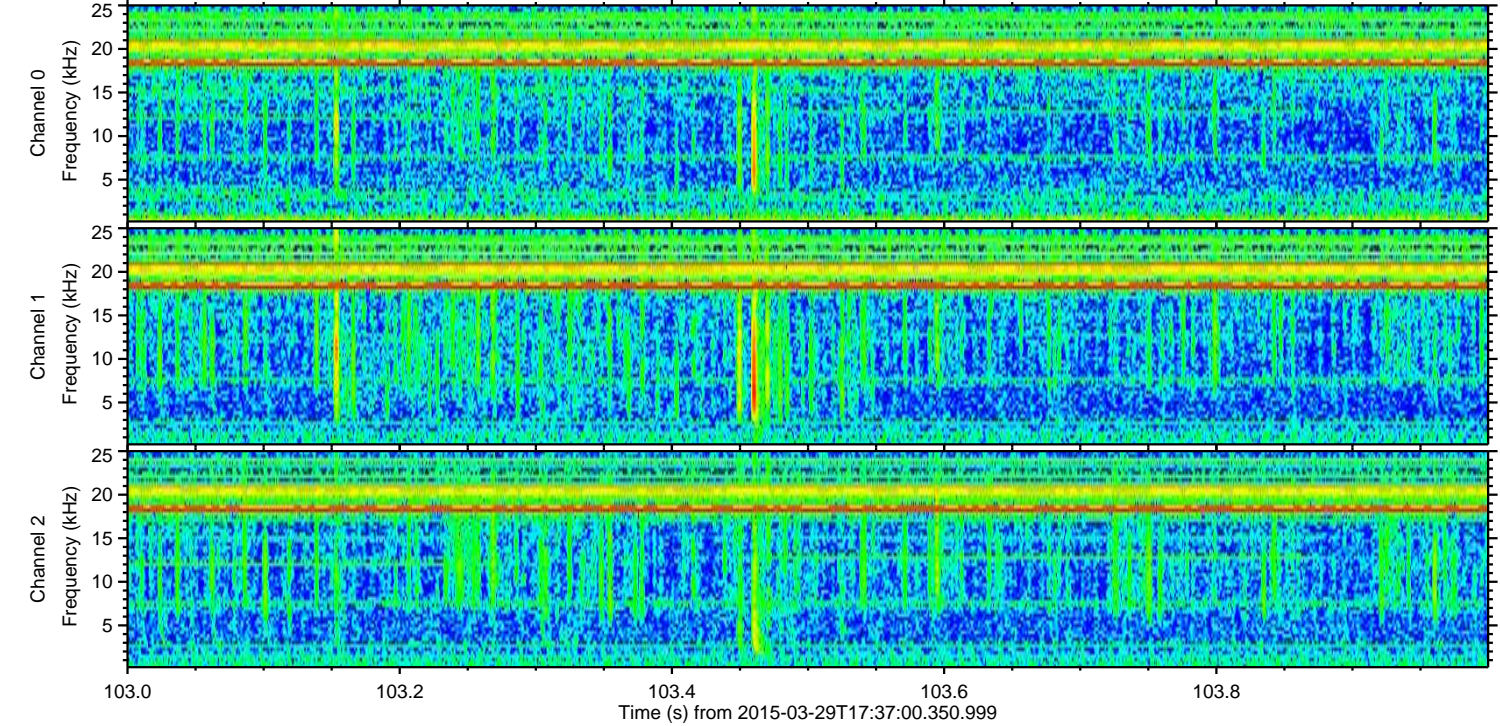
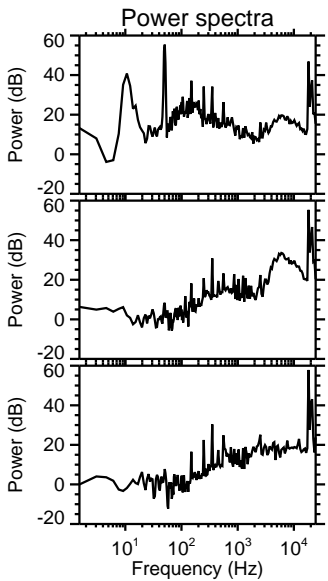
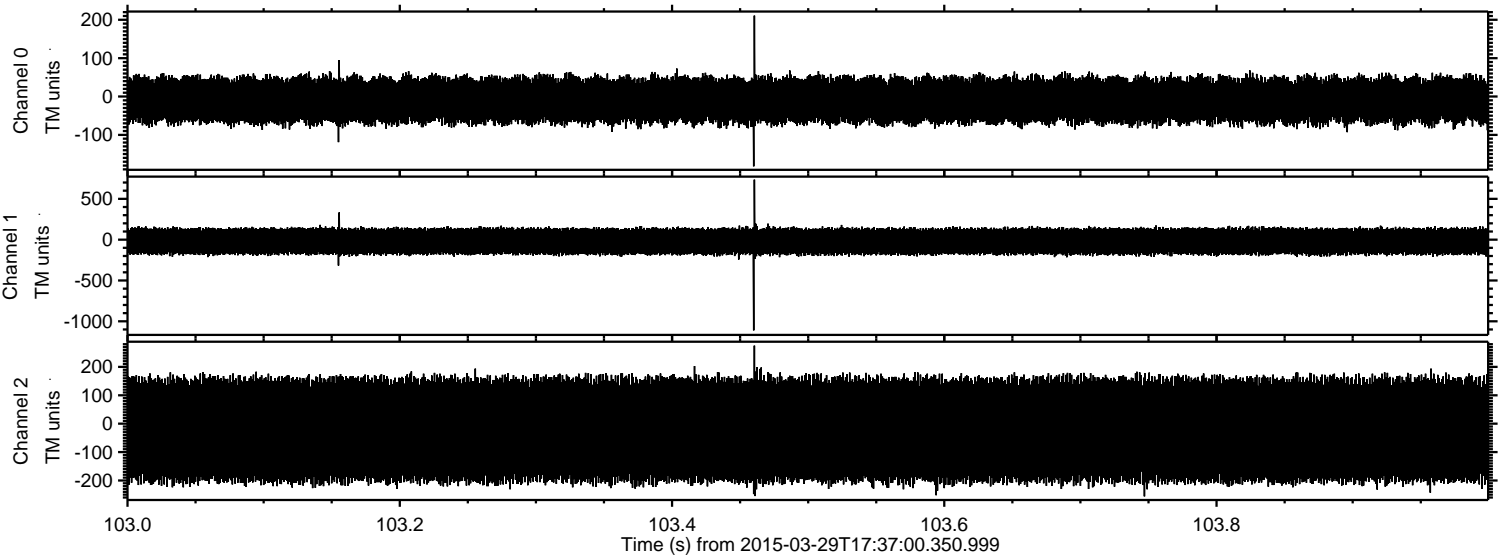
Channel 1  
mn: -1133  
mx: 908  
 $\mu$ : -20.7  
 $\sigma$ : 85.7

Channel 2  
mn: -293  
mx: 292  
 $\mu$ : -22.0  
 $\sigma$ : 106.7



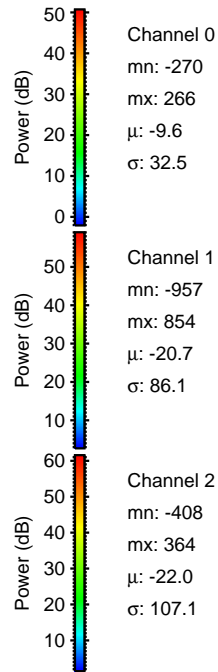
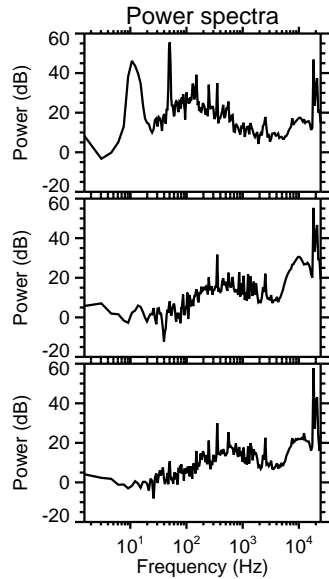
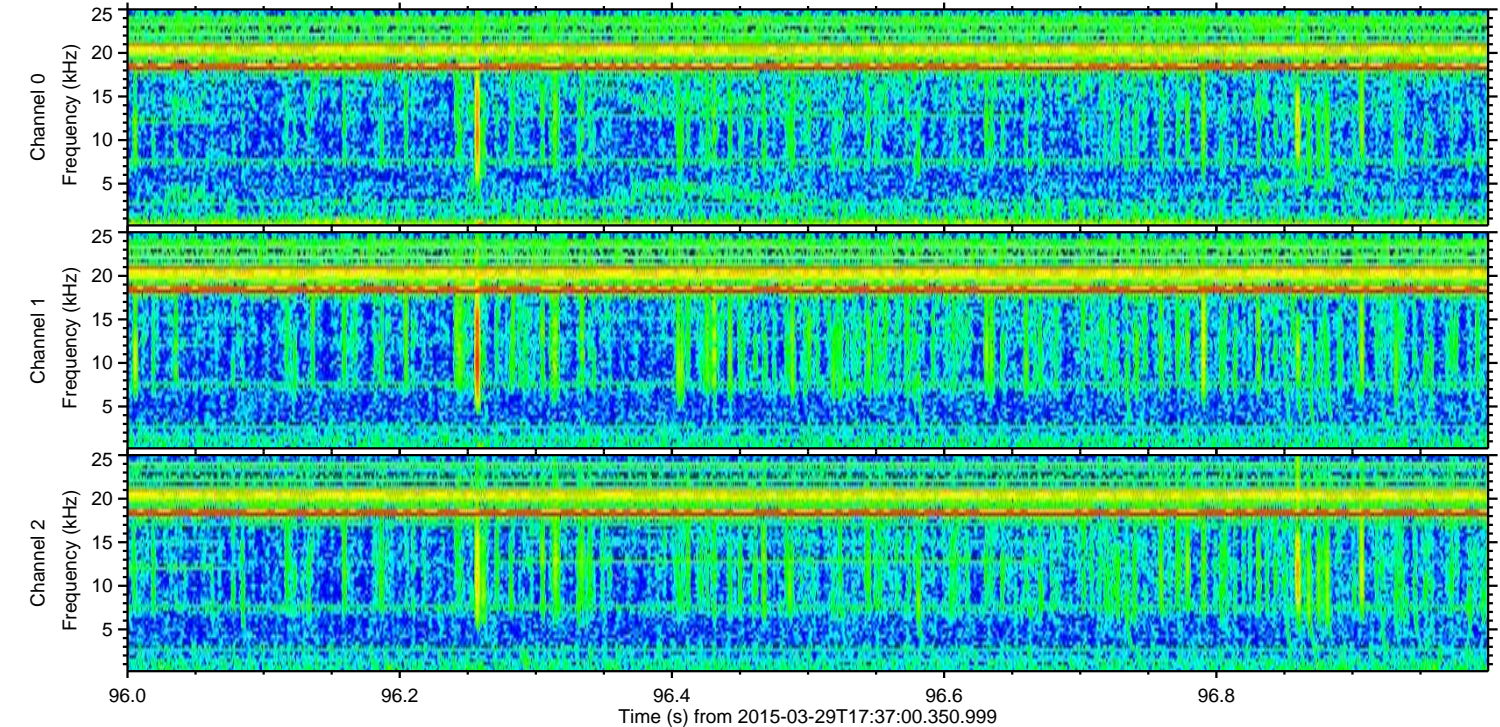
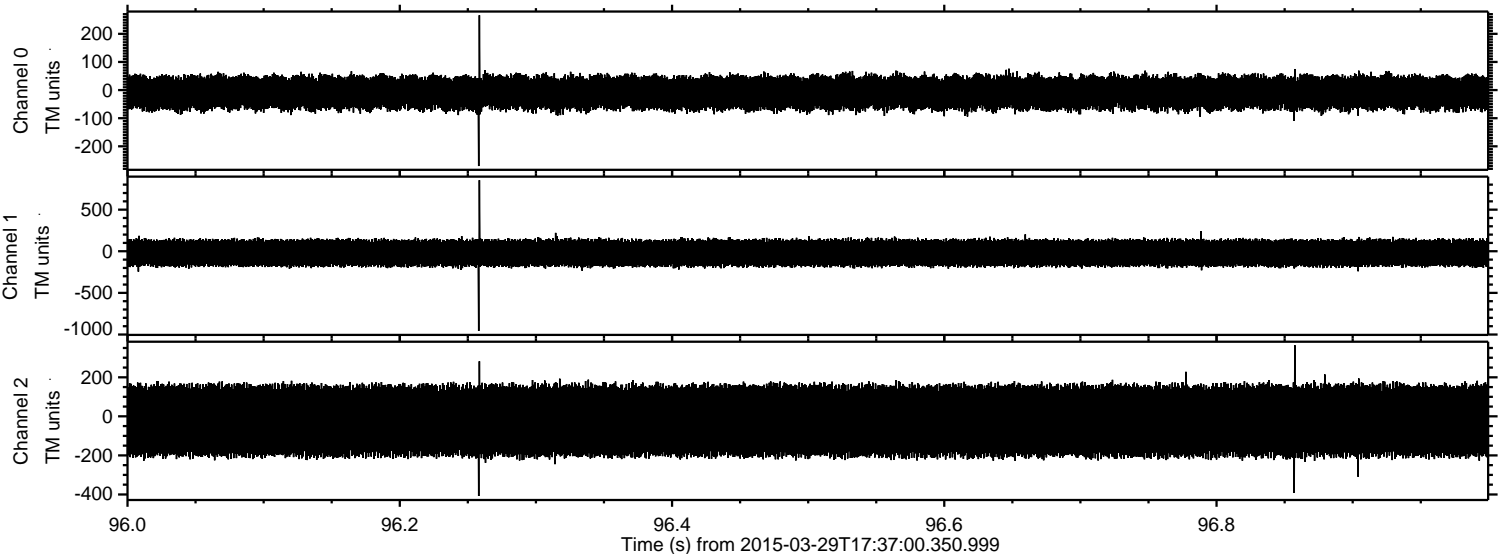
ELMAVAN 3D WAVEFORMS (Measured data sampled at 50 kHz) 49744 packets of 144 samples from 2015-03-29T17:37:00.350.999. Part 104/144

Processed Sun Mar 29 19:44:15 2015 by ELM ver.2012-10-06 from 001\_\_elm20150329\_173659\_\_dat00.bin





Processed Sun Mar 29 19:44:16 2015 by ELM ver.2012-10-06 from 001\_\_elm20150329\_173659\_\_dat00.bin



Channel 0  
mn: -270  
mx: 266  
 $\mu$ : -9.6  
 $\sigma$ : 32.5

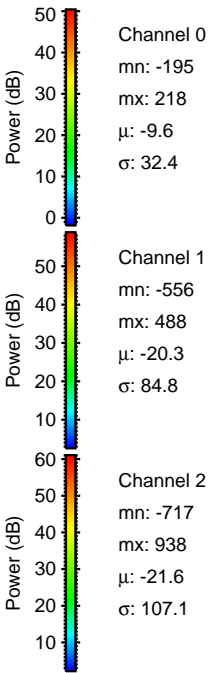
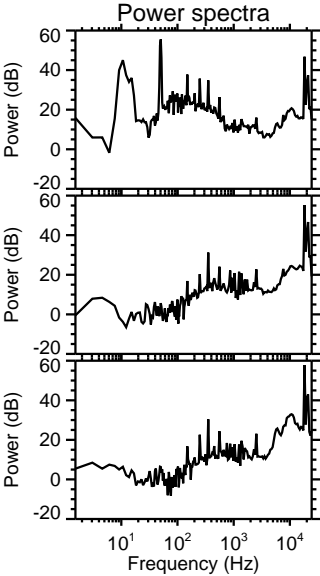
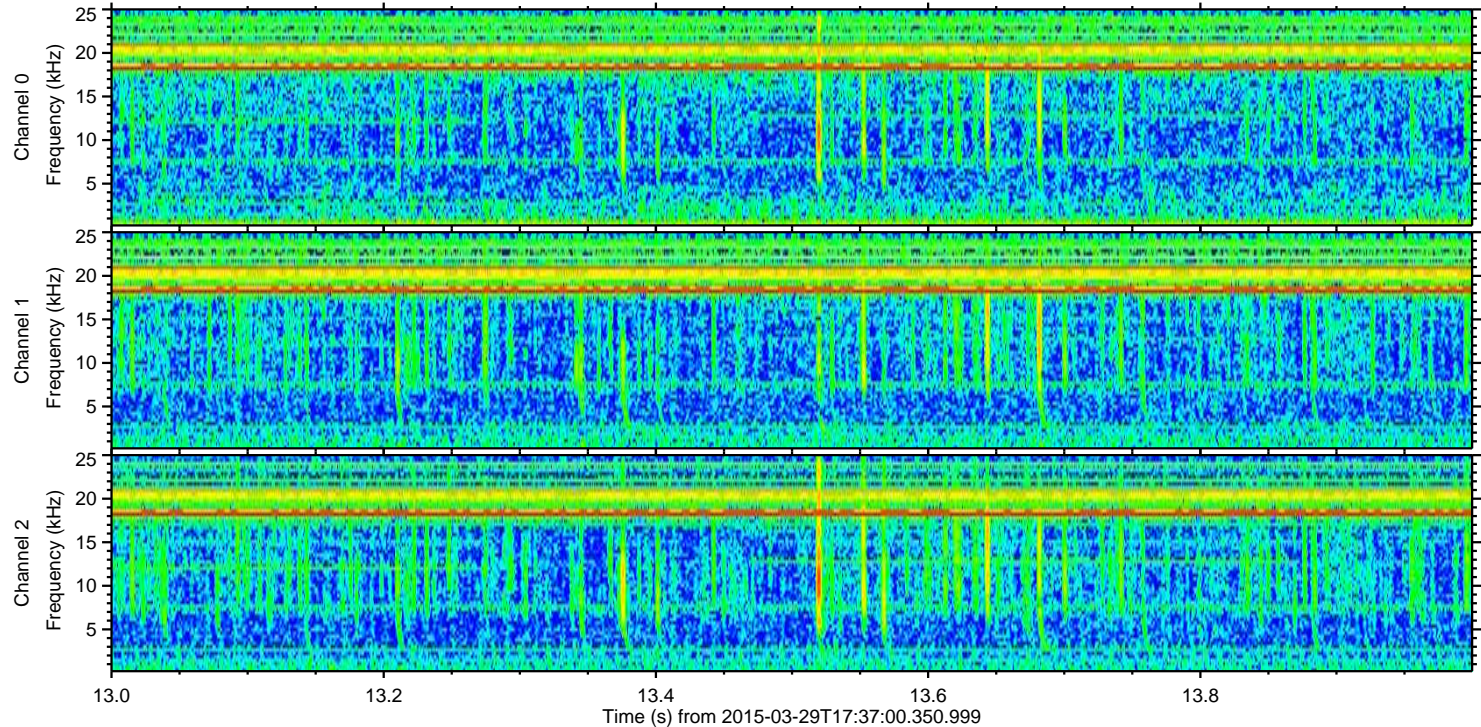
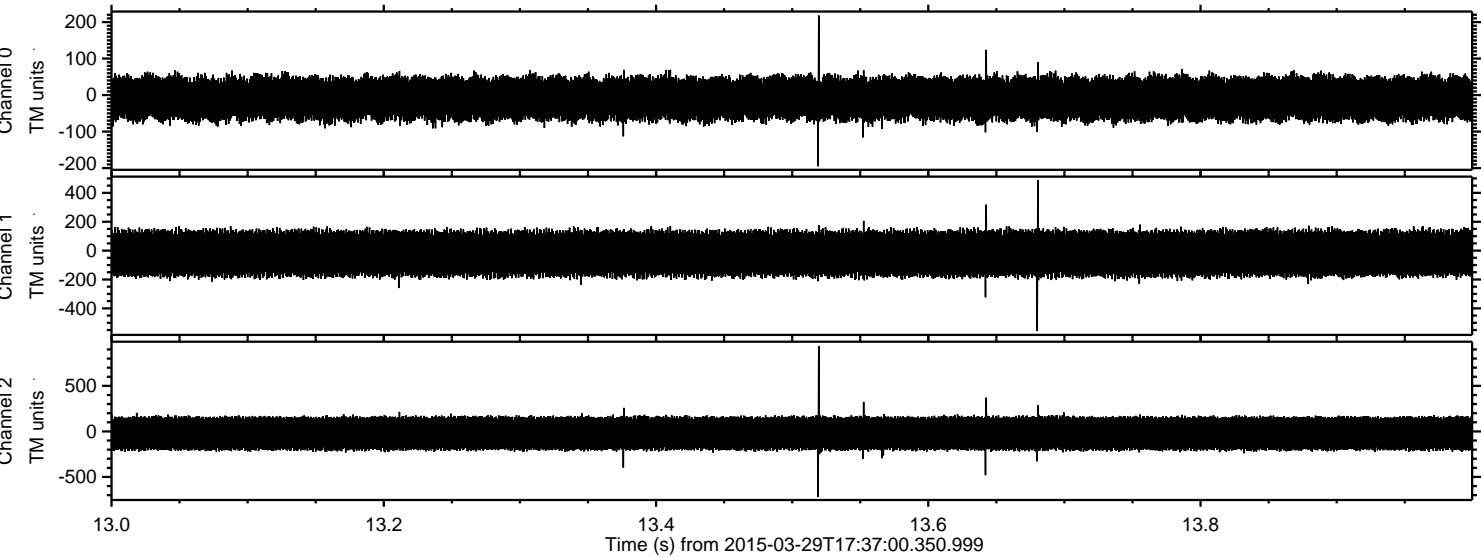
Channel 1  
mn: -957  
mx: 854  
 $\mu$ : -20.7  
 $\sigma$ : 86.1

Channel 2  
mn: -408  
mx: 364  
 $\mu$ : -22.0  
 $\sigma$ : 107.1



ELMAVAN 3D WAVEFORMS (Measured data sampled at 50 kHz) 49744 packets of 144 samples from 2015-03-29T17:37:00.350.999. Part 14/144

Processed Sun Mar 29 19:44:17 2015 by ELM ver.2012-10-06 from 001\_\_elm20150329\_173659\_\_dat00.bin





Processed Sun Mar 29 19:44:18 2015 by ELM ver.2012-10-06 from 001\_\_elm20150329\_173659\_\_dat00.bin

