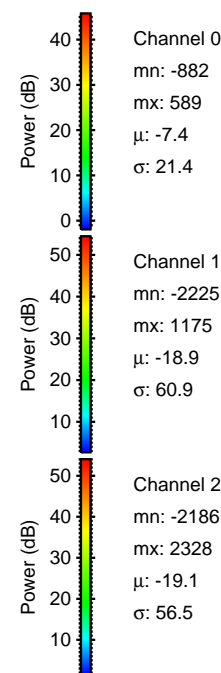
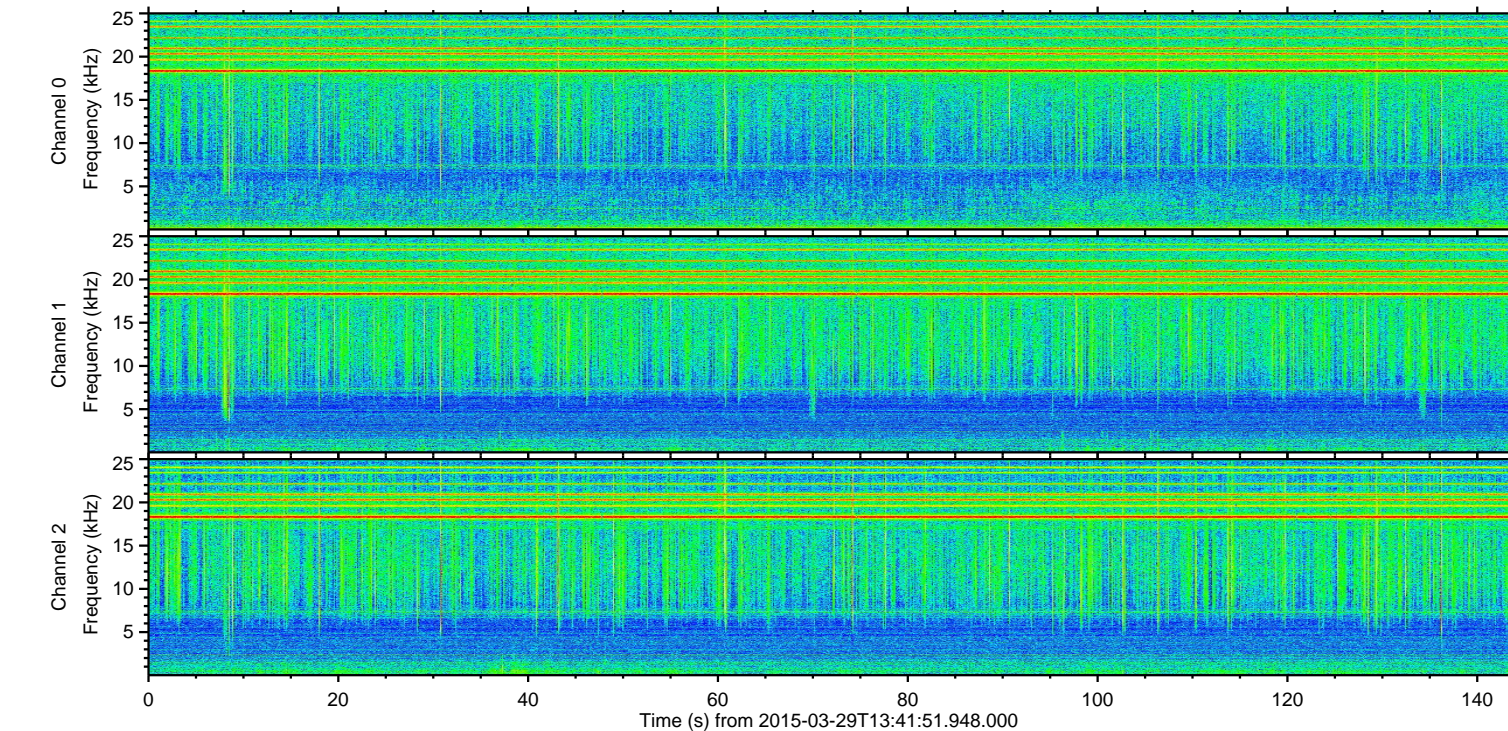
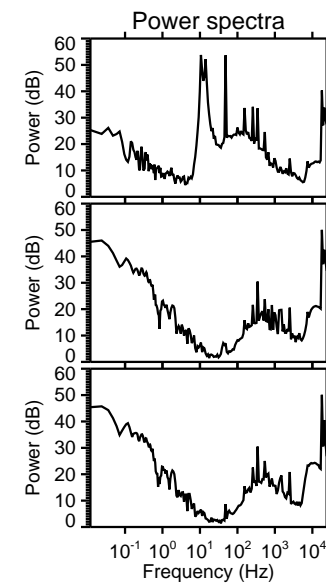
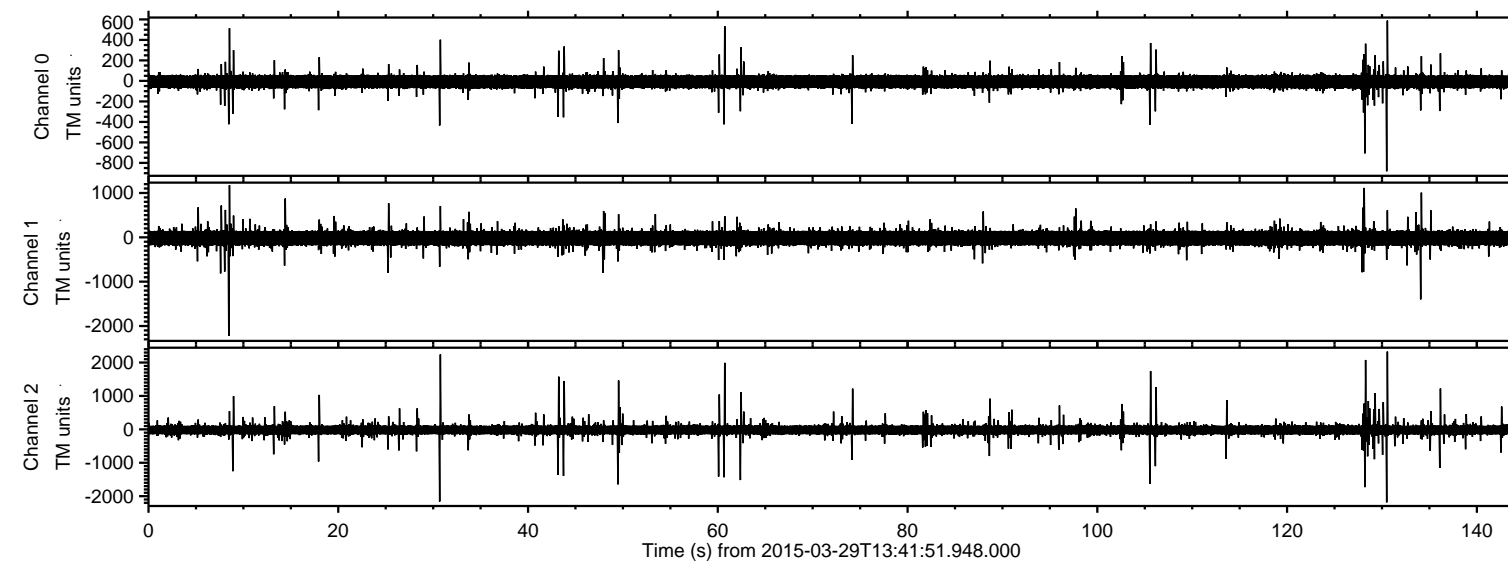


# ELMAVAN 3D WAVEFORMS (Measured data sampled at 50 kHz) 49793 packets of 144 samples from 2015-03-29T13:41:51.948.000.

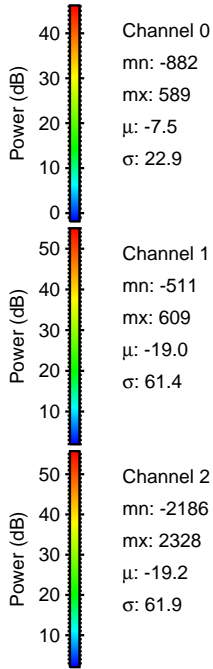
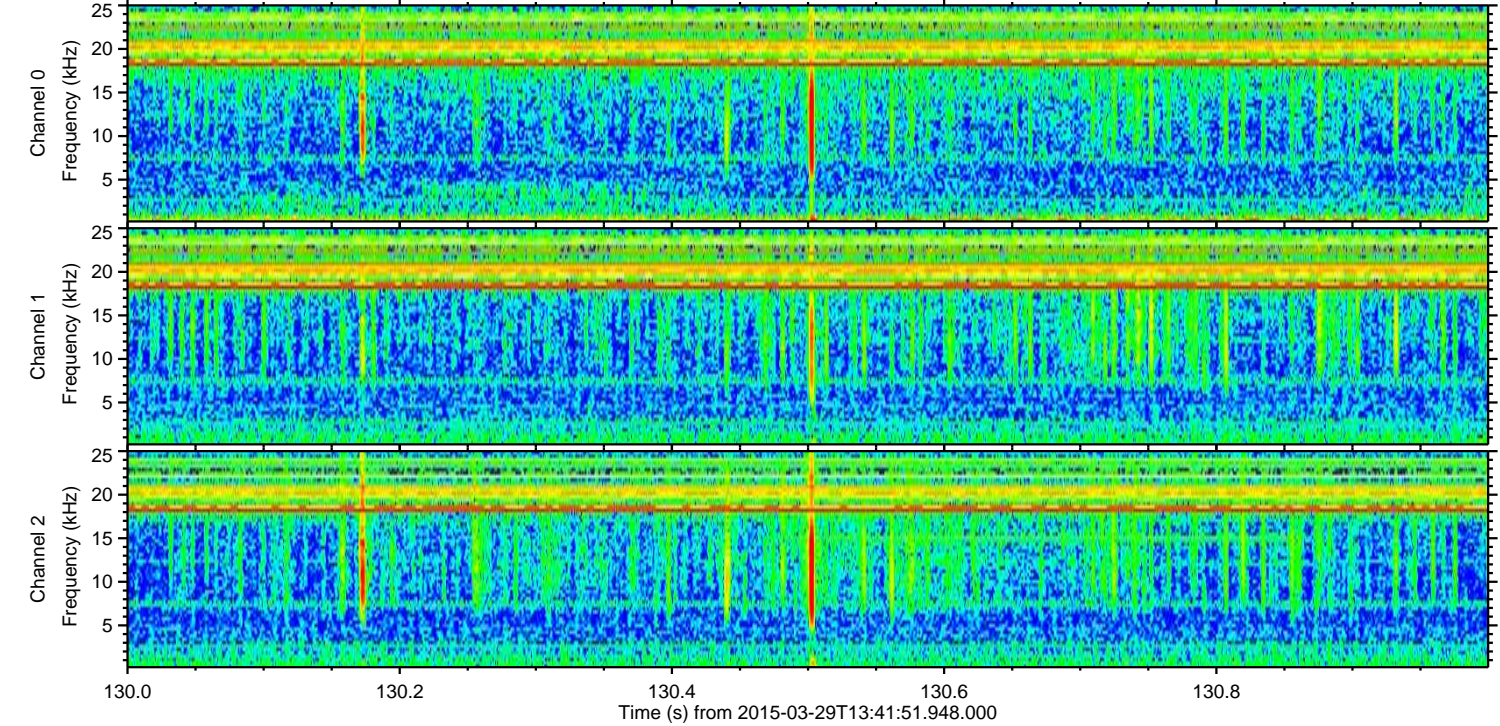
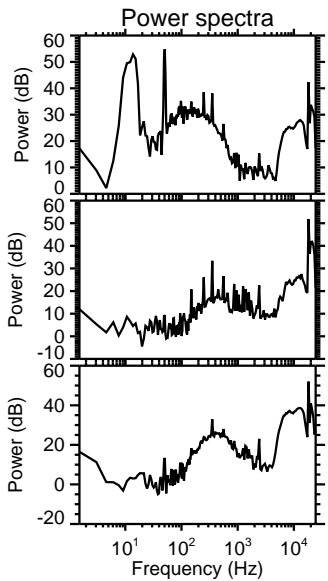
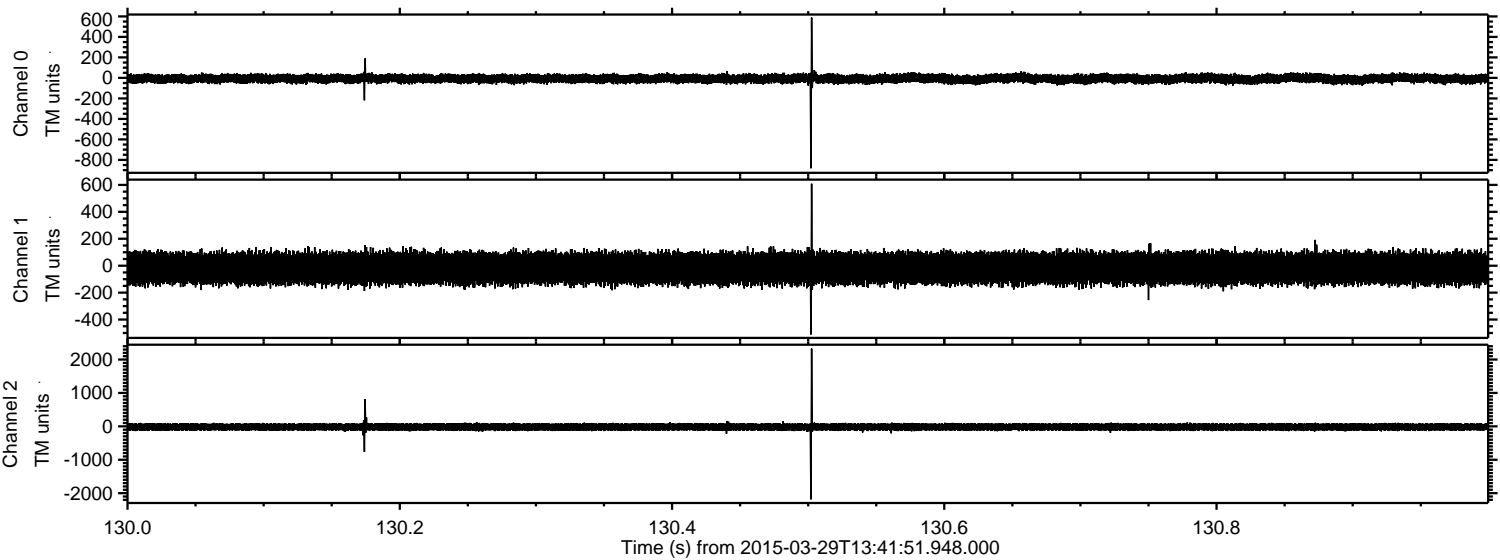
Processed Sun Mar 29 15:48:44 2015 by ELM ver.2012-10-06 from 001\_\_elm20150329\_134150\_\_dat00.bin





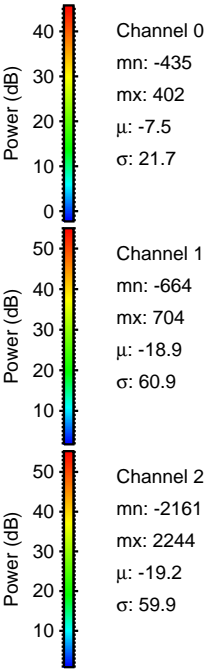
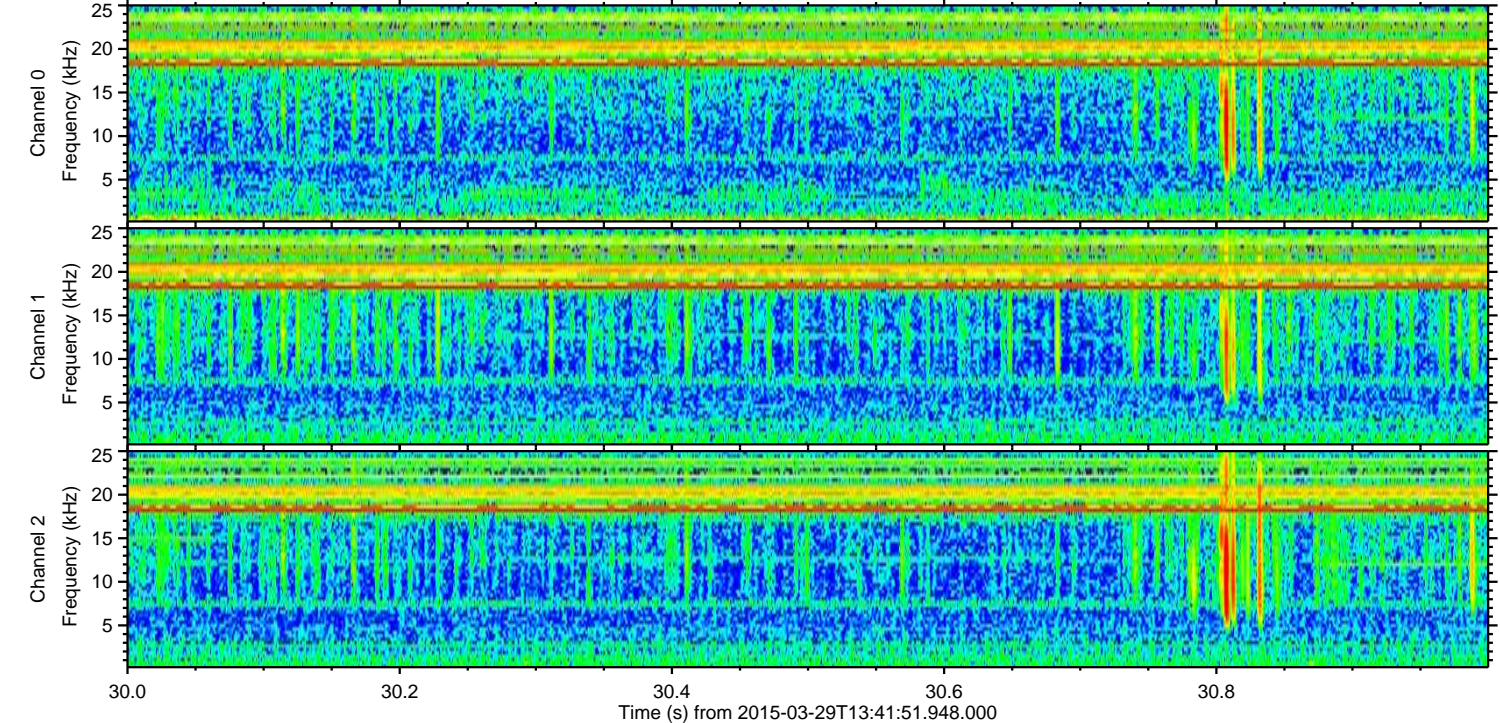
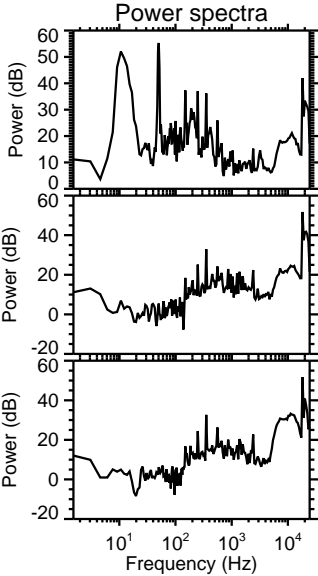
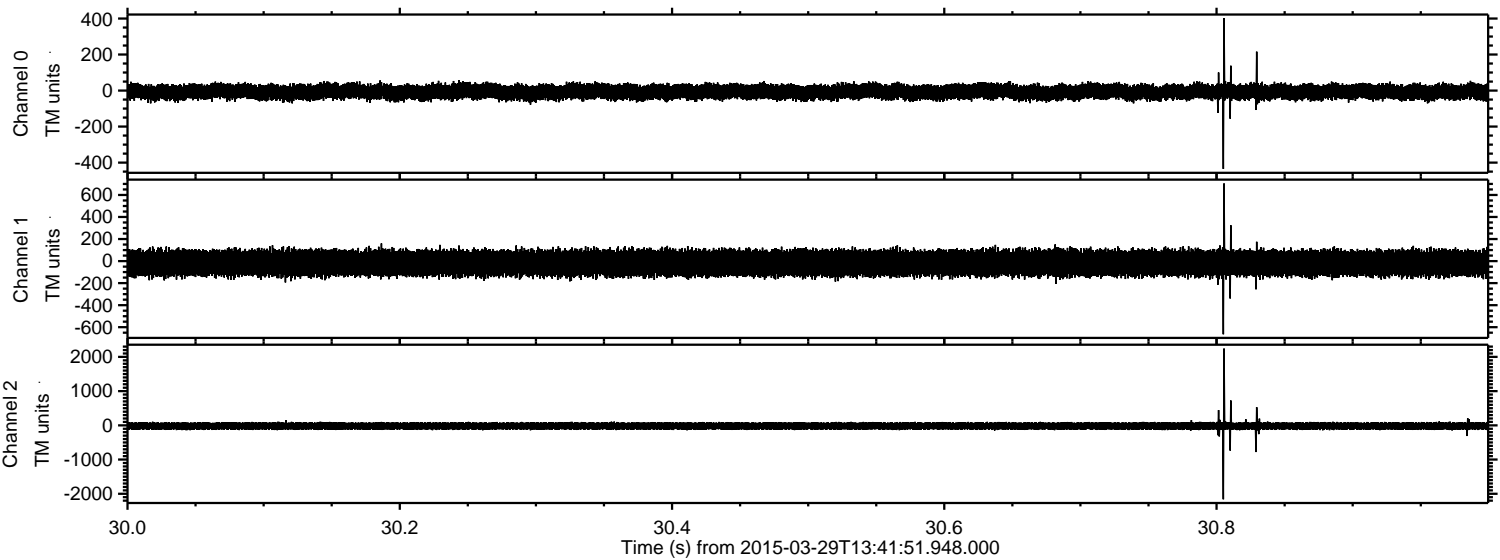
ELMAVAN 3D WAVEFORMS (Measured data sampled at 50 kHz) 49793 packets of 144 samples from 2015-03-29T13:41:51.948.000. Part 131/144

Processed Sun Mar 29 15:48:56 2015 by ELM ver.2012-10-06 from 001\_\_elm20150329\_134150\_\_dat00.bin



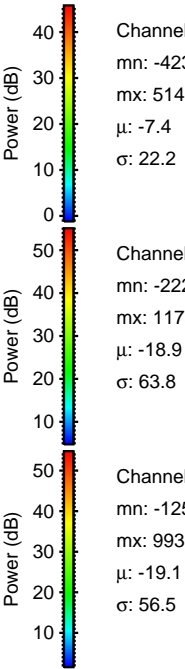
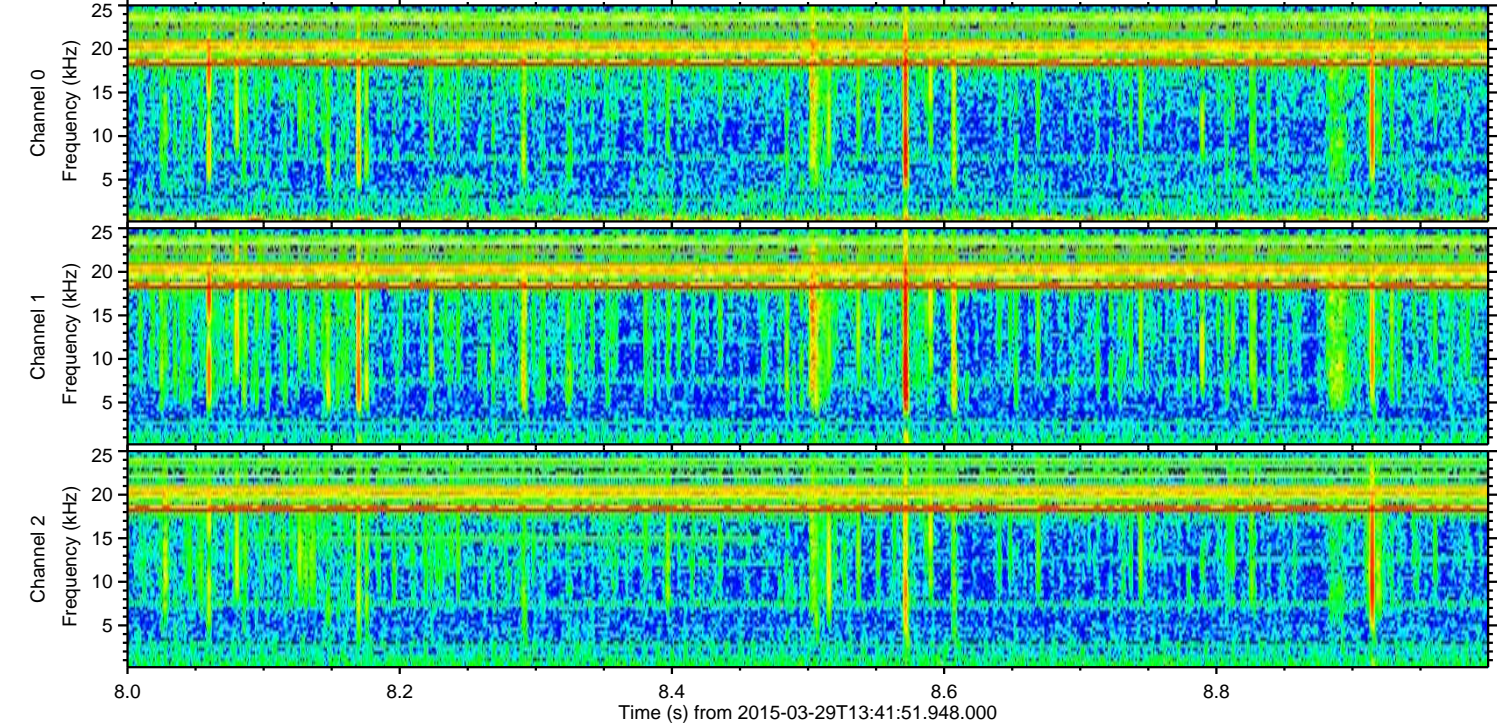
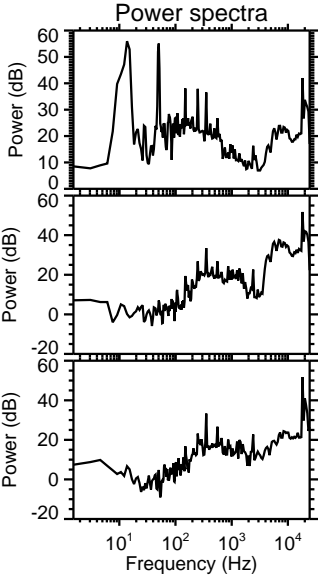
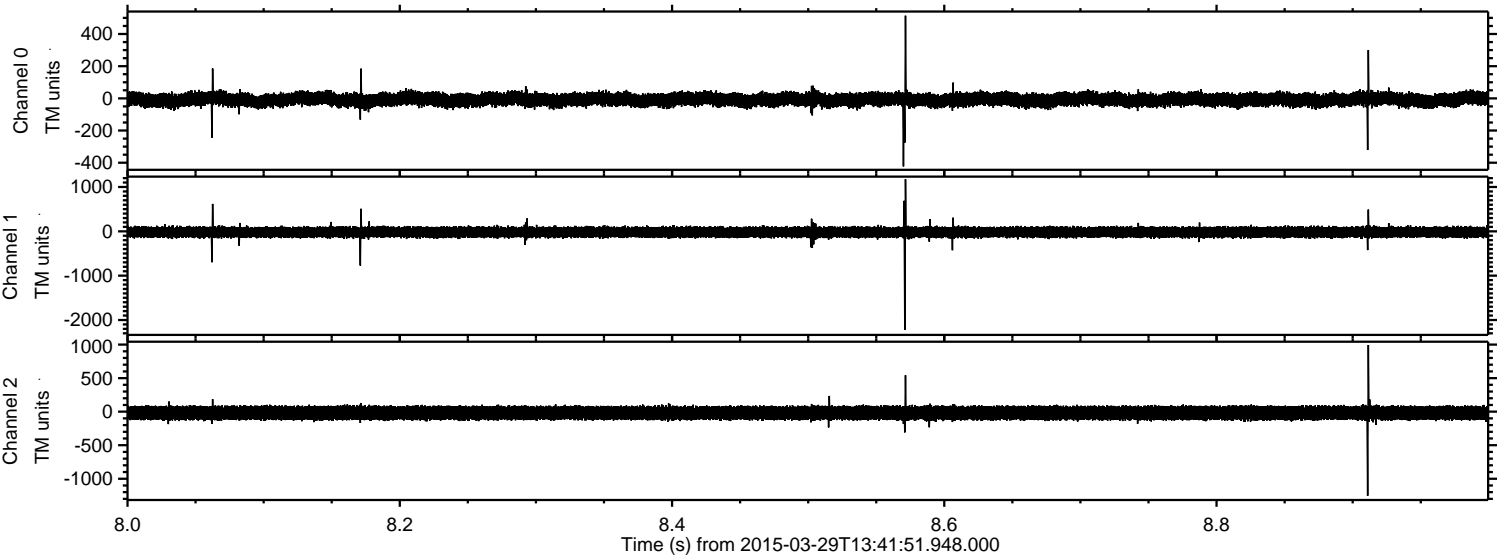


Processed Sun Mar 29 15:48:57 2015 by ELM ver.2012-10-06 from 001\_\_elm20150329\_134150\_\_dat00.bin





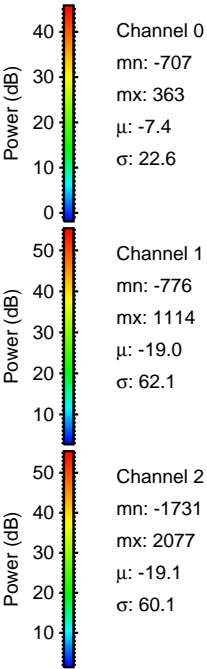
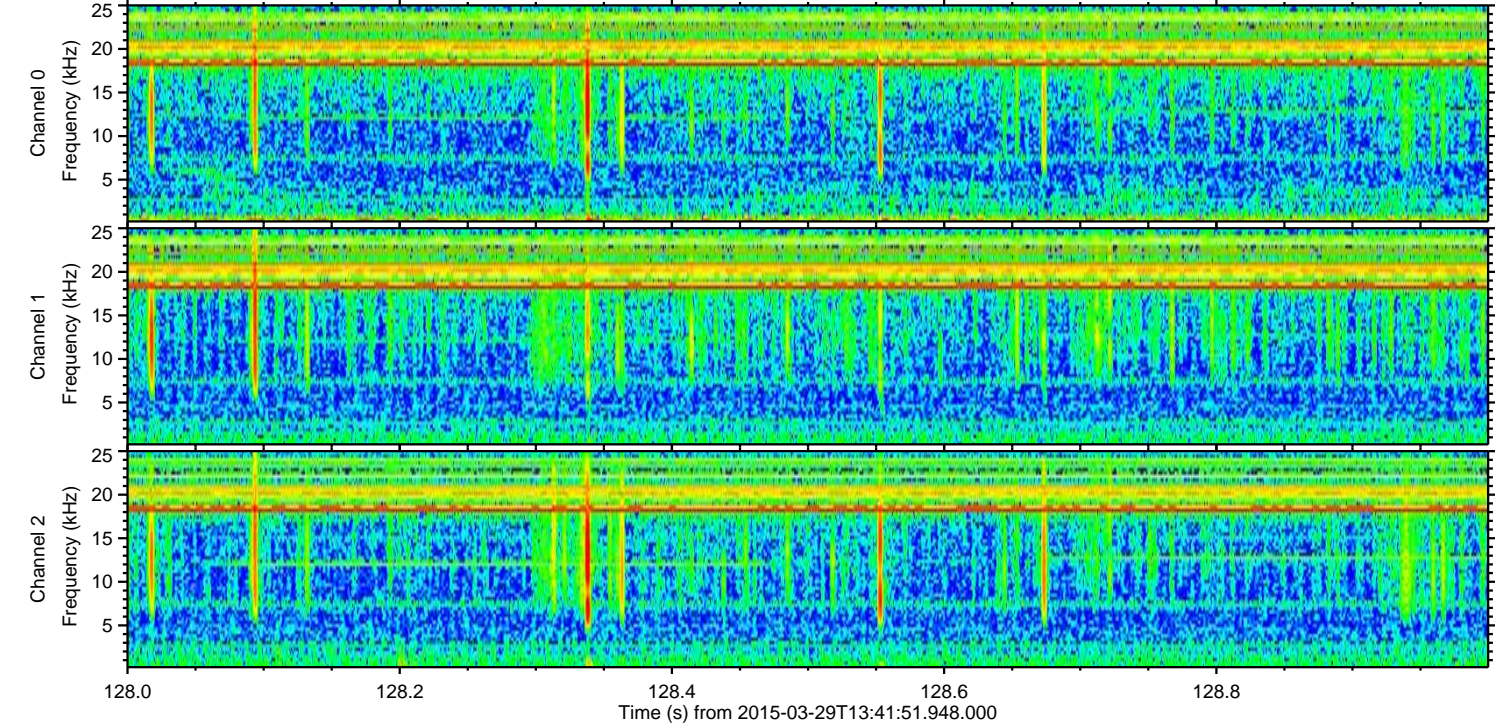
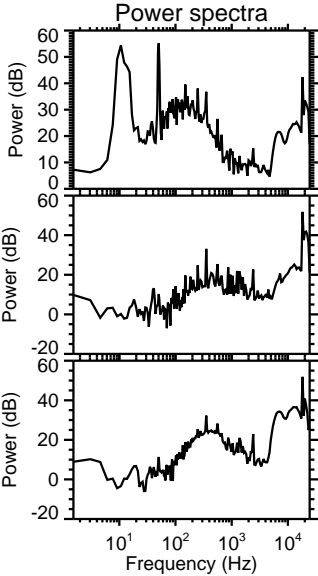
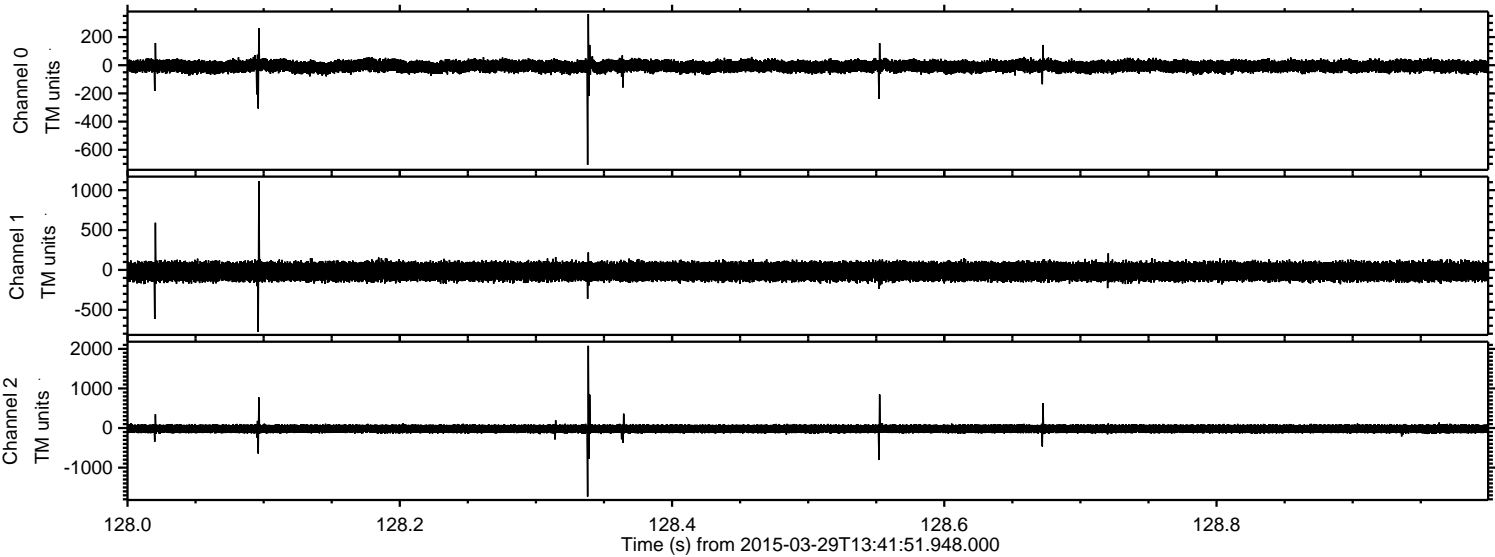
Processed Sun Mar 29 15:48:58 2015 by ELM ver.2012-10-06 from 001\_\_elm20150329\_134150\_\_dat00.bin





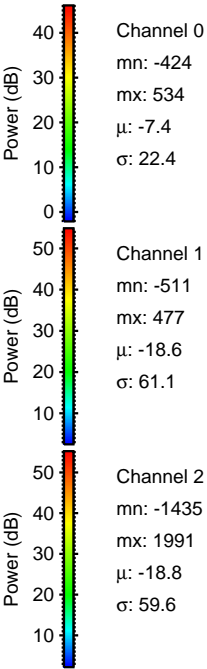
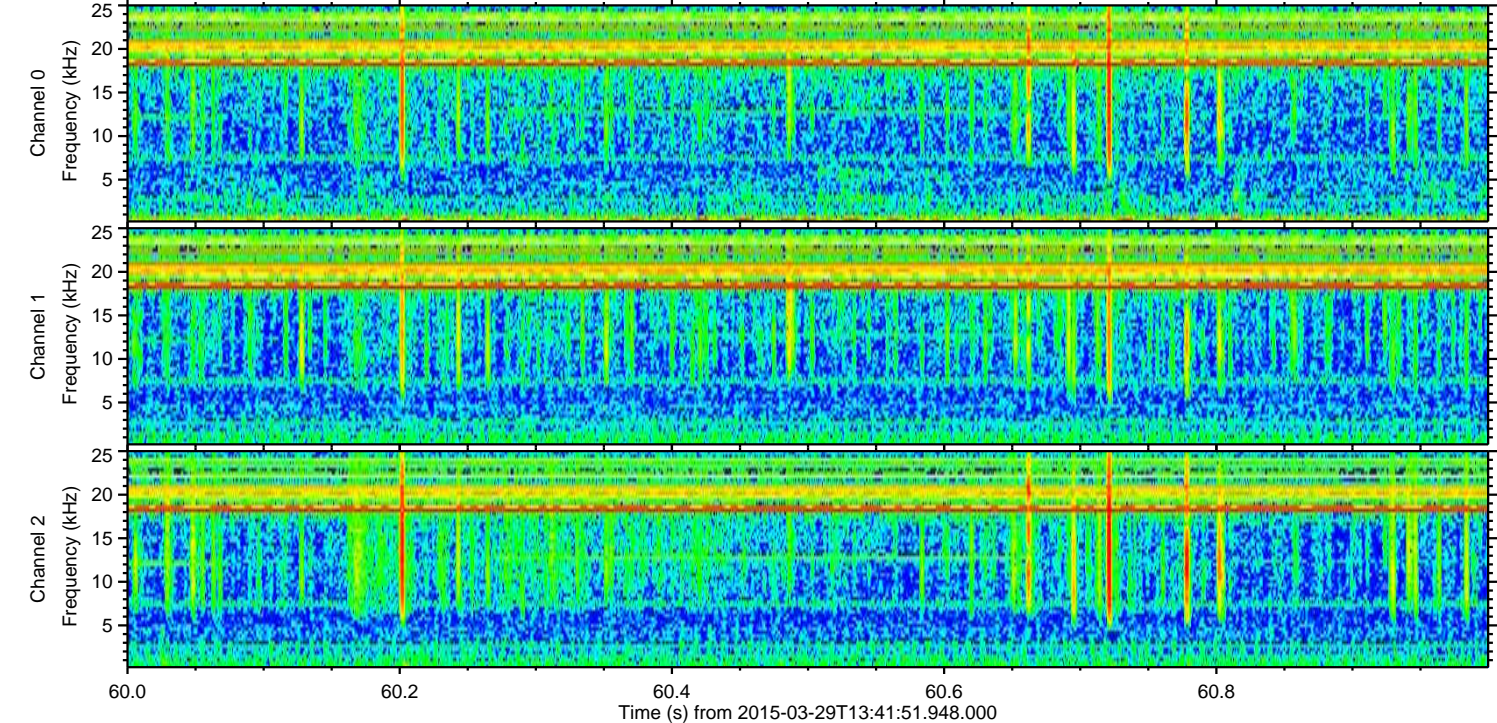
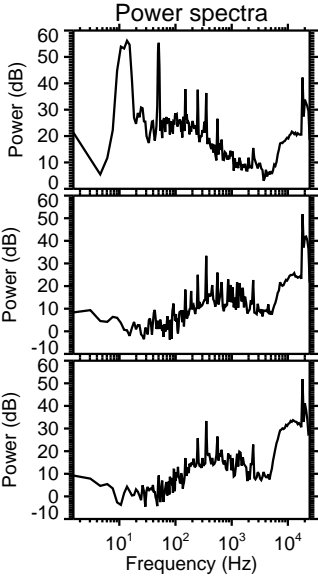
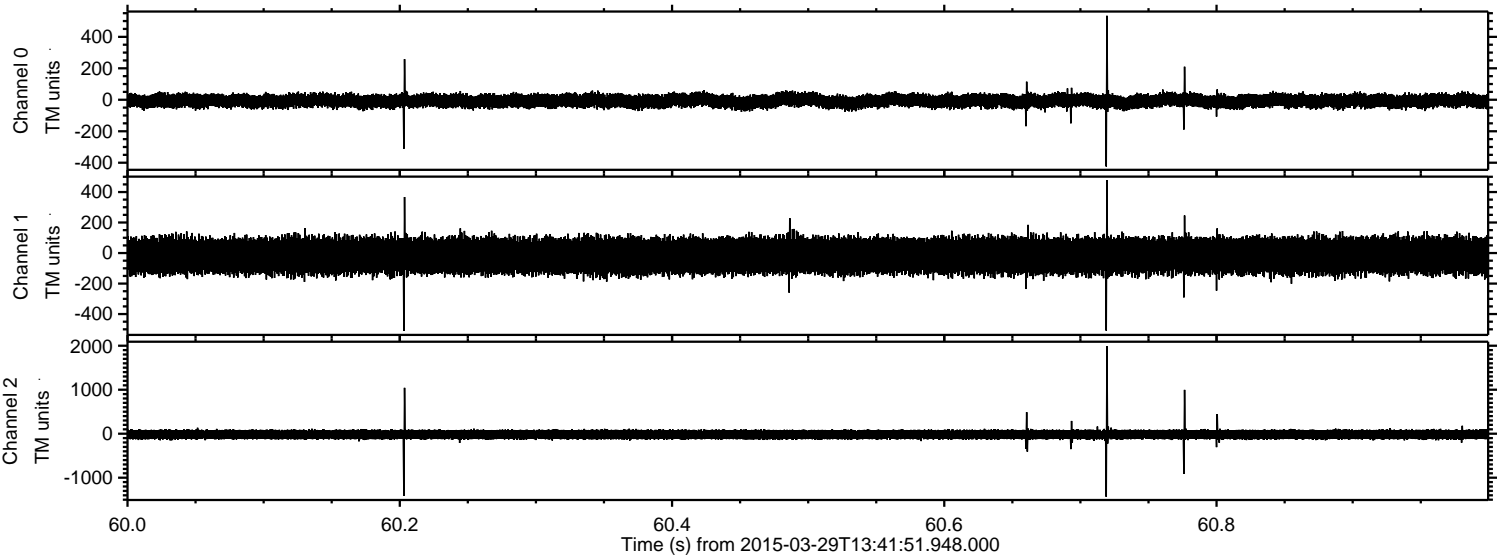
ELMAVAN 3D WAVEFORMS (Measured data sampled at 50 kHz) 49793 packets of 144 samples from 2015-03-29T13:41:51.948.000. Part 129/144

Processed Sun Mar 29 15:48:58 2015 by ELM ver.2012-10-06 from 001\_\_elm20150329\_134150\_\_dat00.bin





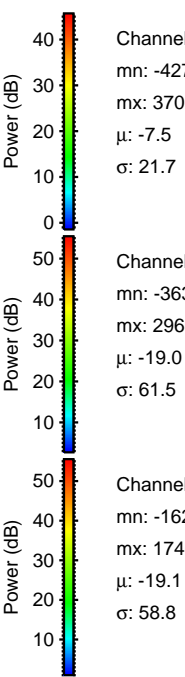
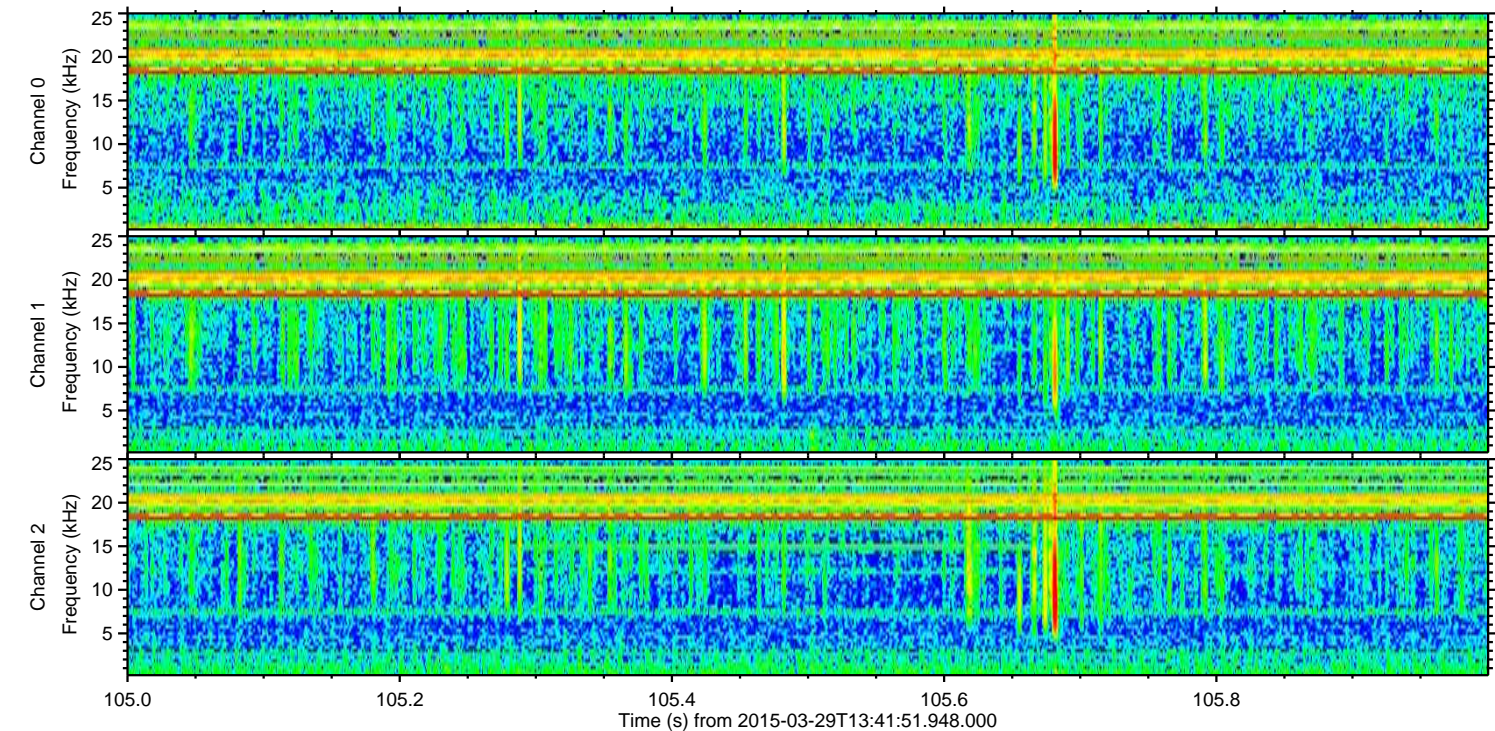
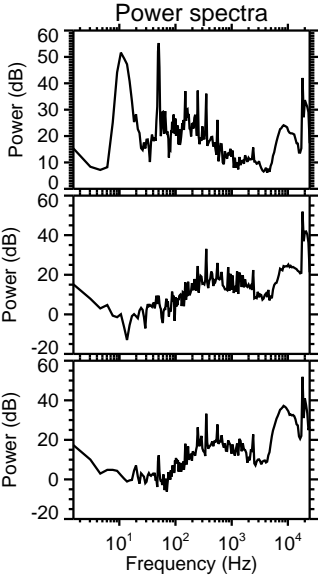
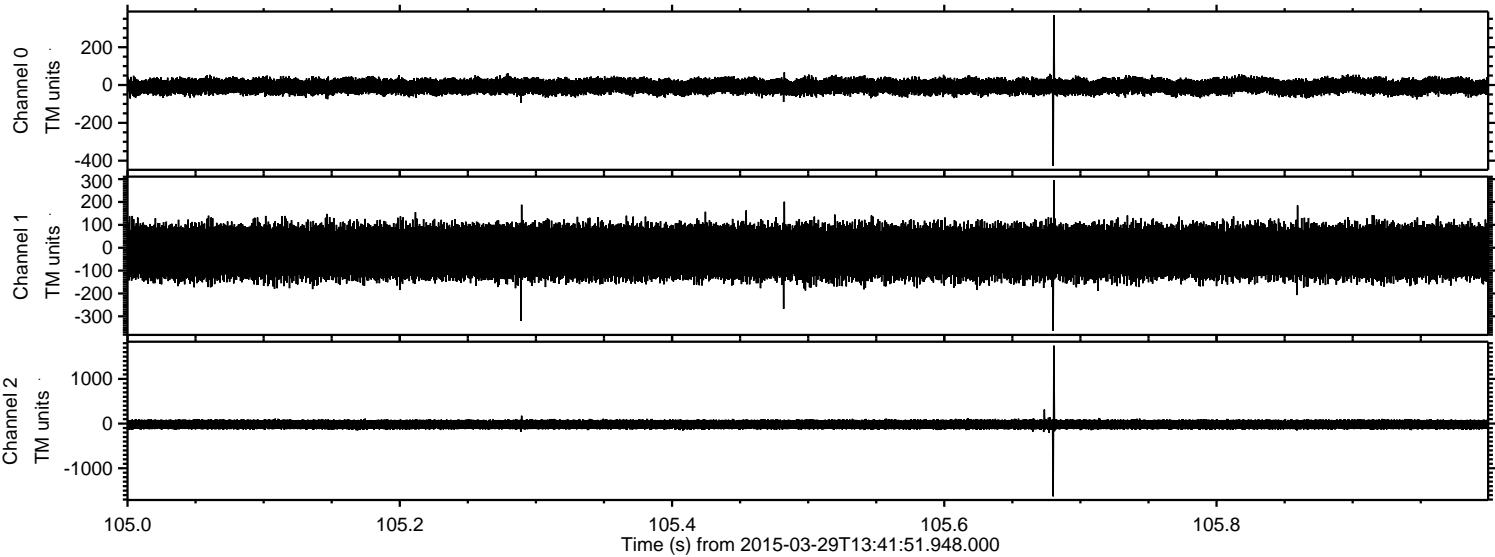
Processed Sun Mar 29 15:48:59 2015 by ELM ver.2012-10-06 from 001\_\_elm20150329\_134150\_\_dat00.bin





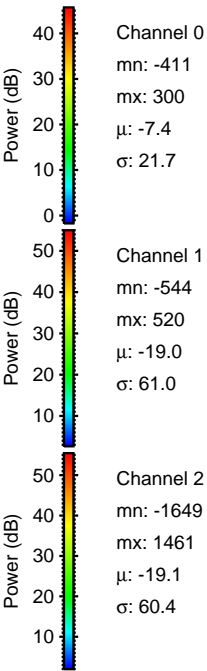
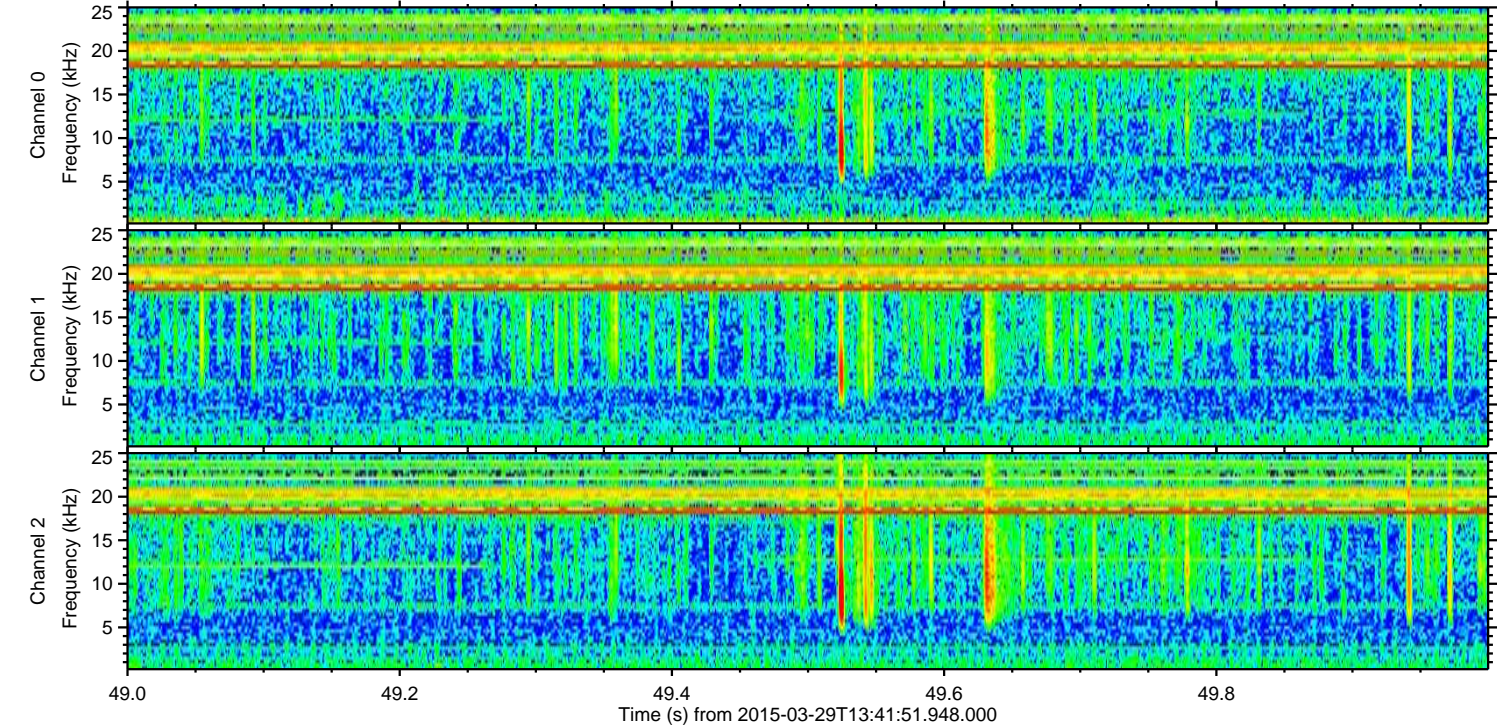
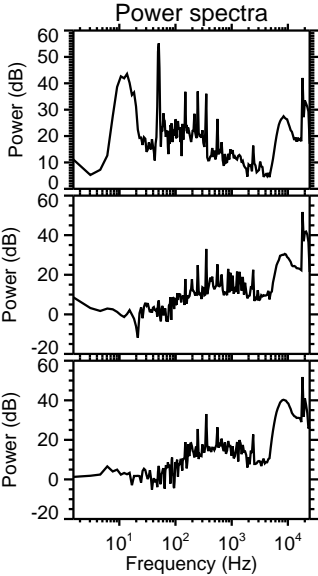
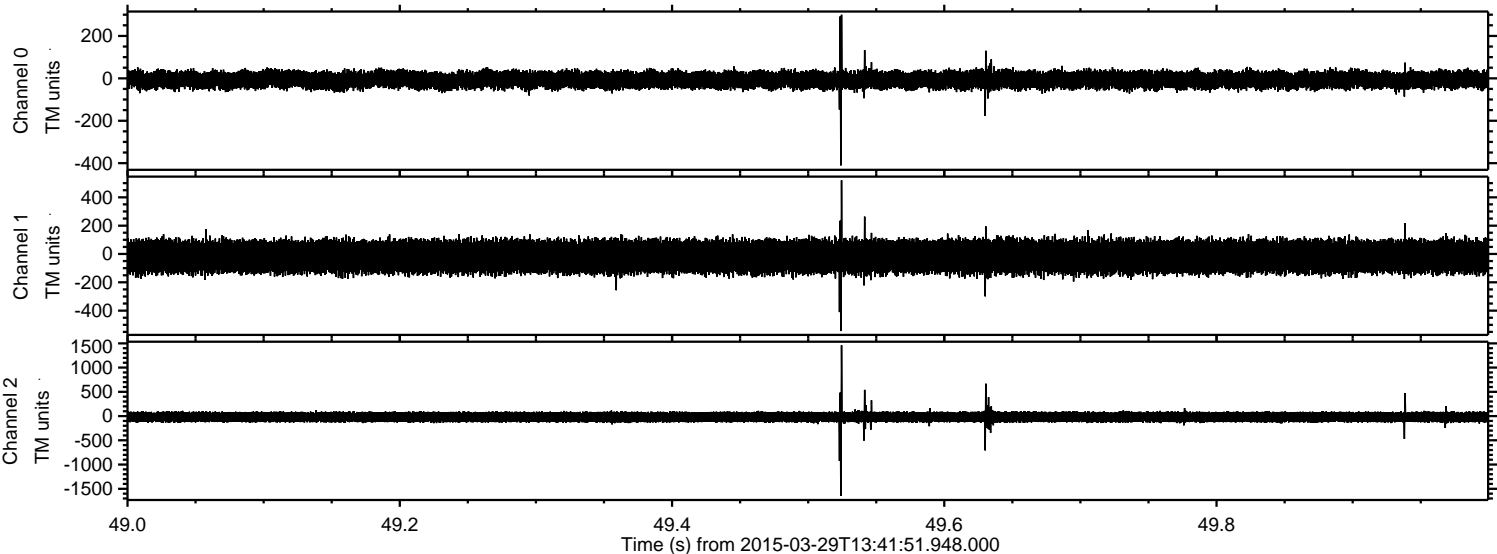
ELMAVAN 3D WAVEFORMS (Measured data sampled at 50 kHz) 49793 packets of 144 samples from 2015-03-29T13:41:51.948.000. Part 106/144

Processed Sun Mar 29 15:49:00 2015 by ELM ver.2012-10-06 from 001\_\_elm20150329\_134150\_\_dat00.bin



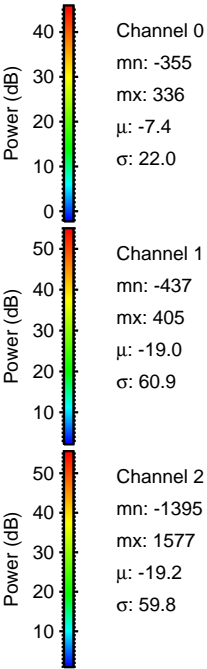
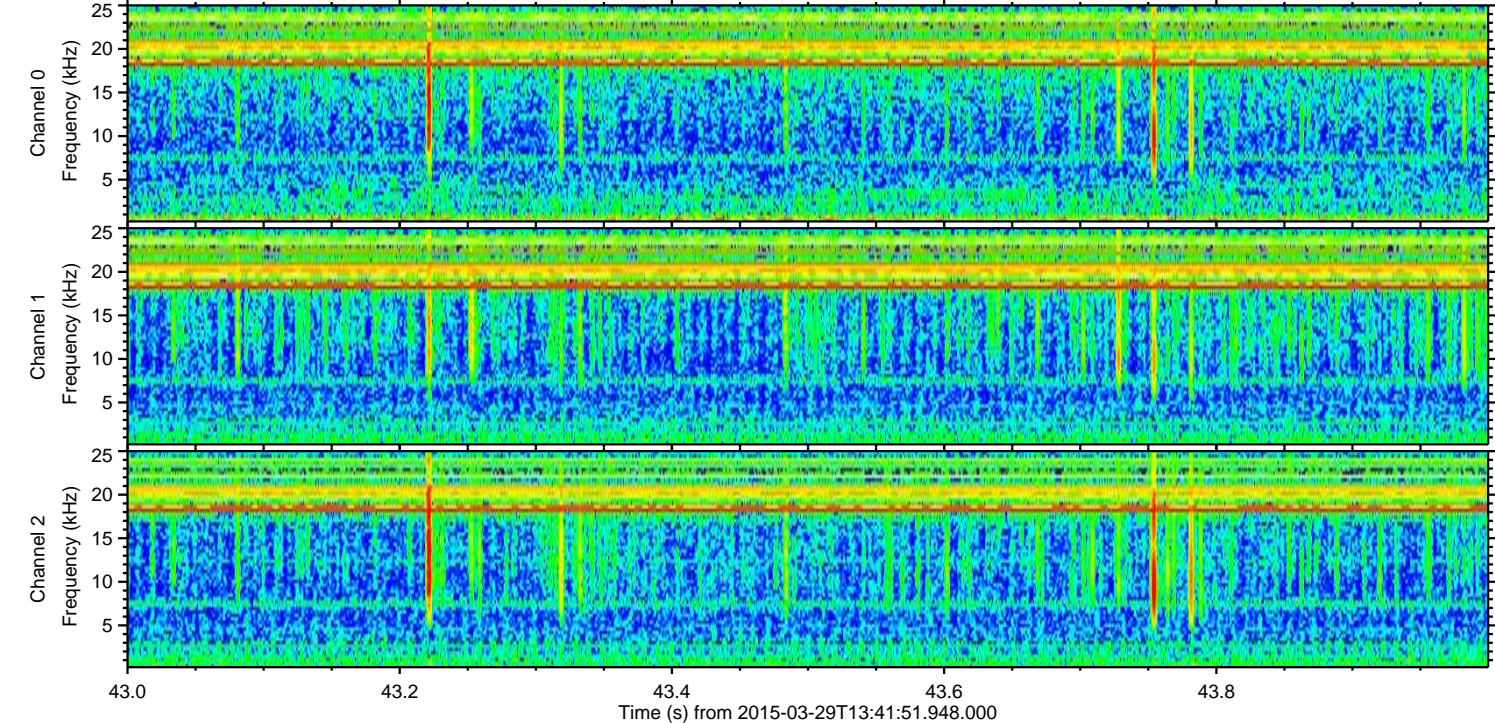
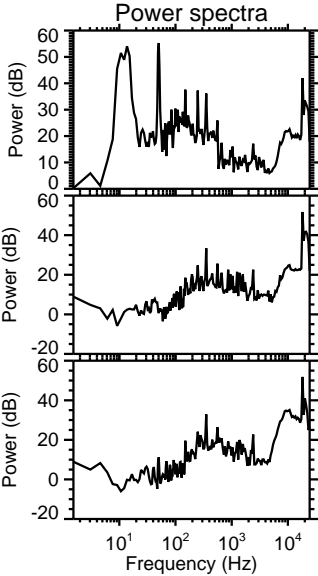
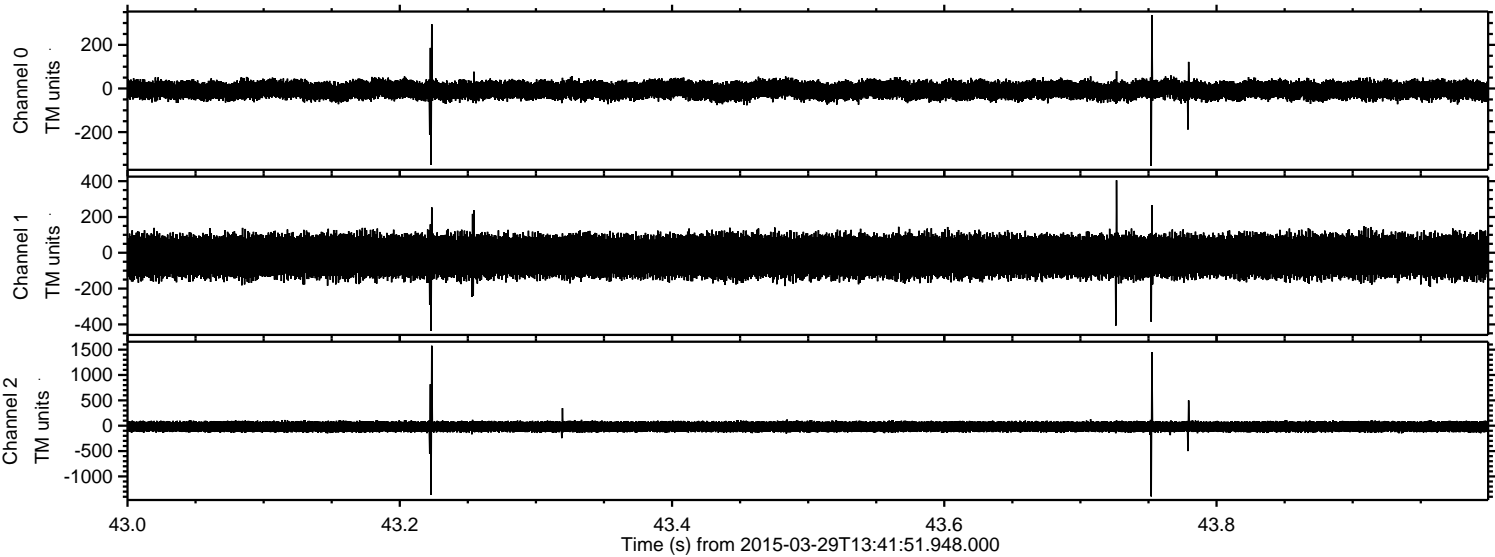


Processed Sun Mar 29 15:49:01 2015 by ELM ver.2012-10-06 from 001\_\_elm20150329\_134150\_\_dat00.bin



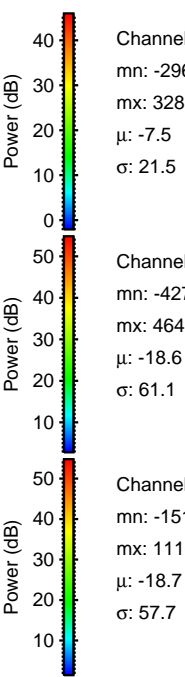
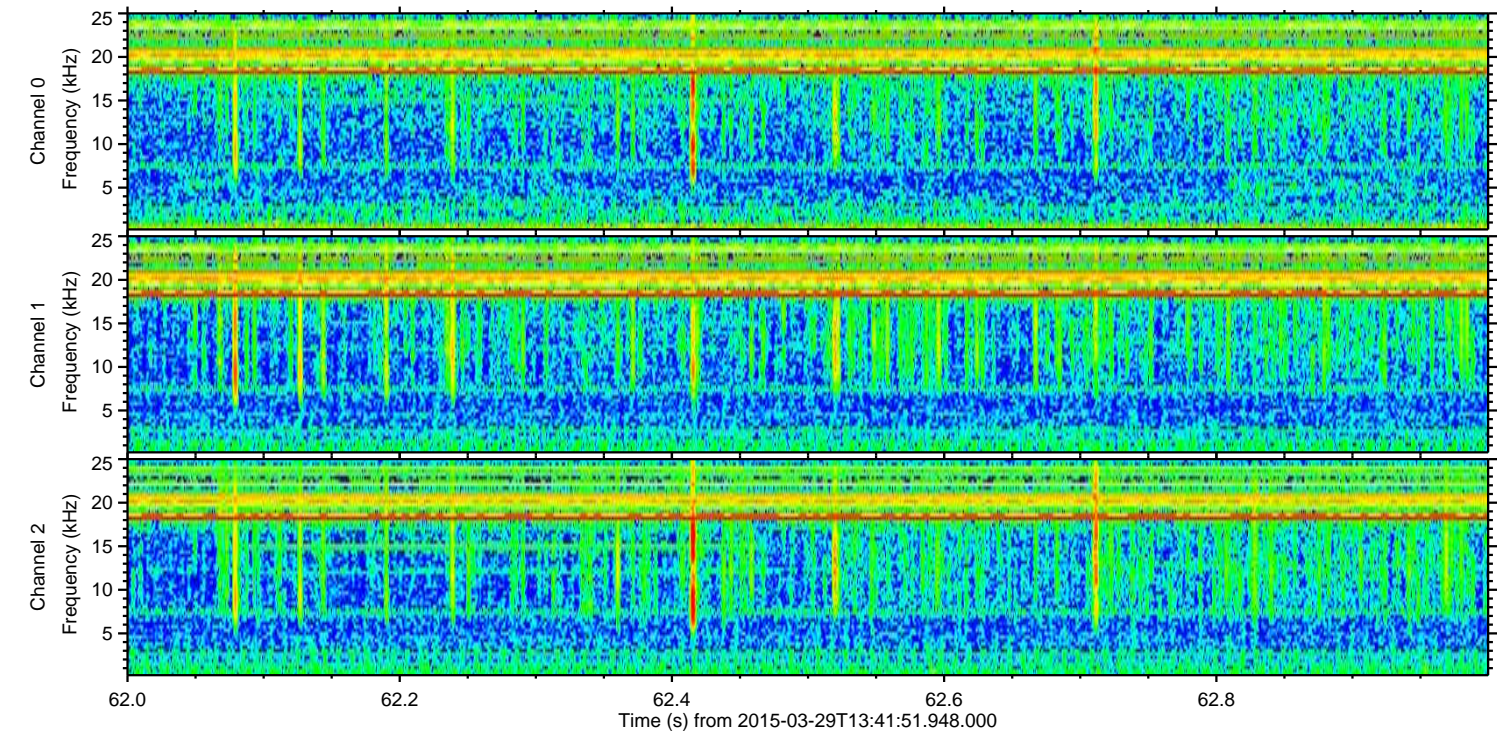
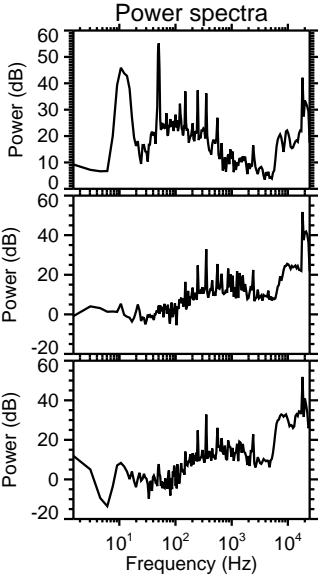
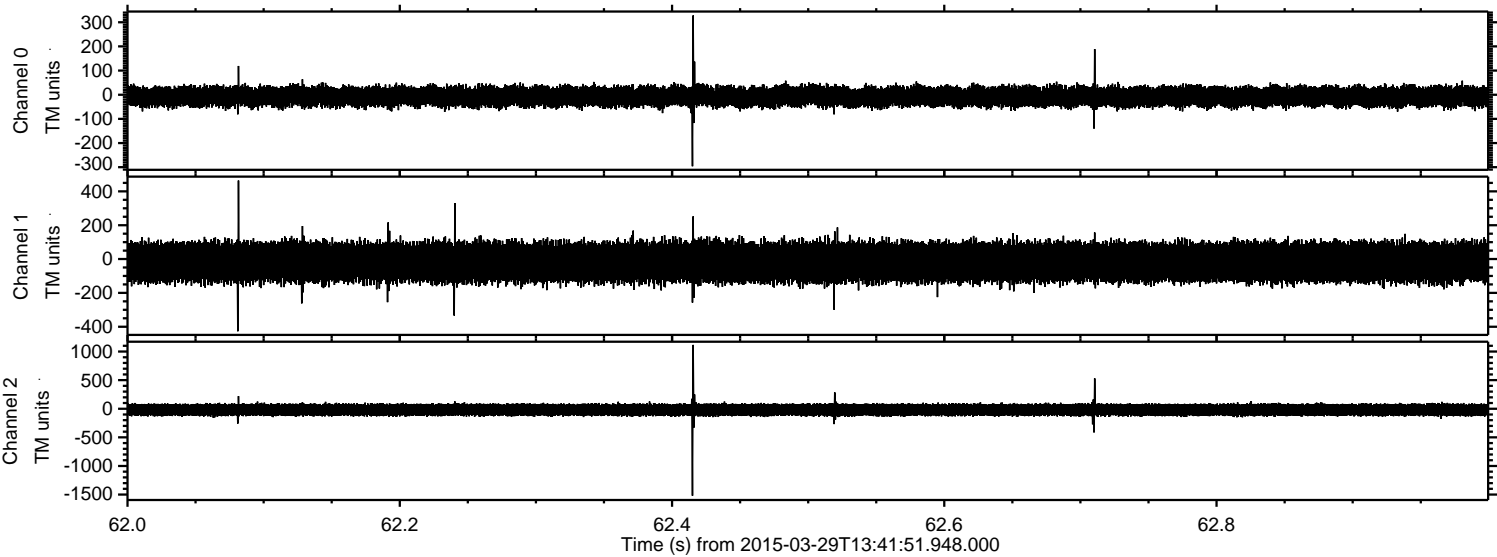


Processed Sun Mar 29 15:49:02 2015 by ELM ver.2012-10-06 from 001\_\_elm20150329\_134150\_\_dat00.bin





Processed Sun Mar 29 15:49:03 2015 by ELM ver.2012-10-06 from 001\_\_elm20150329\_134150\_\_dat00.bin



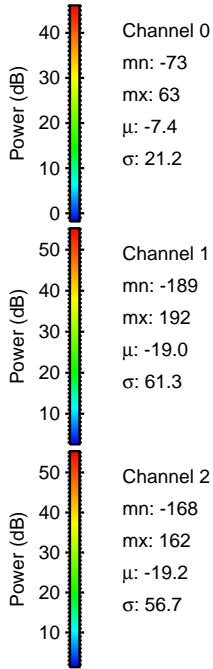
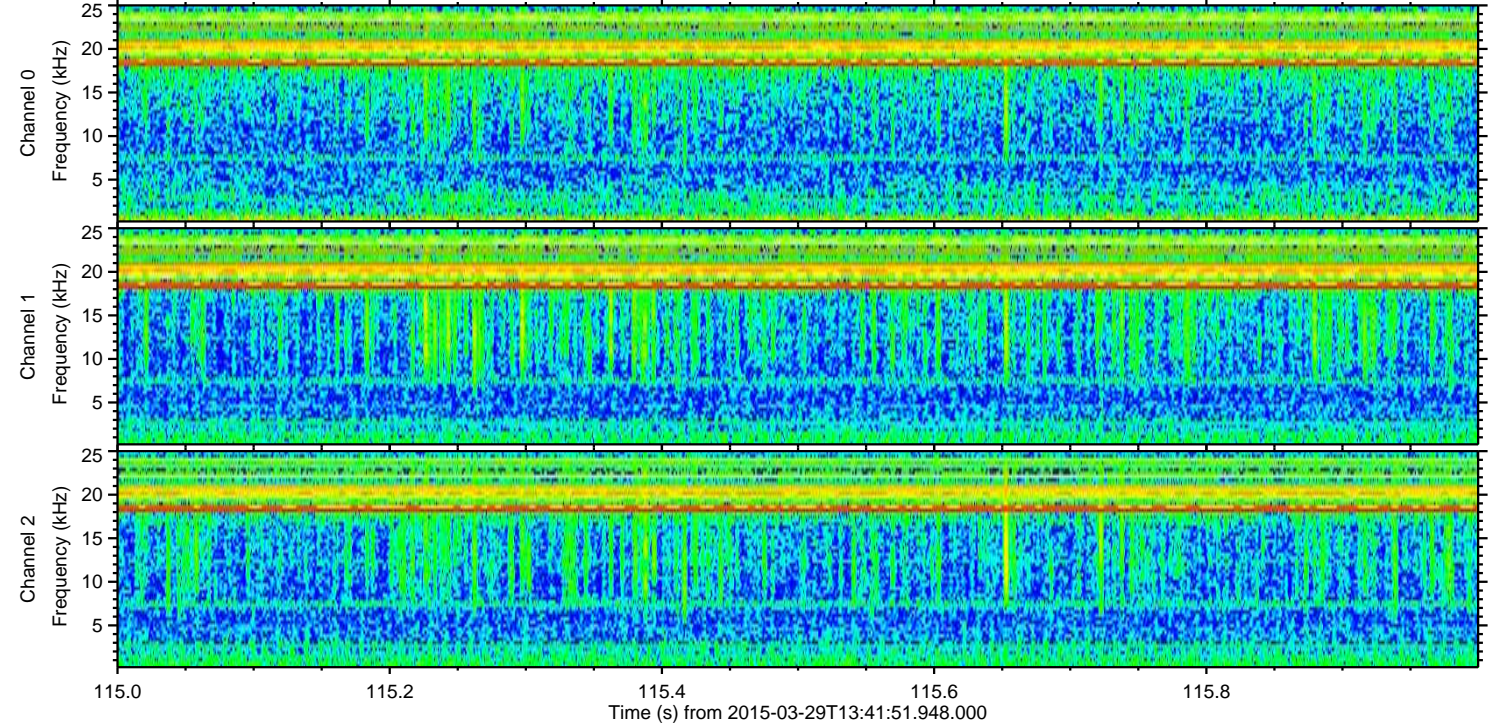
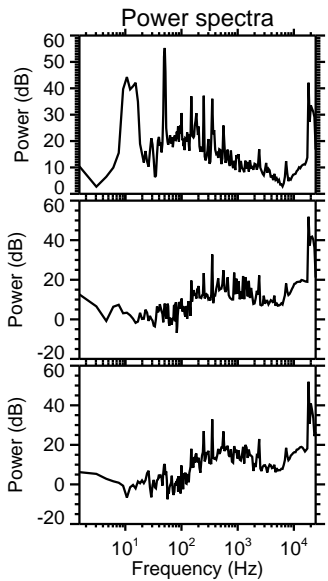
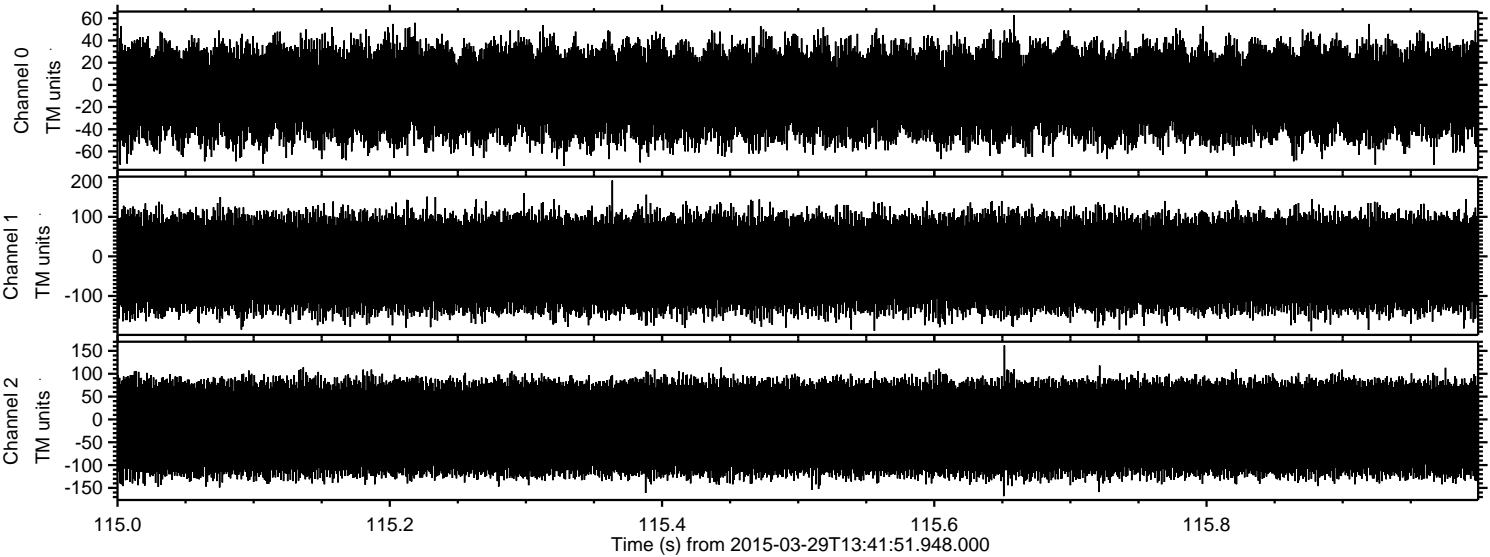
Channel 0  
mn: -296  
mx: 328  
 $\mu$ : -7.5  
 $\sigma$ : 21.5

Channel 1  
mn: -427  
mx: 464  
 $\mu$ : -18.6  
 $\sigma$ : 61.1

Channel 2  
mn: -1519  
mx: 1116  
 $\mu$ : -18.7  
 $\sigma$ : 57.7



Processed Sun Mar 29 15:49:04 2015 by ELM ver.2012-10-06 from 001\_\_elm20150329\_134150\_\_dat00.bin



Channel 0  
mn: -73  
mx: 63  
 $\mu$ : -7.4  
 $\sigma$ : 21.2

Channel 1  
mn: -189  
mx: 192  
 $\mu$ : -19.0  
 $\sigma$ : 61.3

Channel 2  
mn: -168  
mx: 162  
 $\mu$ : -19.2  
 $\sigma$ : 56.7