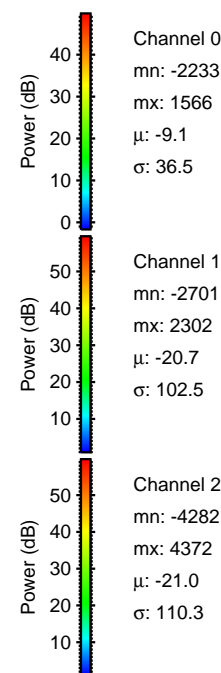
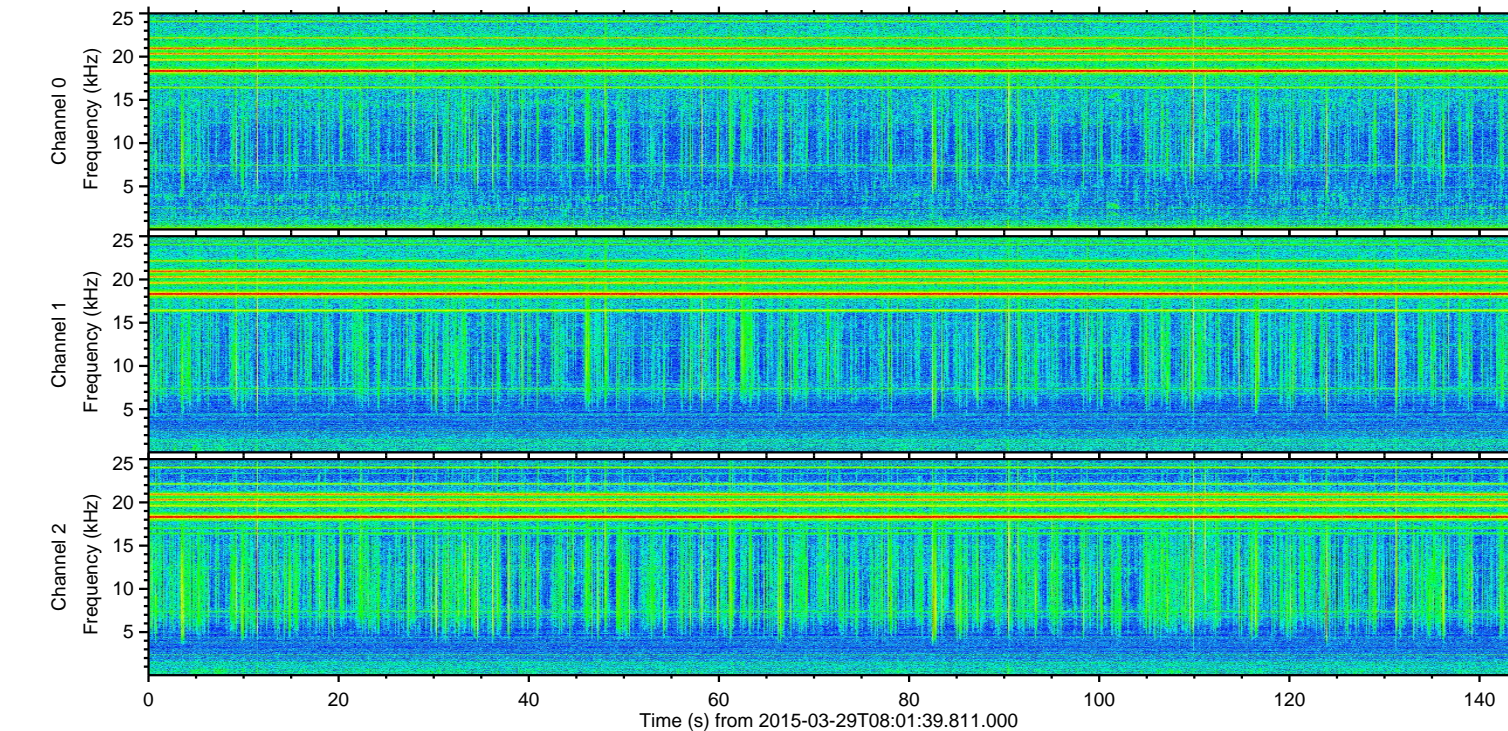
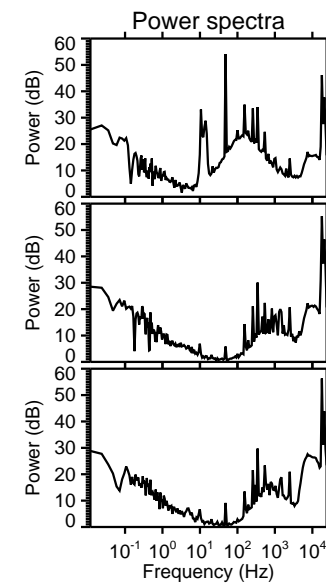
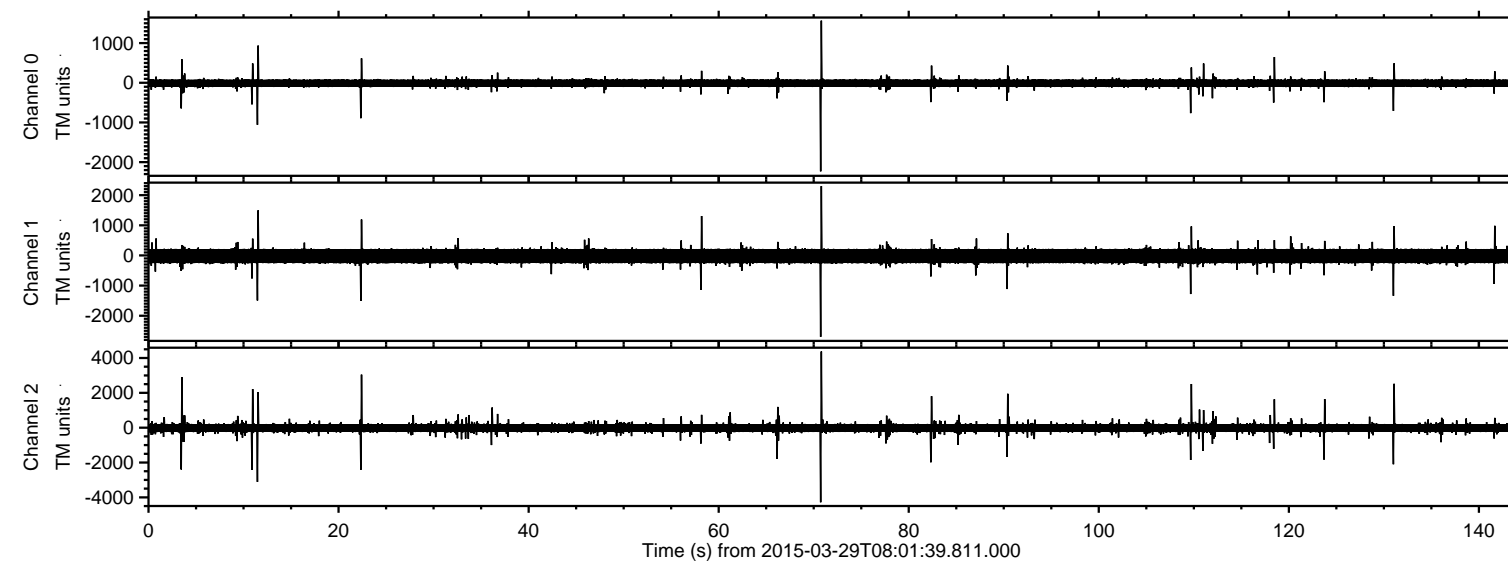
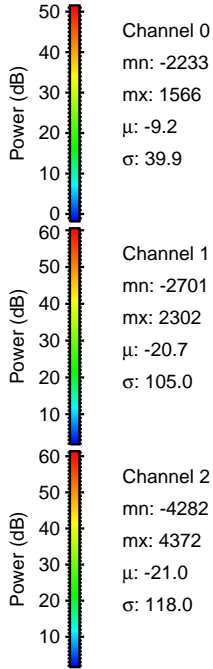
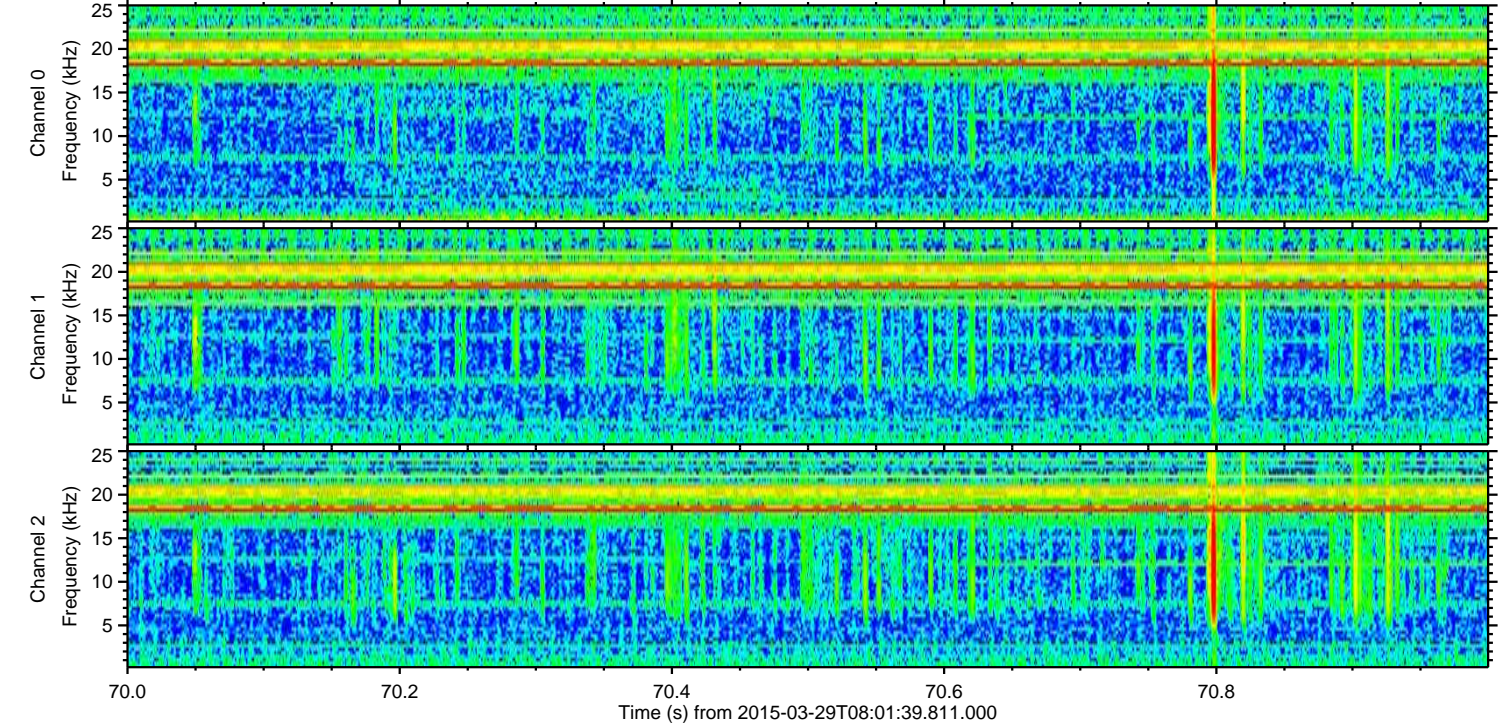
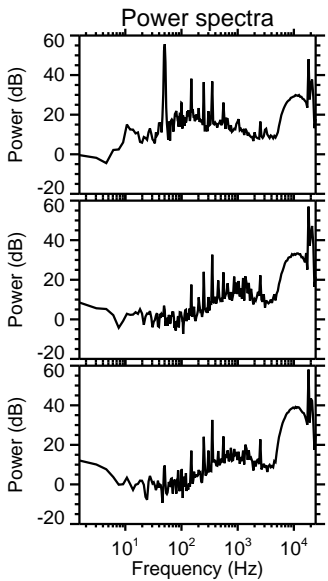
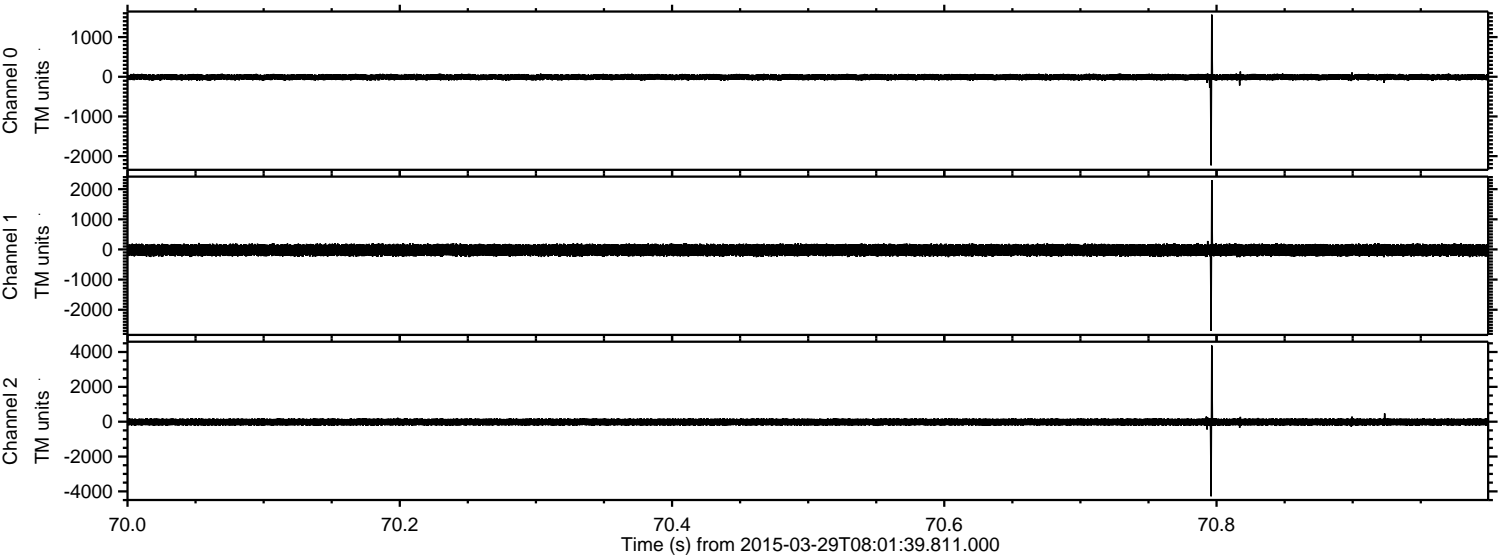


# ELMAVAN 3D WAVEFORMS (Measured data sampled at 50 kHz) 49716 packets of 144 samples from 2015-03-29T08:01:39.811.000.

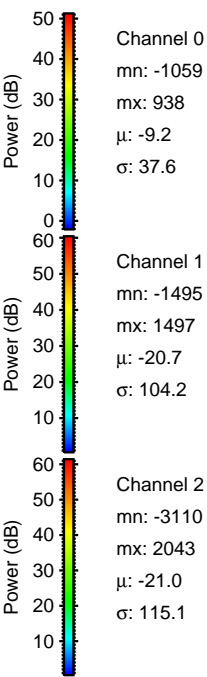
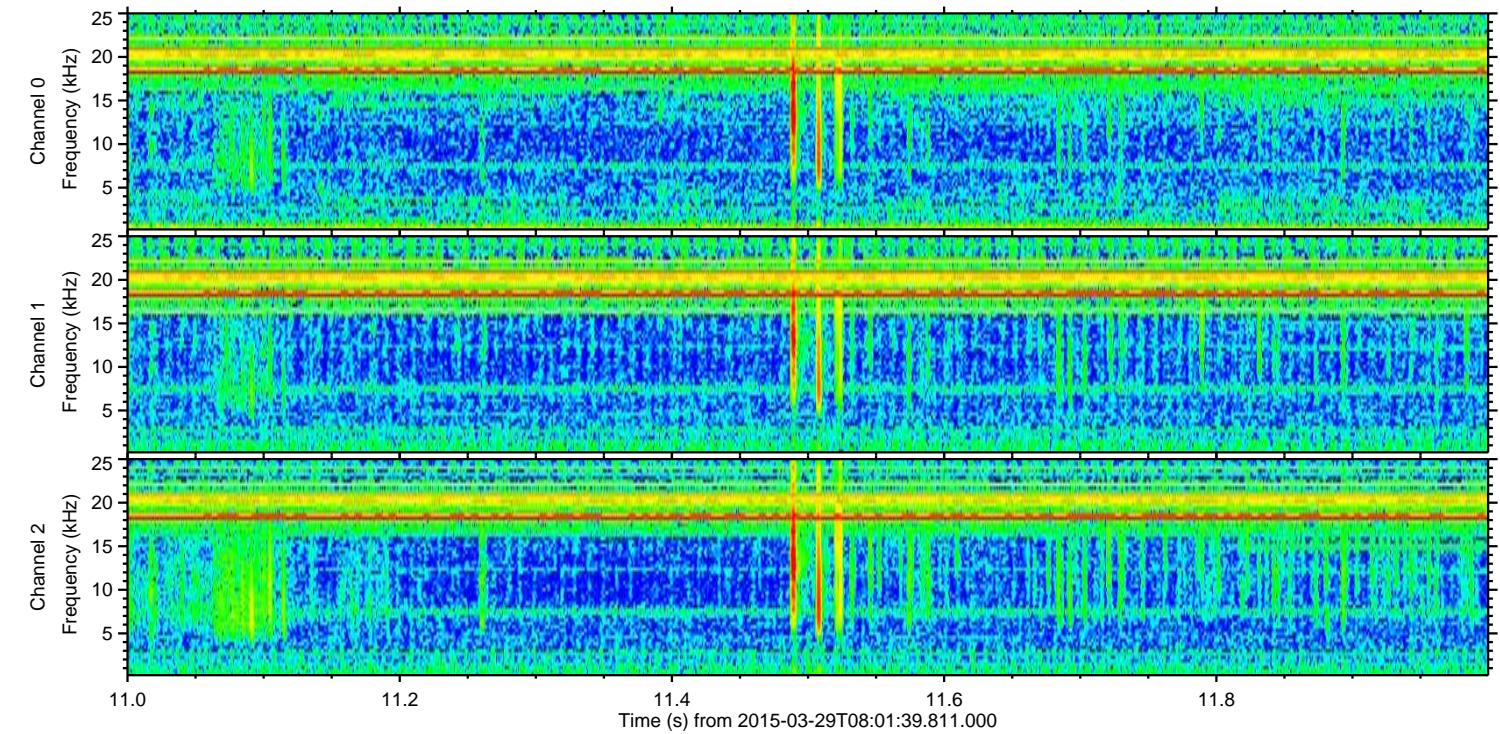
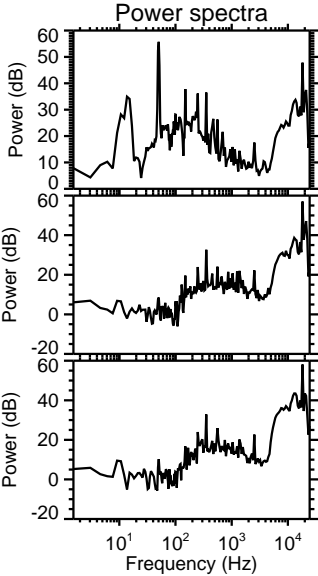
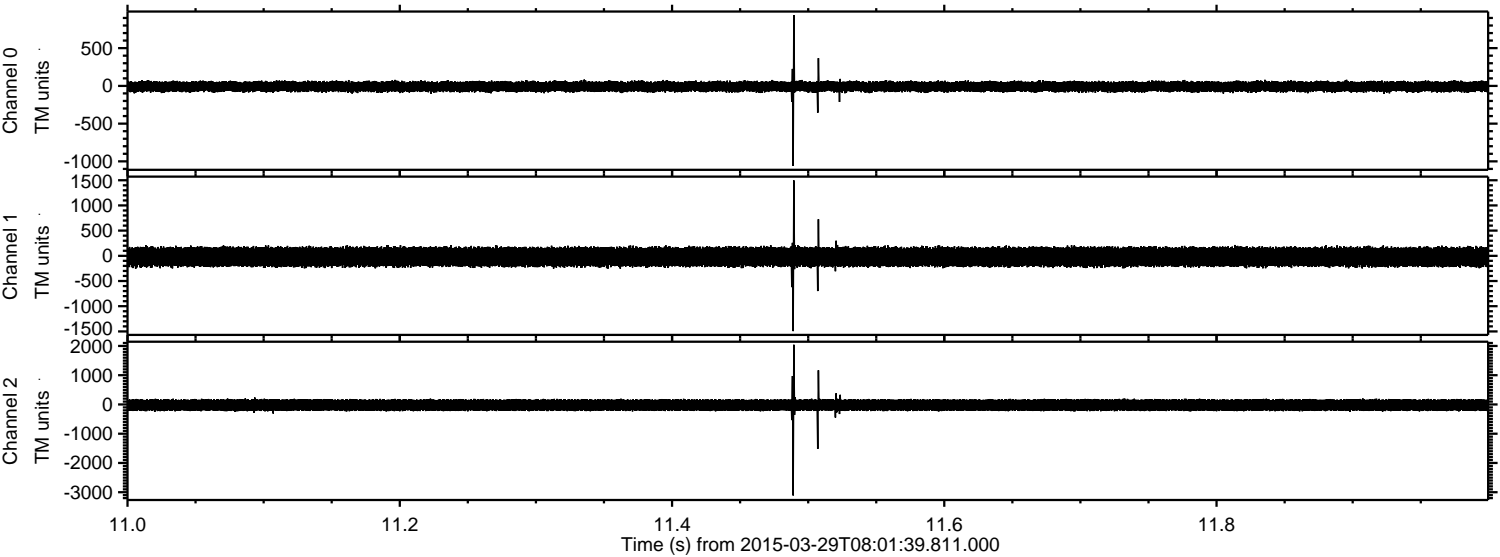
Processed Sun Mar 29 10:09:17 2015 by ELM ver.2012-10-06 from 001\_\_elm20150329\_080138\_\_dat00.bin



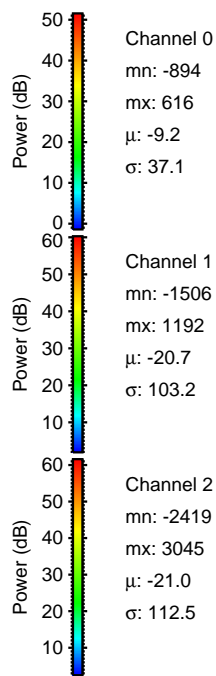
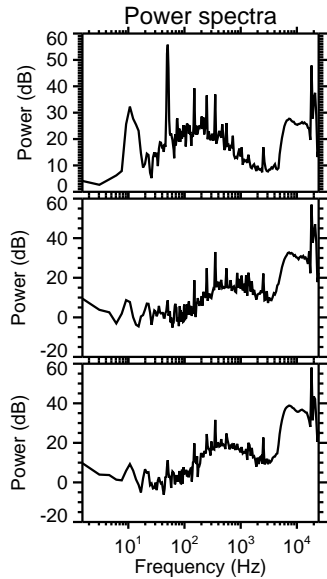
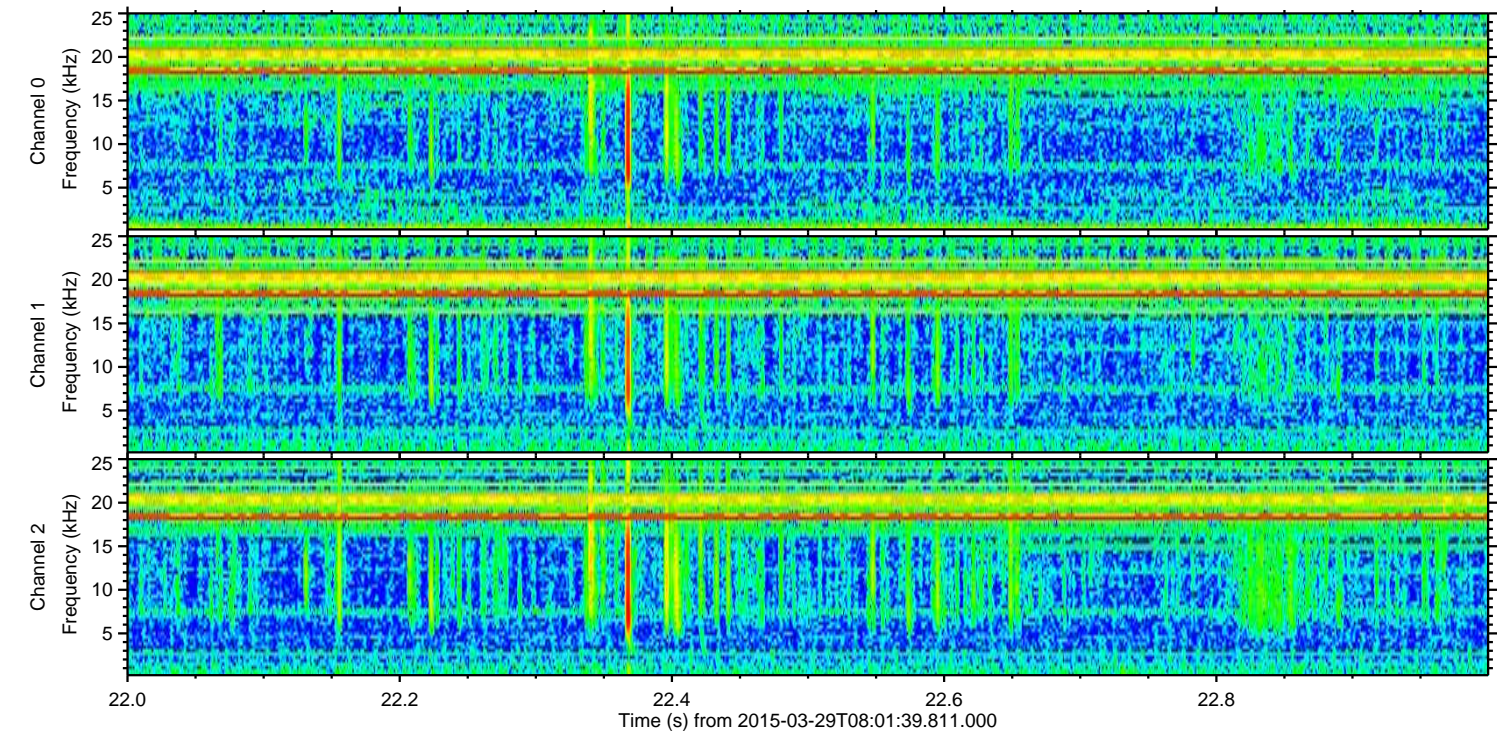
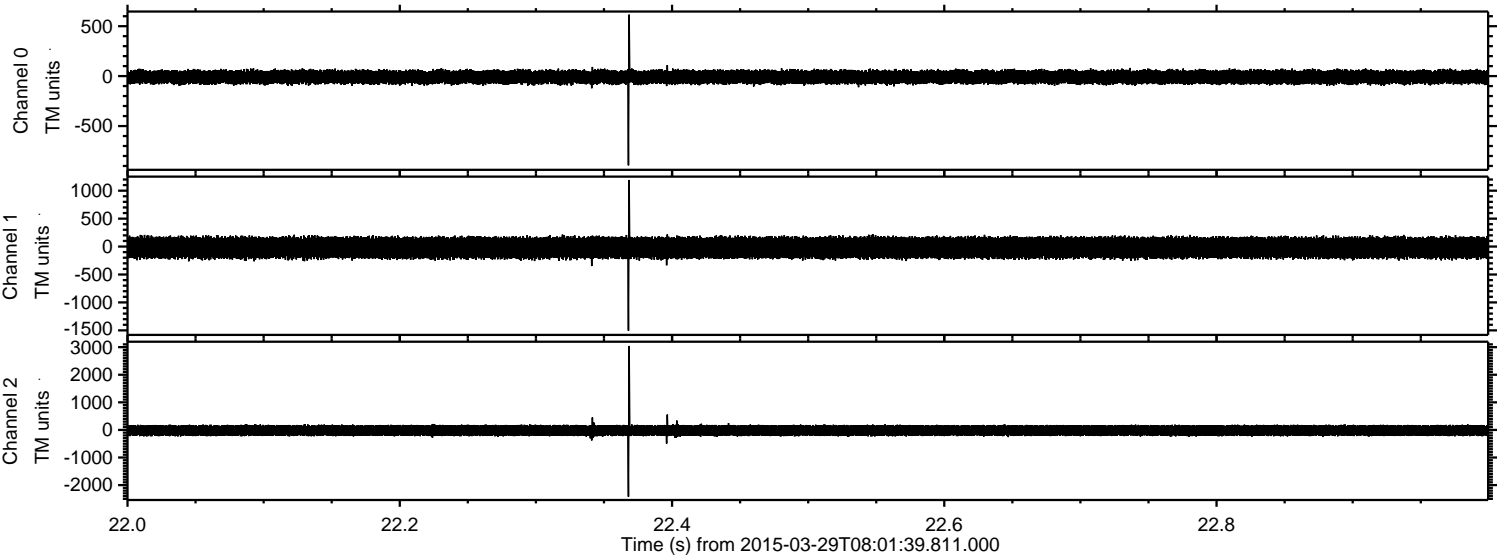
Processed Sun Mar 29 10:09:28 2015 by ELM ver.2012-10-06 from 001\_\_elm20150329\_080138\_\_dat00.bin



Processed Sun Mar 29 10:09:29 2015 by ELM ver.2012-10-06 from 001\_\_elm20150329\_080138\_\_dat00.bin



Processed Sun Mar 29 10:09:30 2015 by ELM ver.2012-10-06 from 001\_\_elm20150329\_080138\_\_dat00.bin



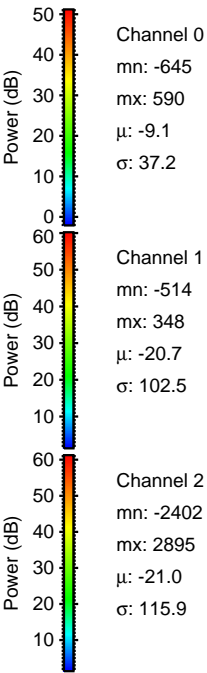
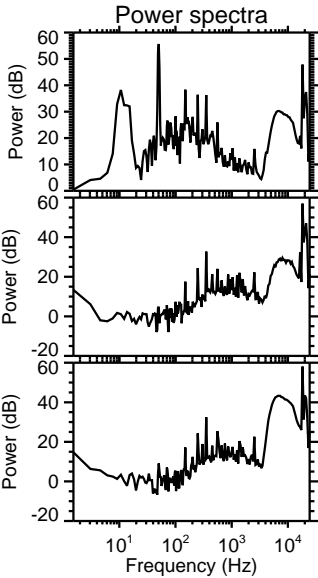
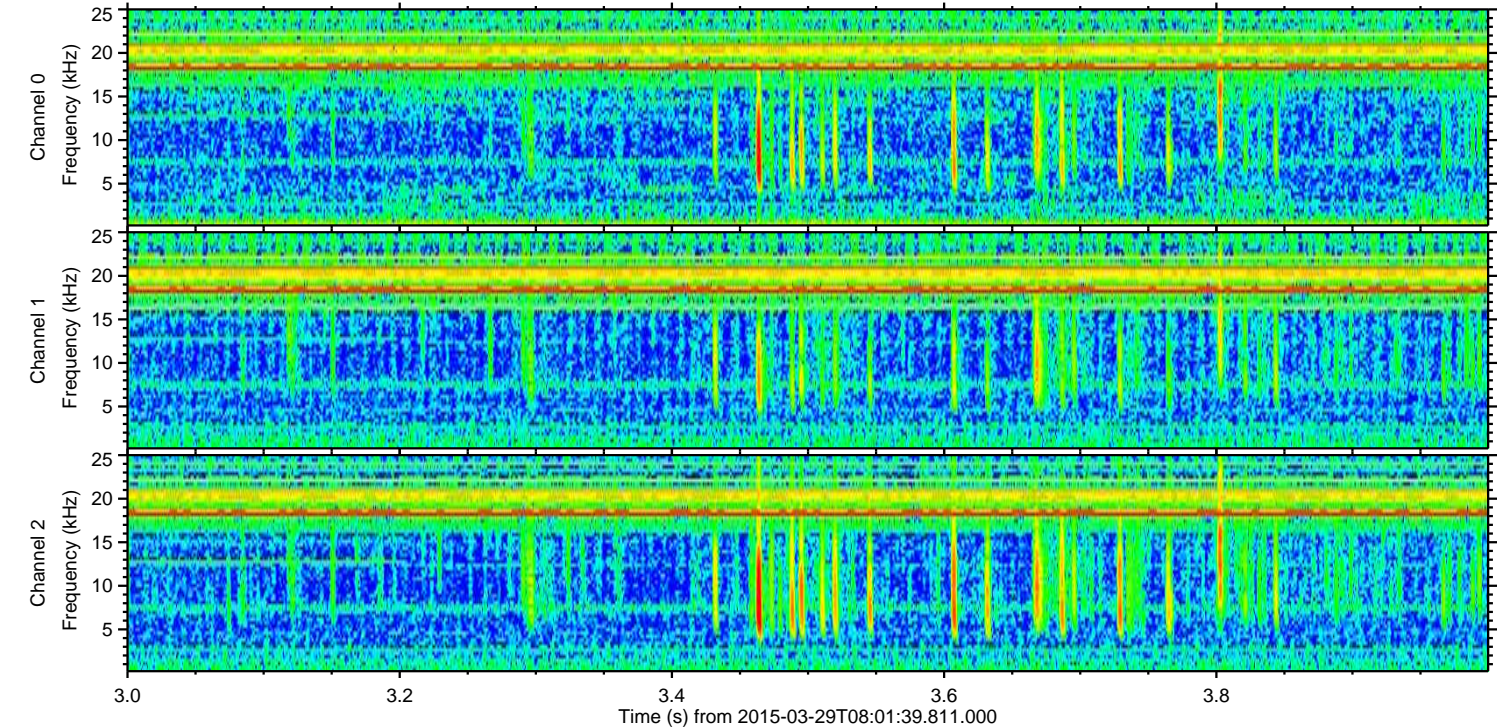
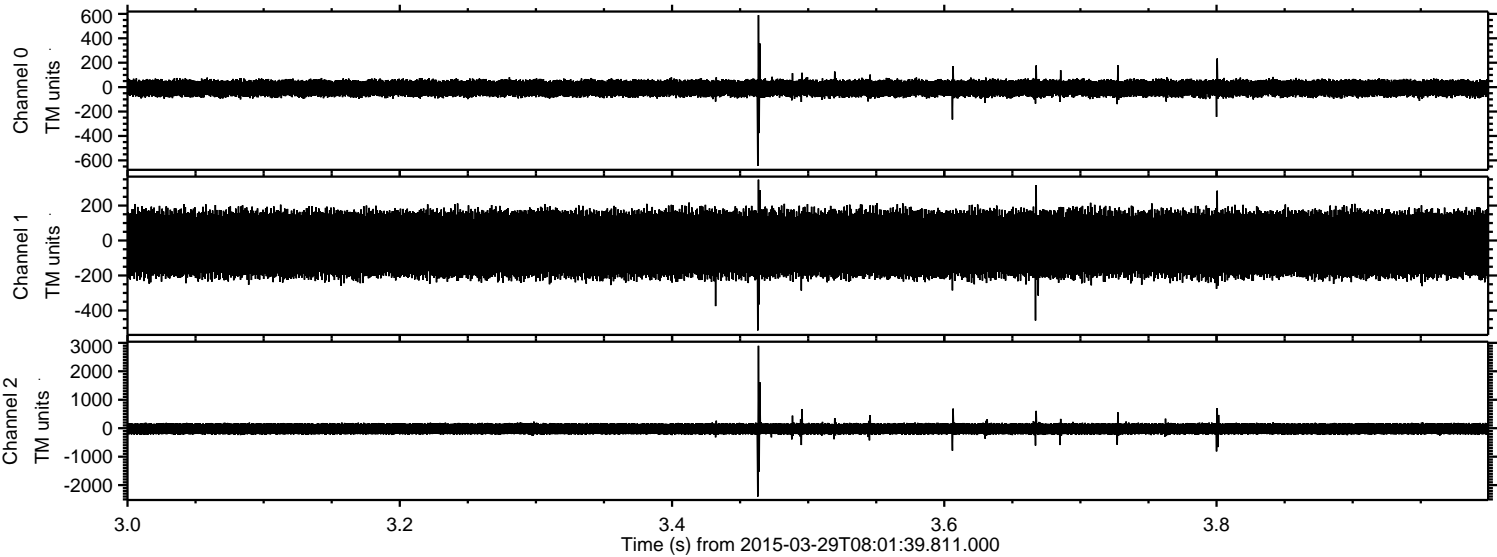
Power spectra

Channel 0  
mn: -894  
mx: 616  
 $\mu$ : -9.2  
 $\sigma$ : 37.1

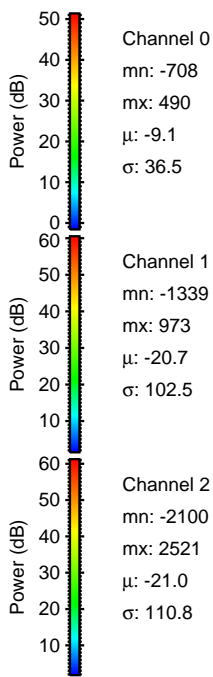
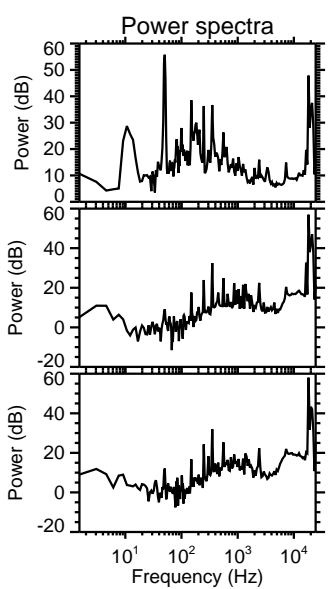
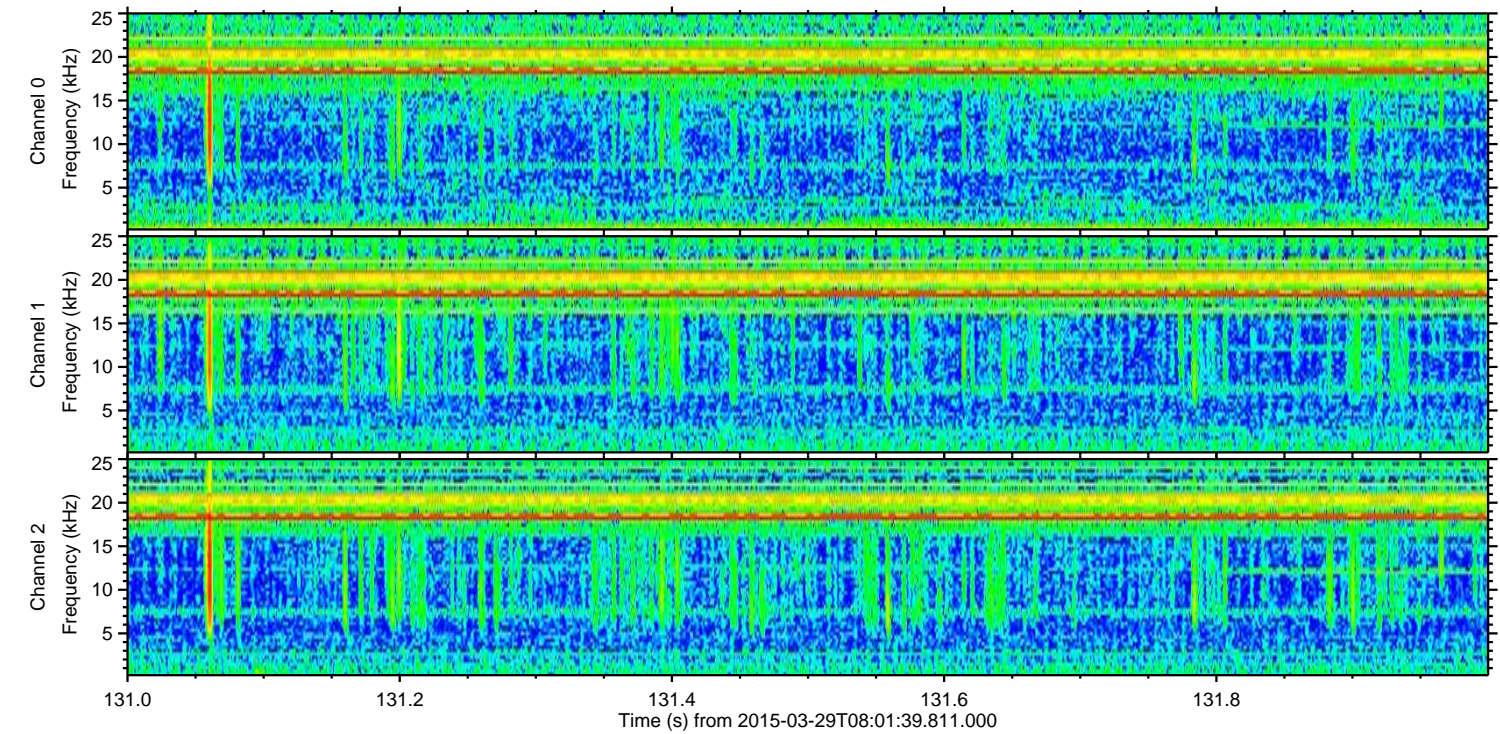
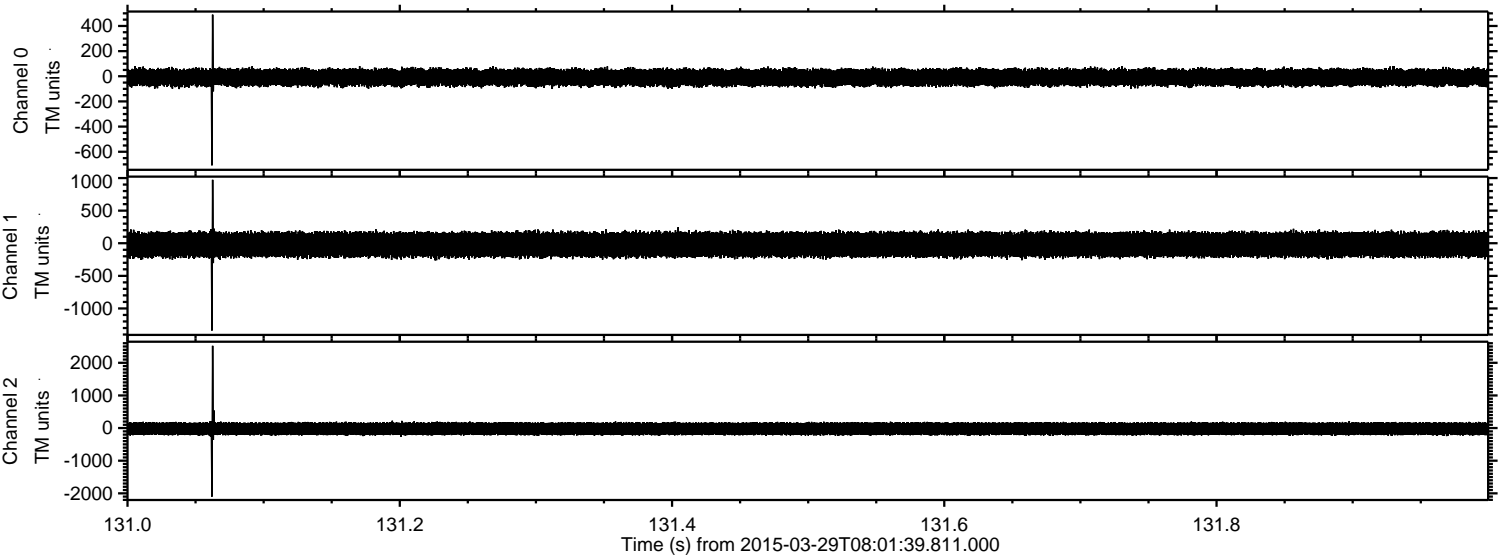
Channel 1  
mn: -1506  
mx: 1192  
 $\mu$ : -20.7  
 $\sigma$ : 103.2

Channel 2  
mn: -2419  
mx: 3045  
 $\mu$ : -21.0  
 $\sigma$ : 112.5

Processed Sun Mar 29 10:09:31 2015 by ELM ver.2012-10-06 from 001\_\_elm20150329\_080138\_\_dat00.bin



Processed Sun Mar 29 10:09:32 2015 by ELM ver.2012-10-06 from 001\_\_elm20150329\_080138\_\_dat00.bin



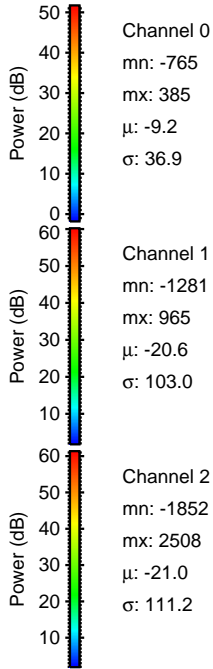
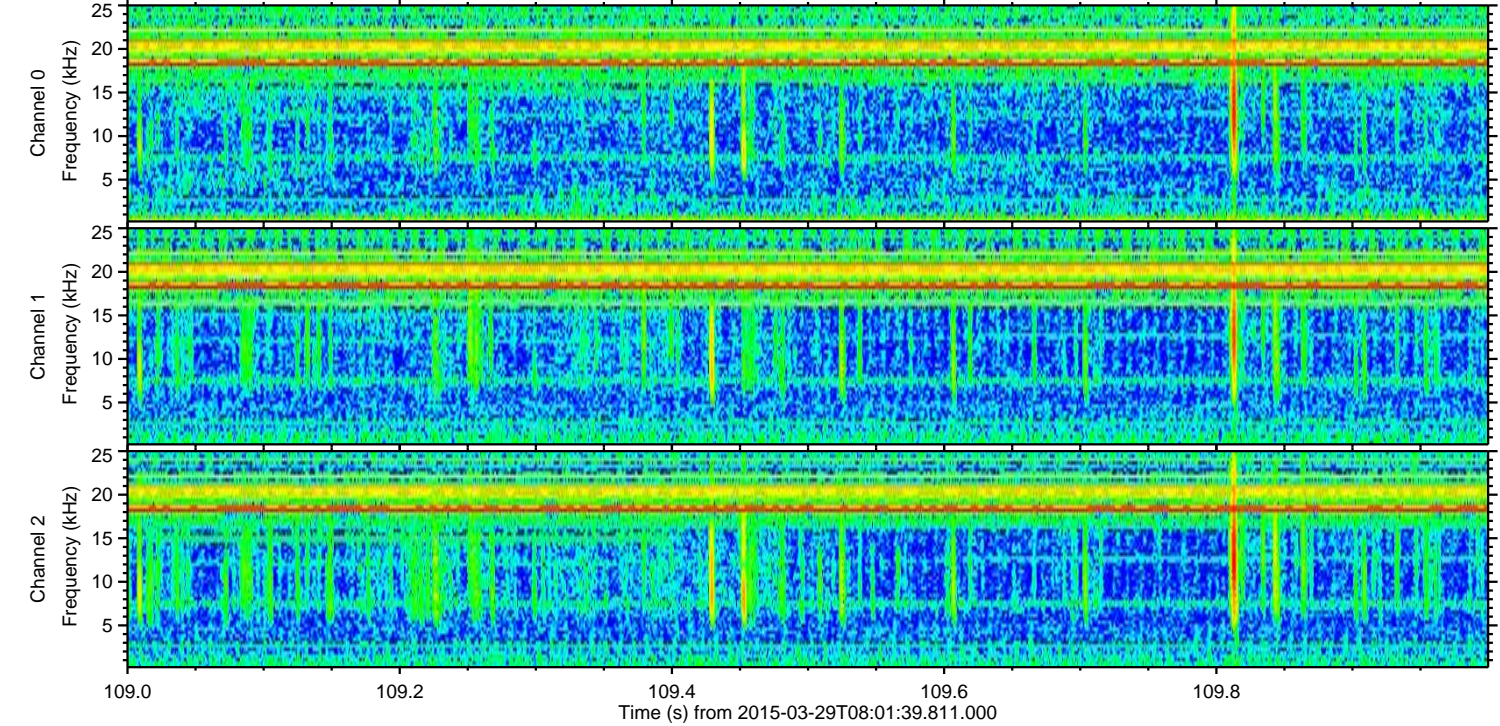
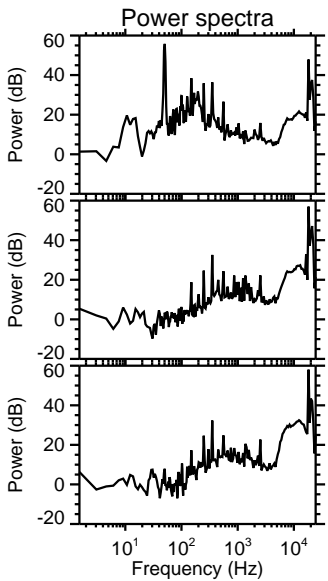
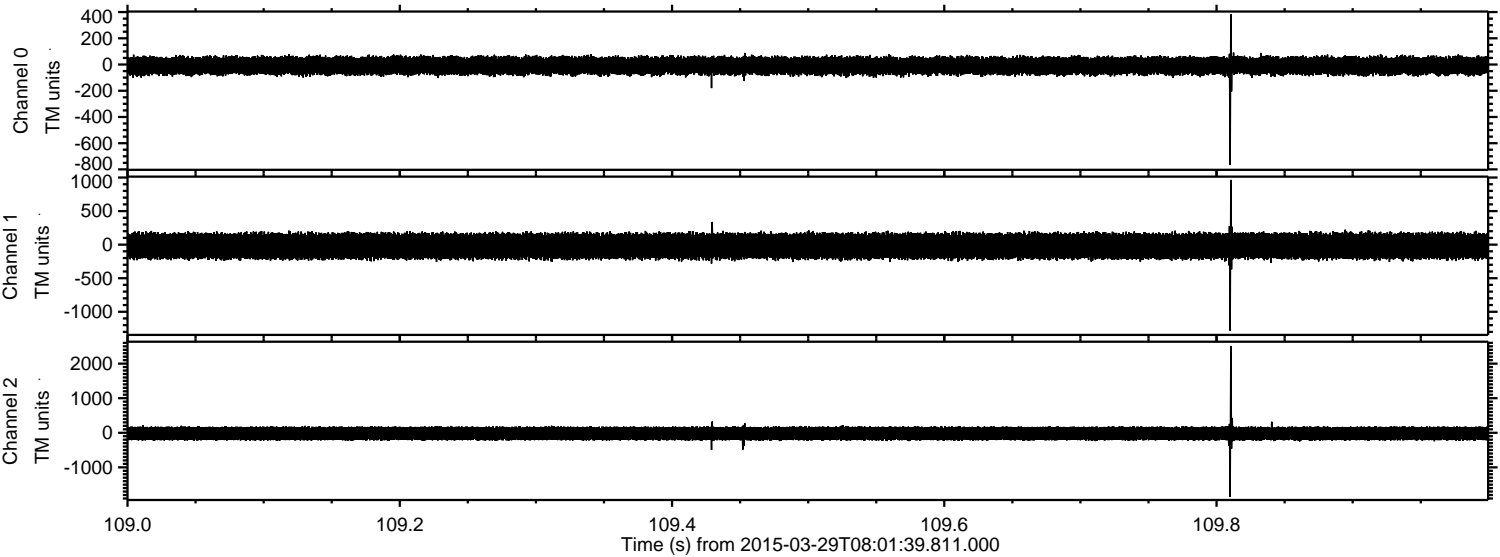
Channel 0  
mn: -708  
mx: 490  
 $\mu$ : -9.1  
 $\sigma$ : 36.5

Channel 1  
mn: -1339  
mx: 973  
 $\mu$ : -20.7  
 $\sigma$ : 102.5

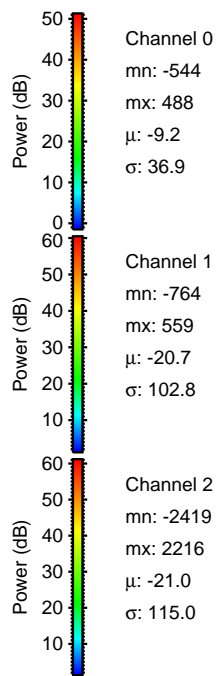
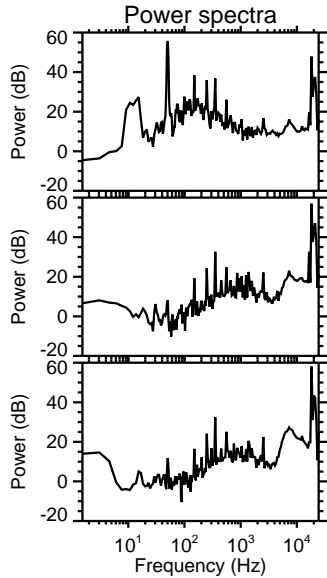
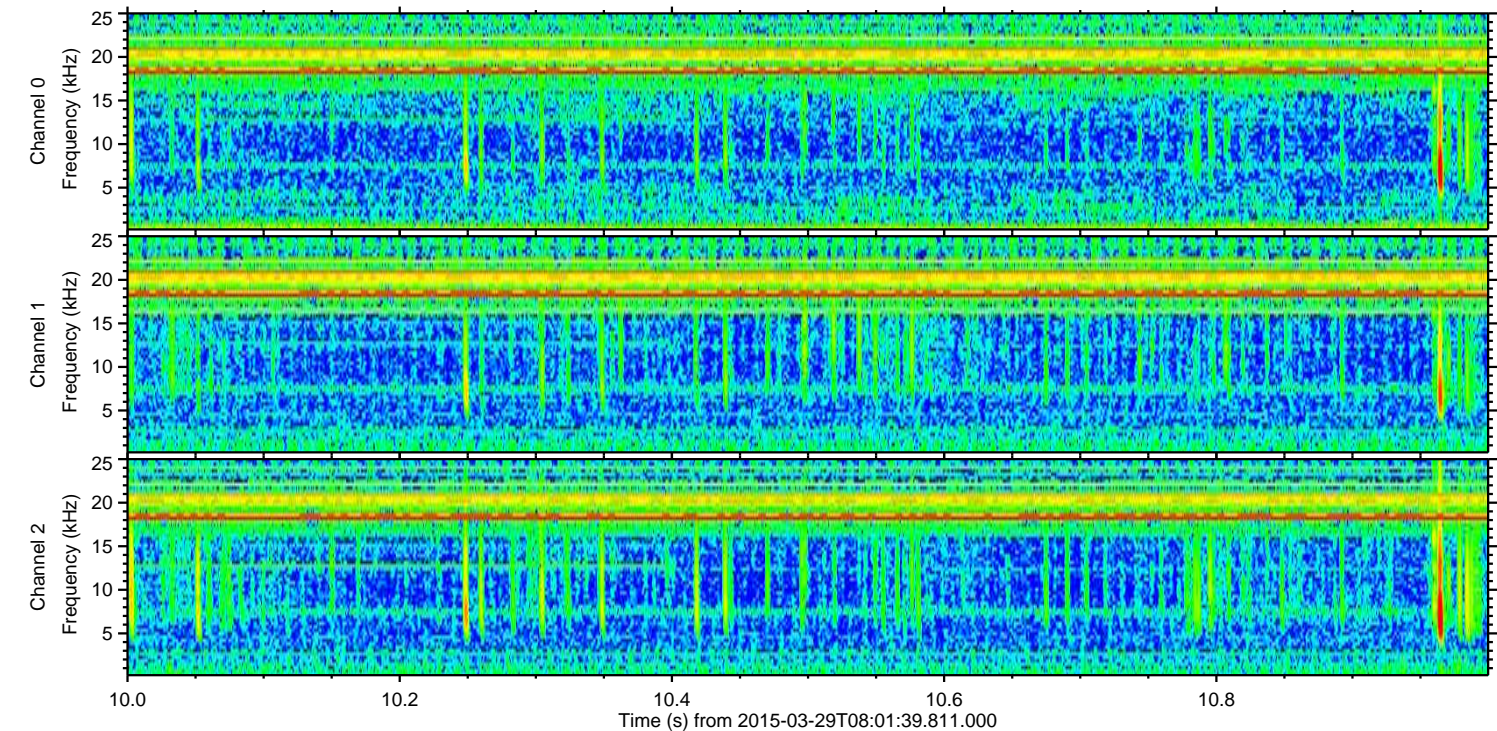
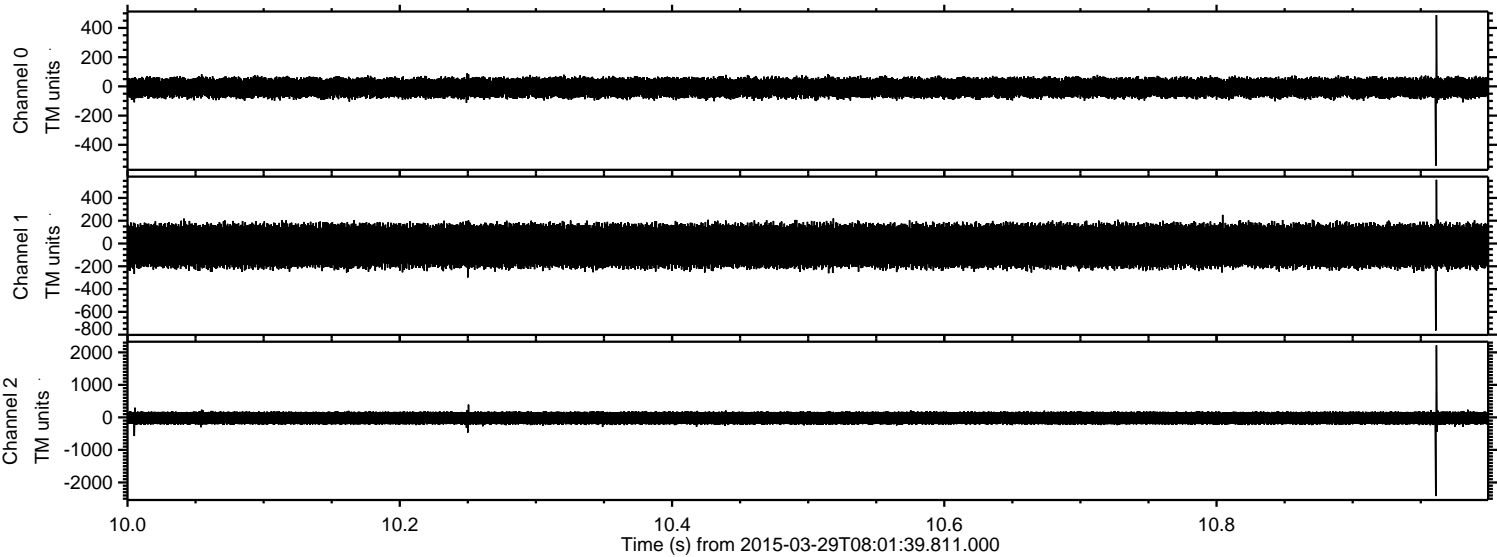
Channel 2  
mn: -2100  
mx: 2521  
 $\mu$ : -21.0  
 $\sigma$ : 110.8

ELMAVAN 3D WAVEFORMS (Measured data sampled at 50 kHz) 49716 packets of 144 samples from 2015-03-29T08:01:39.811.000. Part 110/144

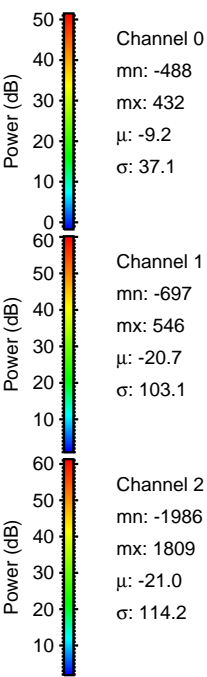
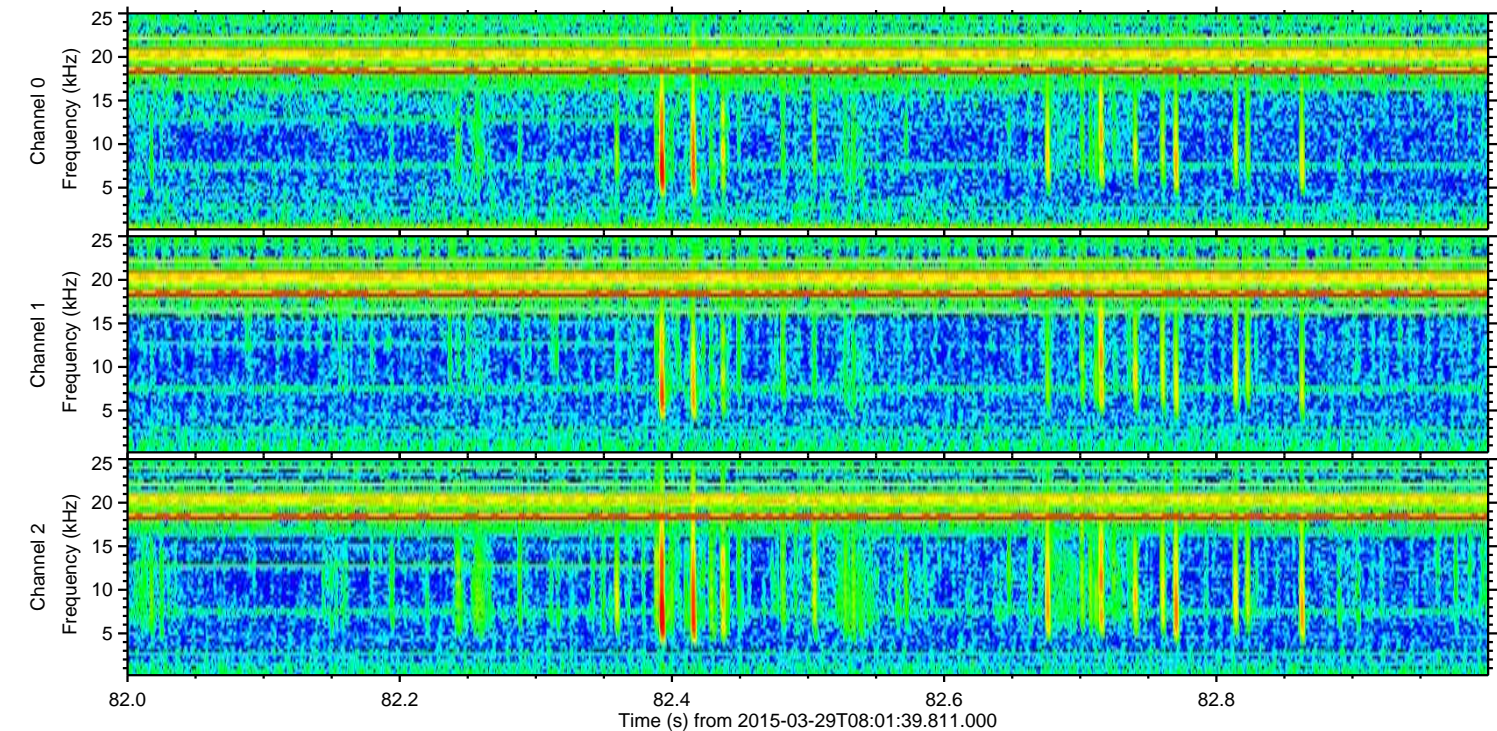
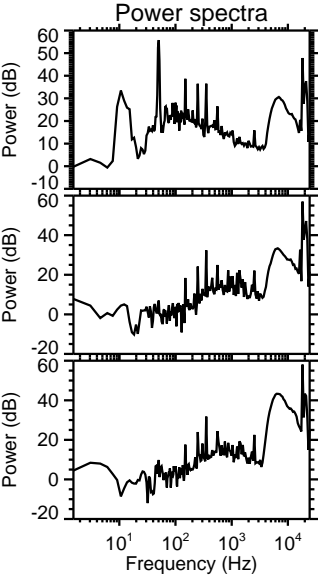
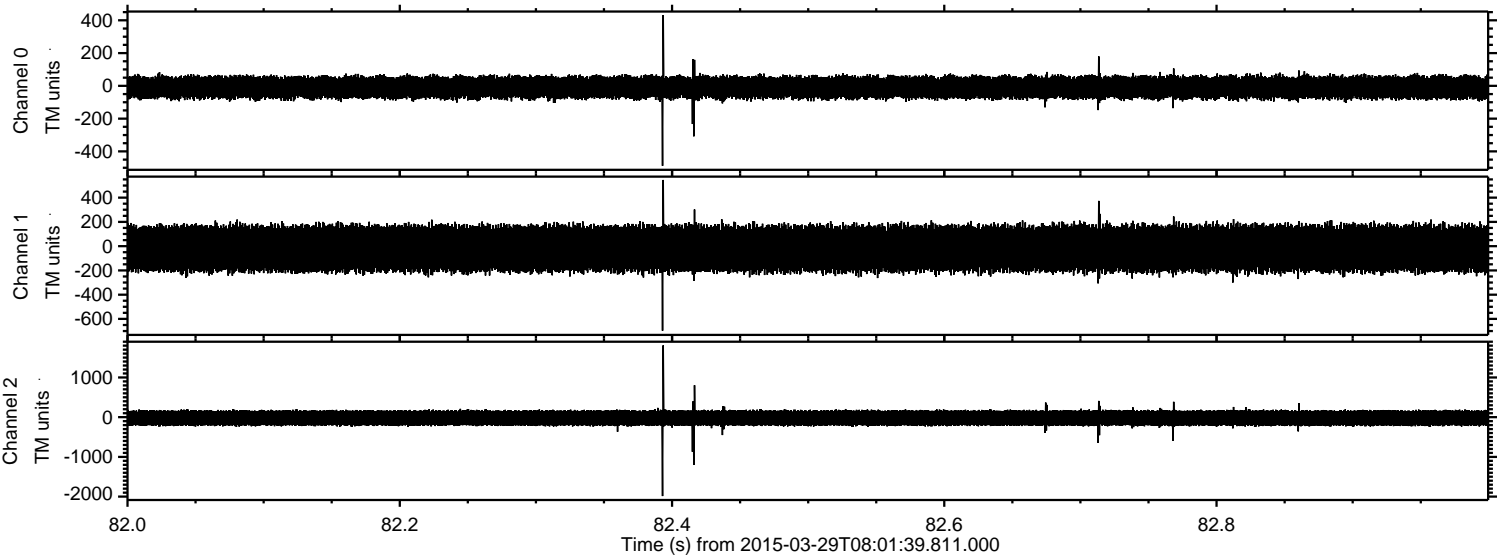
Processed Sun Mar 29 10:09:33 2015 by ELM ver.2012-10-06 from 001\_\_elm20150329\_080138\_\_dat00.bin



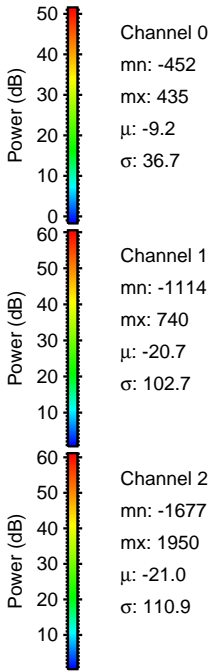
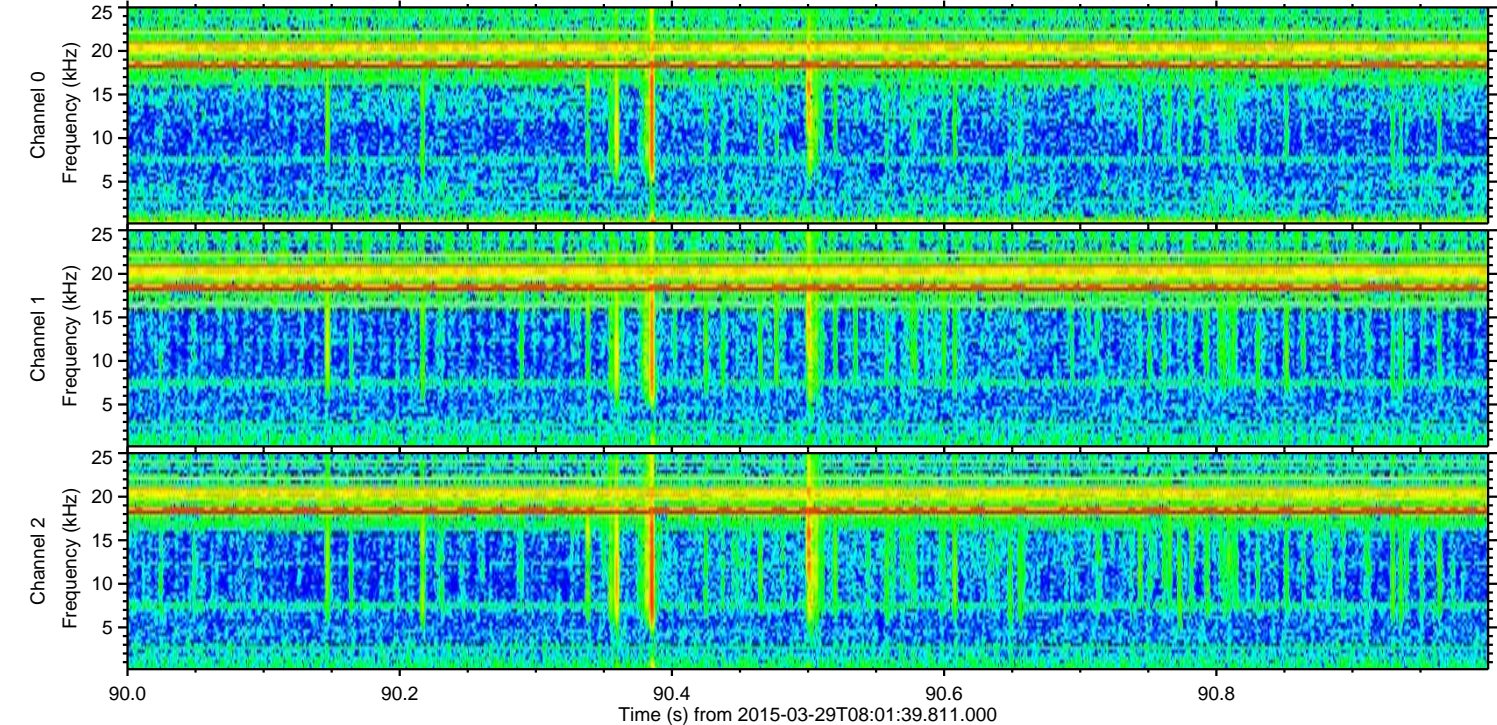
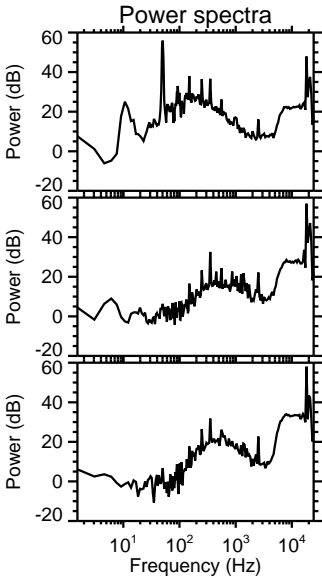
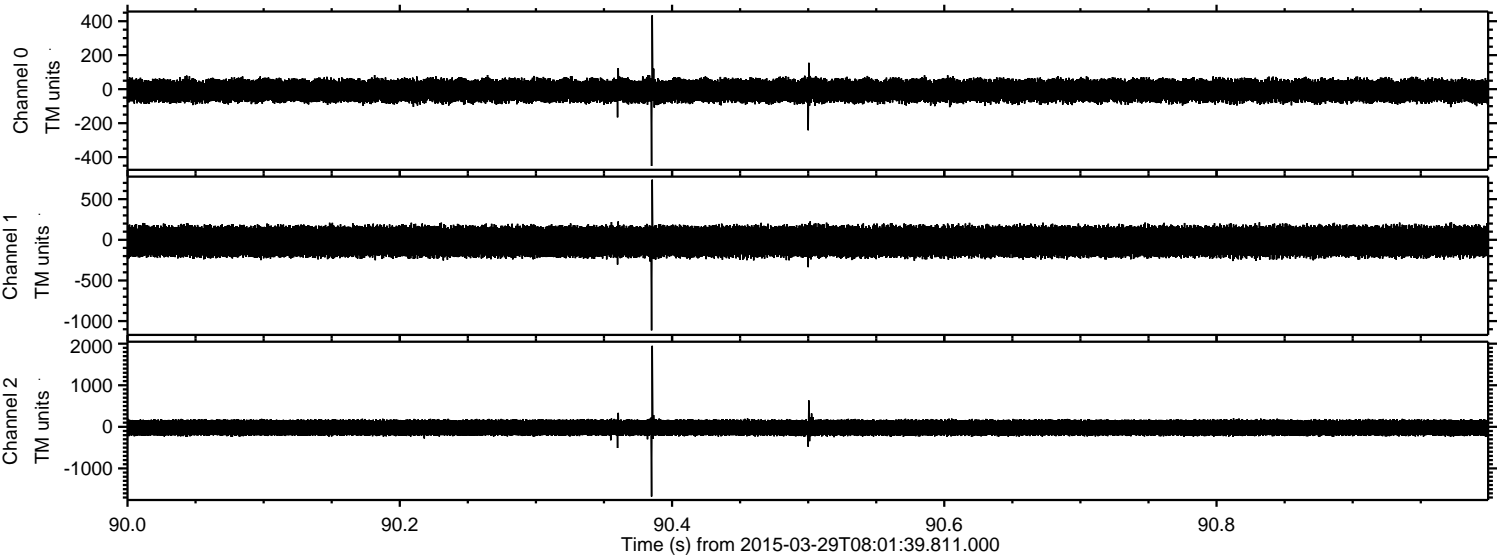
Processed Sun Mar 29 10:09:34 2015 by ELM ver.2012-10-06 from 001\_\_elm20150329\_080138\_\_dat00.bin



Processed Sun Mar 29 10:09:35 2015 by ELM ver.2012-10-06 from 001\_\_elm20150329\_080138\_\_dat00.bin



Processed Sun Mar 29 10:09:36 2015 by ELM ver.2012-10-06 from 001\_\_elm20150329\_080138\_\_dat00.bin



Processed Sun Mar 29 10:09:37 2015 by ELM ver.2012-10-06 from 001\_\_elm20150329\_080138\_\_dat00.bin

