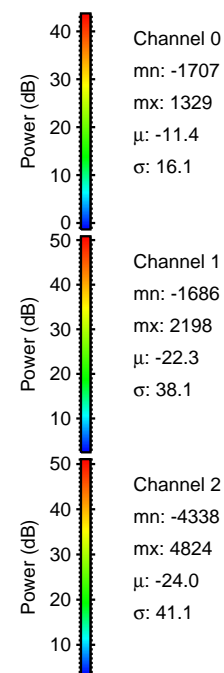
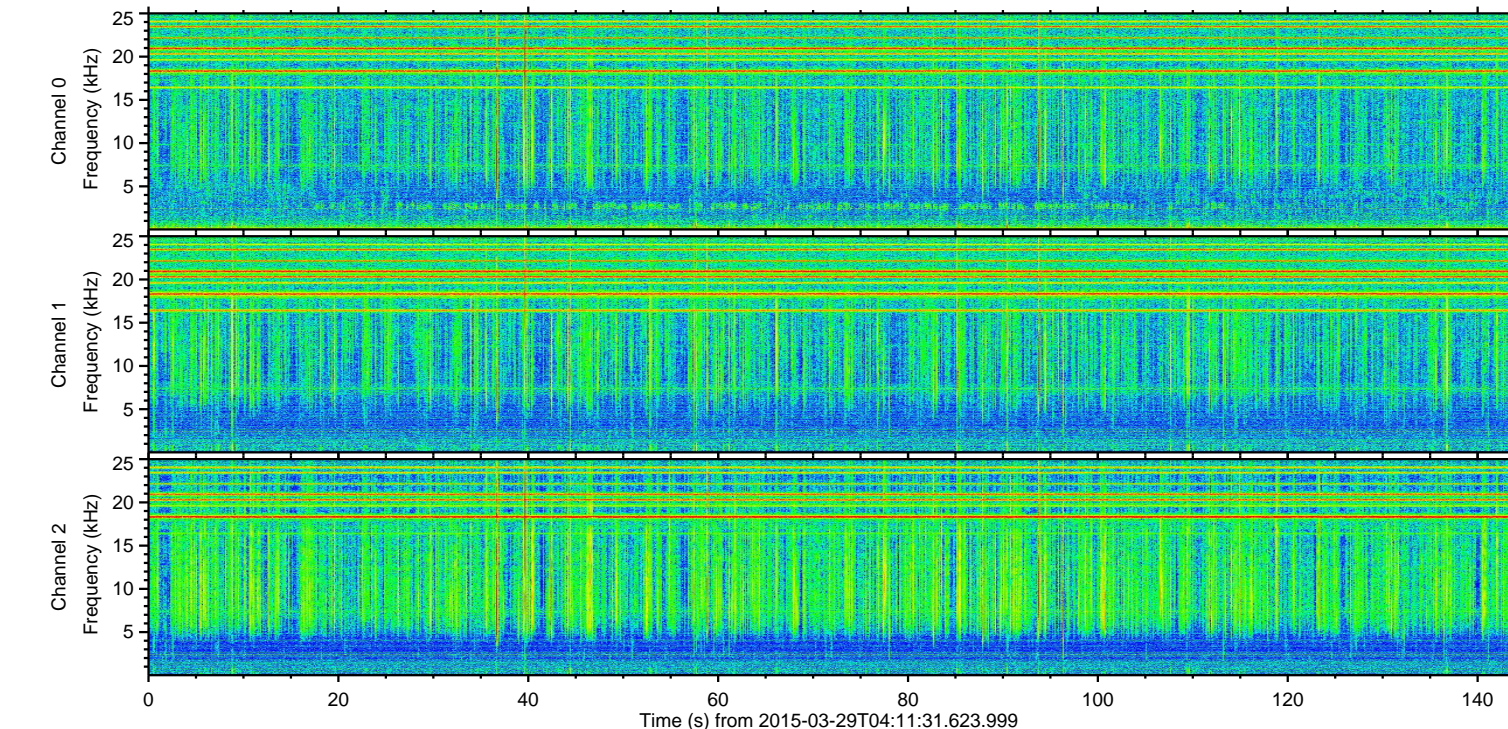
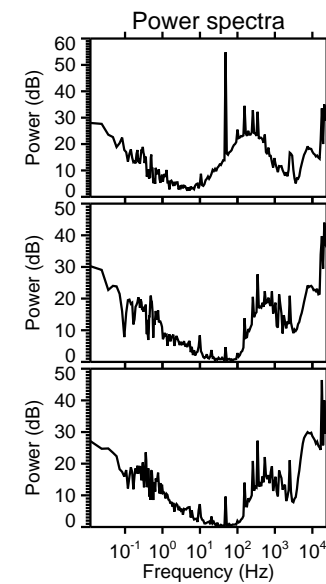
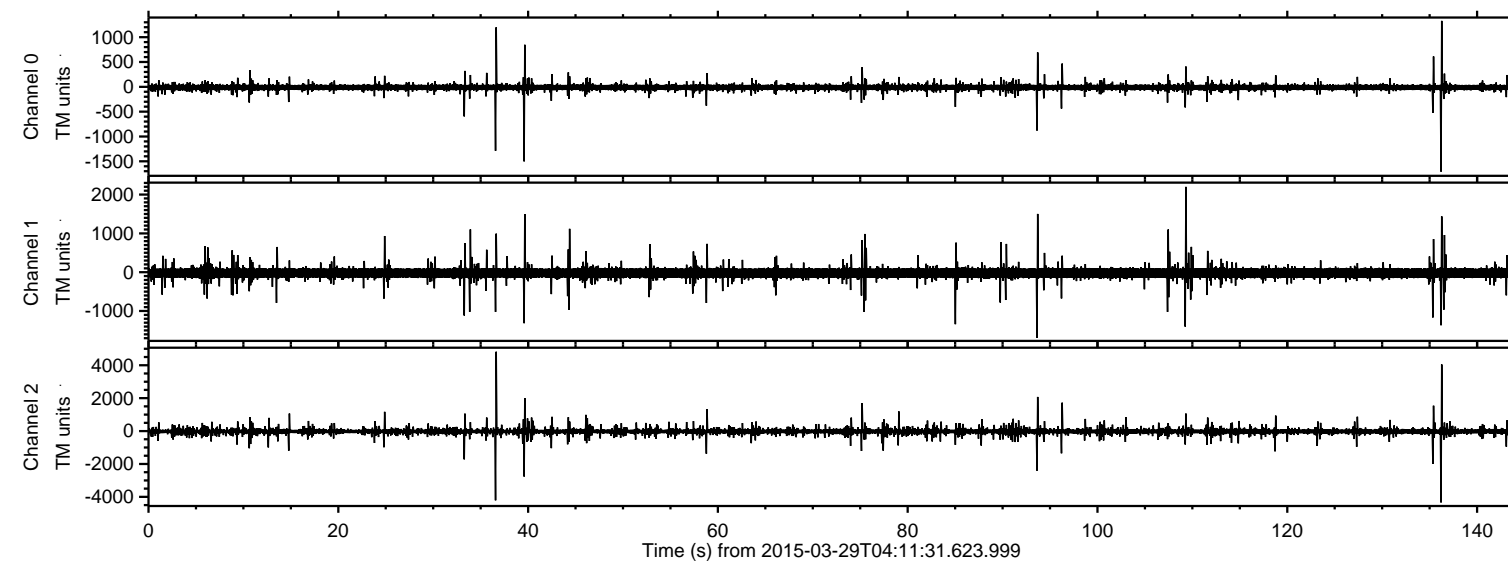


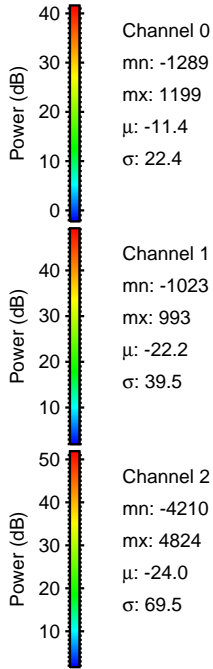
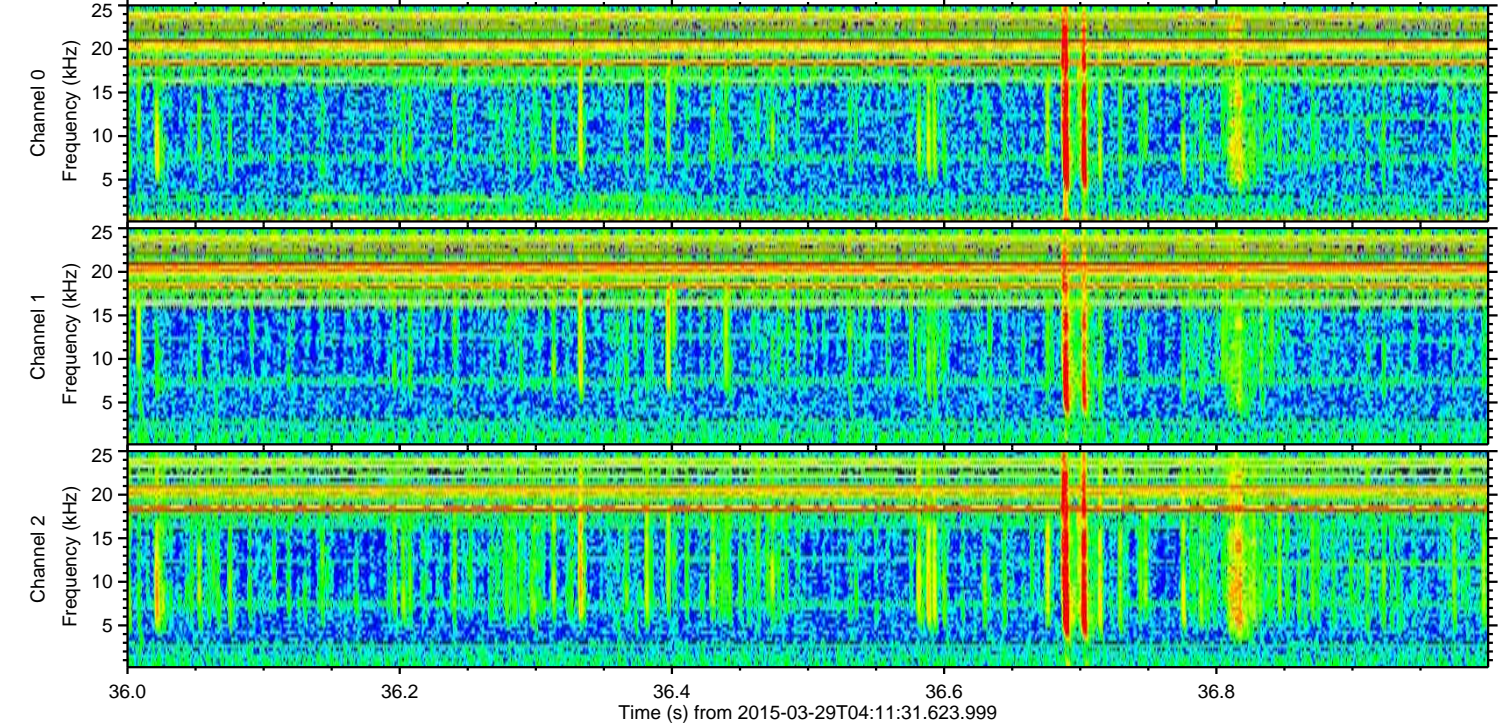
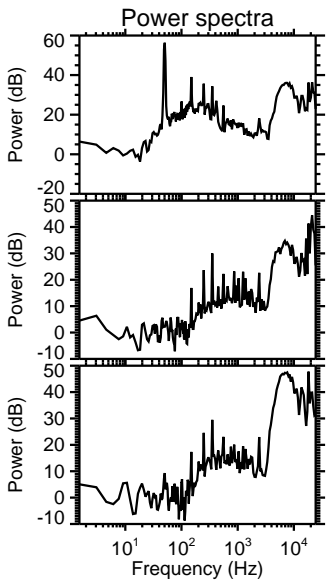
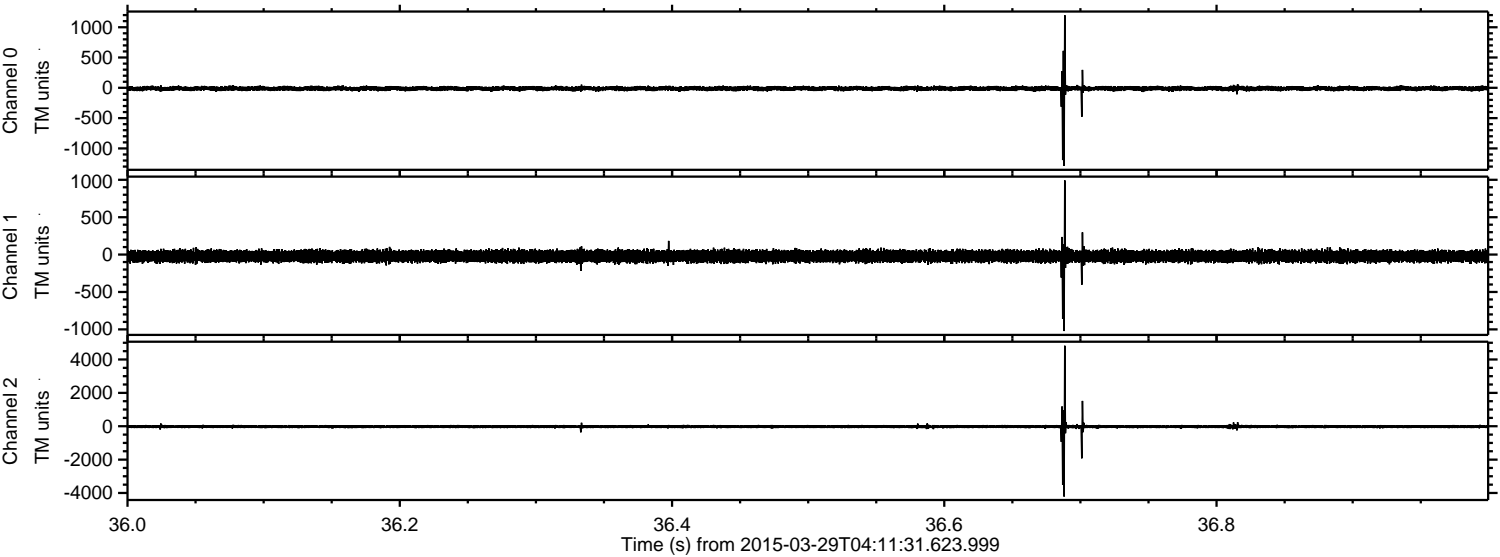
ELMAVAN 3D WAVEFORMS (Measured data sampled at 50 kHz) 49785 packets of 144 samples from 2015-03-29T04:11:31.623.999.

Processed Sun Mar 29 06:48:14 2015 by ELM ver.2012-10-06 from 001__elm20150329_041130__dat00.bin



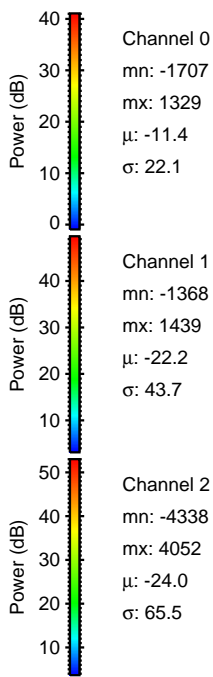
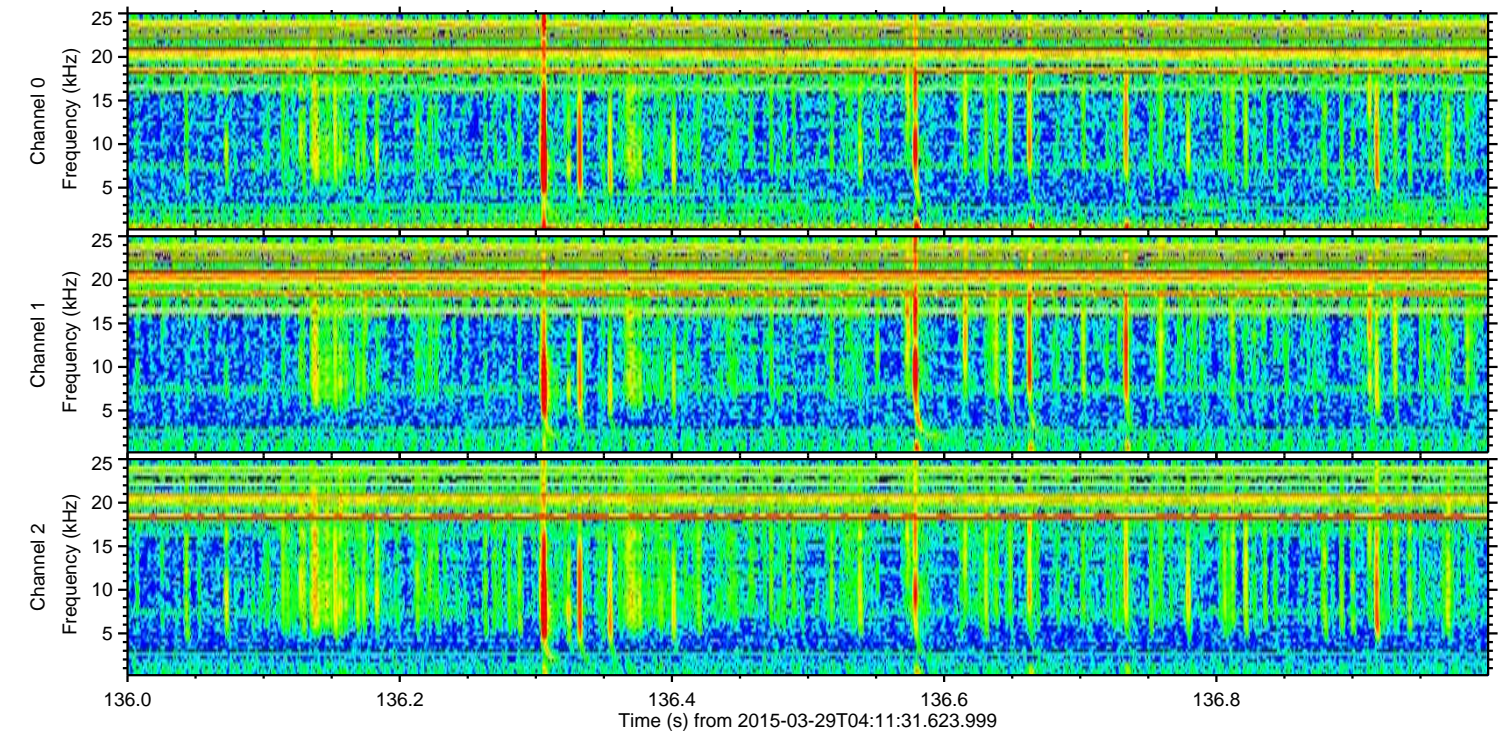
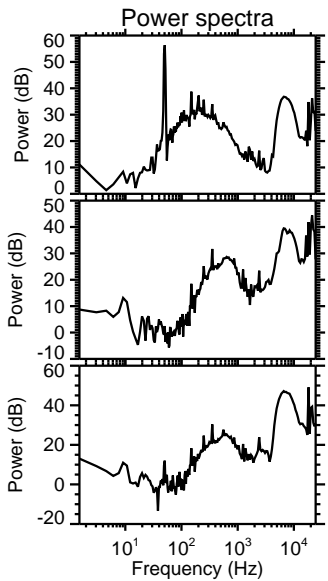
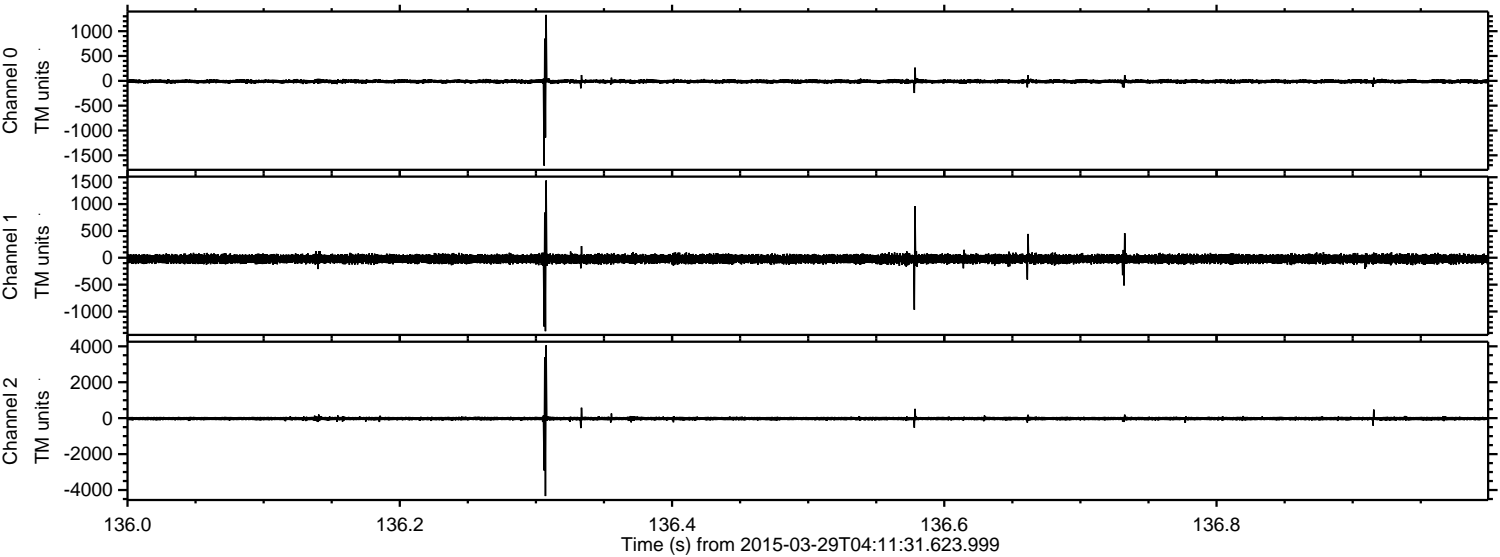
ELMAVAN 3D WAVEFORMS (Measured data sampled at 50 kHz) 49785 packets of 144 samples from 2015-03-29T04:11:31.623.999. Part 37/144

Processed Sun Mar 29 06:48:26 2015 by ELM ver.2012-10-06 from 001__elm20150329_041130__dat00.bin



ELMAVAN 3D WAVEFORMS (Measured data sampled at 50 kHz) 49785 packets of 144 samples from 2015-03-29T04:11:31.623.999. Part 137/144

Processed Sun Mar 29 06:48:27 2015 by ELM ver.2012-10-06 from 001__elm20150329_041130__dat00.bin

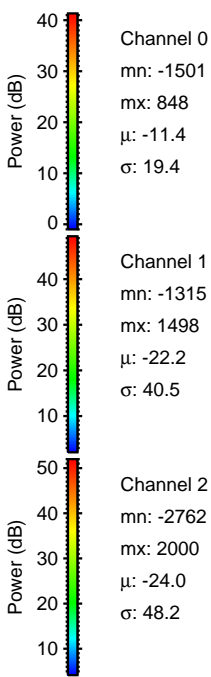
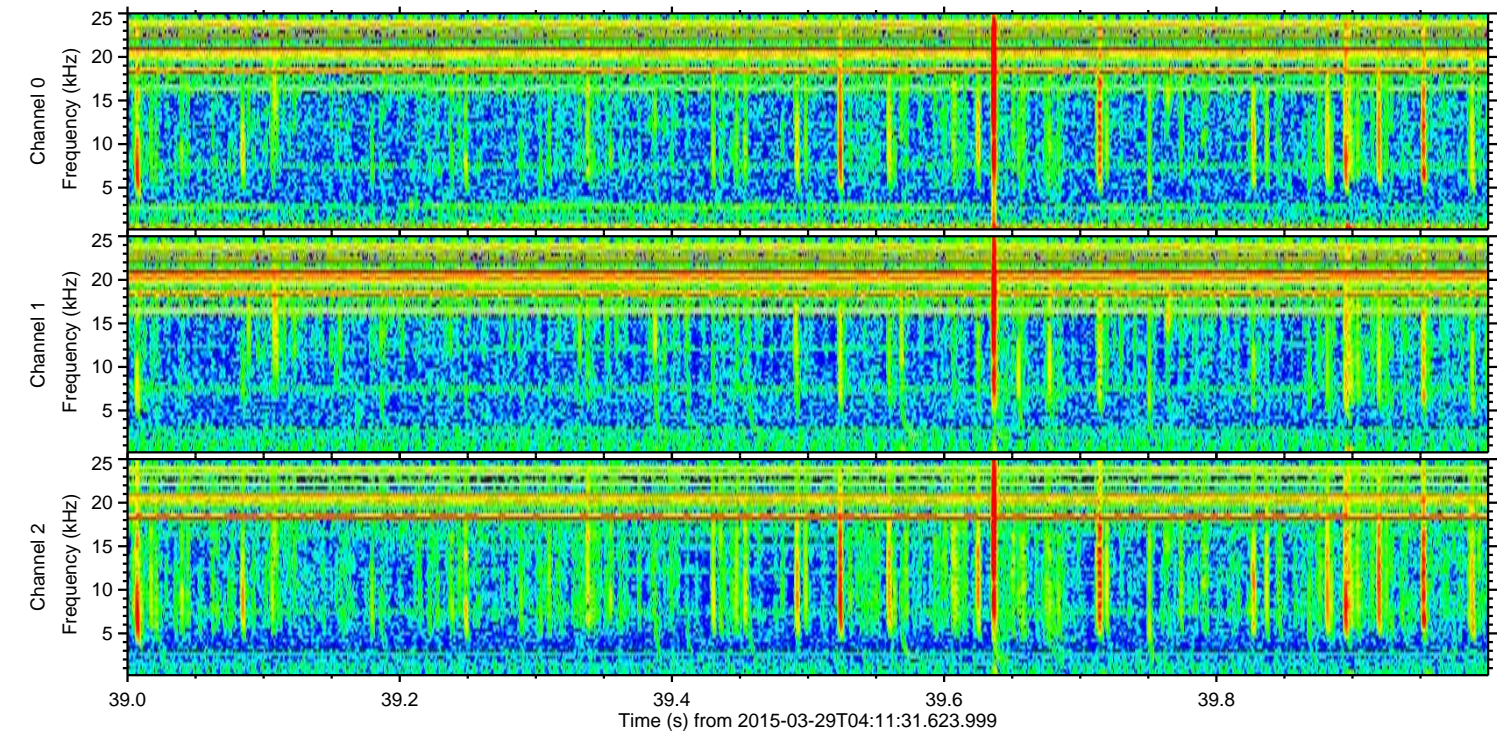
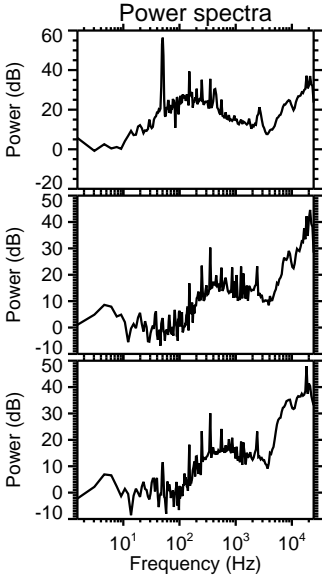
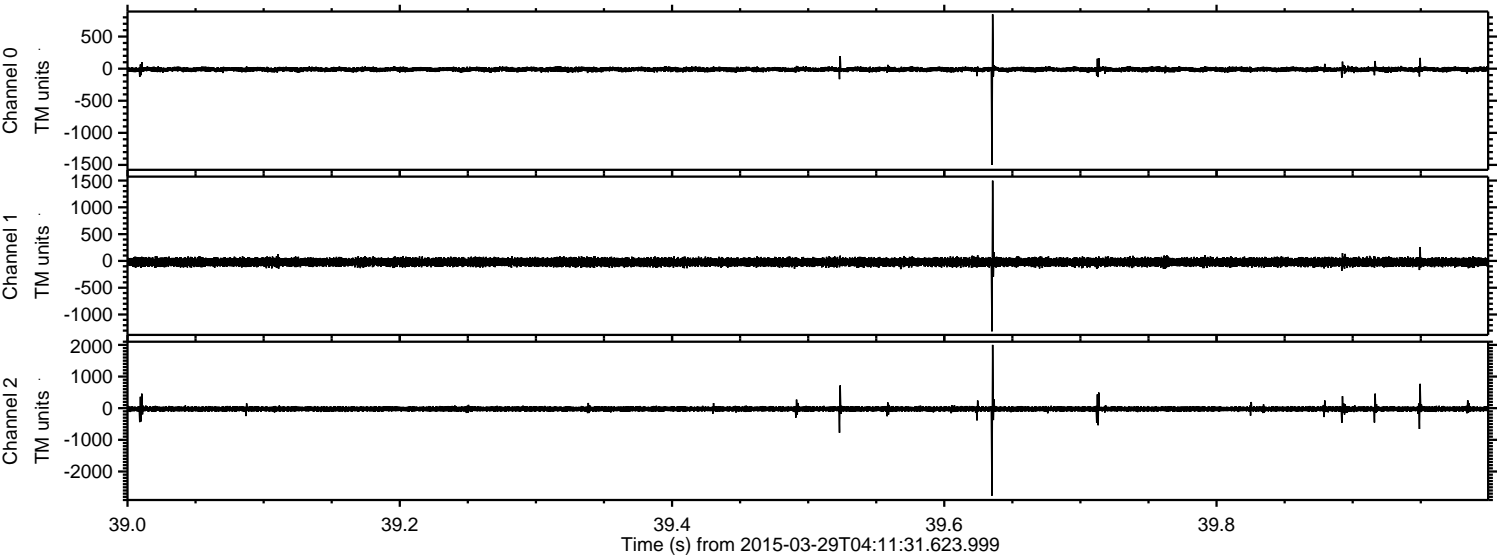


Channel 0
mn: -1707
mx: 1329
 μ : -11.4
 σ : 22.1

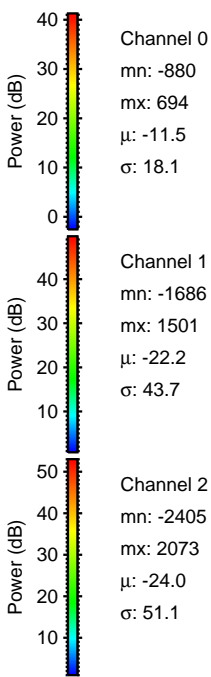
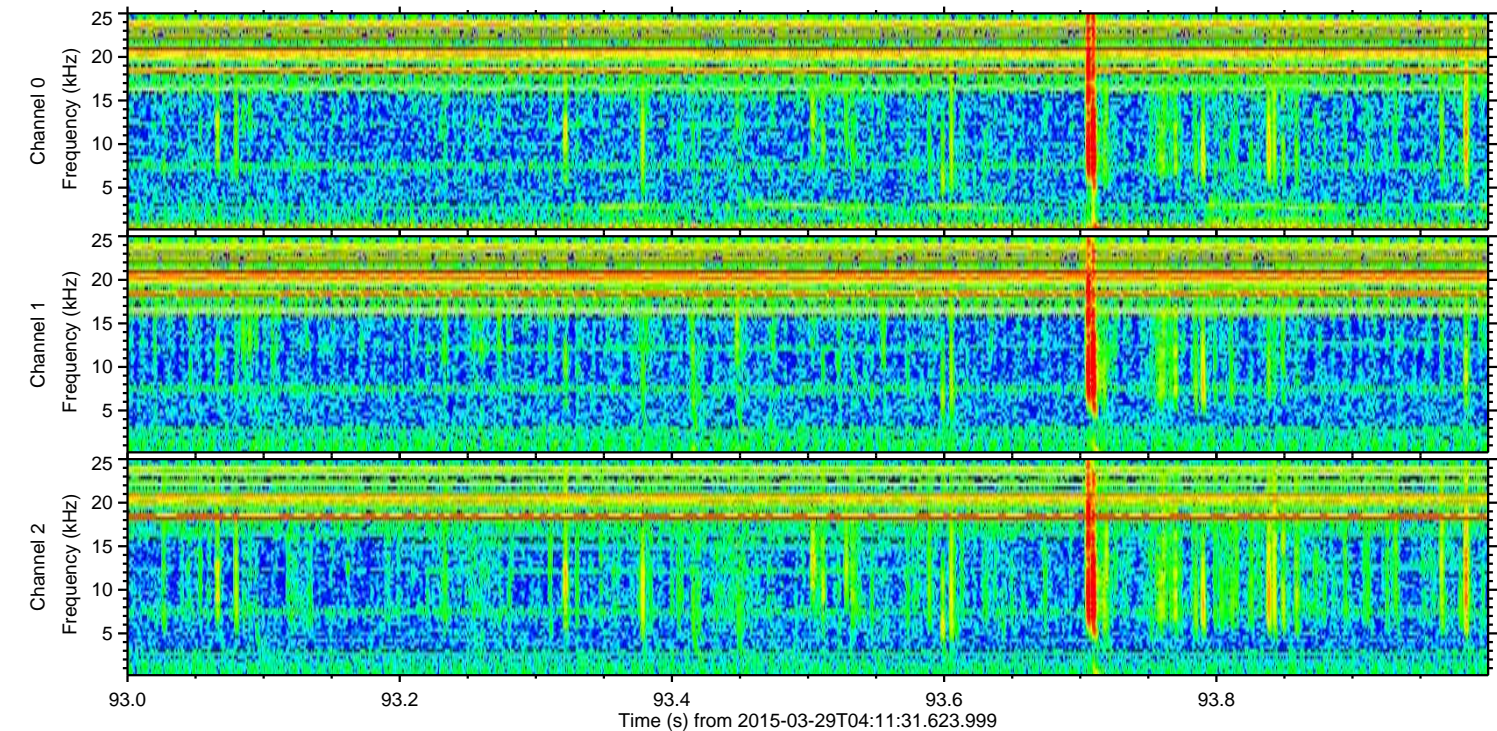
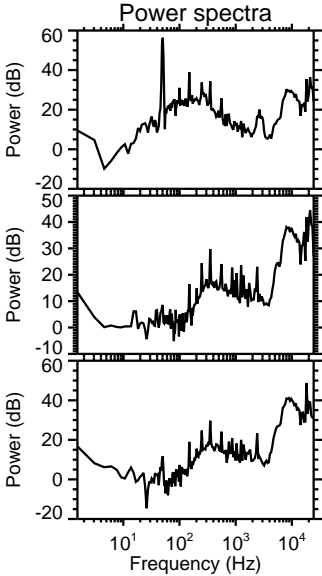
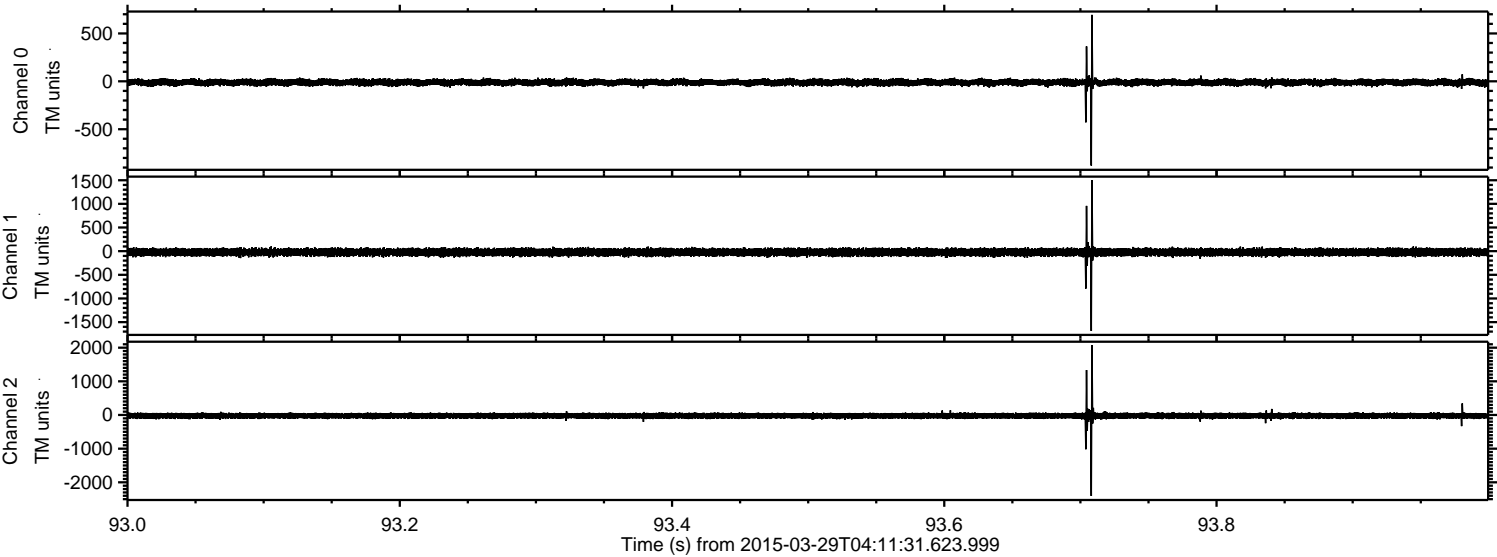
Channel 1
mn: -1368
mx: 1439
 μ : -22.2
 σ : 43.7

Channel 2
mn: -4338
mx: 4052
 μ : -24.0
 σ : 65.5

Processed Sun Mar 29 06:48:28 2015 by ELM ver.2012-10-06 from 001__elm20150329_041130__dat00.bin

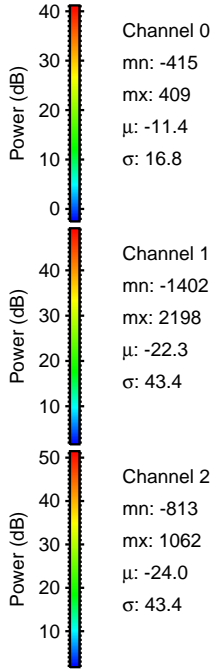
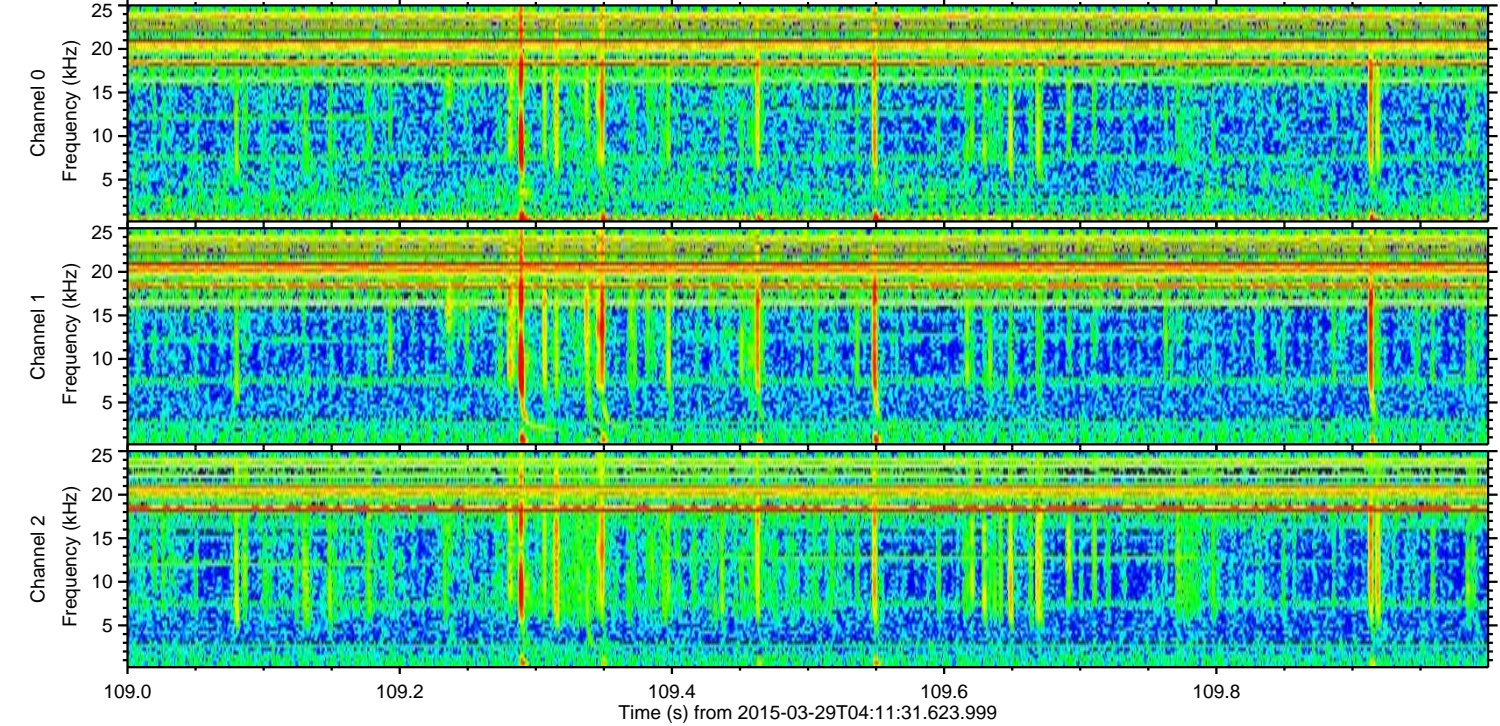
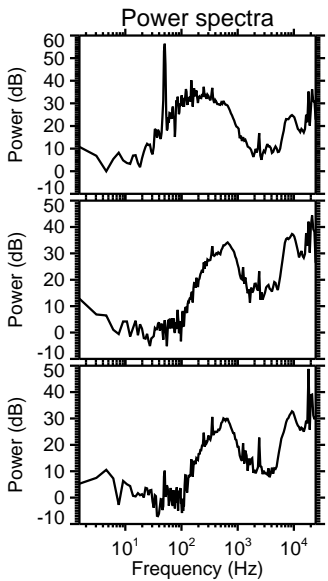
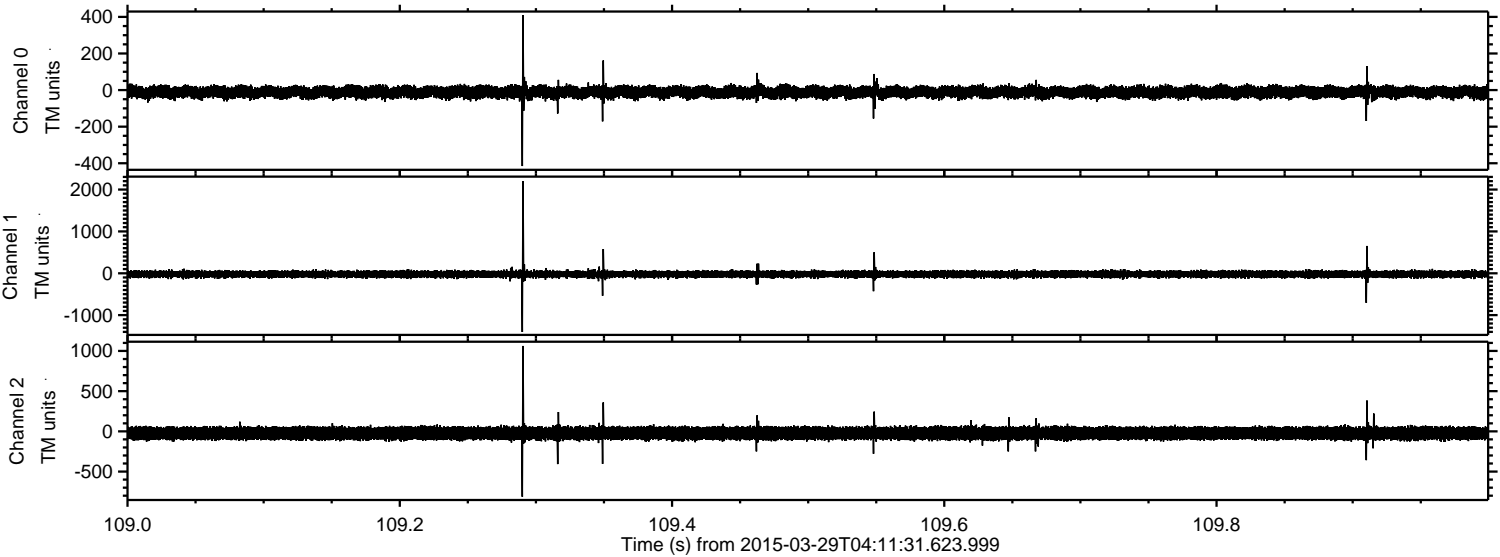


Processed Sun Mar 29 06:48:29 2015 by ELM ver.2012-10-06 from 001__elm20150329_041130__dat00.bin



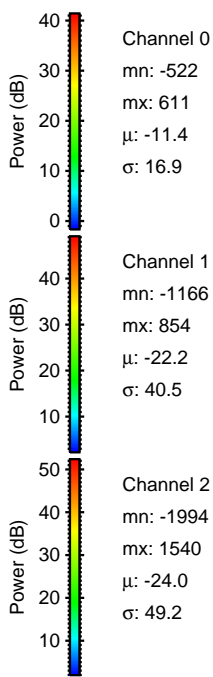
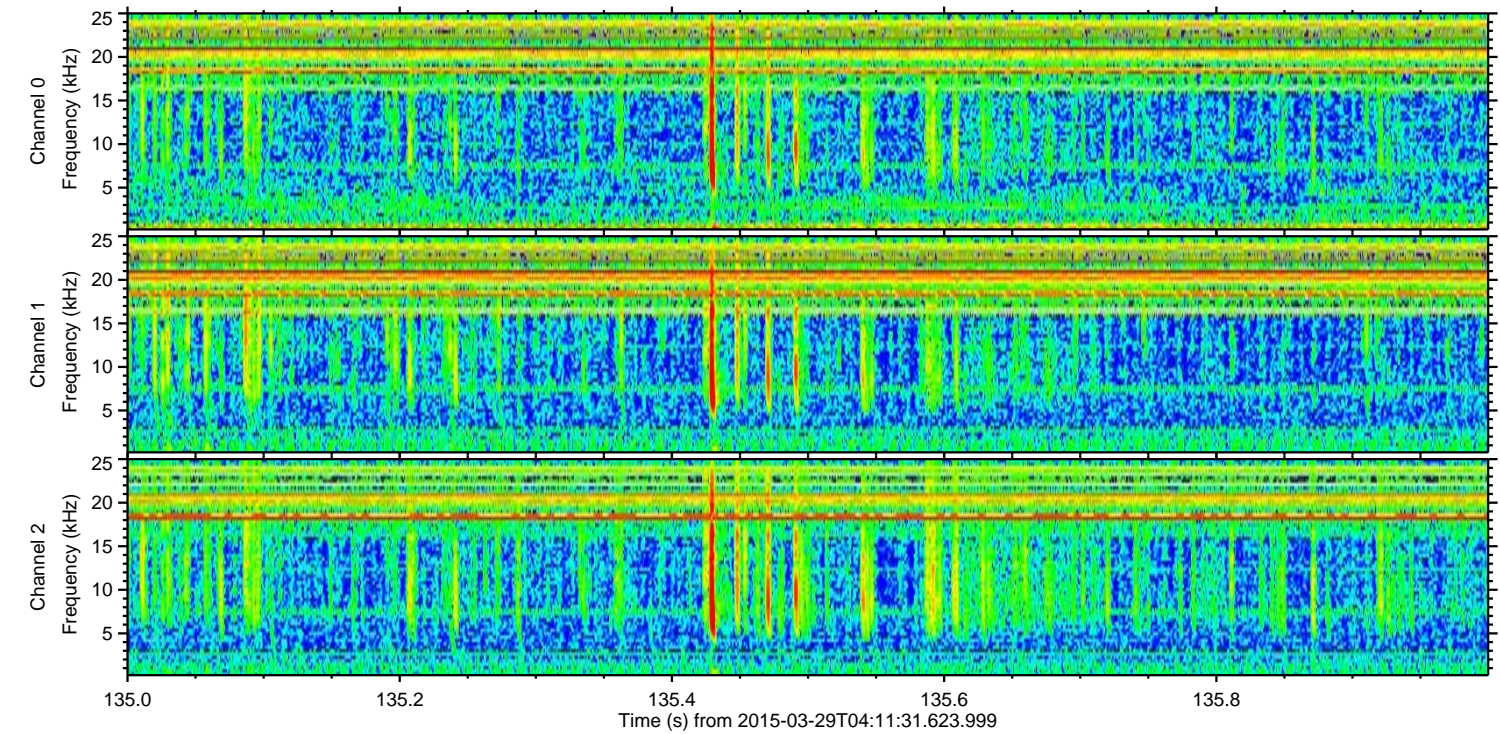
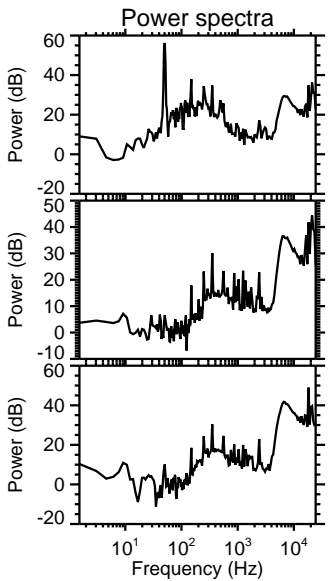
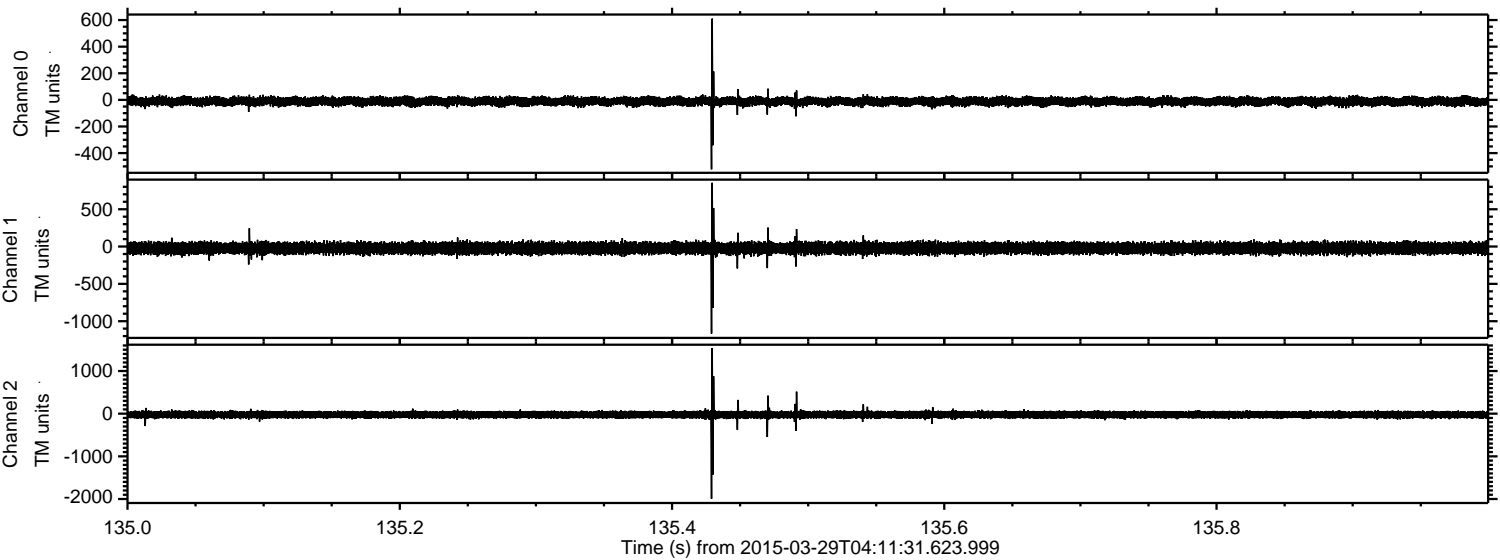
ELMAVAN 3D WAVEFORMS (Measured data sampled at 50 kHz) 49785 packets of 144 samples from 2015-03-29T04:11:31.623.999. Part 110/144

Processed Sun Mar 29 06:48:30 2015 by ELM ver.2012-10-06 from 001__elm20150329_041130__dat00.bin



ELMAVAN 3D WAVEFORMS (Measured data sampled at 50 kHz) 49785 packets of 144 samples from 2015-03-29T04:11:31.623.999. Part 136/144

Processed Sun Mar 29 06:48:30 2015 by ELM ver.2012-10-06 from 001__elm20150329_041130__dat00.bin

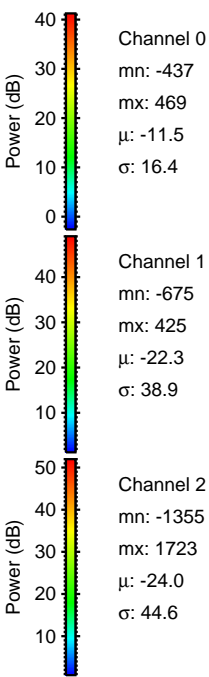
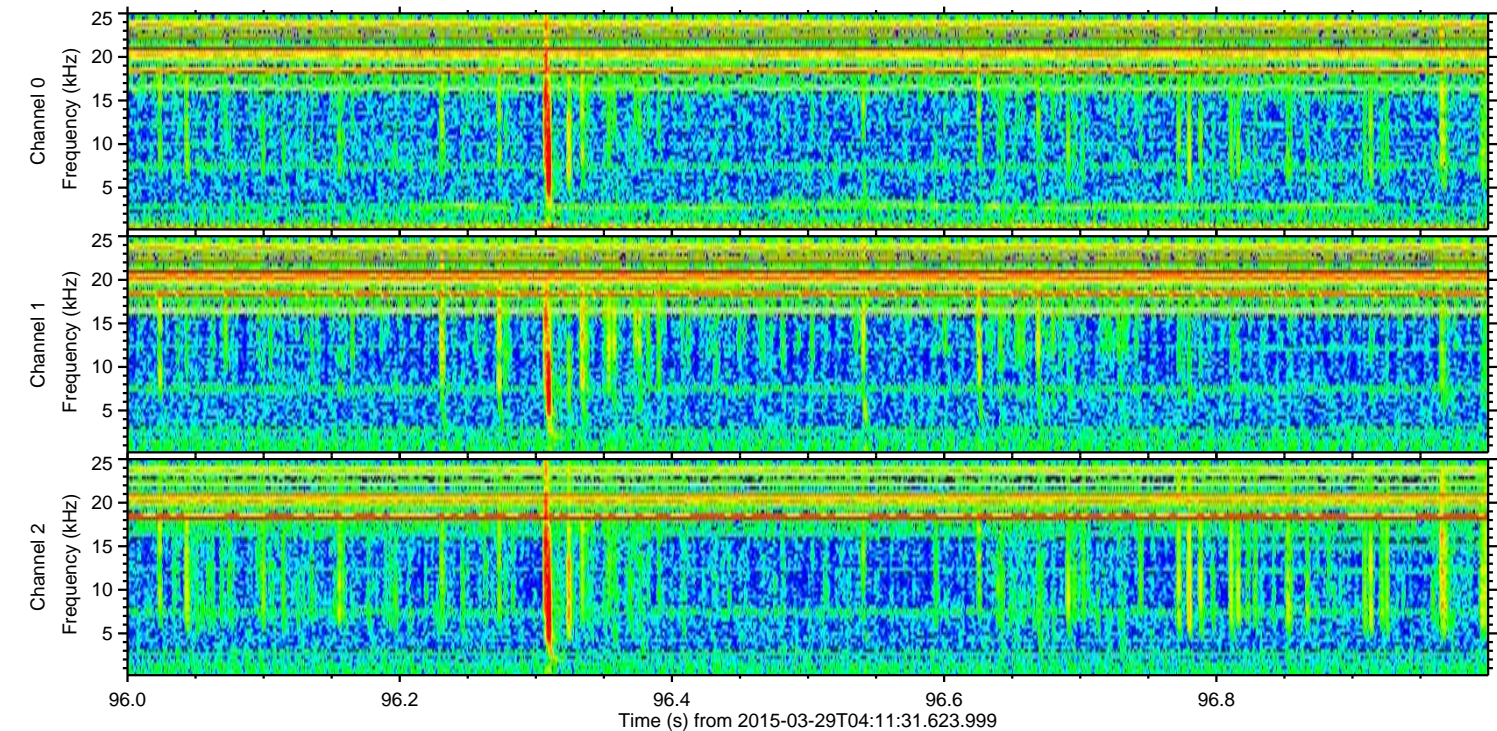
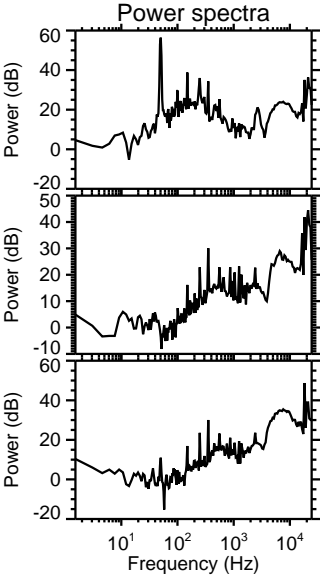
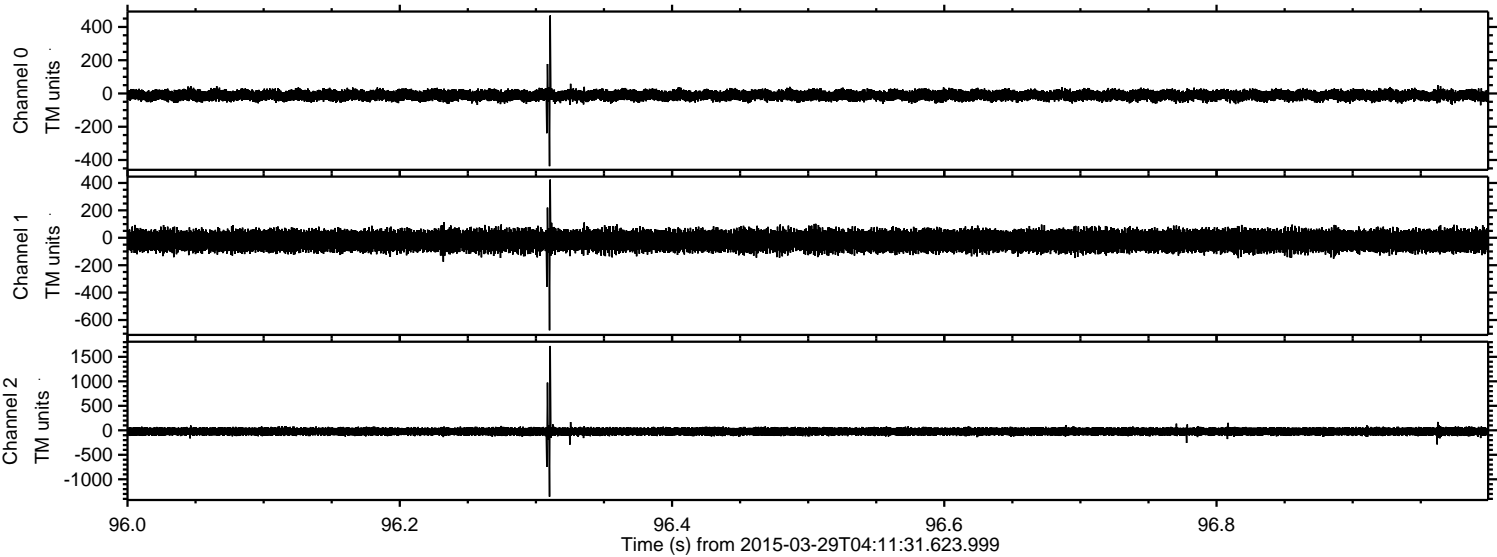


Channel 0
mn: -522
mx: 611
 μ : -11.4
 σ : 16.9

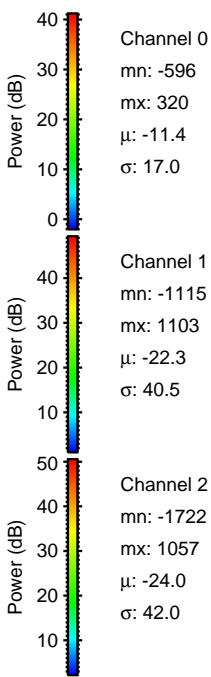
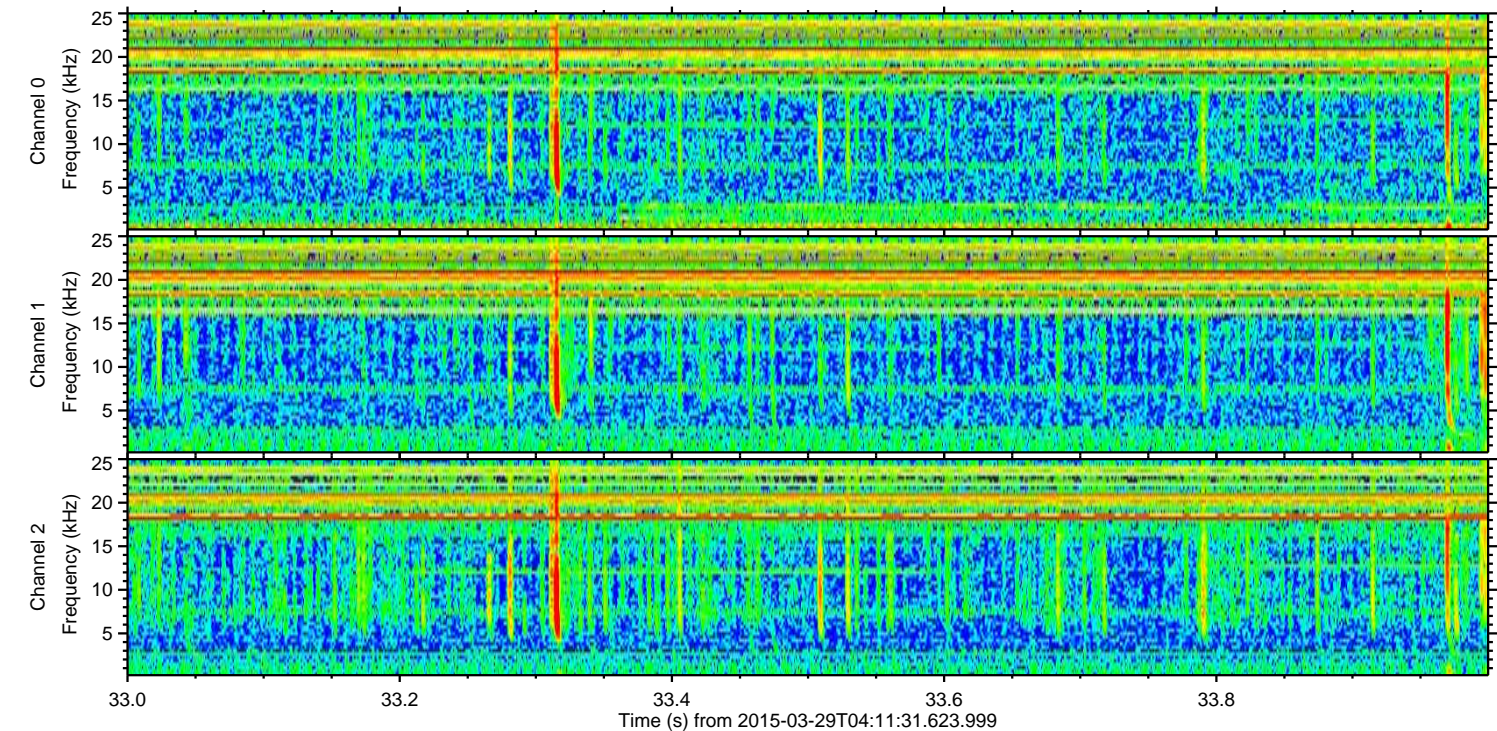
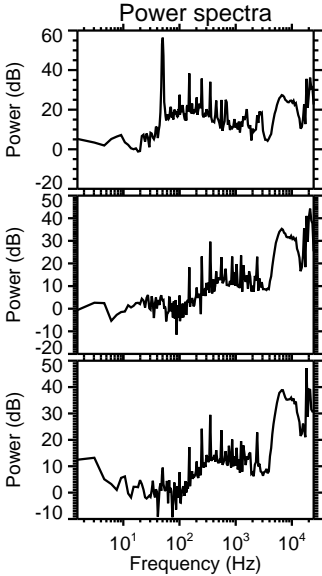
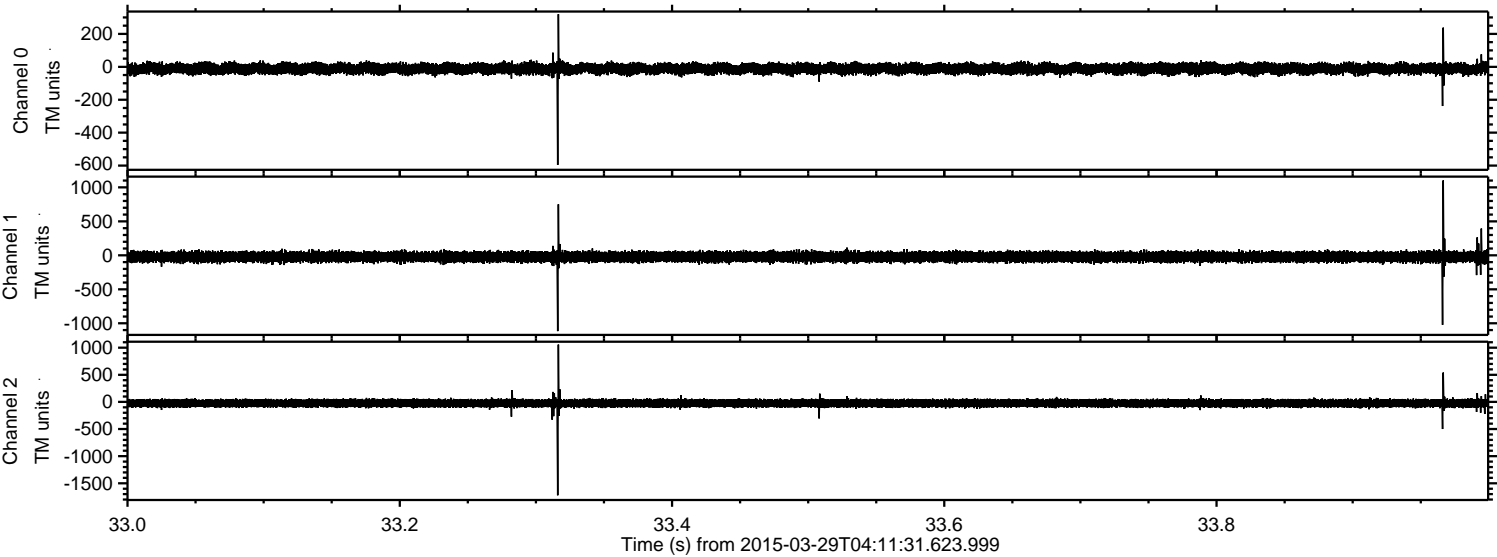
Channel 1
mn: -1166
mx: 854
 μ : -22.2
 σ : 40.5

Channel 2
mn: -1994
mx: 1540
 μ : -24.0
 σ : 49.2

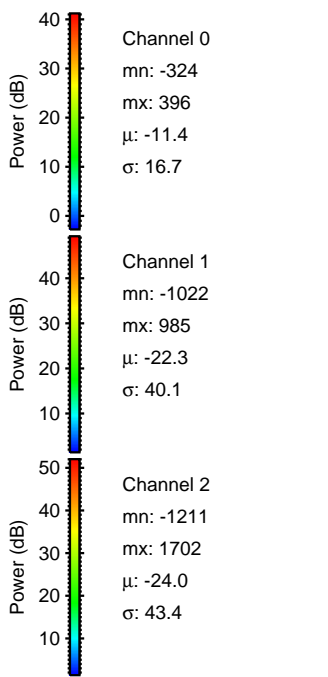
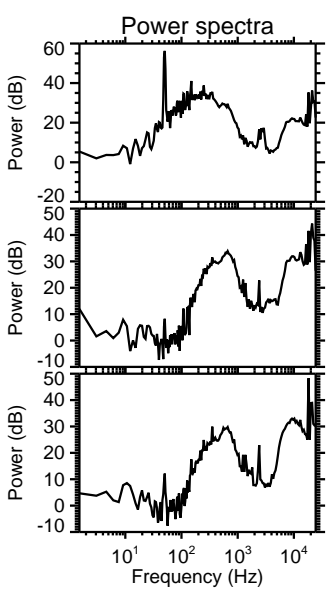
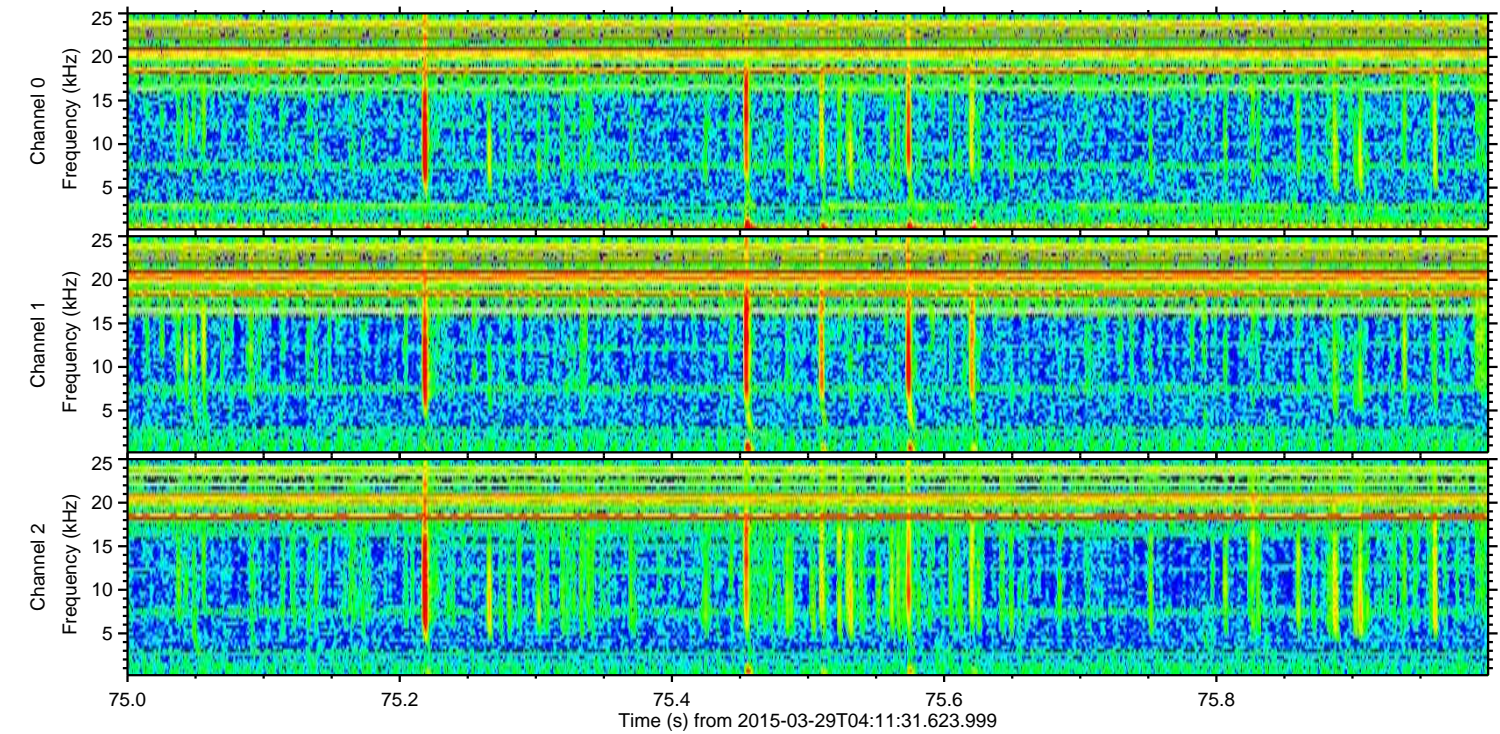
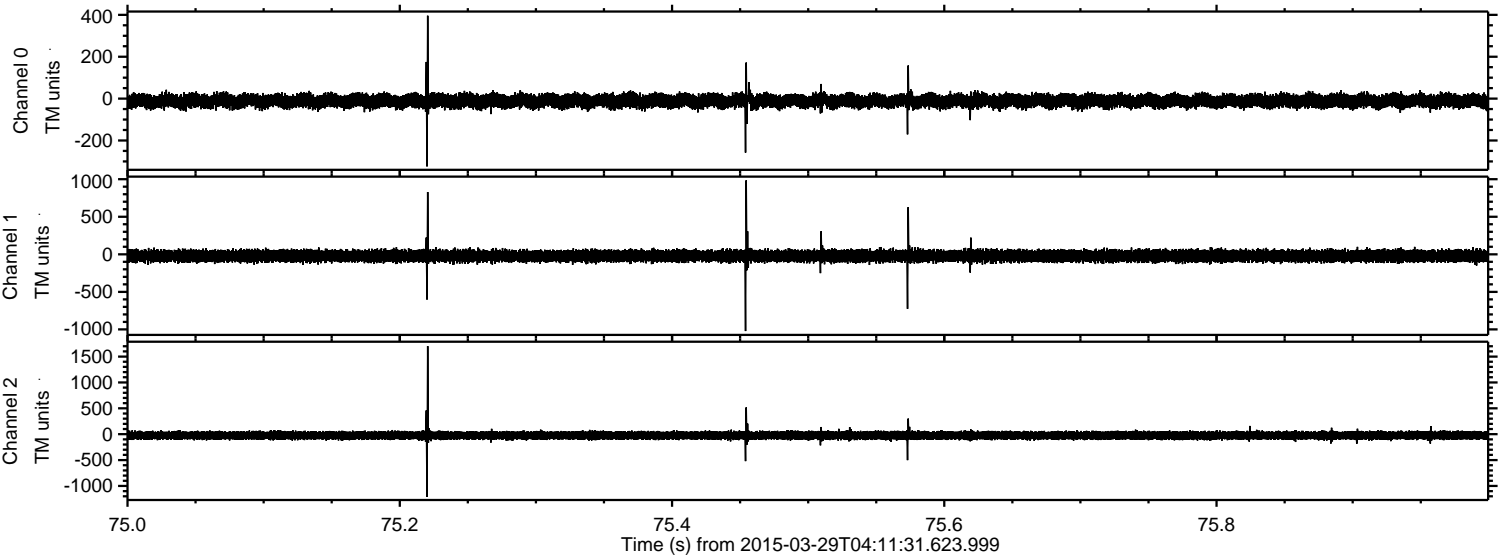
Processed Sun Mar 29 06:48:31 2015 by ELM ver.2012-10-06 from 001__elm20150329_041130__dat00.bin



Processed Sun Mar 29 06:48:32 2015 by ELM ver.2012-10-06 from 001__elm20150329_041130__dat00.bin



Processed Sun Mar 29 06:48:33 2015 by ELM ver.2012-10-06 from 001__elm20150329_041130__dat00.bin



Processed Sun Mar 29 06:48:34 2015 by ELM ver.2012-10-06 from 001__elm20150329_041130__dat00.bin

