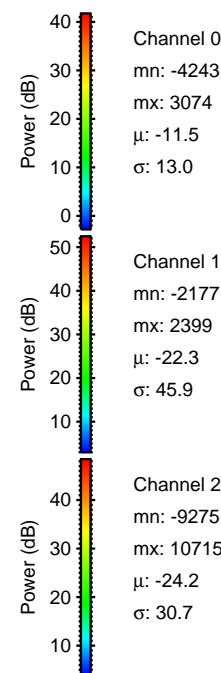
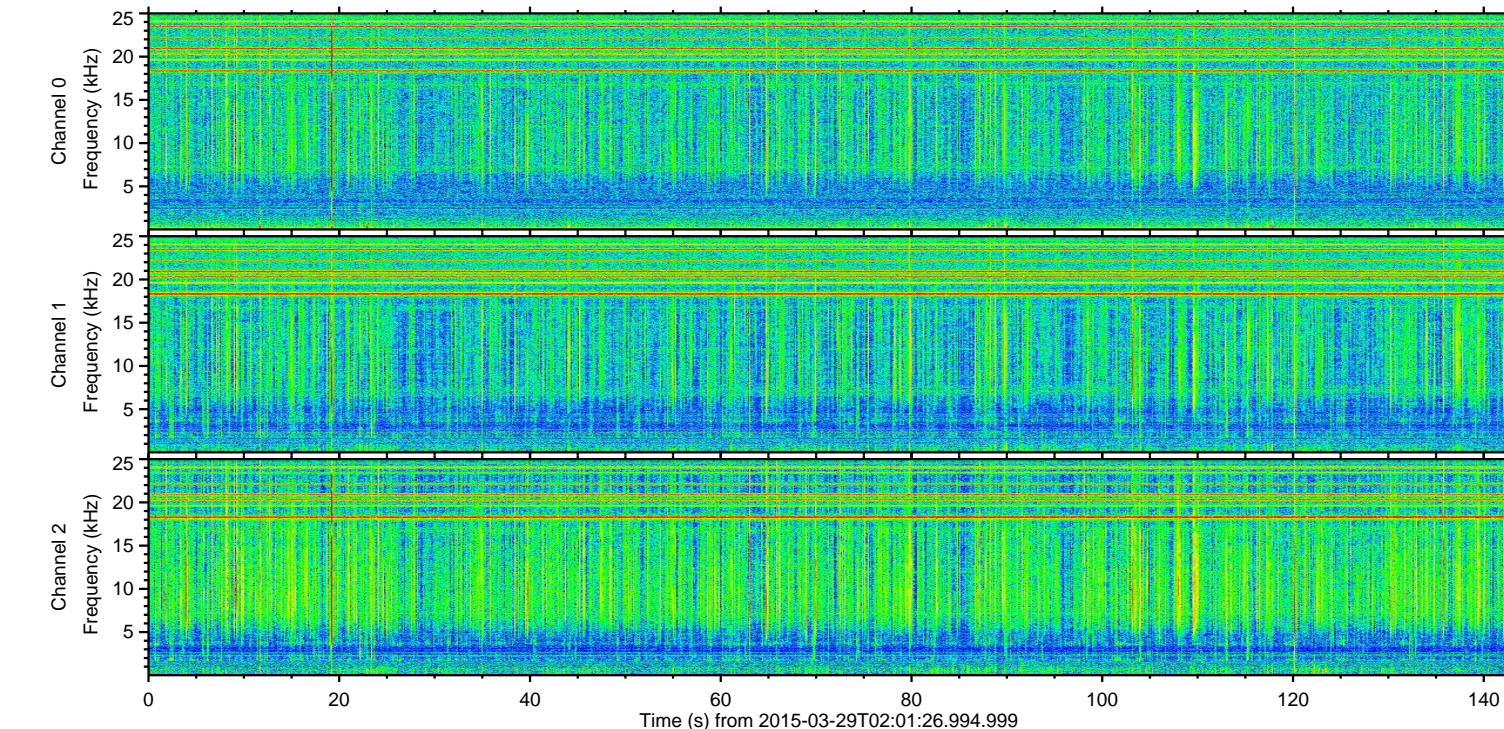
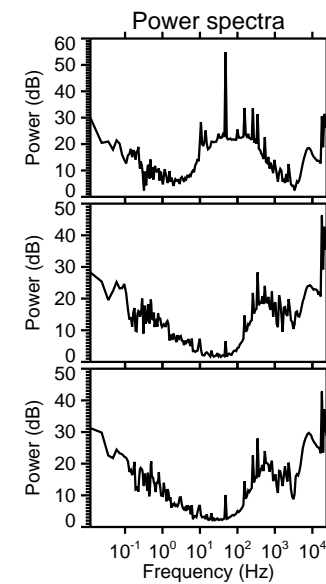
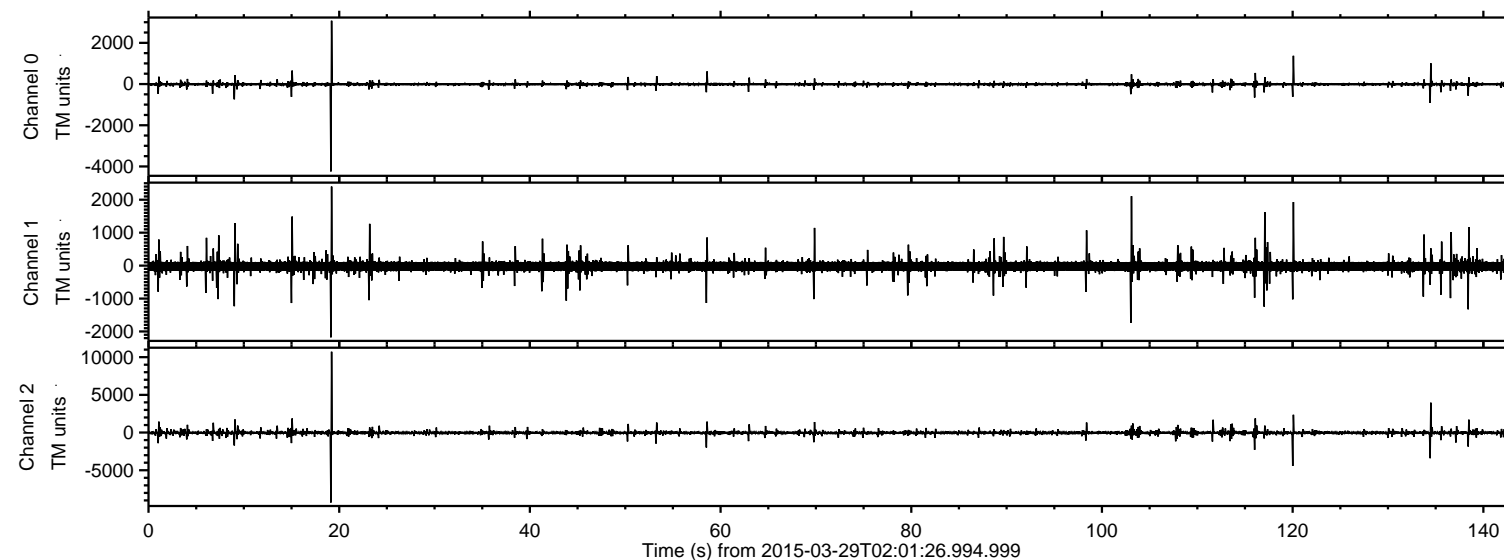
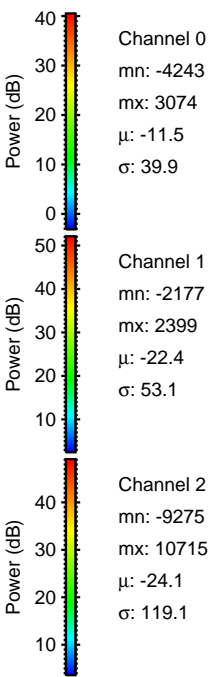
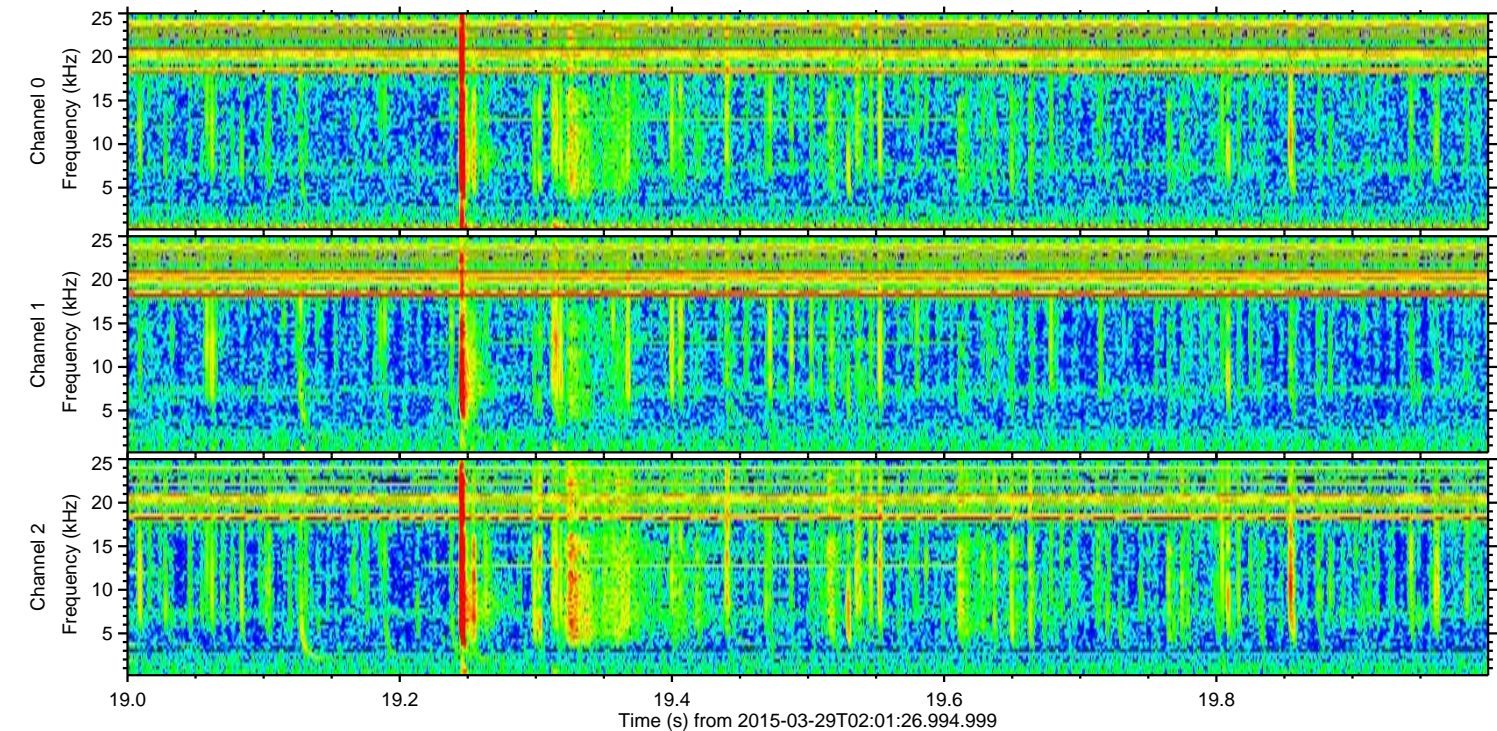
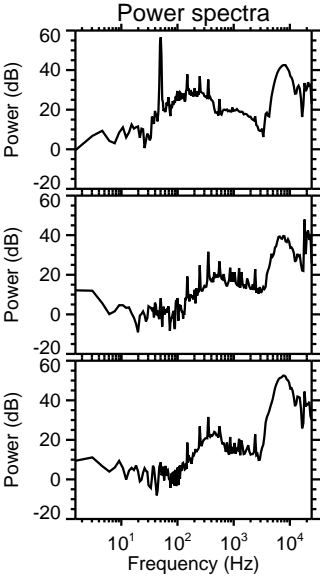
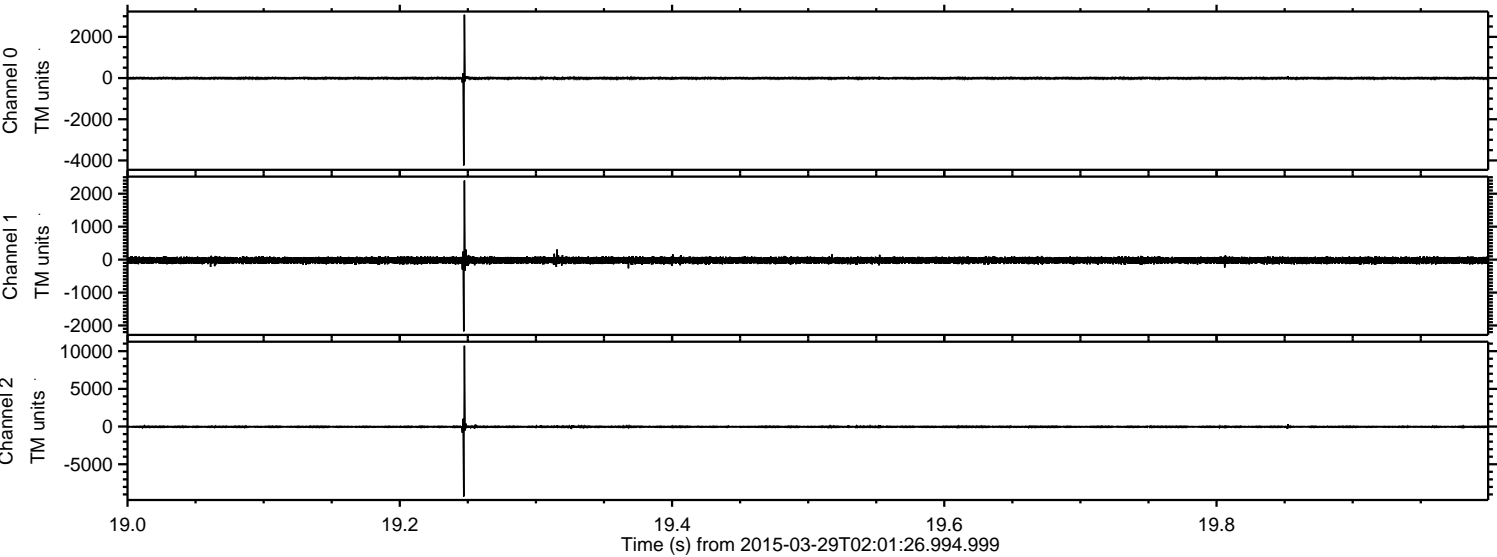


ELMAVAN 3D WAVEFORMS (Measured data sampled at 50 kHz) 49551 packets of 144 samples from 2015-03-29T02:01:26.994.999.

Processed Sun Mar 29 04:08:42 2015 by ELM ver.2012-10-06 from 001__elm20150329_020125__dat00.bin

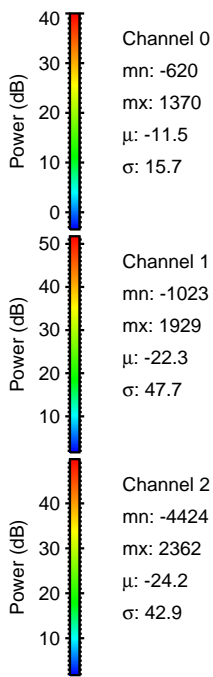
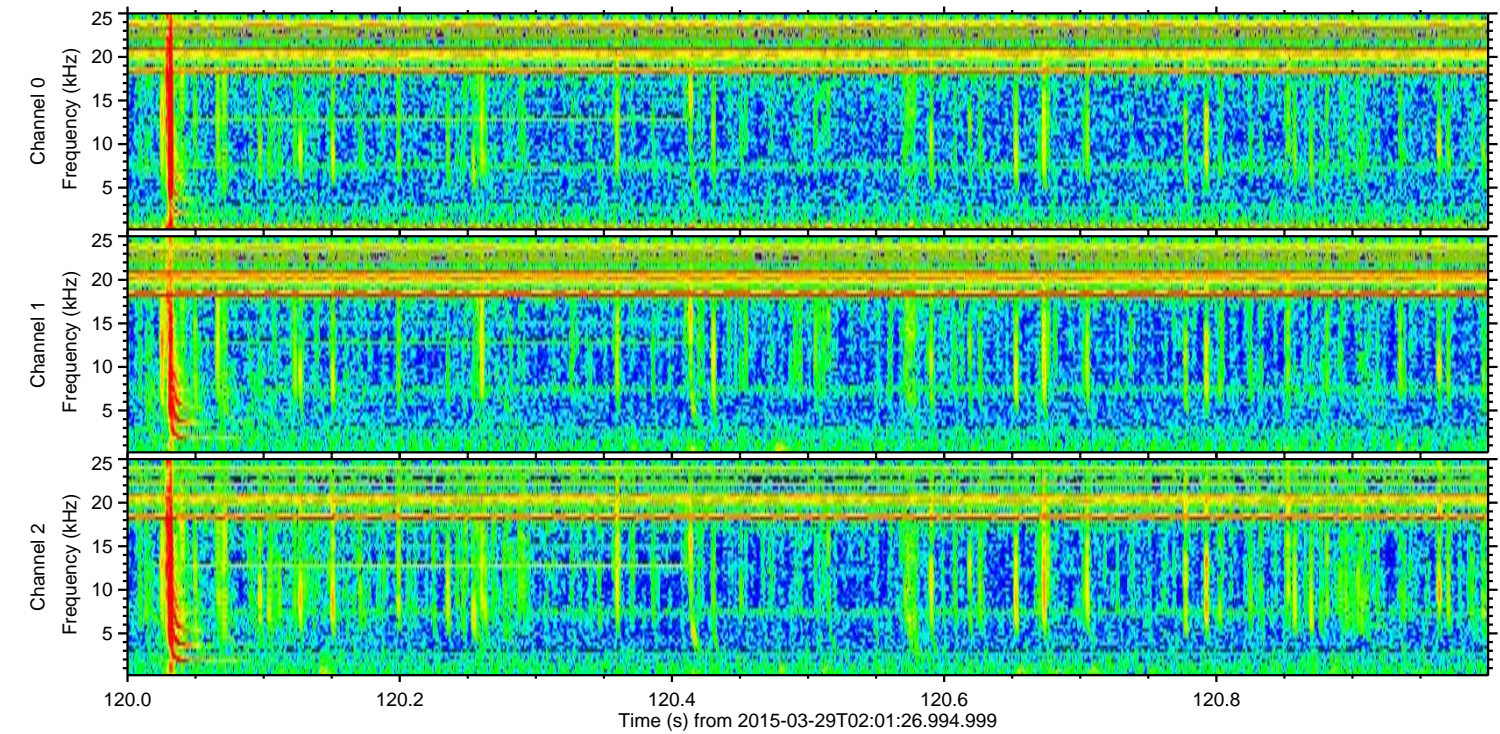
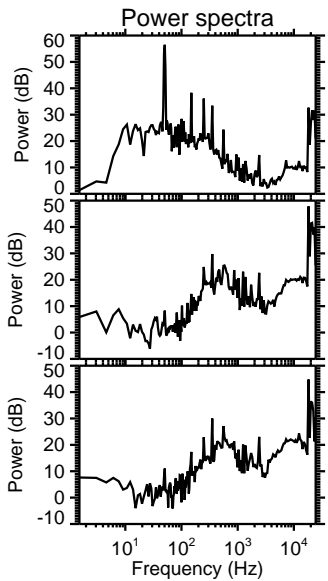
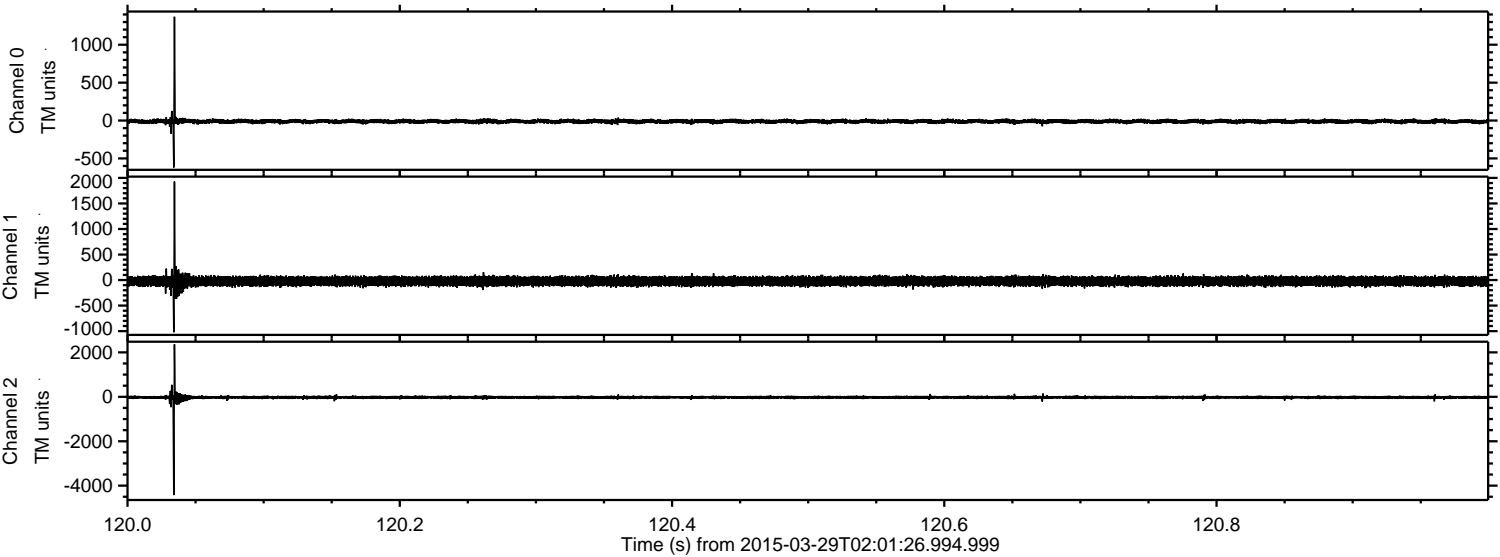


Processed Sun Mar 29 04:08:57 2015 by ELM ver.2012-10-06 from 001__elm20150329_020125__dat00.bin



ELMAVAN 3D WAVEFORMS (Measured data sampled at 50 kHz) 49551 packets of 144 samples from 2015-03-29T02:01:26.994.999. Part 121/143

Processed Sun Mar 29 04:08:58 2015 by ELM ver.2012-10-06 from 001__elm20150329_020125__dat00.bin



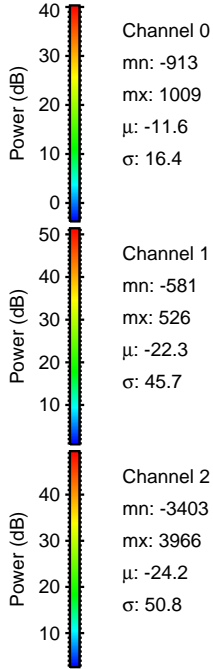
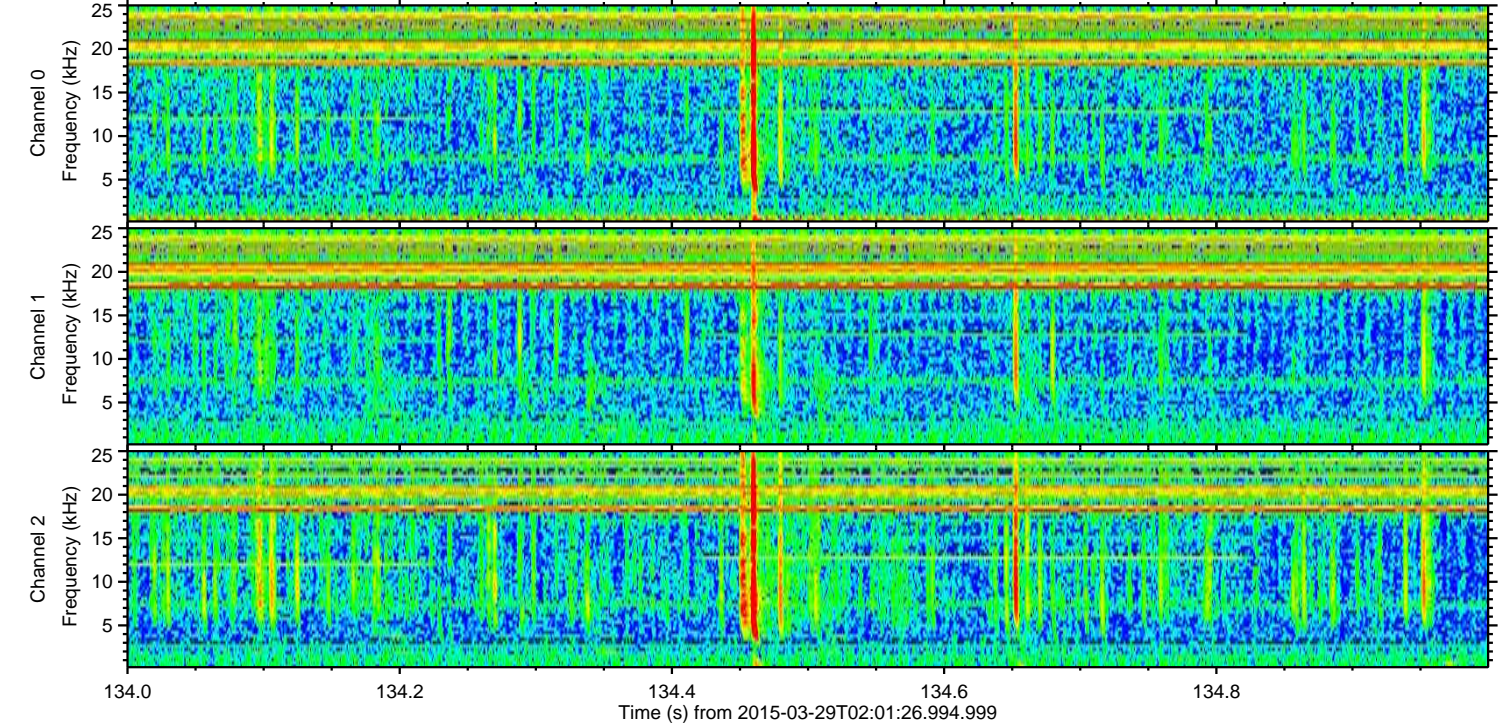
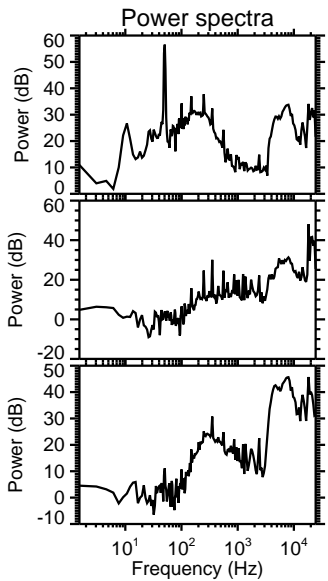
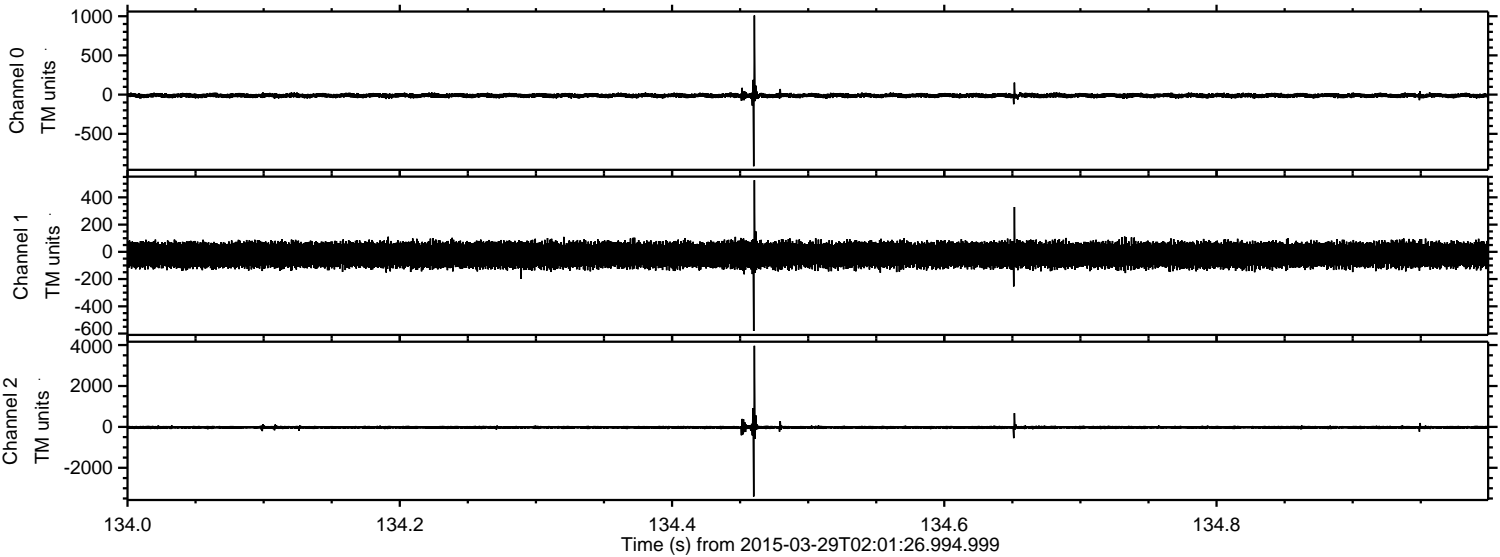
Channel 0
mn: -620
mx: 1370
 μ : -11.5
 σ : 15.7

Channel 1
mn: -1023
mx: 1929
 μ : -22.3
 σ : 47.7

Channel 2
mn: -4424
mx: 2362
 μ : -24.2
 σ : 42.9

ELMAVAN 3D WAVEFORMS (Measured data sampled at 50 kHz) 49551 packets of 144 samples from 2015-03-29T02:01:26.994.999. Part 135/143

Processed Sun Mar 29 04:08:59 2015 by ELM ver.2012-10-06 from 001__elm20150329_020125__dat00.bin



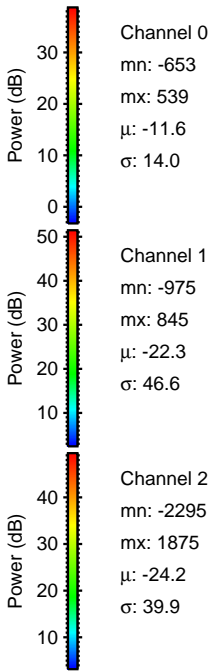
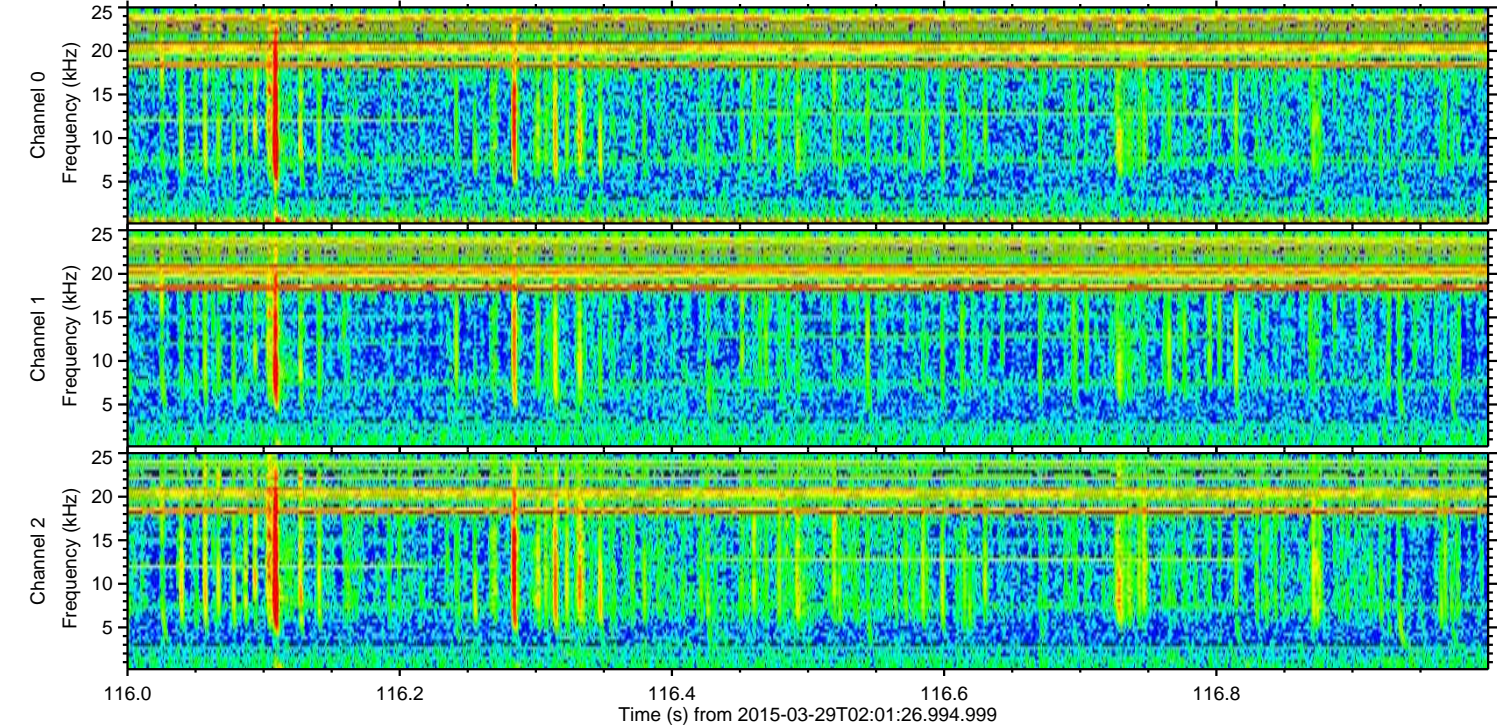
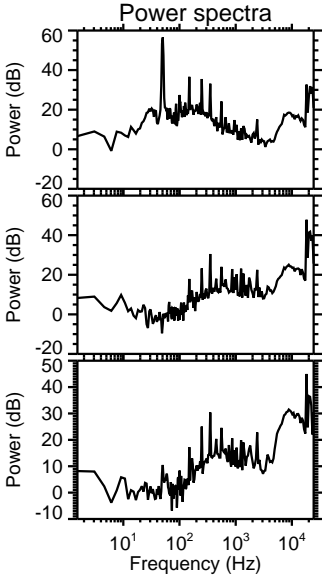
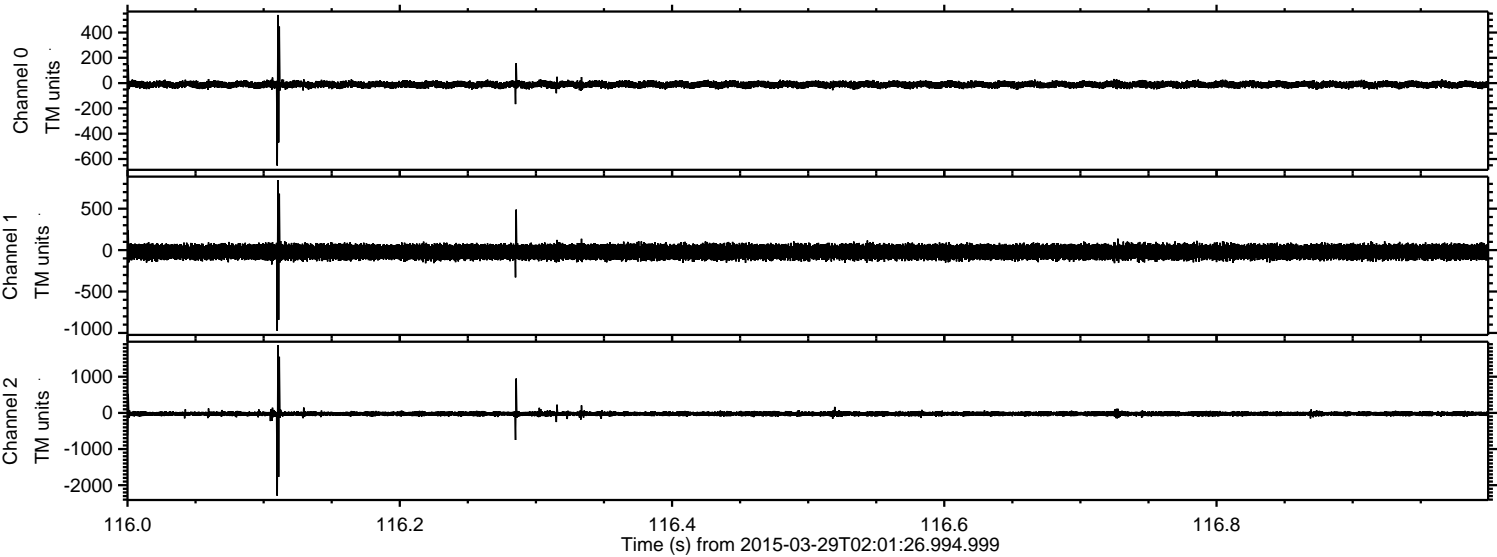
Channel 0
mn: -913
mx: 1009
 μ : -11.6
 σ : 16.4

Channel 1
mn: -581
mx: 526
 μ : -22.3
 σ : 45.7

Channel 2
mn: -3403
mx: 3966
 μ : -24.2
 σ : 50.8

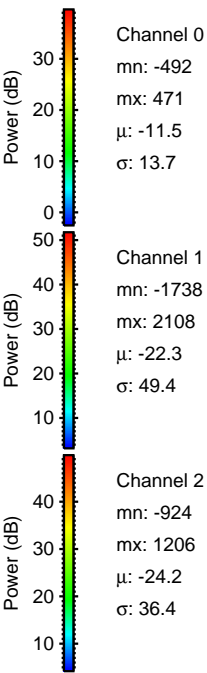
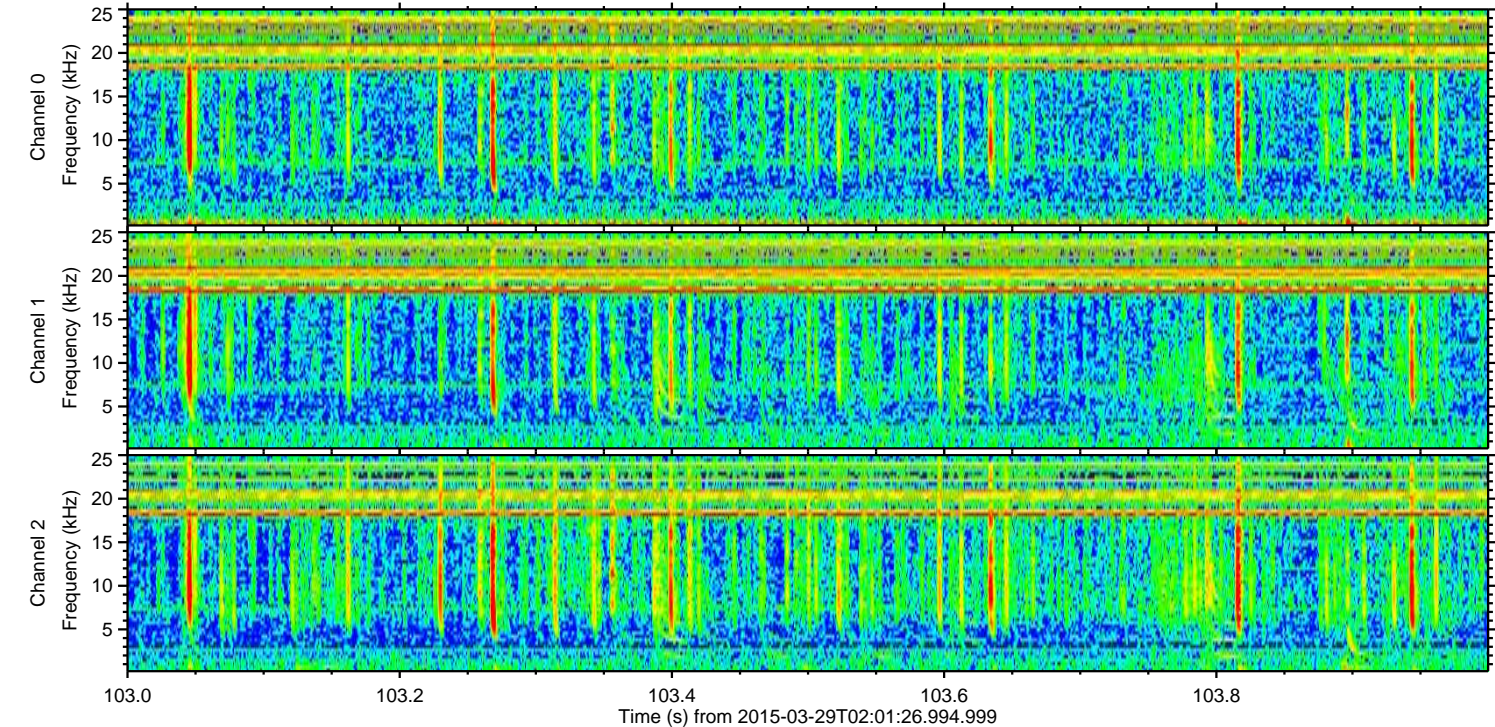
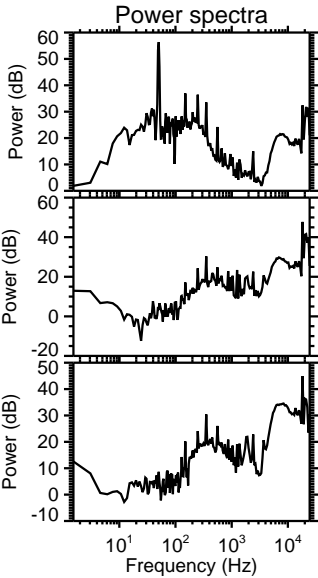
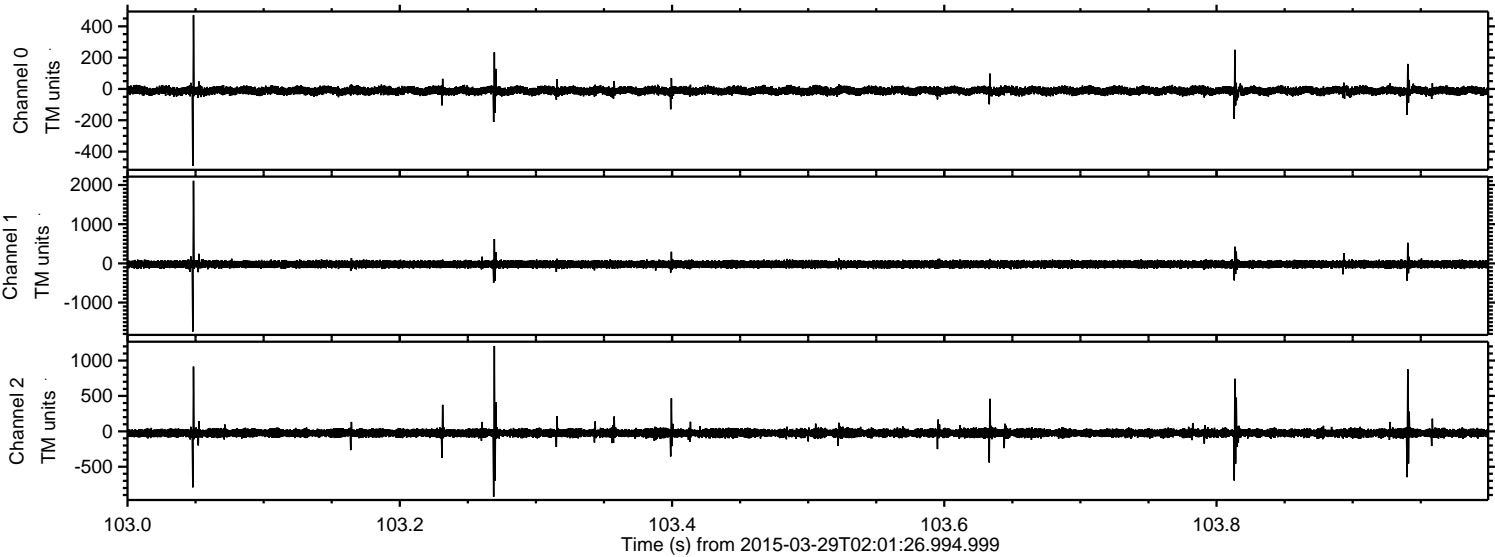
ELMAVAN 3D WAVEFORMS (Measured data sampled at 50 kHz) 49551 packets of 144 samples from 2015-03-29T02:01:26.994.999. Part 117/143

Processed Sun Mar 29 04:09:00 2015 by ELM ver.2012-10-06 from 001__elm20150329_020125__dat00.bin



ELMAVAN 3D WAVEFORMS (Measured data sampled at 50 kHz) 49551 packets of 144 samples from 2015-03-29T02:01:26.994.999. Part 104/143

Processed Sun Mar 29 04:09:01 2015 by ELM ver.2012-10-06 from 001__elm20150329_020125__dat00.bin



Channel 0

mn: -492
mx: 471
 μ : -11.5
 σ : 13.7

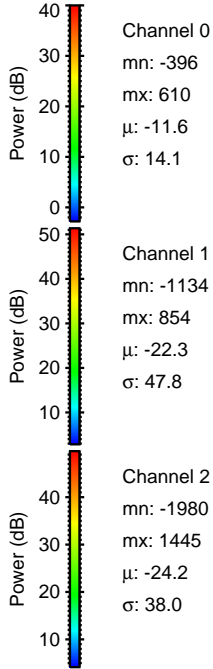
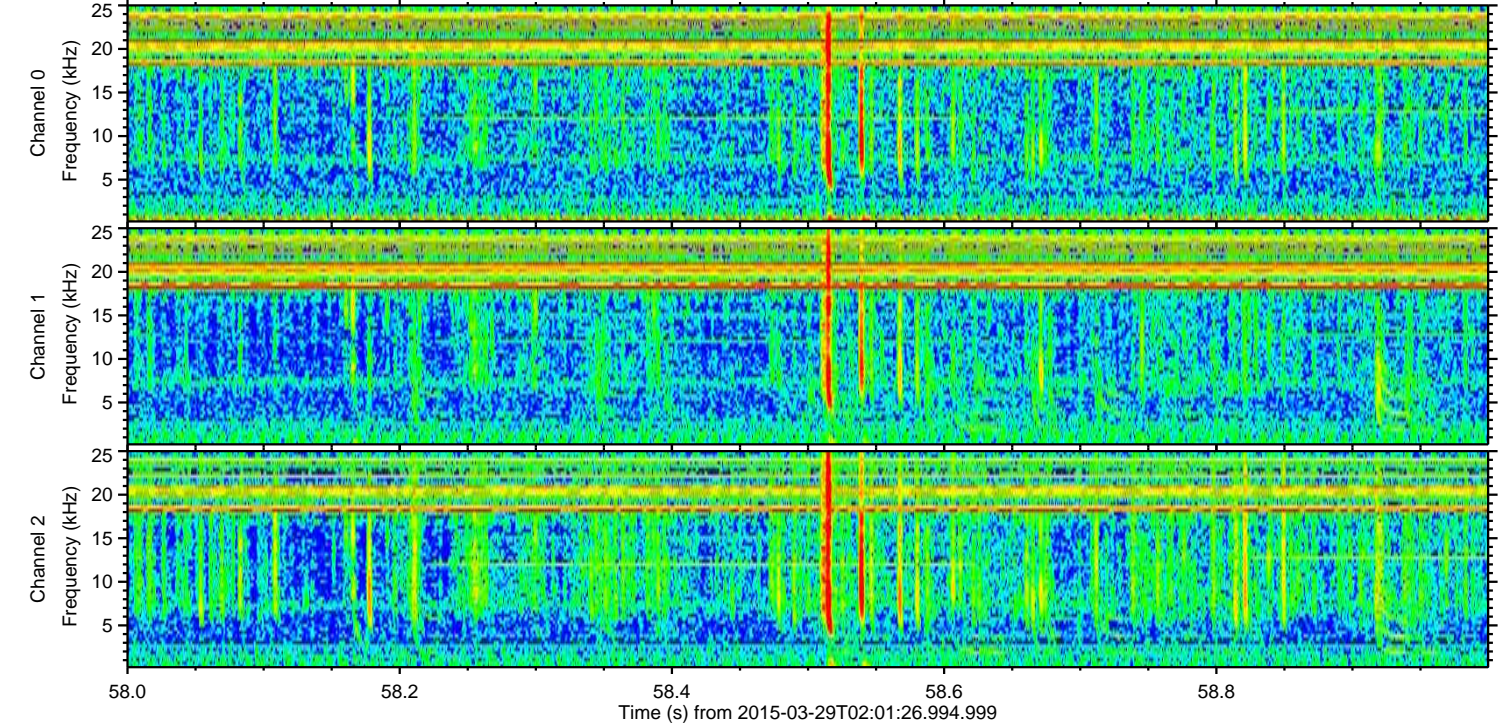
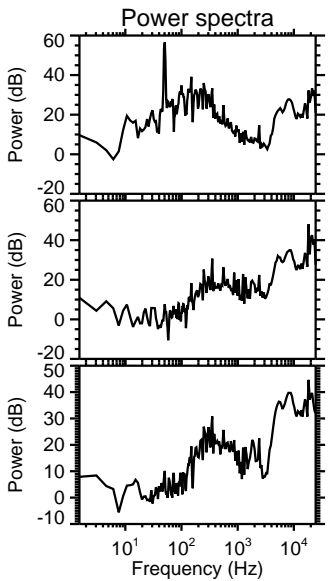
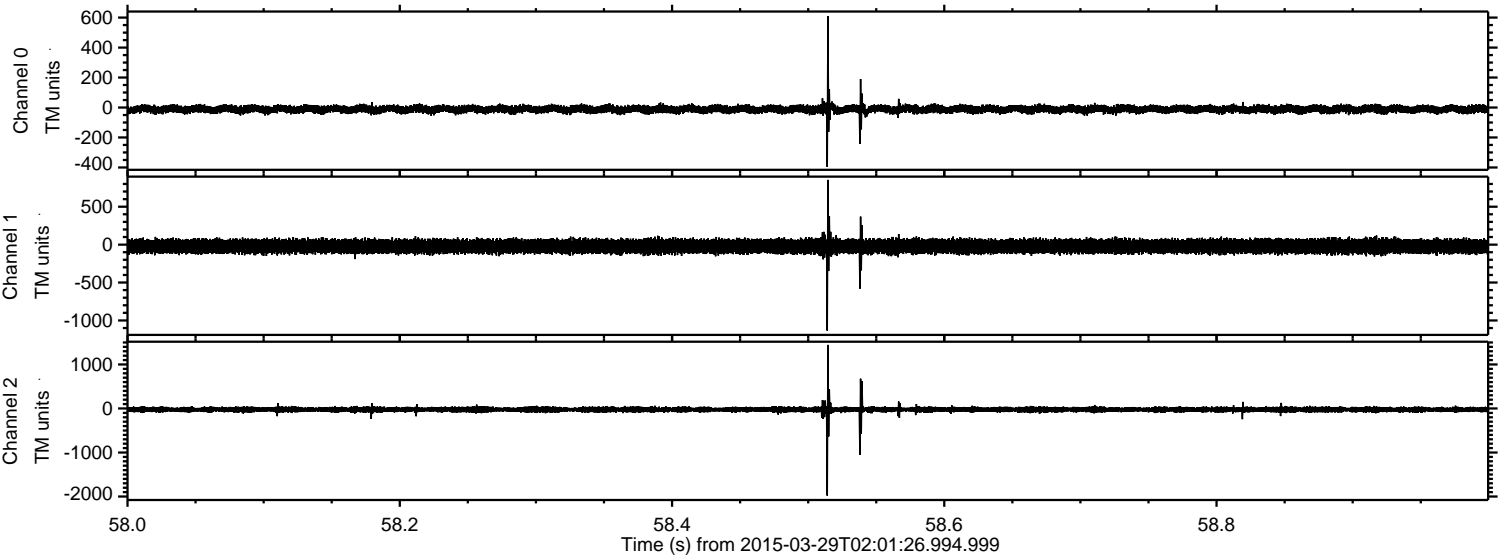
Channel 1

mn: -1738
mx: 2108
 μ : -22.3
 σ : 49.4

Channel 2

mn: -924
mx: 1206
 μ : -24.2
 σ : 36.4

Processed Sun Mar 29 04:09:02 2015 by ELM ver.2012-10-06 from 001__elm20150329_020125__dat00.bin



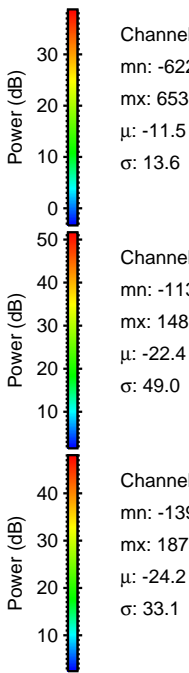
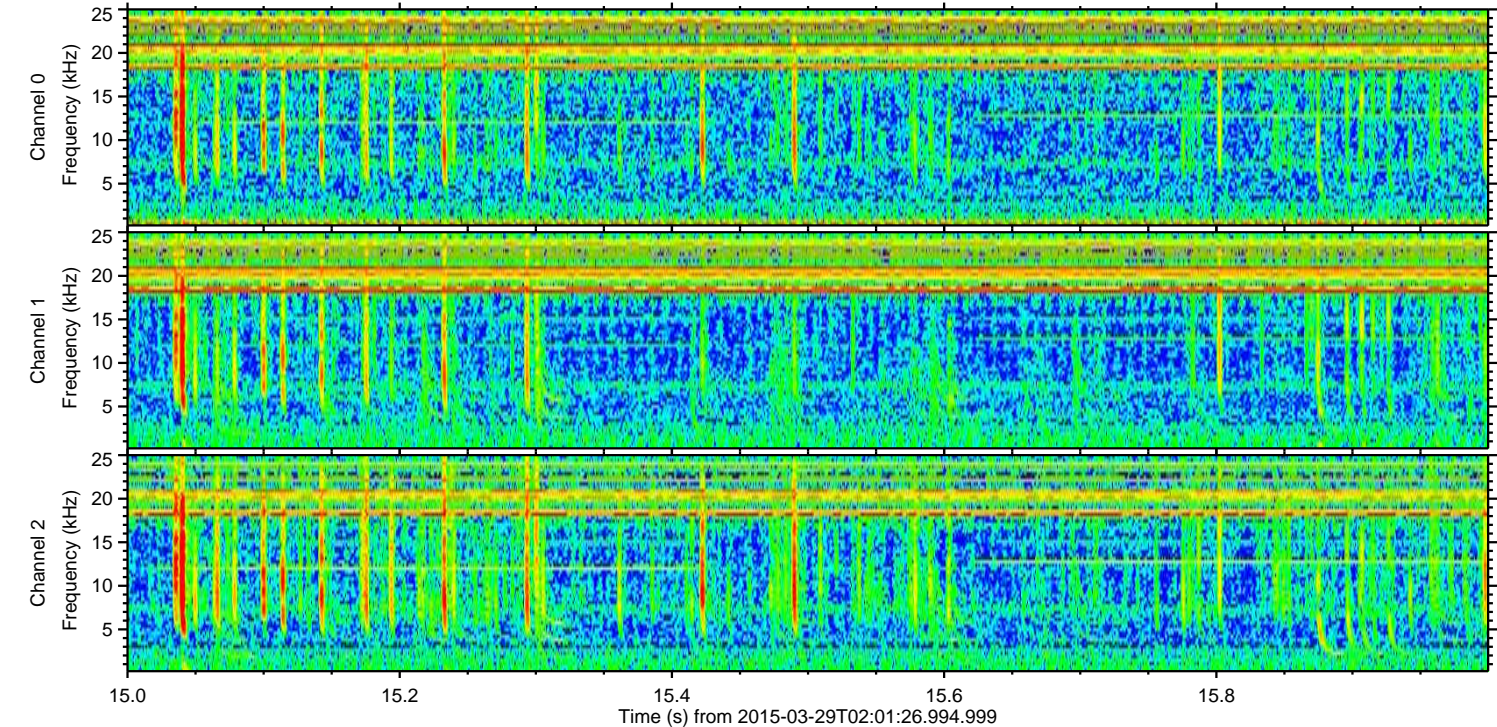
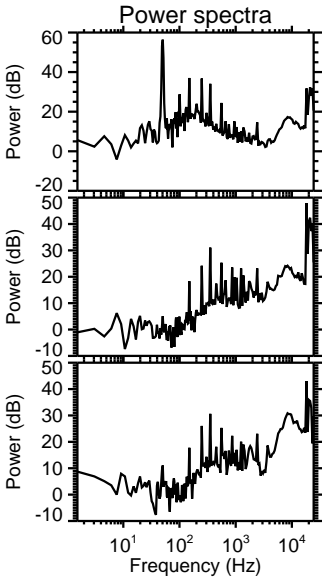
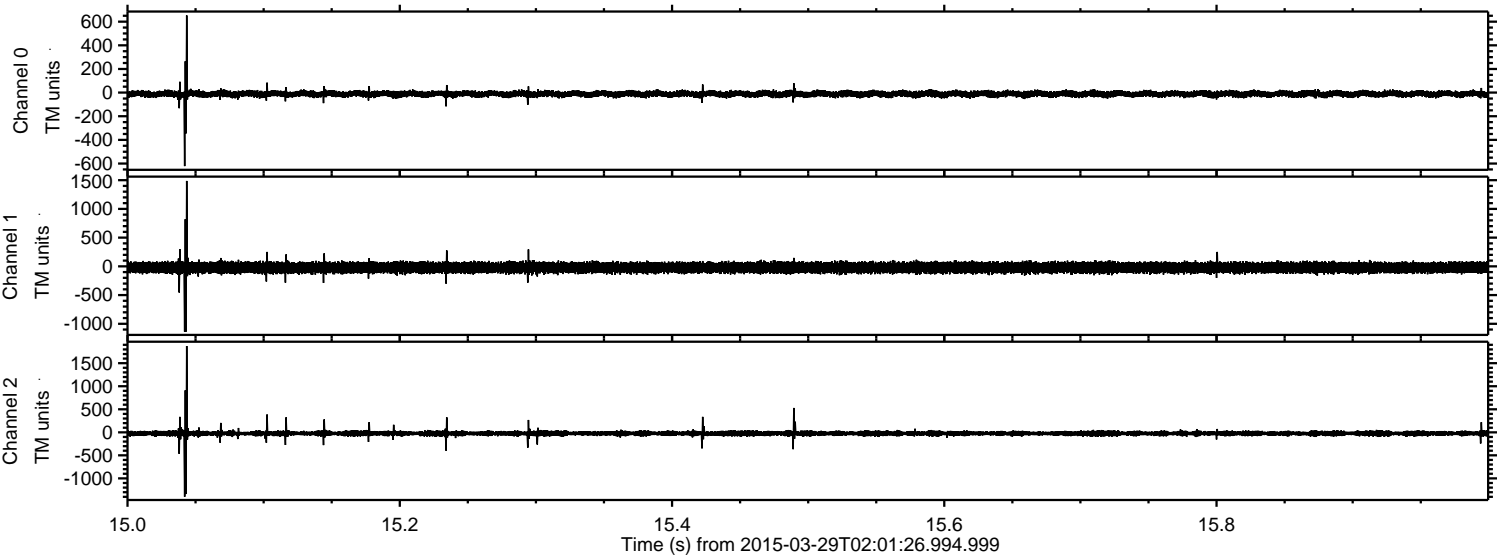
Channel 0
mn: -396
mx: 610
 μ : -11.6
 σ : 14.1

Channel 1
mn: -1134
mx: 854
 μ : -22.3
 σ : 47.8

Channel 2
mn: -1980
mx: 1445
 μ : -24.2
 σ : 38.0

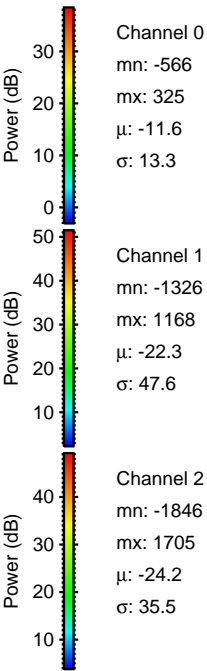
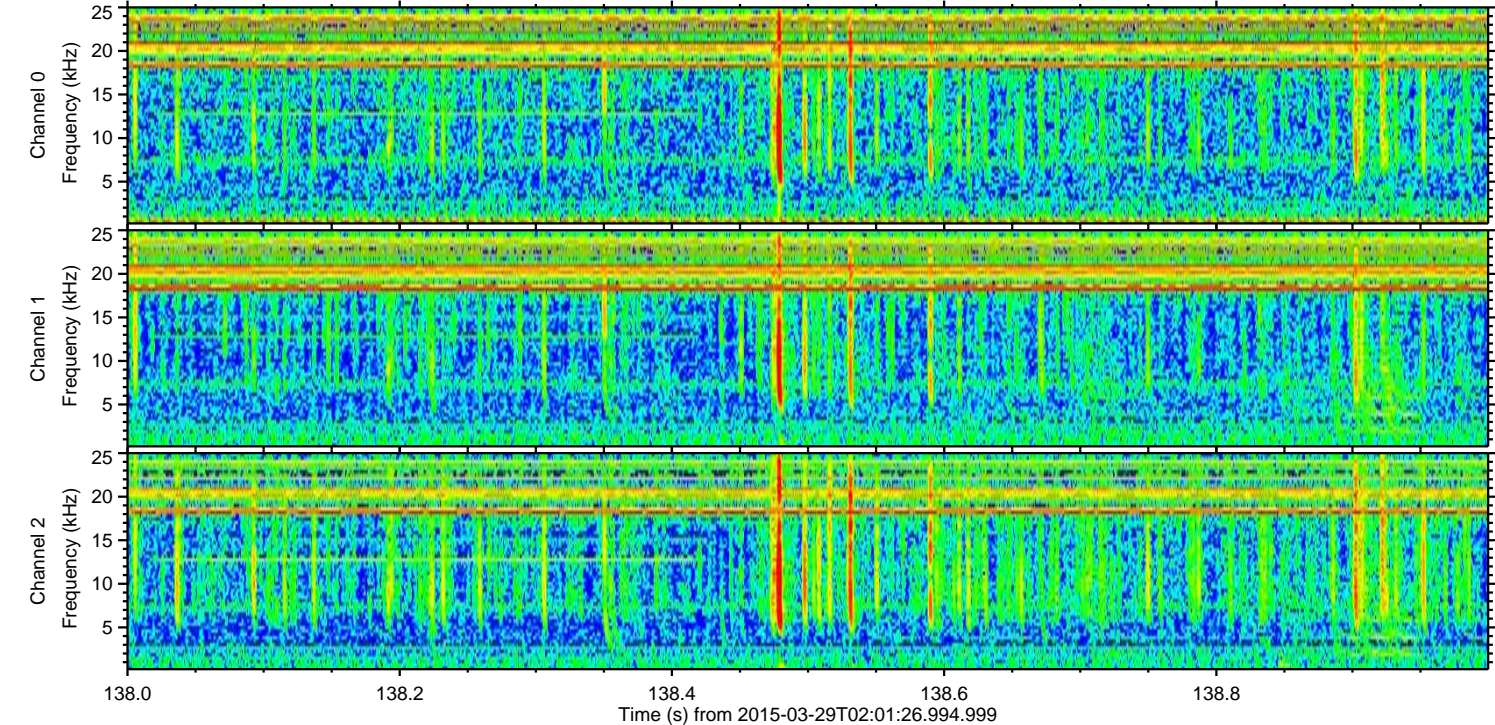
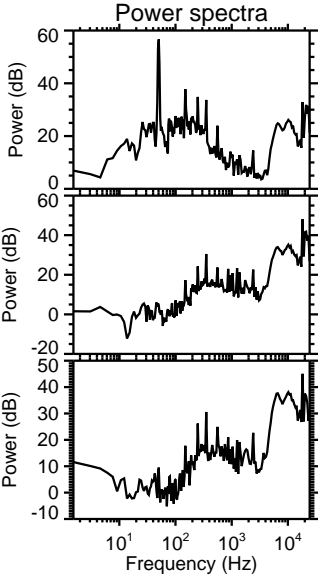
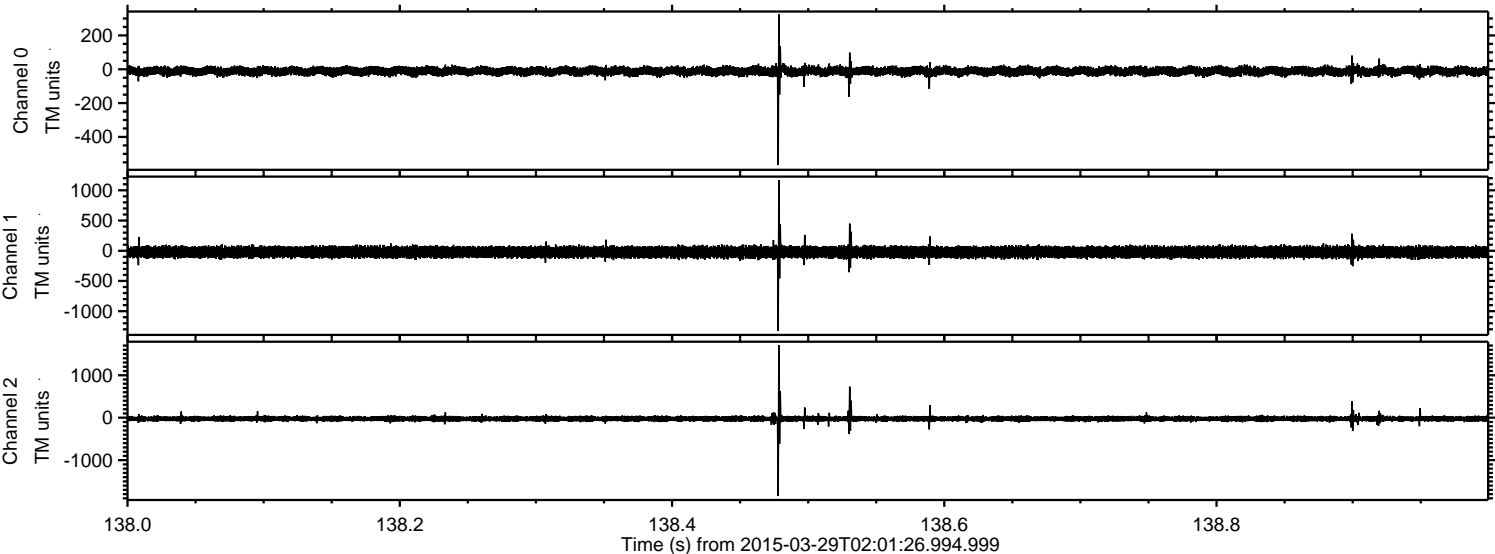
ELMAVAN 3D WAVEFORMS (Measured data sampled at 50 kHz) 49551 packets of 144 samples from 2015-03-29T02:01:26.994.999. Part 16/143

Processed Sun Mar 29 04:09:03 2015 by ELM ver.2012-10-06 from 001__elm20150329_020125__dat00.bin



ELMAVAN 3D WAVEFORMS (Measured data sampled at 50 kHz) 49551 packets of 144 samples from 2015-03-29T02:01:26.994.999. Part 139/143

Processed Sun Mar 29 04:09:04 2015 by ELM ver.2012-10-06 from 001__elm20150329_020125__dat00.bin



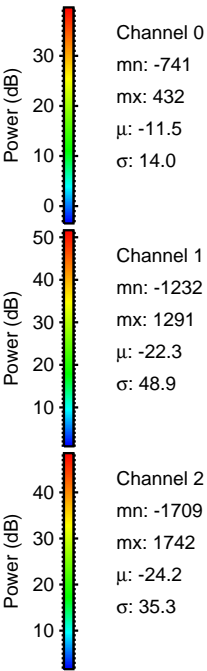
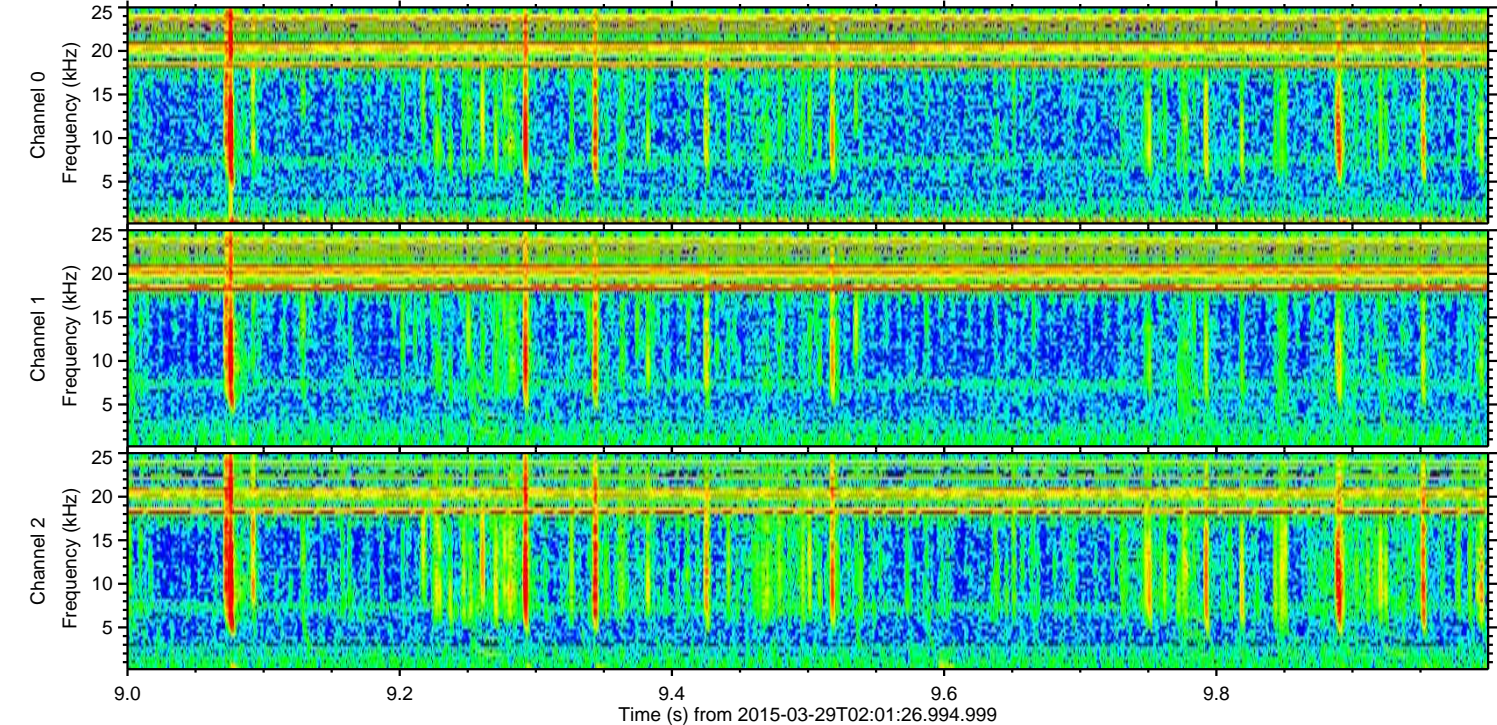
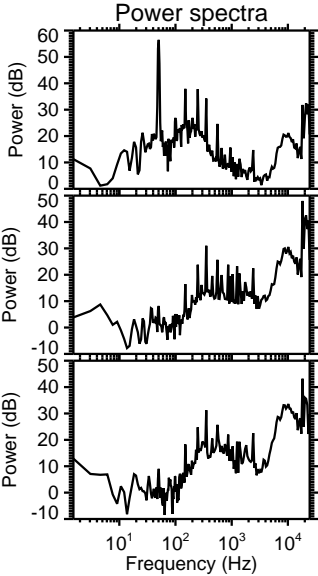
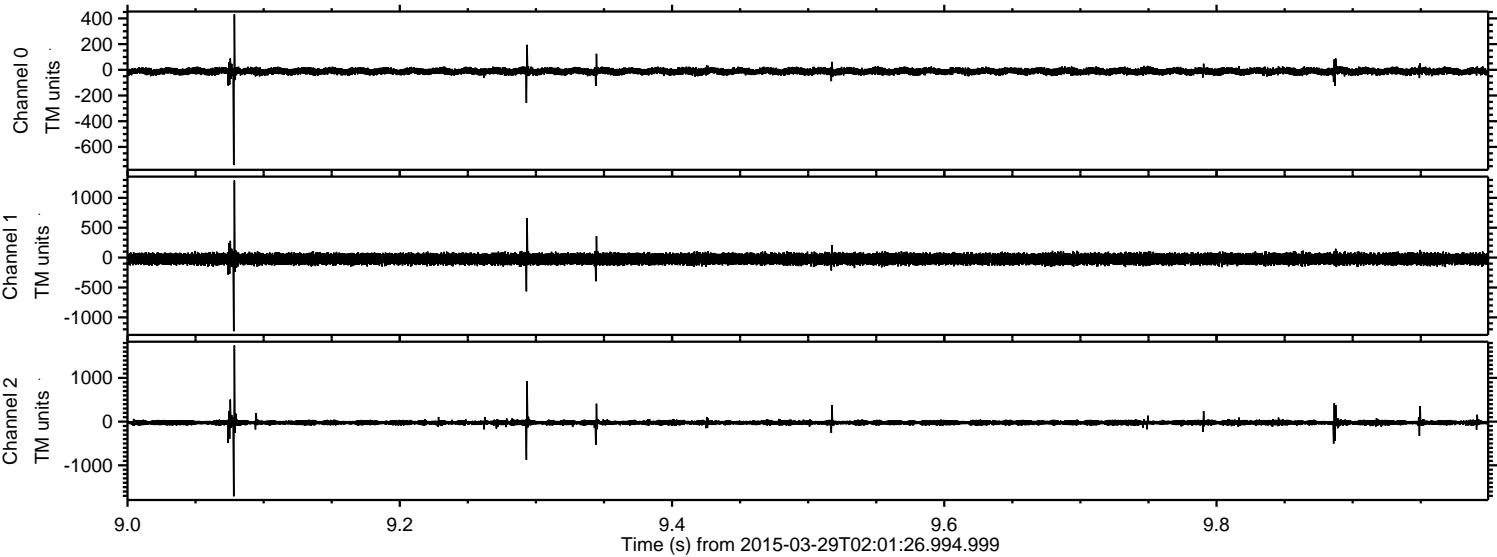
Channel 0
mn: -566
mx: 325
 μ : -11.6
 σ : 13.3

Channel 1
mn: -1326
mx: 1168
 μ : -22.3
 σ : 47.6

Channel 2
mn: -1846
mx: 1705
 μ : -24.2
 σ : 35.5

ELMAVAN 3D WAVEFORMS (Measured data sampled at 50 kHz) 49551 packets of 144 samples from 2015-03-29T02:01:26.994.999. Part 10/143

Processed Sun Mar 29 04:09:05 2015 by ELM ver.2012-10-06 from 001__elm20150329_020125__dat00.bin



Processed Sun Mar 29 04:09:06 2015 by ELM ver.2012-10-06 from 001__elm20150329_020125__dat00.bin

