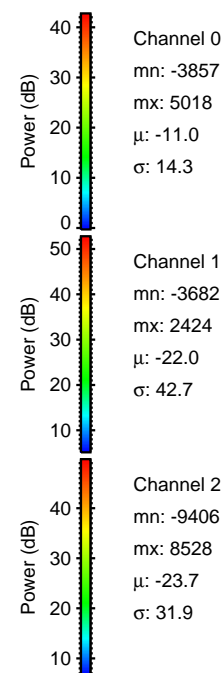
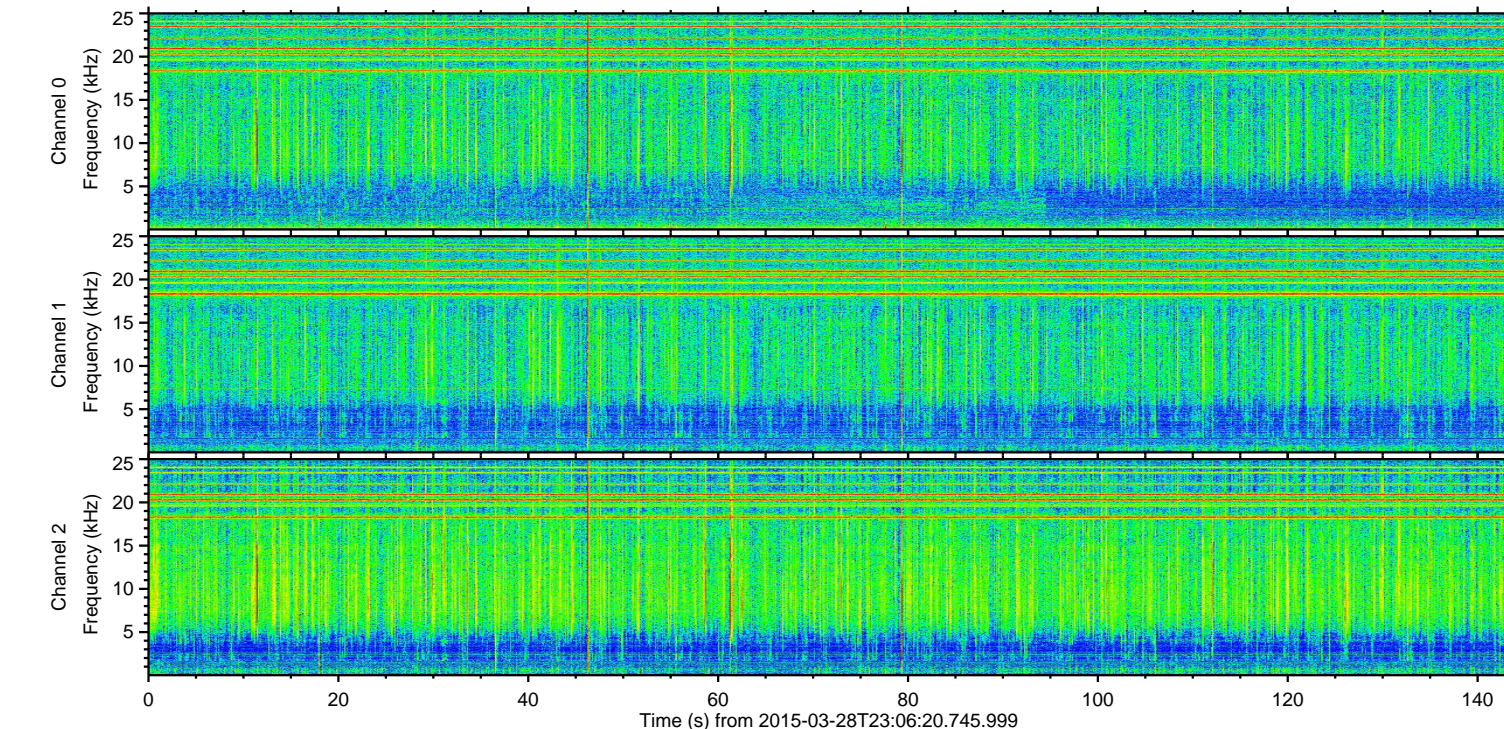
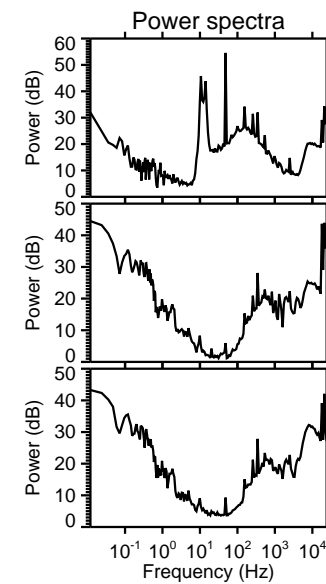
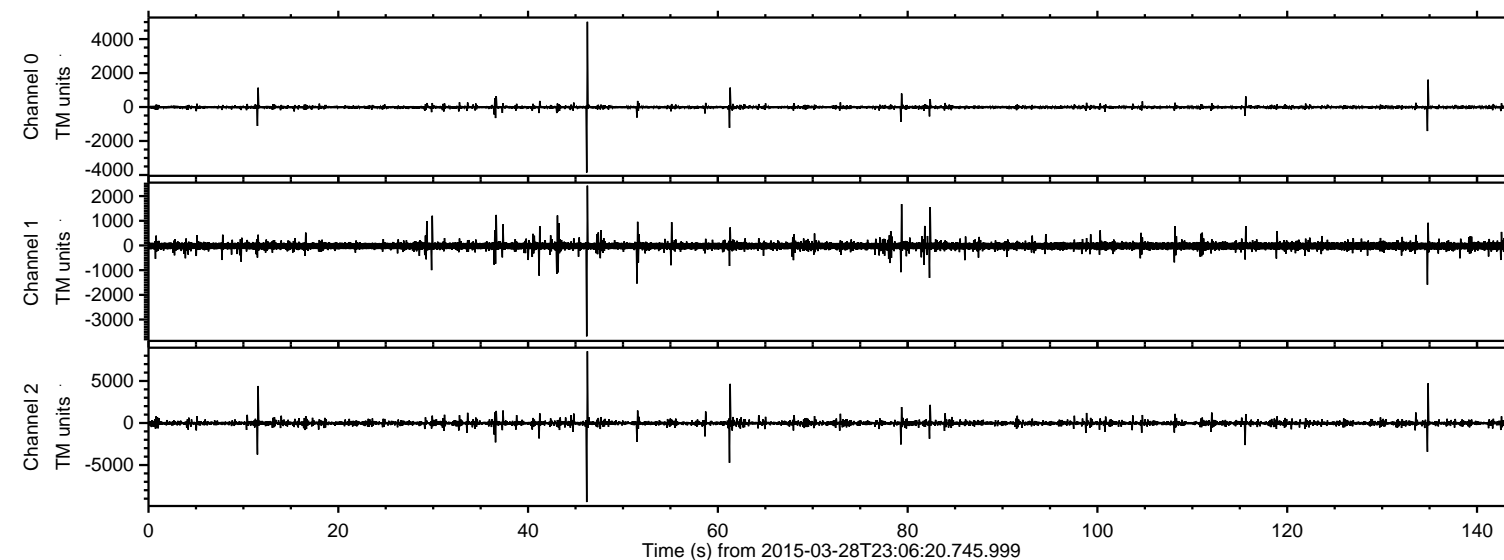
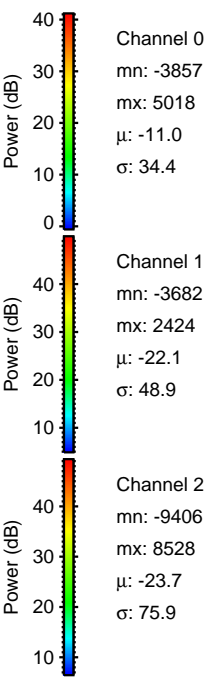
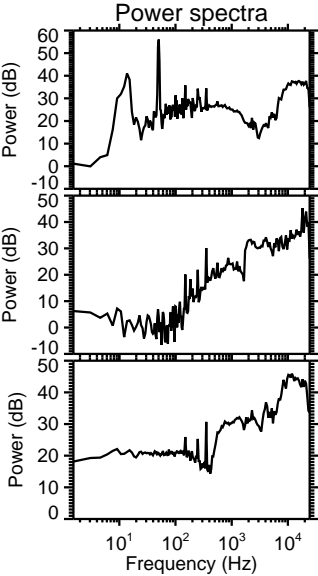
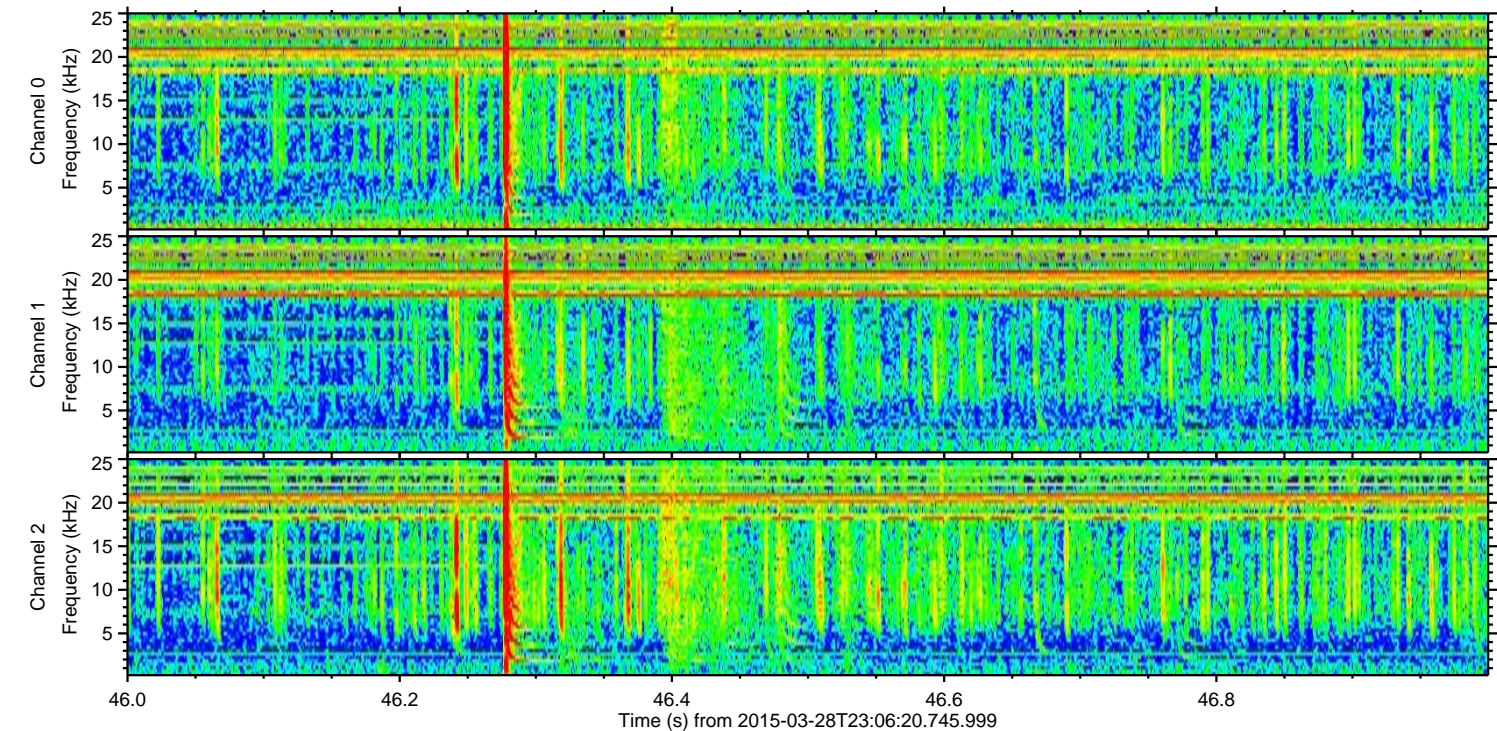
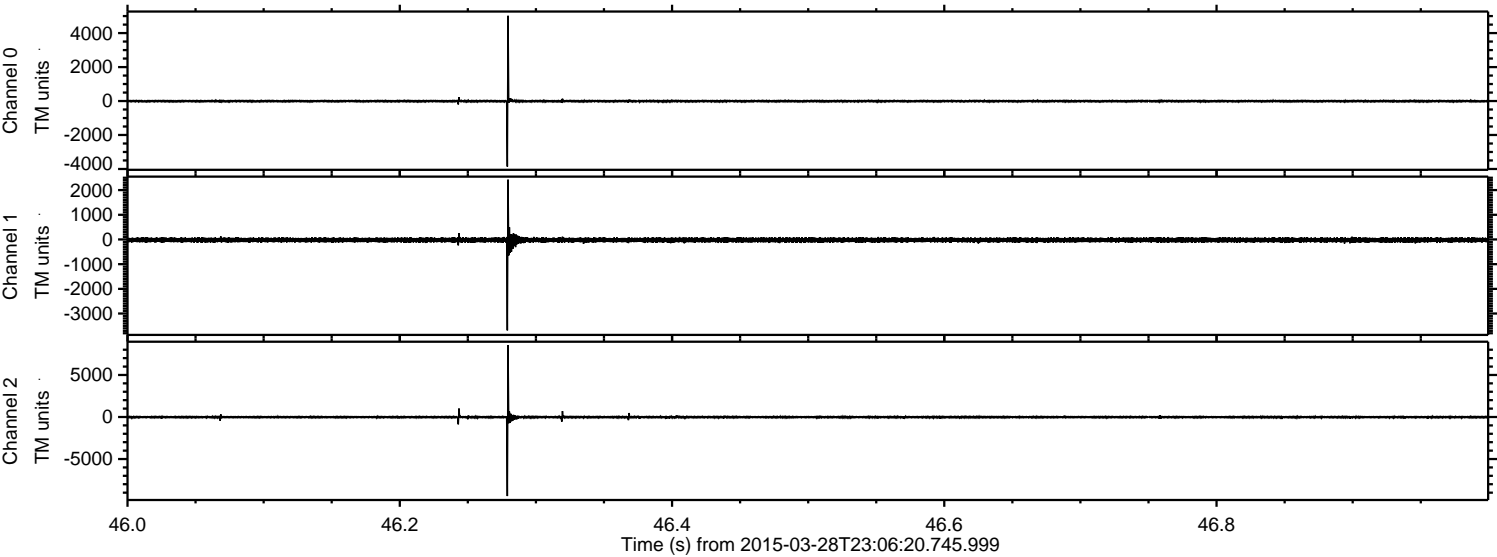


ELMAVAN 3D WAVEFORMS (Measured data sampled at 50 kHz) 49787 packets of 144 samples from 2015-03-28T23:06:20.745.999.

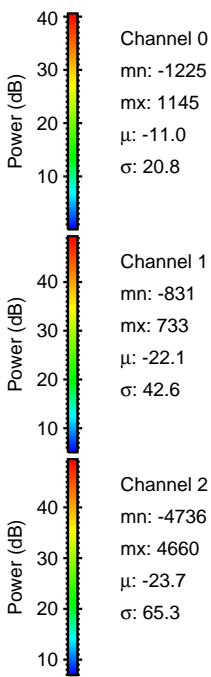
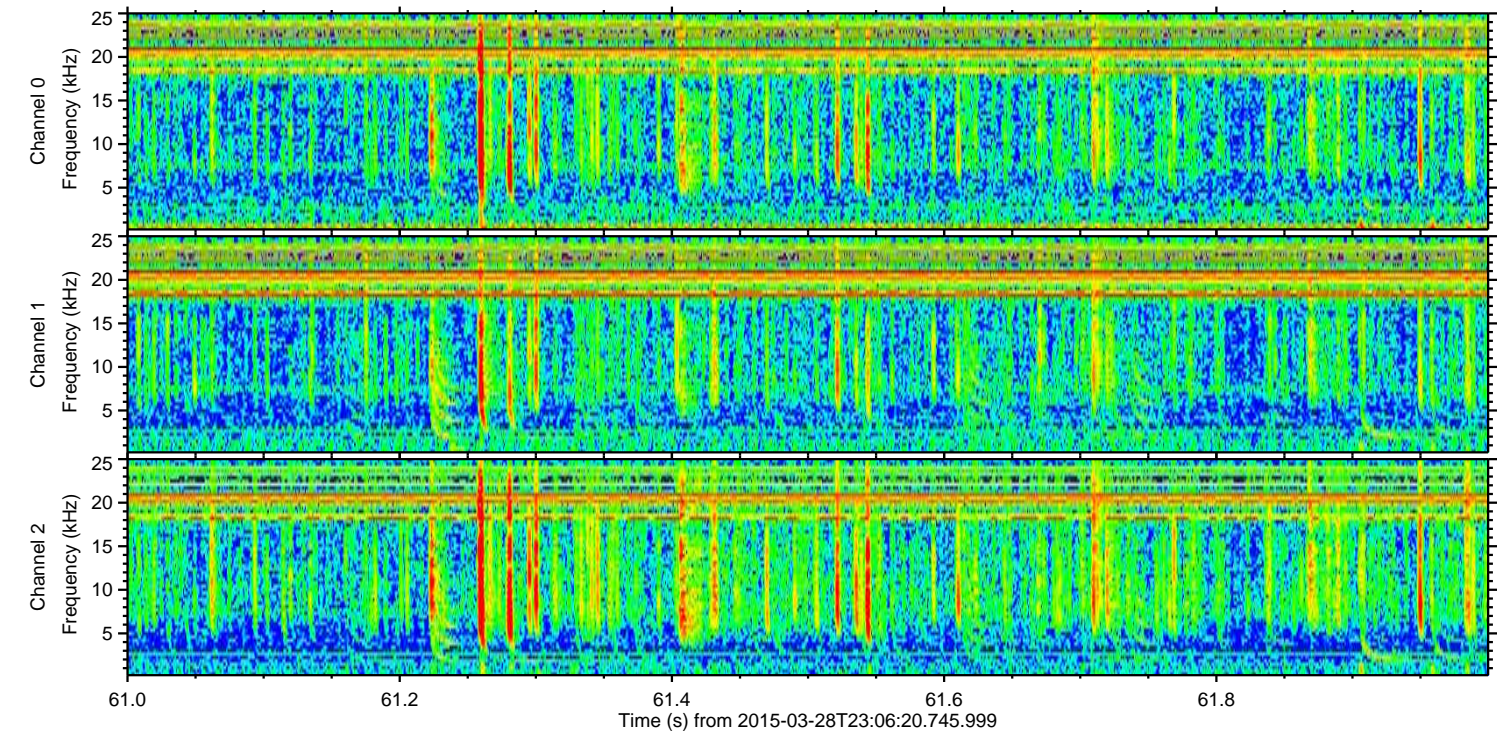
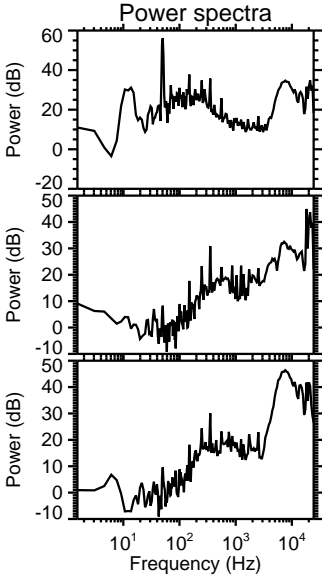
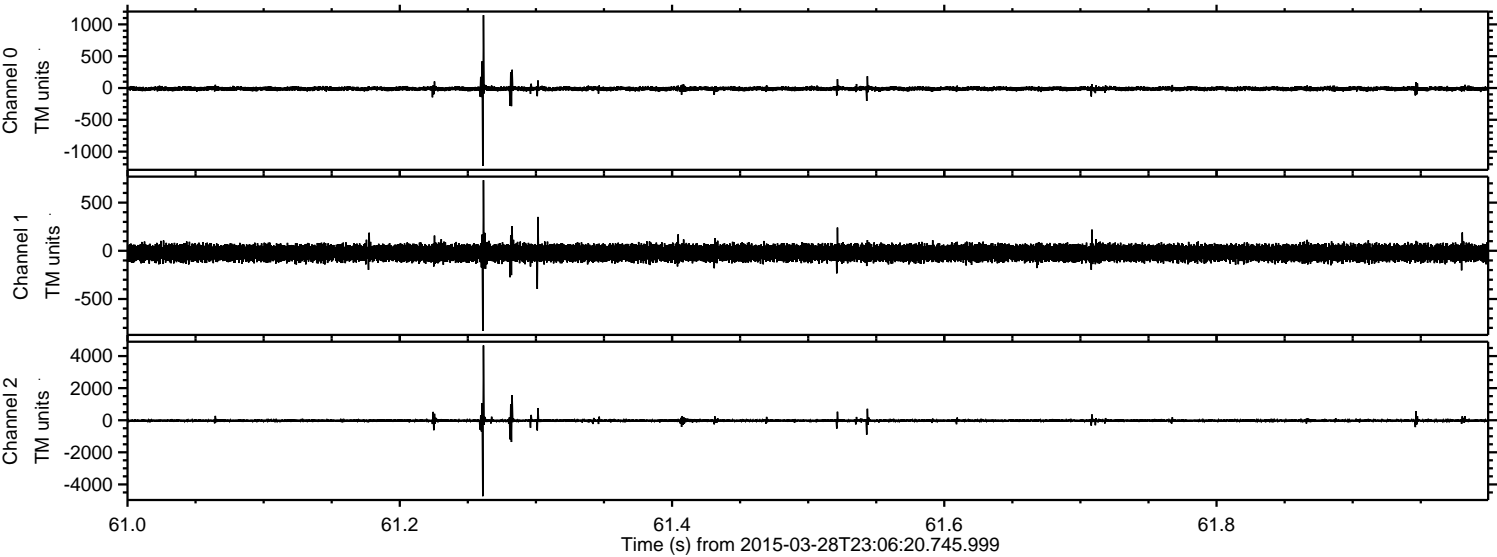
Processed Sun Mar 29 00:13:22 2015 by ELM ver.2012-10-06 from 001__elm20150328_230619__dat00.bin



Processed Sun Mar 29 00:13:34 2015 by ELM ver.2012-10-06 from 001__elm20150328_230619__dat00.bin

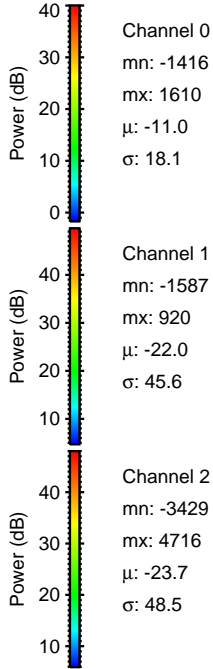
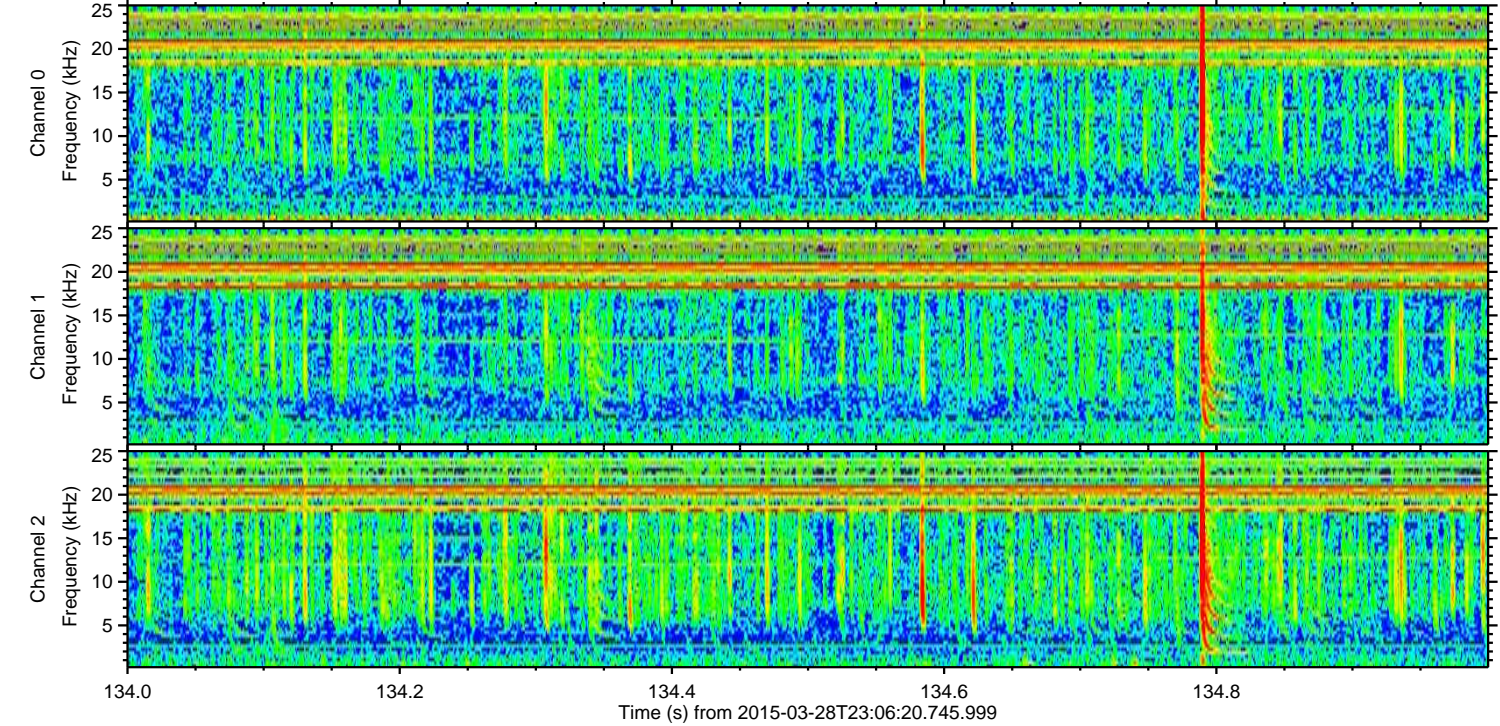
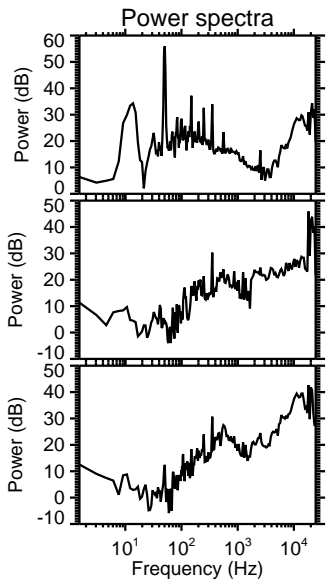
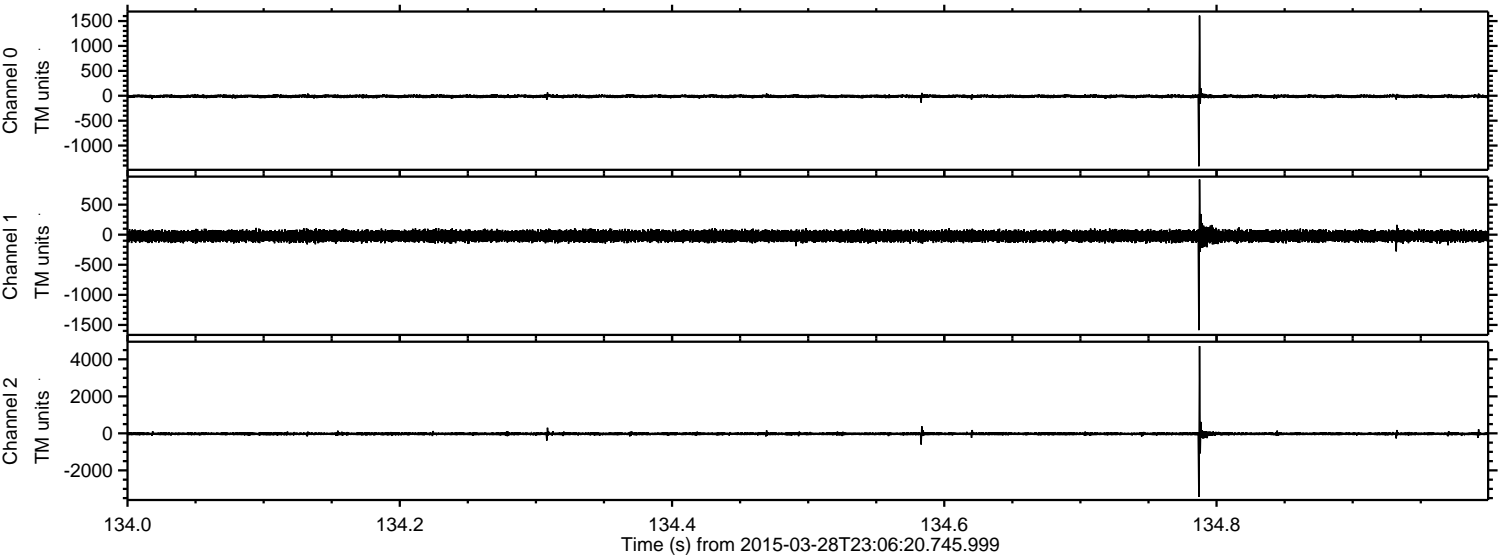


Processed Sun Mar 29 00:13:34 2015 by ELM ver.2012-10-06 from 001__elm20150328_230619__dat00.bin



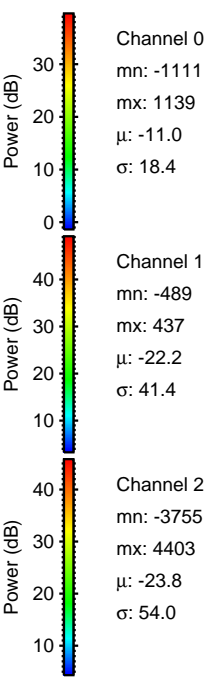
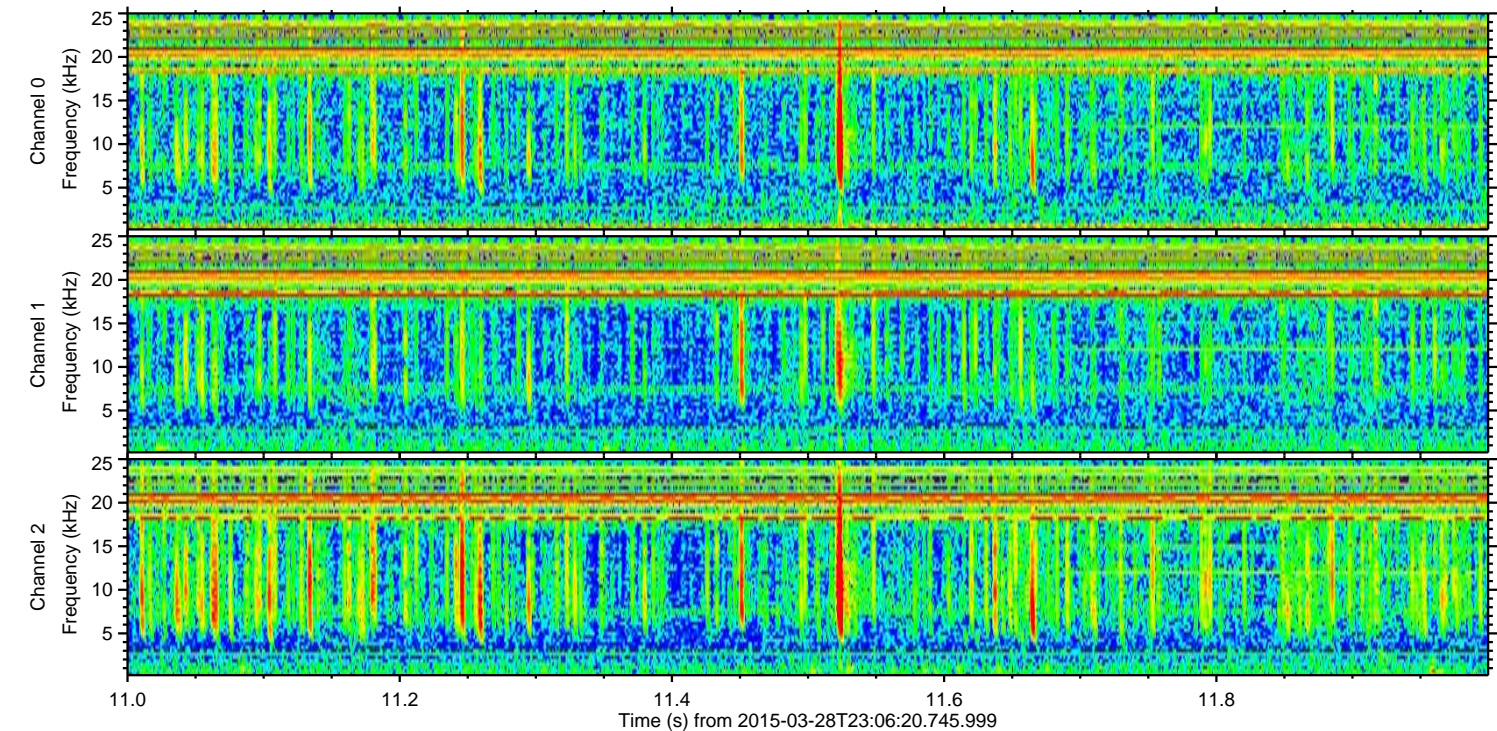
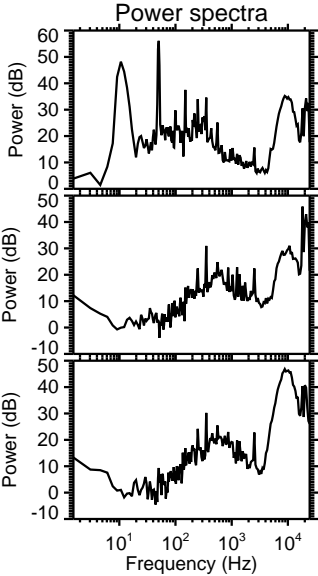
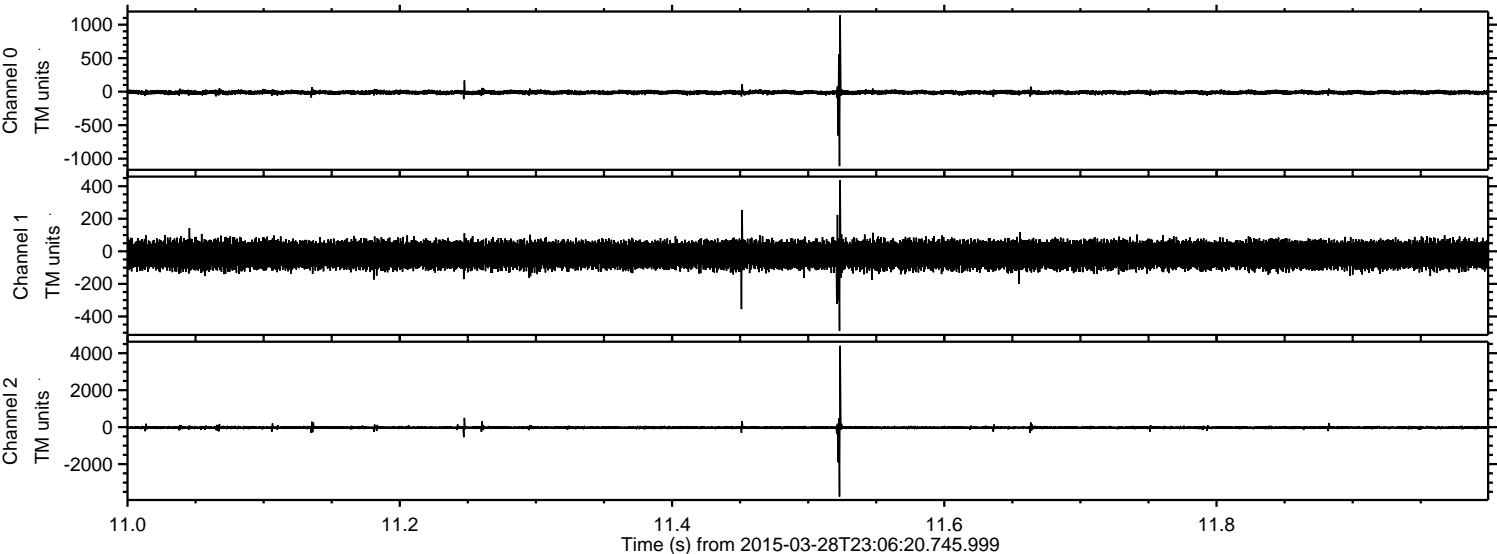
ELMAVAN 3D WAVEFORMS (Measured data sampled at 50 kHz) 49787 packets of 144 samples from 2015-03-28T23:06:20.745.999. Part 135/144

Processed Sun Mar 29 00:13:35 2015 by ELM ver.2012-10-06 from 001__elm20150328_230619__dat00.bin



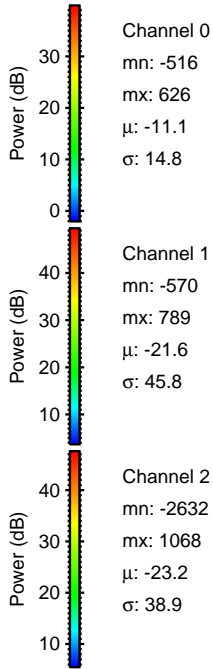
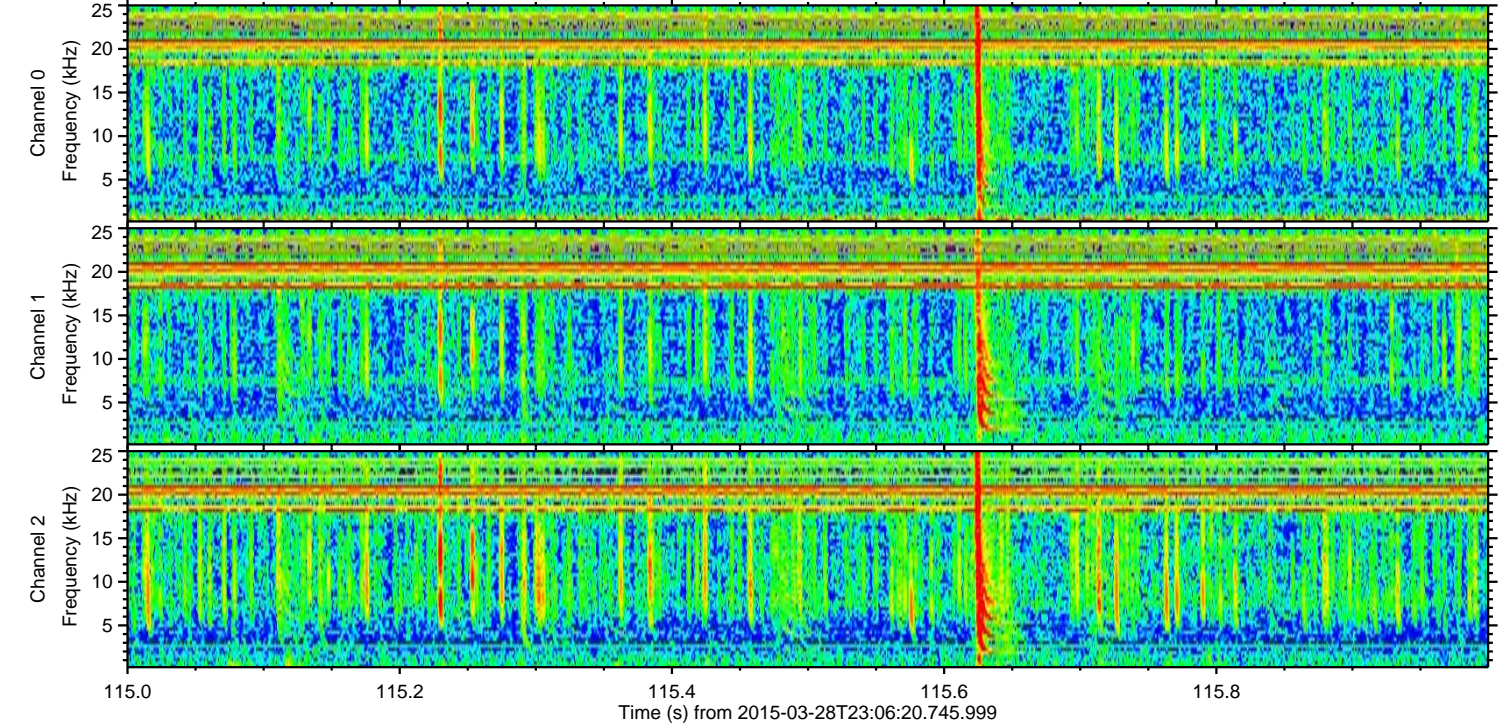
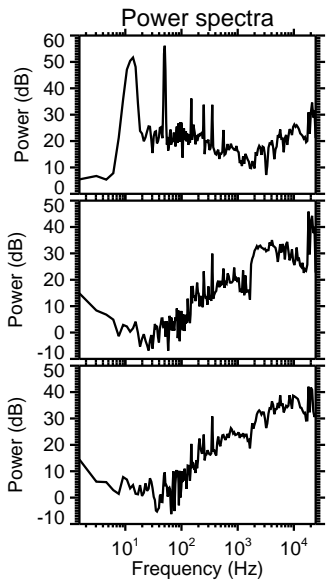
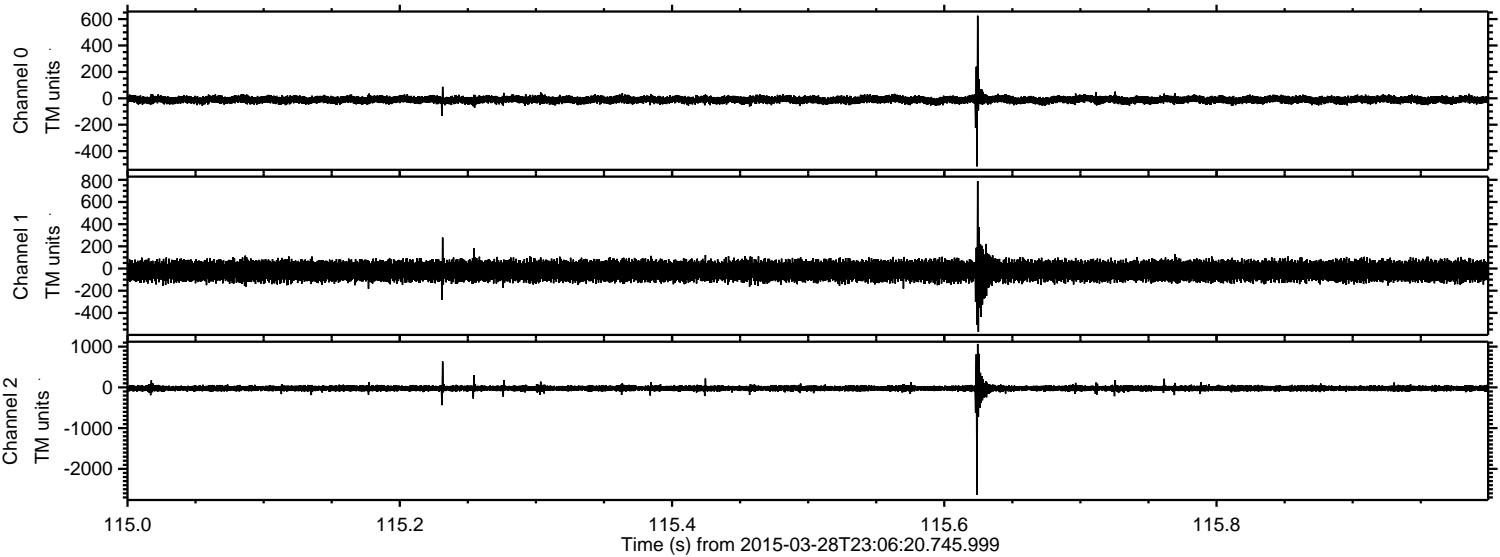
ELMAVAN 3D WAVEFORMS (Measured data sampled at 50 kHz) 49787 packets of 144 samples from 2015-03-28T23:06:20.745.999. Part 12/144

Processed Sun Mar 29 00:13:36 2015 by ELM ver.2012-10-06 from 001__elm20150328_230619__dat00.bin

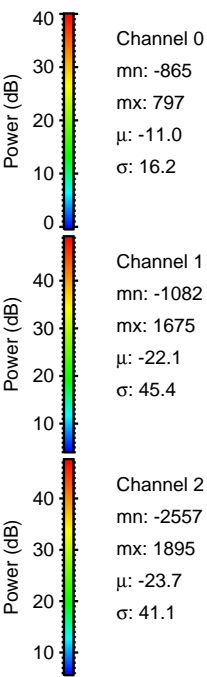
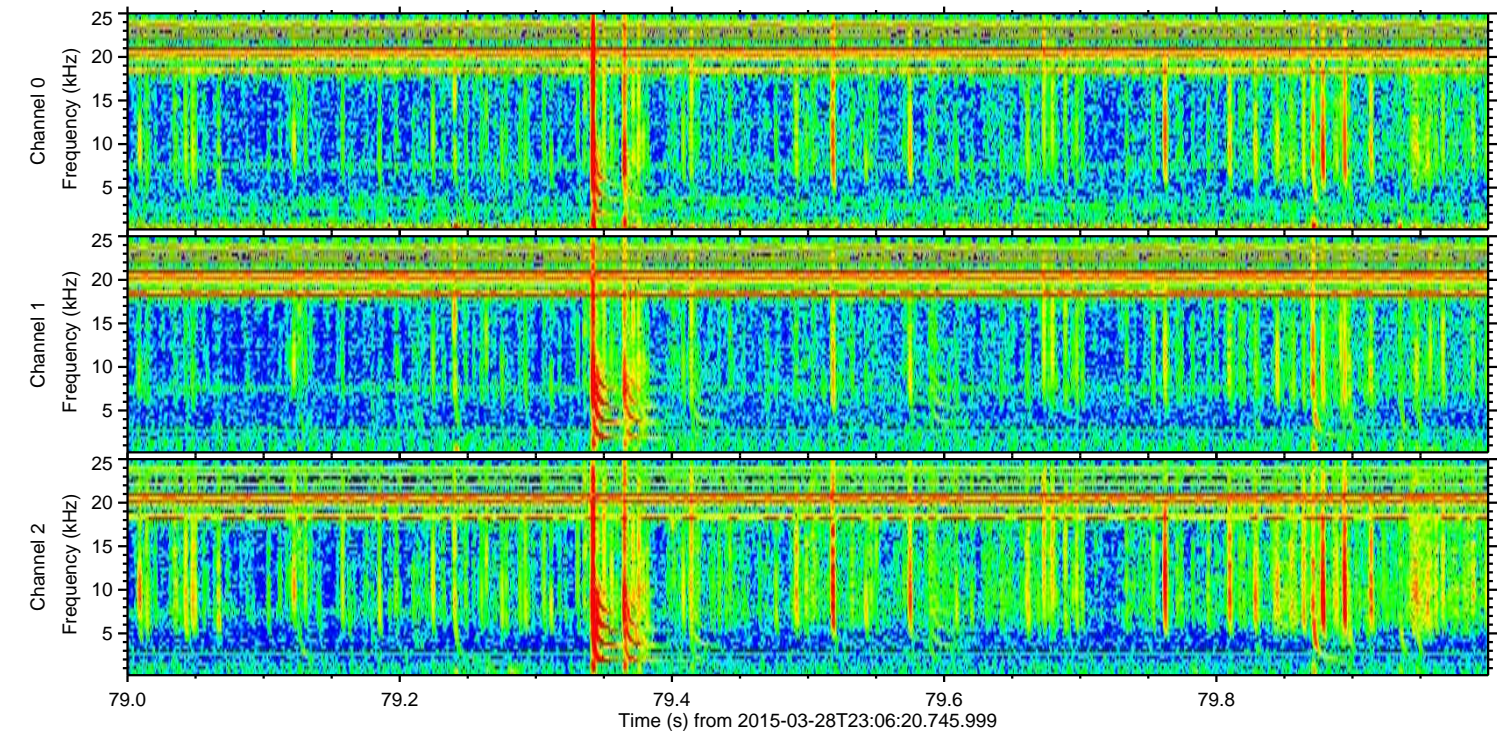
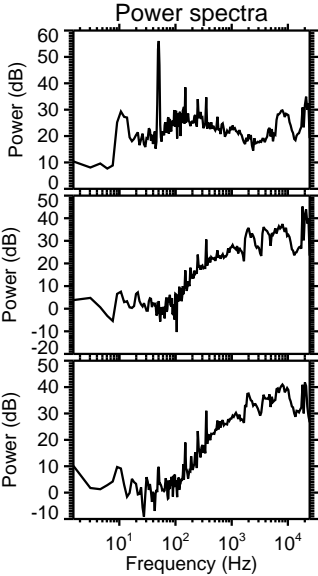
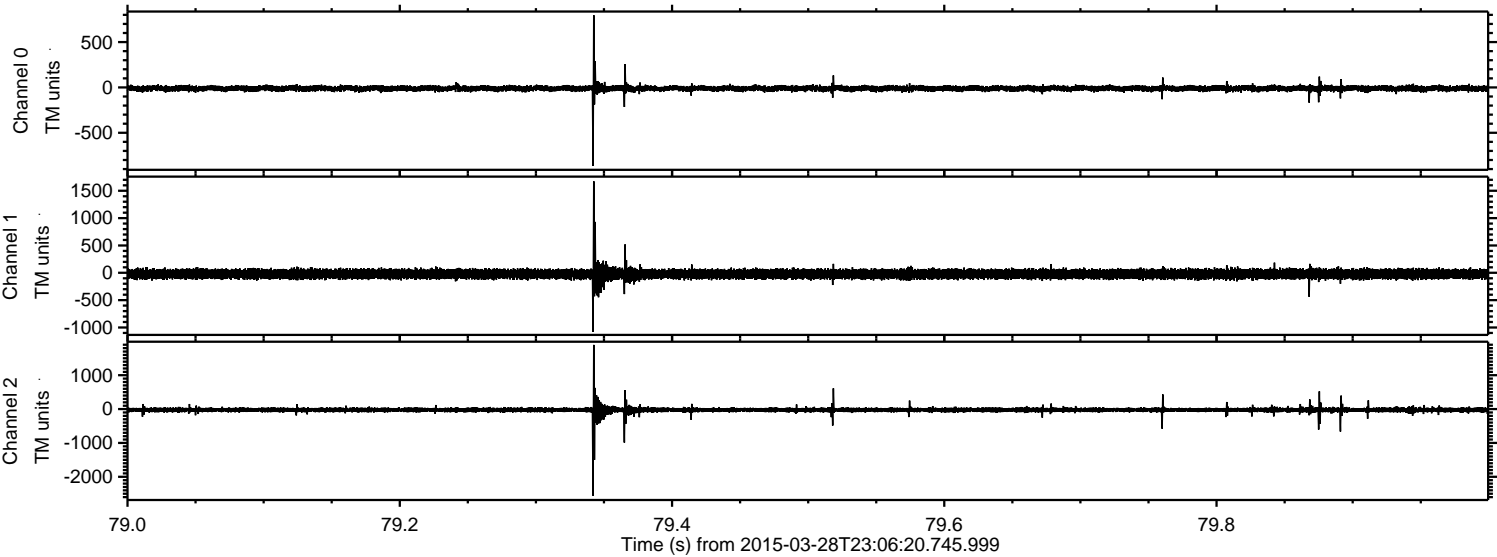


ELMAVAN 3D WAVEFORMS (Measured data sampled at 50 kHz) 49787 packets of 144 samples from 2015-03-28T23:06:20.745.999. Part 116/144

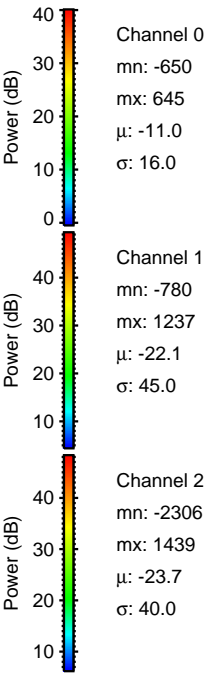
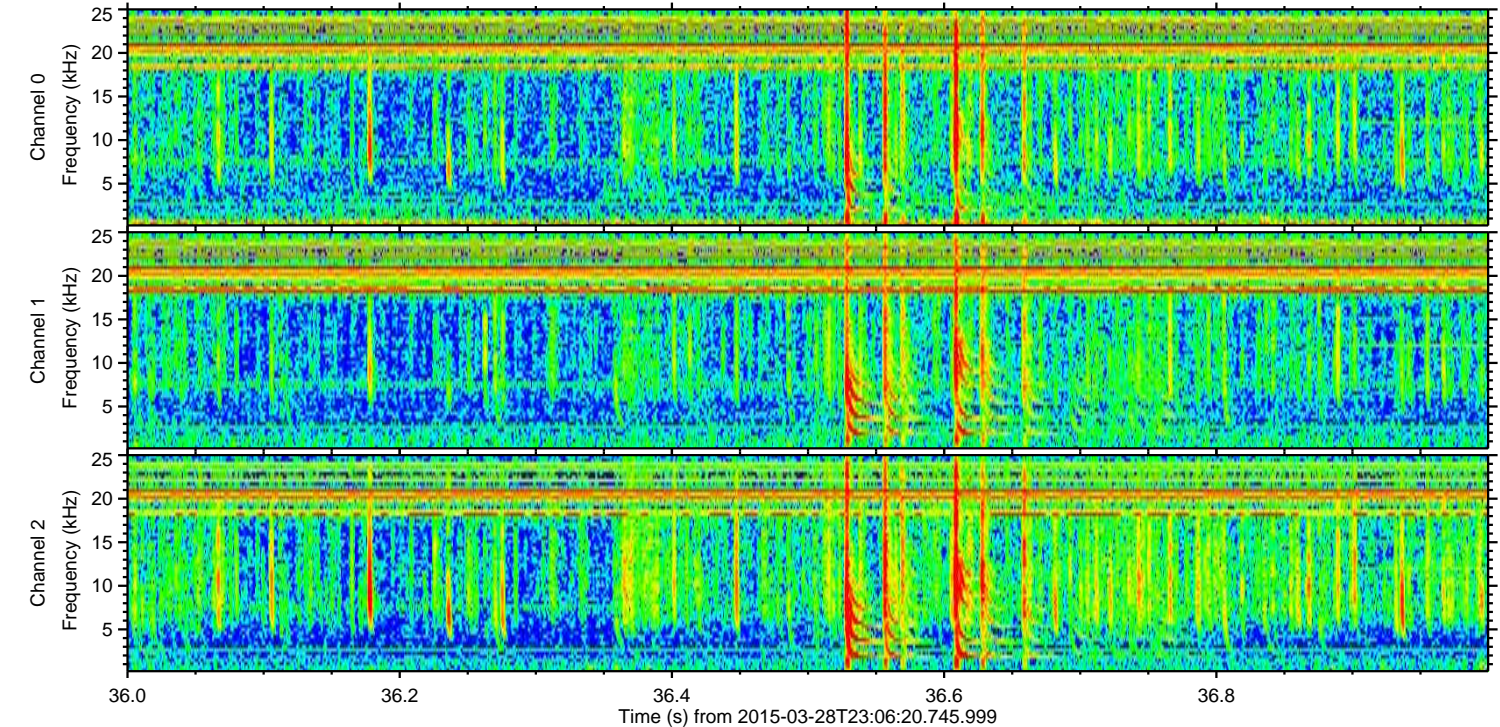
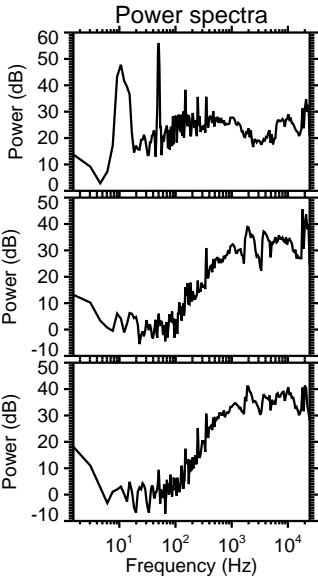
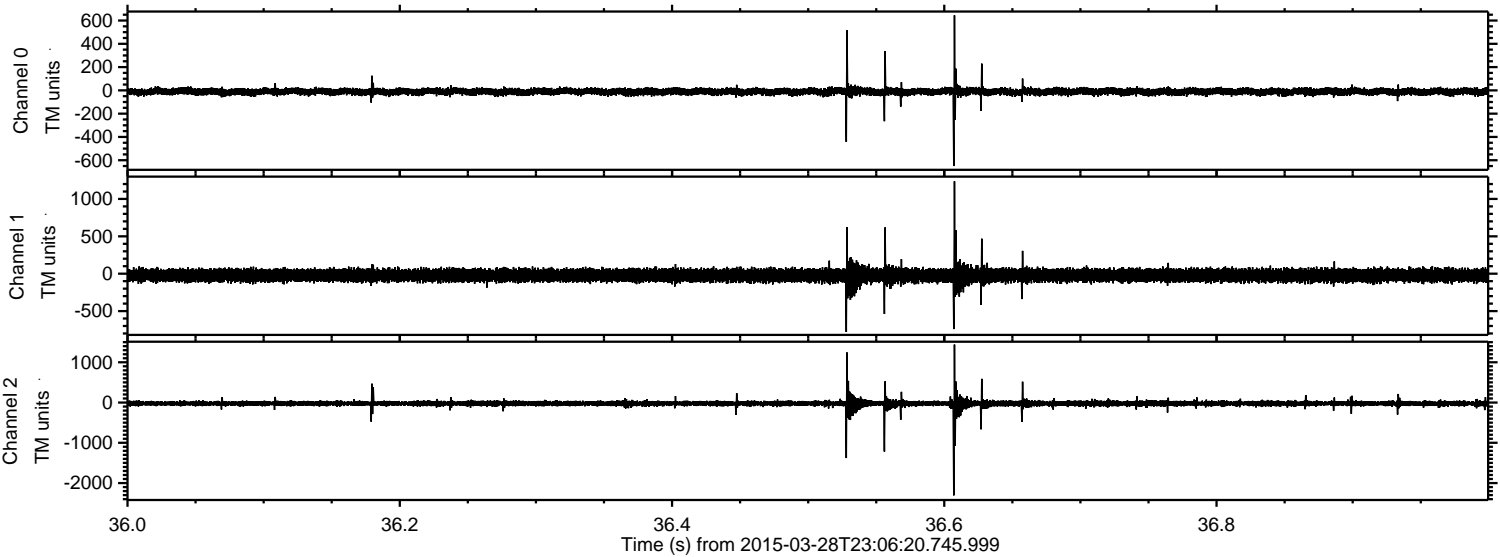
Processed Sun Mar 29 00:13:37 2015 by ELM ver.2012-10-06 from 001__elm20150328_230619__dat00.bin



Processed Sun Mar 29 00:13:38 2015 by ELM ver.2012-10-06 from 001__elm20150328_230619__dat00.bin



Processed Sun Mar 29 00:13:39 2015 by ELM ver.2012-10-06 from 001__elm20150328_230619__dat00.bin

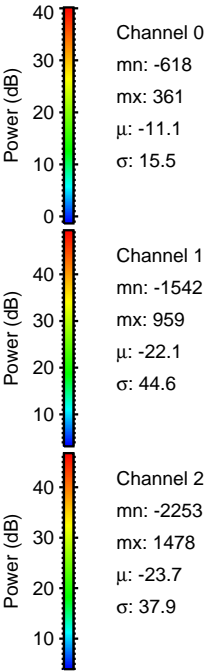
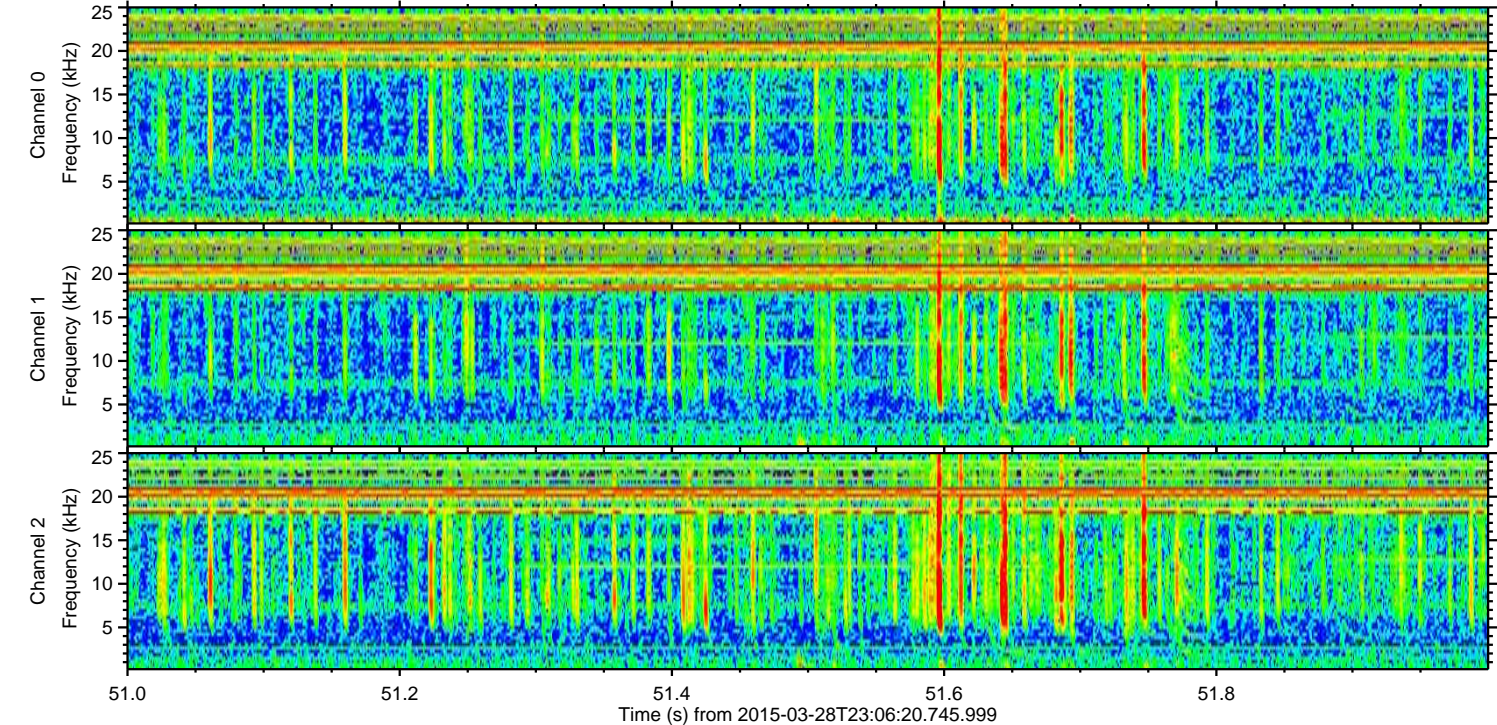
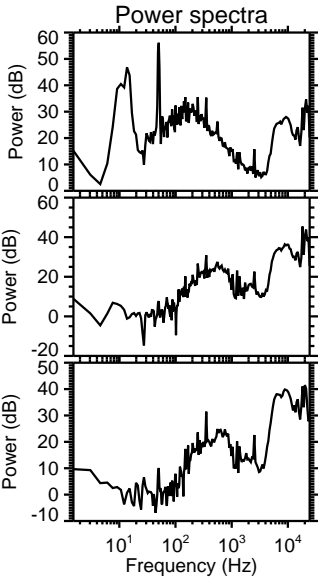
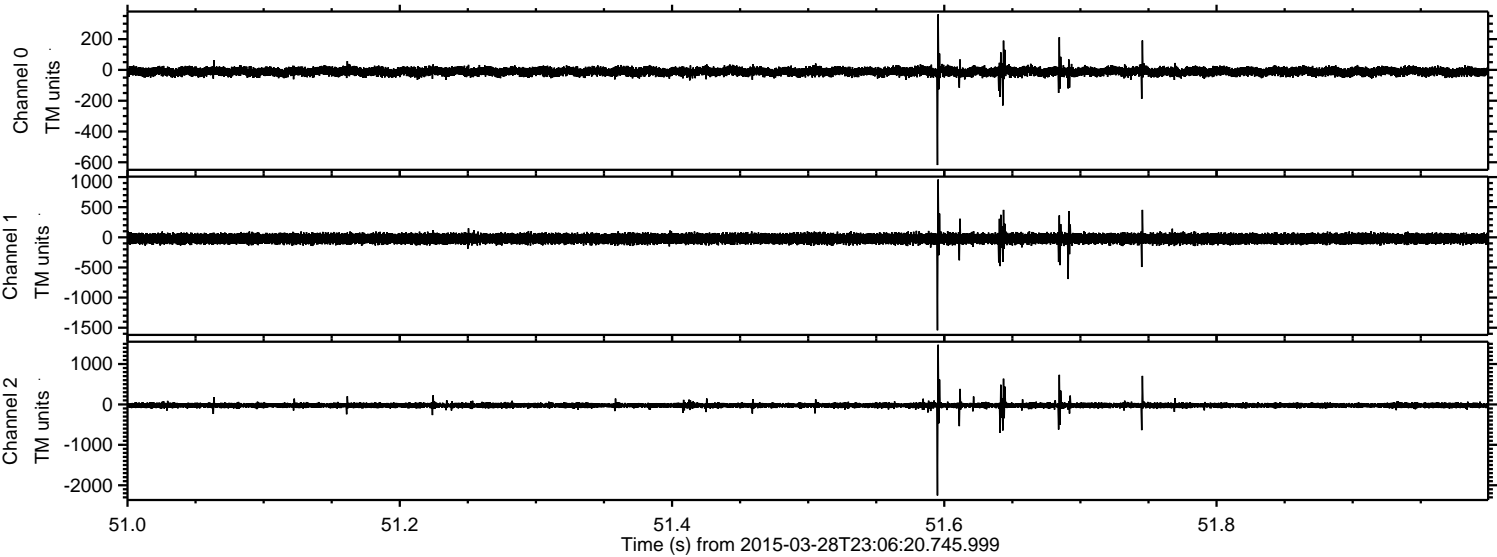


Channel 0
mn: -650
mx: 645
 μ : -11.0
 σ : 16.0

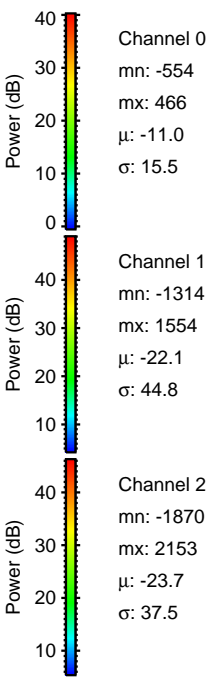
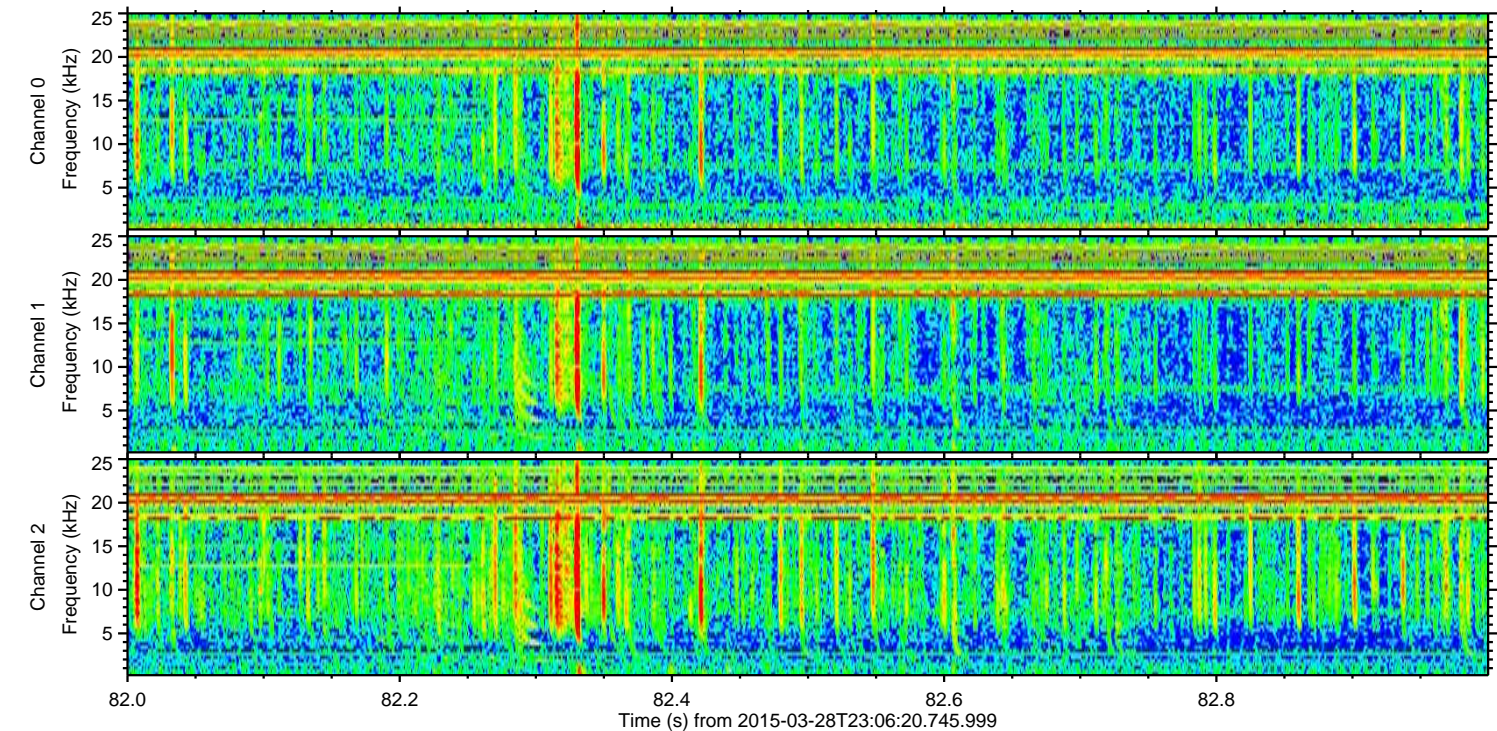
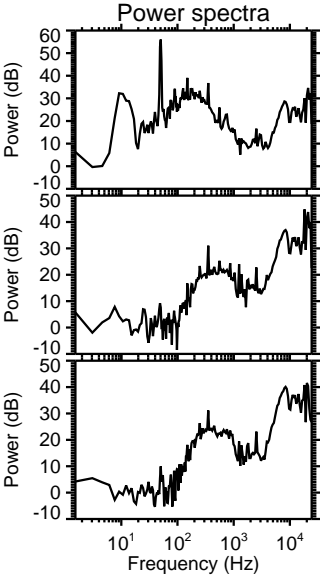
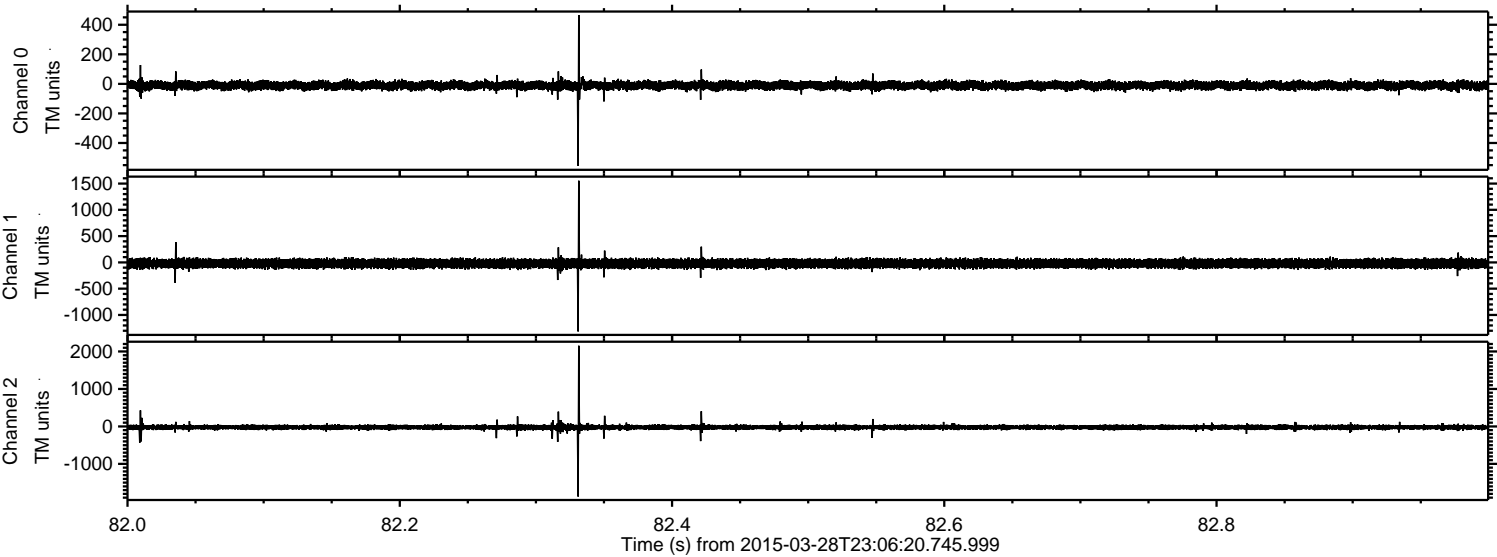
Channel 1
mn: -780
mx: 1237
 μ : -22.1
 σ : 45.0

Channel 2
mn: -2306
mx: 1439
 μ : -23.7
 σ : 40.0

Processed Sun Mar 29 00:13:40 2015 by ELM ver.2012-10-06 from 001__elm20150328_230619__dat00.bin



Processed Sun Mar 29 00:13:41 2015 by ELM ver.2012-10-06 from 001__elm20150328_230619__dat00.bin



Processed Sun Mar 29 00:13:42 2015 by ELM ver.2012-10-06 from 001__elm20150328_230619__dat00.bin

