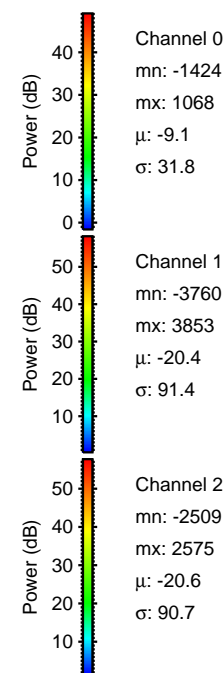
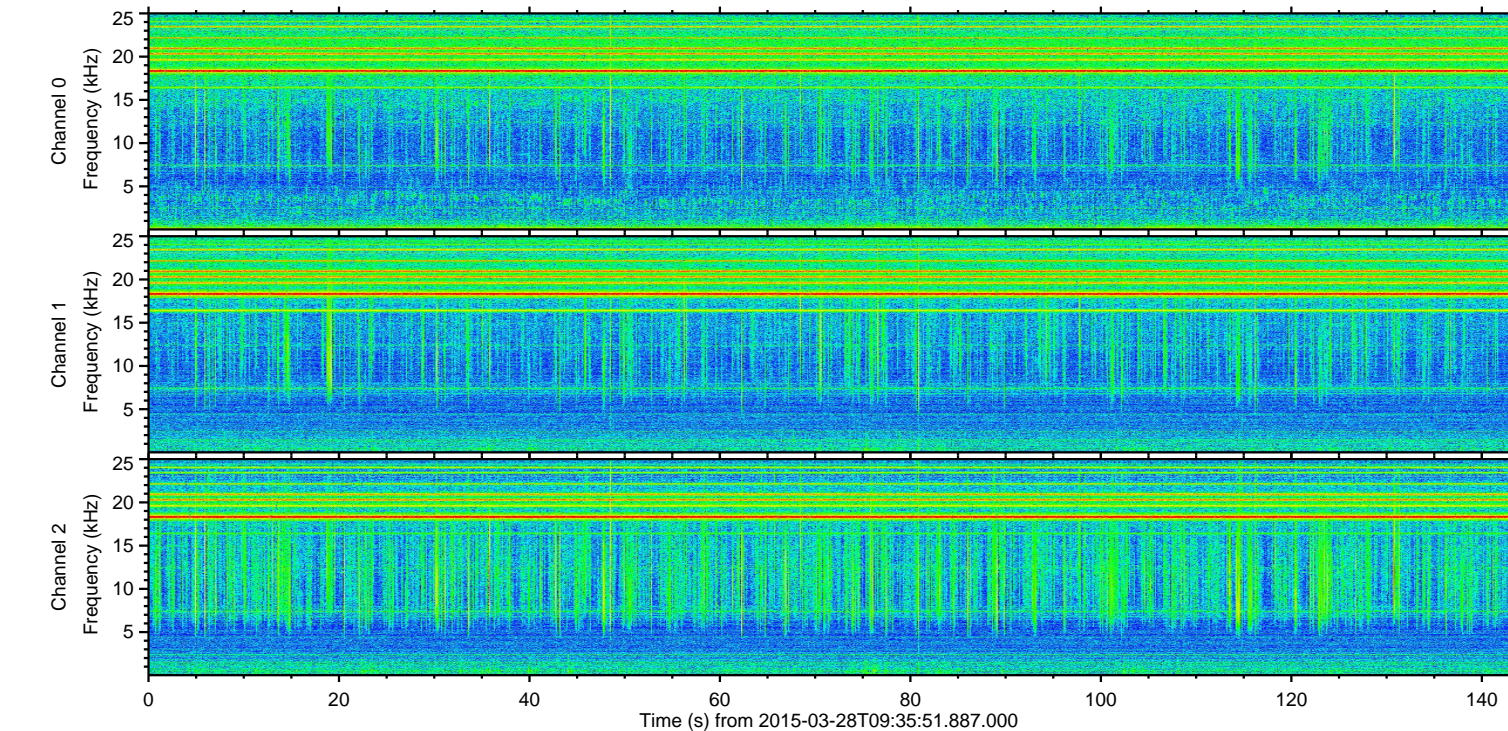
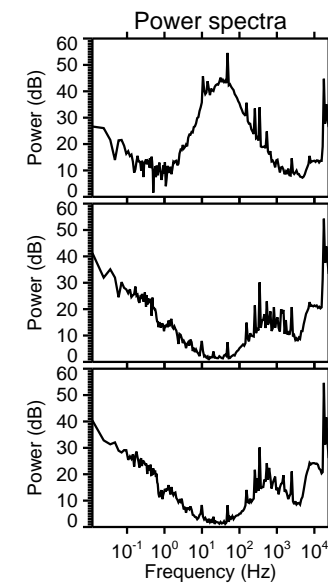
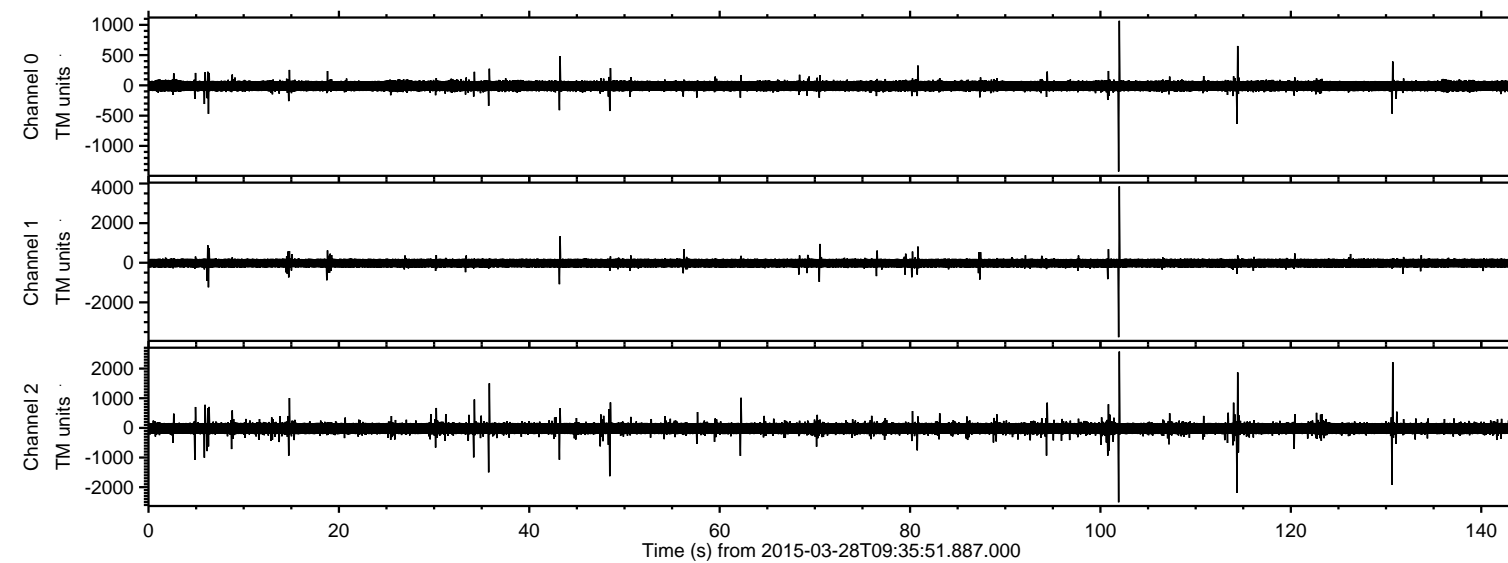


ELMAVAN 3D WAVEFORMS (Measured data sampled at 50 kHz) 49629 packets of 144 samples from 2015-03-28T09:35:51.887.000.

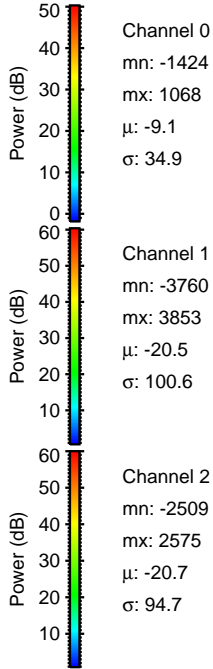
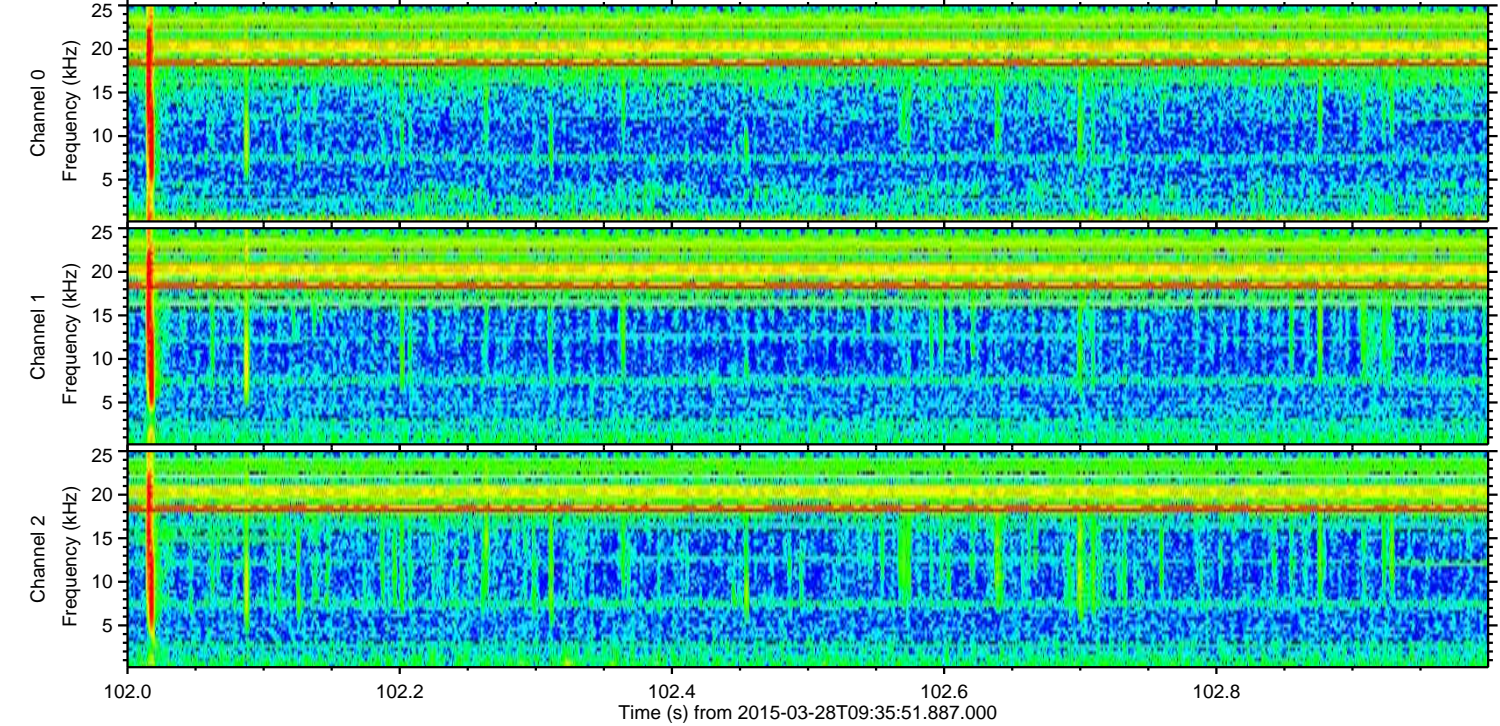
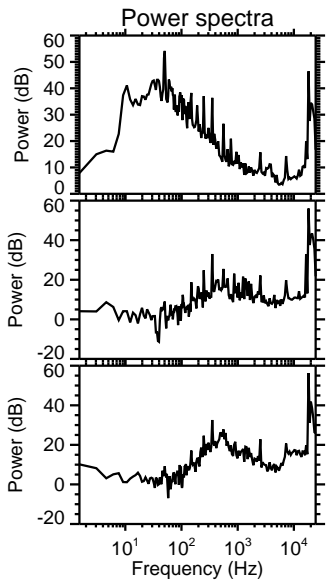
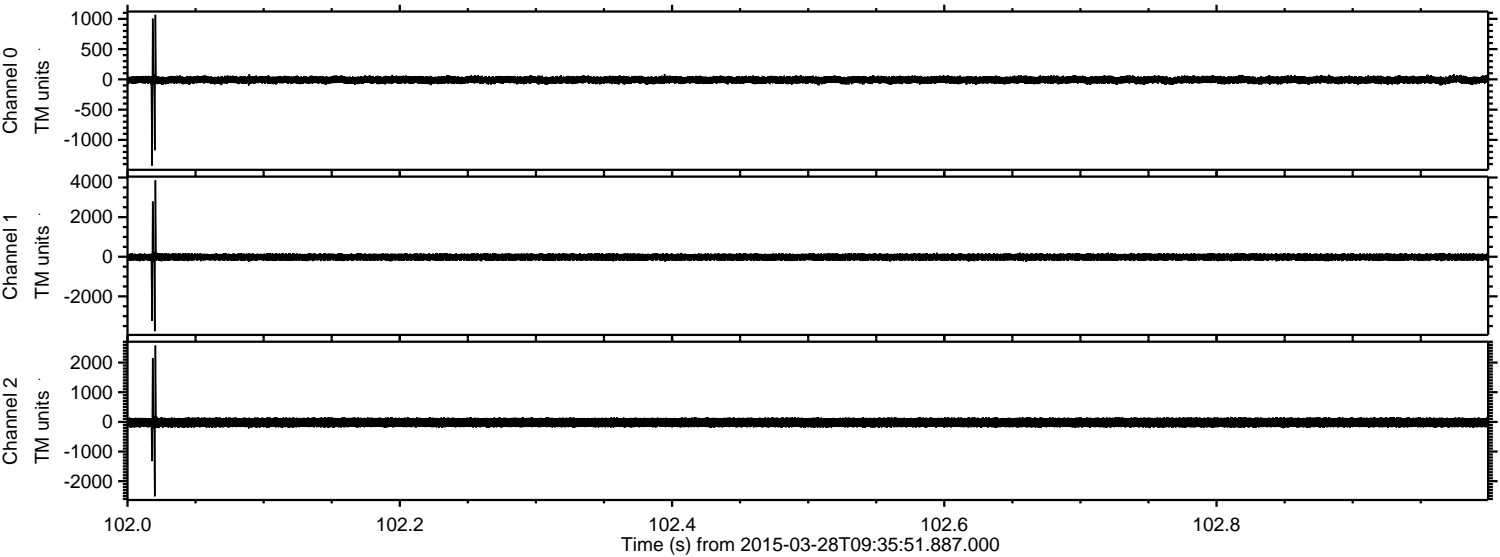
Processed Sat Mar 28 10:43:52 2015 by ELM ver.2012-10-06 from 001\_\_elm20150328\_093550\_\_dat00.bin





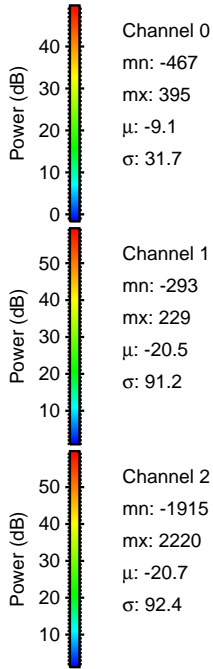
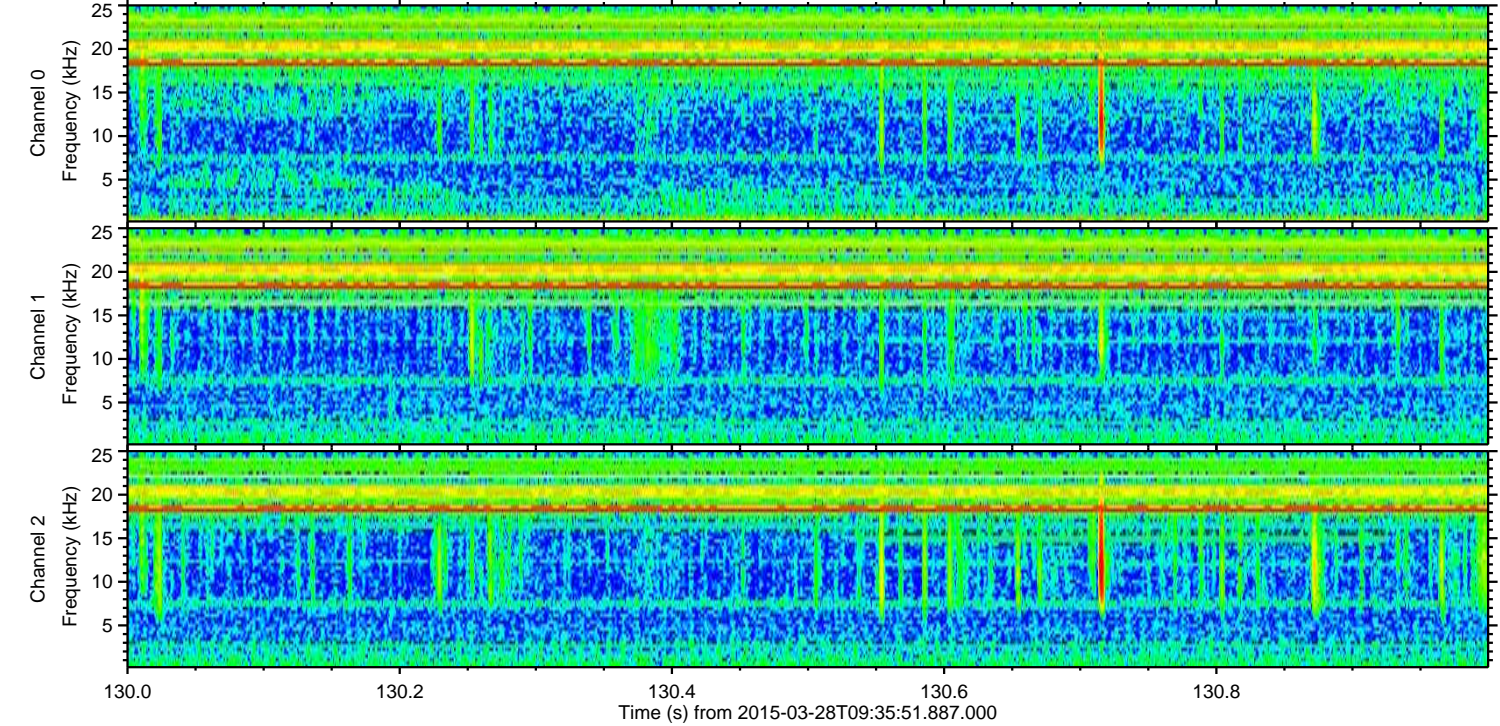
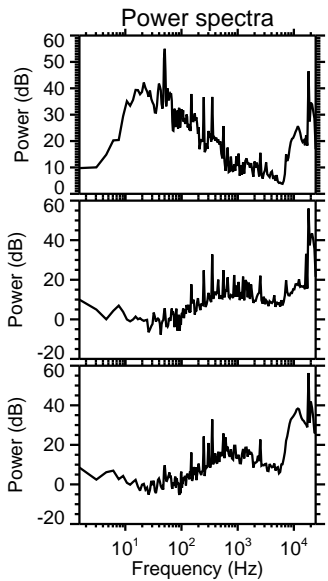
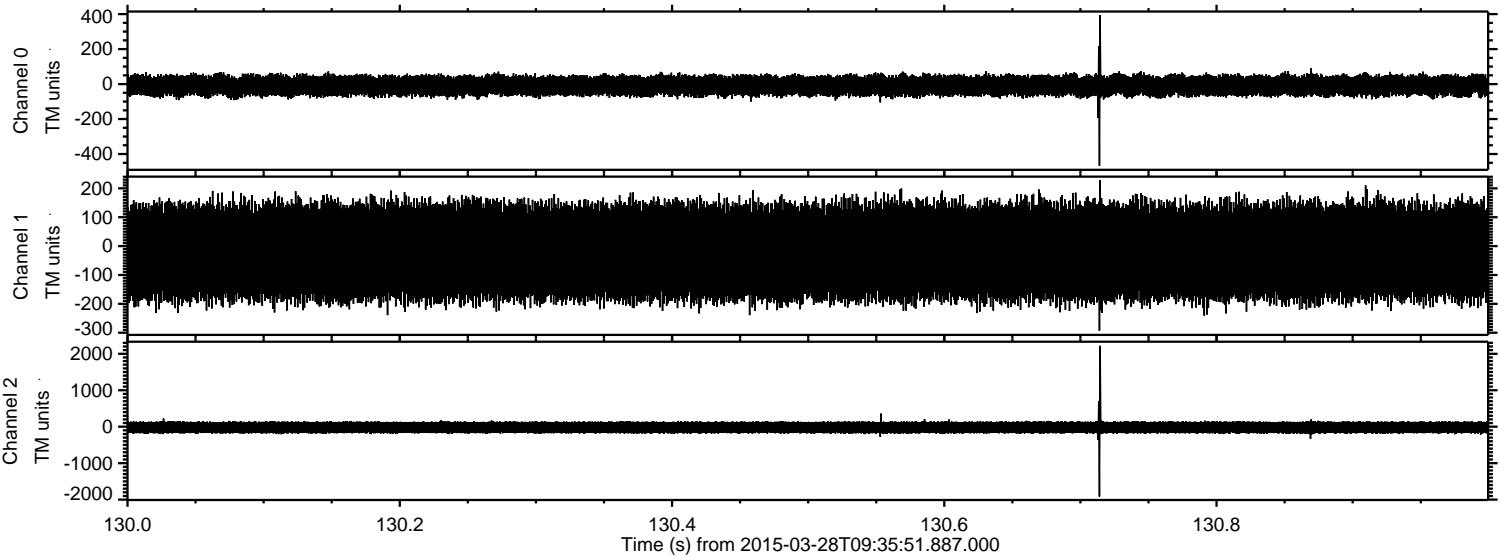
ELMAVAN 3D WAVEFORMS (Measured data sampled at 50 kHz) 49629 packets of 144 samples from 2015-03-28T09:35:51.887.000. Part 103/143

Processed Sat Mar 28 10:44:07 2015 by ELM ver.2012-10-06 from 001\_\_elm20150328\_093550\_\_dat00.bin



ELMAVAN 3D WAVEFORMS (Measured data sampled at 50 kHz) 49629 packets of 144 samples from 2015-03-28T09:35:51.887.000. Part 131/143

Processed Sat Mar 28 10:44:08 2015 by ELM ver.2012-10-06 from 001\_\_elm20150328\_093550\_\_dat00.bin



Channel 0  
mn: -467  
mx: 395  
 $\mu$ : -9.1  
 $\sigma$ : 31.7

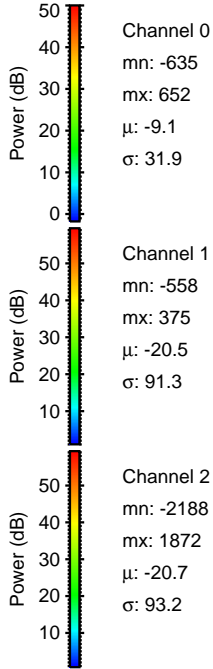
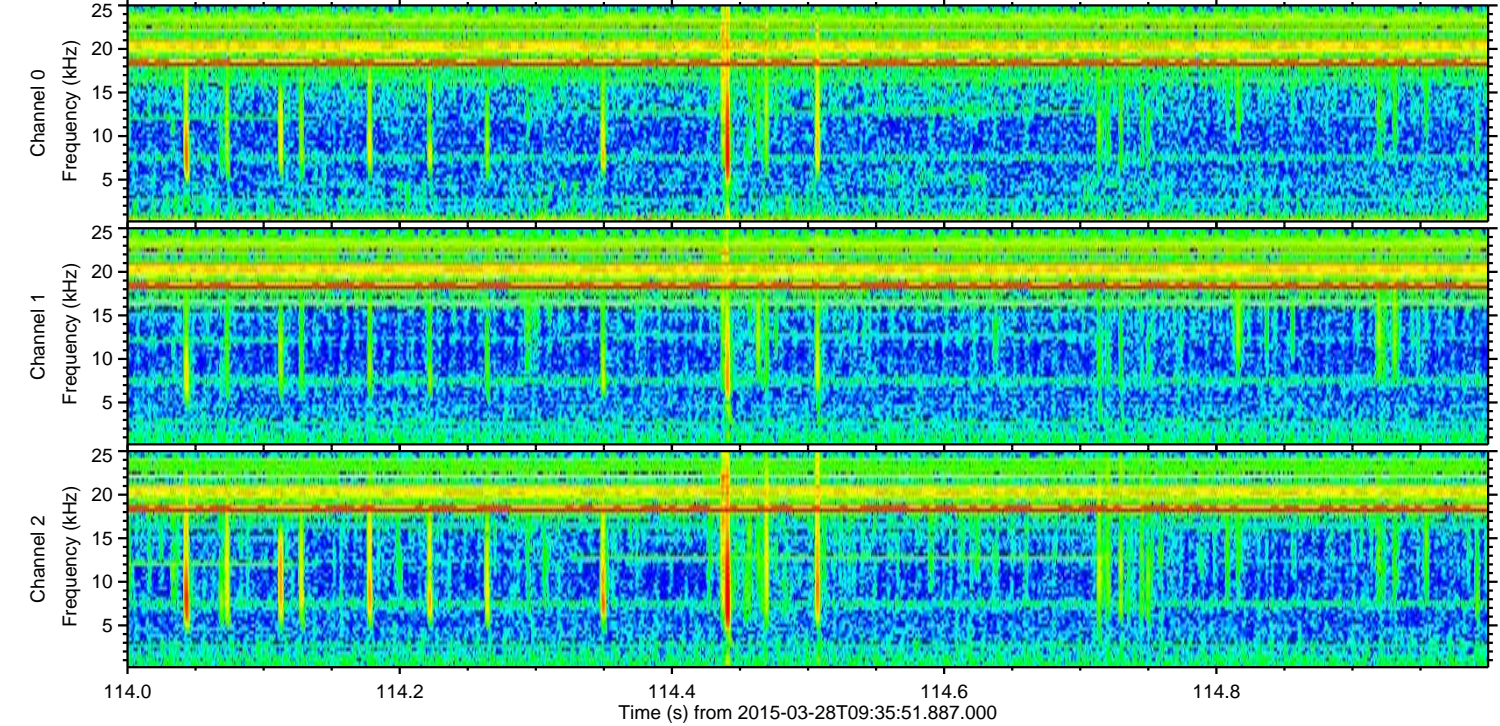
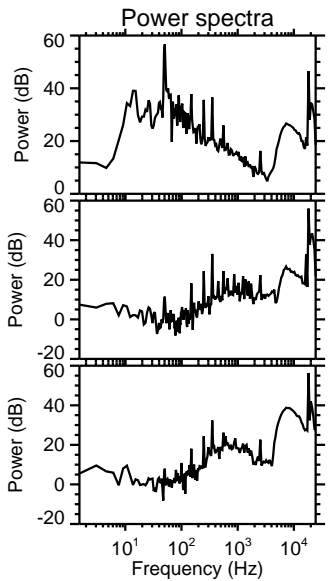
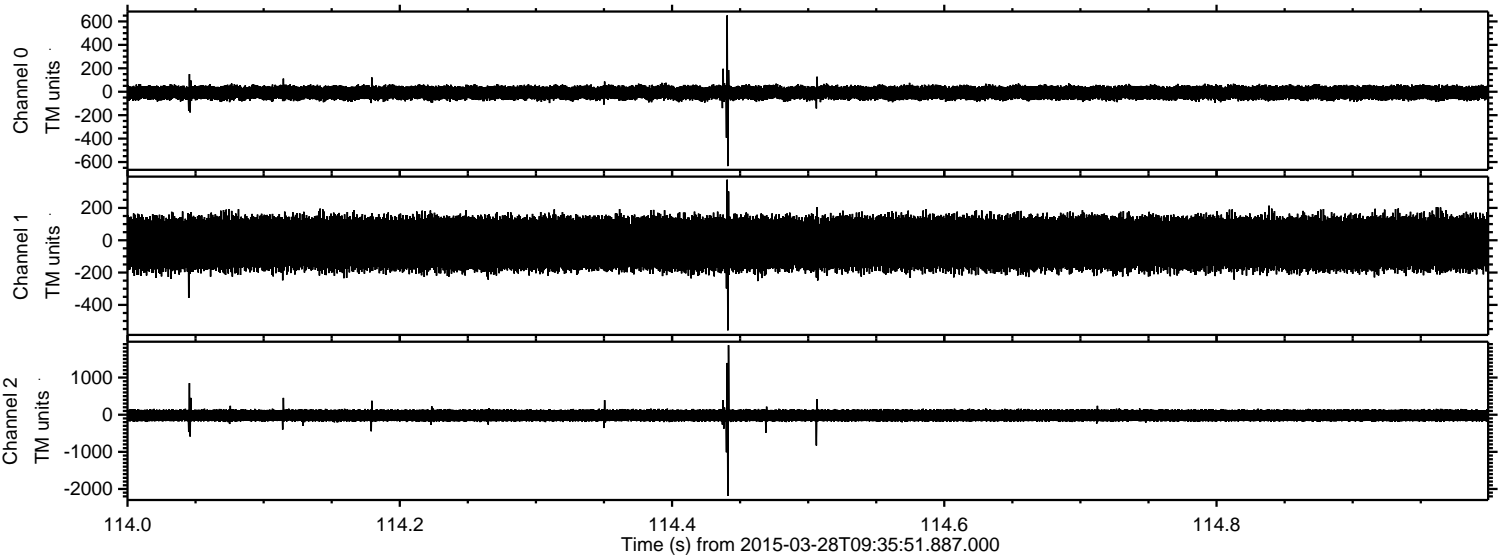
Channel 1  
mn: -293  
mx: 229  
 $\mu$ : -20.5  
 $\sigma$ : 91.2

Channel 2  
mn: -1915  
mx: 2220  
 $\mu$ : -20.7  
 $\sigma$ : 92.4

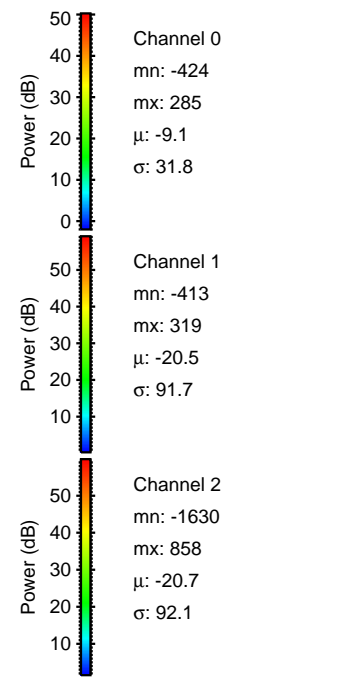
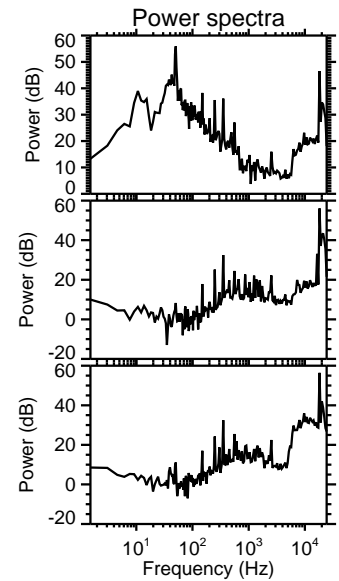
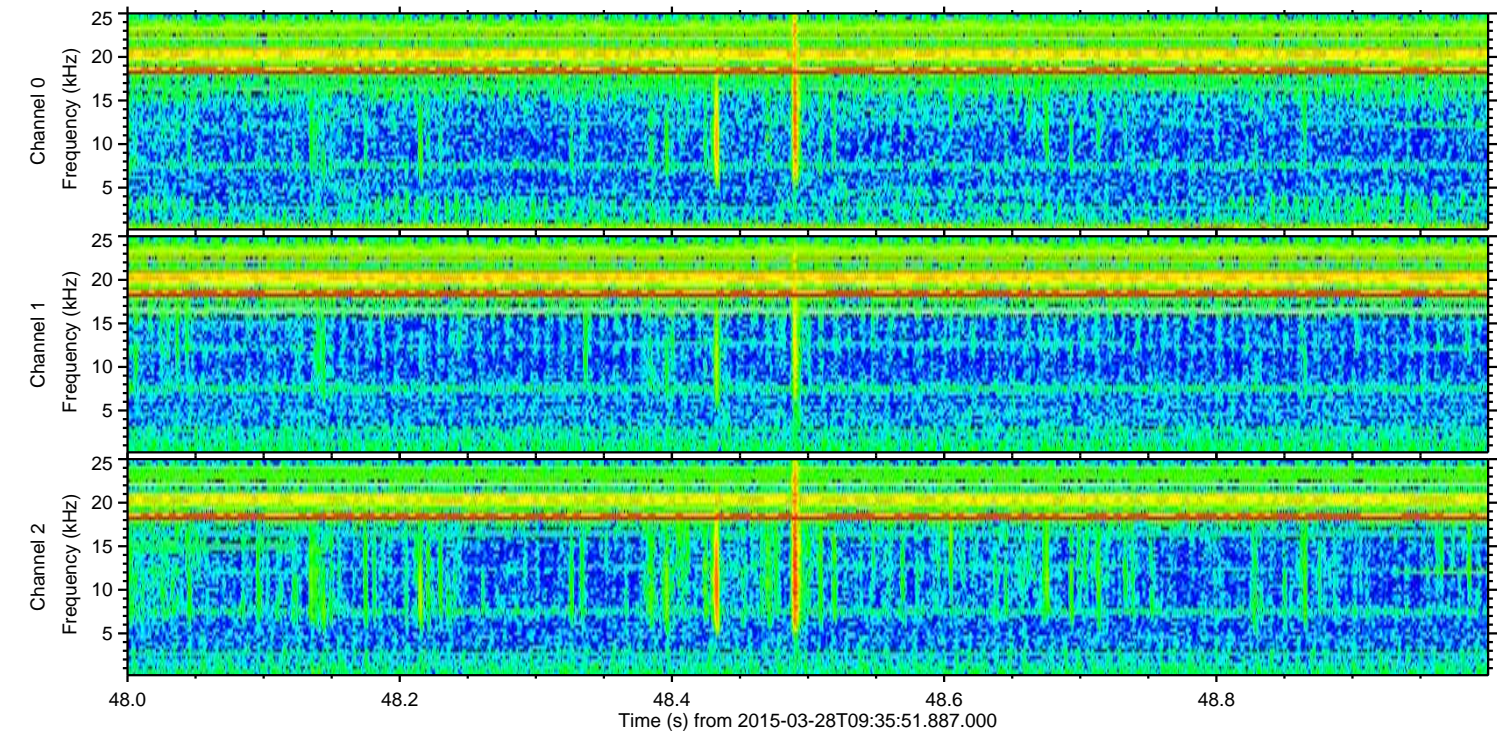
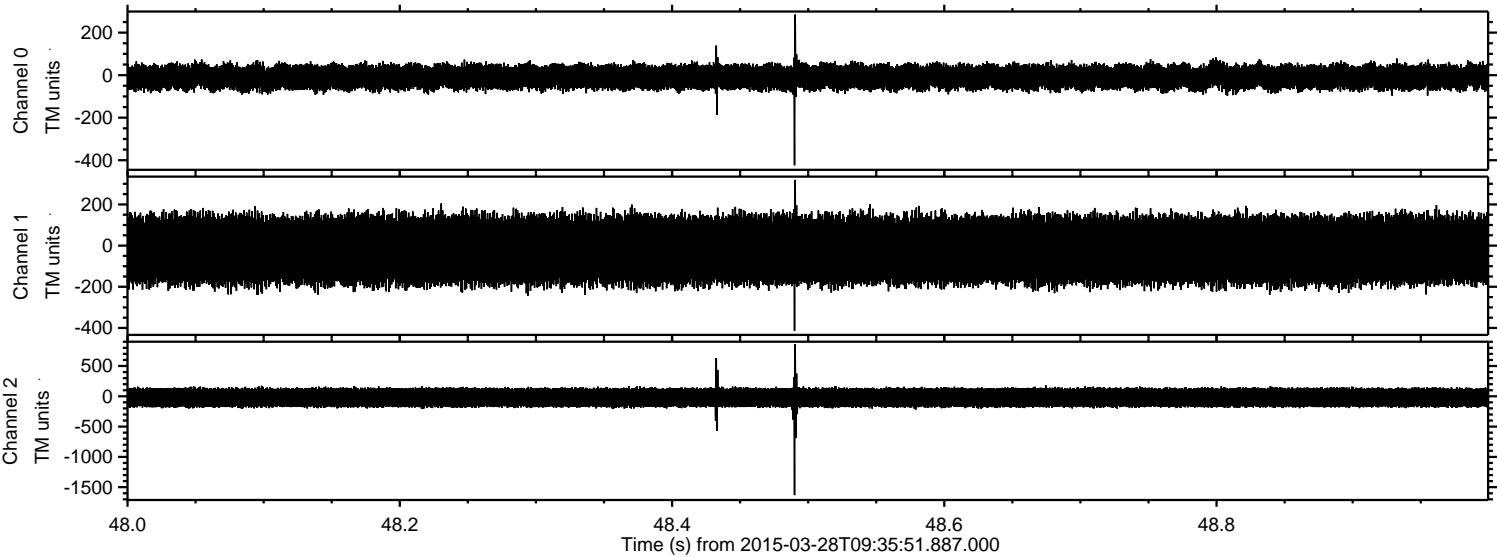


ELMAVAN 3D WAVEFORMS (Measured data sampled at 50 kHz) 49629 packets of 144 samples from 2015-03-28T09:35:51.887.000. Part 115/143

Processed Sat Mar 28 10:44:09 2015 by ELM ver.2012-10-06 from 001\_\_elm20150328\_093550\_\_dat00.bin



Processed Sat Mar 28 10:44:11 2015 by ELM ver.2012-10-06 from 001\_\_elm20150328\_093550\_\_dat00.bin



Power spectra

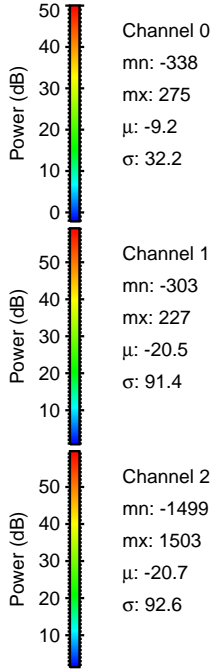
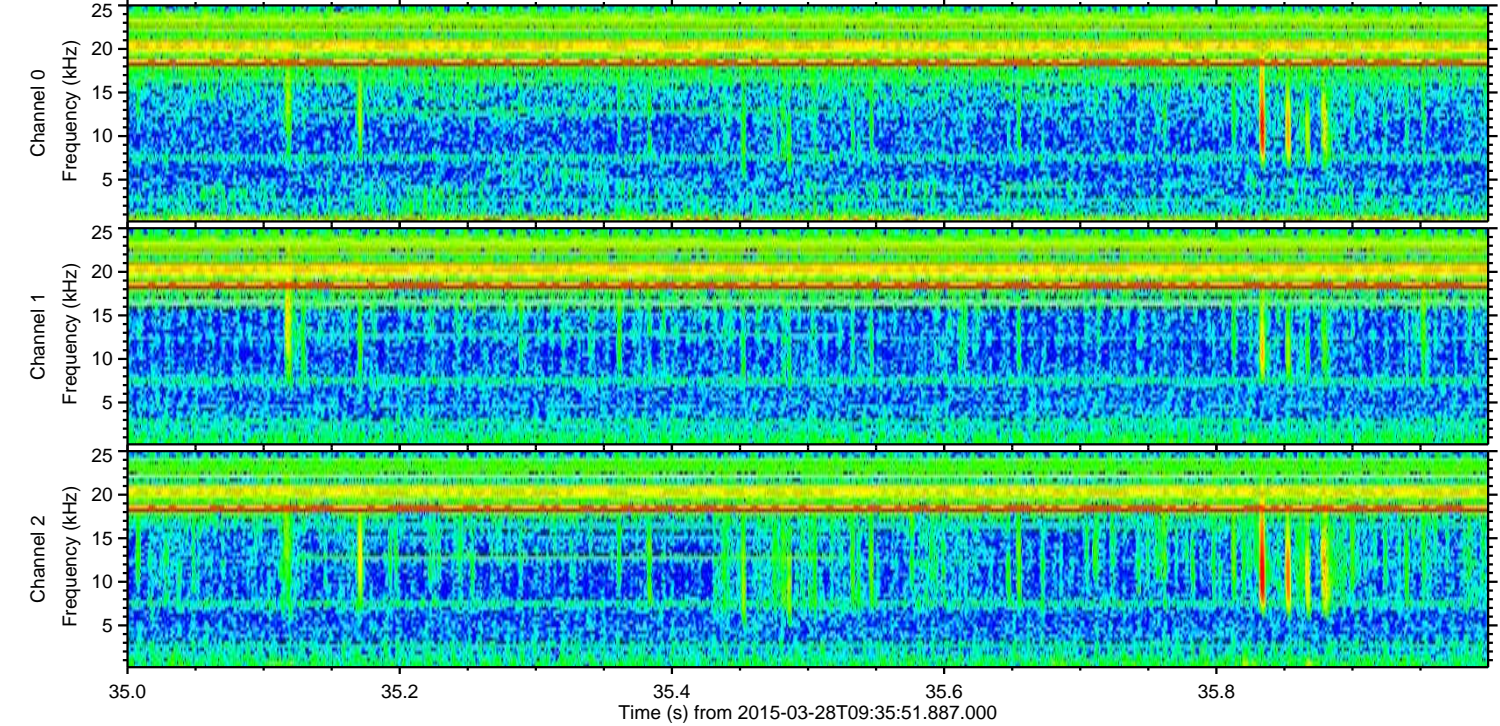
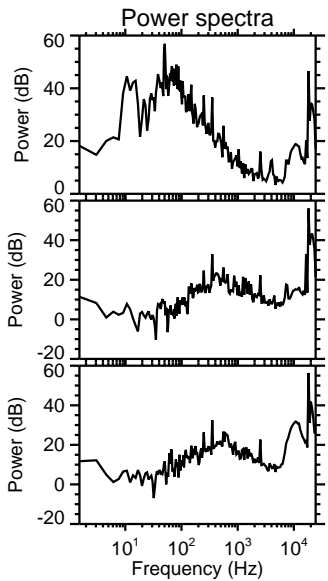
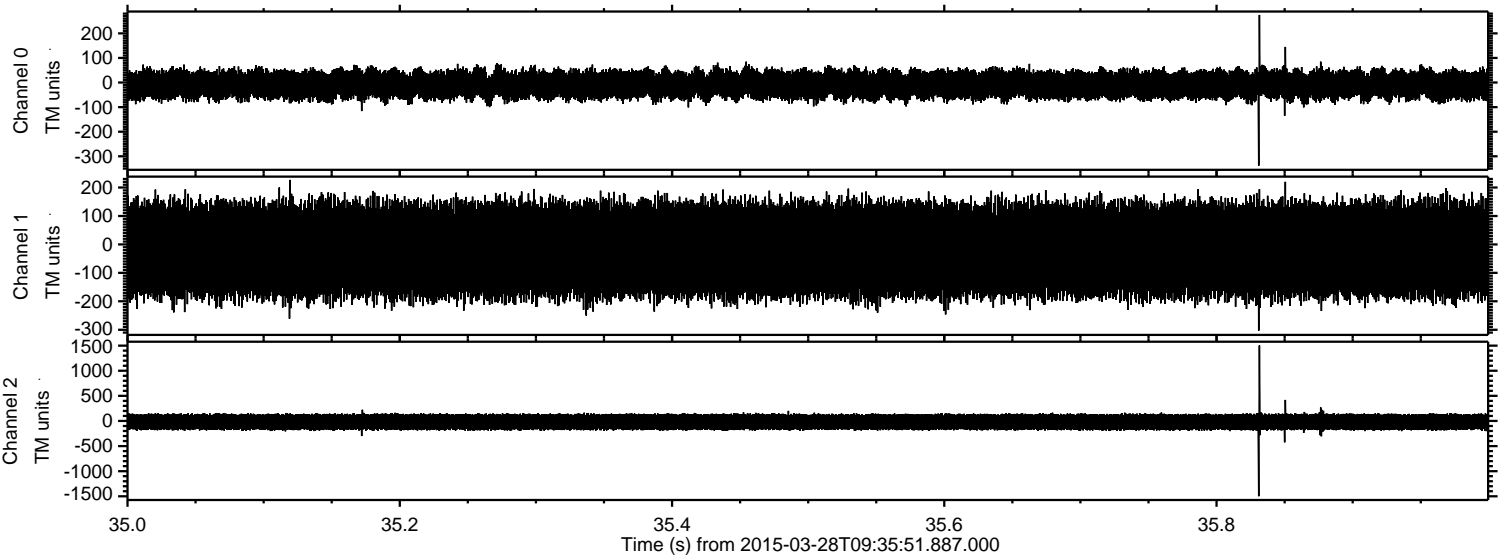
Channel 0  
mn: -424  
mx: 285  
 $\mu$ : -9.1  
 $\sigma$ : 31.8

Channel 1  
mn: -413  
mx: 319  
 $\mu$ : -20.5  
 $\sigma$ : 91.7

Channel 2  
mn: -1630  
mx: 858  
 $\mu$ : -20.7  
 $\sigma$ : 92.1

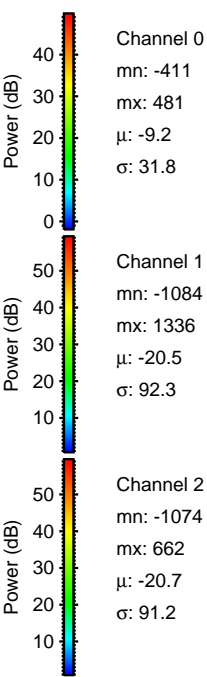
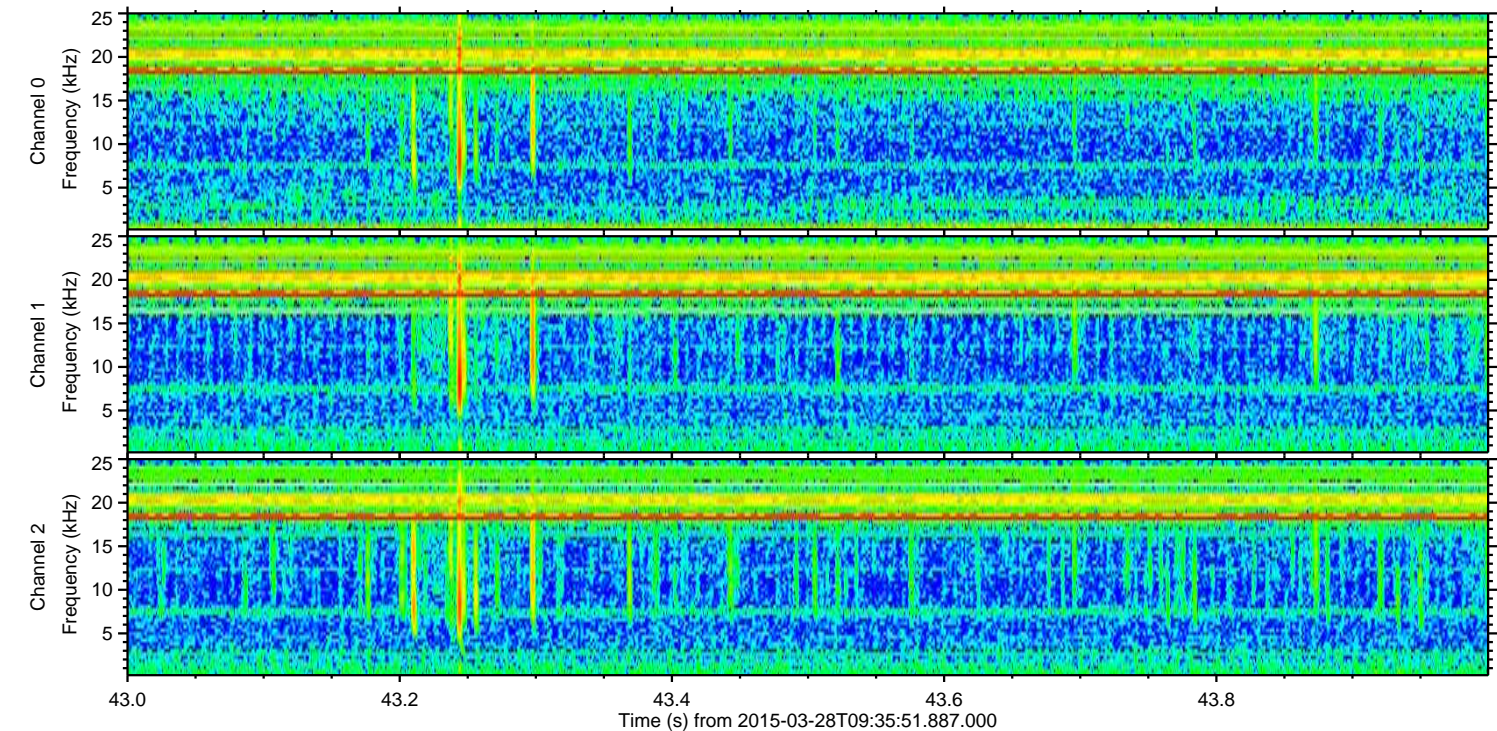
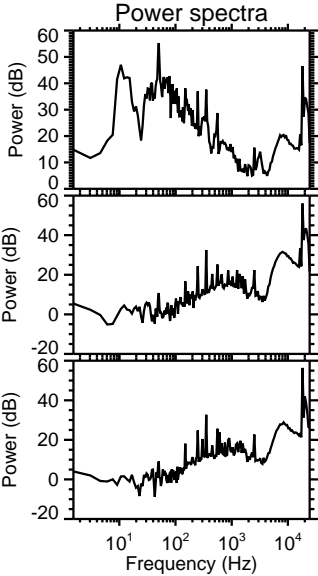
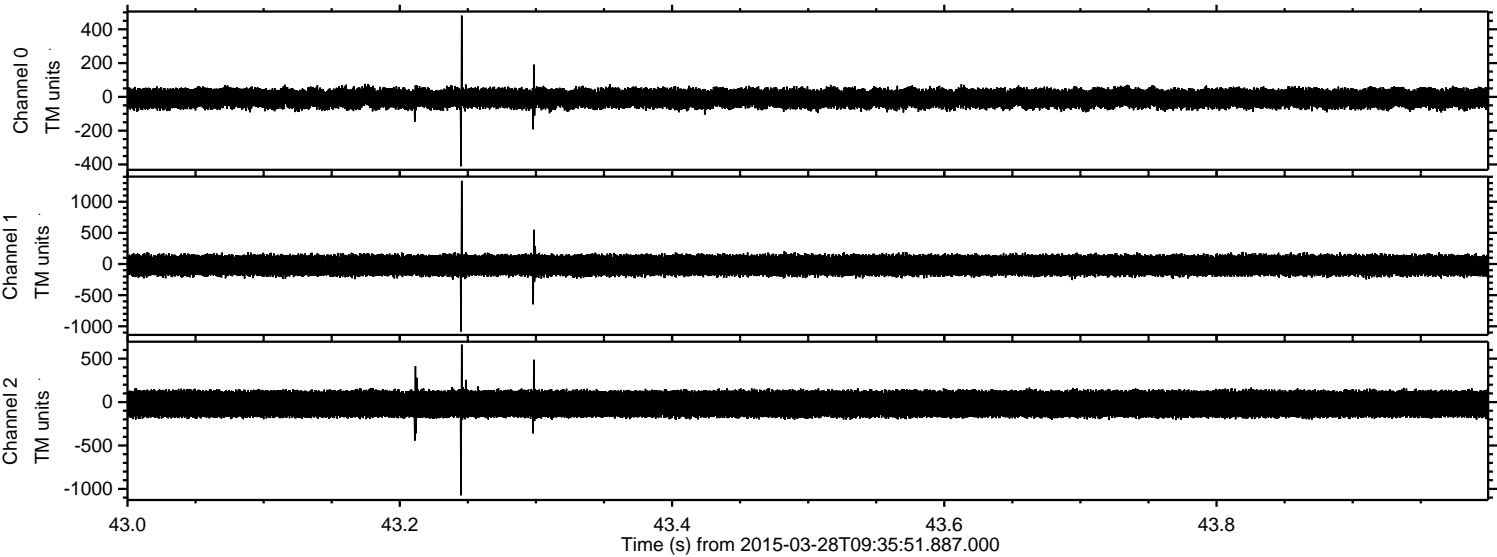


Processed Sat Mar 28 10:44:12 2015 by ELM ver.2012-10-06 from 001\_\_elm20150328\_093550\_\_dat00.bin

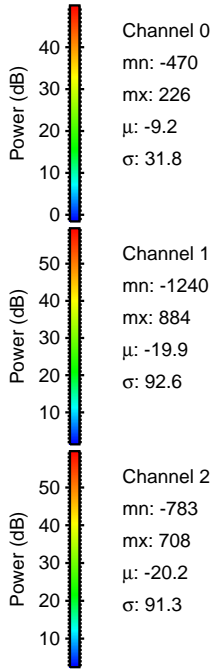
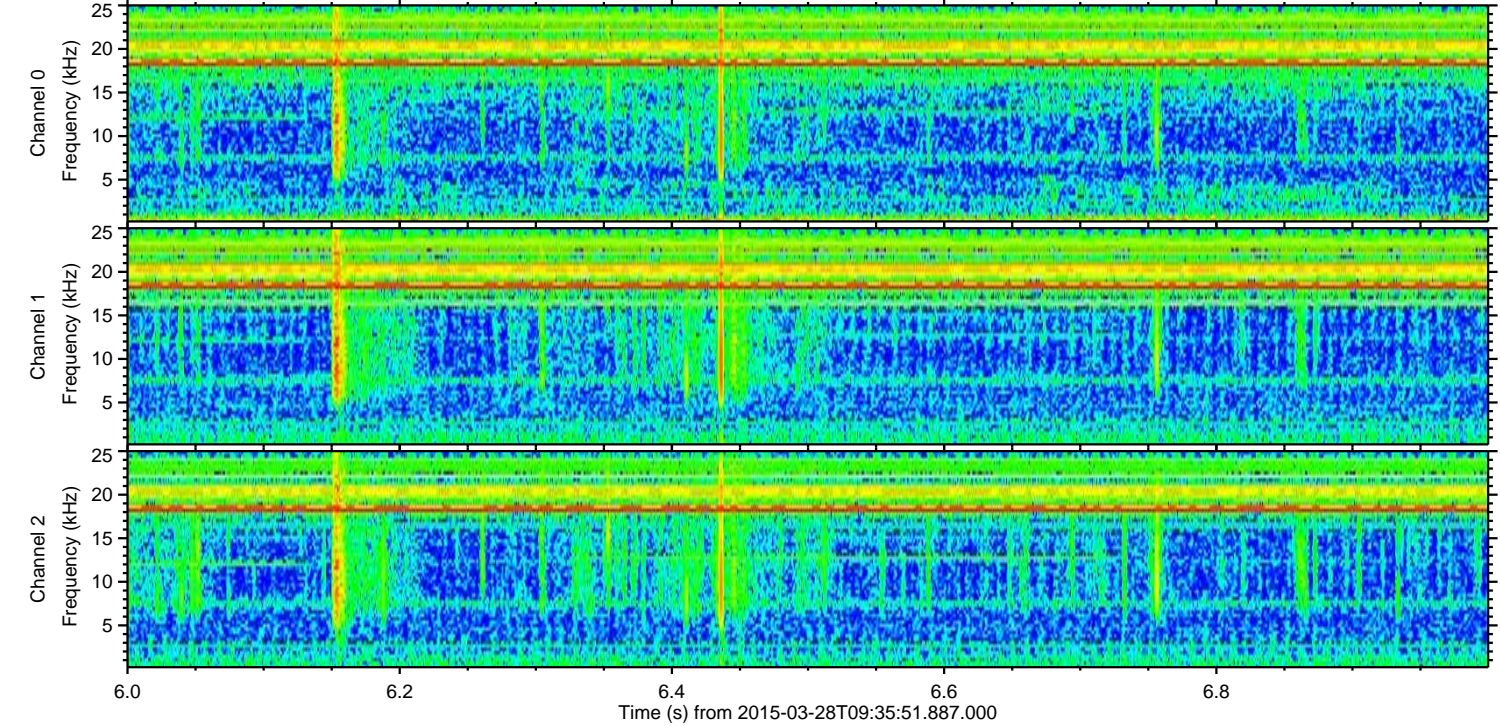
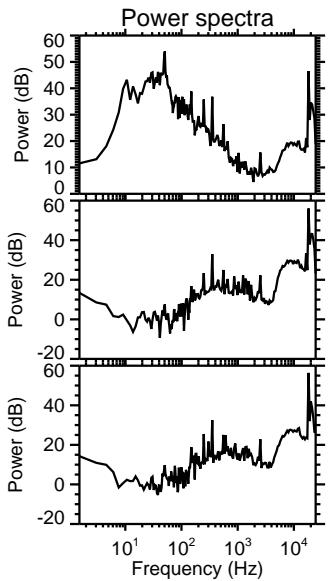
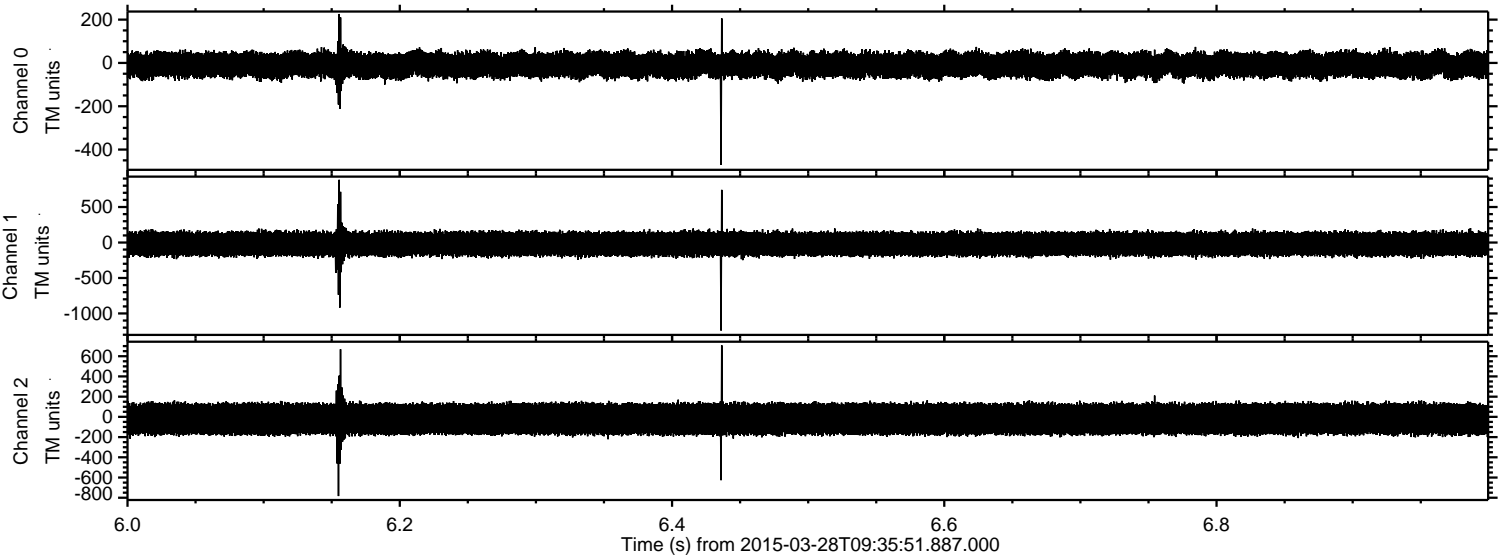




Processed Sat Mar 28 10:44:13 2015 by ELM ver.2012-10-06 from 001\_\_elm20150328\_093550\_\_dat00.bin

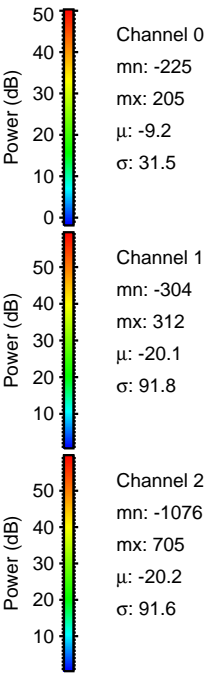
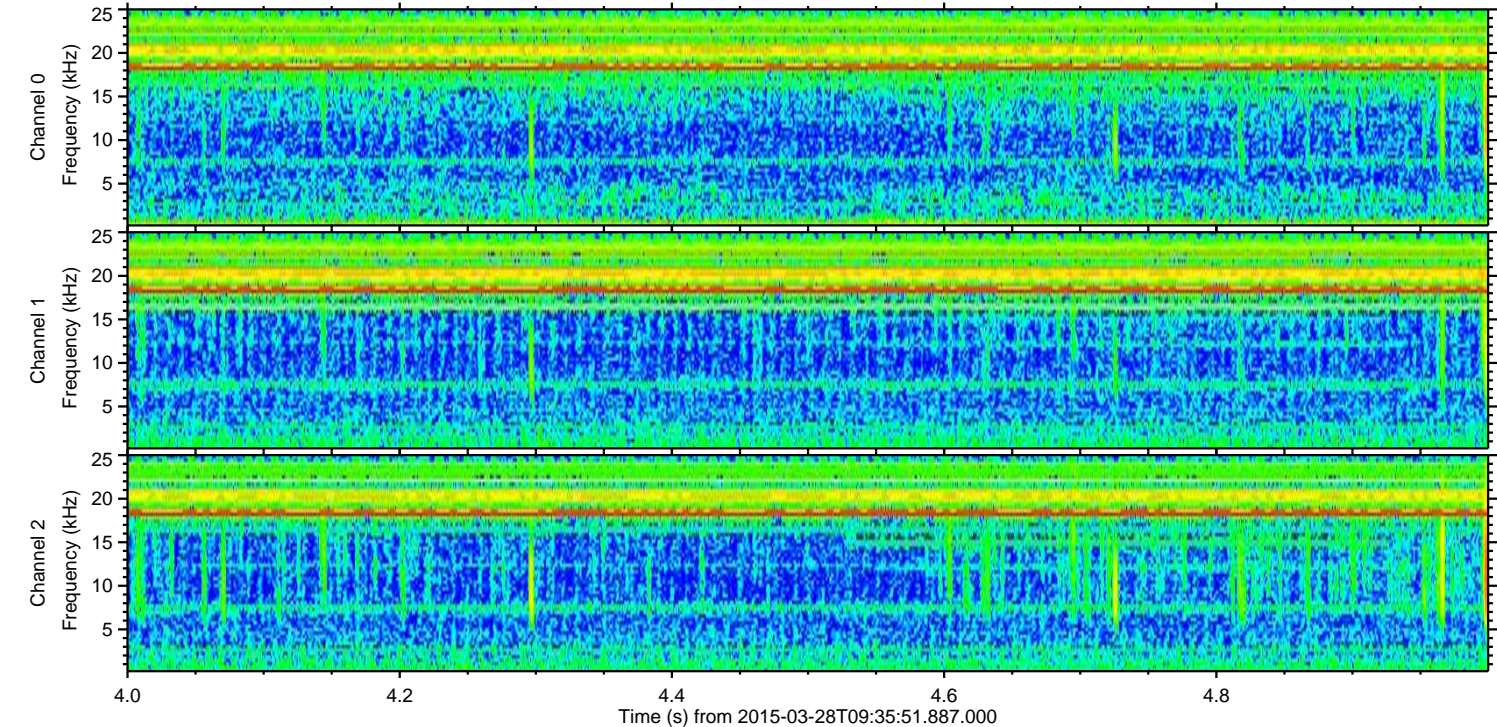
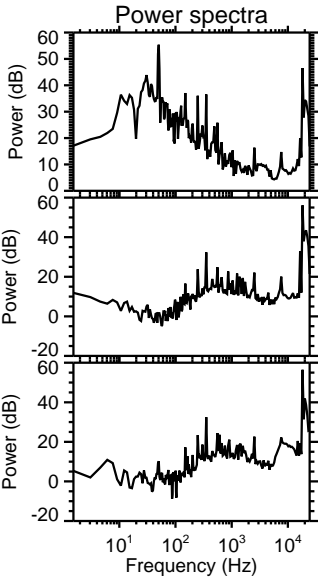
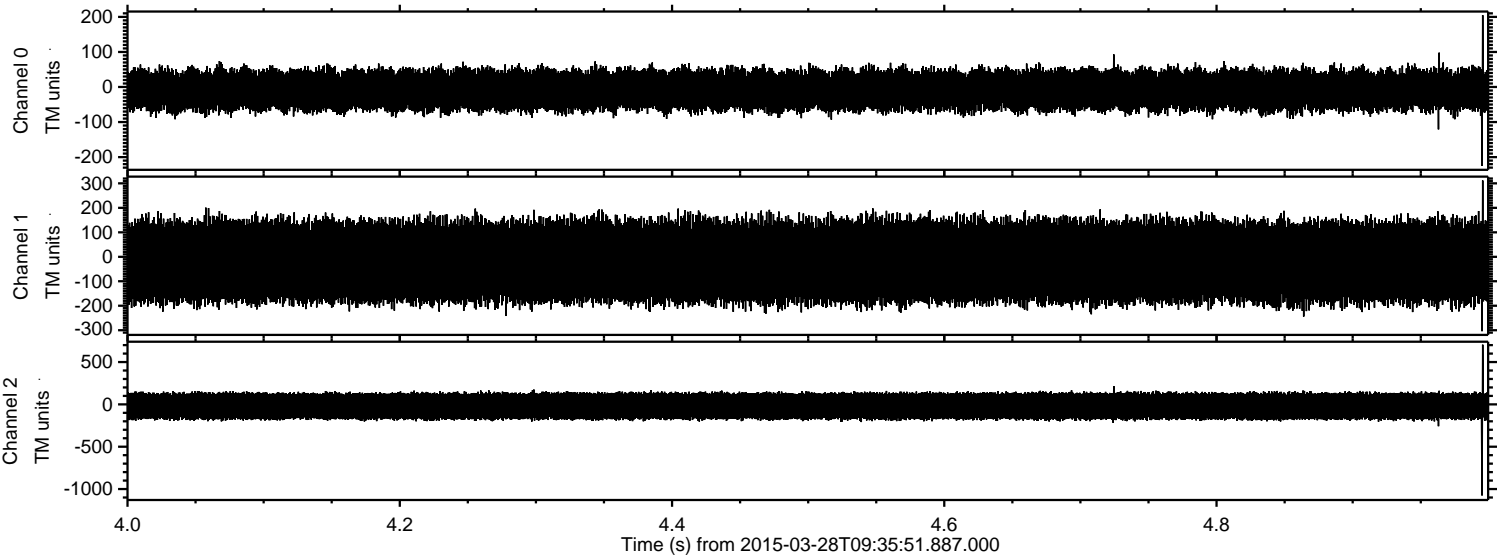


Processed Sat Mar 28 10:44:14 2015 by ELM ver.2012-10-06 from 001\_\_elm20150328\_093550\_\_dat00.bin



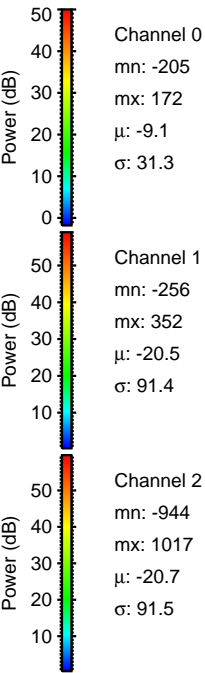
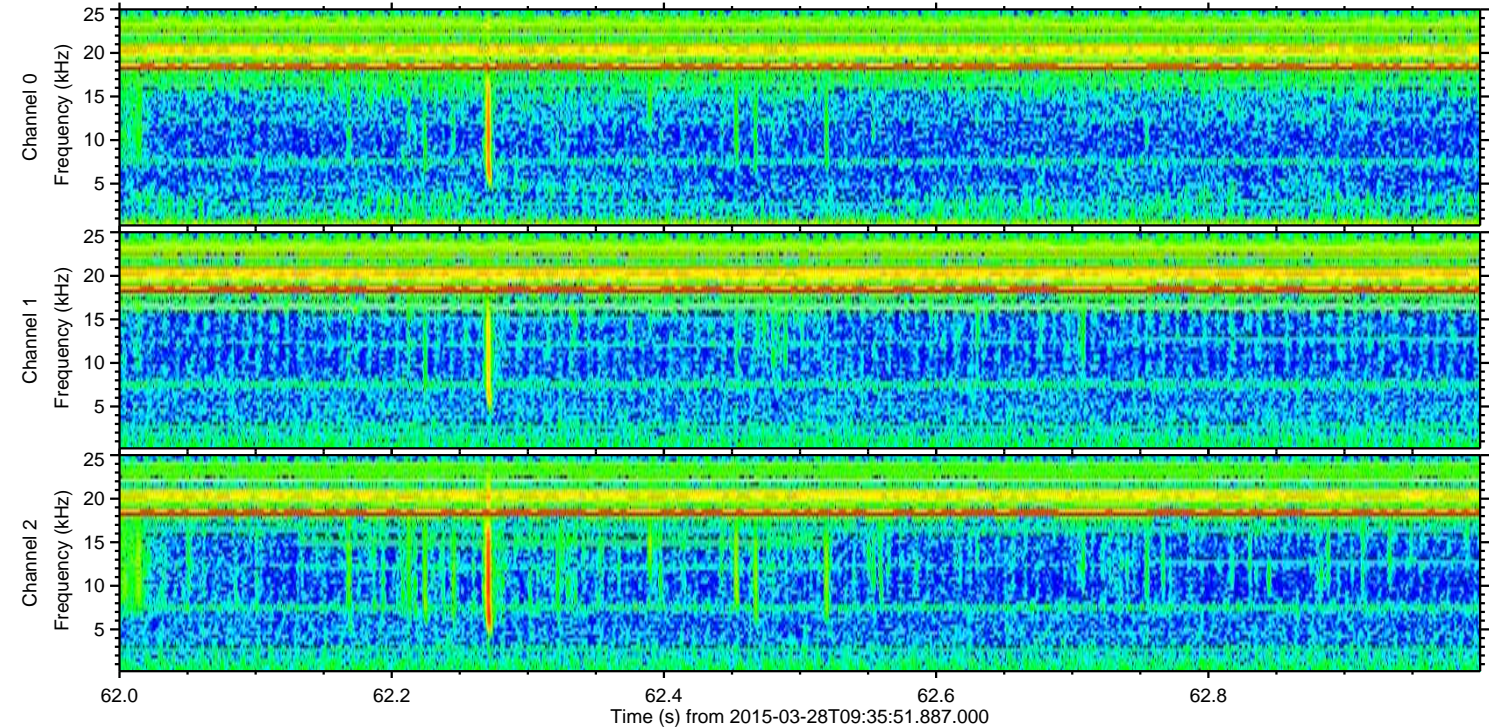
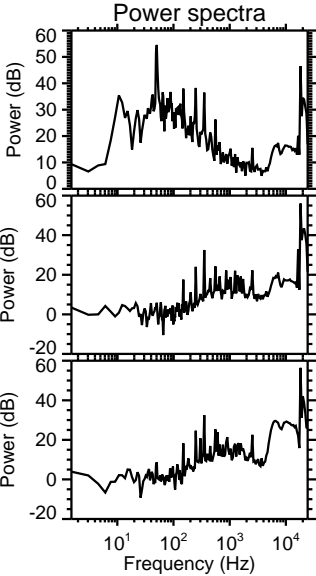
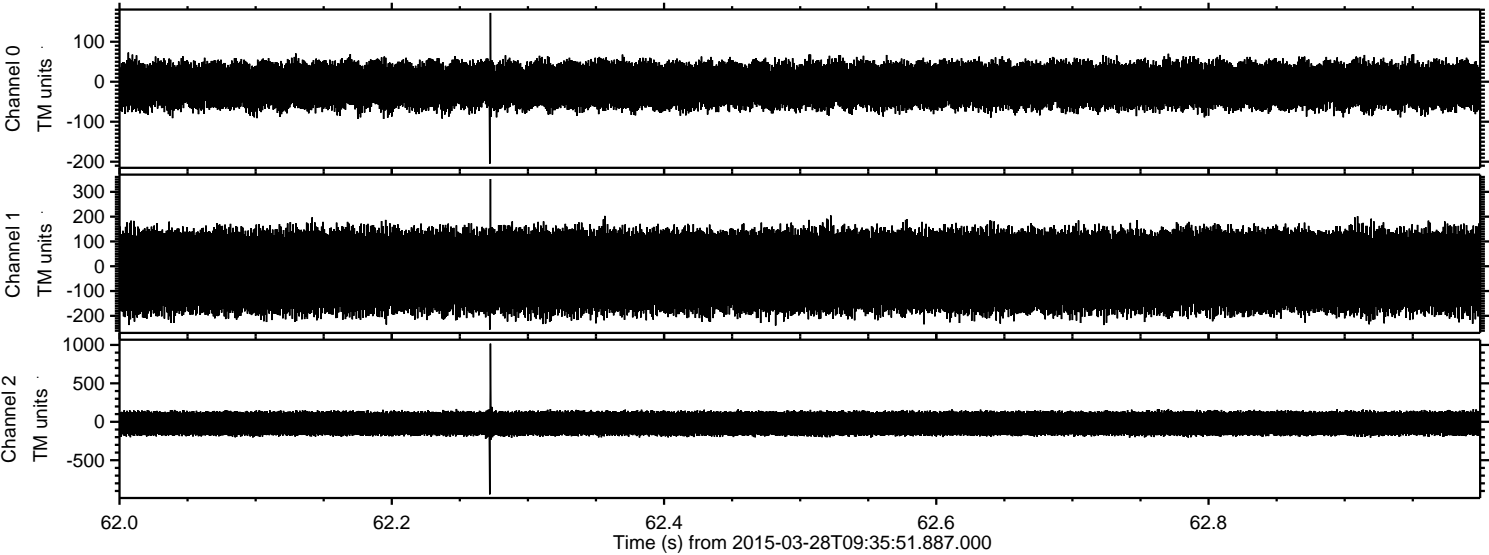


Processed Sat Mar 28 10:44:15 2015 by ELM ver.2012-10-06 from 001\_\_elm20150328\_093550\_\_dat00.bin





Processed Sat Mar 28 10:44:16 2015 by ELM ver.2012-10-06 from 001\_\_elm20150328\_093550\_\_dat00.bin





Processed Sat Mar 28 10:44:17 2015 by ELM ver.2012-10-06 from 001\_\_elm20150328\_093550\_\_dat00.bin

