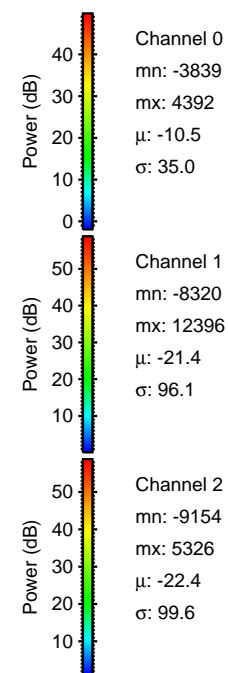
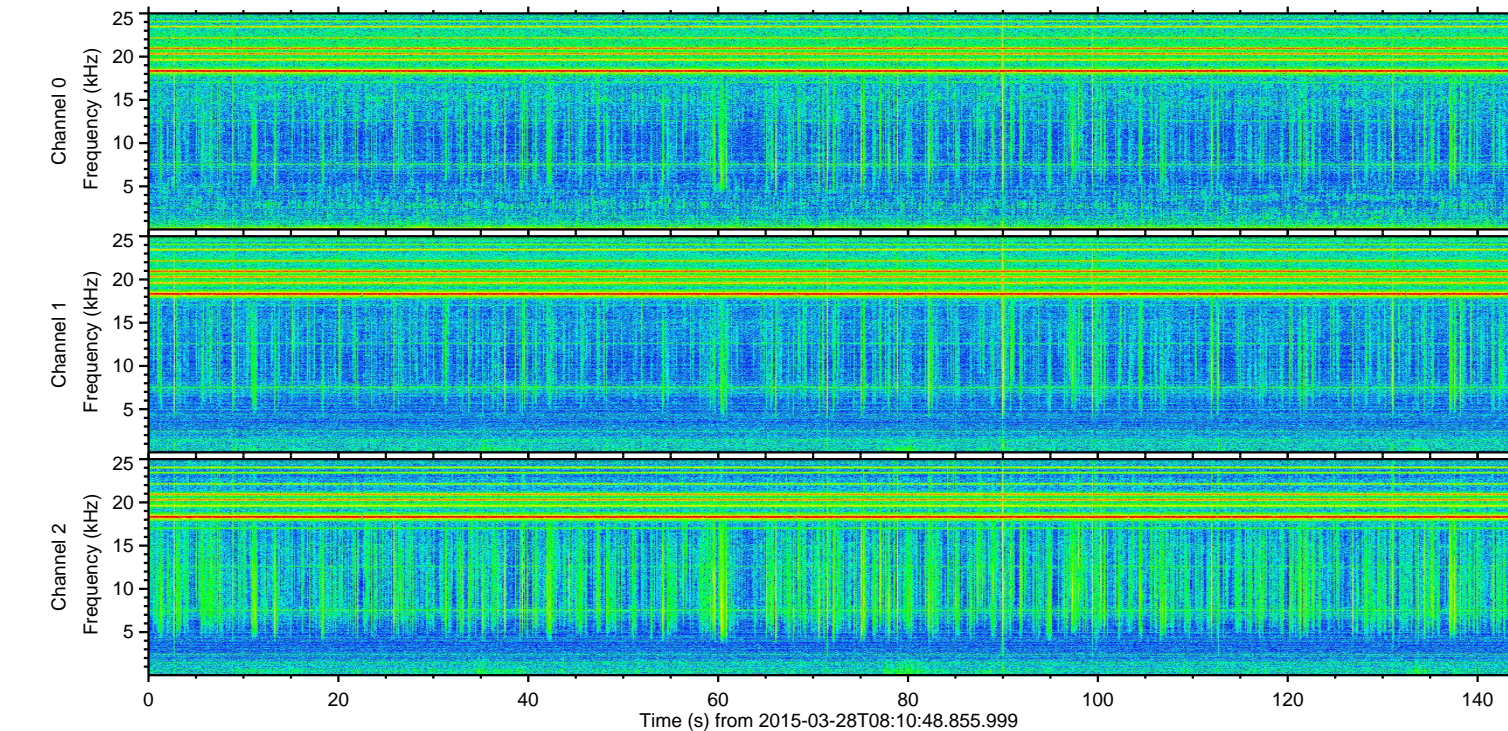
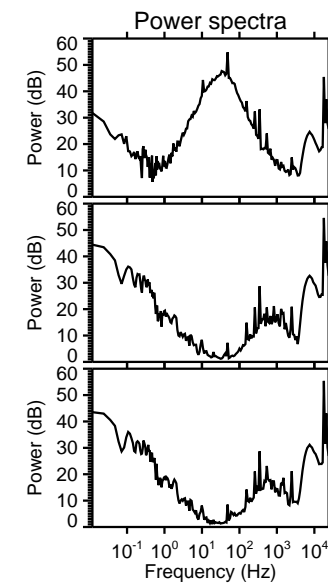
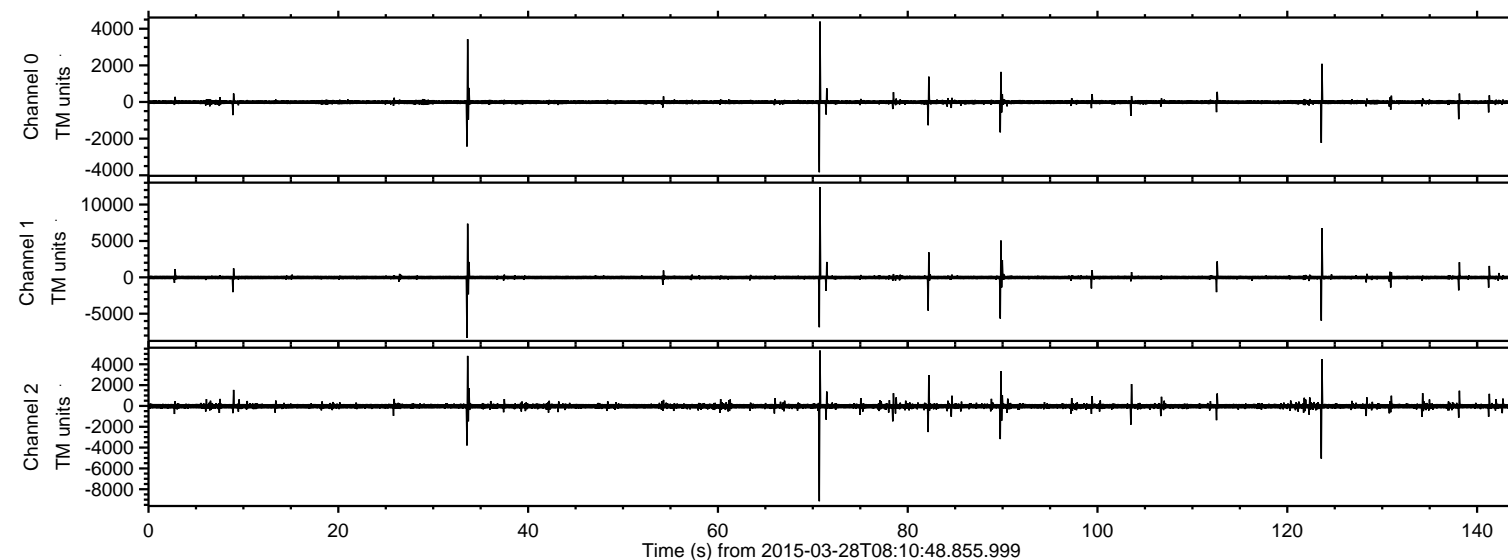


# ELMAVAN 3D WAVEFORMS (Measured data sampled at 50 kHz) 49783 packets of 144 samples from 2015-03-28T08:10:48.855.999.

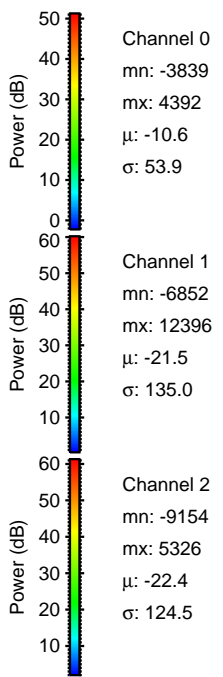
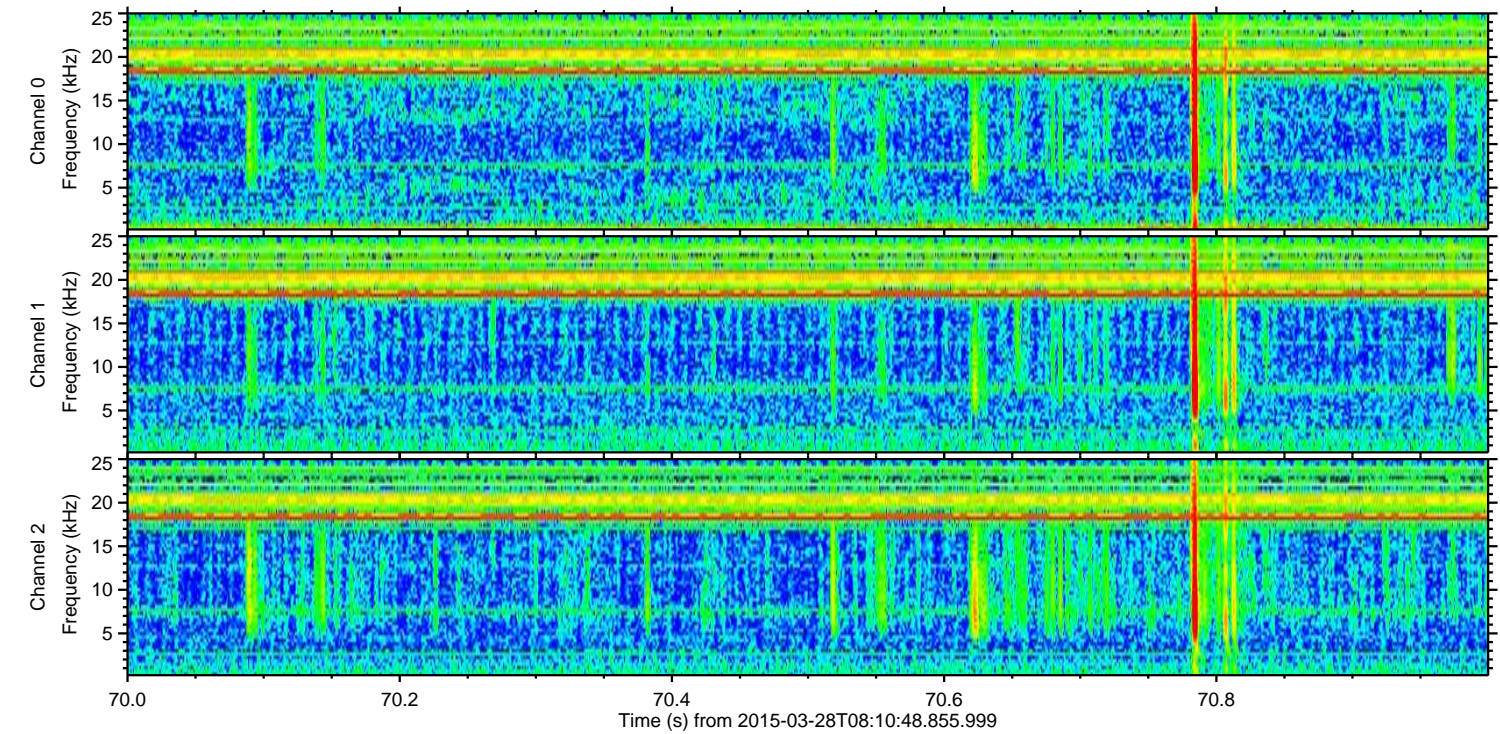
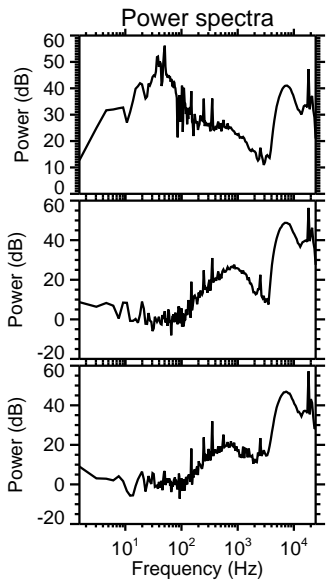
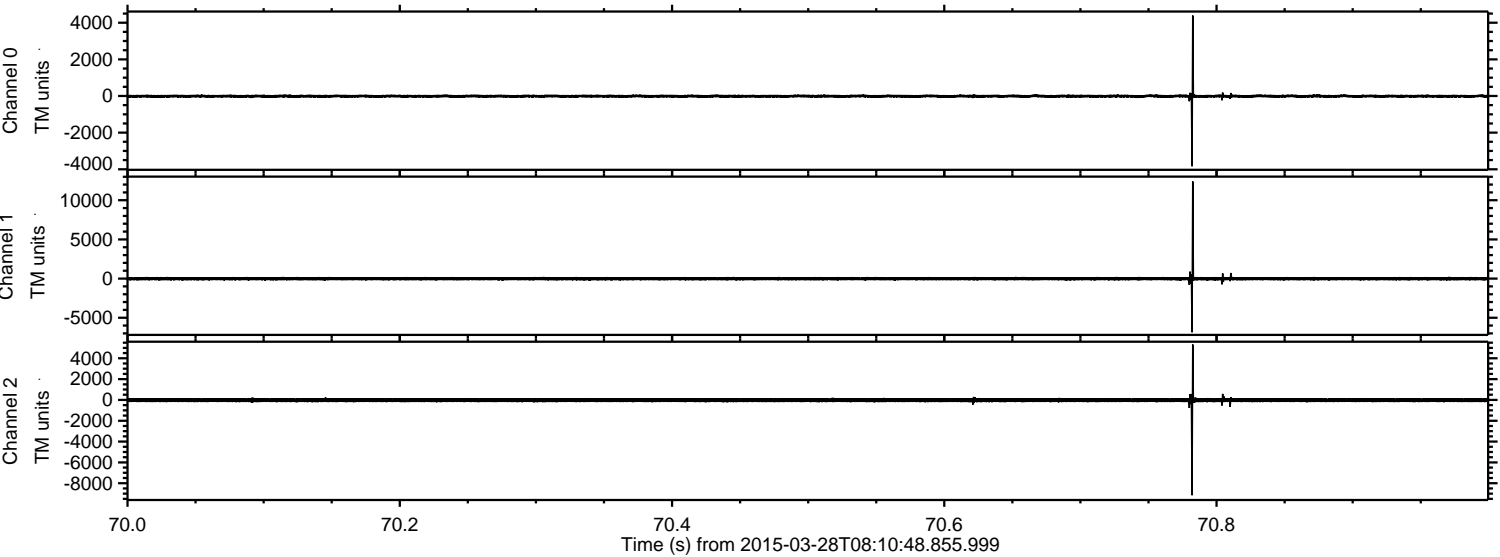
Processed Sat Mar 28 09:19:11 2015 by ELM ver.2012-10-06 from 001\_\_elm20150328\_081047\_\_dat00.bin





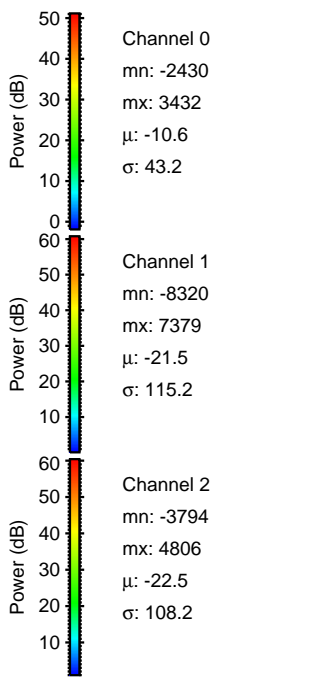
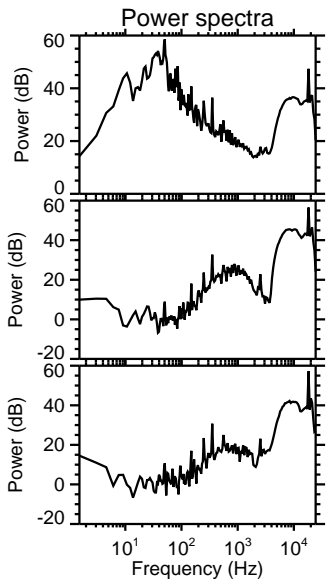
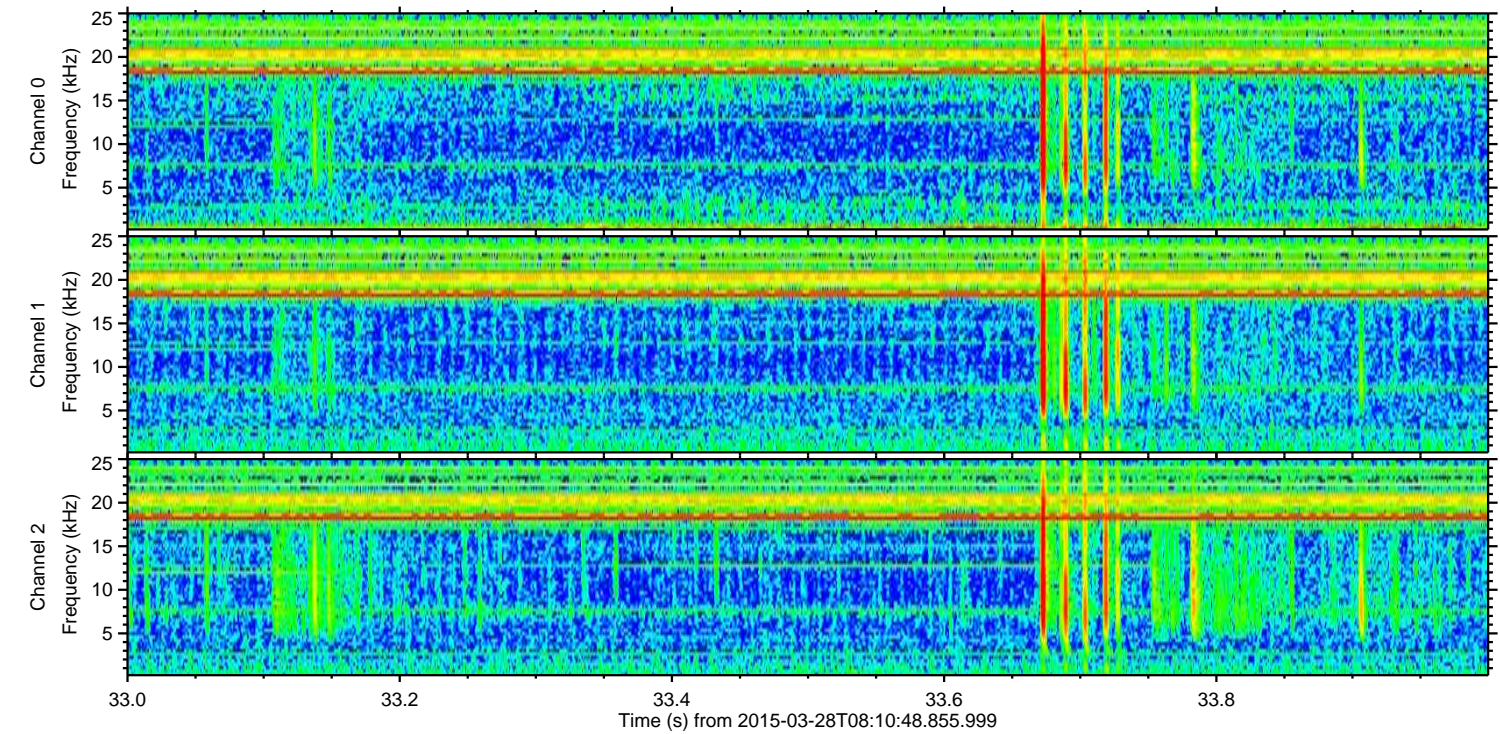
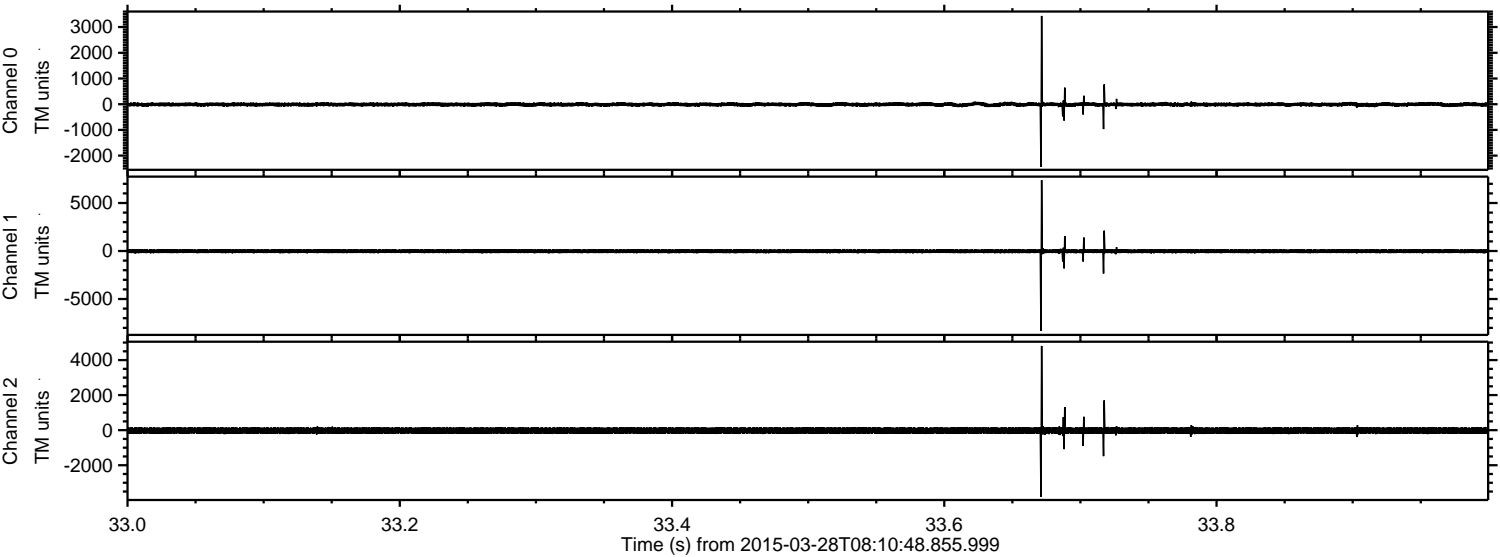
ELMAVAN 3D WAVEFORMS (Measured data sampled at 50 kHz) 49783 packets of 144 samples from 2015-03-28T08:10:48.855.999. Part 71/144

Processed Sat Mar 28 09:19:22 2015 by ELM ver.2012-10-06 from 001\_\_elm20150328\_081047\_\_dat00.bin





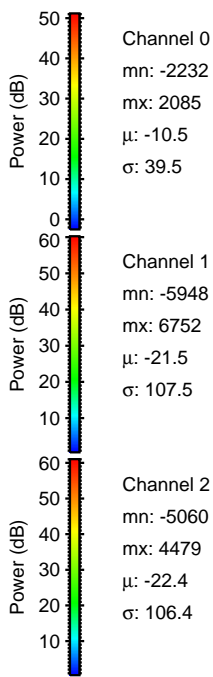
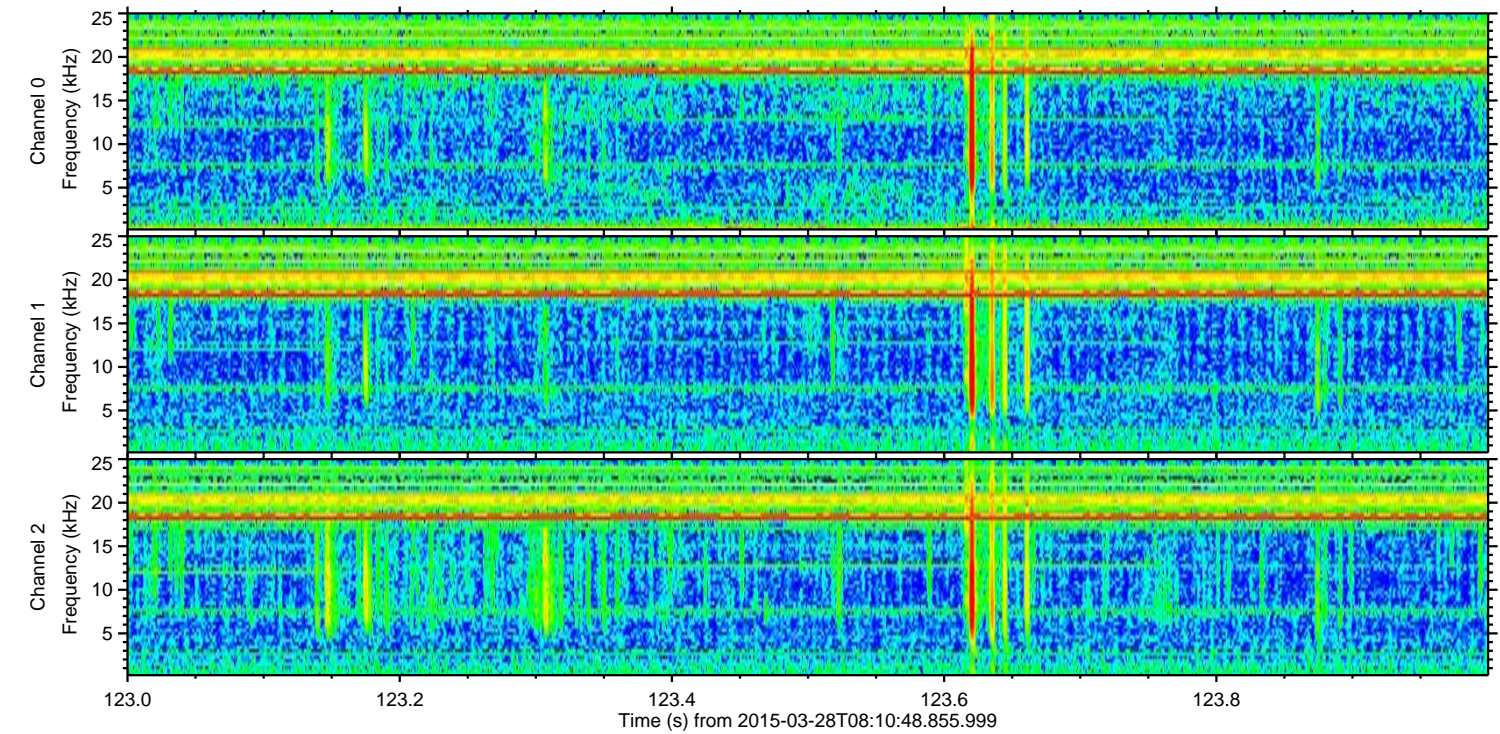
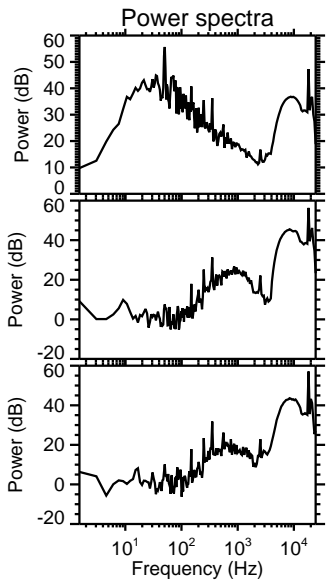
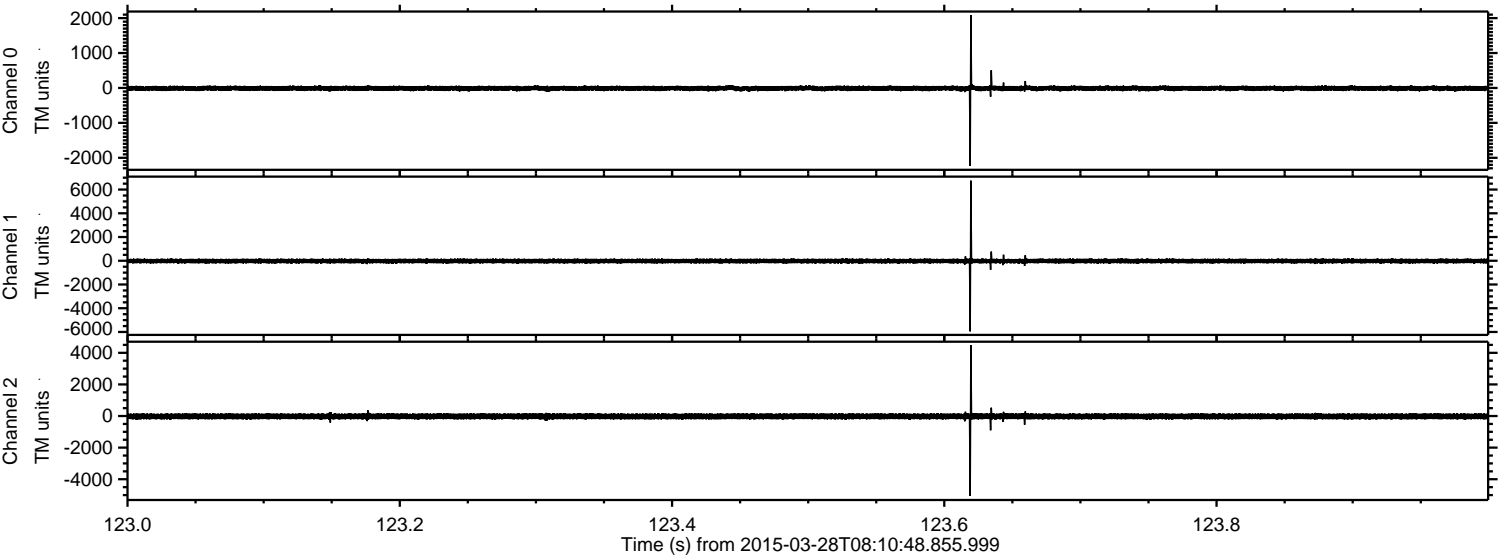
Processed Sat Mar 28 09:19:23 2015 by ELM ver.2012-10-06 from 001\_\_elm20150328\_081047\_\_dat00.bin





ELMAVAN 3D WAVEFORMS (Measured data sampled at 50 kHz) 49783 packets of 144 samples from 2015-03-28T08:10:48.855.999. Part 124/144

Processed Sat Mar 28 09:19:24 2015 by ELM ver.2012-10-06 from 001\_\_elm20150328\_081047\_\_dat00.bin



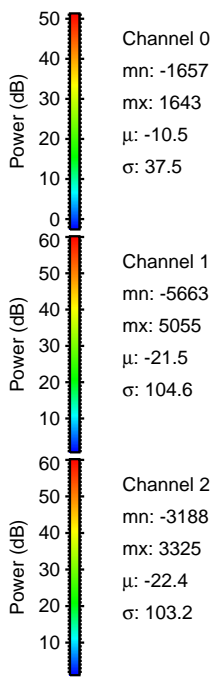
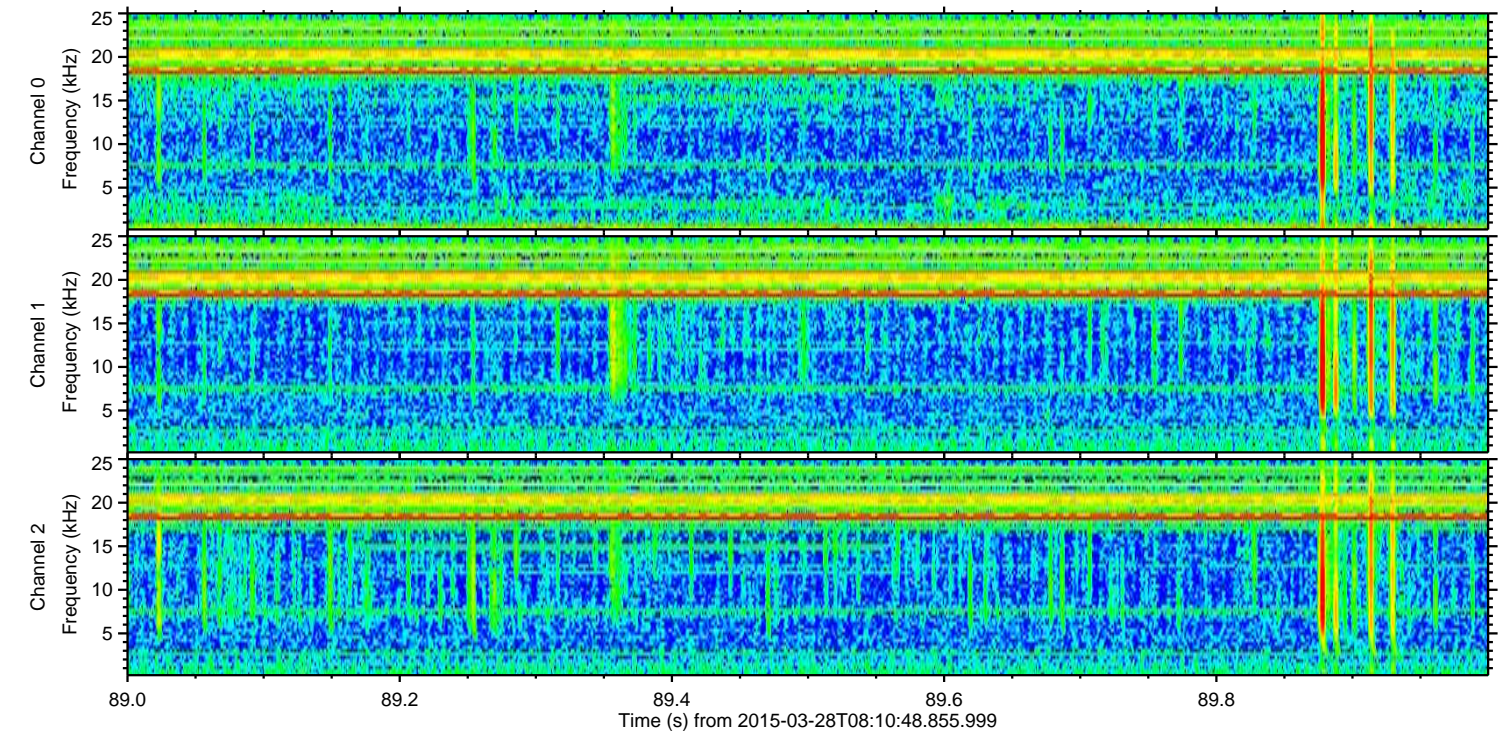
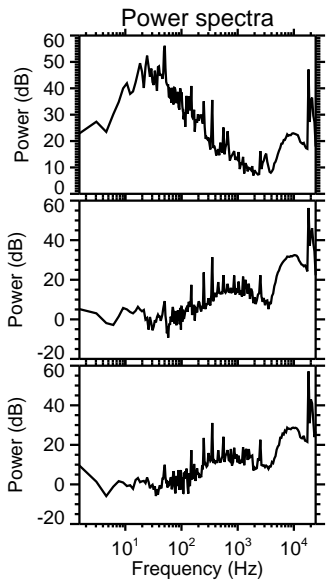
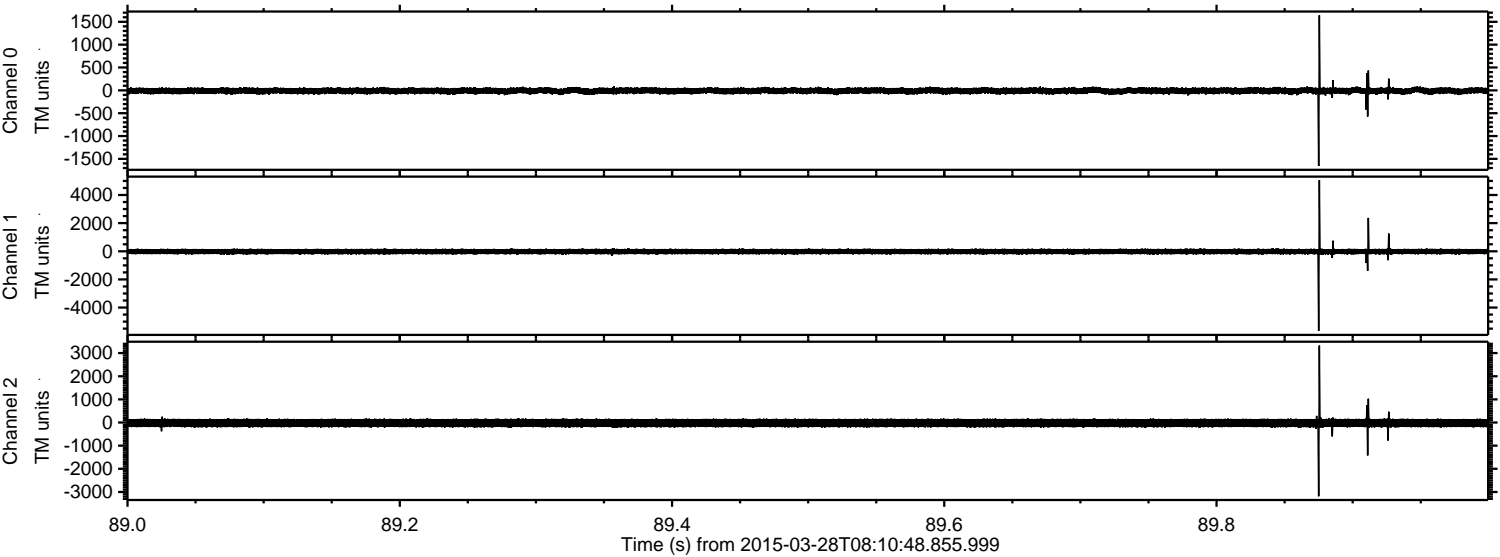
Channel 0  
mn: -2232  
mx: 2085  
 $\mu$ : -10.5  
 $\sigma$ : 39.5

Channel 1  
mn: -5948  
mx: 6752  
 $\mu$ : -21.5  
 $\sigma$ : 107.5

Channel 2  
mn: -5060  
mx: 4479  
 $\mu$ : -22.4  
 $\sigma$ : 106.4



Processed Sat Mar 28 09:19:25 2015 by ELM ver.2012-10-06 from 001\_\_elm20150328\_081047\_\_dat00.bin



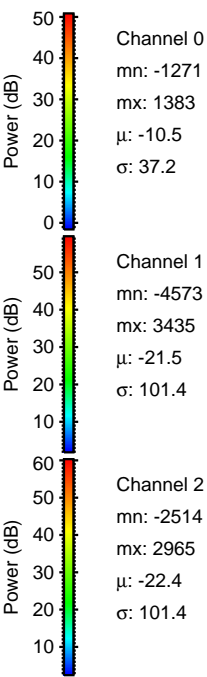
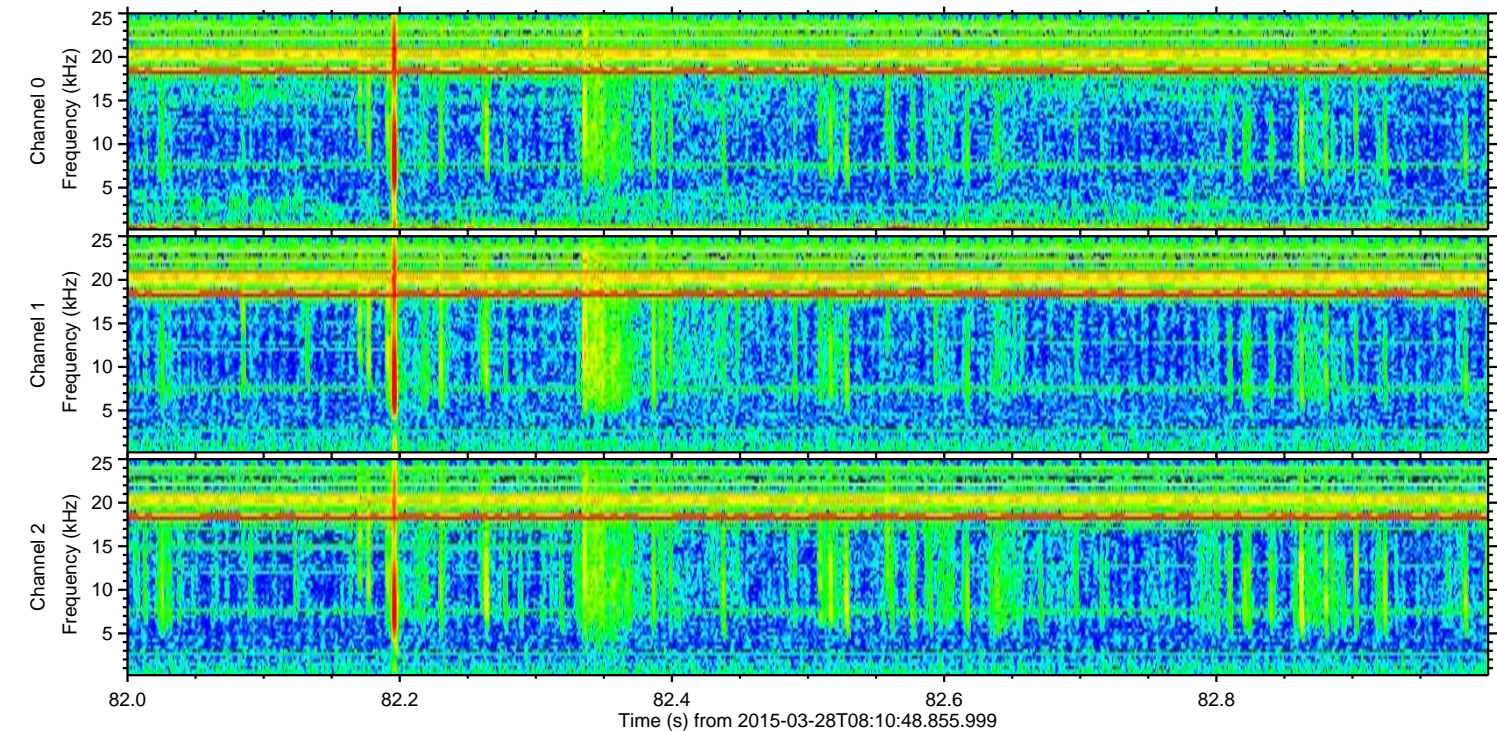
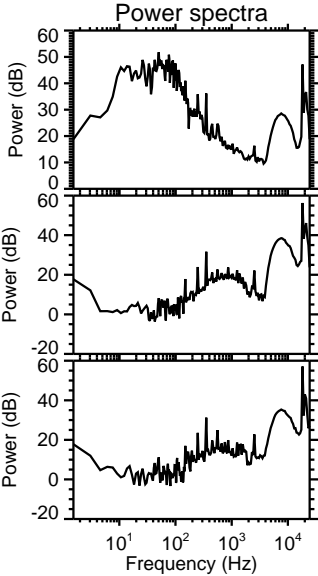
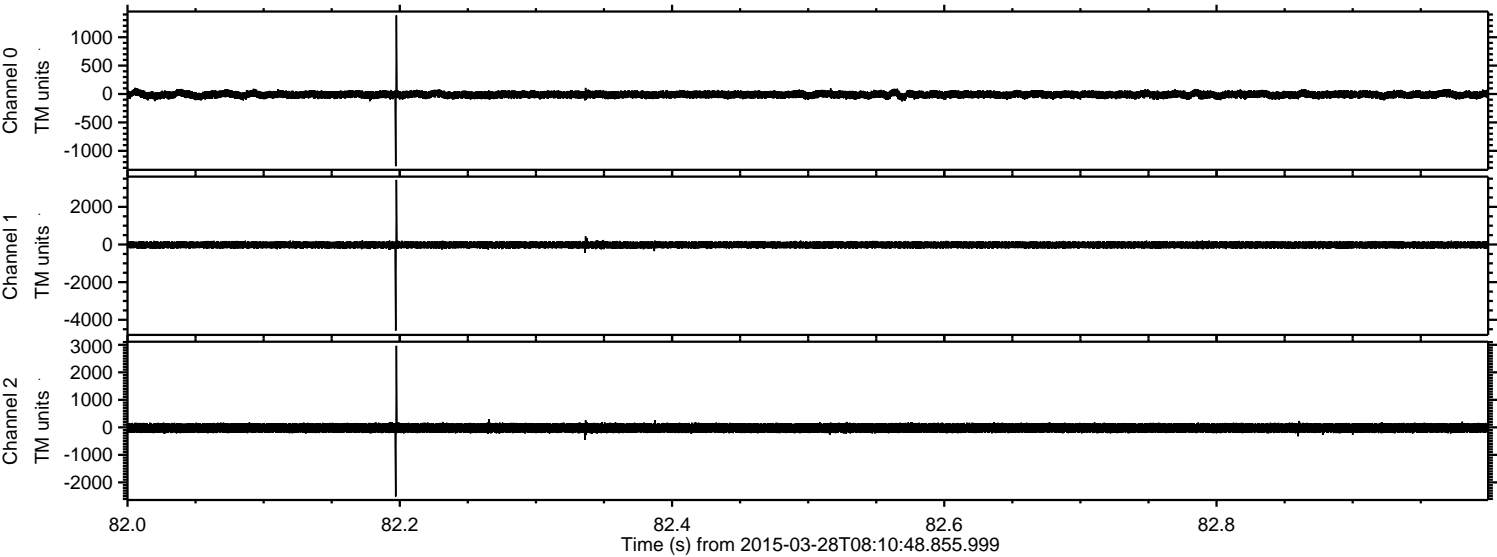
Channel 0  
mn: -1657  
mx: 1643  
 $\mu$ : -10.5  
 $\sigma$ : 37.5

Channel 1  
mn: -5663  
mx: 5055  
 $\mu$ : -21.5  
 $\sigma$ : 104.6

Channel 2  
mn: -3188  
mx: 3325  
 $\mu$ : -22.4  
 $\sigma$ : 103.2



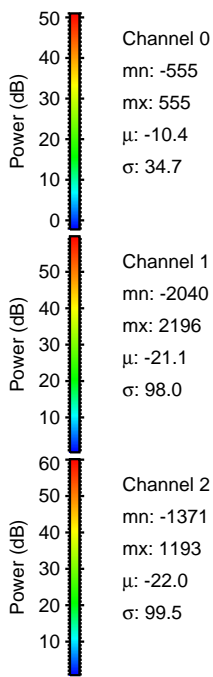
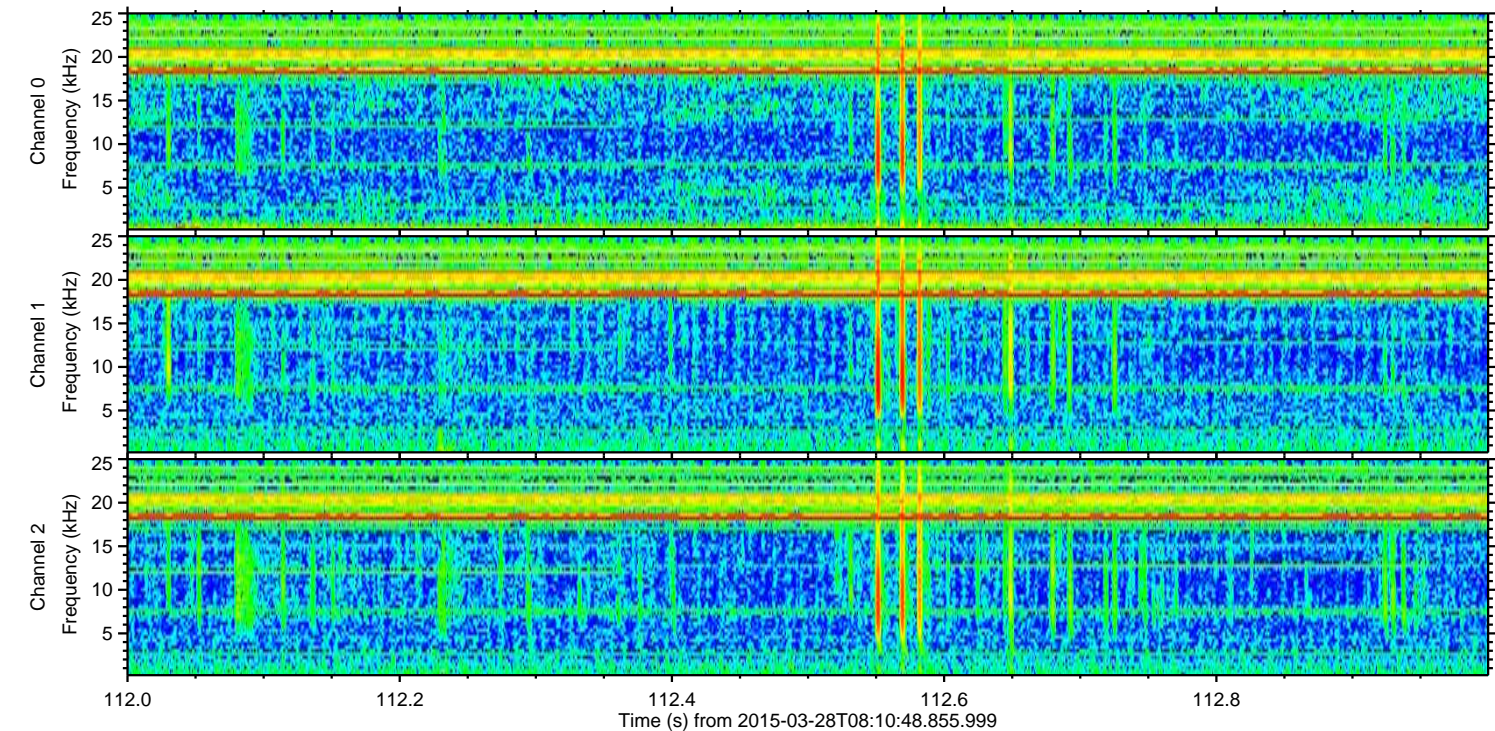
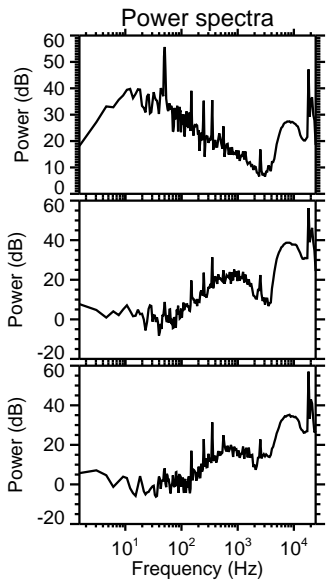
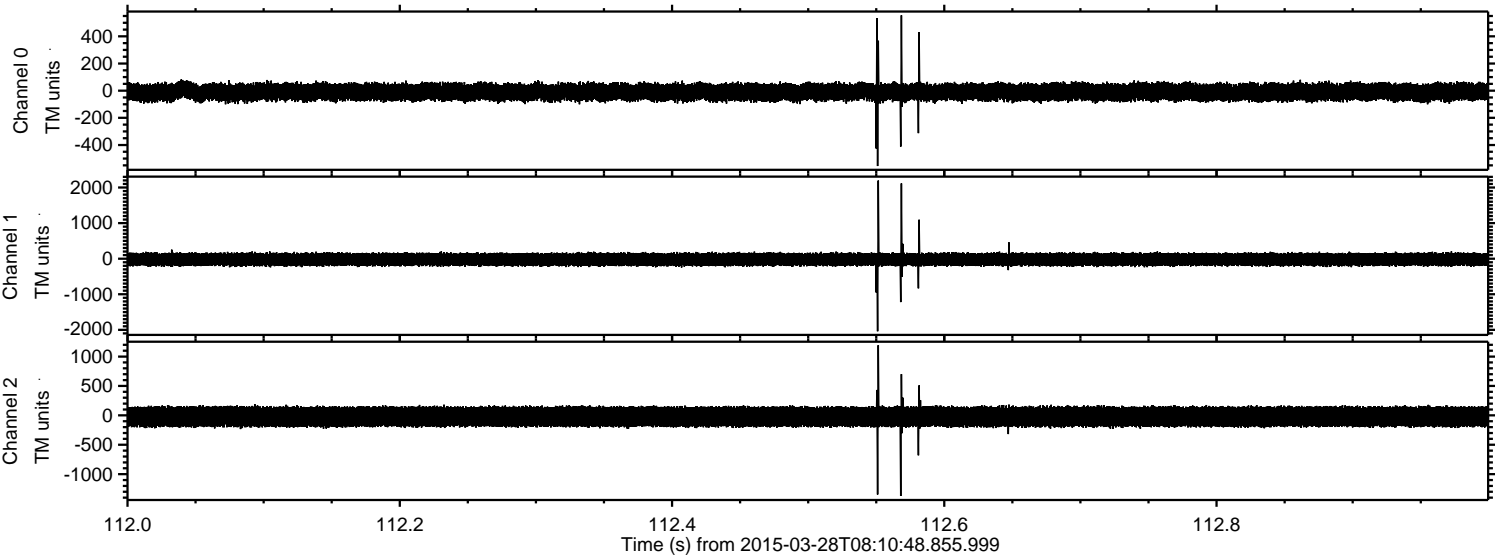
Processed Sat Mar 28 09:19:26 2015 by ELM ver.2012-10-06 from 001\_\_elm20150328\_081047\_\_dat00.bin





ELMAVAN 3D WAVEFORMS (Measured data sampled at 50 kHz) 49783 packets of 144 samples from 2015-03-28T08:10:48.855.999. Part 113/144

Processed Sat Mar 28 09:19:27 2015 by ELM ver.2012-10-06 from 001\_\_elm20150328\_081047\_\_dat00.bin



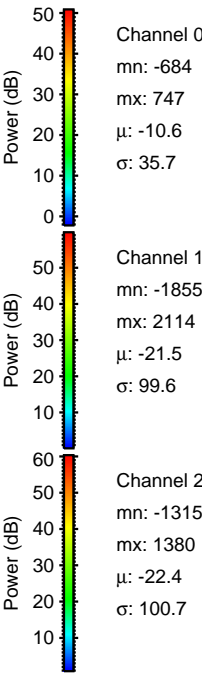
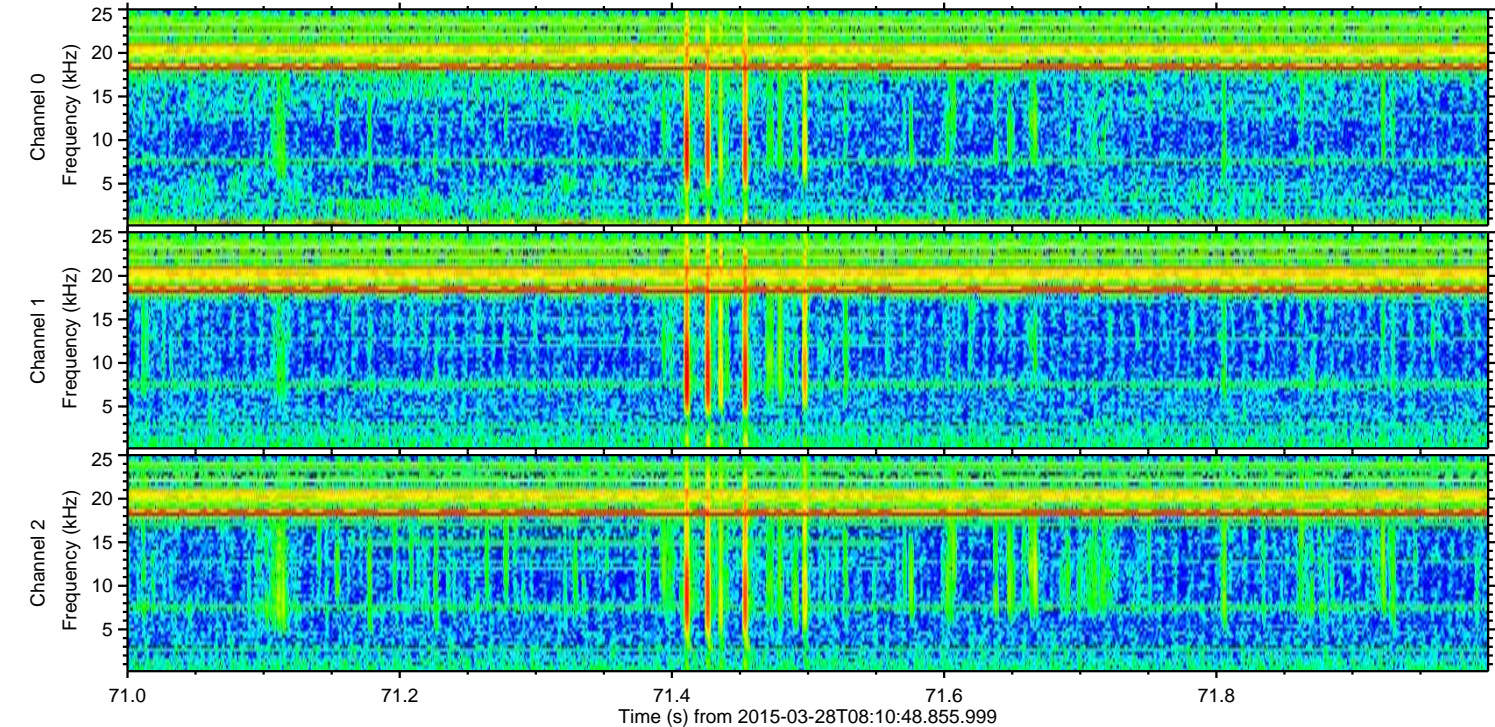
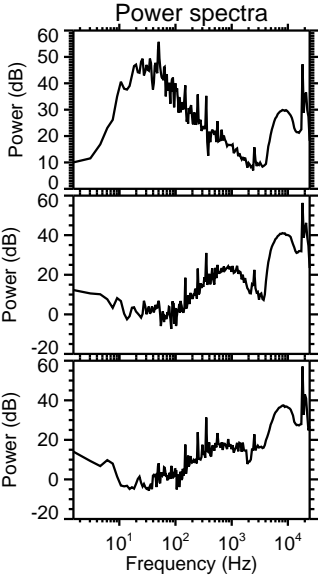
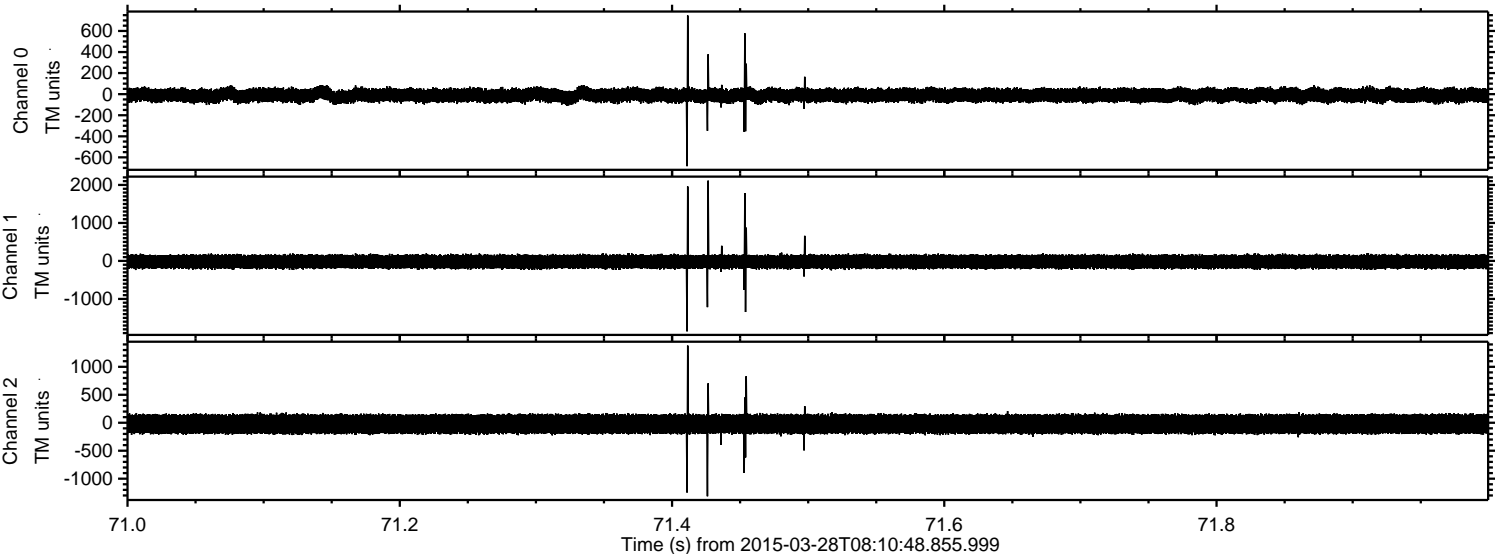
Channel 0  
mn: -555  
mx: 555  
 $\mu$ : -10.4  
 $\sigma$ : 34.7

Channel 1  
mn: -2040  
mx: 2196  
 $\mu$ : -21.1  
 $\sigma$ : 98.0

Channel 2  
mn: -1371  
mx: 1193  
 $\mu$ : -22.0  
 $\sigma$ : 99.5



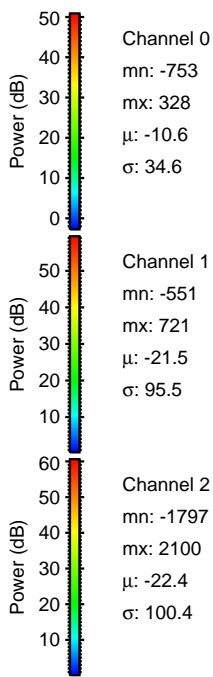
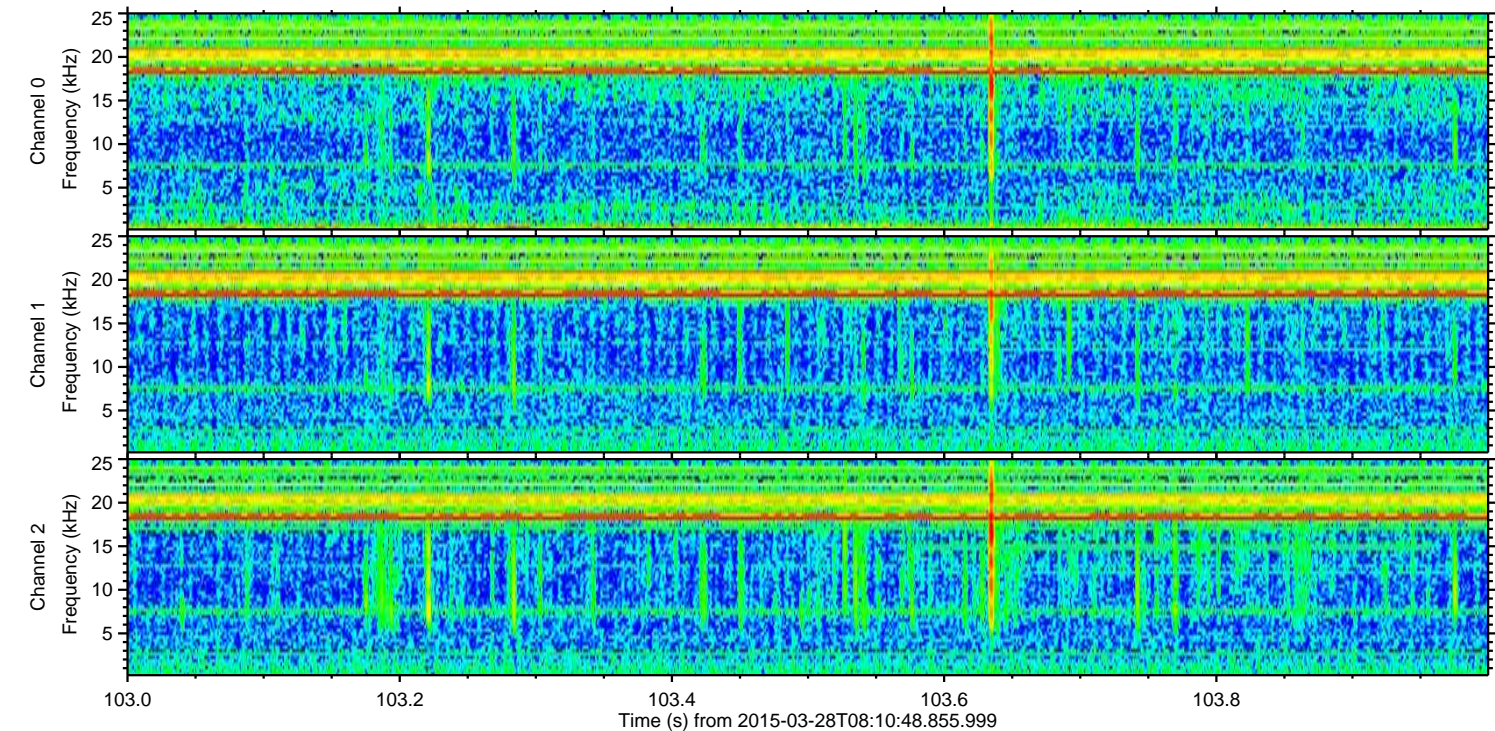
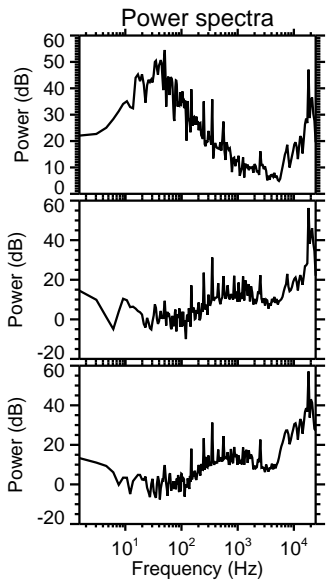
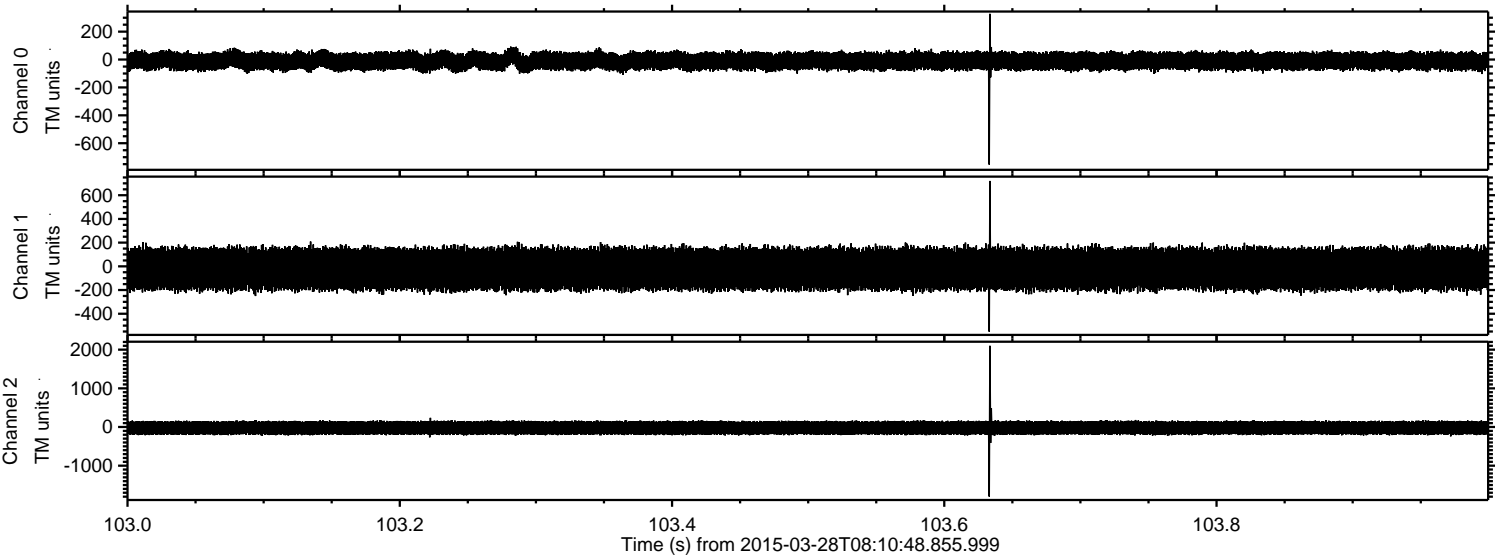
Processed Sat Mar 28 09:19:28 2015 by ELM ver.2012-10-06 from 001\_\_elm20150328\_081047\_\_dat00.bin





ELMAVAN 3D WAVEFORMS (Measured data sampled at 50 kHz) 49783 packets of 144 samples from 2015-03-28T08:10:48.855.999. Part 104/144

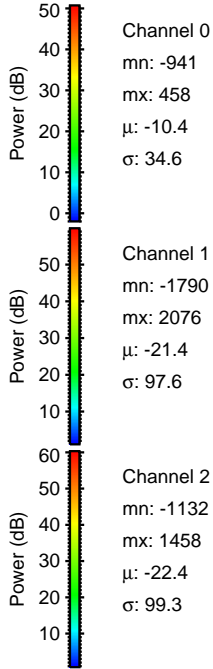
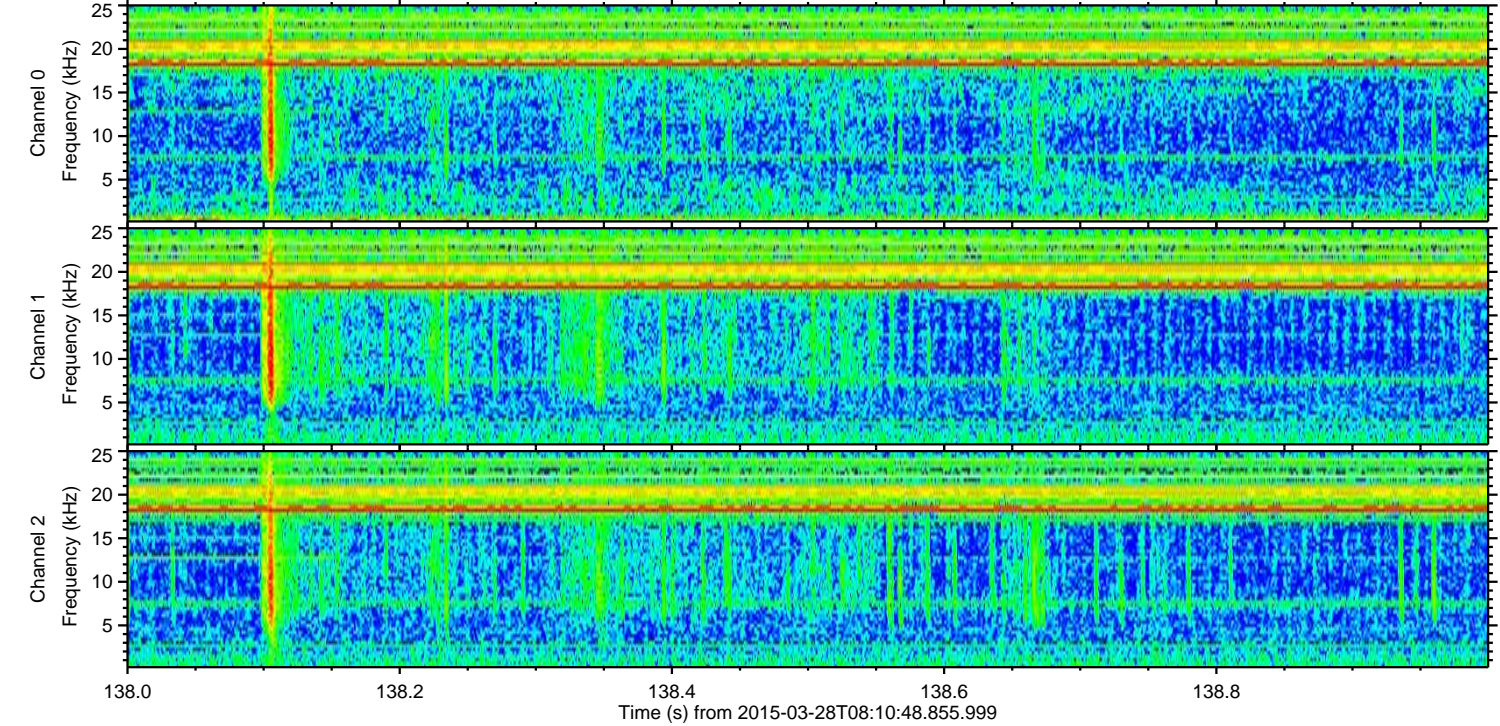
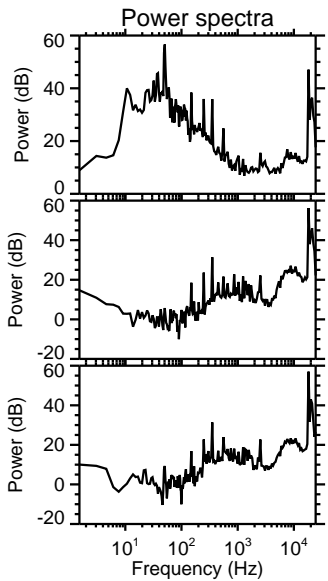
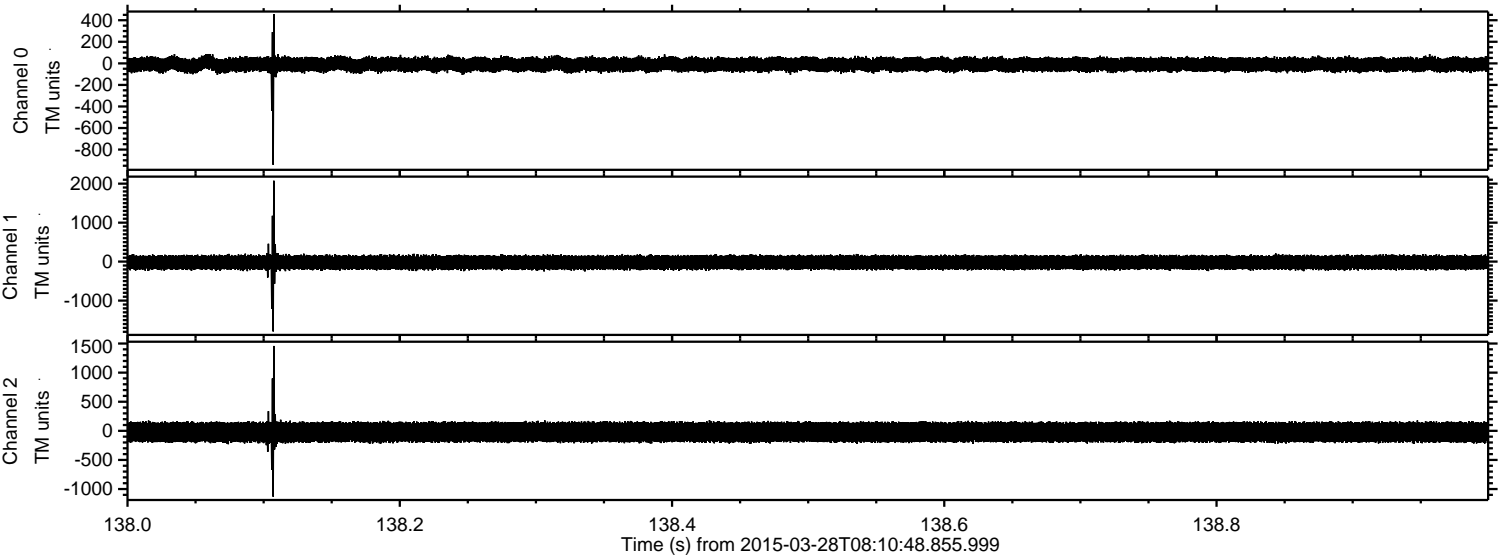
Processed Sat Mar 28 09:19:29 2015 by ELM ver.2012-10-06 from 001\_\_elm20150328\_081047\_\_dat00.bin





ELMAVAN 3D WAVEFORMS (Measured data sampled at 50 kHz) 49783 packets of 144 samples from 2015-03-28T08:10:48.855.999. Part 139/144

Processed Sat Mar 28 09:19:30 2015 by ELM ver.2012-10-06 from 001\_\_elm20150328\_081047\_\_dat00.bin





Processed Sat Mar 28 09:19:31 2015 by ELM ver.2012-10-06 from 001\_\_elm20150328\_081047\_\_dat00.bin

