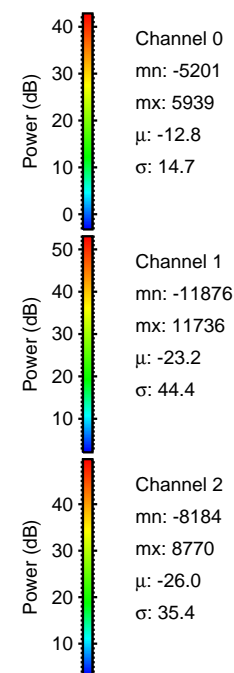
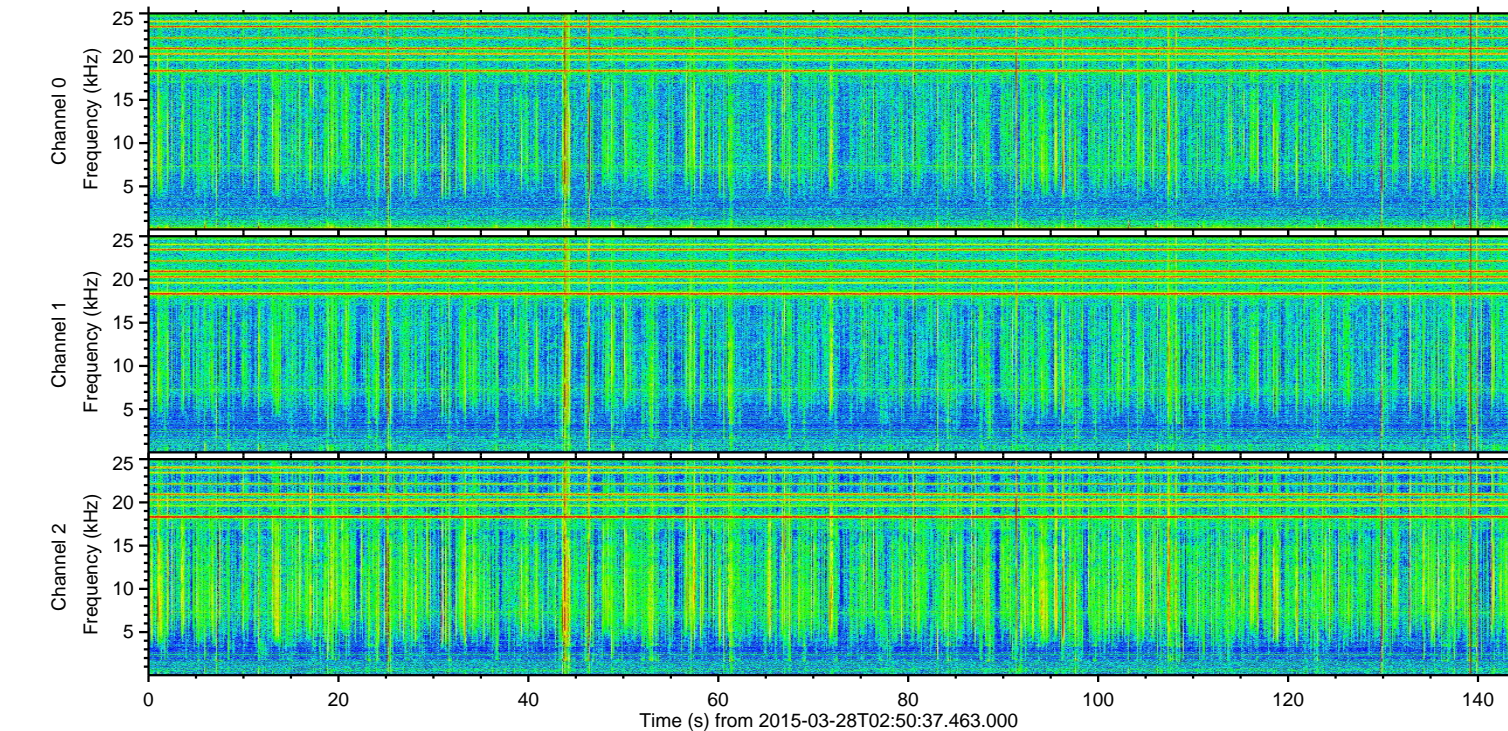
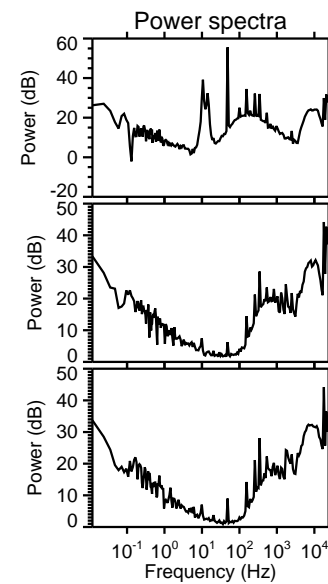
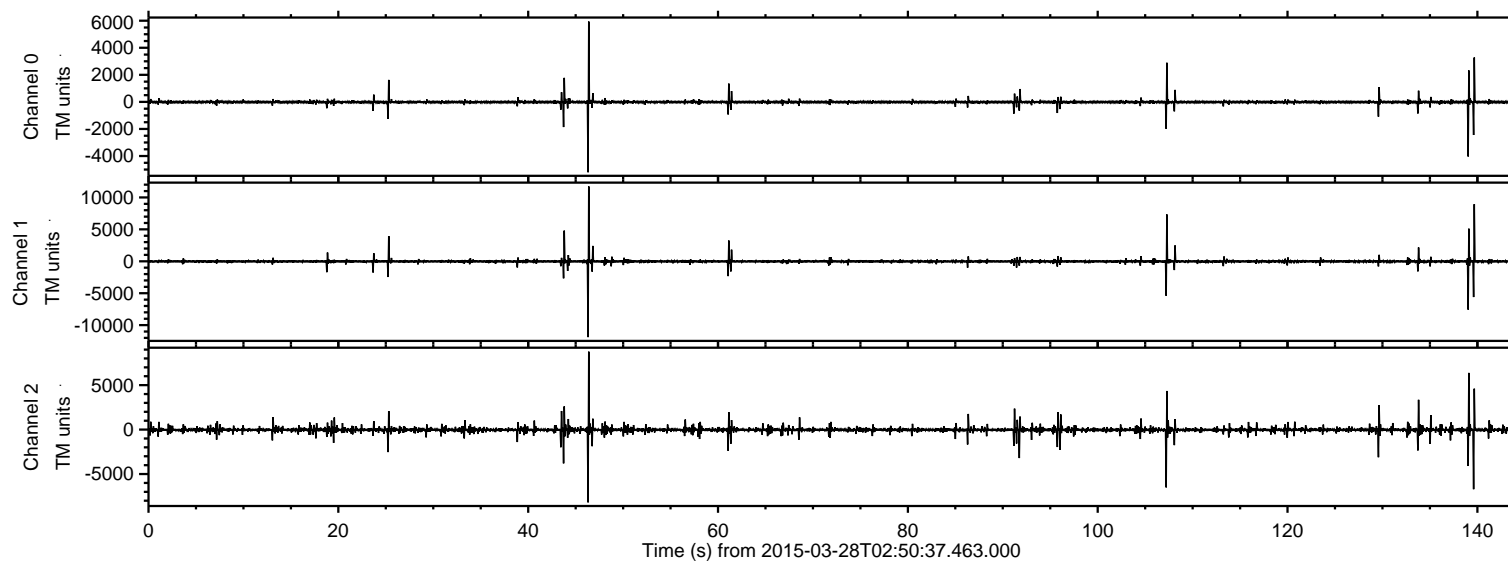


# ELMAVAN 3D WAVEFORMS (Measured data sampled at 50 kHz) 49773 packets of 144 samples from 2015-03-28T02:50:37.463.000.

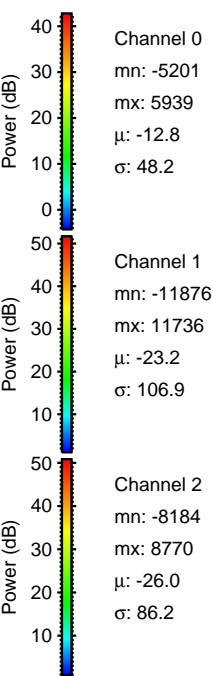
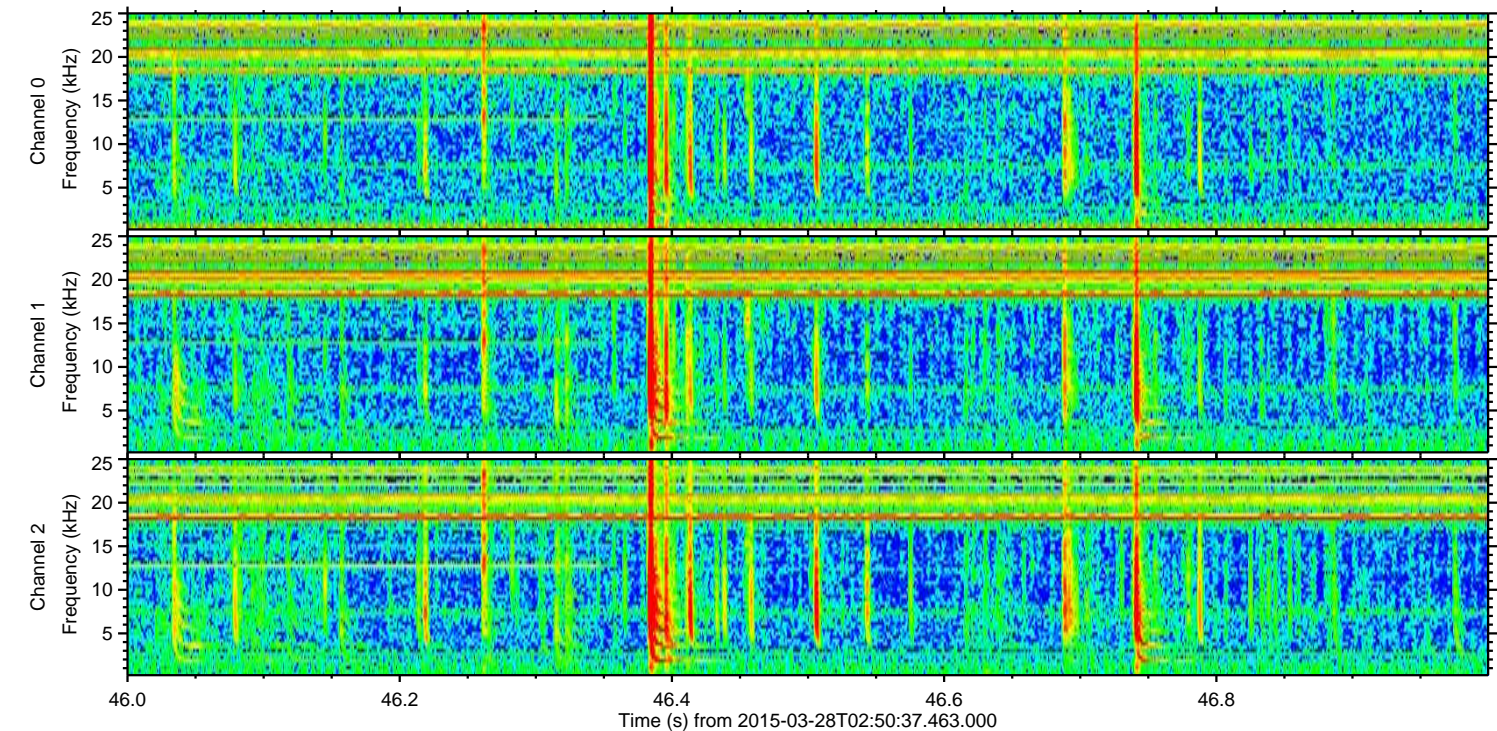
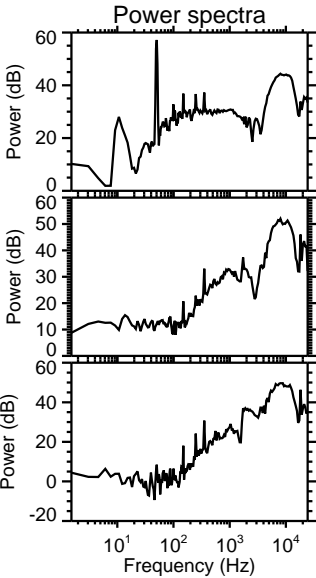
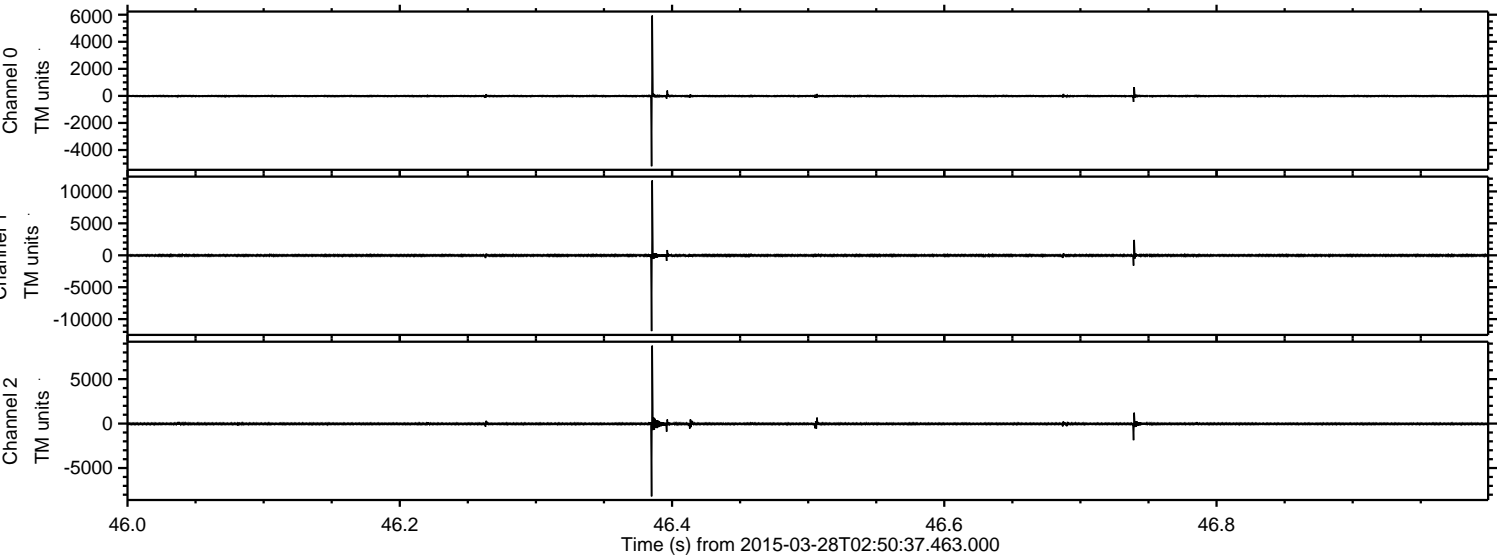
Processed Sat Mar 28 03:57:55 2015 by ELM ver.2012-10-06 from 001\_\_elm20150328\_025036\_\_dat00.bin





ELMAVAN 3D WAVEFORMS (Measured data sampled at 50 kHz) 49773 packets of 144 samples from 2015-03-28T02:50:37.463.000. Part 47/144

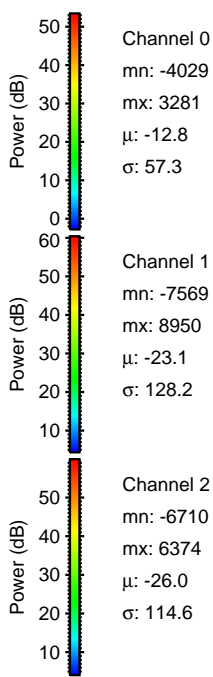
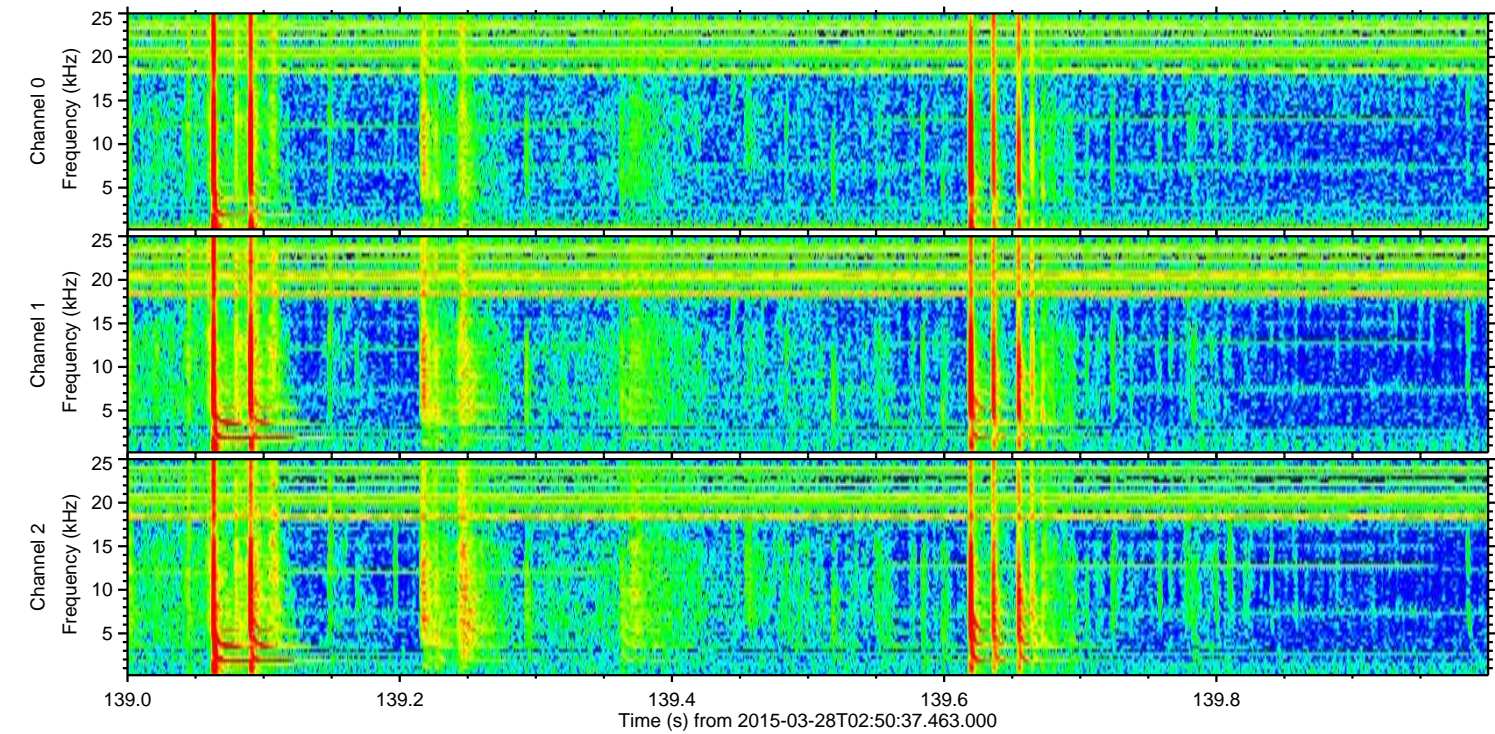
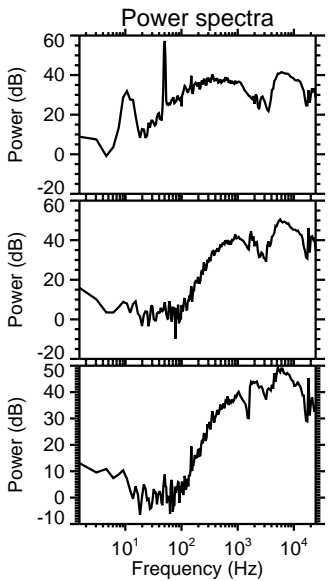
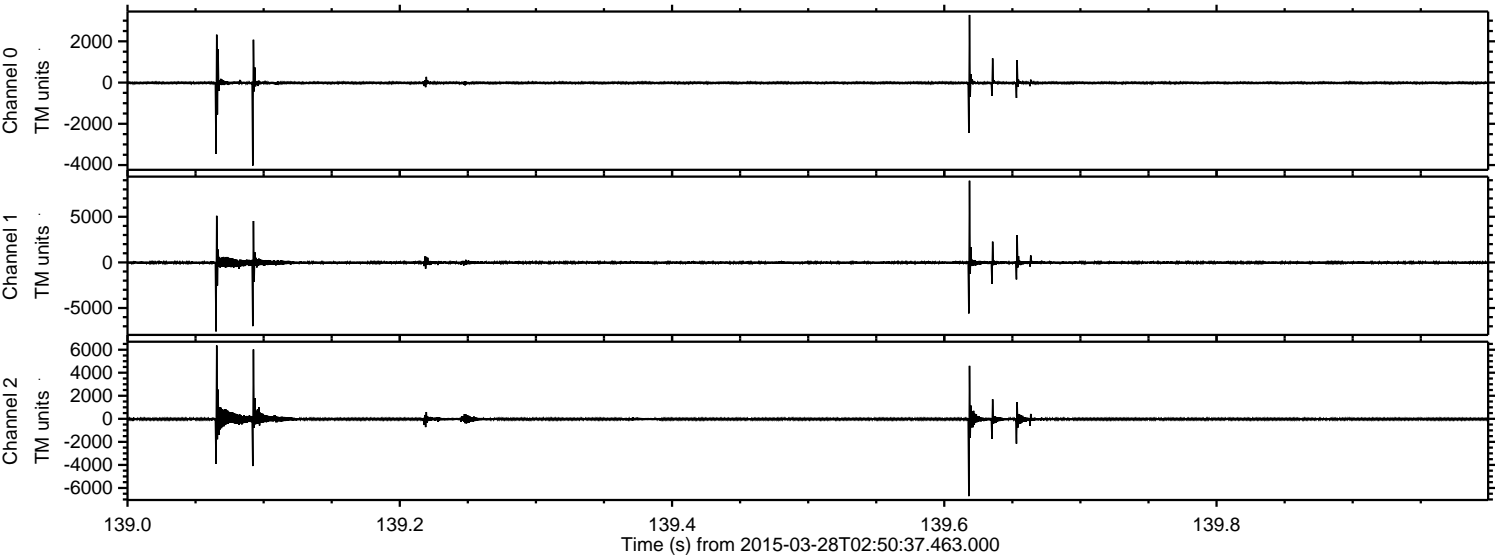
Processed Sat Mar 28 03:58:06 2015 by ELM ver.2012-10-06 from 001\_\_elm20150328\_025036\_\_dat00.bin





ELMAVAN 3D WAVEFORMS (Measured data sampled at 50 kHz) 49773 packets of 144 samples from 2015-03-28T02:50:37.463.000. Part 140/144

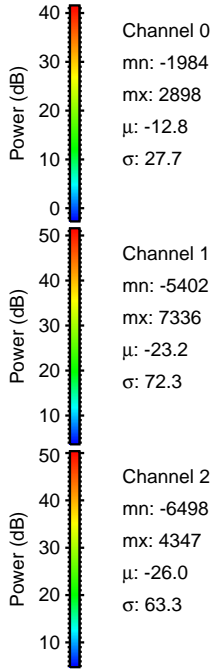
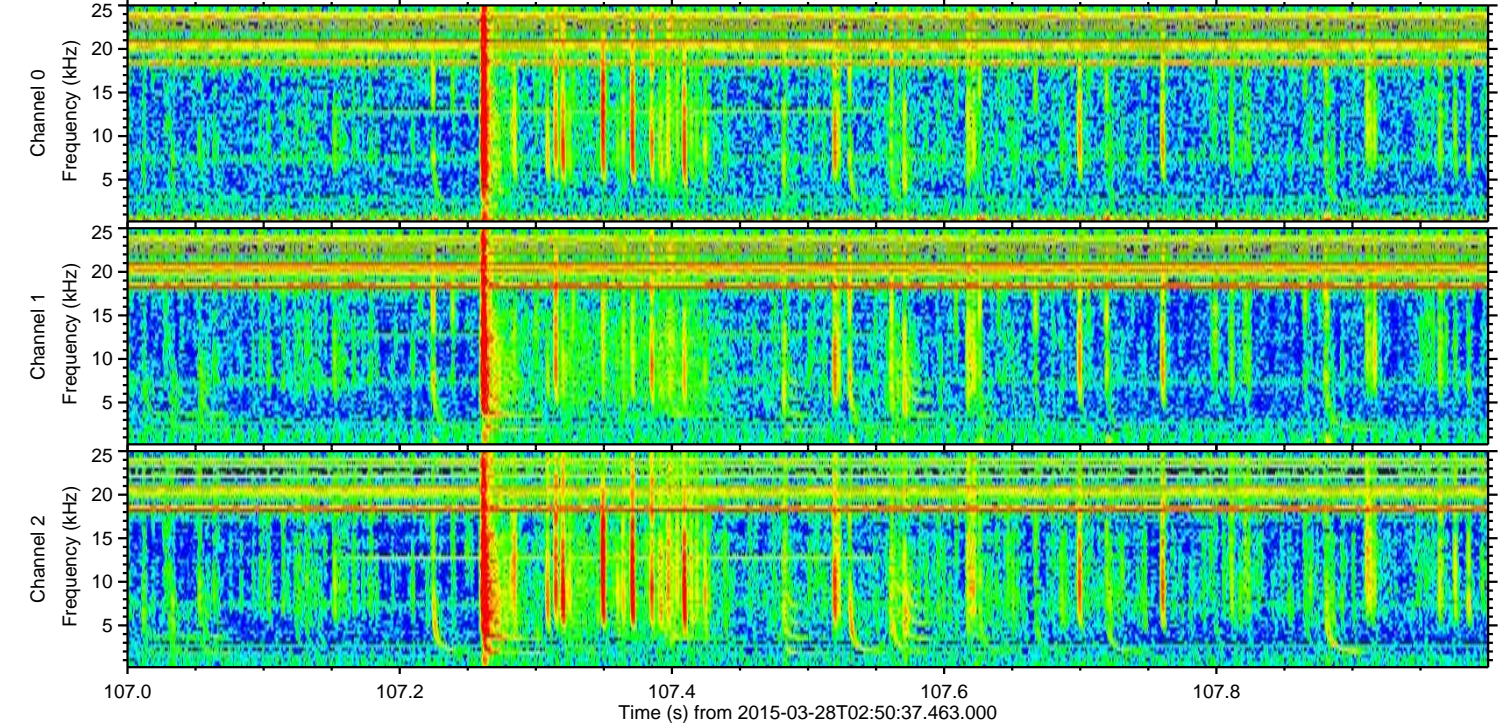
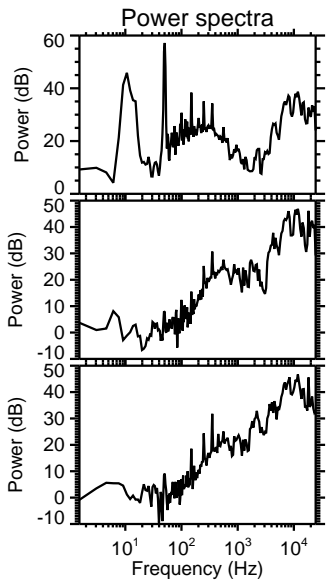
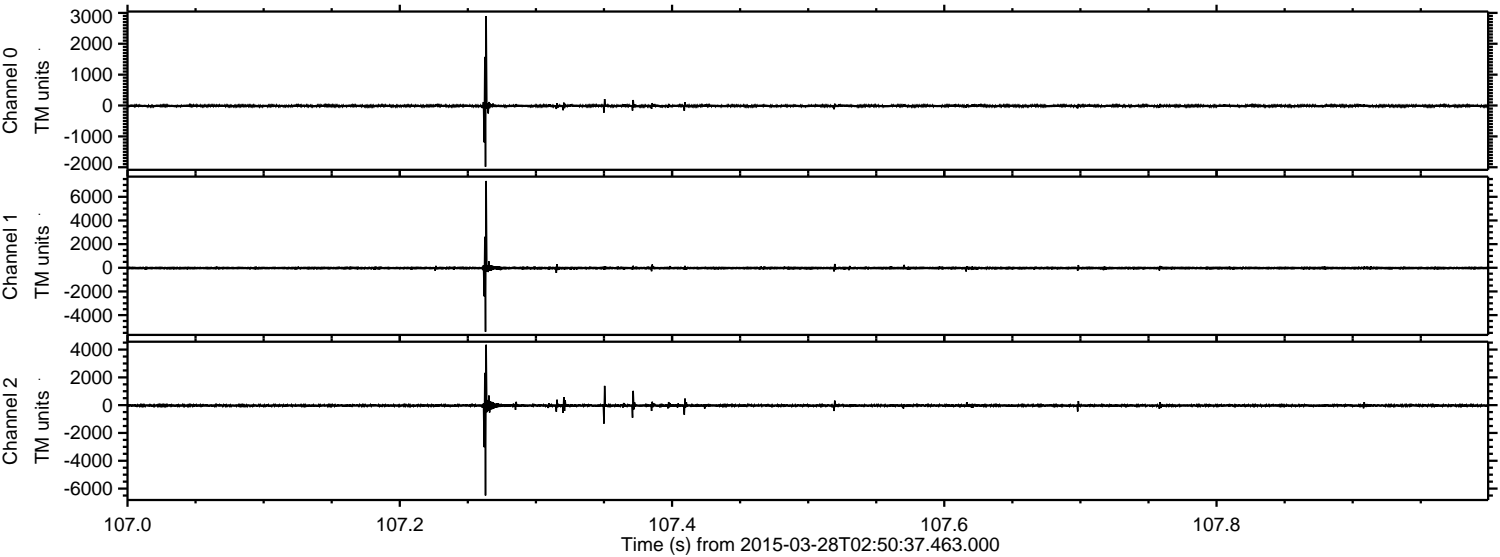
Processed Sat Mar 28 03:58:07 2015 by ELM ver.2012-10-06 from 001\_\_elm20150328\_025036\_\_dat00.bin





ELMAVAN 3D WAVEFORMS (Measured data sampled at 50 kHz) 49773 packets of 144 samples from 2015-03-28T02:50:37.463.000. Part 108/144

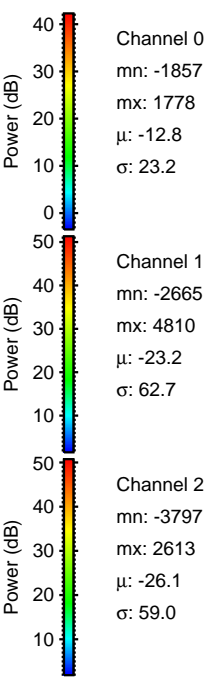
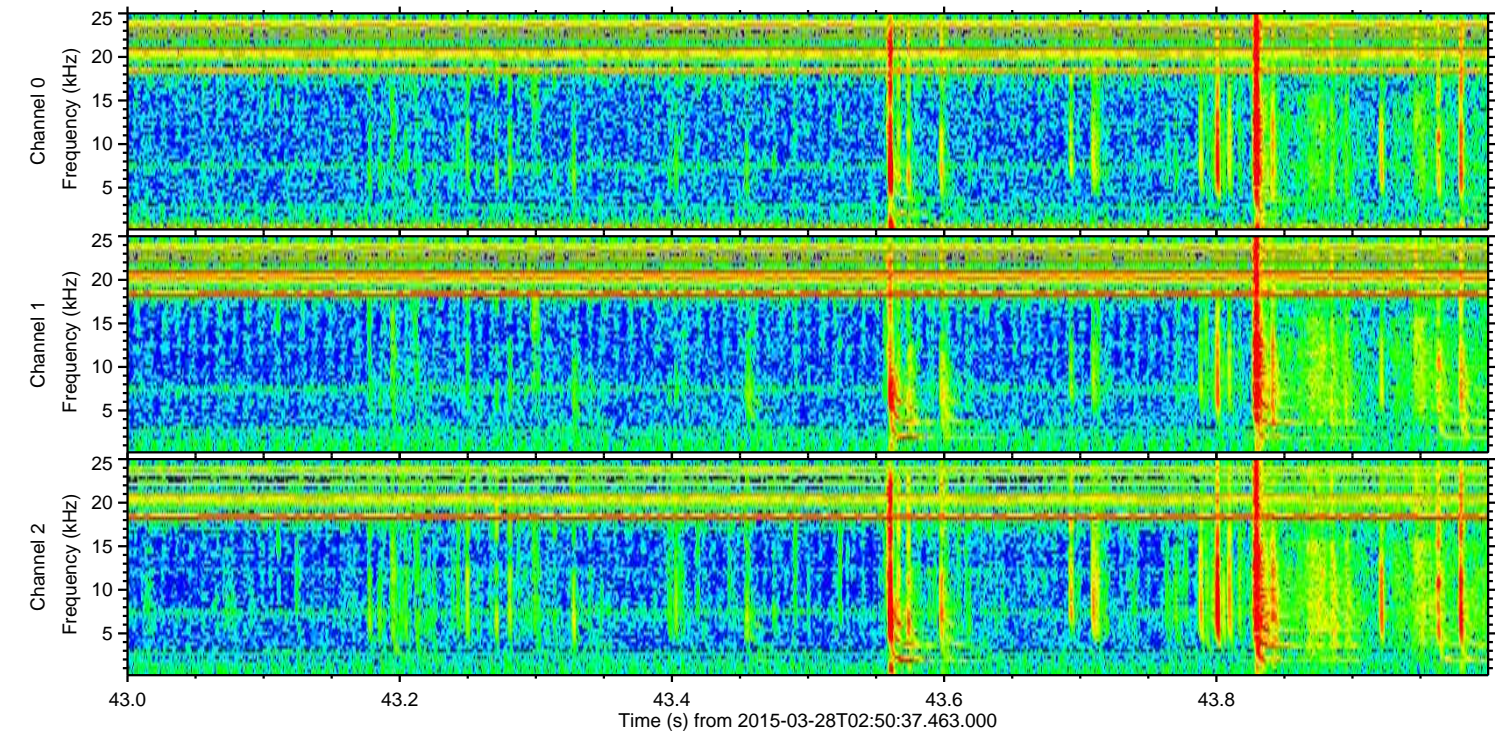
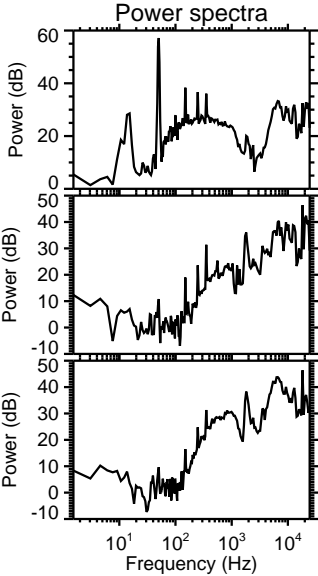
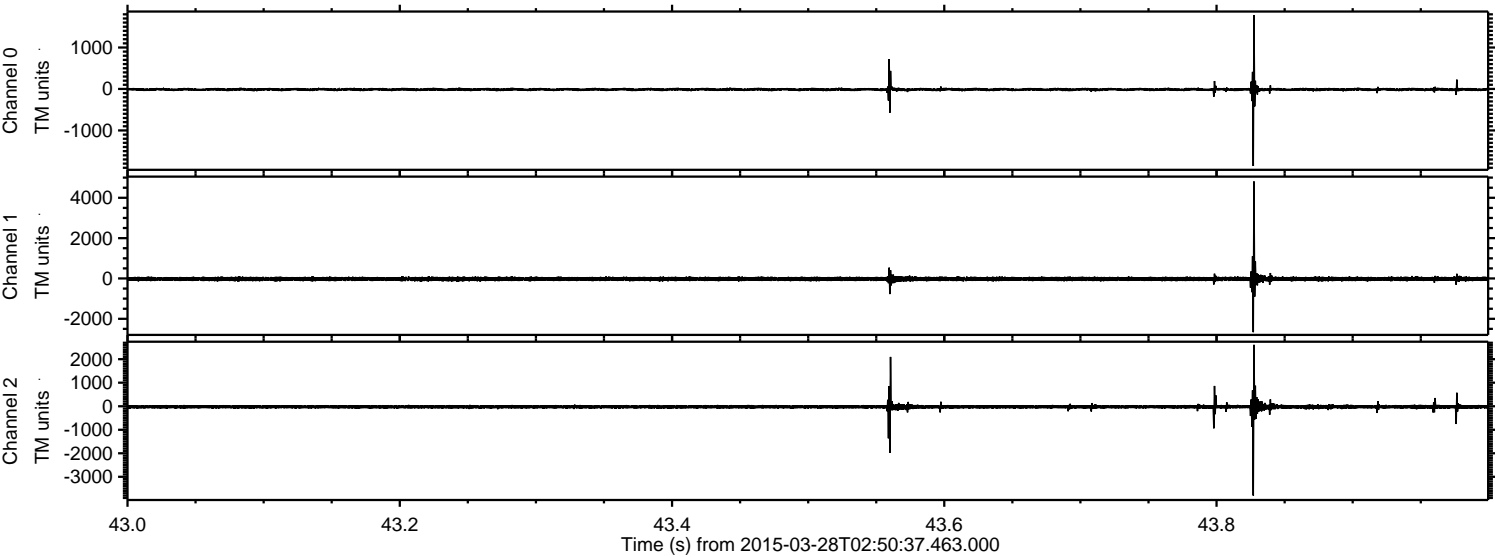
Processed Sat Mar 28 03:58:08 2015 by ELM ver.2012-10-06 from 001\_\_elm20150328\_025036\_\_dat00.bin





ELMAVAN 3D WAVEFORMS (Measured data sampled at 50 kHz) 49773 packets of 144 samples from 2015-03-28T02:50:37.463.000. Part 44/144

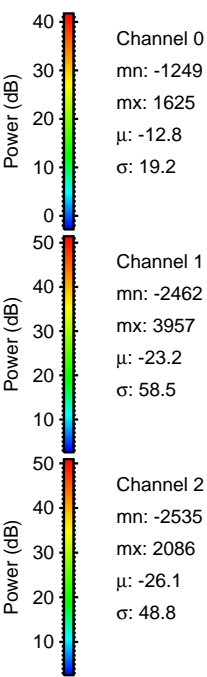
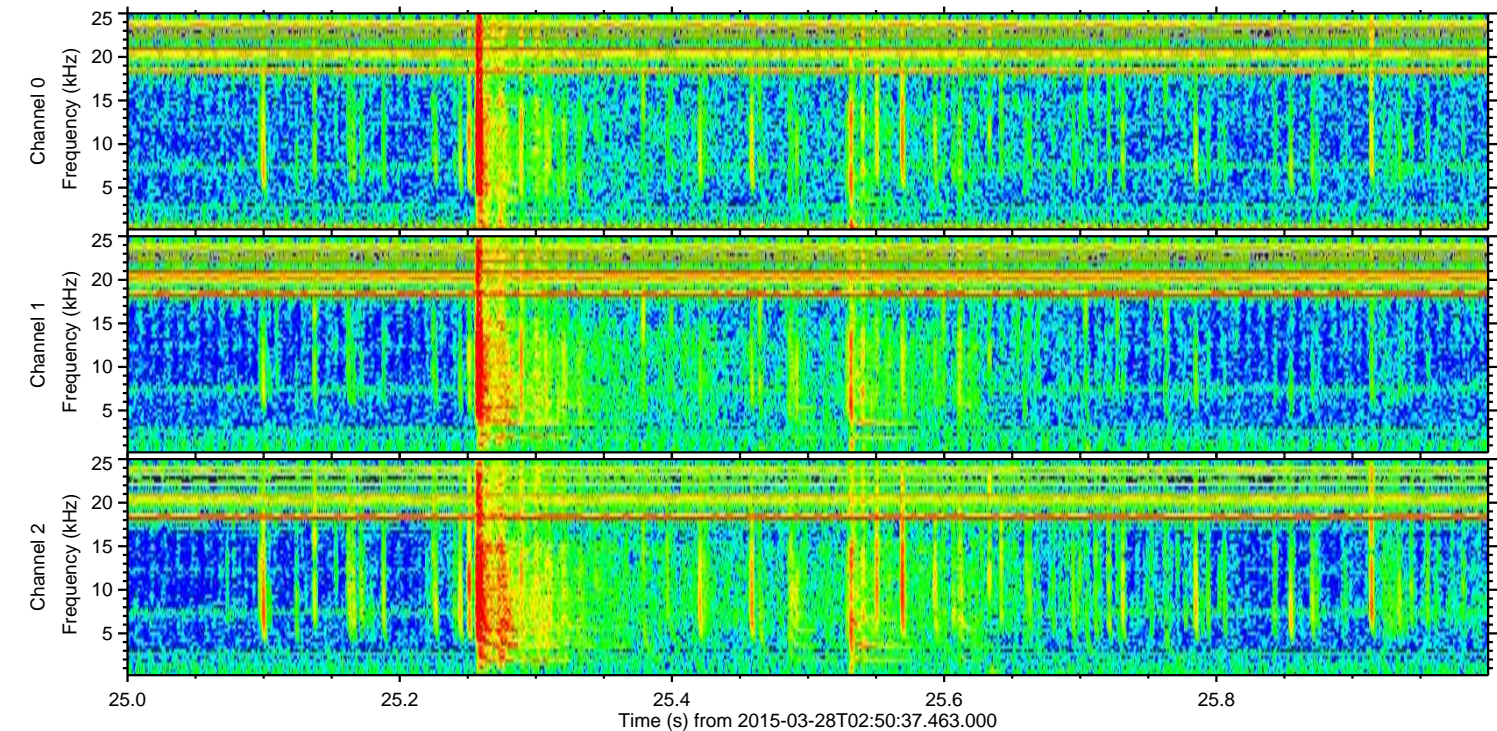
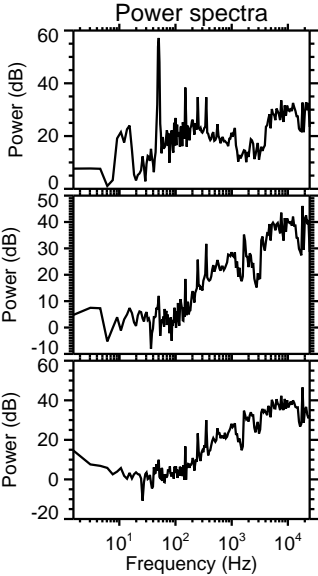
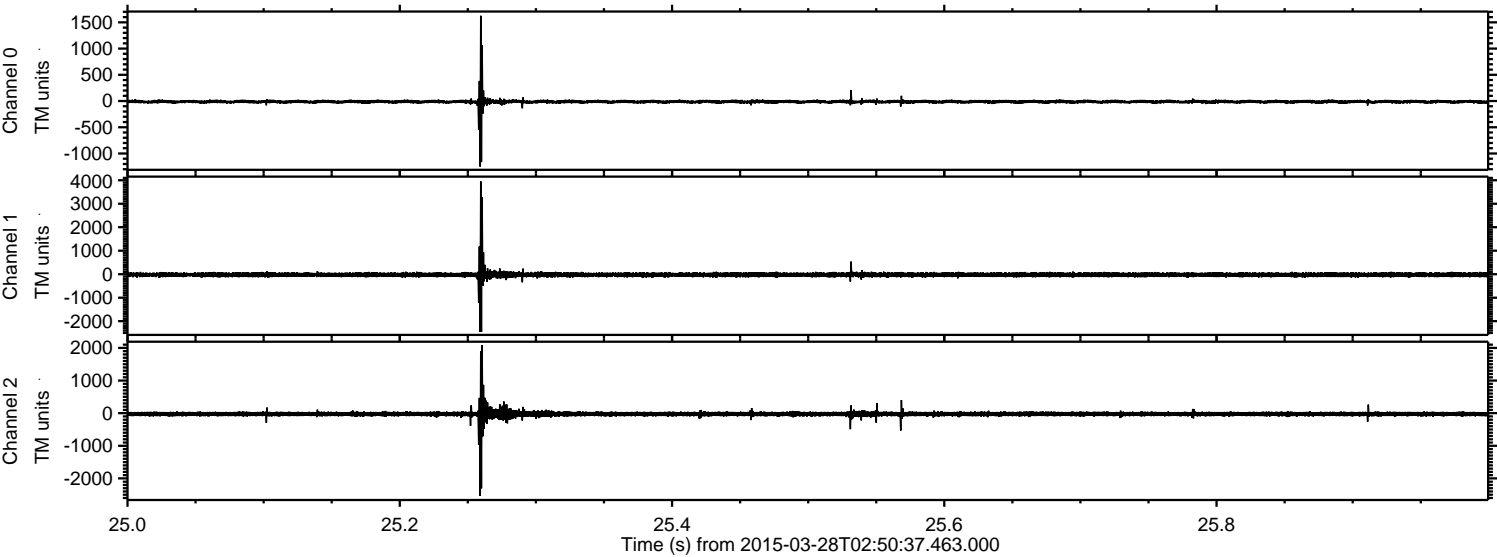
Processed Sat Mar 28 03:58:09 2015 by ELM ver.2012-10-06 from 001\_\_elm20150328\_025036\_\_dat00.bin





ELMAVAN 3D WAVEFORMS (Measured data sampled at 50 kHz) 49773 packets of 144 samples from 2015-03-28T02:50:37.463.000. Part 26/144

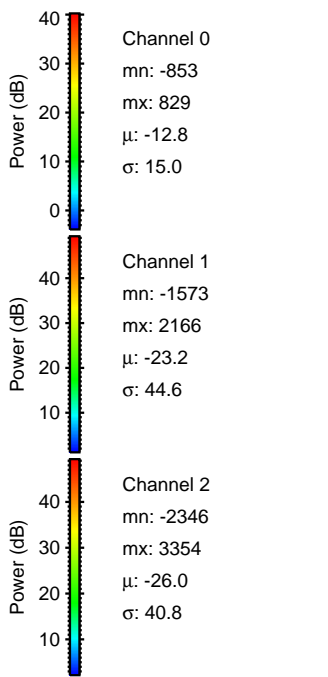
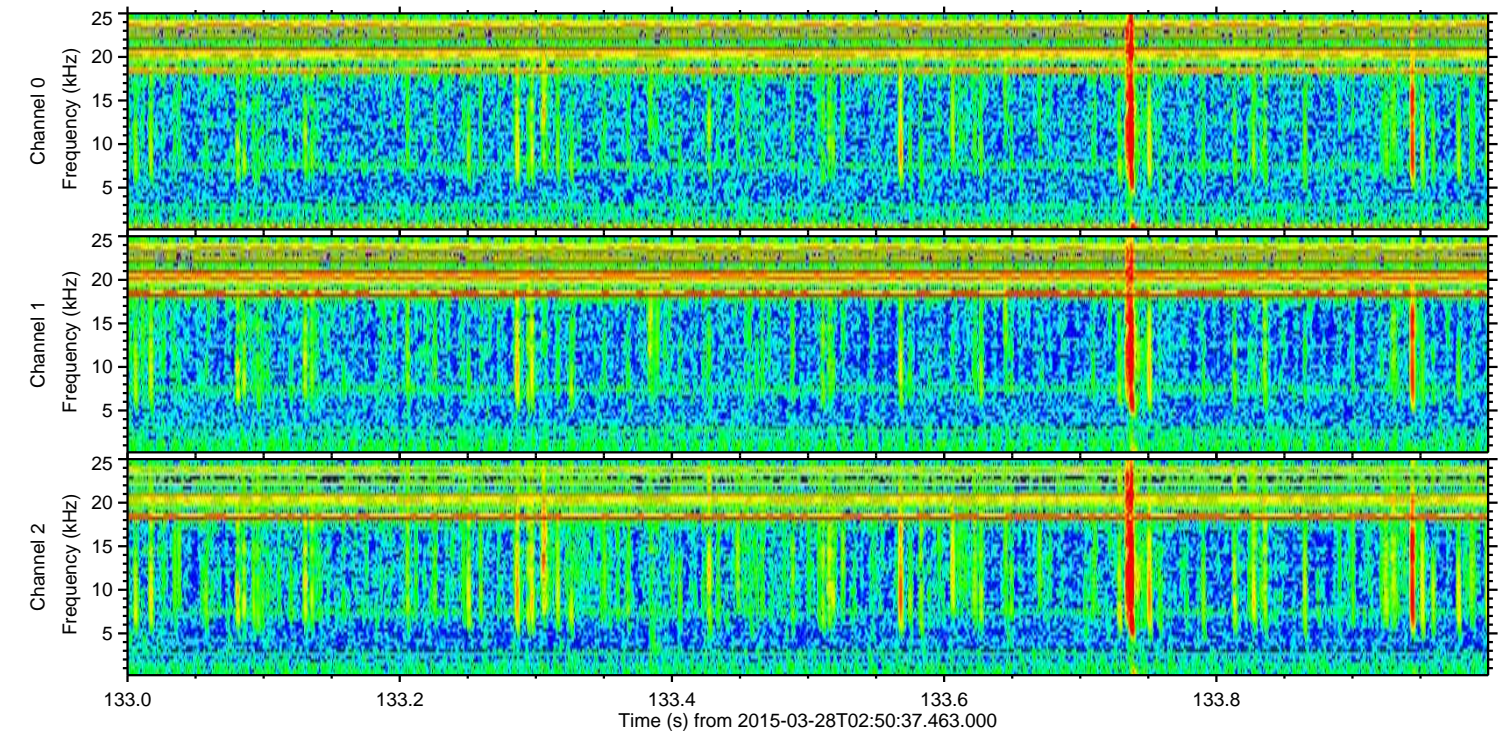
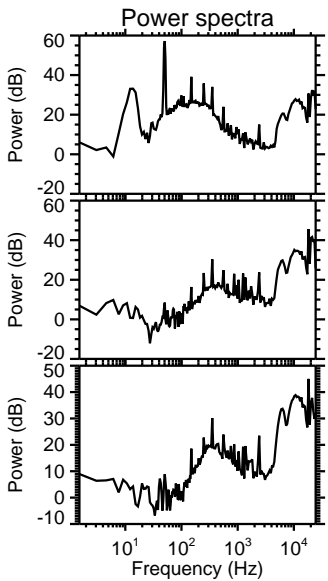
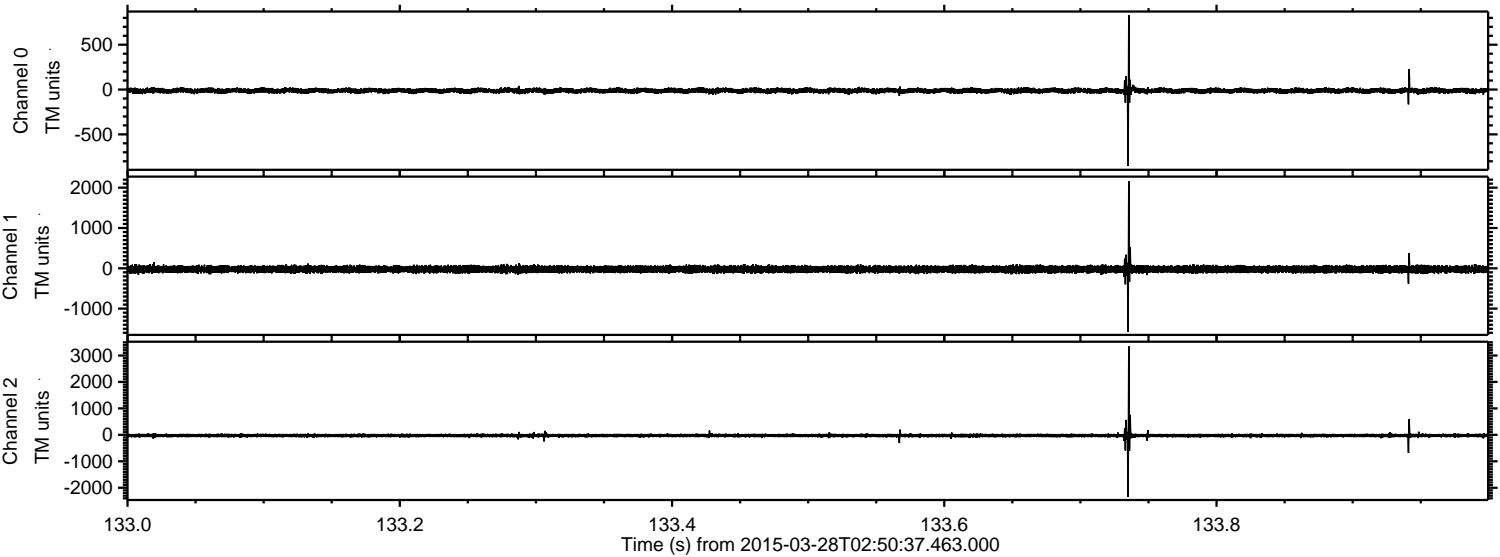
Processed Sat Mar 28 03:58:10 2015 by ELM ver.2012-10-06 from 001\_\_elm20150328\_025036\_\_dat00.bin





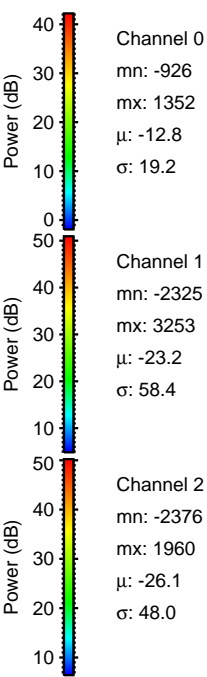
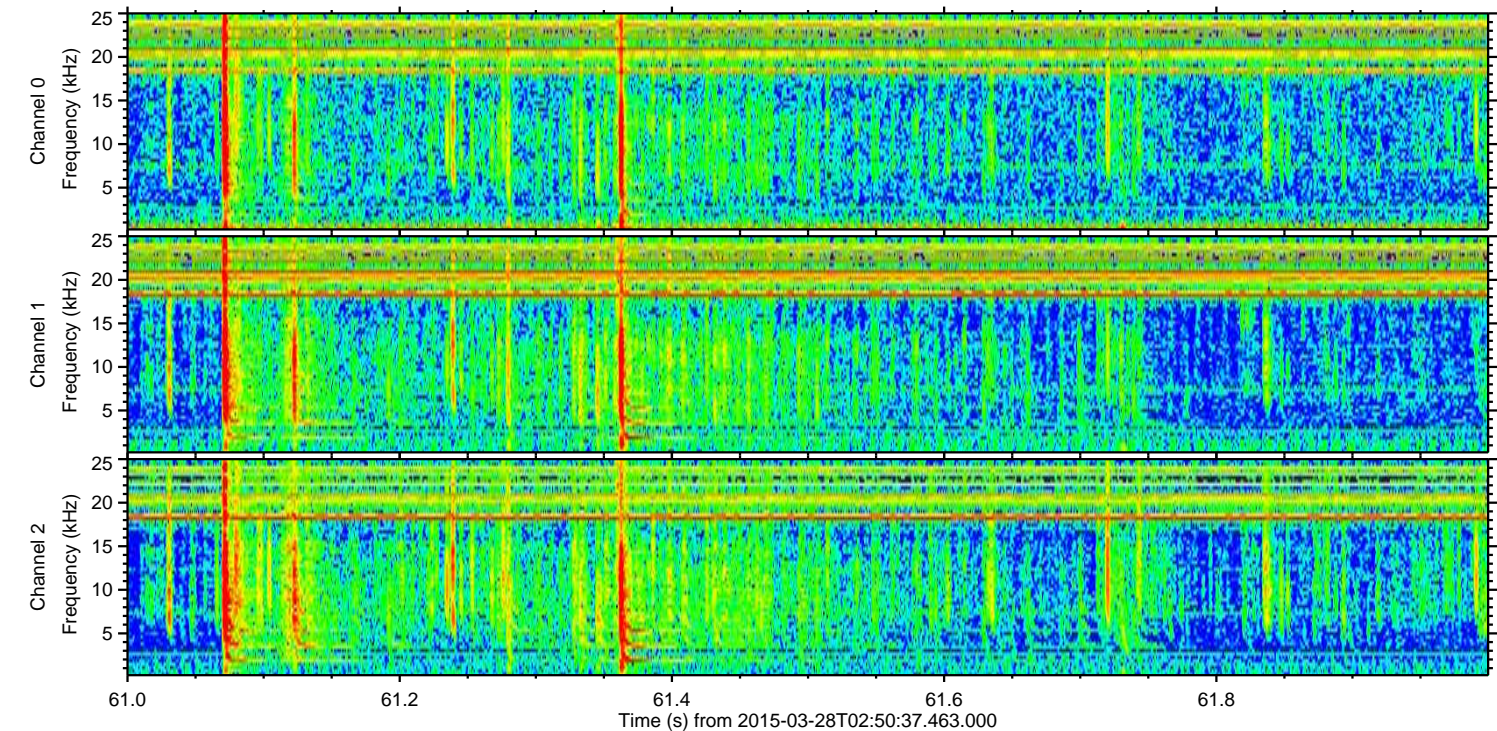
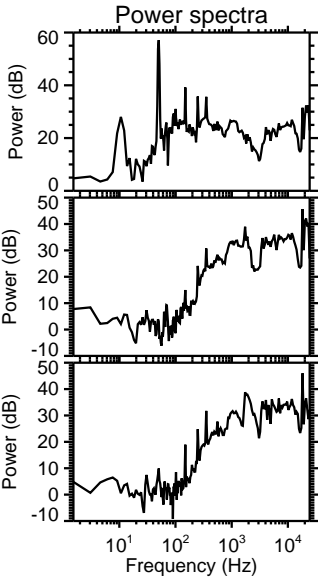
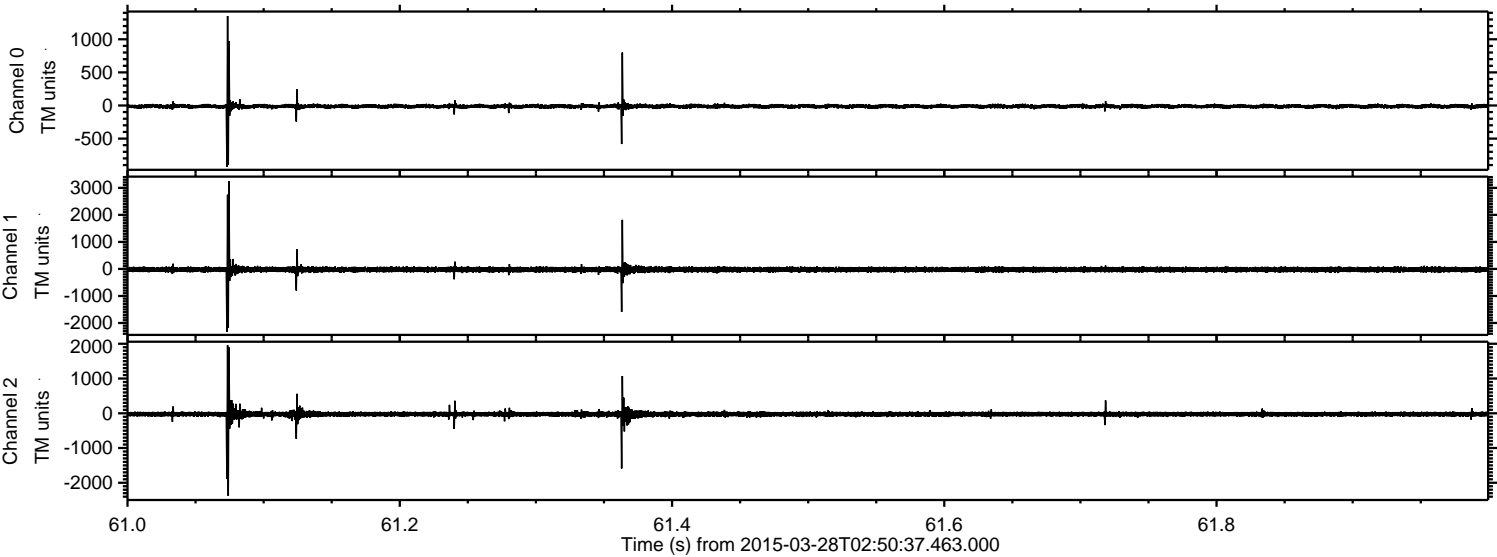
ELMAVAN 3D WAVEFORMS (Measured data sampled at 50 kHz) 49773 packets of 144 samples from 2015-03-28T02:50:37.463.000. Part 134/144

Processed Sat Mar 28 03:58:11 2015 by ELM ver.2012-10-06 from 001\_\_elm20150328\_025036\_\_dat00.bin





Processed Sat Mar 28 03:58:12 2015 by ELM ver.2012-10-06 from 001\_\_elm20150328\_025036\_\_dat00.bin



Channel 0  
mn: -926  
mx: 1352  
 $\mu$ : -12.8  
 $\sigma$ : 19.2

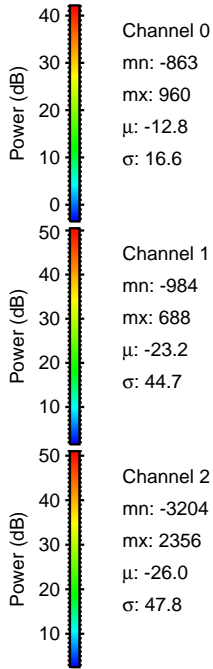
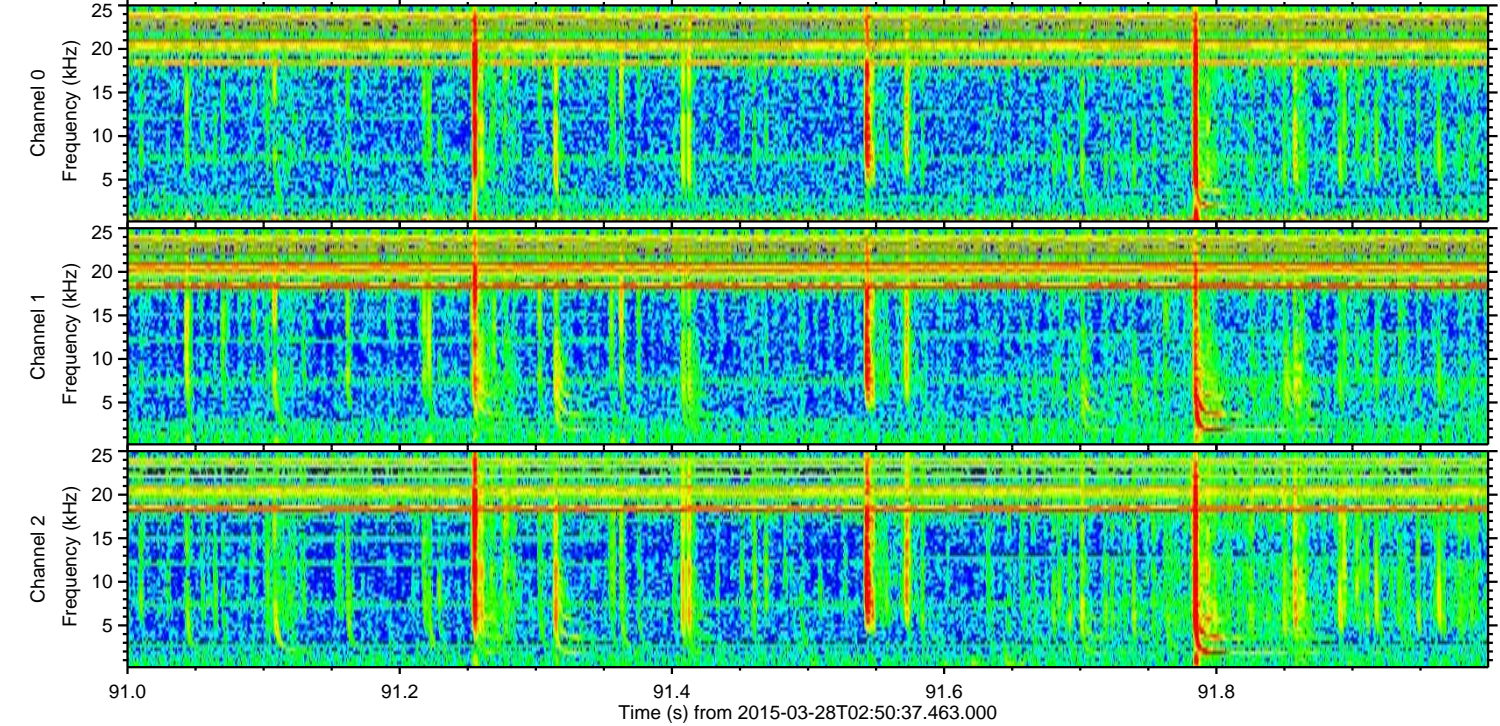
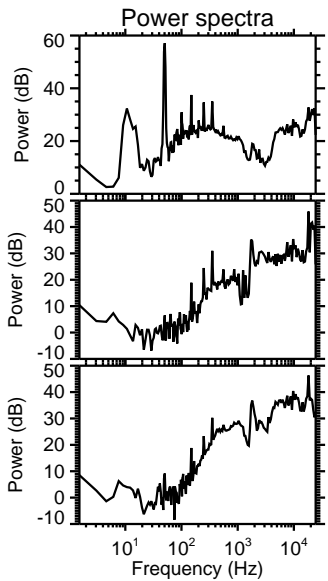
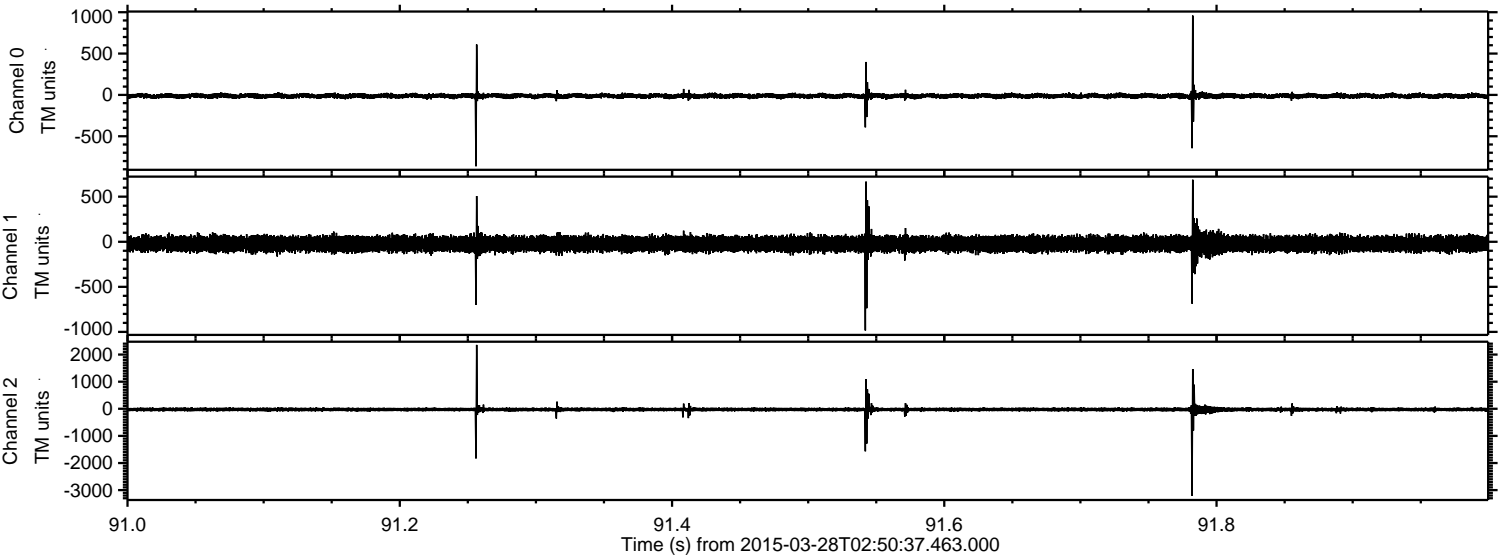
Channel 1  
mn: -2325  
mx: 3253  
 $\mu$ : -23.2  
 $\sigma$ : 58.4

Channel 2  
mn: -2376  
mx: 1960  
 $\mu$ : -26.1  
 $\sigma$ : 48.0



ELMAVAN 3D WAVEFORMS (Measured data sampled at 50 kHz) 49773 packets of 144 samples from 2015-03-28T02:50:37.463.000. Part 92/144

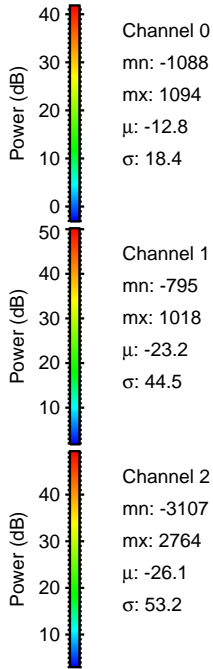
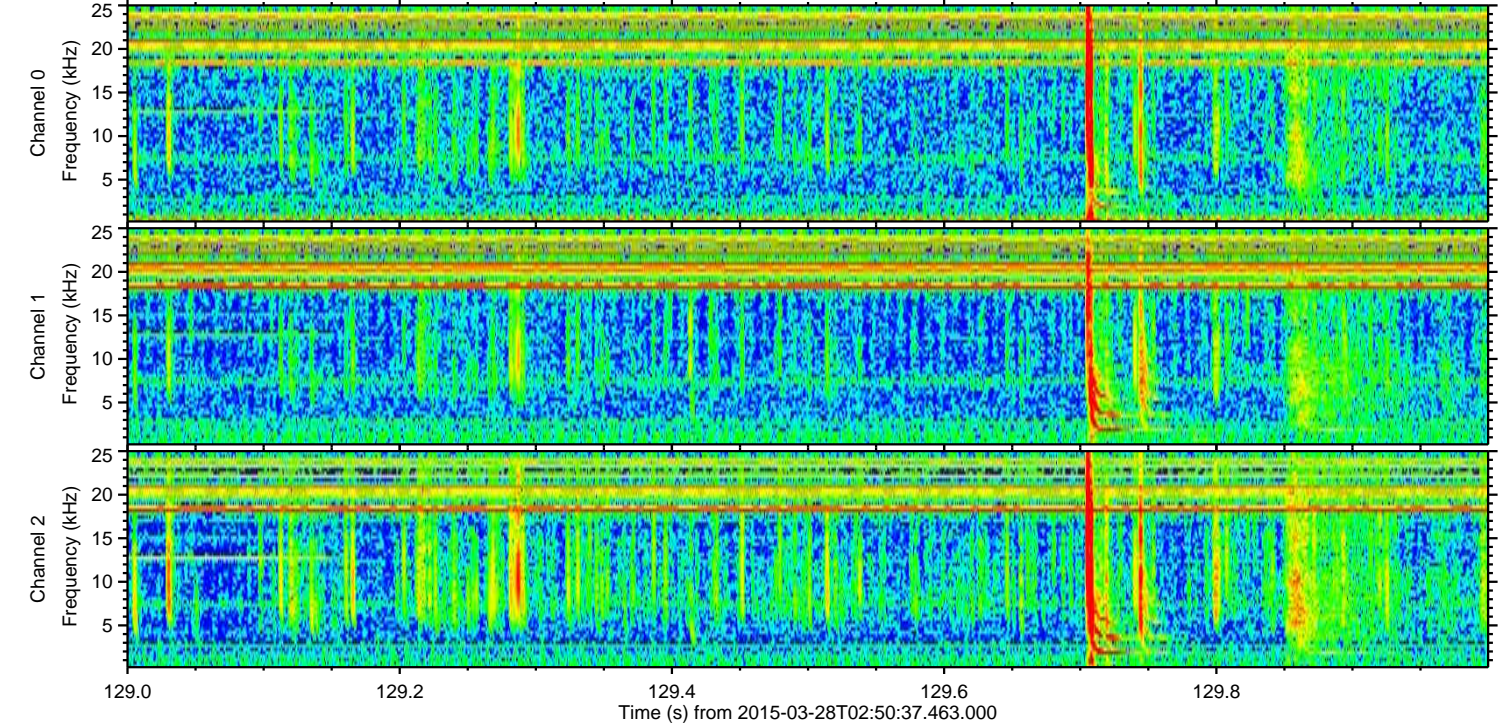
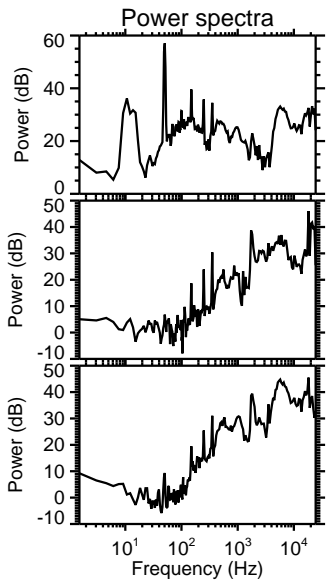
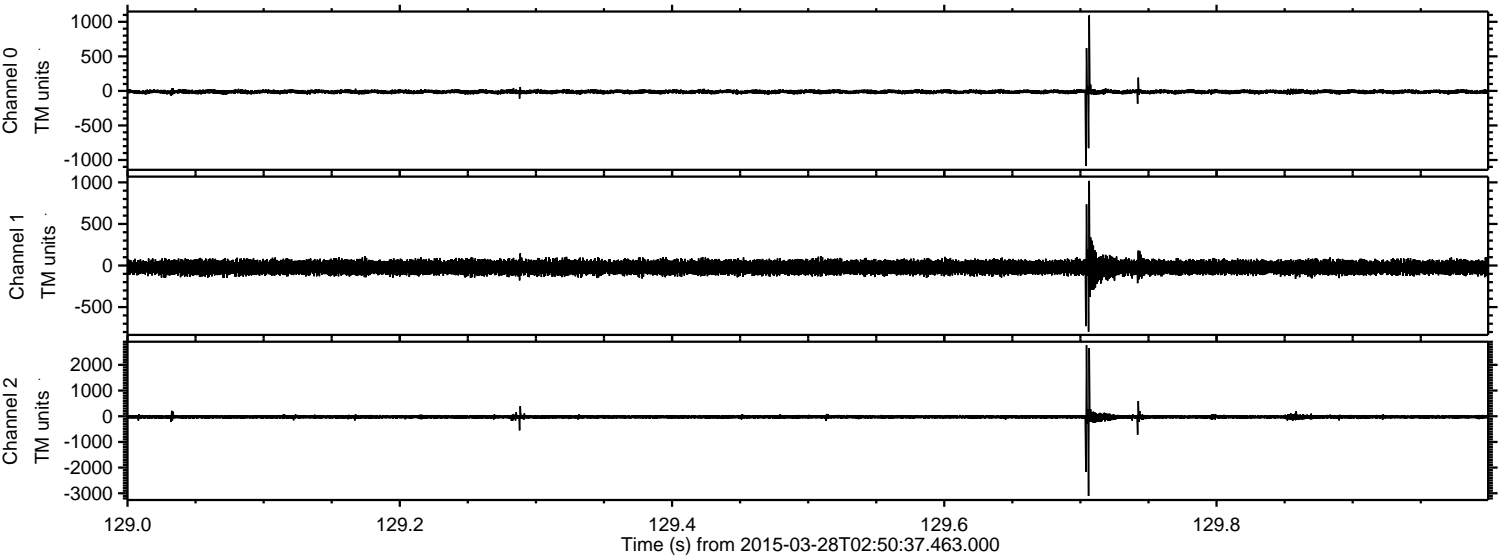
Processed Sat Mar 28 03:58:13 2015 by ELM ver.2012-10-06 from 001\_\_elm20150328\_025036\_\_dat00.bin





ELMAVAN 3D WAVEFORMS (Measured data sampled at 50 kHz) 49773 packets of 144 samples from 2015-03-28T02:50:37.463.000. Part 130/144

Processed Sat Mar 28 03:58:14 2015 by ELM ver.2012-10-06 from 001\_\_elm20150328\_025036\_\_dat00.bin



Channel 0  
mn: -1088  
mx: 1094  
 $\mu$ : -12.8  
 $\sigma$ : 18.4

Channel 1  
mn: -795  
mx: 1018  
 $\mu$ : -23.2  
 $\sigma$ : 44.5

Channel 2  
mn: -3107  
mx: 2764  
 $\mu$ : -26.1  
 $\sigma$ : 53.2



Processed Sat Mar 28 03:58:15 2015 by ELM ver.2012-10-06 from 001\_\_elm20150328\_025036\_\_dat00.bin

