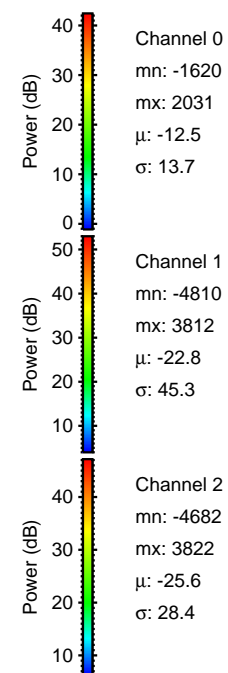
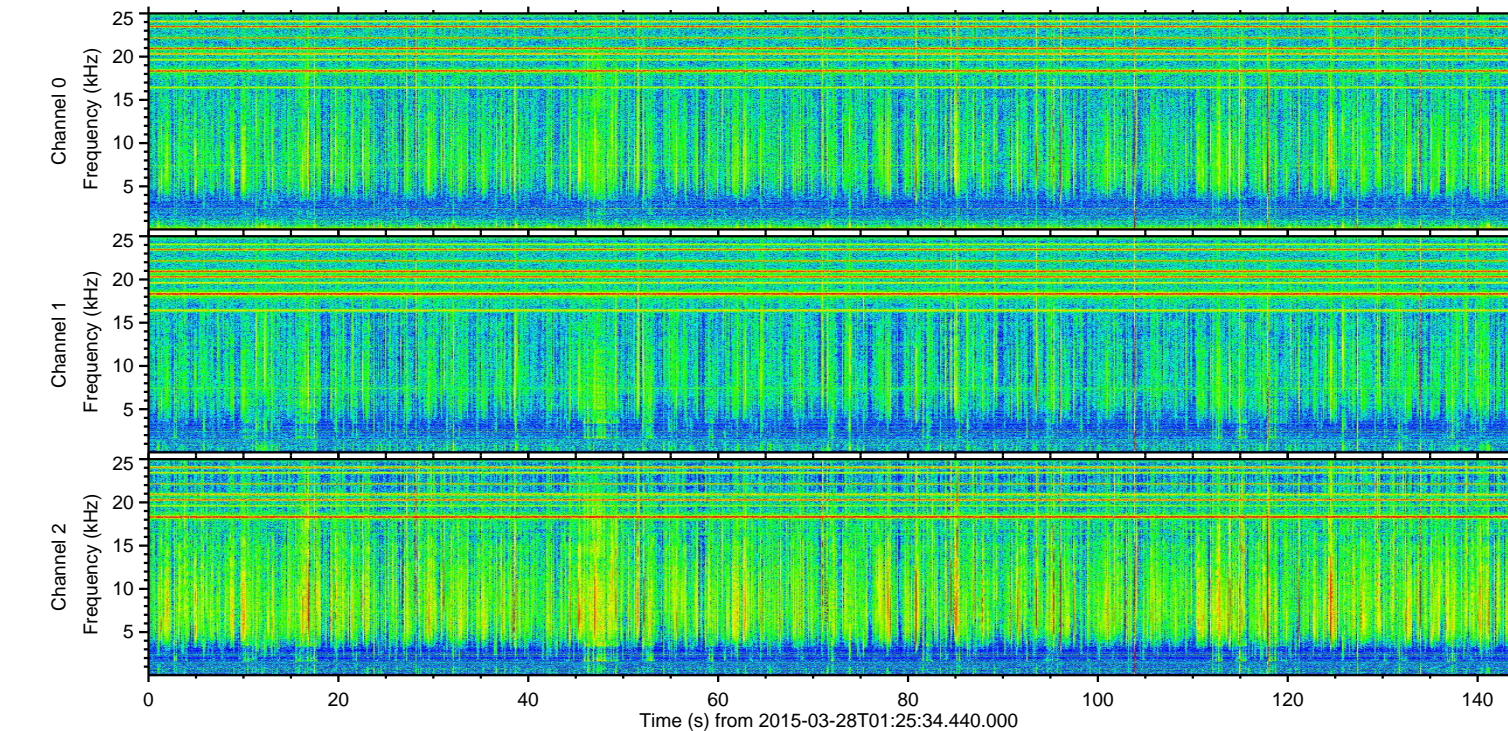
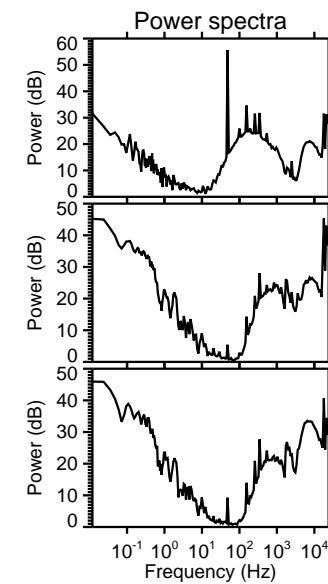
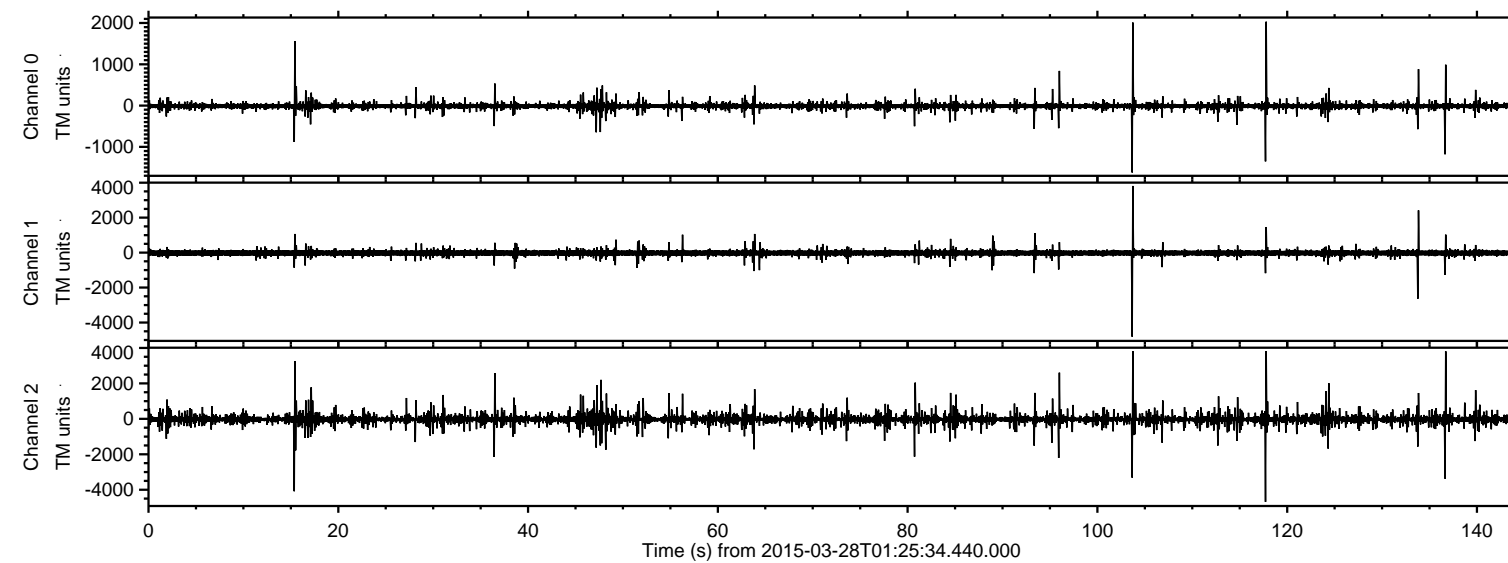


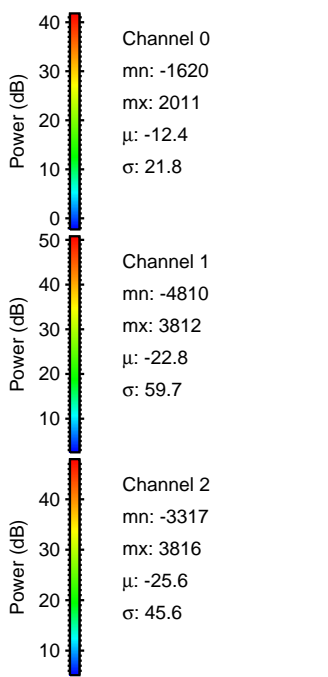
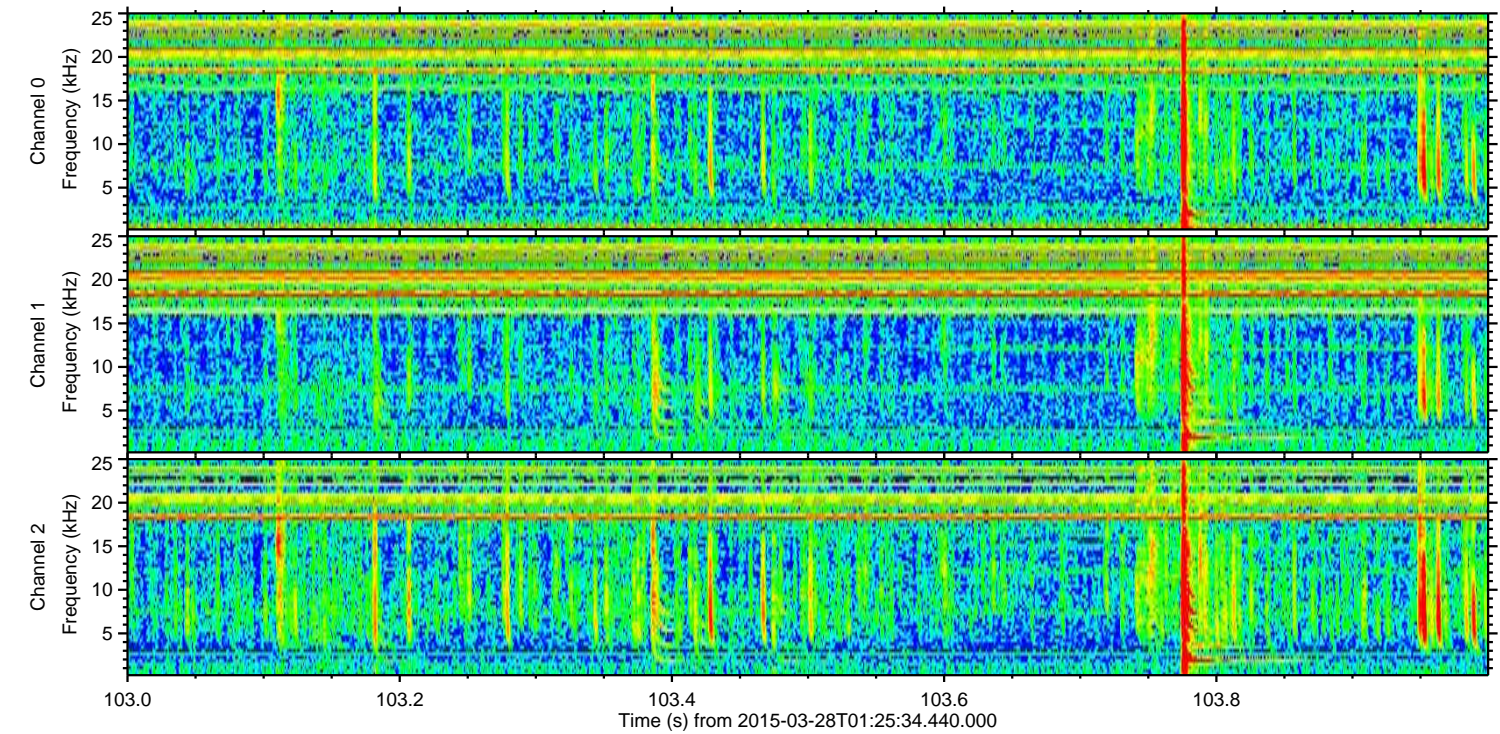
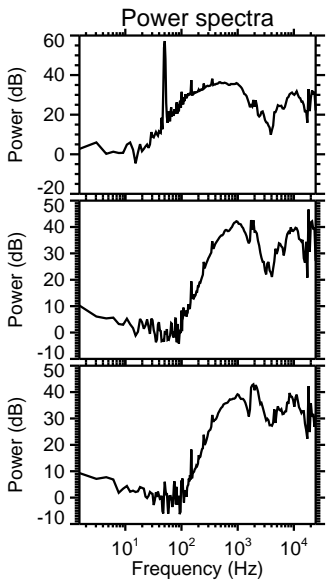
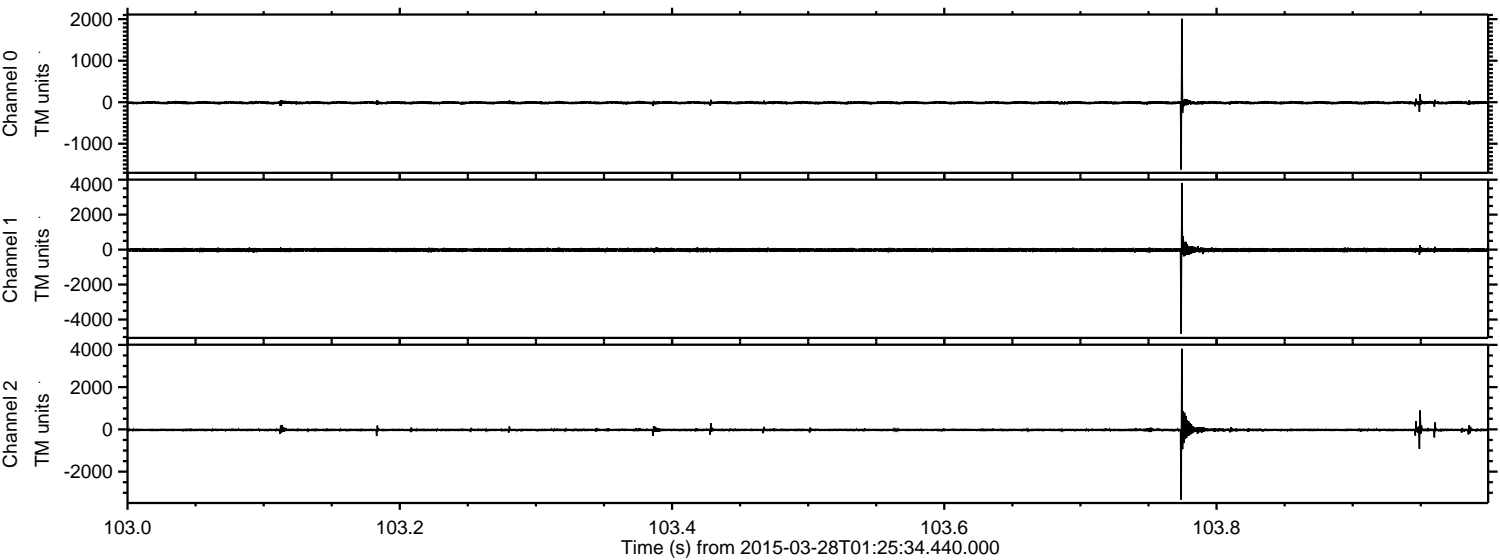
ELMAVAN 3D WAVEFORMS (Measured data sampled at 50 kHz) 49789 packets of 144 samples from 2015-03-28T01:25:34.440.000.

Processed Sat Mar 28 02:32:47 2015 by ELM ver.2012-10-06 from 001__elm20150328_012533__dat00.bin



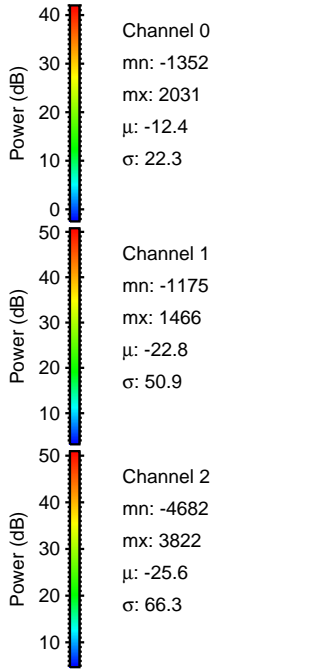
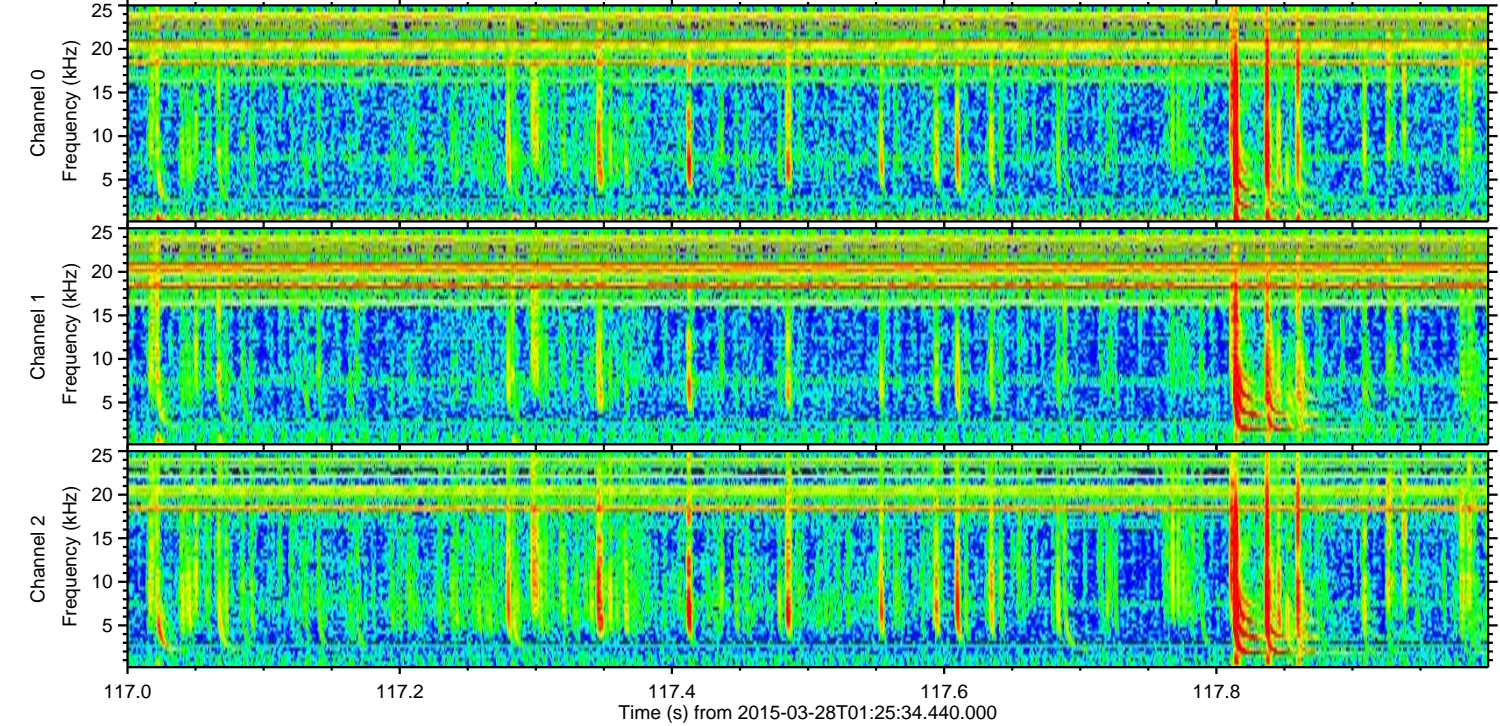
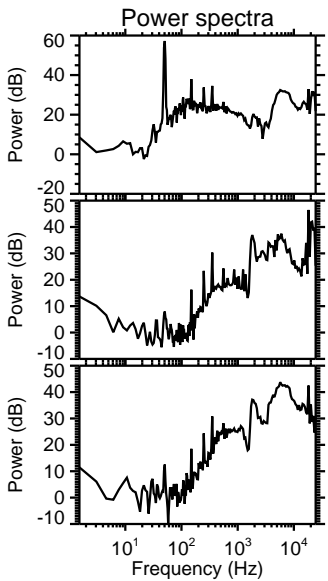
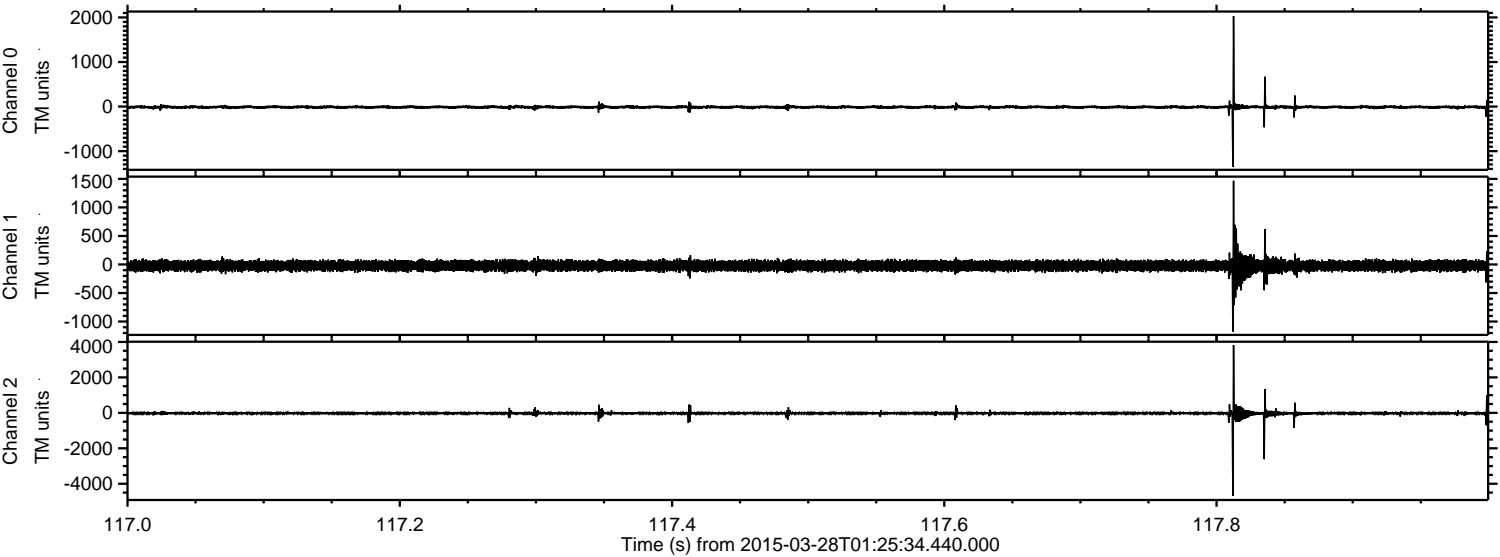
ELMAVAN 3D WAVEFORMS (Measured data sampled at 50 kHz) 49789 packets of 144 samples from 2015-03-28T01:25:34.440.000. Part 104/144

Processed Sat Mar 28 02:32:58 2015 by ELM ver.2012-10-06 from 001__elm20150328_012533__dat00.bin



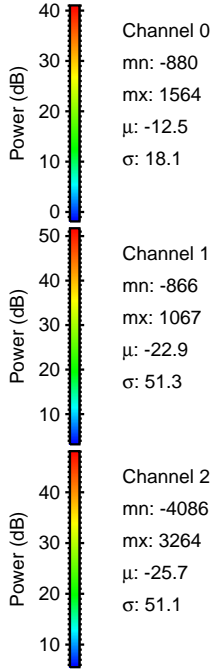
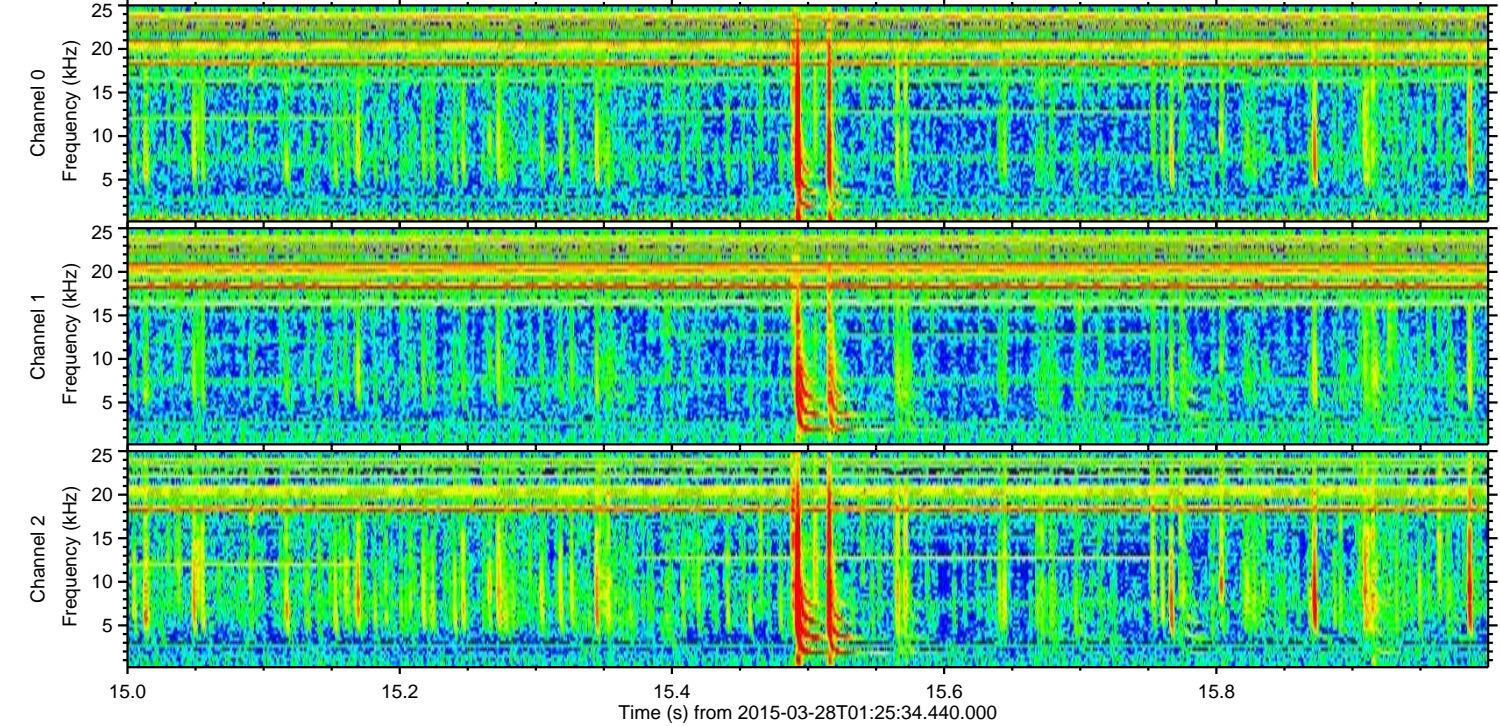
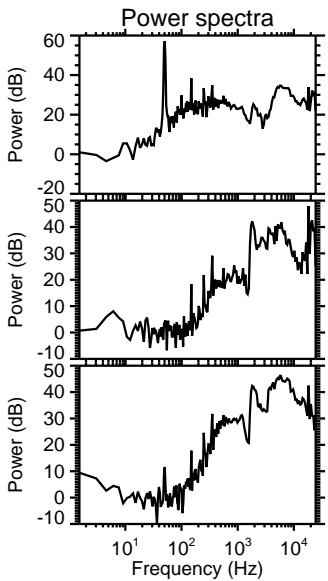
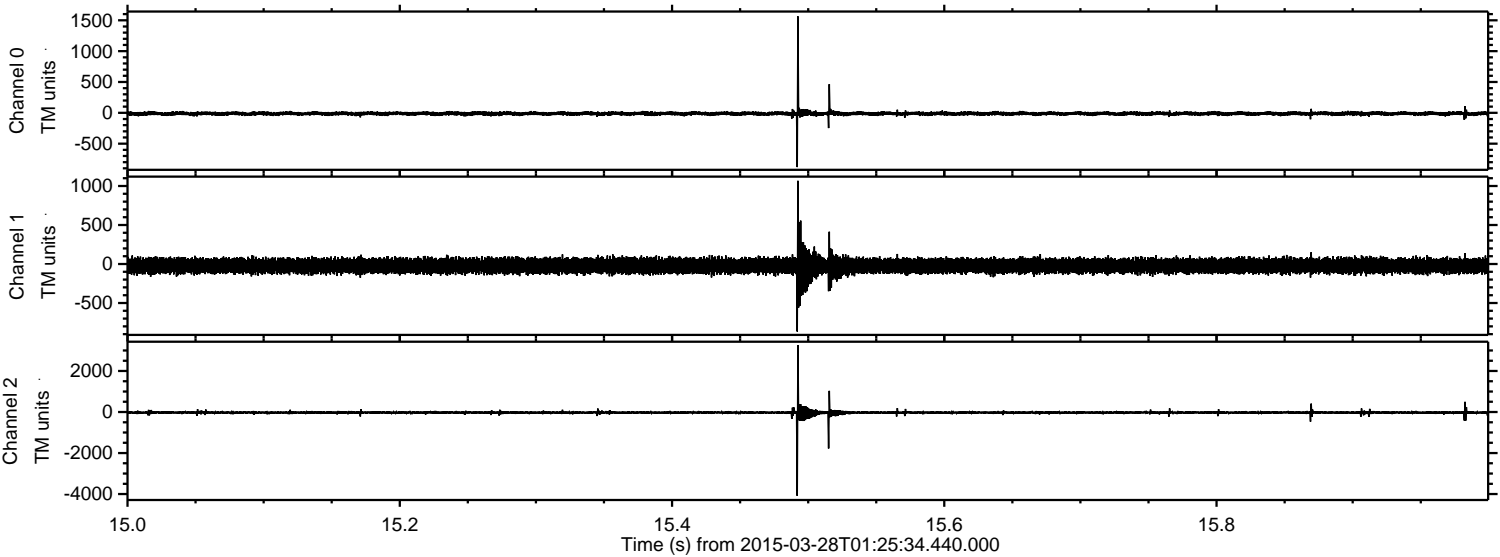
ELMAVAN 3D WAVEFORMS (Measured data sampled at 50 kHz) 49789 packets of 144 samples from 2015-03-28T01:25:34.440.000. Part 118/144

Processed Sat Mar 28 02:32:59 2015 by ELM ver.2012-10-06 from 001__elm20150328_012533__dat00.bin



ELMAVAN 3D WAVEFORMS (Measured data sampled at 50 kHz) 49789 packets of 144 samples from 2015-03-28T01:25:34.440.000. Part 16/144

Processed Sat Mar 28 02:33:00 2015 by ELM ver.2012-10-06 from 001__elm20150328_012533__dat00.bin



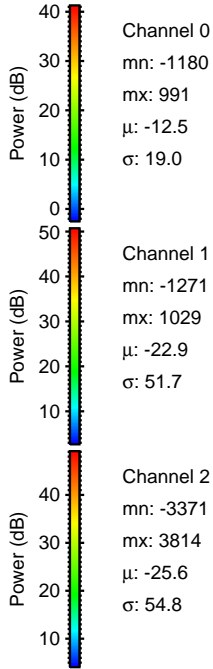
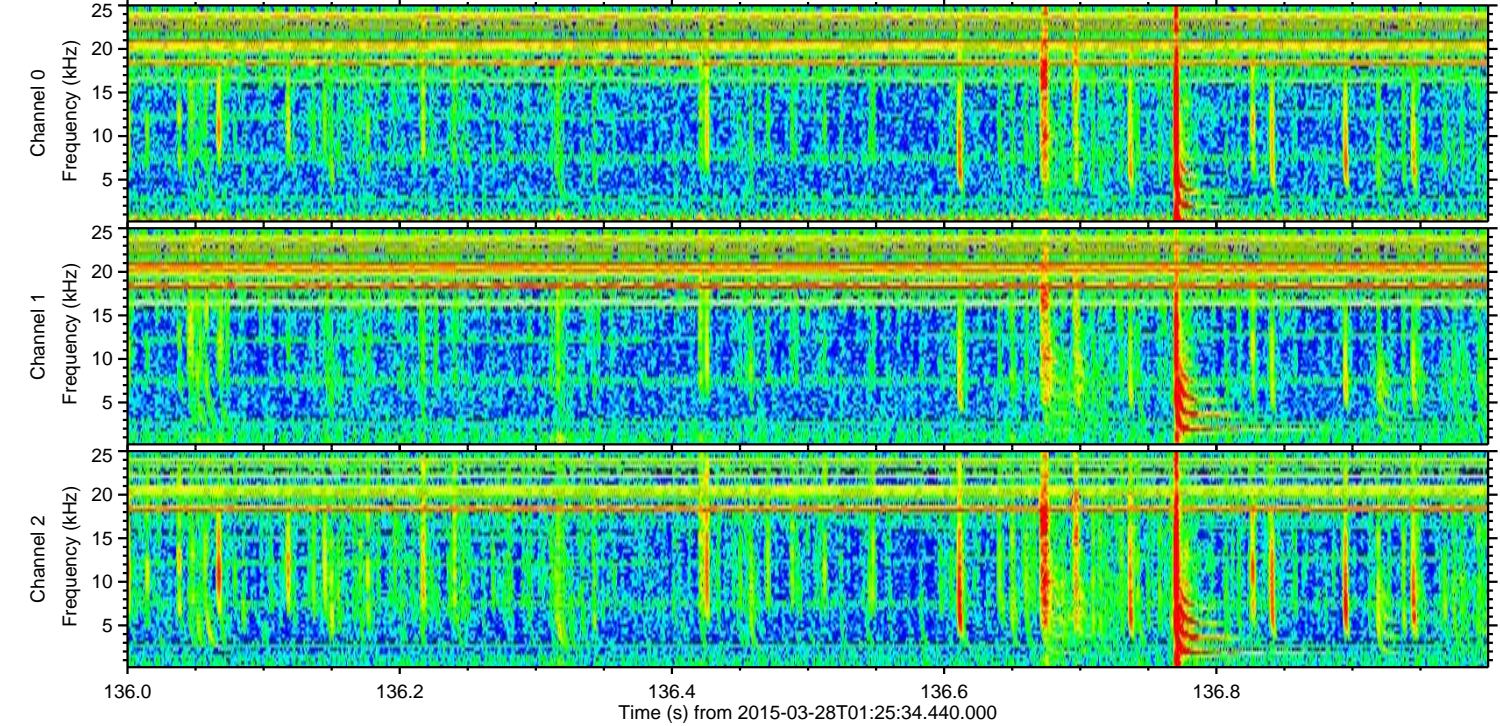
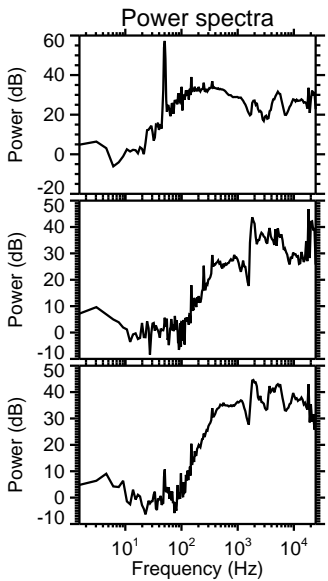
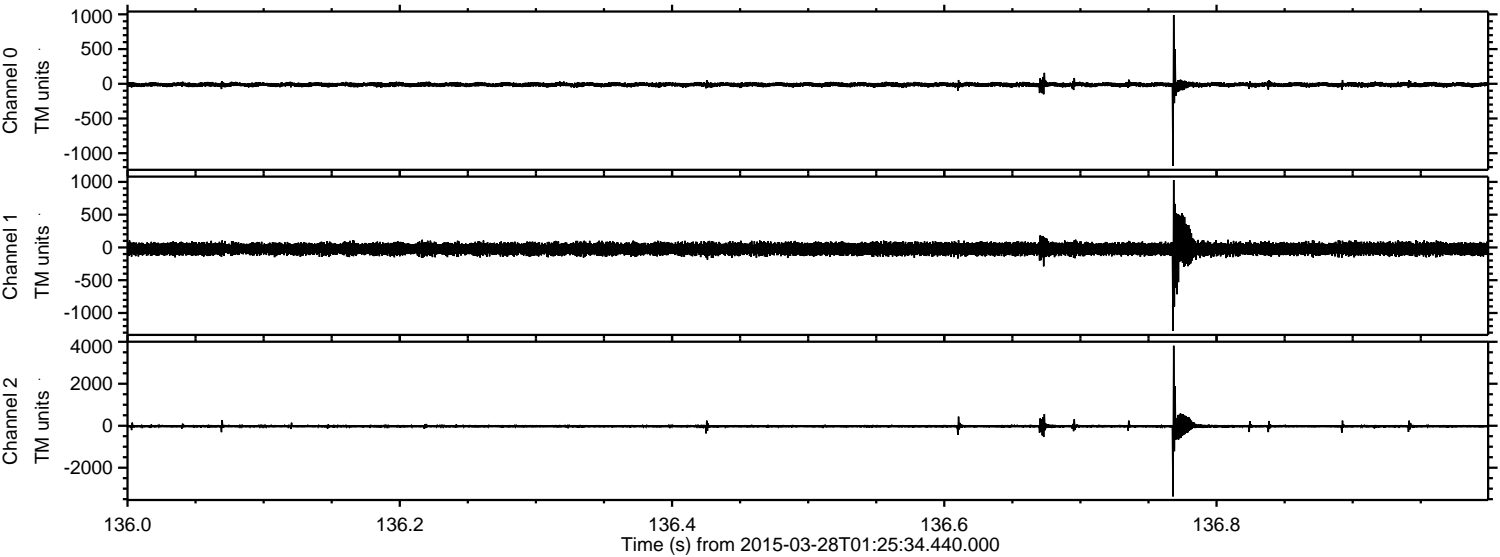
Channel 0
mn: -880
mx: 1564
 μ : -12.5
 σ : 18.1

Channel 1
mn: -866
mx: 1067
 μ : -22.9
 σ : 51.3

Channel 2
mn: -4086
mx: 3264
 μ : -25.7
 σ : 51.1

ELMAVAN 3D WAVEFORMS (Measured data sampled at 50 kHz) 49789 packets of 144 samples from 2015-03-28T01:25:34.440.000. Part 137/144

Processed Sat Mar 28 02:33:01 2015 by ELM ver.2012-10-06 from 001__elm20150328_012533__dat00.bin



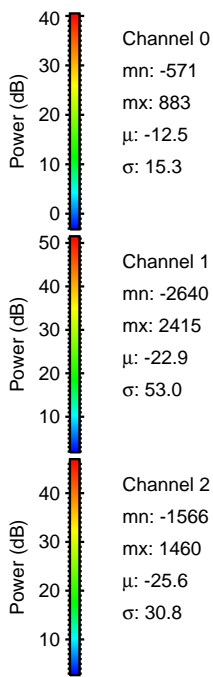
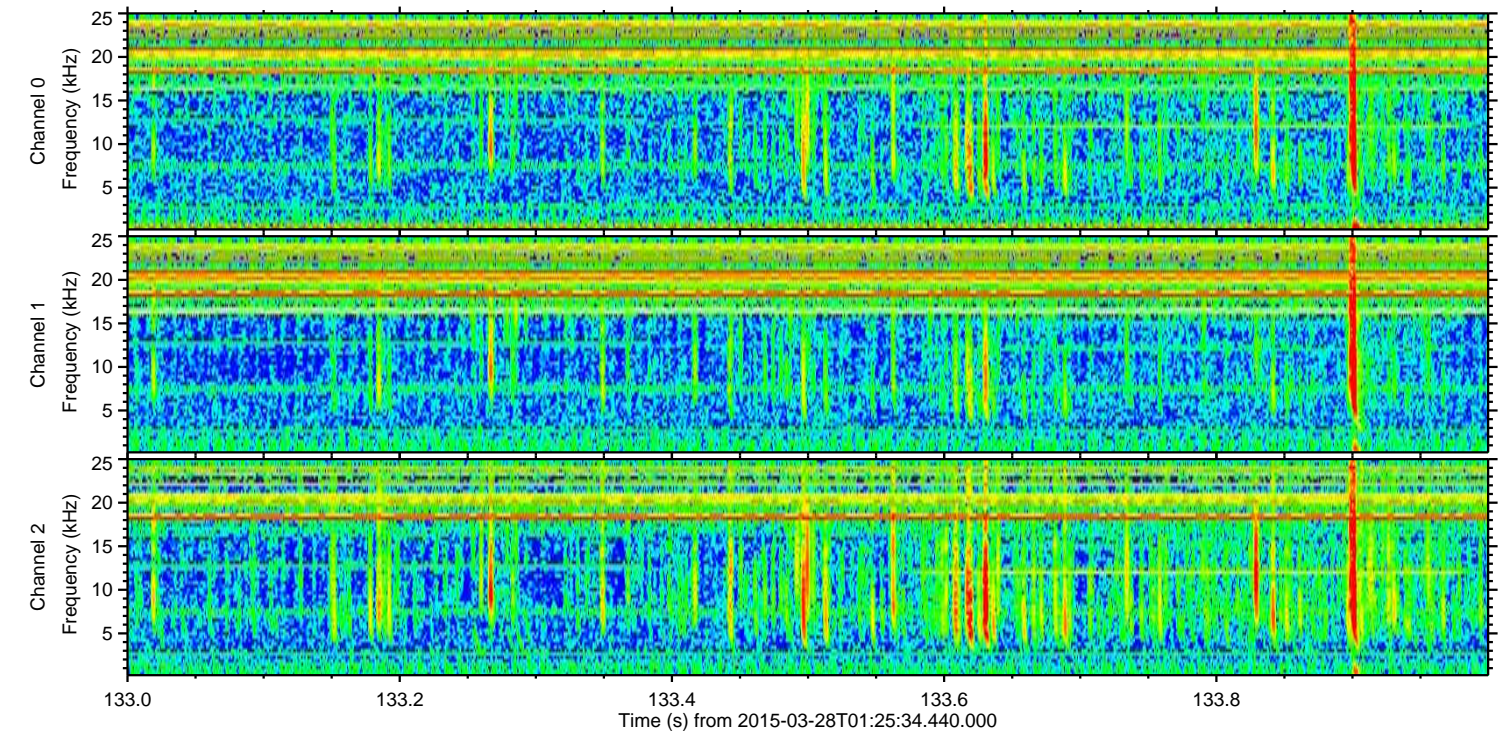
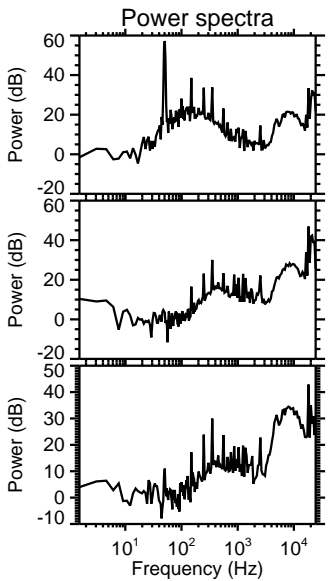
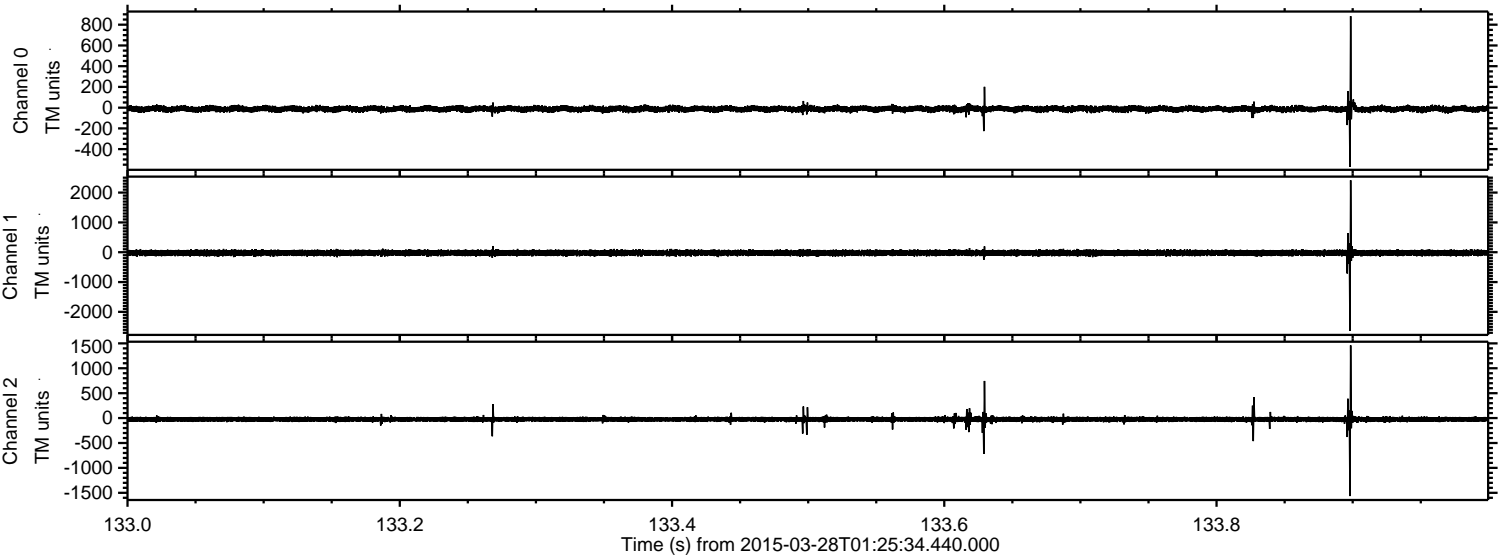
Channel 0
mn: -1180
mx: 991
 μ : -12.5
 σ : 19.0

Channel 1
mn: -1271
mx: 1029
 μ : -22.9
 σ : 51.7

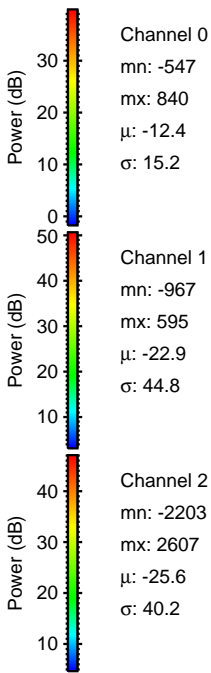
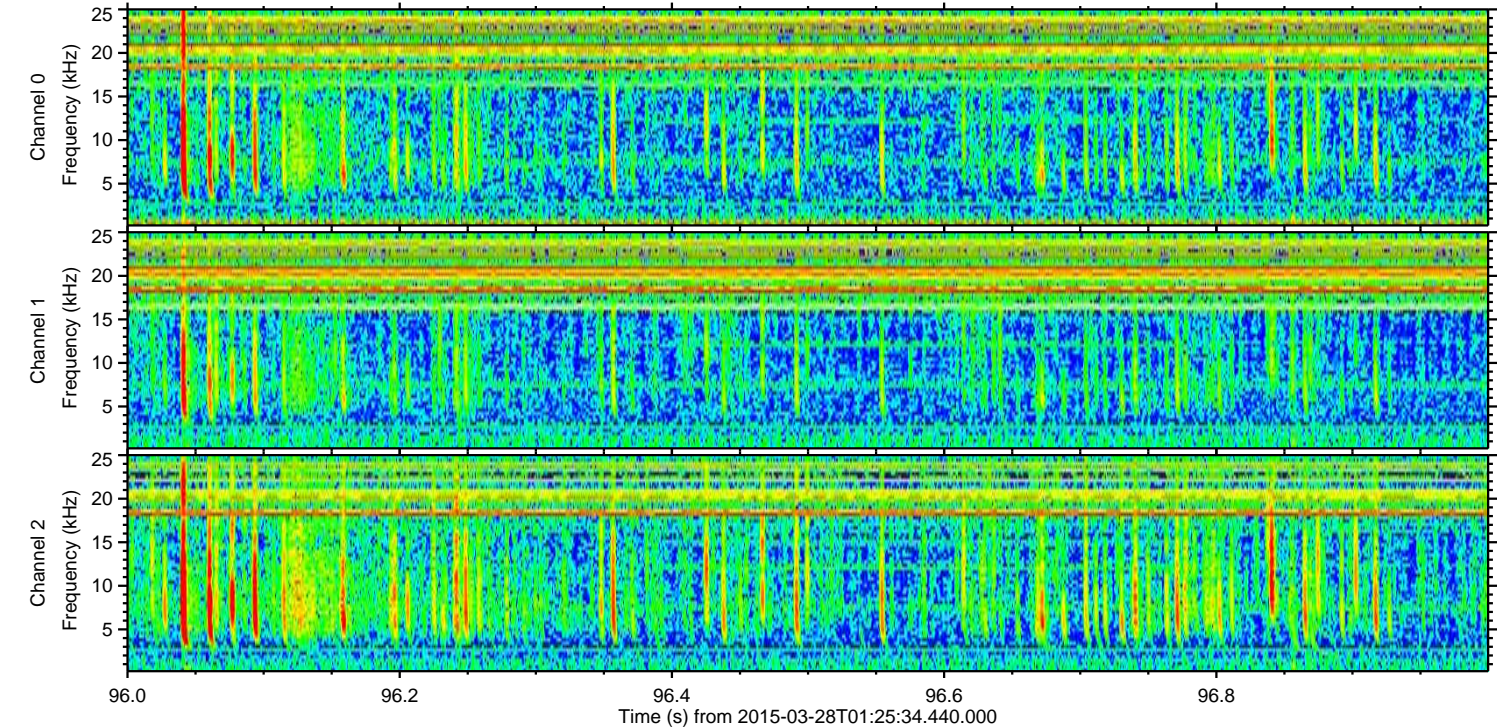
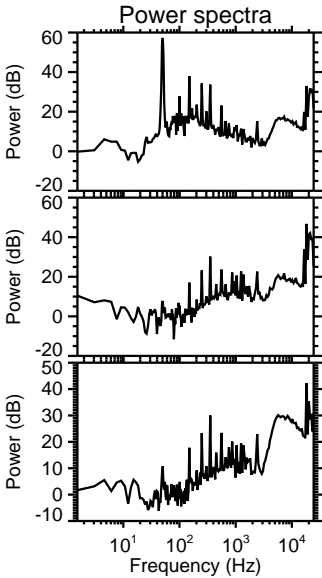
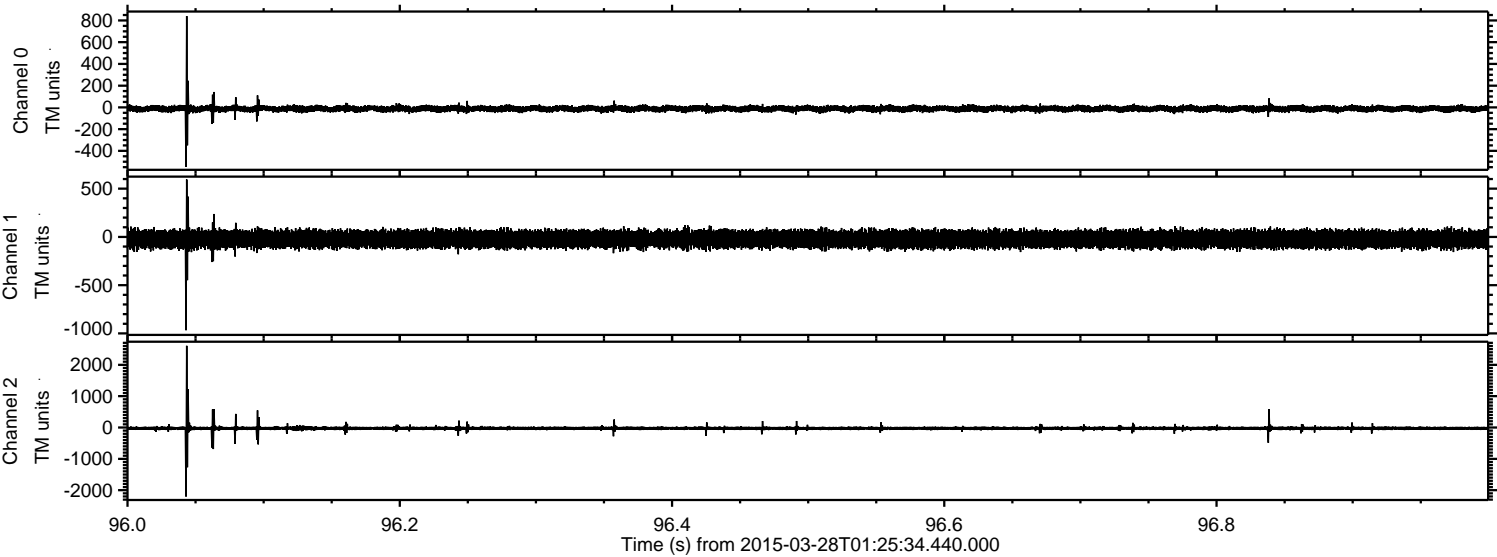
Channel 2
mn: -3371
mx: 3814
 μ : -25.6
 σ : 54.8

ELMAVAN 3D WAVEFORMS (Measured data sampled at 50 kHz) 49789 packets of 144 samples from 2015-03-28T01:25:34.440.000. Part 134/144

Processed Sat Mar 28 02:33:02 2015 by ELM ver.2012-10-06 from 001__elm20150328_012533__dat00.bin

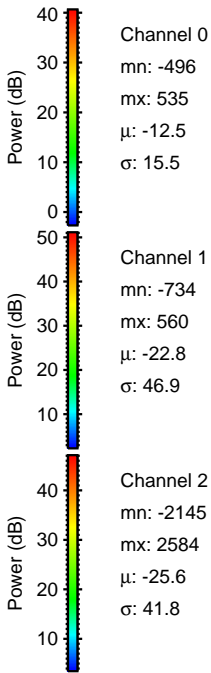
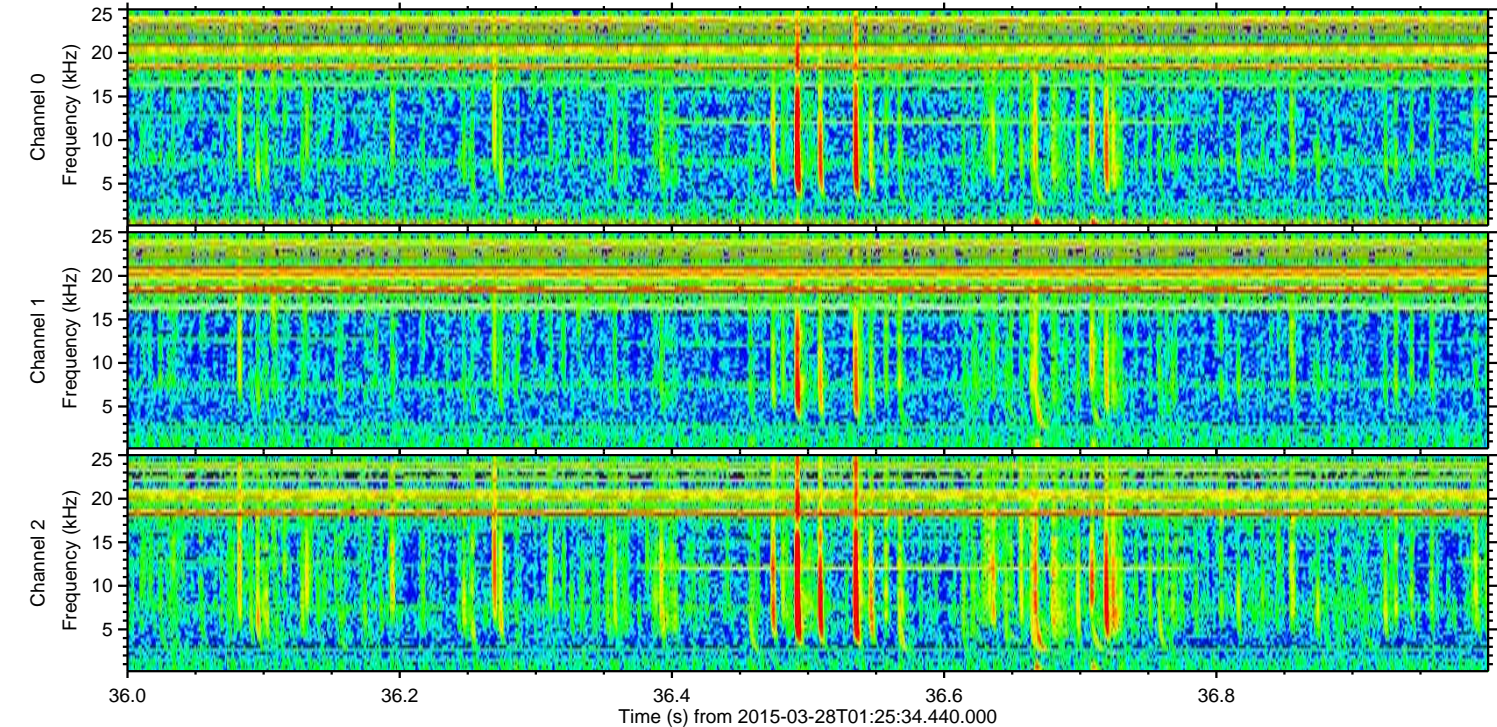
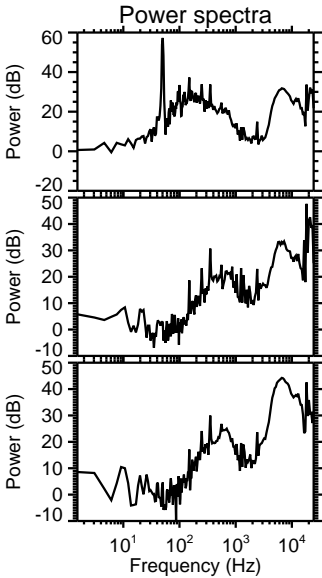
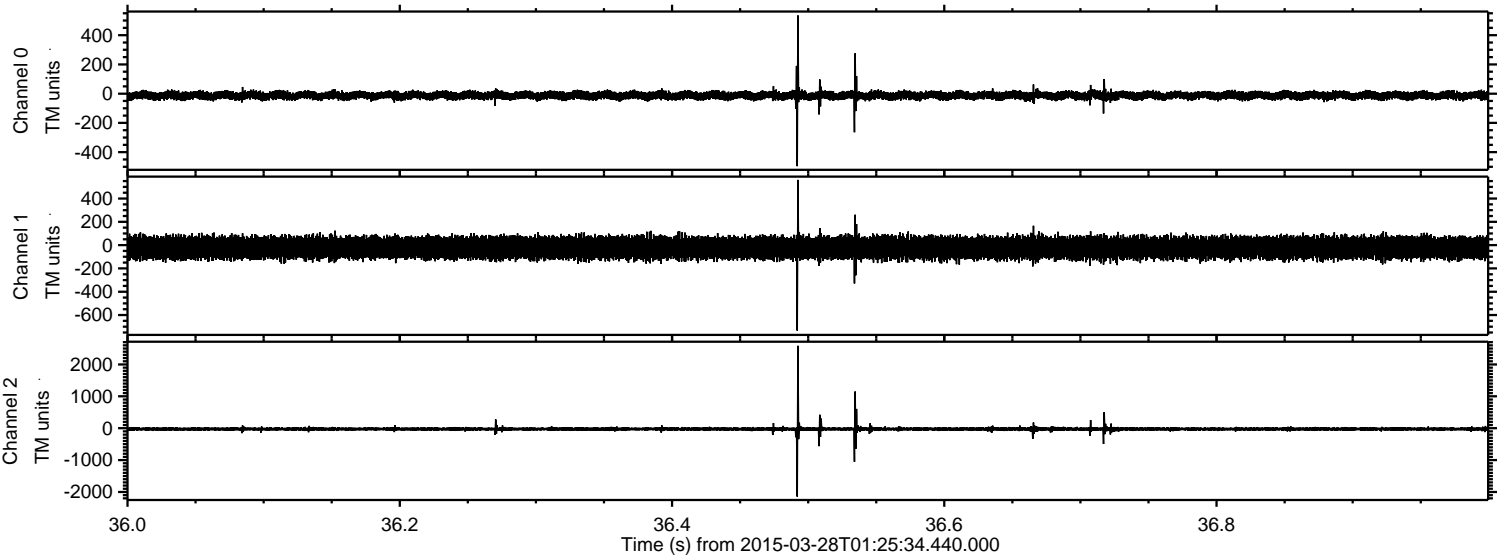


Processed Sat Mar 28 02:33:03 2015 by ELM ver.2012-10-06 from 001__elm20150328_012533__dat00.bin

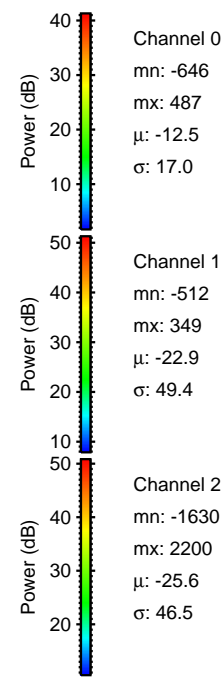
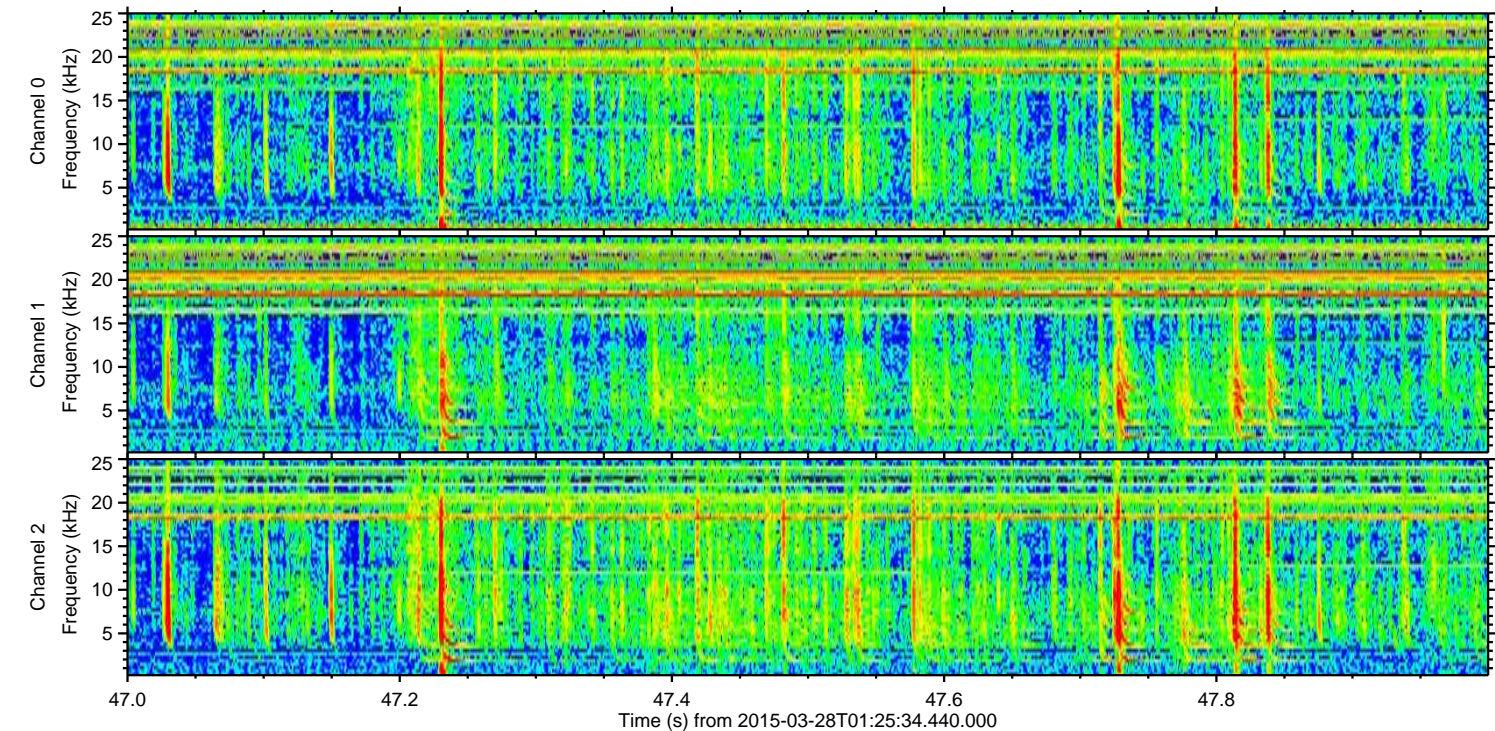
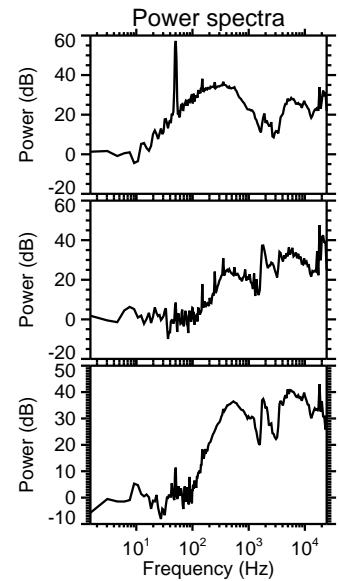
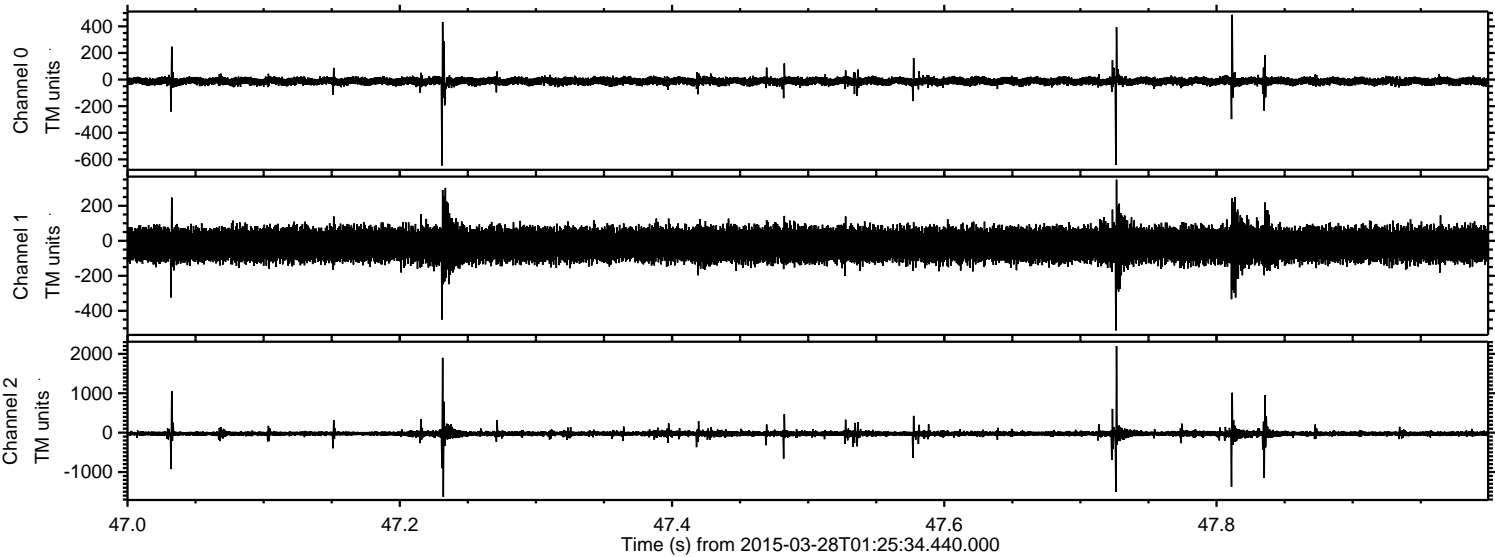


ELMAVAN 3D WAVEFORMS (Measured data sampled at 50 kHz) 49789 packets of 144 samples from 2015-03-28T01:25:34.440.000. Part 37/144

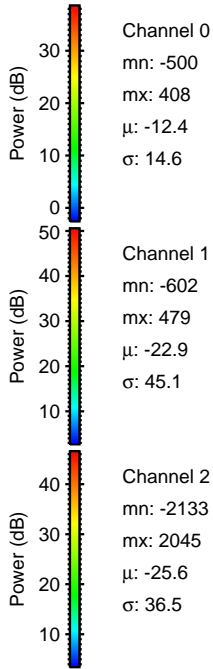
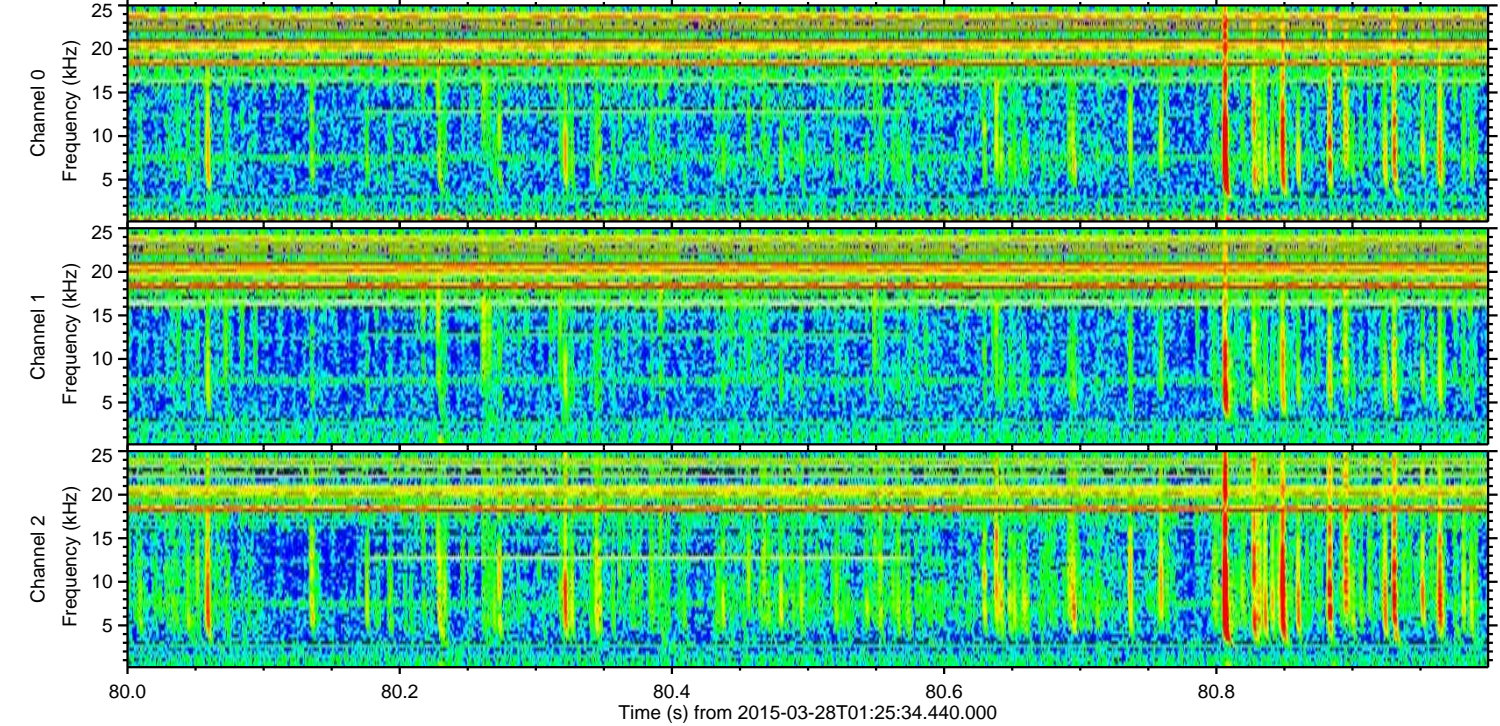
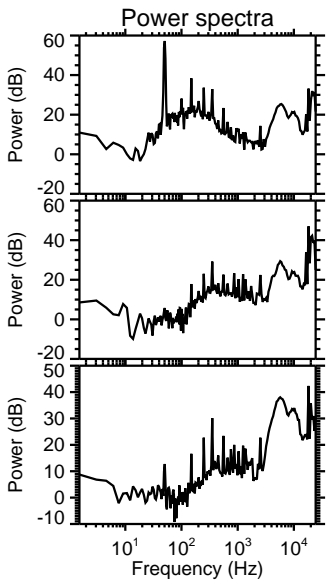
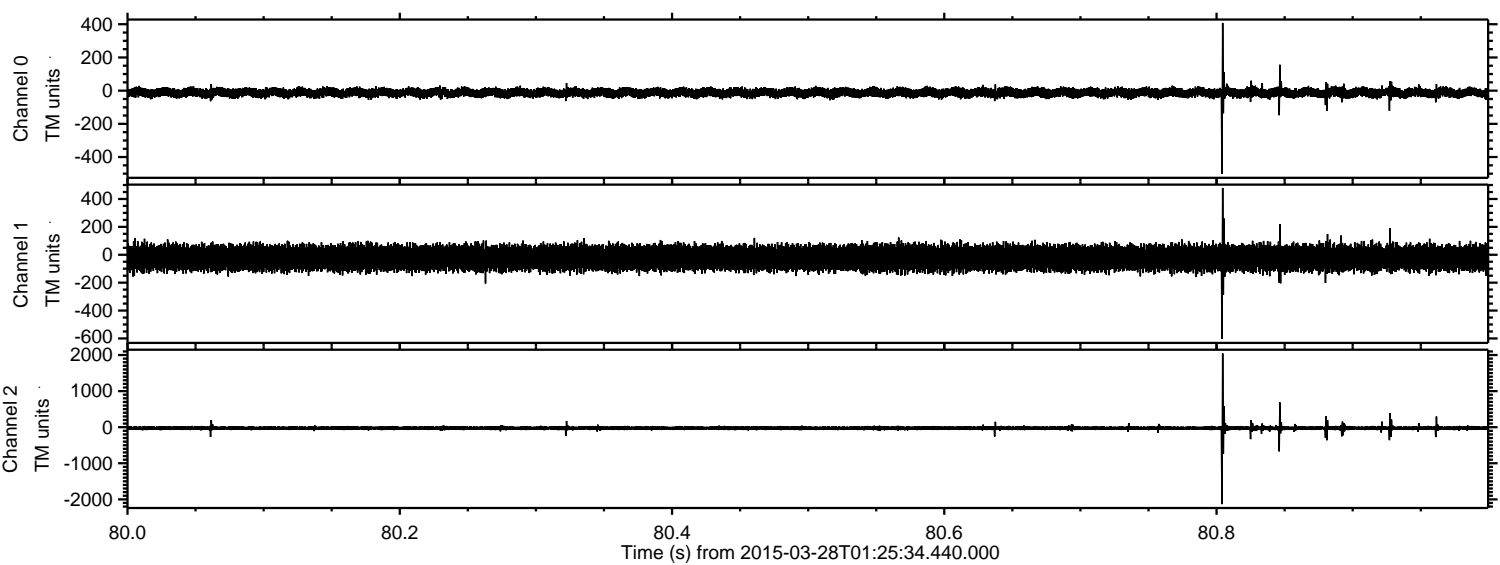
Processed Sat Mar 28 02:33:04 2015 by ELM ver.2012-10-06 from 001__elm20150328_012533__dat00.bin



Processed Sat Mar 28 02:33:05 2015 by ELM ver.2012-10-06 from 001__elm20150328_012533__dat00.bin



Processed Sat Mar 28 02:33:06 2015 by ELM ver.2012-10-06 from 001__elm20150328_012533__dat00.bin



Channel 0
mn: -500
mx: 408
 μ : -12.4
 σ : 14.6

Channel 1
mn: -602
mx: 479
 μ : -22.9
 σ : 45.1

Channel 2
mn: -2133
mx: 2045
 μ : -25.6
 σ : 36.5

Processed Sat Mar 28 02:33:07 2015 by ELM ver.2012-10-06 from 001__elm20150328_012533__dat00.bin

