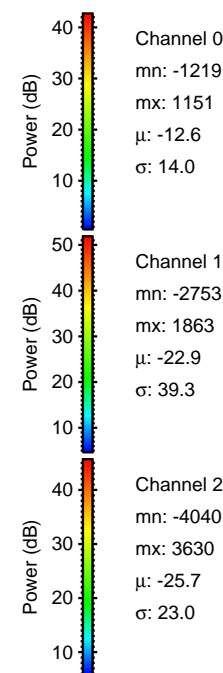
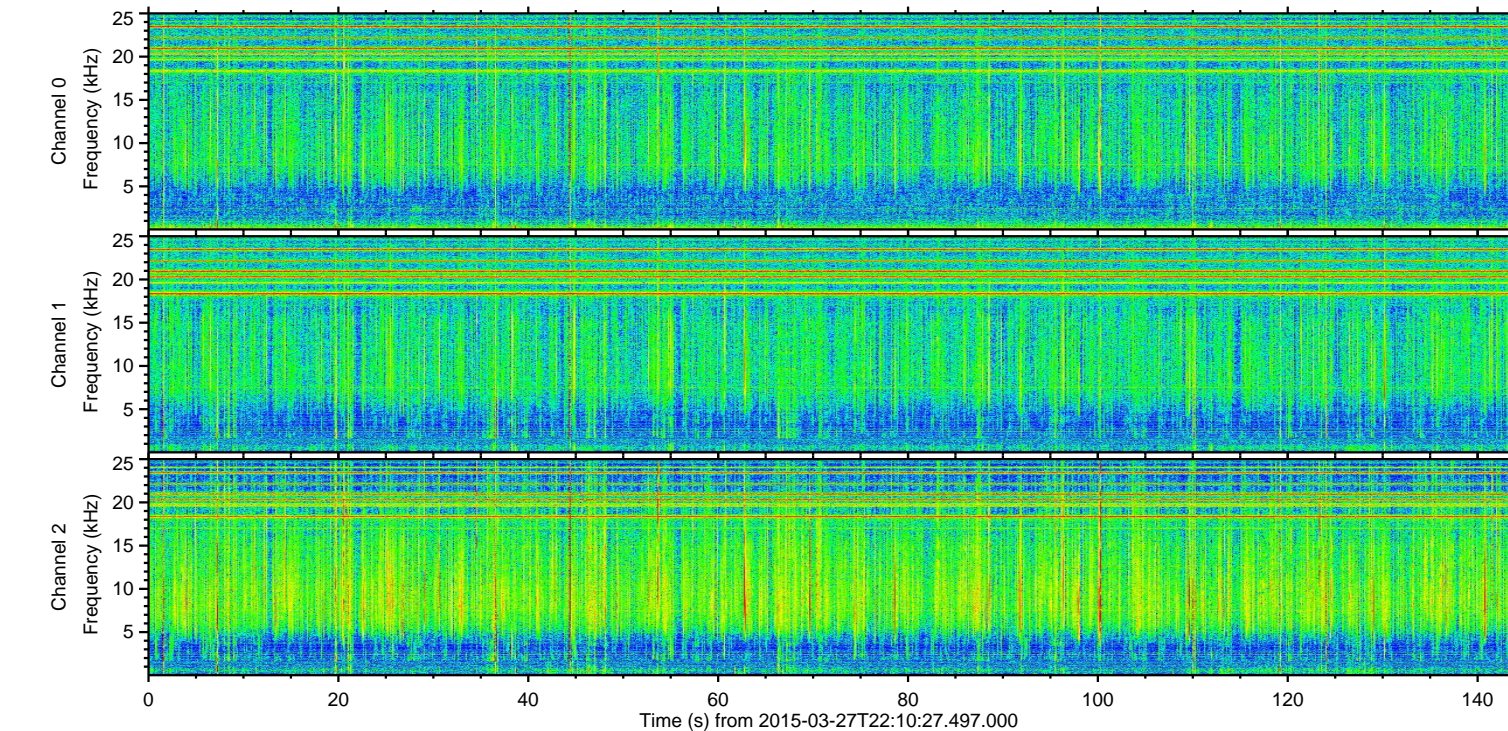
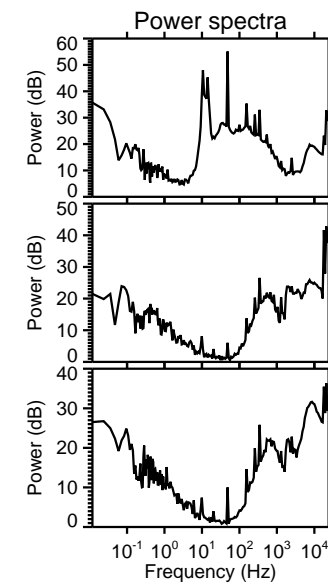
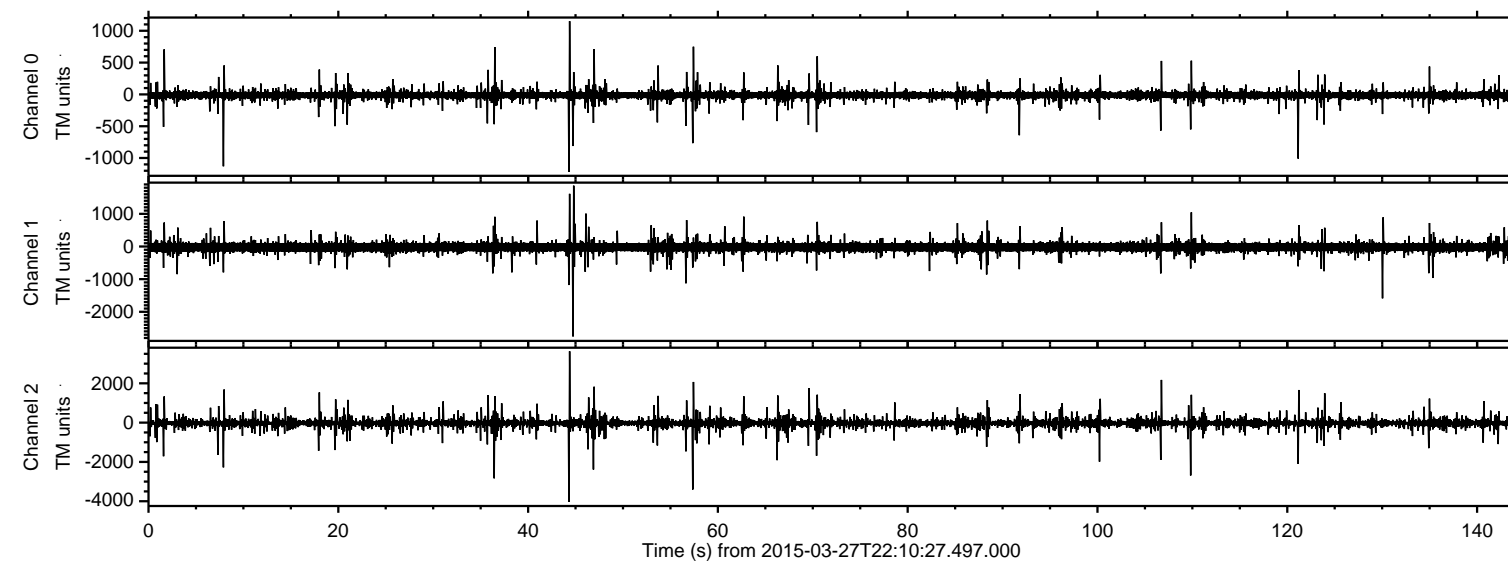
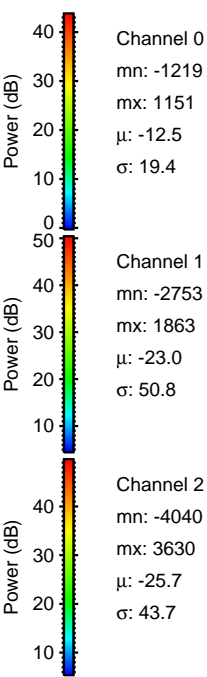
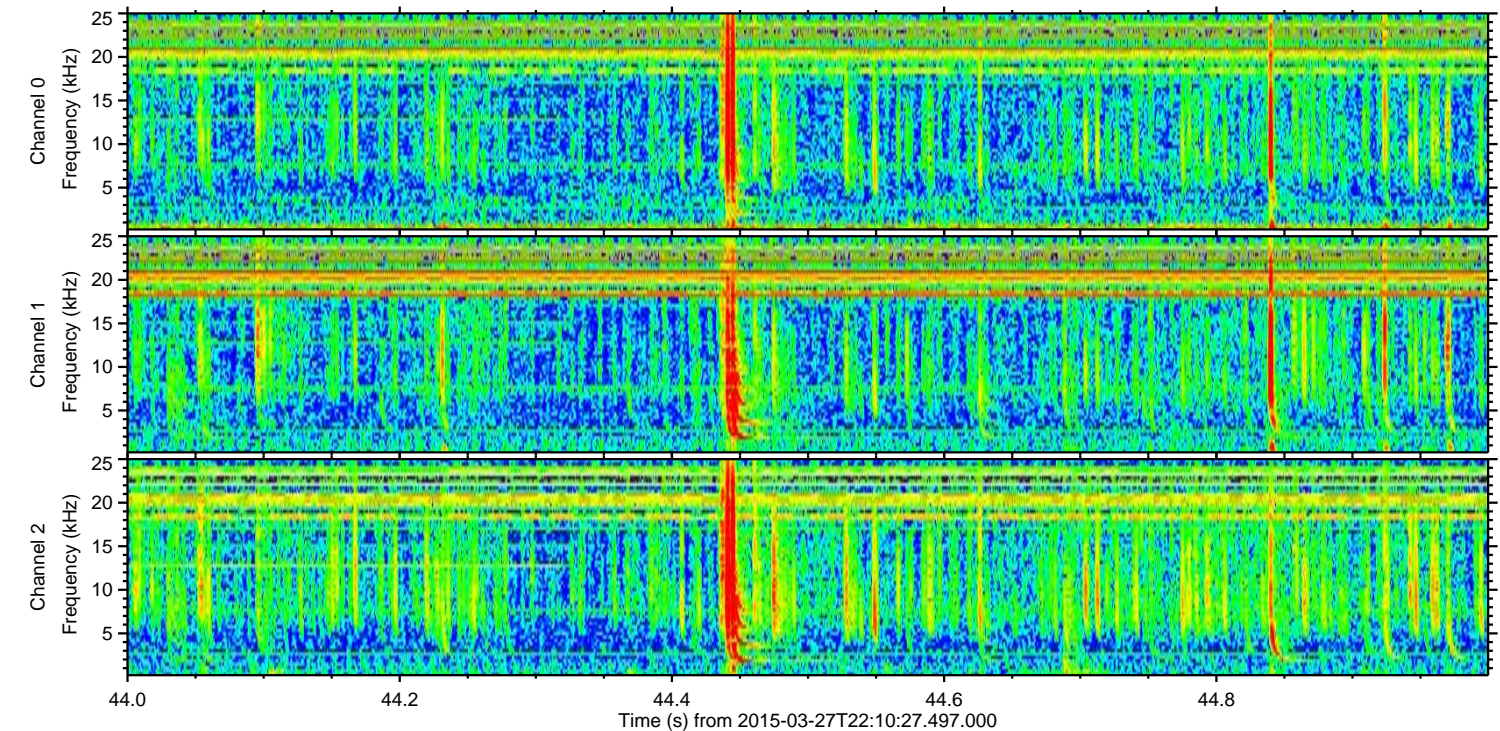
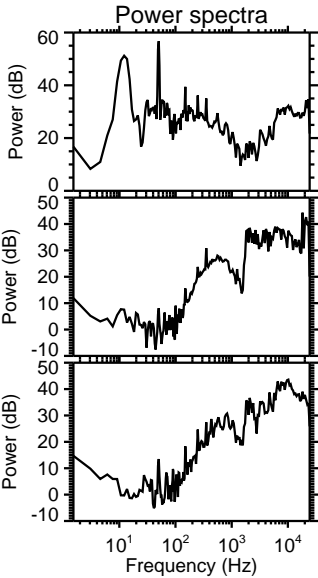
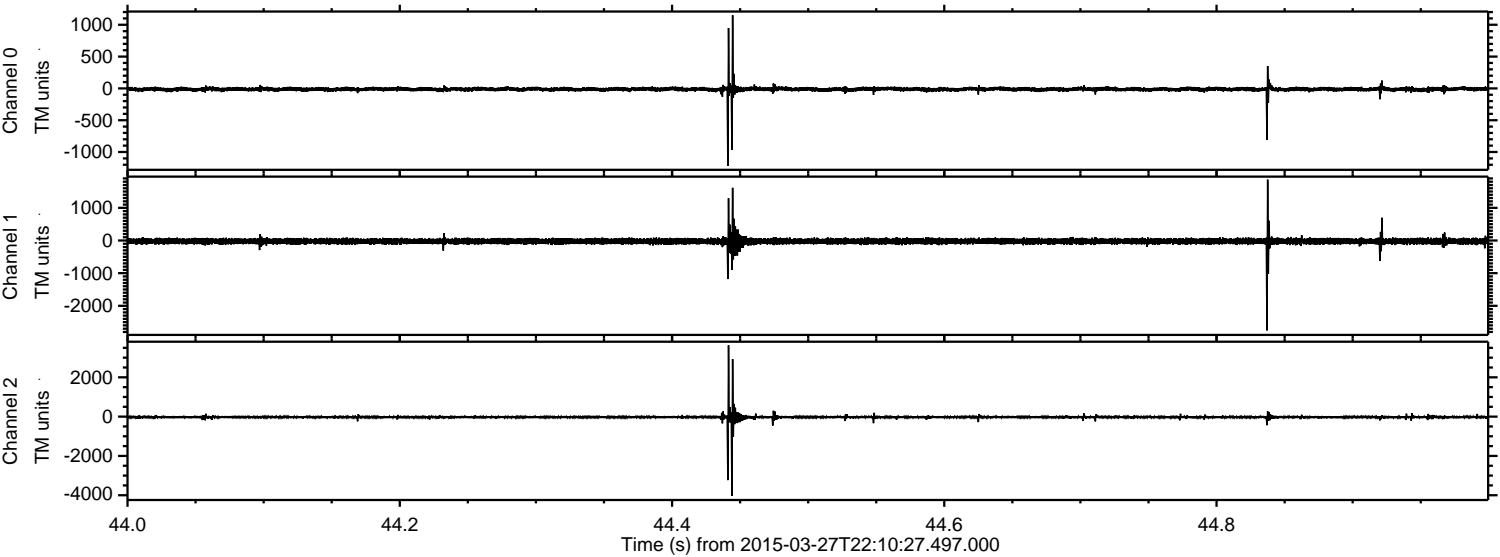


ELMAVAN 3D WAVEFORMS (Measured data sampled at 50 kHz) 49785 packets of 144 samples from 2015-03-27T22:10:27.497.000.

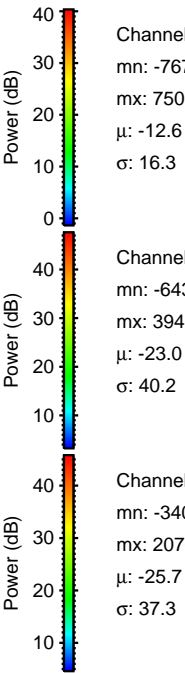
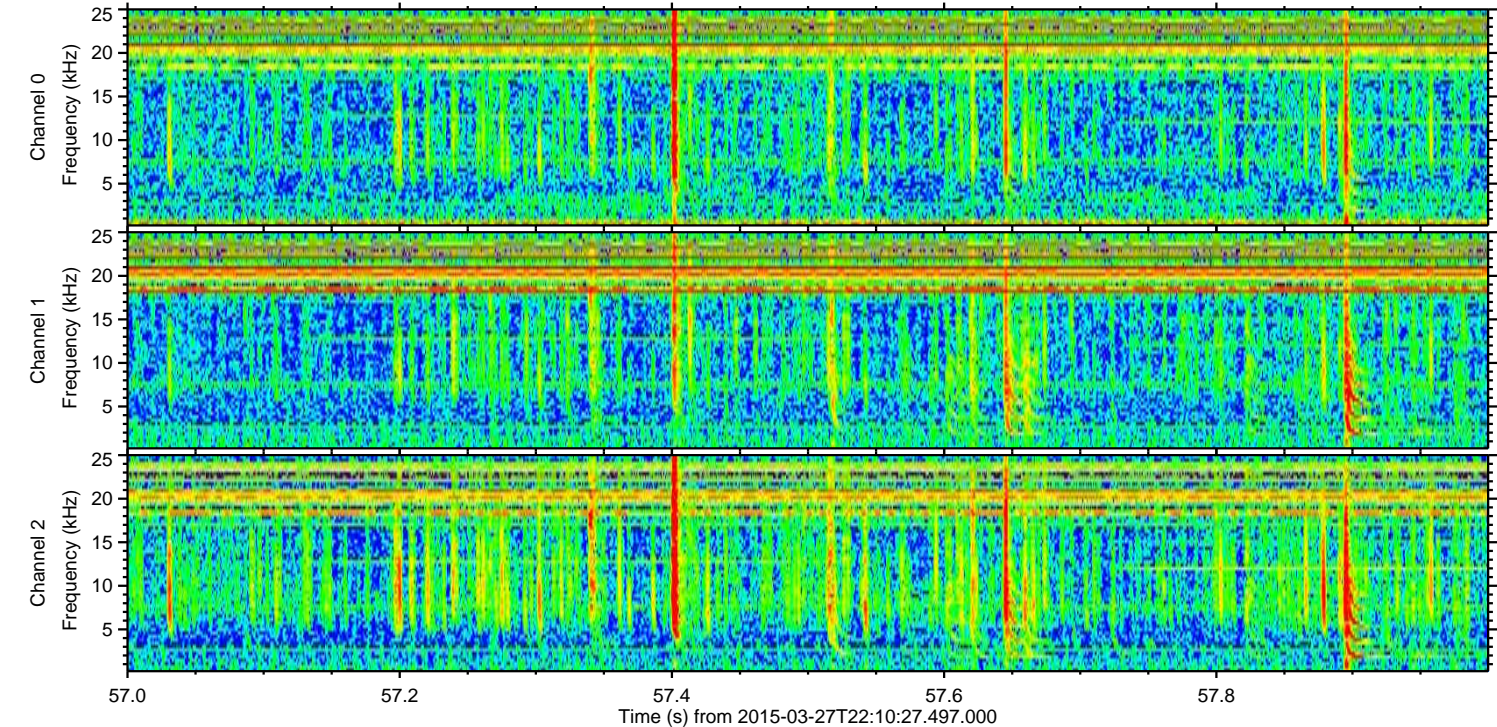
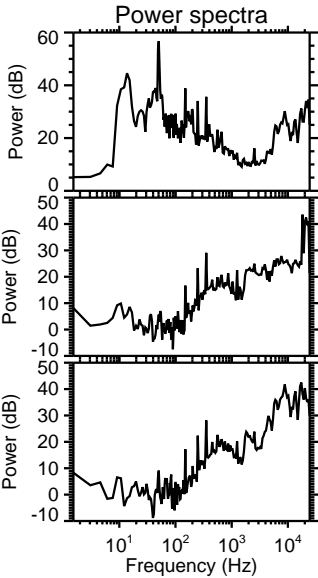
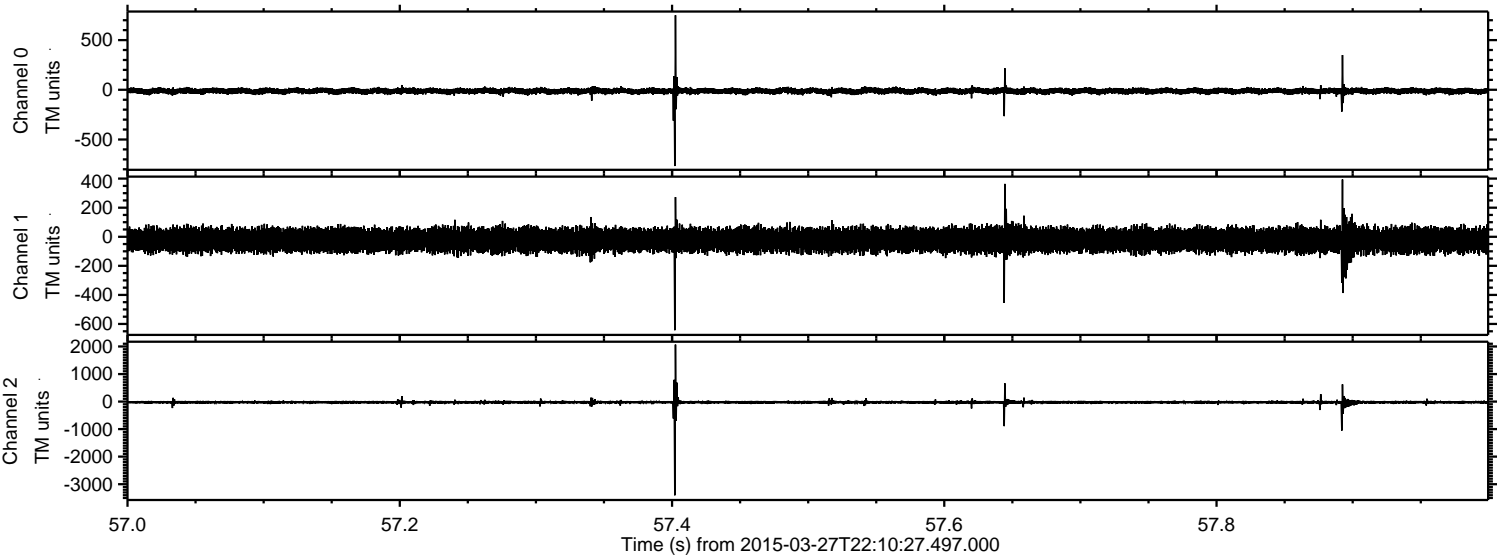
Processed Fri Mar 27 23:18:13 2015 by ELM ver.2012-10-06 from 001__elm20150327_221026__dat00.bin



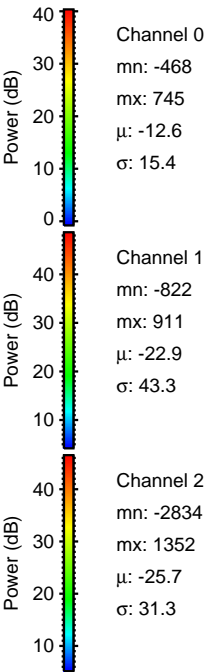
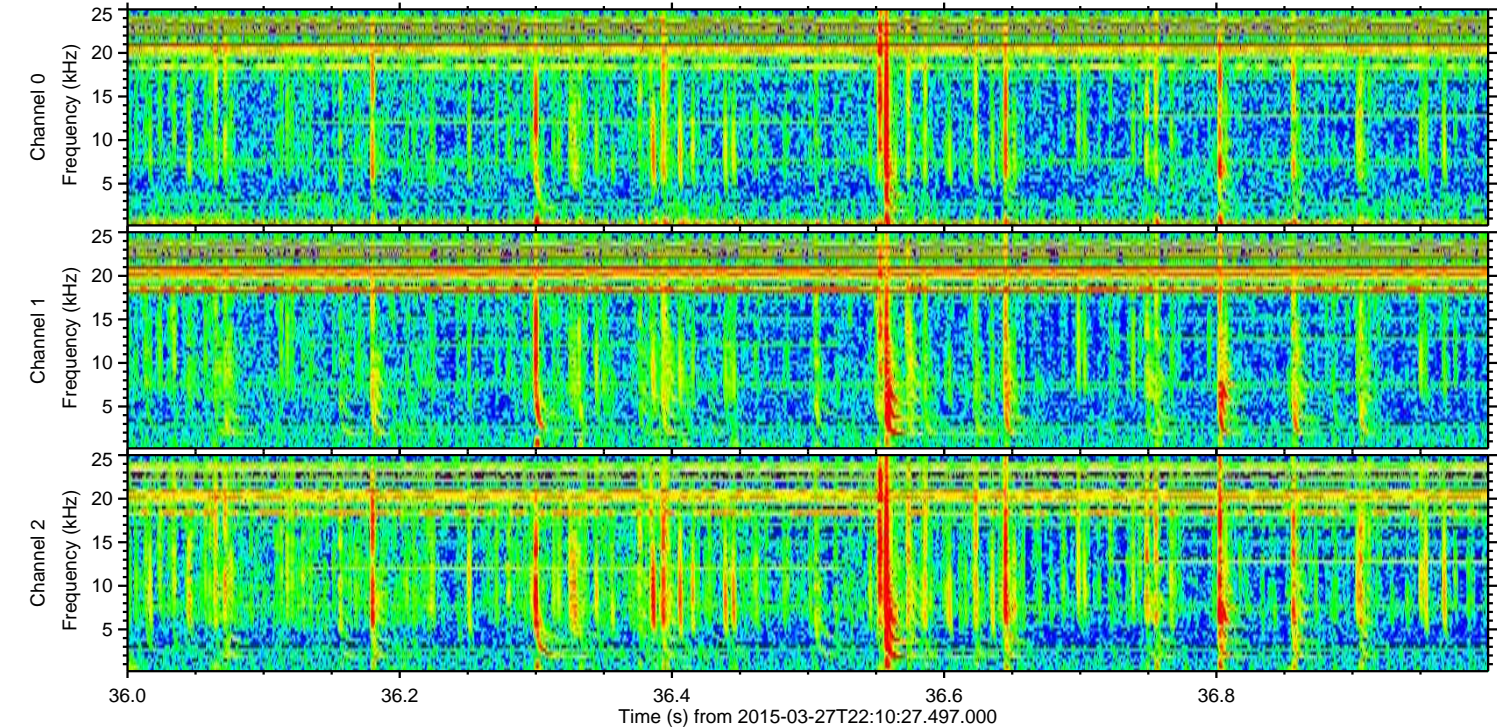
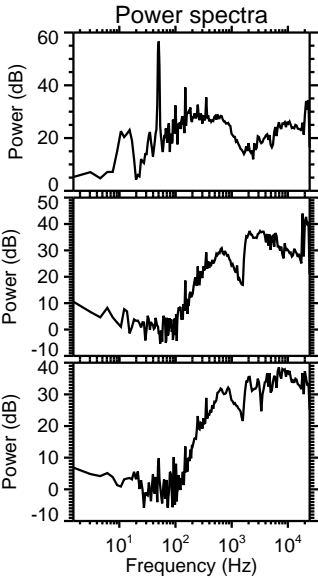
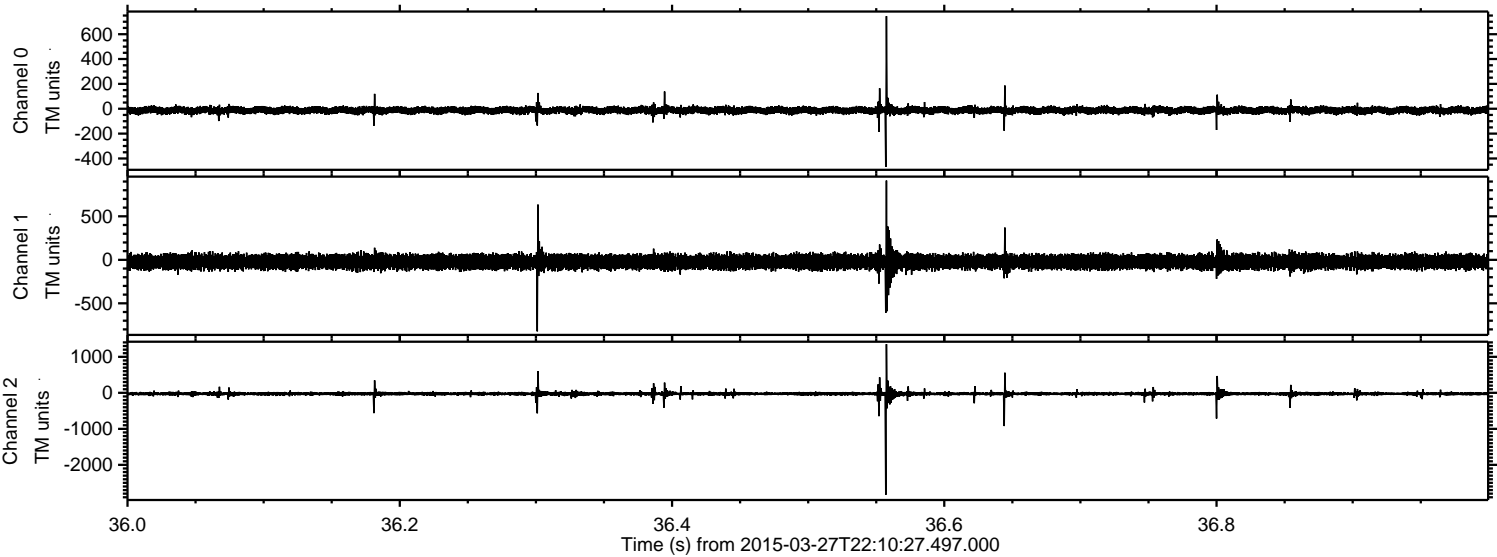
Processed Fri Mar 27 23:18:25 2015 by ELM ver.2012-10-06 from 001__elm20150327_221026__dat00.bin



Processed Fri Mar 27 23:18:26 2015 by ELM ver.2012-10-06 from 001__elm20150327_221026__dat00.bin

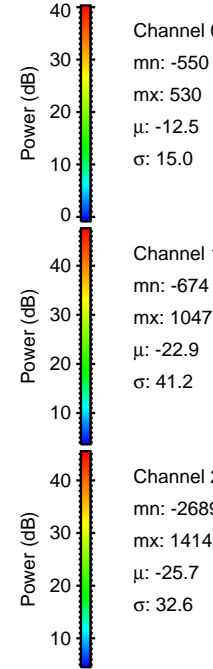
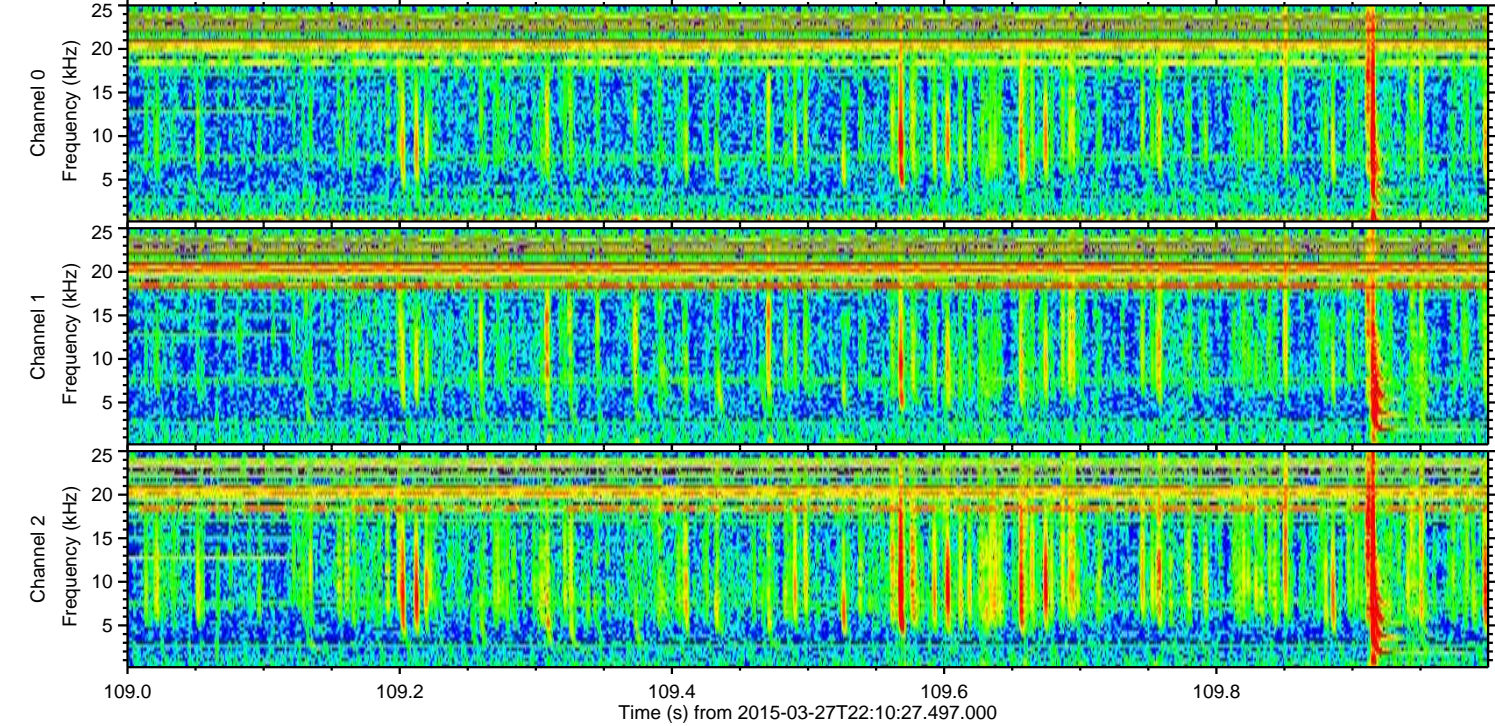
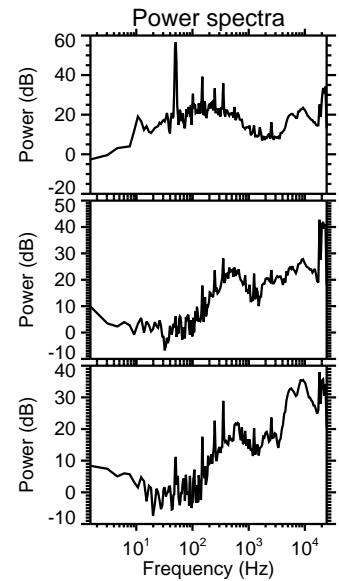
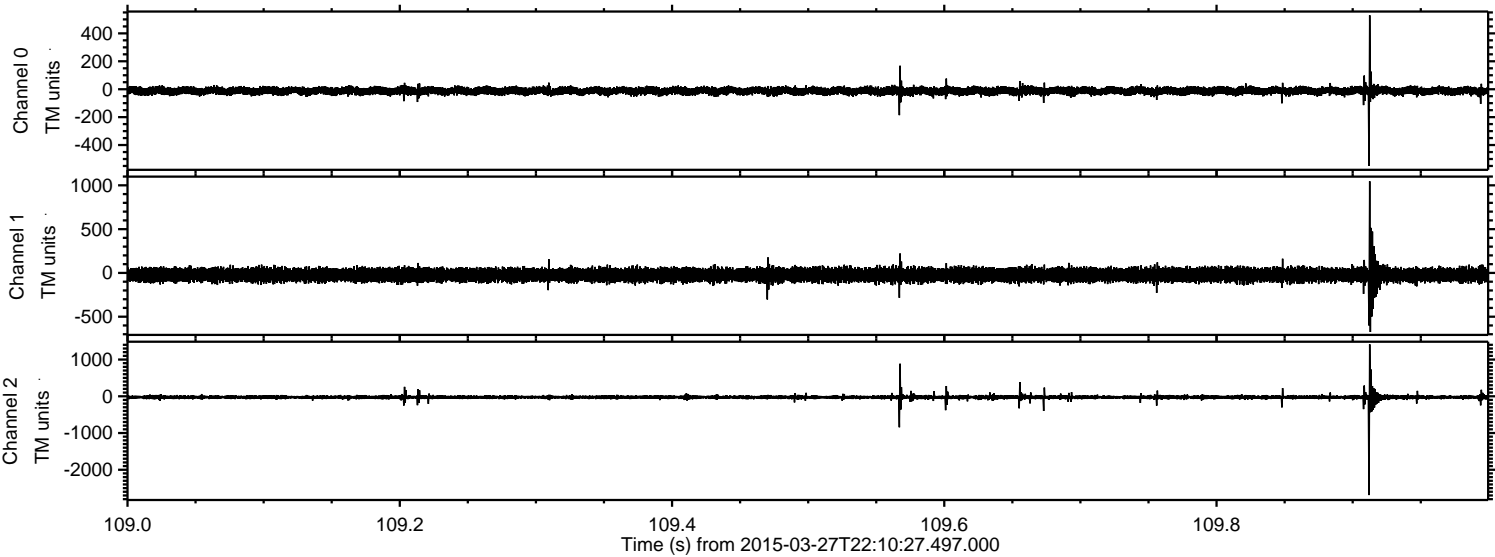


Processed Fri Mar 27 23:18:27 2015 by ELM ver.2012-10-06 from 001__elm20150327_221026__dat00.bin

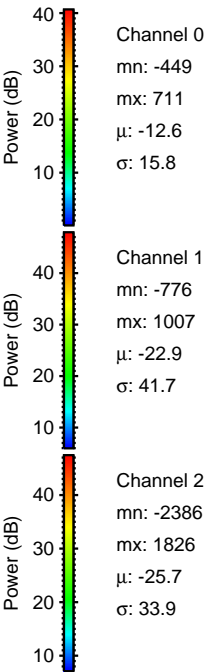
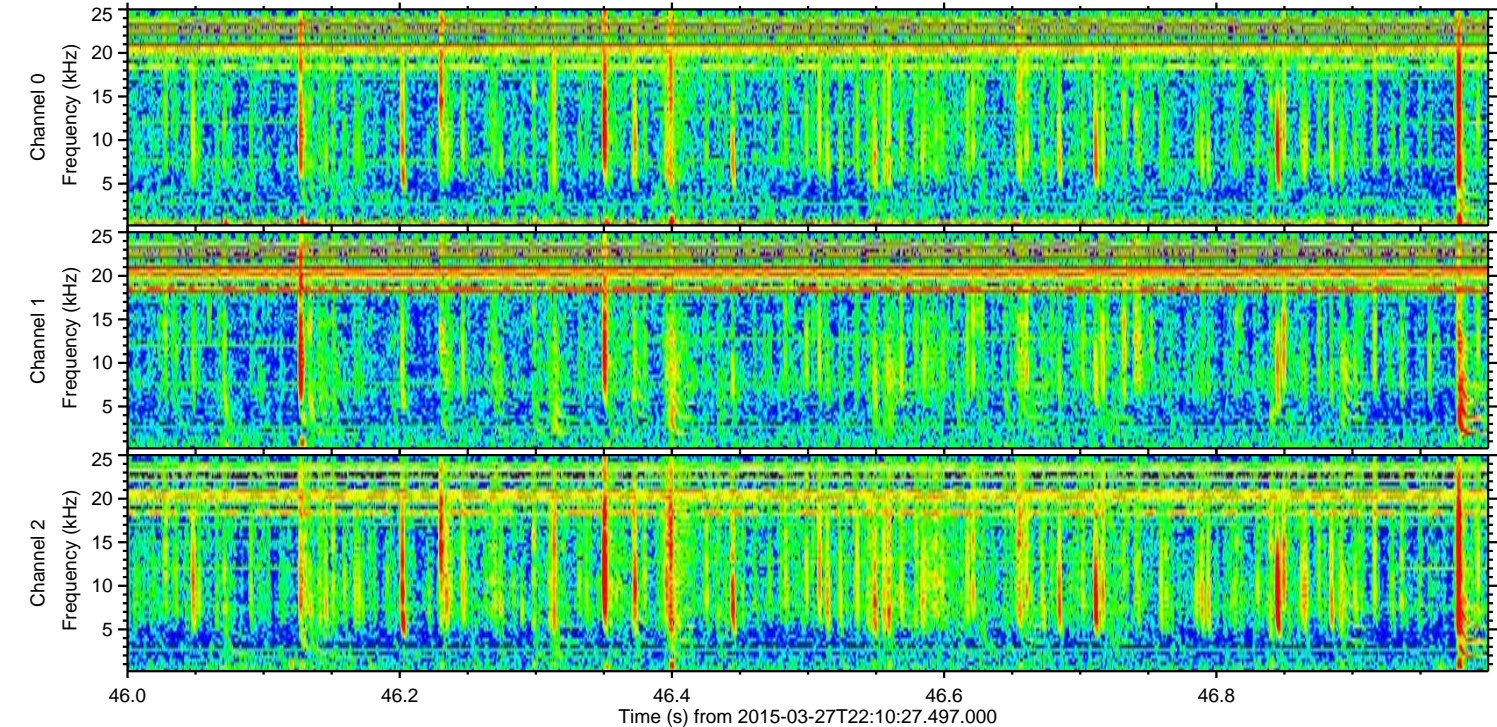
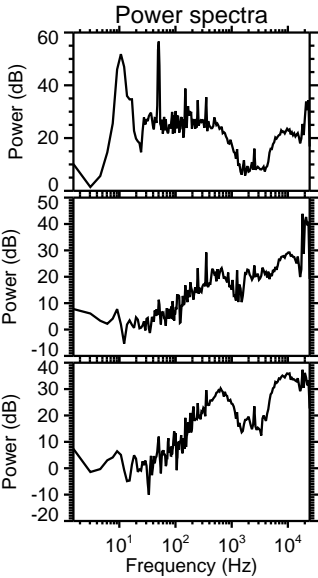
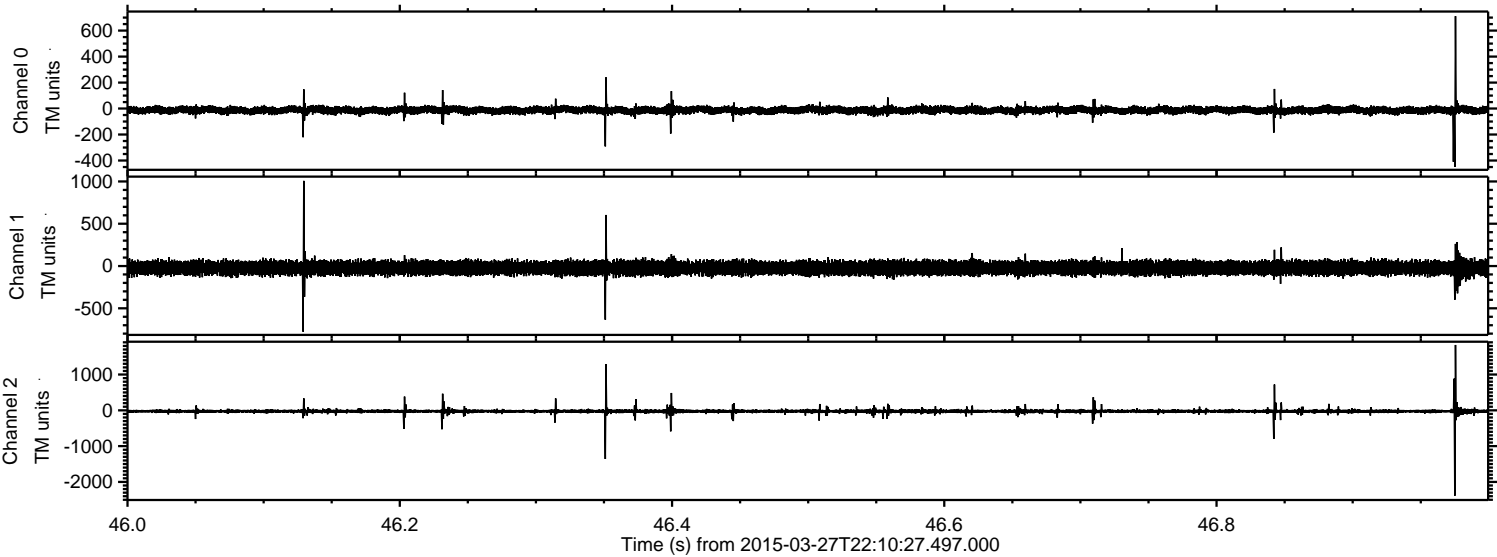


ELMAVAN 3D WAVEFORMS (Measured data sampled at 50 kHz) 49785 packets of 144 samples from 2015-03-27T22:10:27.497.000. Part 110/144

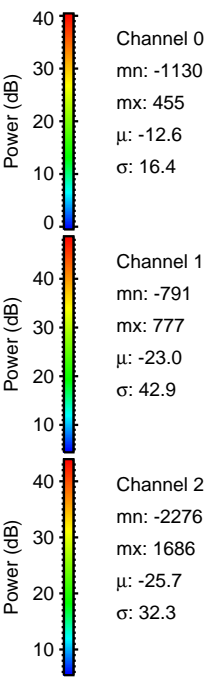
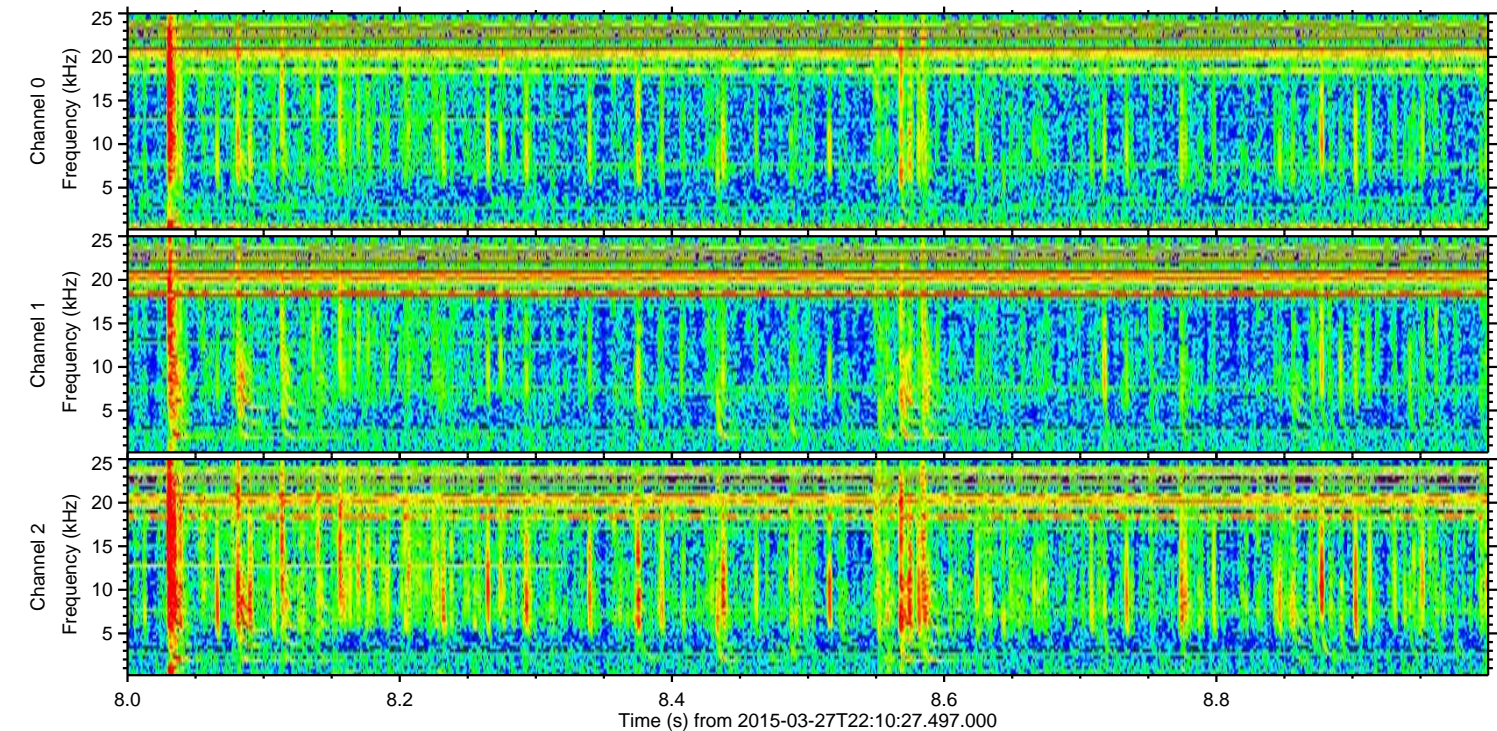
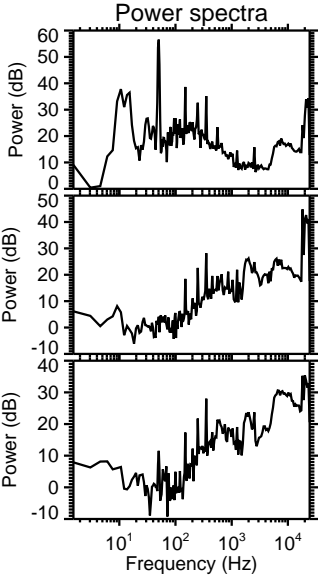
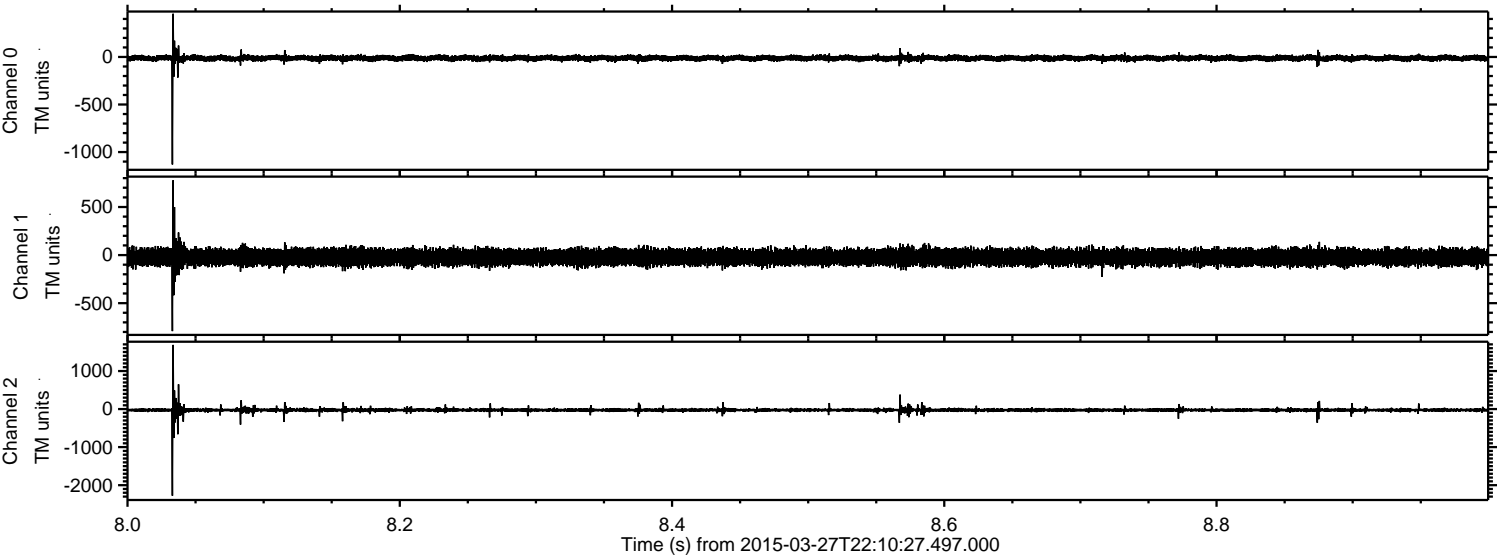
Processed Fri Mar 27 23:18:28 2015 by ELM ver.2012-10-06 from 001__elm20150327_221026__dat00.bin



Processed Fri Mar 27 23:18:29 2015 by ELM ver.2012-10-06 from 001__elm20150327_221026__dat00.bin

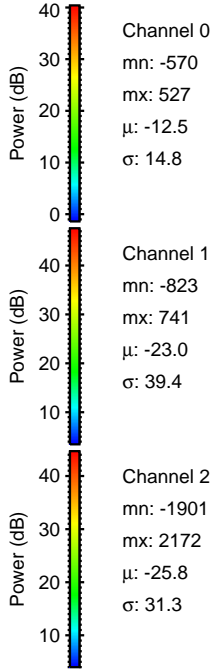
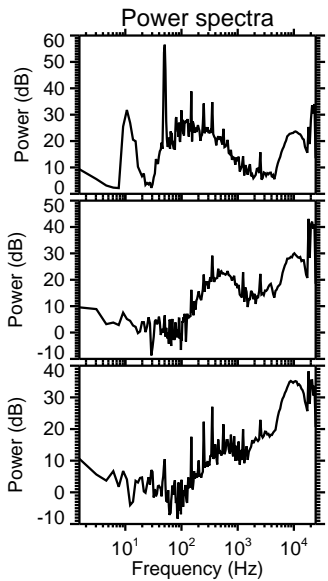
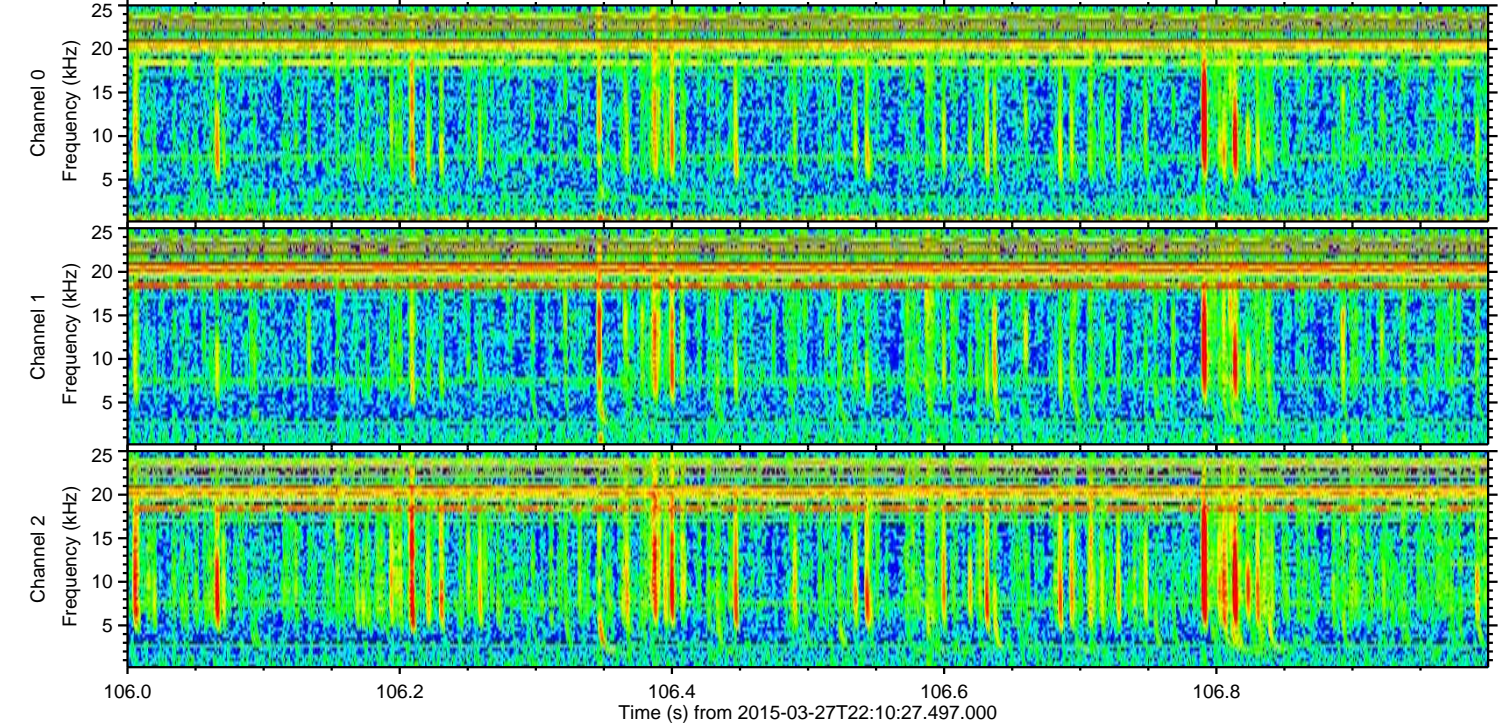
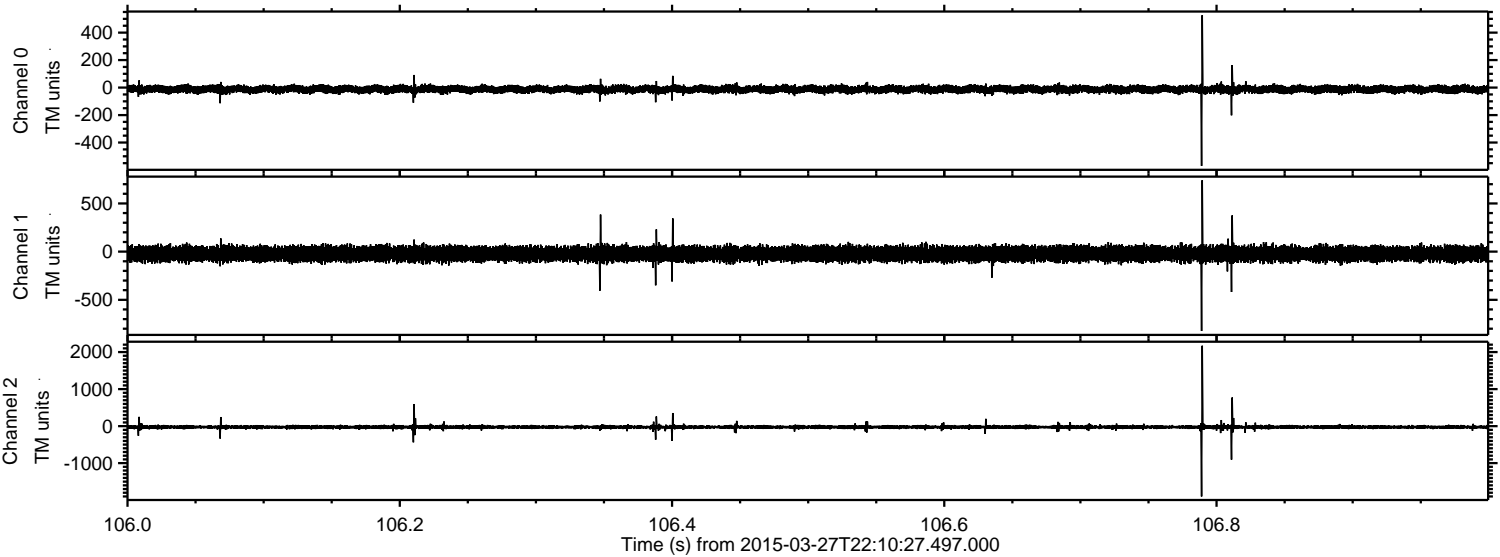


Processed Fri Mar 27 23:18:29 2015 by ELM ver.2012-10-06 from 001__elm20150327_221026__dat00.bin



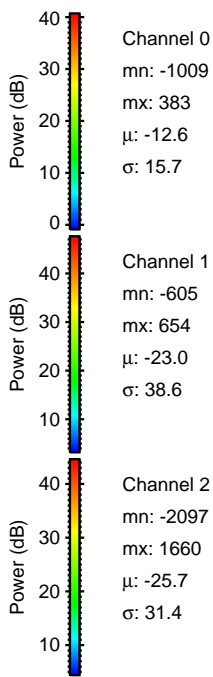
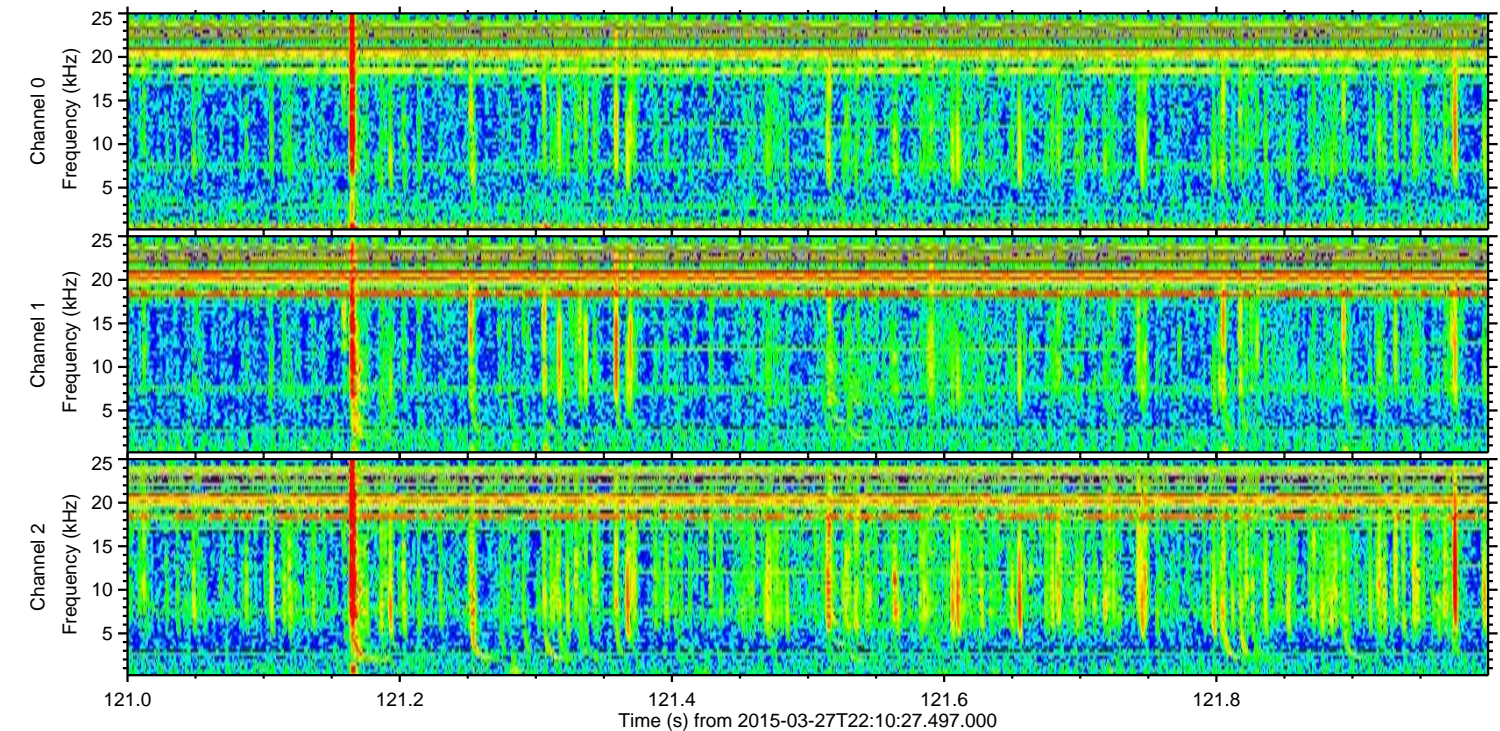
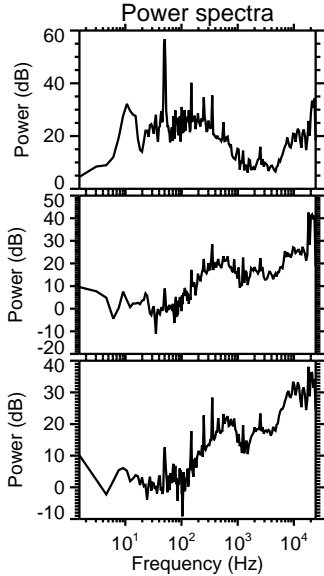
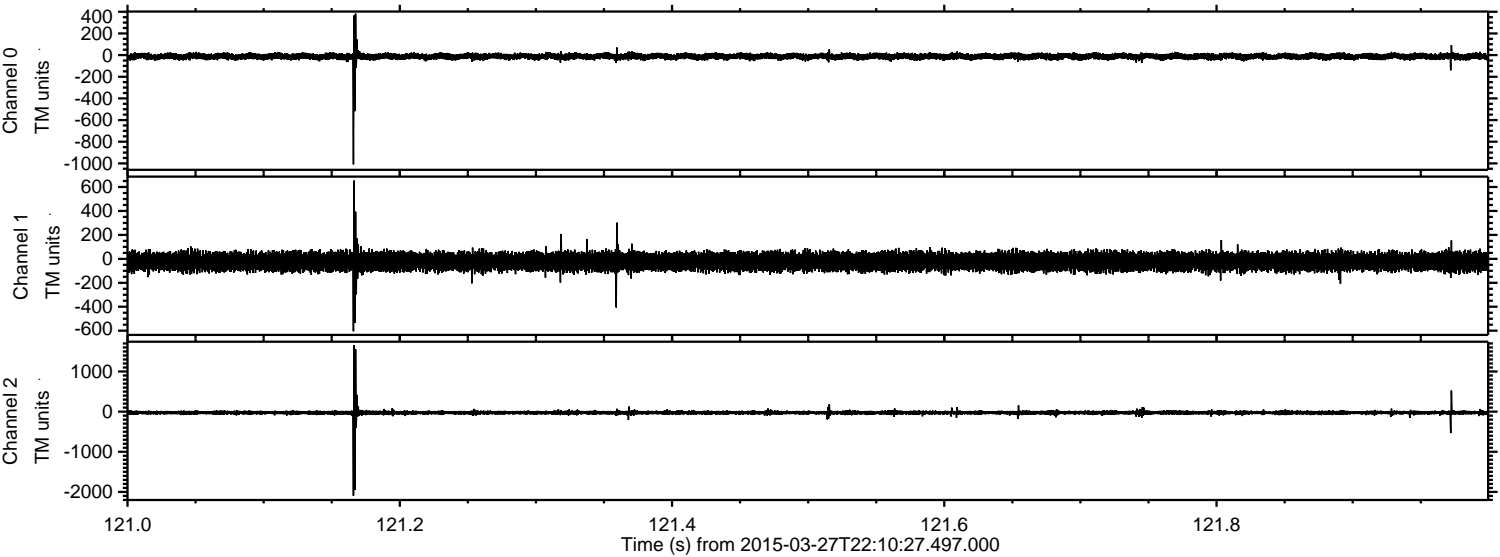
ELMAVAN 3D WAVEFORMS (Measured data sampled at 50 kHz) 49785 packets of 144 samples from 2015-03-27T22:10:27.497.000. Part 107/144

Processed Fri Mar 27 23:18:30 2015 by ELM ver.2012-10-06 from 001__elm20150327_221026__dat00.bin



ELMAVAN 3D WAVEFORMS (Measured data sampled at 50 kHz) 49785 packets of 144 samples from 2015-03-27T22:10:27.497.000. Part 122/144

Processed Fri Mar 27 23:18:31 2015 by ELM ver.2012-10-06 from 001__elm20150327_221026__dat00.bin

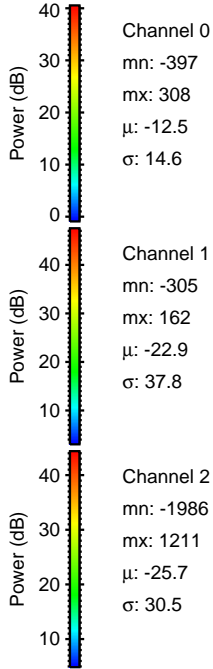
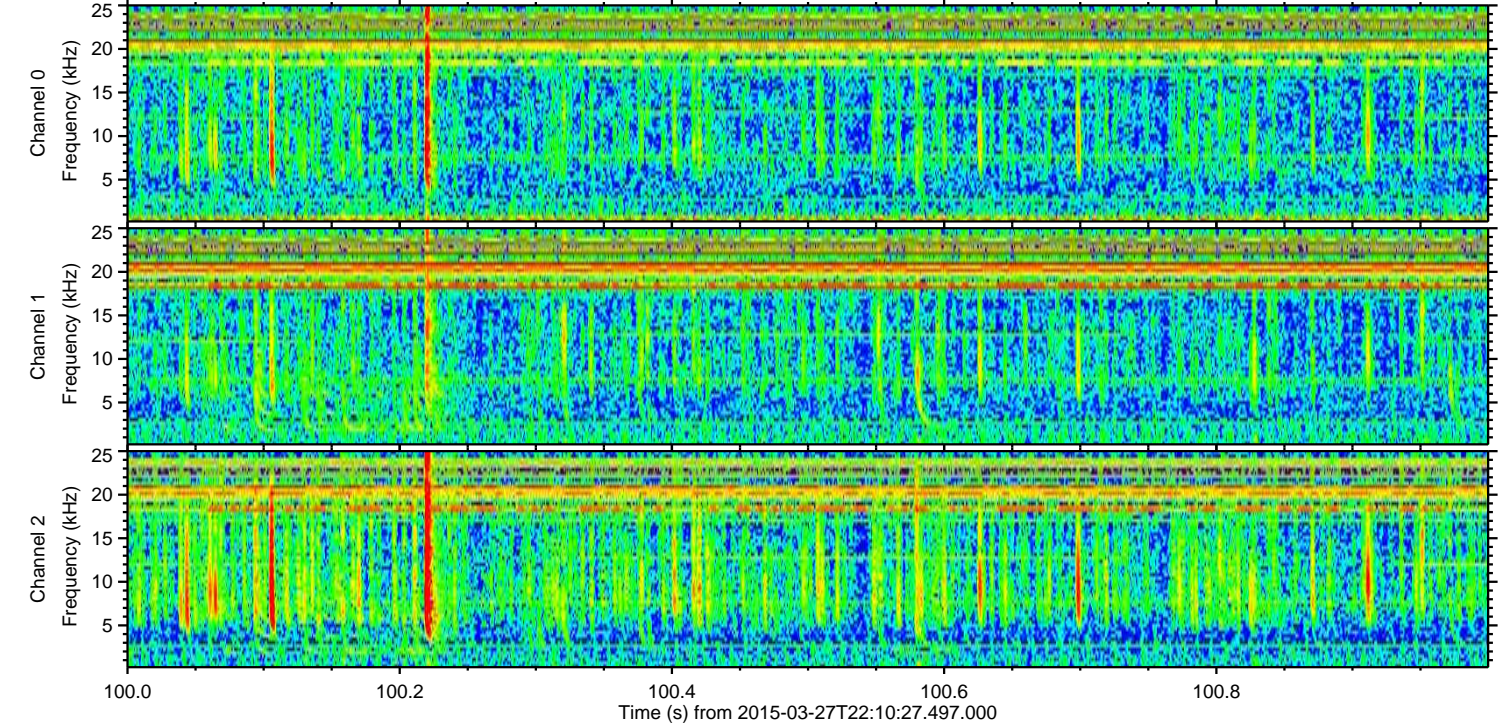
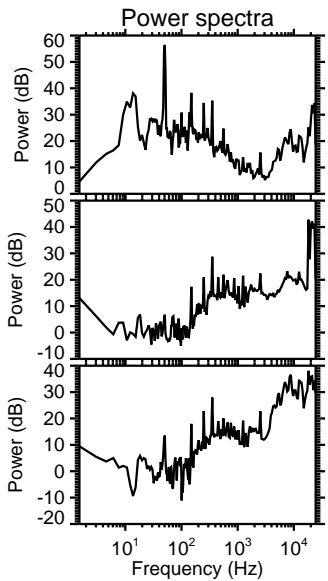
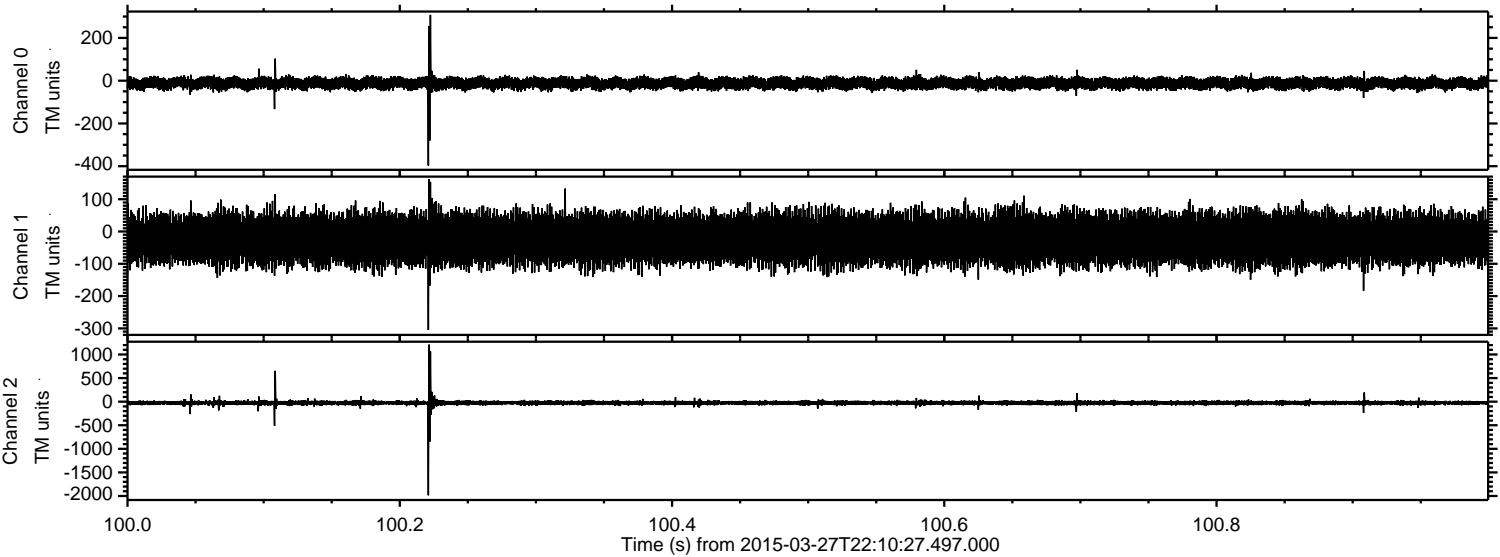


Channel 0
mn: -1009
mx: 383
 μ : -12.6
 σ : 15.7

Channel 1
mn: -605
mx: 654
 μ : -23.0
 σ : 38.6

Channel 2
mn: -2097
mx: 1660
 μ : -25.7
 σ : 31.4

Processed Fri Mar 27 23:18:32 2015 by ELM ver.2012-10-06 from 001__elm20150327_221026__dat00.bin



Processed Fri Mar 27 23:18:33 2015 by ELM ver.2012-10-06 from 001__elm20150327_221026__dat00.bin

