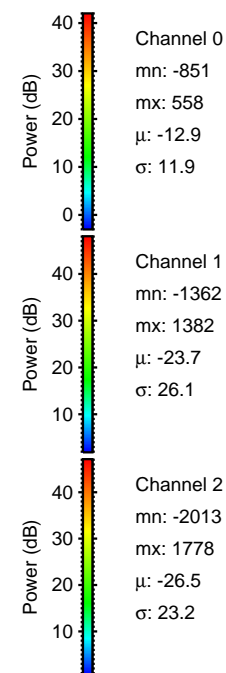
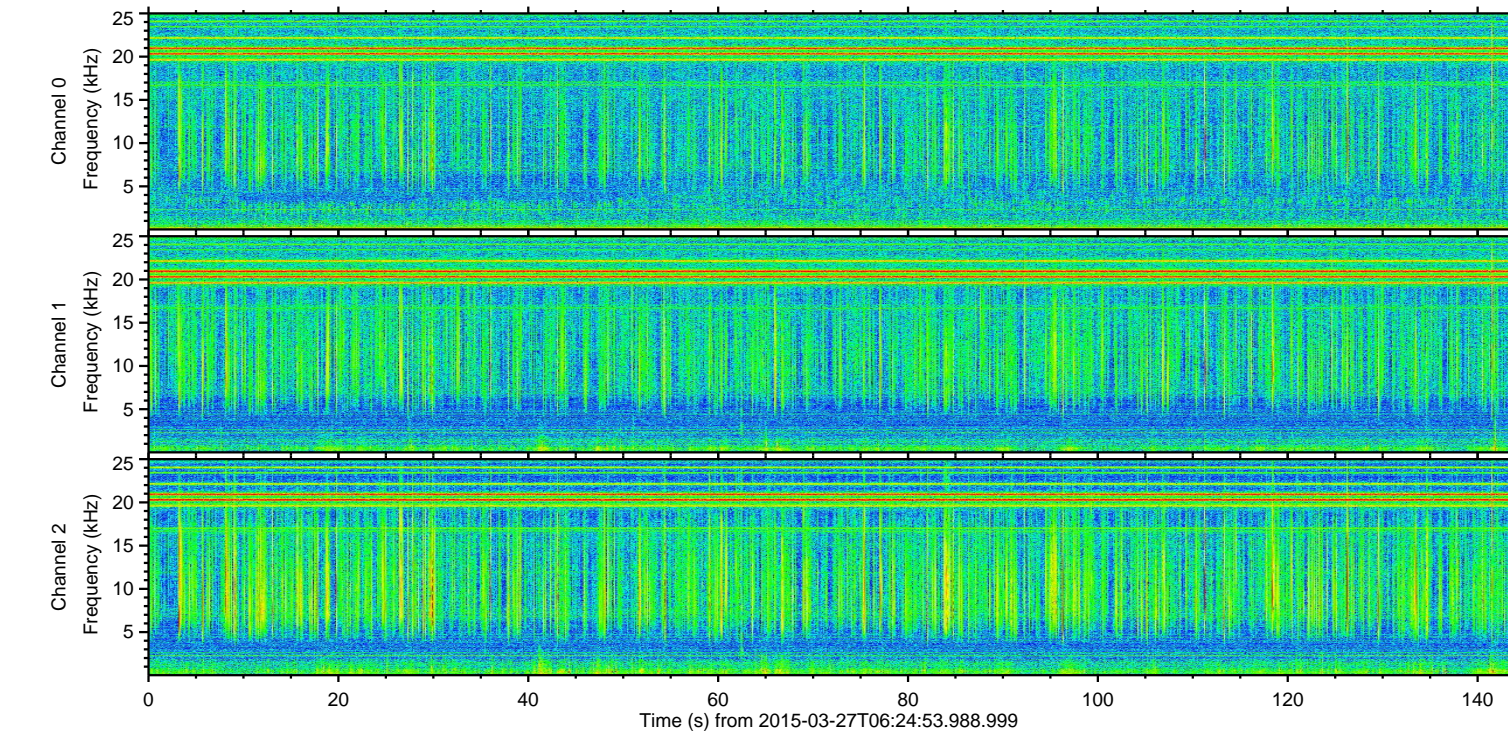
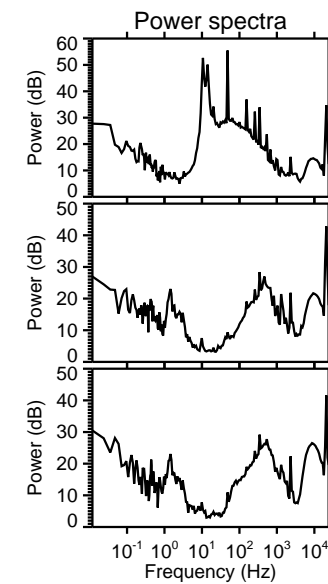
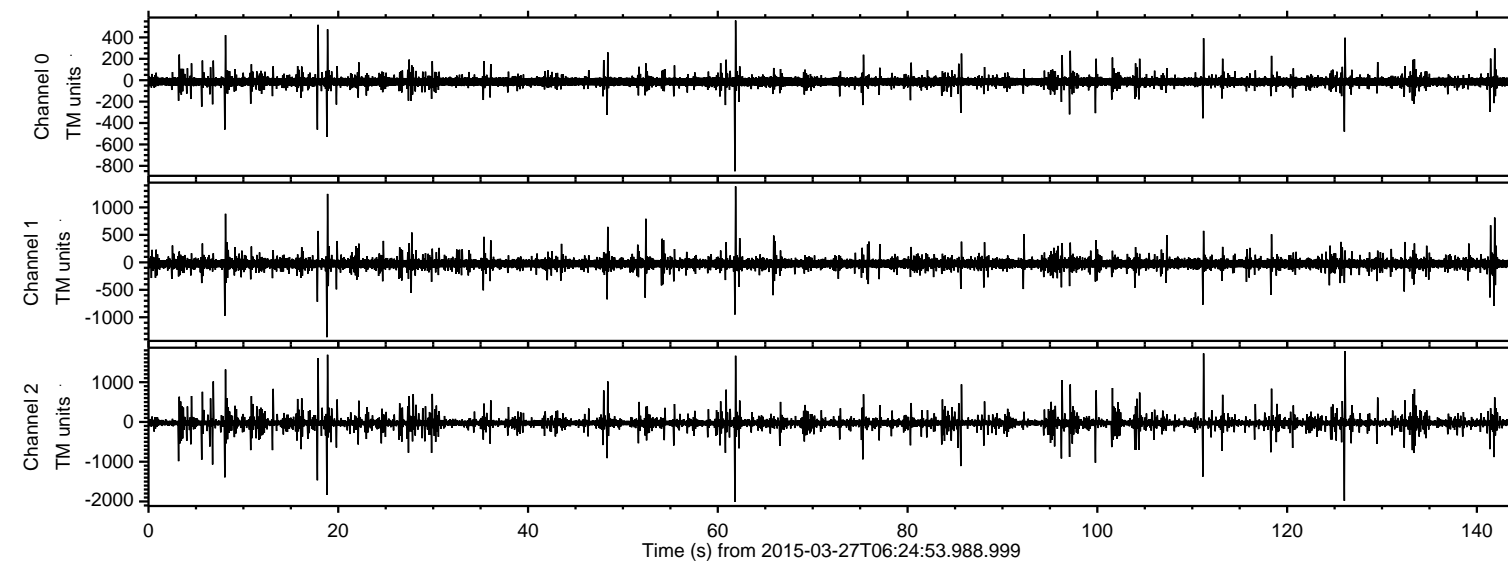


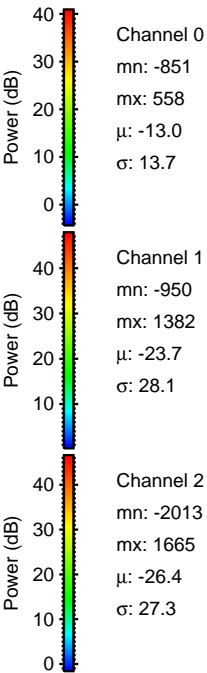
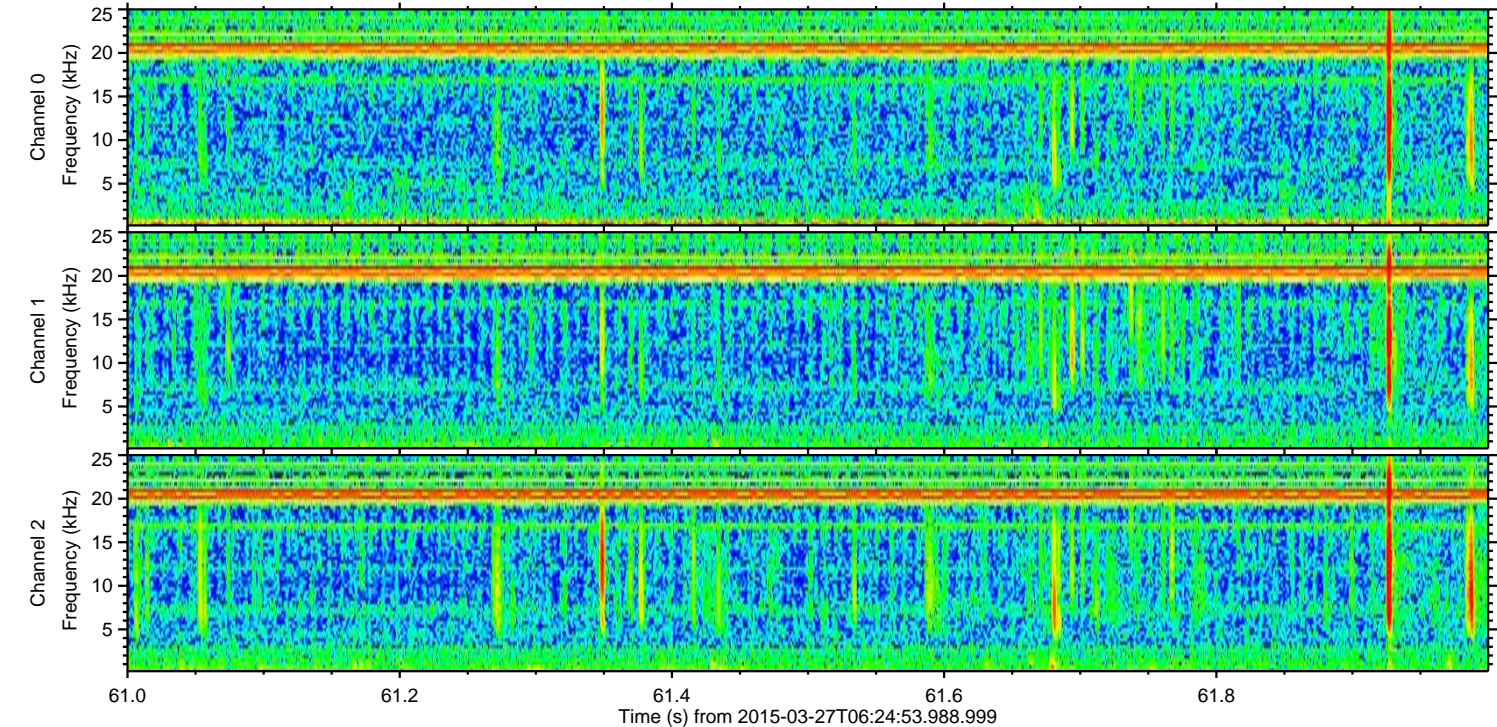
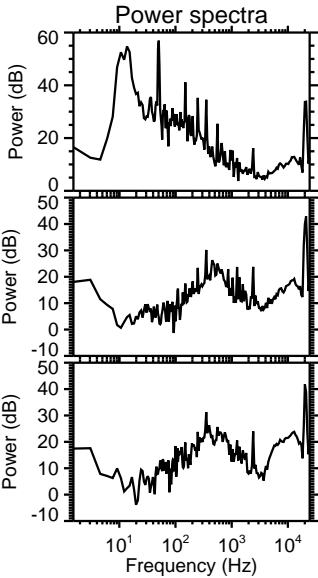
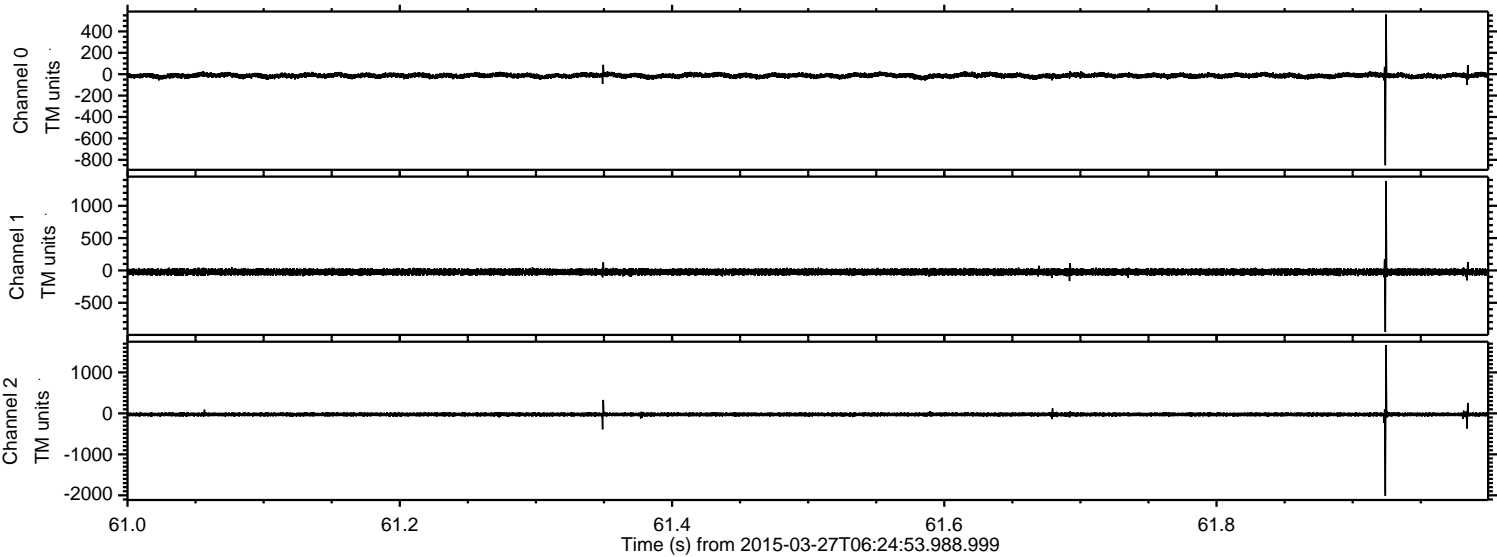
ELMAVAN 3D WAVEFORMS (Measured data sampled at 50 kHz) 49791 packets of 144 samples from 2015-03-27T06:24:53.988.999.

Processed Fri Mar 27 08:39:49 2015 by ELM ver.2012-10-06 from 001\_\_elm20150327\_062452\_\_dat00.bin





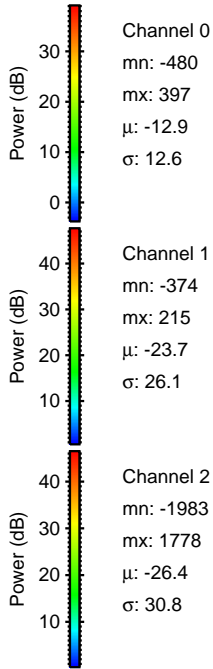
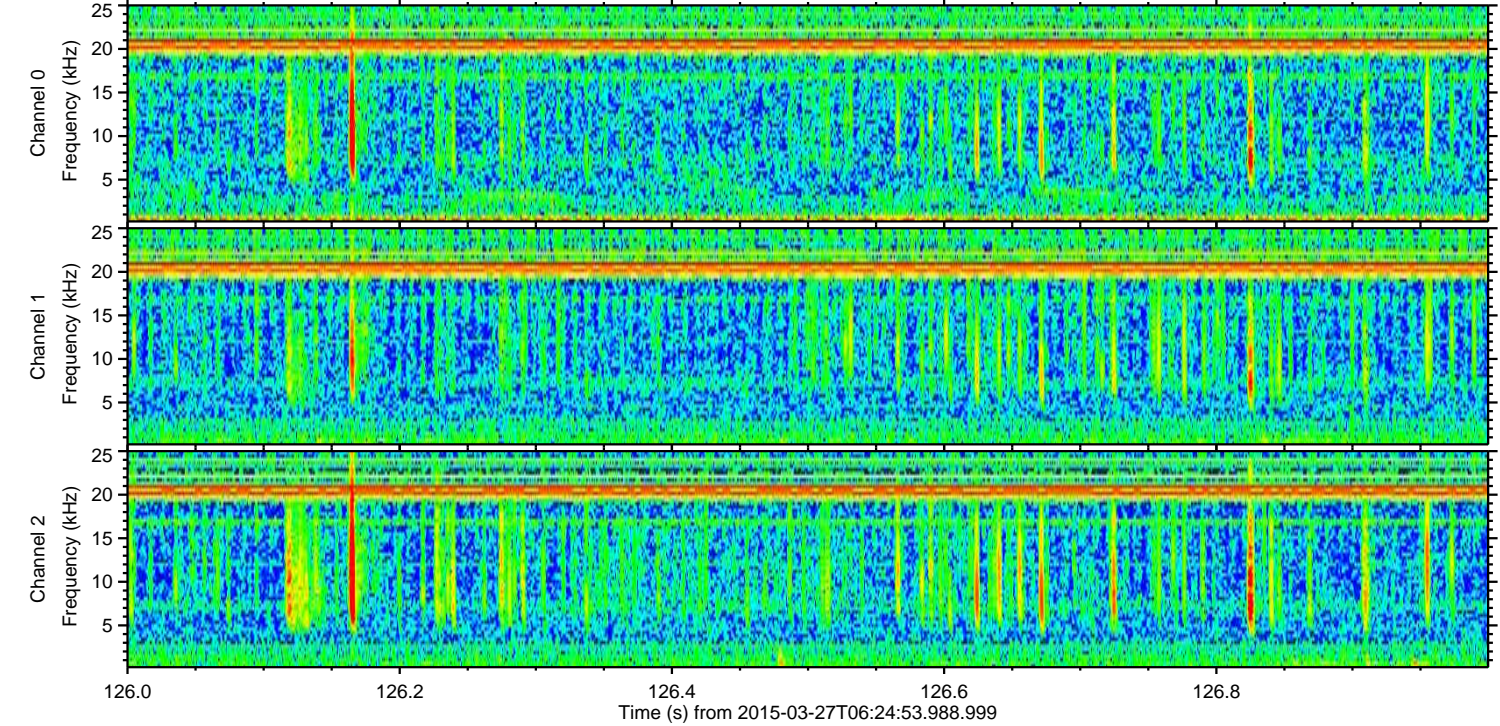
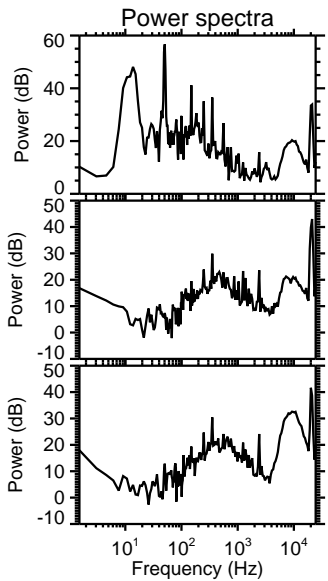
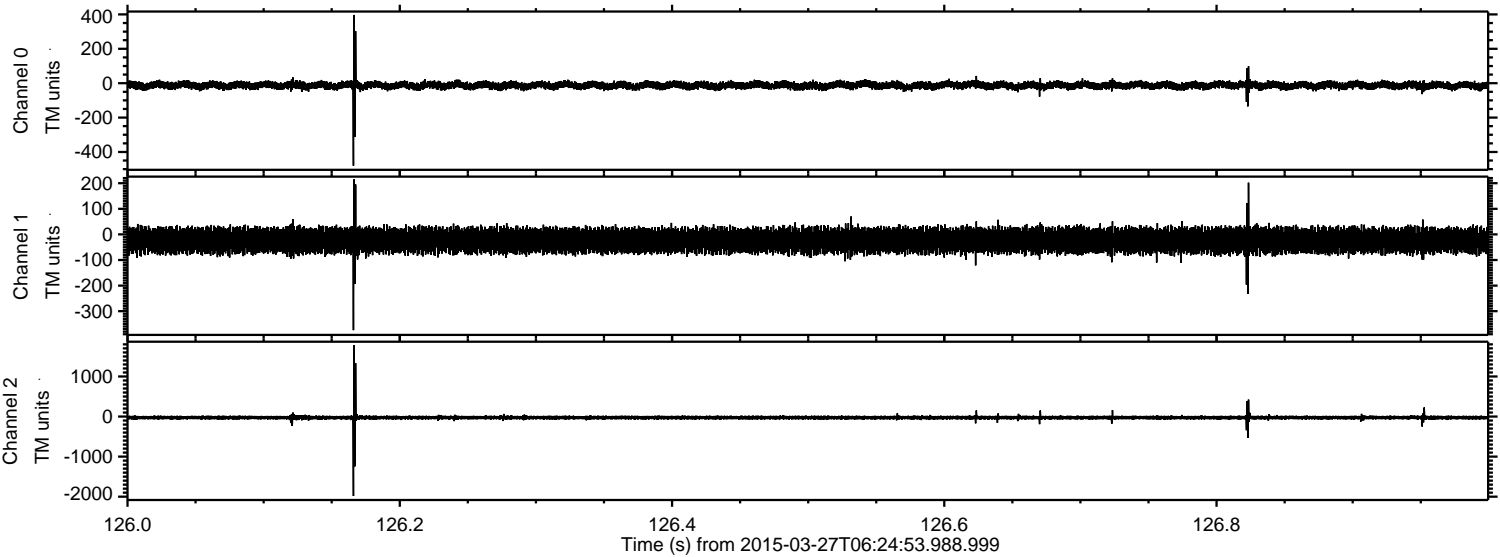
Processed Fri Mar 27 08:40:00 2015 by ELM ver.2012-10-06 from 001\_\_elm20150327\_062452\_\_dat00.bin





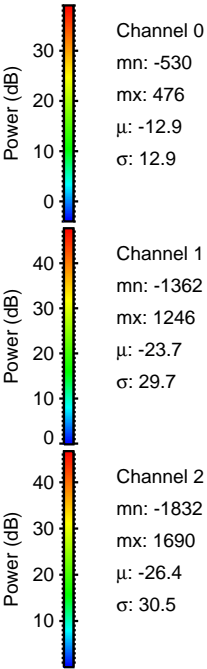
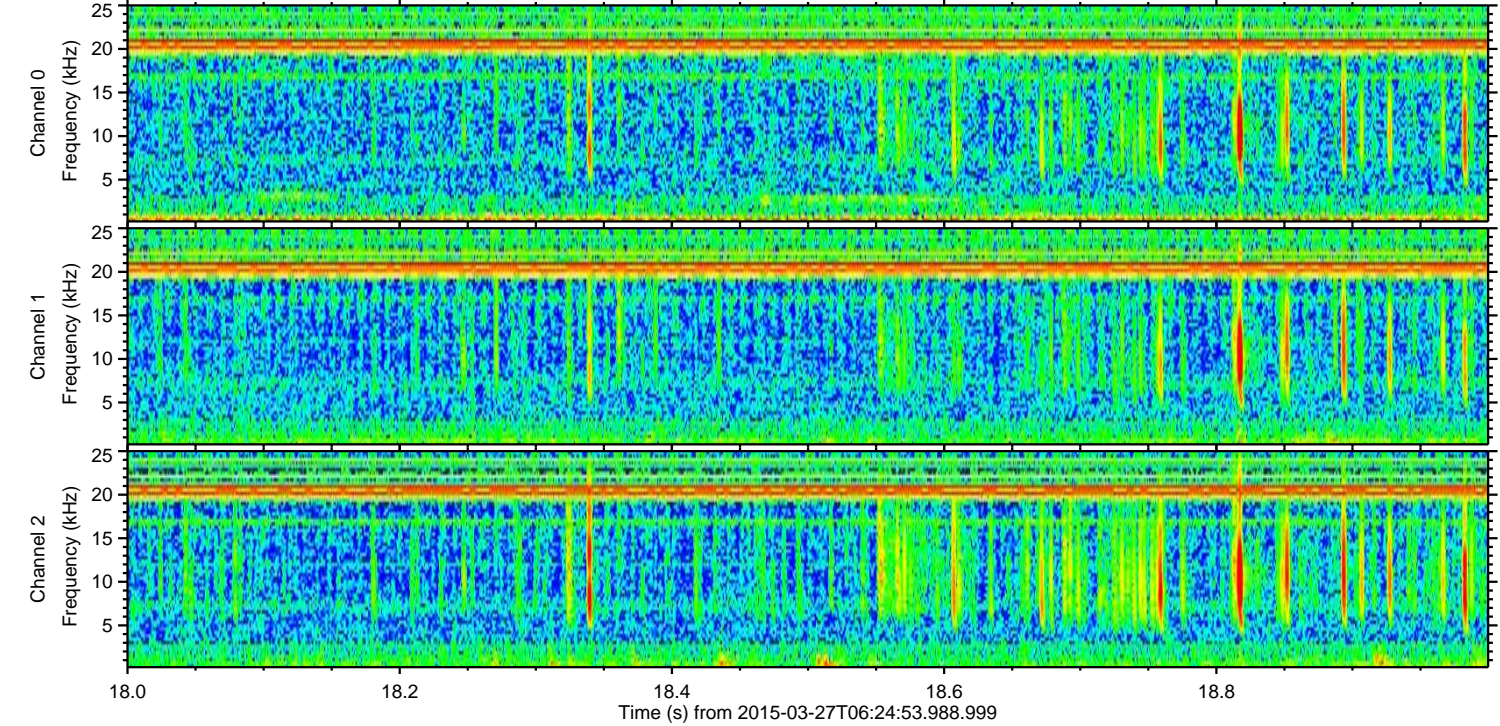
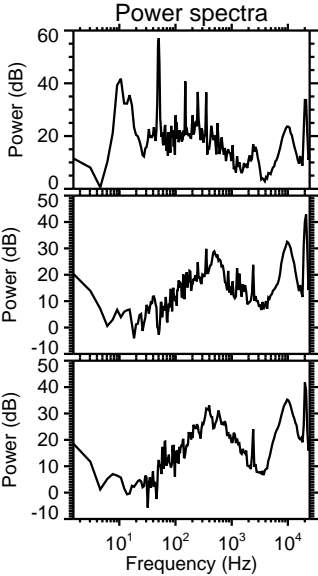
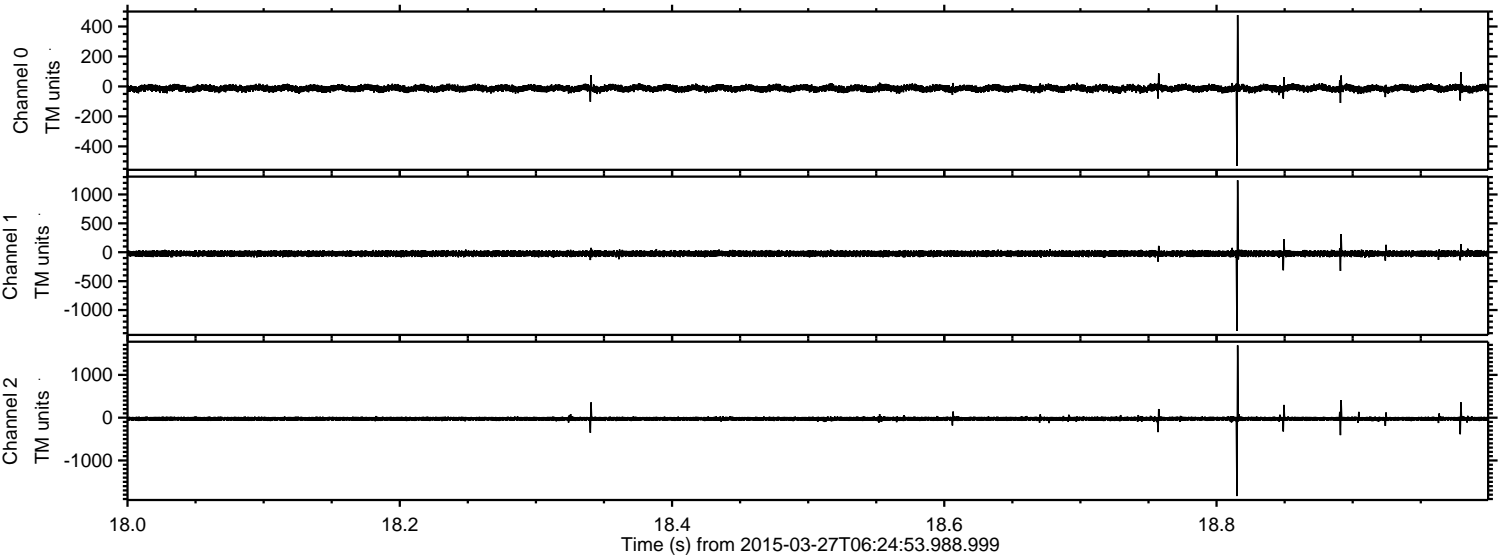
ELMAVAN 3D WAVEFORMS (Measured data sampled at 50 kHz) 49791 packets of 144 samples from 2015-03-27T06:24:53.988.999. Part 127/144

Processed Fri Mar 27 08:40:01 2015 by ELM ver.2012-10-06 from 001\_\_elm20150327\_062452\_\_dat00.bin





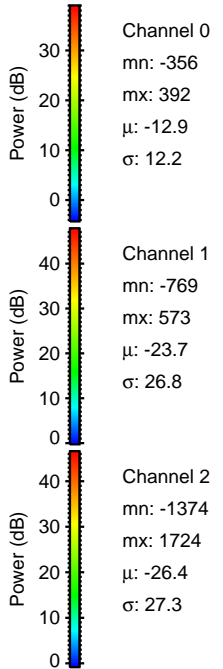
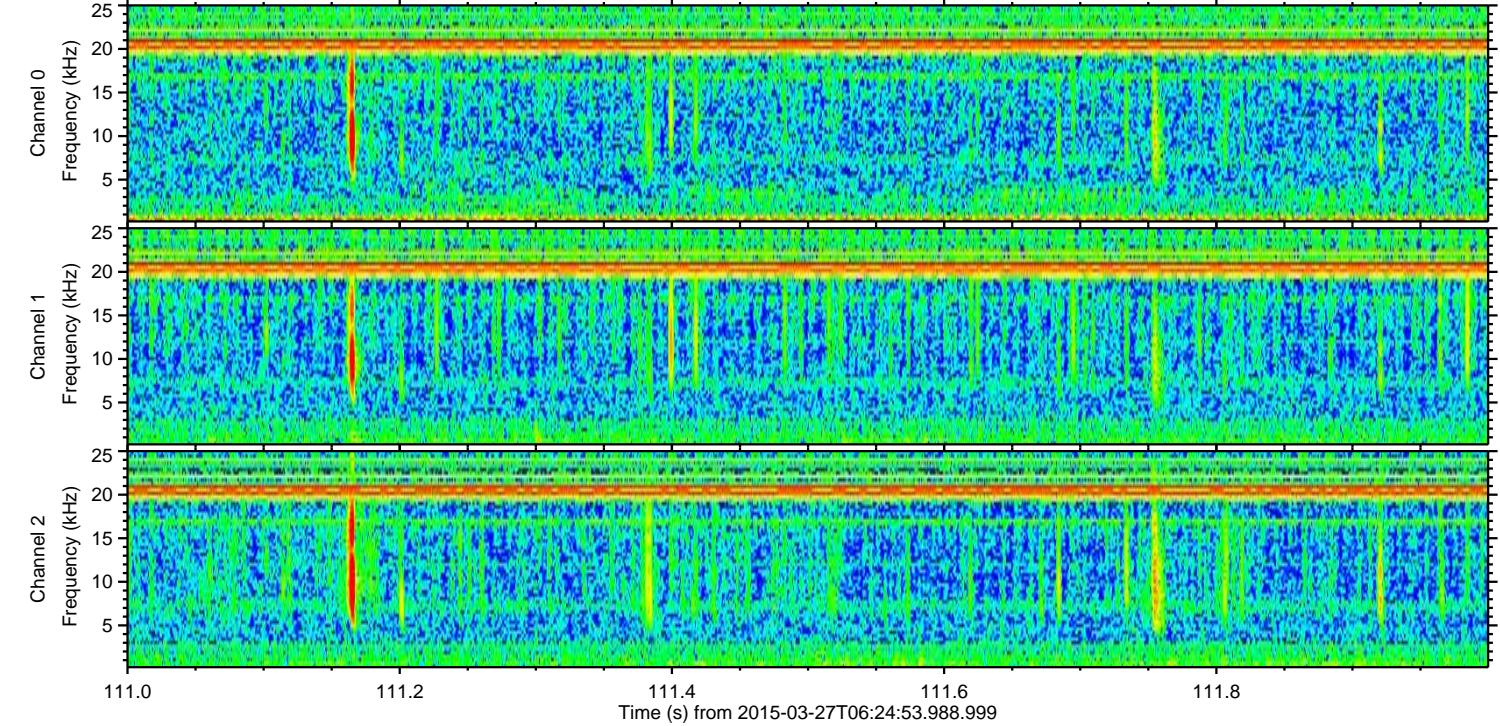
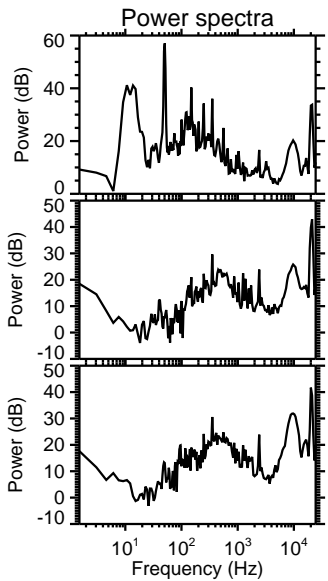
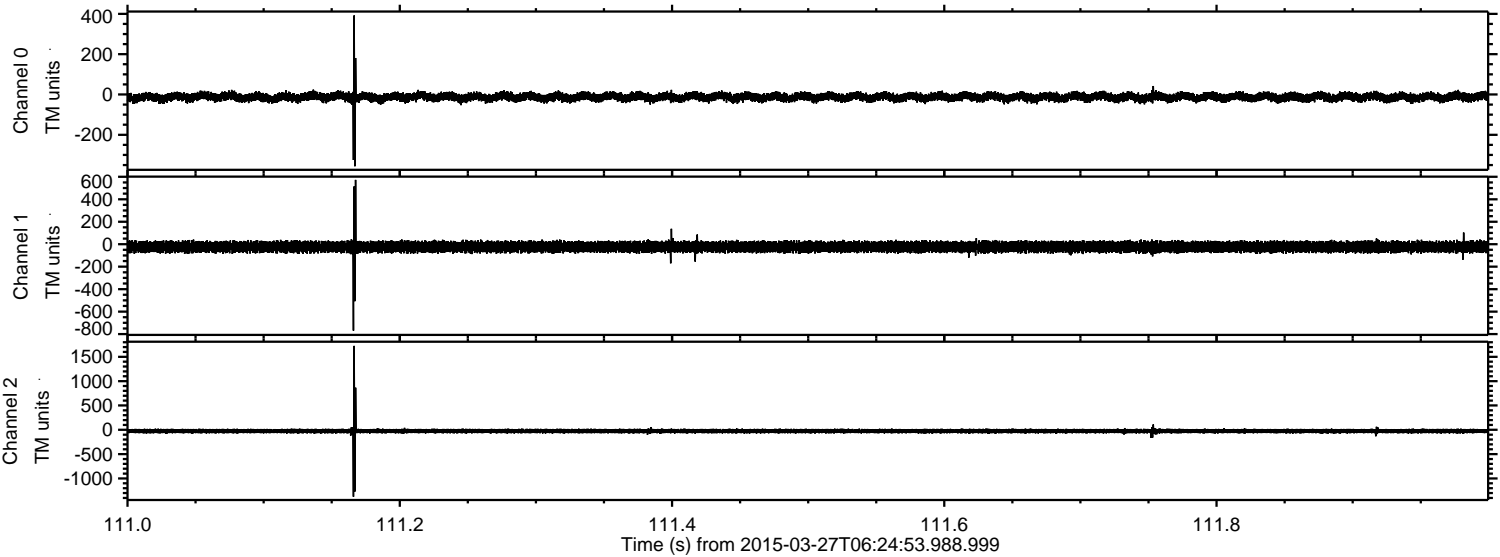
Processed Fri Mar 27 08:40:02 2015 by ELM ver.2012-10-06 from 001\_\_elm20150327\_062452\_\_dat00.bin





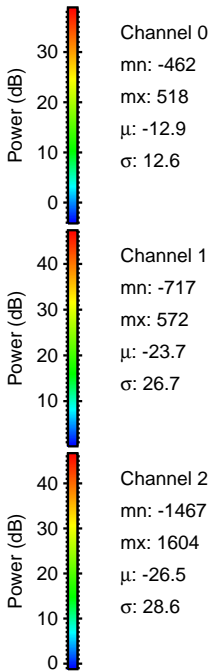
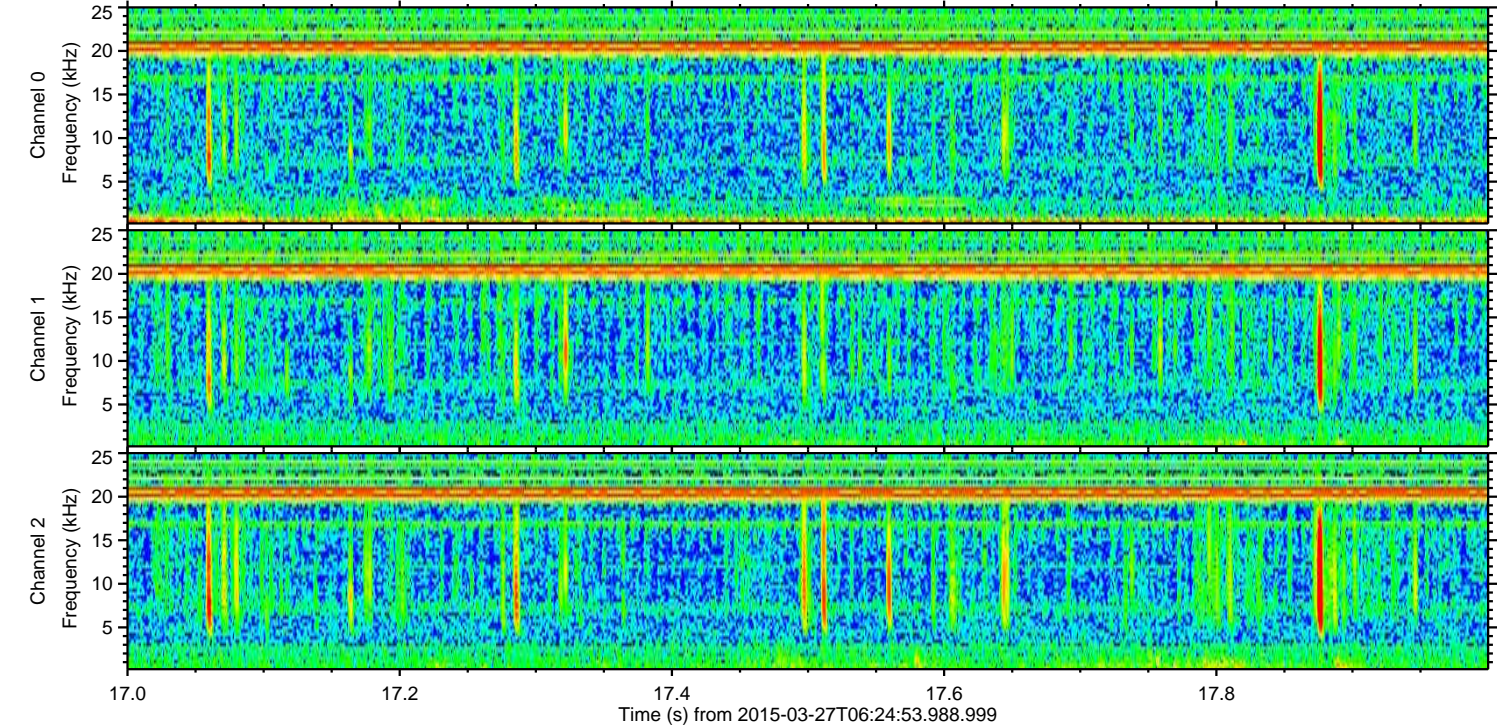
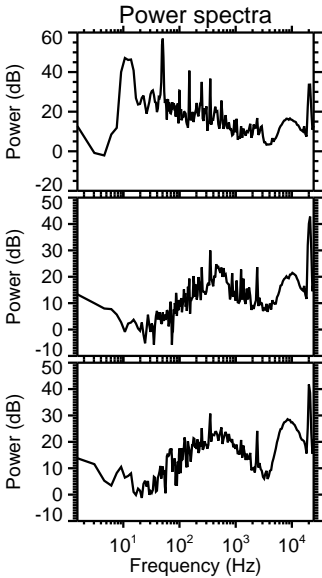
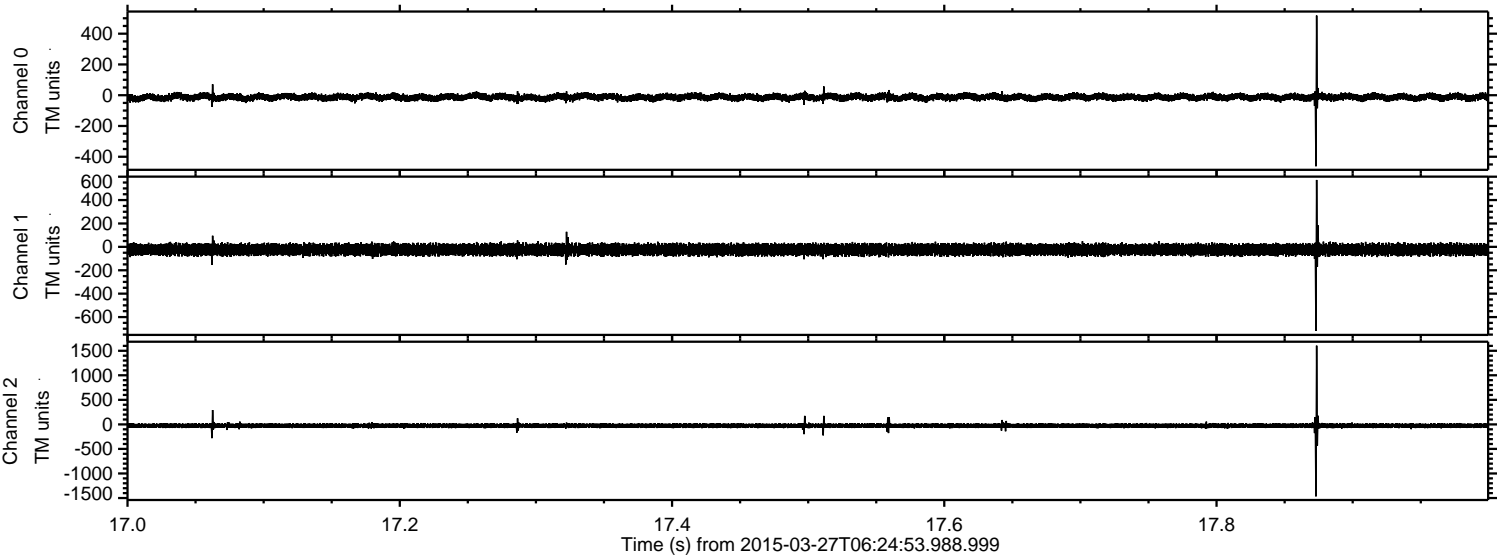
ELMAVAN 3D WAVEFORMS (Measured data sampled at 50 kHz) 49791 packets of 144 samples from 2015-03-27T06:24:53.988.999. Part 112/144

Processed Fri Mar 27 08:40:03 2015 by ELM ver.2012-10-06 from 001\_\_elm20150327\_062452\_\_dat00.bin



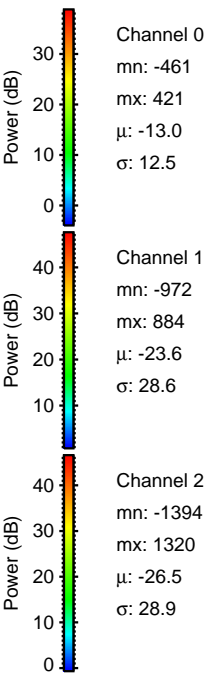
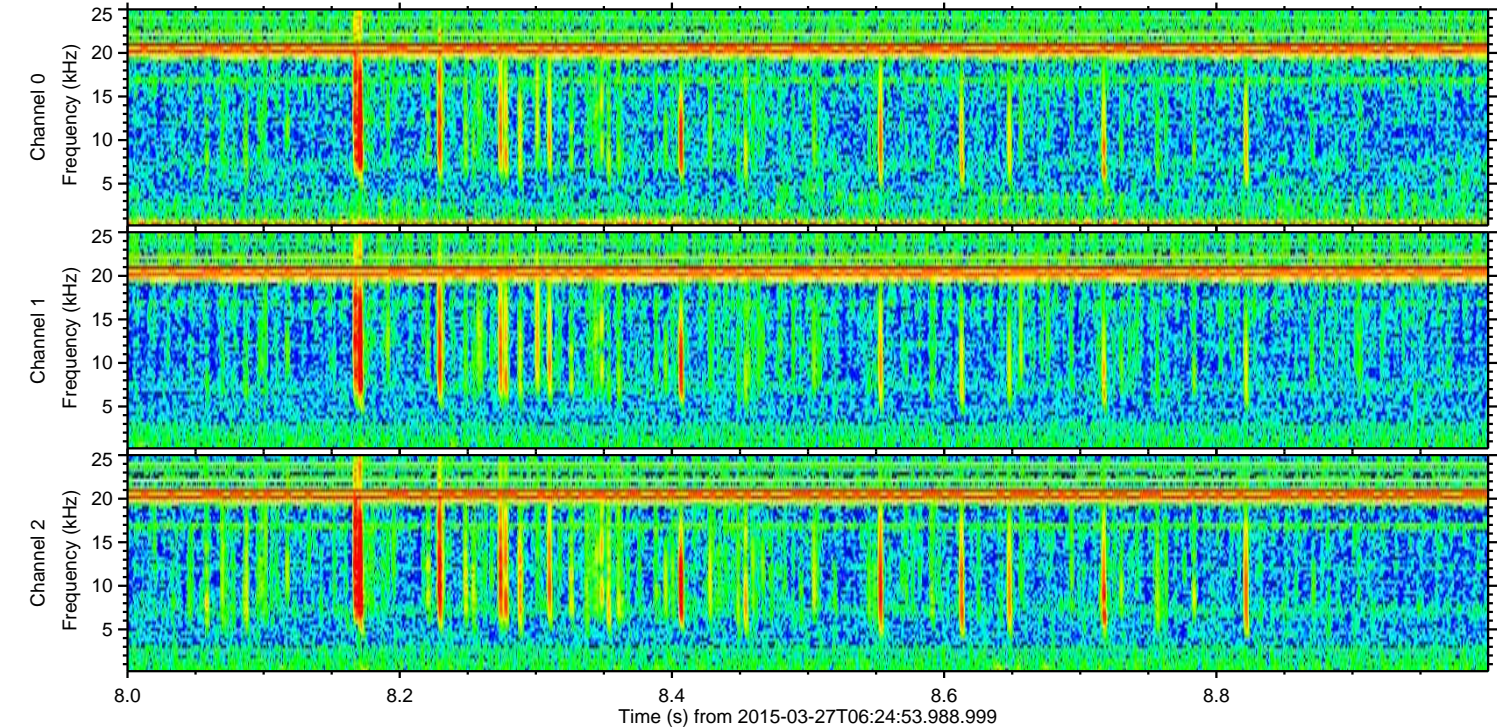
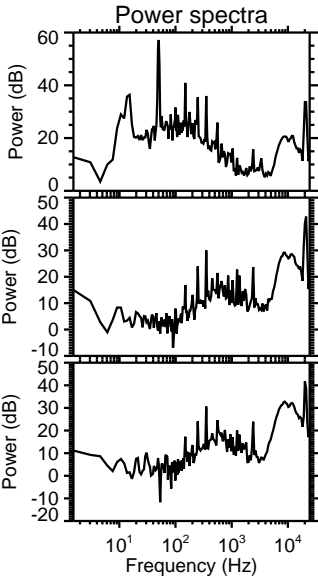
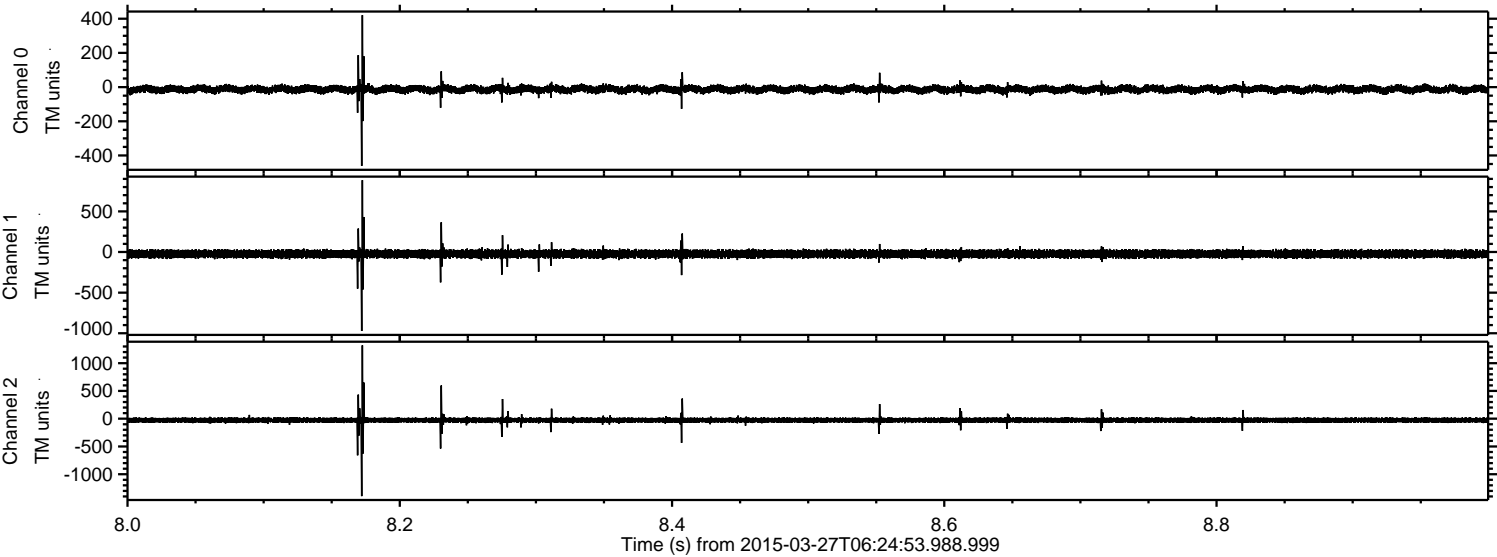


Processed Fri Mar 27 08:40:04 2015 by ELM ver.2012-10-06 from 001\_\_elm20150327\_062452\_\_dat00.bin



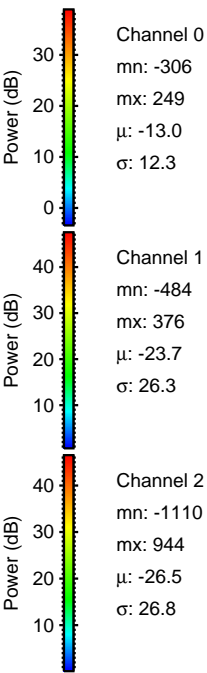
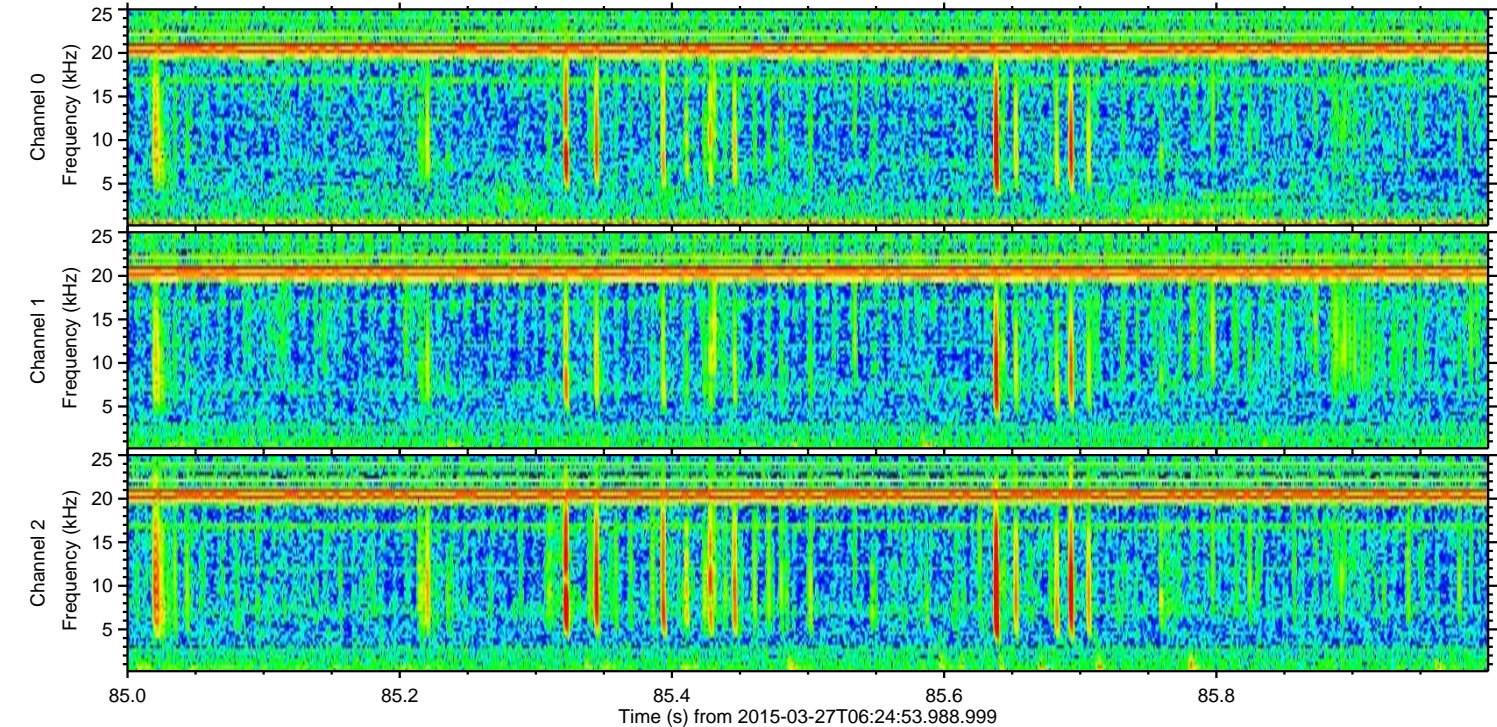
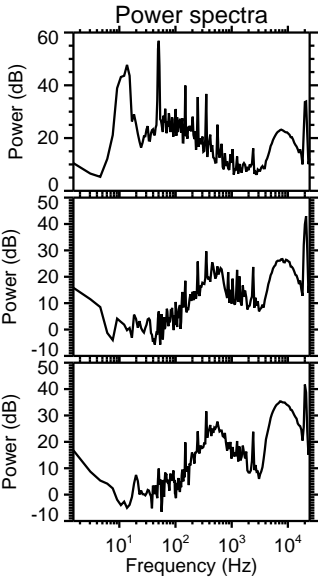
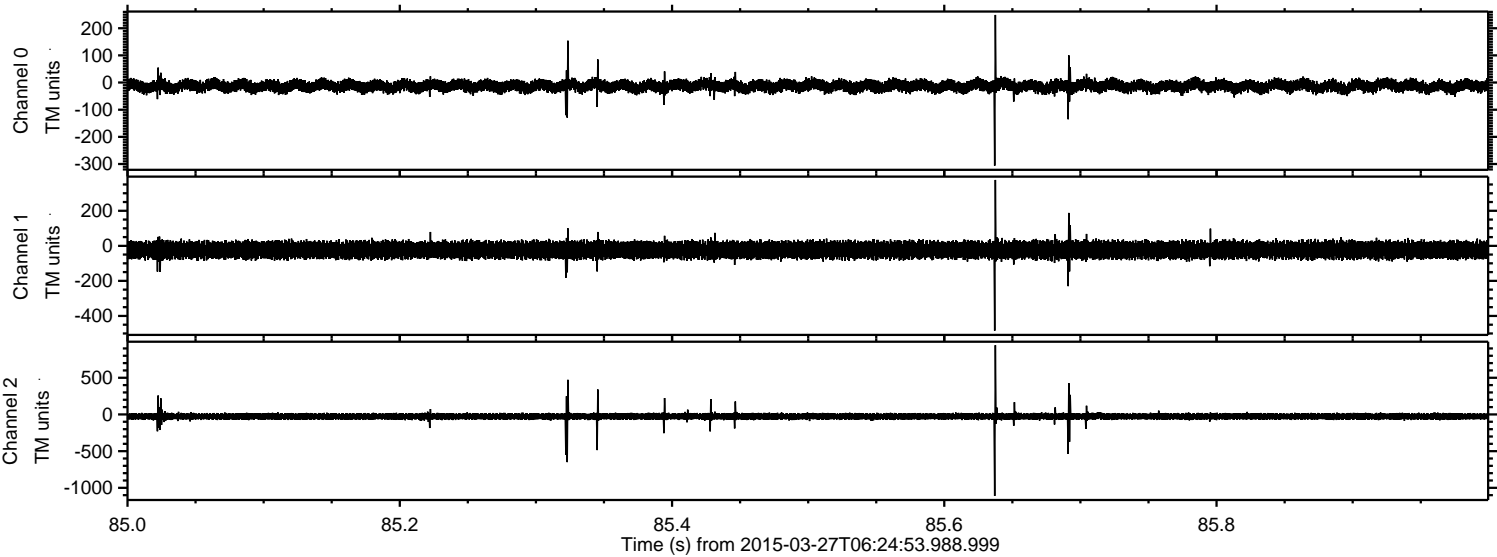


Processed Fri Mar 27 08:40:05 2015 by ELM ver.2012-10-06 from 001\_\_elm20150327\_062452\_\_dat00.bin



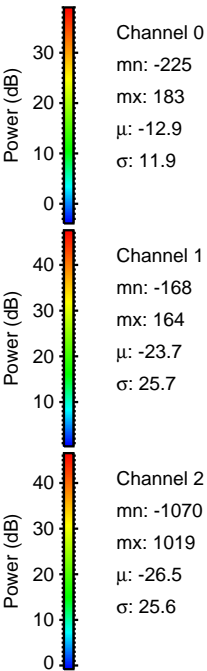
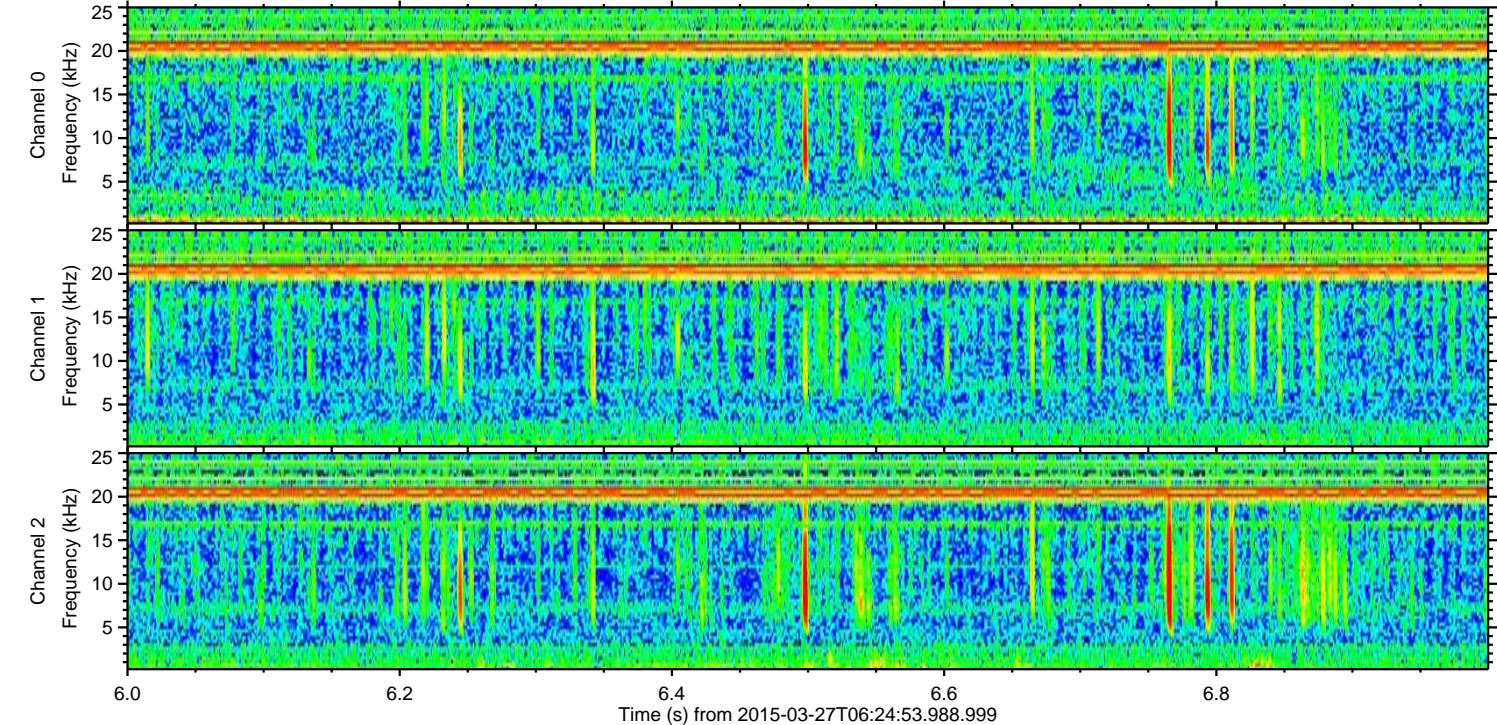
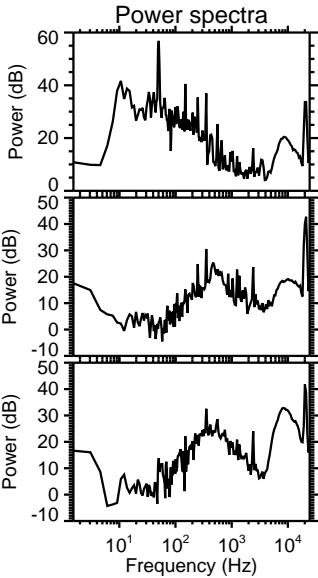
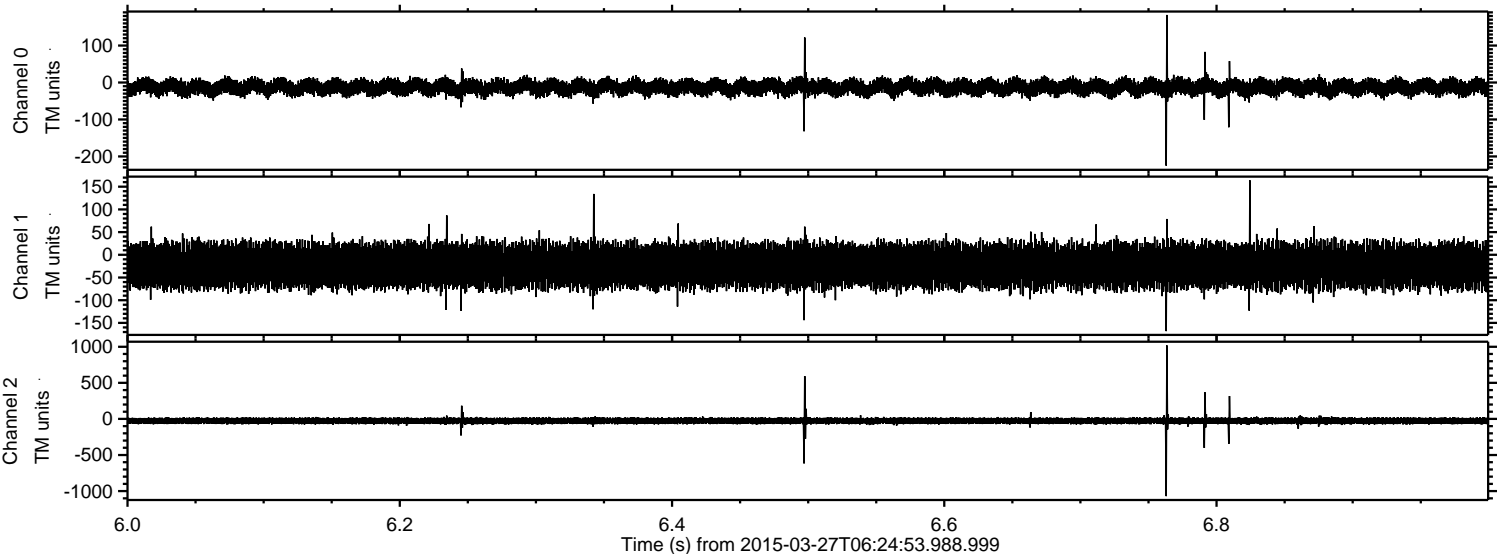


Processed Fri Mar 27 08:40:06 2015 by ELM ver.2012-10-06 from 001\_\_elm20150327\_062452\_\_dat00.bin



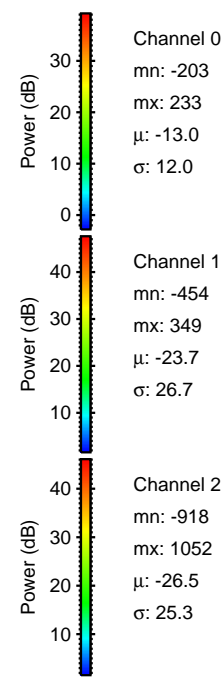
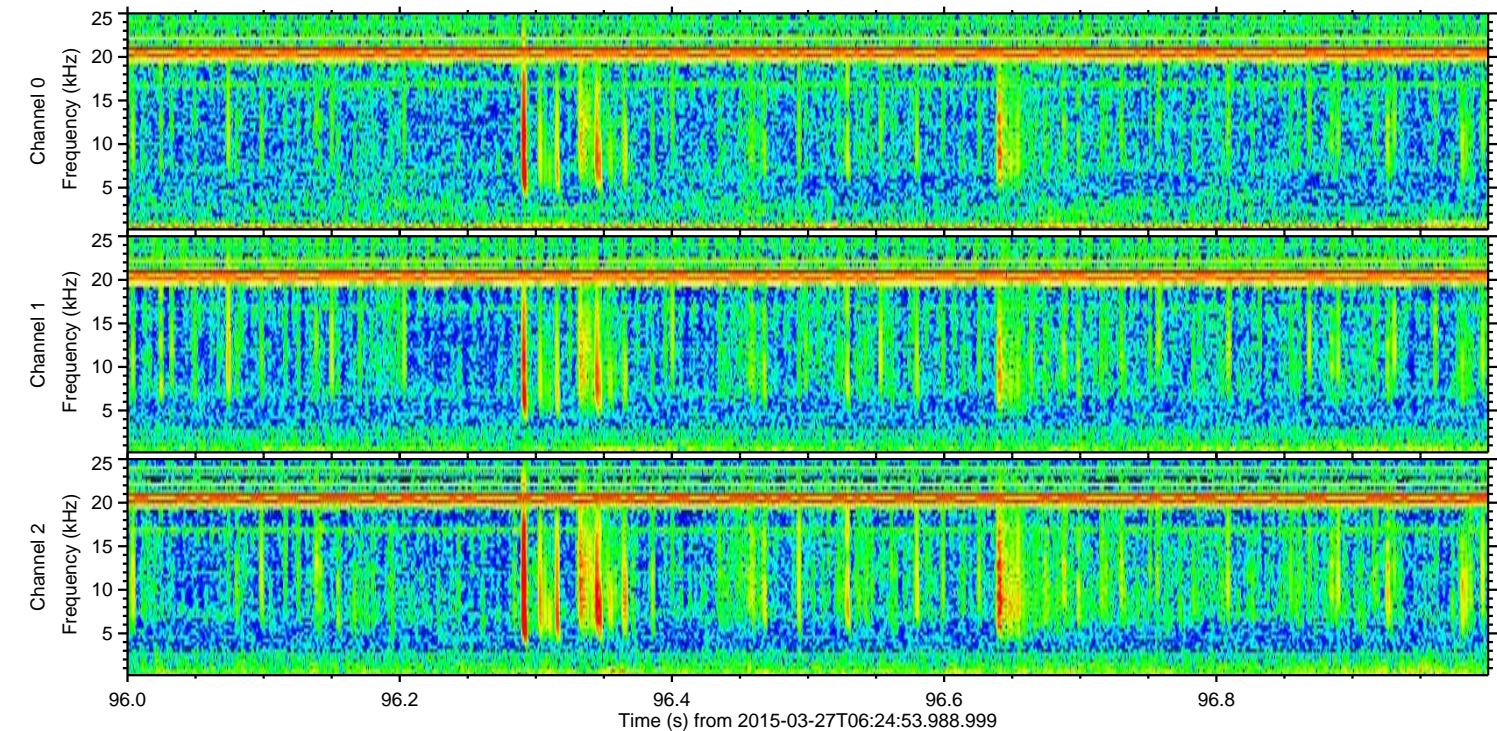
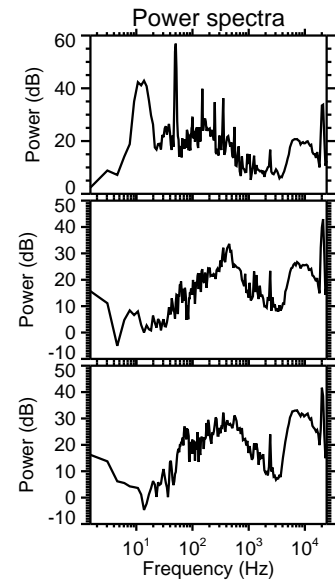
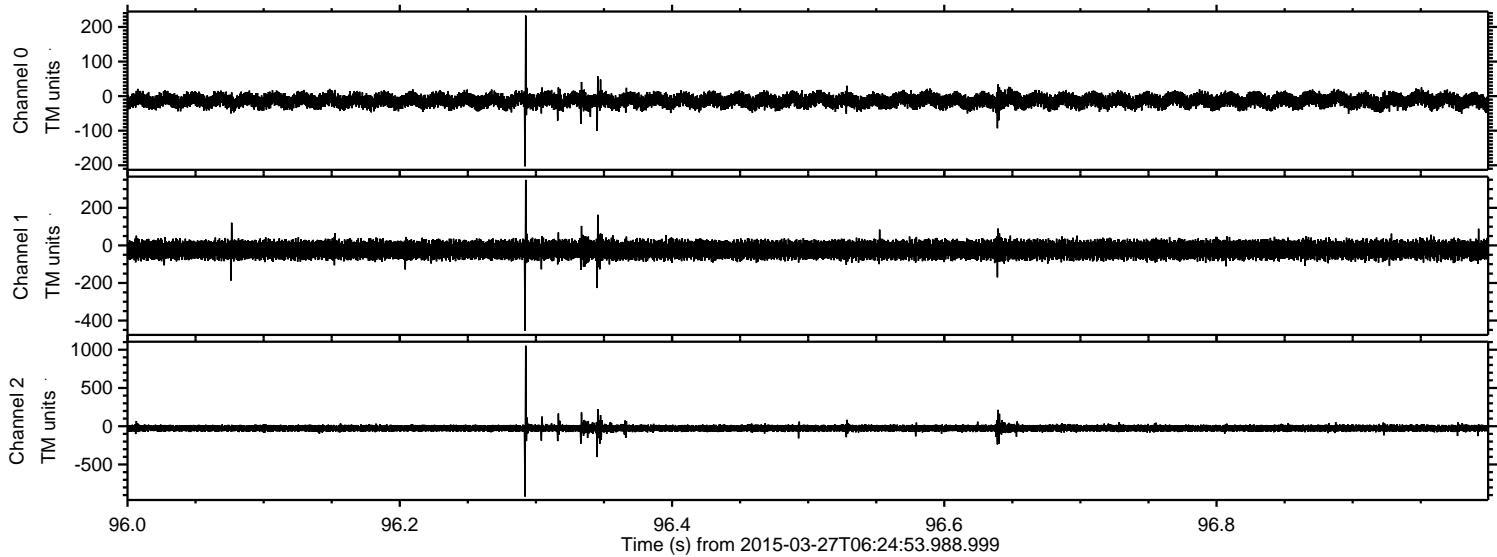


Processed Fri Mar 27 08:40:07 2015 by ELM ver.2012-10-06 from 001\_\_elm20150327\_062452\_\_dat00.bin





Processed Fri Mar 27 08:40:08 2015 by ELM ver.2012-10-06 from 001\_\_elm20150327\_062452\_\_dat00.bin



Channel 0  
mn: -203  
mx: 233  
 $\mu$ : -13.0  
 $\sigma$ : 12.0

Channel 1  
mn: -454  
mx: 349  
 $\mu$ : -23.7  
 $\sigma$ : 26.7

Channel 2  
mn: -918  
mx: 1052  
 $\mu$ : -26.5  
 $\sigma$ : 25.3



