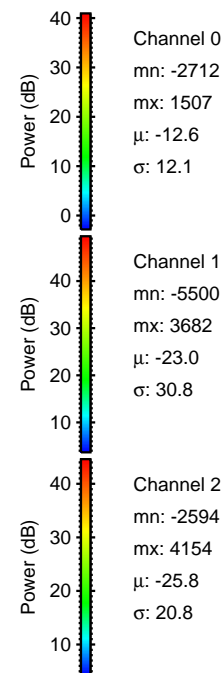
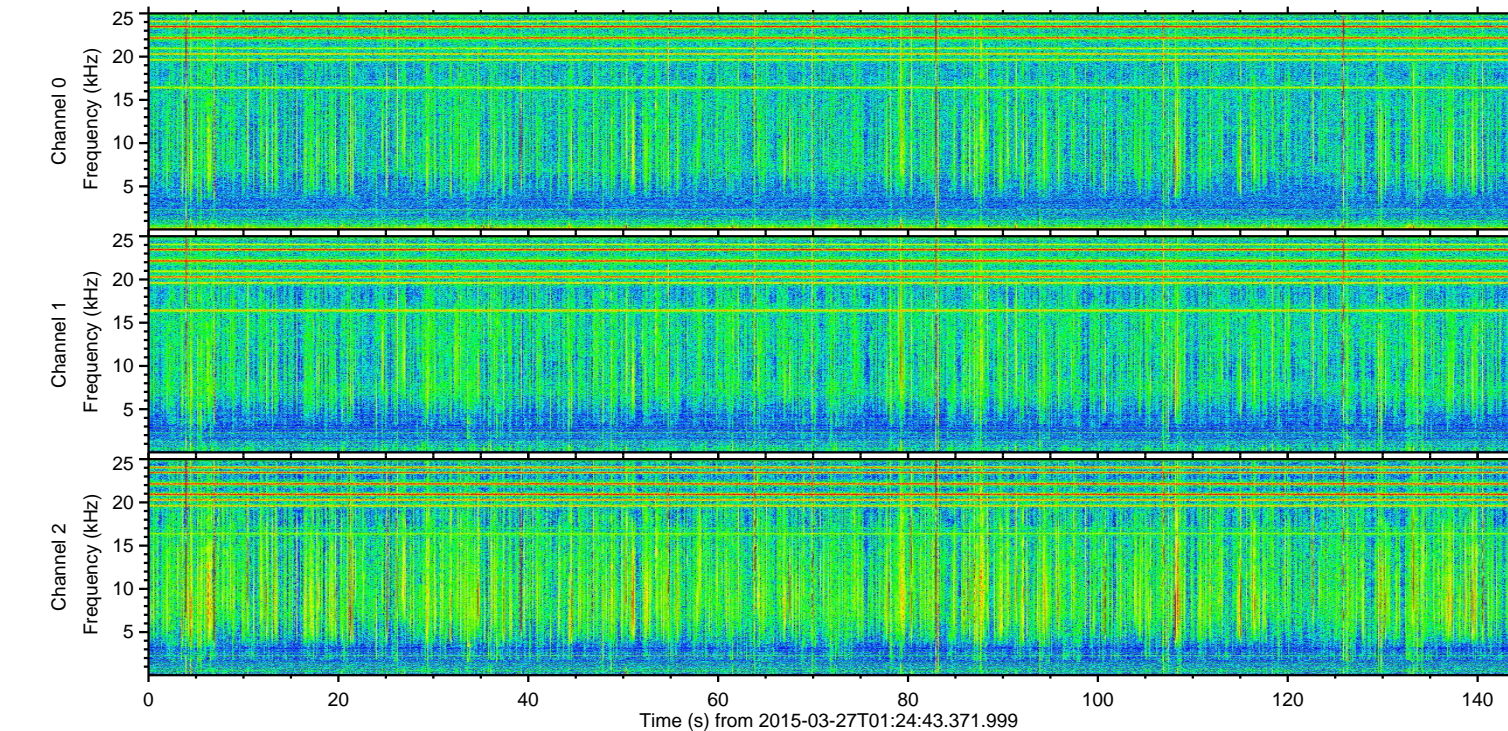
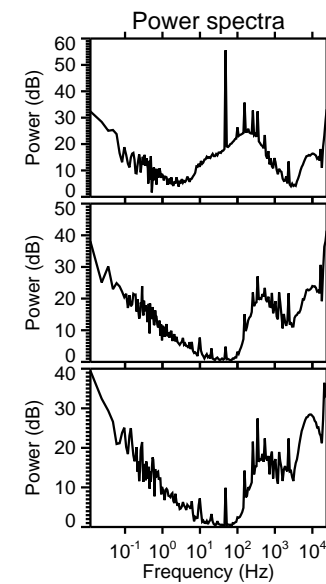
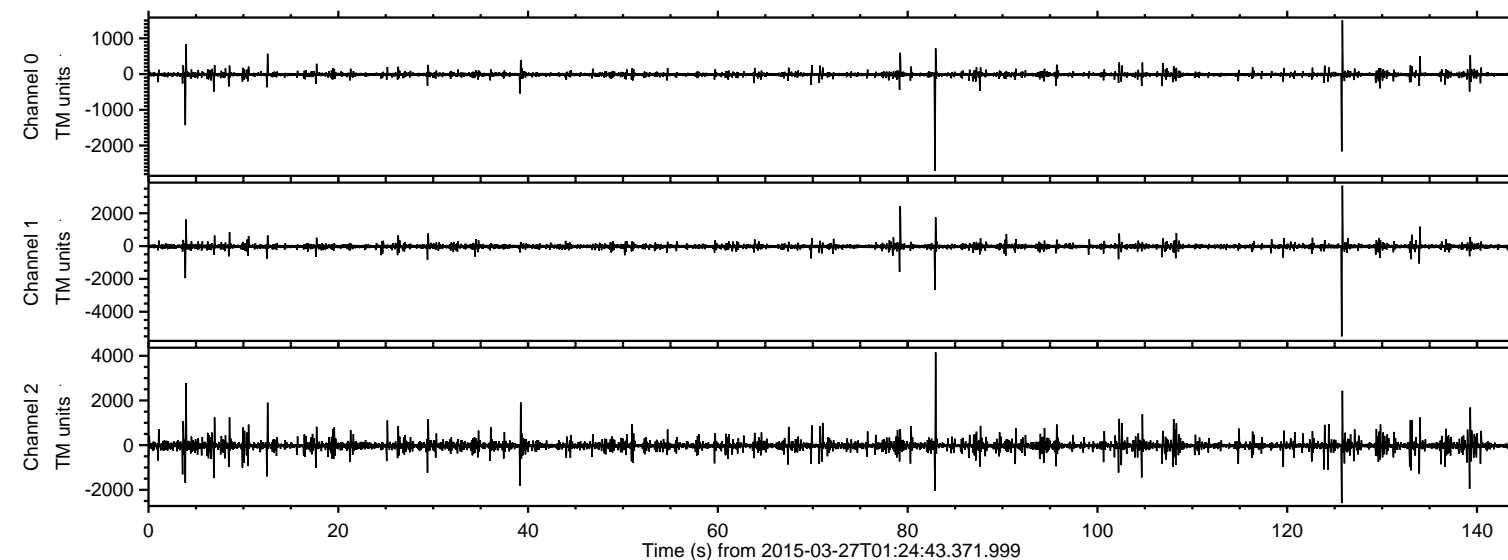


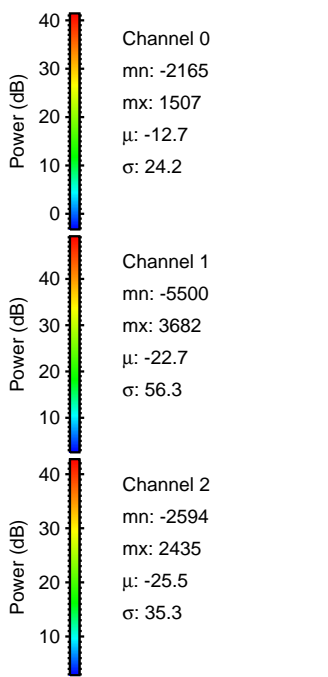
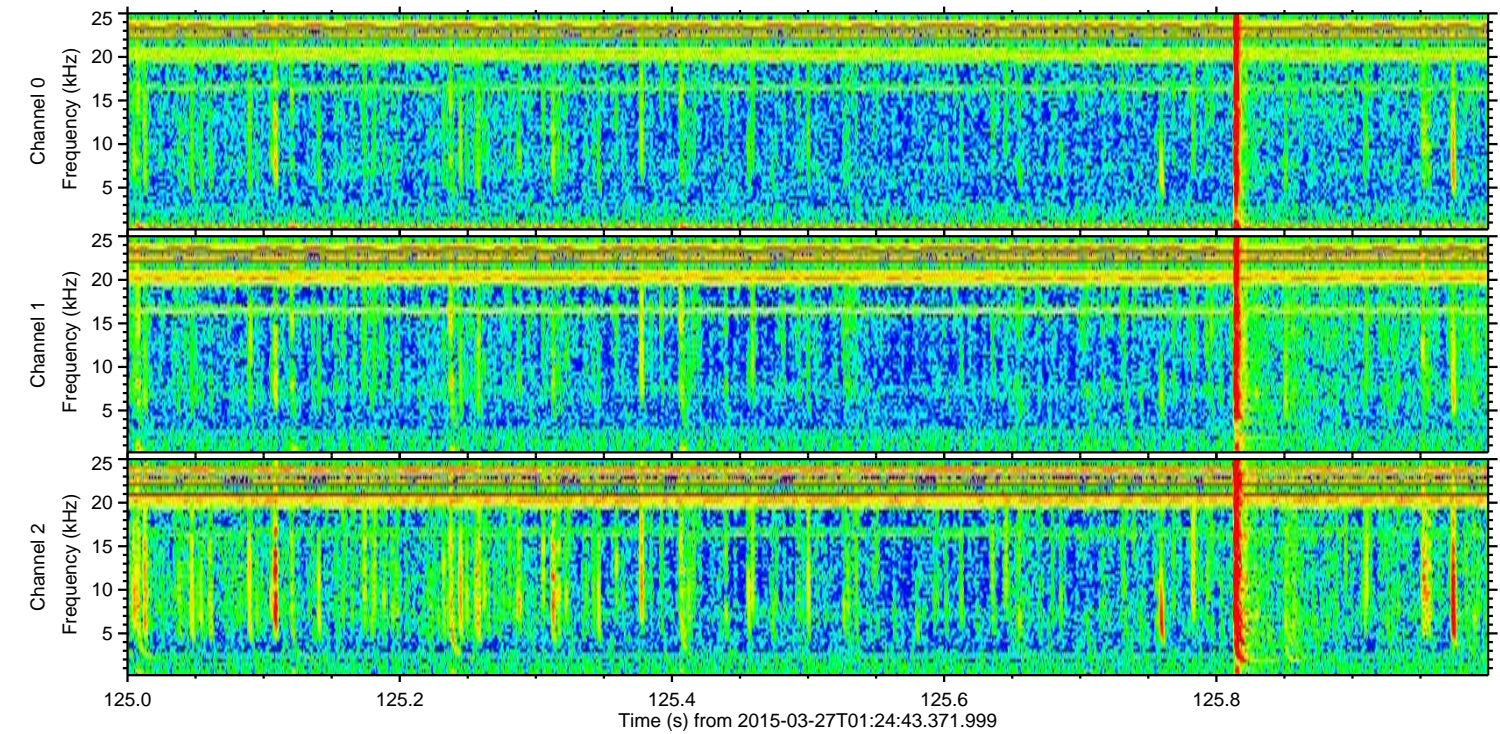
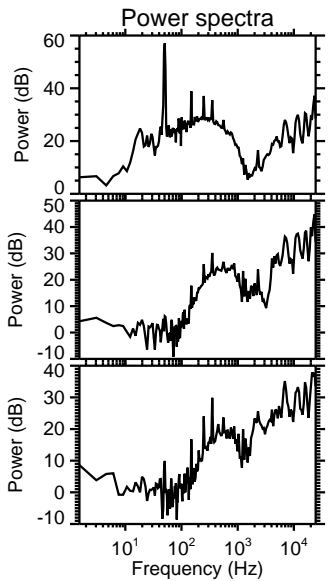
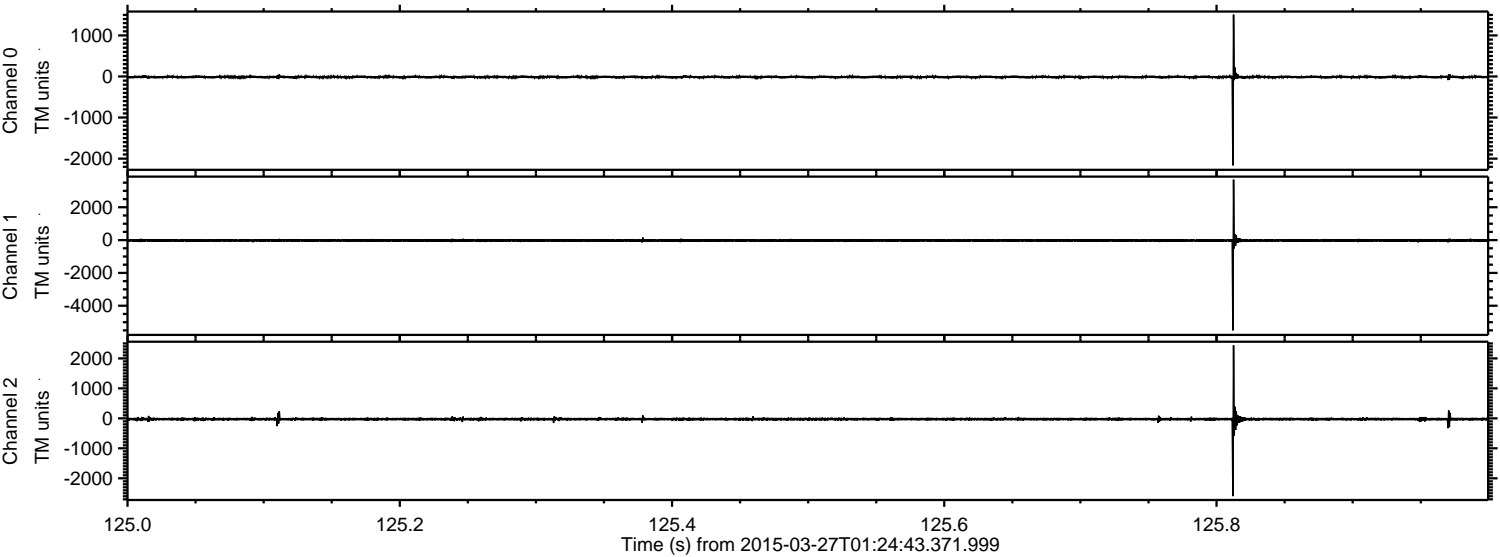
ELMAVAN 3D WAVEFORMS (Measured data sampled at 50 kHz) 49786 packets of 144 samples from 2015-03-27T01:24:43.371.999.

Processed Fri Mar 27 02:31:47 2015 by ELM ver.2012-10-06 from 001__elm20150327_012442__dat00.bin

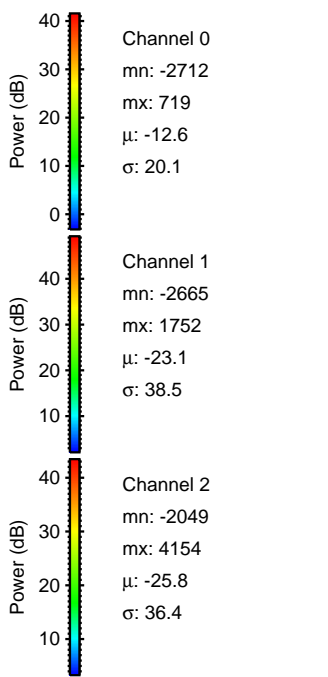
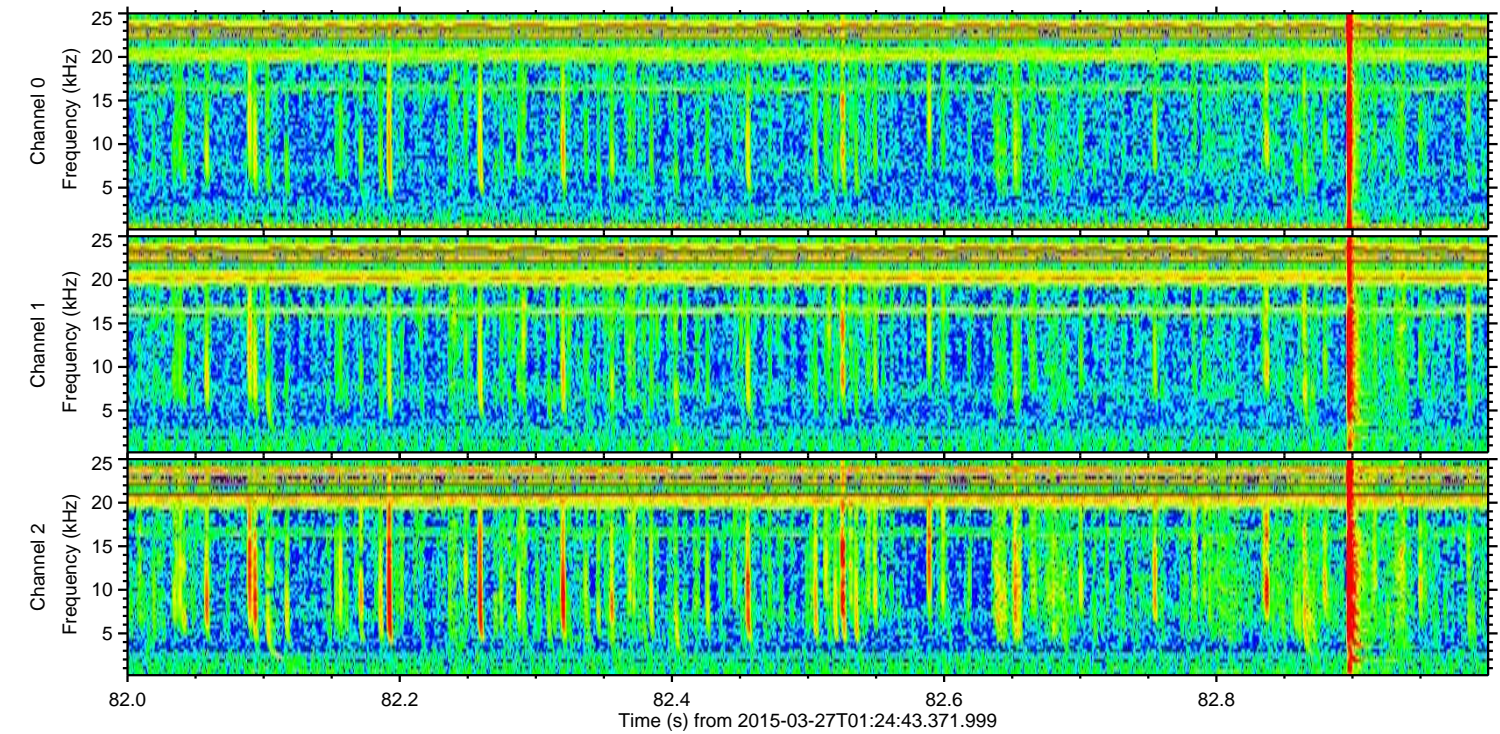
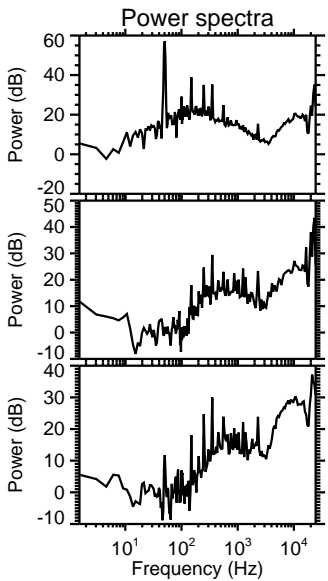
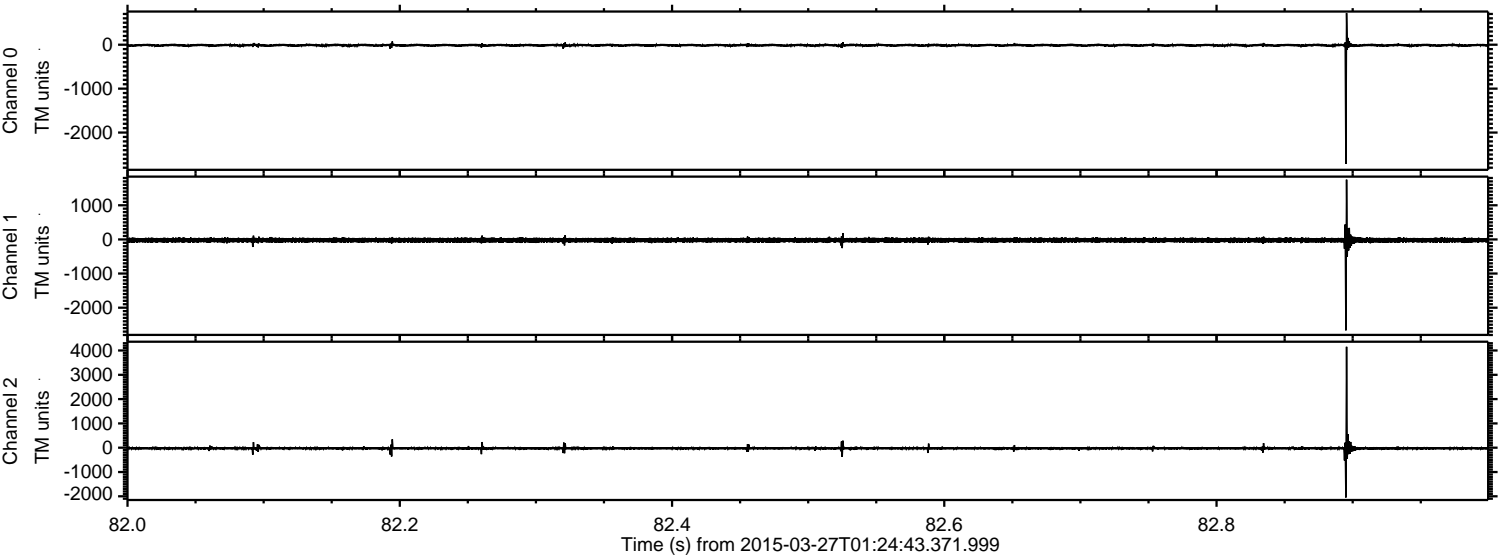


ELMAVAN 3D WAVEFORMS (Measured data sampled at 50 kHz) 49786 packets of 144 samples from 2015-03-27T01:24:43.371.999. Part 126/144

Processed Fri Mar 27 02:31:58 2015 by ELM ver.2012-10-06 from 001__elm20150327_012442__dat00.bin

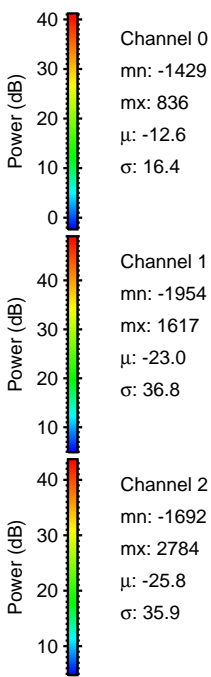
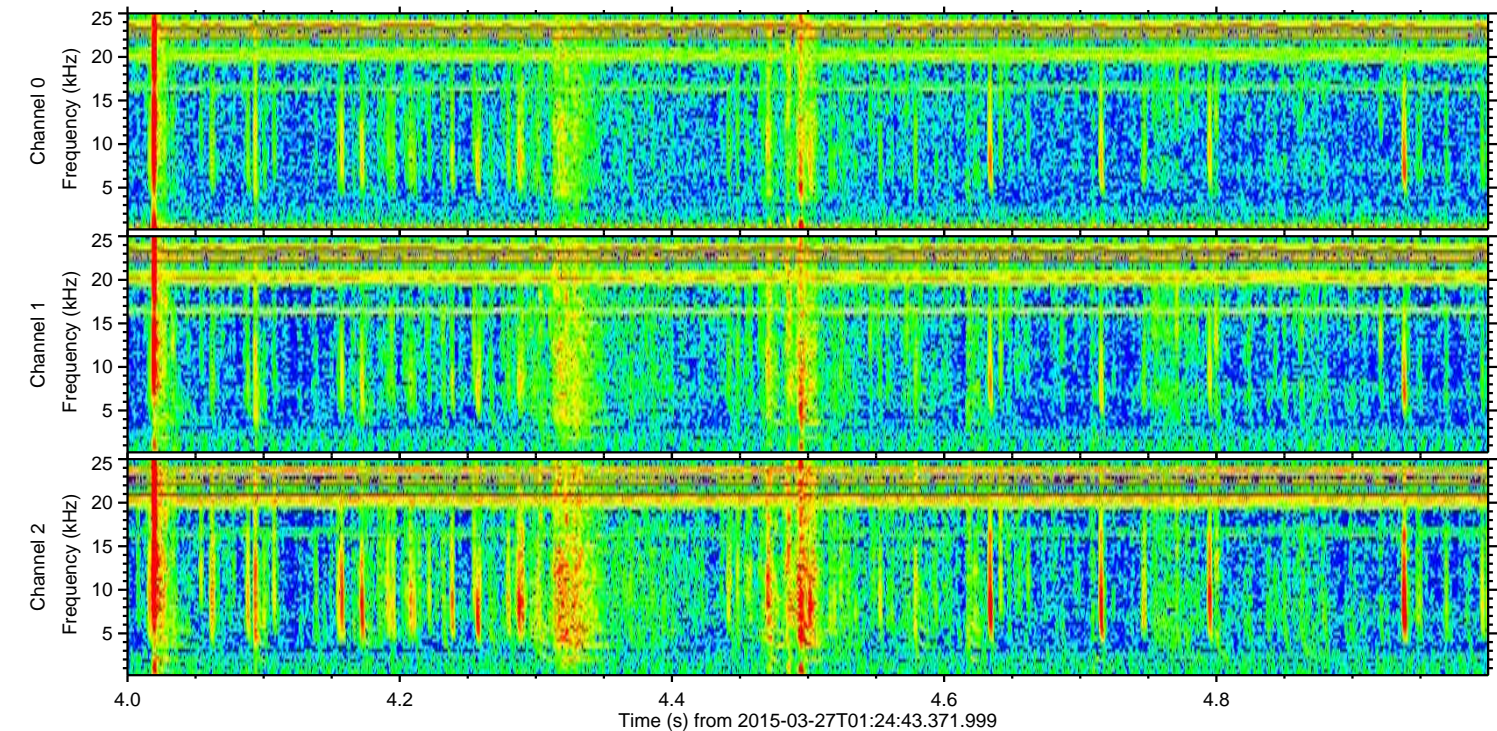
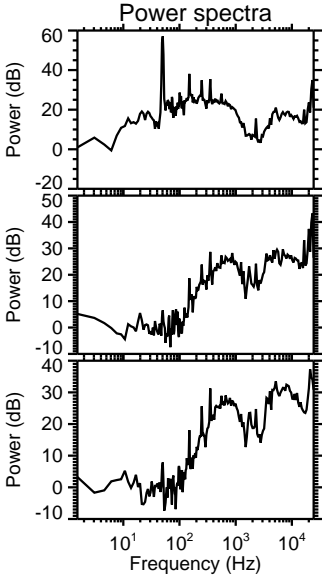
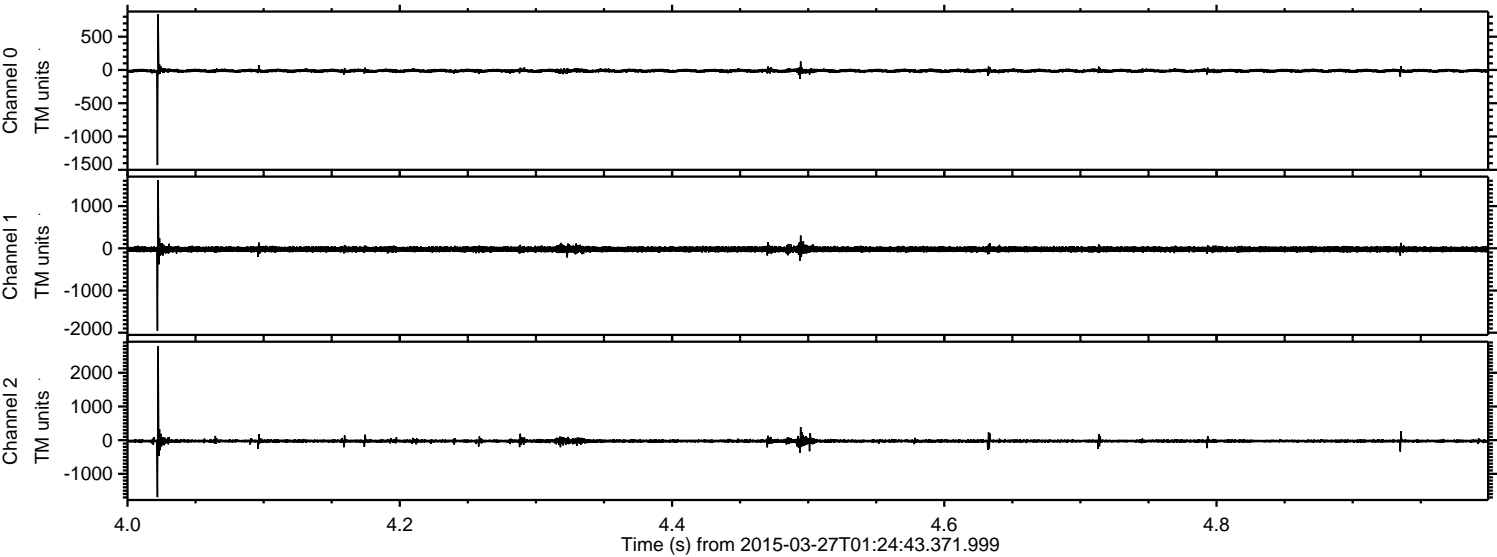


Processed Fri Mar 27 02:31:59 2015 by ELM ver.2012-10-06 from 001__elm20150327_012442__dat00.bin

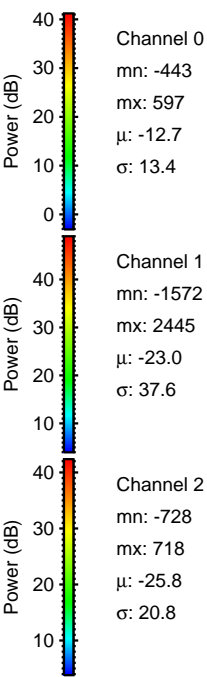
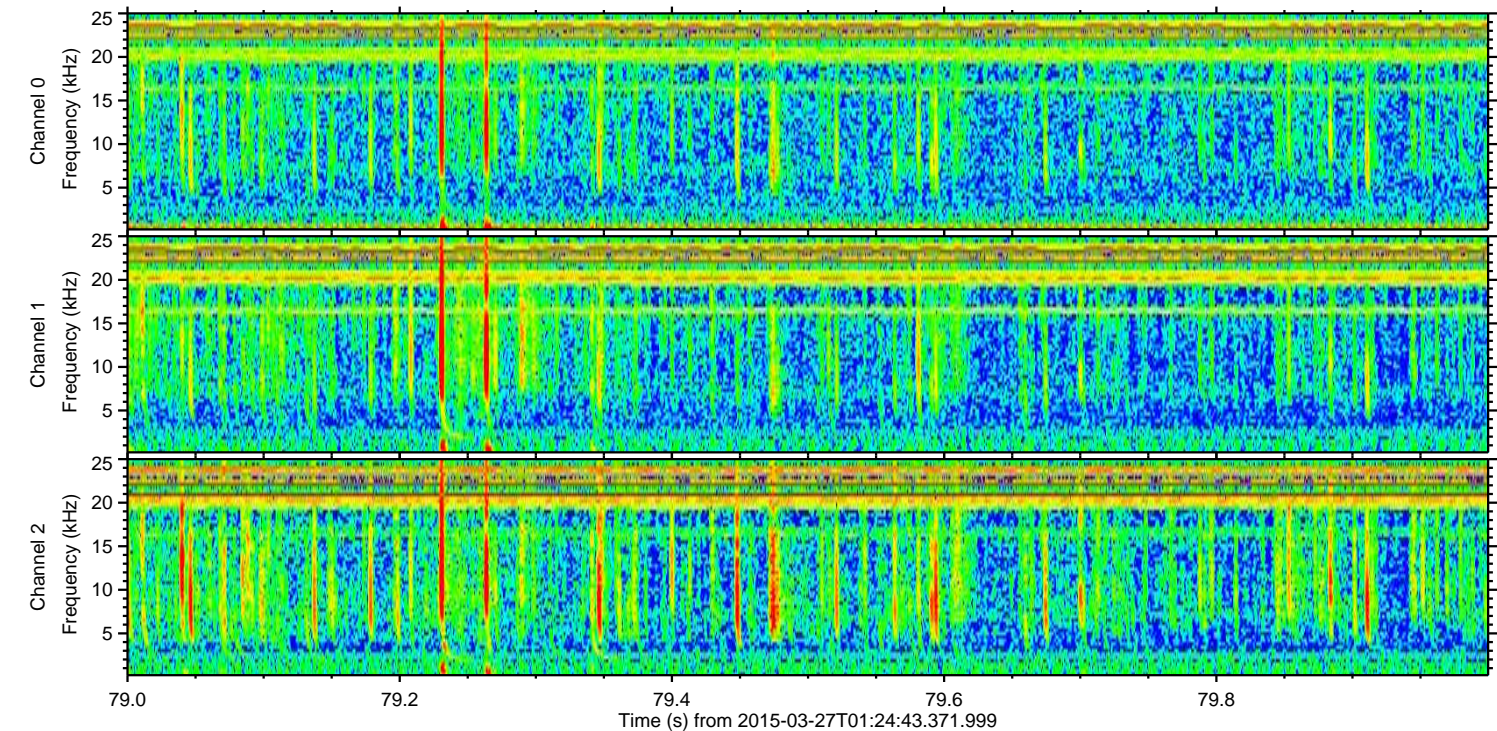
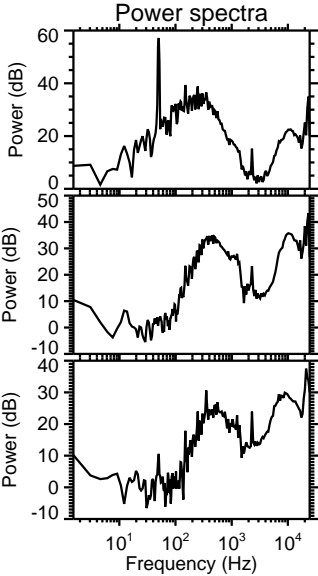
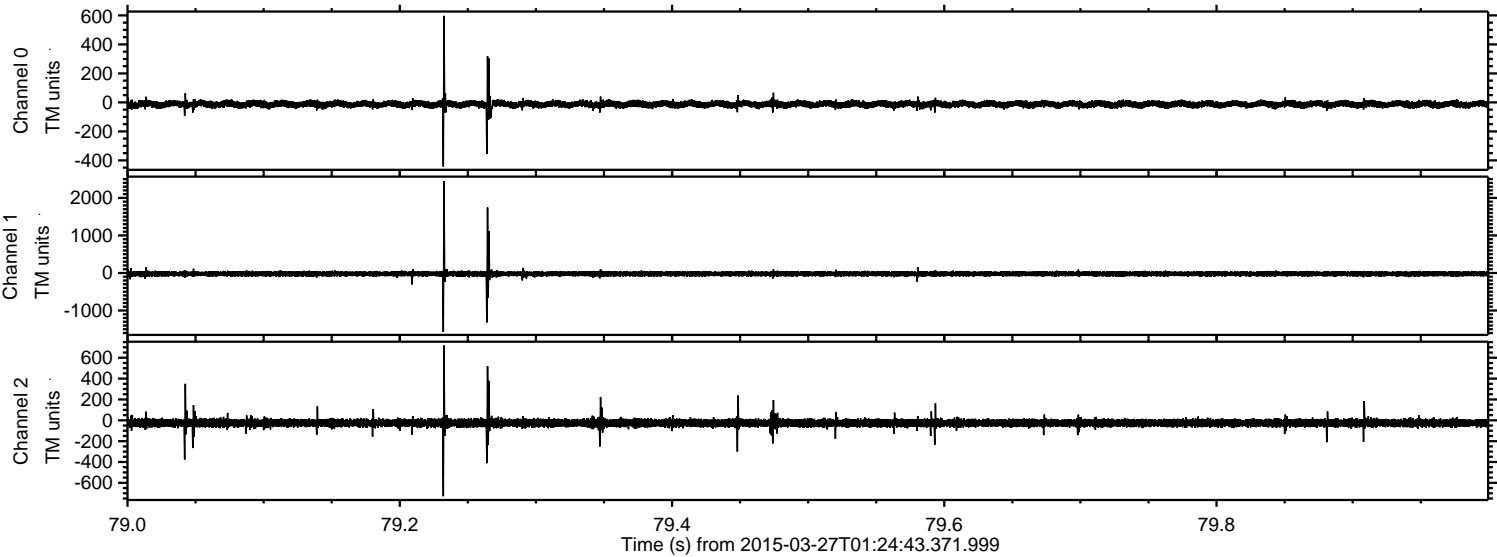


ELMAVAN 3D WAVEFORMS (Measured data sampled at 50 kHz) 49786 packets of 144 samples from 2015-03-27T01:24:43.371.999. Part 5/144

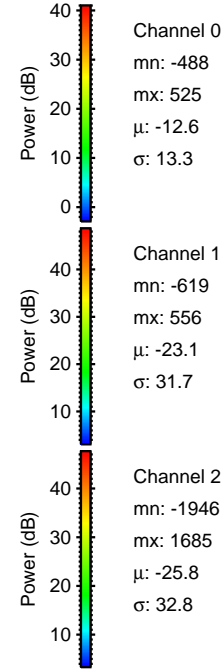
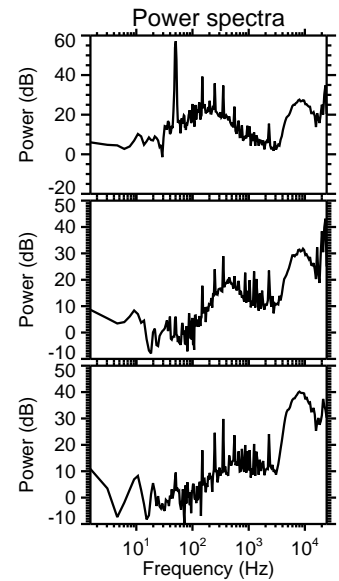
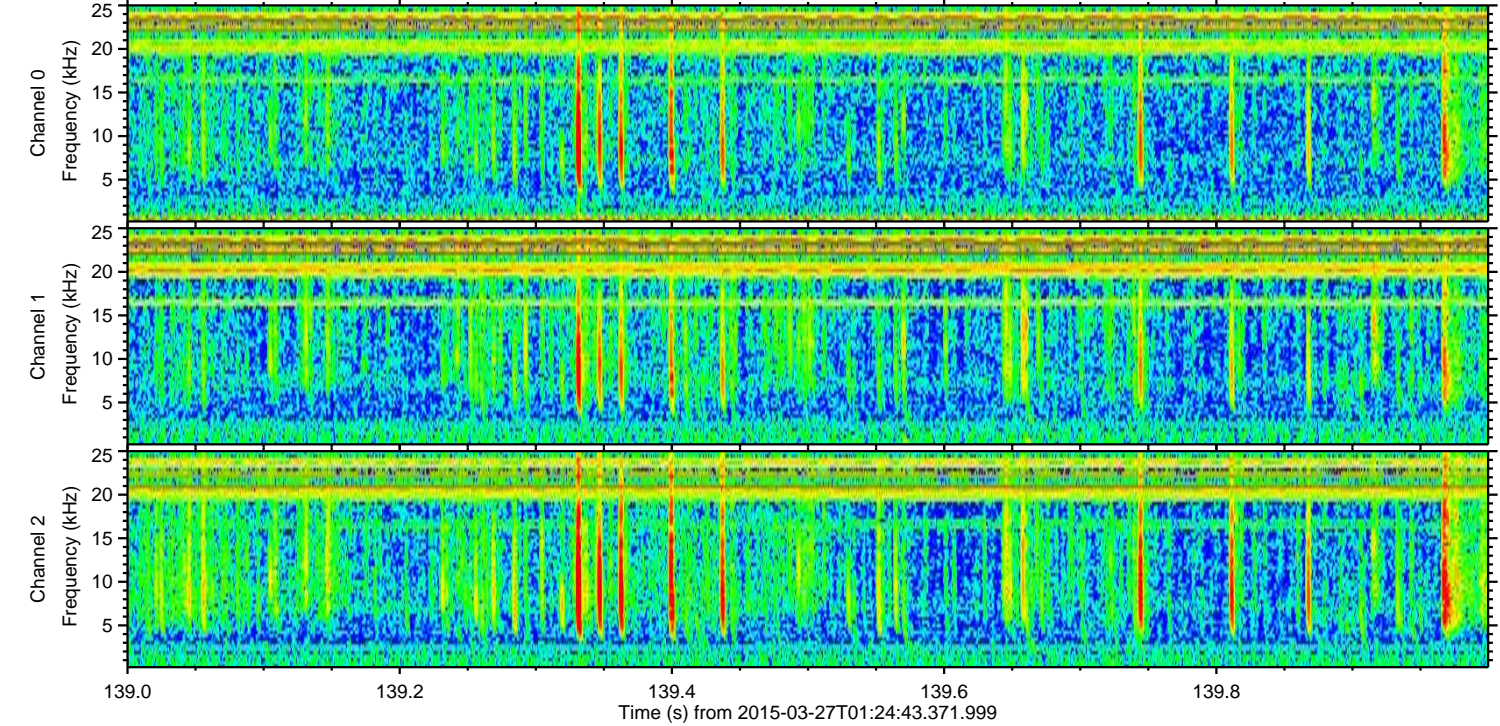
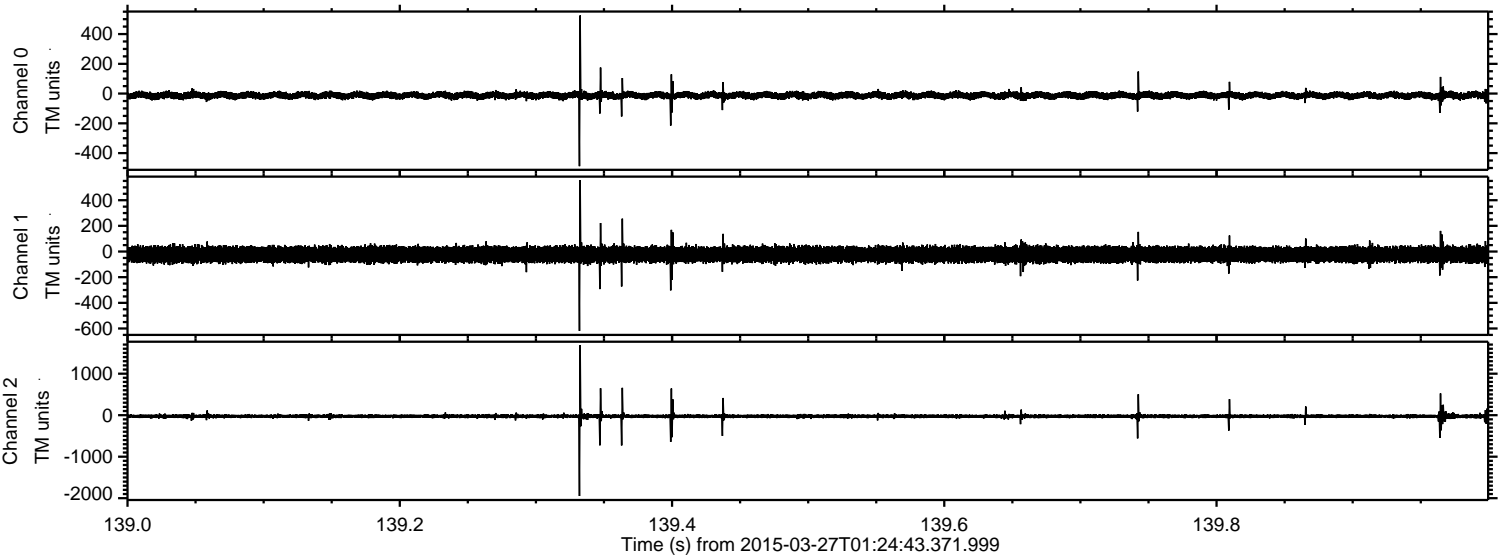
Processed Fri Mar 27 02:32:00 2015 by ELM ver.2012-10-06 from 001__elm20150327_012442__dat00.bin



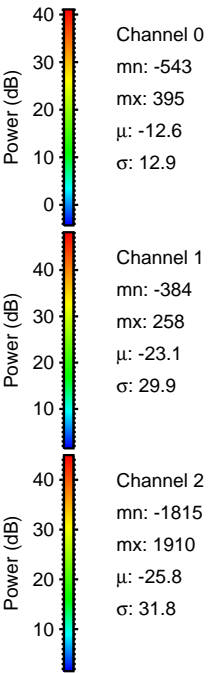
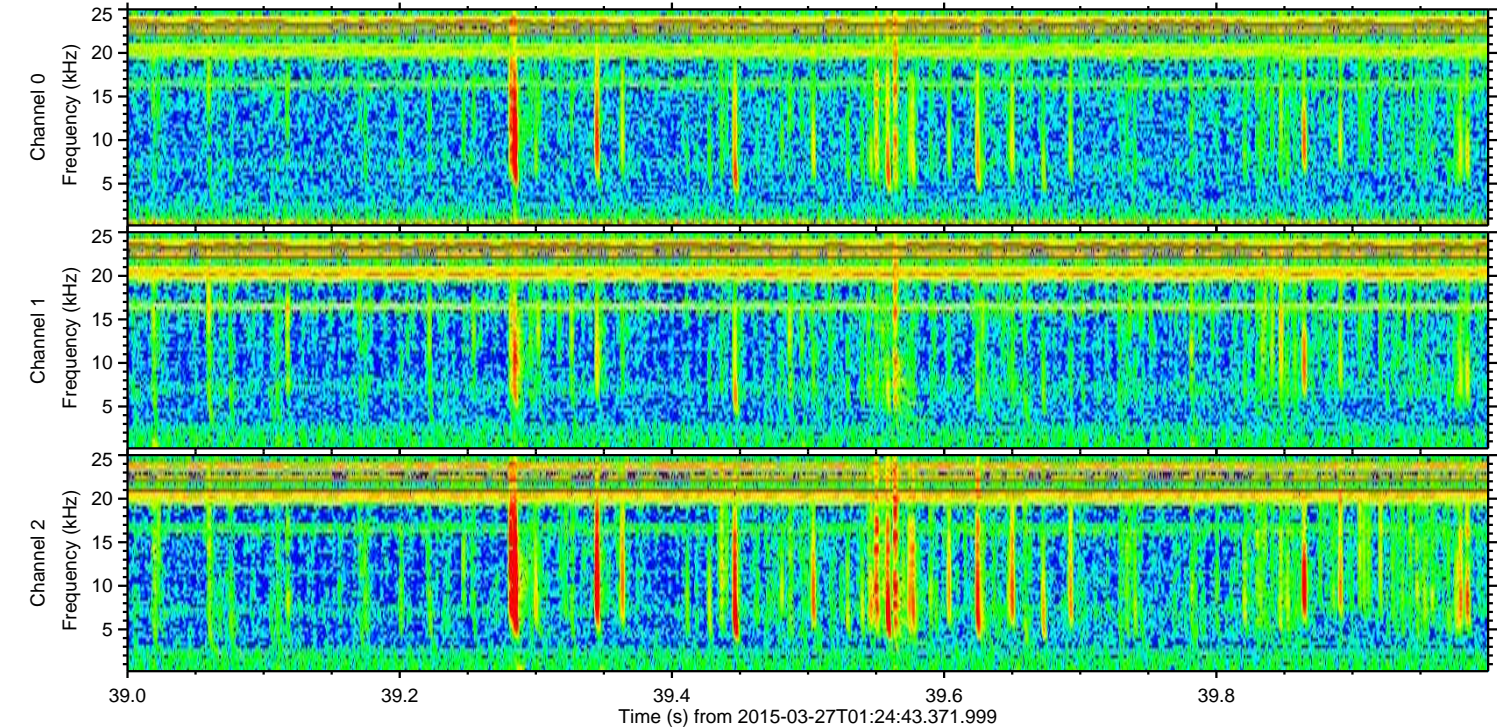
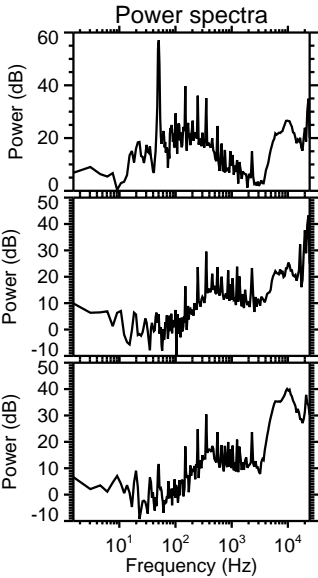
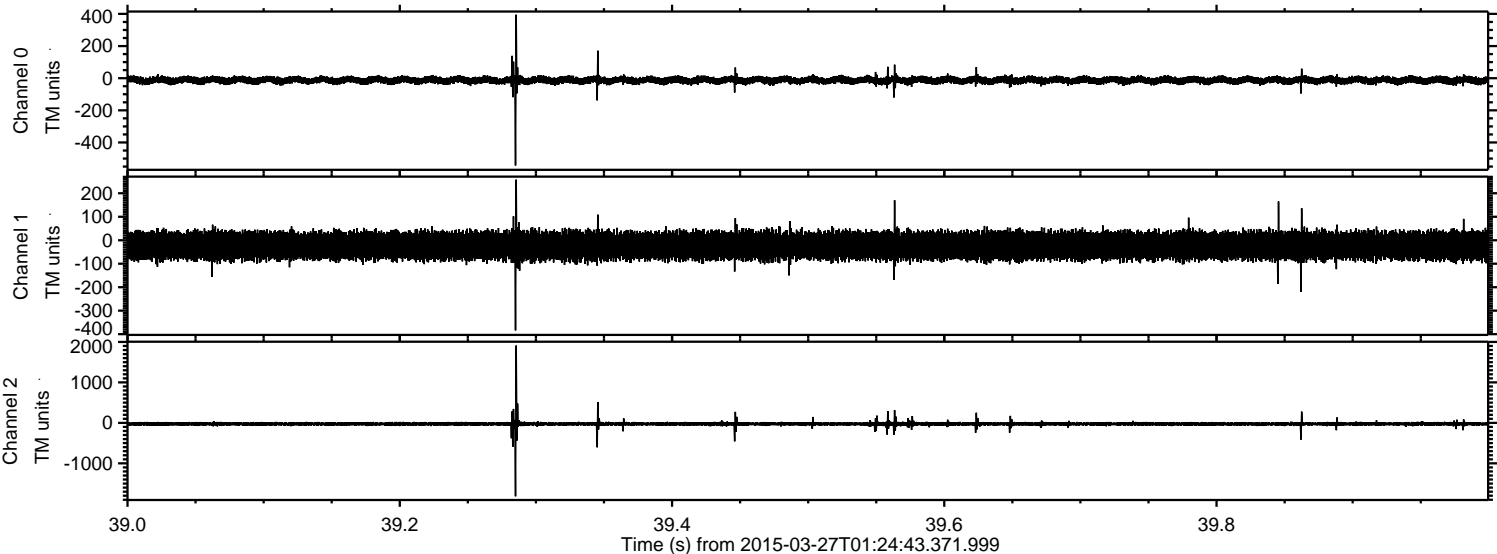
Processed Fri Mar 27 02:32:01 2015 by ELM ver.2012-10-06 from 001__elm20150327_012442__dat00.bin



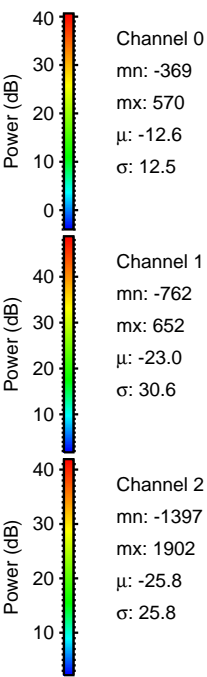
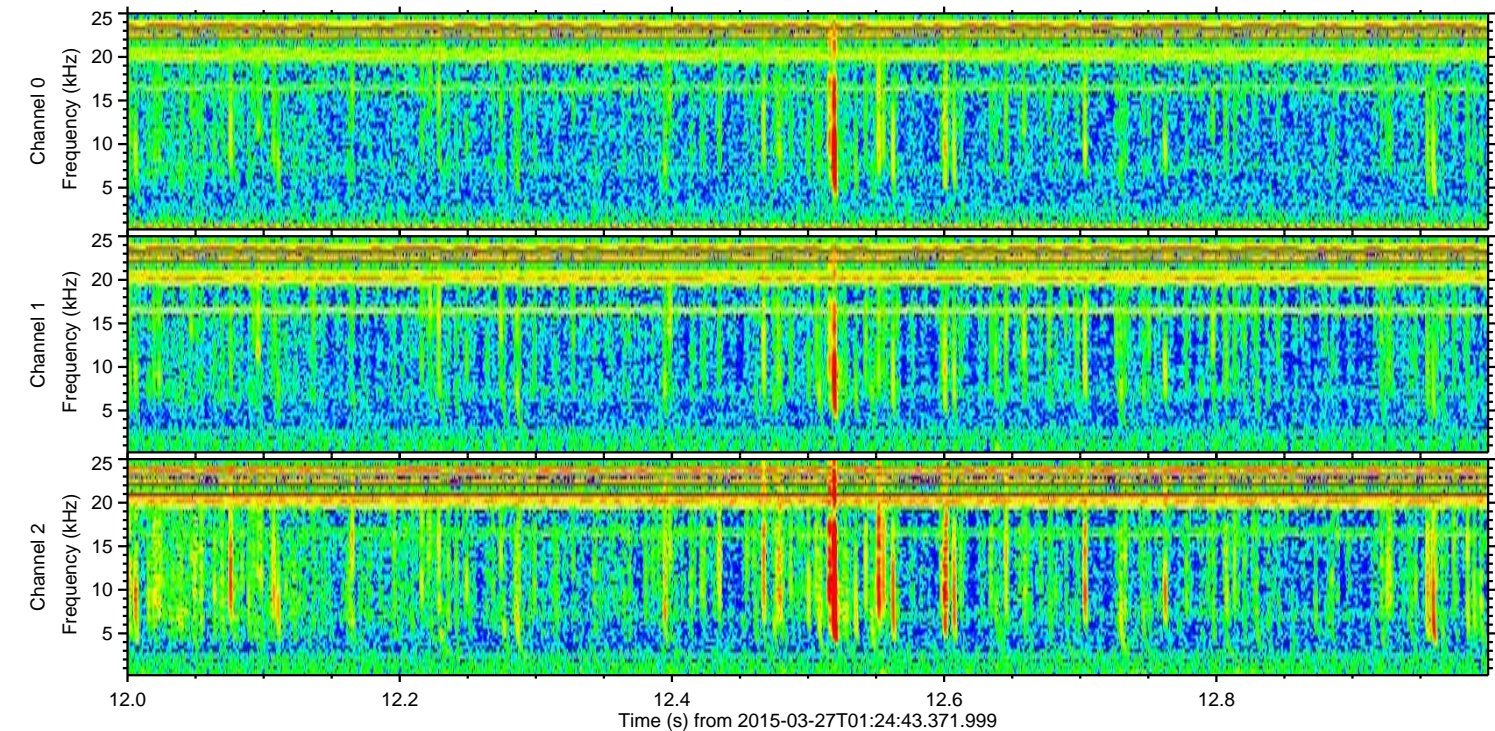
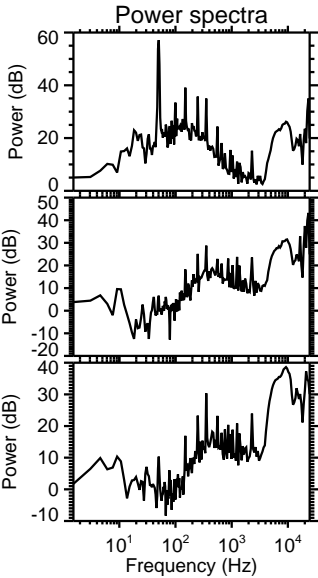
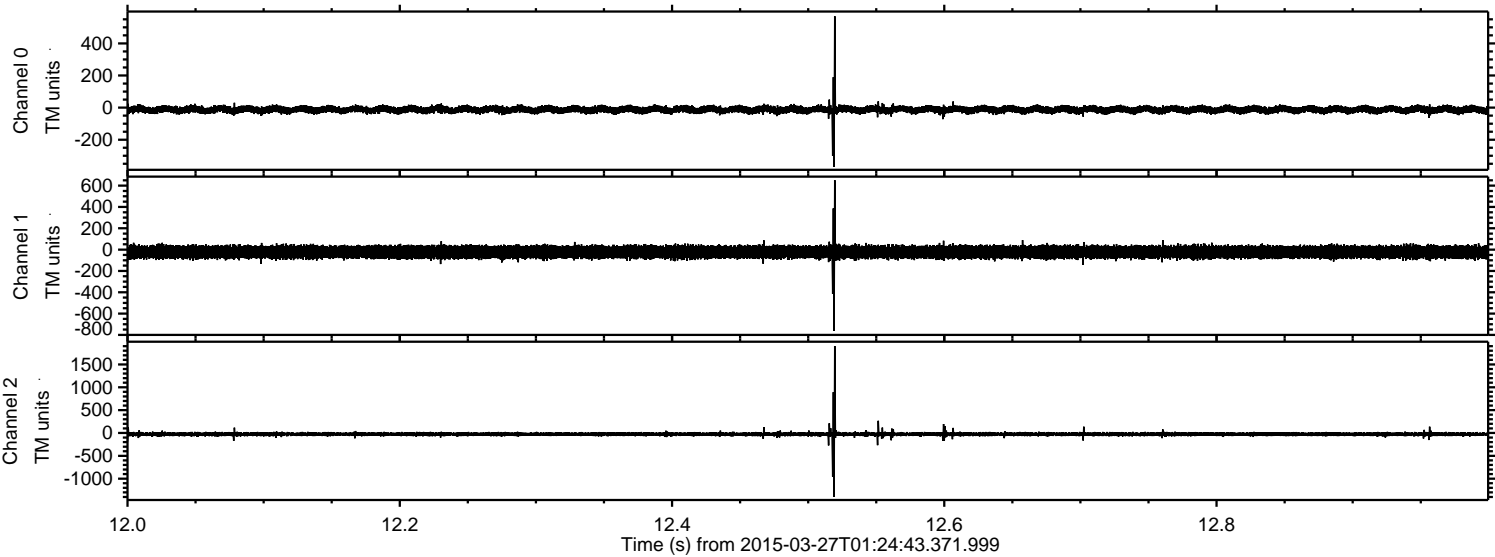
Processed Fri Mar 27 02:32:02 2015 by ELM ver.2012-10-06 from 001__elm20150327_012442__dat00.bin



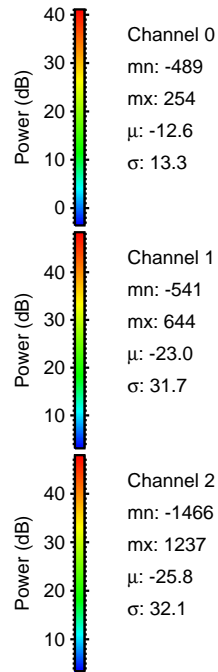
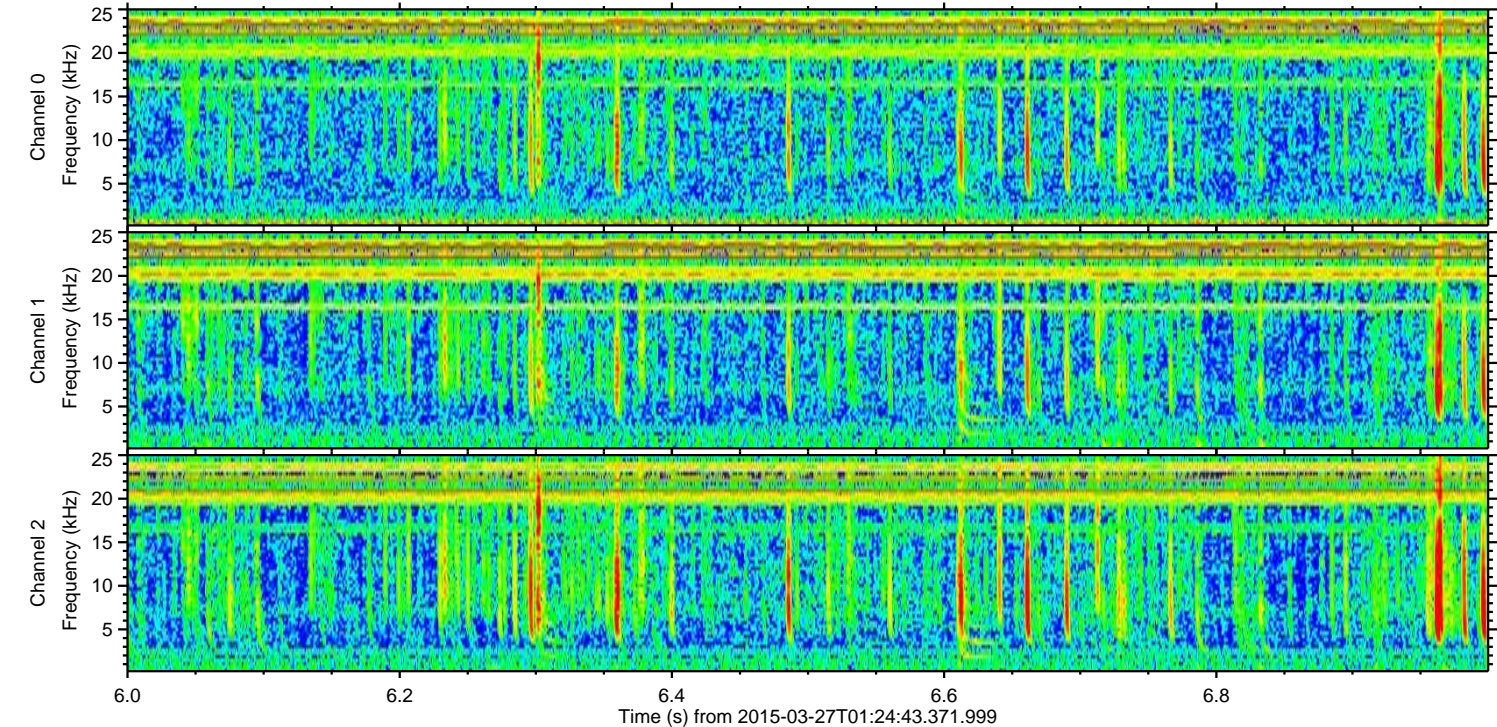
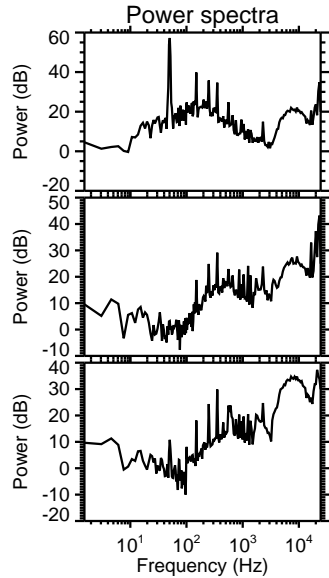
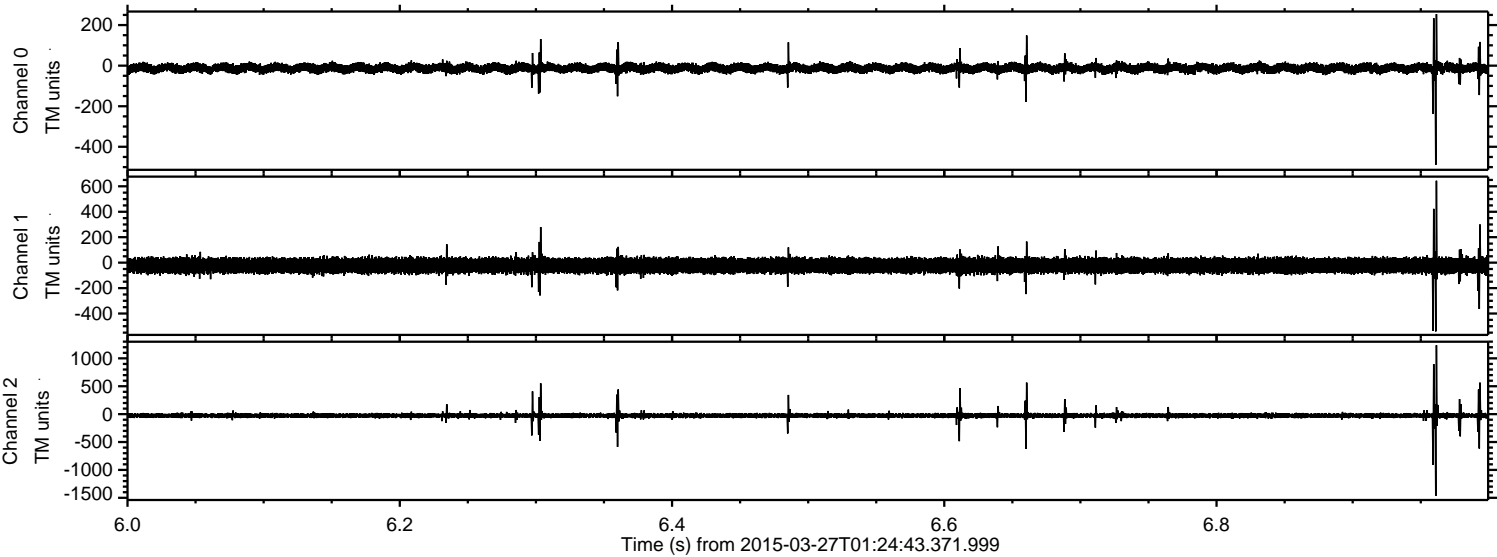
Processed Fri Mar 27 02:32:03 2015 by ELM ver.2012-10-06 from 001__elm20150327_012442__dat00.bin



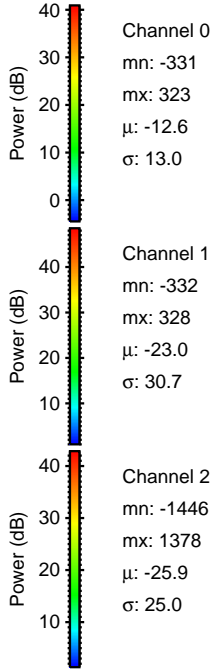
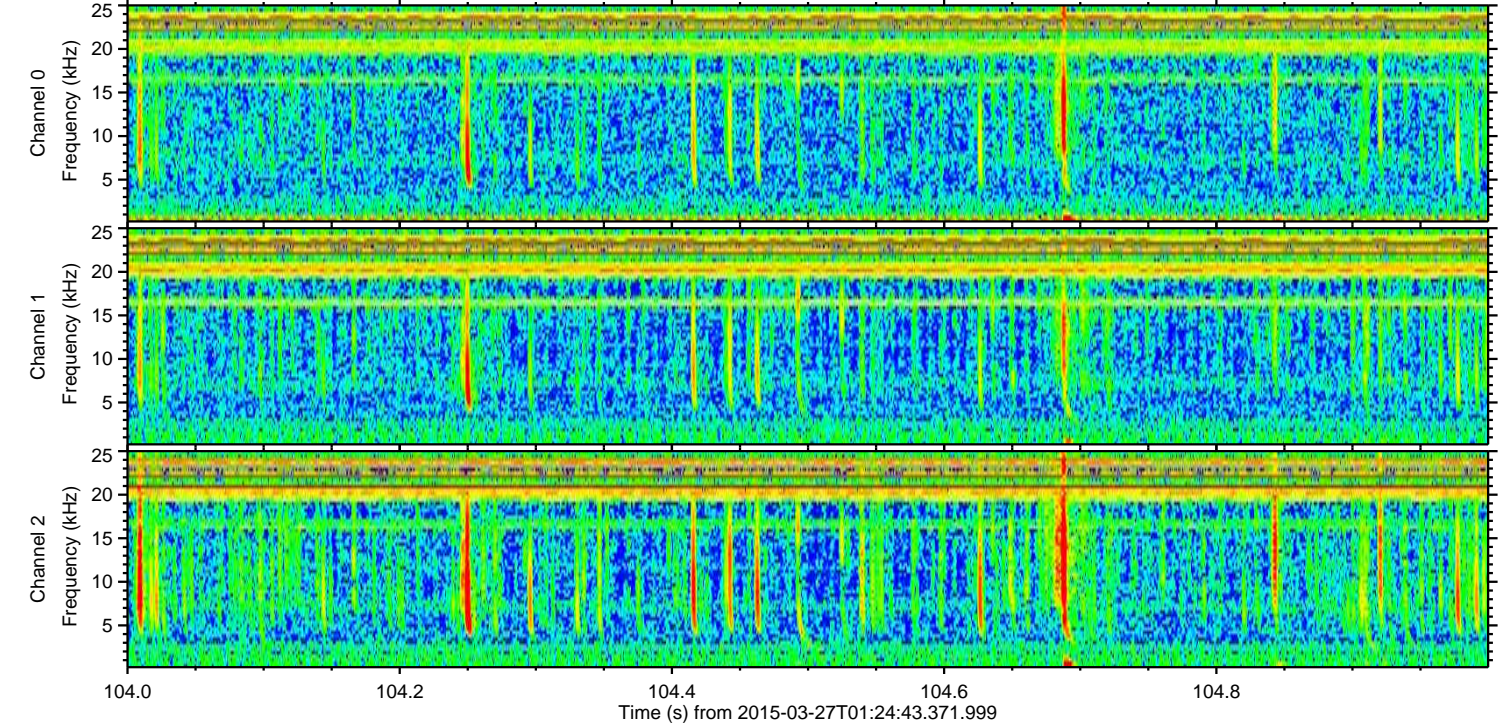
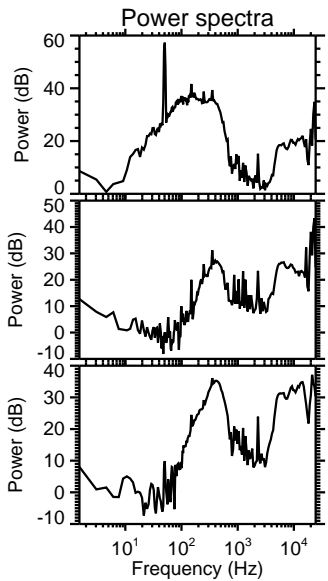
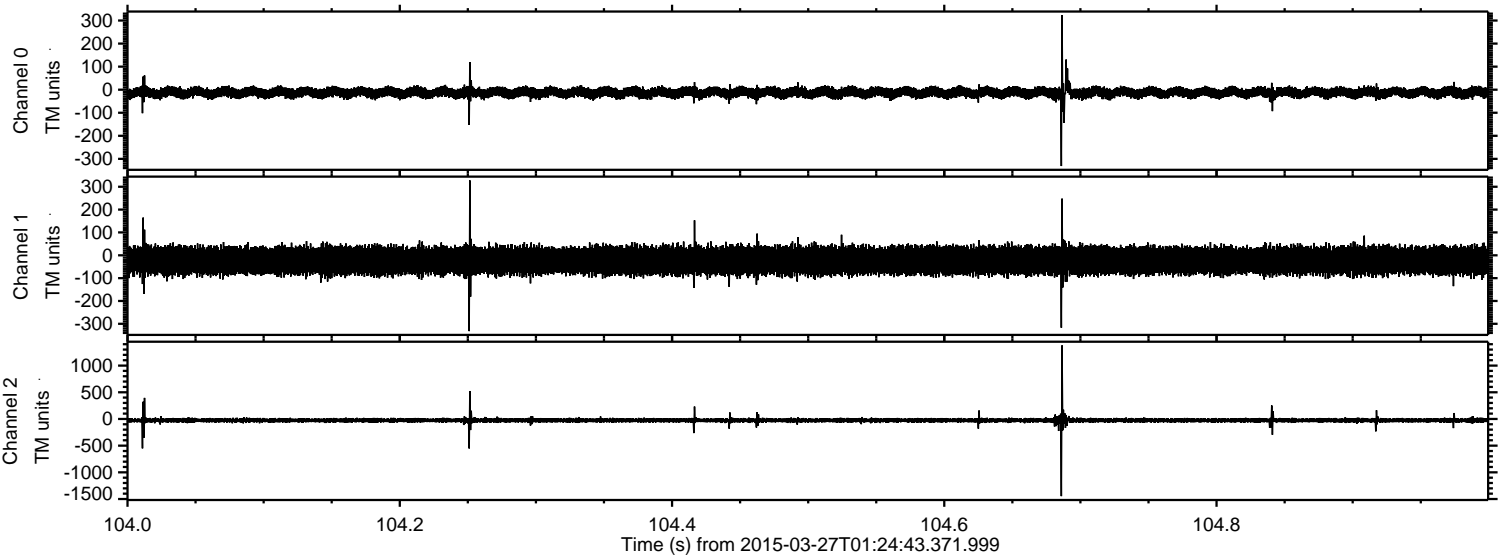
Processed Fri Mar 27 02:32:04 2015 by ELM ver.2012-10-06 from 001__elm20150327_012442__dat00.bin



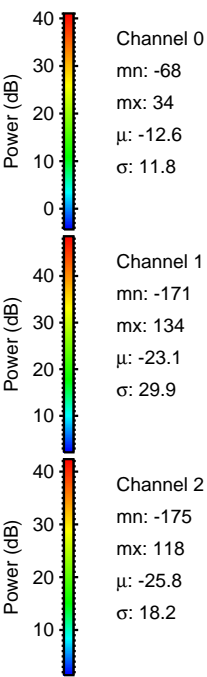
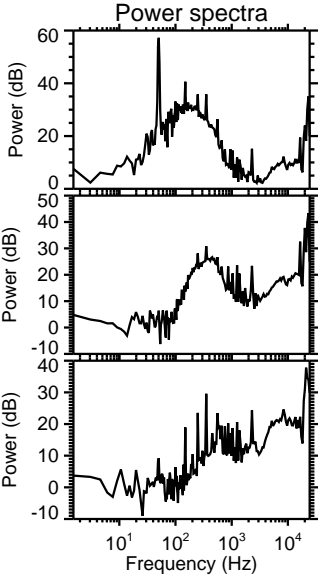
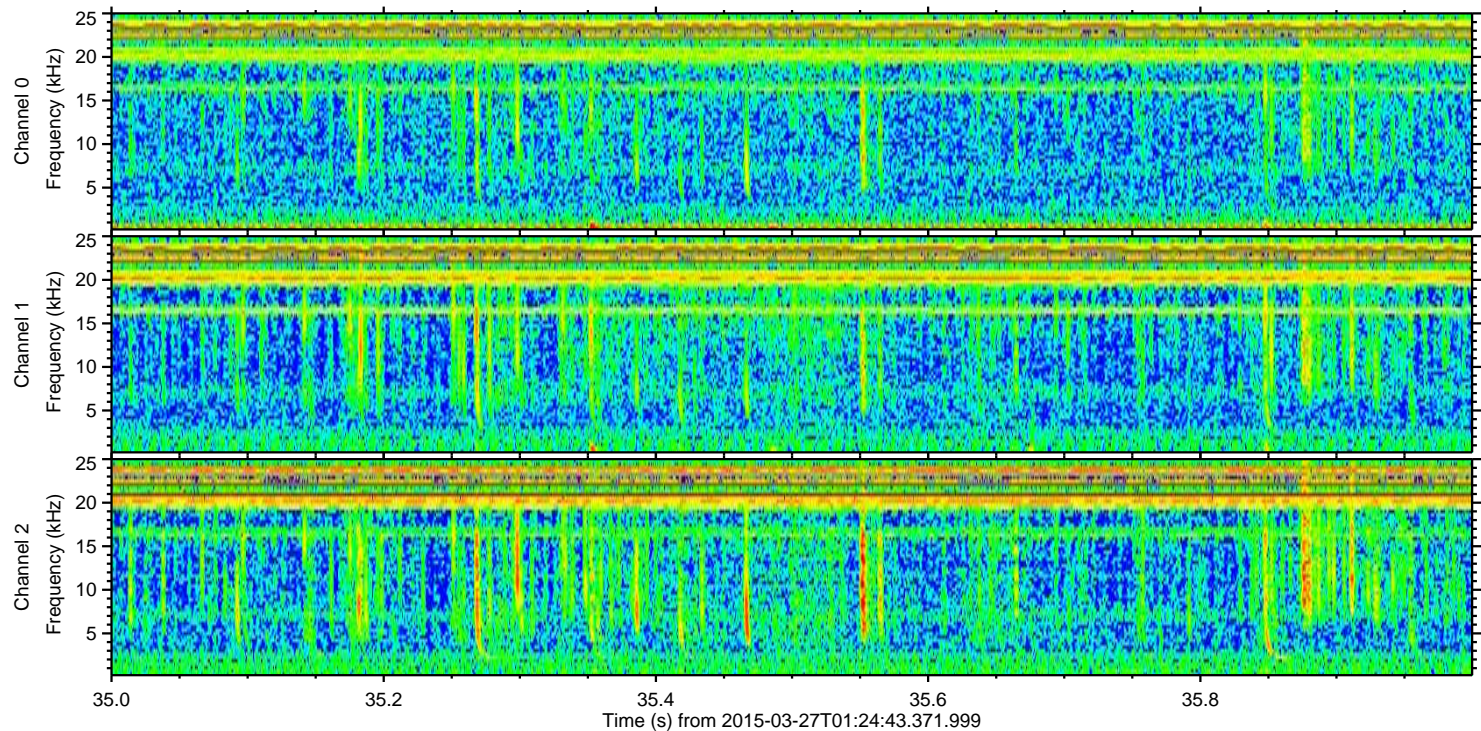
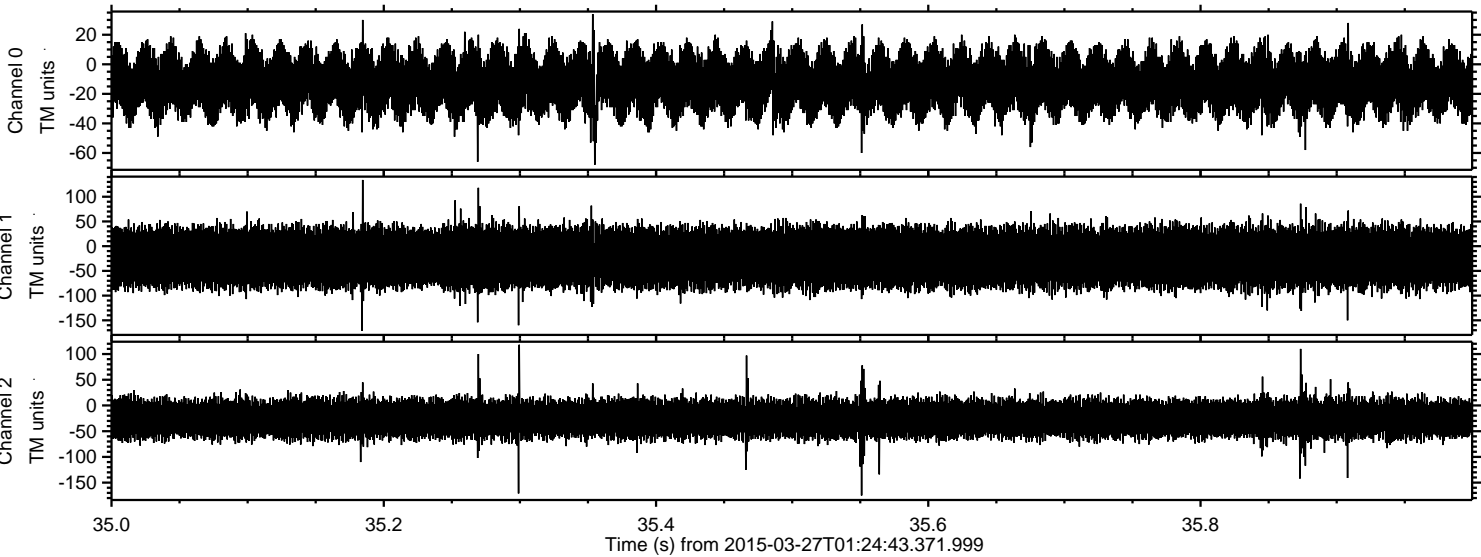
Processed Fri Mar 27 02:32:05 2015 by ELM ver.2012-10-06 from 001__elm20150327_012442__dat00.bin



Processed Fri Mar 27 02:32:06 2015 by ELM ver.2012-10-06 from 001__elm20150327_012442__dat00.bin



Processed Fri Mar 27 02:32:07 2015 by ELM ver.2012-10-06 from 001__elm20150327_012442__dat00.bin



Channel 0
mn: -68
mx: 34
 μ : -12.6
 σ : 11.8

Channel 1
mn: -171
mx: 134
 μ : -23.1
 σ : 29.9

Channel 2
mn: -175
mx: 118
 μ : -25.8
 σ : 18.2