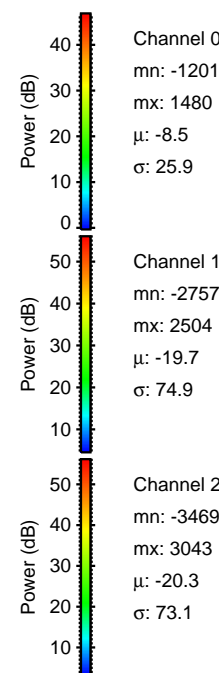
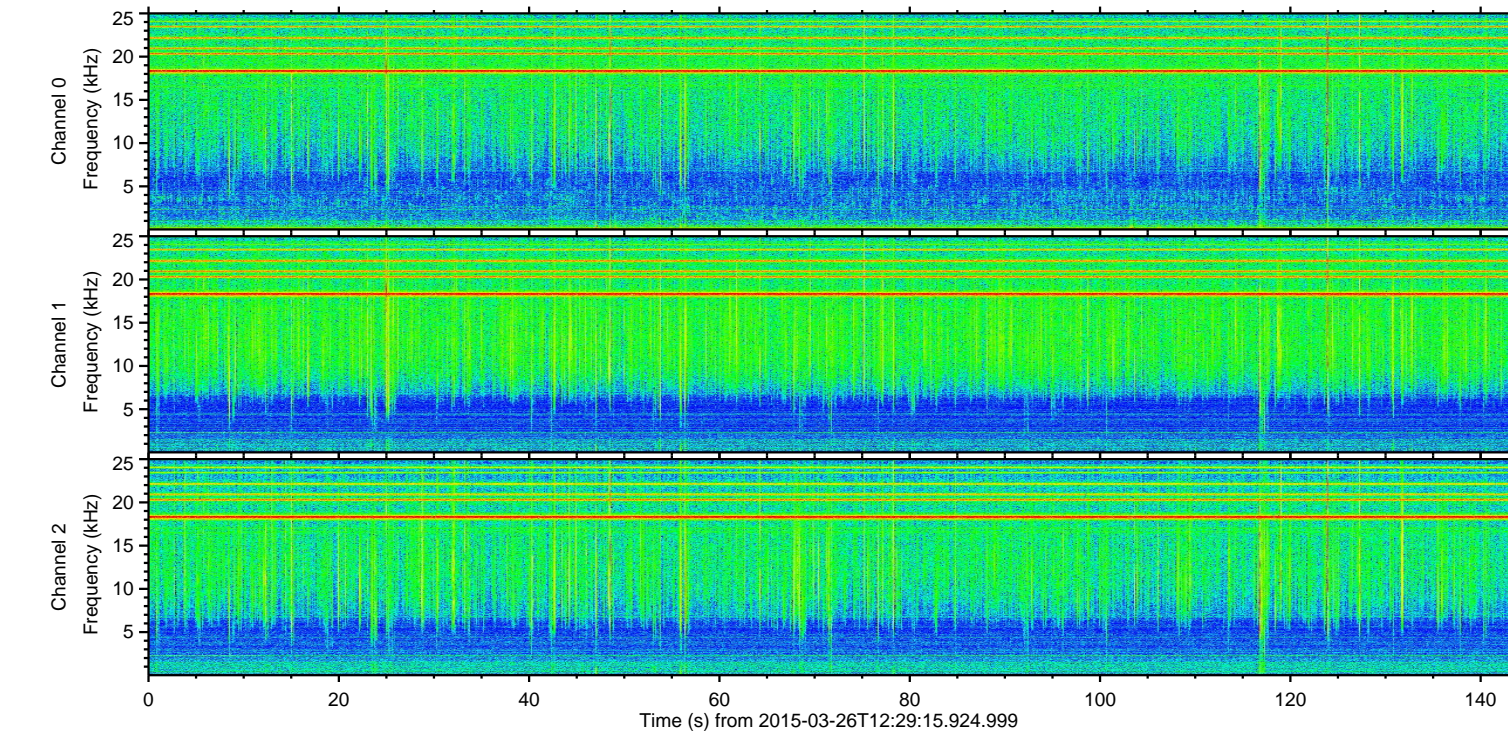
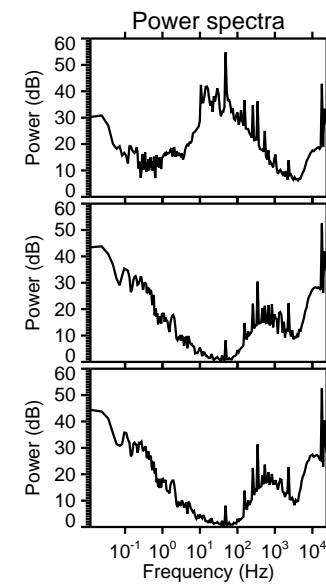
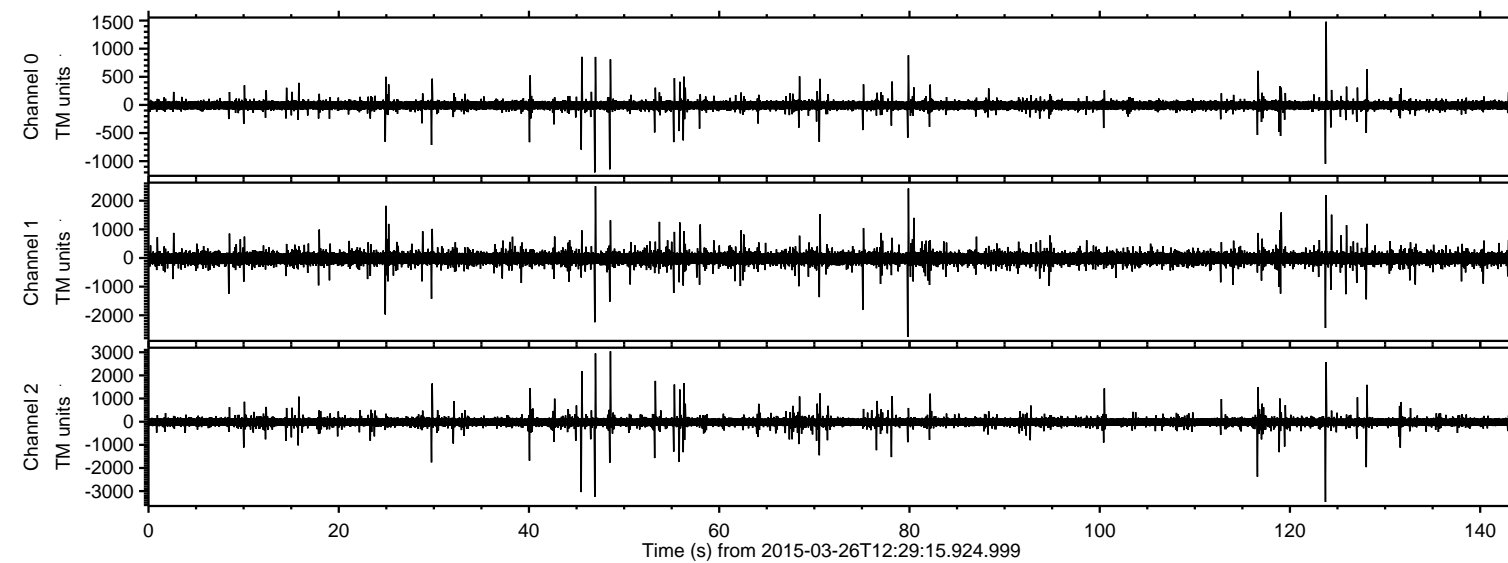


ELMAVAN 3D WAVEFORMS (Measured data sampled at 50 kHz) 49668 packets of 144 samples from 2015-03-26T12:29:15.924.999.

Processed Thu Mar 26 13:39:22 2015 by ELM ver.2012-10-06 from 001__elm20150326_122914__dat00.bin



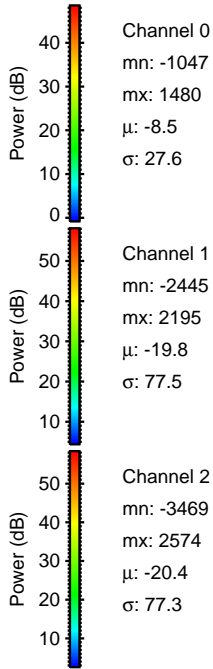
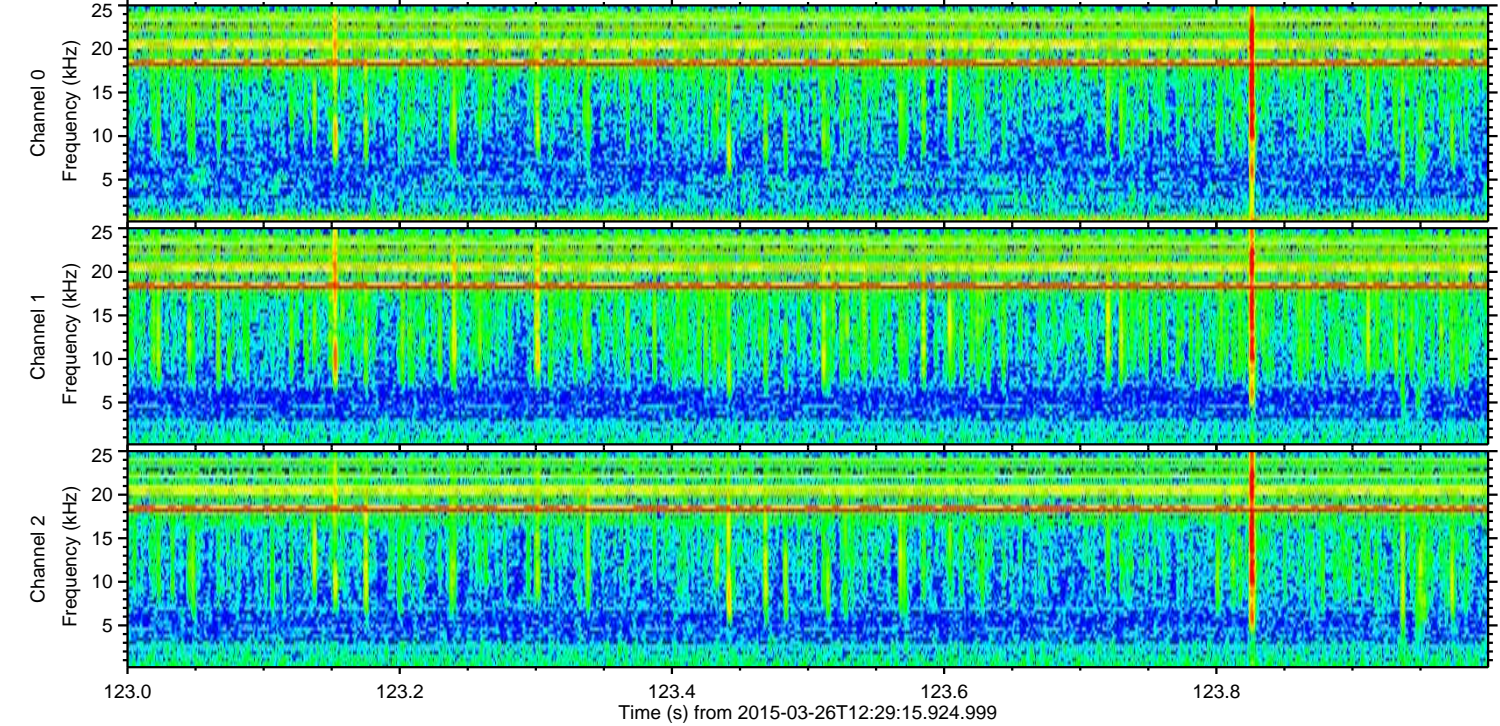
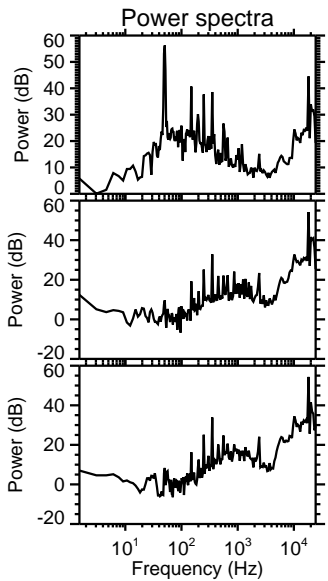
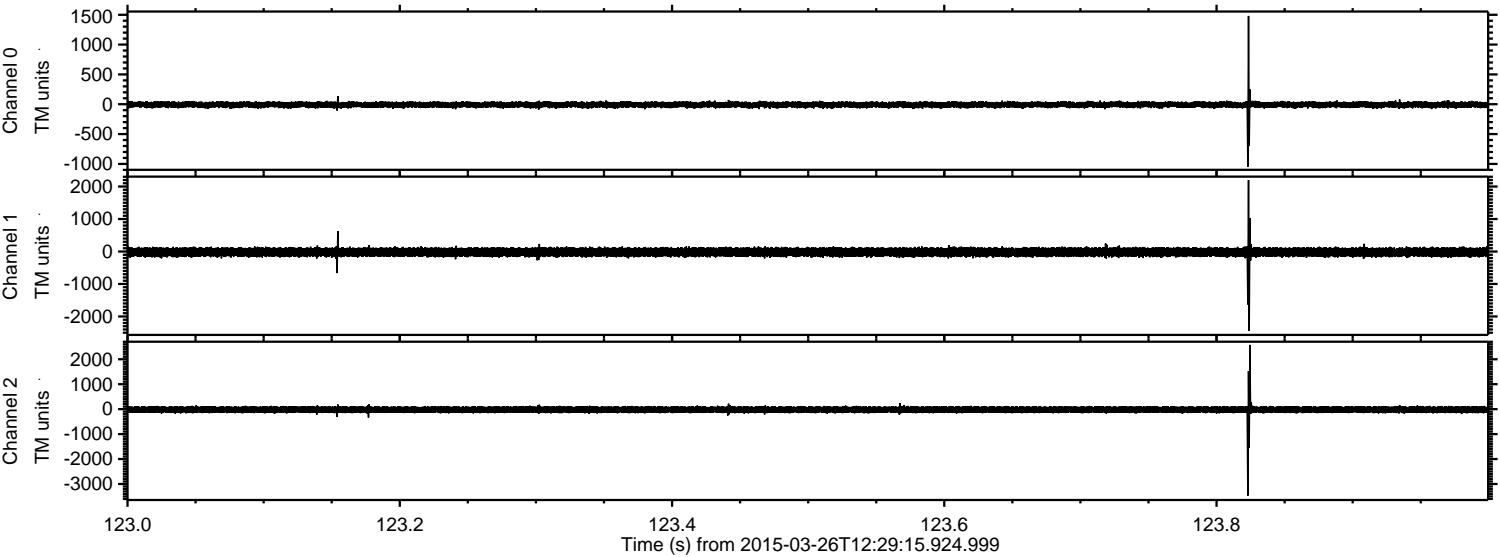
Channel 0
mn: -1201
mx: 1480
 μ : -8.5
 σ : 25.9

Channel 1
mn: -2757
mx: 2504
 μ : -19.7
 σ : 74.9

Channel 2
mn: -3469
mx: 3043
 μ : -20.3
 σ : 73.1

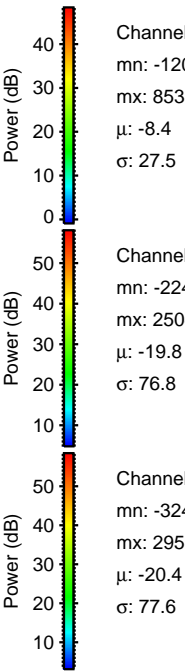
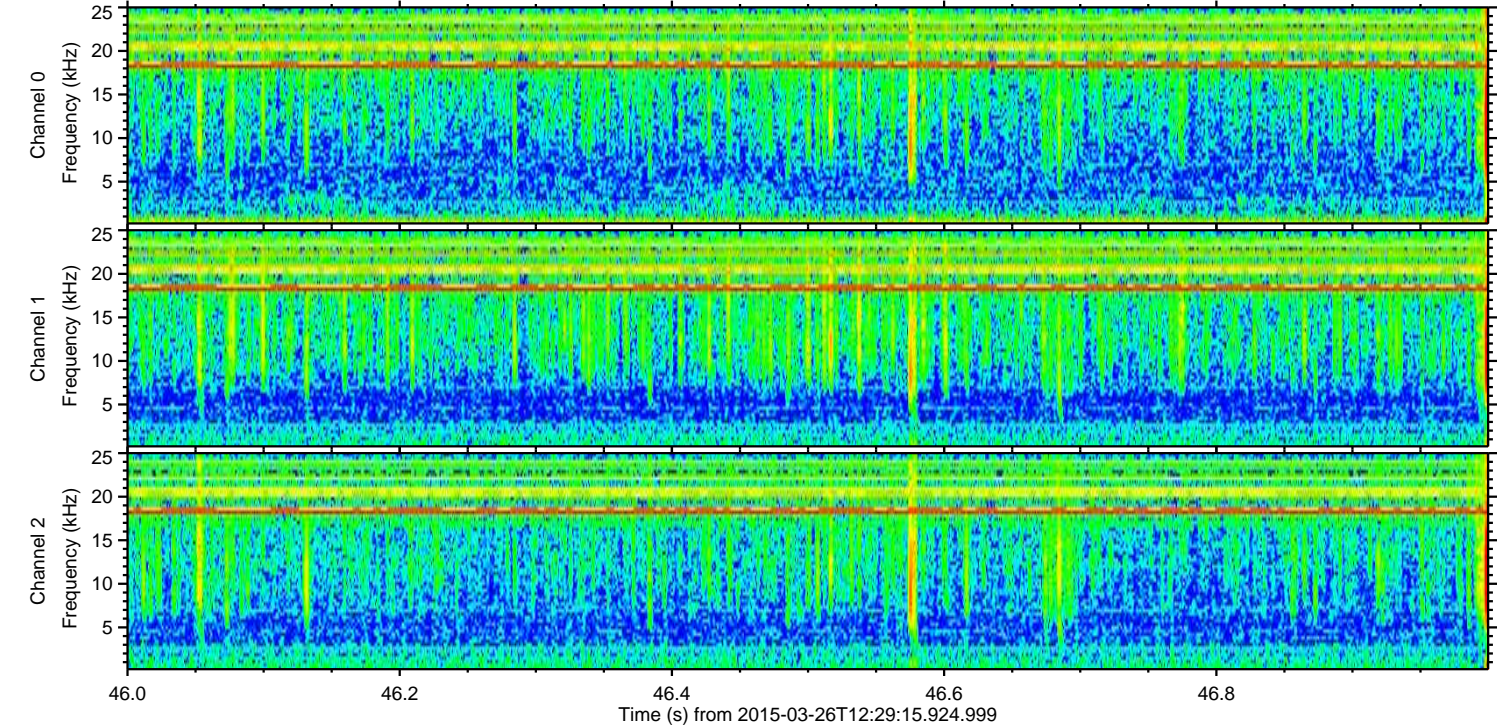
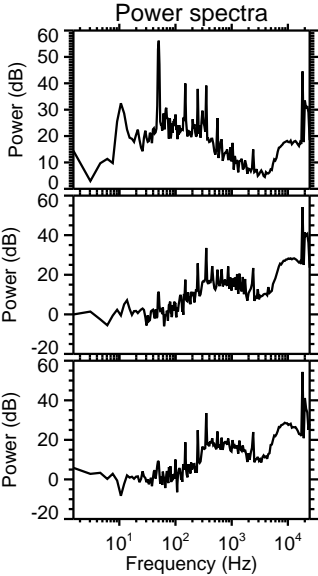
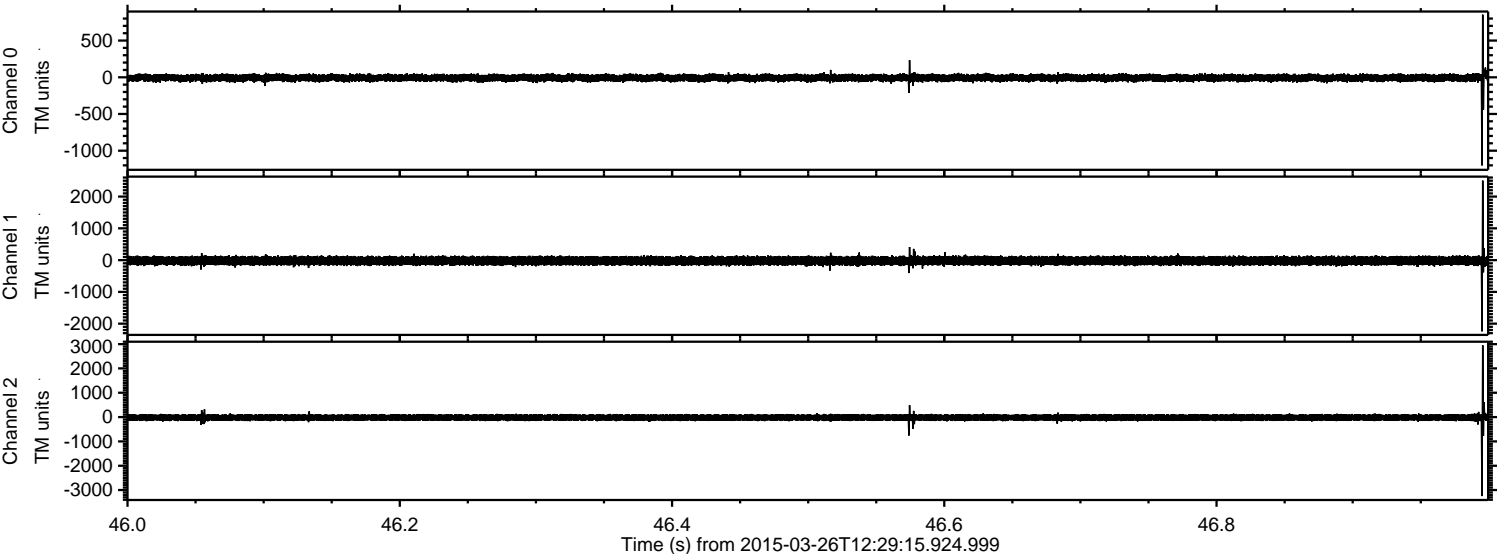
ELMAVAN 3D WAVEFORMS (Measured data sampled at 50 kHz) 49668 packets of 144 samples from 2015-03-26T12:29:15.924.999. Part 124/144

Processed Thu Mar 26 13:39:37 2015 by ELM ver.2012-10-06 from 001__elm20150326_122914__dat00.bin

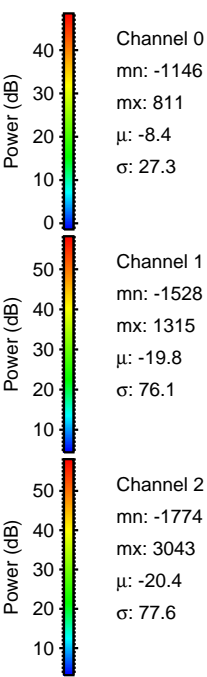
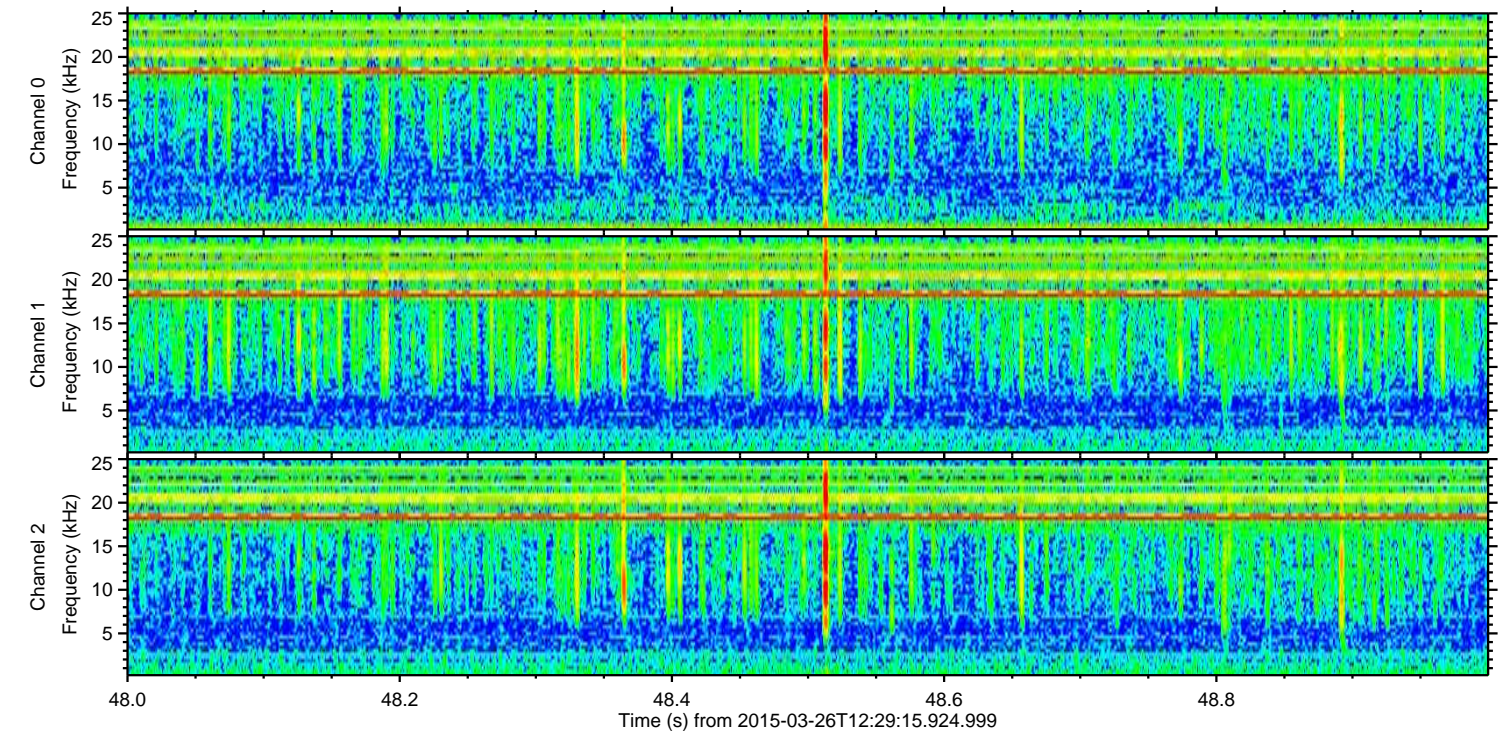
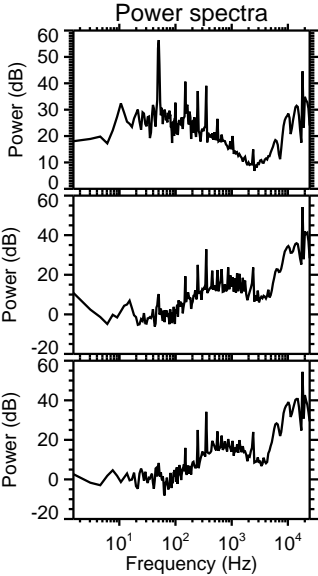
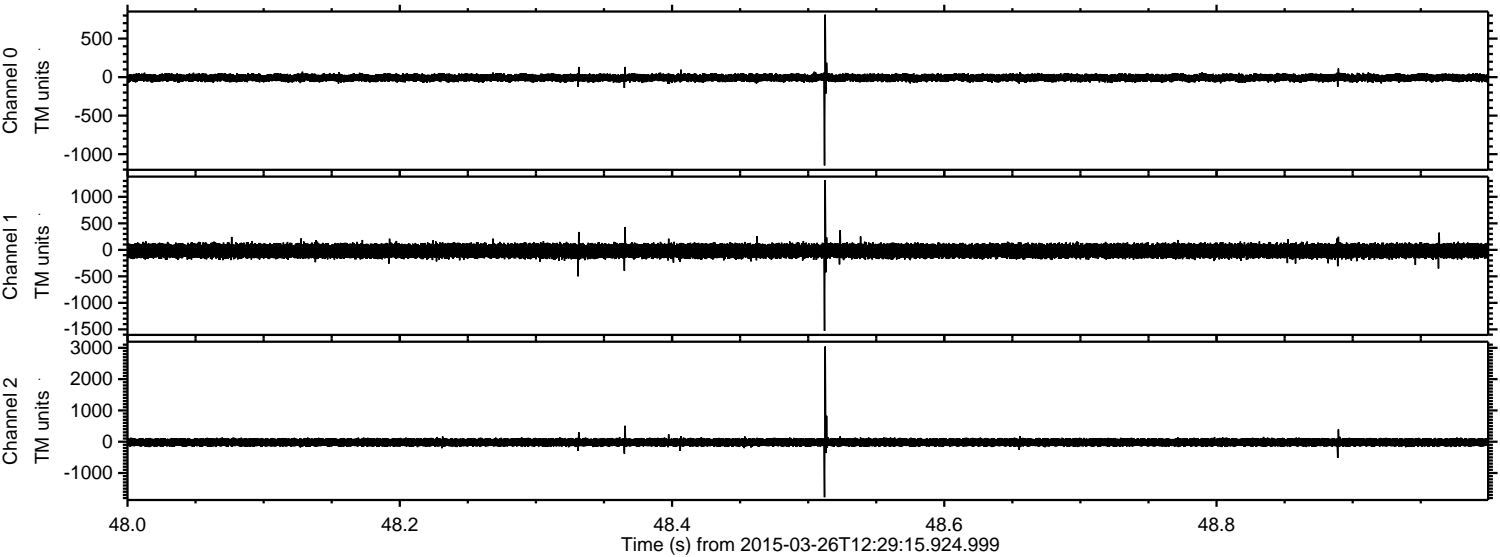


ELMAVAN 3D WAVEFORMS (Measured data sampled at 50 kHz) 49668 packets of 144 samples from 2015-03-26T12:29:15.924.999. Part 47/144

Processed Thu Mar 26 13:39:38 2015 by ELM ver.2012-10-06 from 001__elm20150326_122914__dat00.bin



Processed Thu Mar 26 13:39:39 2015 by ELM ver.2012-10-06 from 001__elm20150326_122914__dat00.bin

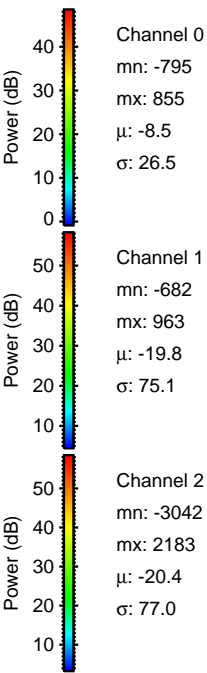
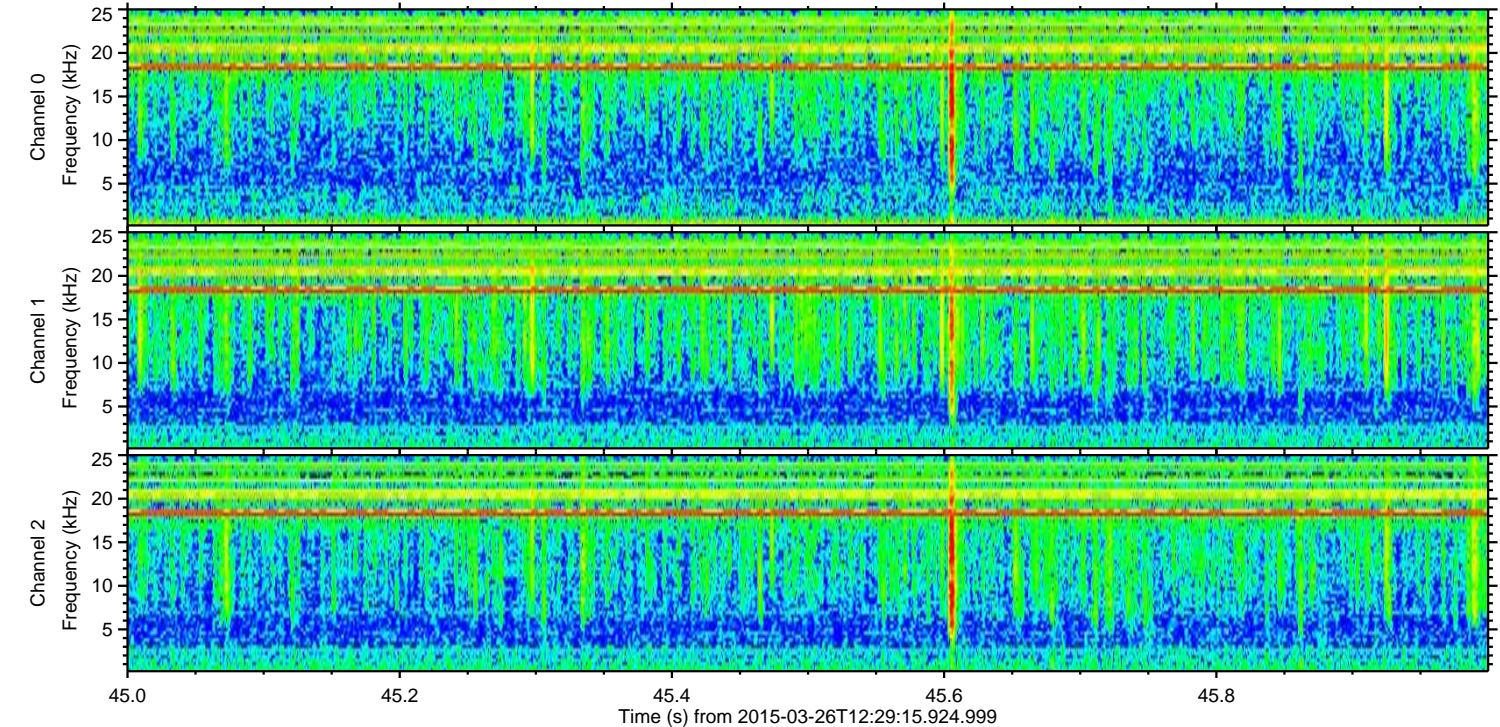
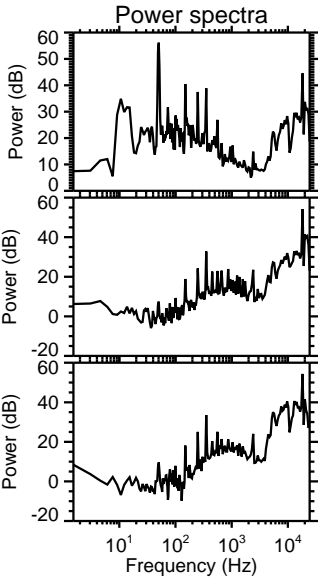
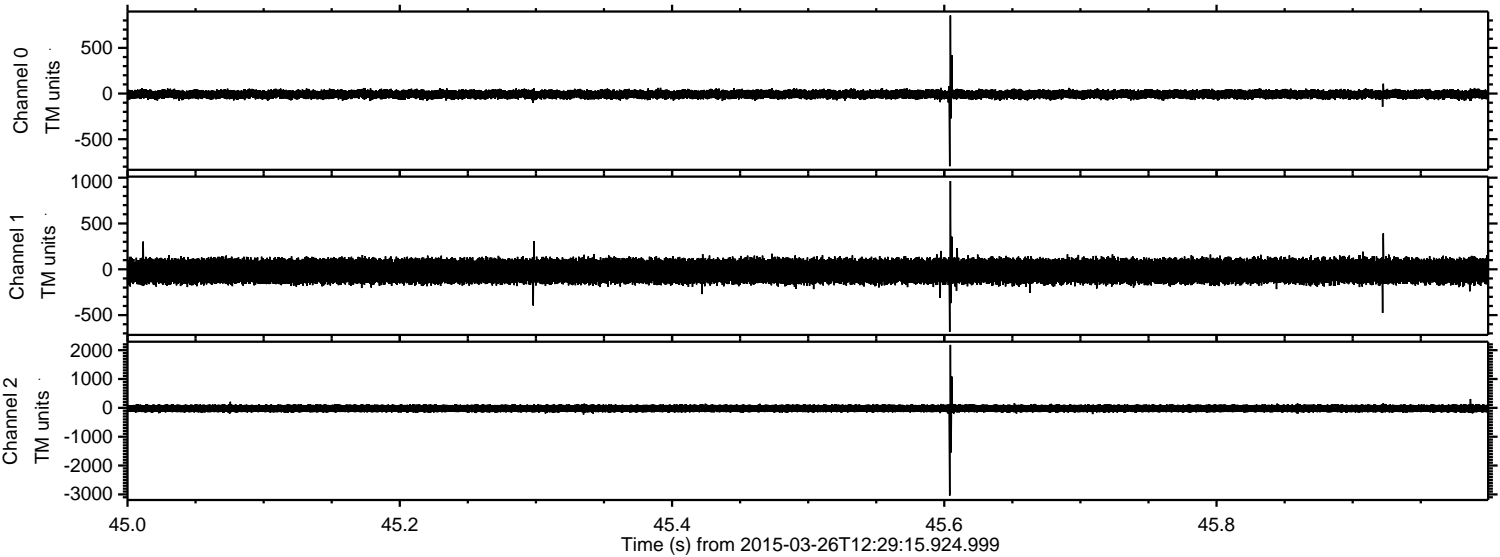


Channel 0
mn: -1146
mx: 811
 μ : -8.4
 σ : 27.3

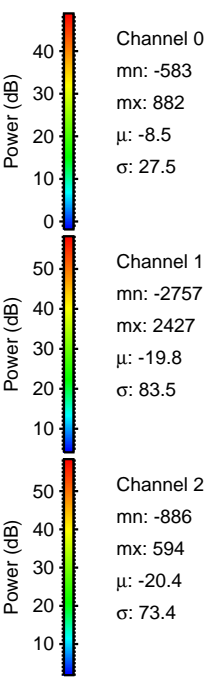
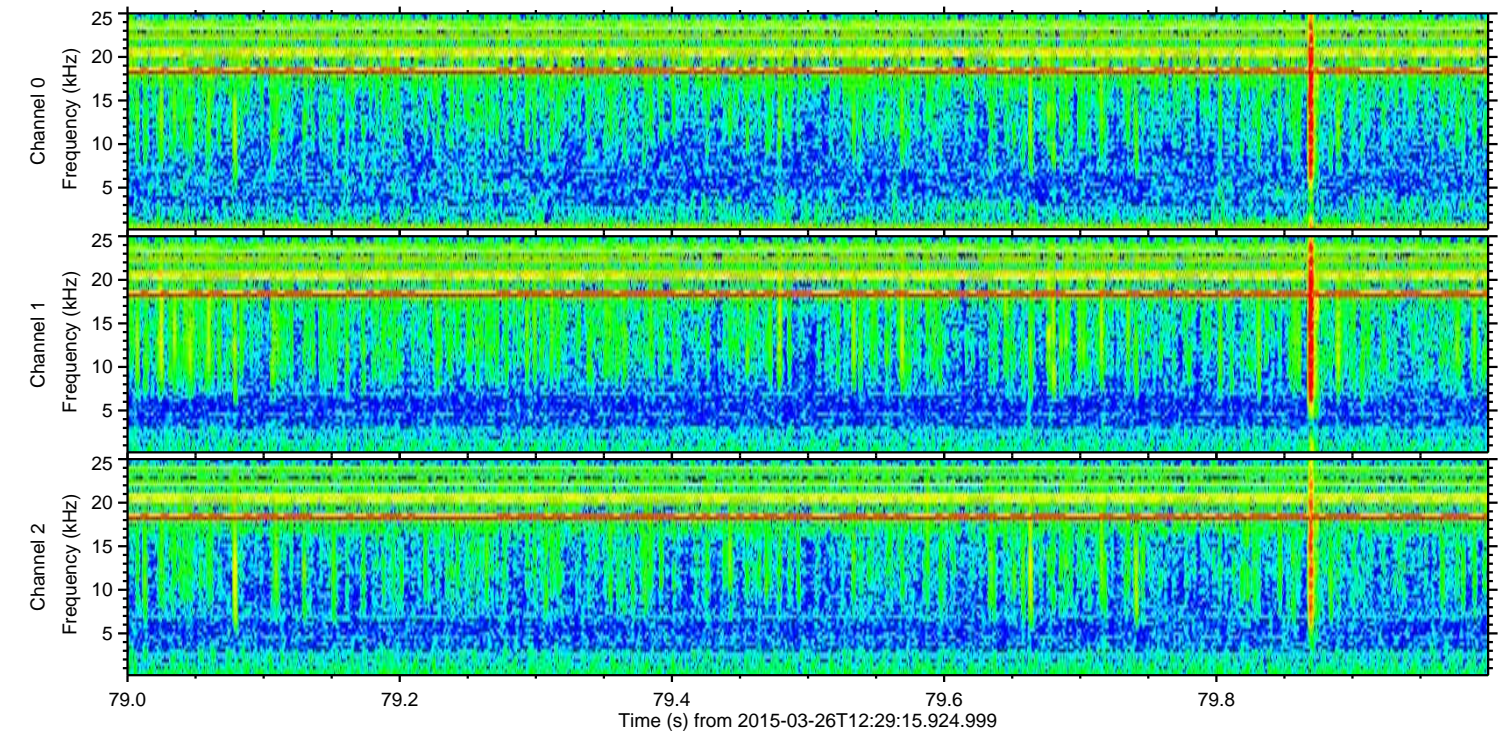
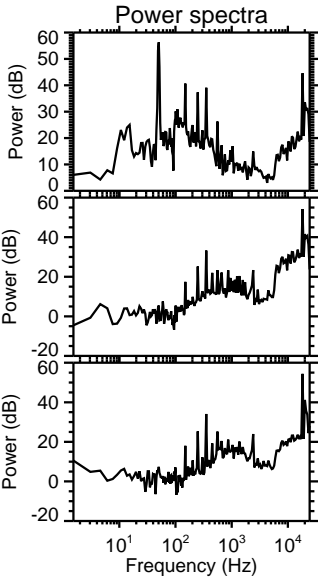
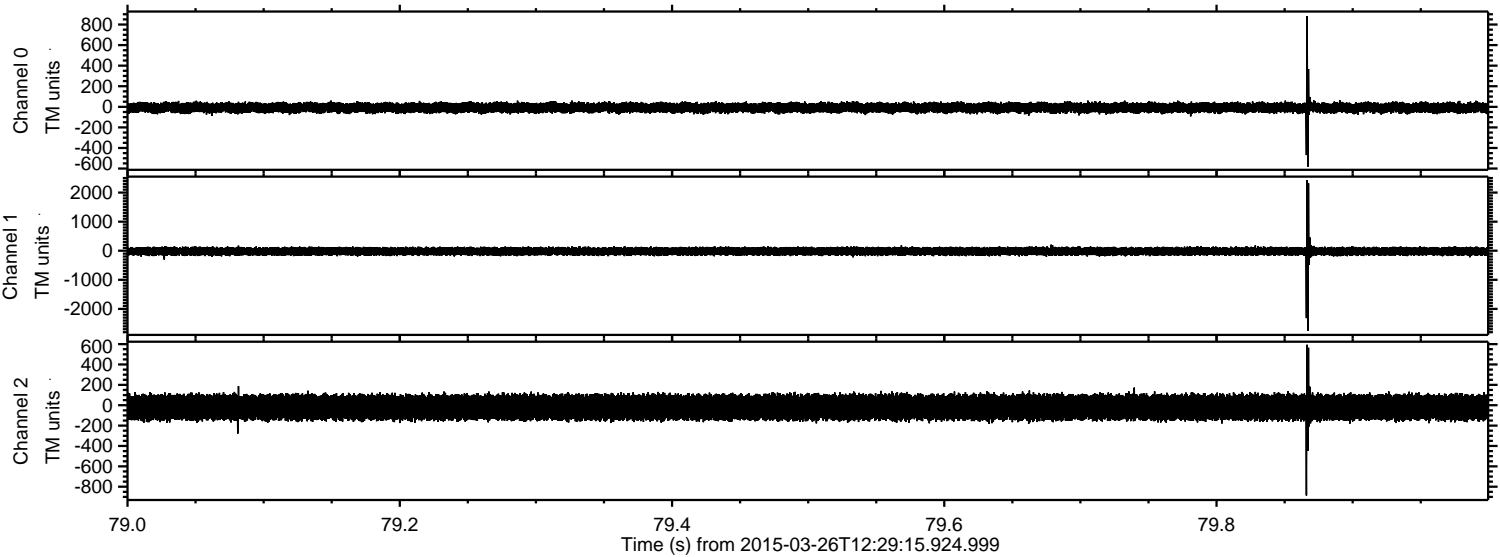
Channel 1
mn: -1528
mx: 1315
 μ : -19.8
 σ : 76.1

Channel 2
mn: -1774
mx: 3043
 μ : -20.4
 σ : 77.6

Processed Thu Mar 26 13:39:41 2015 by ELM ver.2012-10-06 from 001__elm20150326_122914__dat00.bin



Processed Thu Mar 26 13:39:42 2015 by ELM ver.2012-10-06 from 001__elm20150326_122914__dat00.bin



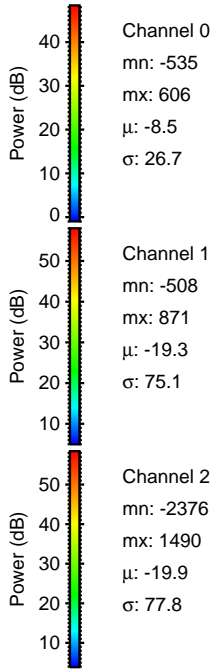
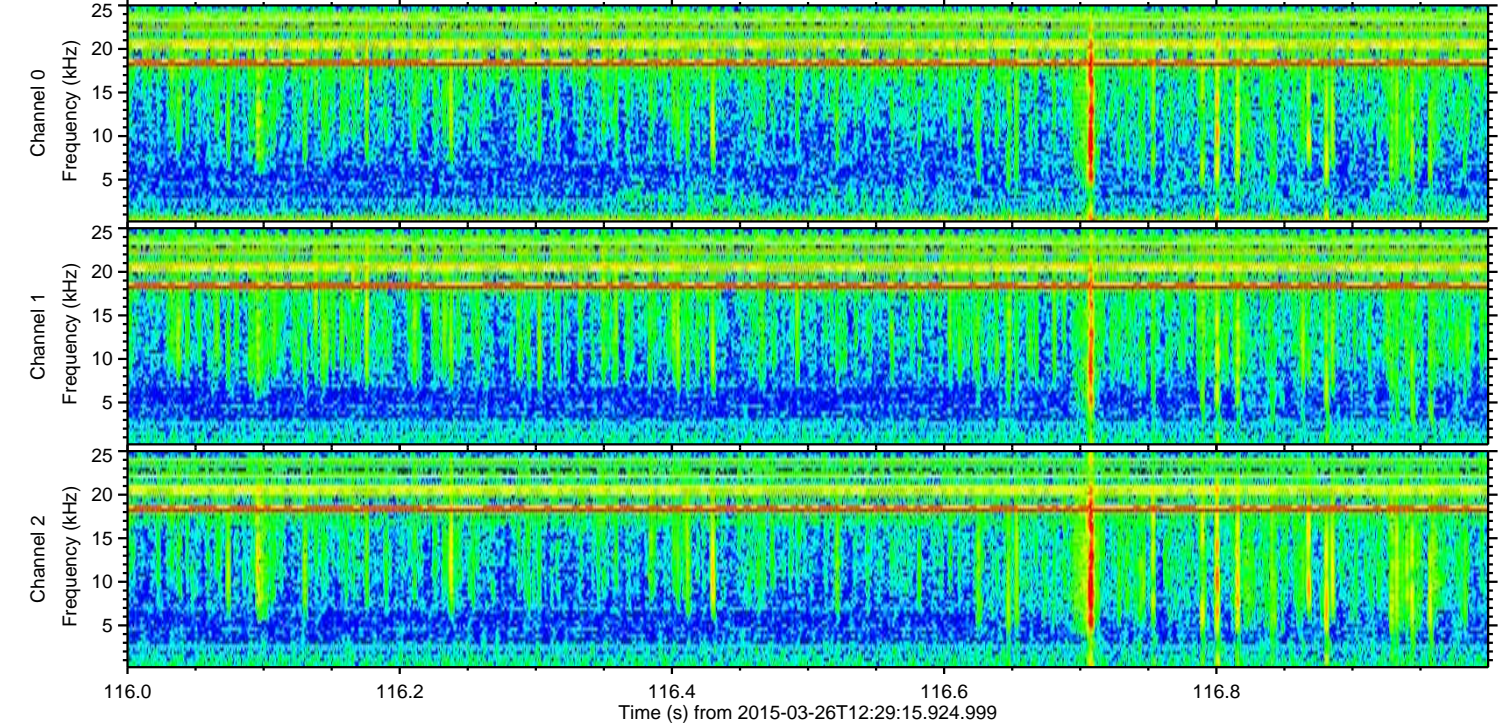
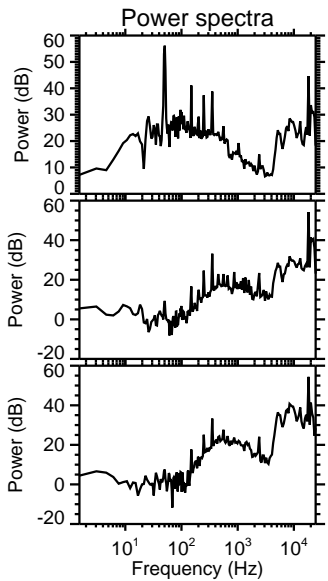
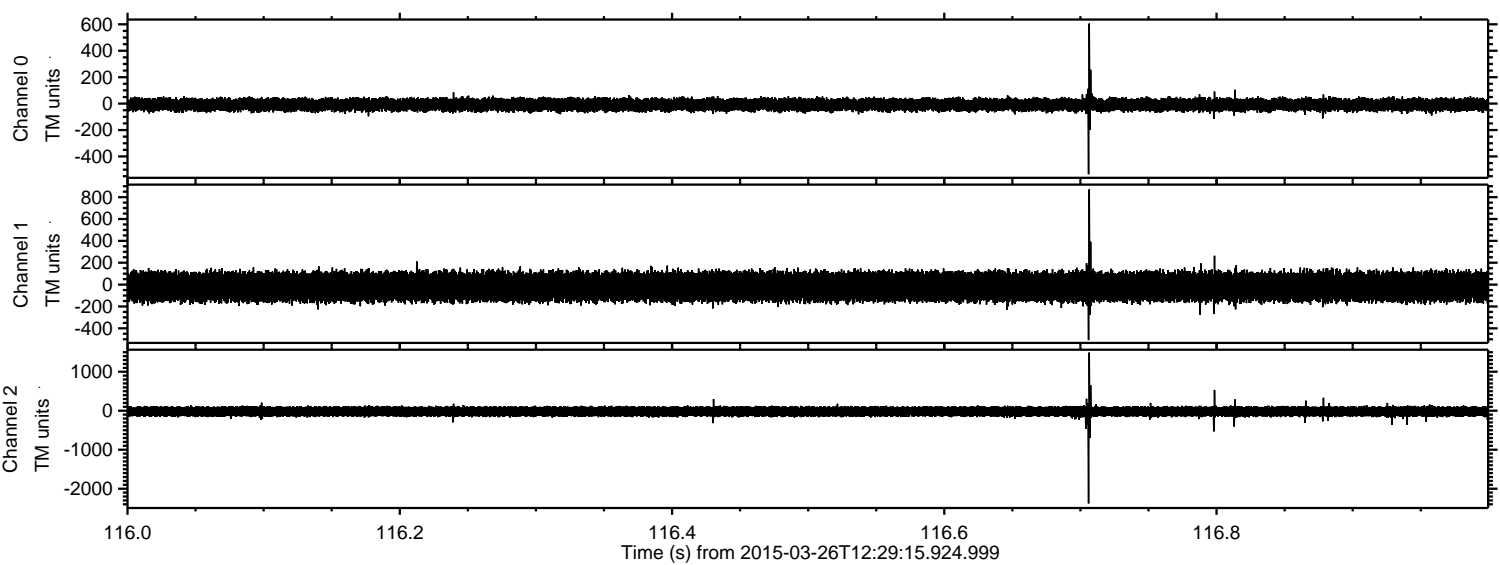
Channel 0
mn: -583
mx: 882
 μ : -8.5
 σ : 27.5

Channel 1
mn: -2757
mx: 2427
 μ : -19.8
 σ : 83.5

Channel 2
mn: -886
mx: 594
 μ : -20.4
 σ : 73.4

ELMAVAN 3D WAVEFORMS (Measured data sampled at 50 kHz) 49668 packets of 144 samples from 2015-03-26T12:29:15.924.999. Part 117/144

Processed Thu Mar 26 13:39:43 2015 by ELM ver.2012-10-06 from 001__elm20150326_122914__dat00.bin



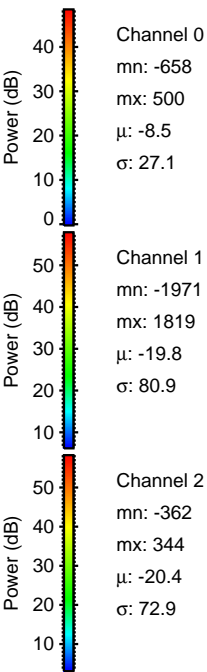
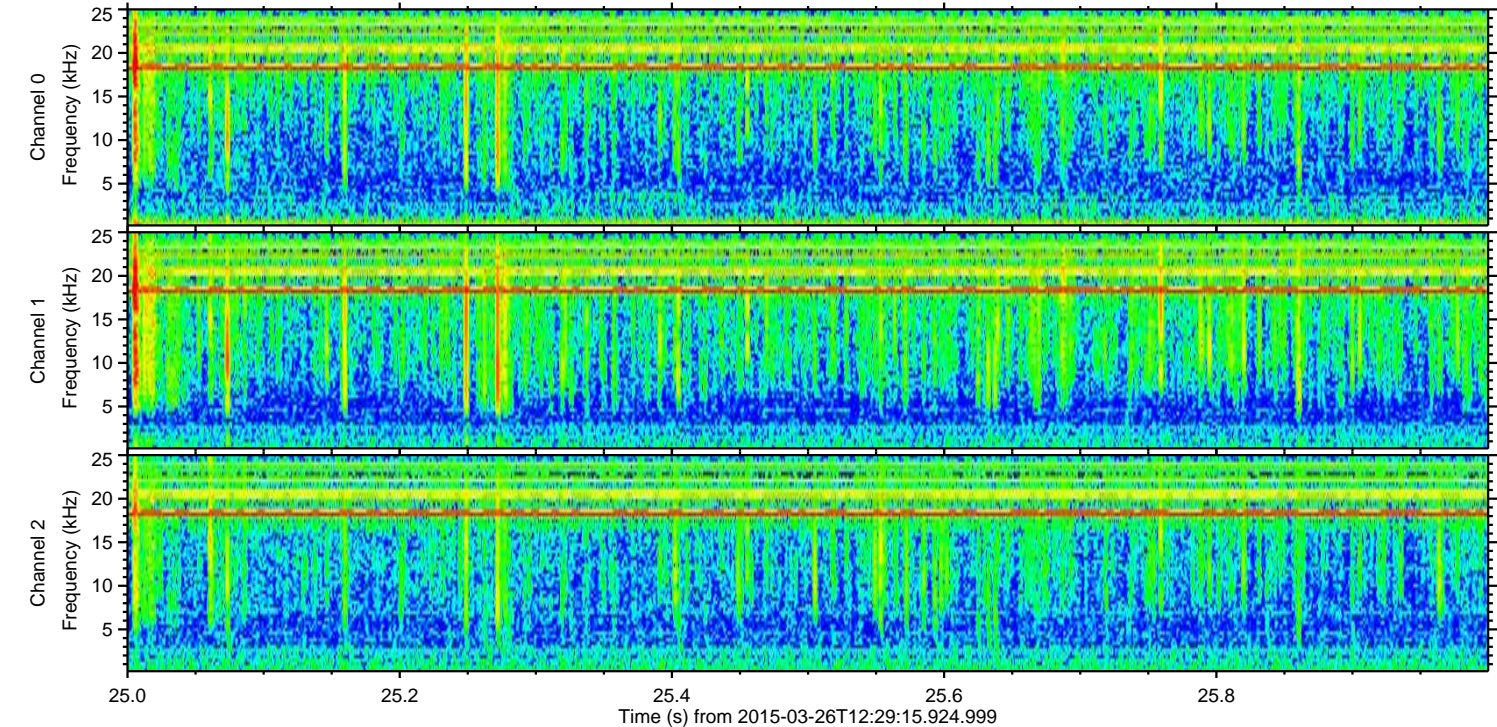
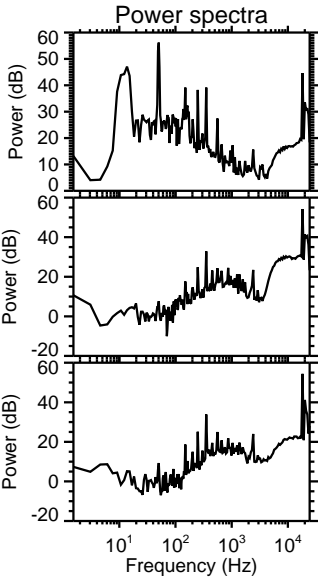
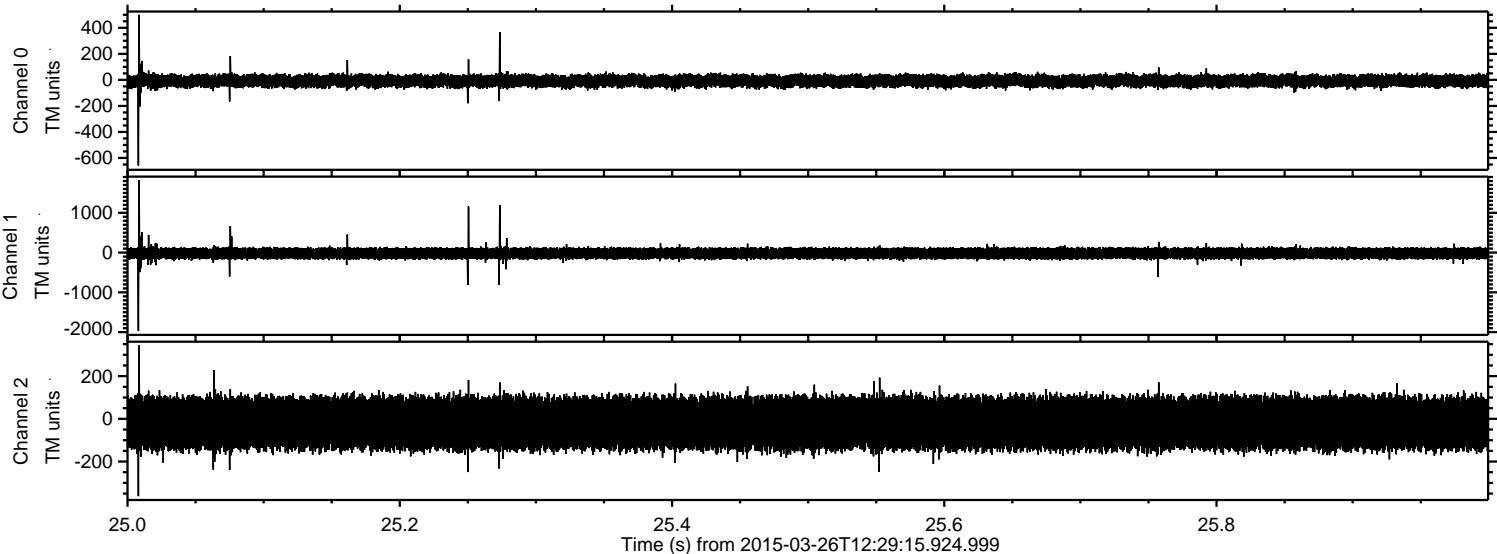
Channel 0
mn: -535
mx: 606
 μ : -8.5
 σ : 26.7

Channel 1
mn: -508
mx: 871
 μ : -19.3
 σ : 75.1

Channel 2
mn: -2376
mx: 1490
 μ : -19.9
 σ : 77.8

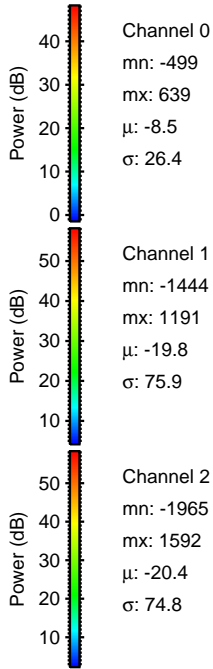
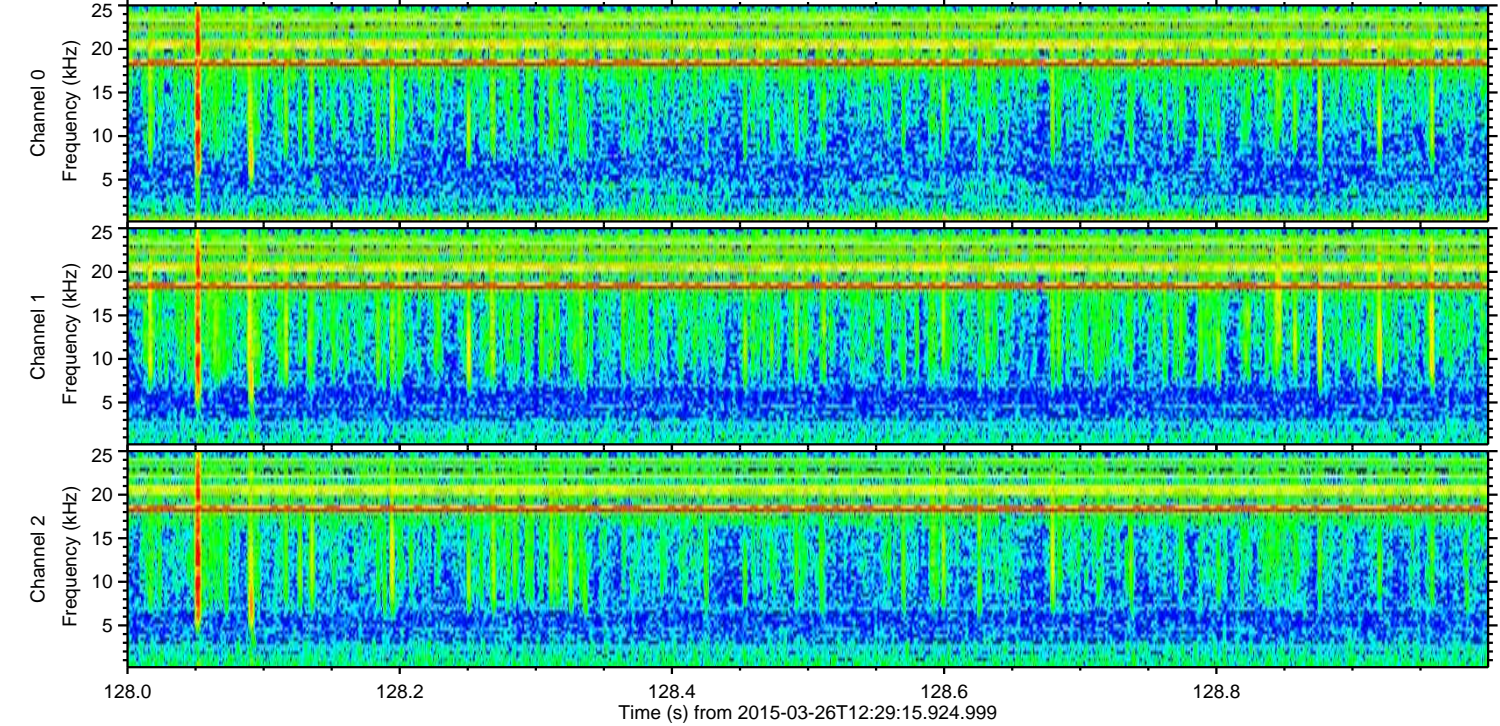
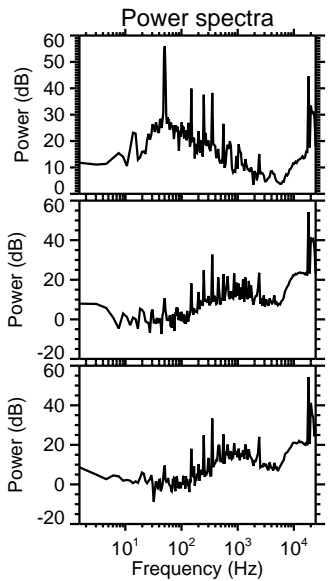
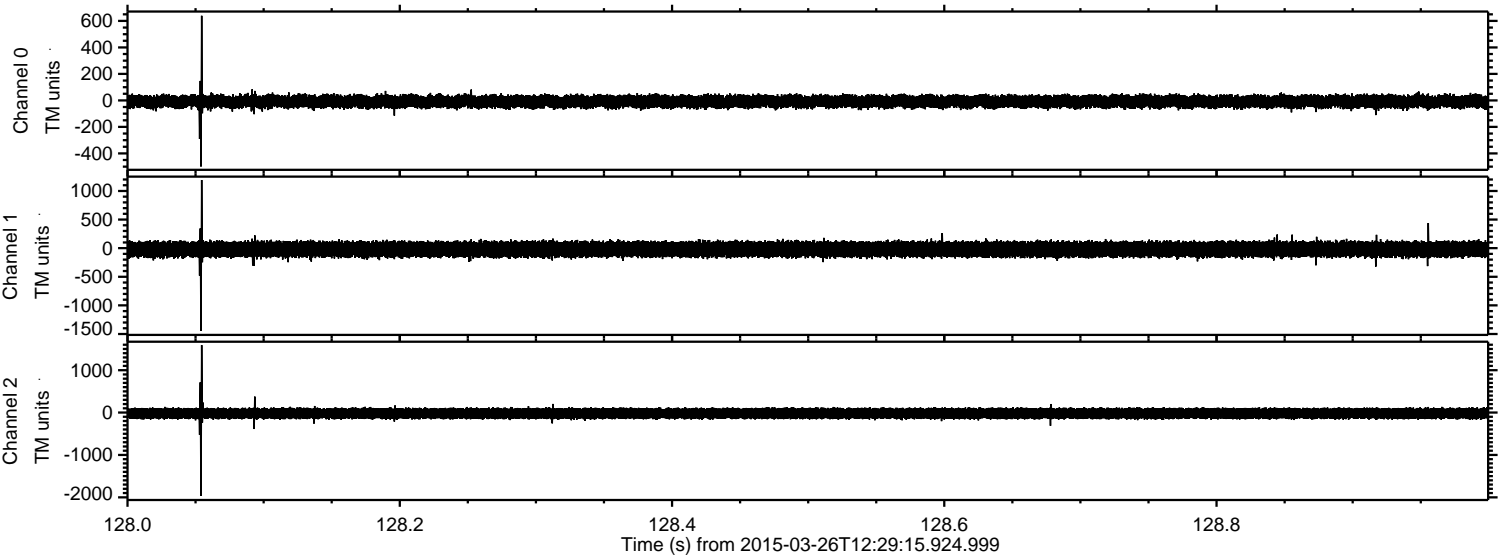
ELMAVAN 3D WAVEFORMS (Measured data sampled at 50 kHz) 49668 packets of 144 samples from 2015-03-26T12:29:15.924.999. Part 26/144

Processed Thu Mar 26 13:39:44 2015 by ELM ver.2012-10-06 from 001__elm20150326_122914__dat00.bin



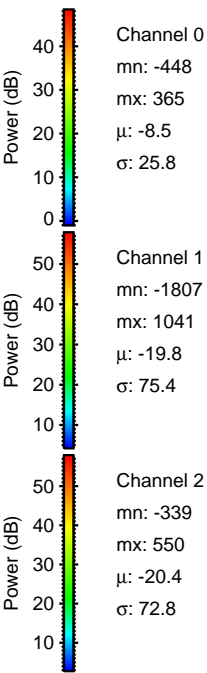
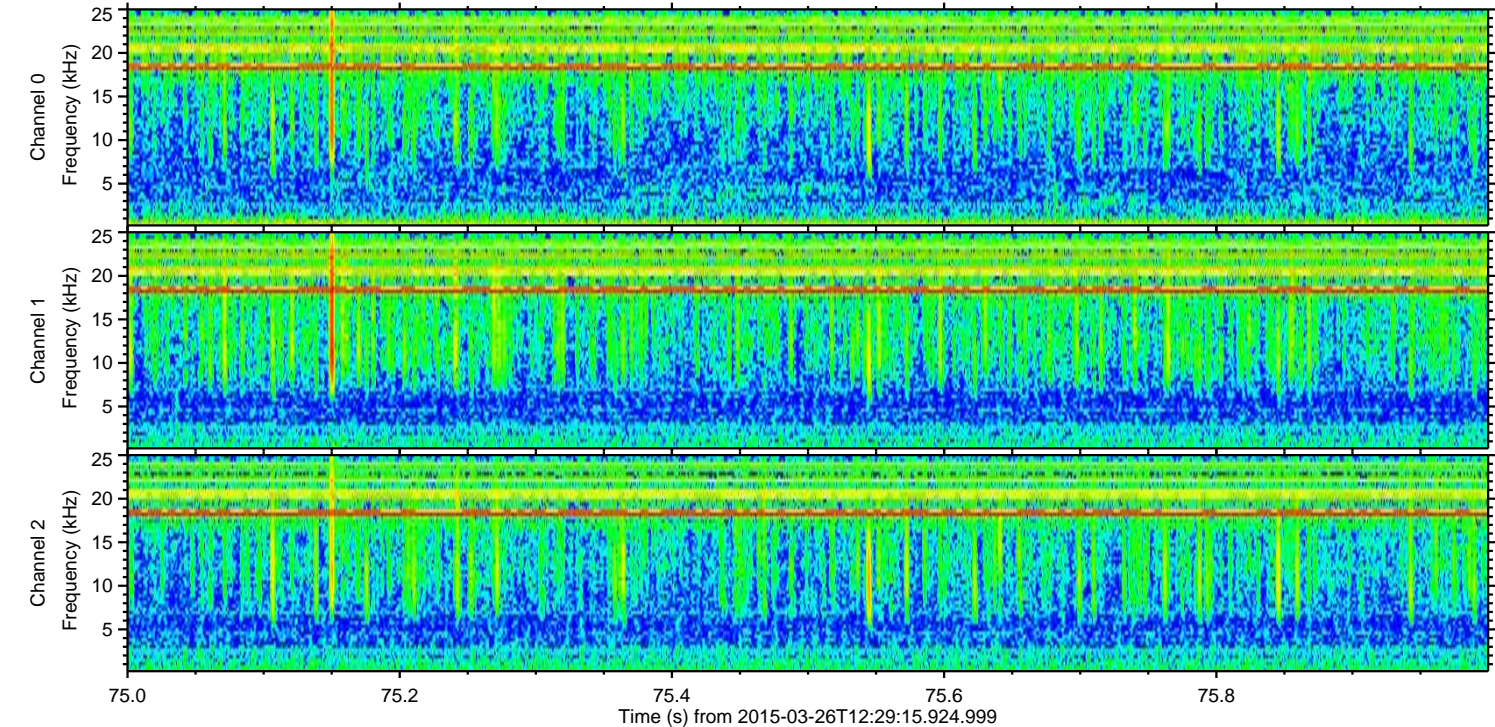
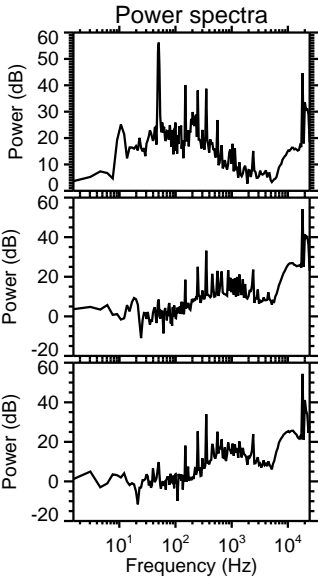
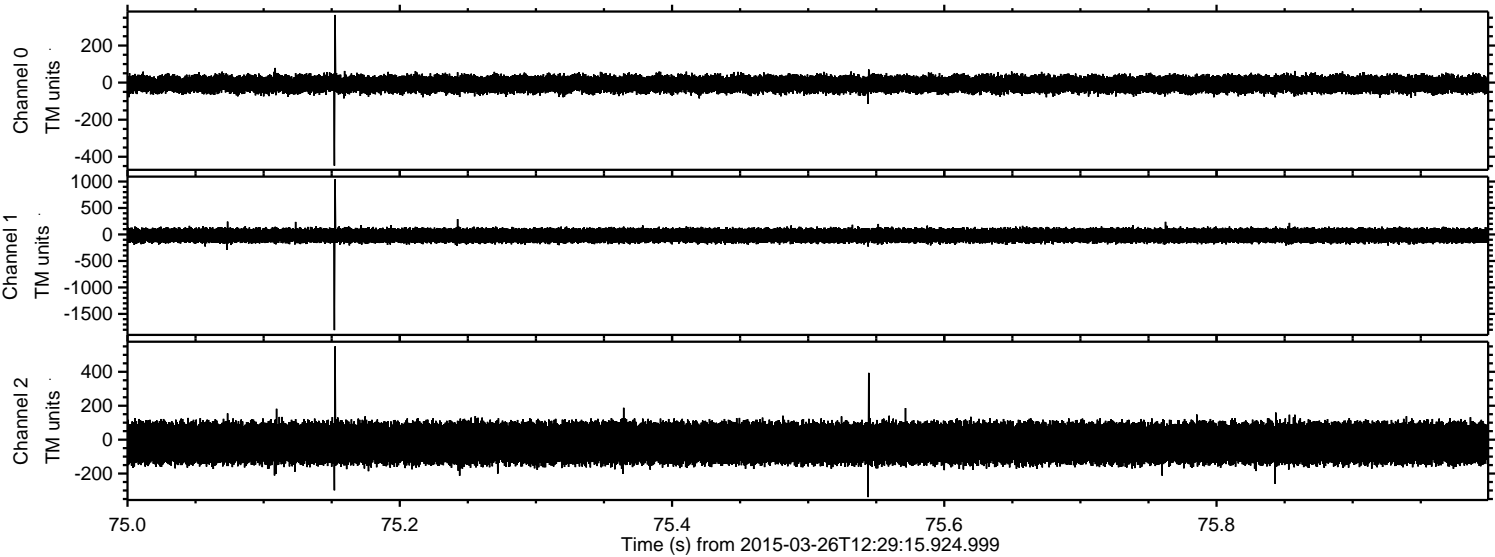
ELMAVAN 3D WAVEFORMS (Measured data sampled at 50 kHz) 49668 packets of 144 samples from 2015-03-26T12:29:15.924.999. Part 129/144

Processed Thu Mar 26 13:39:45 2015 by ELM ver.2012-10-06 from 001__elm20150326_122914__dat00.bin



ELMAVAN 3D WAVEFORMS (Measured data sampled at 50 kHz) 49668 packets of 144 samples from 2015-03-26T12:29:15.924.999. Part 76/144

Processed Thu Mar 26 13:39:46 2015 by ELM ver.2012-10-06 from 001__elm20150326_122914__dat00.bin



Processed Thu Mar 26 13:39:47 2015 by ELM ver.2012-10-06 from 001__elm20150326_122914__dat00.bin

