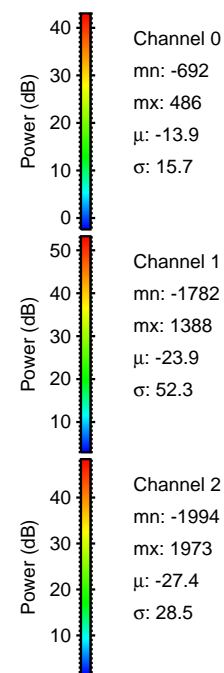
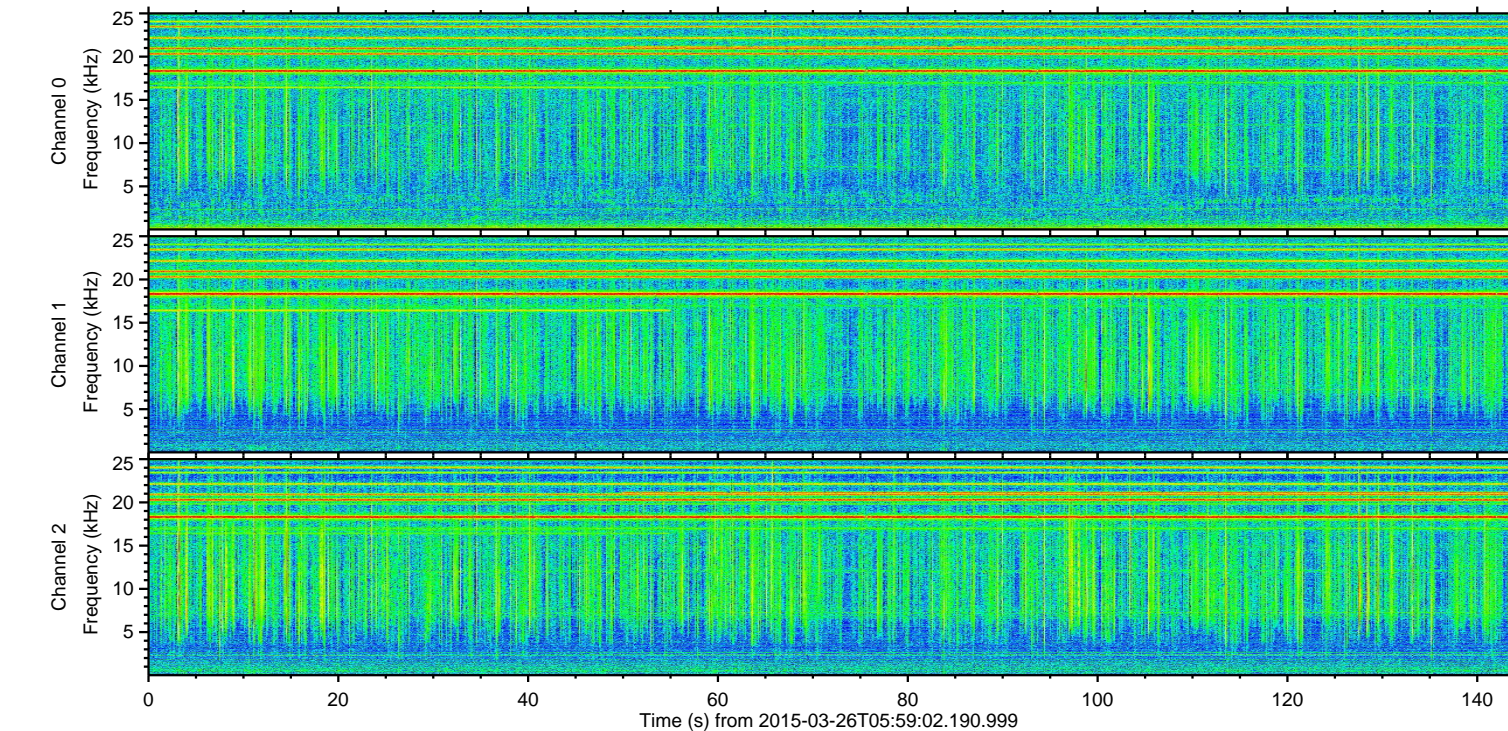
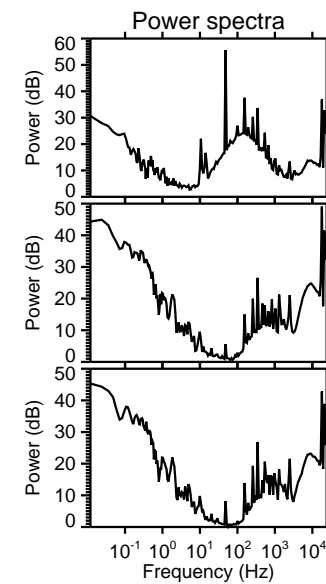
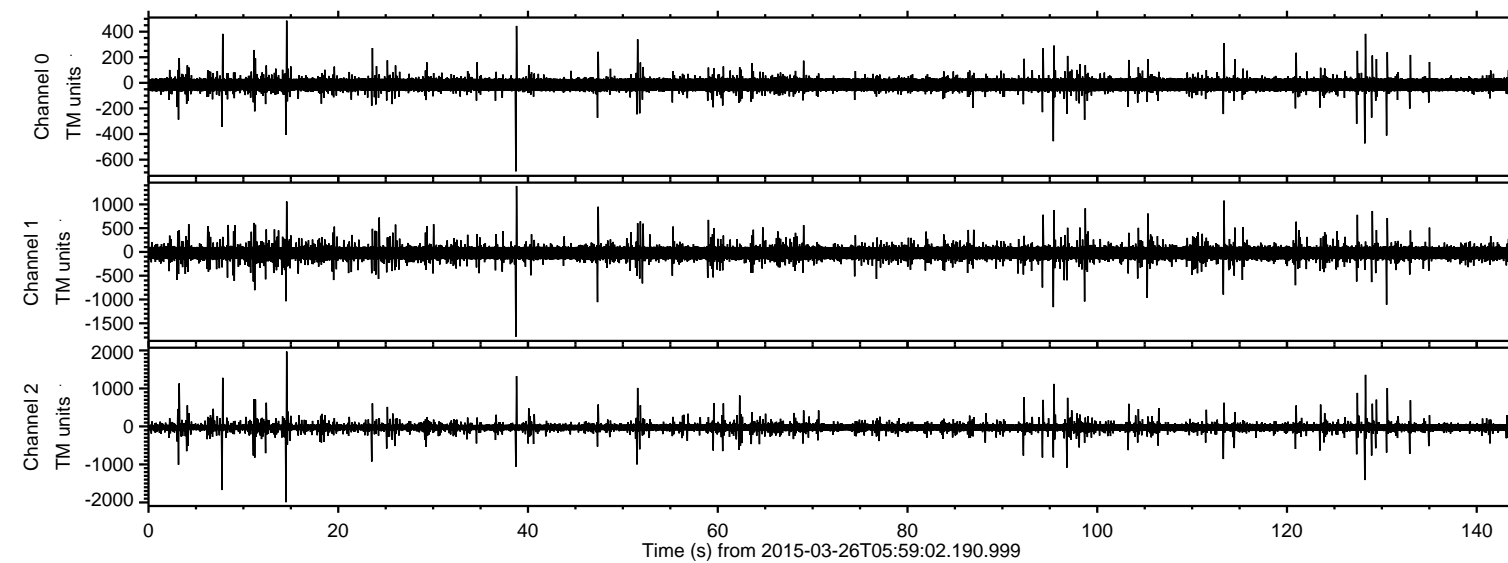


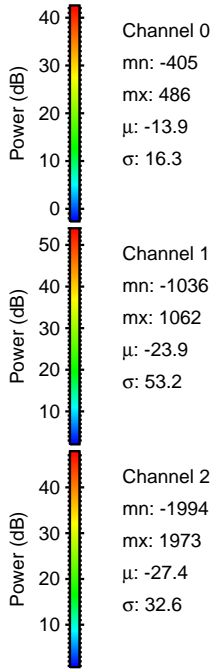
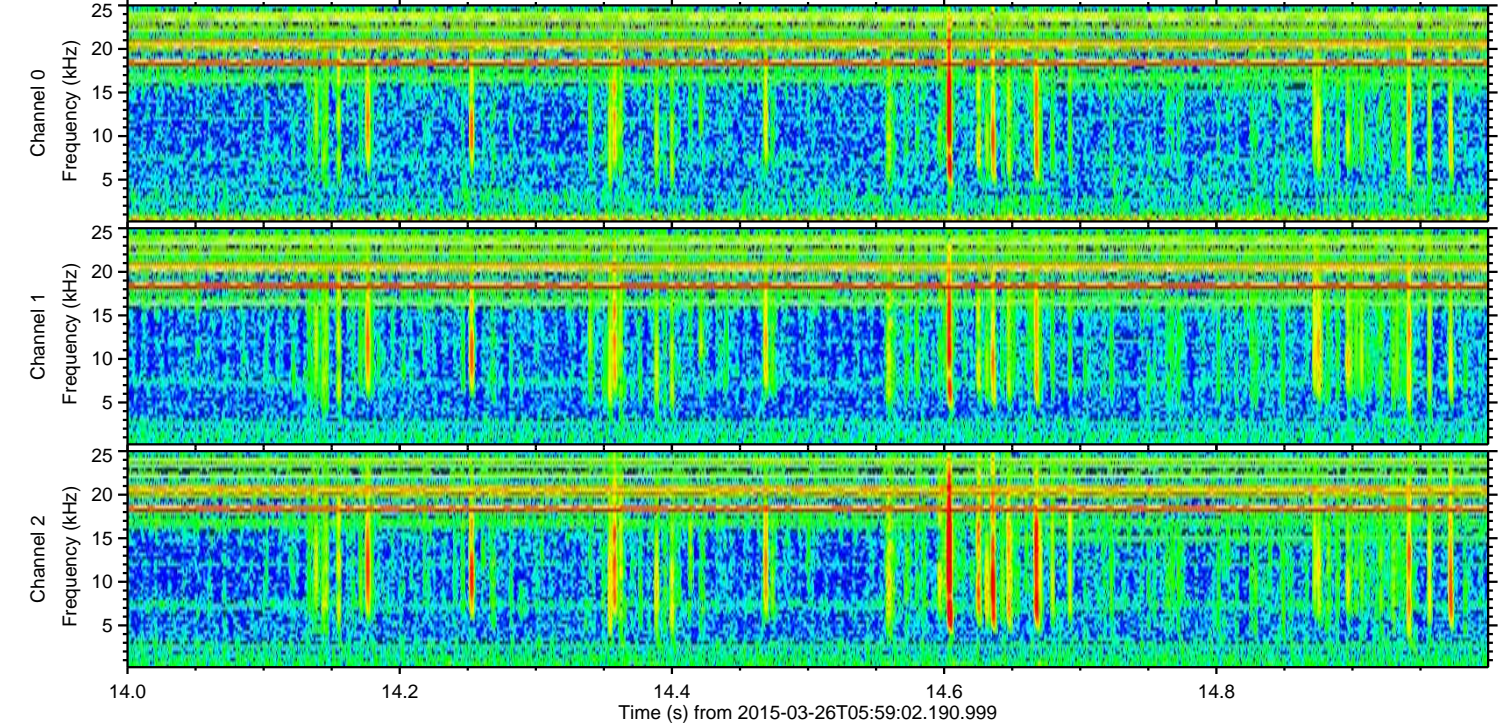
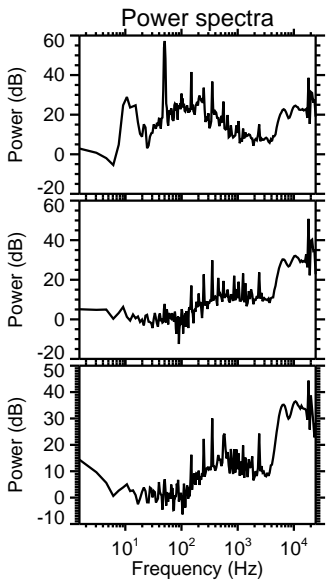
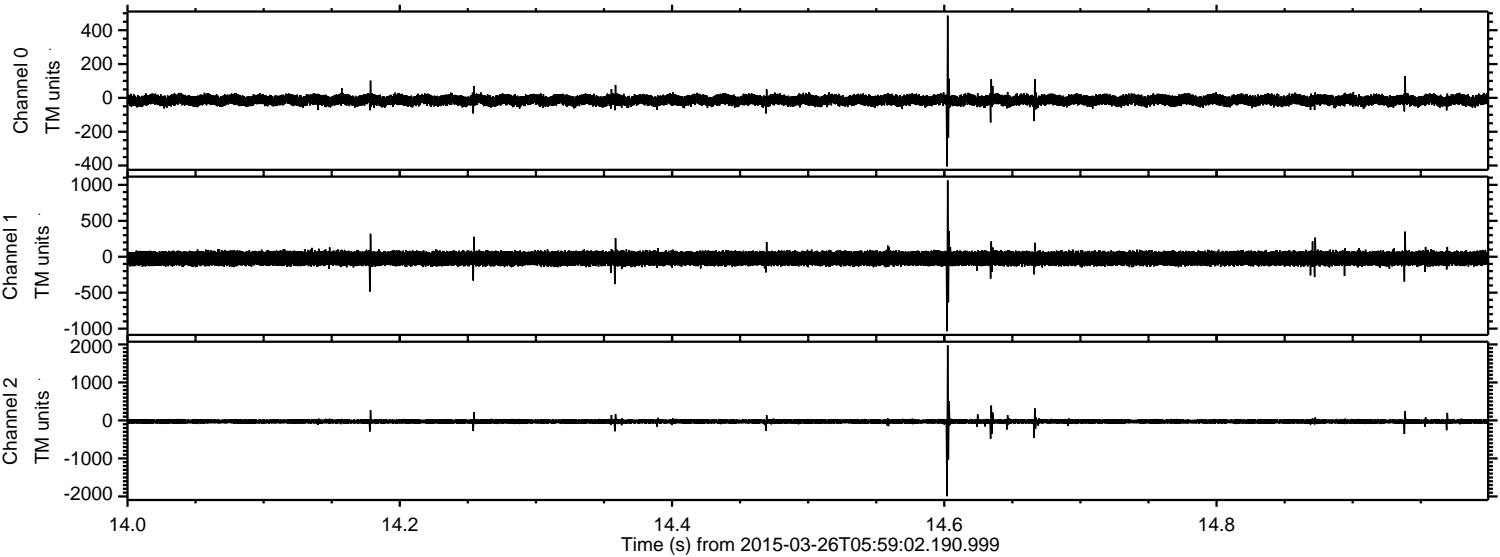
# ELMAVAN 3D WAVEFORMS (Measured data sampled at 50 kHz) 49797 packets of 144 samples from 2015-03-26T05:59:02.190.999.

Processed Thu Mar 26 08:58:27 2015 by ELM ver.2012-10-06 from 001\_\_elm20150326\_055901\_\_dat00.bin





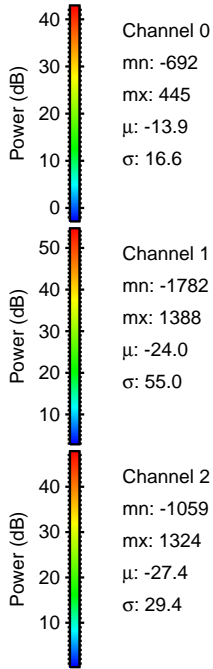
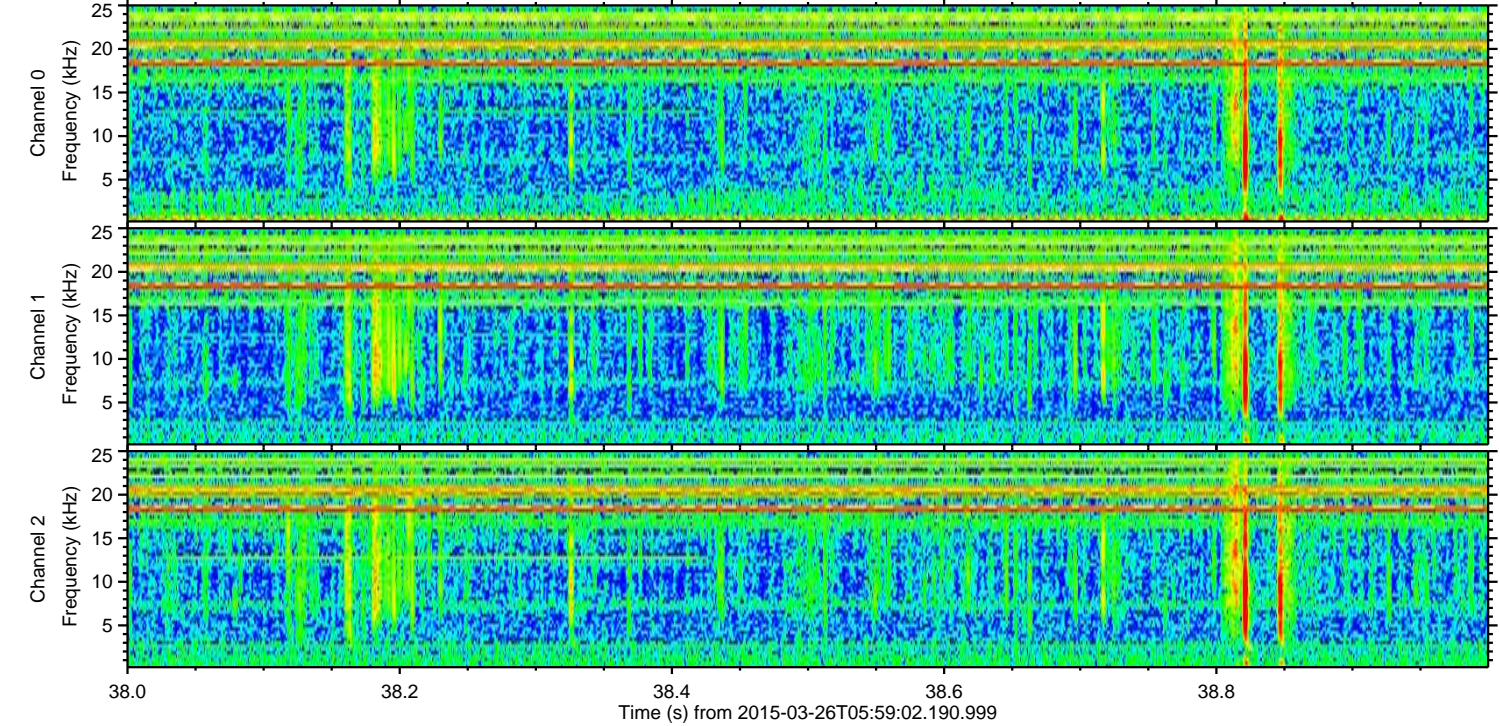
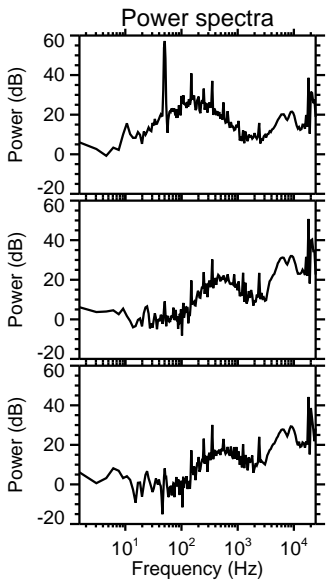
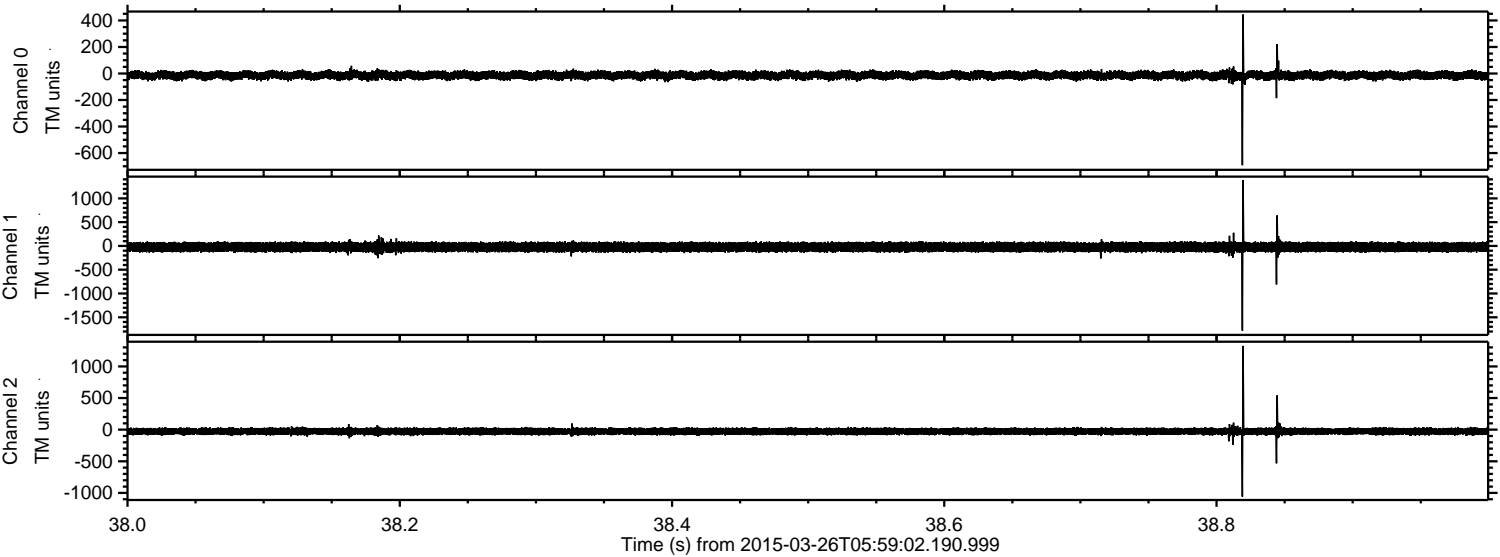
Processed Thu Mar 26 08:58:38 2015 by ELM ver.2012-10-06 from 001\_\_elm20150326\_055901\_\_dat00.bin





ELMAVAN 3D WAVEFORMS (Measured data sampled at 50 kHz) 49797 packets of 144 samples from 2015-03-26T05:59:02.190.999. Part 39/144

Processed Thu Mar 26 08:58:39 2015 by ELM ver.2012-10-06 from 001\_\_elm20150326\_055901\_\_dat00.bin



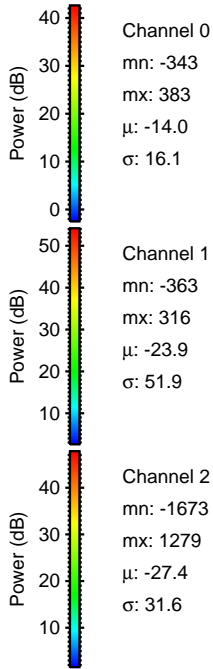
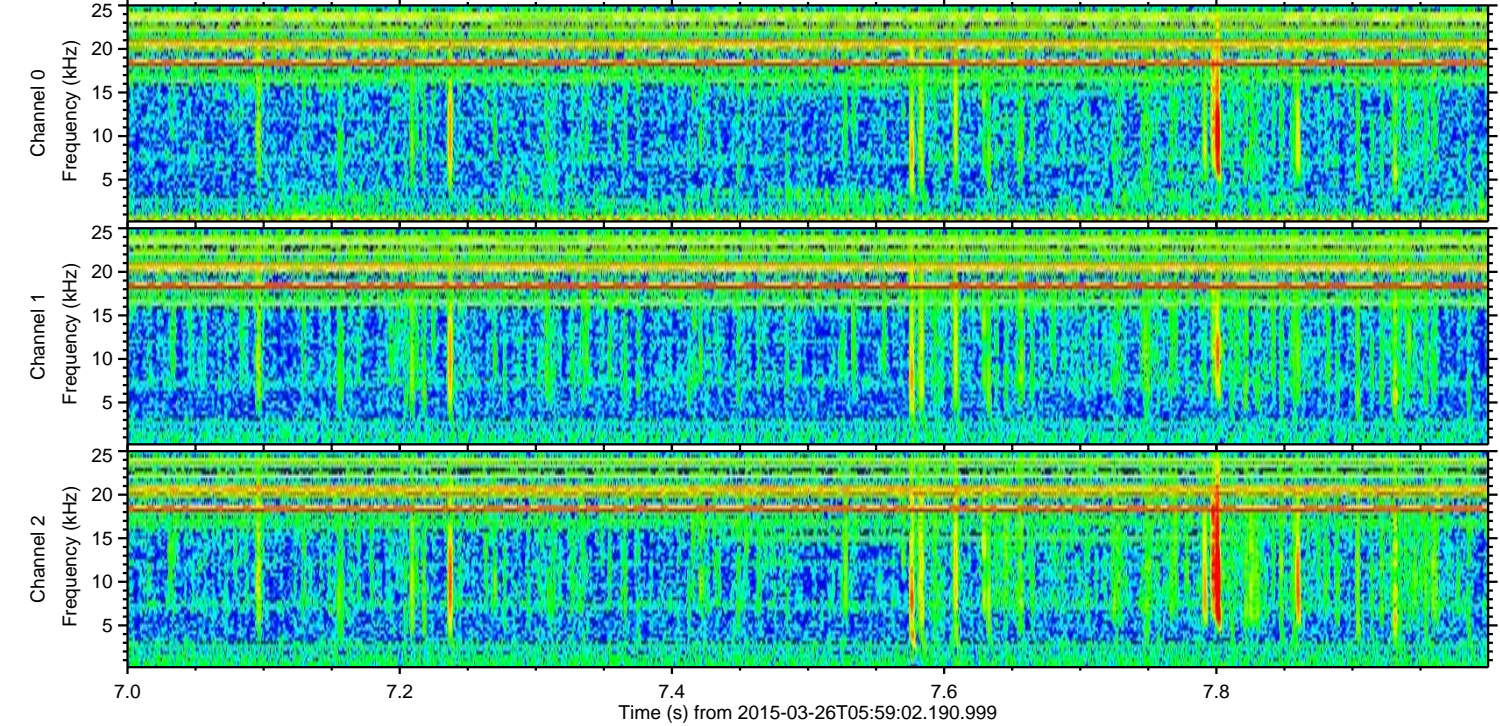
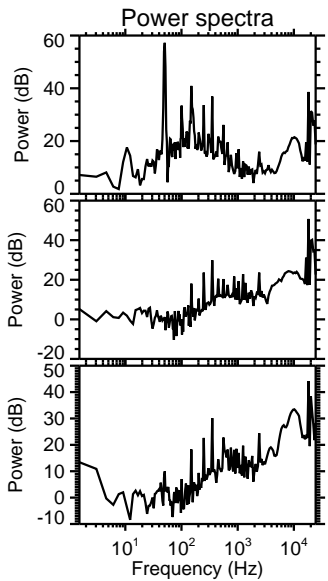
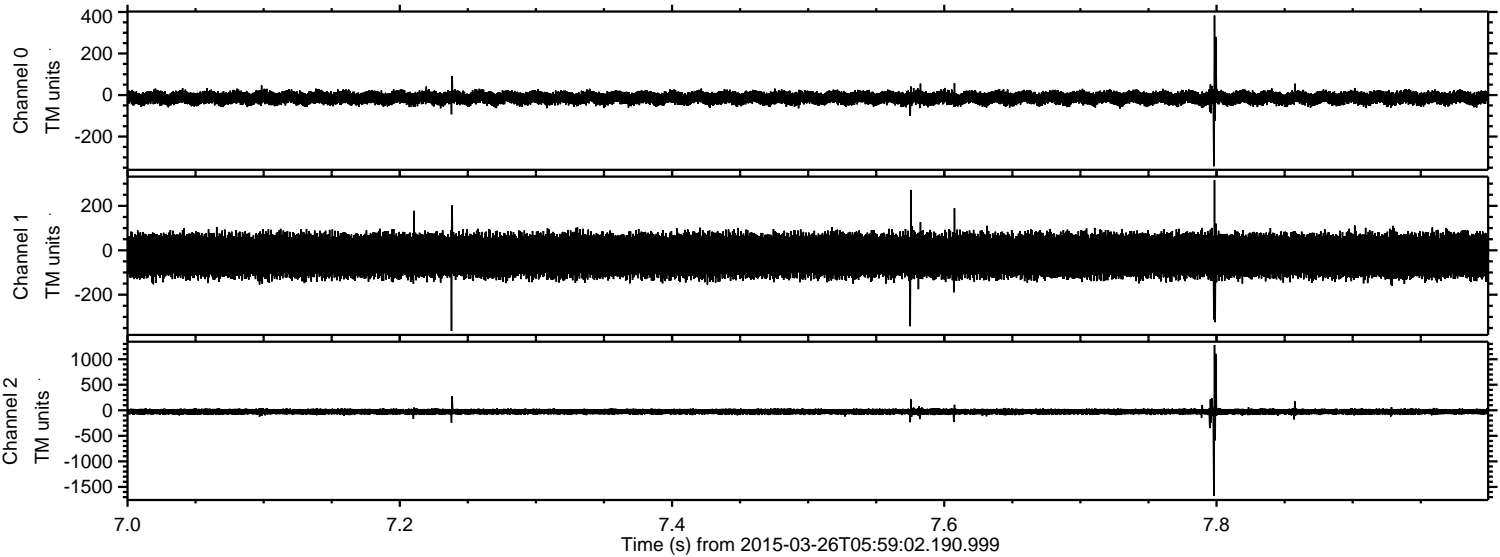
Channel 0  
mn: -692  
mx: 445  
 $\mu$ : -13.9  
 $\sigma$ : 16.6

Channel 1  
mn: -1782  
mx: 1388  
 $\mu$ : -24.0  
 $\sigma$ : 55.0

Channel 2  
mn: -1059  
mx: 1324  
 $\mu$ : -27.4  
 $\sigma$ : 29.4



Processed Thu Mar 26 08:58:40 2015 by ELM ver.2012-10-06 from 001\_\_elm20150326\_055901\_\_dat00.bin



Channel 0  
mn: -343  
mx: 383  
 $\mu$ : -14.0  
 $\sigma$ : 16.1

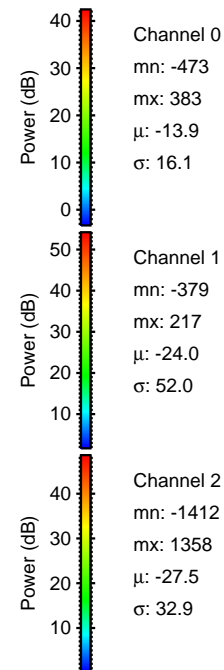
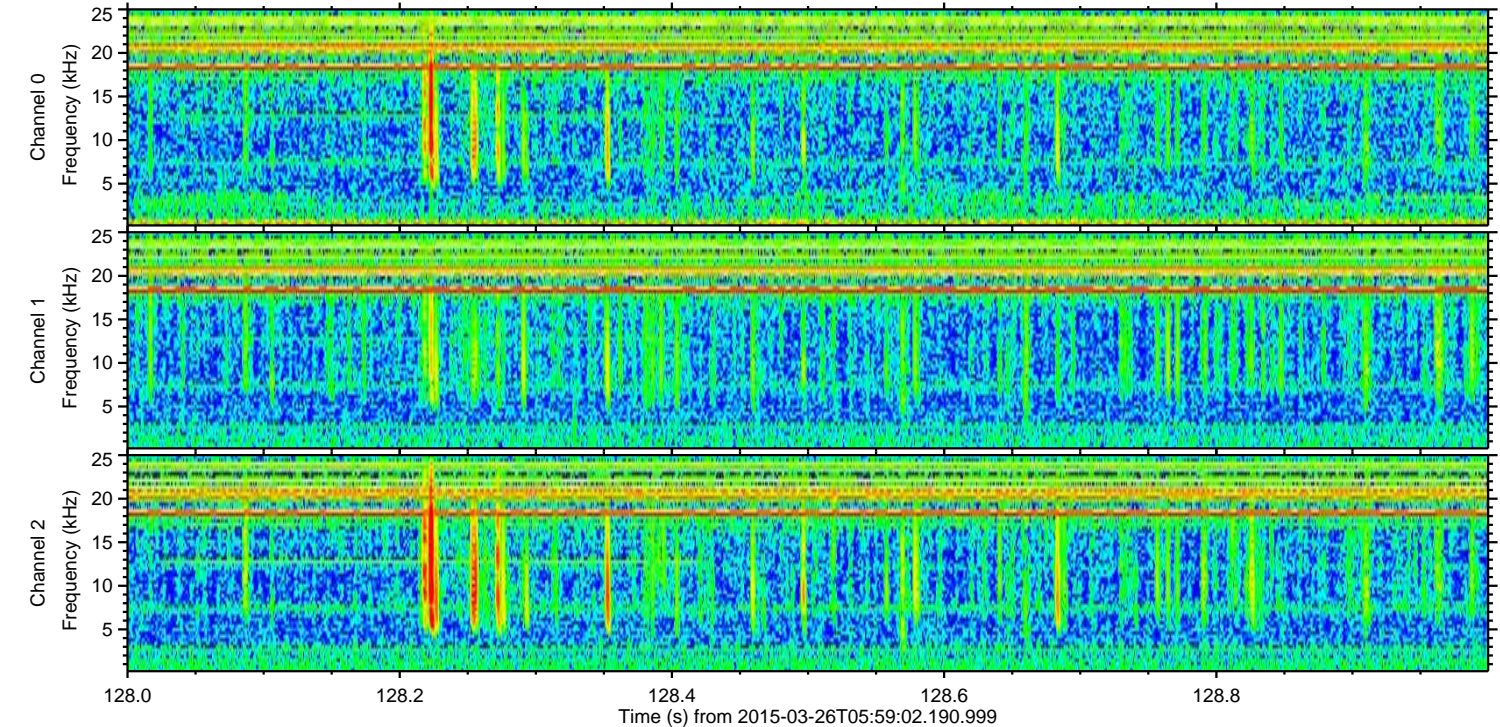
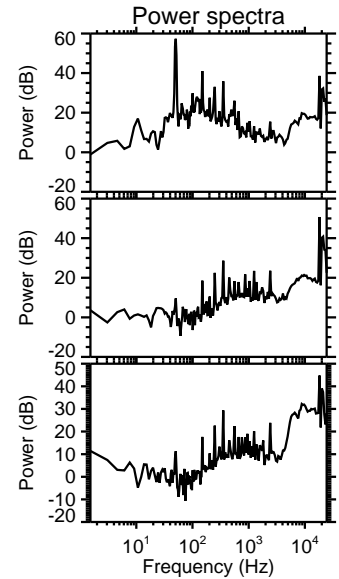
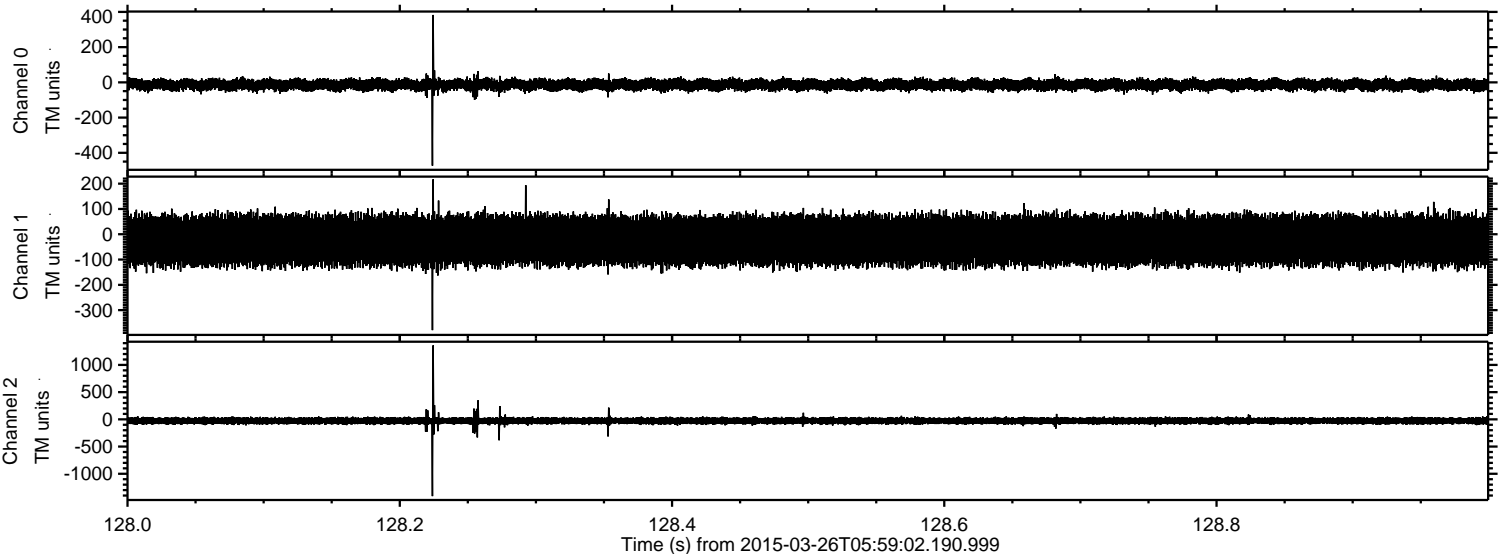
Channel 1  
mn: -363  
mx: 316  
 $\mu$ : -23.9  
 $\sigma$ : 51.9

Channel 2  
mn: -1673  
mx: 1279  
 $\mu$ : -27.4  
 $\sigma$ : 31.6



ELMAVAN 3D WAVEFORMS (Measured data sampled at 50 kHz) 49797 packets of 144 samples from 2015-03-26T05:59:02.190.999. Part 129/144

Processed Thu Mar 26 08:58:41 2015 by ELM ver.2012-10-06 from 001\_\_elm20150326\_055901\_\_dat00.bin



Channel 0  
mn: -473  
mx: 383  
 $\mu$ : -13.9  
 $\sigma$ : 16.1

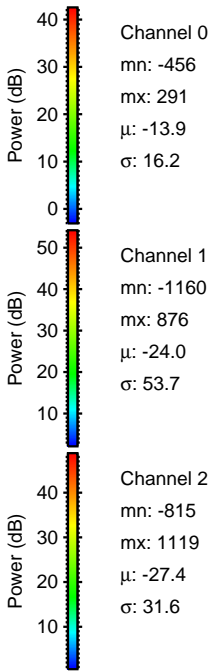
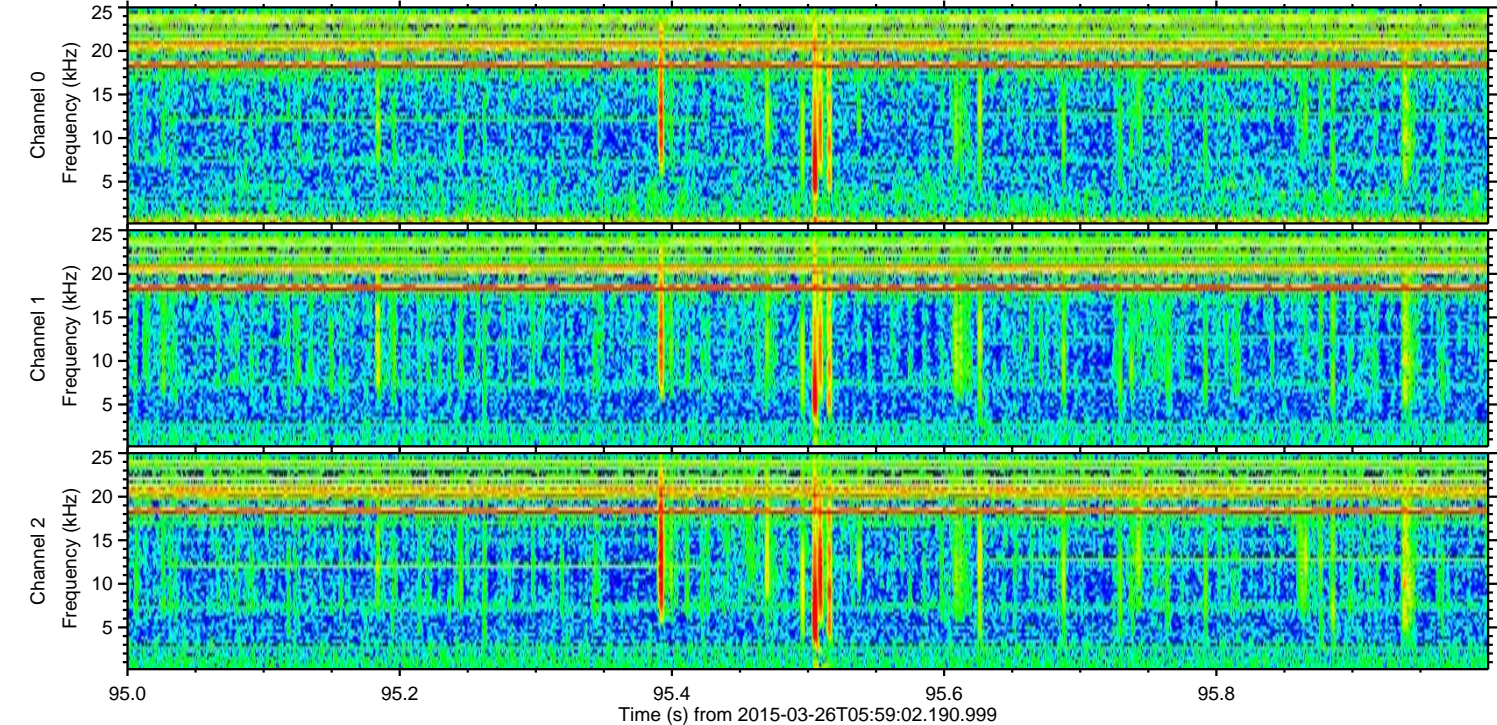
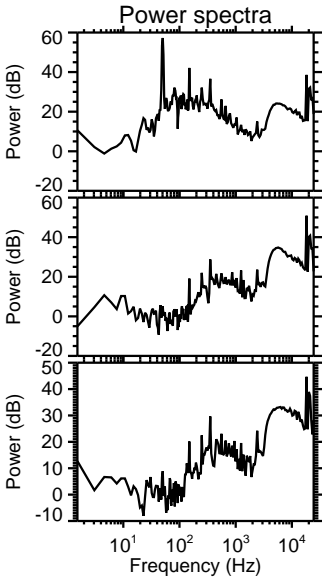
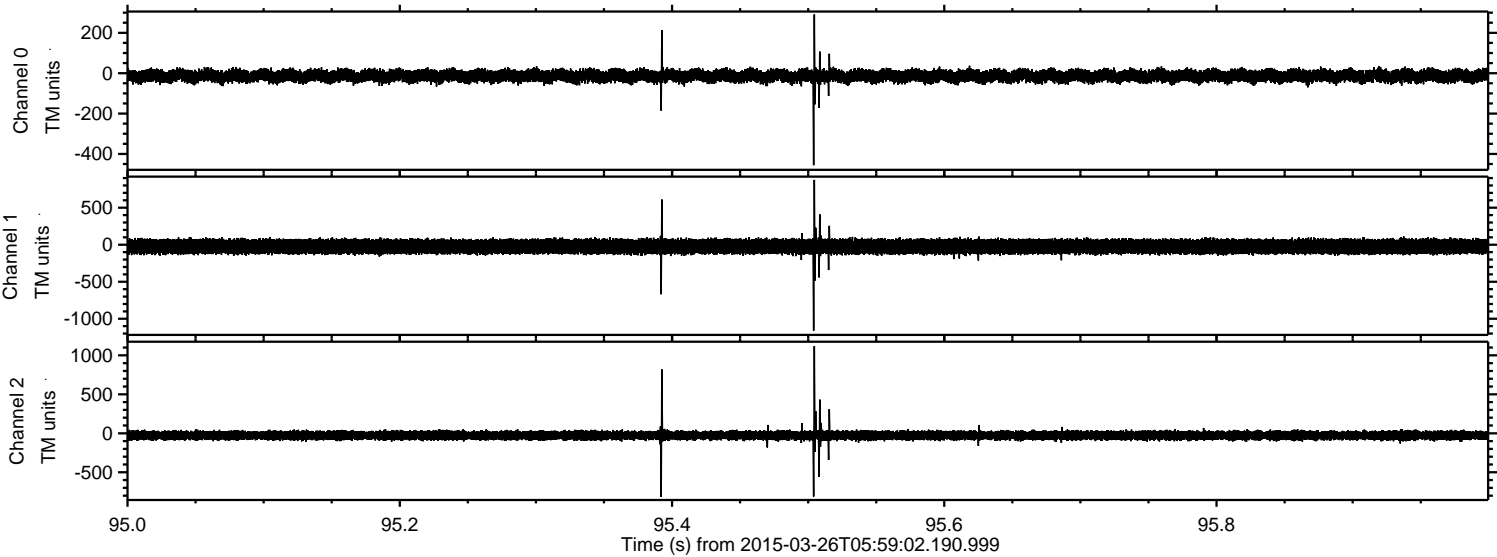
Channel 1  
mn: -379  
mx: 217  
 $\mu$ : -24.0  
 $\sigma$ : 52.0

Channel 2  
mn: -1412  
mx: 1358  
 $\mu$ : -27.5  
 $\sigma$ : 32.9



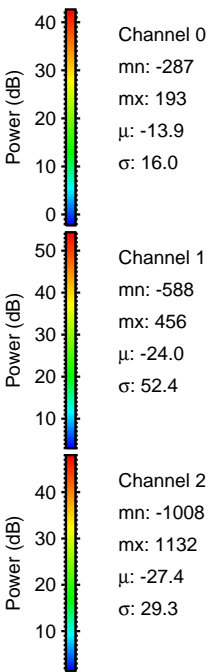
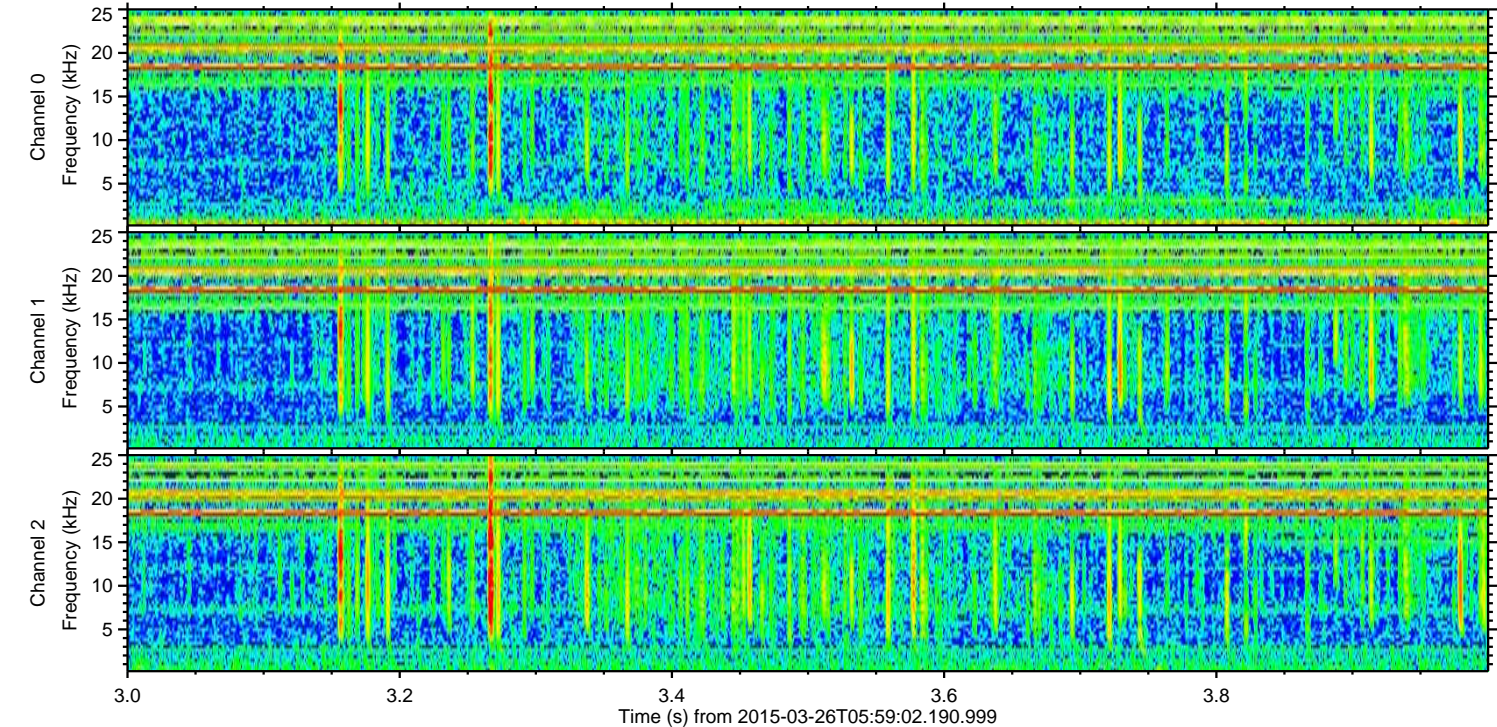
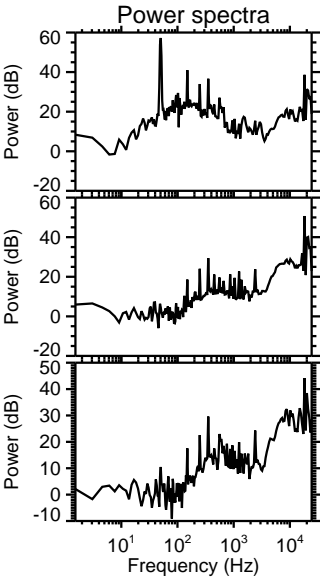
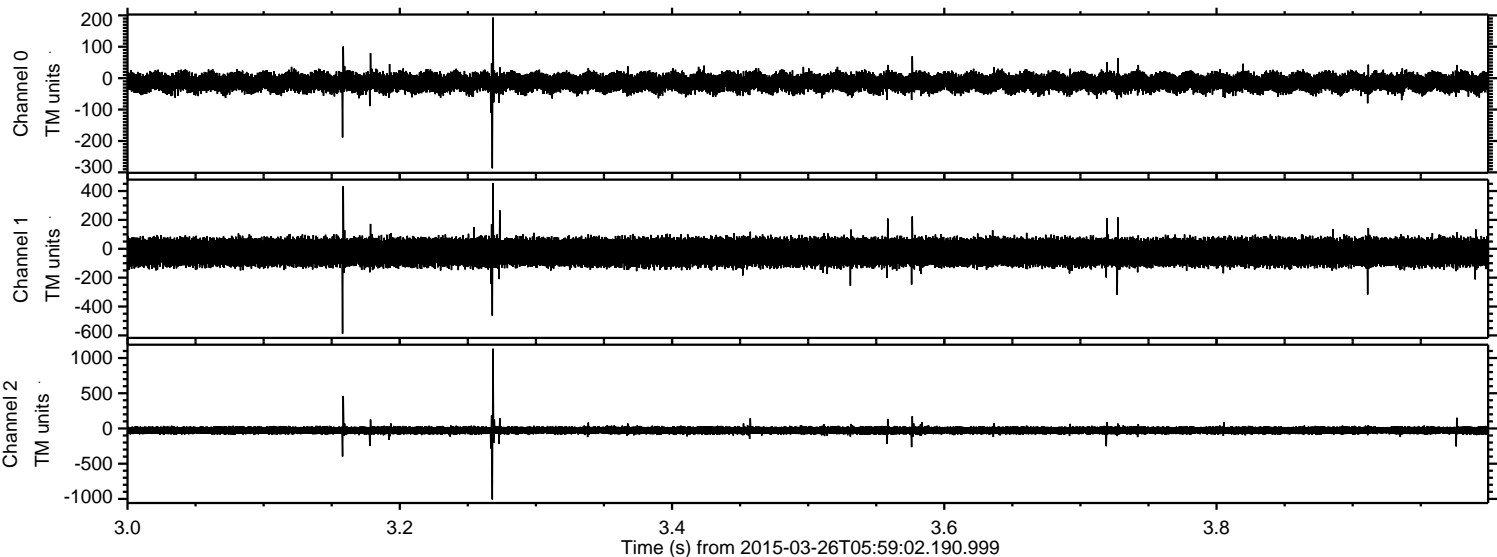
ELMAVAN 3D WAVEFORMS (Measured data sampled at 50 kHz) 49797 packets of 144 samples from 2015-03-26T05:59:02.190.999. Part 96/144

Processed Thu Mar 26 08:58:42 2015 by ELM ver.2012-10-06 from 001\_\_elm20150326\_055901\_\_dat00.bin





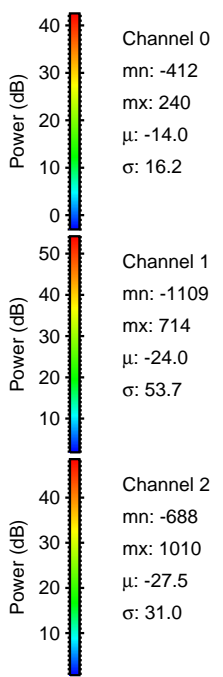
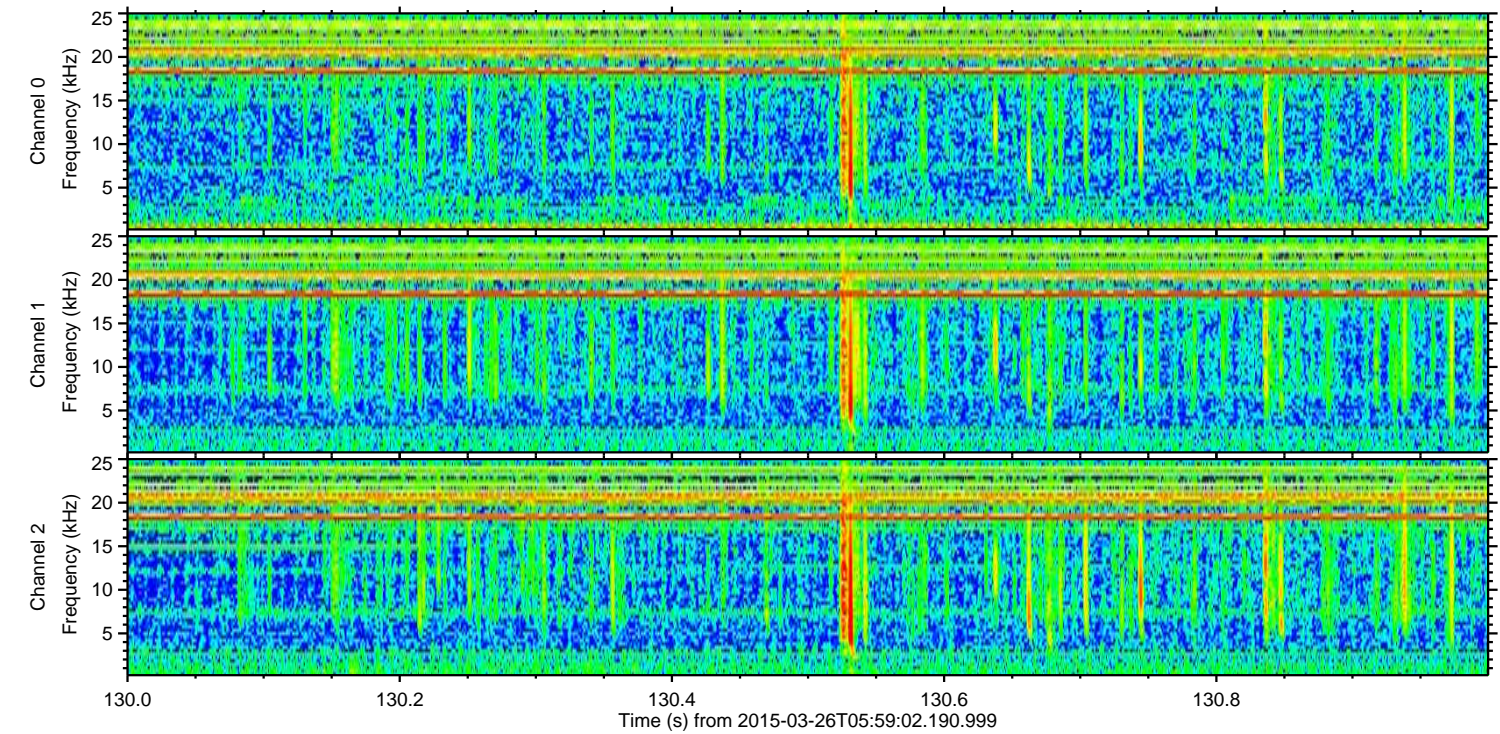
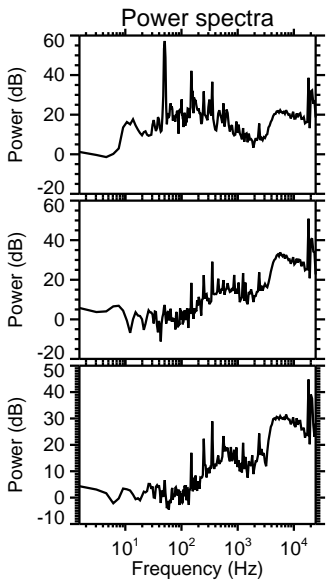
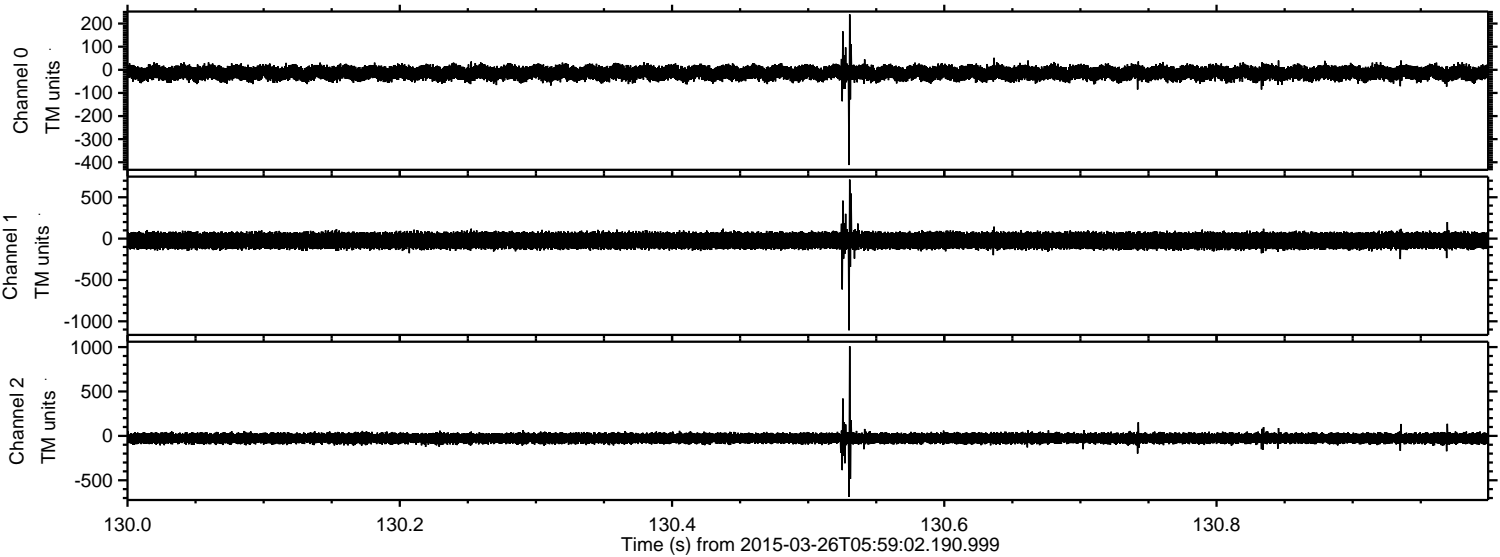
Processed Thu Mar 26 08:58:43 2015 by ELM ver.2012-10-06 from 001\_\_elm20150326\_055901\_\_dat00.bin





ELMAVAN 3D WAVEFORMS (Measured data sampled at 50 kHz) 49797 packets of 144 samples from 2015-03-26T05:59:02.190.999. Part 131/144

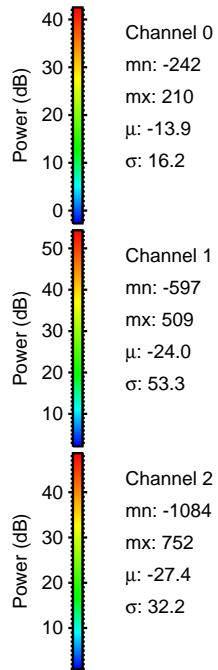
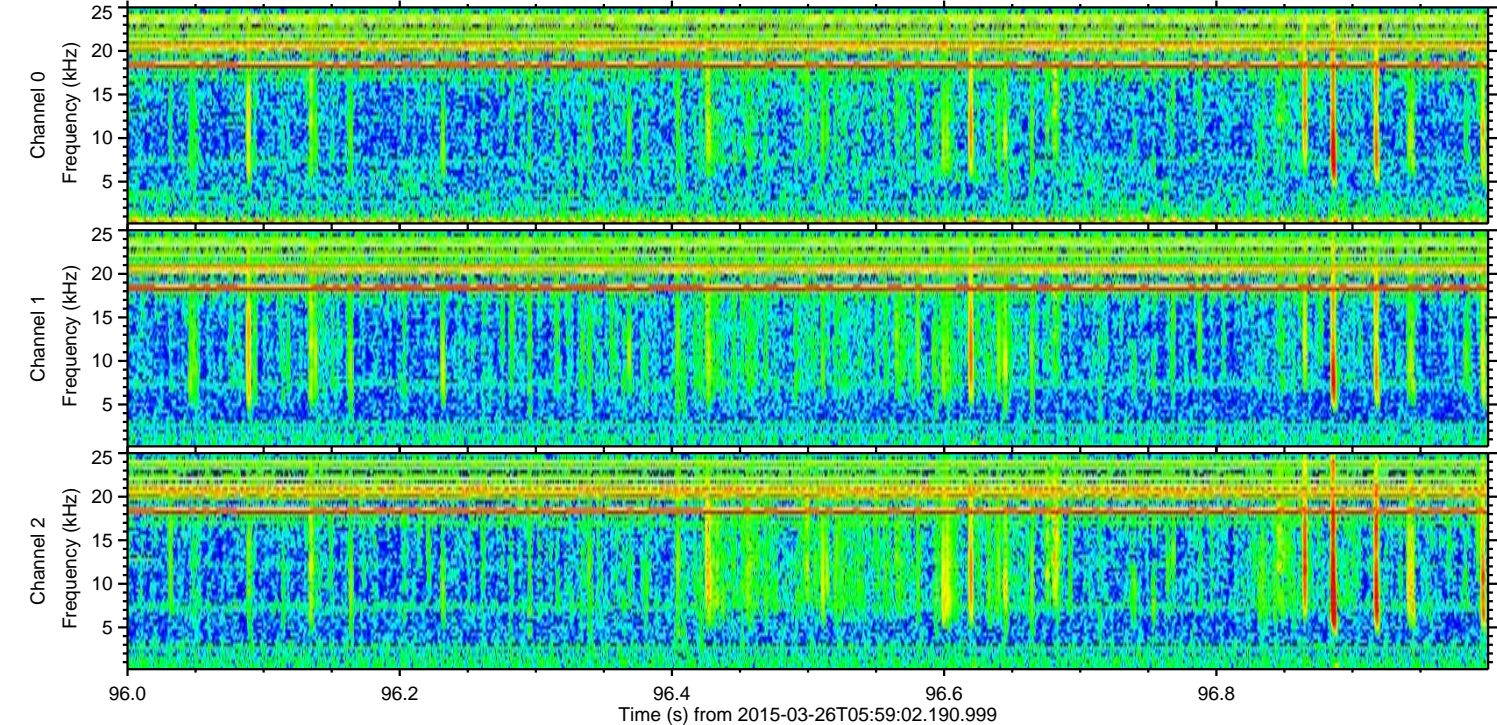
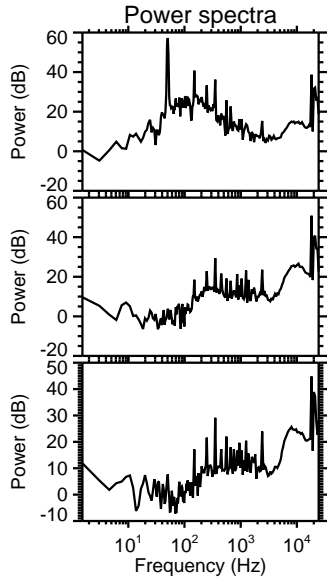
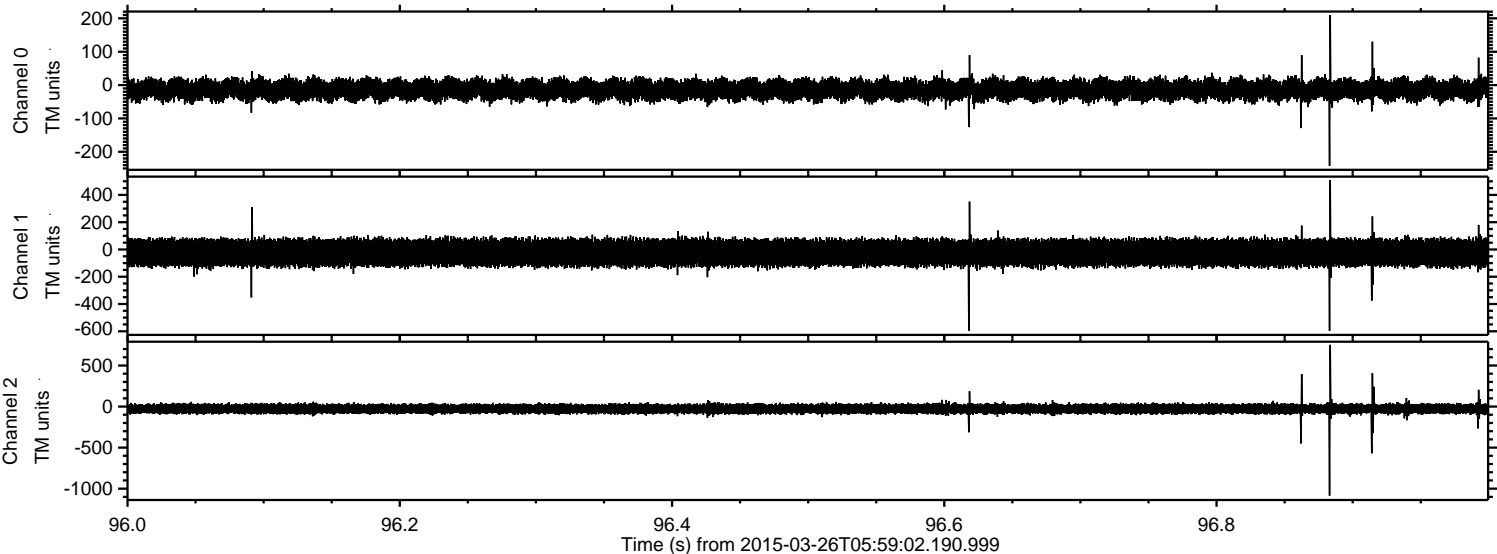
Processed Thu Mar 26 08:58:44 2015 by ELM ver.2012-10-06 from 001\_\_elm20150326\_055901\_\_dat00.bin





ELMAVAN 3D WAVEFORMS (Measured data sampled at 50 kHz) 49797 packets of 144 samples from 2015-03-26T05:59:02.190.999. Part 97/144

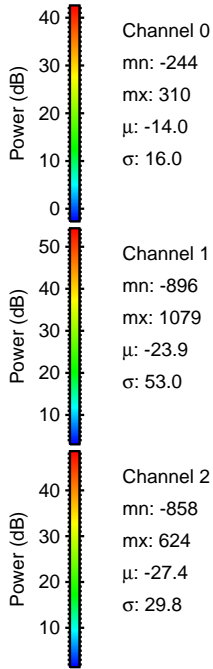
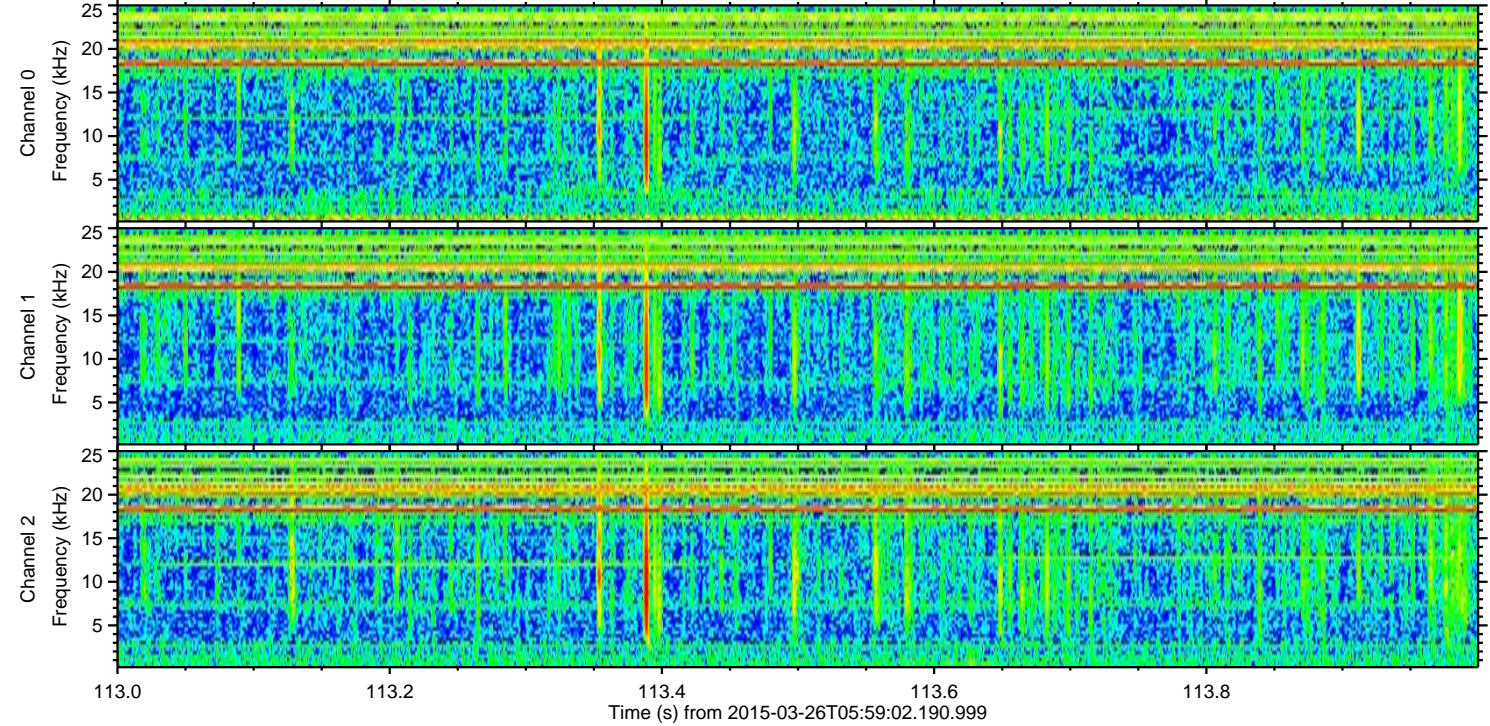
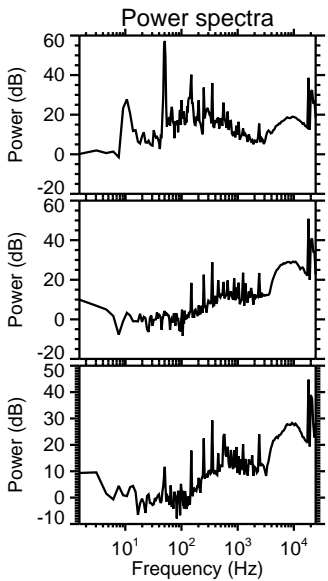
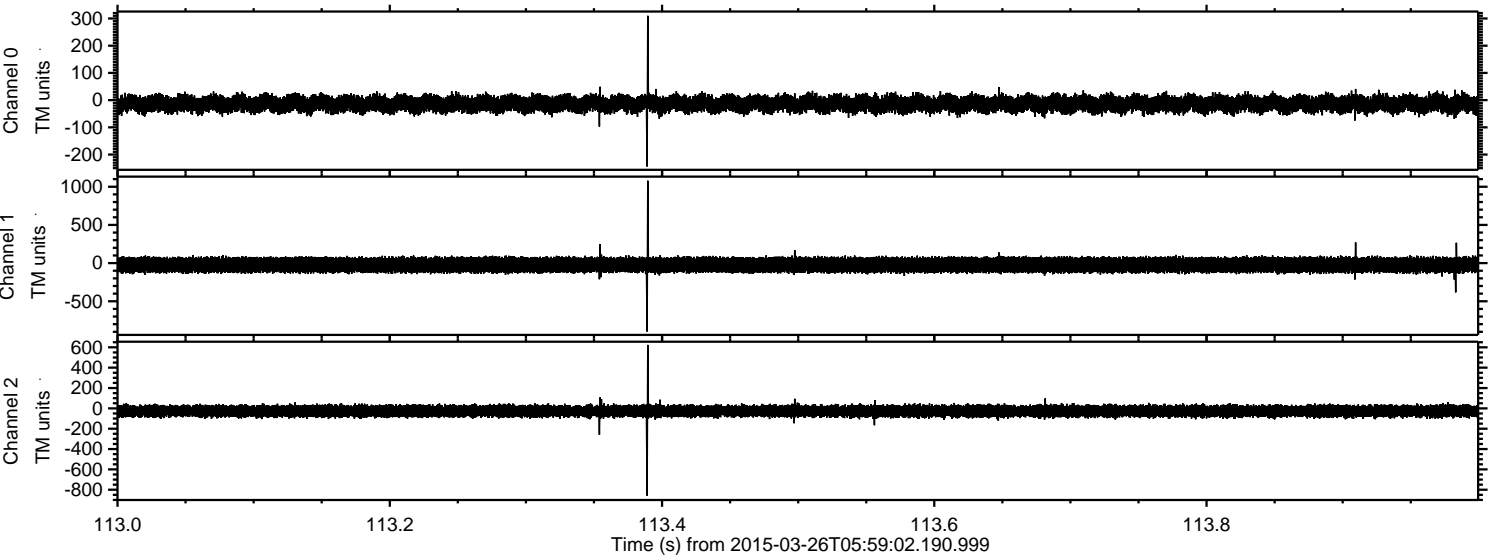
Processed Thu Mar 26 08:58:45 2015 by ELM ver.2012-10-06 from 001\_\_elm20150326\_055901\_\_dat00.bin





ELMAVAN 3D WAVEFORMS (Measured data sampled at 50 kHz) 49797 packets of 144 samples from 2015-03-26T05:59:02.190.999. Part 114/144

Processed Thu Mar 26 08:58:46 2015 by ELM ver.2012-10-06 from 001\_\_elm20150326\_055901\_\_dat00.bin





Processed Thu Mar 26 08:58:47 2015 by ELM ver.2012-10-06 from 001\_\_elm20150326\_055901\_\_dat00.bin

