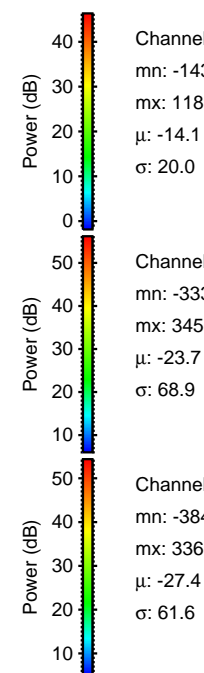
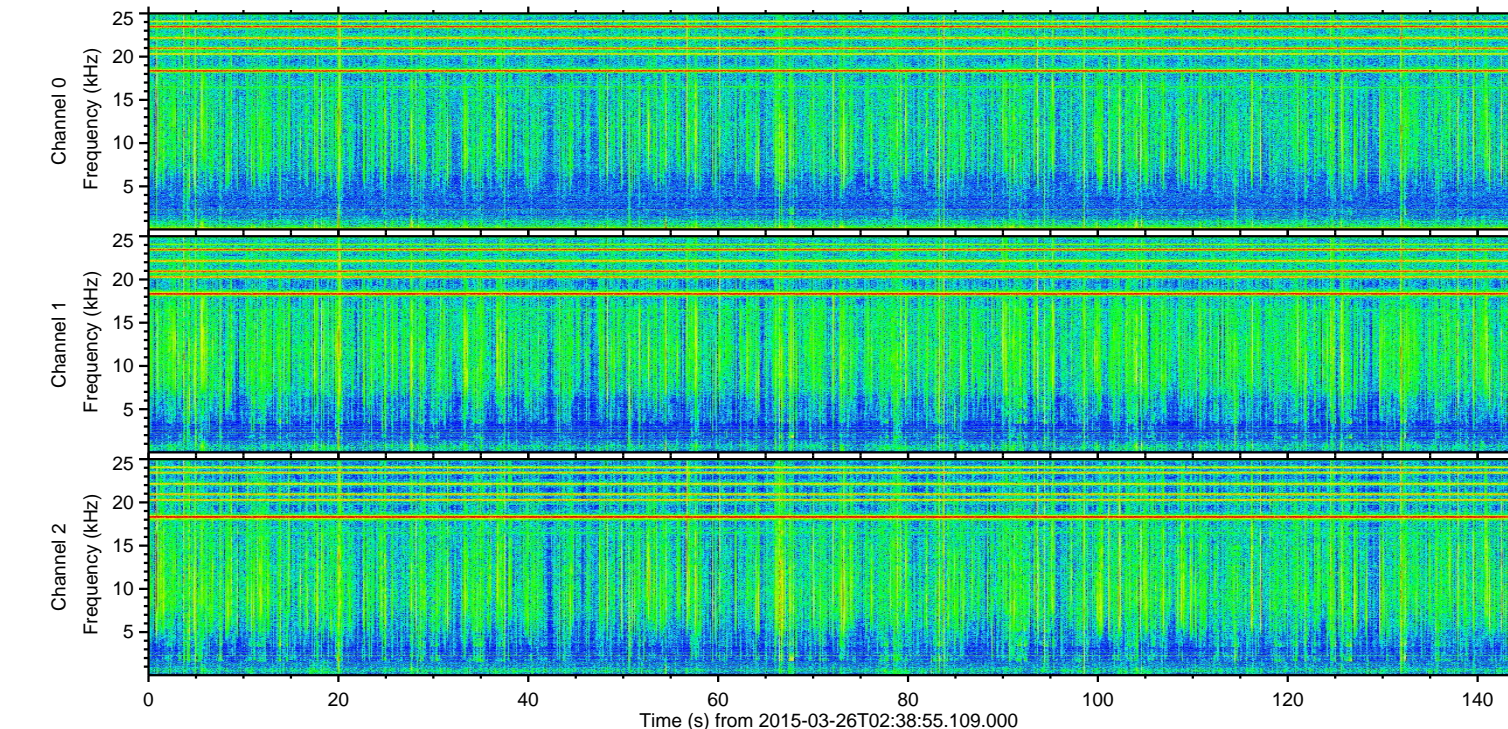
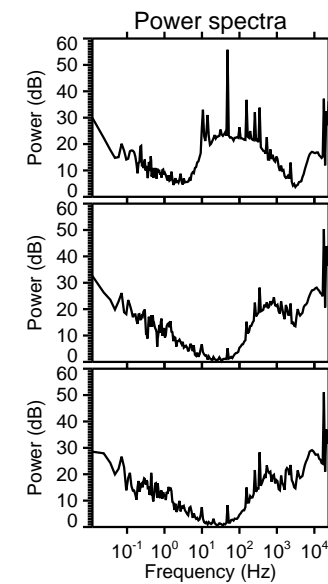
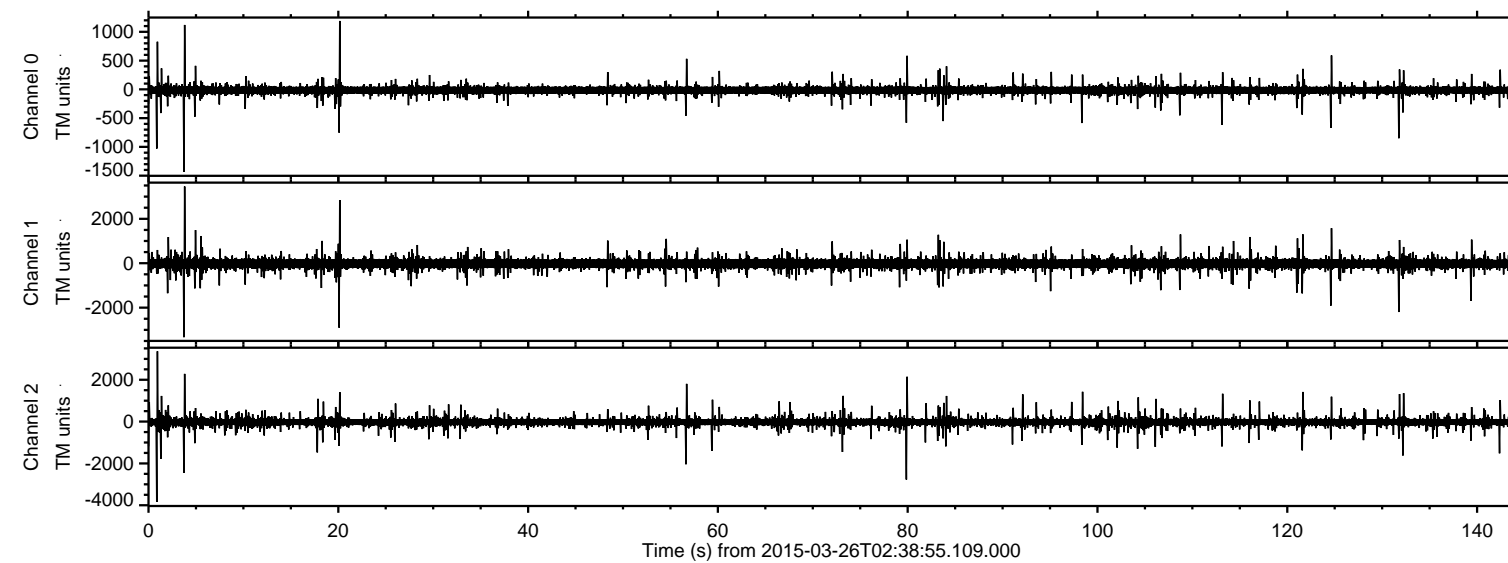


ELMAVAN 3D WAVEFORMS (Measured data sampled at 50 kHz) 49785 packets of 144 samples from 2015-03-26T02:38:55.109.000.

Processed Thu Mar 26 03:47:34 2015 by ELM ver.2012-10-06 from 001__elm20150326_023854__dat00.bin



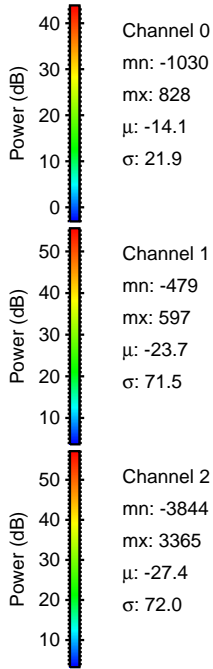
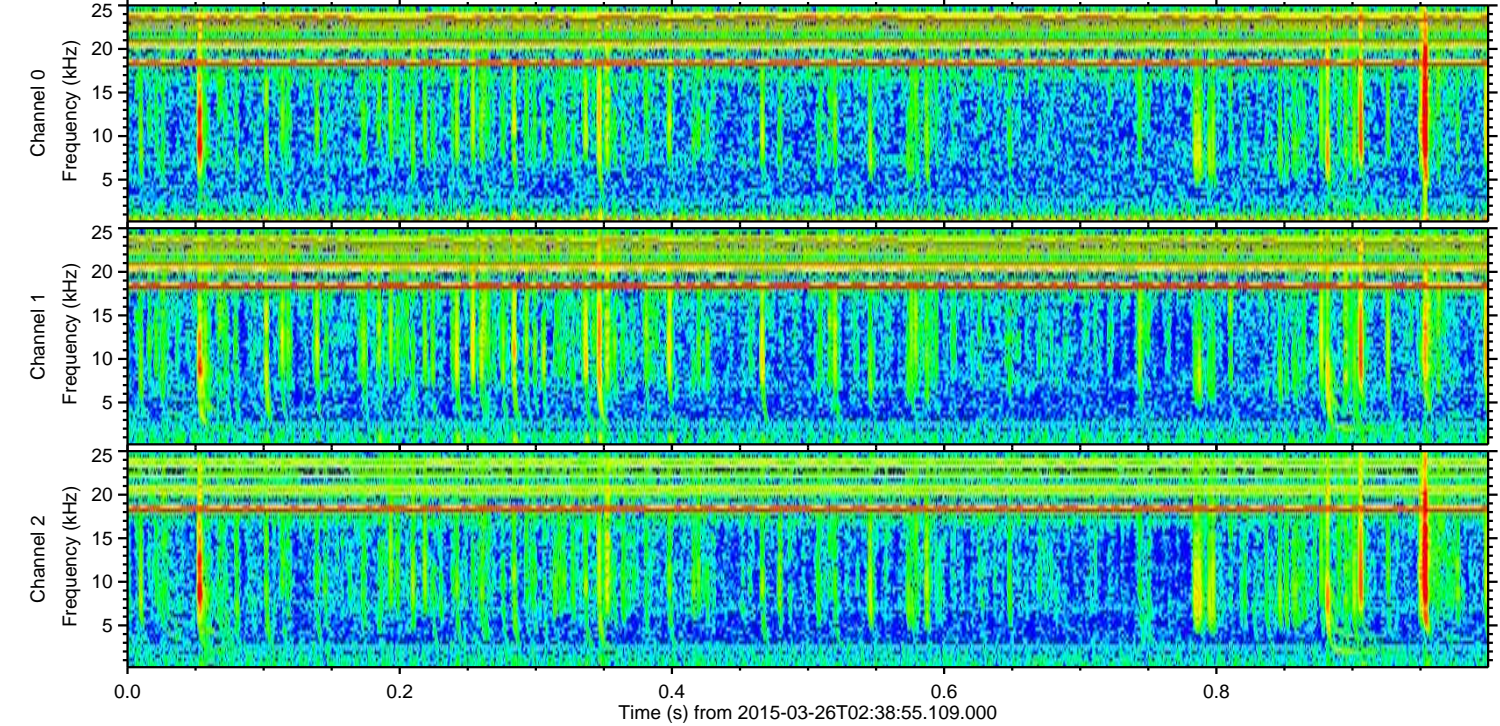
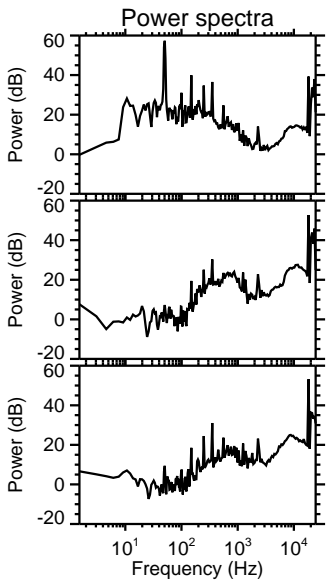
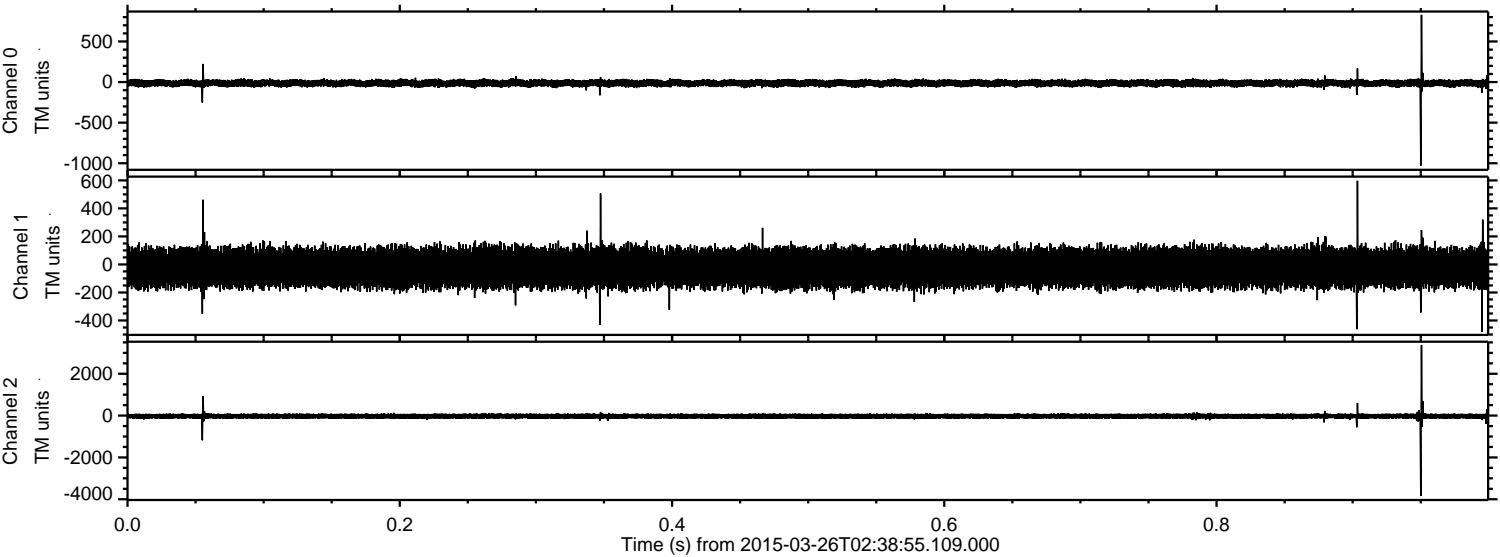
Channel 0
mn: -1431
mx: 1189
 μ : -14.1
 σ : 20.0

Channel 1
mn: -3331
mx: 3456
 μ : -23.7
 σ : 68.9

Channel 2
mn: -3844
mx: 3365
 μ : -27.4
 σ : 61.6

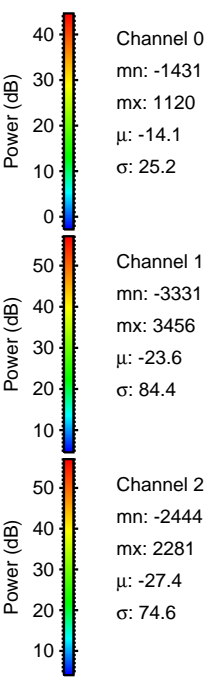
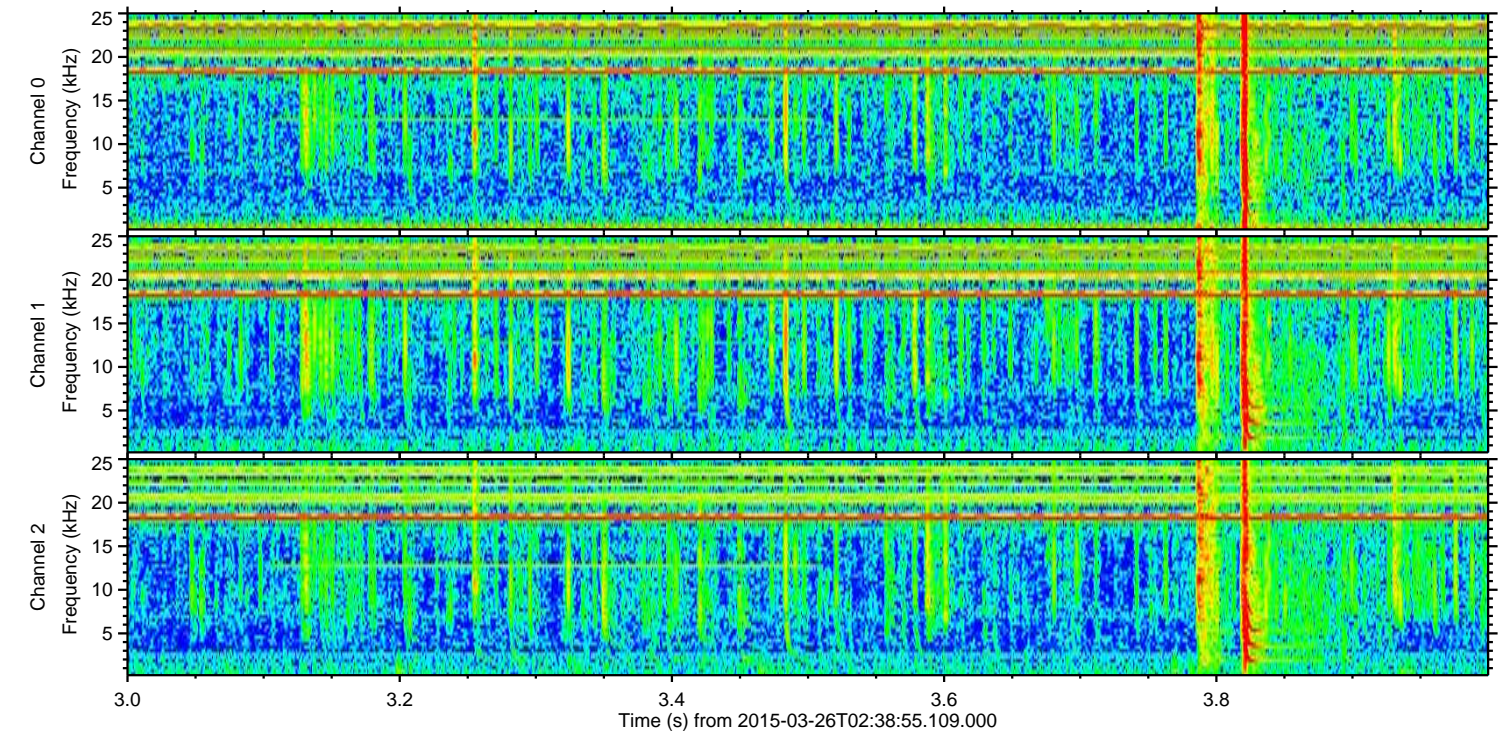
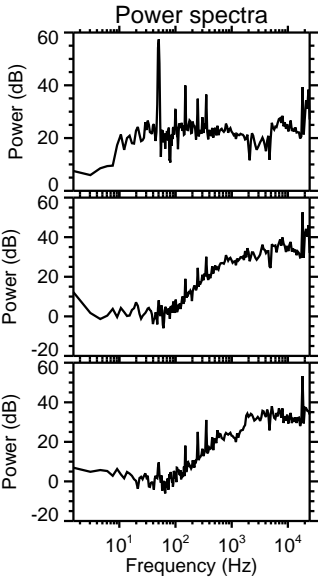
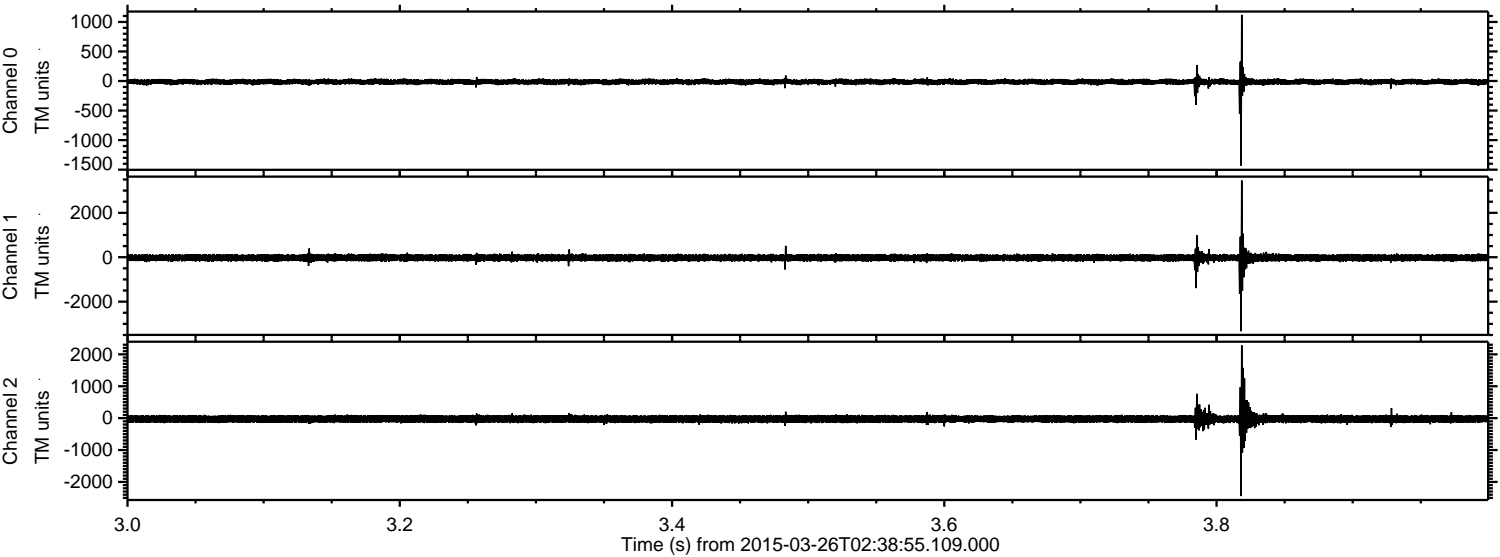
ELMAVAN 3D WAVEFORMS (Measured data sampled at 50 kHz) 49785 packets of 144 samples from 2015-03-26T02:38:55.109.000. Part 1/144

Processed Thu Mar 26 03:47:45 2015 by ELM ver.2012-10-06 from 001__elm20150326_023854__dat00.bin



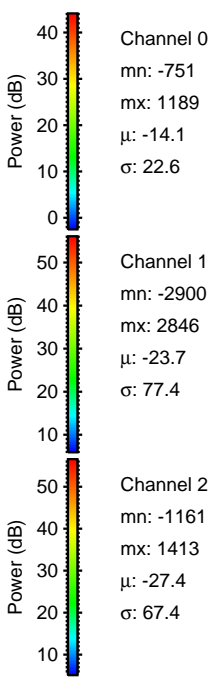
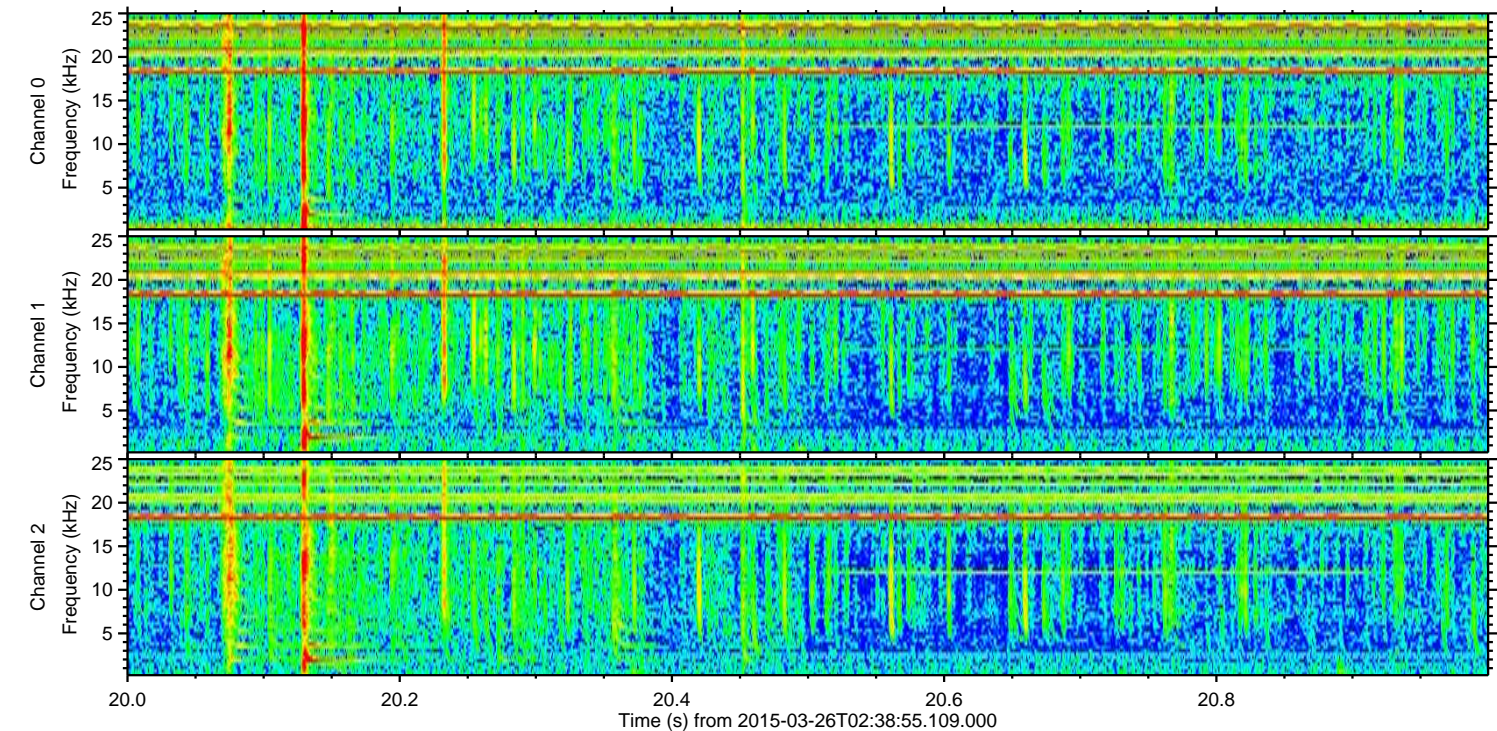
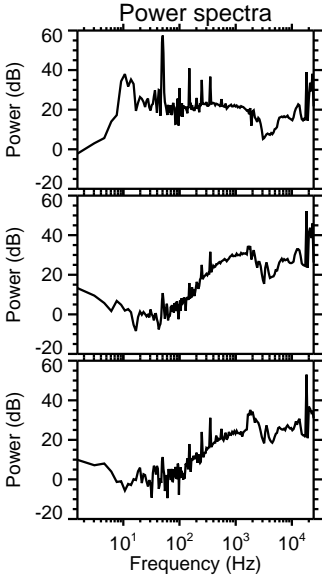
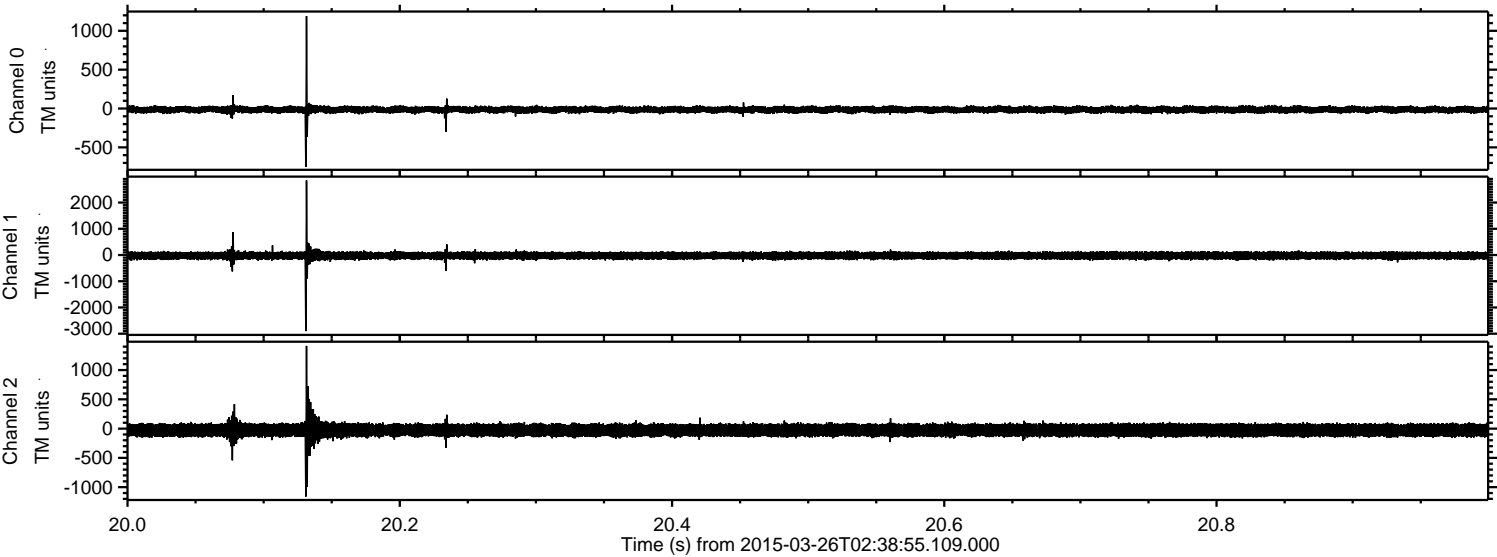
ELMAVAN 3D WAVEFORMS (Measured data sampled at 50 kHz) 49785 packets of 144 samples from 2015-03-26T02:38:55.109.000. Part 4/144

Processed Thu Mar 26 03:47:46 2015 by ELM ver.2012-10-06 from 001__elm20150326_023854__dat00.bin

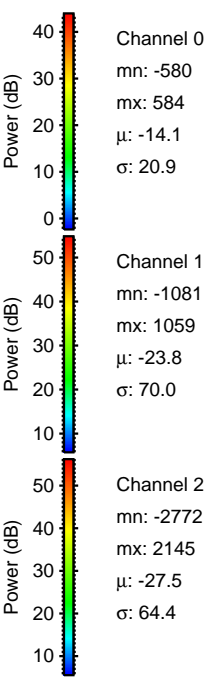
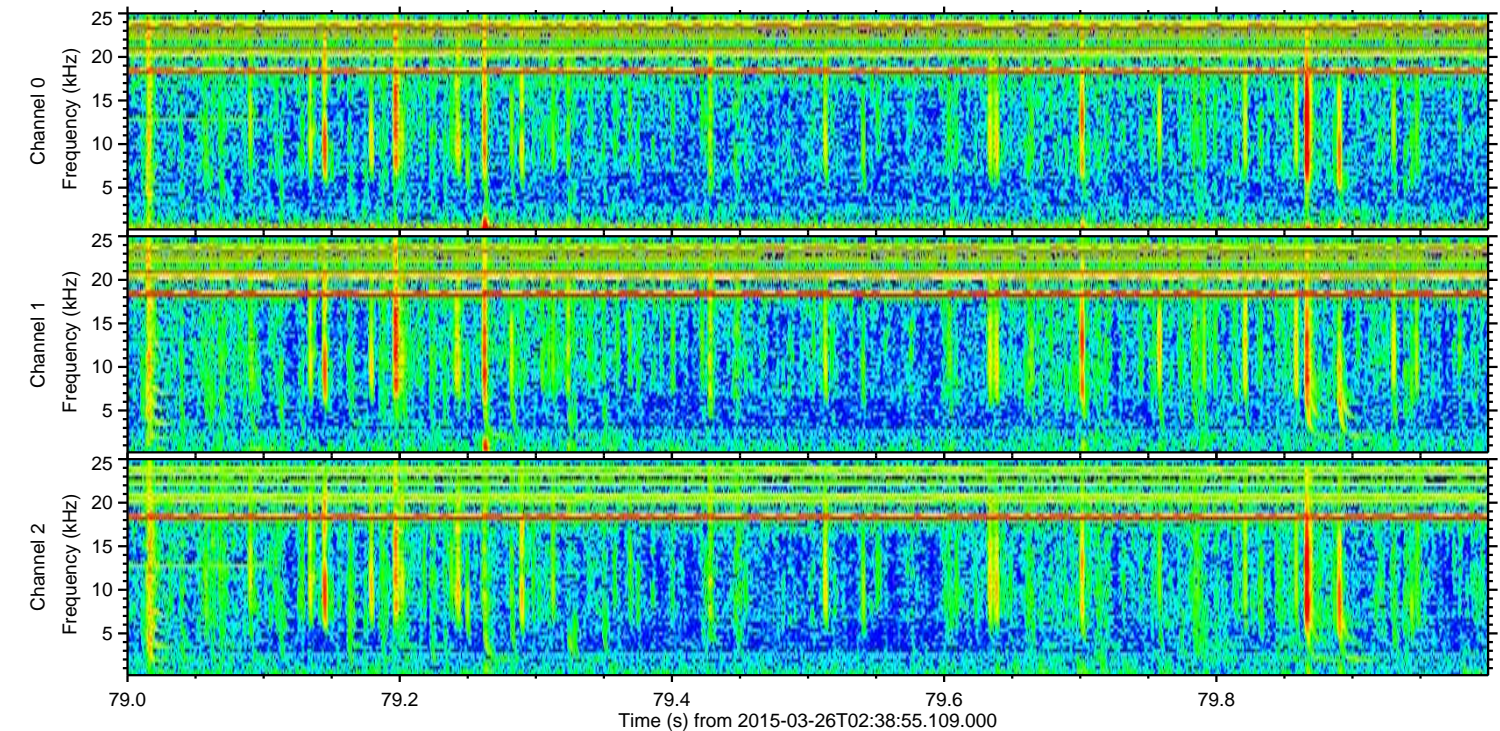
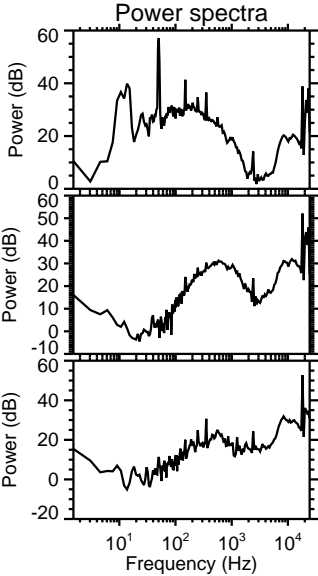
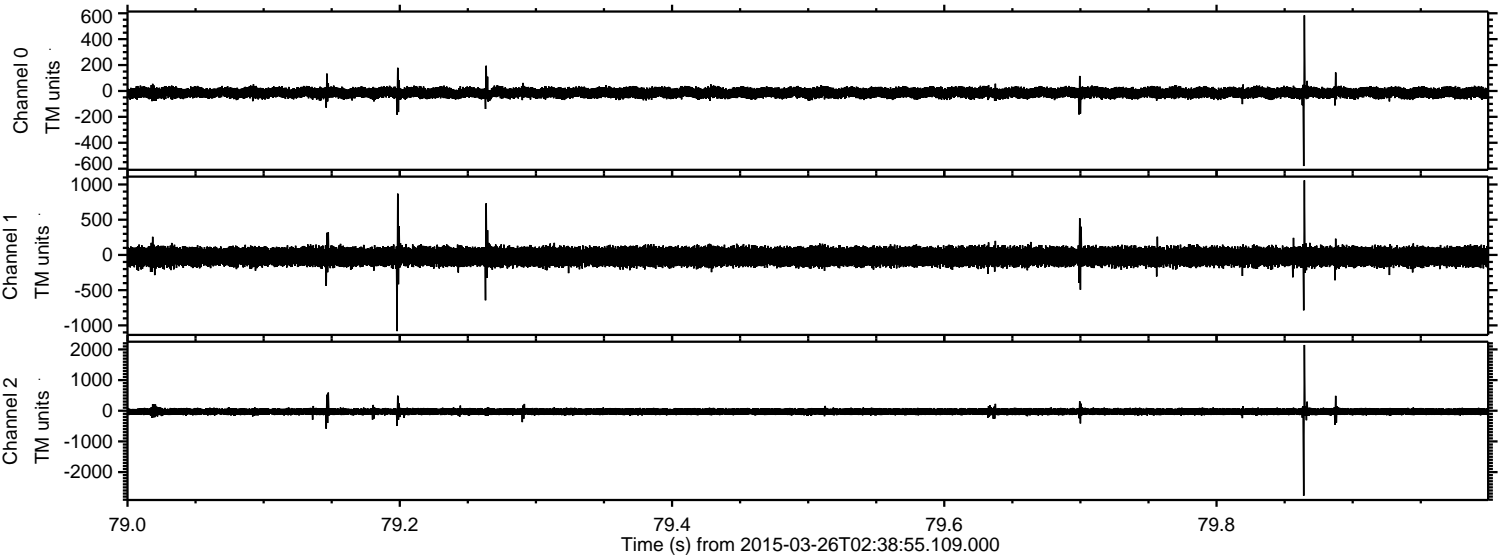


ELMAVAN 3D WAVEFORMS (Measured data sampled at 50 kHz) 49785 packets of 144 samples from 2015-03-26T02:38:55.109.000. Part 21/144

Processed Thu Mar 26 03:47:47 2015 by ELM ver.2012-10-06 from 001__elm20150326_023854__dat00.bin



Processed Thu Mar 26 03:47:48 2015 by ELM ver.2012-10-06 from 001__elm20150326_023854__dat00.bin



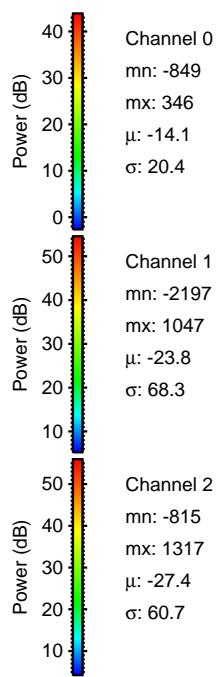
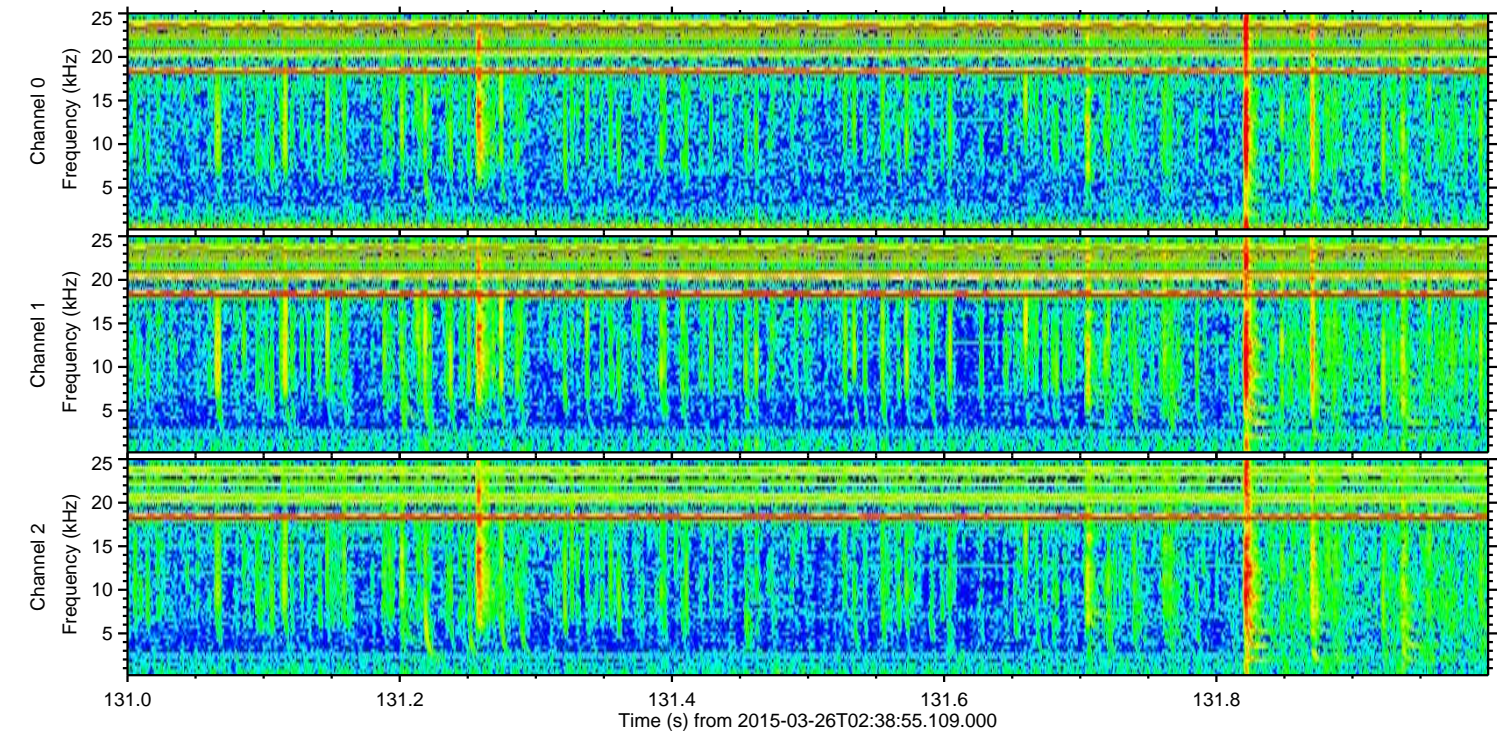
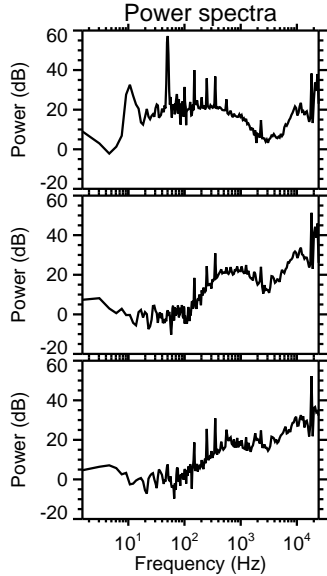
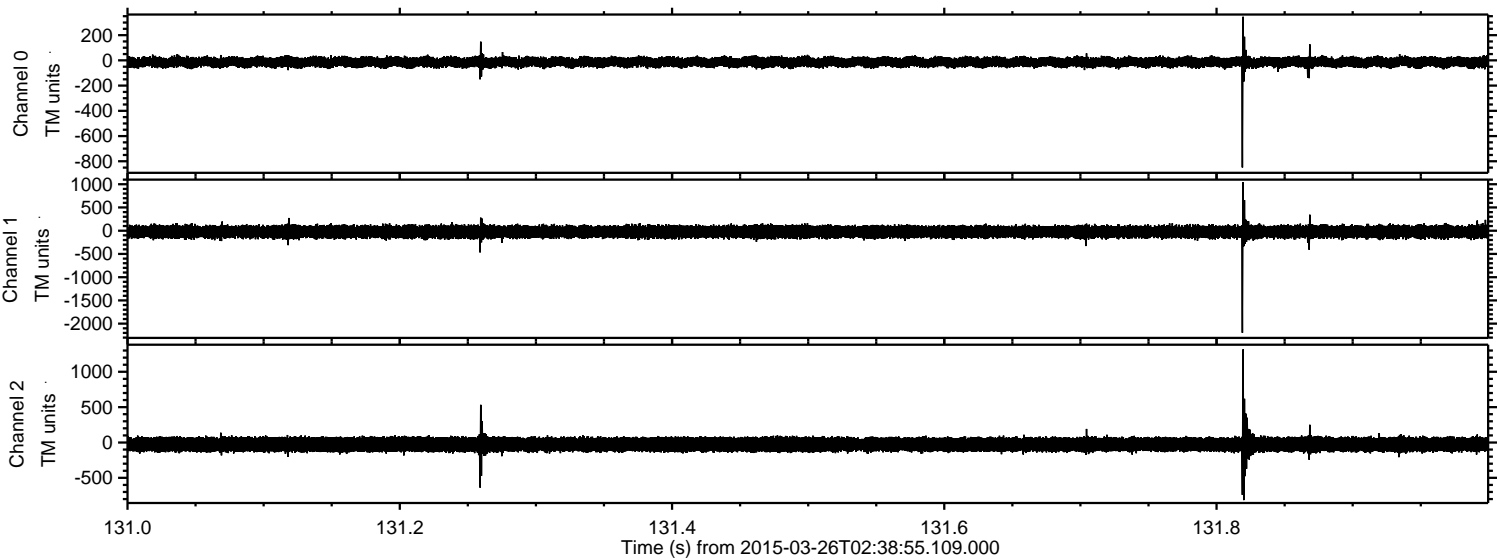
Channel 0
mn: -580
mx: 584
 μ : -14.1
 σ : 20.9

Channel 1
mn: -1081
mx: 1059
 μ : -23.8
 σ : 70.0

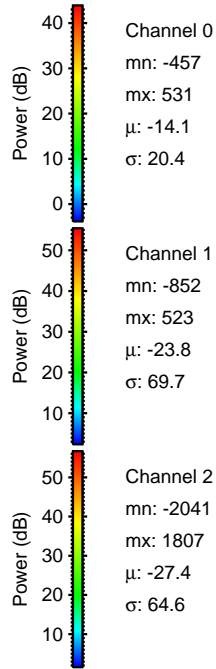
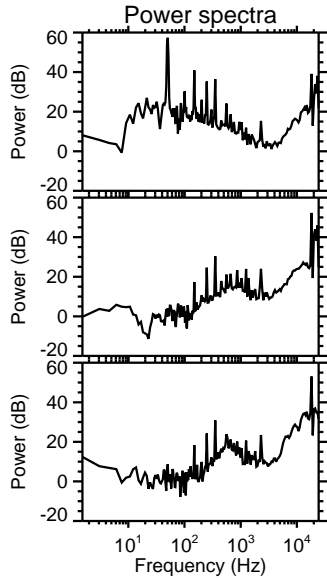
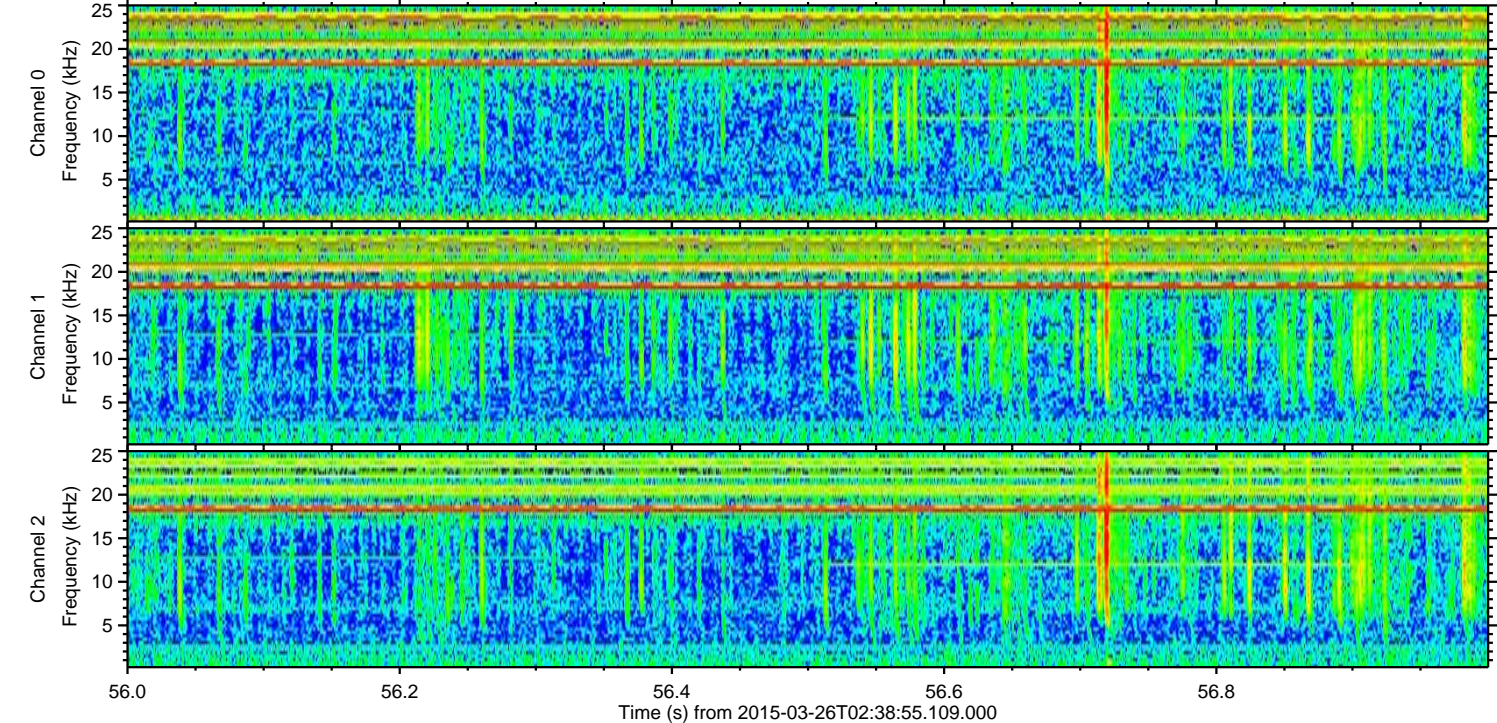
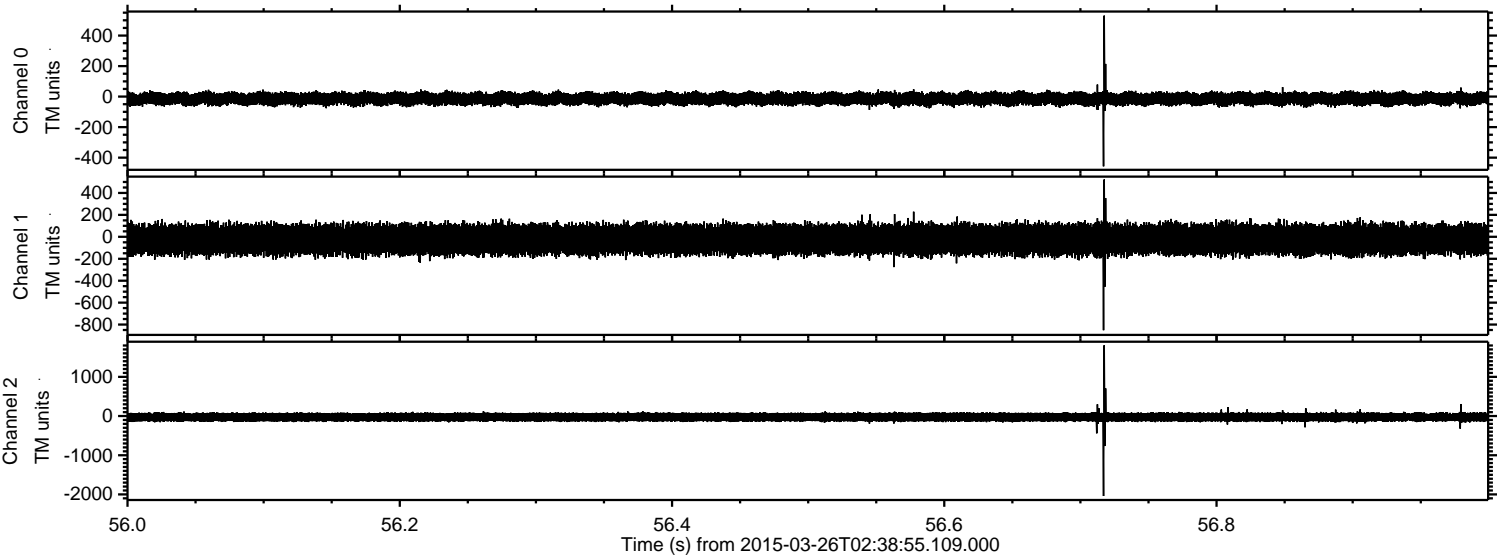
Channel 2
mn: -2772
mx: 2145
 μ : -27.5
 σ : 64.4

ELMAVAN 3D WAVEFORMS (Measured data sampled at 50 kHz) 49785 packets of 144 samples from 2015-03-26T02:38:55.109.000. Part 132/144

Processed Thu Mar 26 03:47:49 2015 by ELM ver.2012-10-06 from 001__elm20150326_023854__dat00.bin

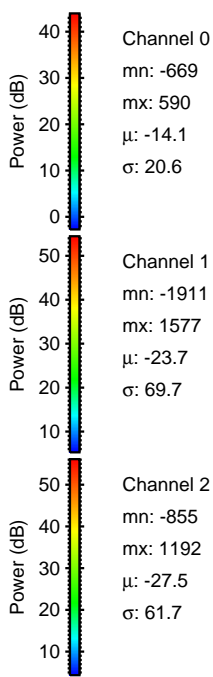
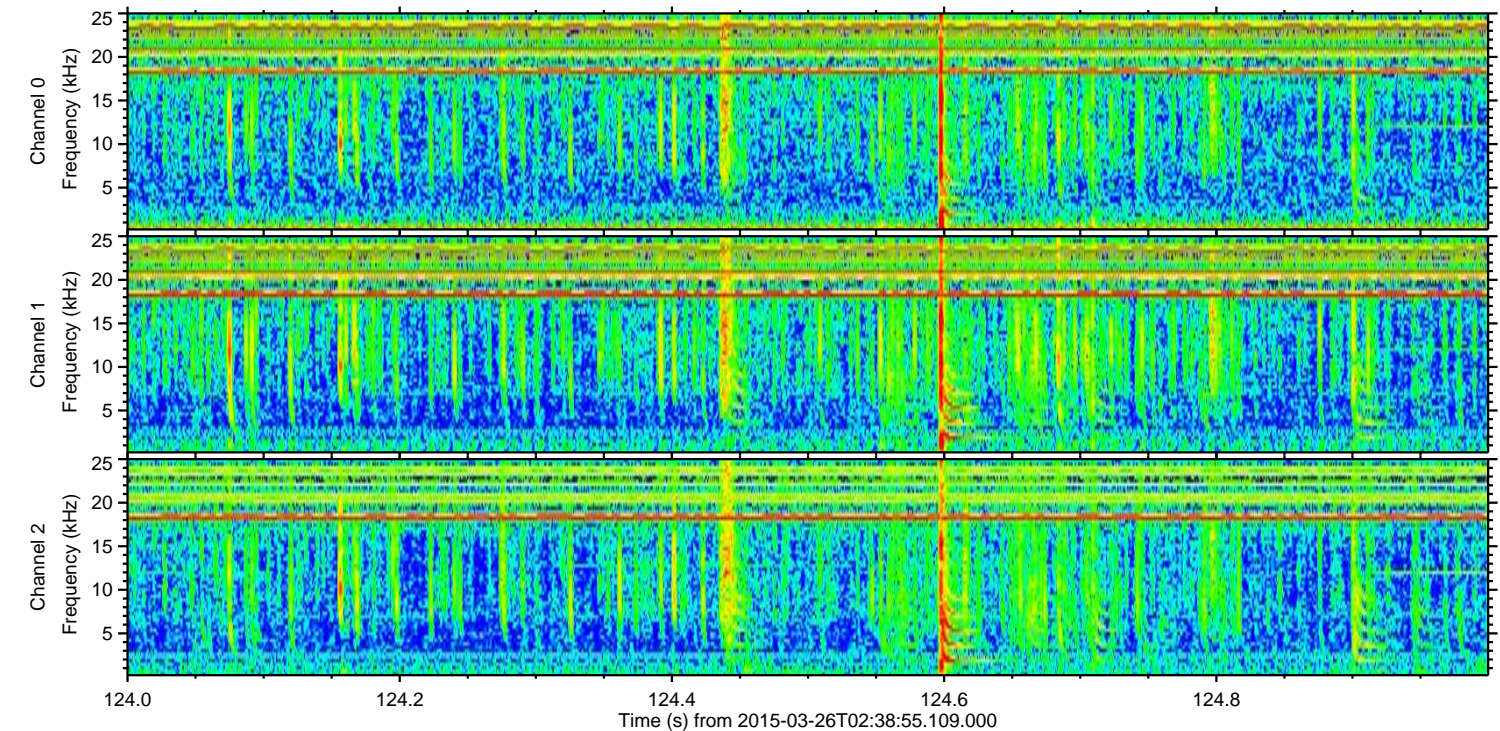
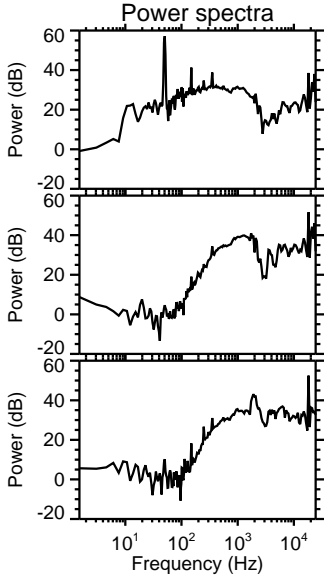
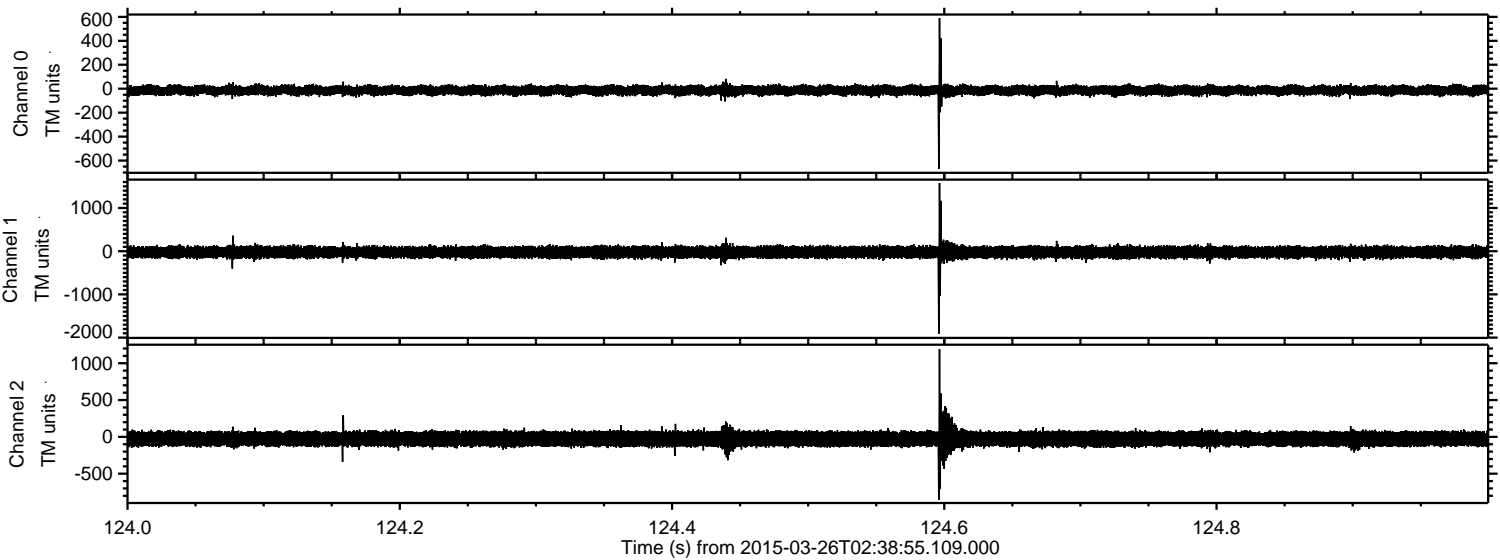


Processed Thu Mar 26 03:47:50 2015 by ELM ver.2012-10-06 from 001__elm20150326_023854__dat00.bin



ELMAVAN 3D WAVEFORMS (Measured data sampled at 50 kHz) 49785 packets of 144 samples from 2015-03-26T02:38:55.109.000. Part 125/144

Processed Thu Mar 26 03:47:51 2015 by ELM ver.2012-10-06 from 001__elm20150326_023854__dat00.bin



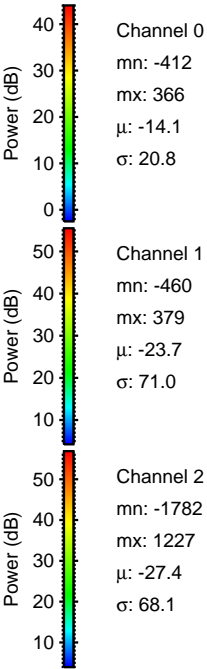
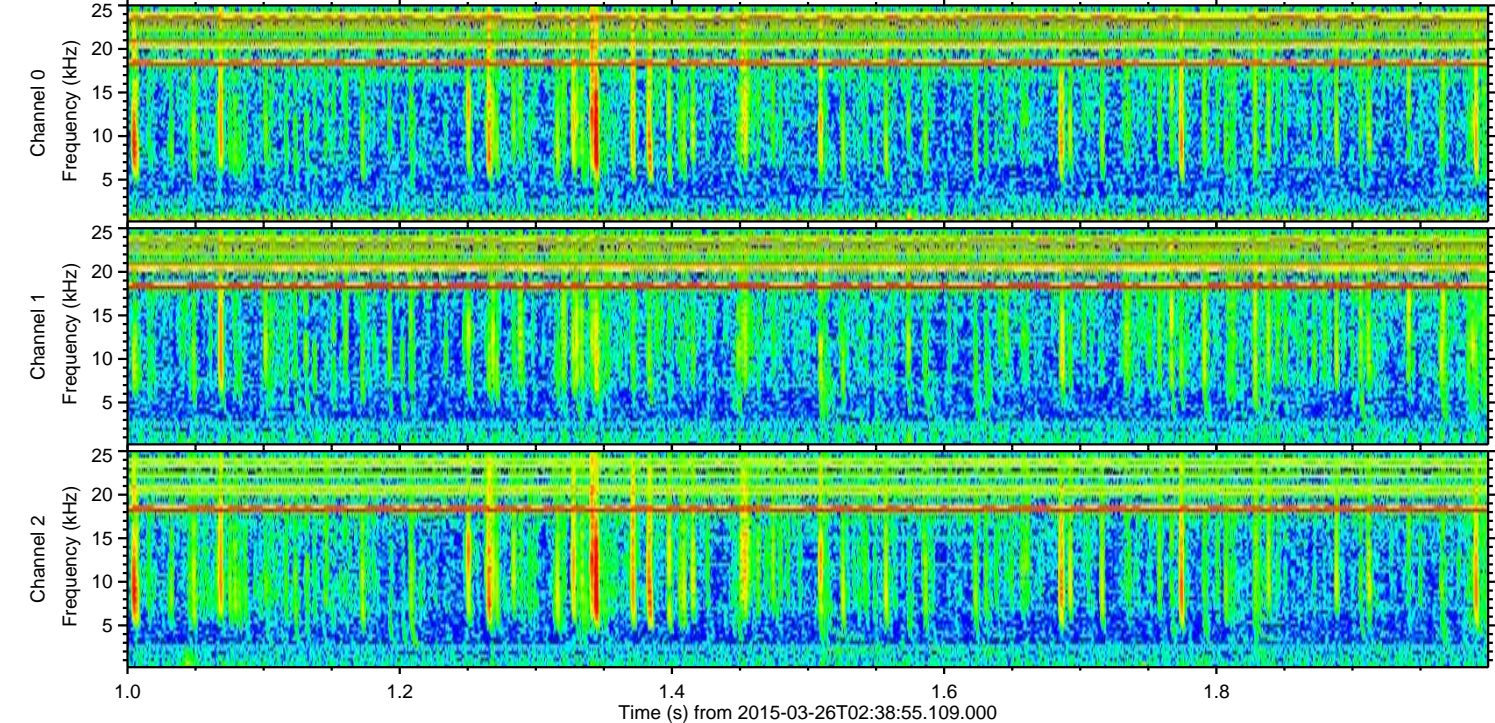
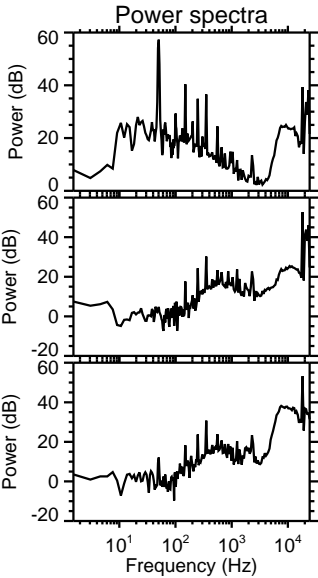
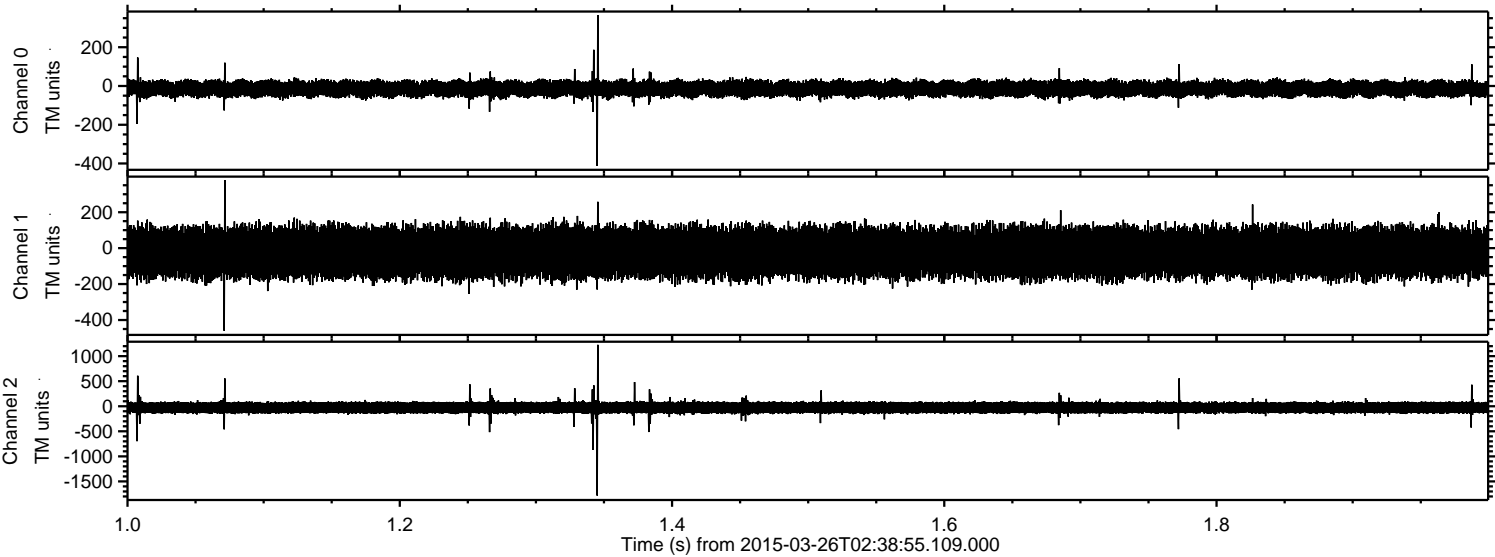
Channel 0
mn: -669
mx: 590
 μ : -14.1
 σ : 20.6

Channel 1
mn: -1911
mx: 1577
 μ : -23.7
 σ : 69.7

Channel 2
mn: -855
mx: 1192
 μ : -27.5
 σ : 61.7

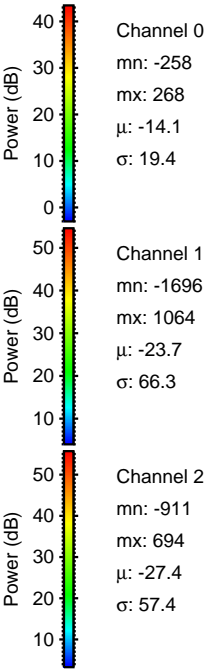
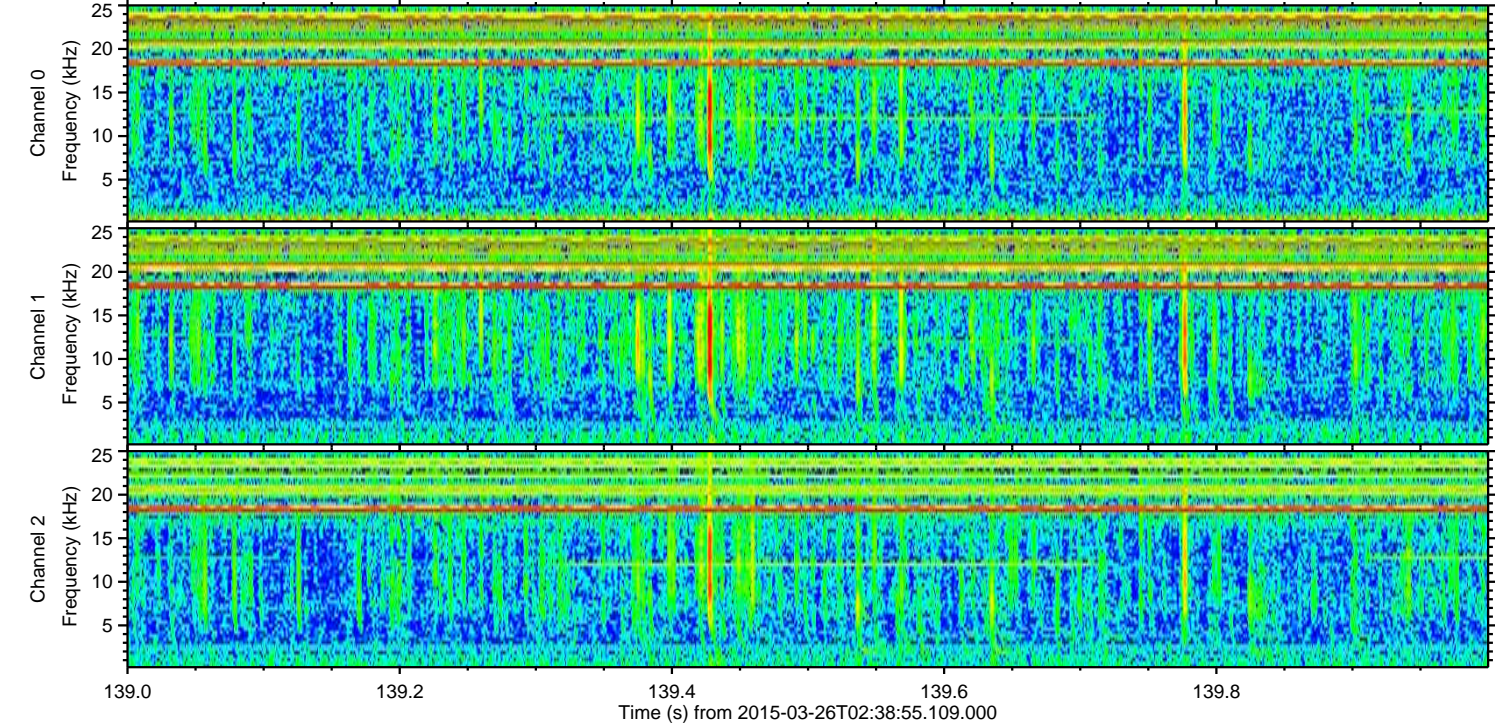
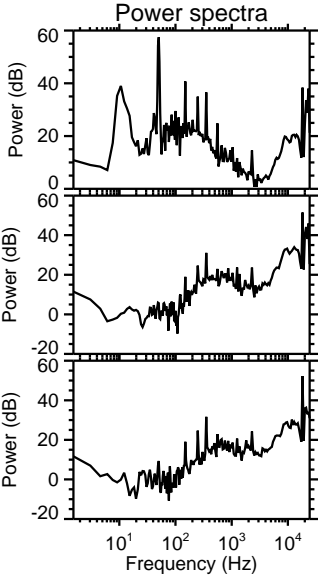
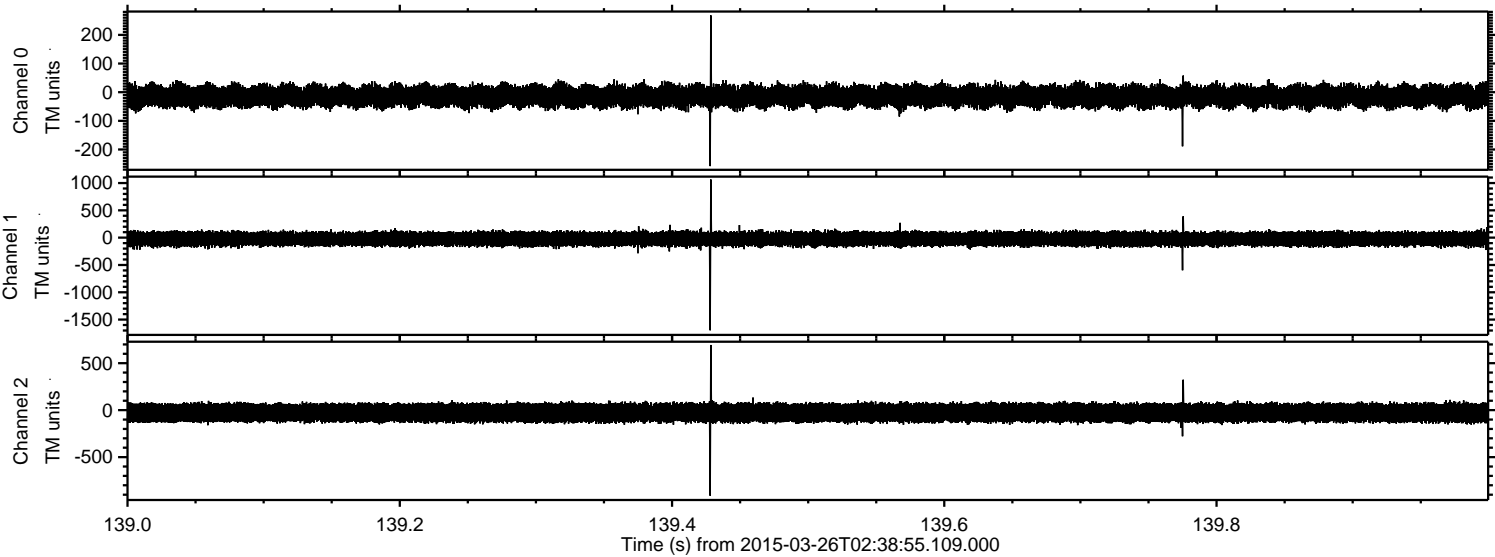
ELMAVAN 3D WAVEFORMS (Measured data sampled at 50 kHz) 49785 packets of 144 samples from 2015-03-26T02:38:55.109.000. Part 2/144

Processed Thu Mar 26 03:47:52 2015 by ELM ver.2012-10-06 from 001__elm20150326_023854__dat00.bin



ELMAVAN 3D WAVEFORMS (Measured data sampled at 50 kHz) 49785 packets of 144 samples from 2015-03-26T02:38:55.109.000. Part 140/144

Processed Thu Mar 26 03:47:53 2015 by ELM ver.2012-10-06 from 001__elm20150326_023854__dat00.bin



ELMAVAN 3D WAVEFORMS (Measured data sampled at 50 kHz) 49785 packets of 144 samples from 2015-03-26T02:38:55.109.000. Part 123/144

