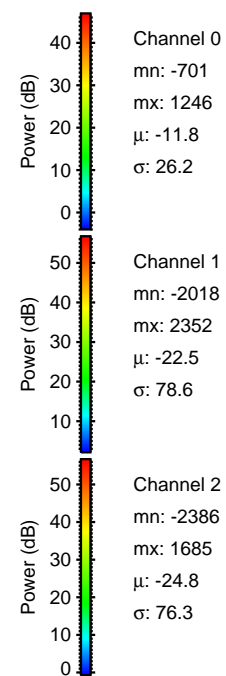
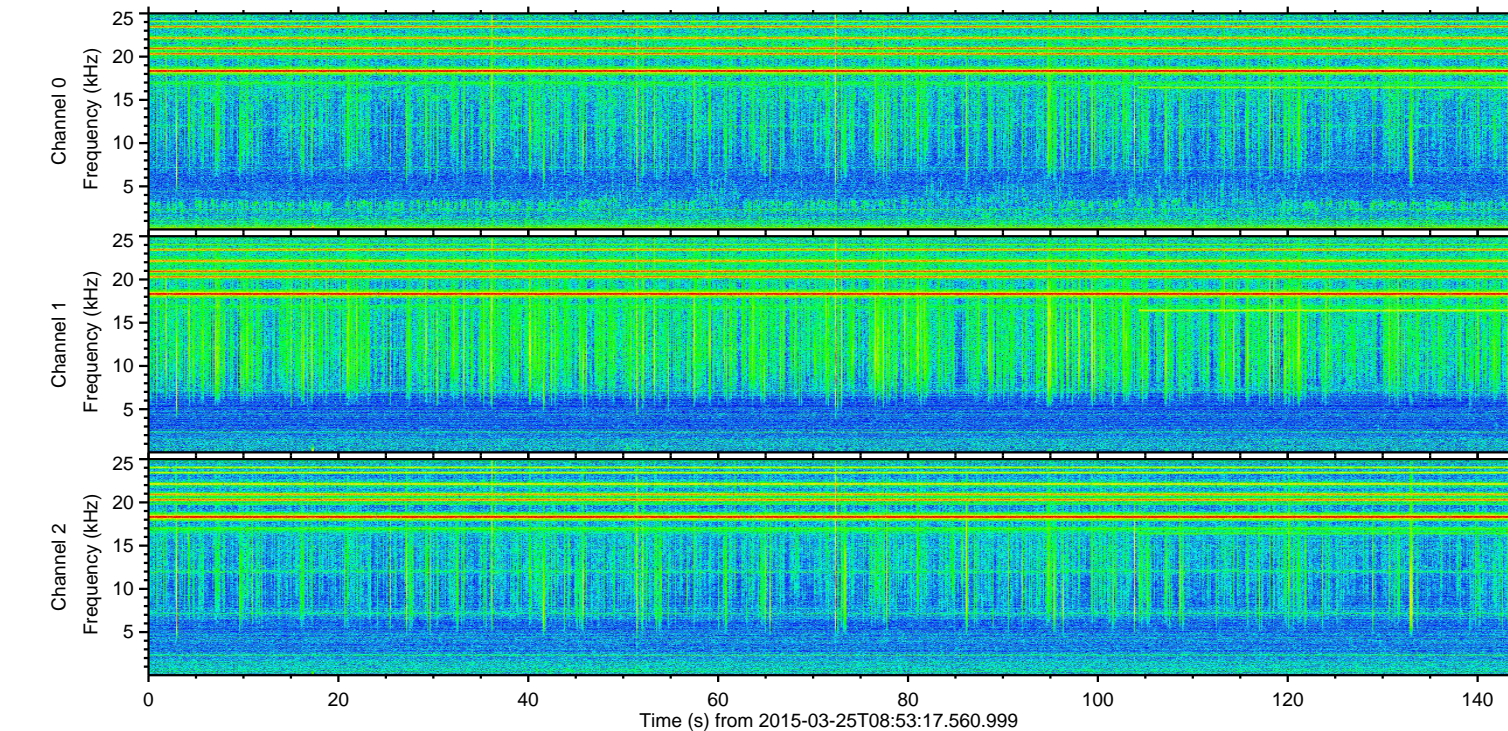
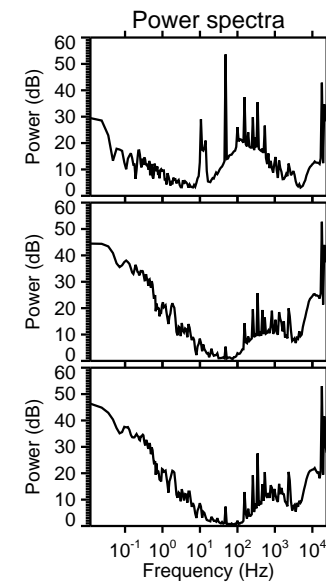
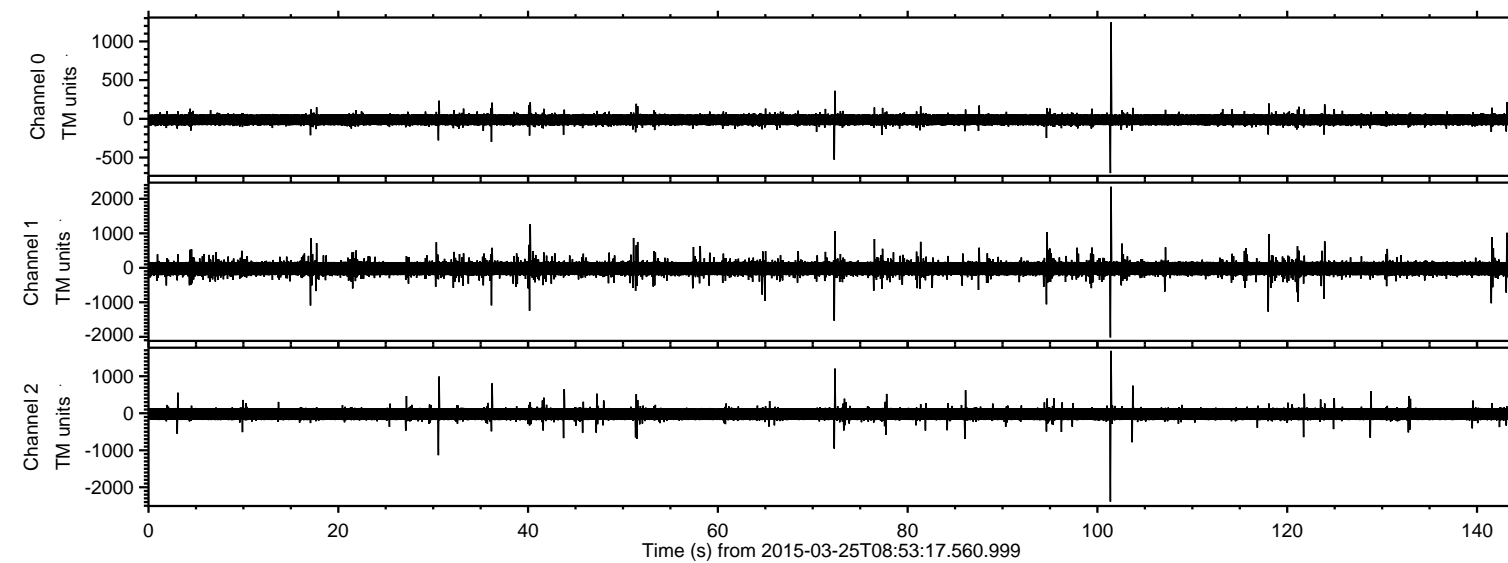


# ELMAVAN 3D WAVEFORMS (Measured data sampled at 50 kHz) 49787 packets of 144 samples from 2015-03-25T08:53:17.560.999.

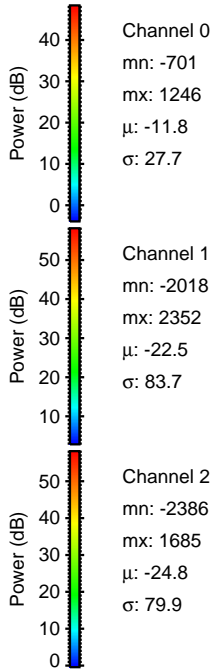
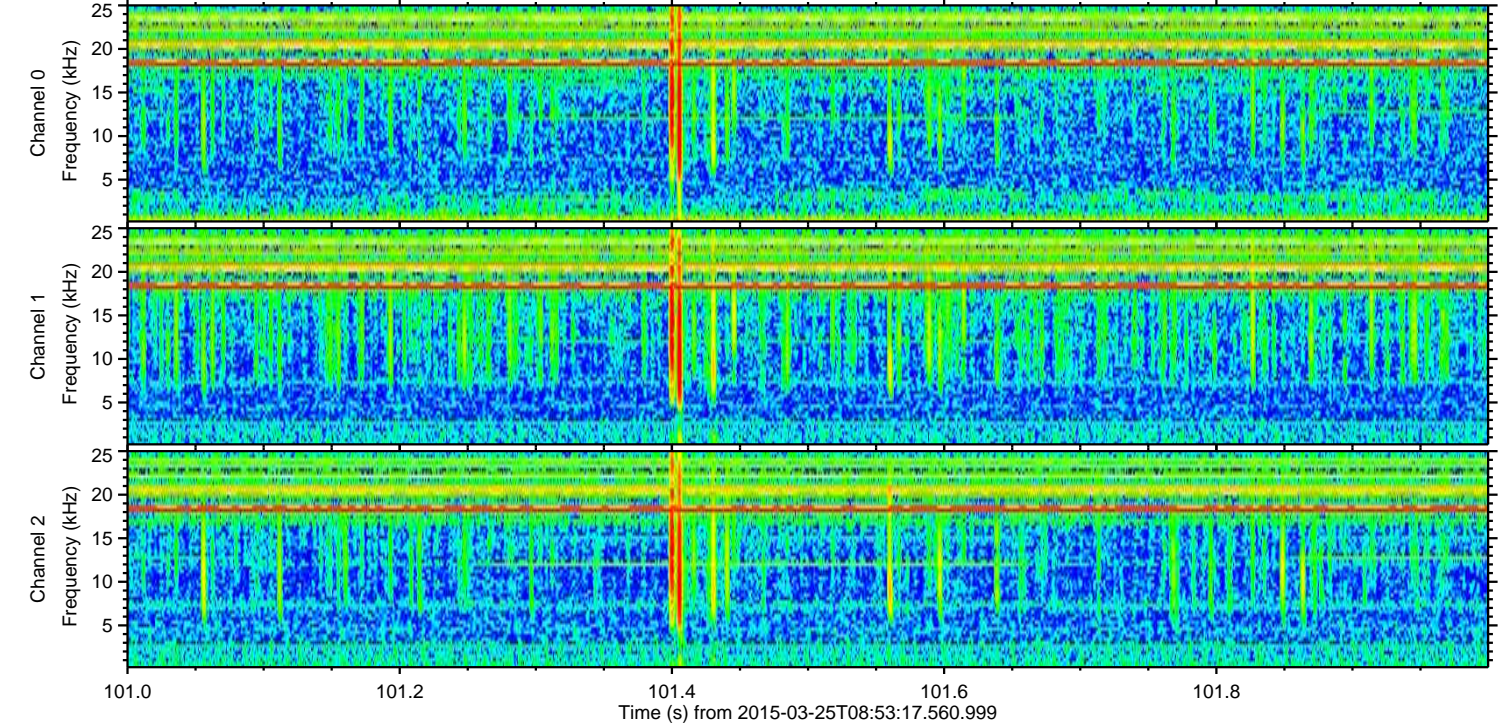
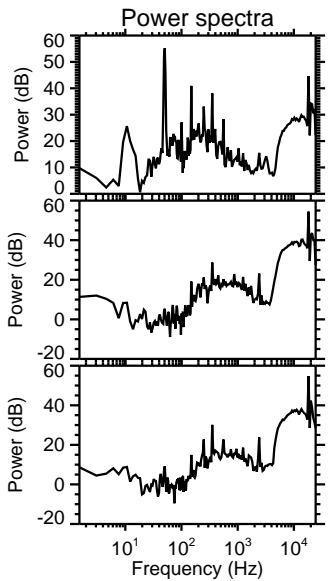
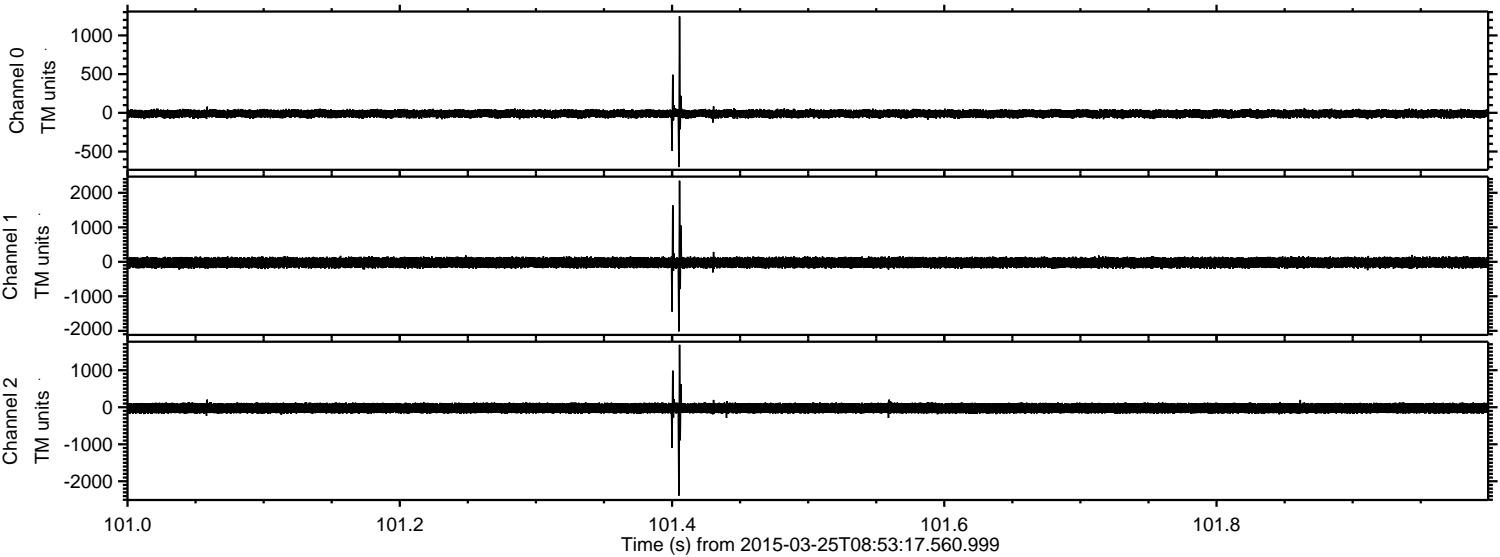
Processed Wed Mar 25 10:01:32 2015 by ELM ver.2012-10-06 from 001\_\_elm20150325\_085316\_\_dat00.bin





ELMAVAN 3D WAVEFORMS (Measured data sampled at 50 kHz) 49787 packets of 144 samples from 2015-03-25T08:53:17.560.999. Part 102/144

Processed Wed Mar 25 10:01:44 2015 by ELM ver.2012-10-06 from 001\_\_elm20150325\_085316\_\_dat00.bin



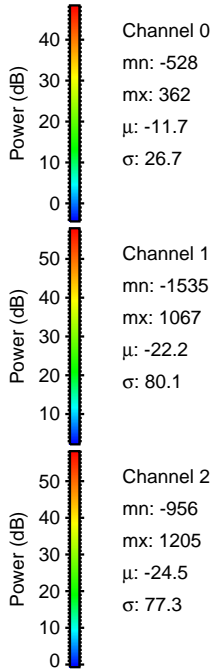
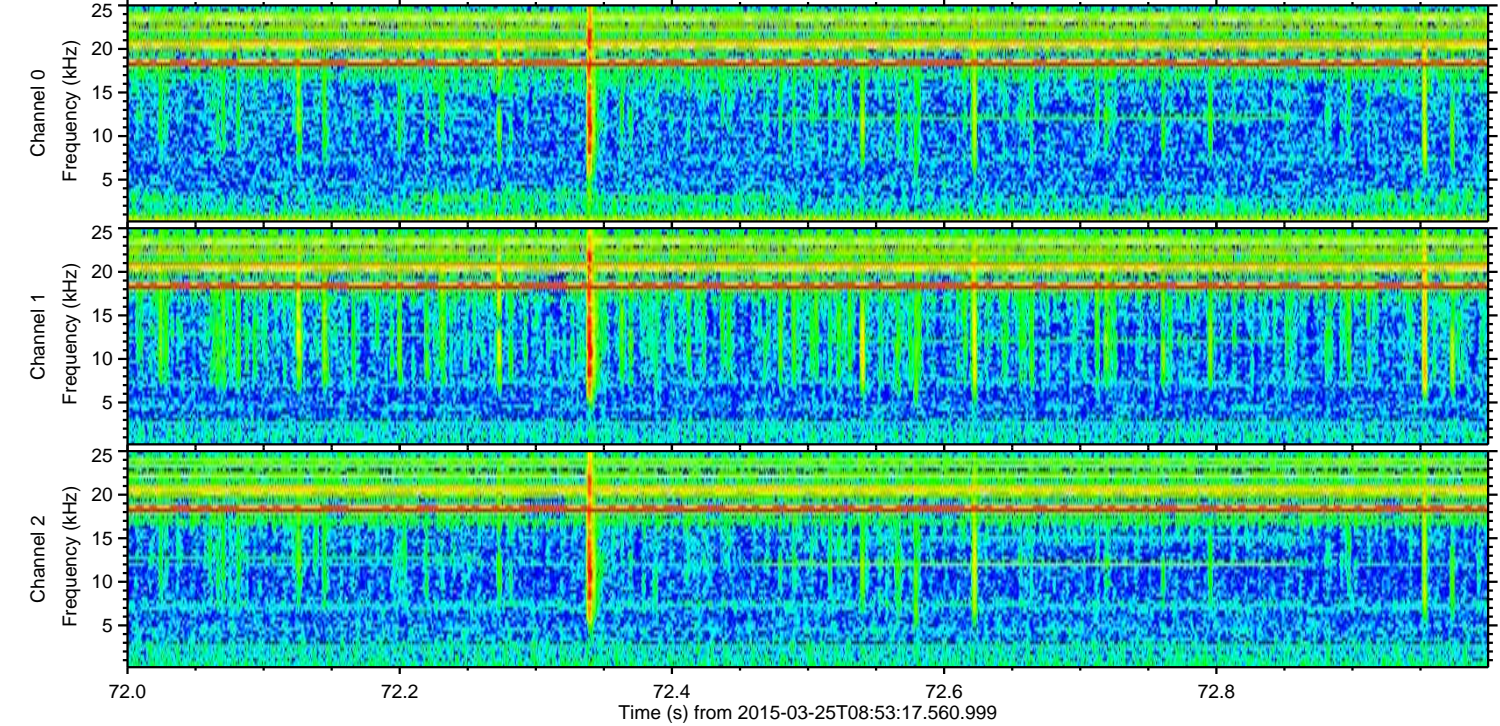
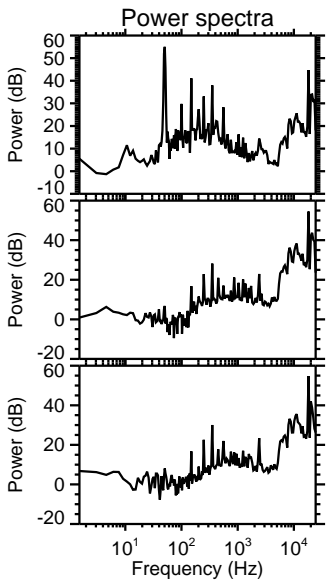
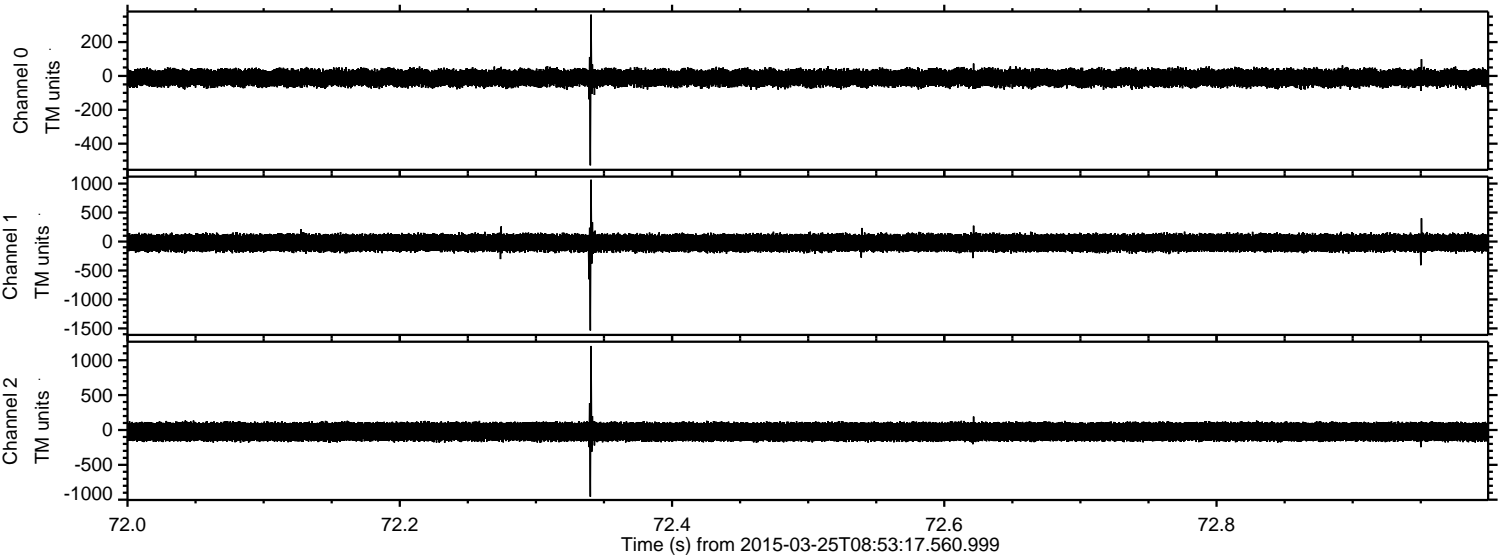
Channel 0  
mn: -701  
mx: 1246  
 $\mu$ : -11.8  
 $\sigma$ : 27.7

Channel 1  
mn: -2018  
mx: 2352  
 $\mu$ : -22.5  
 $\sigma$ : 83.7

Channel 2  
mn: -2386  
mx: 1685  
 $\mu$ : -24.8  
 $\sigma$ : 79.9



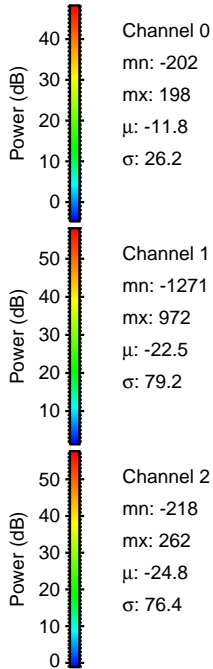
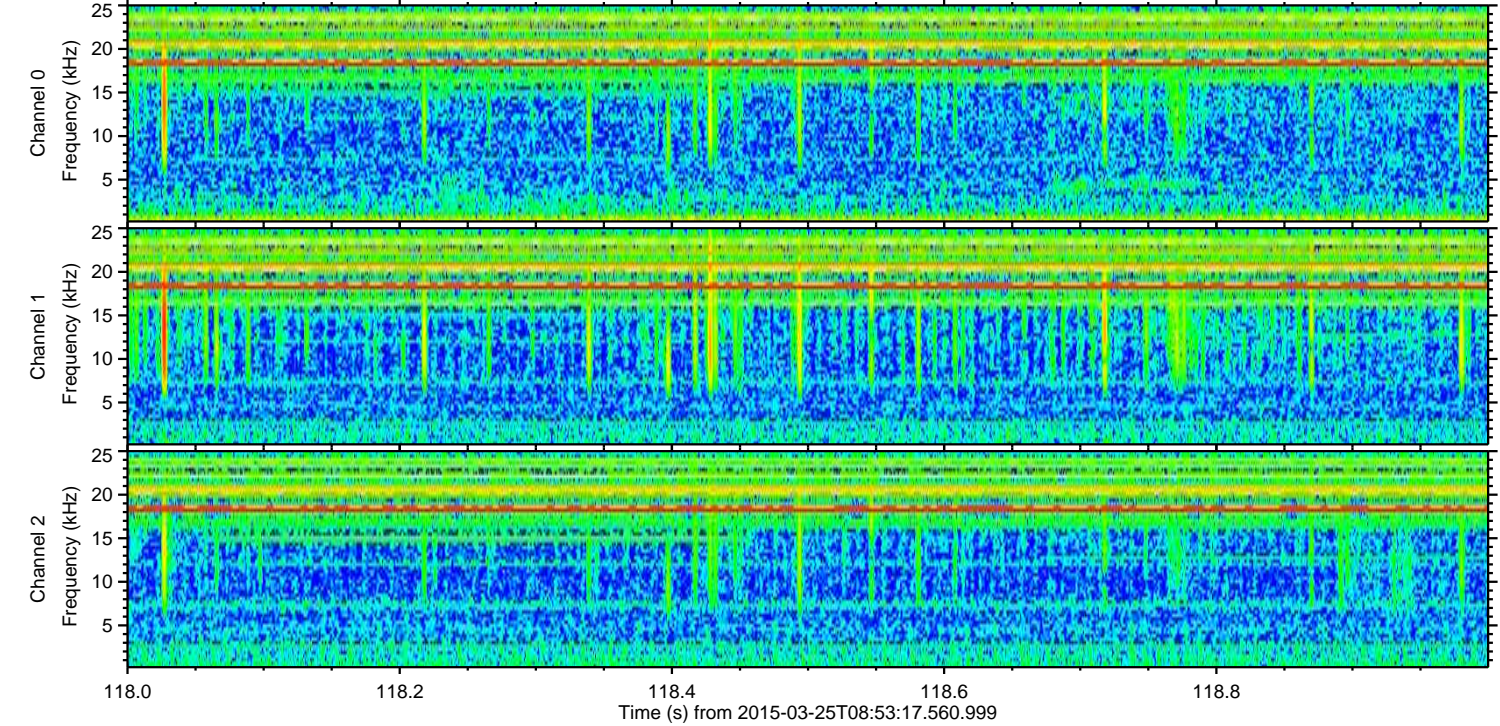
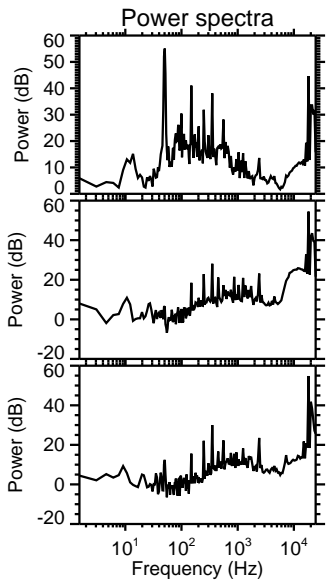
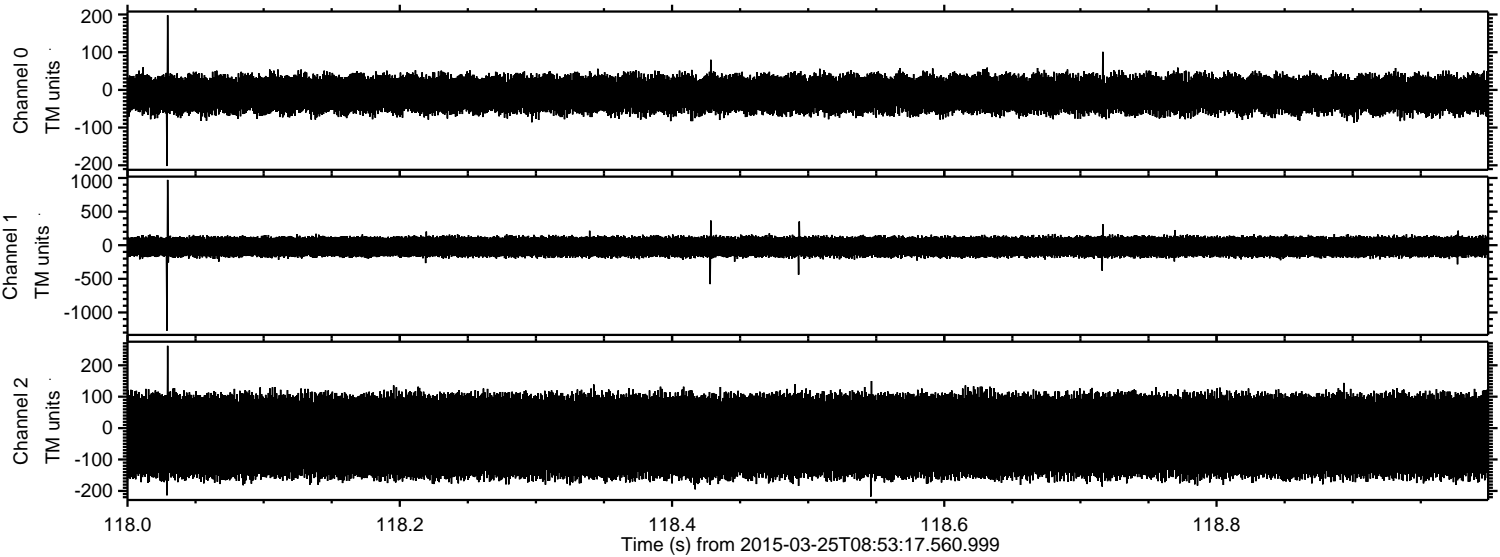
Processed Wed Mar 25 10:01:45 2015 by ELM ver.2012-10-06 from 001\_\_elm20150325\_085316\_\_dat00.bin





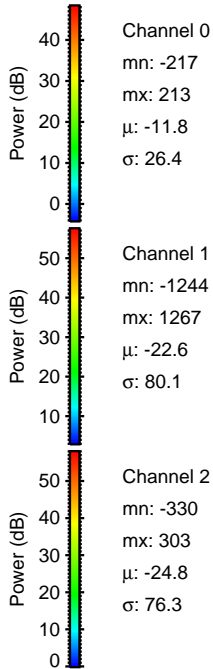
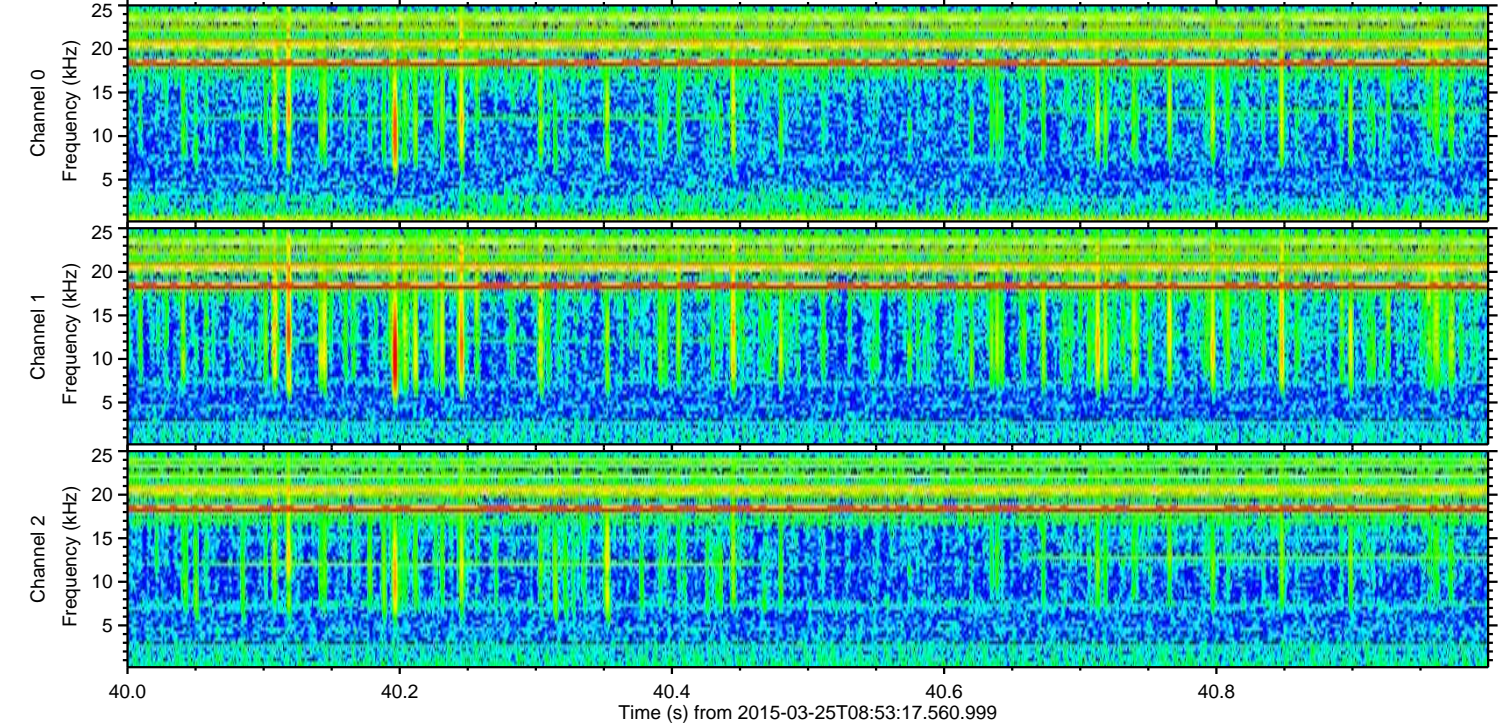
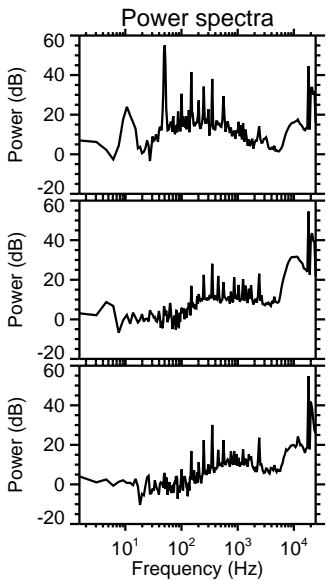
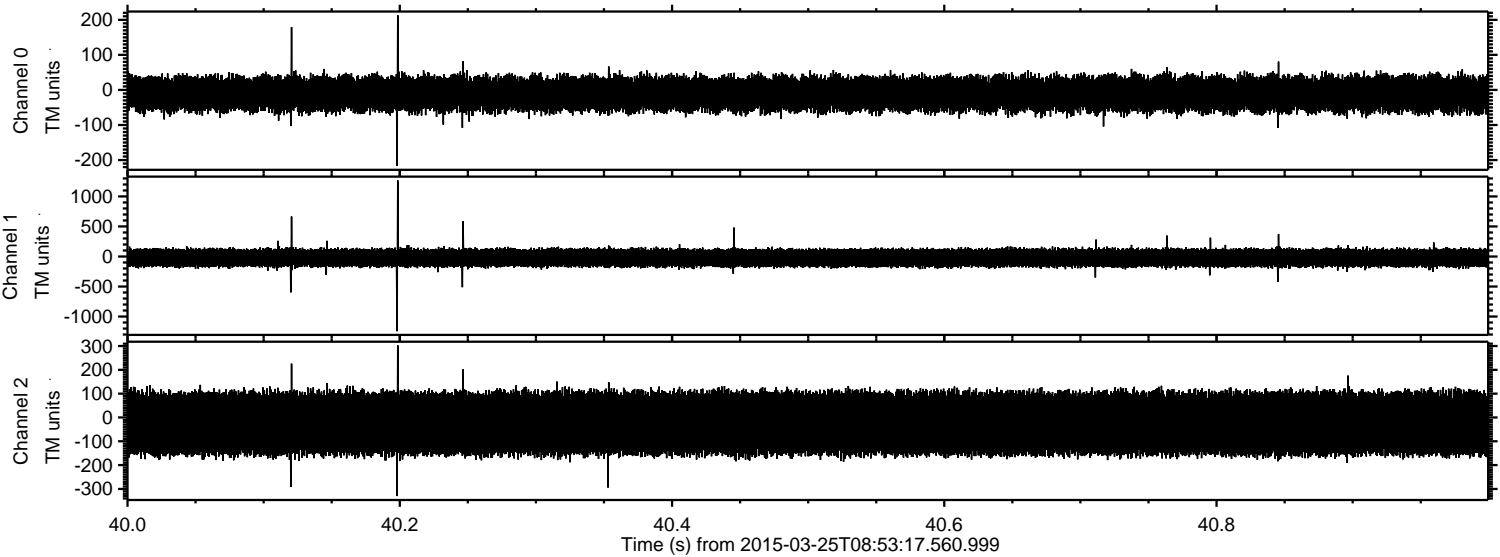
ELMAVAN 3D WAVEFORMS (Measured data sampled at 50 kHz) 49787 packets of 144 samples from 2015-03-25T08:53:17.560.999. Part 119/144

Processed Wed Mar 25 10:01:46 2015 by ELM ver.2012-10-06 from 001\_\_elm20150325\_085316\_\_dat00.bin





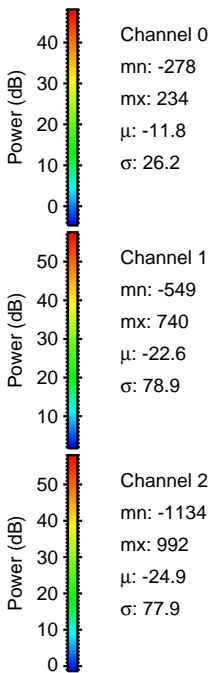
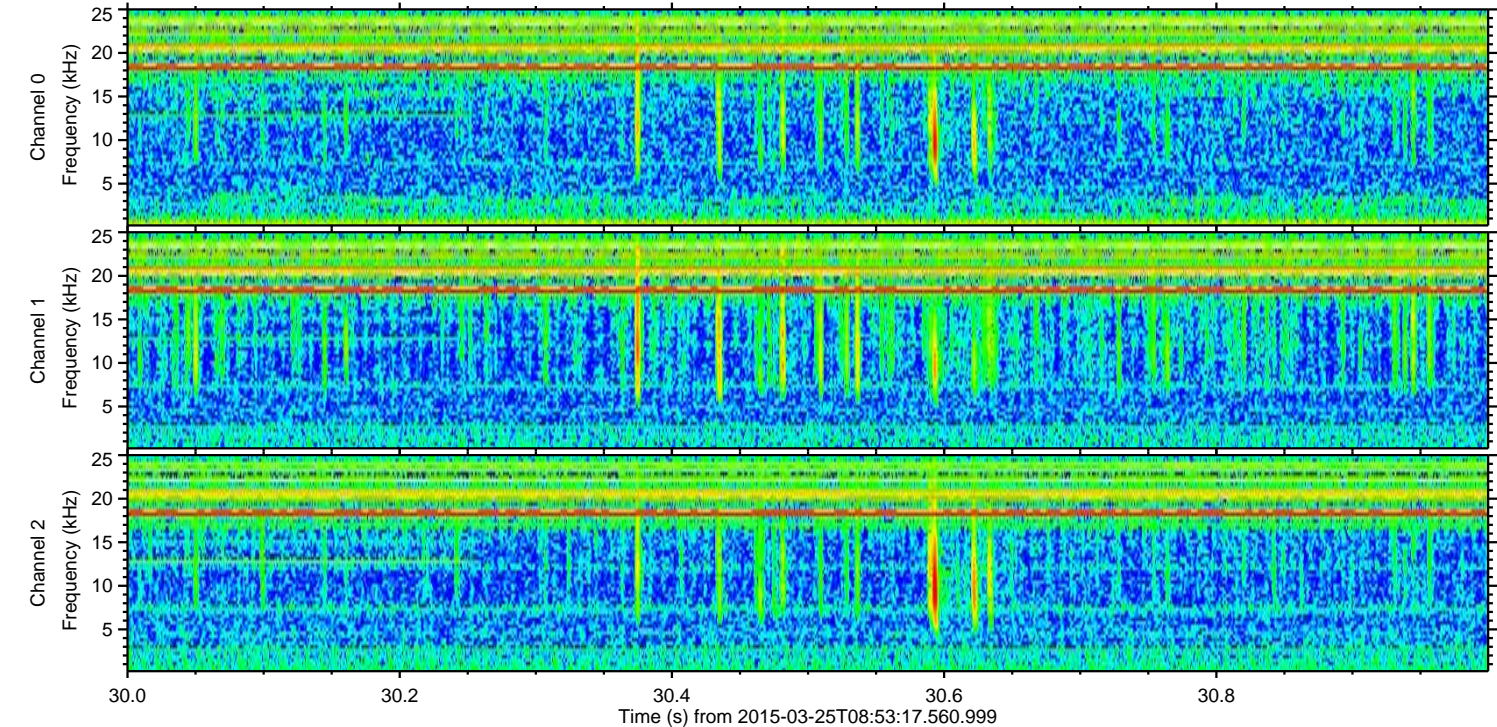
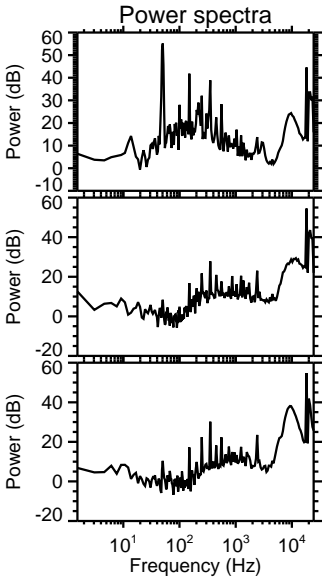
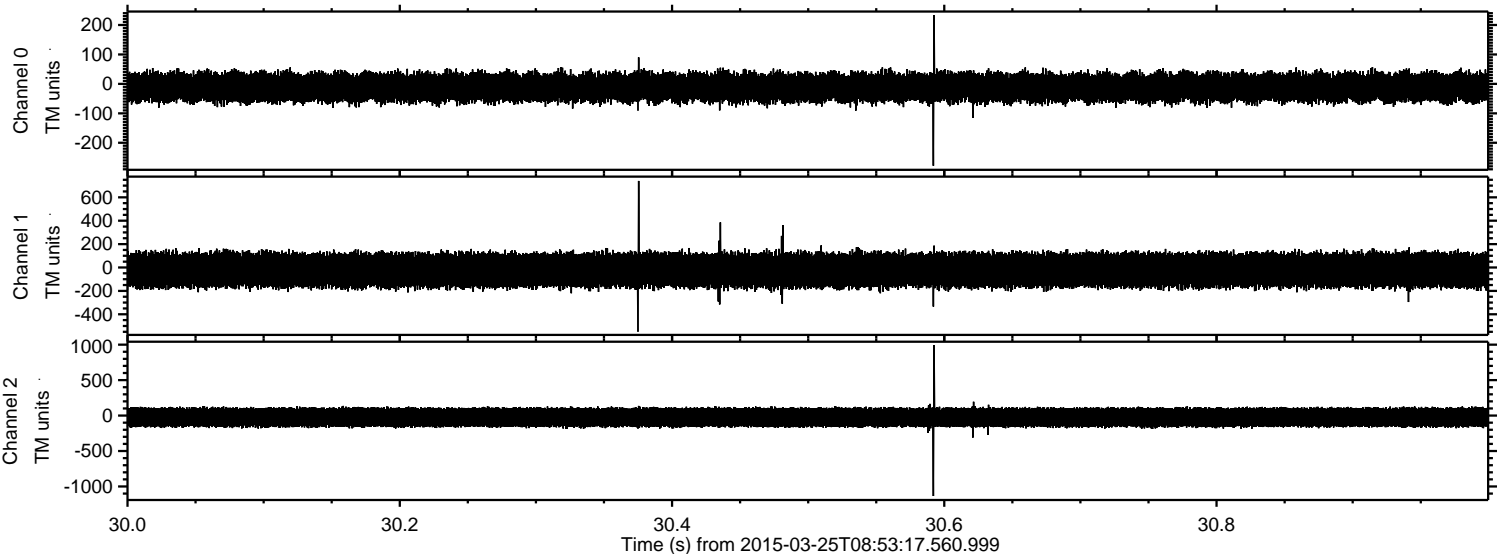
Processed Wed Mar 25 10:01:47 2015 by ELM ver.2012-10-06 from 001\_\_elm20150325\_085316\_\_dat00.bin





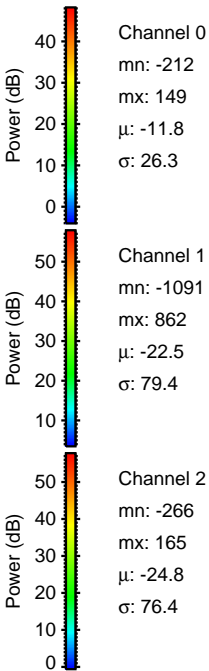
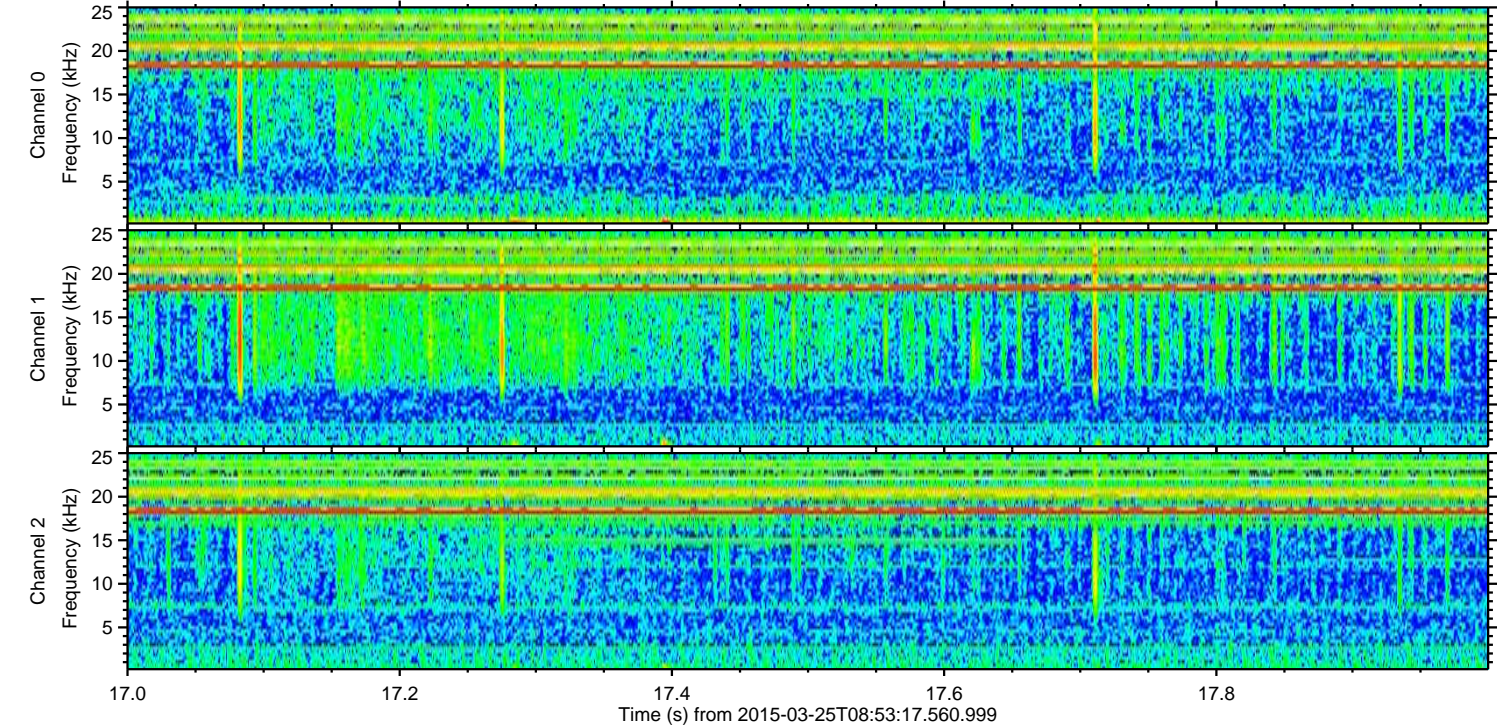
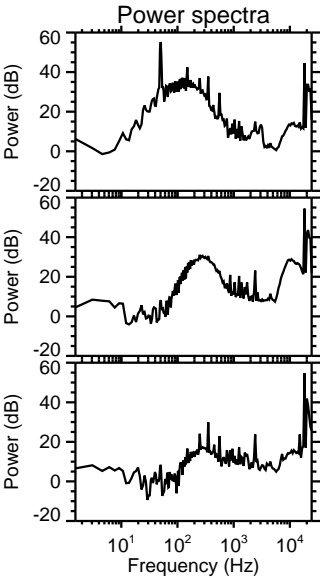
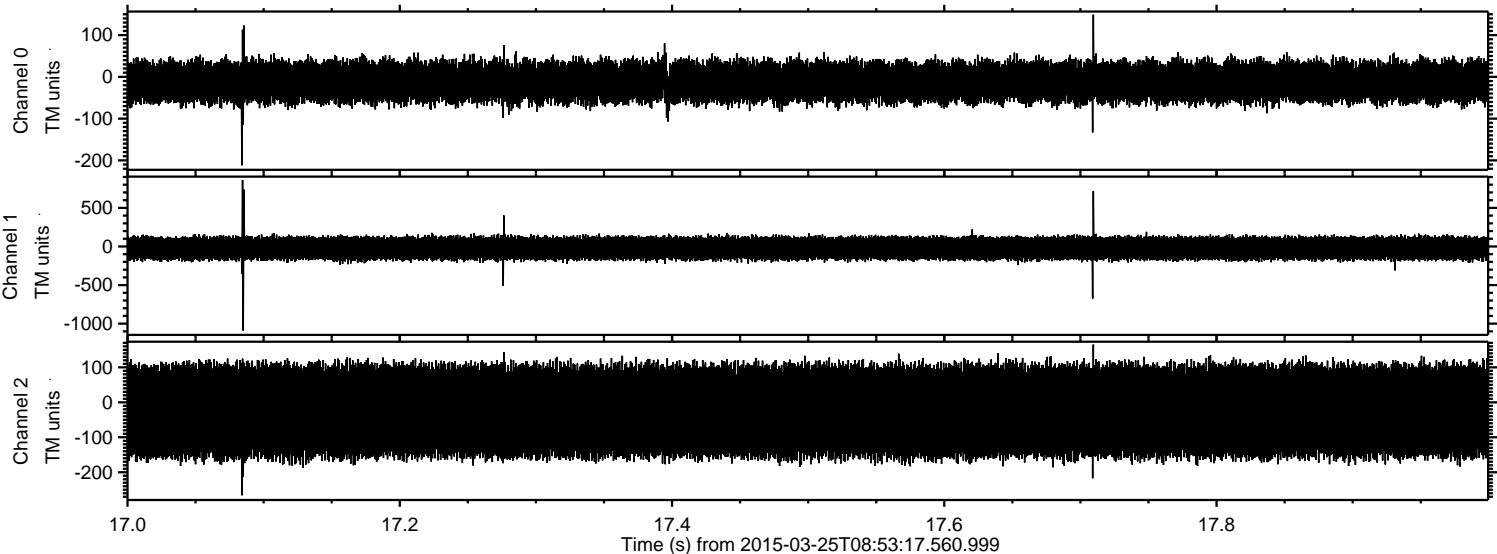
ELMAVAN 3D WAVEFORMS (Measured data sampled at 50 kHz) 49787 packets of 144 samples from 2015-03-25T08:53:17.560.999. Part 31/144

Processed Wed Mar 25 10:01:48 2015 by ELM ver.2012-10-06 from 001\_\_elm20150325\_085316\_\_dat00.bin



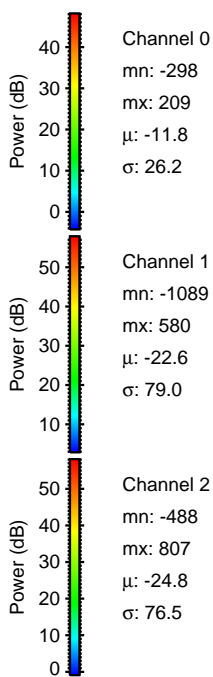
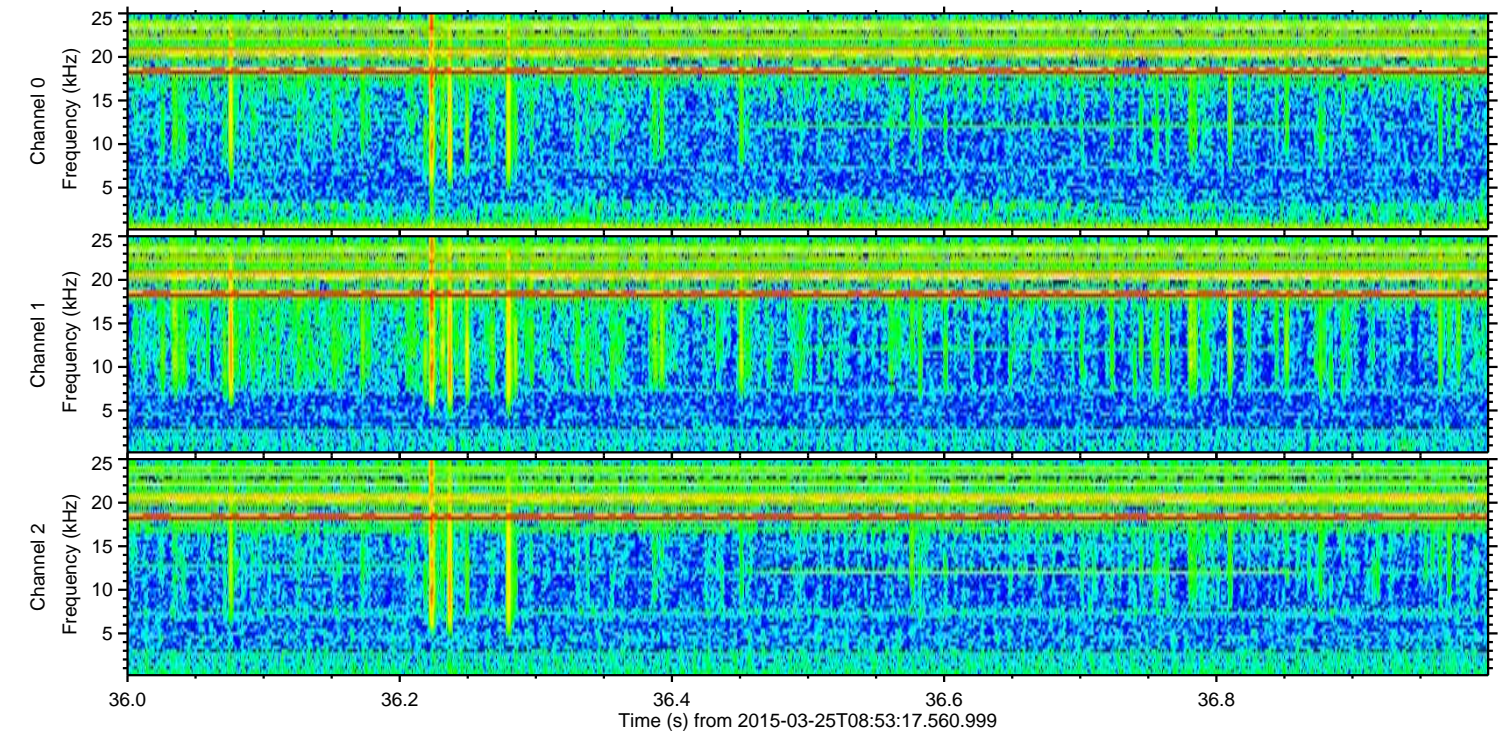
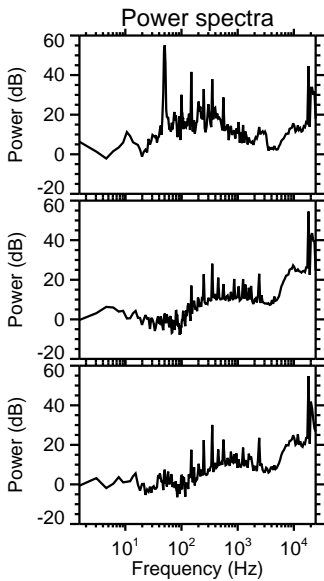
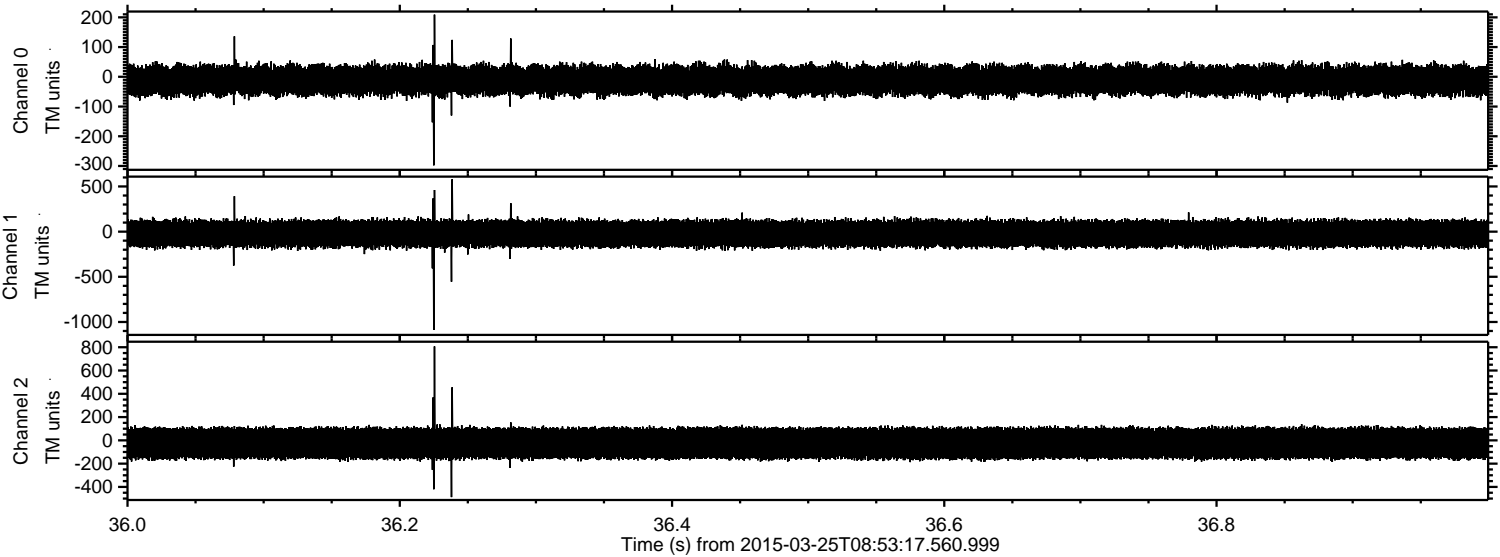


Processed Wed Mar 25 10:01:48 2015 by ELM ver.2012-10-06 from 001\_\_elm20150325\_085316\_\_dat00.bin



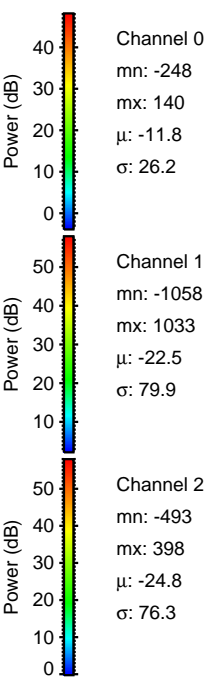
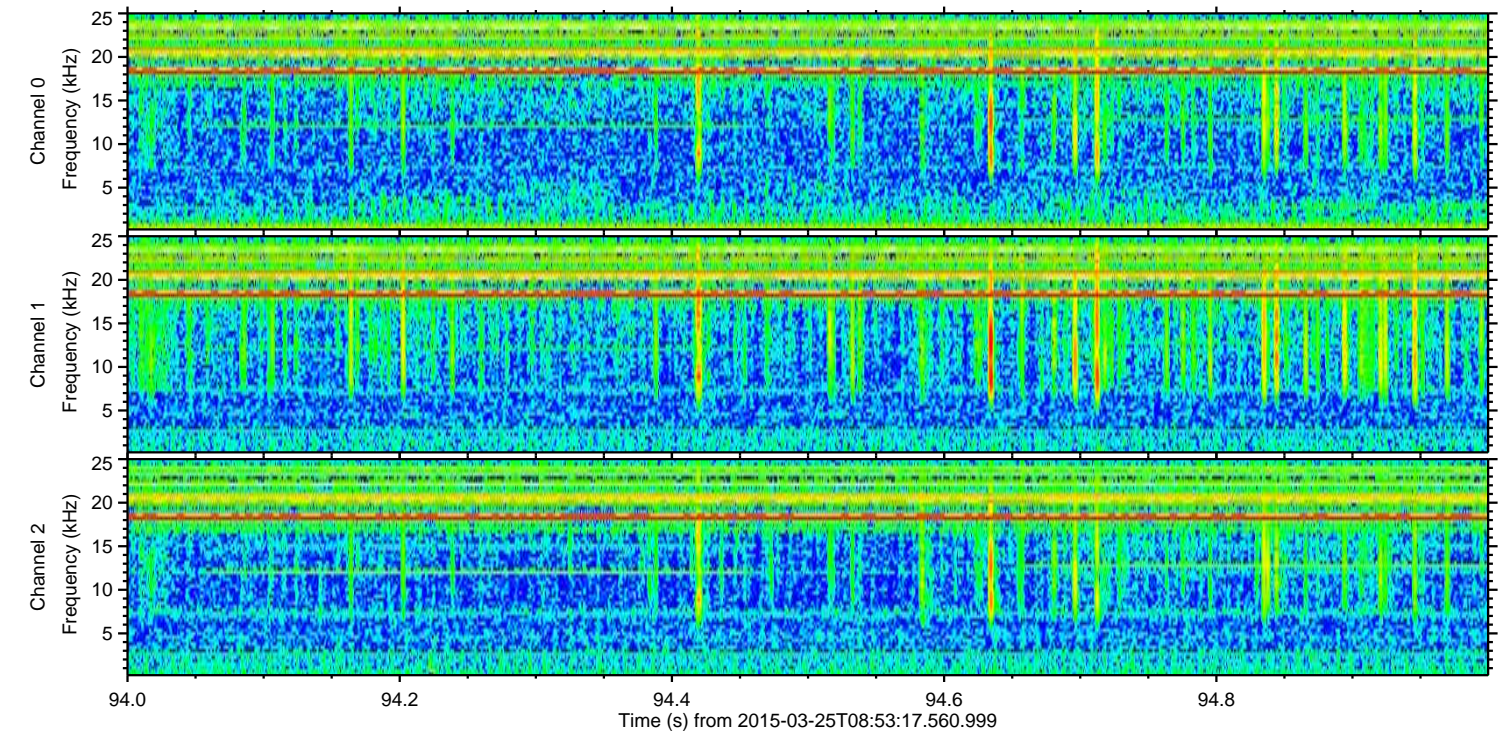
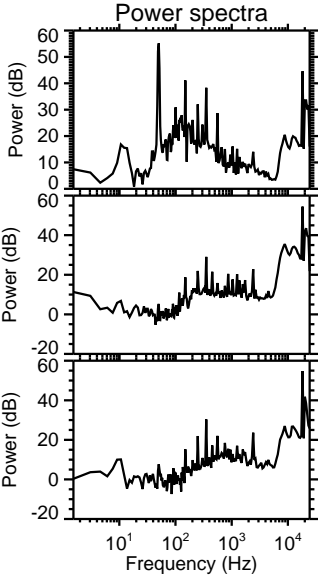
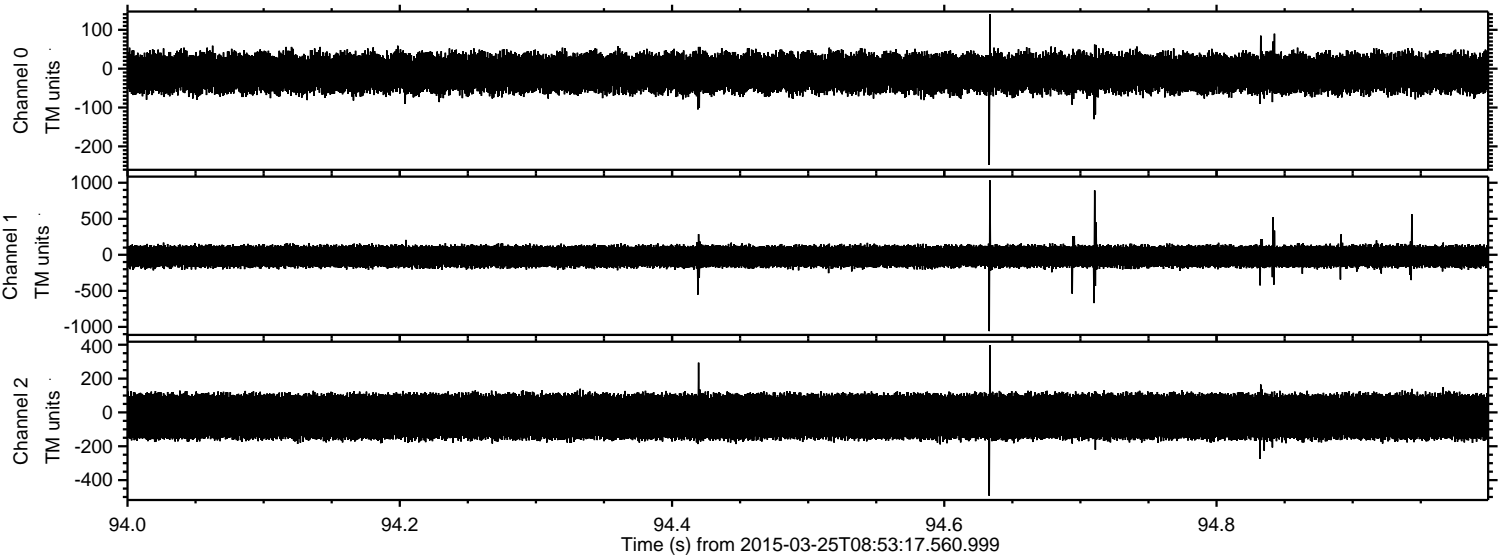


Processed Wed Mar 25 10:01:49 2015 by ELM ver.2012-10-06 from 001\_\_elm20150325\_085316\_\_dat00.bin



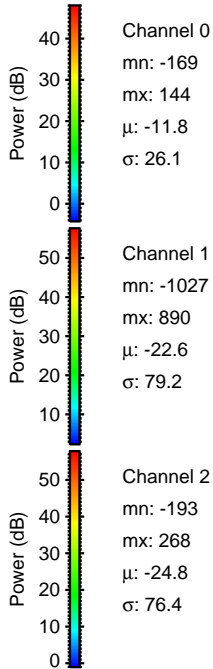
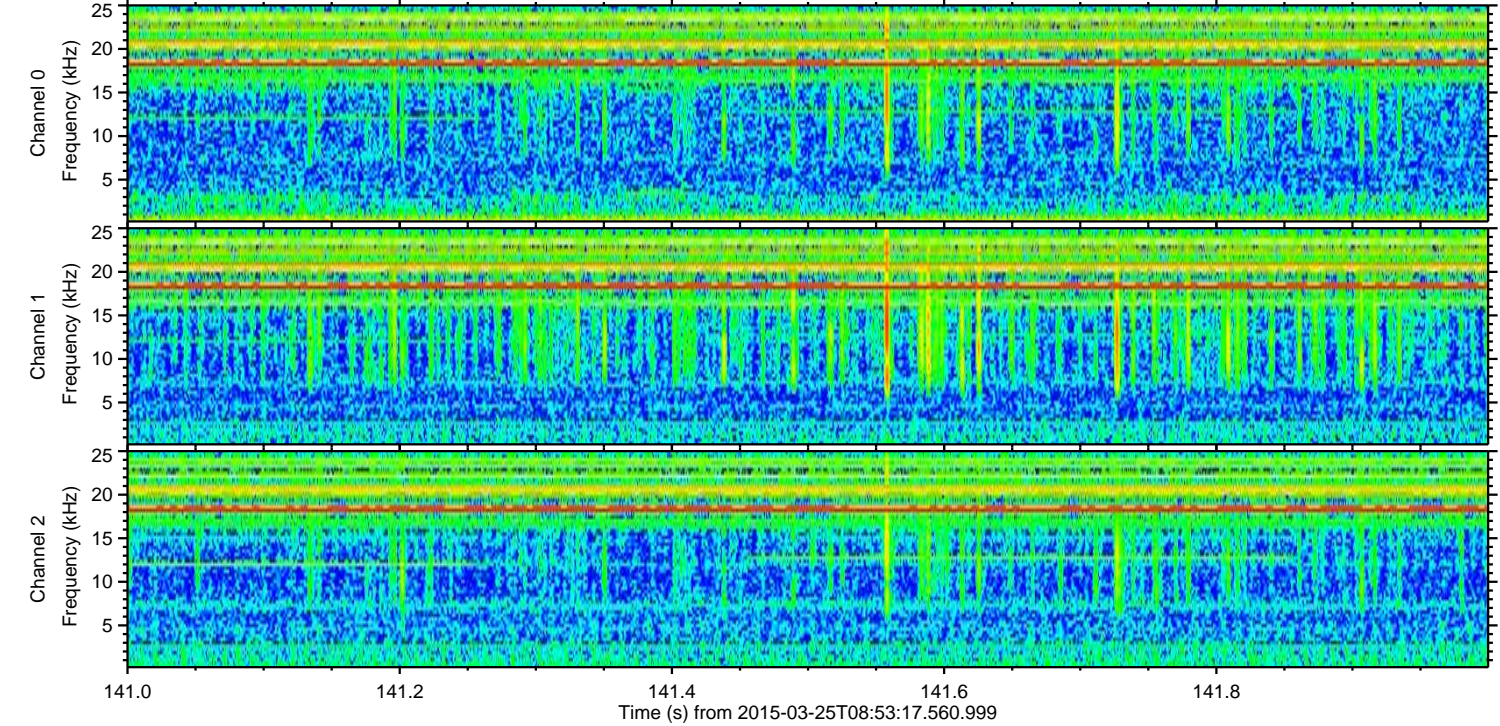
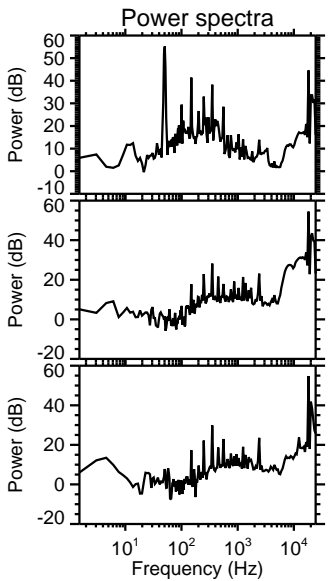
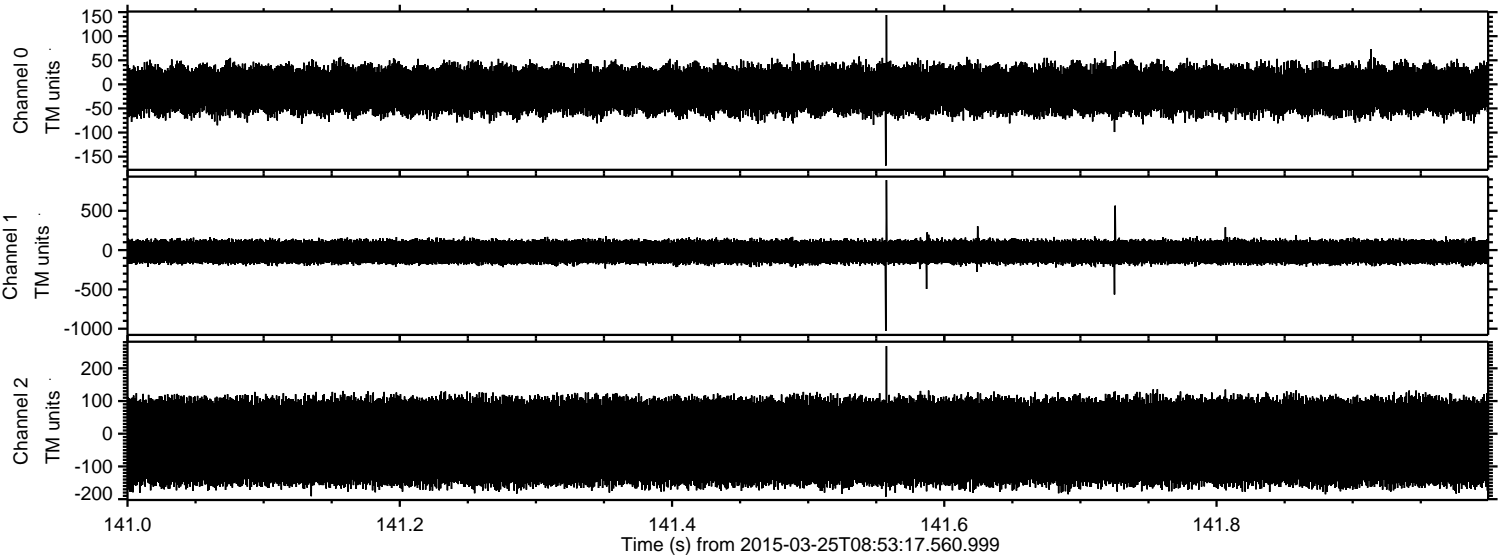


Processed Wed Mar 25 10:01:50 2015 by ELM ver.2012-10-06 from 001\_\_elm20150325\_085316\_\_dat00.bin





Processed Wed Mar 25 10:01:51 2015 by ELM ver.2012-10-06 from 001\_\_elm20150325\_085316\_\_dat00.bin



Channel 0  
mn: -169  
mx: 144  
 $\mu$ : -11.8  
 $\sigma$ : 26.1

Channel 1  
mn: -1027  
mx: 890  
 $\mu$ : -22.6  
 $\sigma$ : 79.2

Channel 2  
mn: -193  
mx: 268  
 $\mu$ : -24.8  
 $\sigma$ : 76.4



Processed Wed Mar 25 10:01:52 2015 by ELM ver.2012-10-06 from 001\_\_elm20150325\_085316\_\_dat00.bin

