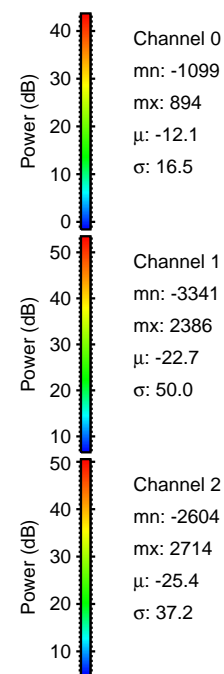
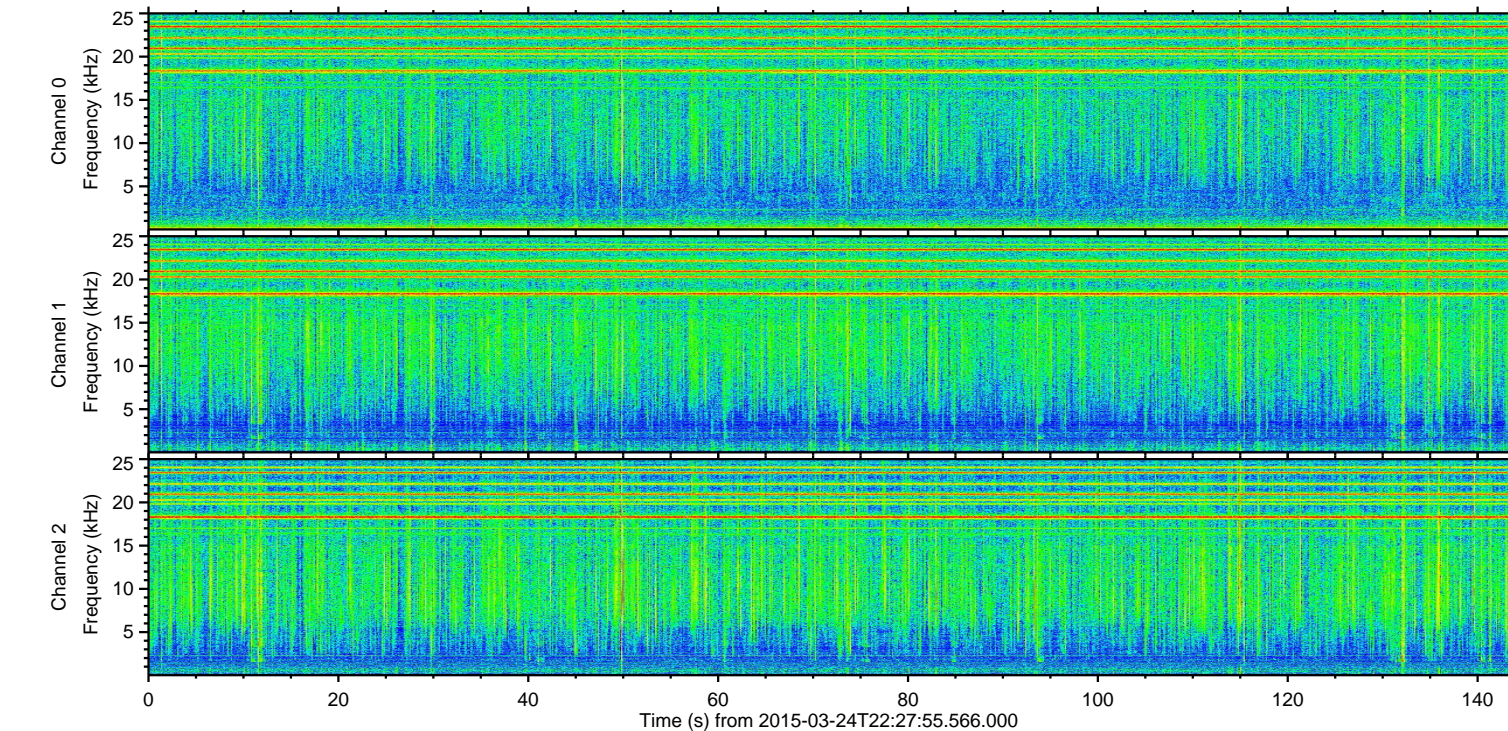
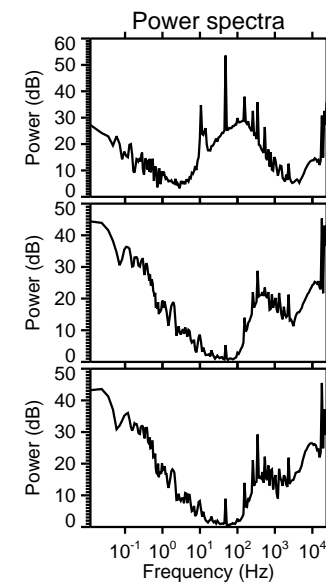
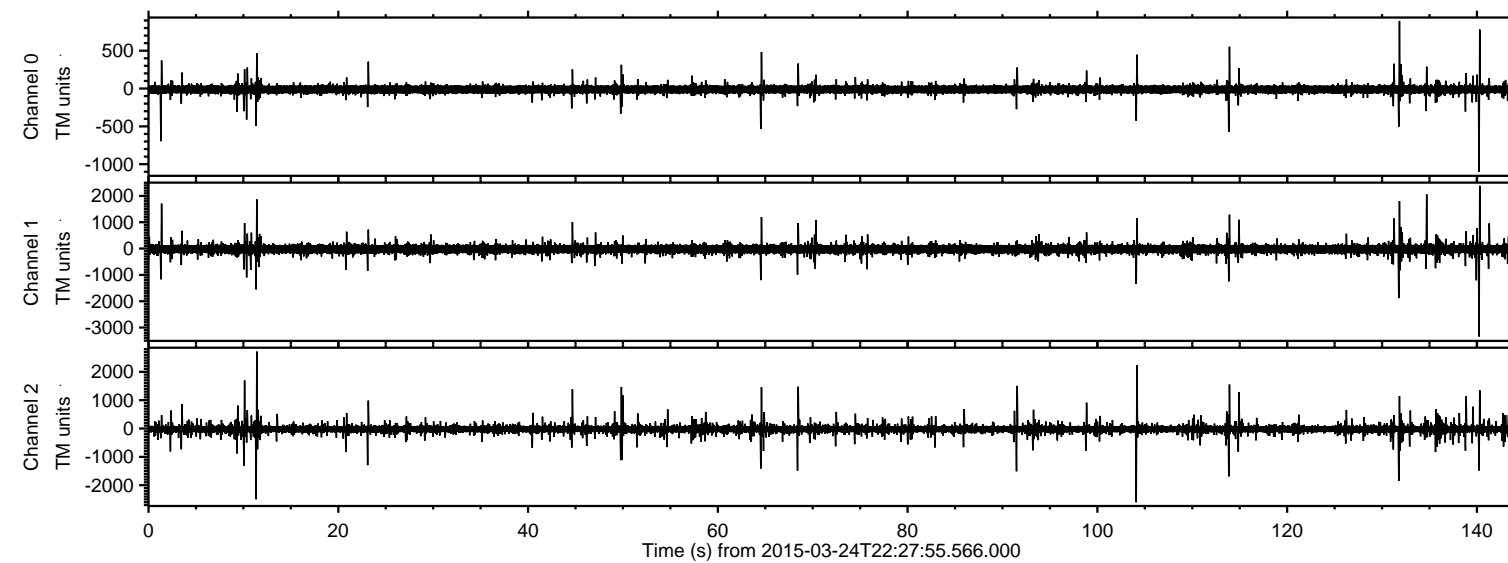


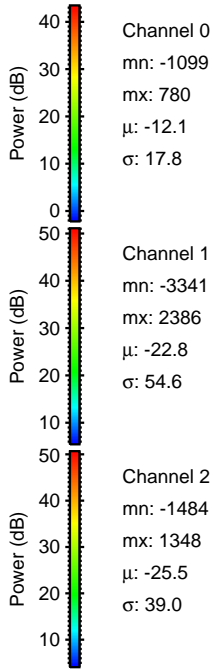
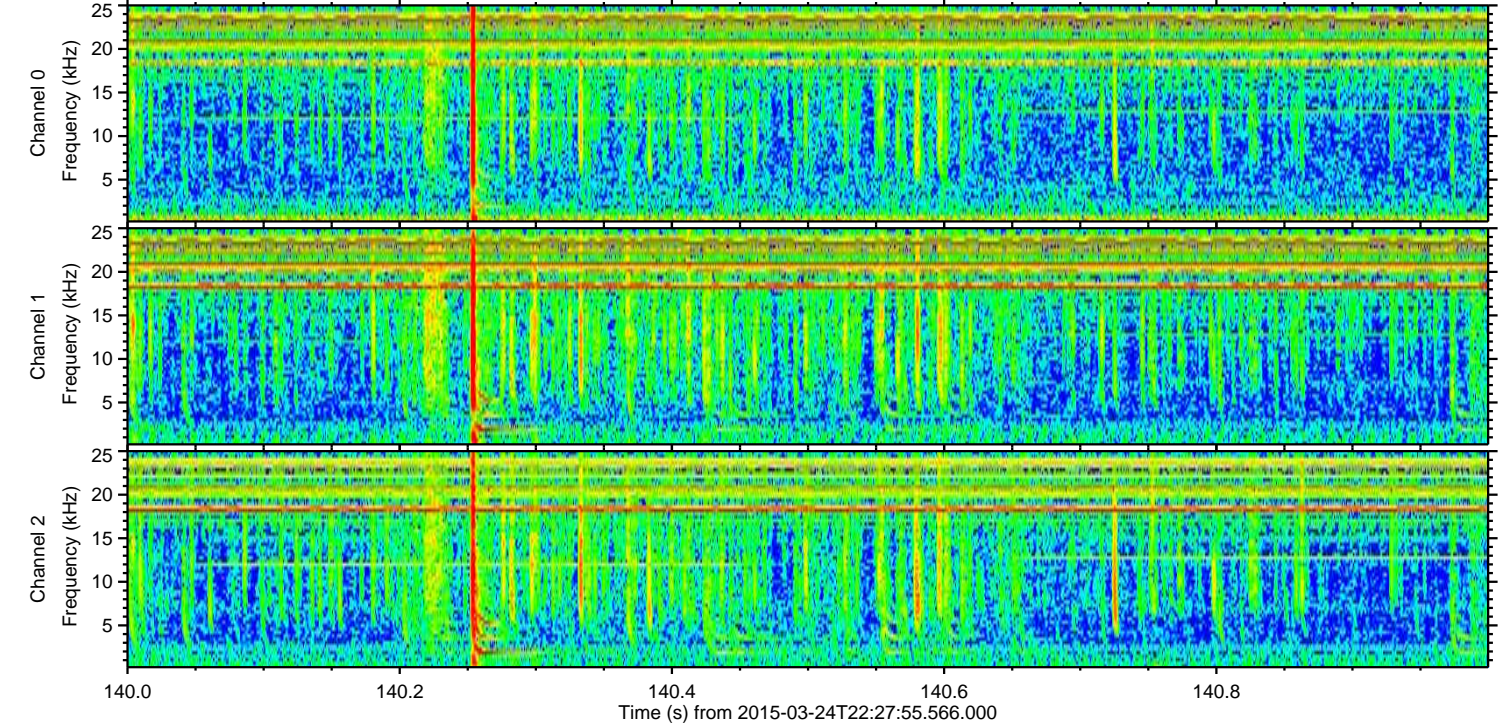
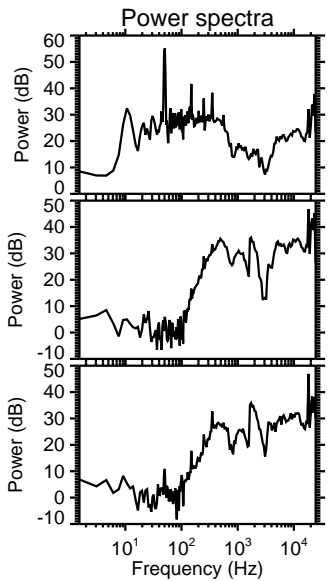
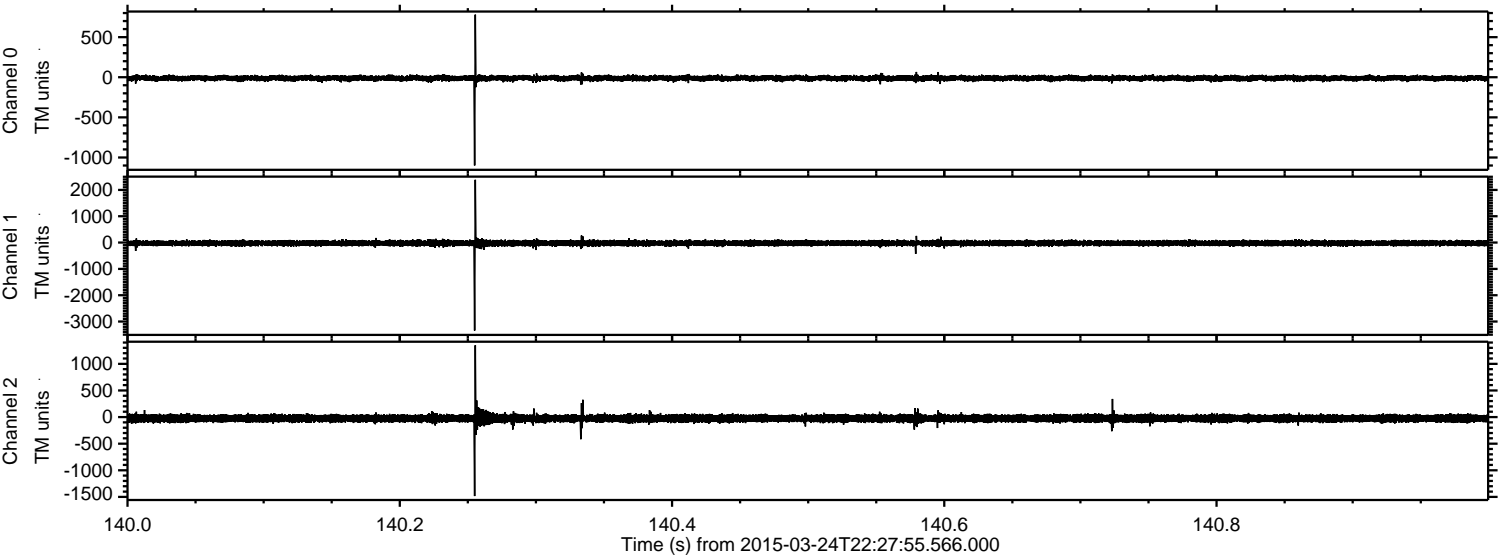
ELMAVAN 3D WAVEFORMS (Measured data sampled at 50 kHz) 49790 packets of 144 samples from 2015-03-24T22:27:55.566.000.

Processed Tue Mar 24 23:35:27 2015 by ELM ver.2012-10-06 from 001__elm20150324_222754__dat00.bin

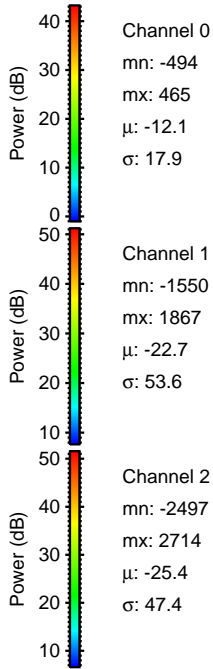
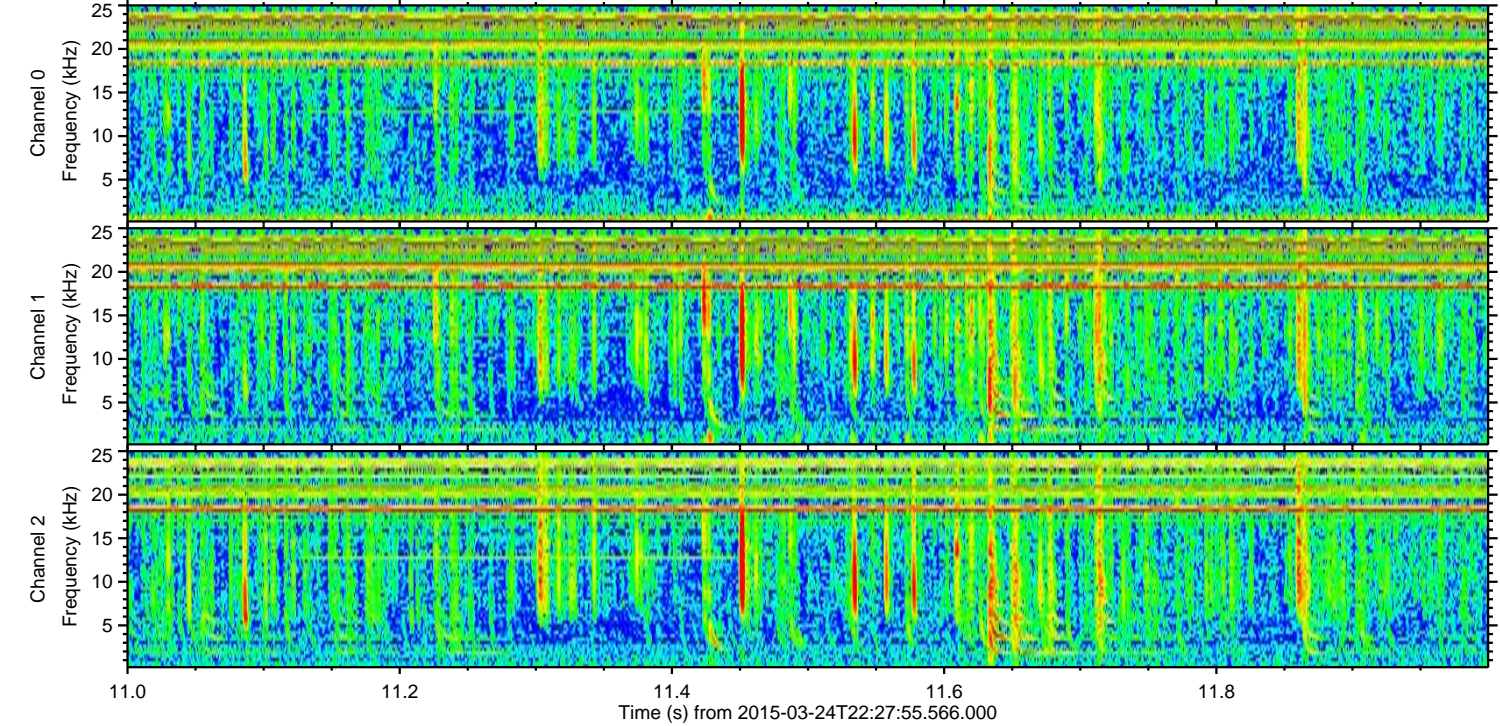
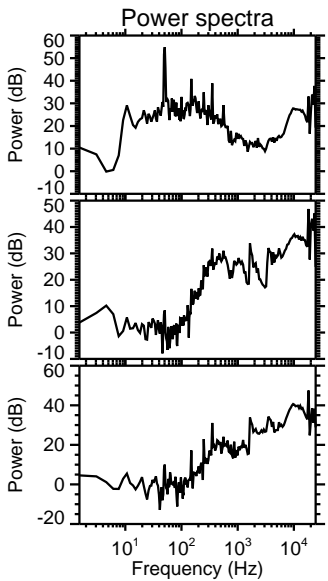
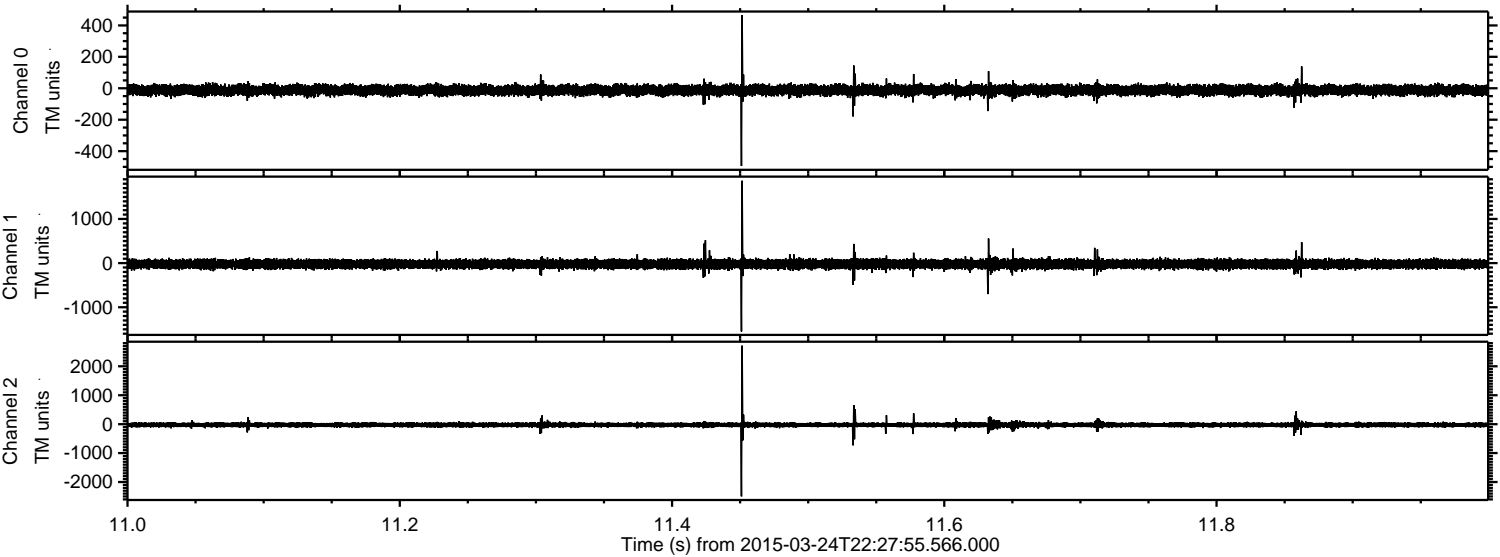


ELMAVAN 3D WAVEFORMS (Measured data sampled at 50 kHz) 49790 packets of 144 samples from 2015-03-24T22:27:55.566.000. Part 141/144

Processed Tue Mar 24 23:35:38 2015 by ELM ver.2012-10-06 from 001__elm20150324_222754__dat00.bin

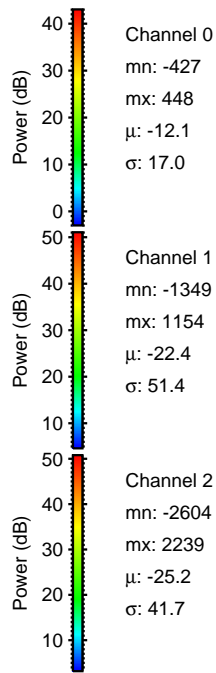
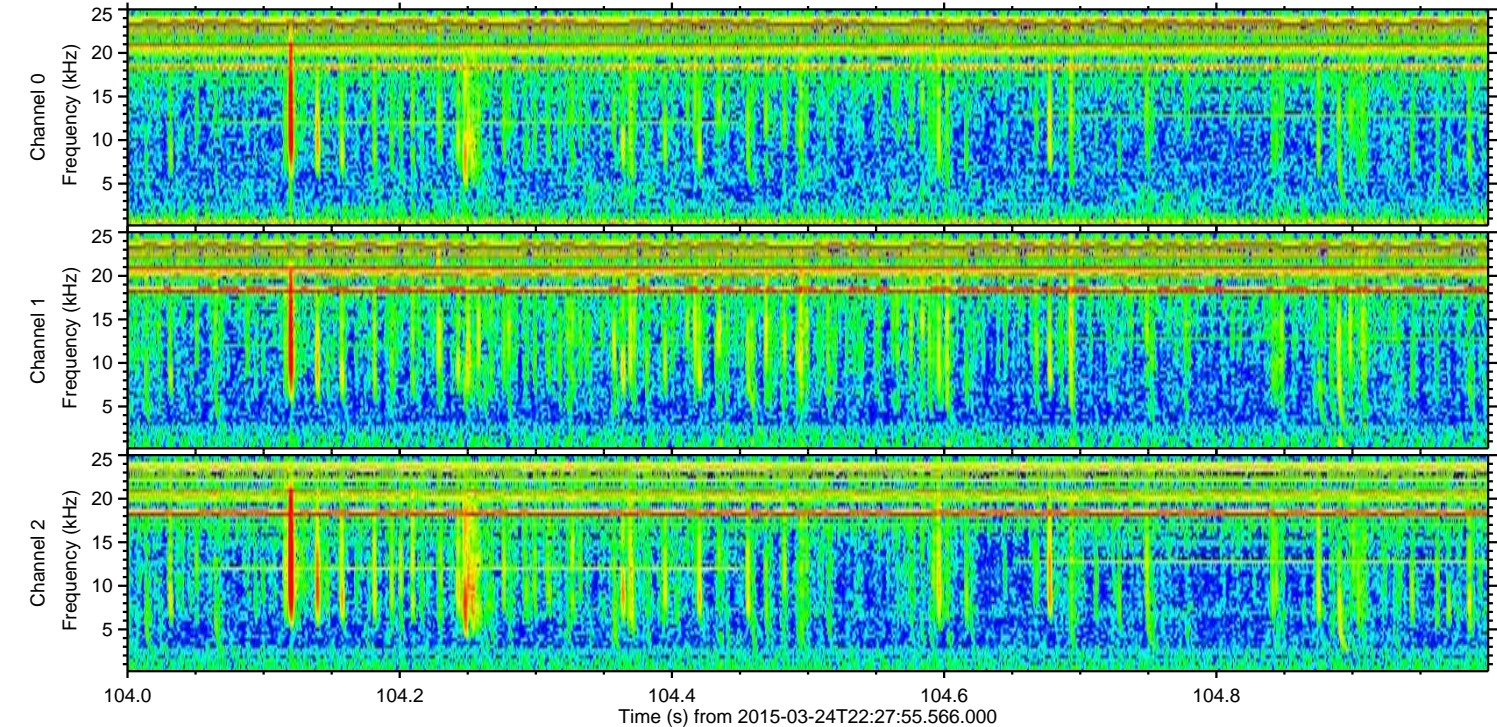
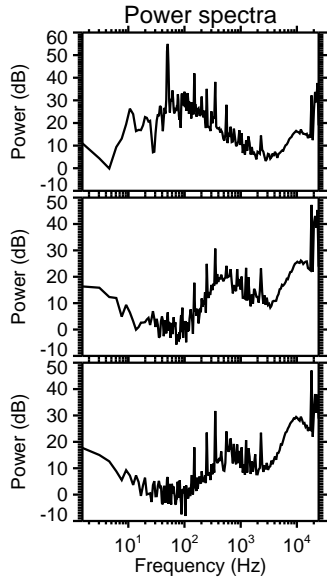
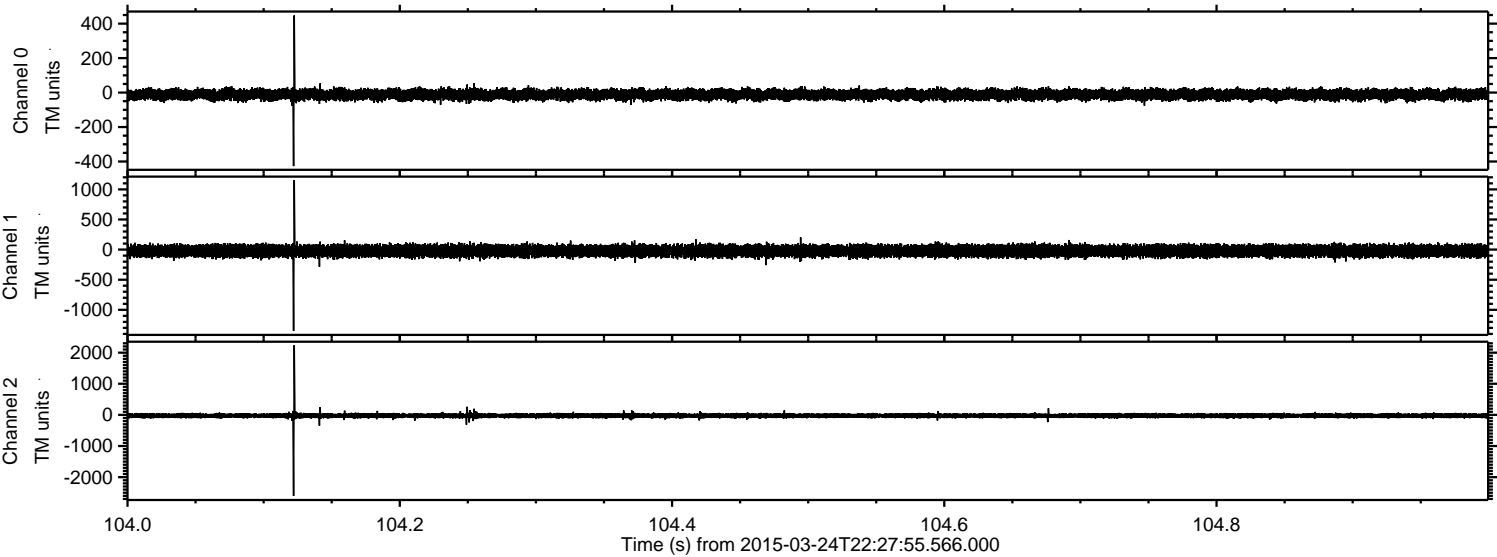


Processed Tue Mar 24 23:35:39 2015 by ELM ver.2012-10-06 from 001__elm20150324_222754__dat00.bin



ELMAVAN 3D WAVEFORMS (Measured data sampled at 50 kHz) 49790 packets of 144 samples from 2015-03-24T22:27:55.566.000. Part 105/144

Processed Tue Mar 24 23:35:40 2015 by ELM ver.2012-10-06 from 001__elm20150324_222754__dat00.bin



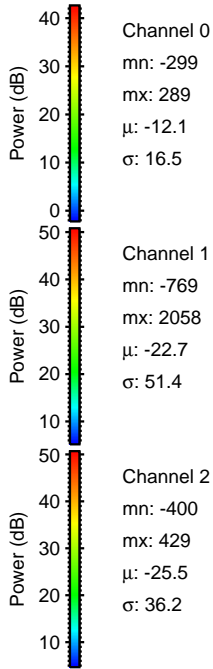
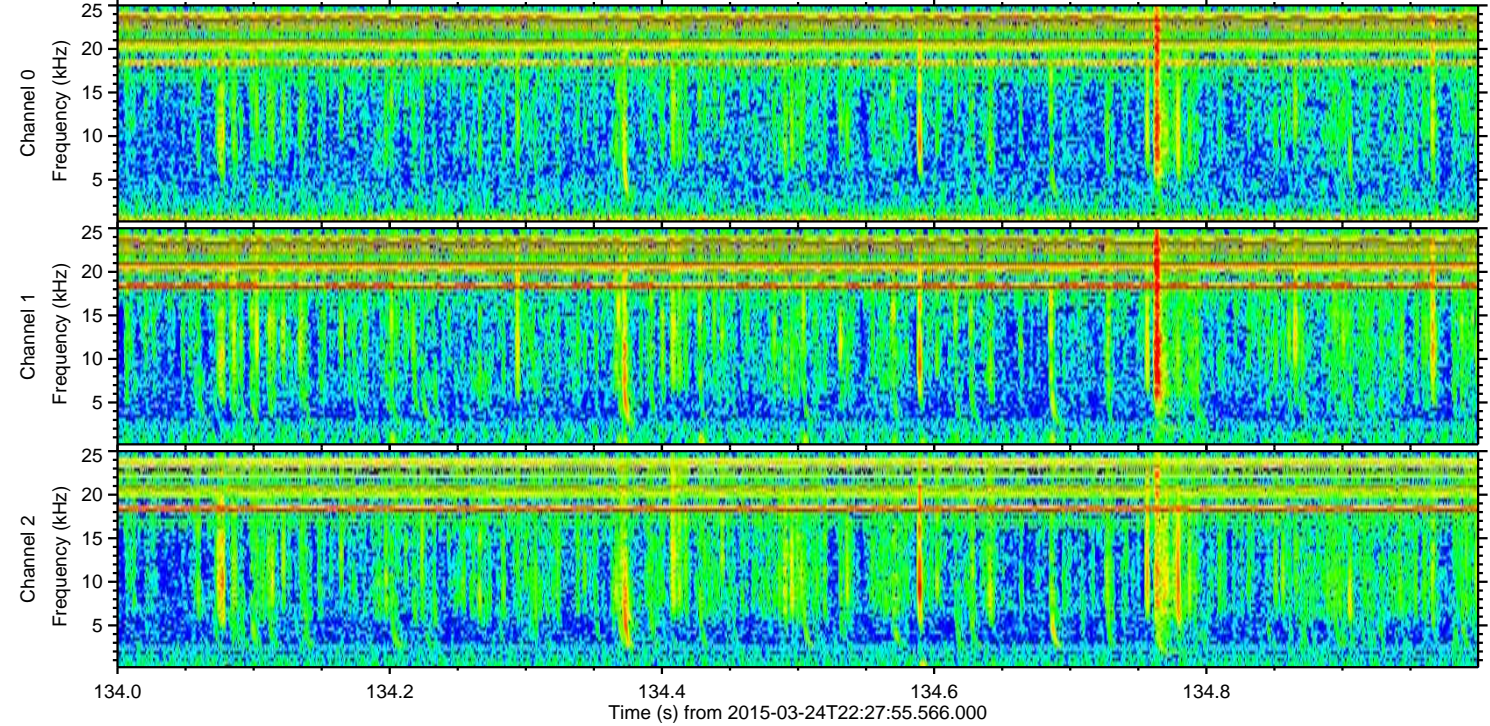
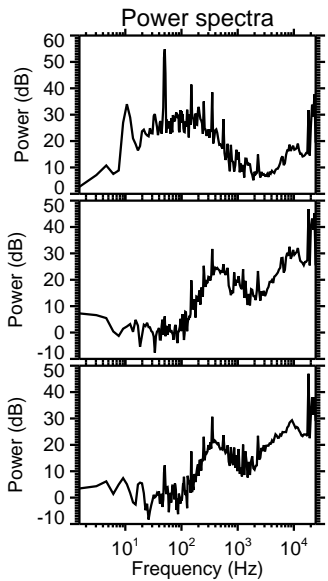
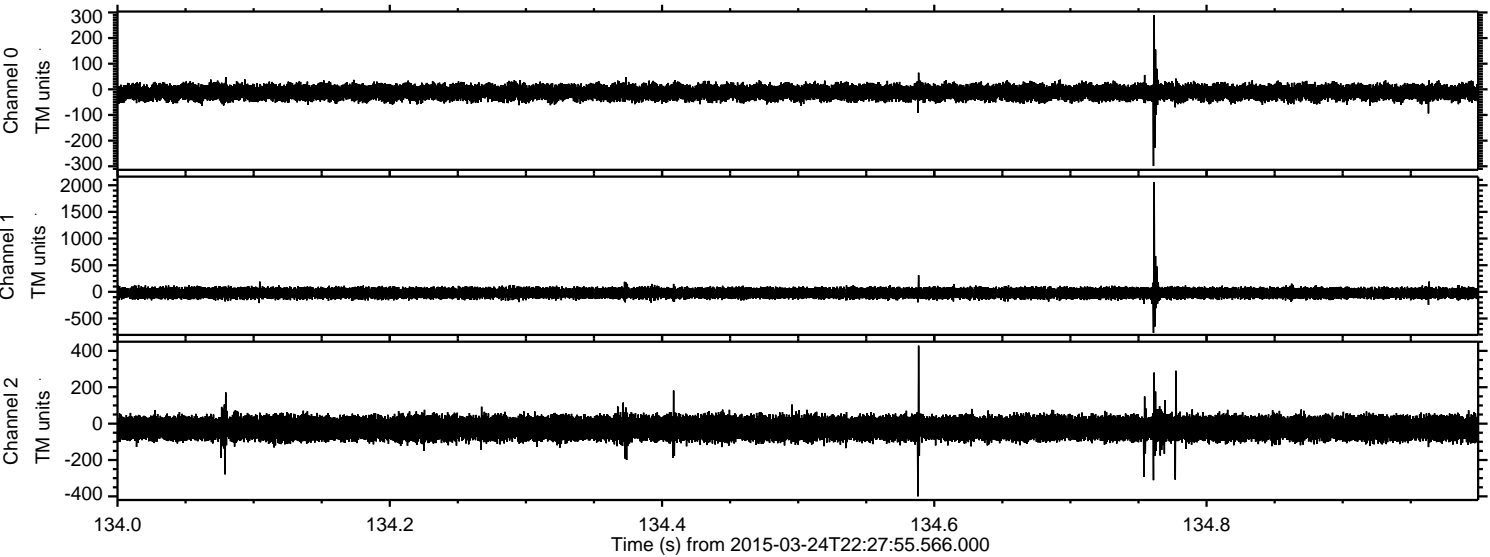
Channel 0
mn: -427
mx: 448
 μ : -12.1
 σ : 17.0

Channel 1
mn: -1349
mx: 1154
 μ : -22.4
 σ : 51.4

Channel 2
mn: -2604
mx: 2239
 μ : -25.2
 σ : 41.7

ELMAVAN 3D WAVEFORMS (Measured data sampled at 50 kHz) 49790 packets of 144 samples from 2015-03-24T22:27:55.566.000. Part 135/144

Processed Tue Mar 24 23:35:41 2015 by ELM ver.2012-10-06 from 001__elm20150324_222754__dat00.bin



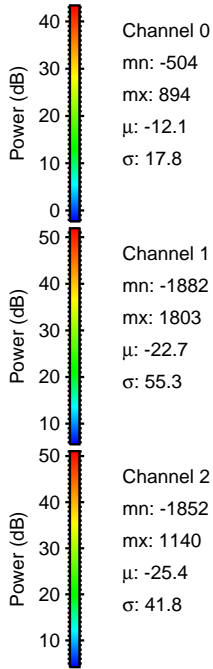
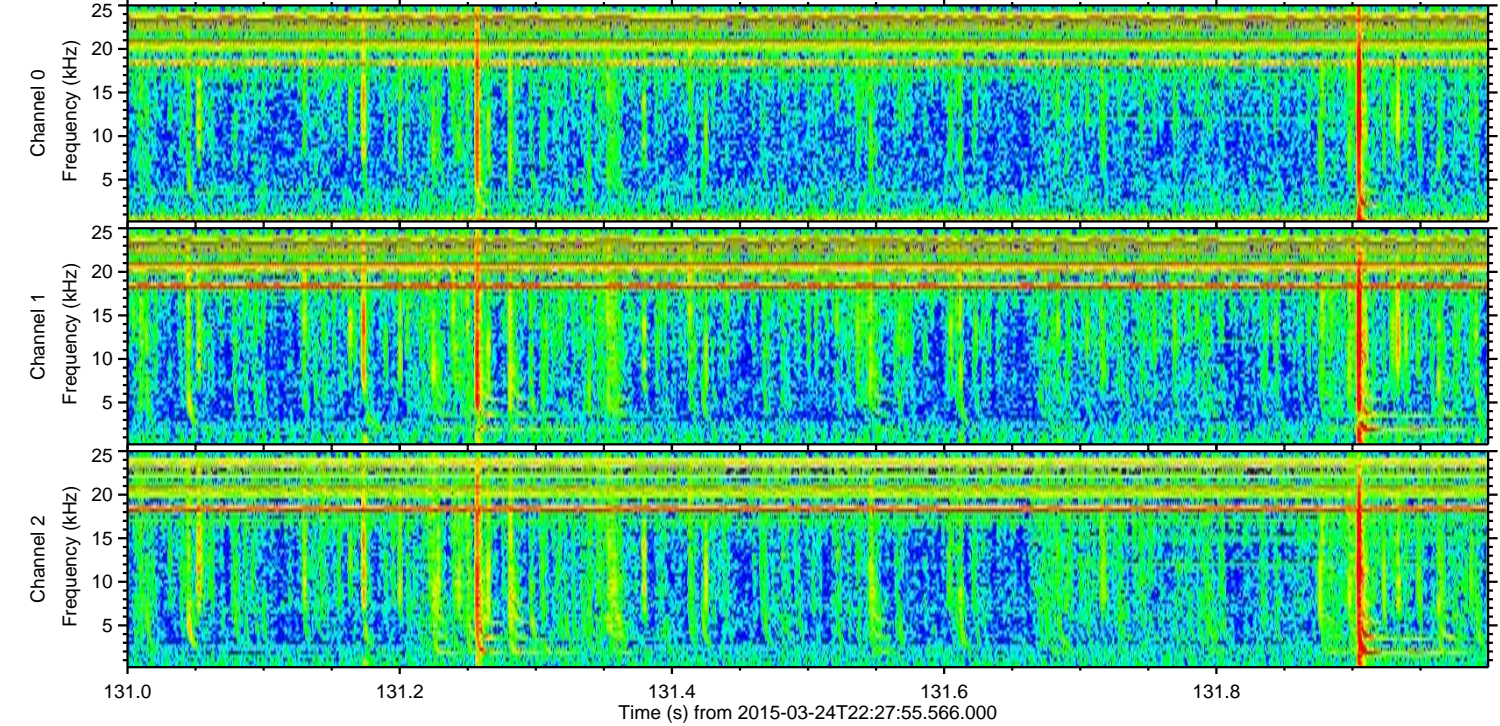
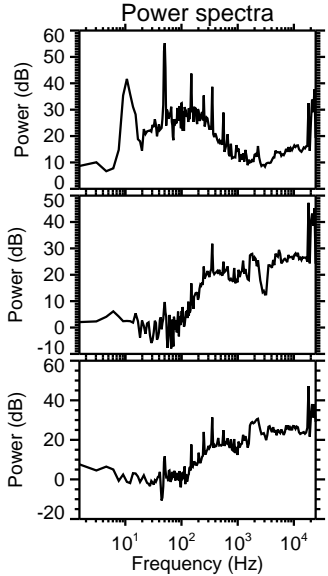
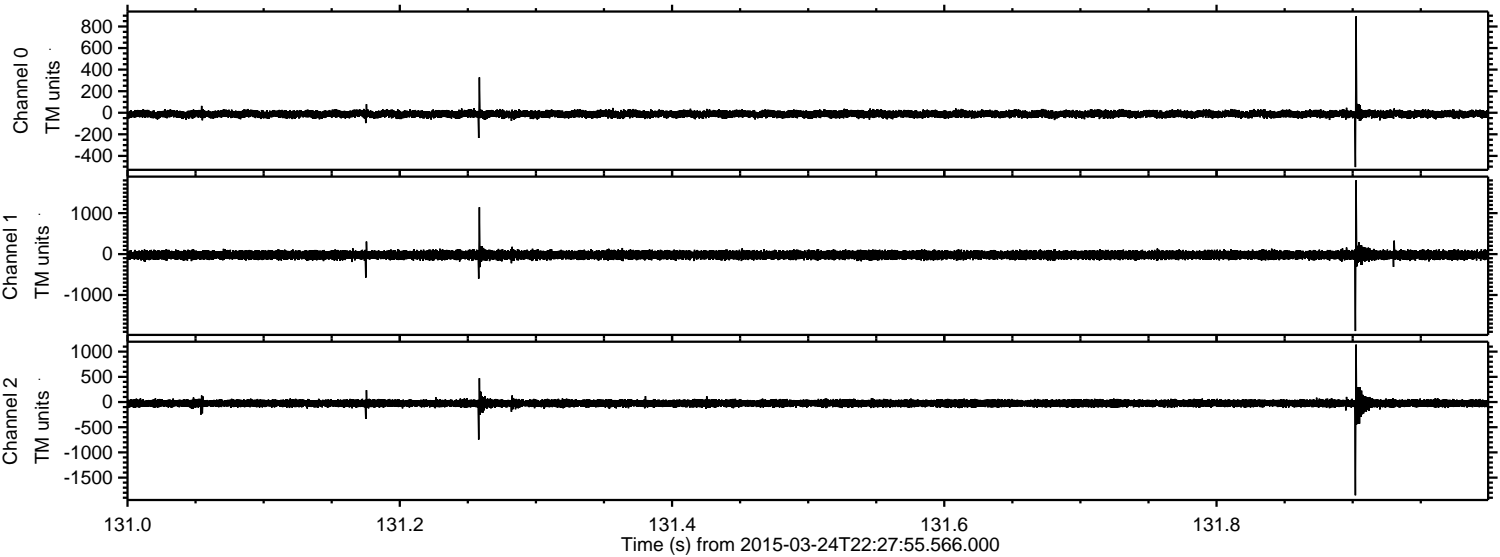
Channel 0
mn: -299
mx: 289
 μ : -12.1
 σ : 16.5

Channel 1
mn: -769
mx: 2058
 μ : -22.7
 σ : 51.4

Channel 2
mn: -400
mx: 429
 μ : -25.5
 σ : 36.2

ELMAVAN 3D WAVEFORMS (Measured data sampled at 50 kHz) 49790 packets of 144 samples from 2015-03-24T22:27:55.566.000. Part 132/144

Processed Tue Mar 24 23:35:42 2015 by ELM ver.2012-10-06 from 001__elm20150324_222754__dat00.bin



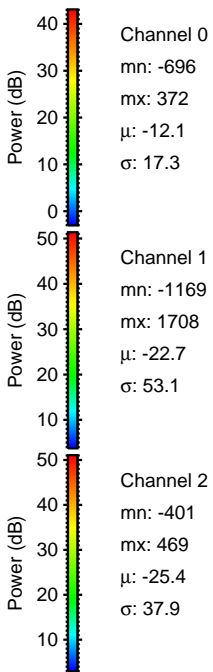
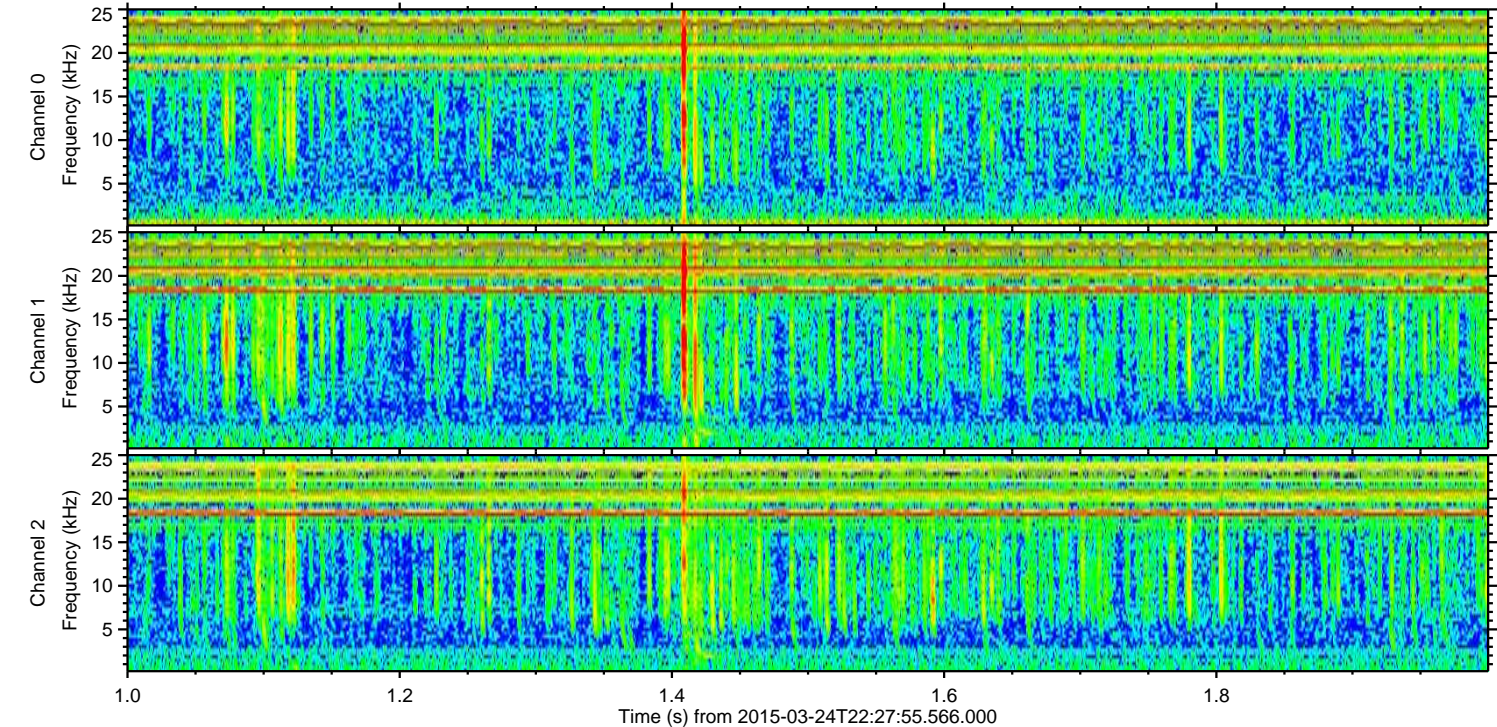
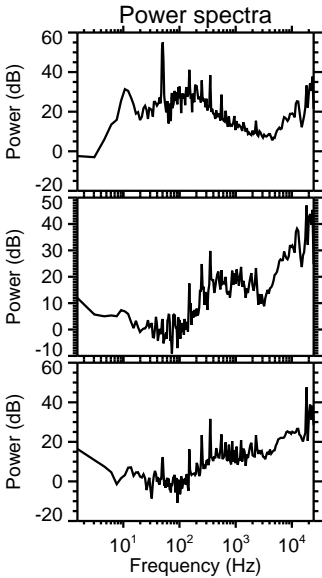
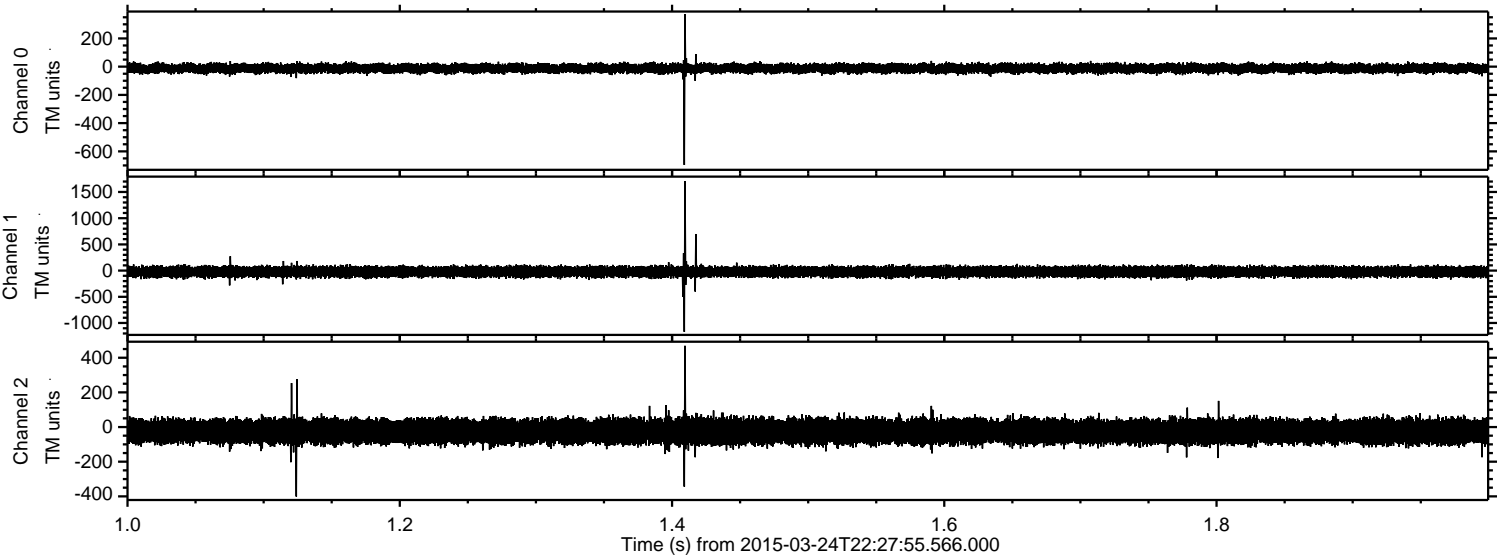
Channel 0
mn: -504
mx: 894
 μ : -12.1
 σ : 17.8

Channel 1
mn: -1882
mx: 1803
 μ : -22.7
 σ : 55.3

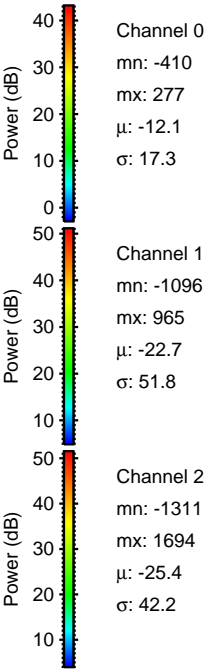
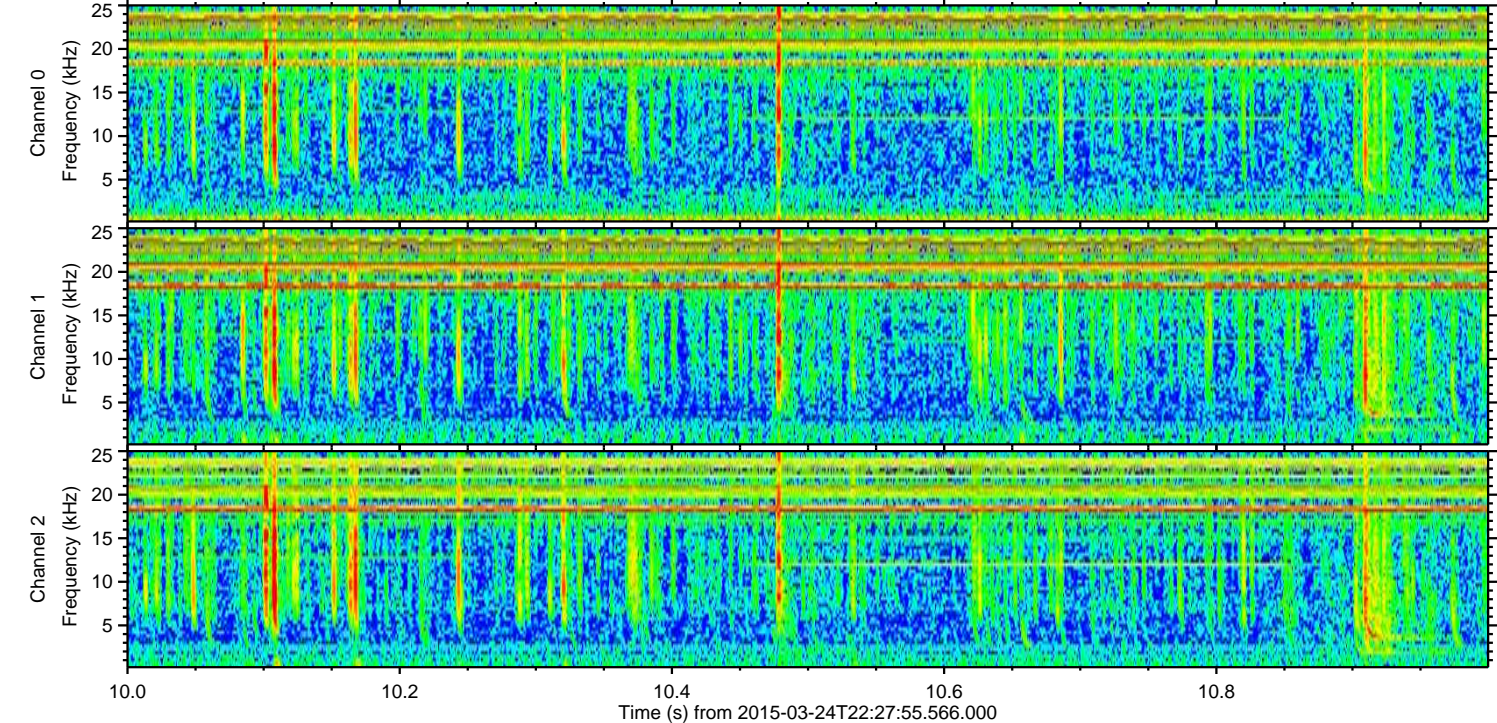
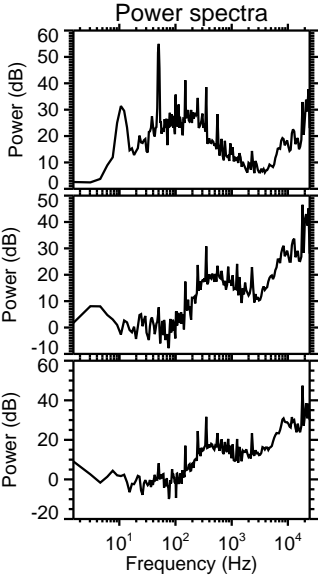
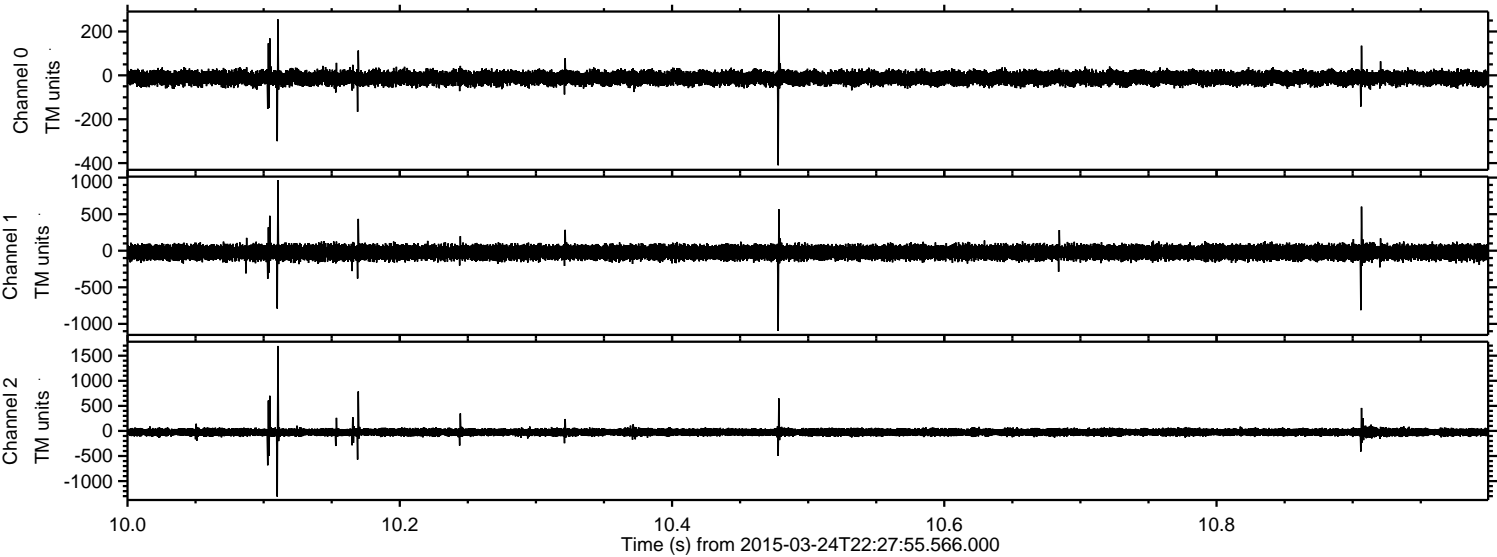
Channel 2
mn: -1852
mx: 1140
 μ : -25.4
 σ : 41.8

ELMAVAN 3D WAVEFORMS (Measured data sampled at 50 kHz) 49790 packets of 144 samples from 2015-03-24T22:27:55.566.000. Part 2/144

Processed Tue Mar 24 23:35:43 2015 by ELM ver.2012-10-06 from 001__elm20150324_222754__dat00.bin



Processed Tue Mar 24 23:35:44 2015 by ELM ver.2012-10-06 from 001__elm20150324_222754__dat00.bin



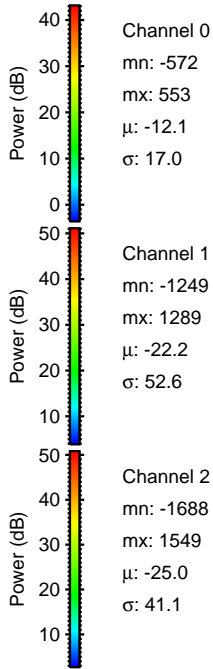
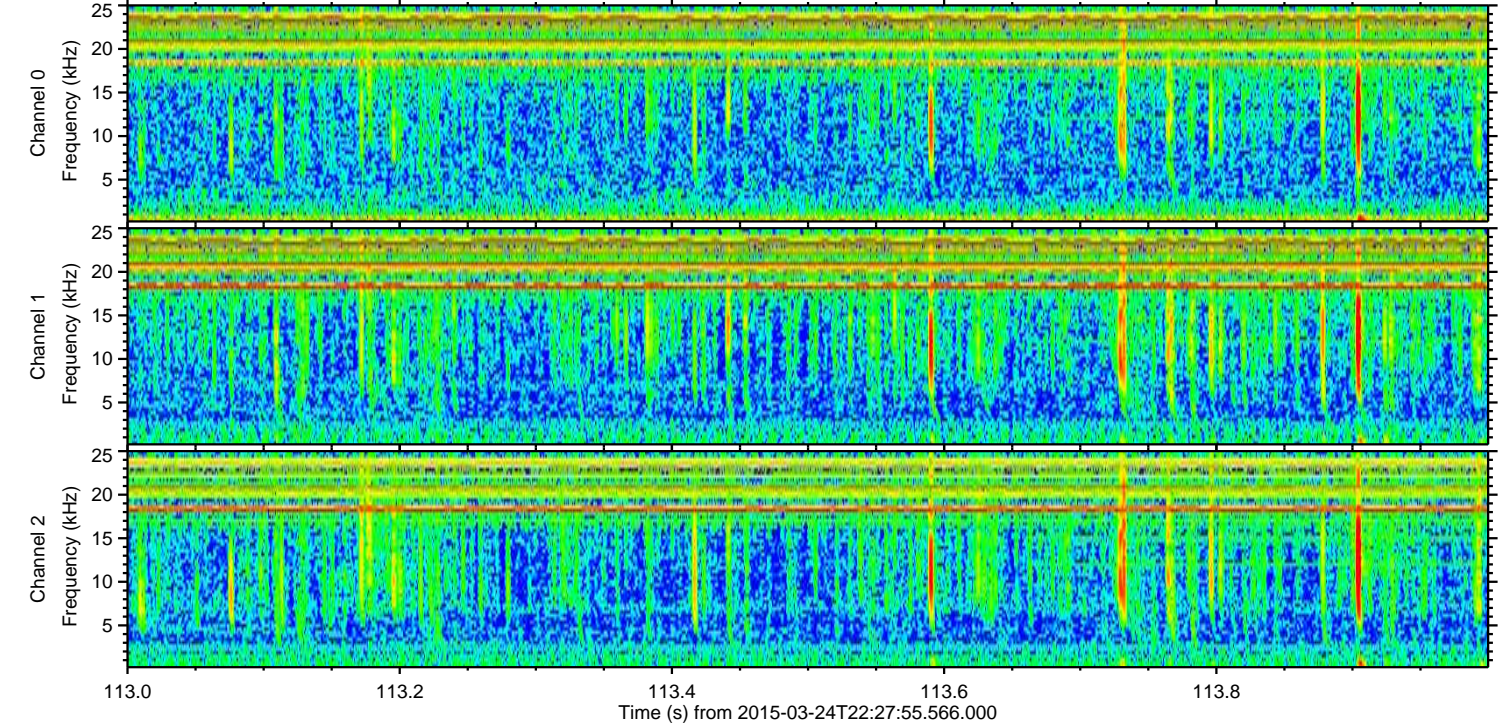
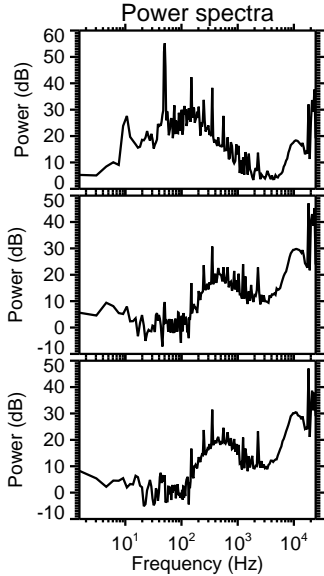
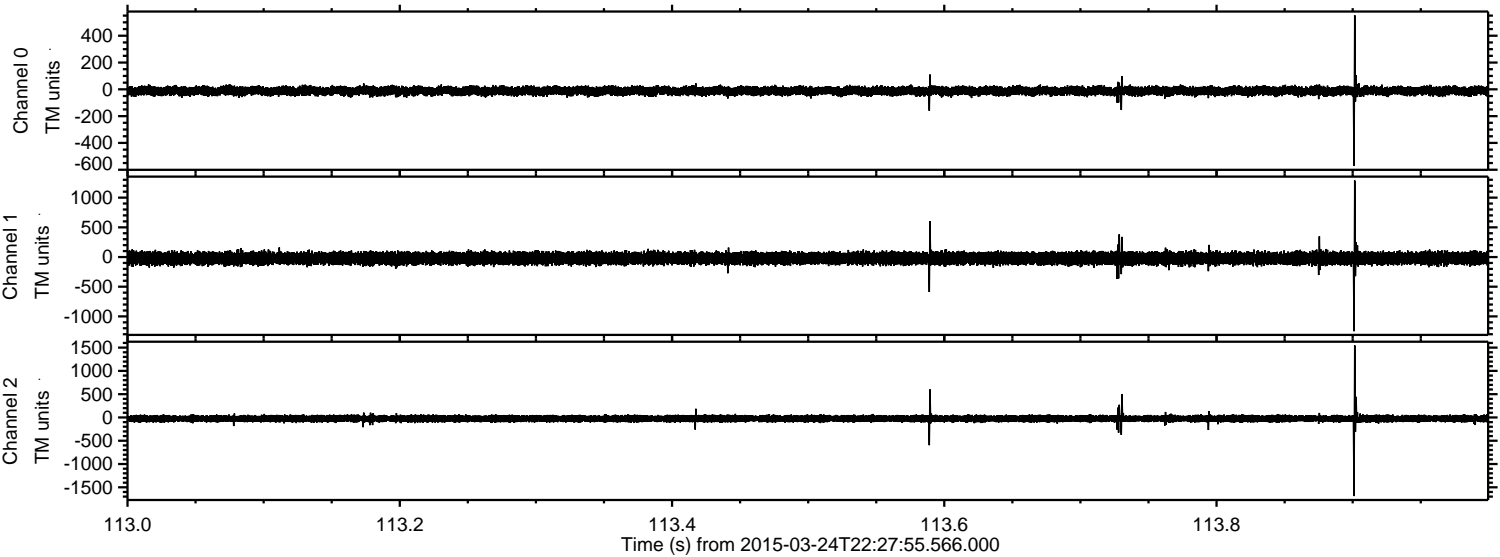
Channel 0
mn: -410
mx: 277
 μ : -12.1
 σ : 17.3

Channel 1
mn: -1096
mx: 965
 μ : -22.7
 σ : 51.8

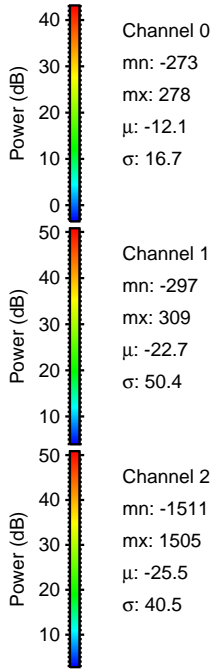
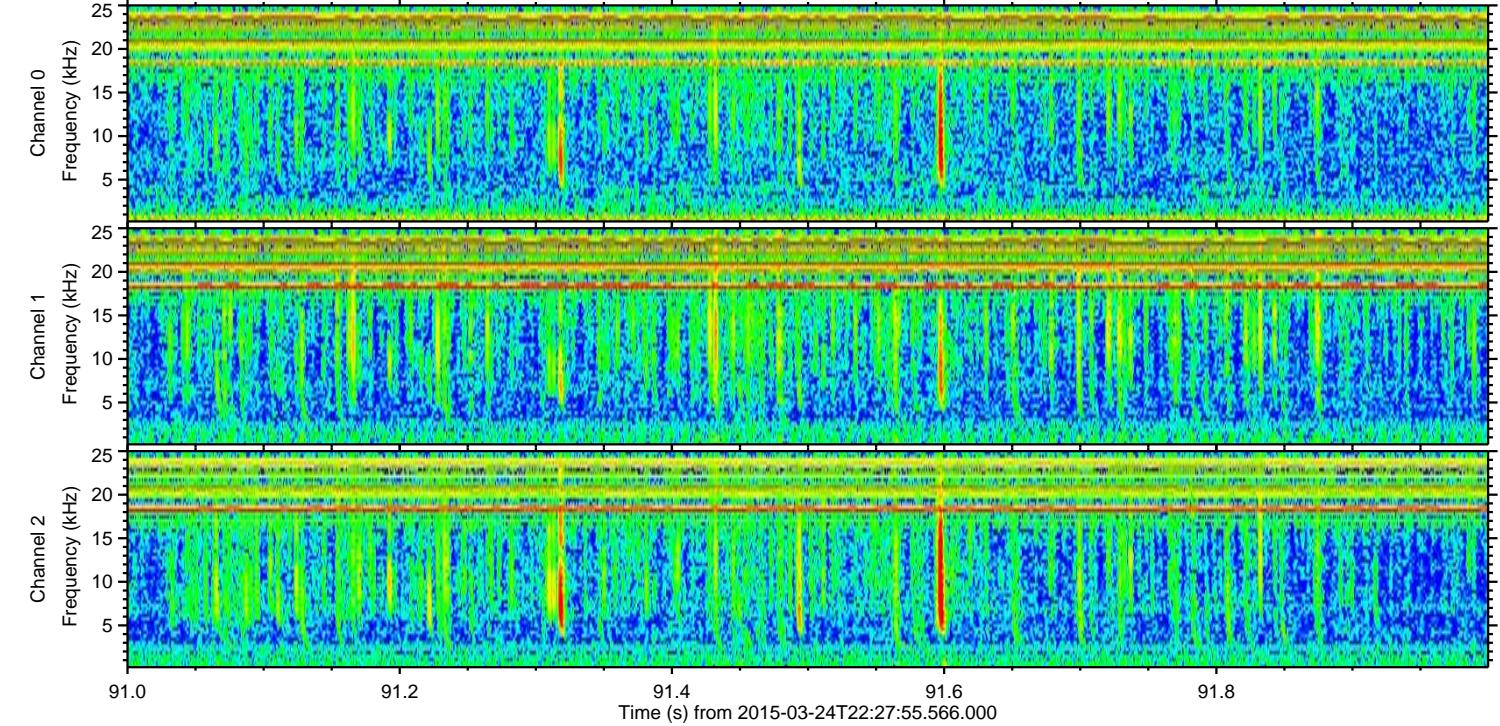
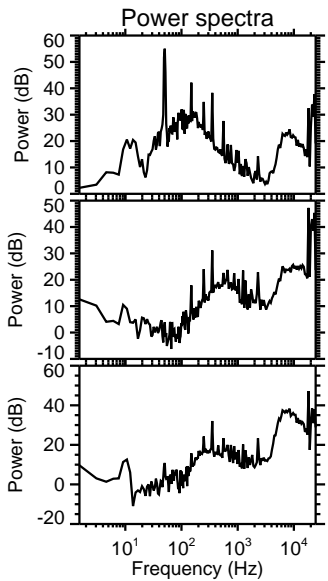
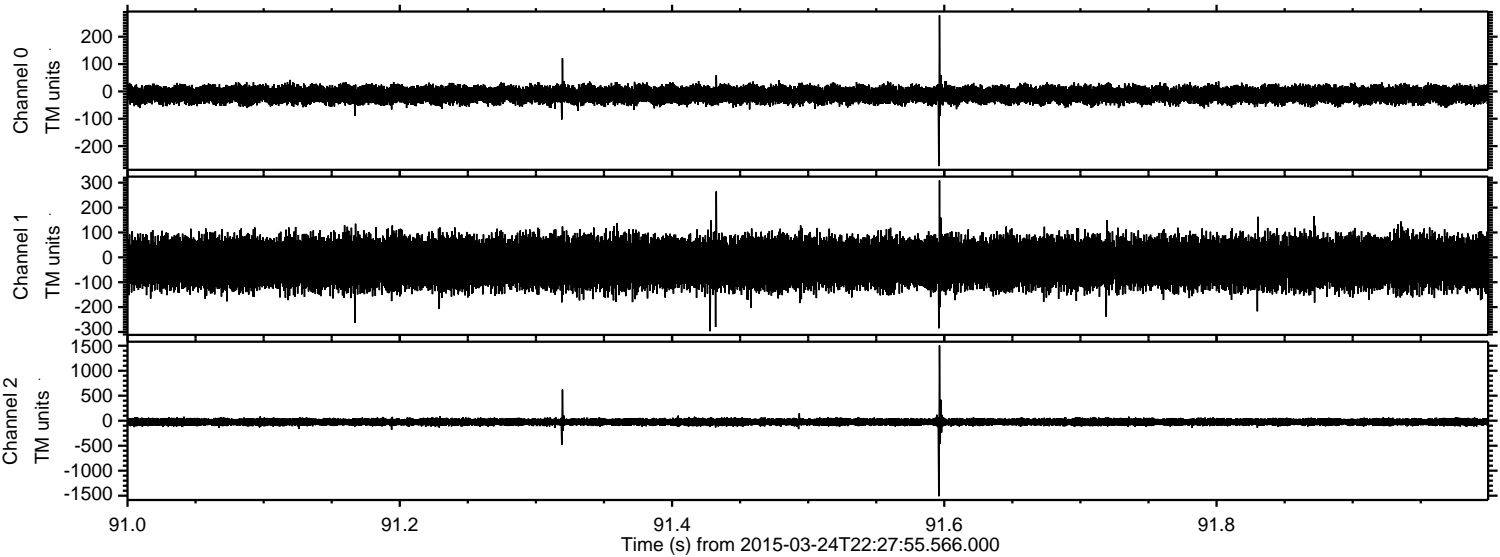
Channel 2
mn: -1311
mx: 1694
 μ : -25.4
 σ : 42.2

ELMAVAN 3D WAVEFORMS (Measured data sampled at 50 kHz) 49790 packets of 144 samples from 2015-03-24T22:27:55.566.000. Part 114/144

Processed Tue Mar 24 23:35:45 2015 by ELM ver.2012-10-06 from 001__elm20150324_222754__dat00.bin



Processed Tue Mar 24 23:35:45 2015 by ELM ver.2012-10-06 from 001__elm20150324_222754__dat00.bin



ELMAVAN 3D WAVEFORMS (Measured data sampled at 50 kHz) 49790 packets of 144 samples from 2015-03-24T22:27:55.566.000. Part 15/144

Processed Tue Mar 24 23:35:46 2015 by ELM ver.2012-10-06 from 001__elm20150324_222754__dat00.bin

