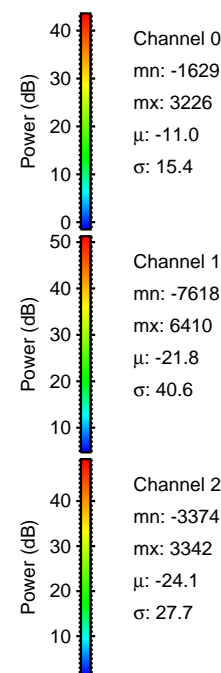
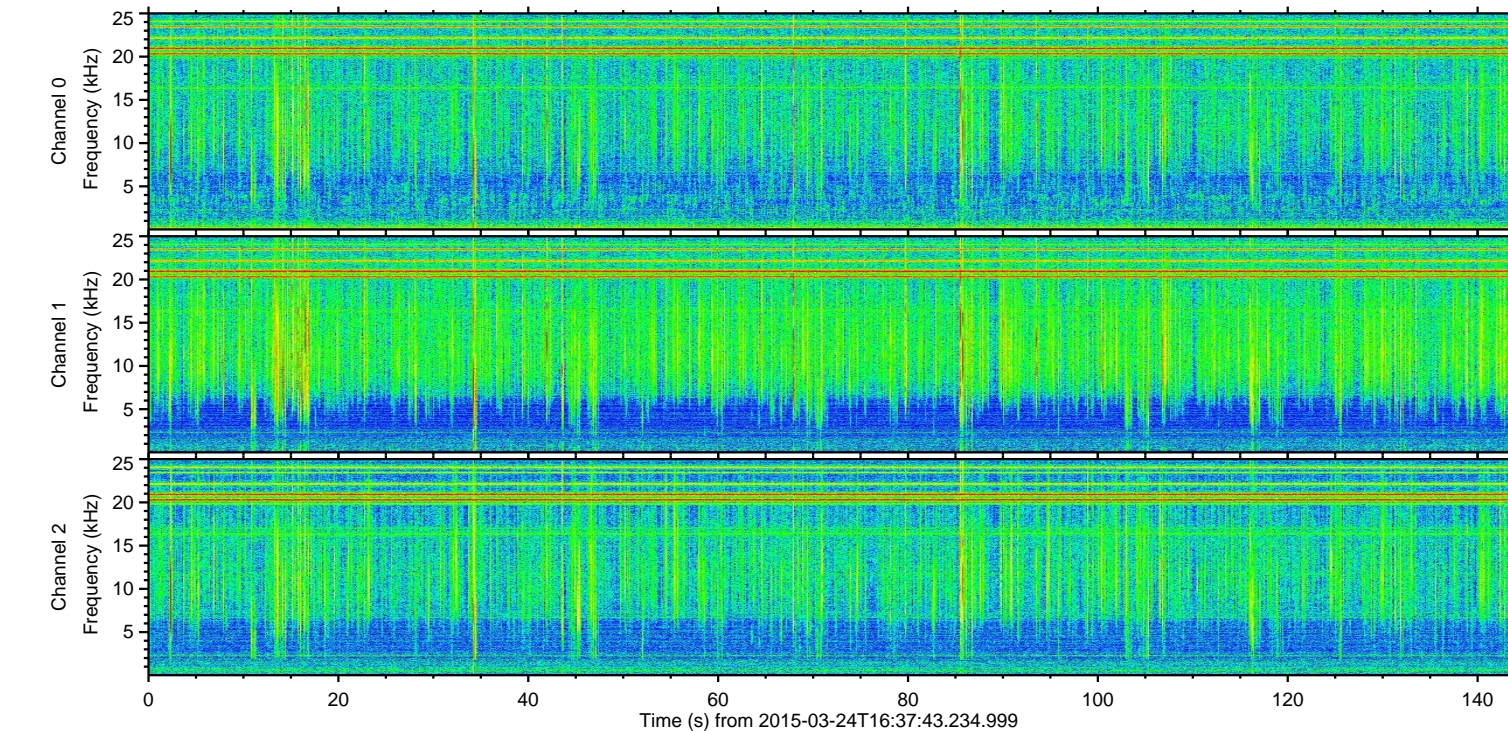
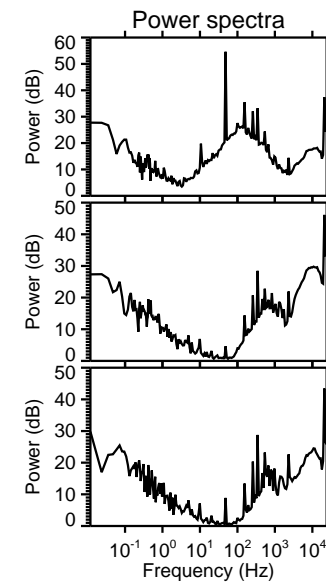
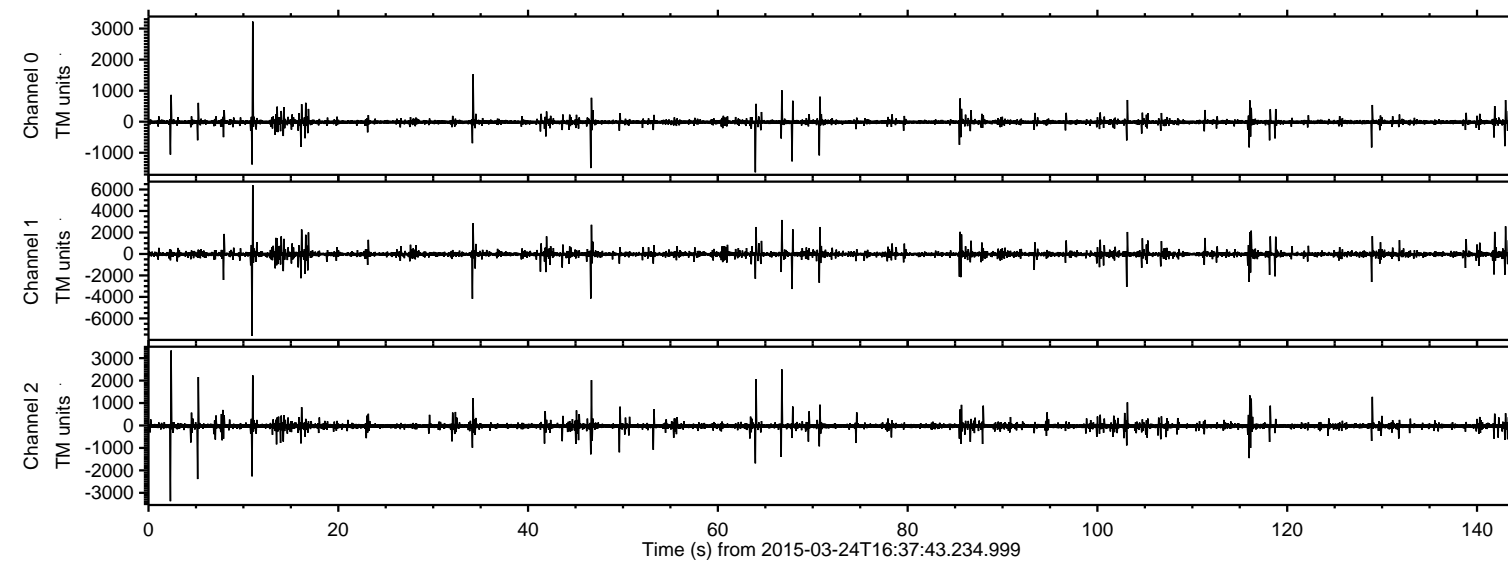
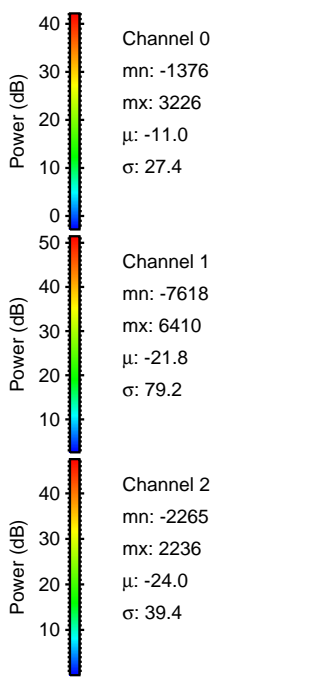
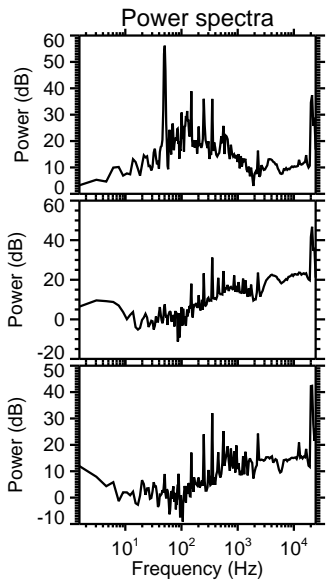
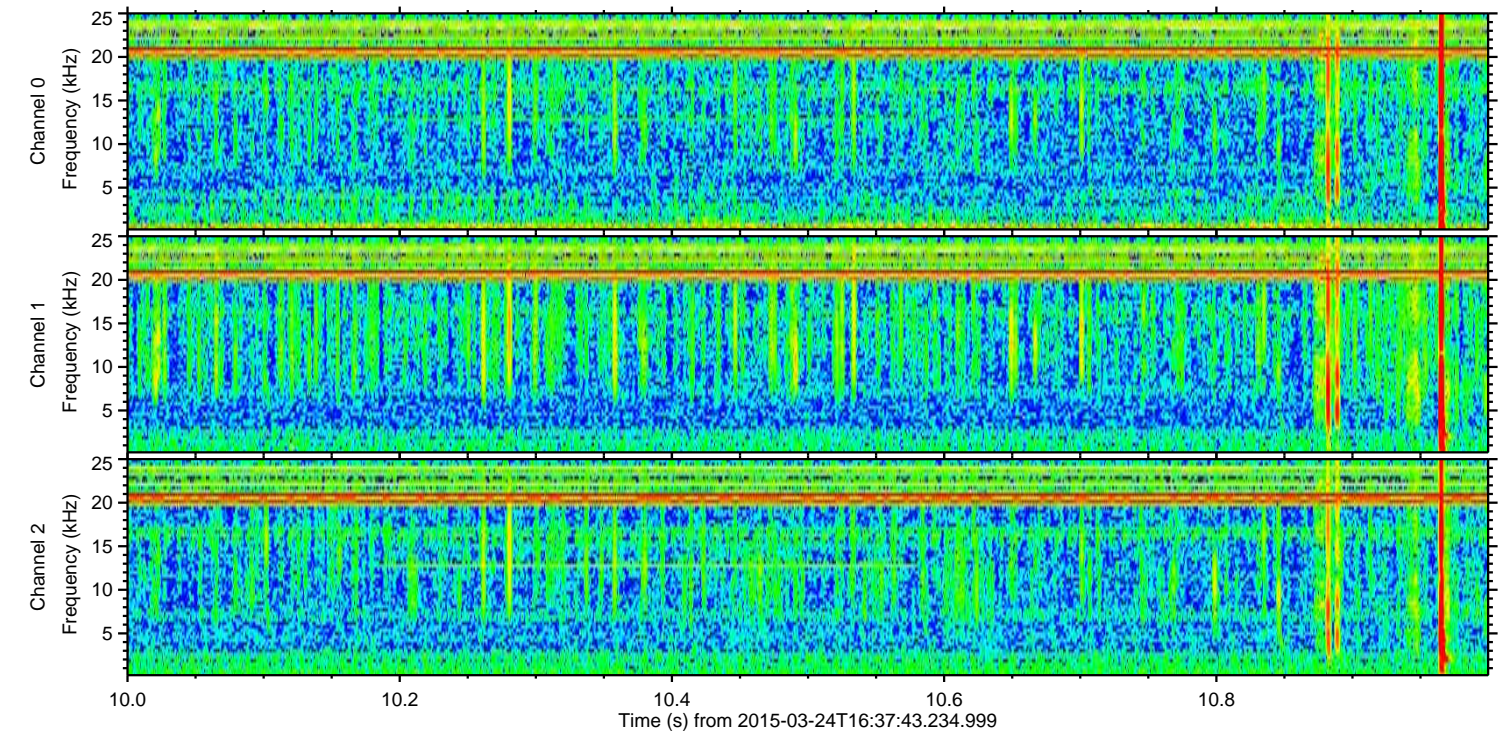
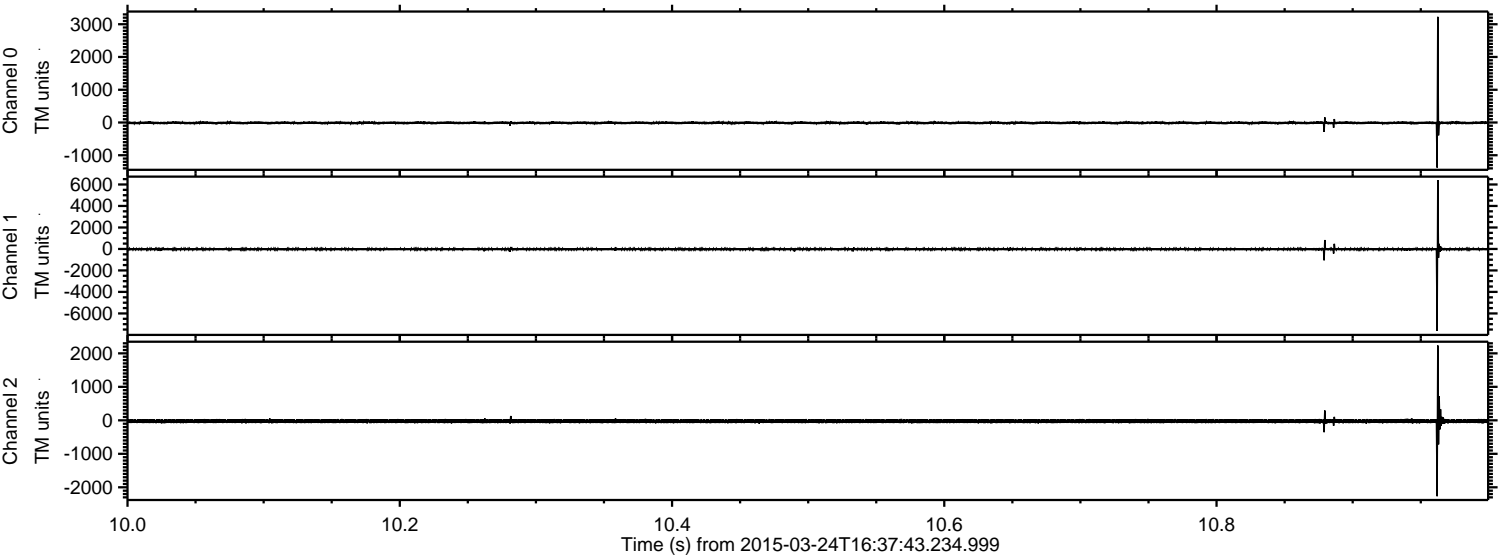


ELMAVAN 3D WAVEFORMS (Measured data sampled at 50 kHz) 49788 packets of 144 samples from 2015-03-24T16:37:43.234.999.

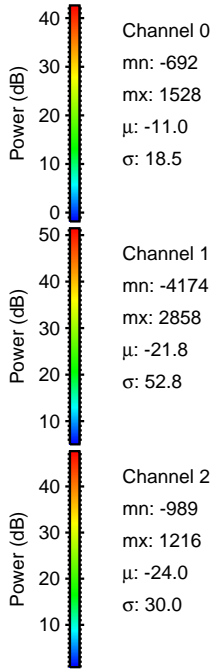
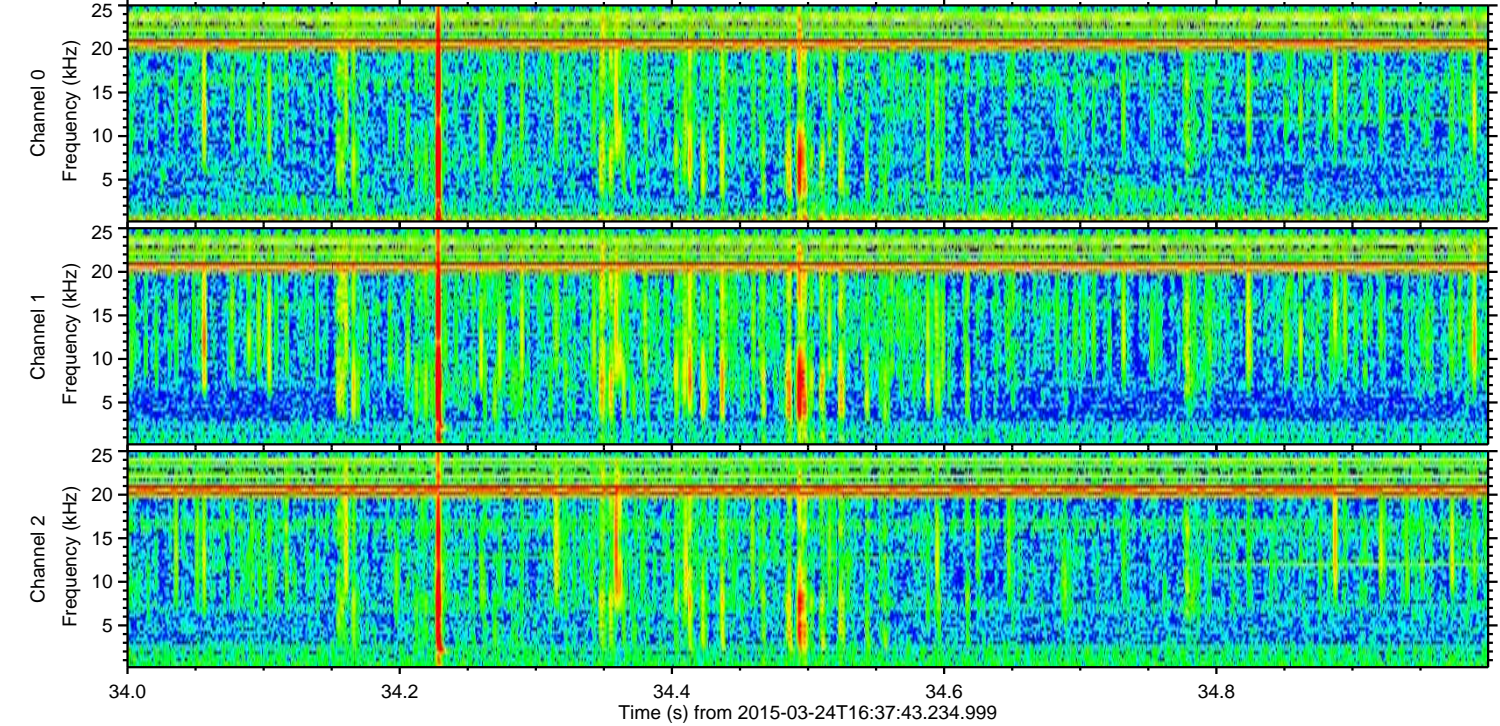
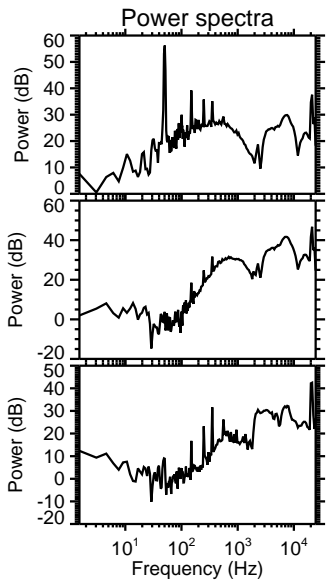
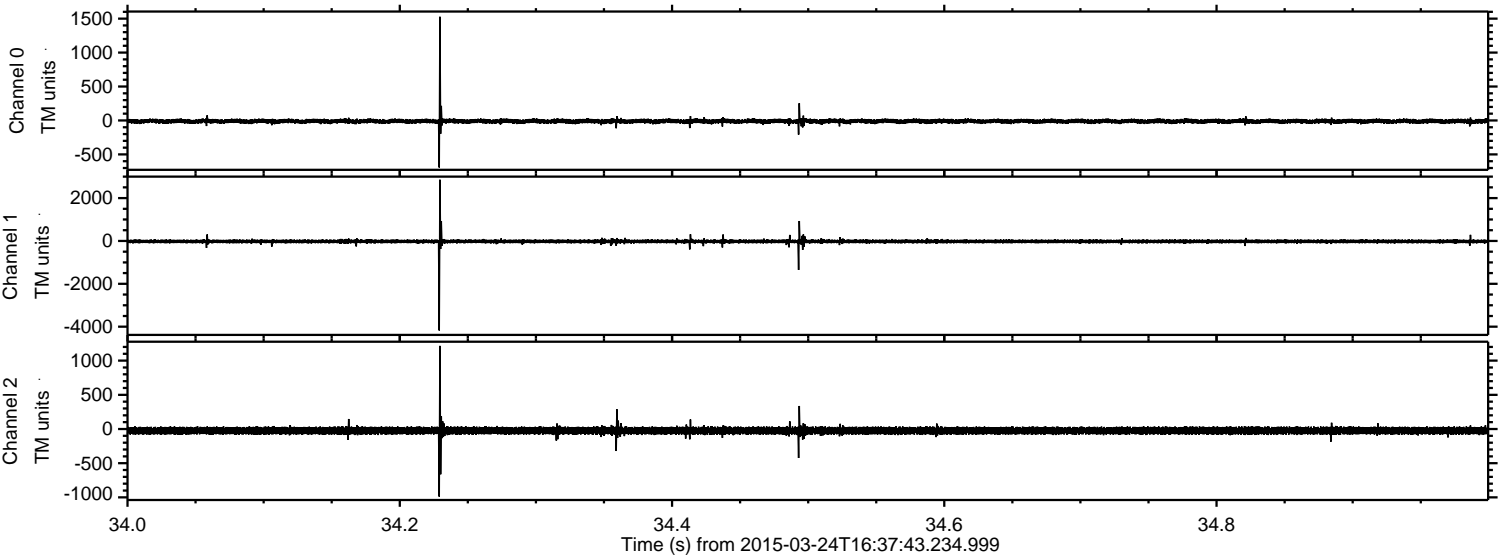
Processed Tue Mar 24 17:44:45 2015 by ELM ver.2012-10-06 from 001__elm20150324_163742__dat00.bin



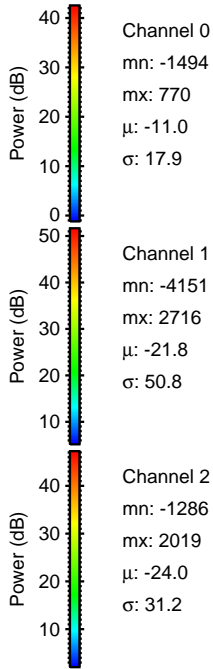
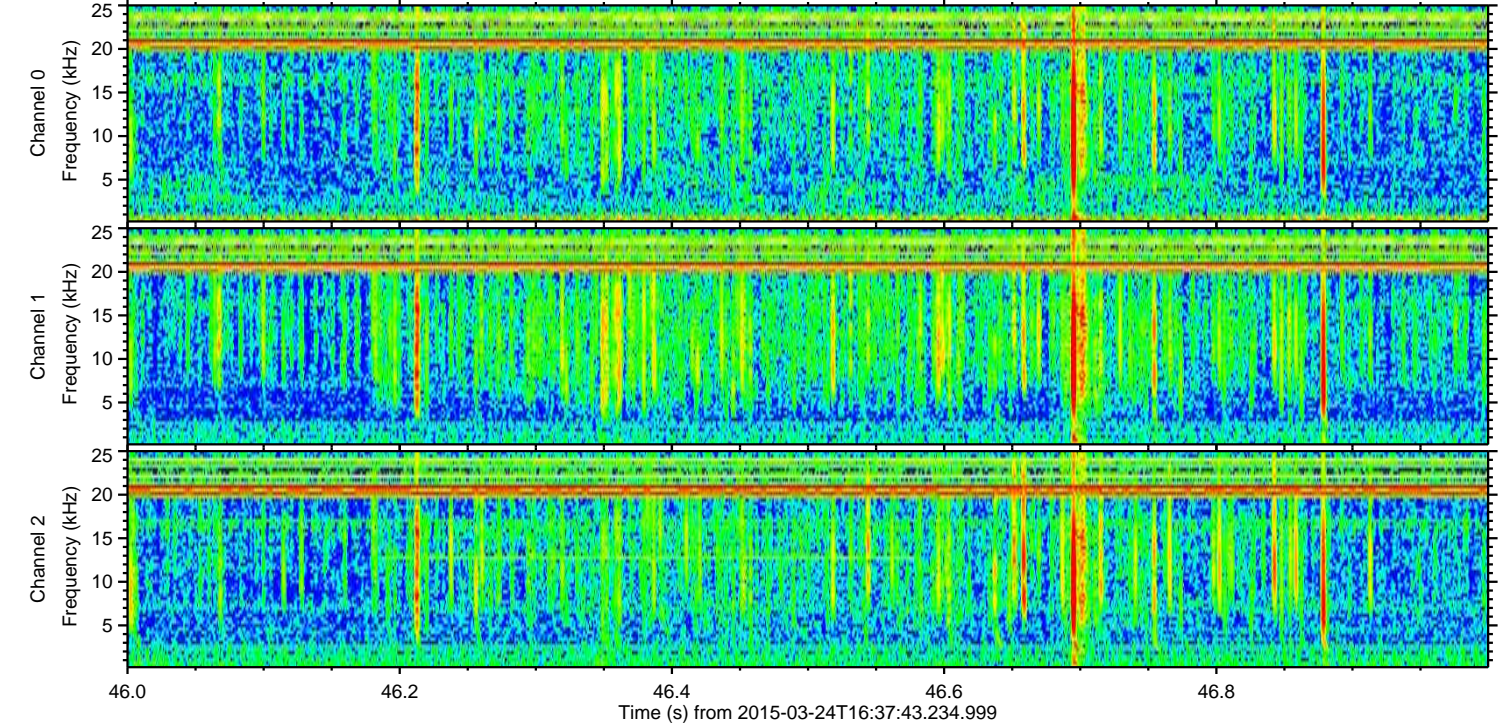
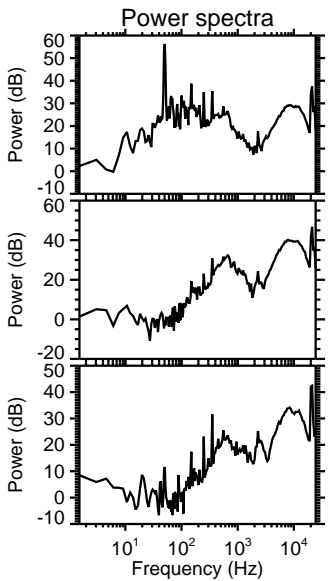
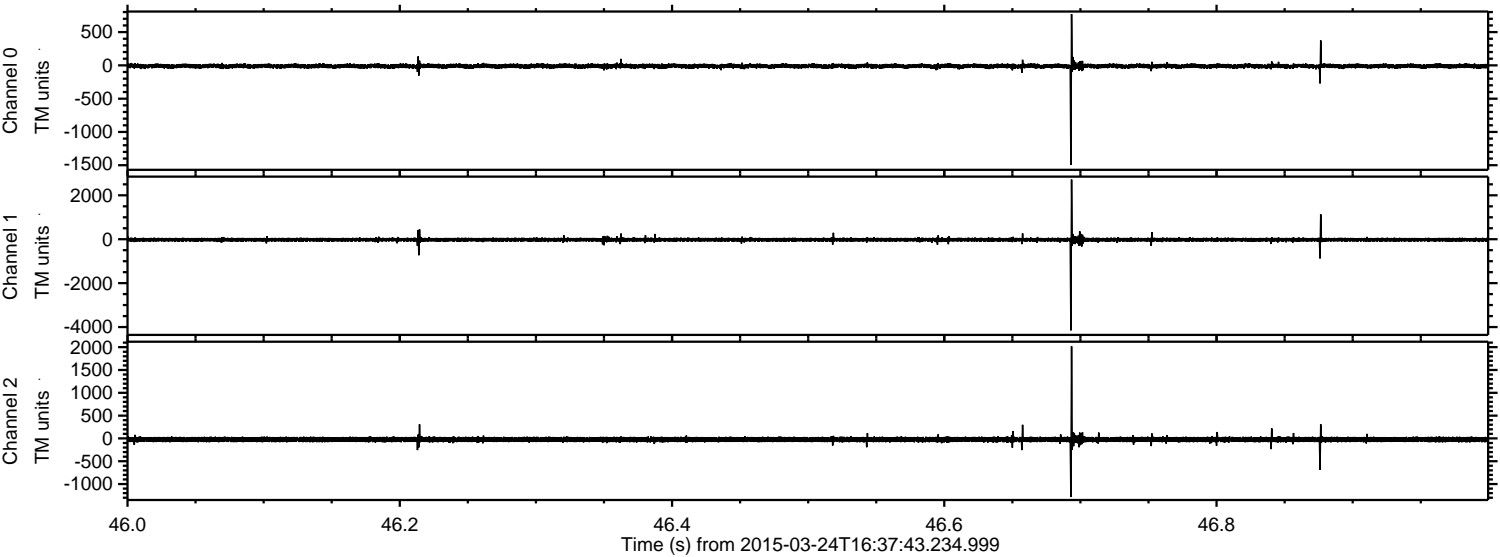
Processed Tue Mar 24 17:44:56 2015 by ELM ver.2012-10-06 from 001__elm20150324_163742__dat00.bin



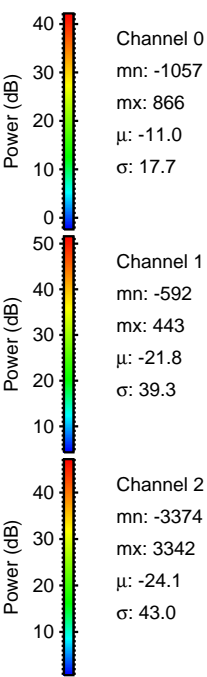
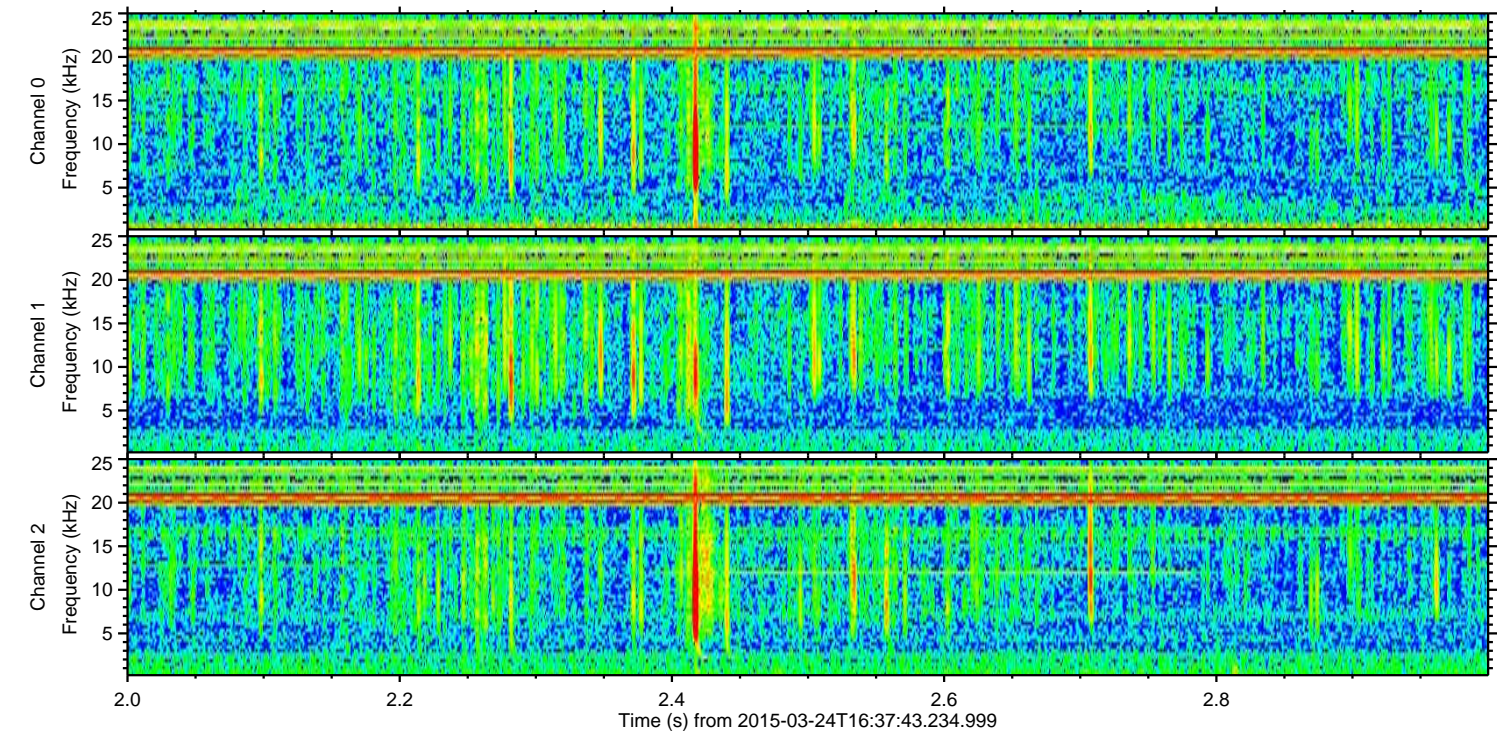
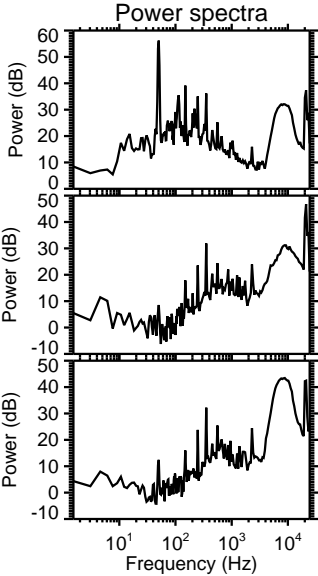
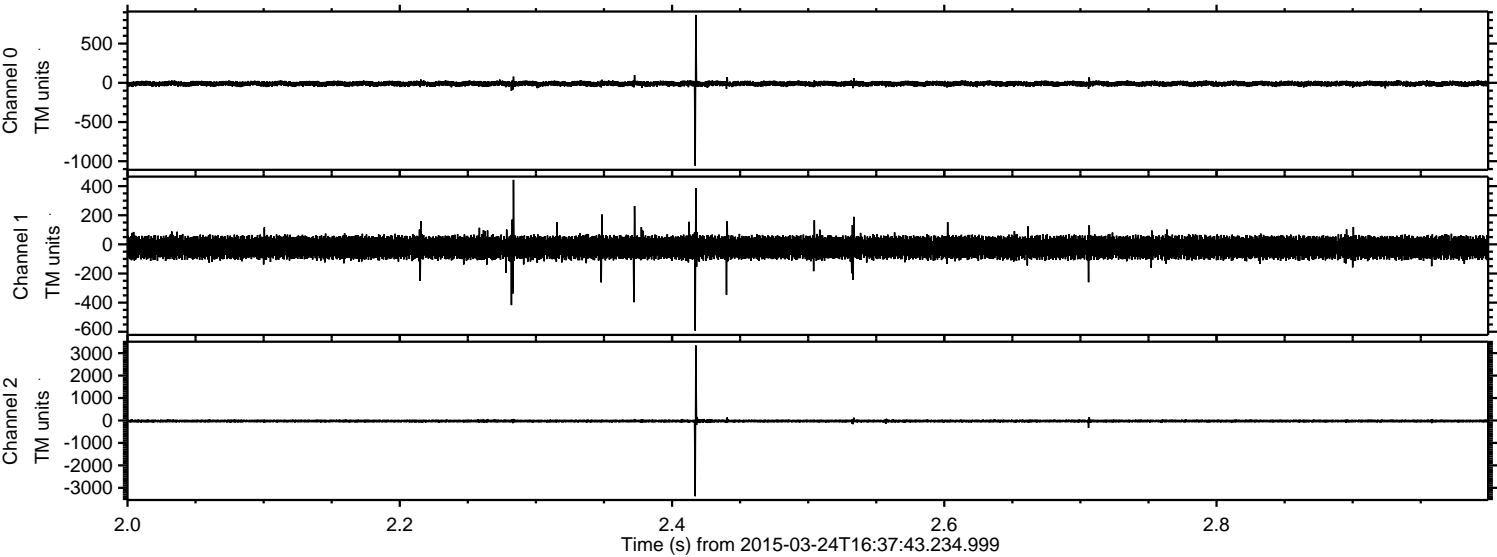
Processed Tue Mar 24 17:44:57 2015 by ELM ver.2012-10-06 from 001__elm20150324_163742__dat00.bin



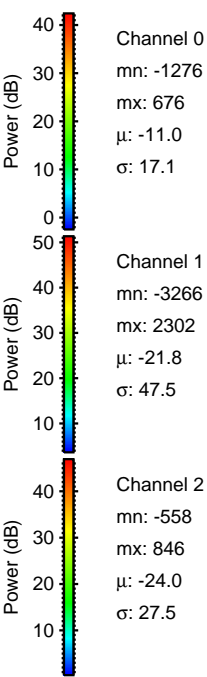
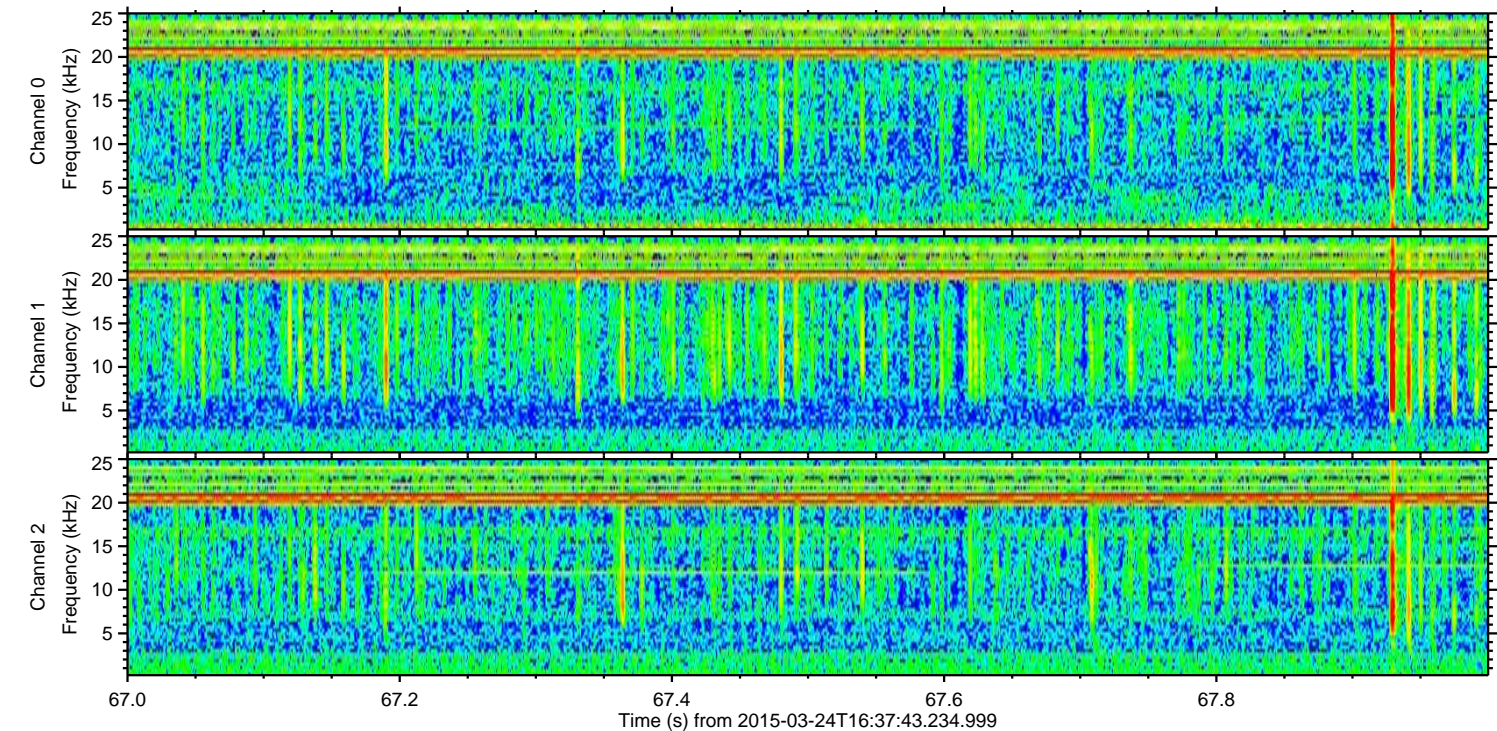
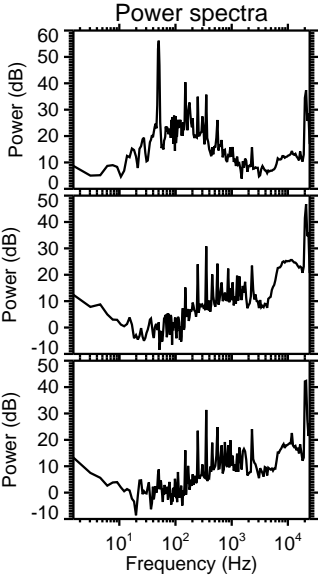
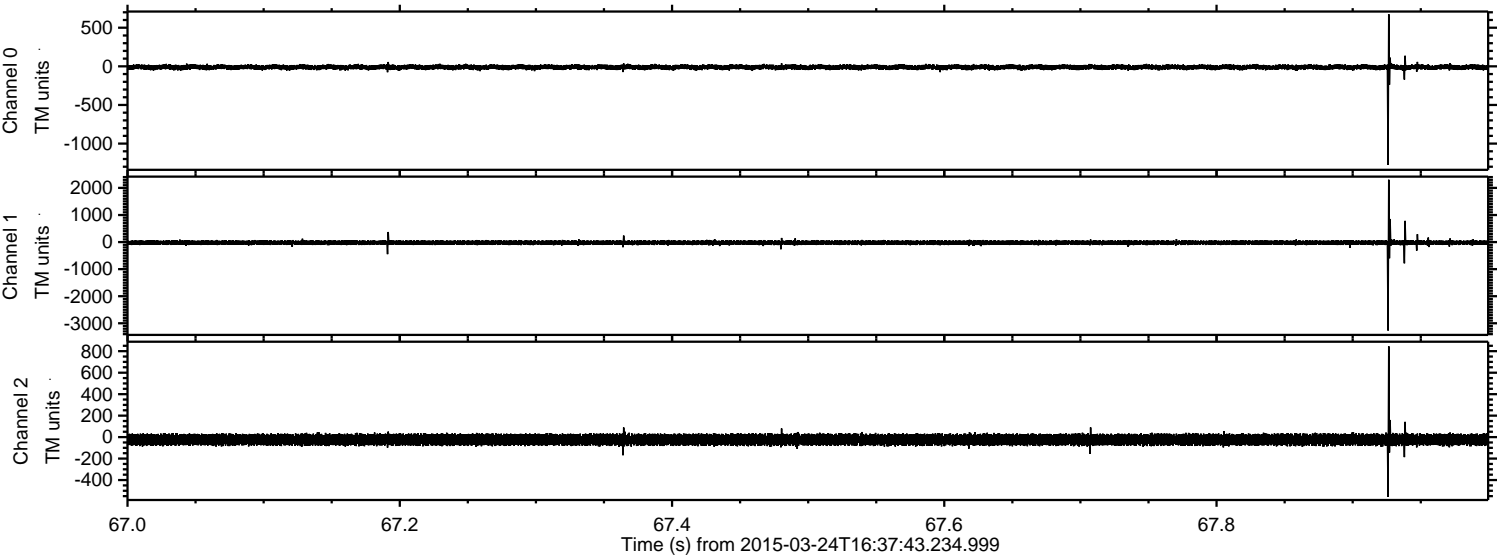
Processed Tue Mar 24 17:44:58 2015 by ELM ver.2012-10-06 from 001__elm20150324_163742__dat00.bin



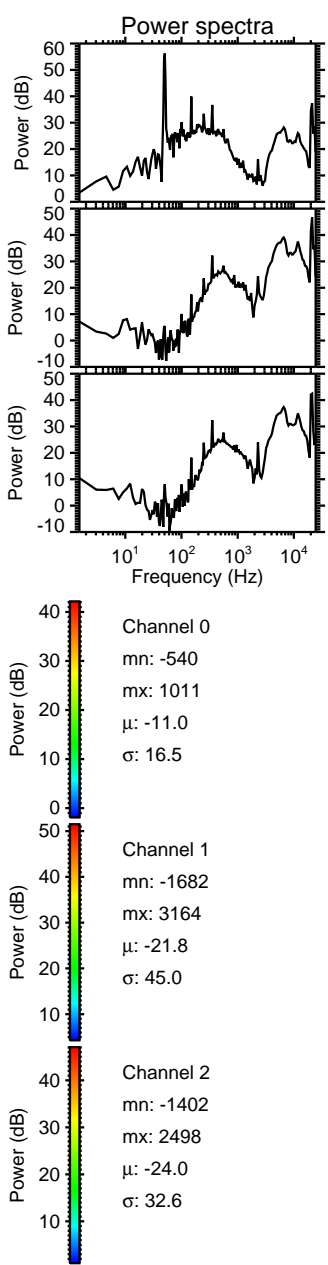
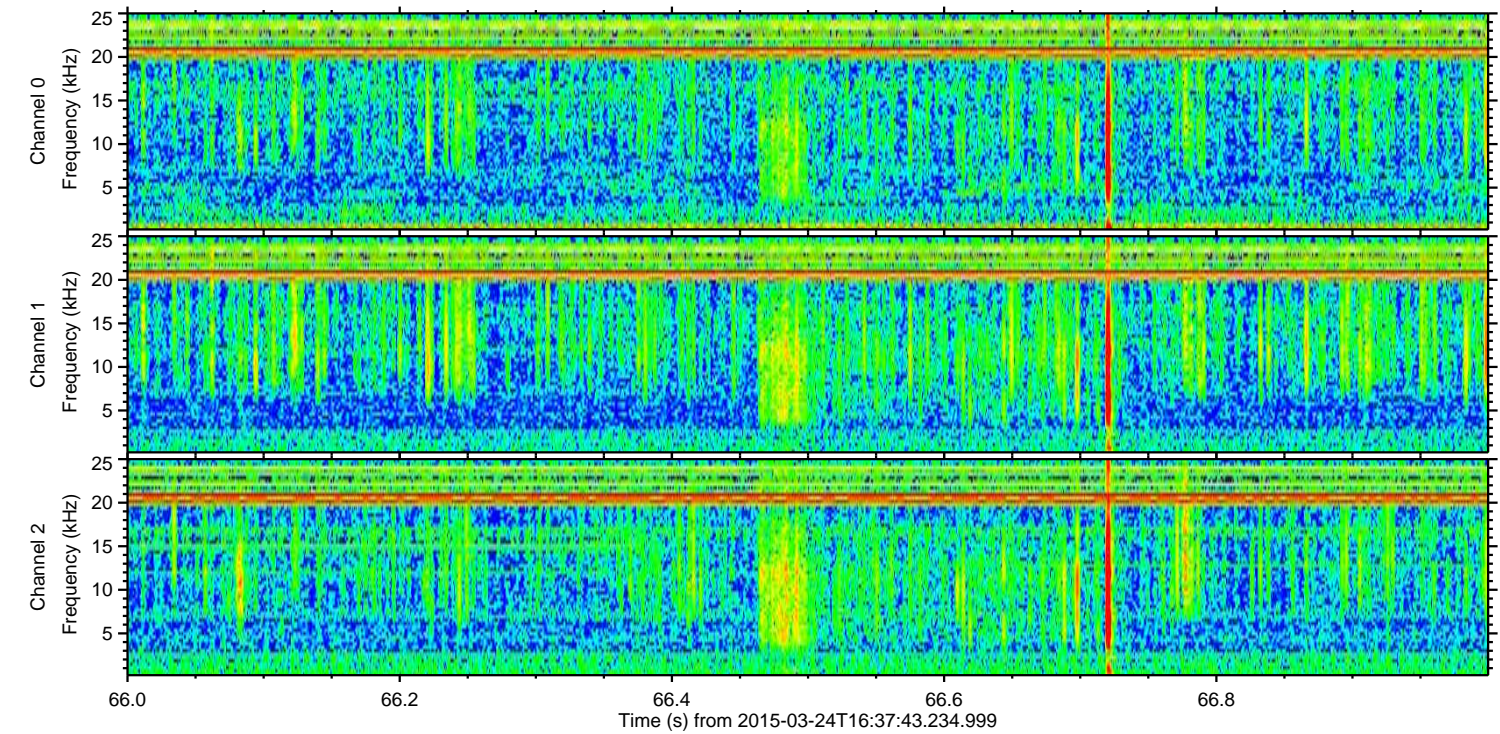
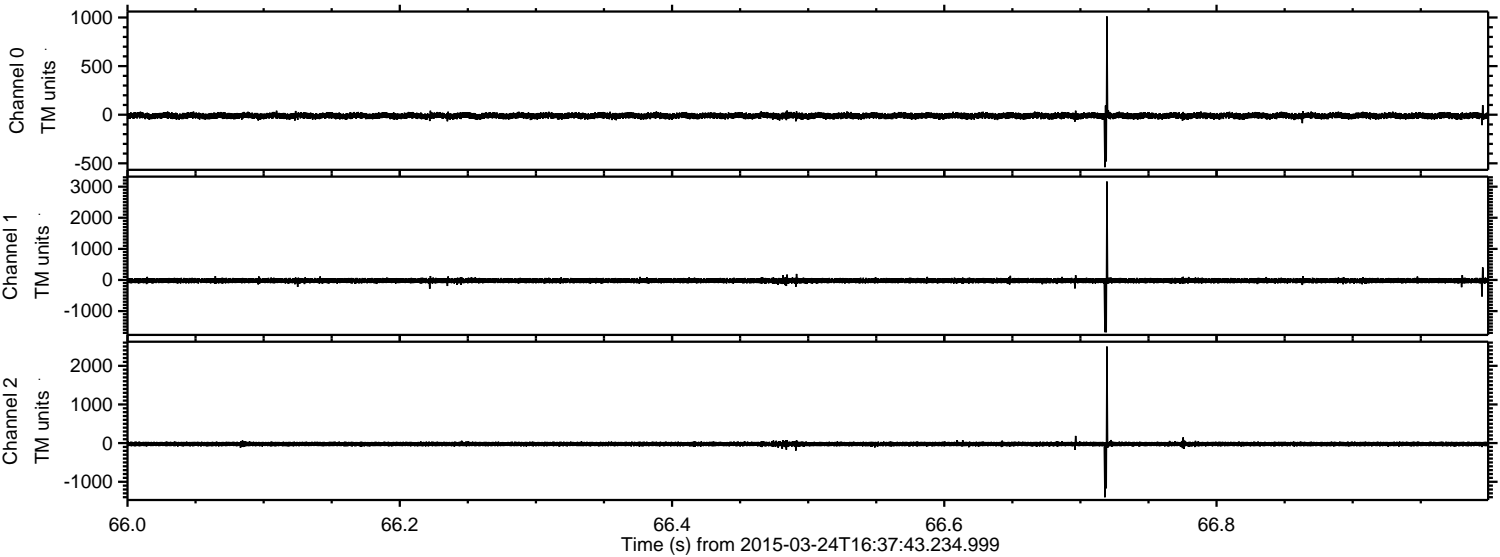
Processed Tue Mar 24 17:44:59 2015 by ELM ver.2012-10-06 from 001__elm20150324_163742__dat00.bin



Processed Tue Mar 24 17:45:00 2015 by ELM ver.2012-10-06 from 001__elm20150324_163742__dat00.bin

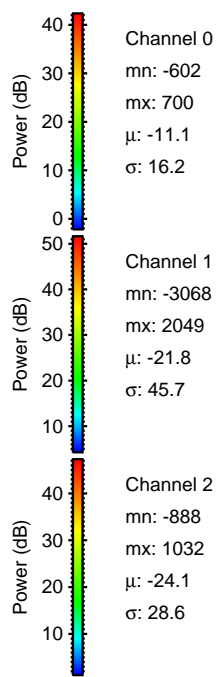
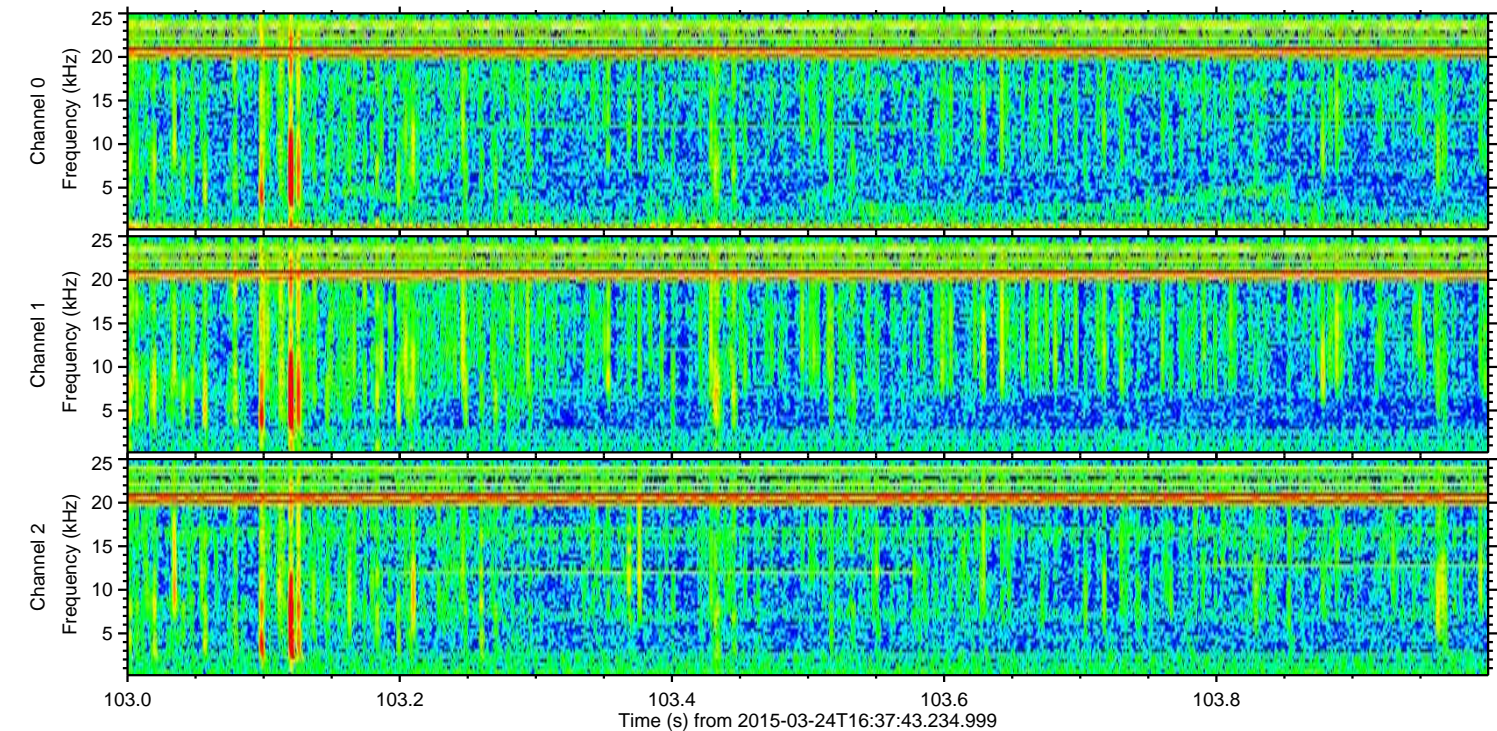
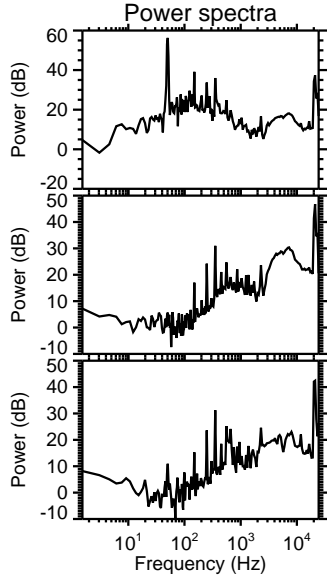
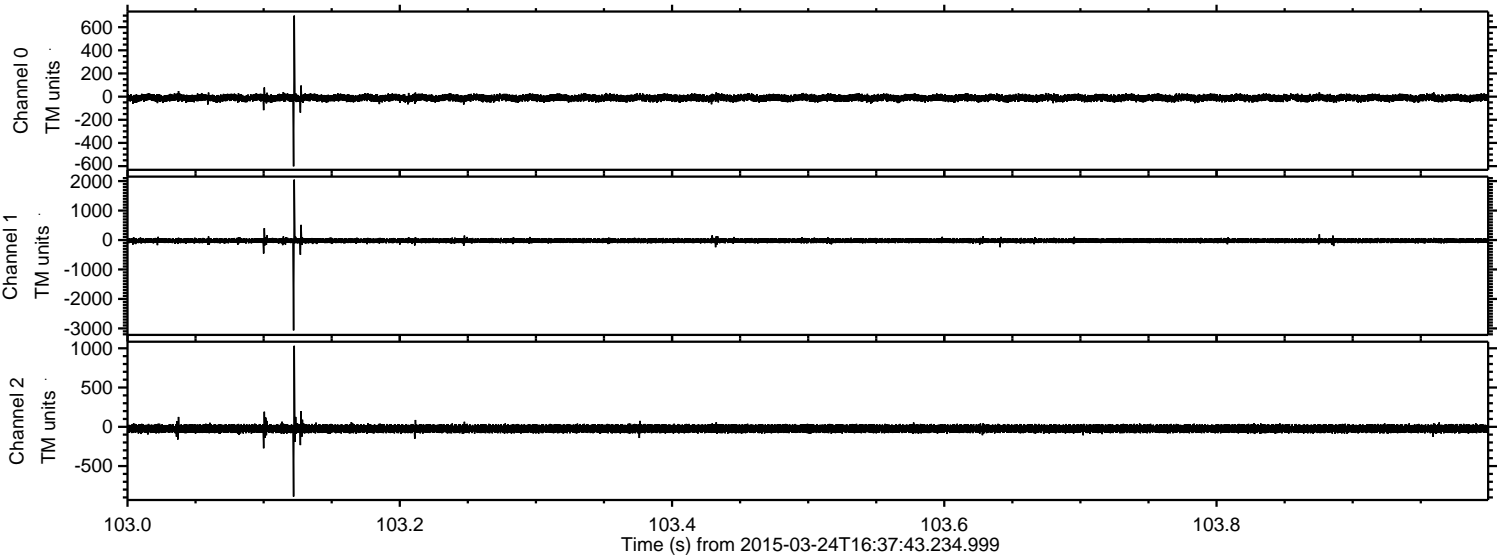


Processed Tue Mar 24 17:45:01 2015 by ELM ver.2012-10-06 from 001__elm20150324_163742__dat00.bin

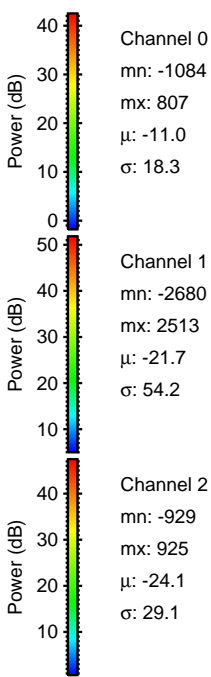
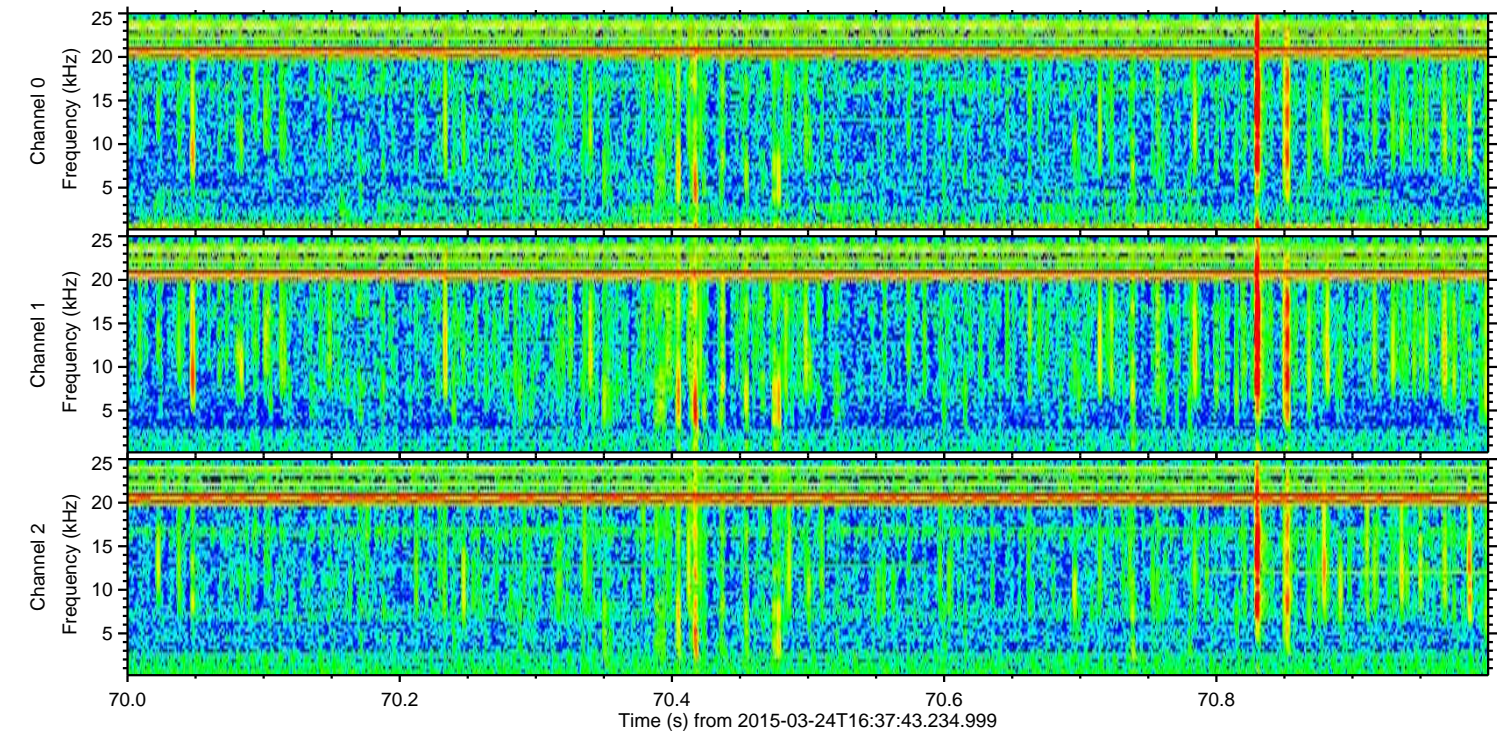
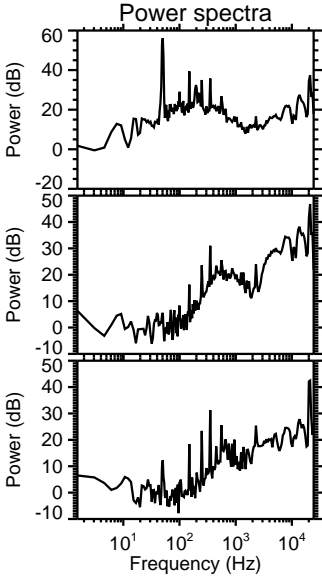
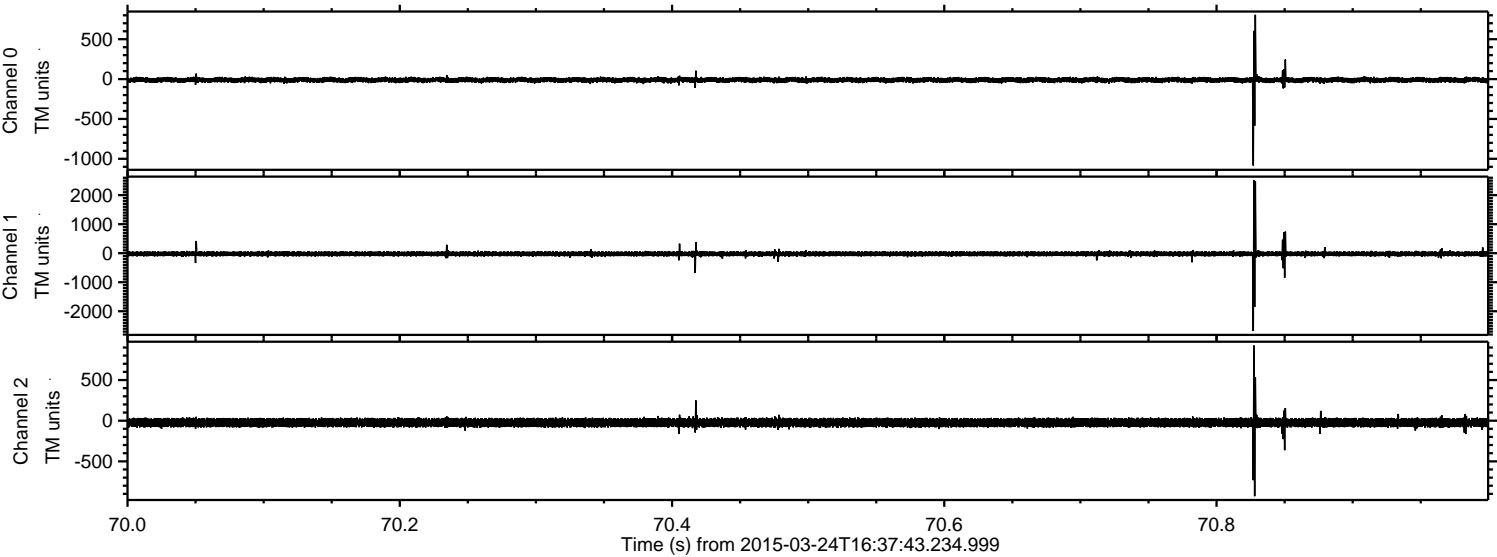


ELMAVAN 3D WAVEFORMS (Measured data sampled at 50 kHz) 49788 packets of 144 samples from 2015-03-24T16:37:43.234.999. Part 104/144

Processed Tue Mar 24 17:45:02 2015 by ELM ver.2012-10-06 from 001__elm20150324_163742__dat00.bin

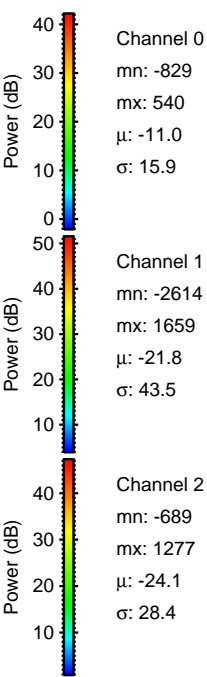
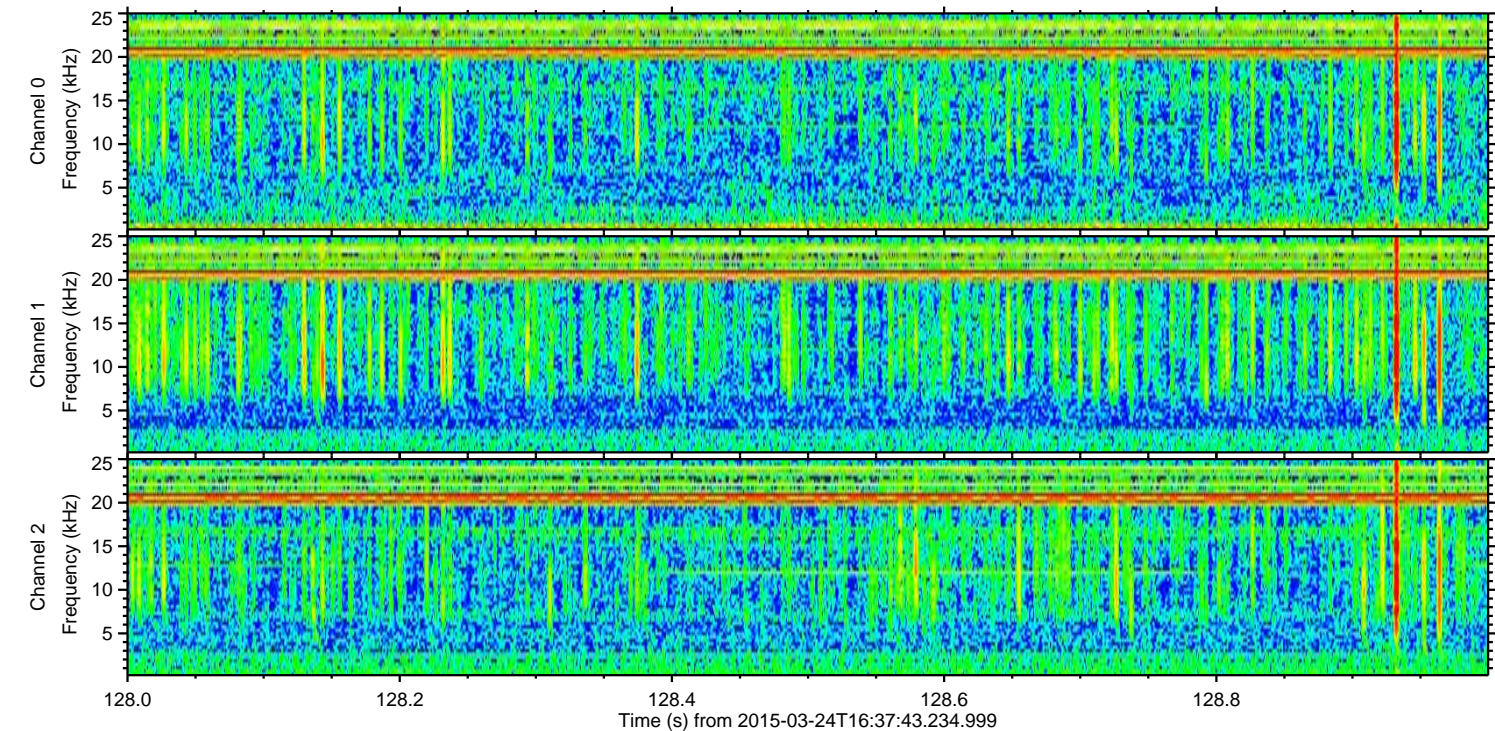
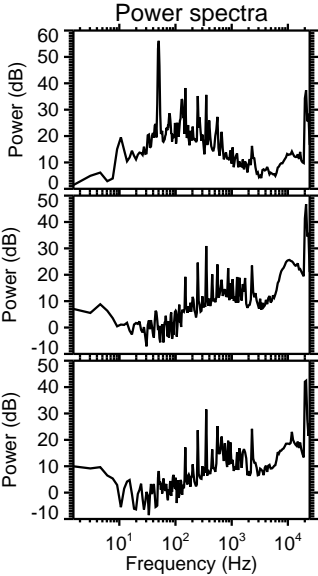
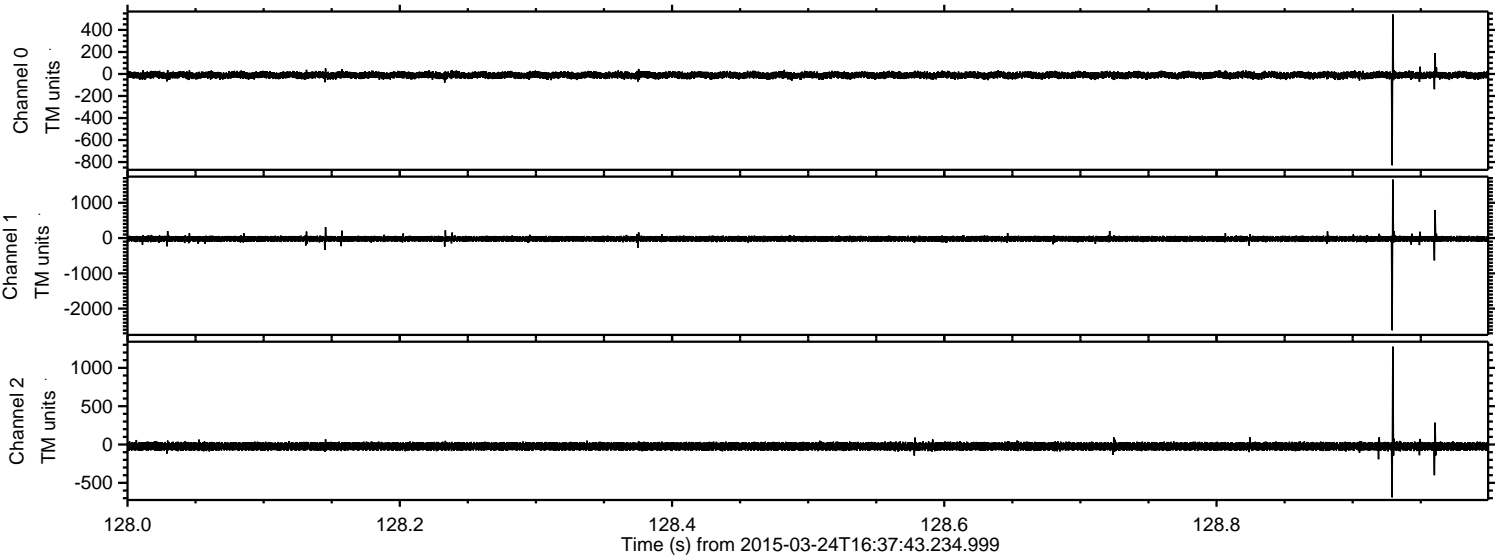


Processed Tue Mar 24 17:45:03 2015 by ELM ver.2012-10-06 from 001__elm20150324_163742__dat00.bin



ELMAVAN 3D WAVEFORMS (Measured data sampled at 50 kHz) 49788 packets of 144 samples from 2015-03-24T16:37:43.234.999. Part 129/144

Processed Tue Mar 24 17:45:04 2015 by ELM ver.2012-10-06 from 001__elm20150324_163742__dat00.bin



Channel 0
mn: -829
mx: 540
 μ : -11.0
 σ : 15.9

Channel 1
mn: -2614
mx: 1659
 μ : -21.8
 σ : 43.5

Channel 2
mn: -689
mx: 1277
 μ : -24.1
 σ : 28.4

Processed Tue Mar 24 17:45:05 2015 by ELM ver.2012-10-06 from 001__elm20150324_163742__dat00.bin

