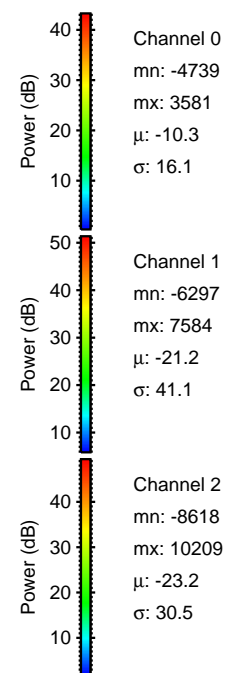
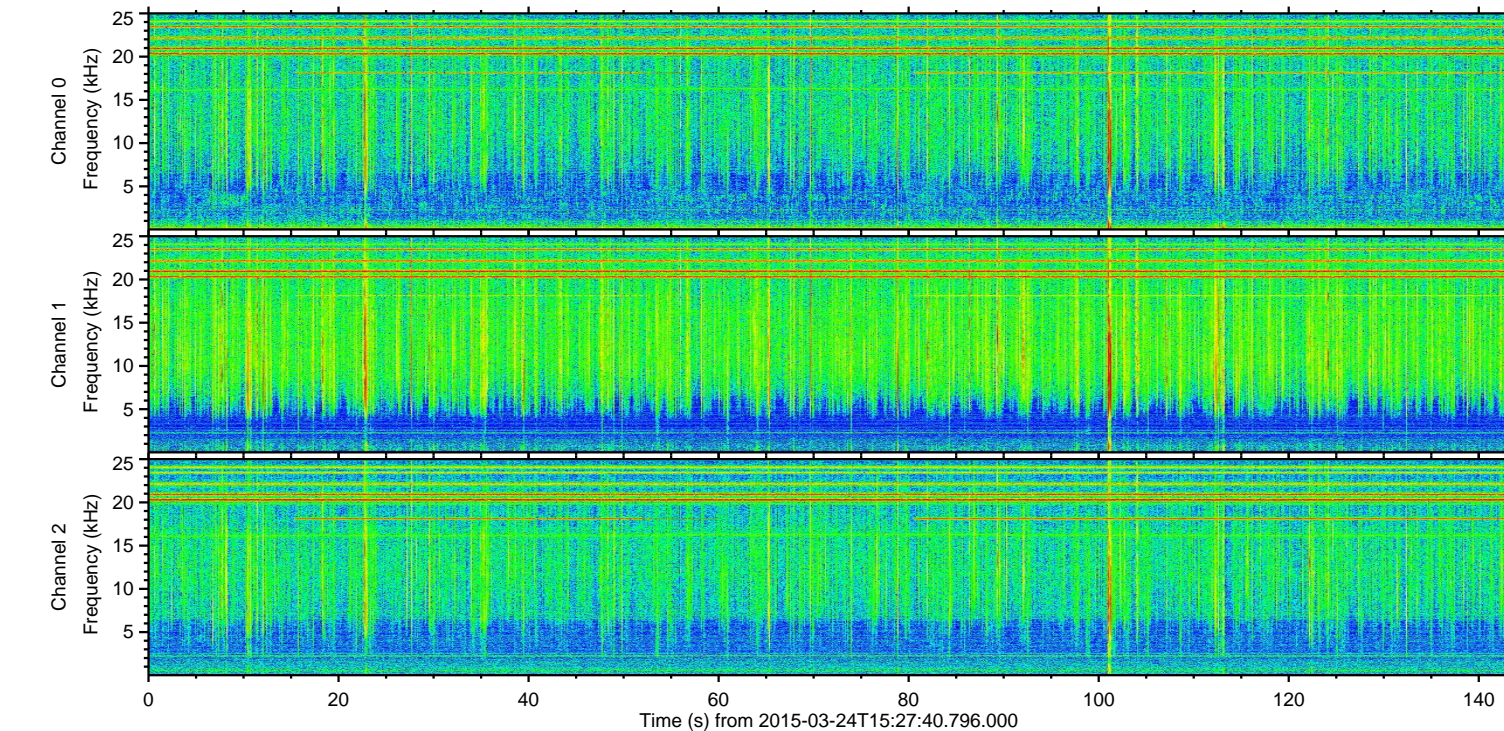
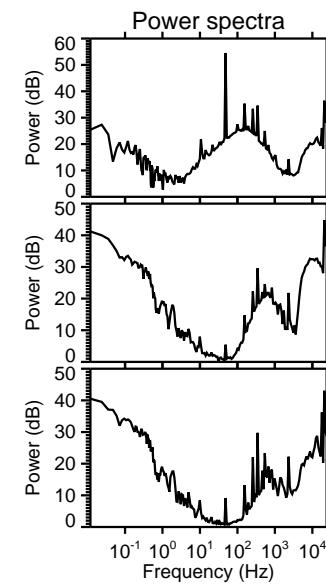
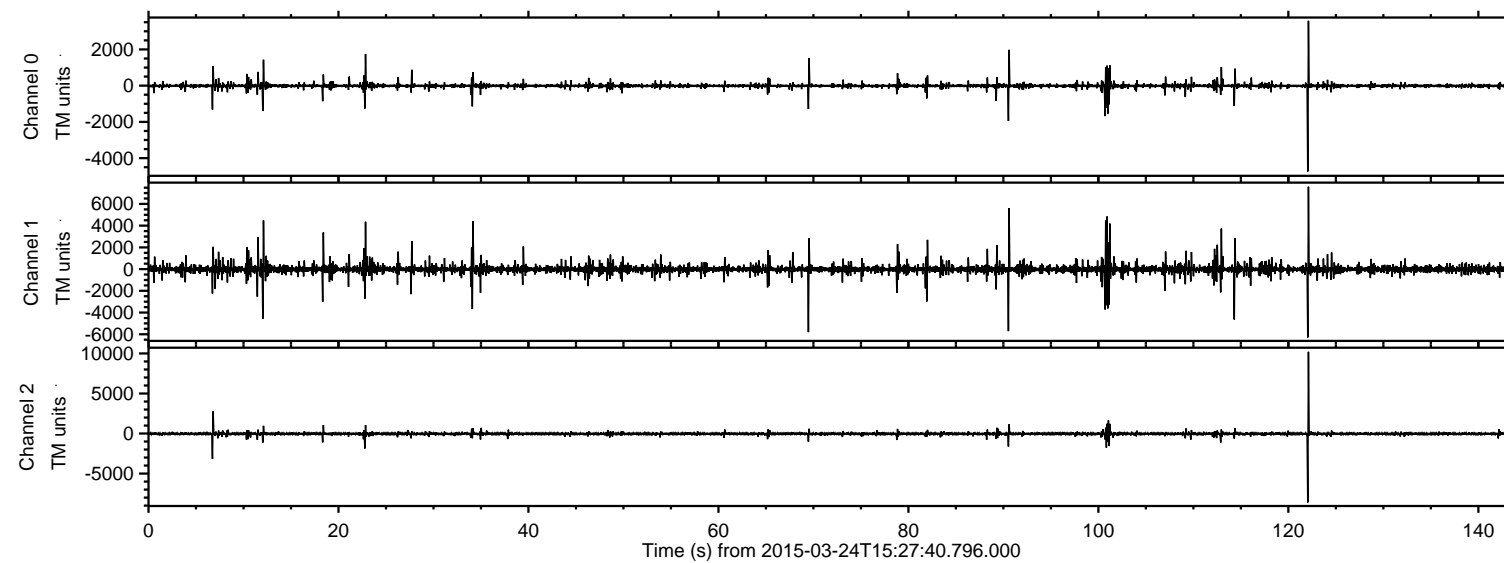


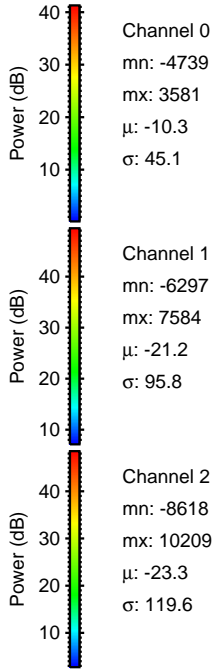
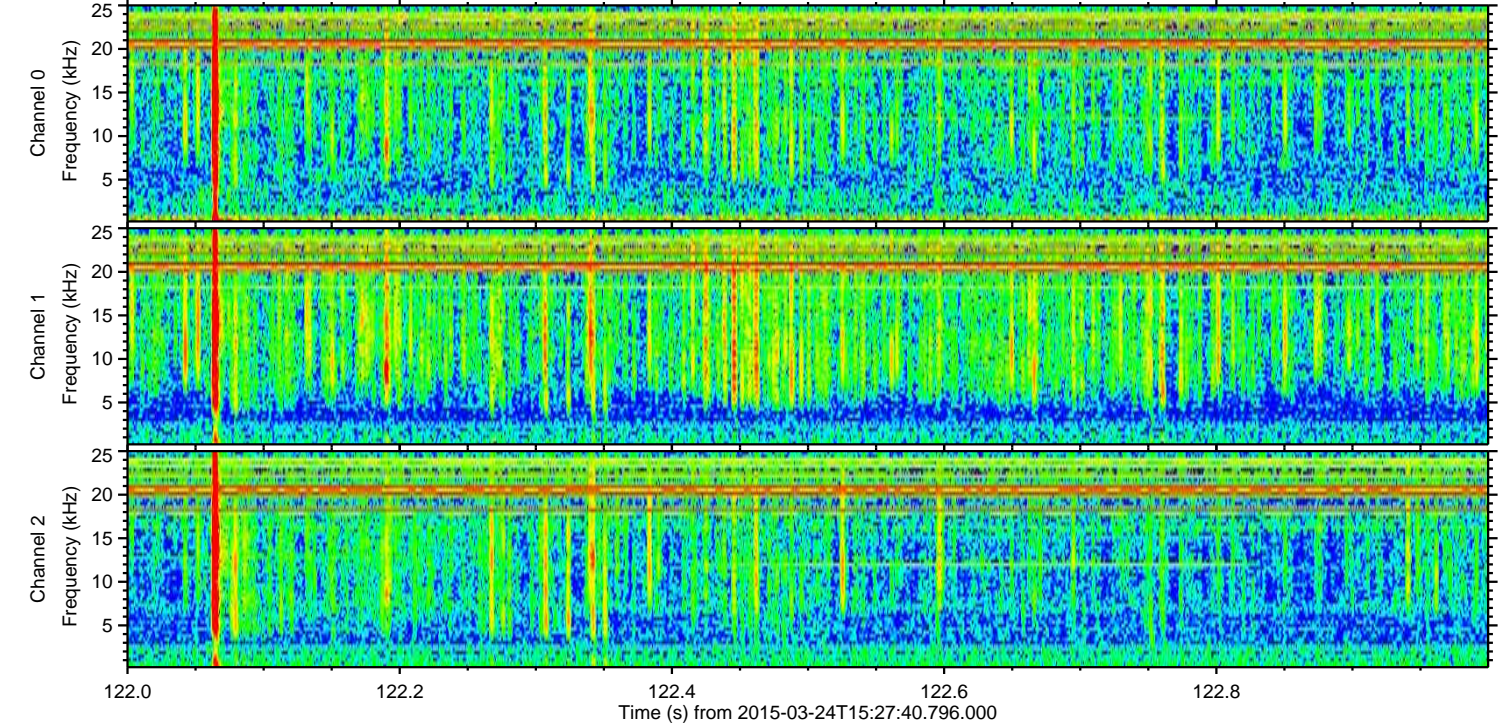
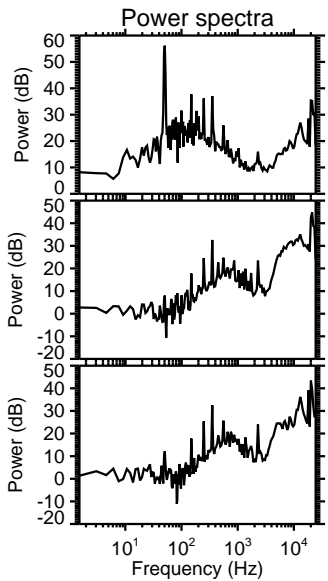
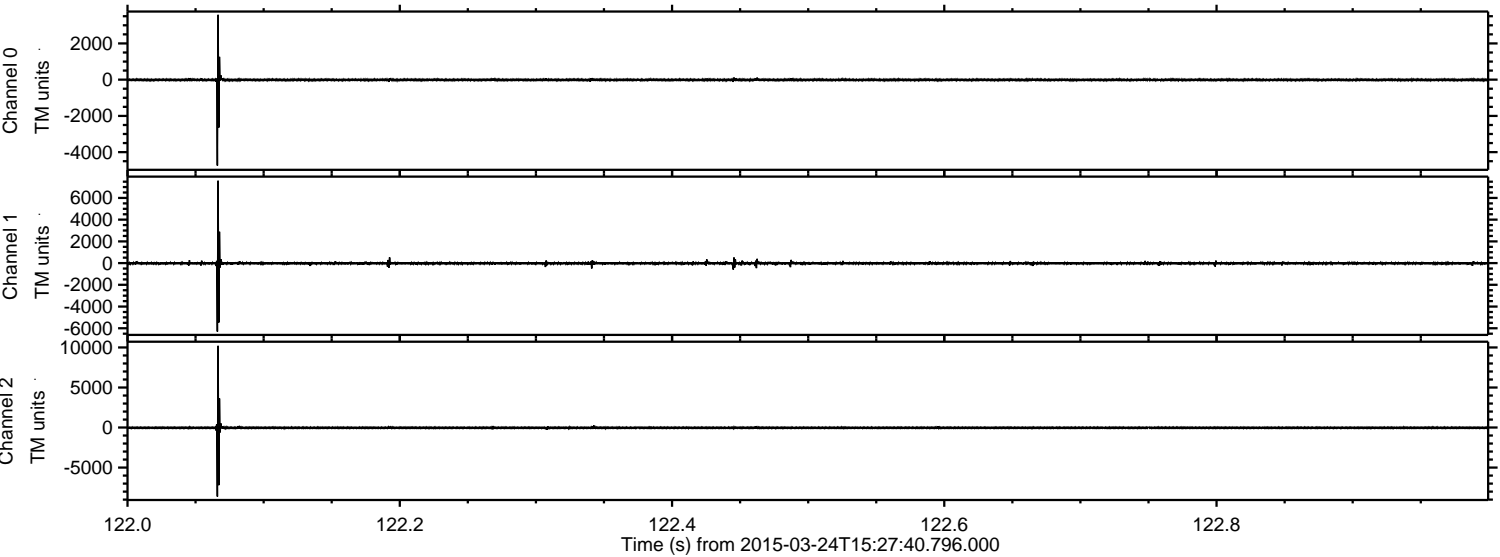
ELMAVAN 3D WAVEFORMS (Measured data sampled at 50 kHz) 49737 packets of 144 samples from 2015-03-24T15:27:40.796.000.

Processed Tue Mar 24 16:38:10 2015 by ELM ver.2012-10-06 from 001__elm20150324_152739__dat00.bin

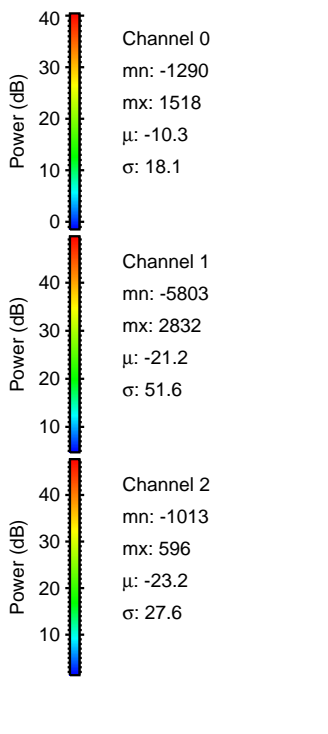
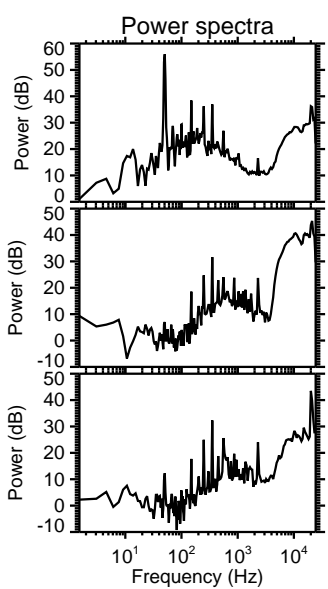
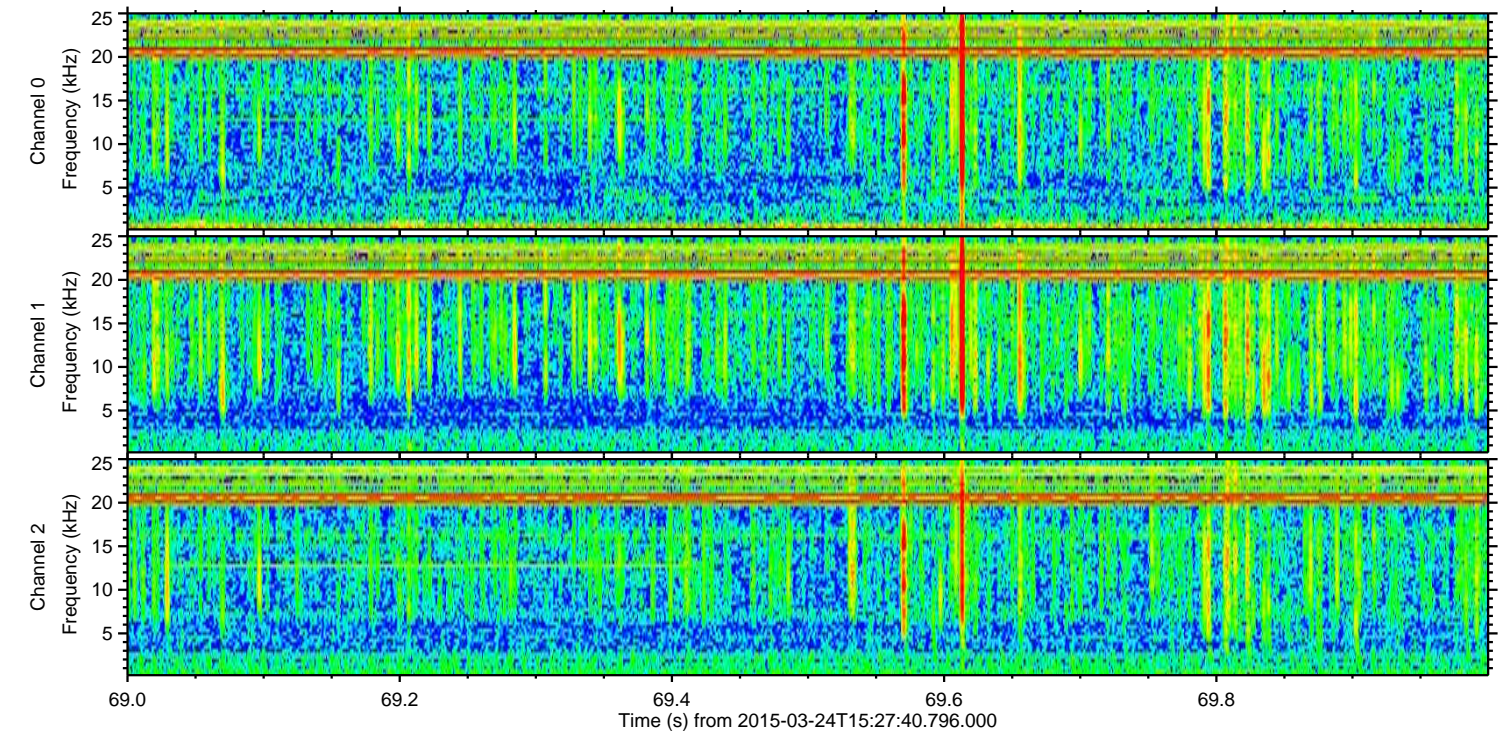
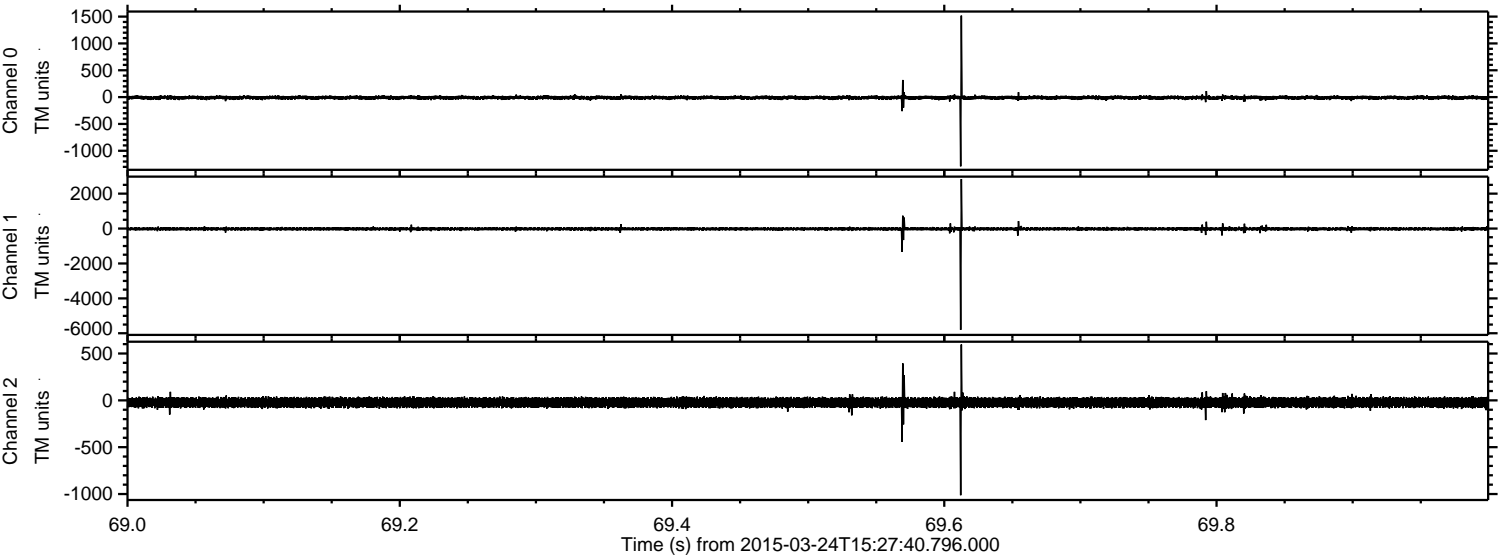


ELMAVAN 3D WAVEFORMS (Measured data sampled at 50 kHz) 49737 packets of 144 samples from 2015-03-24T15:27:40.796.000. Part 123/144

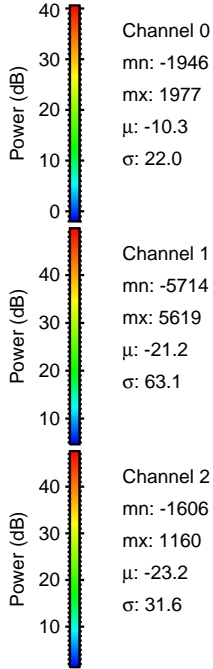
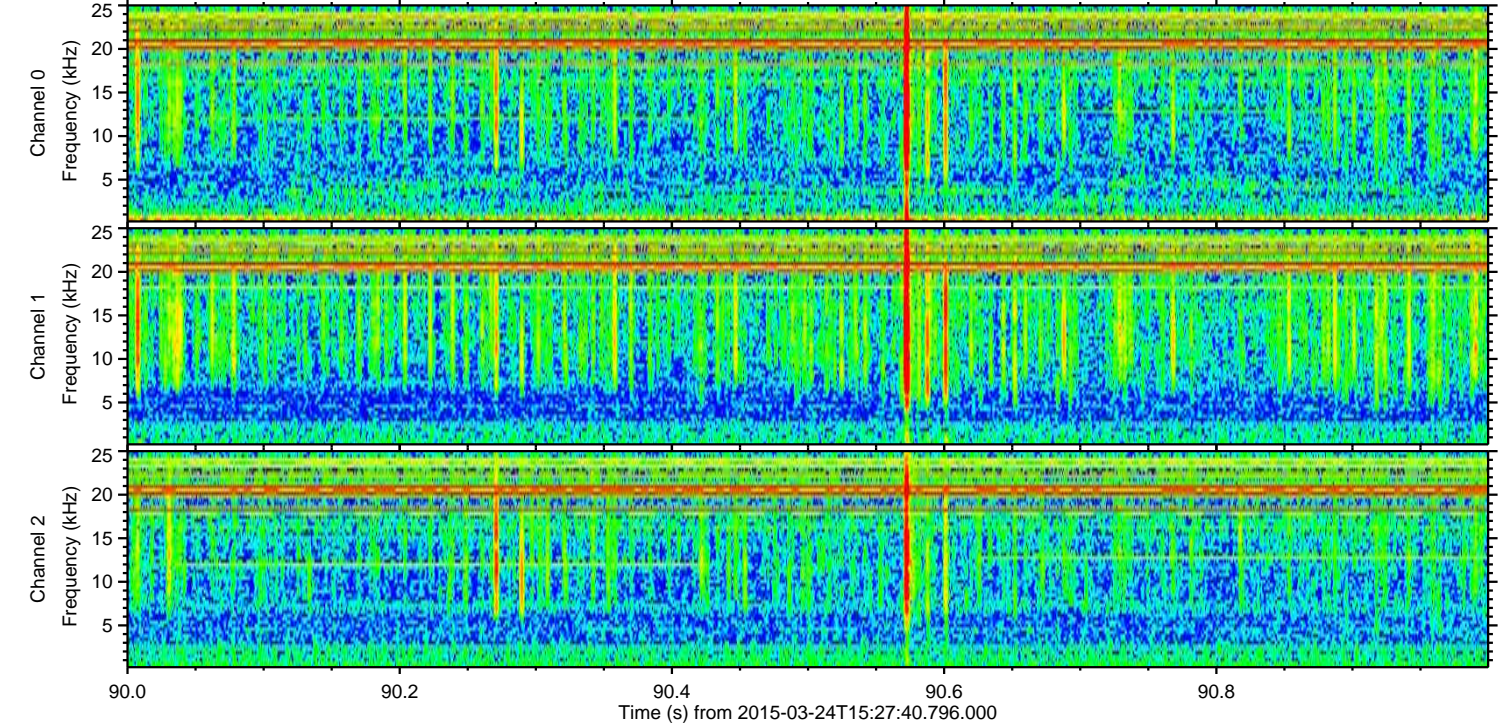
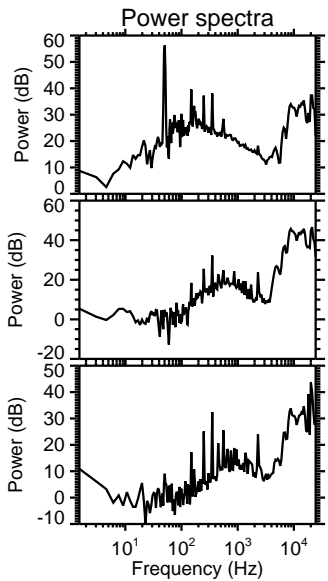
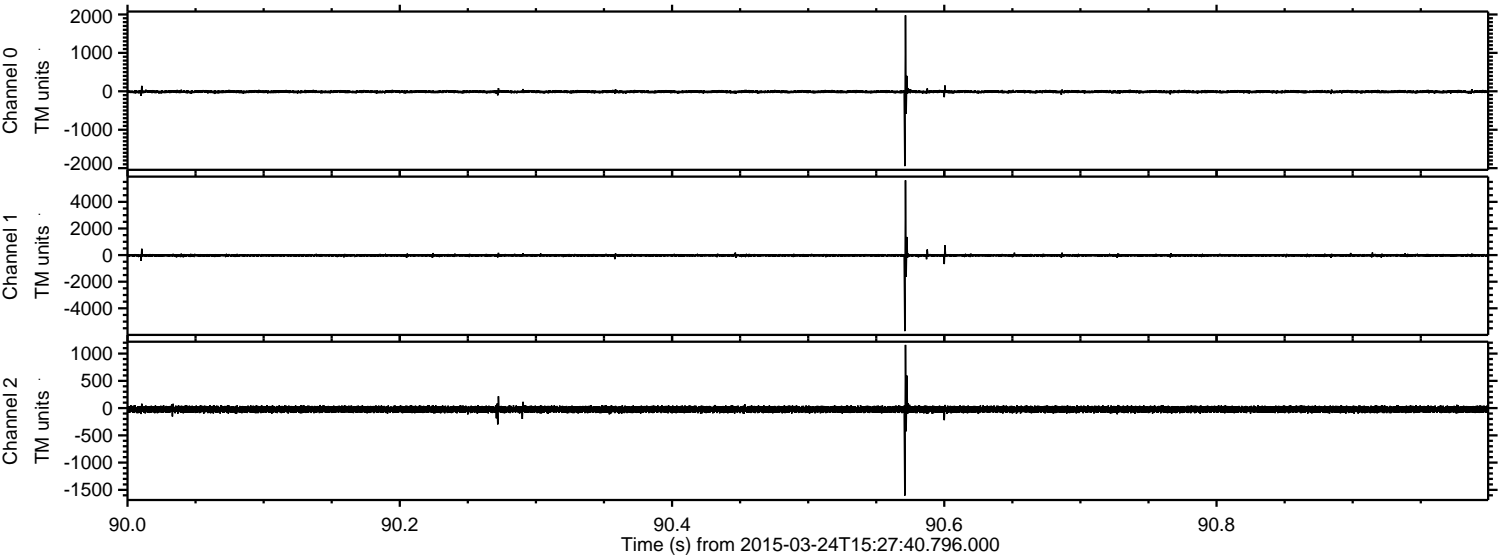
Processed Tue Mar 24 16:38:22 2015 by ELM ver.2012-10-06 from 001__elm20150324_152739__dat00.bin



Processed Tue Mar 24 16:38:22 2015 by ELM ver.2012-10-06 from 001__elm20150324_152739__dat00.bin

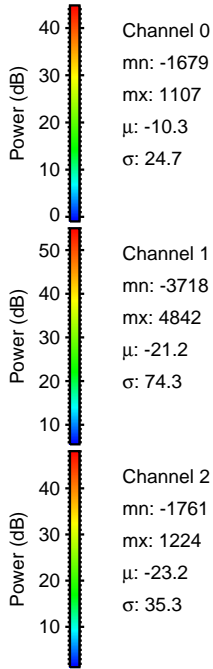
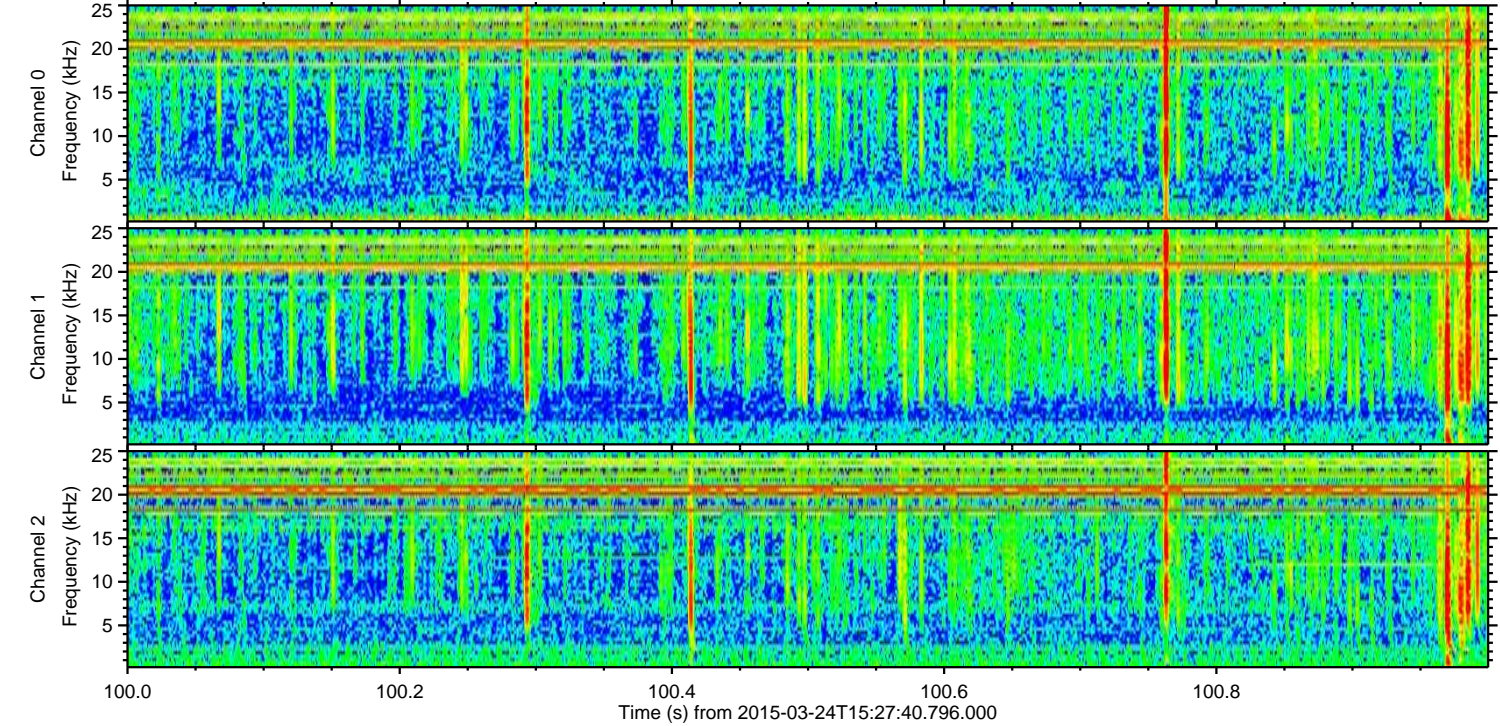
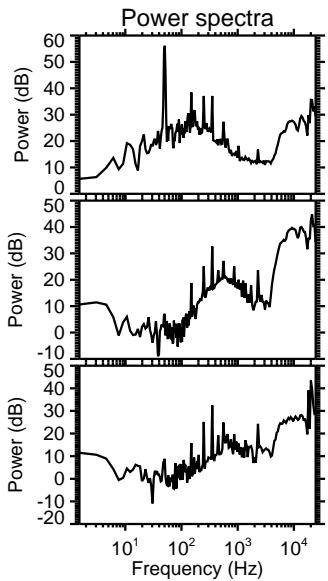
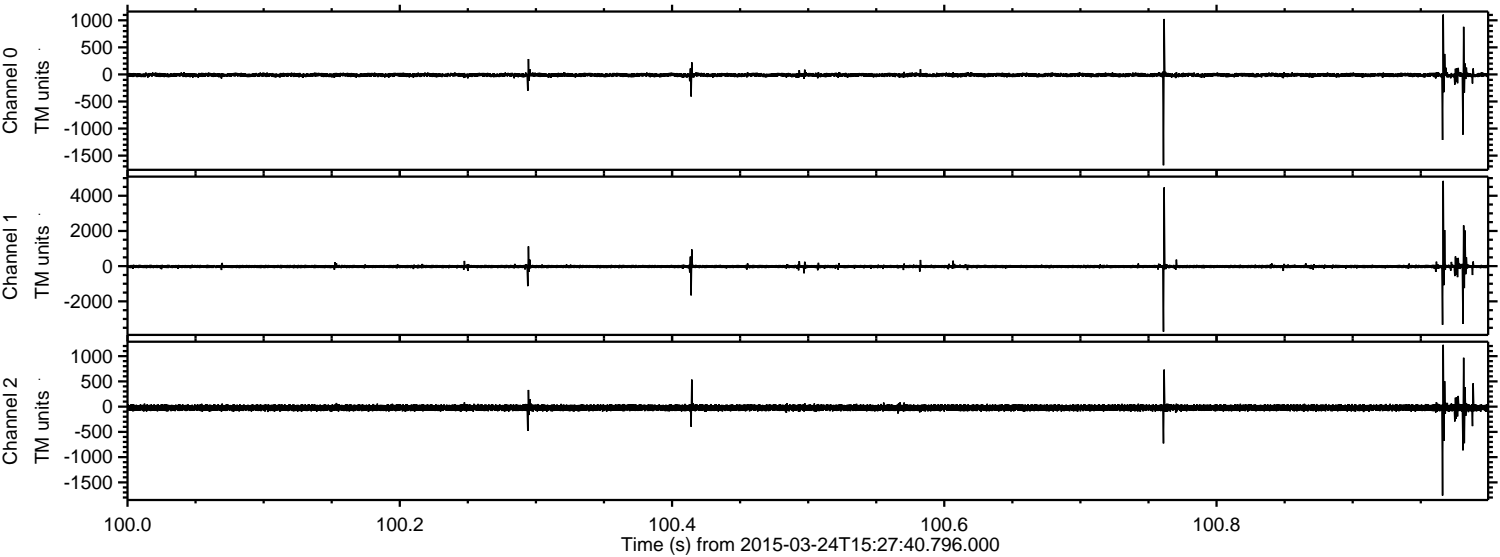


Processed Tue Mar 24 16:38:23 2015 by ELM ver.2012-10-06 from 001__elm20150324_152739__dat00.bin



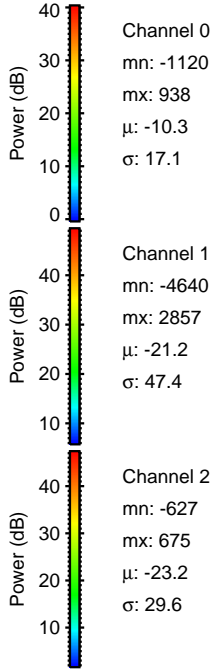
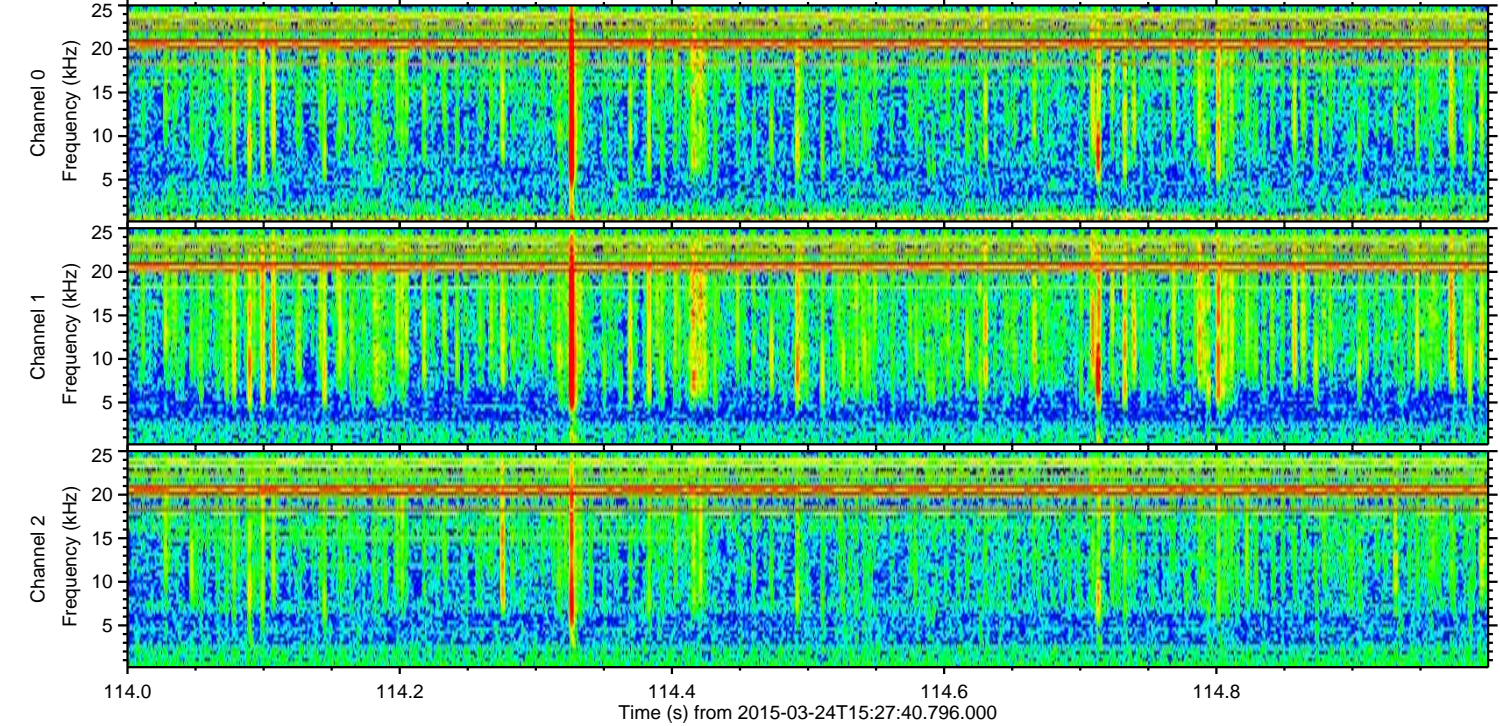
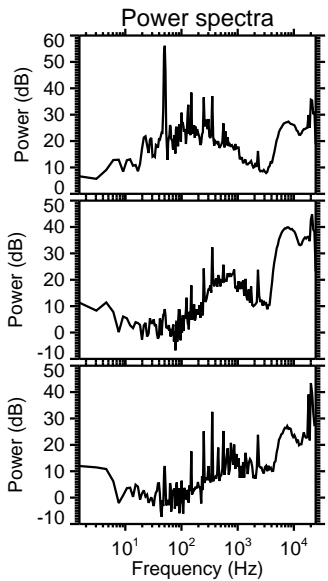
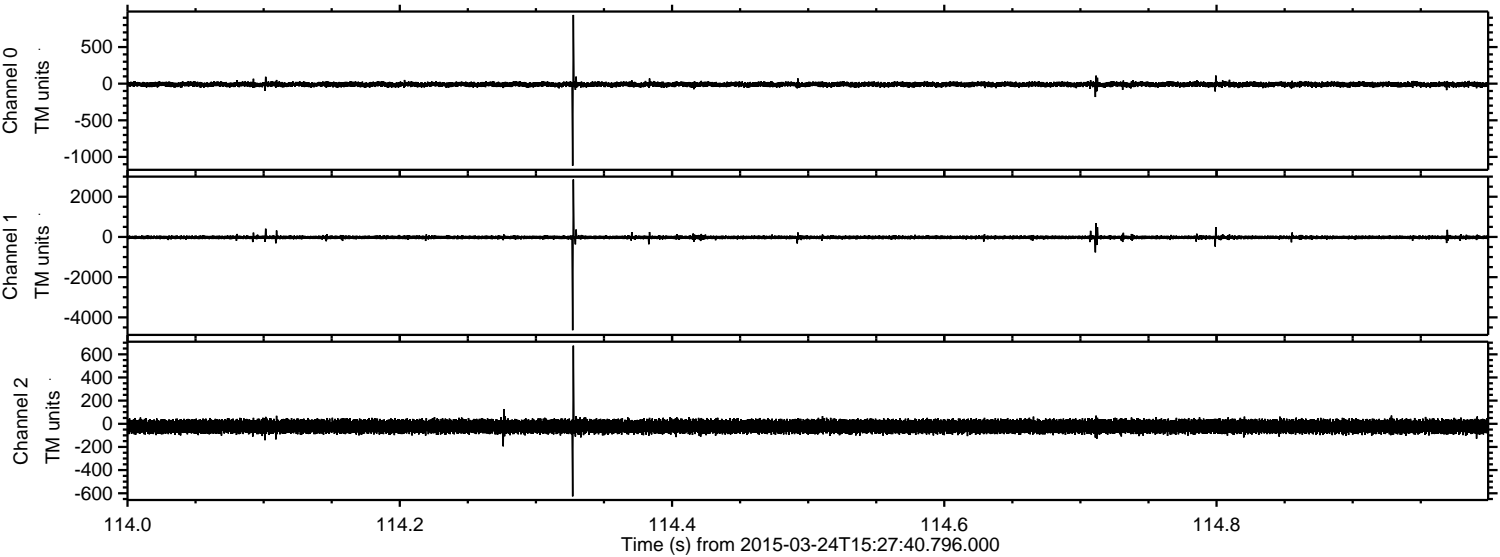
ELMAVAN 3D WAVEFORMS (Measured data sampled at 50 kHz) 49737 packets of 144 samples from 2015-03-24T15:27:40.796.000. Part 101/144

Processed Tue Mar 24 16:38:24 2015 by ELM ver.2012-10-06 from 001__elm20150324_152739__dat00.bin

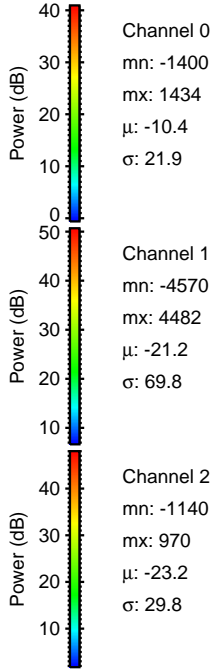
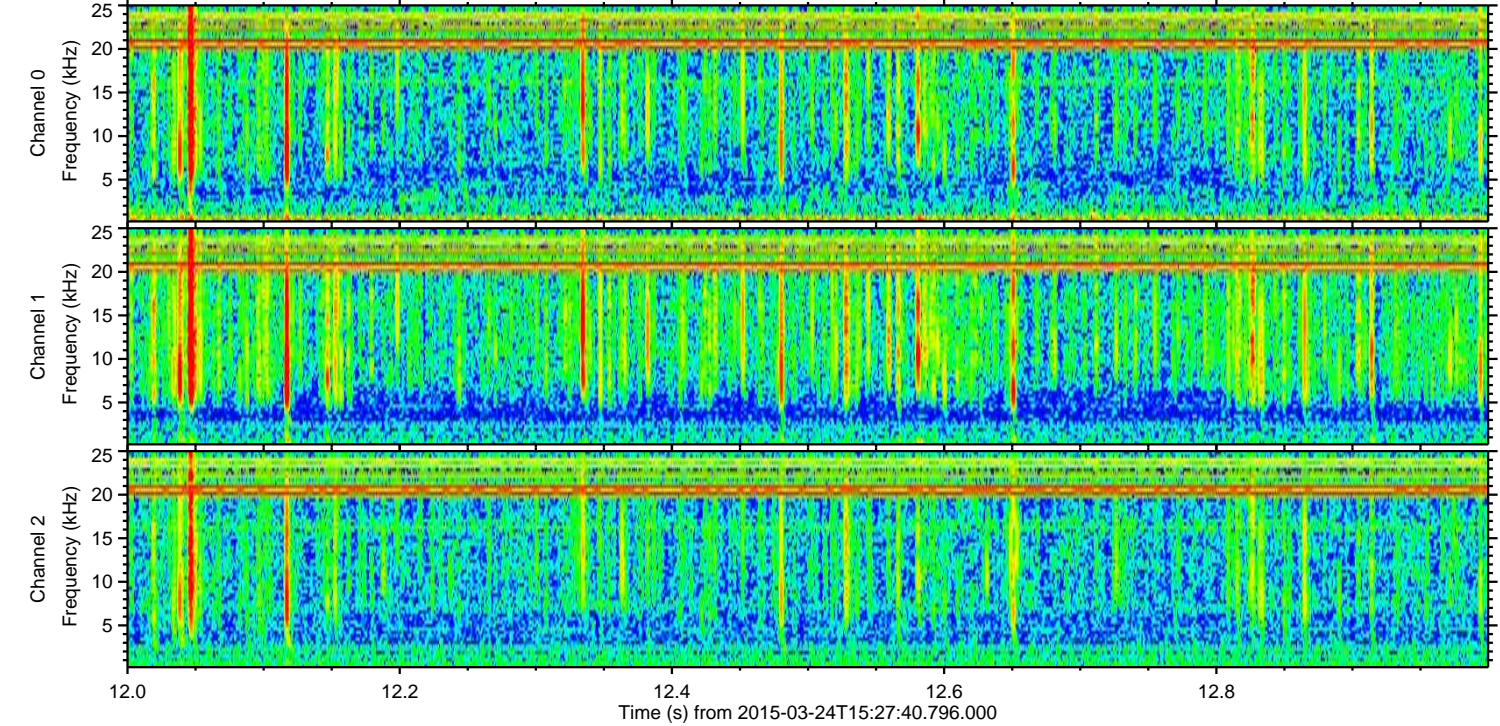
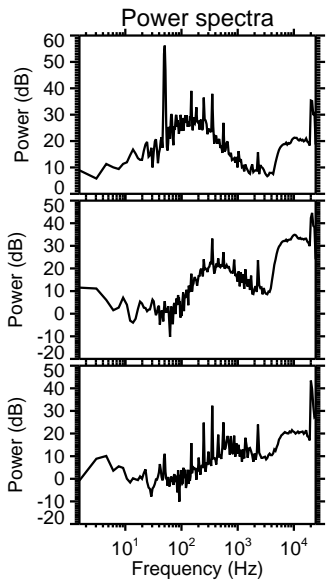
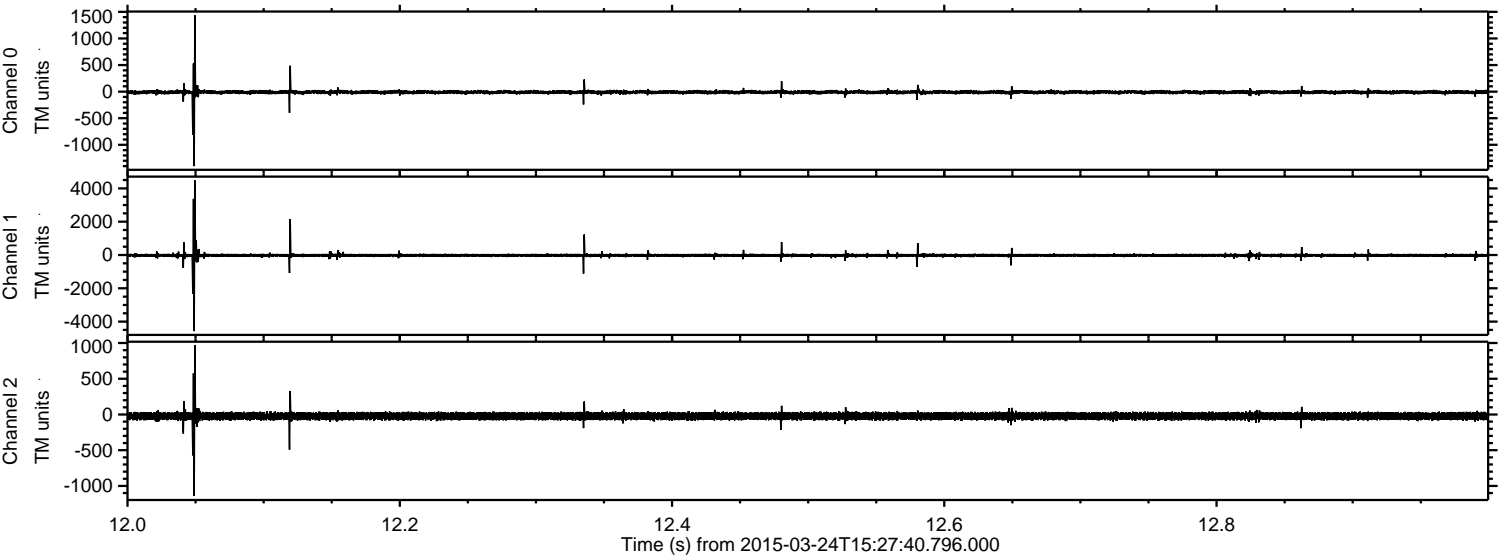


ELMAVAN 3D WAVEFORMS (Measured data sampled at 50 kHz) 49737 packets of 144 samples from 2015-03-24T15:27:40.796.000. Part 115/144

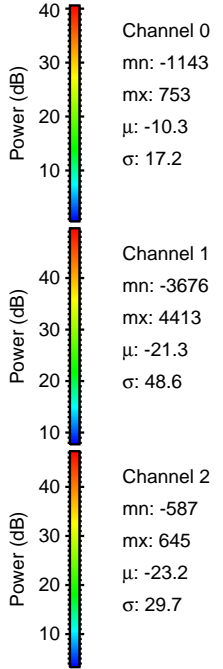
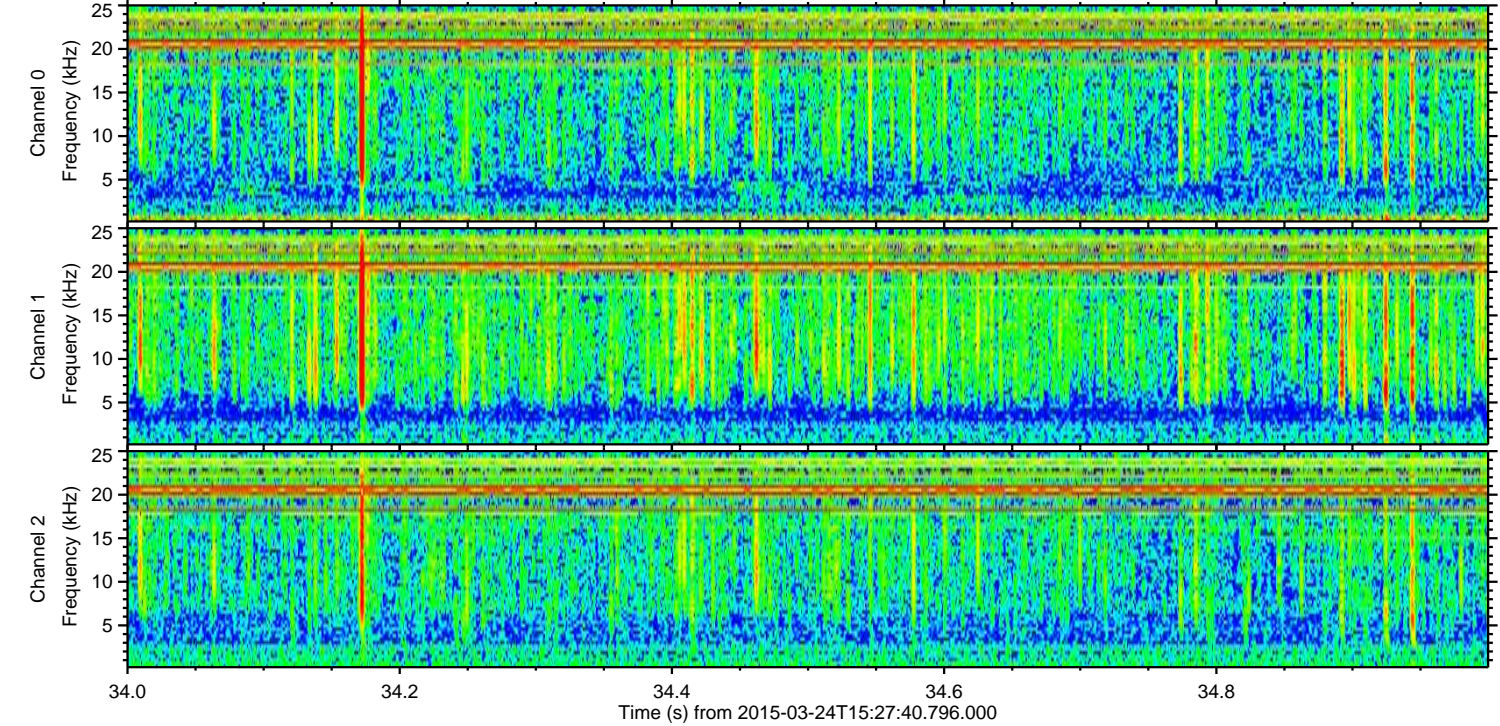
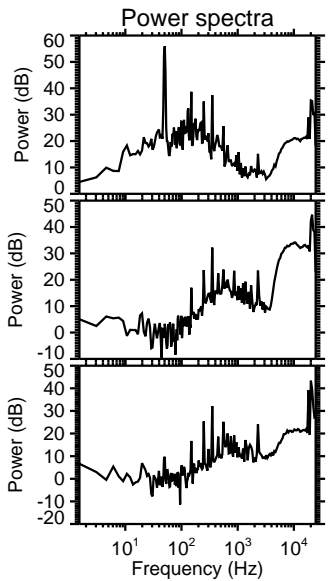
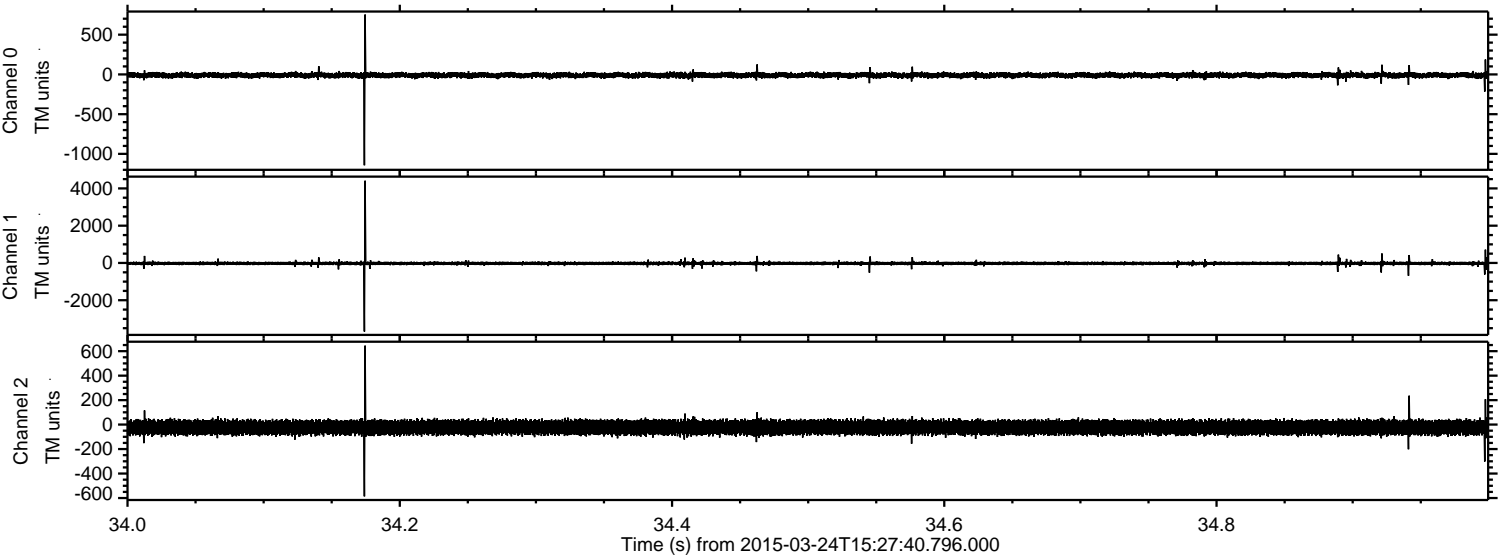
Processed Tue Mar 24 16:38:25 2015 by ELM ver.2012-10-06 from 001__elm20150324_152739__dat00.bin



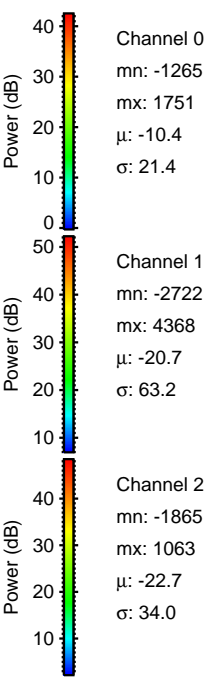
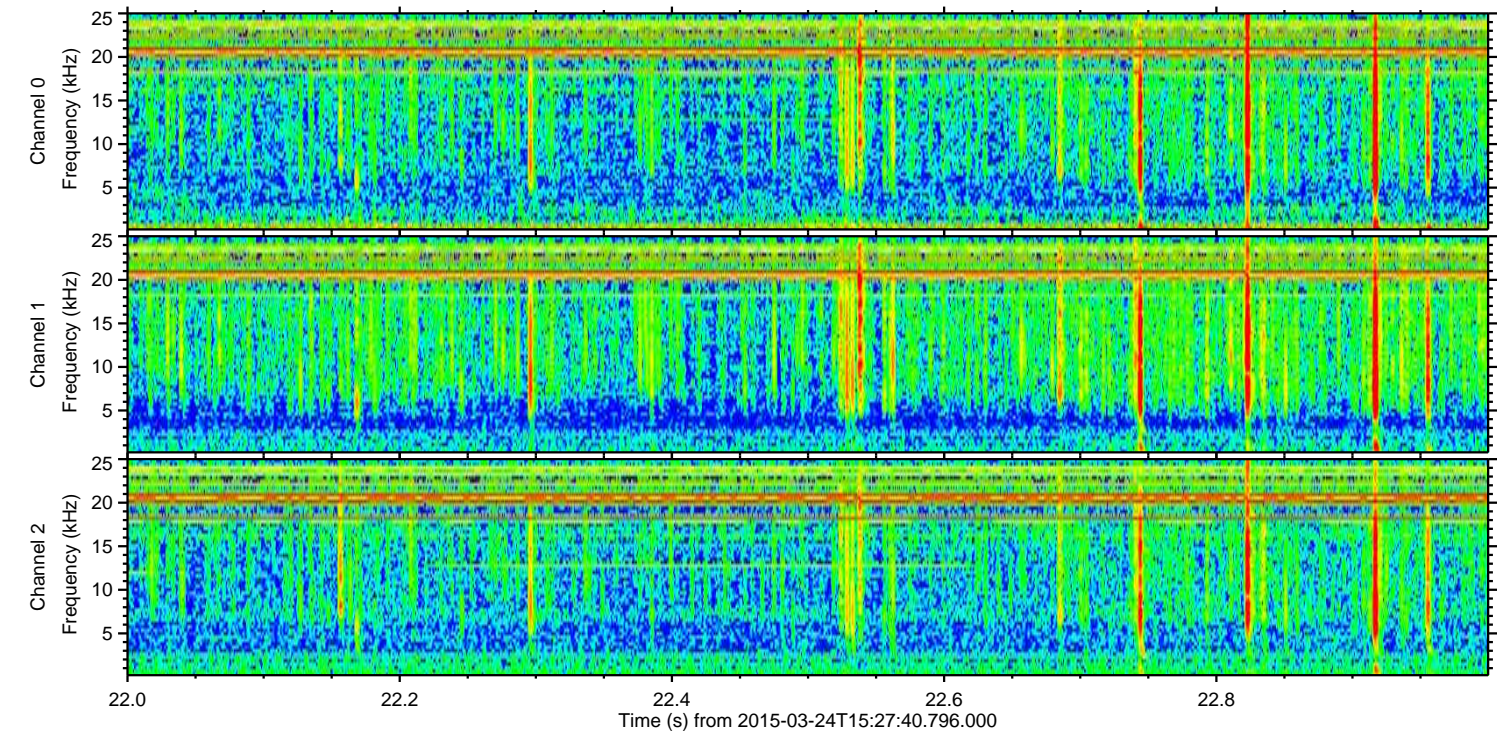
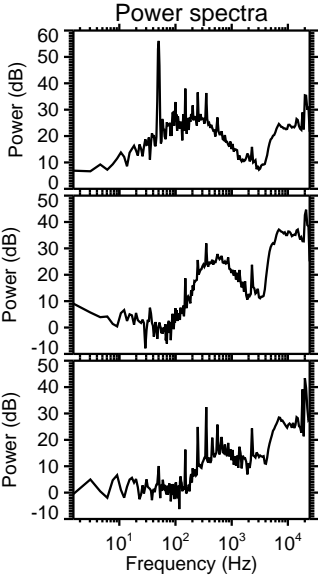
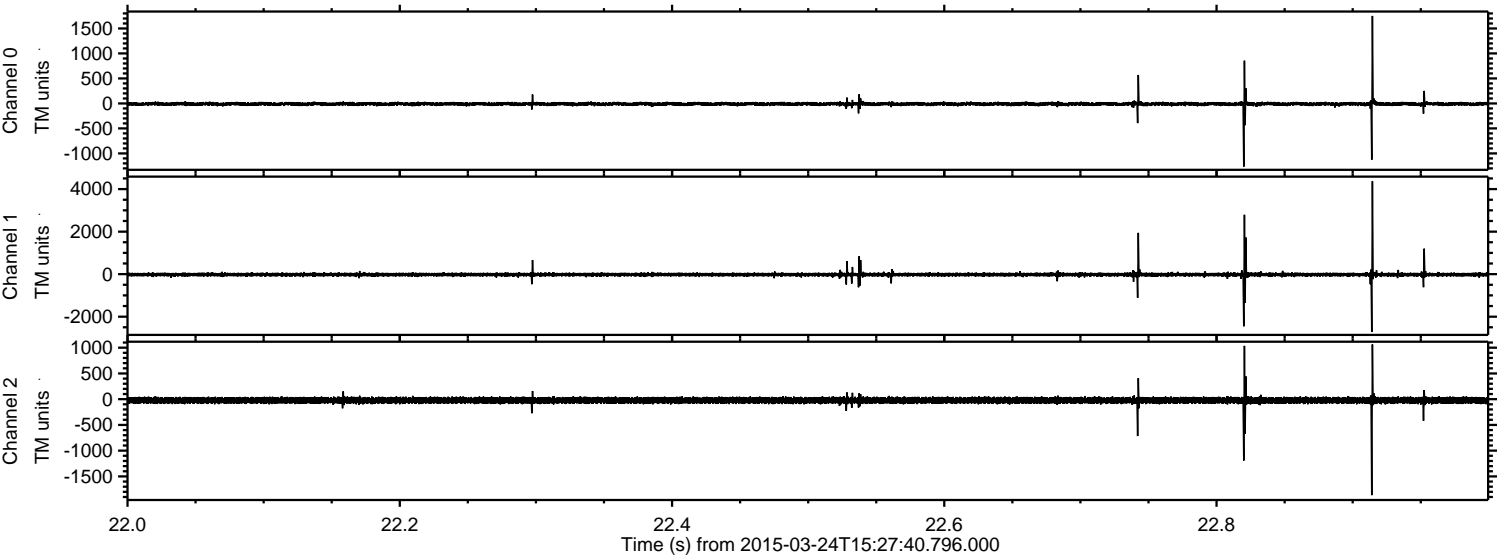
Processed Tue Mar 24 16:38:26 2015 by ELM ver.2012-10-06 from 001__elm20150324_152739__dat00.bin



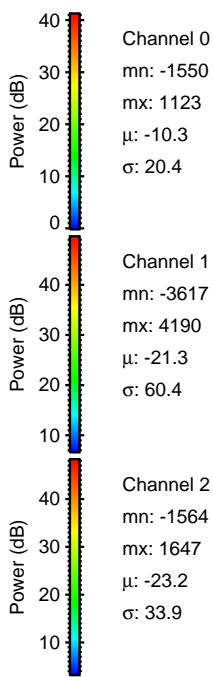
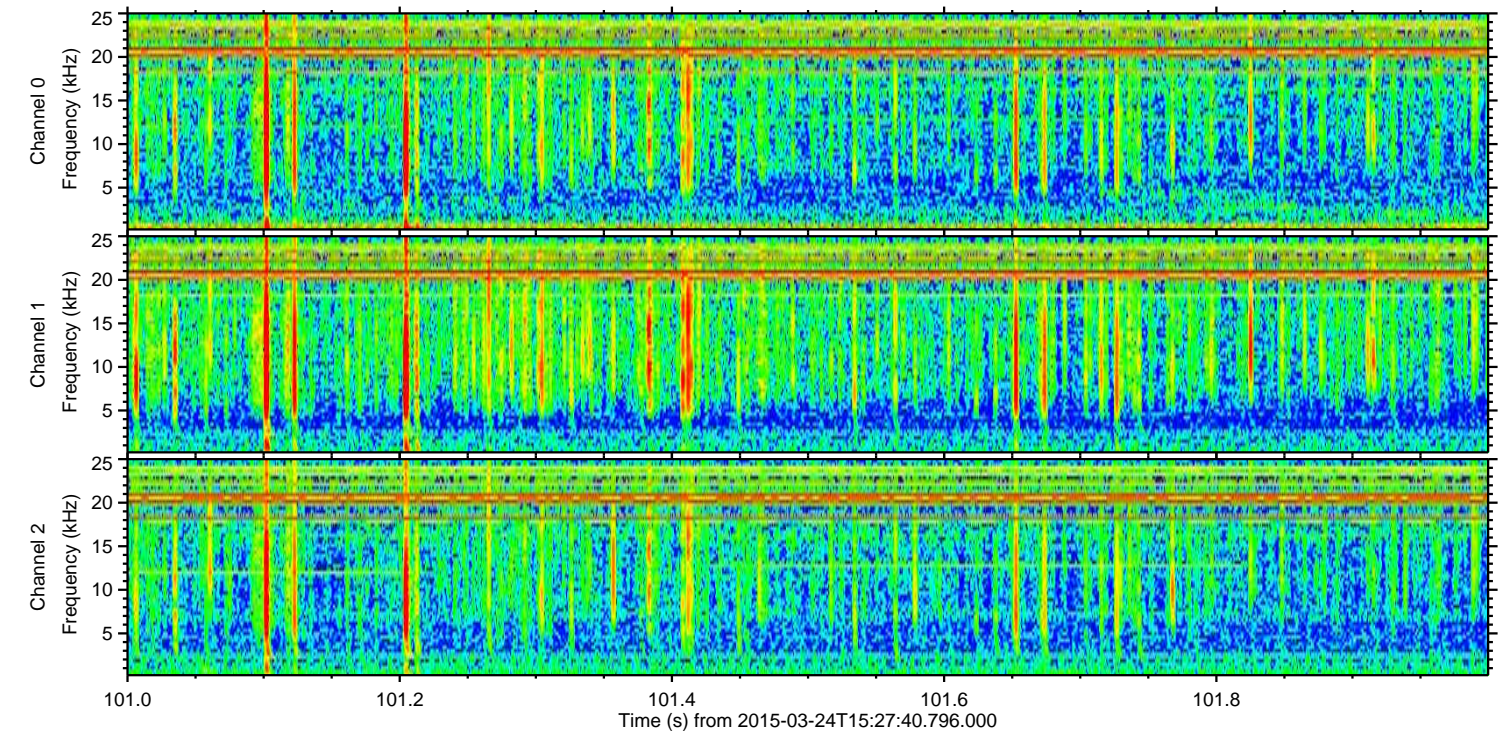
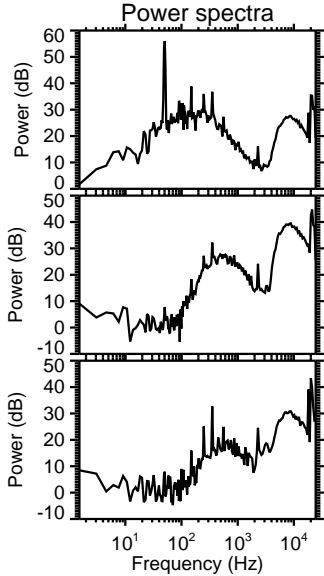
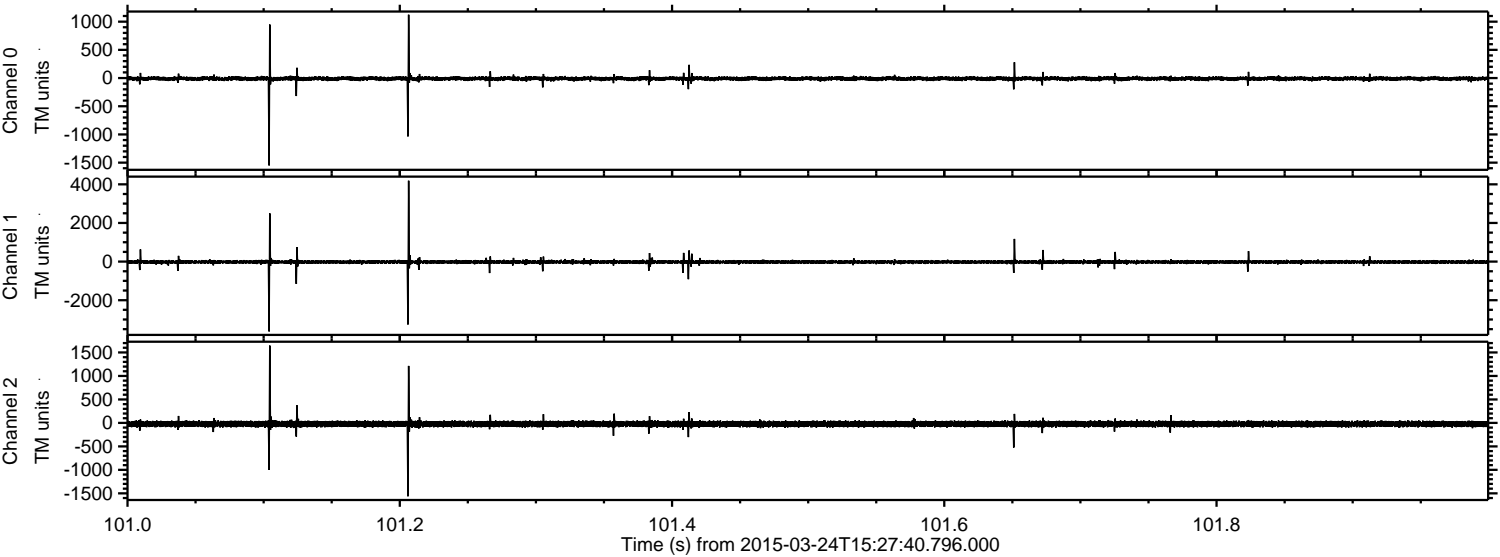
Processed Tue Mar 24 16:38:27 2015 by ELM ver.2012-10-06 from 001__elm20150324_152739__dat00.bin



Processed Tue Mar 24 16:38:28 2015 by ELM ver.2012-10-06 from 001__elm20150324_152739__dat00.bin



Processed Tue Mar 24 16:38:29 2015 by ELM ver.2012-10-06 from 001__elm20150324_152739__dat00.bin



Channel 0
mn: -1550
mx: 1123
 μ : -10.3
 σ : 20.4

Channel 1
mn: -3617
mx: 4190
 μ : -21.3
 σ : 60.4

Channel 2
mn: -1564
mx: 1647
 μ : -23.2
 σ : 33.9

Processed Tue Mar 24 16:38:30 2015 by ELM ver.2012-10-06 from 001__elm20150324_152739__dat00.bin

