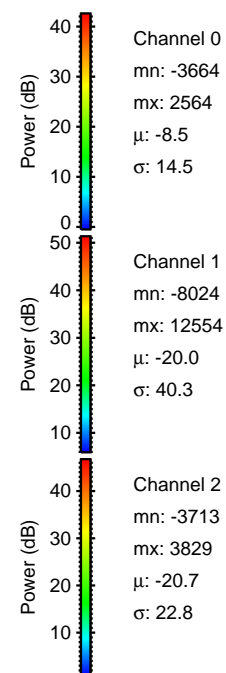
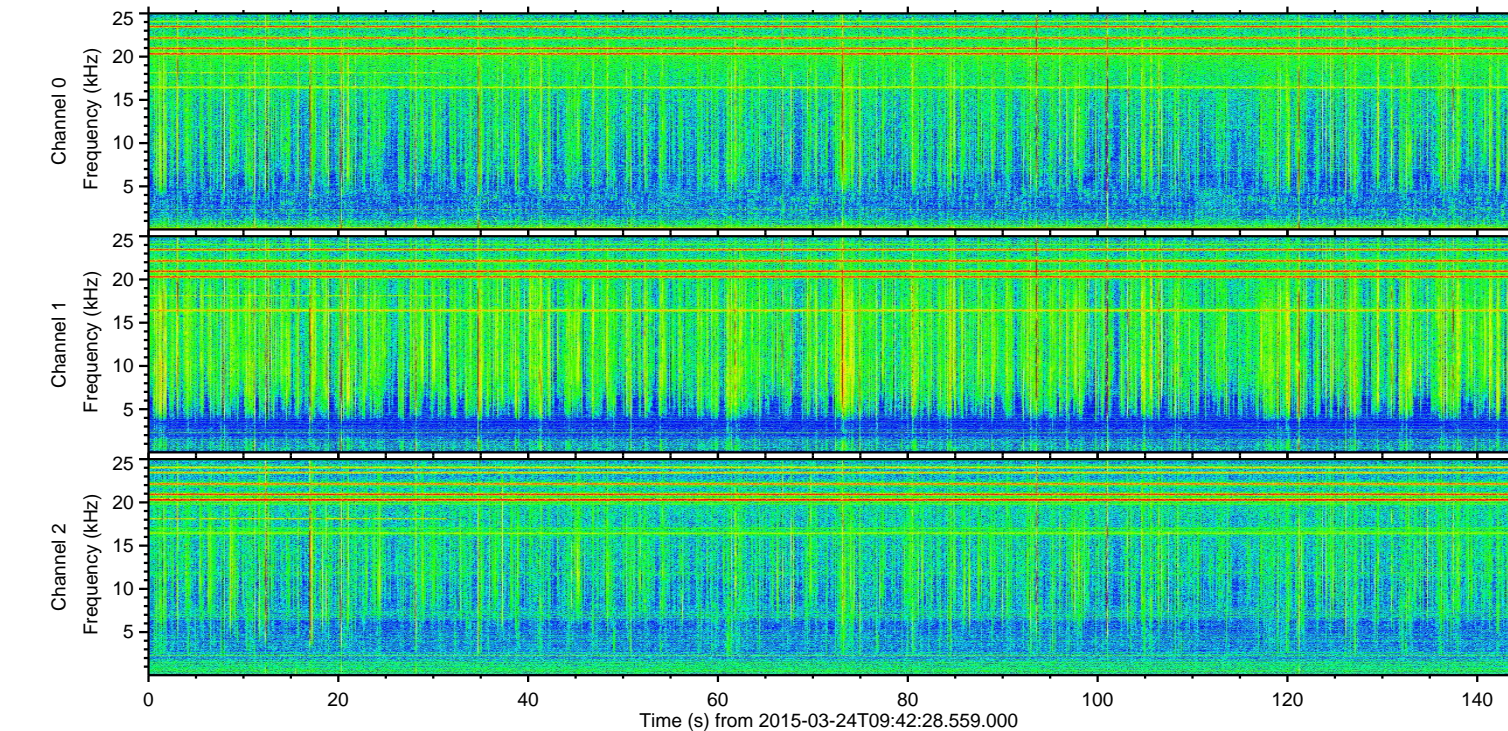
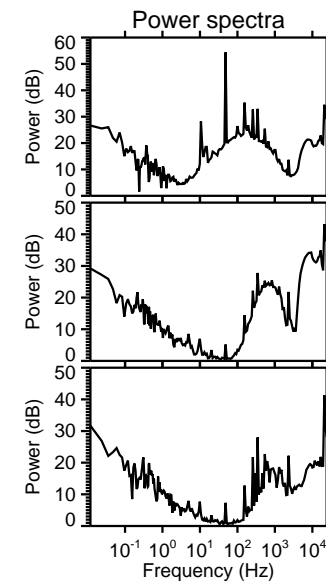
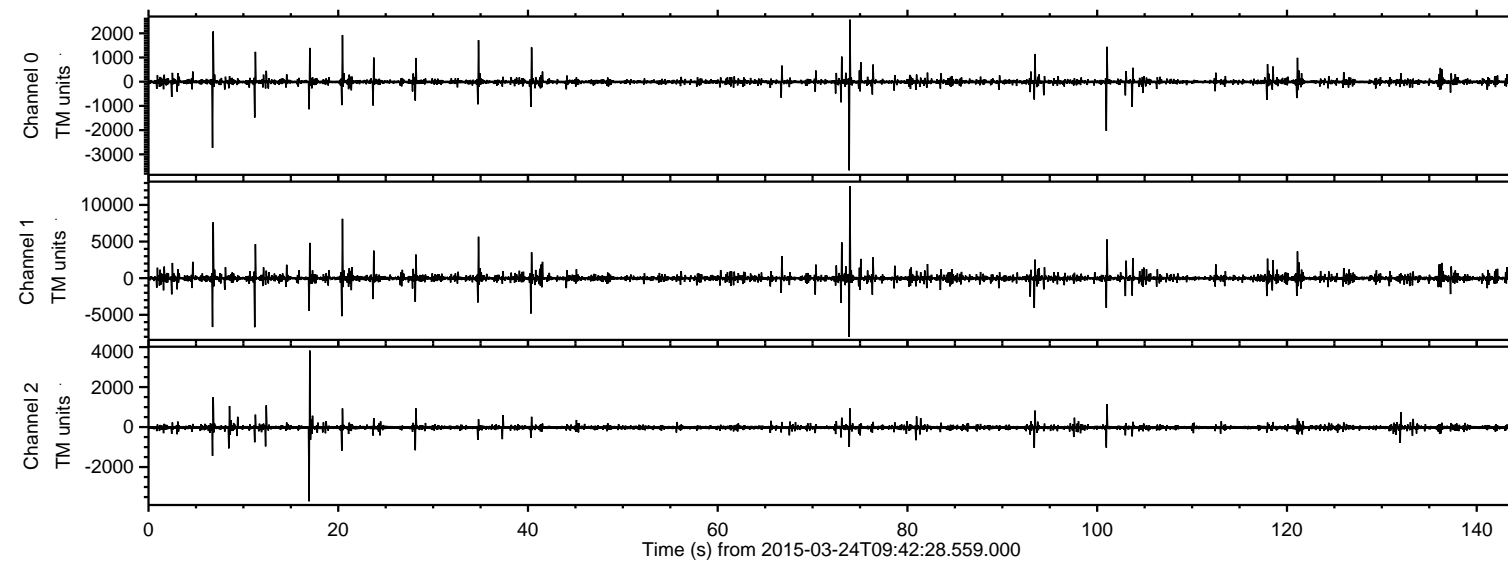


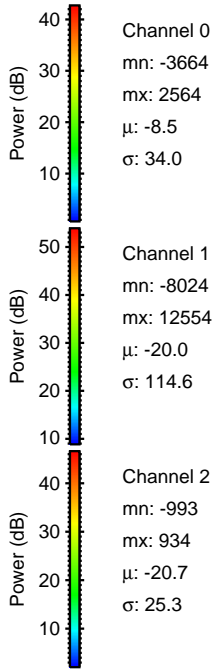
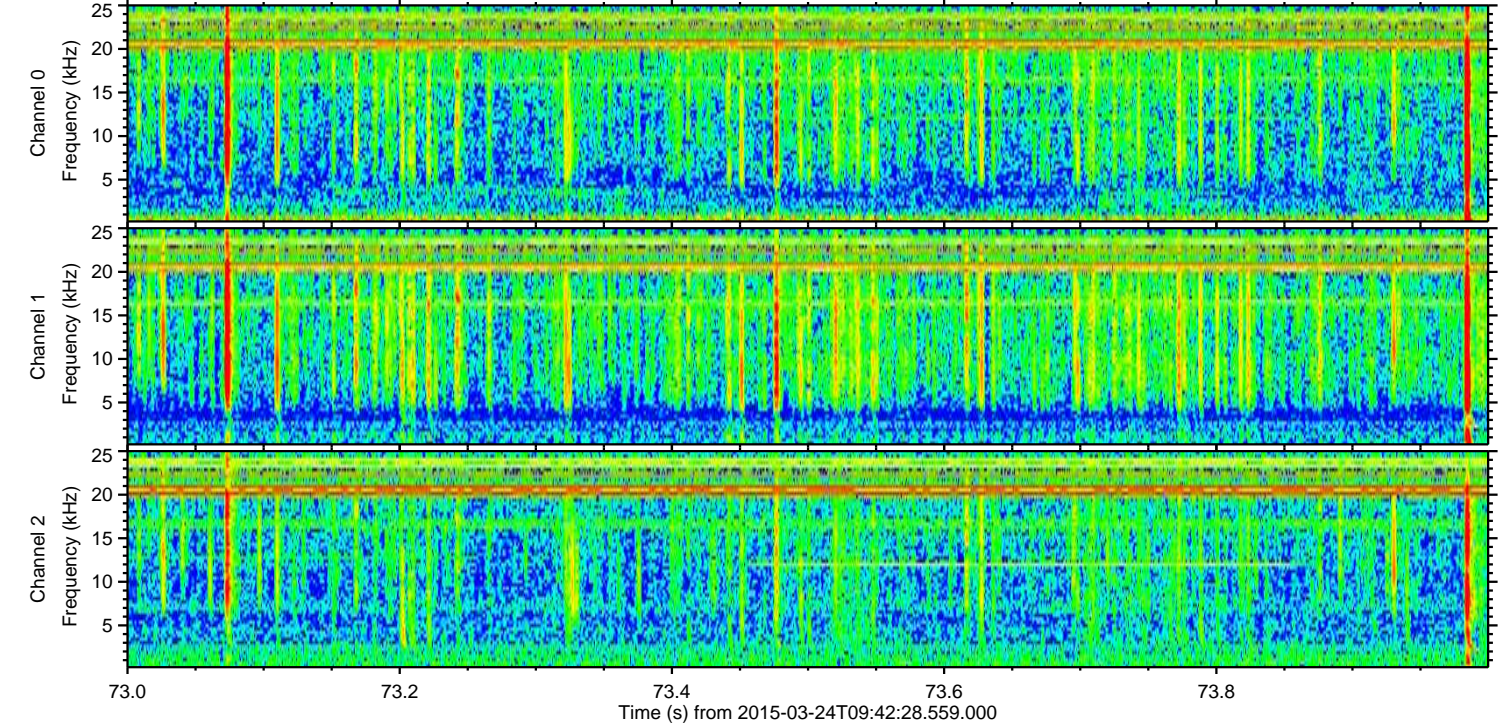
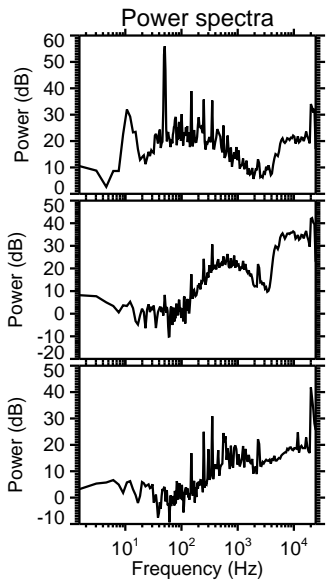
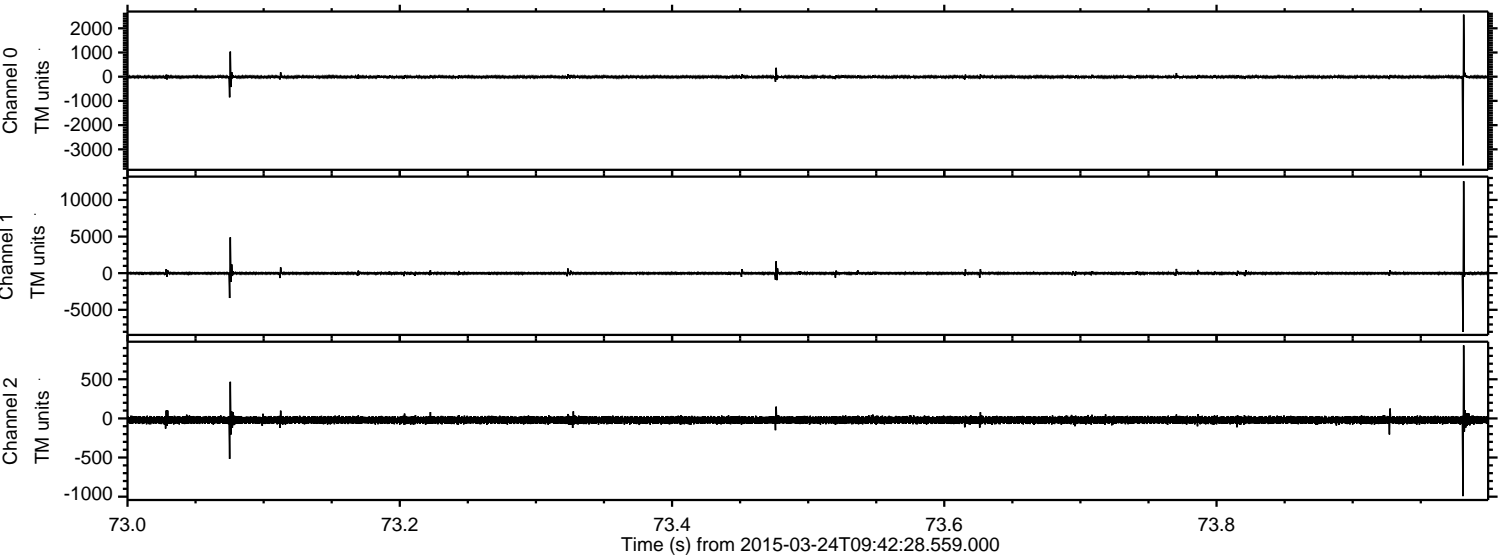
# ELMAVAN 3D WAVEFORMS (Measured data sampled at 50 kHz) 49799 packets of 144 samples from 2015-03-24T09:42:28.559.000.

Processed Tue Mar 24 10:50:21 2015 by ELM ver.2012-10-06 from 001\_\_elm20150324\_094227\_\_dat00.bin





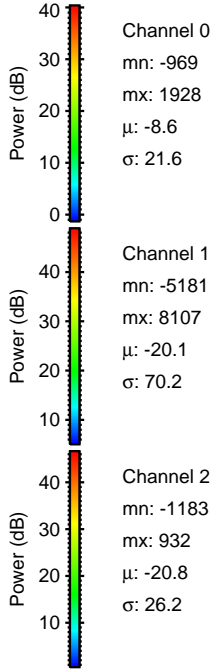
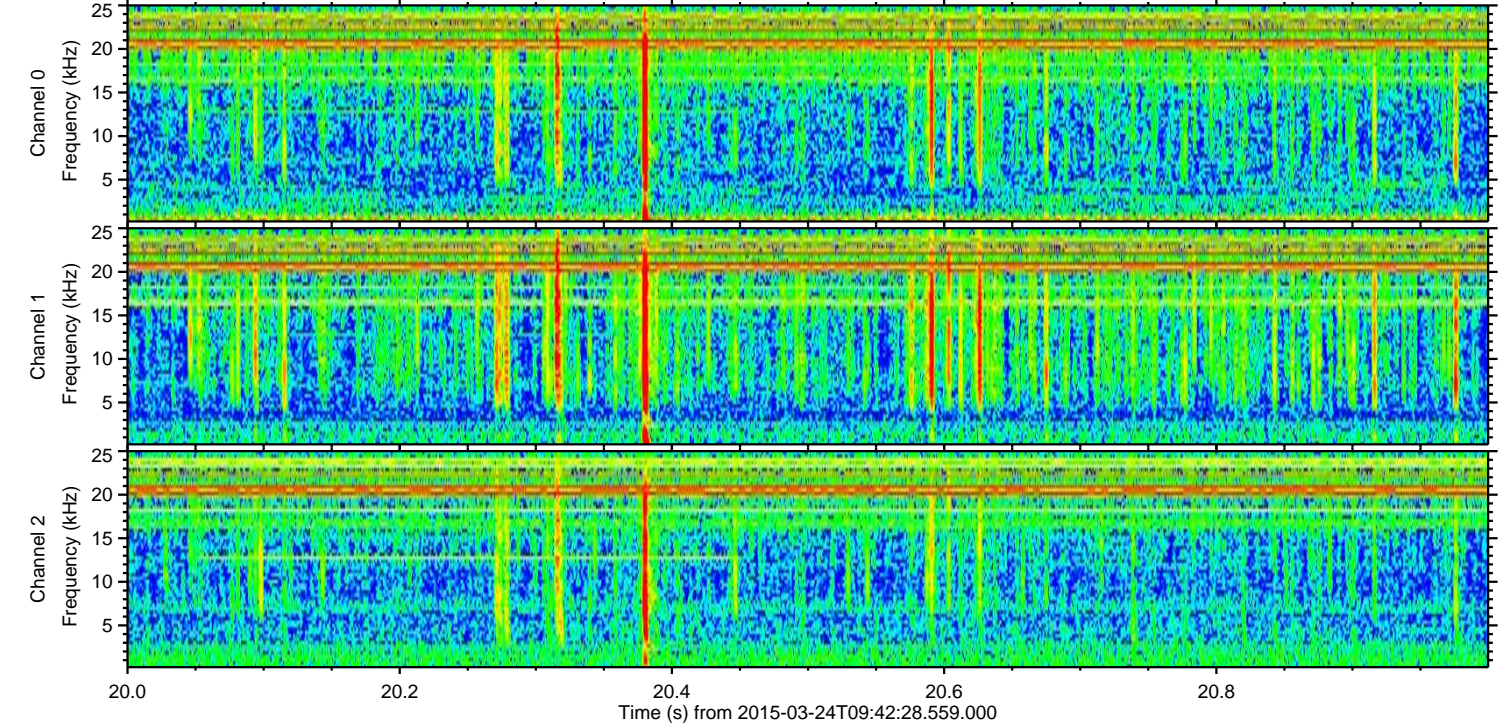
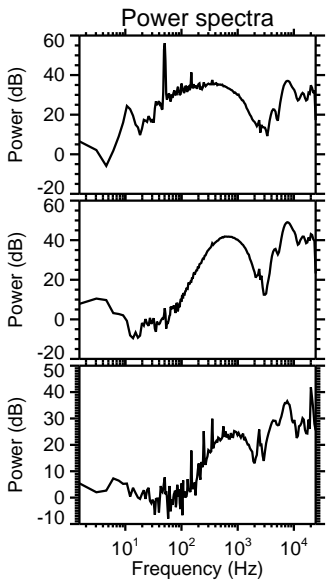
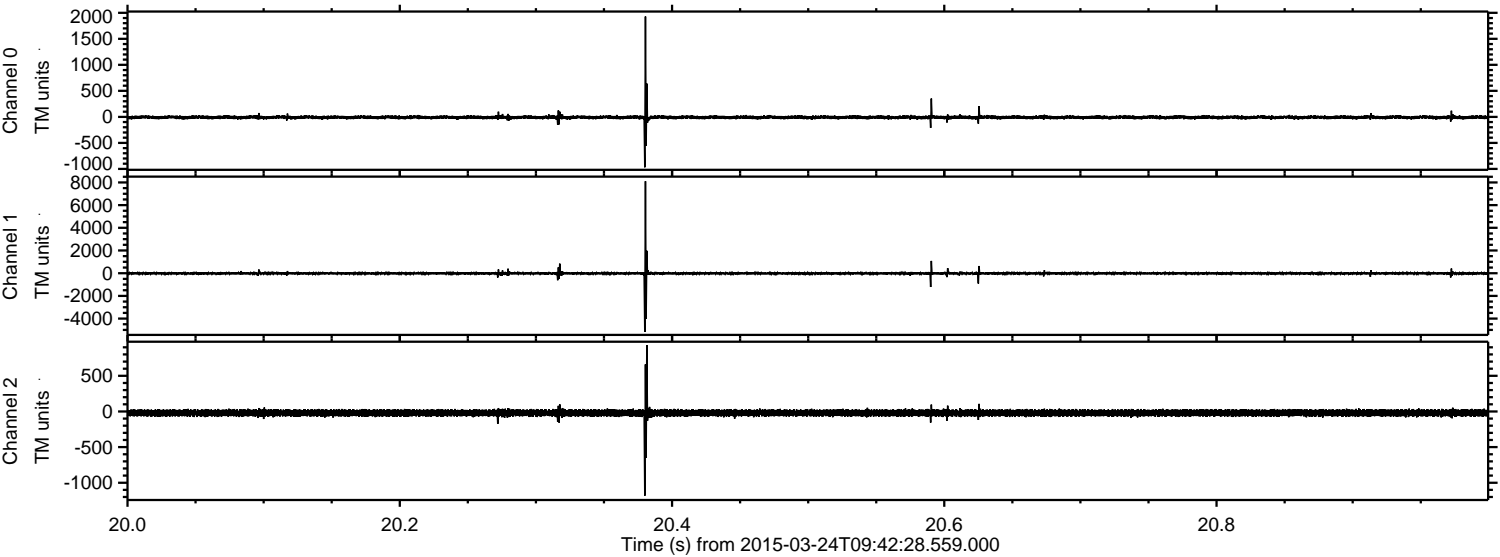
Processed Tue Mar 24 10:50:33 2015 by ELM ver.2012-10-06 from 001\_\_elm20150324\_094227\_\_dat00.bin





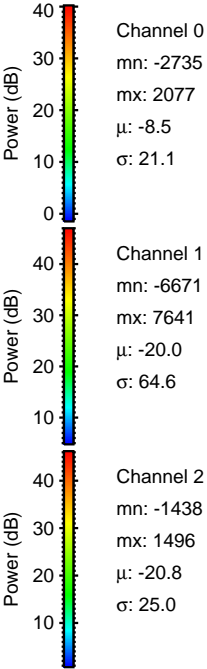
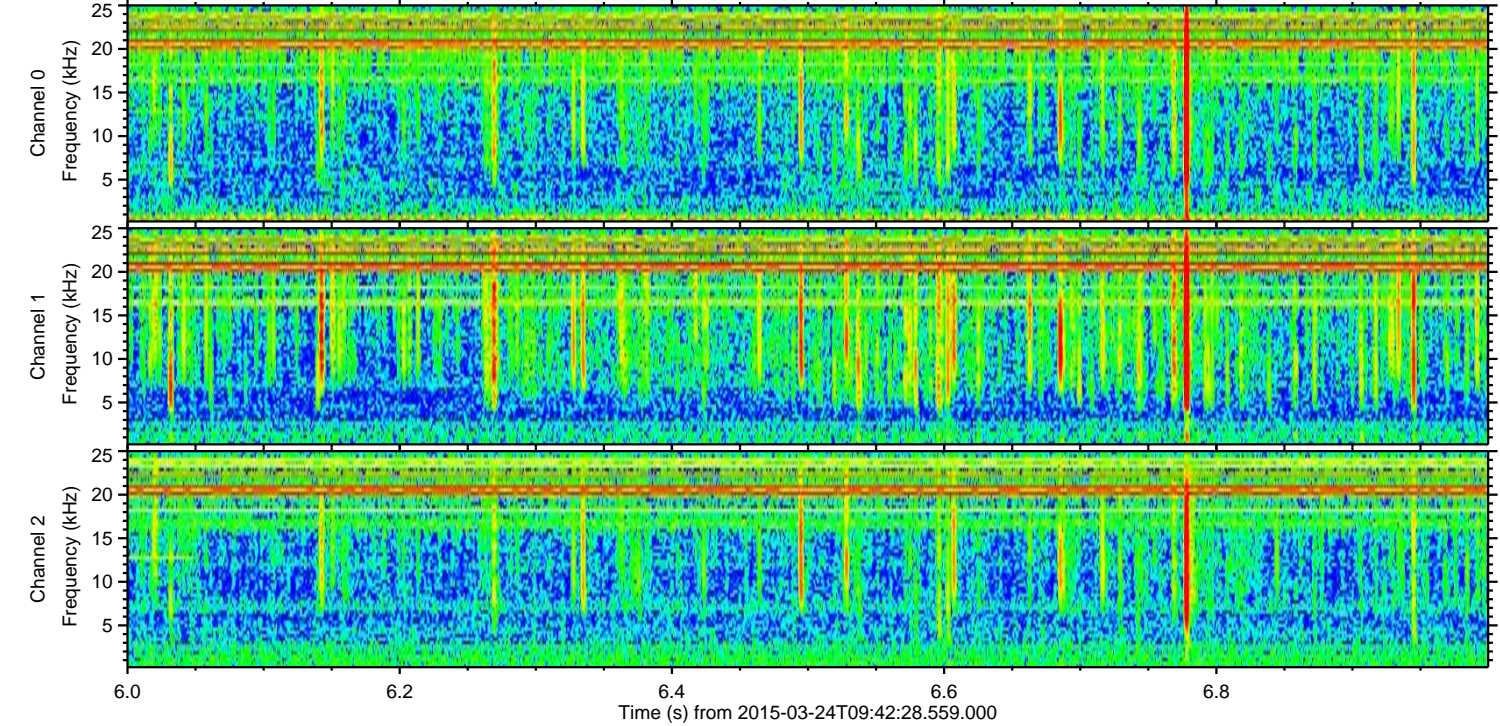
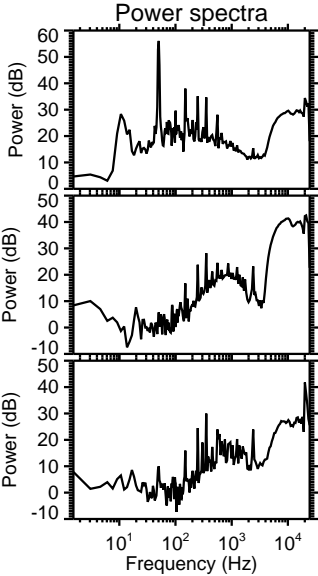
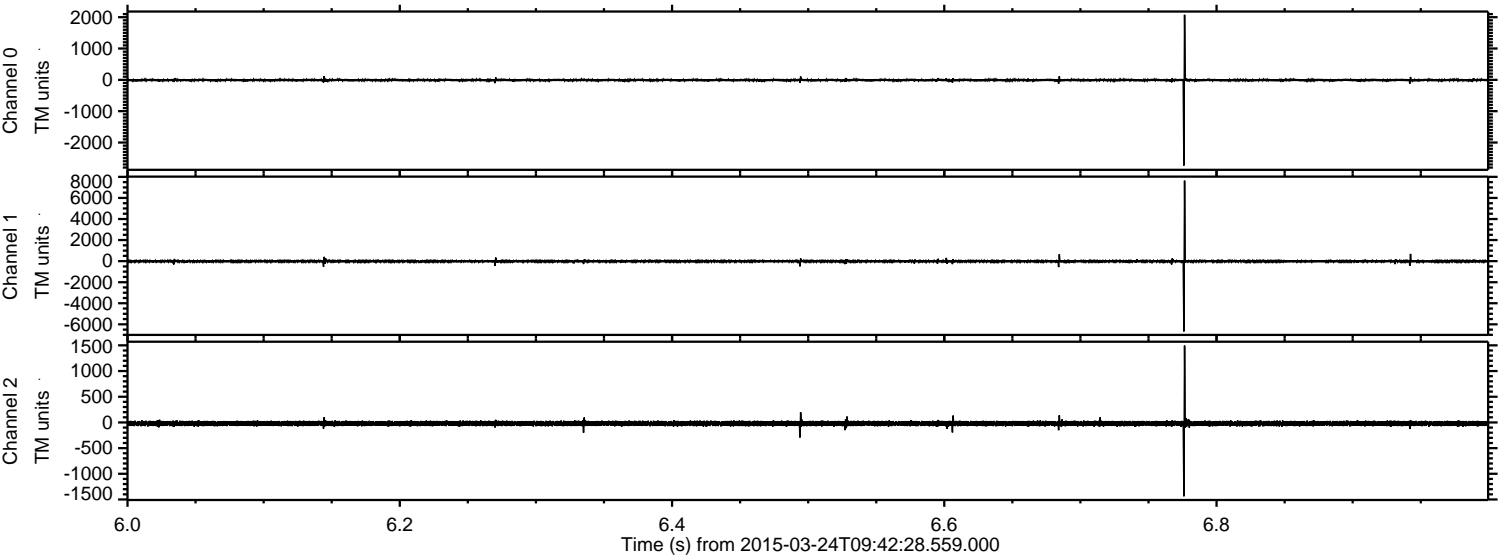
ELMAVAN 3D WAVEFORMS (Measured data sampled at 50 kHz) 49799 packets of 144 samples from 2015-03-24T09:42:28.559.000. Part 21/144

Processed Tue Mar 24 10:50:34 2015 by ELM ver.2012-10-06 from 001\_\_elm20150324\_094227\_\_dat00.bin



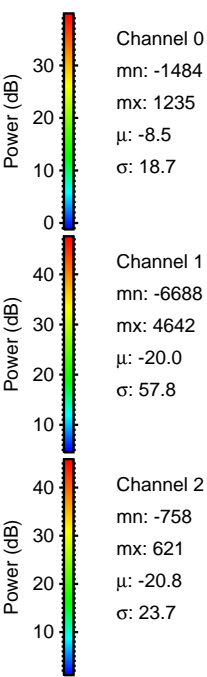
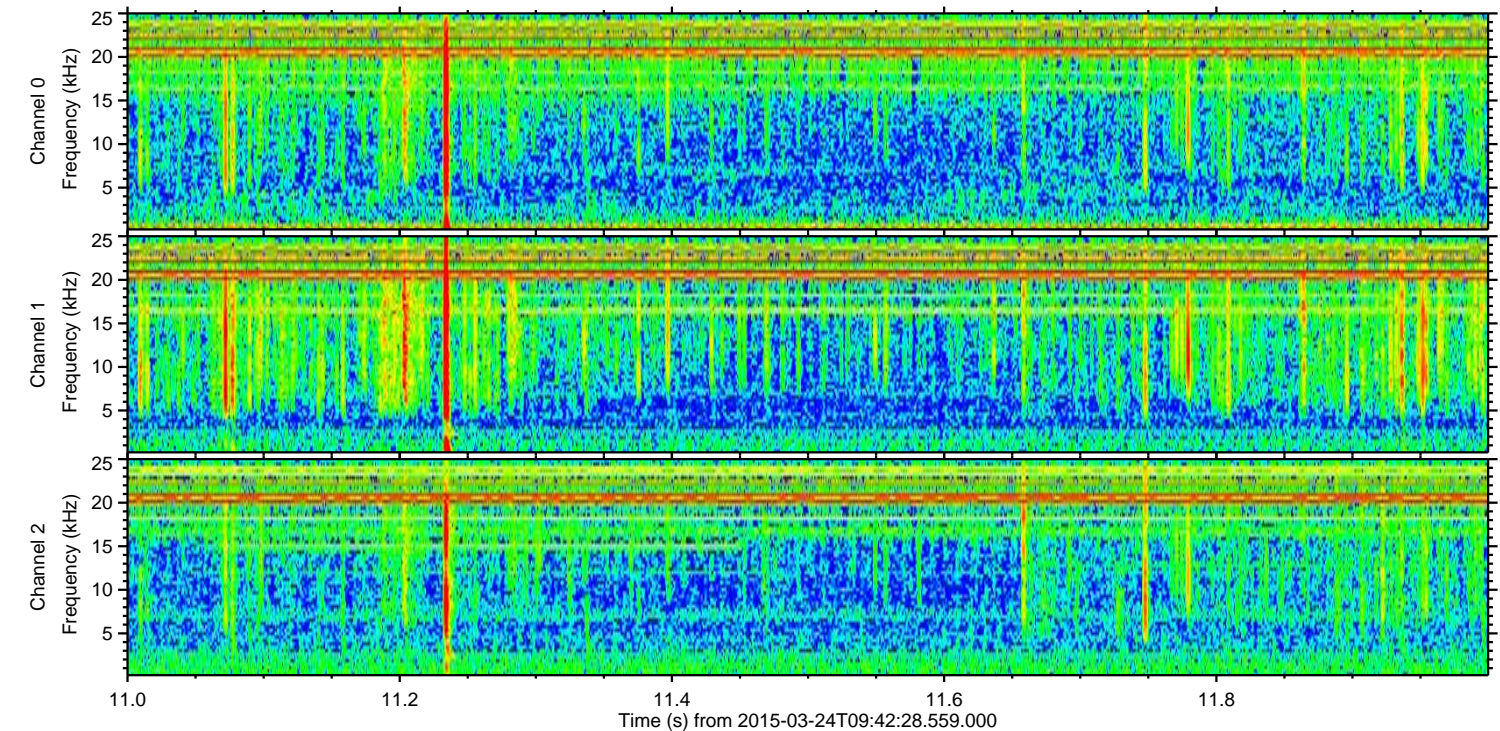
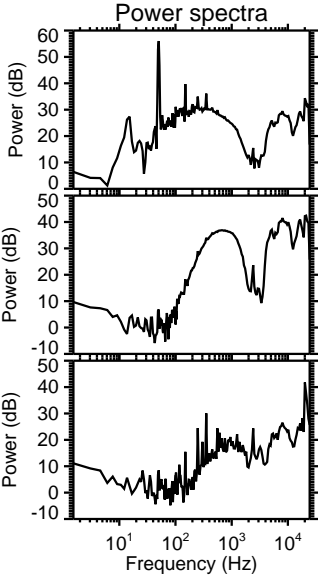
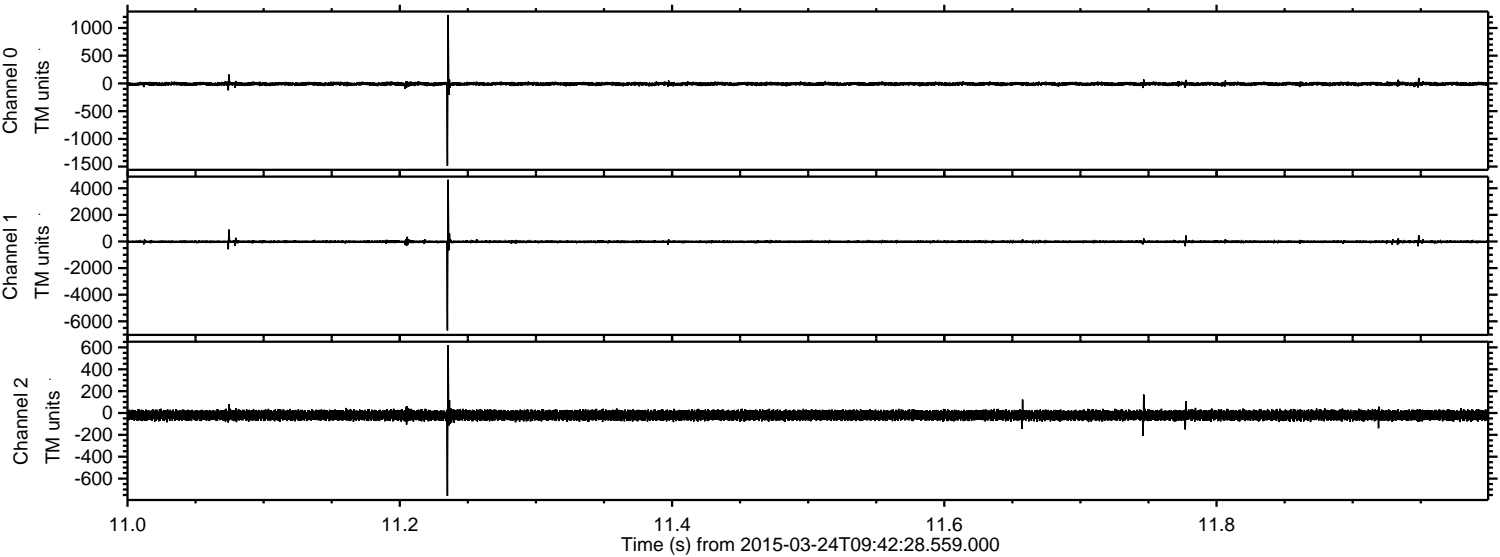


Processed Tue Mar 24 10:50:35 2015 by ELM ver.2012-10-06 from 001\_\_elm20150324\_094227\_\_dat00.bin



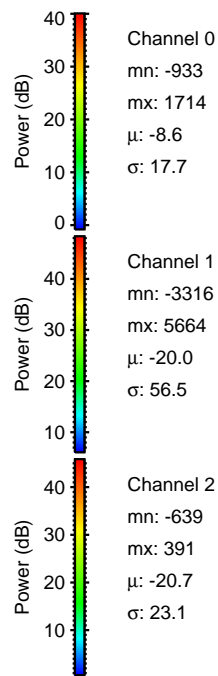
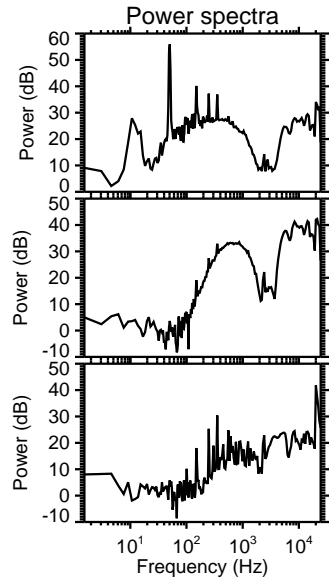
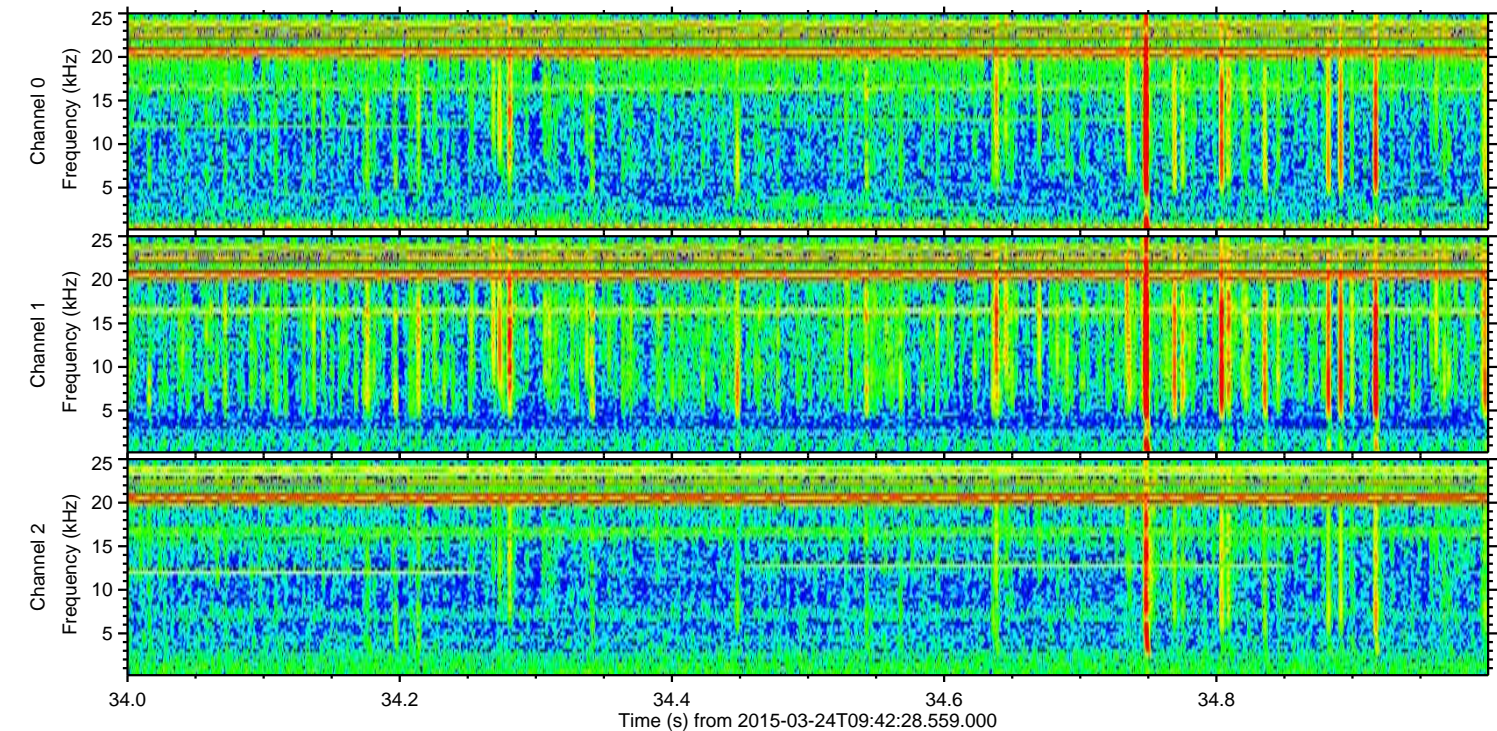
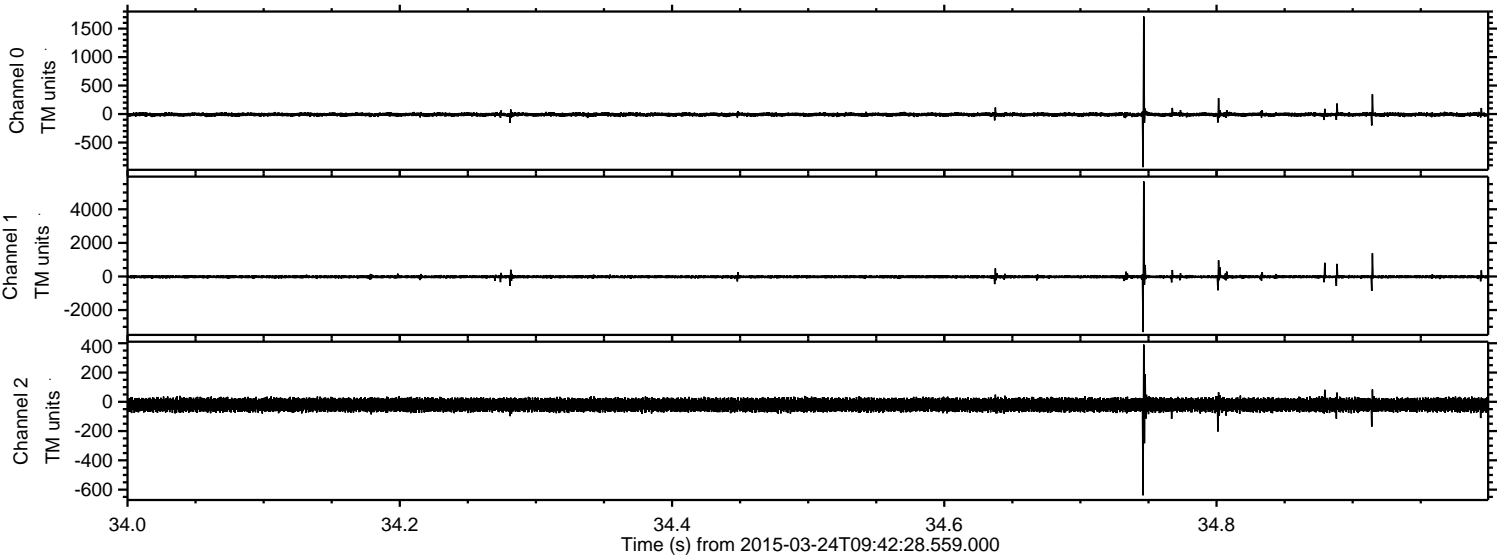


Processed Tue Mar 24 10:50:36 2015 by ELM ver.2012-10-06 from 001\_\_elm20150324\_094227\_\_dat00.bin





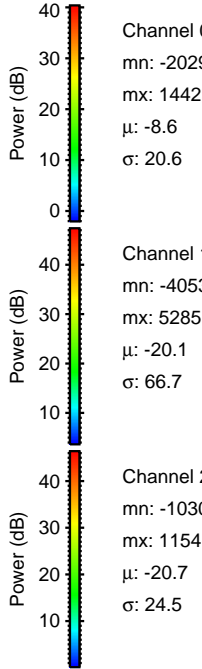
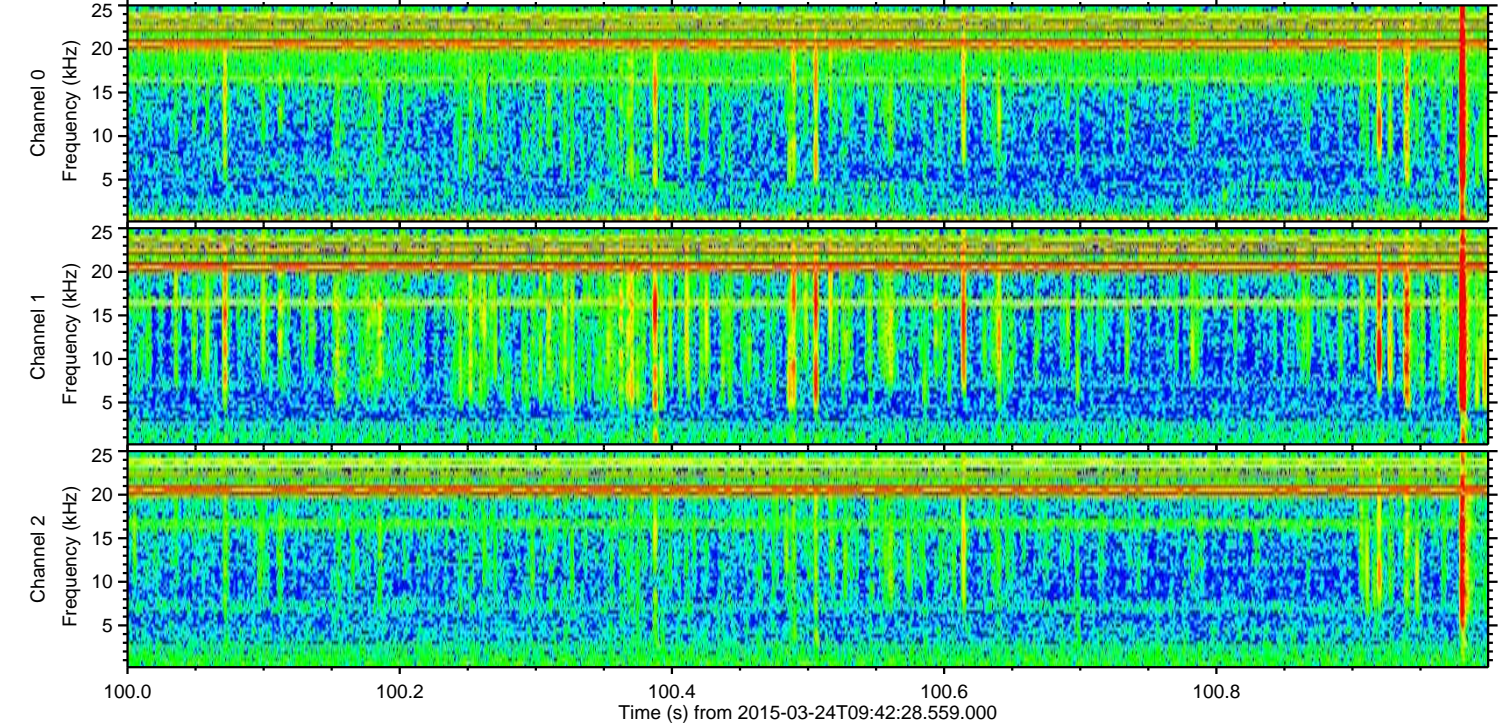
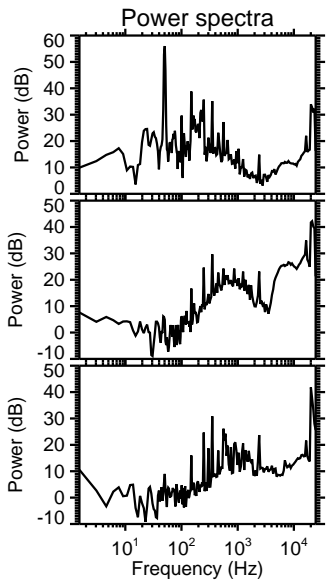
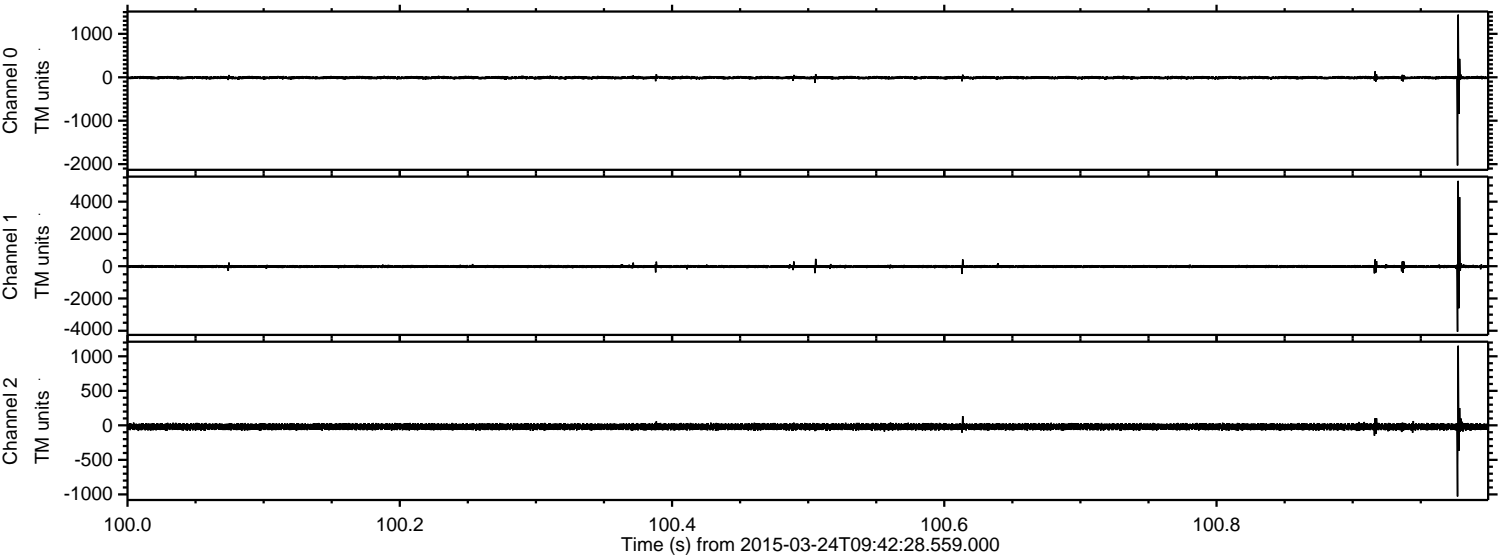
Processed Tue Mar 24 10:50:37 2015 by ELM ver.2012-10-06 from 001\_\_elm20150324\_094227\_\_dat00.bin





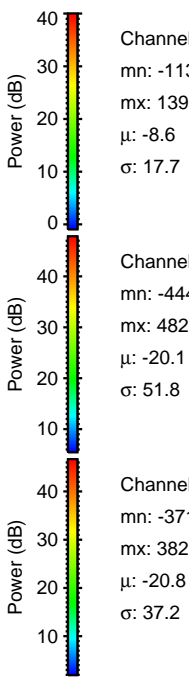
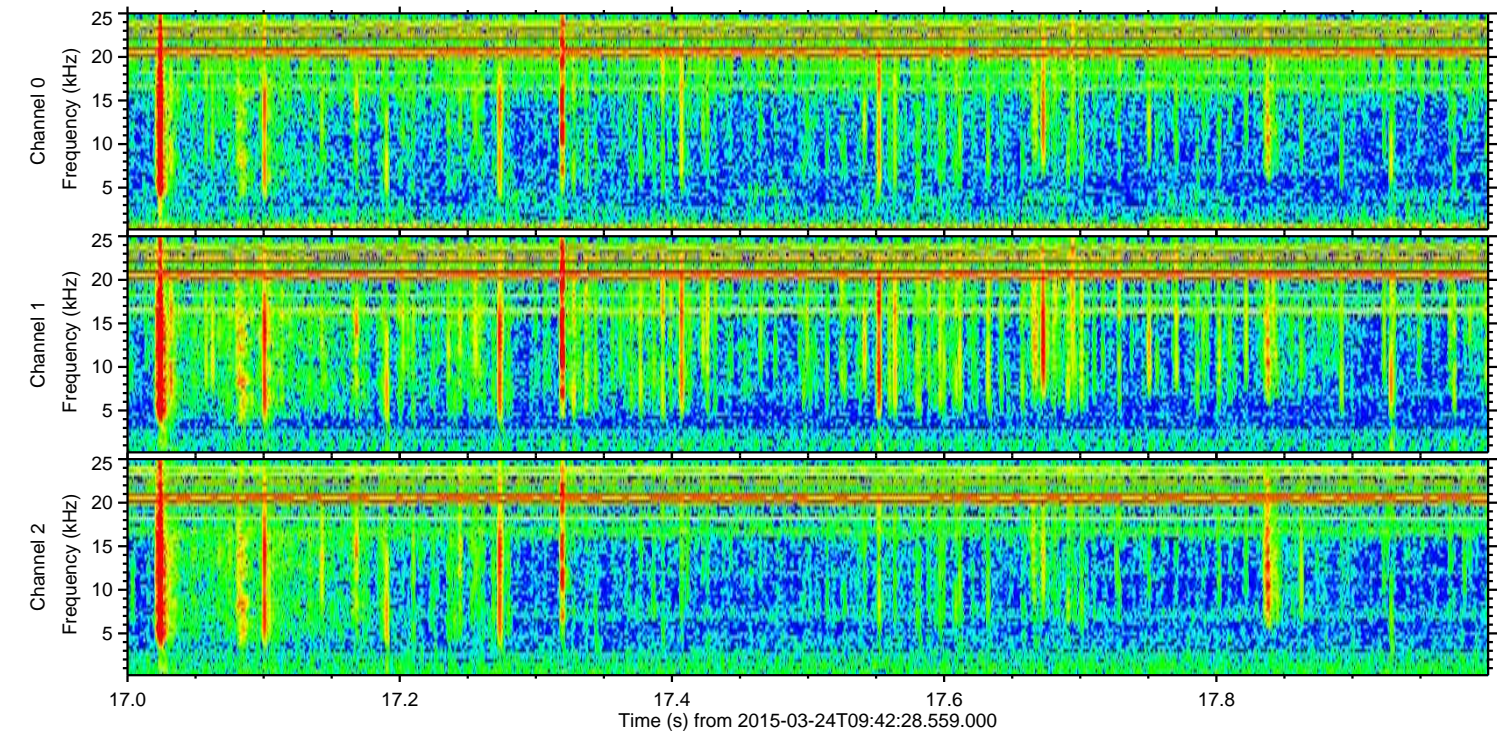
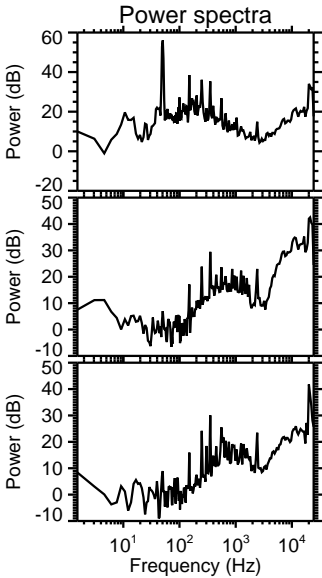
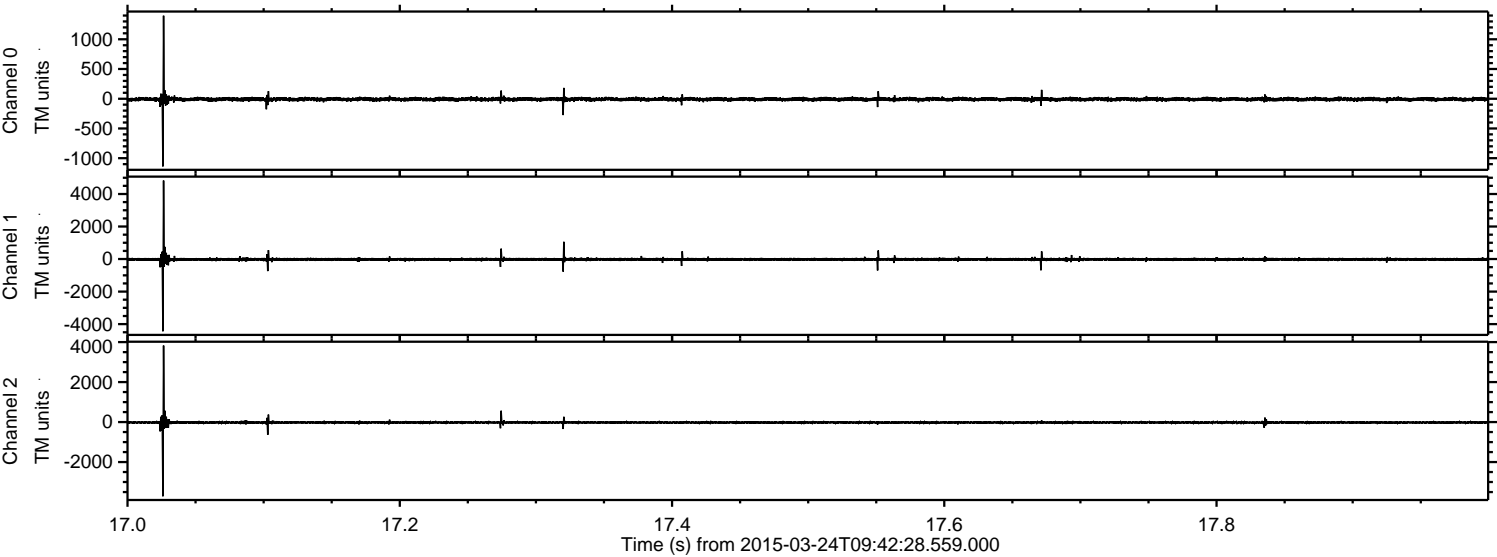
ELMAVAN 3D WAVEFORMS (Measured data sampled at 50 kHz) 49799 packets of 144 samples from 2015-03-24T09:42:28.559.000. Part 101/144

Processed Tue Mar 24 10:50:38 2015 by ELM ver.2012-10-06 from 001\_\_elm20150324\_094227\_\_dat00.bin



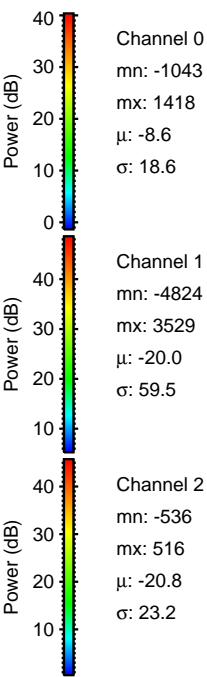
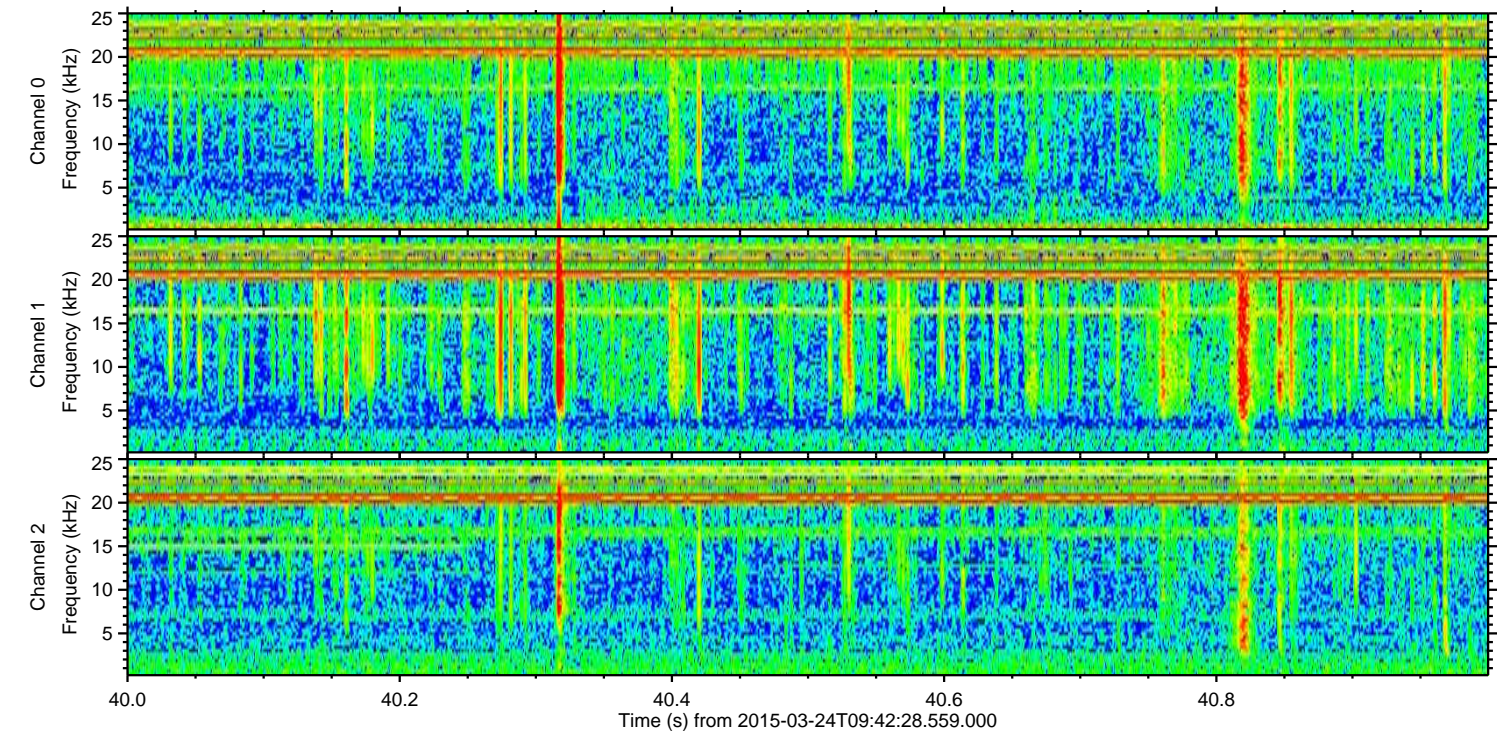
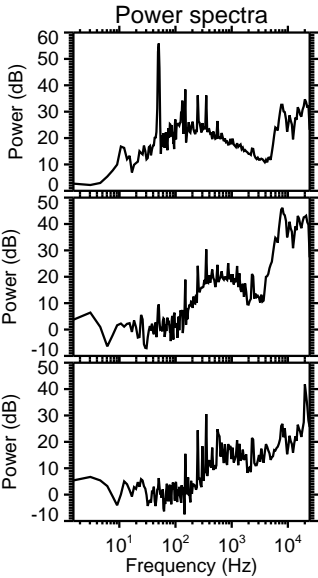
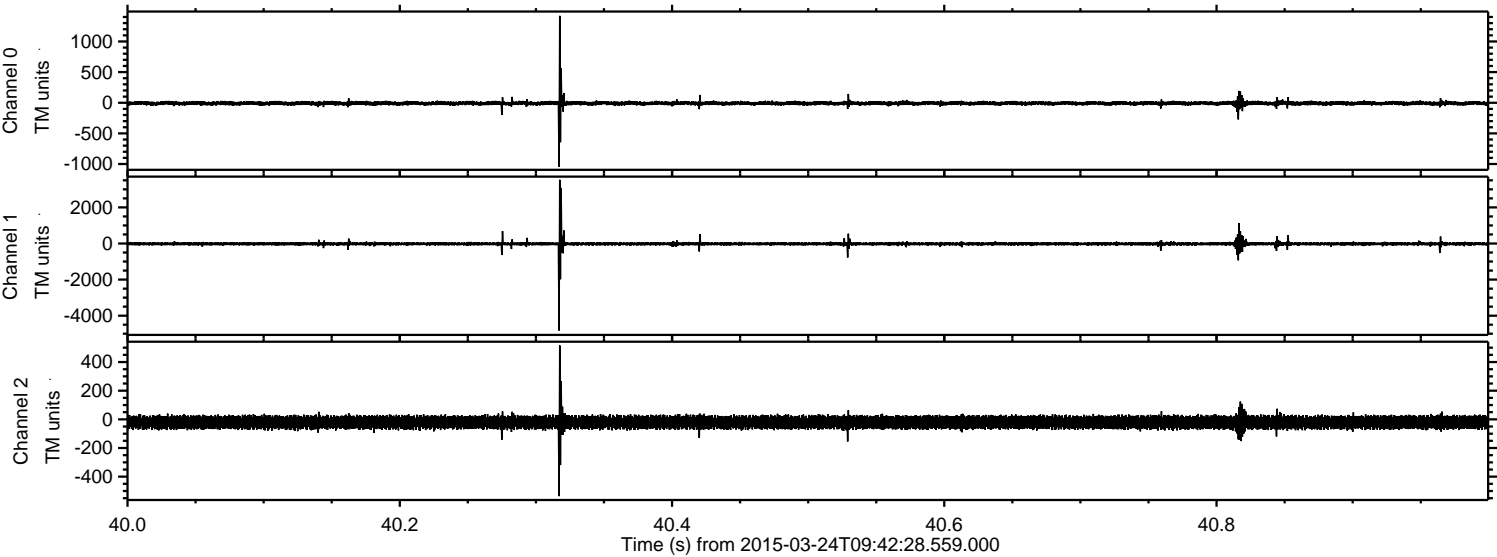


Processed Tue Mar 24 10:50:39 2015 by ELM ver.2012-10-06 from 001\_\_elm20150324\_094227\_\_dat00.bin



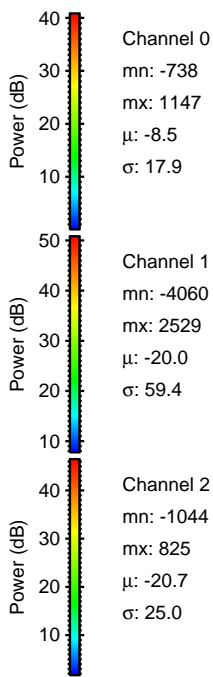
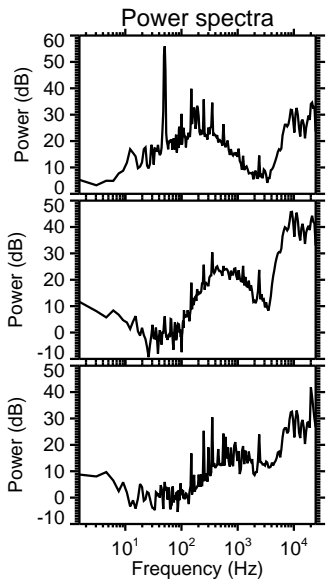
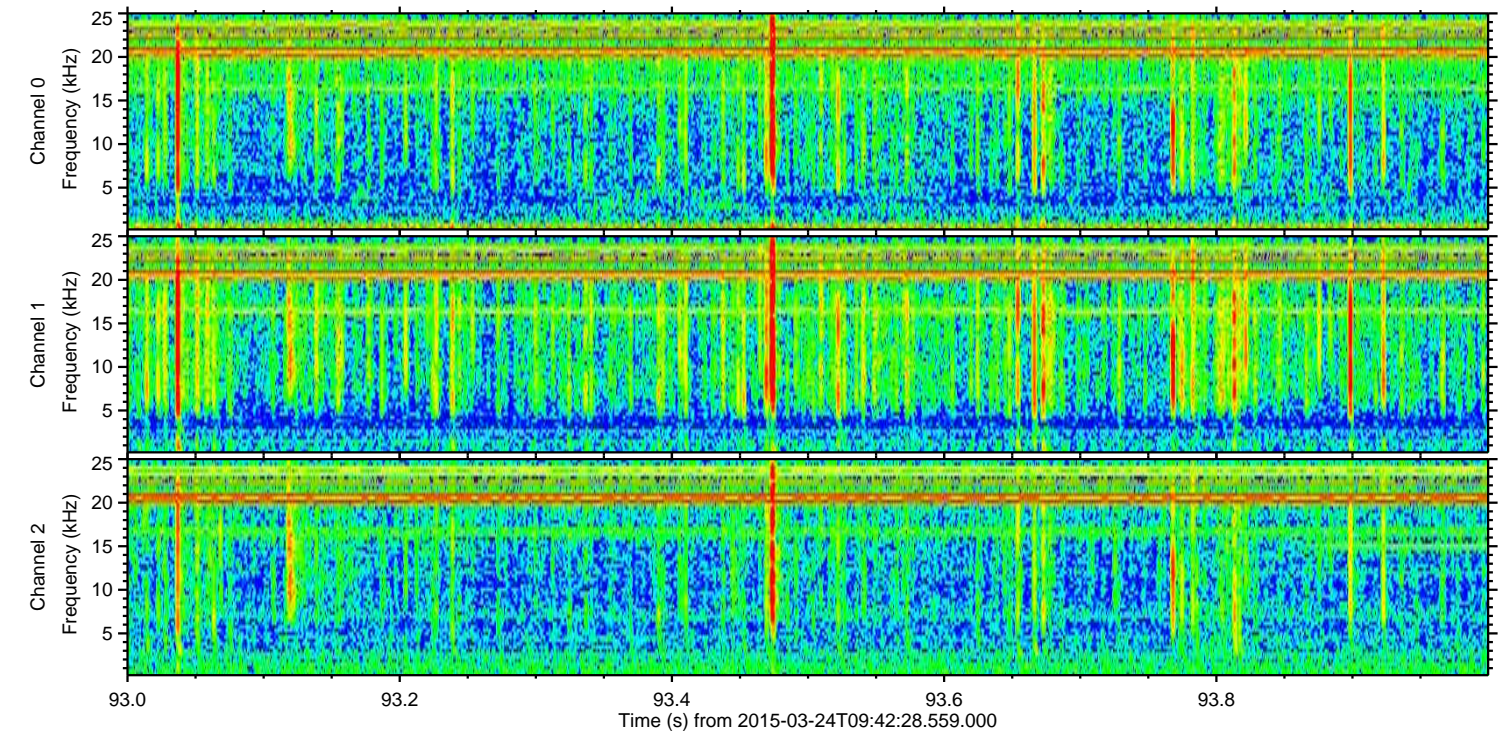
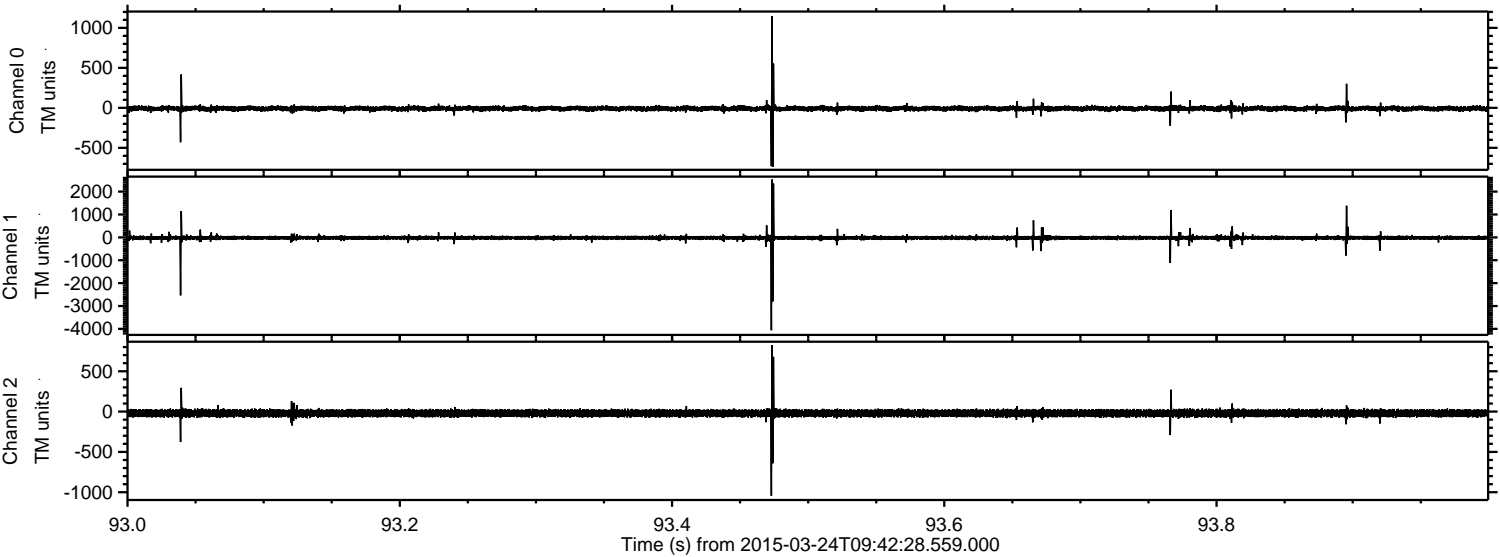


Processed Tue Mar 24 10:50:39 2015 by ELM ver.2012-10-06 from 001\_\_elm20150324\_094227\_\_dat00.bin





Processed Tue Mar 24 10:50:40 2015 by ELM ver.2012-10-06 from 001\_\_elm20150324\_094227\_\_dat00.bin



Channel 0  
mn: -738  
mx: 1147  
 $\mu$ : -8.5  
 $\sigma$ : 17.9

Channel 1  
mn: -4060  
mx: 2529  
 $\mu$ : -20.0  
 $\sigma$ : 59.4

Channel 2  
mn: -1044  
mx: 825  
 $\mu$ : -20.7  
 $\sigma$ : 25.0



