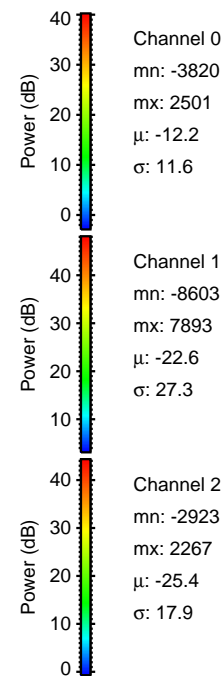
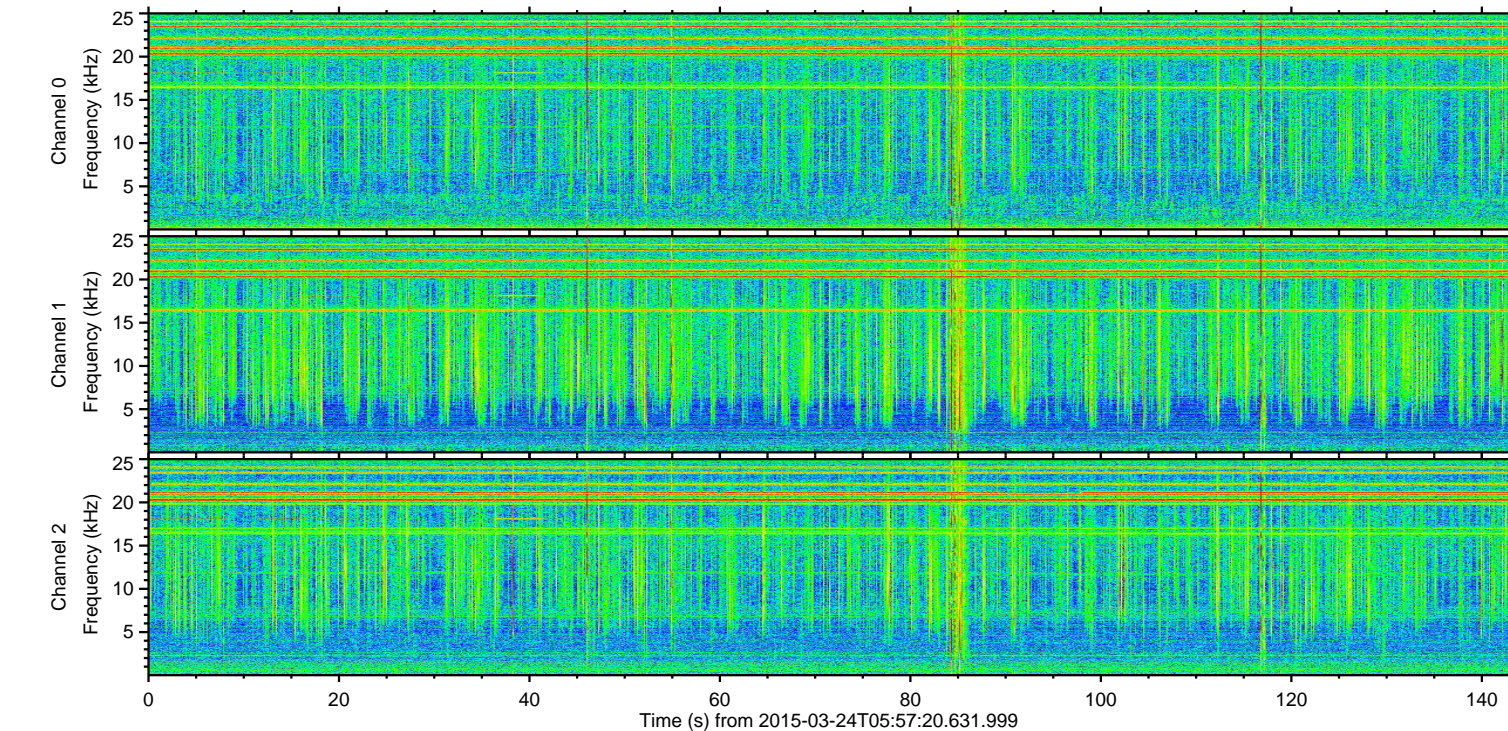
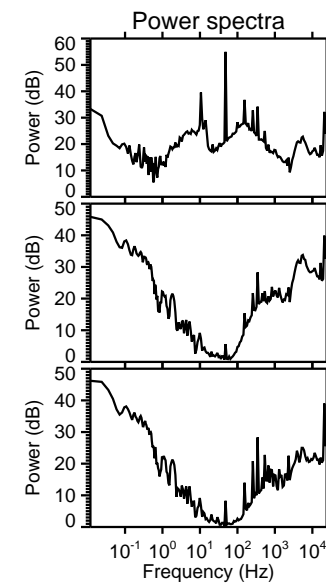
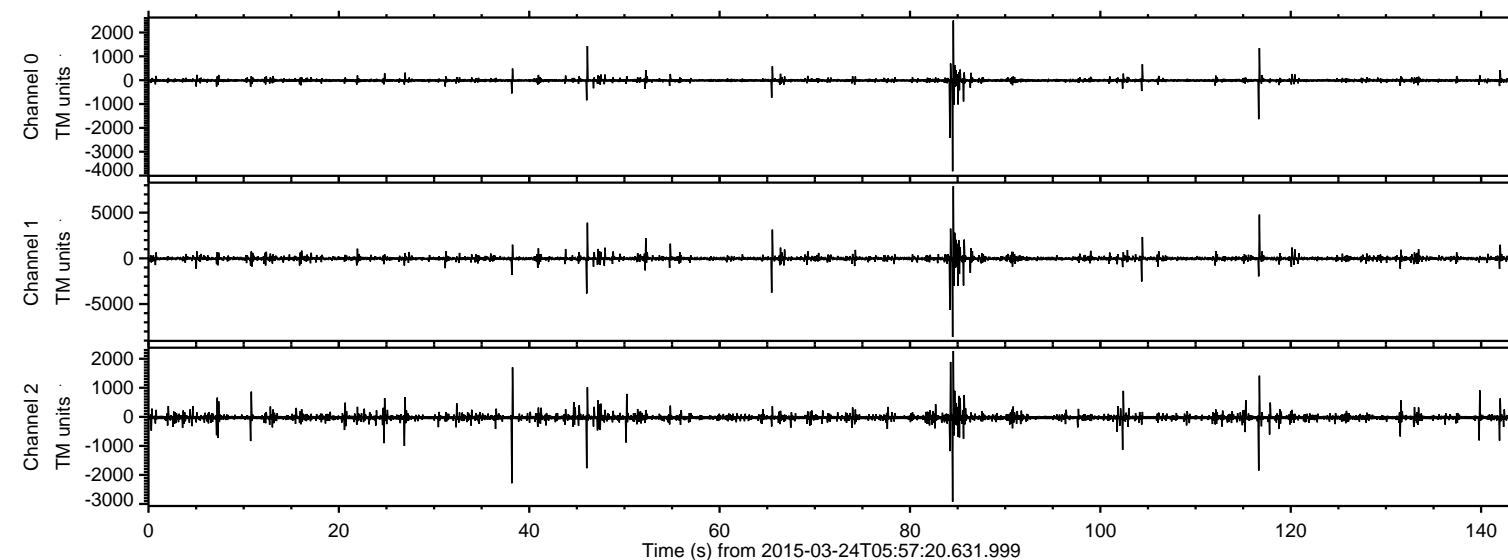
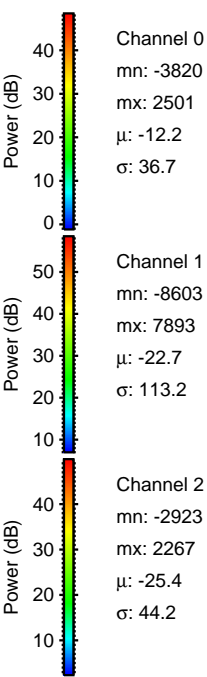
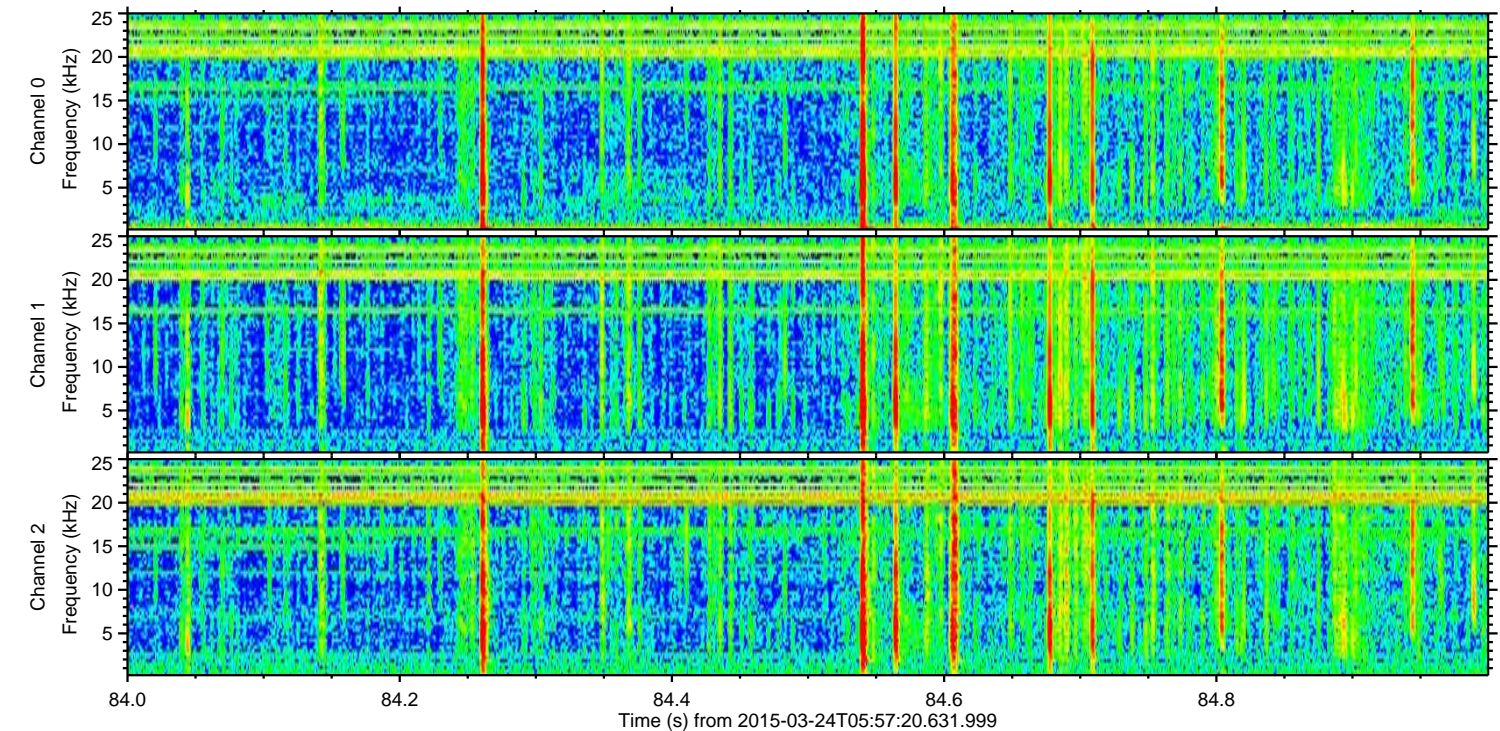
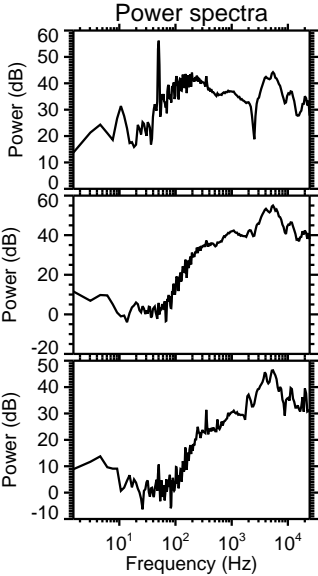
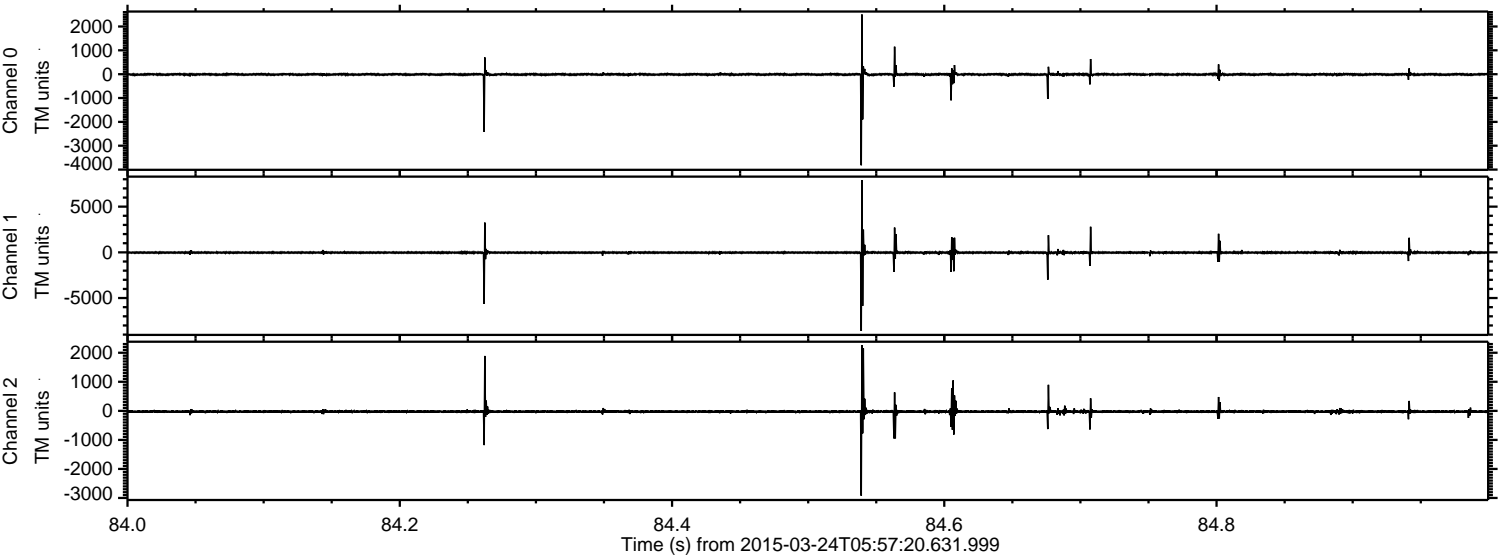


ELMAVAN 3D WAVEFORMS (Measured data sampled at 50 kHz) 49633 packets of 144 samples from 2015-03-24T05:57:20.631.999.

Processed Tue Mar 24 07:07:30 2015 by ELM ver.2012-10-06 from 001__elm20150324_055719__dat00.bin



Processed Tue Mar 24 07:07:45 2015 by ELM ver.2012-10-06 from 001__elm20150324_055719__dat00.bin



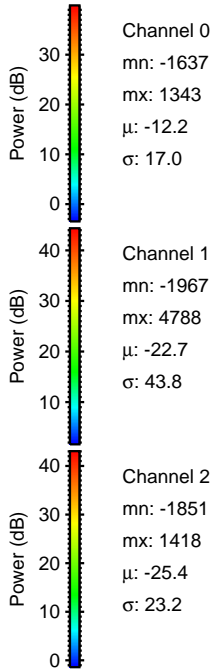
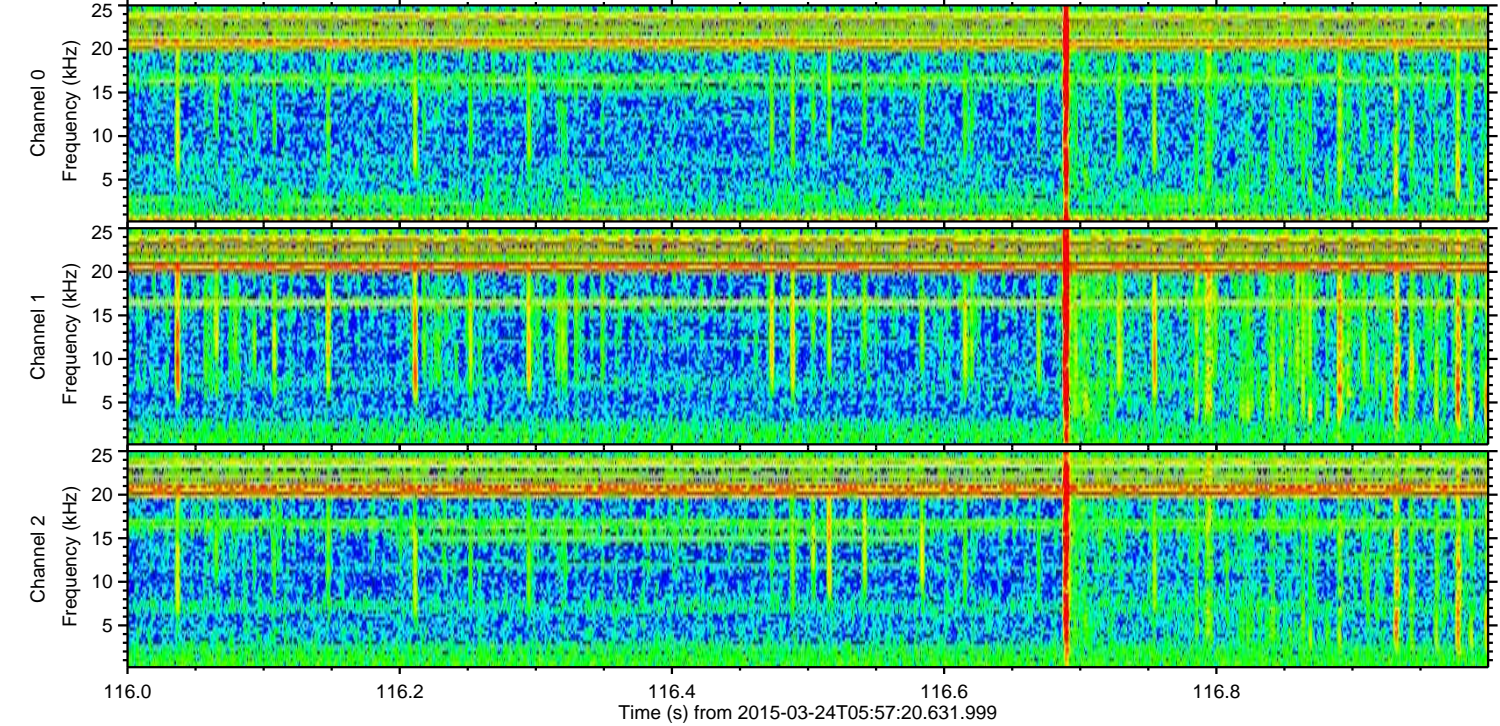
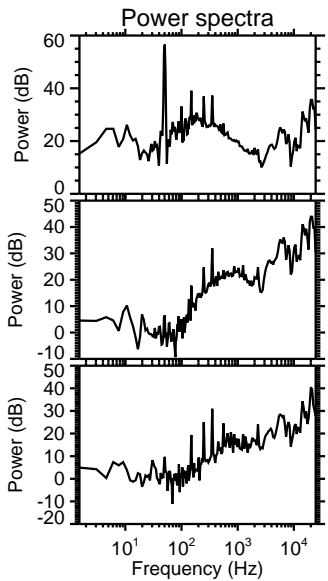
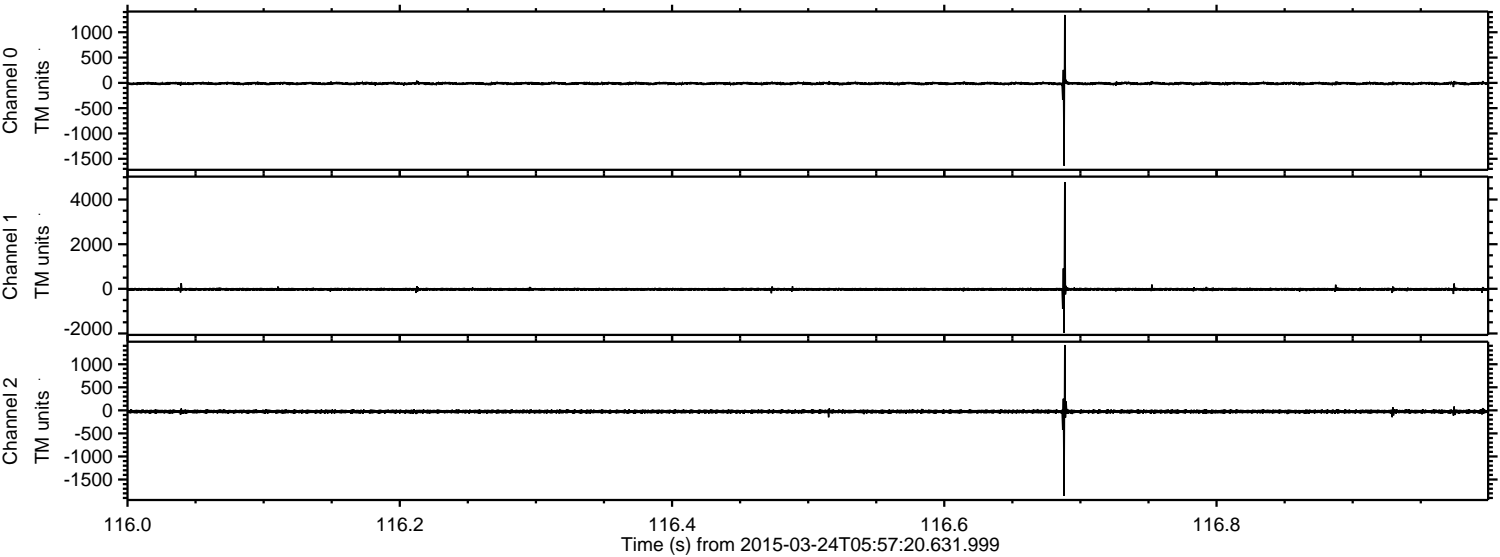
Channel 0
mn: -3820
mx: 2501
 μ : -12.2
 σ : 36.7

Channel 1
mn: -8603
mx: 7893
 μ : -22.7
 σ : 113.2

Channel 2
mn: -2923
mx: 2267
 μ : -25.4
 σ : 44.2

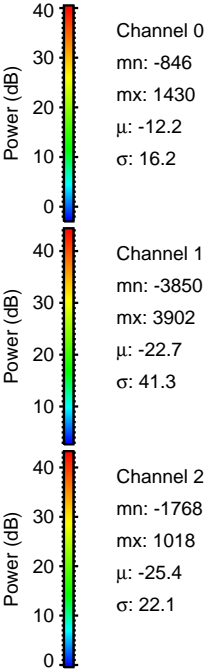
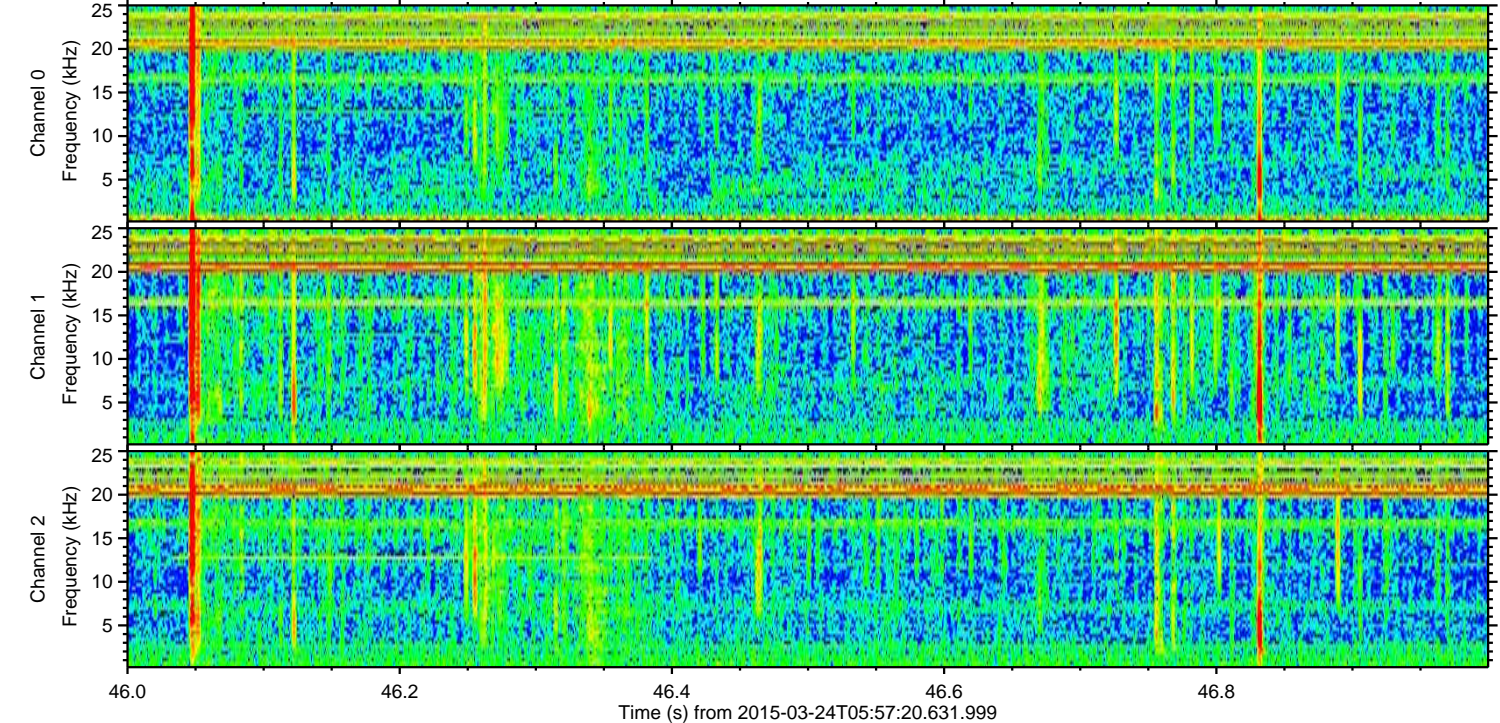
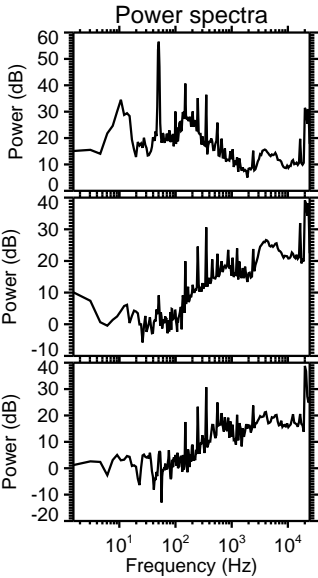
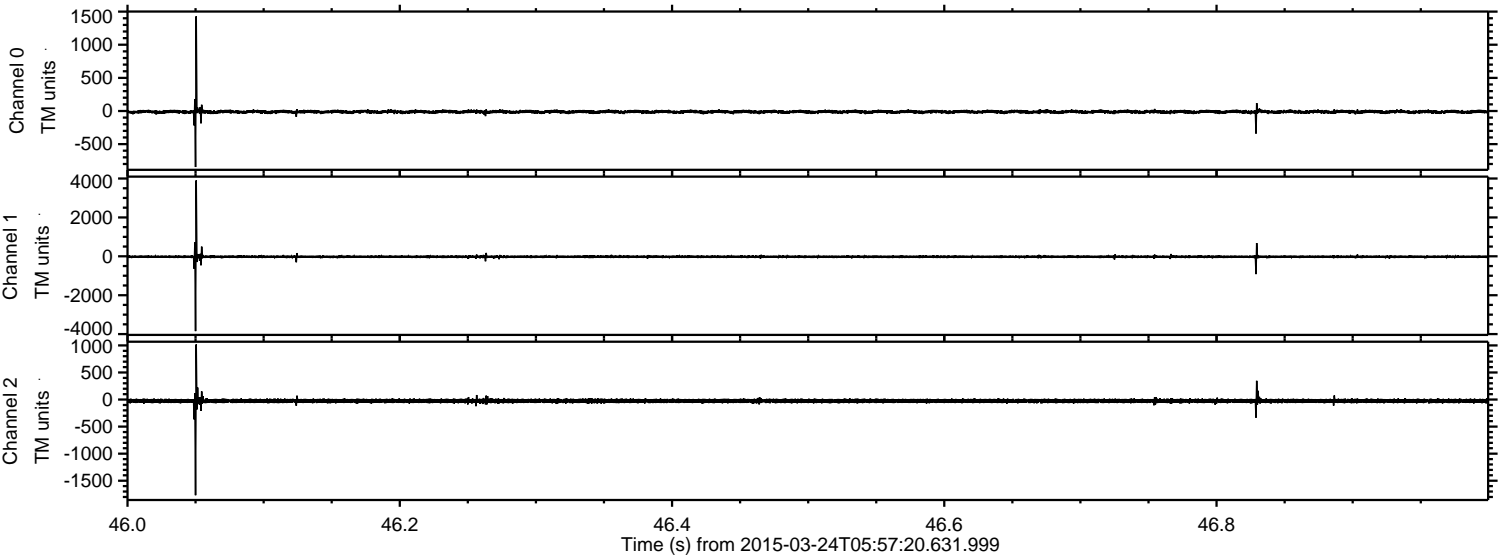
ELMAVAN 3D WAVEFORMS (Measured data sampled at 50 kHz) 49633 packets of 144 samples from 2015-03-24T05:57:20.631.999. Part 117/143

Processed Tue Mar 24 07:07:46 2015 by ELM ver.2012-10-06 from 001__elm20150324_055719__dat00.bin

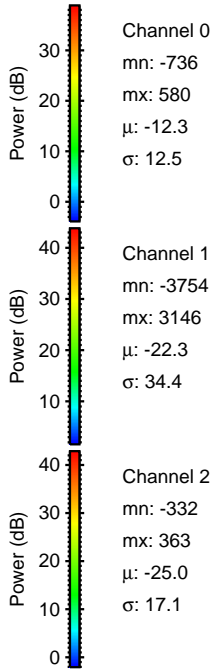
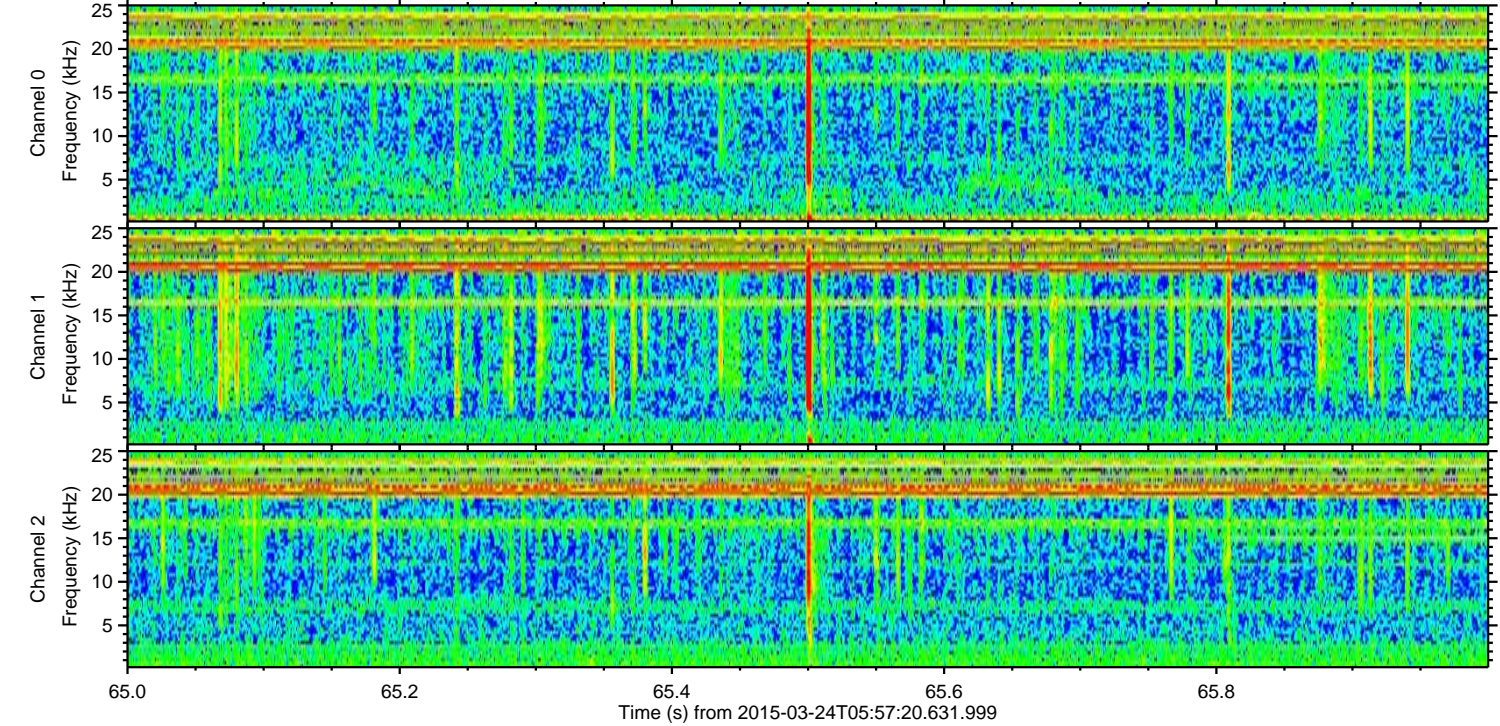
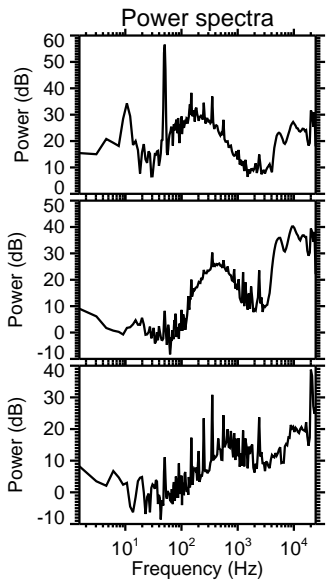
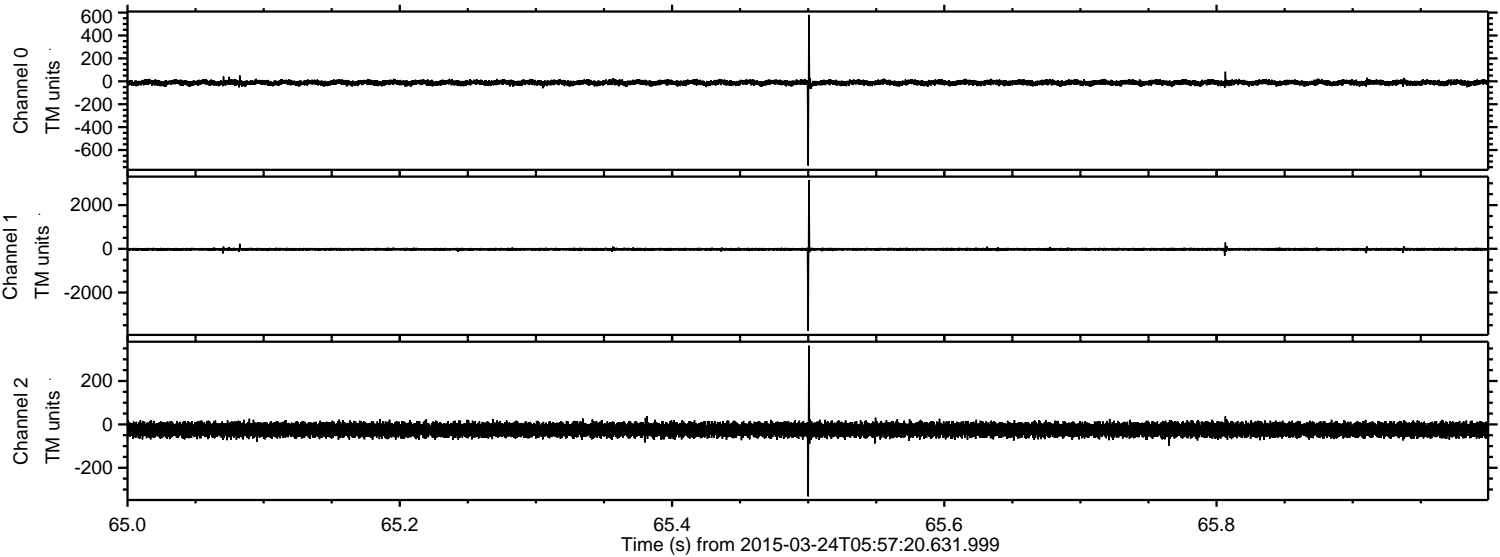


ELMAVAN 3D WAVEFORMS (Measured data sampled at 50 kHz) 49633 packets of 144 samples from 2015-03-24T05:57:20.631.999. Part 47/143

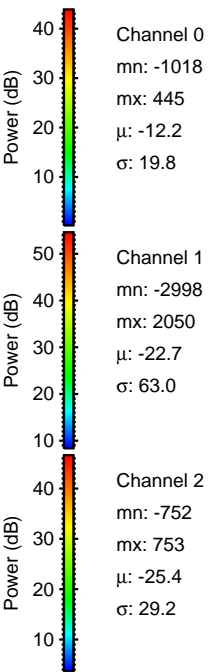
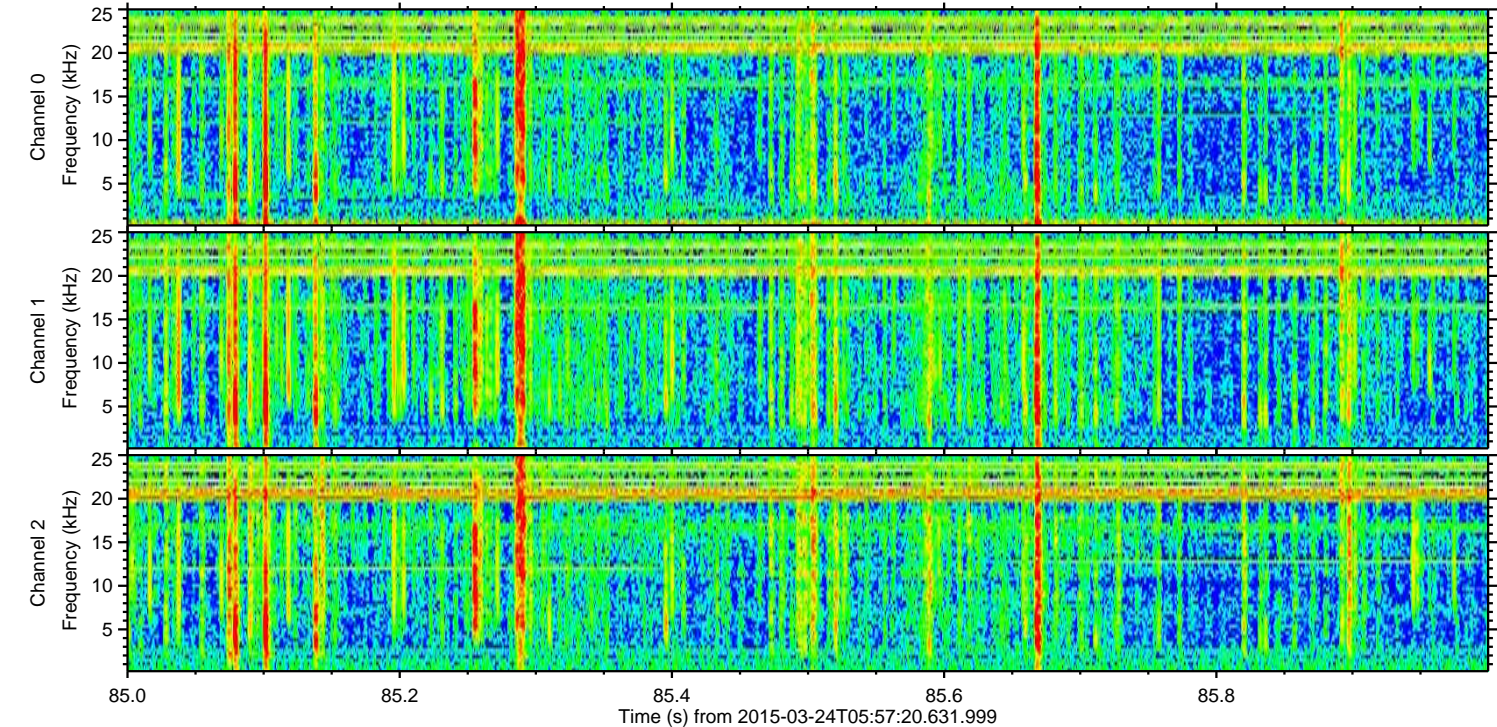
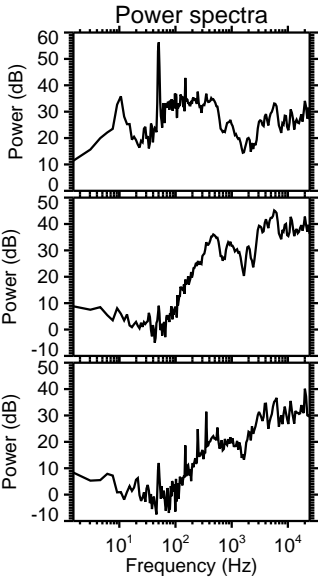
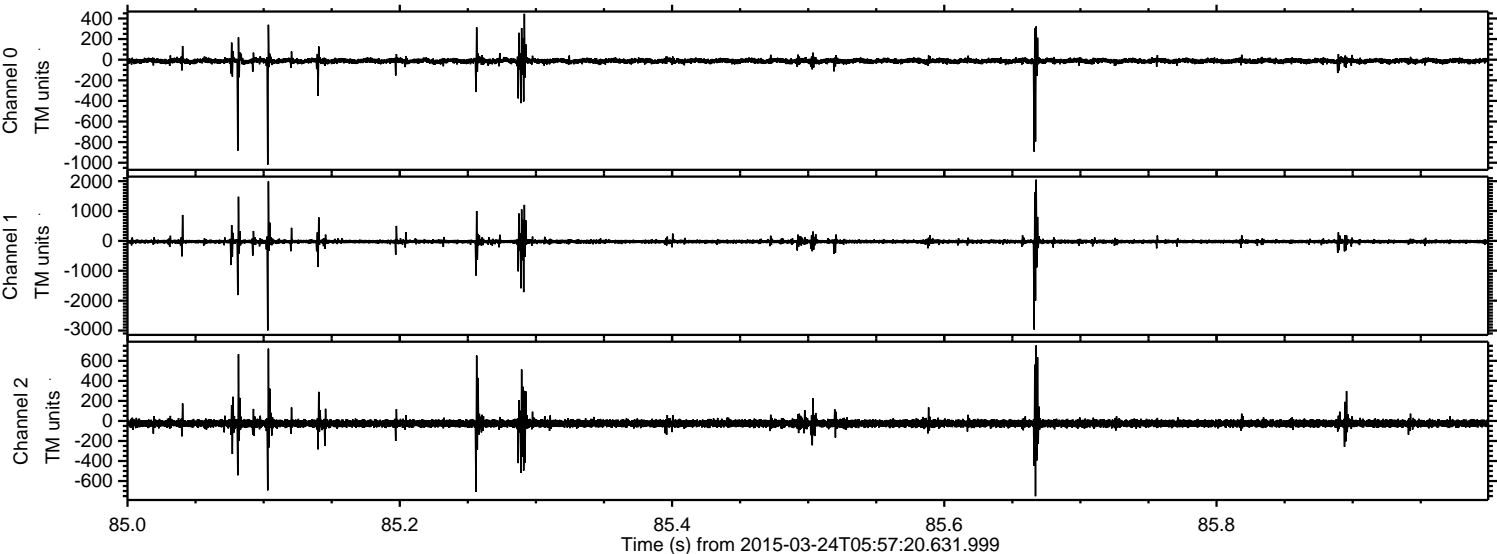
Processed Tue Mar 24 07:07:47 2015 by ELM ver.2012-10-06 from 001__elm20150324_055719__dat00.bin



Processed Tue Mar 24 07:07:48 2015 by ELM ver.2012-10-06 from 001__elm20150324_055719__dat00.bin

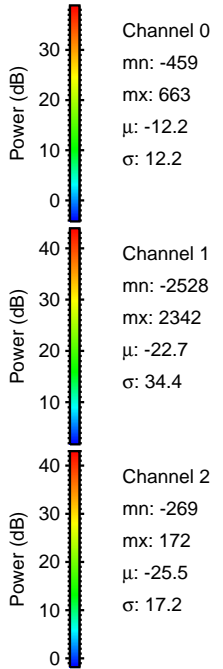
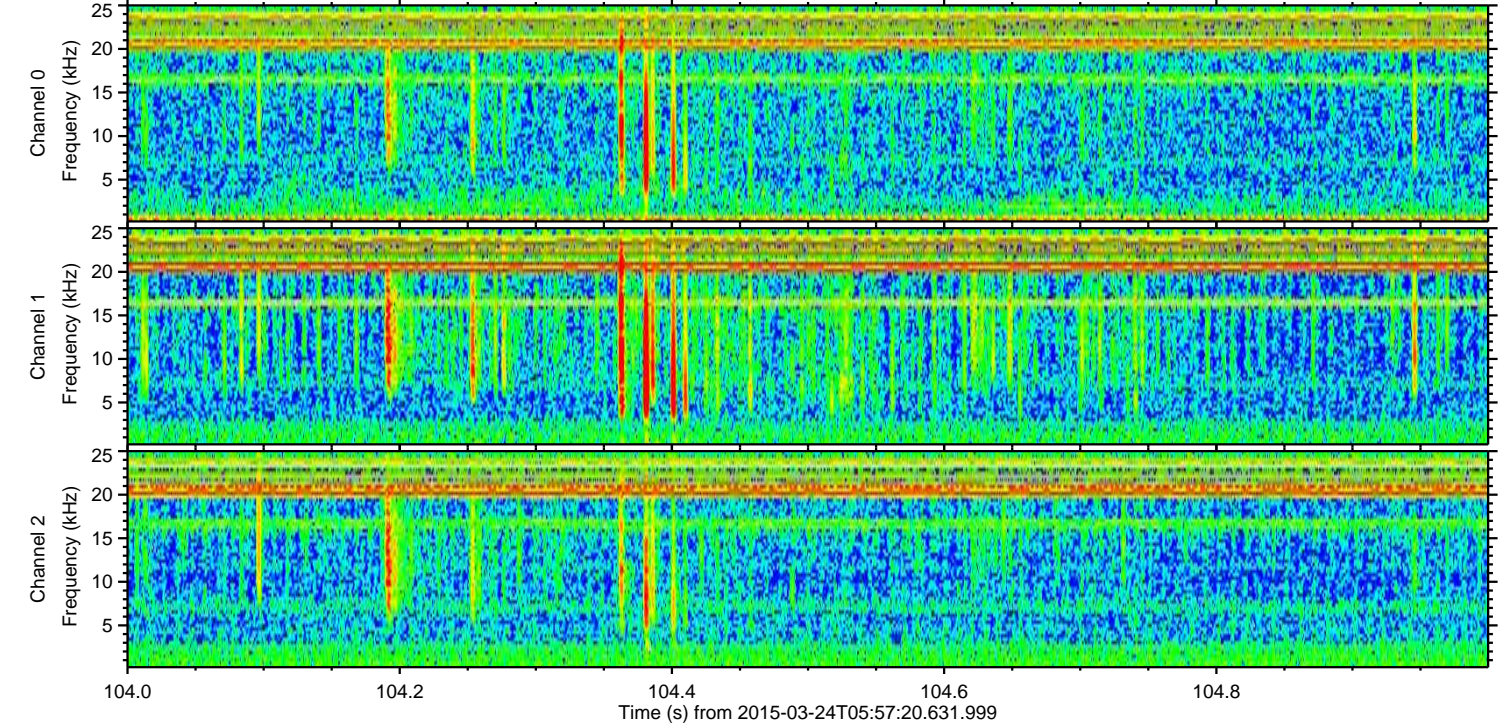
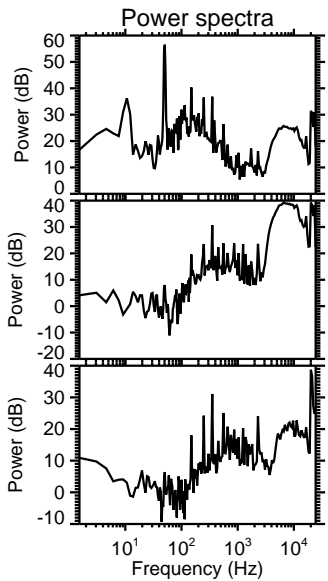
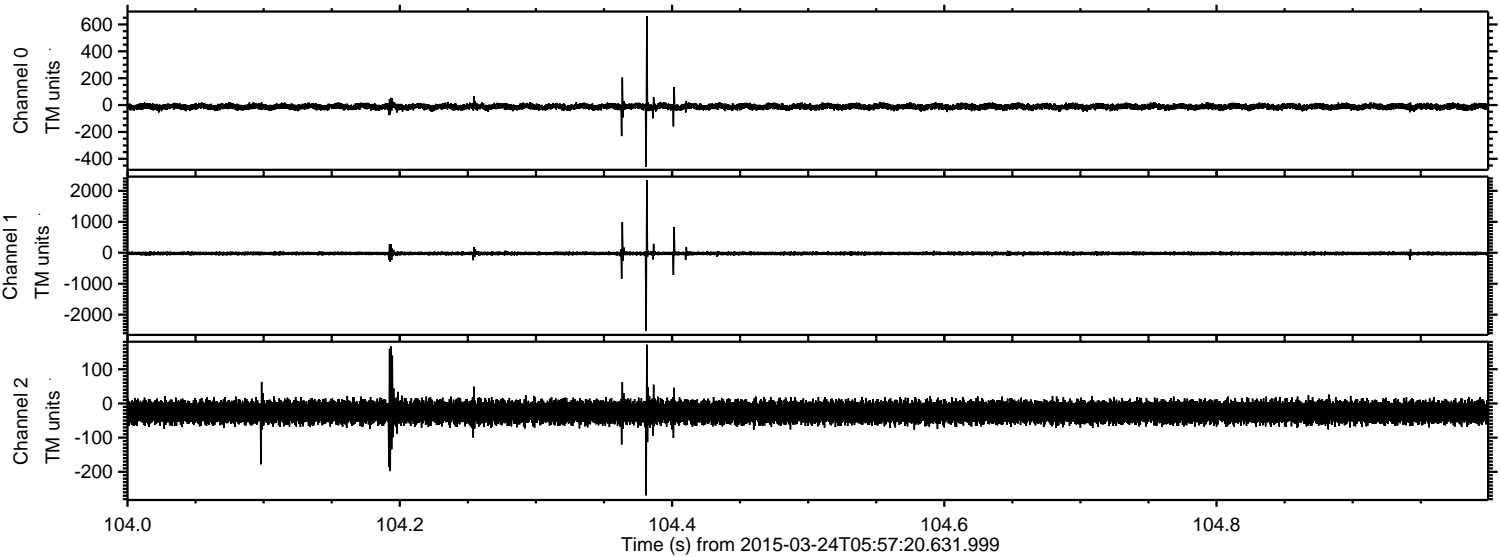


Processed Tue Mar 24 07:07:49 2015 by ELM ver.2012-10-06 from 001__elm20150324_055719__dat00.bin

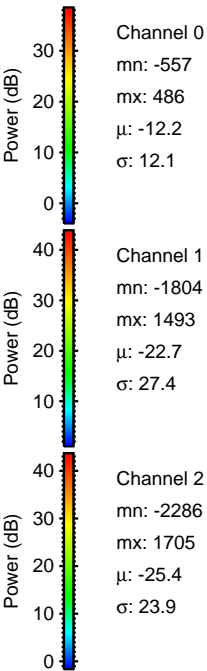
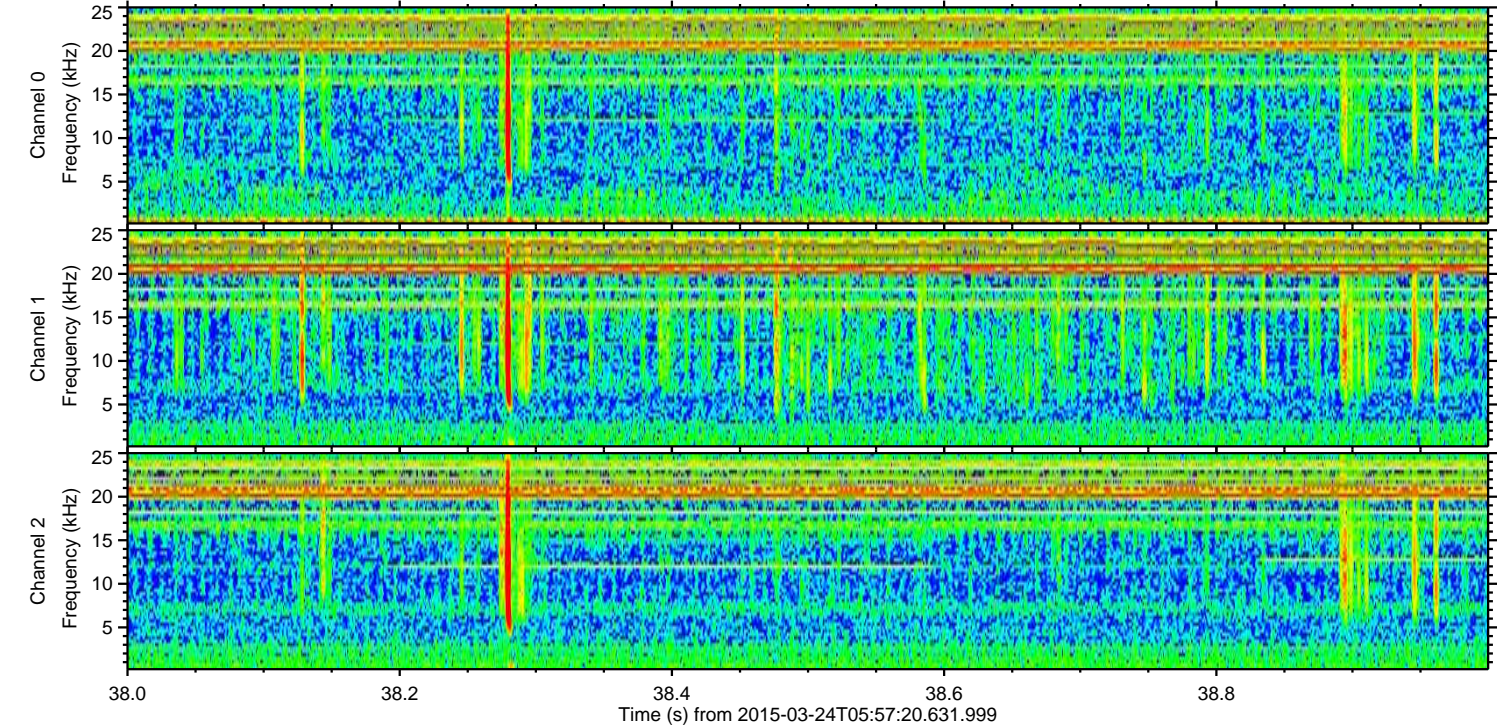
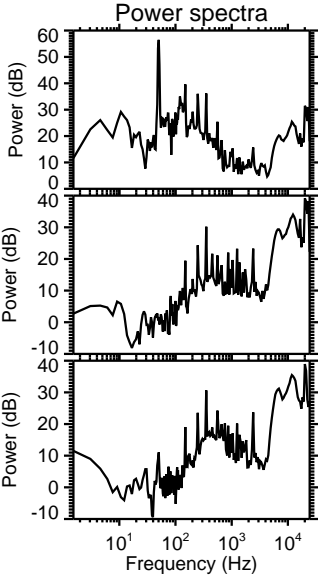
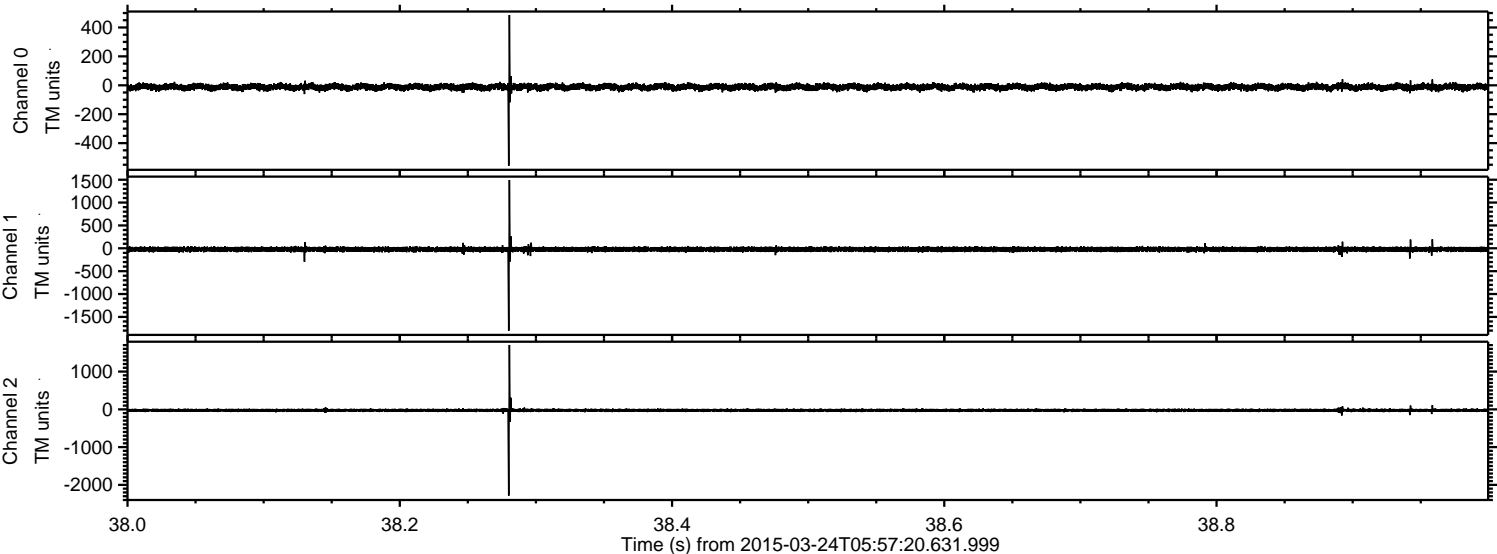


ELMAVAN 3D WAVEFORMS (Measured data sampled at 50 kHz) 49633 packets of 144 samples from 2015-03-24T05:57:20.631.999. Part 105/143

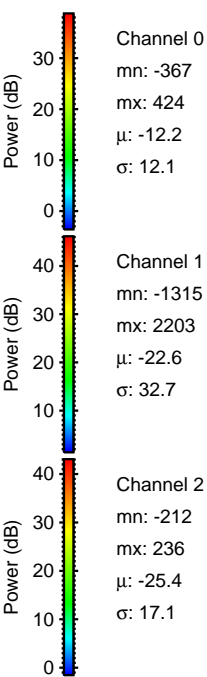
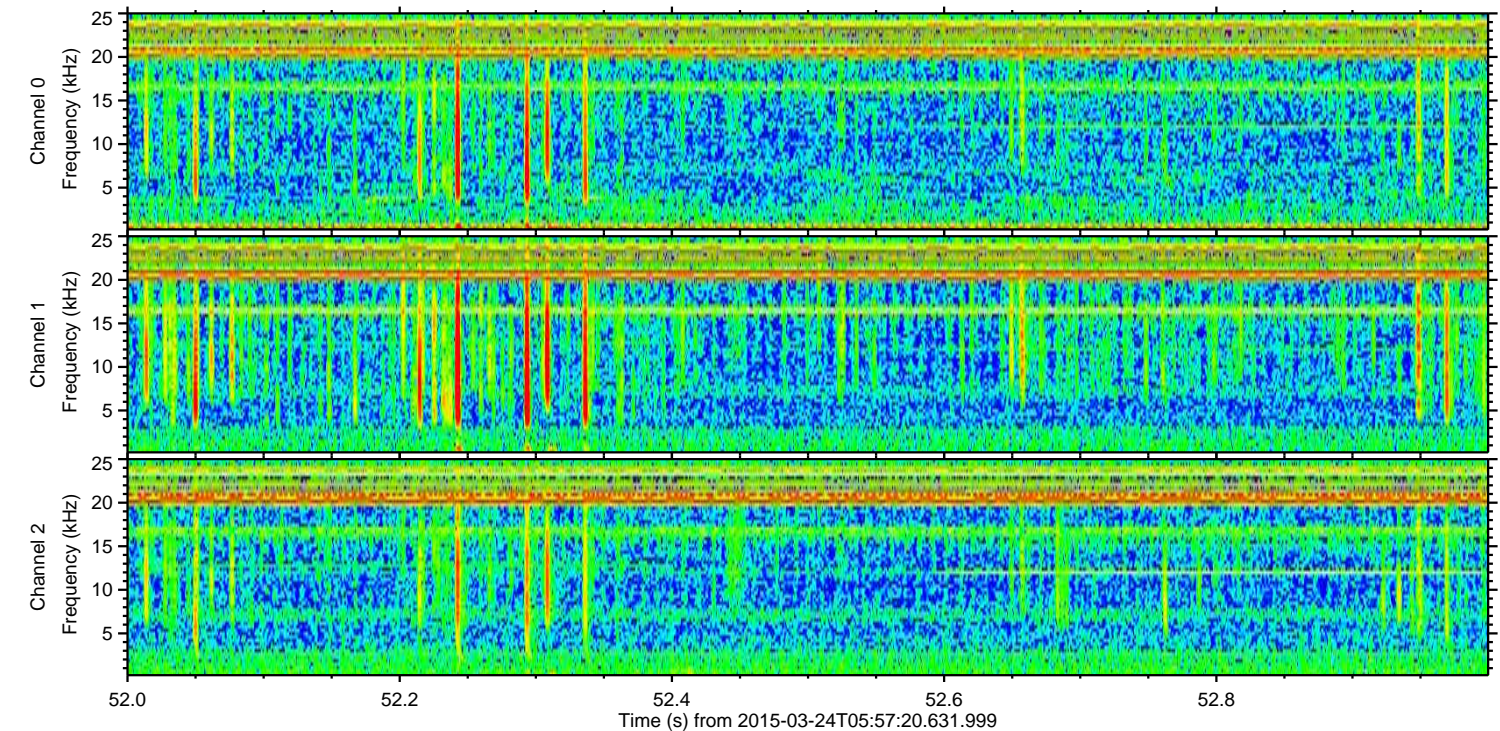
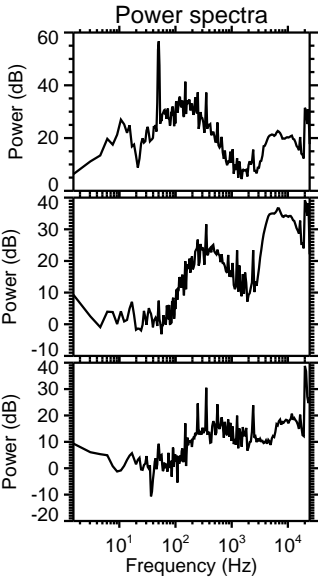
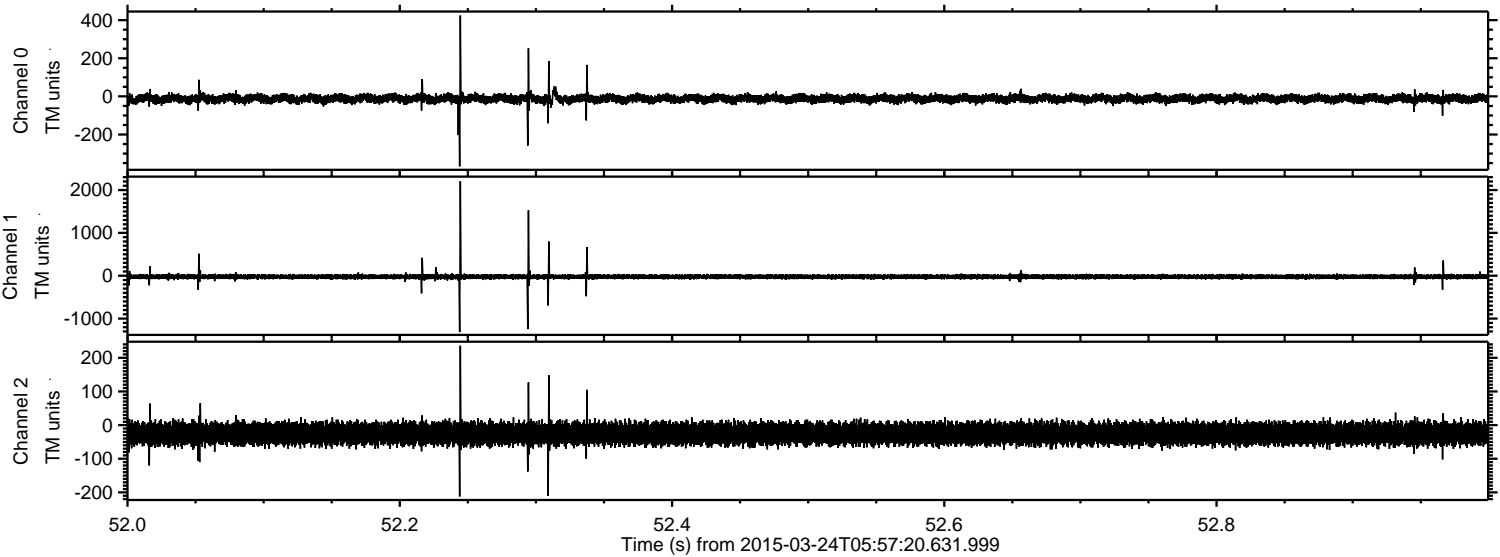
Processed Tue Mar 24 07:07:51 2015 by ELM ver.2012-10-06 from 001__elm20150324_055719__dat00.bin



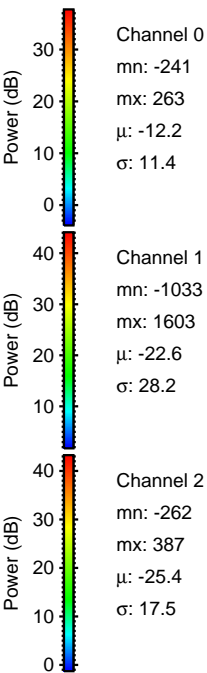
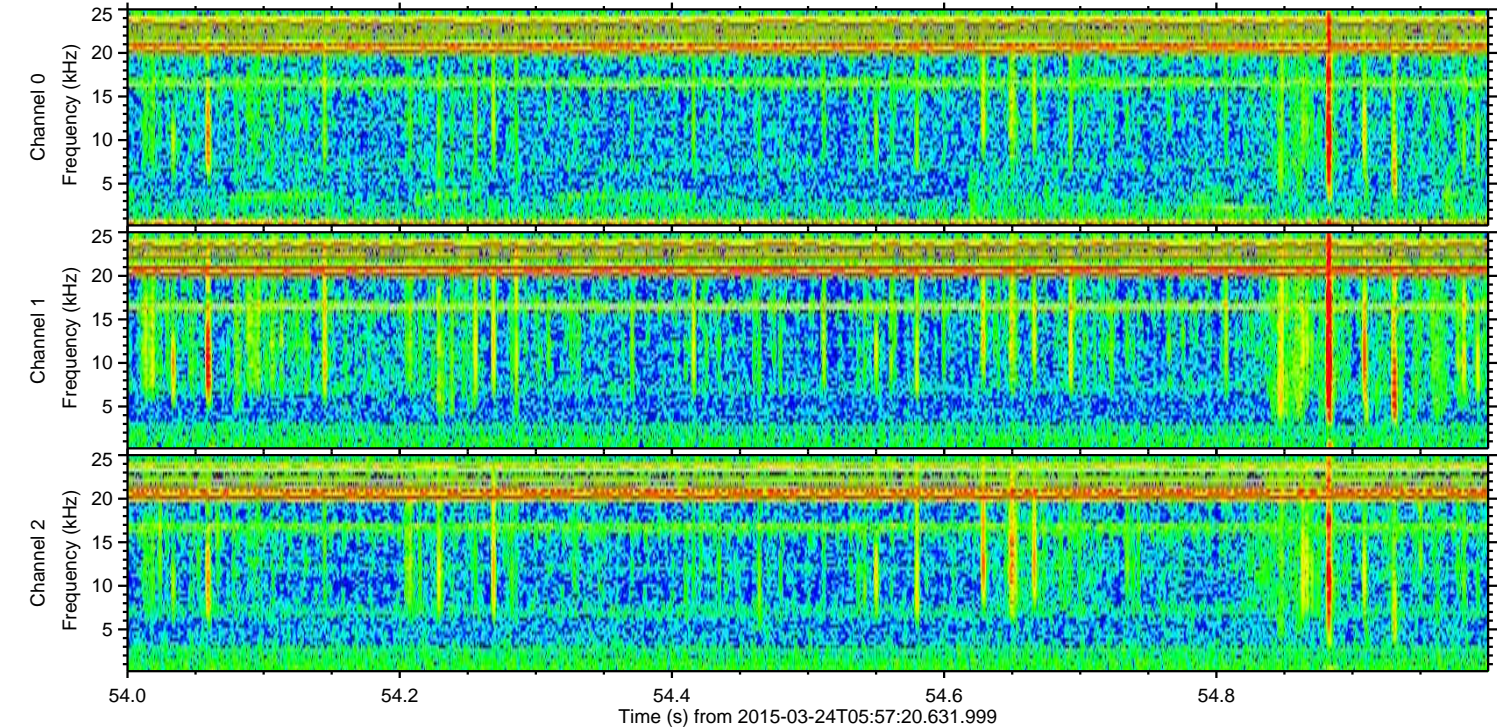
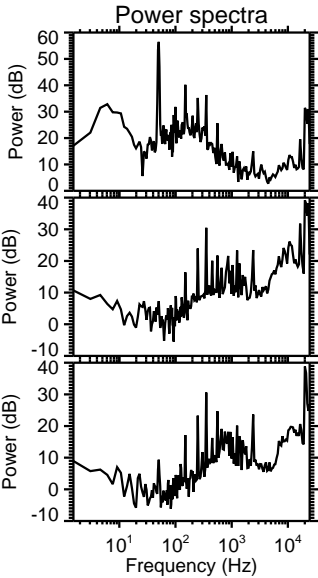
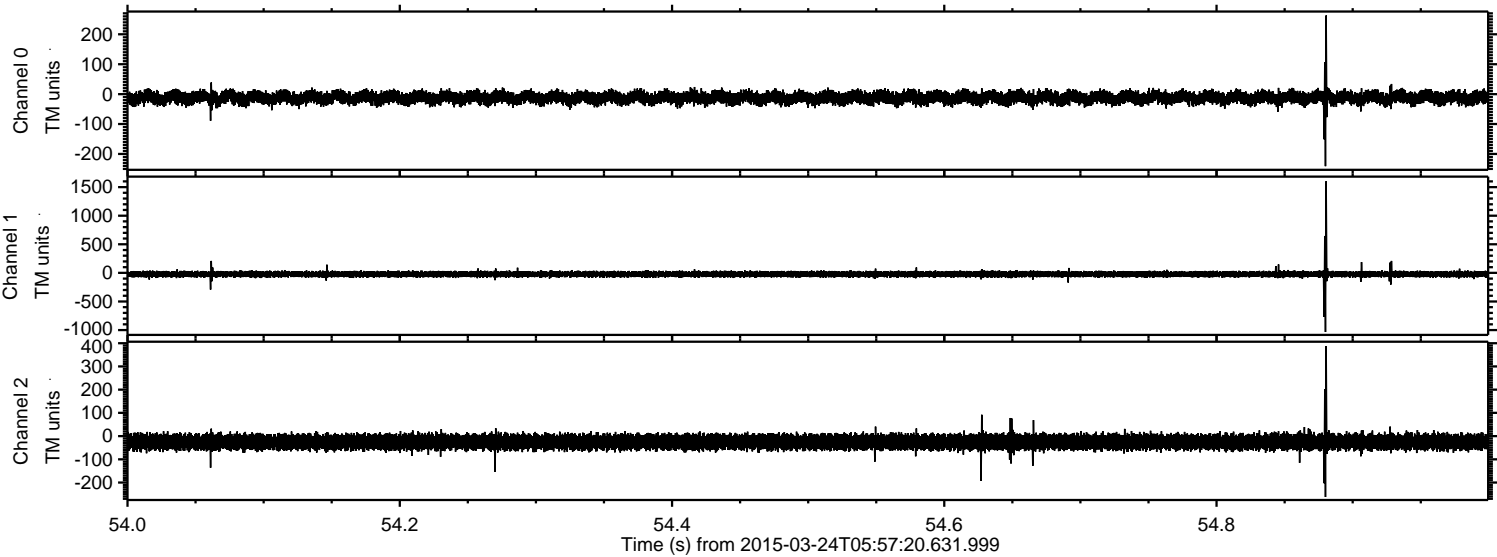
Processed Tue Mar 24 07:07:52 2015 by ELM ver.2012-10-06 from 001__elm20150324_055719__dat00.bin



Processed Tue Mar 24 07:07:53 2015 by ELM ver.2012-10-06 from 001__elm20150324_055719__dat00.bin



Processed Tue Mar 24 07:07:54 2015 by ELM ver.2012-10-06 from 001__elm20150324_055719__dat00.bin



Processed Tue Mar 24 07:07:55 2015 by ELM ver.2012-10-06 from 001__elm20150324_055719__dat00.bin

