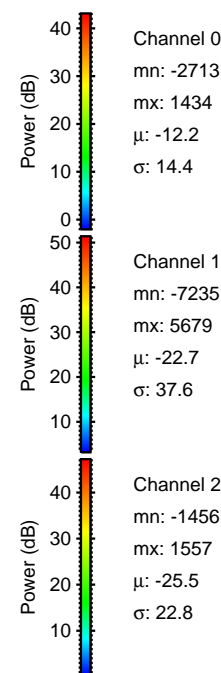
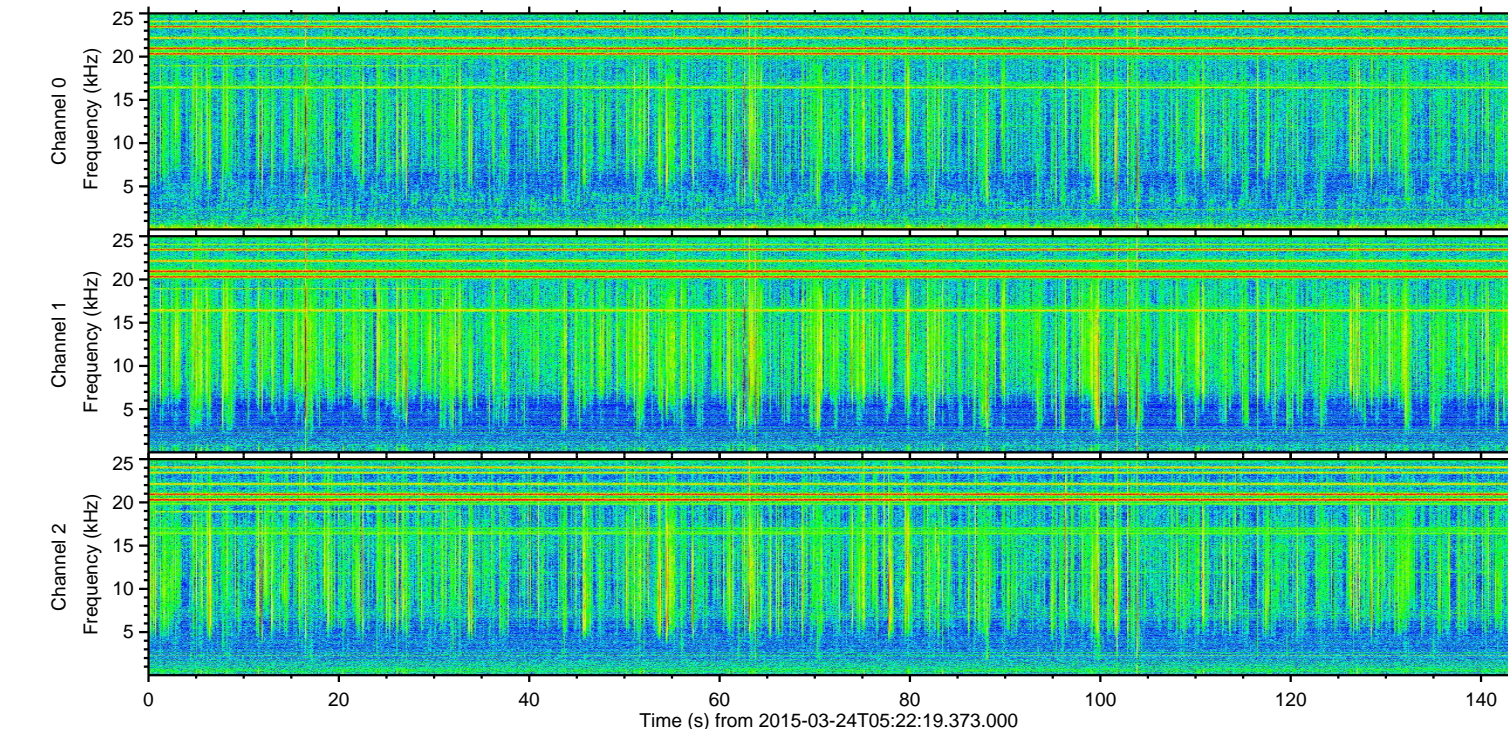
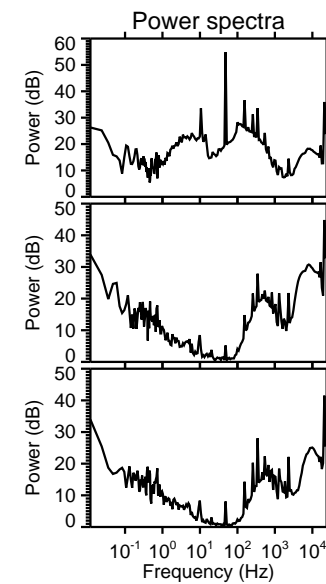
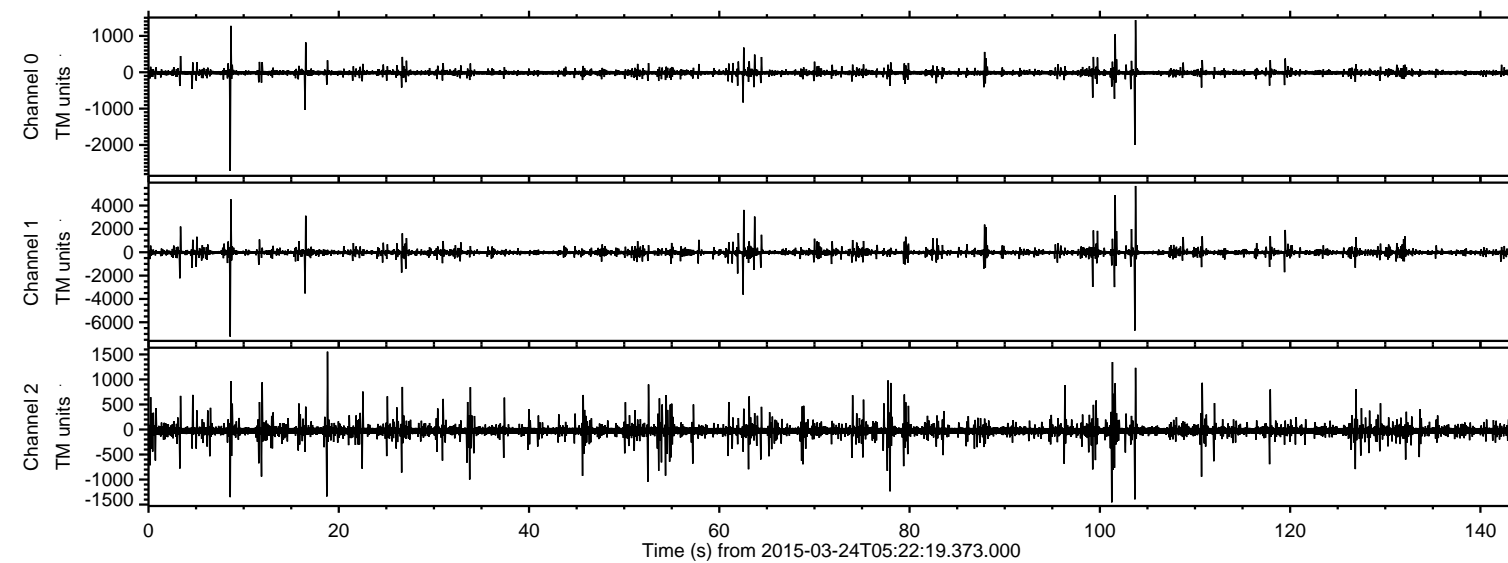


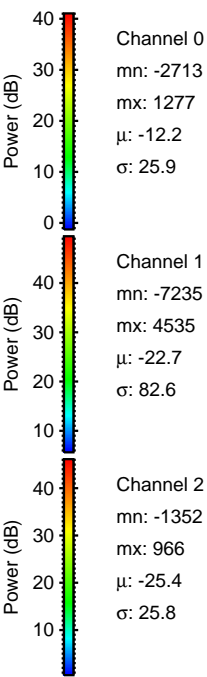
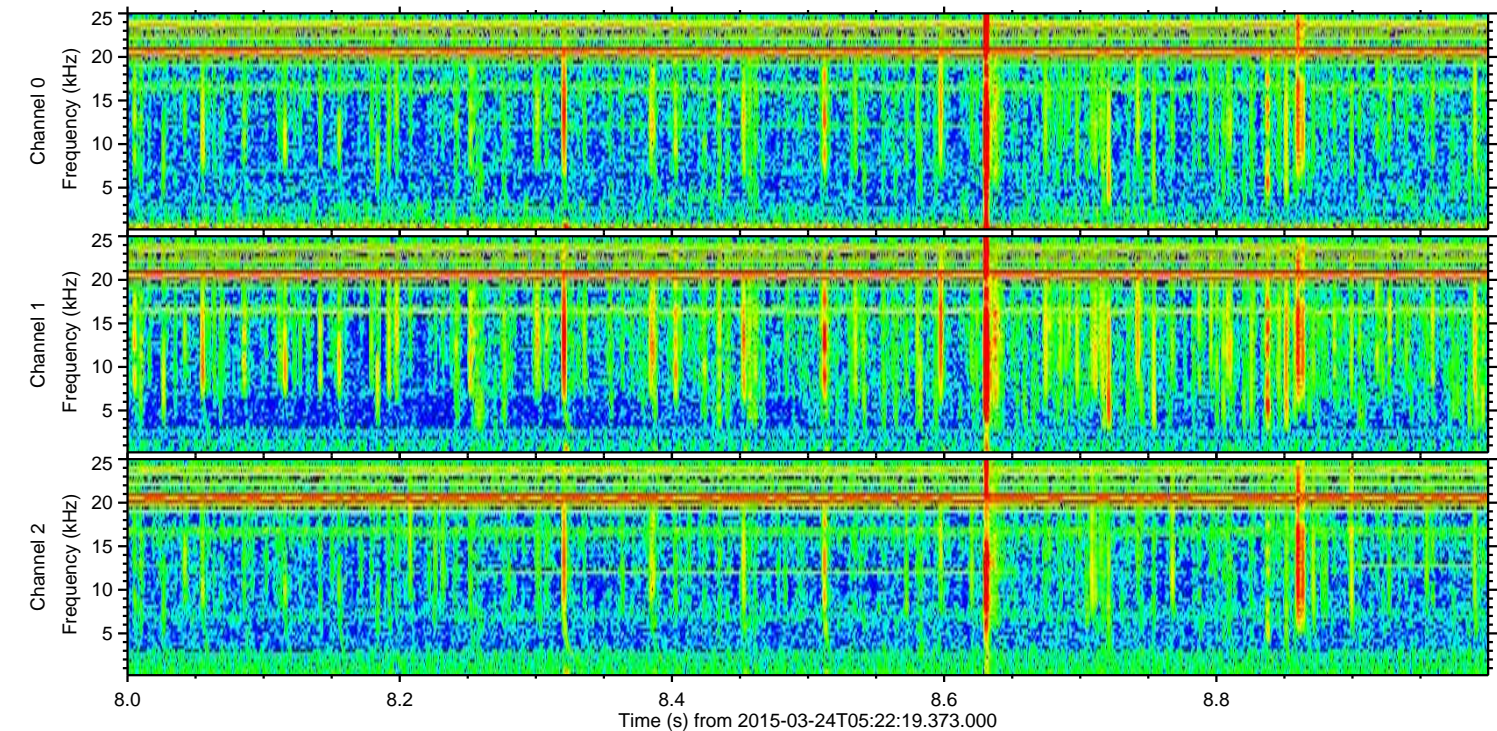
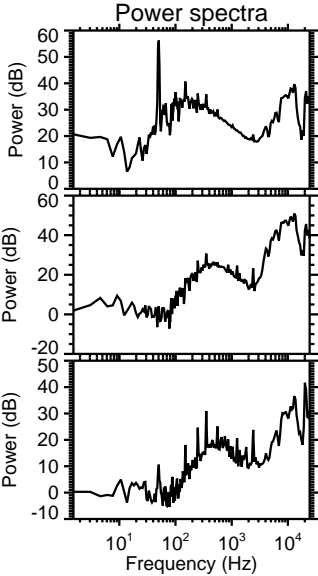
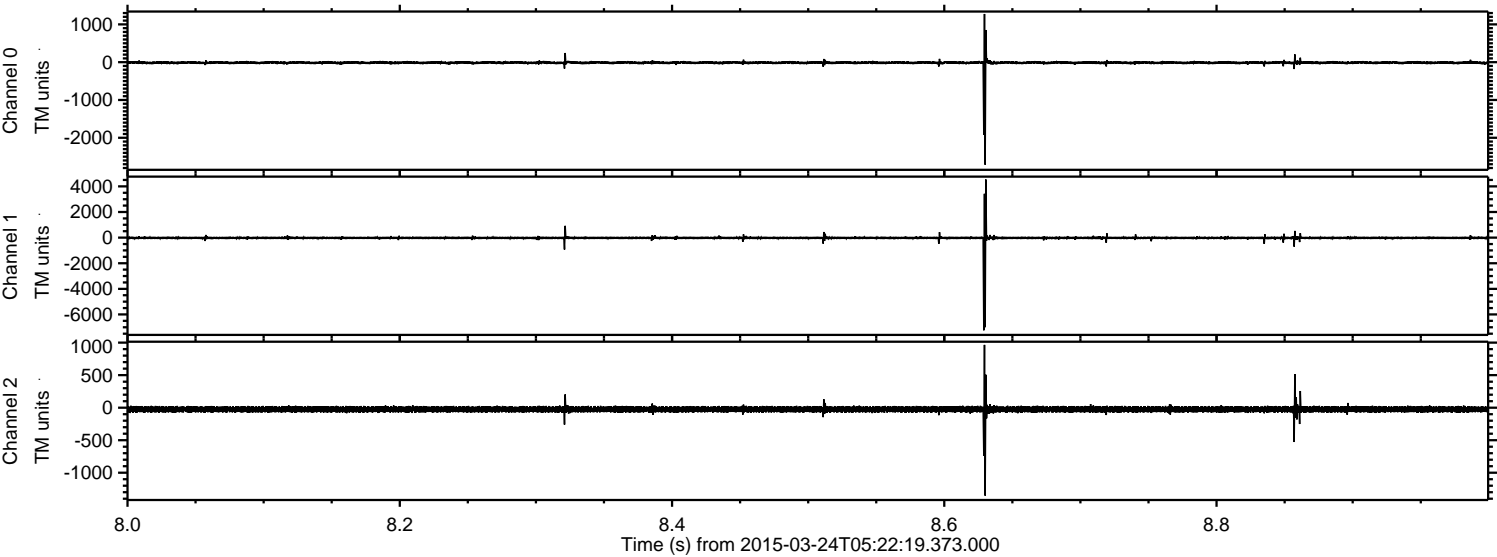
# ELMAVAN 3D WAVEFORMS (Measured data sampled at 50 kHz) 49660 packets of 144 samples from 2015-03-24T05:22:19.373.000.

Processed Tue Mar 24 06:31:01 2015 by ELM ver.2012-10-06 from 001\_\_elm20150324\_052218\_\_dat00.bin





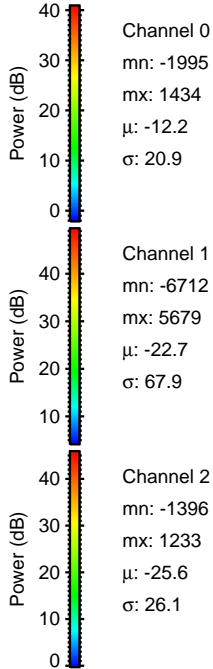
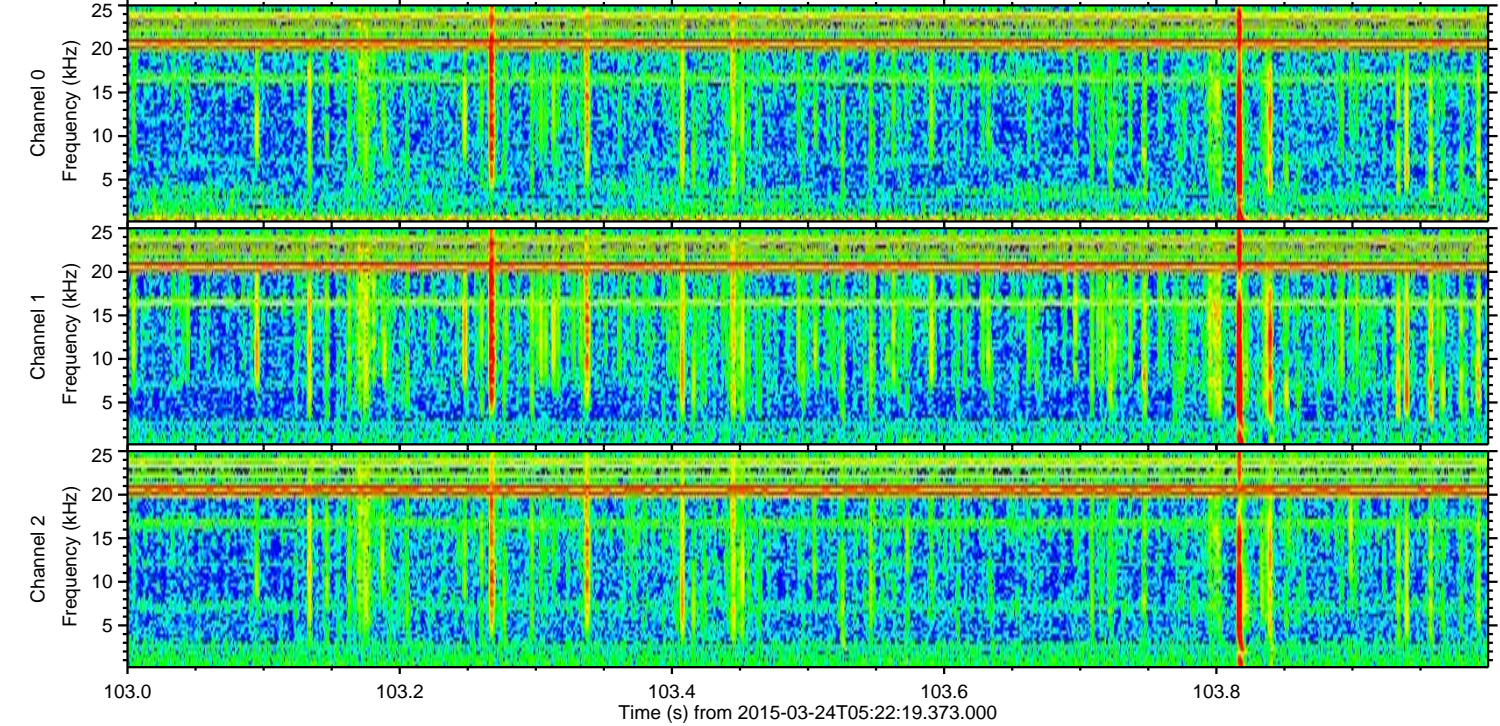
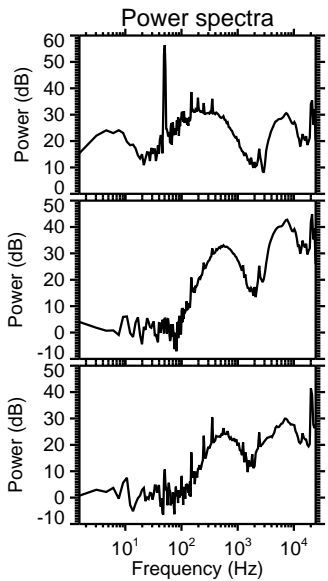
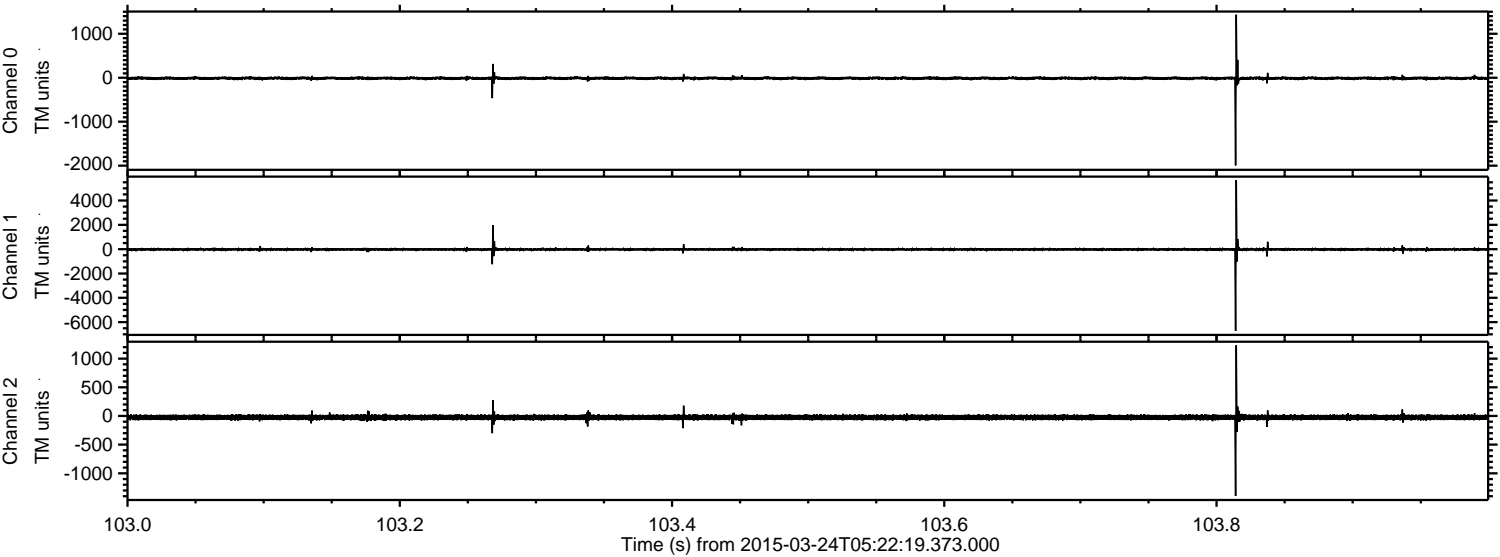
Processed Tue Mar 24 06:31:16 2015 by ELM ver.2012-10-06 from 001\_\_elm20150324\_052218\_\_dat00.bin





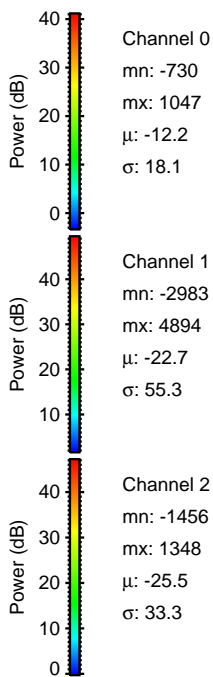
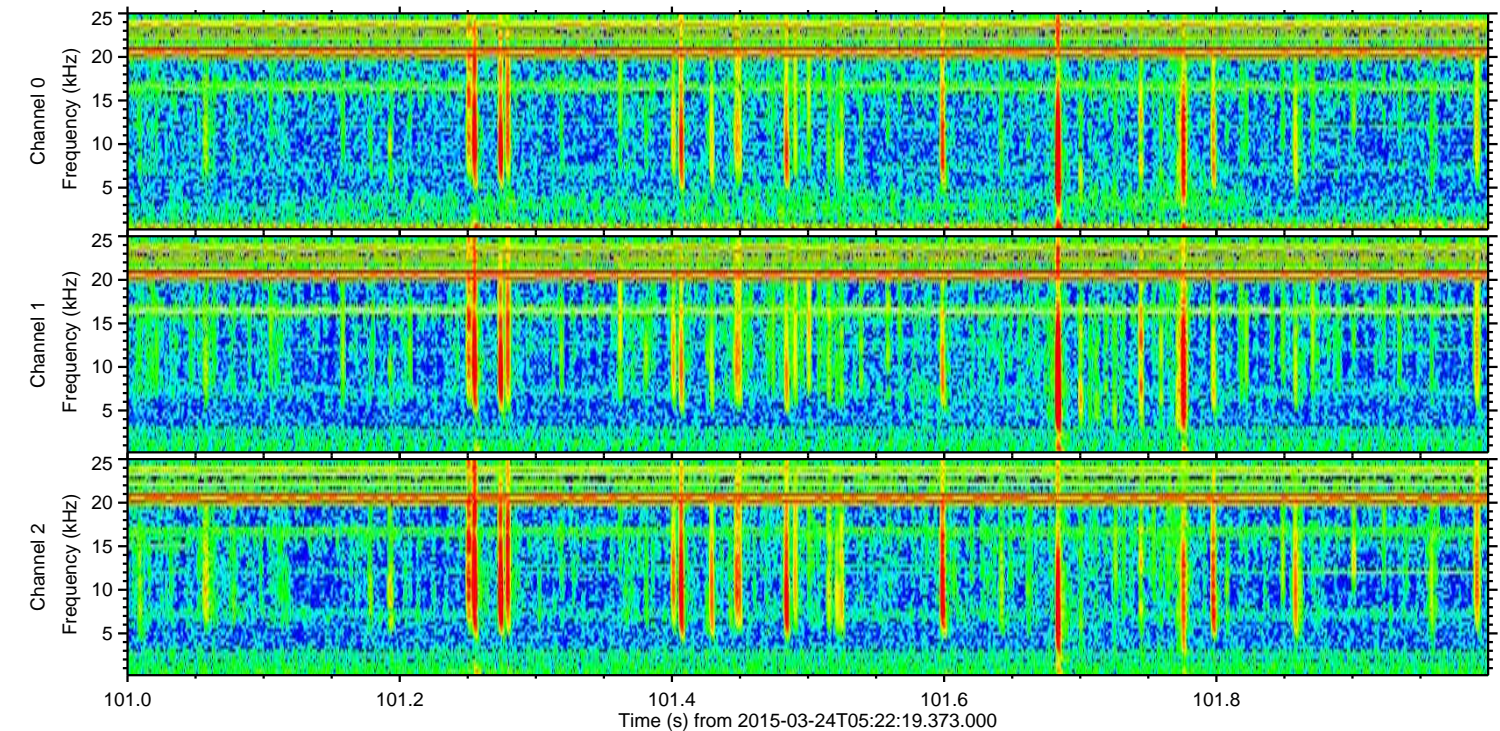
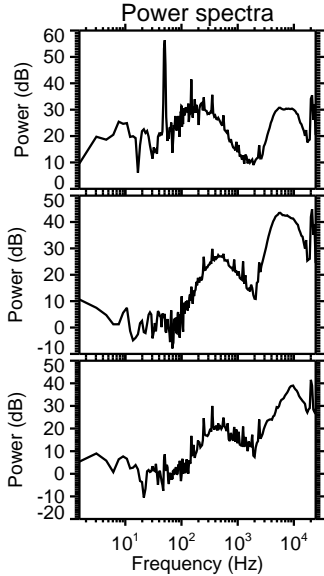
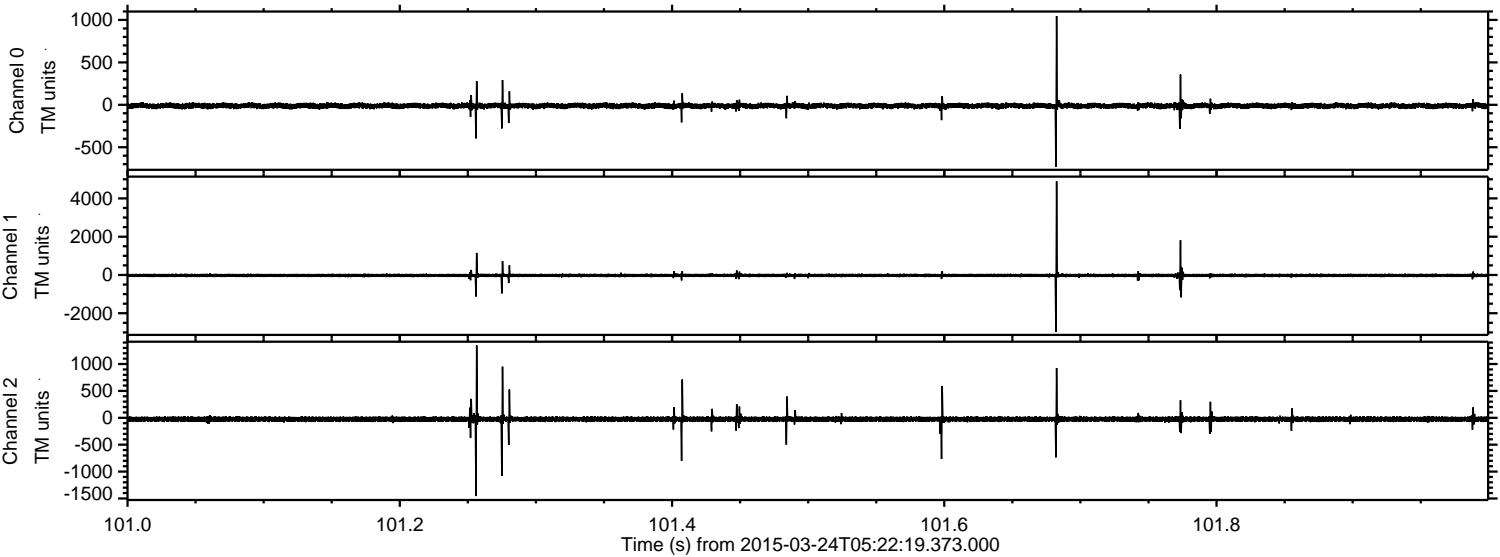
ELMAVAN 3D WAVEFORMS (Measured data sampled at 50 kHz) 49660 packets of 144 samples from 2015-03-24T05:22:19.373.000. Part 104/144

Processed Tue Mar 24 06:31:17 2015 by ELM ver.2012-10-06 from 001\_\_elm20150324\_052218\_\_dat00.bin





Processed Tue Mar 24 06:31:19 2015 by ELM ver.2012-10-06 from 001\_\_elm20150324\_052218\_\_dat00.bin



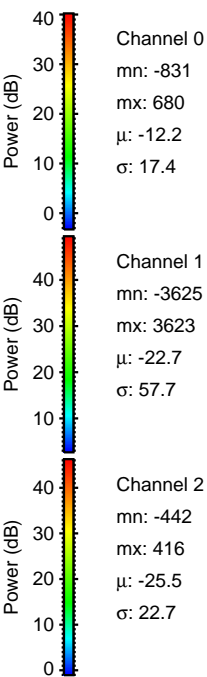
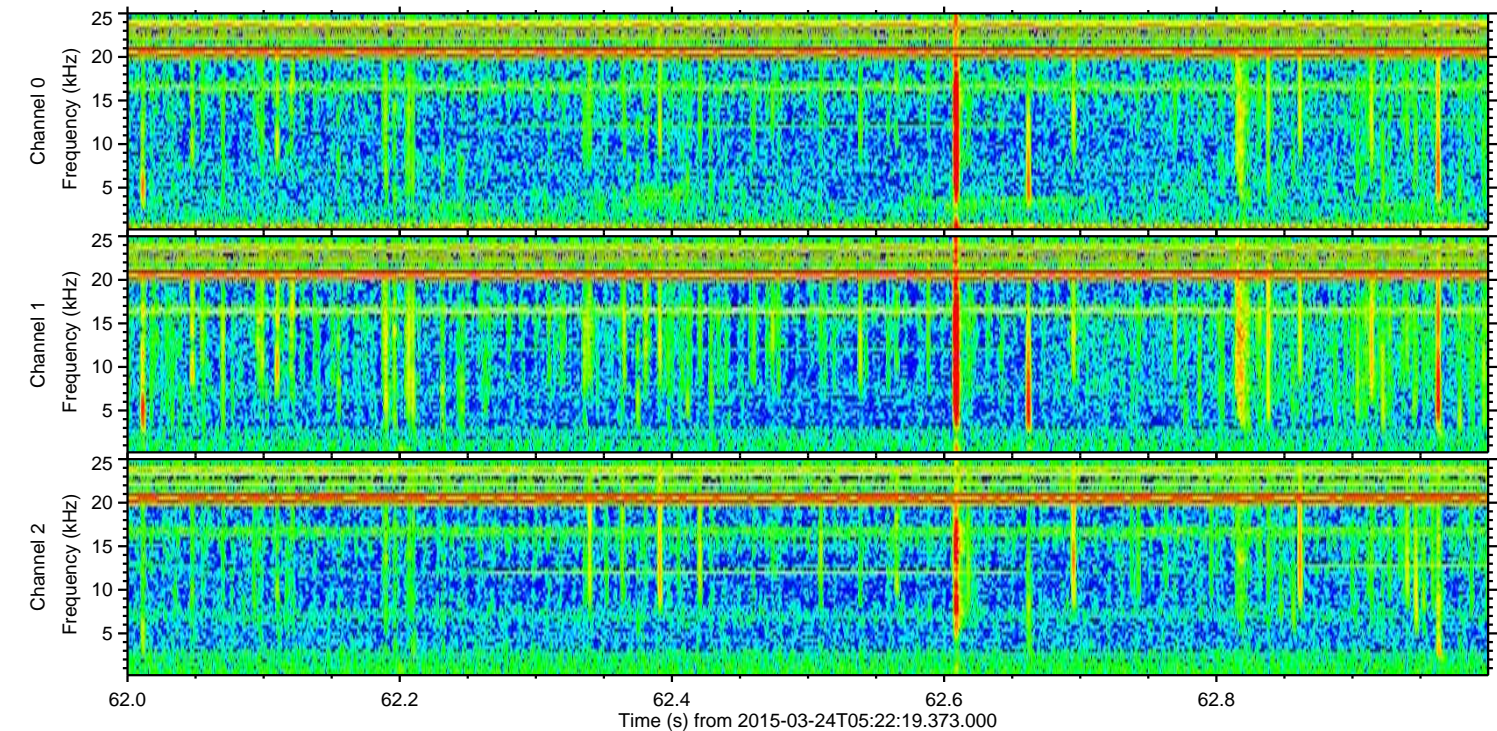
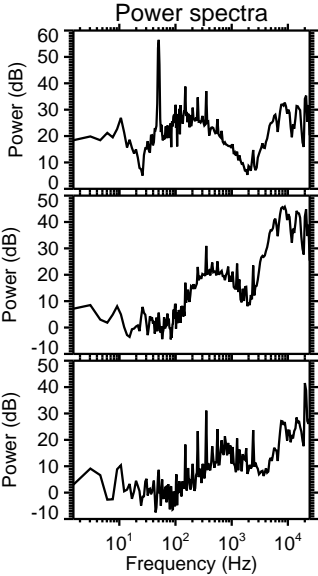
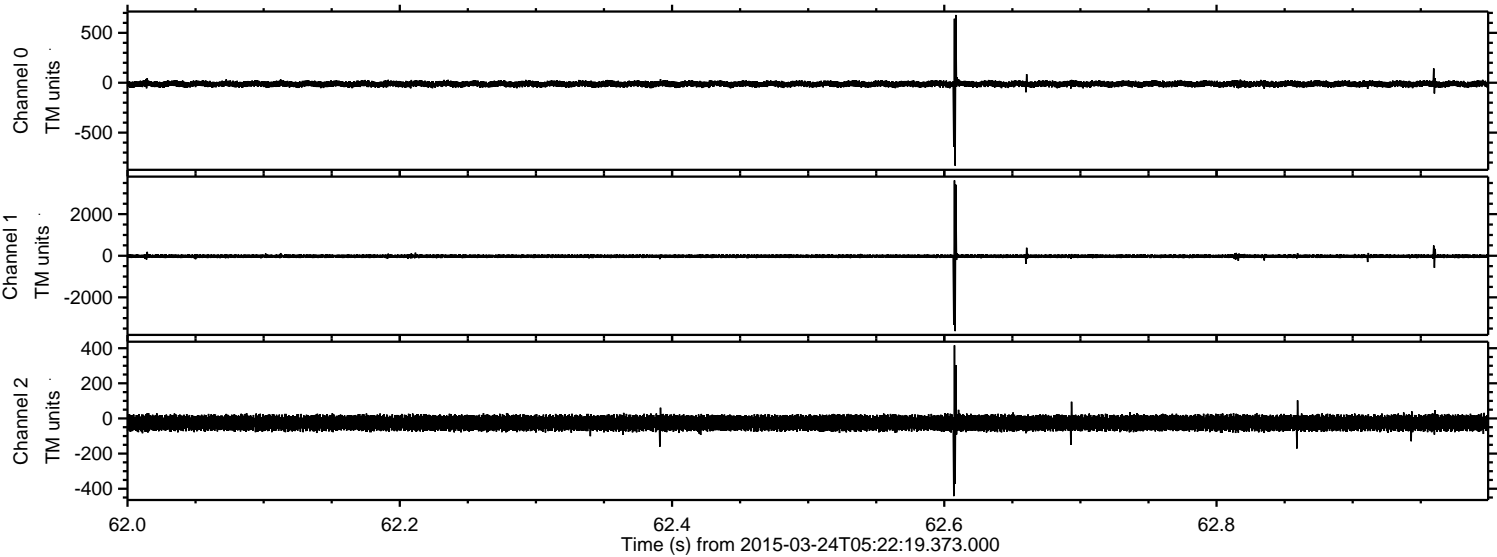
Channel 0  
mn: -730  
mx: 1047  
 $\mu$ : -12.2  
 $\sigma$ : 18.1

Channel 1  
mn: -2983  
mx: 4894  
 $\mu$ : -22.7  
 $\sigma$ : 55.3

Channel 2  
mn: -1456  
mx: 1348  
 $\mu$ : -25.5  
 $\sigma$ : 33.3

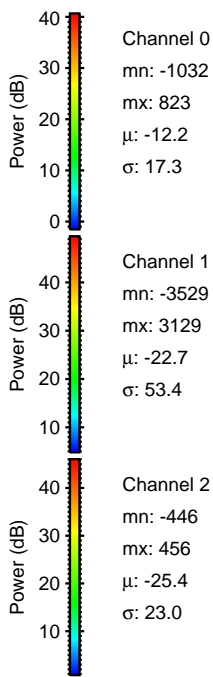
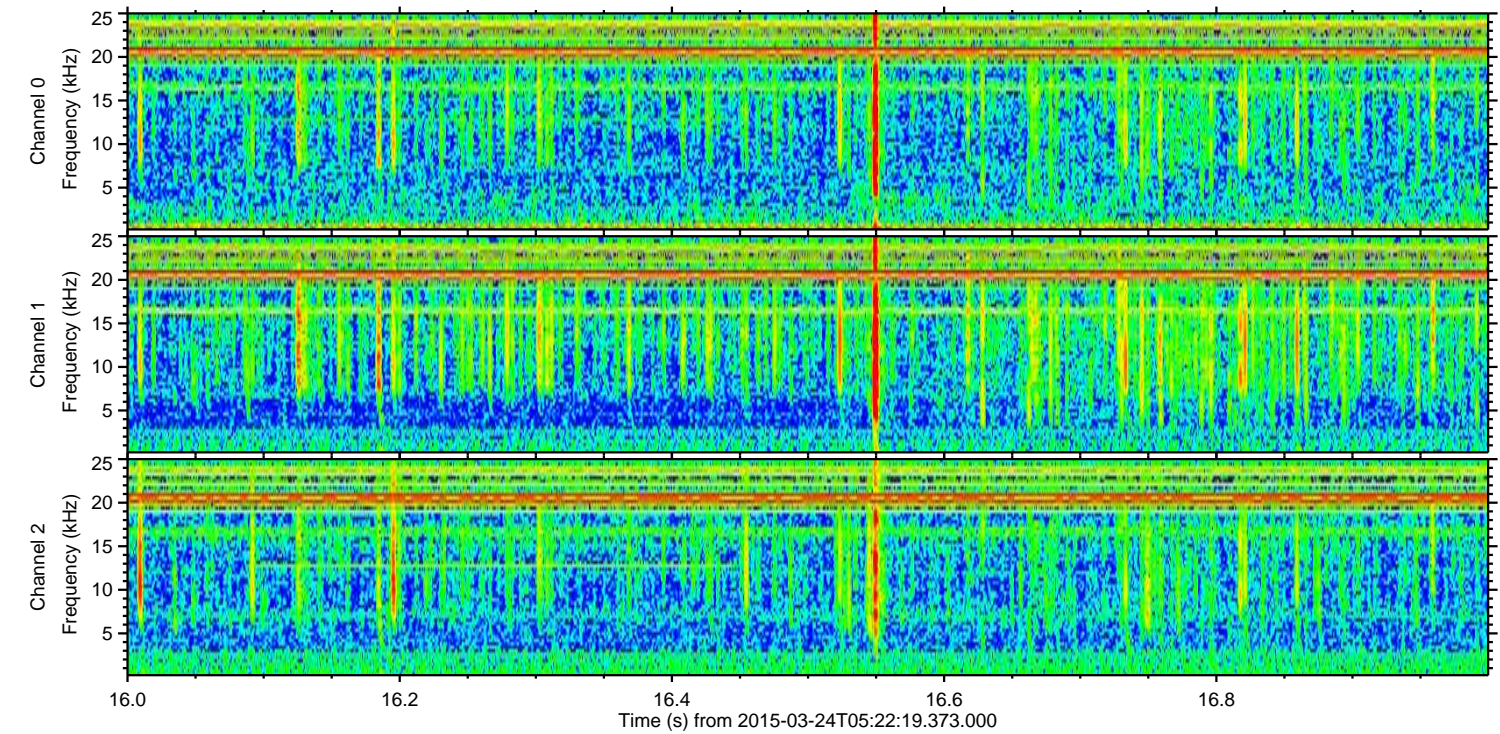
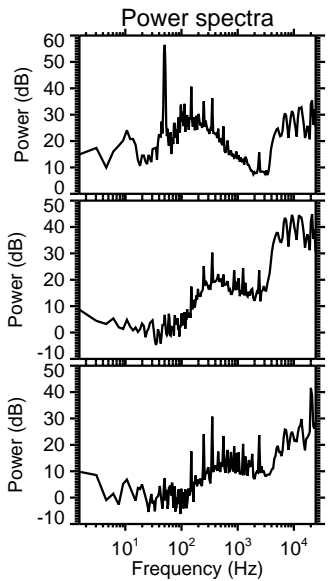
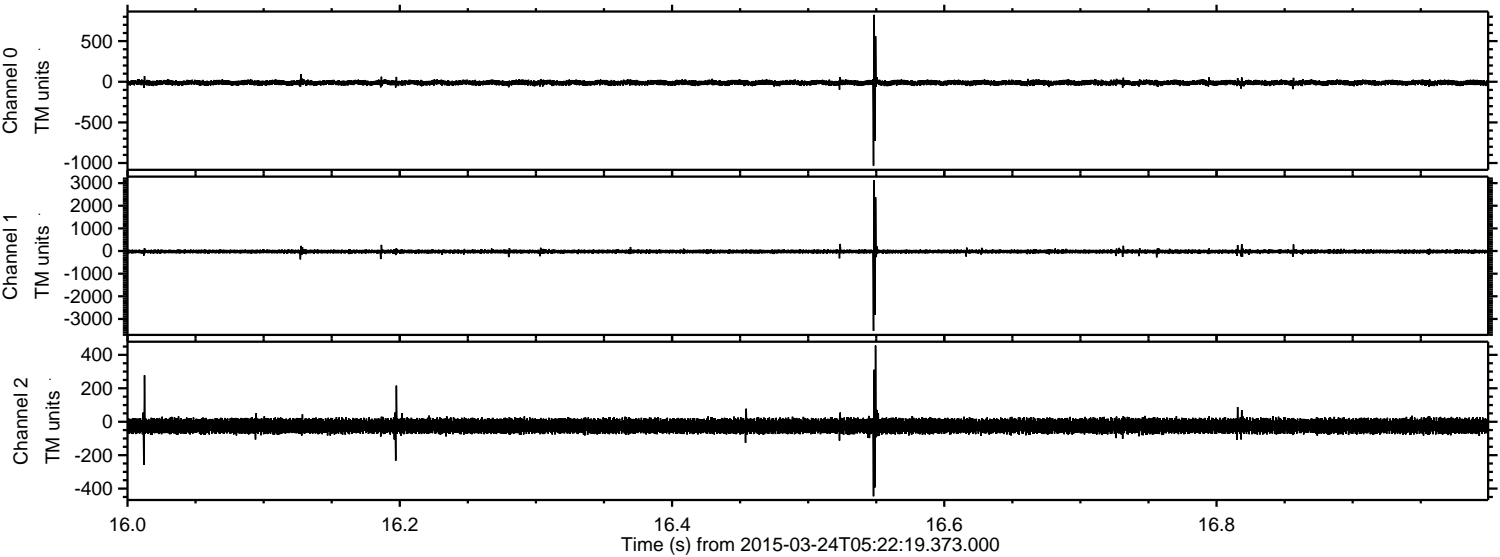


Processed Tue Mar 24 06:31:20 2015 by ELM ver.2012-10-06 from 001\_\_elm20150324\_052218\_\_dat00.bin





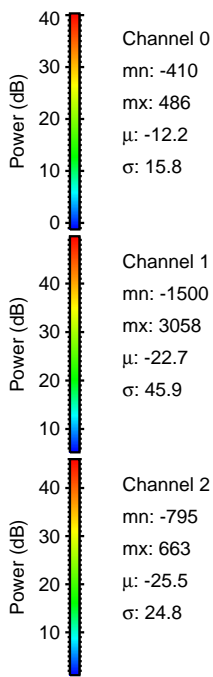
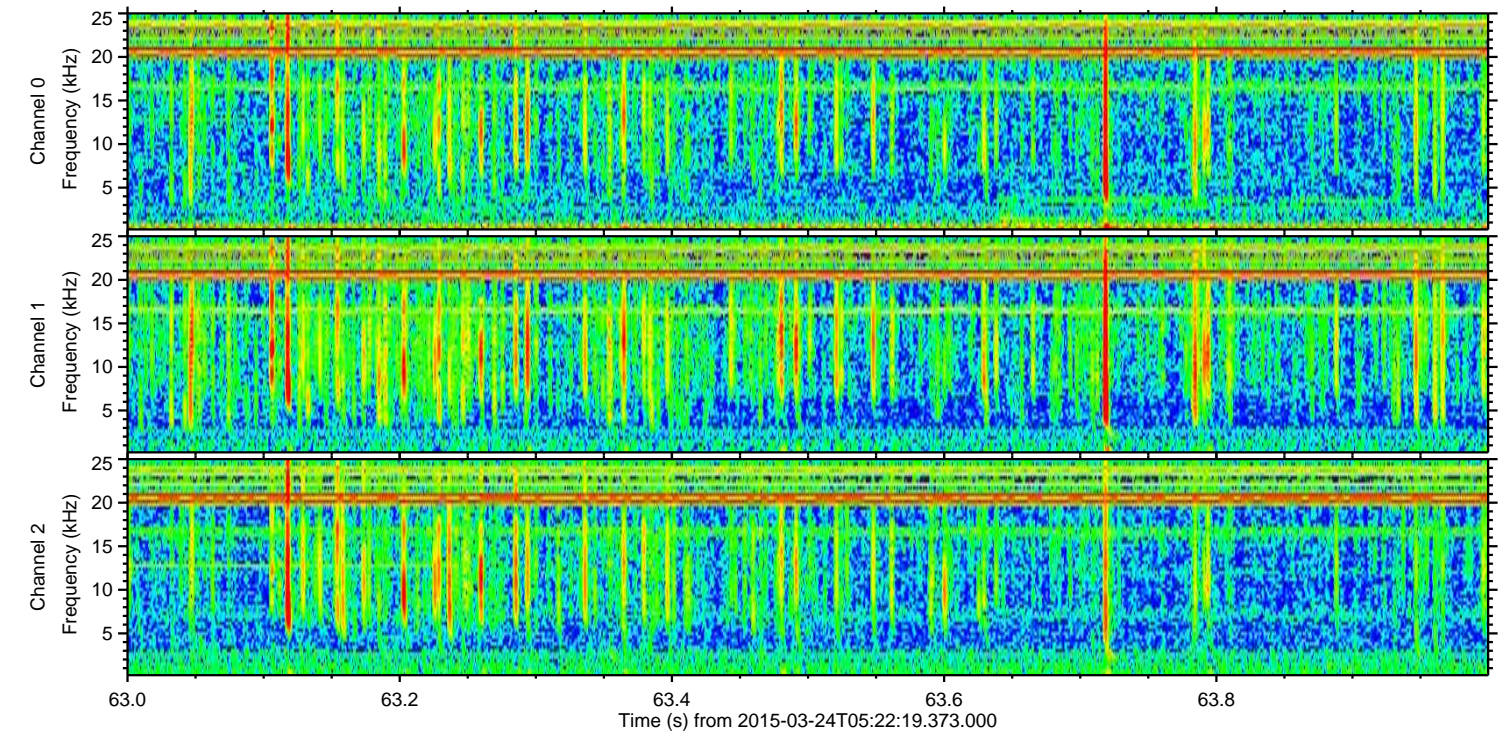
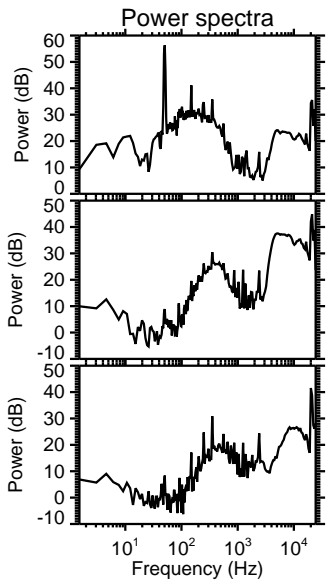
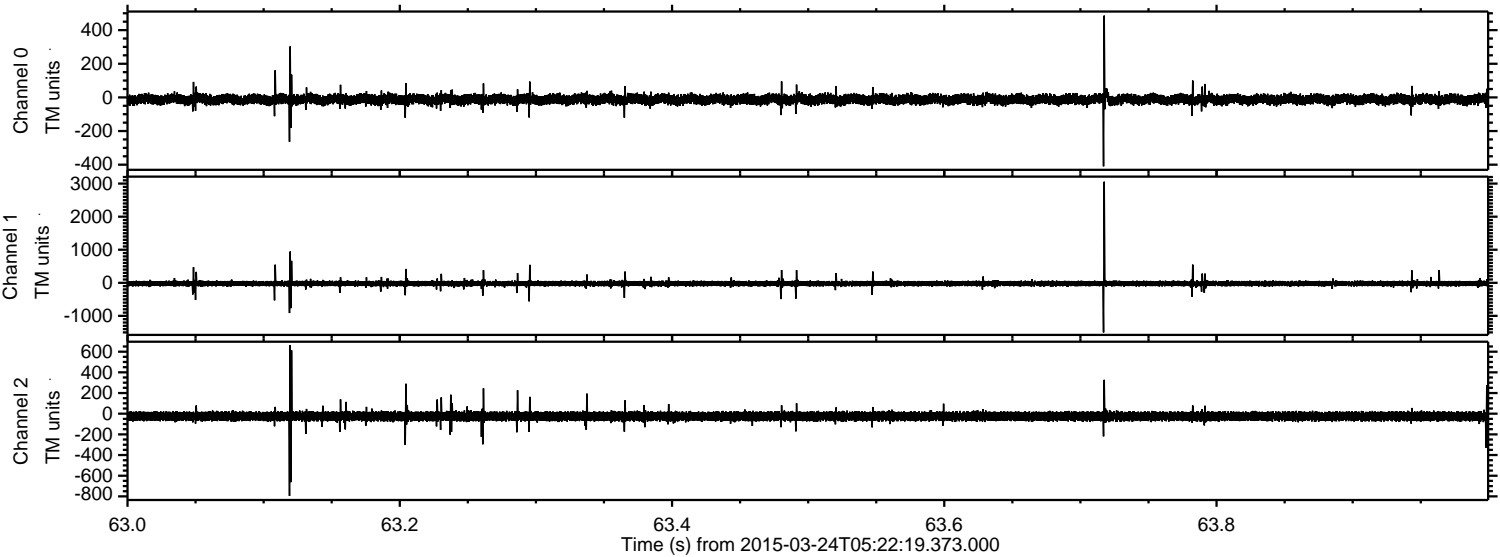
Processed Tue Mar 24 06:31:21 2015 by ELM ver.2012-10-06 from 001\_\_elm20150324\_052218\_\_dat00.bin





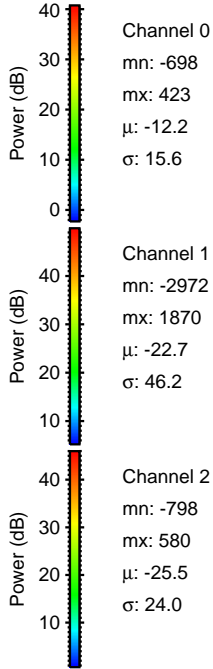
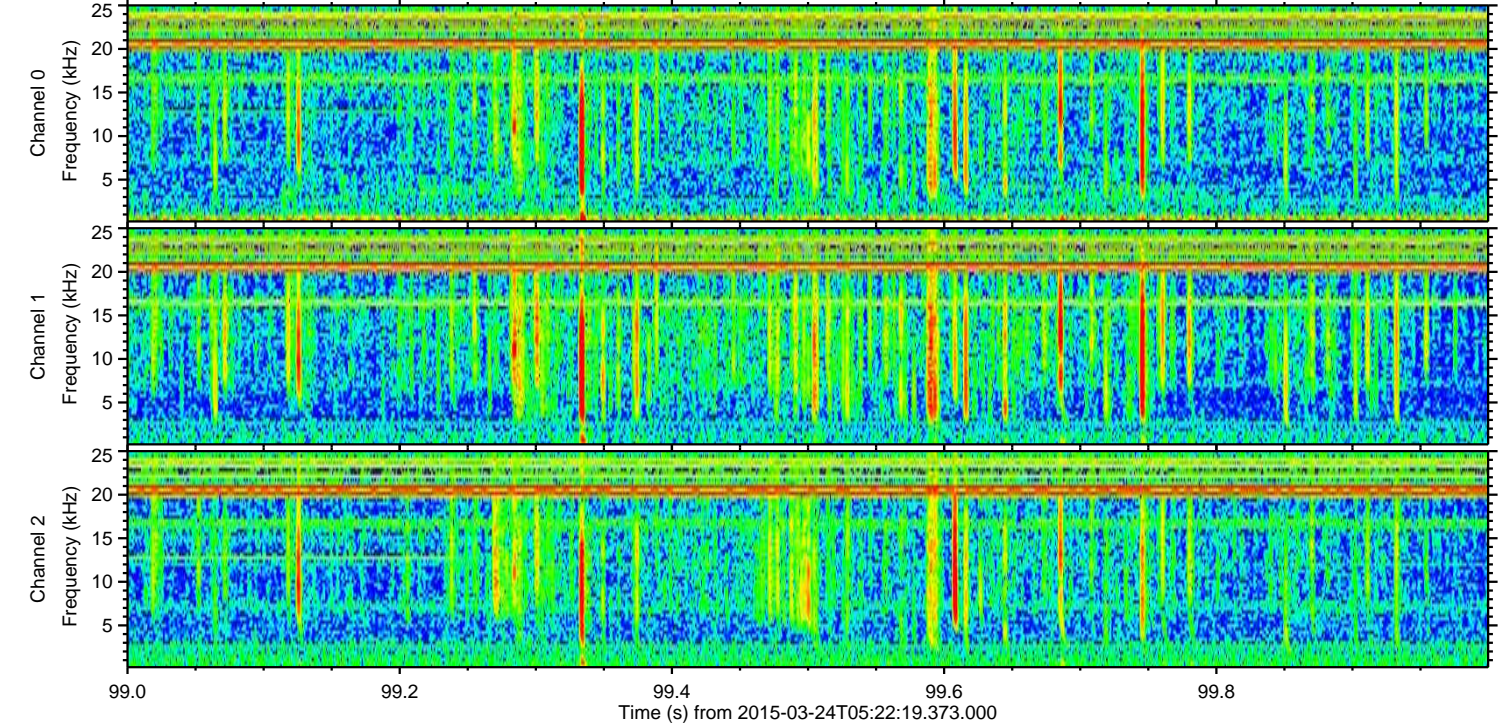
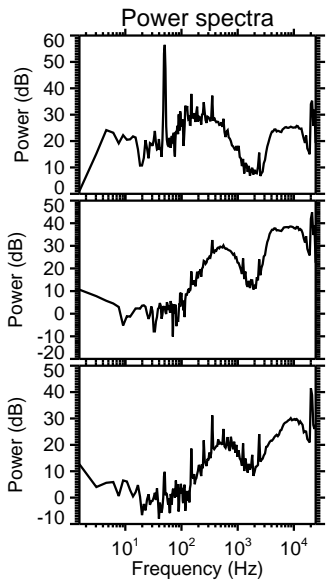
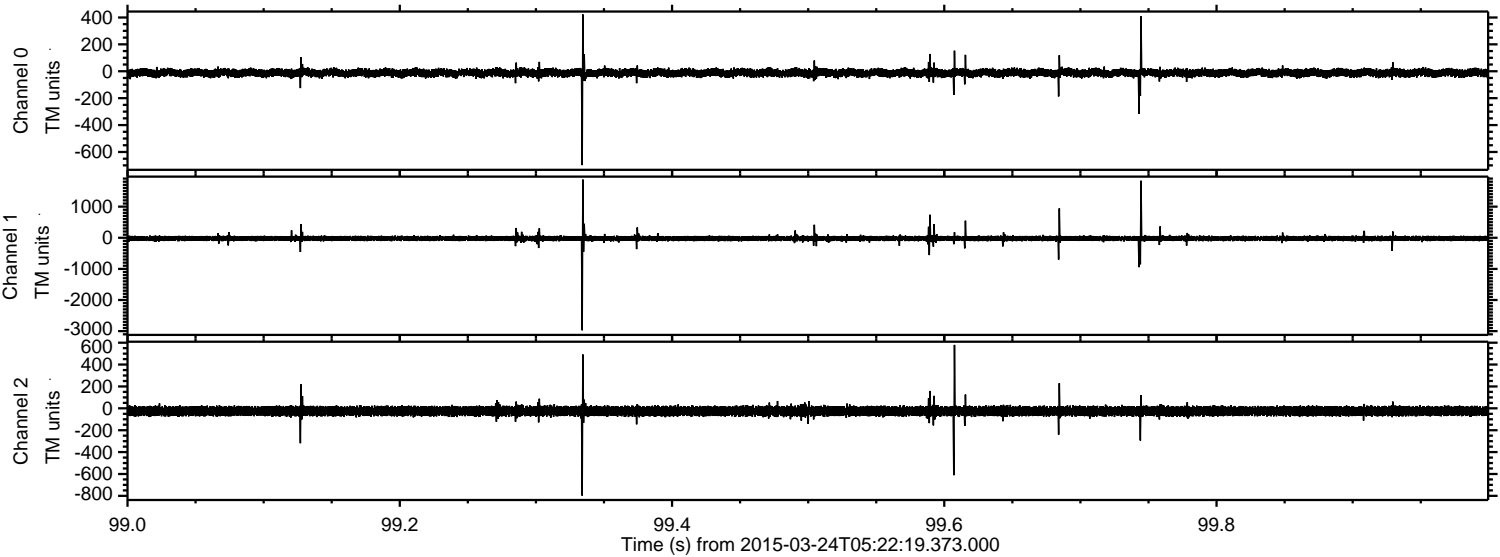
ELMAVAN 3D WAVEFORMS (Measured data sampled at 50 kHz) 49660 packets of 144 samples from 2015-03-24T05:22:19.373.000. Part 64/144

Processed Tue Mar 24 06:31:22 2015 by ELM ver.2012-10-06 from 001\_\_elm20150324\_052218\_\_dat00.bin



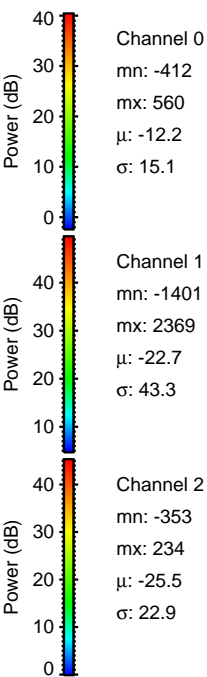
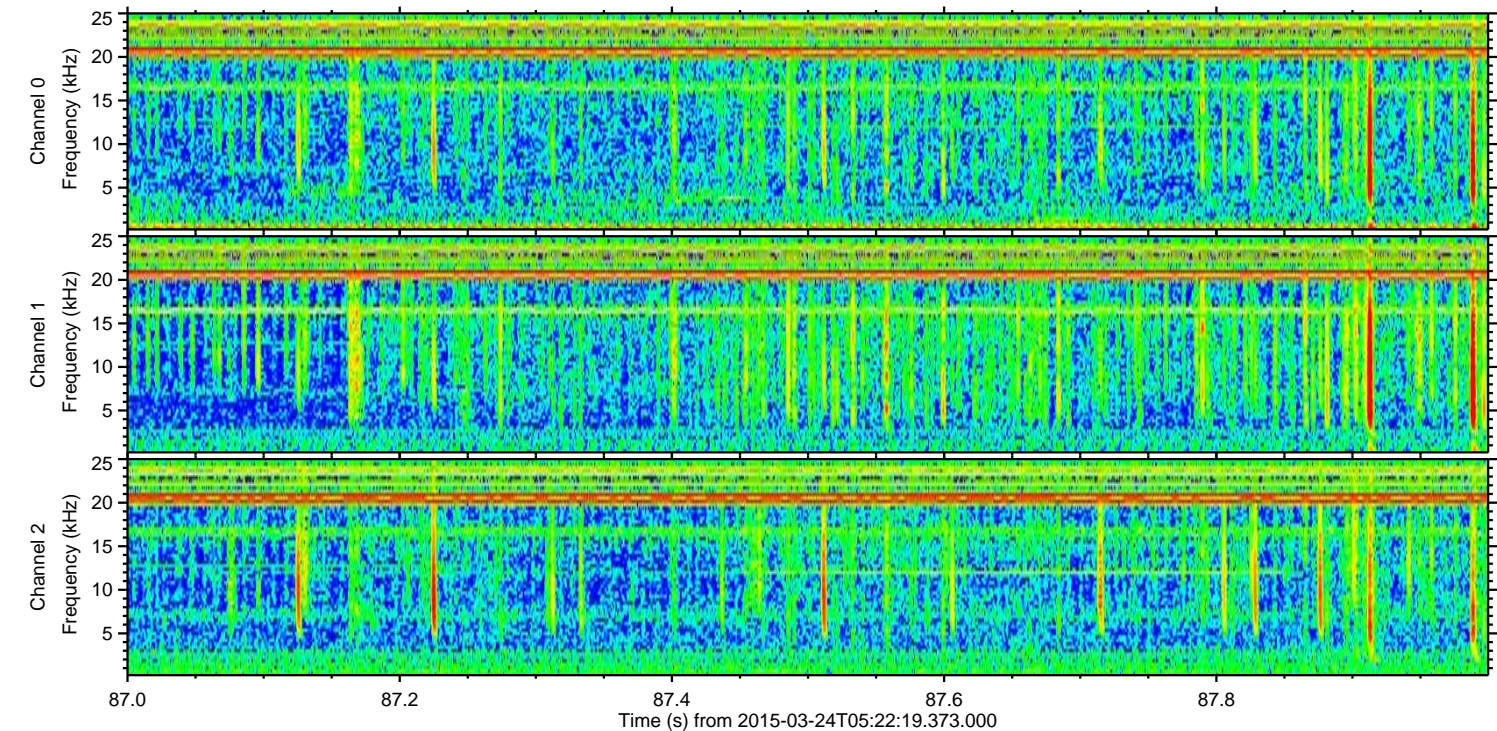
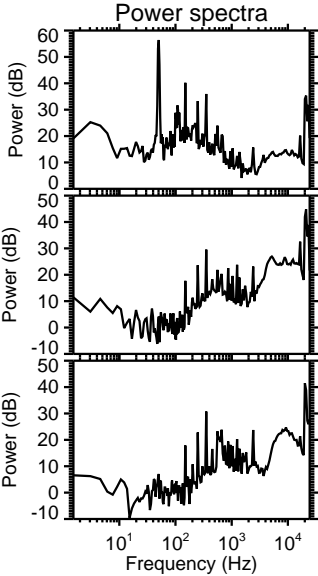
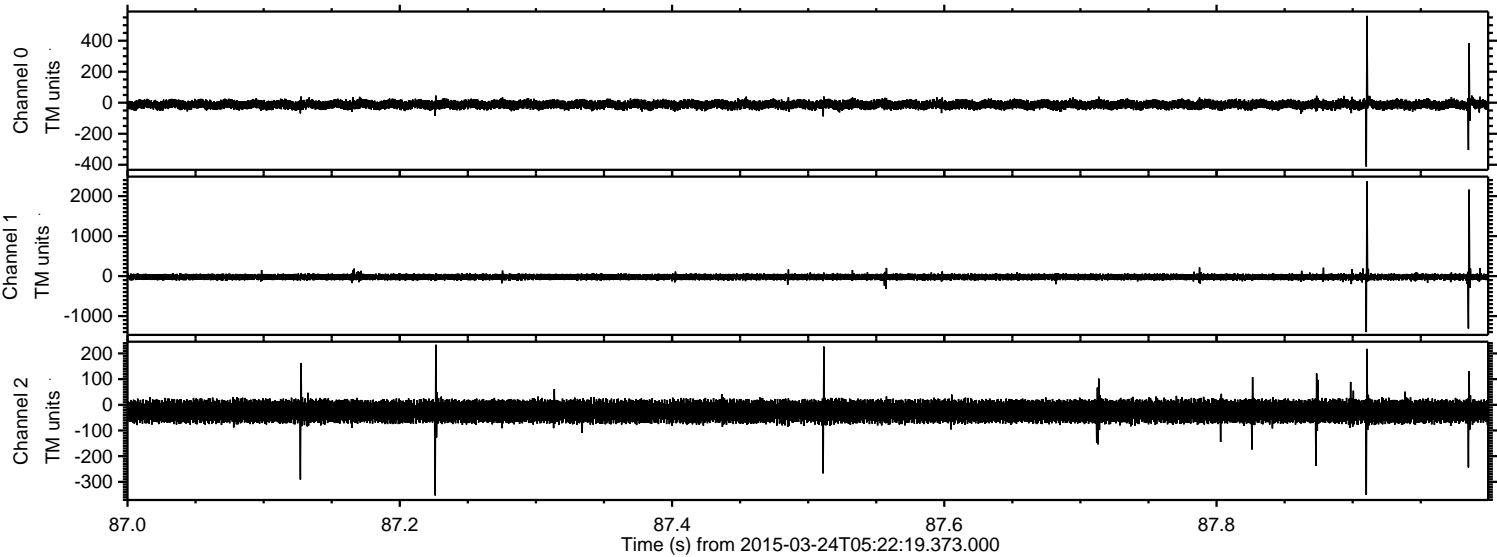


Processed Tue Mar 24 06:31:24 2015 by ELM ver.2012-10-06 from 001\_\_elm20150324\_052218\_\_dat00.bin



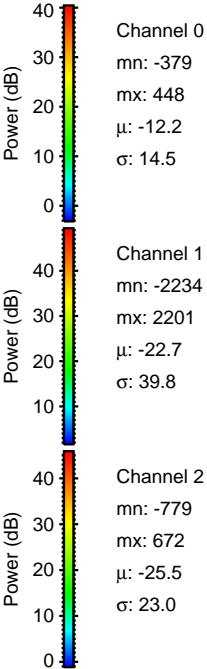
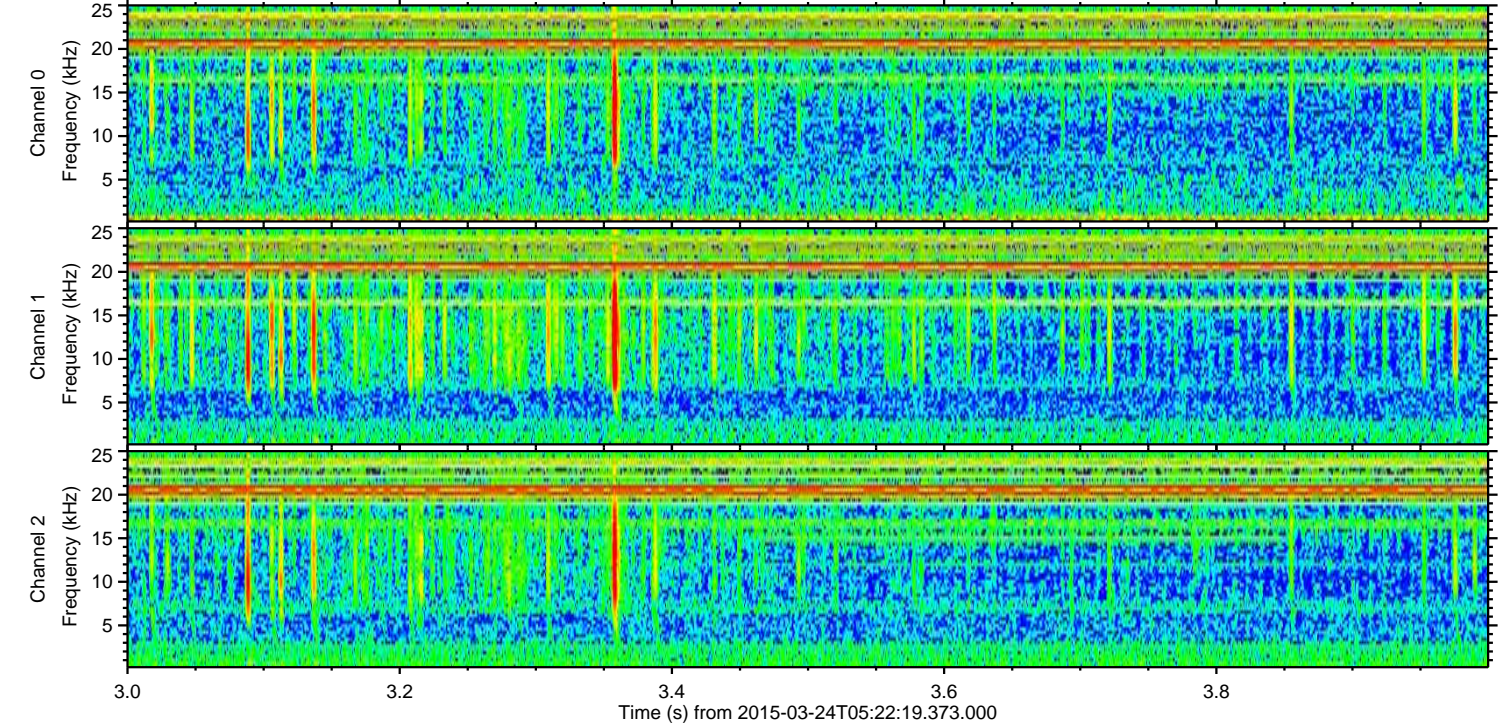
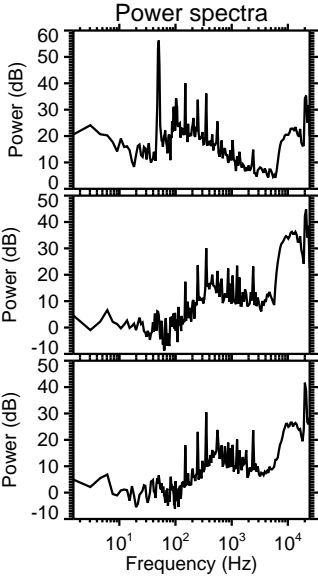
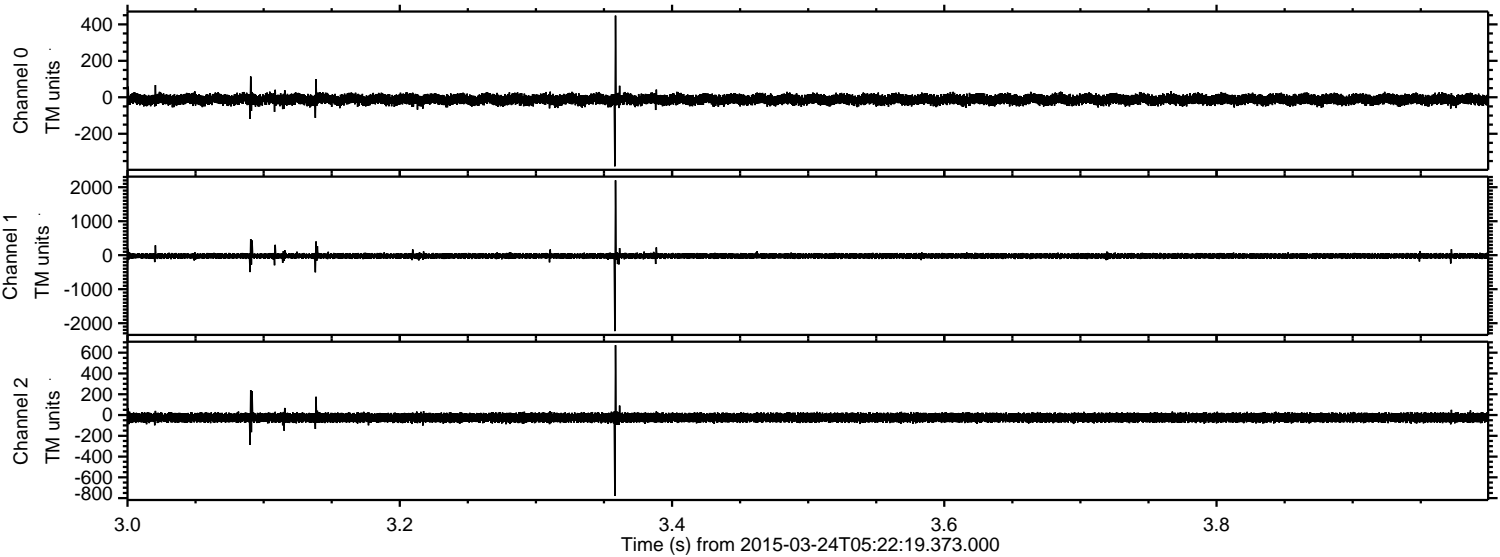


Processed Tue Mar 24 06:31:25 2015 by ELM ver.2012-10-06 from 001\_\_elm20150324\_052218\_\_dat00.bin





Processed Tue Mar 24 06:31:26 2015 by ELM ver.2012-10-06 from 001\_\_elm20150324\_052218\_\_dat00.bin





Processed Tue Mar 24 06:31:27 2015 by ELM ver.2012-10-06 from 001\_\_elm20150324\_052218\_\_dat00.bin

