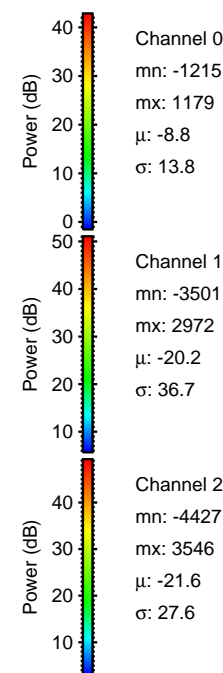
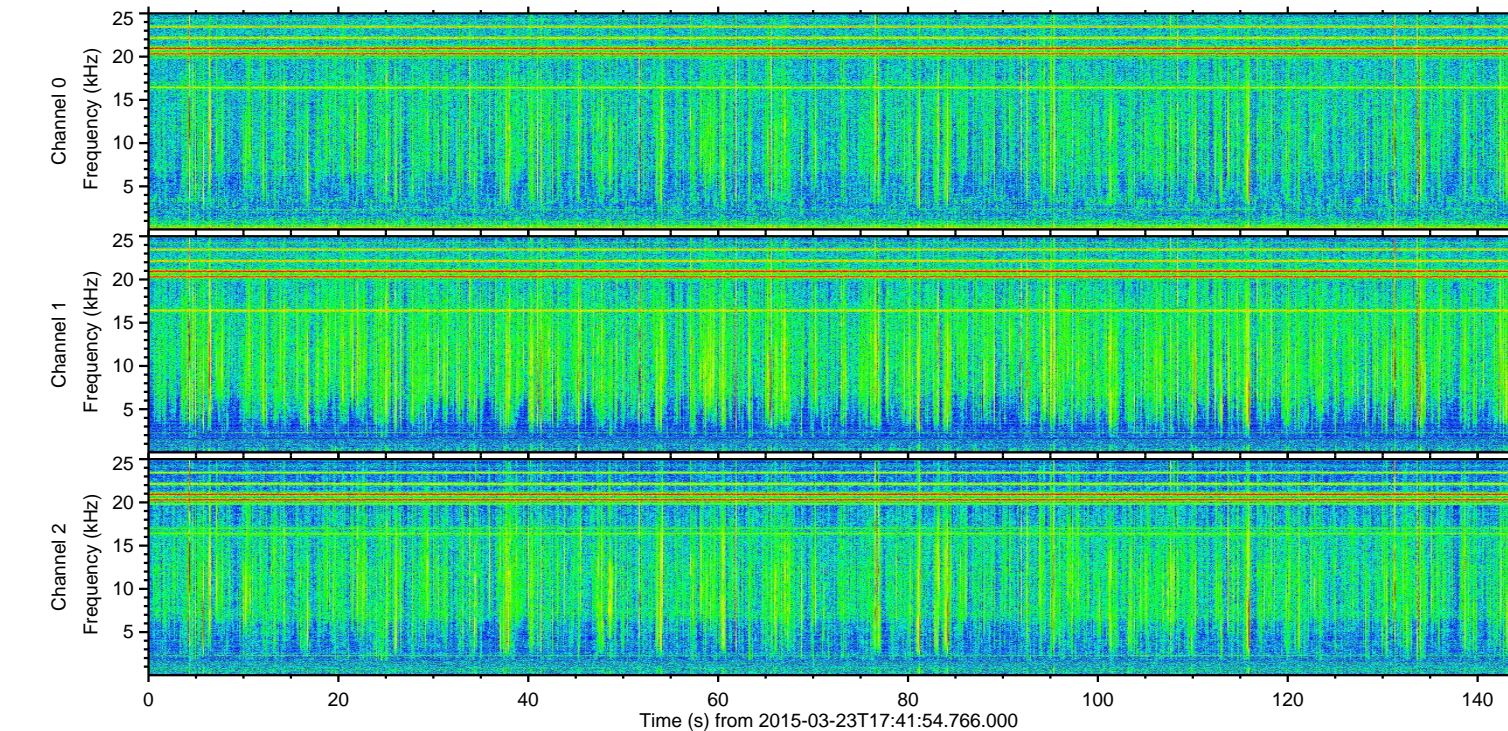
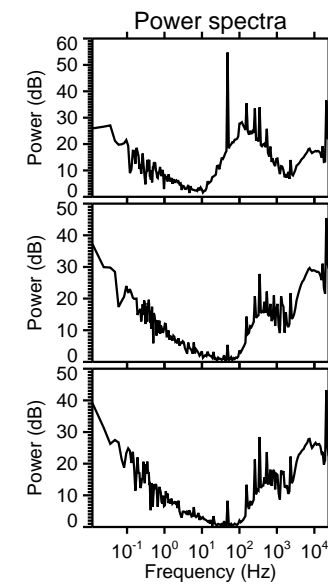
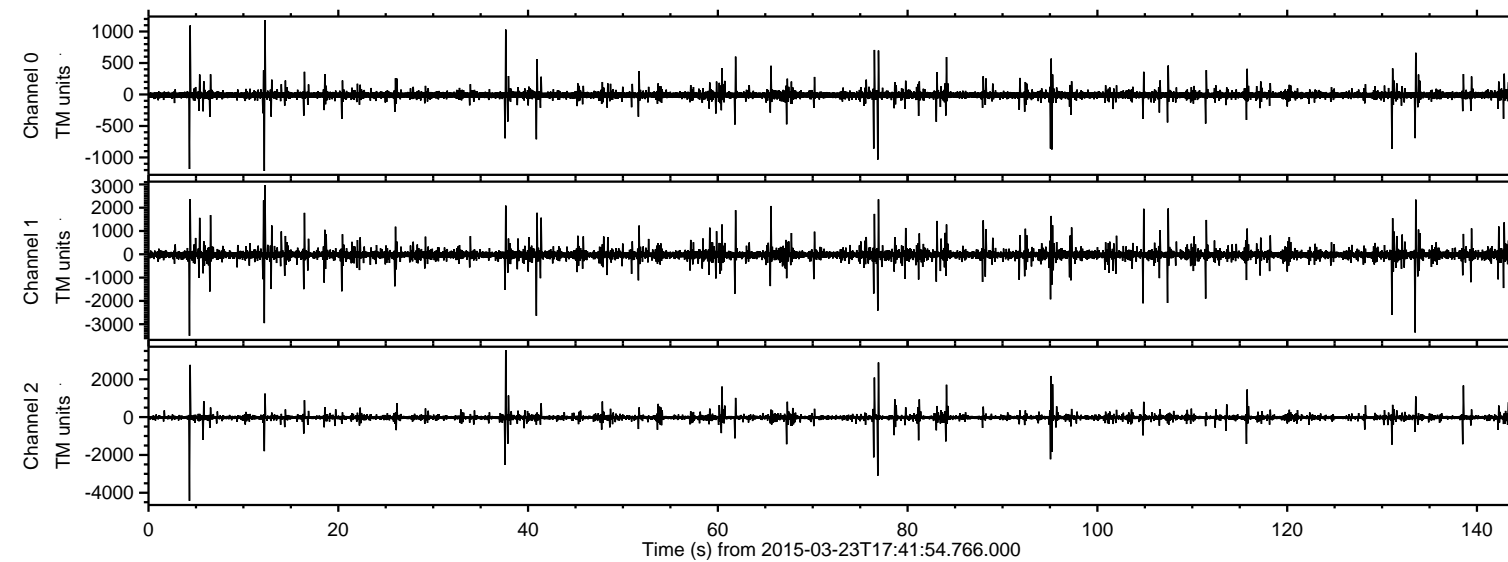


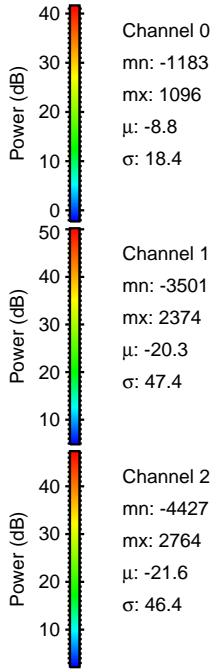
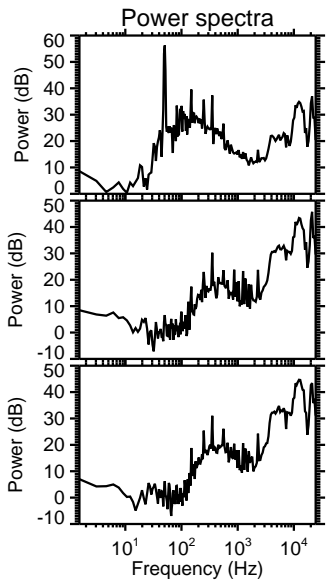
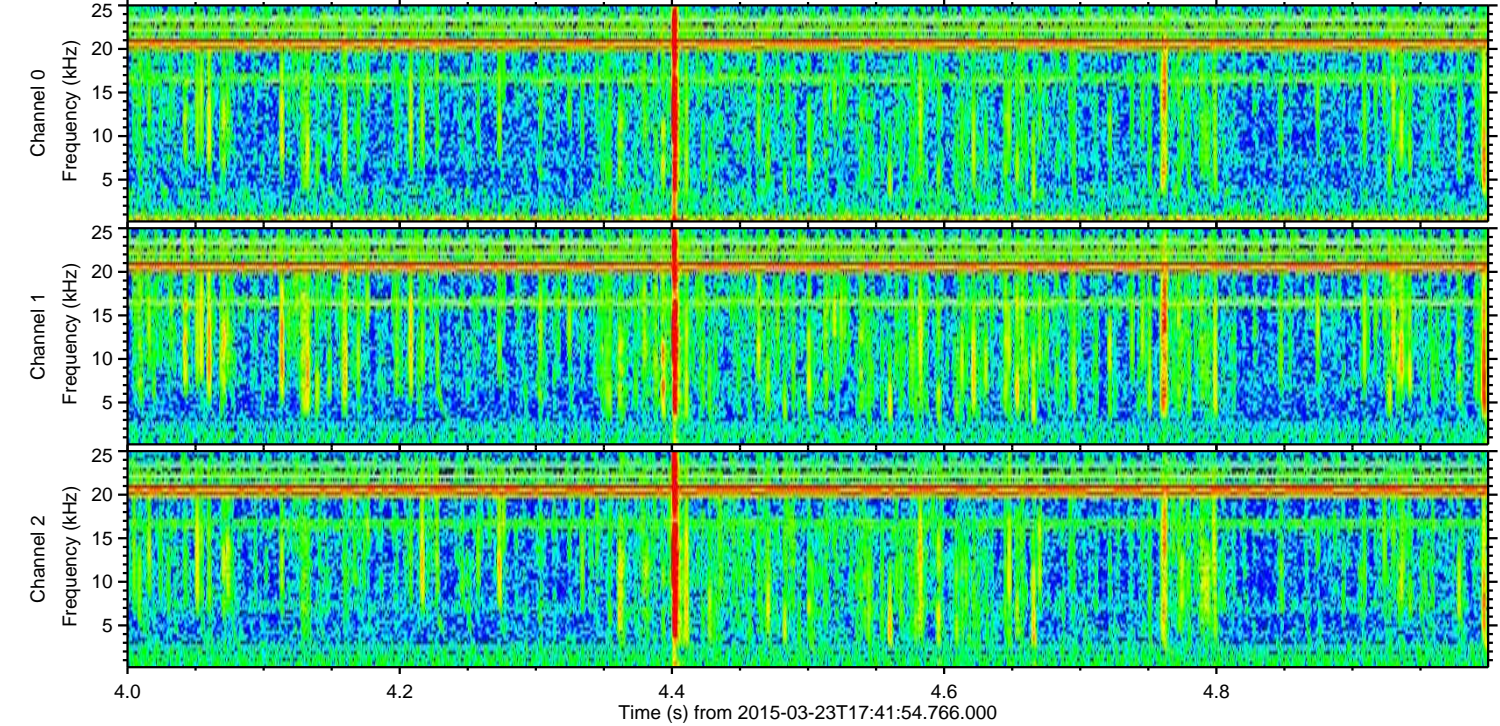
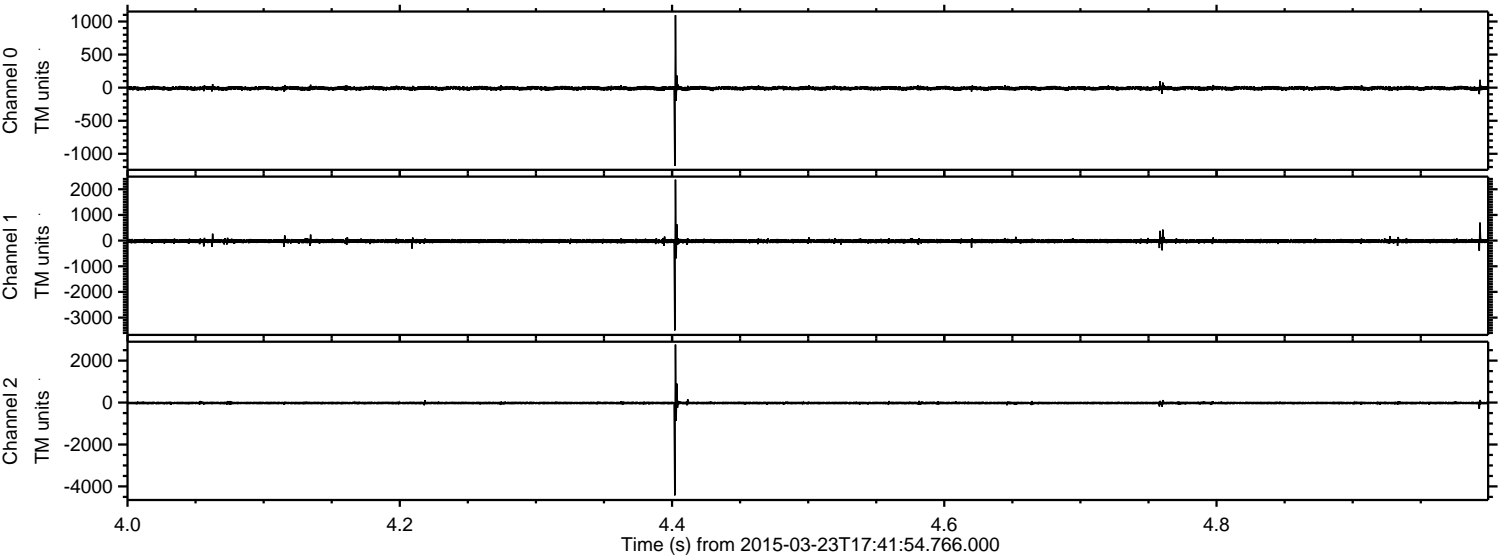
# ELMAVAN 3D WAVEFORMS (Measured data sampled at 50 kHz) 49789 packets of 144 samples from 2015-03-23T17:41:54.766.000.

Processed Mon Mar 23 18:49:13 2015 by ELM ver.2012-10-06 from 001\_\_elm20150323\_174153\_\_dat00.bin





Processed Mon Mar 23 18:49:24 2015 by ELM ver.2012-10-06 from 001\_\_elm20150323\_174153\_\_dat00.bin



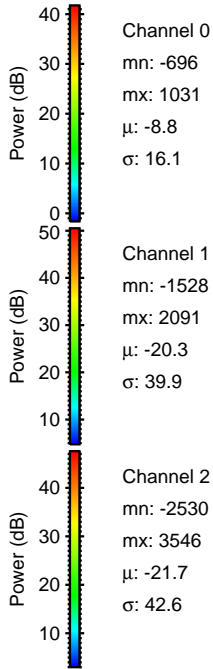
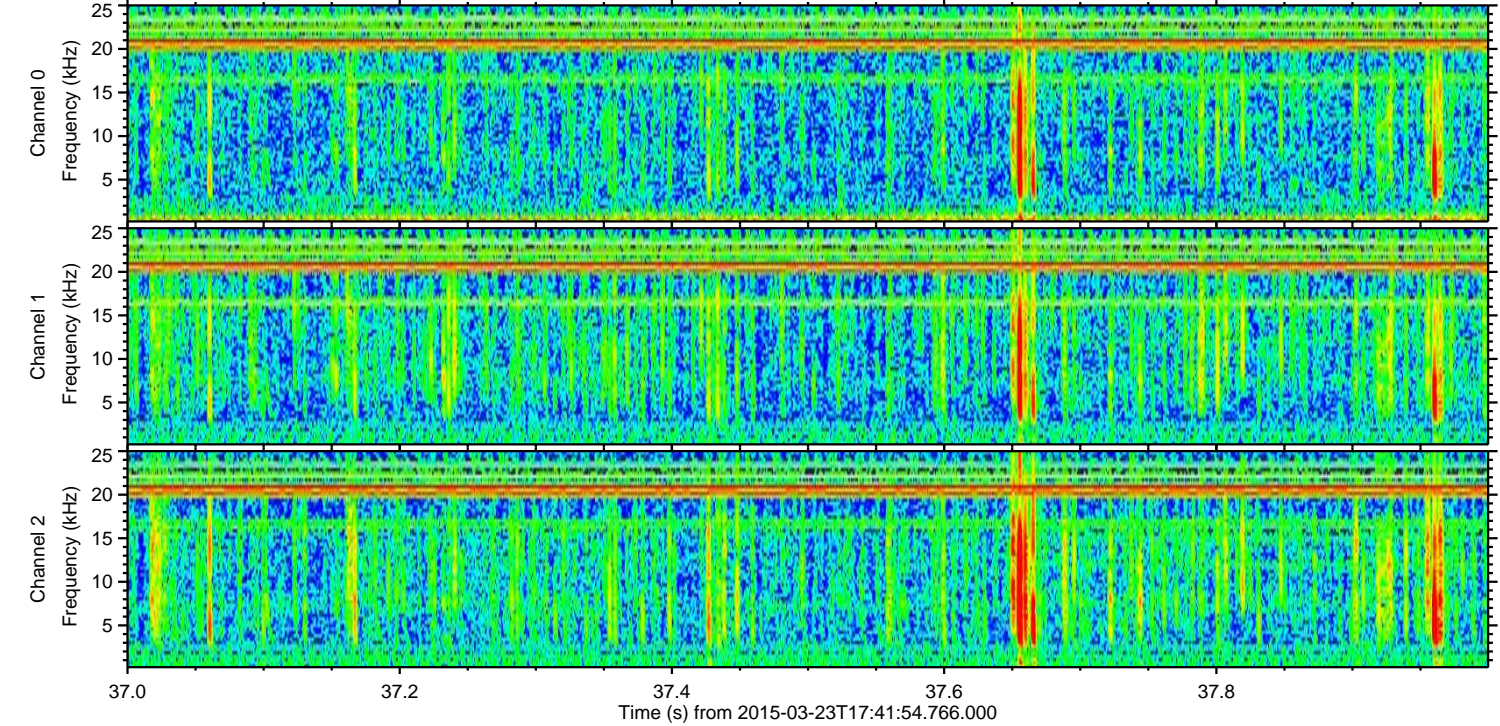
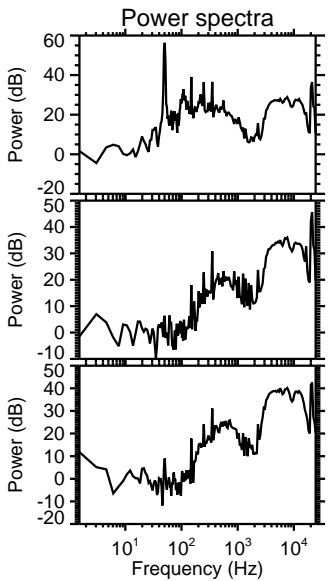
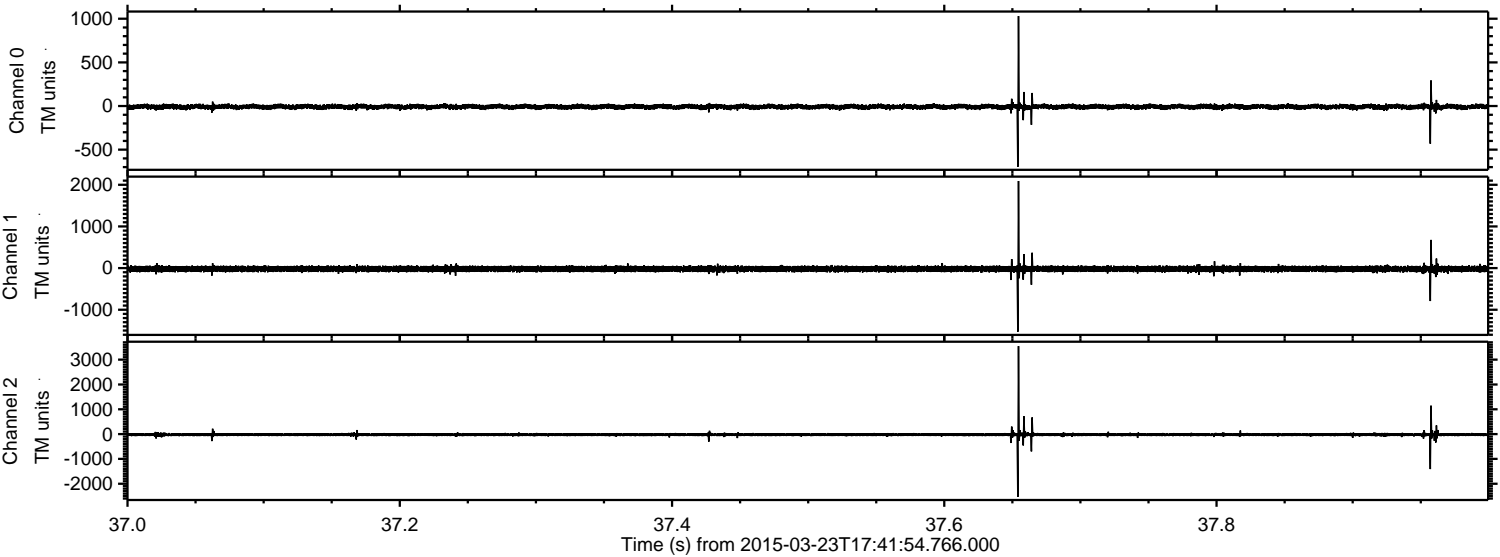
Channel 0  
mn: -1183  
mx: 1096  
 $\mu$ : -8.8  
 $\sigma$ : 18.4

Channel 1  
mn: -3501  
mx: 2374  
 $\mu$ : -20.3  
 $\sigma$ : 47.4

Channel 2  
mn: -4427  
mx: 2764  
 $\mu$ : -21.6  
 $\sigma$ : 46.4



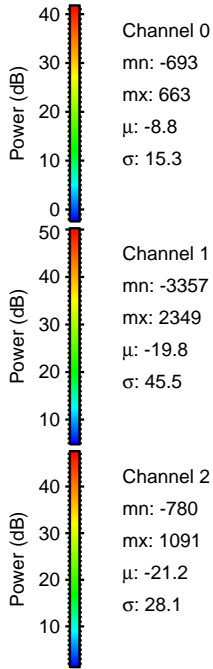
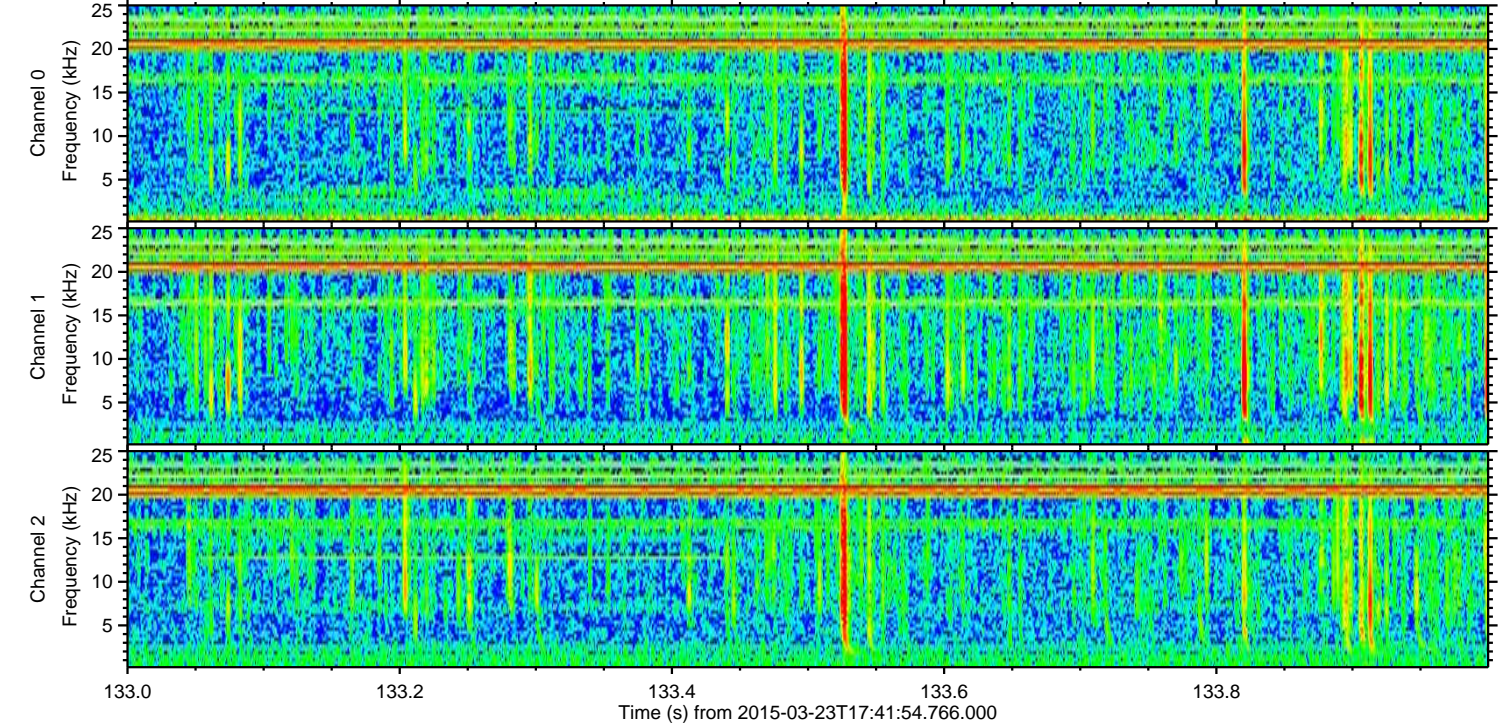
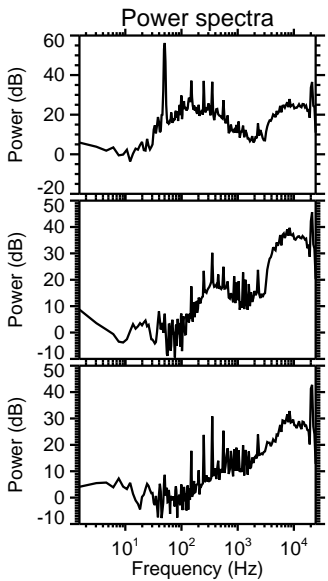
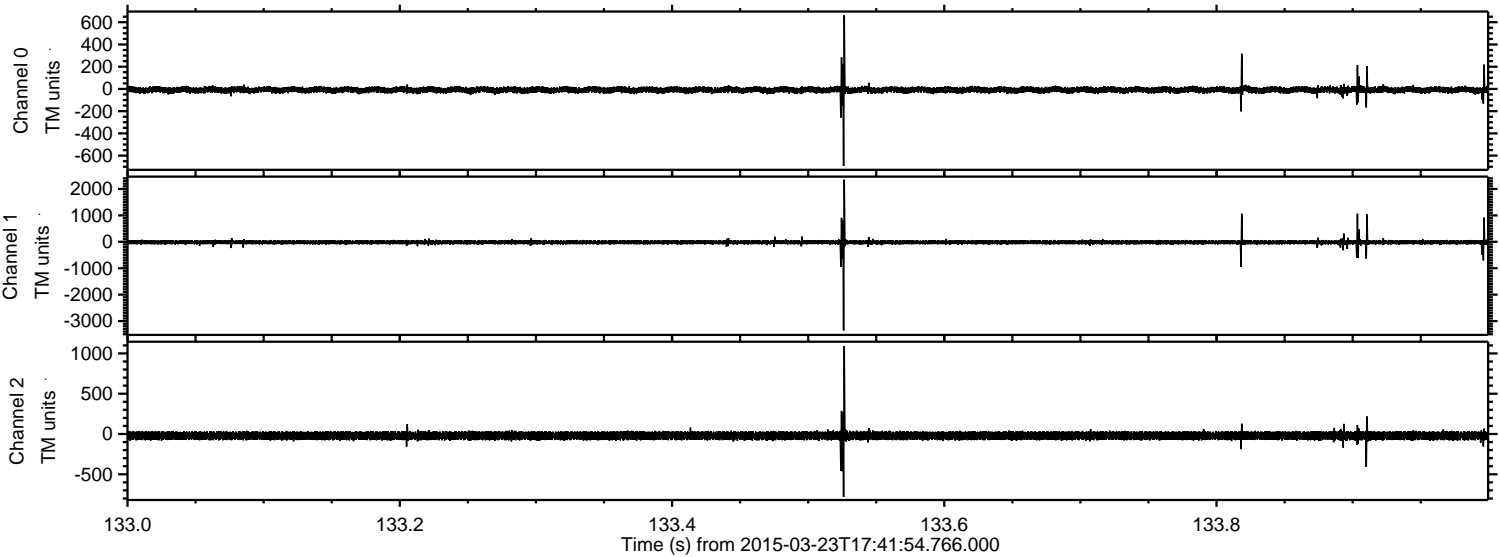
Processed Mon Mar 23 18:49:25 2015 by ELM ver.2012-10-06 from 001\_\_elm20150323\_174153\_\_dat00.bin





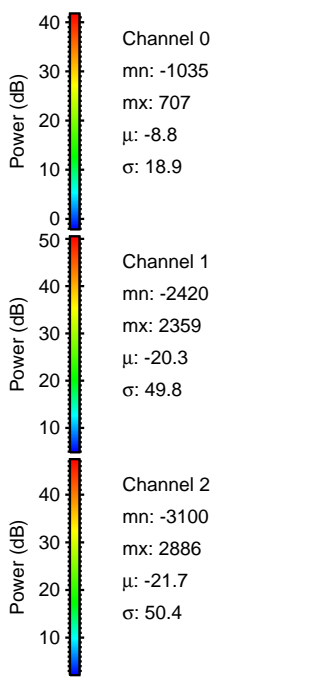
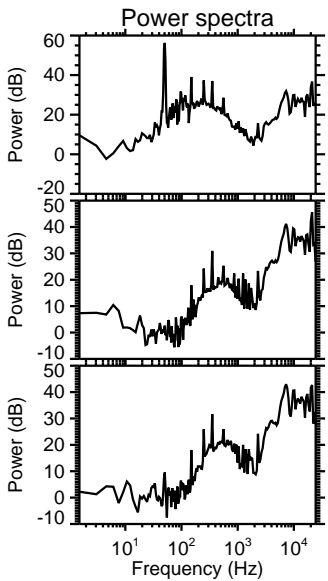
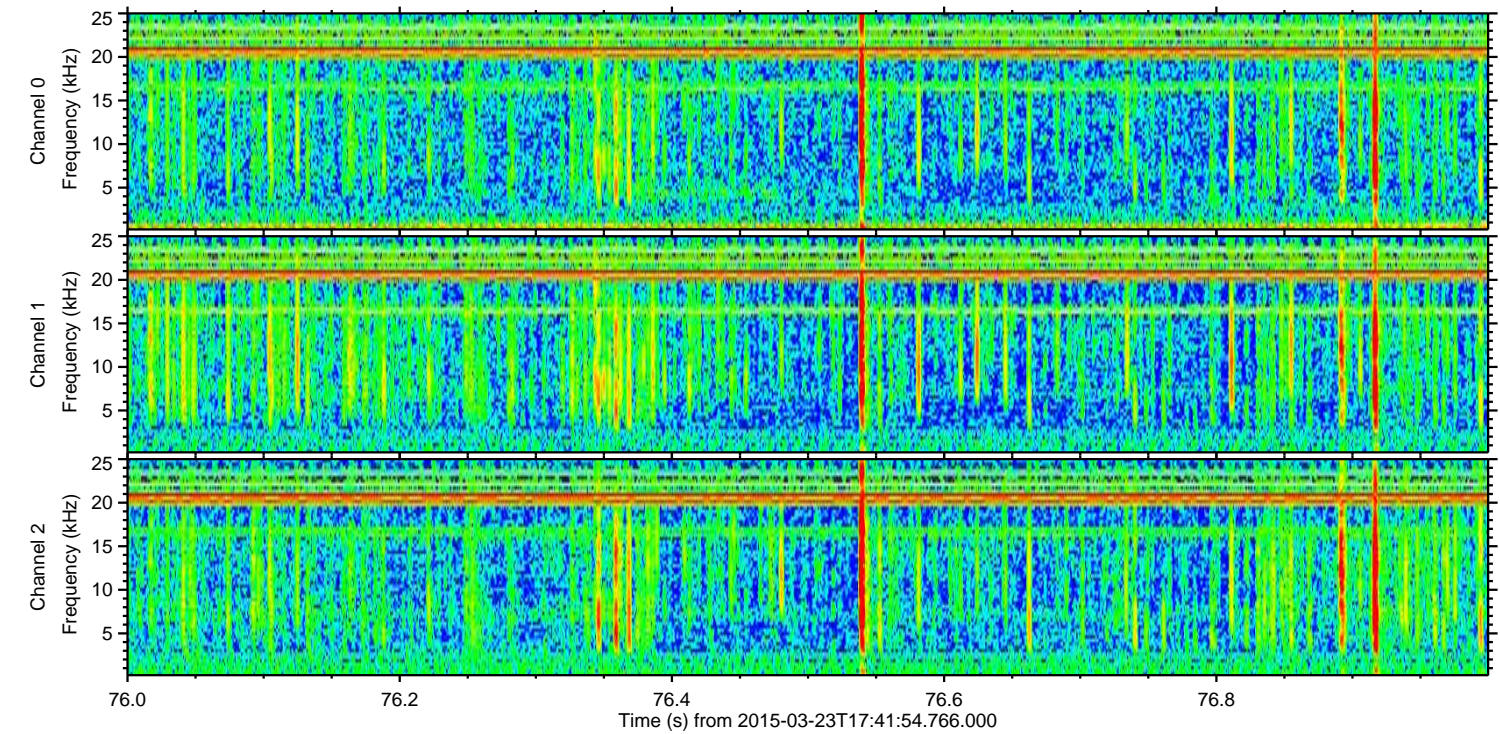
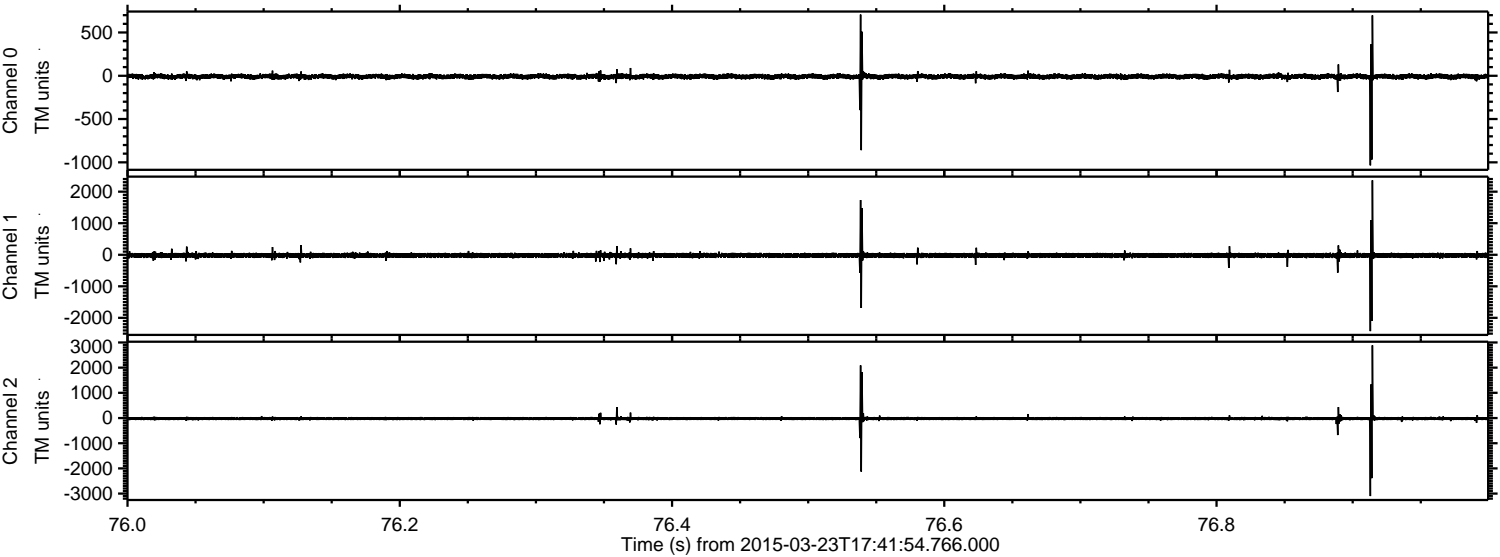
ELMAVAN 3D WAVEFORMS (Measured data sampled at 50 kHz) 49789 packets of 144 samples from 2015-03-23T17:41:54.766.000. Part 134/144

Processed Mon Mar 23 18:49:26 2015 by ELM ver.2012-10-06 from 001\_\_elm20150323\_174153\_\_dat00.bin



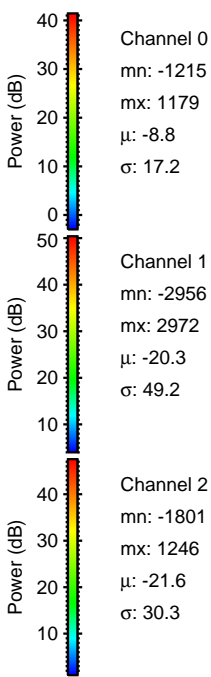
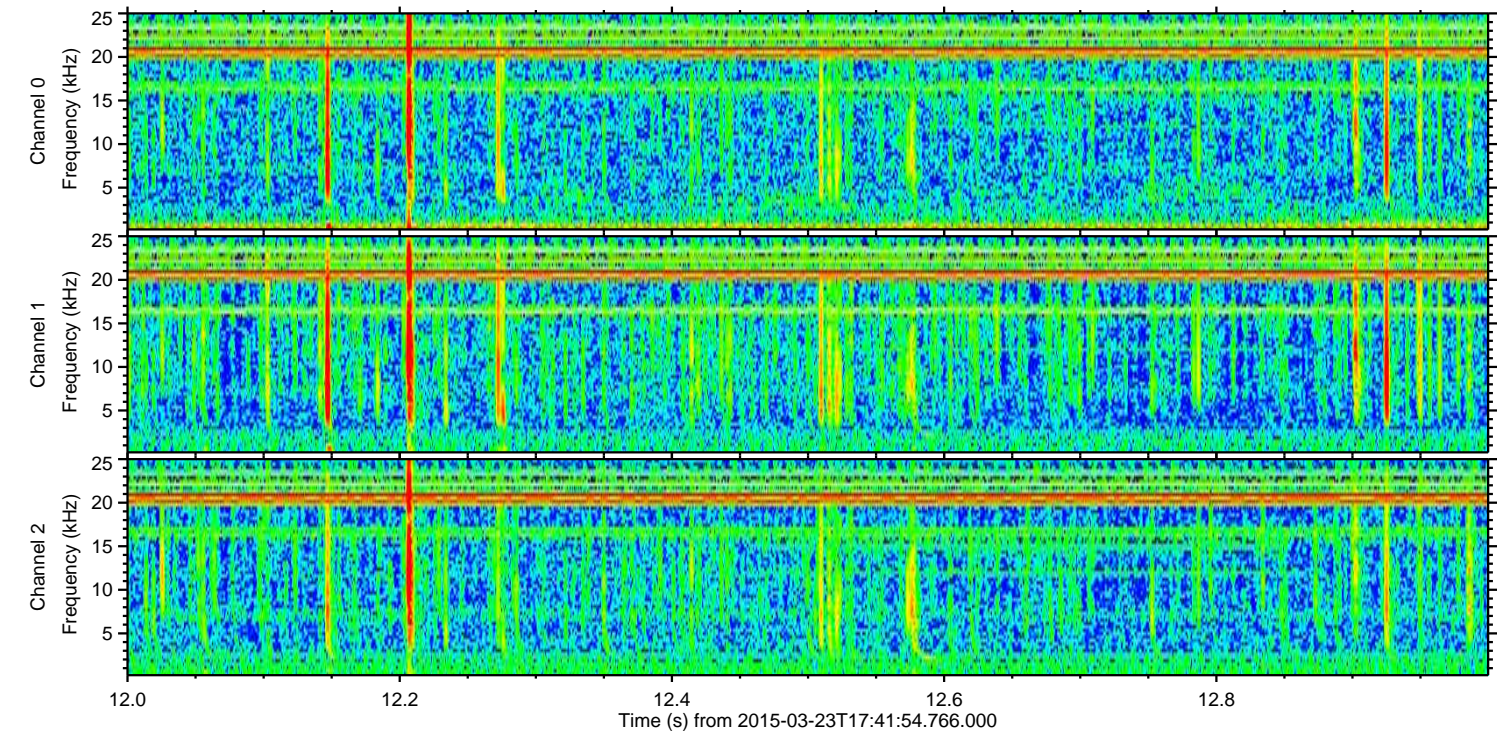
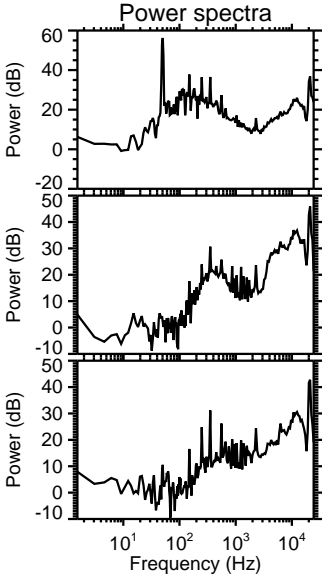
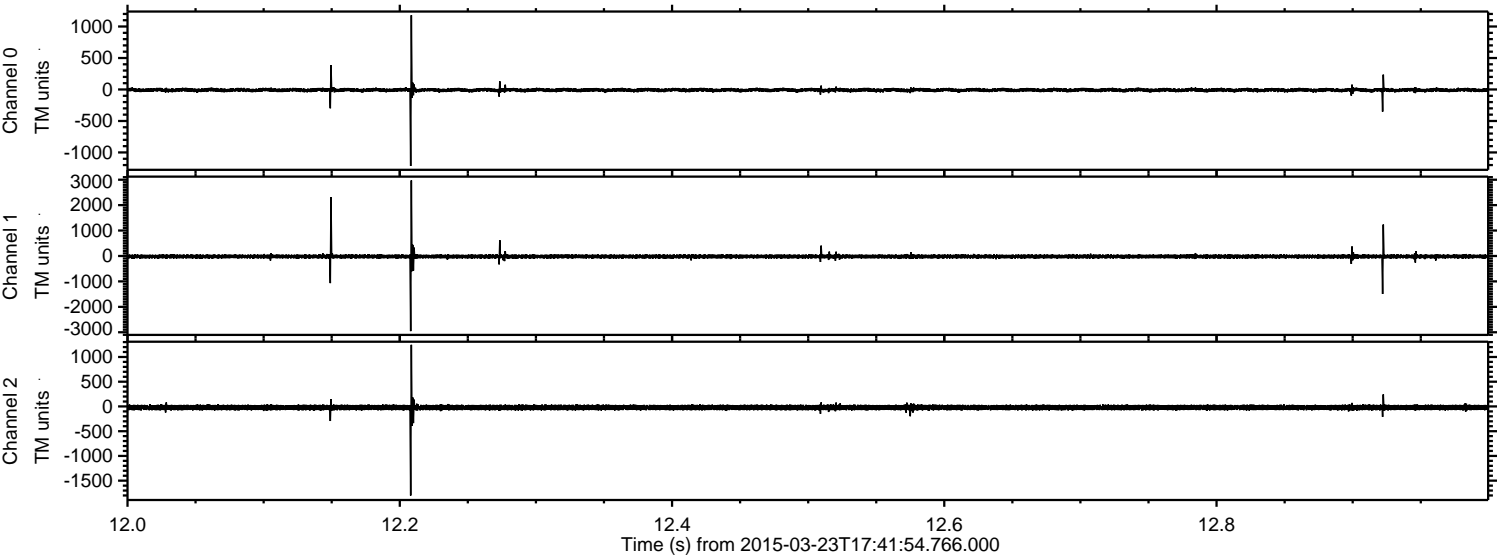


Processed Mon Mar 23 18:49:27 2015 by ELM ver.2012-10-06 from 001\_\_elm20150323\_174153\_\_dat00.bin



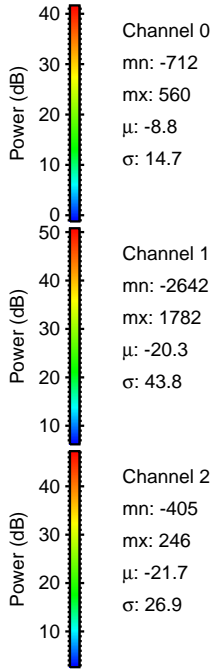
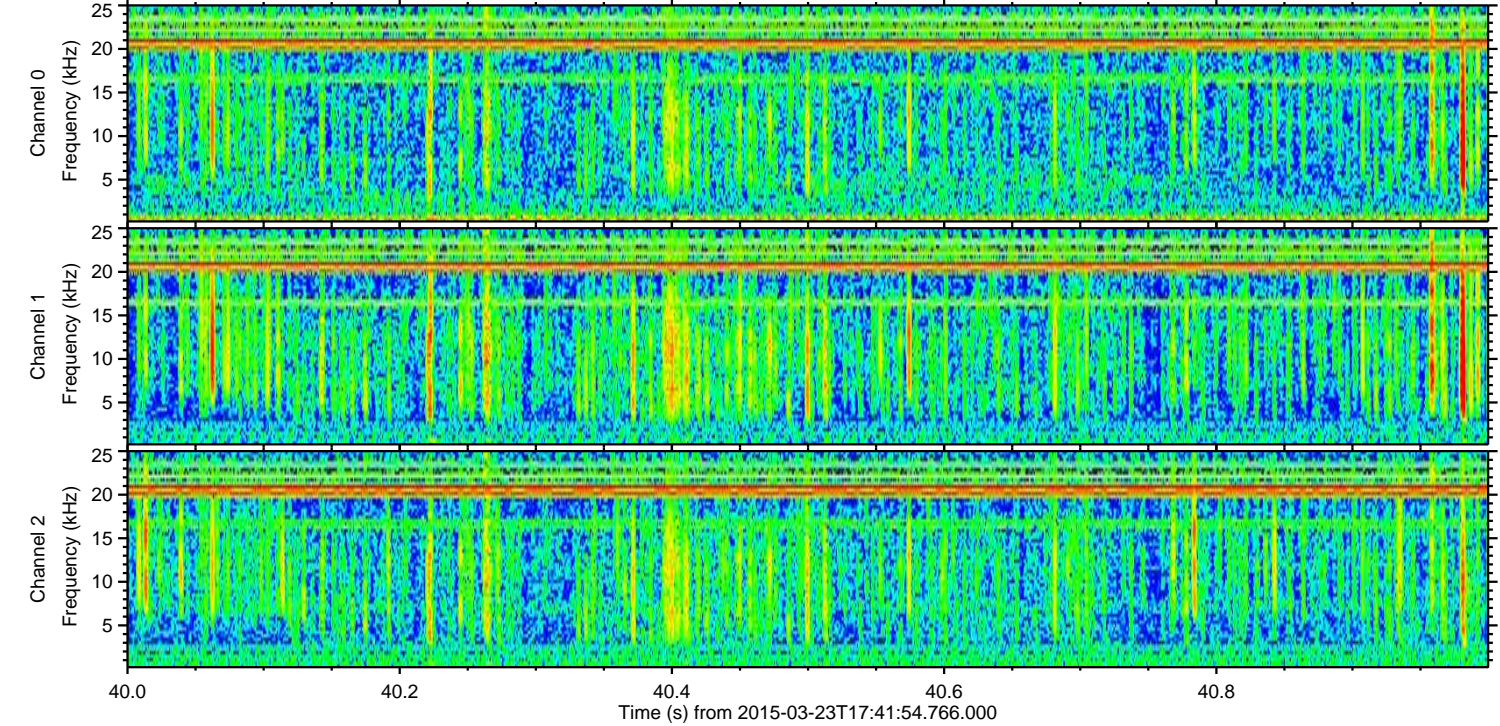
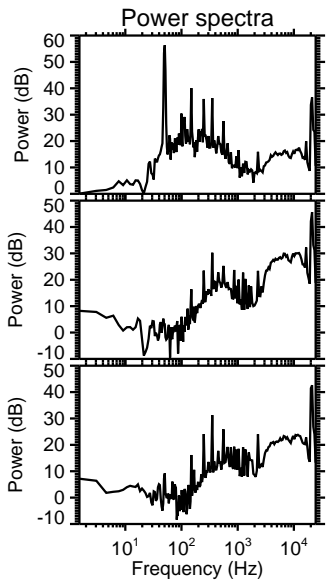
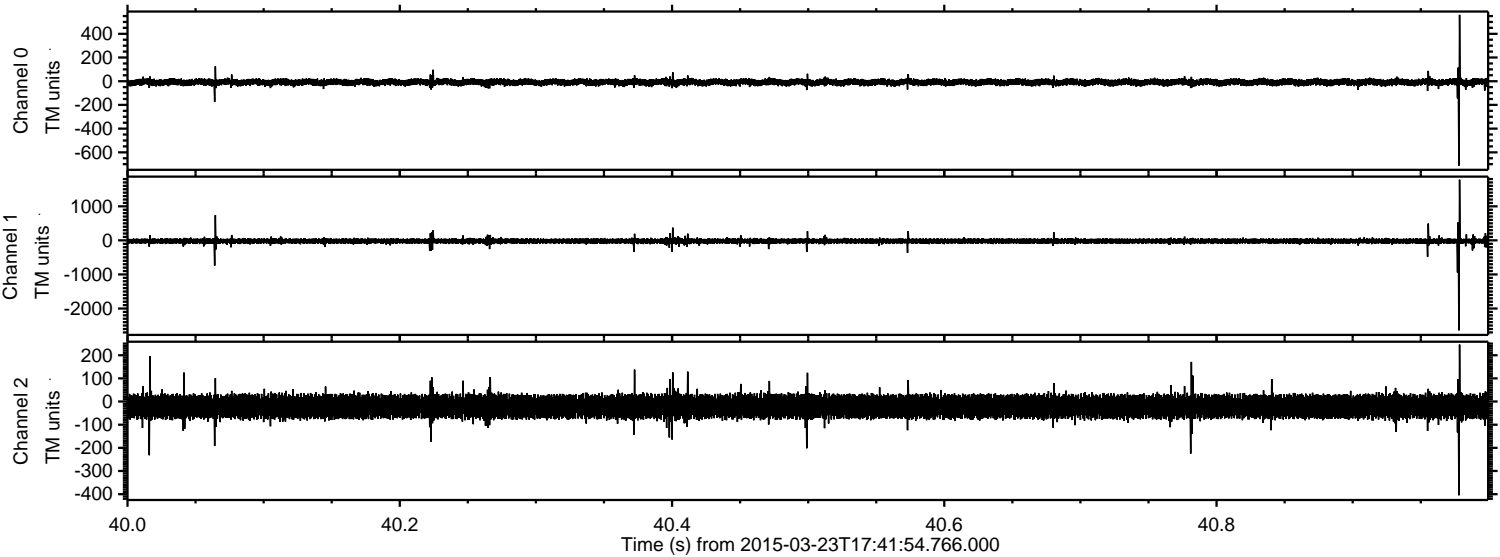


Processed Mon Mar 23 18:49:28 2015 by ELM ver.2012-10-06 from 001\_\_elm20150323\_174153\_\_dat00.bin





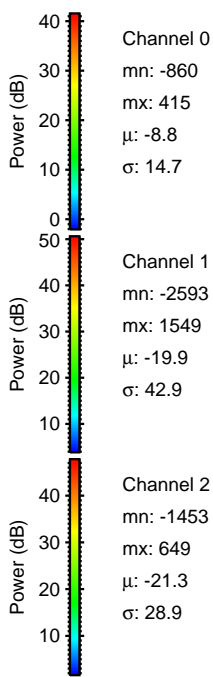
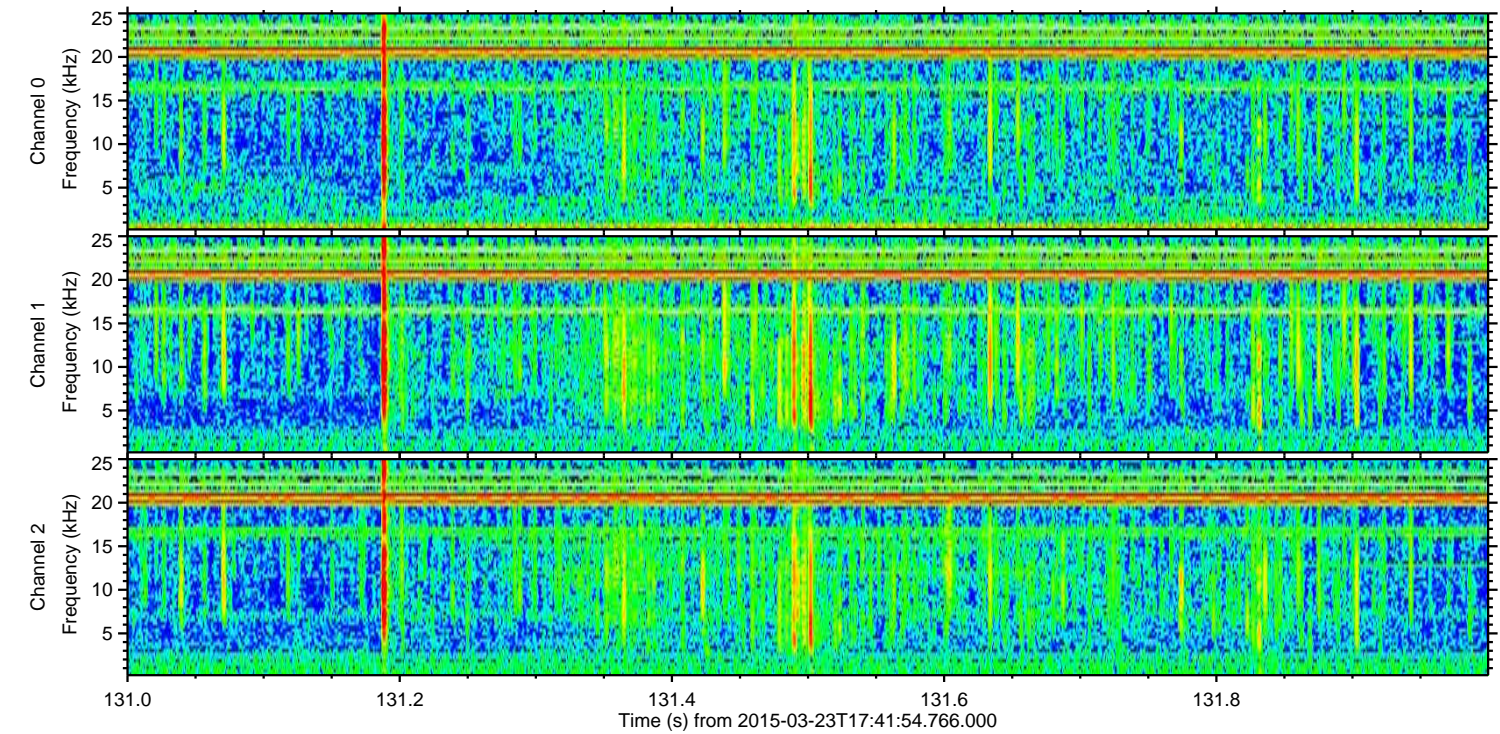
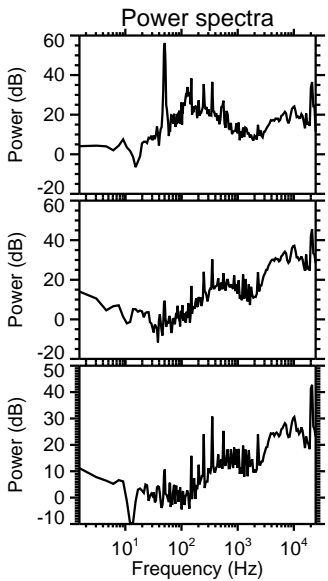
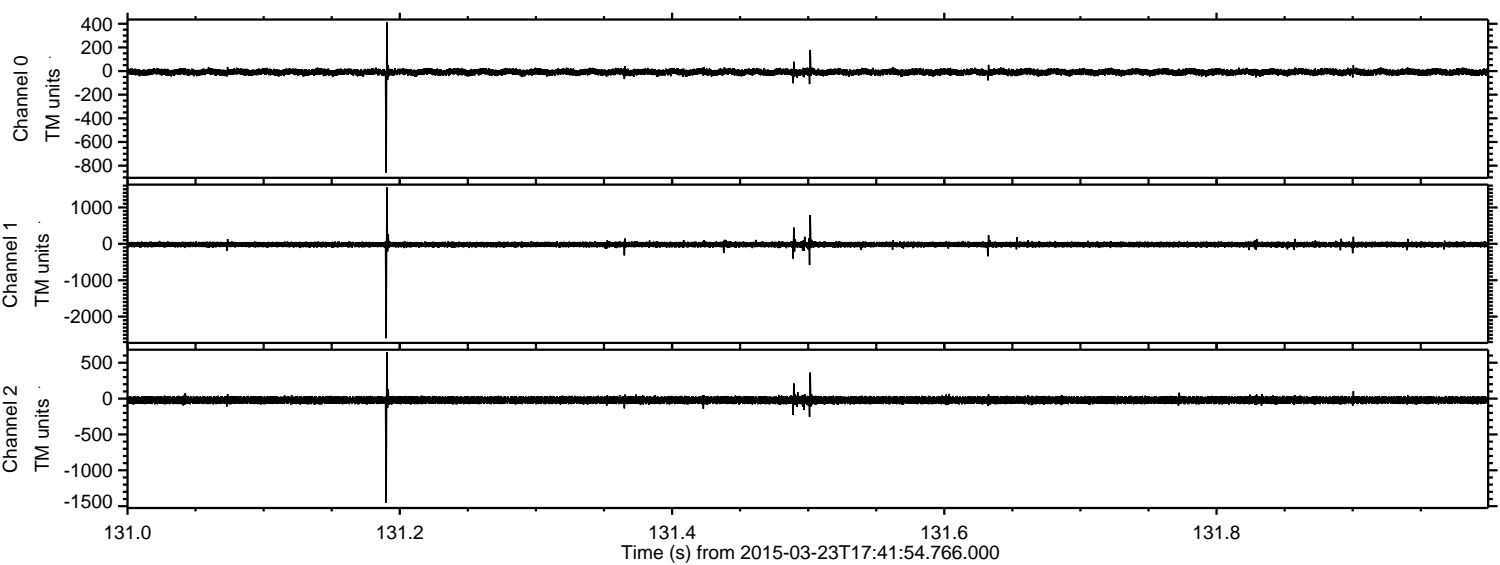
Processed Mon Mar 23 18:49:29 2015 by ELM ver.2012-10-06 from 001\_\_elm20150323\_174153\_\_dat00.bin





ELMAVAN 3D WAVEFORMS (Measured data sampled at 50 kHz) 49789 packets of 144 samples from 2015-03-23T17:41:54.766.000. Part 132/144

Processed Mon Mar 23 18:49:30 2015 by ELM ver.2012-10-06 from 001\_\_elm20150323\_174153\_\_dat00.bin



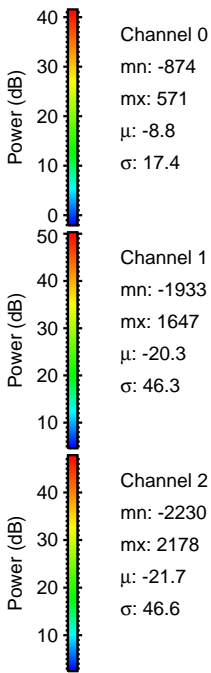
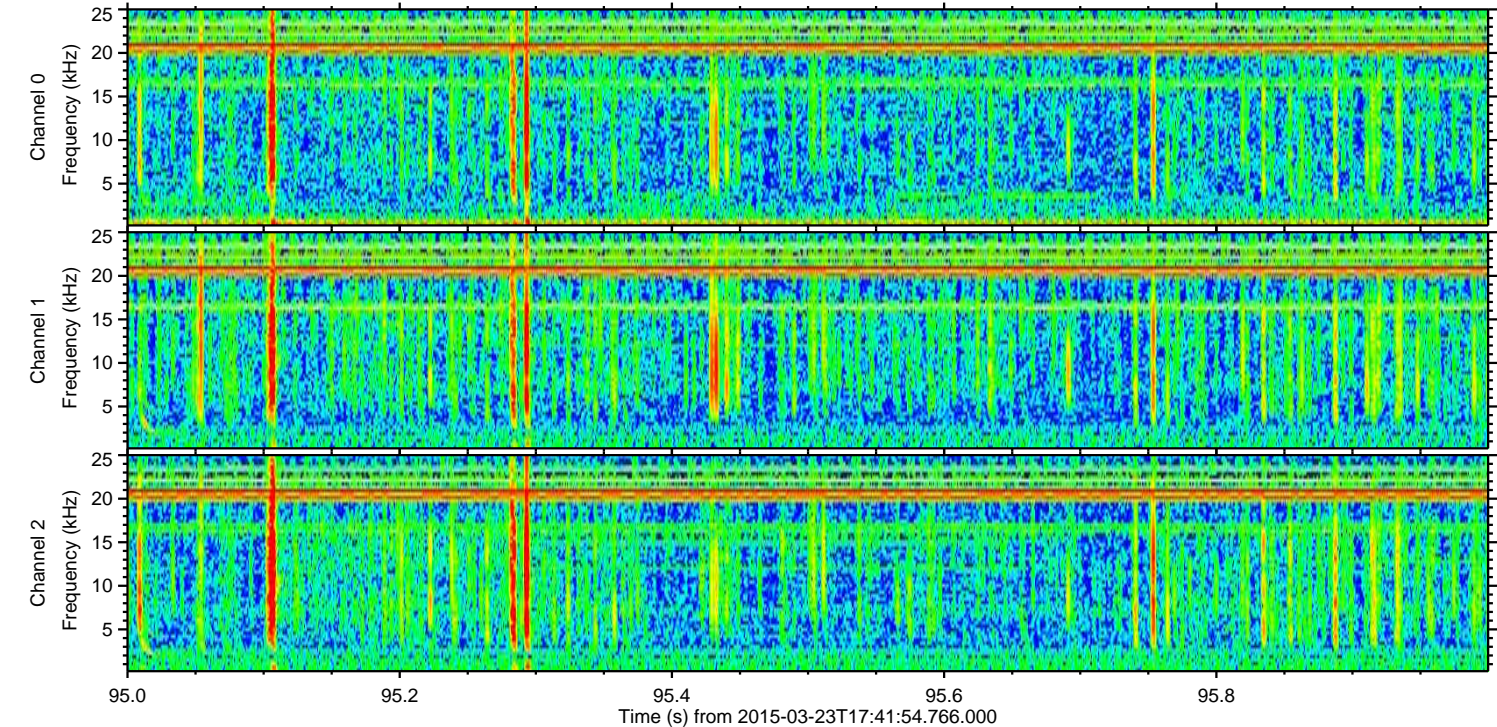
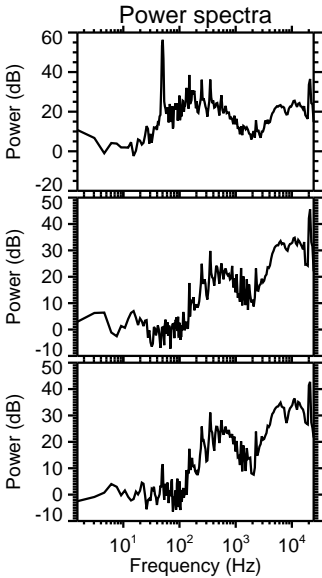
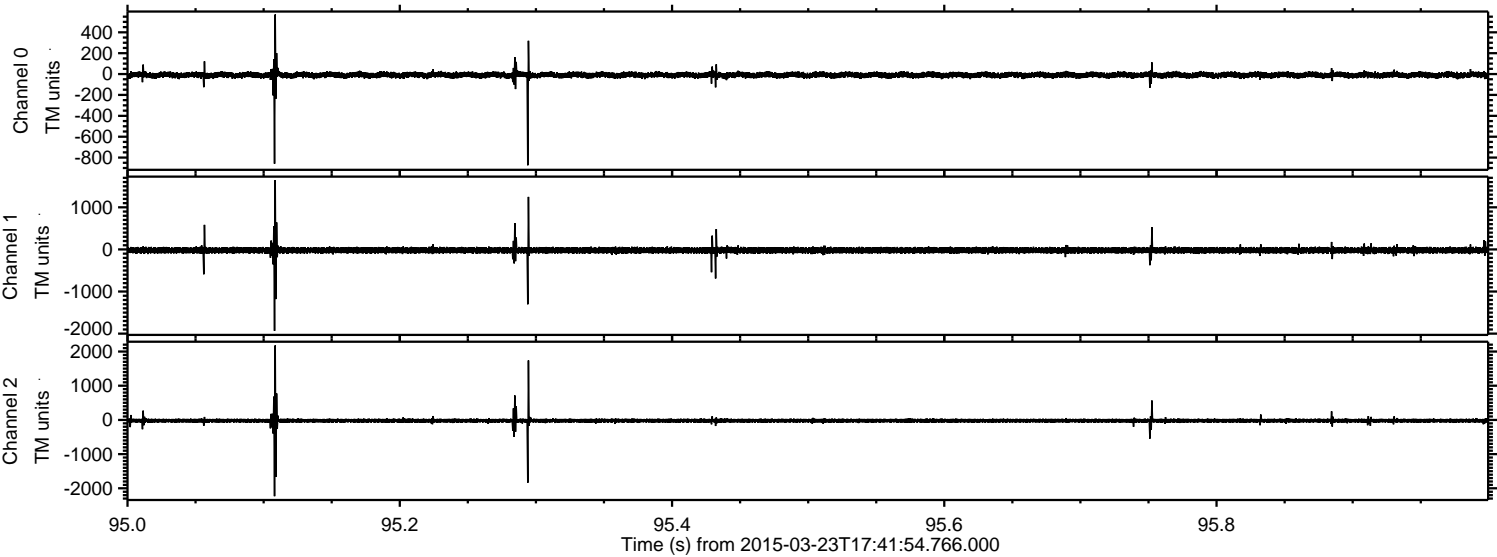
Channel 0  
mn: -860  
mx: 415  
 $\mu$ : -8.8  
 $\sigma$ : 14.7

Channel 1  
mn: -2593  
mx: 1549  
 $\mu$ : -19.9  
 $\sigma$ : 42.9

Channel 2  
mn: -1453  
mx: 649  
 $\mu$ : -21.3  
 $\sigma$ : 28.9

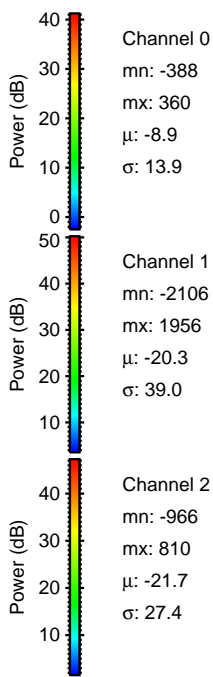
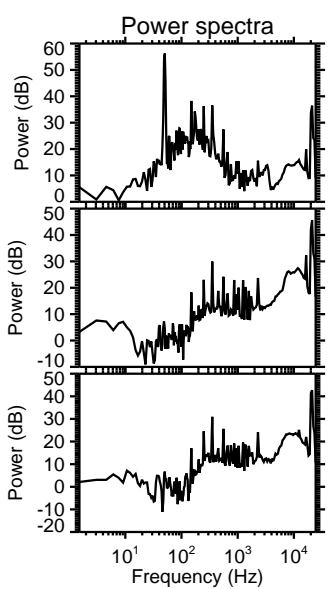
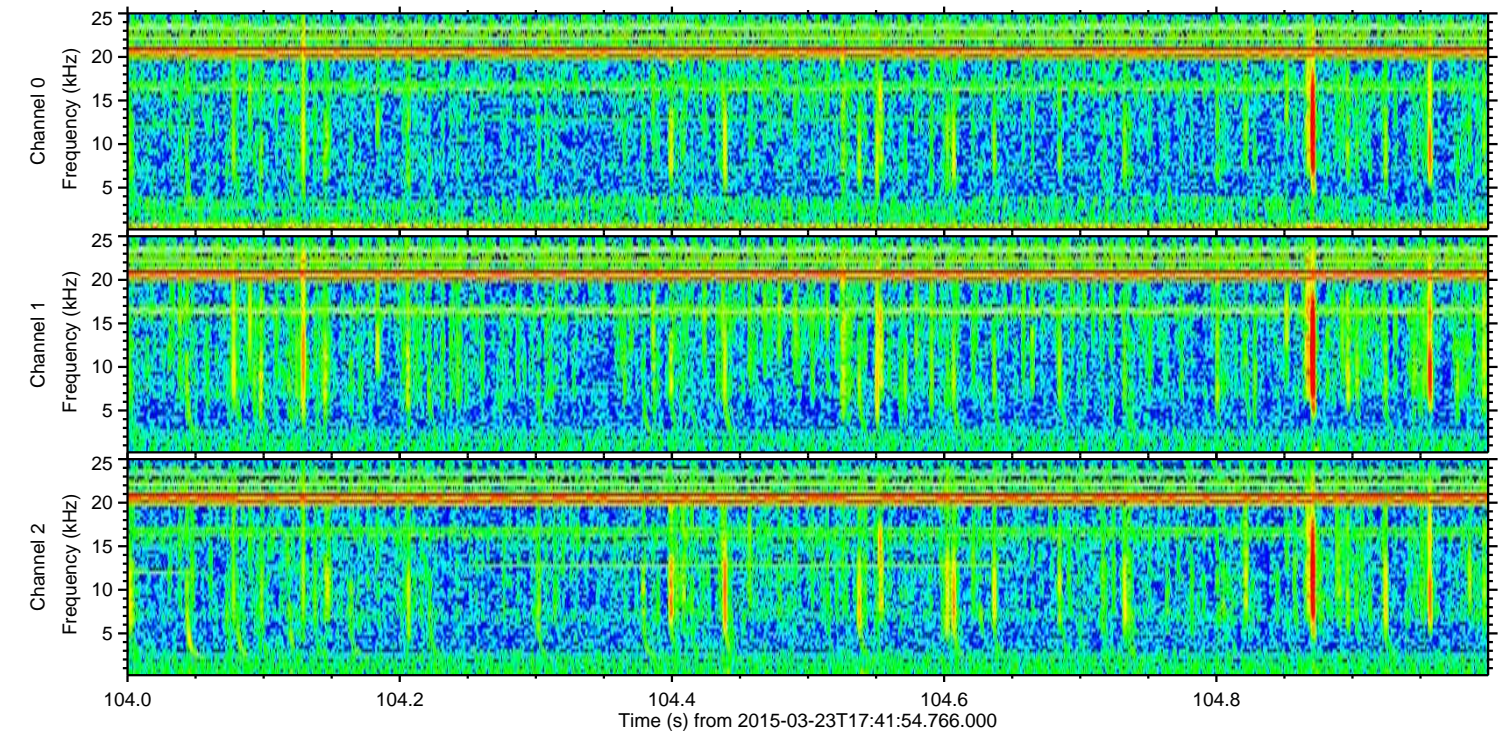
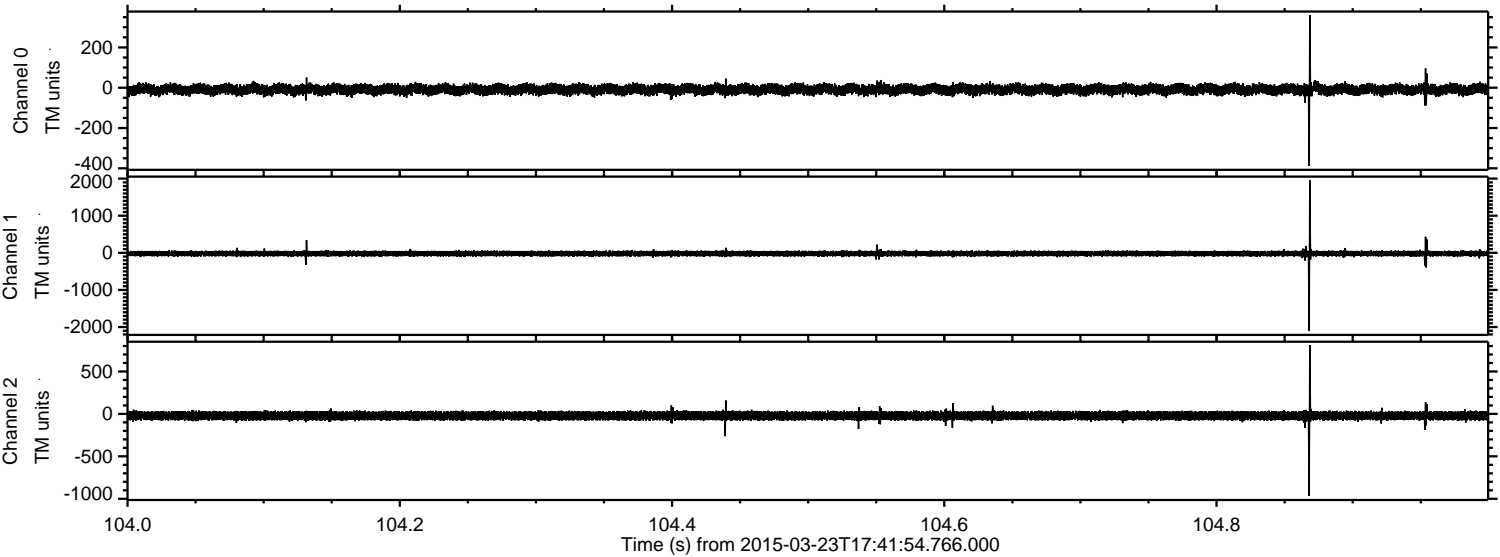


Processed Mon Mar 23 18:49:31 2015 by ELM ver.2012-10-06 from 001\_\_elm20150323\_174153\_\_dat00.bin





Processed Mon Mar 23 18:49:32 2015 by ELM ver.2012-10-06 from 001\_\_elm20150323\_174153\_\_dat00.bin





Processed Mon Mar 23 18:49:33 2015 by ELM ver.2012-10-06 from 001\_\_elm20150323\_174153\_\_dat00.bin

