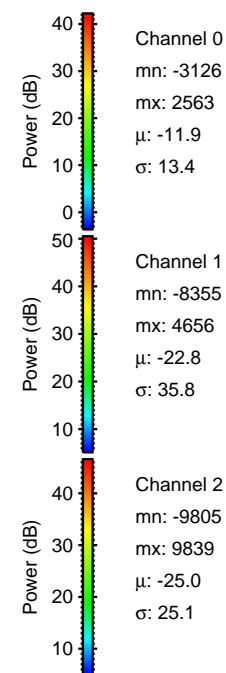
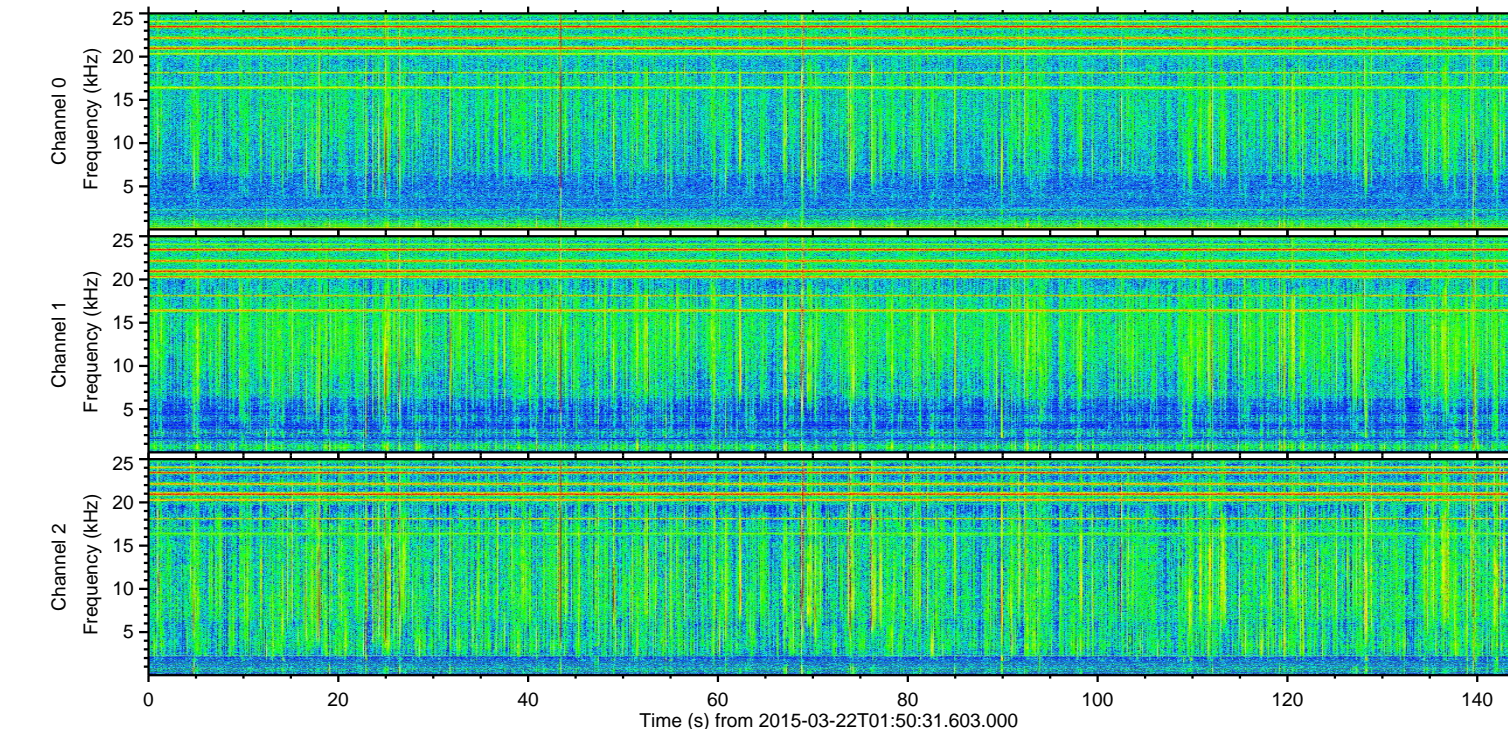
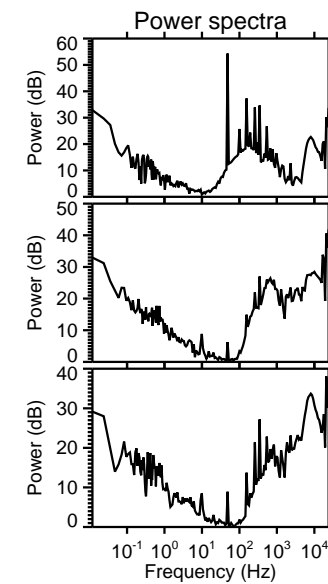
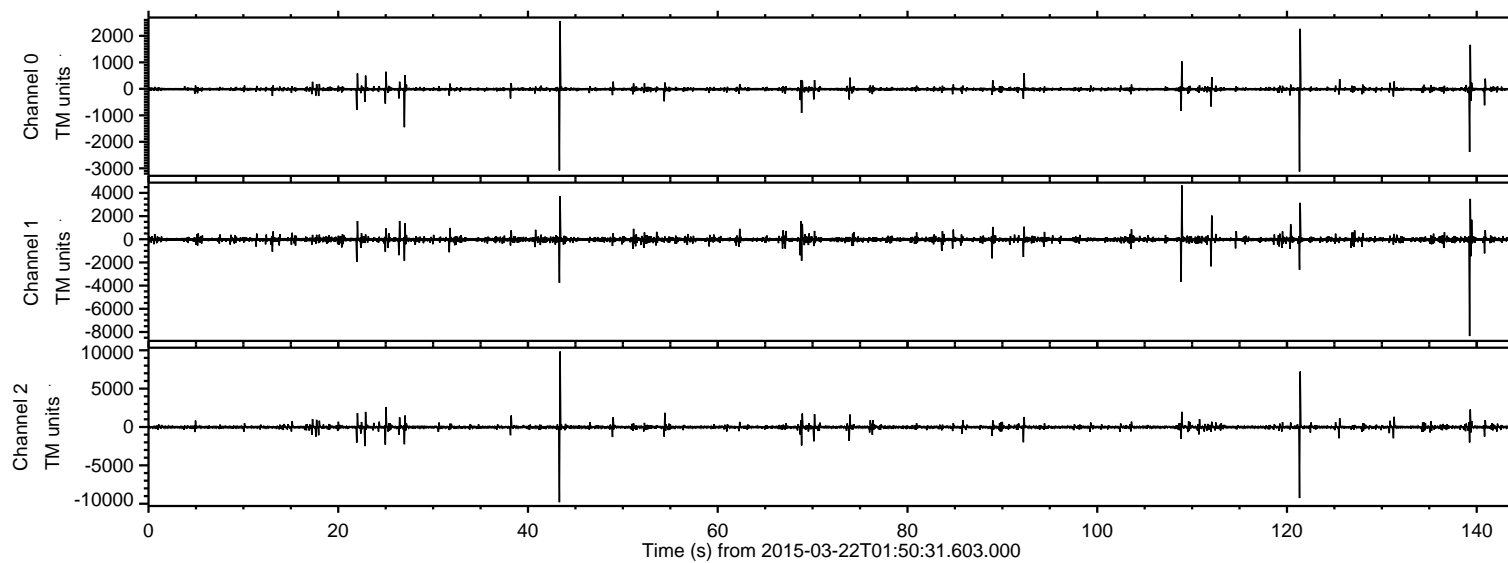


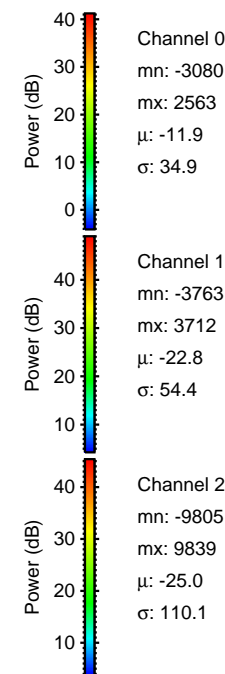
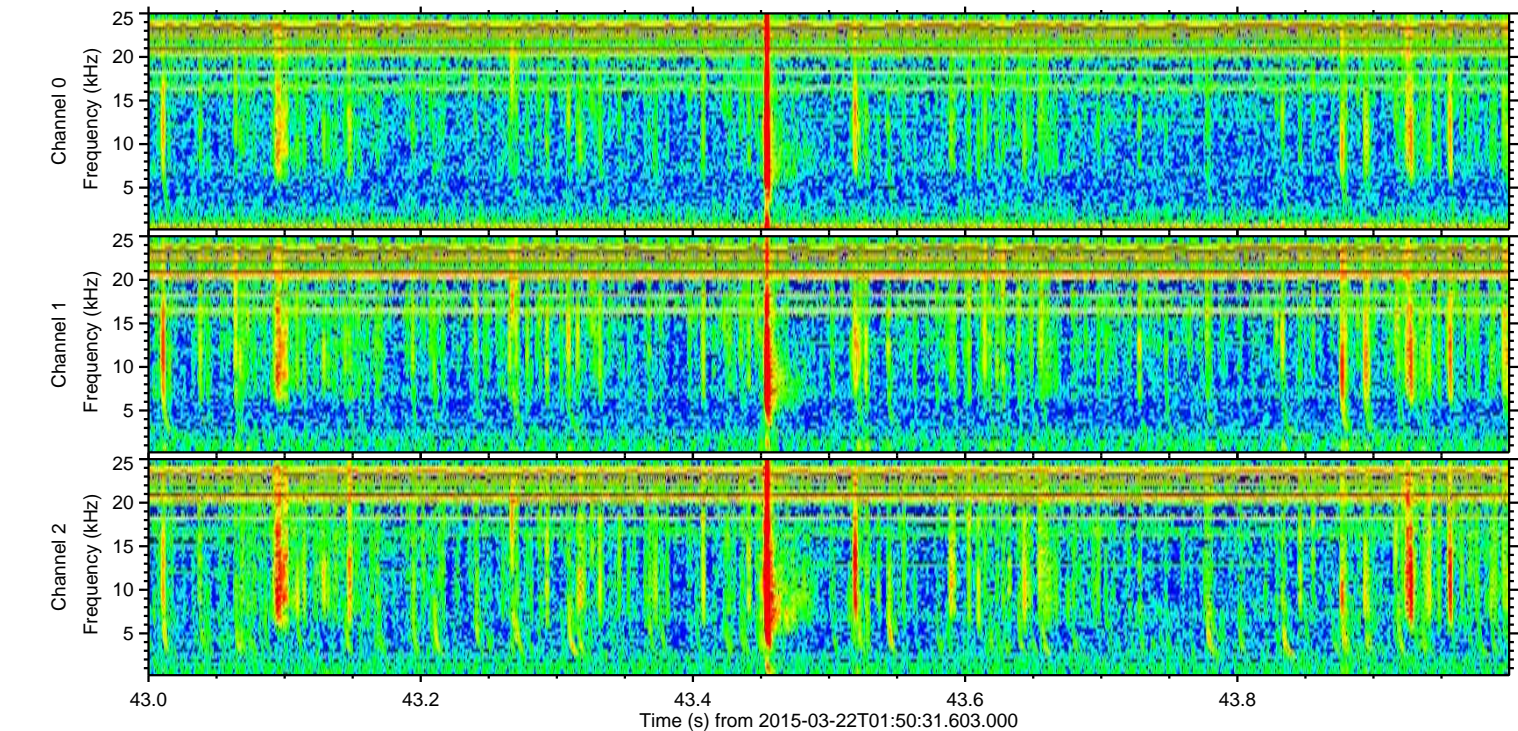
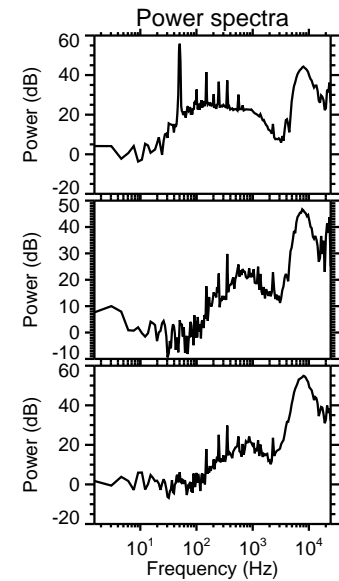
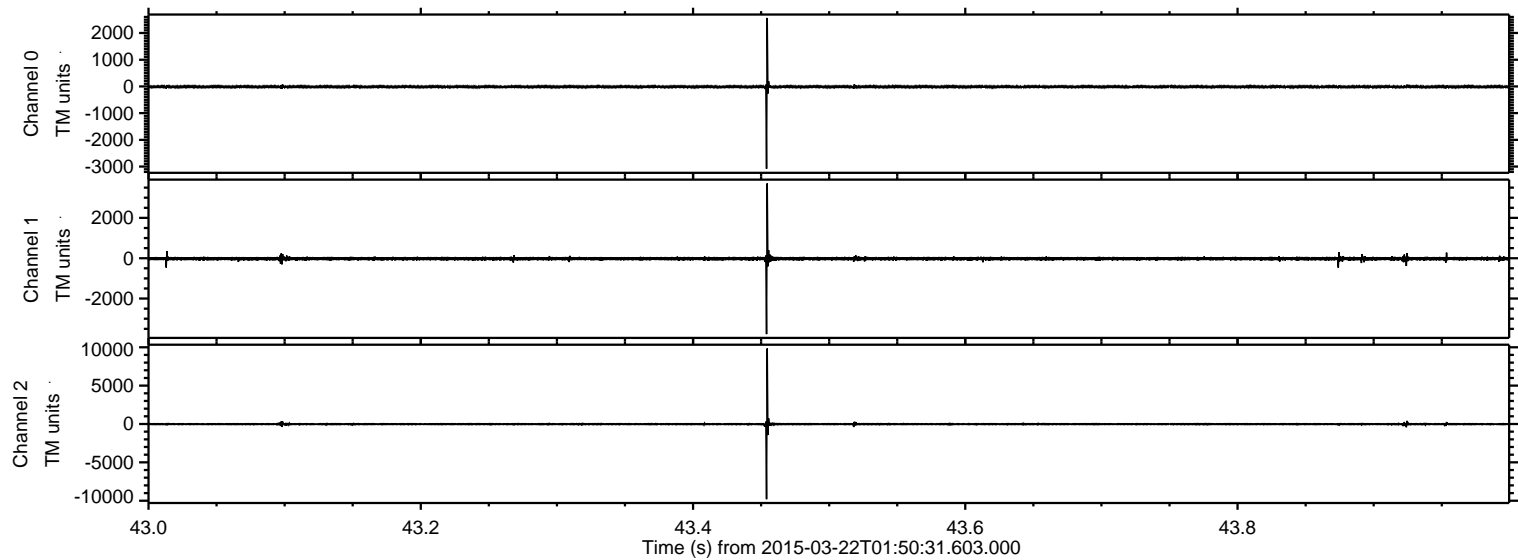
# ELMAVAN 3D WAVEFORMS (Measured data sampled at 50 kHz) 49798 packets of 144 samples from 2015-03-22T01:50:31.603.000.

Processed Sun Mar 22 06:40:46 2015 by ELM ver.2012-10-06 from 001\_\_elm20150322\_015030\_\_dat00.bin





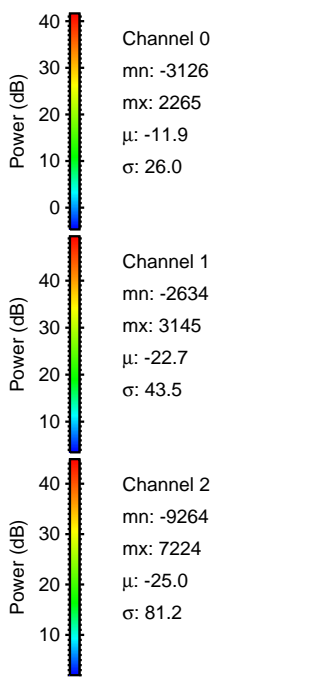
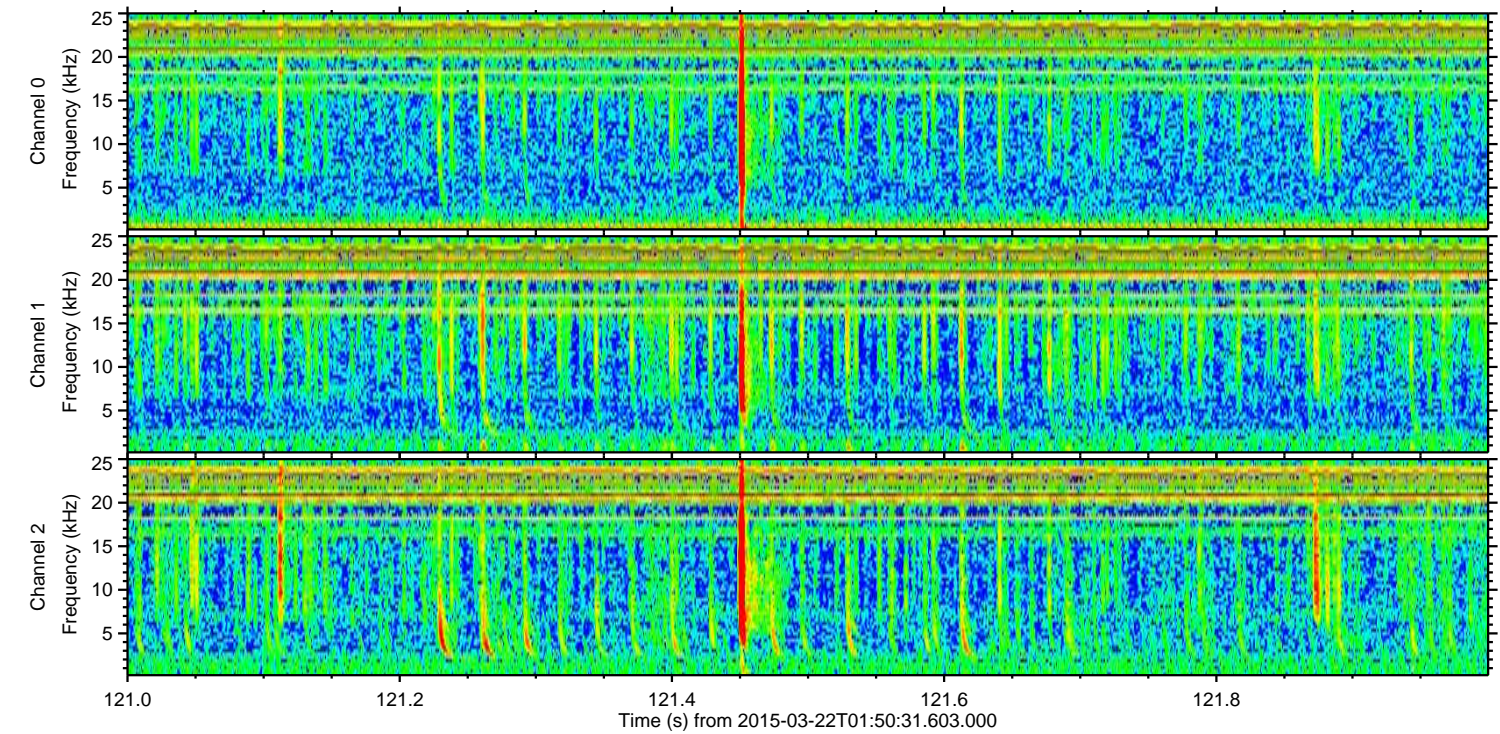
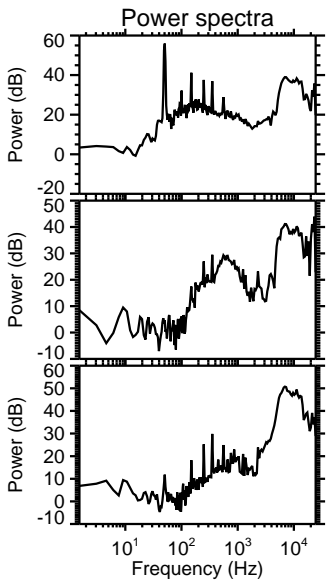
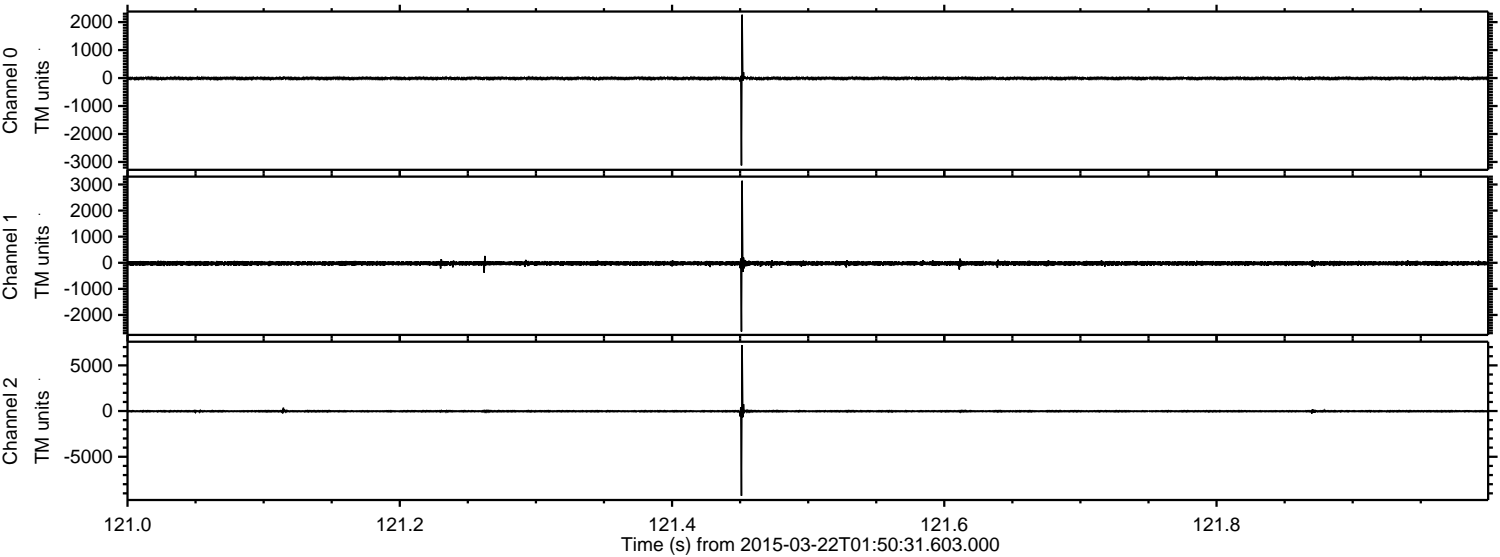
Processed Sun Mar 22 06:40:58 2015 by ELM ver.2012-10-06 from 001\_\_elm20150322\_015030\_\_dat00.bin





ELMAVAN 3D WAVEFORMS (Measured data sampled at 50 kHz) 49798 packets of 144 samples from 2015-03-22T01:50:31.603.000. Part 122/144

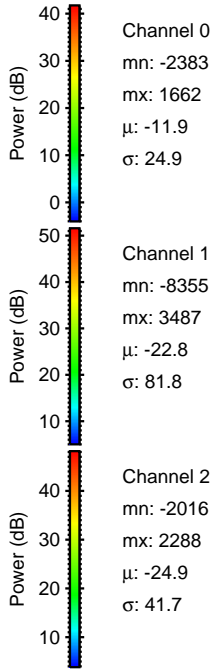
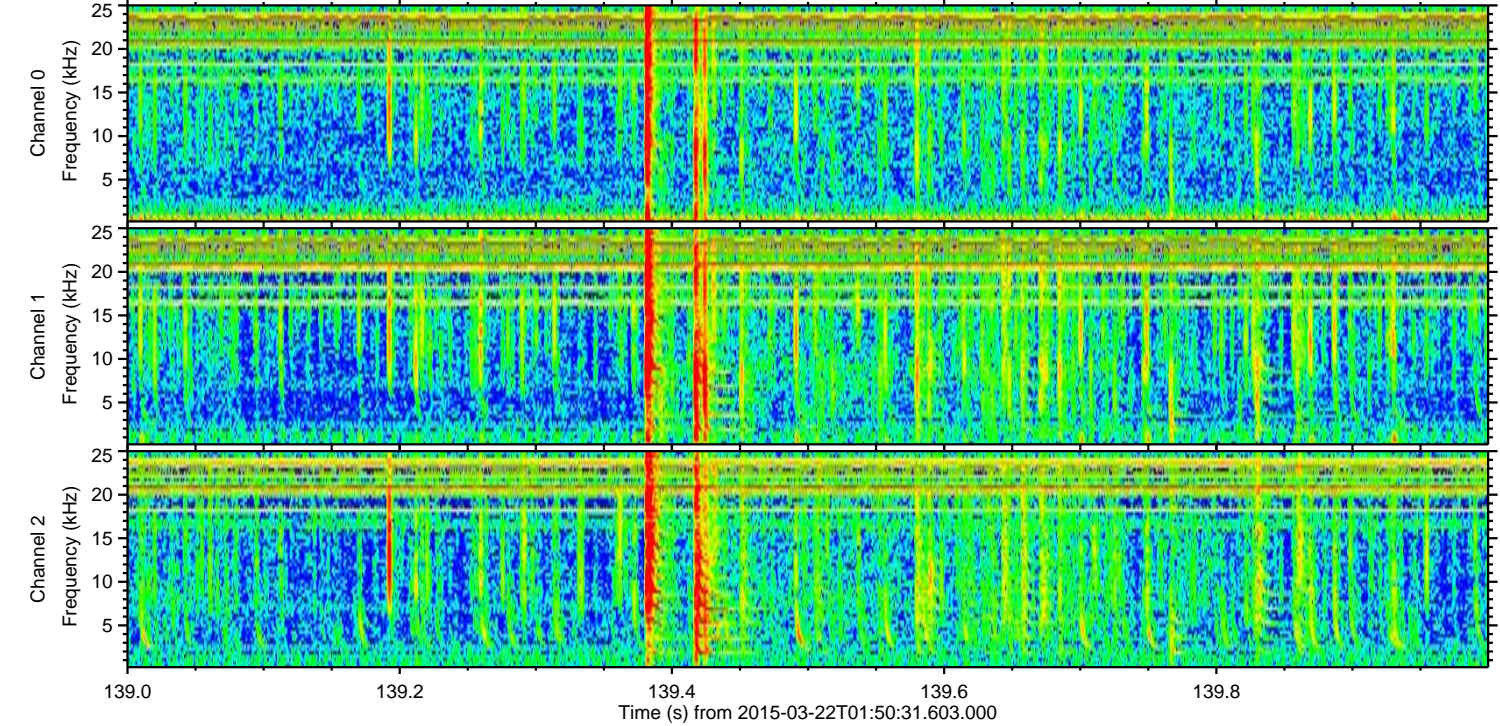
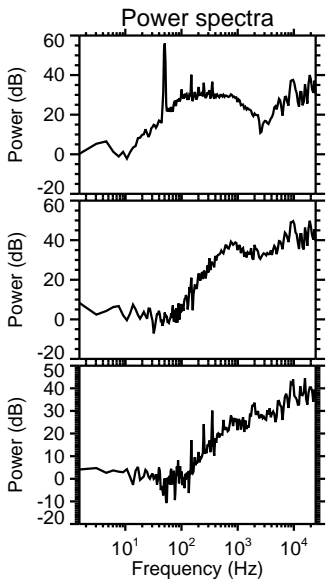
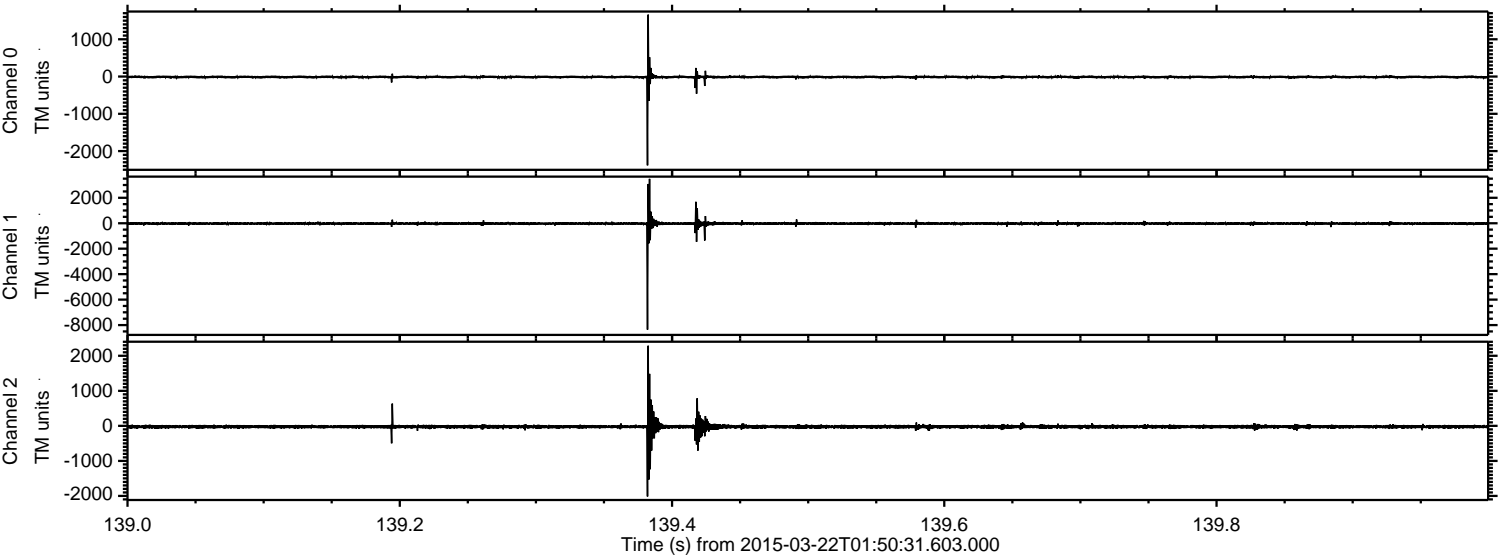
Processed Sun Mar 22 06:40:59 2015 by ELM ver.2012-10-06 from 001\_\_elm20150322\_015030\_\_dat00.bin





ELMAVAN 3D WAVEFORMS (Measured data sampled at 50 kHz) 49798 packets of 144 samples from 2015-03-22T01:50:31.603.000. Part 140/144

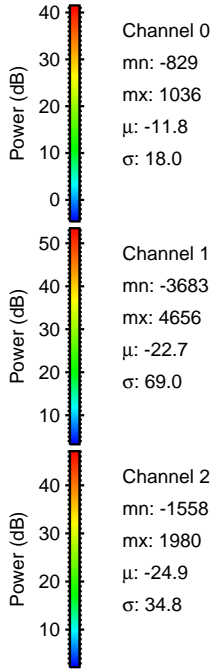
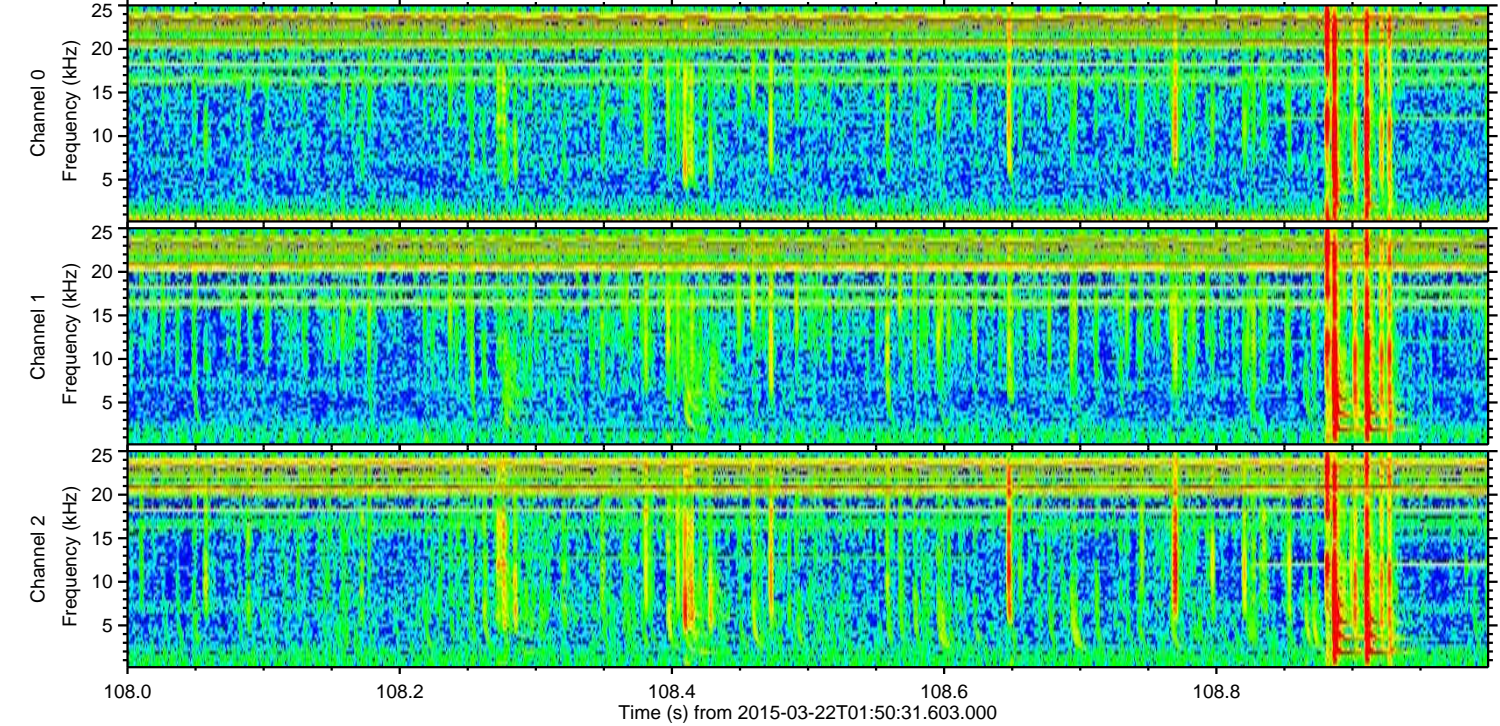
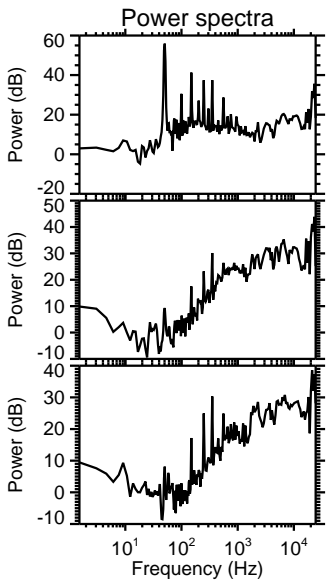
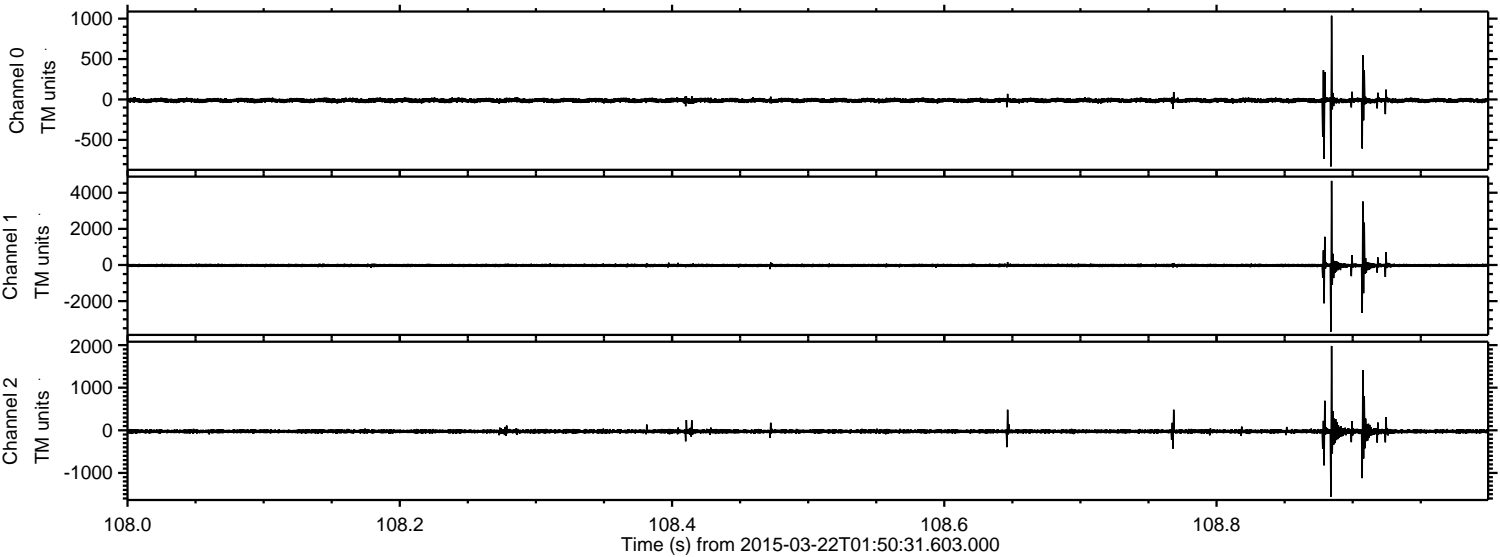
Processed Sun Mar 22 06:41:00 2015 by ELM ver.2012-10-06 from 001\_\_elm20150322\_015030\_\_dat00.bin





ELMAVAN 3D WAVEFORMS (Measured data sampled at 50 kHz) 49798 packets of 144 samples from 2015-03-22T01:50:31.603.000. Part 109/144

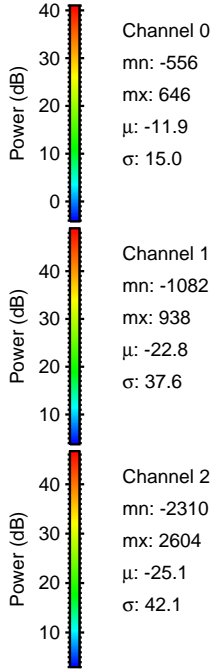
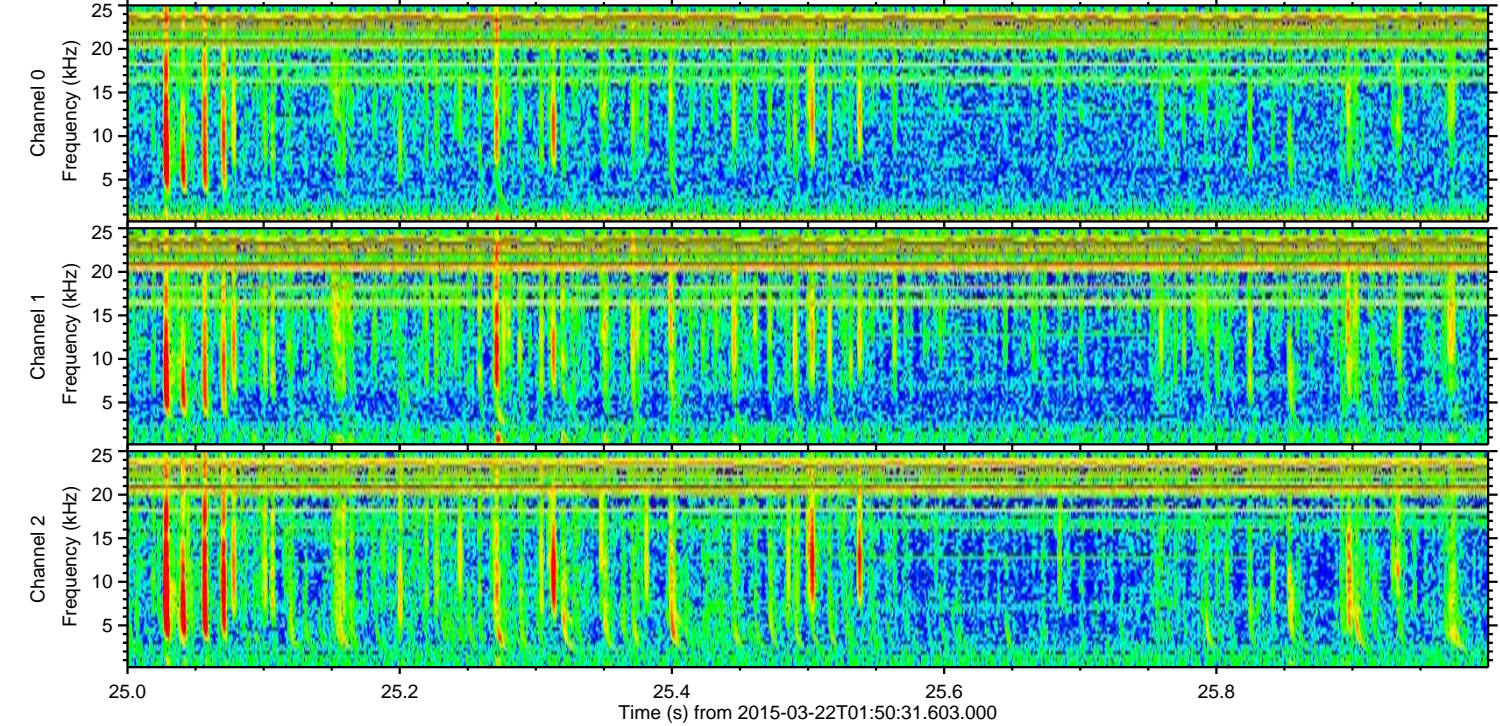
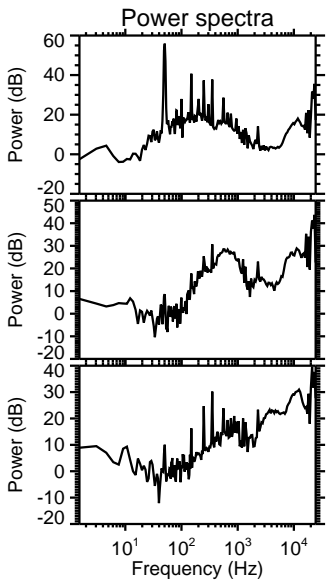
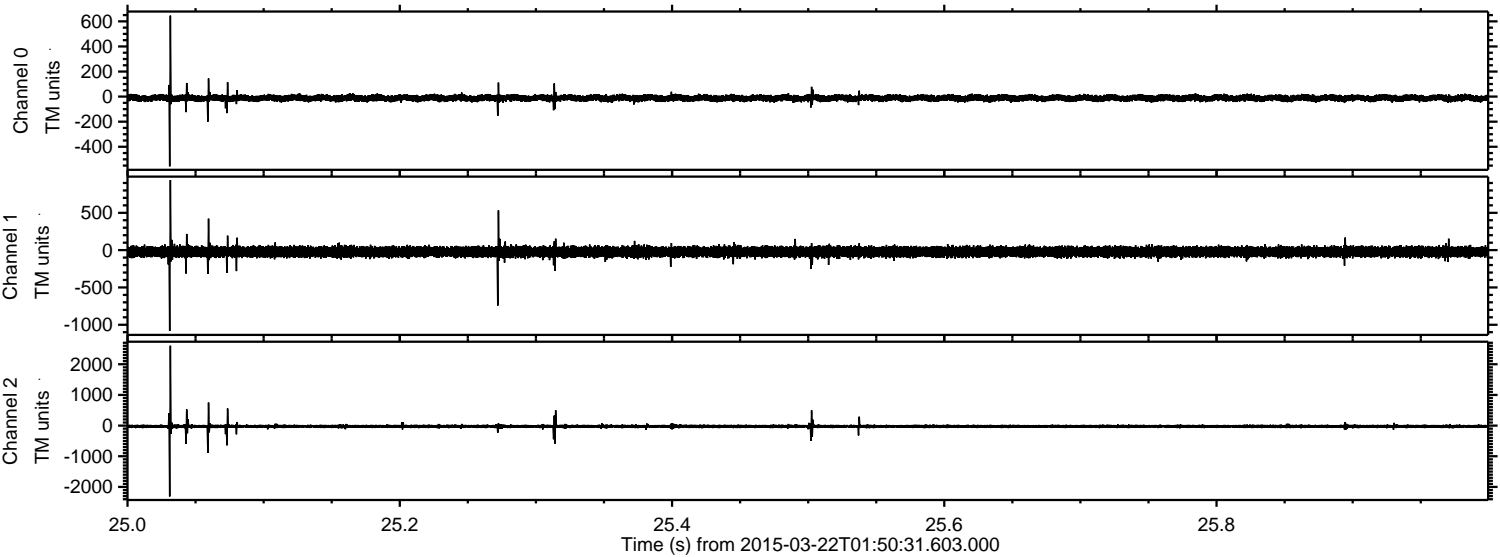
Processed Sun Mar 22 06:41:01 2015 by ELM ver.2012-10-06 from 001\_\_elm20150322\_015030\_\_dat00.bin





ELMAVAN 3D WAVEFORMS (Measured data sampled at 50 kHz) 49798 packets of 144 samples from 2015-03-22T01:50:31.603.000. Part 26/144

Processed Sun Mar 22 06:41:01 2015 by ELM ver.2012-10-06 from 001\_\_elm20150322\_015030\_\_dat00.bin



Channel 0  
mn: -556  
mx: 646  
 $\mu$ : -11.9  
 $\sigma$ : 15.0

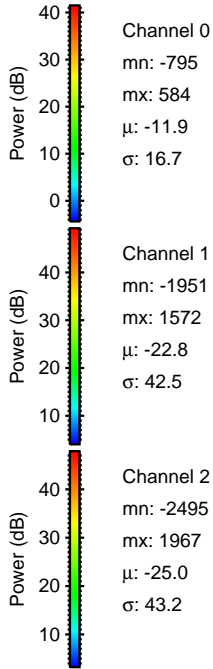
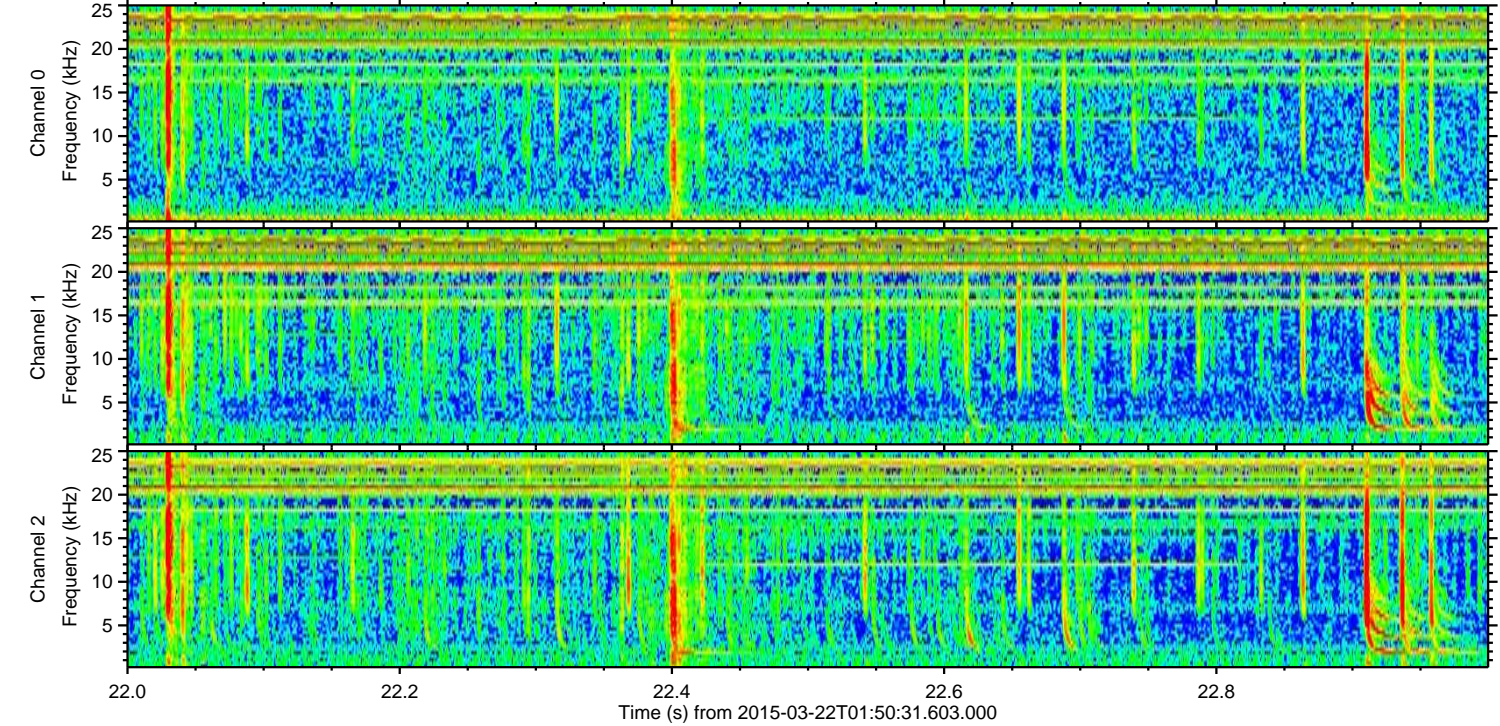
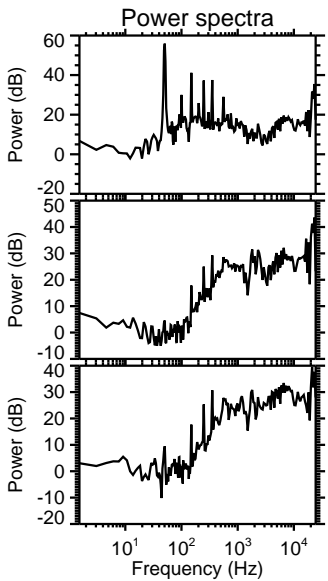
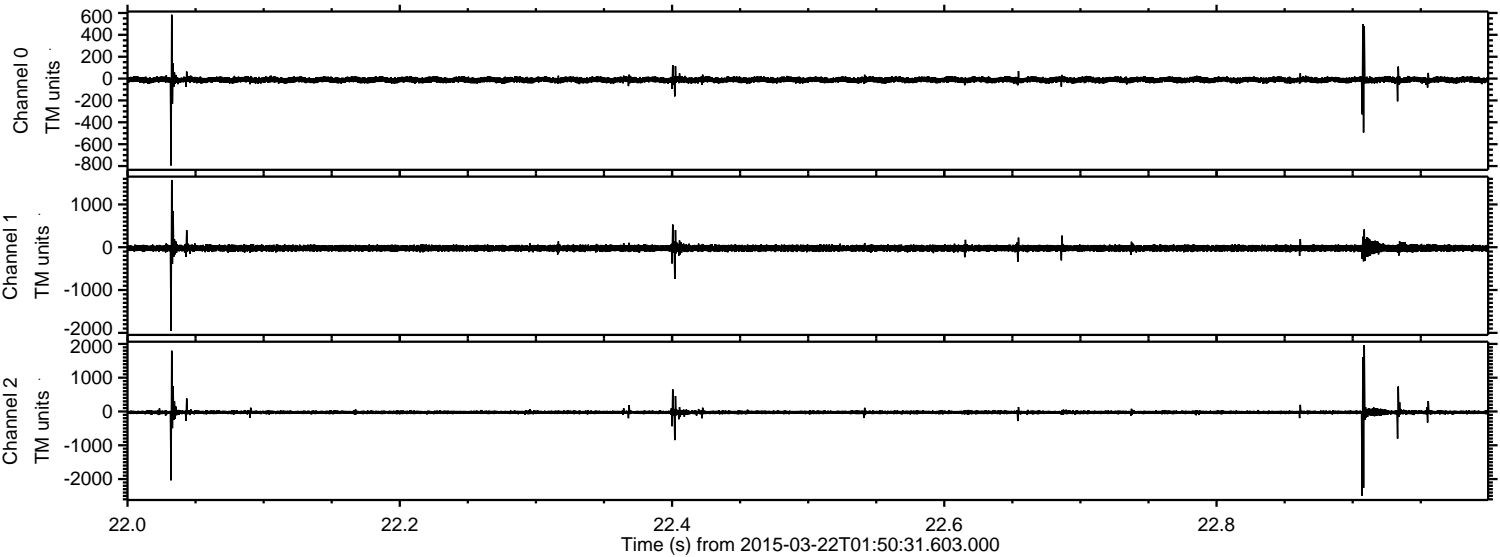
Channel 1  
mn: -1082  
mx: 938  
 $\mu$ : -22.8  
 $\sigma$ : 37.6

Channel 2  
mn: -2310  
mx: 2604  
 $\mu$ : -25.1  
 $\sigma$ : 42.1



ELMAVAN 3D WAVEFORMS (Measured data sampled at 50 kHz) 49798 packets of 144 samples from 2015-03-22T01:50:31.603.000. Part 23/144

Processed Sun Mar 22 06:41:02 2015 by ELM ver.2012-10-06 from 001\_\_elm20150322\_015030\_\_dat00.bin



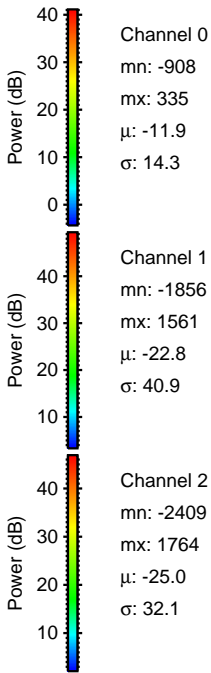
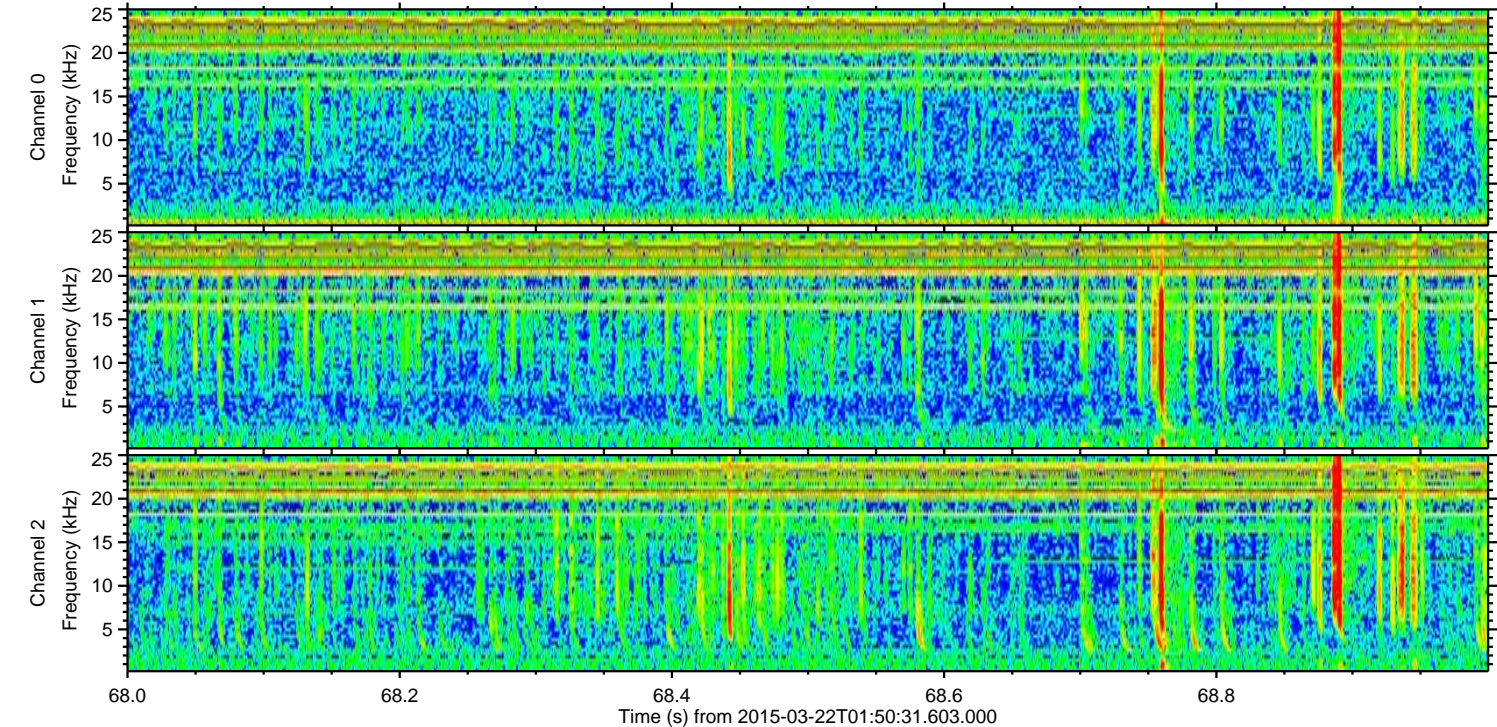
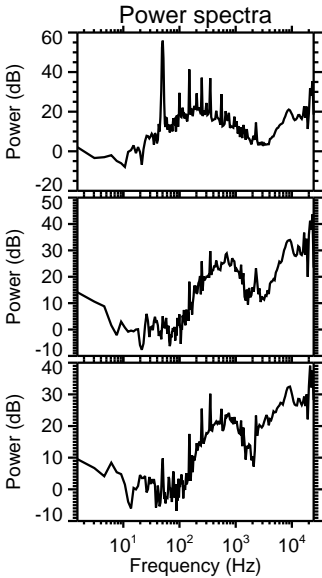
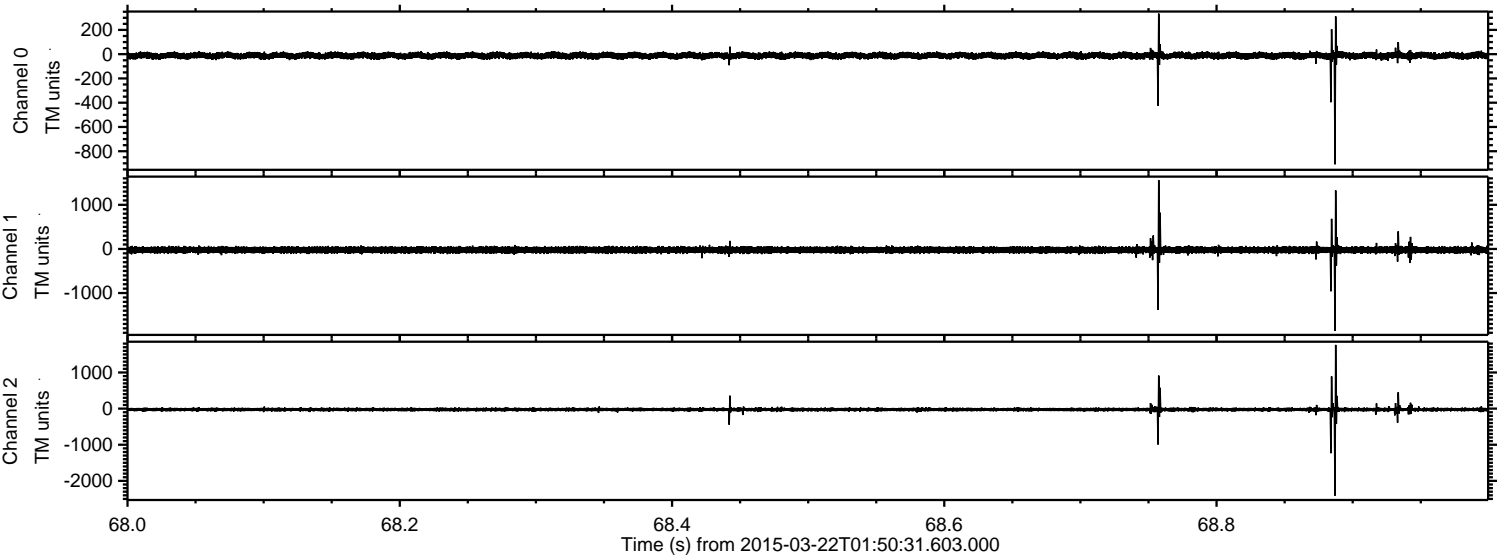
Channel 0  
mn: -795  
mx: 584  
 $\mu$ : -11.9  
 $\sigma$ : 16.7

Channel 1  
mn: -1951  
mx: 1572  
 $\mu$ : -22.8  
 $\sigma$ : 42.5

Channel 2  
mn: -2495  
mx: 1967  
 $\mu$ : -25.0  
 $\sigma$ : 43.2

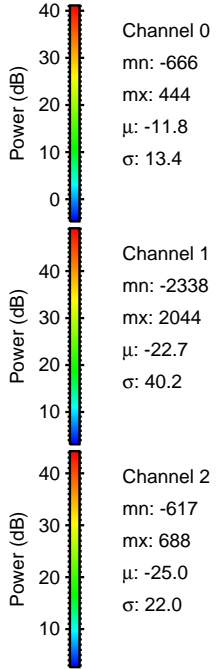
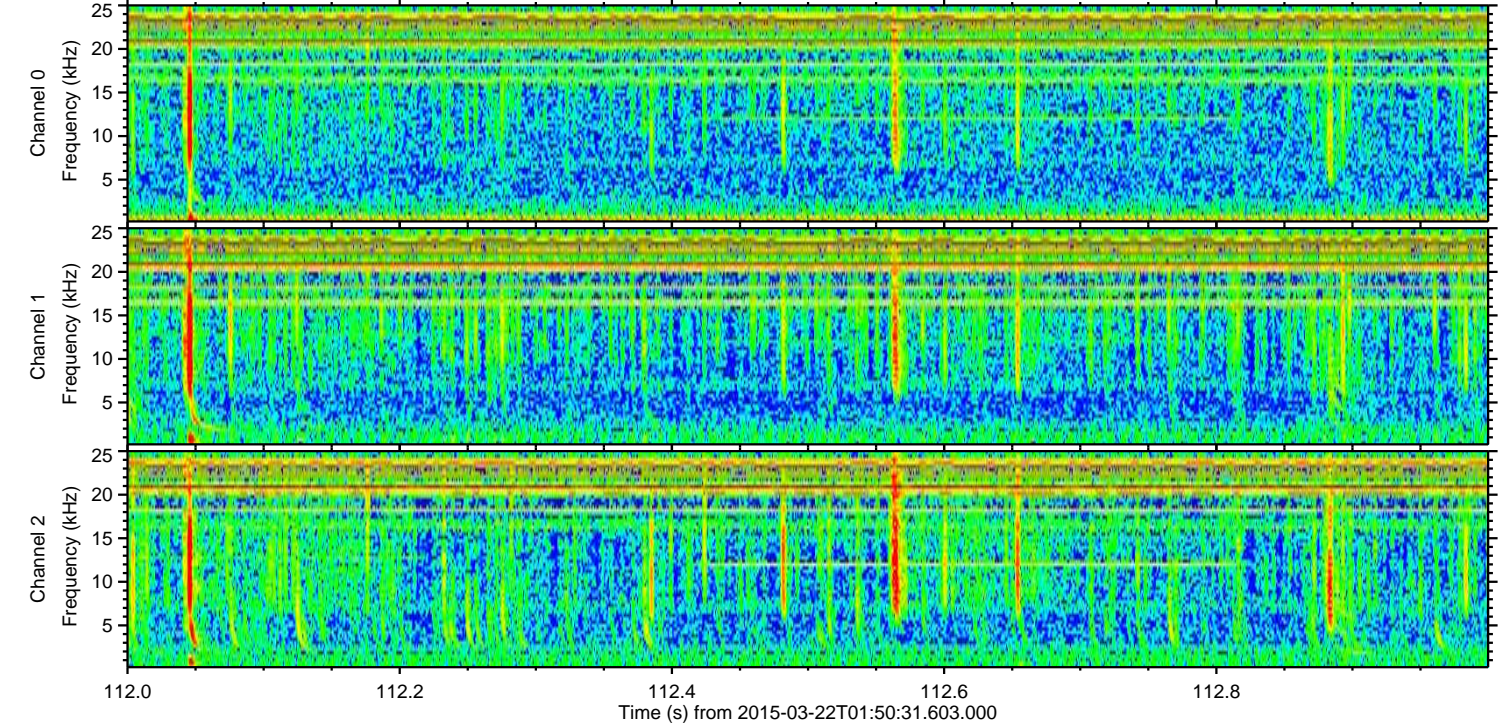
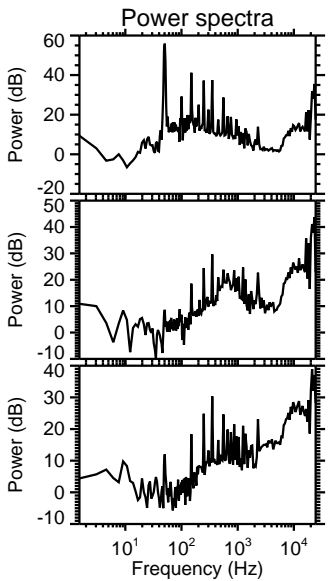
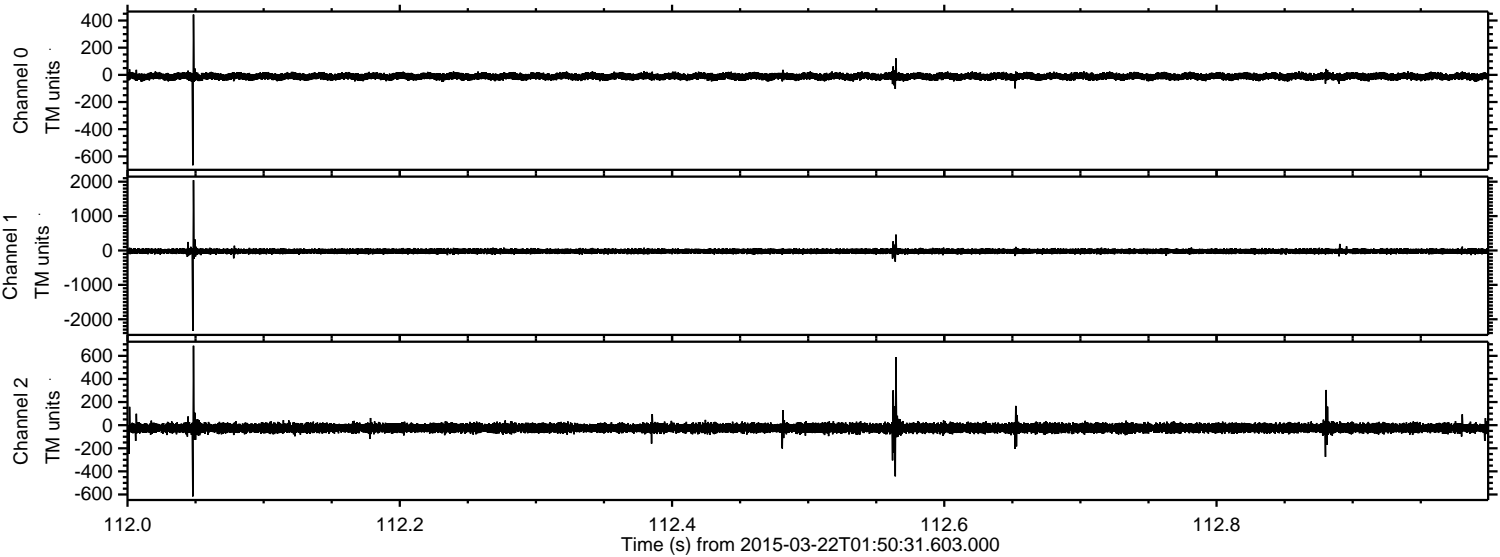


Processed Sun Mar 22 06:41:03 2015 by ELM ver.2012-10-06 from 001\_\_elm20150322\_015030\_\_dat00.bin



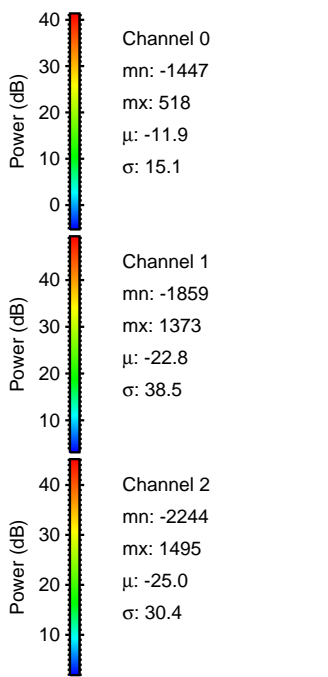
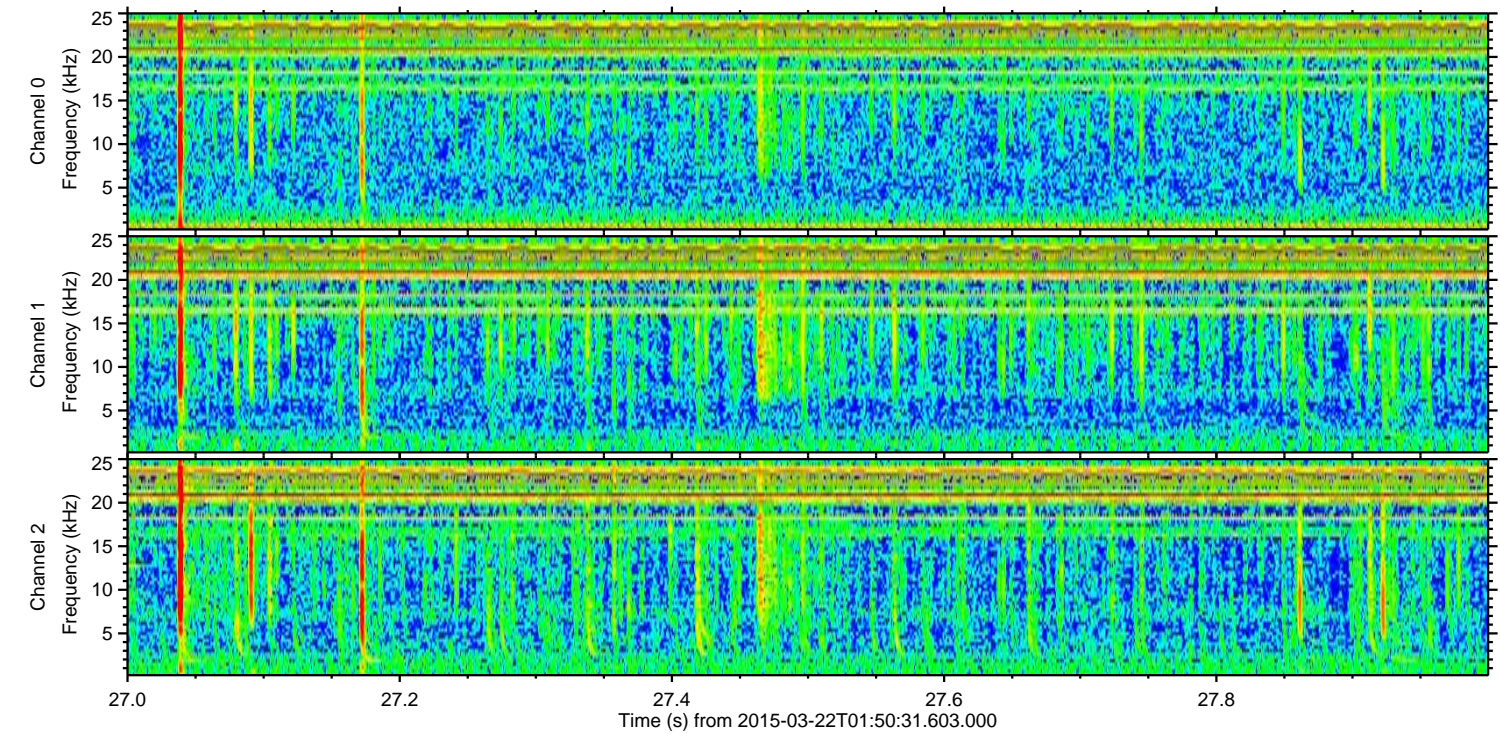
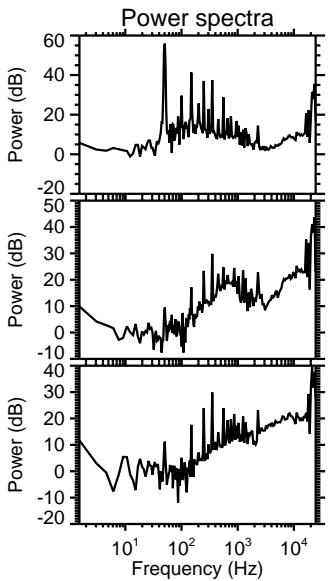
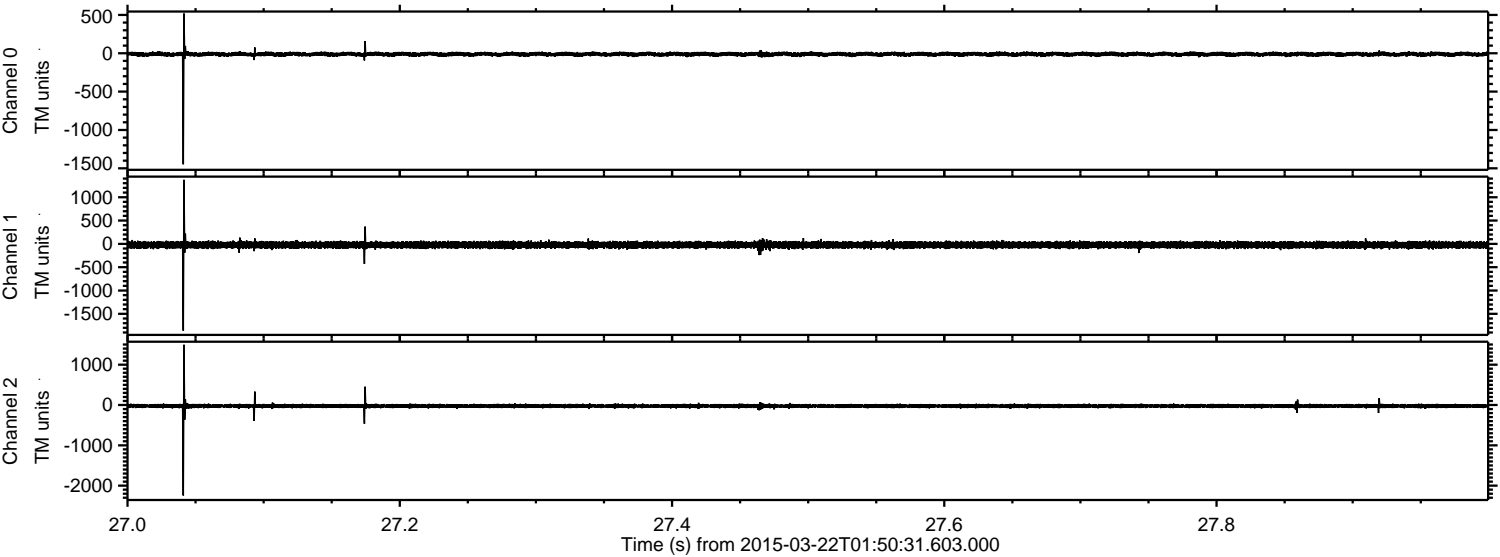


Processed Sun Mar 22 06:41:04 2015 by ELM ver.2012-10-06 from 001\_\_elm20150322\_015030\_\_dat00.bin





Processed Sun Mar 22 06:41:05 2015 by ELM ver.2012-10-06 from 001\_\_elm20150322\_015030\_\_dat00.bin





Processed Sun Mar 22 06:41:06 2015 by ELM ver.2012-10-06 from 001\_\_elm20150322\_015030\_\_dat00.bin

