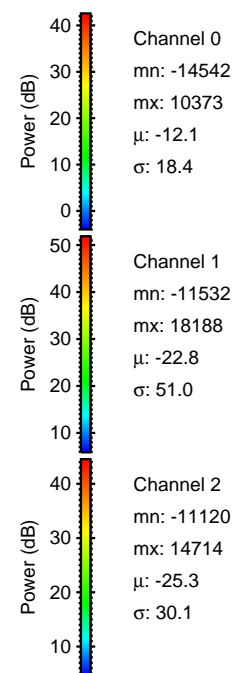
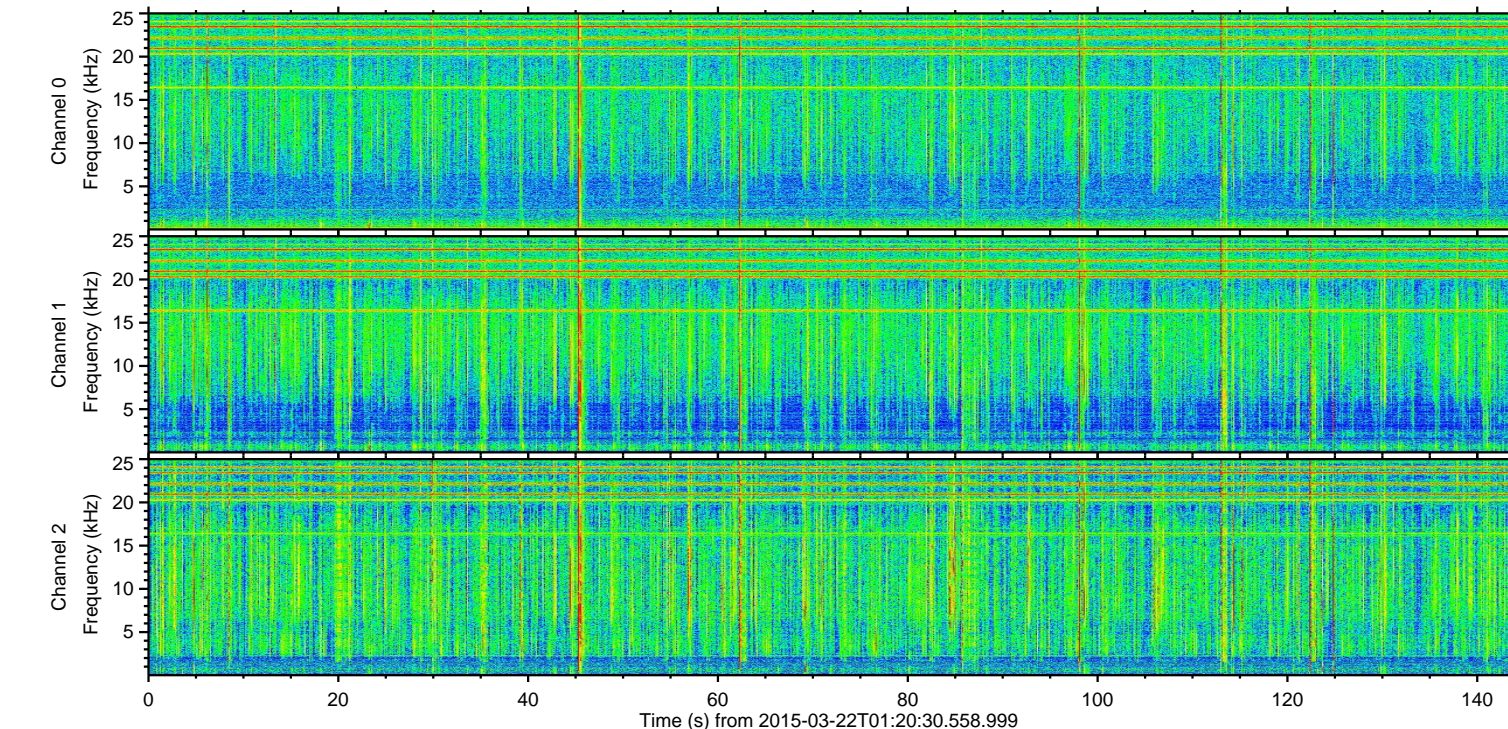
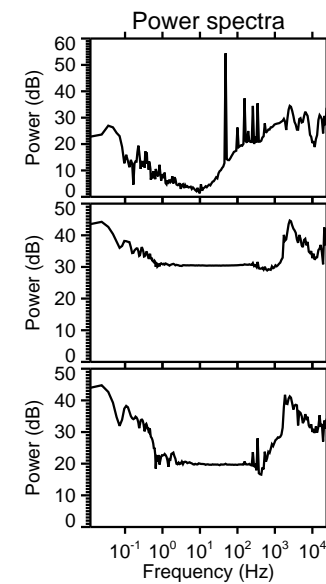
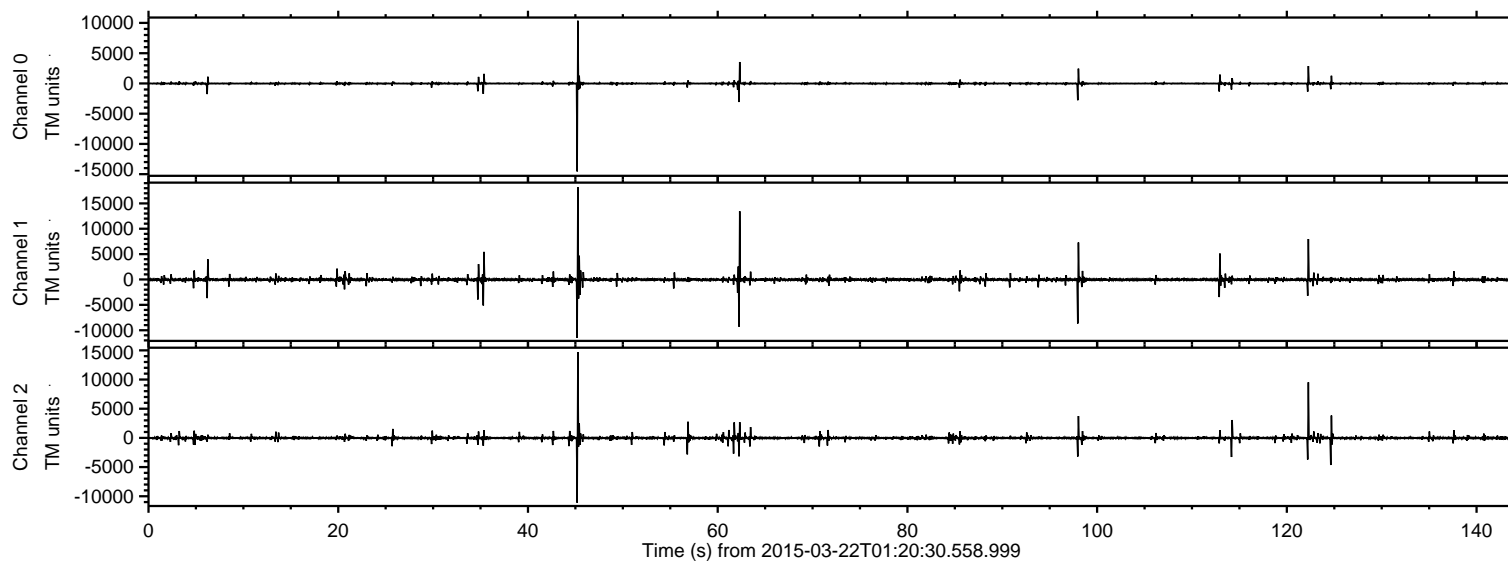


# ELMAVAN 3D WAVEFORMS (Measured data sampled at 50 kHz) 49803 packets of 144 samples from 2015-03-22T01:20:30.558.999.

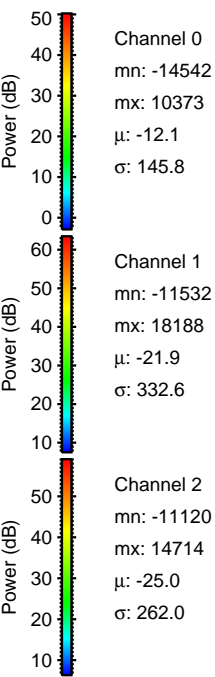
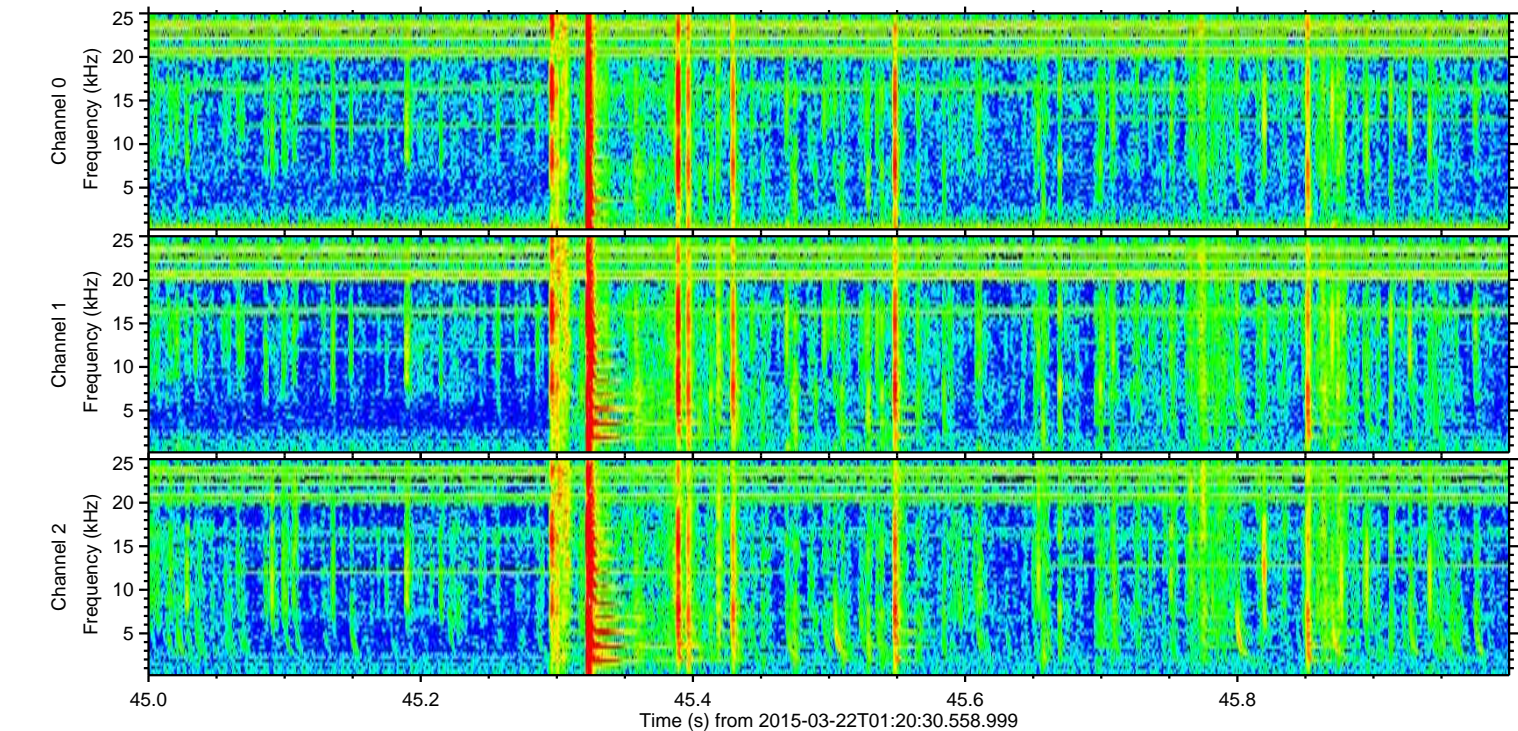
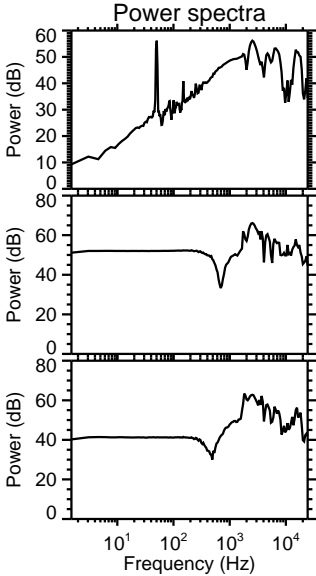
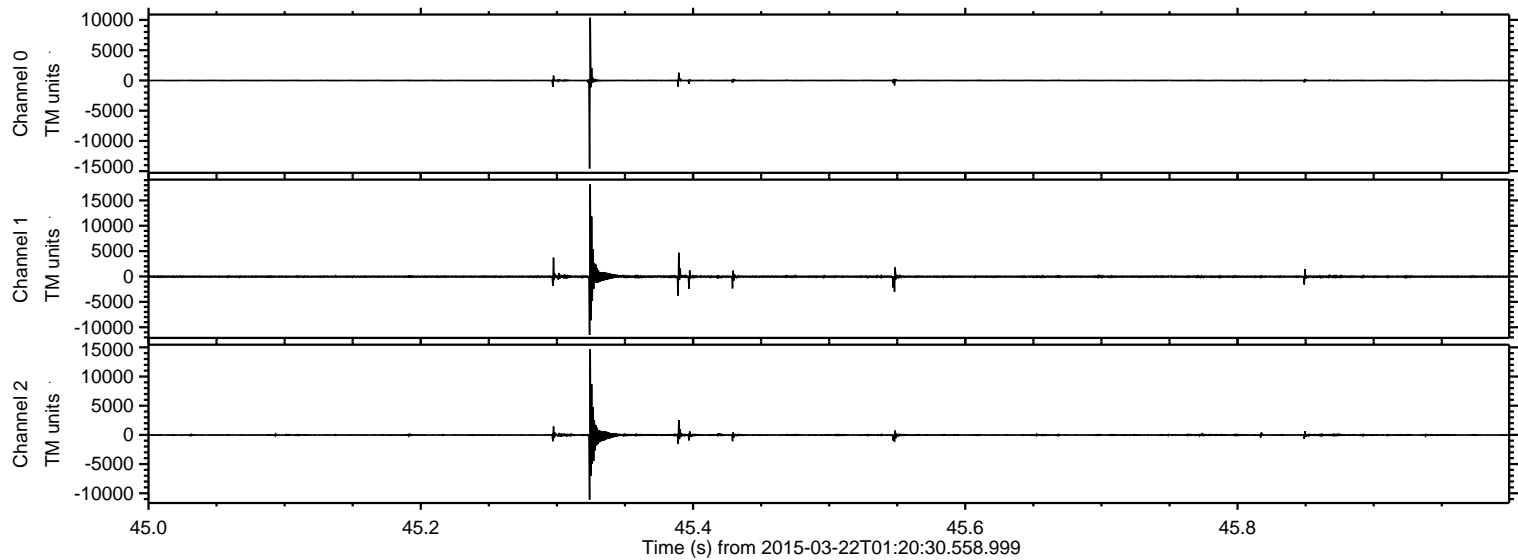
Processed Sun Mar 22 06:28:26 2015 by ELM ver.2012-10-06 from 001\_\_elm20150322\_012029\_\_dat00.bin





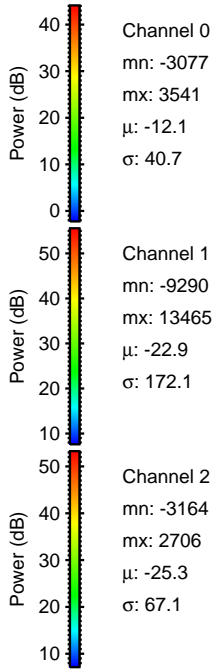
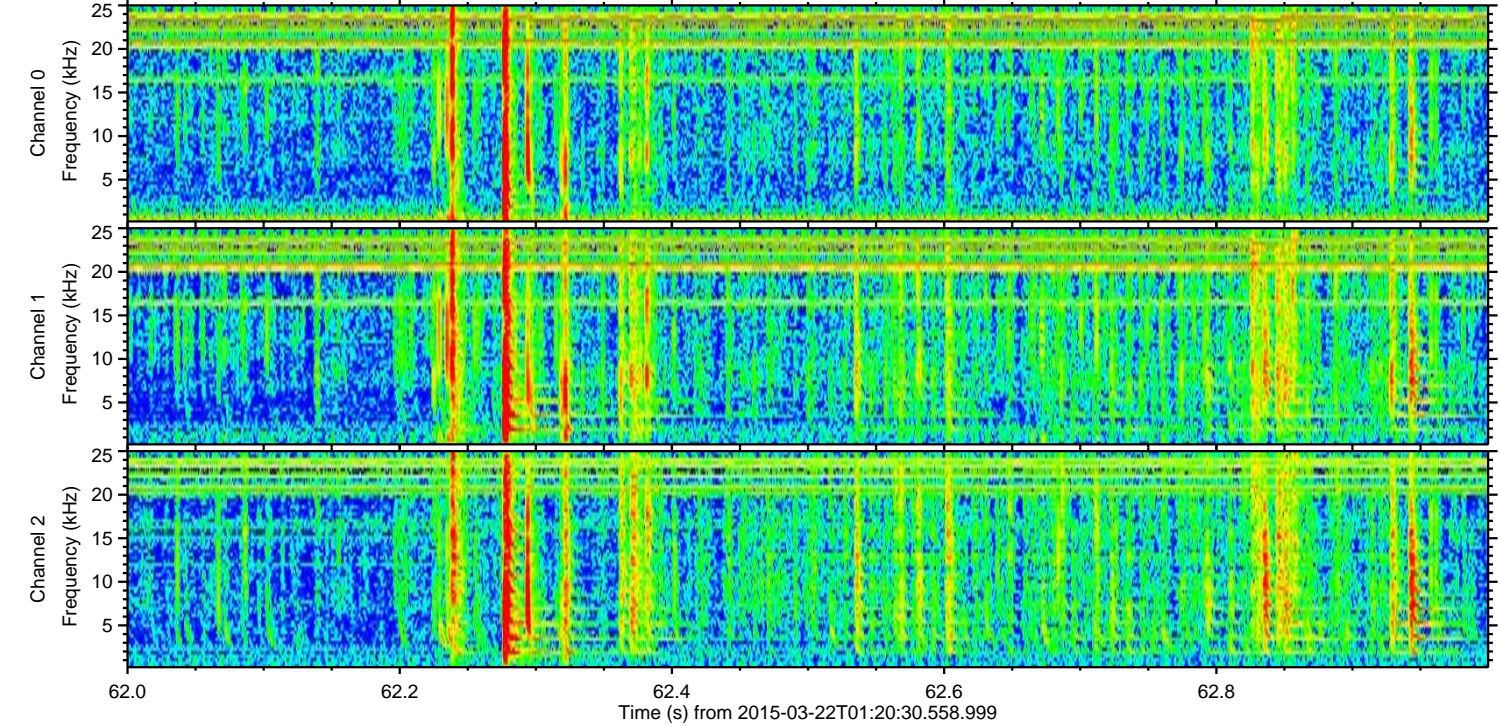
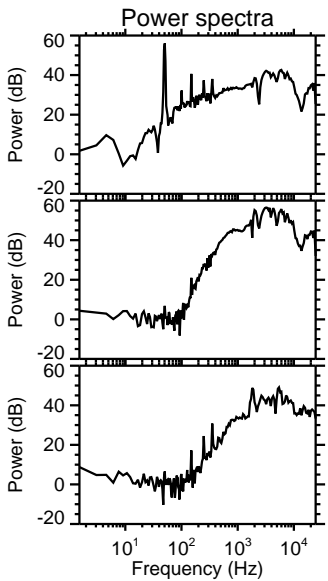
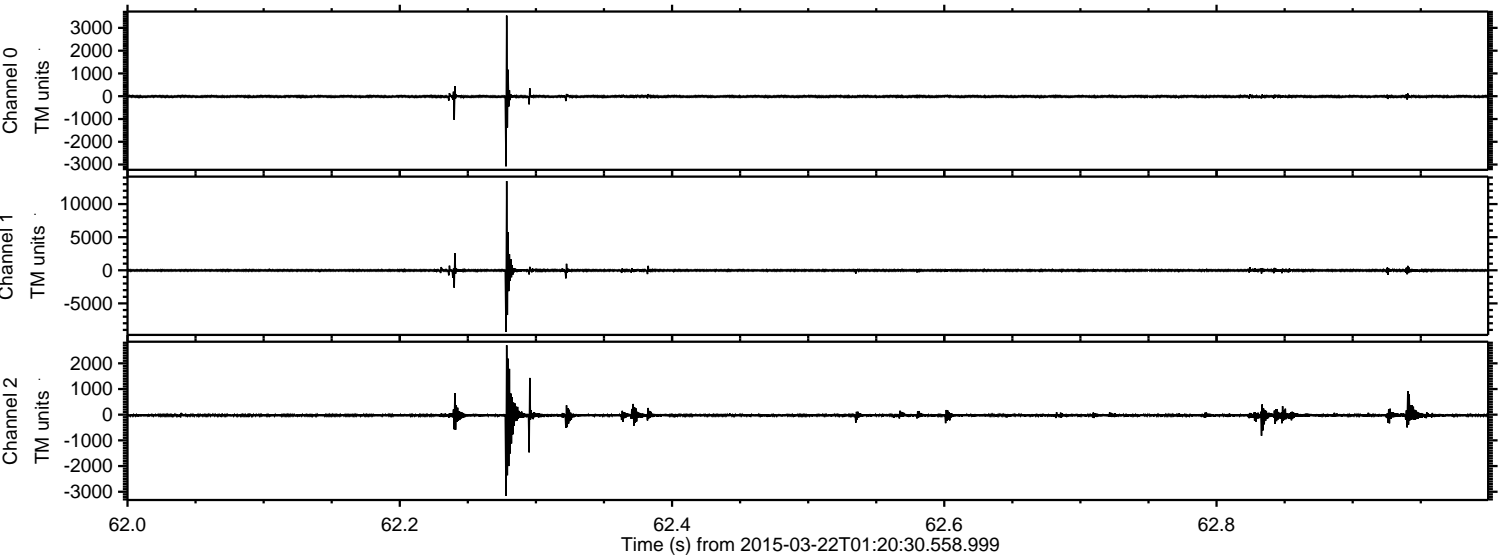
ELMAVAN 3D WAVEFORMS (Measured data sampled at 50 kHz) 49803 packets of 144 samples from 2015-03-22T01:20:30.558.999. Part 46/144

Processed Sun Mar 22 06:28:38 2015 by ELM ver.2012-10-06 from 001\_\_elm20150322\_012029\_\_dat00.bin





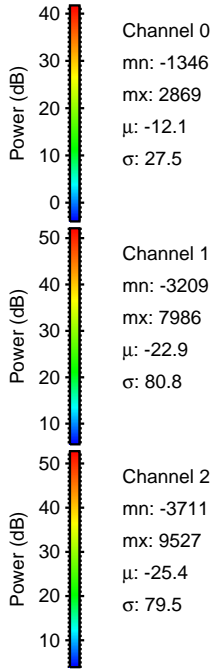
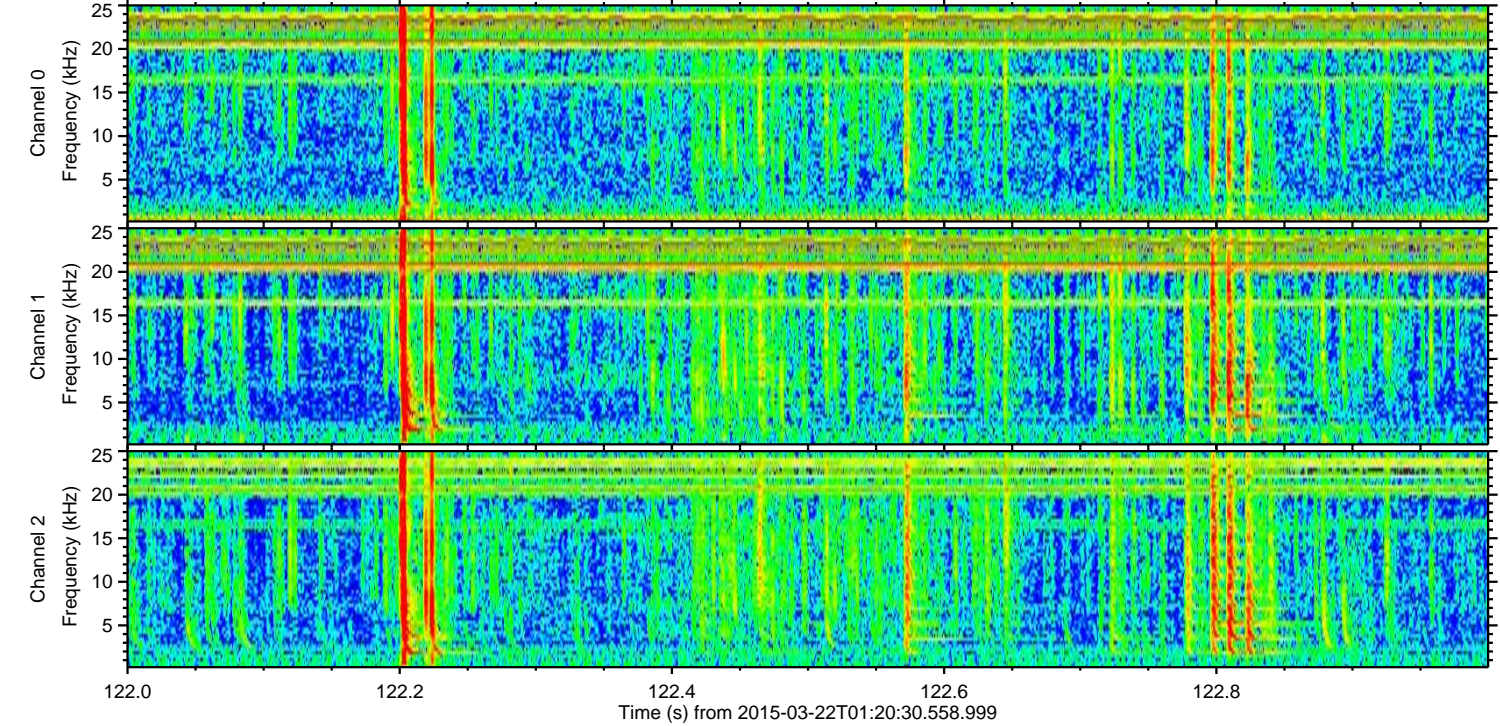
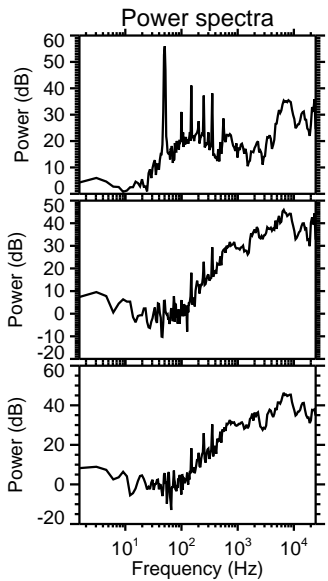
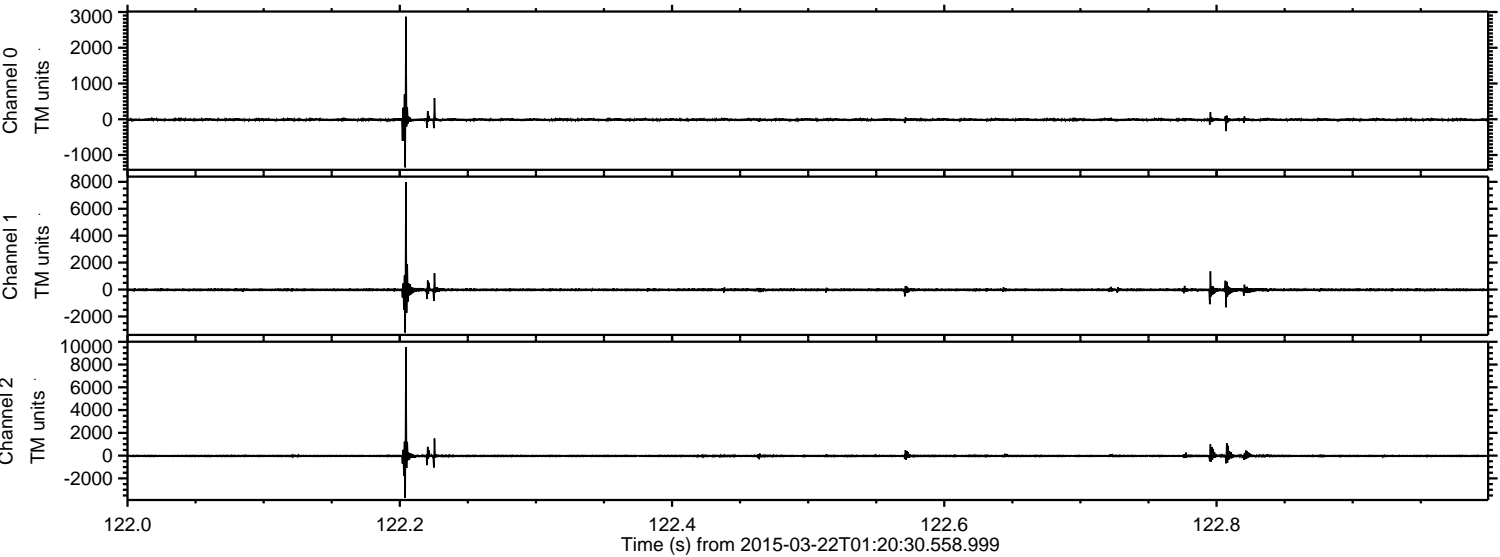
Processed Sun Mar 22 06:28:39 2015 by ELM ver.2012-10-06 from 001\_\_elm20150322\_012029\_\_dat00.bin





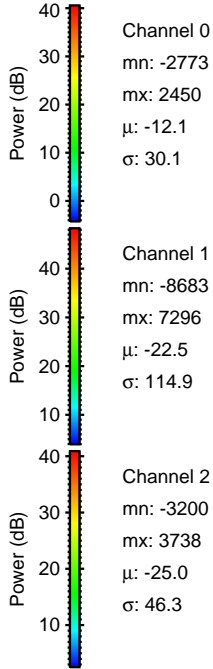
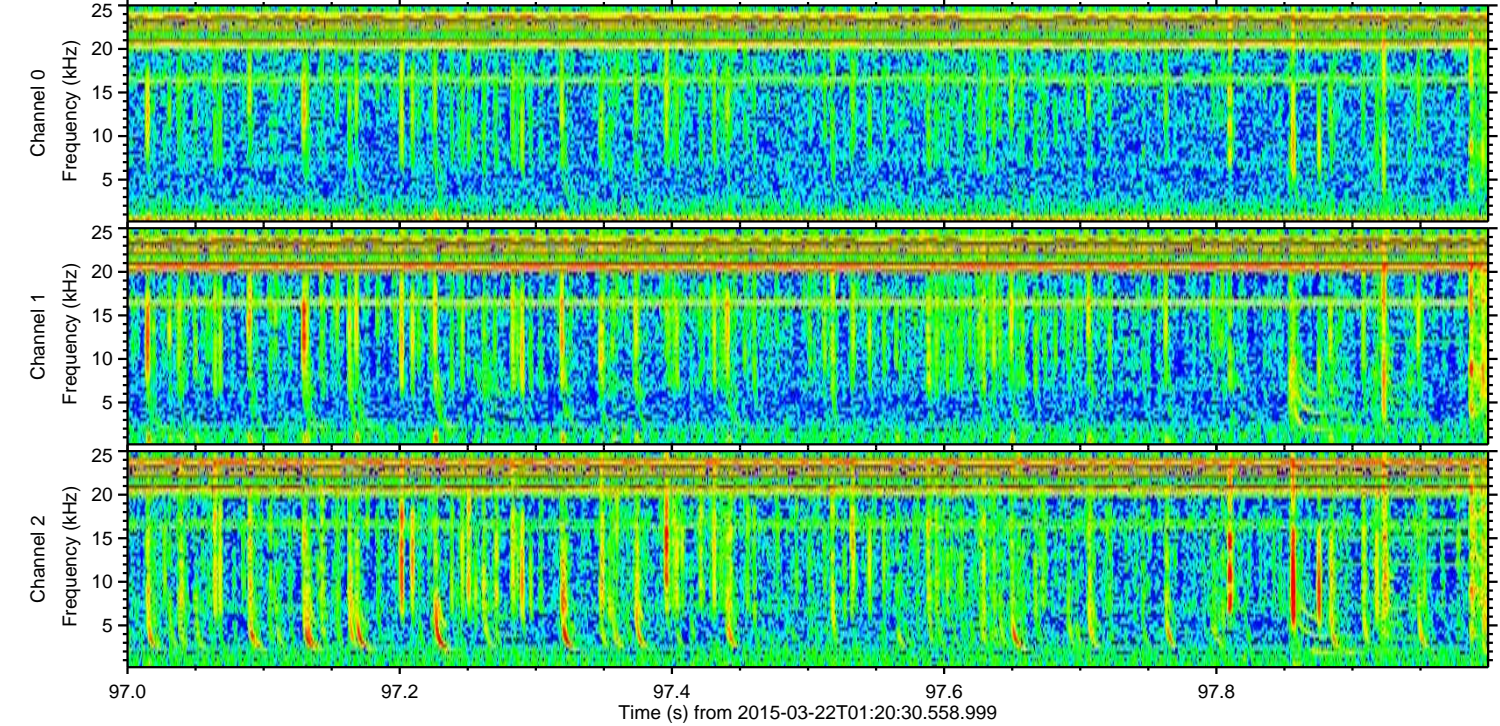
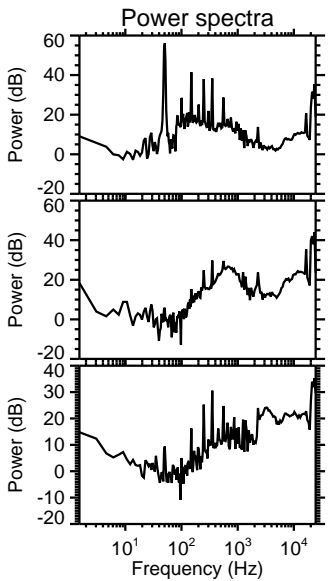
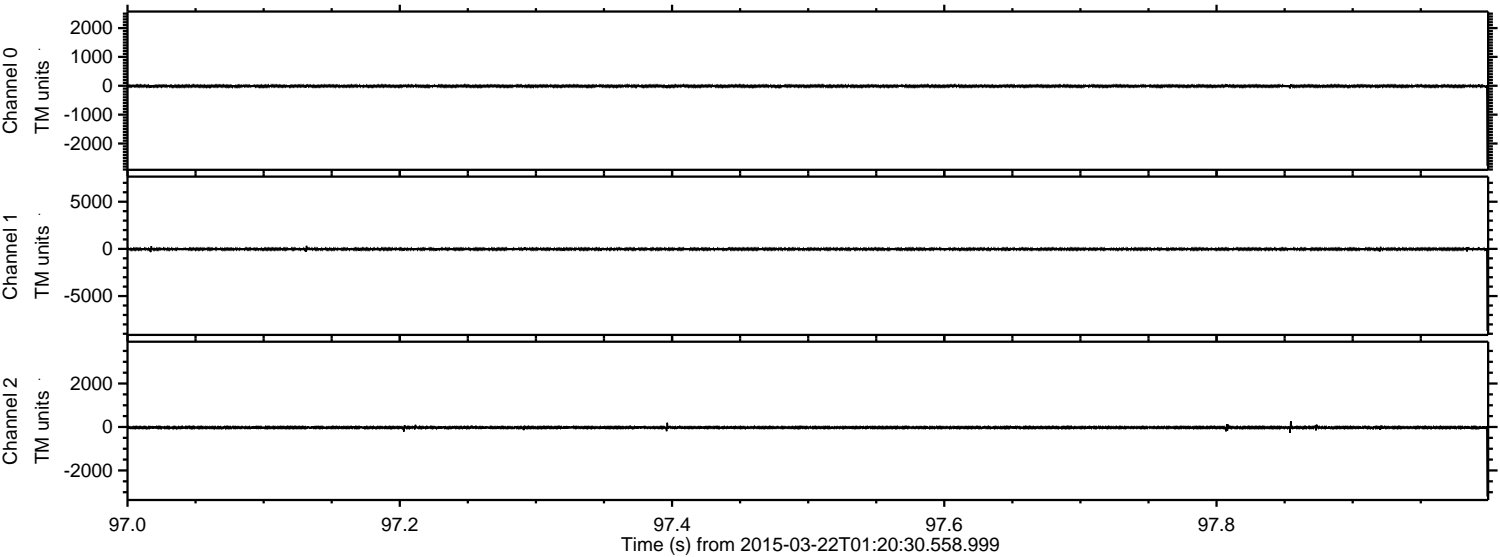
ELMAVAN 3D WAVEFORMS (Measured data sampled at 50 kHz) 49803 packets of 144 samples from 2015-03-22T01:20:30.558.999. Part 123/144

Processed Sun Mar 22 06:28:39 2015 by ELM ver.2012-10-06 from 001\_\_elm20150322\_012029\_\_dat00.bin



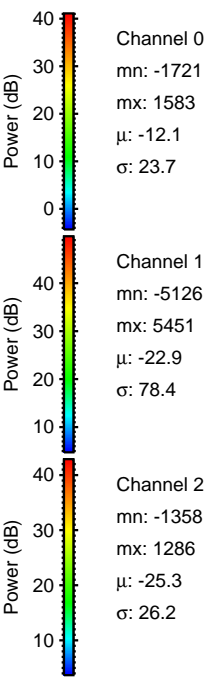
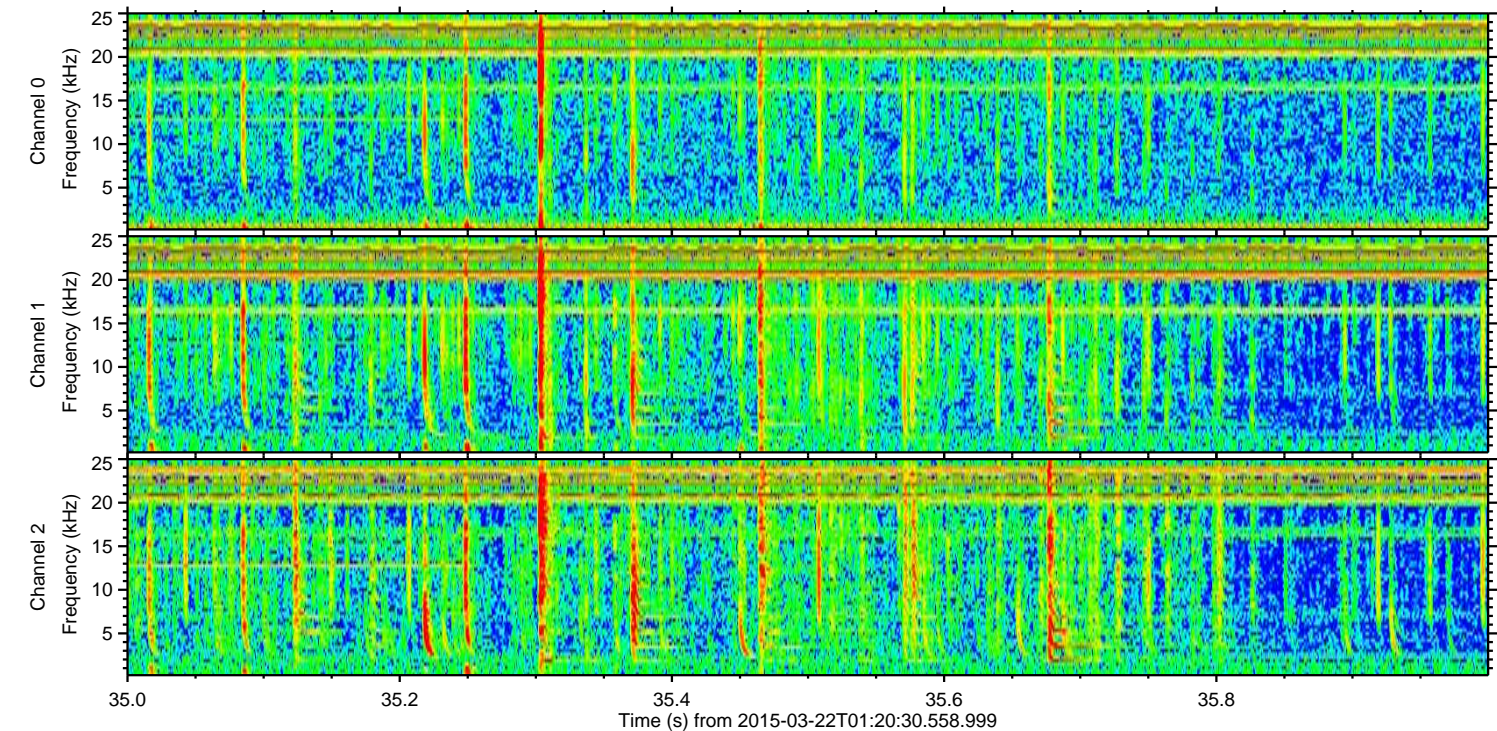
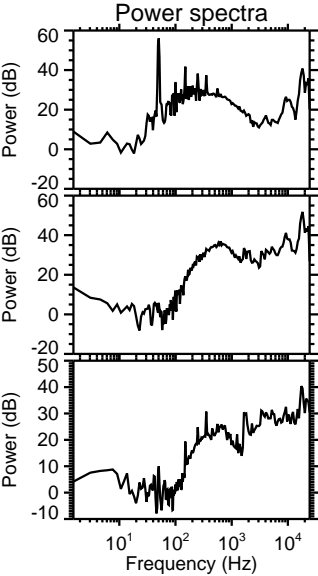
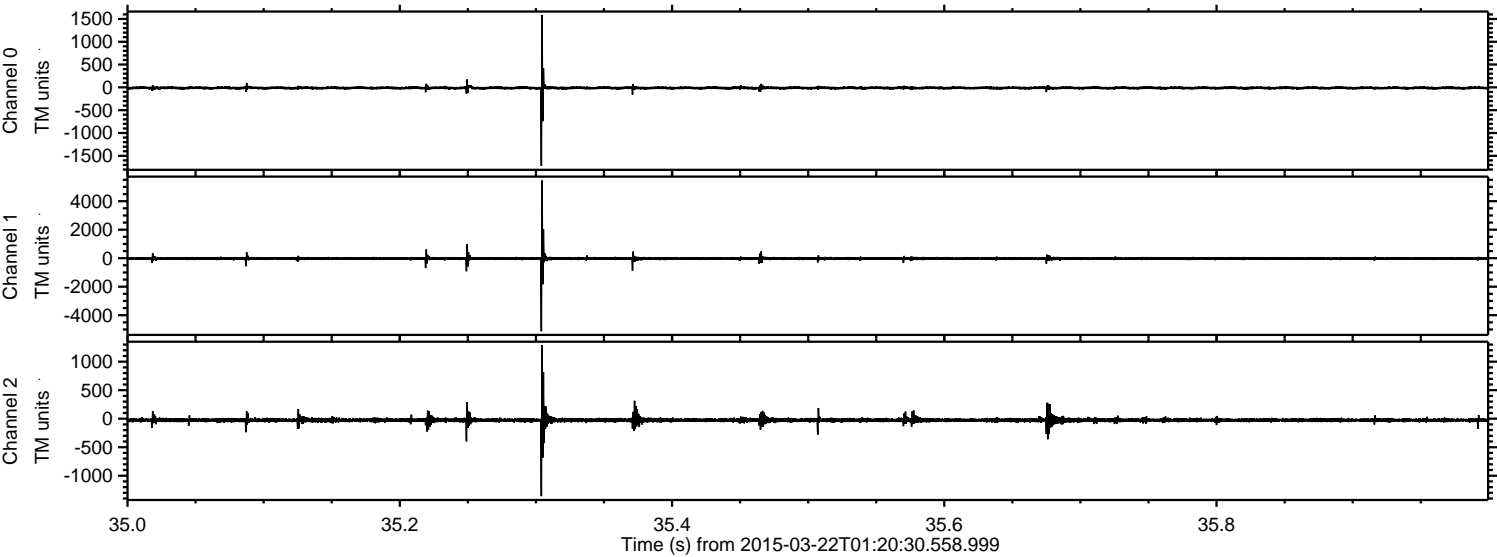


Processed Sun Mar 22 06:28:40 2015 by ELM ver.2012-10-06 from 001\_\_elm20150322\_012029\_\_dat00.bin





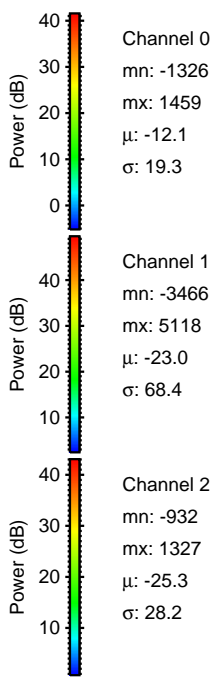
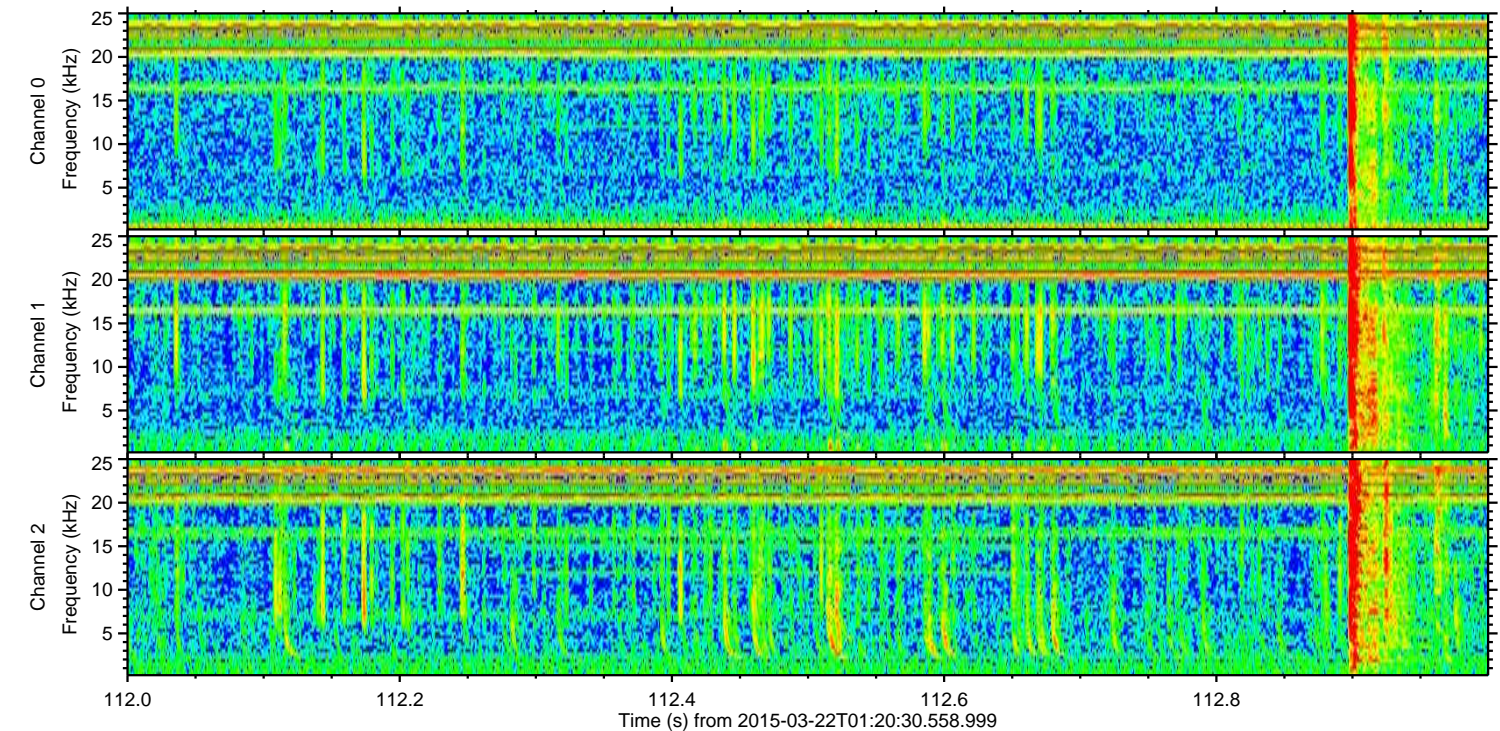
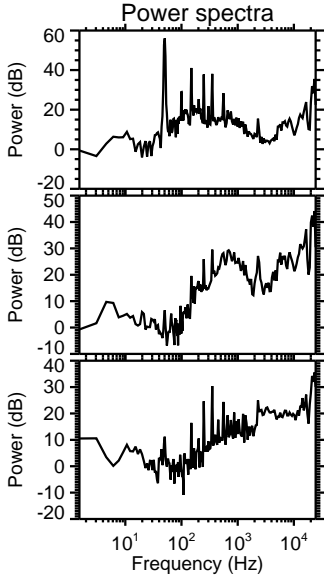
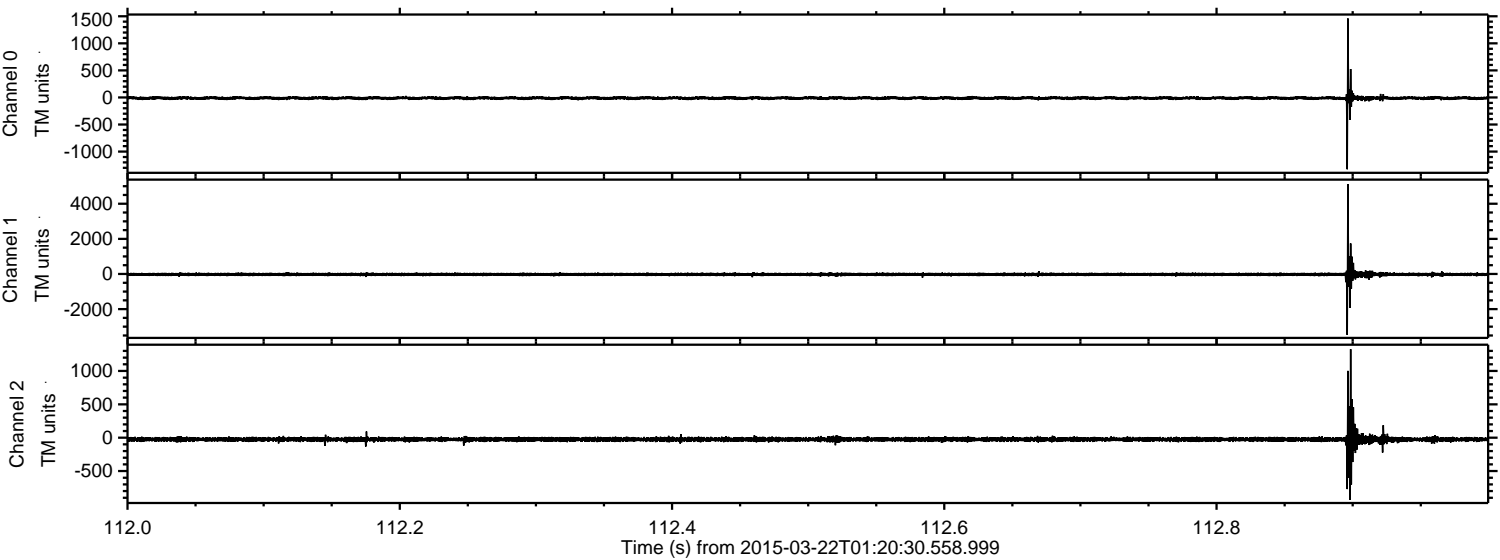
Processed Sun Mar 22 06:28:41 2015 by ELM ver.2012-10-06 from 001\_\_elm20150322\_012029\_\_dat00.bin





ELMAVAN 3D WAVEFORMS (Measured data sampled at 50 kHz) 49803 packets of 144 samples from 2015-03-22T01:20:30.558.999. Part 113/144

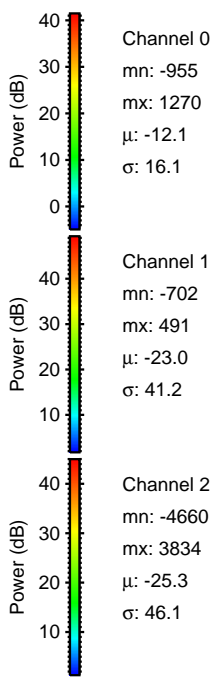
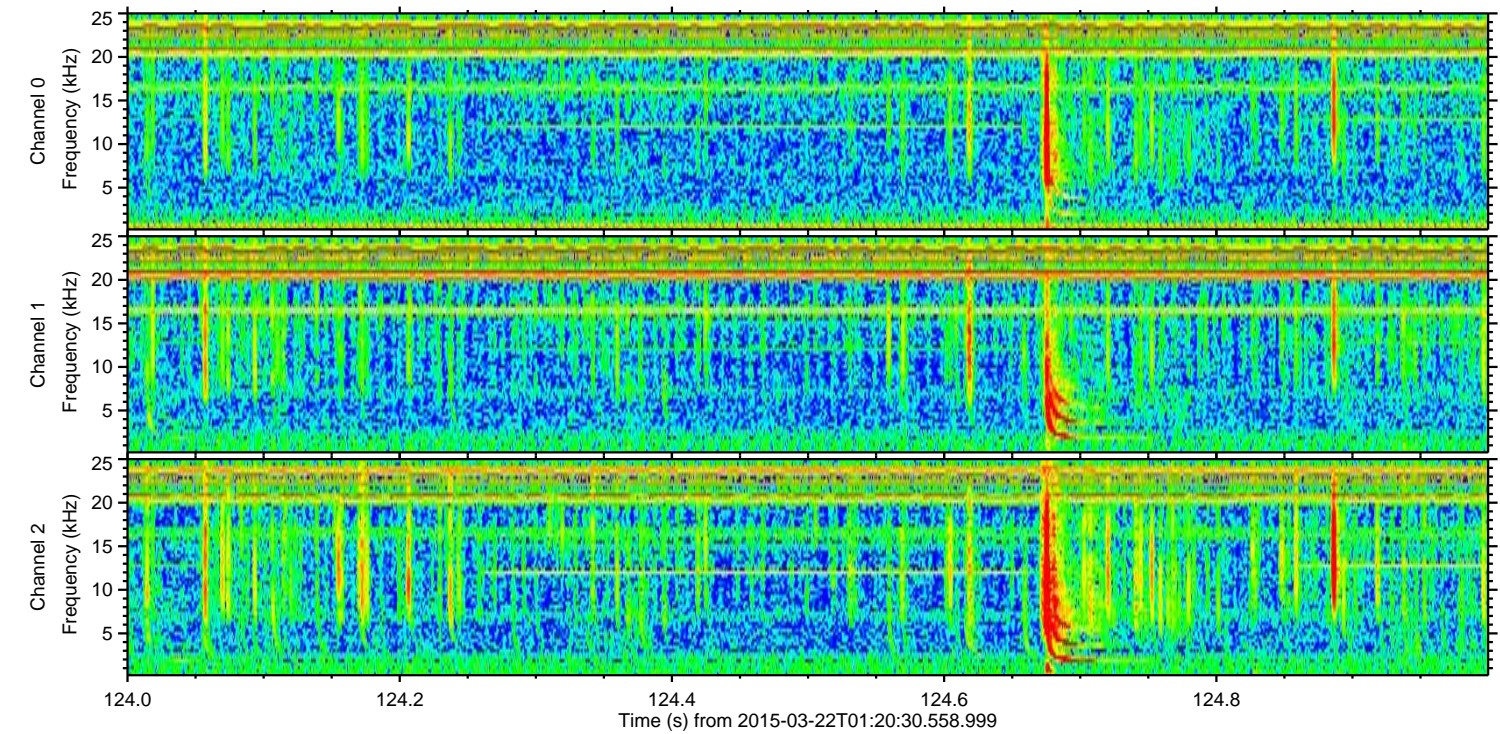
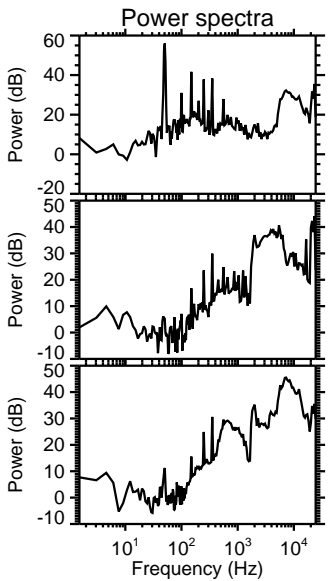
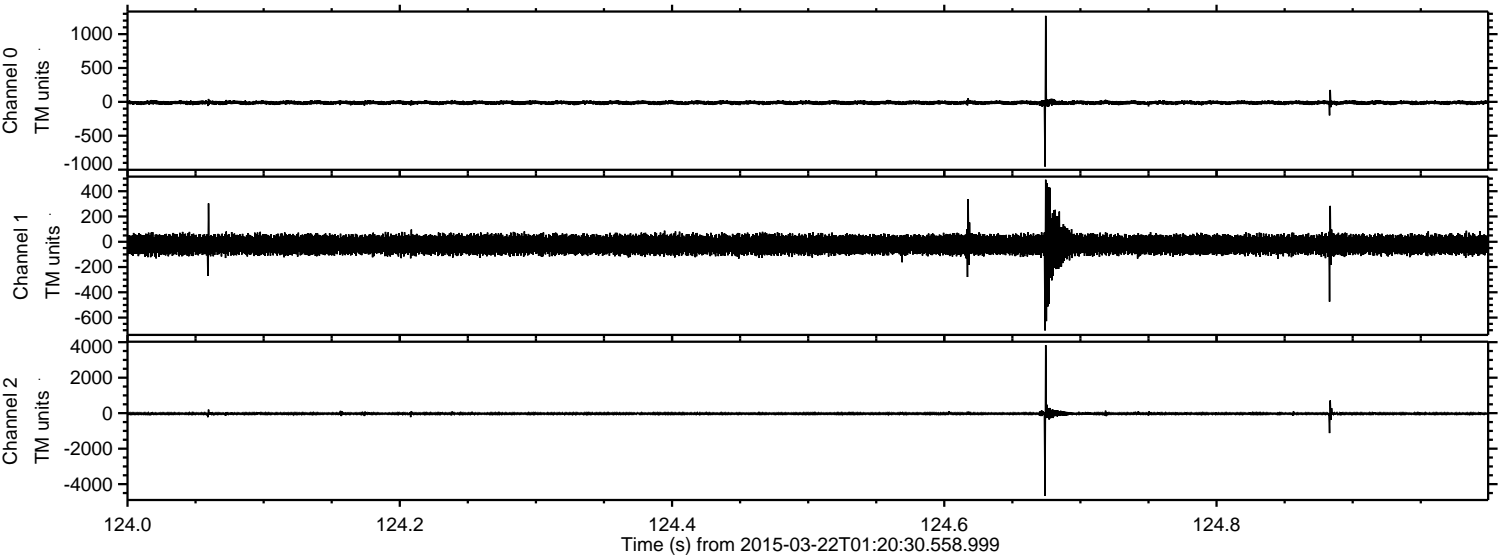
Processed Sun Mar 22 06:28:42 2015 by ELM ver.2012-10-06 from 001\_\_elm20150322\_012029\_\_dat00.bin





ELMAVAN 3D WAVEFORMS (Measured data sampled at 50 kHz) 49803 packets of 144 samples from 2015-03-22T01:20:30.558.999. Part 125/144

Processed Sun Mar 22 06:28:43 2015 by ELM ver.2012-10-06 from 001\_\_elm20150322\_012029\_\_dat00.bin



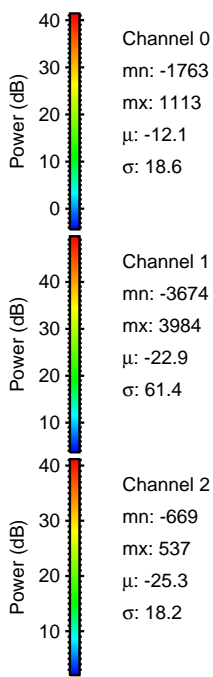
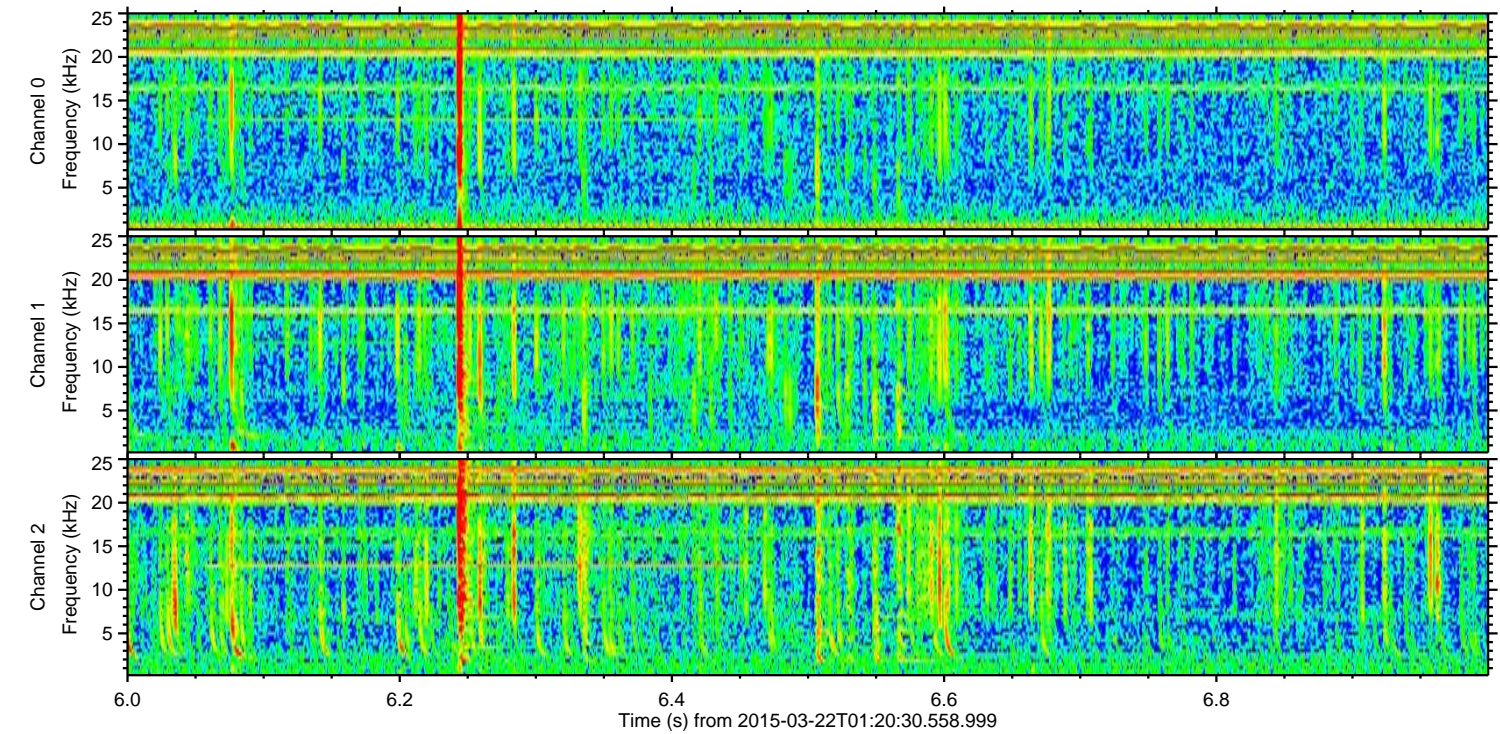
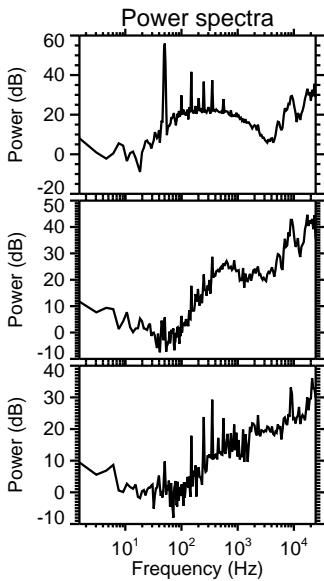
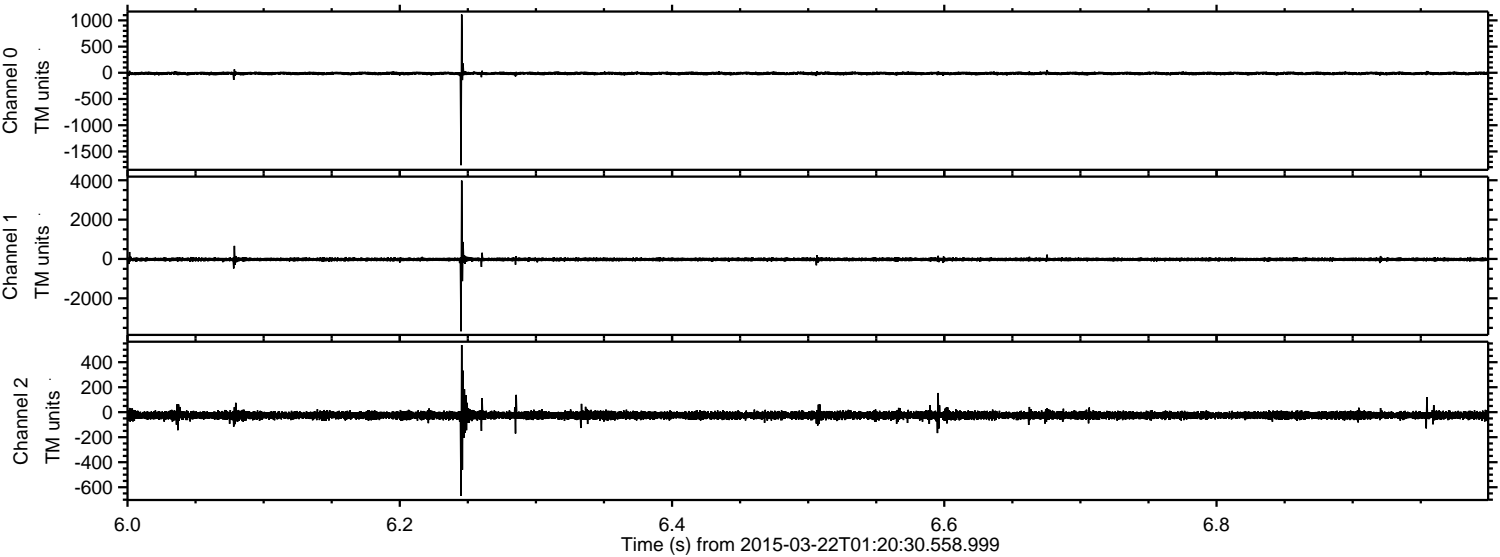
Channel 0  
mn: -955  
mx: 1270  
 $\mu$ : -12.1  
 $\sigma$ : 16.1

Channel 1  
mn: -702  
mx: 491  
 $\mu$ : -23.0  
 $\sigma$ : 41.2

Channel 2  
mn: -4660  
mx: 3834  
 $\mu$ : -25.3  
 $\sigma$ : 46.1

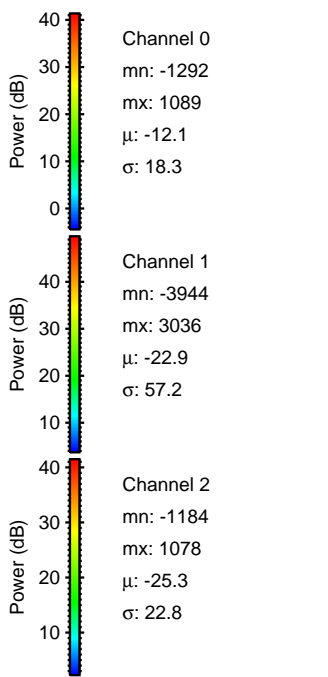
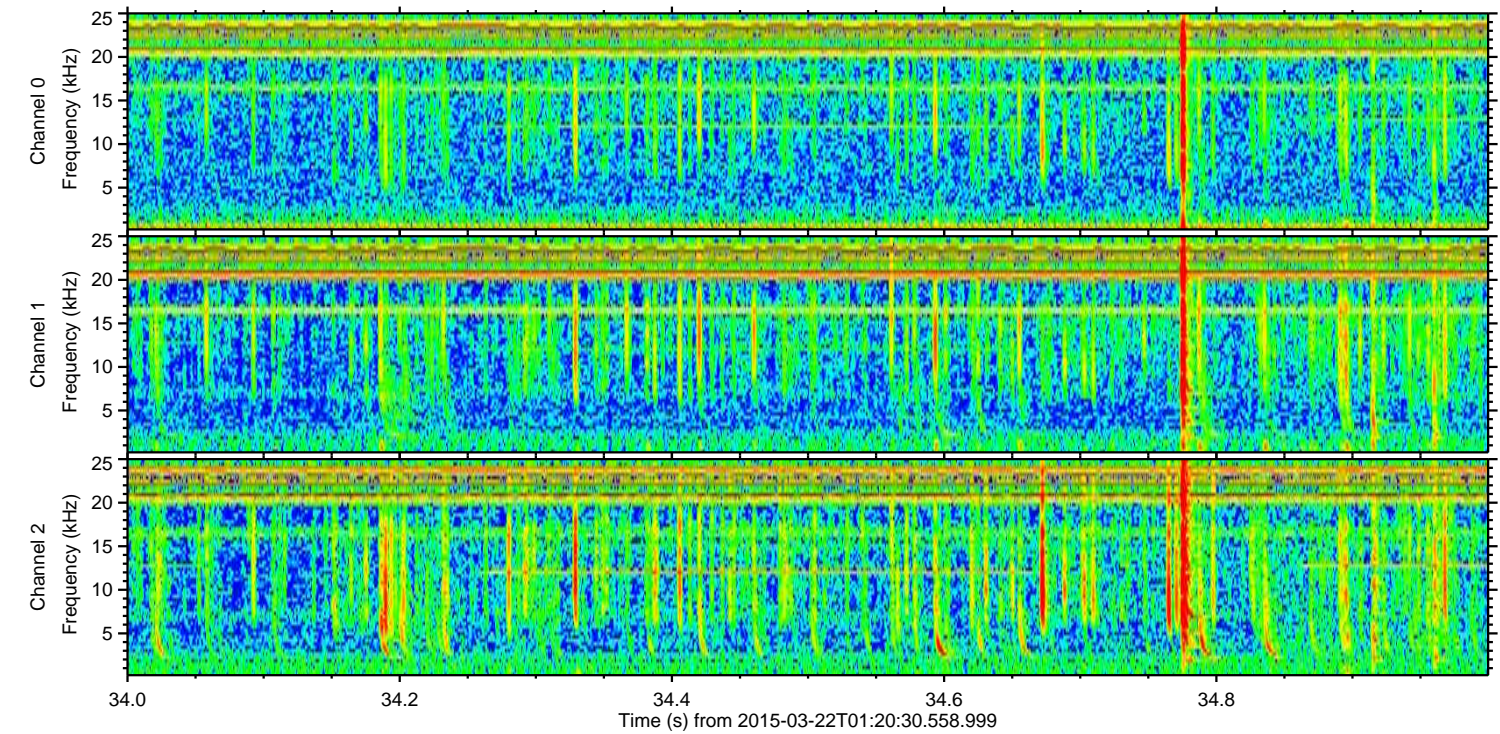
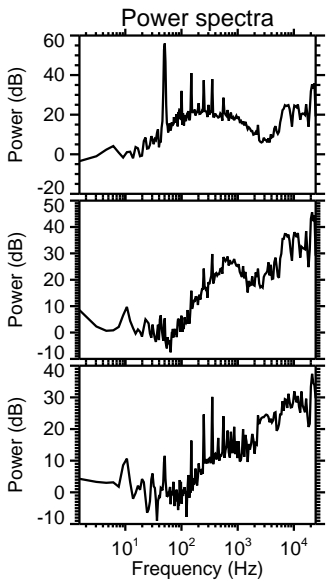
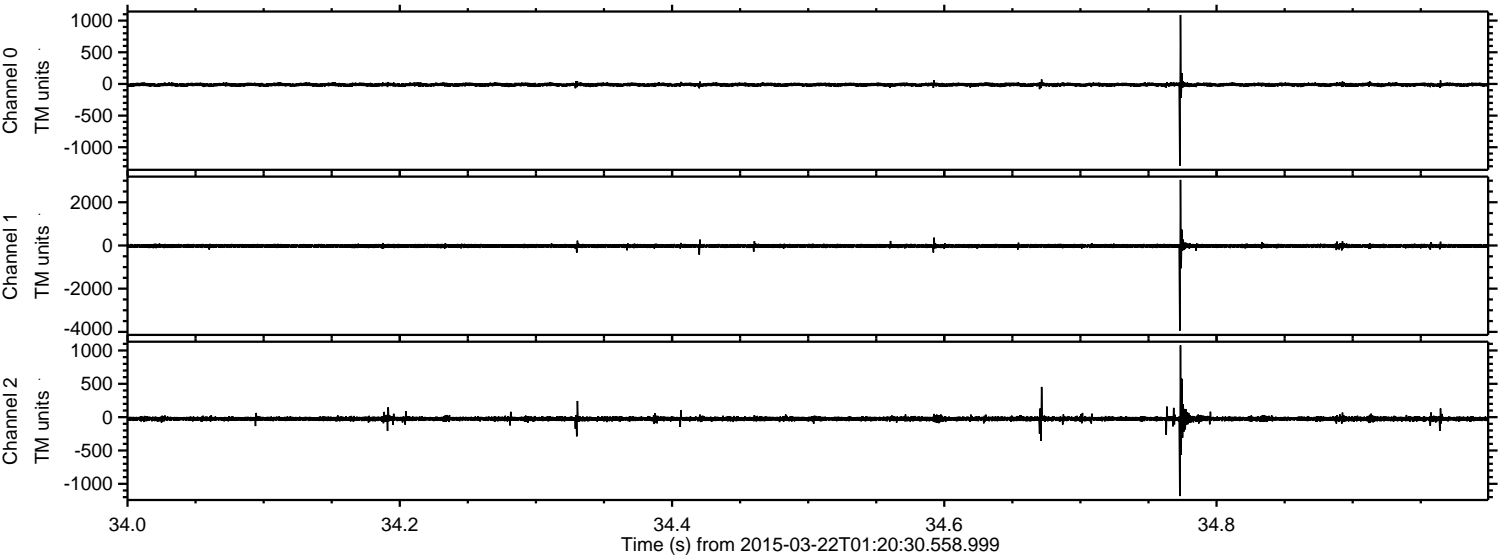


Processed Sun Mar 22 06:28:44 2015 by ELM ver.2012-10-06 from 001\_\_elm20150322\_012029\_\_dat00.bin





Processed Sun Mar 22 06:28:45 2015 by ELM ver.2012-10-06 from 001\_\_elm20150322\_012029\_\_dat00.bin





Processed Sun Mar 22 06:28:46 2015 by ELM ver.2012-10-06 from 001\_\_elm20150322\_012029\_\_dat00.bin

