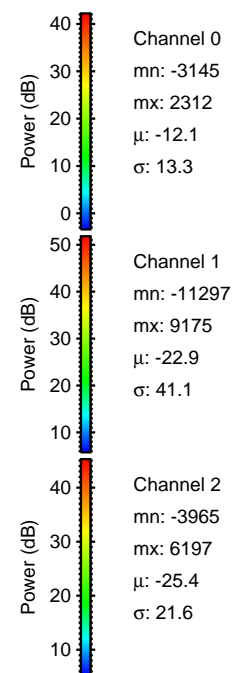
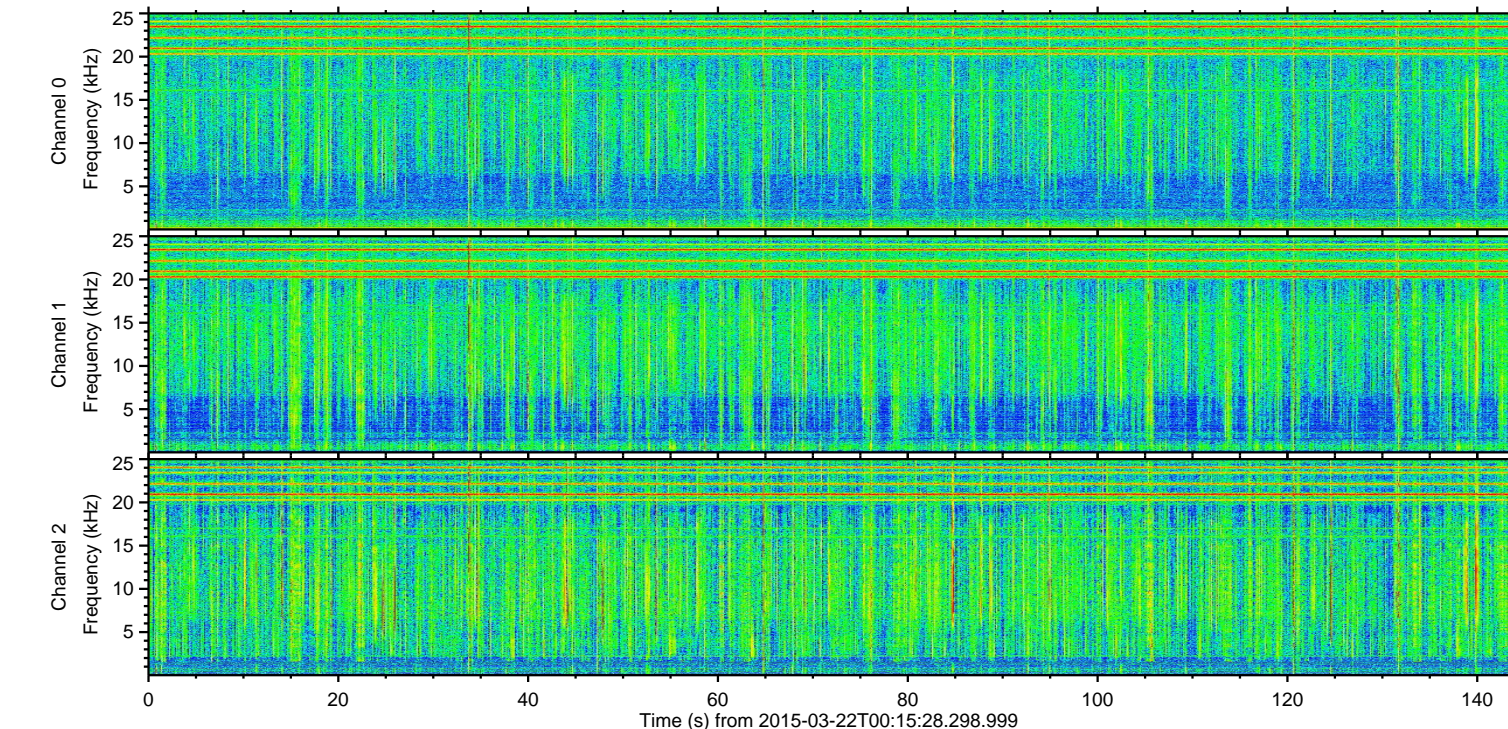
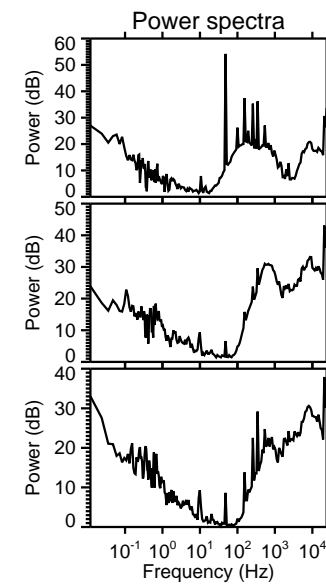
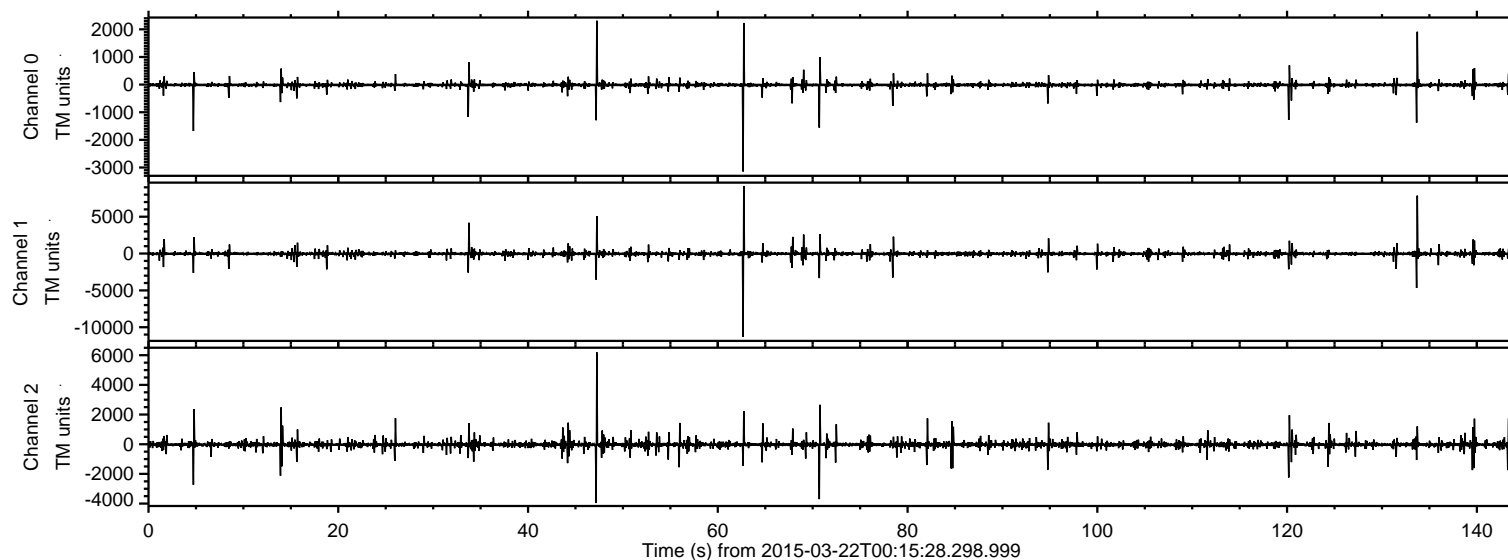


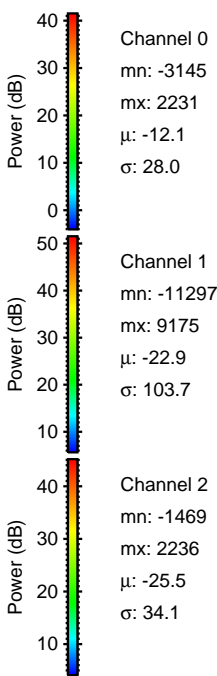
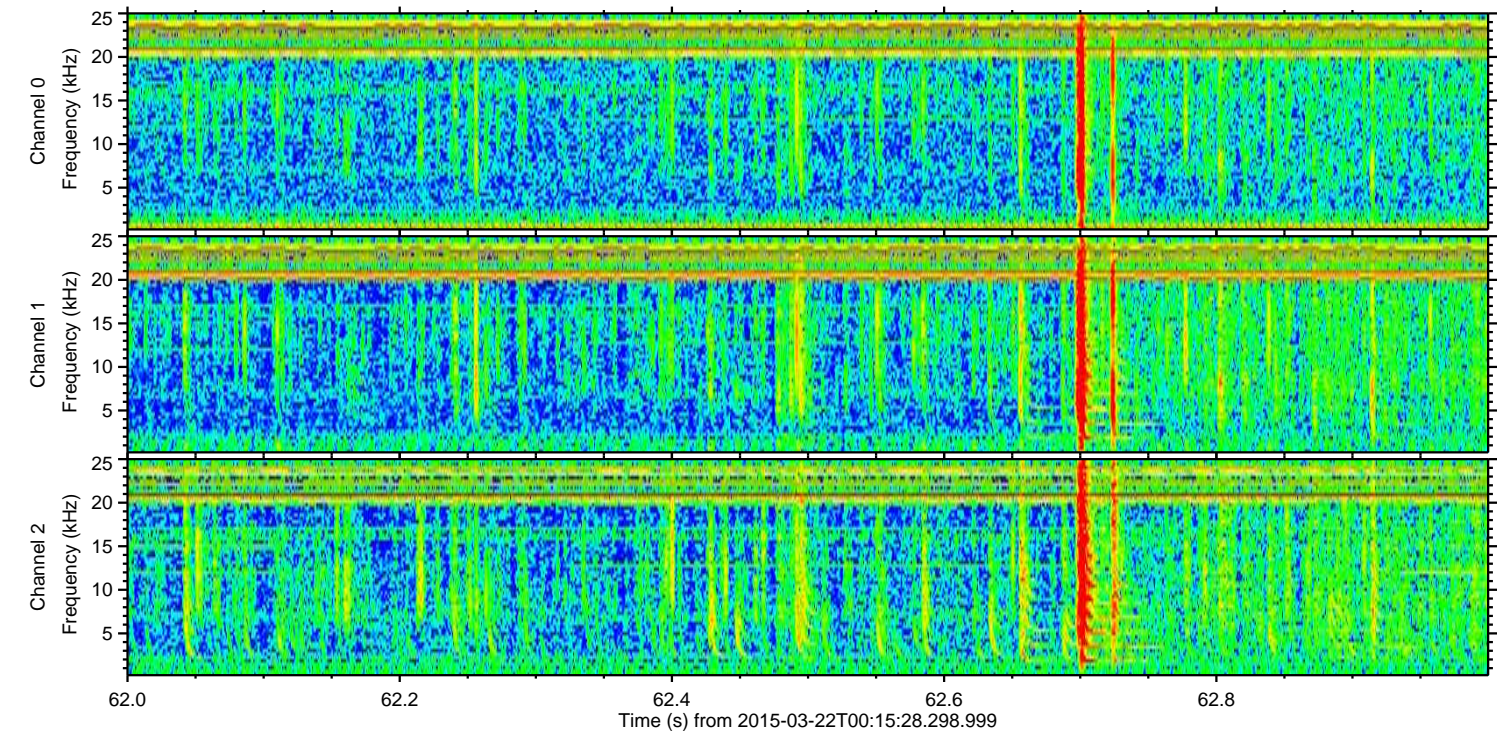
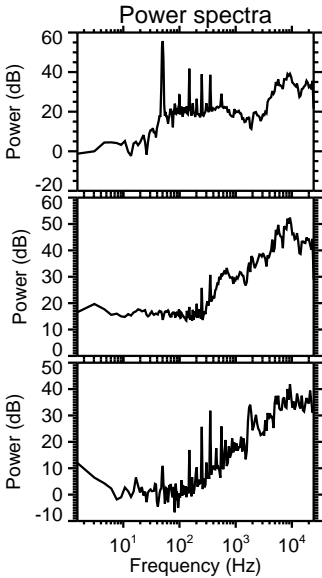
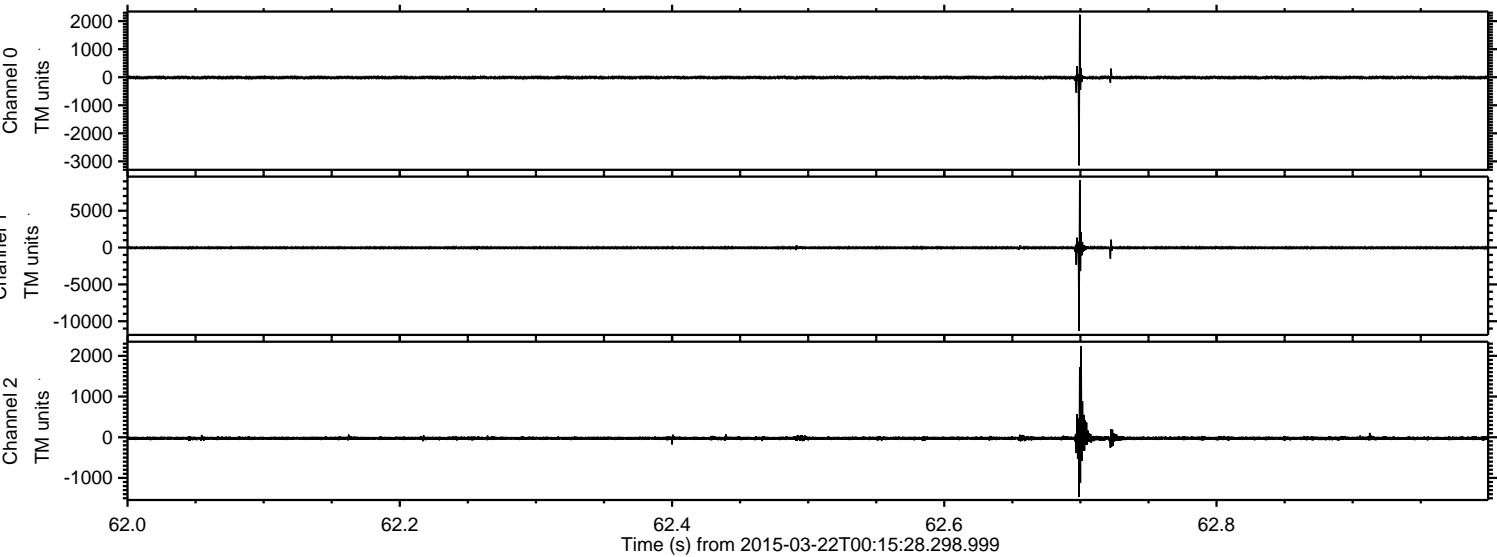
ELMAVAN 3D WAVEFORMS (Measured data sampled at 50 kHz) 49793 packets of 144 samples from 2015-03-22T00:15:28.298.999.

Processed Sun Mar 22 04:15:02 2015 by ELM ver.2012-10-06 from 001__elm20150322_001527__dat00.bin



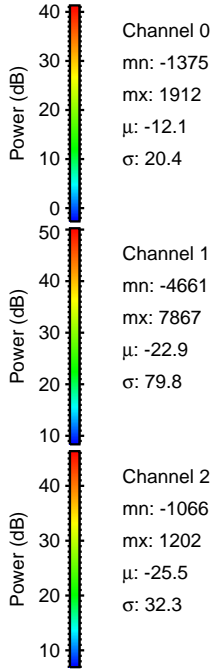
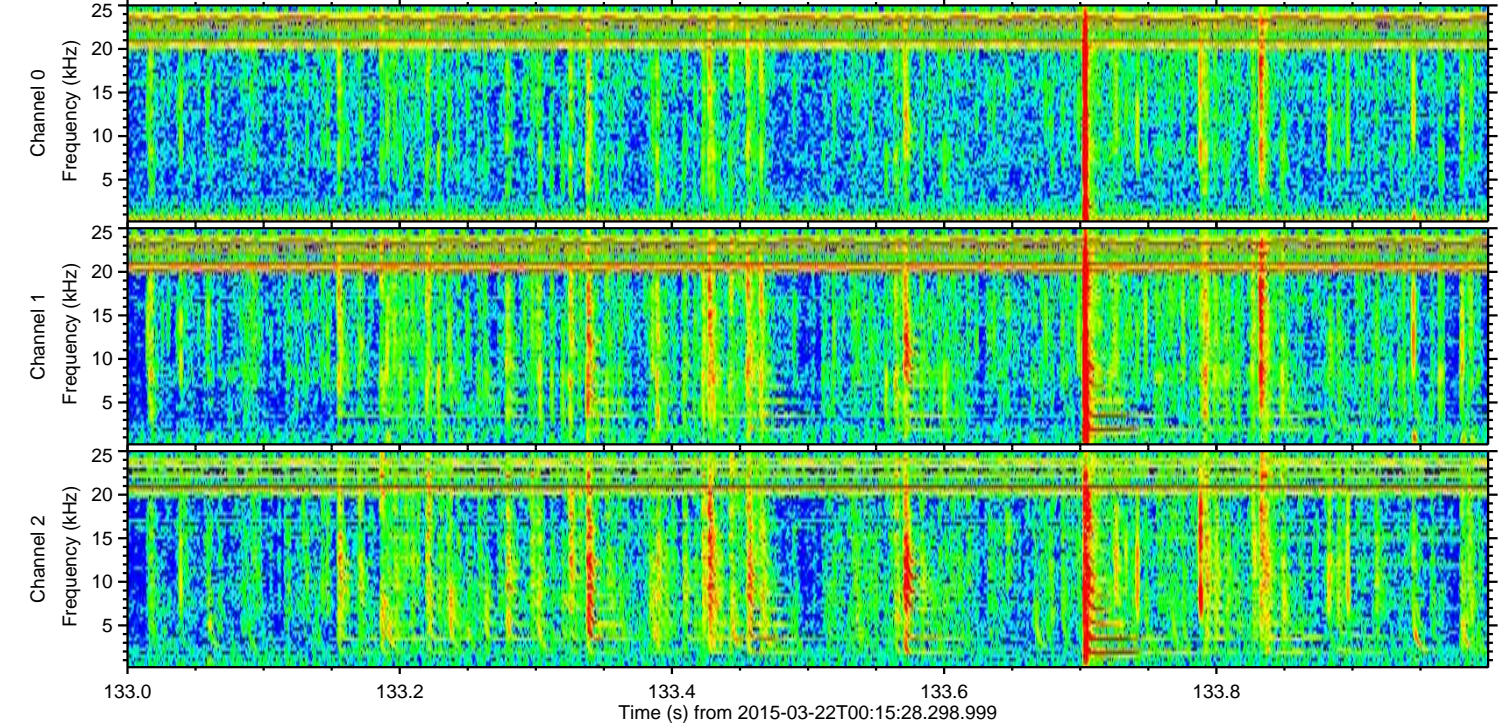
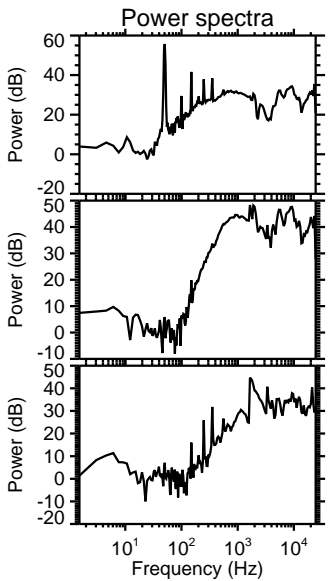
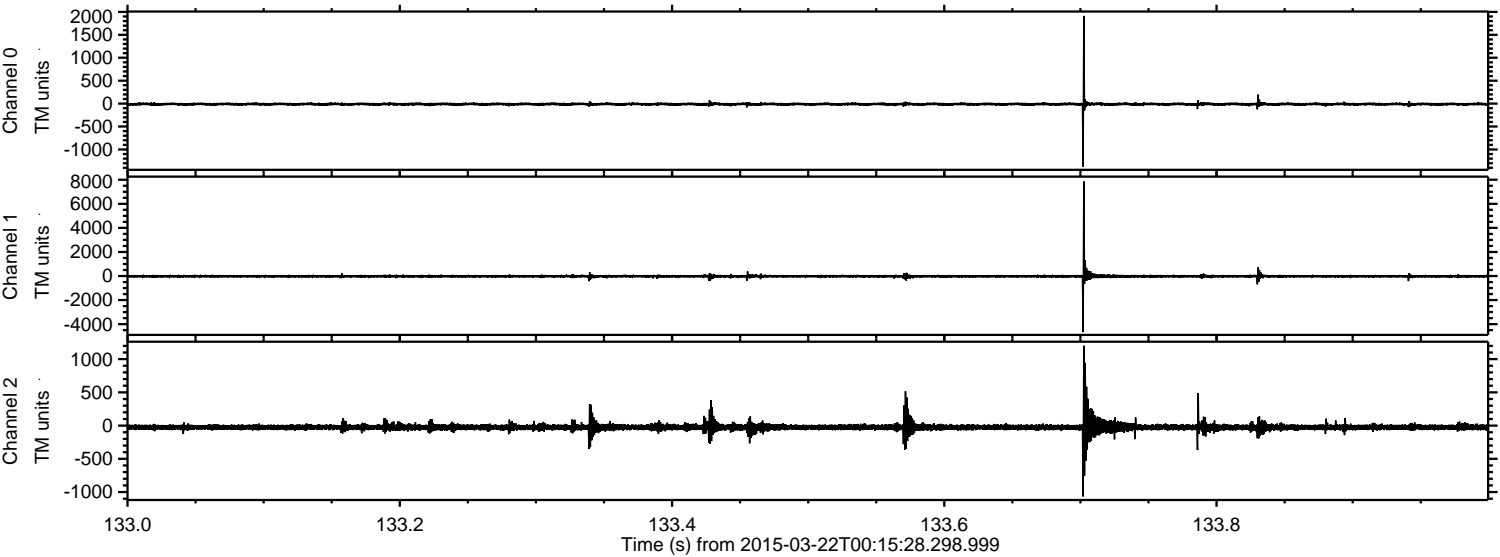
ELMAVAN 3D WAVEFORMS (Measured data sampled at 50 kHz) 49793 packets of 144 samples from 2015-03-22T00:15:28.298.999. Part 63/144

Processed Sun Mar 22 04:15:13 2015 by ELM ver.2012-10-06 from 001__elm20150322_001527__dat00.bin

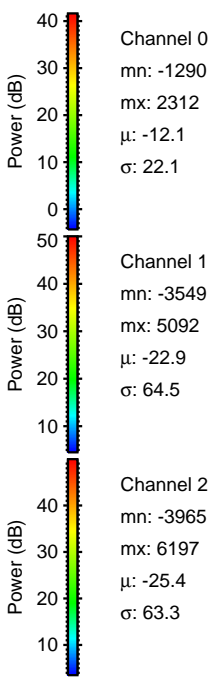
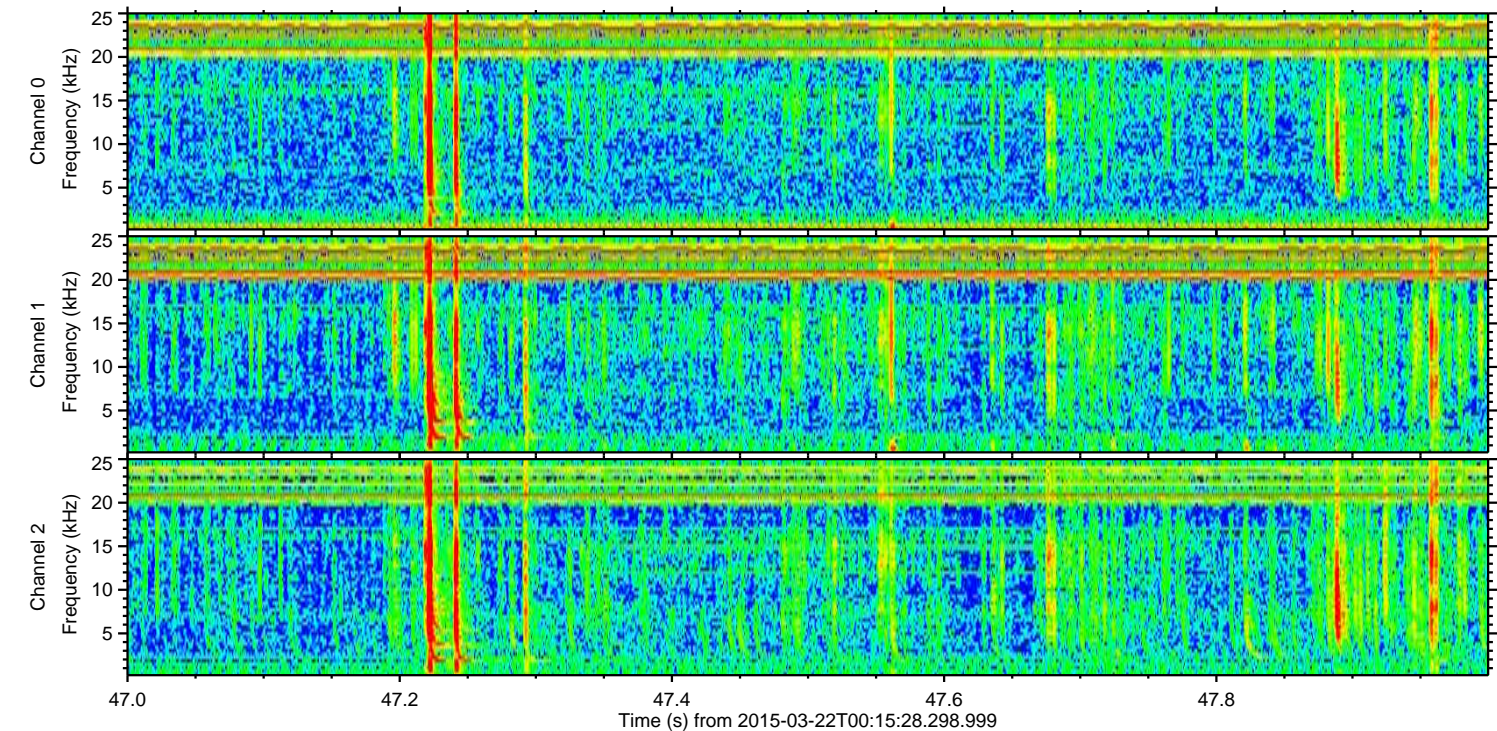
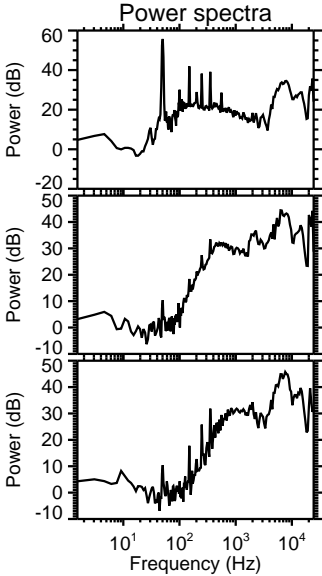
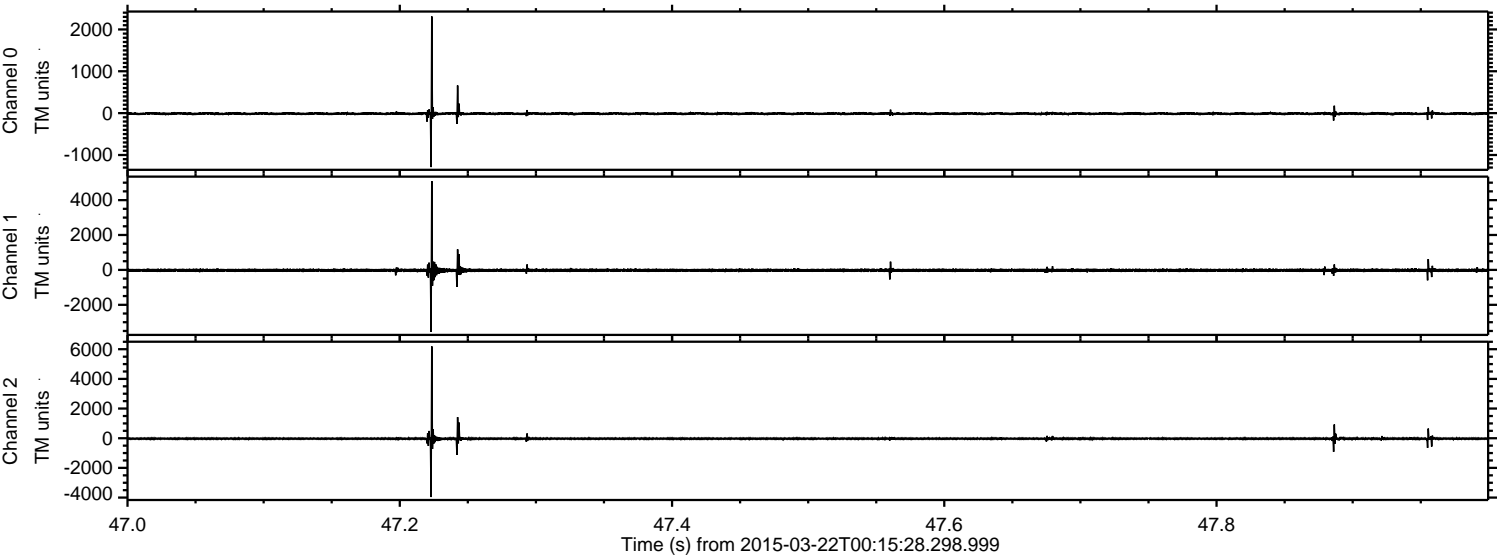


ELMAVAN 3D WAVEFORMS (Measured data sampled at 50 kHz) 49793 packets of 144 samples from 2015-03-22T00:15:28.298.999. Part 134/144

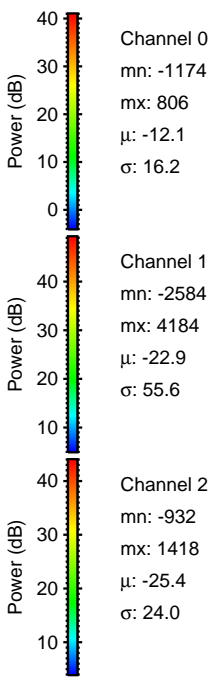
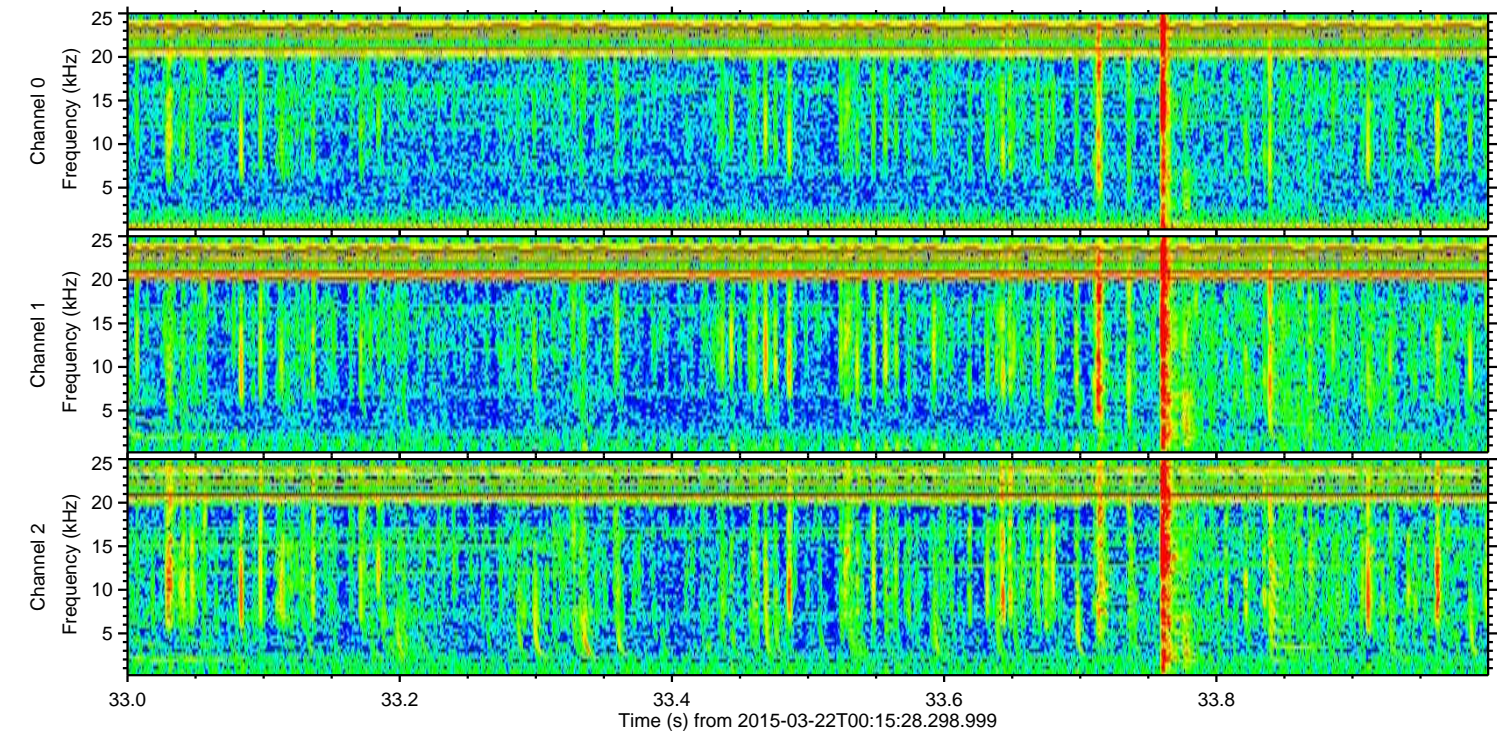
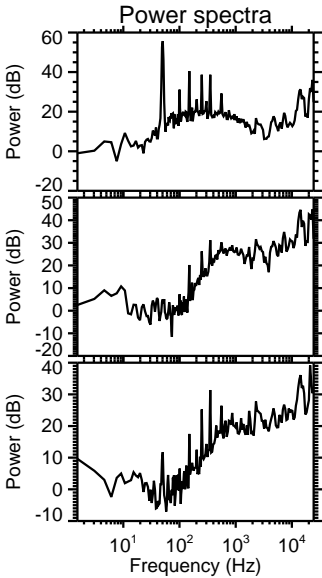
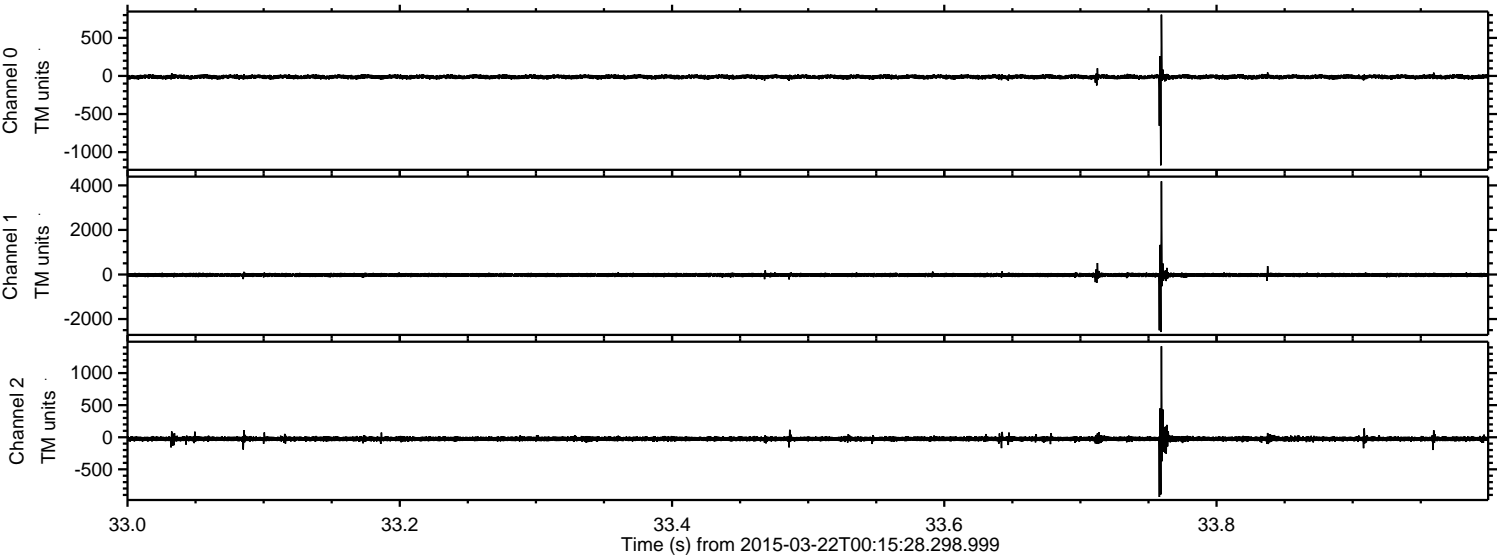
Processed Sun Mar 22 04:15:14 2015 by ELM ver.2012-10-06 from 001__elm20150322_001527__dat00.bin



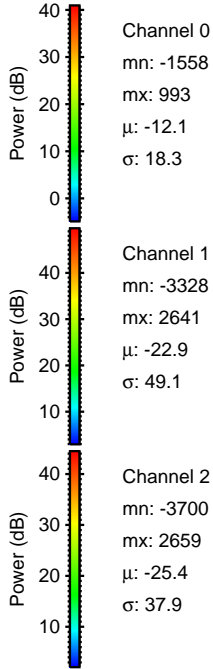
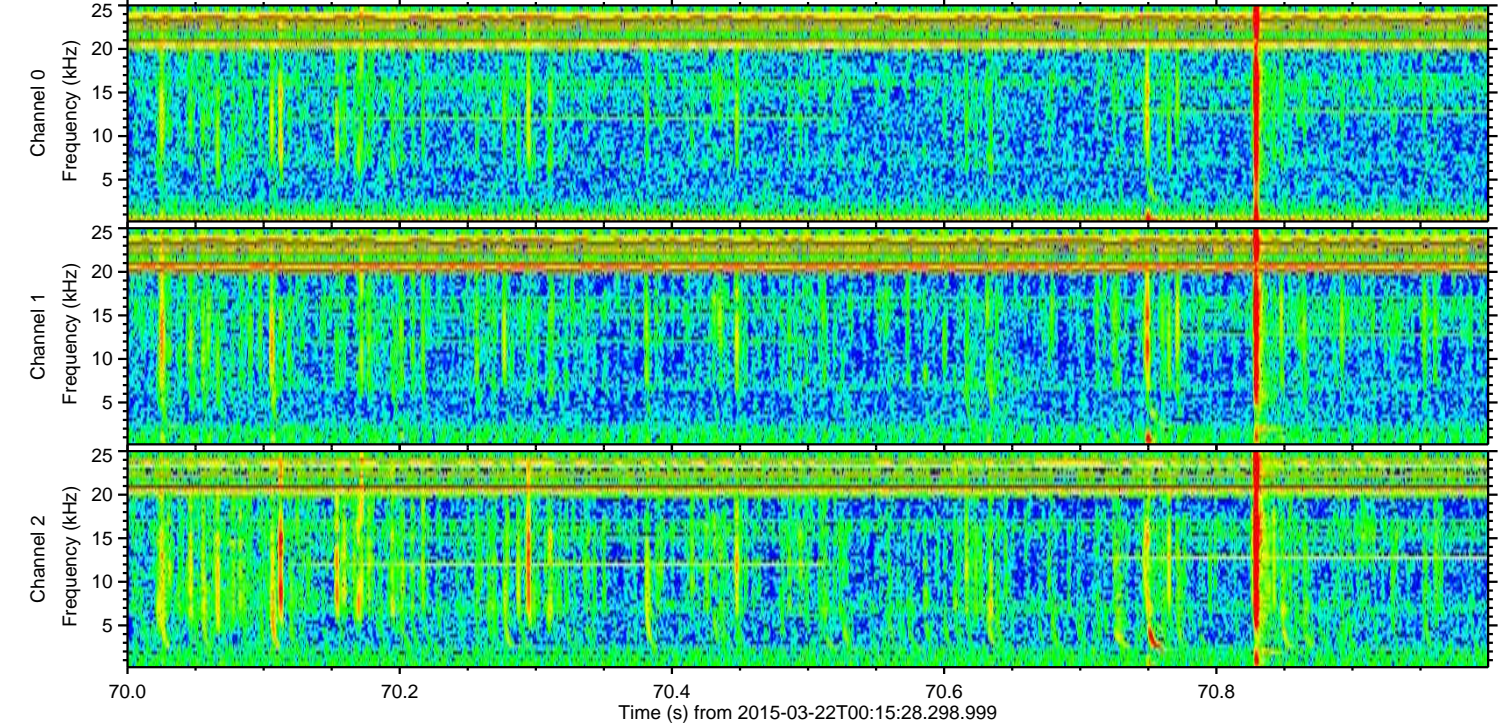
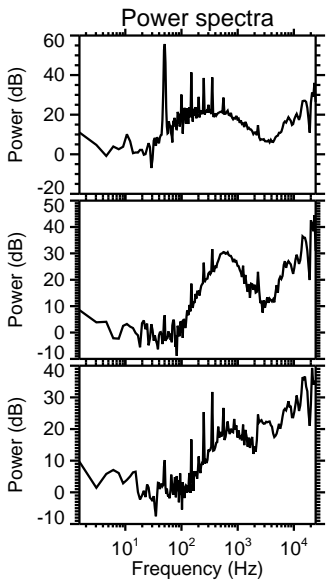
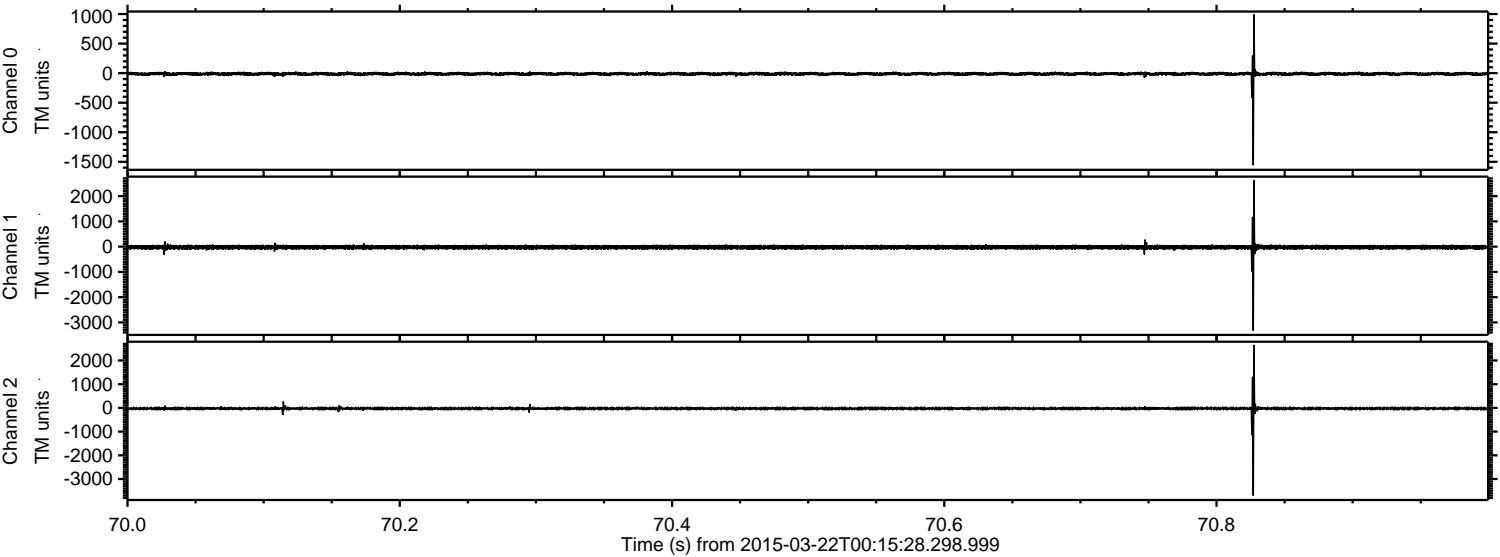
Processed Sun Mar 22 04:15:15 2015 by ELM ver.2012-10-06 from 001__elm20150322_001527__dat00.bin



Processed Sun Mar 22 04:15:16 2015 by ELM ver.2012-10-06 from 001__elm20150322_001527__dat00.bin

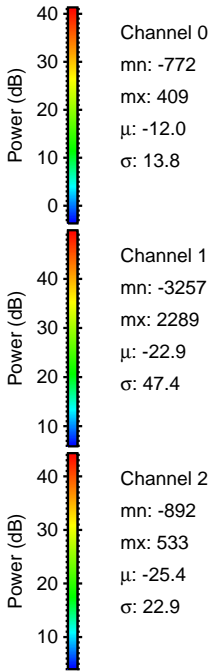
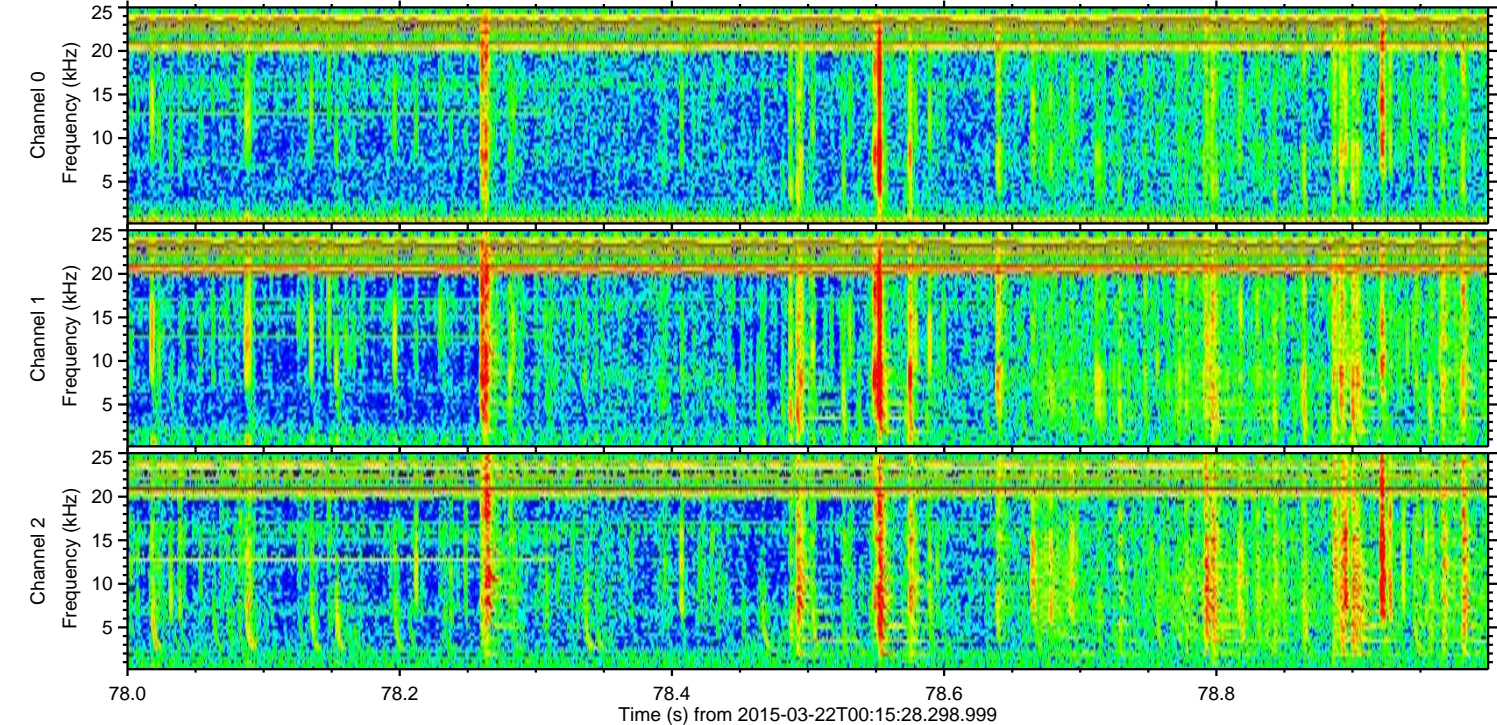
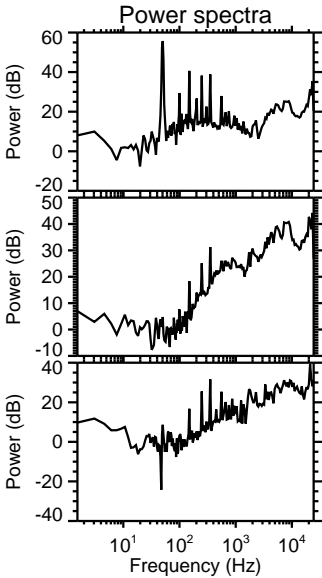
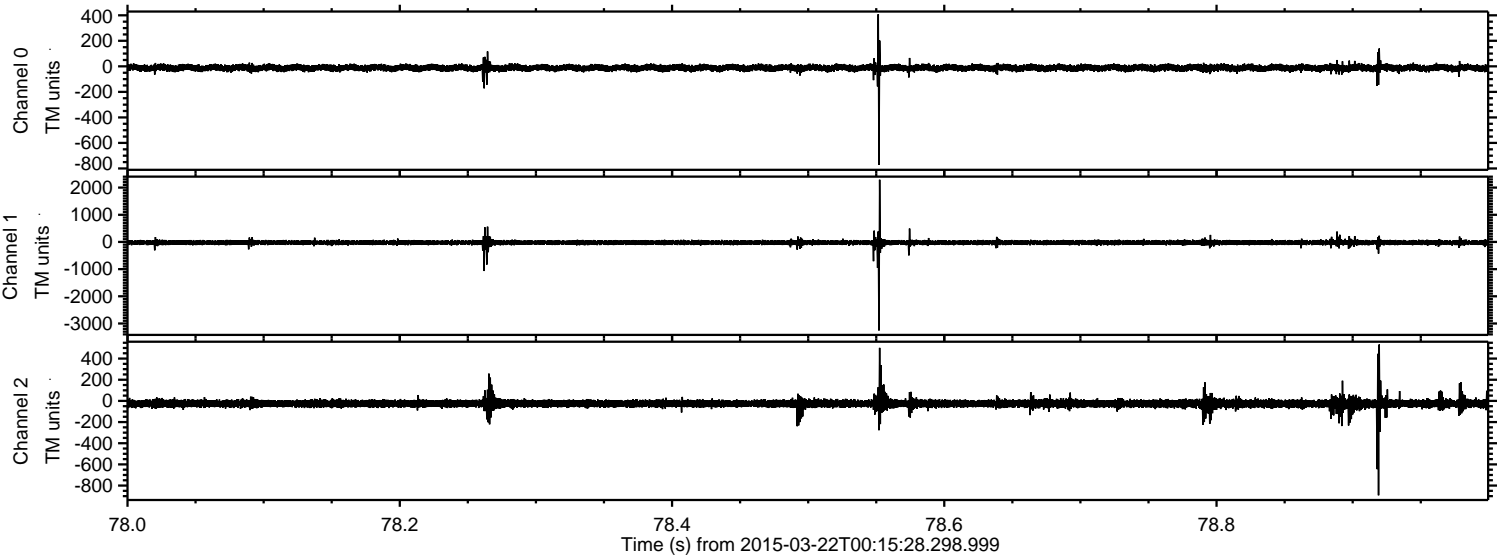


Processed Sun Mar 22 04:15:17 2015 by ELM ver.2012-10-06 from 001__elm20150322_001527__dat00.bin

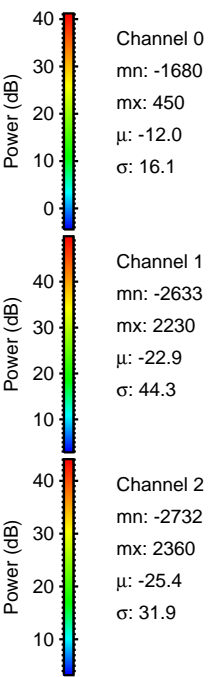
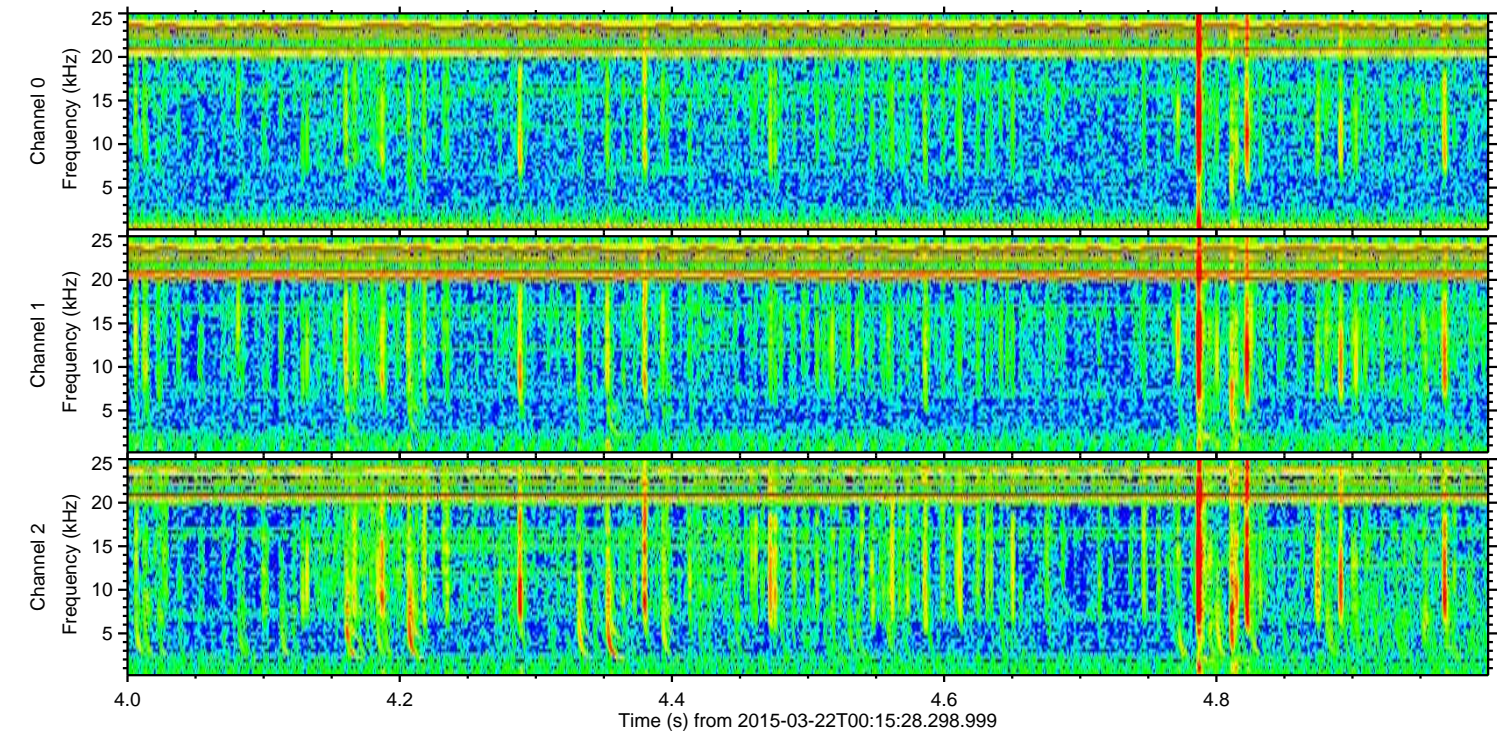
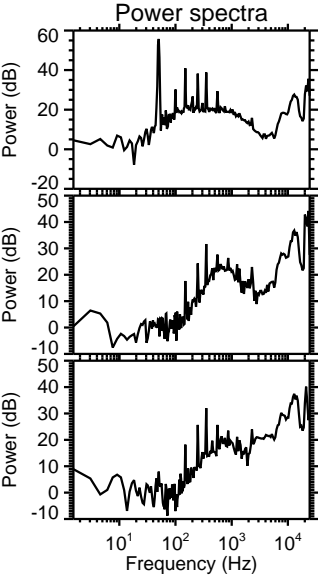
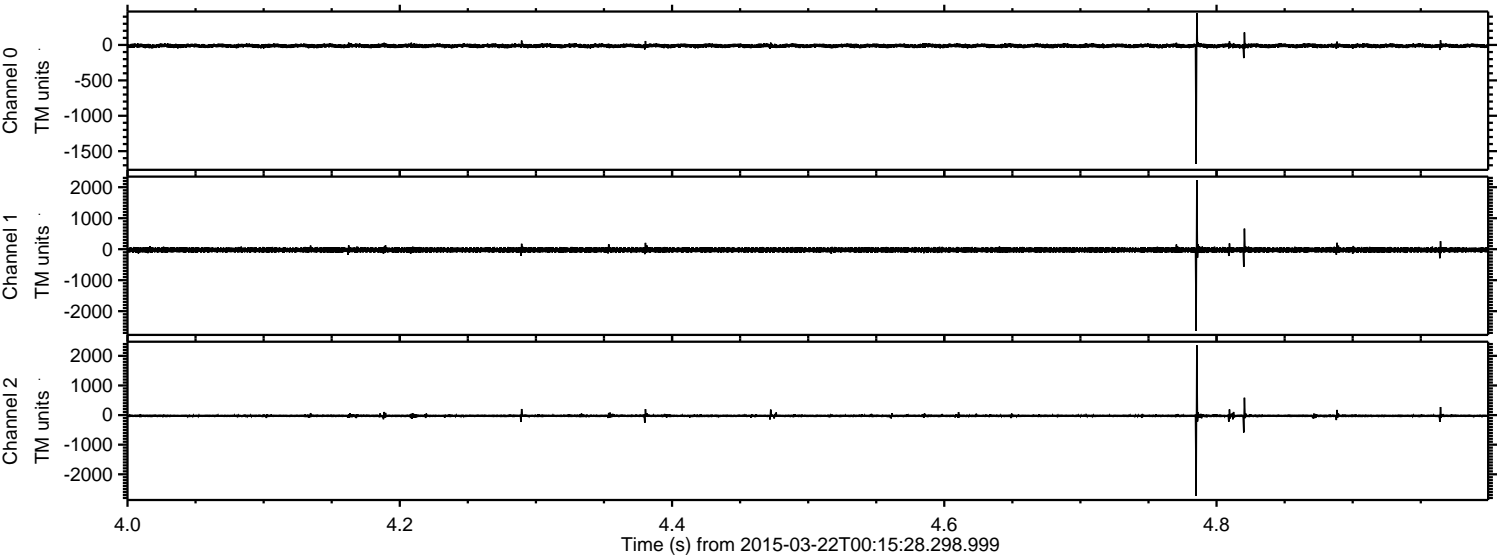


ELMAVAN 3D WAVEFORMS (Measured data sampled at 50 kHz) 49793 packets of 144 samples from 2015-03-22T00:15:28.298.999. Part 79/144

Processed Sun Mar 22 04:15:18 2015 by ELM ver.2012-10-06 from 001__elm20150322_001527__dat00.bin



Processed Sun Mar 22 04:15:19 2015 by ELM ver.2012-10-06 from 001__elm20150322_001527__dat00.bin

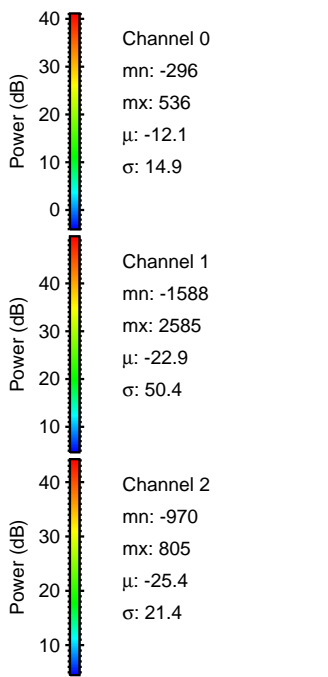
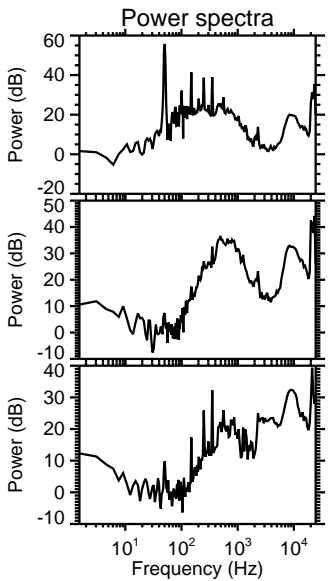
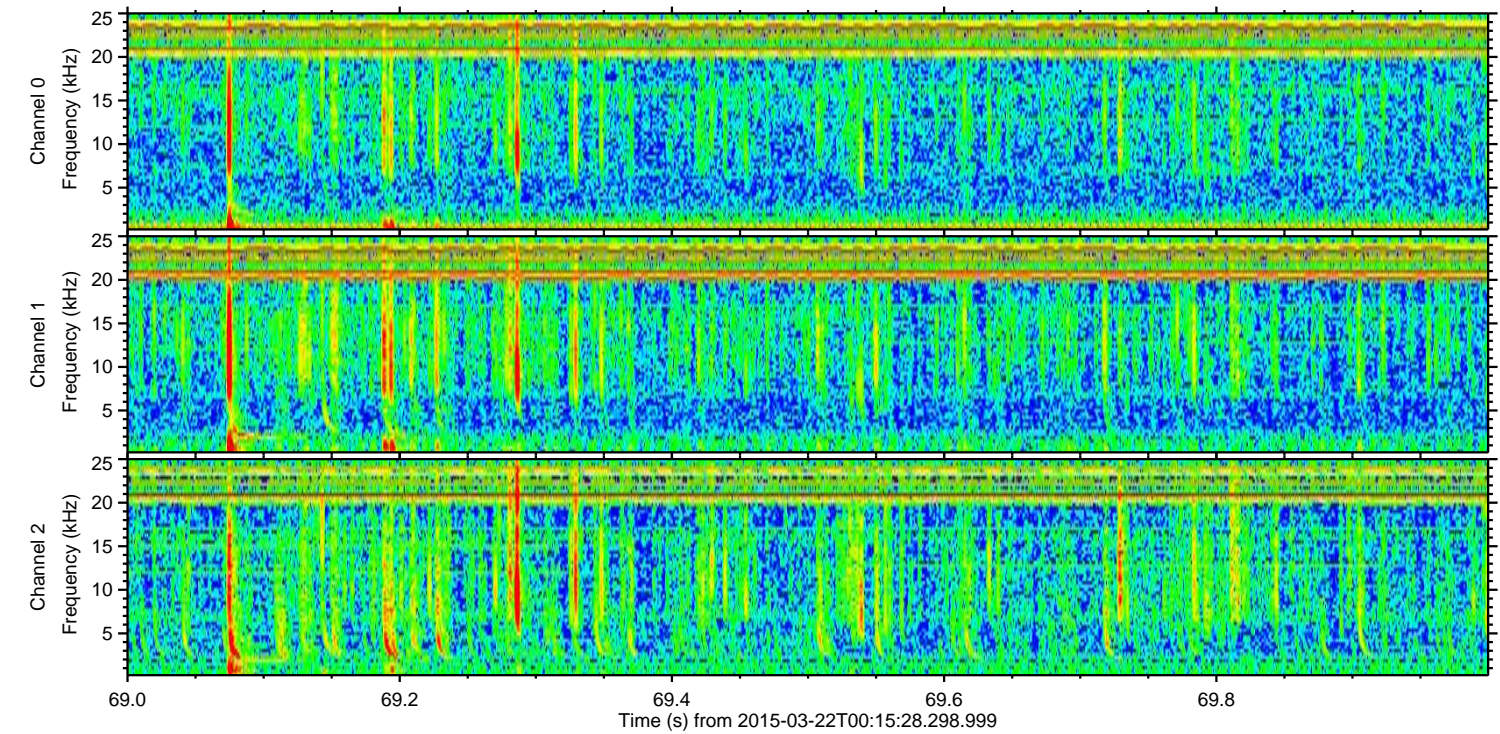
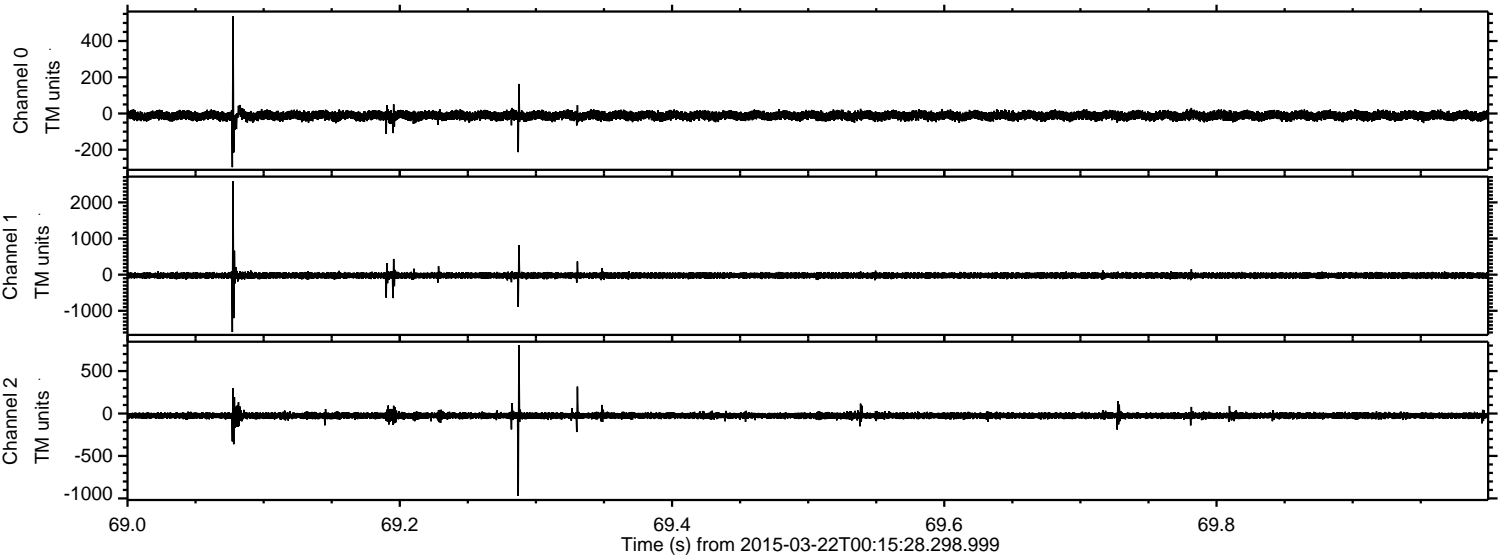


Channel 0
mn: -1680
mx: 450
 μ : -12.0
 σ : 16.1

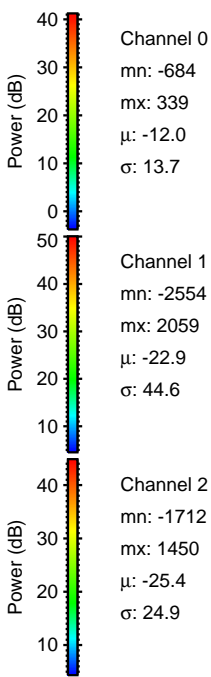
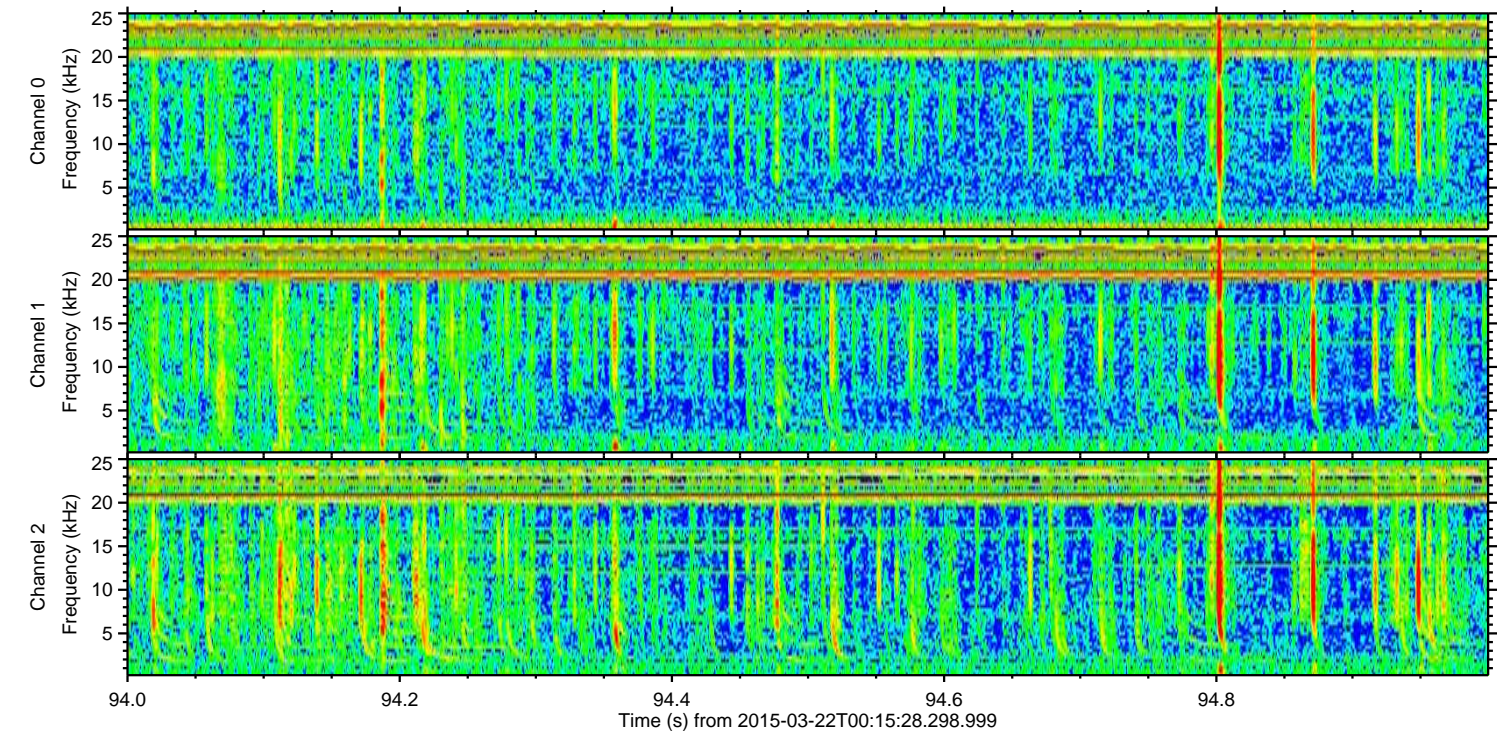
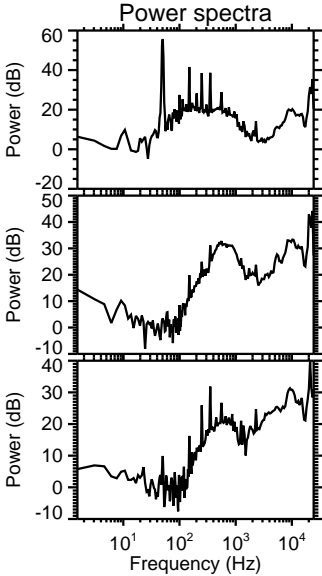
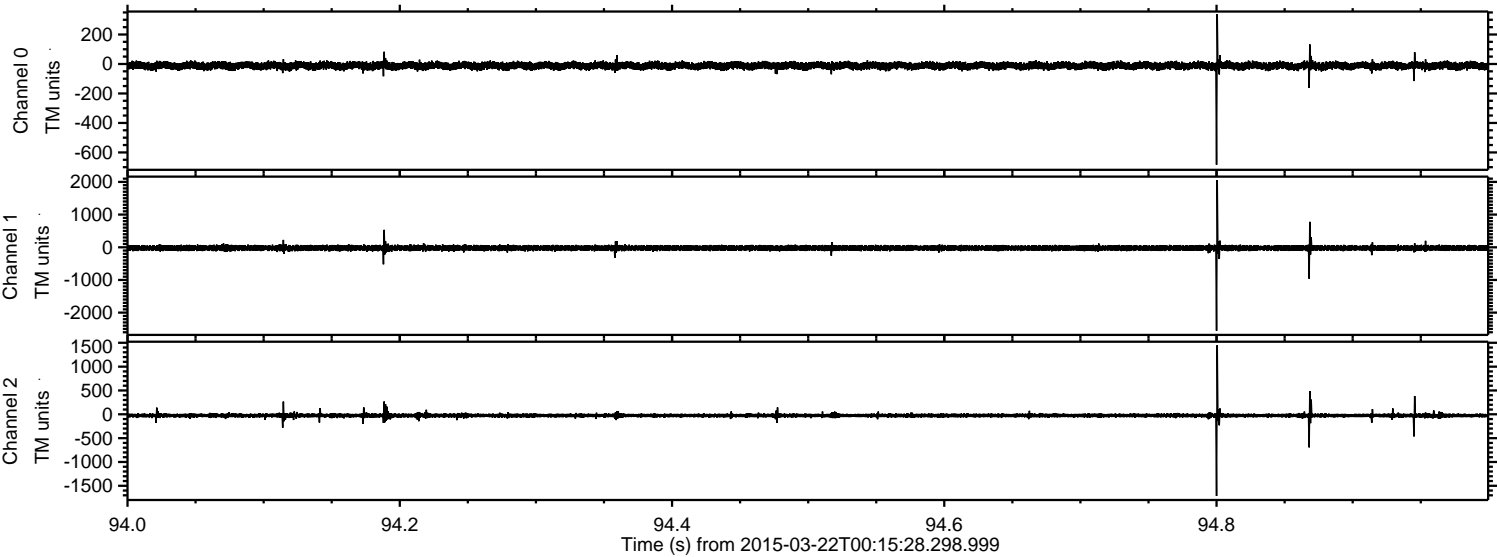
Channel 1
mn: -2633
mx: 2230
 μ : -22.9
 σ : 44.3

Channel 2
mn: -2732
mx: 2360
 μ : -25.4
 σ : 31.9

Processed Sun Mar 22 04:15:20 2015 by ELM ver.2012-10-06 from 001__elm20150322_001527__dat00.bin



Processed Sun Mar 22 04:15:21 2015 by ELM ver.2012-10-06 from 001__elm20150322_001527__dat00.bin



Processed Sun Mar 22 04:15:22 2015 by ELM ver.2012-10-06 from 001__elm20150322_001527__dat00.bin

