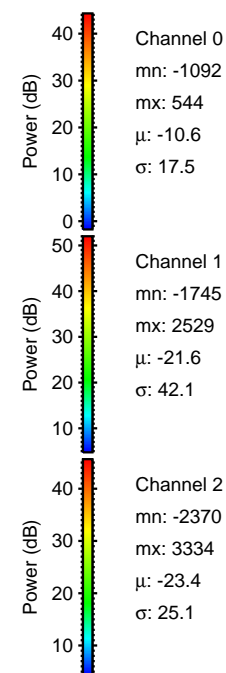
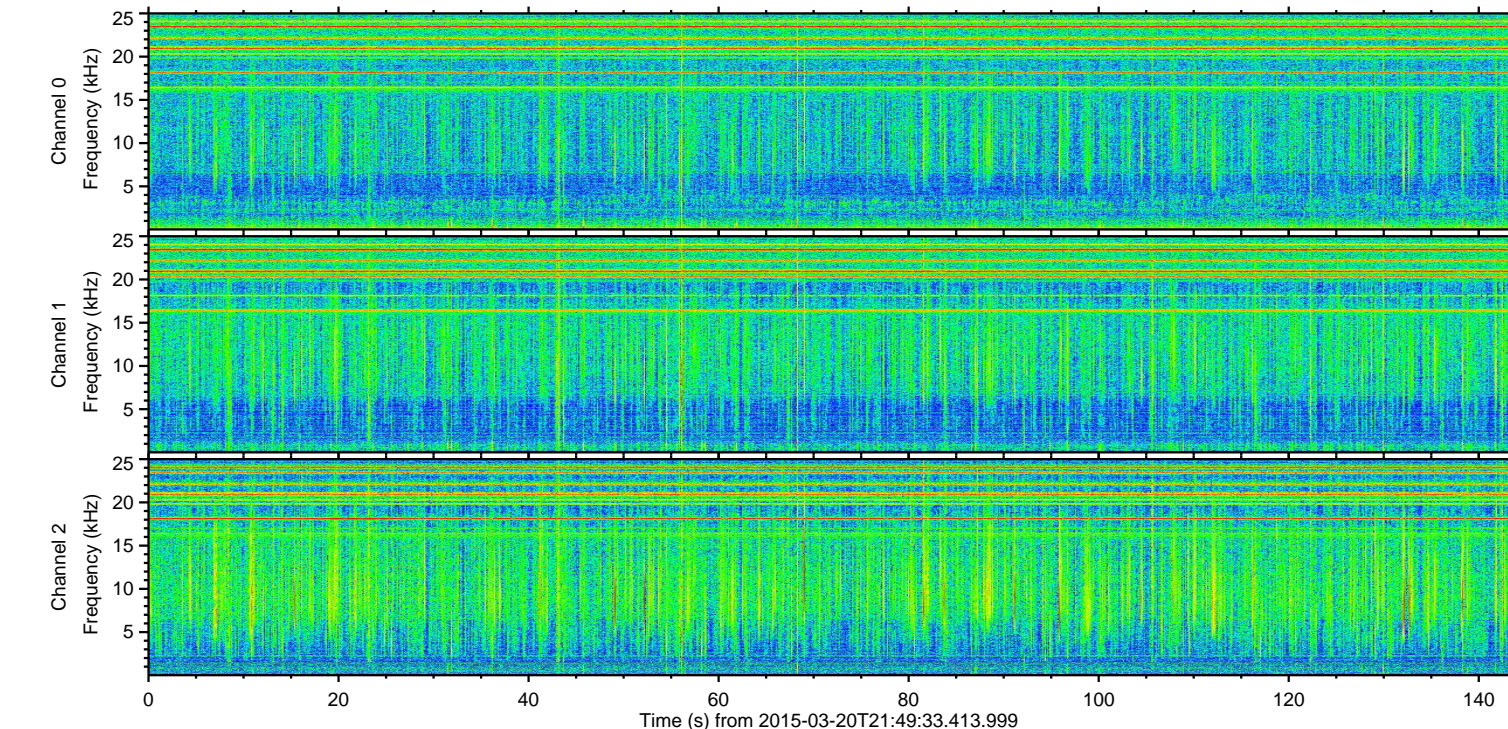
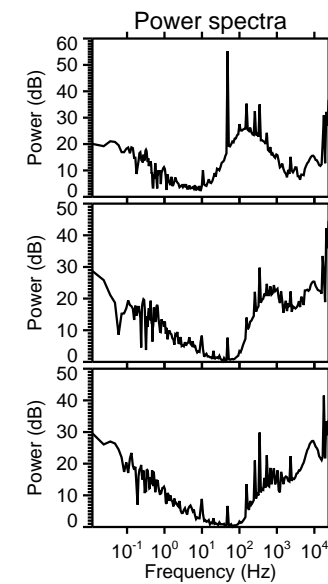
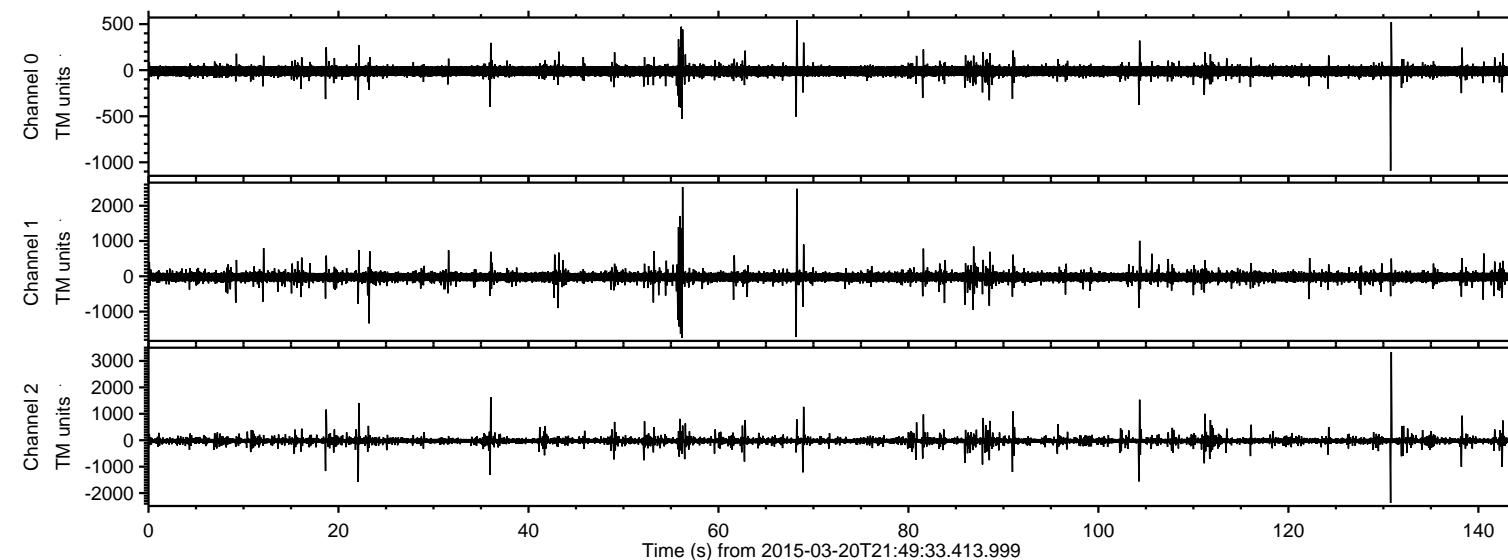


ELMAVAN 3D WAVEFORMS (Measured data sampled at 50 kHz) 49736 packets of 144 samples from 2015-03-20T21:49:33.413.999.

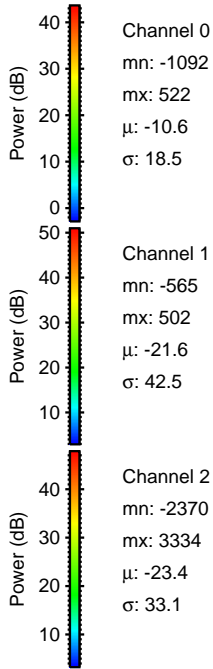
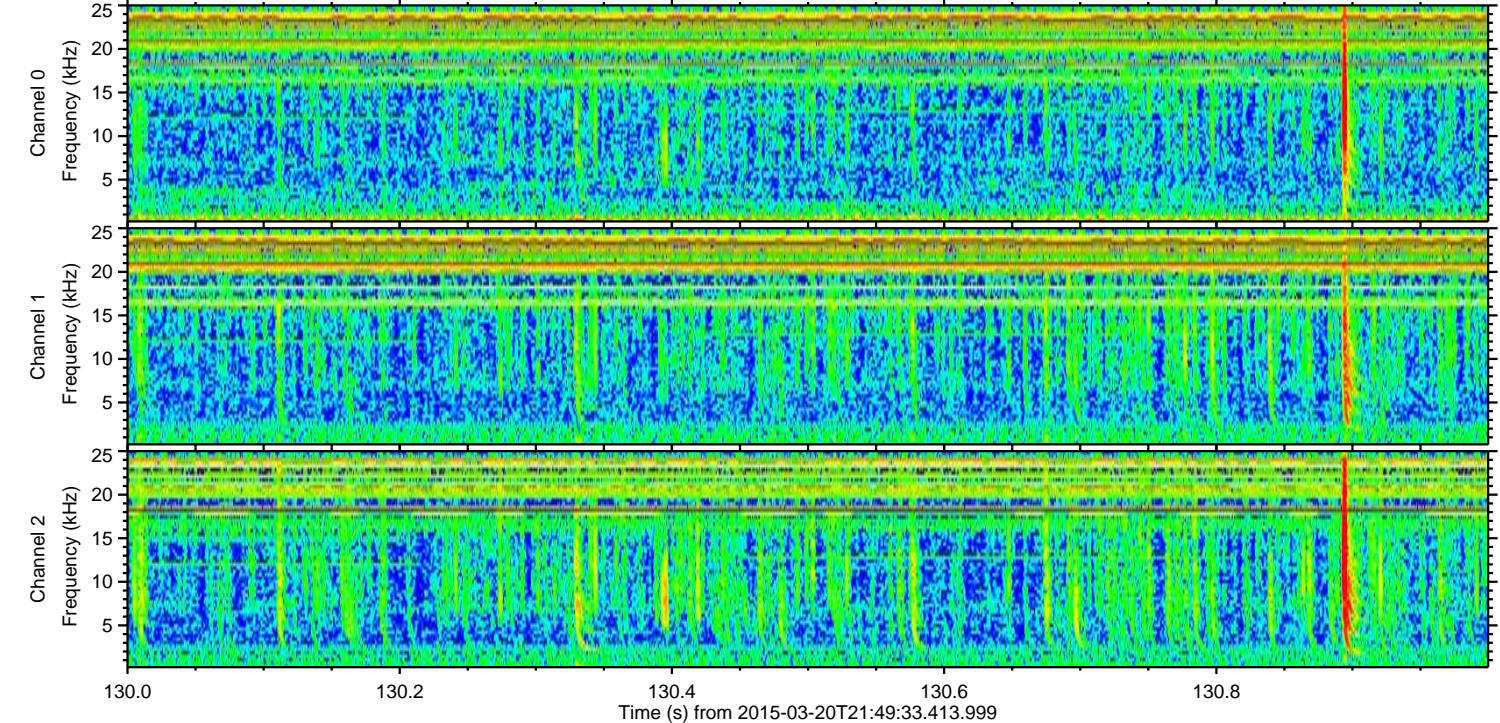
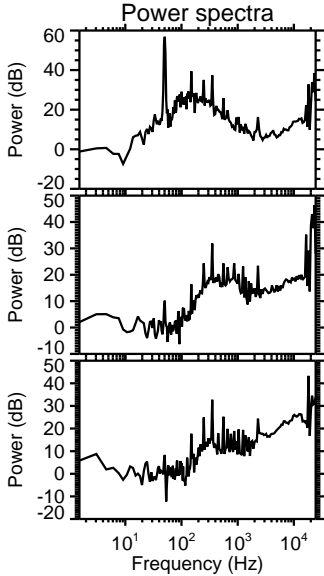
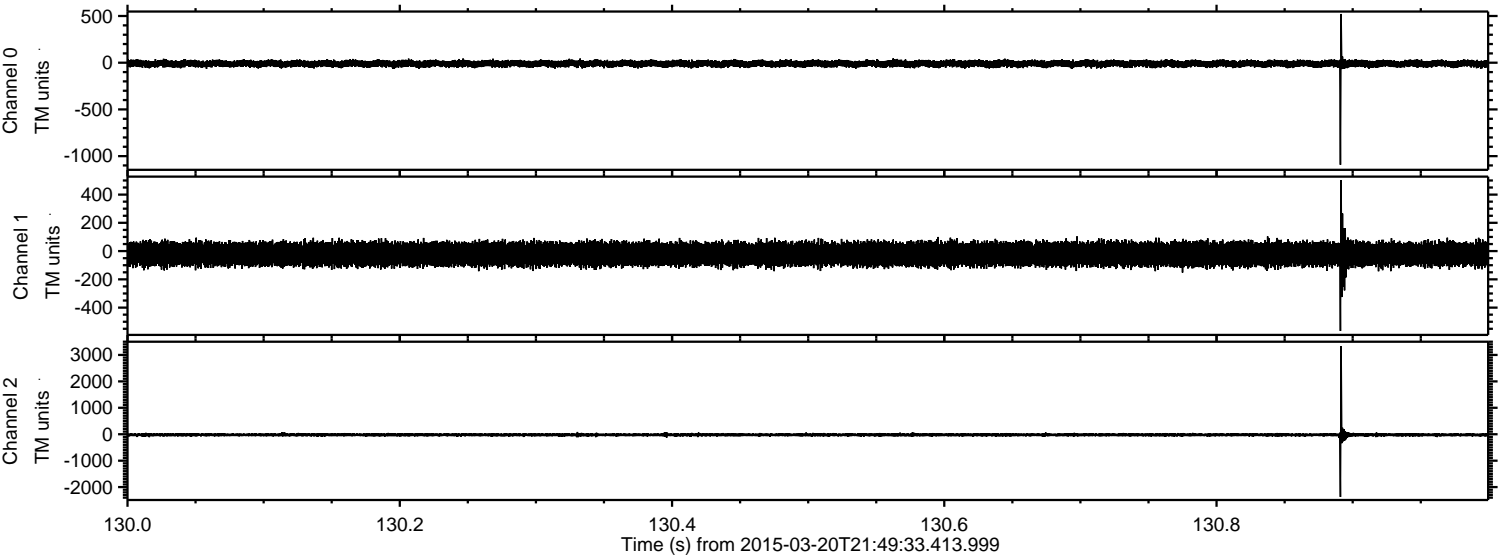
Processed Fri Mar 20 22:58:00 2015 by ELM ver.2012-10-06 from 001\_\_elm20150320\_214932\_\_dat00.bin





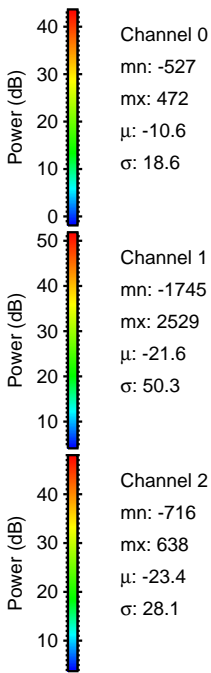
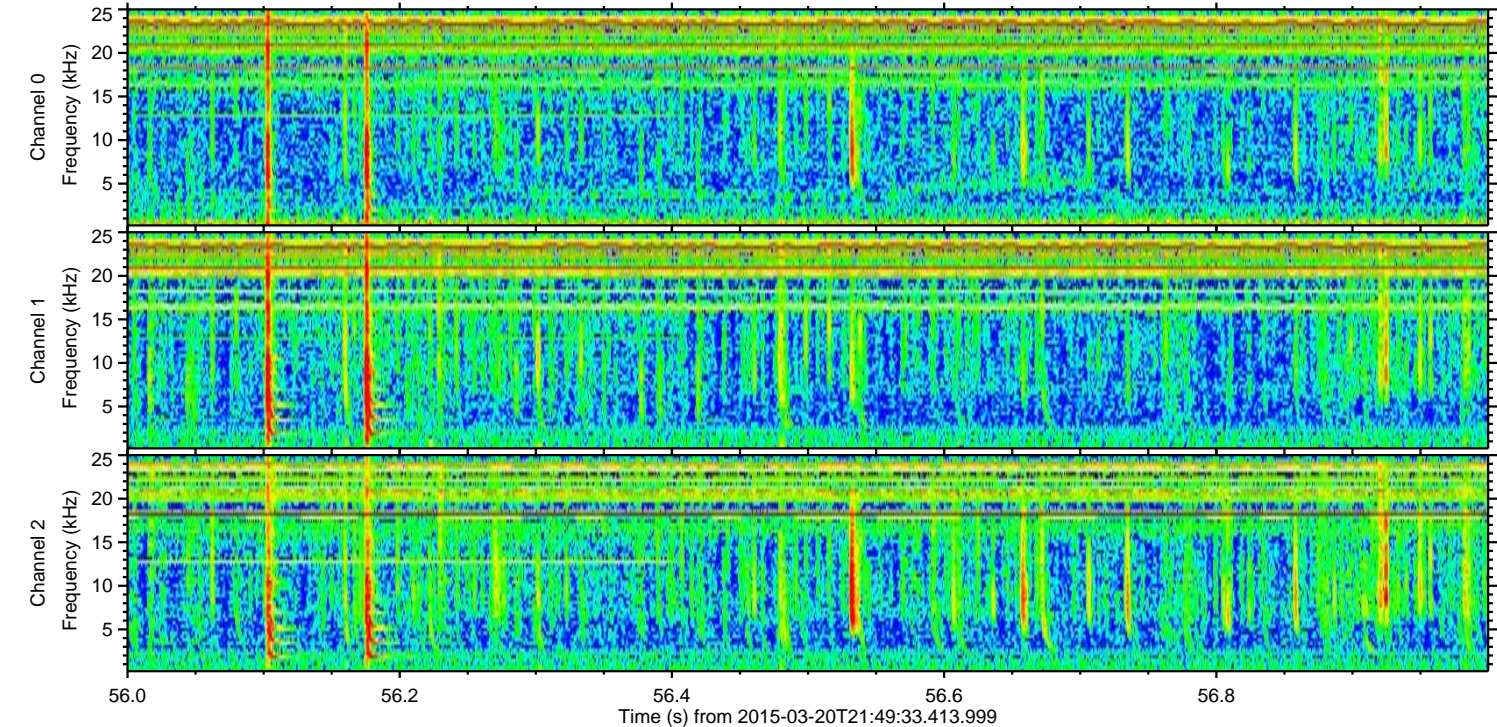
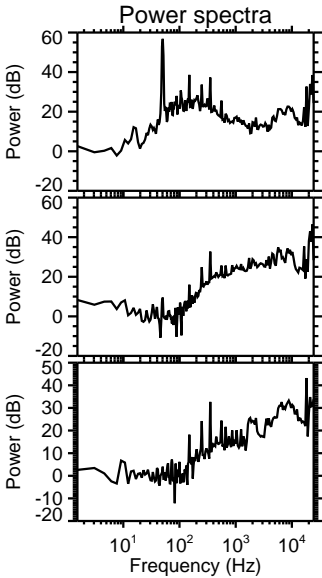
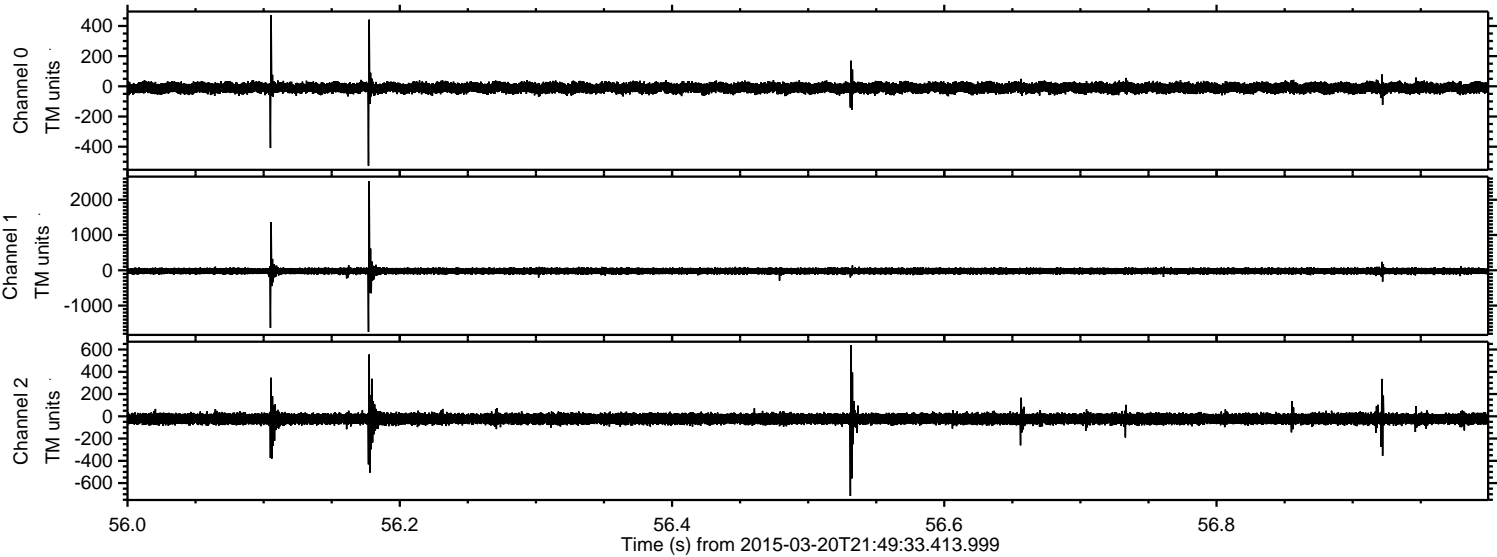
ELMAVAN 3D WAVEFORMS (Measured data sampled at 50 kHz) 49736 packets of 144 samples from 2015-03-20T21:49:33.413.999. Part 131/144

Processed Fri Mar 20 22:58:12 2015 by ELM ver.2012-10-06 from 001\_\_elm20150320\_214932\_\_dat00.bin



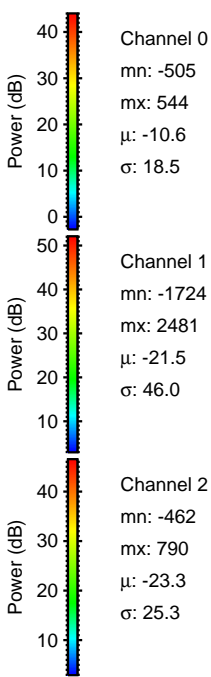
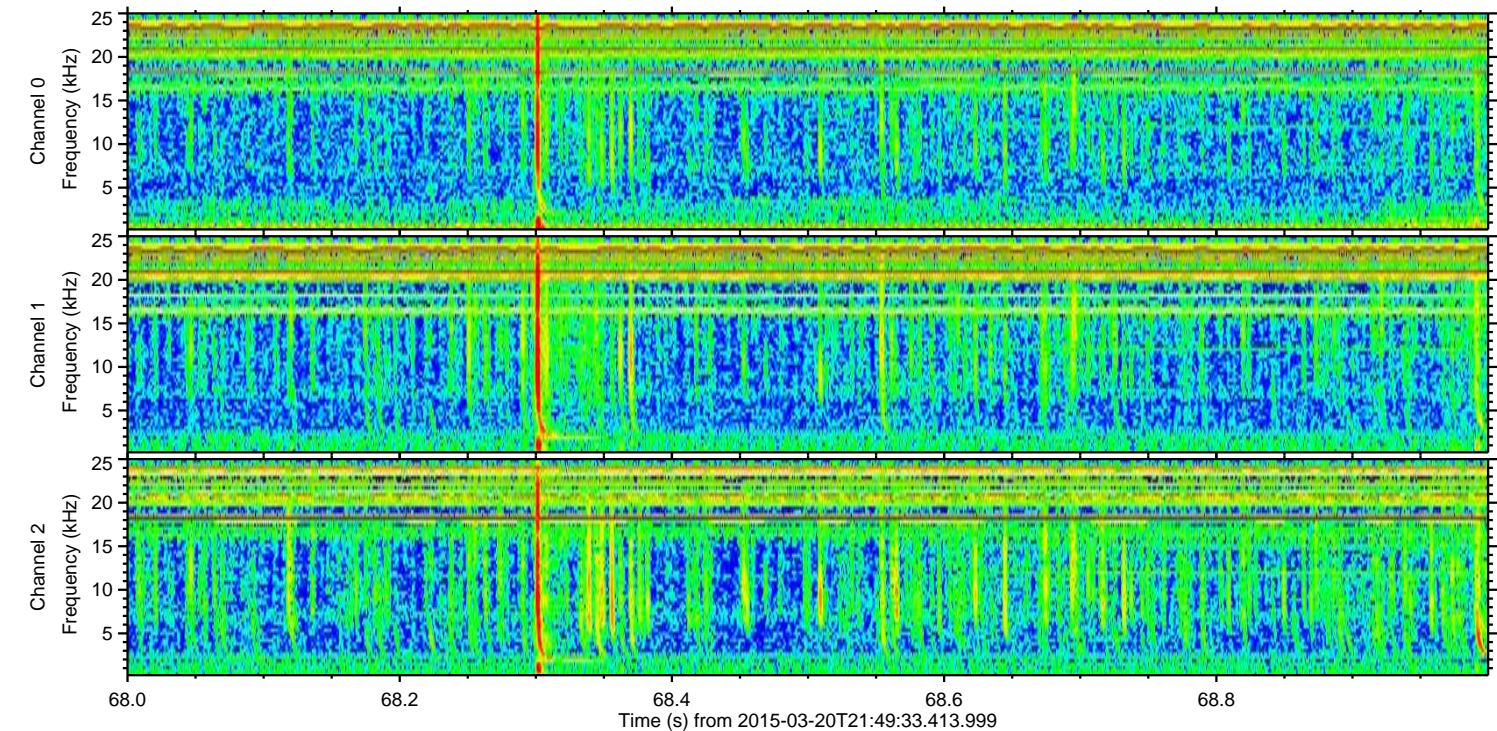
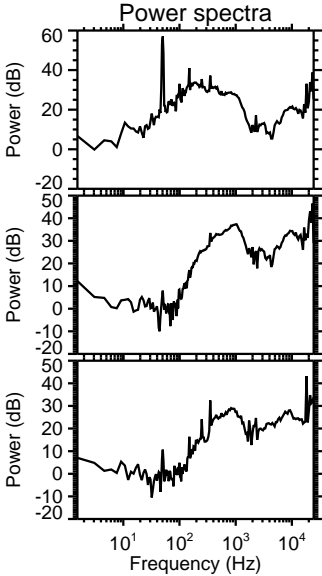
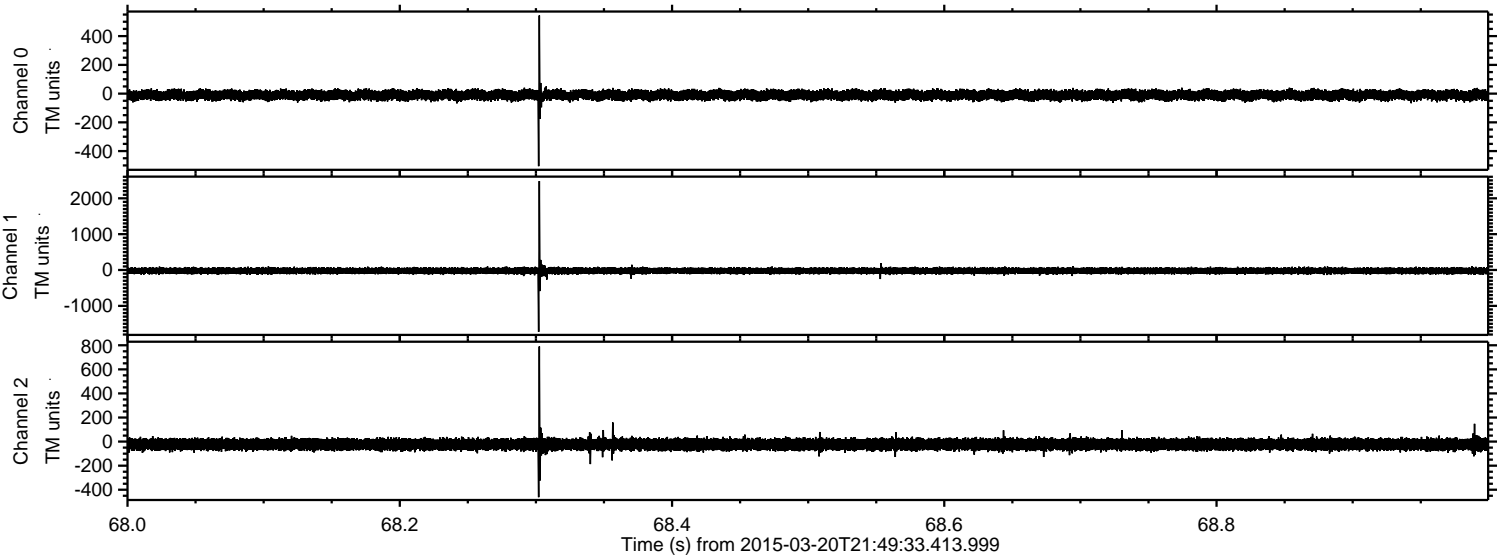


Processed Fri Mar 20 22:58:13 2015 by ELM ver.2012-10-06 from 001\_\_elm20150320\_214932\_\_dat00.bin



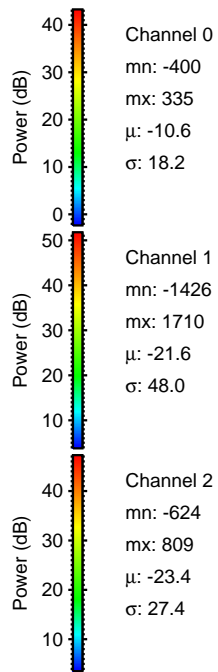
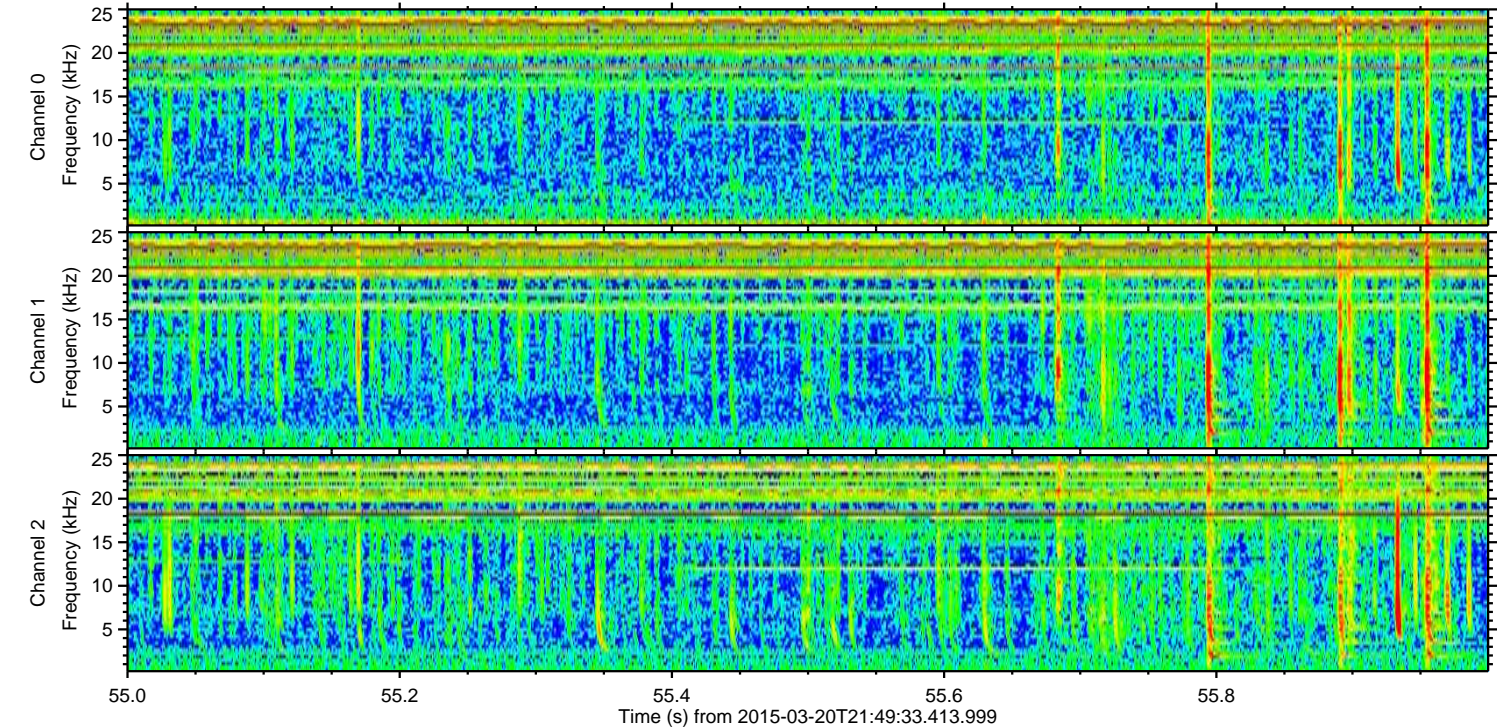
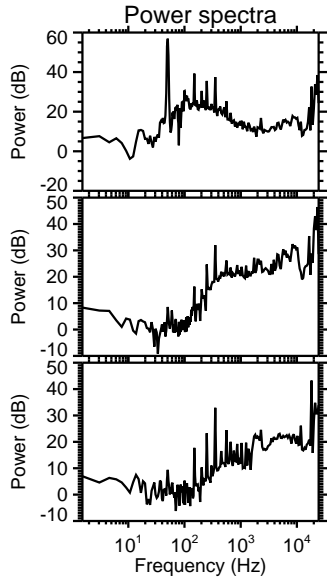
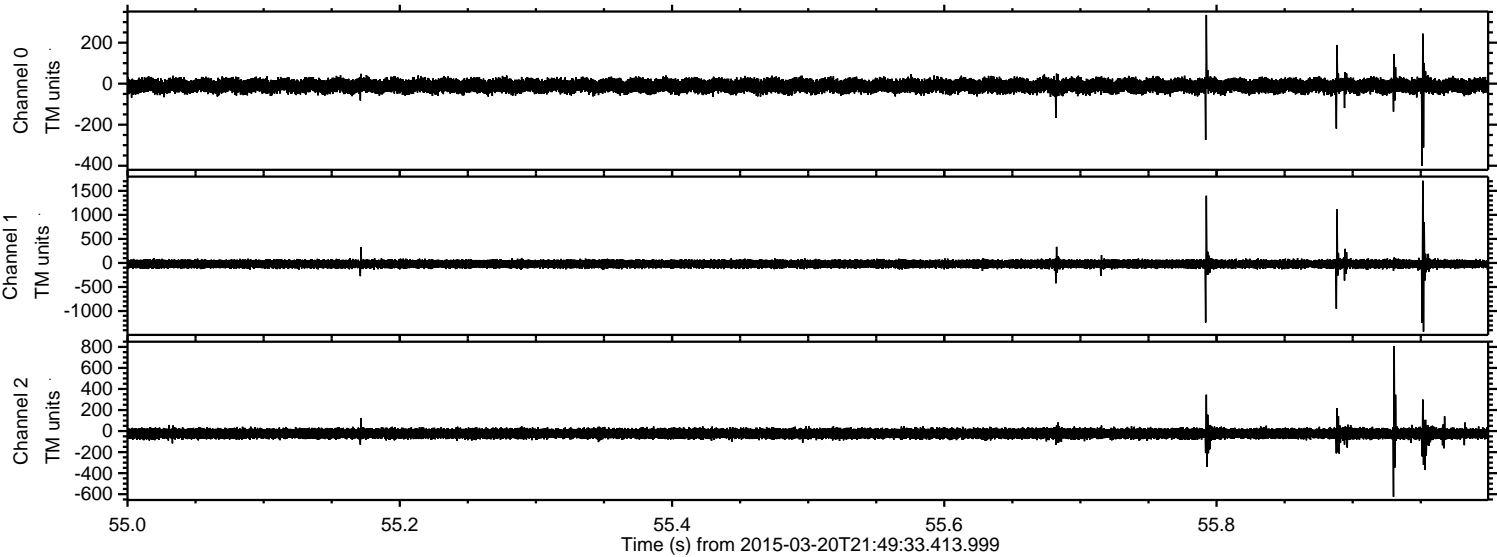


Processed Fri Mar 20 22:58:14 2015 by ELM ver.2012-10-06 from 001\_\_elm20150320\_214932\_\_dat00.bin



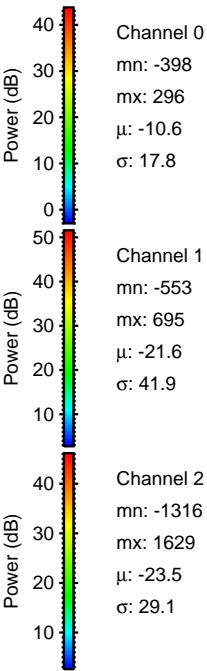
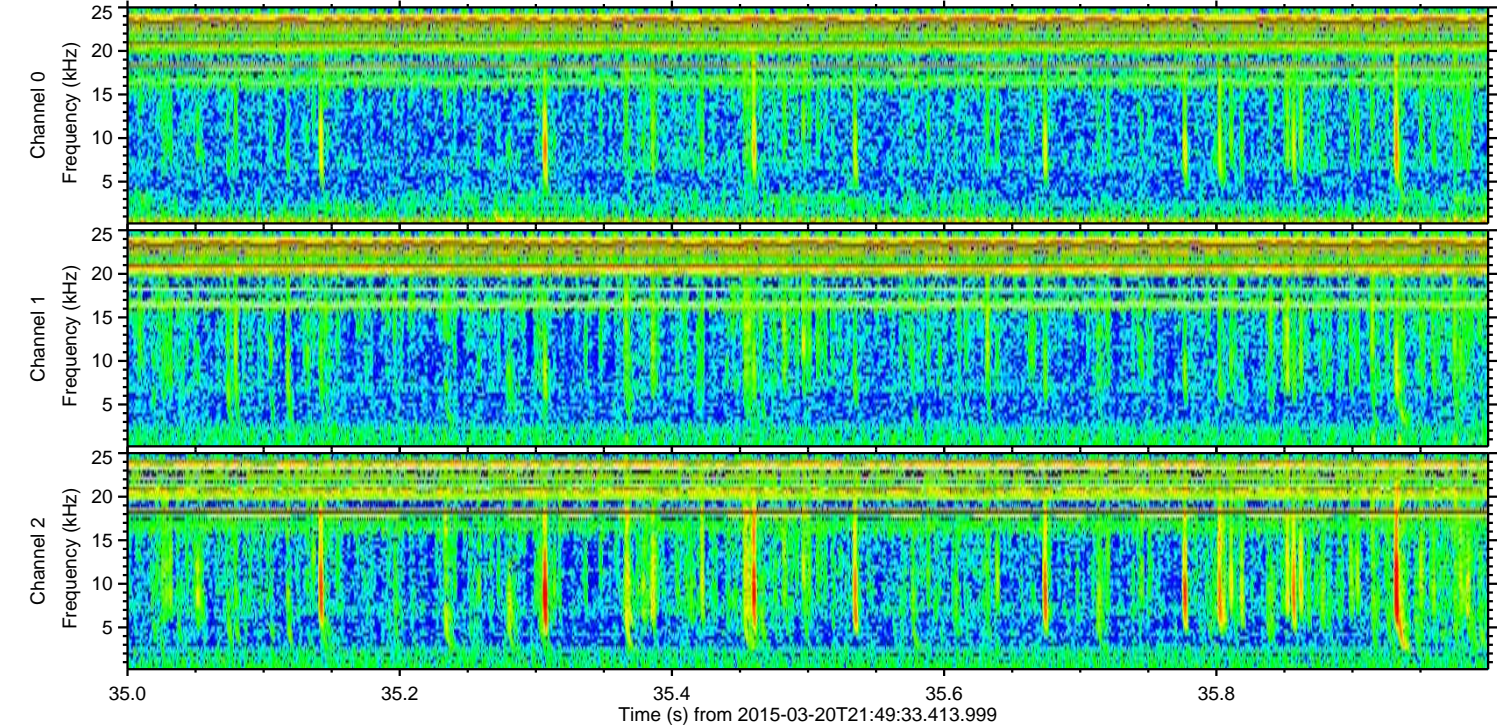
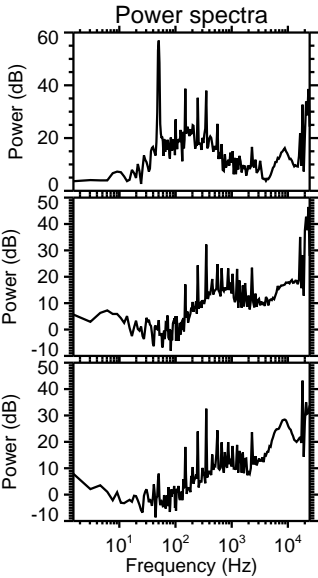
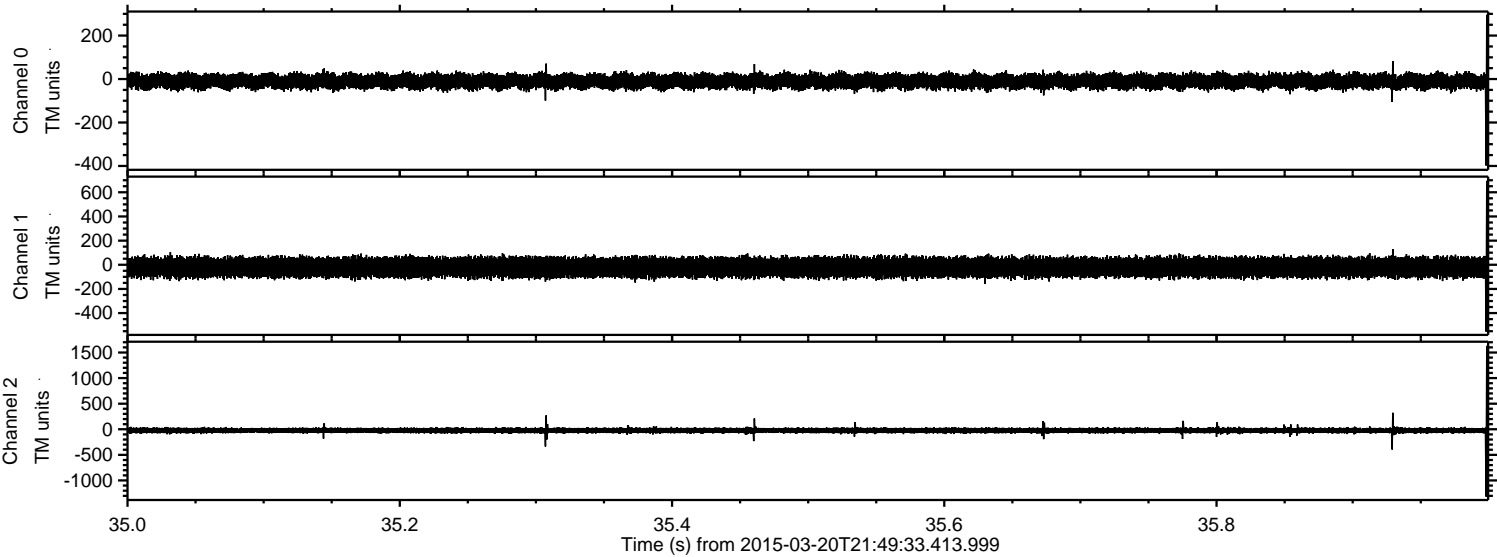


Processed Fri Mar 20 22:58:15 2015 by ELM ver.2012-10-06 from 001\_\_elm20150320\_214932\_\_dat00.bin



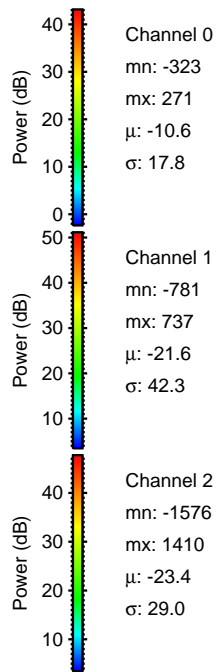
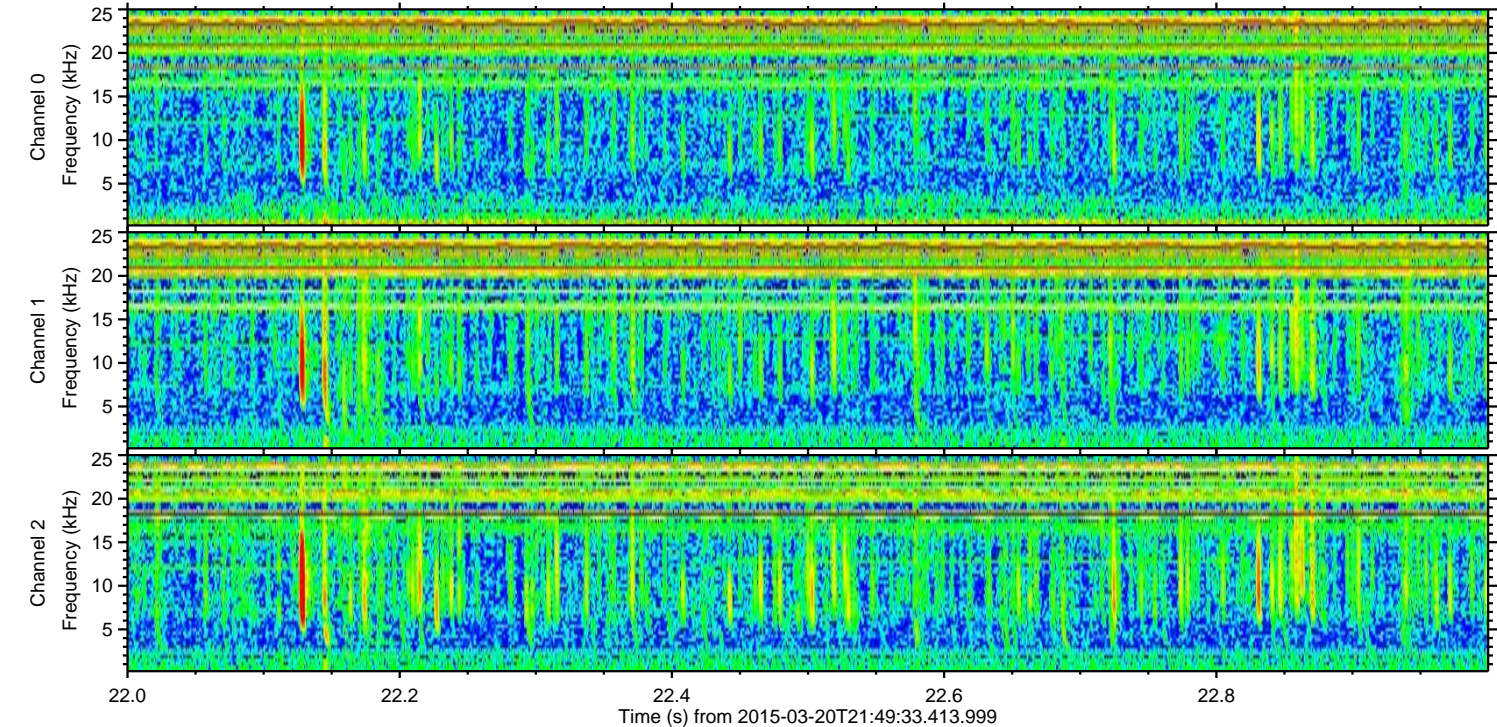
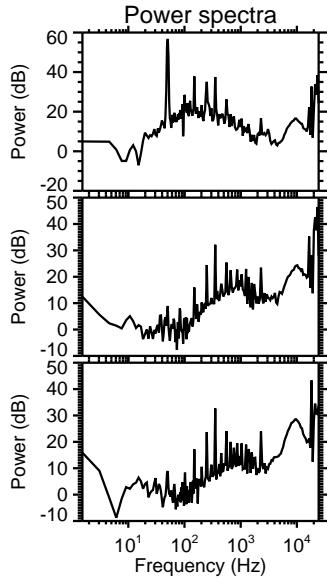
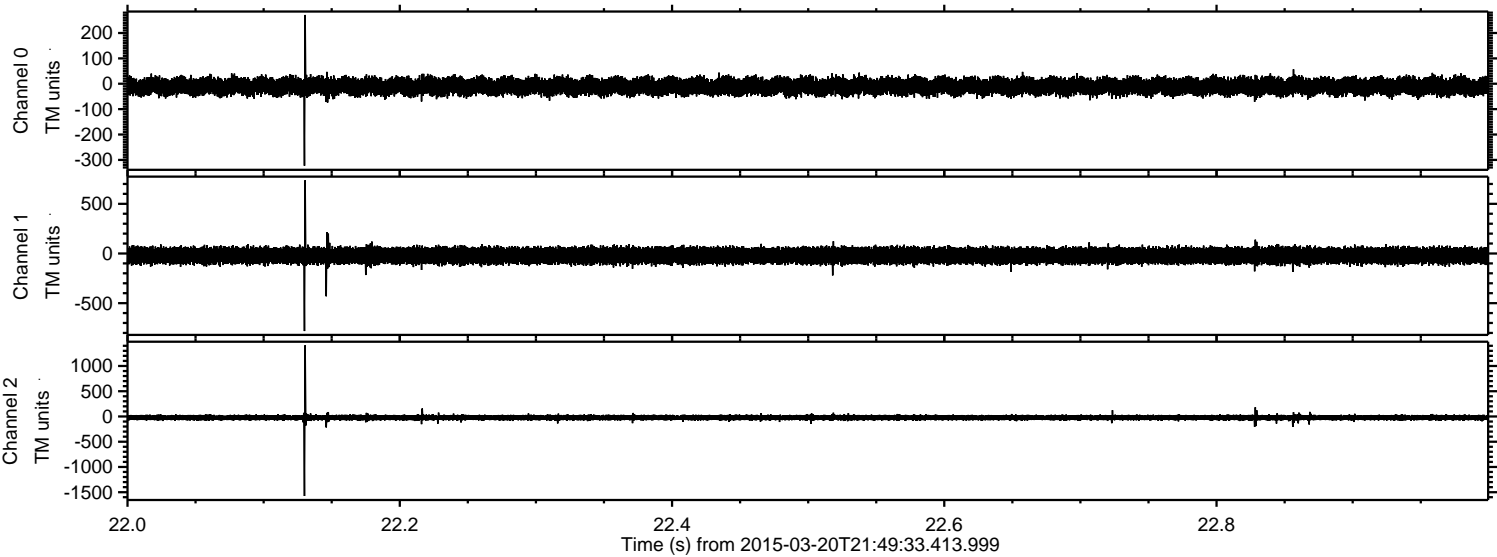


Processed Fri Mar 20 22:58:16 2015 by ELM ver.2012-10-06 from 001\_\_elm20150320\_214932\_\_dat00.bin





Processed Fri Mar 20 22:58:17 2015 by ELM ver.2012-10-06 from 001\_\_elm20150320\_214932\_\_dat00.bin



Channel 0  
mn: -323  
mx: 271  
 $\mu$ : -10.6  
 $\sigma$ : 17.8

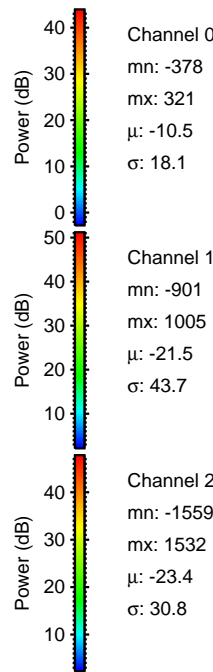
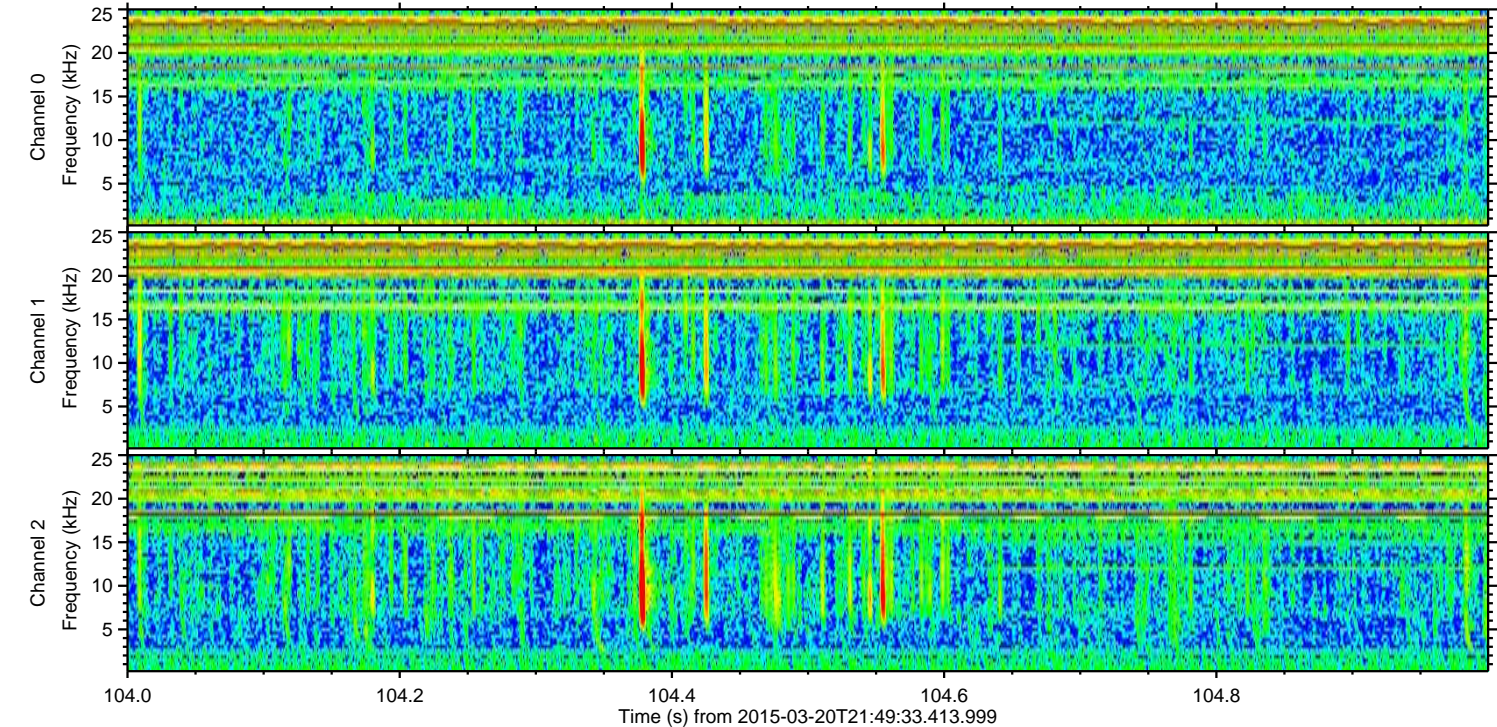
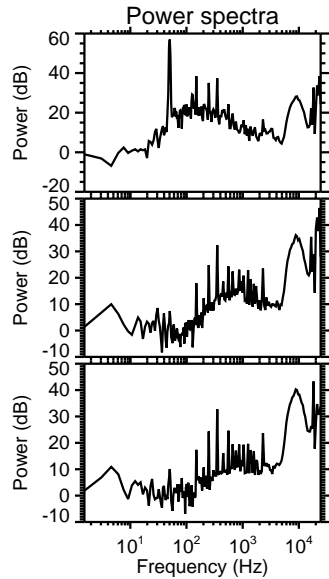
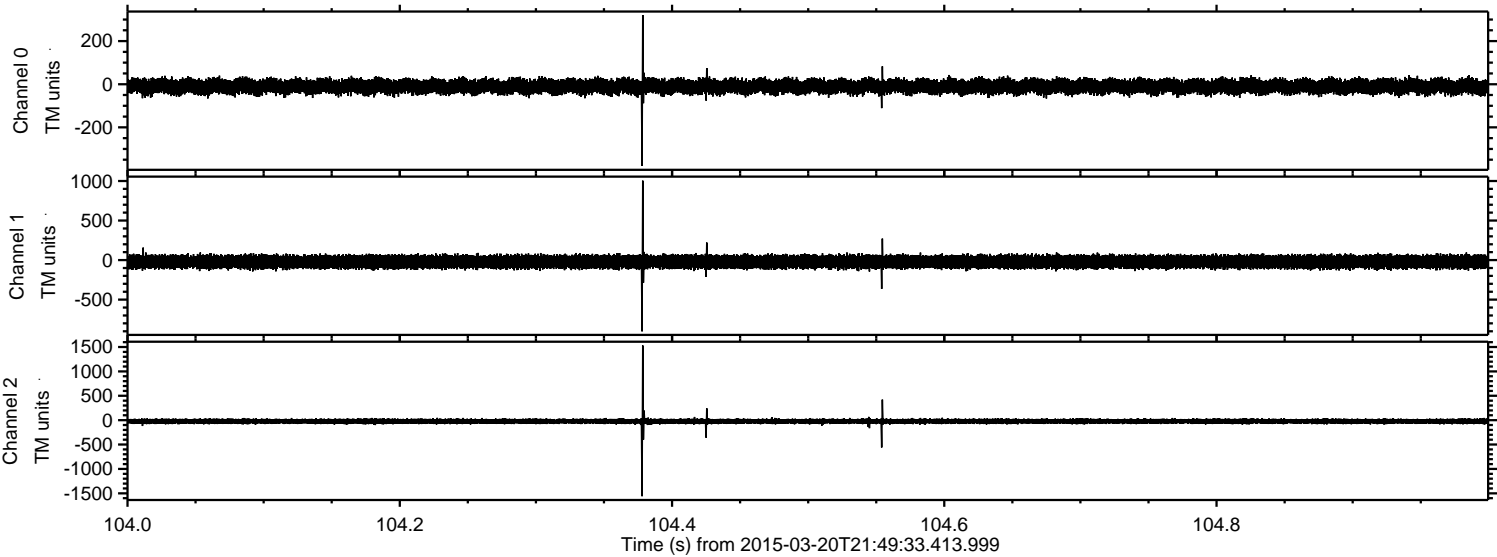
Channel 1  
mn: -781  
mx: 737  
 $\mu$ : -21.6  
 $\sigma$ : 42.3

Channel 2  
mn: -1576  
mx: 1410  
 $\mu$ : -23.4  
 $\sigma$ : 29.0



ELMAVAN 3D WAVEFORMS (Measured data sampled at 50 kHz) 49736 packets of 144 samples from 2015-03-20T21:49:33.413.999. Part 105/144

Processed Fri Mar 20 22:58:17 2015 by ELM ver.2012-10-06 from 001\_\_elm20150320\_214932\_\_dat00.bin



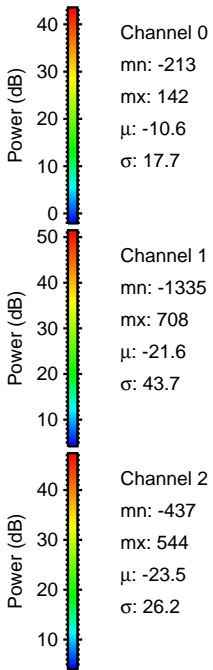
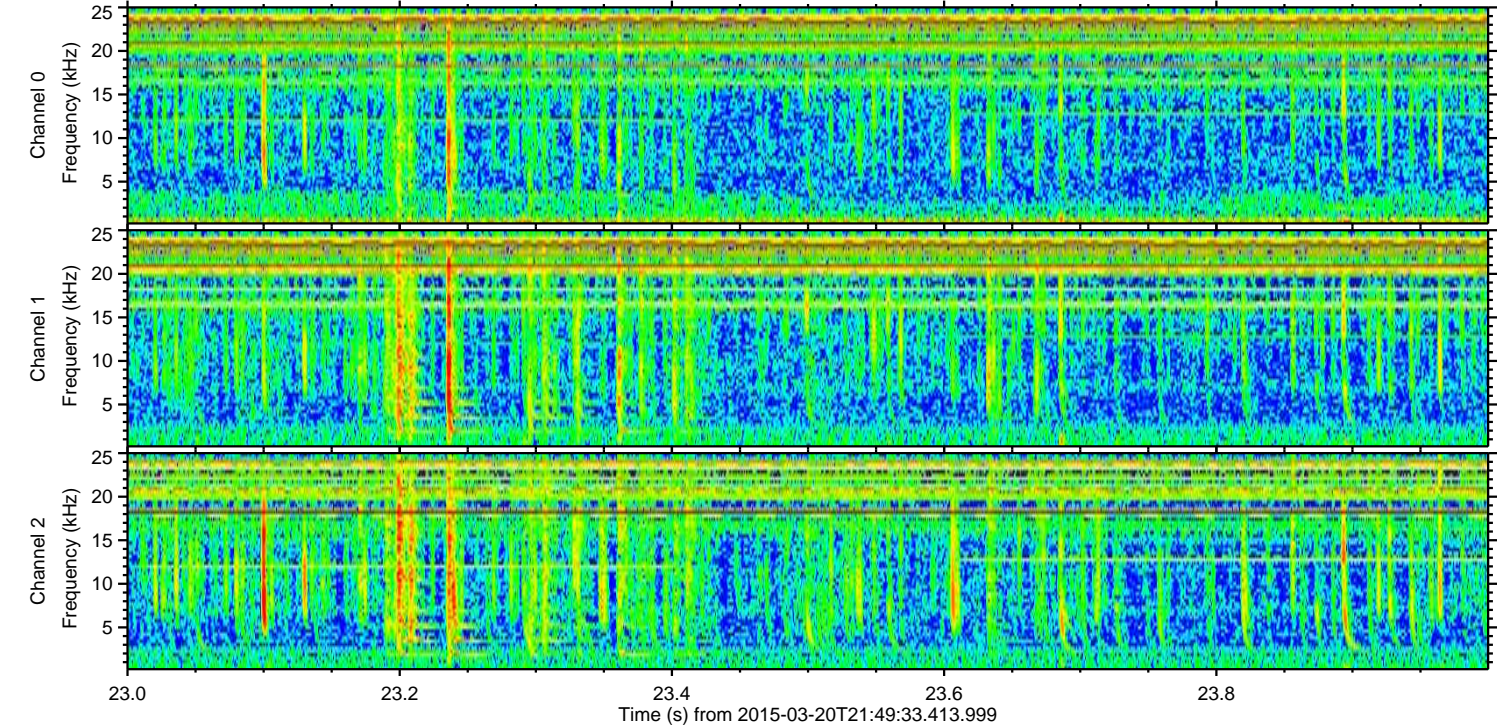
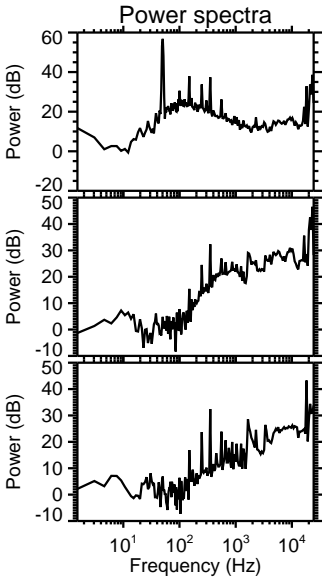
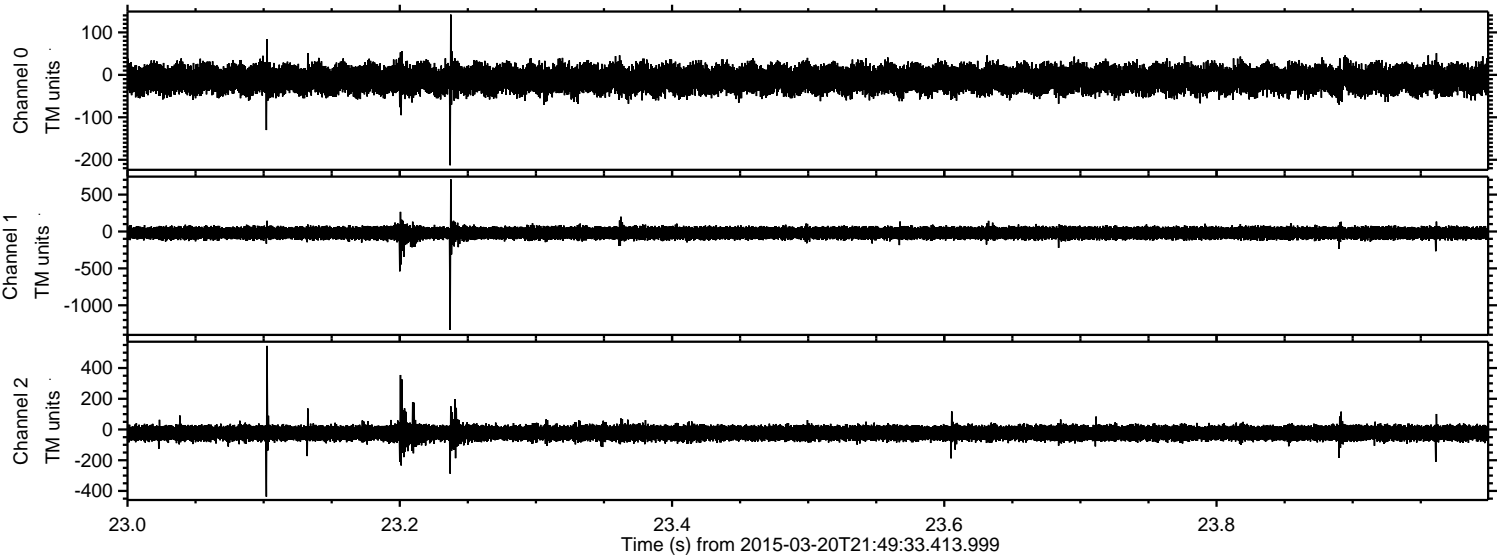
Channel 0  
mn: -378  
mx: 321  
 $\mu$ : -10.5  
 $\sigma$ : 18.1

Channel 1  
mn: -901  
mx: 1005  
 $\mu$ : -21.5  
 $\sigma$ : 43.7

Channel 2  
mn: -1559  
mx: 1532  
 $\mu$ : -23.4  
 $\sigma$ : 30.8



Processed Fri Mar 20 22:58:18 2015 by ELM ver.2012-10-06 from 001\_\_elm20150320\_214932\_\_dat00.bin





Processed Fri Mar 20 22:58:19 2015 by ELM ver.2012-10-06 from 001\_\_elm20150320\_214932\_\_dat00.bin

