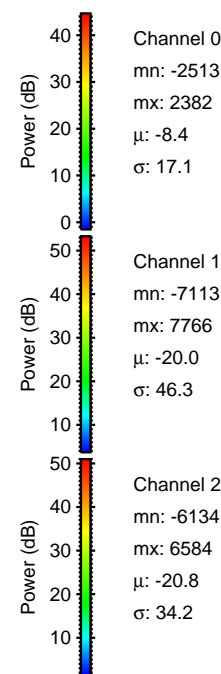
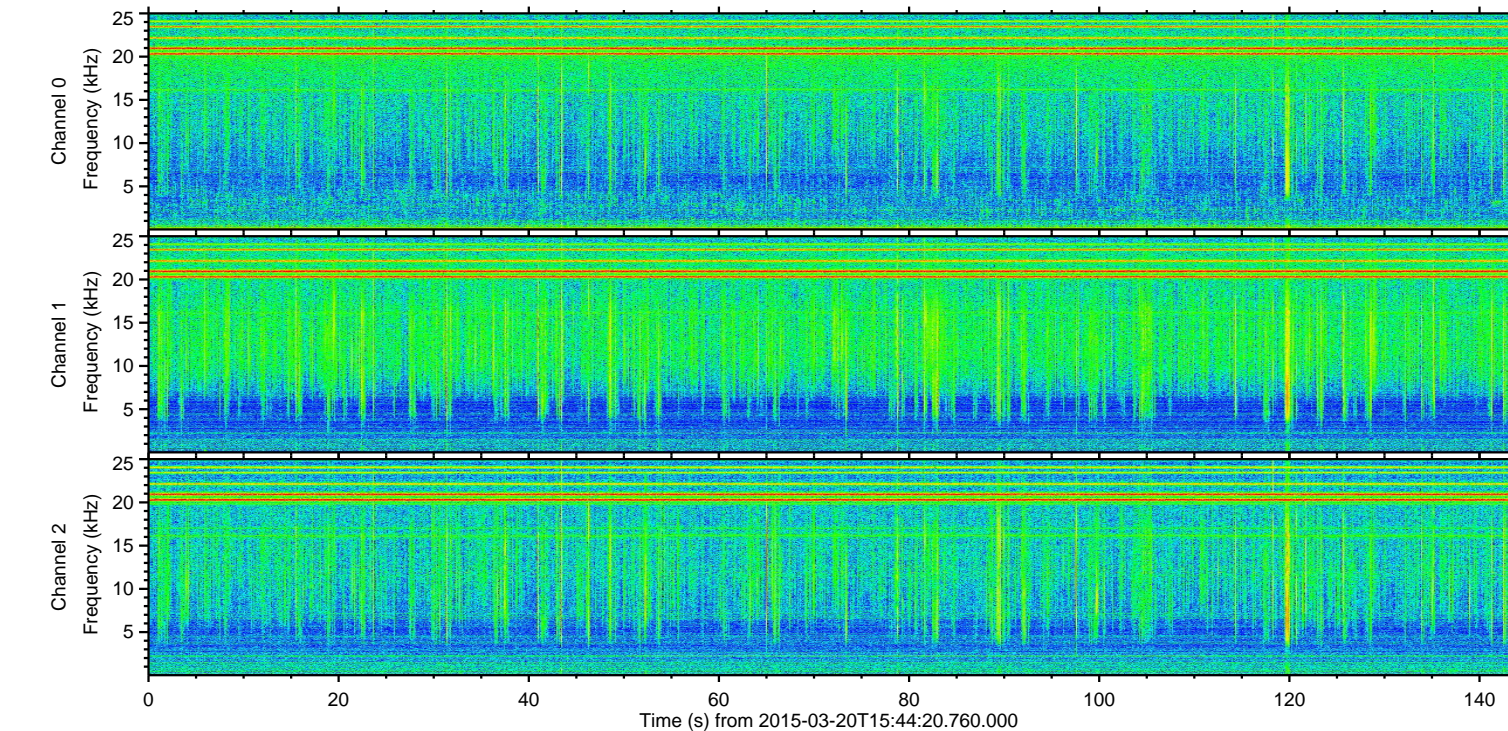
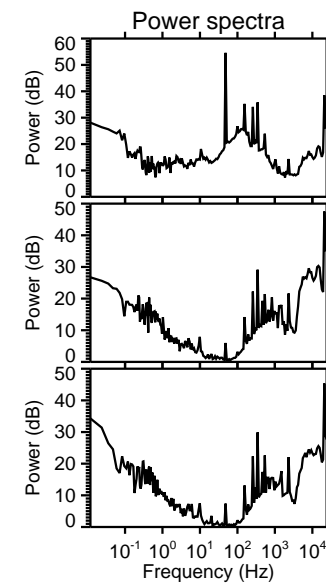
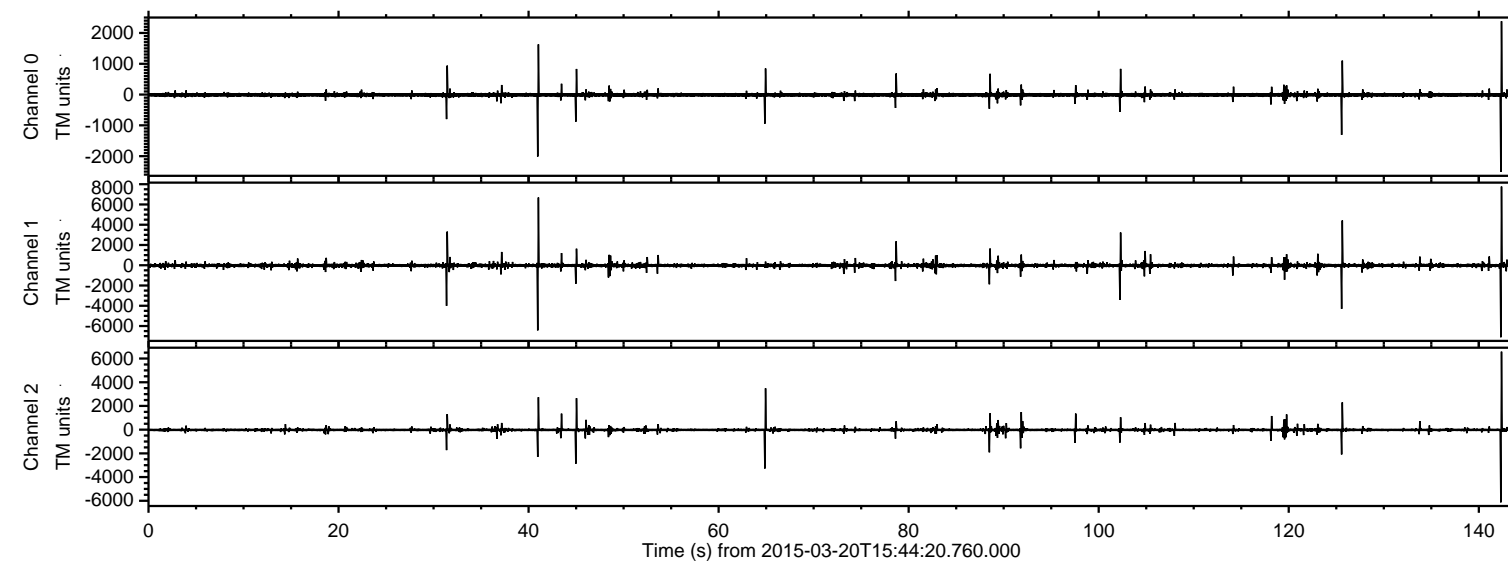


# ELMAVAN 3D WAVEFORMS (Measured data sampled at 50 kHz) 49720 packets of 144 samples from 2015-03-20T15:44:20.760.000.

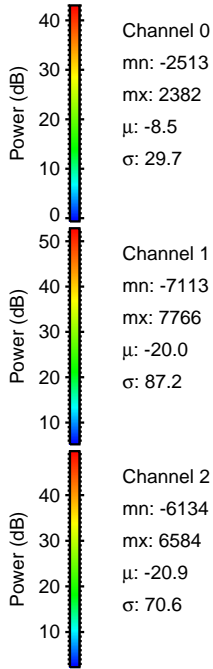
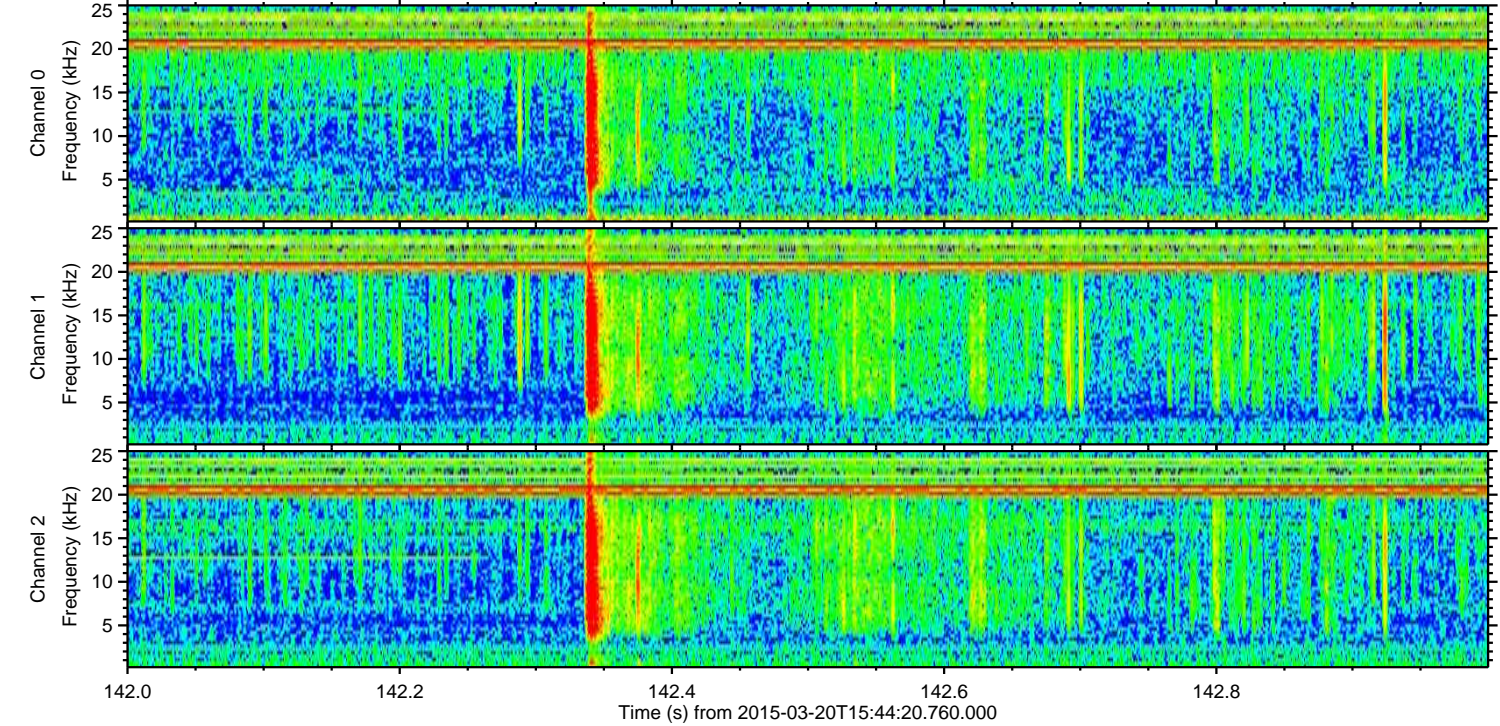
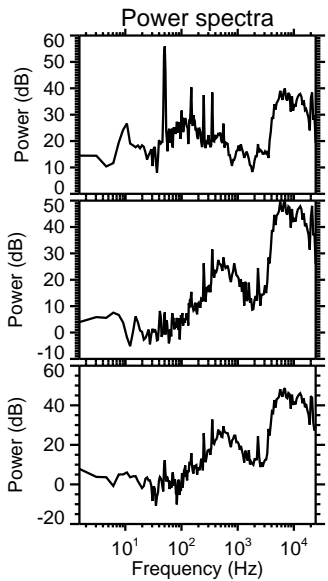
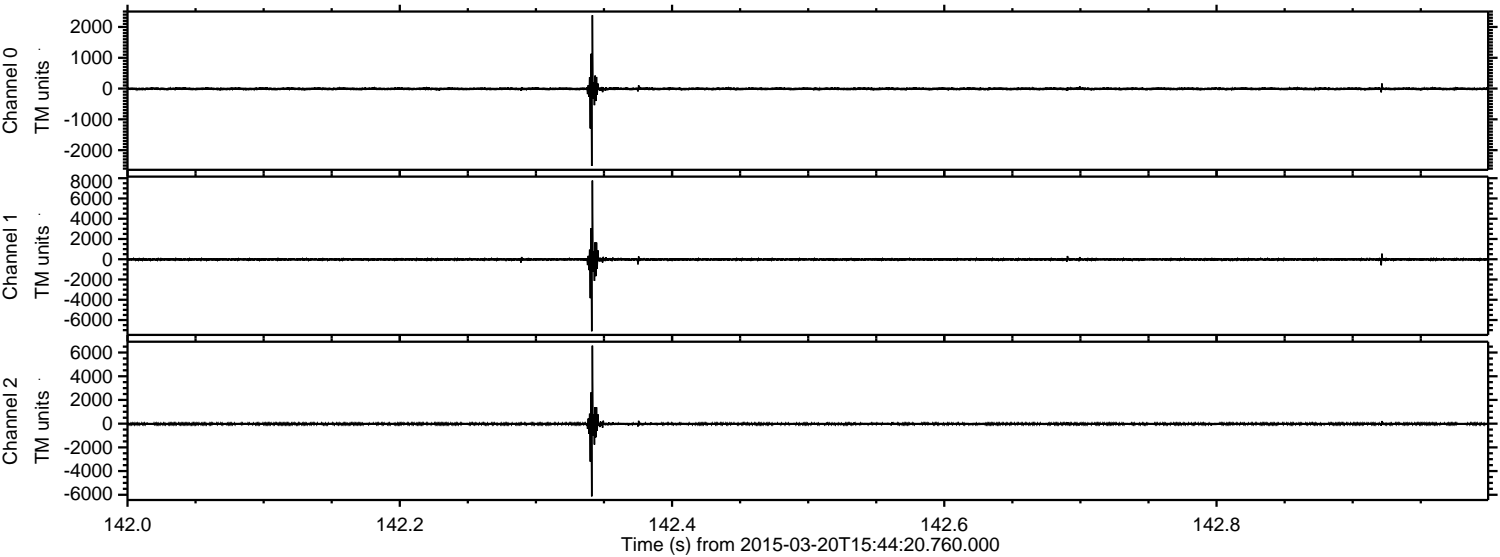
Processed Fri Mar 20 16:52:20 2015 by ELM ver.2012-10-06 from 001\_\_elm20150320\_154419\_\_dat00.bin





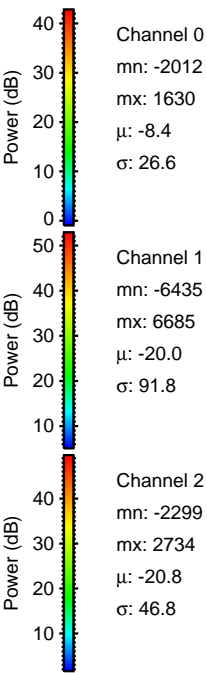
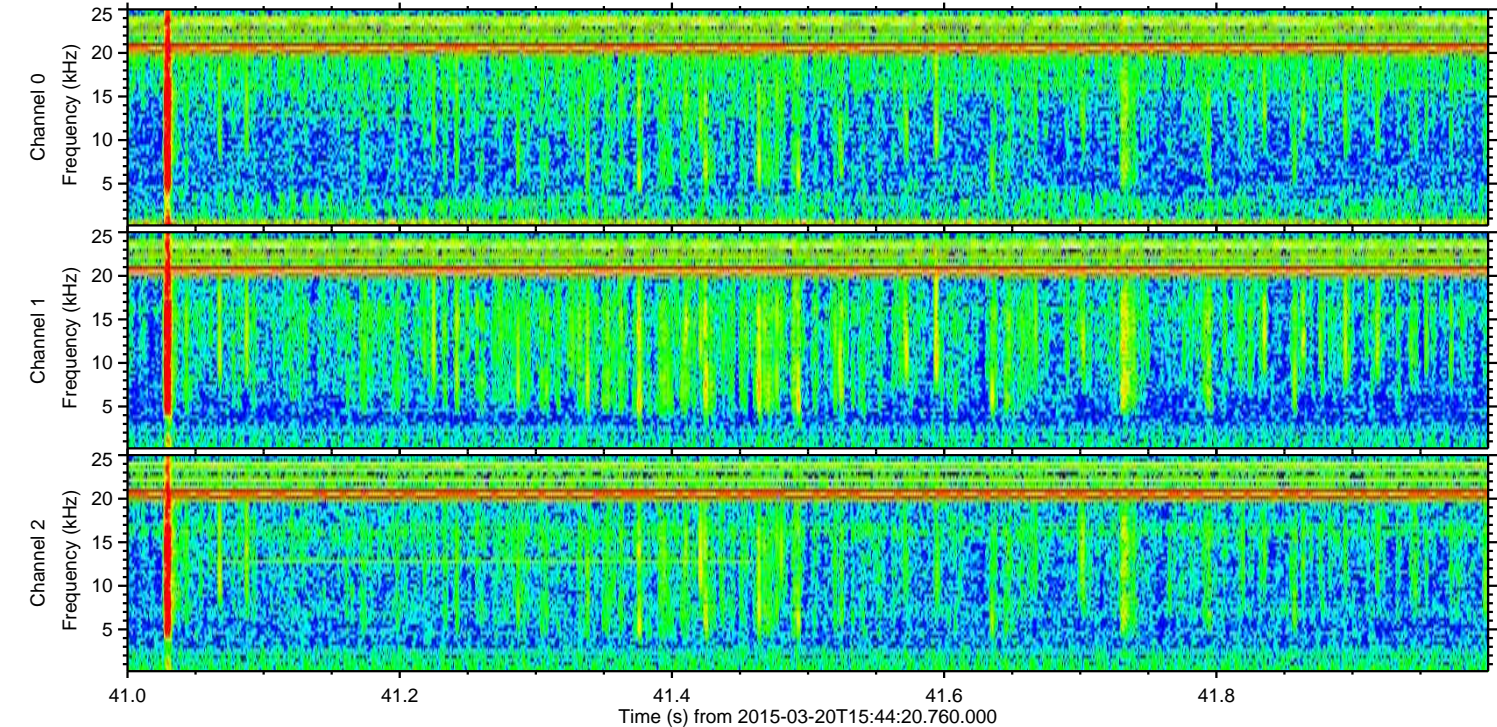
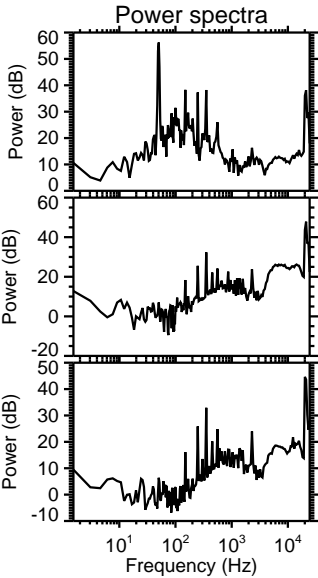
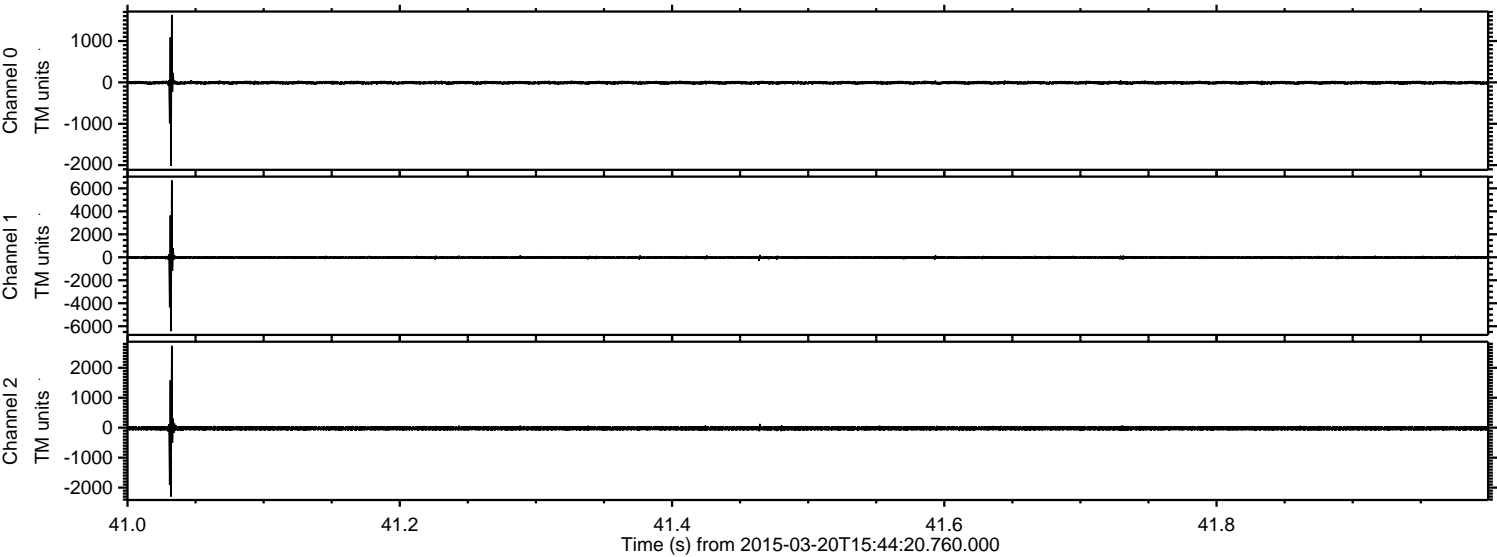
ELMAVAN 3D WAVEFORMS (Measured data sampled at 50 kHz) 49720 packets of 144 samples from 2015-03-20T15:44:20.760.000. Part 143/144

Processed Fri Mar 20 16:52:31 2015 by ELM ver.2012-10-06 from 001\_\_elm20150320\_154419\_\_dat00.bin





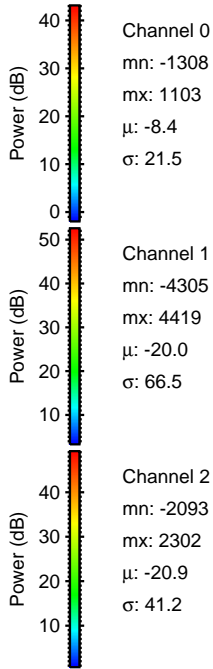
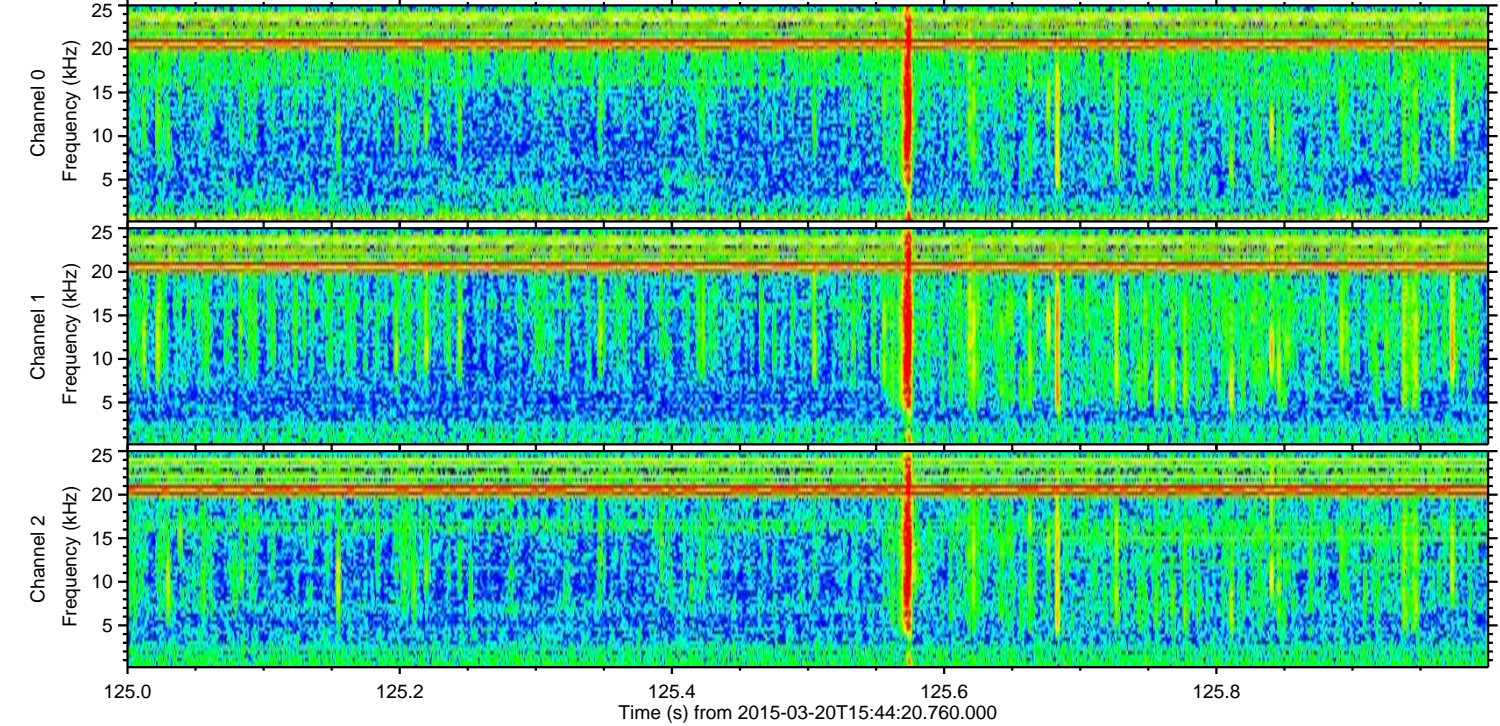
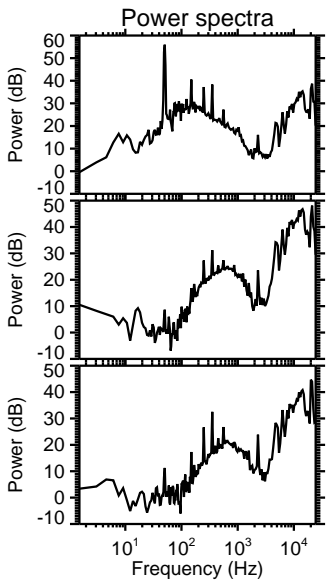
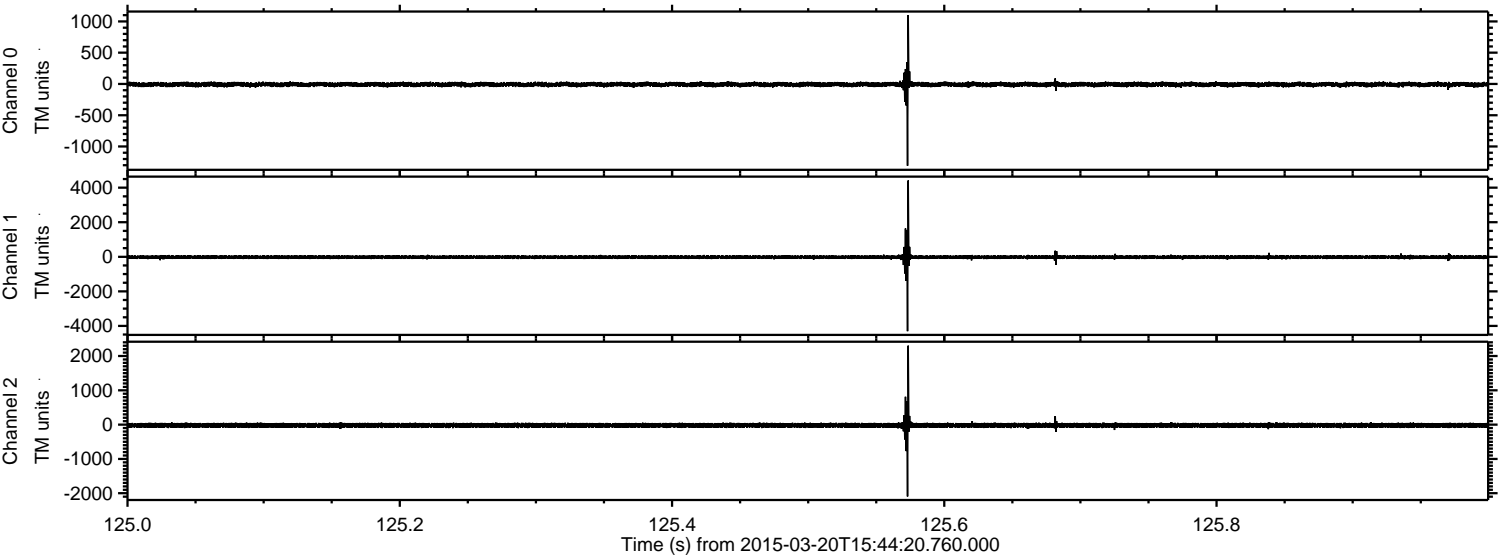
Processed Fri Mar 20 16:52:32 2015 by ELM ver.2012-10-06 from 001\_\_elm20150320\_154419\_\_dat00.bin





ELMAVAN 3D WAVEFORMS (Measured data sampled at 50 kHz) 49720 packets of 144 samples from 2015-03-20T15:44:20.760.000. Part 126/144

Processed Fri Mar 20 16:52:33 2015 by ELM ver.2012-10-06 from 001\_\_elm20150320\_154419\_\_dat00.bin



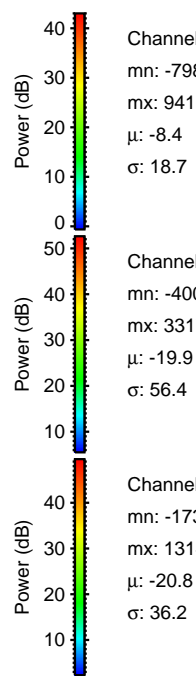
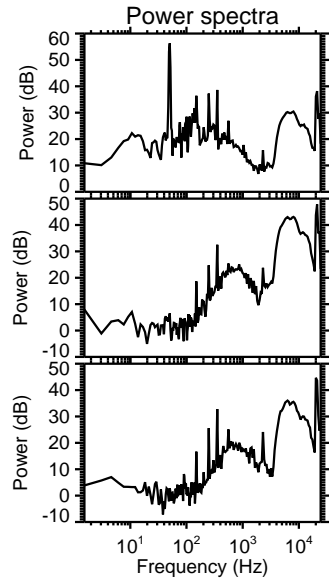
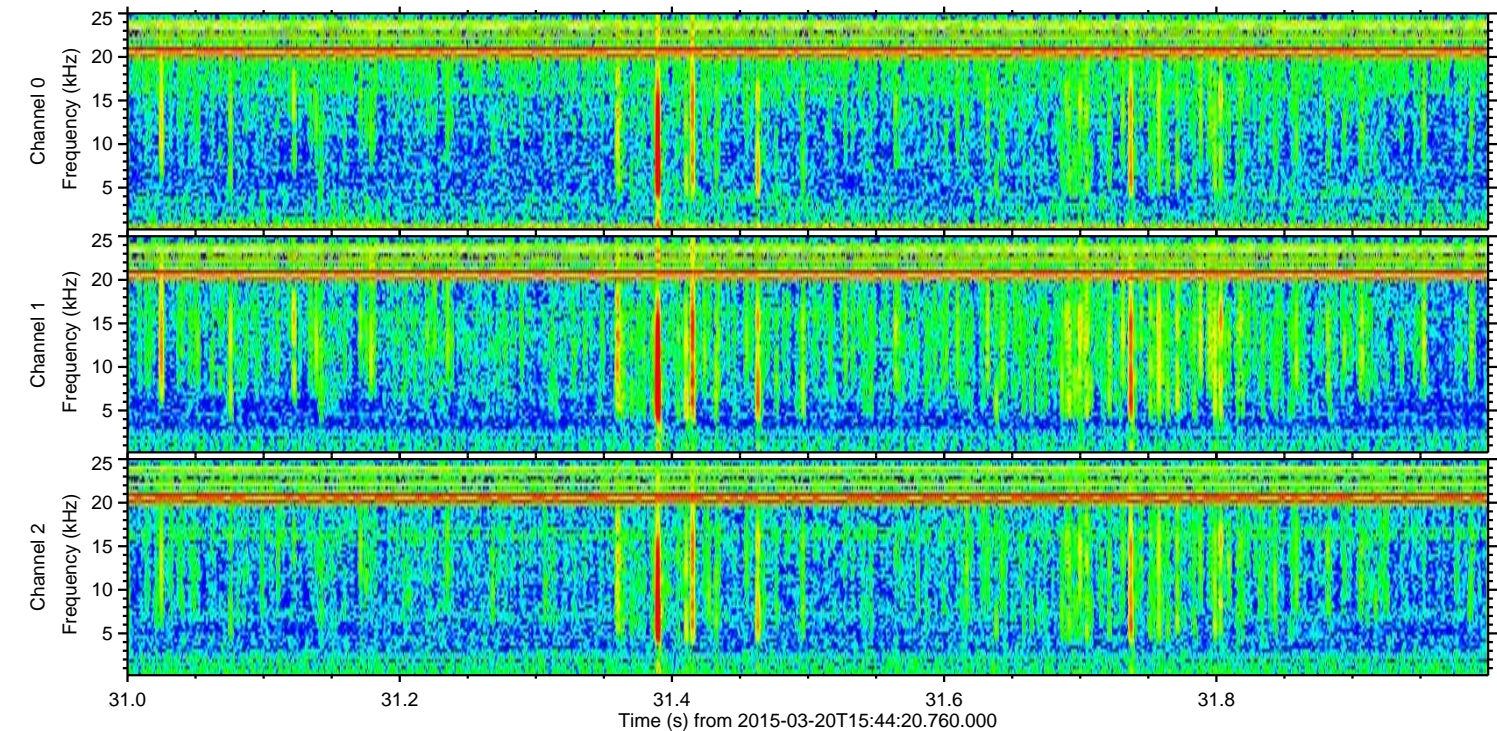
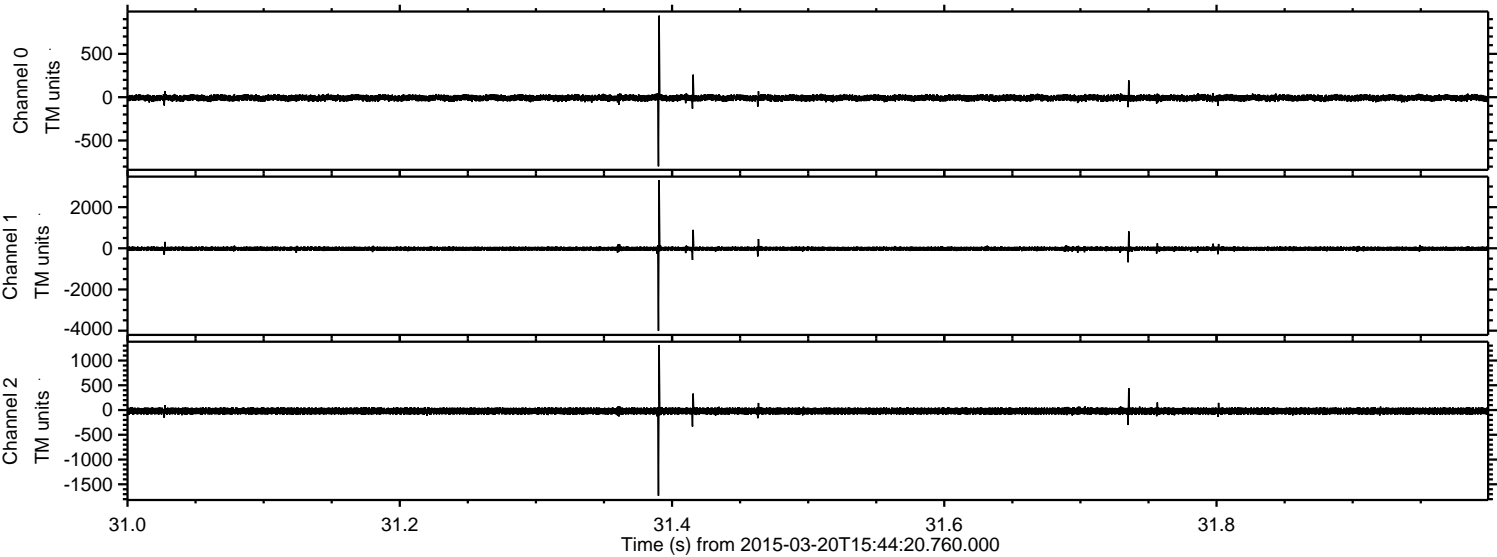
Channel 0  
mn: -1308  
mx: 1103  
 $\mu$ : -8.4  
 $\sigma$ : 21.5

Channel 1  
mn: -4305  
mx: 4419  
 $\mu$ : -20.0  
 $\sigma$ : 66.5

Channel 2  
mn: -2093  
mx: 2302  
 $\mu$ : -20.9  
 $\sigma$ : 41.2

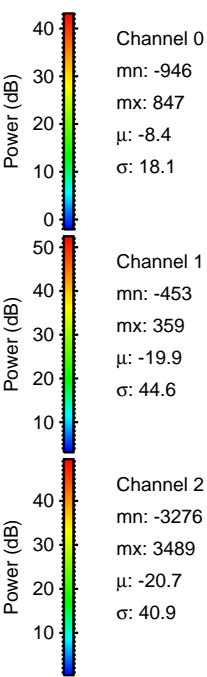
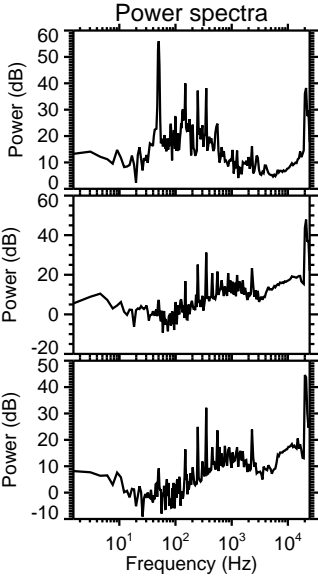
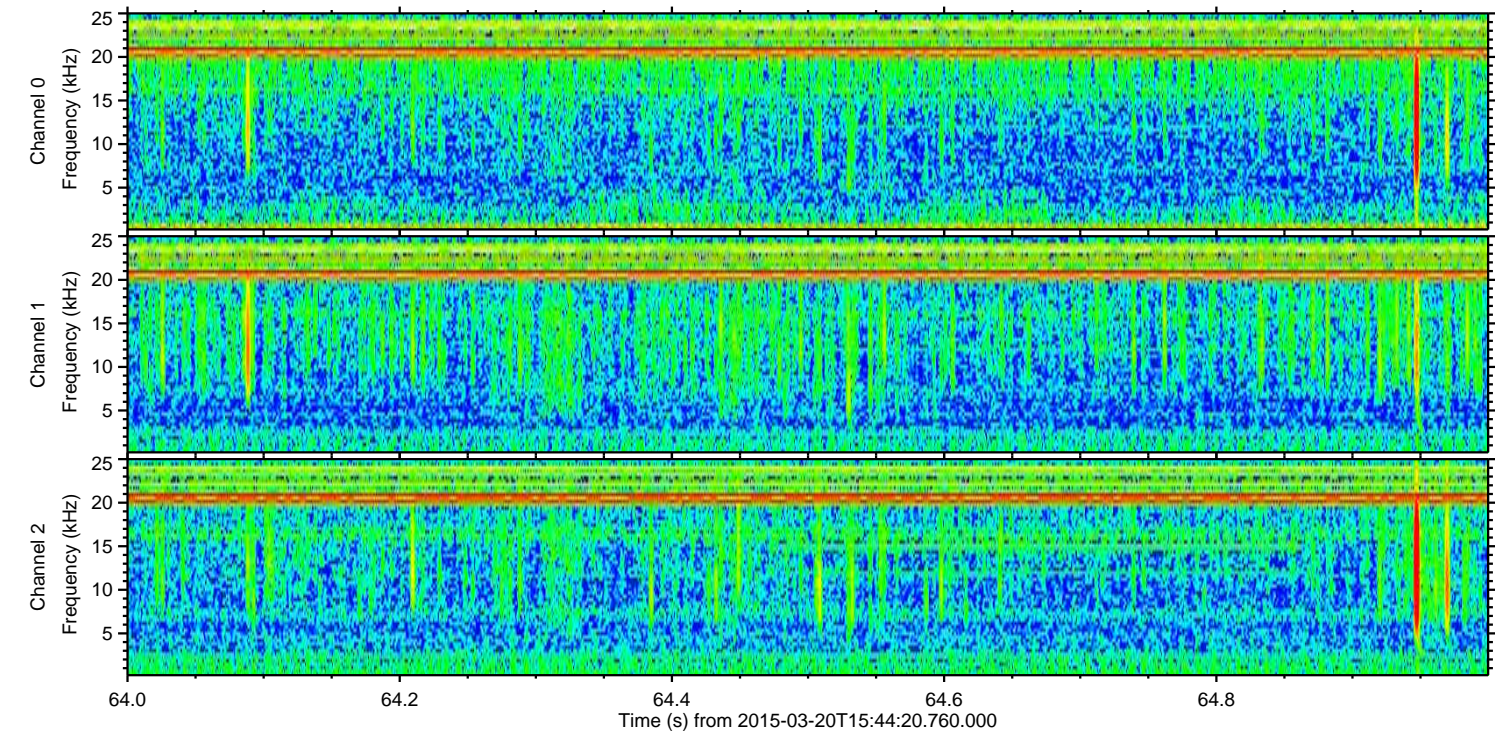
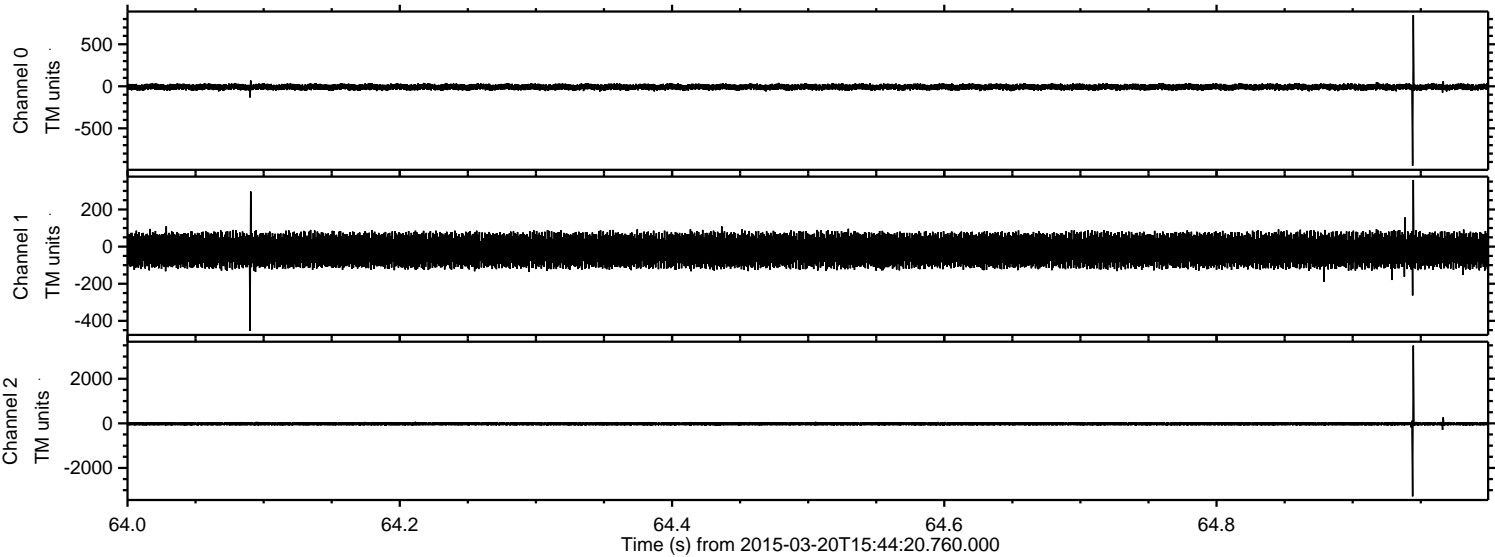


Processed Fri Mar 20 16:52:34 2015 by ELM ver.2012-10-06 from 001\_\_elm20150320\_154419\_\_dat00.bin





Processed Fri Mar 20 16:52:35 2015 by ELM ver.2012-10-06 from 001\_\_elm20150320\_154419\_\_dat00.bin



Channel 0  
mn: -946  
mx: 847  
 $\mu$ : -8.4  
 $\sigma$ : 18.1

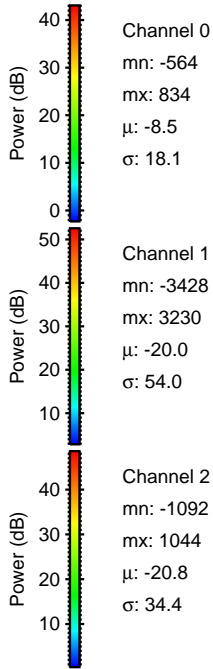
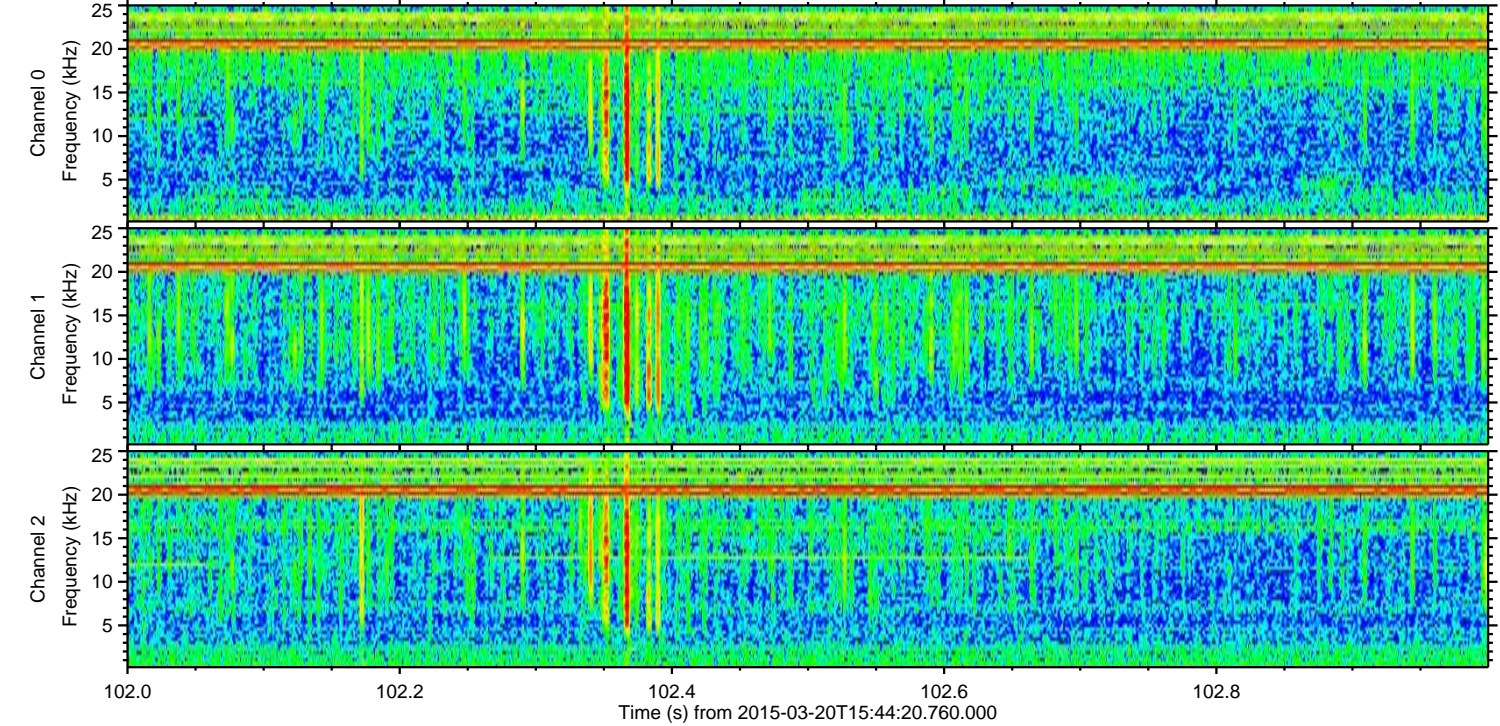
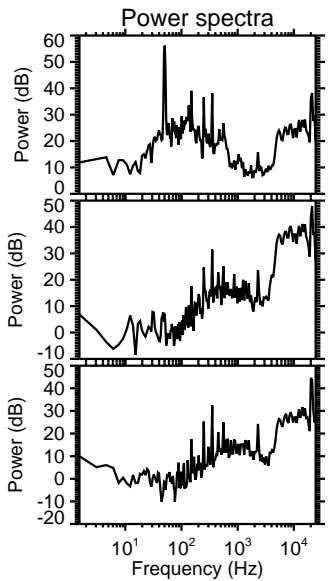
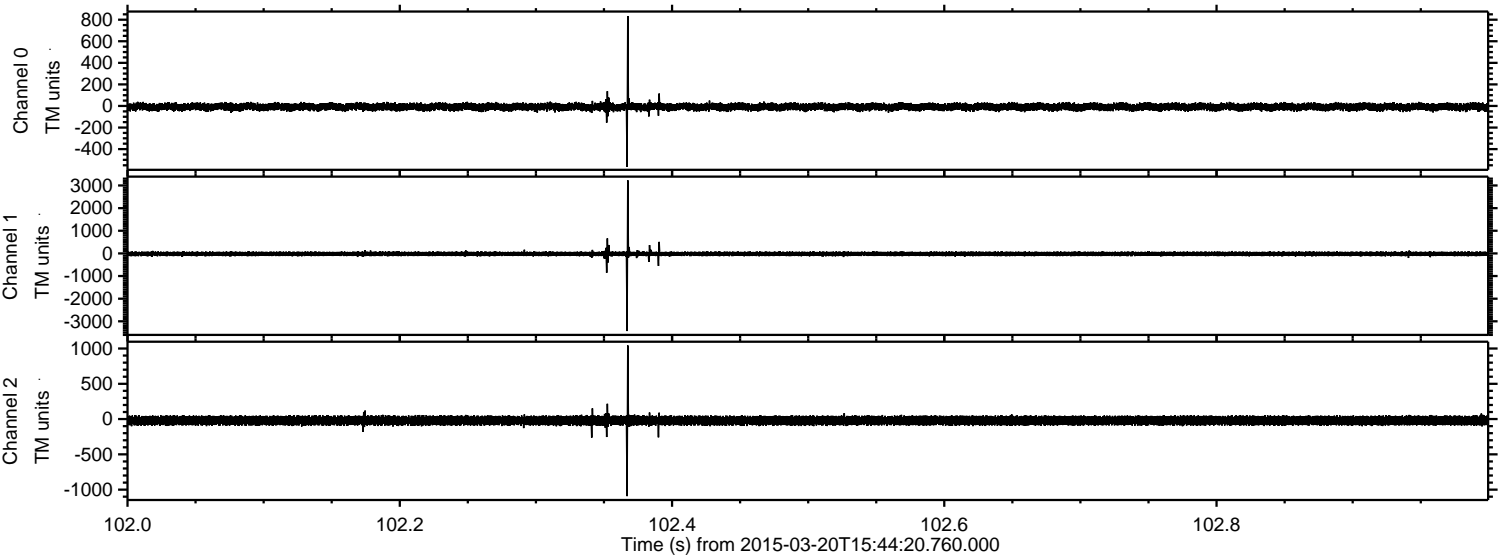
Channel 1  
mn: -453  
mx: 359  
 $\mu$ : -19.9  
 $\sigma$ : 44.6

Channel 2  
mn: -3276  
mx: 3489  
 $\mu$ : -20.7  
 $\sigma$ : 40.9



ELMAVAN 3D WAVEFORMS (Measured data sampled at 50 kHz) 49720 packets of 144 samples from 2015-03-20T15:44:20.760.000. Part 103/144

Processed Fri Mar 20 16:52:36 2015 by ELM ver.2012-10-06 from 001\_\_elm20150320\_154419\_\_dat00.bin



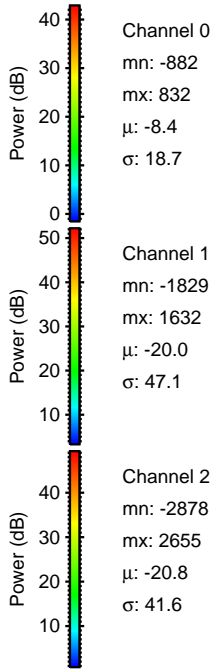
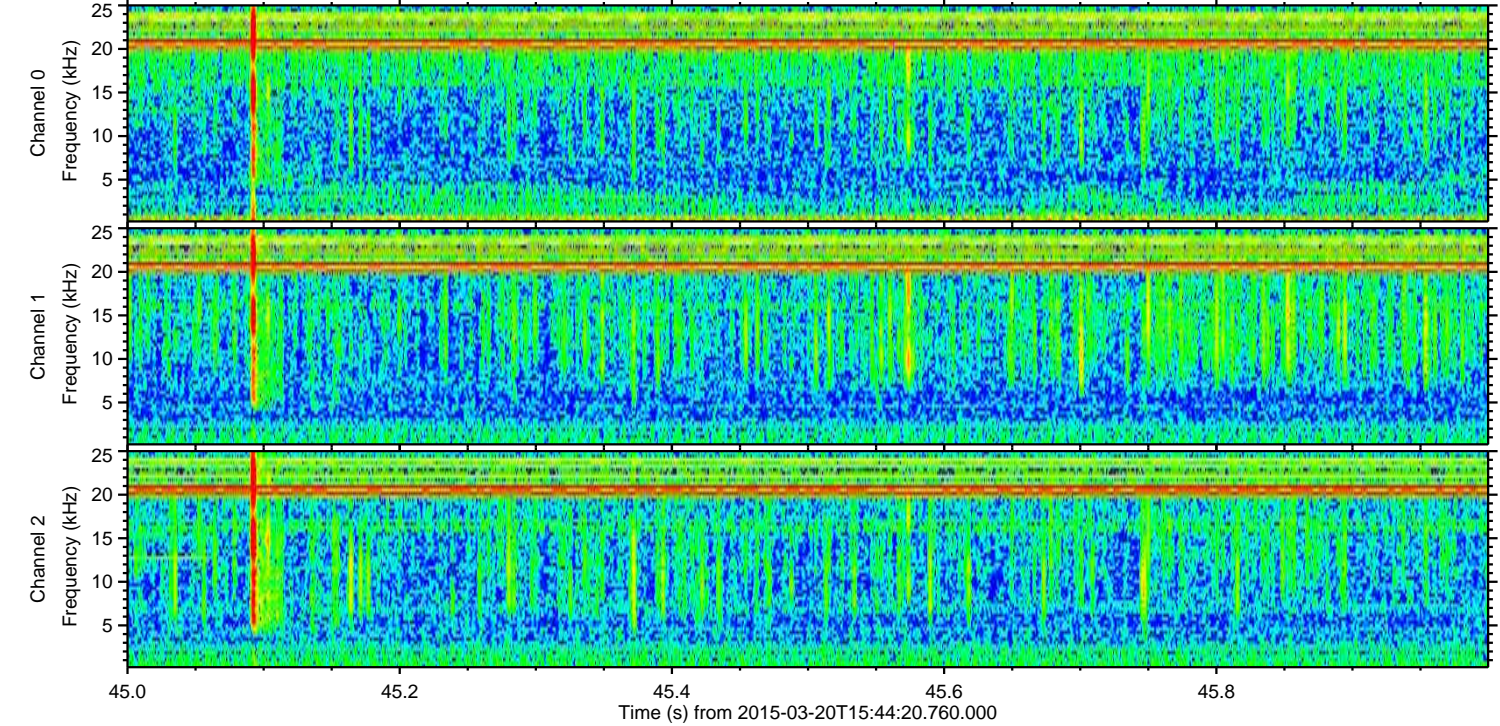
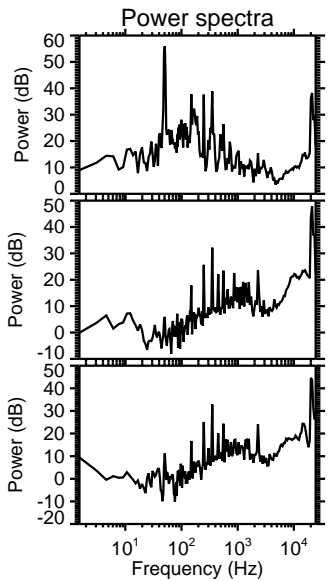
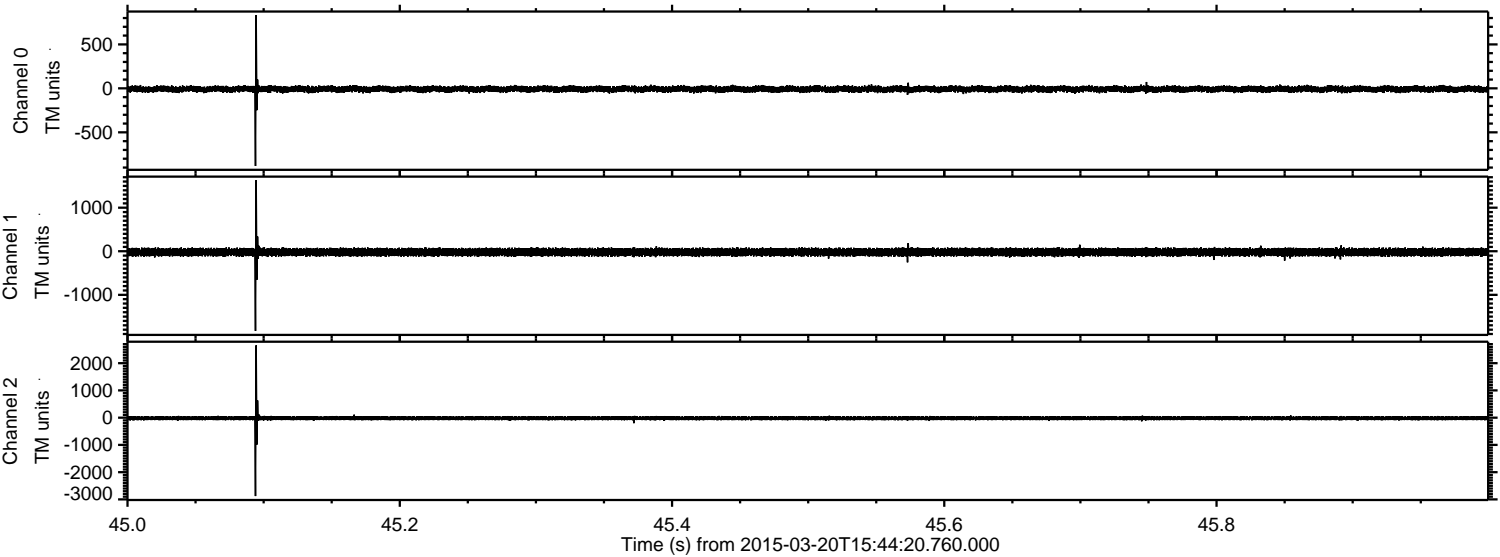
Channel 0  
mn: -564  
mx: 834  
 $\mu$ : -8.5  
 $\sigma$ : 18.1

Channel 1  
mn: -3428  
mx: 3230  
 $\mu$ : -20.0  
 $\sigma$ : 54.0

Channel 2  
mn: -1092  
mx: 1044  
 $\mu$ : -20.8  
 $\sigma$ : 34.4



Processed Fri Mar 20 16:52:37 2015 by ELM ver.2012-10-06 from 001\_\_elm20150320\_154419\_\_dat00.bin



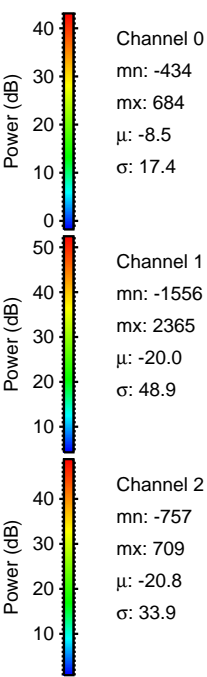
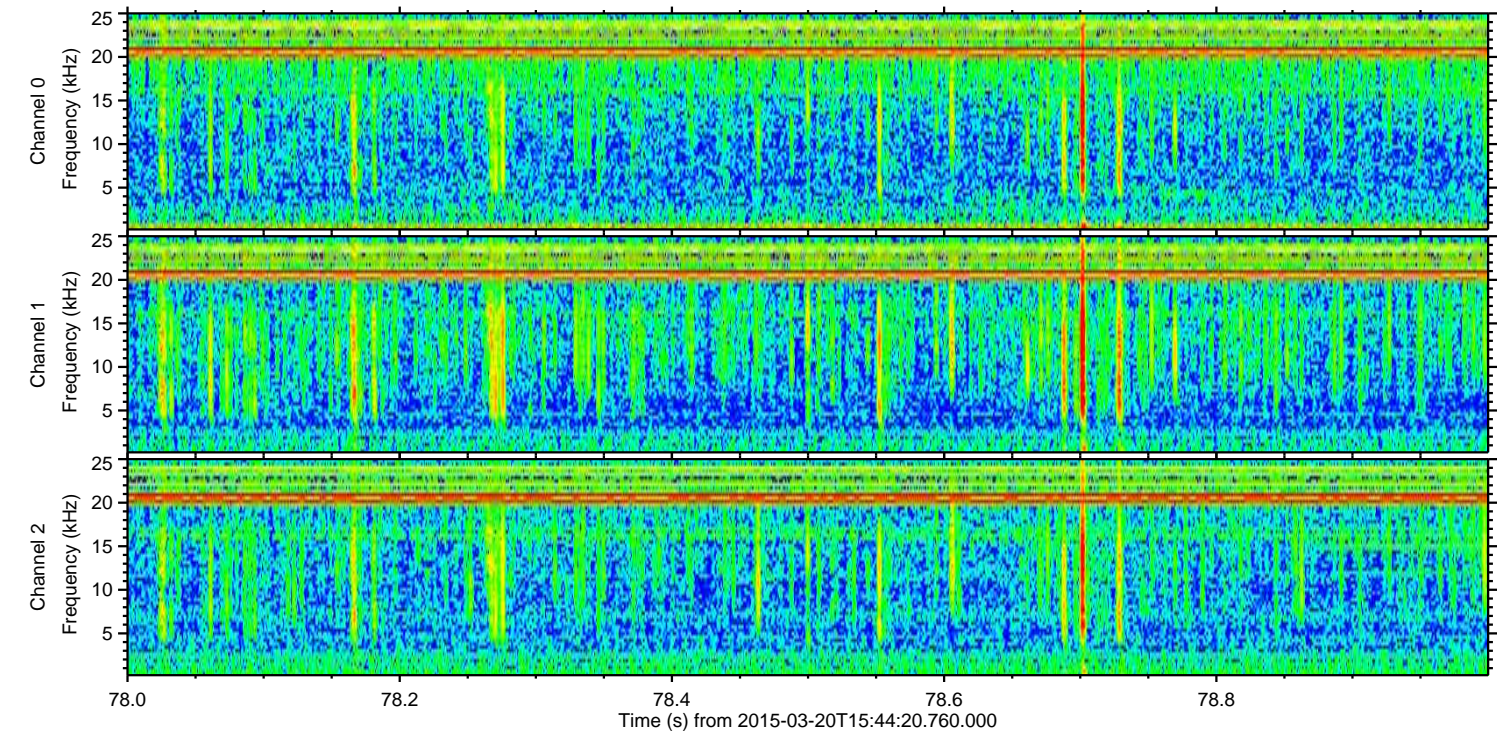
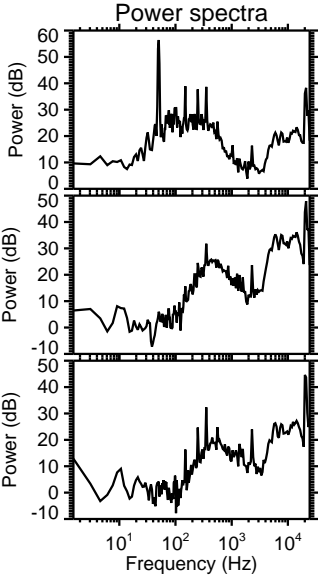
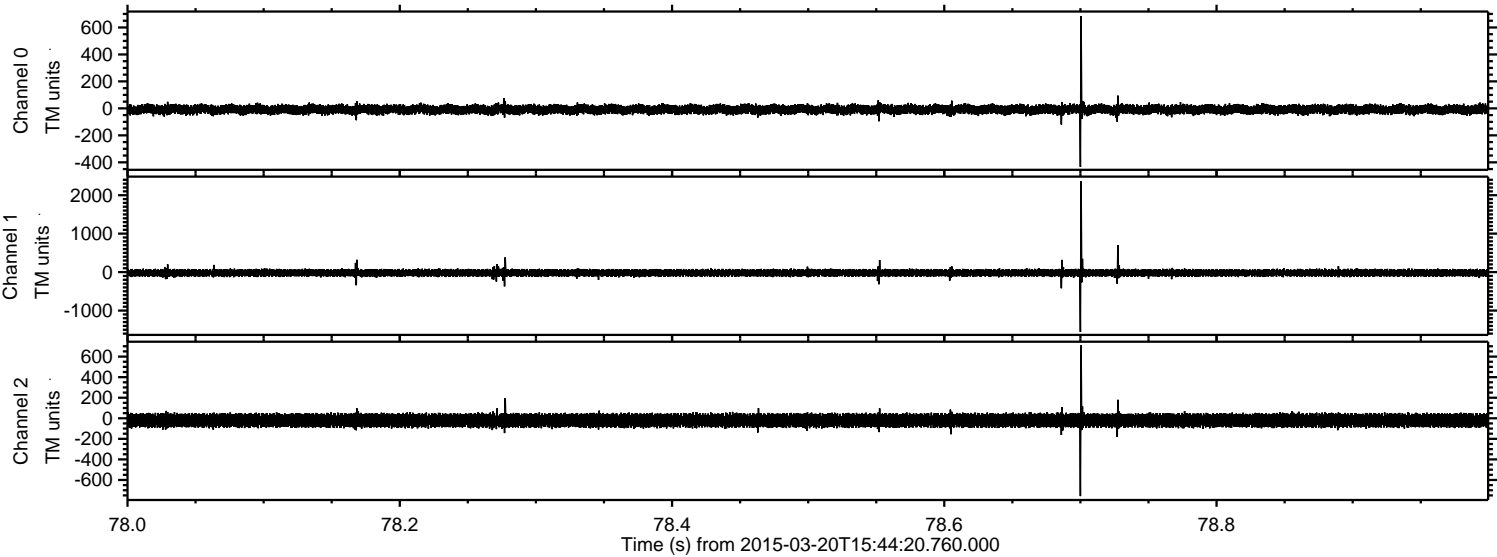
Channel 0  
mn: -882  
mx: 832  
 $\mu$ : -8.4  
 $\sigma$ : 18.7

Channel 1  
mn: -1829  
mx: 1632  
 $\mu$ : -20.0  
 $\sigma$ : 47.1

Channel 2  
mn: -2878  
mx: 2655  
 $\mu$ : -20.8  
 $\sigma$ : 41.6

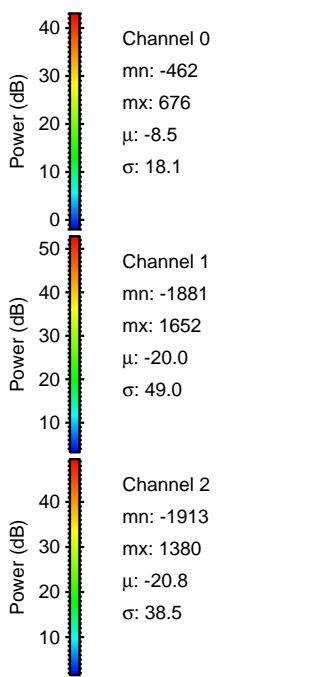
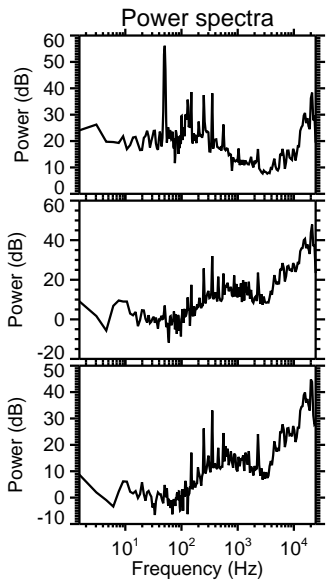
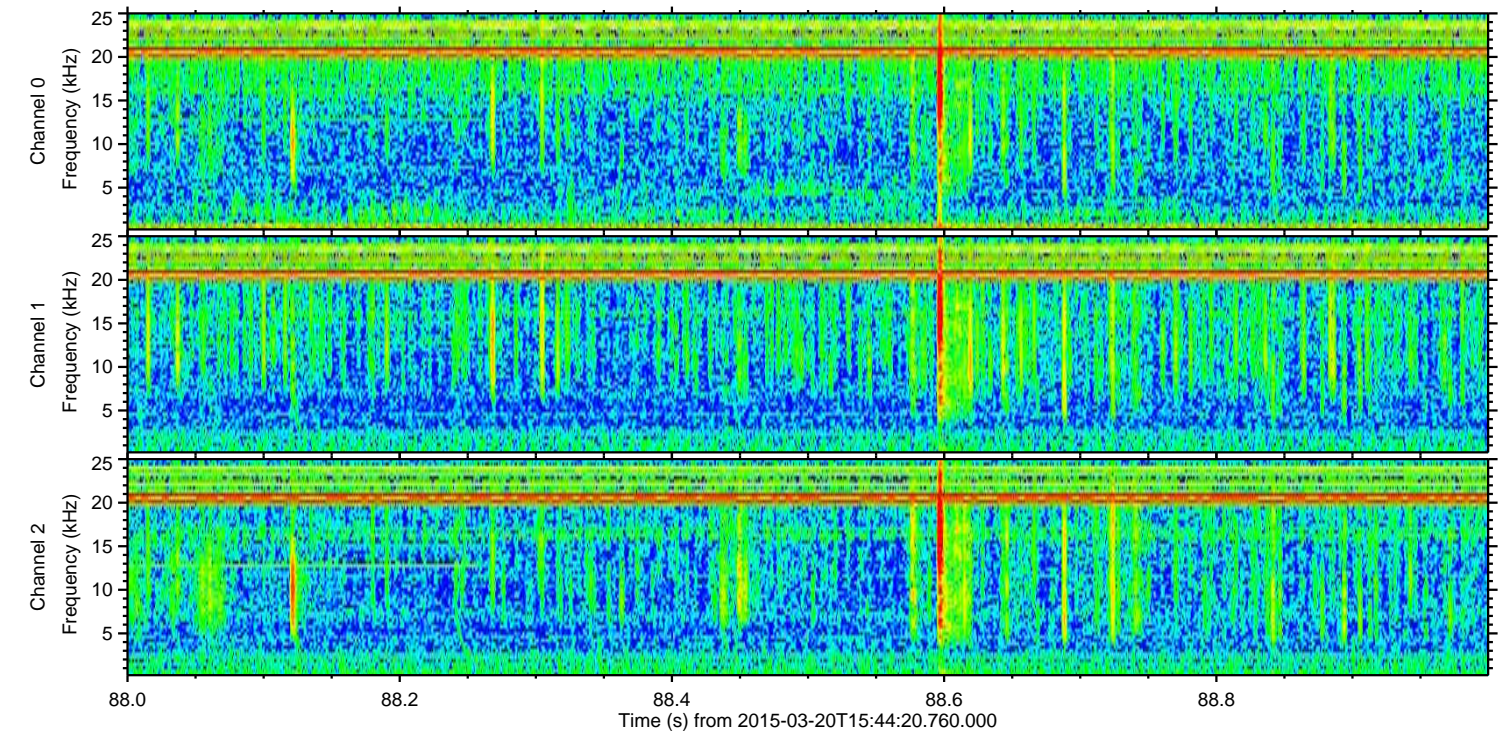
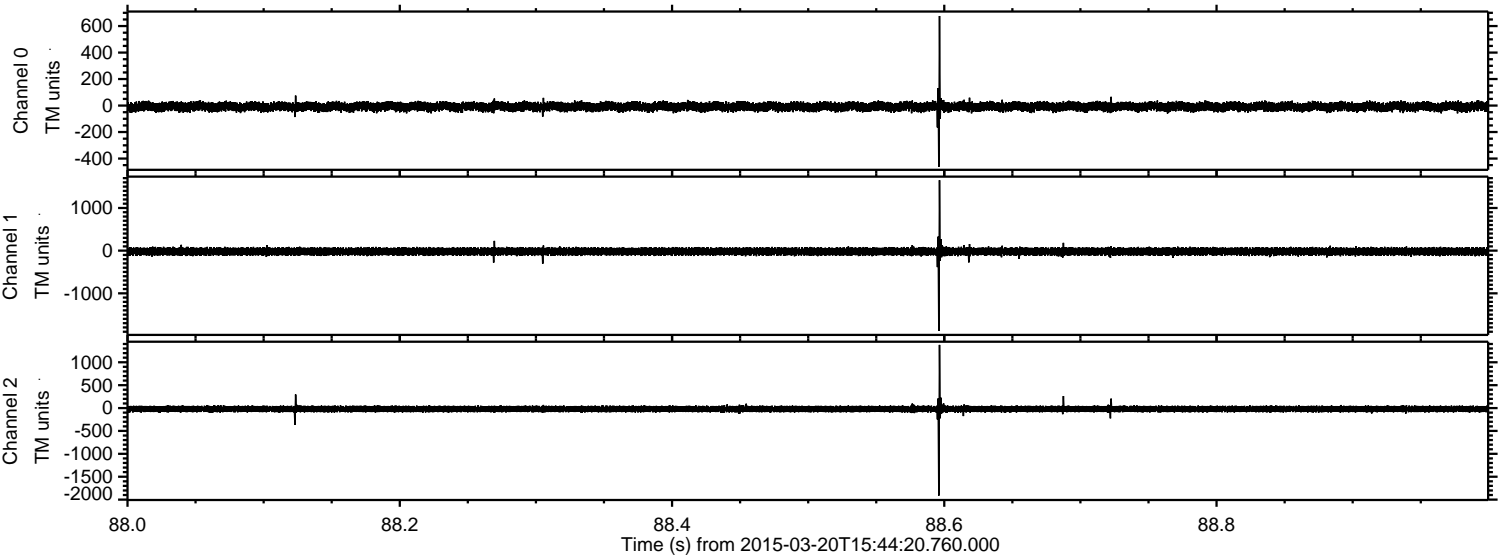


Processed Fri Mar 20 16:52:38 2015 by ELM ver.2012-10-06 from 001\_\_elm20150320\_154419\_\_dat00.bin





Processed Fri Mar 20 16:52:39 2015 by ELM ver.2012-10-06 from 001\_\_elm20150320\_154419\_\_dat00.bin



Channel 0  
mn: -462  
mx: 676  
 $\mu$ : -8.5  
 $\sigma$ : 18.1

Channel 1  
mn: -1881  
mx: 1652  
 $\mu$ : -20.0  
 $\sigma$ : 49.0

Channel 2  
mn: -1913  
mx: 1380  
 $\mu$ : -20.8  
 $\sigma$ : 38.5



ELMAVAN 3D WAVEFORMS (Measured data sampled at 50 kHz) 49720 packets of 144 samples from 2015-03-20T15:44:20.760.000. Part 116/144

