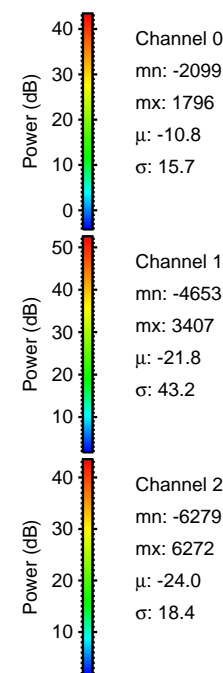
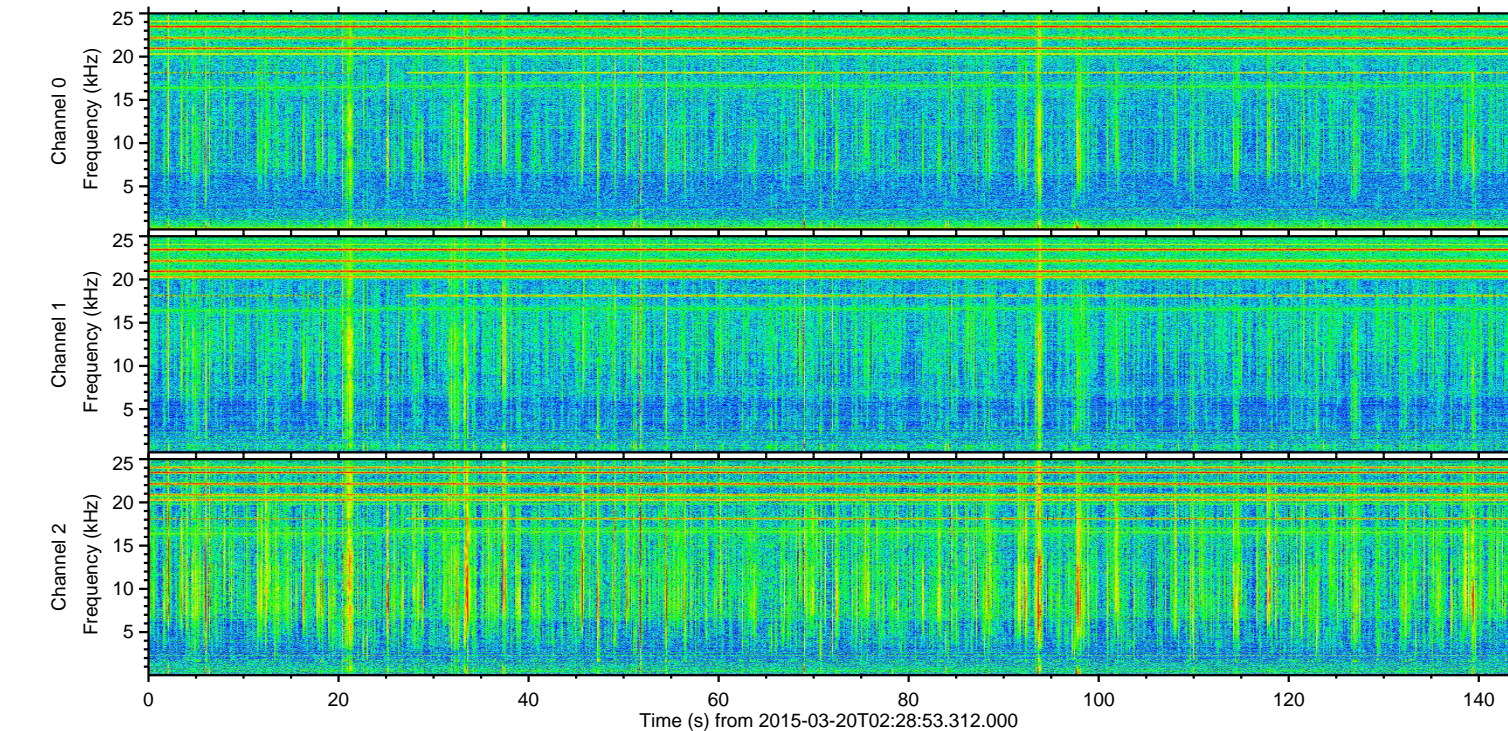
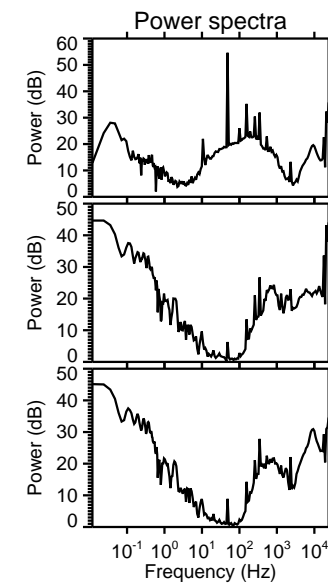
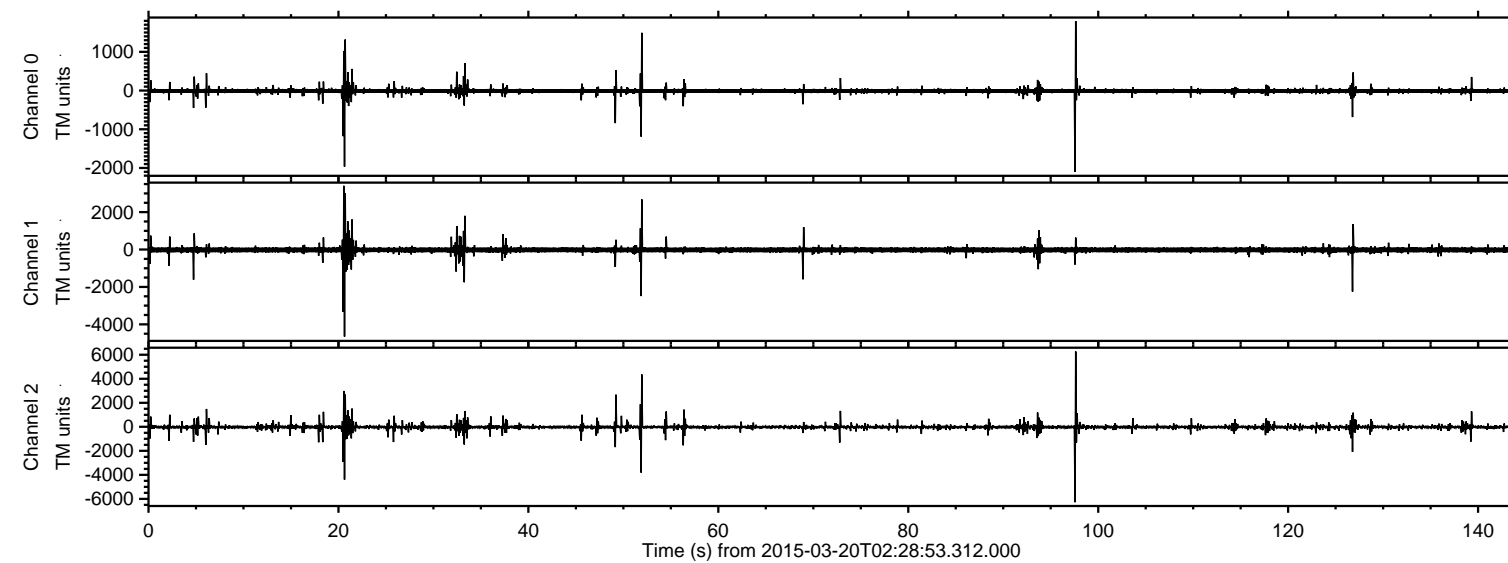
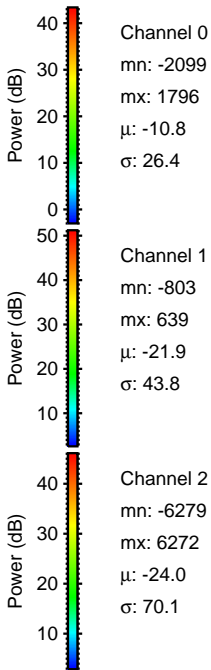
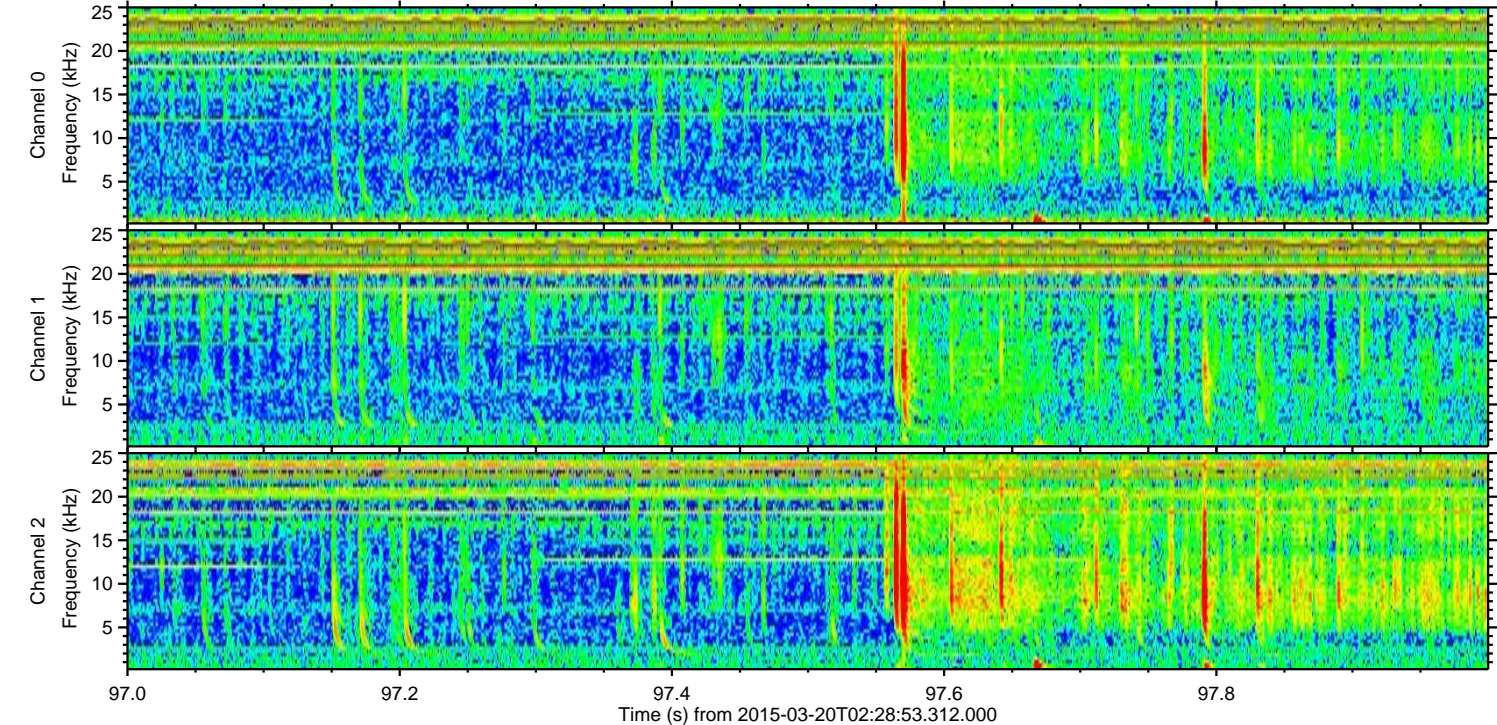
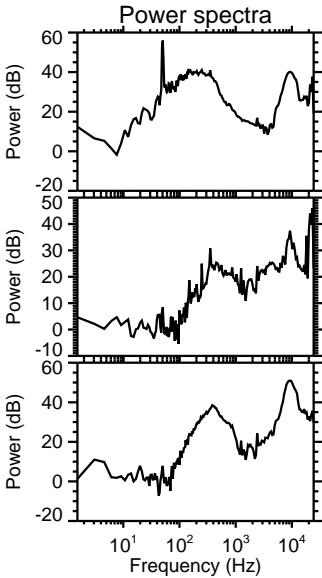
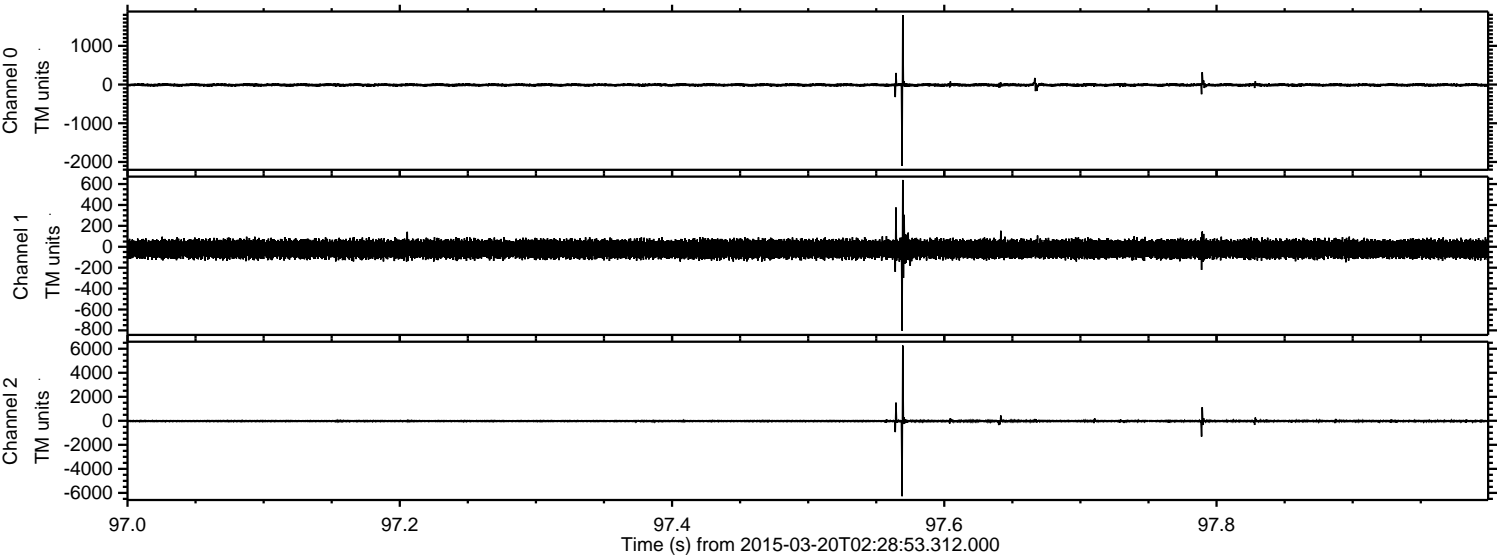


ELMAVAN 3D WAVEFORMS (Measured data sampled at 50 kHz) 49747 packets of 144 samples from 2015-03-20T02:28:53.312.000.

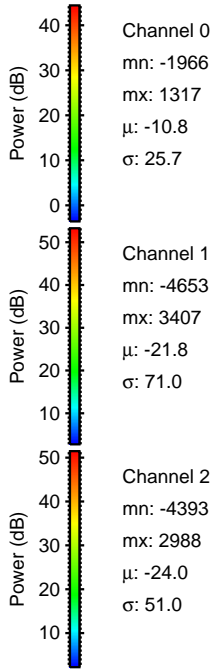
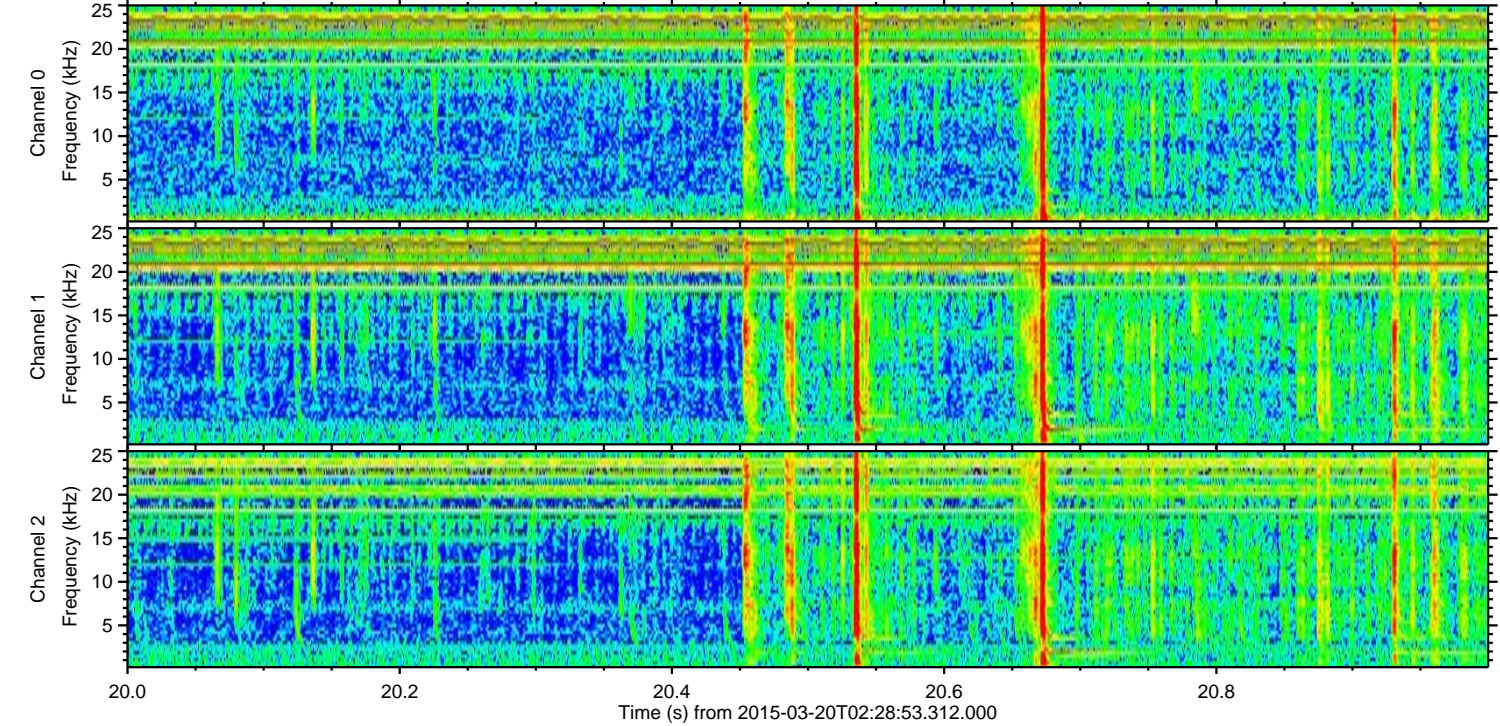
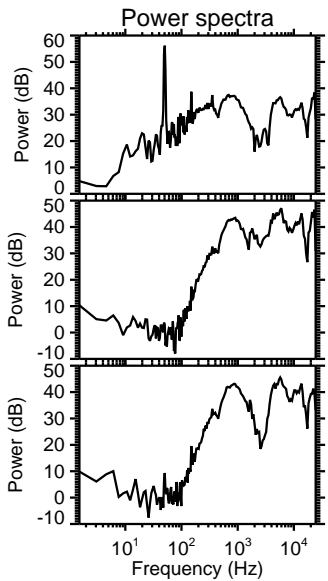
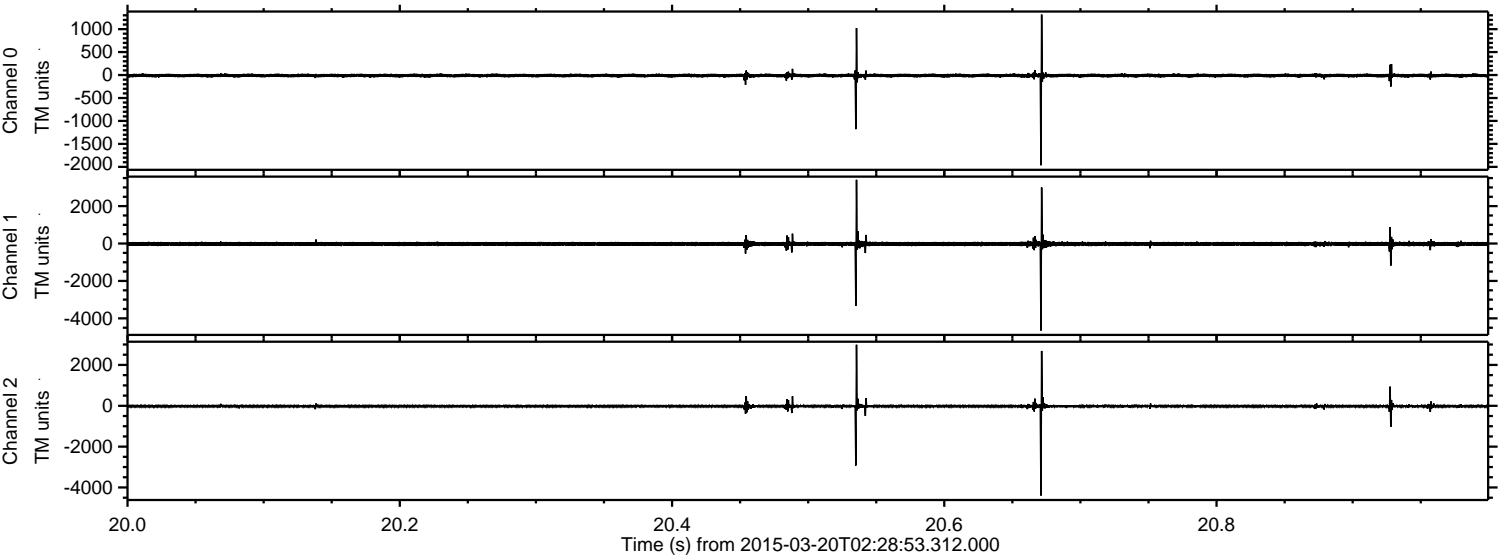
Processed Fri Mar 20 03:35:31 2015 by ELM ver.2012-10-06 from 001__elm20150320_022852__dat00.bin



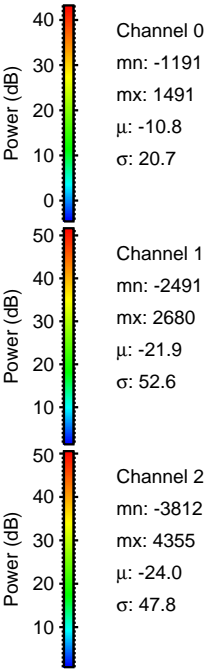
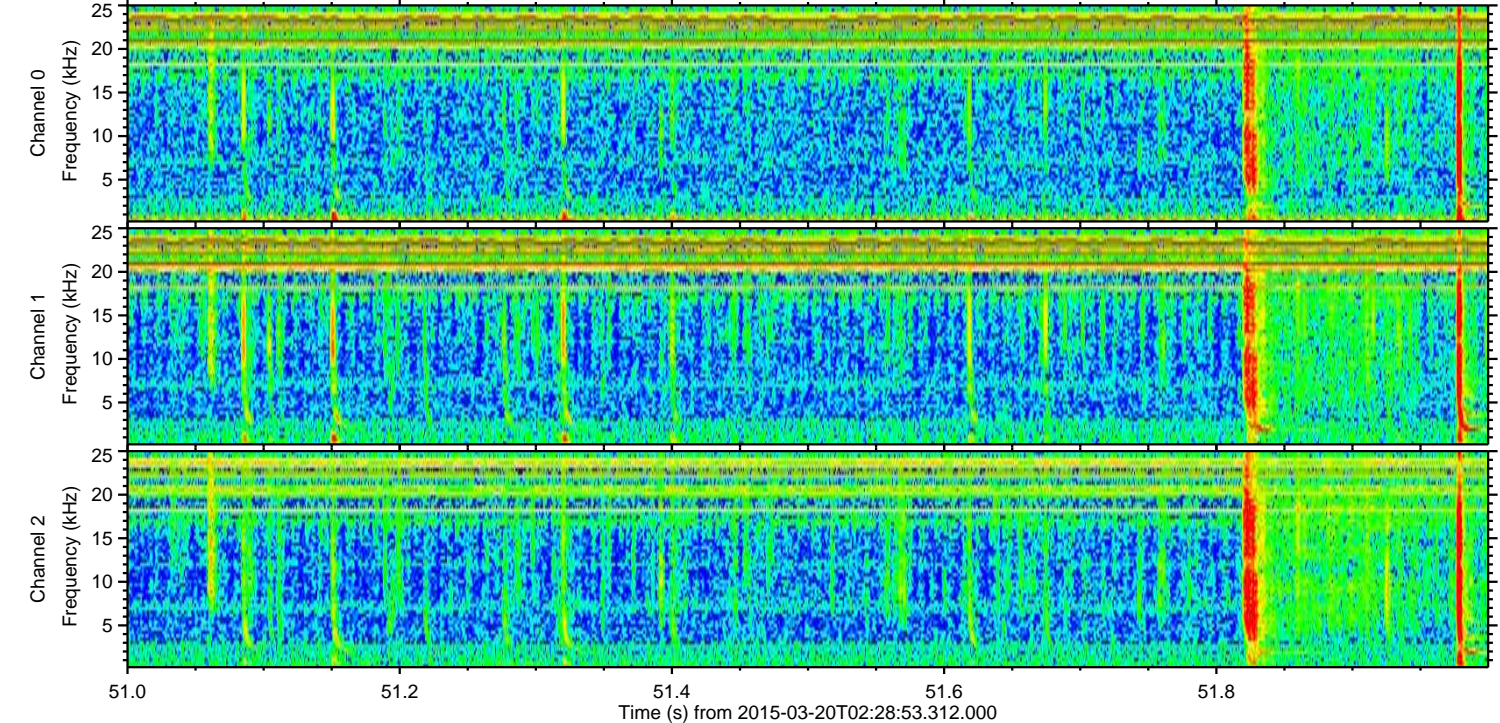
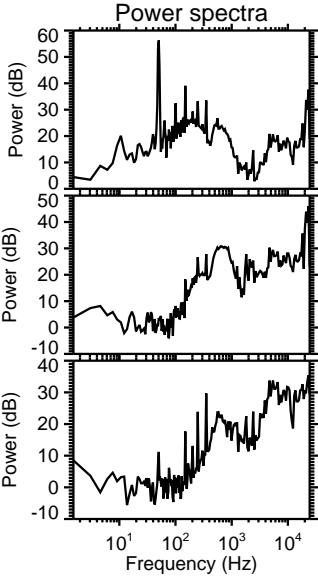
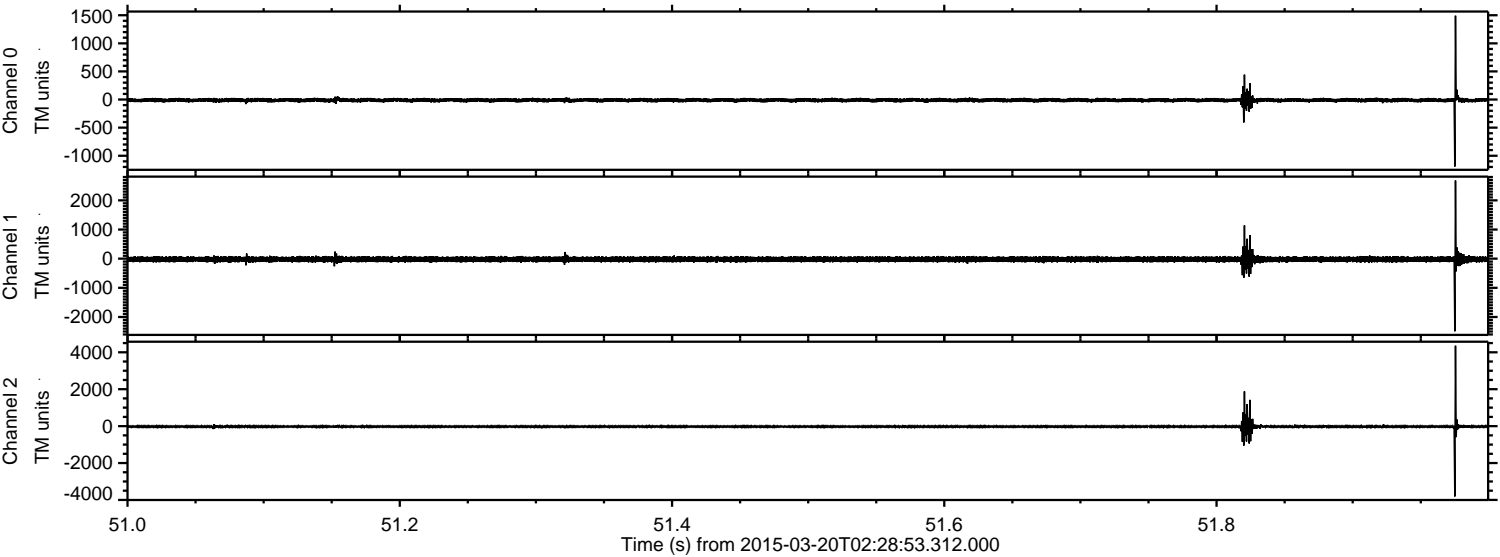
Processed Fri Mar 20 03:35:42 2015 by ELM ver.2012-10-06 from 001__elm20150320_022852__dat00.bin



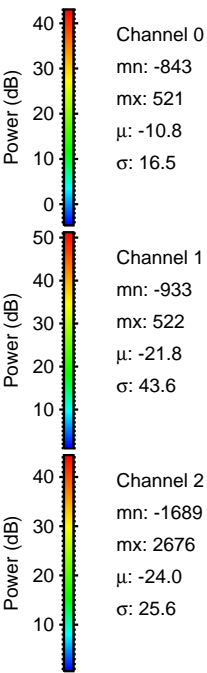
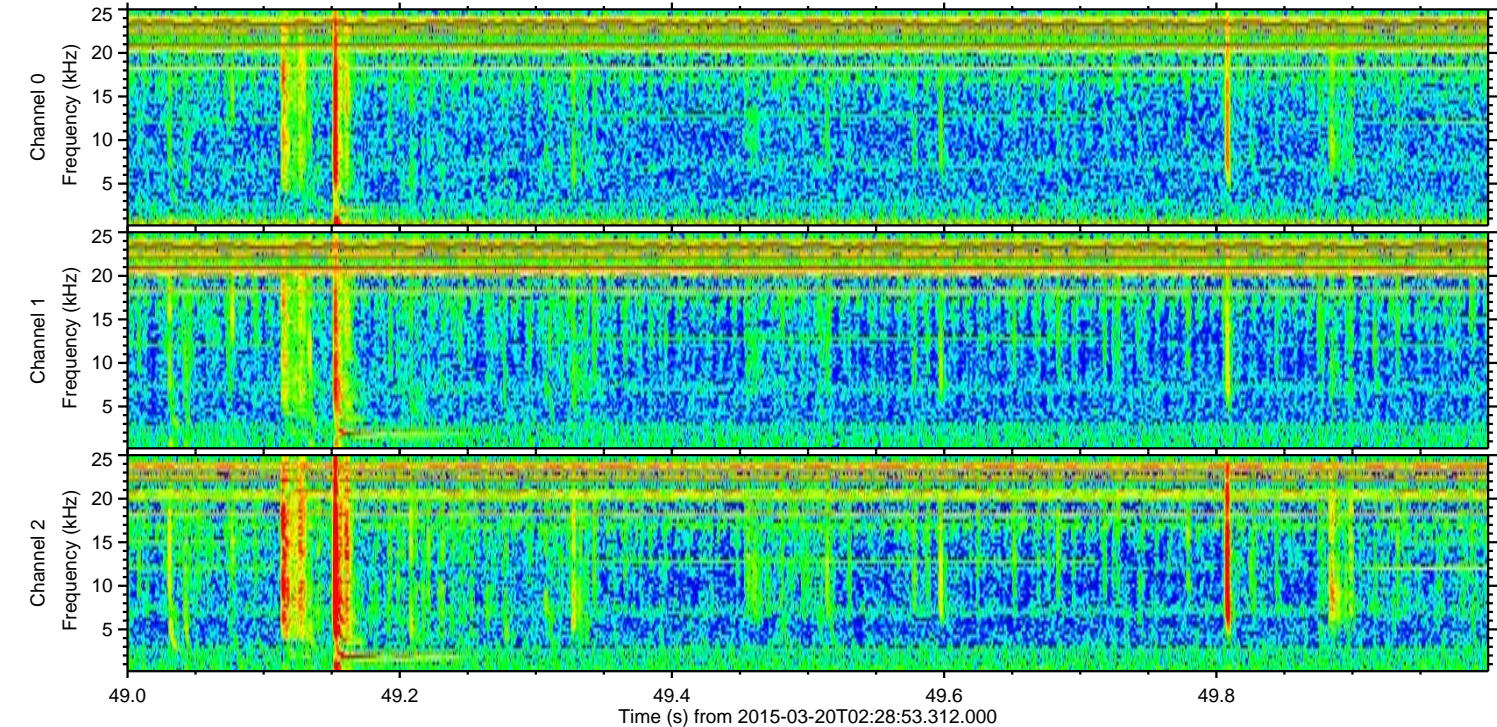
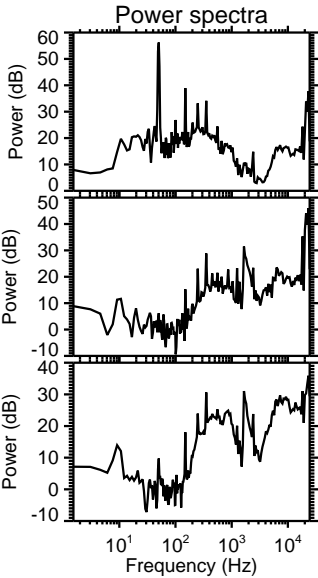
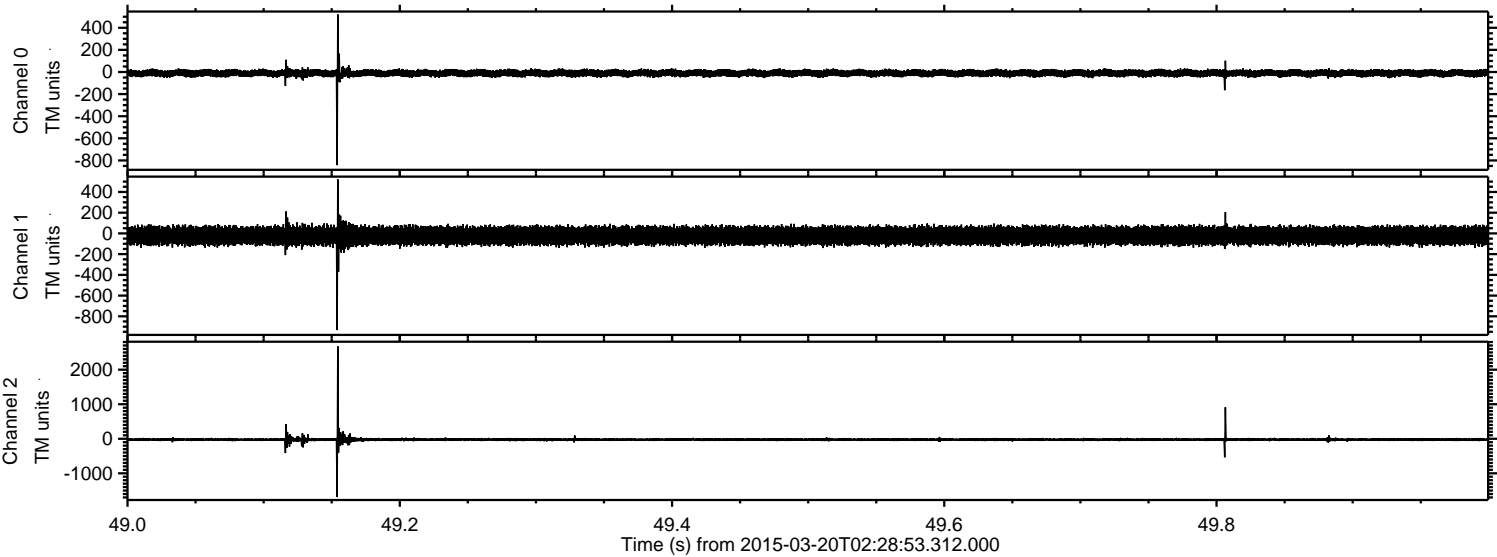
Processed Fri Mar 20 03:35:43 2015 by ELM ver.2012-10-06 from 001__elm20150320_022852__dat00.bin



Processed Fri Mar 20 03:35:44 2015 by ELM ver.2012-10-06 from 001__elm20150320_022852__dat00.bin

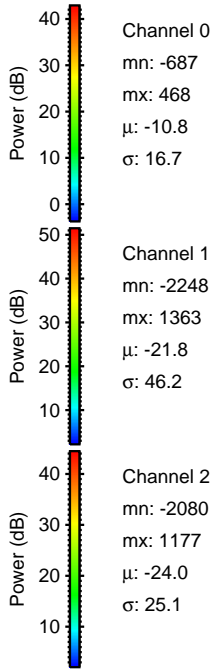
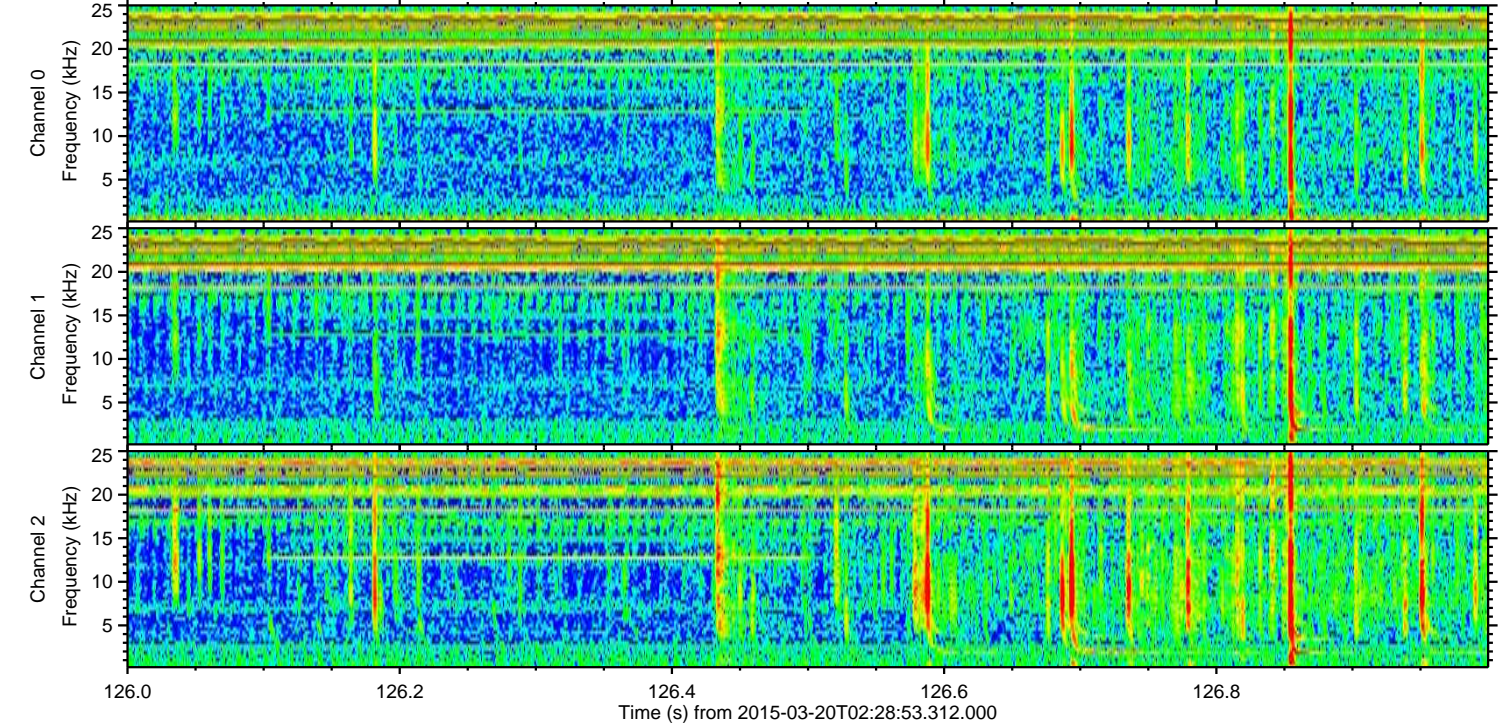
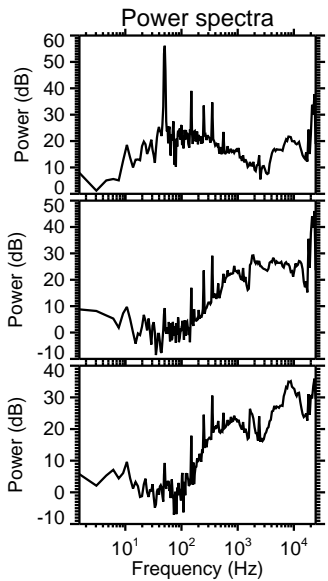
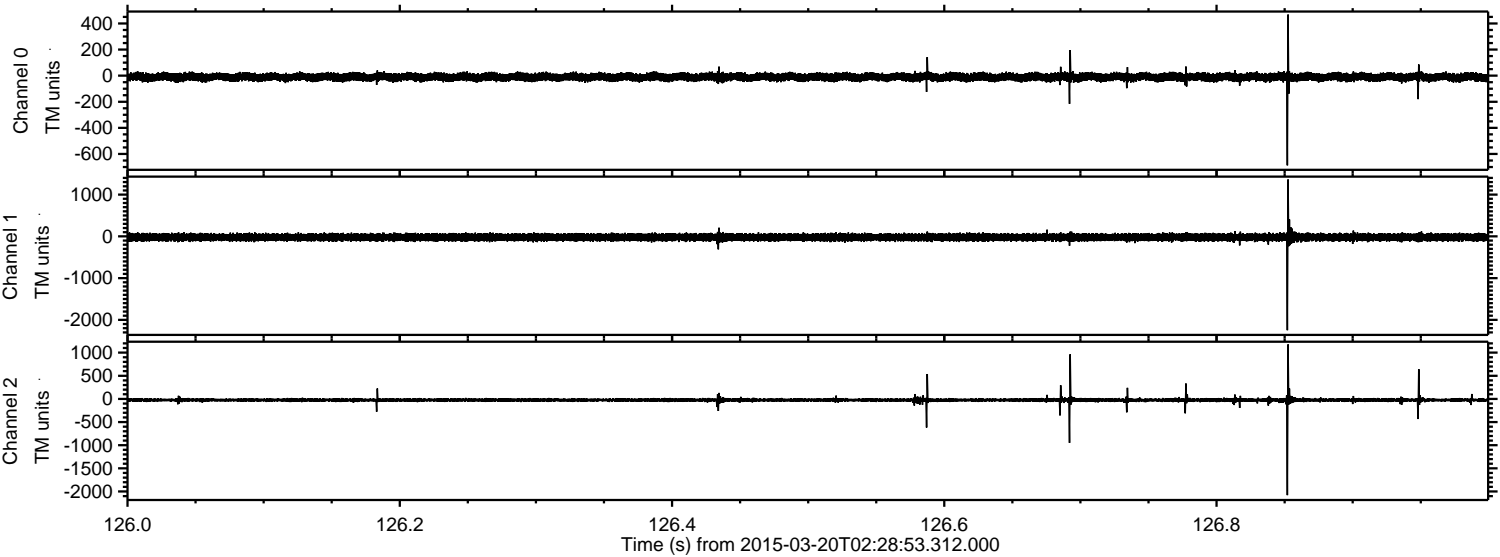


Processed Fri Mar 20 03:35:45 2015 by ELM ver.2012-10-06 from 001__elm20150320_022852__dat00.bin



ELMAVAN 3D WAVEFORMS (Measured data sampled at 50 kHz) 49747 packets of 144 samples from 2015-03-20T02:28:53.312.000. Part 127/144

Processed Fri Mar 20 03:35:46 2015 by ELM ver.2012-10-06 from 001__elm20150320_022852__dat00.bin

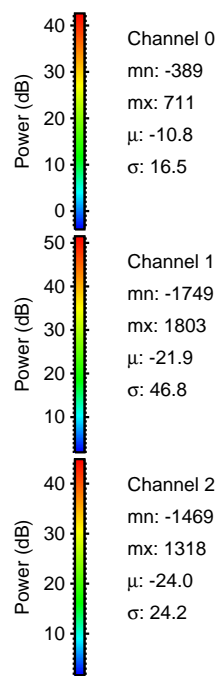
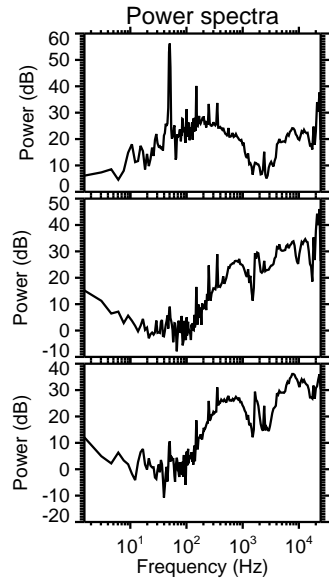
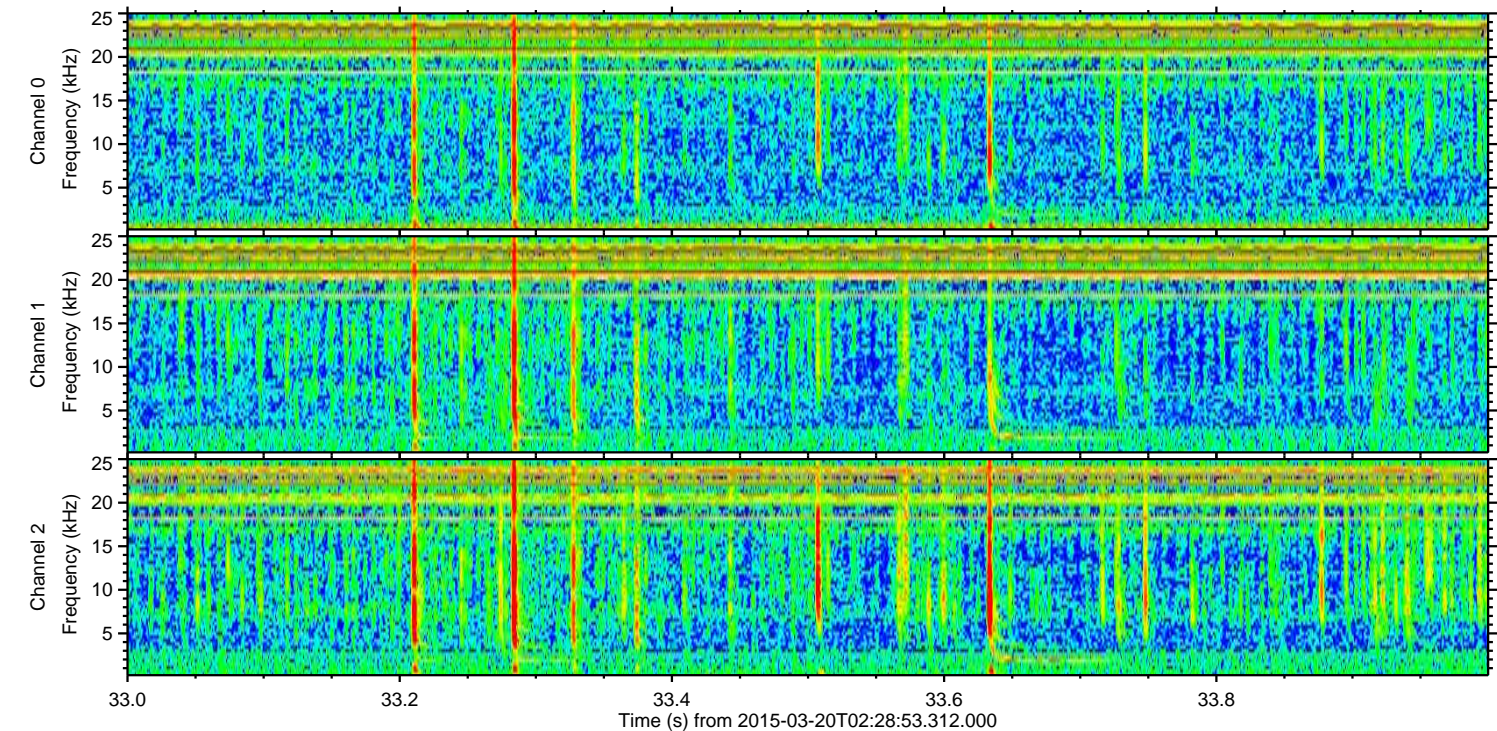
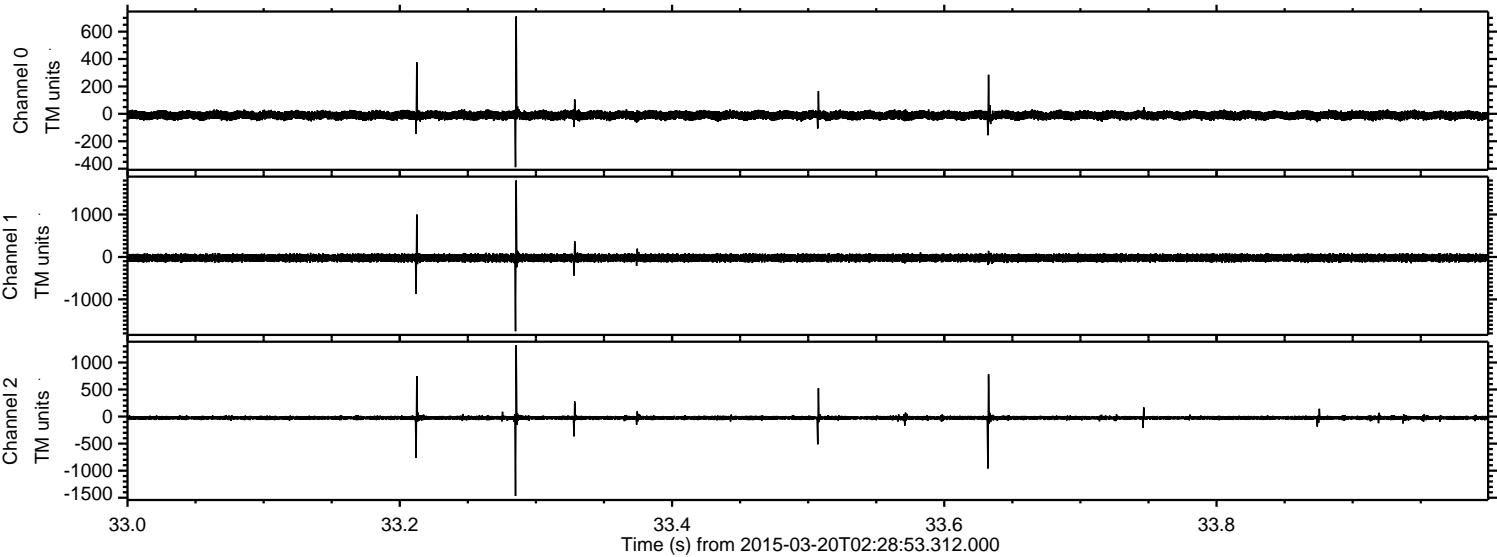


Channel 0
mn: -687
mx: 468
 μ : -10.8
 σ : 16.7

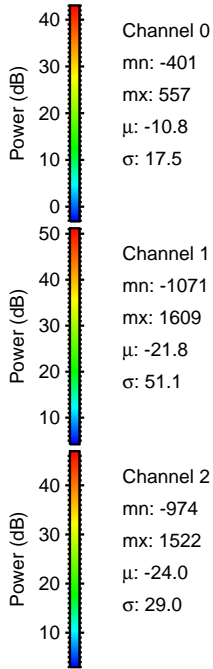
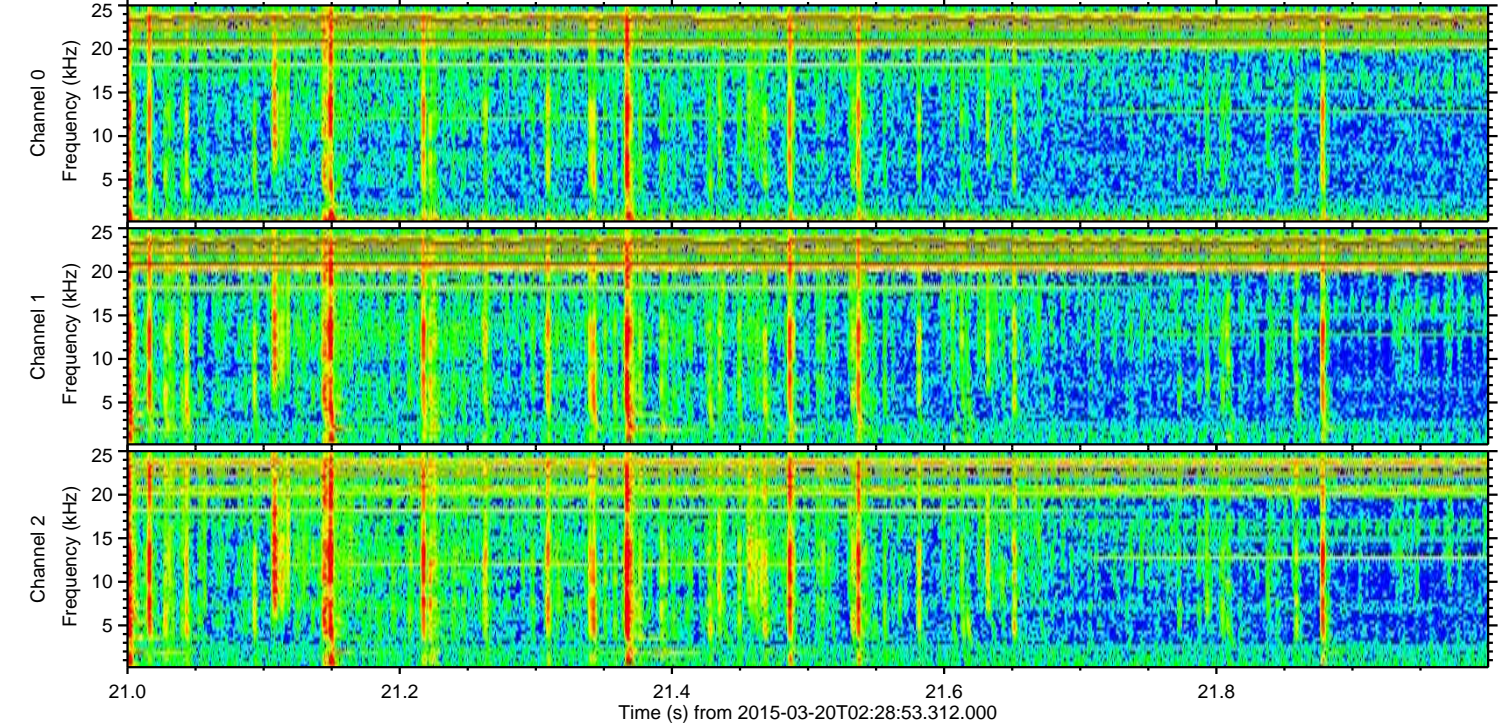
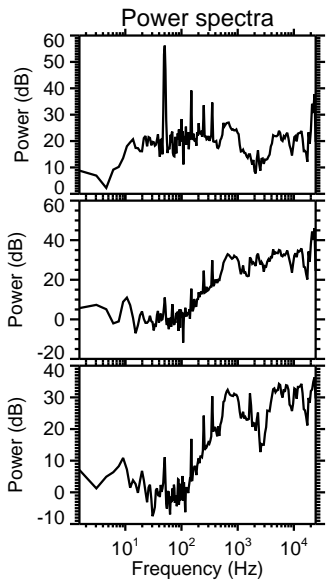
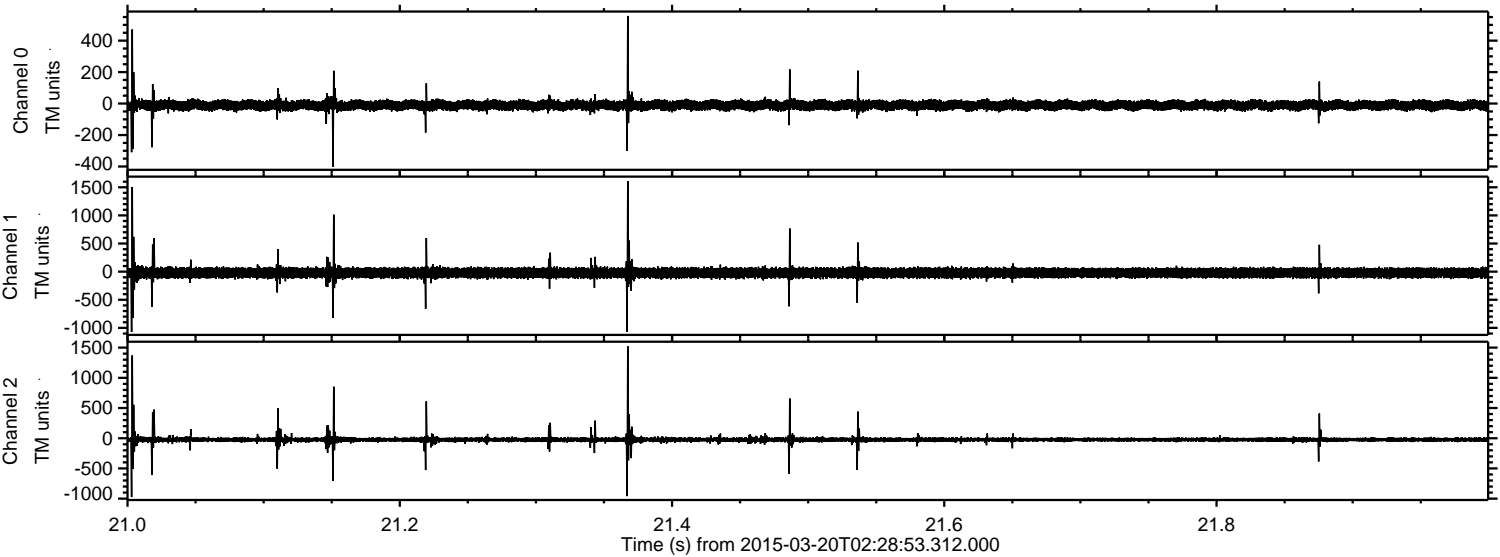
Channel 1
mn: -2248
mx: 1363
 μ : -21.8
 σ : 46.2

Channel 2
mn: -2080
mx: 1177
 μ : -24.0
 σ : 25.1

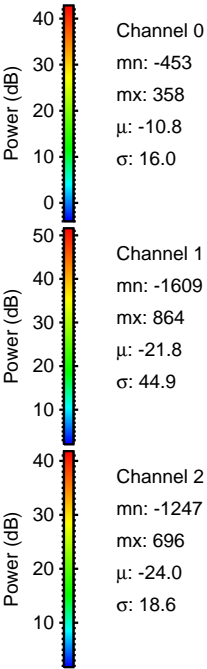
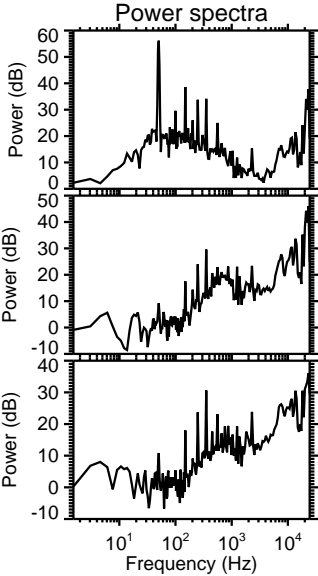
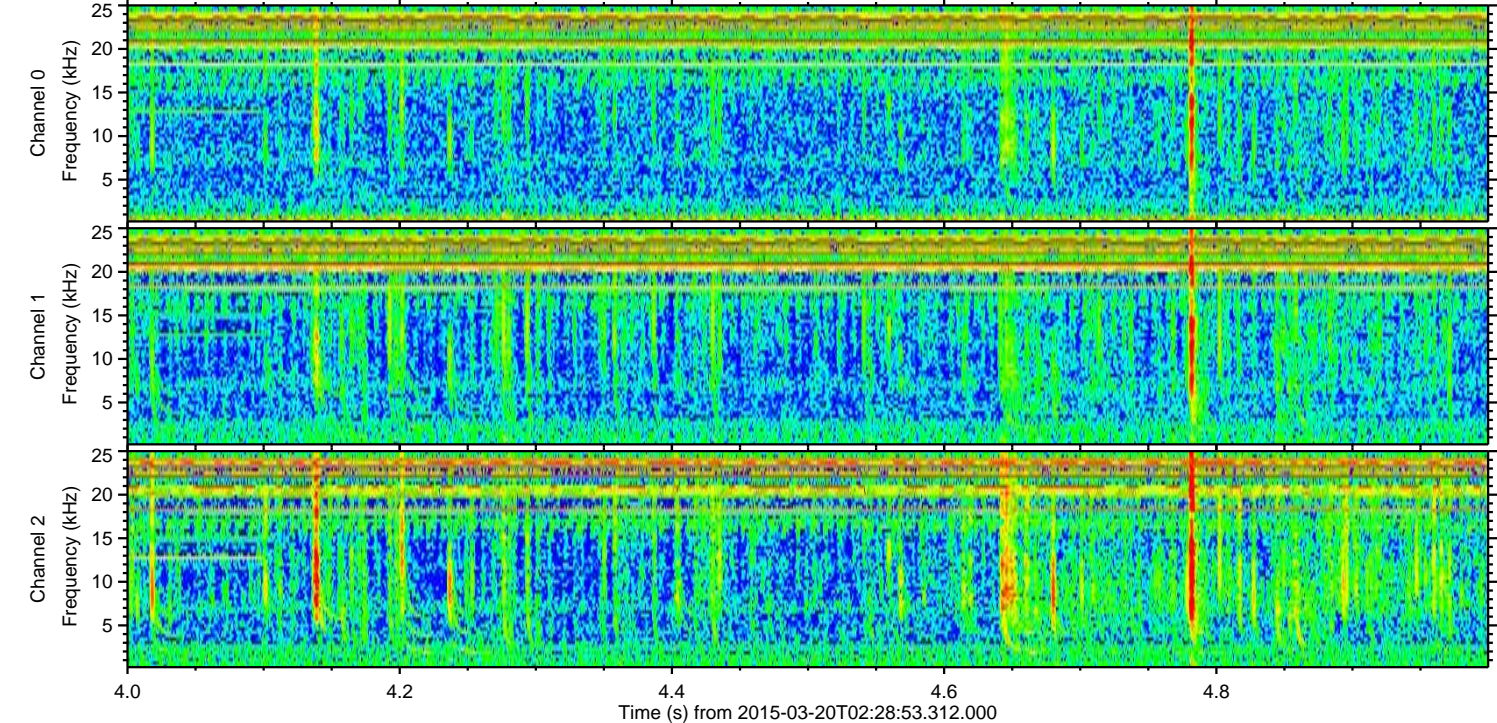
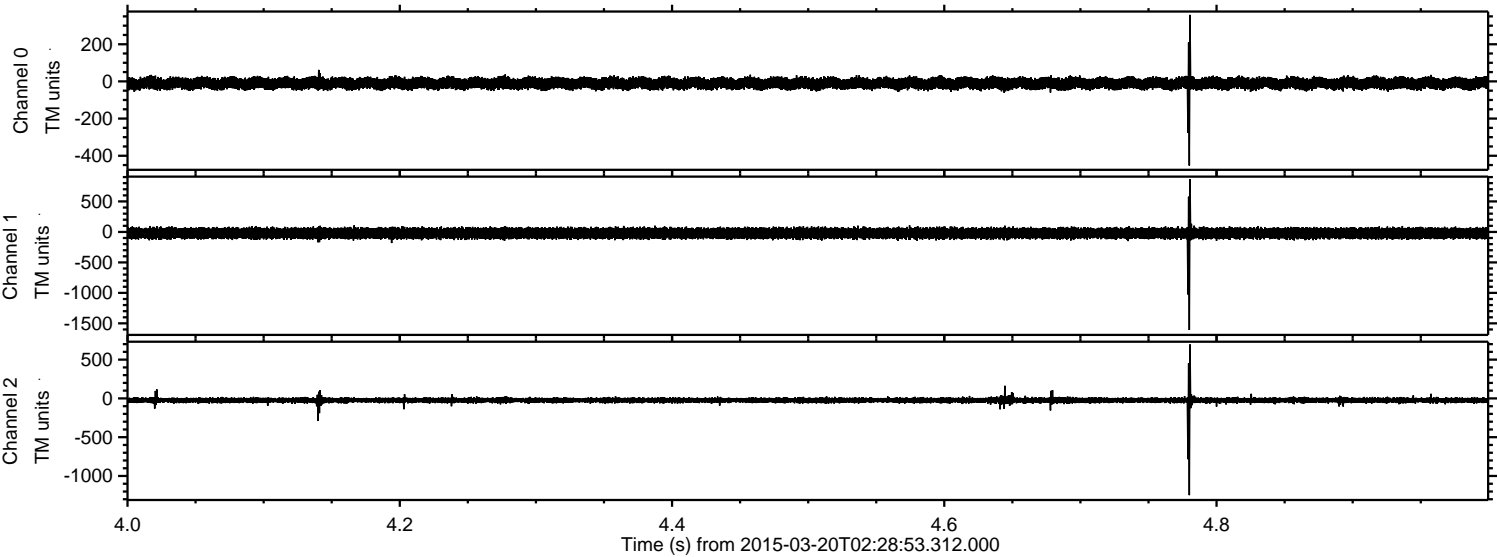
Processed Fri Mar 20 03:35:47 2015 by ELM ver.2012-10-06 from 001__elm20150320_022852__dat00.bin



Processed Fri Mar 20 03:35:48 2015 by ELM ver.2012-10-06 from 001__elm20150320_022852__dat00.bin



Processed Fri Mar 20 03:35:49 2015 by ELM ver.2012-10-06 from 001__elm20150320_022852__dat00.bin

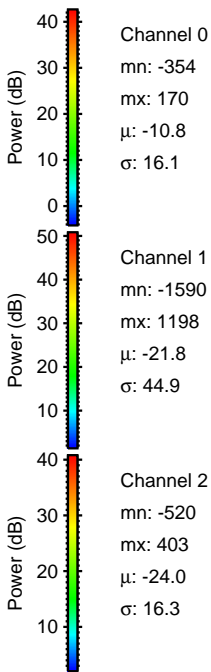
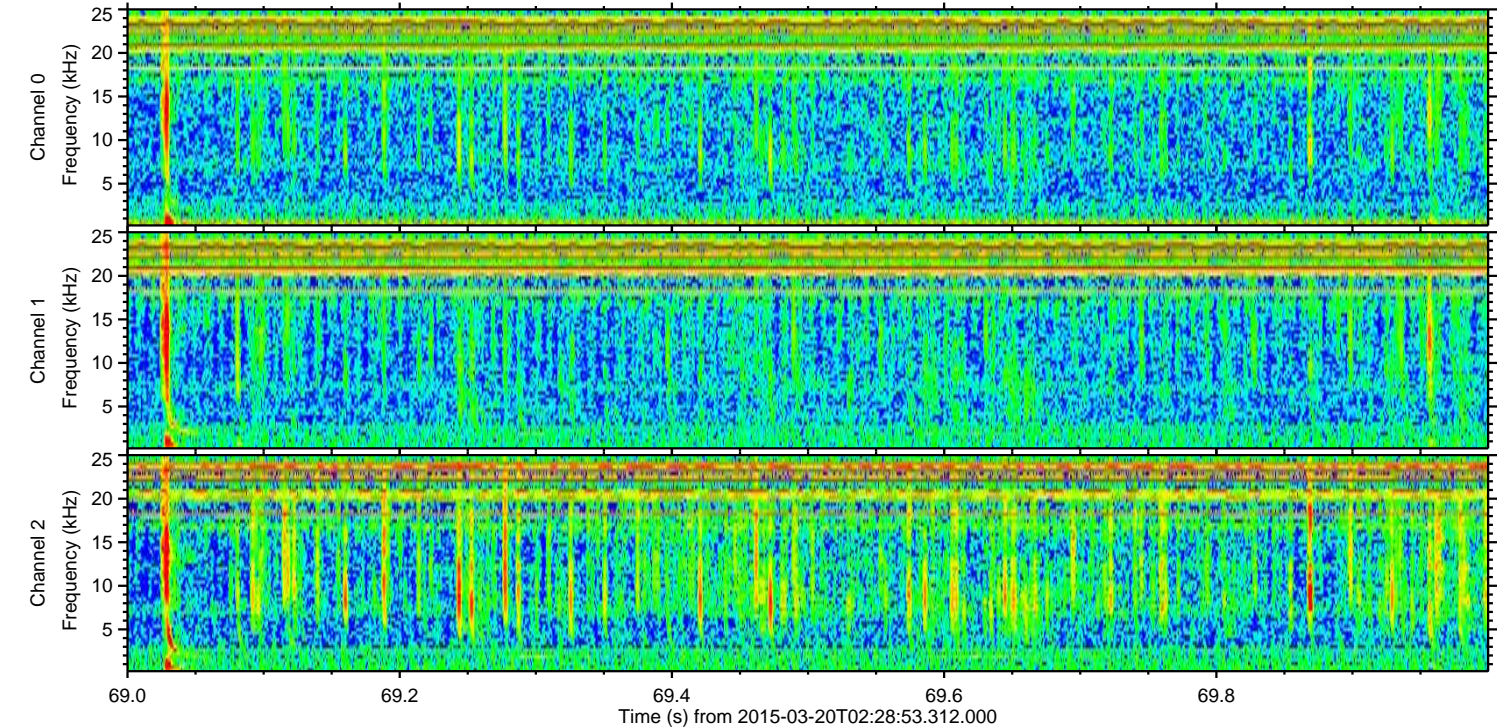
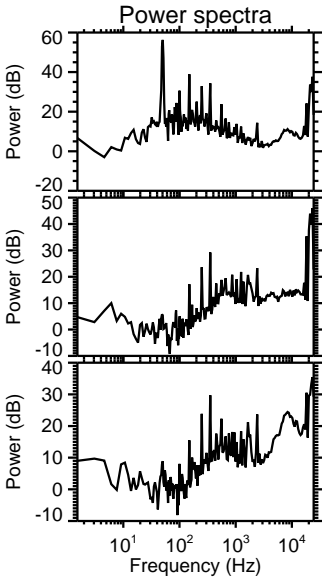
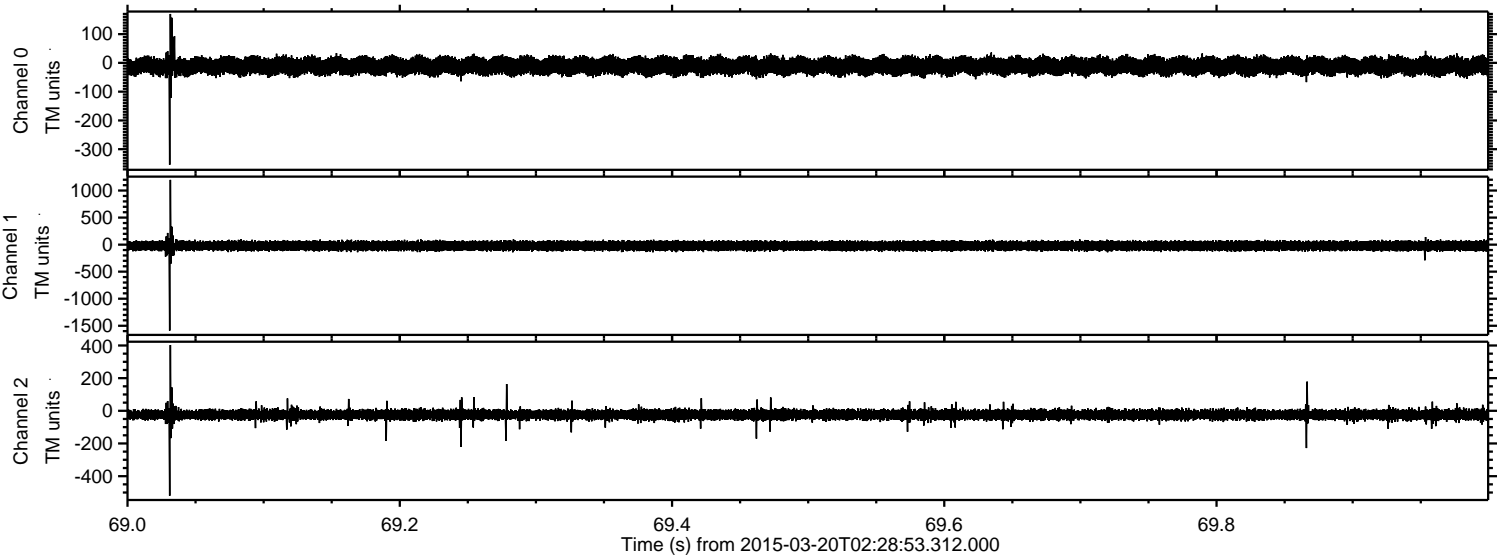


Channel 0
mn: -453
mx: 358
 μ : -10.8
 σ : 16.0

Channel 1
mn: -1609
mx: 864
 μ : -21.8
 σ : 44.9

Channel 2
mn: -1247
mx: 696
 μ : -24.0
 σ : 18.6

Processed Fri Mar 20 03:35:50 2015 by ELM ver.2012-10-06 from 001__elm20150320_022852__dat00.bin



Processed Fri Mar 20 03:35:51 2015 by ELM ver.2012-10-06 from 001__elm20150320_022852__dat00.bin

