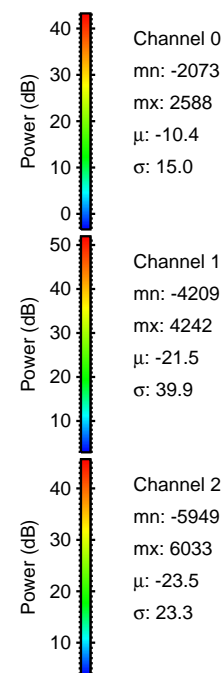
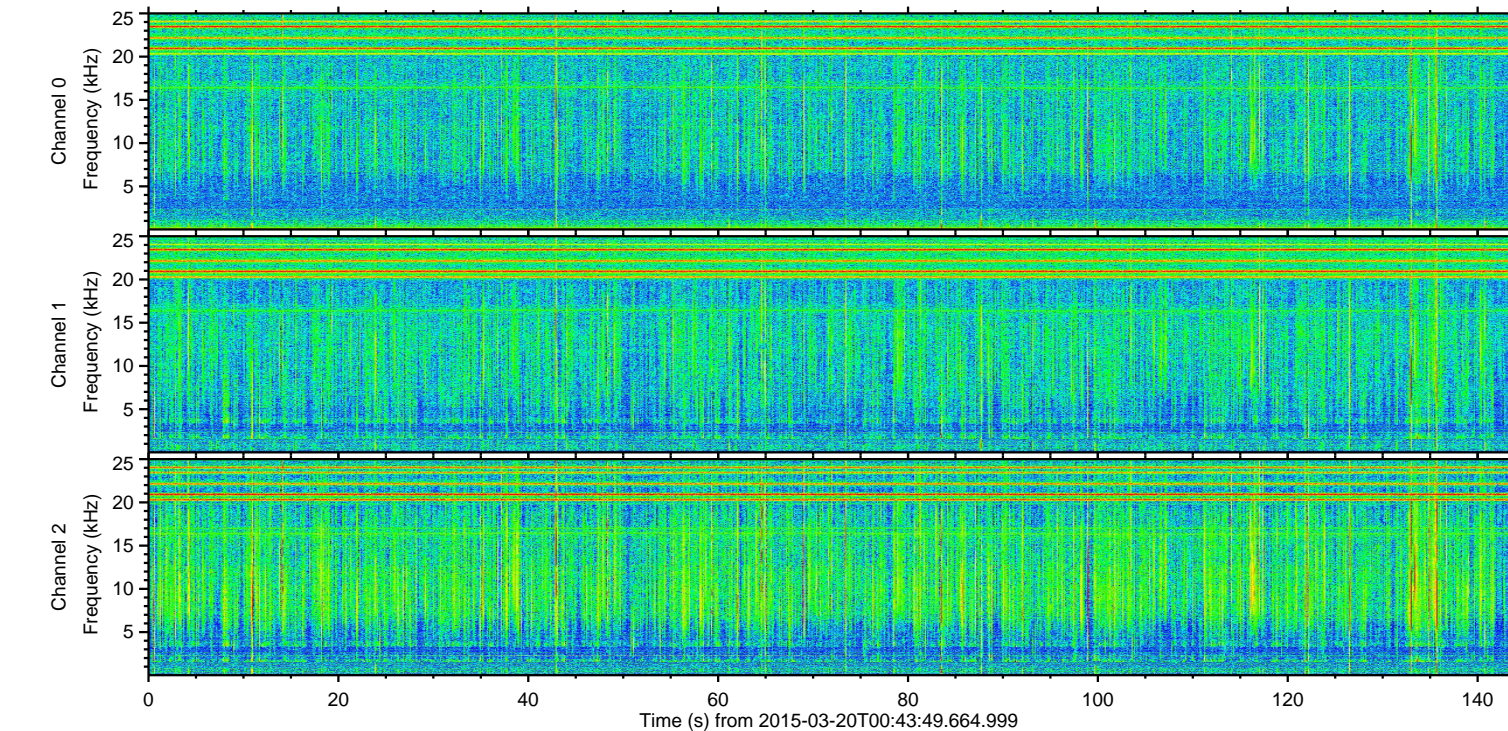
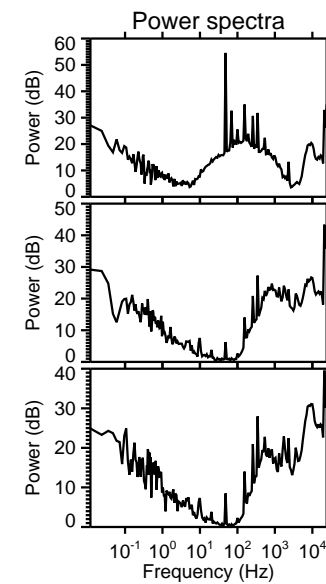
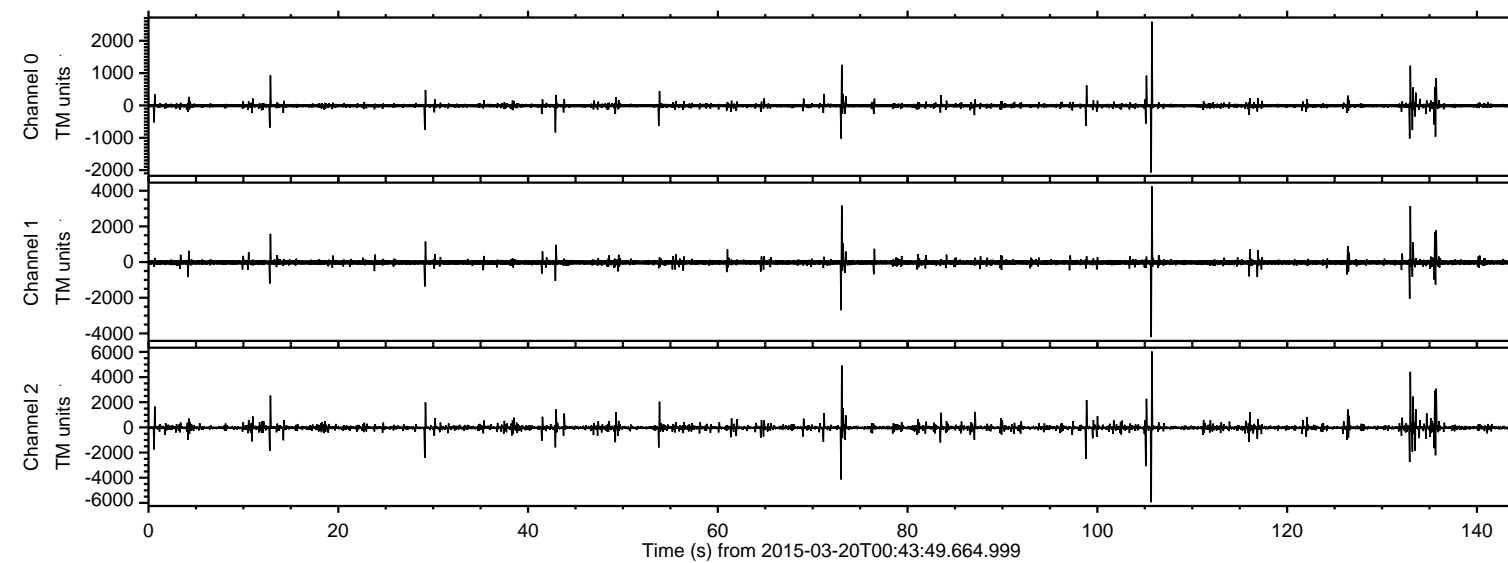


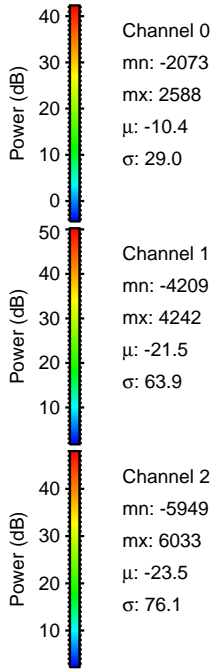
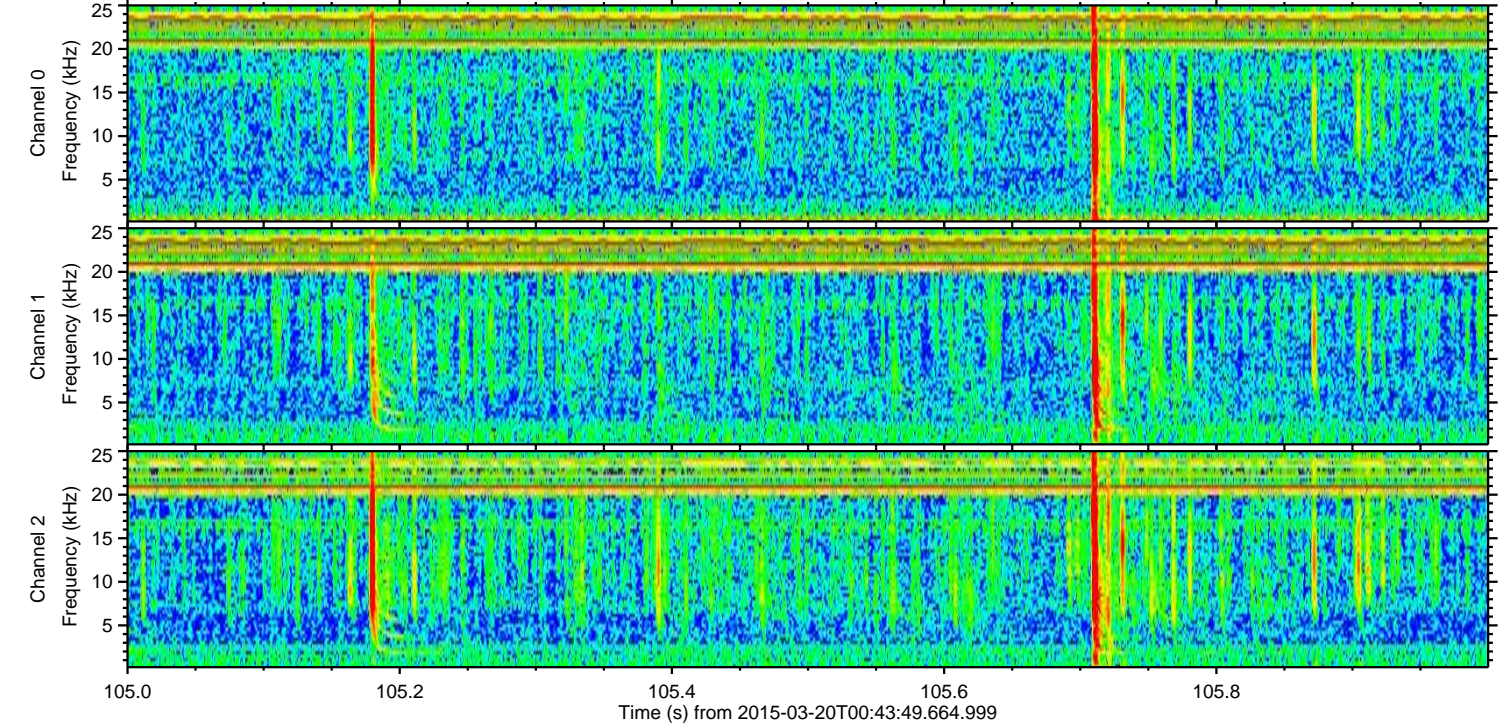
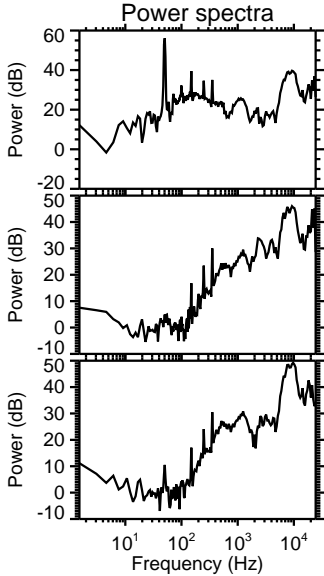
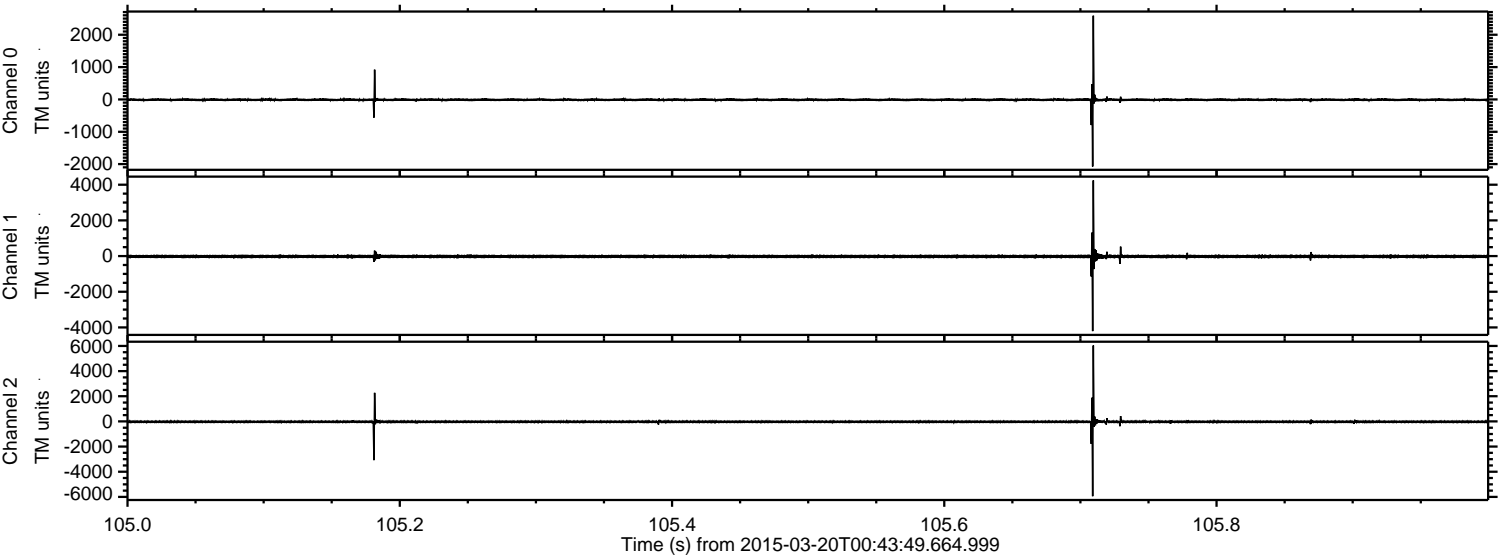
ELMAVAN 3D WAVEFORMS (Measured data sampled at 50 kHz) 49790 packets of 144 samples from 2015-03-20T00:43:49.664.999.

Processed Fri Mar 20 01:50:55 2015 by ELM ver.2012-10-06 from 001__elm20150320_004348__dat00.bin

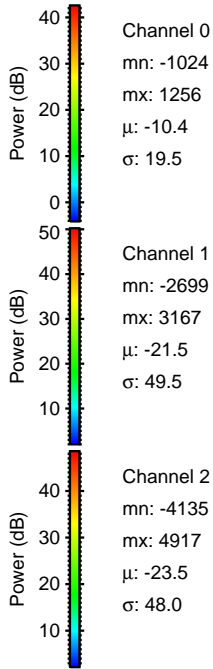
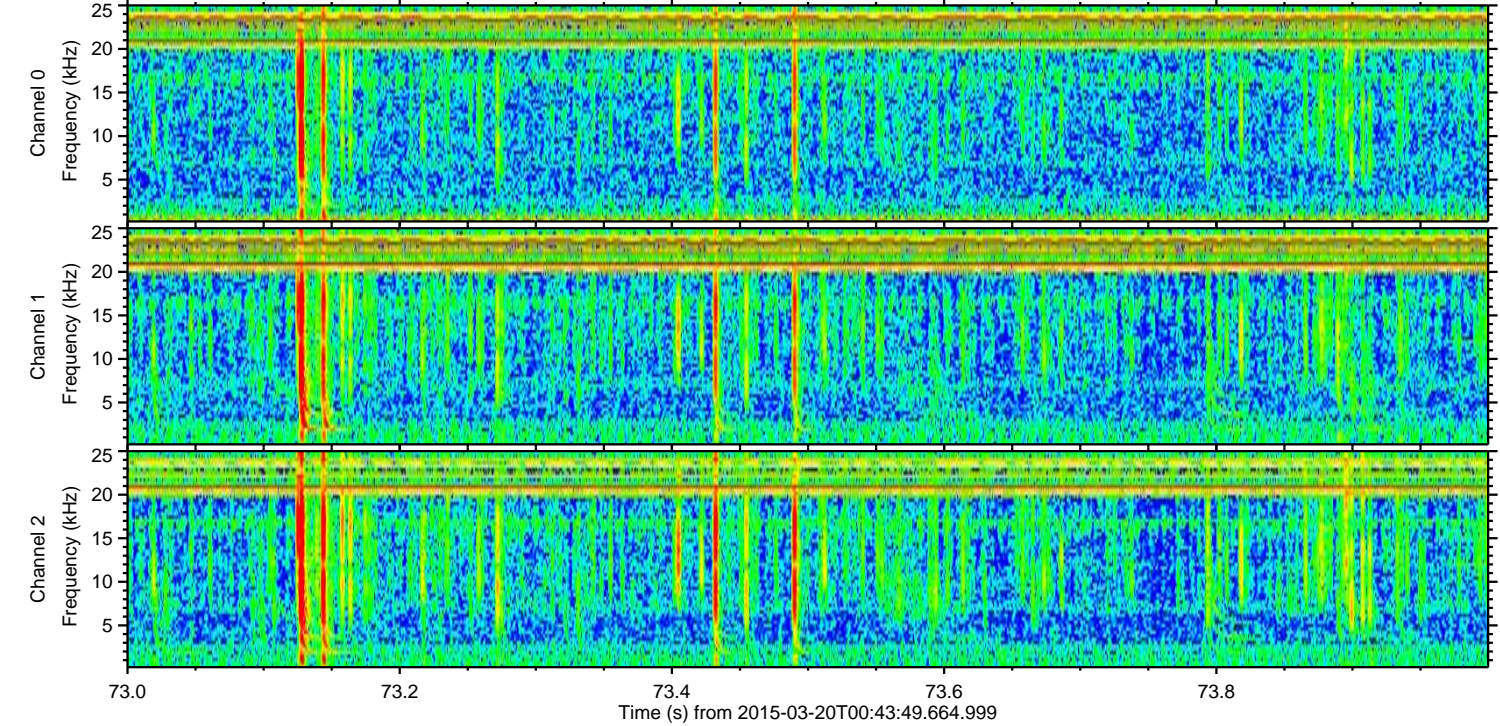
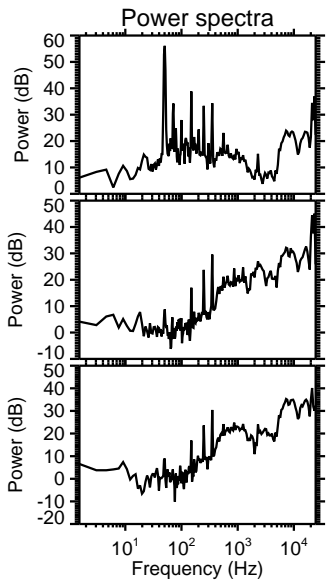
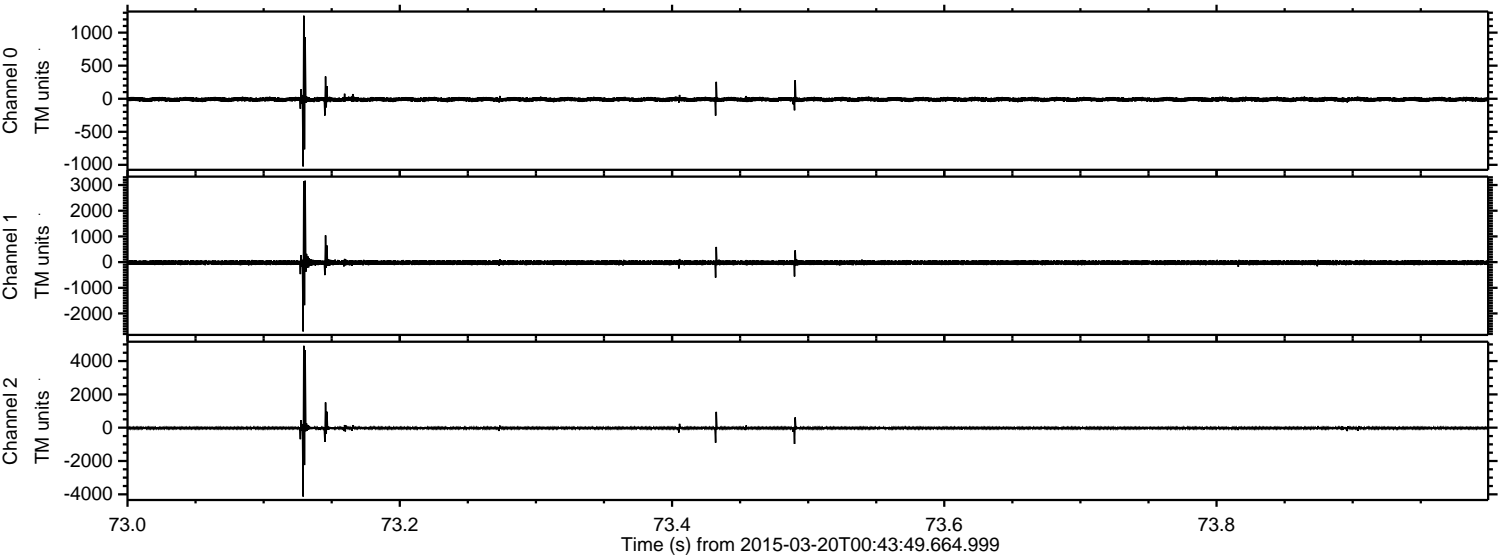


ELMAVAN 3D WAVEFORMS (Measured data sampled at 50 kHz) 49790 packets of 144 samples from 2015-03-20T00:43:49.664.999. Part 106/144

Processed Fri Mar 20 01:51:06 2015 by ELM ver.2012-10-06 from 001__elm20150320_004348__dat00.bin

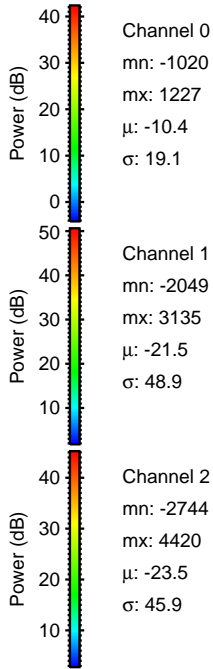
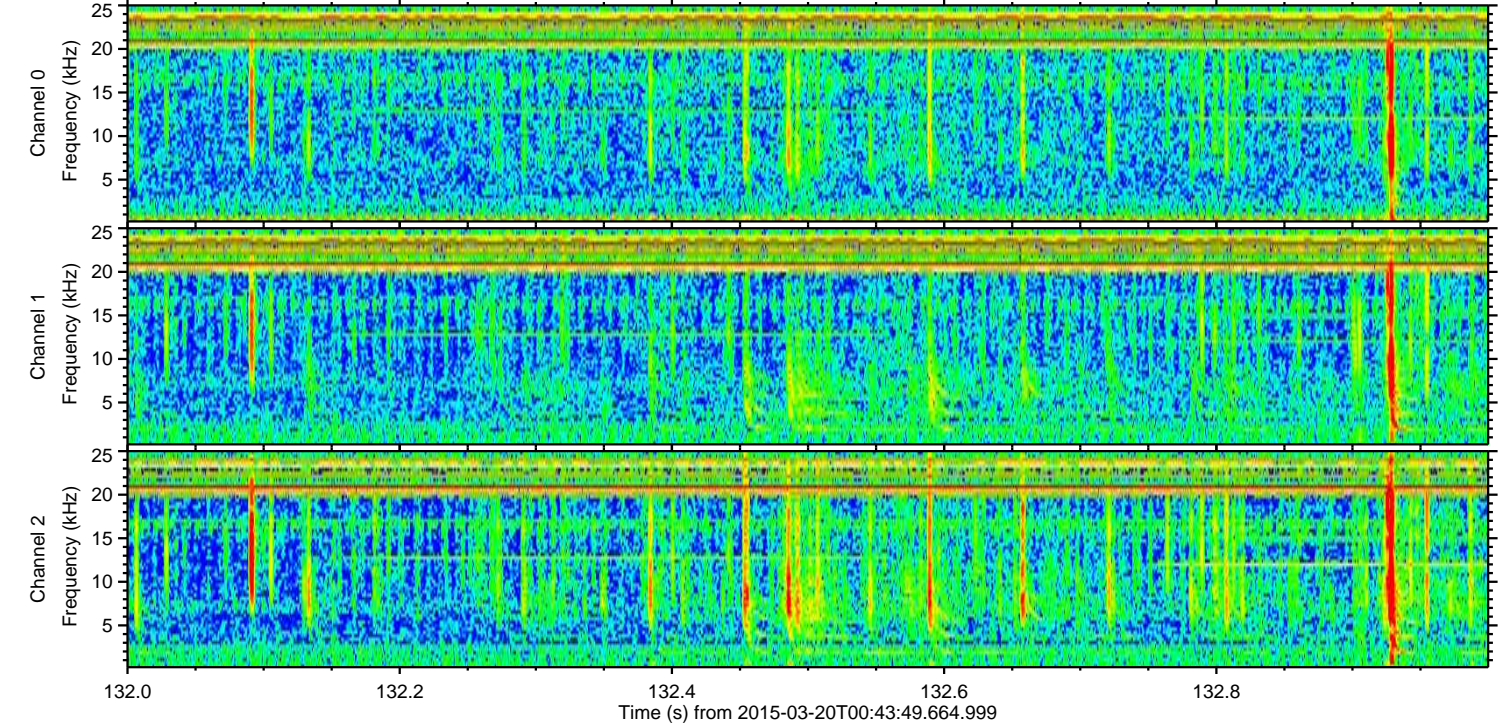
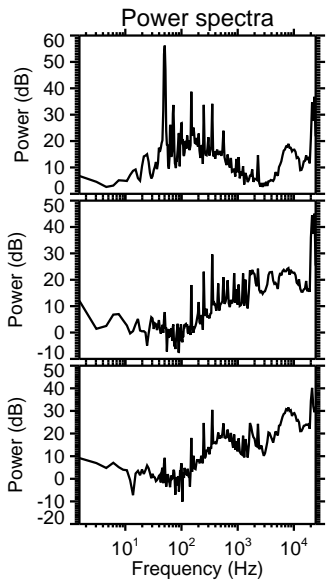
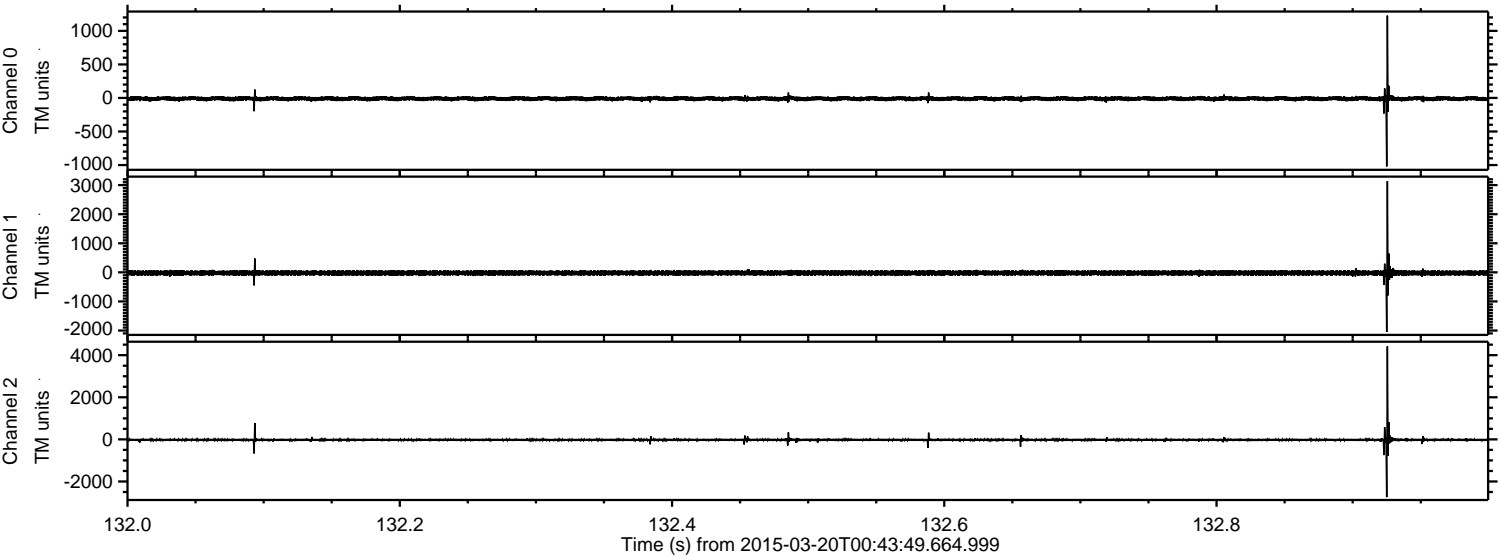


Processed Fri Mar 20 01:51:07 2015 by ELM ver.2012-10-06 from 001__elm20150320_004348__dat00.bin



ELMAVAN 3D WAVEFORMS (Measured data sampled at 50 kHz) 49790 packets of 144 samples from 2015-03-20T00:43:49.664.999. Part 133/144

Processed Fri Mar 20 01:51:08 2015 by ELM ver.2012-10-06 from 001__elm20150320_004348__dat00.bin



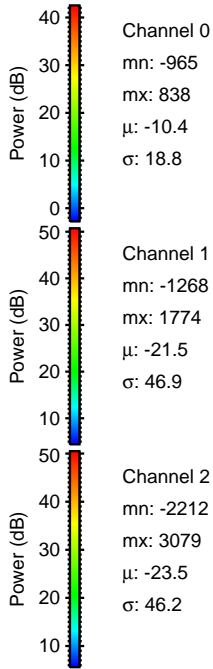
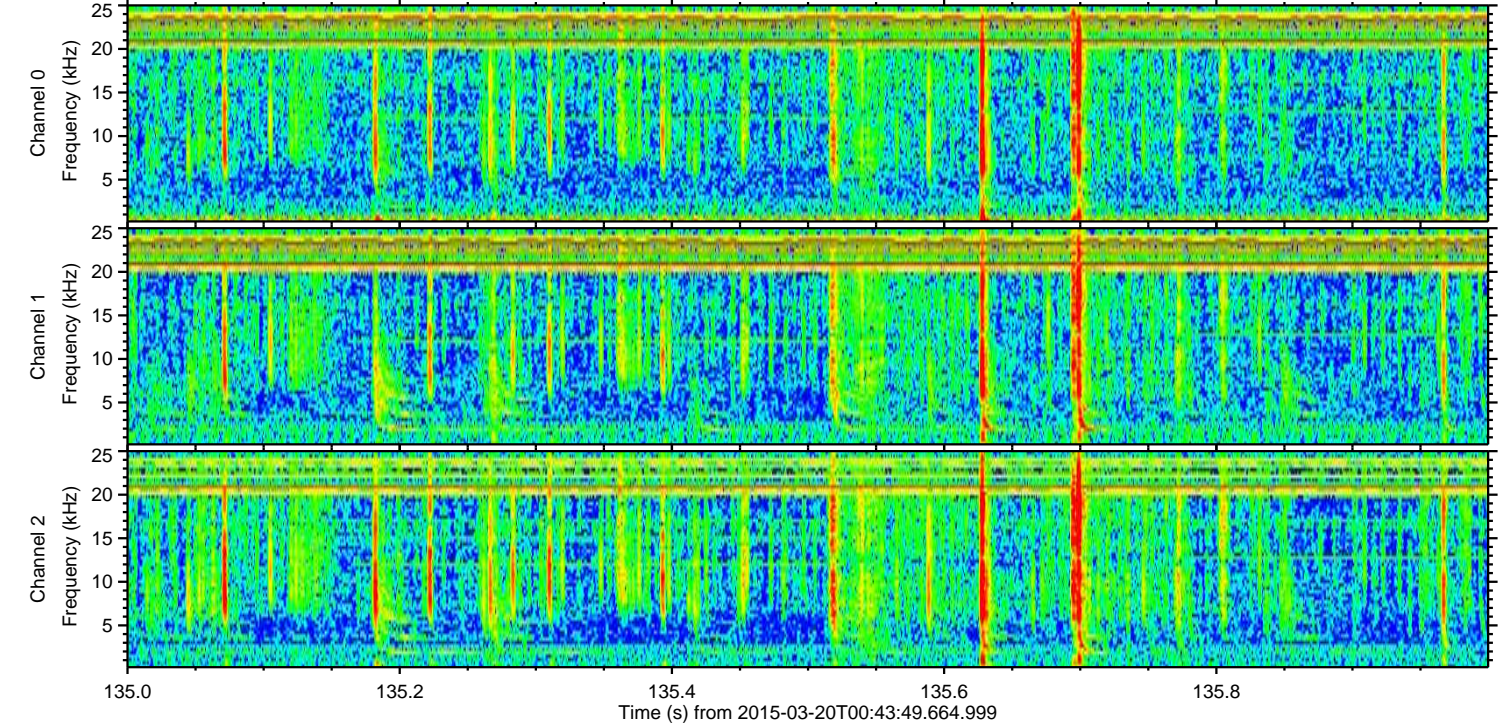
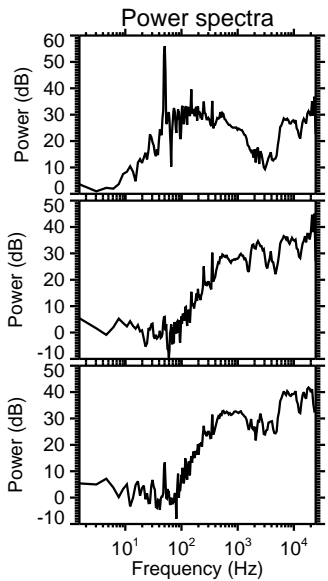
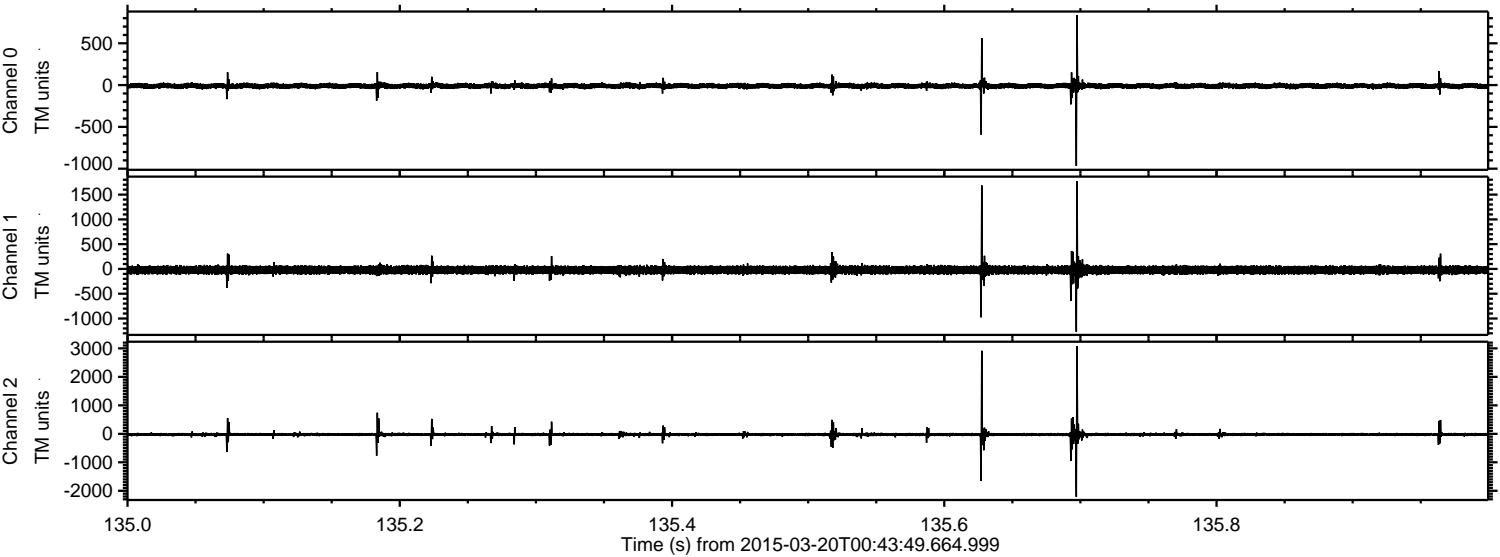
Channel 0
mn: -1020
mx: 1227
 μ : -10.4
 σ : 19.1

Channel 1
mn: -2049
mx: 3135
 μ : -21.5
 σ : 48.9

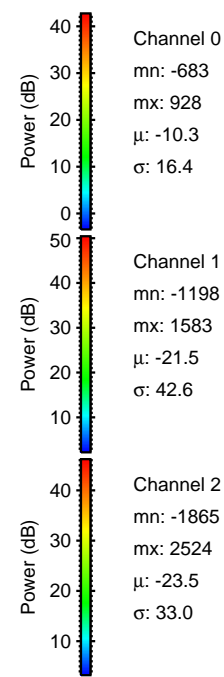
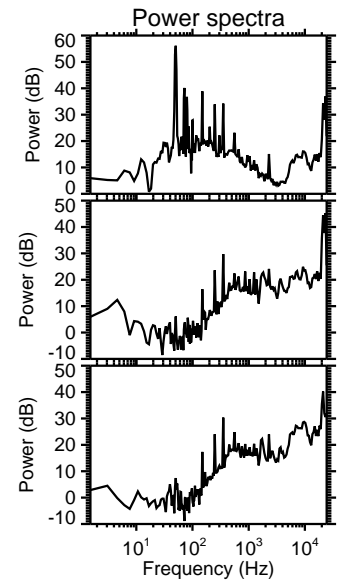
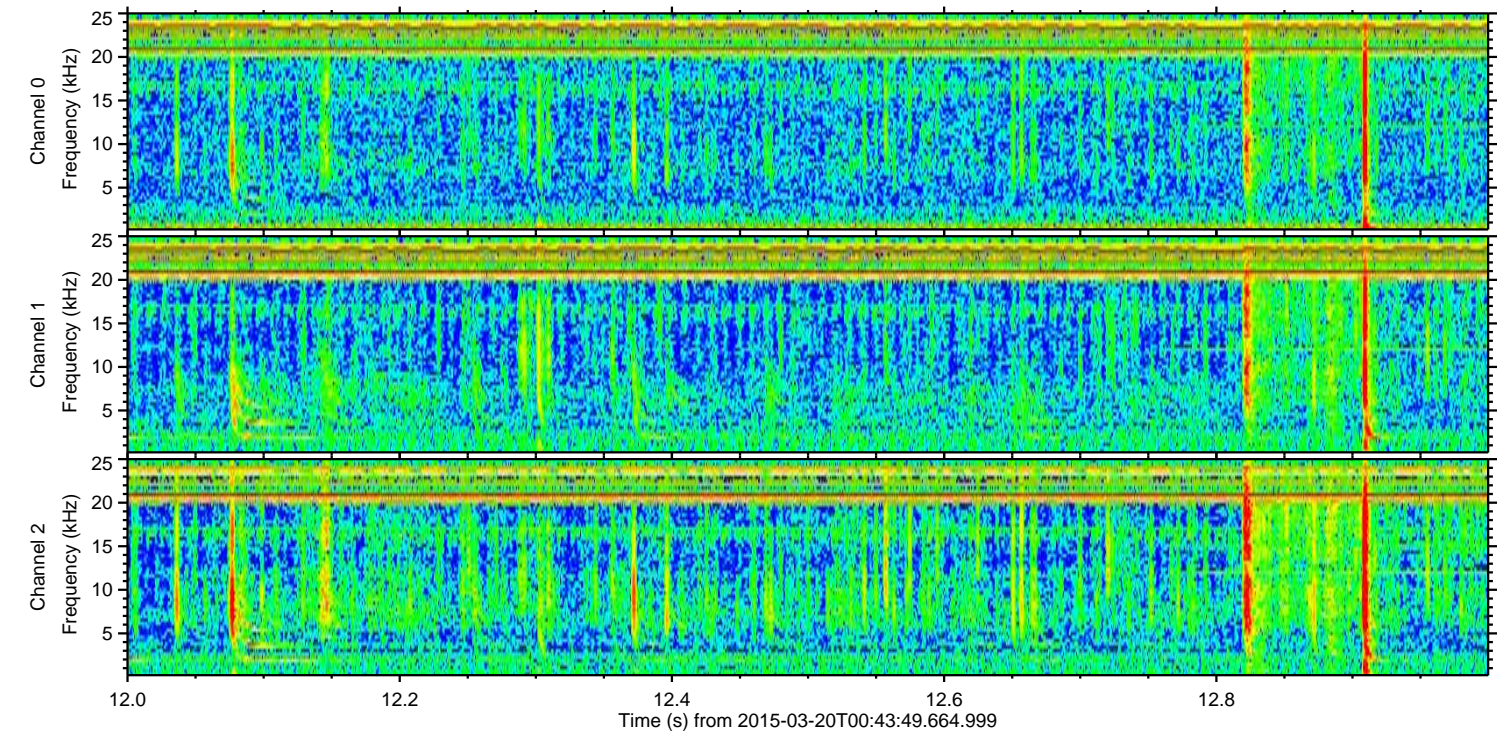
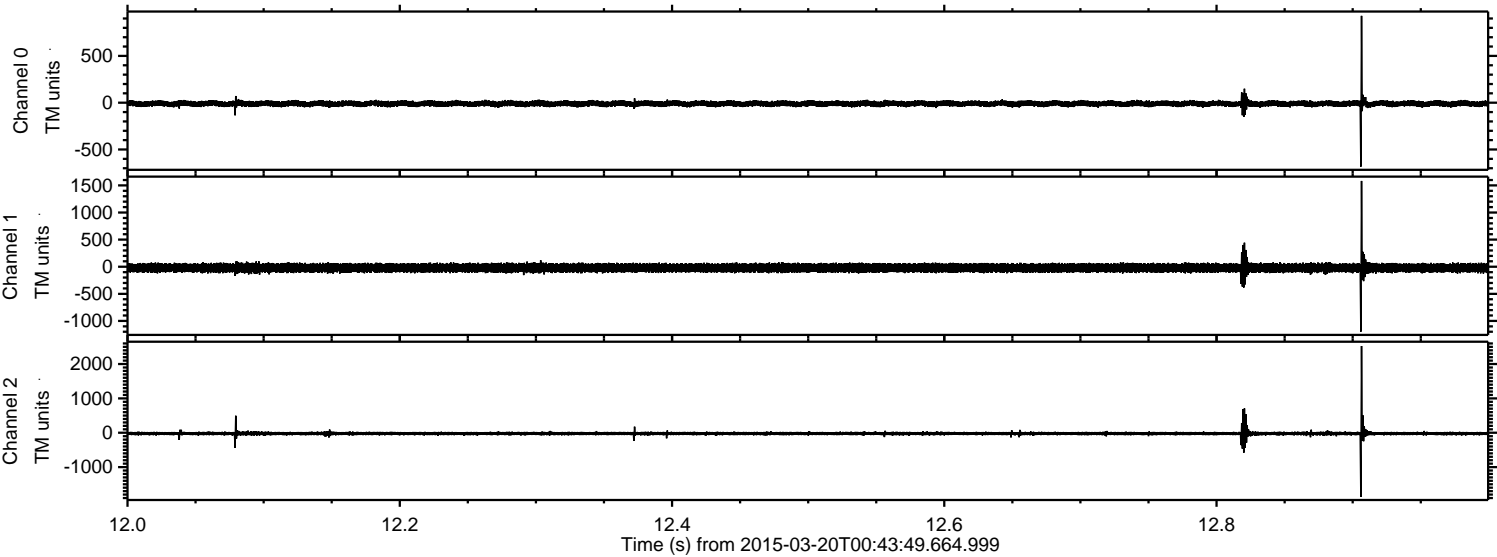
Channel 2
mn: -2744
mx: 4420
 μ : -23.5
 σ : 45.9

ELMAVAN 3D WAVEFORMS (Measured data sampled at 50 kHz) 49790 packets of 144 samples from 2015-03-20T00:43:49.664.999. Part 136/144

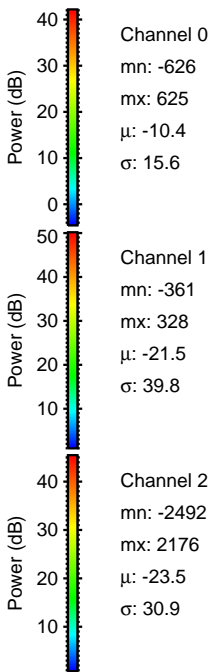
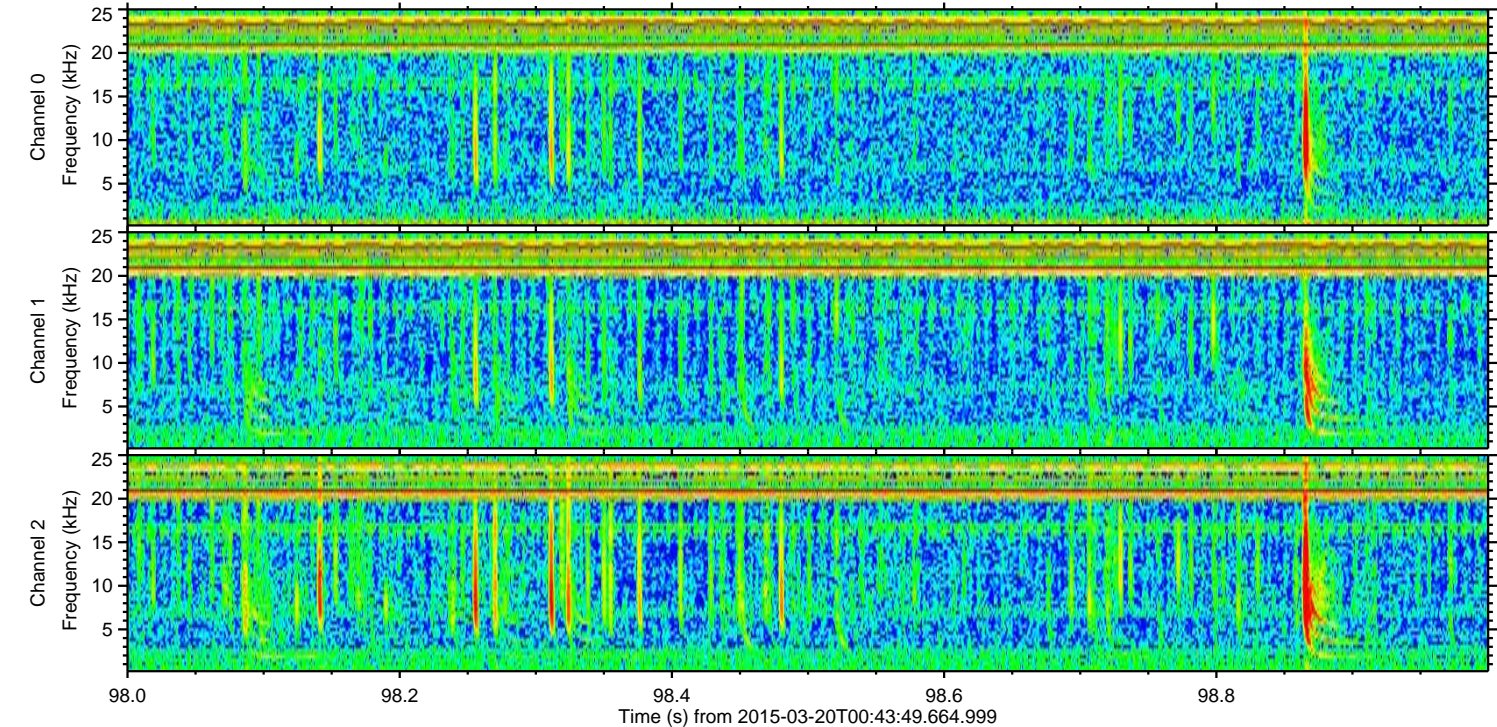
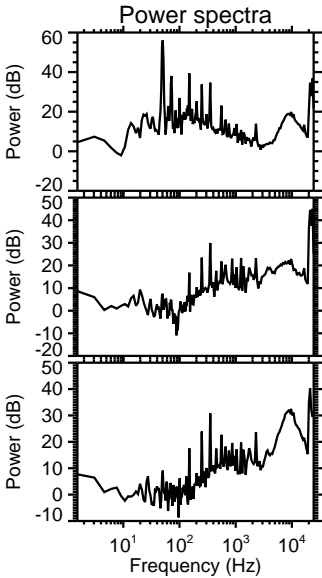
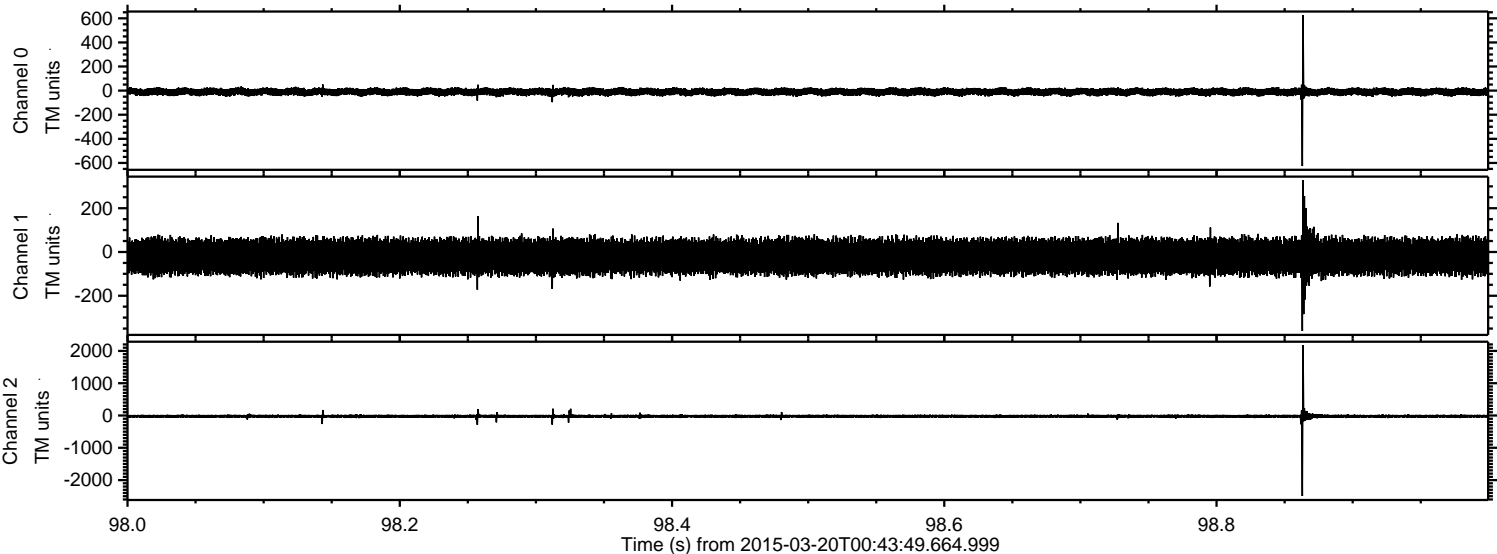
Processed Fri Mar 20 01:51:09 2015 by ELM ver.2012-10-06 from 001__elm20150320_004348__dat00.bin



Processed Fri Mar 20 01:51:10 2015 by ELM ver.2012-10-06 from 001__elm20150320_004348__dat00.bin

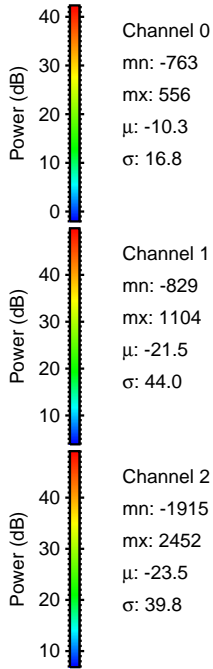
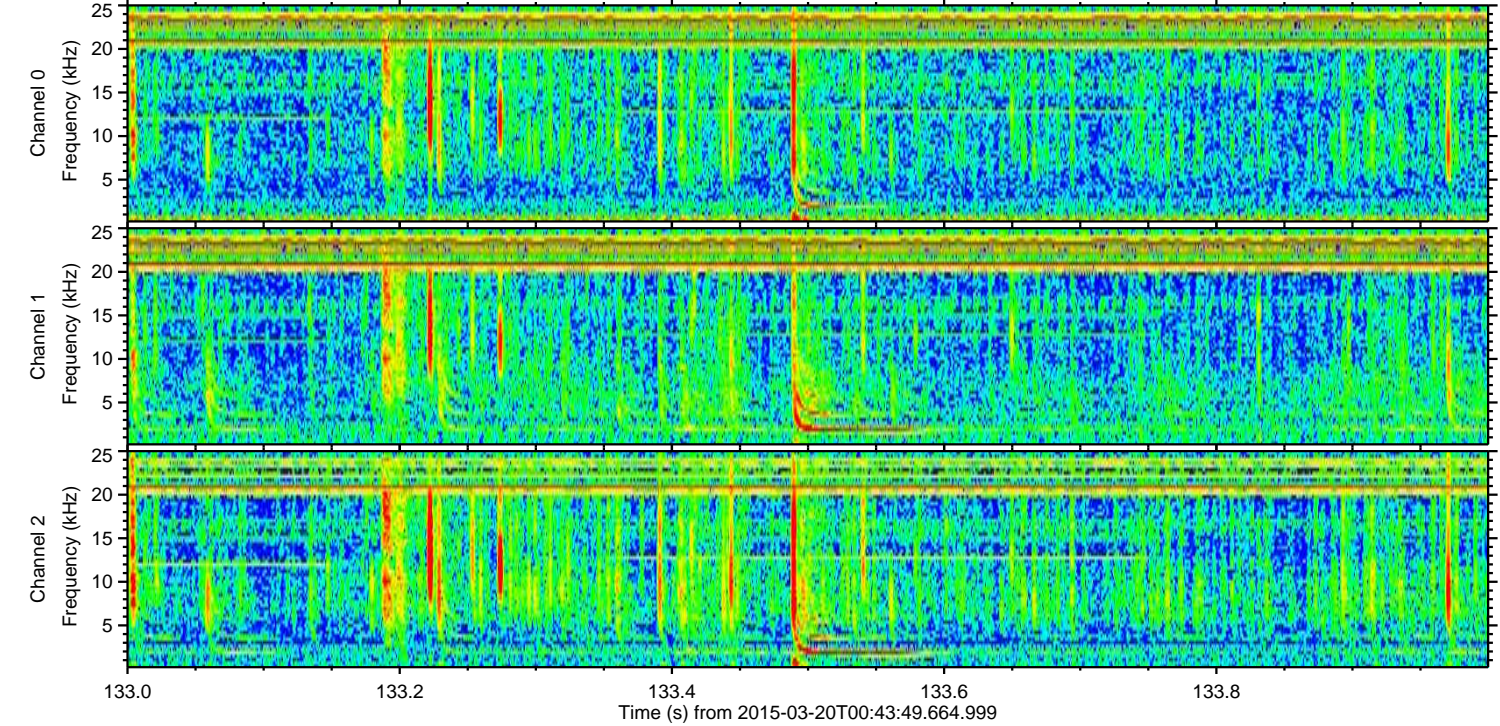
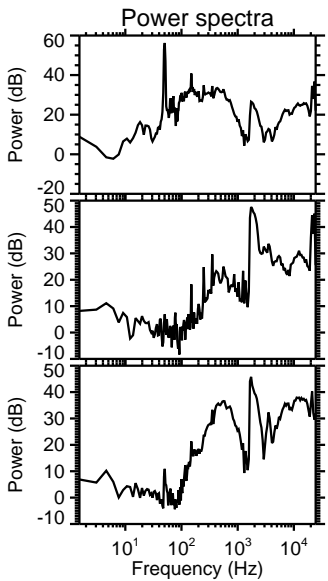
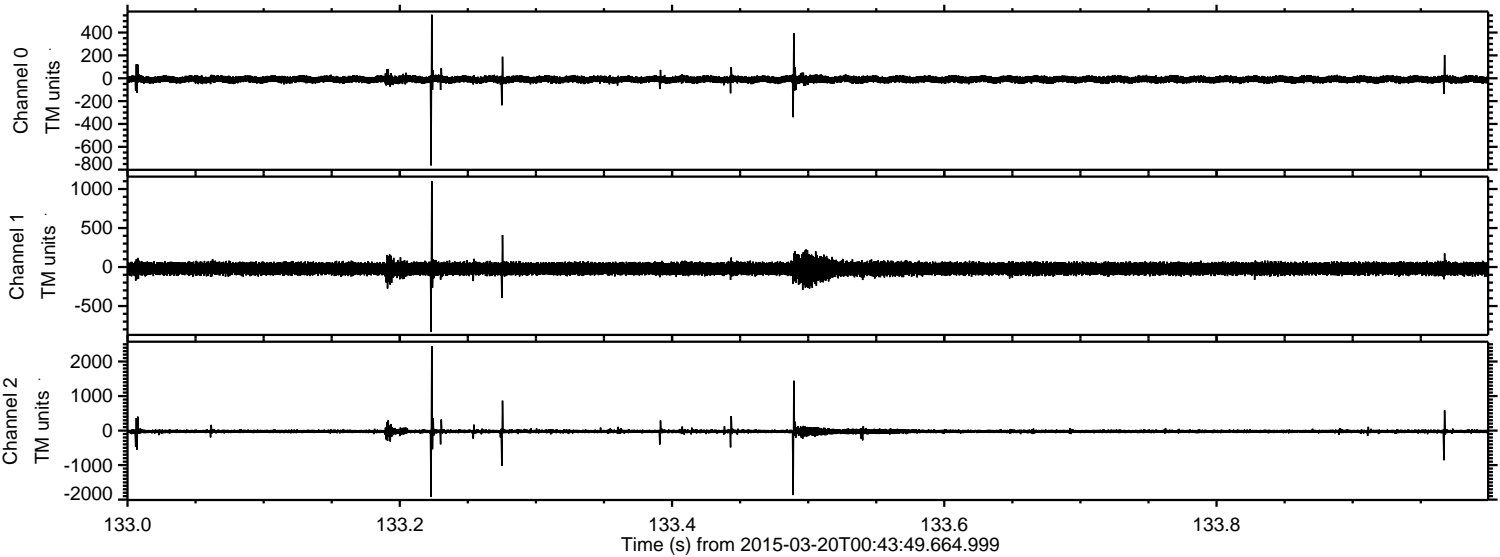


Processed Fri Mar 20 01:51:11 2015 by ELM ver.2012-10-06 from 001__elm20150320_004348__dat00.bin

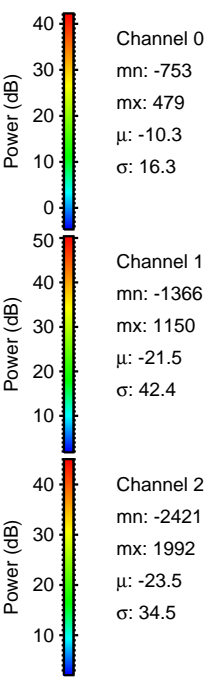
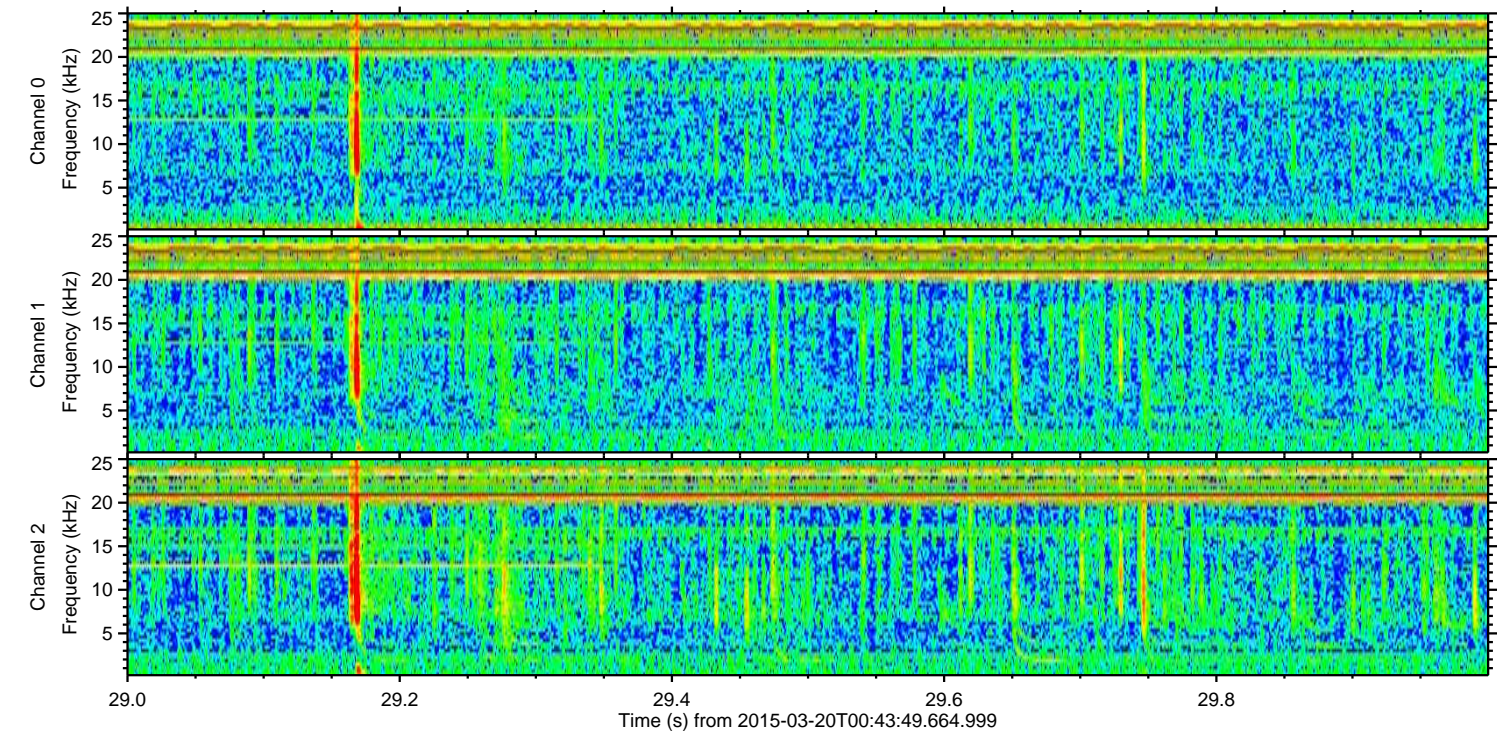
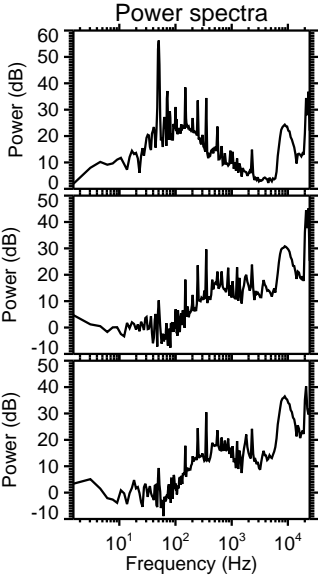
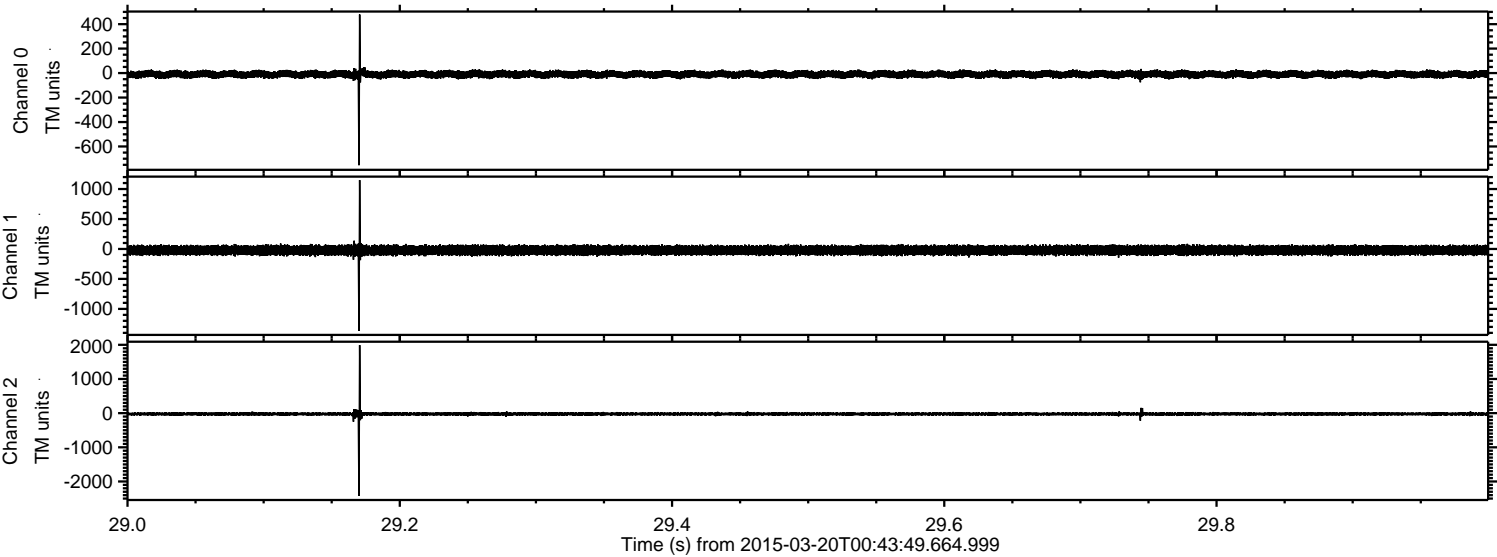


ELMAVAN 3D WAVEFORMS (Measured data sampled at 50 kHz) 49790 packets of 144 samples from 2015-03-20T00:43:49.664.999. Part 134/144

Processed Fri Mar 20 01:51:12 2015 by ELM ver.2012-10-06 from 001__elm20150320_004348__dat00.bin



Processed Fri Mar 20 01:51:13 2015 by ELM ver.2012-10-06 from 001__elm20150320_004348__dat00.bin

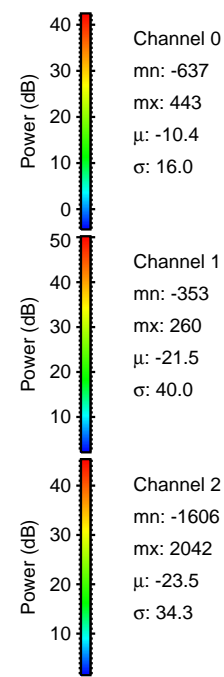
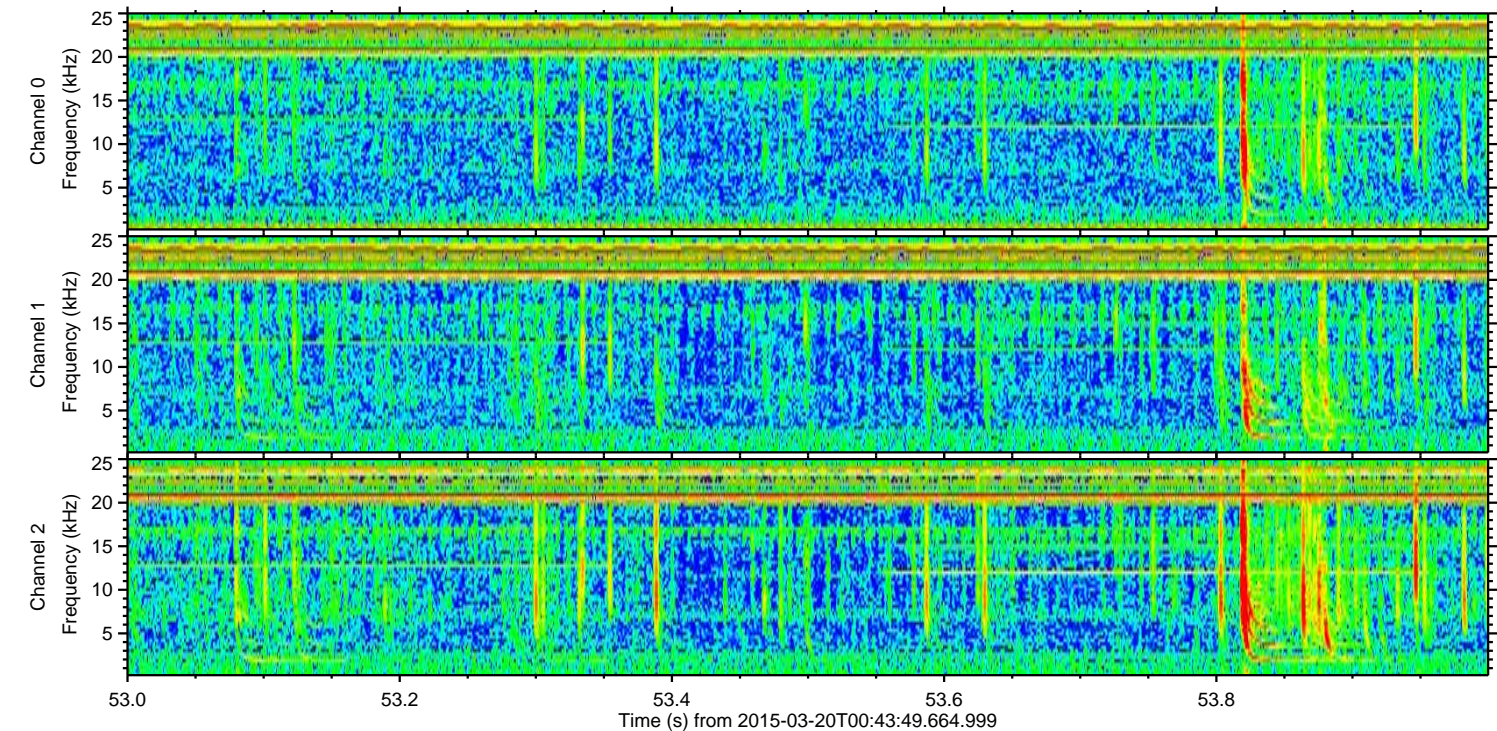
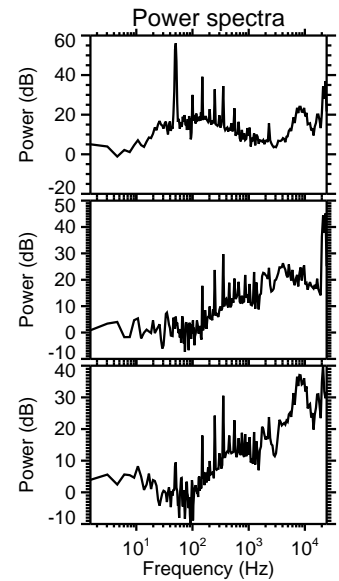
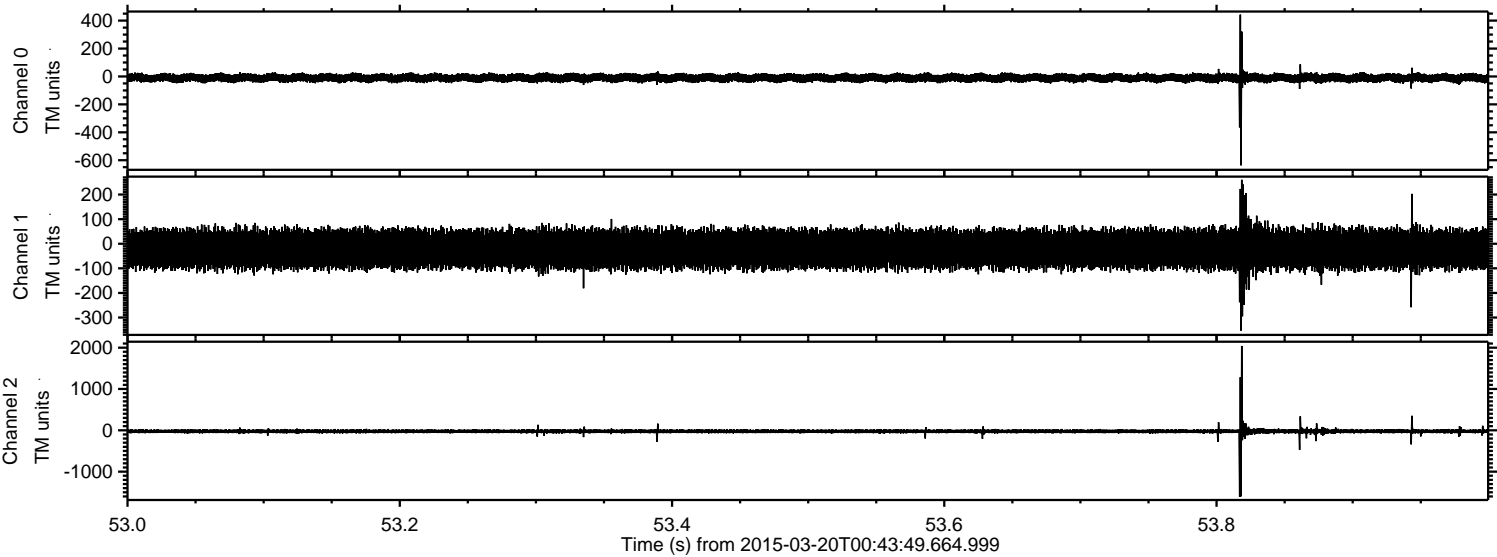


Channel 0
mn: -753
mx: 479
 μ : -10.3
 σ : 16.3

Channel 1
mn: -1366
mx: 1150
 μ : -21.5
 σ : 42.4

Channel 2
mn: -2421
mx: 1992
 μ : -23.5
 σ : 34.5

Processed Fri Mar 20 01:51:14 2015 by ELM ver.2012-10-06 from 001__elm20150320_004348__dat00.bin



Channel 0
mn: -637
mx: 443
 μ : -10.4
 σ : 16.0

Channel 1
mn: -353
mx: 260
 μ : -21.5
 σ : 40.0

Channel 2
mn: -1606
mx: 2042
 μ : -23.5
 σ : 34.3

