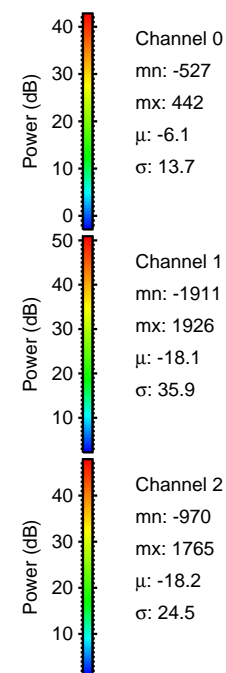
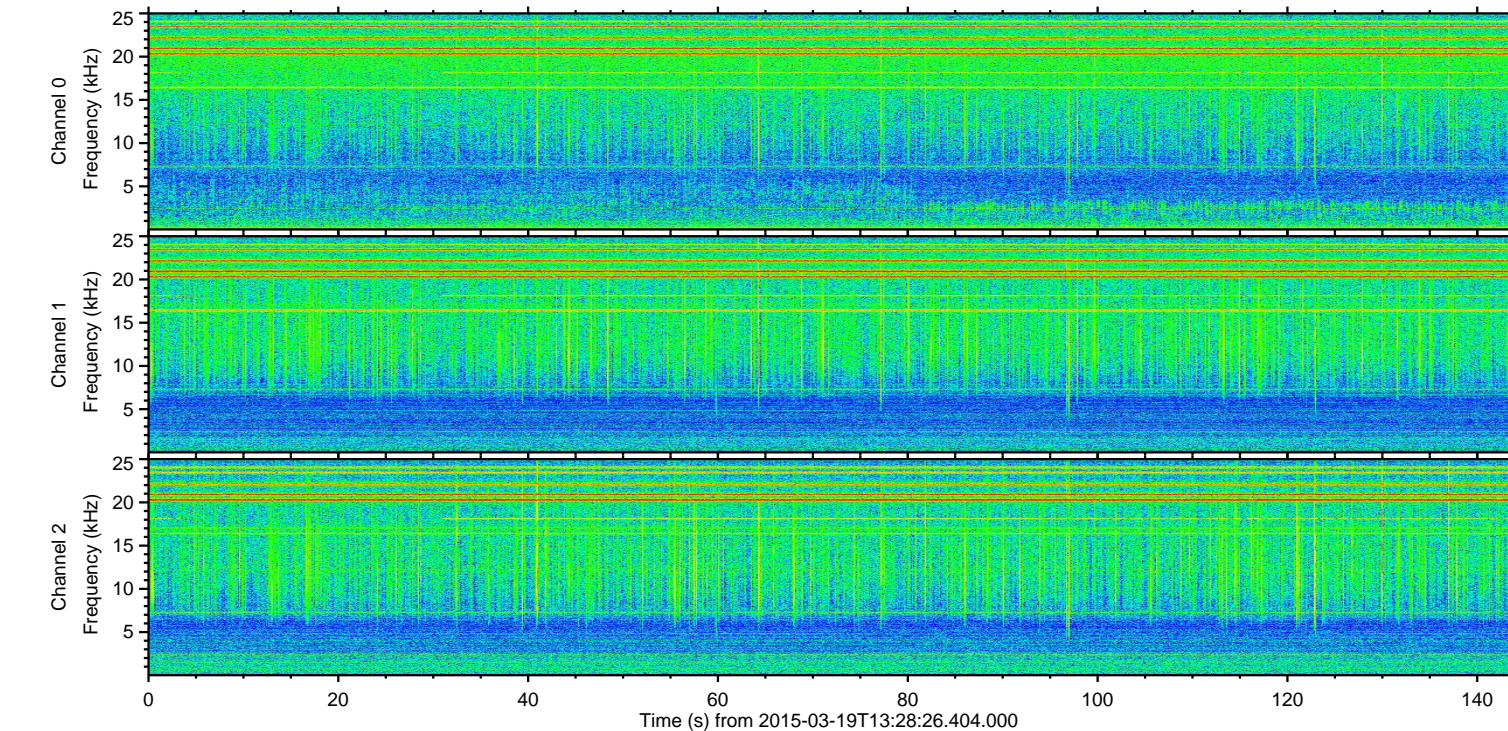
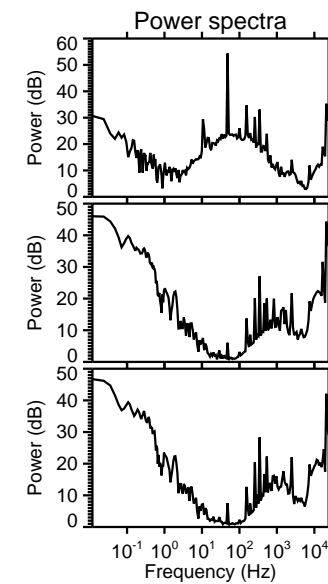
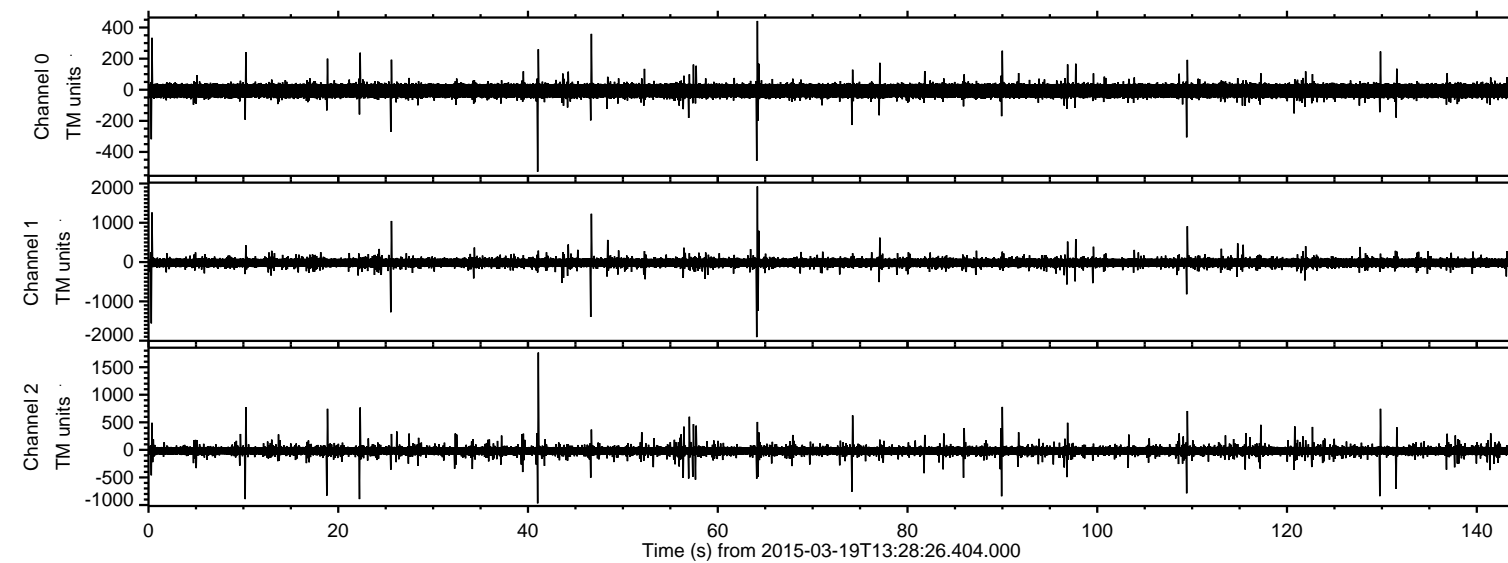


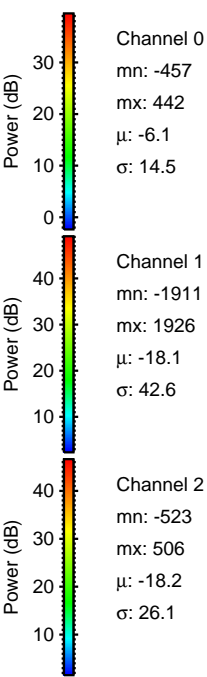
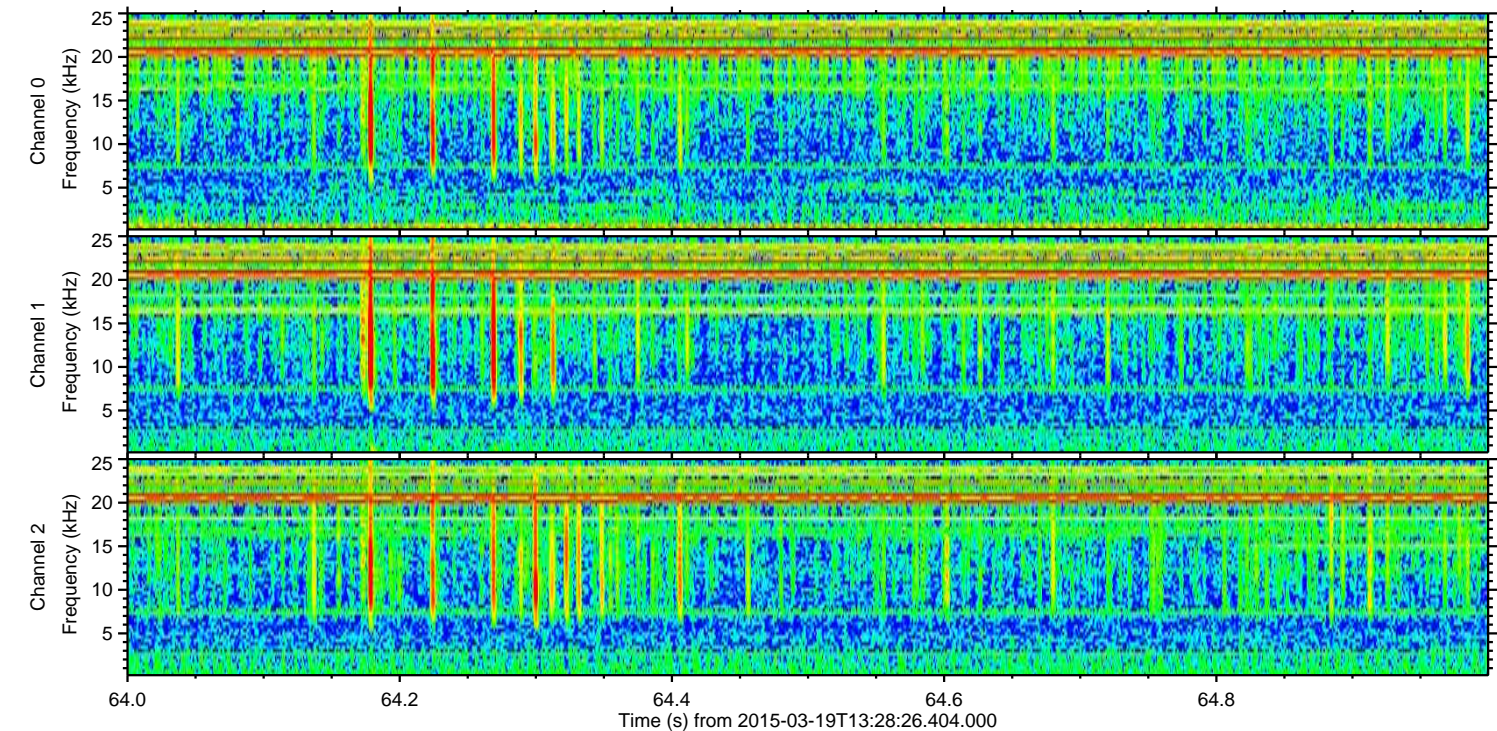
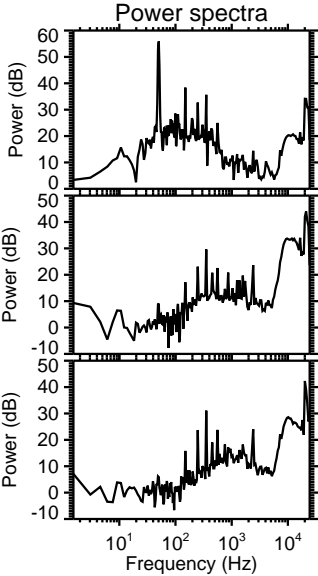
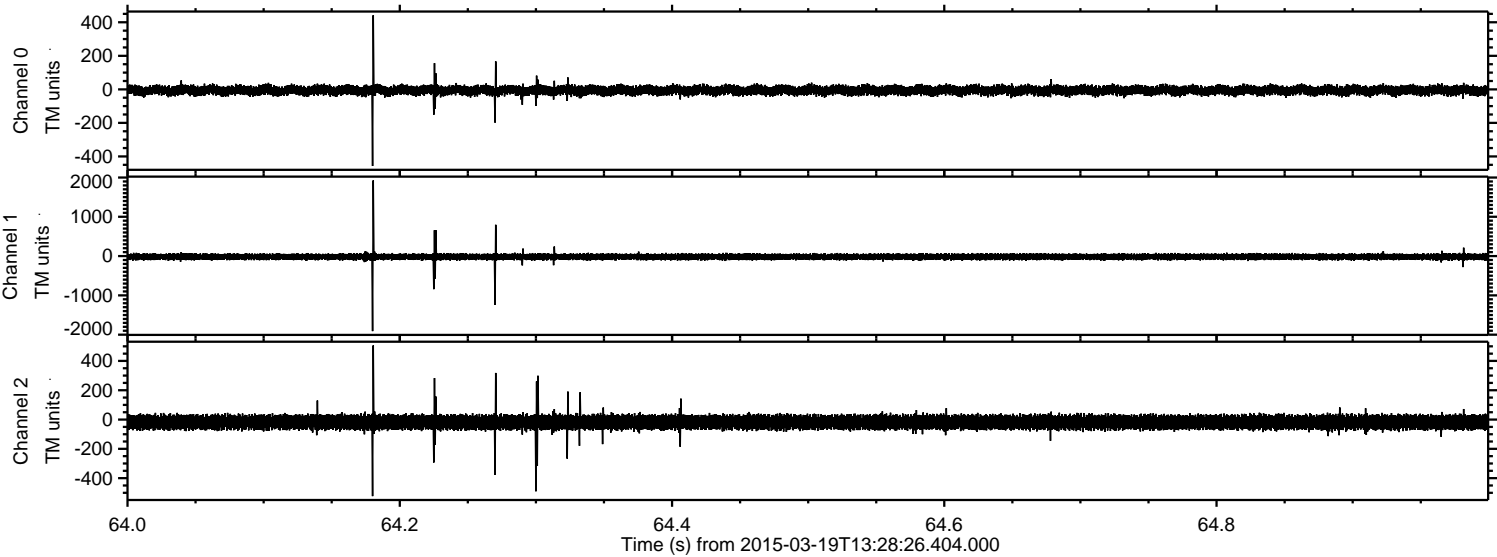
ELMAVAN 3D WAVEFORMS (Measured data sampled at 50 kHz) 49796 packets of 144 samples from 2015-03-19T13:28:26.404.000.

Processed Thu Mar 19 14:35:42 2015 by ELM ver.2012-10-06 from 001\_\_elm20150319\_132825\_\_dat00.bin



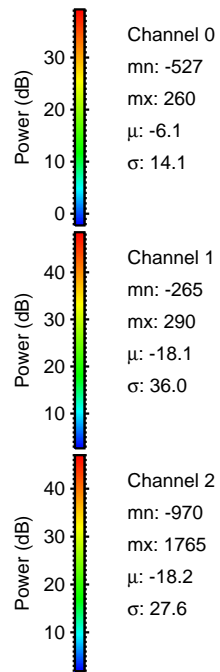
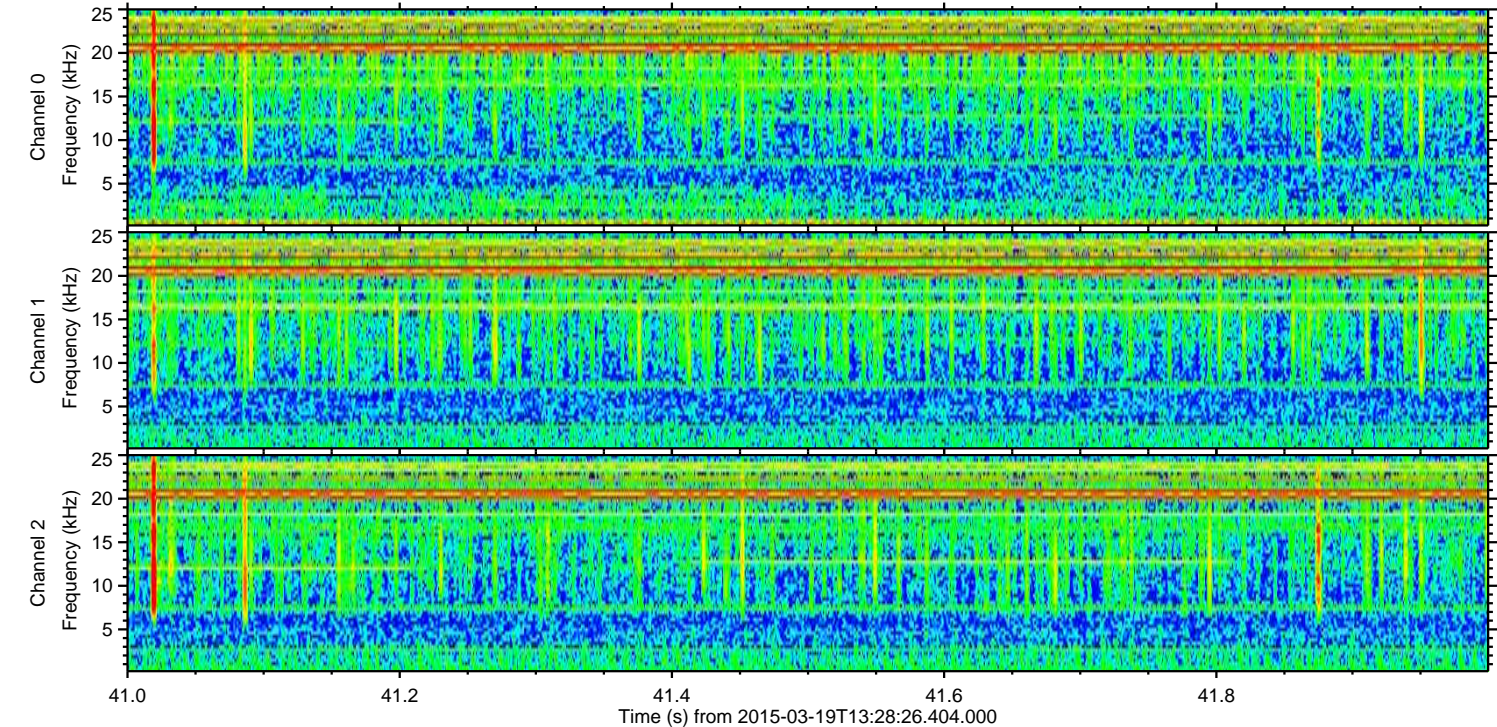
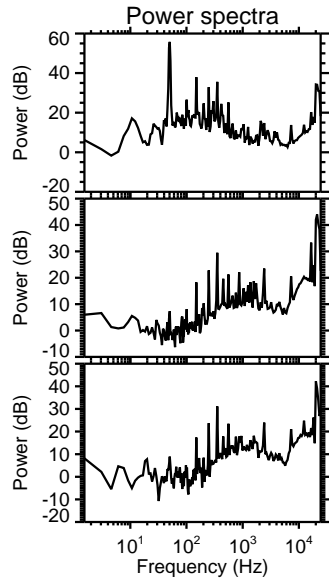
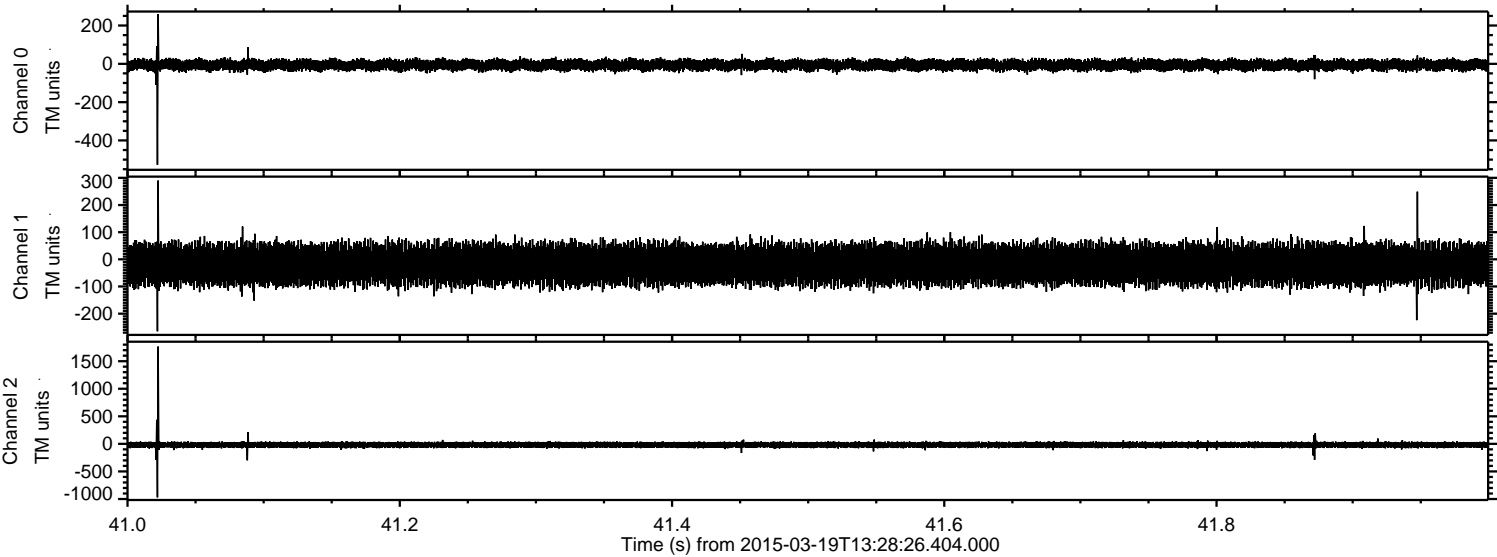


Processed Thu Mar 19 14:35:53 2015 by ELM ver.2012-10-06 from 001\_\_elm20150319\_132825\_\_dat00.bin



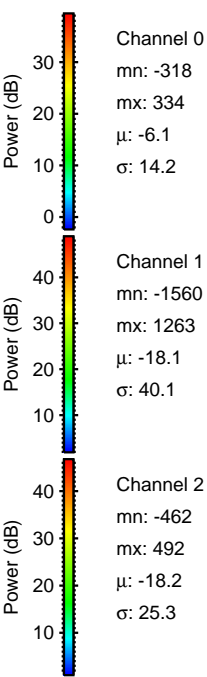
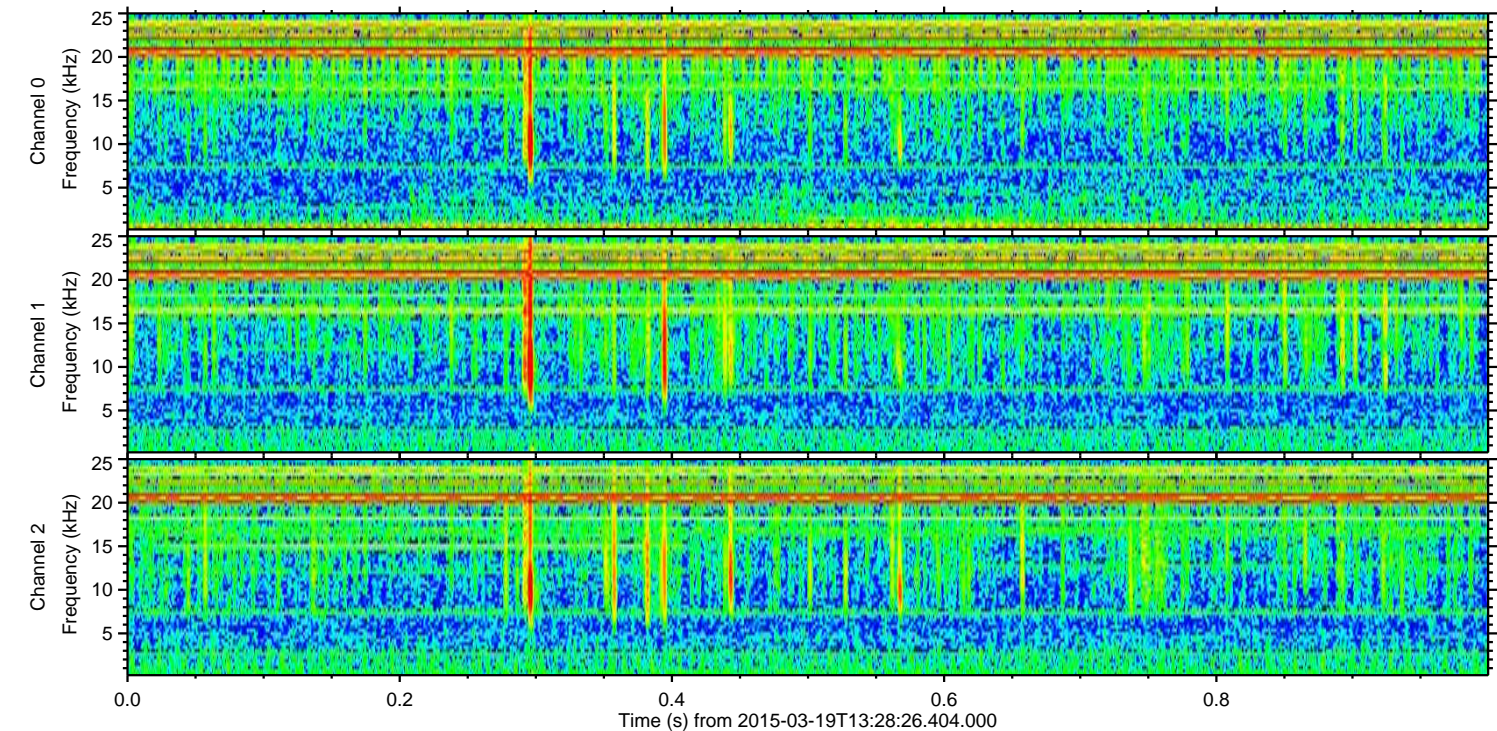
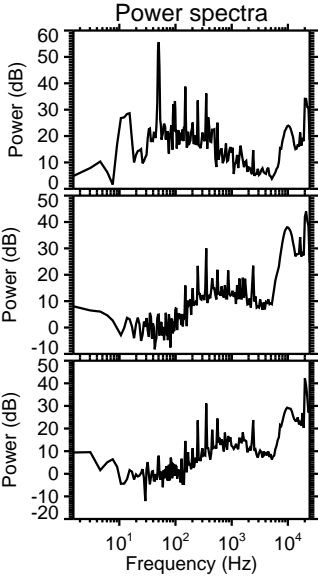
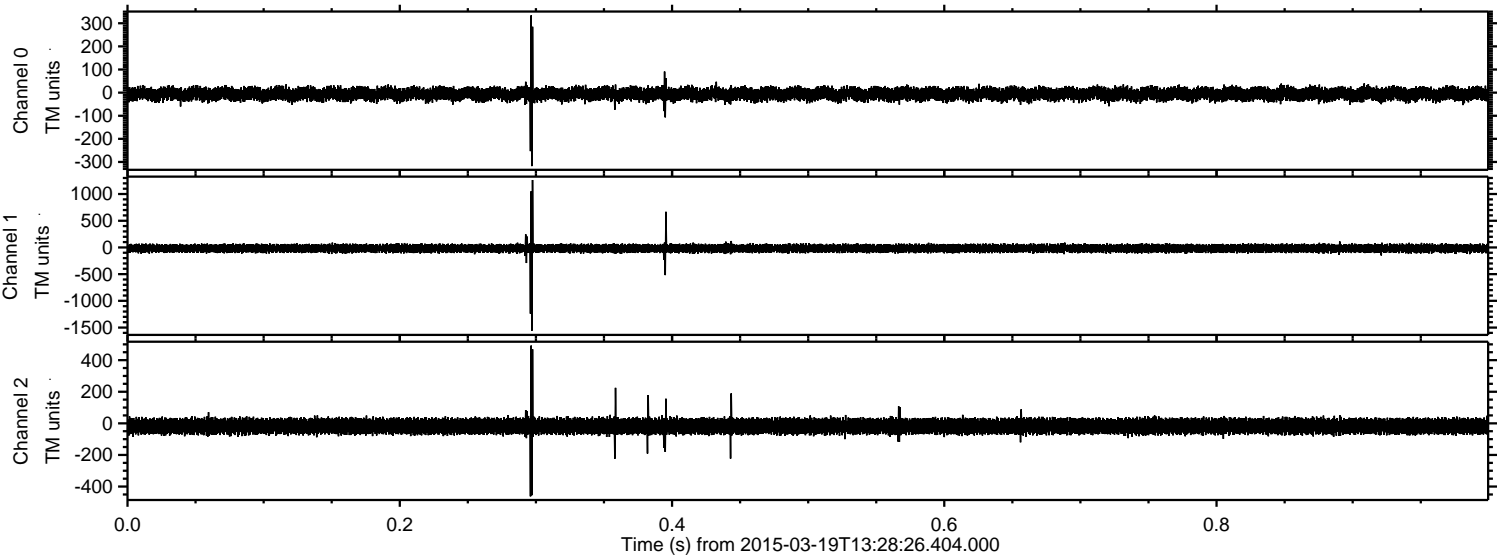


Processed Thu Mar 19 14:35:54 2015 by ELM ver.2012-10-06 from 001\_\_elm20150319\_132825\_\_dat00.bin



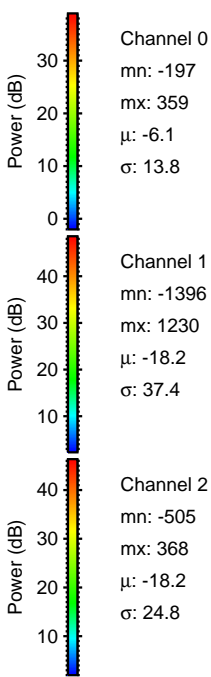
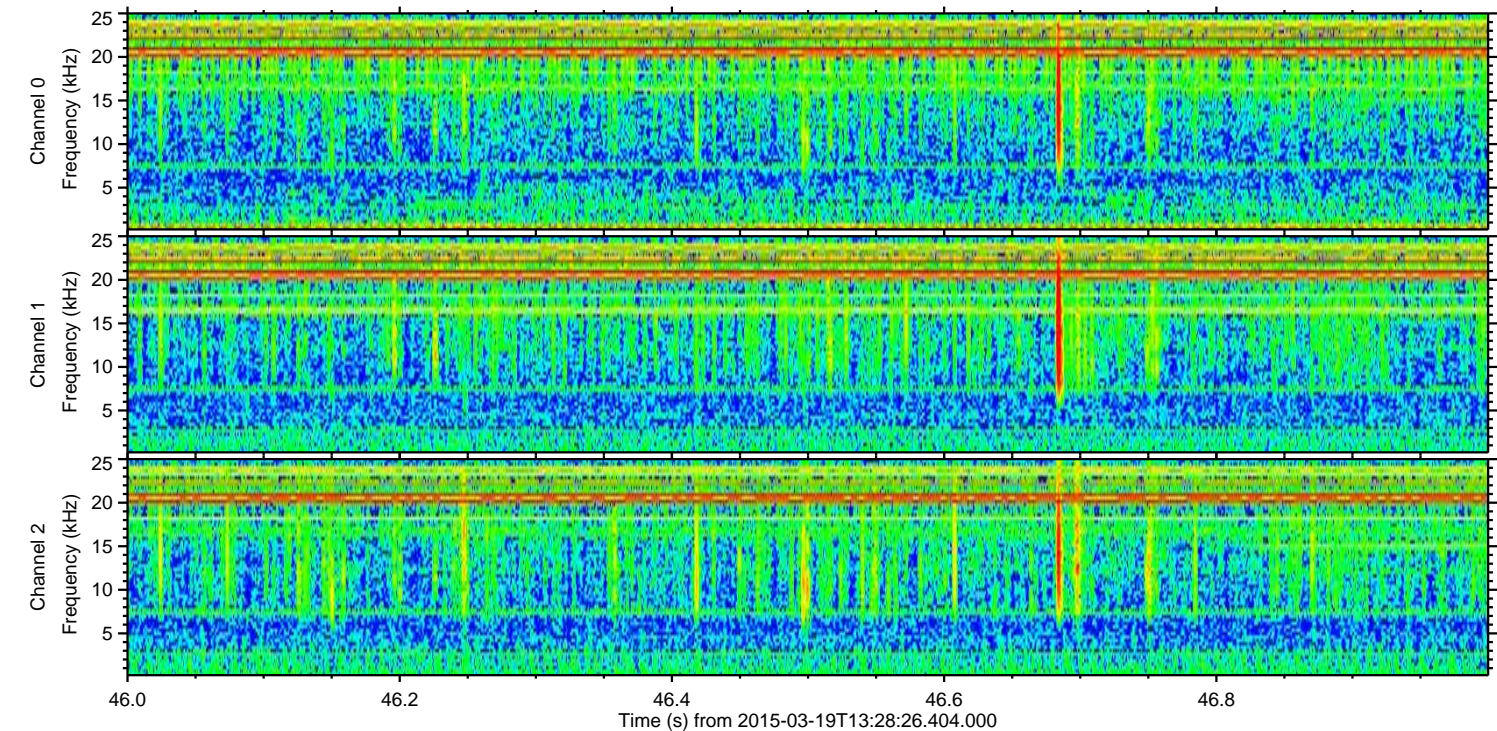
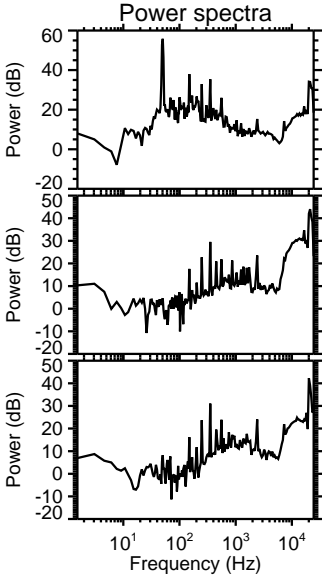
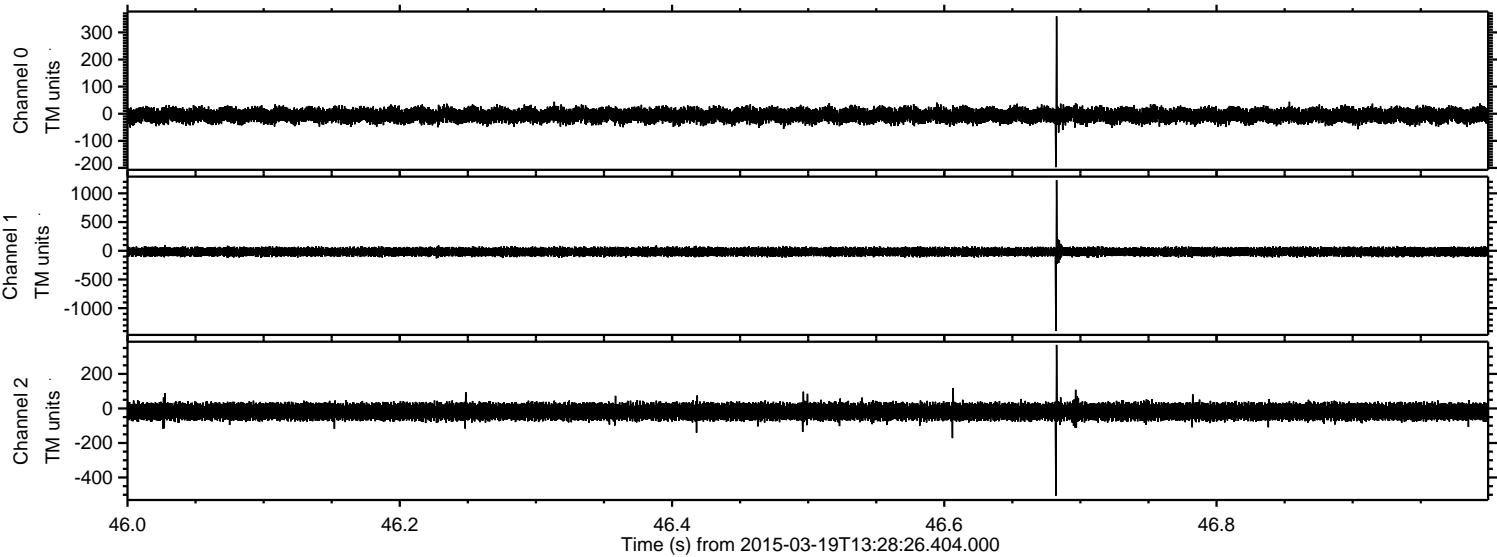


Processed Thu Mar 19 14:35:55 2015 by ELM ver.2012-10-06 from 001\_\_elm20150319\_132825\_\_dat00.bin





Processed Thu Mar 19 14:35:56 2015 by ELM ver.2012-10-06 from 001\_\_elm20150319\_132825\_\_dat00.bin



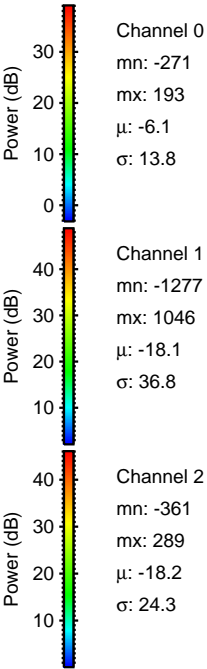
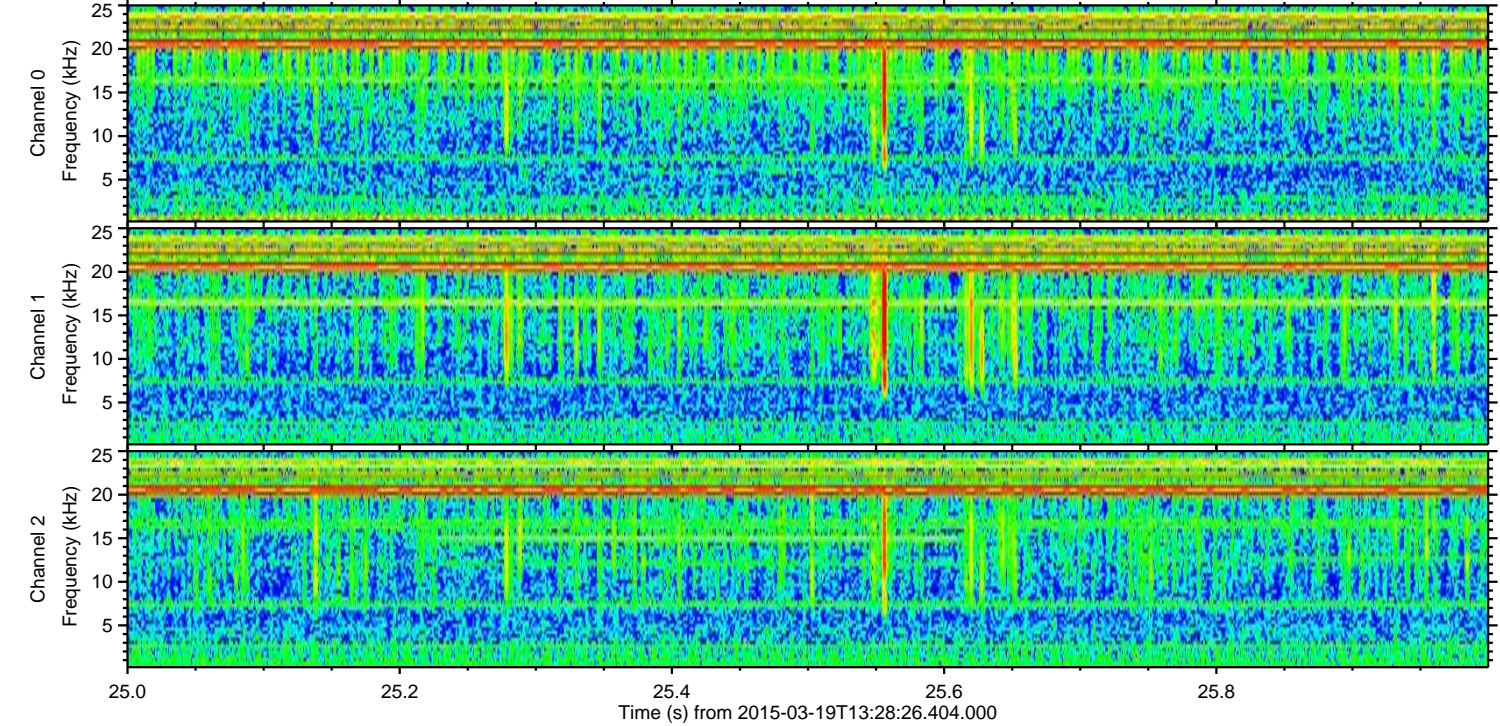
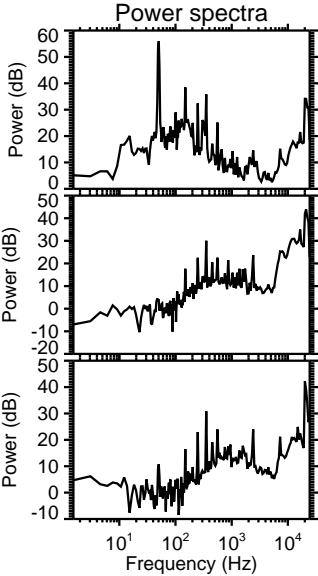
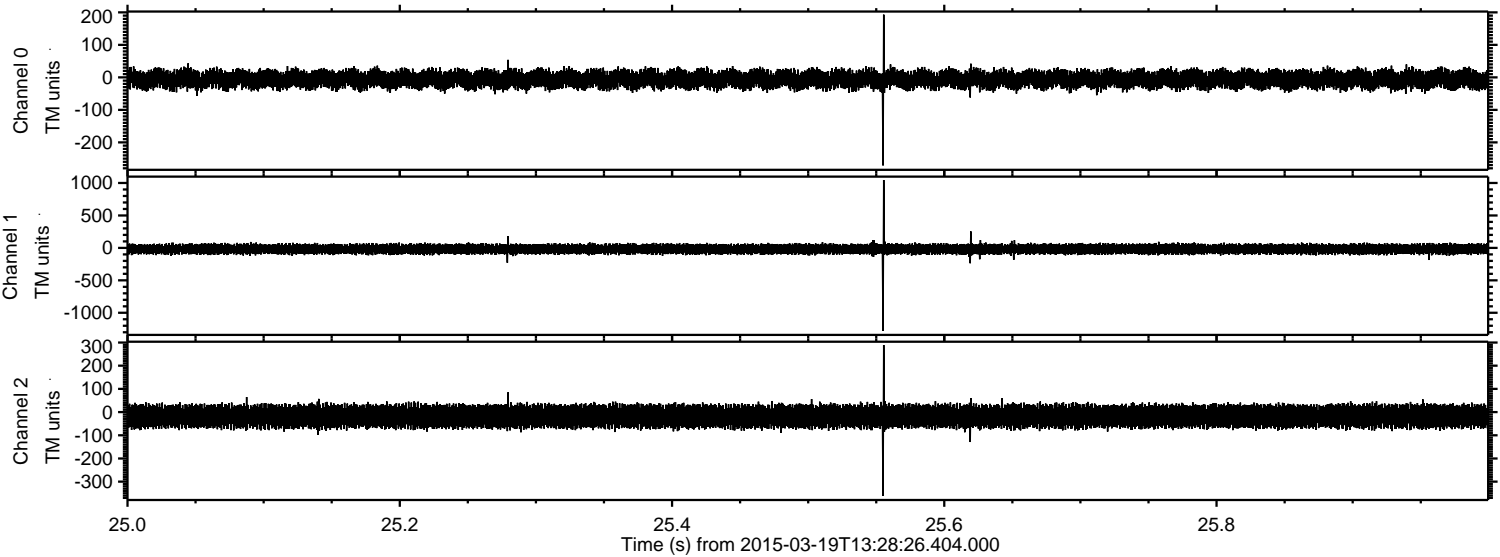
Channel 0  
mn: -197  
mx: 359  
 $\mu$ : -6.1  
 $\sigma$ : 13.8

Channel 1  
mn: -1396  
mx: 1230  
 $\mu$ : -18.2  
 $\sigma$ : 37.4

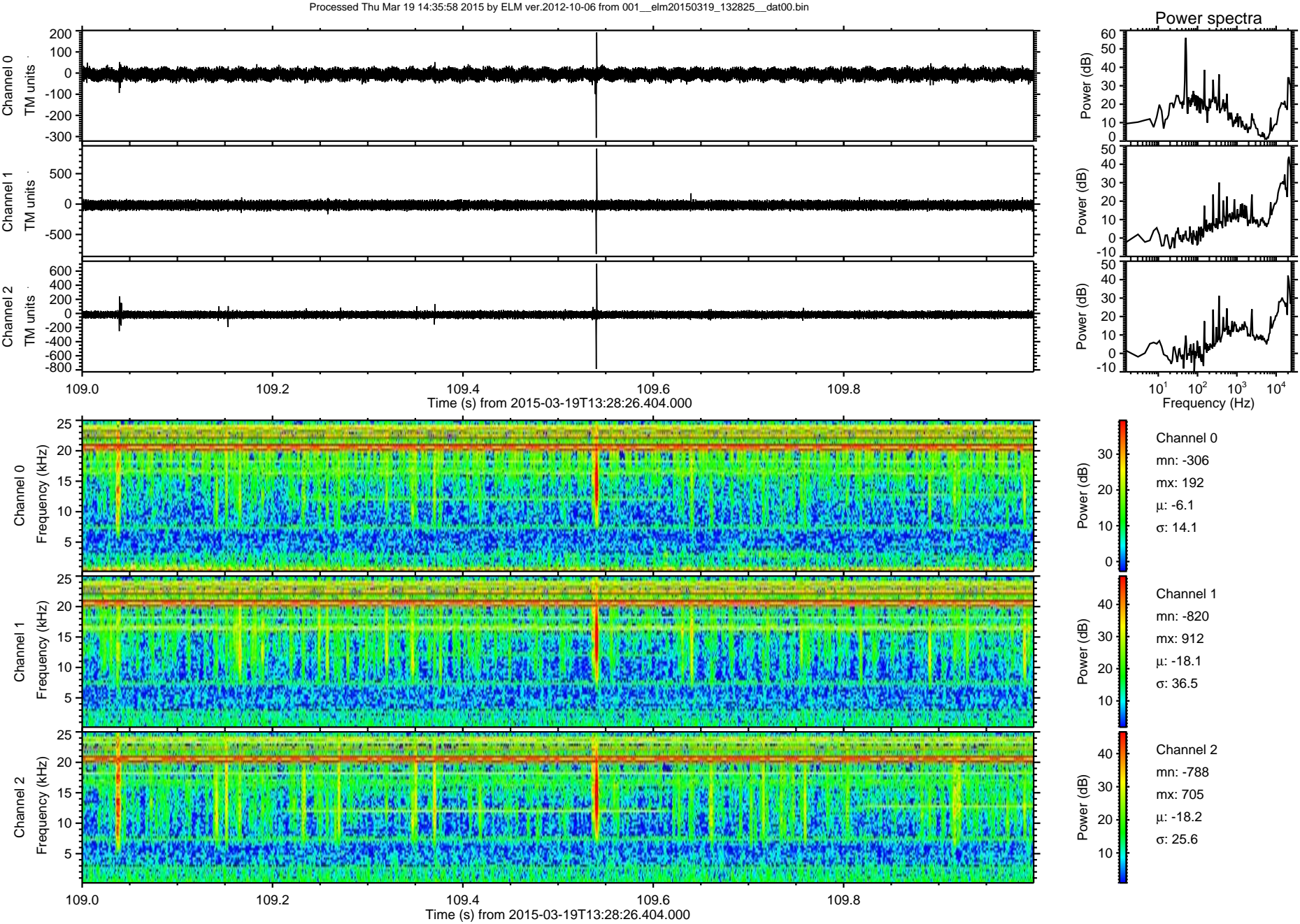
Channel 2  
mn: -505  
mx: 368  
 $\mu$ : -18.2  
 $\sigma$ : 24.8



Processed Thu Mar 19 14:35:57 2015 by ELM ver.2012-10-06 from 001\_\_elm20150319\_132825\_\_dat00.bin

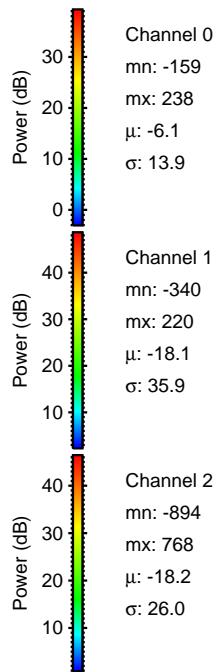
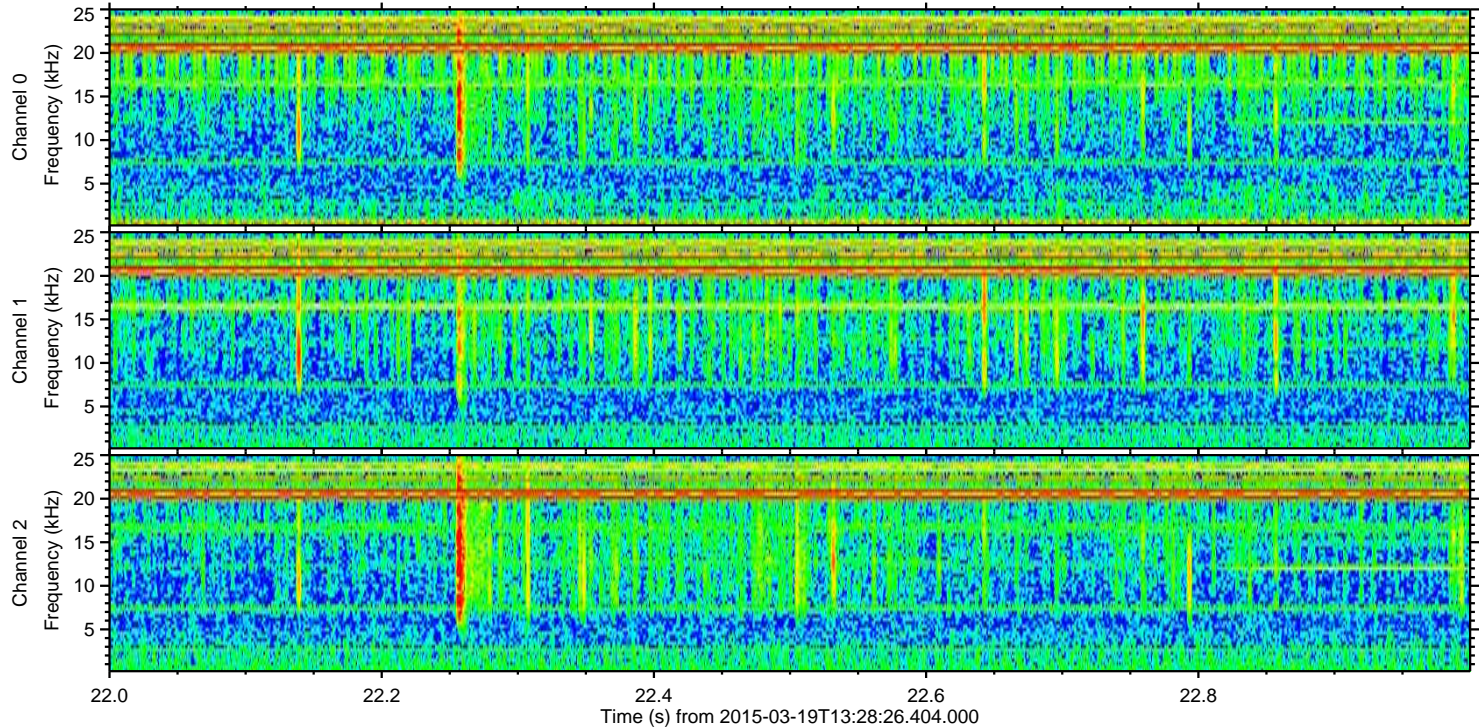
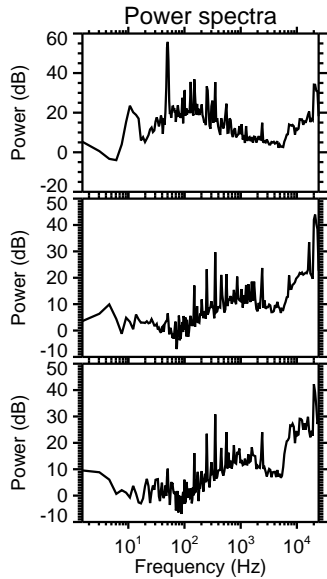
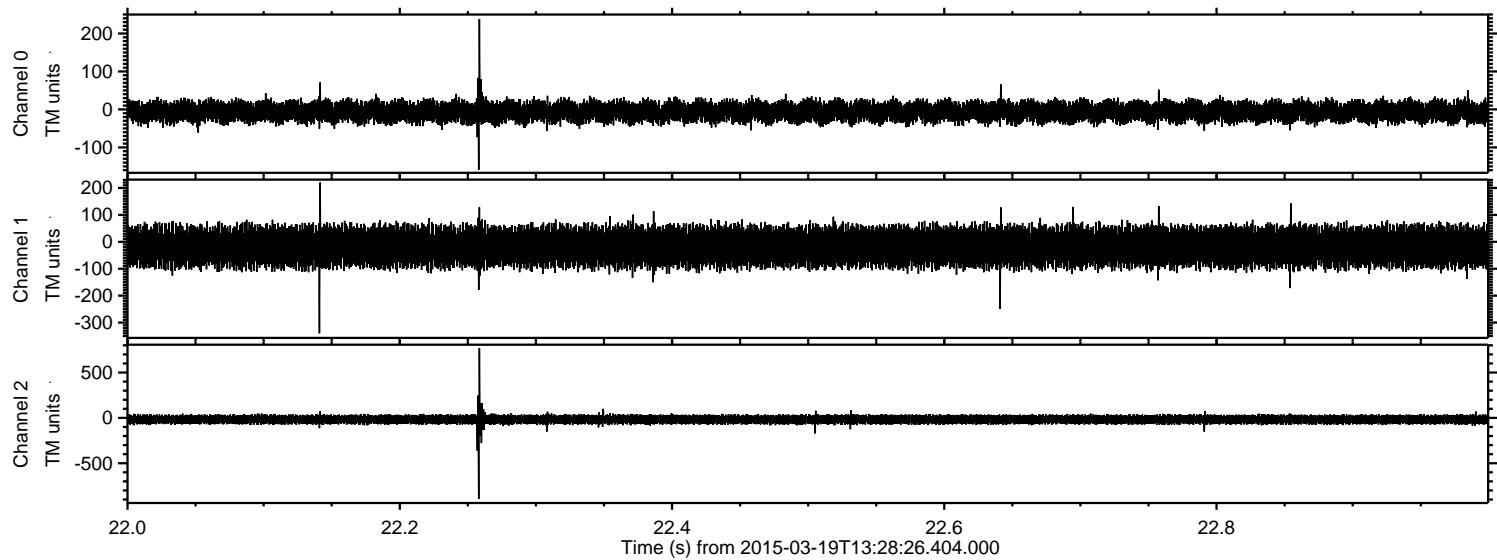






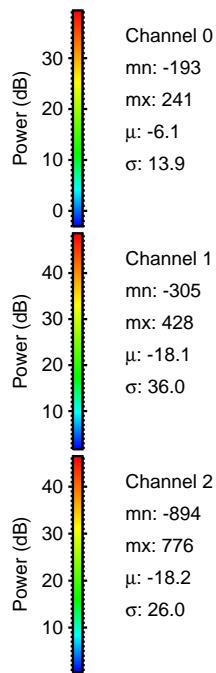
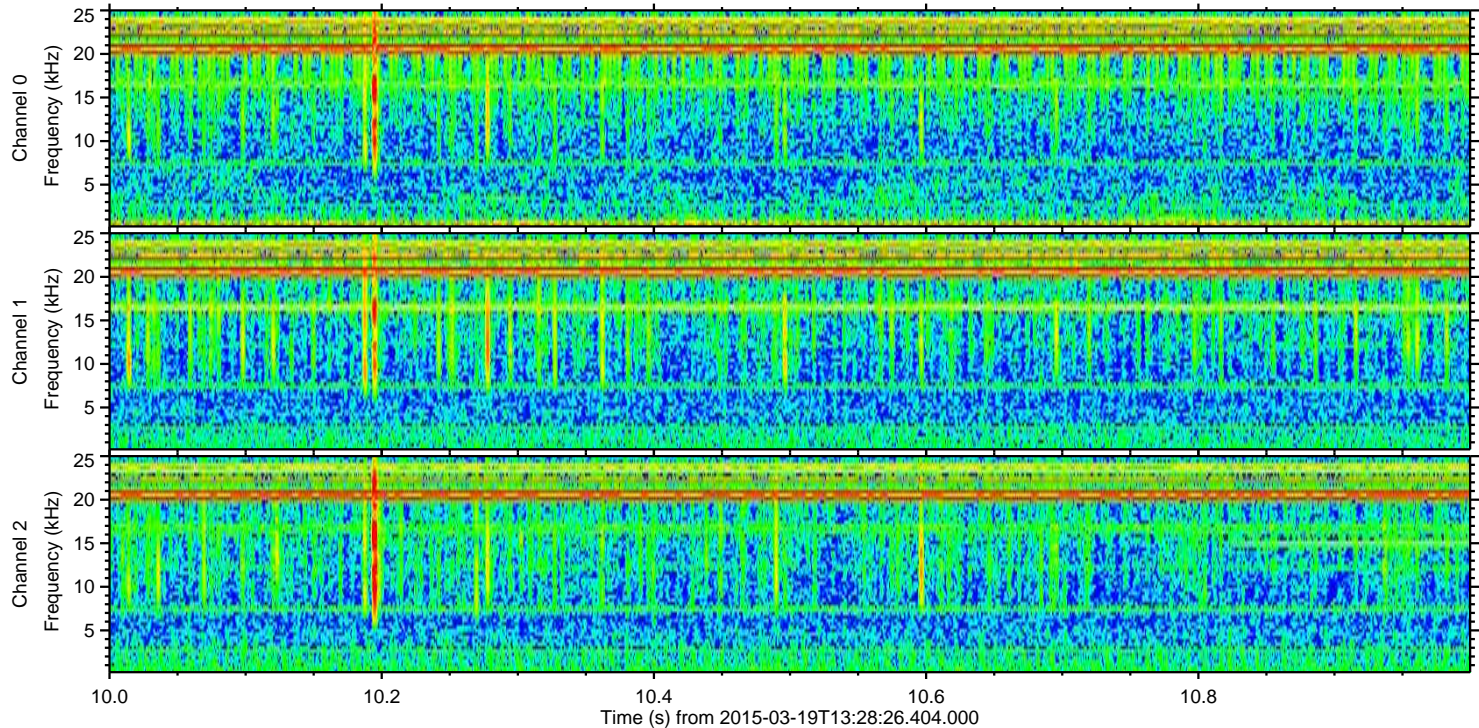
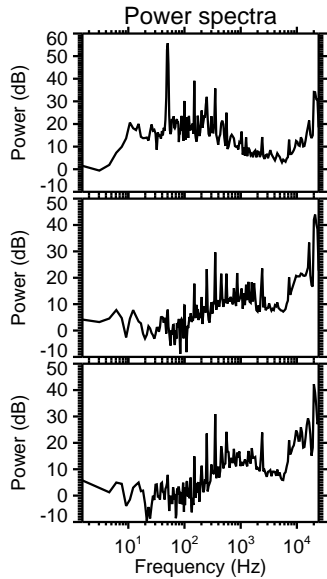
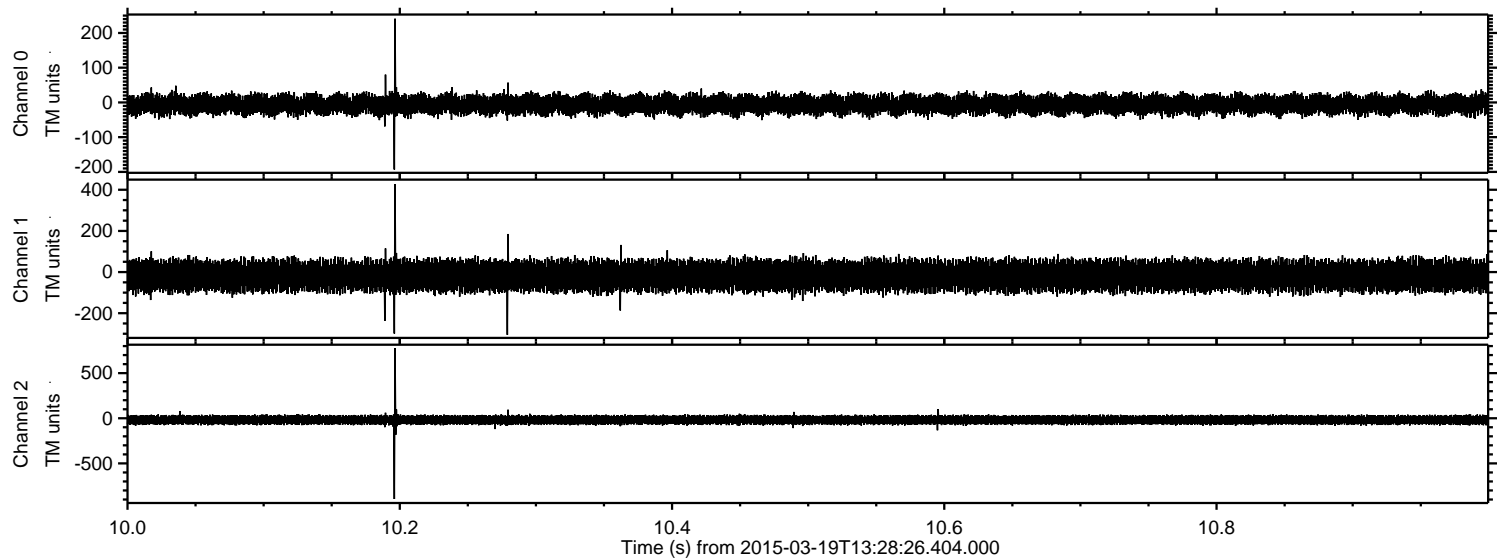


Processed Thu Mar 19 14:35:59 2015 by ELM ver.2012-10-06 from 001\_\_elm20150319\_132825\_\_dat00.bin



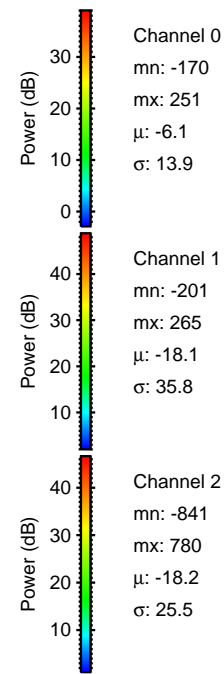
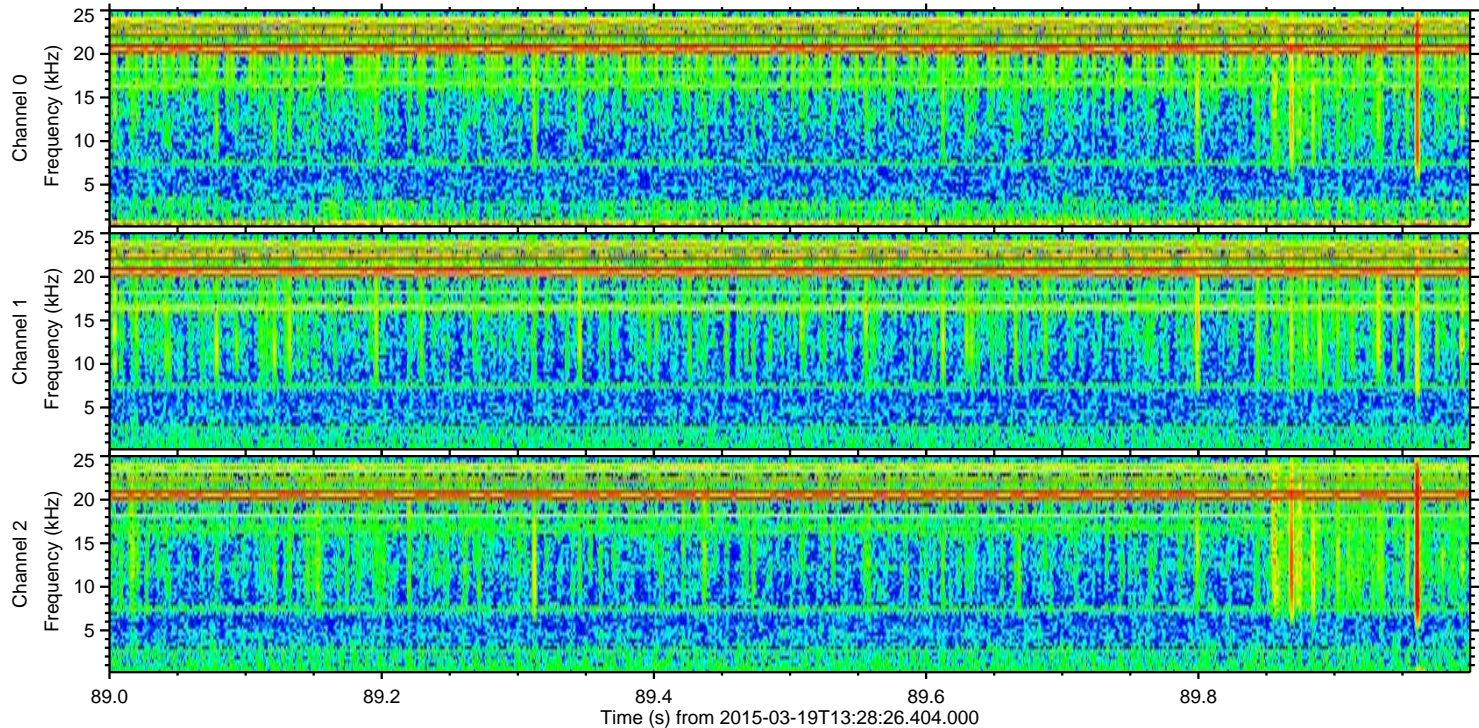
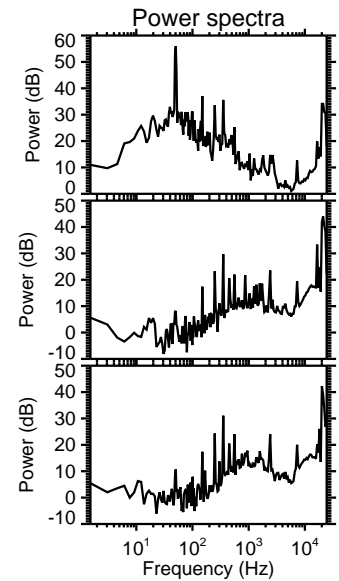
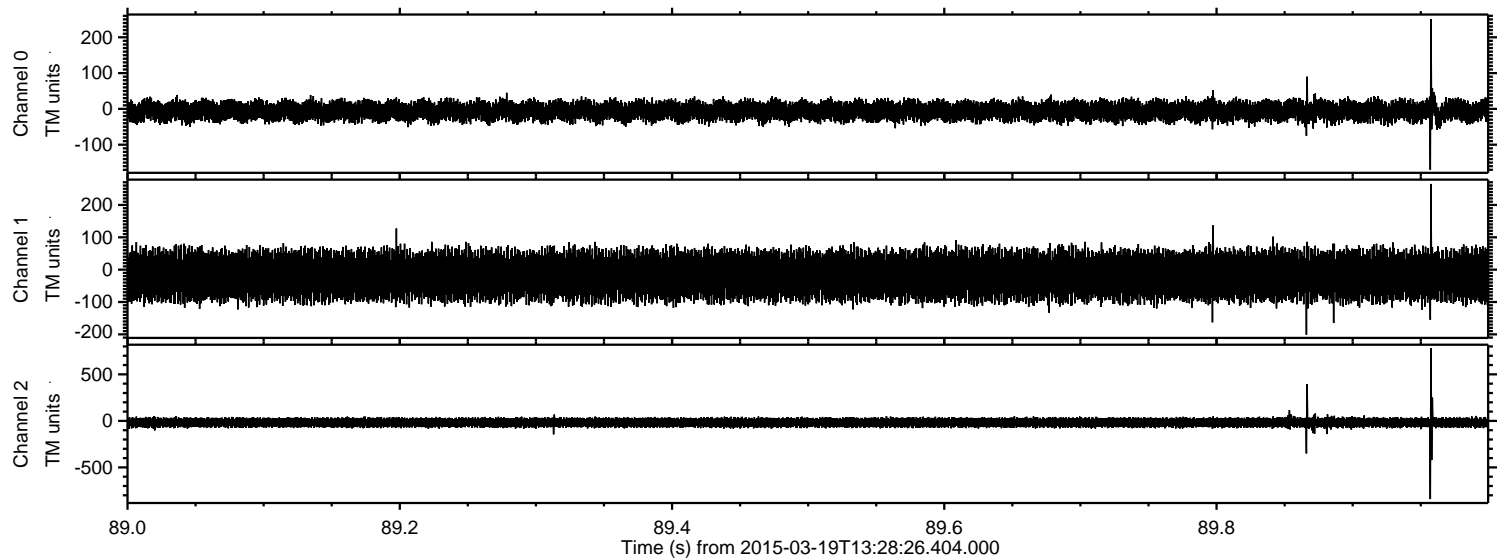


Processed Thu Mar 19 14:36:00 2015 by ELM ver.2012-10-06 from 001\_\_elm20150319\_132825\_\_dat00.bin





Processed Thu Mar 19 14:36:01 2015 by ELM ver.2012-10-06 from 001\_\_elm20150319\_132825\_\_dat00.bin





ELMAVAN 3D WAVEFORMS (Measured data sampled at 50 kHz) 49796 packets of 144 samples from 2015-03-19T13:28:26.404.000. Part 133/144

