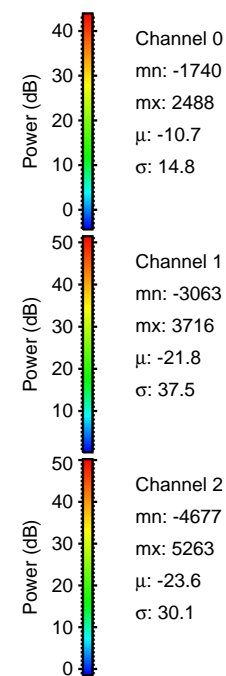
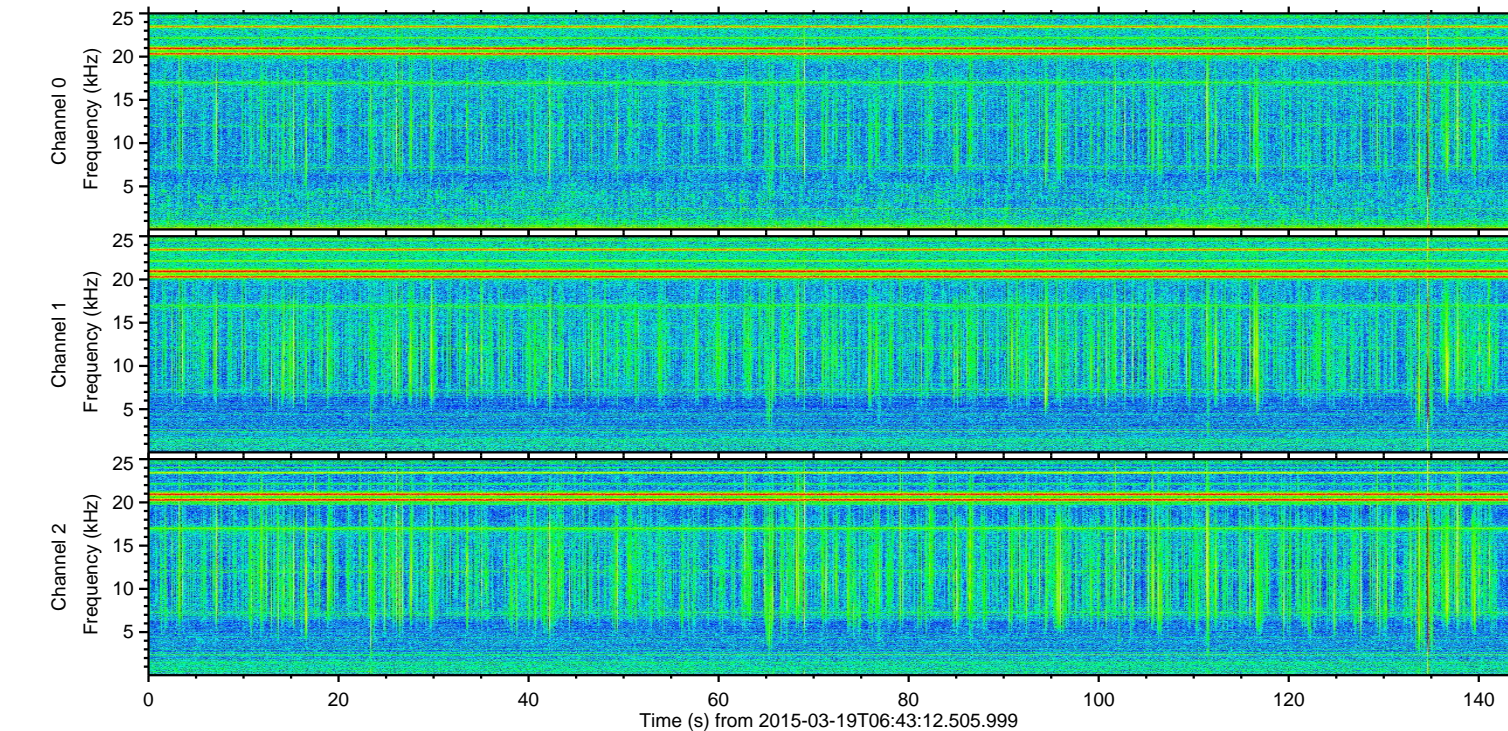
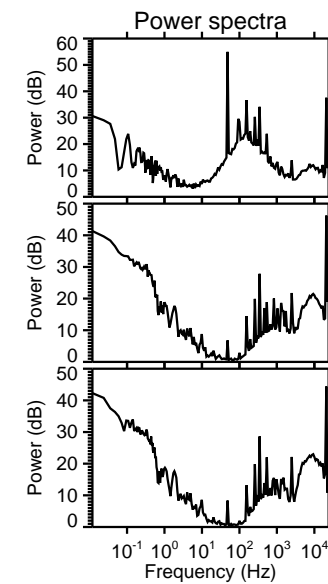
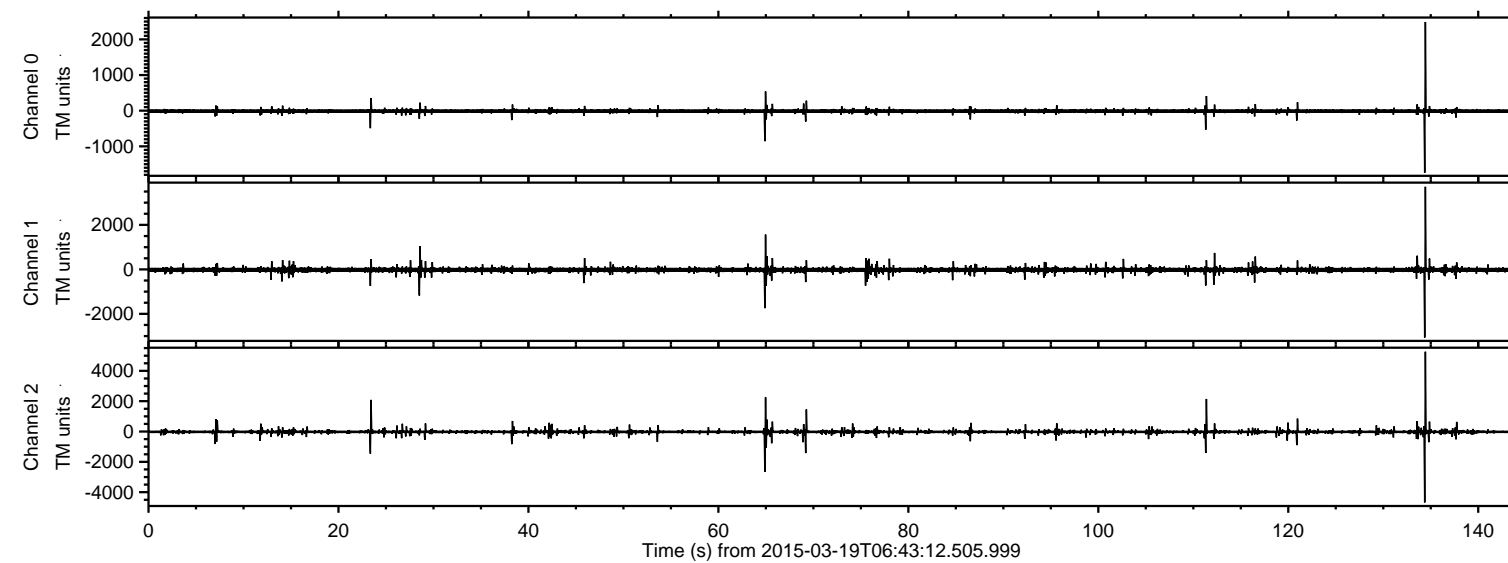


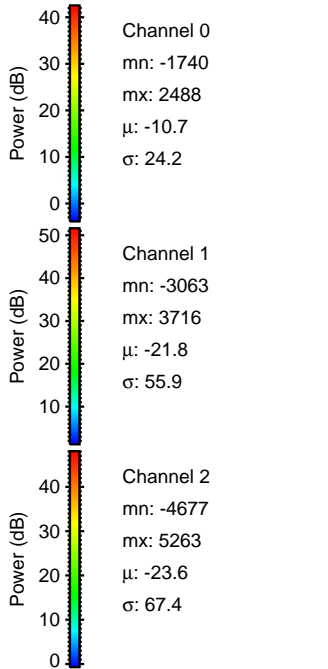
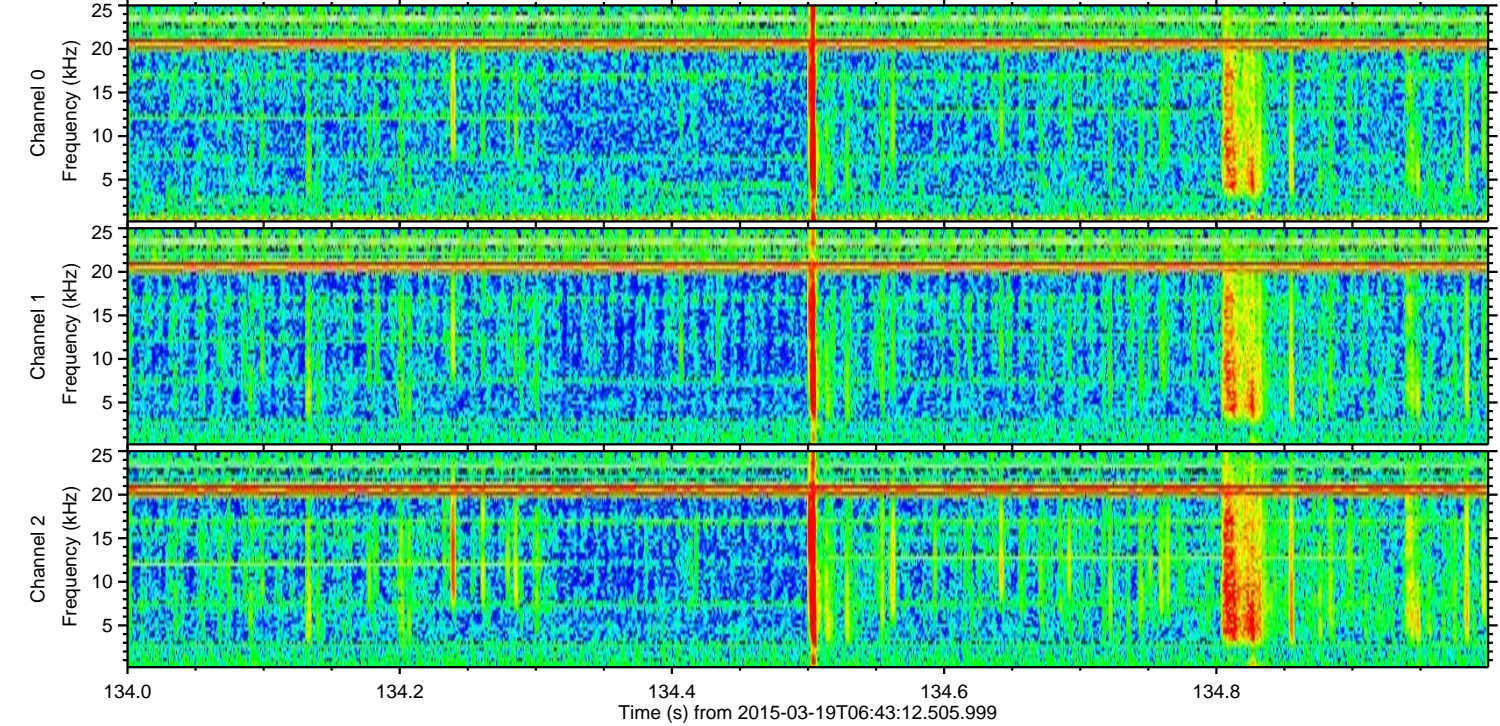
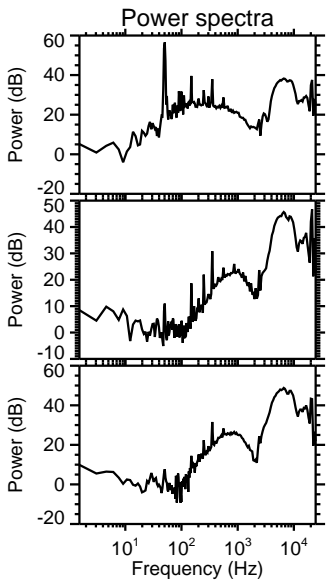
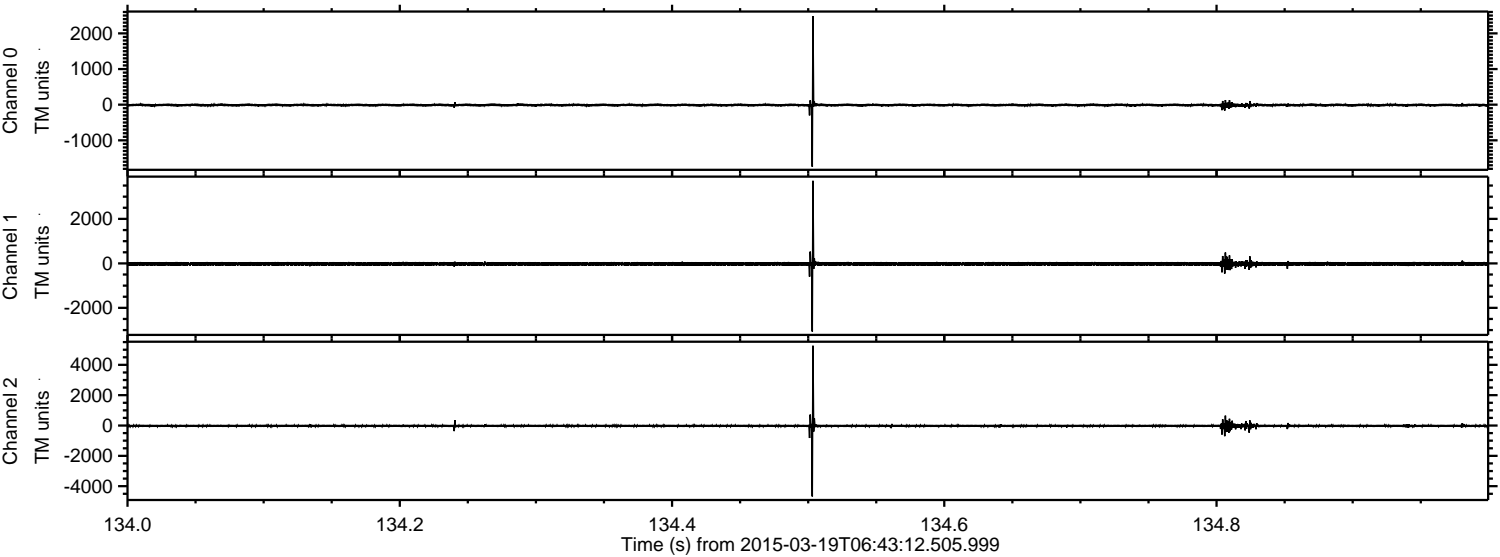
ELMAVAN 3D WAVEFORMS (Measured data sampled at 50 kHz) 49741 packets of 144 samples from 2015-03-19T06:43:12.505.999.

Processed Thu Mar 19 07:50:24 2015 by ELM ver.2012-10-06 from 001__elm20150319_064311__dat00.bin

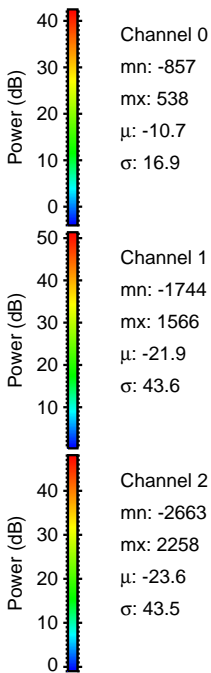
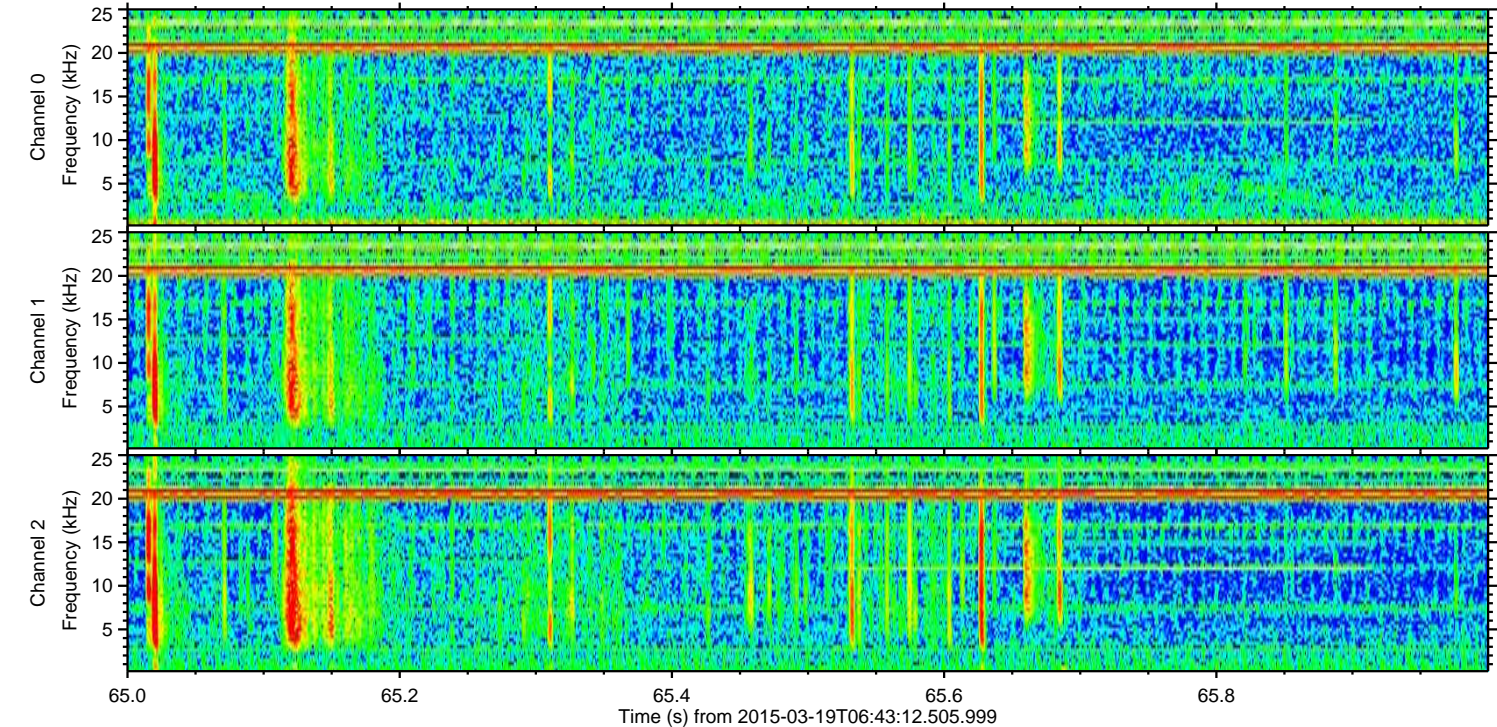
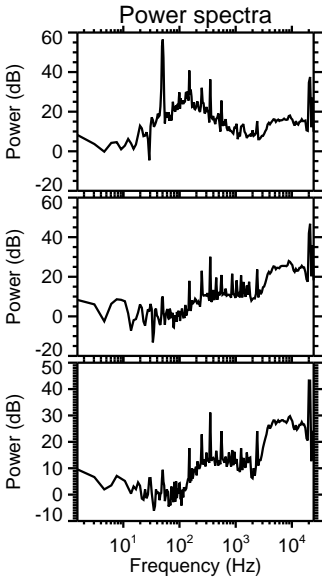
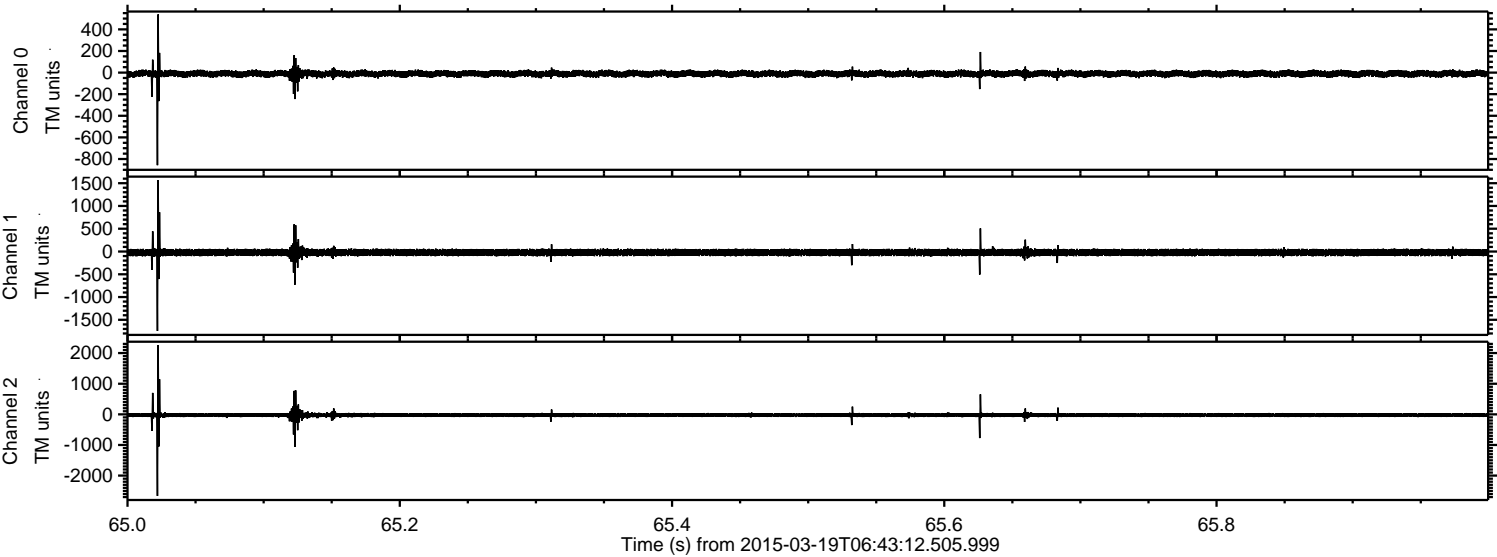


ELMAVAN 3D WAVEFORMS (Measured data sampled at 50 kHz) 49741 packets of 144 samples from 2015-03-19T06:43:12.505.999. Part 135/144

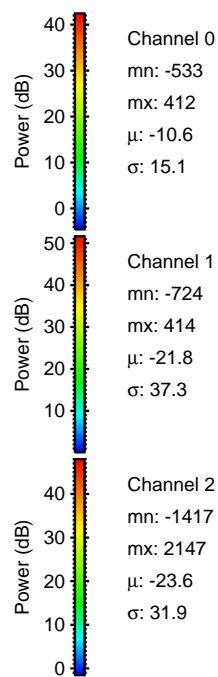
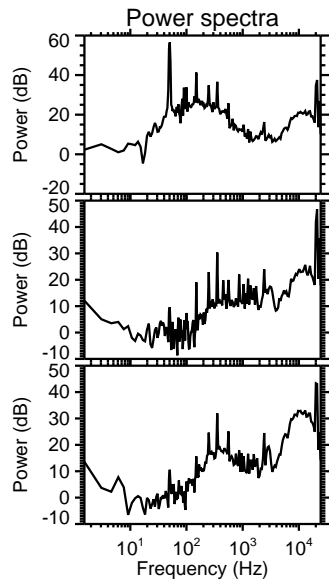
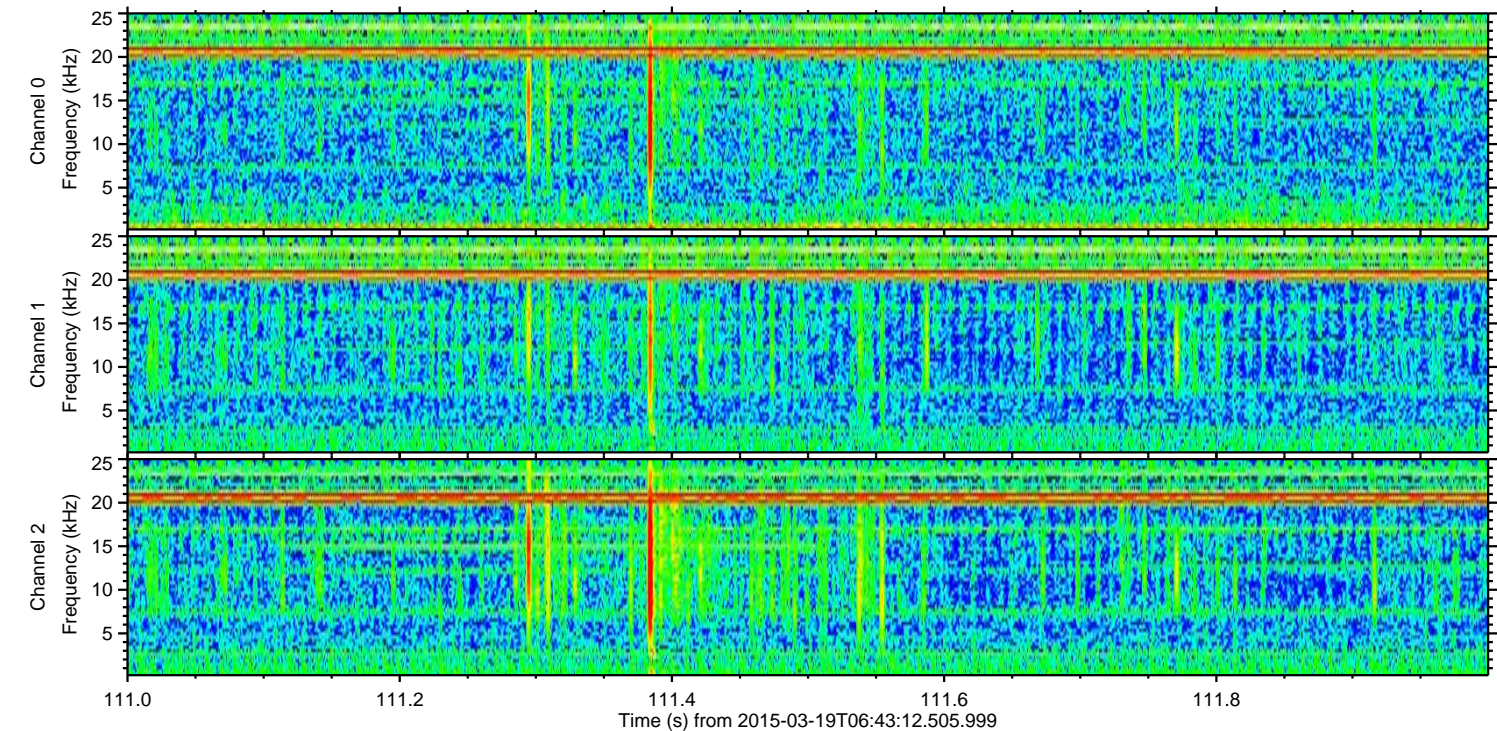
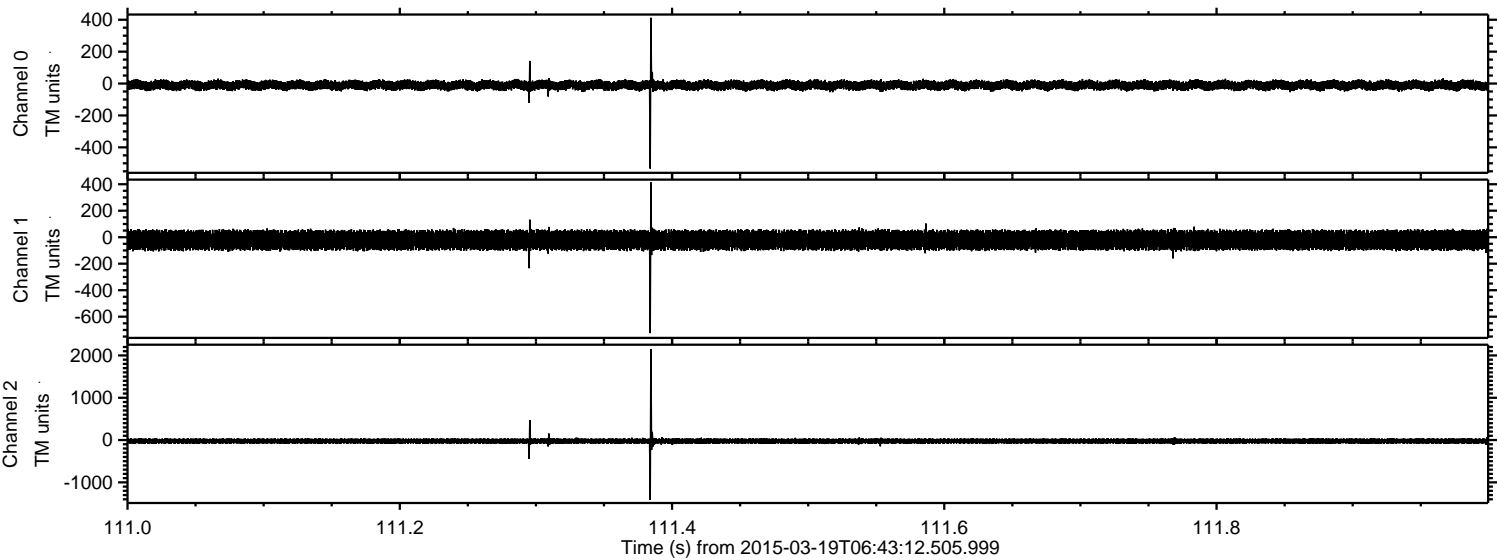
Processed Thu Mar 19 07:50:35 2015 by ELM ver.2012-10-06 from 001__elm20150319_064311__dat00.bin



Processed Thu Mar 19 07:50:36 2015 by ELM ver.2012-10-06 from 001__elm20150319_064311__dat00.bin



Processed Thu Mar 19 07:50:37 2015 by ELM ver.2012-10-06 from 001__elm20150319_064311__dat00.bin

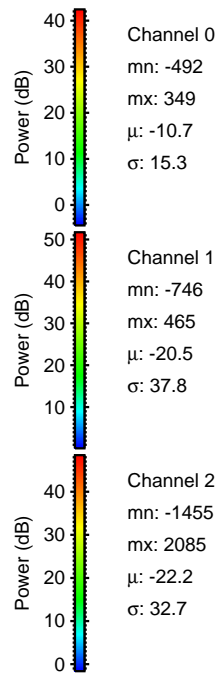
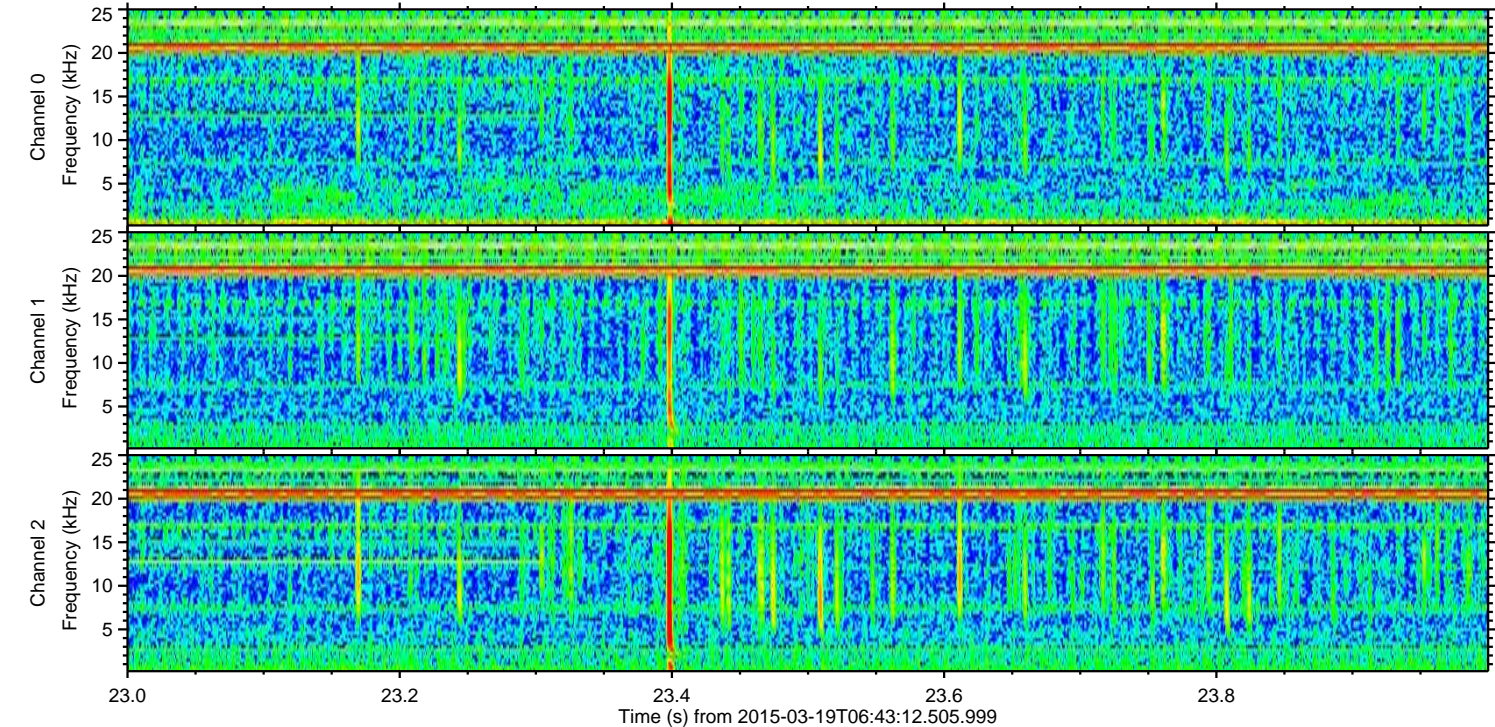
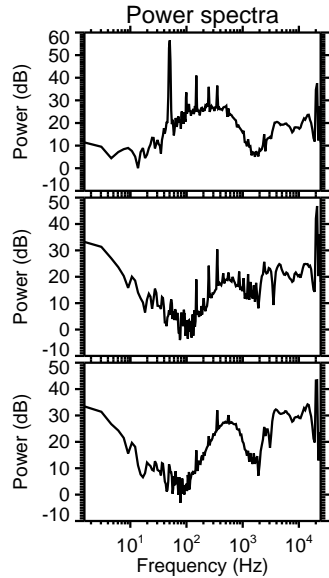
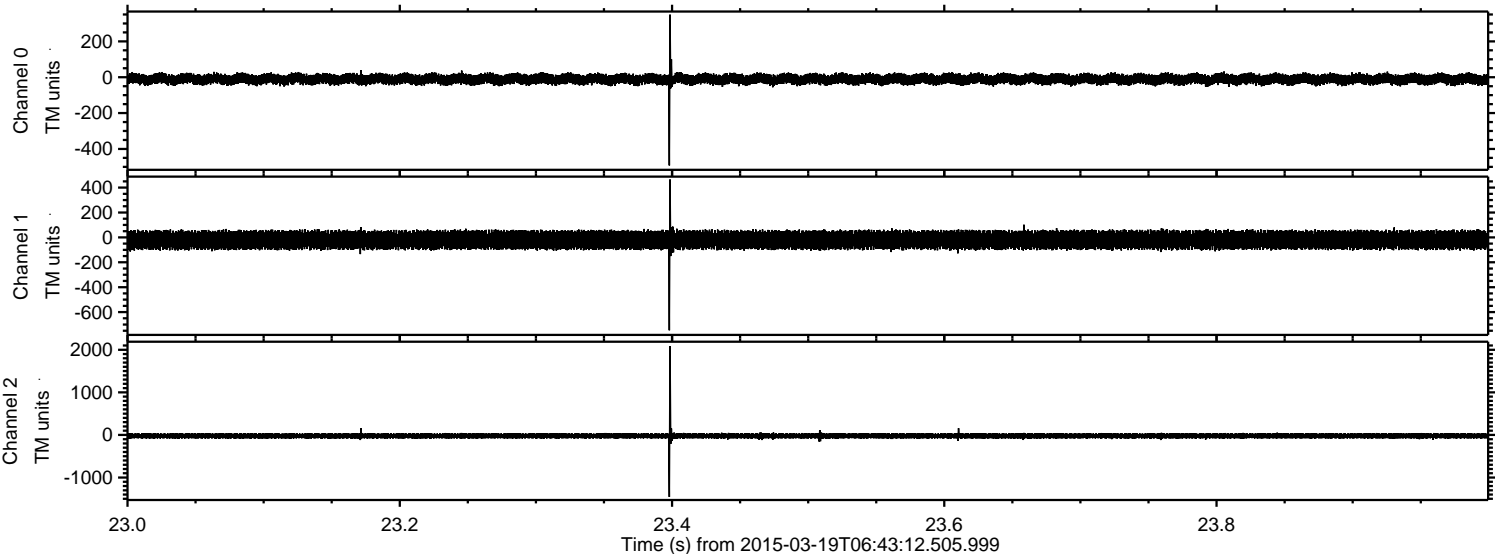


Channel 0
mn: -533
mx: 412
 μ : -10.6
 σ : 15.1

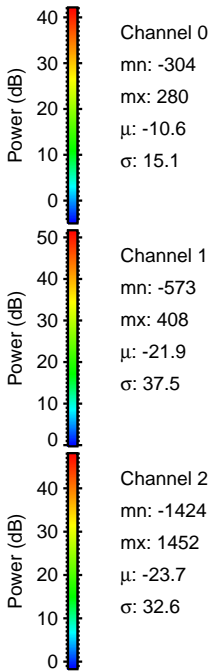
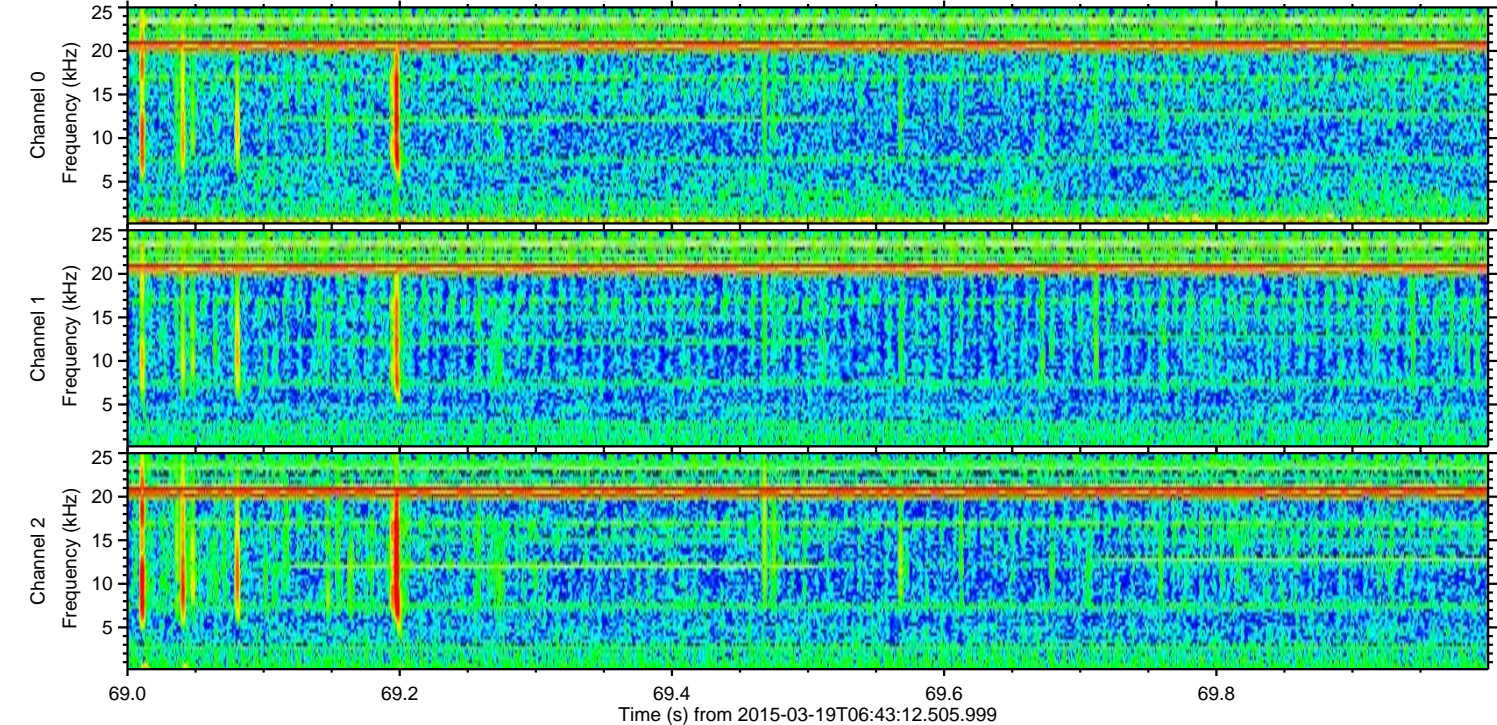
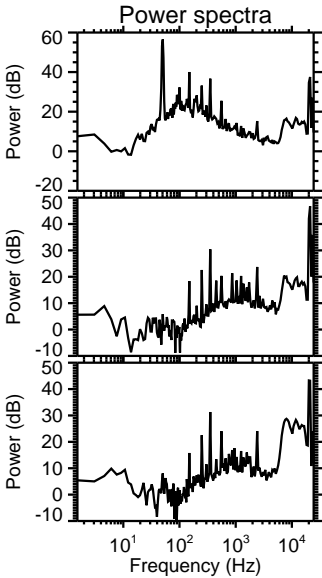
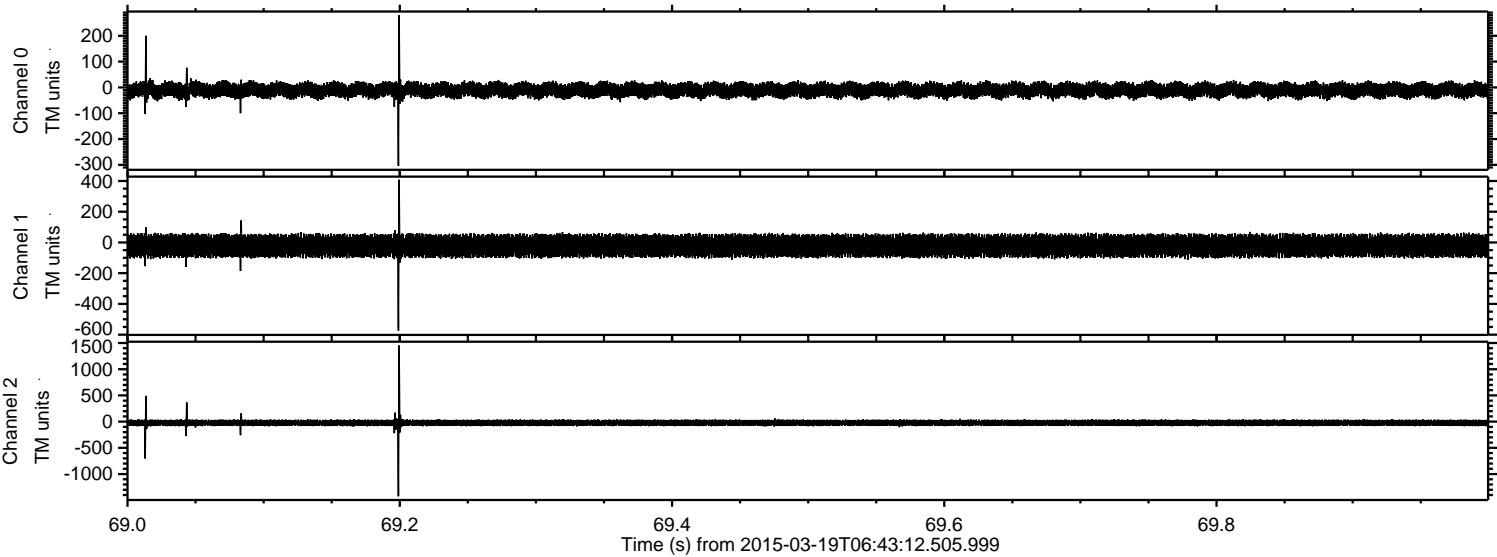
Channel 1
mn: -724
mx: 414
 μ : -21.8
 σ : 37.3

Channel 2
mn: -1417
mx: 2147
 μ : -23.6
 σ : 31.9

Processed Thu Mar 19 07:50:38 2015 by ELM ver.2012-10-06 from 001__elm20150319_064311__dat00.bin



Processed Thu Mar 19 07:50:39 2015 by ELM ver.2012-10-06 from 001__elm20150319_064311__dat00.bin

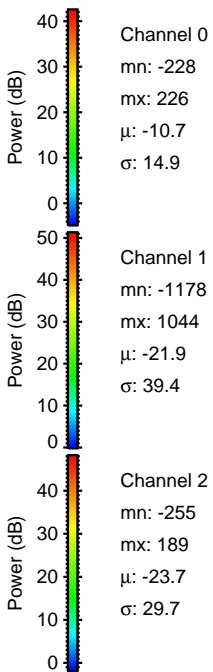
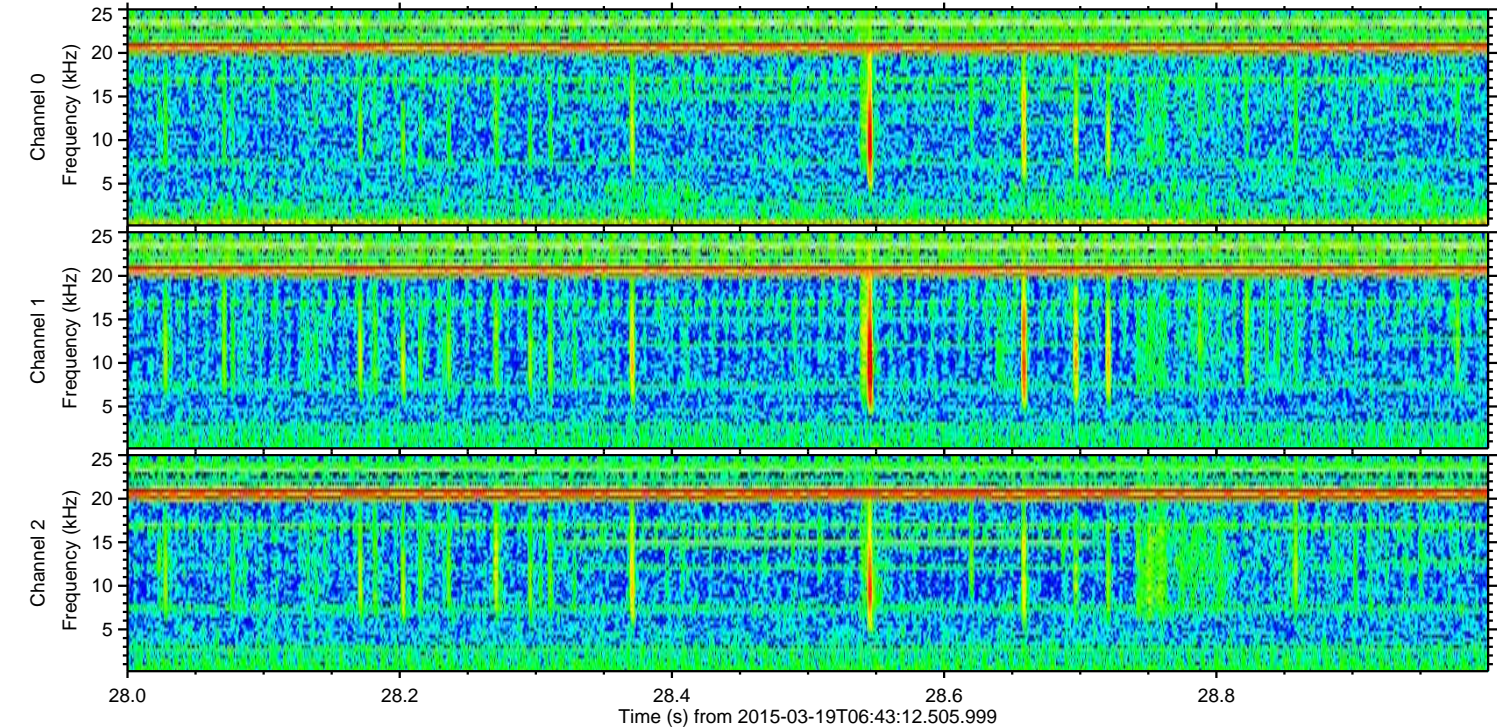
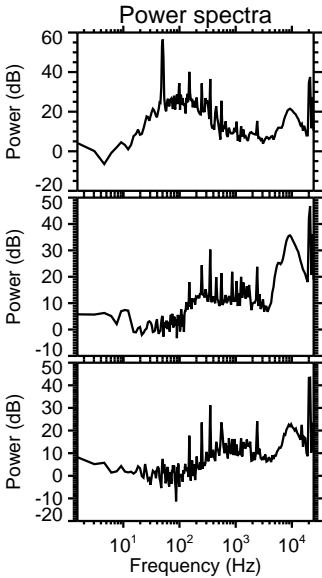
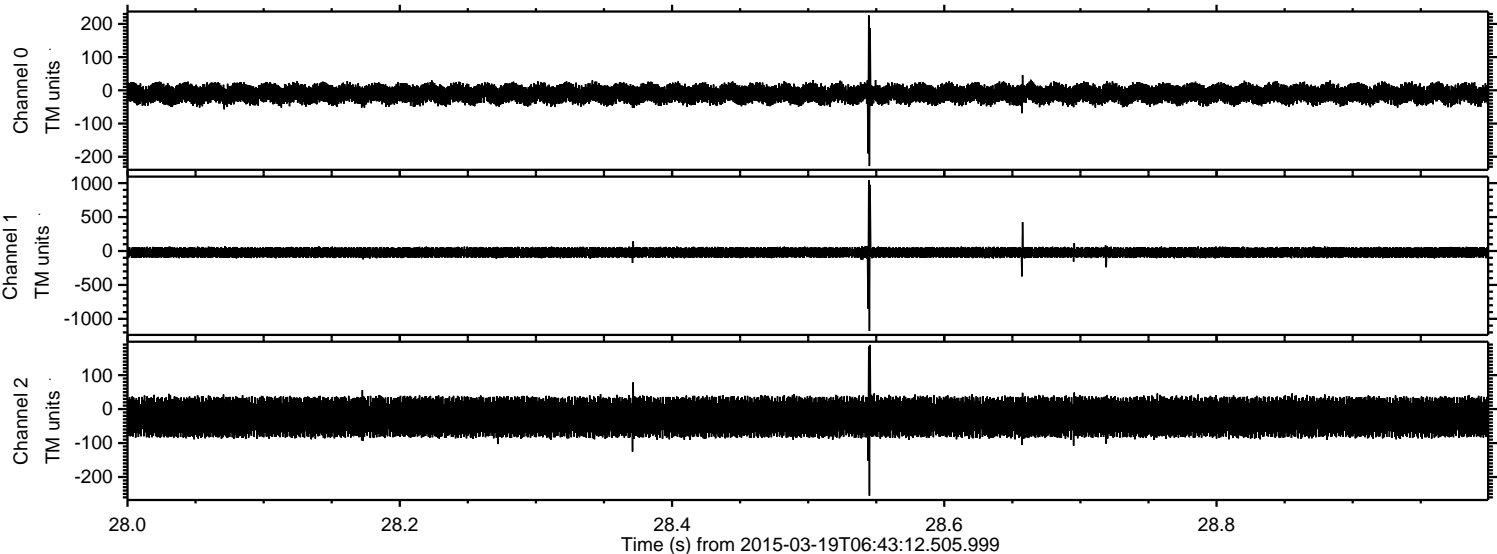


Channel 0
mn: -304
mx: 280
 μ : -10.6
 σ : 15.1

Channel 1
mn: -573
mx: 408
 μ : -21.9
 σ : 37.5

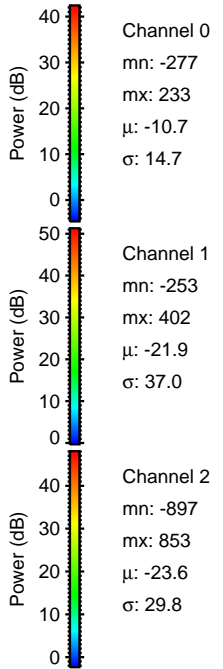
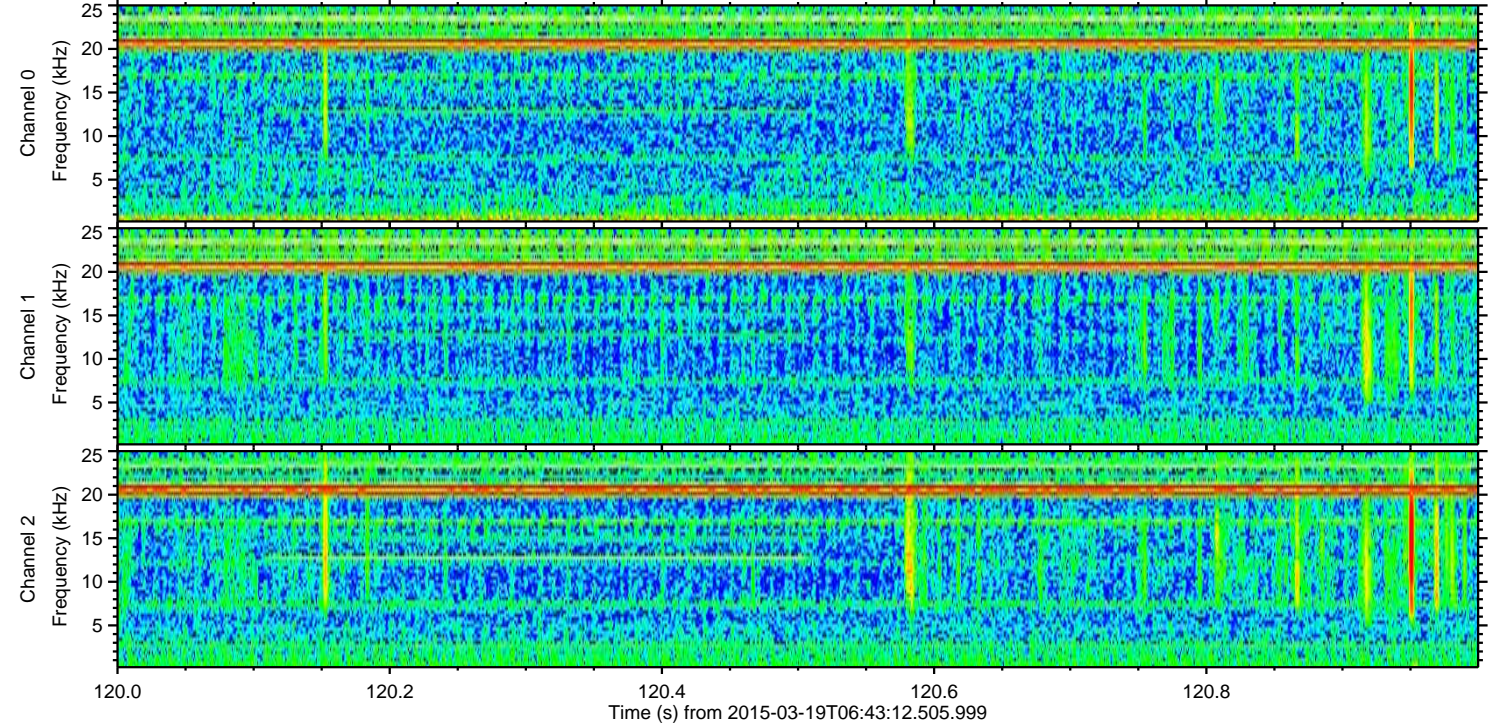
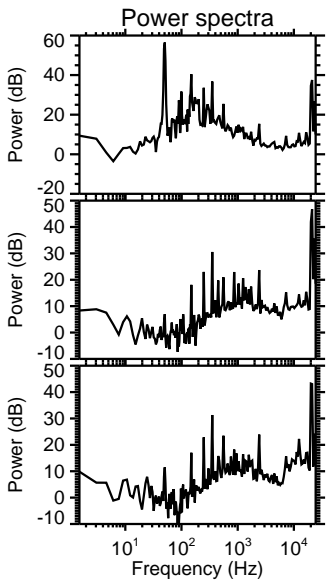
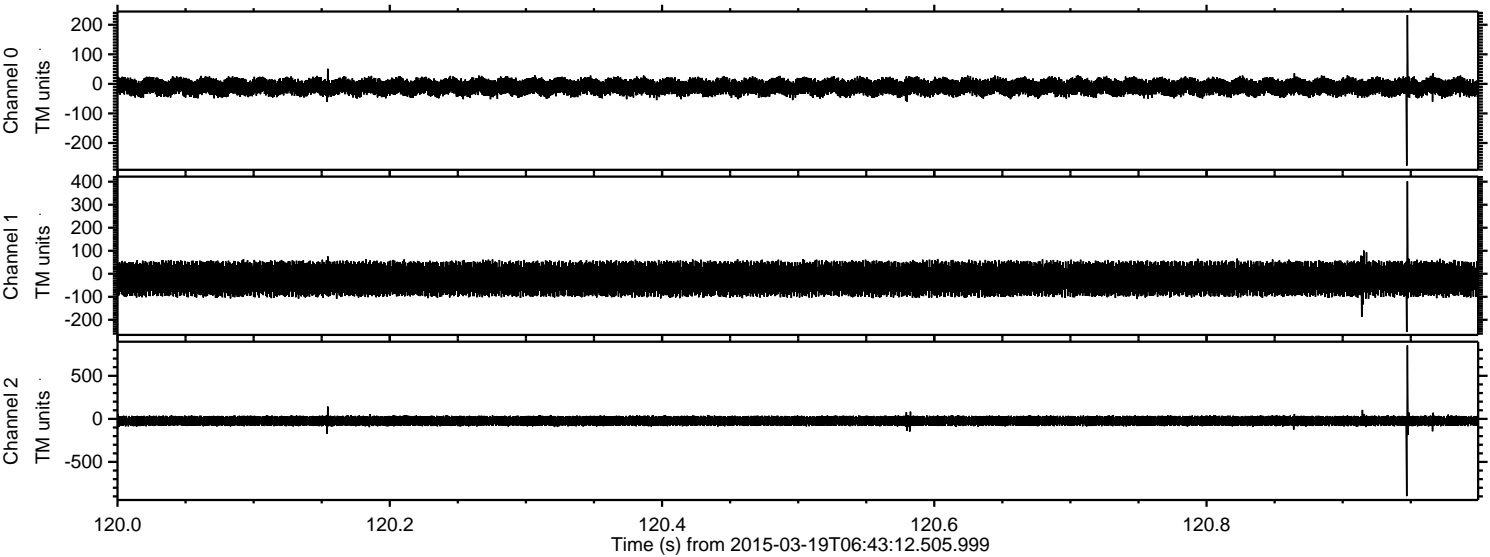
Channel 2
mn: -1424
mx: 1452
 μ : -23.7
 σ : 32.6

Processed Thu Mar 19 07:50:40 2015 by ELM ver.2012-10-06 from 001__elm20150319_064311__dat00.bin

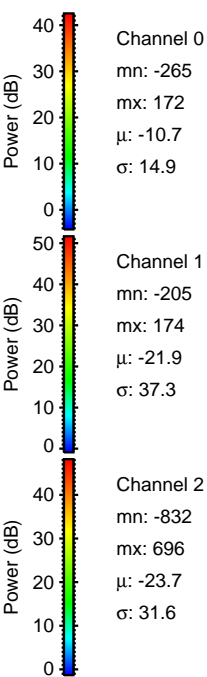
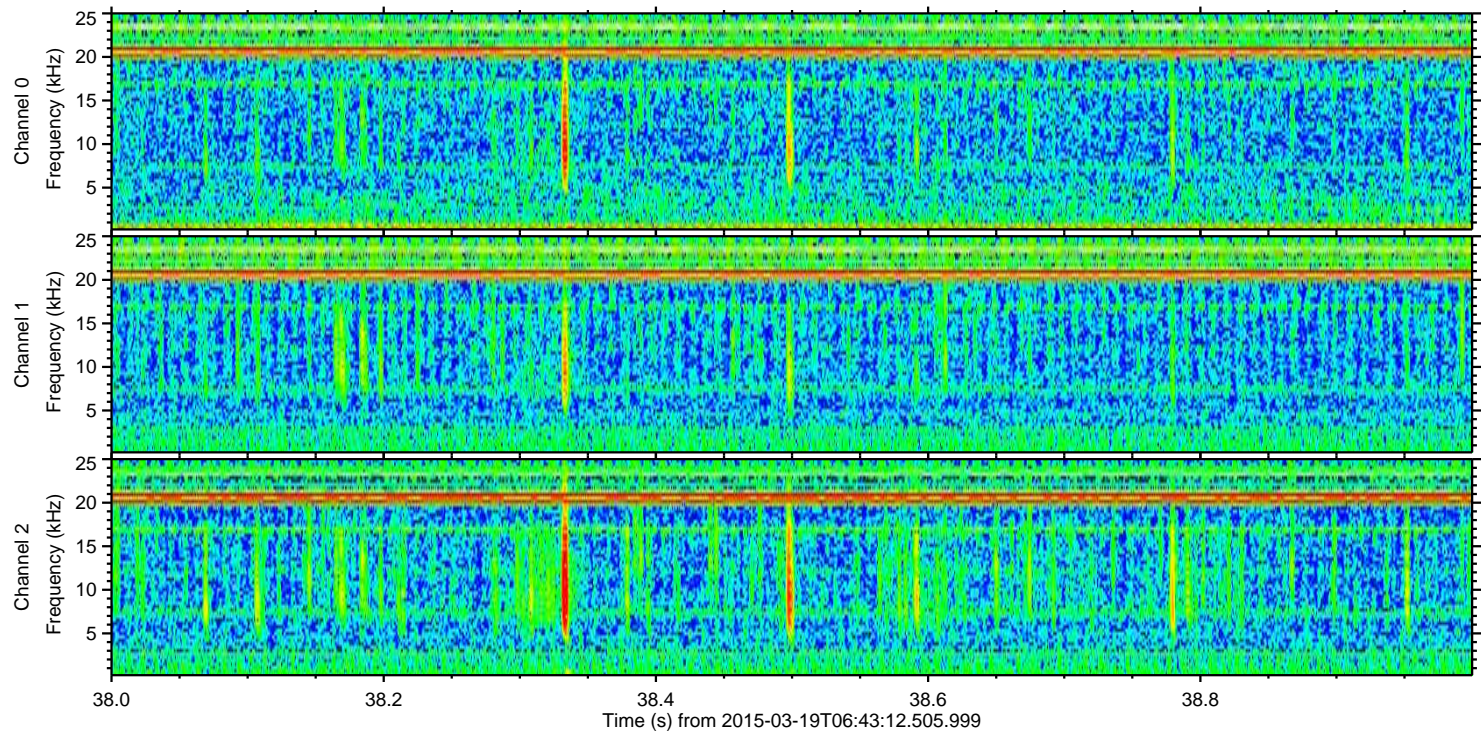
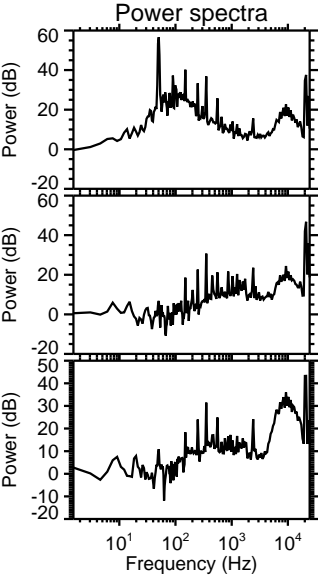
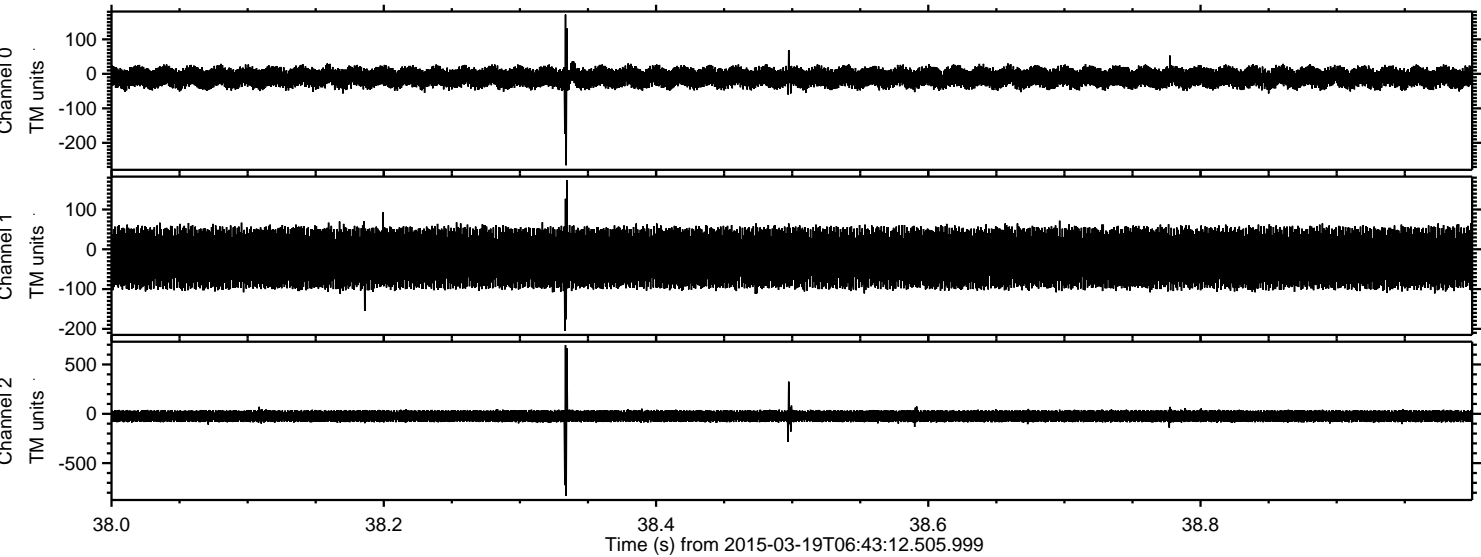


ELMAVAN 3D WAVEFORMS (Measured data sampled at 50 kHz) 49741 packets of 144 samples from 2015-03-19T06:43:12.505.999. Part 121/144

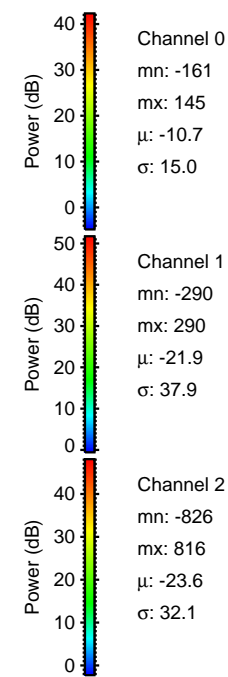
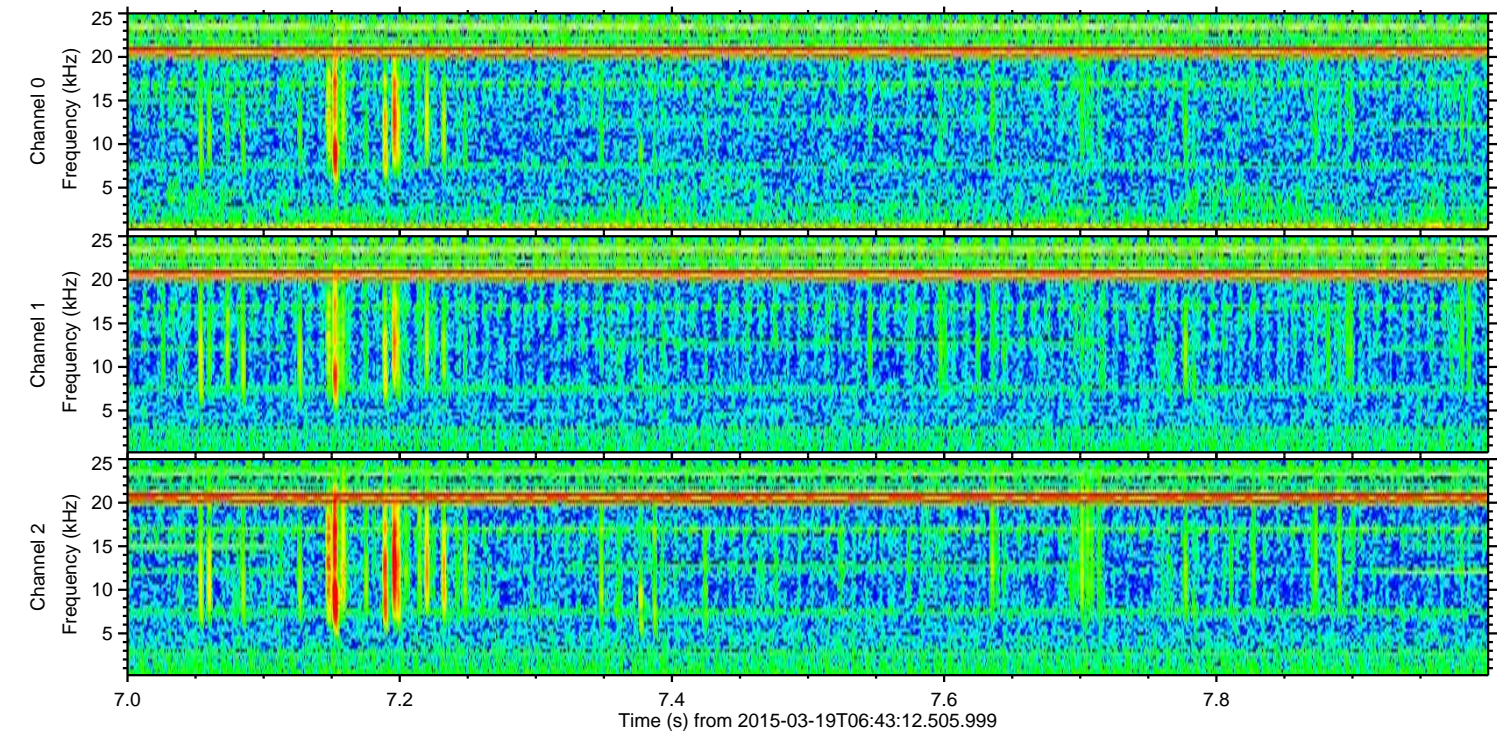
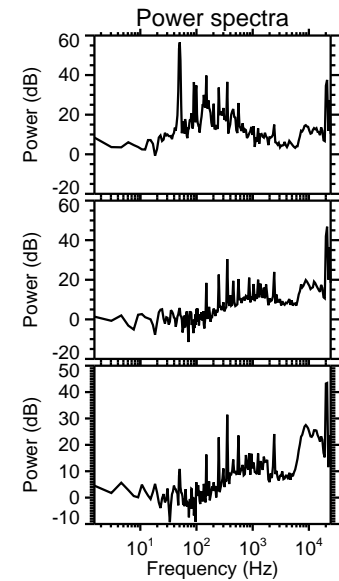
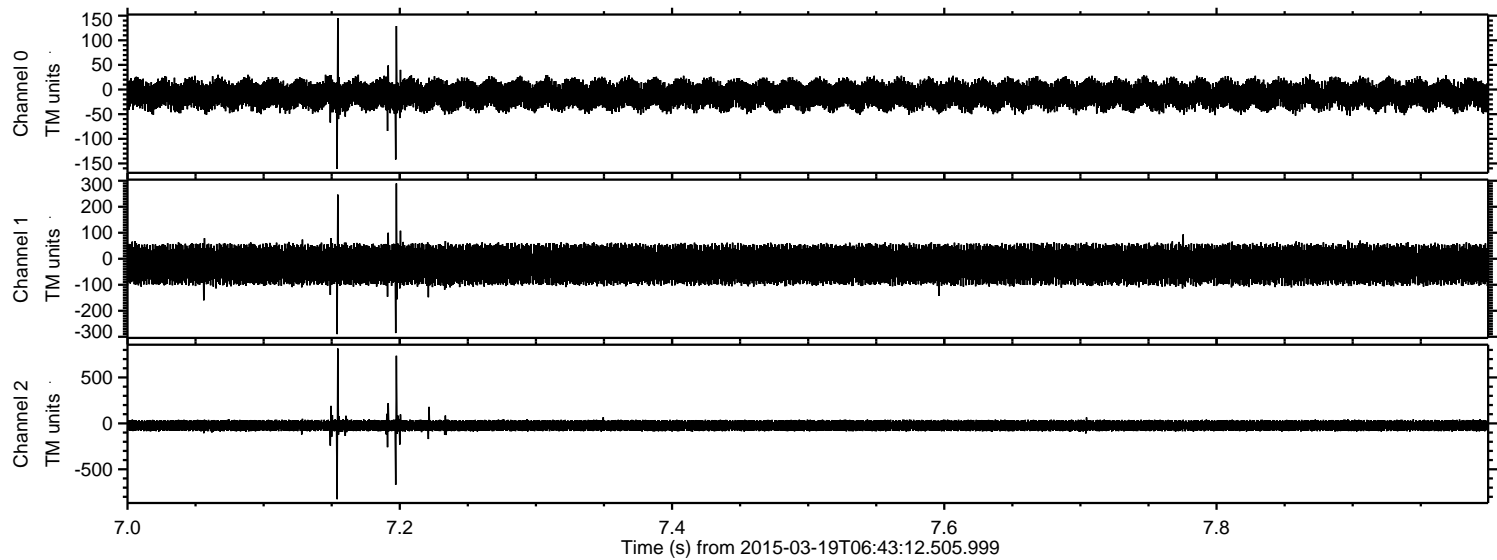
Processed Thu Mar 19 07:50:41 2015 by ELM ver.2012-10-06 from 001__elm20150319_064311__dat00.bin



Processed Thu Mar 19 07:50:42 2015 by ELM ver.2012-10-06 from 001__elm20150319_064311__dat00.bin



Processed Thu Mar 19 07:50:43 2015 by ELM ver.2012-10-06 from 001__elm20150319_064311__dat00.bin



Processed Thu Mar 19 07:50:44 2015 by ELM ver.2012-10-06 from 001__elm20150319_064311__dat00.bin

