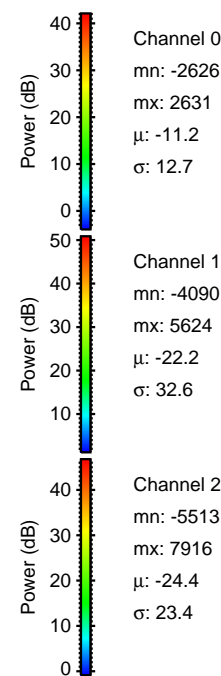
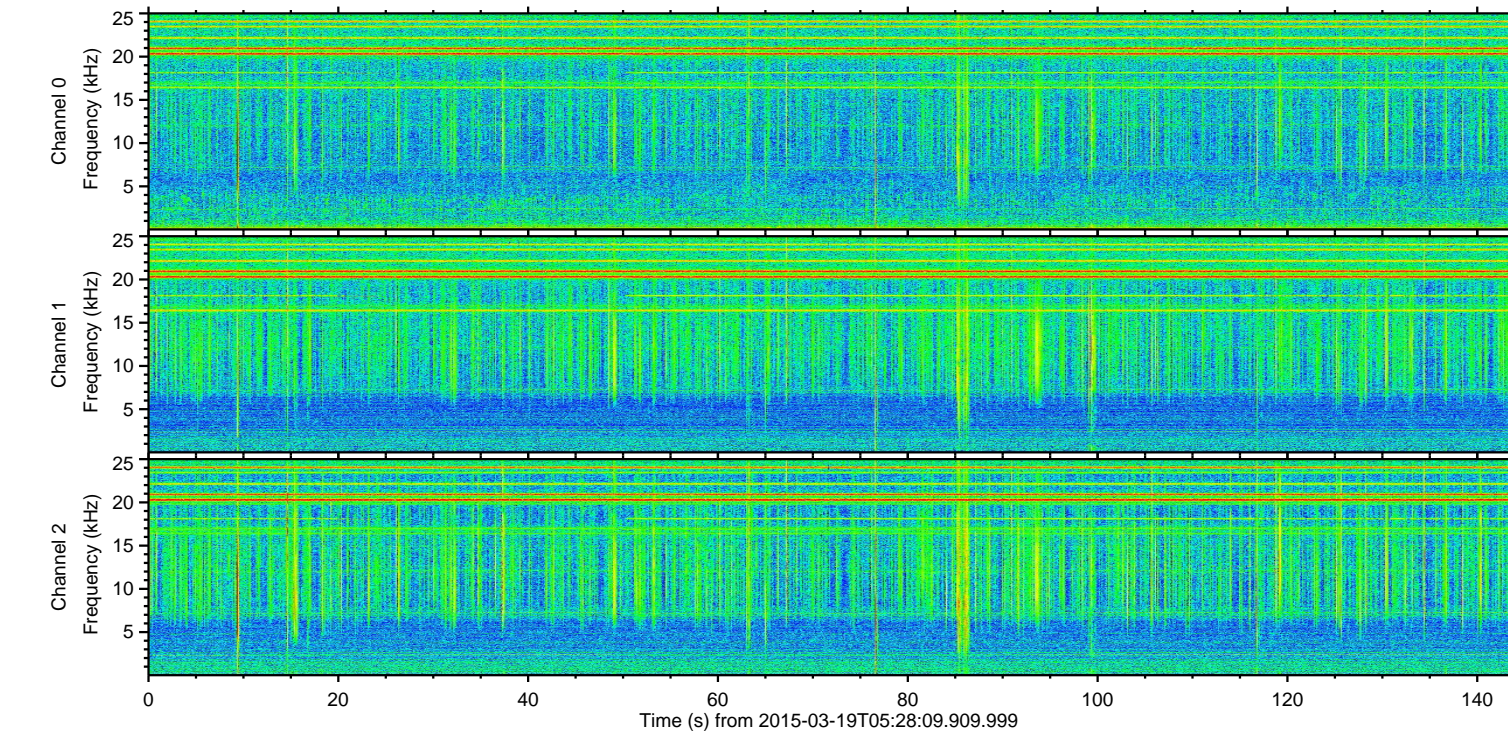
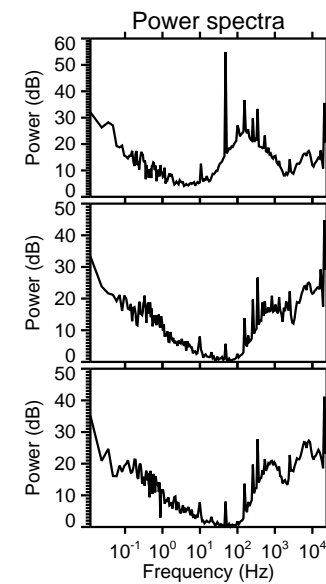
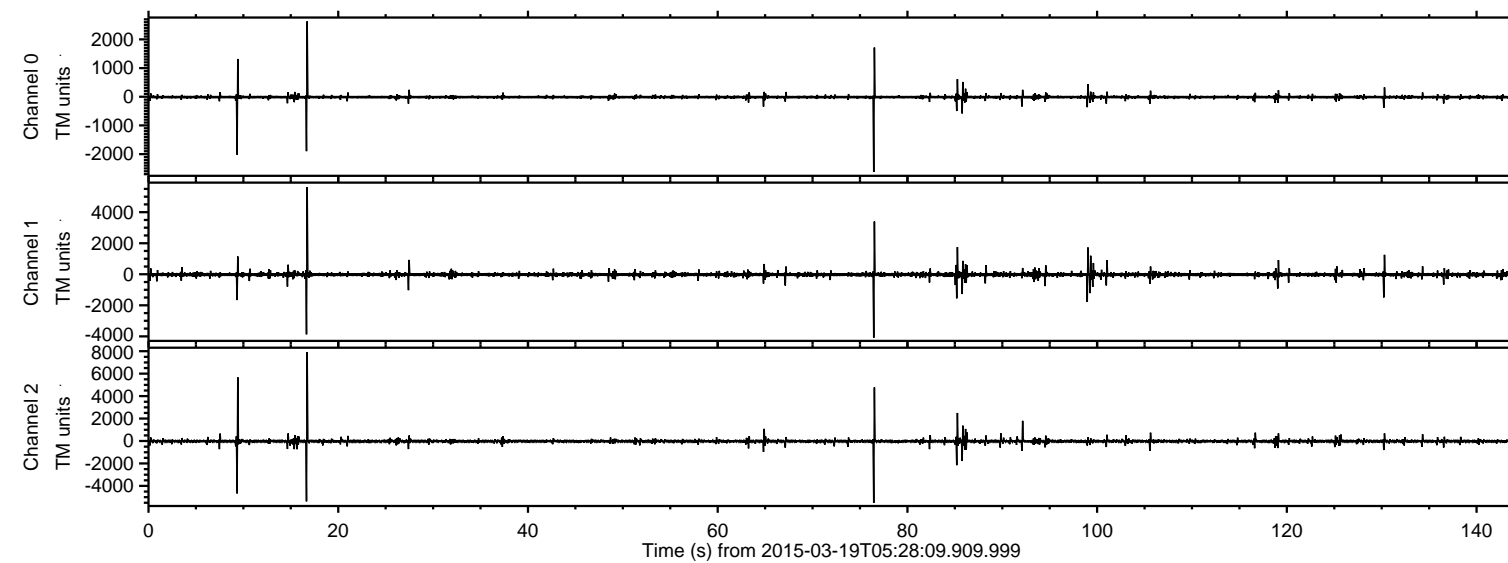


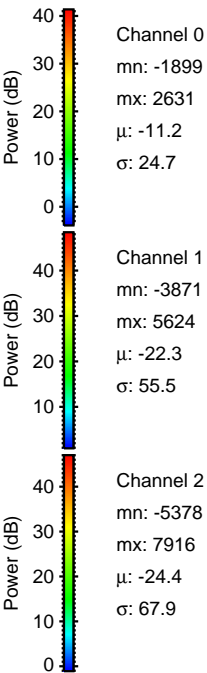
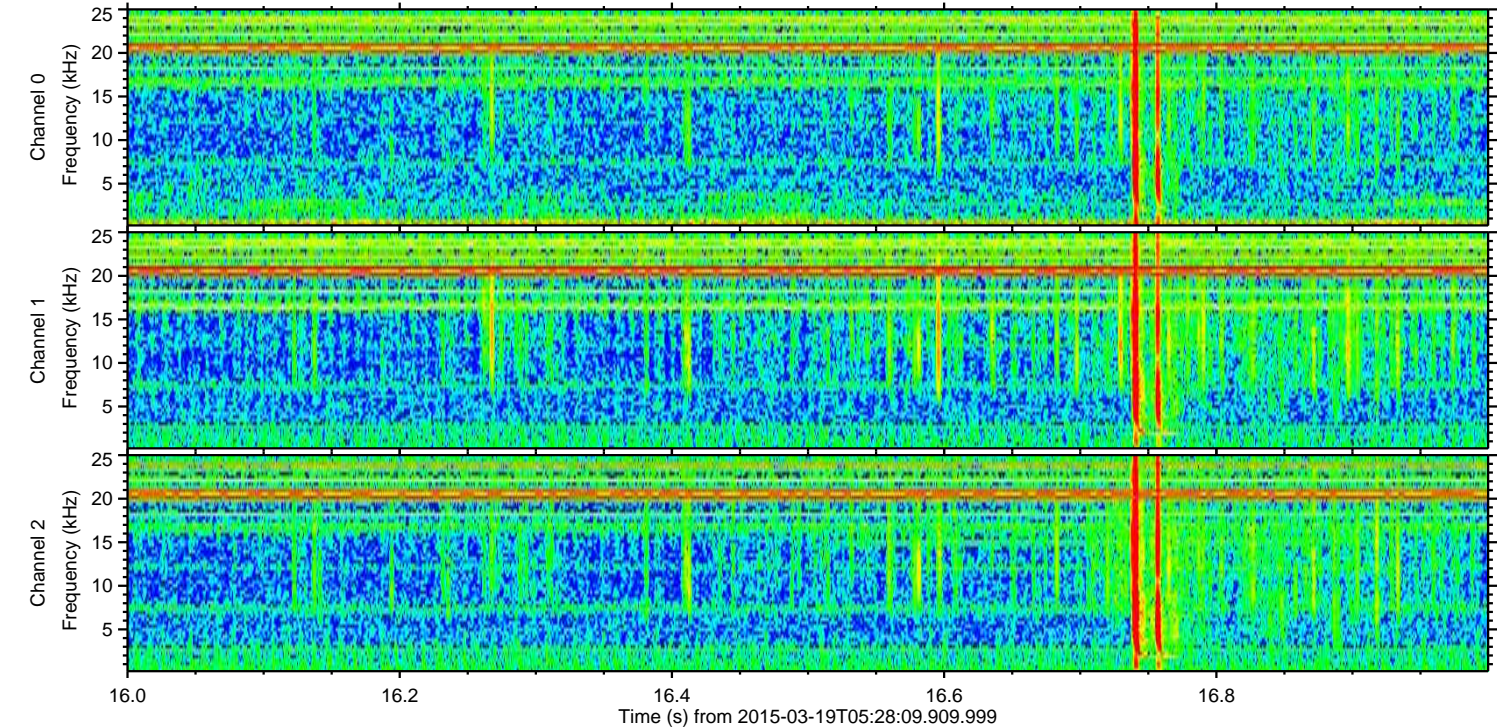
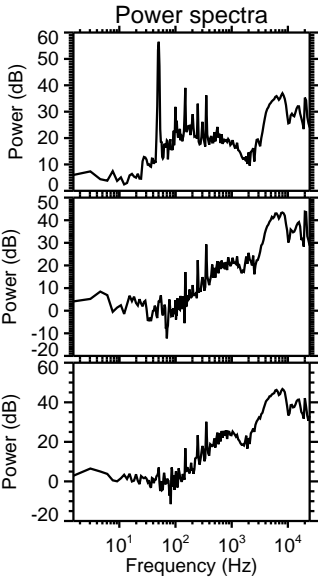
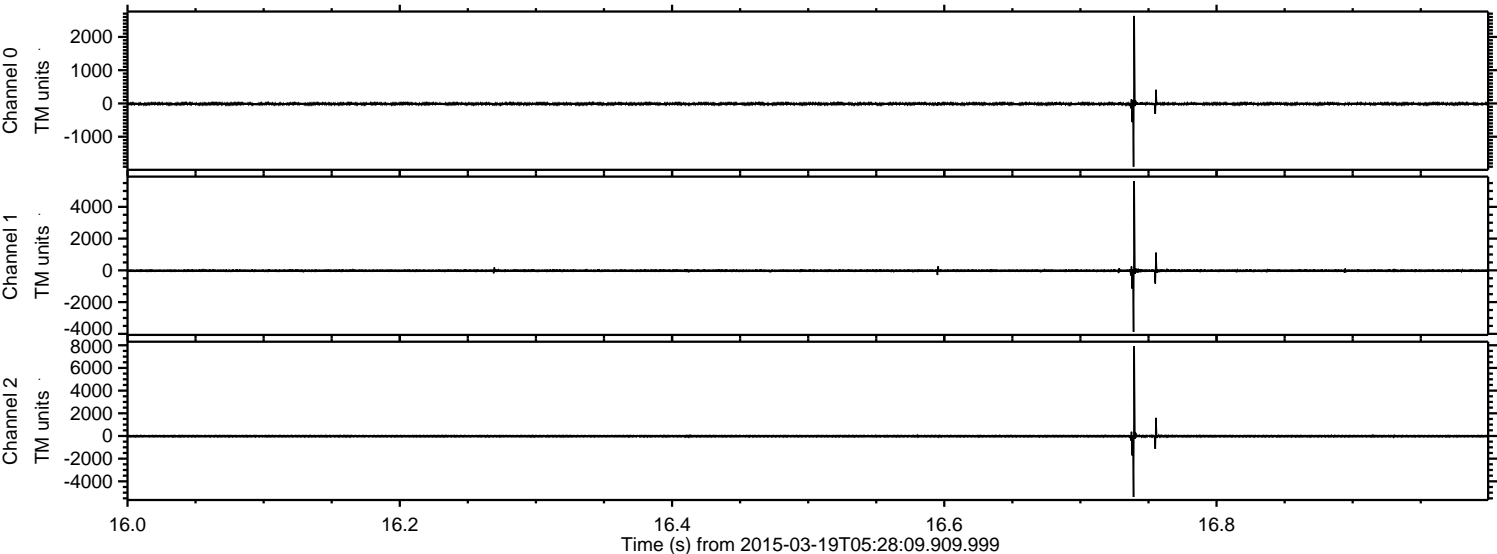
ELMAVAN 3D WAVEFORMS (Measured data sampled at 50 kHz) 49803 packets of 144 samples from 2015-03-19T05:28:09.909.999.

Processed Thu Mar 19 06:53:03 2015 by ELM ver.2012-10-06 from 001__elm20150319_052808__dat00.bin

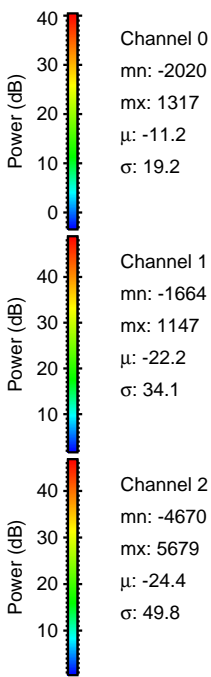
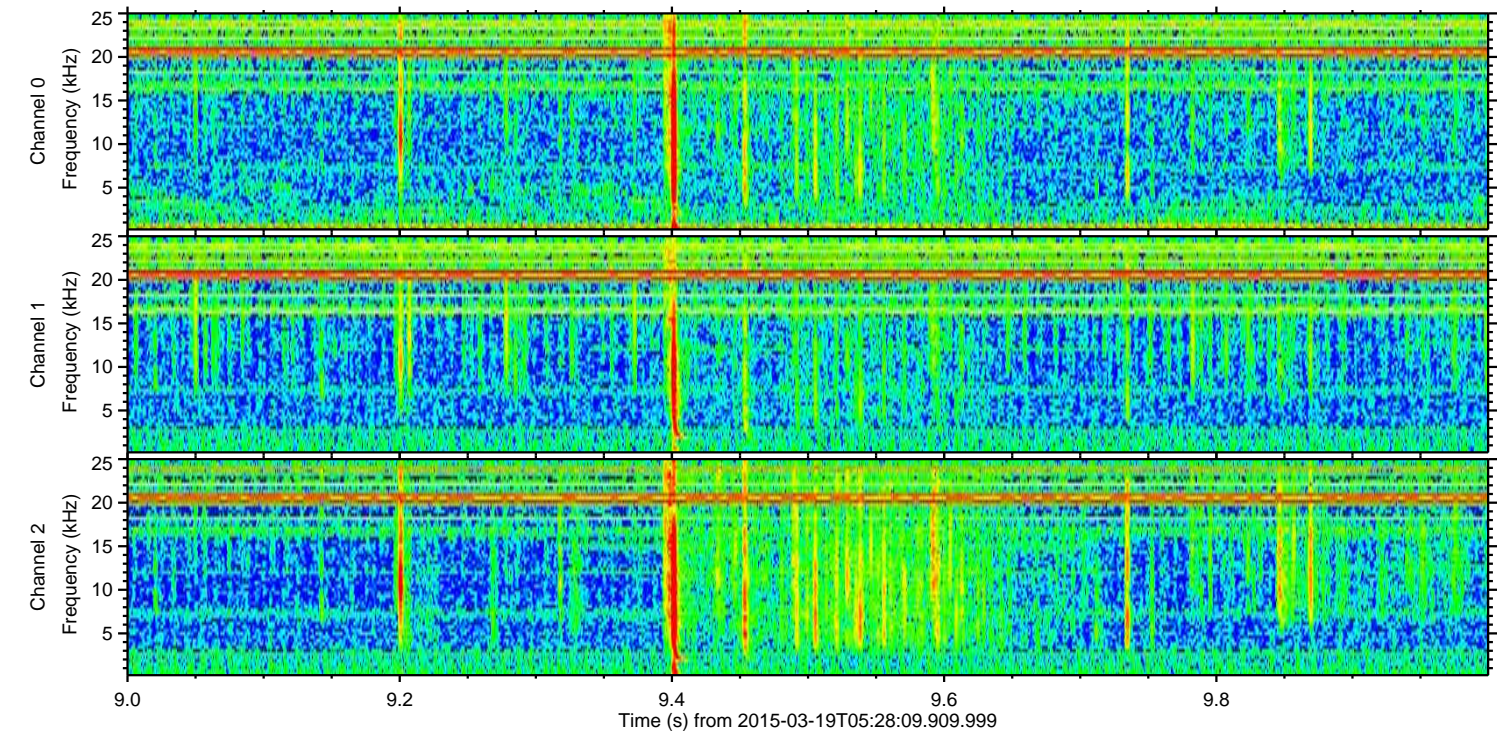
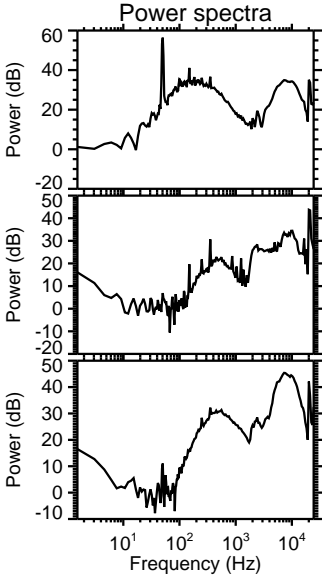
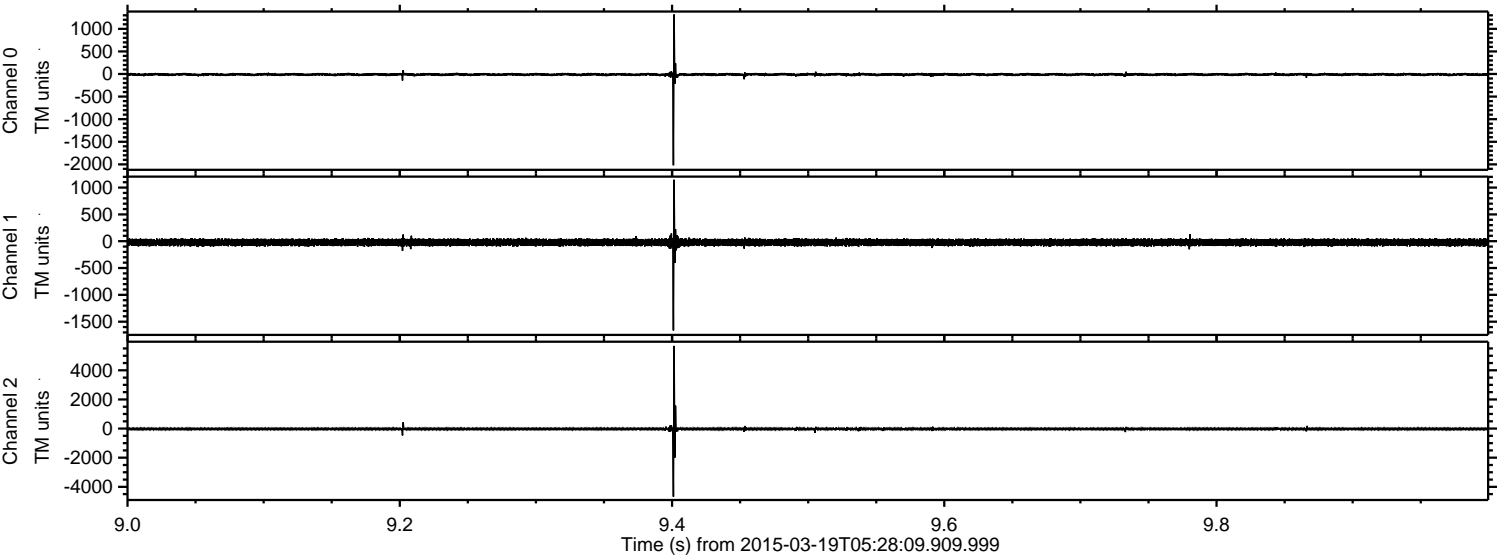


ELMAVAN 3D WAVEFORMS (Measured data sampled at 50 kHz) 49803 packets of 144 samples from 2015-03-19T05:28:09.909.999. Part 17/144

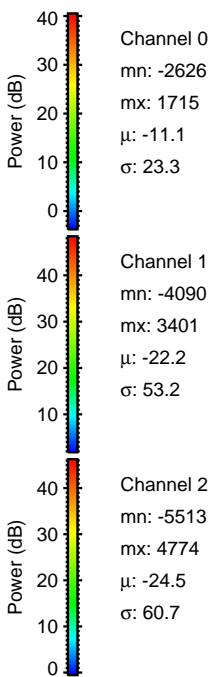
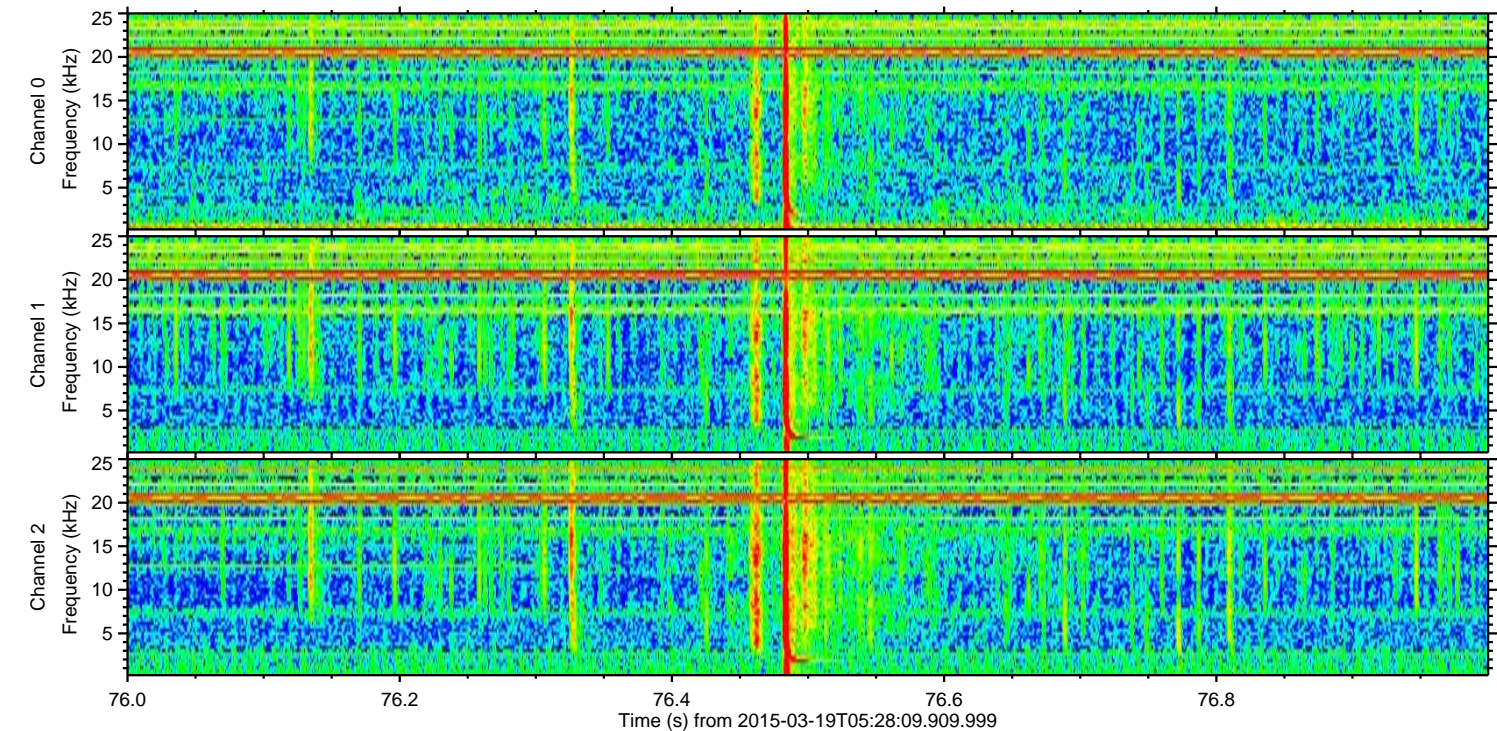
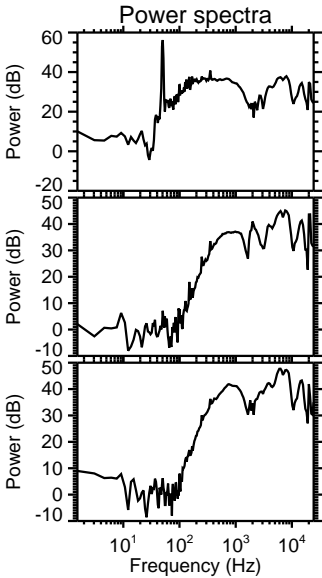
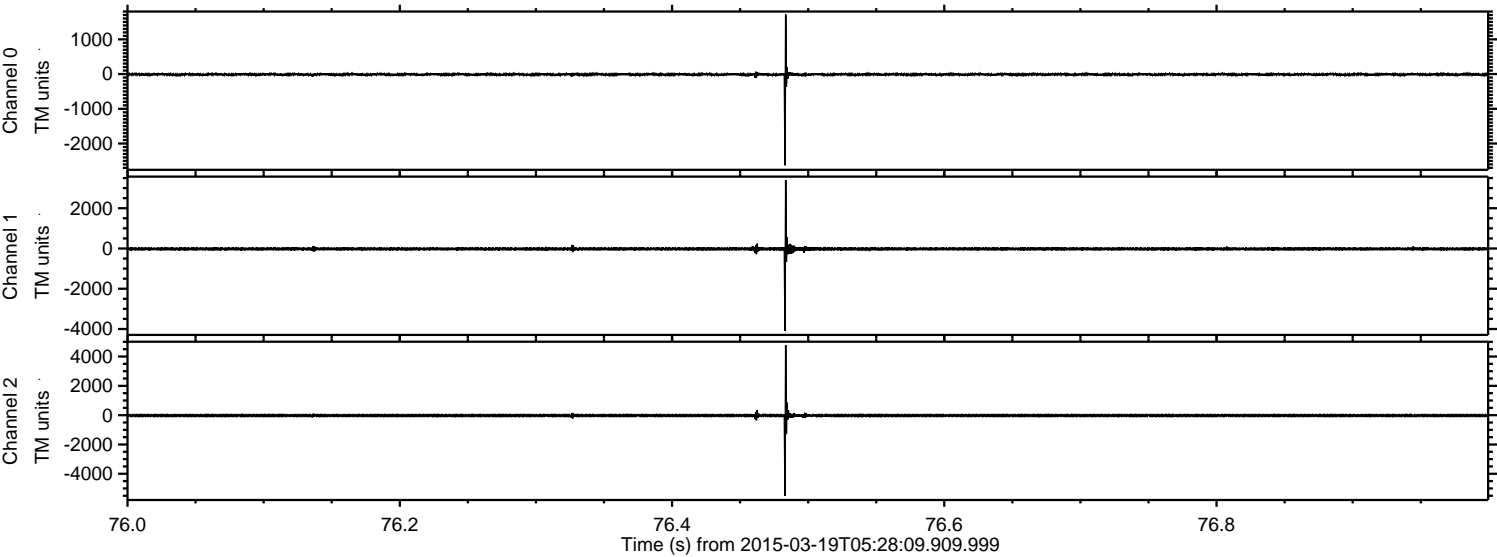
Processed Thu Mar 19 06:53:14 2015 by ELM ver.2012-10-06 from 001__elm20150319_052808__dat00.bin



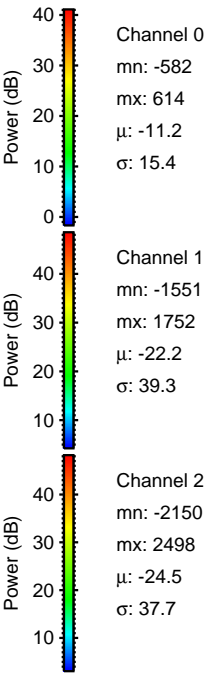
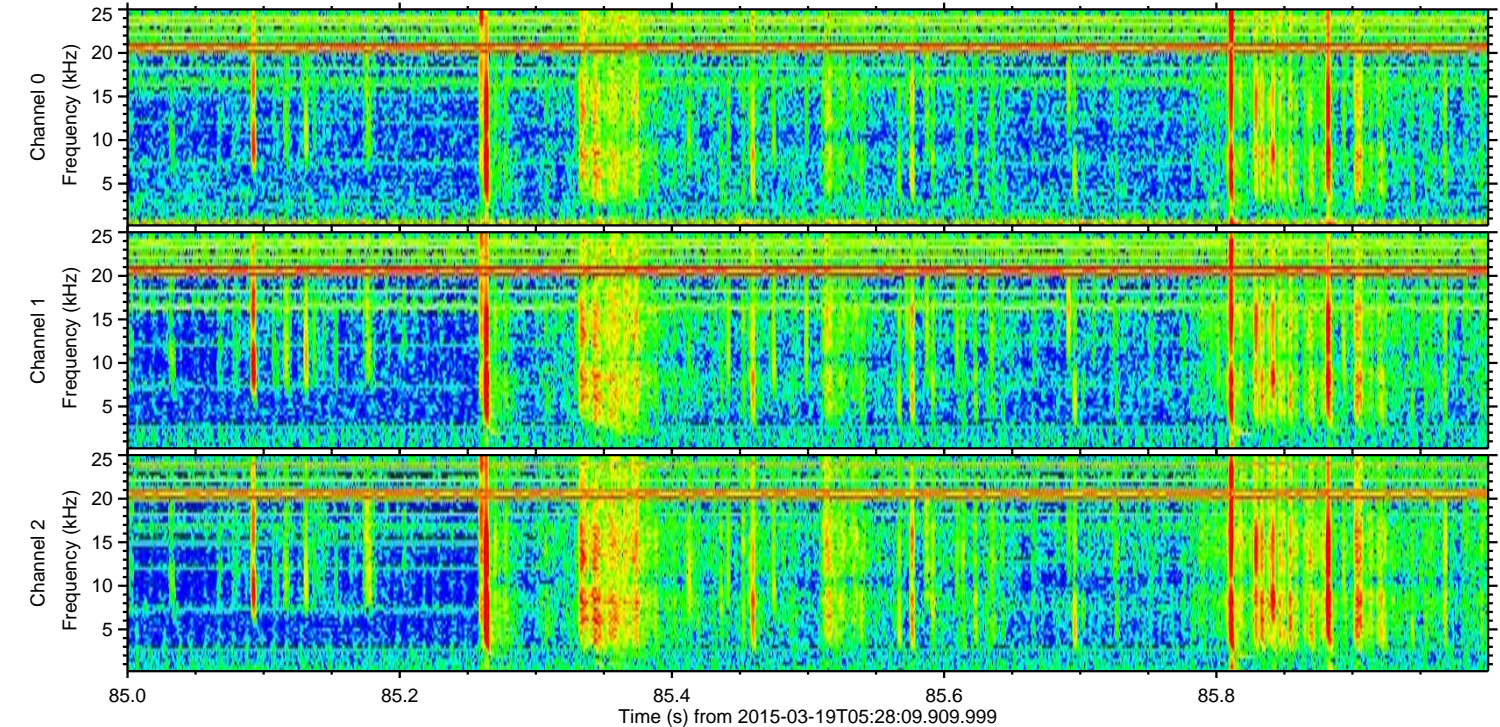
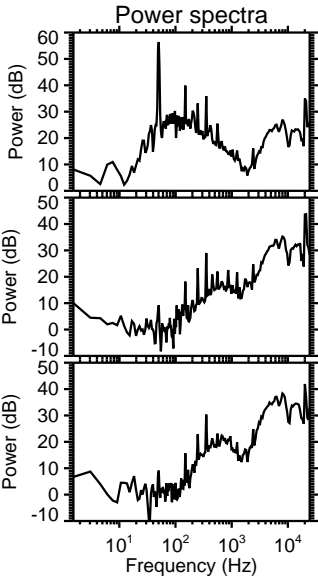
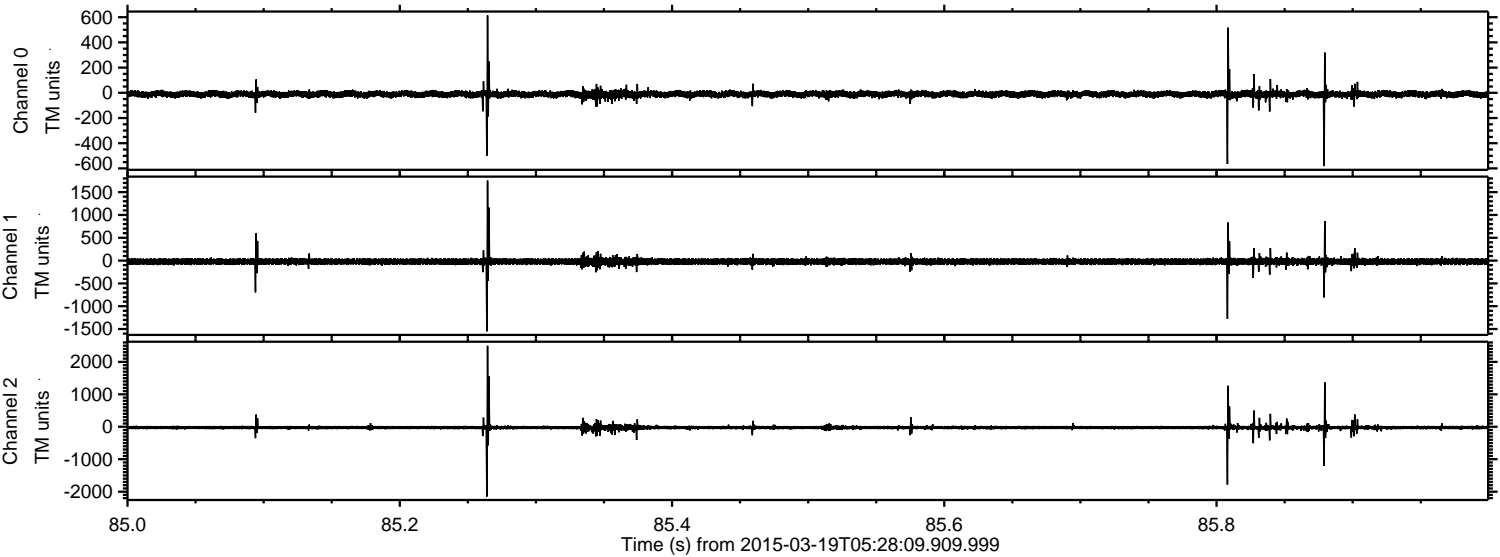
Processed Thu Mar 19 06:53:15 2015 by ELM ver.2012-10-06 from 001__elm20150319_052808__dat00.bin



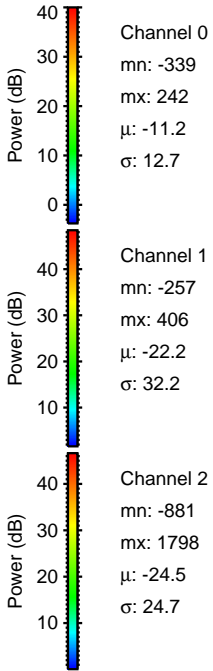
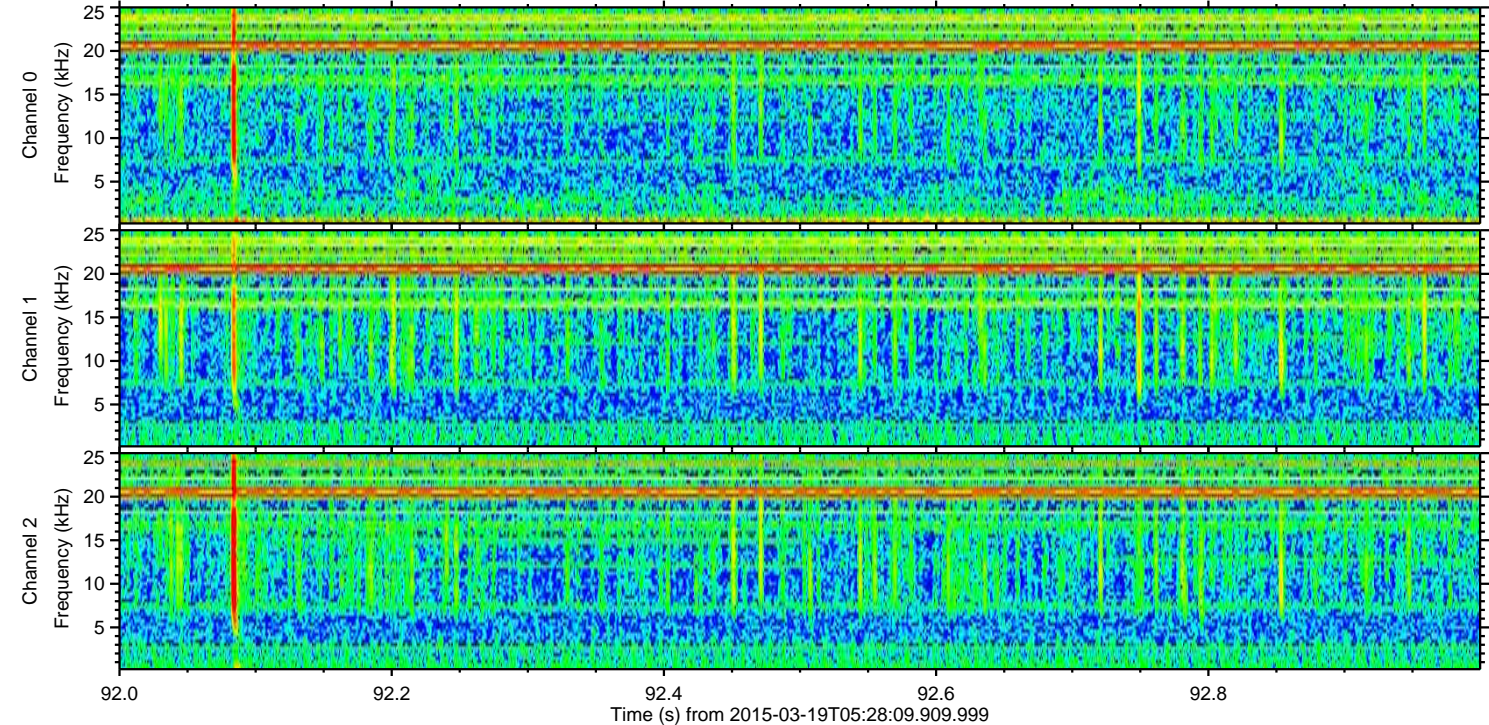
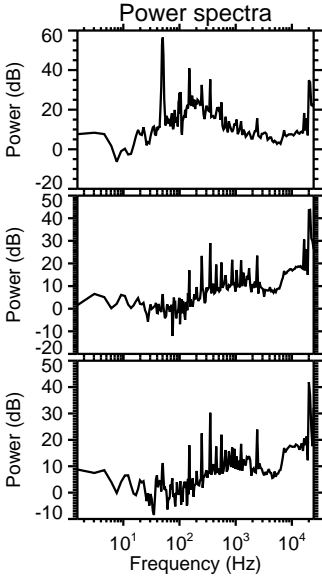
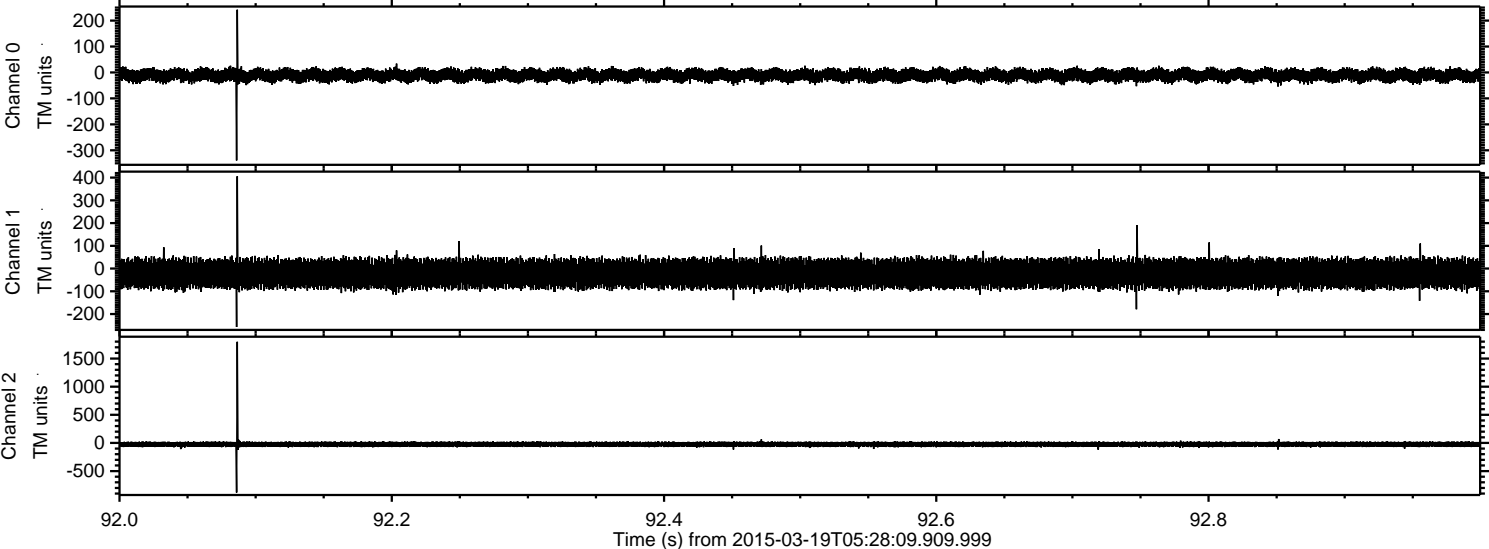
Processed Thu Mar 19 06:53:16 2015 by ELM ver.2012-10-06 from 001__elm20150319_052808__dat00.bin



Processed Thu Mar 19 06:53:17 2015 by ELM ver.2012-10-06 from 001__elm20150319_052808__dat00.bin

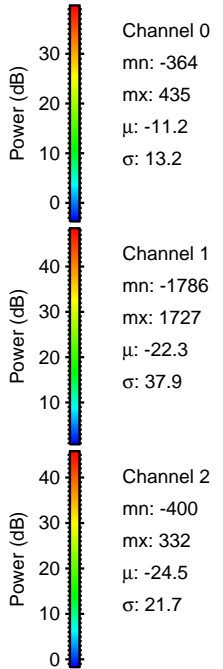
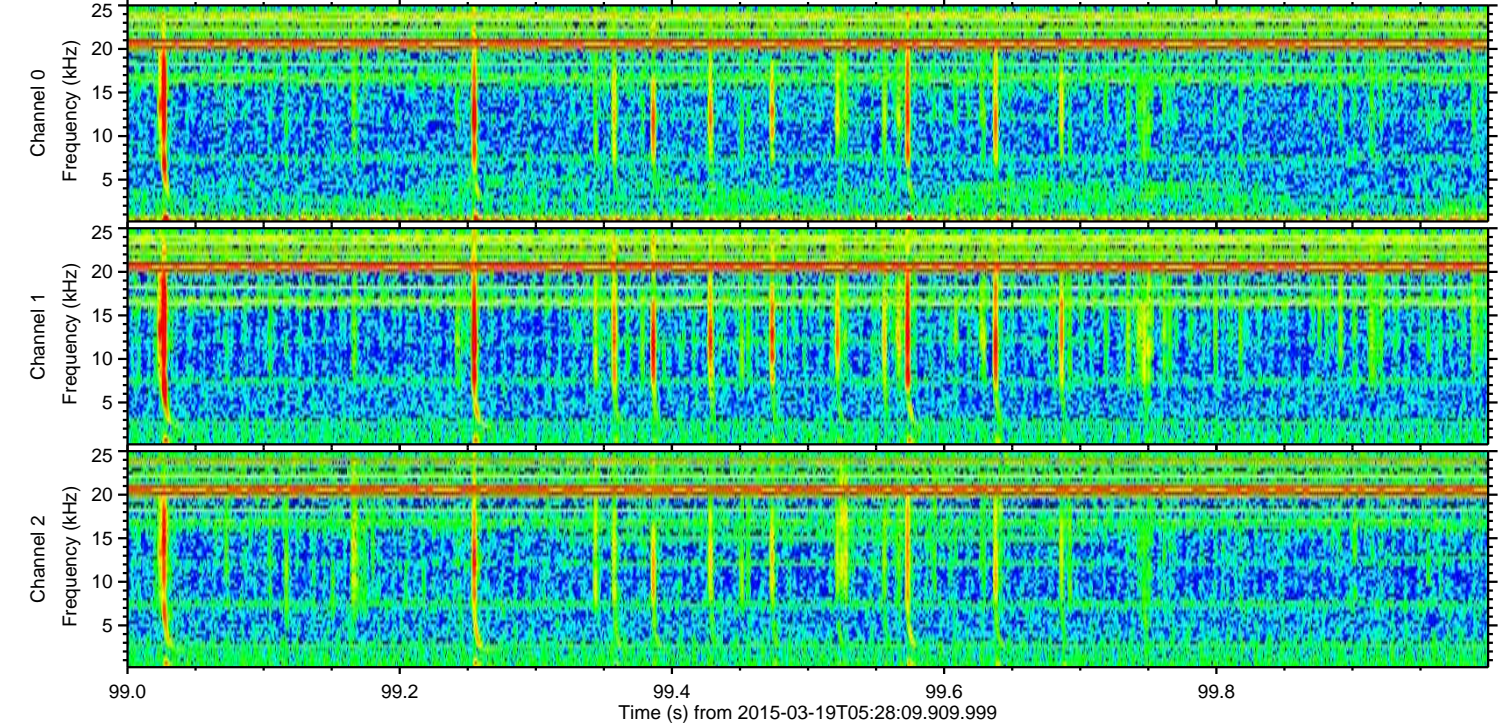
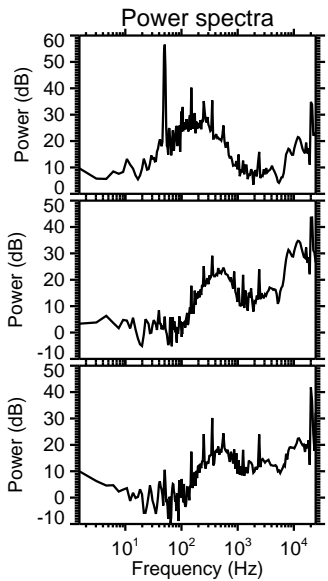
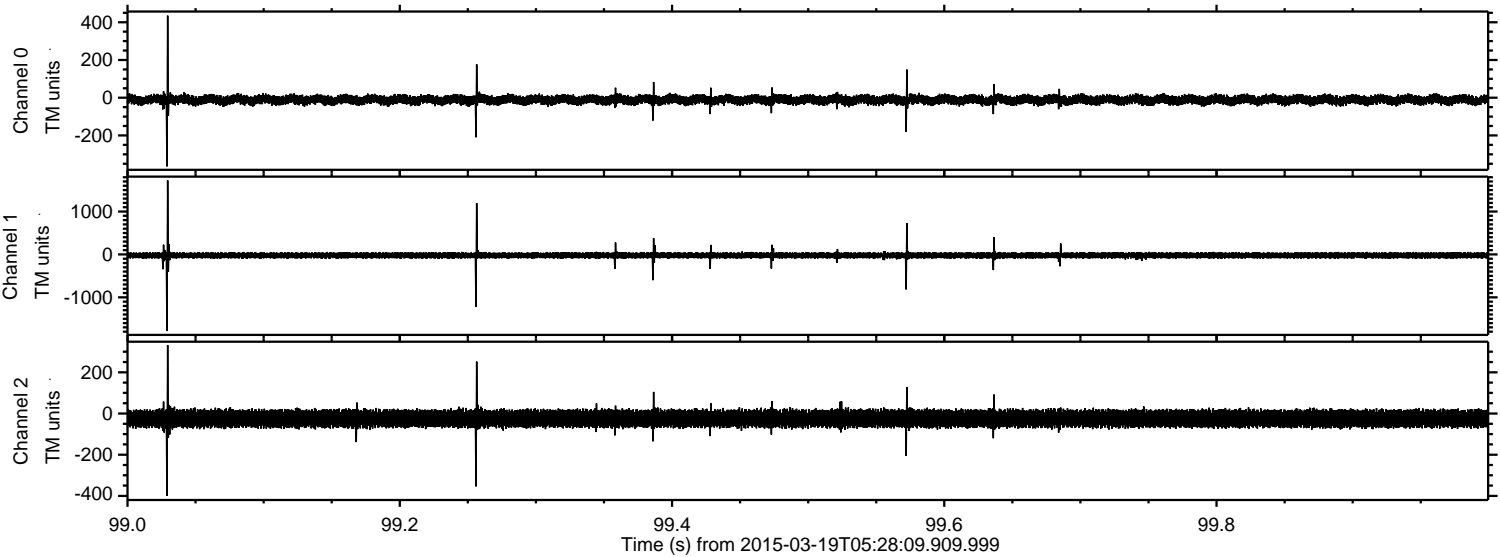


Processed Thu Mar 19 06:53:18 2015 by ELM ver.2012-10-06 from 001__elm20150319_052808__dat00.bin

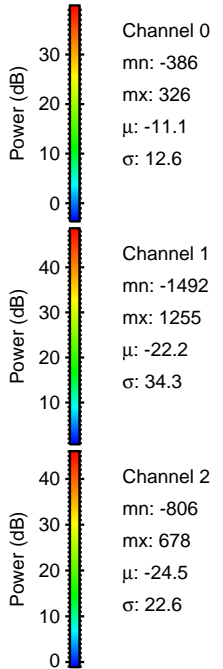
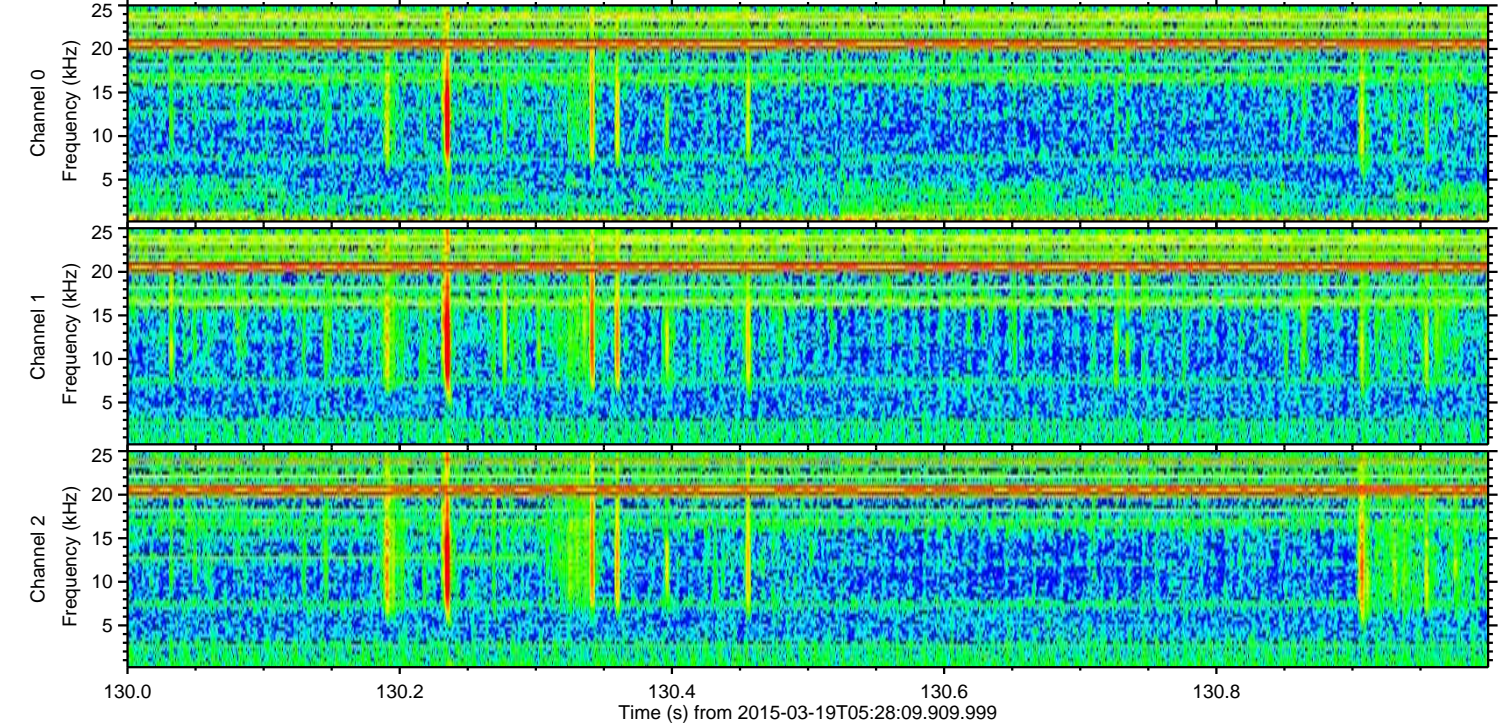
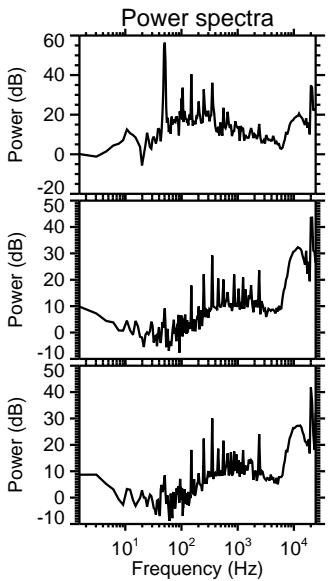
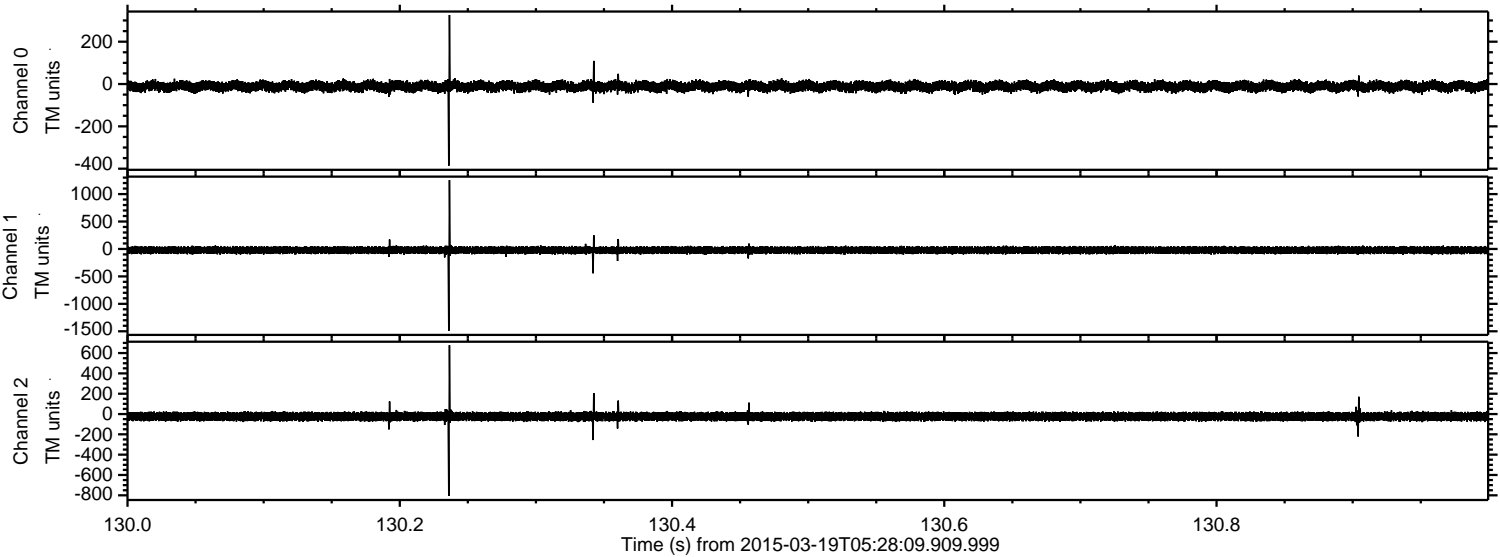


ELMAVAN 3D WAVEFORMS (Measured data sampled at 50 kHz) 49803 packets of 144 samples from 2015-03-19T05:28:09.909.999. Part 100/144

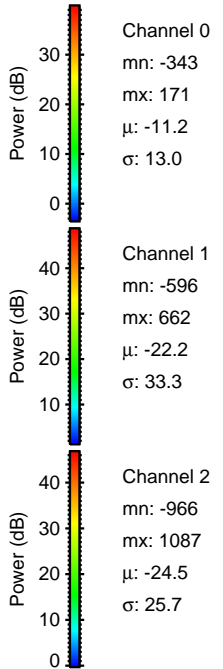
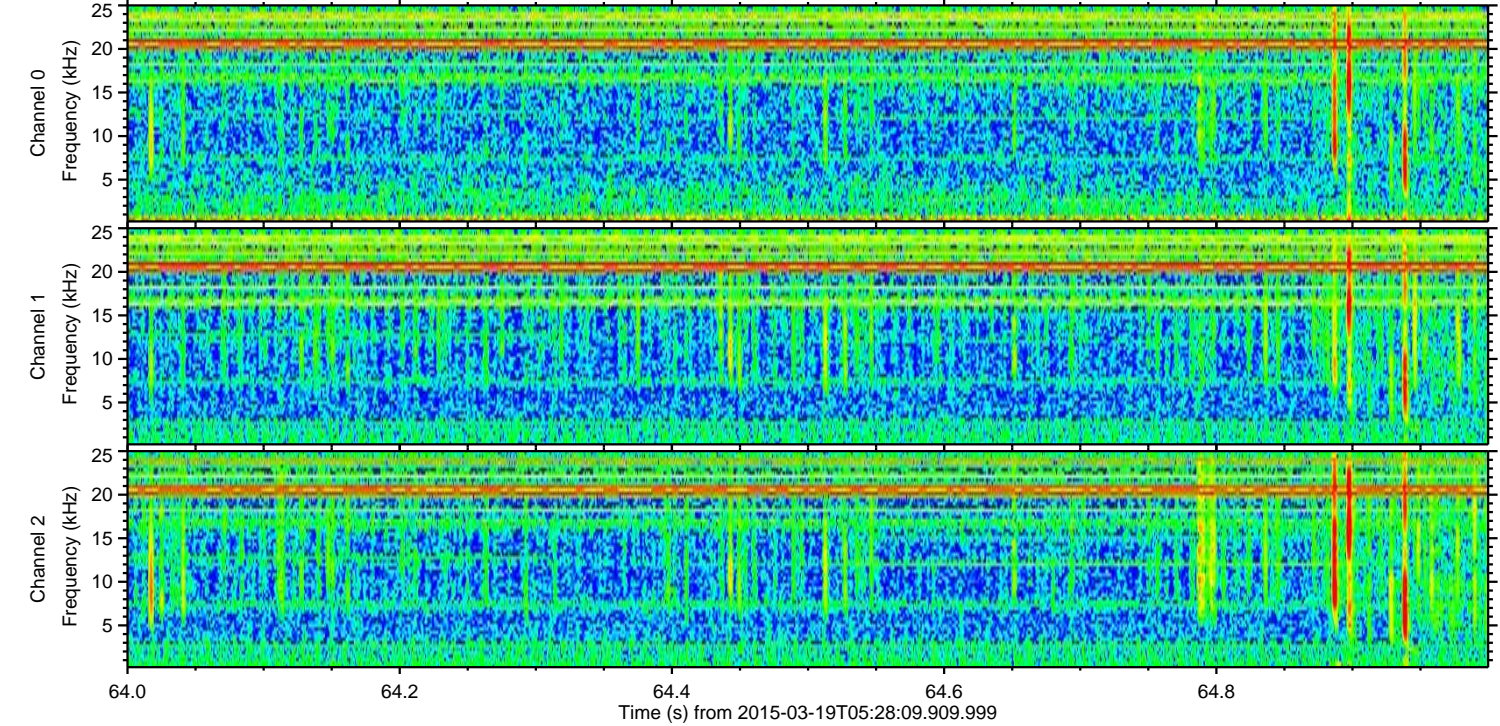
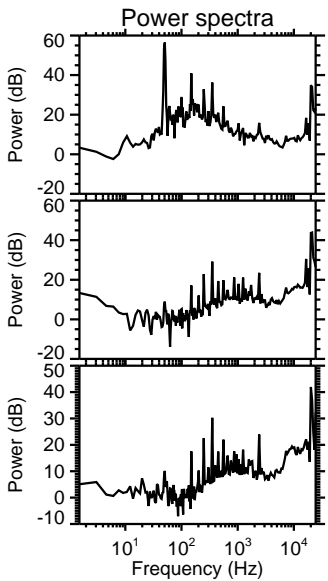
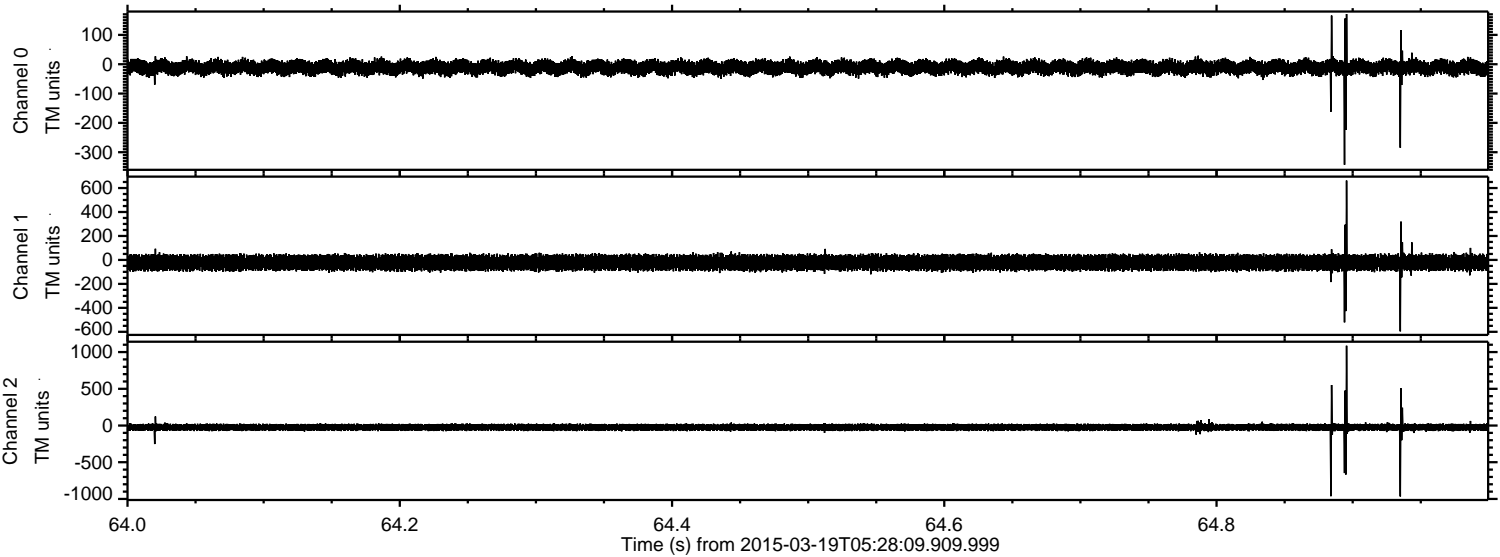
Processed Thu Mar 19 06:53:19 2015 by ELM ver.2012-10-06 from 001__elm20150319_052808__dat00.bin



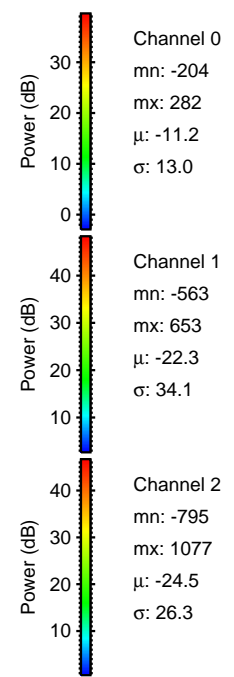
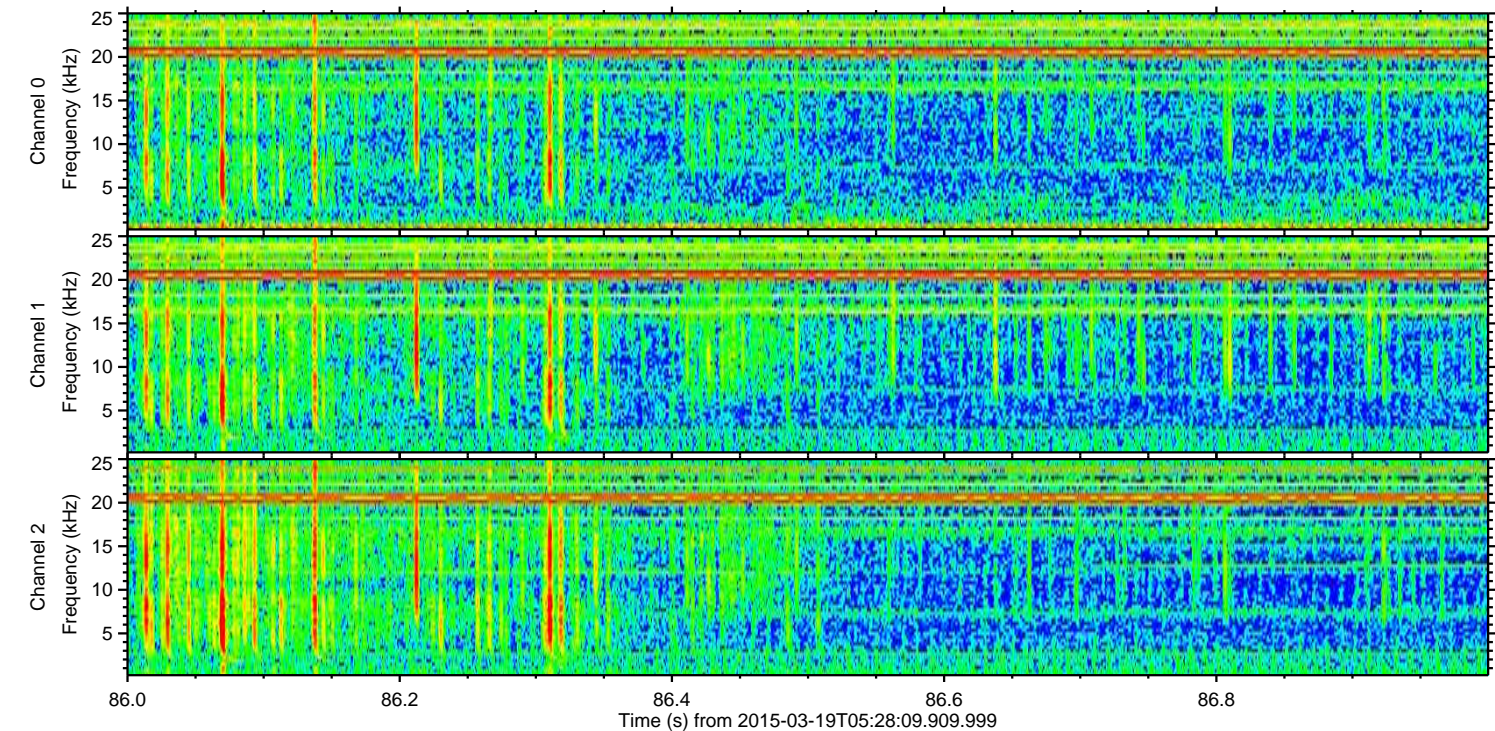
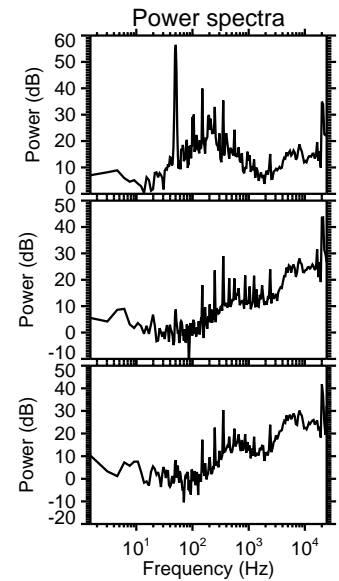
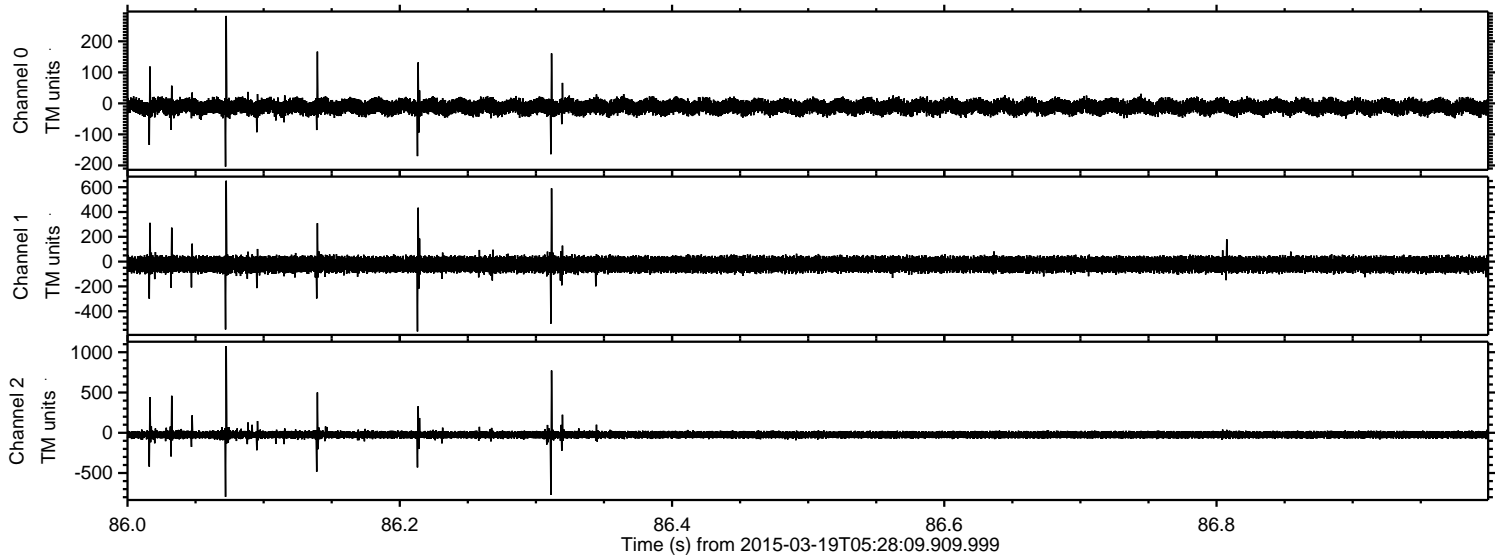
Processed Thu Mar 19 06:53:20 2015 by ELM ver.2012-10-06 from 001__elm20150319_052808__dat00.bin



Processed Thu Mar 19 06:53:21 2015 by ELM ver.2012-10-06 from 001__elm20150319_052808__dat00.bin



Processed Thu Mar 19 06:53:22 2015 by ELM ver.2012-10-06 from 001__elm20150319_052808__dat00.bin



Channel 0
mn: -204
mx: 282
 μ : -11.2
 σ : 13.0

Channel 1
mn: -563
mx: 653
 μ : -22.3
 σ : 34.1

Channel 2
mn: -795
mx: 1077
 μ : -24.5
 σ : 26.3

Processed Thu Mar 19 06:53:23 2015 by ELM ver.2012-10-06 from 001__elm20150319_052808__dat00.bin

