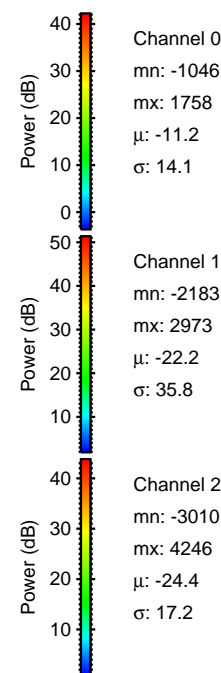
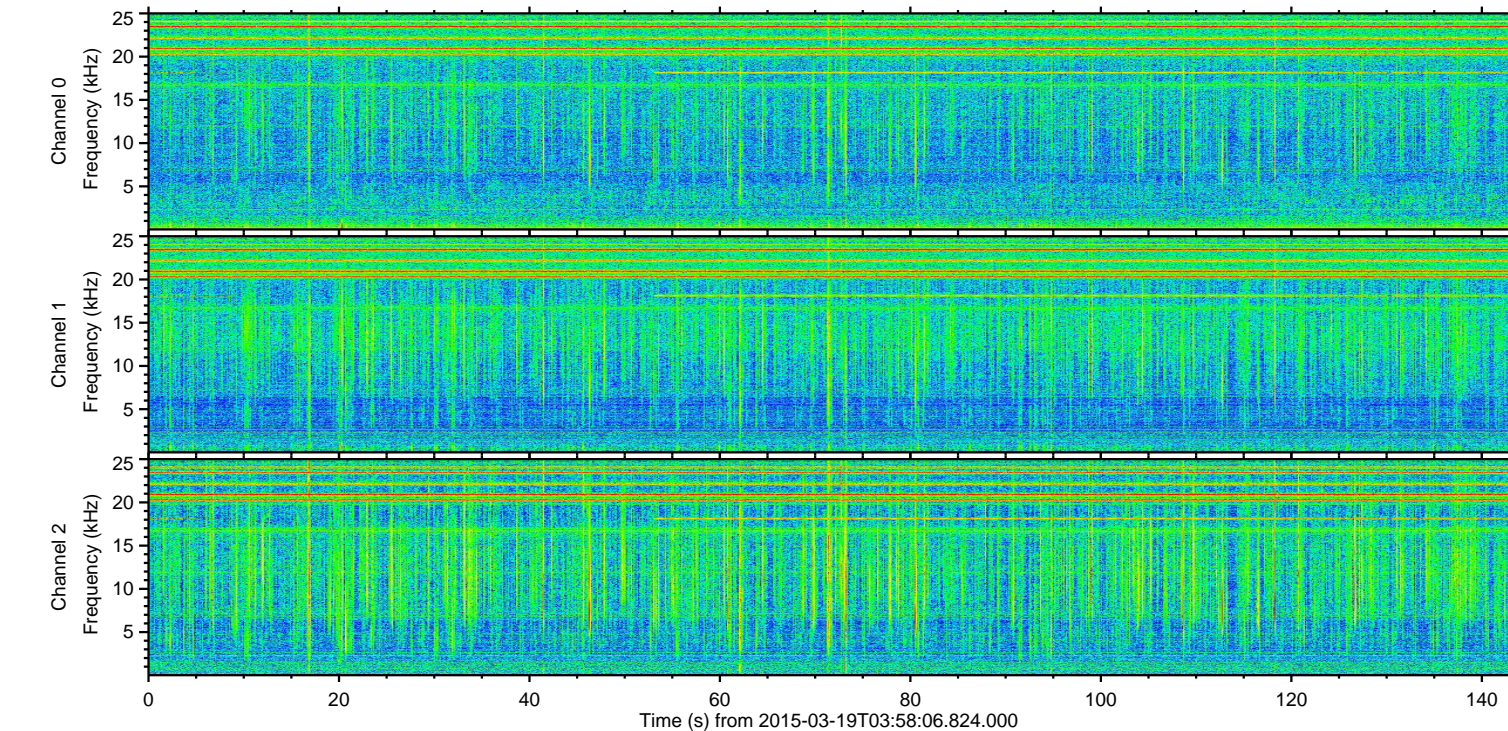
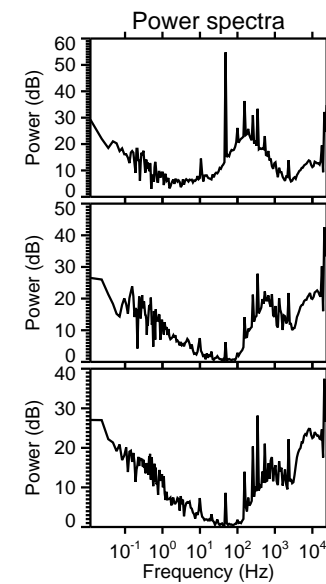
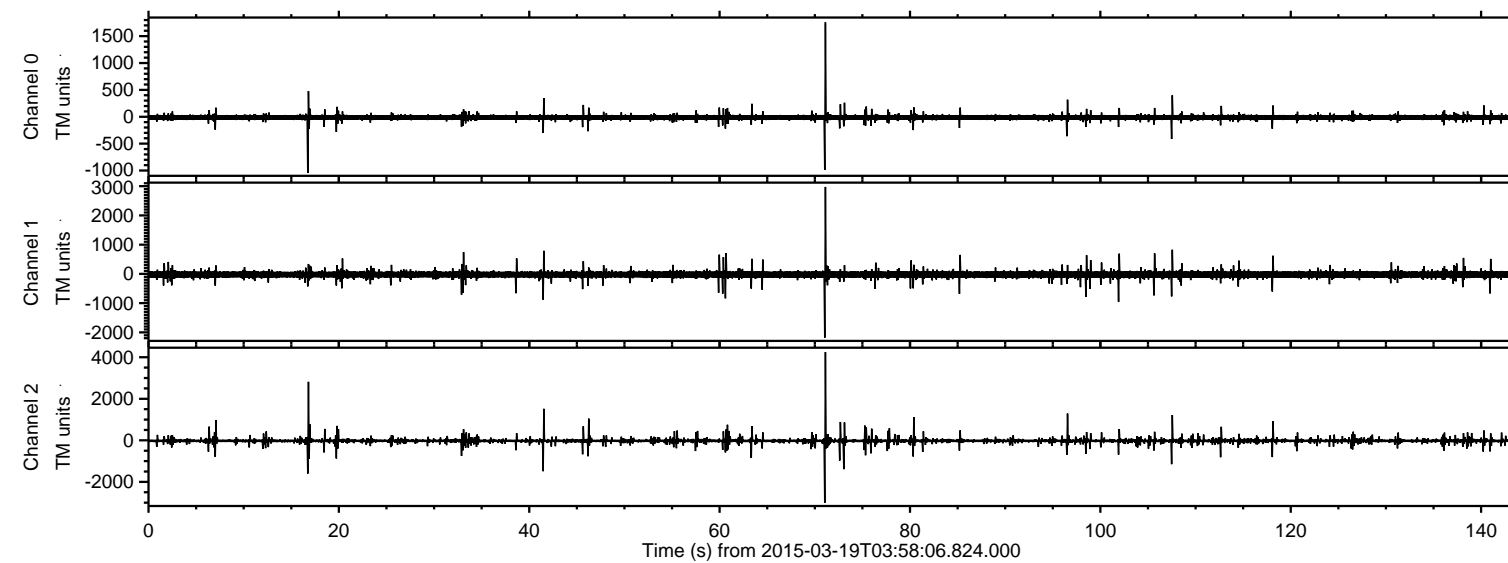


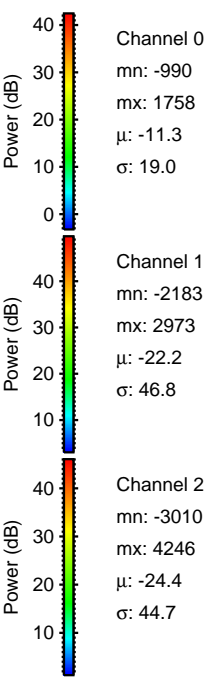
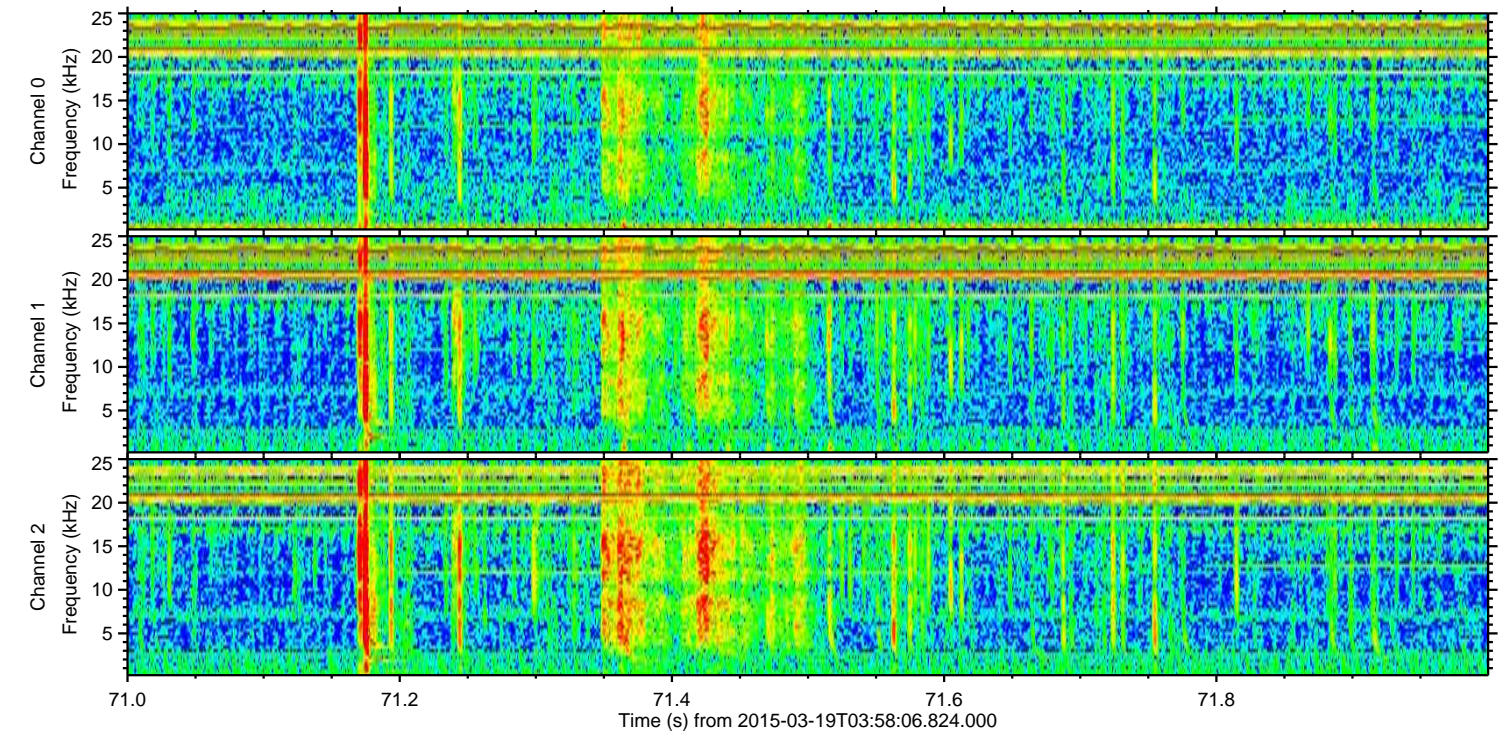
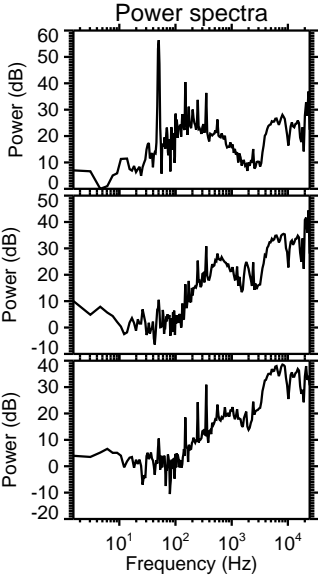
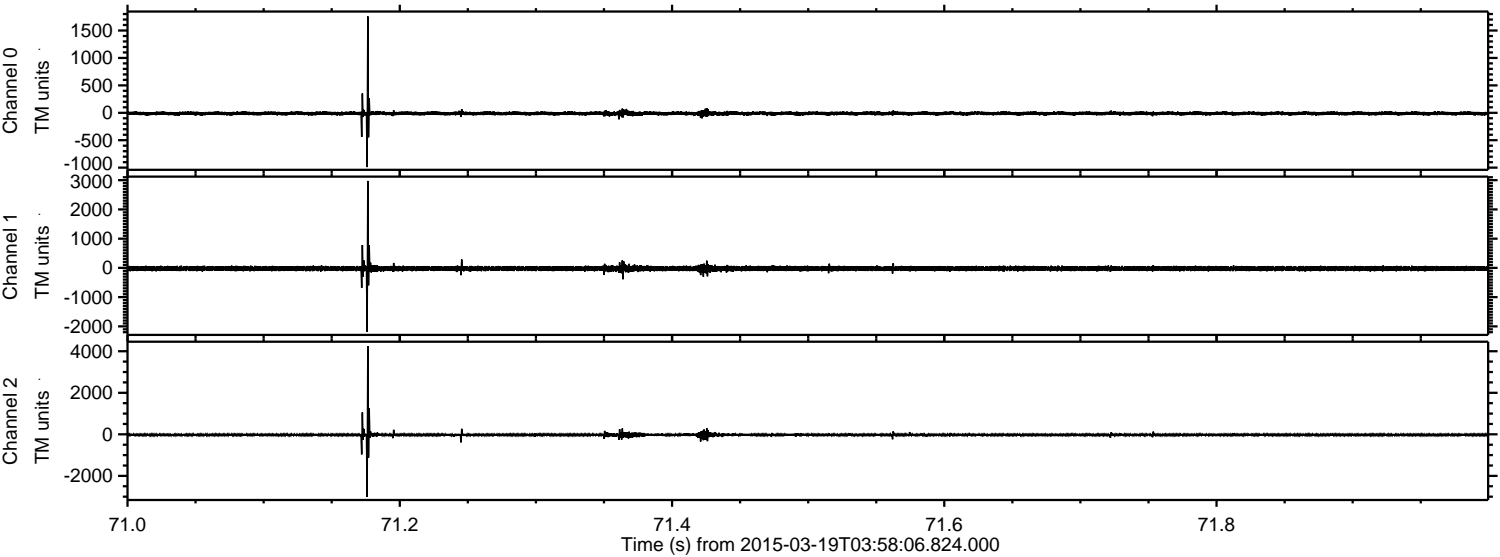
ELMAVAN 3D WAVEFORMS (Measured data sampled at 50 kHz) 49633 packets of 144 samples from 2015-03-19T03:58:06.824.000.

Processed Thu Mar 19 06:31:49 2015 by ELM ver.2012-10-06 from 001__elm20150319_035805__dat00.bin



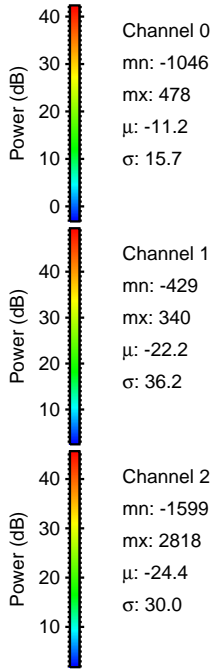
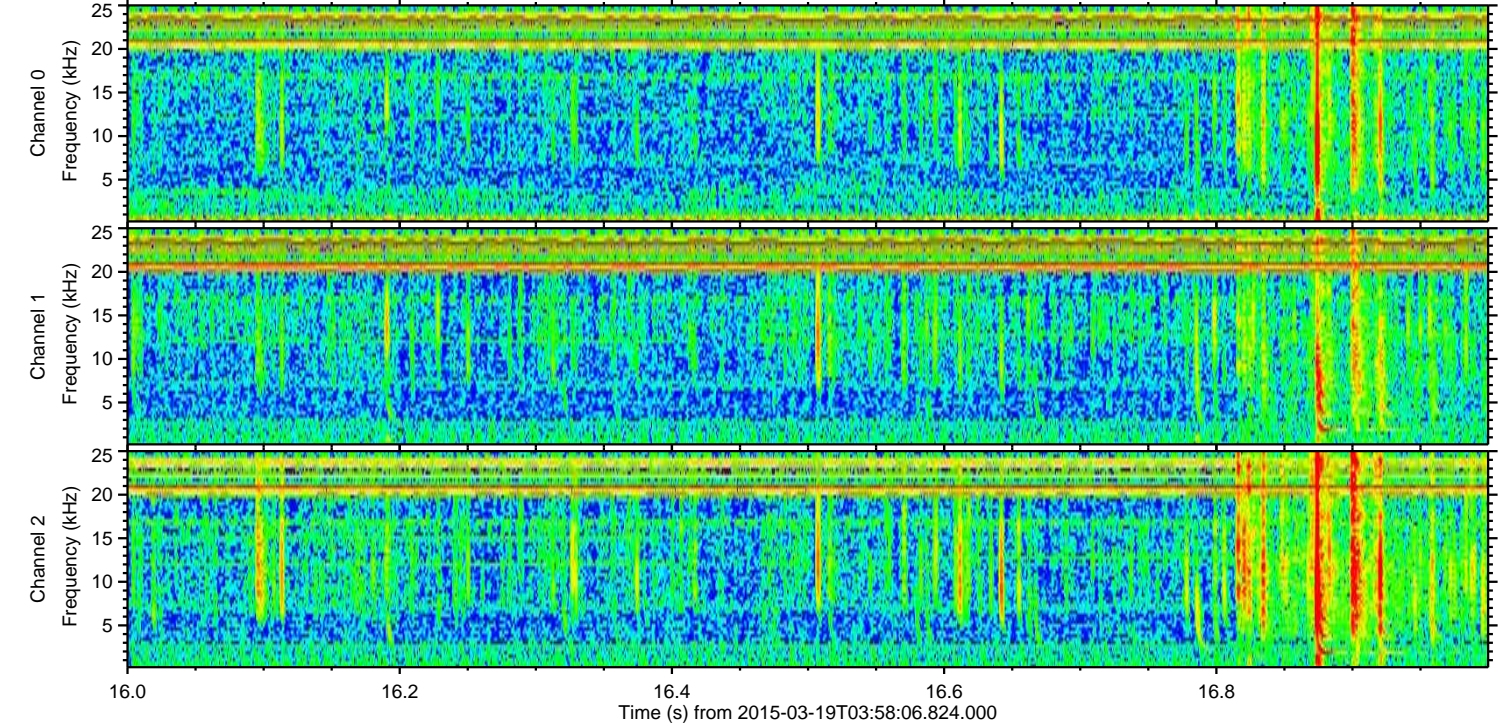
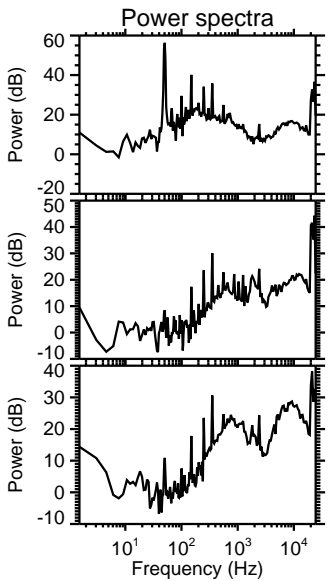
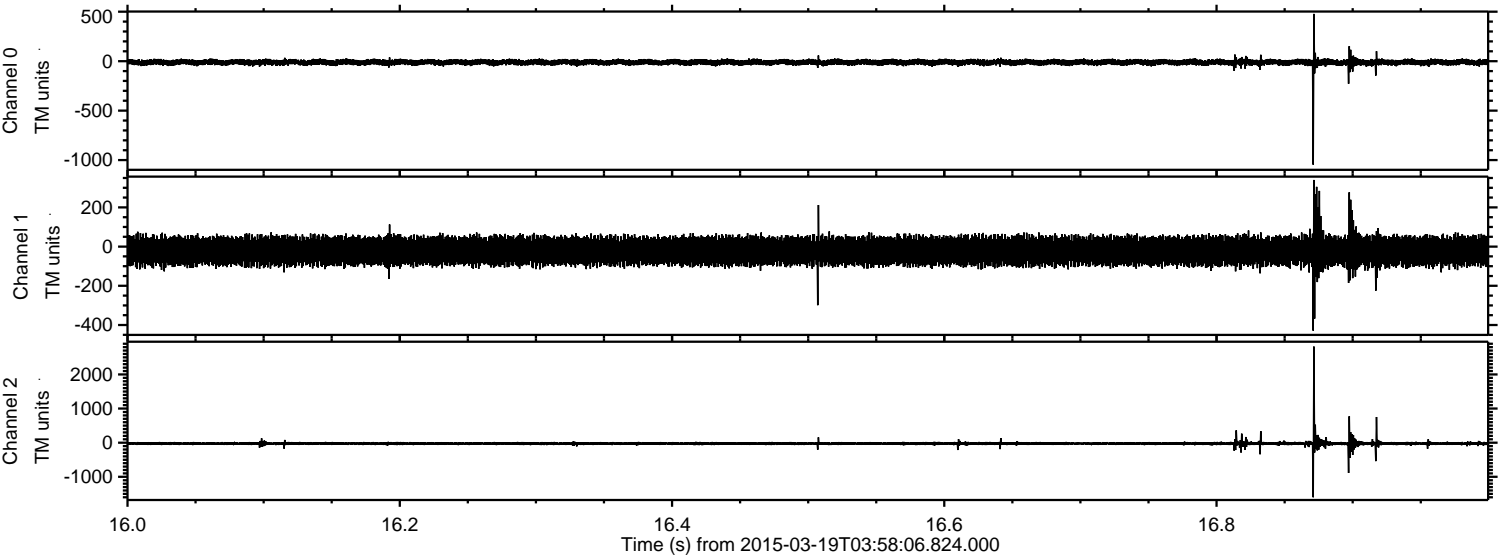
ELMAVAN 3D WAVEFORMS (Measured data sampled at 50 kHz) 49633 packets of 144 samples from 2015-03-19T03:58:06.824.000. Part 72/143

Processed Thu Mar 19 06:32:04 2015 by ELM ver.2012-10-06 from 001__elm20150319_035805__dat00.bin



ELMAVAN 3D WAVEFORMS (Measured data sampled at 50 kHz) 49633 packets of 144 samples from 2015-03-19T03:58:06.824.000. Part 17/143

Processed Thu Mar 19 06:32:05 2015 by ELM ver.2012-10-06 from 001__elm20150319_035805__dat00.bin

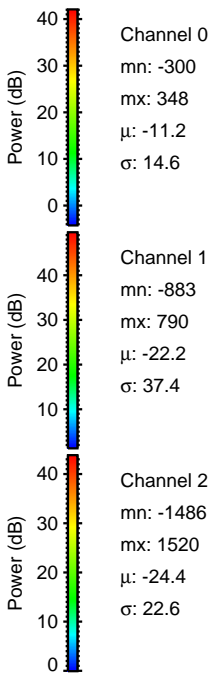
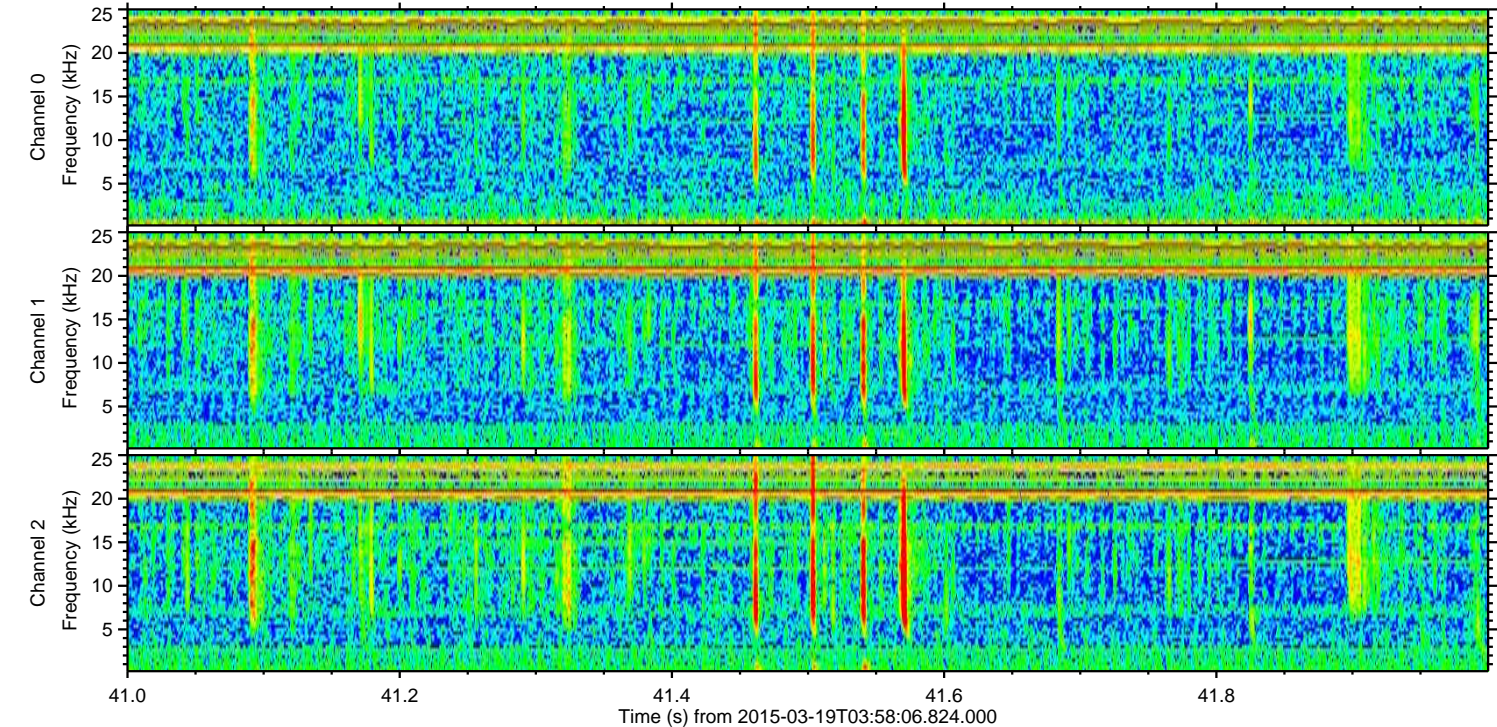
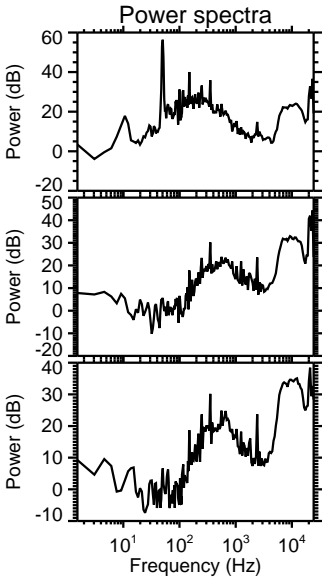
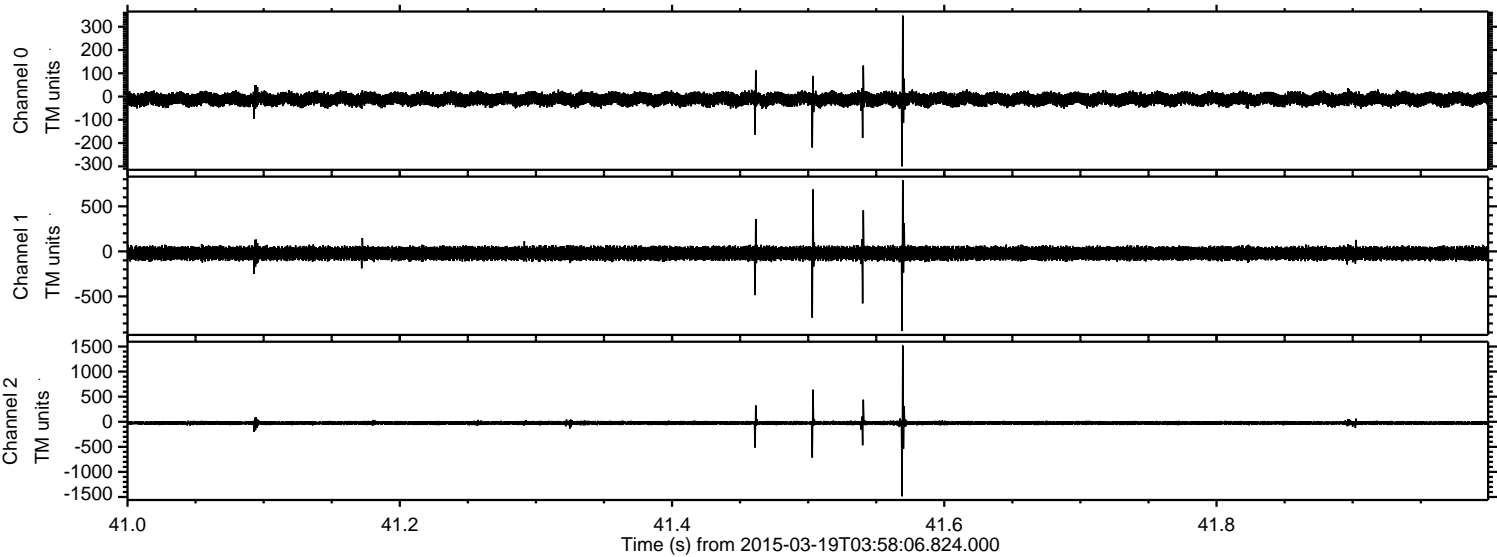


Channel 0
mn: -1046
mx: 478
 μ : -11.2
 σ : 15.7

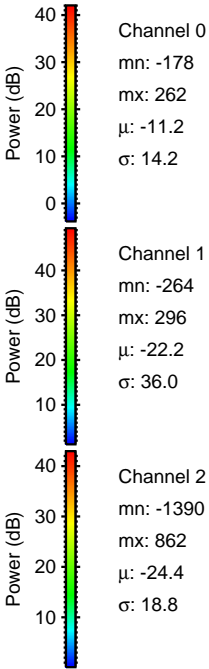
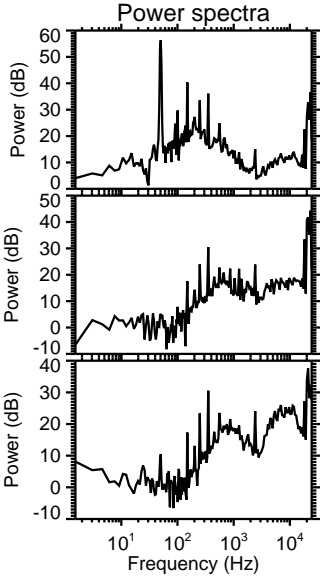
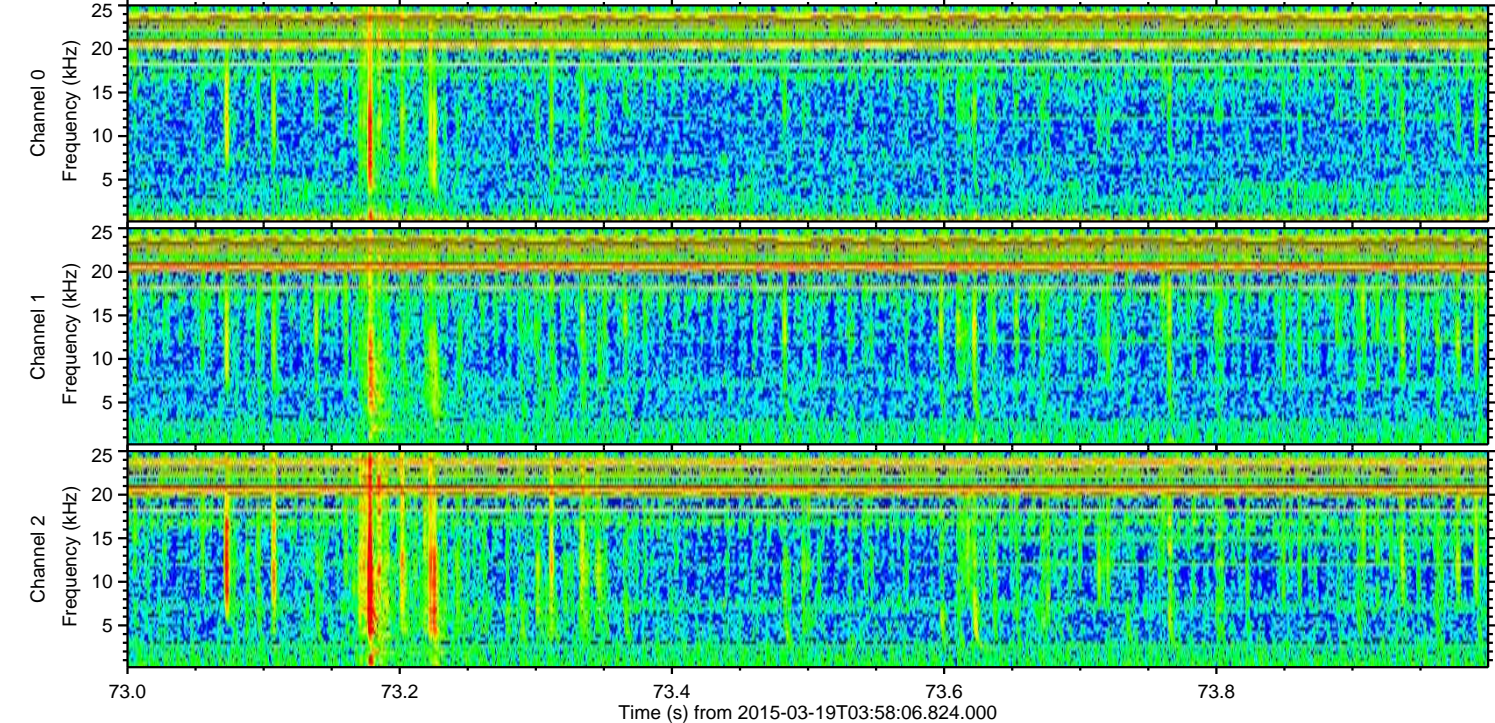
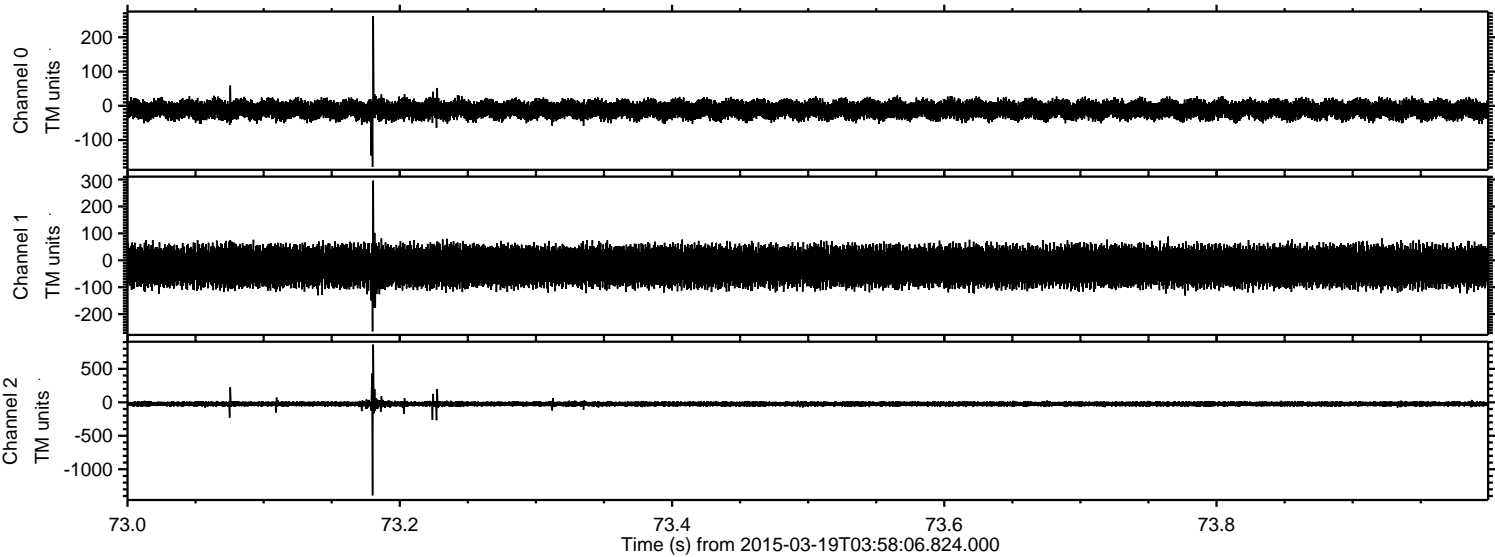
Channel 1
mn: -429
mx: 340
 μ : -22.2
 σ : 36.2

Channel 2
mn: -1599
mx: 2818
 μ : -24.4
 σ : 30.0

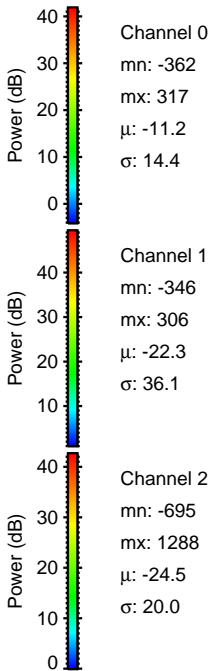
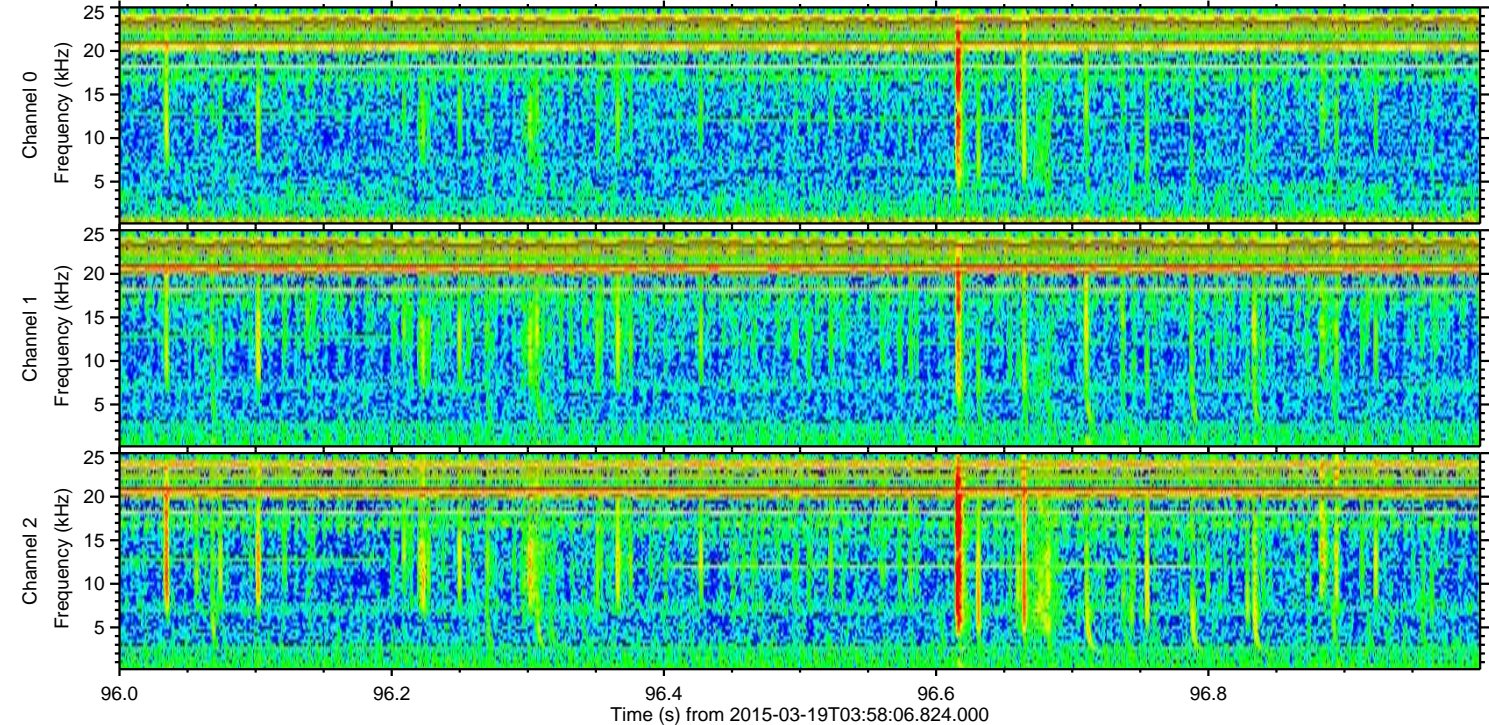
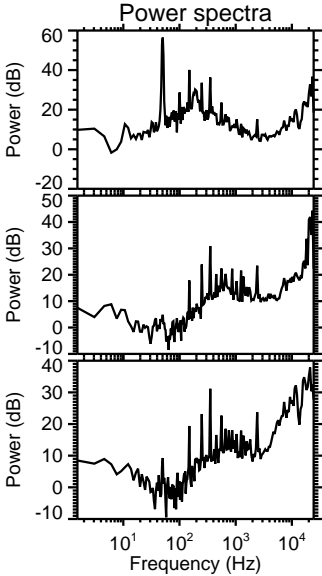
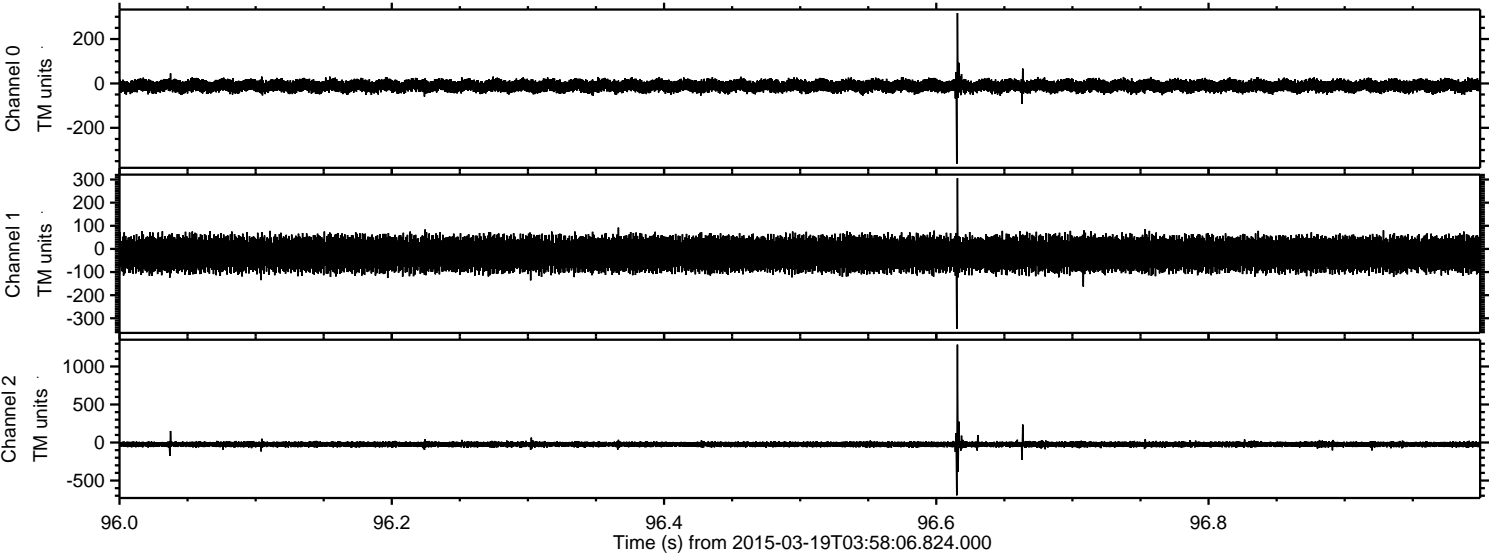
Processed Thu Mar 19 06:32:06 2015 by ELM ver.2012-10-06 from 001__elm20150319_035805__dat00.bin



Processed Thu Mar 19 06:32:07 2015 by ELM ver.2012-10-06 from 001__elm20150319_035805__dat00.bin

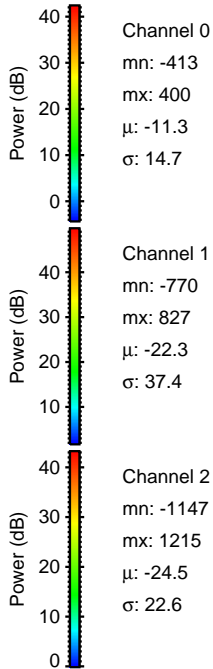
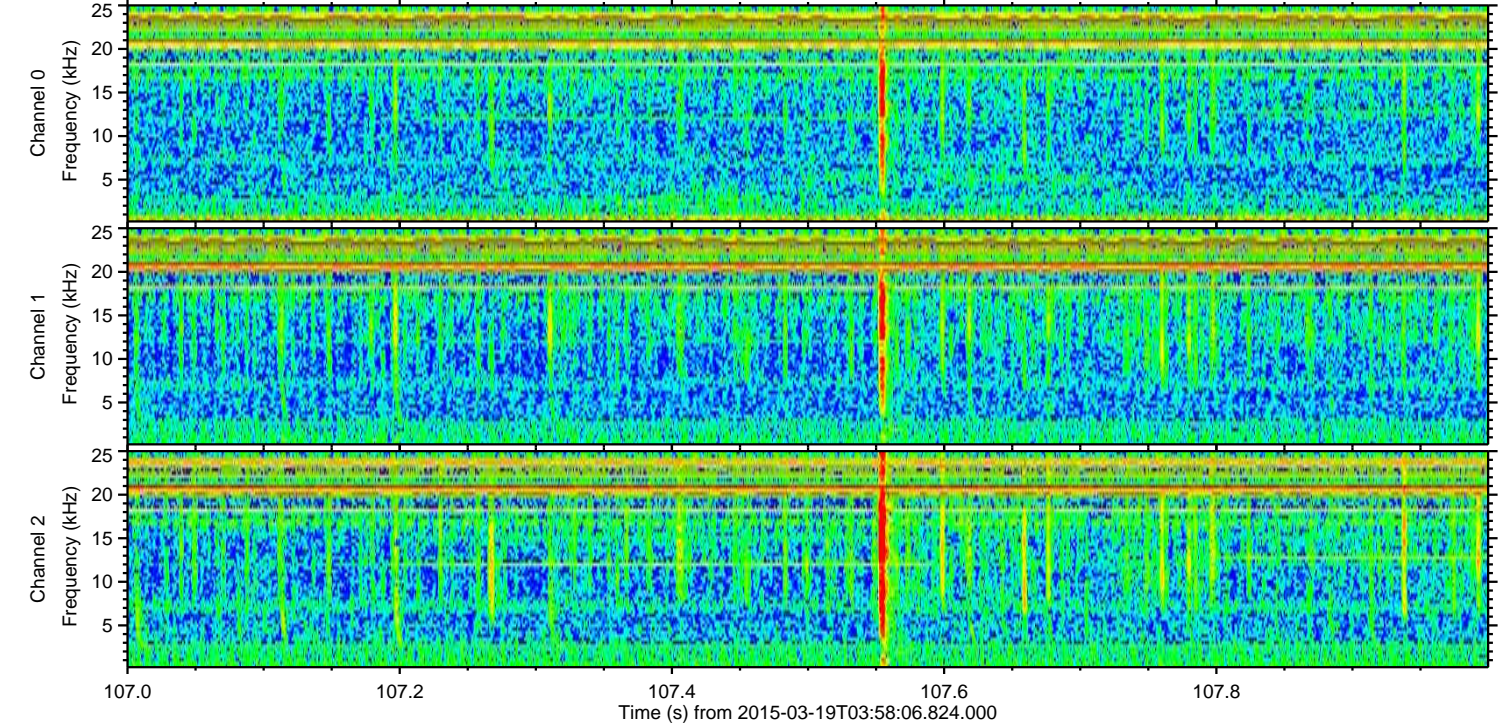
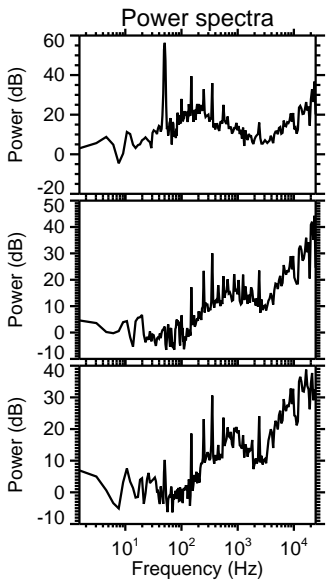
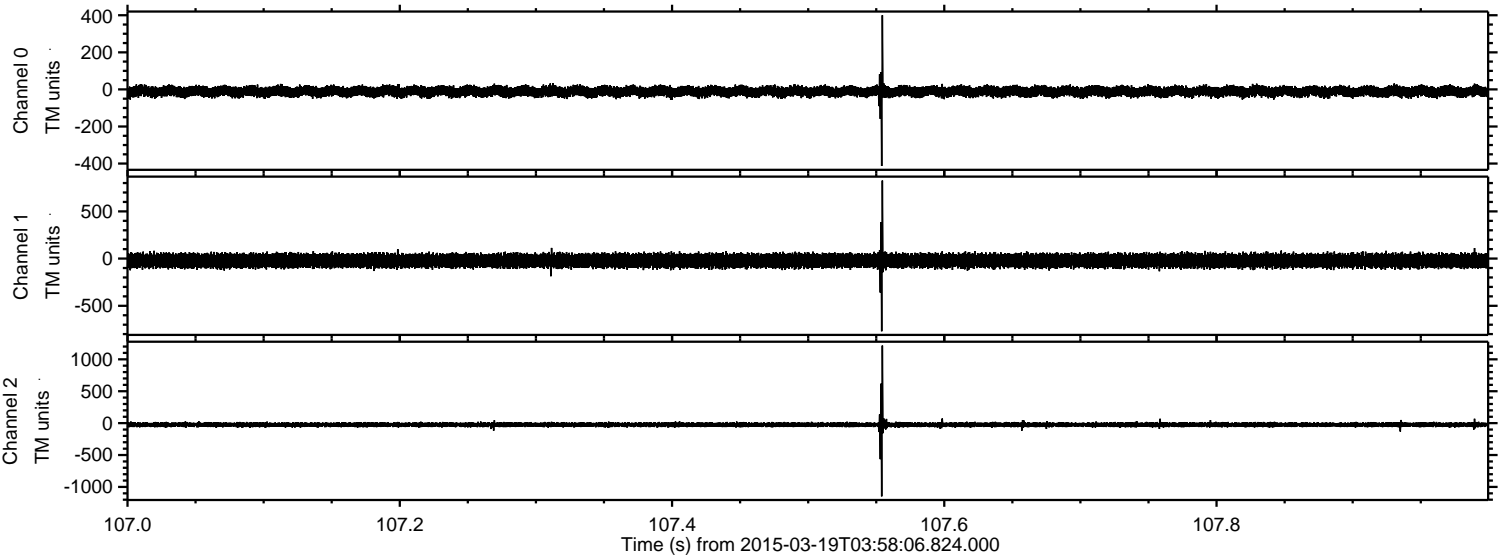


Processed Thu Mar 19 06:32:08 2015 by ELM ver.2012-10-06 from 001__elm20150319_035805__dat00.bin

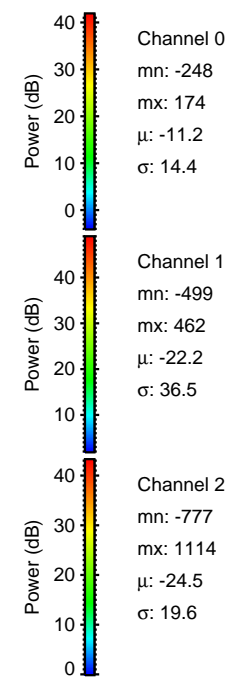
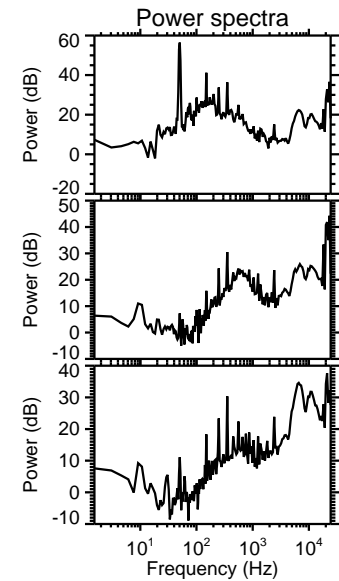
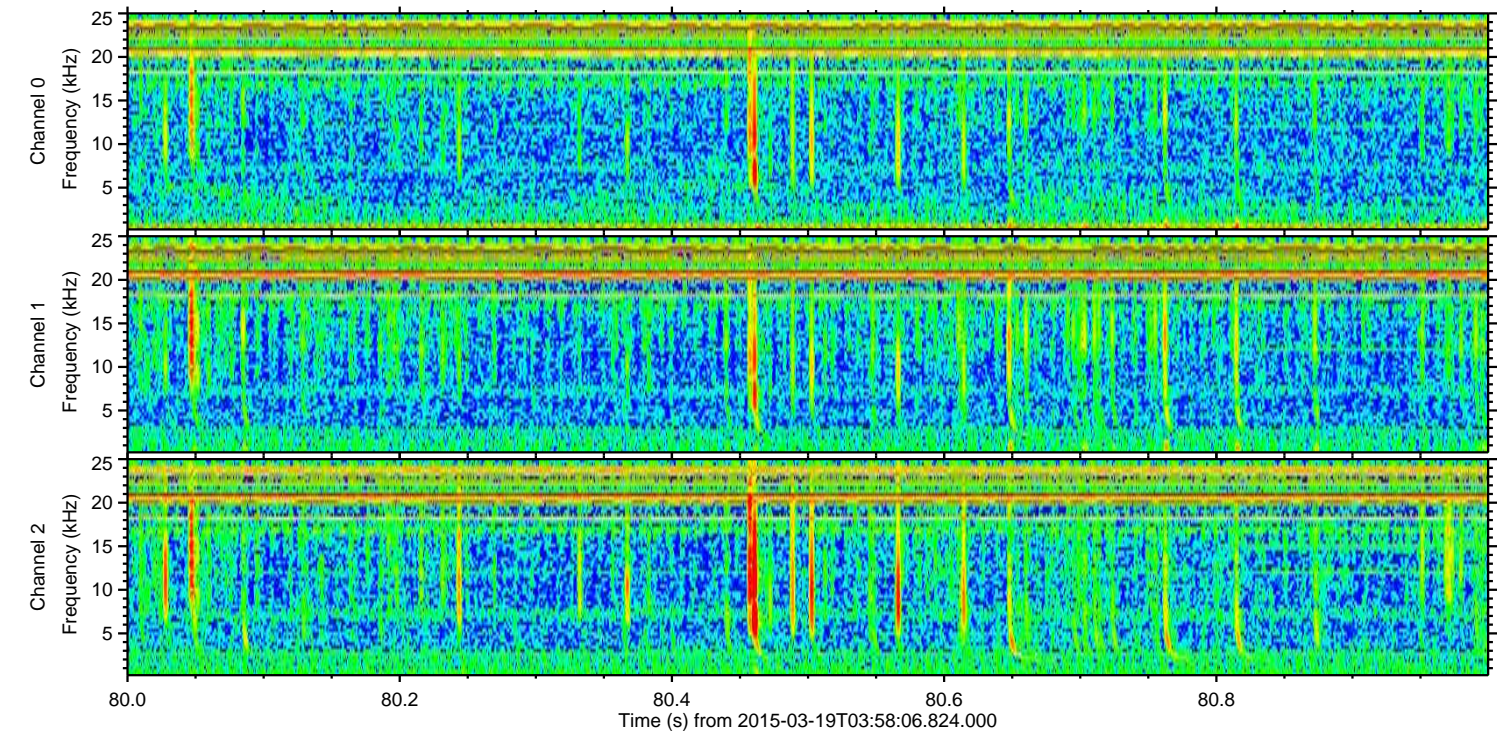
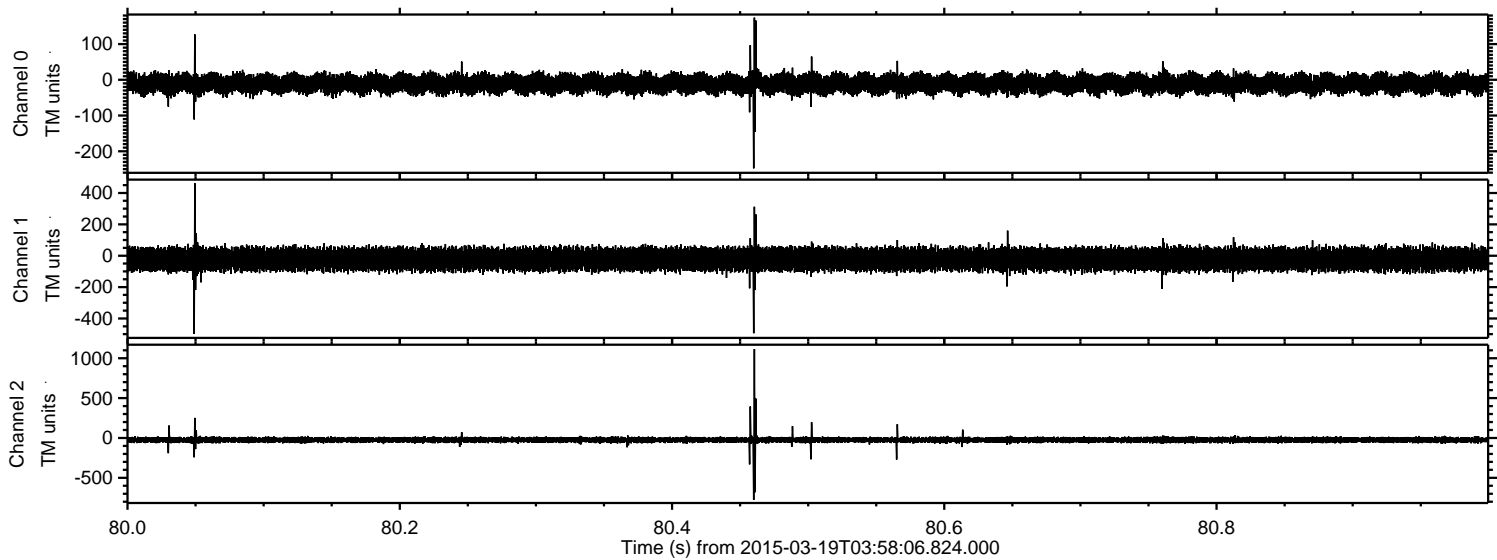


ELMAVAN 3D WAVEFORMS (Measured data sampled at 50 kHz) 49633 packets of 144 samples from 2015-03-19T03:58:06.824.000. Part 108/143

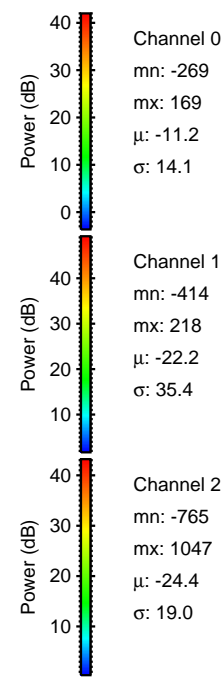
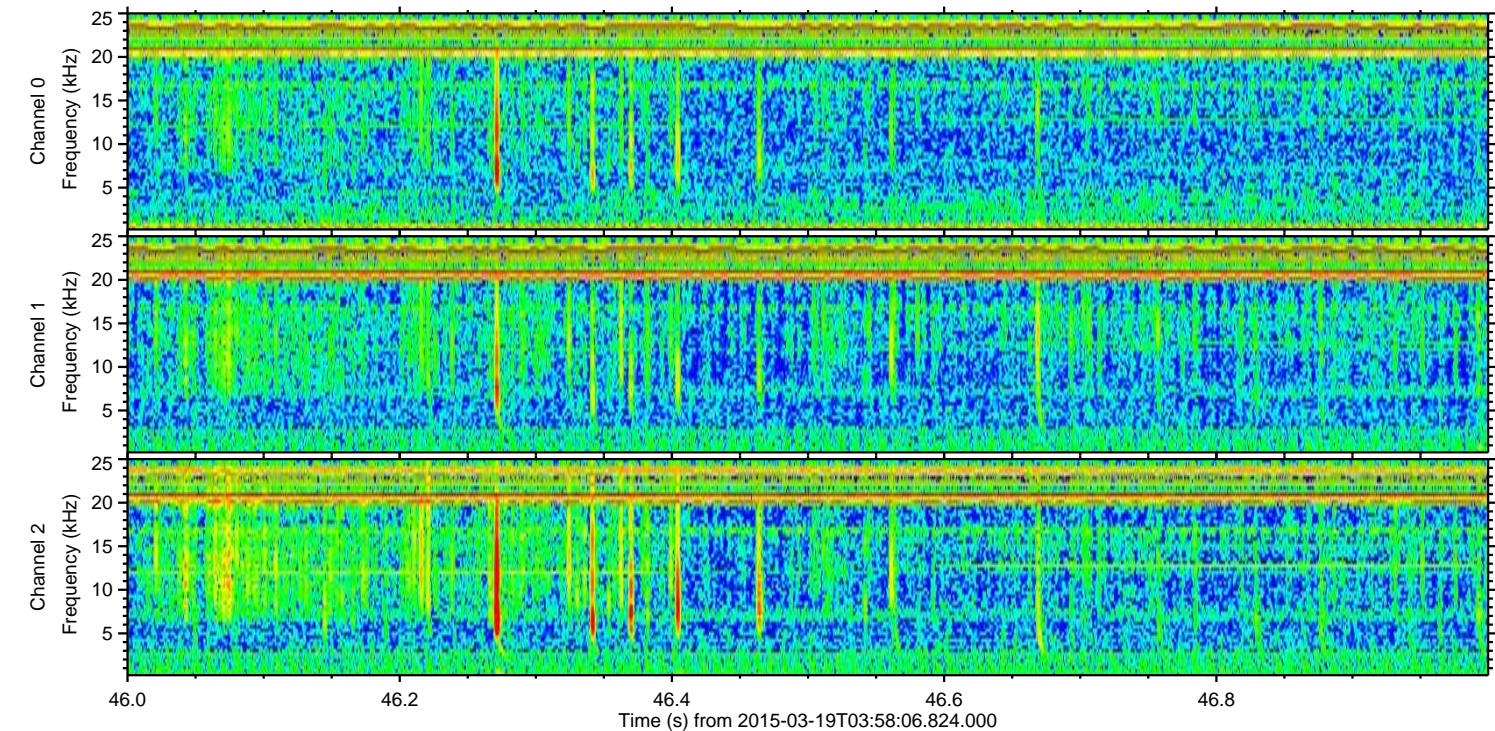
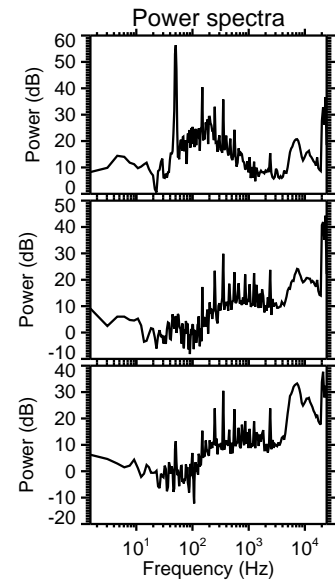
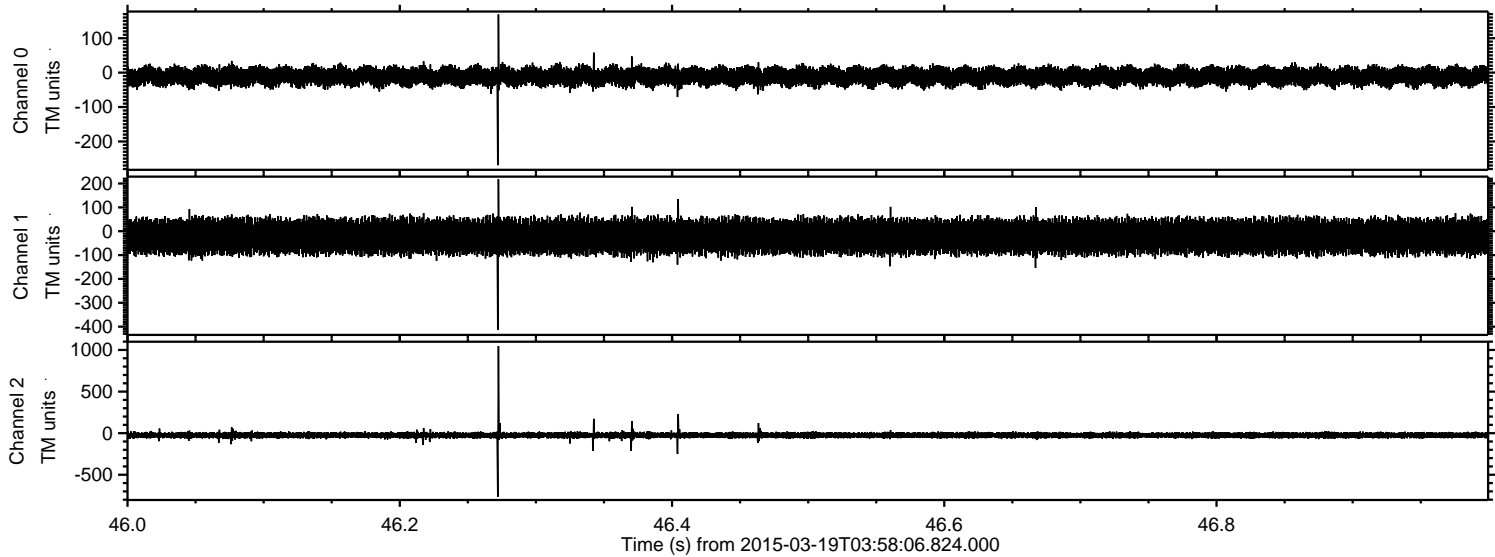
Processed Thu Mar 19 06:32:09 2015 by ELM ver.2012-10-06 from 001__elm20150319_035805__dat00.bin



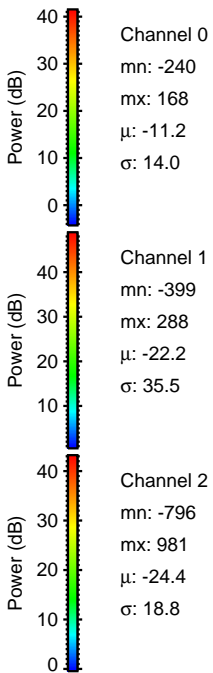
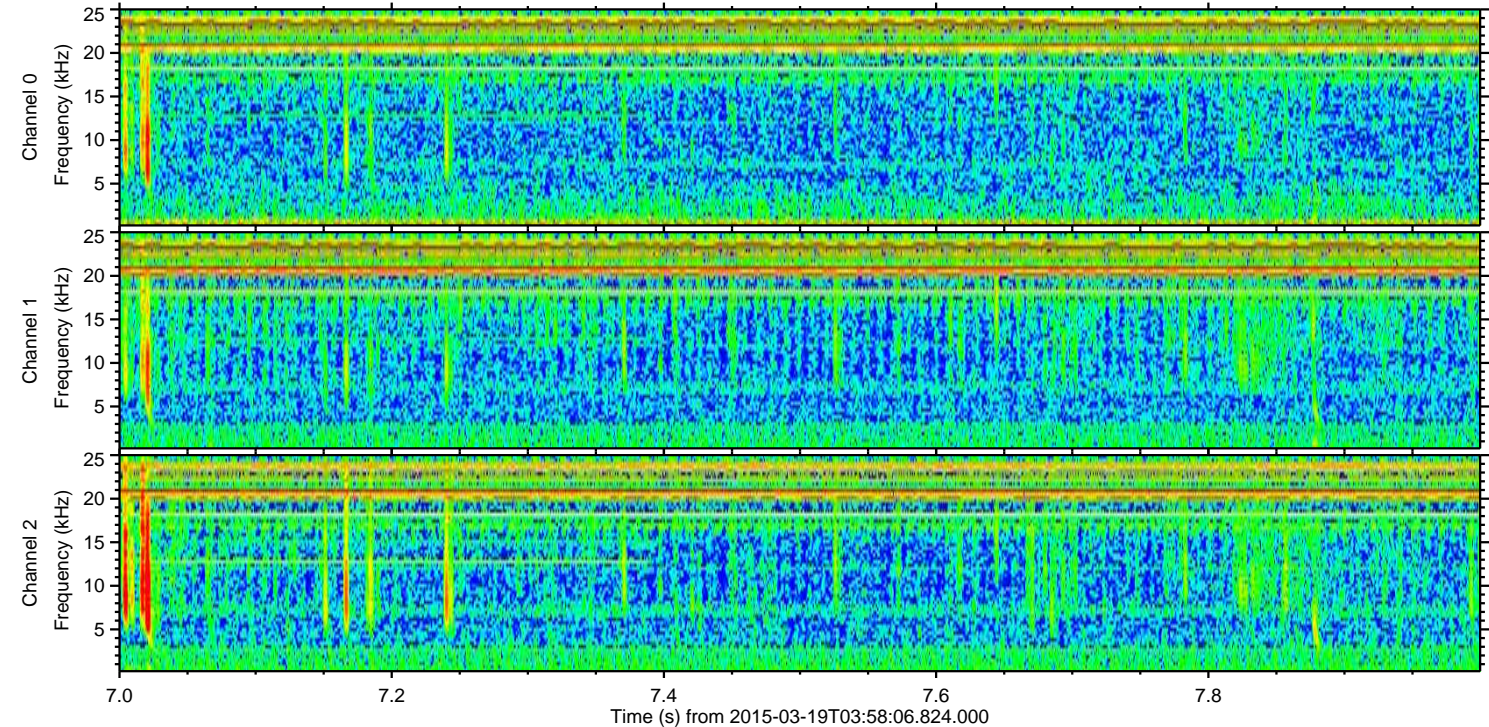
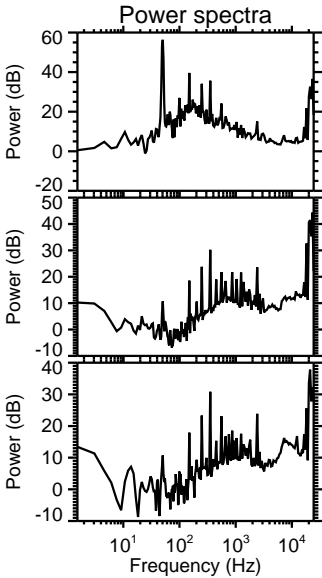
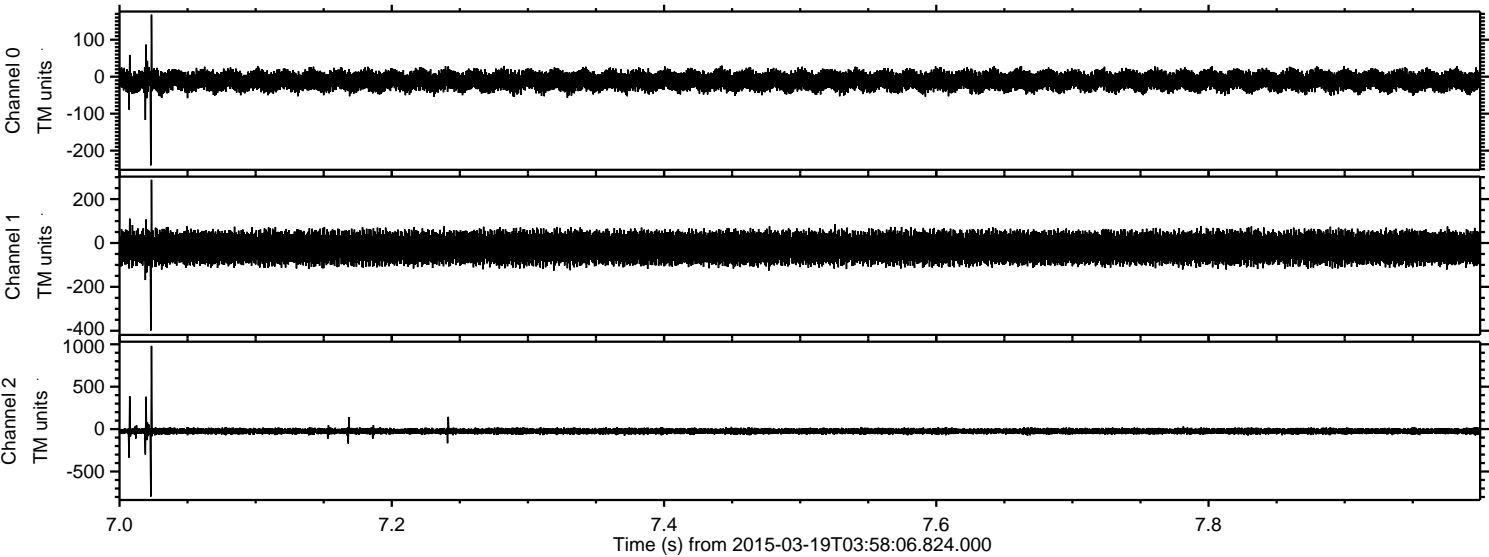
Processed Thu Mar 19 06:32:10 2015 by ELM ver.2012-10-06 from 001__elm20150319_035805__dat00.bin



Processed Thu Mar 19 06:32:11 2015 by ELM ver.2012-10-06 from 001__elm20150319_035805__dat00.bin



Processed Thu Mar 19 06:32:12 2015 by ELM ver.2012-10-06 from 001__elm20150319_035805__dat00.bin



Processed Thu Mar 19 06:32:13 2015 by ELM ver.2012-10-06 from 001__elm20150319_035805__dat00.bin

