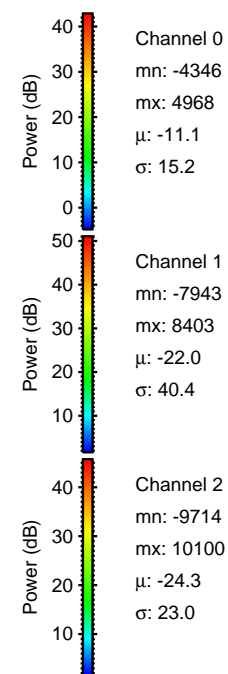
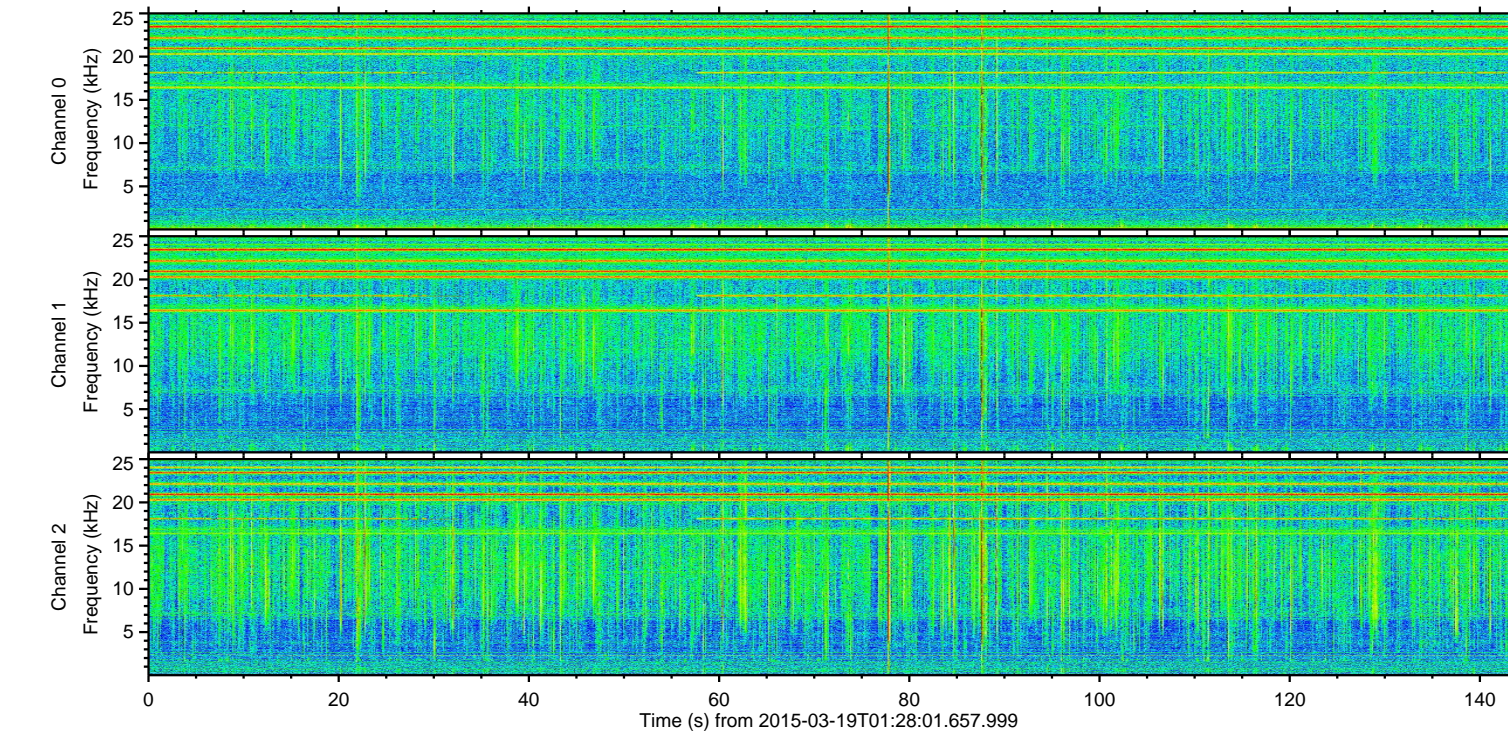
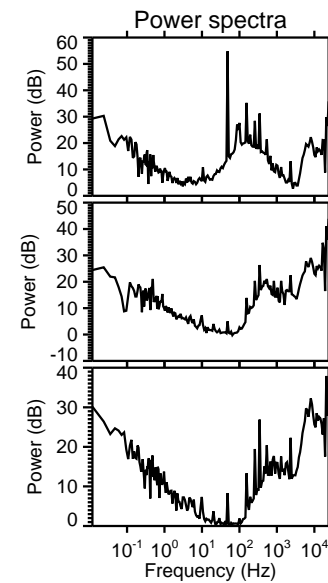
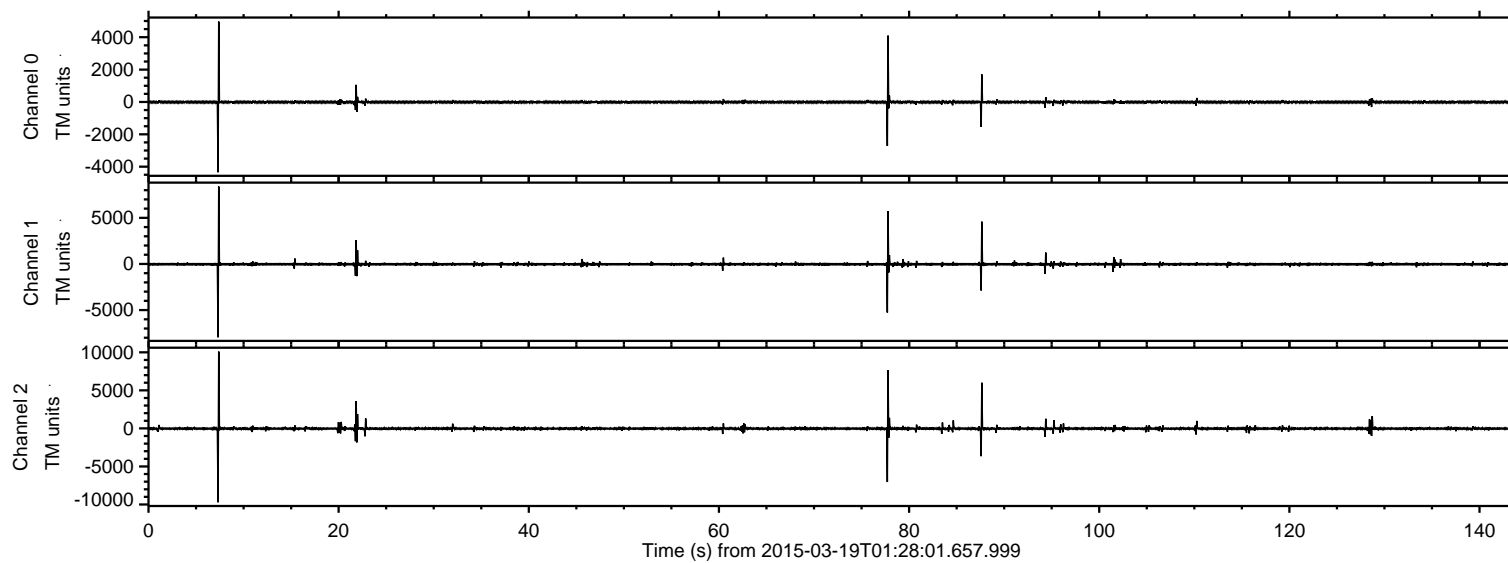


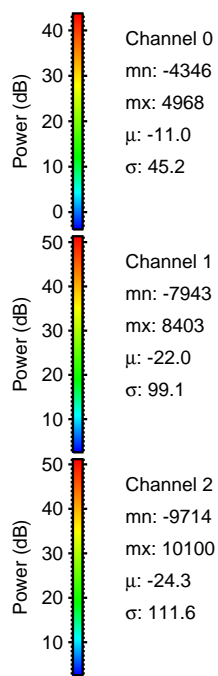
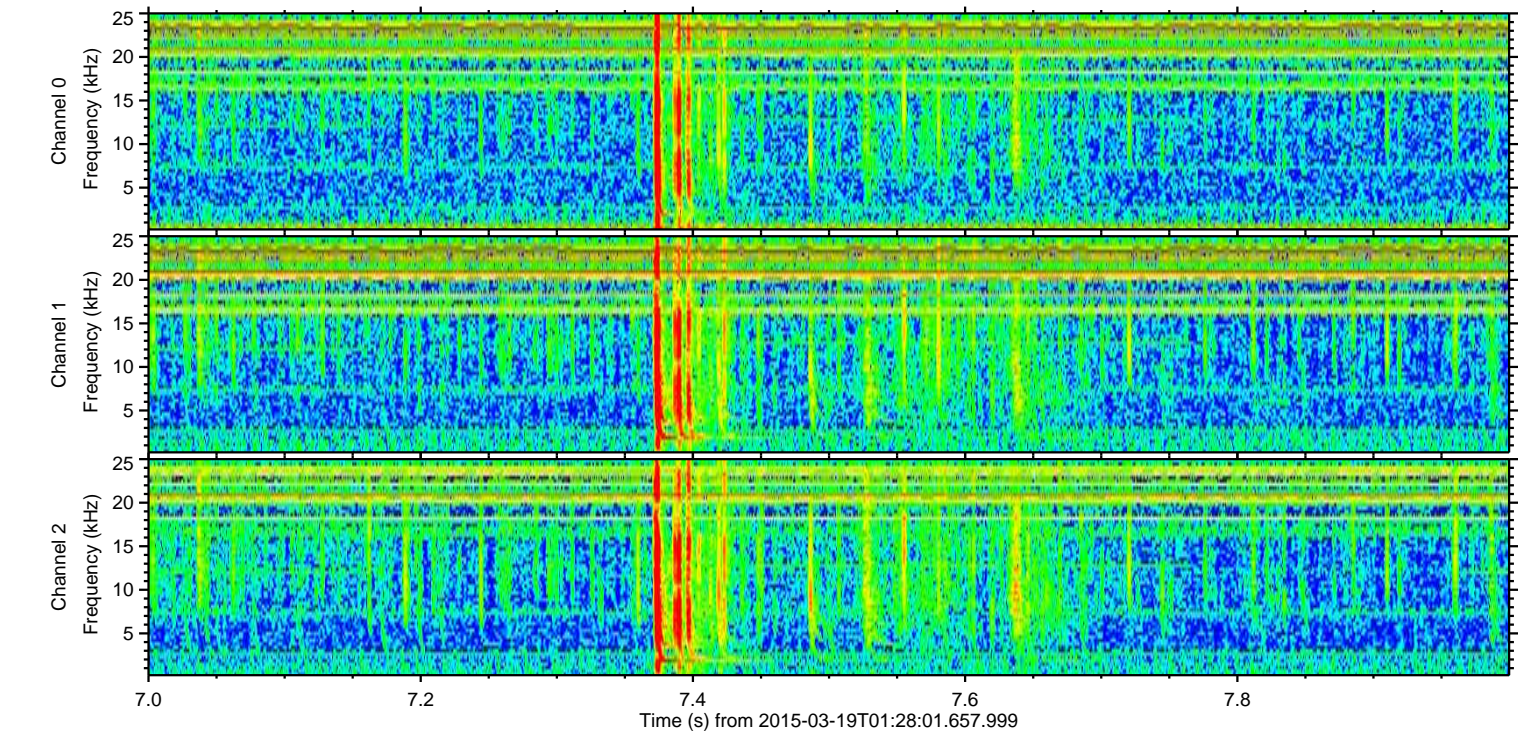
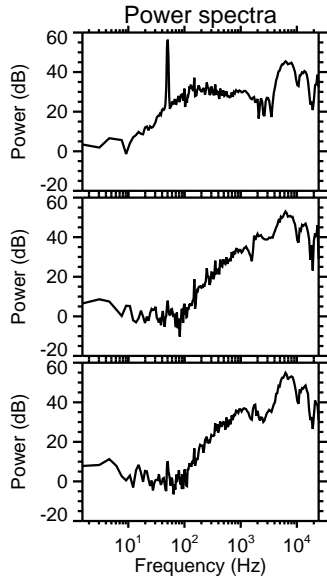
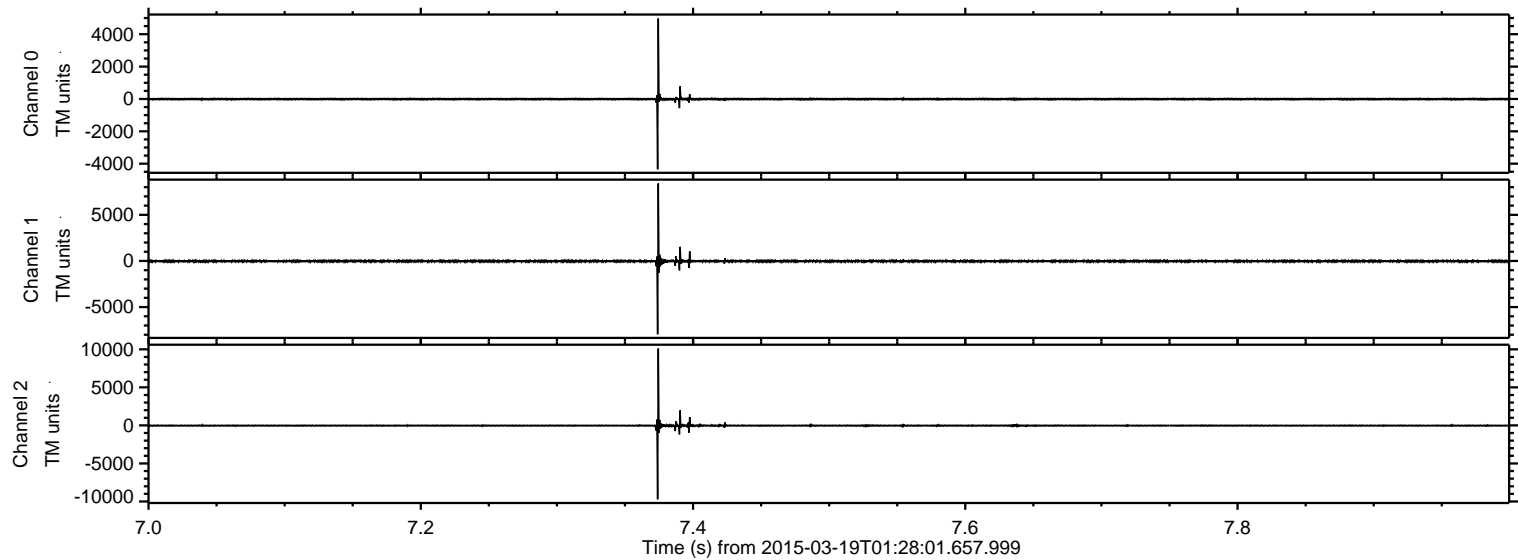
# ELMAVAN 3D WAVEFORMS (Measured data sampled at 50 kHz) 49693 packets of 144 samples from 2015-03-19T01:28:01.657.999.

Processed Thu Mar 19 02:34:50 2015 by ELM ver.2012-10-06 from 001\_\_elm20150319\_012800\_\_dat00.bin



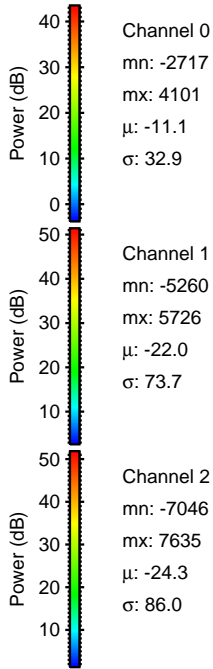
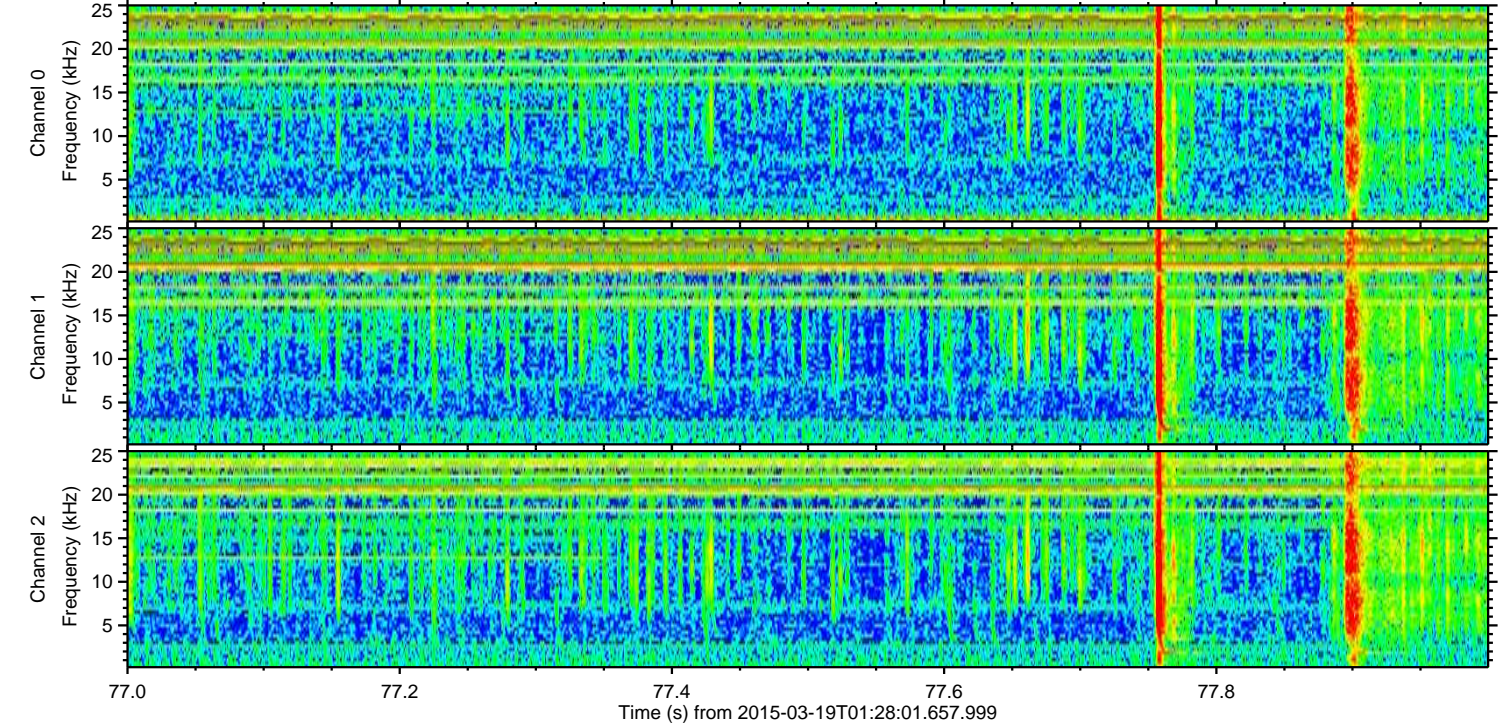
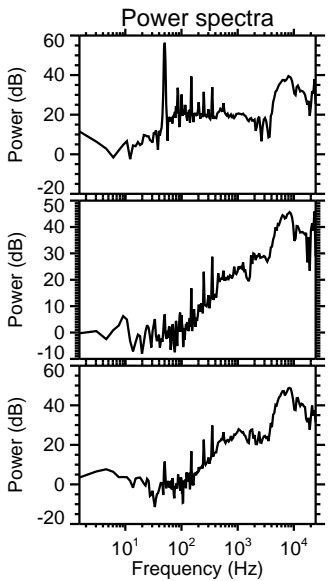
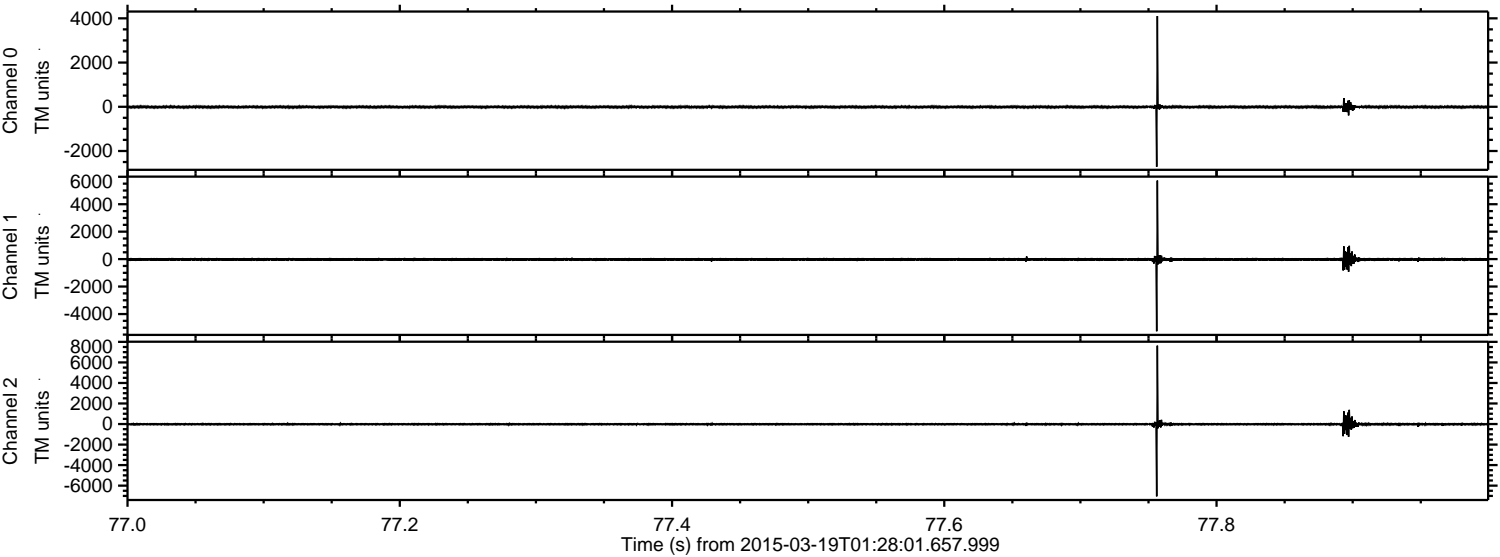


Processed Thu Mar 19 02:35:01 2015 by ELM ver.2012-10-06 from 001\_\_elm20150319\_012800\_\_dat00.bin



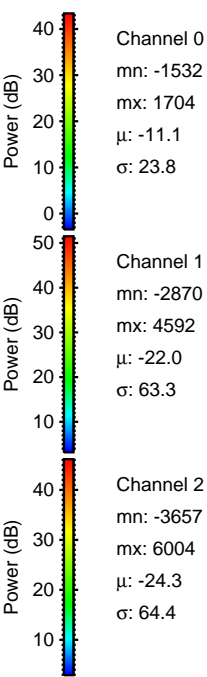
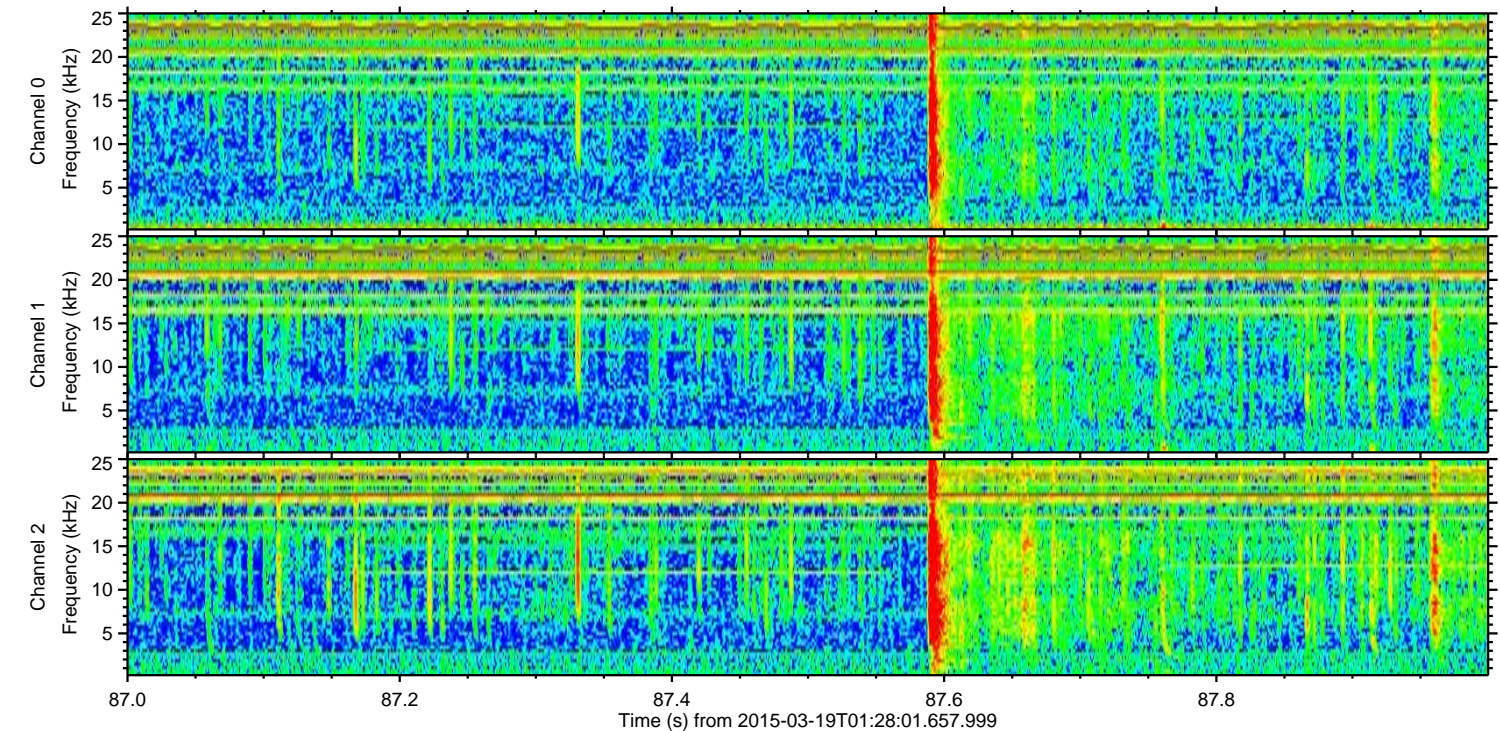
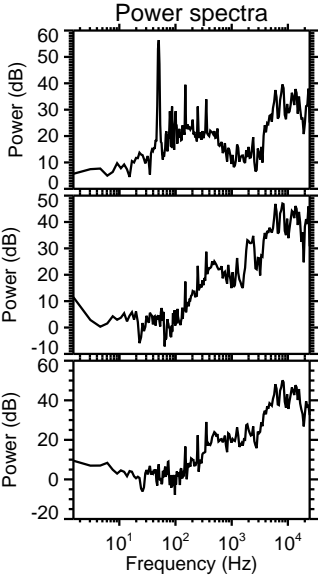
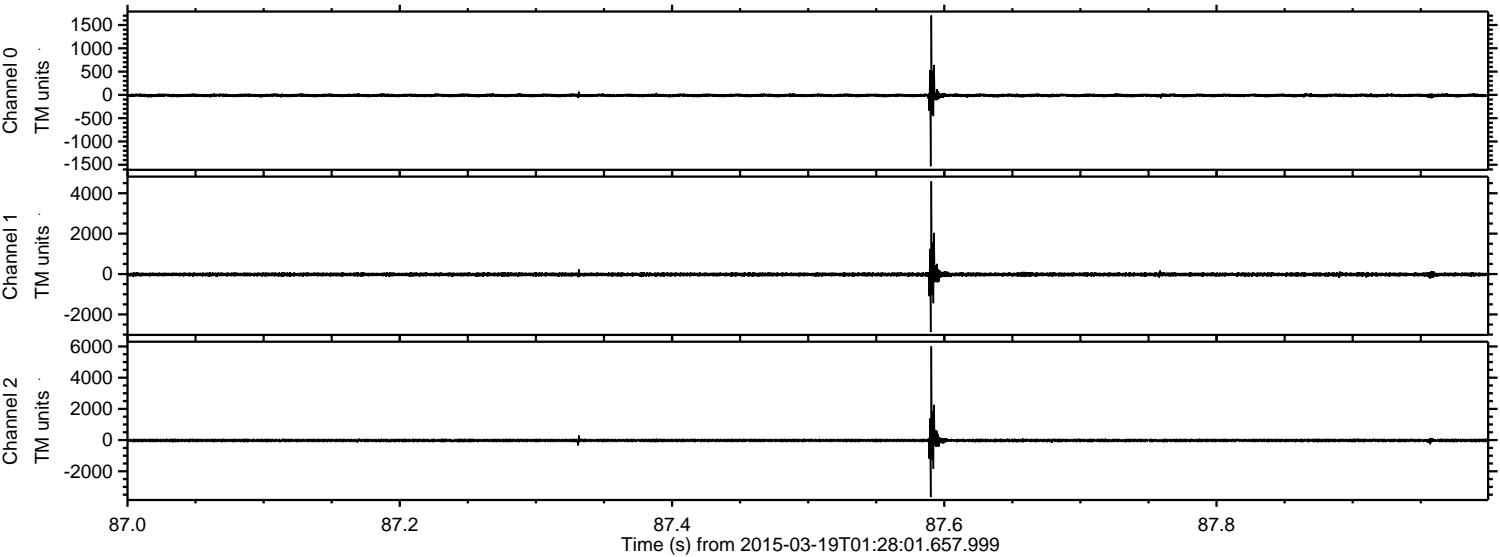


Processed Thu Mar 19 02:35:02 2015 by ELM ver.2012-10-06 from 001\_\_elm20150319\_012800\_\_dat00.bin





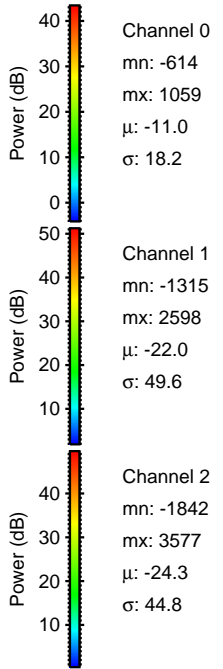
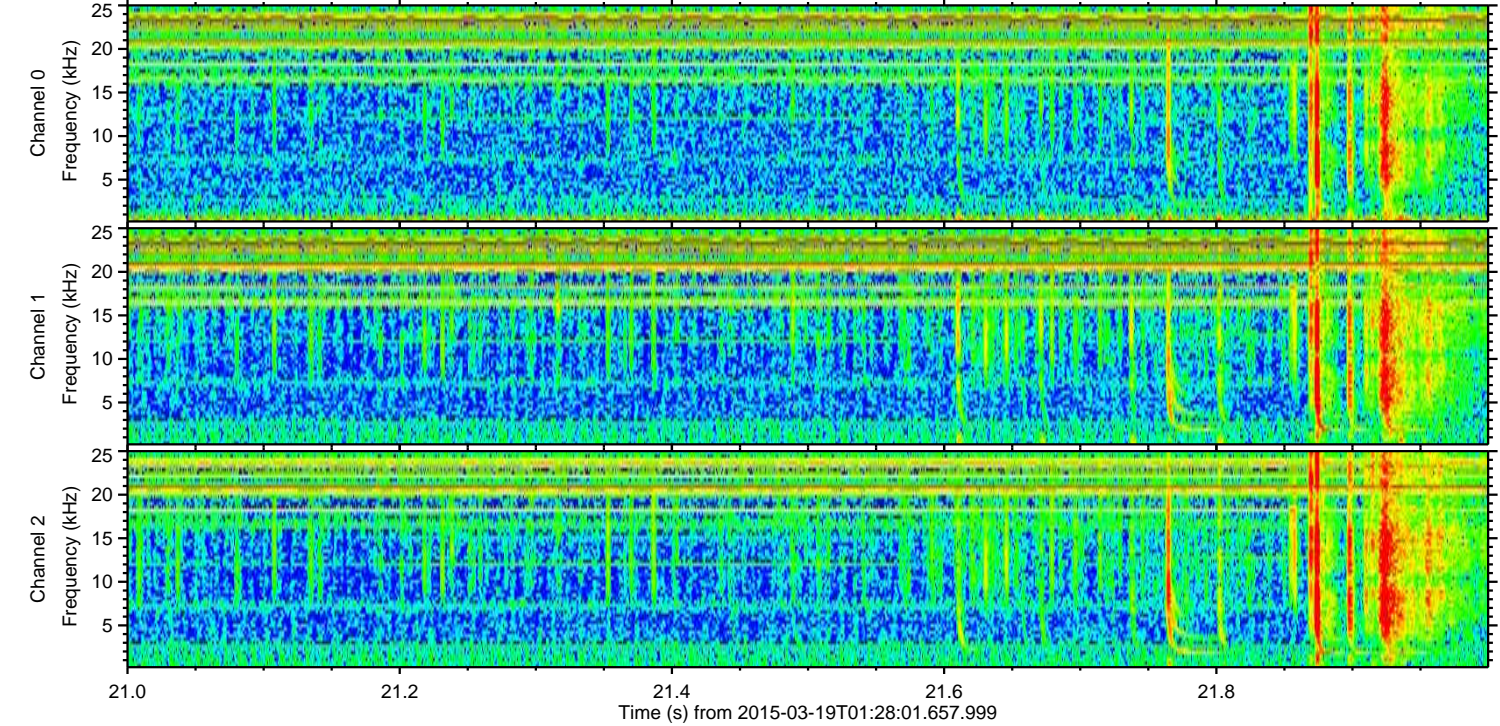
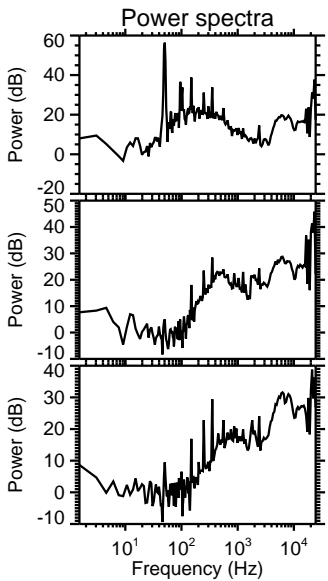
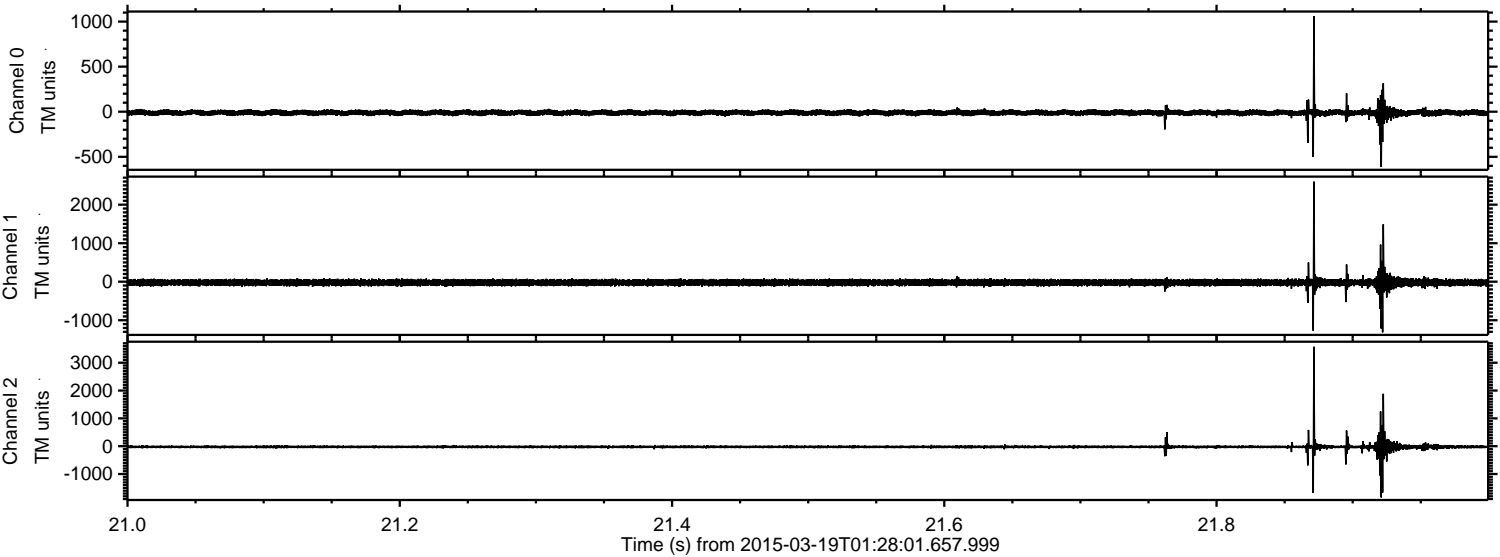
Processed Thu Mar 19 02:35:03 2015 by ELM ver.2012-10-06 from 001\_\_elm20150319\_012800\_\_dat00.bin





ELMAVAN 3D WAVEFORMS (Measured data sampled at 50 kHz) 49693 packets of 144 samples from 2015-03-19T01:28:01.657.999. Part 22/144

Processed Thu Mar 19 02:35:04 2015 by ELM ver.2012-10-06 from 001\_\_elm20150319\_012800\_\_dat00.bin



Channel 0  
mn: -614  
mx: 1059  
 $\mu$ : -11.0  
 $\sigma$ : 18.2

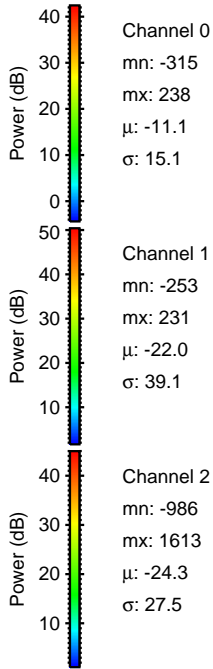
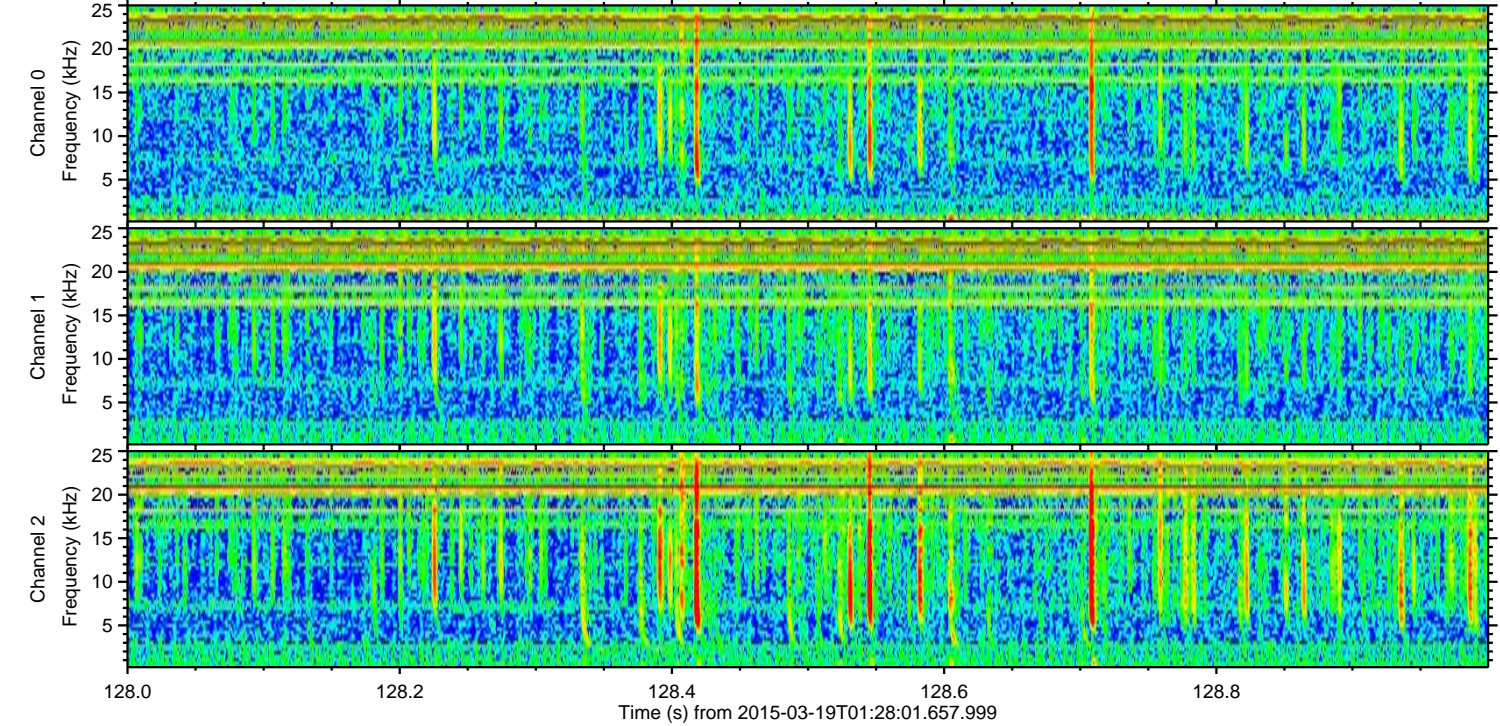
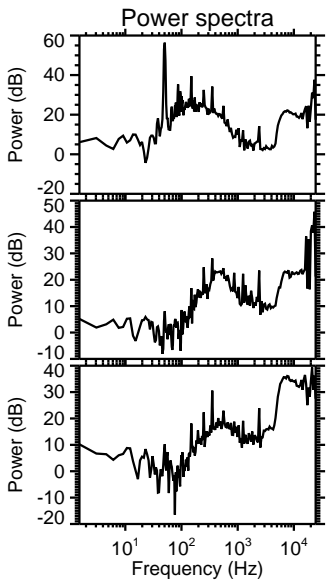
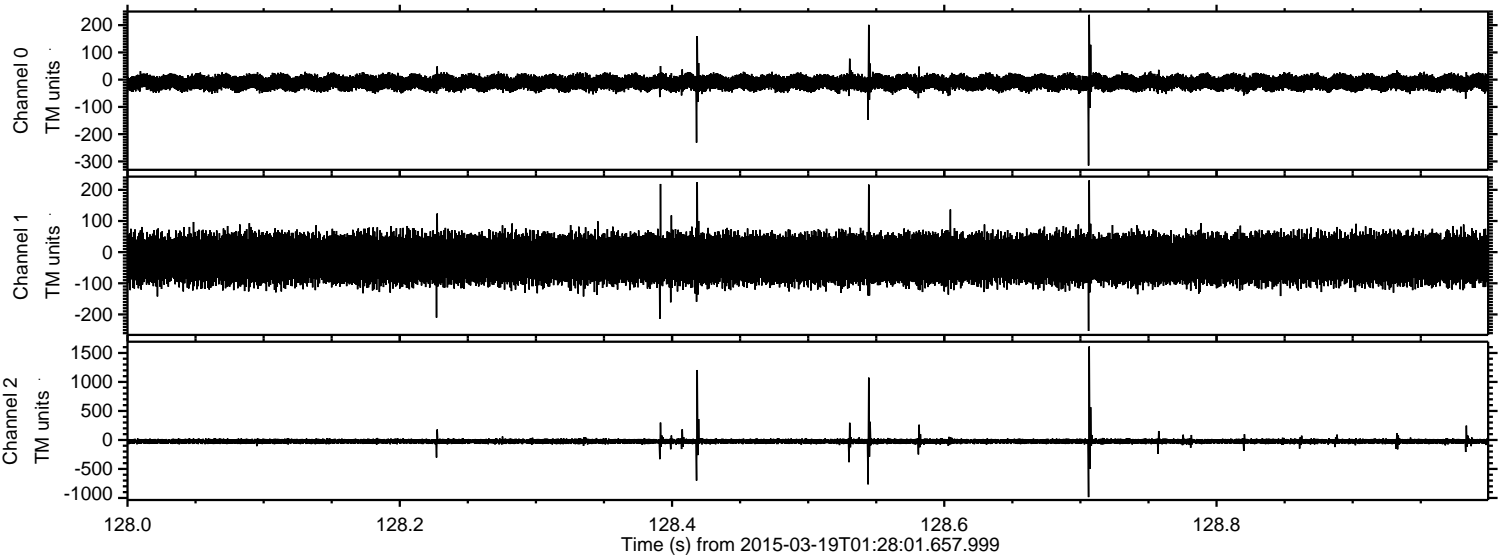
Channel 1  
mn: -1315  
mx: 2598  
 $\mu$ : -22.0  
 $\sigma$ : 49.6

Channel 2  
mn: -1842  
mx: 3577  
 $\mu$ : -24.3  
 $\sigma$ : 44.8



ELMAVAN 3D WAVEFORMS (Measured data sampled at 50 kHz) 49693 packets of 144 samples from 2015-03-19T01:28:01.657.999. Part 129/144

Processed Thu Mar 19 02:35:05 2015 by ELM ver.2012-10-06 from 001\_\_elm20150319\_012800\_\_dat00.bin



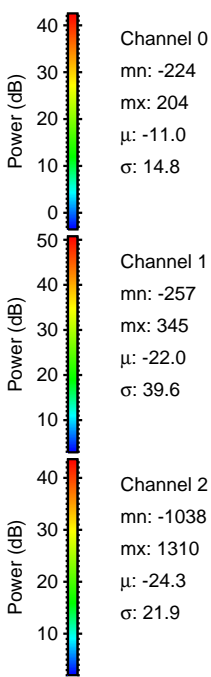
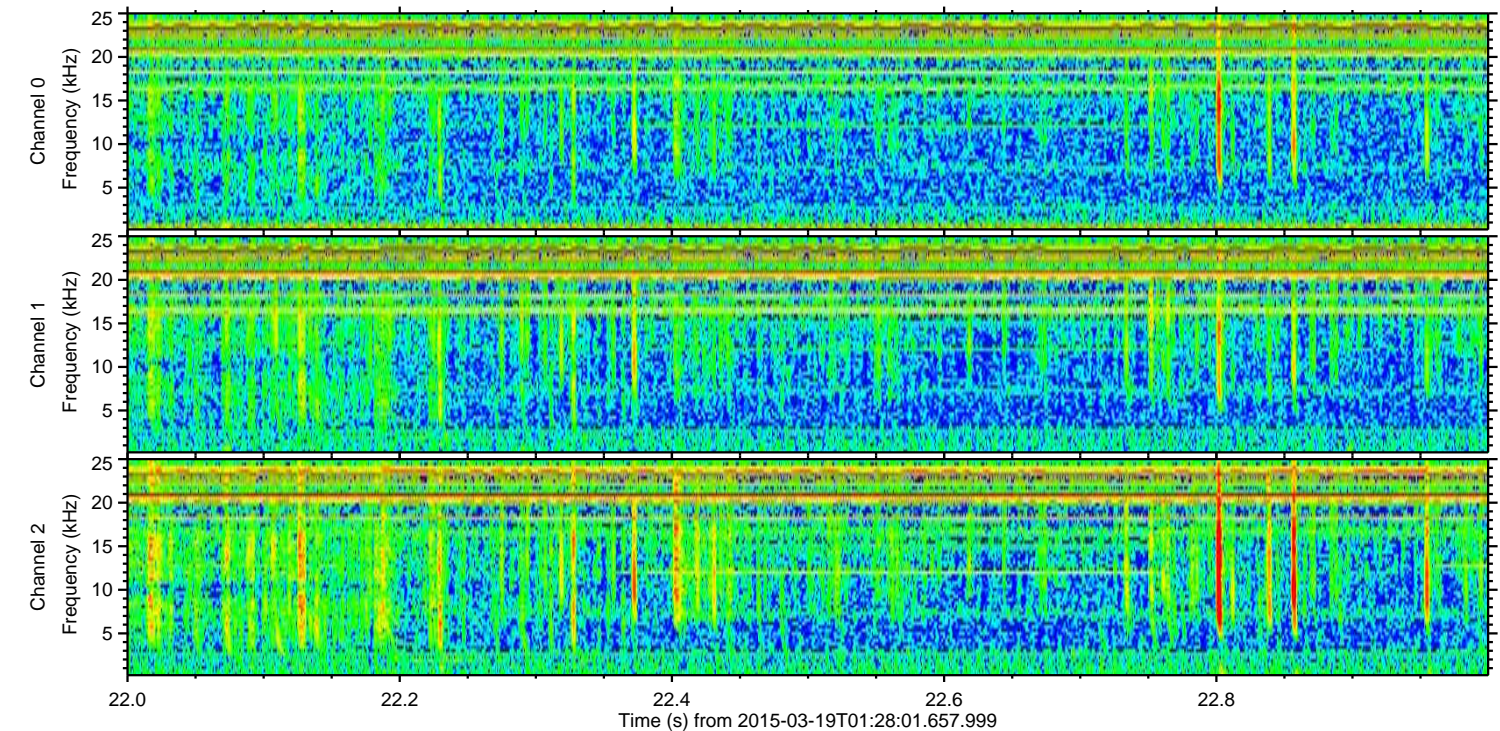
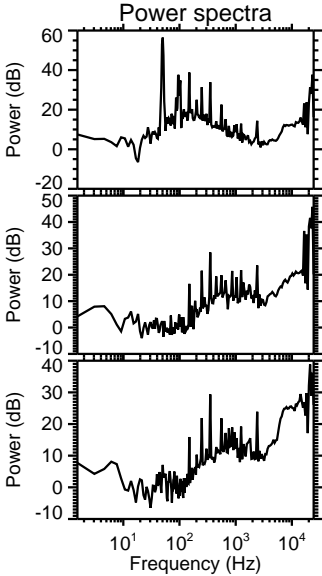
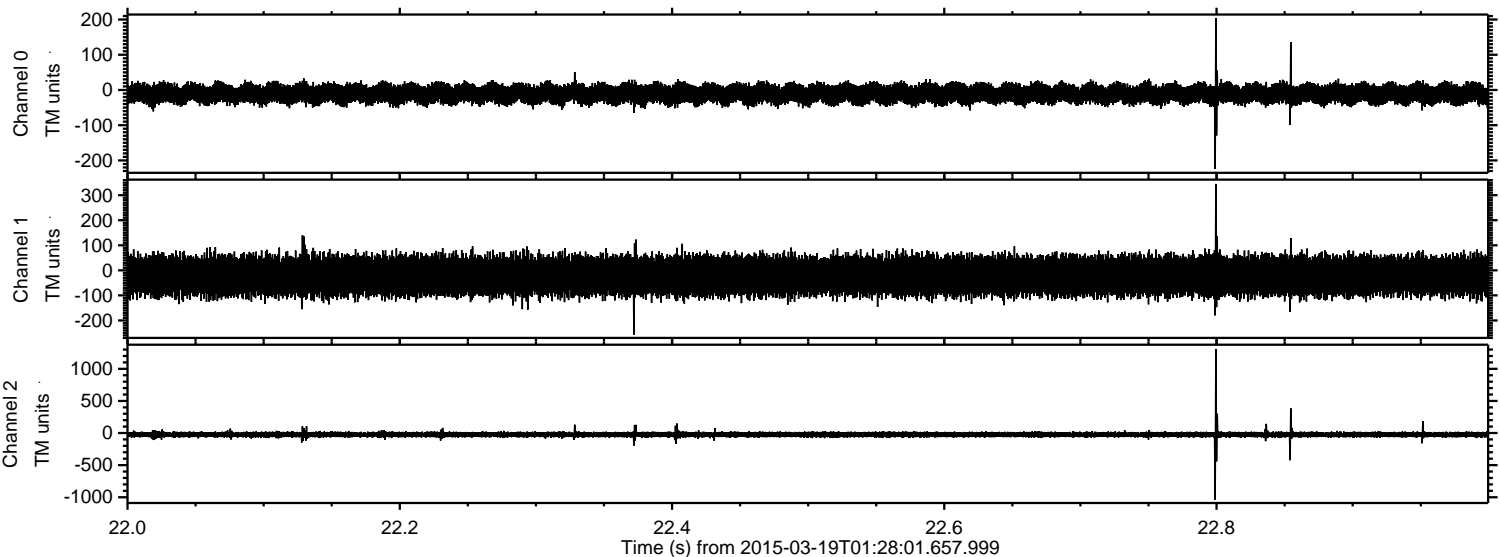
Channel 0  
mn: -315  
mx: 238  
 $\mu$ : -11.1  
 $\sigma$ : 15.1

Channel 1  
mn: -253  
mx: 231  
 $\mu$ : -22.0  
 $\sigma$ : 39.1

Channel 2  
mn: -986  
mx: 1613  
 $\mu$ : -24.3  
 $\sigma$ : 27.5

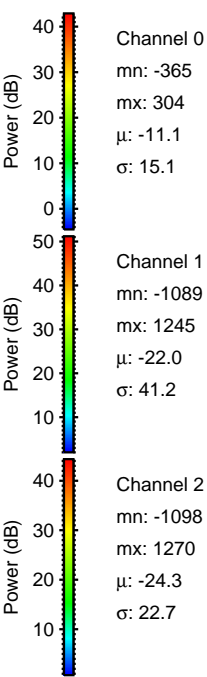
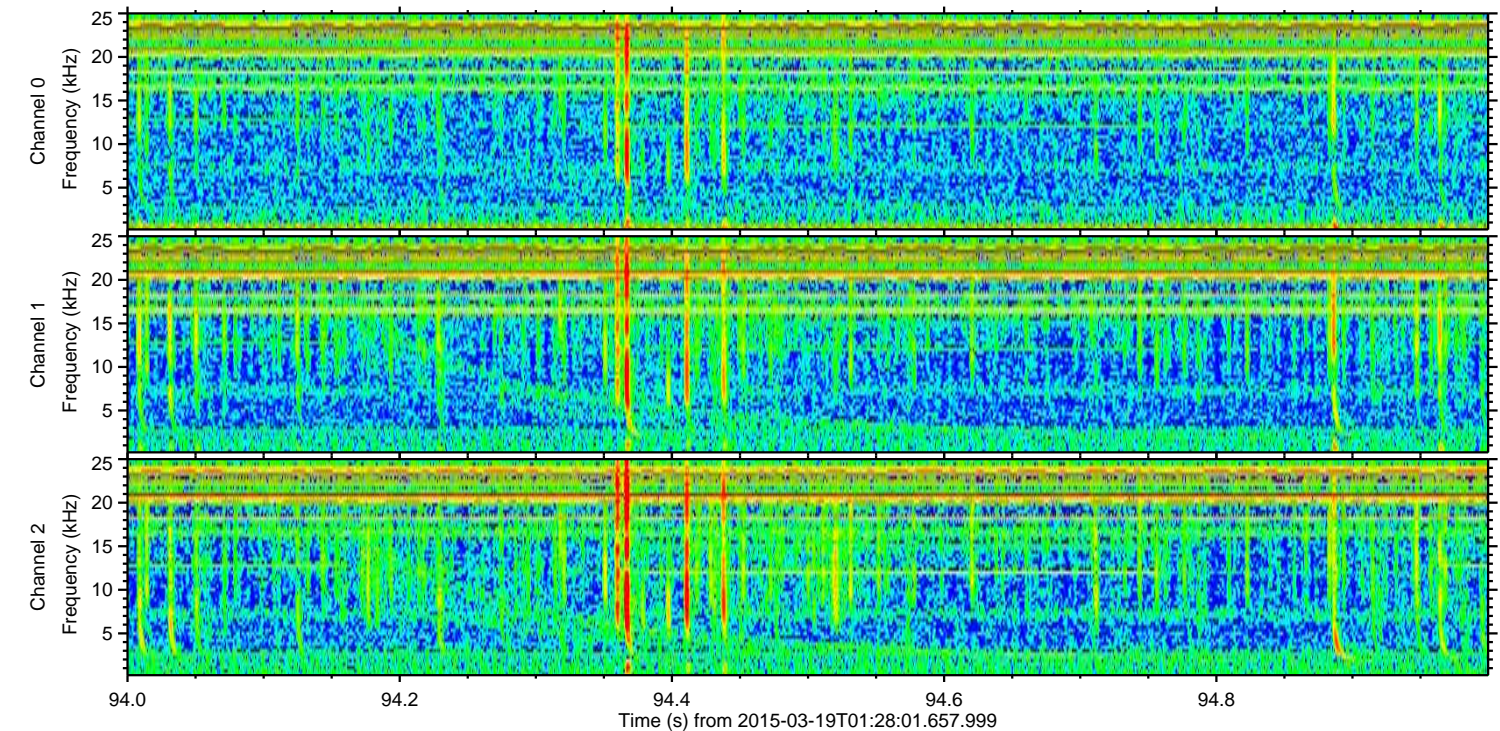
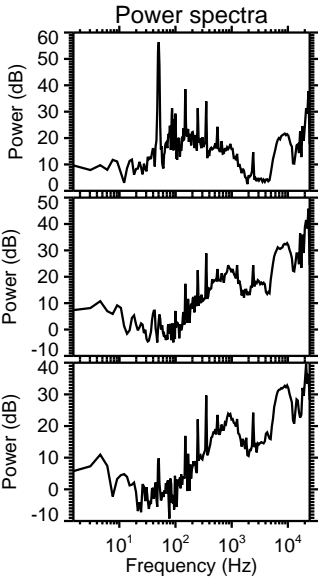
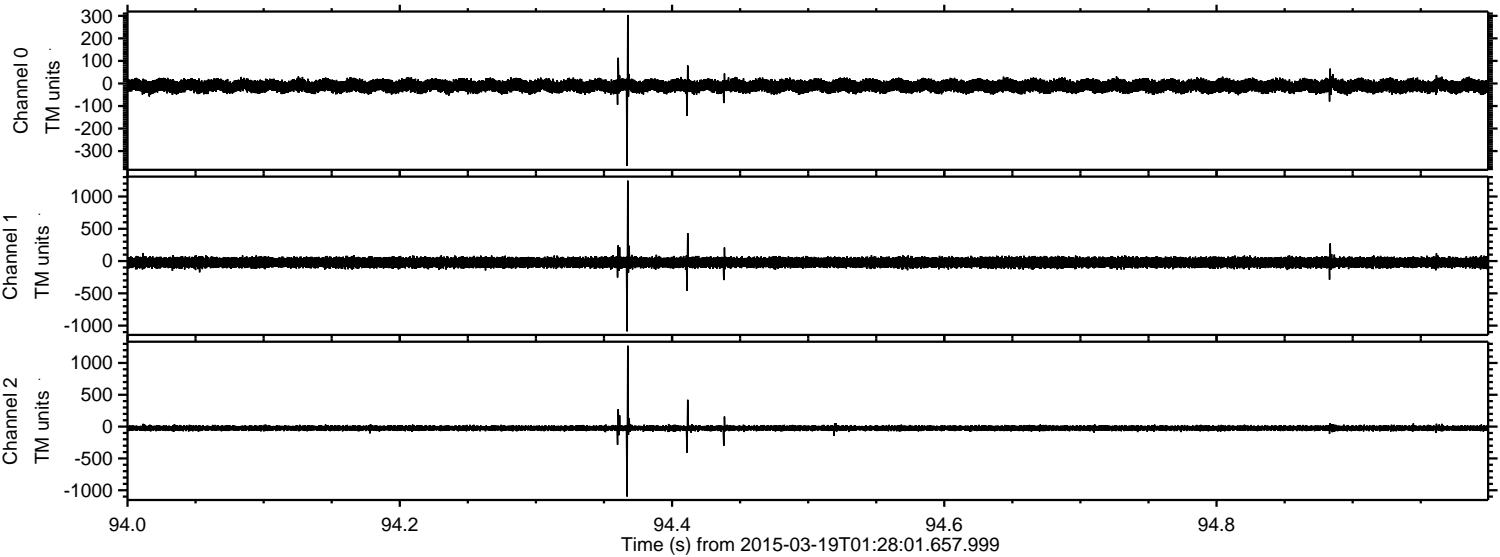


Processed Thu Mar 19 02:35:06 2015 by ELM ver.2012-10-06 from 001\_\_elm20150319\_012800\_\_dat00.bin





Processed Thu Mar 19 02:35:07 2015 by ELM ver.2012-10-06 from 001\_\_elm20150319\_012800\_\_dat00.bin



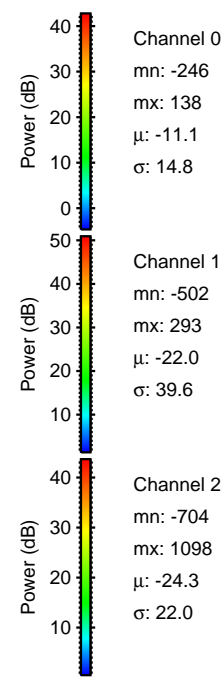
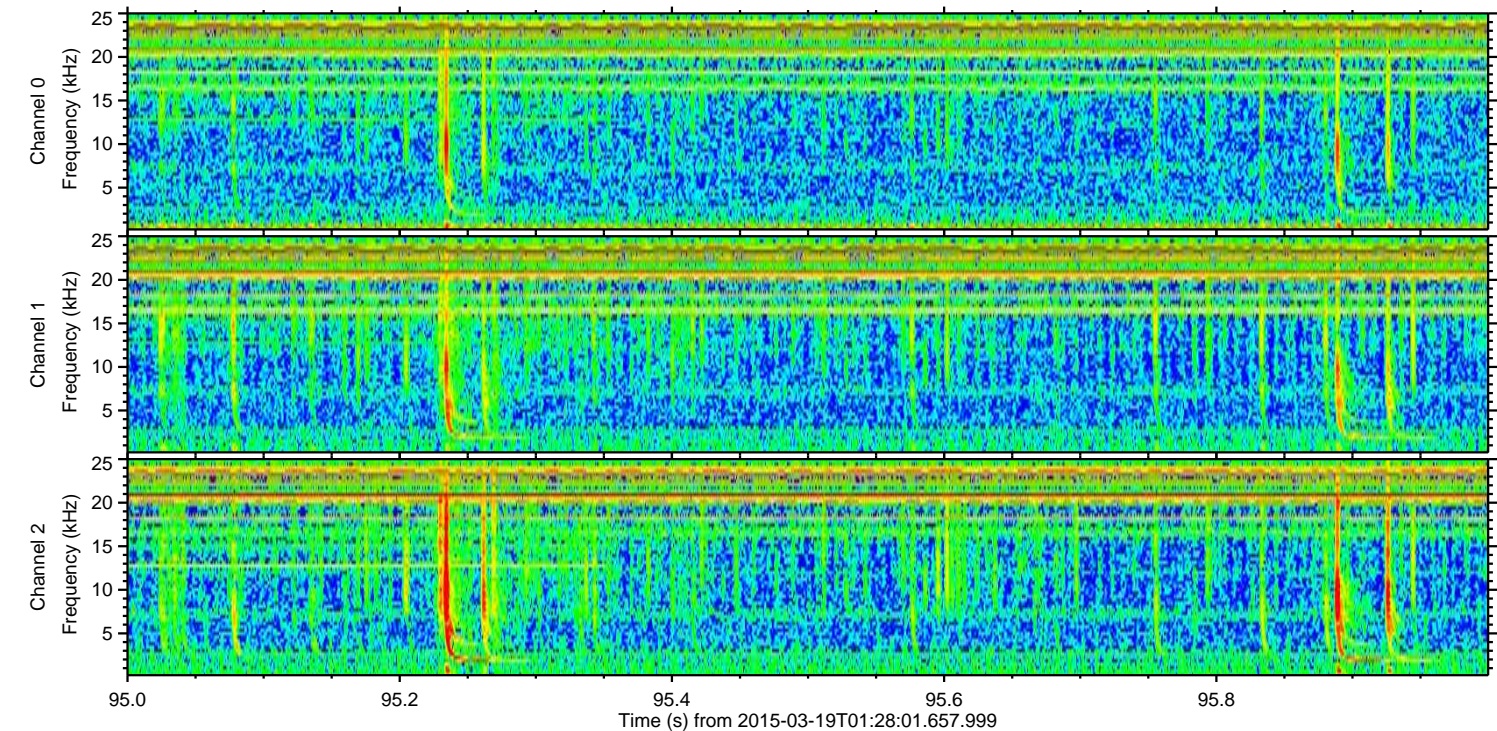
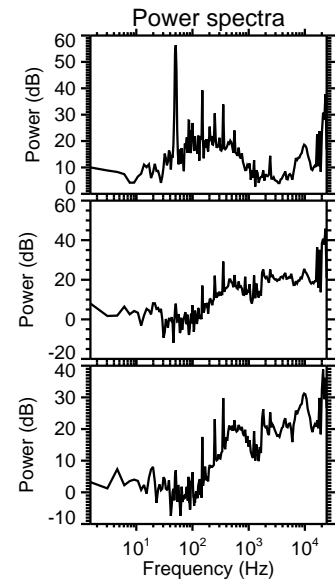
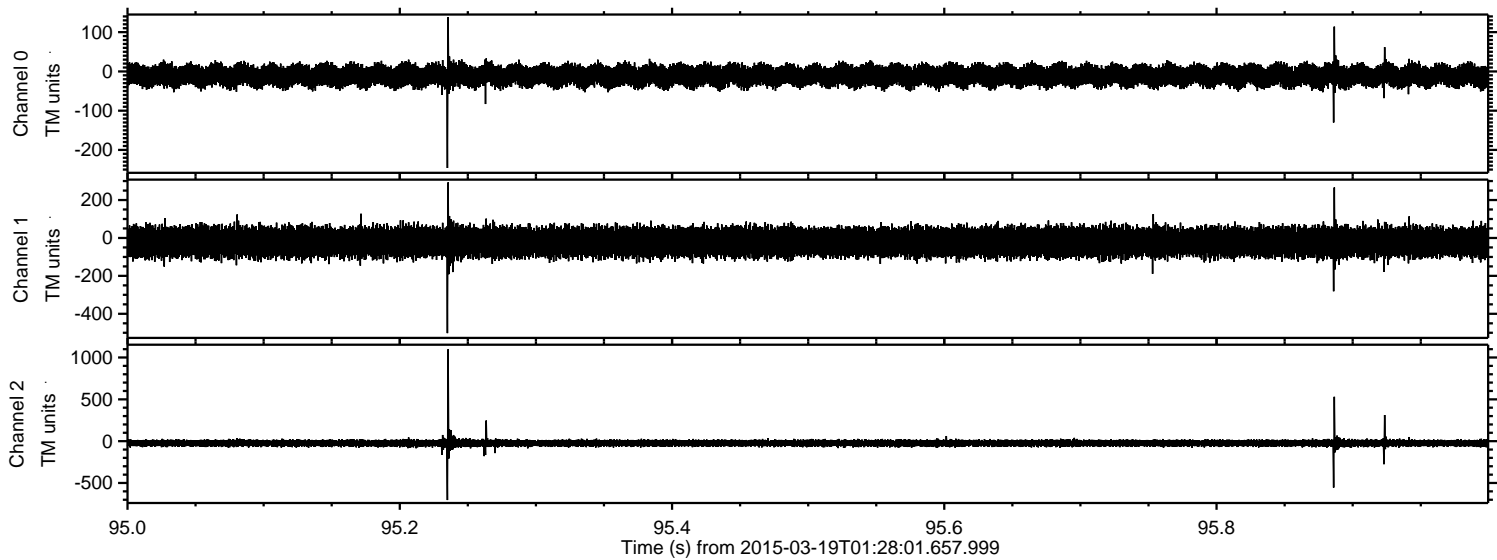
Channel 0  
mn: -365  
mx: 304  
 $\mu$ : -11.1  
 $\sigma$ : 15.1

Channel 1  
mn: -1089  
mx: 1245  
 $\mu$ : -22.0  
 $\sigma$ : 41.2

Channel 2  
mn: -1098  
mx: 1270  
 $\mu$ : -24.3  
 $\sigma$ : 22.7



Processed Thu Mar 19 02:35:08 2015 by ELM ver.2012-10-06 from 001\_\_elm20150319\_012800\_\_dat00.bin



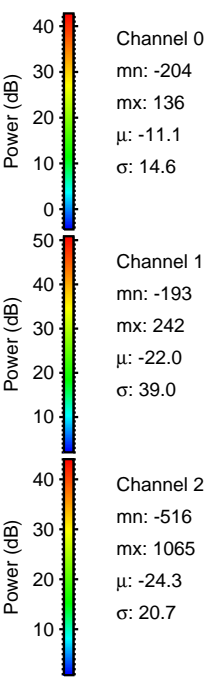
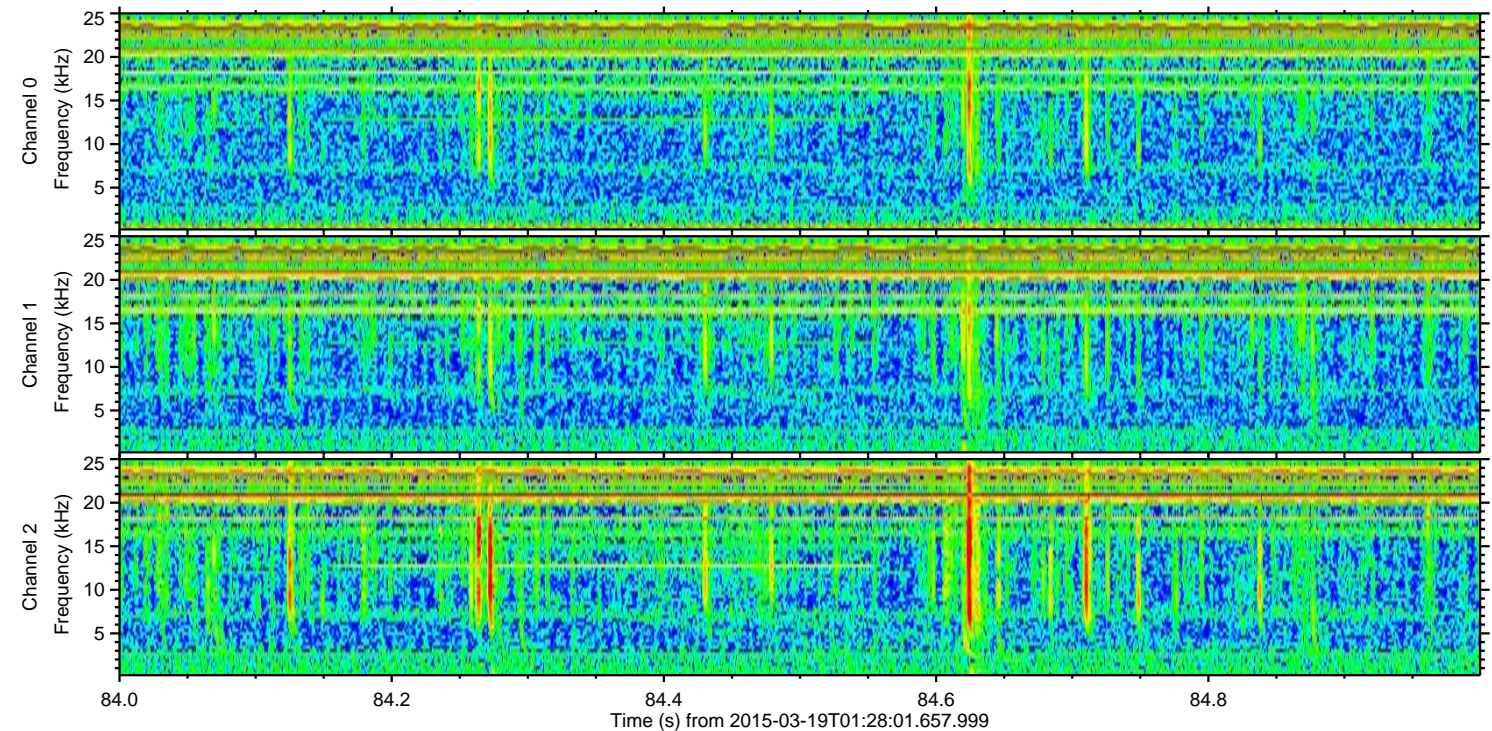
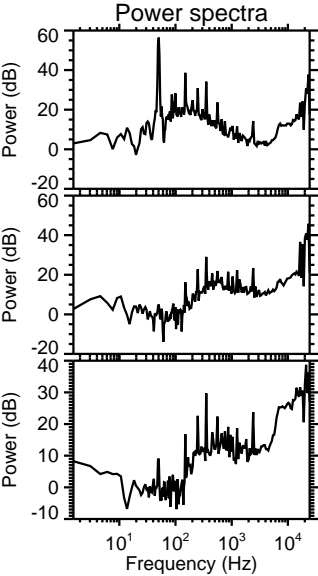
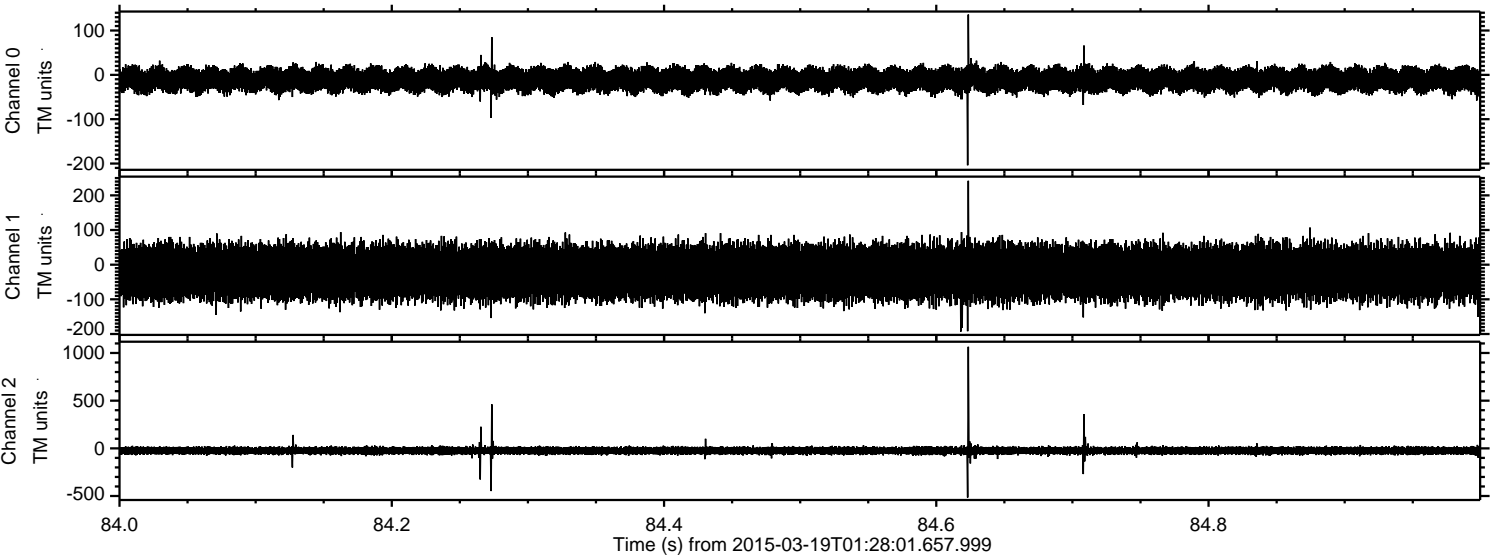
Channel 0  
mn: -246  
mx: 138  
 $\mu$ : -11.1  
 $\sigma$ : 14.8

Channel 1  
mn: -502  
mx: 293  
 $\mu$ : -22.0  
 $\sigma$ : 39.6

Channel 2  
mn: -704  
mx: 1098  
 $\mu$ : -24.3  
 $\sigma$ : 22.0



Processed Thu Mar 19 02:35:09 2015 by ELM ver.2012-10-06 from 001\_\_elm20150319\_012800\_\_dat00.bin





Processed Thu Mar 19 02:35:10 2015 by ELM ver.2012-10-06 from 001\_\_elm20150319\_012800\_\_dat00.bin

